

Data Path : Z:\VOASRV\HPCHEM1\MSVOA N\DATA\VN112818\
 Data File : VN052545.D
 Acq On : 29 Nov 2018 3:27
 Operator : MD\SY
 Sample : J6120-02DL 20X
 Misc : 5.00mL/MSVOA N/WATER
 ALS Vial : 43 Sample Multiplier: 28

Instrument :
 MSVOA_N
 ClientSampleId :
 14B-2DL

Quant Time: Nov 29 07:11:57 2018
 Quant Method : Z:\VOASRV\HPCHEM1\MSVOA N\METHODS\624N112618W.M
 Quant Title : METHOD 624 VOLATILE ORGANIC ANALYSIS
 QLast Update : Tue Nov 27 00:48:33 2018
 Response via : Initial Calibration

Internal Standards	R.T.	QIon	Response	Conc	Units	Dev(Min)
1) Bromochloromethane	7.20	128	174952	30.00	ug/l	0.00
28) 1,4-Difluorobenzene	8.59	114	1007114	30.00	ug/l	0.00
57) Chlorobenzene-d5	11.41	117	836464	30.00	ug/l	0.00

System Monitoring Compounds

27) 1,2-Dichloroethane-d4	8.03	65	355237	29.80	ug/l	0.00
Spiked Amount	30.000	Range	50 - 169	Recovery	=	99.33%
60) 4-Bromofluorobenzene	12.40	95	335658	26.25	ug/l	0.00
Spiked Amount	30.000	Range	56 - 143	Recovery	=	87.50%
63) Toluene-d8	10.09	98	1167473	30.10	ug/l	0.00
Spiked Amount	30.000	Range	66 - 137	Recovery	=	100.33%

Target Compounds

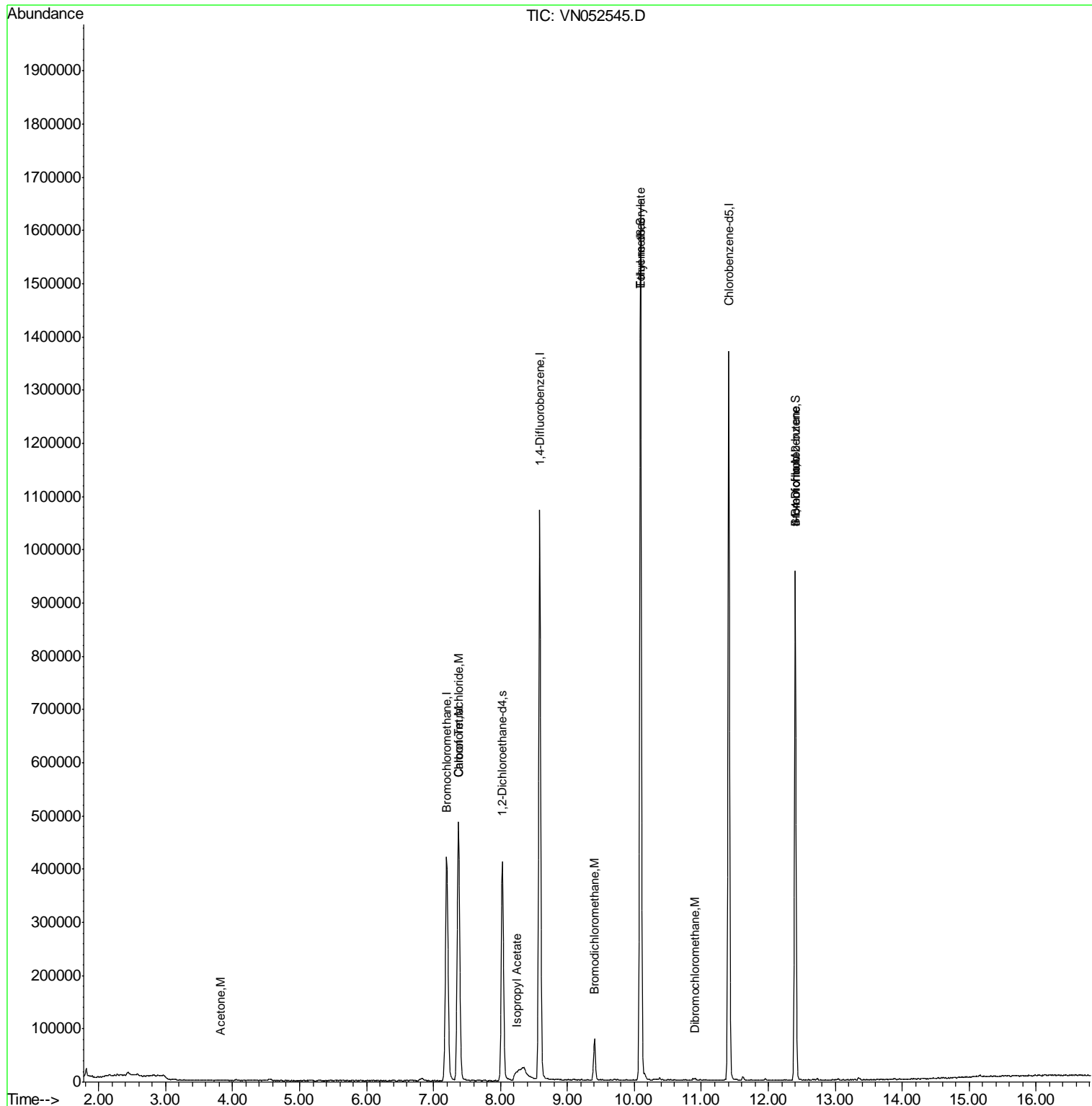
					Ovalue	
15) Acetone	3.82	58	515	0.560	ug/l	# 7
25) Chloroform	7.37	83	537576	27.191	ug/l	99
33) Carbon Tetrachloride	7.37	117	6380	0.456	ug/l	91
41) Bromodichloromethane	9.40	83	53782	3.634	ug/l	# 99
44) Isopropyl Acetate	8.23	43	12553	0.818	ug/l	# 58
51) Ethyl methacrylate	10.09	69	3273	0.274	ug/l	84
53) Dibromochloromethane	10.90	129	2563	0.245	ug/l	97
56) Bromoform	12.41	173	2248	0.329	ug/l	# 1
77) t-1,4-Dichloro-2-butene	12.40	75	160624	56.948	ug/l	# 11

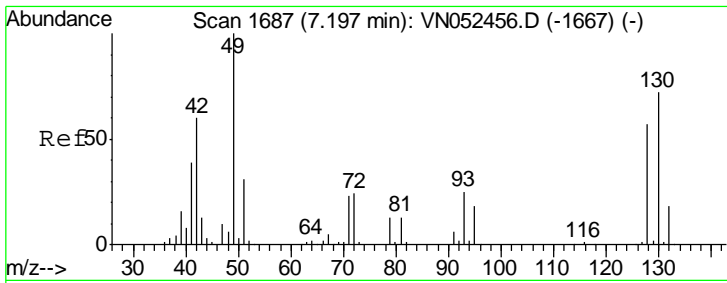
(#) = qualifier out of range (m) = manual integration (+) = signals summed

Data Path : Z:\VOASRV\HPCHEM1\MSVOA N\DATA\VN112818\
 Data File : VN052545.D
 Acq On : 29 Nov 2018 3:27
 Operator : MD\SY
 Sample : J6120-02DL 20X
 Misc : 5.00mL/MSVOA N/WATER
 ALS Vial : 43 Sample Multiplier: 28

Instrument :
 MSVOA_N
 ClientSampleId :
 14B-2DL

Quant Time: Nov 29 07:11:57 2018
 Quant Method : Z:\VOASRV\HPCHEM1\MSVOA N\METHODS\624N112618W.M
 Quant Title : METHOD 624 VOLATILE ORGANIC ANALYSIS
 QLast Update : Tue Nov 27 00:48:33 2018
 Response via : Initial Calibration

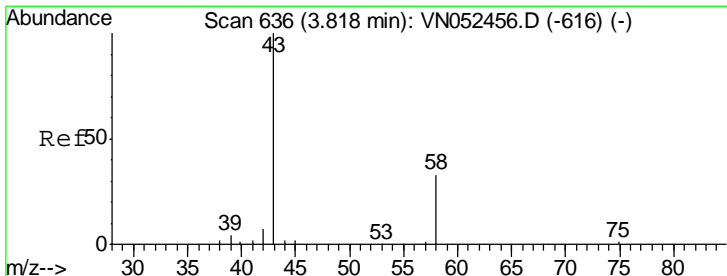
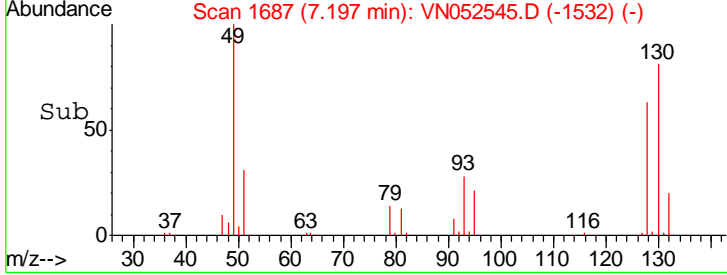
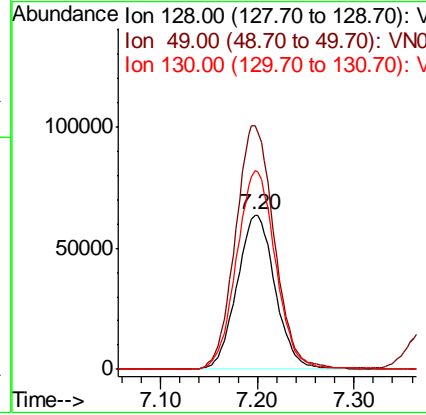
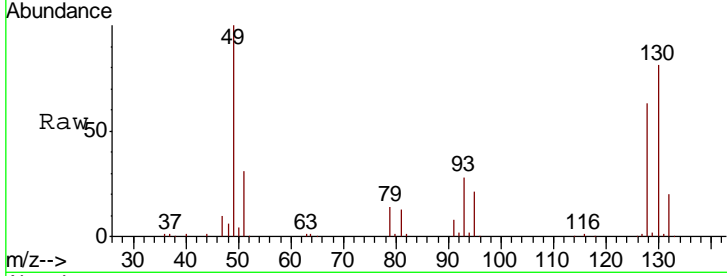




#1
 Bromochloromethane
 Concen: 30.000 ug/l
 RT: 7.20 min Scan# 1687
 Delta R.T. -0.00 min
 Lab File: VN052545.D
 Acq: 29 Nov 2018 3:27

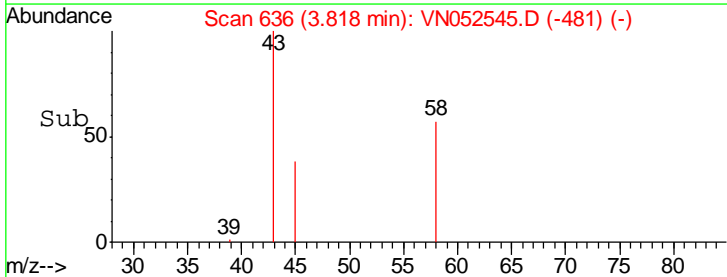
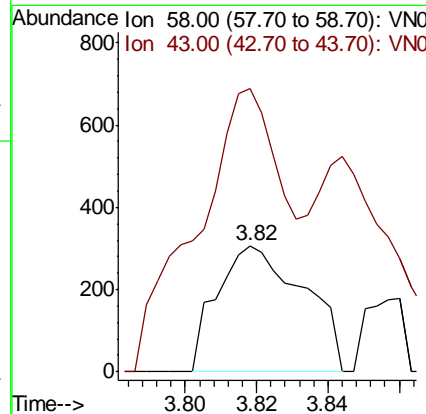
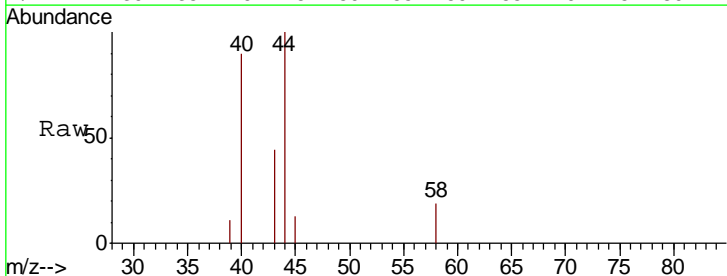
Instrument :
 MSVOA_N
ClientSampled :
 14B-2DL

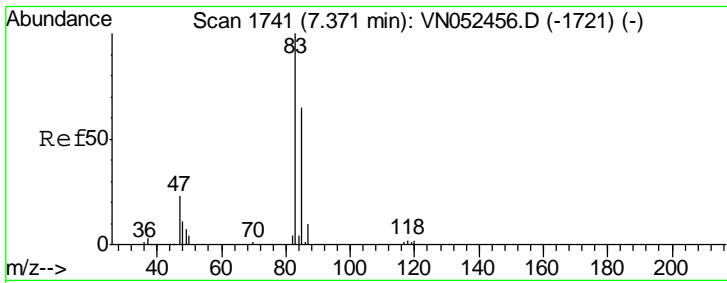
Tgt Ion	Resp	Lower	Upper
128	174952		
Ion Ratio			
128	100		
49	160.3	0.0	431.8
130	131.6	0.0	317.0



#15
 Acetone
 Concen: 0.560 ug/l
 RT: 3.82 min Scan# 636
 Delta R.T. -0.00 min
 Lab File: VN052545.D
 Acq: 29 Nov 2018 3:27

Tgt Ion	Resp	Lower	Upper
58	515		
Ion Ratio			
58	100		
43	120.9	243.6	365.4#

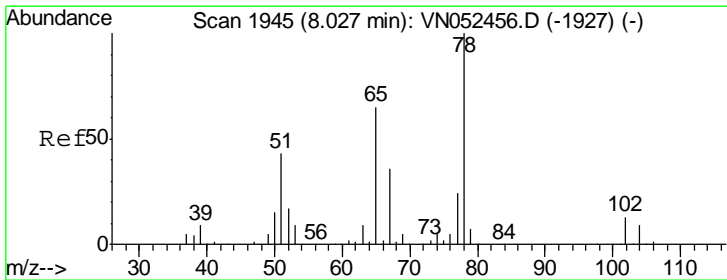
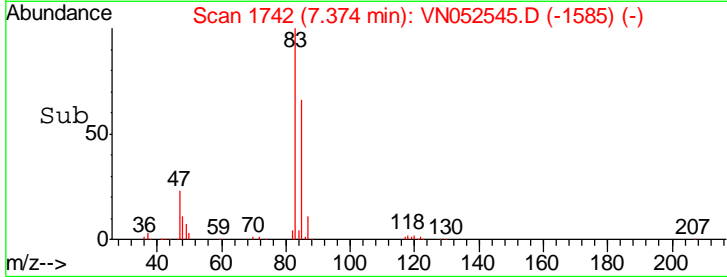
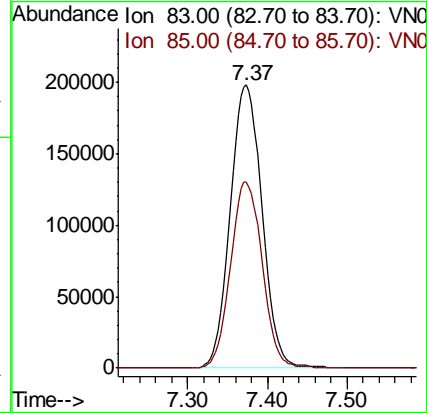
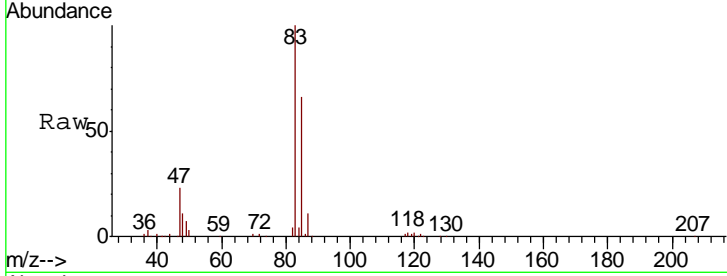




#25
 Chloroform
 Concen: 27.191 ug/l
 RT: 7.37 min Scan# 1742
 Delta R.T. 0.00 min
 Lab File: VN052545.D
 Acq: 29 Nov 2018 3:27

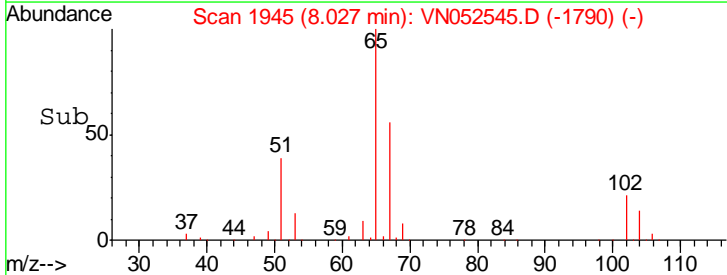
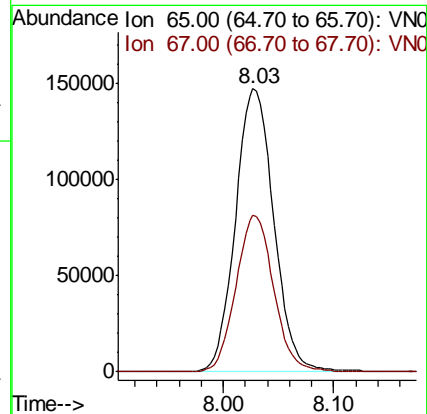
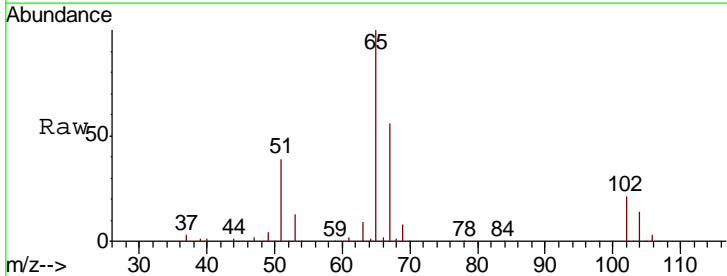
Instrument :
 MSVOA_N
 ClientSampled :
 14B-2DL

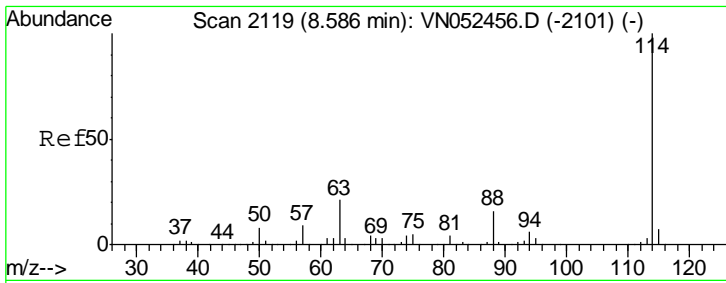
Tgt Ion: 83 Resp: 537576
 Ion Ratio Lower Upper
 83 100
 85 65.6 51.7 77.5



#27
 1,2-Dichloroethane-d4
 Concen: Below ug/l
 RT: 8.03 min Scan# 1945
 Delta R.T. -0.00 min
 Lab File: VN052545.D
 Acq: 29 Nov 2018 3:27

Tgt Ion: 65 Resp: 355237
 Ion Ratio Lower Upper
 65 100
 67 54.5 44.6 66.8

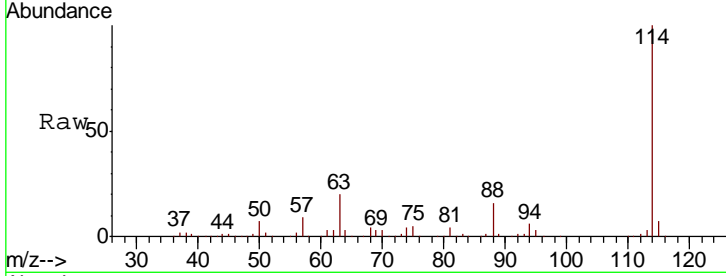




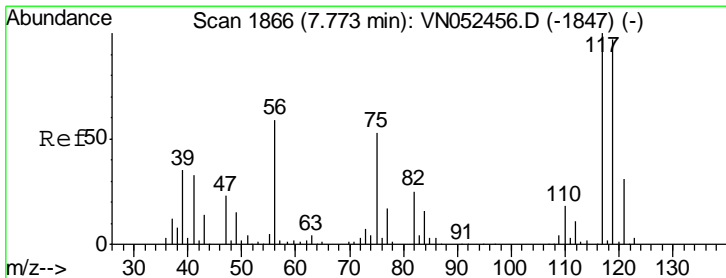
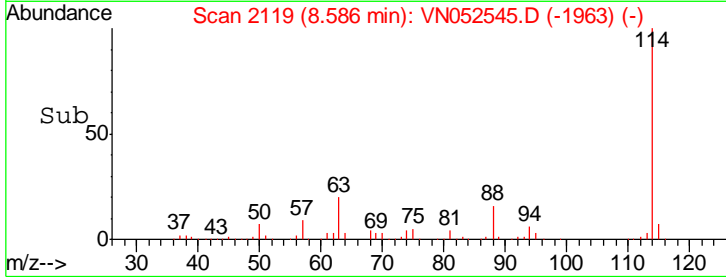
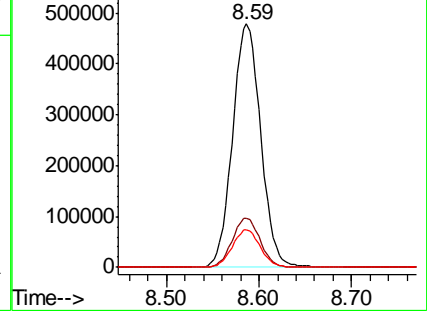
#28
 1,4-Difluorobenzene
 Concen: 30.000 ug/l
 RT: 8.59 min Scan# 2119
 Delta R.T. -0.00 min
 Lab File: VN052545.D
 Acq: 29 Nov 2018 3:27

Instrument :
 MSVOA_N
 ClientSampled :
 14B-2DL

Tgt Ion	Resp	Lower	Upper
114	100		
63	20.1	16.9	25.3
88	15.5	12.8	19.2

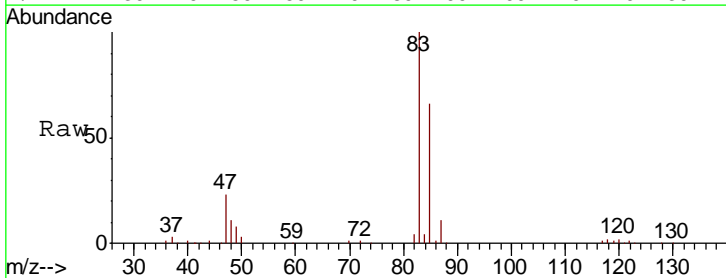


Abundance Ion 114.00 (113.70 to 114.70): V
 Ion 63.00 (62.70 to 63.70): VN
 Ion 88.00 (87.70 to 88.70): VN

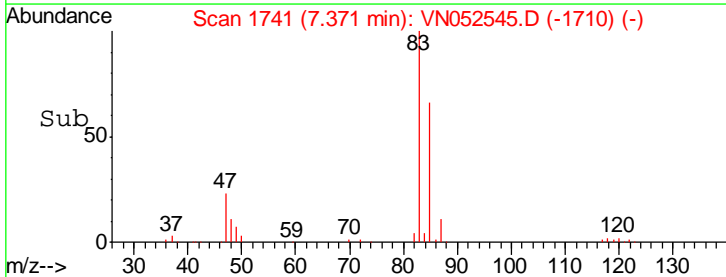
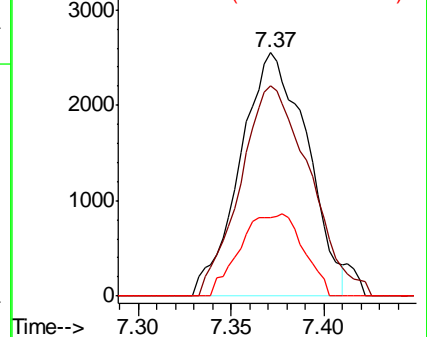


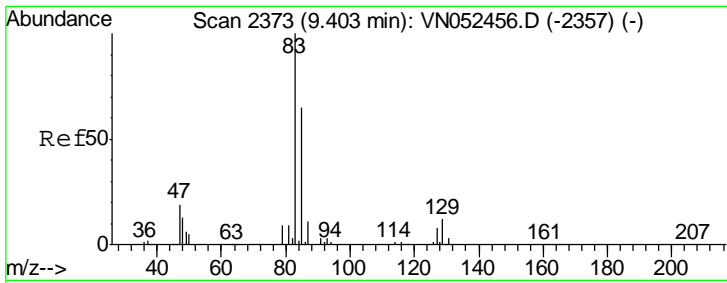
#33
 Carbon Tetrachloride
 Concen: 0.456 ug/l
 RT: 7.37 min Scan# 1741
 Delta R.T. -0.40 min
 Lab File: VN052545.D
 Acq: 29 Nov 2018 3:27

Tgt Ion	Resp	Lower	Upper
117	100		
119	86.2	77.3	115.9
121	32.3	24.9	37.3



Abundance Ion 117.00 (116.70 to 117.70): V
 Ion 119.00 (118.70 to 119.70): V
 Ion 121.00 (120.70 to 121.70): V



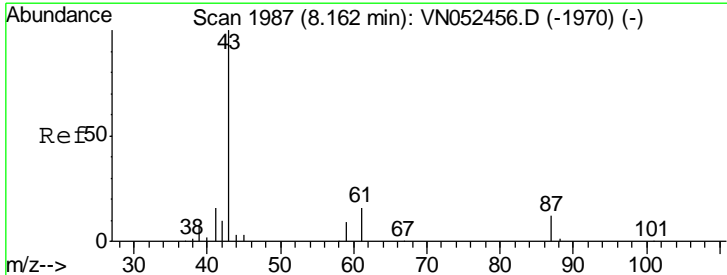
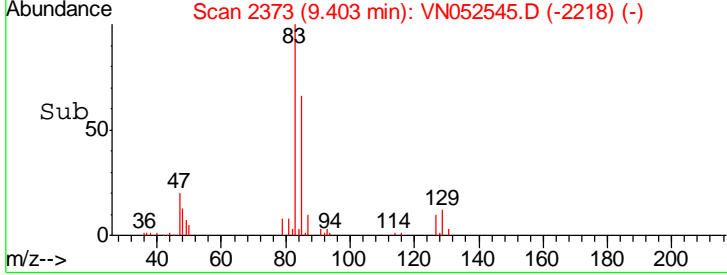
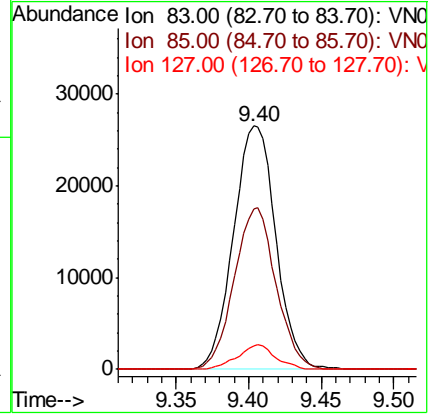
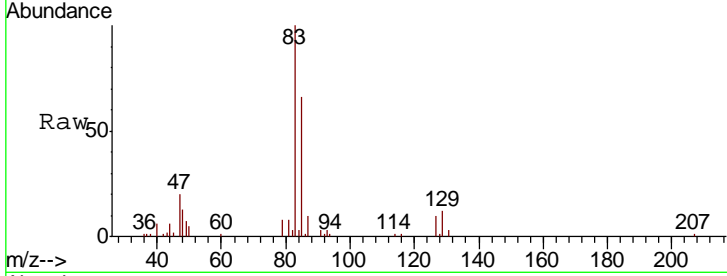


#41

Bromodichloromethane
 Concen: 3.634 ug/l
 RT: 9.40 min Scan# 2373
 Delta R.T. -0.00 min
 Lab File: VN052545.D
 Acq: 29 Nov 2018 3:27

Instrument :
 MSVOA_N
 ClientSampled :
 14B-2DL

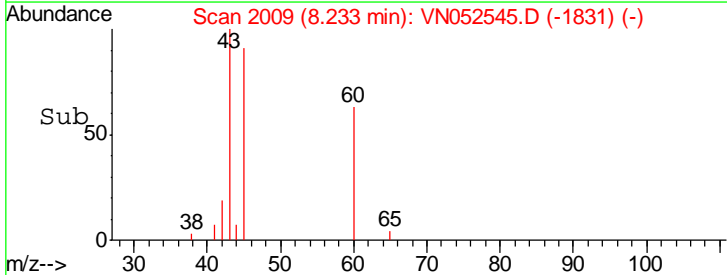
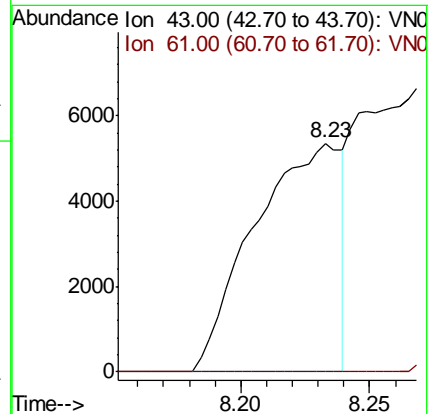
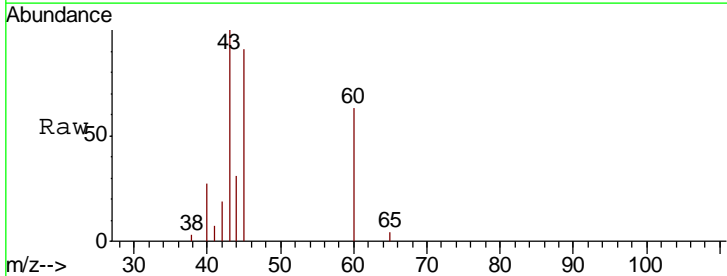
Tgt Ion	Resp	Lower	Upper
83	100		
85	65.8	52.4	78.6
127	10.3	6.6	9.8#

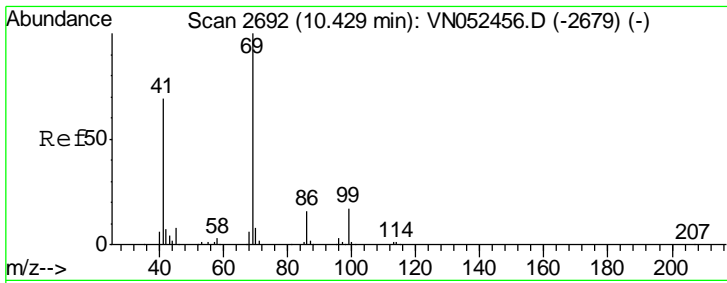


#44

Isopropyl Acetate
 Concen: 0.818 ug/l
 RT: 8.23 min Scan# 2009
 Delta R.T. 0.07 min
 Lab File: VN052545.D
 Acq: 29 Nov 2018 3:27

Tgt Ion	Resp	Lower	Upper
43	100		
61	0.8	16.0	24.0#

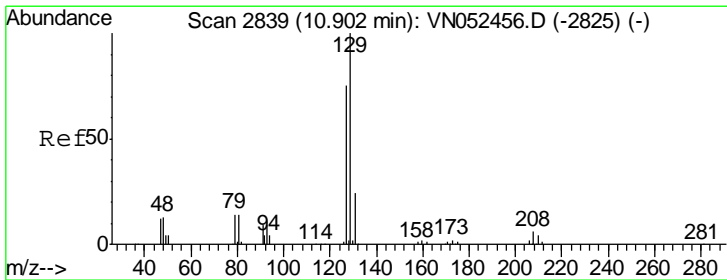
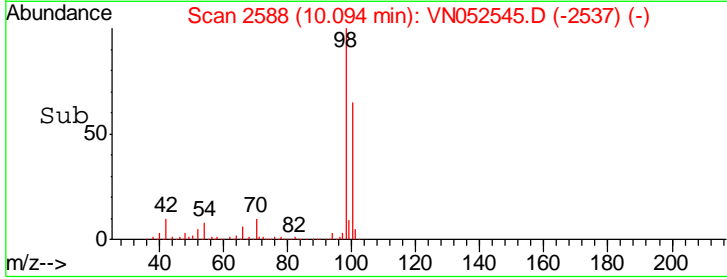
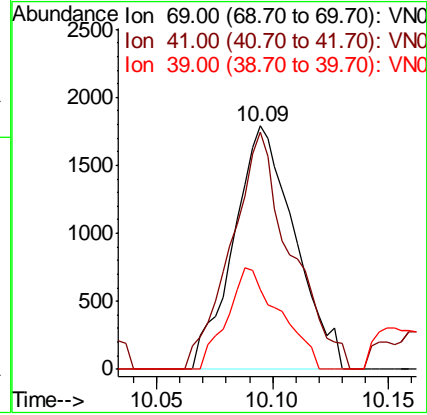
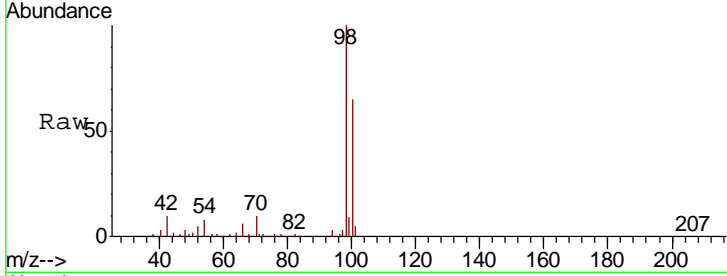




#51
 Ethyl methacrylate
 Concen: 0.274 ug/l
 RT: 10.09 min Scan# 2588
 Delta R.T. -0.33 min
 Lab File: VN052545.D
 Acq: 29 Nov 2018 3:27

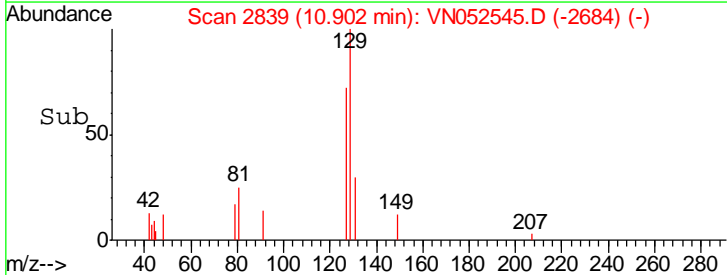
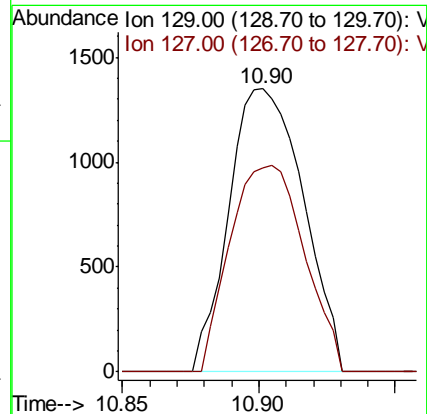
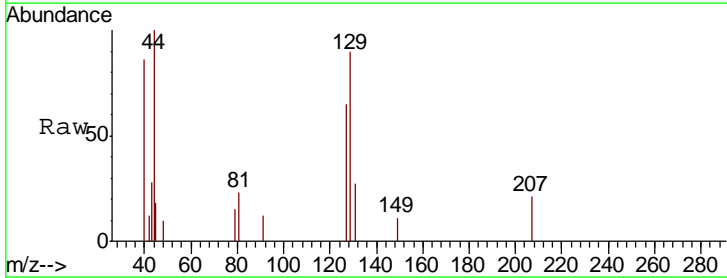
Instrument :
 MSVOA_N
 ClientSampled :
 14B-2DL

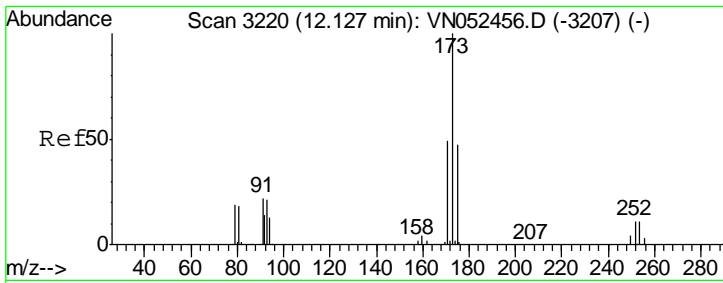
Tgt Ion	Resp	Lower	Upper
69	100		
41	87.8	34.4	103.3
39	32.7	16.4	49.2



#53
 Dibromochloromethane
 Concen: 0.245 ug/l
 RT: 10.90 min Scan# 2839
 Delta R.T. -0.00 min
 Lab File: VN052545.D
 Acq: 29 Nov 2018 3:27

Tgt Ion	Resp	Lower	Upper
129	100		
127	72.7	37.6	112.8

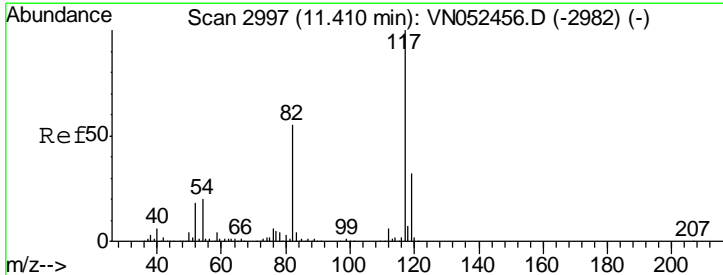
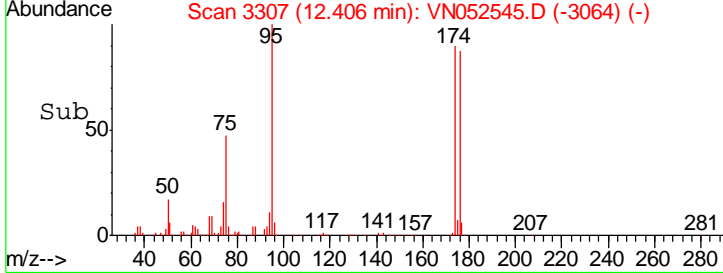
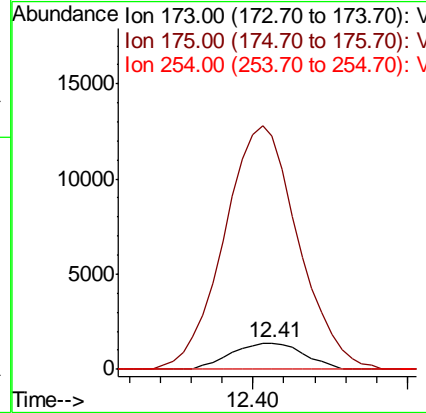
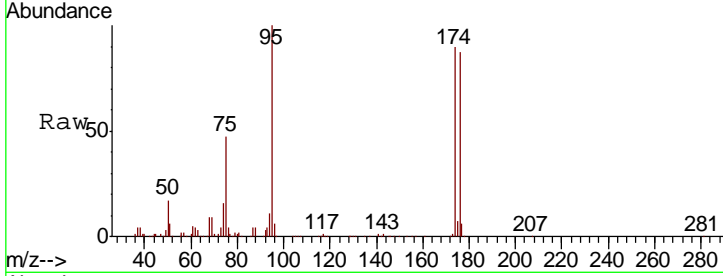




#56
 Bromoform
 Concen: 0.329 ug/l
 RT: 12.41 min Scan# 3307
 Delta R.T. 0.28 min
 Lab File: VN052545.D
 Acq: 29 Nov 2018 3:27

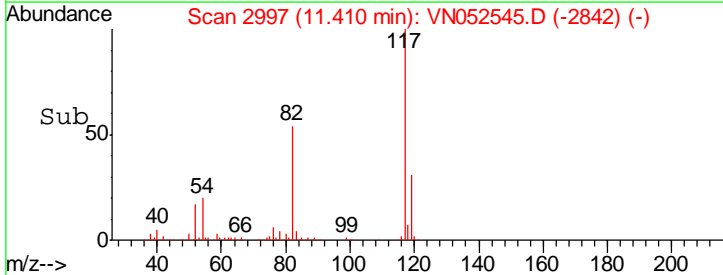
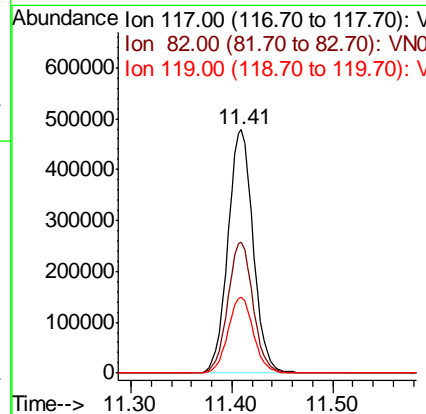
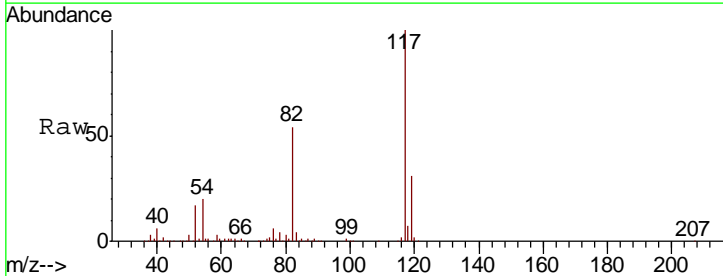
Instrument : MSVOA_N
 ClientSampled : 14B-2DL

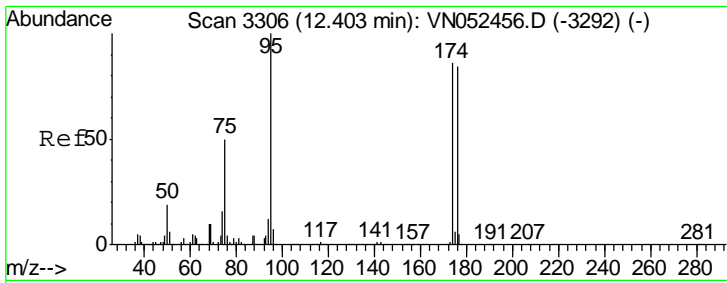
Tgt Ion	Resp	Lower	Upper
173	100		
175	947.8	38.7	58.1#
254	0.0	8.4	12.6#



#57
 Chlorobenzene-d5
 Concen: 30.000 ug/l
 RT: 11.41 min Scan# 2997
 Delta R.T. -0.00 min
 Lab File: VN052545.D
 Acq: 29 Nov 2018 3:27

Tgt Ion	Resp	Lower	Upper
117	100		
82	54.0	44.2	66.2
119	31.6	25.4	38.2

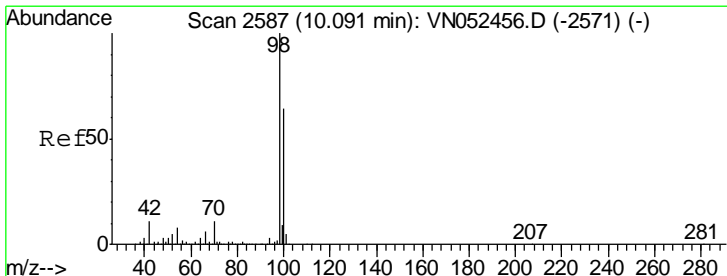
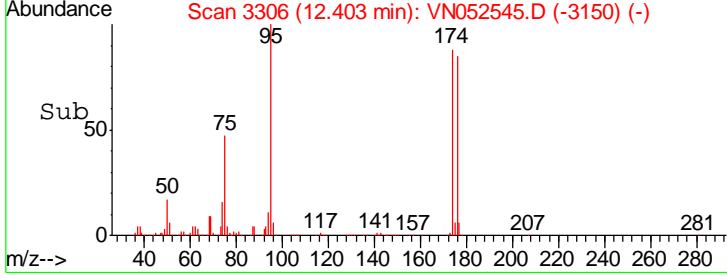
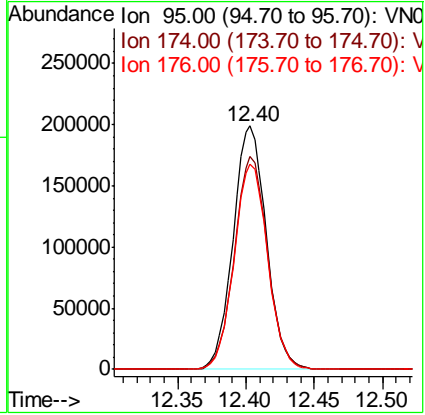
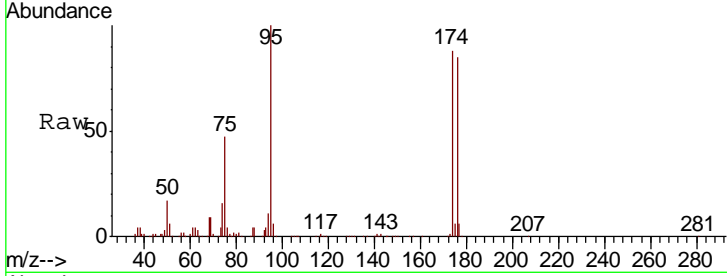




#60
 4-Bromofluorobenzene
 Concen: Below ug/l
 RT: 12.40 min Scan# 3306
 Delta R.T. -0.00 min
 Lab File: VN052545.D
 Acq: 29 Nov 2018 3:27

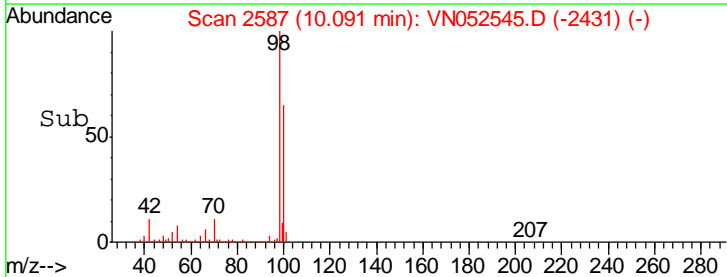
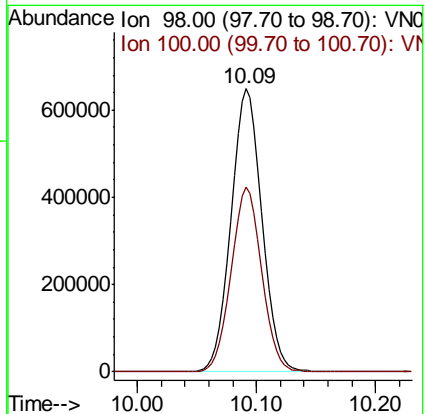
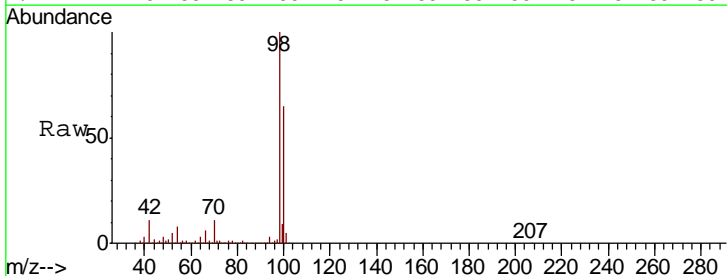
Instrument : MSVOA_N
 ClientSampled : 14B-2DL

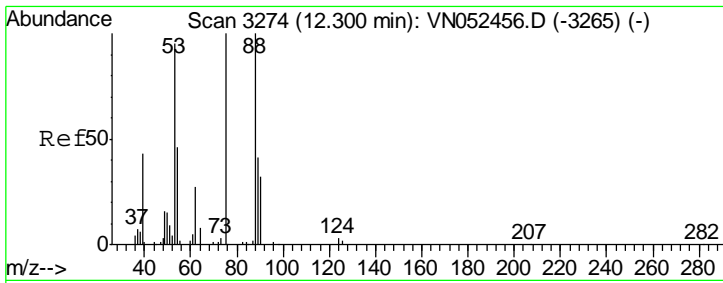
Tgt Ion	Resp	Lower	Upper
95	335658		
174	87.5	67.9	101.9
176	85.3	66.4	99.6



#63
 Toluene-d8
 Concen: Below ug/l
 RT: 10.09 min Scan# 2587
 Delta R.T. -0.00 min
 Lab File: VN052545.D
 Acq: 29 Nov 2018 3:27

Tgt Ion	Resp	Lower	Upper
98	1167473		
100	64.5	51.1	76.7



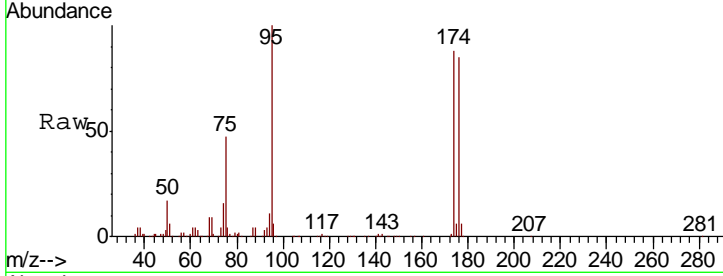


#77
 t-1,4-Dichloro-2-butene
 Concen: 56.948 ug/l
 RT: 12.40 min Scan# 3306
 Delta R.T. 0.10 min
 Lab File: VN052545.D
 Acq: 29 Nov 2018 3:27

Instrument :
 MSVOA_N
 ClientSampleId :
 14B-2DL

Tot Ion: 75 Resp: 160624

Ion	Ratio	Lower	Upper
75	100		
53	0.0	48.5	145.6#
89	0.0	21.7	65.1#



Abundance

Ion 75.00 (74.70 to 75.70): VNO

Ion 53.00 (52.70 to 53.70): VNO

Ion 89.00 (88.70 to 89.70): VNO

