

Data Path : Z:\voasrv\HPCHEM1\MSVOA_N\Data\VN112921\
 Data File : VN069663.D
 Acq On : 29 Nov 2021 14:22
 Operator : JC/MD
 Sample : M4818-01
 Misc : 5.00g/10mL/100uL/5.00mL/MSVOA_N/MEOH
 ALS Vial : 7 Sample Multiplier: 1

Instrument :
 MSVOA_N
 ClientSampleId :
 TR-04-112321

Manual Integrations
 APPROVED

Reviewed By :John Carlone 11/30/2021
 Supervised By :Mahesh Dadoda 12/01/2021

Quant Time: Nov 30 04:16:56 2021
 Quant Method : Z:\voasrv\HPCHEM1\MSVOA_N\methods\82N110921W.M
 Quant Title : SW846 8260
 QLast Update : Tue Nov 09 18:18:22 2021
 Response via : Initial Calibration

Compound	R.T.	QIon	Response	Conc	Units	Dev(Min)

Internal Standards						
1) Pentafluorobenzene	8.080	168	1485388	50.000	ug/l	0.00
34) 1,4-Difluorobenzene	8.965	114	2572406	50.000	ug/l	0.00
63) Chlorobenzene-d5	11.746	117	2451989	50.000	ug/l	0.00
72) 1,4-Dichlorobenzene-d4	13.675	152	1077550	50.000	ug/l	0.00
System Monitoring Compounds						
33) 1,2-Dichloroethane-d4	8.431	65	1105566	51.332	ug/l	0.00
Spiked Amount	50.000	Range 61 - 141	Recovery =	102.660%		
35) Dibromofluoromethane	8.016	113	726571	47.094	ug/l	0.00
Spiked Amount	50.000	Range 69 - 133	Recovery =	94.180%		
50) Toluene-d8	10.440	98	3189835	52.569	ug/l	0.00
Spiked Amount	50.000	Range 65 - 126	Recovery =	105.140%		
62) 4-Bromofluorobenzene	12.731	95	1189756	53.373	ug/l	0.00
Spiked Amount	50.000	Range 58 - 135	Recovery =	106.740%		
Target Compounds						
						Qvalue
16) Acetone	4.309	43	14767m	1.271	ug/l	
29) Tetrahydrofuran	7.699	42	16215	1.679	ug/l #	77
59) 2-Hexanone	11.092	43	36582	9.325	ug/l	90
70) Styrene	12.294	104	5040	1.608	ug/l	97
93) 1,2,4-Trichlorobenzene	15.268	180	16344	4.017	ug/l	97
96) 1,2,3-Trichlorobenzene	15.697	180	18651	4.247	ug/l	95

(#) = qualifier out of range (m) = manual integration (+) = signals summed

Data Path : Z:\voasrv\HPCHEM1\MSVOA_N\Data\VN112921\
 Data File : VN069663.D
 Acq On : 29 Nov 2021 14:22
 Operator : JC/MD
 Sample : M4818-01
 Misc : 5.00g/10mL/100uL/5.00mL/MSVOA_N/MEOH
 ALS Vial : 7 Sample Multiplier: 1

Instrument :

MSVOA_N

ClientSampleId :

TR-04-112321

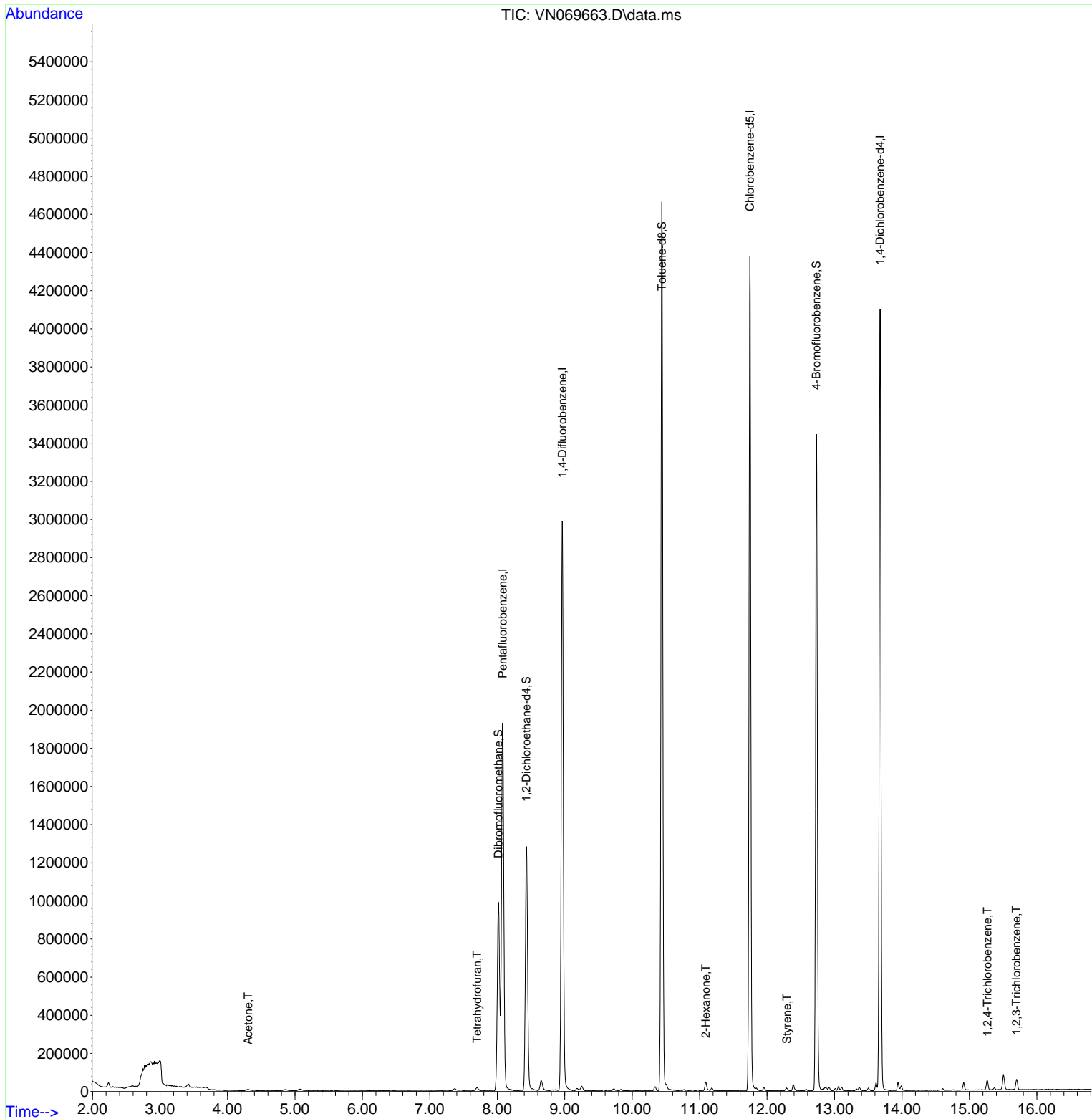
Manual Integrations

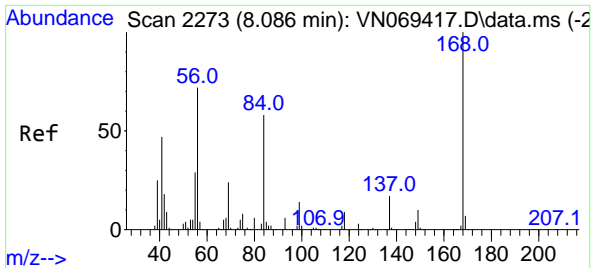
APPROVED

Reviewed By : John Carlone 11/30/2021

Supervised By : Mahesh Dadoda 12/01/2021

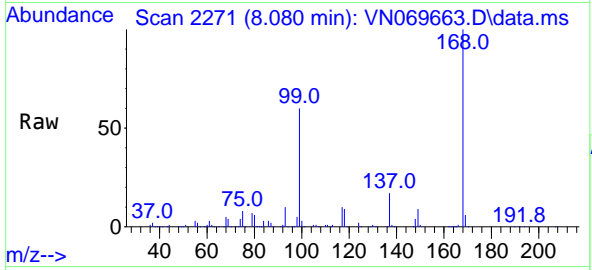
Quant Time: Nov 30 04:16:56 2021
 Quant Method : Z:\voasrv\HPCHEM1\MSVOA_N\methods\82N110921W.M
 Quant Title : SW846 8260
 QLast Update : Tue Nov 09 18:18:22 2021
 Response via : Initial Calibration





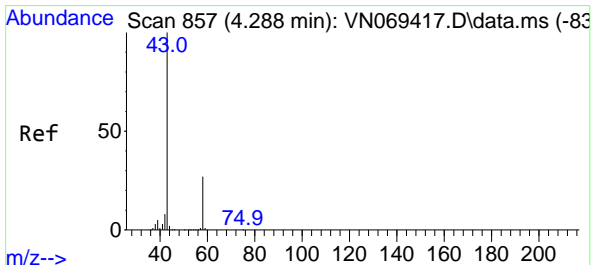
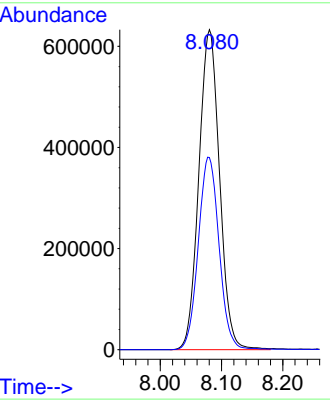
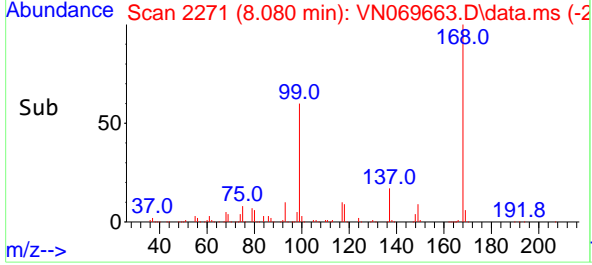
#1
 Pentafluorobenzene
 Concen: 50.000 ug/l
 RT: 8.080 min Scan# 21
 Delta R.T. -0.006 min
 Lab File: VN069663.D
 Acq: 29 Nov 2021 14:22

Instrument : MSVOA_N
 Client Sample Id : TR-04-112321

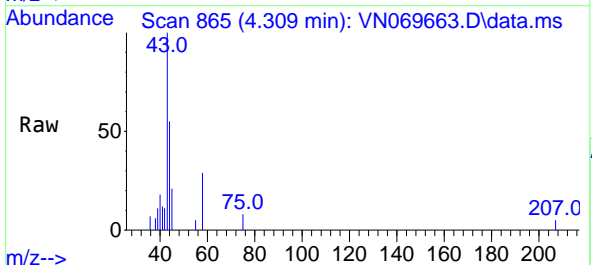


Tgt Ion: 168 Resp: 148538
 Ion Ratio Lower Upper
 168 100
 99 60.0 41.3 61.9

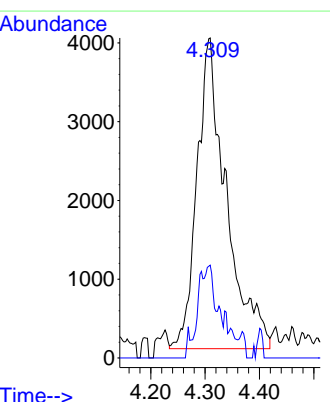
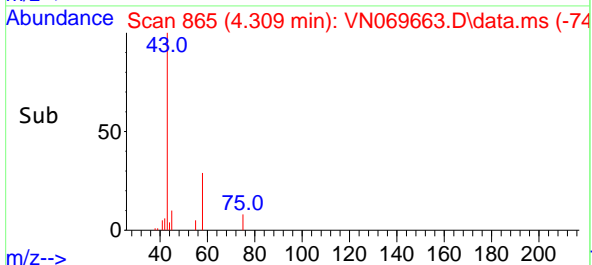
Manual Integrations
APPROVED
 Reviewed By : John Carlone 11/30/2021
 Supervised By : Mahesh Dadoda 12/01/2021

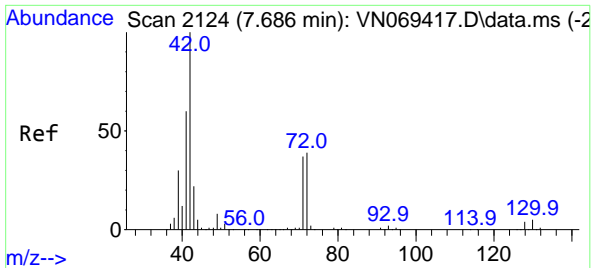


#16
 Acetone
 Concen: 1.271 ug/l m
 RT: 4.309 min Scan# 865
 Delta R.T. 0.021 min
 Lab File: VN069663.D
 Acq: 29 Nov 2021 14:22



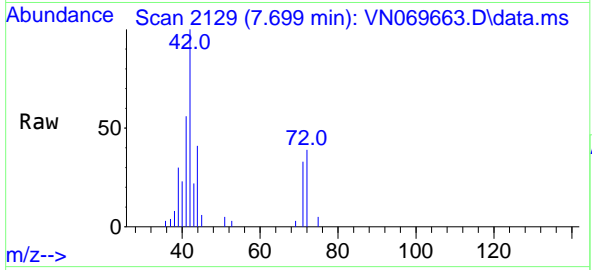
Tgt Ion: 43 Resp: 14767
 Ion Ratio Lower Upper
 43 100
 58 29.0 23.1 34.7





#29
 Tetrahydrofuran
 Concen: 1.679 ug/l
 RT: 7.699 min Scan# 2129
 Delta R.T. 0.013 min
 Lab File: VN069663.D
 Acq: 29 Nov 2021 14:22

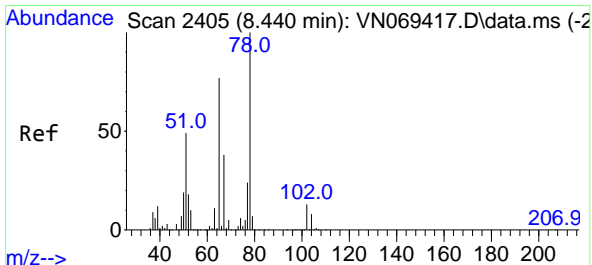
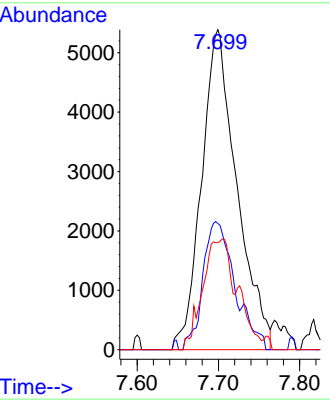
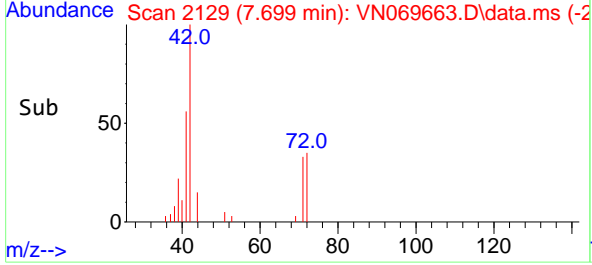
Instrument : MSVOA_N
 Client Sampled : TR-04-112321



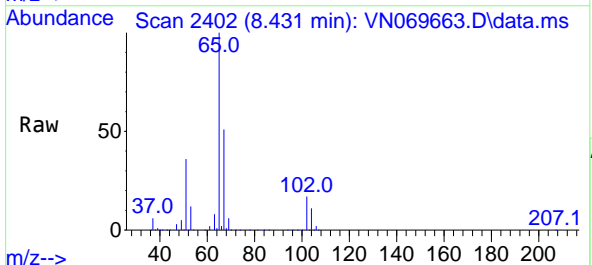
Tgt Ion: 42 Resp: 1621

Ion	Ratio	Lower	Upper
42	100		
72	31.8	36.3	54.5
71	27.5	34.7	52.1

Manual Integrations
APPROVED
 Reviewed By : John Carlone 11/30/2021
 Supervised By : Mahesh Dadoda 12/01/2021

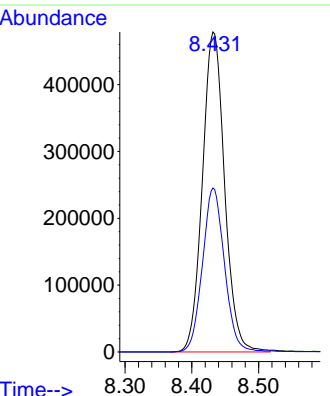
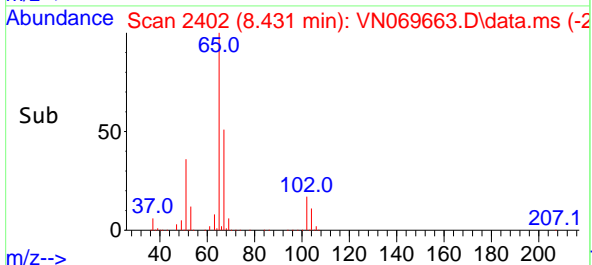


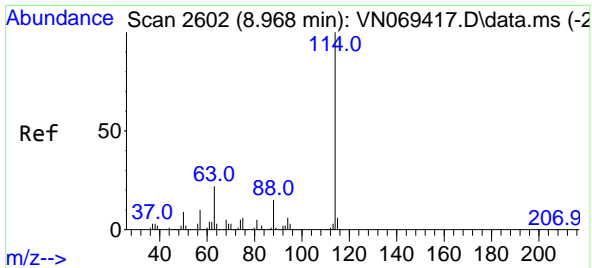
#33
 1,2-Dichloroethane-d4
 Concen: 51.332 ug/l
 RT: 8.431 min Scan# 2402
 Delta R.T. -0.009 min
 Lab File: VN069663.D
 Acq: 29 Nov 2021 14:22



Tgt Ion: 65 Resp: 1105566

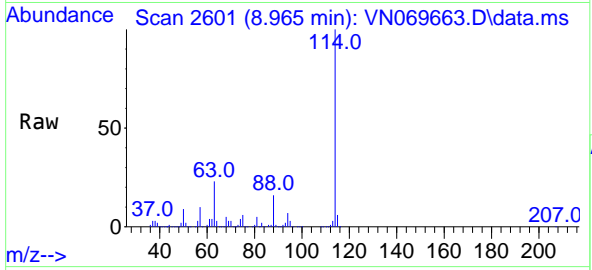
Ion	Ratio	Lower	Upper
65	100		
67	50.8	0.0	103.0





#34
 1,4-Difluorobenzene
 Concen: 50.000 ug/l
 RT: 8.965 min Scan# 2601
 Delta R.T. -0.003 min
 Lab File: VN069663.D
 Acq: 29 Nov 2021 14:22

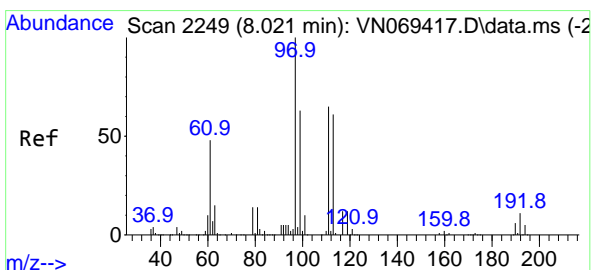
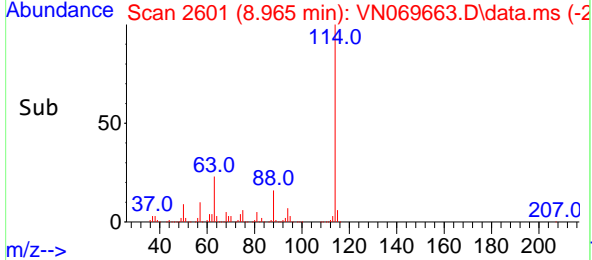
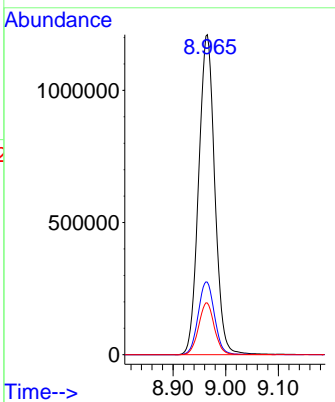
Instrument :
 MSVOA_N
Client Sample Id :
 TR-04-112321



Tgt Ion:114 Resp: 2572400
 Ion Ratio Lower Upper
 114 100
 63 22.6 0.0 37.8
 88 16.1 0.0 27.4

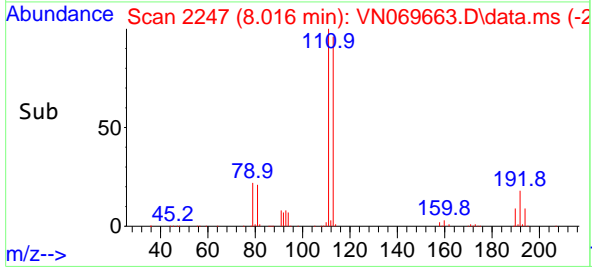
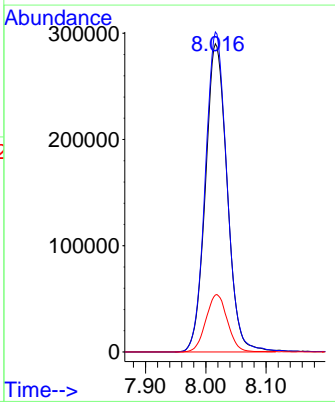
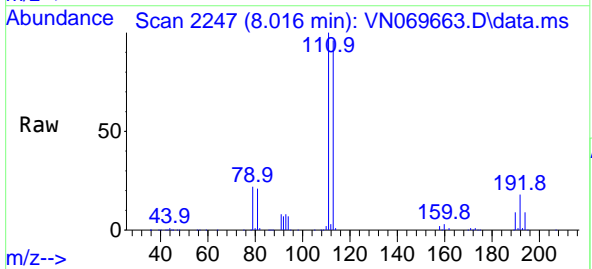
Manual Integrations
APPROVED

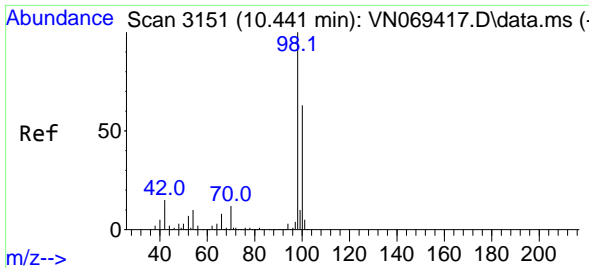
Reviewed By :John Carlone 11/30/2021
 Supervised By :Mahesh Dadoda 12/01/2021



#35
 Dibromofluoromethane
 Concen: 47.094 ug/l
 RT: 8.016 min Scan# 2247
 Delta R.T. -0.005 min
 Lab File: VN069663.D
 Acq: 29 Nov 2021 14:22

Tgt Ion:113 Resp: 726571
 Ion Ratio Lower Upper
 113 100
 111 103.5 82.2 123.2
 192 18.4 16.9 25.3





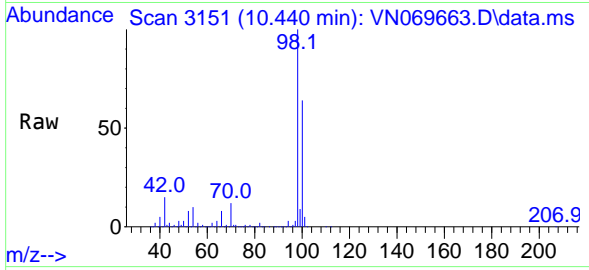
#50
 Toluene-d8
 Concen: 52.569 ug/l
 RT: 10.440 min Scan# 3151
 Delta R.T. -0.001 min
 Lab File: VN069663.D
 Acq: 29 Nov 2021 14:22

Instrument :

MSVOA_N

Client Sample Id :

TR-04-112321

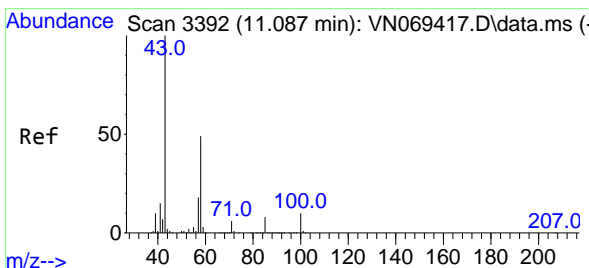
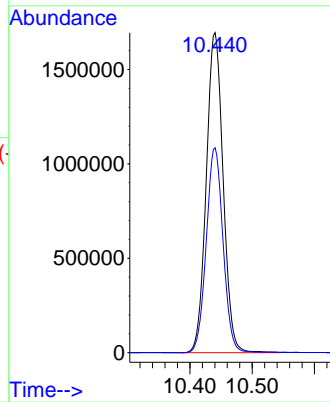
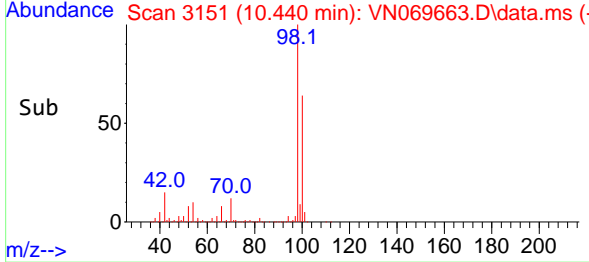


Tgt Ion: 98 Resp: 318983
 Ion Ratio Lower Upper
 98 100
 100 63.8 50.4 75.6

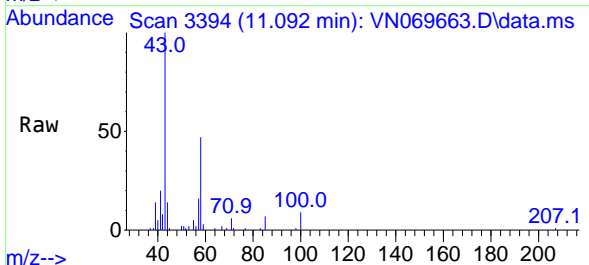
Manual Integrations

APPROVED

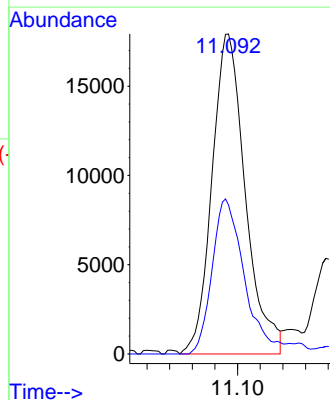
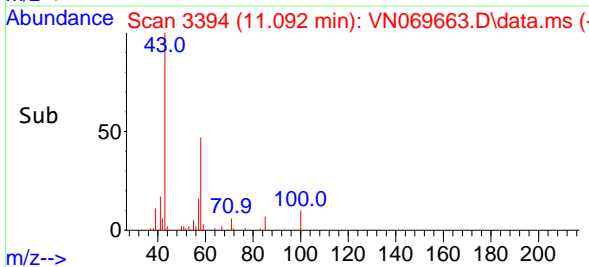
Reviewed By :John Carlone 11/30/2021
 Supervised By :Mahesh Dadoda 12/01/2021

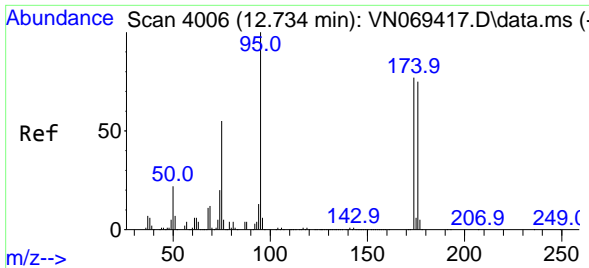


#59
 2-Hexanone
 Concen: 9.325 ug/l
 RT: 11.092 min Scan# 3394
 Delta R.T. 0.005 min
 Lab File: VN069663.D
 Acq: 29 Nov 2021 14:22



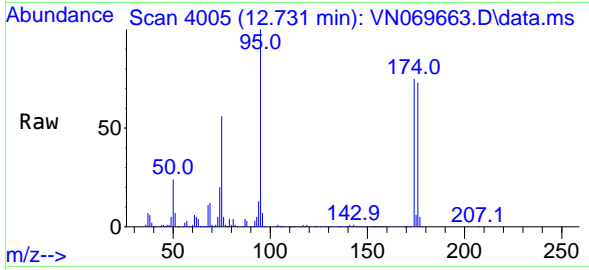
Tgt Ion: 43 Resp: 36582
 Ion Ratio Lower Upper
 43 100
 58 47.0 26.9 80.7





#62
 4-Bromofluorobenzene
 Concen: 53.373 ug/l
 RT: 12.731 min Scan# 4006
 Delta R.T. -0.003 min
 Lab File: VN069663.D
 Acq: 29 Nov 2021 14:22

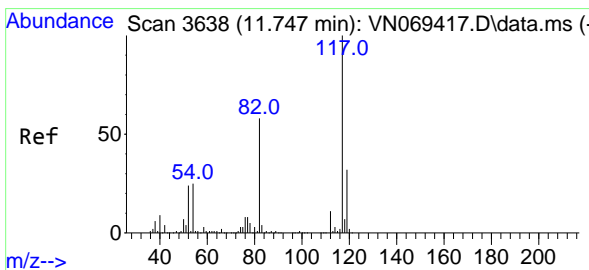
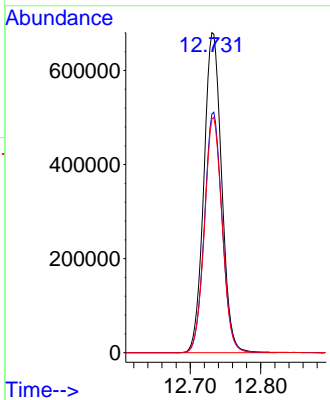
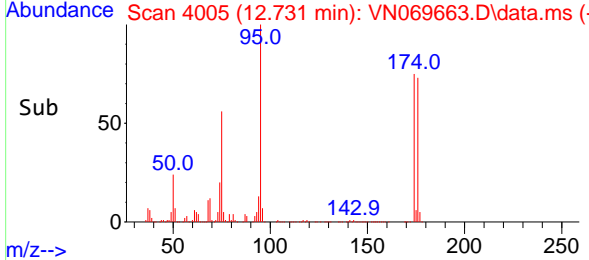
Instrument : MSVOA_N
 Client Sample Id : TR-04-112321



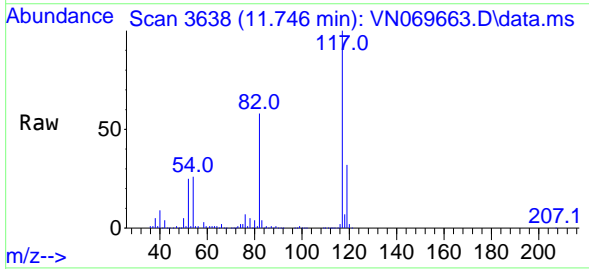
Tgt Ion: 95 Resp: 1189750
 Ion Ratio Lower Upper
 95 100
 174 75.0 0.0 187.2
 176 73.2 0.0 181.4

Manual Integrations
APPROVED

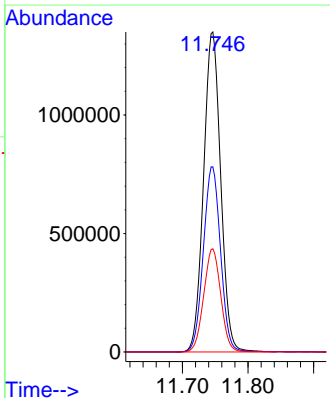
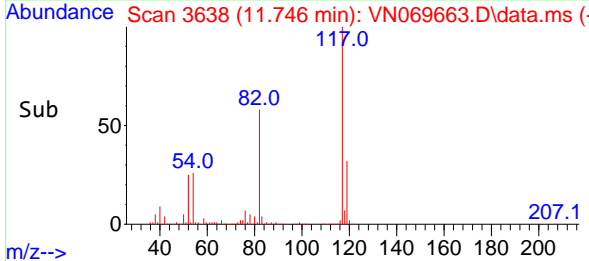
Reviewed By :John Carlone 11/30/2021
 Supervised By :Mahesh Dadoda 12/01/2021

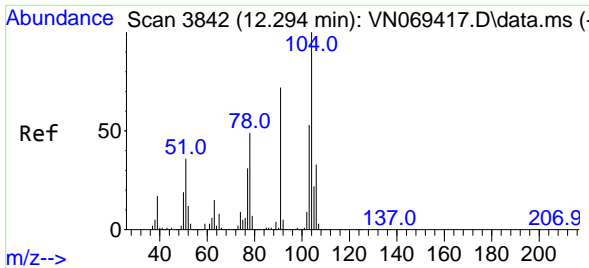


#63
 Chlorobenzene-d5
 Concen: 50.000 ug/l
 RT: 11.746 min Scan# 3638
 Delta R.T. -0.001 min
 Lab File: VN069663.D
 Acq: 29 Nov 2021 14:22



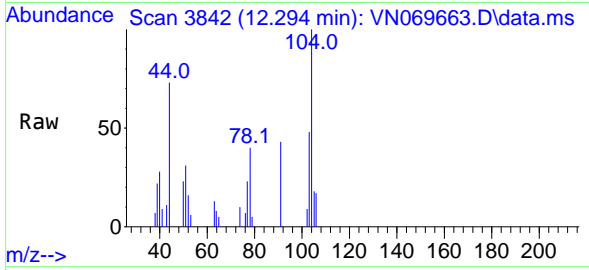
Tgt Ion:117 Resp: 2451989
 Ion Ratio Lower Upper
 117 100
 82 57.9 42.4 63.6
 119 32.2 25.4 38.2





#70
 Styrene
 Concen: 1.608 ug/l
 RT: 12.294 min Scan# 3842
 Delta R.T. -0.001 min
 Lab File: VN069663.D
 Acq: 29 Nov 2021 14:22

Instrument : MSVOA_N
 Client Sample Id : TR-04-112321

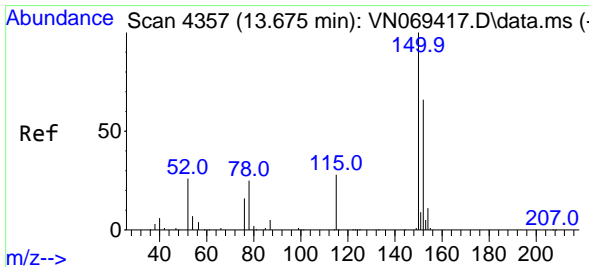
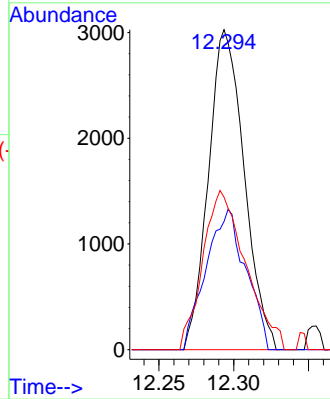
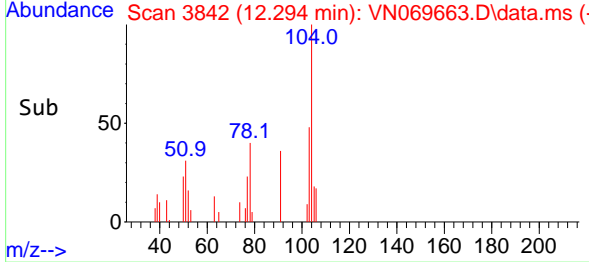


Tgt Ion:104 Resp: 5040

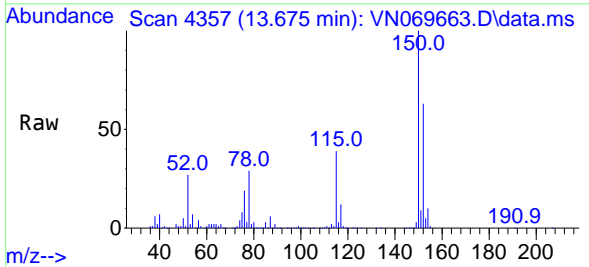
Ion	Ratio	Lower	Upper
104	100		
78	48.8	38.7	58.1
103	59.6	45.0	67.6

Manual Integrations
 APPROVED

Reviewed By :John Carlone 11/30/2021
 Supervised By :Mahesh Dadoda 12/01/2021

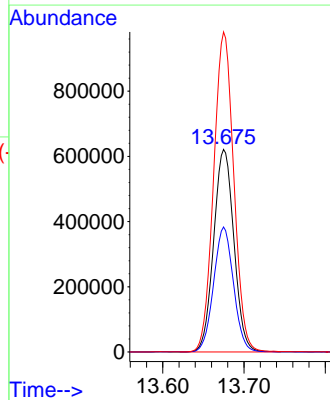
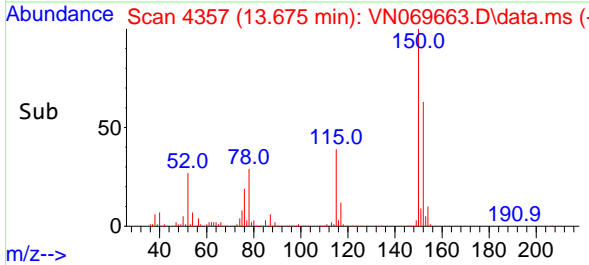


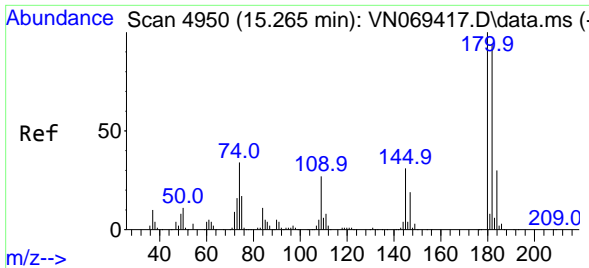
#72
 1,4-Dichlorobenzene-d4
 Concen: 50.000 ug/l
 RT: 13.675 min Scan# 4357
 Delta R.T. -0.000 min
 Lab File: VN069663.D
 Acq: 29 Nov 2021 14:22



Tgt Ion:152 Resp: 1077550

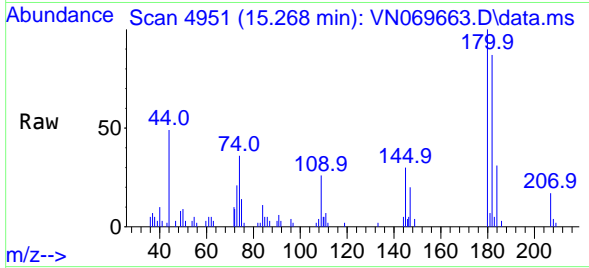
Ion	Ratio	Lower	Upper
152	100		
115	60.5	27.5	82.5
150	156.8	0.0	344.4





#93
 1,2,4-Trichlorobenzene
 Concen: 4.017 ug/l
 RT: 15.268 min Scan# 4950
 Delta R.T. 0.003 min
 Lab File: VN069663.D
 Acq: 29 Nov 2021 14:22

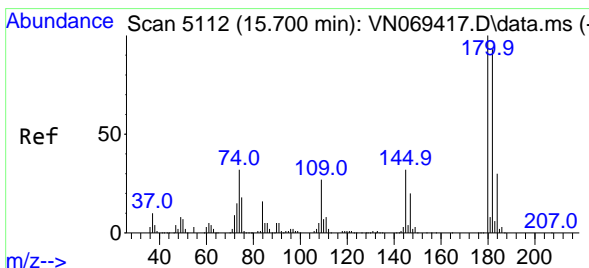
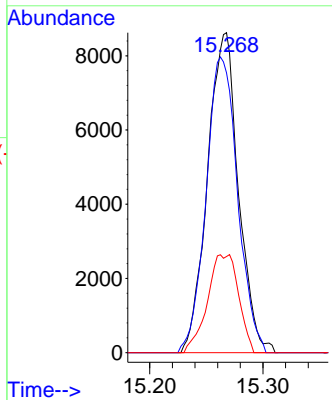
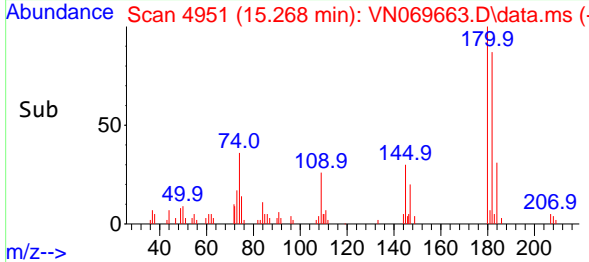
Instrument :
 MSVOA_N
 ClientSampleId :
 TR-04-112321



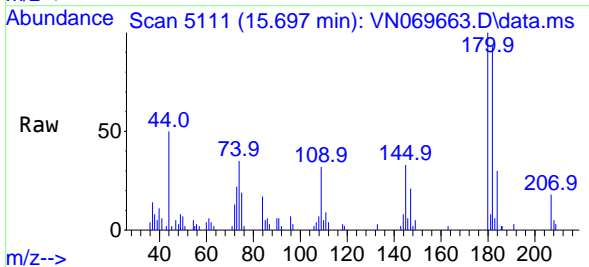
Tgt Ion:180 Resp: 1634
 Ion Ratio Lower Upper
 180 100
 182 94.3 48.3 144.9
 145 30.8 14.5 43.5

Manual Integrations
 APPROVED

Reviewed By :John Carlone 11/30/2021
 Supervised By :Mahesh Dadoda 12/01/2021



#96
 1,2,3-Trichlorobenzene
 Concen: 4.247 ug/l
 RT: 15.697 min Scan# 5111
 Delta R.T. -0.003 min
 Lab File: VN069663.D
 Acq: 29 Nov 2021 14:22



Tgt Ion:180 Resp: 18651
 Ion Ratio Lower Upper
 180 100
 182 90.6 47.4 142.2
 145 34.3 15.0 45.1

