

Data Path : Z:\VOASRV\HPCHEM1\MSVOA_N\DATA\VN113018\
 Data File : VN052595.D
 Acq On : 30 Nov 2018 10:01
 Operator : MD\SY
 Sample : VN1130WBL01
 Misc : 5.00mL/MSVOA_N/WATER
 ALS Vial : 4 Sample Multiplier: 28

Instrument :
 MSVOA_N
 ClientSampleId :
 VN1130WBL01

Quant Time: Nov 30 10:50:41 2018
 Quant Method : Z:\VOASRV\HPCHEM1\MSVOA_N\METHODS\624N112618W.M
 Quant Title : METHOD 624 VOLATILE ORGANIC ANALYSIS
 QLast Update : Tue Nov 27 00:48:33 2018
 Response via : Initial Calibration

Internal Standards	R.T.	QIon	Response	Conc	Units	Dev(Min)
1) Bromochloromethane	7.20	128	165841	30.00	ug/l	0.00
28) 1,4-Difluorobenzene	8.59	114	967795	30.00	ug/l	0.00
57) Chlorobenzene-d5	11.41	117	804549	30.00	ug/l	0.00

System Monitoring Compounds

27) 1,2-Dichloroethane-d4	8.03	65	344669	30.50	ug/l	0.00
Spiked Amount	30.000	Range	50 - 169	Recovery	=	101.67%
60) 4-Bromofluorobenzene	12.40	95	322829	26.24	ug/l	0.00
Spiked Amount	30.000	Range	56 - 143	Recovery	=	87.47%
63) Toluene-d8	10.09	98	1133600	30.39	ug/l	0.00
Spiked Amount	30.000	Range	66 - 137	Recovery	=	101.30%

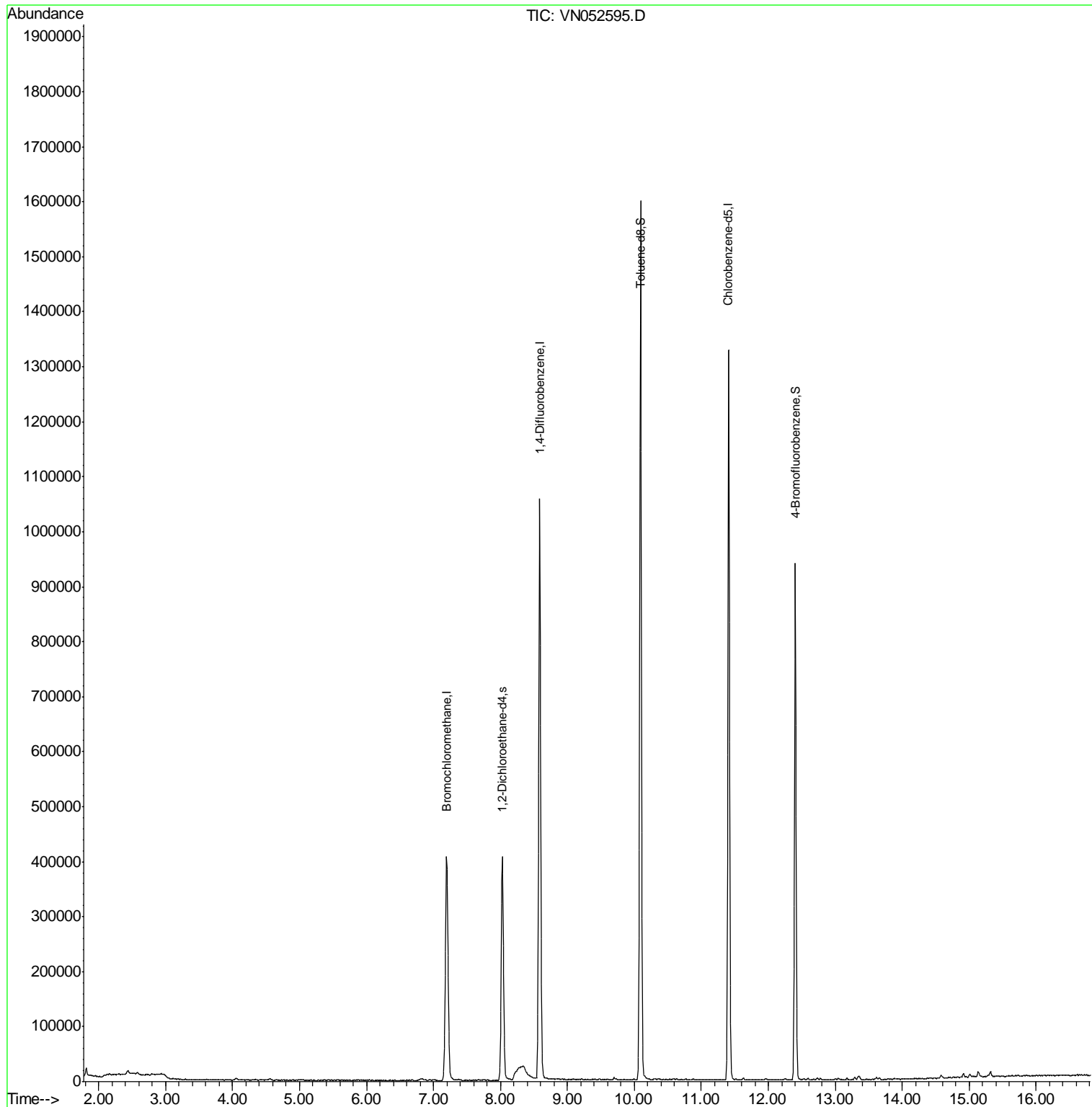
Target Compounds Qvalue

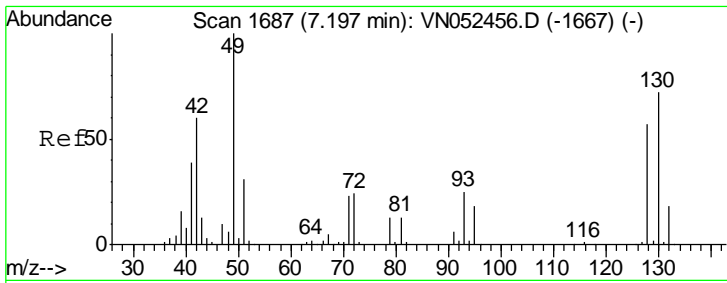
(#) = qualifier out of range (m) = manual integration (+) = signals summed

Data Path : Z:\VOASRV\HPCHEM1\MSVOA_N\DATA\VN113018\
 Data File : VN052595.D
 Acq On : 30 Nov 2018 10:01
 Operator : MD\SY
 Sample : VN1130WBL01
 Misc : 5.00mL/MSVOA_N/WATER
 ALS Vial : 4 Sample Multiplier: 28

Instrument :
 MSVOA_N
 ClientSampleId :
 VN1130WBL01

Quant Time: Nov 30 10:50:41 2018
 Quant Method : Z:\VOASRV\HPCHEM1\MSVOA_N\METHODS\624N112618W.M
 Quant Title : METHOD 624 VOLATILE ORGANIC ANALYSIS
 QLast Update : Tue Nov 27 00:48:33 2018
 Response via : Initial Calibration

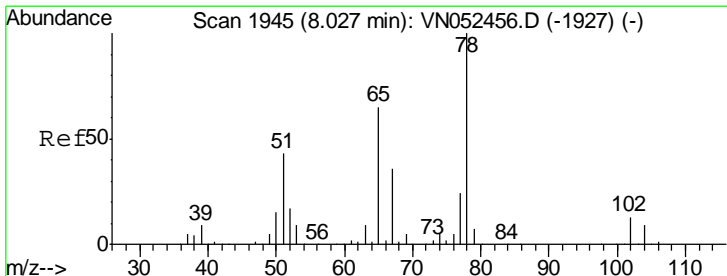
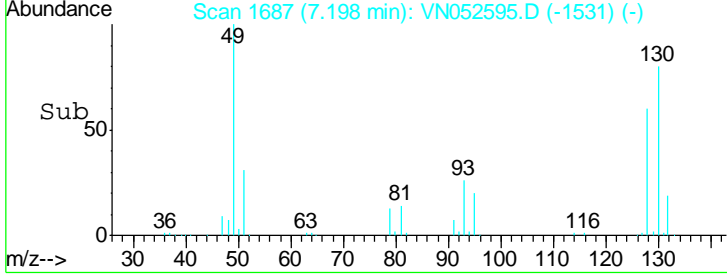
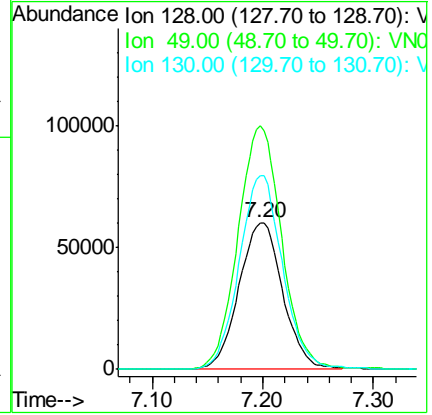
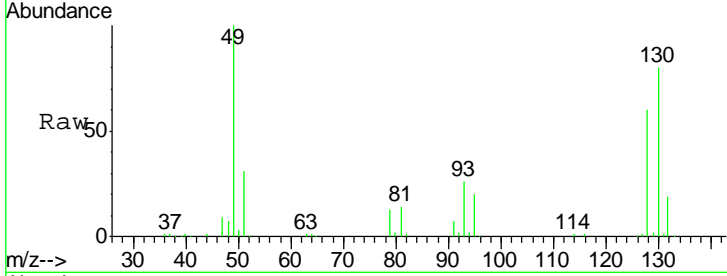




#1
 Bromochloromethane
 Concen: 30.000 ug/l
 RT: 7.20 min Scan# 1687
 Delta R.T. 0.00 min
 Lab File: VN052595.D
 Acq: 30 Nov 2018 10:01

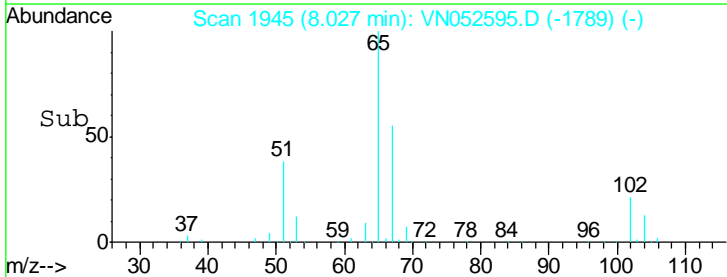
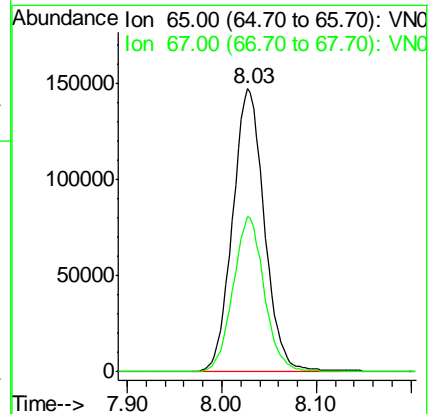
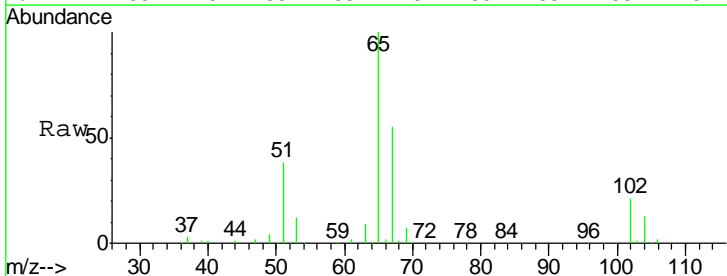
Instrument :
 MSVOA_N
 ClientSampled :
 VN1130WBL01

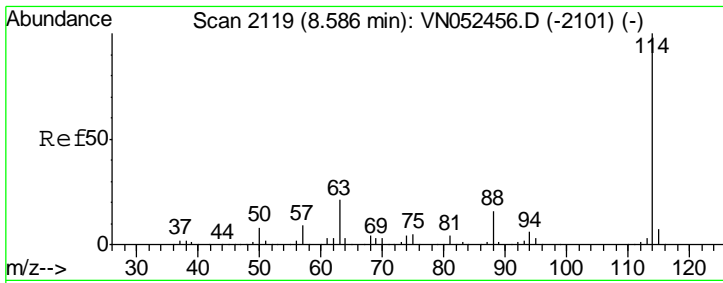
Tgt Ion	Resp	Lower	Upper
128	165841		
49	164.9	0.0	431.8
130	130.8	0.0	317.0



#27
 1,2-Dichloroethane-d4
 Concen: Below ug/l
 RT: 8.03 min Scan# 1945
 Delta R.T. 0.00 min
 Lab File: VN052595.D
 Acq: 30 Nov 2018 10:01

Tgt Ion	Resp	Lower	Upper
65	344669		
67	53.8	44.6	66.8

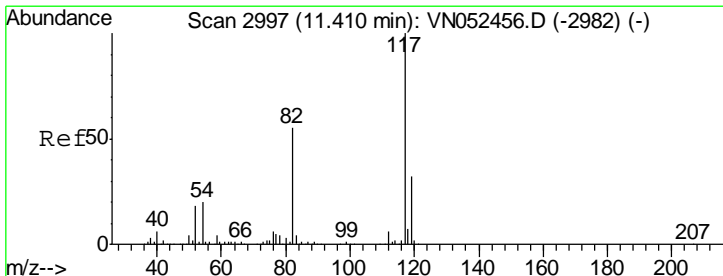
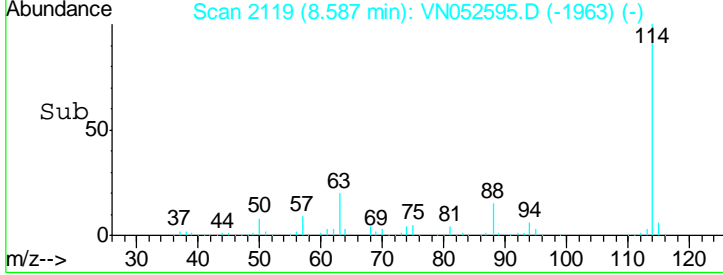
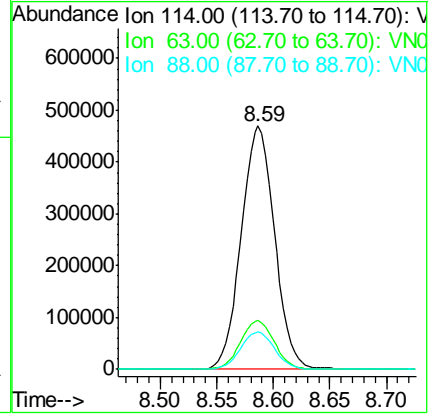
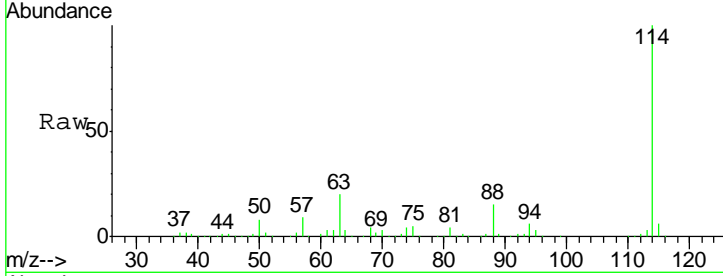




#28
 1,4-Difluorobenzene
 Concen: 30.000 ug/l
 RT: 8.59 min Scan# 2119
 Delta R.T. 0.00 min
 Lab File: VN052595.D
 Acq: 30 Nov 2018 10:01

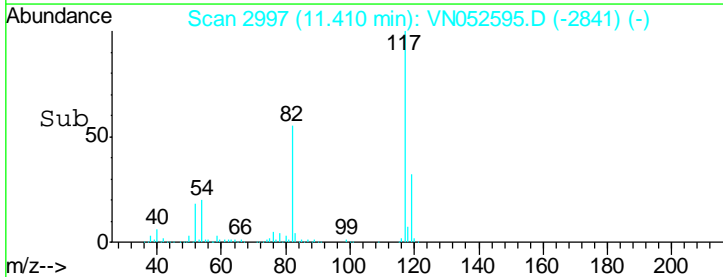
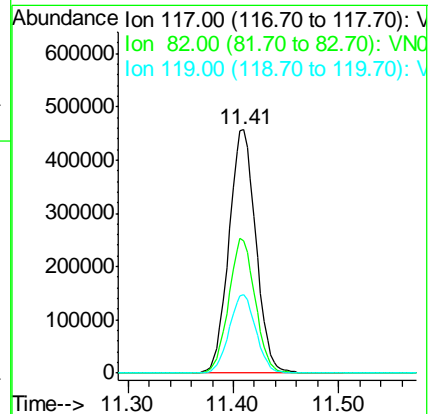
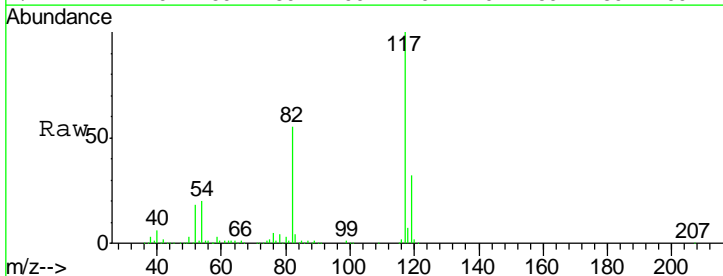
Instrument :
 MSVOA_N
 ClientSampled :
 VN1130WBL01

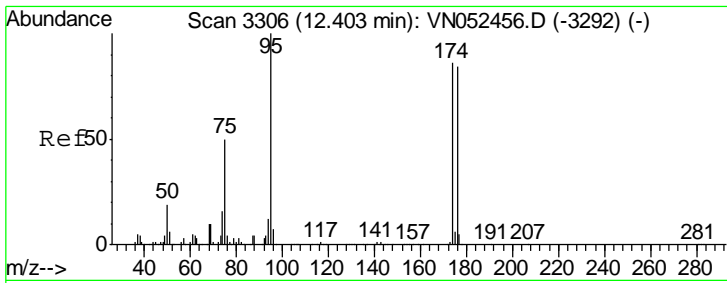
Tgt Ion	Resp	Lower	Upper
114	100		
63	20.3	16.9	25.3
88	15.6	12.8	19.2



#57
 Chlorobenzene-d5
 Concen: 30.000 ug/l
 RT: 11.41 min Scan# 2997
 Delta R.T. 0.00 min
 Lab File: VN052595.D
 Acq: 30 Nov 2018 10:01

Tgt Ion	Resp	Lower	Upper
117	100		
82	54.4	44.2	66.2
119	31.9	25.4	38.2

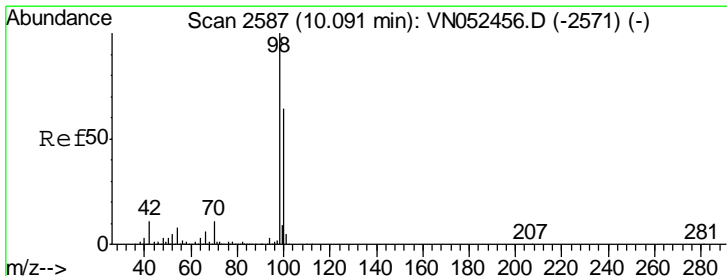
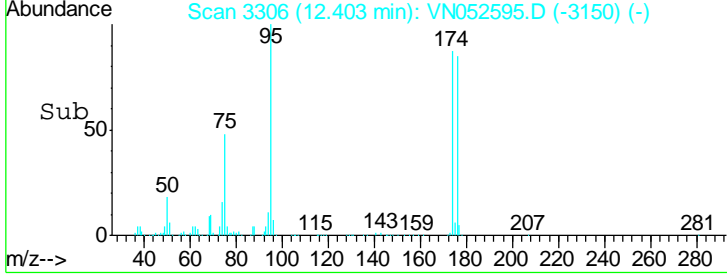
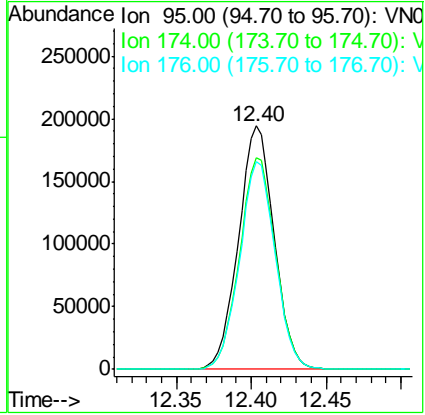
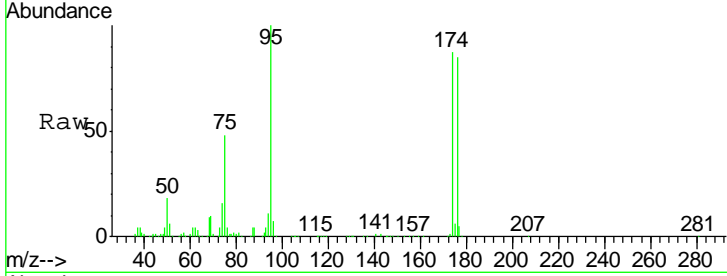




#60
 4-Bromofluorobenzene
 Concen: Below ug/l
 RT: 12.40 min Scan# 3306
 Delta R.T. 0.00 min
 Lab File: VN052595.D
 Acq: 30 Nov 2018 10:01

Instrument : MSVOA_N
 ClientSampled : VN1130WBL01

Tgt Ion	Resp	Lower	Upper
95	322829		
174	87.9	67.9	101.9
176	85.2	66.4	99.6



#63
 Toluene-d8
 Concen: Below ug/l
 RT: 10.09 min Scan# 2587
 Delta R.T. 0.00 min
 Lab File: VN052595.D
 Acq: 30 Nov 2018 10:01

Tgt Ion	Resp	Lower	Upper
98	1133600		
100	63.3	51.1	76.7

