

Data Path : Z:\VOASRV\HPCHEM1\MSVOA N\DATA\VN113020\
 Data File : VN064863.D
 Acq On : 30 Nov 2020 11:06
 Operator : JC/MD
 Sample : VN1130MBL01
 Misc : 5.00µ/10mL/100uL/5.00mL/MSVOA_N/MEOH
 ALS Vial : 3 Sample Multiplier: 1

Instrument :
 MSVOA_N
 ClientSampleId :
 VN1130MBL01

Quant Time: Dec 01 01:18:08 2020
 Quant Method : Z:\VOASRV\HPCHEM1\MSVOA_N\METHODS\82N112320W.M
 Quant Title : SW846 8260
 QLast Update : Mon Nov 23 13:54:12 2020
 Response via : Initial Calibration

Internal Standards	R.T.	QIon	Response	Conc	Units	Dev(Min)
1) Pentafluorobenzene	7.62	168	163422	50.00	µg/l	0.00
34) 1,4-Difluorobenzene	8.55	114	281795	50.00	µg/l	0.00
63) Chlorobenzene-d5	11.38	117	289806	50.00	µg/l	0.00
72) 1,4-Dichlorobenzene-d4	13.32	152	126756	50.00	µg/l	0.00

System Monitoring Compounds

33) 1,2-Dichloroethane-d4	7.99	65	97884	51.52	µg/l	0.00
Spiked Amount	50.000	Range	61 - 141	Recovery	=	103.04%
35) Dibromofluoromethane	7.55	113	89810	53.26	µg/l	0.00
Spiked Amount	50.000	Range	69 - 133	Recovery	=	106.52%
50) Toluene-d8	10.06	98	352030	51.10	µg/l	0.00
Spiked Amount	50.000	Range	65 - 126	Recovery	=	102.20%
62) 4-Bromofluorobenzene	12.37	95	132246	53.64	µg/l	0.00
Spiked Amount	50.000	Range	58 - 135	Recovery	=	107.28%

Target Compounds

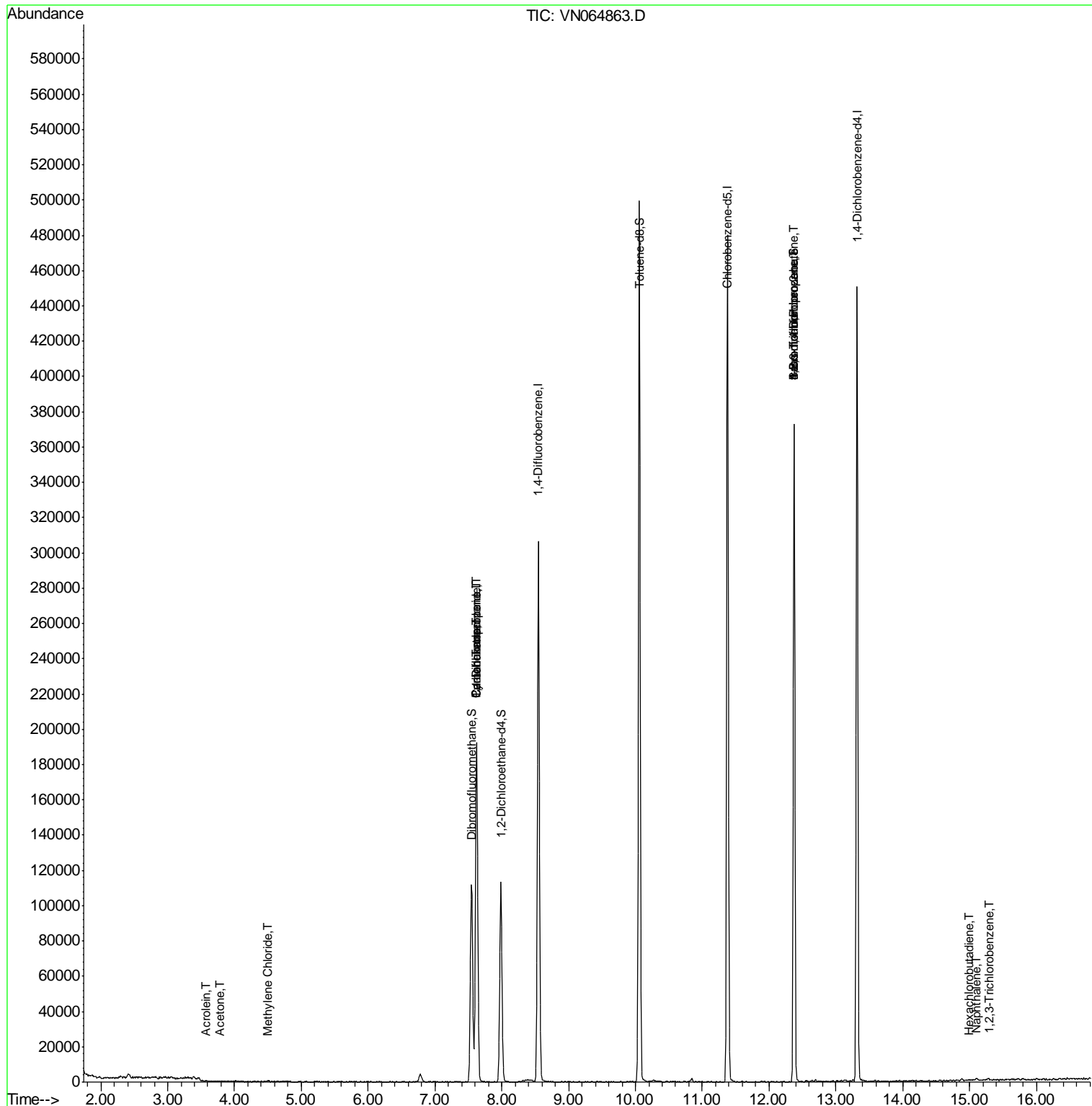
						Qvalue
13) Acrolein	3.57	56	65	0.359	µg/l #	14
16) Acetone	3.78	43	281	0.450	µg/l #	43
20) Methylene Chloride	4.50	84	445	0.227	µg/l #	63
31) Cyclohexane	7.62	56	3023	1.142	µg/l #	42
36) 1,1-Dichloropropene	7.62	75	10851	4.154	µg/l #	46
38) Carbon Tetrachloride	7.62	117	15417	5.673	µg/l #	16
71) Bromoform	12.37	173	966	0.529	µg/l #	1
76) 1,2,3-Trichloropropane	12.37	75	63957	23.429	µg/l #	100
81) trans-1,4-Dichloro-2-buten	12.37	75	63957	64.214	µg/l #	15
94) Hexachlorobutadiene	14.98	225	229	0.569	µg/l #	19
95) Naphthalene	15.11	128	2506	0.326	µg/l #	78
96) 1,2,3-Trichlorobenzene	15.29	180	720	1.679	µg/l #	79

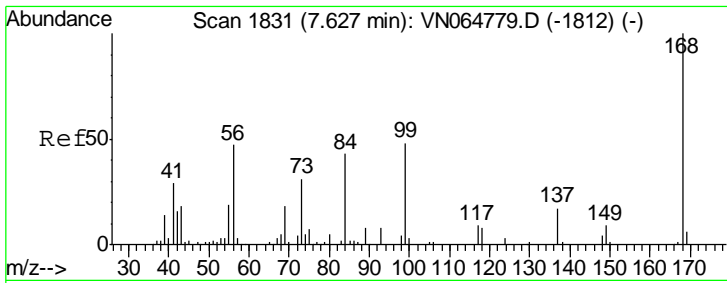
(#) = qualifier out of range (m) = manual integration (+) = signals summed

Data Path : Z:\VOASRV\HPCHEM1\MSVOA N\DATA\VN113020\
 Data File : VN064863.D
 Acq On : 30 Nov 2020 11:06
 Operator : JC/MD
 Sample : VN1130MBL01
 Misc : 5.00µ/10mL/100uL/5.00mL/MSVOA_N/MEOH
 ALS Vial : 3 Sample Multiplier: 1

Instrument :
 MSVOA_N
 Client Sampled :
 VN1130MBL01

Quant Time: Dec 01 01:18:08 2020
 Quant Method : Z:\VOASRV\HPCHEM1\MSVOA_N\METHODS\82N112320W.M
 Quant Title : SW846 8260
 QLast Update : Mon Nov 23 13:54:12 2020
 Response via : Initial Calibration

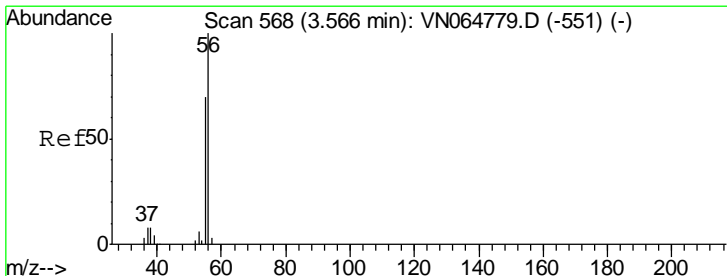
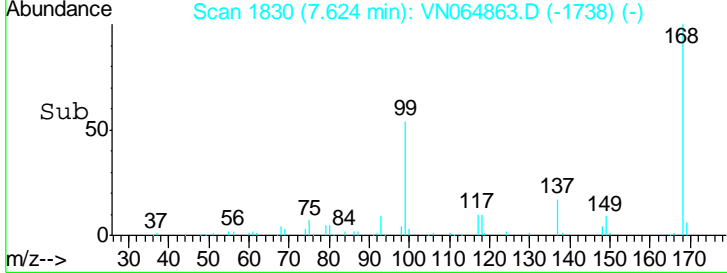
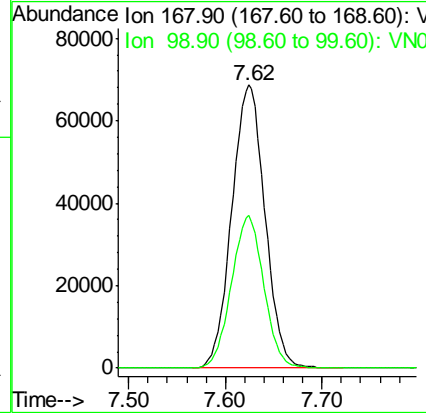
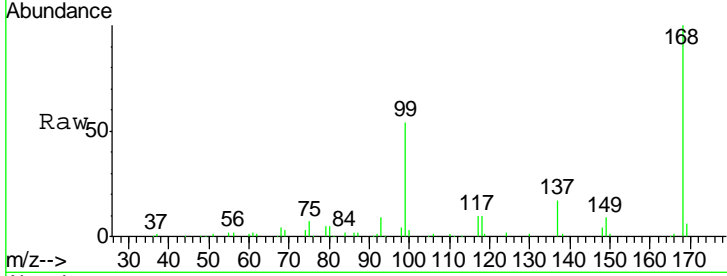




#1
 Pentafluorobenzene
 Concen: 50.000 ug/l
 RT: 7.62 min Scan# 1830
 Delta R.T. -0.00 min
 Lab File: VN064863.D
 Acq: 30 Nov 2020 11:06

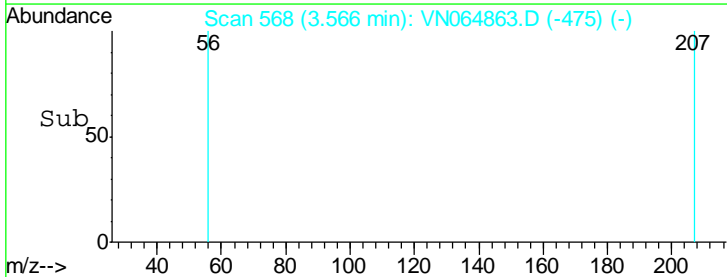
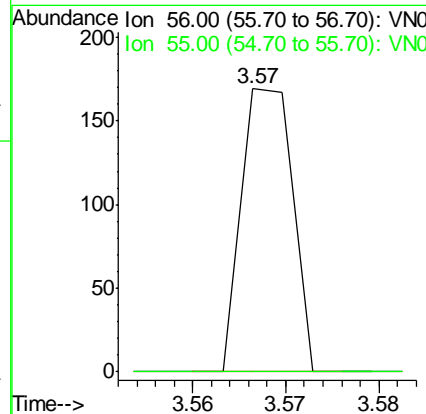
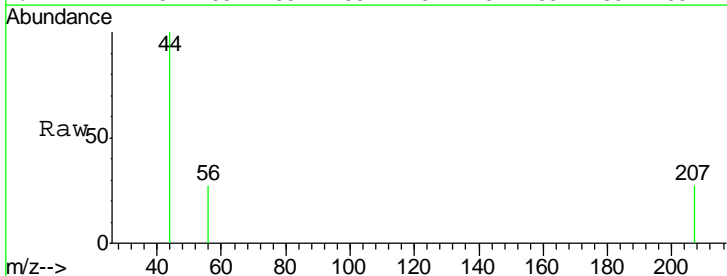
Instrument :
 MSVOA_N
 ClientSampled :
 VN1130MBL01

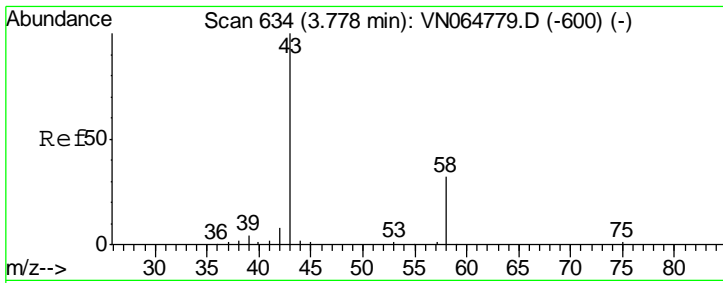
Tgt Ion: 168 Resp: 163422
 Ion Ratio Lower Upper
 168 100
 99 53.9 43.0 64.4



#13
 Acrolein
 Concen: 0.359 ug/l
 RT: 3.57 min Scan# 568
 Delta R.T. 0.00 min
 Lab File: VN064863.D
 Acq: 30 Nov 2020 11:06

Tgt Ion: 56 Resp: 65
 Ion Ratio Lower Upper
 56 100
 55 0.0 56.5 84.7#

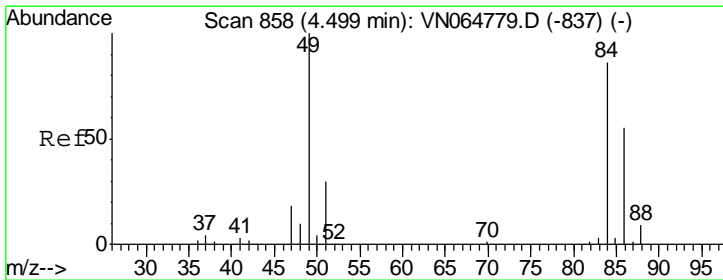
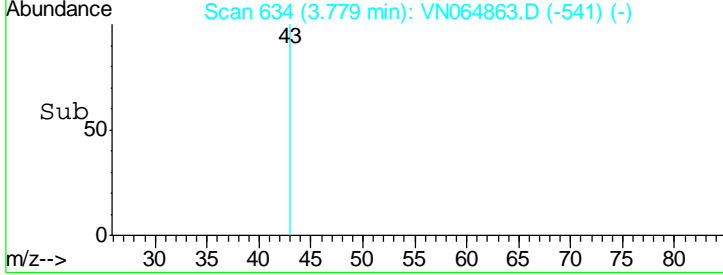
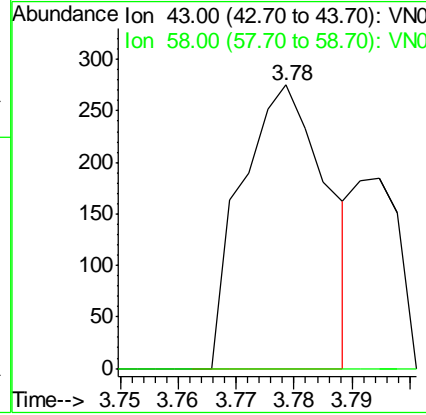
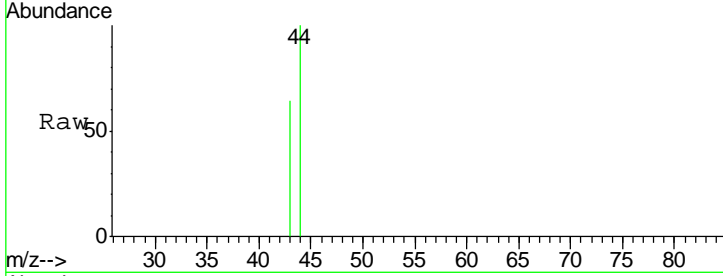




#16
 Acetone
 Concen: 0.450 ug/l
 RT: 3.78 min Scan# 634
 Delta R.T. 0.00 min
 Lab File: VN064863.D
 Acq: 30 Nov 2020 11:06

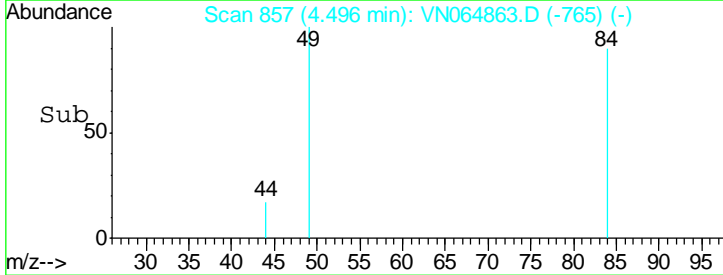
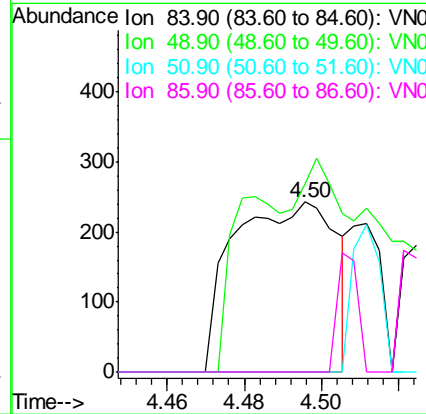
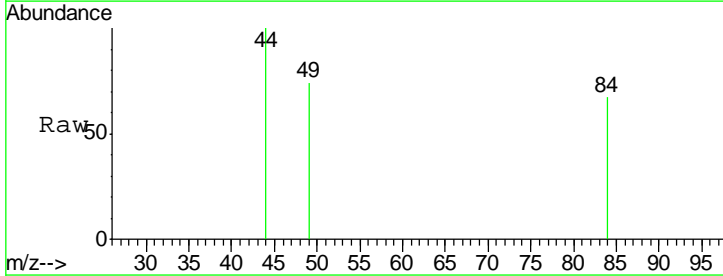
Instrument :
 MSVOA_N
ClientSampled :
 VN1130MBL01

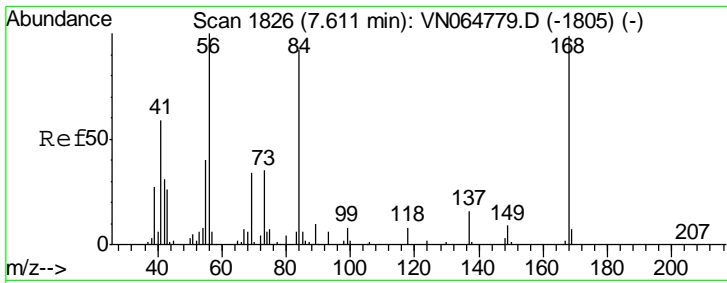
Tgt Ion	Resp	Lower	Upper
43	100		
58	0.0	25.7	38.5#



#20
 Methylene Chloride
 Concen: 0.227 ug/l
 RT: 4.50 min Scan# 857
 Delta R.T. -0.00 min
 Lab File: VN064863.D
 Acq: 30 Nov 2020 11:06

Tgt Ion	Resp	Lower	Upper
84	100		
49	110.7	93.4	140.0
51	0.0	28.2	42.4#
86	0.0	51.7	77.5#

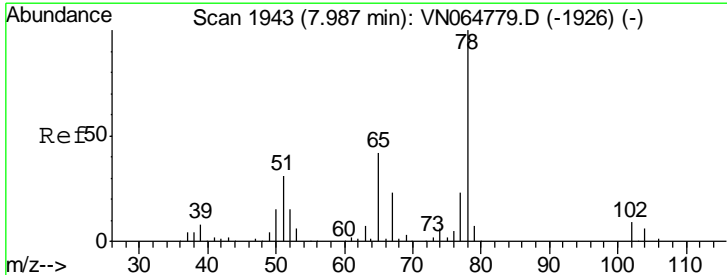
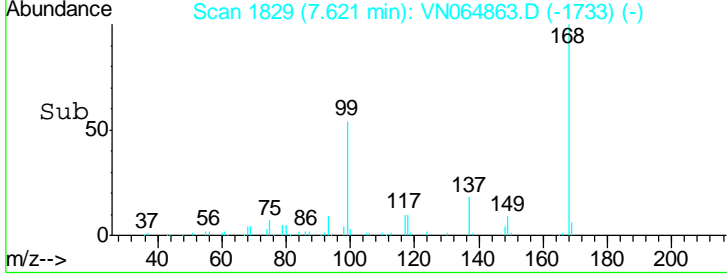
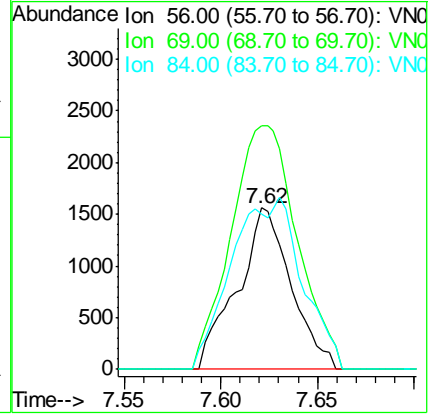
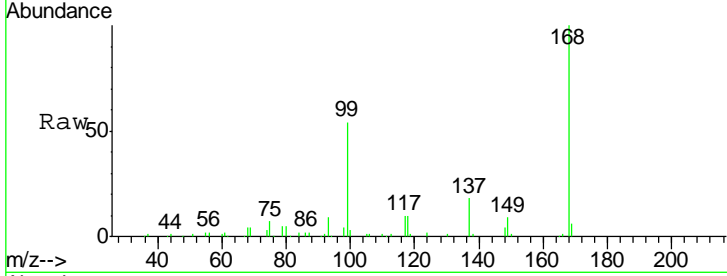




#31
 Cyclohexane
 Concen: 1.142 ug/l
 RT: 7.62 min Scan# 1829
 Delta R.T. 0.01 min
 Lab File: VN064863.D
 Acq: 30 Nov 2020 11:06

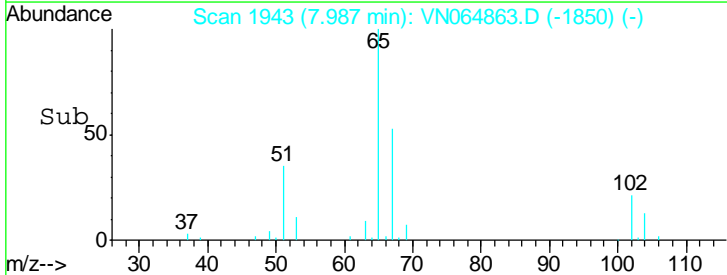
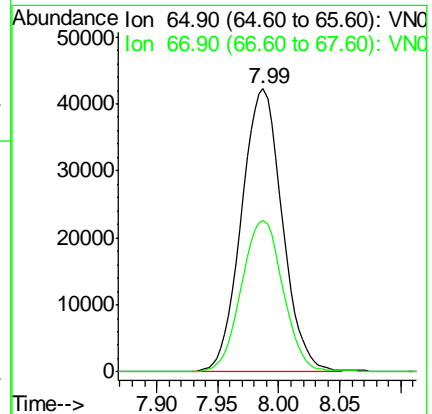
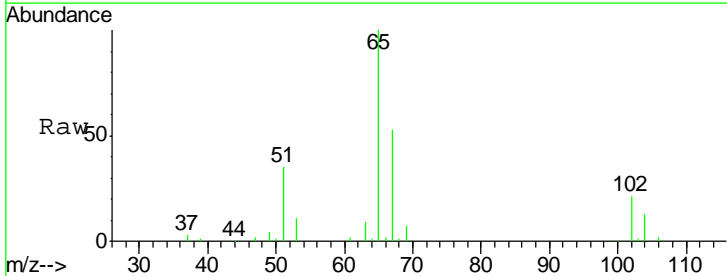
Instrument :
 MSVOA_N
 ClientSampled :
 VN1130MBL01

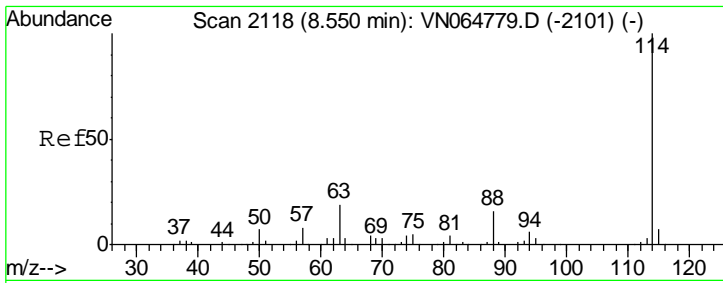
Tgt Ion	Resp	Lower	Upper
56	100		
69	150.6	27.5	41.3#
84	96.5	73.9	110.9



#33
 1,2-Dichloroethane-d4
 Concen: 51.521 ug/l
 RT: 7.99 min Scan# 1943
 Delta R.T. 0.00 min
 Lab File: VN064863.D
 Acq: 30 Nov 2020 11:06

Tgt Ion	Resp	Lower	Upper
65	100		
67	54.7	0.0	108.2

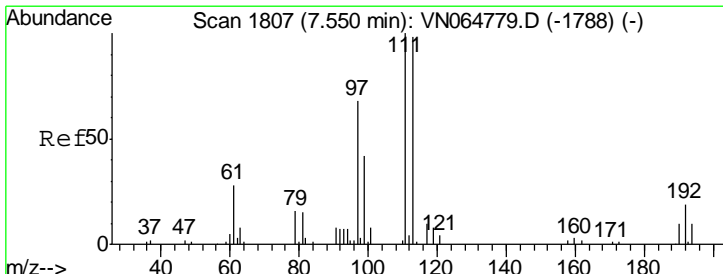
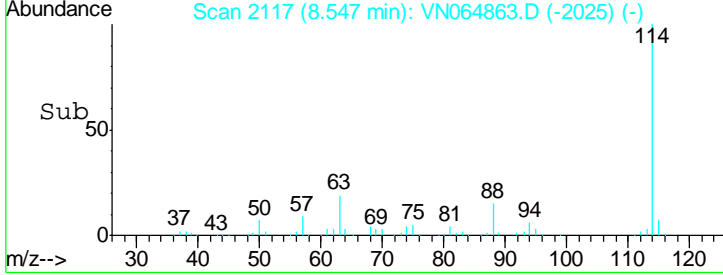
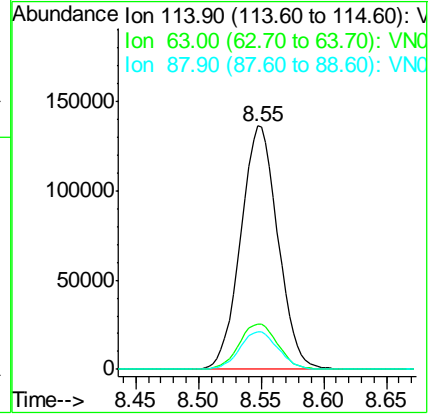
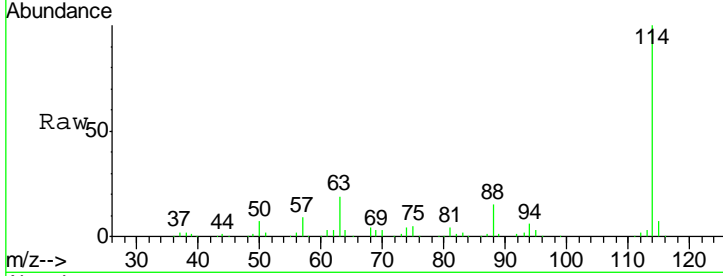




#34
 1,4-Difluorobenzene
 Concen: 50.000 ug/l
 RT: 8.55 min Scan# 2117
 Delta R.T. -0.00 min
 Lab File: VN064863.D
 Acq: 30 Nov 2020 11:06

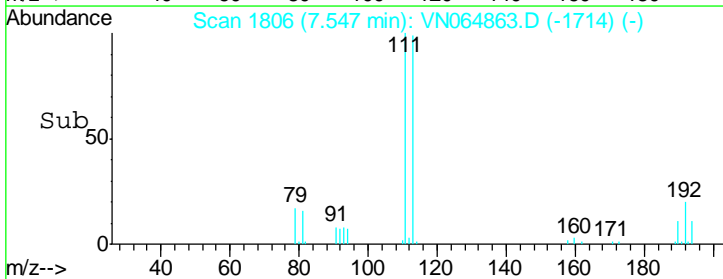
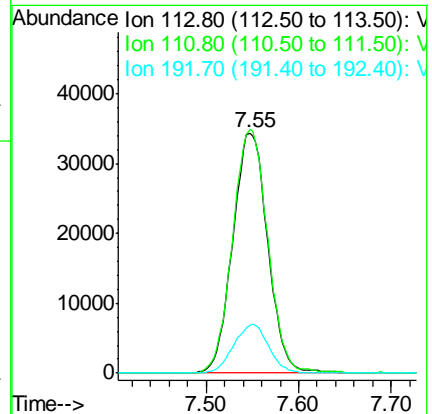
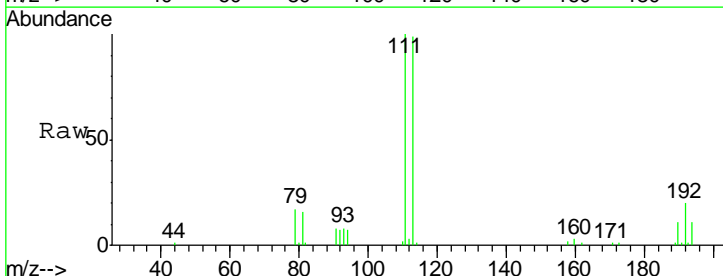
Instrument :
 MSVOA_N
 ClientSampled :
 VN1130MBL01

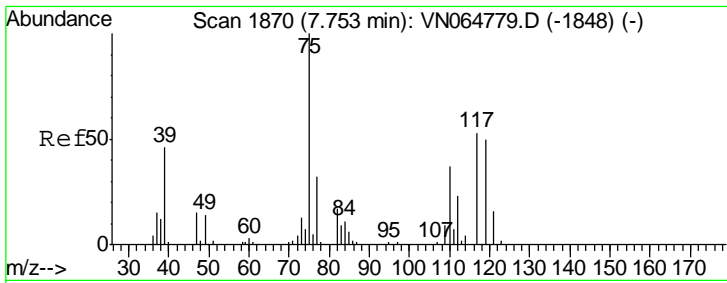
Tgt Ion	Resp	Lower	Upper
114	281795		
63	18.6	0.0	38.6
88	15.5	0.0	32.6



#35
 Dibromofluoromethane
 Concen: 53.263 ug/l
 RT: 7.55 min Scan# 1806
 Delta R.T. -0.00 min
 Lab File: VN064863.D
 Acq: 30 Nov 2020 11:06

Tgt Ion	Resp	Lower	Upper
113	89810		
111	102.1	81.6	122.4
192	20.2	16.2	24.2

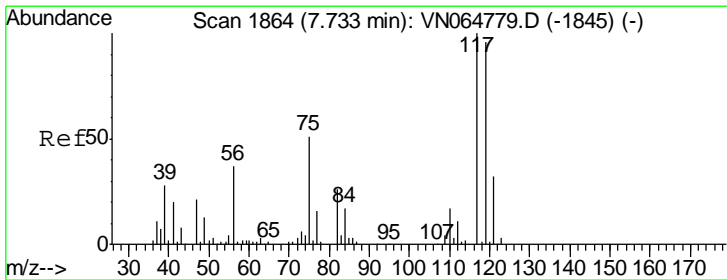
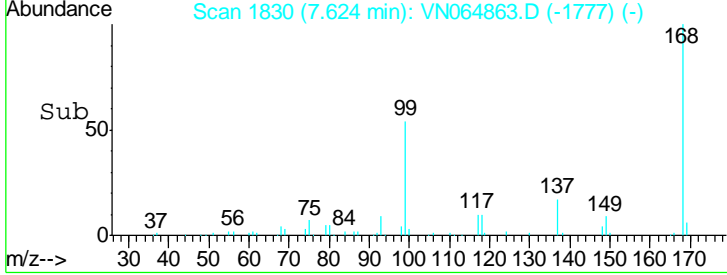
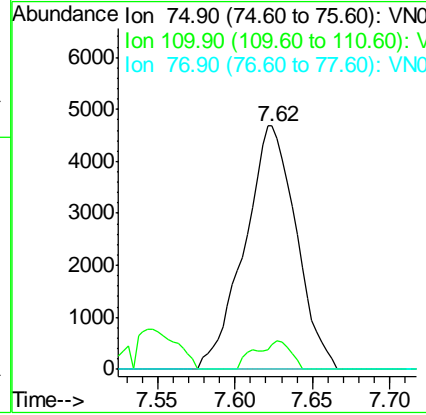
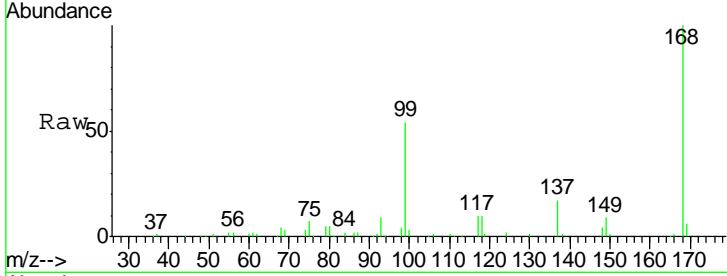




#36
 1,1-Dichloropropene
 Concen: 4.154 ug/l
 RT: 7.62 min Scan# 1830
 Delta R.T. -0.13 min
 Lab File: VN064863.D
 Acq: 30 Nov 2020 11:06

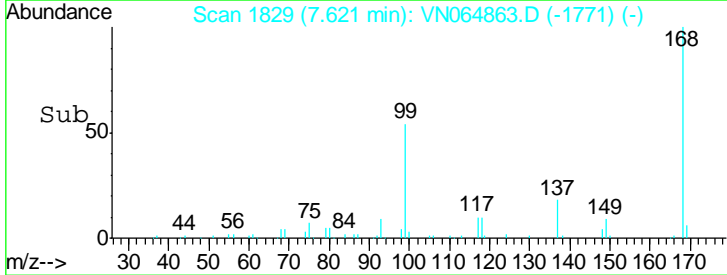
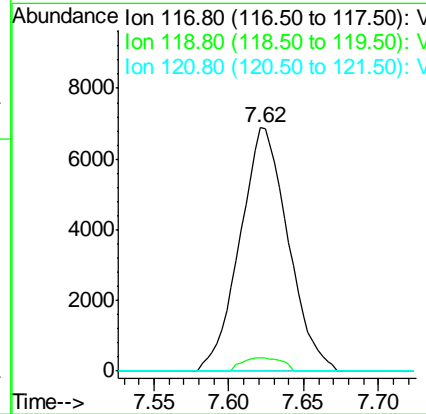
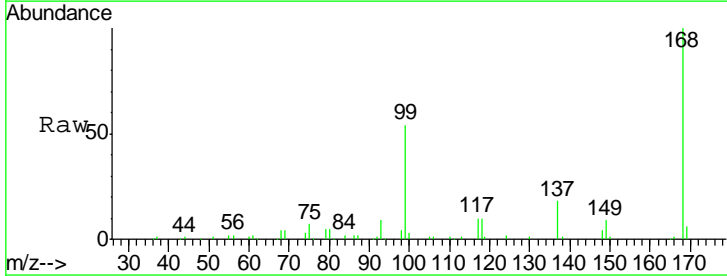
Instrument :
 MSVOA_N
 ClientSampled :
 VN1130MBL01

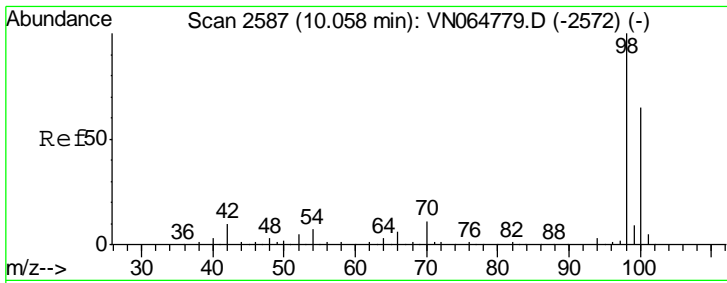
Tgt Ion	Resp	Lower	Upper
75	10851		
110	5.0	17.8	53.3#
77	0.0	25.0	37.4#



#38
 Carbon Tetrachloride
 Concen: 5.673 ug/l
 RT: 7.62 min Scan# 1829
 Delta R.T. -0.11 min
 Lab File: VN064863.D
 Acq: 30 Nov 2020 11:06

Tgt Ion	Resp	Lower	Upper
117	15417		
119	5.6	76.7	115.1#
121	0.0	25.4	38.2#

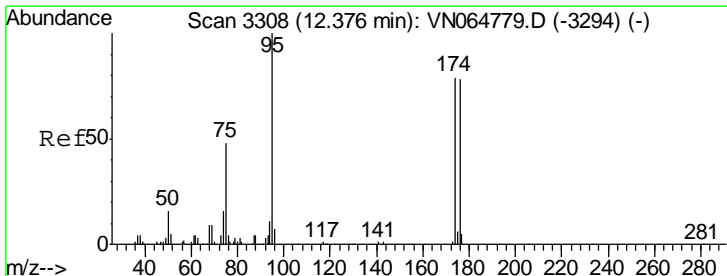
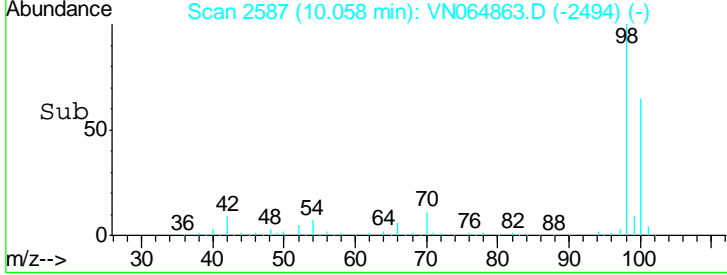
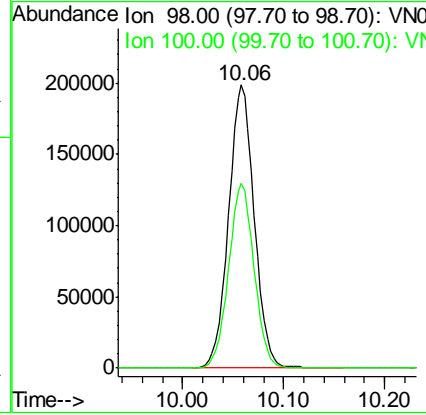
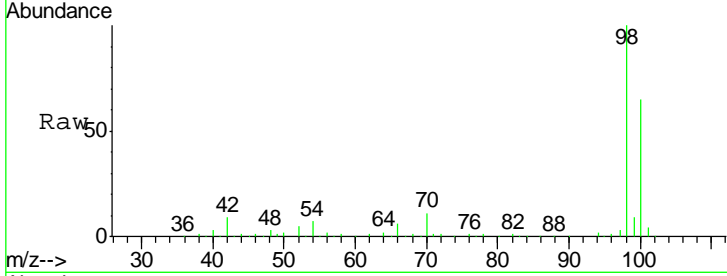




#50
 Toluene-d8
 Concen: 51.096 ug/l
 RT: 10.06 min Scan# 2587
 Delta R.T. 0.00 min
 Lab File: VN064863.D
 Acq: 30 Nov 2020 11:06

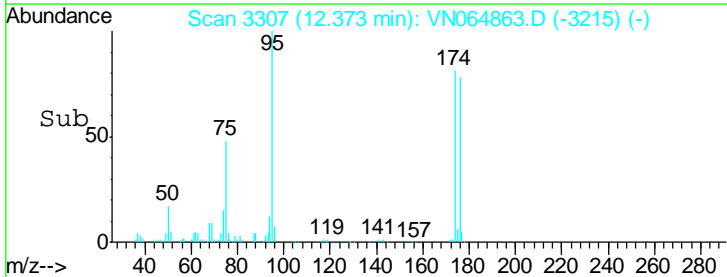
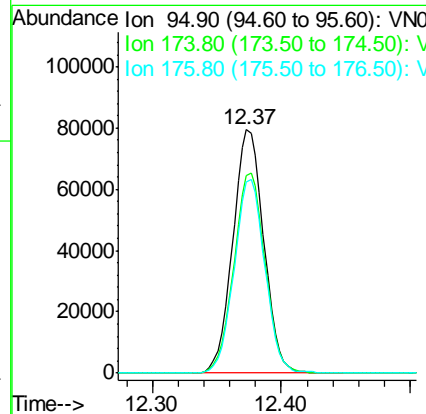
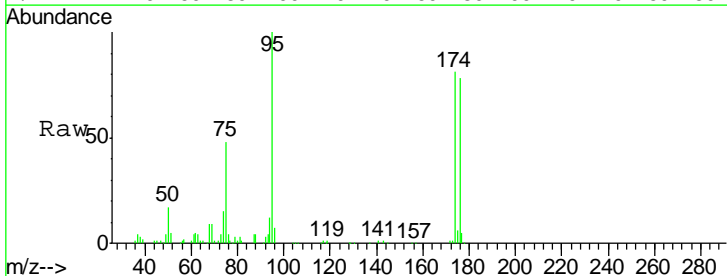
Instrument :
 MSVOA_N
 ClientSampled :
 VN1130MBL01

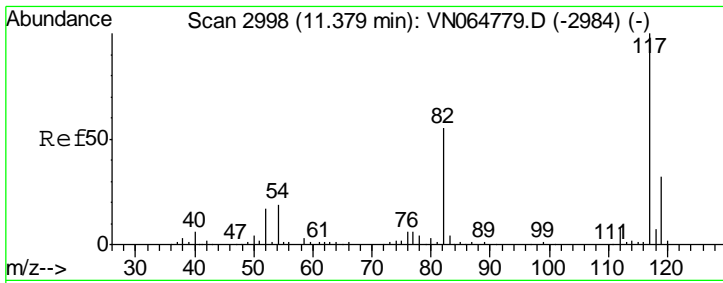
Tgt Ion: 98 Resp: 352030
 Ion Ratio Lower Upper
 98 100
 100 64.9 51.7 77.5



#62
 4-Bromofluorobenzene
 Concen: 53.636 ug/l
 RT: 12.37 min Scan# 3307
 Delta R.T. -0.00 min
 Lab File: VN064863.D
 Acq: 30 Nov 2020 11:06

Tgt Ion: 95 Resp: 132246
 Ion Ratio Lower Upper
 95 100
 174 82.8 0.0 160.4
 176 78.9 0.0 158.4

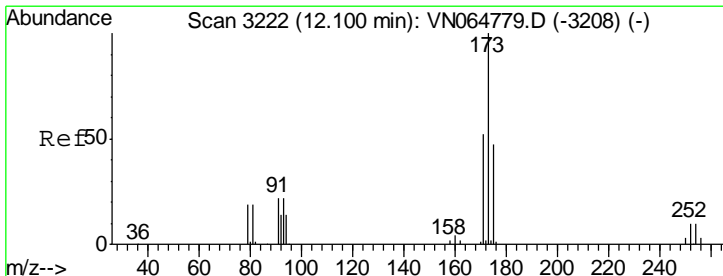
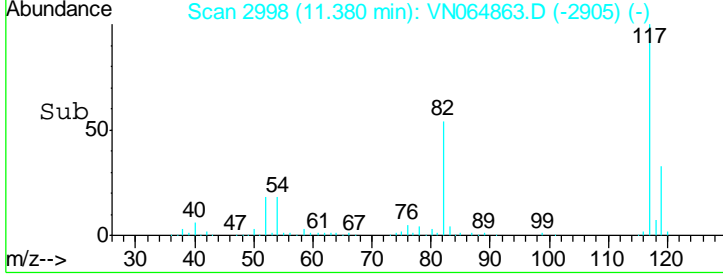
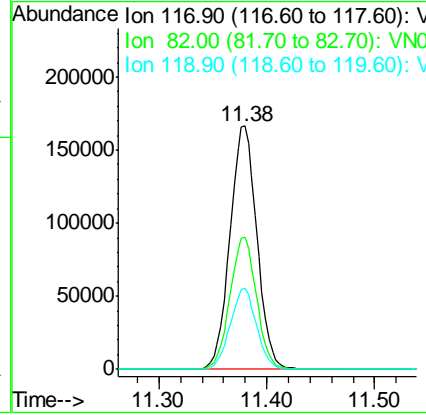
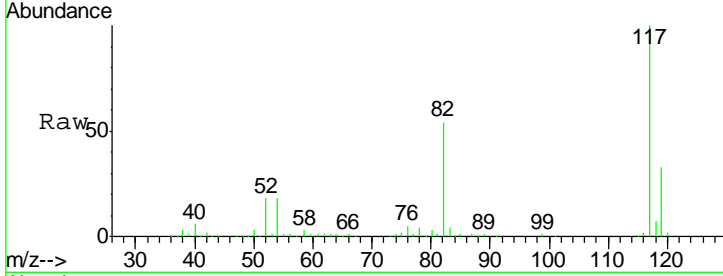




#63
 Chlorobenzene-d5
 Concen: 50.000 ug/l
 RT: 11.38 min Scan# 2998
 Delta R.T. 0.00 min
 Lab File: VN064863.D
 Acq: 30 Nov 2020 11:06

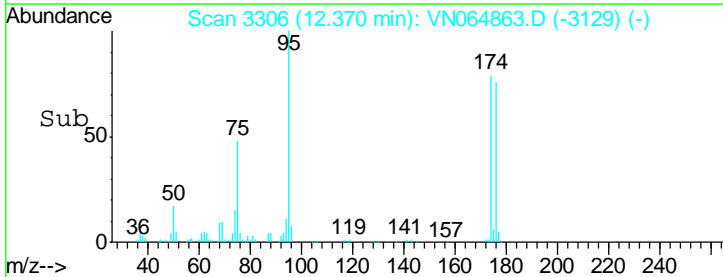
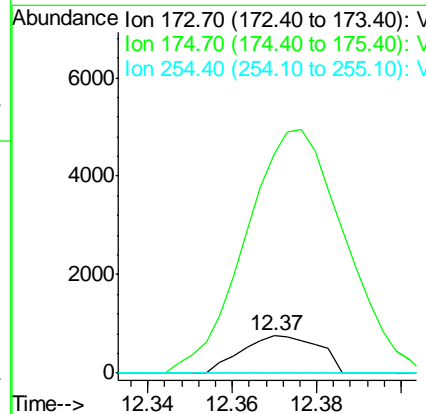
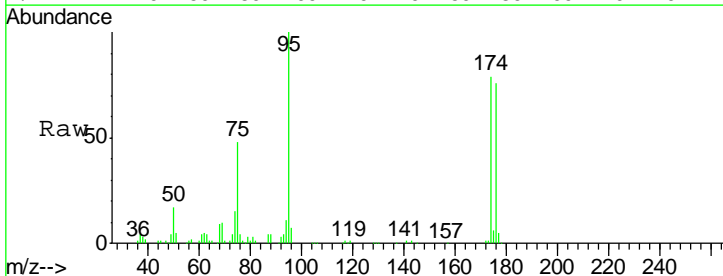
Instrument :
 MSVOA_N
 ClientSampled :
 VN1130MBL01

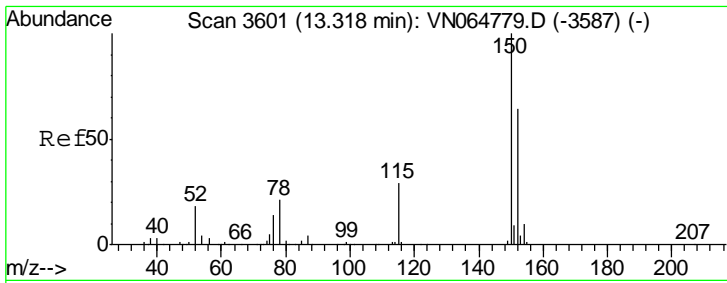
Tgt Ion	Resp	Lower	Upper
117	100		
82	54.1	44.2	66.2
119	33.2	25.8	38.6



#71
 Bromoform
 Concen: 0.529 ug/l
 RT: 12.37 min Scan# 3306
 Delta R.T. 0.27 min
 Lab File: VN064863.D
 Acq: 30 Nov 2020 11:06

Tgt Ion	Resp	Lower	Upper
173	100		
175	728.1	24.3	72.8#
254	0.0	0.0	0.0

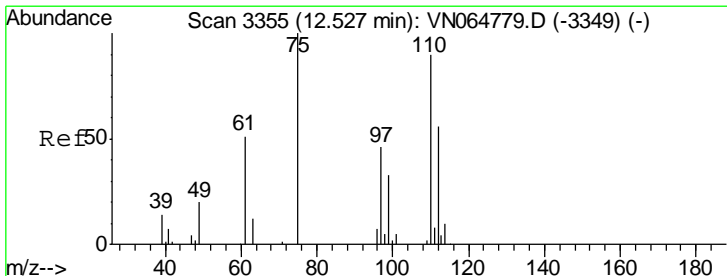
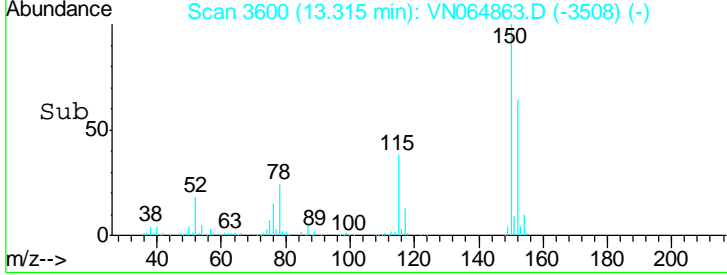
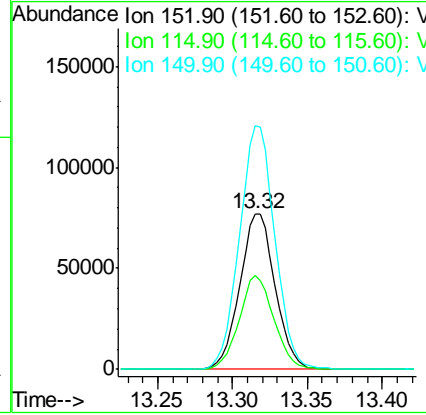
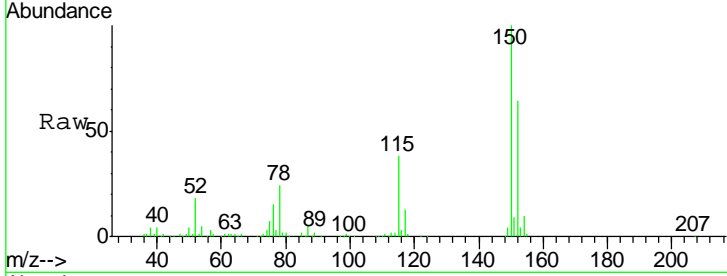




#72
 1,4-Dichlorobenzene-d4
 Concen: 50.000 ug/l
 RT: 13.32 min Scan# 3600
 Delta R.T. -0.00 min
 Lab File: VN064863.D
 Acq: 30 Nov 2020 11:06

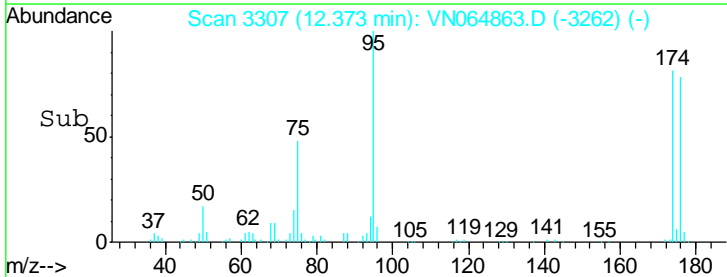
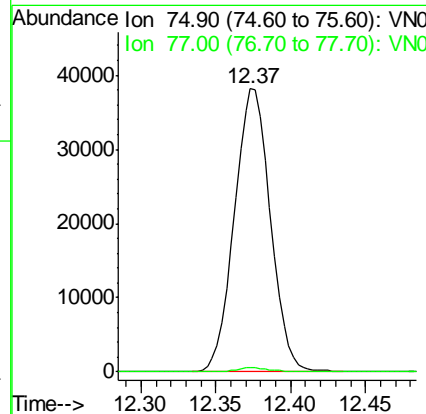
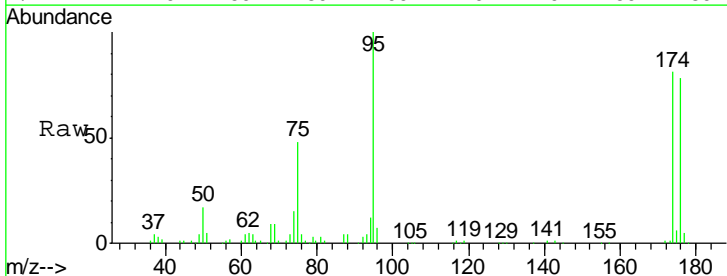
Instrument :
 MSVOA_N
 ClientSampled :
 VN1130MBL01

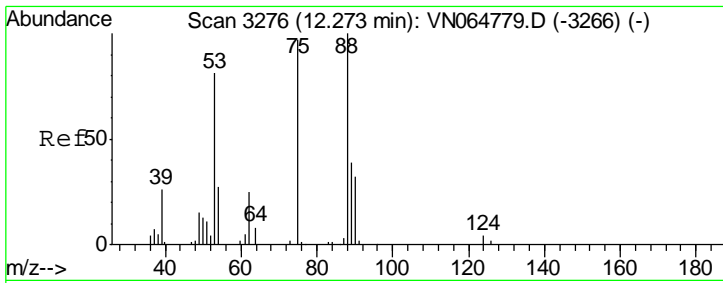
Tgt Ion	Resp	Lower	Upper
152	100		
115	59.1	29.7	89.1
150	157.2	0.0	350.6



#76
 1,2,3-Trichloropropane
 Concen: 23.429 ug/l
 RT: 12.37 min Scan# 3307
 Delta R.T. -0.15 min
 Lab File: VN064863.D
 Acq: 30 Nov 2020 11:06

Tgt Ion	Resp	Lower	Upper
75	100		
77	1.3	0.0	0.0#

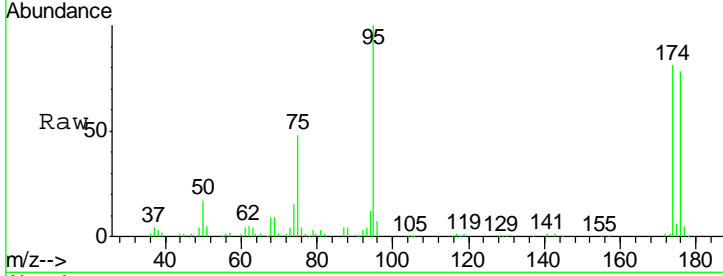




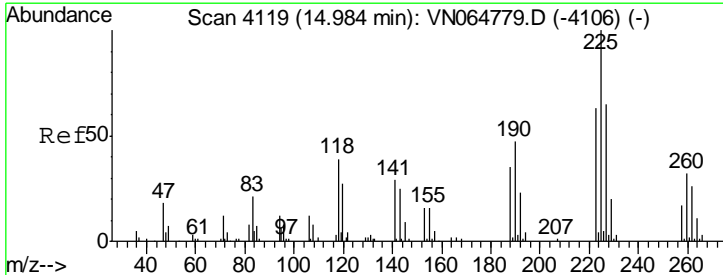
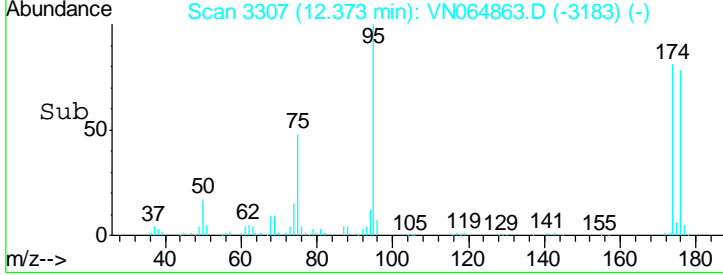
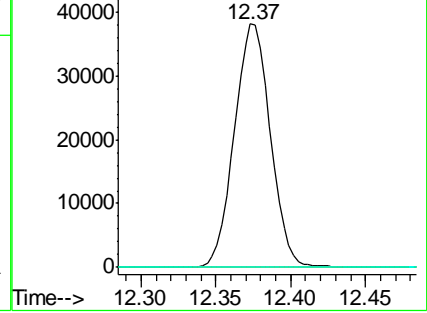
#81
 trans-1,4-Dichloro-2-butene
 Concen: 64.214 ug/l
 RT: 12.37 min Scan# 3307
 Delta R.T. 0.10 min
 Lab File: VN064863.D
 Acq: 30 Nov 2020 11:06

Instrument :
 MSVOA_N
 ClientSampled :
 VN1130MBL01

Tgt Ion	Resp	Lower	Upper
75	100		
53	0.0	67.0	100.4#
89	0.0	39.6	59.4#

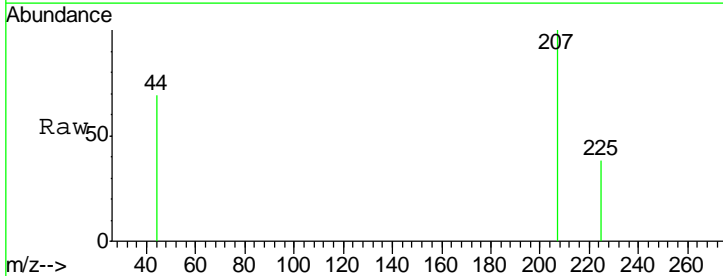


Abundance Ion 74.90 (74.60 to 75.60): VNC
 Ion 53.00 (52.70 to 53.70): VNC
 Ion 88.90 (88.60 to 89.60): VNC

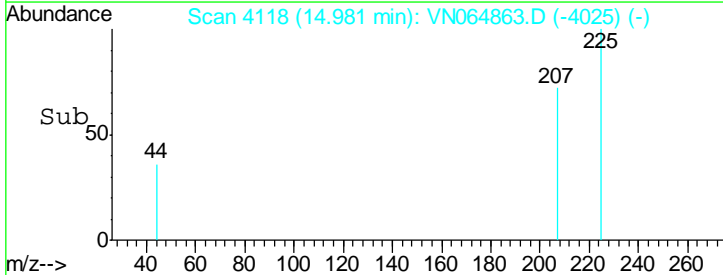
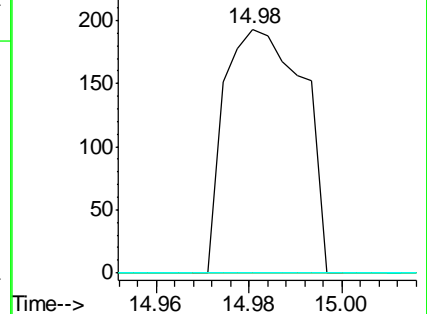


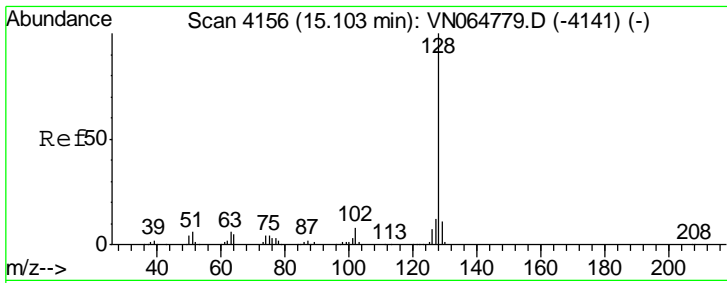
#94
 Hexachlorobutadiene
 Concen: 0.569 ug/l
 RT: 14.98 min Scan# 4118
 Delta R.T. -0.00 min
 Lab File: VN064863.D
 Acq: 30 Nov 2020 11:06

Tgt Ion	Resp	Lower	Upper
225	100		
223	0.0	31.0	93.0#
227	0.0	32.0	96.0#



Abundance Ion 224.70 (224.40 to 225.40): V
 Ion 222.70 (222.40 to 223.40): V
 Ion 226.70 (226.40 to 227.40): V

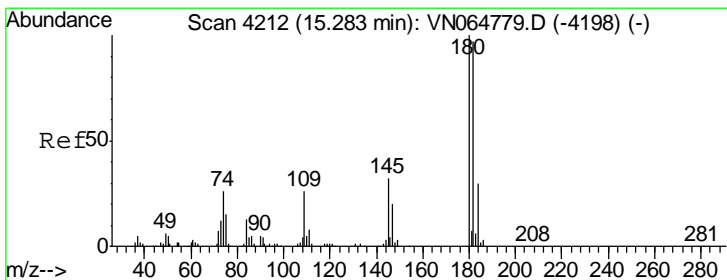
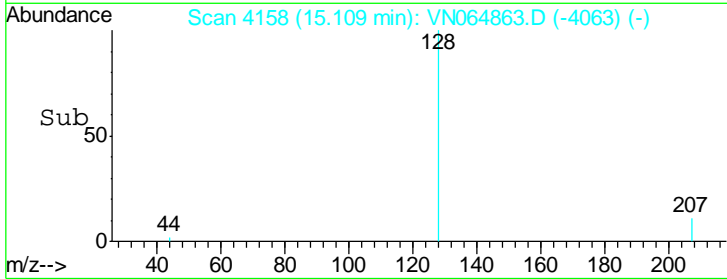
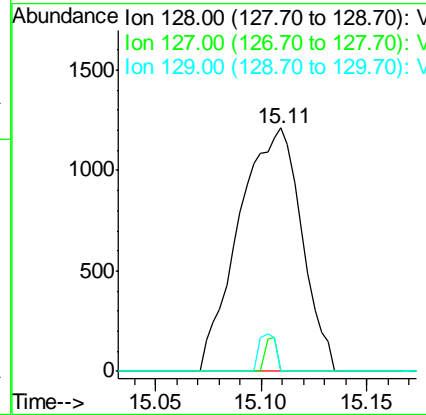
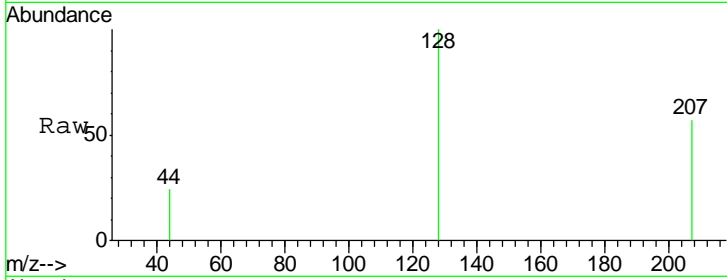




#95
 Naphthalene
 Concen: 0.326 ug/l
 RT: 15.11 min Scan# 4158
 Delta R.T. 0.01 min
 Lab File: VN064863.D
 Acq: 30 Nov 2020 11:06

Instrument :
 MSVOA_N
 ClientSampled :
 VN1130MBL01

Tgt Ion	Resp	Lower	Upper
128	100		
127	2.6	10.3	15.5#
129	4.0	8.7	13.1#



#96
 1,2,3-Trichlorobenzene
 Concen: 1.679 ug/l
 RT: 15.29 min Scan# 4213
 Delta R.T. 0.00 min
 Lab File: VN064863.D
 Acq: 30 Nov 2020 11:06

Tgt Ion	Resp	Lower	Upper
180	100		
182	88.6	48.1	144.4
145	0.0	16.4	49.1#

