

Data Path : Z:\voasrv\HPCHEM1\MSVOA\_N\Data\VN113022\  
 Data File : VN075495.D  
 Acq On : 30 Nov 2022 11:52  
 Operator : JC\MD  
 Sample : N5795-05RE  
 Misc : 5.0mL/MSVOA\_N/WATER  
 ALS Vial : 8 Sample Multiplier: 1

Instrument :  
 MSVOA\_N  
 ClientSampleId :  
 TP-12

Quant Time: Dec 01 02:14:24 2022  
 Quant Method : Z:\voasrv\HPCHEM1\MSVOA\_N\methods\82N112122W.M  
 Quant Title : SW846 8260  
 QLast Update : Wed Nov 23 00:18:03 2022  
 Response via : Initial Calibration

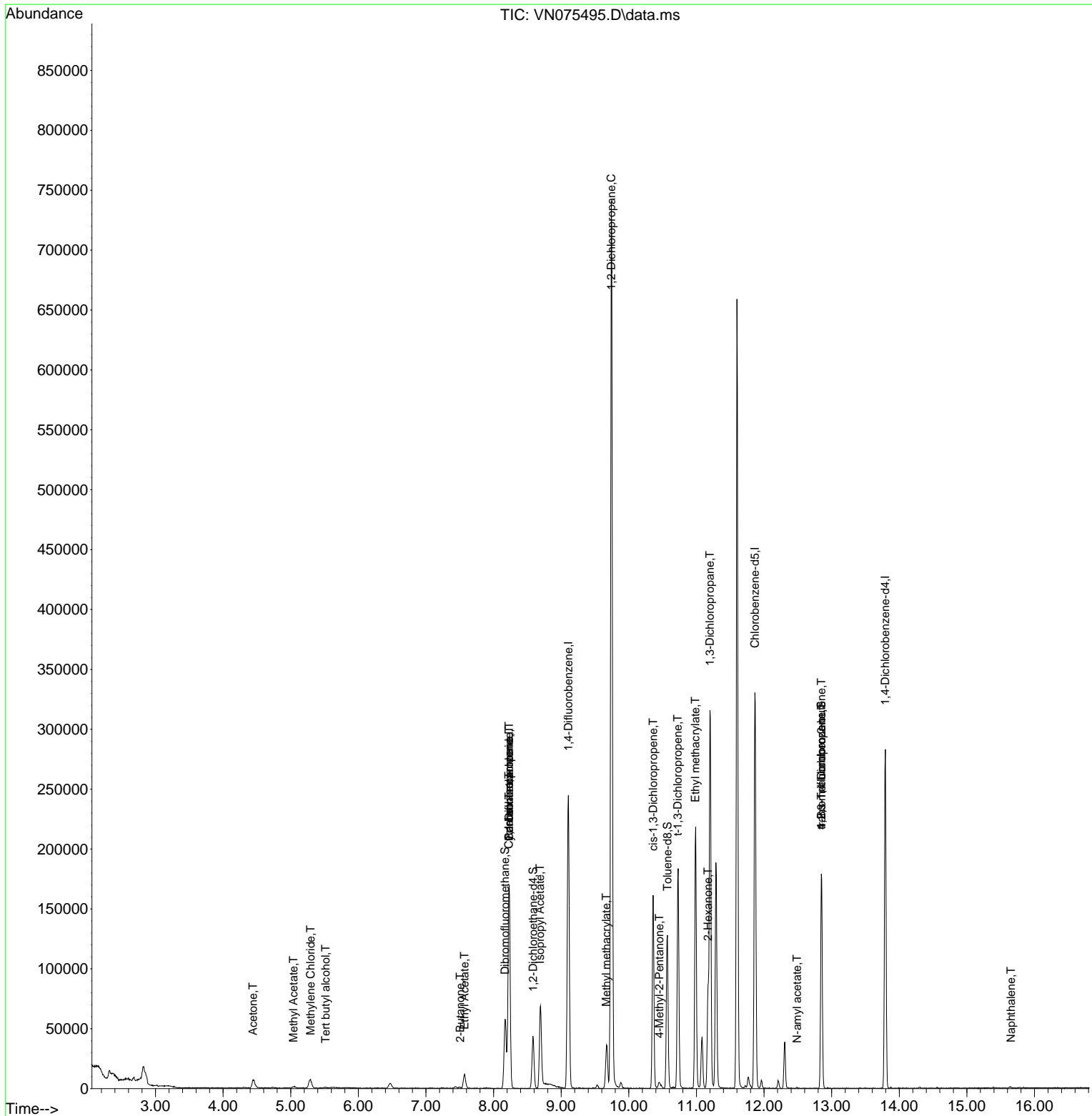
Compound	R.T.	QIon	Response	Conc	Units	Dev(Min)
-----						
Internal Standards						
1) Pentafluorobenzene	8.230	168	130147	50.000	ug/l	0.00
34) 1,4-Difluorobenzene	9.106	114	229370	50.000	ug/l	0.00
63) Chlorobenzene-d5	11.865	117	206434	50.000	ug/l	0.00
72) 1,4-Dichlorobenzene-d4	13.794	152	80751	50.000	ug/l	0.00
System Monitoring Compounds						
33) 1,2-Dichloroethane-d4	8.583	65	34201	48.956	ug/l	0.00
Spiked Amount	50.000	Range	74 - 125	Recovery	=	97.920%
35) Dibromofluoromethane	8.171	113	42018	46.633	ug/l	0.00
Spiked Amount	50.000	Range	75 - 124	Recovery	=	93.260%
50) Toluene-d8	10.571	98	91085	44.883	ug/l	0.00
Spiked Amount	50.000	Range	86 - 113	Recovery	=	89.760%
62) 4-Bromofluorobenzene	12.847	95	60982	40.711	ug/l	0.00
Spiked Amount	50.000	Range	83 - 123	Recovery	=	81.420%#
Target Compounds						
						Qvalue
11) Tert butyl alcohol	5.518	59	296	1.009	ug/l #	72
16) Acetone	4.442	43	13852	21.257	ug/l #	86
18) Methyl Acetate	5.042	43	2552	0.265	ug/l	97
20) Methylene Chloride	5.295	84	6675	3.872	ug/l	97
25) 2-Butanone	7.506	43	1489	1.637	ug/l #	81
31) Cyclohexane	8.224	56	2408	1.085	ug/l #	6
36) 1,1-Dichloropropene	8.230	75	9825	5.000	ug/l #	51
37) Ethyl Acetate	7.571	43	16459	9.303	ug/l	98
38) Carbon Tetrachloride	8.230	117	12844	5.950	ug/l #	15
43) Isopropyl Acetate	8.688	43	77693	27.357	ug/l #	91
45) 1,2-Dichloropropane	9.741	63	1073	0.748	ug/l #	42
48) Methyl methacrylate	9.665	41	1954	1.488	ug/l #	6
51) 4-Methyl-2-Pentanone	10.453	43	5911	3.268	ug/l #	70
53) t-1,3-Dichloropropene	10.724	75	439	0.208	ug/l #	43
54) cis-1,3-Dichloropropene	10.359	75	31651	13.823	ug/l #	65
56) Ethyl methacrylate	10.982	69	757	0.355	ug/l #	1
57) 1,3-Dichloropropane	11.200	76	3673	1.427	ug/l #	42
59) 2-Hexanone	11.171	43	63658	46.867	ug/l #	21
74) N-amyl acetate	12.488	43	501	0.276	ug/l #	38
76) 1,2,3-Trichloropropane	12.847	75	30836	20.197	ug/l #	1
81) trans-1,4-Dichloro-2-b...	12.847	75	30836	59.757	ug/l #	10
95) Naphthalene	15.653	128	1782	0.411	ug/l #	74
-----						

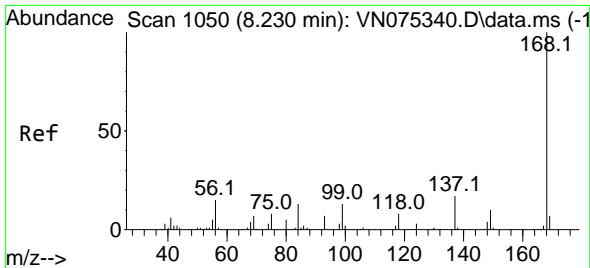
(#) = qualifier out of range (m) = manual integration (+) = signals summed

Data Path : Z:\voasrv\HPCHEM1\MSVOA\_N\Data\VN113022\  
 Data File : VN075495.D  
 Acq On : 30 Nov 2022 11:52  
 Operator : JC\MD  
 Sample : N5795-05RE  
 Misc : 5.0mL/MSVOA\_N/WATER  
 ALS Vial : 8 Sample Multiplier: 1

Instrument :  
 MSVOA\_N  
 ClientSampleId :  
 TP-12

Quant Time: Dec 01 02:14:24 2022  
 Quant Method : Z:\voasrv\HPCHEM1\MSVOA\_N\methods\82N112122W.M  
 Quant Title : SW846 8260  
 QLast Update : Wed Nov 23 00:18:03 2022  
 Response via : Initial Calibration

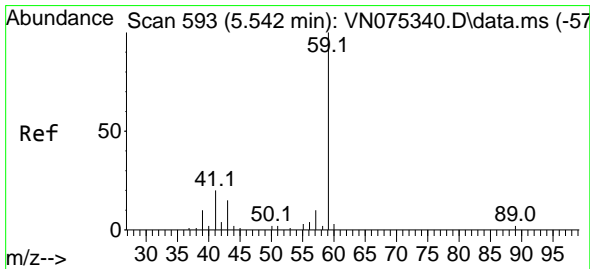
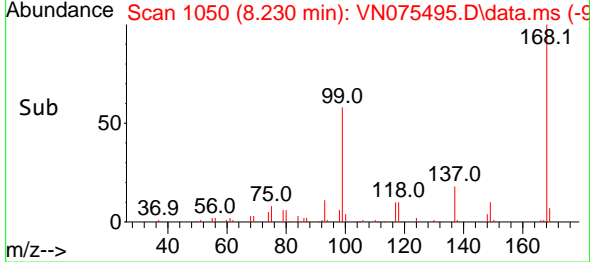
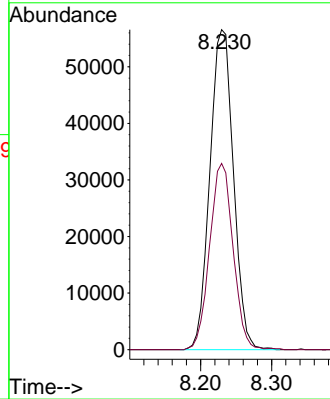
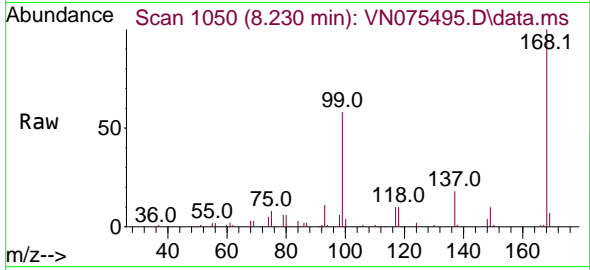




#1  
 Pentafluorobenzene  
 Concen: 50.000 ug/l  
 RT: 8.230 min Scan# 10  
 Delta R.T. -0.000 min  
 Lab File: VN075495.D  
 Acq: 30 Nov 2022 11:52

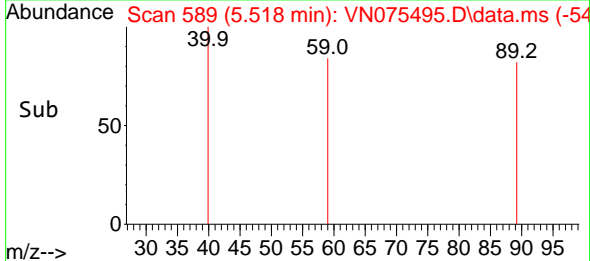
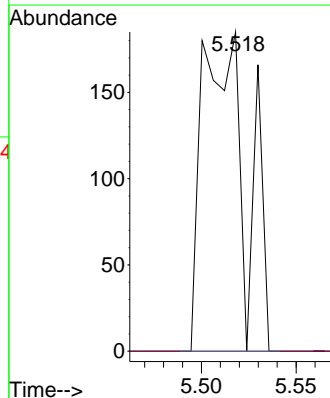
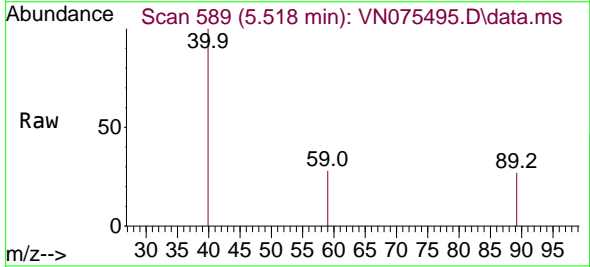
Instrument :  
 MSVOA\_N  
 ClientSampleId :  
 TP-12

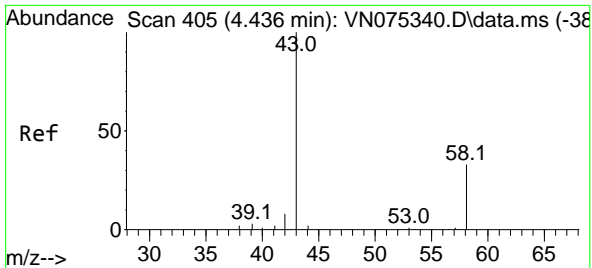
Tgt Ion:168 Resp: 130147  
 Ion Ratio Lower Upper  
 168 100  
 99 58.2 51.6 77.4



#11  
 Tert butyl alcohol  
 Concen: 1.009 ug/l  
 RT: 5.518 min Scan# 589  
 Delta R.T. -0.024 min  
 Lab File: VN075495.D  
 Acq: 30 Nov 2022 11:52

Tgt Ion: 59 Resp: 296  
 Ion Ratio Lower Upper  
 59 100  
 57 0.0 8.5 12.7#

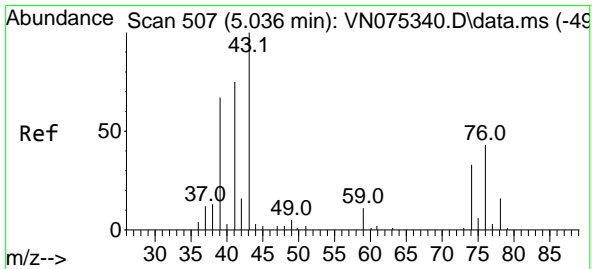
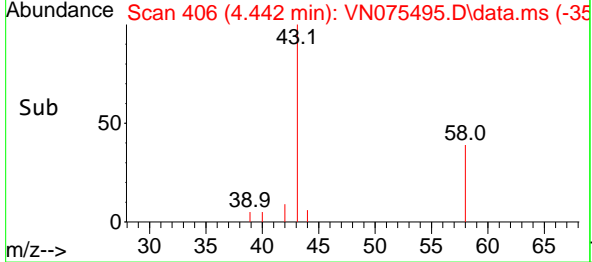
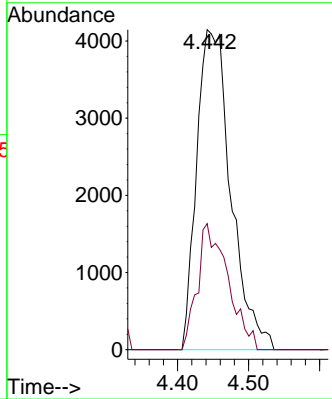
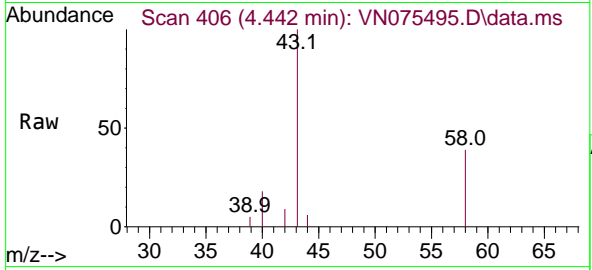




#16  
 Acetone  
 Concen: 21.257 ug/l  
 RT: 4.442 min Scan# 406  
 Delta R.T. 0.006 min  
 Lab File: VN075495.D  
 Acq: 30 Nov 2022 11:52

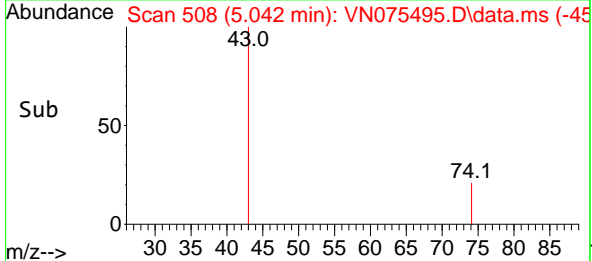
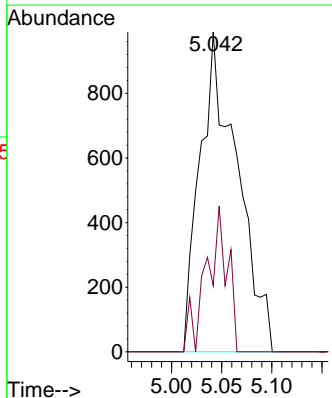
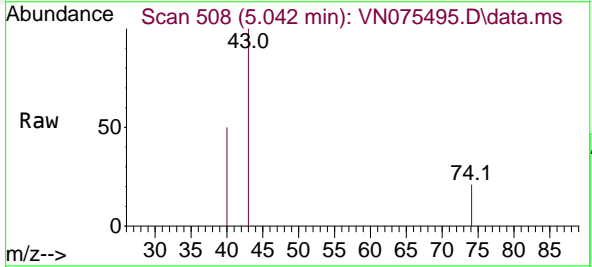
Instrument : MSVOA\_N  
 ClientSampleId : TP-12

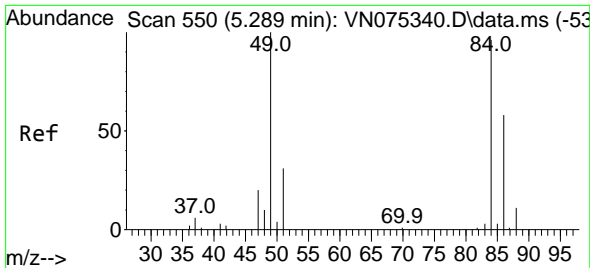
Tgt Ion: 43 Resp: 13852  
 Ion Ratio Lower Upper  
 43 100  
 58 39.4 25.5 38.3#



#18  
 Methyl Acetate  
 Concen: 0.265 ug/l  
 RT: 5.042 min Scan# 508  
 Delta R.T. 0.006 min  
 Lab File: VN075495.D  
 Acq: 30 Nov 2022 11:52

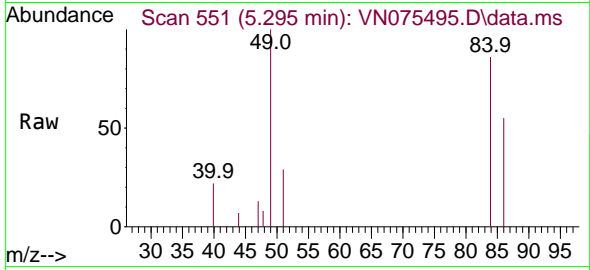
Tgt Ion: 43 Resp: 2552  
 Ion Ratio Lower Upper  
 43 100  
 74 25.9 22.0 33.0





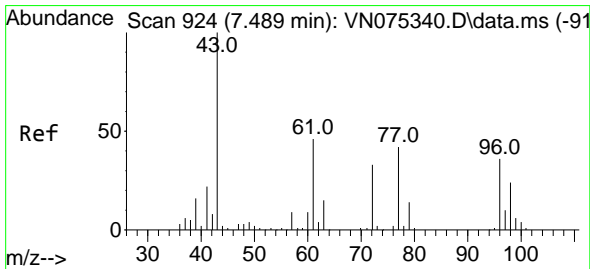
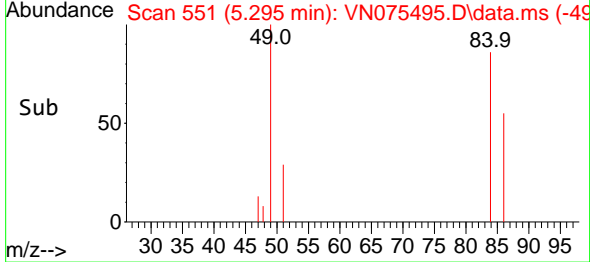
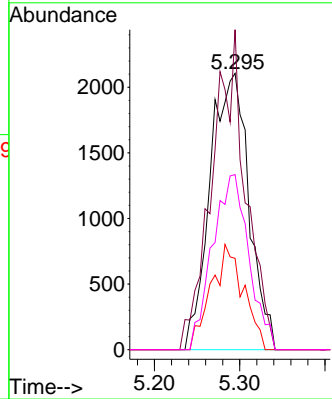
#20  
 Methylene Chloride  
 Concen: 3.872 ug/l  
 RT: 5.295 min Scan# 511  
 Delta R.T. 0.006 min  
 Lab File: VN075495.D  
 Acq: 30 Nov 2022 11:52

Instrument :  
 MSVOA\_N  
 ClientSampleId :  
 TP-12



Tgt Ion: 84 Resp: 6675

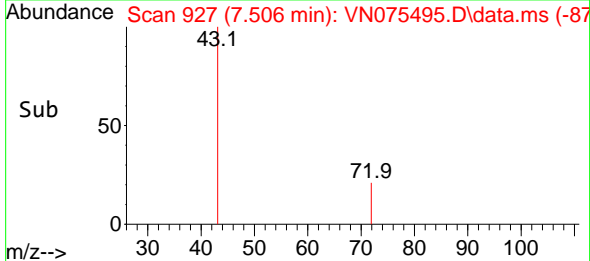
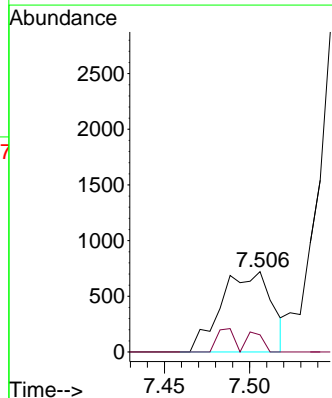
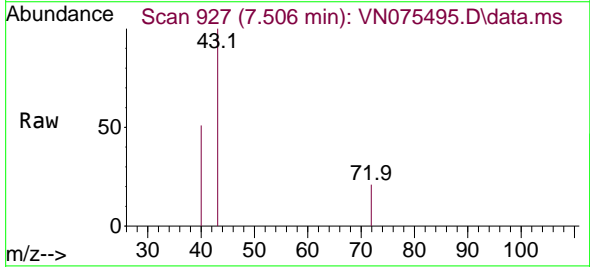
Ion	Ratio	Lower	Upper
84	100		
49	115.8	94.9	142.3
51	33.0	26.8	40.2
86	63.3	53.7	80.5

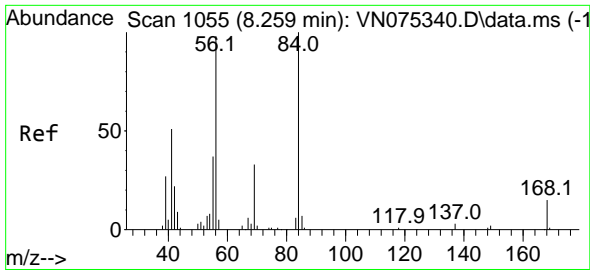


#25  
 2-Butanone  
 Concen: 1.637 ug/l  
 RT: 7.506 min Scan# 927  
 Delta R.T. 0.017 min  
 Lab File: VN075495.D  
 Acq: 30 Nov 2022 11:52

Tgt Ion: 43 Resp: 1489

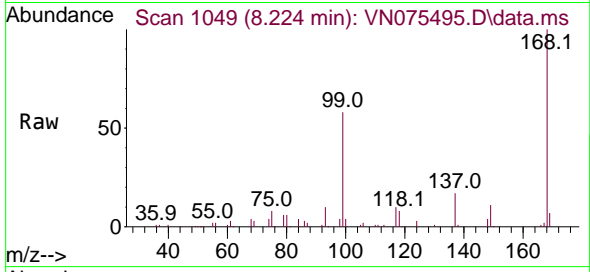
Ion	Ratio	Lower	Upper
43	100		
72	21.4	25.5	38.3#



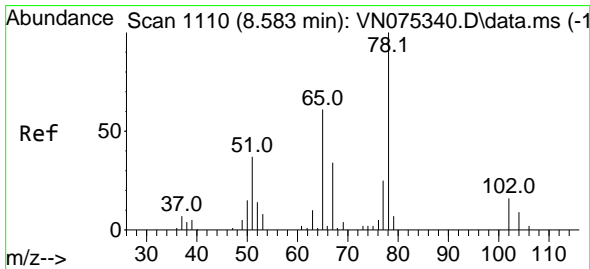
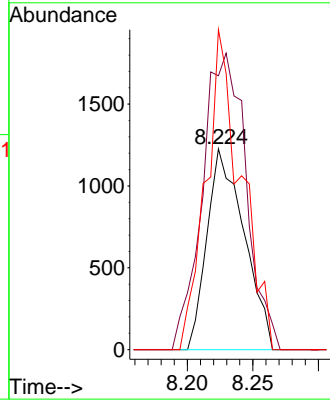
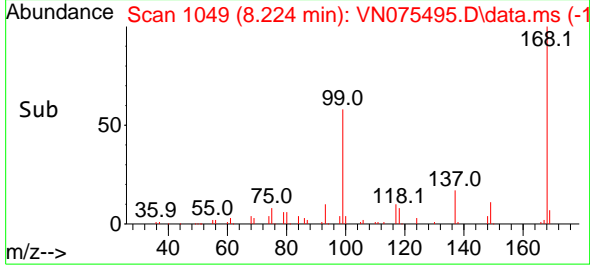


#31  
 Cyclohexane  
 Concen: 1.085 ug/l  
 RT: 8.224 min Scan# 1049  
 Delta R.T. -0.035 min  
 Lab File: VN075495.D  
 Acq: 30 Nov 2022 11:52

Instrument : MSVOA\_N  
 ClientSampleId : TP-12

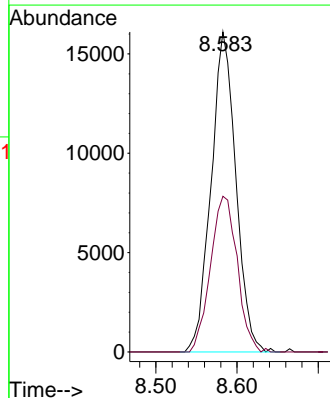
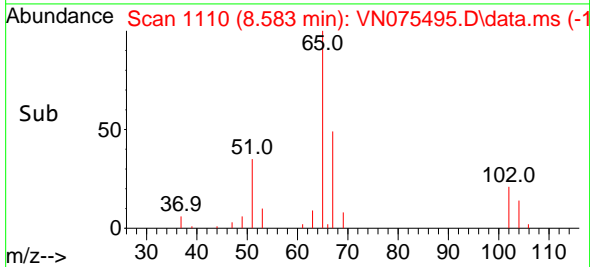
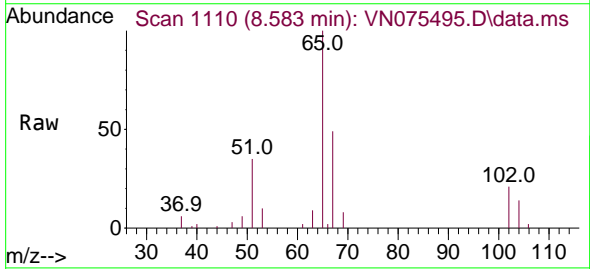


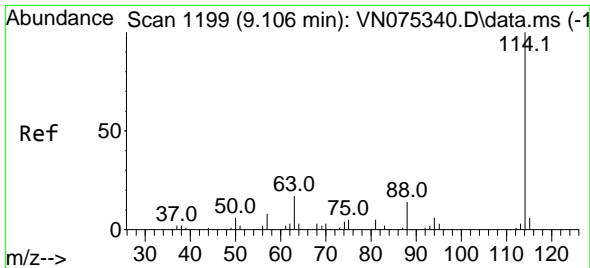
Tgt Ion: 56 Resp: 2408  
 Ion Ratio Lower Upper  
 56 100  
 69 136.3 25.2 37.8#  
 84 159.3 77.8 116.8#



#33  
 1,2-Dichloroethane-d4  
 Concen: 48.956 ug/l  
 RT: 8.583 min Scan# 1110  
 Delta R.T. -0.000 min  
 Lab File: VN075495.D  
 Acq: 30 Nov 2022 11:52

Tgt Ion: 65 Resp: 34201  
 Ion Ratio Lower Upper  
 65 100  
 67 52.4 0.0 102.0



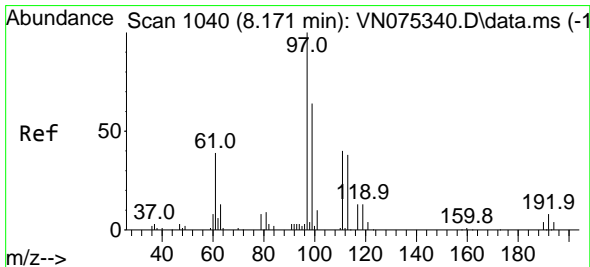
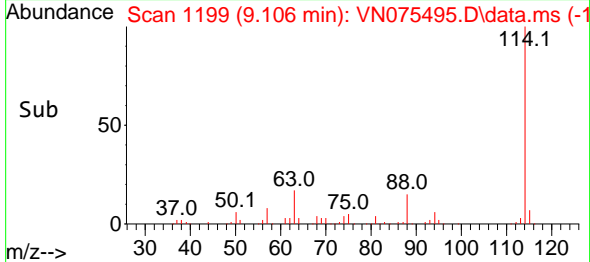
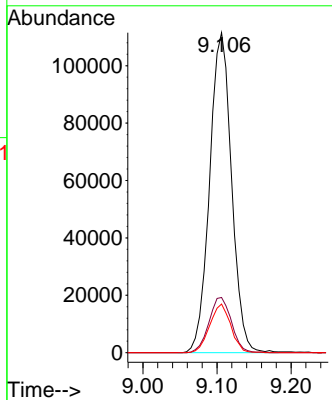
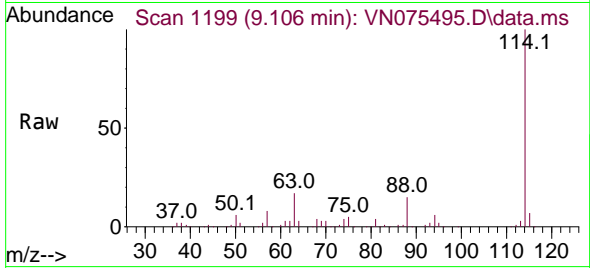


#34  
 1,4-Difluorobenzene  
 Concen: 50.000 ug/l  
 RT: 9.106 min Scan# 1199  
 Delta R.T. 0.000 min  
 Lab File: VN075495.D  
 Acq: 30 Nov 2022 11:52

Instrument : MSVOA\_N  
 ClientSampleId : TP-12

Tgt Ion:114 Resp: 229370

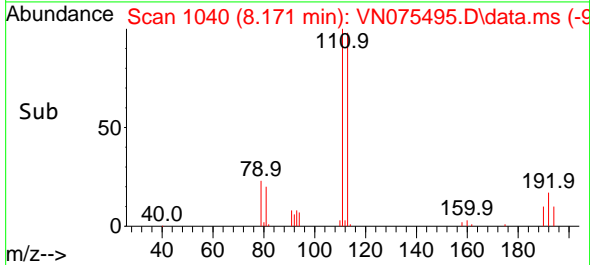
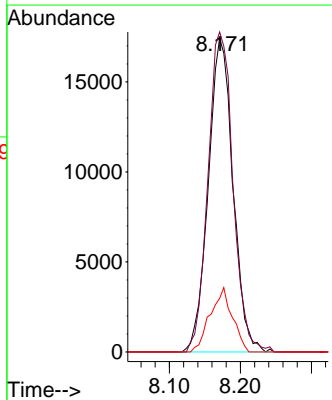
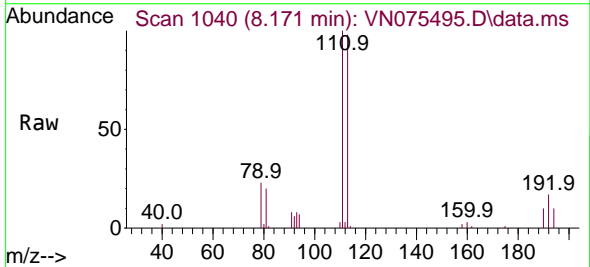
Ion	Ratio	Lower	Upper
114	100		
63	17.3	0.0	39.6
88	15.2	0.0	29.0

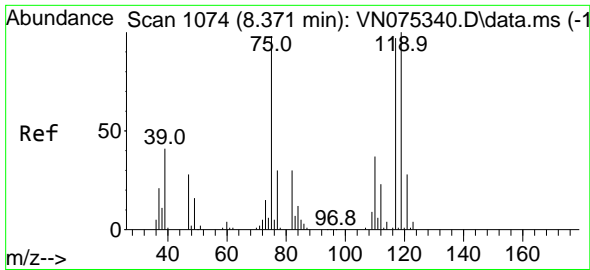


#35  
 Dibromofluoromethane  
 Concen: 46.633 ug/l  
 RT: 8.171 min Scan# 1040  
 Delta R.T. -0.000 min  
 Lab File: VN075495.D  
 Acq: 30 Nov 2022 11:52

Tgt Ion:113 Resp: 42018

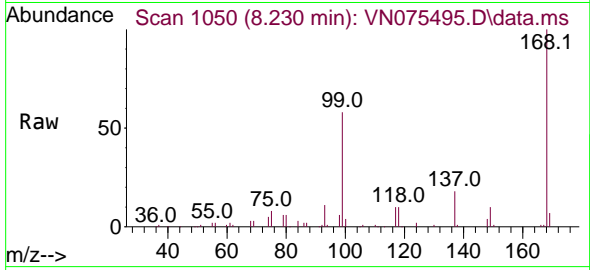
Ion	Ratio	Lower	Upper
113	100		
111	103.3	80.5	120.7
192	18.4	13.2	19.8



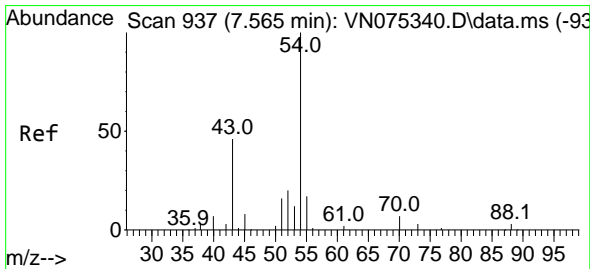
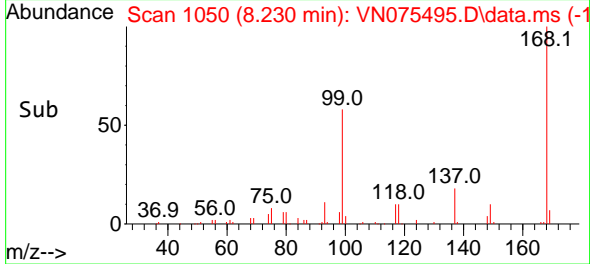
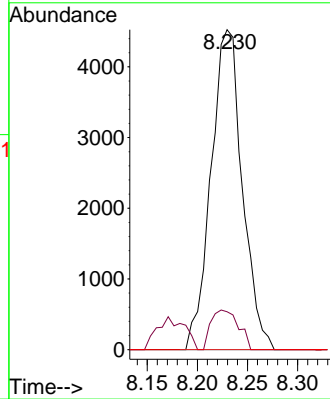


#36  
 1,1-Dichloropropene  
 Concen: 5.000 ug/l  
 RT: 8.230 min Scan# 1074  
 Delta R.T. -0.141 min  
 Lab File: VN075495.D  
 Acq: 30 Nov 2022 11:52

Instrument : MSVOA\_N  
 ClientSampleId : TP-12

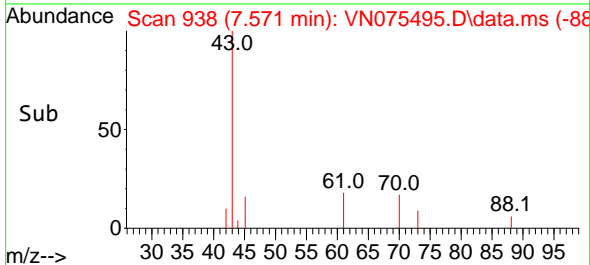
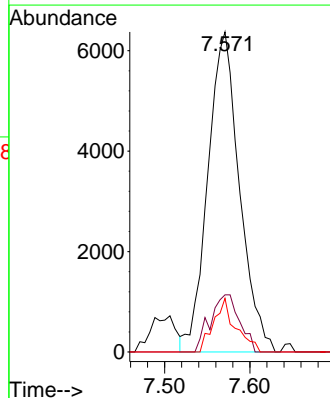
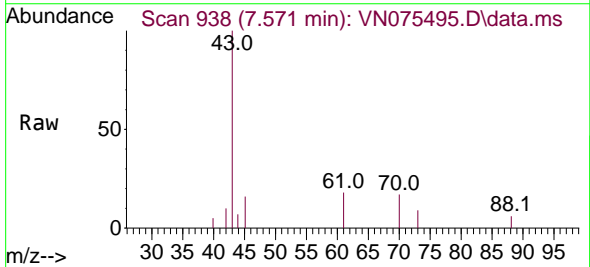


Tgt Ion: 75 Resp: 9825  
 Ion Ratio Lower Upper  
 75 100  
 110 10.9 17.8 53.3#  
 77 0.0 24.6 37.0#

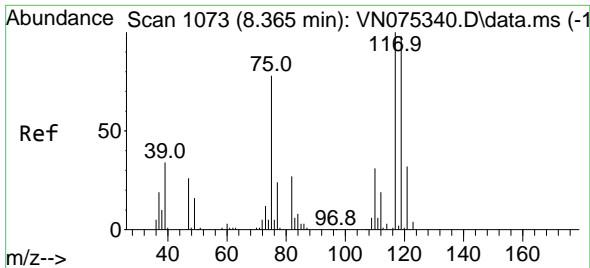


#37  
 Ethyl Acetate  
 Concen: 9.303 ug/l  
 RT: 7.571 min Scan# 938  
 Delta R.T. 0.006 min  
 Lab File: VN075495.D  
 Acq: 30 Nov 2022 11:52

Tgt Ion: 43 Resp: 16459  
 Ion Ratio Lower Upper  
 43 100  
 61 16.5 12.2 18.4  
 70 11.6 9.4 14.2





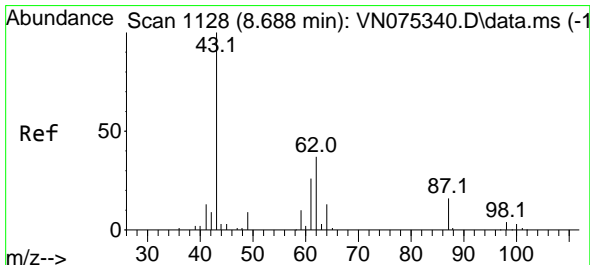
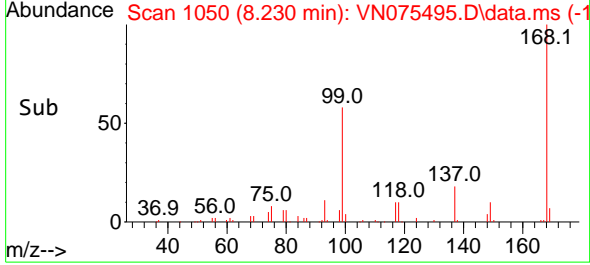
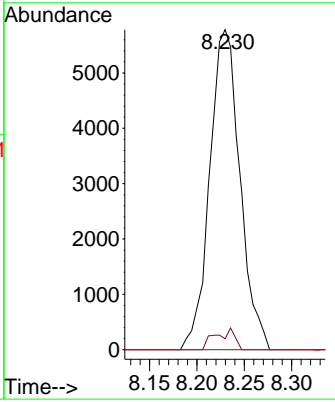
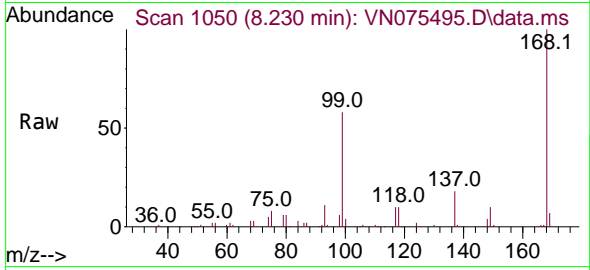


#38  
 Carbon Tetrachloride  
 Concen: 5.950 ug/l  
 RT: 8.230 min Scan# 1073  
 Delta R.T. -0.135 min  
 Lab File: VN075495.D  
 Acq: 30 Nov 2022 11:52

Instrument : MSVOA\_N  
 ClientSampleId : TP-12

Tgt Ion:117 Resp: 12844

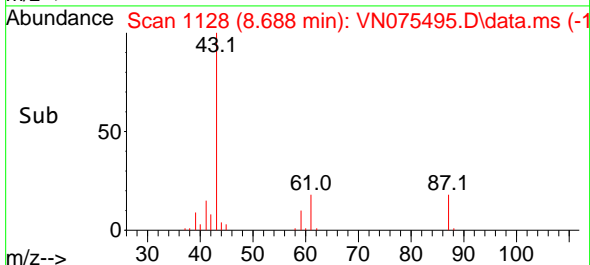
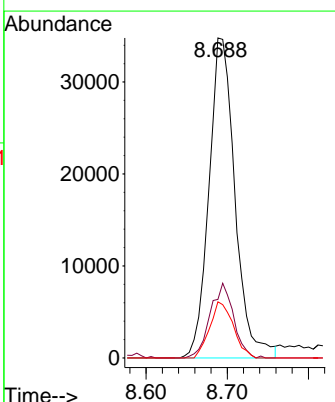
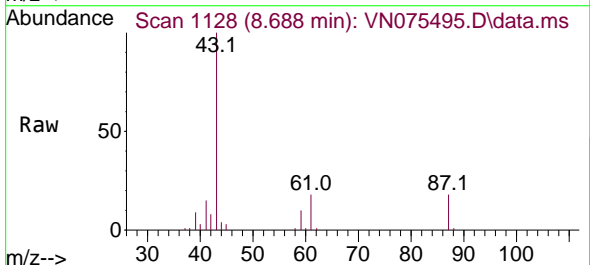
Ion	Ratio	Lower	Upper
117	100		
119	3.4	76.7	115.1#
121	0.0	23.9	35.9#

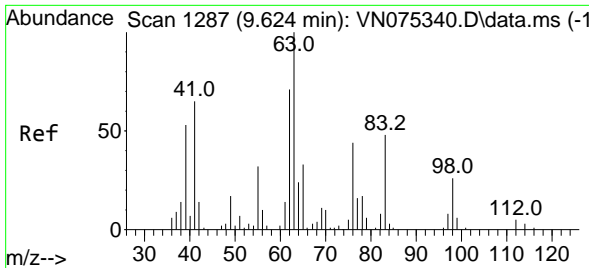


#43  
 Isopropyl Acetate  
 Concen: 27.357 ug/l  
 RT: 8.688 min Scan# 1128  
 Delta R.T. 0.000 min  
 Lab File: VN075495.D  
 Acq: 30 Nov 2022 11:52

Tgt Ion: 43 Resp: 77693

Ion	Ratio	Lower	Upper
43	100		
61	21.0	22.4	33.6#
87	15.9	12.5	18.7

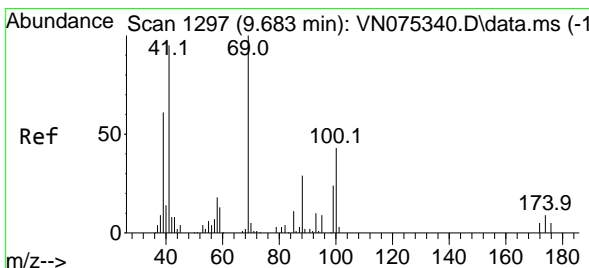
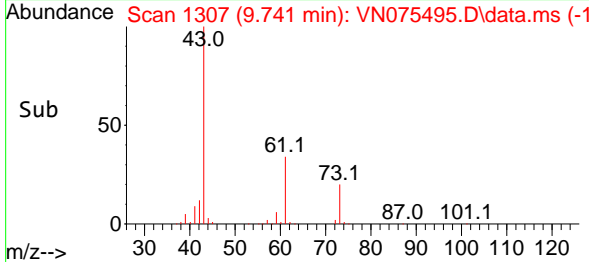
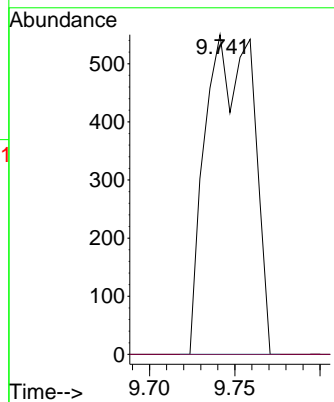
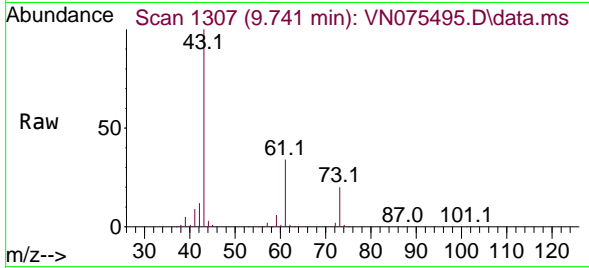




#45  
 1,2-Dichloropropane  
 Concen: 0.748 ug/l  
 RT: 9.741 min Scan# 111  
 Delta R.T. 0.117 min  
 Lab File: VN075495.D  
 Acq: 30 Nov 2022 11:52

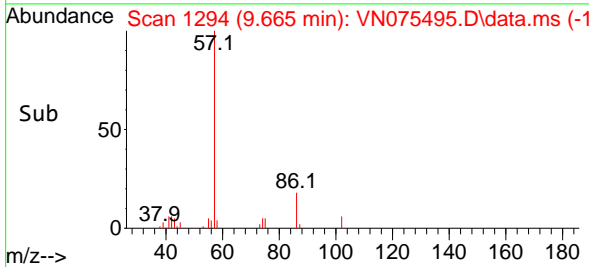
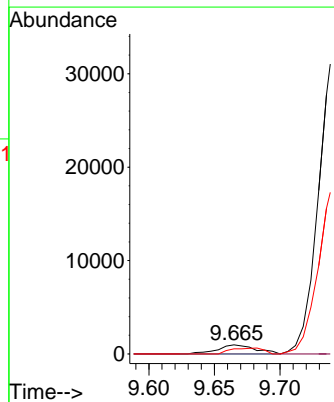
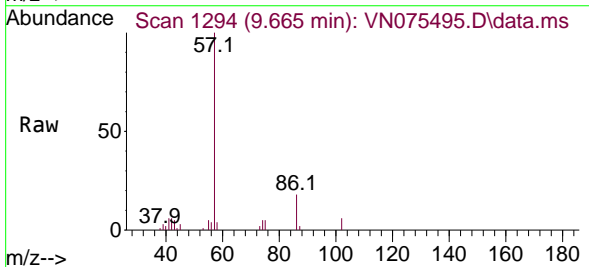
Instrument : MSVOA\_N  
 ClientSampleId : TP-12

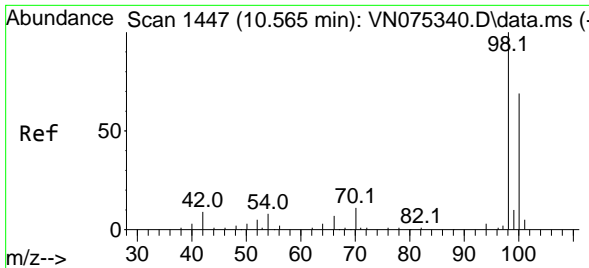
Tgt Ion: 63 Resp: 1073  
 Ion Ratio Lower Upper  
 63 100  
 65 0.0 26.1 39.1#



#48  
 Methyl methacrylate  
 Concen: 1.488 ug/l  
 RT: 9.665 min Scan# 1294  
 Delta R.T. -0.018 min  
 Lab File: VN075495.D  
 Acq: 30 Nov 2022 11:52

Tgt Ion: 41 Resp: 1954  
 Ion Ratio Lower Upper  
 41 100  
 69 0.0 80.2 120.2#  
 39 0.0 56.2 84.2#

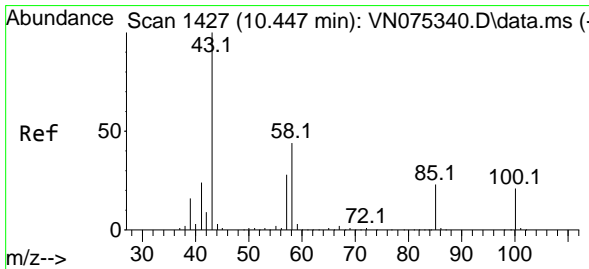
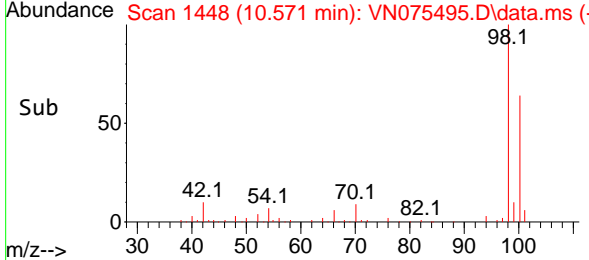
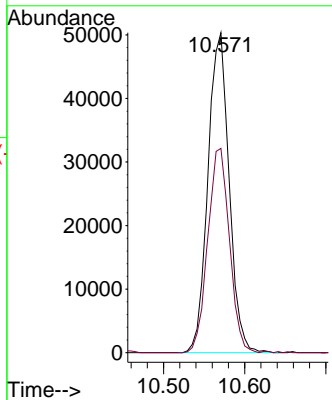
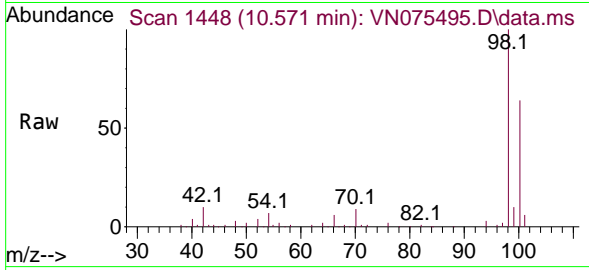




#50  
 Toluene-d8  
 Concen: 44.883 ug/l  
 RT: 10.571 min Scan# 1448  
 Delta R.T. 0.006 min  
 Lab File: VN075495.D  
 Acq: 30 Nov 2022 11:52

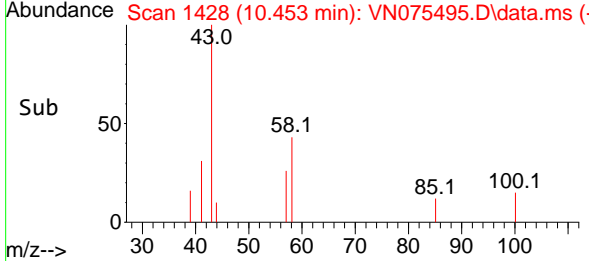
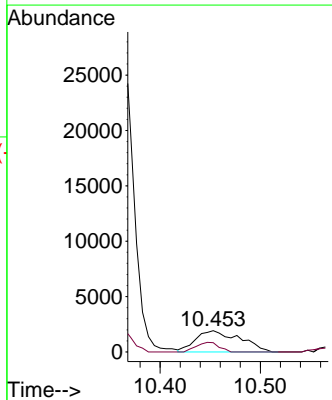
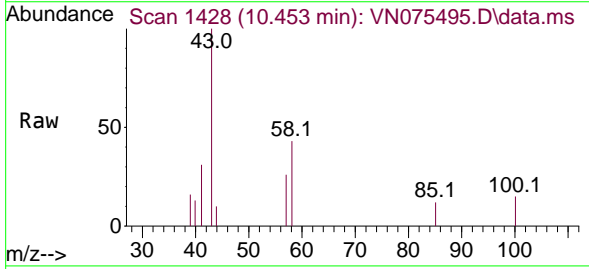
**Instrument :**  
 MSVOA\_N  
**ClientSampleId :**  
 TP-12

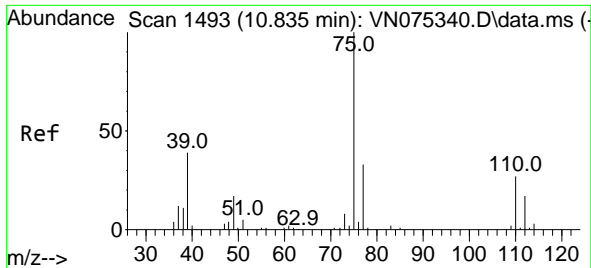
Tgt Ion: 98 Resp: 91085  
 Ion Ratio Lower Upper  
 98 100  
 100 65.3 53.0 79.6



#51  
 4-Methyl-2-Pentanone  
 Concen: 3.268 ug/l  
 RT: 10.453 min Scan# 1428  
 Delta R.T. 0.006 min  
 Lab File: VN075495.D  
 Acq: 30 Nov 2022 11:52

Tgt Ion: 43 Resp: 5911  
 Ion Ratio Lower Upper  
 43 100  
 58 22.9 33.6 50.4#

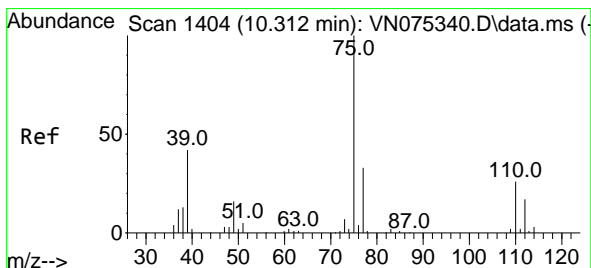
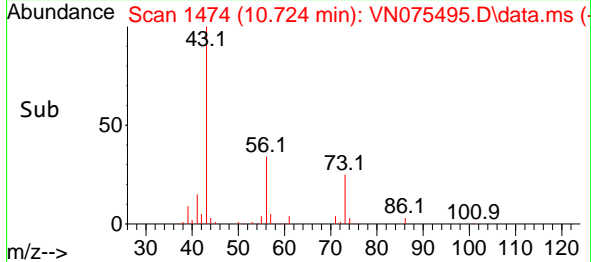
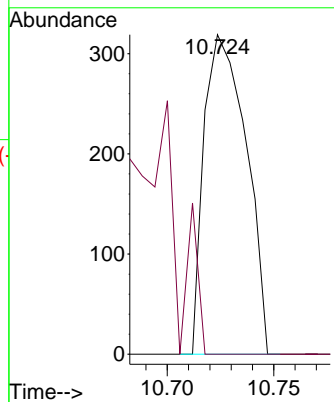
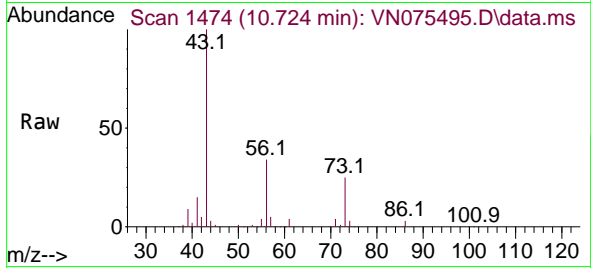




#53  
 t-1,3-Dichloropropene  
 Concen: 0.208 ug/l  
 RT: 10.724 min Scan# 1412  
 Delta R.T. -0.111 min  
 Lab File: VN075495.D  
 Acq: 30 Nov 2022 11:52

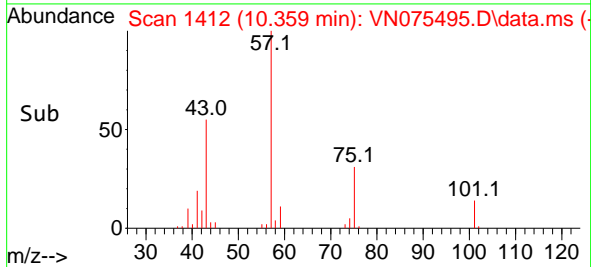
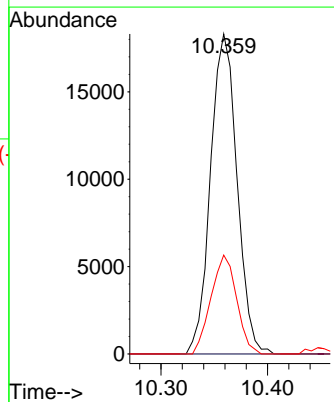
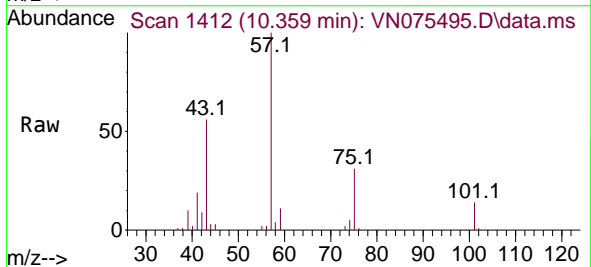
Instrument : MSVOA\_N  
 ClientSampleId : TP-12

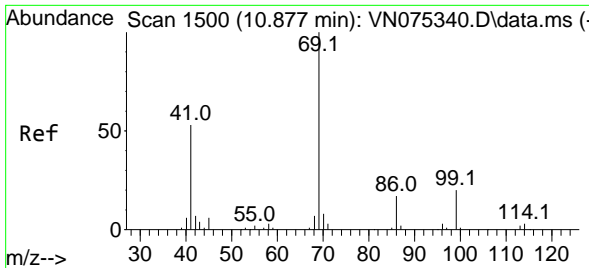
Tgt Ion: 75 Resp: 439  
 Ion Ratio Lower Upper  
 75 100  
 77 0.0 25.4 38.2#



#54  
 cis-1,3-Dichloropropene  
 Concen: 13.823 ug/l  
 RT: 10.359 min Scan# 1412  
 Delta R.T. 0.047 min  
 Lab File: VN075495.D  
 Acq: 30 Nov 2022 11:52

Tgt Ion: 75 Resp: 31651  
 Ion Ratio Lower Upper  
 75 100  
 77 0.0 23.7 35.5#  
 39 30.9 35.8 53.6#

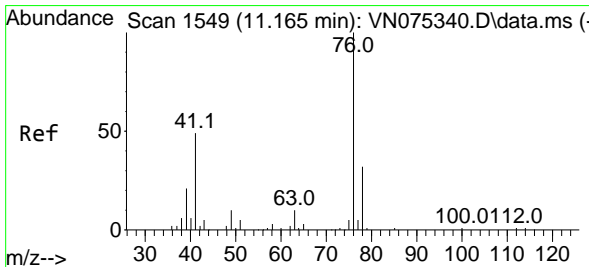
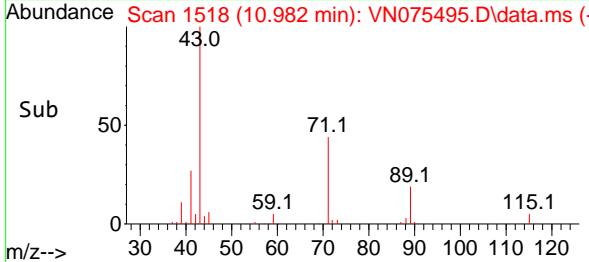
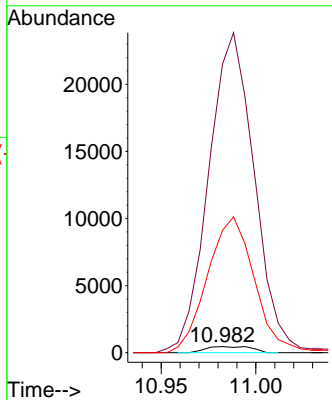
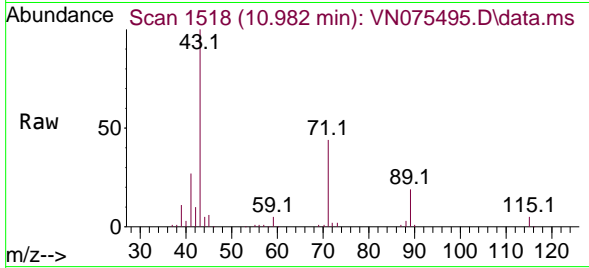




#56  
 Ethyl methacrylate  
 Concen: 0.355 ug/l  
 RT: 10.982 min Scan# 11  
 Delta R.T. 0.105 min  
 Lab File: VN075495.D  
 Acq: 30 Nov 2022 11:52

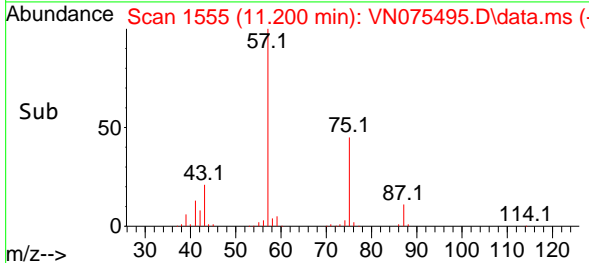
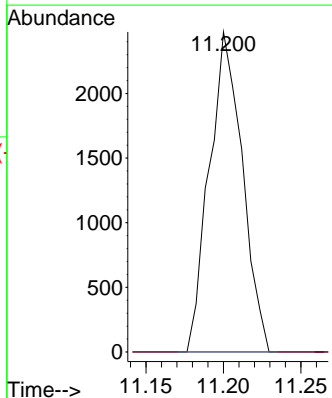
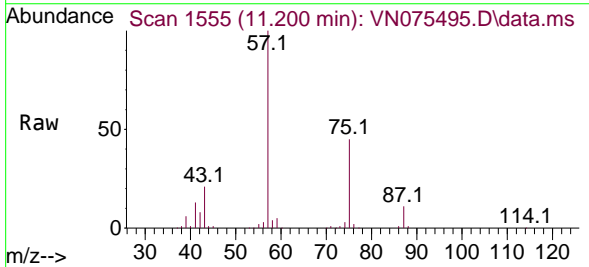
Instrument :  
 MSVOA\_N  
 ClientSampleId :  
 TP-12

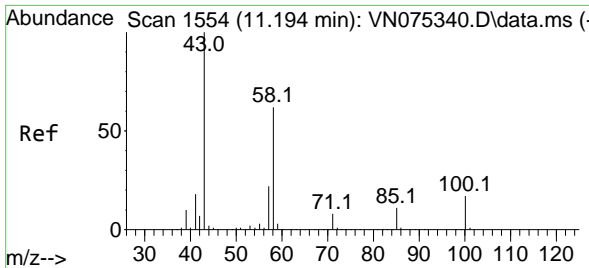
Tgt Ion: 69 Resp: 757  
 Ion Ratio Lower Upper  
 69 100  
 41 5314.1 45.6 68.4#  
 39 2323.9 28.5 42.7#



#57  
 1,3-Dichloropropane  
 Concen: 1.427 ug/l  
 RT: 11.200 min Scan# 1555  
 Delta R.T. 0.035 min  
 Lab File: VN075495.D  
 Acq: 30 Nov 2022 11:52

Tgt Ion: 76 Resp: 3673  
 Ion Ratio Lower Upper  
 76 100  
 78 0.0 25.8 38.6#

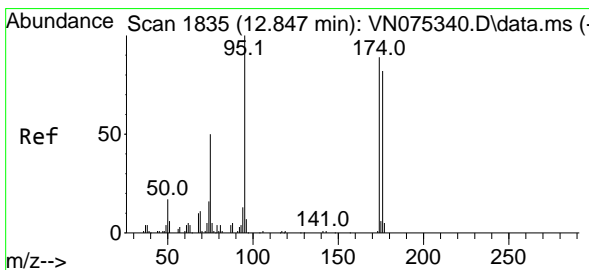
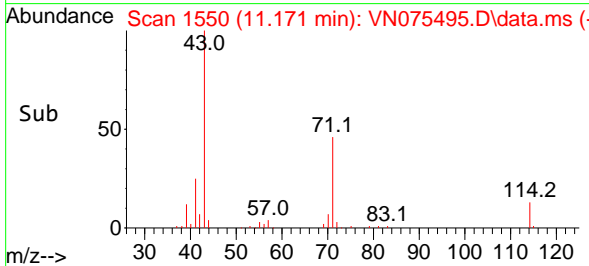
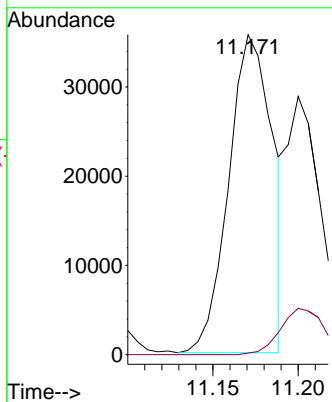
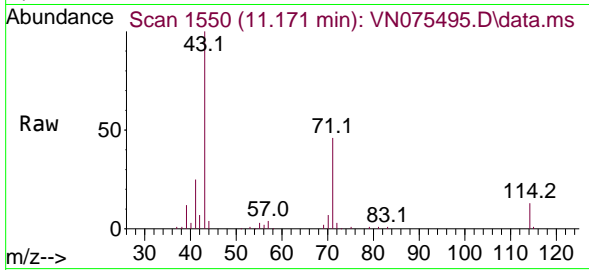




#59  
 2-Hexanone  
 Concen: 46.867 ug/l  
 RT: 11.171 min Scan# 1111  
 Delta R.T. -0.023 min  
 Lab File: VN075495.D  
 Acq: 30 Nov 2022 11:52

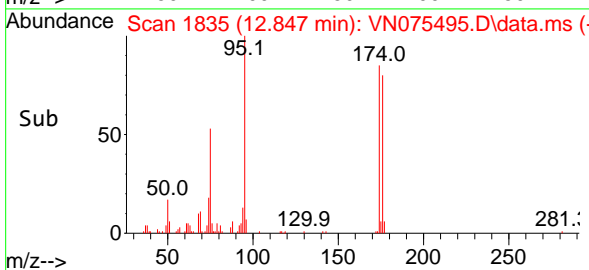
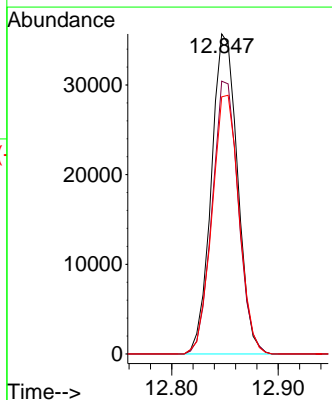
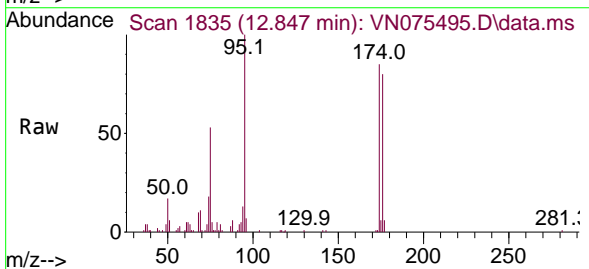
Instrument : MSVOA\_N  
 ClientSampleId : TP-12

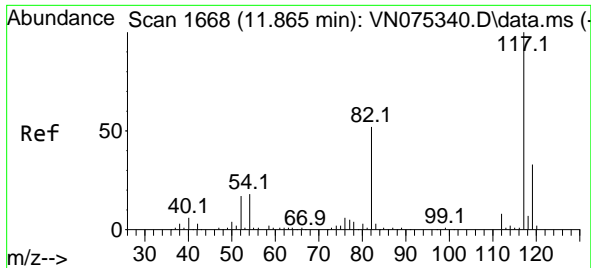
Tgt Ion: 43 Resp: 63658  
 Ion Ratio Lower Upper  
 43 100  
 58 0.0 29.6 88.8#



#62  
 4-Bromofluorobenzene  
 Concen: 40.711 ug/l  
 RT: 12.847 min Scan# 1835  
 Delta R.T. -0.000 min  
 Lab File: VN075495.D  
 Acq: 30 Nov 2022 11:52

Tgt Ion: 95 Resp: 60982  
 Ion Ratio Lower Upper  
 95 100  
 174 84.8 0.0 147.4  
 176 83.0 0.0 142.2

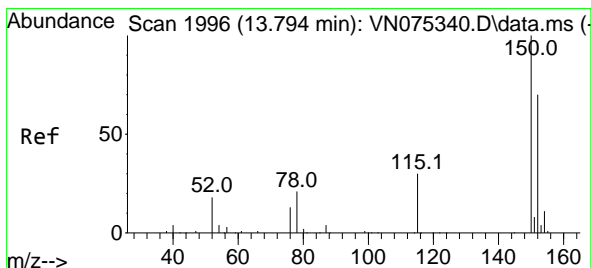
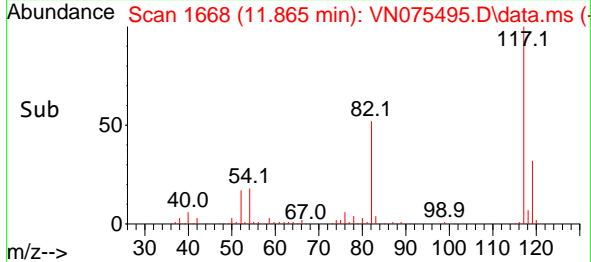
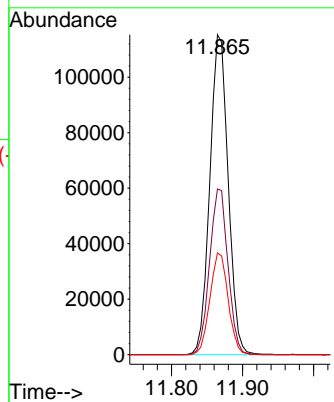
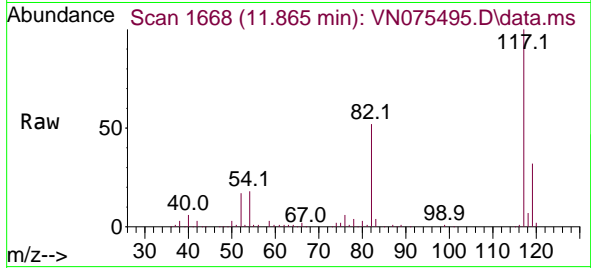




#63  
 Chlorobenzene-d5  
 Concen: 50.000 ug/l  
 RT: 11.865 min Scan# 11  
 Delta R.T. -0.000 min  
 Lab File: VN075495.D  
 Acq: 30 Nov 2022 11:52

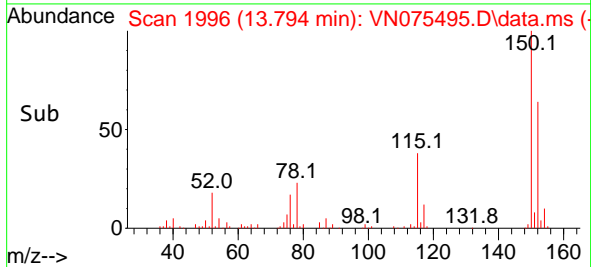
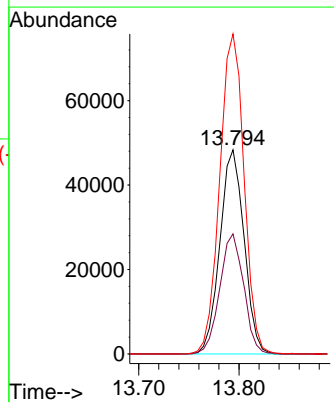
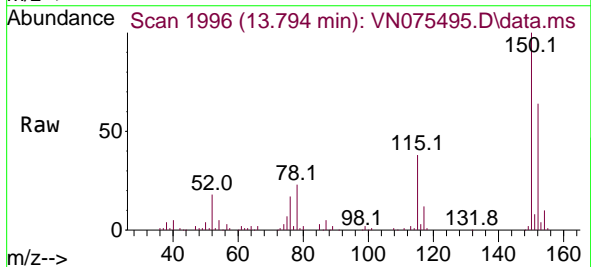
Instrument : MSVOA\_N  
 ClientSampleId : TP-12

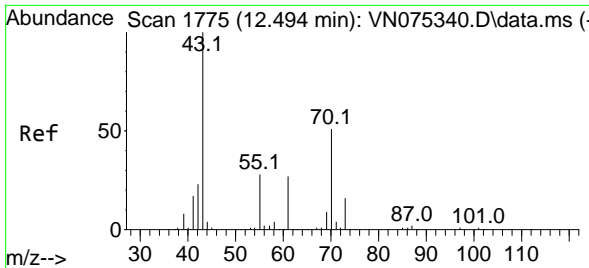
Tgt Ion:117 Resp: 206434  
 Ion Ratio Lower Upper  
 117 100  
 82 51.8 43.1 64.7  
 119 31.8 25.5 38.3



#72  
 1,4-Dichlorobenzene-d4  
 Concen: 50.000 ug/l  
 RT: 13.794 min Scan# 1996  
 Delta R.T. -0.000 min  
 Lab File: VN075495.D  
 Acq: 30 Nov 2022 11:52

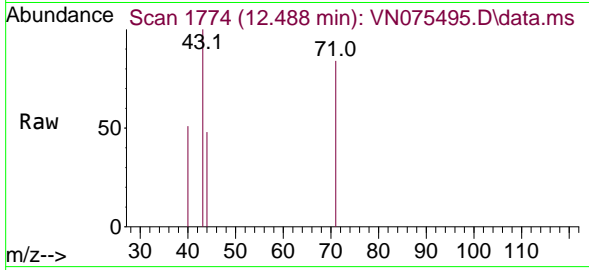
Tgt Ion:152 Resp: 80751  
 Ion Ratio Lower Upper  
 152 100  
 115 58.1 30.2 90.6  
 150 157.6 0.0 348.4





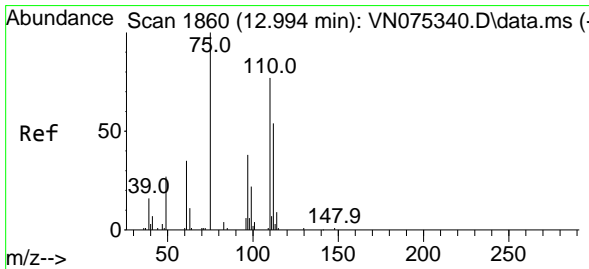
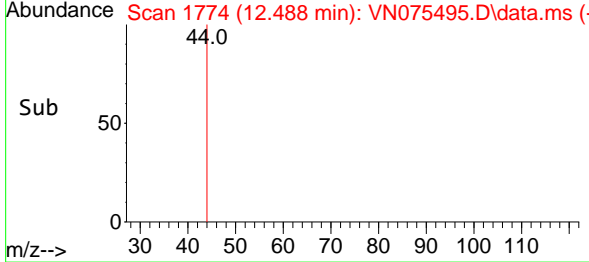
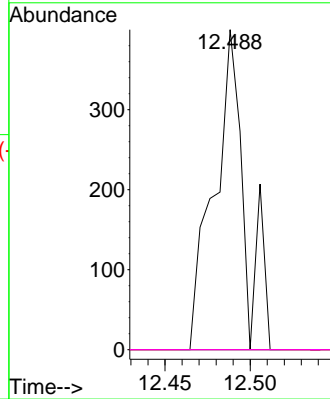
#74  
 N-amy1 acetate  
 Concen: 0.276 ug/l  
 RT: 12.488 min Scan# 1  
 Delta R.T. -0.006 min  
 Lab File: VN075495.D  
 Acq: 30 Nov 2022 11:52

Instrument :  
 MSVOA\_N  
 ClientSampleId :  
 TP-12



Tgt Ion: 43 Resp: 501

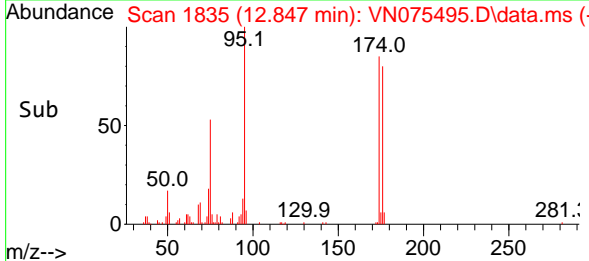
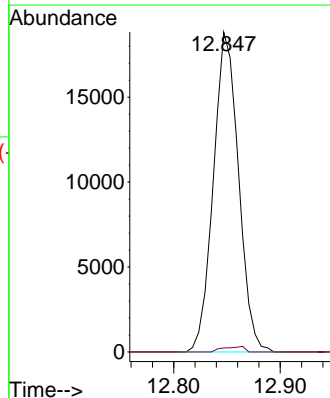
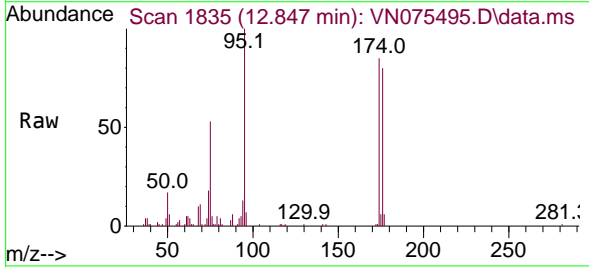
Ion	Ratio	Lower	Upper
43	100		
70	0.0	39.8	59.8#
55	0.0	19.9	29.9#
61	0.0	21.7	32.5#



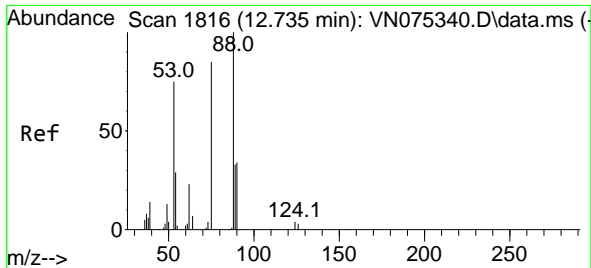
#76  
 1,2,3-Trichloropropane  
 Concen: 20.197 ug/l  
 RT: 12.847 min Scan# 1835  
 Delta R.T. -0.147 min  
 Lab File: VN075495.D  
 Acq: 30 Nov 2022 11:52

Tgt Ion: 75 Resp: 30836

Ion	Ratio	Lower	Upper
75	100		
77	1.5	75.6	226.8#



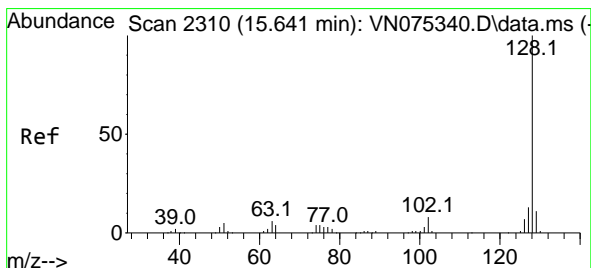
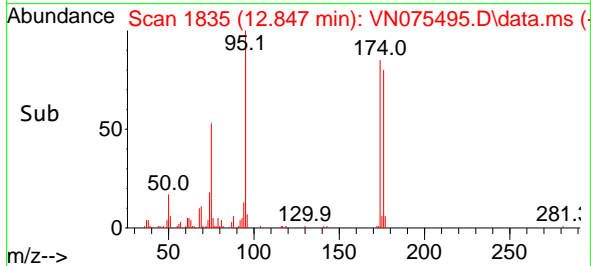
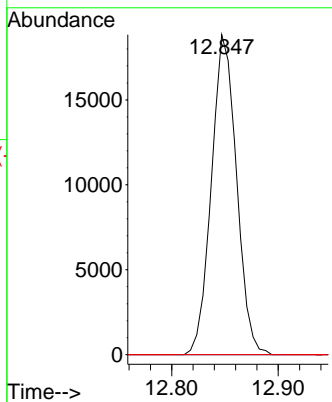
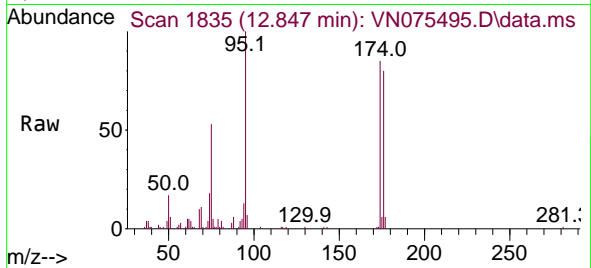




#81  
 trans-1,4-Dichloro-2-butene  
 Concen: 59.757 ug/l  
 RT: 12.847 min Scan# 1816  
 Delta R.T. 0.112 min  
 Lab File: VN075495.D  
 Acq: 30 Nov 2022 11:52

Instrument :  
 MSVOA\_N  
 ClientSampleId :  
 TP-12

Tgt Ion: 75 Resp: 30836  
 Ion Ratio Lower Upper  
 75 100  
 53 0.0 78.5 117.7#  
 89 0.0 37.7 56.5#



#95  
 Naphthalene  
 Concen: 0.411 ug/l  
 RT: 15.653 min Scan# 2312  
 Delta R.T. 0.012 min  
 Lab File: VN075495.D  
 Acq: 30 Nov 2022 11:52

Tgt Ion:128 Resp: 1782  
 Ion Ratio Lower Upper  
 128 100  
 127 0.0 10.4 15.6#  
 129 4.3 8.6 12.8#

