

Data Path : Z:\voasrv\HPCHEM1\MSVOA\_N\Data\VN113022\  
 Data File : VN075496.D  
 Acq On : 30 Nov 2022 13:04  
 Operator : JC\MD  
 Sample : PB149341TB  
 Misc : 5.0mL/MSVOA\_N/WATER  
 ALS Vial : 9 Sample Multiplier: 1

Instrument :  
 MSVOA\_N  
 ClientSampleId :  
 PB149341TB

Quant Time: Dec 01 02:14:42 2022  
 Quant Method : Z:\voasrv\HPCHEM1\MSVOA\_N\methods\82N112122W.M  
 Quant Title : SW846 8260  
 QLast Update : Wed Nov 23 00:18:03 2022  
 Response via : Initial Calibration

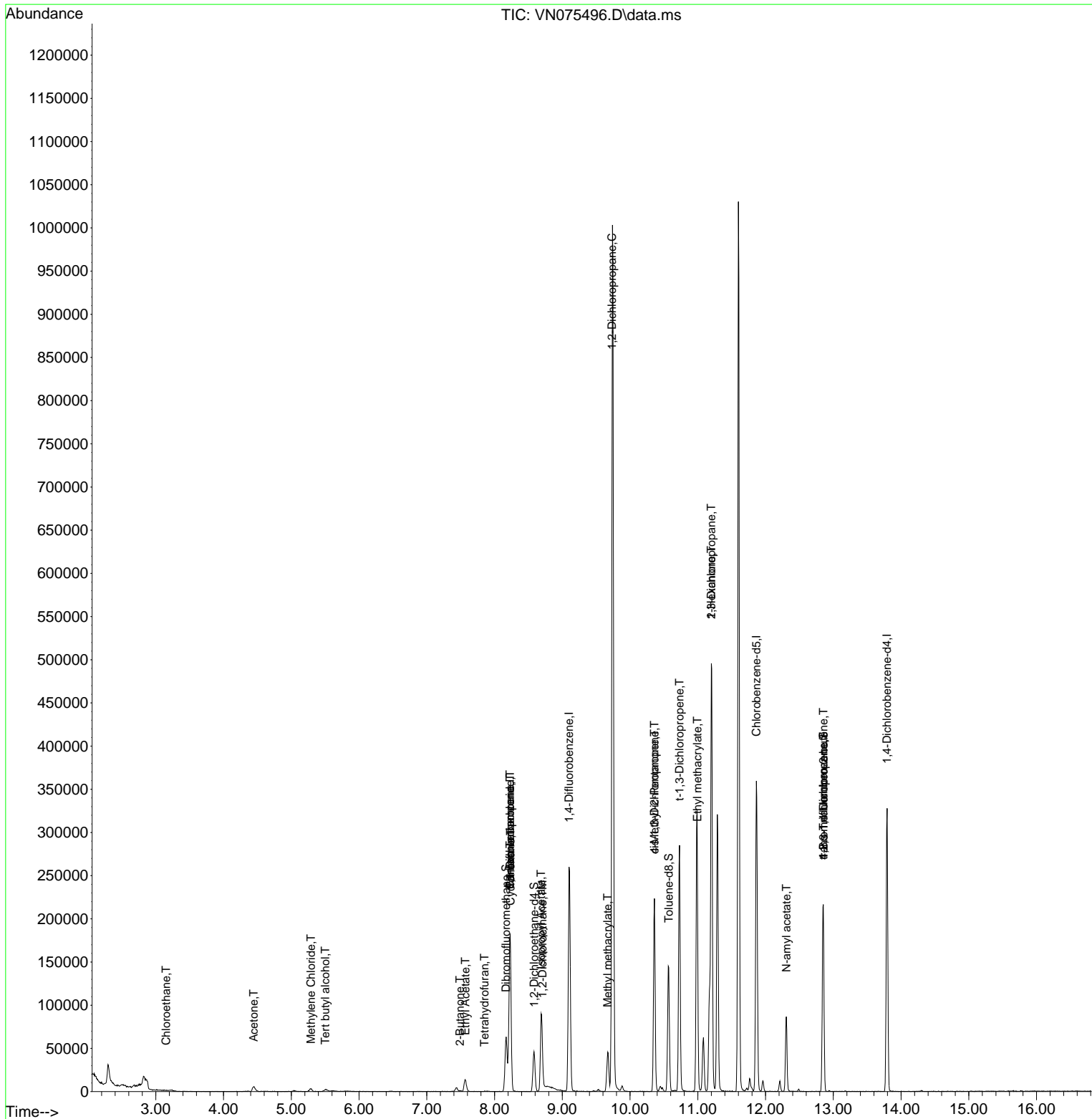
Compound	R.T.	QIon	Response	Conc	Units	Dev(Min)
-----						
Internal Standards						
1) Pentafluorobenzene	8.230	168	139193	50.000	ug/l	0.00
34) 1,4-Difluorobenzene	9.100	114	239455	50.000	ug/l	0.00
63) Chlorobenzene-d5	11.865	117	219473	50.000	ug/l	0.00
72) 1,4-Dichlorobenzene-d4	13.794	152	91289	50.000	ug/l	0.00
System Monitoring Compounds						
33) 1,2-Dichloroethane-d4	8.583	65	37713	50.475	ug/l	0.00
Spiked Amount	50.000	Range 74 - 125	Recovery	=	100.940%	
35) Dibromofluoromethane	8.171	113	45436	48.302	ug/l	0.00
Spiked Amount	50.000	Range 75 - 124	Recovery	=	96.600%	
50) Toluene-d8	10.571	98	104466	49.308	ug/l	0.00
Spiked Amount	50.000	Range 86 - 113	Recovery	=	98.620%	
62) 4-Bromofluorobenzene	12.853	95	75960	48.575	ug/l	0.00
Spiked Amount	50.000	Range 83 - 123	Recovery	=	97.140%	
Target Compounds						
						Qvalue
6) Chloroethane	3.153	64	321	0.254	ug/l #	45
11) Tert butyl alcohol	5.500	59	2112	6.734	ug/l #	72
16) Acetone	4.448	43	11501	16.502	ug/l #	81
20) Methylene Chloride	5.289	84	2737	0.675	ug/l	97
25) 2-Butanone	7.489	43	655	0.673	ug/l #	43
29) Tetrahydrofuran	7.853	42	205	0.346	ug/l #	67
31) Cyclohexane	8.236	56	2503	1.054	ug/l #	14
36) 1,1-Dichloropropene	8.230	75	10293	5.018	ug/l #	50
37) Ethyl Acetate	7.571	43	20884	11.306	ug/l	98
38) Carbon Tetrachloride	8.230	117	13816	6.131	ug/l #	18
42) 1,2-Dichloroethane	8.706	62	464	0.221	ug/l #	75
43) Isopropyl Acetate	8.688	43	101250	34.150	ug/l #	90
45) 1,2-Dichloropropane	9.735	63	1278	0.854	ug/l #	42
48) Methyl methacrylate	9.671	41	2612	1.905	ug/l #	36
51) 4-Methyl-2-Pentanone	10.359	43	74547	39.477	ug/l #	44
53) t-1,3-Dichloropropene	10.729	75	724	0.329	ug/l #	43
54) cis-1,3-Dichloropropene	10.359	75	42574	17.810	ug/l #	62
56) Ethyl methacrylate	10.994	69	1107	0.497	ug/l #	1
57) 1,3-Dichloropropane	11.200	76	5688	2.116	ug/l #	42
59) 2-Hexanone	11.200	43	62164	43.840	ug/l #	51
74) N-amyl acetate	12.306	43	25739	12.553	ug/l #	48
76) 1,2,3-Trichloropropane	12.853	75	39420	22.838	ug/l #	1
81) trans-1,4-Dichloro-2-b...	12.853	75	39420	67.574	ug/l #	10
-----						

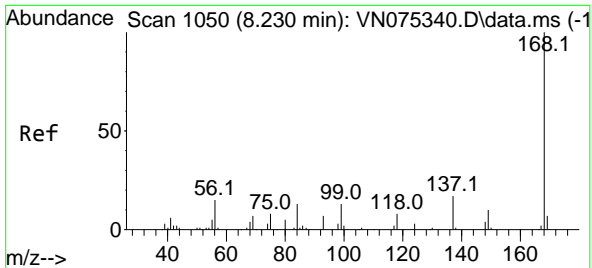
(#) = qualifier out of range (m) = manual integration (+) = signals summed

Data Path : Z:\voasrv\HPCHEM1\MSVOA\_N\Data\VN113022\  
 Data File : VN075496.D  
 Acq On : 30 Nov 2022 13:04  
 Operator : JC\MD  
 Sample : PB149341TB  
 Misc : 5.0mL/MSVOA\_N/WATER  
 ALS Vial : 9 Sample Multiplier: 1

Instrument :  
 MSVOA\_N  
 ClientSampleId :  
 PB149341TB

Quant Time: Dec 01 02:14:42 2022  
 Quant Method : Z:\voasrv\HPCHEM1\MSVOA\_N\methods\82N112122W.M  
 Quant Title : SW846 8260  
 QLast Update : Wed Nov 23 00:18:03 2022  
 Response via : Initial Calibration

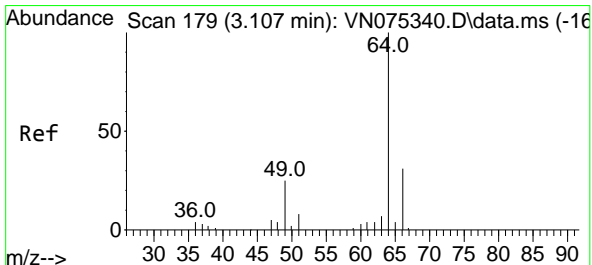
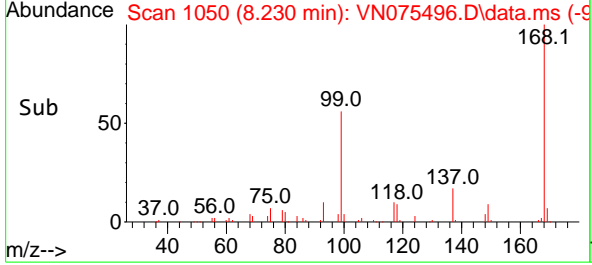
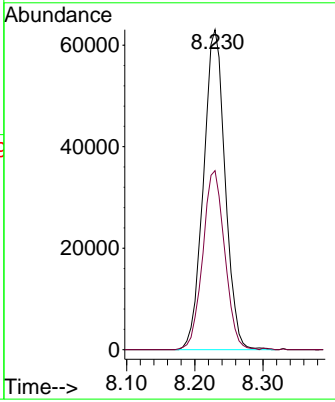
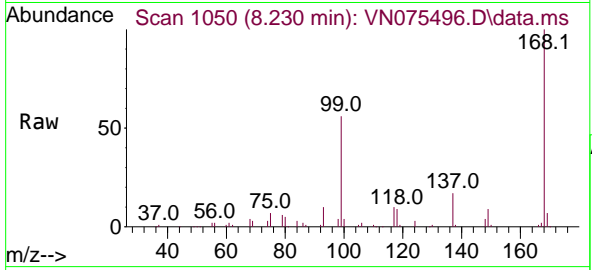




#1  
 Pentafluorobenzene  
 Concen: 50.000 ug/l  
 RT: 8.230 min Scan# 10  
 Delta R.T. -0.000 min  
 Lab File: VN075496.D  
 Acq: 30 Nov 2022 13:04

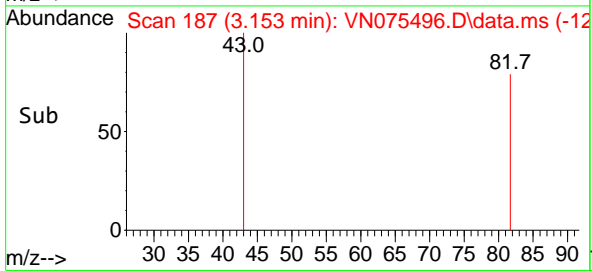
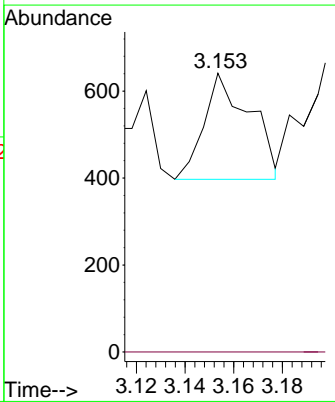
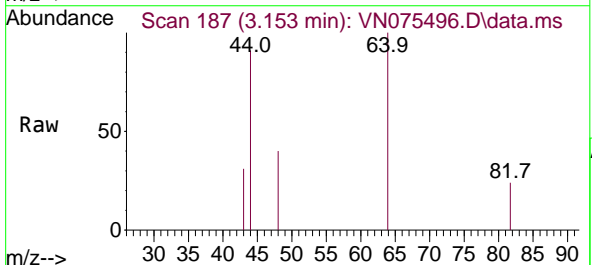
Instrument : MSVOA\_N  
 ClientSampleId : PB149341TB

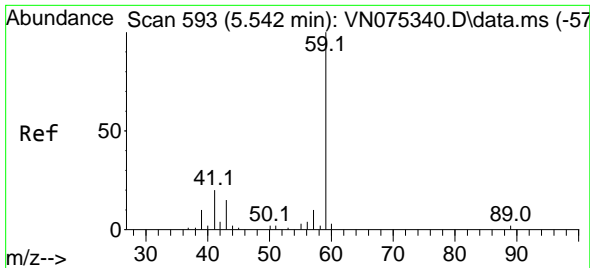
Tgt Ion:168 Resp: 139193  
 Ion Ratio Lower Upper  
 168 100  
 99 56.0 51.6 77.4



#6  
 Chloroethane  
 Concen: 0.254 ug/l  
 RT: 3.153 min Scan# 187  
 Delta R.T. 0.046 min  
 Lab File: VN075496.D  
 Acq: 30 Nov 2022 13:04

Tgt Ion: 64 Resp: 321  
 Ion Ratio Lower Upper  
 64 100  
 66 0.0 23.8 35.8#

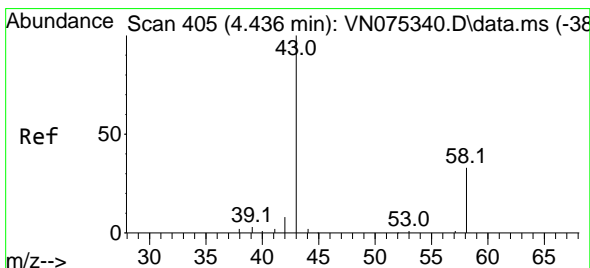
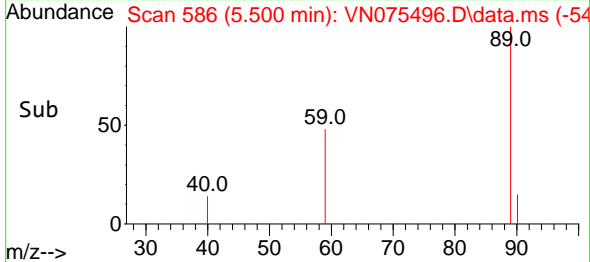
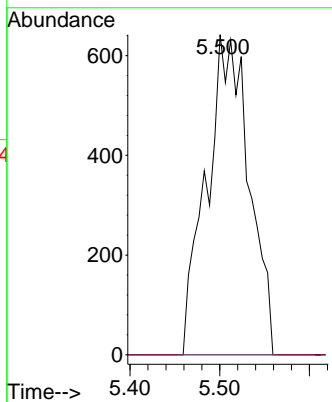
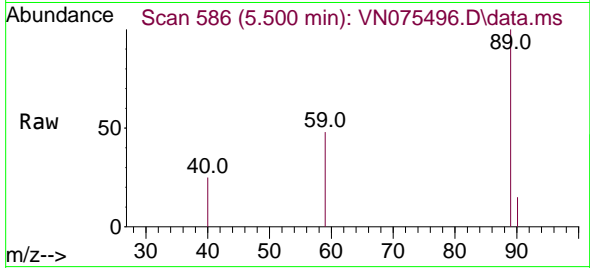




#11  
 Tert butyl alcohol  
 Concen: 6.734 ug/l  
 RT: 5.500 min Scan# 51  
 Delta R.T. -0.042 min  
 Lab File: VN075496.D  
 Acq: 30 Nov 2022 13:04

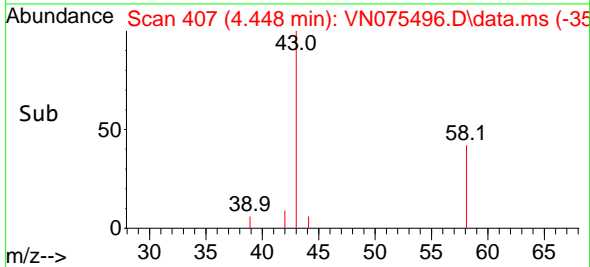
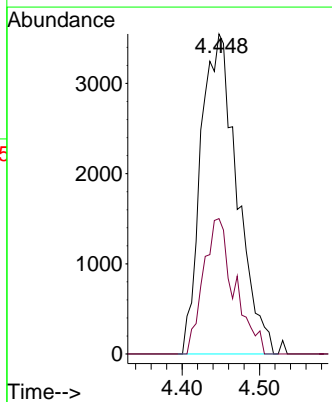
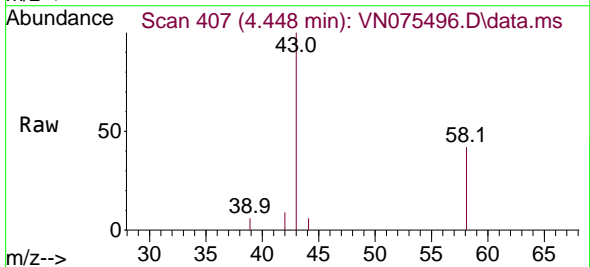
Instrument : MSVOA\_N  
 ClientSampleId : PB149341TB

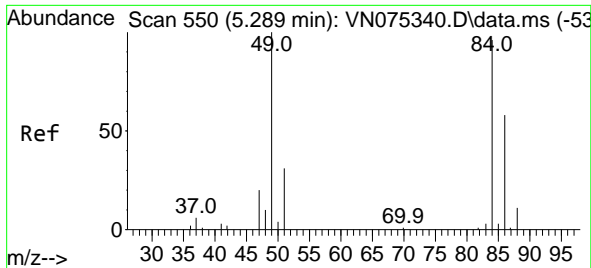
Tgt Ion: 59 Resp: 2112  
 Ion Ratio Lower Upper  
 59 100  
 57 0.0 8.5 12.7#



#16  
 Acetone  
 Concen: 16.502 ug/l  
 RT: 4.448 min Scan# 407  
 Delta R.T. 0.012 min  
 Lab File: VN075496.D  
 Acq: 30 Nov 2022 13:04

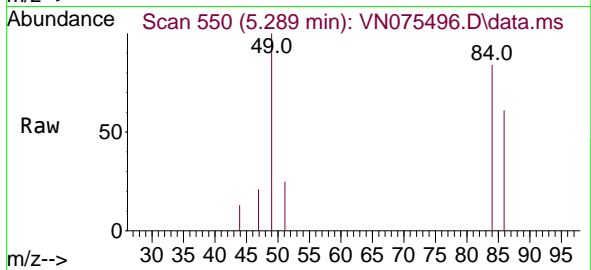
Tgt Ion: 43 Resp: 11501  
 Ion Ratio Lower Upper  
 43 100  
 58 42.3 25.5 38.3#





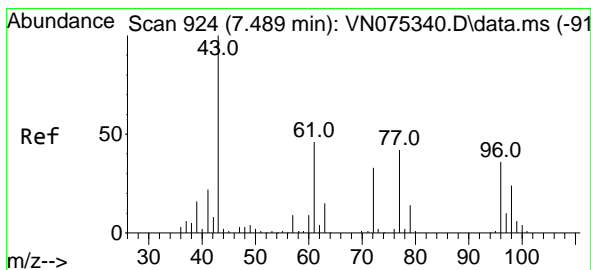
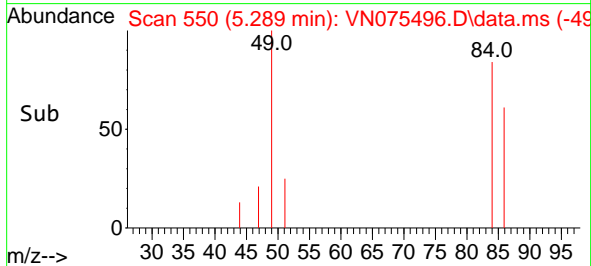
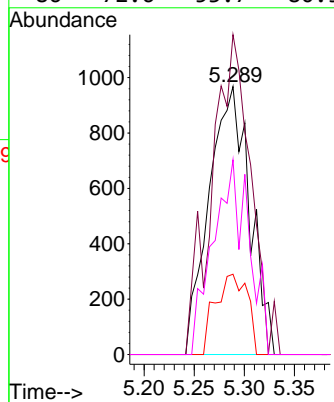
#20  
 Methylene Chloride  
 Concen: 0.675 ug/l  
 RT: 5.289 min Scan# 511  
 Delta R.T. -0.000 min  
 Lab File: VN075496.D  
 Acq: 30 Nov 2022 13:04

Instrument : MSVOA\_N  
 ClientSampleId : PB149341TB



Tgt Ion: 84 Resp: 2737

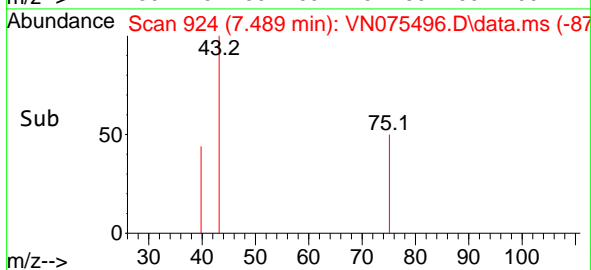
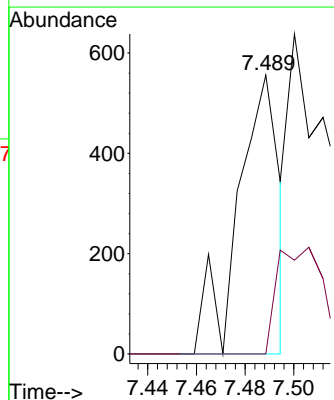
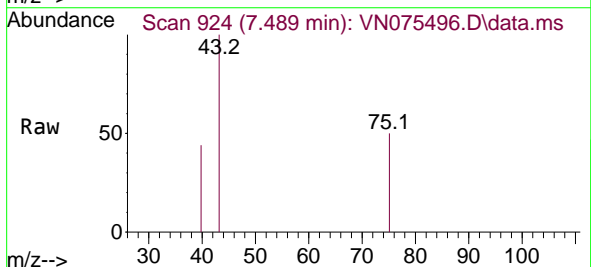
Ion	Ratio	Lower	Upper
84	100		
49	119.3	94.9	142.3
51	30.0	26.8	40.2
86	72.6	53.7	80.5

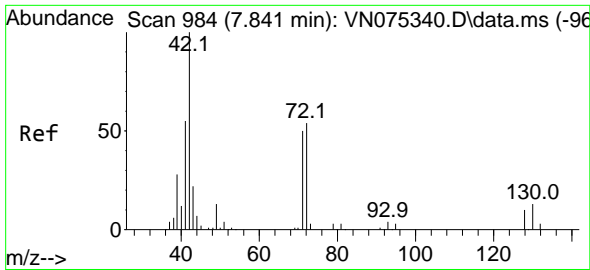


#25  
 2-Butanone  
 Concen: 0.673 ug/l  
 RT: 7.489 min Scan# 924  
 Delta R.T. -0.000 min  
 Lab File: VN075496.D  
 Acq: 30 Nov 2022 13:04

Tgt Ion: 43 Resp: 655

Ion	Ratio	Lower	Upper
43	100		
72	0.0	25.5	38.3#

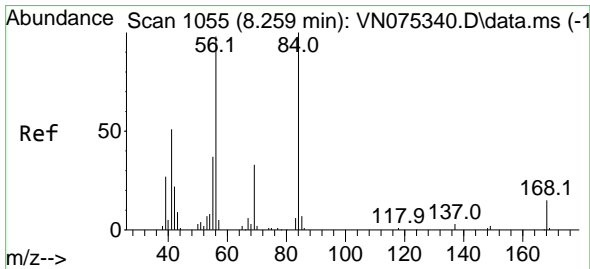
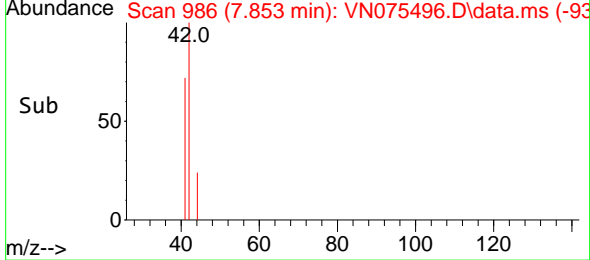
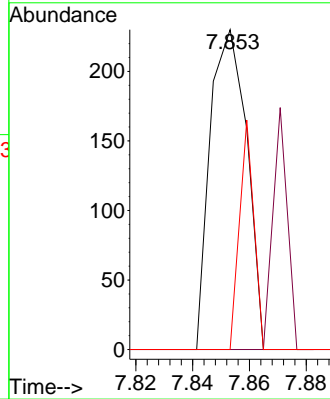
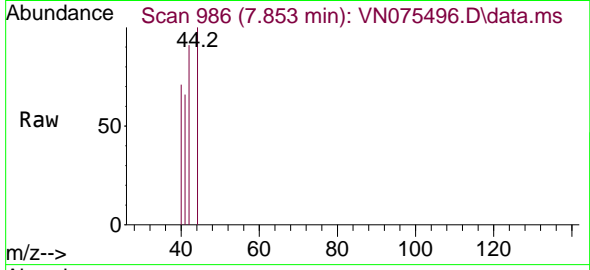




#29  
 Tetrahydrofuran  
 Concen: 0.346 ug/l  
 RT: 7.853 min Scan# 91  
 Delta R.T. 0.012 min  
 Lab File: VN075496.D  
 Acq: 30 Nov 2022 13:04

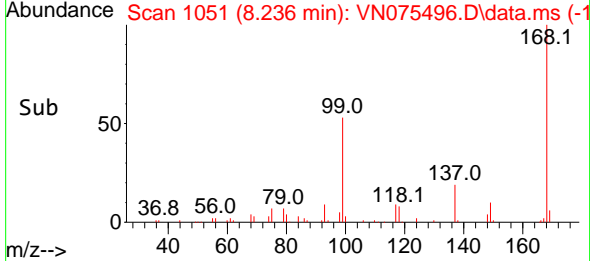
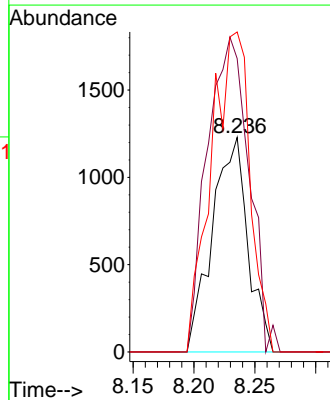
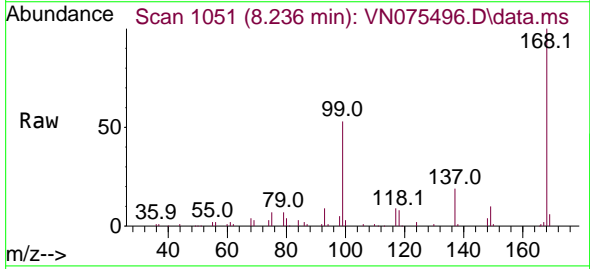
Instrument : MSVOA\_N  
 ClientSampleId : PB149341TB

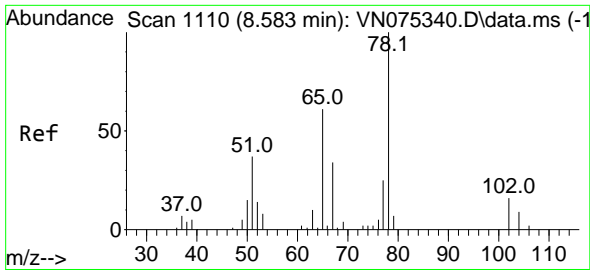
Tgt Ion	Resp	Lower	Upper
42	100		
72	29.8	43.0	64.6#
71	28.3	39.9	59.9#



#31  
 Cyclohexane  
 Concen: 1.054 ug/l  
 RT: 8.236 min Scan# 1051  
 Delta R.T. -0.024 min  
 Lab File: VN075496.D  
 Acq: 30 Nov 2022 13:04

Tgt Ion	Resp	Lower	Upper
56	100		
69	136.8	25.2	37.8#
84	149.1	77.8	116.8#

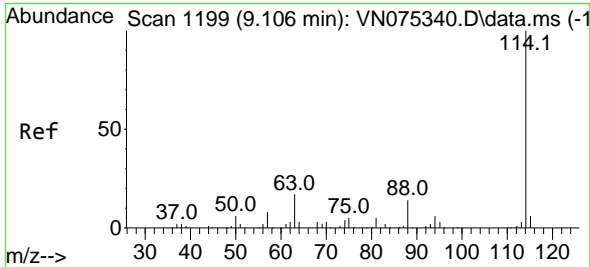
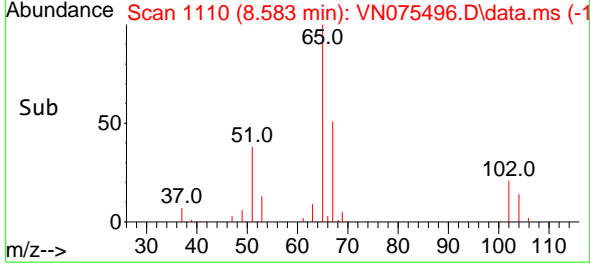
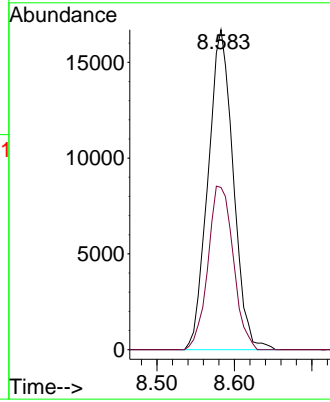
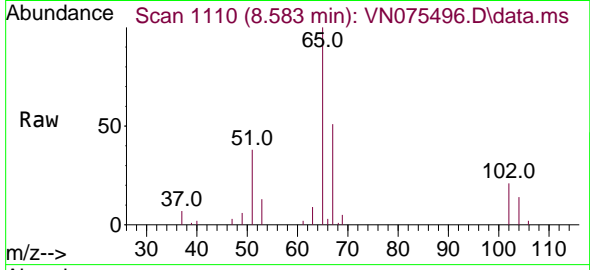




#33  
 1,2-Dichloroethane-d4  
 Concen: 50.475 ug/l  
 RT: 8.583 min Scan# 1110  
 Delta R.T. -0.000 min  
 Lab File: VN075496.D  
 Acq: 30 Nov 2022 13:04

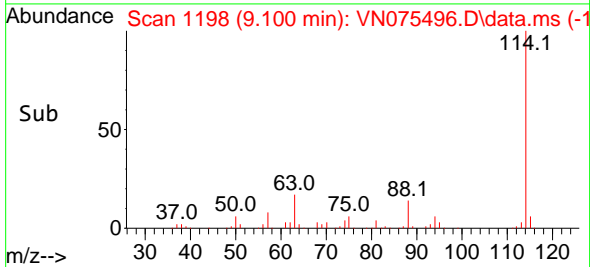
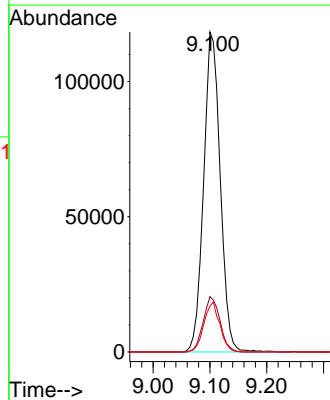
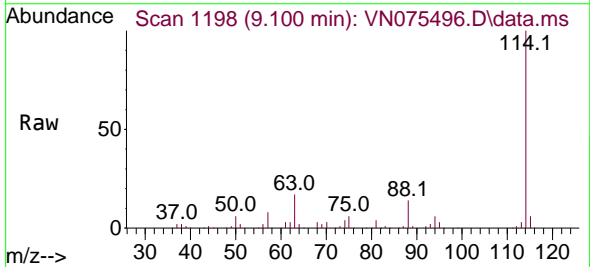
Instrument : MSVOA\_N  
 ClientSampleId : PB149341TB

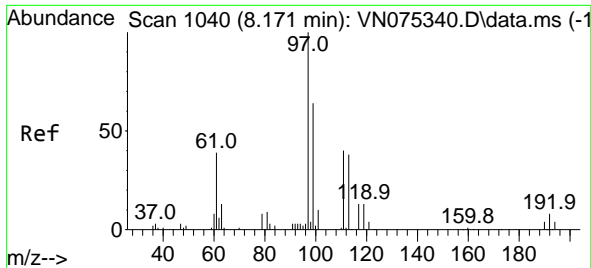
Tgt Ion: 65 Resp: 37713  
 Ion Ratio Lower Upper  
 65 100  
 67 51.4 0.0 102.0



#34  
 1,4-Difluorobenzene  
 Concen: 50.000 ug/l  
 RT: 9.100 min Scan# 1198  
 Delta R.T. -0.006 min  
 Lab File: VN075496.D  
 Acq: 30 Nov 2022 13:04

Tgt Ion:114 Resp: 239455  
 Ion Ratio Lower Upper  
 114 100  
 63 17.3 0.0 39.6  
 88 14.3 0.0 29.0





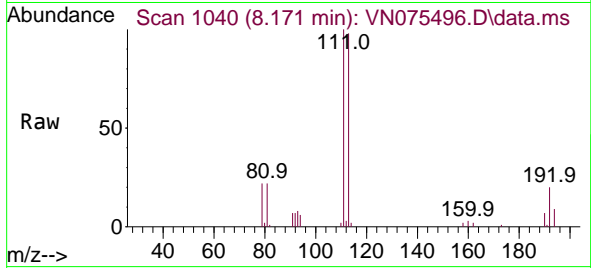
#35  
 Dibromofluoromethane  
 Concen: 48.302 ug/l  
 RT: 8.171 min Scan# 1040  
 Delta R.T. -0.000 min  
 Lab File: VN075496.D  
 Acq: 30 Nov 2022 13:04

Instrument :

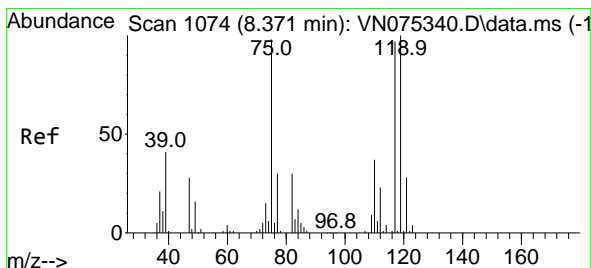
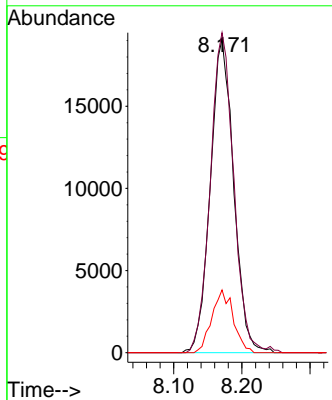
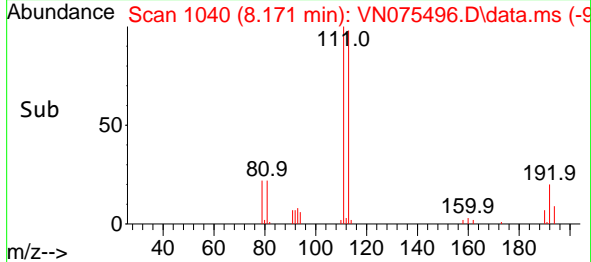
MSVOA\_N

ClientSampleId :

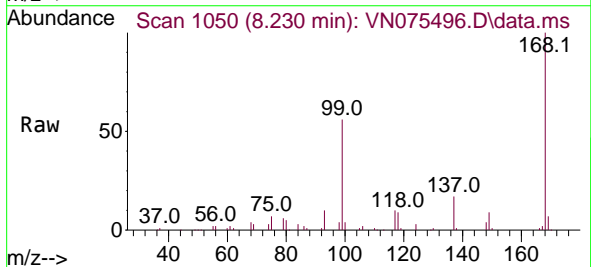
PB149341TB



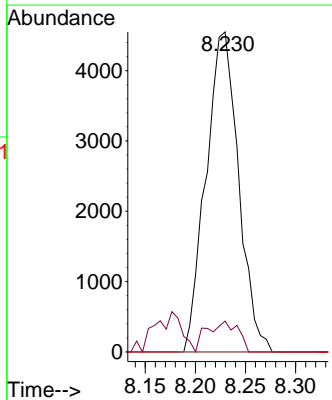
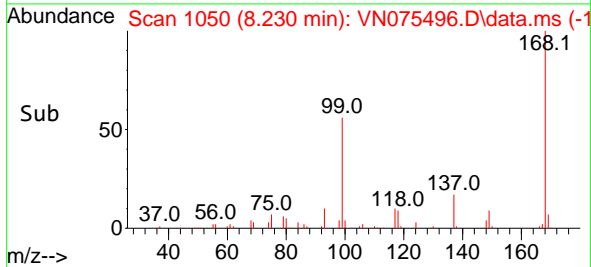
Tgt Ion:113 Resp: 45436  
 Ion Ratio Lower Upper  
 113 100  
 111 102.5 80.5 120.7  
 192 18.4 13.2 19.8



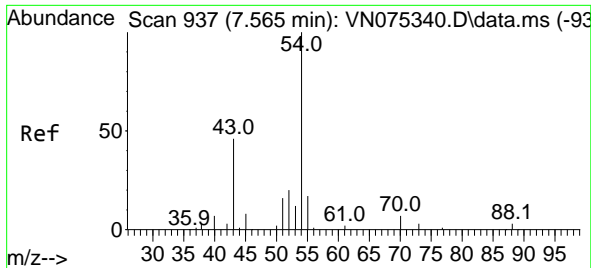
#36  
 1,1-Dichloropropene  
 Concen: 5.018 ug/l  
 RT: 8.230 min Scan# 1050  
 Delta R.T. -0.141 min  
 Lab File: VN075496.D  
 Acq: 30 Nov 2022 13:04



Tgt Ion: 75 Resp: 10293  
 Ion Ratio Lower Upper  
 75 100  
 110 9.2 17.8 53.3#  
 77 0.0 24.6 37.0#



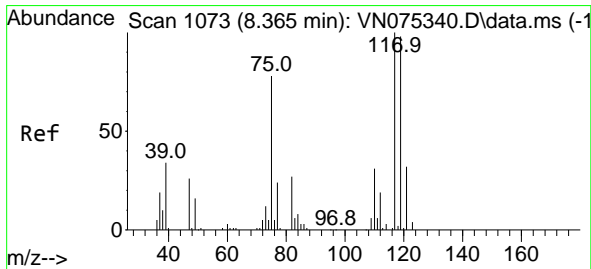
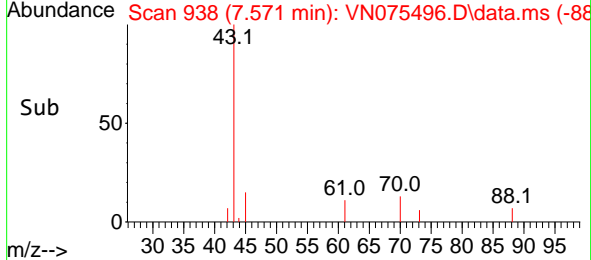
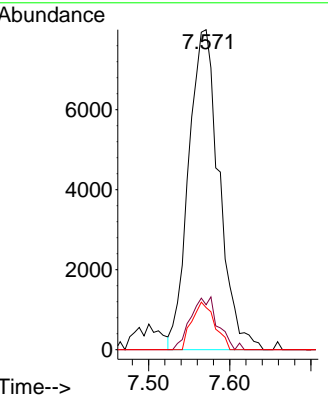
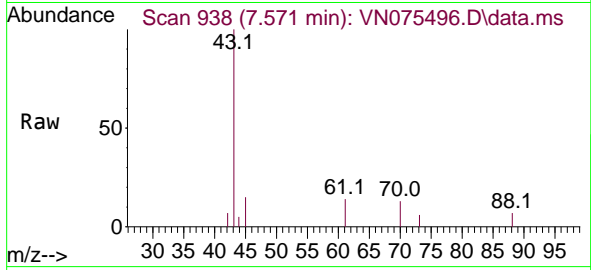




#37  
 Ethyl Acetate  
 Concen: 11.306 ug/l  
 RT: 7.571 min Scan# 91  
 Delta R.T. 0.006 min  
 Lab File: VN075496.D  
 Acq: 30 Nov 2022 13:04

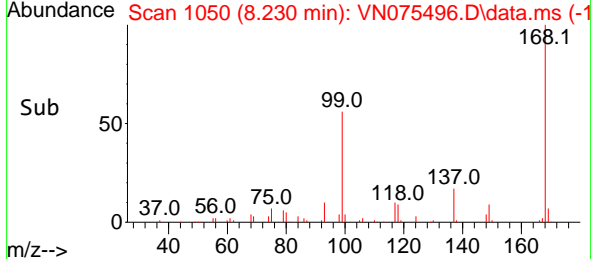
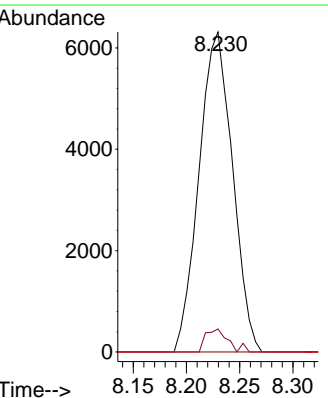
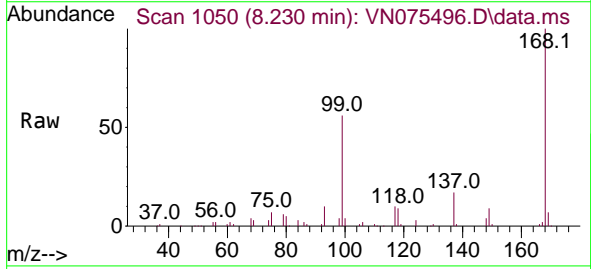
Instrument : MSVOA\_N  
 ClientSampleId : PB149341TB

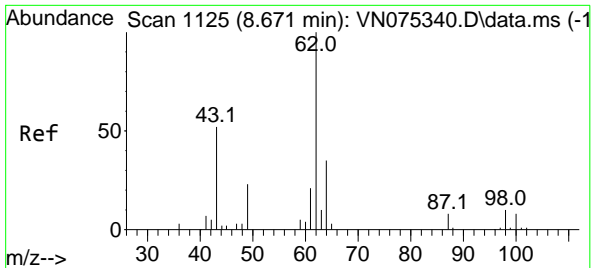
Tgt Ion	Resp	Lower	Upper
43	20884		
61	14.6	12.2	18.4
70	11.2	9.4	14.2



#38  
 Carbon Tetrachloride  
 Concen: 6.131 ug/l  
 RT: 8.230 min Scan# 1050  
 Delta R.T. -0.135 min  
 Lab File: VN075496.D  
 Acq: 30 Nov 2022 13:04

Tgt Ion	Resp	Lower	Upper
117	13816		
119	7.2	76.7	115.1#
121	0.0	23.9	35.9#

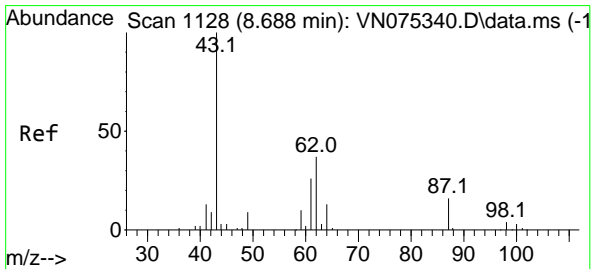
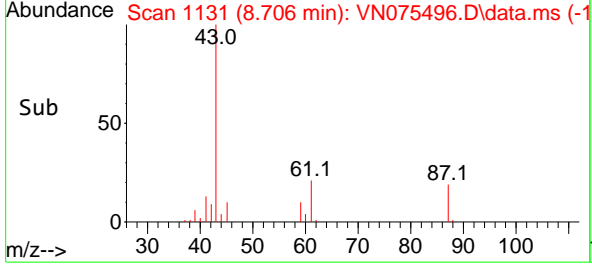
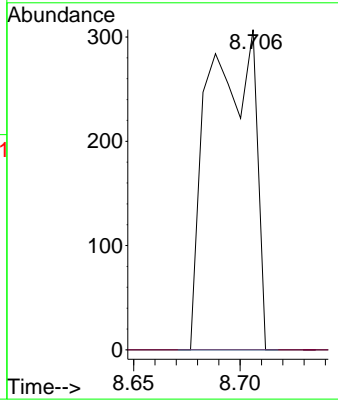
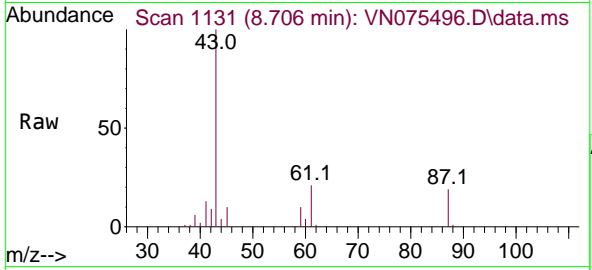




#42  
 1,2-Dichloroethane  
 Concen: 0.221 ug/l  
 RT: 8.706 min Scan# 11131  
 Delta R.T. 0.035 min  
 Lab File: VN075496.D  
 Acq: 30 Nov 2022 13:04

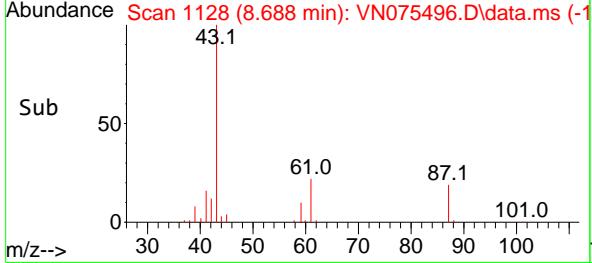
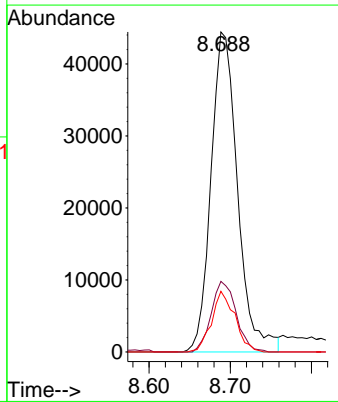
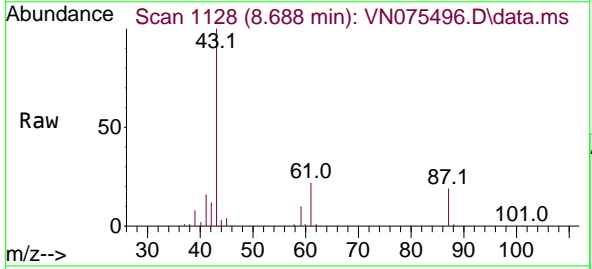
Instrument : MSVOA\_N  
 ClientSampleId : PB149341TB

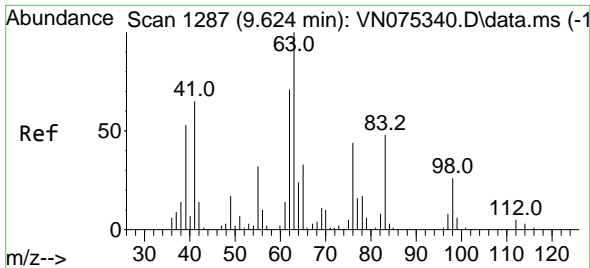
Tgt Ion	Resp	Lower	Upper
62	100		
98	0.0	0.0	18.2



#43  
 Isopropyl Acetate  
 Concen: 34.150 ug/l  
 RT: 8.688 min Scan# 1128  
 Delta R.T. 0.000 min  
 Lab File: VN075496.D  
 Acq: 30 Nov 2022 13:04

Tgt Ion	Resp	Lower	Upper
43	100		
61	20.6	22.4	33.6#
87	16.6	12.5	18.7

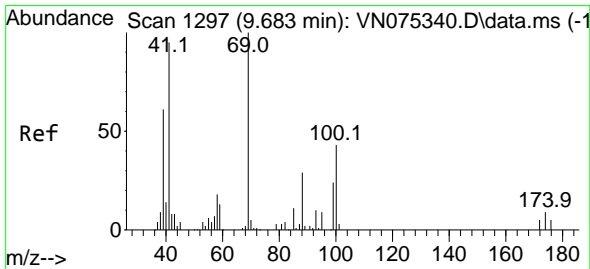
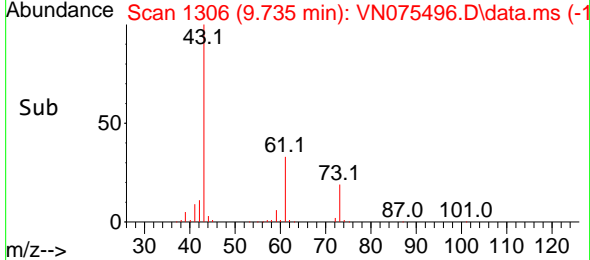
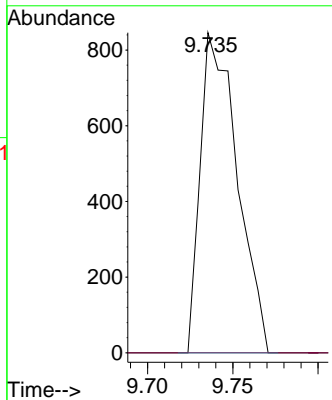
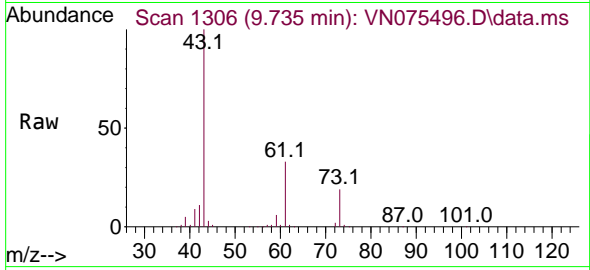




#45  
 1,2-Dichloropropane  
 Concen: 0.854 ug/l  
 RT: 9.735 min Scan# 111  
 Delta R.T. 0.111 min  
 Lab File: VN075496.D  
 Acq: 30 Nov 2022 13:04

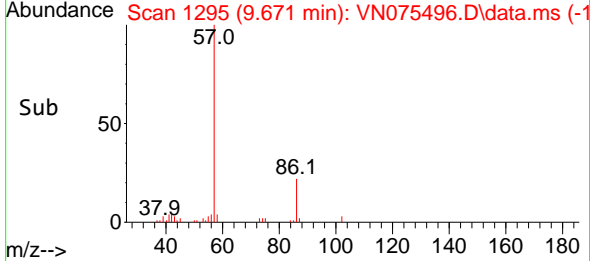
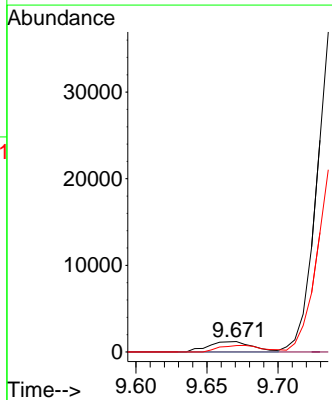
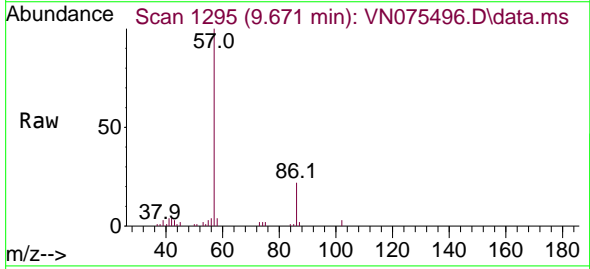
Instrument : MSVOA\_N  
 ClientSampleId : PB149341TB

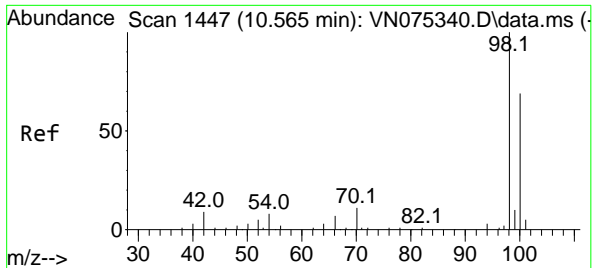
Tgt Ion: 63 Resp: 1278  
 Ion Ratio Lower Upper  
 63 100  
 65 0.0 26.1 39.1#



#48  
 Methyl methacrylate  
 Concen: 1.905 ug/l  
 RT: 9.671 min Scan# 1295  
 Delta R.T. -0.012 min  
 Lab File: VN075496.D  
 Acq: 30 Nov 2022 13:04

Tgt Ion: 41 Resp: 2612  
 Ion Ratio Lower Upper  
 41 100  
 69 0.0 80.2 120.2#  
 39 60.7 56.2 84.2

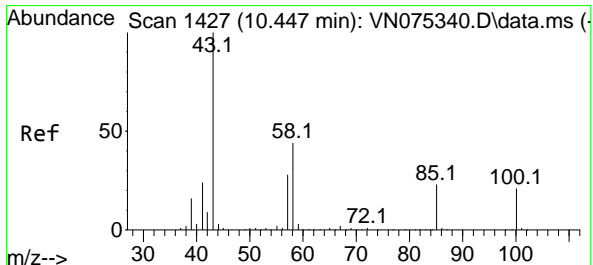
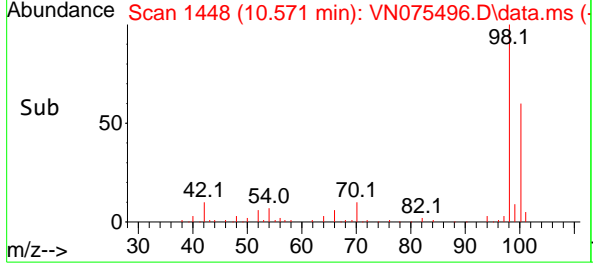
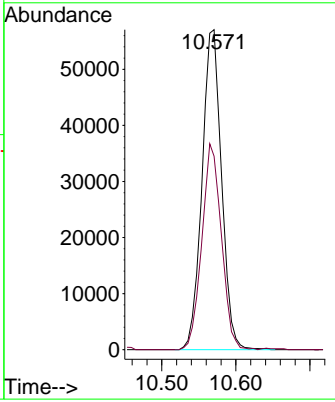
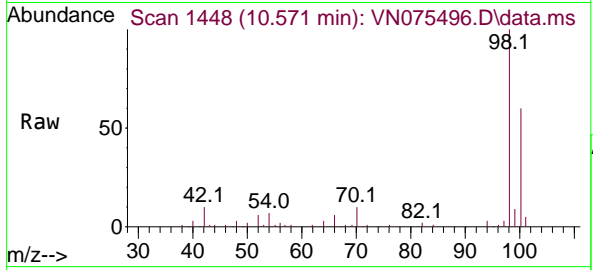




#50  
 Toluene-d8  
 Concen: 49.308 ug/l  
 RT: 10.571 min Scan# 1412  
 Delta R.T. 0.006 min  
 Lab File: VN075496.D  
 Acq: 30 Nov 2022 13:04

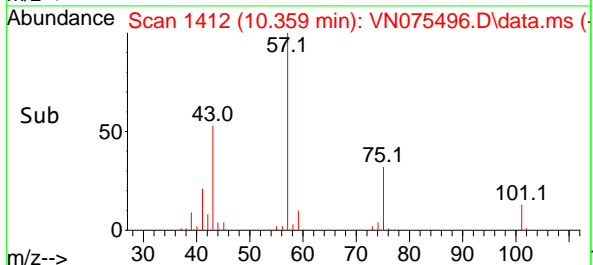
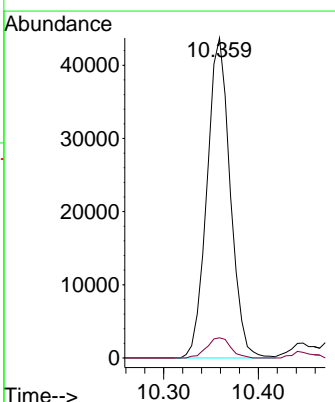
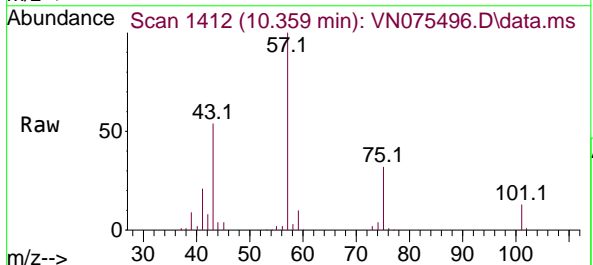
Instrument : MSVOA\_N  
 ClientSampleId : PB149341TB

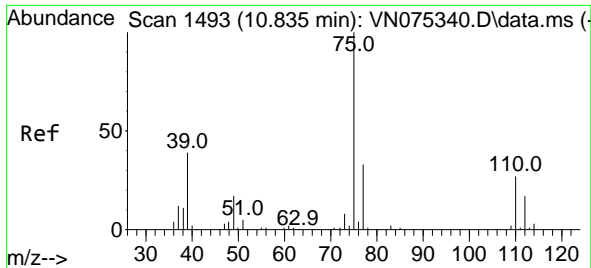
Tgt Ion: 98 Resp: 104466  
 Ion Ratio Lower Upper  
 98 100  
 100 64.2 53.0 79.6



#51  
 4-Methyl-2-Pentanone  
 Concen: 39.477 ug/l  
 RT: 10.359 min Scan# 1412  
 Delta R.T. -0.088 min  
 Lab File: VN075496.D  
 Acq: 30 Nov 2022 13:04

Tgt Ion: 43 Resp: 74547  
 Ion Ratio Lower Upper  
 43 100  
 58 6.5 33.6 50.4#

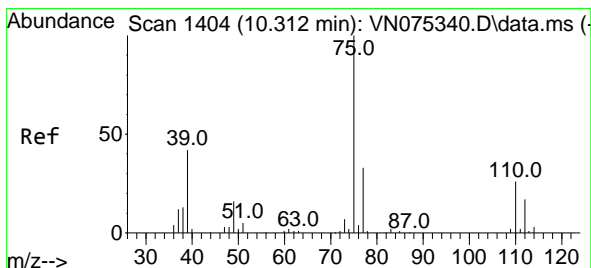
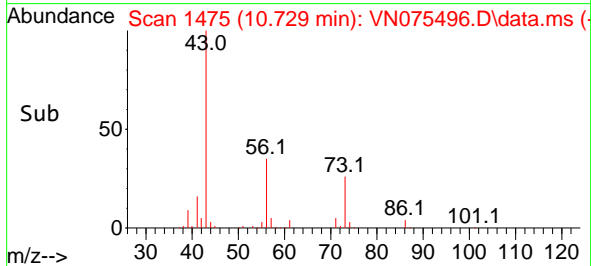
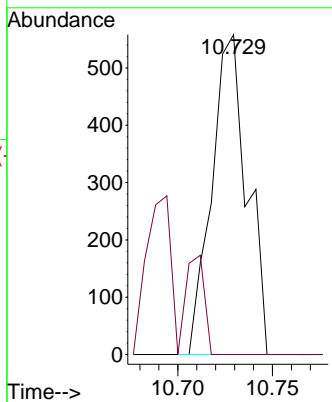
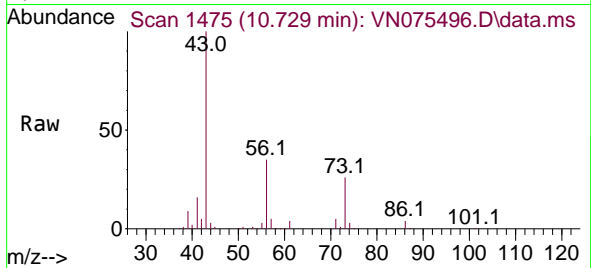




#53  
 t-1,3-Dichloropropene  
 Concen: 0.329 ug/l  
 RT: 10.729 min Scan# 1412  
 Delta R.T. -0.106 min  
 Lab File: VN075496.D  
 Acq: 30 Nov 2022 13:04

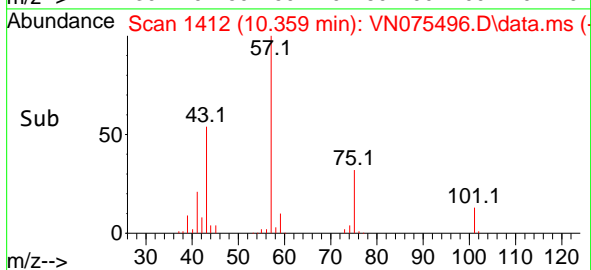
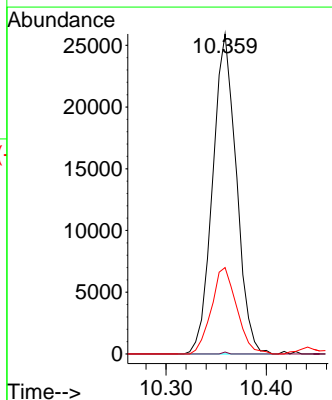
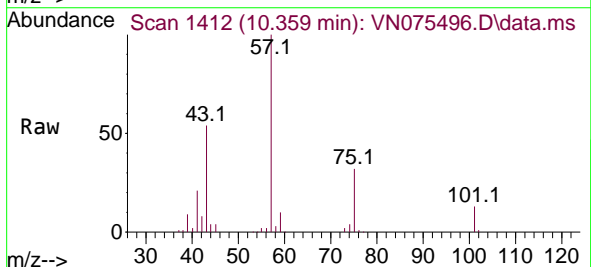
Instrument : MSVOA\_N  
 ClientSampleId : PB149341TB

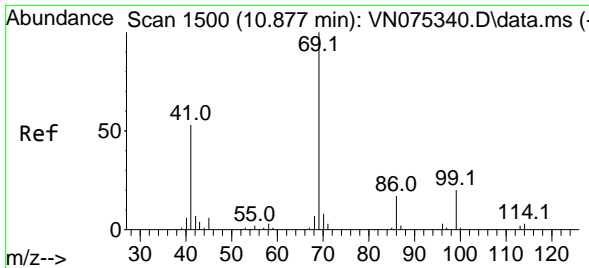
Tgt Ion: 75 Resp: 724  
 Ion Ratio Lower Upper  
 75 100  
 77 0.0 25.4 38.2#



#54  
 cis-1,3-Dichloropropene  
 Concen: 17.810 ug/l  
 RT: 10.359 min Scan# 1412  
 Delta R.T. 0.047 min  
 Lab File: VN075496.D  
 Acq: 30 Nov 2022 13:04

Tgt Ion: 75 Resp: 42574  
 Ion Ratio Lower Upper  
 75 100  
 77 0.6 23.7 35.5#  
 39 27.0 35.8 53.6#



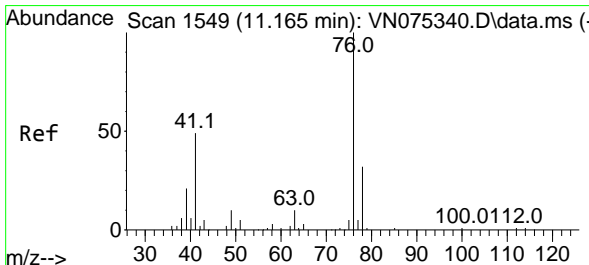
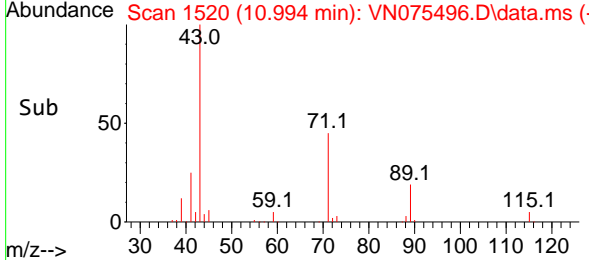
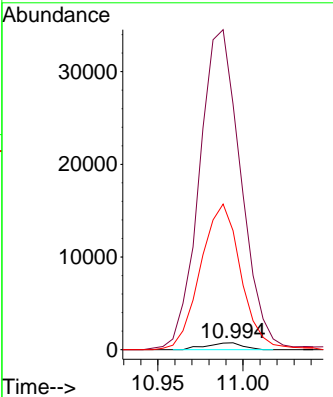
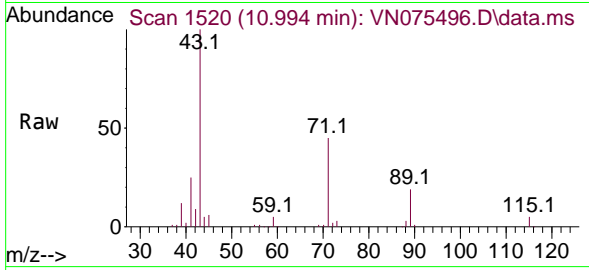


#56  
 Ethyl methacrylate  
 Concen: 0.497 ug/l  
 RT: 10.994 min Scan# 11  
 Delta R.T. 0.117 min  
 Lab File: VN075496.D  
 Acq: 30 Nov 2022 13:04

Instrument : MSVOA\_N  
 ClientSampleId : PB149341TB

Tgt Ion: 69 Resp: 1107

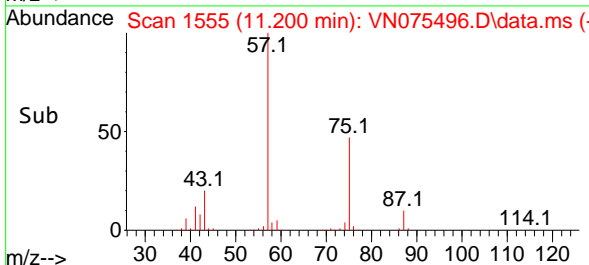
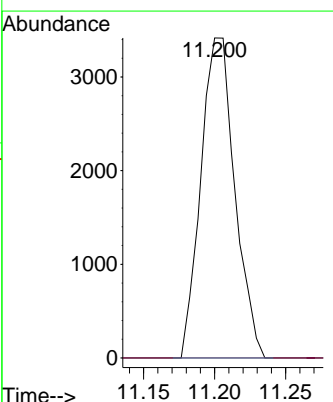
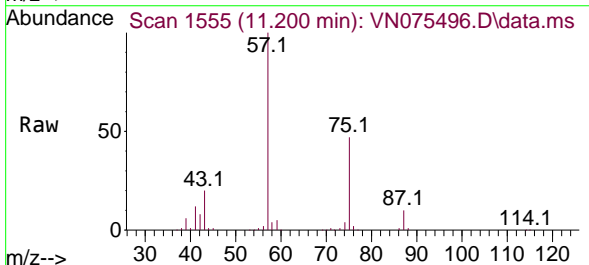
Ion	Ratio	Lower	Upper
69	100		
41	5315.8	45.6	68.4#
39	2352.5	28.5	42.7#

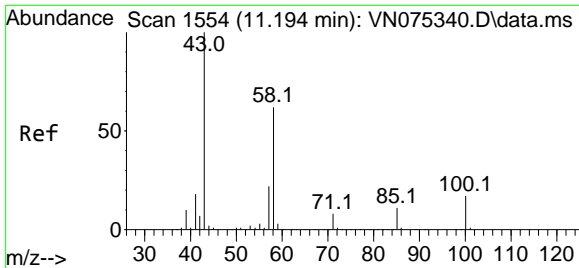


#57  
 1,3-Dichloropropane  
 Concen: 2.116 ug/l  
 RT: 11.200 min Scan# 1555  
 Delta R.T. 0.035 min  
 Lab File: VN075496.D  
 Acq: 30 Nov 2022 13:04

Tgt Ion: 76 Resp: 5688

Ion	Ratio	Lower	Upper
76	100		
78	0.0	25.8	38.6#

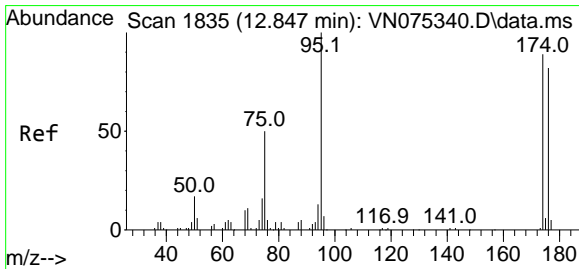
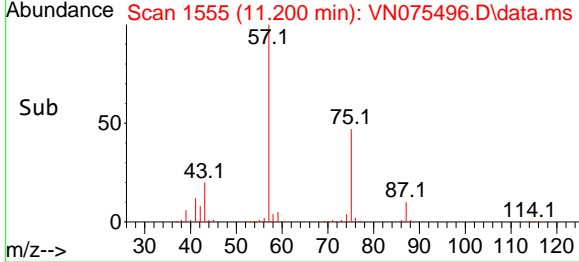
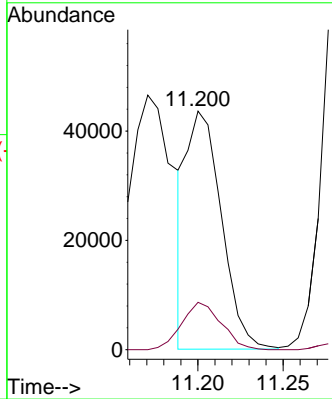
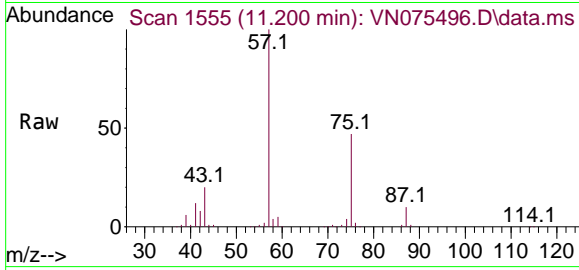




#59  
 2-Hexanone  
 Concen: 43.840 ug/l  
 RT: 11.200 min Scan# 1111  
 Delta R.T. 0.006 min  
 Lab File: VN075496.D  
 Acq: 30 Nov 2022 13:04

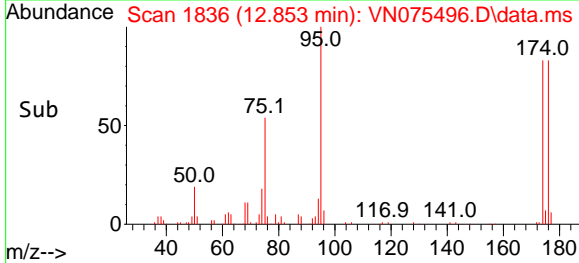
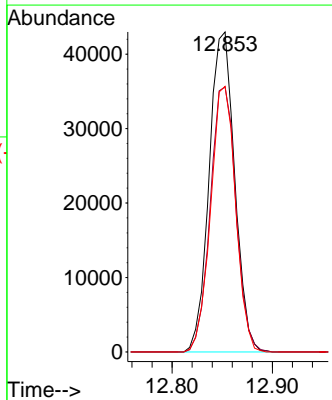
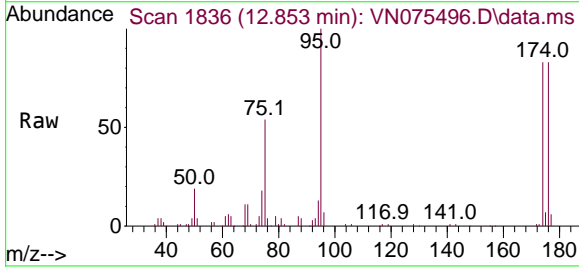
Instrument : MSVOA\_N  
 ClientSampleId : PB149341TB

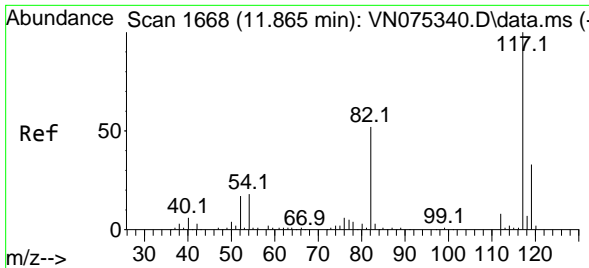
Tgt Ion: 43 Resp: 62164  
 Ion Ratio Lower Upper  
 43 100  
 58 22.5 29.6 88.8#



#62  
 4-Bromofluorobenzene  
 Concen: 48.575 ug/l  
 RT: 12.853 min Scan# 1836  
 Delta R.T. 0.006 min  
 Lab File: VN075496.D  
 Acq: 30 Nov 2022 13:04

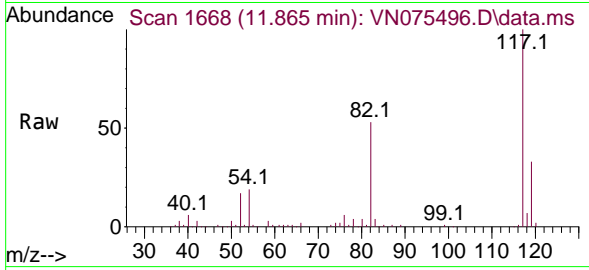
Tgt Ion: 95 Resp: 75960  
 Ion Ratio Lower Upper  
 95 100  
 174 83.3 0.0 147.4  
 176 81.2 0.0 142.2



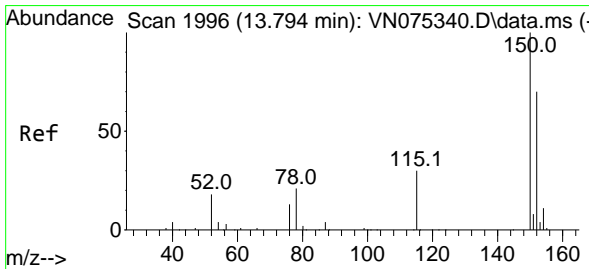
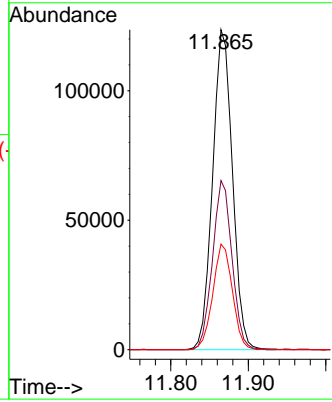
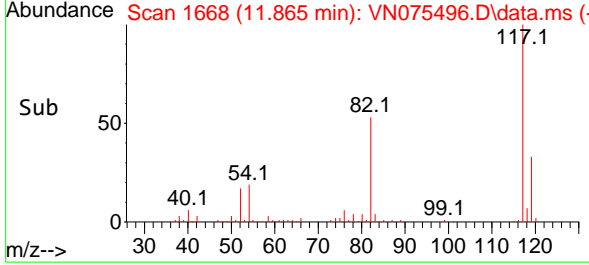


#63  
 Chlorobenzene-d5  
 Concen: 50.000 ug/l  
 RT: 11.865 min Scan# 1668  
 Delta R.T. -0.000 min  
 Lab File: VN075496.D  
 Acq: 30 Nov 2022 13:04

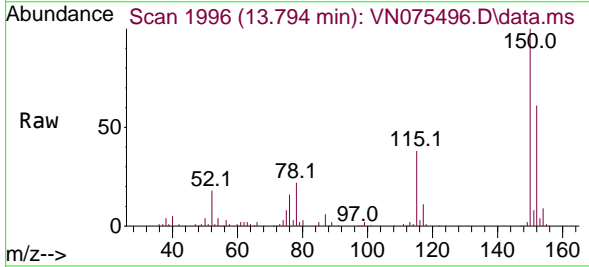
Instrument : MSVOA\_N  
 ClientSampleId : PB149341TB



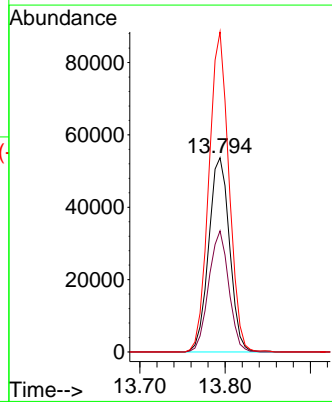
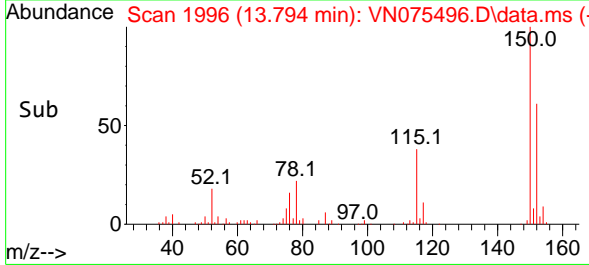
Tgt Ion:117 Resp: 219473  
 Ion Ratio Lower Upper  
 117 100  
 82 52.9 43.1 64.7  
 119 33.0 25.5 38.3



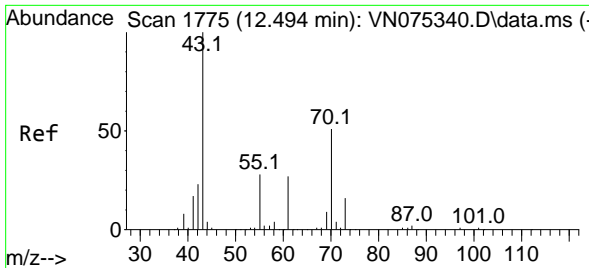
#72  
 1,4-Dichlorobenzene-d4  
 Concen: 50.000 ug/l  
 RT: 13.794 min Scan# 1996  
 Delta R.T. -0.000 min  
 Lab File: VN075496.D  
 Acq: 30 Nov 2022 13:04



Tgt Ion:152 Resp: 91289  
 Ion Ratio Lower Upper  
 152 100  
 115 59.9 30.2 90.6  
 150 158.1 0.0 348.4





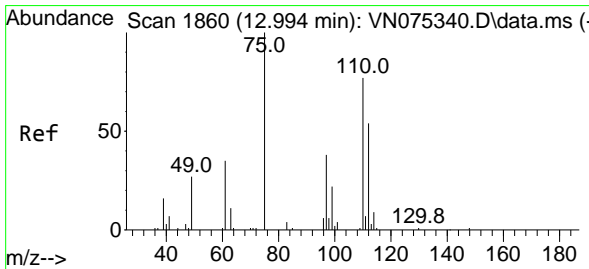
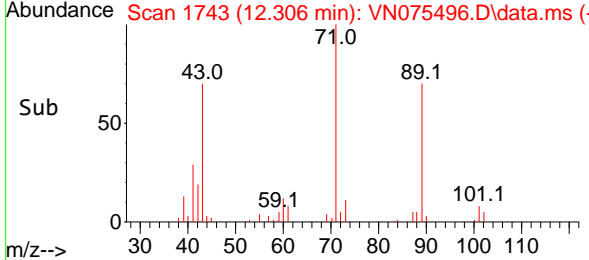
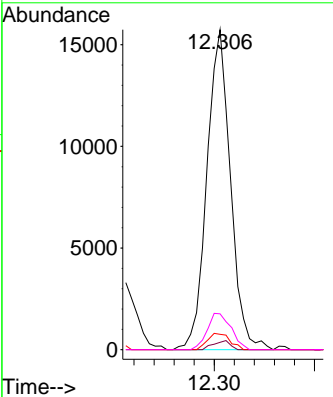
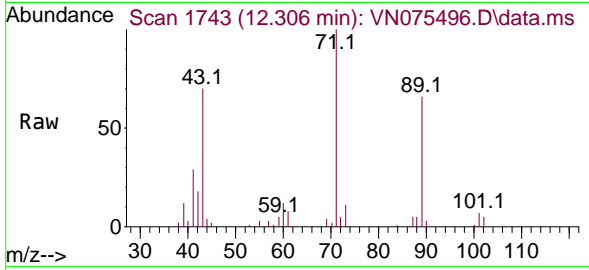


#74  
 N-amy1 acetate  
 Concen: 12.553 ug/l  
 RT: 12.306 min Scan# 11  
 Delta R.T. -0.188 min  
 Lab File: VN075496.D  
 Acq: 30 Nov 2022 13:04

Instrument : MSVOA\_N  
 ClientSampleId : PB149341TB

Tgt Ion: 43 Resp: 25739

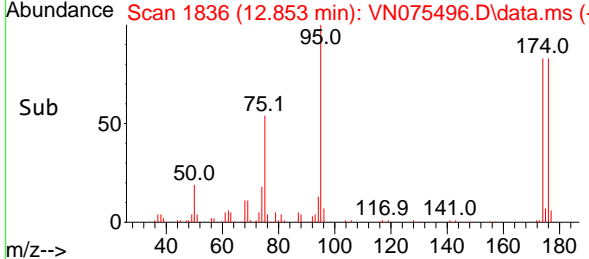
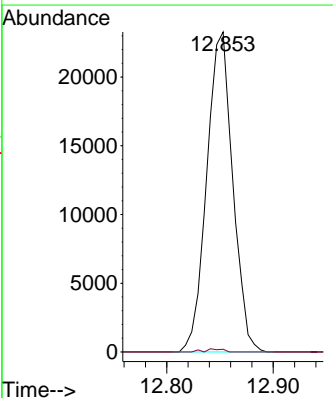
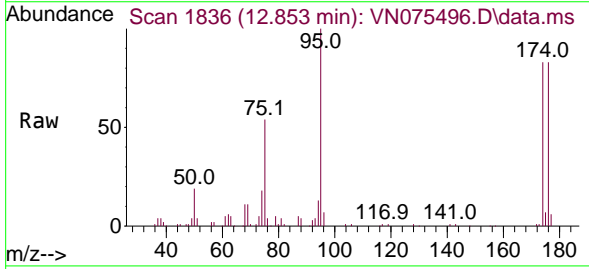
Ion	Ratio	Lower	Upper
43	100		
70	2.0	39.8	59.8#
55	4.8	19.9	29.9#
61	11.4	21.7	32.5#

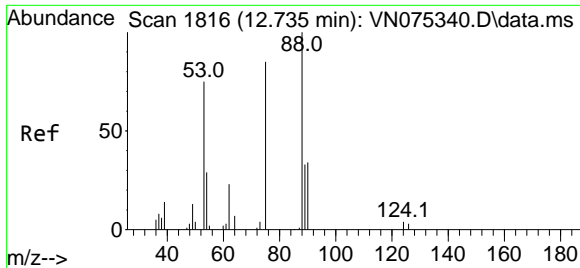


#76  
 1,2,3-Trichloropropane  
 Concen: 22.838 ug/l  
 RT: 12.853 min Scan# 1836  
 Delta R.T. -0.141 min  
 Lab File: VN075496.D  
 Acq: 30 Nov 2022 13:04

Tgt Ion: 75 Resp: 39420

Ion	Ratio	Lower	Upper
75	100		
77	0.7	75.6	226.8#





#81  
 trans-1,4-Dichloro-2-butene  
 Concen: 67.574 ug/l  
 RT: 12.853 min Scan# 11  
 Delta R.T. 0.118 min  
 Lab File: VN075496.D  
 Acq: 30 Nov 2022 13:04

Instrument :  
 MSVOA\_N  
 ClientSampleId :  
 PB149341TB

Tgt Ion: 75 Resp: 39420  
 Ion Ratio Lower Upper  
 75 100  
 53 0.0 78.5 117.7#  
 89 0.0 37.7 56.5#

