

Data Path : Z:\voasrv\HPCHEM1\MSVOA_N\Data\VN120224\
 Data File : VN085063.D
 Acq On : 02 Dec 2024 11:06
 Operator : JC\MD
 Sample : VN1202MBL01
 Misc : 5.00g/10mL/100uL/5.00mL/MSVOA_N/MEOH
 ALS Vial : 3 Sample Multiplier: 1

Instrument :
 MSVOA_N
 ClientSampleId :

Quant Time: Dec 03 00:46:06 2024
 Quant Method : Z:\voasrv\HPCHEM1\MSVOA_N\methods\82N112224W.M
 Quant Title : SW846 8260
 QLast Update : Sat Nov 23 02:54:10 2024
 Response via : Initial Calibration

Compound	R.T.	QIon	Response	Conc	Units	Dev(Min)
Internal Standards						
1) Pentafluorobenzene	8.218	168	143404	50.000	ug/l	0.00
34) 1,4-Difluorobenzene	9.094	114	243136	50.000	ug/l	0.00
63) Chlorobenzene-d5	11.859	117	209124	50.000	ug/l	0.00
72) 1,4-Dichlorobenzene-d4	13.788	152	96211	50.000	ug/l	0.00
System Monitoring Compounds						
33) 1,2-Dichloroethane-d4	8.571	65	103656	50.745	ug/l	0.00
Spiked Amount	50.000	Range 74 - 125	Recovery	=	101.480%	
35) Dibromofluoromethane	8.159	113	85527	52.162	ug/l	0.00
Spiked Amount	50.000	Range 75 - 124	Recovery	=	104.320%	
50) Toluene-d8	10.565	98	278267	47.356	ug/l	0.00
Spiked Amount	50.000	Range 86 - 113	Recovery	=	94.720%	
62) 4-Bromofluorobenzene	12.847	95	102454	46.624	ug/l	0.00
Spiked Amount	50.000	Range 77 - 121	Recovery	=	93.240%	
Target Compounds						
						Qvalue
3) Chloromethane	2.359	50	763	0.406	ug/l #	40
5) Bromomethane	2.906	94	794	0.838	ug/l	96
6) Chloroethane	3.036	64	403	0.354	ug/l #	44
13) Acrolein	4.171	56	54	0.296	ug/l #	16
16) Acetone	4.453	43	119	0.200	ug/l #	43
17) Carbon Disulfide	4.700	76	2394	0.533	ug/l #	77
18) Methyl Acetate	5.018	43	1144	Below Cal	#	50
21) trans-1,2-Dichloroethene	5.789	96	324	0.202	ug/l #	44
23) Vinyl Acetate	6.606	43	935	0.262	ug/l #	71
25) 2-Butanone	7.500	43	205	0.211	ug/l #	48
31) Cyclohexane	8.212	56	2856	1.050	ug/l #	1
36) 1,1-Dichloropropene	8.359	75	608	0.274	ug/l #	65
38) Carbon Tetrachloride	8.218	117	14775	5.764	ug/l #	17
43) Isopropyl Acetate	8.683	43	1046	0.249	ug/l #	55
44) Trichloroethene	9.347	130	694	0.425	ug/l	55
51) 4-Methyl-2-Pentanone	10.447	43	569	0.297	ug/l #	35
52) Toluene	10.624	92	1041	0.250	ug/l	92
53) t-1,3-Dichloropropene	10.835	75	1769	0.693	ug/l	98
54) cis-1,3-Dichloropropene	10.306	75	854	0.315	ug/l #	83
58) 2-Chloroethyl Vinyl ether	10.153	63	1688	1.520	ug/l #	78
59) 2-Hexanone	11.188	43	1190	0.831	ug/l	91
60) Dibromochloromethane	11.359	129	435	0.230	ug/l	64
61) 1,2-Dibromoethane	11.471	107	596	0.372	ug/l	90
64) Tetrachloroethene	11.094	164	537	0.381	ug/l #	83
65) Chlorobenzene	11.894	112	3122	0.658	ug/l #	84
67) Ethyl Benzene	11.959	91	2962	0.385	ug/l #	87
68) m/p-Xylenes	12.071	106	2385	0.814	ug/l	91
69) o-Xylene	12.394	106	620	0.222	ug/l	88
70) Styrene	12.406	104	3050	0.658	ug/l #	89
71) Bromoform	12.576	173	524	0.423	ug/l #	29
73) Isopropylbenzene	12.694	105	1821	0.268	ug/l	100
74) N-ethyl acetate	12.494	43	1101	0.394	ug/l #	65
75) 1,1,2,2-Tetrachloroethane	12.935	83	861	0.371	ug/l #	81
76) 1,2,3-Trichloropropane	12.959	75	1801	1.029	ug/l	98
77) Bromobenzene	12.976	156	1980	1.084	ug/l	91
78) n-propylbenzene	13.029	91	5751	0.735	ug/l	96

Data Path : Z:\voasrv\HPCHEM1\MSVOA_N\Data\VN120224\
 Data File : VN085063.D
 Acq On : 02 Dec 2024 11:06
 Operator : JC\MD
 Sample : VN1202MBL01
 Misc : 5.00g/10mL/100uL/5.00mL/MSVOA_N/MEOH
 ALS Vial : 3 Sample Multiplier: 1

Instrument :
 MSVOA_N
 ClientSampleId :

Quant Time: Dec 03 00:46:06 2024
 Quant Method : Z:\voasrv\HPCHEM1\MSVOA_N\methods\82N112224W.M
 Quant Title : SW846 8260
 QLast Update : Sat Nov 23 02:54:10 2024
 Response via : Initial Calibration

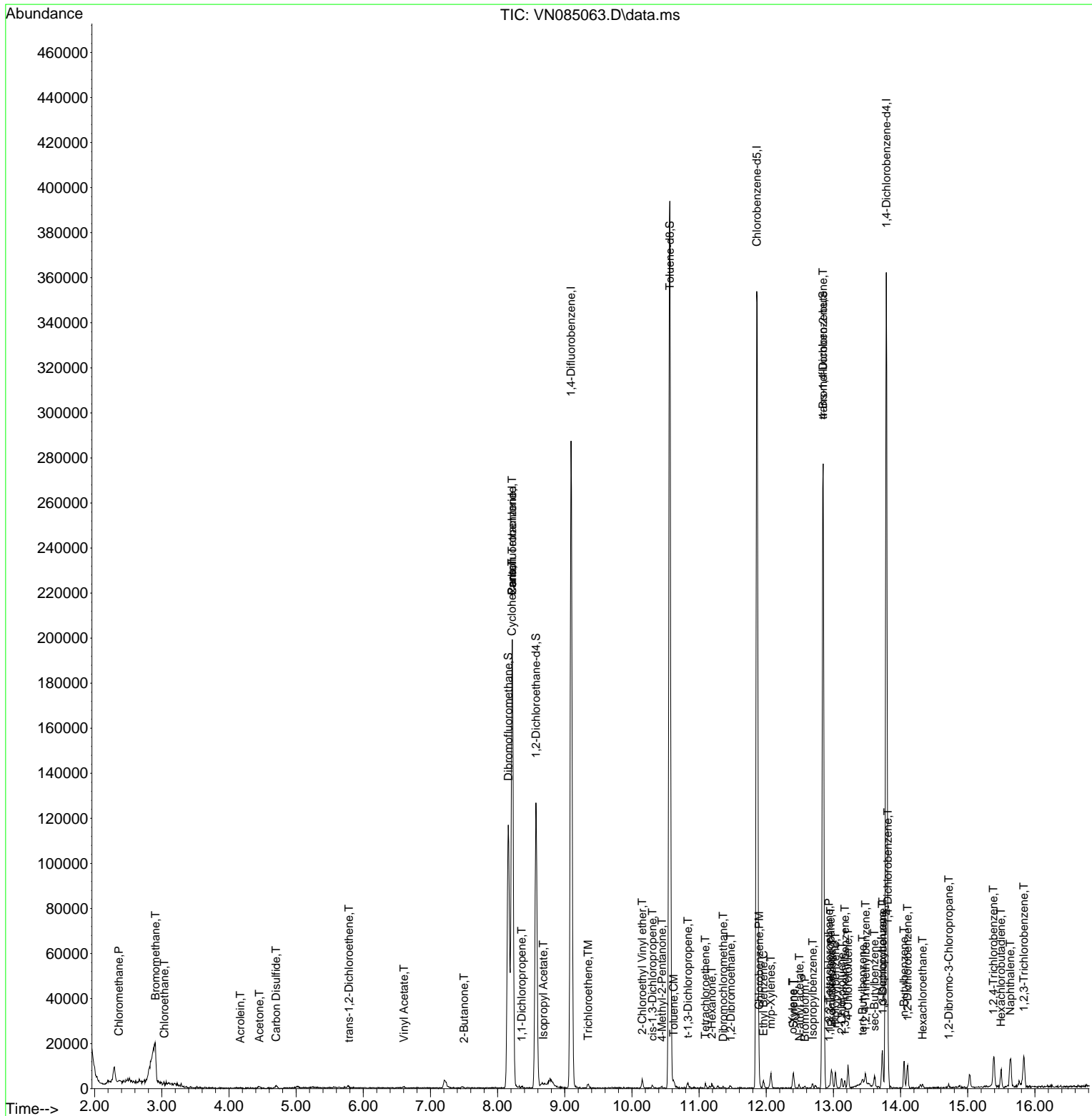
Compound	R.T.	QIon	Response	Conc	Units	Dev(Min)
79) 2-Chlorotoluene	13.123	91	3025	0.579	ug/l	98
80) 1,3,5-Trimethylbenzene	13.170	105	2450	0.430	ug/l	88
81) trans-1,4-Dichloro-2-b...	12.847	75	52763	66.559	ug/l #	10
82) 4-Chlorotoluene	13.218	91	6131	1.127	ug/l	99
83) tert-Butylbenzene	13.435	119	1303	0.266	ug/l	90
84) 1,2,4-Trimethylbenzene	13.482	105	2635	0.449	ug/l	98
85) sec-Butylbenzene	13.612	105	3867	0.584	ug/l	94
86) p-Isopropyltoluene	13.729	119	3563	0.652	ug/l	95
87) 1,3-Dichlorobenzene	13.735	146	5353	1.486	ug/l	96
88) 1,4-Dichlorobenzene	13.812	146	7549	2.053	ug/l	87
89) n-Butylbenzene	14.053	91	6743	1.327	ug/l	96
90) Hexachloroethane	14.329	117	397	0.333	ug/l	85
91) 1,2-Dichlorobenzene	14.106	146	5025	1.456	ug/l	95
92) 1,2-Dibromo-3-Chloropr...	14.717	75	525	1.171	ug/l #	68
93) 1,2,4-Trichlorobenzene	15.382	180	5433	2.897	ug/l	97
94) Hexachlorobutadiene	15.494	225	1703	1.967	ug/l	98
95) Naphthalene	15.635	128	14794	2.770	ug/l	97
96) 1,2,3-Trichlorobenzene	15.835	180	6372	3.561	ug/l	95

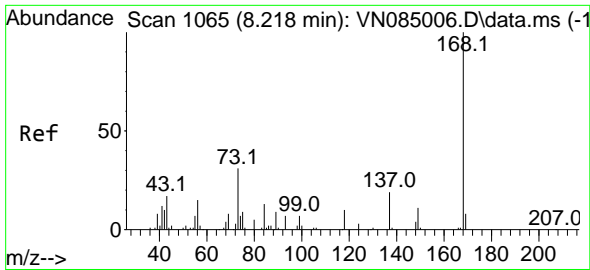
(#) = qualifier out of range (m) = manual integration (+) = signals summed

Data Path : Z:\voasrv\HPCHEM1\MSVOA_N\Data\VN120224\
 Data File : VN085063.D
 Acq On : 02 Dec 2024 11:06
 Operator : JC\MD
 Sample : VN1202MBL01
 Misc : 5.00g/10mL/100uL/5.00mL/MSVOA_N/MEOH
 ALS Vial : 3 Sample Multiplier: 1

Instrument :
 MSVOA_N
 ClientSampleId :

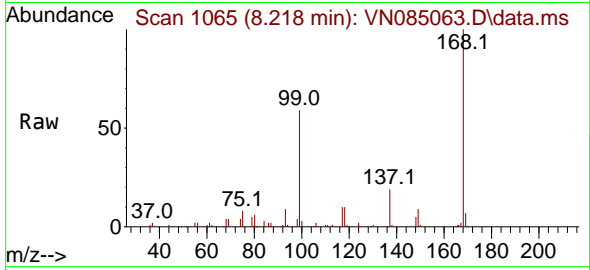
Quant Time: Dec 03 00:46:06 2024
 Quant Method : Z:\voasrv\HPCHEM1\MSVOA_N\methods\82N112224W.M
 Quant Title : SW846 8260
 QLast Update : Sat Nov 23 02:54:10 2024
 Response via : Initial Calibration



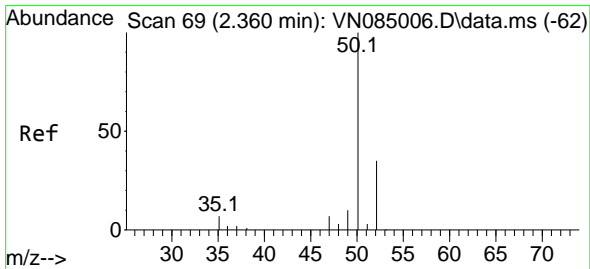
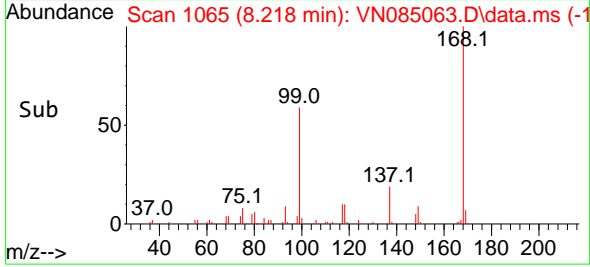
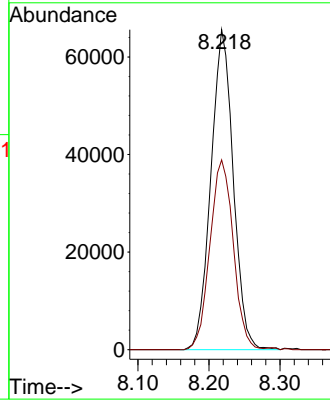


#1
 Pentafluorobenzene
 Concen: 50.000 ug/l
 RT: 8.218 min Scan# 1065
 Delta R.T. -0.000 min
 Lab File: VN085063.D
 Acq: 02 Dec 2024 11:06

Instrument :
 MSVOA_N
 ClientSampleId :

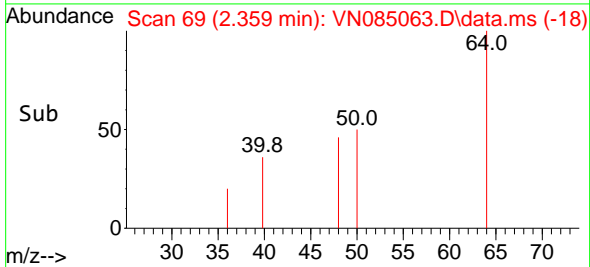
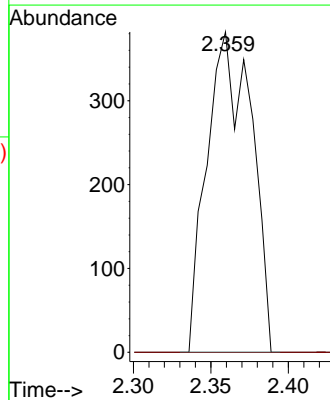
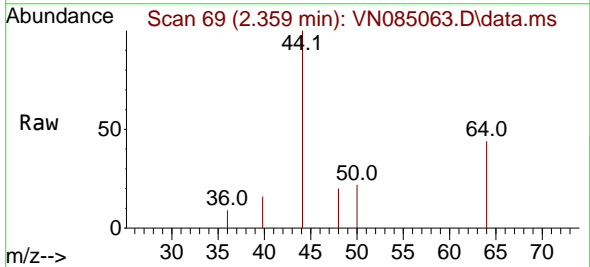


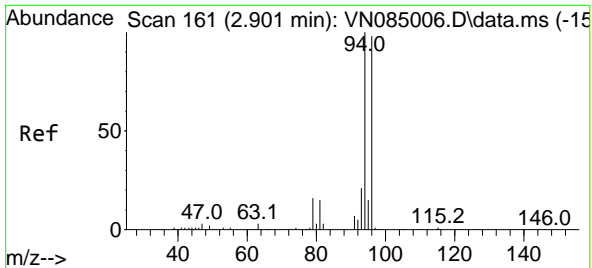
Tgt Ion:168 Resp: 143404
 Ion Ratio Lower Upper
 168 100
 99 59.3 51.2 76.8



#3
 Chloromethane
 Concen: 0.406 ug/l
 RT: 2.359 min Scan# 69
 Delta R.T. -0.000 min
 Lab File: VN085063.D
 Acq: 02 Dec 2024 11:06

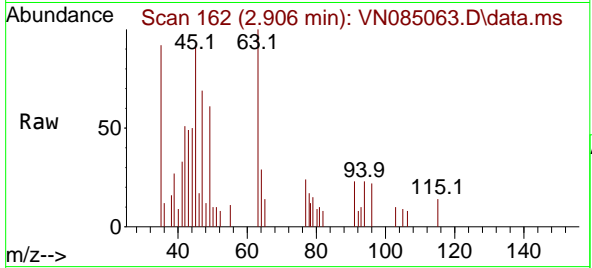
Tgt Ion: 50 Resp: 763
 Ion Ratio Lower Upper
 50 100
 52 0.0 27.8 41.8#



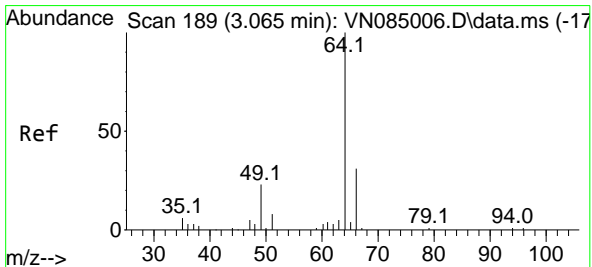
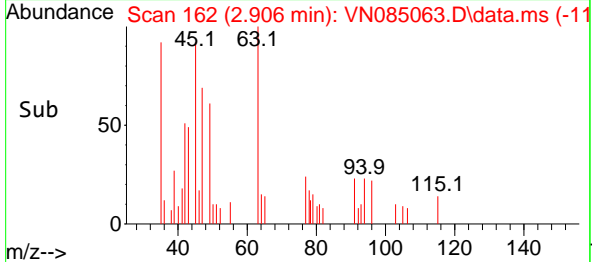
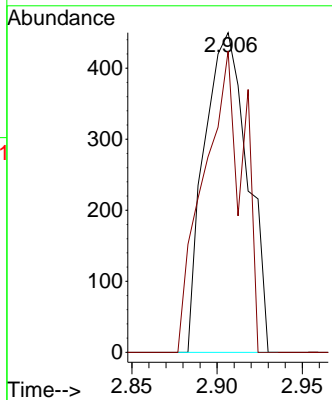


#5
 Bromomethane
 Concen: 0.838 ug/l
 RT: 2.906 min Scan# 11
 Delta R.T. 0.006 min
 Lab File: VN085063.D
 Acq: 02 Dec 2024 11:06

Instrument :
 MSVOA_N
 ClientSampleId :

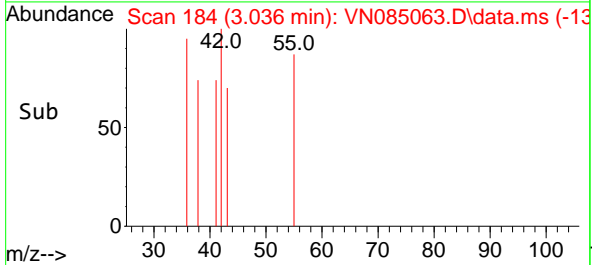
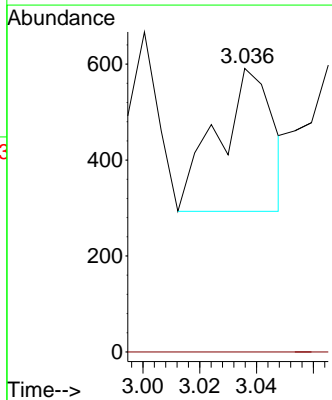
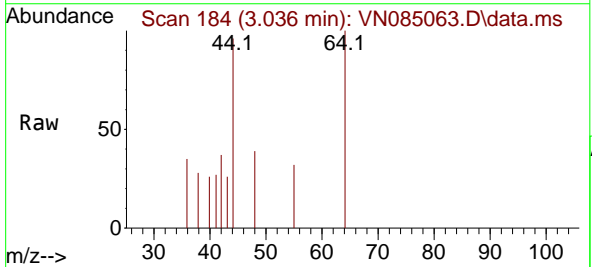


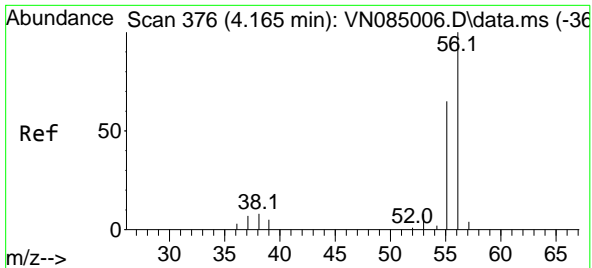
Tgt Ion: 94 Resp: 794
 Ion Ratio Lower Upper
 94 100
 96 94.2 78.7 118.1



#6
 Chloroethane
 Concen: 0.354 ug/l
 RT: 3.036 min Scan# 184
 Delta R.T. -0.030 min
 Lab File: VN085063.D
 Acq: 02 Dec 2024 11:06

Tgt Ion: 64 Resp: 403
 Ion Ratio Lower Upper
 64 100
 66 0.0 24.4 36.6#

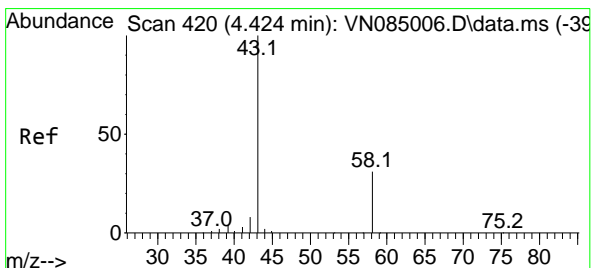
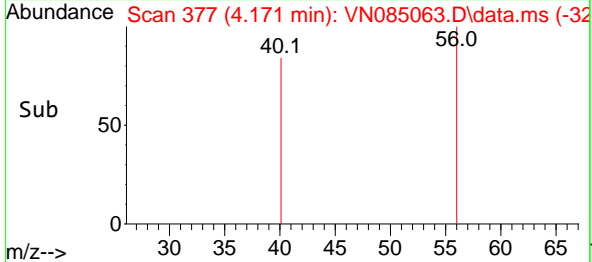
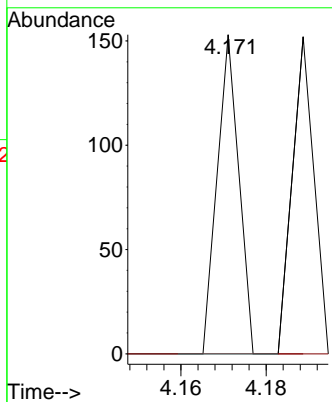
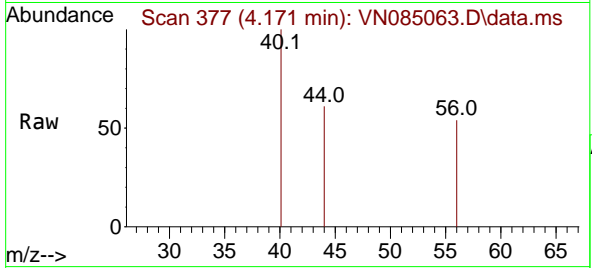




#13
 Acrolein
 Concen: 0.296 ug/l
 RT: 4.171 min Scan# 31
 Delta R.T. 0.006 min
 Lab File: VN085063.D
 Acq: 02 Dec 2024 11:06

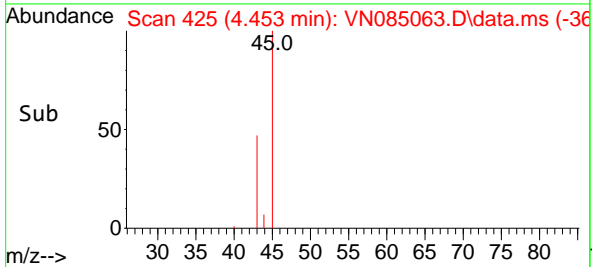
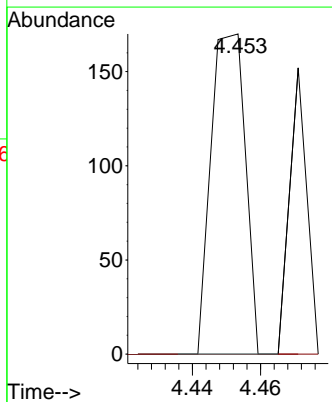
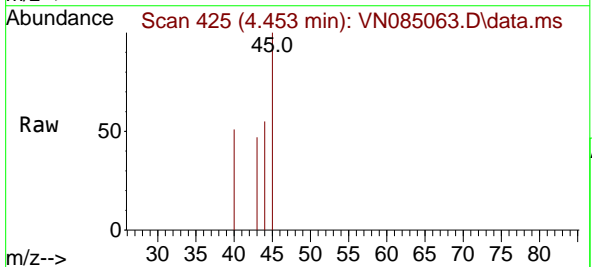
Instrument :
 MSVOA_N
 ClientSampleId :

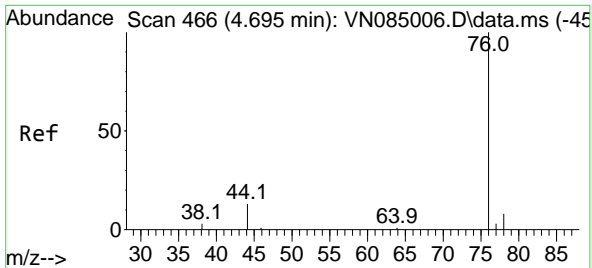
Tgt Ion: 56 Resp: 54
 Ion Ratio Lower Upper
 56 100
 55 0.0 54.5 81.7#



#16
 Acetone
 Concen: 0.200 ug/l
 RT: 4.453 min Scan# 425
 Delta R.T. 0.029 min
 Lab File: VN085063.D
 Acq: 02 Dec 2024 11:06

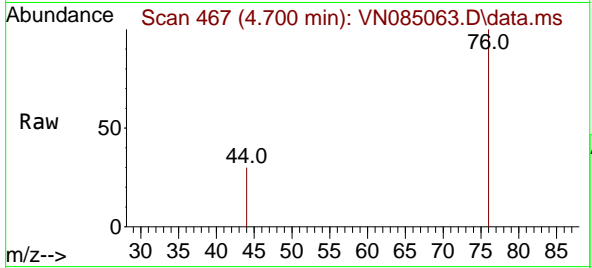
Tgt Ion: 43 Resp: 119
 Ion Ratio Lower Upper
 43 100
 58 0.0 25.4 38.2#



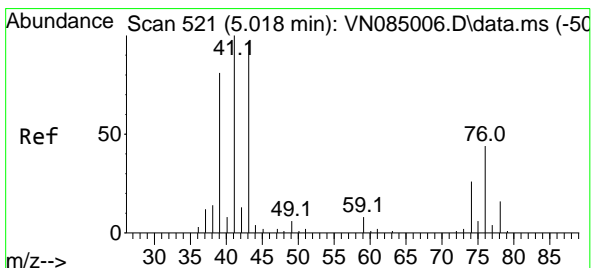
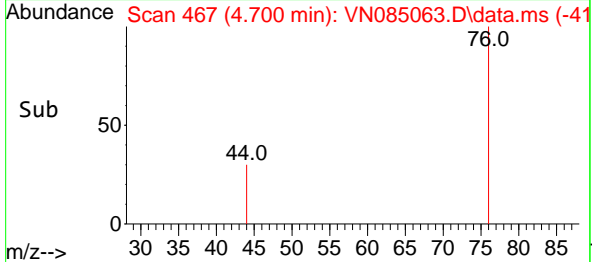
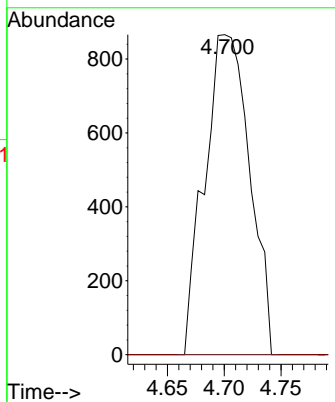


#17
 Carbon Disulfide
 Concen: 0.533 ug/l
 RT: 4.700 min Scan# 41
 Delta R.T. 0.006 min
 Lab File: VN085063.D
 Acq: 02 Dec 2024 11:06

Instrument :
 MSVOA_N
 ClientSampleId :

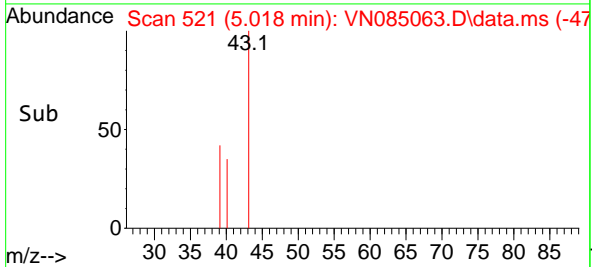
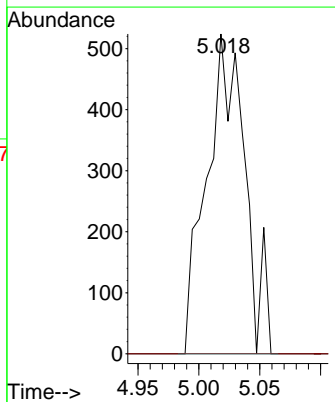
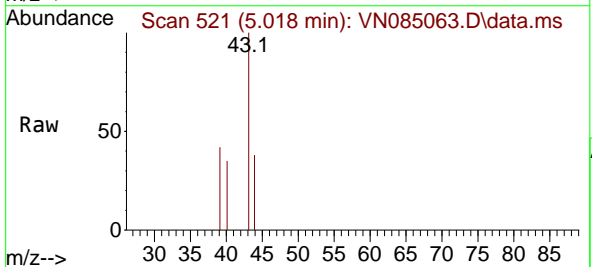


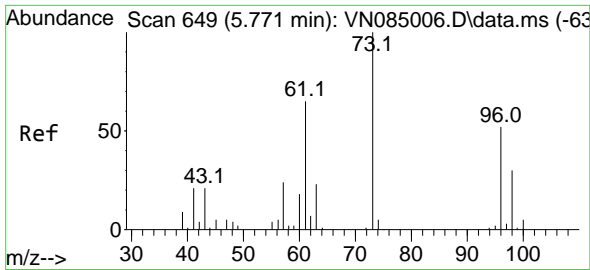
Tgt Ion: 76 Resp: 2394
 Ion Ratio Lower Upper
 76 100
 78 0.0 6.5 9.7#



#18
 Methyl Acetate
 Concen: Below Cal
 RT: 5.018 min Scan# 521
 Delta R.T. -0.000 min
 Lab File: VN085063.D
 Acq: 02 Dec 2024 11:06

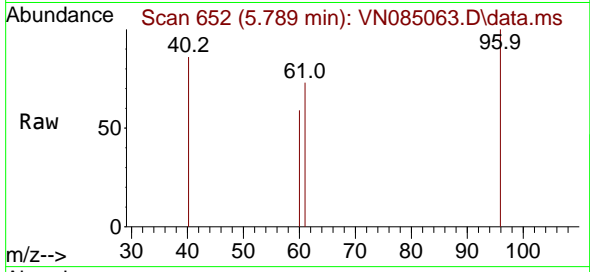
Tgt Ion: 43 Resp: 1144
 Ion Ratio Lower Upper
 43 100
 74 0.0 20.1 30.1#



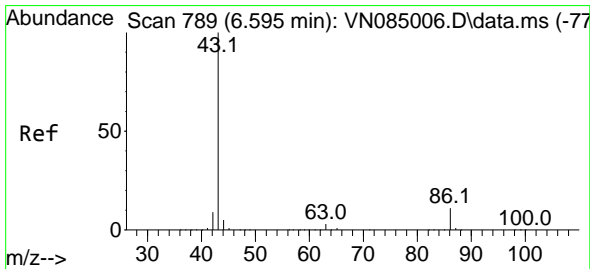
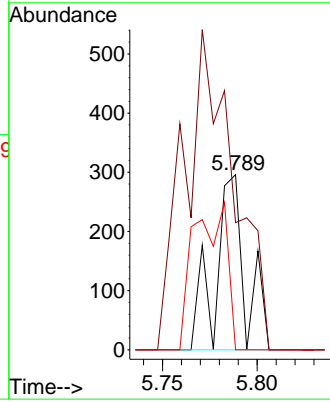
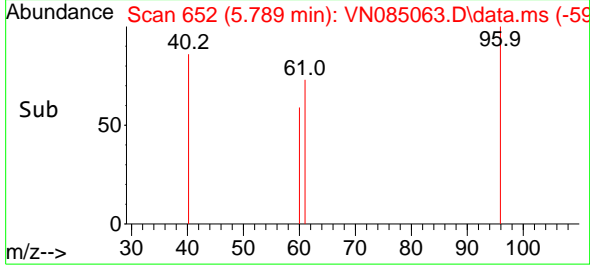


#21
 trans-1,2-Dichloroethene
 Concen: 0.202 ug/l
 RT: 5.789 min Scan# 611
 Delta R.T. 0.018 min
 Lab File: VN085063.D
 Acq: 02 Dec 2024 11:06

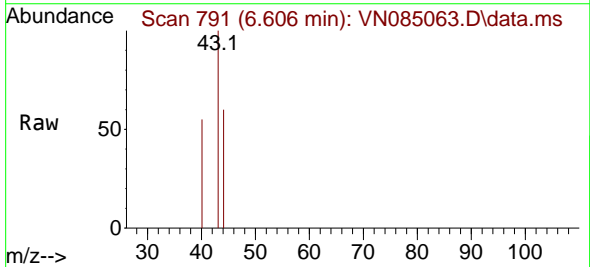
Instrument :
 MSVOA_N
 ClientSampleId :



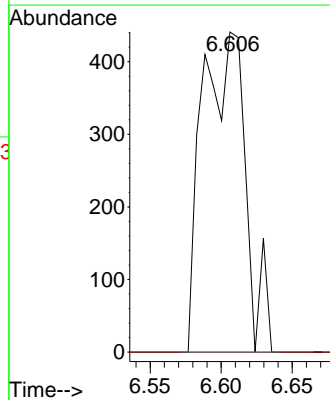
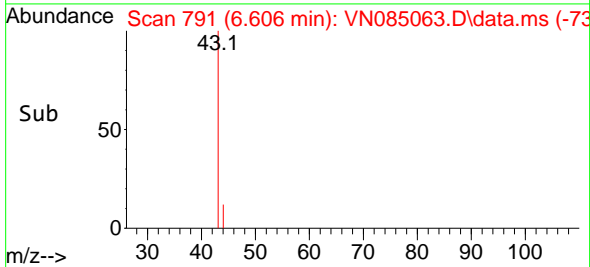
Tgt Ion: 96 Resp: 324
 Ion Ratio Lower Upper
 96 100
 61 72.6 100.7 151.1#
 98 0.0 45.8 68.6#

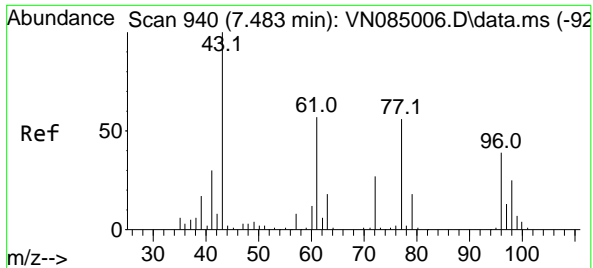


#23
 Vinyl Acetate
 Concen: 0.262 ug/l
 RT: 6.606 min Scan# 791
 Delta R.T. 0.012 min
 Lab File: VN085063.D
 Acq: 02 Dec 2024 11:06



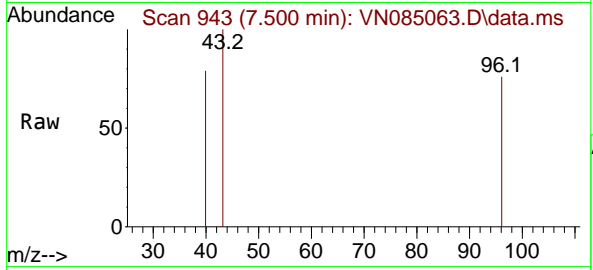
Tgt Ion: 43 Resp: 935
 Ion Ratio Lower Upper
 43 100
 86 0.0 8.9 13.3#



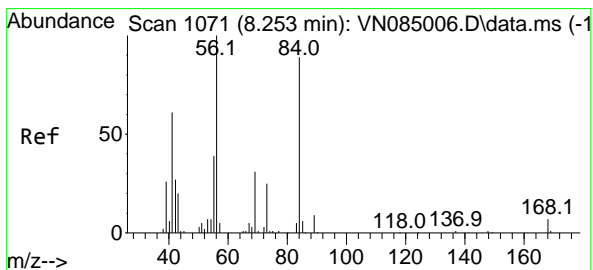
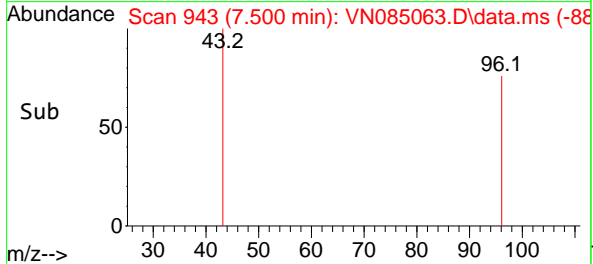
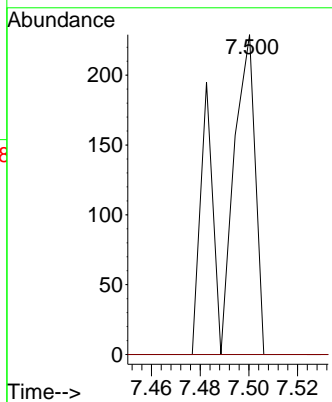


#25
 2-Butanone
 Concen: 0.211 ug/l
 RT: 7.500 min Scan# 94
 Delta R.T. 0.018 min
 Lab File: VN085063.D
 Acq: 02 Dec 2024 11:06

Instrument :
 MSVOA_N
 ClientSampleId :

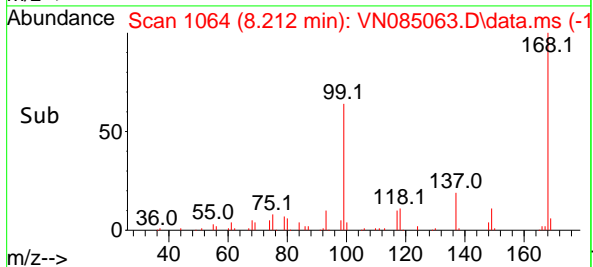
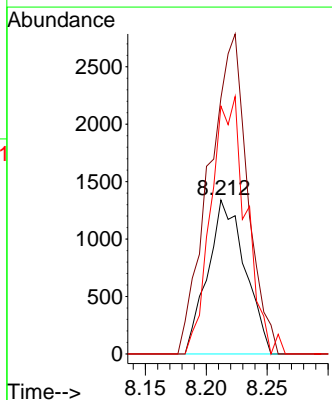
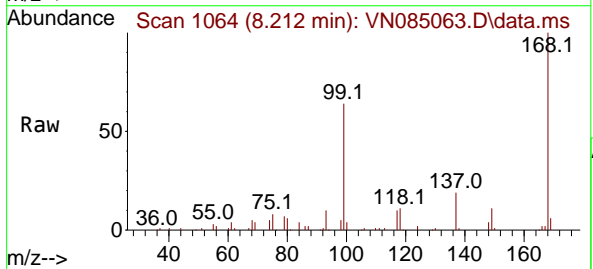


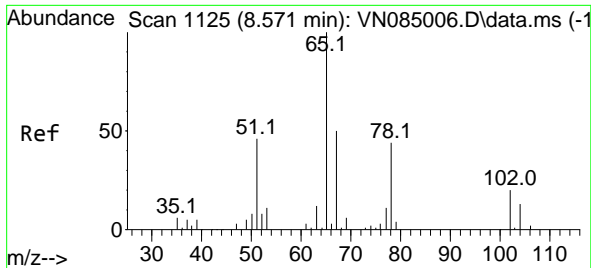
Tgt Ion: 43 Resp: 205
 Ion Ratio Lower Upper
 43 100
 72 0.0 21.4 32.0#



#31
 Cyclohexane
 Concen: 1.050 ug/l
 RT: 8.212 min Scan# 1064
 Delta R.T. -0.041 min
 Lab File: VN085063.D
 Acq: 02 Dec 2024 11:06

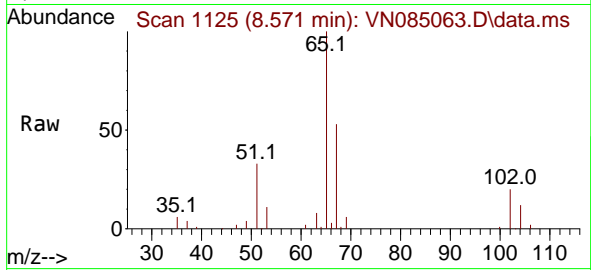
Tgt Ion: 56 Resp: 2856
 Ion Ratio Lower Upper
 56 100
 69 166.3 24.6 36.8#
 84 161.0 71.4 107.2#



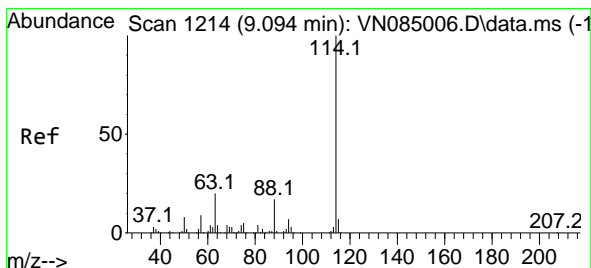
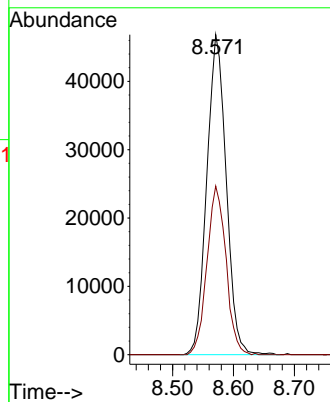
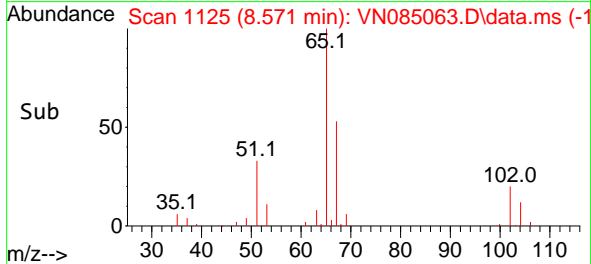


#33
 1,2-Dichloroethane-d4
 Concen: 50.745 ug/l
 RT: 8.571 min Scan# 1125
 Delta R.T. -0.000 min
 Lab File: VN085063.D
 Acq: 02 Dec 2024 11:06

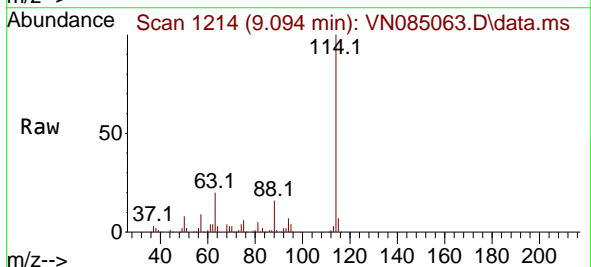
Instrument : MSVOA_N
 ClientSampleId :



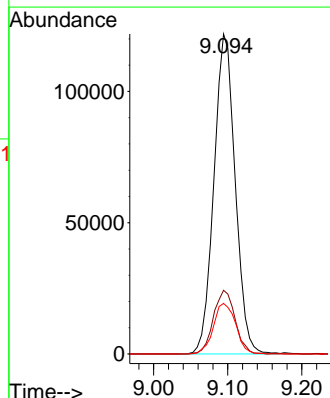
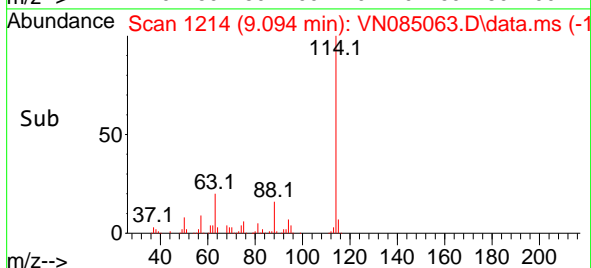
Tgt Ion: 65 Resp: 103656
 Ion Ratio Lower Upper
 65 100
 67 51.6 0.0 105.0

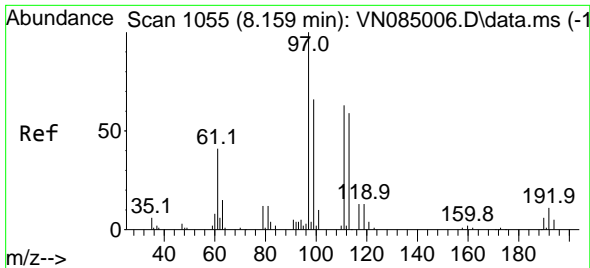


#34
 1,4-Difluorobenzene
 Concen: 50.000 ug/l
 RT: 9.094 min Scan# 1214
 Delta R.T. -0.000 min
 Lab File: VN085063.D
 Acq: 02 Dec 2024 11:06



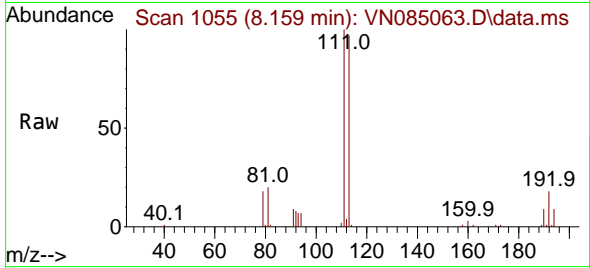
Tgt Ion: 114 Resp: 243136
 Ion Ratio Lower Upper
 114 100
 63 19.9 0.0 41.0
 88 15.8 0.0 34.8



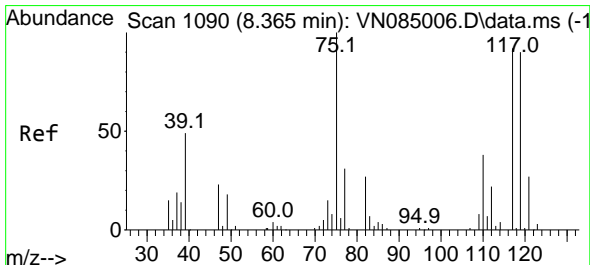
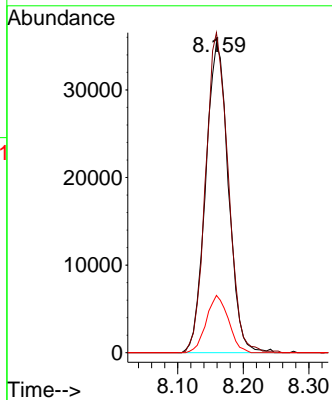
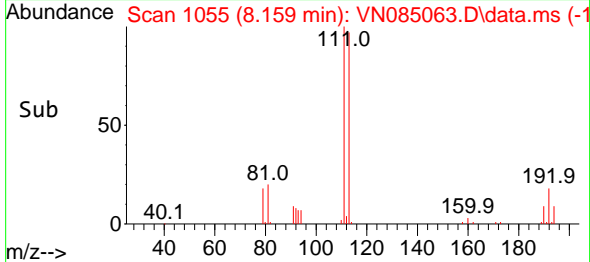


#35
 Dibromofluoromethane
 Concen: 52.162 ug/l
 RT: 8.159 min Scan# 1089
 Delta R.T. -0.000 min
 Lab File: VN085063.D
 Acq: 02 Dec 2024 11:06

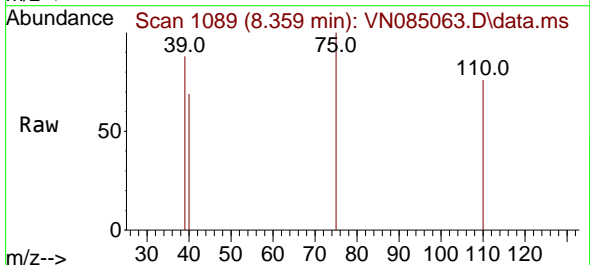
Instrument : MSVOA_N
 ClientSampleId :



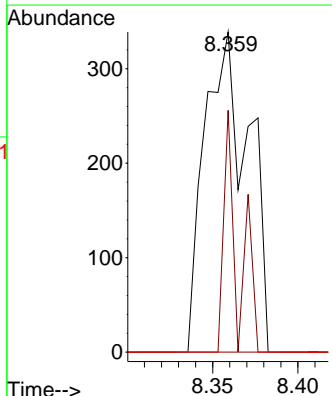
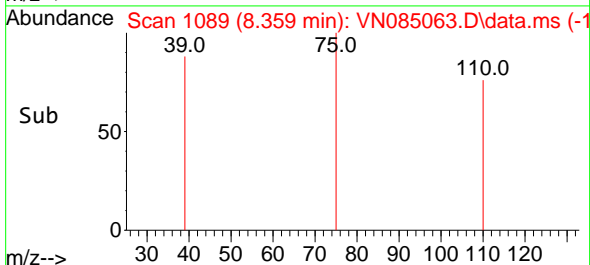
Tgt Ion:113 Resp: 85527
 Ion Ratio Lower Upper
 113 100
 111 102.2 82.0 123.0
 192 17.9 14.8 22.2

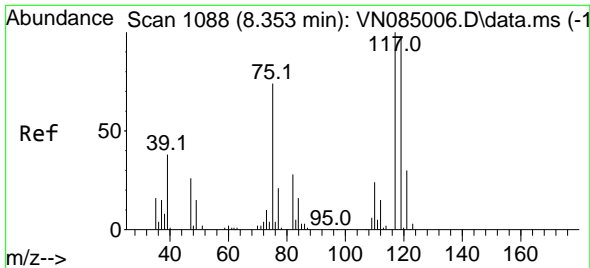


#36
 1,1-Dichloropropene
 Concen: 0.274 ug/l
 RT: 8.359 min Scan# 1089
 Delta R.T. -0.006 min
 Lab File: VN085063.D
 Acq: 02 Dec 2024 11:06



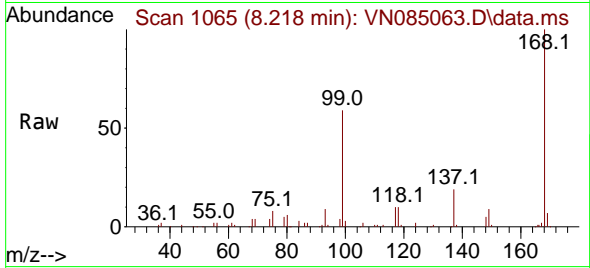
Tgt Ion: 75 Resp: 608
 Ion Ratio Lower Upper
 75 100
 110 24.5 17.2 51.6
 77 0.0 24.2 36.4#





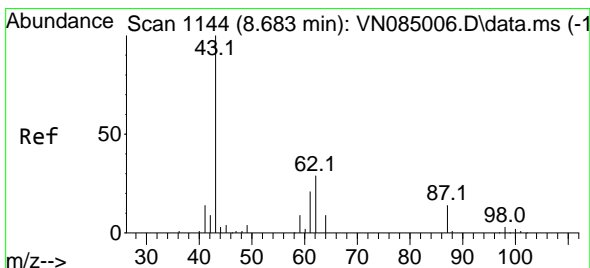
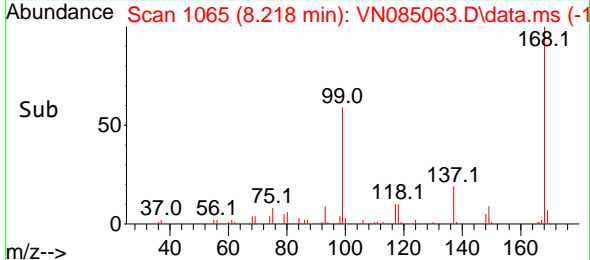
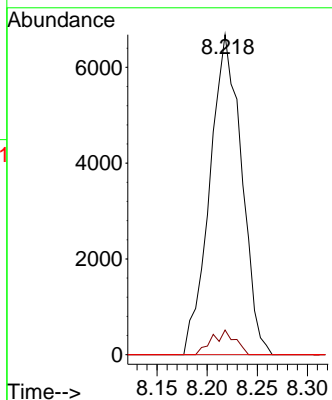
#38
 Carbon Tetrachloride
 Concen: 5.764 ug/l
 RT: 8.218 min Scan# 1088
 Delta R.T. -0.135 min
 Lab File: VN085063.D
 Acq: 02 Dec 2024 11:06

Instrument : MSVOA_N
 ClientSampleId :



Tgt Ion: 117 Resp: 14775

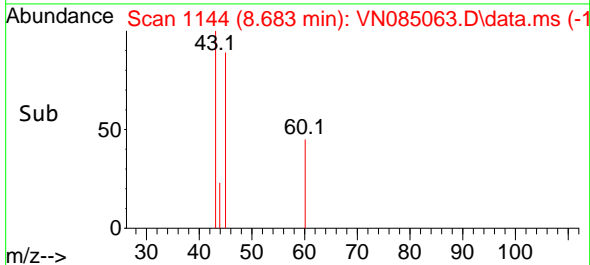
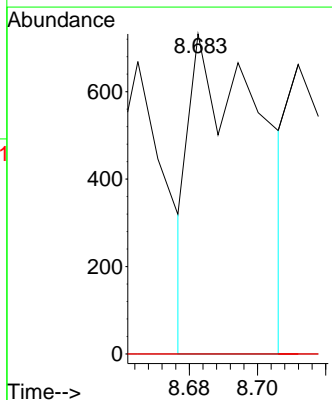
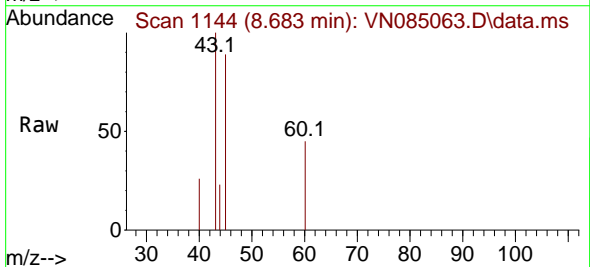
Ion	Ratio	Lower	Upper
117	100		
119	7.7	78.6	117.8#
121	0.0	24.2	36.2#

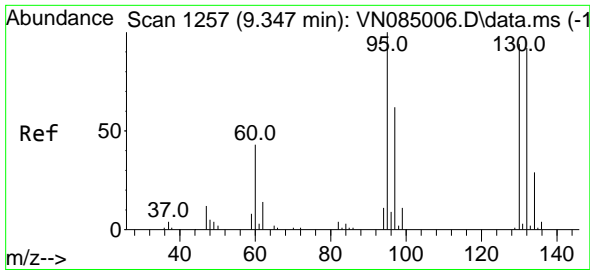


#43
 Isopropyl Acetate
 Concen: 0.249 ug/l
 RT: 8.683 min Scan# 1144
 Delta R.T. -0.000 min
 Lab File: VN085063.D
 Acq: 02 Dec 2024 11:06

Tgt Ion: 43 Resp: 1046

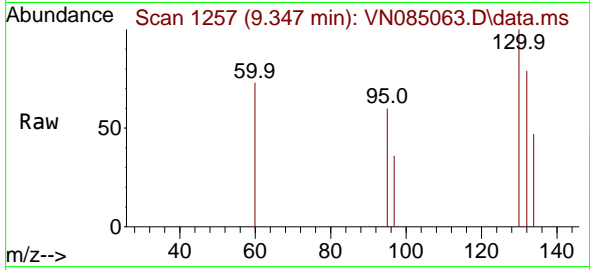
Ion	Ratio	Lower	Upper
43	100		
61	0.0	20.6	30.8#
87	0.0	11.0	16.4#



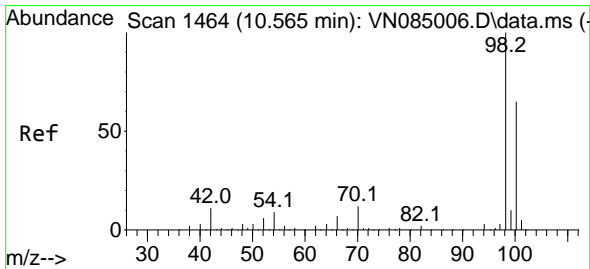
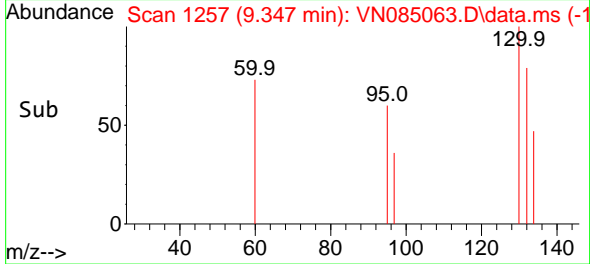
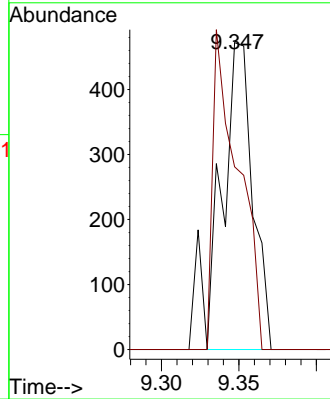


#44
 Trichloroethene
 Concen: 0.425 ug/l
 RT: 9.347 min Scan# 11
 Delta R.T. -0.000 min
 Lab File: VN085063.D
 Acq: 02 Dec 2024 11:06

Instrument :
 MSVOA_N
 ClientSampleId :

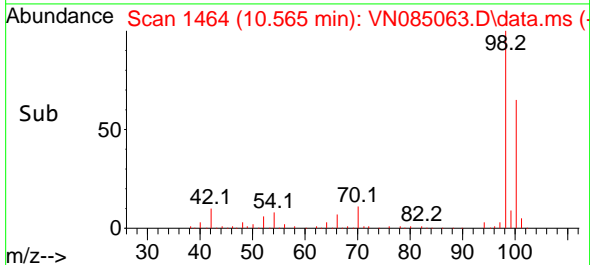
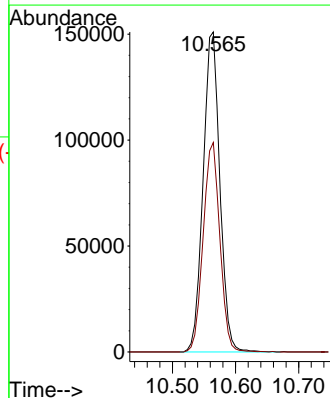
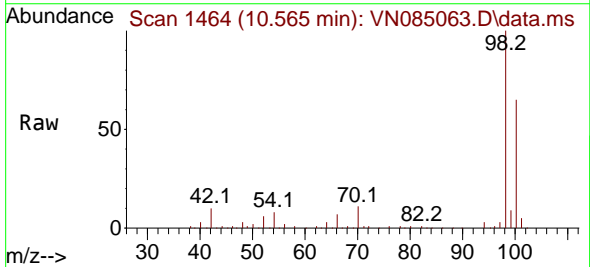


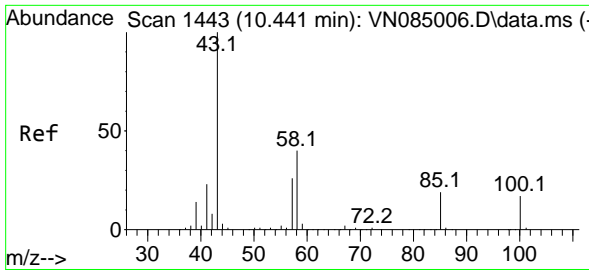
Tgt Ion:130 Resp: 694
 Ion Ratio Lower Upper
 130 100
 95 59.5 0.0 213.4



#50
 Toluene-d8
 Concen: 47.356 ug/l
 RT: 10.565 min Scan# 1464
 Delta R.T. -0.000 min
 Lab File: VN085063.D
 Acq: 02 Dec 2024 11:06

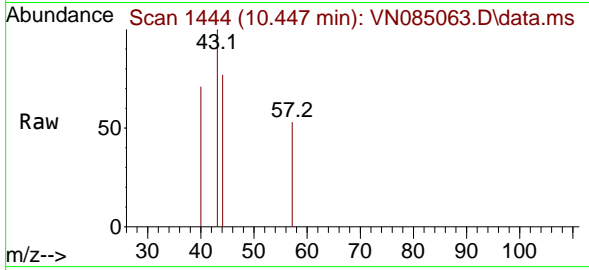
Tgt Ion: 98 Resp: 278267
 Ion Ratio Lower Upper
 98 100
 100 65.3 52.5 78.7



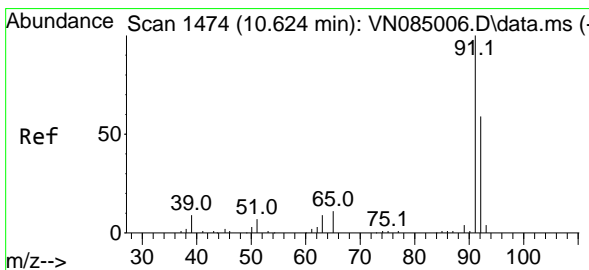
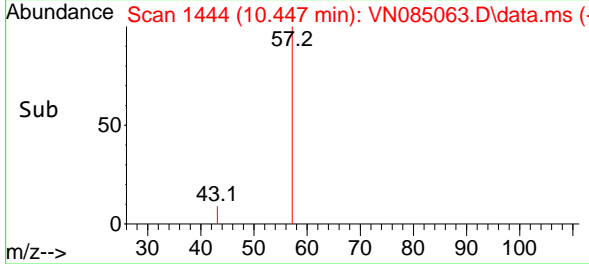
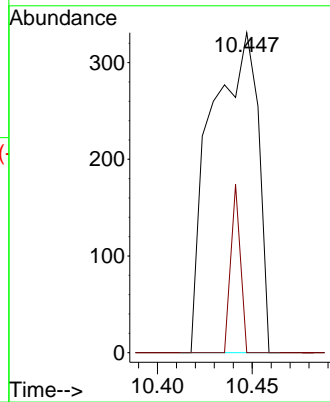


#51
 4-Methyl-2-Pentanone
 Concen: 0.297 ug/l
 RT: 10.447 min Scan# 1444
 Delta R.T. 0.006 min
 Lab File: VN085063.D
 Acq: 02 Dec 2024 11:06

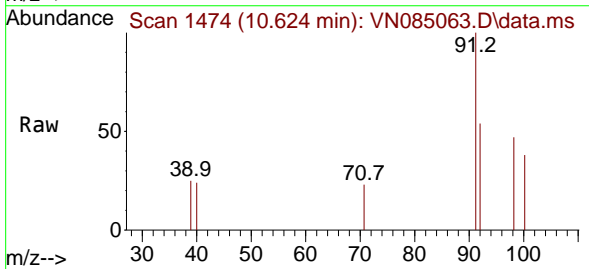
Instrument :
 MSVOA_N
 ClientSampleId :



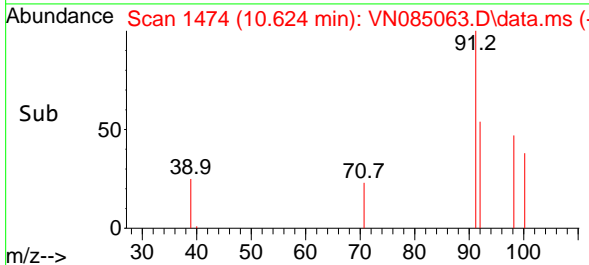
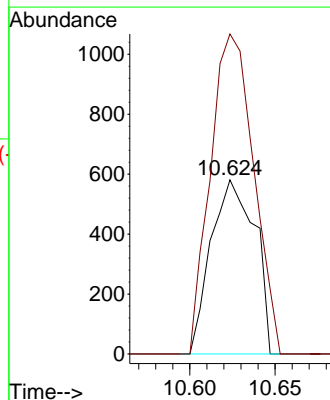
Tgt Ion: 43 Resp: 569
 Ion Ratio Lower Upper
 43 100
 58 0.0 32.1 48.1#

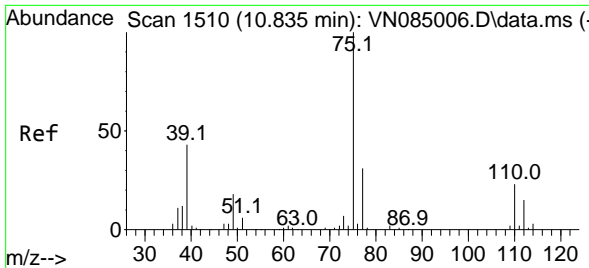


#52
 Toluene
 Concen: 0.250 ug/l
 RT: 10.624 min Scan# 1474
 Delta R.T. -0.000 min
 Lab File: VN085063.D
 Acq: 02 Dec 2024 11:06



Tgt Ion: 92 Resp: 1041
 Ion Ratio Lower Upper
 92 100
 91 181.6 136.7 205.1

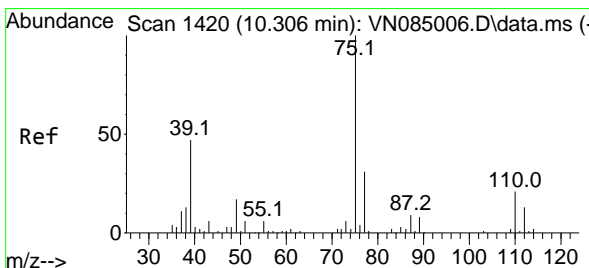
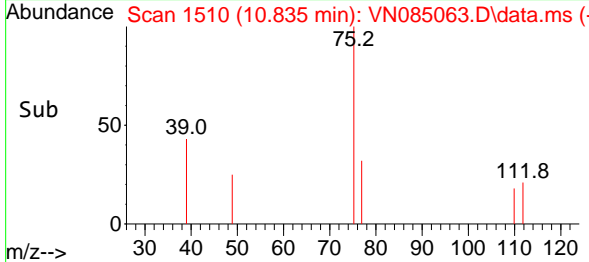
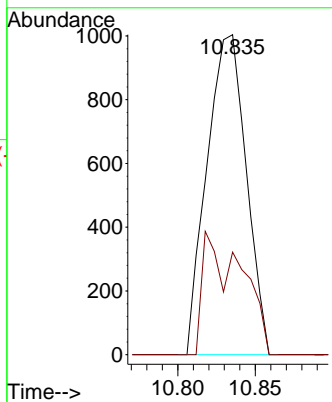
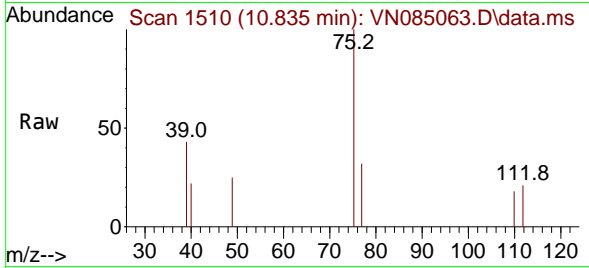




#53
 t-1,3-Dichloropropene
 Concen: 0.693 ug/l
 RT: 10.835 min Scan# 1510
 Delta R.T. -0.000 min
 Lab File: VN085063.D
 Acq: 02 Dec 2024 11:06

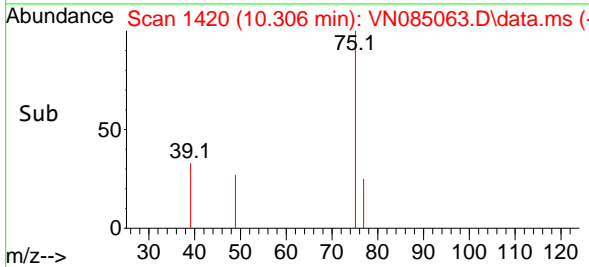
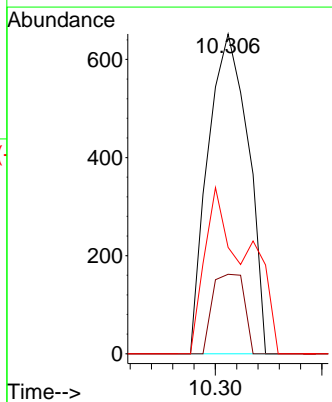
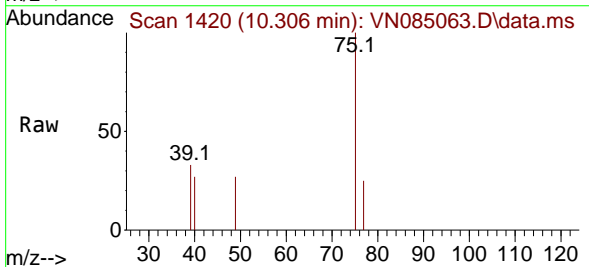
Instrument : MSVOA_N
 ClientSampleId :

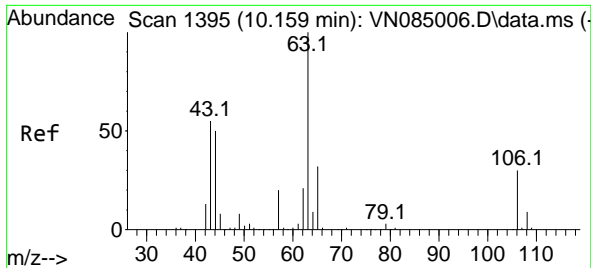
Tgt Ion: 75 Resp: 1769
 Ion Ratio Lower Upper
 75 100
 77 32.1 25.0 37.4



#54
 cis-1,3-Dichloropropene
 Concen: 0.315 ug/l
 RT: 10.306 min Scan# 1420
 Delta R.T. -0.000 min
 Lab File: VN085063.D
 Acq: 02 Dec 2024 11:06

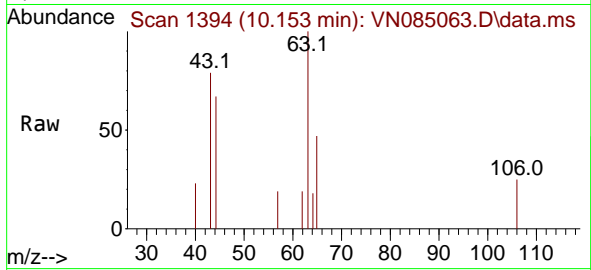
Tgt Ion: 75 Resp: 854
 Ion Ratio Lower Upper
 75 100
 77 24.8 25.0 37.4#
 39 33.3 37.6 56.4#



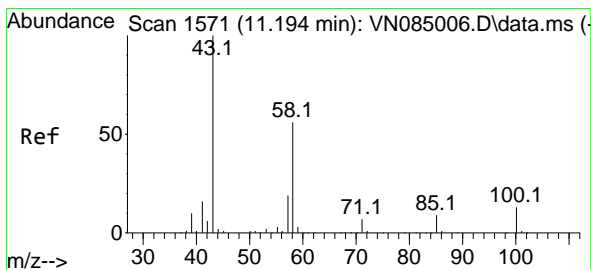
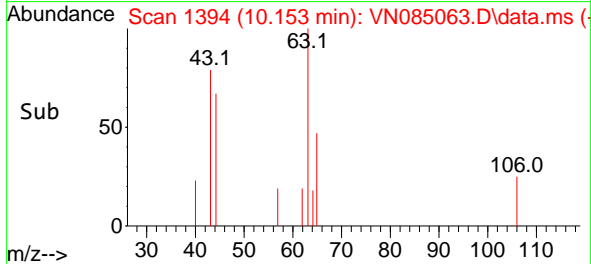
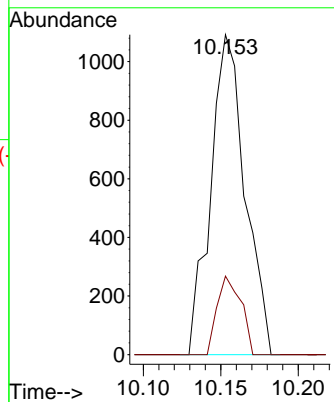


#58
 2-Chloroethyl Vinyl ether
 Concen: 1.520 ug/l
 RT: 10.153 min Scan# 11
 Delta R.T. -0.006 min
 Lab File: VN085063.D
 Acq: 02 Dec 2024 11:06

Instrument :
 MSVOA_N
 ClientSampleId :

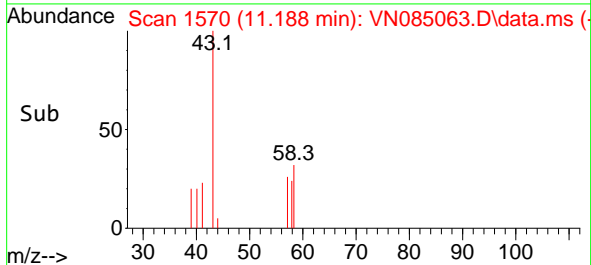
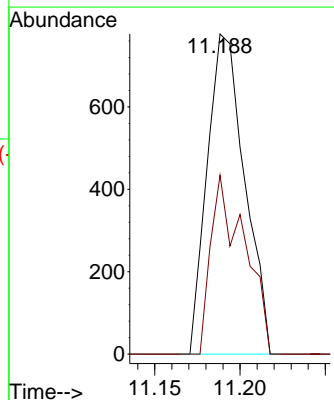
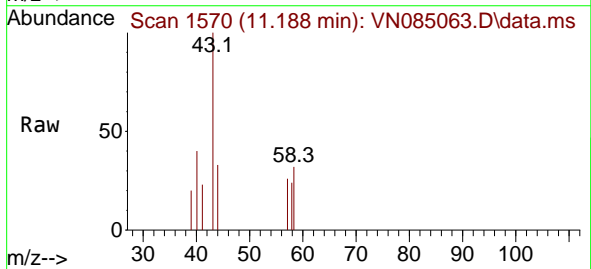


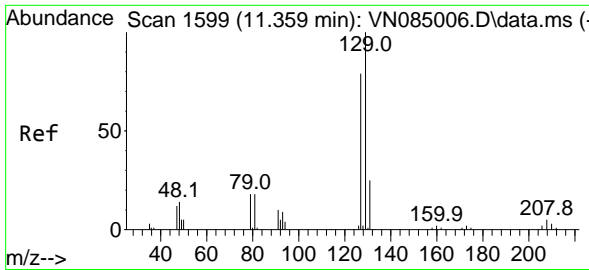
Tgt Ion: 63 Resp: 1688
 Ion Ratio Lower Upper
 63 100
 106 16.9 23.0 34.6#



#59
 2-Hexanone
 Concen: 0.831 ug/l
 RT: 11.188 min Scan# 1570
 Delta R.T. -0.006 min
 Lab File: VN085063.D
 Acq: 02 Dec 2024 11:06

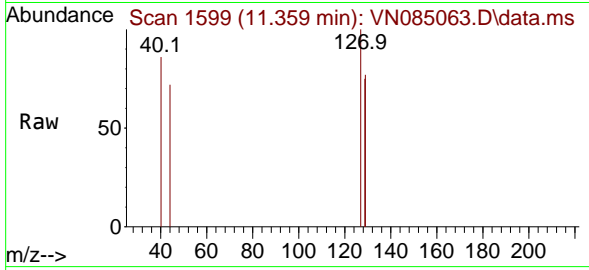
Tgt Ion: 43 Resp: 1190
 Ion Ratio Lower Upper
 43 100
 58 50.3 28.3 85.0



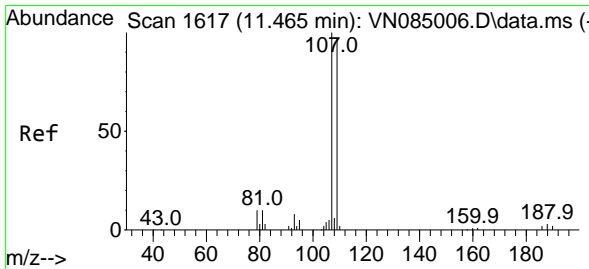
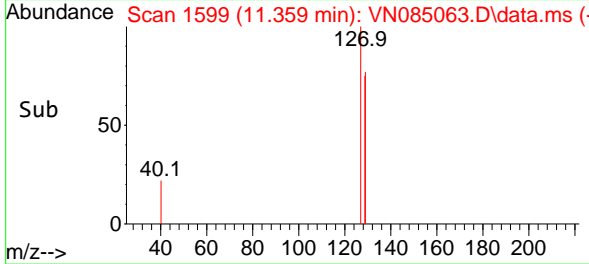
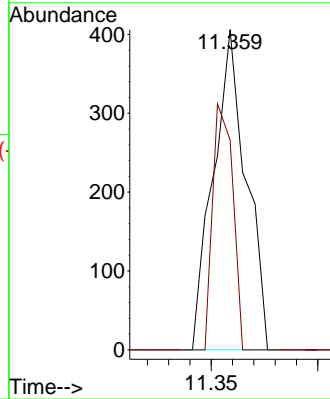


#60
 Dibromochloromethane
 Concen: 0.230 ug/l
 RT: 11.359 min Scan# 1599
 Delta R.T. -0.000 min
 Lab File: VN085063.D
 Acq: 02 Dec 2024 11:06

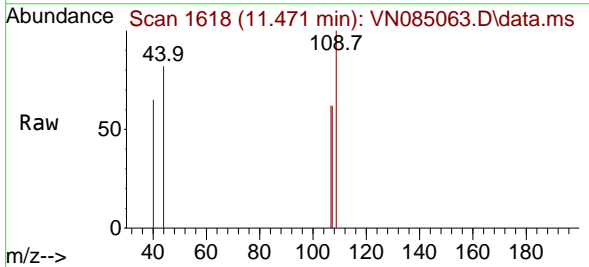
Instrument :
 MSVOA_N
 ClientSampleId :



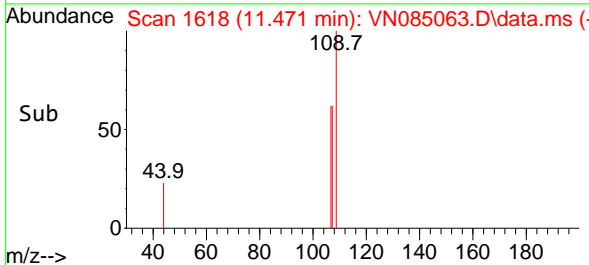
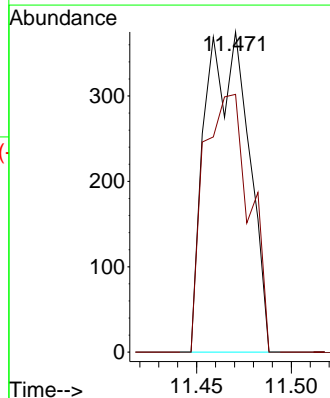
Tgt Ion:129 Resp: 435
 Ion Ratio Lower Upper
 129 100
 127 46.9 39.2 117.6

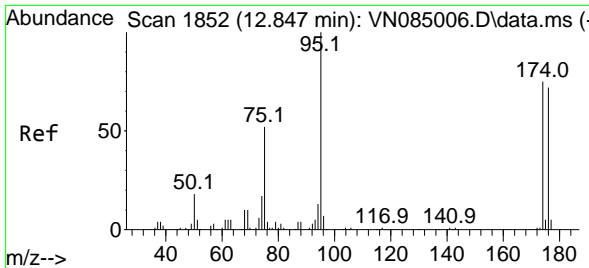


#61
 1,2-Dibromoethane
 Concen: 0.372 ug/l
 RT: 11.471 min Scan# 1618
 Delta R.T. 0.006 min
 Lab File: VN085063.D
 Acq: 02 Dec 2024 11:06



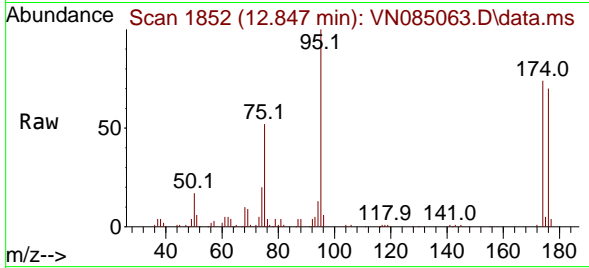
Tgt Ion:107 Resp: 596
 Ion Ratio Lower Upper
 107 100
 109 85.1 76.1 114.1



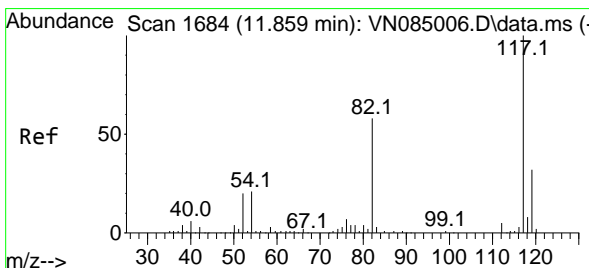
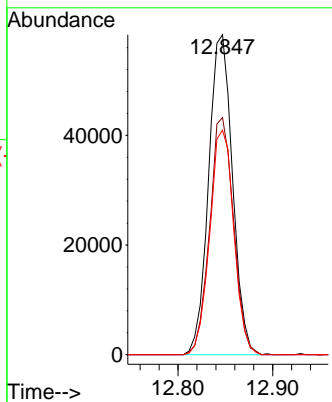
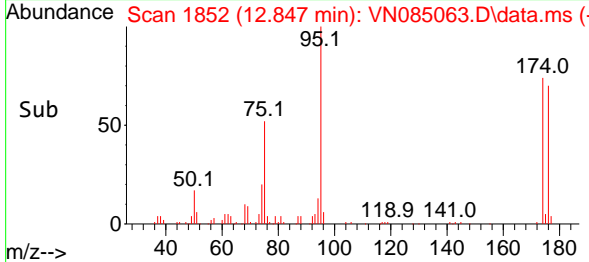


#62
 4-Bromofluorobenzene
 Concen: 46.624 ug/l
 RT: 12.847 min Scan# 1852
 Delta R.T. -0.000 min
 Lab File: VN085063.D
 Acq: 02 Dec 2024 11:06

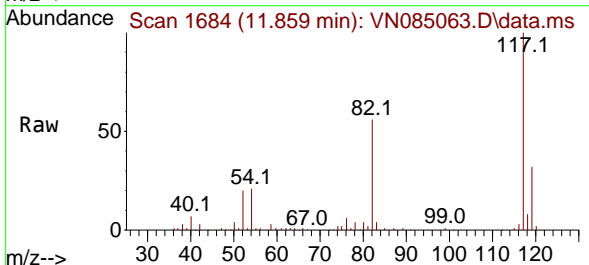
Instrument : MSVOA_N
 ClientSampleId :



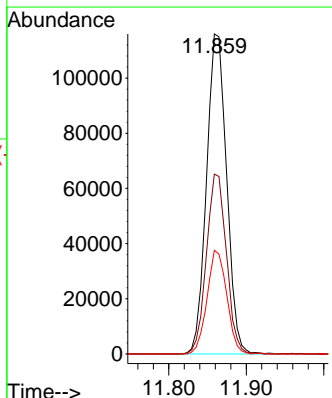
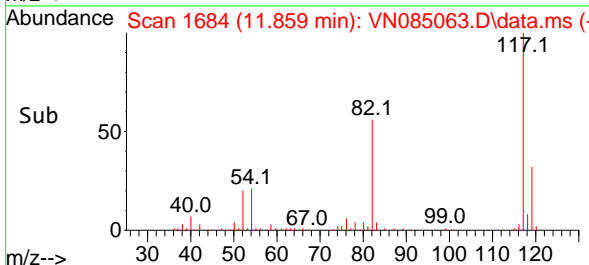
Tgt Ion: 95 Resp: 102454
 Ion Ratio Lower Upper
 95 100
 174 74.1 0.0 146.6
 176 70.6 0.0 141.8

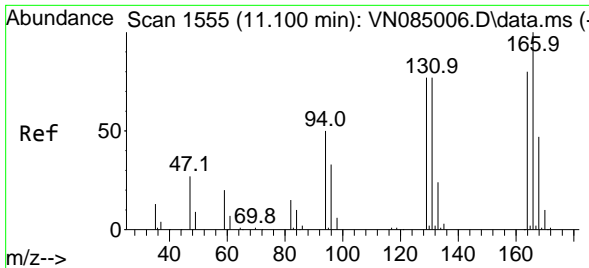


#63
 Chlorobenzene-d5
 Concen: 50.000 ug/l
 RT: 11.859 min Scan# 1684
 Delta R.T. -0.000 min
 Lab File: VN085063.D
 Acq: 02 Dec 2024 11:06



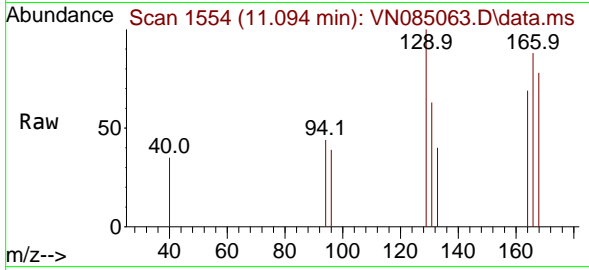
Tgt Ion: 117 Resp: 209124
 Ion Ratio Lower Upper
 117 100
 82 56.2 46.0 69.0
 119 32.4 25.6 38.4





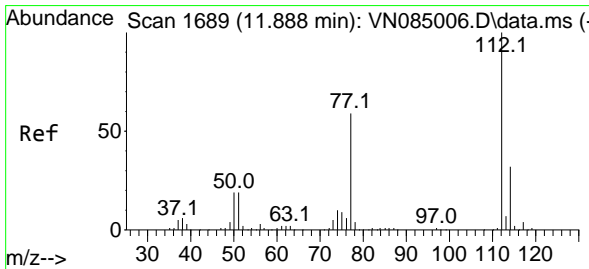
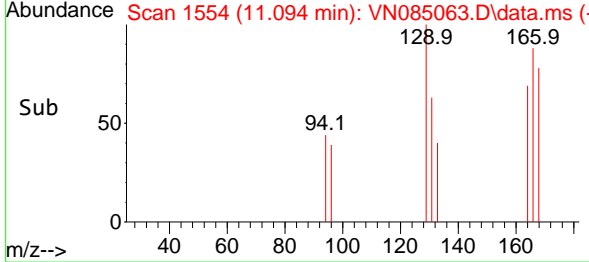
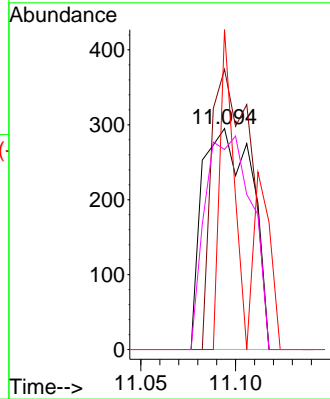
#64
 Tetrachloroethene
 Concen: 0.381 ug/l
 RT: 11.094 min Scan# 11
 Delta R.T. -0.006 min
 Lab File: VN085063.D
 Acq: 02 Dec 2024 11:06

Instrument :
 MSVOA_N
 ClientSampleId :



Tgt Ion:164 Resp: 537

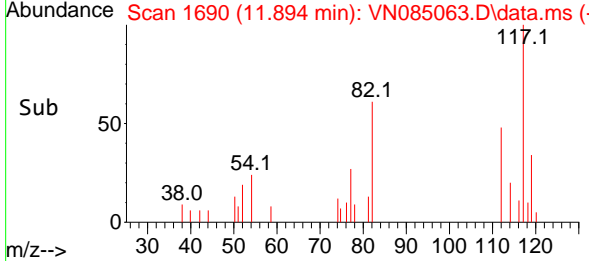
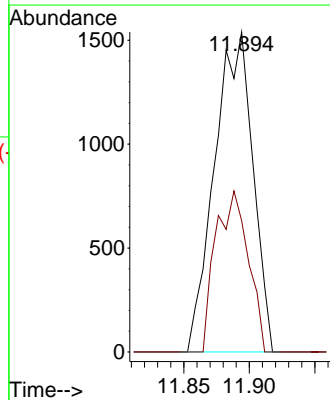
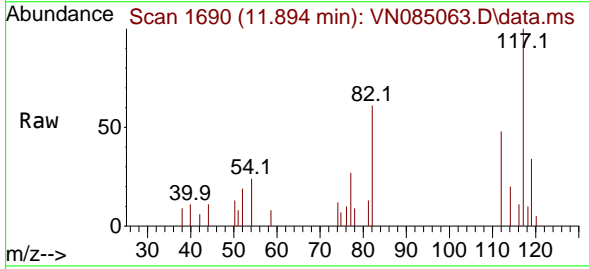
Ion	Ratio	Lower	Upper
164	100		
166	126.8	100.6	151.0
129	144.7	77.7	116.5#
131	90.5	77.2	115.8

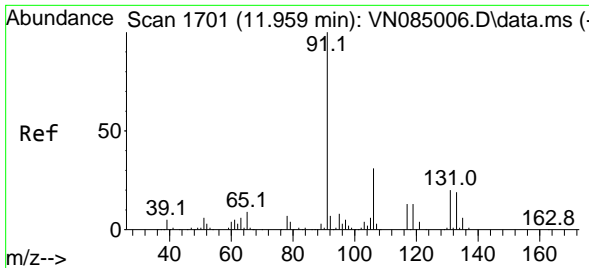


#65
 Chlorobenzene
 Concen: 0.658 ug/l
 RT: 11.894 min Scan# 1690
 Delta R.T. 0.006 min
 Lab File: VN085063.D
 Acq: 02 Dec 2024 11:06

Tgt Ion:112 Resp: 3122

Ion	Ratio	Lower	Upper
112	100		
114	41.0	25.8	38.6#

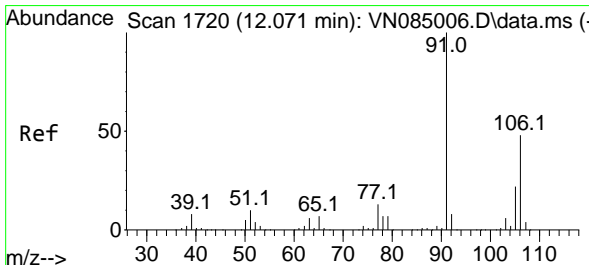
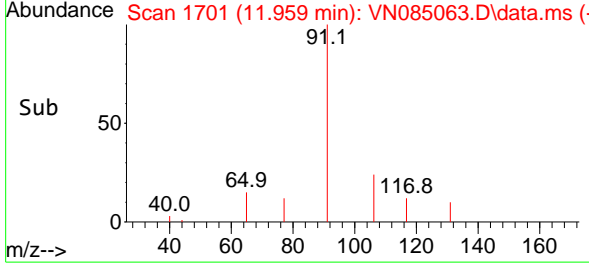
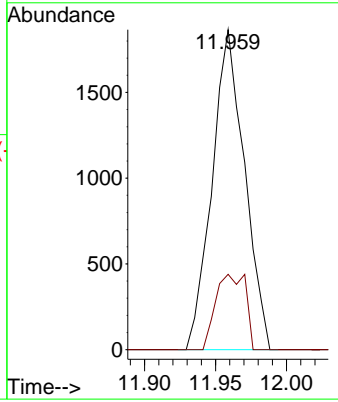
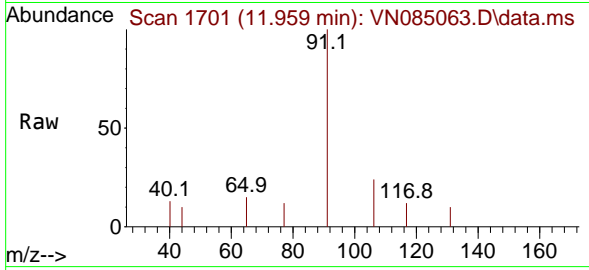




#67
 Ethyl Benzene
 Concen: 0.385 ug/l
 RT: 11.959 min Scan# 1701
 Delta R.T. -0.000 min
 Lab File: VN085063.D
 Acq: 02 Dec 2024 11:06

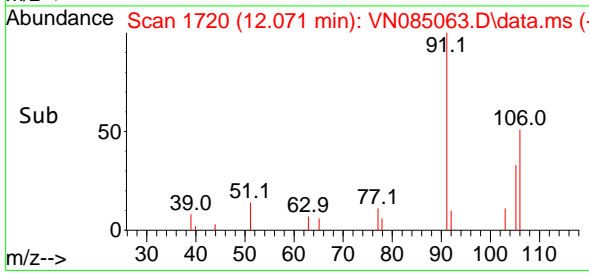
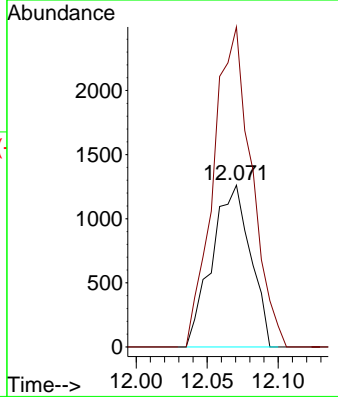
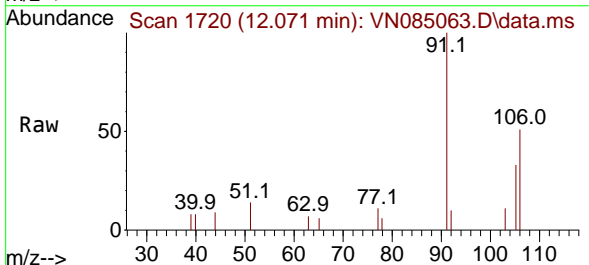
Instrument : MSVOA_N
 ClientSampleId :

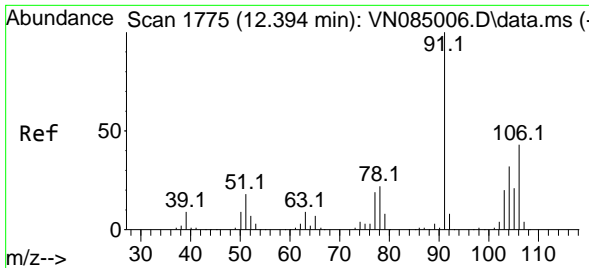
Tgt Ion: 91 Resp: 2962
 Ion Ratio Lower Upper
 91 100
 106 23.5 24.7 37.1#



#68
 m/p-Xylenes
 Concen: 0.814 ug/l
 RT: 12.071 min Scan# 1720
 Delta R.T. -0.000 min
 Lab File: VN085063.D
 Acq: 02 Dec 2024 11:06

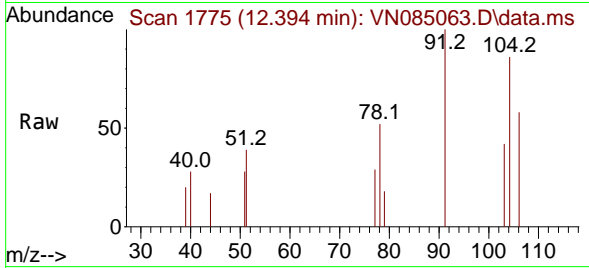
Tgt Ion: 106 Resp: 2385
 Ion Ratio Lower Upper
 106 100
 91 195.9 168.0 252.0



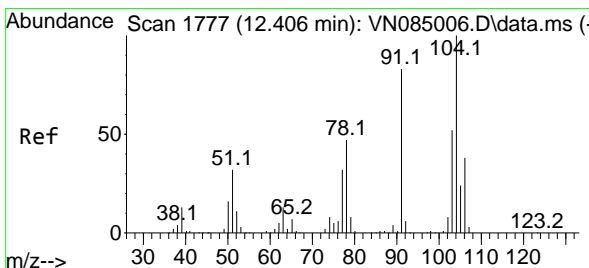
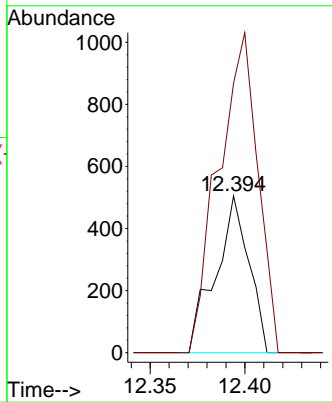
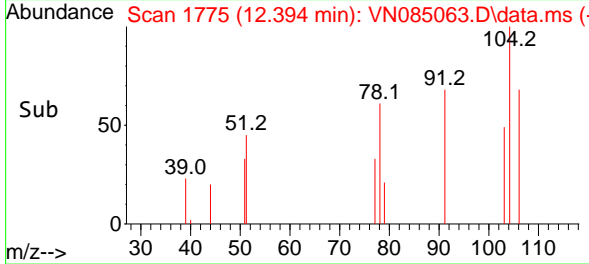


#69
 o-Xylene
 Concen: 0.222 ug/l
 RT: 12.394 min Scan# 1775
 Delta R.T. -0.000 min
 Lab File: VN085063.D
 Acq: 02 Dec 2024 11:06

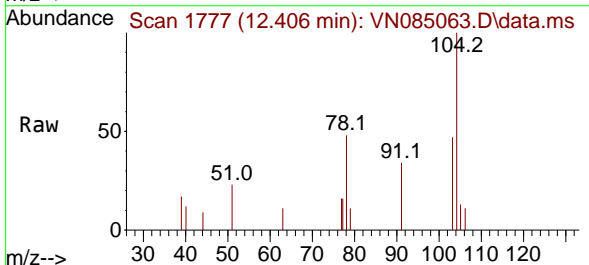
Instrument : MSVOA_N
 ClientSampleId :



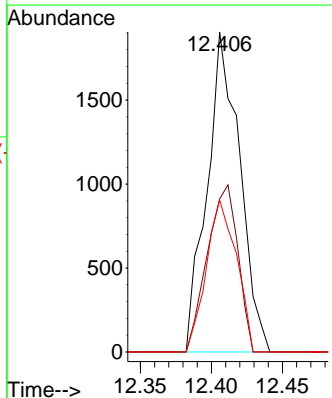
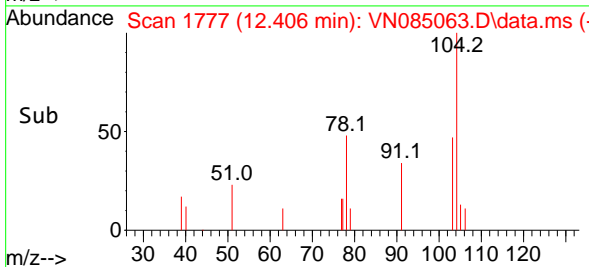
Tgt Ion:106 Resp: 620
 Ion Ratio Lower Upper
 106 100
 91 240.5 110.7 331.9

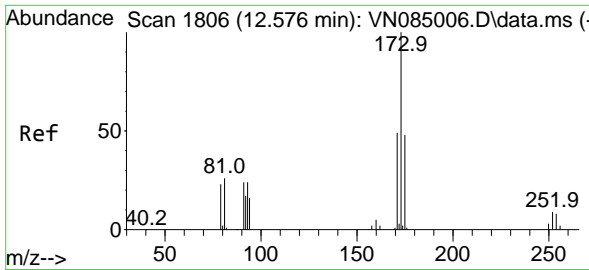


#70
 Styrene
 Concen: 0.658 ug/l
 RT: 12.406 min Scan# 1777
 Delta R.T. -0.000 min
 Lab File: VN085063.D
 Acq: 02 Dec 2024 11:06



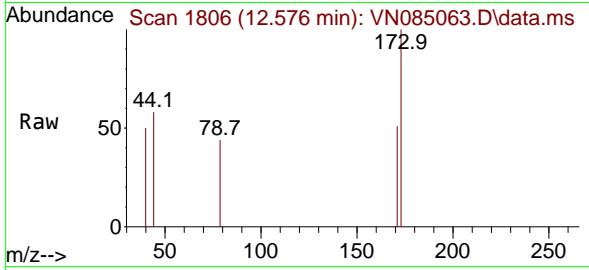
Tgt Ion:104 Resp: 3050
 Ion Ratio Lower Upper
 104 100
 78 48.7 42.3 63.5
 103 43.9 44.2 66.2#



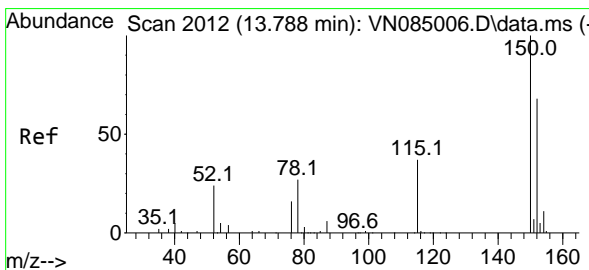
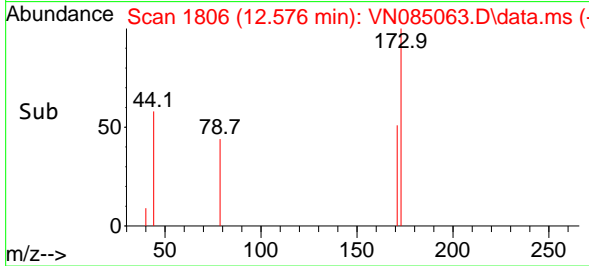
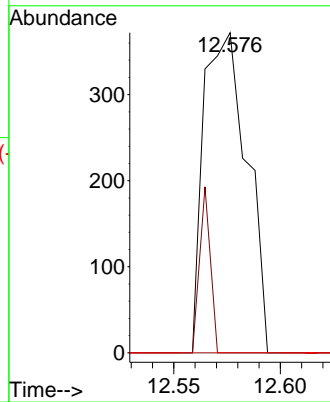


#71
 Bromoform
 Concen: 0.423 ug/l
 RT: 12.576 min Scan# 1806
 Delta R.T. -0.000 min
 Lab File: VN085063.D
 Acq: 02 Dec 2024 11:06

Instrument : MSVOA_N
 ClientSampleId :

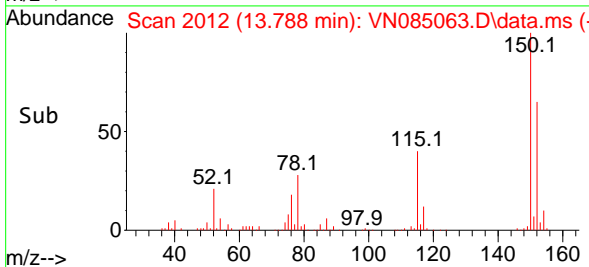
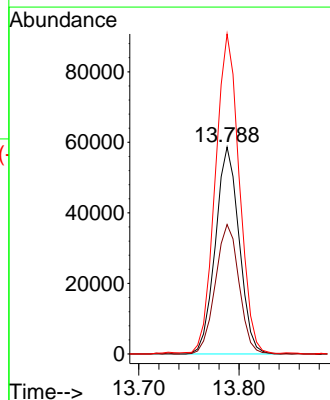
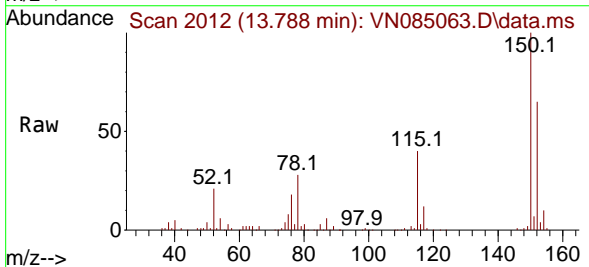


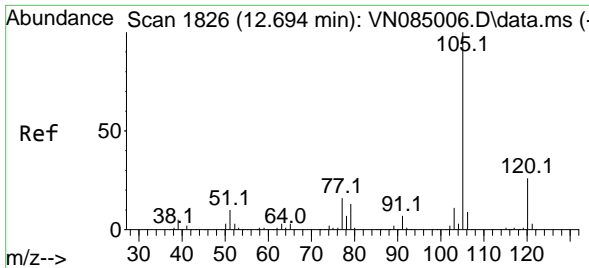
Tgt Ion:173 Resp: 524
 Ion Ratio Lower Upper
 173 100
 175 0.0 23.8 71.2#
 254 0.0 0.0 0.0



#72
 1,4-Dichlorobenzene-d4
 Concen: 50.000 ug/l
 RT: 13.788 min Scan# 2012
 Delta R.T. -0.000 min
 Lab File: VN085063.D
 Acq: 02 Dec 2024 11:06

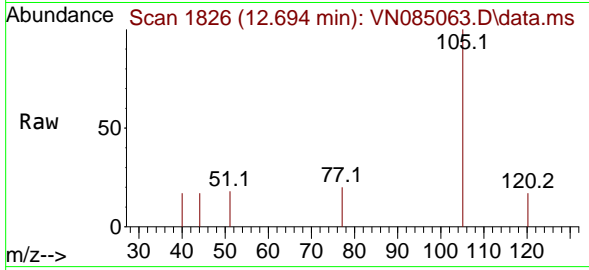
Tgt Ion:152 Resp: 96211
 Ion Ratio Lower Upper
 152 100
 115 62.5 31.7 95.1
 150 155.8 0.0 351.4



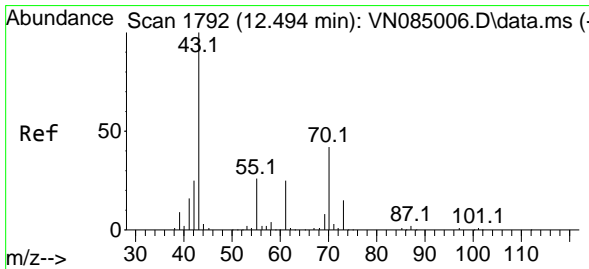
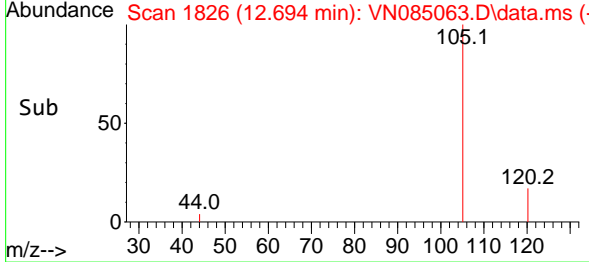
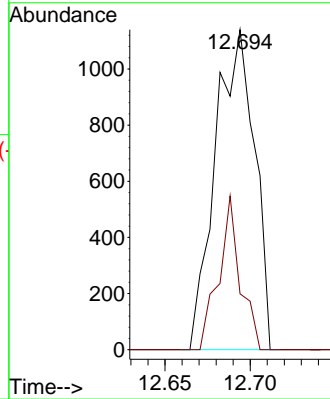


#73
 Isopropylbenzene
 Concen: 0.268 ug/l
 RT: 12.694 min Scan# 1821
 Delta R.T. -0.000 min
 Lab File: VN085063.D
 Acq: 02 Dec 2024 11:06

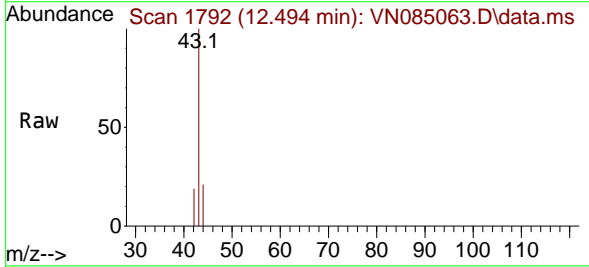
Instrument :
 MSVOA_N
 ClientSampleId :



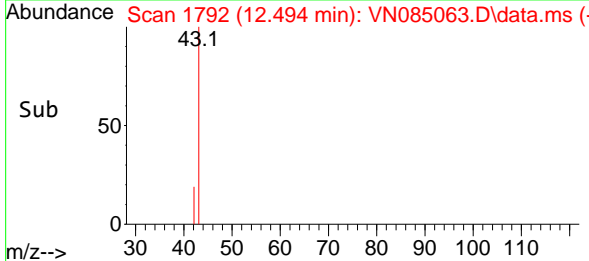
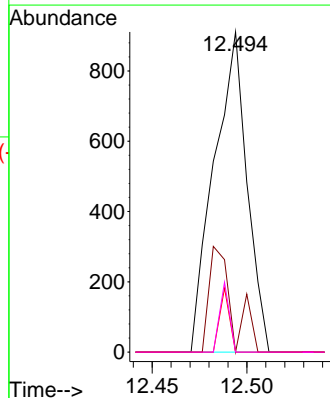
Tgt Ion:105 Resp: 1821
 Ion Ratio Lower Upper
 105 100
 120 26.2 13.0 39.0

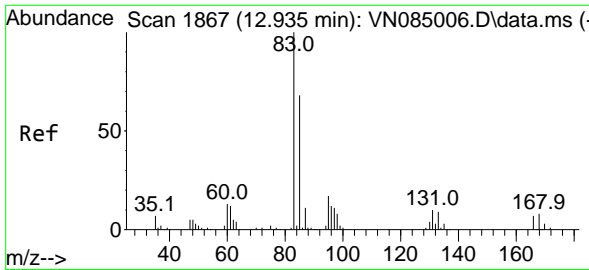


#74
 N-ethyl acetate
 Concen: 0.394 ug/l
 RT: 12.494 min Scan# 1792
 Delta R.T. -0.000 min
 Lab File: VN085063.D
 Acq: 02 Dec 2024 11:06



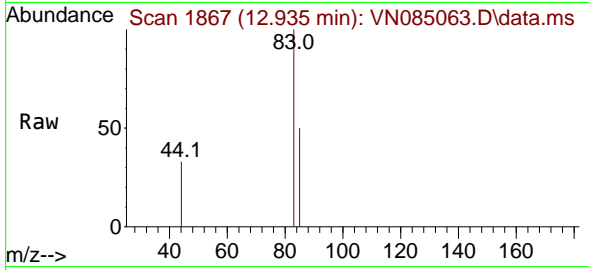
Tgt Ion: 43 Resp: 1101
 Ion Ratio Lower Upper
 43 100
 70 23.3 34.6 51.8#
 55 5.8 20.5 30.7#
 61 6.4 19.6 29.4#



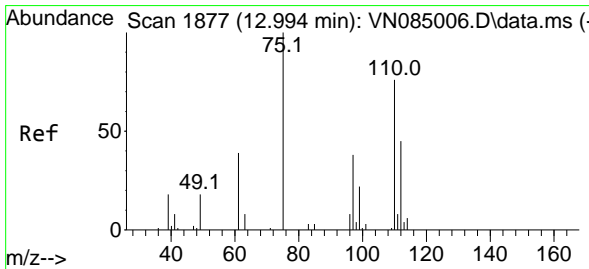
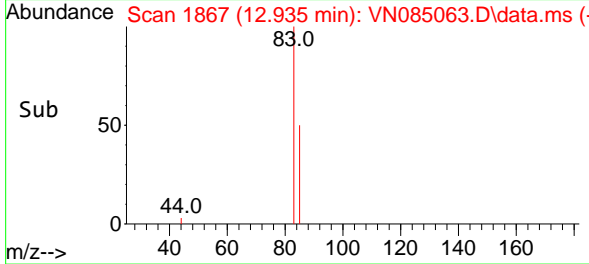
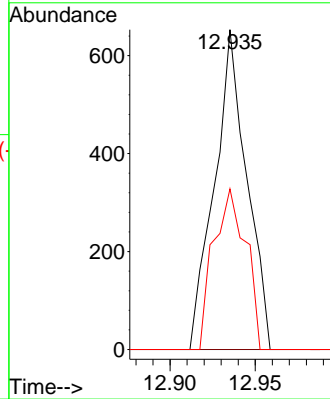


#75
 1,1,2,2-Tetrachloroethane
 Concen: 0.371 ug/l
 RT: 12.935 min Scan# 1867
 Delta R.T. -0.000 min
 Lab File: VN085063.D
 Acq: 02 Dec 2024 11:06

Instrument :
 MSVOA_N
 ClientSampleId :

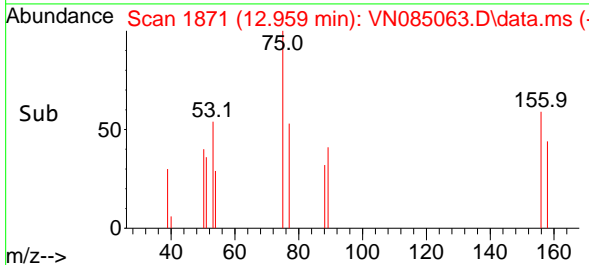
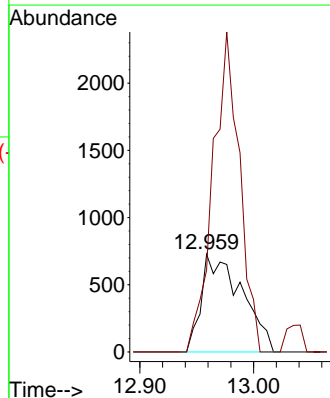
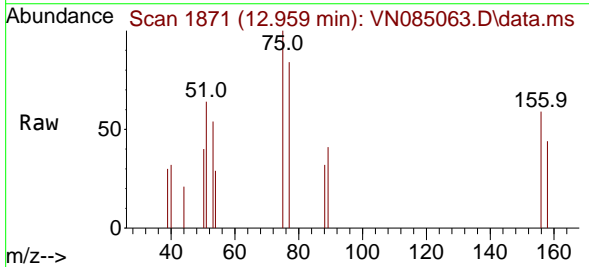


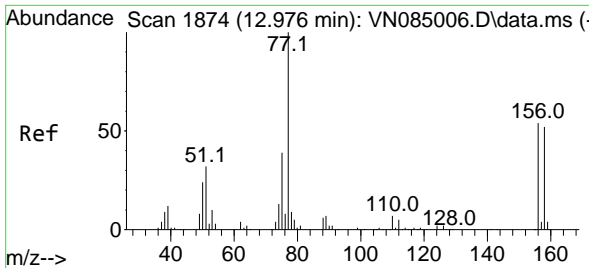
Tgt Ion: 83 Resp: 861
 Ion Ratio Lower Upper
 83 100
 131 0.0 5.1 15.4#
 85 50.1 32.1 96.3



#76
 1,2,3-Trichloropropane
 Concen: 1.029 ug/l
 RT: 12.959 min Scan# 1871
 Delta R.T. -0.035 min
 Lab File: VN085063.D
 Acq: 02 Dec 2024 11:06

Tgt Ion: 75 Resp: 1801
 Ion Ratio Lower Upper
 75 100
 77 215.6 109.1 327.4

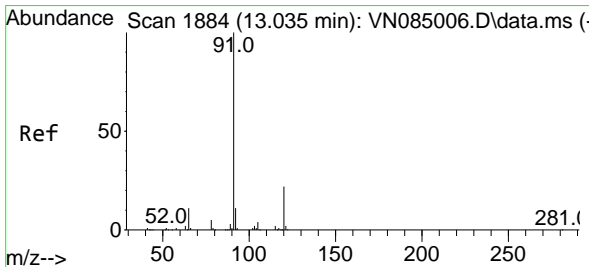
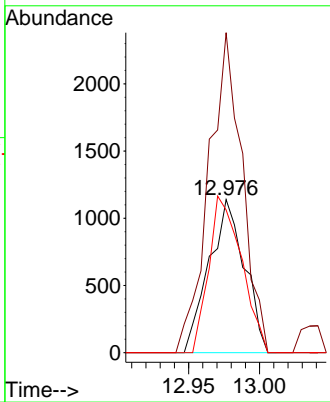
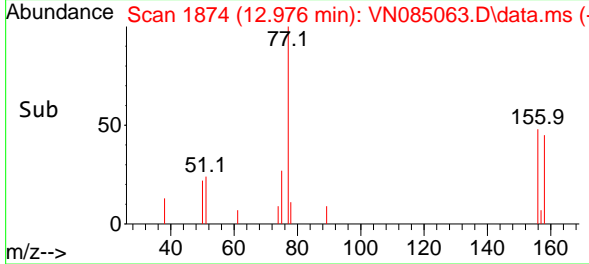
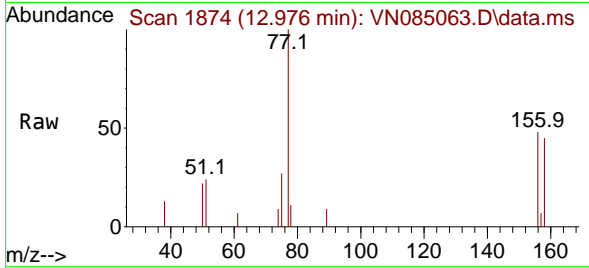




#77
 Bromobenzene
 Concen: 1.084 ug/l
 RT: 12.976 min Scan# 1883
 Delta R.T. -0.000 min
 Lab File: VN085063.D
 Acq: 02 Dec 2024 11:06

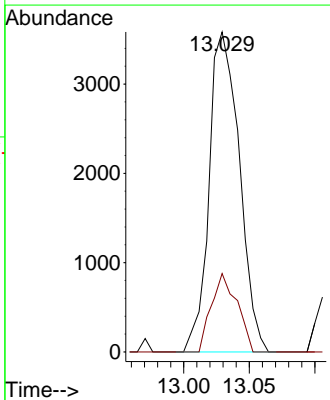
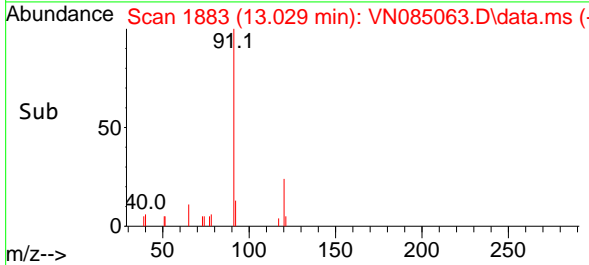
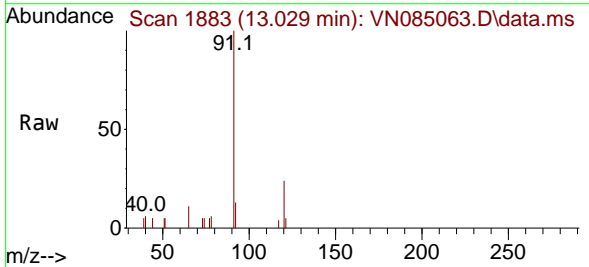
Instrument : MSVOA_N
 ClientSampleId :

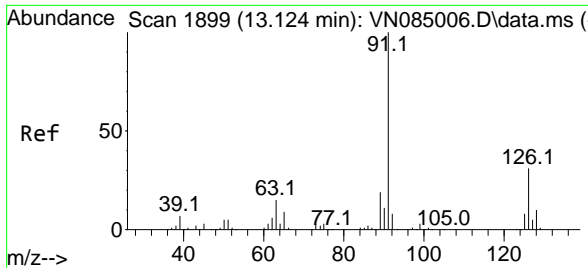
Tgt Ion	Resp	Ion Ratio	Lower	Upper
156	1980	100		
77	196.1	107.2	321.6	
158	94.3	48.5	145.6	



#78
 n-propylbenzene
 Concen: 0.735 ug/l
 RT: 13.029 min Scan# 1883
 Delta R.T. -0.006 min
 Lab File: VN085063.D
 Acq: 02 Dec 2024 11:06

Tgt Ion	Resp	Ion Ratio	Lower	Upper
91	5751	100		
120	20.8	11.3	33.9	

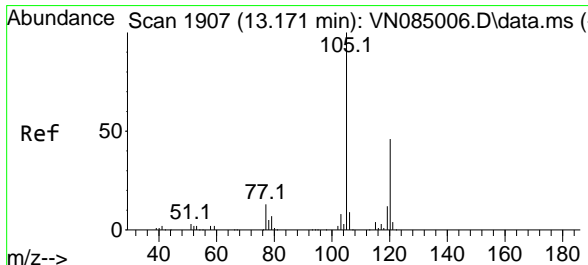
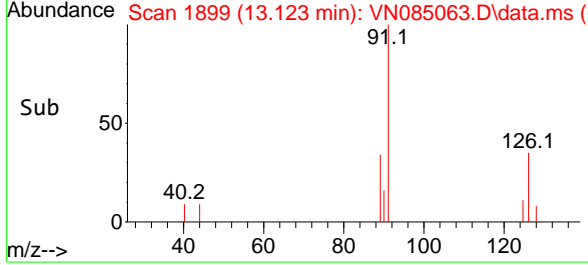
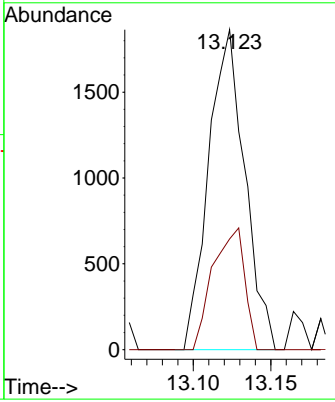
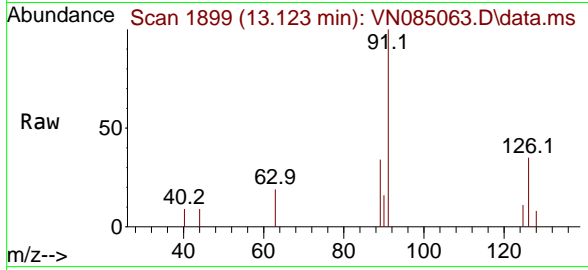




#79
 2-Chlorotoluene
 Concen: 0.579 ug/l
 RT: 13.123 min Scan# 1899
 Delta R.T. -0.000 min
 Lab File: VN085063.D
 Acq: 02 Dec 2024 11:06

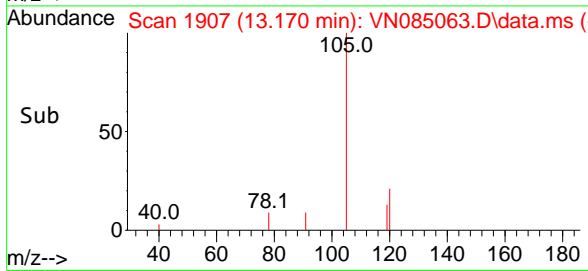
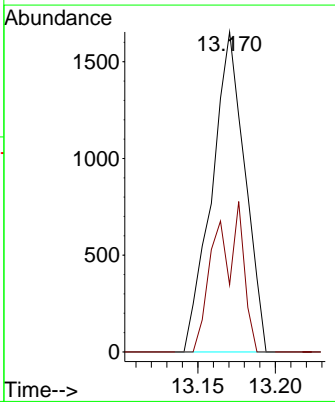
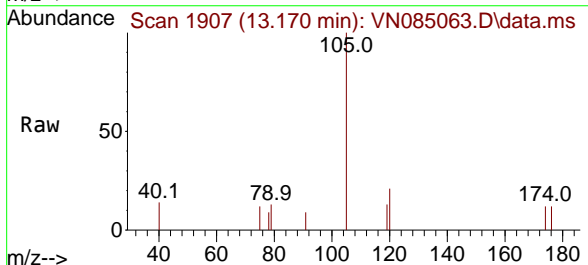
Instrument : MSVOA_N
 ClientSampleId :

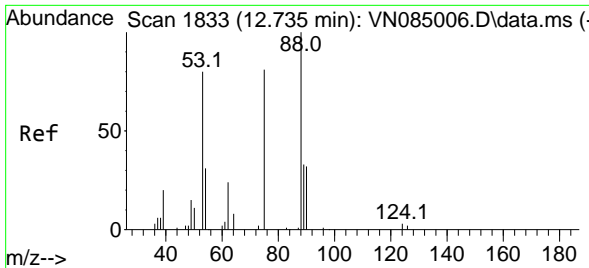
Tgt Ion: 91 Resp: 3025
 Ion Ratio Lower Upper
 91 100
 126 33.4 16.1 48.3



#80
 1,3,5-Trimethylbenzene
 Concen: 0.430 ug/l
 RT: 13.170 min Scan# 1907
 Delta R.T. -0.000 min
 Lab File: VN085063.D
 Acq: 02 Dec 2024 11:06

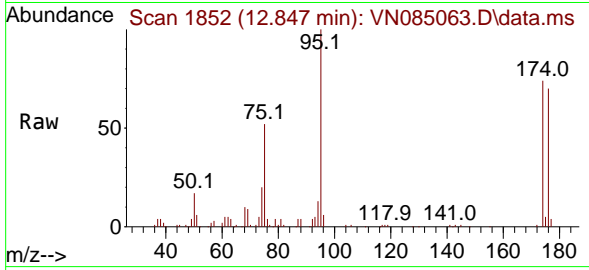
Tgt Ion: 105 Resp: 2450
 Ion Ratio Lower Upper
 105 100
 120 39.3 23.6 71.0



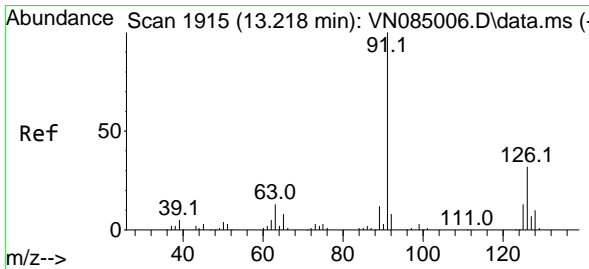
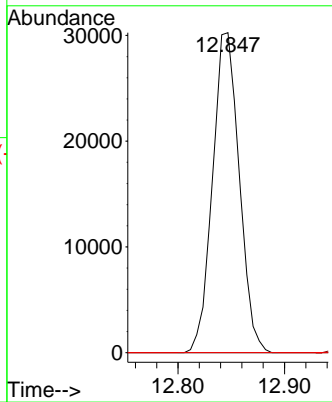
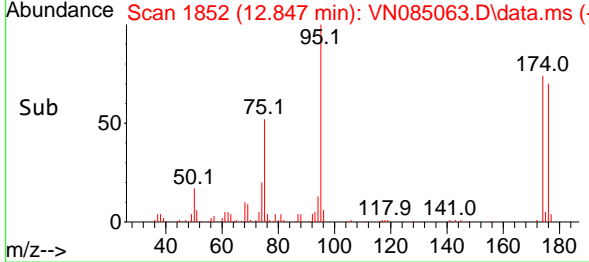


#81
 trans-1,4-Dichloro-2-butene
 Concen: 66.559 ug/l
 RT: 12.847 min Scan# 1852
 Delta R.T. 0.112 min
 Lab File: VN085063.D
 Acq: 02 Dec 2024 11:06

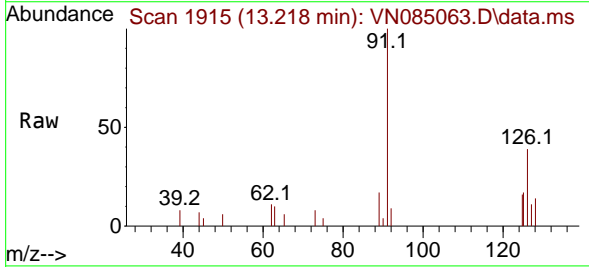
Instrument : MSVOA_N
 ClientSampleId :



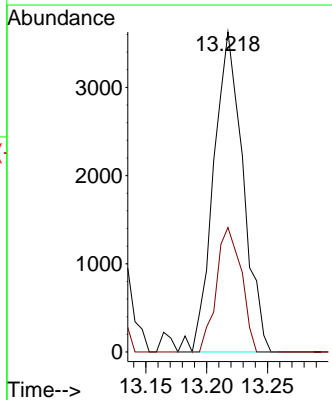
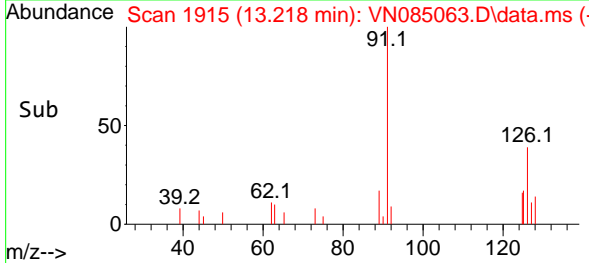
Tgt Ion: 75 Resp: 52763
 Ion Ratio Lower Upper
 75 100
 53 0.0 78.2 117.4#
 89 0.0 37.9 56.9#

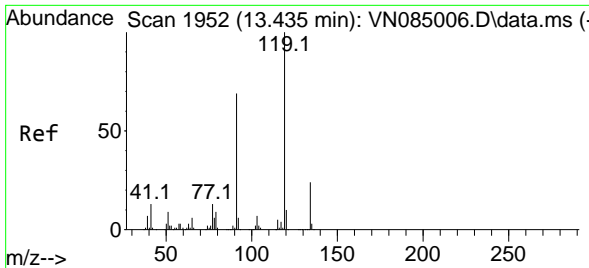


#82
 4-Chlorotoluene
 Concen: 1.127 ug/l
 RT: 13.218 min Scan# 1915
 Delta R.T. -0.000 min
 Lab File: VN085063.D
 Acq: 02 Dec 2024 11:06



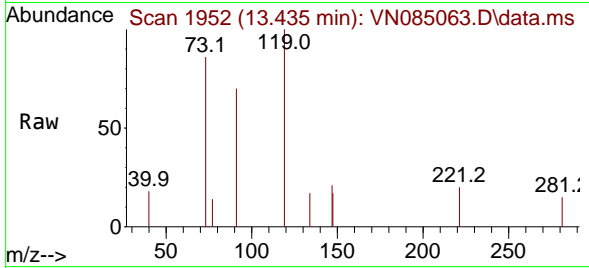
Tgt Ion: 91 Resp: 6131
 Ion Ratio Lower Upper
 91 100
 126 32.8 16.1 48.3





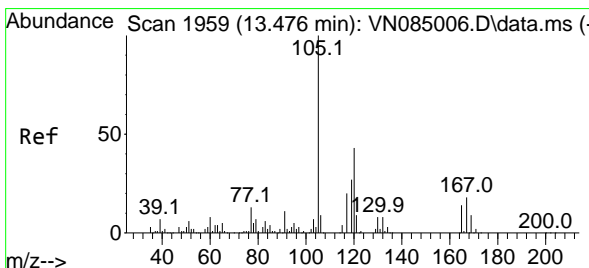
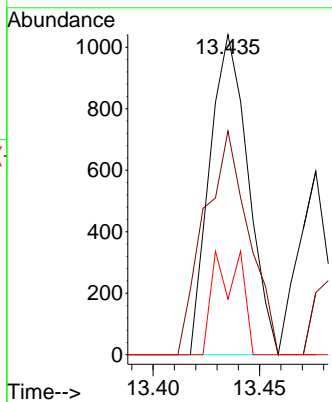
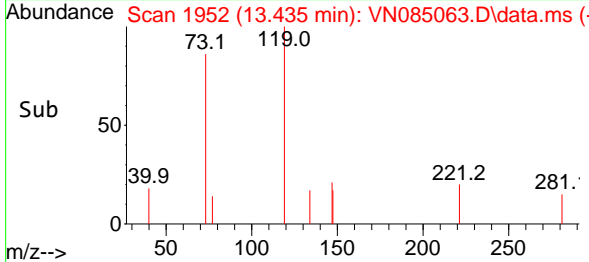
#83
 tert-Butylbenzene
 Concen: 0.266 ug/l
 RT: 13.435 min Scan# 1952
 Delta R.T. -0.000 min
 Lab File: VN085063.D
 Acq: 02 Dec 2024 11:06

Instrument : MSVOA_N
 ClientSampleId :

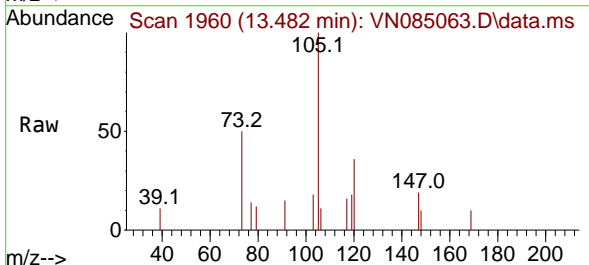


Tgt Ion:119 Resp: 1303

Ion	Ratio	Lower	Upper
119	100		
91	81.0	35.1	105.5
134	23.2	12.1	36.3

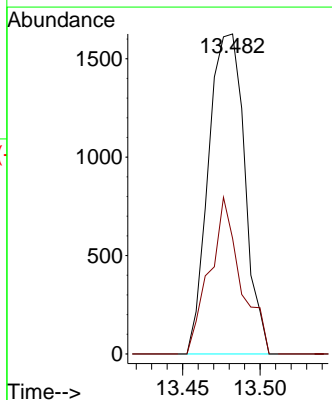
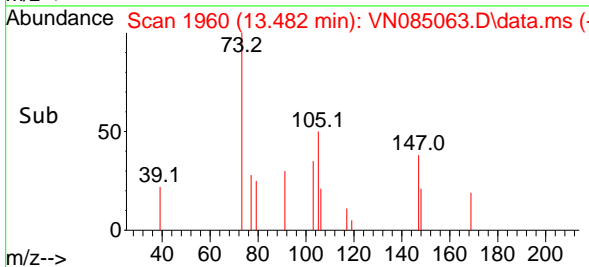


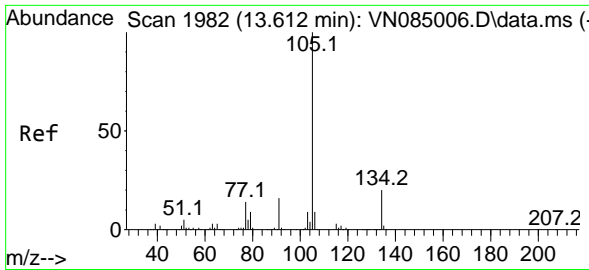
#84
 1,2,4-Trimethylbenzene
 Concen: 0.449 ug/l
 RT: 13.482 min Scan# 1960
 Delta R.T. 0.006 min
 Lab File: VN085063.D
 Acq: 02 Dec 2024 11:06



Tgt Ion:105 Resp: 2635

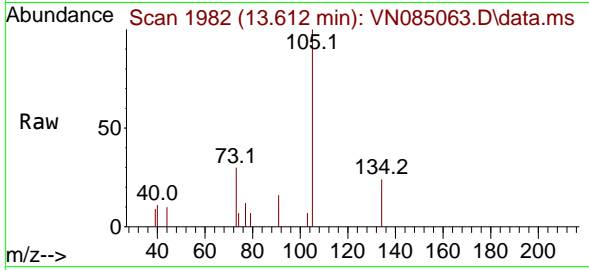
Ion	Ratio	Lower	Upper
105	100		
120	42.4	21.8	65.4



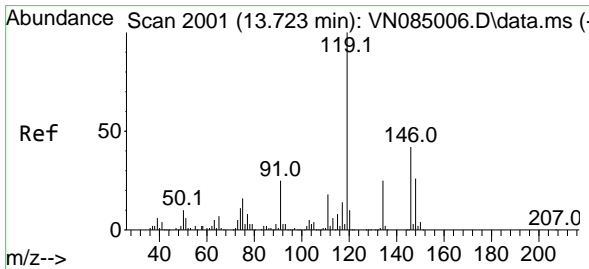
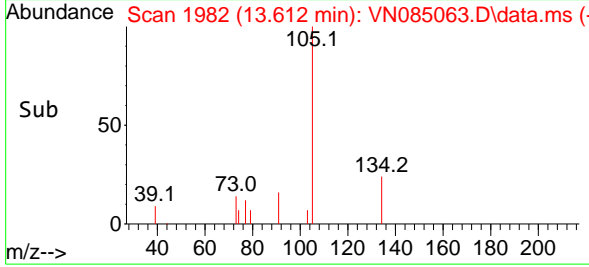
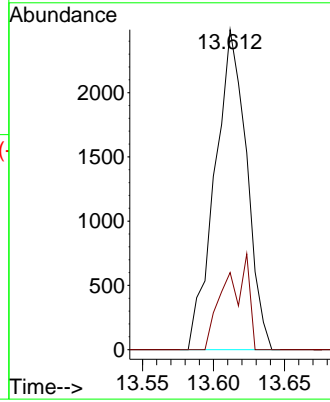


#85
 sec-Butylbenzene
 Concen: 0.584 ug/l
 RT: 13.612 min Scan# 1982
 Delta R.T. -0.000 min
 Lab File: VN085063.D
 Acq: 02 Dec 2024 11:06

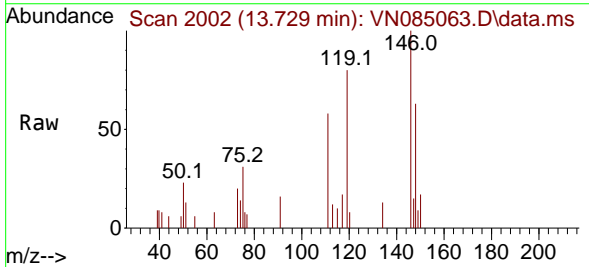
Instrument :
 MSVOA_N
 ClientSampleId :



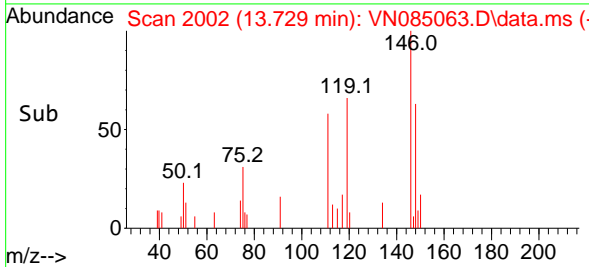
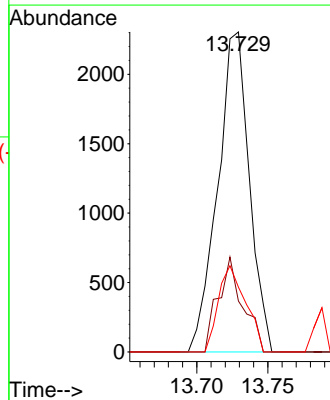
Tgt Ion:105 Resp: 3867
 Ion Ratio Lower Upper
 105 100
 134 22.1 9.8 29.3

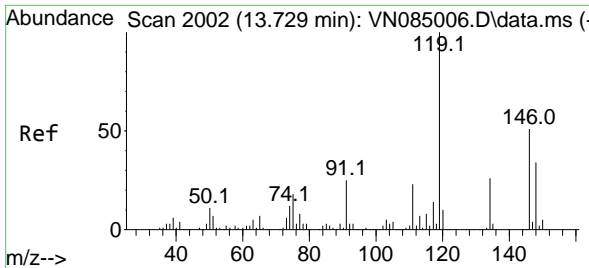


#86
 p-Isopropyltoluene
 Concen: 0.652 ug/l
 RT: 13.729 min Scan# 2002
 Delta R.T. 0.006 min
 Lab File: VN085063.D
 Acq: 02 Dec 2024 11:06



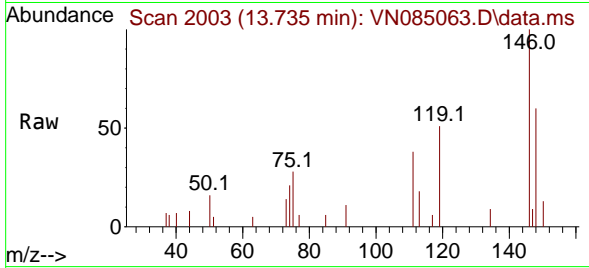
Tgt Ion:119 Resp: 3563
 Ion Ratio Lower Upper
 119 100
 134 23.2 13.0 39.0
 91 23.2 12.8 38.4



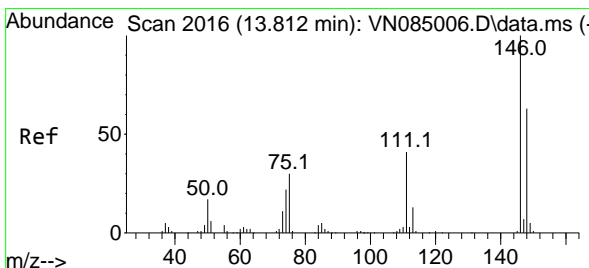
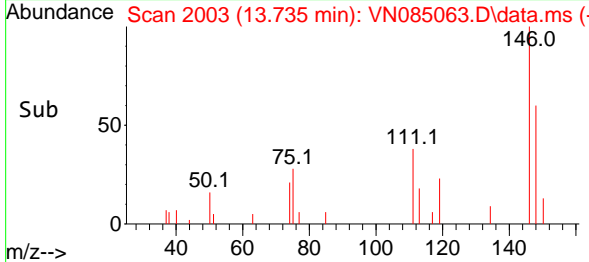
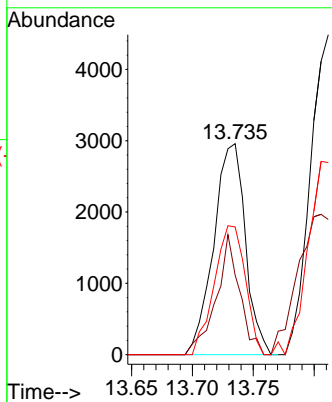


#87
 1,3-Dichlorobenzene
 Concen: 1.486 ug/l
 RT: 13.735 min Scan# 2003
 Delta R.T. 0.006 min
 Lab File: VN085063.D
 Acq: 02 Dec 2024 11:06

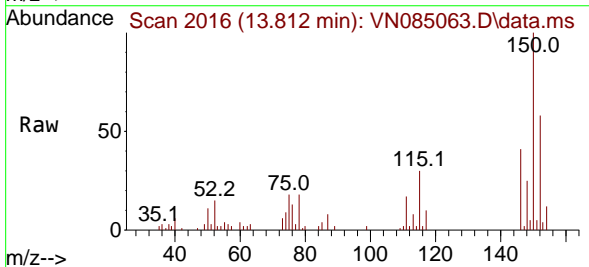
Instrument : MSVOA_N
 ClientSampleId :



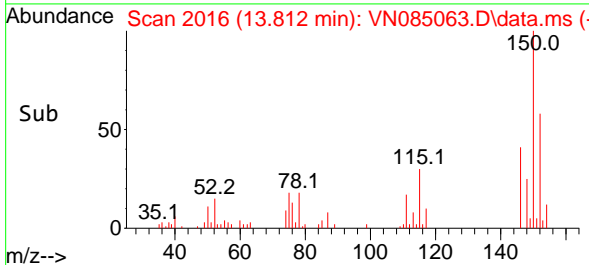
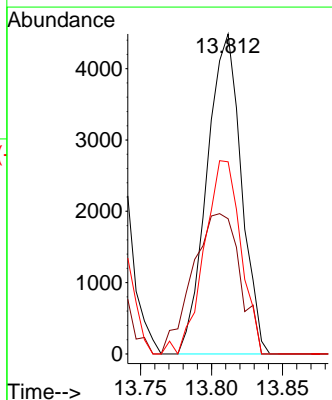
Tgt Ion:146 Resp: 5353
 Ion Ratio Lower Upper
 146 100
 111 42.3 21.6 65.0
 148 59.9 32.2 96.6

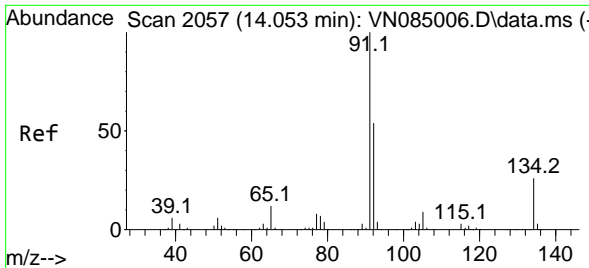


#88
 1,4-Dichlorobenzene
 Concen: 2.053 ug/l
 RT: 13.812 min Scan# 2016
 Delta R.T. -0.000 min
 Lab File: VN085063.D
 Acq: 02 Dec 2024 11:06



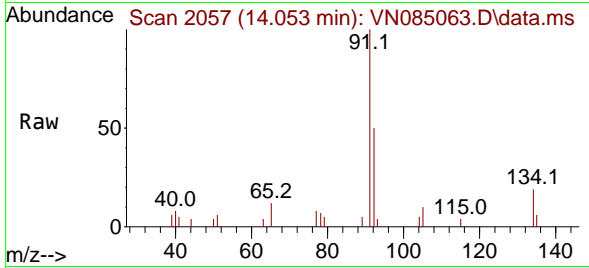
Tgt Ion:146 Resp: 7549
 Ion Ratio Lower Upper
 146 100
 111 60.5 20.9 62.8
 148 64.2 31.3 93.9



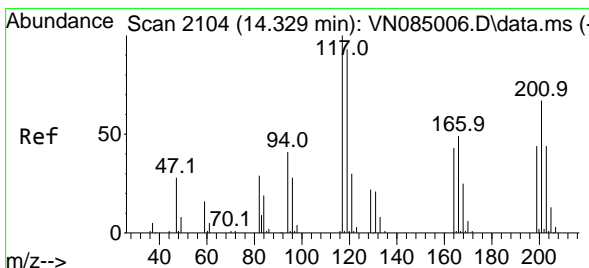
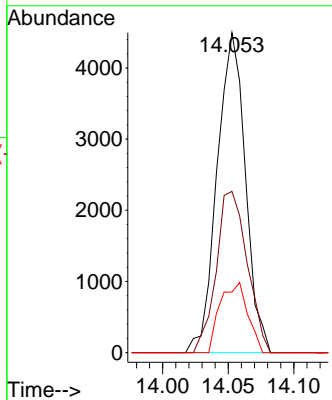
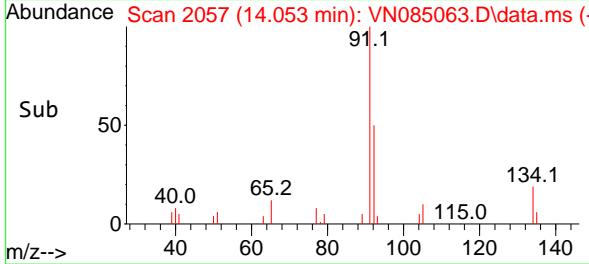


#89
 n-Butylbenzene
 Concen: 1.327 ug/l
 RT: 14.053 min Scan# 2057
 Delta R.T. -0.000 min
 Lab File: VN085063.D
 Acq: 02 Dec 2024 11:06

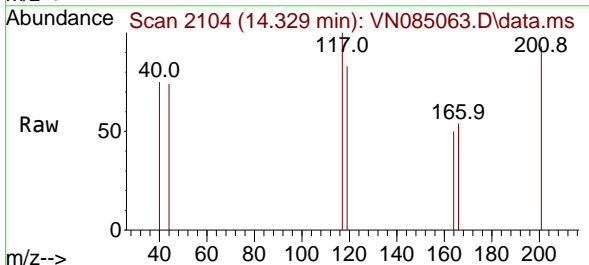
Instrument : MSVOA_N
 ClientSampleId :



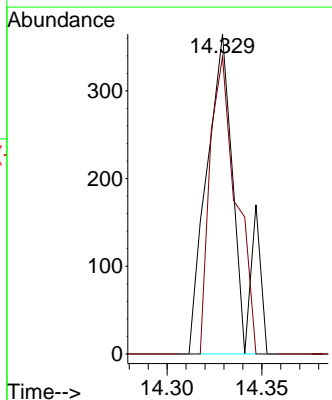
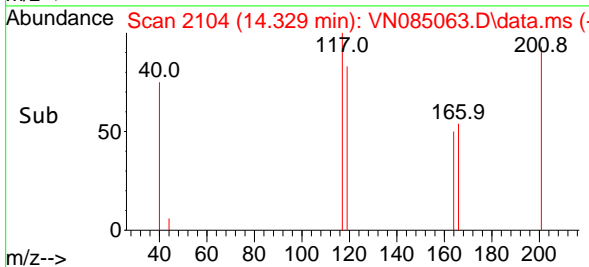
Tgt Ion: 91 Resp: 6743
 Ion Ratio Lower Upper
 91 100
 92 55.2 26.8 80.3
 134 21.3 12.8 38.4

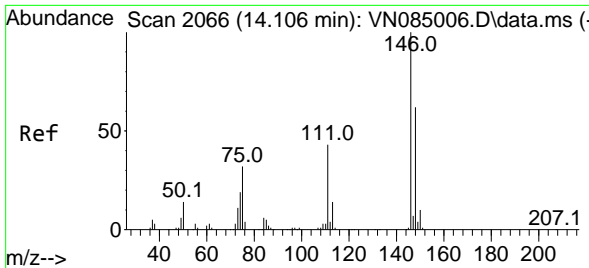


#90
 Hexachloroethane
 Concen: 0.333 ug/l
 RT: 14.329 min Scan# 2104
 Delta R.T. -0.000 min
 Lab File: VN085063.D
 Acq: 02 Dec 2024 11:06



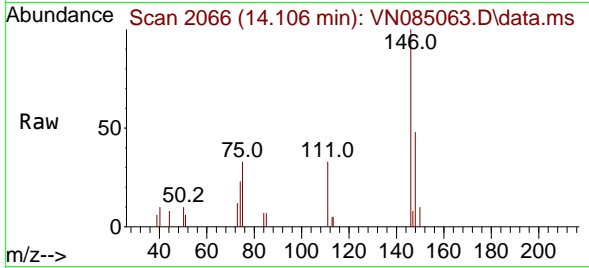
Tgt Ion: 117 Resp: 397
 Ion Ratio Lower Upper
 117 100
 201 82.4 35.2 105.6





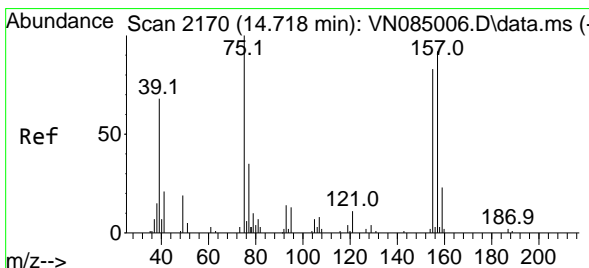
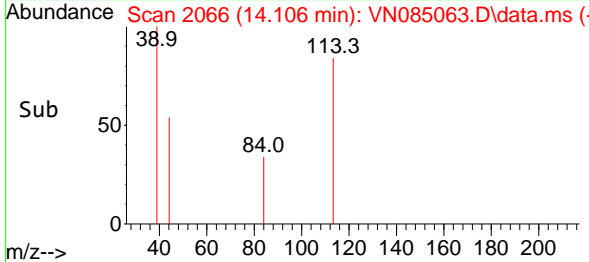
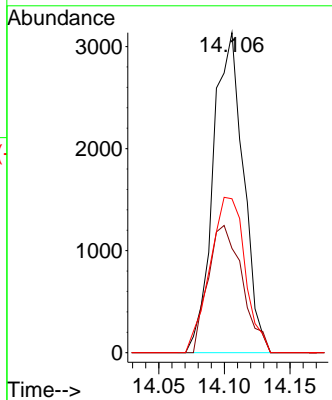
#91
 1,2-Dichlorobenzene
 Concen: 1.456 ug/l
 RT: 14.106 min Scan# 2066
 Delta R.T. -0.000 min
 Lab File: VN085063.D
 Acq: 02 Dec 2024 11:06

Instrument : MSVOA_N
 ClientSampleId :



Tgt Ion:146 Resp: 5025

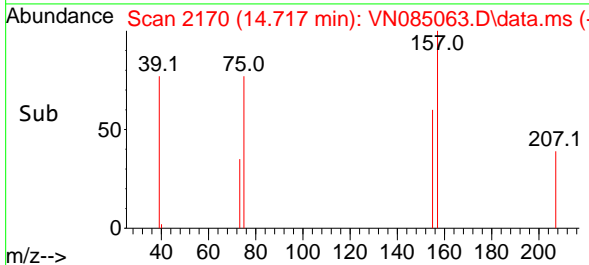
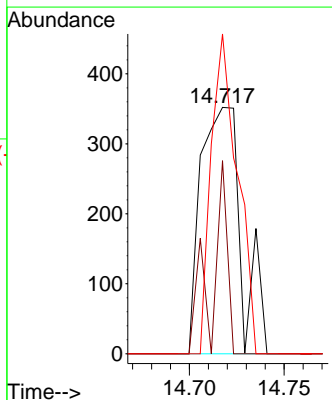
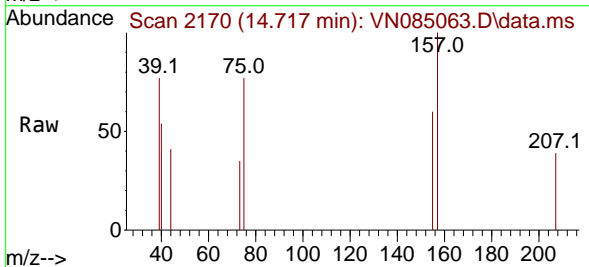
Ion	Ratio	Lower	Upper
146	100		
111	45.2	21.9	65.8
148	56.4	31.1	93.2

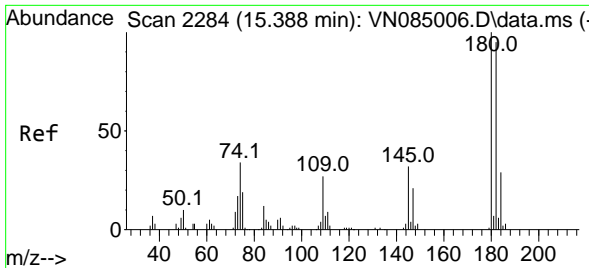


#92
 1,2-Dibromo-3-Chloropropane
 Concen: 1.171 ug/l
 RT: 14.717 min Scan# 2170
 Delta R.T. -0.000 min
 Lab File: VN085063.D
 Acq: 02 Dec 2024 11:06

Tgt Ion: 75 Resp: 525

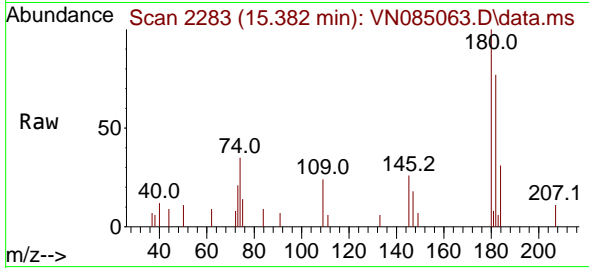
Ion	Ratio	Lower	Upper
75	100		
155	29.7	38.9	116.7#
157	84.0	48.3	144.9



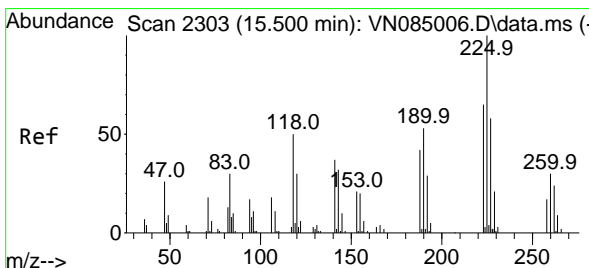
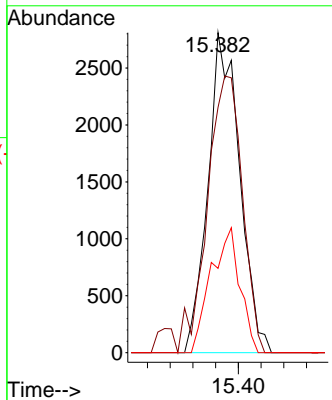
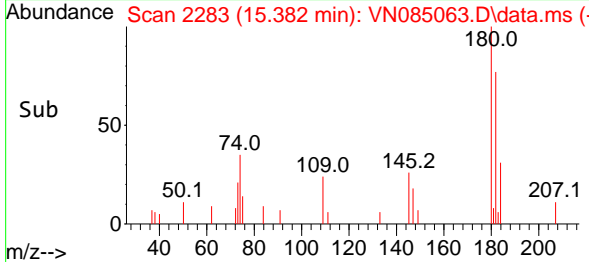


#93
 1,2,4-Trichlorobenzene
 Concen: 2.897 ug/l
 RT: 15.382 min Scan# 21
 Delta R.T. -0.006 min
 Lab File: VN085063.D
 Acq: 02 Dec 2024 11:06

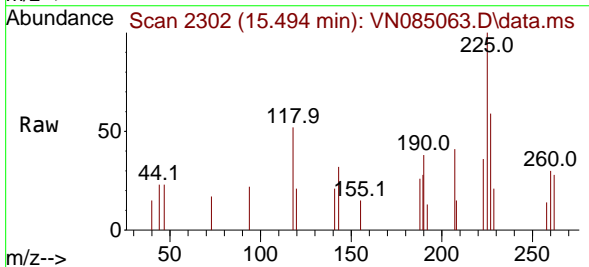
Instrument :
 MSVOA_N
 ClientSampleId :



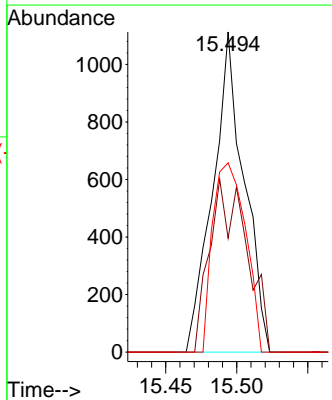
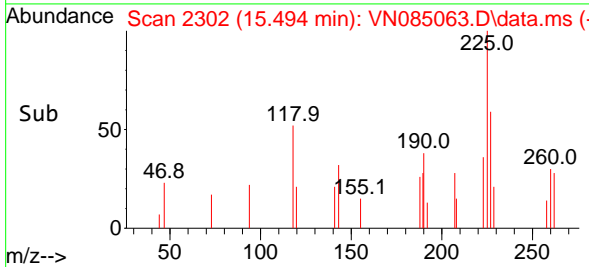
Tgt Ion:180 Resp: 5433
 Ion Ratio Lower Upper
 180 100
 182 95.5 46.9 140.8
 145 35.7 16.3 48.8

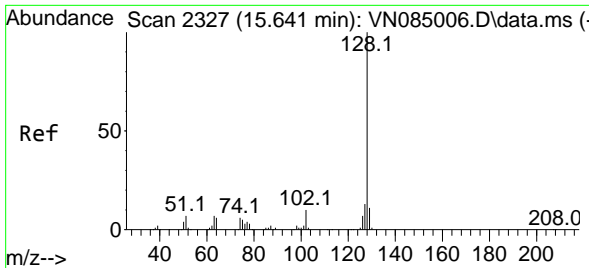


#94
 Hexachlorobutadiene
 Concen: 1.967 ug/l
 RT: 15.494 min Scan# 2302
 Delta R.T. -0.006 min
 Lab File: VN085063.D
 Acq: 02 Dec 2024 11:06



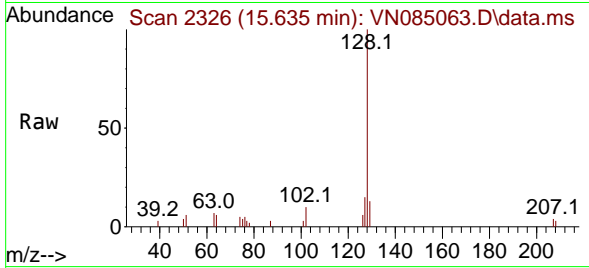
Tgt Ion:225 Resp: 1703
 Ion Ratio Lower Upper
 225 100
 223 64.2 30.9 92.8
 227 62.2 31.5 94.5





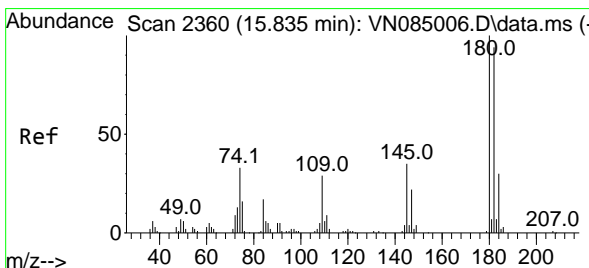
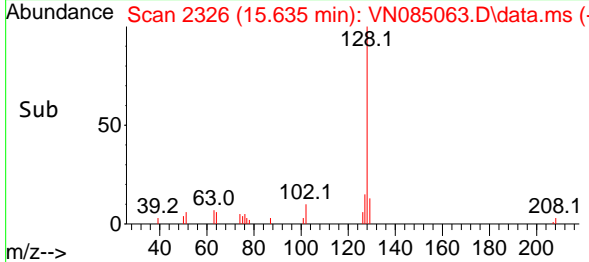
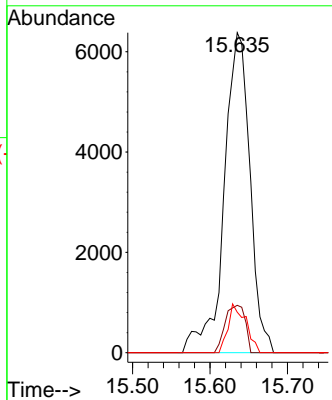
#95
 Naphthalene
 Concen: 2.770 ug/l
 RT: 15.635 min Scan# 21
 Delta R.T. -0.006 min
 Lab File: VN085063.D
 Acq: 02 Dec 2024 11:06

Instrument :
 MSVOA_N
 ClientSampleId :



Tgt Ion:128 Resp: 14794

Ion	Ratio	Lower	Upper
128	100		
127	11.5	10.6	16.0
129	10.5	8.6	12.8



#96
 1,2,3-Trichlorobenzene
 Concen: 3.561 ug/l
 RT: 15.835 min Scan# 2360
 Delta R.T. -0.000 min
 Lab File: VN085063.D
 Acq: 02 Dec 2024 11:06

Tgt Ion:180 Resp: 6372

Ion	Ratio	Lower	Upper
180	100		
182	98.4	46.4	139.2
145	35.7	17.3	52.0

