

Data Path : Z:\VOASRV\HPCHEM1\MSVOA N\DATA\VN120318\
 Data File : VN052640.D
 Acq On : 3 Dec 2018 19:10
 Operator : MD\SY
 Sample : PB115231ZHE#11
 Misc : 5.00mL/MSVOA N/WATER
 ALS Vial : 23 Sample Multiplier: 28

Instrument :
 MSVOA_N
 ClientSampleId :
 PB115231ZHE#11

Quant Time: Dec 04 00:34:57 2018
 Quant Method : Z:\VOASRV\HPCHEM1\MSVOA_N\METHODS\82N112718W.M
 Quant Title : SW846 8260
 QLast Update : Mon Dec 03 03:24:02 2018
 Response via : Initial Calibration

Internal Standards	R.T.	QIon	Response	Conc	Units	Dev(Min)
1) Pentafluorobenzene	7.67	168	1199128	50.00	ug/l	0.00
34) 1,4-Difluorobenzene	8.59	114	1849589	50.00	ug/l	0.00
63) Chlorobenzene-d5	11.41	117	1612429	50.00	ug/l	0.00
72) 1,4-Dichlorobenzene-d4	13.35	152	589363	50.00	ug/l	0.00

System Monitoring Compounds

33) 1,2-Dichloroethane-d4	8.03	65	622806	47.70	ug/l	0.00
Spiked Amount	50.000		Recovery	=	95.40%	
35) Dibromofluoromethane	7.59	113	570034	49.99	ug/l	0.00
Spiked Amount	50.000		Recovery	=	99.98%	
50) Toluene-d8	10.09	98	2253052	50.76	ug/l	0.00
Spiked Amount	50.000		Recovery	=	101.52%	
62) 4-Bromofluorobenzene	12.40	95	691066	46.33	ug/l	0.00
Spiked Amount	50.000		Recovery	=	92.66%	

Target Compounds

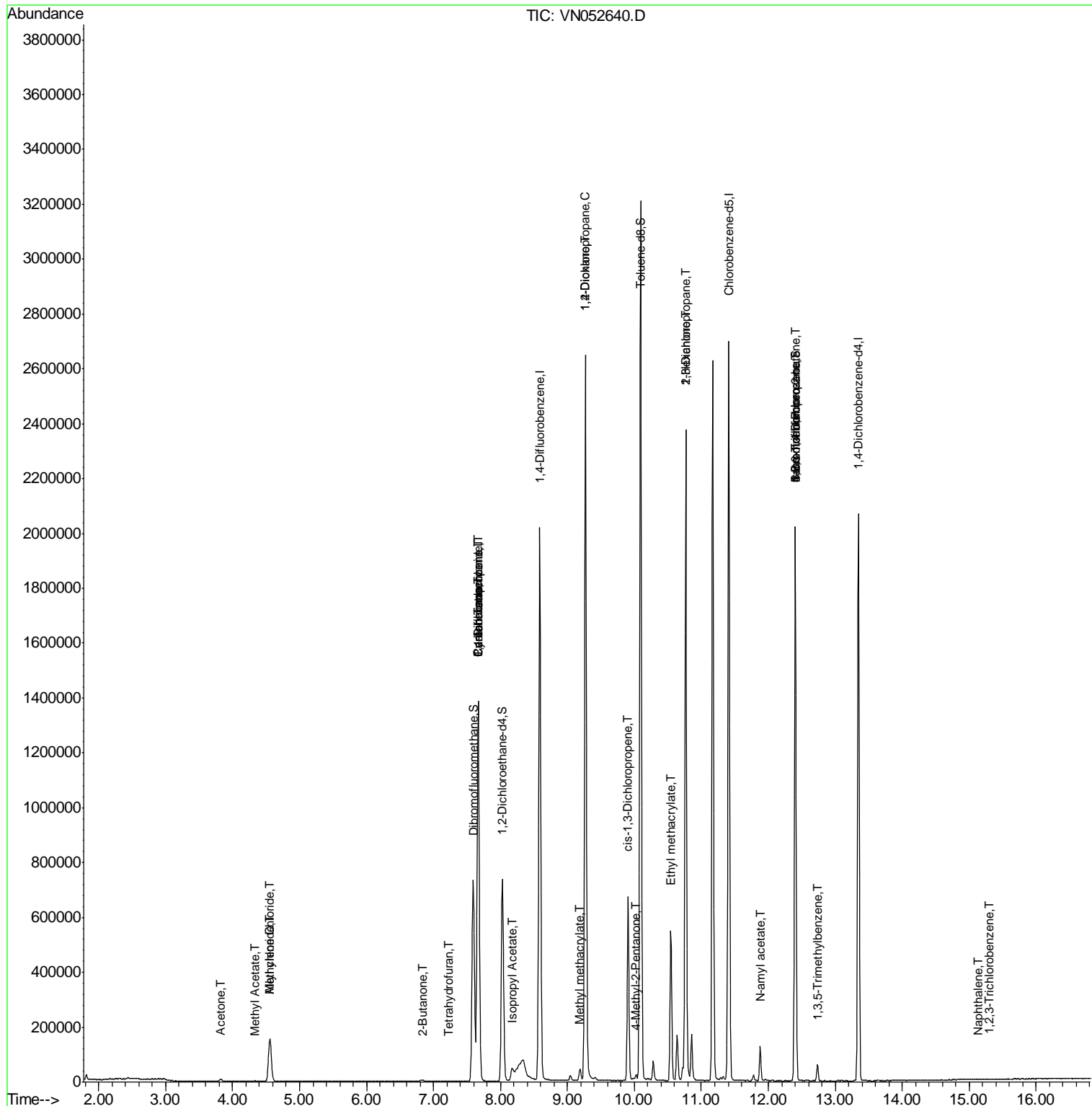
						Qvalue
14) Allyl chloride	4.56	41	4826	0.249	ug/l #	28
16) Acetone	3.82	43	15224	4.421	ug/l #	85
18) Methyl Acetate	4.34	43	6036	0.611	ug/l #	64
20) Methylene Chloride	4.55	84	119448	8.864	ug/l	97
25) 2-Butanone	6.85	43	2432	0.498	ug/l #	50
29) Tetrahydrofuran	7.23	42	722	0.229	ug/l #	69
31) Cyclohexane	7.67	56	20648	0.557	ug/l #	1
36) 1,1-Dichloropropene	7.67	75	81594	4.672	ug/l #	49
38) Carbon Tetrachloride	7.67	117	105374	6.664	ug/l #	15
43) Isopropyl Acetate	8.17	43	66366	3.679	ug/l #	76
45) 1,2-Dichloropropane	9.26	63	3274	0.237	ug/l #	43
48) Methyl methacrylate	9.18	41	13070	1.390	ug/l #	13
49) 1,4-Dioxane	9.26	88	186	1.905	ug/l #	1
51) 4-Methyl-2-Pentanone	10.03	43	19074	1.885	ug/l #	36
54) cis-1,3-Dichloropropene	9.91	75	123665	6.440	ug/l #	61
56) Ethyl methacrylate	10.54	69	1871	2.810	ug/l #	1
57) 1,3-Dichloropropane	10.77	76	25037	1.303	ug/l #	43
59) 2-Hexanone	10.77	43	349155	51.400	ug/l #	51
71) Bromoform	12.40	173	3795	0.496	ug/l #	1
74) N-amyl acetate	11.88	43	38937	3.333	ug/l #	52
76) 1,2,3-Trichloropropane	12.40	75	331259	36.449	ug/l #	100
80) 1,3,5-Trimethylbenzene	12.73	105	30712	0.833	ug/l	97
81) trans-1,4-Dichloro-2-buten	12.40	75	331259	121.722	ug/l #	11
95) Naphthalene	15.13	128	129	3.434	ug/l #	69
96) 1,2,3-Trichlorobenzene	15.32	180	79	2.735	ug/l #	12

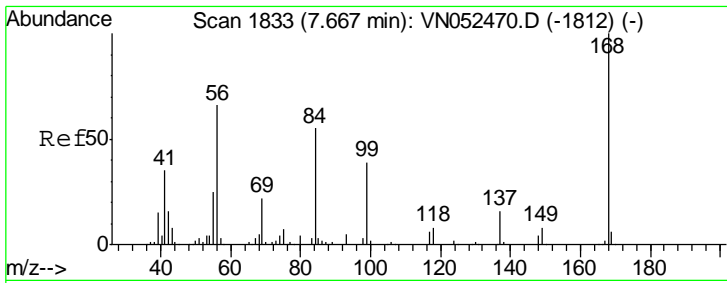
(#) = qualifier out of range (m) = manual integration (+) = signals summed

Data Path : Z:\VOASRV\HPCHEM1\MSVOA N\DATA\VN120318\
 Data File : VN052640.D
 Acq On : 3 Dec 2018 19:10
 Operator : MD\SY
 Sample : PB115231ZHE#11
 Misc : 5.00mL/MSVOA N/WATER
 ALS Vial : 23 Sample Multiplier: 28

Instrument :
 MSVOA_N
 Client Sample Id :
 PB115231ZHE#11

Quant Time: Dec 04 00:34:57 2018
 Quant Method : Z:\VOASRV\HPCHEM1\MSVOA_N\METHODS\82N112718W.M
 Quant Title : SW846 8260
 QLast Update : Mon Dec 03 03:24:02 2018
 Response via : Initial Calibration



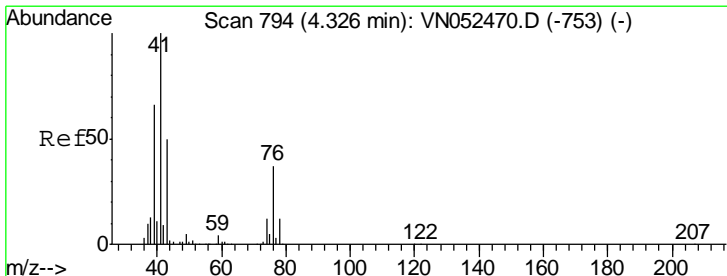
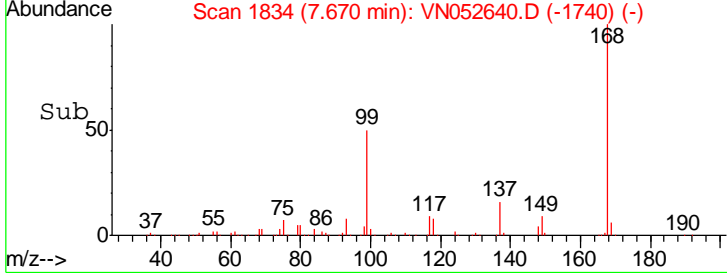
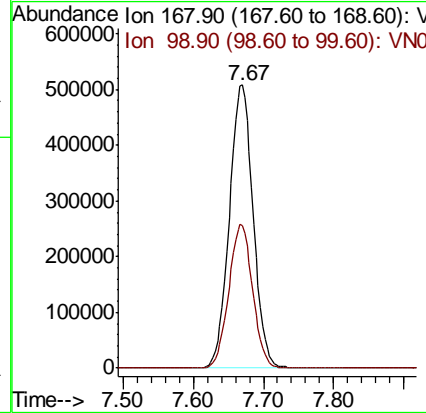
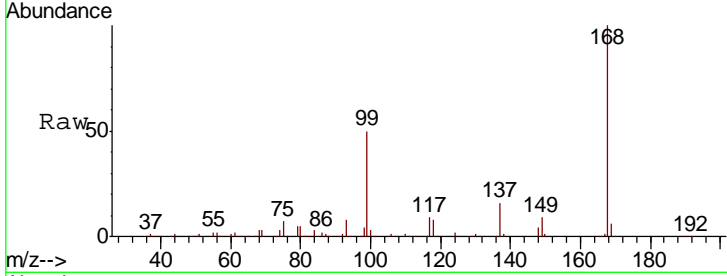


#1
 Pentafluorobenzene
 Concen: 50.000 ug/l
 RT: 7.67 min Scan# 1834
 Delta R.T. 0.00 min
 Lab File: VN052640.D
 Acq: 3 Dec 2018 19:10

Instrument : MSVOA_N
 ClientSampleId : PB115231ZHE#11

Tgt Ion: 168 Resp: 1199128

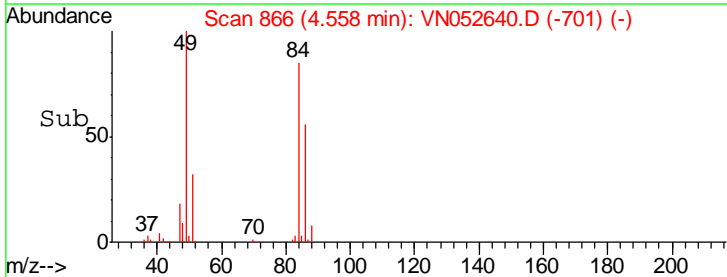
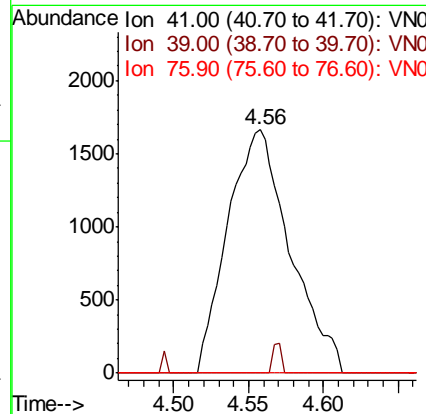
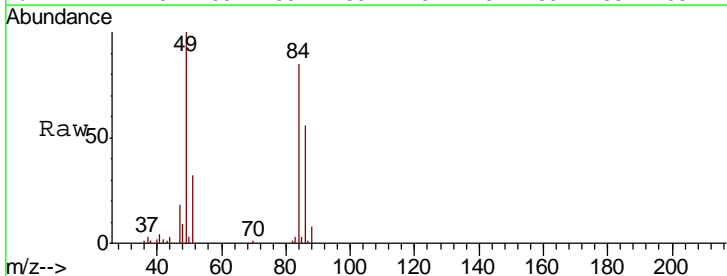
Ion	Ratio	Lower	Upper
168	100		
99	50.5	41.7	62.5

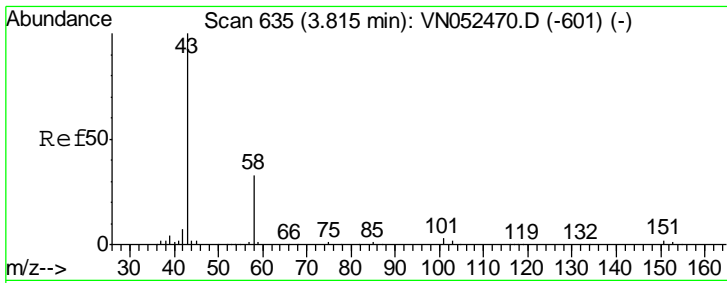


#14
 Allyl chloride
 Concen: 0.249 ug/l
 RT: 4.56 min Scan# 866
 Delta R.T. 0.23 min
 Lab File: VN052640.D
 Acq: 3 Dec 2018 19:10

Tgt Ion: 41 Resp: 4826

Ion	Ratio	Lower	Upper
41	100		
39	1.6	50.6	76.0#
76	0.0	27.4	41.2#

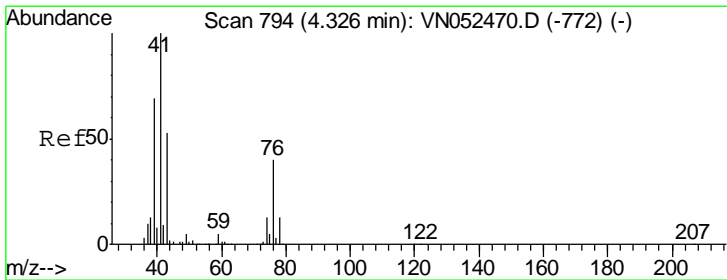
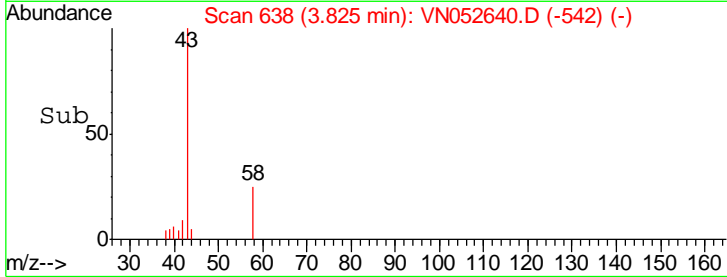
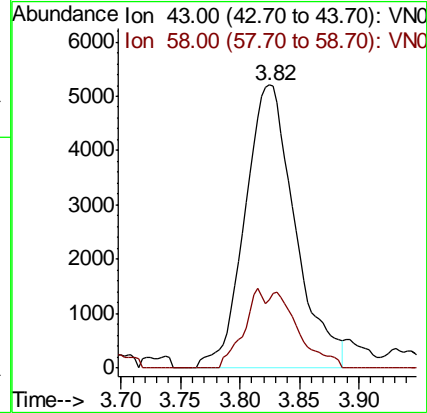
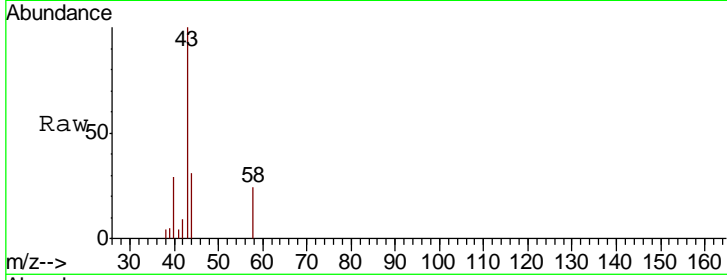




#16
 Acetone
 Concen: 4.421 ug/l
 RT: 3.82 min Scan# 638
 Delta R.T. 0.01 min
 Lab File: VN052640.D
 Acq: 3 Dec 2018 19:10

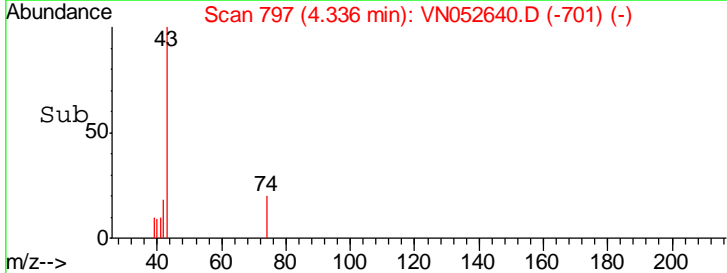
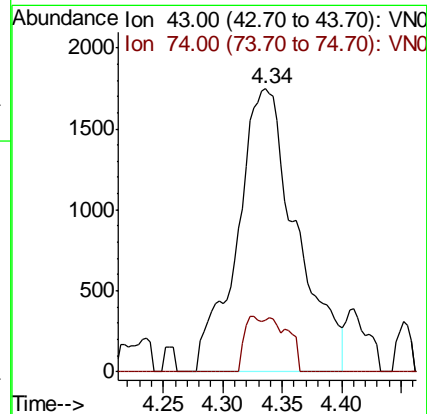
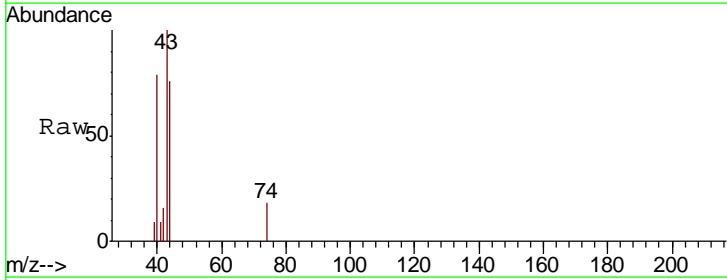
Instrument :
 MSVOA_N
 ClientSampled :
 PB115231ZHE#11

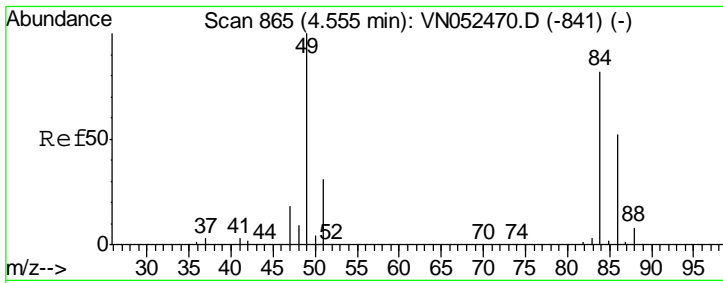
Tgt Ion: 43 Resp: 15224
 Ion Ratio Lower Upper
 43 100
 58 24.1 26.0 39.0#



#18
 Methyl Acetate
 Concen: 0.611 ug/l
 RT: 4.34 min Scan# 797
 Delta R.T. 0.01 min
 Lab File: VN052640.D
 Acq: 3 Dec 2018 19:10

Tgt Ion: 43 Resp: 6036
 Ion Ratio Lower Upper
 43 100
 74 5.7 18.6 27.8#



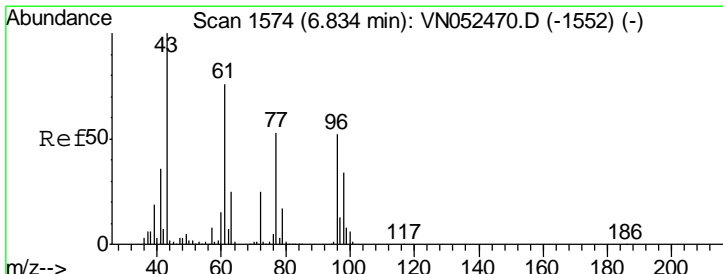
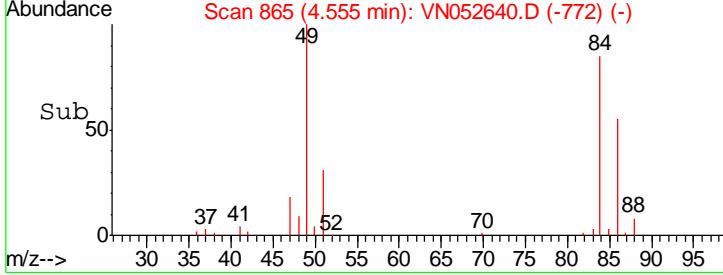
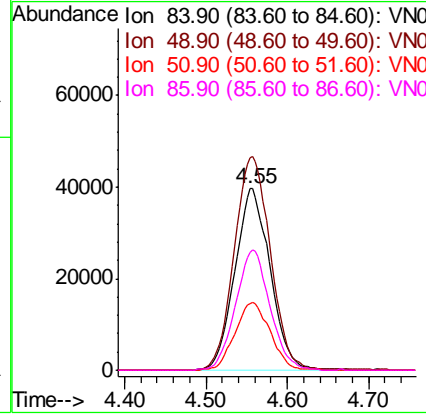
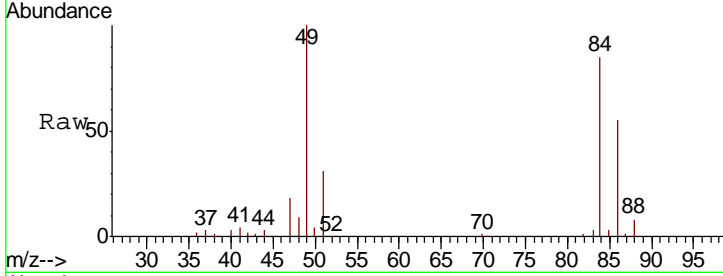


#20
 Methylene Chloride
 Concen: 8.864 ug/l
 RT: 4.55 min Scan# 865
 Delta R.T. -0.00 min
 Lab File: VN052640.D
 Acq: 3 Dec 2018 19:10

Instrument : MSVOA_N
 ClientSampled : PB115231ZHE#11

Tgt Ion: 84 Resp: 119448

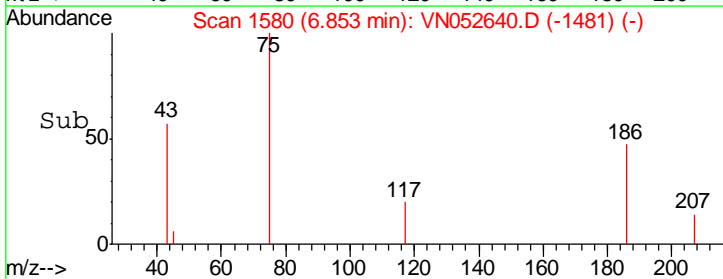
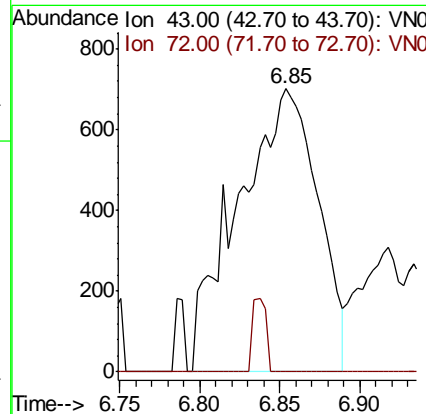
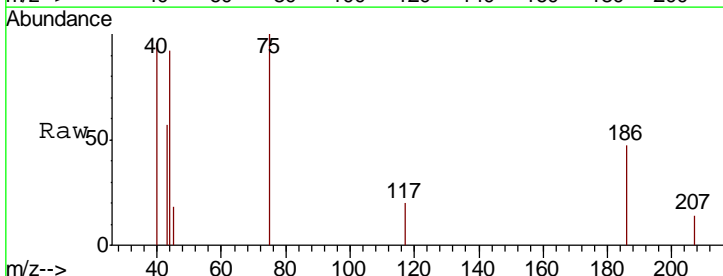
Ion	Ratio	Lower	Upper
84	100		
49	117.0	98.0	147.0
51	36.8	30.1	45.1
86	64.6	50.7	76.1

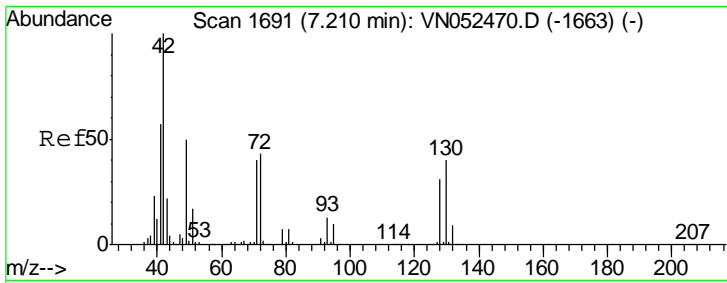


#25
 2-Butanone
 Concen: 0.498 ug/l
 RT: 6.85 min Scan# 1580
 Delta R.T. 0.02 min
 Lab File: VN052640.D
 Acq: 3 Dec 2018 19:10

Tgt Ion: 43 Resp: 2432

Ion	Ratio	Lower	Upper
43	100		
72	0.0	20.1	30.1#

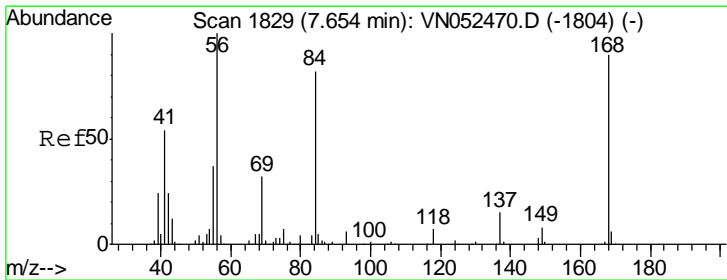
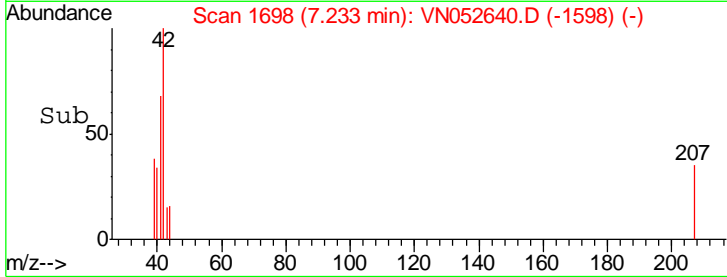
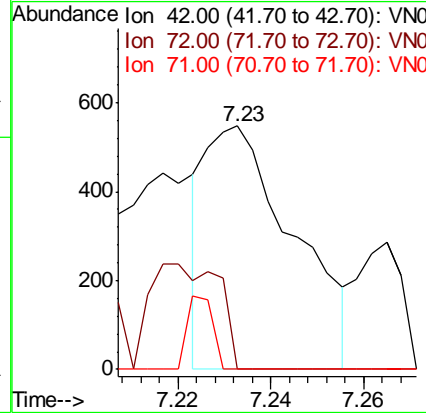
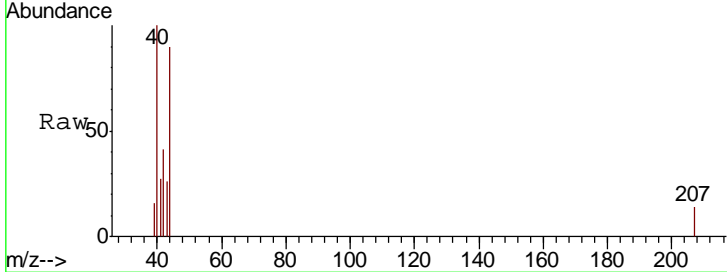




#29
 Tetrahydrofuran
 Concen: 0.229 ug/l
 RT: 7.23 min Scan# 1698
 Delta R.T. 0.02 min
 Lab File: VN052640.D
 Acq: 3 Dec 2018 19:10

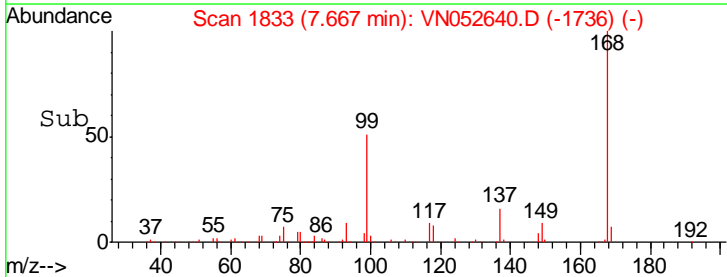
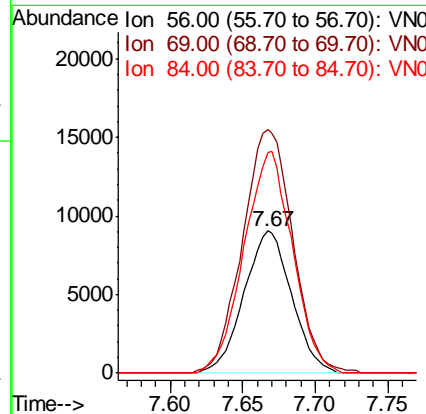
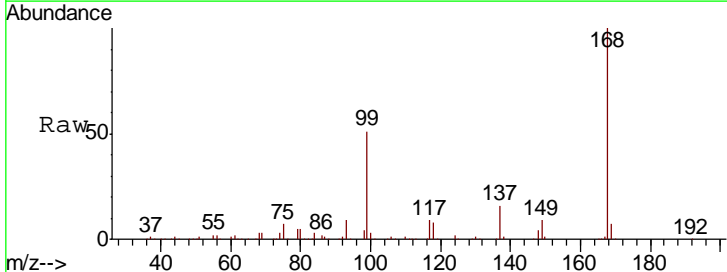
Instrument :
 MSVOA_N
 ClientSampleId :
 PB115231ZHE#11

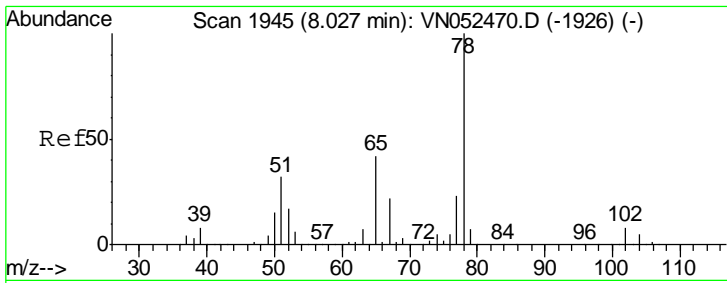
Tgt Ion	Resp	Lower	Upper
42	100		
72	33.9	33.3	49.9
71	8.6	32.0	48.0#



#31
 Cyclohexane
 Concen: 0.557 ug/l
 RT: 7.67 min Scan# 1833
 Delta R.T. 0.01 min
 Lab File: VN052640.D
 Acq: 3 Dec 2018 19:10

Tgt Ion	Resp	Lower	Upper
56	100		
69	171.5	25.8	38.6#
84	155.6	65.3	97.9#

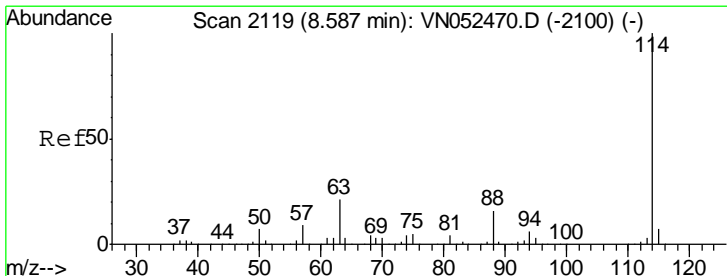
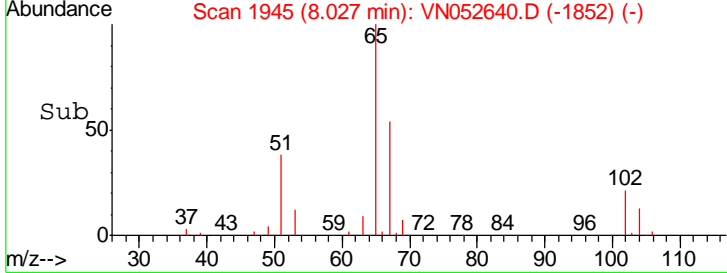
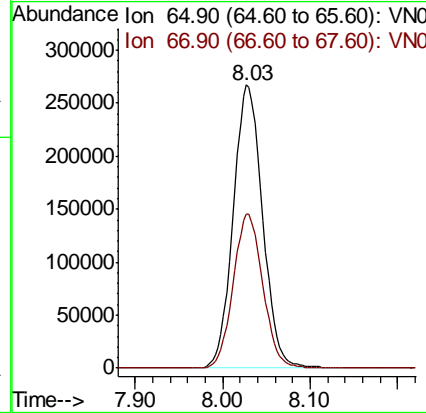
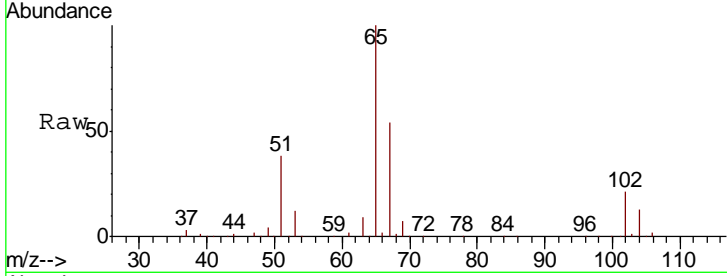




#33
 1,2-Dichloroethane-d4
 Concen: Below ug/l
 RT: 8.03 min Scan# 1945
 Delta R.T. -0.00 min
 Lab File: VN052640.D
 Acq: 3 Dec 2018 19:10

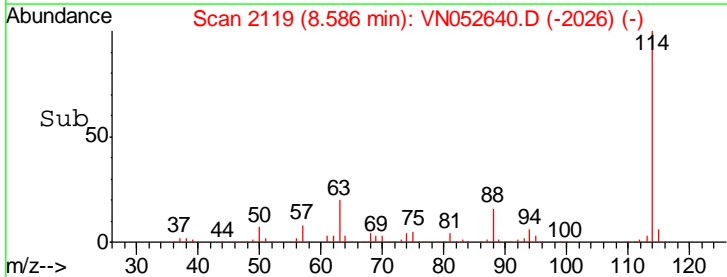
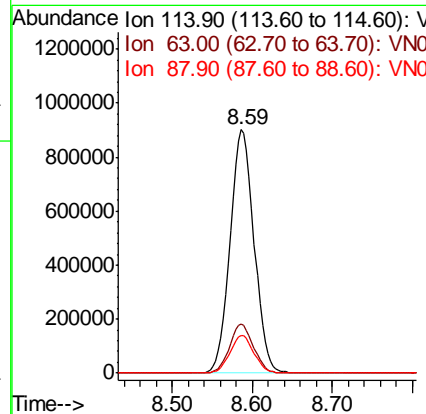
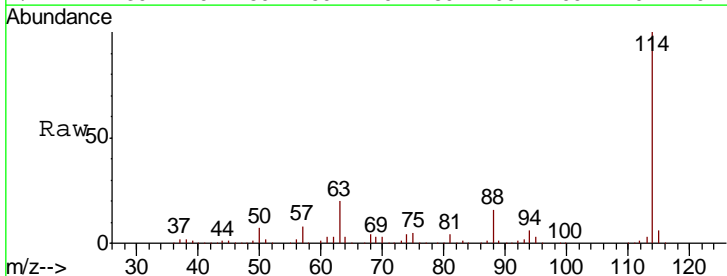
Instrument : MSVOA_N
 ClientSampleId : PB115231ZHE#11

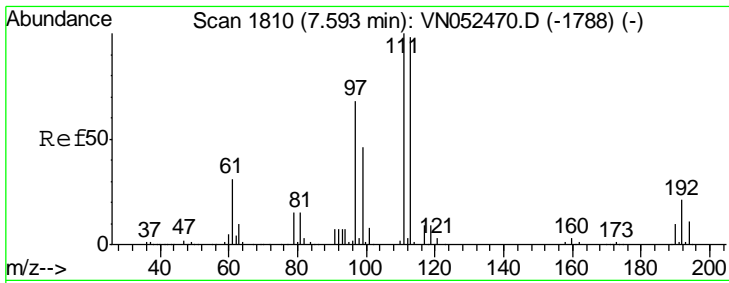
Tgt Ion	Resp	Lower	Upper
65	100		
67	54.8	0.0	109.8



#34
 1,4-Difluorobenzene
 Concen: 50.000 ug/l
 RT: 8.59 min Scan# 2119
 Delta R.T. -0.00 min
 Lab File: VN052640.D
 Acq: 3 Dec 2018 19:10

Tgt Ion	Resp	Lower	Upper
114	100		
63	20.0	0.0	41.8
88	15.6	0.0	31.6

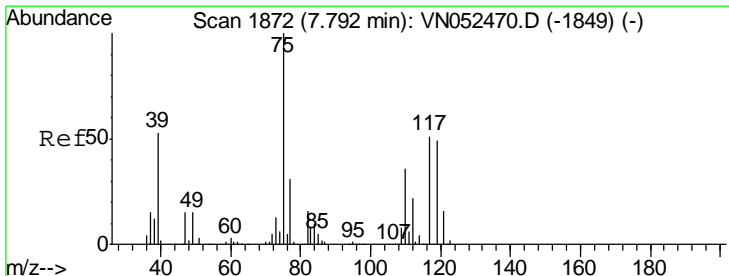
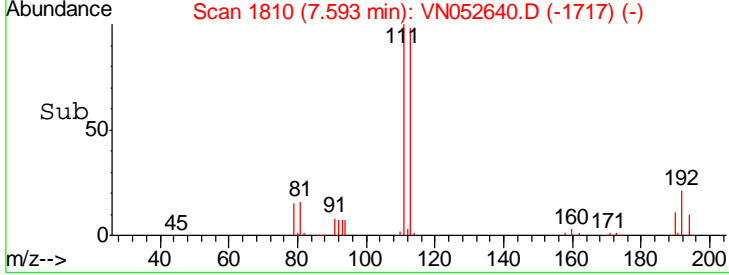
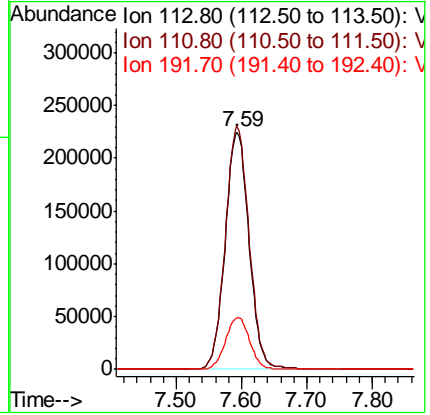
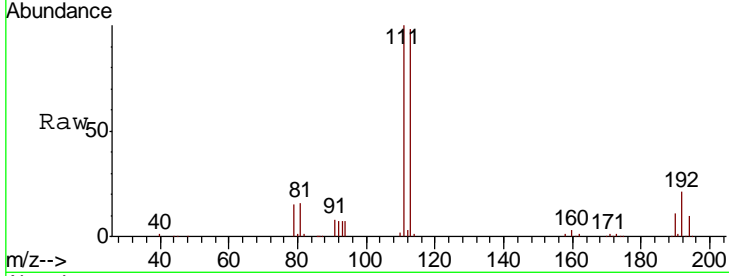




#35
 Dibromofluoromethane
 Concen: 50.000 ug/l
 RT: 7.59 min Scan# 1810
 Delta R.T. -0.00 min
 Lab File: VN052640.D
 Acq: 3 Dec 2018 19:10

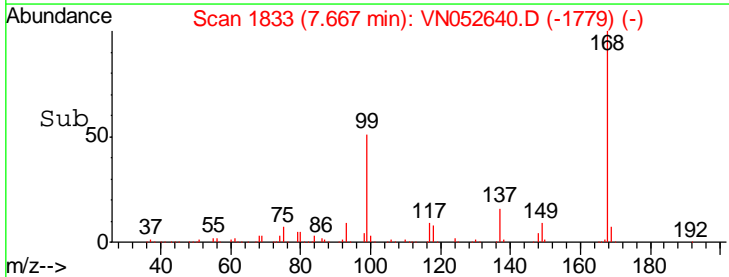
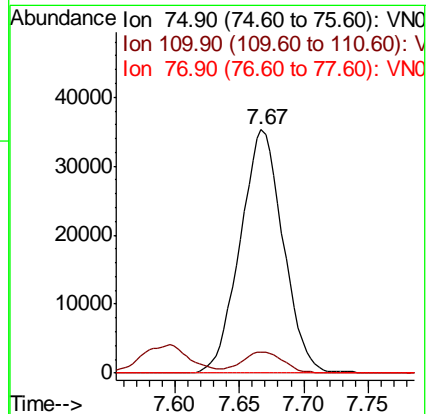
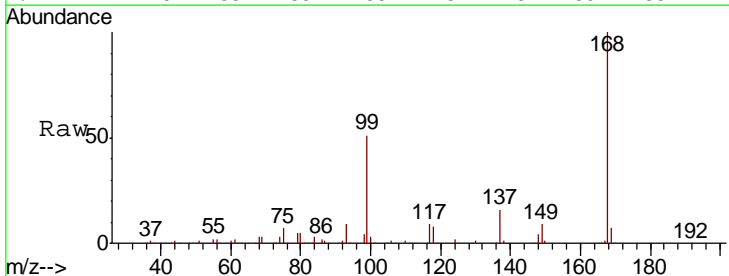
Instrument : MSVOA_N
 ClientSampleId : PB115231ZHE#11

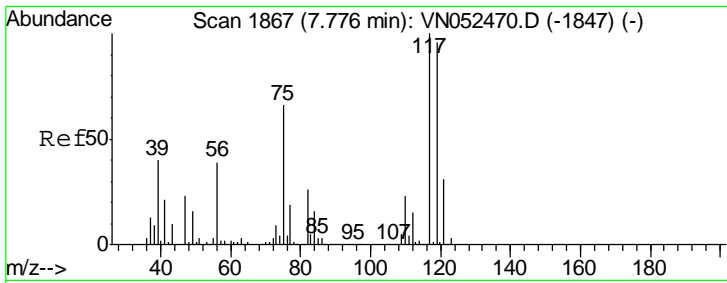
Tgt Ion	Resp	Lower	Upper
113	100		
111	102.4	82.0	123.0
192	22.0	17.0	25.6



#36
 1,1-Dichloropropene
 Concen: 4.672 ug/l
 RT: 7.67 min Scan# 1833
 Delta R.T. -0.13 min
 Lab File: VN052640.D
 Acq: 3 Dec 2018 19:10

Tgt Ion	Resp	Lower	Upper
75	100		
110	8.4	17.5	52.6#
77	0.0	24.5	36.7#

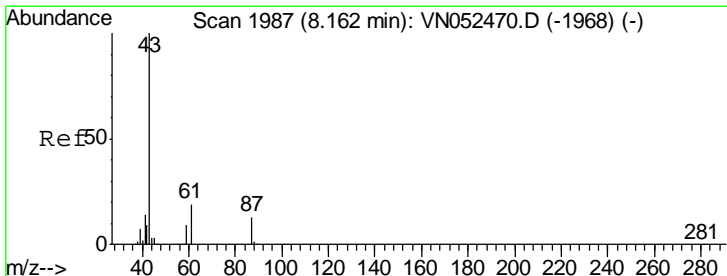
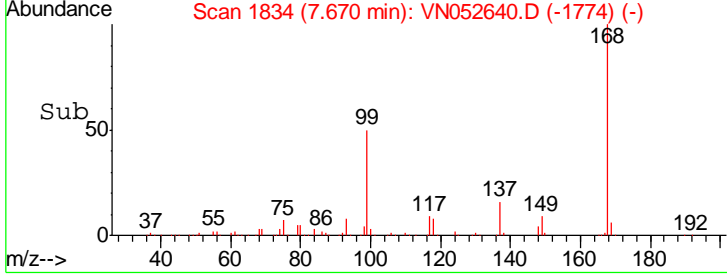
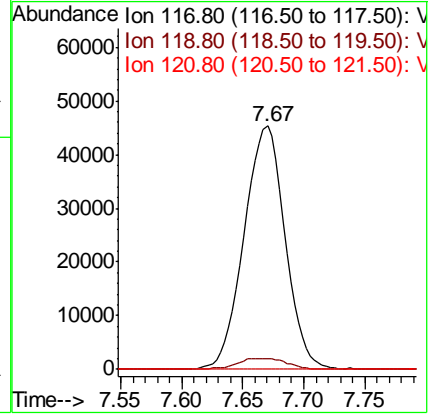
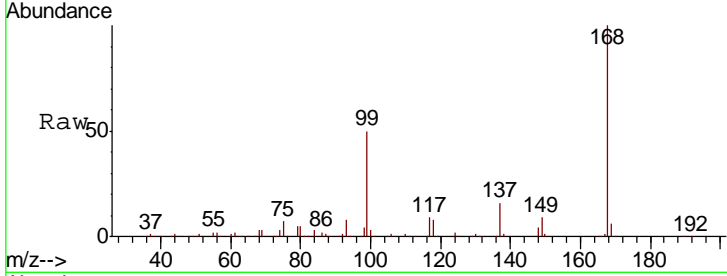




#38
 Carbon Tetrachloride
 Concen: 6.664 ug/l
 RT: 7.67 min Scan# 1834
 Delta R.T. -0.11 min
 Lab File: VN052640.D
 Acq: 3 Dec 2018 19:10

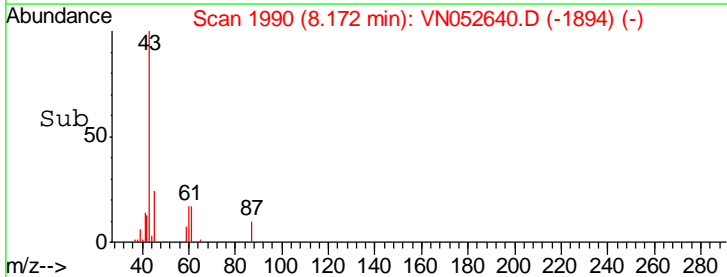
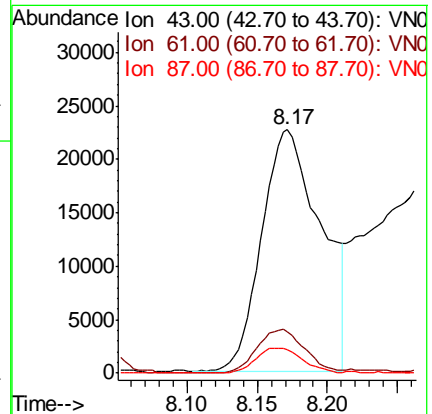
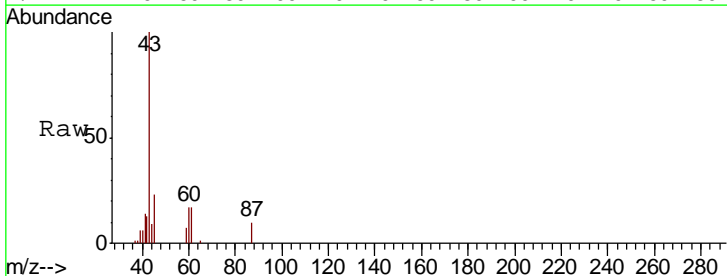
Instrument :
 MSVOA_N
 ClientSampleId :
 PB115231ZHE#11

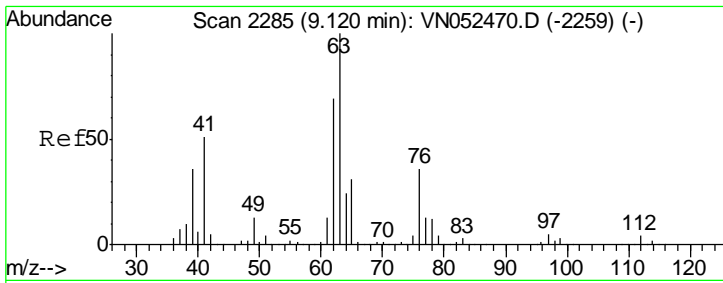
Tgt Ion	Resp	Lower	Upper
117	100		
119	4.5	76.8	115.2#
121	0.0	24.9	37.3#



#43
 Isopropyl Acetate
 Concen: 3.679 ug/l
 RT: 8.17 min Scan# 1990
 Delta R.T. 0.01 min
 Lab File: VN052640.D
 Acq: 3 Dec 2018 19:10

Tgt Ion	Resp	Lower	Upper
43	100		
61	14.6	24.1	36.1#
87	8.2	10.6	15.8#

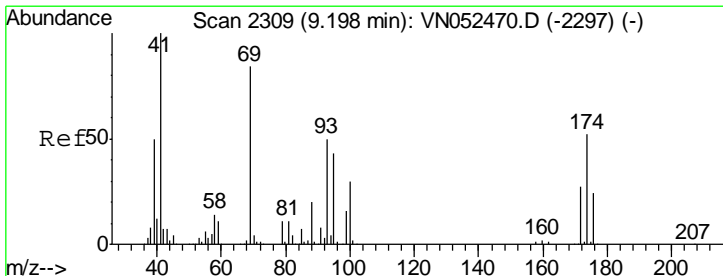
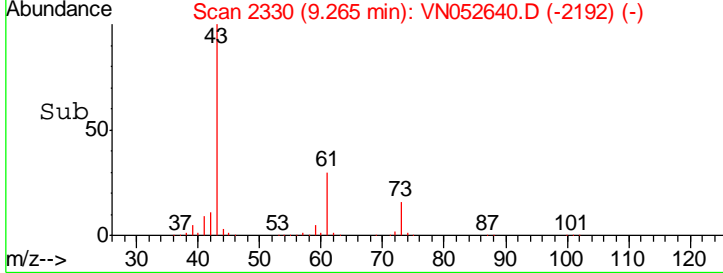
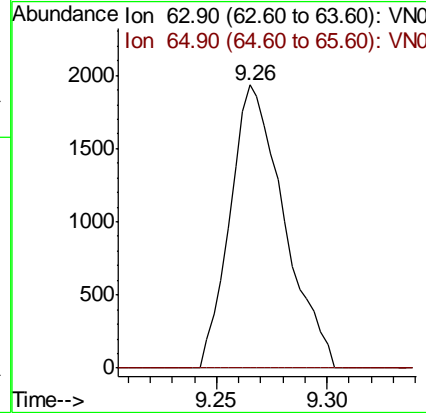
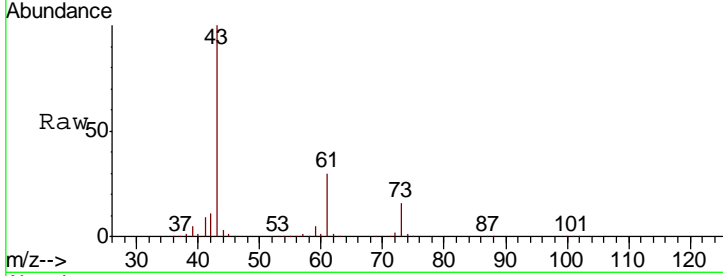




#45
 1,2-Dichloropropane
 Concen: 0.237 ug/l
 RT: 9.26 min Scan# 2330
 Delta R.T. 0.14 min
 Lab File: VN052640.D
 Acq: 3 Dec 2018 19:10

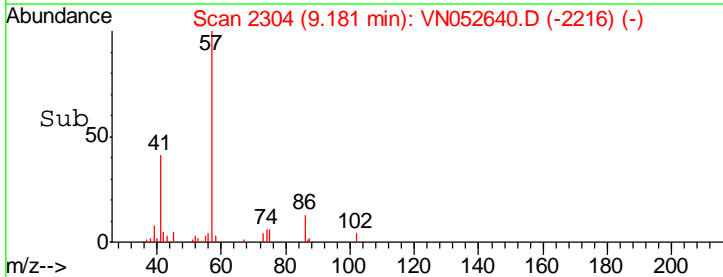
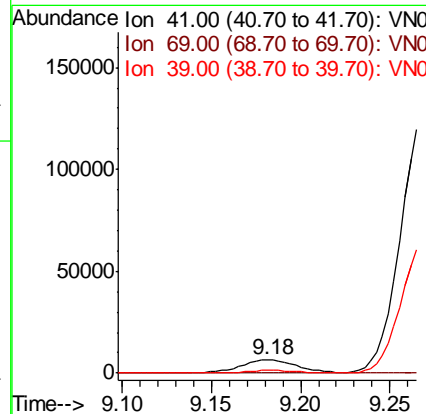
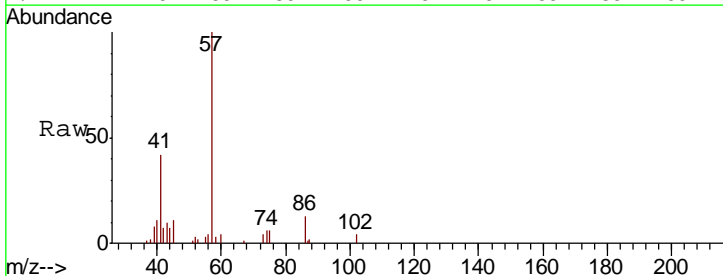
Instrument : MSVOA_N
 ClientSampled : PB115231ZHE#11

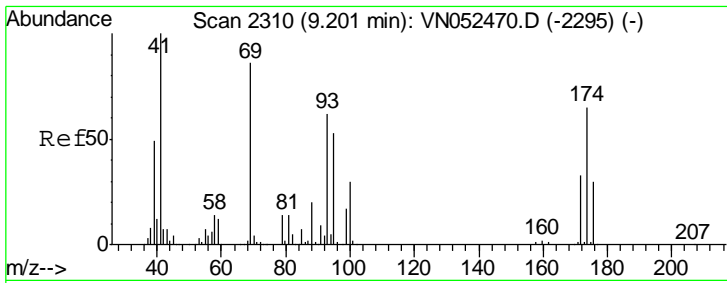
Tgt Ion	Resp	Lower	Upper
63	100		
65	0.0	25.0	37.6#



#48
 Methyl methacrylate
 Concen: 1.390 ug/l
 RT: 9.18 min Scan# 2304
 Delta R.T. -0.02 min
 Lab File: VN052640.D
 Acq: 3 Dec 2018 19:10

Tgt Ion	Resp	Lower	Upper
41	100		
69	0.0	70.0	105.0#
39	0.0	42.6	64.0#

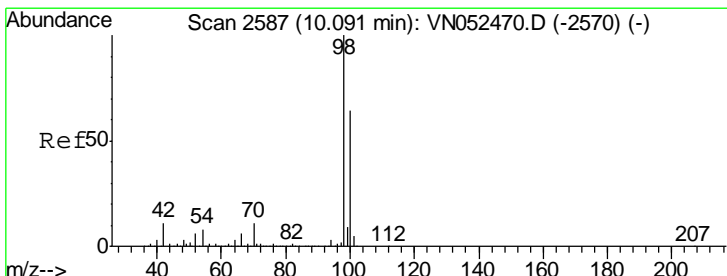
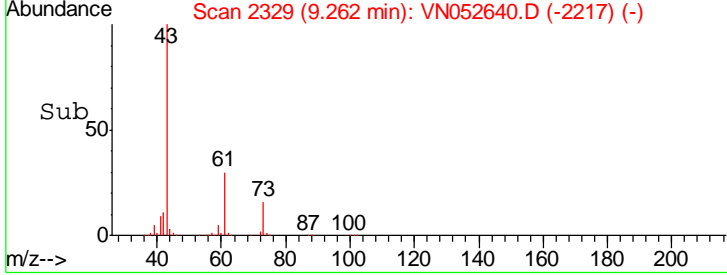
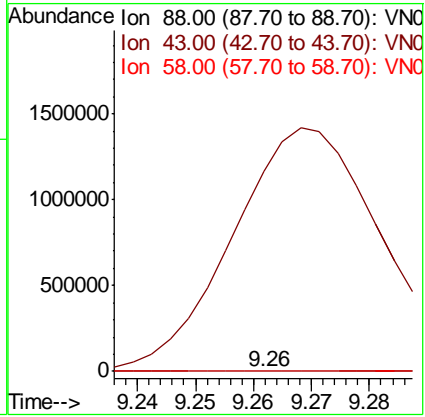
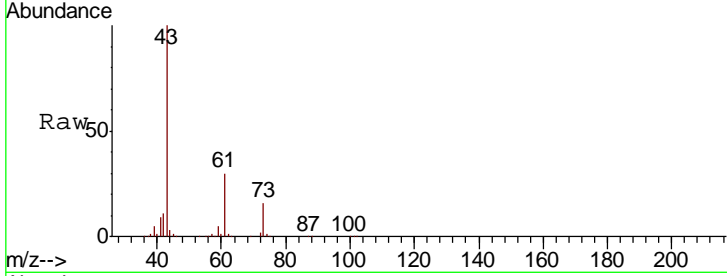




#49
 1,4-Dioxane
 Concen: 1.905 ug/l
 RT: 9.26 min Scan# 2329
 Delta R.T. 0.06 min
 Lab File: VN052640.D
 Acq: 3 Dec 2018 19:10

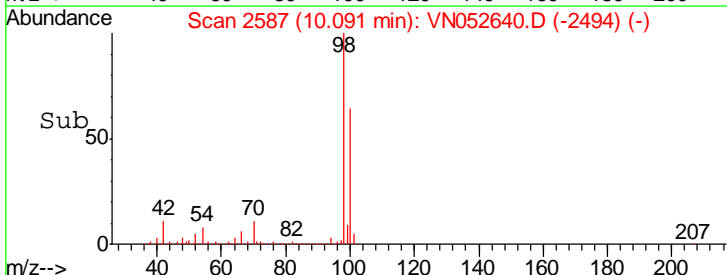
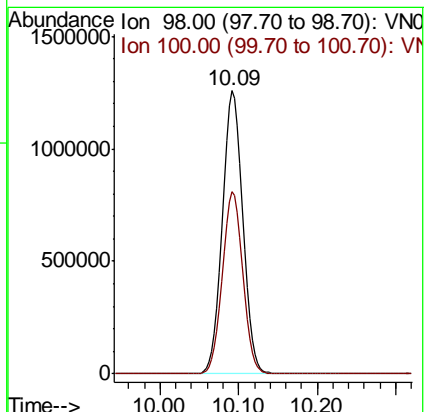
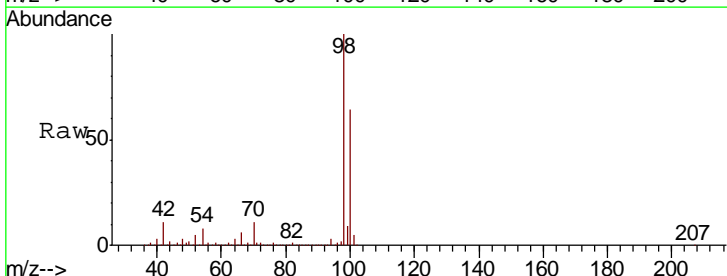
Tgt Ion	Resp	Lower	Upper
88	186		
43	1402357.5	26.4	39.6#
58	6404.3	55.4	83.0#

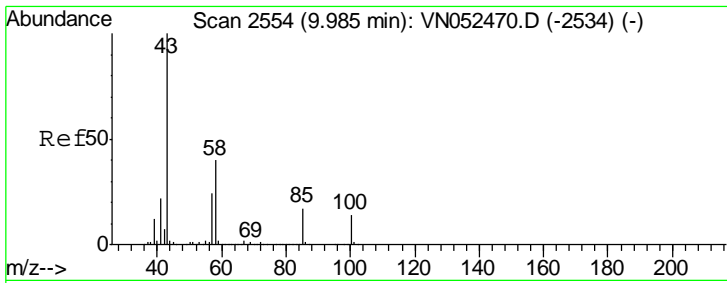
Instrument : MSVOA_N
 ClientSampled : PB115231ZHE#11



#50
 Toluene-d8
 Concen: 1.905 ug/l
 RT: 10.09 min Scan# 2587
 Delta R.T. -0.00 min
 Lab File: VN052640.D
 Acq: 3 Dec 2018 19:10

Tgt Ion	Resp	Lower	Upper
98	2253052		
100	64.3	51.3	76.9

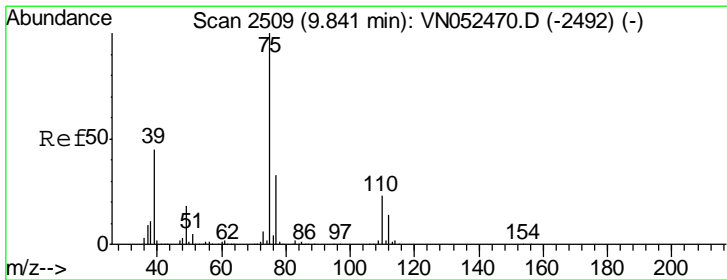
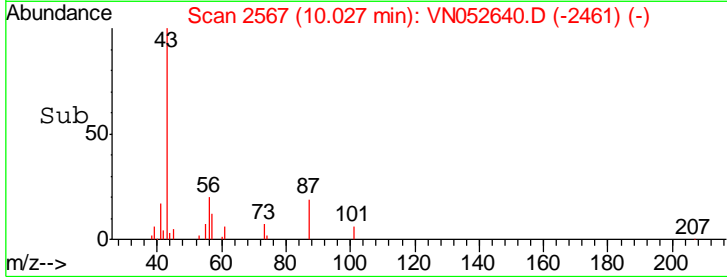
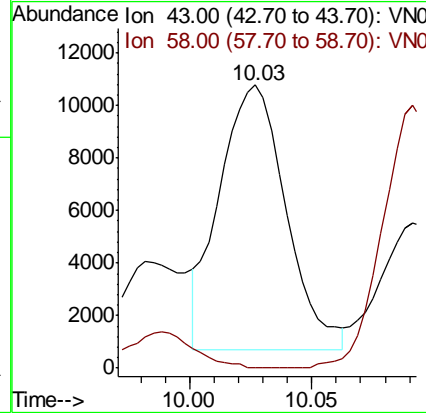
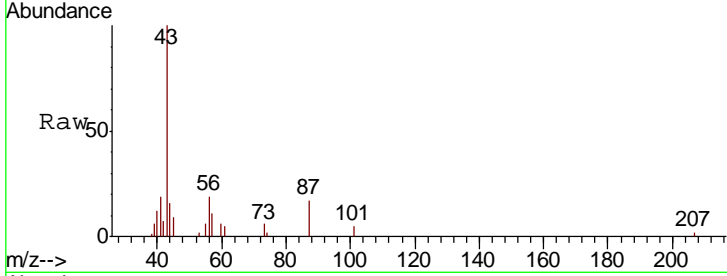




#51
 4-Methyl-2-Pentanone
 Concen: 1.885 ug/l
 RT: 10.03 min Scan# 2567
 Delta R.T. 0.04 min
 Lab File: VN052640.D
 Acq: 3 Dec 2018 19:10

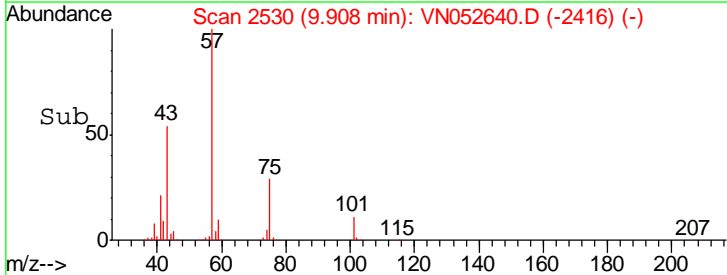
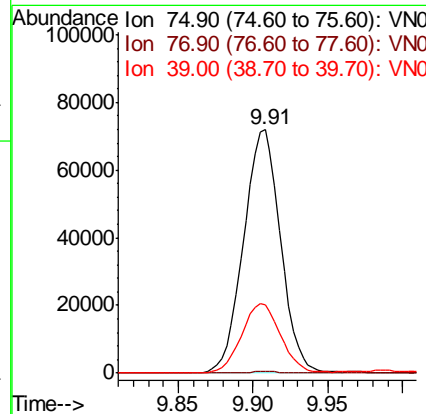
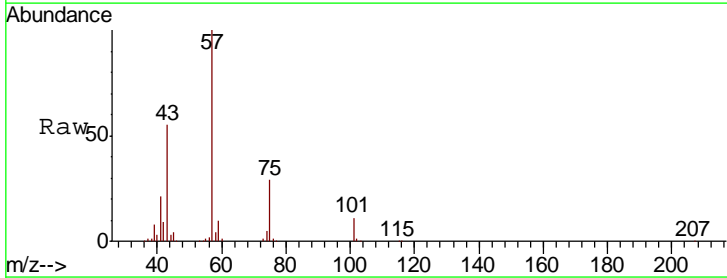
Instrument : MSVOA_N
 ClientSampled : PB115231ZHE#11

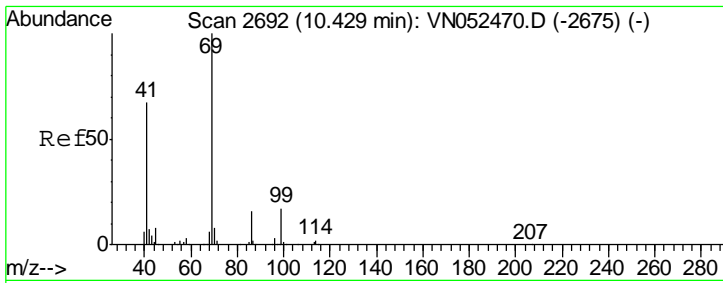
Tgt Ion	Resp	Lower	Upper
43	19074		
58	0.0	31.5	47.3#



#54
 cis-1,3-Dichloropropene
 Concen: 6.440 ug/l
 RT: 9.91 min Scan# 2530
 Delta R.T. 0.07 min
 Lab File: VN052640.D
 Acq: 3 Dec 2018 19:10

Tgt Ion	Resp	Lower	Upper
75	123665		
77	0.5	26.2	39.2#
39	28.2	36.0	54.0#

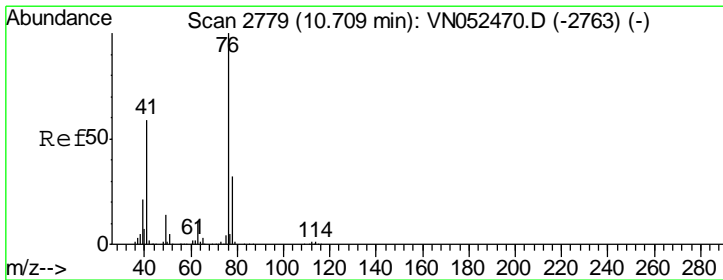
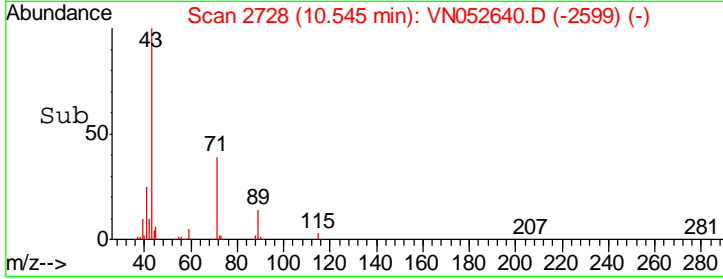
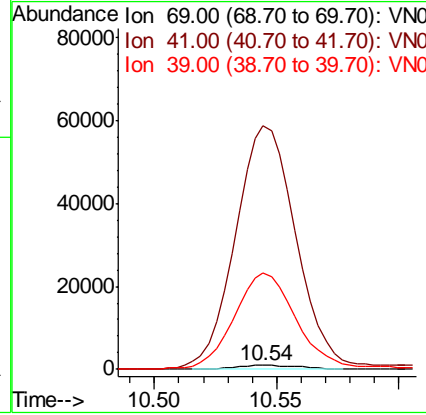
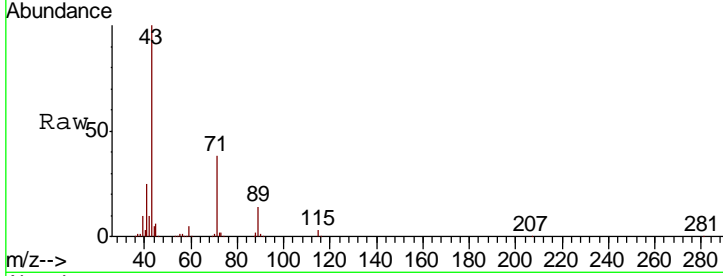




#56
 Ethyl methacrylate
 Concen: 2.810 ug/l
 RT: 10.54 min Scan# 2728
 Delta R.T. 0.12 min
 Lab File: VN052640.D
 Acq: 3 Dec 2018 19:10

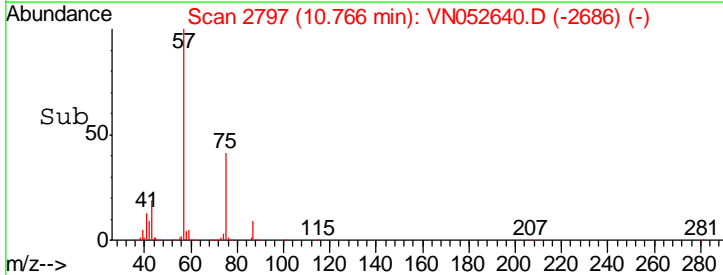
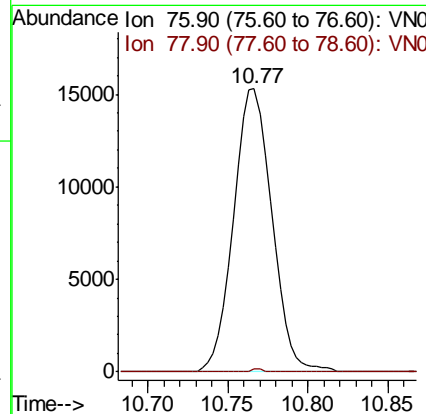
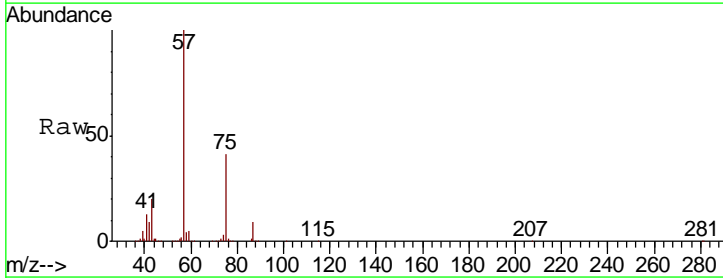
Instrument : MSVOA_N
 ClientSampled : PB115231ZHE#11

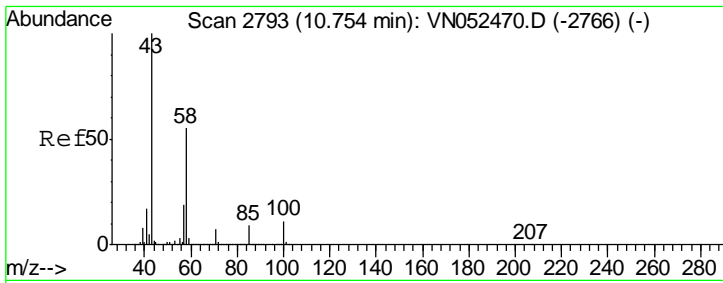
Tgt Ion	Resp	Lower	Upper
69	1871		
41	5434.7	52.6	79.0#
39	2222.8	25.9	38.9#



#57
 1,3-Dichloropropane
 Concen: 1.303 ug/l
 RT: 10.77 min Scan# 2797
 Delta R.T. 0.06 min
 Lab File: VN052640.D
 Acq: 3 Dec 2018 19:10

Tgt Ion	Resp	Lower	Upper
76	25037		
78	0.2	25.6	38.4#

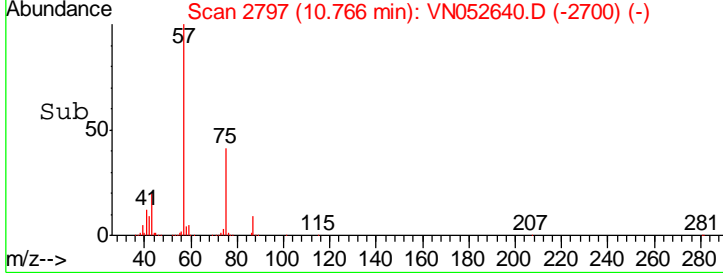
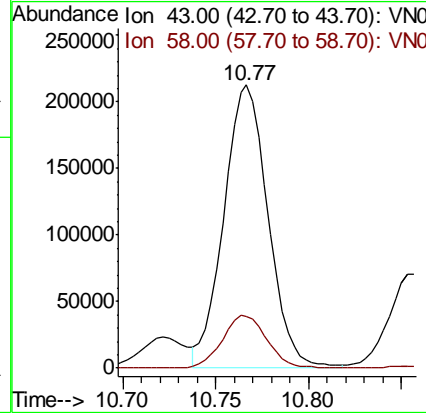
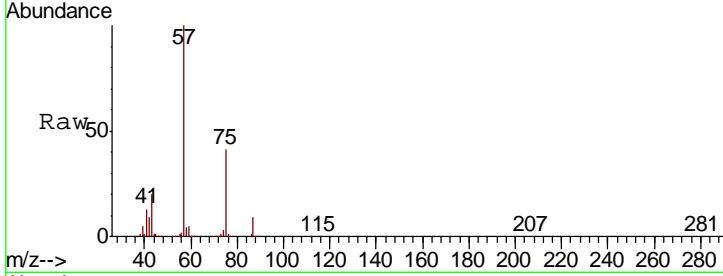




#59
 2-Hexanone
 Concen: 51.400 ug/l
 RT: 10.77 min Scan# 2797
 Delta R.T. 0.01 min
 Lab File: VN052640.D
 Acq: 3 Dec 2018 19:10

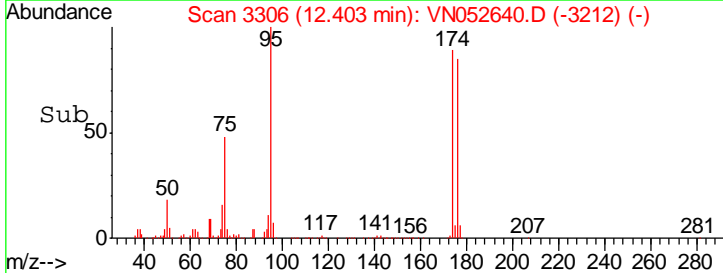
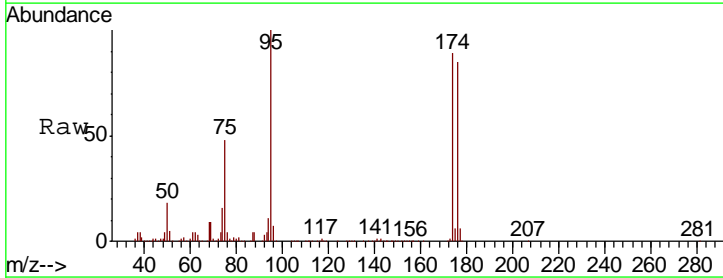
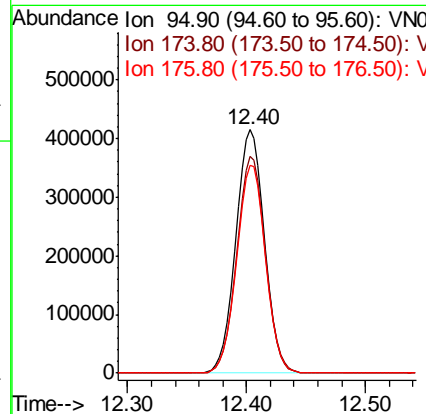
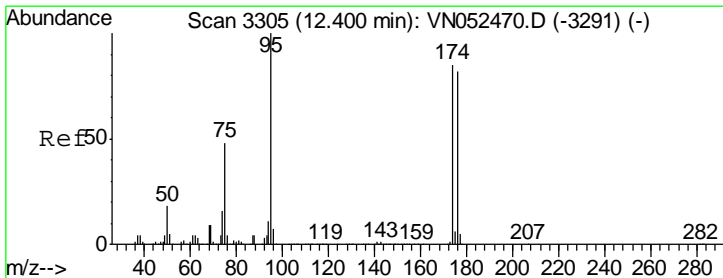
Instrument : MSVOA_N
 ClientSampled : PB115231ZHE#11

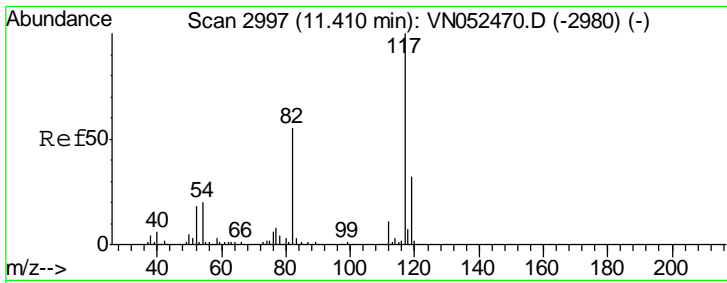
Tgt Ion	Resp	Lower	Upper
43	100		
58	19.1	27.4	82.0#



#62
 4-Bromofluorobenzene
 Concen: N.D. ug/l
 RT: 12.40 min Scan# 3306
 Delta R.T. 0.00 min
 Lab File: VN052640.D
 Acq: 3 Dec 2018 19:10

Tgt Ion	Resp	Lower	Upper
95	100		
174	89.0	0.0	173.0
176	86.0	0.0	166.2

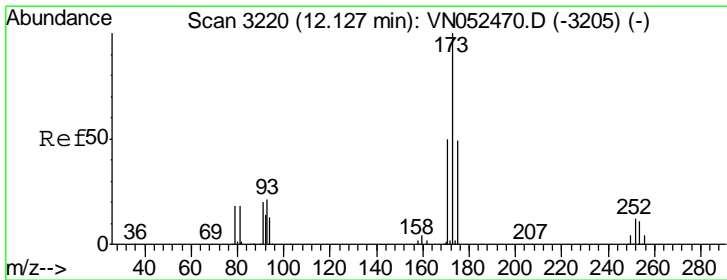
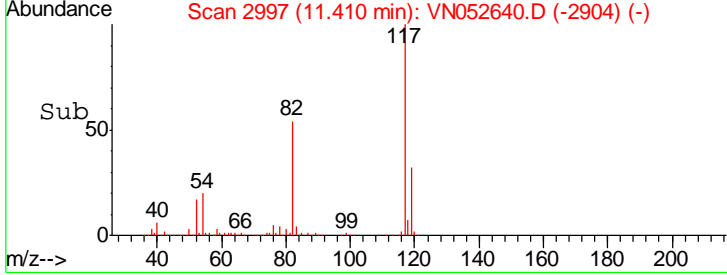
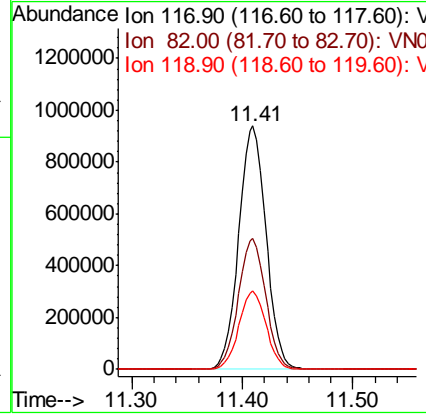
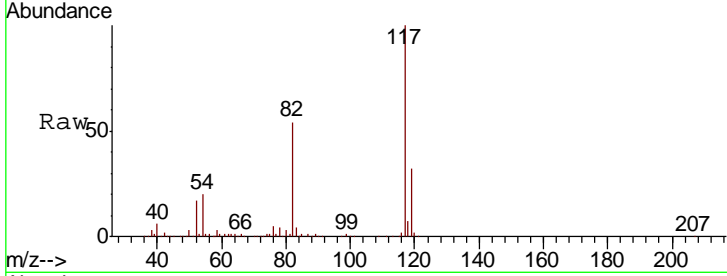




#63
 Chlorobenzene-d5
 Concen: 50.000 ug/l
 RT: 11.41 min Scan# 2997
 Delta R.T. -0.00 min
 Lab File: VN052640.D
 Acq: 3 Dec 2018 19:10

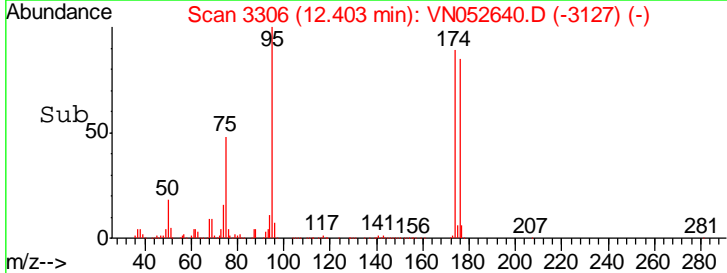
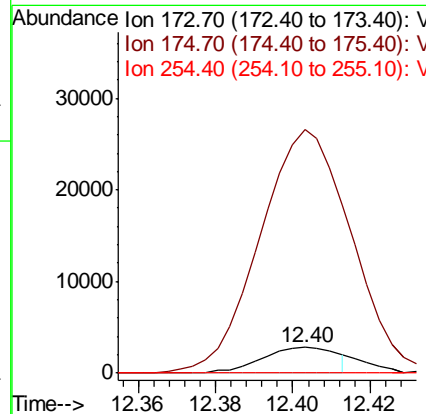
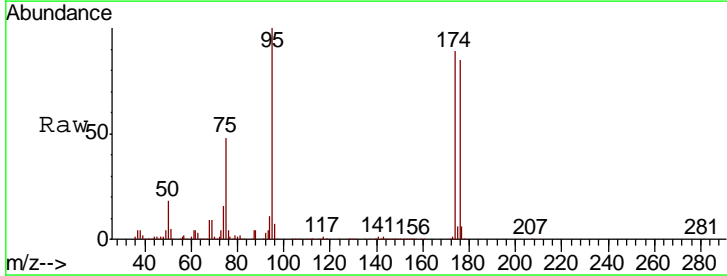
Instrument : MSVOA_N
 ClientSampled : PB115231ZHE#11

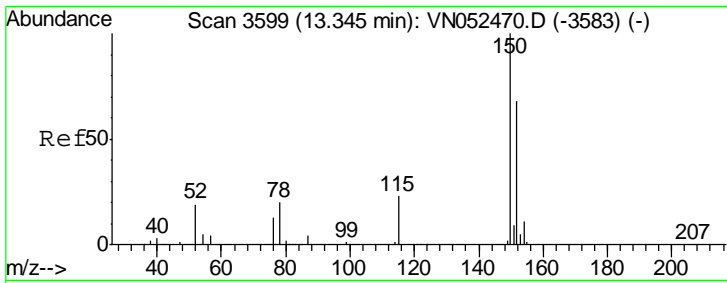
Tgt Ion	Resp	Lower	Upper
117	1612429		
82	53.7	43.6	65.4
119	32.0	25.4	38.2



#71
 Bromoform
 Concen: 0.496 ug/l
 RT: 12.40 min Scan# 3306
 Delta R.T. 0.28 min
 Lab File: VN052640.D
 Acq: 3 Dec 2018 19:10

Tgt Ion	Resp	Lower	Upper
173	3795		
175	966.1	24.4	73.2#
254	0.0	0.1	0.1#

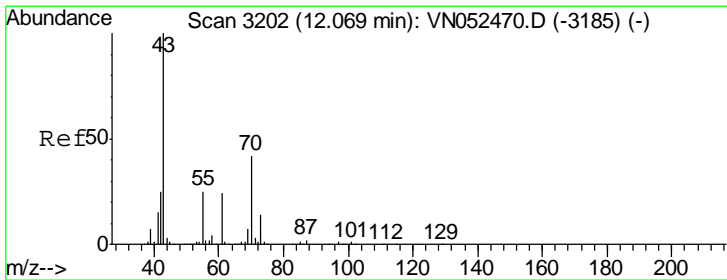
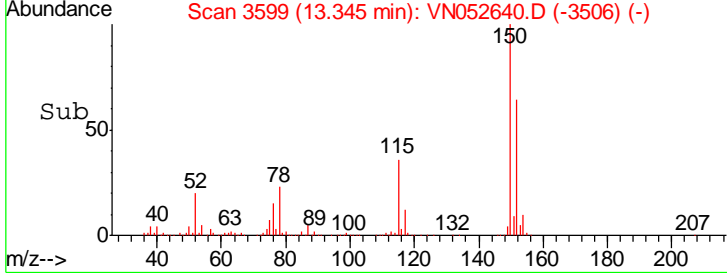
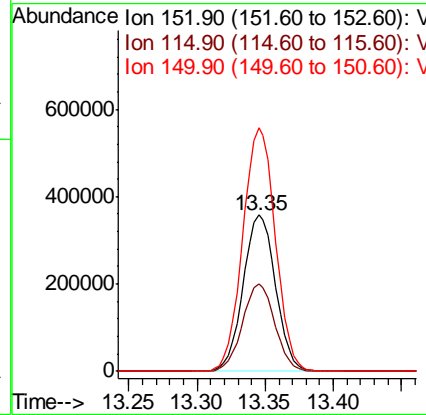
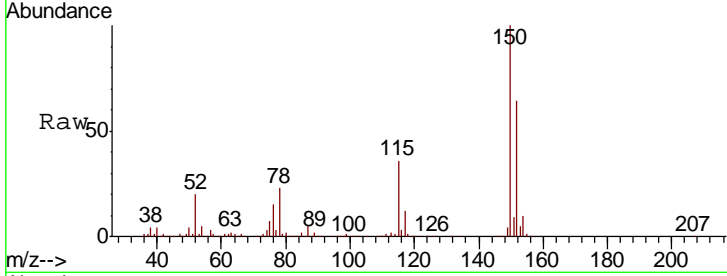




#72
 1,4-Dichlorobenzene-d4
 Concen: 50.000 ug/l
 RT: 13.35 min Scan# 3599
 Delta R.T. -0.00 min
 Lab File: VN052640.D
 Acq: 3 Dec 2018 19:10

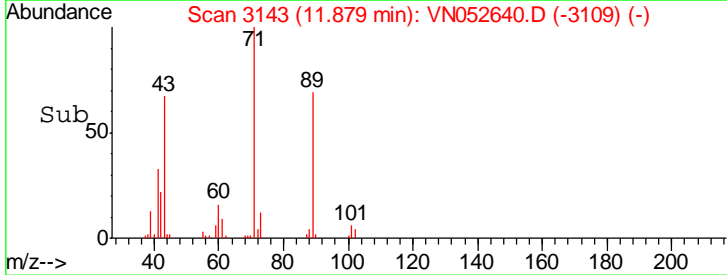
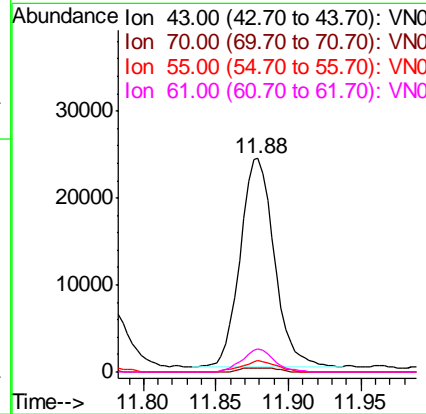
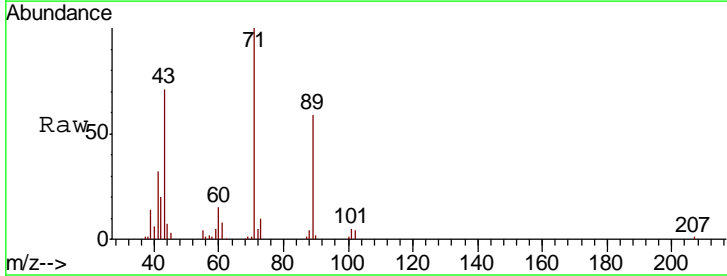
Instrument :
 MSVOA_N
 ClientSampled :
 PB115231ZHE#11

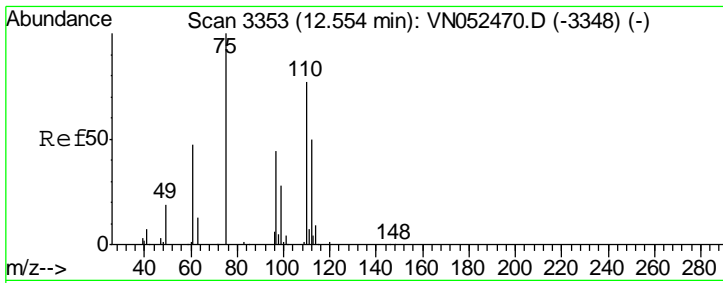
Tgt Ion	Resp	Lower	Upper
152	100		
115	56.1	28.4	85.2
150	156.4	0.0	346.0



#74
 N-amyl acetate
 Concen: 3.333 ug/l
 RT: 11.88 min Scan# 3143
 Delta R.T. -0.19 min
 Lab File: VN052640.D
 Acq: 3 Dec 2018 19:10

Tgt Ion	Resp	Lower	Upper
43	100		
70	1.1	33.8	50.8#
55	5.4	20.0	30.0#
61	10.4	19.7	29.5#

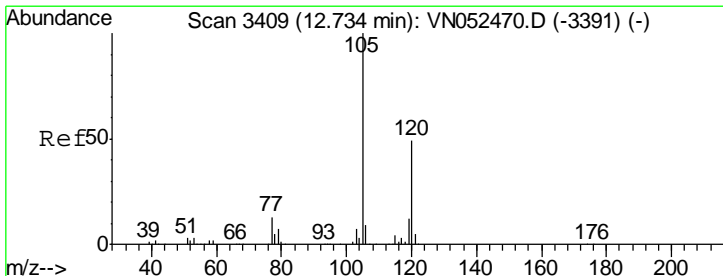
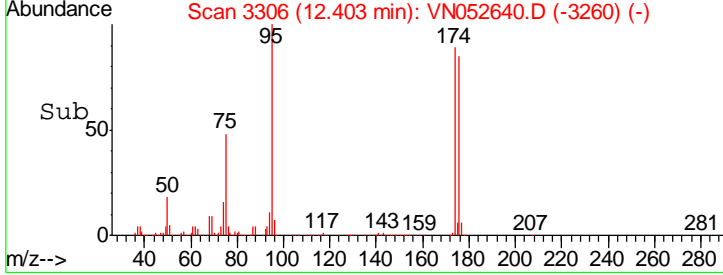
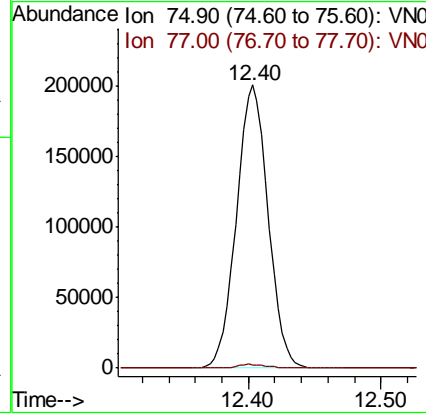
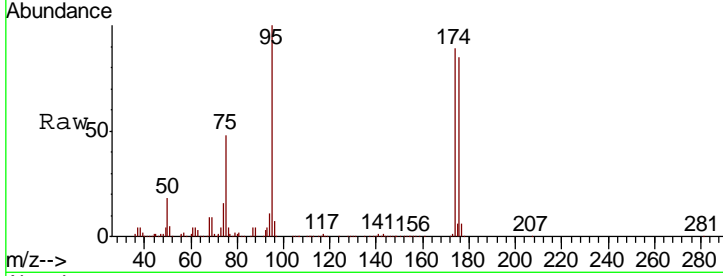




#76
 1,2,3-Trichloropropane
 Concen: 36.449 ug/l
 RT: 12.40 min Scan# 3306
 Delta R.T. -0.15 min
 Lab File: VN052640.D
 Acq: 3 Dec 2018 19:10

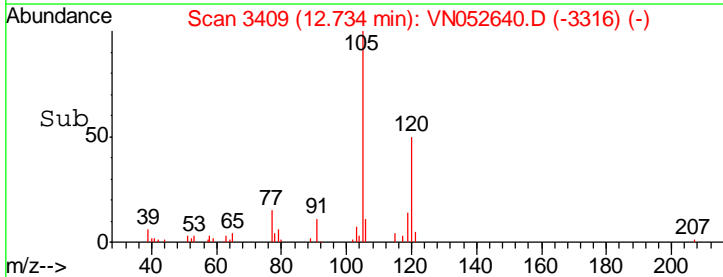
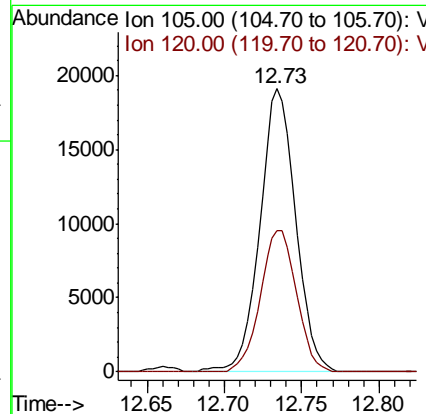
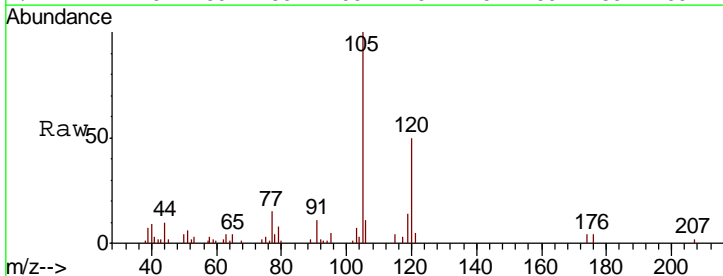
Instrument :
 MSVOA_N
 ClientSampled :
 PB115231ZHE#11

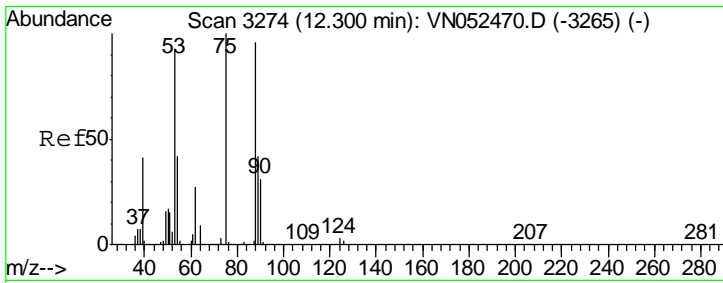
Tgt Ion: 75 Resp: 331259
 Ion Ratio Lower Upper
 75 100
 77 1.3 0.0 0.0#



#80
 1,3,5-Trimethylbenzene
 Concen: 0.833 ug/l
 RT: 12.73 min Scan# 3409
 Delta R.T. -0.00 min
 Lab File: VN052640.D
 Acq: 3 Dec 2018 19:10

Tgt Ion: 105 Resp: 30712
 Ion Ratio Lower Upper
 105 100
 120 50.5 24.3 73.0

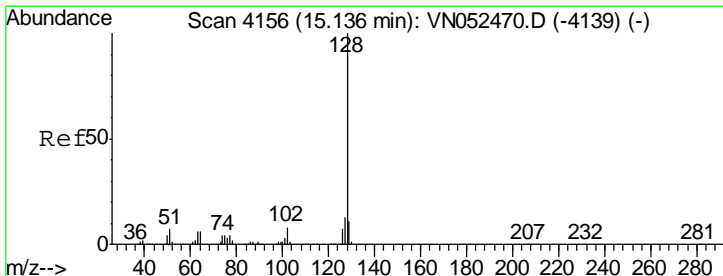
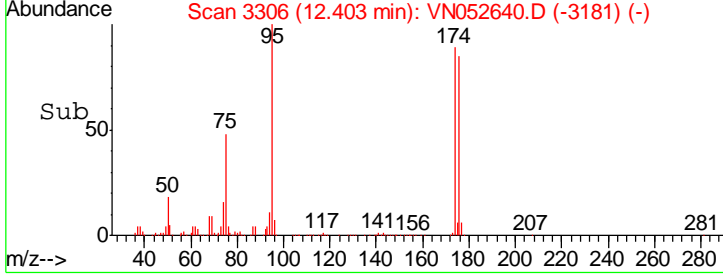
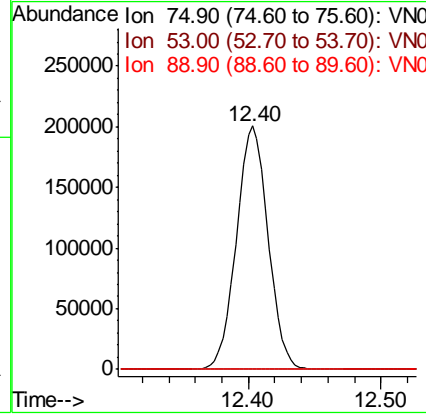
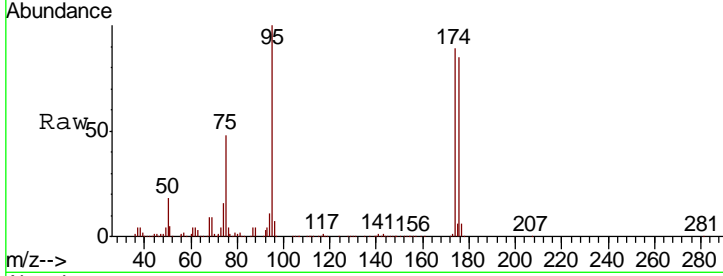




#81
 trans-1,4-Dichloro-2-butene
 Concen: 121.722 ug/l
 RT: 12.40 min Scan# 3306
 Delta R.T. 0.10 min
 Lab File: VN052640.D
 Acq: 3 Dec 2018 19:10

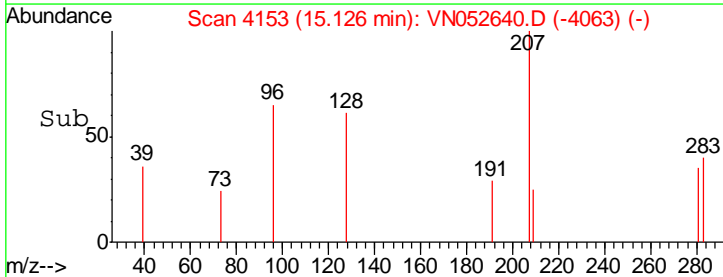
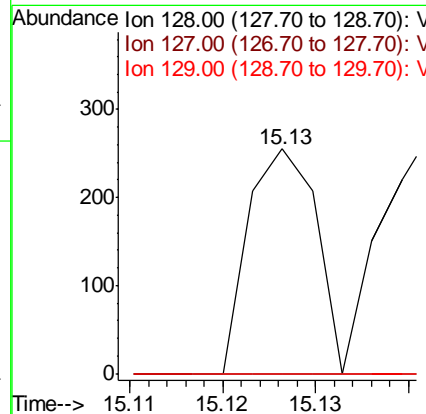
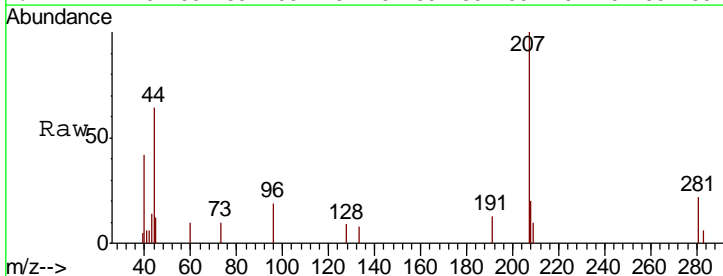
Instrument : MSVOA_N
 ClientSampled : PB115231ZHE#11

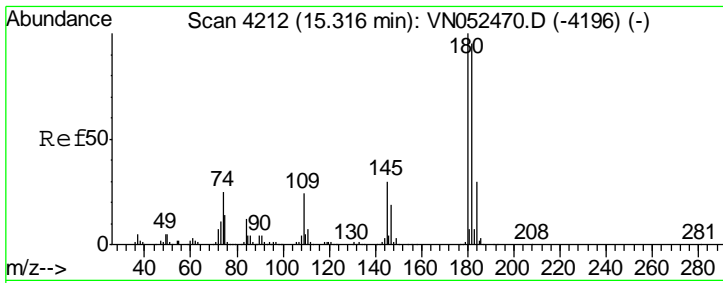
Tgt Ion	Resp	Lower	Upper
75	100		
53	0.0	77.4	116.0#
89	0.0	35.4	53.2#



#95
 Naphthalene
 Concen: 3.434 ug/l
 RT: 15.13 min Scan# 4153
 Delta R.T. -0.01 min
 Lab File: VN052640.D
 Acq: 3 Dec 2018 19:10

Tgt Ion	Resp	Lower	Upper
128	100		
127	0.0	10.2	15.2#
129	0.0	8.7	13.1#

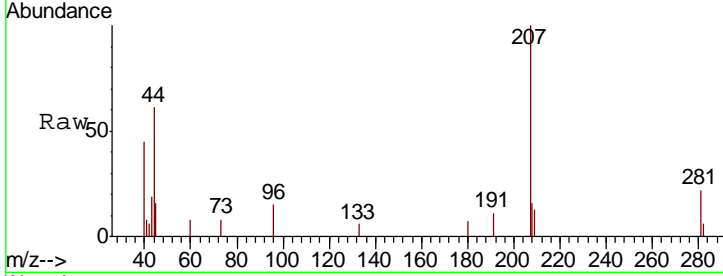




#96
 1,2,3-Trichlorobenzene
 Concen: 2.735 ug/l
 RT: 15.32 min Scan# 4212
 Delta R.T. 0.00 min
 Lab File: VN052640.D
 Acq: 3 Dec 2018 19:10

Instrument : MSVOA_N
 ClientSampled : PB115231ZHE#11

Tot Ion	Ratio	Lower	Upper
180	100		
182	0.0	47.8	143.3#
145	0.0	15.2	45.5#



Abundance Ion 179.80 (179.50 to 180.50): V
 Ion 181.80 (181.50 to 182.50): V
 Ion 144.90 (144.60 to 145.60): V

