

Data Path : Z:\VOASRV\HPCHEM1\MSVOA N\DATA\VN120318\
 Data File : VN052639.D
 Acq On : 3 Dec 2018 18:43
 Operator : MD\SY
 Sample : PB115231ZHE#10
 Misc : 5.00mL/MSVOA N/WATER
 ALS Vial : 22 Sample Multiplier: 28

Instrument :
 MSVOA_N
 ClientSampleId :
 PB115231ZHE#10

Quant Time: Dec 04 01:28:59 2018
 Quant Method : Z:\VOASRV\HPCHEM1\MSVOA_N\METHODS\82N112718W.M
 Quant Title : SW846 8260
 QLast Update : Mon Dec 03 03:24:02 2018
 Response via : Initial Calibration

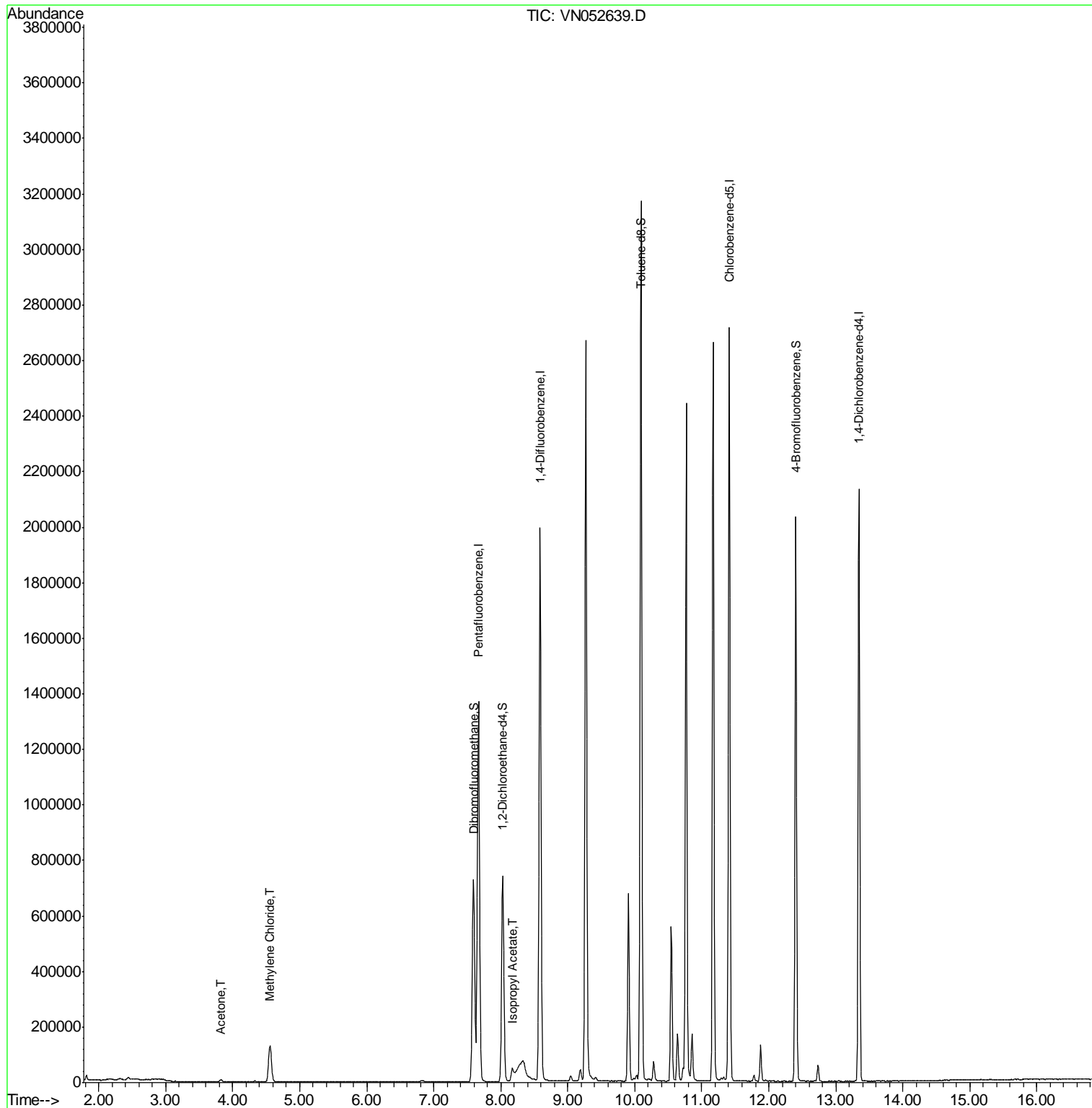
Internal Standards	R.T.	QIon	Response	Conc	Units	Dev(Min)
1) Pentafluorobenzene	7.67	168	1197771	50.00	ug/l	0.00
34) 1,4-Difluorobenzene	8.59	114	1846149	50.00	ug/l	0.00
63) Chlorobenzene-d5	11.41	117	1633185	50.00	ug/l	0.00
72) 1,4-Dichlorobenzene-d4	13.35	152	607955	50.00	ug/l	0.00
System Monitoring Compounds						
33) 1,2-Dichloroethane-d4	8.03	65	630074	48.31	ug/l	0.00
Spiked Amount	50.000		Recovery	=	96.62%	
35) Dibromofluoromethane	7.59	113	566086	49.74	ug/l	0.00
Spiked Amount	50.000		Recovery	=	99.48%	
50) Toluene-d8	10.09	98	2262177	51.06	ug/l	0.00
Spiked Amount	50.000		Recovery	=	102.12%	
62) 4-Bromofluorobenzene	12.40	95	706427	47.45	ug/l	0.00
Spiked Amount	50.000		Recovery	=	94.90%	
Target Compounds						
16) Acetone	3.82	43	16124	4.687	ug/l	92
20) Methylene Chloride	4.56	84	100830	7.491	ug/l	98
43) Isopropyl Acetate	8.17	43	67511	3.749	ug/l #	75

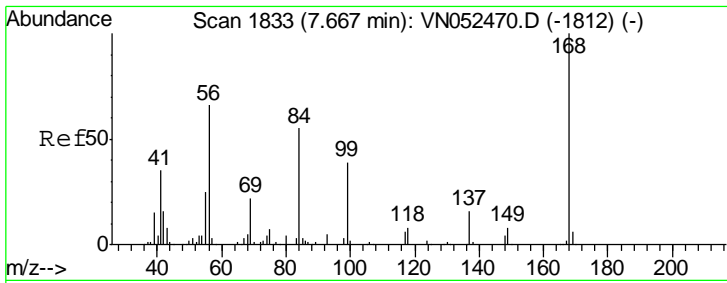
(#) = qualifier out of range (m) = manual integration (+) = signals summed

Data Path : Z:\VOASRV\HPCHEM1\MSVOA N\DATA\VN120318\
Data File : VN052639.D
Acq On : 3 Dec 2018 18:43
Operator : MD\SY
Sample : PB115231ZHE#10
Misc : 5.00mL/MSVOA N/WATER
ALS Vial : 22 Sample Multiplier: 28

Instrument :
MSVOA_N
ClientSampleId :
PB115231ZHE#10

Quant Time: Dec 04 01:28:59 2018
Quant Method : Z:\VOASRV\HPCHEM1\MSVOA_N\METHODS\82N112718W.M
Quant Title : SW846 8260
QLast Update : Mon Dec 03 03:24:02 2018
Response via : Initial Calibration

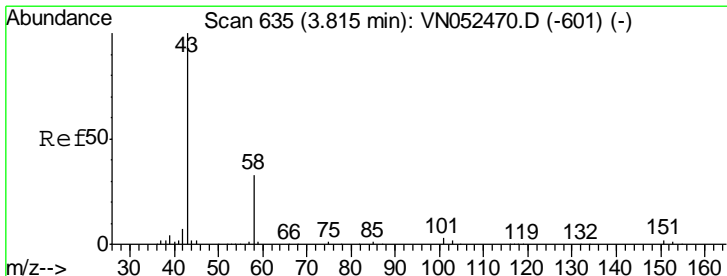
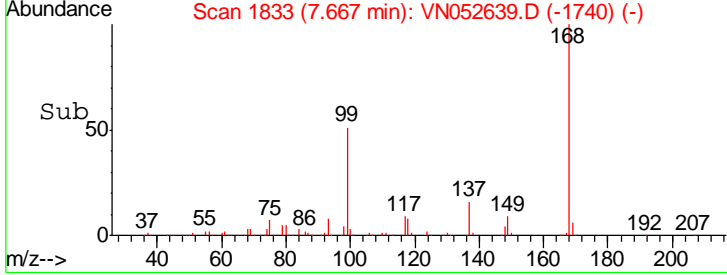
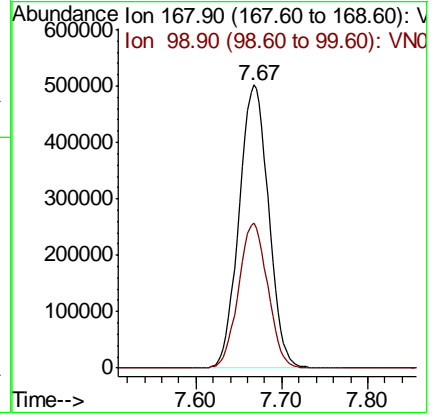
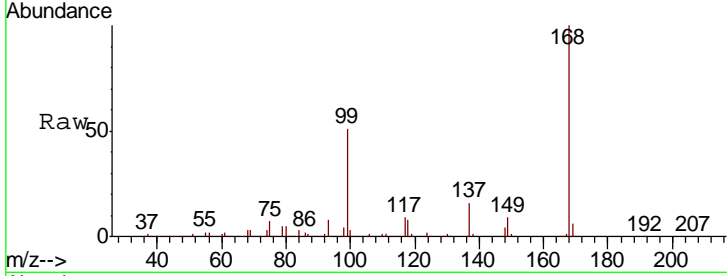




#1
 Pentafluorobenzene
 Concen: 50.000 ug/l
 RT: 7.67 min Scan# 1833
 Delta R.T. -0.00 min
 Lab File: VN052639.D
 Acq: 3 Dec 2018 18:43

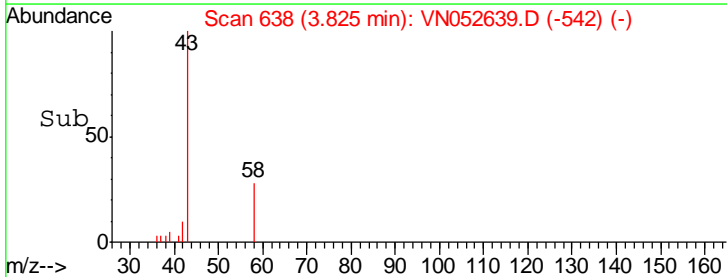
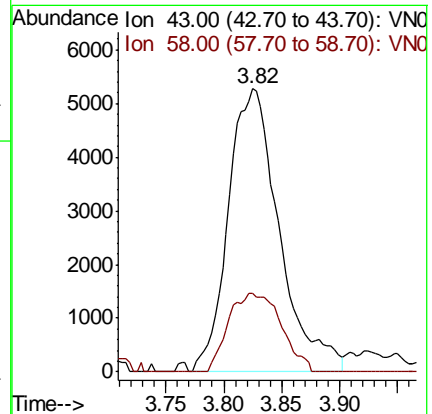
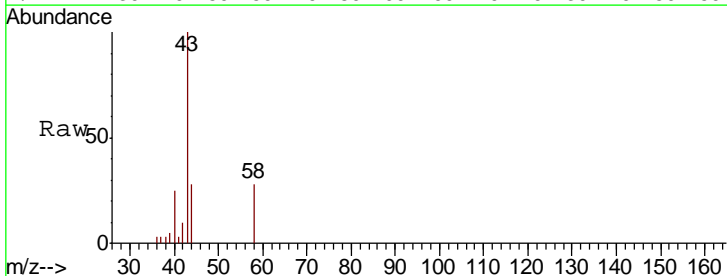
Instrument : MSVOA_N
 ClientSampleID : PB115231ZHE#10

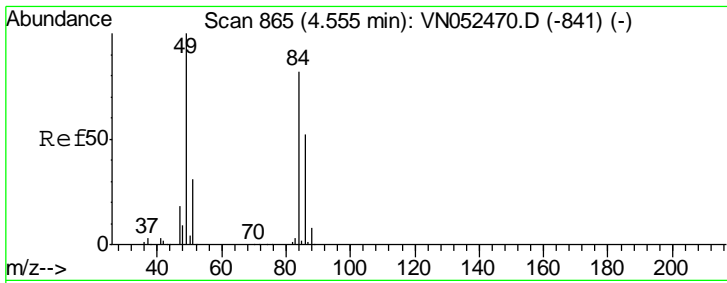
Tgt Ion: 168 Resp: 1197771
 Ion Ratio Lower Upper
 168 100
 99 51.2 41.7 62.5



#16
 Acetone
 Concen: 4.687 ug/l
 RT: 3.82 min Scan# 638
 Delta R.T. 0.01 min
 Lab File: VN052639.D
 Acq: 3 Dec 2018 18:43

Tgt Ion: 43 Resp: 16124
 Ion Ratio Lower Upper
 43 100
 58 27.9 26.0 39.0

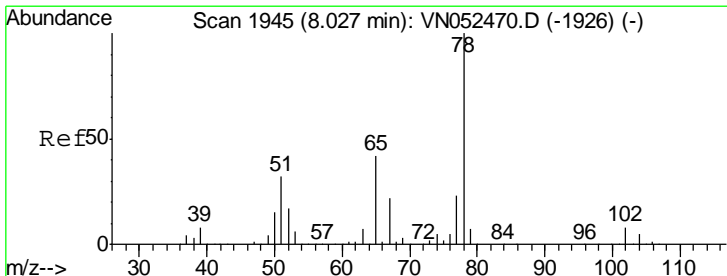
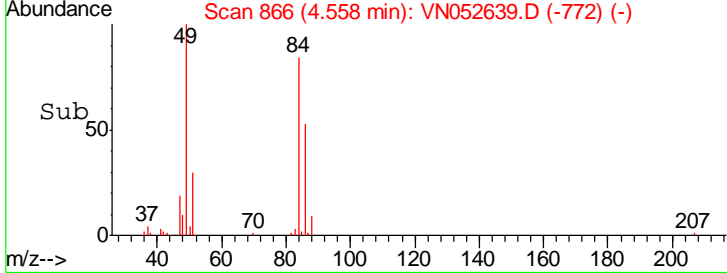
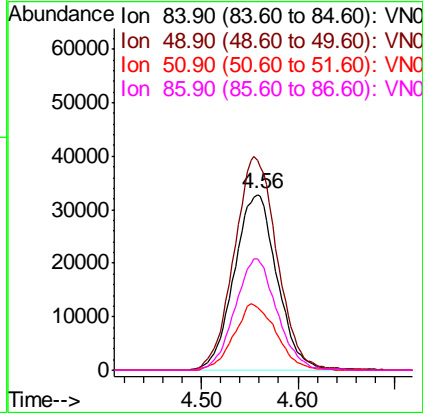
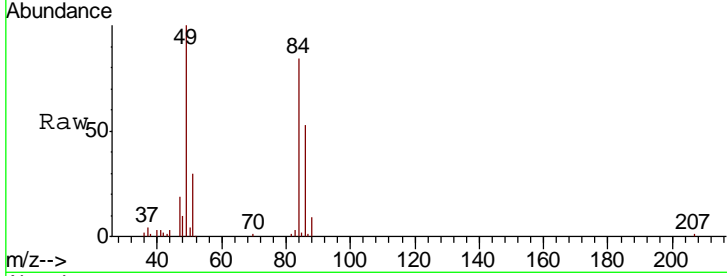




#20
 Methylene Chloride
 Concen: 7.491 ug/l
 RT: 4.56 min Scan# 866
 Delta R.T. 0.00 min
 Lab File: VN052639.D
 Acq: 3 Dec 2018 18:43

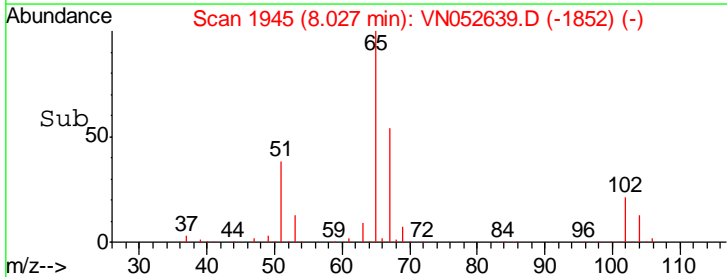
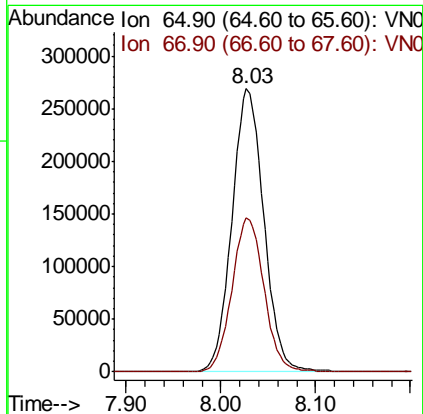
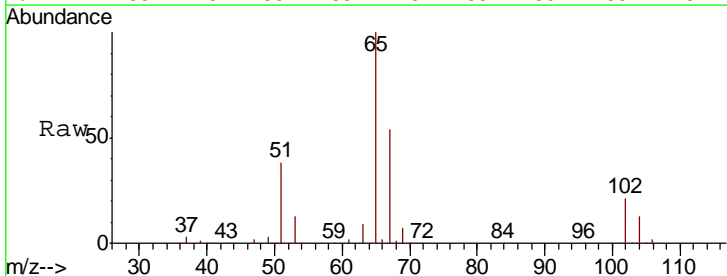
Instrument : MSVOA_N
 ClientSampleId : PB115231ZHE#10

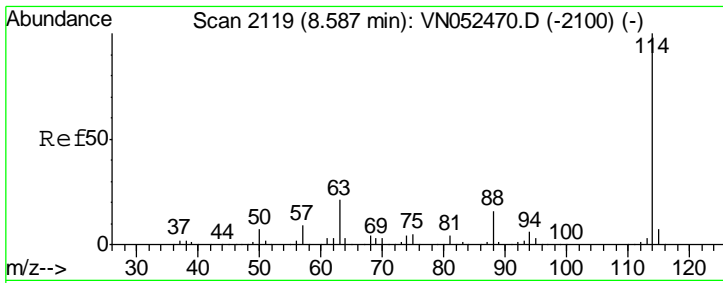
Tgt Ion	Resp	Lower	Upper
84	100830		
49	119.5	98.0	147.0
51	36.0	30.1	45.1
86	63.4	50.7	76.1



#33
 1,2-Dichloroethane-d4
 Concen: Below ug/l
 RT: 8.03 min Scan# 1945
 Delta R.T. -0.00 min
 Lab File: VN052639.D
 Acq: 3 Dec 2018 18:43

Tgt Ion	Resp	Lower	Upper
65	630074		
67	54.8	0.0	109.8

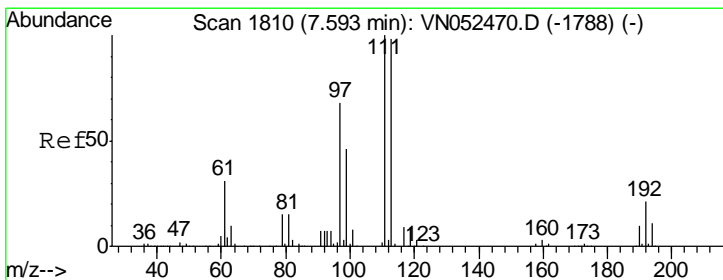
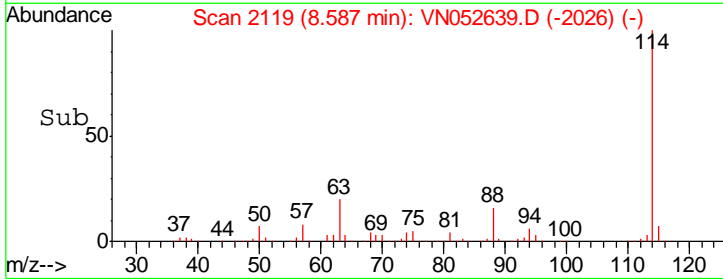
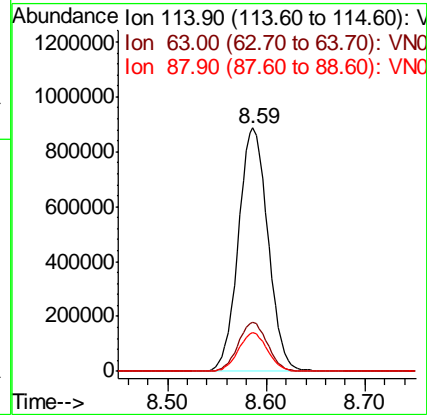
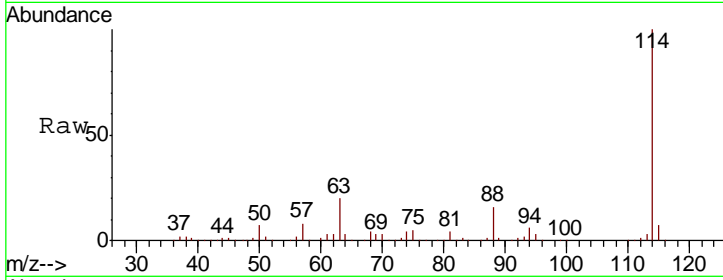




#34
 1,4-Difluorobenzene
 Concen: 50.000 ug/l
 RT: 8.59 min Scan# 2119
 Delta R.T. -0.00 min
 Lab File: VN052639.D
 Acq: 3 Dec 2018 18:43

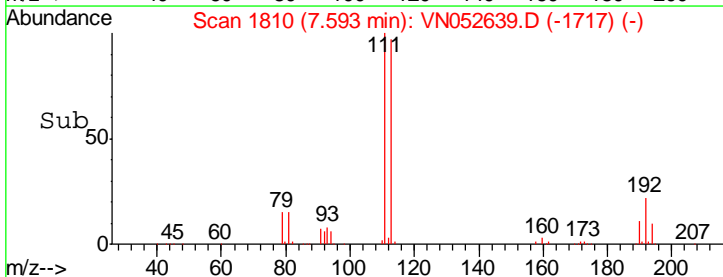
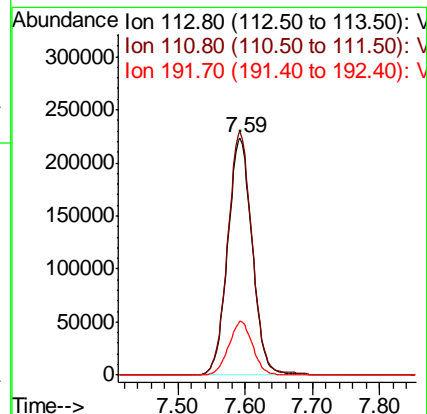
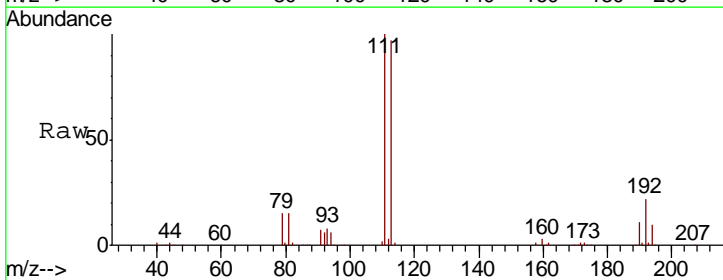
Instrument :
 MSVOA_N
 ClientSampleId :
 PB115231ZHE#10

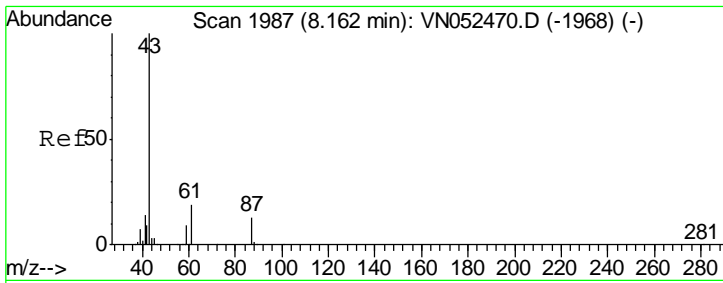
Tgt Ion	Resp	Lower	Upper
114	1846149		
63	20.0	0.0	41.8
88	15.7	0.0	31.6



#35
 Dibromofluoromethane
 Concen: 50.000 ug/l
 RT: 7.59 min Scan# 1810
 Delta R.T. -0.00 min
 Lab File: VN052639.D
 Acq: 3 Dec 2018 18:43

Tgt Ion	Resp	Lower	Upper
113	566086		
111	102.8	82.0	123.0
192	22.1	17.0	25.6

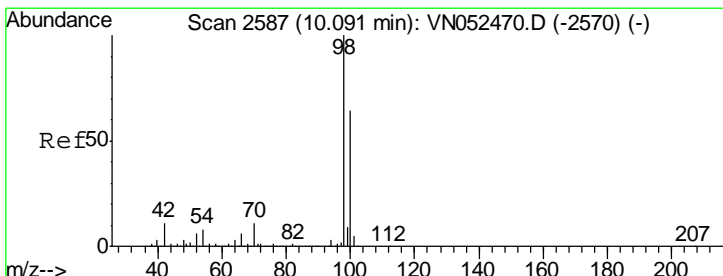
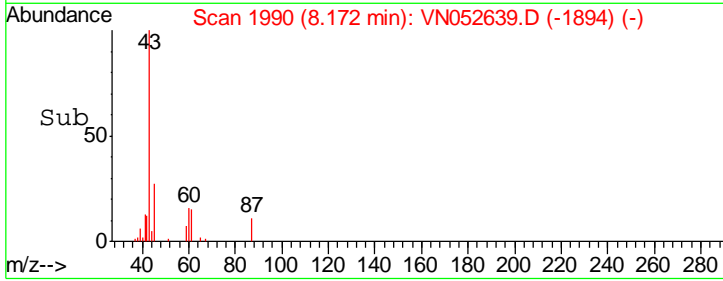
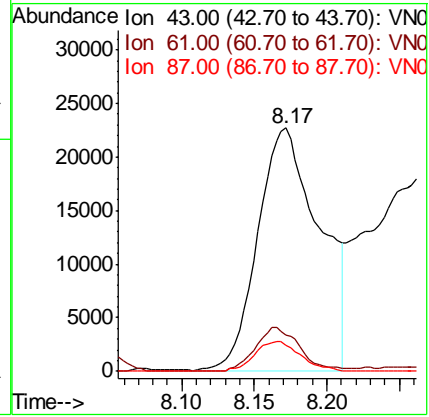
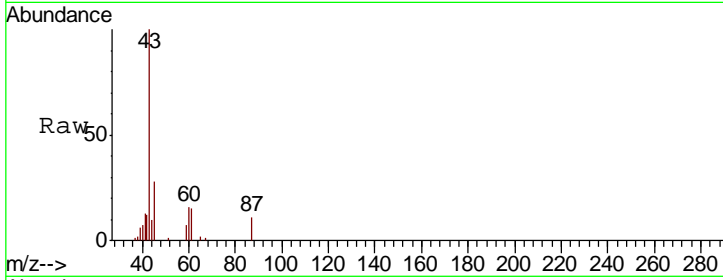




#43
 Isopropyl Acetate
 Concen: 3.749 ug/l
 RT: 8.17 min Scan# 1990
 Delta R.T. 0.01 min
 Lab File: VN052639.D
 Acq: 3 Dec 2018 18:43

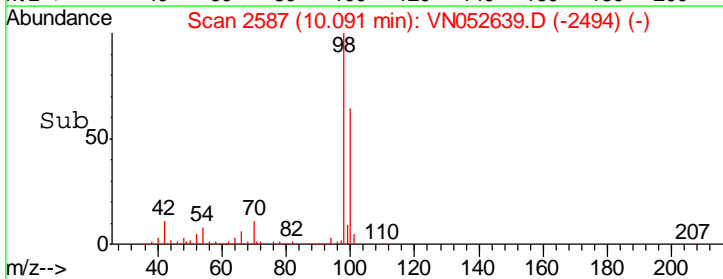
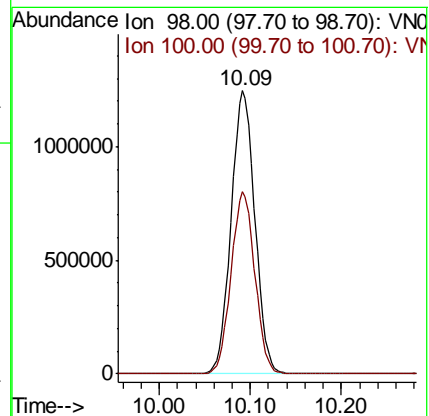
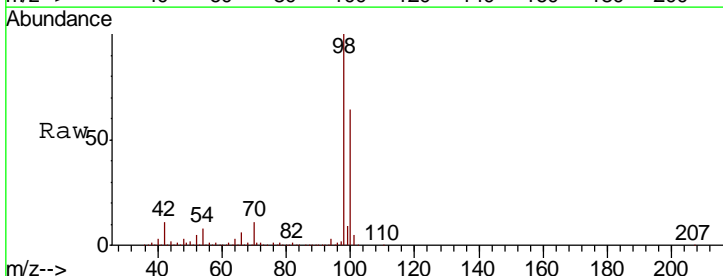
Instrument :
 MSVOA_N
ClientSampled :
 PB115231ZHE#10

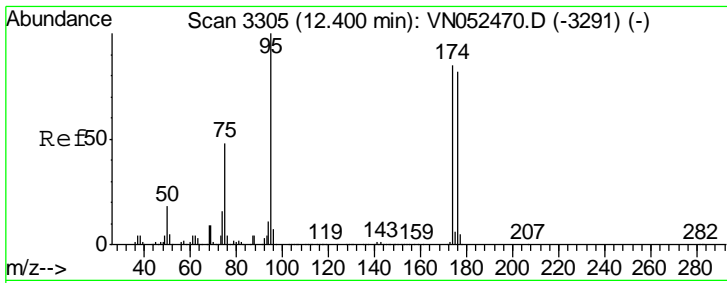
Tgt Ion	Resp	Lower	Upper
43	67511		
61	13.2	24.1	36.1#
87	9.1	10.6	15.8#



#50
 Toluene-d8
 Concen: N.D. ug/l
 RT: 10.09 min Scan# 2587
 Delta R.T. -0.00 min
 Lab File: VN052639.D
 Acq: 3 Dec 2018 18:43

Tgt Ion	Resp	Lower	Upper
98	2262177		
100	64.4	51.3	76.9

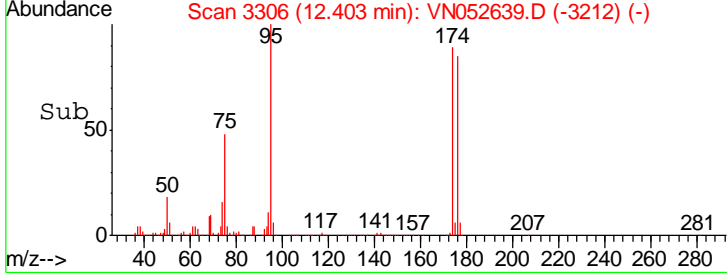
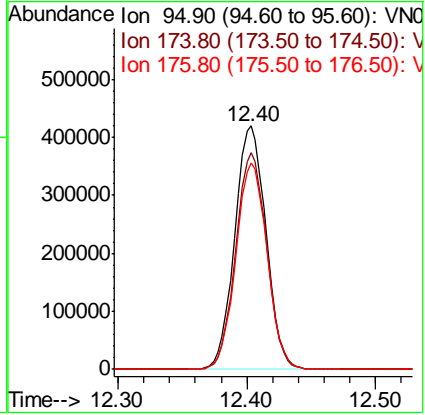
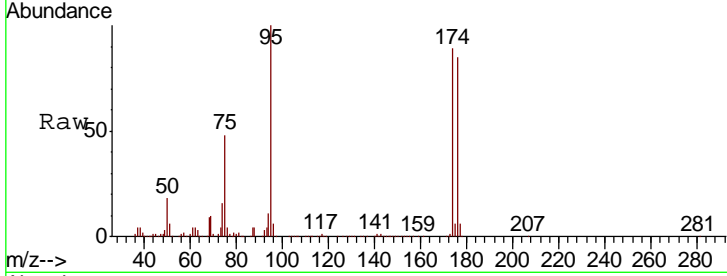




#62
 4-Bromofluorobenzene
 Concen: N.D. ug/l
 RT: 12.40 min Scan# 3306
 Delta R.T. 0.00 min
 Lab File: VN052639.D
 Acq: 3 Dec 2018 18:43

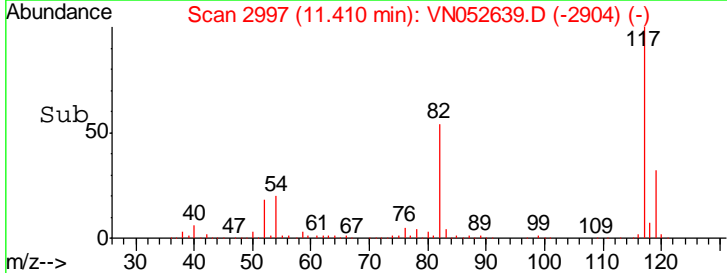
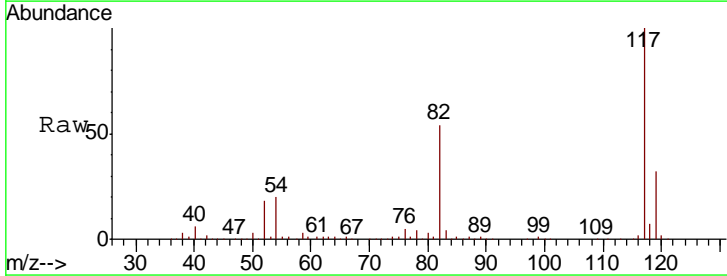
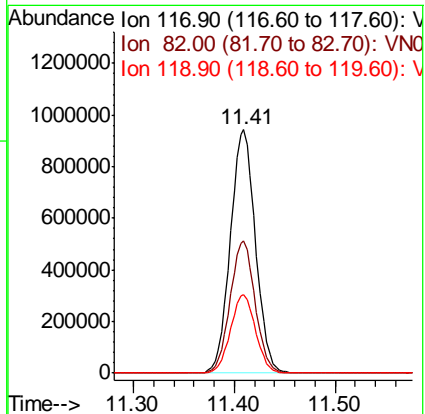
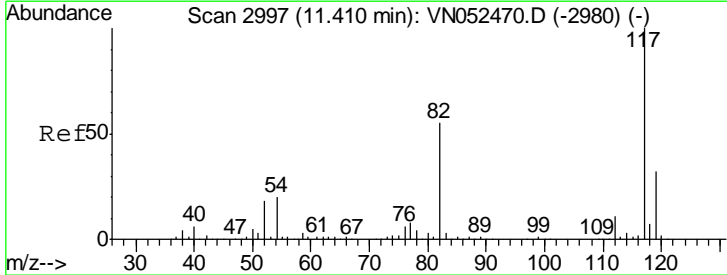
Instrument : MSVOA_N
 ClientSampled : PB115231ZHE#10

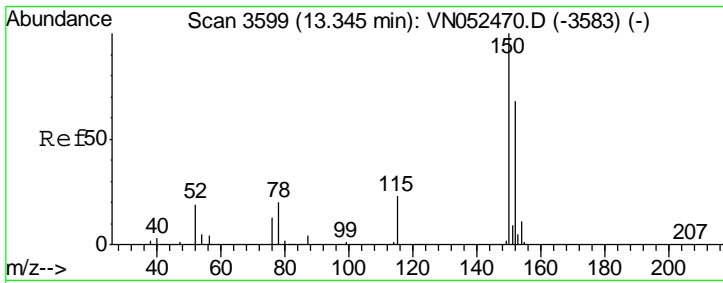
Tgt Ion	Resp	Lower	Upper
95	100		
174	88.5	0.0	173.0
176	84.9	0.0	166.2



#63
 Chlorobenzene-d5
 Concen: 50.000 ug/l
 RT: 11.41 min Scan# 2997
 Delta R.T. -0.00 min
 Lab File: VN052639.D
 Acq: 3 Dec 2018 18:43

Tgt Ion	Resp	Lower	Upper
117	100		
82	54.2	43.6	65.4
119	32.1	25.4	38.2





#72
 1,4-Dichlorobenzene-d4
 Concen: 50.000 ug/l
 RT: 13.35 min Scan# 3599
 Delta R.T. -0.00 min
 Lab File: VN052639.D
 Acq: 3 Dec 2018 18:43

Instrument : MSVOA_N
 ClientSampled : PB115231ZHE#10

Tot Ion	Resp	Lower	Upper
152	100		
115	56.7	28.4	85.2
150	156.8	0.0	346.0

