

Data Path : Z:\voasrv\HPCHEM1\MSVOA_N\Data\VN120321\
 Data File : VN069738.D
 Acq On : 4 Dec 2021 00:34
 Operator : JC/MD
 Sample : M4922-13 20X
 Misc : 5.00mL/MSVOA_N/WATER
 ALS Vial : 33 Sample Multiplier: 1

Instrument :
 MSVOA_N
 ClientSampleId :
 DUP04-20211130

Quant Time: Dec 04 05:39:53 2021
 Quant Method : Z:\voasrv\HPCHEM1\MSVOA_N\methods\82N120221W.M
 Quant Title : SW846 8260
 QLast Update : Fri Dec 03 08:46:47 2021
 Response via : Initial Calibration

Compound	R.T.	QIon	Response	Conc	Units	Dev(Min)

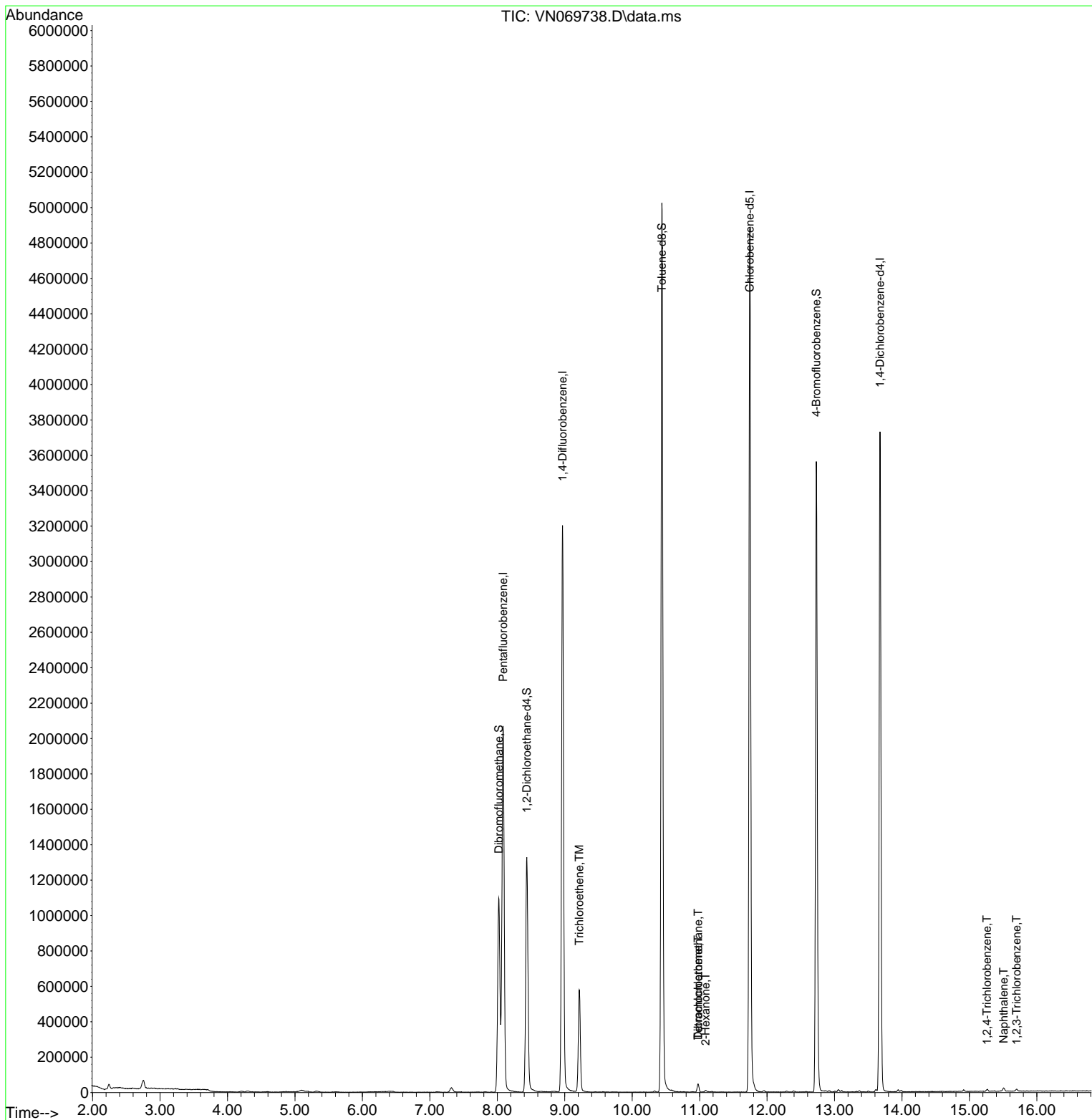
Internal Standards						
1) Pentafluorobenzene	8.086	168	1539421	50.000	ug/l	# 0.00
34) 1,4-Difluorobenzene	8.968	114	2667103	50.000	ug/l	0.00
63) Chlorobenzene-d5	11.744	117	2716959	50.000	ug/l	0.00
72) 1,4-Dichlorobenzene-d4	13.675	152	1013093	50.000	ug/l	0.00
System Monitoring Compounds						
33) 1,2-Dichloroethane-d4	8.437	65	1163911	48.968	ug/l	0.00
Spiked Amount	50.000	Range	61 - 141	Recovery	=	97.940%
35) Dibromofluoromethane	8.021	113	792583	47.443	ug/l	0.00
Spiked Amount	50.000	Range	69 - 133	Recovery	=	94.880%
50) Toluene-d8	10.440	98	3425999	51.073	ug/l	0.00
Spiked Amount	50.000	Range	65 - 126	Recovery	=	102.140%
62) 4-Bromofluorobenzene	12.731	95	1254015	51.601	ug/l	0.00
Spiked Amount	50.000	Range	58 - 135	Recovery	=	103.200%
Target Compounds						
						Qvalue
44) Trichloroethene	9.215	130	202634	10.939	ug/l	89
59) 2-Hexanone	11.087	43	8998	0.328	ug/l	78
60) Dibromochloromethane	10.979	129	10184	2.850	ug/l #	11
64) Tetrachloroethene	10.979	164	10447	0.567	ug/l	90
93) 1,2,4-Trichlorobenzene	15.263	180	4206	3.116	ug/l	82
95) Naphthalene	15.507	128	16943	4.300	ug/l	99
96) 1,2,3-Trichlorobenzene	15.700	180	4307	2.689	ug/l #	57

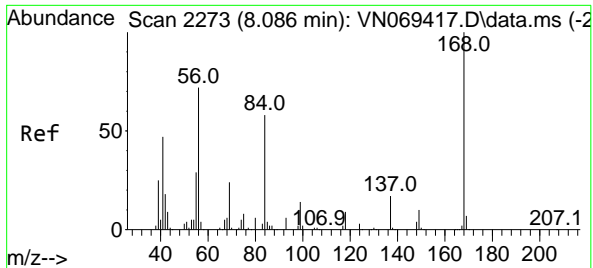
(#) = qualifier out of range (m) = manual integration (+) = signals summed

Data Path : Z:\voasrv\HPCHEM1\MSVOA_N\Data\VN120321\
 Data File : VN069738.D
 Acq On : 4 Dec 2021 00:34
 Operator : JC/MD
 Sample : M4922-13 20X
 Misc : 5.00mL/MSVOA_N/WATER
 ALS Vial : 33 Sample Multiplier: 1

Instrument :
 MSVOA_N
 ClientSampleId :
 DUP04-20211130

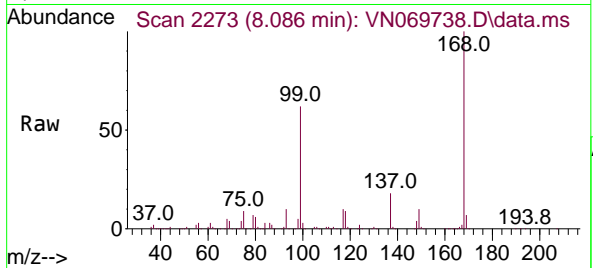
Quant Time: Dec 04 05:39:53 2021
 Quant Method : Z:\voasrv\HPCHEM1\MSVOA_N\methods\82N120221W.M
 Quant Title : SW846 8260
 QLast Update : Fri Dec 03 08:46:47 2021
 Response via : Initial Calibration



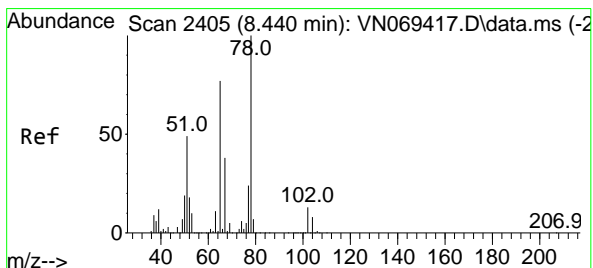
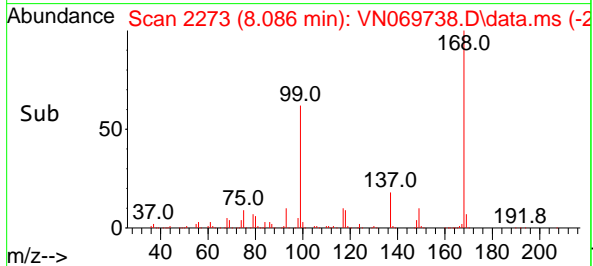
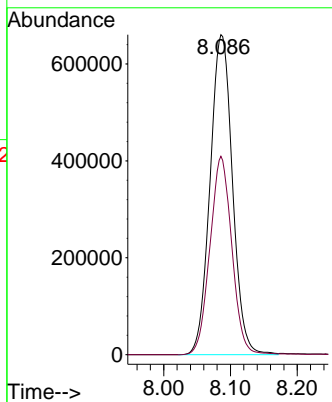


#1
 Pentafluorobenzene
 Concen: 50.000 ug/l
 RT: 8.086 min Scan# 21
 Delta R.T. -0.000 min
 Lab File: VN069738.D
 Acq: 4 Dec 2021 00:34

Instrument : MSVOA_N
 ClientSampleId : DUP04-20211130

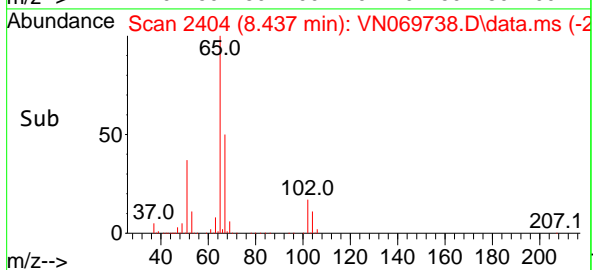
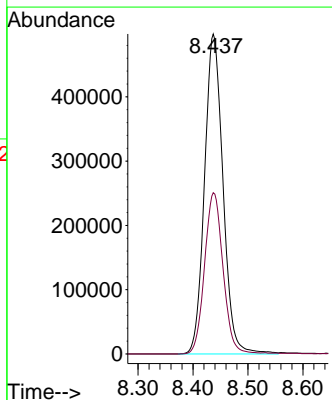
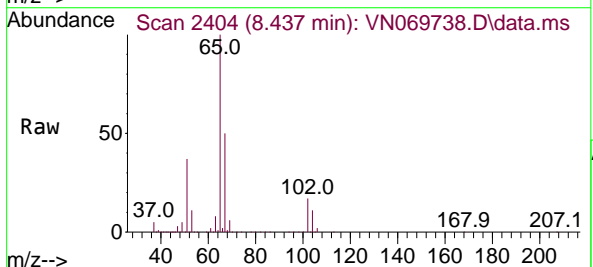


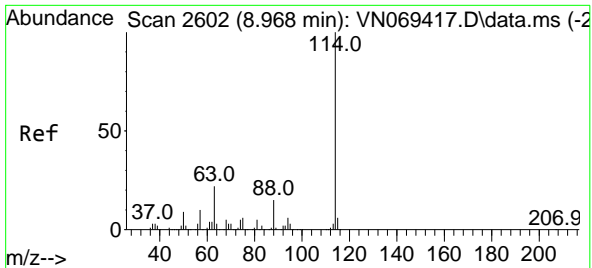
Tgt Ion:168 Resp: 1539421
 Ion Ratio Lower Upper
 168 100
 99 62.0 41.3 61.9#



#33
 1,2-Dichloroethane-d4
 Concen: 48.968 ug/l
 RT: 8.437 min Scan# 2404
 Delta R.T. 0.000 min
 Lab File: VN069738.D
 Acq: 4 Dec 2021 00:34

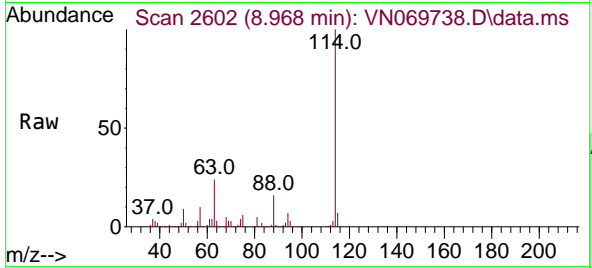
Tgt Ion: 65 Resp: 1163911
 Ion Ratio Lower Upper
 65 100
 67 50.3 0.0 103.0



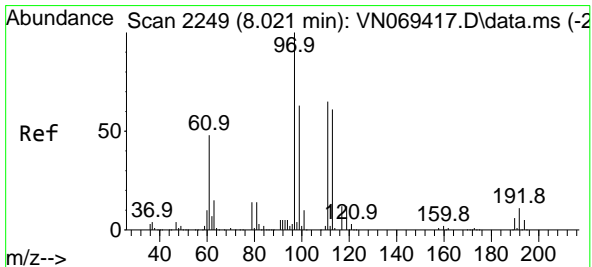
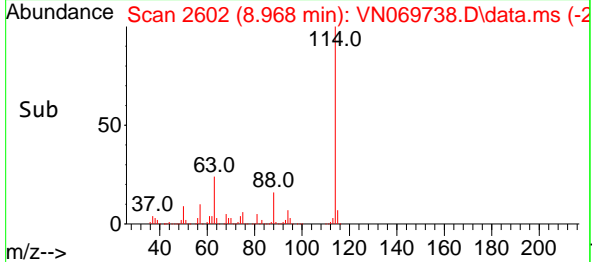
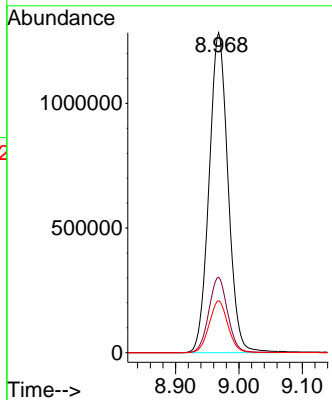


#34
 1,4-Difluorobenzene
 Concen: 50.000 ug/l
 RT: 8.968 min Scan# 2602
 Delta R.T. -0.000 min
 Lab File: VN069738.D
 Acq: 4 Dec 2021 00:34

Instrument : MSVOA_N
 ClientSampleId : DUP04-20211130

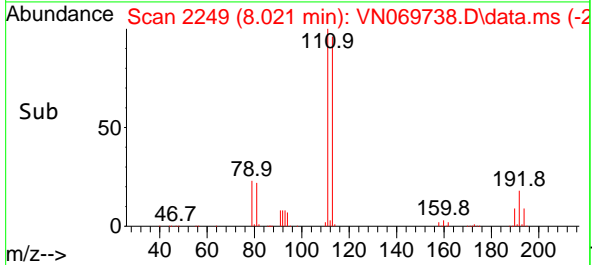
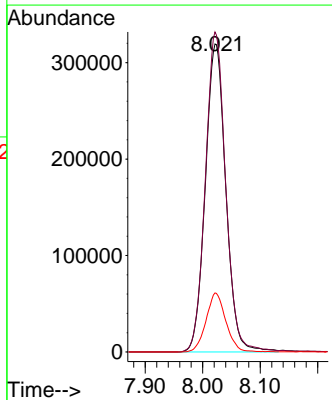
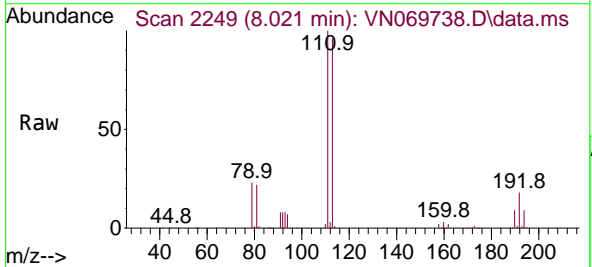


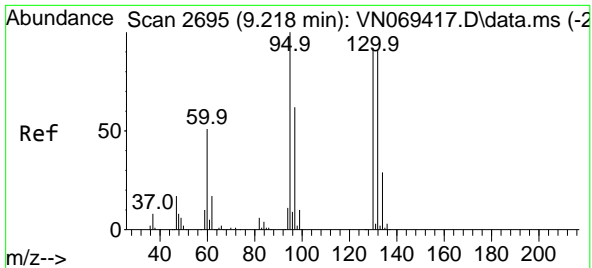
Tgt Ion:114 Resp: 2667103
 Ion Ratio Lower Upper
 114 100
 63 23.6 0.0 37.8
 88 16.3 0.0 27.4



#35
 Dibromofluoromethane
 Concen: 47.443 ug/l
 RT: 8.021 min Scan# 2249
 Delta R.T. -0.003 min
 Lab File: VN069738.D
 Acq: 4 Dec 2021 00:34

Tgt Ion:113 Resp: 792583
 Ion Ratio Lower Upper
 113 100
 111 103.0 82.2 123.2
 192 18.5 16.9 25.3

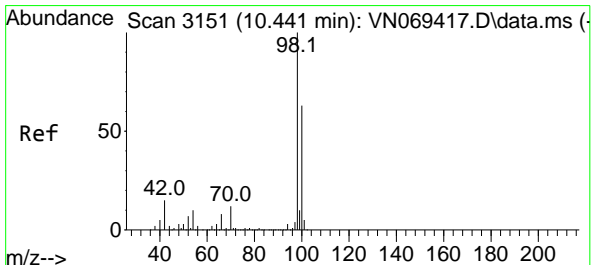
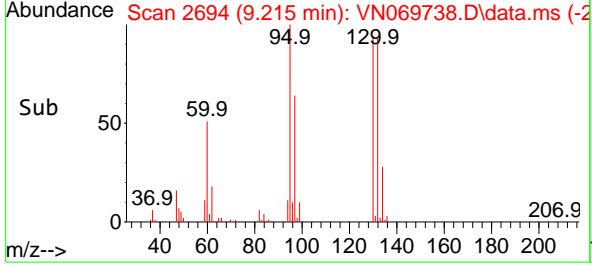
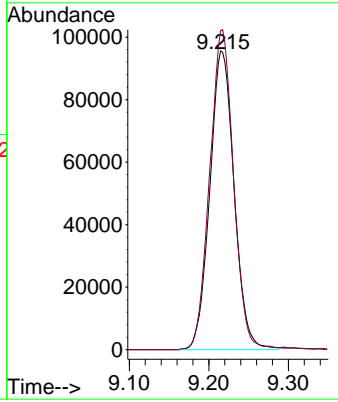
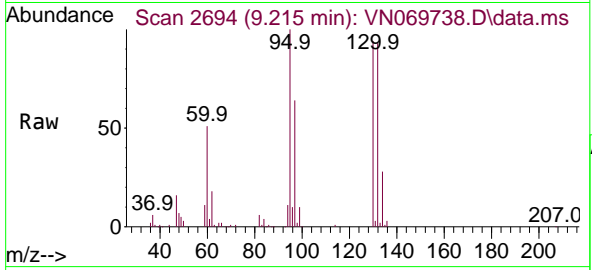




#44
 Trichloroethene
 Concen: 10.939 ug/l
 RT: 9.215 min Scan# 2695
 Delta R.T. -0.002 min
 Lab File: VN069738.D
 Acq: 4 Dec 2021 00:34

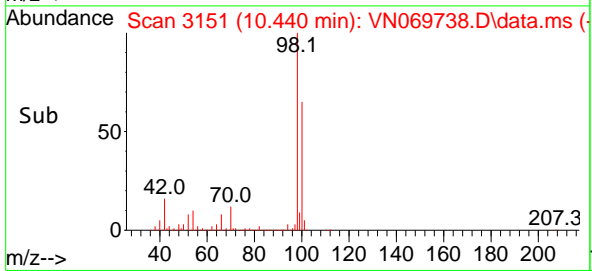
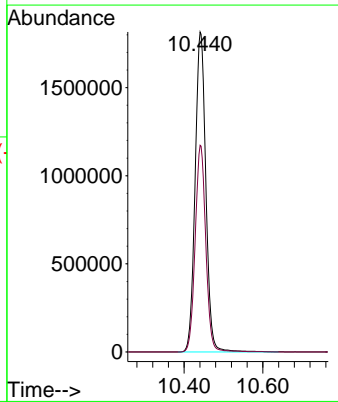
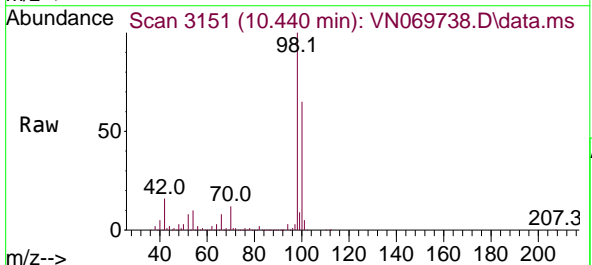
Instrument : MSVOA_N
 ClientSampleId : DUP04-20211130

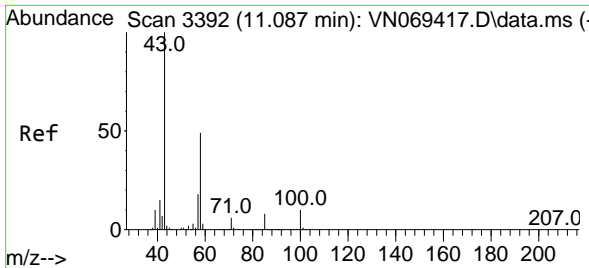
Tgt Ion:130 Resp: 202634
 Ion Ratio Lower Upper
 130 100
 95 106.8 0.0 191.2



#50
 Toluene-d8
 Concen: 51.073 ug/l
 RT: 10.440 min Scan# 3151
 Delta R.T. -0.003 min
 Lab File: VN069738.D
 Acq: 4 Dec 2021 00:34

Tgt Ion: 98 Resp: 3425999
 Ion Ratio Lower Upper
 98 100
 100 64.0 50.4 75.6

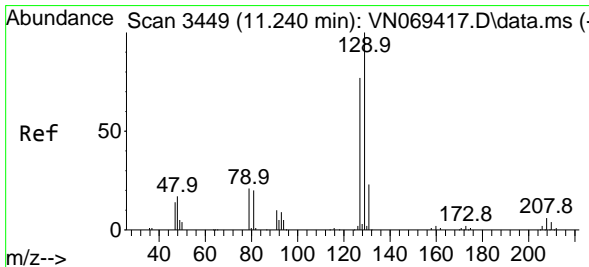
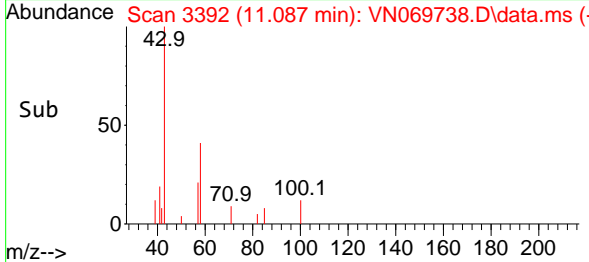
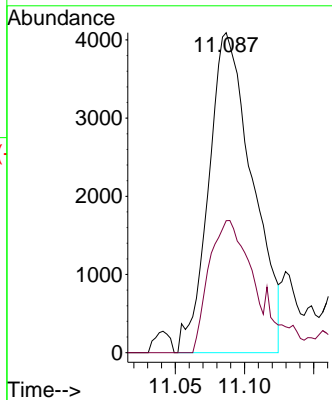
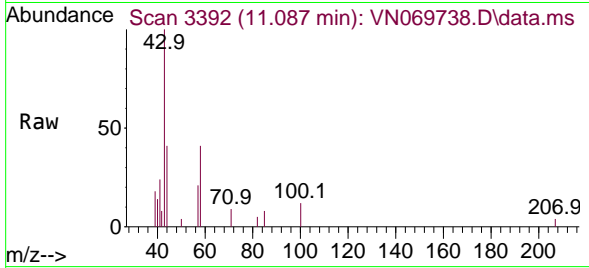




#59
 2-Hexanone
 Concen: 0.328 ug/l
 RT: 11.087 min Scan# 31
 Delta R.T. -0.000 min
 Lab File: VN069738.D
 Acq: 4 Dec 2021 00:34

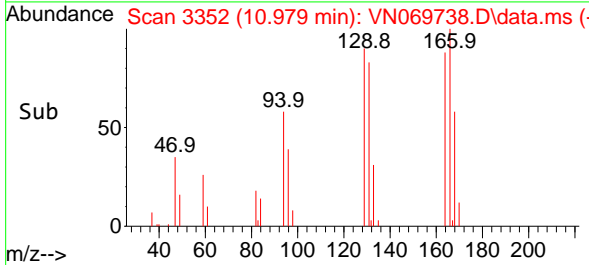
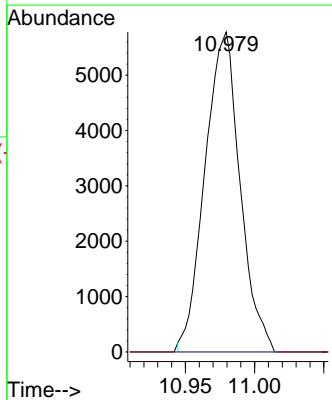
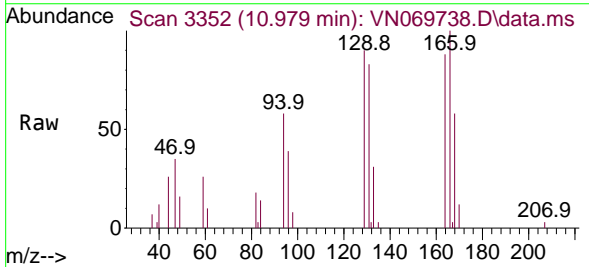
Instrument :
 MSVOA_N
 ClientSampleId :
 DUP04-20211130

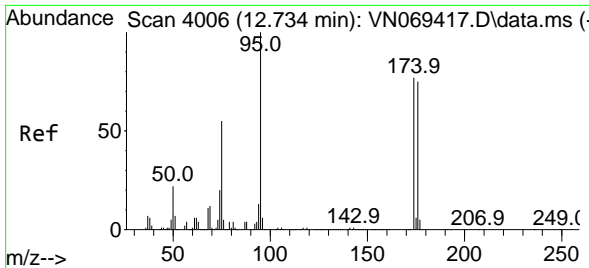
Tgt Ion: 43 Resp: 8998
 Ion Ratio Lower Upper
 43 100
 58 38.2 26.9 80.7



#60
 Dibromochloromethane
 Concen: 2.850 ug/l
 RT: 10.979 min Scan# 3352
 Delta R.T. -0.261 min
 Lab File: VN069738.D
 Acq: 4 Dec 2021 00:34

Tgt Ion: 129 Resp: 10184
 Ion Ratio Lower Upper
 129 100
 127 0.0 38.6 116.0#

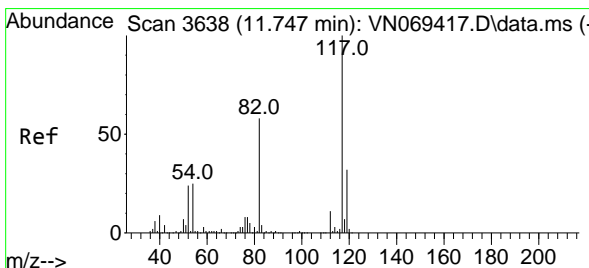
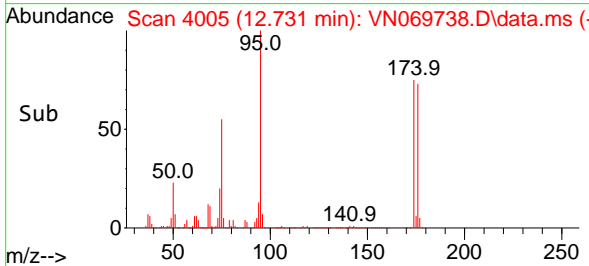
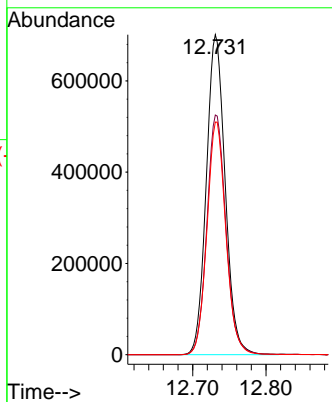
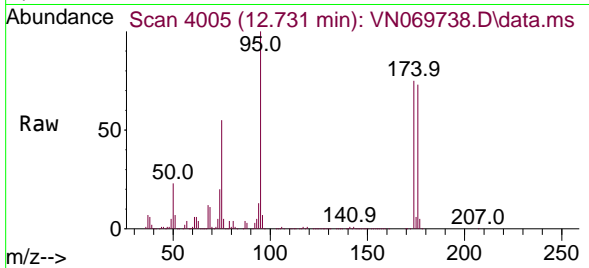




#62
 4-Bromofluorobenzene
 Concen: 51.601 ug/l
 RT: 12.731 min Scan# 4006
 Delta R.T. -0.000 min
 Lab File: VN069738.D
 Acq: 4 Dec 2021 00:34

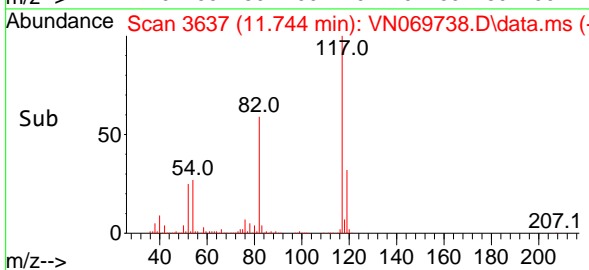
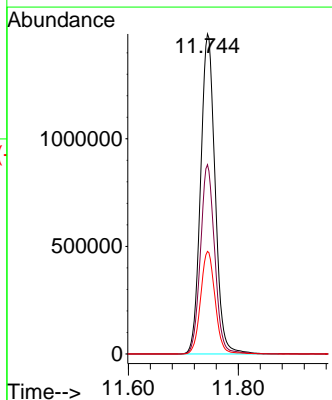
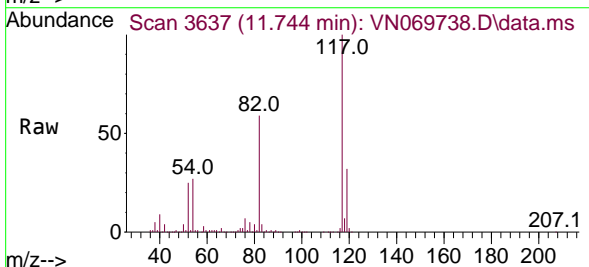
Instrument :
 MSVOA_N
 ClientSampleId :
 DUP04-20211130

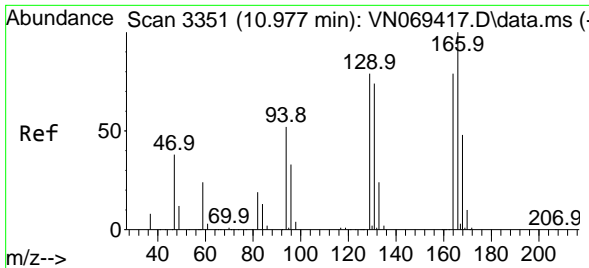
Tgt Ion: 95 Resp: 1254015
 Ion Ratio Lower Upper
 95 100
 174 75.7 0.0 187.2
 176 72.9 0.0 181.4



#63
 Chlorobenzene-d5
 Concen: 50.000 ug/l
 RT: 11.744 min Scan# 3637
 Delta R.T. -0.002 min
 Lab File: VN069738.D
 Acq: 4 Dec 2021 00:34

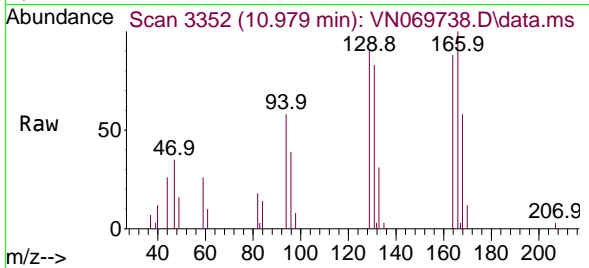
Tgt Ion: 117 Resp: 2716959
 Ion Ratio Lower Upper
 117 100
 82 59.1 42.4 63.6
 119 32.1 25.4 38.2



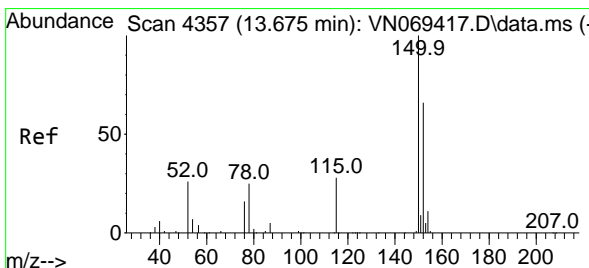
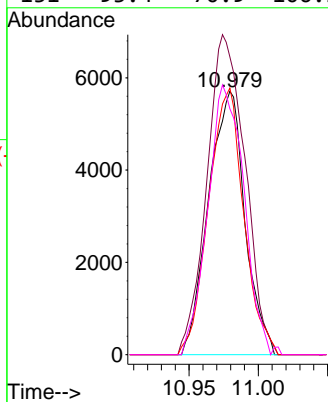
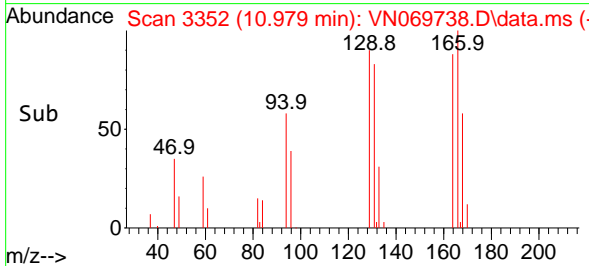


#64
 Tetrachloroethene
 Concen: 0.567 ug/l
 RT: 10.979 min Scan# 31
 Delta R.T. 0.000 min
 Lab File: VN069738.D
 Acq: 4 Dec 2021 00:34

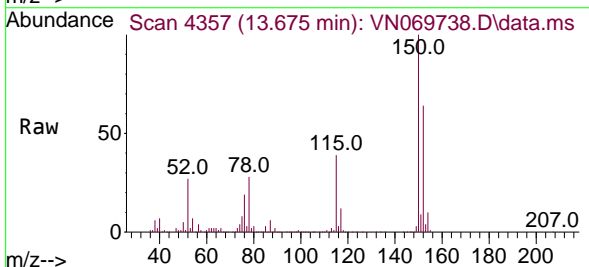
Instrument :
 MSVOA_N
 ClientSampleId :
 DUP04-20211130



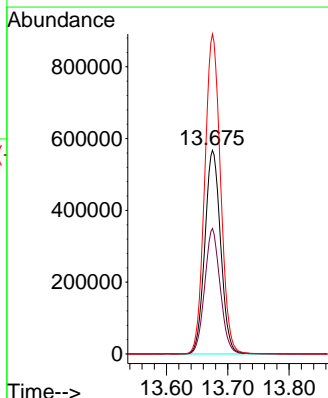
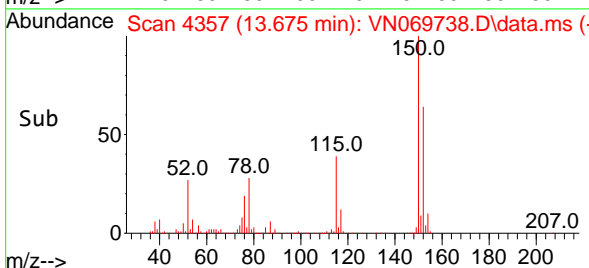
Tgt Ion:164 Resp: 10447
 Ion Ratio Lower Upper
 164 100
 166 113.1 101.9 152.9
 129 101.3 72.0 108.0
 131 93.4 70.9 106.3

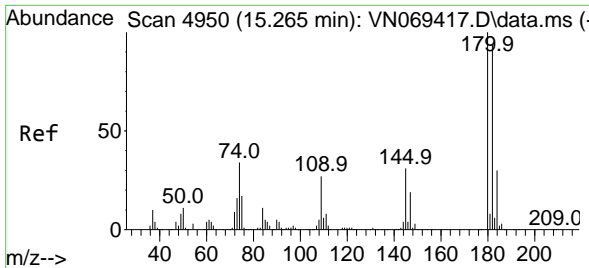


#72
 1,4-Dichlorobenzene-d4
 Concen: 50.000 ug/l
 RT: 13.675 min Scan# 4357
 Delta R.T. -0.003 min
 Lab File: VN069738.D
 Acq: 4 Dec 2021 00:34



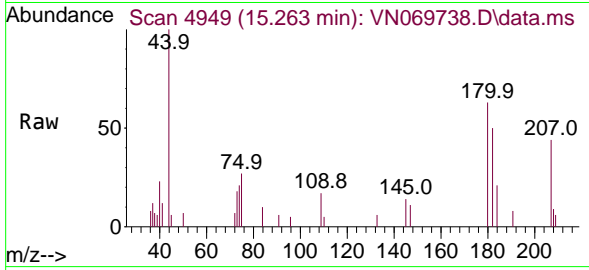
Tgt Ion:152 Resp: 1013093
 Ion Ratio Lower Upper
 152 100
 115 60.3 27.5 82.5
 150 157.4 0.0 344.4



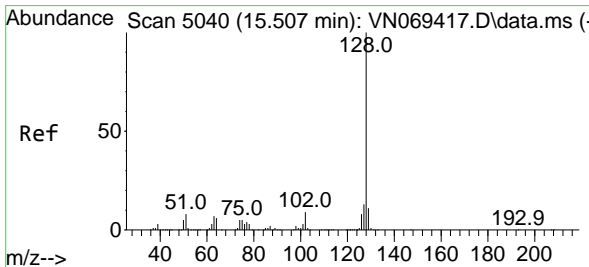
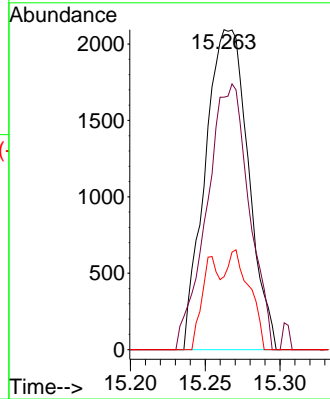
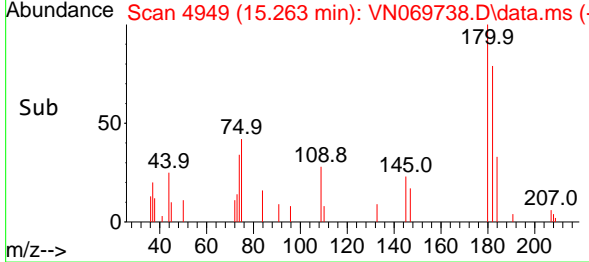


#93
 1,2,4-Trichlorobenzene
 Concen: 3.116 ug/l
 RT: 15.263 min Scan# 4950
 Delta R.T. -0.002 min
 Lab File: VN069738.D
 Acq: 4 Dec 2021 00:34

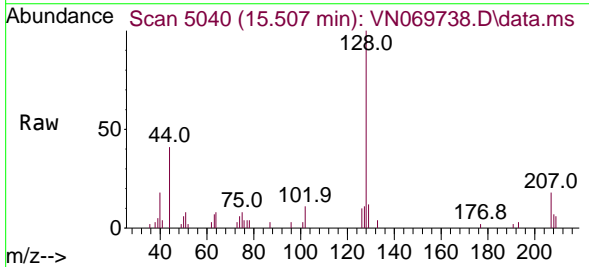
Instrument : MSVOA_N
 ClientSampleId : DUP04-20211130



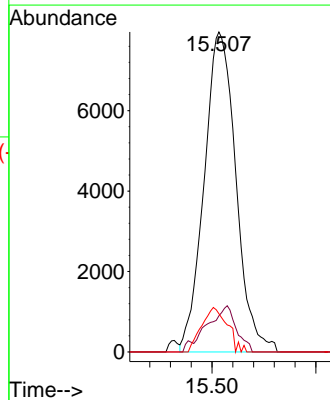
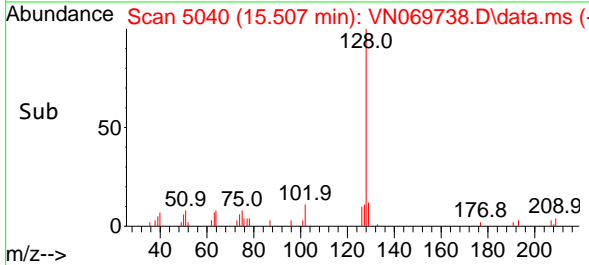
Tgt Ion:180 Resp: 4206
 Ion Ratio Lower Upper
 180 100
 182 81.1 48.3 144.9
 145 15.8 14.5 43.5

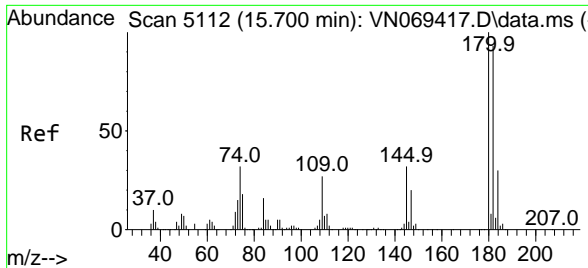


#95
 Naphthalene
 Concen: 4.300 ug/l
 RT: 15.507 min Scan# 5040
 Delta R.T. -0.000 min
 Lab File: VN069738.D
 Acq: 4 Dec 2021 00:34



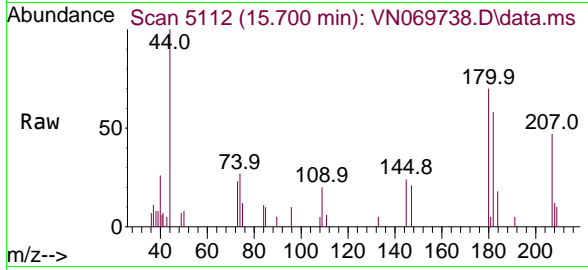
Tgt Ion:128 Resp: 16943
 Ion Ratio Lower Upper
 128 100
 127 13.3 10.5 15.7
 129 11.3 8.7 13.1





#96
 1,2,3-Trichlorobenzene
 Concen: 2.689 ug/l
 RT: 15.700 min Scan# 51
 Delta R.T. -0.002 min
 Lab File: VN069738.D
 Acq: 4 Dec 2021 00:34

Instrument :
 MSVOA_N
 ClientSampleId :
 DUP04-20211130



Tgt Ion:180 Resp: 4307

Ion	Ratio	Lower	Upper
180	100		
182	42.1	47.4	142.2#
145	25.1	15.0	45.1

