

Data Path : Z:\voasrv\HPCHEM1\MSVOA_N\Data\VN120321\
 Data File : VN069742.D
 Acq On : 4 Dec 2021 2:15
 Operator : JC/MD
 Sample : M4922-14 20X
 Misc : 5.00mL/MSVOA_N/WATER
 ALS Vial : 37 Sample Multiplier: 1

Instrument :
 MSVOA_N
 ClientSampleId :
 DUP06-20211130

Quant Time: Dec 04 05:40:48 2021
 Quant Method : Z:\voasrv\HPCHEM1\MSVOA_N\methods\82N120221W.M
 Quant Title : SW846 8260
 QLast Update : Fri Dec 03 08:46:47 2021
 Response via : Initial Calibration

Compound	R.T.	QIon	Response	Conc	Units	Dev(Min)

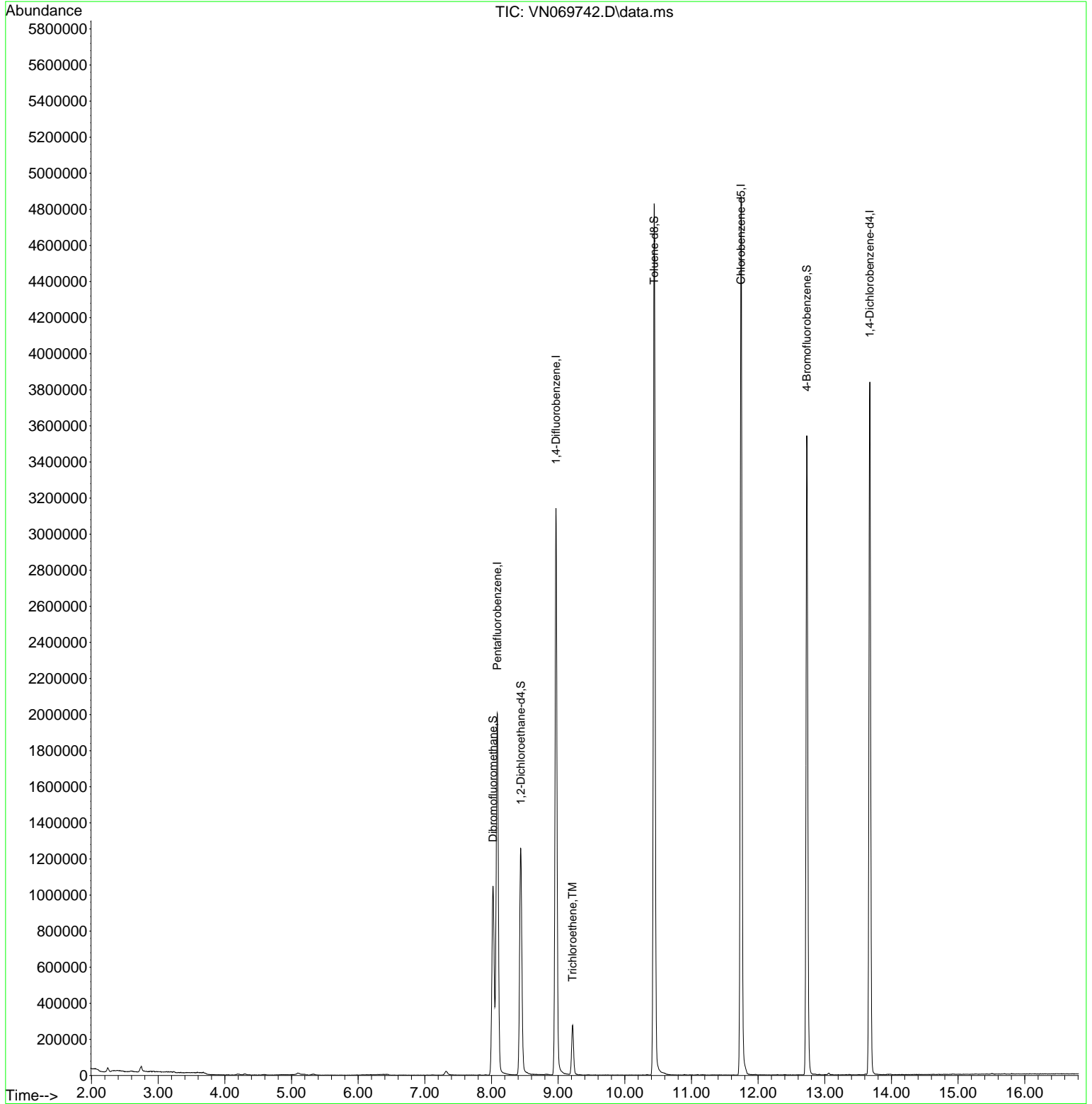
Internal Standards						
1) Pentafluorobenzene	8.088	168	1491160	50.000	ug/l	0.00
34) 1,4-Difluorobenzene	8.968	114	2610209	50.000	ug/l	0.00
63) Chlorobenzene-d5	11.744	117	2713436	50.000	ug/l	0.00
72) 1,4-Dichlorobenzene-d4	13.675	152	1018868	50.000	ug/l	0.00
System Monitoring Compounds						
33) 1,2-Dichloroethane-d4	8.440	65	1112928	48.339	ug/l	0.00
Spiked Amount	50.000	Range	61 - 141	Recovery	=	96.680%
35) Dibromofluoromethane	8.021	113	773615	47.317	ug/l	0.00
Spiked Amount	50.000	Range	69 - 133	Recovery	=	94.640%
50) Toluene-d8	10.441	98	3359003	51.165	ug/l	0.00
Spiked Amount	50.000	Range	65 - 126	Recovery	=	102.340%
62) 4-Bromofluorobenzene	12.731	95	1246627	52.416	ug/l	0.00
Spiked Amount	50.000	Range	58 - 135	Recovery	=	104.840%
Target Compounds						
44) Trichloroethene	9.215	130	93764	5.172	ug/l	93

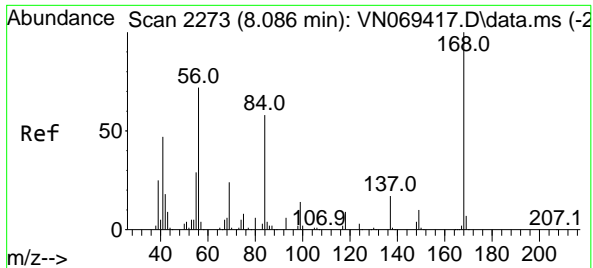
(#) = qualifier out of range (m) = manual integration (+) = signals summed

Data Path : Z:\voasrv\HPCHEM1\MSVOA_N\Data\VN120321\
 Data File : VN069742.D
 Acq On : 4 Dec 2021 2:15
 Operator : JC/MD
 Sample : M4922-14 20X
 Misc : 5.00mL/MSVOA_N/WATER
 ALS Vial : 37 Sample Multiplier: 1

Instrument :
 MSVOA_N
 ClientSampleId :
 DUP06-20211130

Quant Time: Dec 04 05:40:48 2021
 Quant Method : Z:\voasrv\HPCHEM1\MSVOA_N\methods\82N120221W.M
 Quant Title : SW846 8260
 QLast Update : Fri Dec 03 08:46:47 2021
 Response via : Initial Calibration

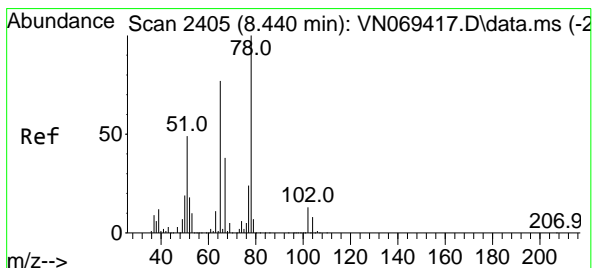
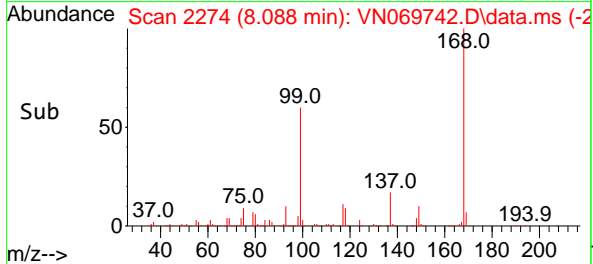
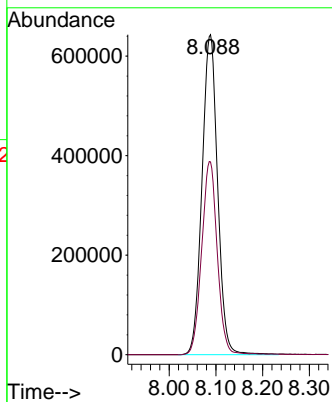
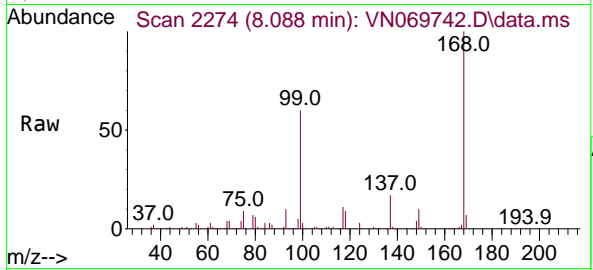




#1
 Pentafluorobenzene
 Concen: 50.000 ug/l
 RT: 8.088 min Scan# 21
 Delta R.T. 0.002 min
 Lab File: VN069742.D
 Acq: 4 Dec 2021 2:15

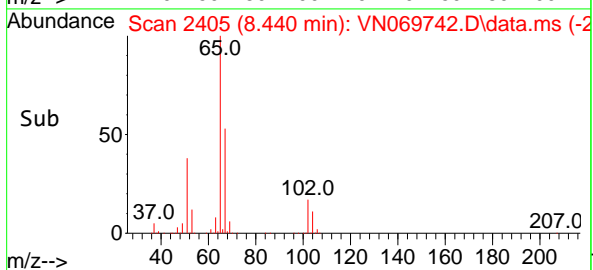
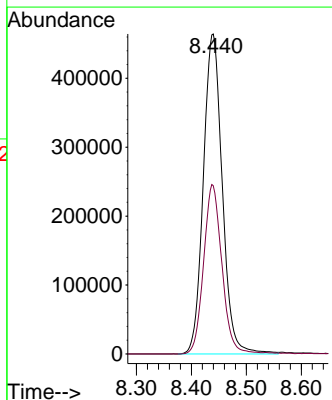
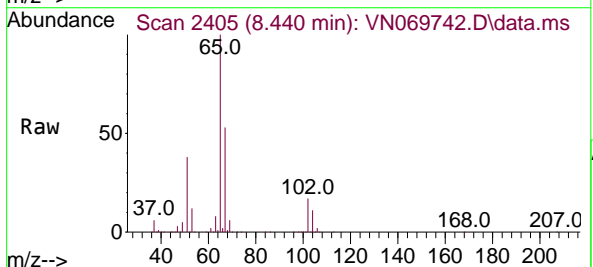
Instrument :
 MSVOA_N
 ClientSampleId :
 DUP06-20211130

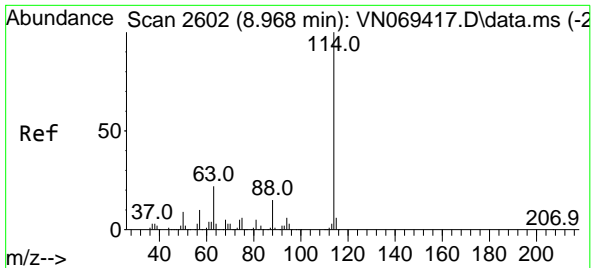
Tgt Ion:168 Resp: 1491160
 Ion Ratio Lower Upper
 168 100
 99 60.2 41.3 61.9



#33
 1,2-Dichloroethane-d4
 Concen: 48.339 ug/l
 RT: 8.440 min Scan# 2405
 Delta R.T. 0.003 min
 Lab File: VN069742.D
 Acq: 4 Dec 2021 2:15

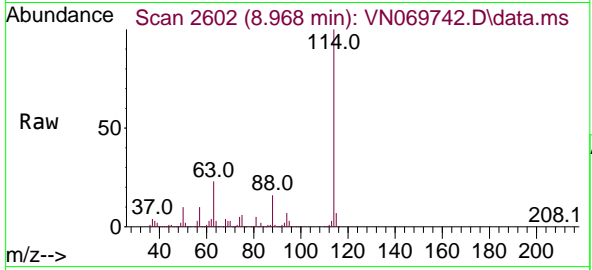
Tgt Ion: 65 Resp: 1112928
 Ion Ratio Lower Upper
 65 100
 67 51.0 0.0 103.0



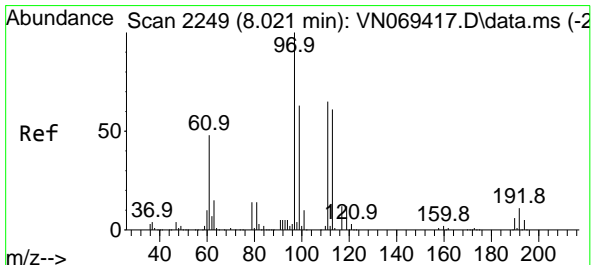
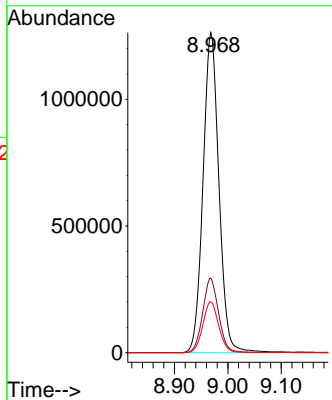
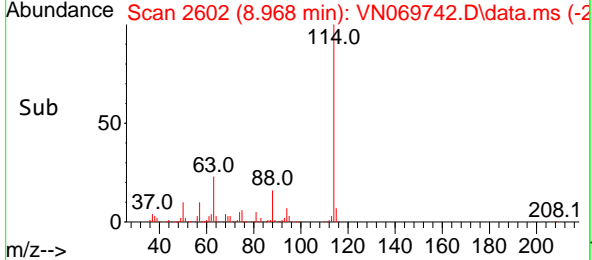


#34
 1,4-Difluorobenzene
 Concen: 50.000 ug/l
 RT: 8.968 min Scan# 2602
 Delta R.T. 0.000 min
 Lab File: VN069742.D
 Acq: 4 Dec 2021 2:15

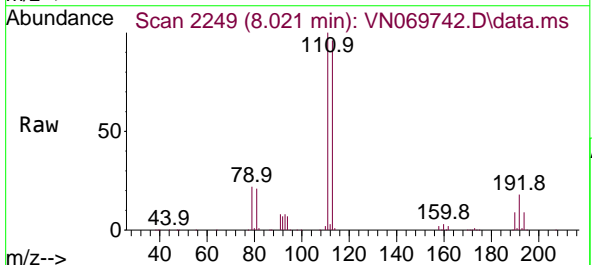
Instrument : MSVOA_N
 ClientSampleId : DUP06-20211130



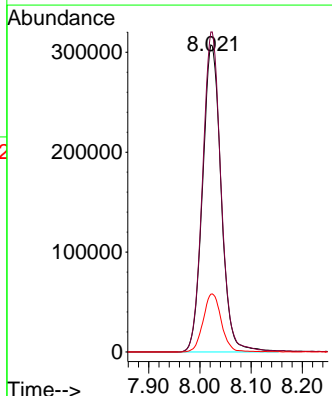
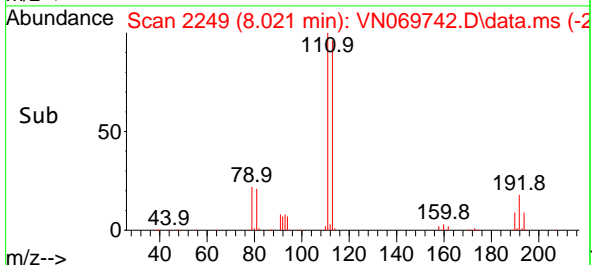
Tgt Ion:114 Resp: 2610209
 Ion Ratio Lower Upper
 114 100
 63 23.3 0.0 37.8
 88 16.0 0.0 27.4

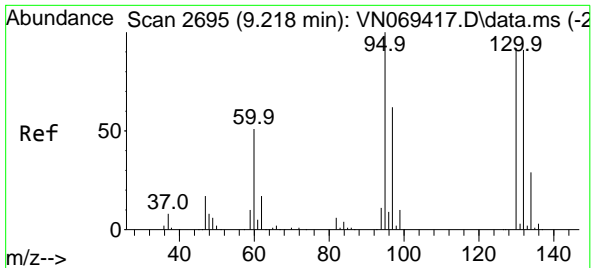


#35
 Dibromofluoromethane
 Concen: 47.317 ug/l
 RT: 8.021 min Scan# 2249
 Delta R.T. -0.002 min
 Lab File: VN069742.D
 Acq: 4 Dec 2021 2:15



Tgt Ion:113 Resp: 773615
 Ion Ratio Lower Upper
 113 100
 111 103.5 82.2 123.2
 192 18.6 16.9 25.3

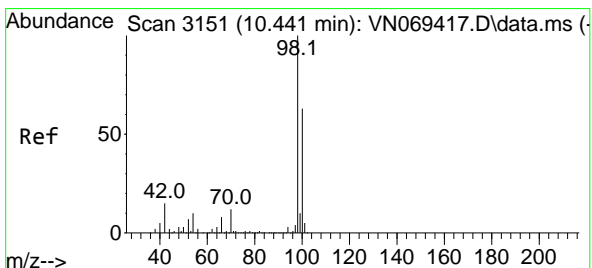
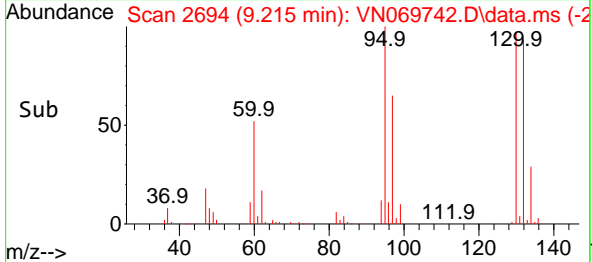
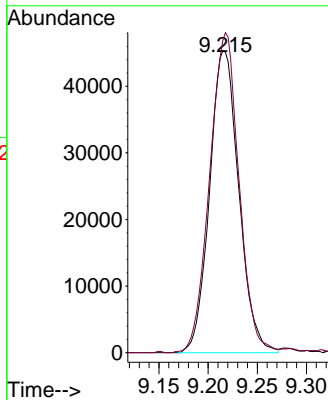
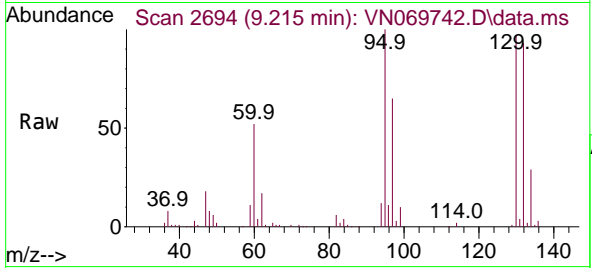




#44
 Trichloroethene
 Concen: 5.172 ug/l
 RT: 9.215 min Scan# 2695
 Delta R.T. -0.002 min
 Lab File: VN069742.D
 Acq: 4 Dec 2021 2:15

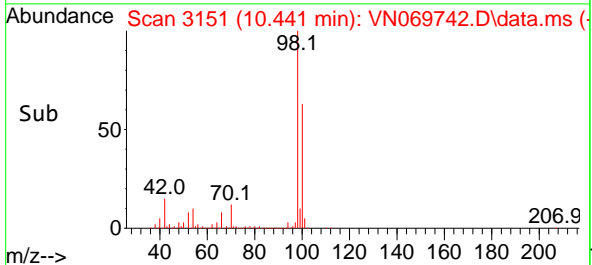
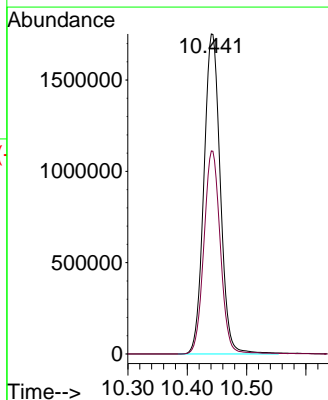
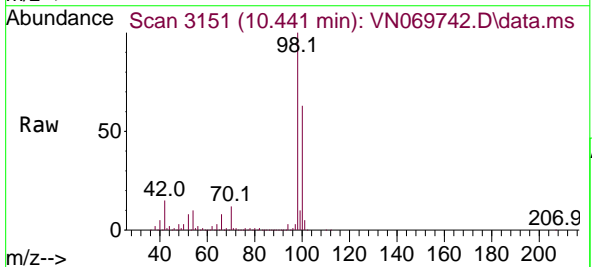
Instrument : MSVOA_N
 ClientSampleId : DUP06-20211130

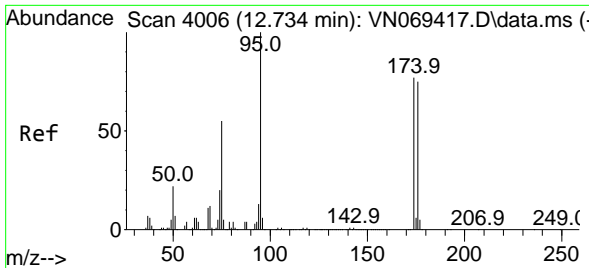
Tgt Ion:130 Resp: 93764
 Ion Ratio Lower Upper
 130 100
 95 102.9 0.0 191.2



#50
 Toluene-d8
 Concen: 51.165 ug/l
 RT: 10.441 min Scan# 3151
 Delta R.T. -0.002 min
 Lab File: VN069742.D
 Acq: 4 Dec 2021 2:15

Tgt Ion: 98 Resp: 3359003
 Ion Ratio Lower Upper
 98 100
 100 63.5 50.4 75.6



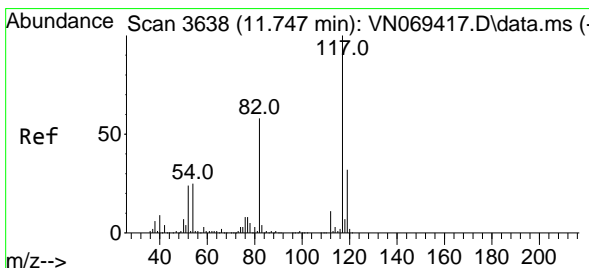
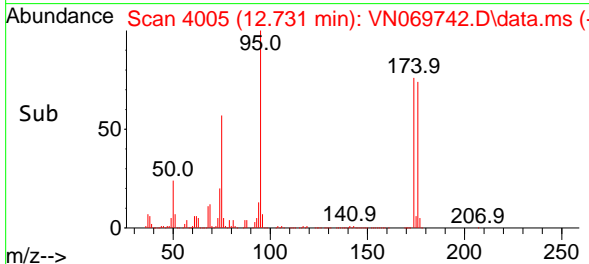
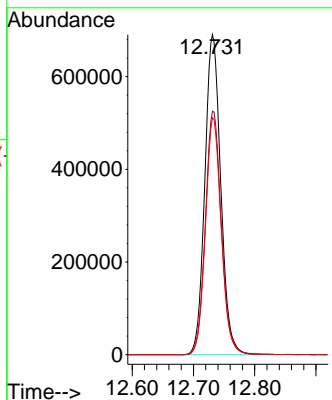
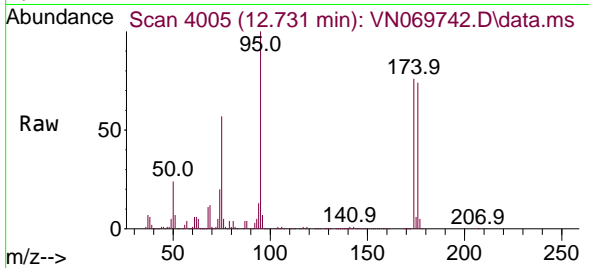


#62
 4-Bromofluorobenzene
 Concen: 52.416 ug/l
 RT: 12.731 min Scan# 4006
 Delta R.T. -0.000 min
 Lab File: VN069742.D
 Acq: 4 Dec 2021 2:15

Instrument :
 MSVOA_N
 ClientSampleId :
 DUP06-20211130

Tgt Ion: 95 Resp: 1246627

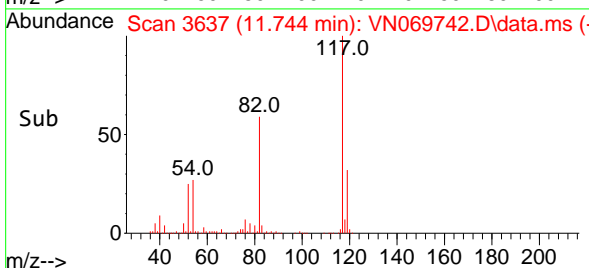
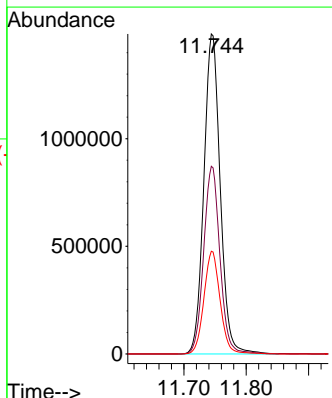
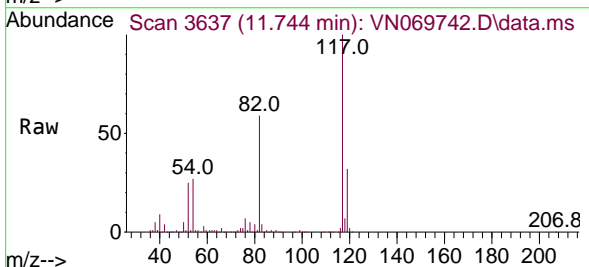
Ion	Ratio	Lower	Upper
95	100		
174	76.5	0.0	187.2
176	73.3	0.0	181.4

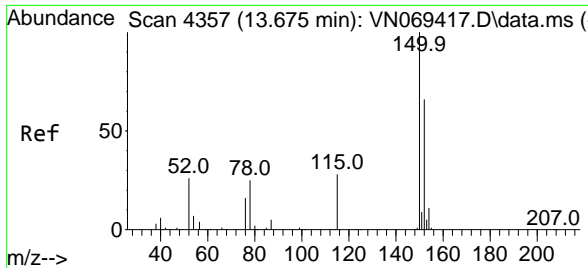


#63
 Chlorobenzene-d5
 Concen: 50.000 ug/l
 RT: 11.744 min Scan# 3637
 Delta R.T. -0.002 min
 Lab File: VN069742.D
 Acq: 4 Dec 2021 2:15

Tgt Ion: 117 Resp: 2713436

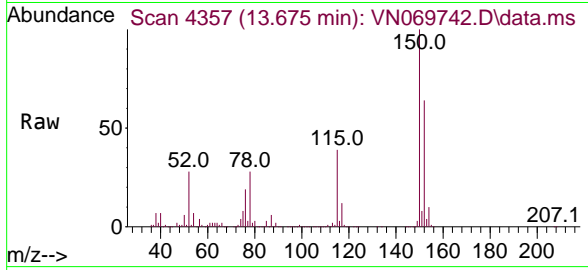
Ion	Ratio	Lower	Upper
117	100		
82	58.6	42.4	63.6
119	32.1	25.4	38.2





#72
 1,4-Dichlorobenzene-d4
 Concen: 50.000 ug/l
 RT: 13.675 min Scan# 41
 Delta R.T. -0.002 min
 Lab File: VN069742.D
 Acq: 4 Dec 2021 2:15

Instrument : MSVOA_N
 ClientSampleId : DUP06-20211130



Tgt Ion:152 Resp: 1018868

Ion	Ratio	Lower	Upper
152	100		
115	60.3	27.5	82.5
150	157.0	0.0	344.4

