

Data Path : Z:\voasrv\HPCHEM1\MSVOA_N\Data\VN120321\
 Data File : VN069720.D
 Acq On : 3 Dec 2021 16:04
 Operator : JC/MD
 Sample : M4922-09
 Misc : 5.00mL/MSVOA_N/WATER
 ALS Vial : 13 Sample Multiplier: 1

Instrument :
 MSVOA_N
 ClientSampleId :
 RE131D2-20211130

Integration Parameters: RTEINT.P
 Integrator: RTE
 Smoothing : ON Filtering: 5
 Sampling : 1 Min Area: 3 % of largest Peak
 Start Thrs: 0.2 Max Peaks: 100
 Stop Thrs : 0 Peak Location: TOP

If leading or trailing edge < 100 prefer < Baseline drop else tangent >
 Peak separation: 5

Method : Z:\voasrv\HPCHEM1\MSVOA_N\methods\82N120221W.M
 Title : SW846 8260

Signal : TIC: VN069720.D\data.ms

peak #	R.T. min	first scan	max scan	last scan	PK TY	peak height	corr. area	corr. % max.	% of total
1	4.210	795	828	876	rBV2	3766656	12480089	100.00%	18.035%
2	7.327	1964	1990	2012	rBV2	107358	297154	2.38%	0.429%
3	8.024	2223	2250	2260	rBV	1039399	2480449	19.88%	3.584%
4	8.085	2261	2273	2300	rVB	1964205	4515107	36.18%	6.525%
5	8.440	2382	2405	2430	rBV	1238526	2911190	23.33%	4.207%
6	8.968	2581	2602	2641	rBV	2987151	6322062	50.66%	9.136%
7	9.217	2674	2695	2740	rBV	4674022	9695831	77.69%	14.011%
8	10.443	3131	3152	3186	rBV	4616375	8818097	70.66%	12.743%
9	10.977	3334	3351	3377	rBV	778575	1449898	11.62%	2.095%
10	11.744	3618	3637	3684	rBV	4494087	8283431	66.37%	11.970%
11	12.733	3984	4006	4032	rBV	3293891	5874563	47.07%	8.489%
12	13.675	4340	4357	4390	rBV	3463248	6072867	48.66%	8.776%

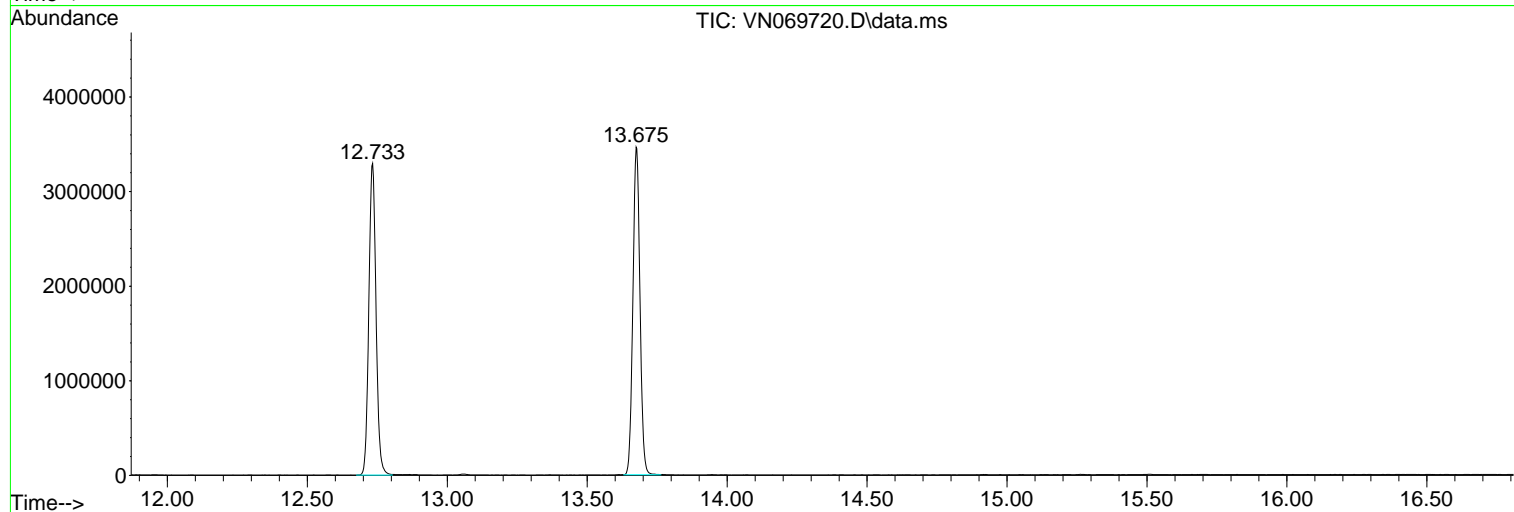
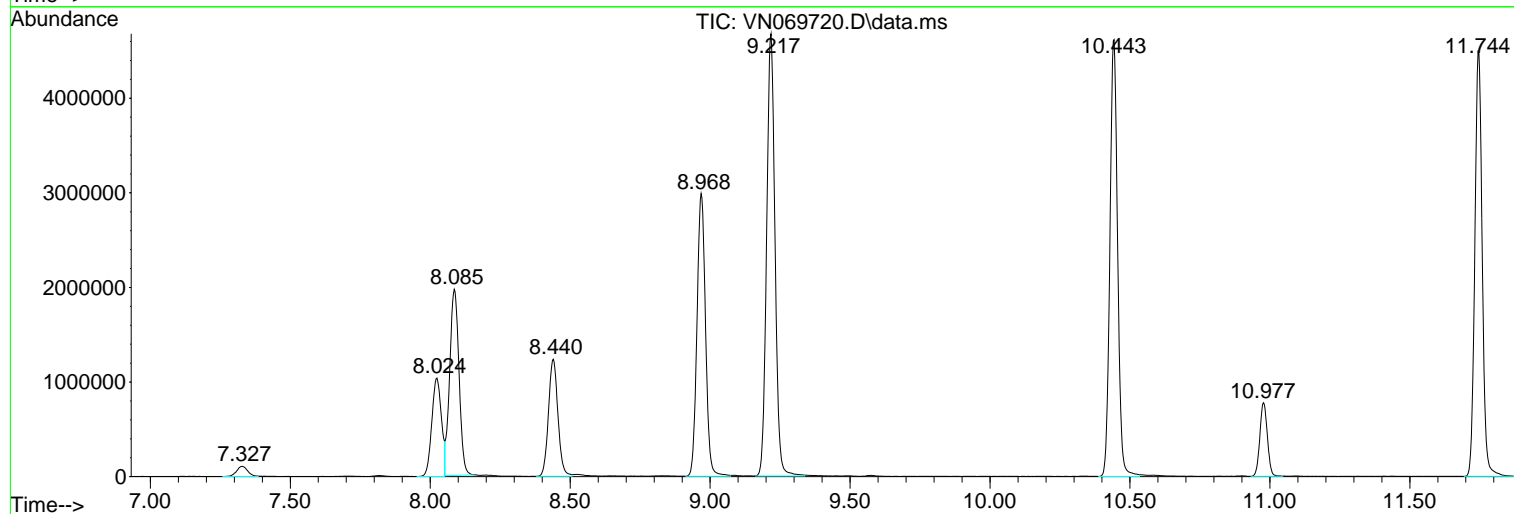
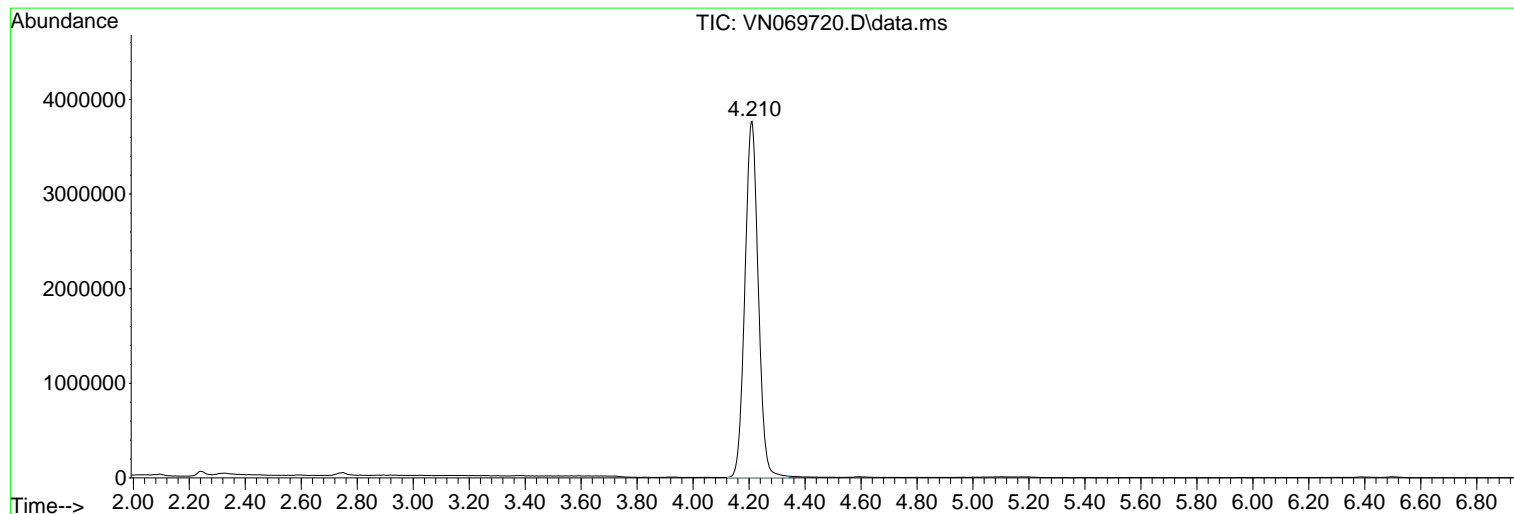
Sum of corrected areas: 69200738

Data Path : Z:\voasrv\HPCHEM1\MSVOA_N\Data\VN120321\
Data File : VN069720.D
Acq On : 3 Dec 2021 16:04
Operator : JC/MD
Sample : M4922-09
Misc : 5.00mL/MSVOA_N/WATER
ALS Vial : 13 Sample Multiplier: 1

Instrument :
MSVOA_N
ClientSampleId :
RE131D2-20211130

Quant Method : Z:\voasrv\HPCHEM1\MSVOA_N\methods\82N120221W.M
Quant Title : SW846 8260

TIC Library : C:\Database\NIST20.L
TIC Integration Parameters: LSCINT.P



Data Path : Z:\voasrv\HPCHEM1\MSVOA_N\Data\VN120321\
Data File : VN069720.D
Acq On : 3 Dec 2021 16:04
Operator : JC/MD
Sample : M4922-09
Misc : 5.00mL/MSVOA_N/WATER
ALS Vial : 13 Sample Multiplier: 1

Instrument :
MSVOA_N
ClientSampleId :
RE131D2-20211130

Quant Method : Z:\voasrv\HPCHEM1\MSVOA_N\methods\82N120221W.M
Quant Title : SW846 8260

TIC Library : C:\Database\NIST20.L
TIC Integration Parameters: LSCINT.P

No Library Search Compounds Detected

Data Path : Z:\voasrv\HPCHEM1\MSVOA_N\Data\VN120321\
Data File : VN069720.D
Acq On : 3 Dec 2021 16:04
Operator : JC/MD
Sample : M4922-09
Misc : 5.00mL/MSVOA_N/WATER
ALS Vial : 13 Sample Multiplier: 1

Instrument :
MSVOA_N
ClientSampleId :
RE131D2-20211130

Quant Method : Z:\voasrv\HPCHEM1\MSVOA_N\methods\82N120221W.M
Quant Title : SW846 8260

TIC Library : C:\Database\NIST20.L
TIC Integration Parameters: LSCINT.P

TIC Top Hit name	RT	EstConc	Units	Response	#	RT	Resp	Conc
------------------	----	---------	-------	----------	---	----	------	------
