

Data Path : Z:\voasrv\HPCHEM1\MSVOA\_N\Data\VN120321\  
 Data File : VN069748.D  
 Acq On : 4 Dec 2021 4:48  
 Operator : JC/MD  
 Sample : M4919-08  
 Misc : 5.00mL/MSVOA\_N/WATER  
 ALS Vial : 43 Sample Multiplier: 1

Instrument :  
 MSVOA\_N  
 ClientSampleId :  
 TB-20211202

Integration Parameters: RTEINT.P

Integrator: RTE  
 Smoothing : ON Filtering: 5  
 Sampling : 1 Min Area: 3 % of largest Peak  
 Start Thrs: 0.2 Max Peaks: 100  
 Stop Thrs : 0 Peak Location: TOP

If leading or trailing edge < 100 prefer < Baseline drop else tangent >  
 Peak separation: 5

Method : Z:\voasrv\HPCHEM1\MSVOA\_N\methods\82N120221W.M  
 Title : SW846 8260

Signal : TIC: VN069748.D\data.ms

peak #	R.T. min	first scan	max scan	last scan	PK TY	peak height	corr. area	corr. % max.	% of total
1	2.231	77	90	106	rBV	906835	1870142	20.42%	3.808%
2	8.021	2224	2249	2260	rBV2	1068557	2534189	27.68%	5.160%
3	8.086	2261	2273	2308	rVB	1963548	4515138	49.31%	9.193%
4	8.440	2382	2405	2435	rBV	1267273	3006479	32.83%	6.121%
5	8.968	2579	2602	2639	rBV	3041399	6448309	70.42%	13.129%
6	10.440	3131	3151	3190	rBV	4824524	9156675	100.00%	18.643%
7	11.744	3615	3637	3676	rBV	4733803	8687679	94.88%	17.688%
8	12.731	3987	4005	4033	rBV	3526757	6255808	68.32%	12.737%
9	13.675	4338	4357	4384	rBV	3770035	6641415	72.53%	13.522%

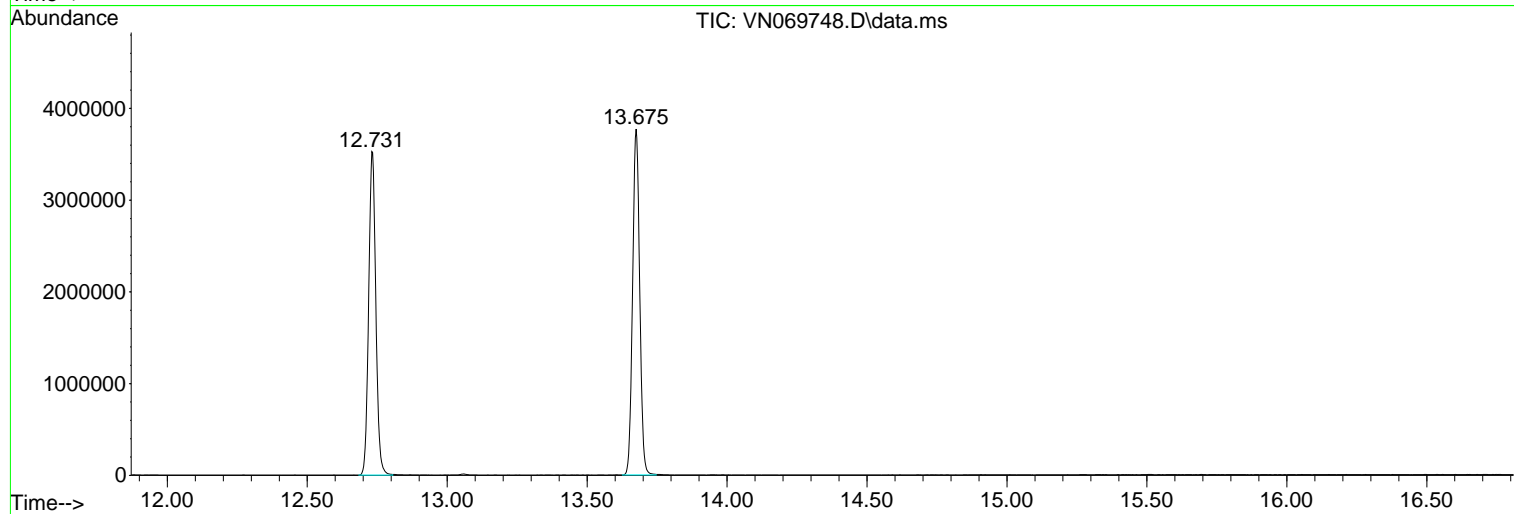
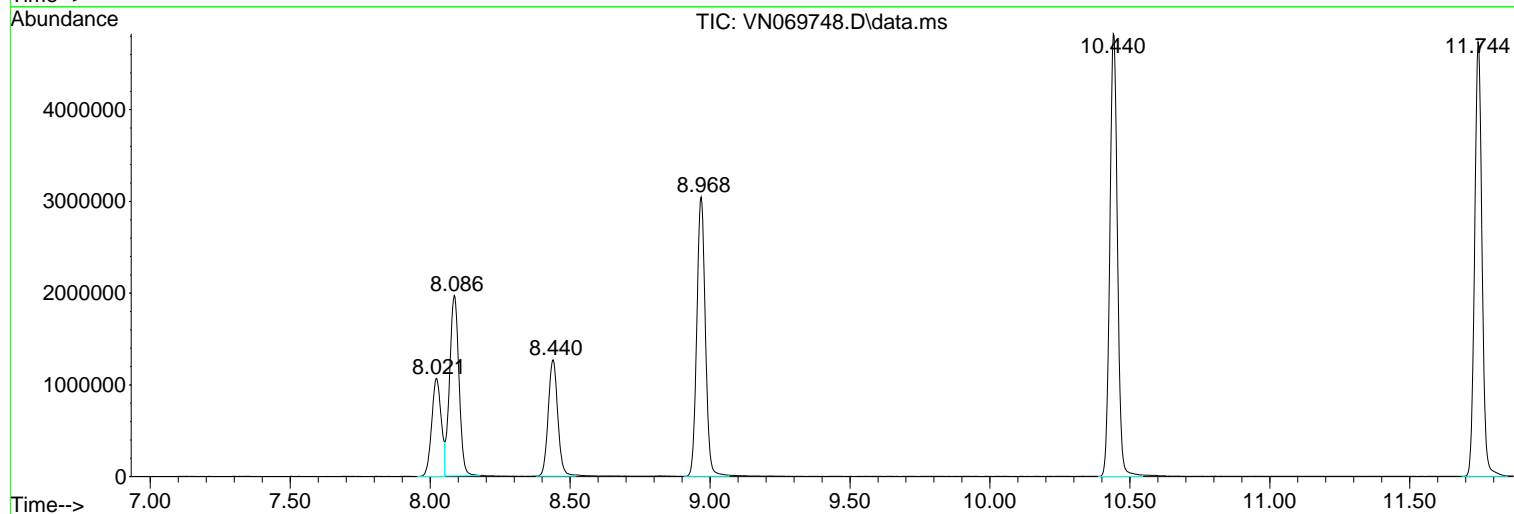
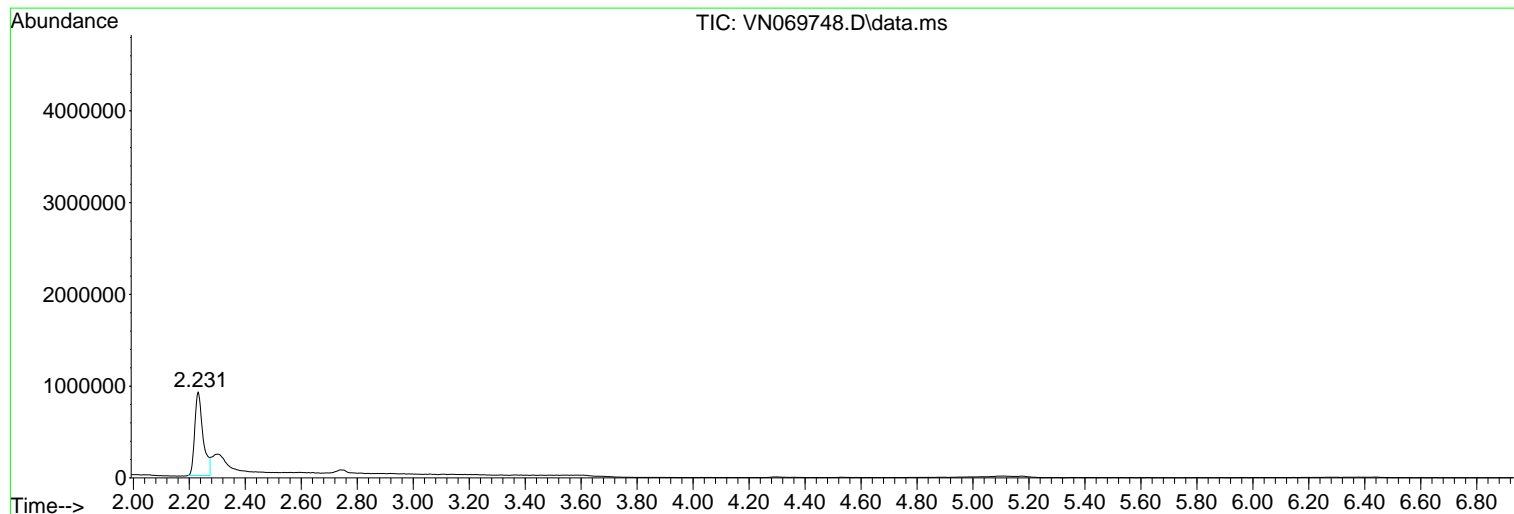
Sum of corrected areas: 49115834

Data Path : Z:\voasrv\HPCHEM1\MSVOA\_N\Data\VN120321\  
Data File : VN069748.D  
Acq On : 4 Dec 2021 4:48  
Operator : JC/MD  
Sample : M4919-08  
Misc : 5.00mL/MSVOA\_N/WATER  
ALS Vial : 43 Sample Multiplier: 1

Instrument :  
MSVOA\_N  
ClientSampleId :  
TB-20211202

Quant Method : Z:\voasrv\HPCHEM1\MSVOA\_N\methods\82N120221W.M  
Quant Title : SW846 8260

TIC Library : C:\Database\NIST20.L  
TIC Integration Parameters: LSCINT.P



Data Path : Z:\voasrv\HPCHEM1\MSVOA\_N\Data\VN120321\  
Data File : VN069748.D  
Acq On : 4 Dec 2021 4:48  
Operator : JC/MD  
Sample : M4919-08  
Misc : 5.00mL/MSVOA\_N/WATER  
ALS Vial : 43 Sample Multiplier: 1

**Instrument :**  
MSVOA\_N  
**ClientSampleId :**  
TB-20211202

Quant Method : Z:\voasrv\HPCHEM1\MSVOA\_N\methods\82N120221W.M  
Quant Title : SW846 8260

TIC Library : C:\Database\NIST20.L  
TIC Integration Parameters: LSCINT.P

No Library Search Compounds Detected

\*\*\*\*\*

Data Path : Z:\voasrv\HPCHEM1\MSVOA\_N\Data\VN120321\  
Data File : VN069748.D  
Acq On : 4 Dec 2021 4:48  
Operator : JC/MD  
Sample : M4919-08  
Misc : 5.00mL/MSVOA\_N/WATER  
ALS Vial : 43 Sample Multiplier: 1

Instrument :  
MSVOA\_N  
ClientSampleId :  
TB-20211202

Quant Method : Z:\voasrv\HPCHEM1\MSVOA\_N\methods\82N120221W.M  
Quant Title : SW846 8260

TIC Library : C:\Database\NIST20.L  
TIC Integration Parameters: LSCINT.P

TIC Top Hit name	RT	EstConc	Units	Response	--Internal Standard--		
					#	RT	Resp Conc

---