

Data Path : Z:\VOASRV\HPCHEM1\MSVOA N\DATA\VN120420\  
 Data File : VN064919.D  
 Acq On : 4 Dec 2020 15:17  
 Operator : JC/MD  
 Sample : L4954-02  
 Misc : 5.00mL/MSVOA N/WATER  
 ALS Vial : 12 Sample Multiplier: 1

Instrument :  
 MSVOA\_N  
 ClientSampleId :  
 SS013-13-5045-120120

Quant Time: Dec 05 01:29:27 2020  
 Quant Method : Z:\VOASRV\HPCHEM1\MSVOA\_N\METHODS\82N112320W.M  
 Quant Title : SW846 8260  
 QLast Update : Mon Nov 23 13:54:12 2020  
 Response via : Initial Calibration

Internal Standards	R.T.	QIon	Response	Conc	Units	Dev(Min)
1) Pentafluorobenzene	7.62	168	188592	50.00	ug/l	0.00
34) 1,4-Difluorobenzene	8.55	114	319883	50.00	ug/l	0.00
63) Chlorobenzene-d5	11.38	117	327647	50.00	ug/l	0.00
72) 1,4-Dichlorobenzene-d4	13.32	152	151110	50.00	ug/l	0.00

## System Monitoring Compounds

33) 1,2-Dichloroethane-d4	7.99	65	106503	48.58	ug/l	0.00
Spiked Amount	50.000	Range	61 - 141	Recovery	=	97.16%
35) Dibromofluoromethane	7.55	113	99181	51.82	ug/l	0.00
Spiked Amount	50.000	Range	69 - 133	Recovery	=	103.64%
50) Toluene-d8	10.06	98	418220	53.48	ug/l	0.00
Spiked Amount	50.000	Range	65 - 126	Recovery	=	106.96%
62) 4-Bromofluorobenzene	12.38	95	153676	54.91	ug/l	0.00
Spiked Amount	50.000	Range	58 - 135	Recovery	=	109.82%

## Target Compounds

						Qvalue
13) Acrolein	3.76	56	7665	36.700	ug/l #	75
14) Allyl chloride	4.48	41	58557	19.414	ug/l #	43
15) Acrylonitrile	4.99	53	5581	5.908	ug/l #	32
16) Acetone	3.76	43	19523	27.087	ug/l #	55
18) Methyl Acetate	4.48	43	136277	62.889	ug/l #	50
20) Methylene Chloride	4.48	84	2118	0.938	ug/l #	1
25) 2-Butanone	6.76	43	6522	5.582	ug/l #	49
29) Tetrahydrofuran	7.34	42	339	0.420	ug/l #	1
31) Cyclohexane	7.61	56	650219	212.780	ug/l	96
36) 1,1-Dichloropropene	7.62	75	13770	4.644	ug/l #	48
37) Ethyl Acetate	6.76	43	6522	2.284	ug/l #	66
38) Carbon Tetrachloride	7.63	117	17807	5.772	ug/l #	16
39) Methylcyclohexane	9.05	83	861761	269.990	ug/l	97
41) Methacrylonitrile	7.05	41	1703	1.292	ug/l #	31
43) Isopropyl Acetate	8.11	43	31592	6.874	ug/l #	59
45) 1,2-Dichloropropane	9.04	63	6929	2.945	ug/l #	1
47) Bromodichloromethane	9.48	83	5234	1.655	ug/l #	41
48) Methyl methacrylate	9.05	41	340267	154.946	ug/l #	78
51) 4-Methyl-2-Pentanone	9.87	43	1533	0.556	ug/l #	35
55) 1,1,2-Trichloroethane	10.50	97	51156	22.233	ug/l #	18
56) Ethyl methacrylate	10.40	69	39500	12.440	ug/l #	24
59) 2-Hexanone	10.73	43	1290	0.650	ug/l #	23
71) Bromoform	12.38	173	1059	0.513	ug/l #	1
74) N-amyl acetate	12.06	43	1703	0.412	ug/l #	51
75) 1,1,2,2-Tetrachloroethane	12.44	83	859	0.279	ug/l #	24
76) 1,2,3-Trichloropropane	12.37	75	73404	22.556	ug/l #	100
81) trans-1,4-Dichloro-2-buten	12.37	75	73404	61.821	ug/l #	15
83) tert-Butylbenzene	12.97	119	5101	0.697	ug/l	86
85) sec-Butylbenzene	13.35	105	204166	20.999	ug/l #	56
86) p-Isopropyltoluene	13.42	119	47841	5.405	ug/l	94
90) Hexachloroethane	13.86	117	11214	7.292	ug/l #	9
92) 1,2-Dibromo-3-Chloropropan	14.18	75	825	1.190	ug/l #	1
95) Naphthalene	15.10	128	25241	2.755	ug/l	95

Data Path : Z:\VOASRV\HPCHEM1\MSVOA N\DATA\VN120420\  
 Data File : VN064919.D  
 Acq On : 4 Dec 2020 15:17  
 Operator : JC/MD  
 Sample : L4954-02  
 Misc : 5.00mL/MSVOA N/WATER  
 ALS Vial : 12 Sample Multiplier: 1

**Instrument :**  
 MSVOA\_N  
**ClientSampleId :**  
 SS013-13-5045-120120

Quant Time: Dec 05 01:29:27 2020  
 Quant Method : Z:\VOASRV\HPCHEM1\MSVOA\_N\METHODS\82N112320W.M  
 Quant Title : SW846 8260  
 QLast Update : Mon Nov 23 13:54:12 2020  
 Response via : Initial Calibration

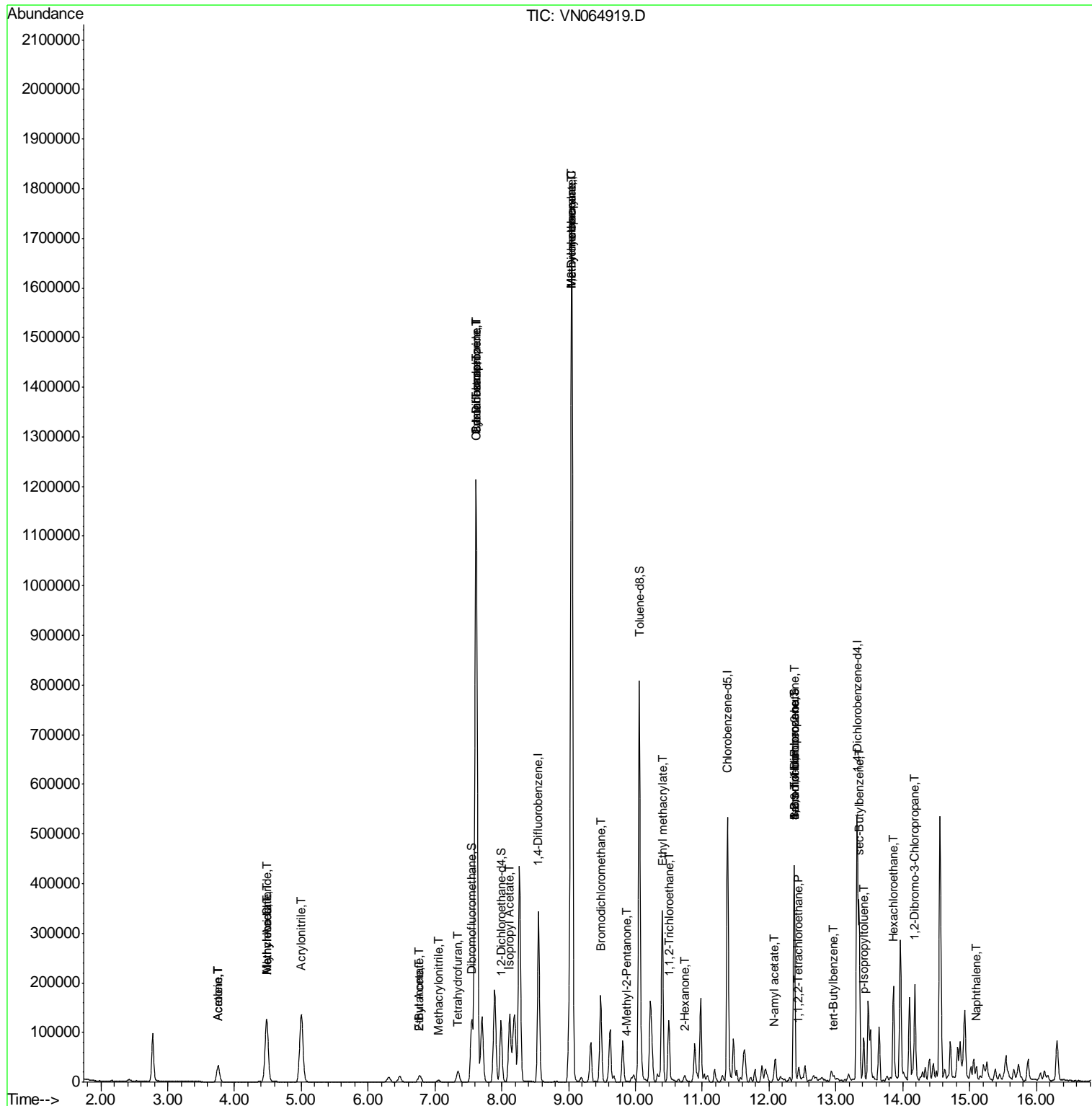
Internal Standards	R.T.	QIon	Response	Conc	Units	Dev(Min)
--------------------	------	------	----------	------	-------	----------

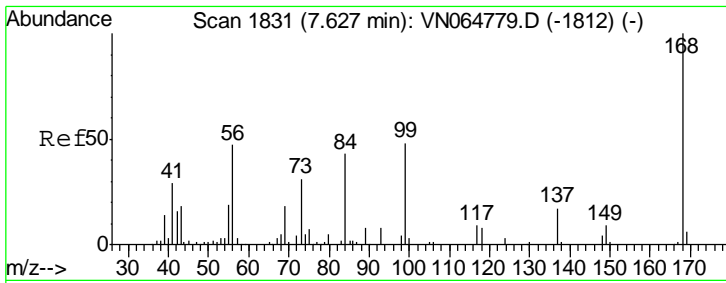
(#) = qualifier out of range (m) = manual integration (+) = signals summed

Data Path : Z:\VOASRV\HPCHEM1\MSVOA N\DATA\VN120420\  
 Data File : VN064919.D  
 Acq On : 4 Dec 2020 15:17  
 Operator : JC/MD  
 Sample : L4954-02  
 Misc : 5.00mL/MSVOA N/WATER  
 ALS Vial : 12 Sample Multiplier: 1

Instrument :  
 MSVOA\_N  
 Client Sampled :  
 SS013-13-5045-120120

Quant Time: Dec 05 01:29:27 2020  
 Quant Method : Z:\VOASRV\HPCHEM1\MSVOA\_N\METHODS\82N112320W.M  
 Quant Title : SW846 8260  
 QLast Update : Mon Nov 23 13:54:12 2020  
 Response via : Initial Calibration

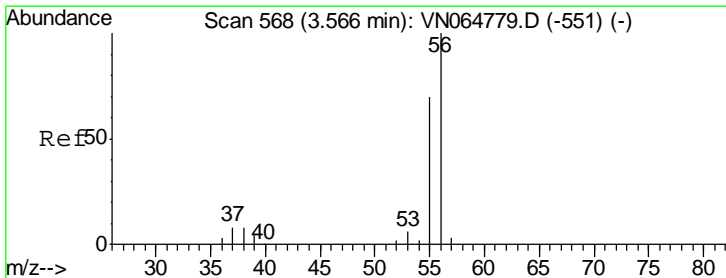
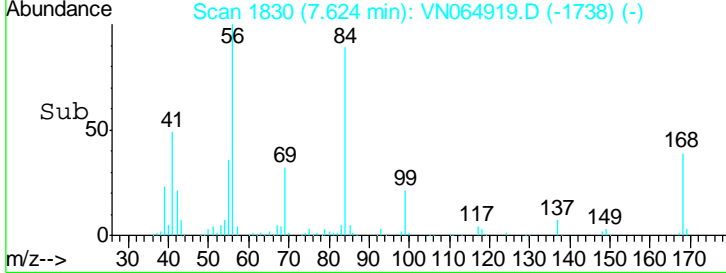
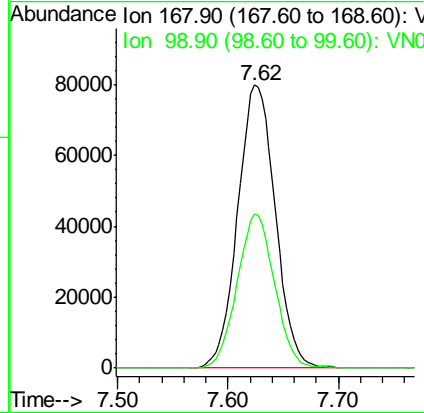
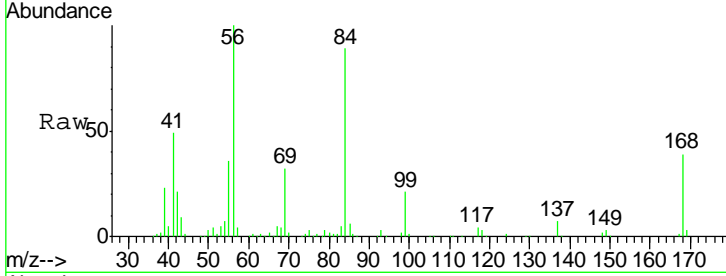




#1  
 Pentafluorobenzene  
 Concen: 50.000 ug/l  
 RT: 7.62 min Scan# 1830  
 Delta R.T. -0.00 min  
 Lab File: VN064919.D  
 Acq: 4 Dec 2020 15:17

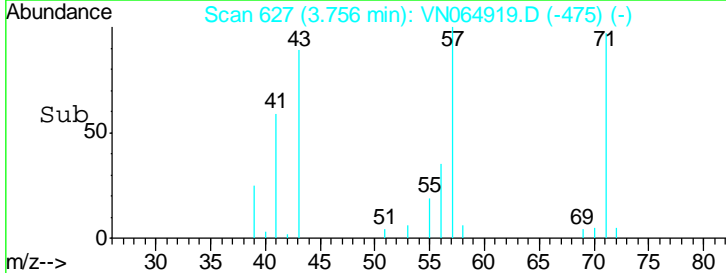
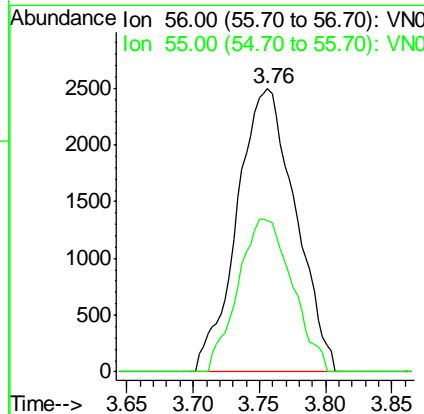
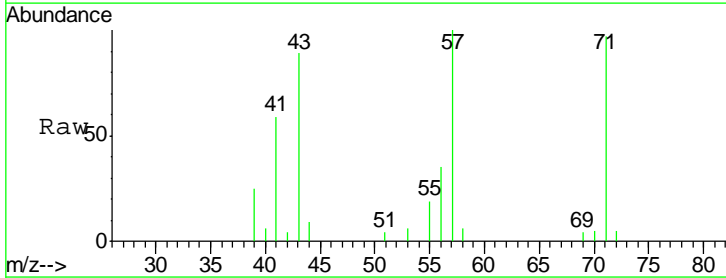
**Instrument :**  
 MSVOA\_N  
**ClientSampled :**  
 SS013-13-5045-120120

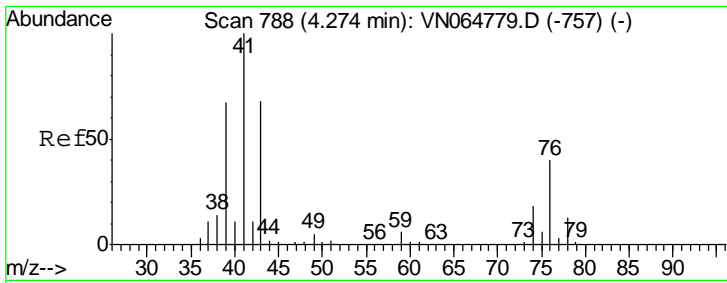
Tgt Ion	Resp	Lower	Upper
168	100		
99	54.6	43.0	64.4



#13  
 Acrolein  
 Concen: 36.700 ug/l  
 RT: 3.76 min Scan# 627  
 Delta R.T. 0.19 min  
 Lab File: VN064919.D  
 Acq: 4 Dec 2020 15:17

Tgt Ion	Resp	Lower	Upper
56	100		
55	50.2	56.5	84.7#

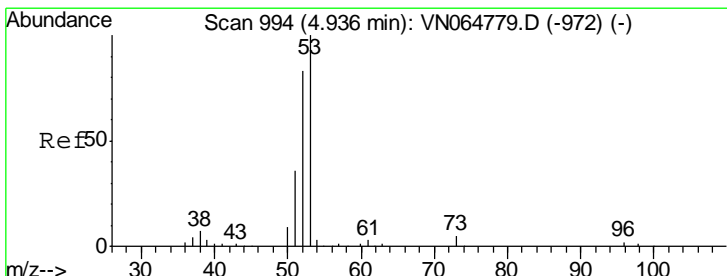
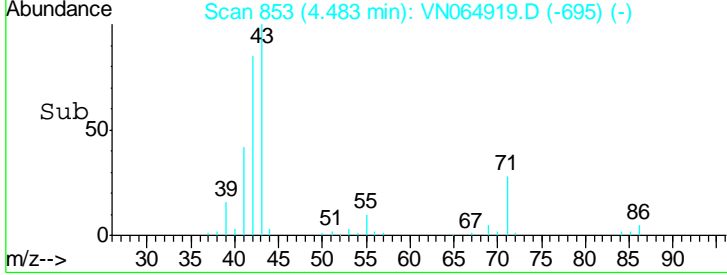
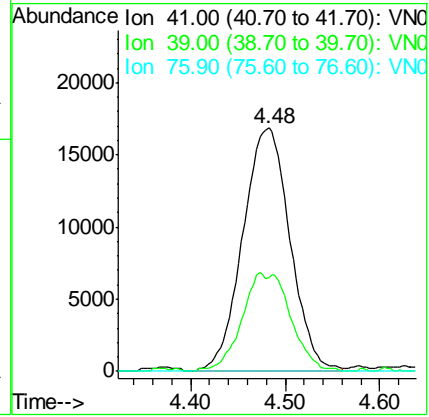
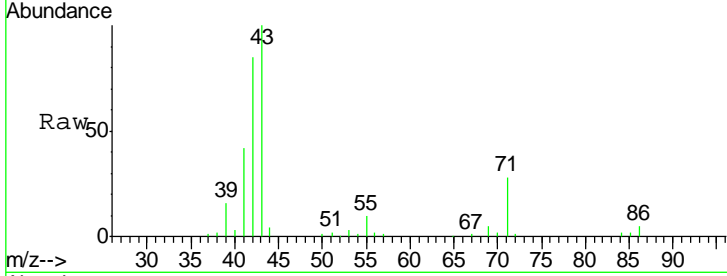




#14  
 Allyl chloride  
 Concen: 19.414 ug/l  
 RT: 4.48 min Scan# 853  
 Delta R.T. 0.21 min  
 Lab File: VN064919.D  
 Acq: 4 Dec 2020 15:17

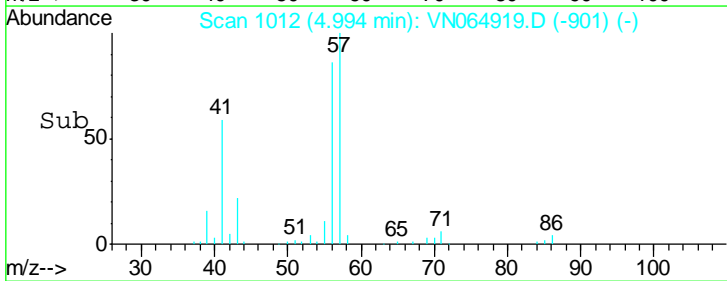
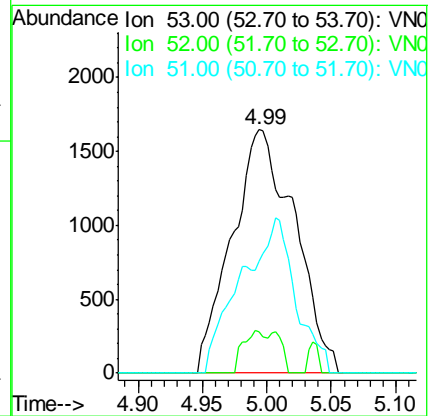
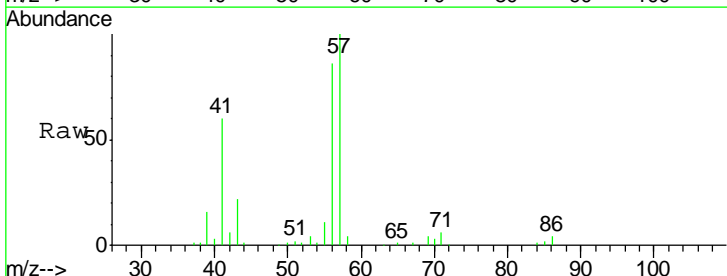
**Instrument :**  
 MSVOA\_N  
**ClientSampled :**  
 SS013-13-5045-120120

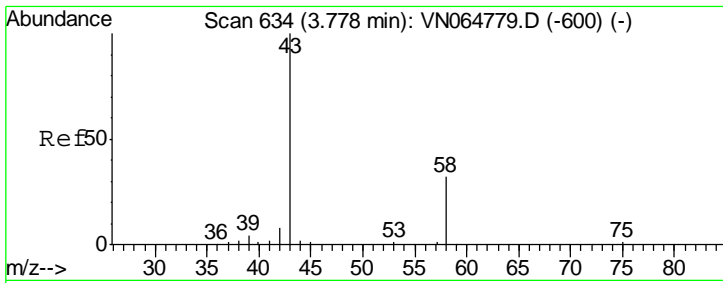
Tgt Ion	Resp	Lower	Upper
41	100		
39	21.1	50.9	76.3#
76	0.0	29.0	43.4#



#15  
 Acrylonitrile  
 Concen: 5.908 ug/l  
 RT: 4.99 min Scan# 1012  
 Delta R.T. 0.06 min  
 Lab File: VN064919.D  
 Acq: 4 Dec 2020 15:17

Tgt Ion	Resp	Lower	Upper
53	100		
52	6.5	65.5	98.3#
51	18.6	28.6	43.0#

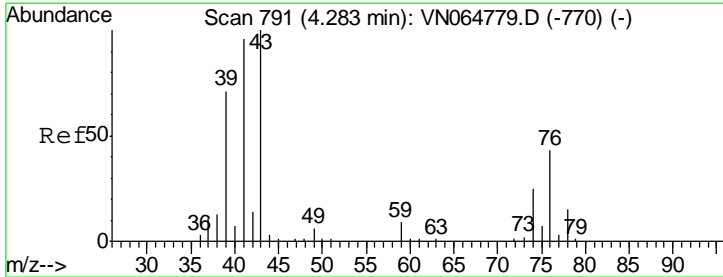
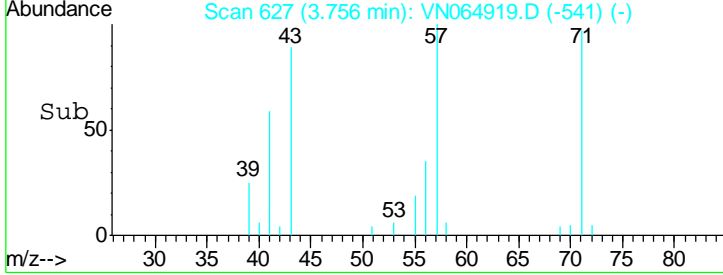
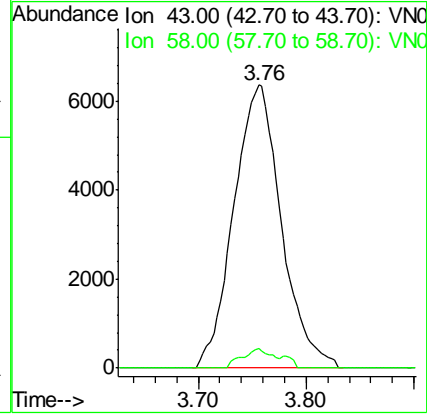
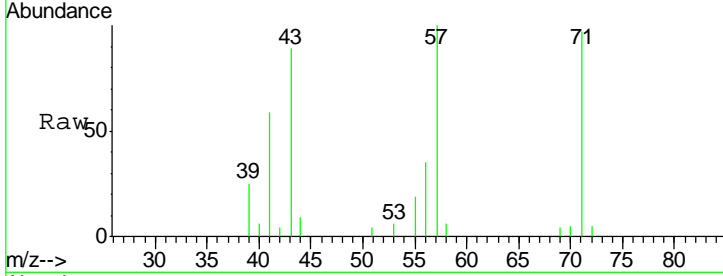




#16  
 Acetone  
 Concen: 27.087 ug/l  
 RT: 3.76 min Scan# 627  
 Delta R.T. -0.02 min  
 Lab File: VN064919.D  
 Acq: 4 Dec 2020 15:17

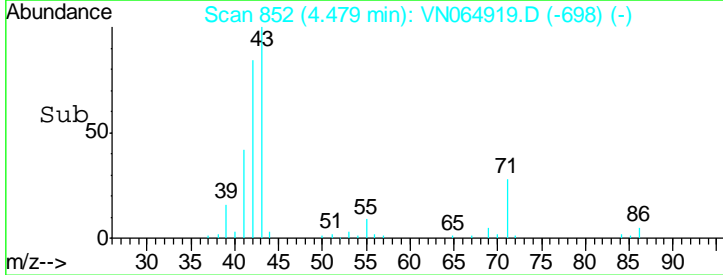
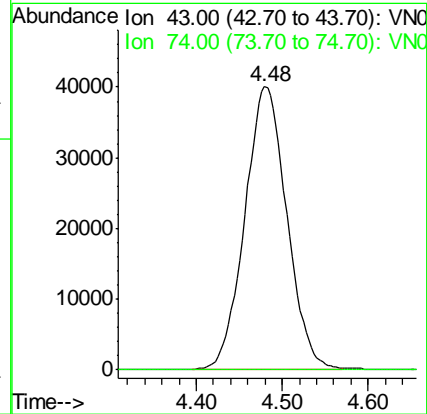
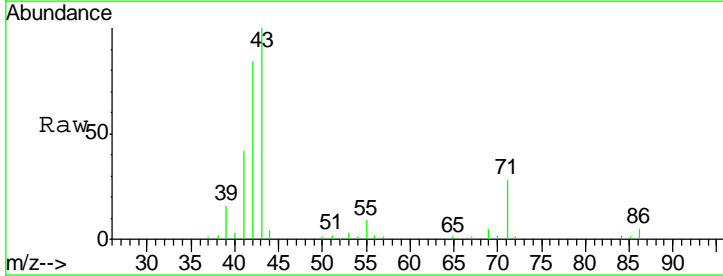
Instrument :  
 MSVOA\_N  
 ClientSampleId :  
 SS013-13-5045-120120

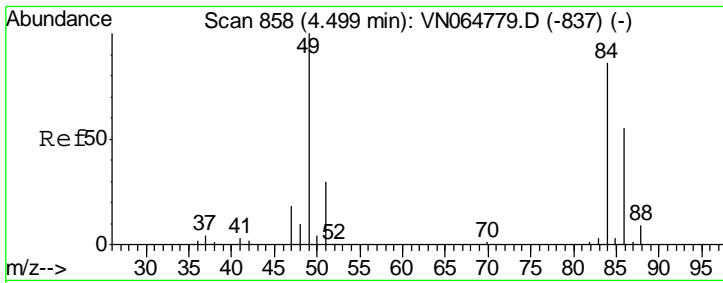
Tgt Ion	Resp	Lower	Upper
43	19523		
58	6.9	25.7	38.5#



#18  
 Methyl Acetate  
 Concen: 62.889 ug/l  
 RT: 4.48 min Scan# 852  
 Delta R.T. 0.20 min  
 Lab File: VN064919.D  
 Acq: 4 Dec 2020 15:17

Tgt Ion	Resp	Lower	Upper
43	136277		
74	0.0	20.2	30.2#

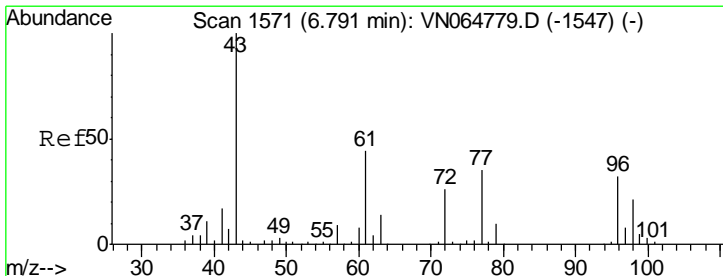
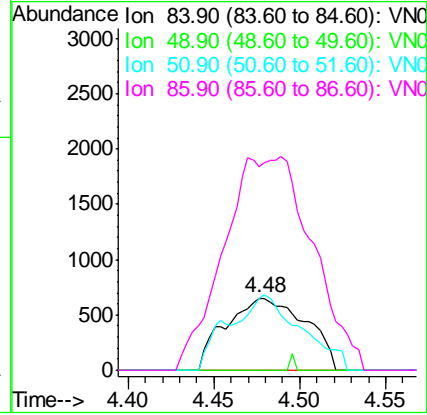
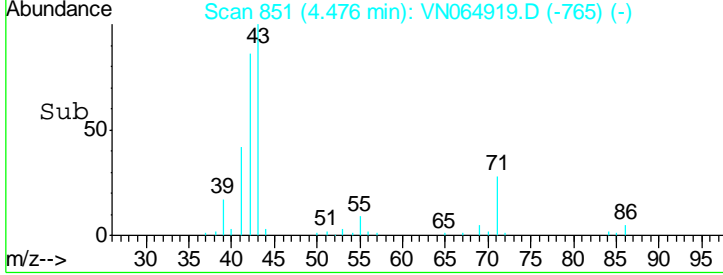
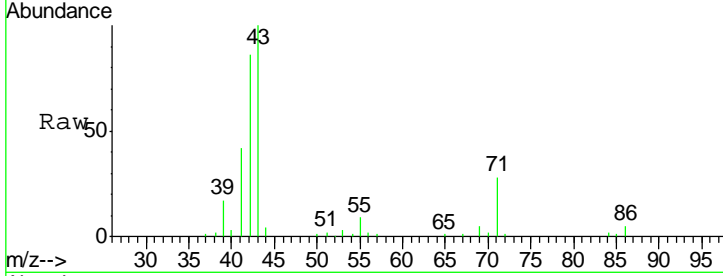




#20  
 Methylene Chloride  
 Concen: 0.938 ug/l  
 RT: 4.48 min Scan# 851  
 Delta R.T. -0.02 min  
 Lab File: VN064919.D  
 Acq: 4 Dec 2020 15:17

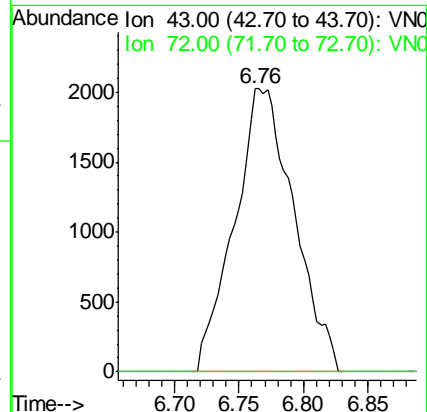
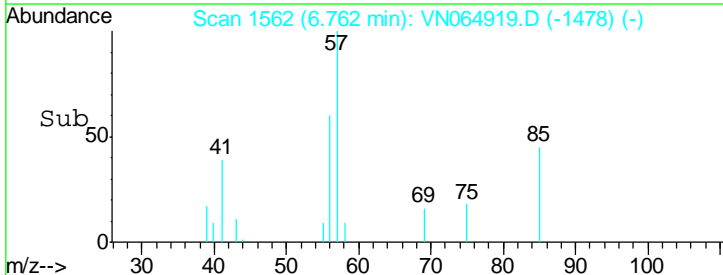
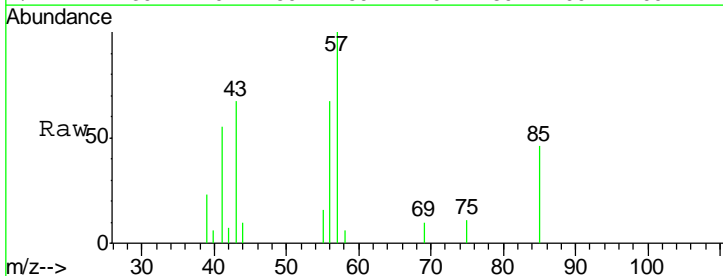
Instrument :  
 MSVOA\_N  
 ClientSampled :  
 SS013-13-5045-120120

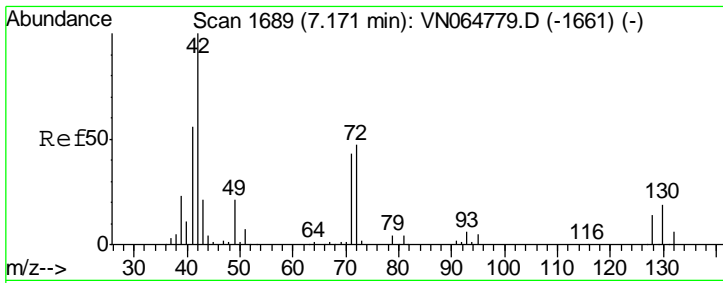
Tgt Ion	Resp	Lower	Upper
84	100		
49	0.0	93.4	140.0#
51	99.5	28.2	42.4#
86	228.7	51.7	77.5#



#25  
 2-Butanone  
 Concen: 5.582 ug/l  
 RT: 6.76 min Scan# 1562  
 Delta R.T. -0.03 min  
 Lab File: VN064919.D  
 Acq: 4 Dec 2020 15:17

Tgt Ion	Resp	Lower	Upper
43	100		
72	0.0	21.0	31.6#

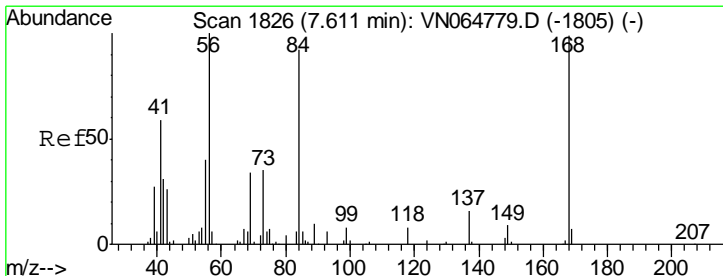
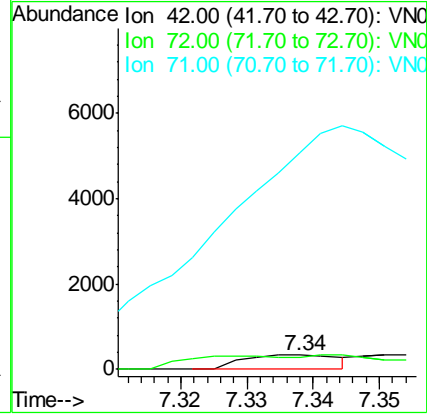
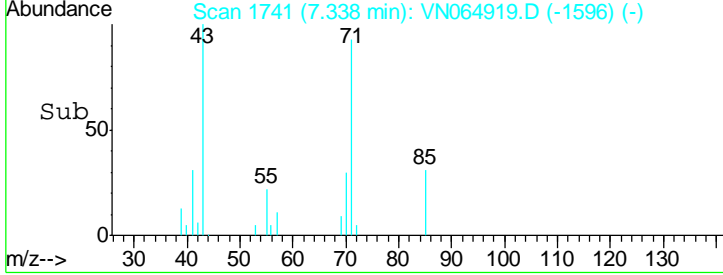
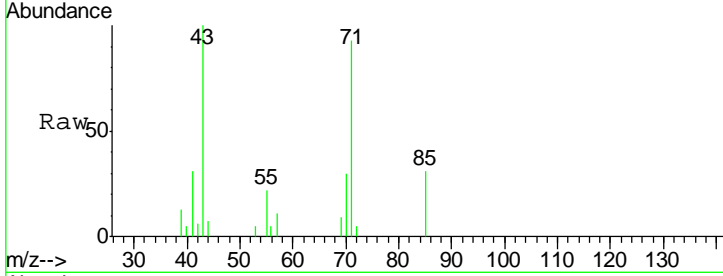




#29  
 Tetrahydrofuran  
 Concen: 0.420 ug/l  
 RT: 7.34 min Scan# 1741  
 Delta R.T. 0.17 min  
 Lab File: VN064919.D  
 Acq: 4 Dec 2020 15:17

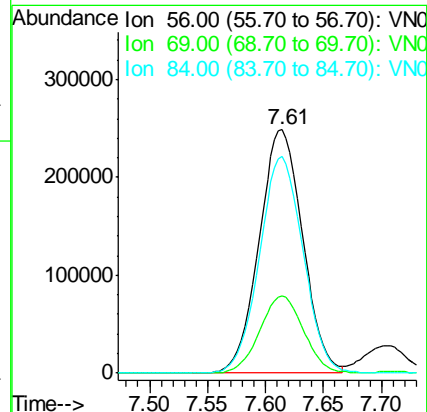
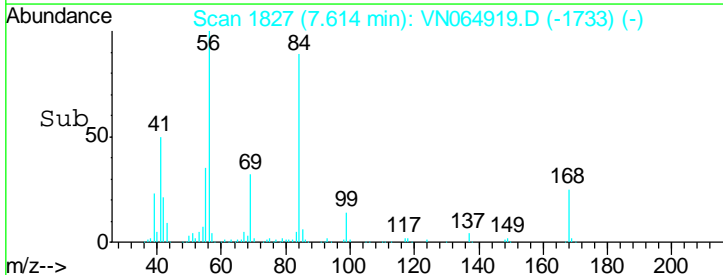
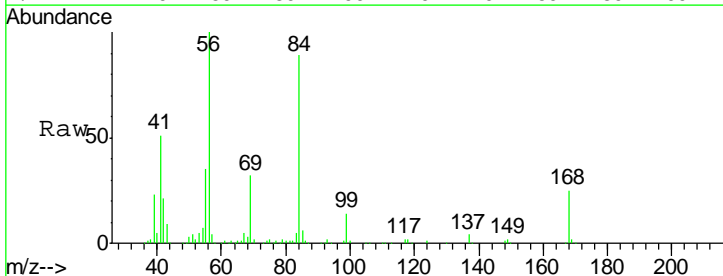
Instrument :  
 MSVOA\_N  
 ClientSampleId :  
 SS013-13-5045-120120

Tgt Ion	Resp	Lower	Upper
42	100		
72	91.7	36.6	54.8#
71	4884.4	33.6	50.4#

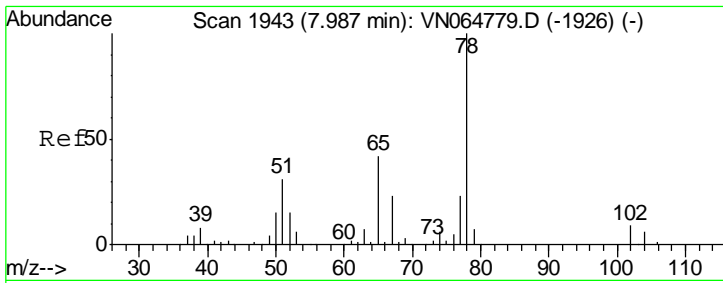


#31  
 Cyclohexane  
 Concen: 212.780 ug/l  
 RT: 7.61 min Scan# 1827  
 Delta R.T. 0.00 min  
 Lab File: VN064919.D  
 Acq: 4 Dec 2020 15:17

Tgt Ion	Resp	Lower	Upper
56	100		
69	31.8	27.5	41.3
84	88.8	73.9	110.9



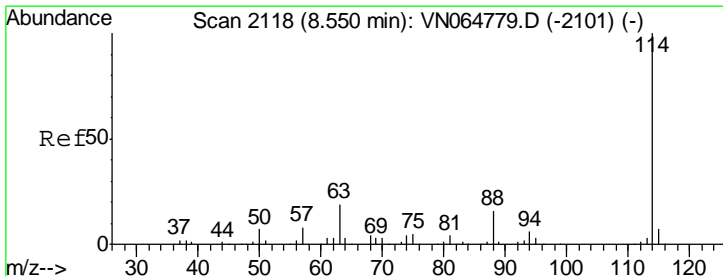
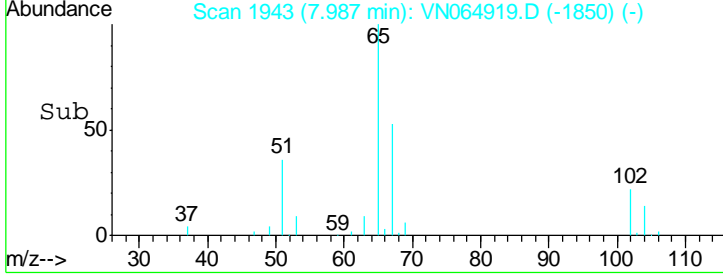
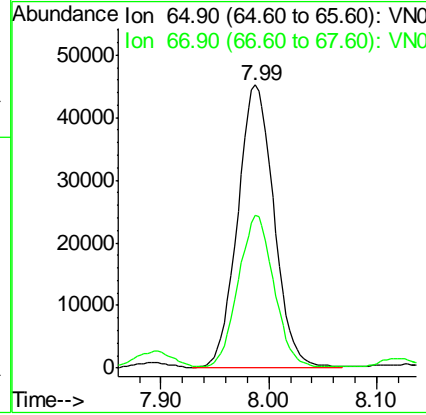
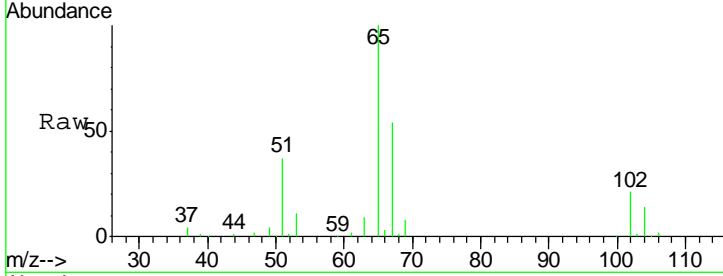




#33  
 1,2-Dichloroethane-d4  
 Concen: 48.576 ug/l  
 RT: 7.99 min Scan# 1943  
 Delta R.T. 0.00 min  
 Lab File: VN064919.D  
 Acq: 4 Dec 2020 15:17

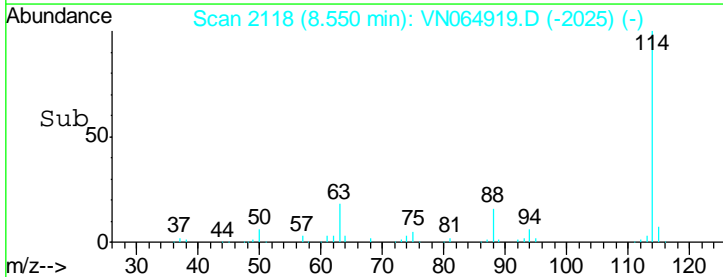
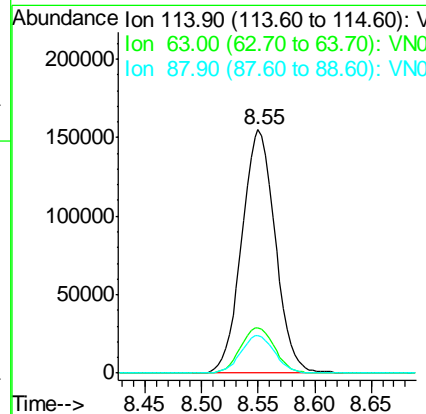
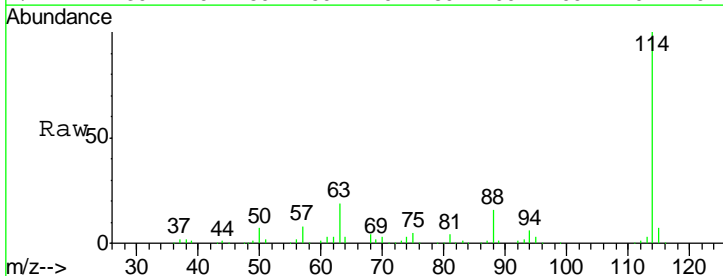
**Instrument :**  
 MSVOA\_N  
**ClientSampled :**  
 SS013-13-5045-120120

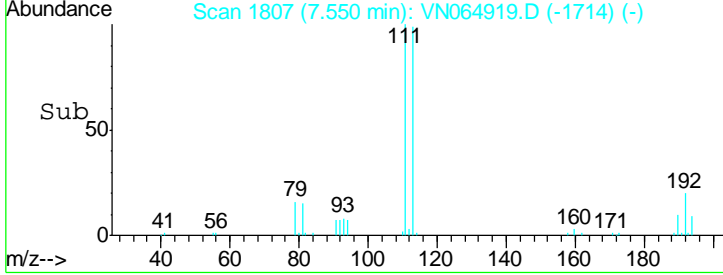
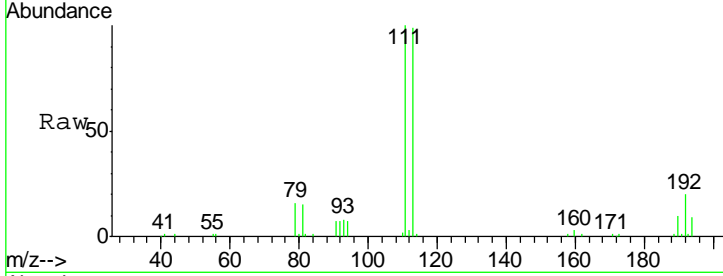
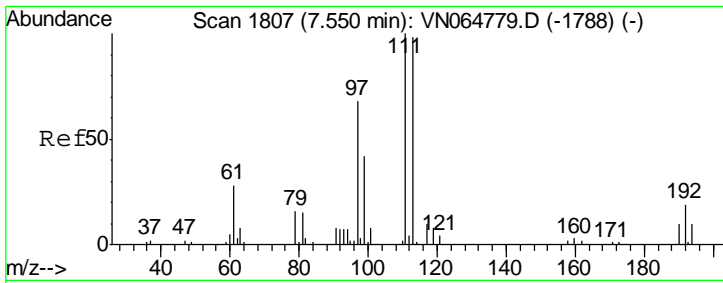
Tgt Ion	Resp	Lower	Upper
65	106503		
67	52.0	0.0	108.2



#34  
 1,4-Difluorobenzene  
 Concen: 50.000 ug/l  
 RT: 8.55 min Scan# 2118  
 Delta R.T. 0.00 min  
 Lab File: VN064919.D  
 Acq: 4 Dec 2020 15:17

Tgt Ion	Resp	Lower	Upper
114	319883		
63	18.8	0.0	38.6
88	15.7	0.0	32.6

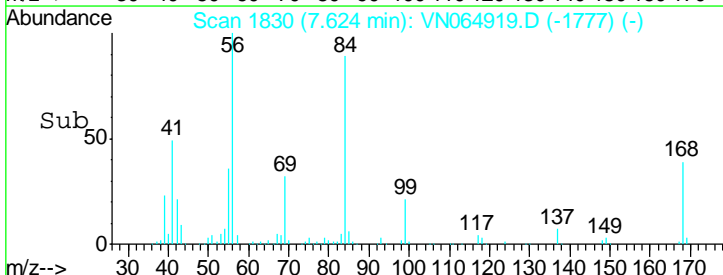
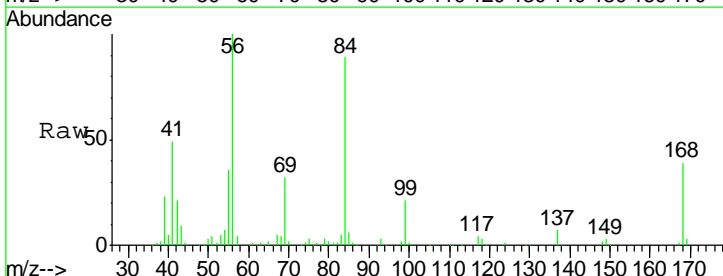
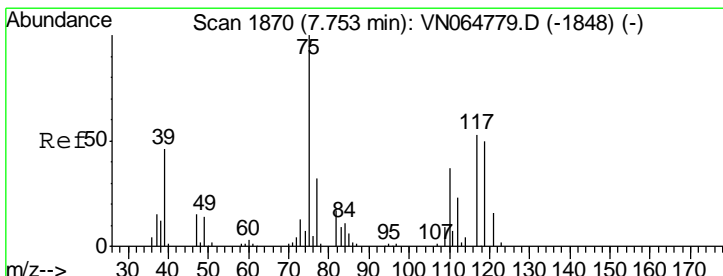
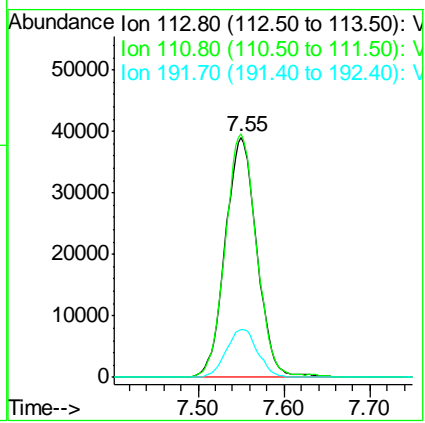




#35  
 Dibromofluoromethane  
 Concen: 51.817 ug/l  
 RT: 7.55 min Scan# 1807  
 Delta R.T. 0.00 min  
 Lab File: VN064919.D  
 Acq: 4 Dec 2020 15:17

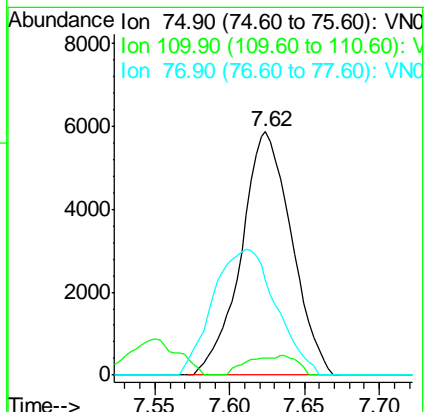
**Instrument :**  
 MSVOA\_N  
**ClientSampled :**  
 SS013-13-5045-120120

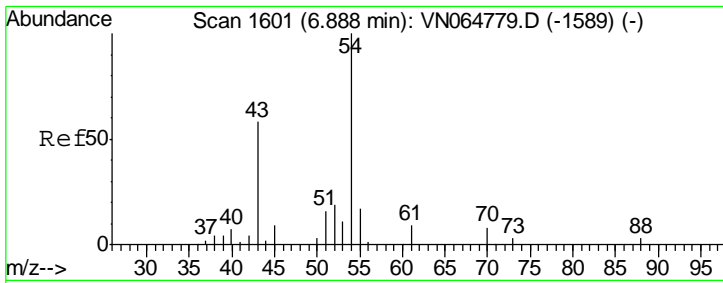
Tgt Ion	Resp	Lower	Upper
113	99181		
113	100		
111	100.2	81.6	122.4
192	19.9	16.2	24.2



#36  
 1,1-Dichloropropene  
 Concen: 4.644 ug/l  
 RT: 7.62 min Scan# 1830  
 Delta R.T. -0.13 min  
 Lab File: VN064919.D  
 Acq: 4 Dec 2020 15:17

Tgt Ion	Resp	Lower	Upper
75	13770		
75	100		
110	7.8	17.8	53.3#
77	0.0	25.0	37.4#

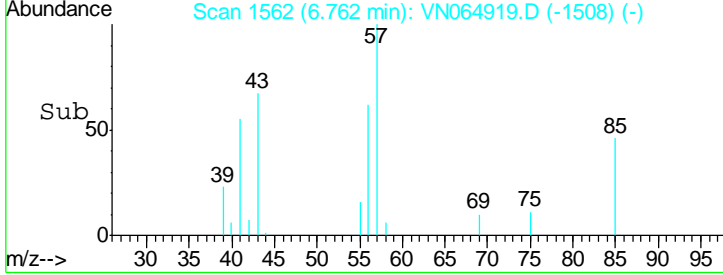
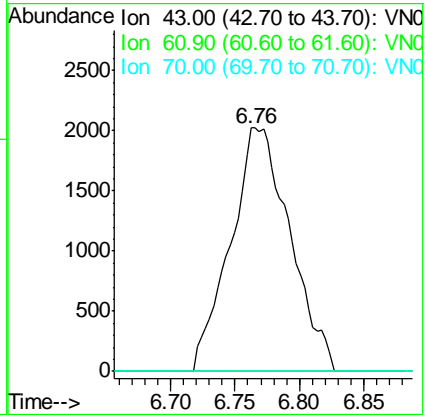
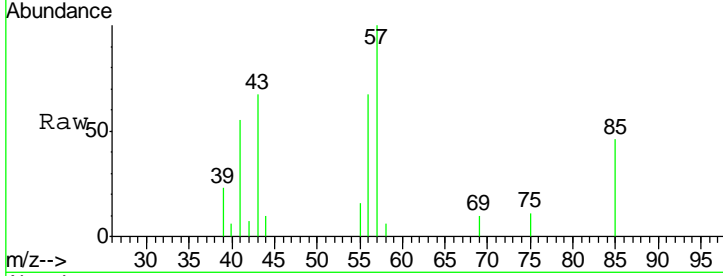




#37  
 Ethyl Acetate  
 Concen: 2.284 ug/l  
 RT: 6.76 min Scan# 1562  
 Delta R.T. -0.13 min  
 Lab File: VN064919.D  
 Acq: 4 Dec 2020 15:17

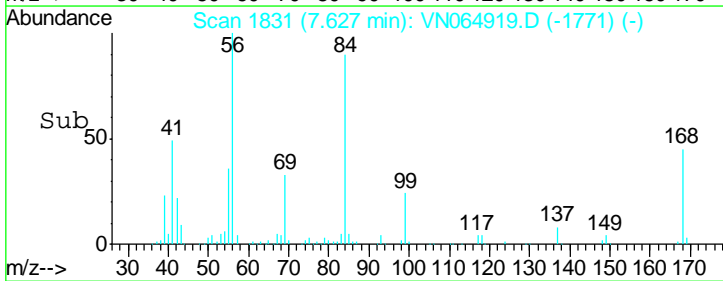
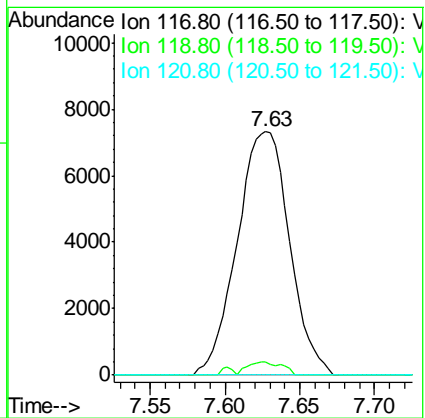
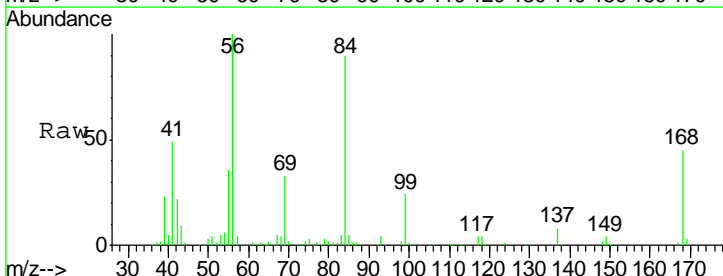
**Instrument :**  
 MSVOA\_N  
**ClientSampled :**  
 SS013-13-5045-120120

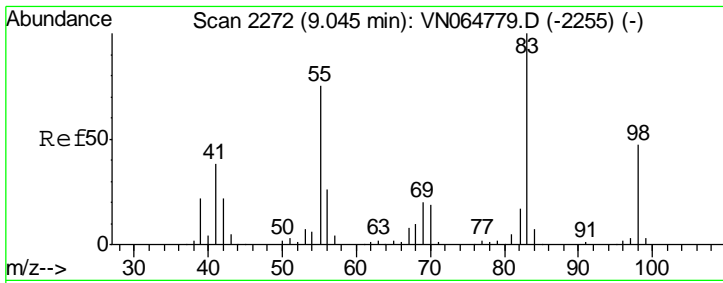
Tgt Ion	Resp	Lower	Upper
43	100		
61	0.0	12.8	19.2#
70	0.0	8.8	13.2#



#38  
 Carbon Tetrachloride  
 Concen: 5.772 ug/l  
 RT: 7.63 min Scan# 1831  
 Delta R.T. -0.11 min  
 Lab File: VN064919.D  
 Acq: 4 Dec 2020 15:17

Tgt Ion	Resp	Lower	Upper
117	100		
119	5.3	76.7	115.1#
121	0.0	25.4	38.2#

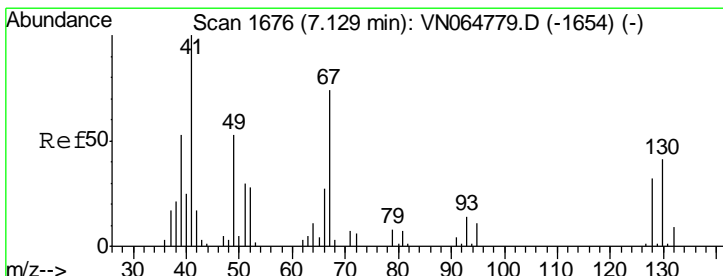
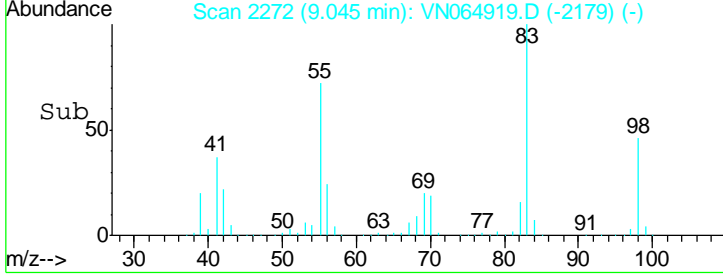
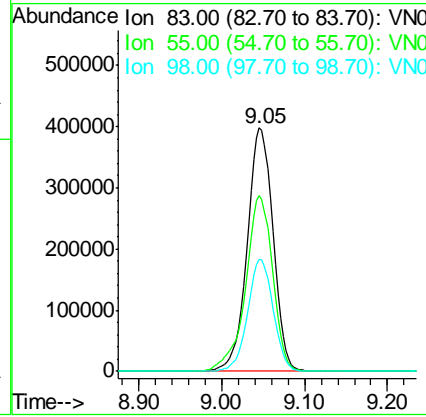
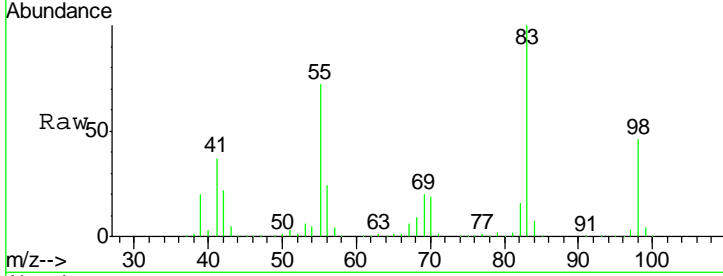




#39  
 Methylcyclohexane  
 Concen: 269.990 ug/l  
 RT: 9.05 min Scan# 2272  
 Delta R.T. 0.00 min  
 Lab File: VN064919.D  
 Acq: 4 Dec 2020 15:17

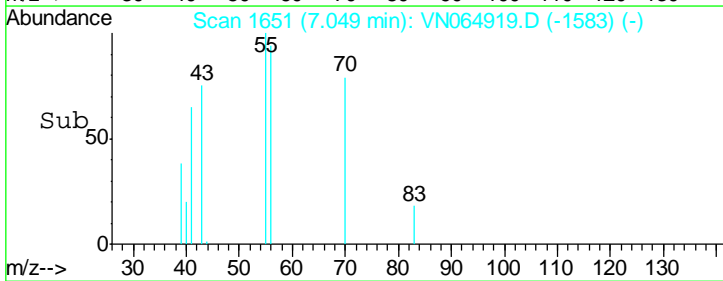
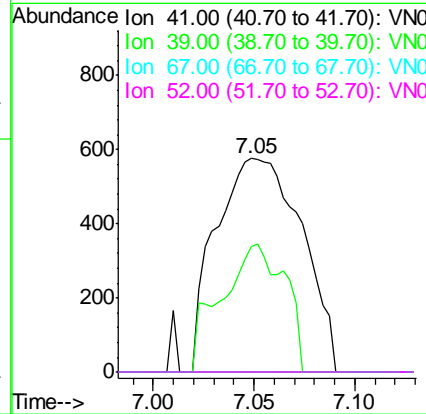
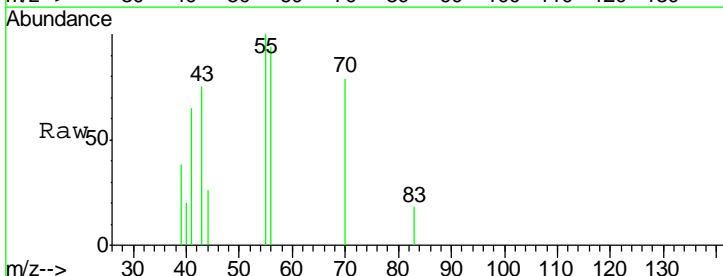
**Instrument :**  
 MSVOA\_N  
**ClientSampled :**  
 SS013-13-5045-120120

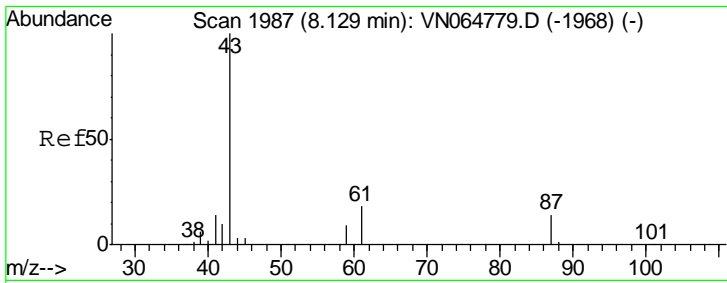
Tgt Ion	Resp	Lower	Upper
83	100		
55	72.3	60.2	90.2
98	46.1	37.4	56.2



#41  
 Methacrylonitrile  
 Concen: 1.292 ug/l  
 RT: 7.05 min Scan# 1651  
 Delta R.T. -0.08 min  
 Lab File: VN064919.D  
 Acq: 4 Dec 2020 15:17

Tgt Ion	Resp	Lower	Upper
41	100		
39	44.9	51.0	76.6#
67	0.0	79.8	119.8#
52	0.0	31.5	47.3#

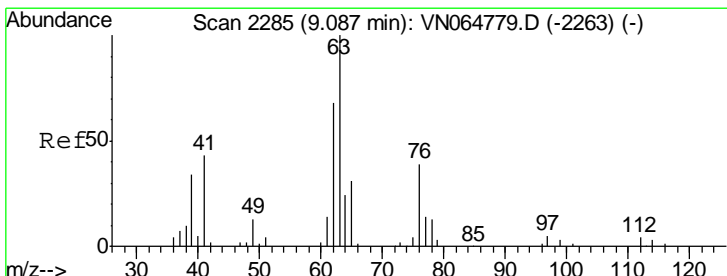
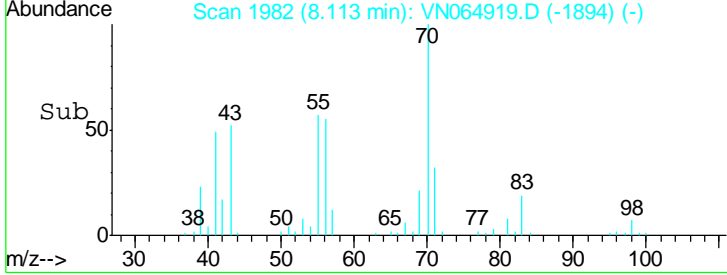
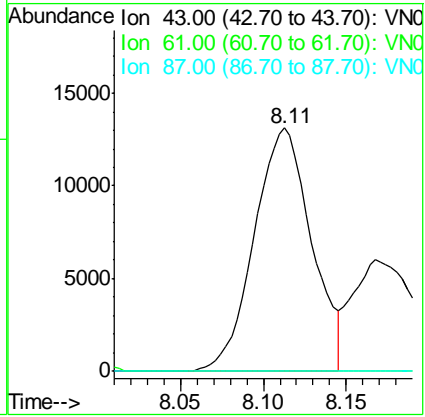
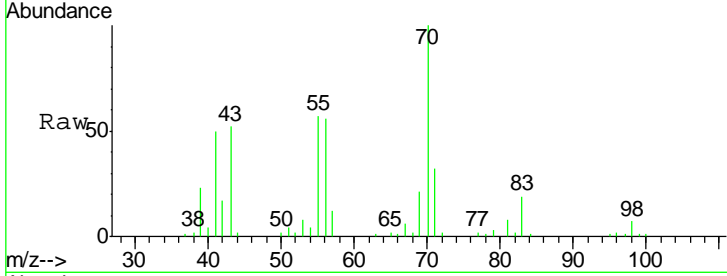




#43  
 Isopropyl Acetate  
 Concen: 6.874 ug/l  
 RT: 8.11 min Scan# 1982  
 Delta R.T. -0.02 min  
 Lab File: VN064919.D  
 Acq: 4 Dec 2020 15:17

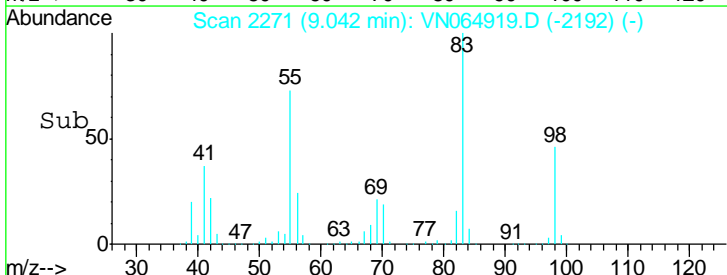
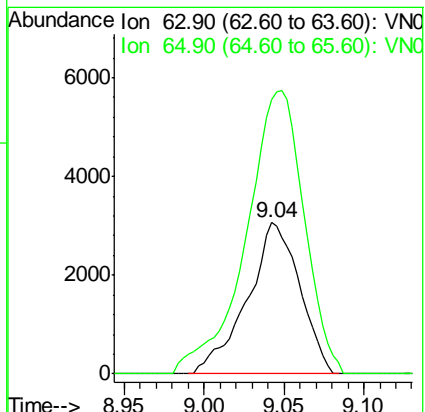
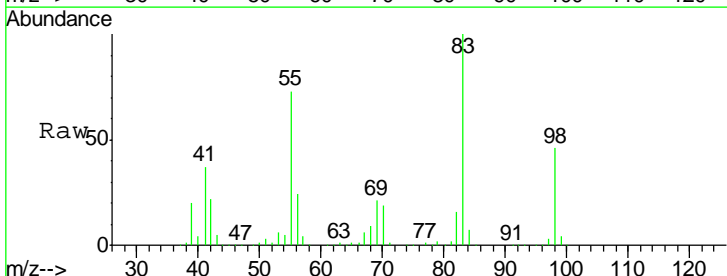
**Instrument :**  
 MSVOA\_N  
**ClientSampled :**  
 SS013-13-5045-120120

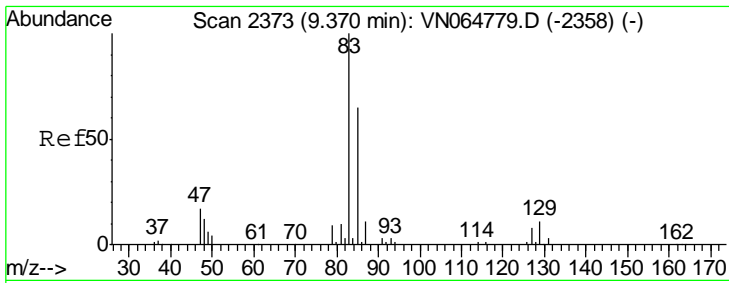
Tgt Ion	Resp	Lower	Upper
43	100		
61	0.0	17.2	25.8#
87	0.0	11.4	17.0#



#45  
 1,2-Dichloropropane  
 Concen: 2.945 ug/l  
 RT: 9.04 min Scan# 2271  
 Delta R.T. -0.04 min  
 Lab File: VN064919.D  
 Acq: 4 Dec 2020 15:17

Tgt Ion	Resp	Lower	Upper
63	100		
65	173.9	25.0	37.4#

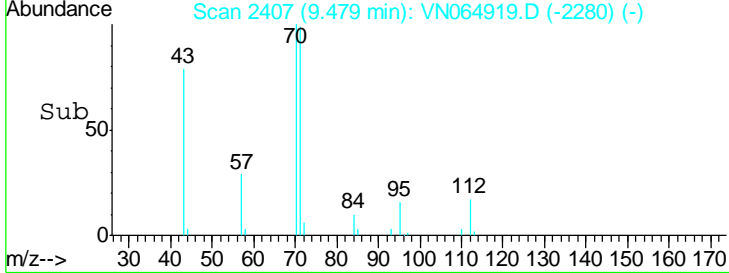
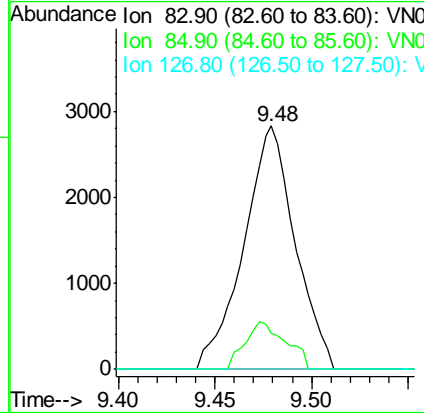
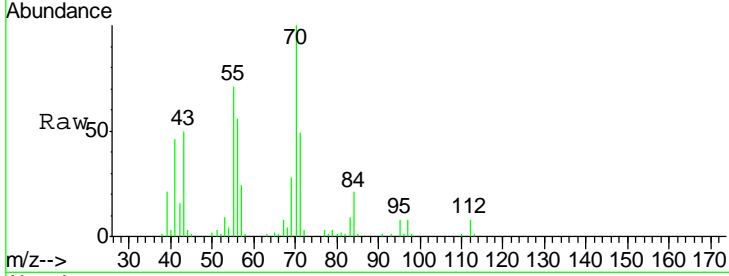




#47  
 Bromodichloromethane  
 Concen: 1.655 ug/l  
 RT: 9.48 min Scan# 2407  
 Delta R.T. 0.11 min  
 Lab File: VN064919.D  
 Acq: 4 Dec 2020 15:17

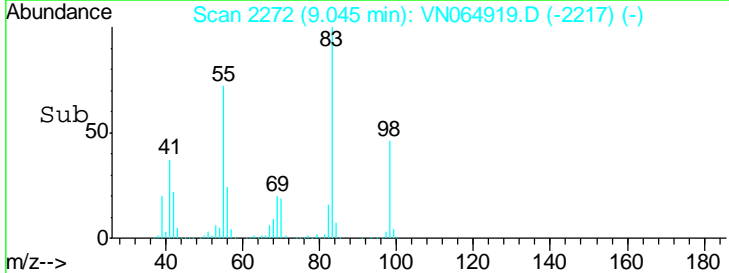
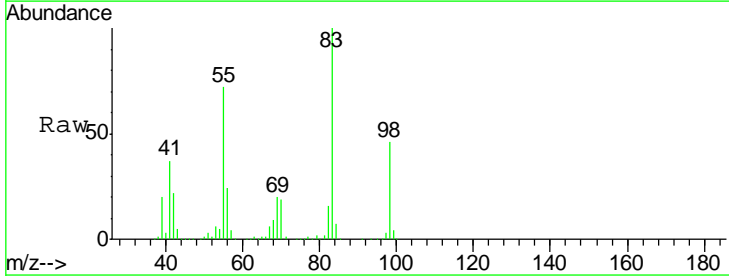
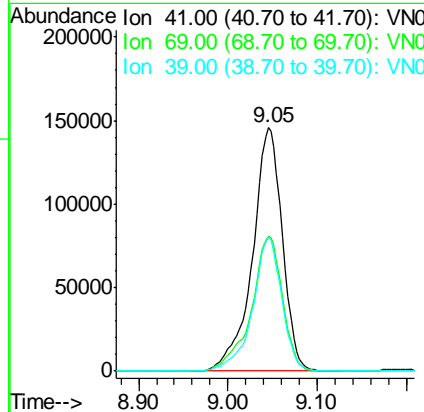
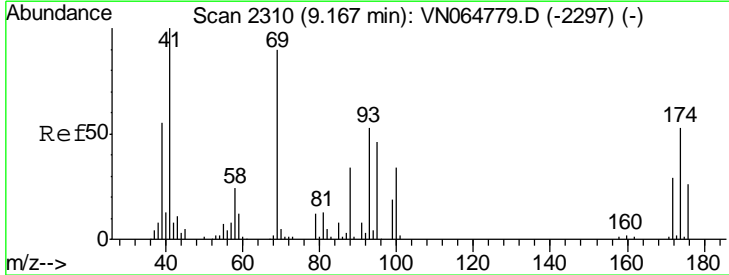
**Instrument :**  
 MSVOA\_N  
**ClientSampled :**  
 SS013-13-5045-120120

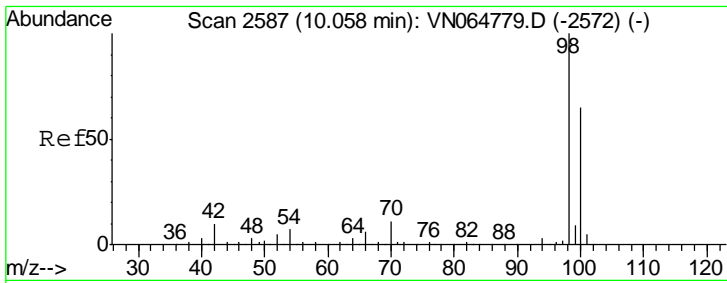
Tgt Ion	Resp	Lower	Upper
83	100		
85	15.1	51.8	77.8#
127	0.0	6.8	10.2#



#48  
 Methyl methacrylate  
 Concen: 154.946 ug/l  
 RT: 9.05 min Scan# 2272  
 Delta R.T. -0.12 min  
 Lab File: VN064919.D  
 Acq: 4 Dec 2020 15:17

Tgt Ion	Resp	Lower	Upper
41	100		
69	57.9	71.8	107.8#
39	53.7	44.1	66.1

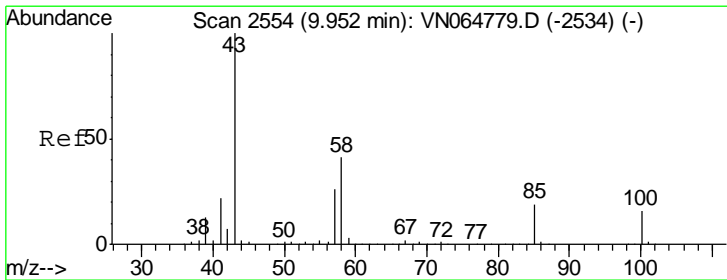
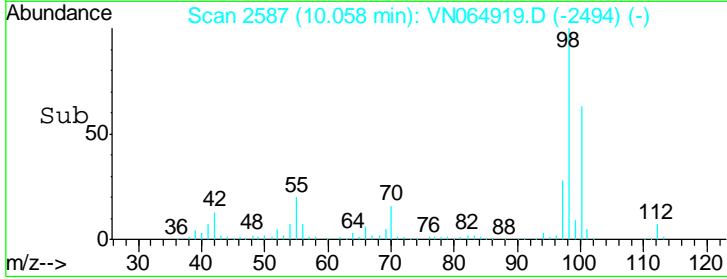
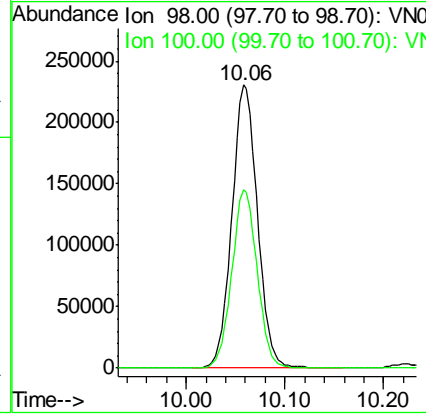
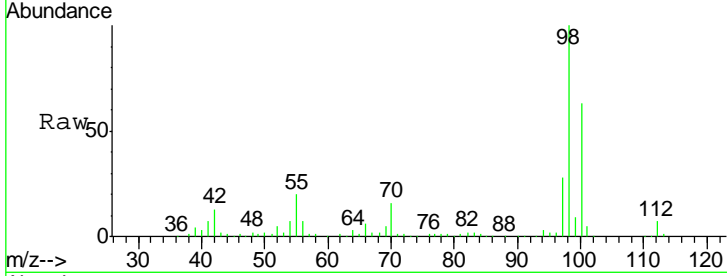




#50  
 Toluene-d8  
 Concen: 53.476 ug/l  
 RT: 10.06 min Scan# 2587  
 Delta R.T. 0.00 min  
 Lab File: VN064919.D  
 Acq: 4 Dec 2020 15:17

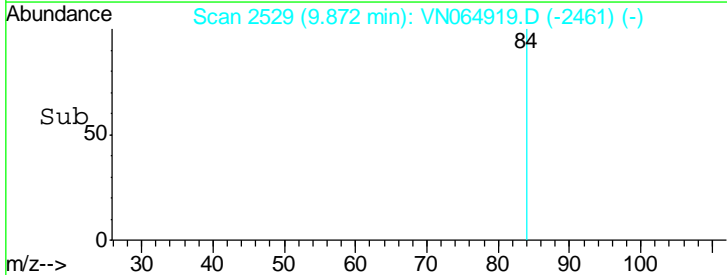
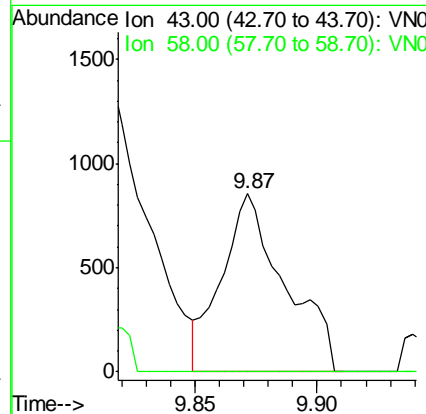
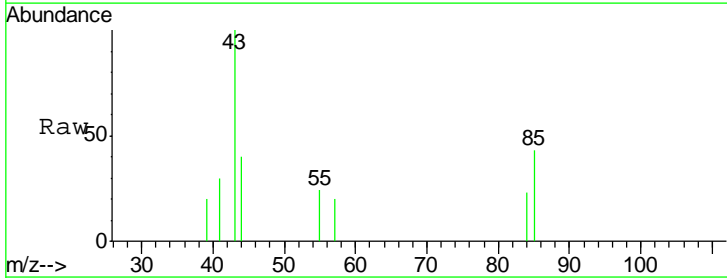
Instrument : MSVOA\_N  
 ClientSampled : SS013-13-5045-120120

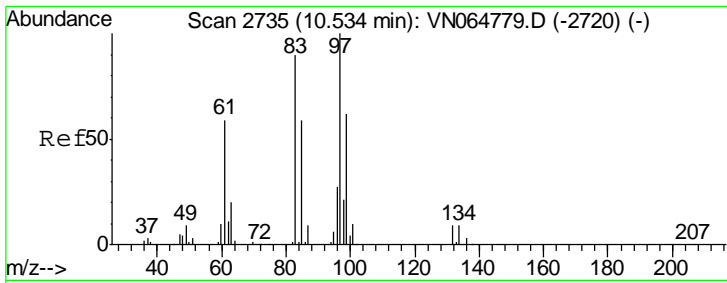
Tot Ion: 98 Resp: 418220  
 Ion Ratio Lower Upper  
 98 100  
 100 62.5 51.7 77.5



#51  
 4-Methyl-2-Pentanone  
 Concen: 0.556 ug/l  
 RT: 9.87 min Scan# 2529  
 Delta R.T. -0.08 min  
 Lab File: VN064919.D  
 Acq: 4 Dec 2020 15:17

Tgt Ion: 43 Resp: 1533  
 Ion Ratio Lower Upper  
 43 100  
 58 0.0 32.4 48.6#

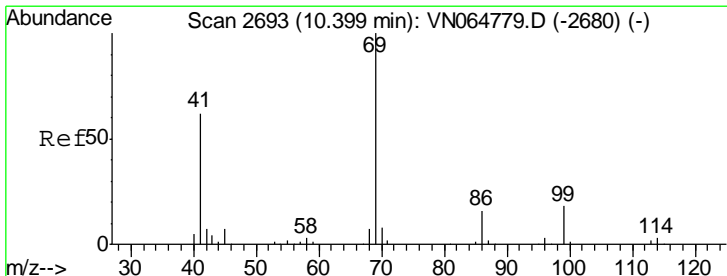
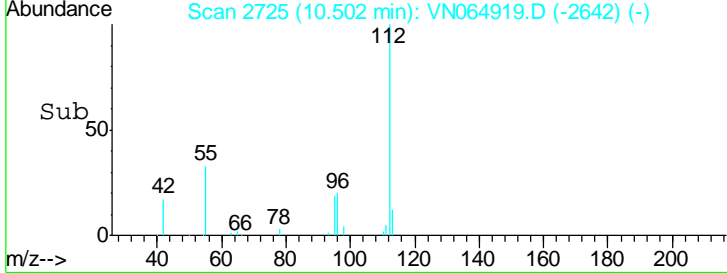
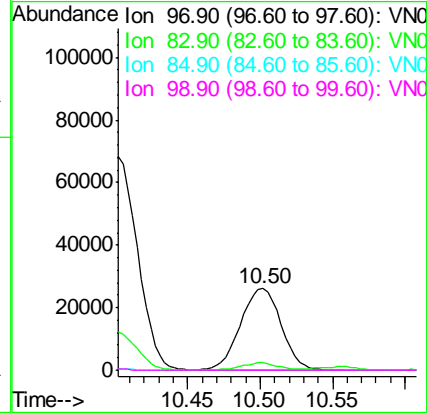
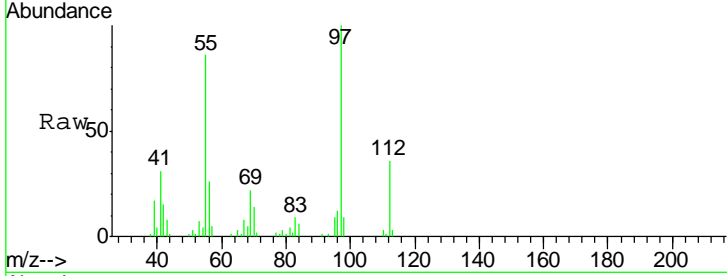




#55  
 1,1,2-Trichloroethane  
 Concen: 22.233 ug/l  
 RT: 10.50 min Scan# 2725  
 Delta R.T. -0.03 min  
 Lab File: VN064919.D  
 Acq: 4 Dec 2020 15:17

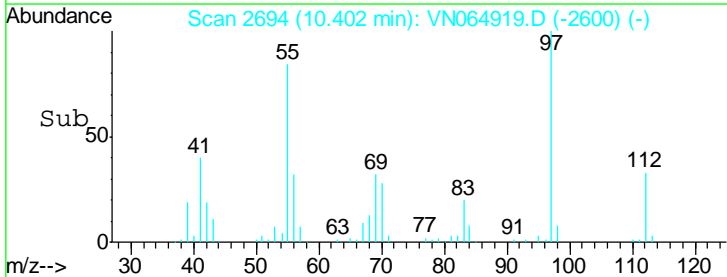
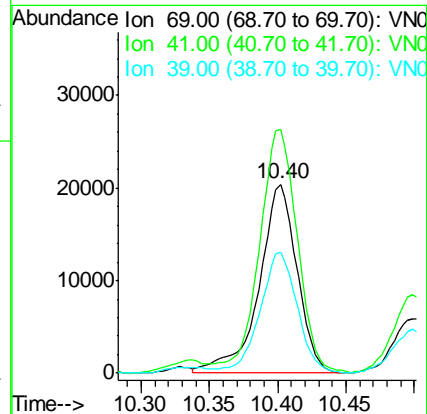
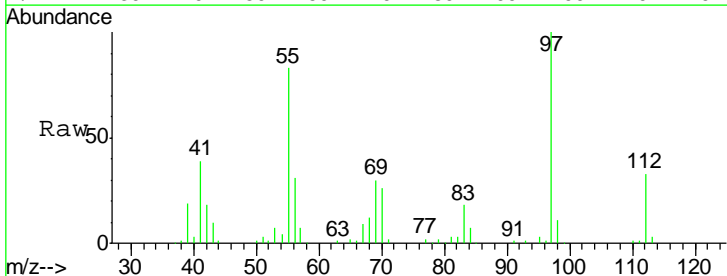
Instrument : MSVOA\_N  
 ClientSampleId : SS013-13-5045-120120

Tgt Ion	Resp	Lower	Upper
97	51156		
83	9.0	72.1	108.1#
85	0.0	46.8	70.2#
99	0.0	49.6	74.4#

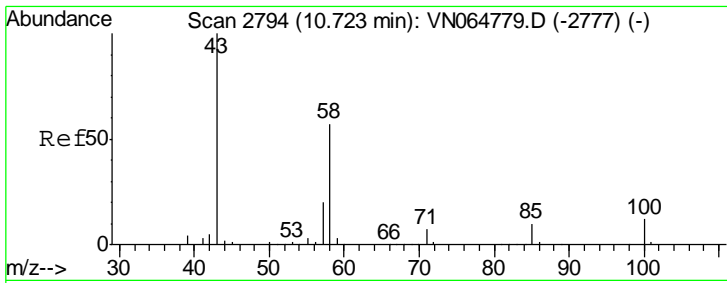


#56  
 Ethyl methacrylate  
 Concen: 12.440 ug/l  
 RT: 10.40 min Scan# 2694  
 Delta R.T. 0.00 min  
 Lab File: VN064919.D  
 Acq: 4 Dec 2020 15:17

Tgt Ion	Resp	Lower	Upper
69	39500		
41	128.8	49.4	74.0#
39	62.6	25.9	38.9#



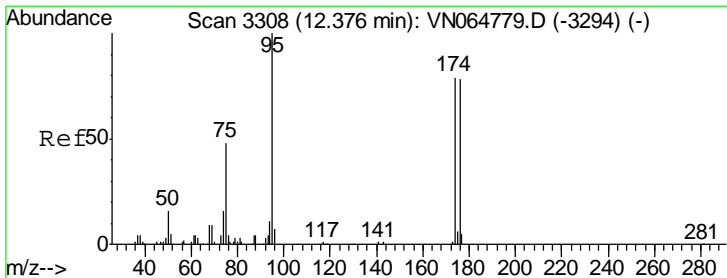
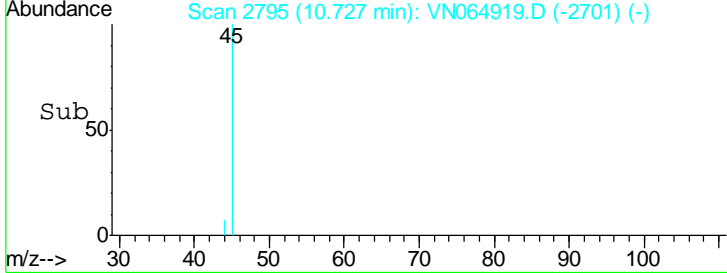
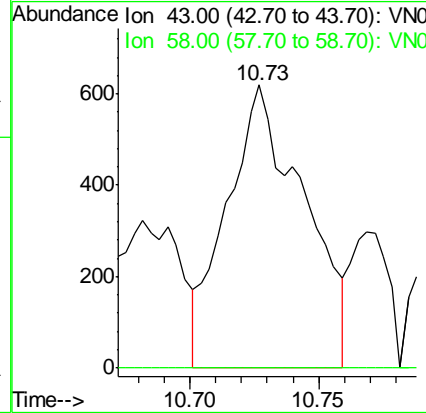
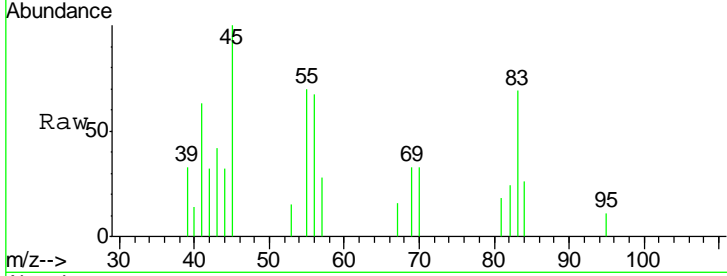




#59  
 2-Hexanone  
 Concen: 0.650 ug/l  
 RT: 10.73 min Scan# 2795  
 Delta R.T. 0.00 min  
 Lab File: VN064919.D  
 Acq: 4 Dec 2020 15:17

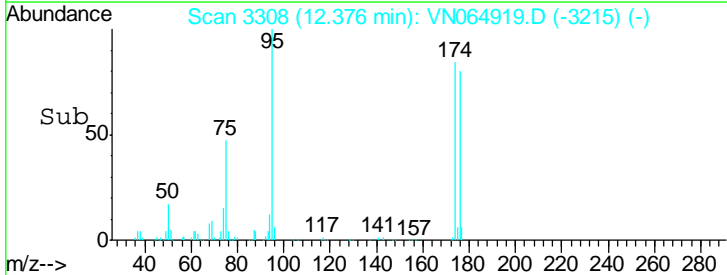
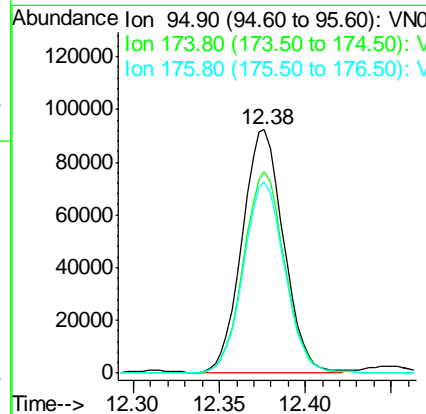
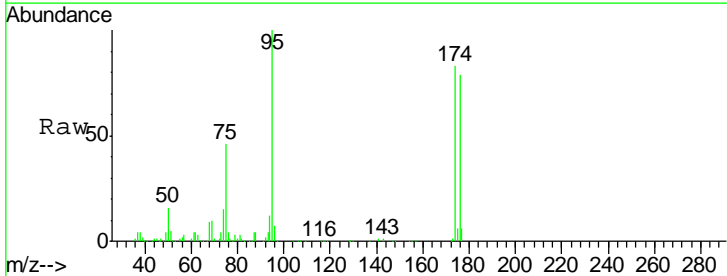
Instrument : MSVOA\_N  
 ClientSampled : SS013-13-5045-120120

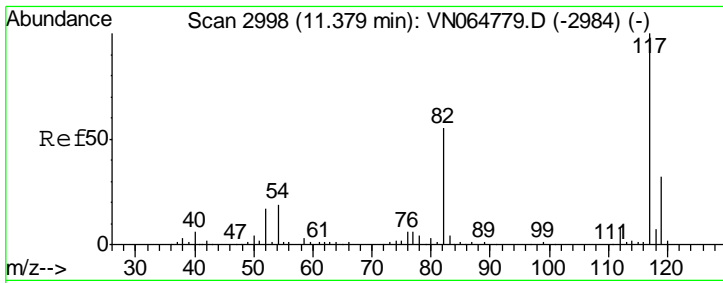
Tgt Ion	Resp	Lower	Upper
43	1290		
43	100		
58	0.0	28.3	84.9#



#62  
 4-Bromofluorobenzene  
 Concen: 54.906 ug/l  
 RT: 12.38 min Scan# 3308  
 Delta R.T. 0.00 min  
 Lab File: VN064919.D  
 Acq: 4 Dec 2020 15:17

Tgt Ion	Resp	Lower	Upper
95	153676		
95	100		
174	83.2	0.0	160.4
176	79.0	0.0	158.4

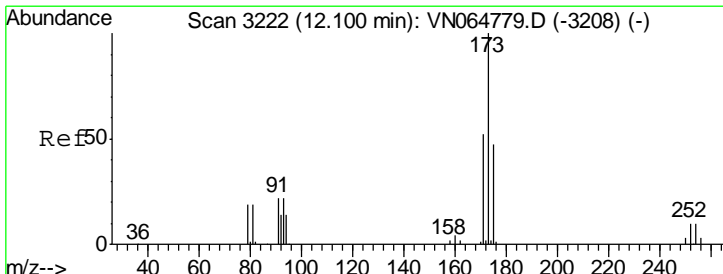
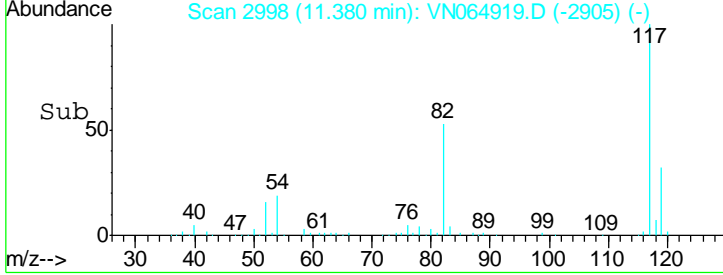
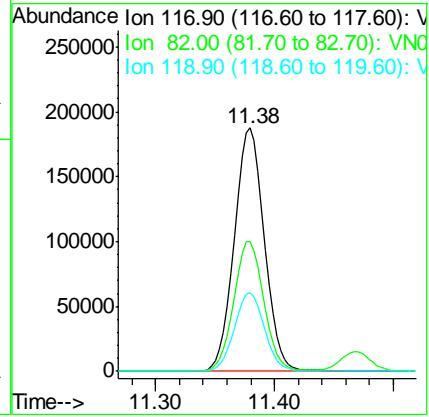
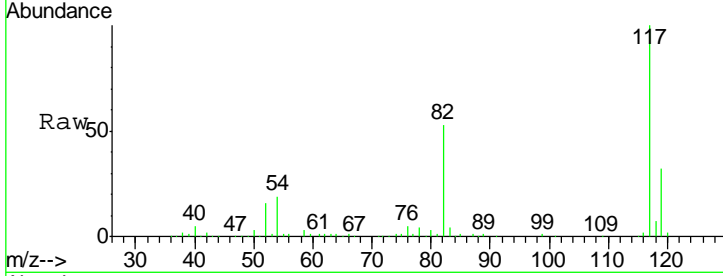




#63  
 Chlorobenzene-d5  
 Concen: 50.000 ug/l  
 RT: 11.38 min Scan# 2998  
 Delta R.T. 0.00 min  
 Lab File: VN064919.D  
 Acq: 4 Dec 2020 15:17

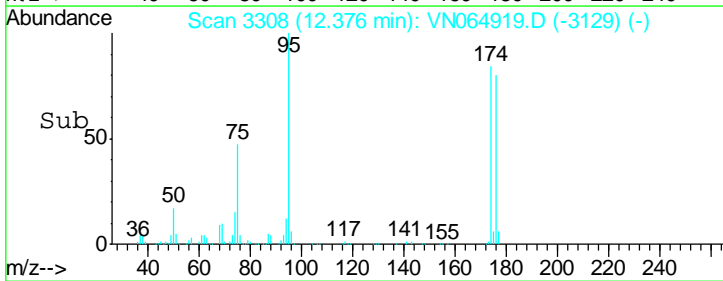
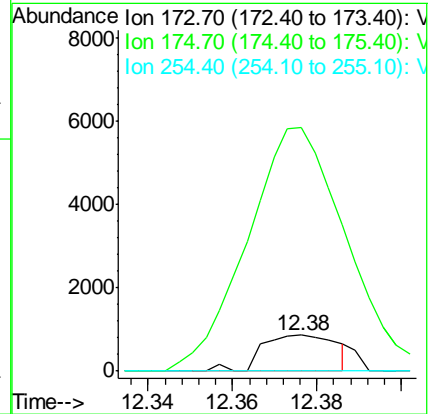
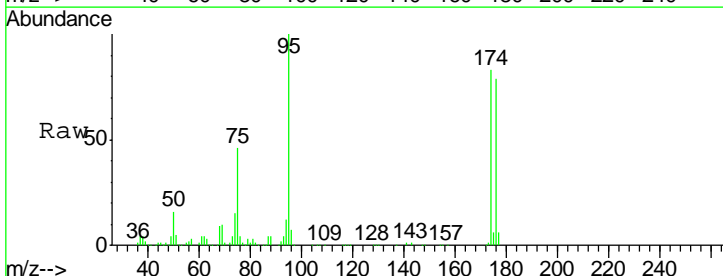
Instrument : MSVOA\_N  
 ClientSampled : SS013-13-5045-120120

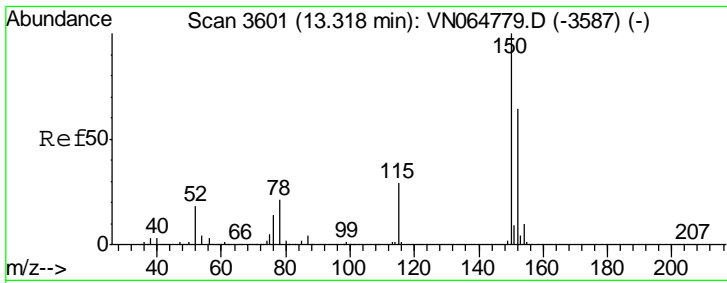
Tgt Ion	Resp	Lower	Upper
117	327647		
82	53.4	44.2	66.2
119	32.3	25.8	38.6



#71  
 Bromoform  
 Concen: 0.513 ug/l  
 RT: 12.38 min Scan# 3308  
 Delta R.T. 0.28 min  
 Lab File: VN064919.D  
 Acq: 4 Dec 2020 15:17

Tgt Ion	Resp	Lower	Upper
173	1059		
175	773.5	24.3	72.8#
254	0.0	0.0	0.0

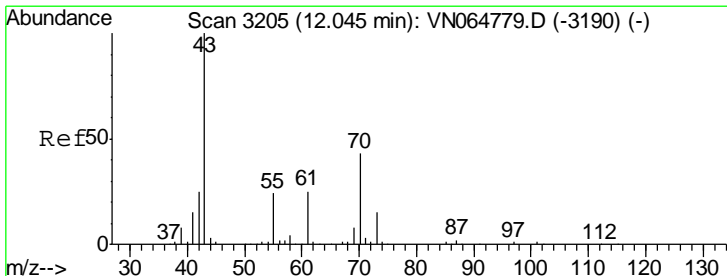
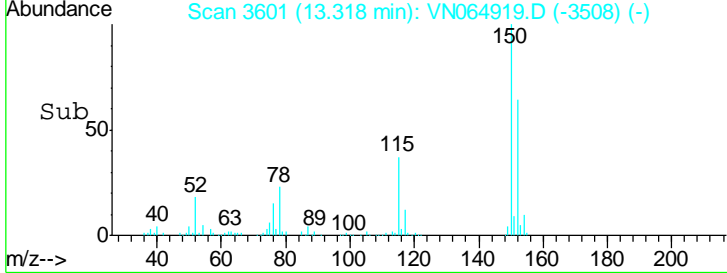
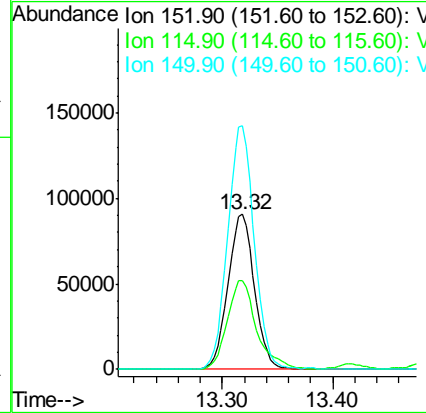
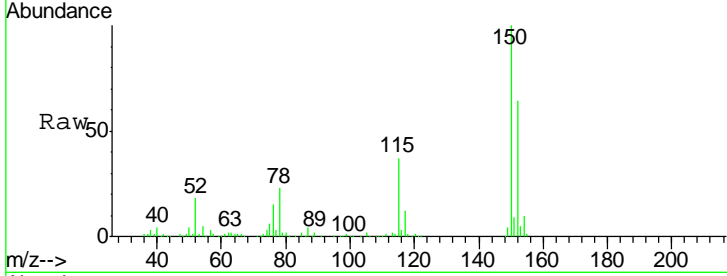




#72  
 1,4-Dichlorobenzene-d4  
 Concen: 50.000 ug/l  
 RT: 13.32 min Scan# 3601  
 Delta R.T. 0.00 min  
 Lab File: VN064919.D  
 Acq: 4 Dec 2020 15:17

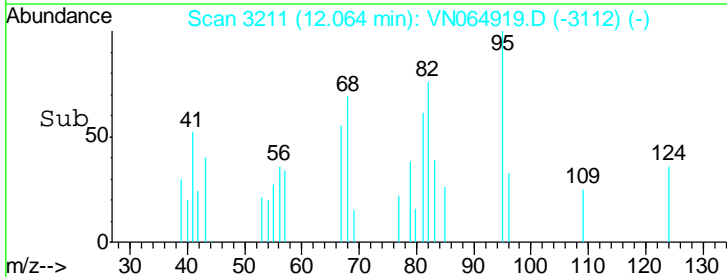
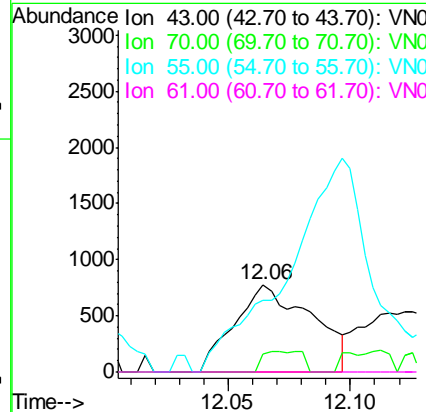
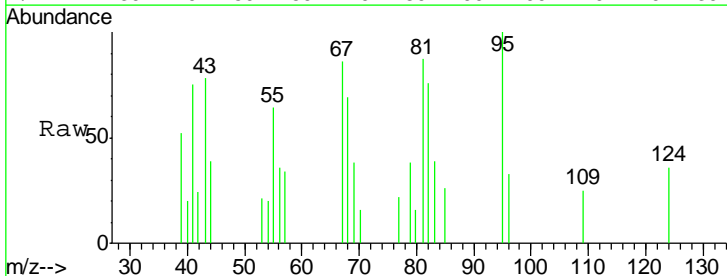
Instrument : MSVOA\_N  
 ClientSampled : SS013-13-5045-120120

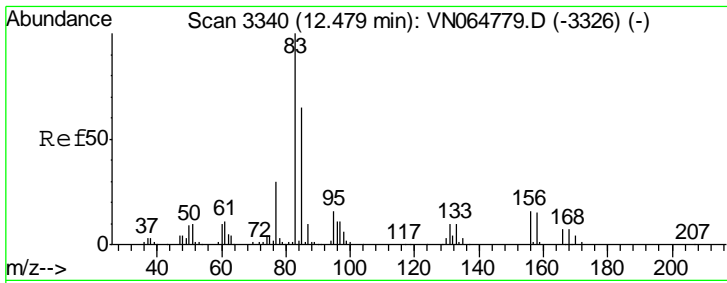
Tgt Ion	Resp	Lower	Upper
152	100		
115	64.0	29.7	89.1
150	157.4	0.0	350.6



#74  
 N-aryl acetate  
 Concen: 0.412 ug/l  
 RT: 12.06 min Scan# 3211  
 Delta R.T. 0.02 min  
 Lab File: VN064919.D  
 Acq: 4 Dec 2020 15:17

Tgt Ion	Resp	Lower	Upper
43	100		
70	12.2	34.5	51.7#
55	0.0	20.4	30.6#
61	0.0	20.0	30.0#

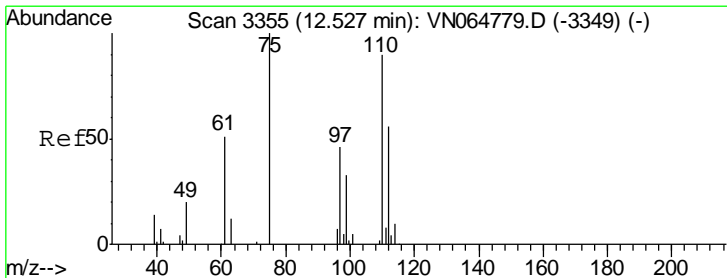
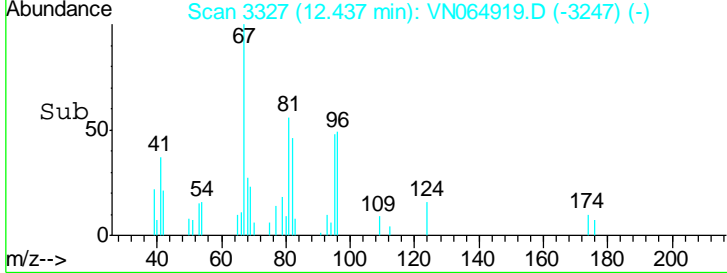
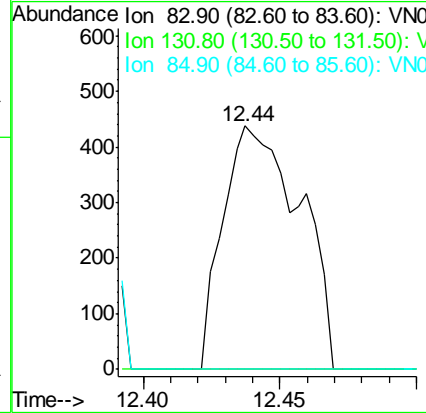
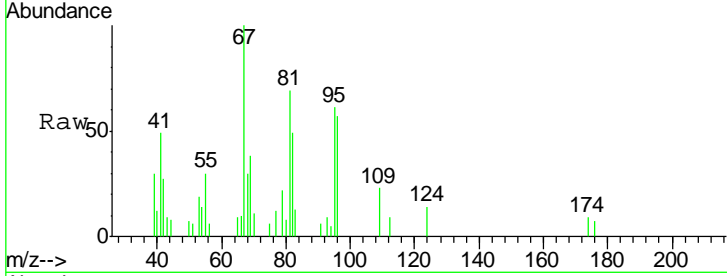




#75  
 1,1,2,2-Tetrachloroethane  
 Concen: 0.279 ug/l  
 RT: 12.44 min Scan# 3327  
 Delta R.T. -0.04 min  
 Lab File: VN064919.D  
 Acq: 4 Dec 2020 15:17

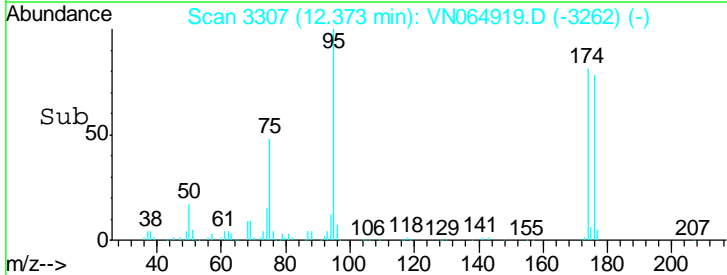
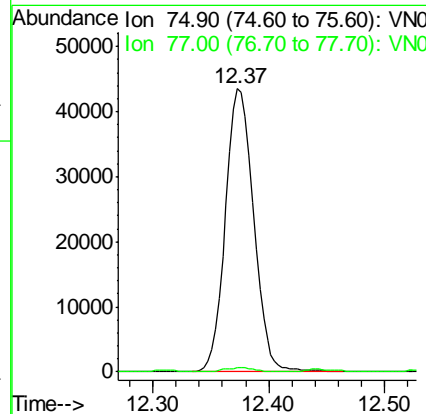
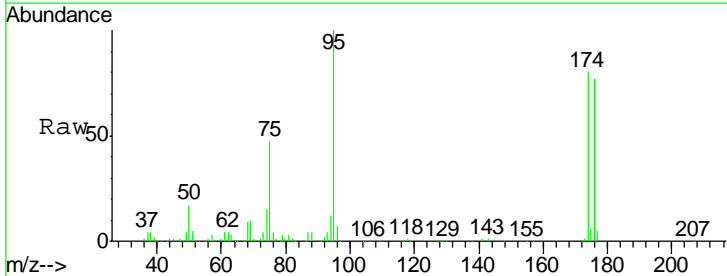
Instrument :  
 MSVOA\_N  
 ClientSampleId :  
 SS013-13-5045-120120

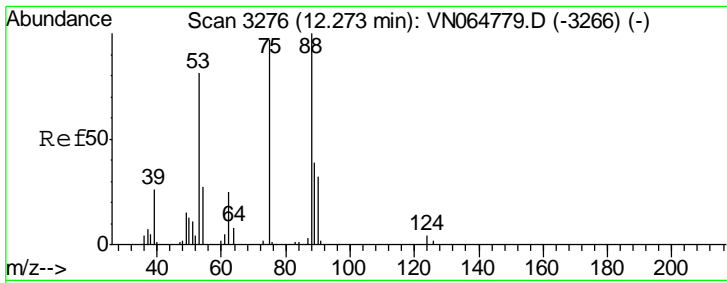
Tgt Ion	Resp	Lower	Upper
83	100		
131	0.0	5.1	15.3#
85	0.0	33.0	99.0#



#76  
 1,2,3-Trichloropropane  
 Concen: 22.556 ug/l  
 RT: 12.37 min Scan# 3307  
 Delta R.T. -0.15 min  
 Lab File: VN064919.D  
 Acq: 4 Dec 2020 15:17

Tgt Ion	Resp	Lower	Upper
75	100		
77	1.4	0.0	0.0#

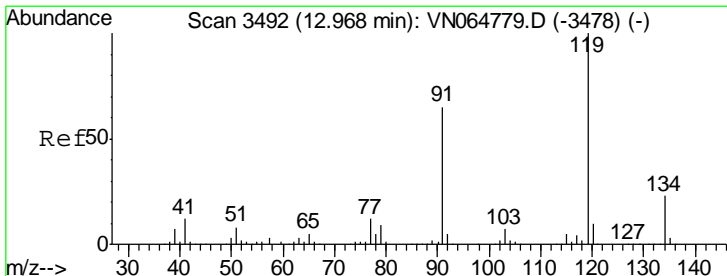
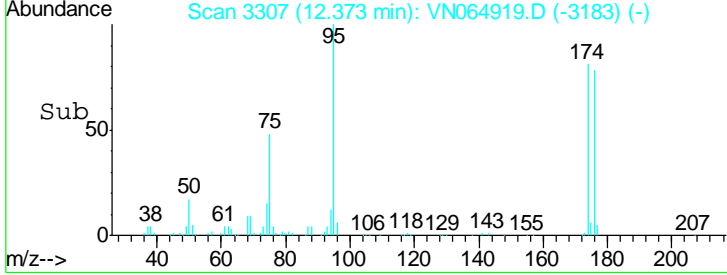
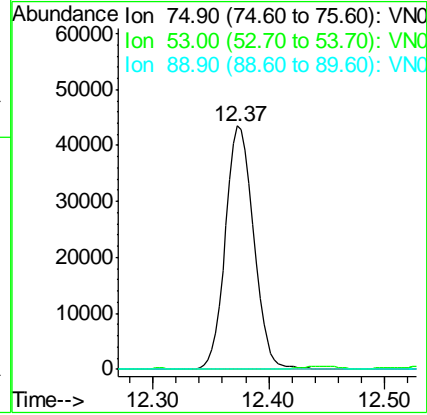
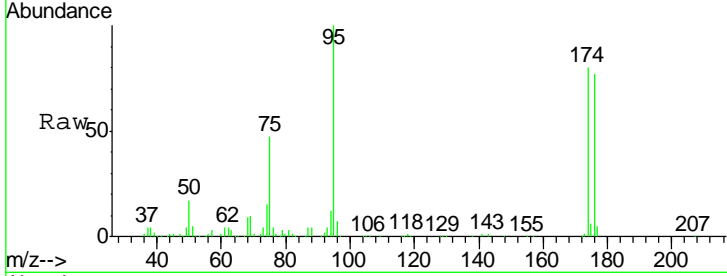




#81  
 trans-1,4-Dichloro-2-butene  
 Concen: 61.821 ug/l  
 RT: 12.37 min Scan# 3307  
 Delta R.T. 0.10 min  
 Lab File: VN064919.D  
 Acq: 4 Dec 2020 15:17

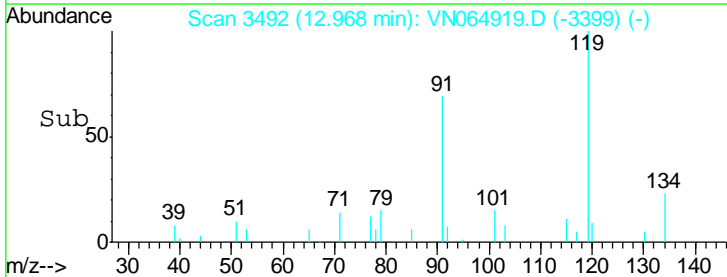
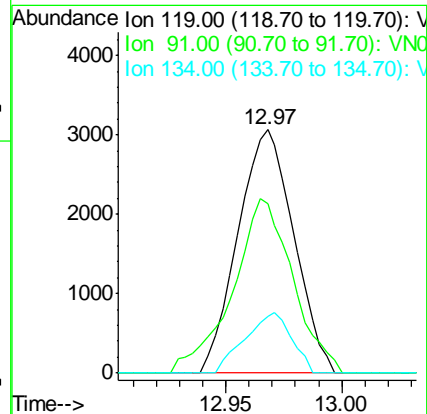
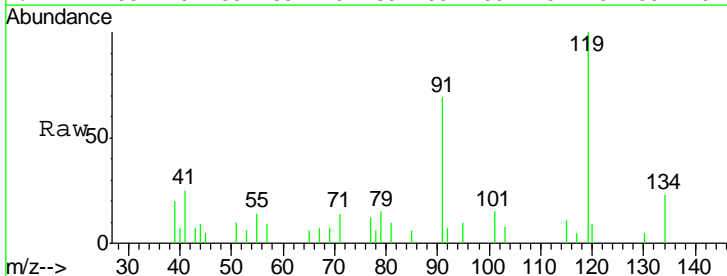
Instrument :  
 MSVOA\_N  
 ClientSampleId :  
 SS013-13-5045-120120

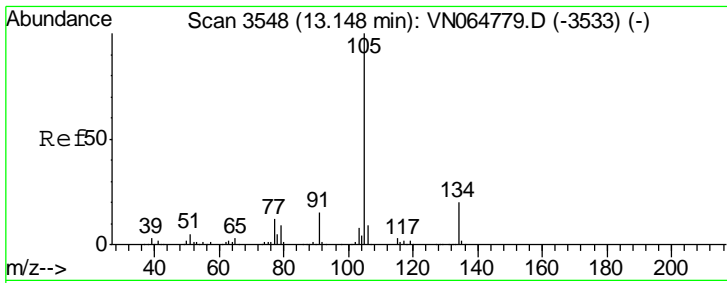
Tgt Ion	Resp	Lower	Upper
75	100		
53	0.1	67.0	100.4#
89	0.0	39.6	59.4#



#83  
 tert-Butylbenzene  
 Concen: 0.697 ug/l  
 RT: 12.97 min Scan# 3492  
 Delta R.T. 0.00 min  
 Lab File: VN064919.D  
 Acq: 4 Dec 2020 15:17

Tgt Ion	Resp	Lower	Upper
119	100		
91	77.2	32.3	96.8
134	20.8	12.6	37.6

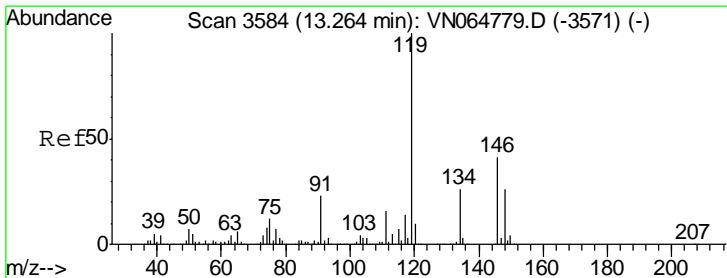
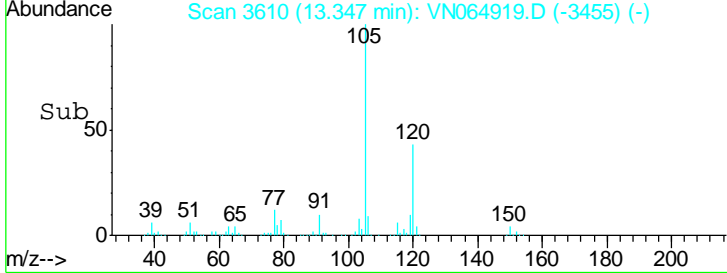
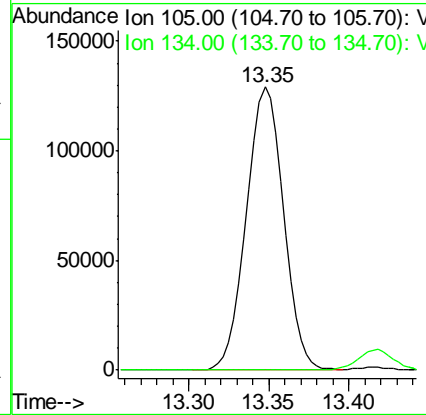
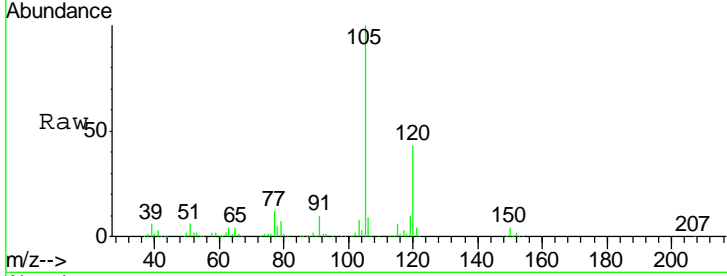




#85  
 sec-Butylbenzene  
 Concen: 20.999 ug/l  
 RT: 13.35 min Scan# 3610  
 Delta R.T. 0.20 min  
 Lab File: VN064919.D  
 Acq: 4 Dec 2020 15:17

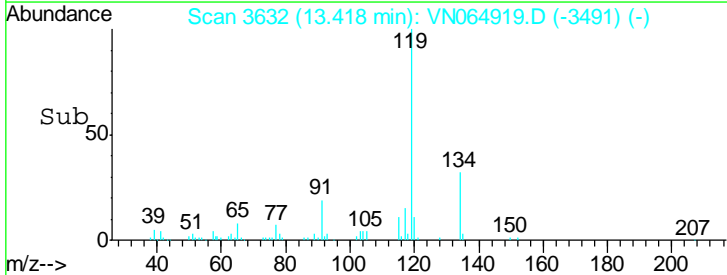
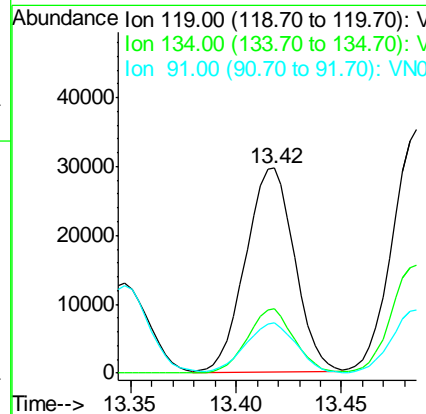
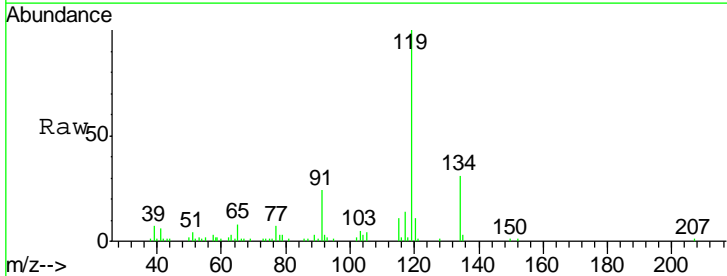
Instrument :  
 MSVOA\_N  
 ClientSampled :  
 SS013-13-5045-120120

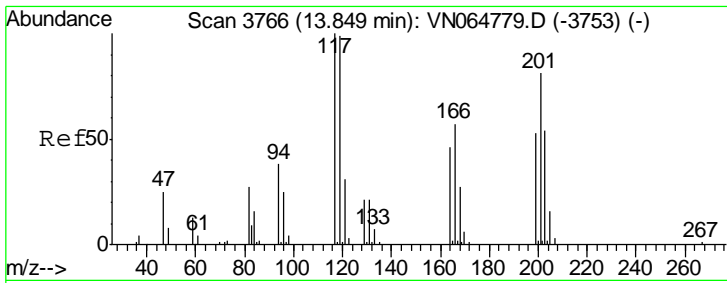
Tgt Ion:105 Resp: 204166  
 Ion Ratio Lower Upper  
 105 100  
 134 0.0 10.1 30.1#



#86  
 p-Isopropyltoluene  
 Concen: 5.405 ug/l  
 RT: 13.42 min Scan# 3632  
 Delta R.T. 0.15 min  
 Lab File: VN064919.D  
 Acq: 4 Dec 2020 15:17

Tgt Ion:119 Resp: 47841  
 Ion Ratio Lower Upper  
 119 100  
 134 29.9 13.1 39.1  
 91 25.5 11.5 34.5

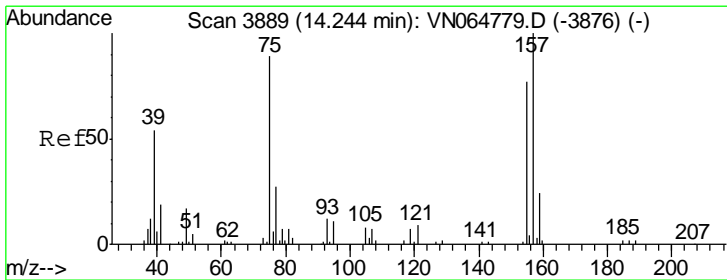
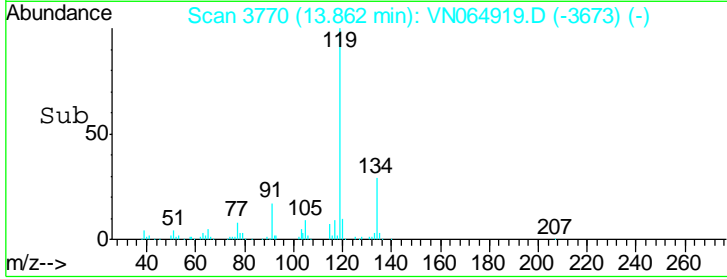
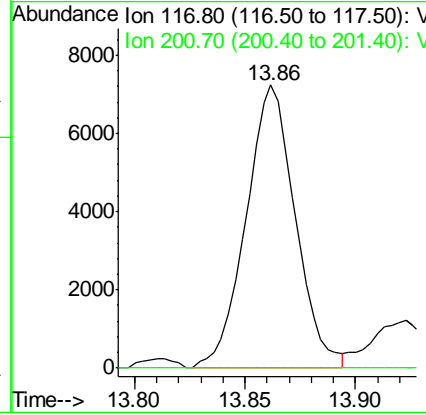
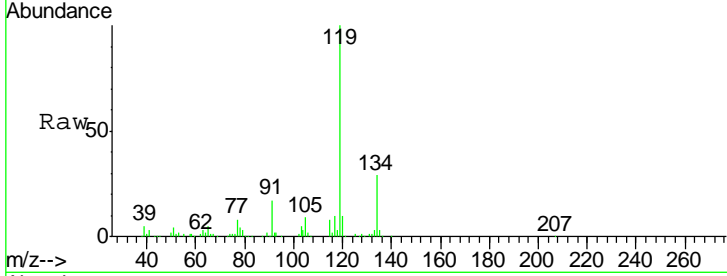




#90  
 Hexachloroethane  
 Concen: 7.292 ug/l  
 RT: 13.86 min Scan# 3770  
 Delta R.T. 0.01 min  
 Lab File: VN064919.D  
 Acq: 4 Dec 2020 15:17

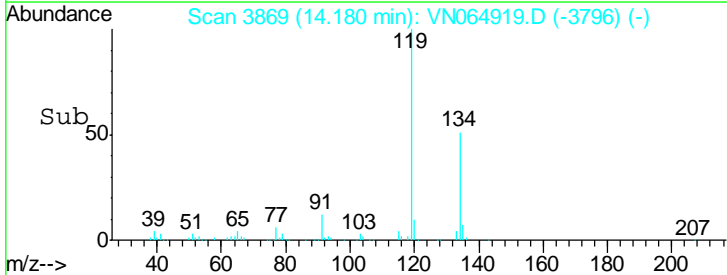
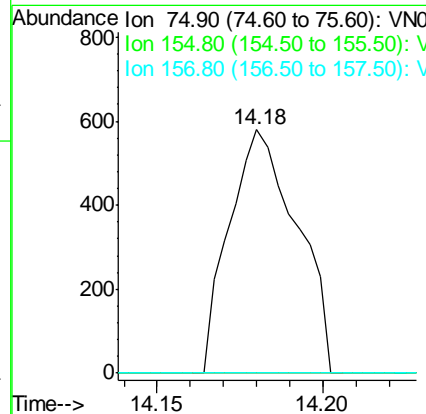
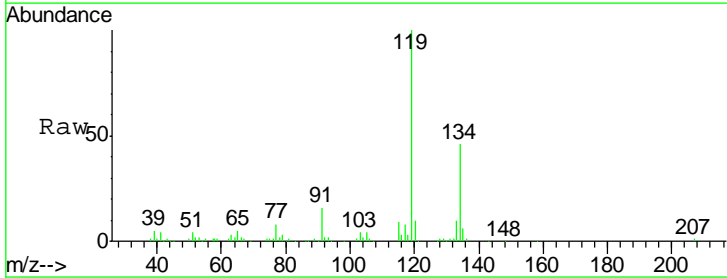
**Instrument :**  
 MSVOA\_N  
**ClientSampled :**  
 SS013-13-5045-120120

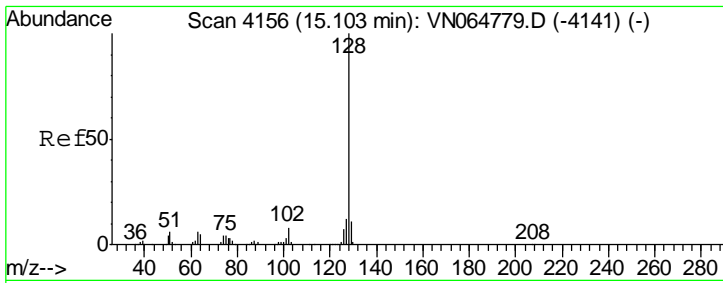
Tgt Ion: 117 Resp: 11214  
 Ion Ratio Lower Upper  
 117 100  
 201 0.0 40.1 120.3#



#92  
 1,2-Dibromo-3-Chloropropane  
 Concen: 1.190 ug/l  
 RT: 14.18 min Scan# 3869  
 Delta R.T. -0.06 min  
 Lab File: VN064919.D  
 Acq: 4 Dec 2020 15:17

Tgt Ion: 75 Resp: 825  
 Ion Ratio Lower Upper  
 75 100  
 155 0.0 42.8 128.3#  
 157 0.0 56.4 169.1#





#95  
 Naphthalene  
 Concen: 2.755 ug/l  
 RT: 15.10 min Scan# 4156  
 Delta R.T. 0.00 min  
 Lab File: VN064919.D  
 Acq: 4 Dec 2020 15:17

Instrument : MSVOA\_N  
 ClientSampled : SS013-13-5045-120120

Tot Ion	128	127	129
Resp:	25241		
Ratio	100	14.8	9.0
Lower		10.3	8.7
Upper		15.5	13.1

