

Data Path : Z:\voasrv\HPCHEM1\MSVOA_N\Data\VN120424\
 Data File : VN085090.D
 Acq On : 04 Dec 2024 13:37
 Operator : JC\MD
 Sample : P5052-02
 Misc : 5.0mL/MSVOA_N/WATER
 ALS Vial : 8 Sample Multiplier: 1

Instrument :
 MSVOA_N
 ClientSampleId :

Quant Time: Dec 04 22:05:39 2024
 Quant Method : Z:\voasrv\HPCHEM1\MSVOA_N\methods\82N112224W.M
 Quant Title : SW846 8260
 QLast Update : Sat Nov 23 02:54:10 2024
 Response via : Initial Calibration

Compound	R.T.	QIon	Response	Conc	Units	Dev(Min)

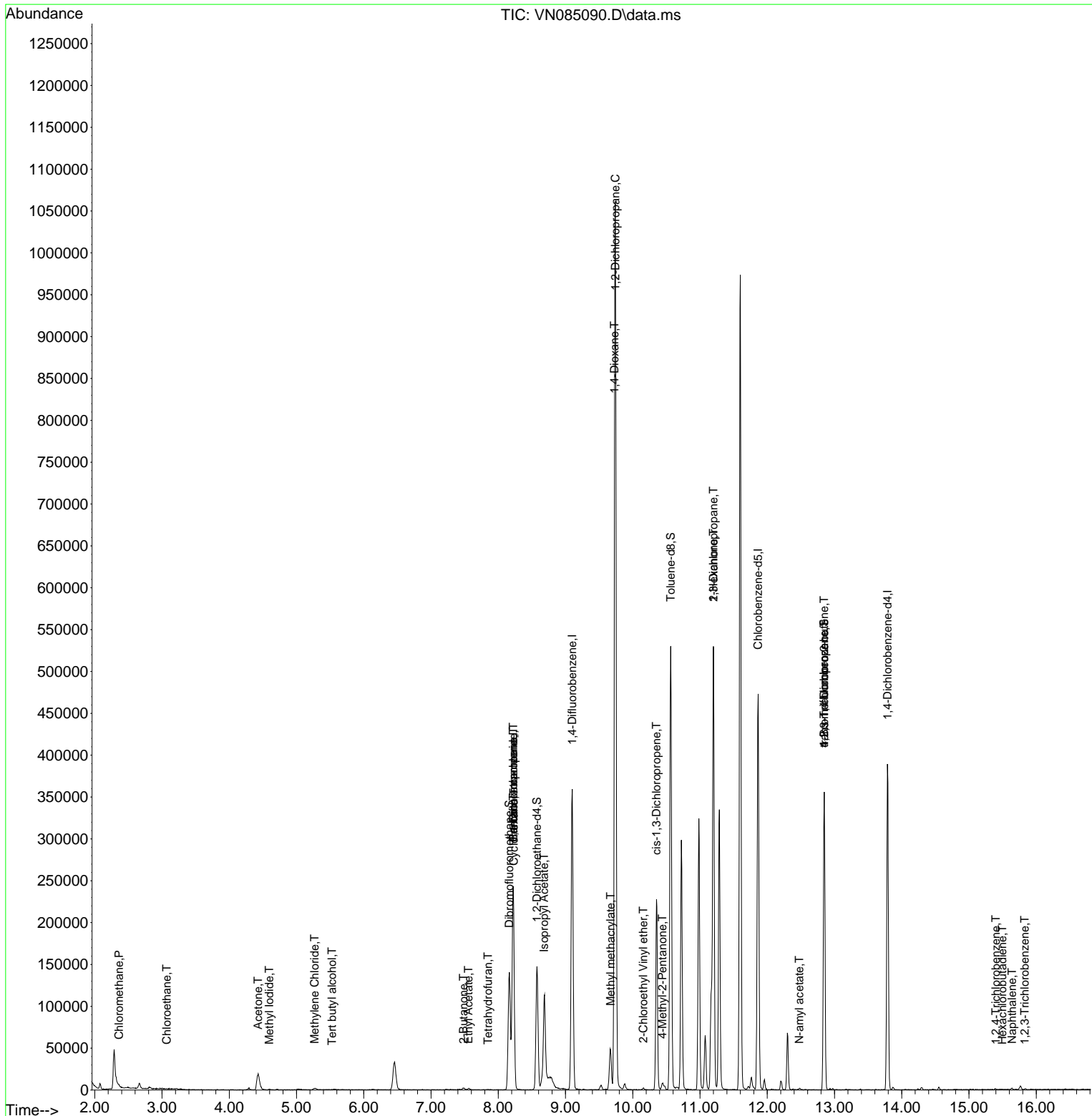
Internal Standards						
1) Pentafluorobenzene	8.224	168	175739	50.000	ug/l	0.00
34) 1,4-Difluorobenzene	9.100	114	306852	50.000	ug/l	0.00
63) Chlorobenzene-d5	11.865	117	269451	50.000	ug/l	0.00
72) 1,4-Dichlorobenzene-d4	13.788	152	103980	50.000	ug/l	0.00
System Monitoring Compounds						
33) 1,2-Dichloroethane-d4	8.577	65	121946	48.715	ug/l	0.00
Spiked Amount	50.000	Range	74 - 125	Recovery	=	97.420%
35) Dibromofluoromethane	8.165	113	100942	48.781	ug/l	0.00
Spiked Amount	50.000	Range	75 - 124	Recovery	=	97.560%
50) Toluene-d8	10.565	98	365962	49.348	ug/l	0.00
Spiked Amount	50.000	Range	86 - 113	Recovery	=	98.700%
62) 4-Bromofluorobenzene	12.847	95	127190	45.862	ug/l	0.00
Spiked Amount	50.000	Range	77 - 121	Recovery	=	91.720%
Target Compounds						
						Qvalue
3) Chloromethane	2.359	50	819	0.355	ug/l	90
6) Chloroethane	3.071	64	467	0.335	ug/l #	44
10) Methyl Iodide	4.595	142	1001	0.378	ug/l #	88
11) Tert butyl alcohol	5.530	59	110	0.329	ug/l #	75
16) Acetone	4.430	43	35303	48.423	ug/l	100
18) Methyl Acetate	5.012	43	671	Below Cal	#	71
20) Methylene Chloride	5.271	84	1604	0.721	ug/l #	68
25) 2-Butanone	7.483	43	3759	3.154	ug/l #	71
29) Tetrahydrofuran	7.847	42	222	0.300	ug/l #	50
31) Cyclohexane	8.230	56	3831	1.149	ug/l #	13
36) 1,1-Dichloropropene	8.224	75	14048	5.012	ug/l #	53
37) Ethyl Acetate	7.559	43	2914	1.144	ug/l #	79
38) Carbon Tetrachloride	8.224	117	18460	5.706	ug/l #	17
43) Isopropyl Acetate	8.682	43	136255	25.743	ug/l #	86
45) 1,2-Dichloropropane	9.741	63	1417	0.649	ug/l #	45
48) Methyl methacrylate	9.671	41	3134	1.591	ug/l #	41
49) 1,4-Dioxane	9.729	88	60	1.757	ug/l #	24
51) 4-Methyl-2-Pentanone	10.441	43	9608	3.974	ug/l #	74
54) cis-1,3-Dichloropropene	10.353	75	41155	12.033	ug/l #	64
57) 1,3-Dichloropropane	11.200	76	5848	1.700	ug/l #	42
58) 2-Chloroethyl Vinyl ether	10.159	63	1106	0.789	ug/l #	82
59) 2-Hexanone	11.200	43	60420	33.417	ug/l #	55
74) N-amyl acetate	12.476	43	1287	0.426	ug/l #	42
76) 1,2,3-Trichloropropane	12.847	75	64009	33.844	ug/l #	1
81) trans-1,4-Dichloro-2-b...	12.847	75	64009	74.712	ug/l #	10
93) 1,2,4-Trichlorobenzene	15.400	180	536	0.264	ug/l #	83
94) Hexachlorobutadiene	15.494	225	233	0.249	ug/l #	35
95) Naphthalene	15.641	128	1810	0.314	ug/l #	88
96) 1,2,3-Trichlorobenzene	15.829	180	477	0.247	ug/l #	62

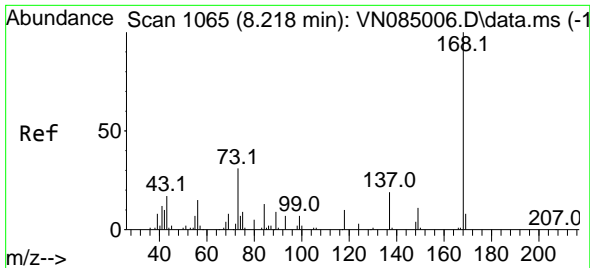
(#) = qualifier out of range (m) = manual integration (+) = signals summed

Data Path : Z:\voasrv\HPCHEM1\MSVOA_N\Data\VN120424\
 Data File : VN085090.D
 Acq On : 04 Dec 2024 13:37
 Operator : JC\MD
 Sample : P5052-02
 Misc : 5.0mL/MSVOA_N/WATER
 ALS Vial : 8 Sample Multiplier: 1

Instrument :
 MSVOA_N
 ClientSampleId :

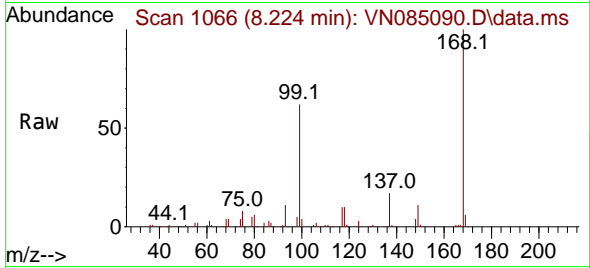
Quant Time: Dec 04 22:05:39 2024
 Quant Method : Z:\voasrv\HPCHEM1\MSVOA_N\methods\82N112224W.M
 Quant Title : SW846 8260
 QLast Update : Sat Nov 23 02:54:10 2024
 Response via : Initial Calibration



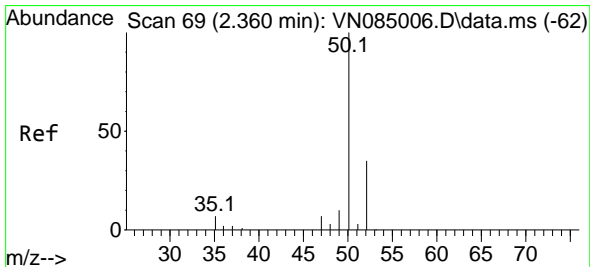
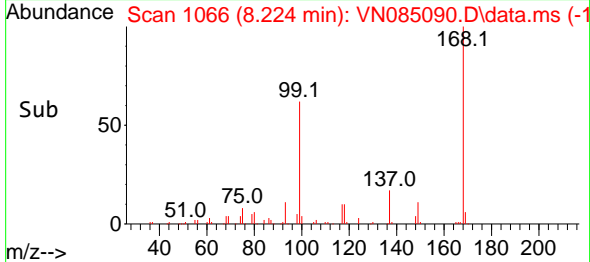
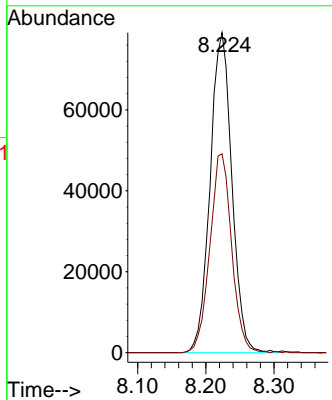


#1
 Pentafluorobenzene
 Concen: 50.000 ug/l
 RT: 8.224 min Scan# 10
 Delta R.T. 0.006 min
 Lab File: VN085090.D
 Acq: 04 Dec 2024 13:37

Instrument :
 MSVOA_N
 ClientSampleId :

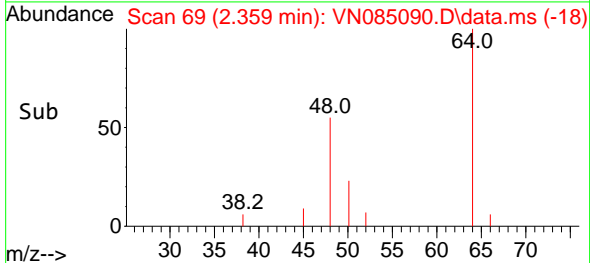
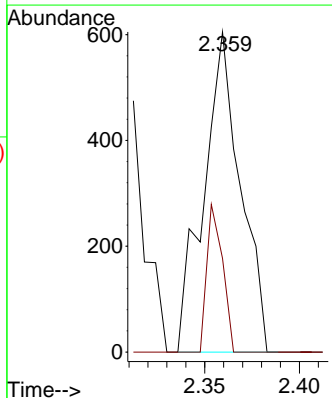
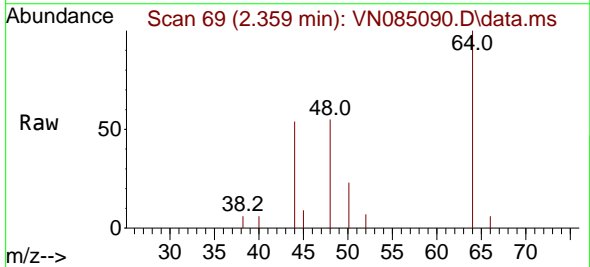


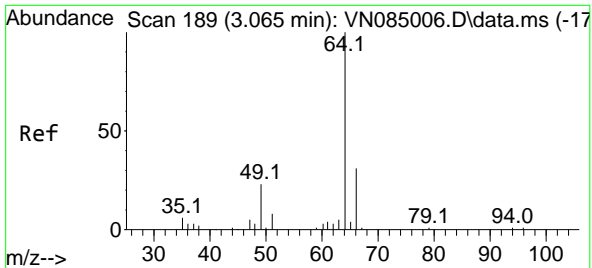
Tgt Ion:168 Resp: 175739
 Ion Ratio Lower Upper
 168 100
 99 62.1 51.2 76.8



#3
 Chloromethane
 Concen: 0.355 ug/l
 RT: 2.359 min Scan# 69
 Delta R.T. -0.000 min
 Lab File: VN085090.D
 Acq: 04 Dec 2024 13:37

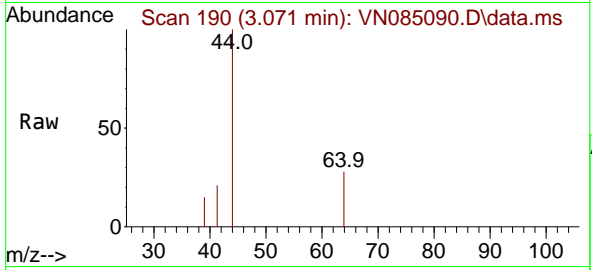
Tgt Ion: 50 Resp: 819
 Ion Ratio Lower Upper
 50 100
 52 29.3 27.8 41.8



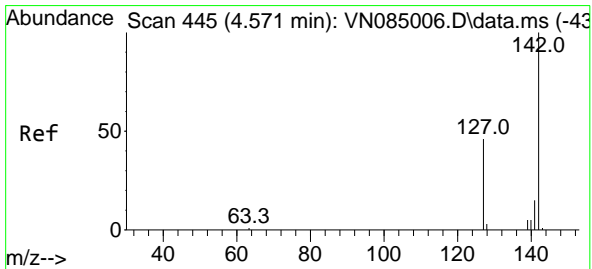
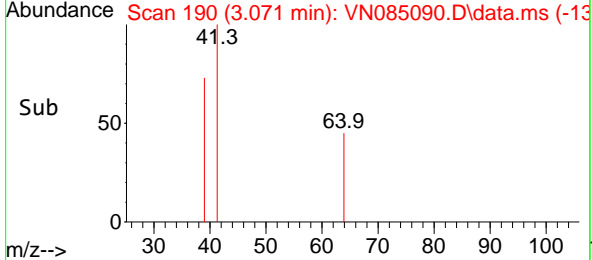
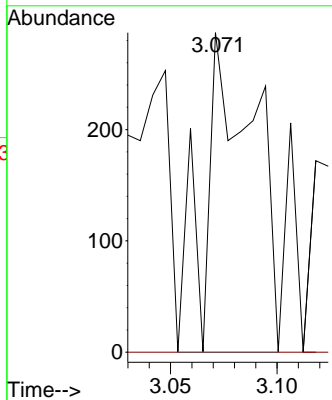


#6
 Chloroethane
 Concen: 0.335 ug/l
 RT: 3.071 min Scan# 189
 Delta R.T. 0.006 min
 Lab File: VN085090.D
 Acq: 04 Dec 2024 13:37

Instrument : MSVOA_N
 ClientSampleId :

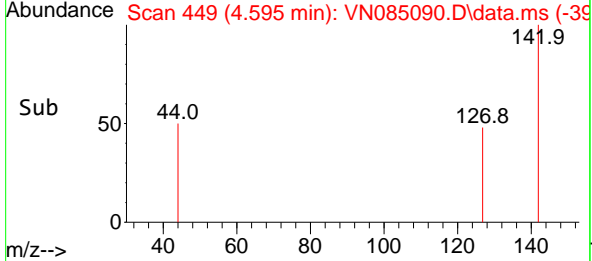
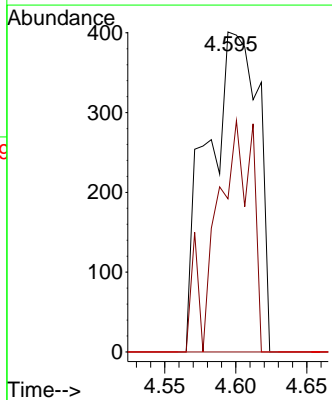
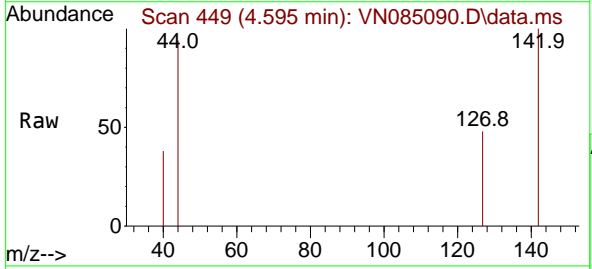


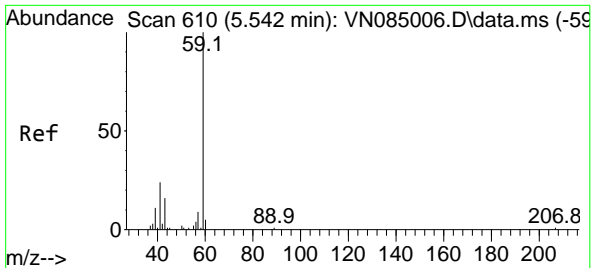
Tgt Ion: 64 Resp: 467
 Ion Ratio Lower Upper
 64 100
 66 0.0 24.4 36.6#



#10
 Methyl Iodide
 Concen: 0.378 ug/l
 RT: 4.595 min Scan# 449
 Delta R.T. 0.023 min
 Lab File: VN085090.D
 Acq: 04 Dec 2024 13:37

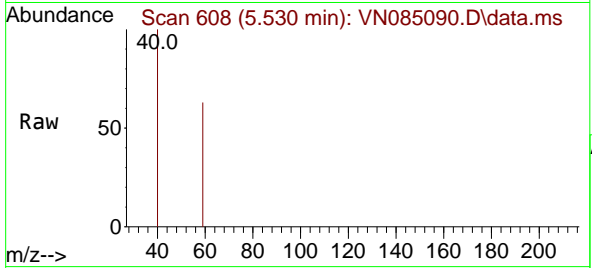
Tgt Ion: 142 Resp: 1001
 Ion Ratio Lower Upper
 142 100
 127 47.9 36.6 54.8
 141 0.0 12.2 18.4#



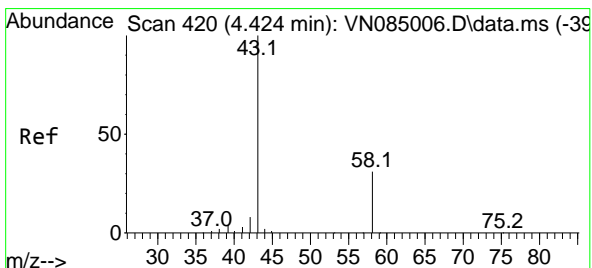
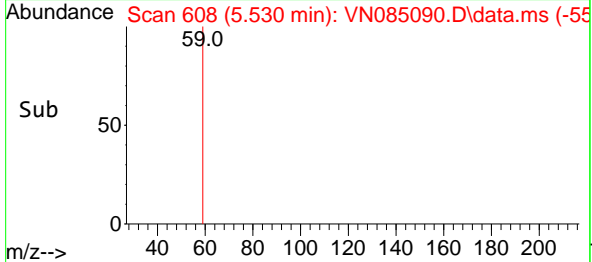
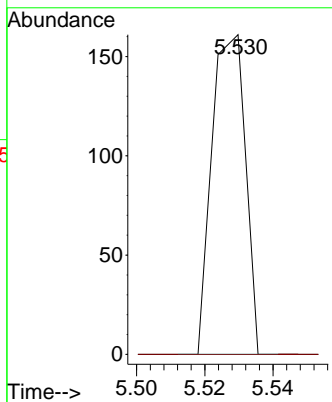


#11
 Tert butyl alcohol
 Concen: 0.329 ug/l
 RT: 5.530 min Scan# 608
 Delta R.T. -0.012 min
 Lab File: VN085090.D
 Acq: 04 Dec 2024 13:37

Instrument : MSVOA_N
 ClientSampleId :

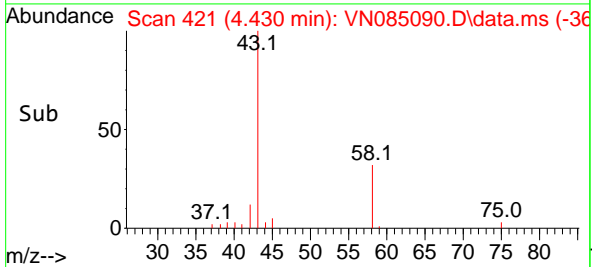
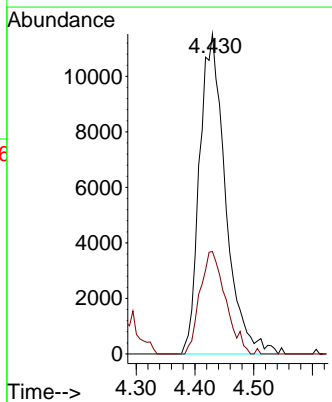
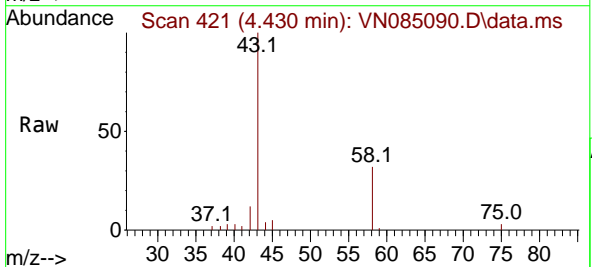


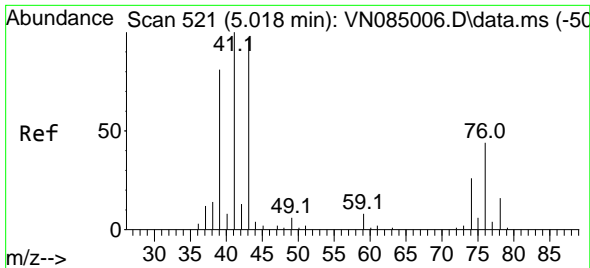
Tgt Ion: 59 Resp: 110
 Ion Ratio Lower Upper
 59 100
 57 0.0 7.4 11.0#



#16
 Acetone
 Concen: 48.423 ug/l
 RT: 4.430 min Scan# 421
 Delta R.T. 0.006 min
 Lab File: VN085090.D
 Acq: 04 Dec 2024 13:37

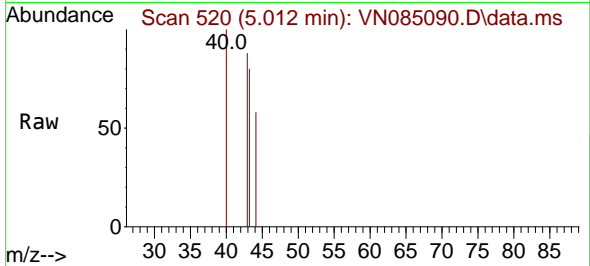
Tgt Ion: 43 Resp: 35303
 Ion Ratio Lower Upper
 43 100
 58 32.0 25.4 38.2



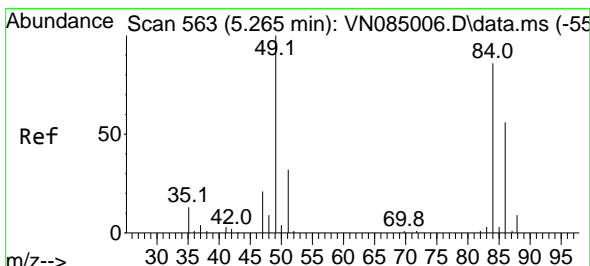
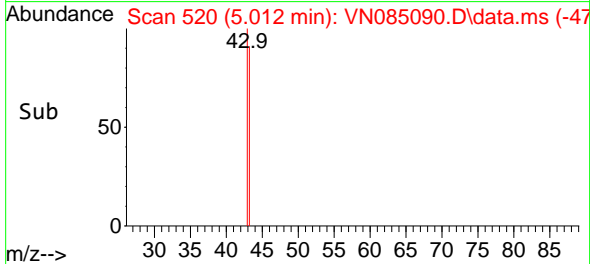
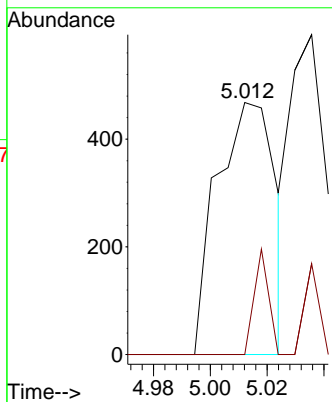


#18
 Methyl Acetate
 Concen: Below Cal
 RT: 5.012 min Scan# 51
 Delta R.T. -0.006 min
 Lab File: VN085090.D
 Acq: 04 Dec 2024 13:37

Instrument :
 MSVOA_N
 ClientSampleId :

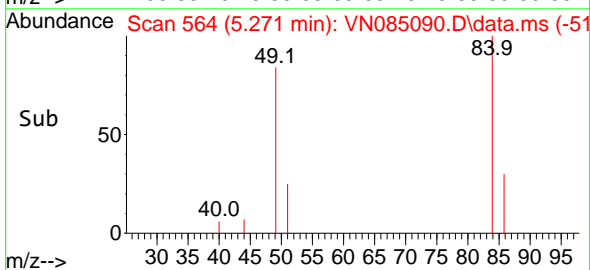
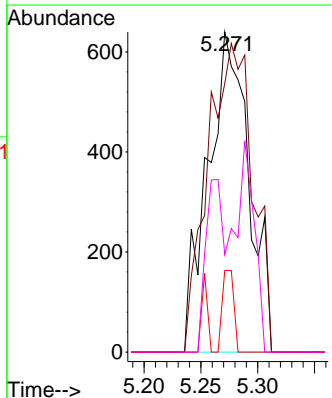
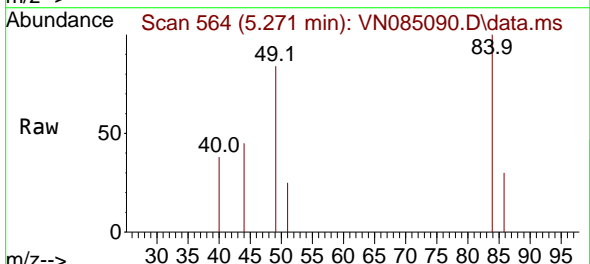


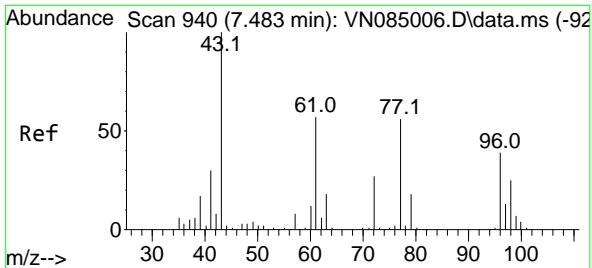
Tgt Ion: 43 Resp: 671
 Ion Ratio Lower Upper
 43 100
 74 10.3 20.1 30.1#



#20
 Methylene Chloride
 Concen: 0.721 ug/l
 RT: 5.271 min Scan# 564
 Delta R.T. 0.006 min
 Lab File: VN085090.D
 Acq: 04 Dec 2024 13:37

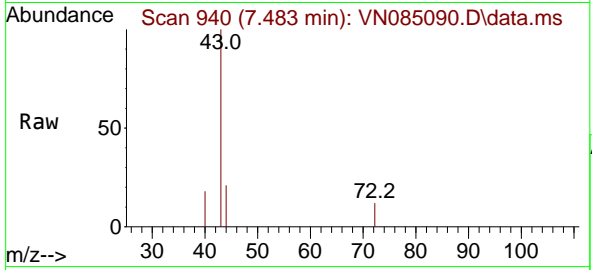
Tgt Ion: 84 Resp: 1604
 Ion Ratio Lower Upper
 84 100
 49 83.9 92.7 139.1#
 51 25.5 29.4 44.2#
 86 30.5 51.9 77.9#



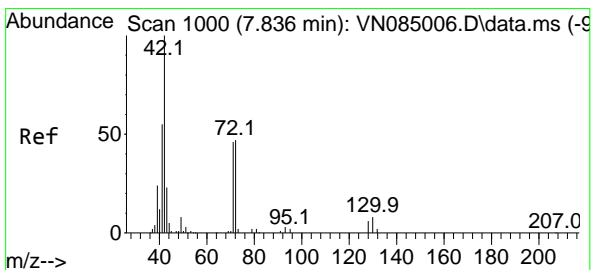
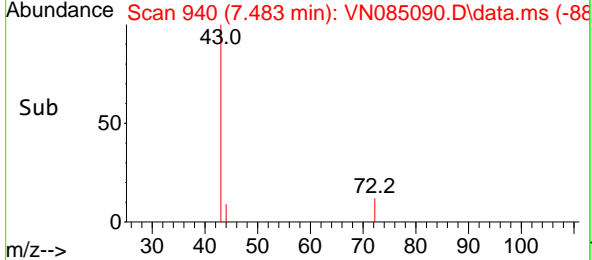
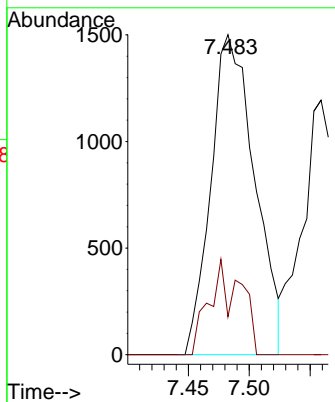


#25
 2-Butanone
 Concen: 3.154 ug/l
 RT: 7.483 min Scan# 94
 Delta R.T. -0.000 min
 Lab File: VN085090.D
 Acq: 04 Dec 2024 13:37

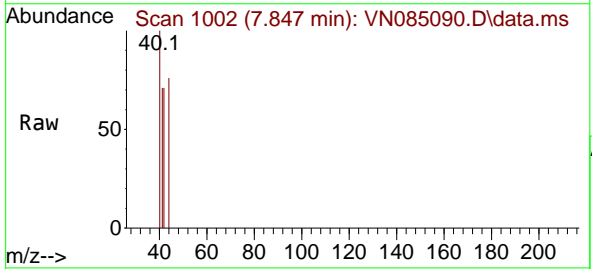
Instrument :
 MSVOA_N
 ClientSampleId :



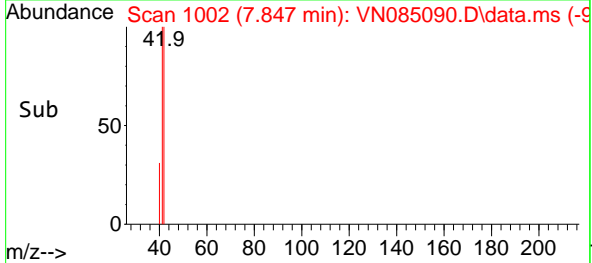
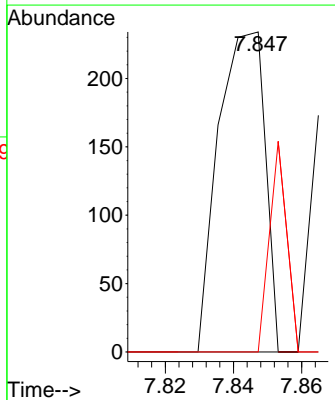
Tgt Ion: 43 Resp: 3759
 Ion Ratio Lower Upper
 43 100
 72 11.9 21.4 32.0#

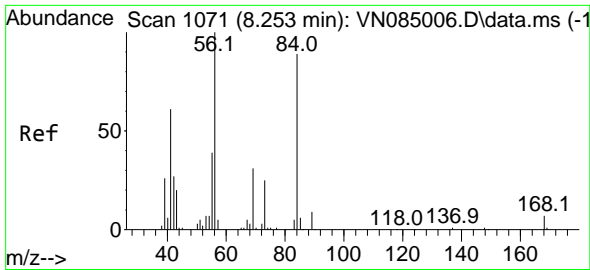


#29
 Tetrahydrofuran
 Concen: 0.300 ug/l
 RT: 7.847 min Scan# 1002
 Delta R.T. 0.012 min
 Lab File: VN085090.D
 Acq: 04 Dec 2024 13:37



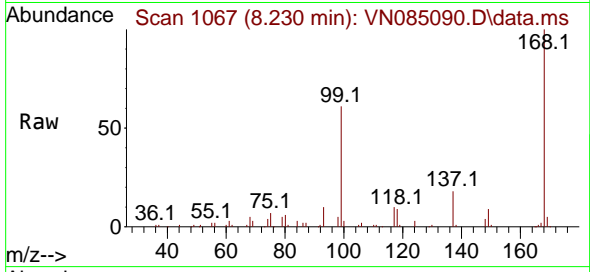
Tgt Ion: 42 Resp: 222
 Ion Ratio Lower Upper
 42 100
 72 0.0 37.0 55.4#
 71 24.3 35.0 52.4#



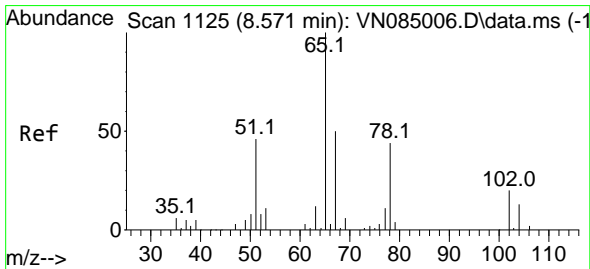
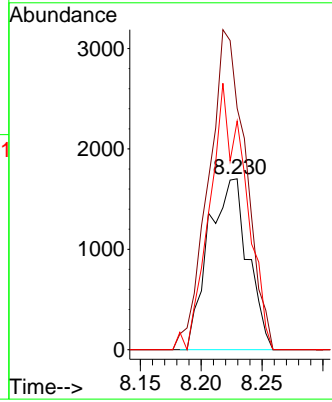
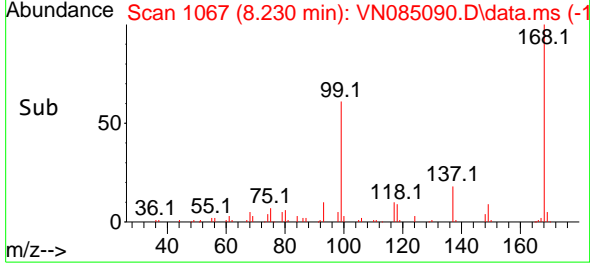


#31
 Cyclohexane
 Concen: 1.149 ug/l
 RT: 8.230 min Scan# 1067
 Delta R.T. -0.024 min
 Lab File: VN085090.D
 Acq: 04 Dec 2024 13:37

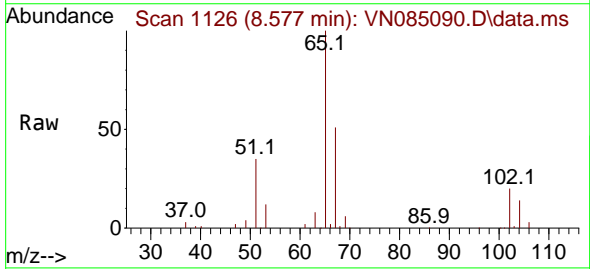
Instrument :
 MSVOA_N
 ClientSampleId :



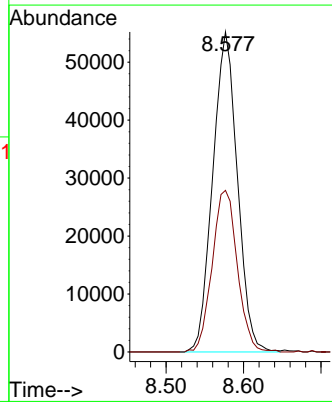
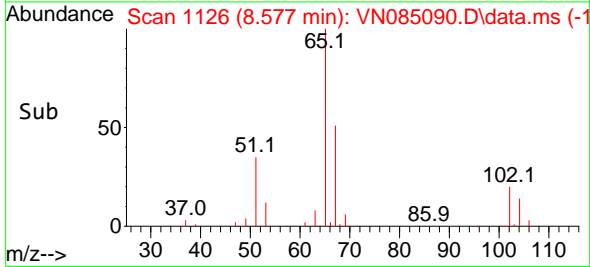
Tgt Ion: 56 Resp: 3831
 Ion Ratio Lower Upper
 56 100
 69 141.2 24.6 36.8#
 84 133.8 71.4 107.2#

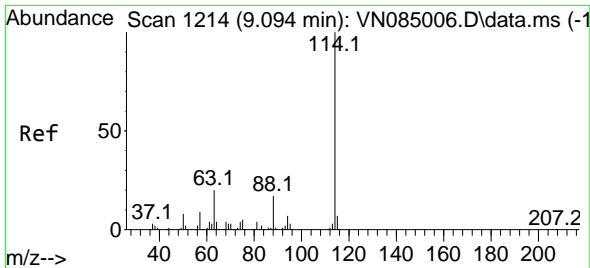


#33
 1,2-Dichloroethane-d4
 Concen: 48.715 ug/l
 RT: 8.577 min Scan# 1126
 Delta R.T. 0.006 min
 Lab File: VN085090.D
 Acq: 04 Dec 2024 13:37



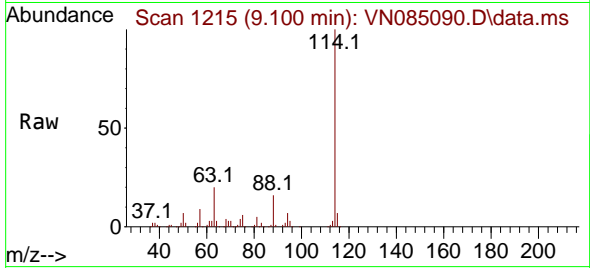
Tgt Ion: 65 Resp: 121946
 Ion Ratio Lower Upper
 65 100
 67 51.6 0.0 105.0



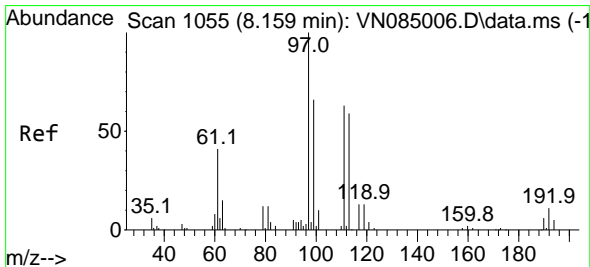
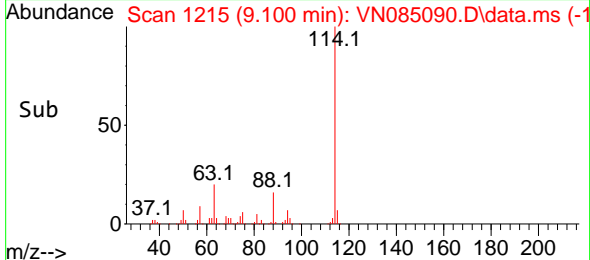
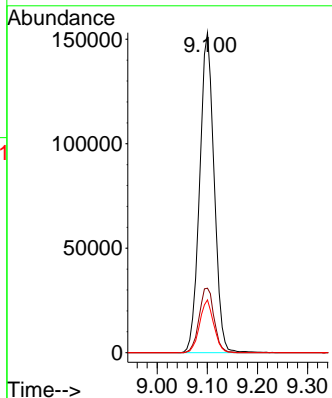


#34
 1,4-Difluorobenzene
 Concen: 50.000 ug/l
 RT: 9.100 min Scan# 11
 Delta R.T. 0.006 min
 Lab File: VN085090.D
 Acq: 04 Dec 2024 13:37

Instrument :
 MSVOA_N
 ClientSampleId :

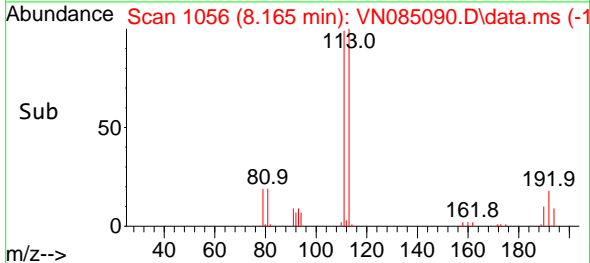
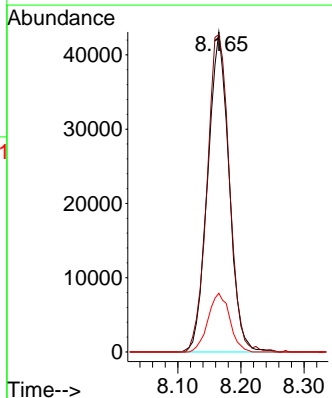
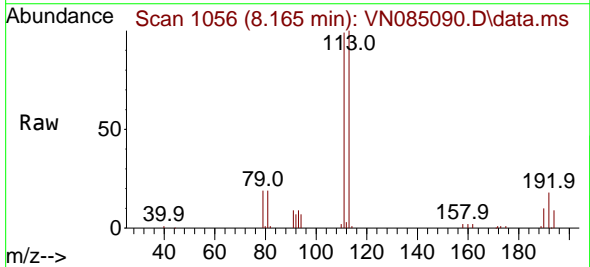


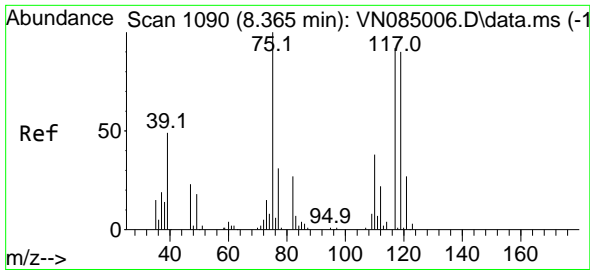
Tgt Ion:114 Resp: 306852
 Ion Ratio Lower Upper
 114 100
 63 20.2 0.0 41.0
 88 16.5 0.0 34.8



#35
 Dibromofluoromethane
 Concen: 48.781 ug/l
 RT: 8.165 min Scan# 1056
 Delta R.T. 0.006 min
 Lab File: VN085090.D
 Acq: 04 Dec 2024 13:37

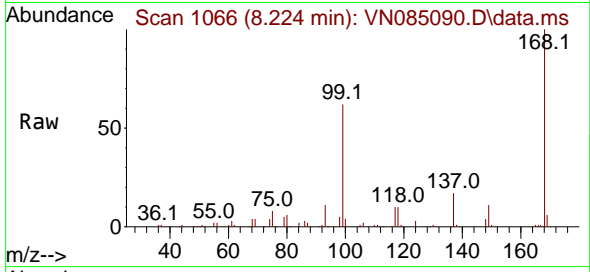
Tgt Ion:113 Resp: 100942
 Ion Ratio Lower Upper
 113 100
 111 103.9 82.0 123.0
 192 18.6 14.8 22.2



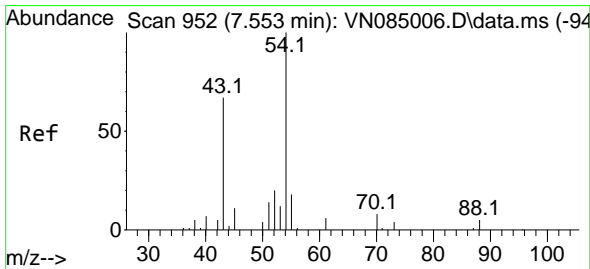
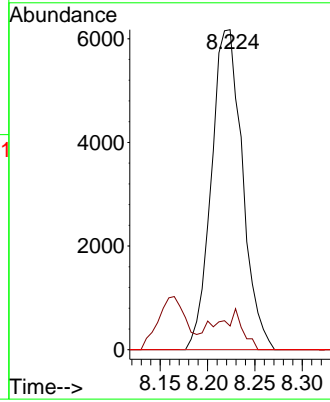
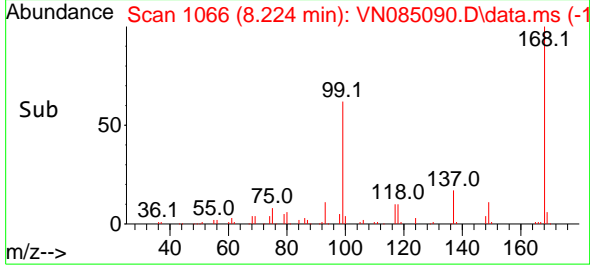


#36
 1,1-Dichloropropene
 Concen: 5.012 ug/l
 RT: 8.224 min Scan# 1066
 Delta R.T. -0.141 min
 Lab File: VN085090.D
 Acq: 04 Dec 2024 13:37

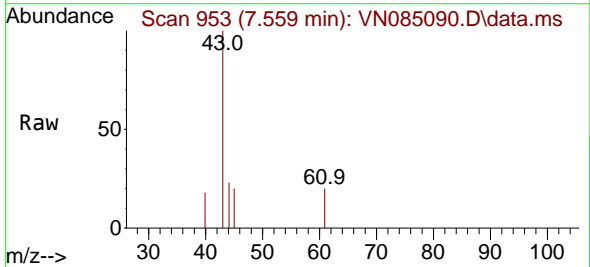
Instrument : MSVOA_N
 ClientSampleId :



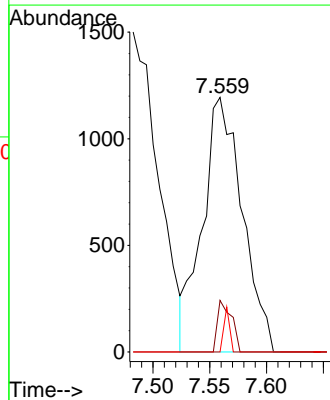
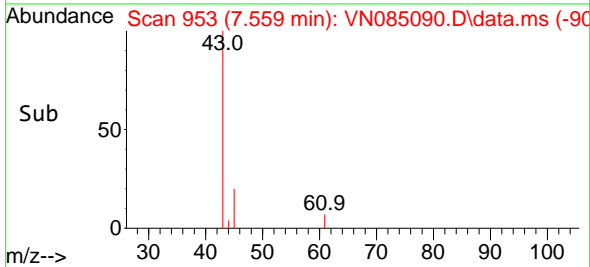
Tgt Ion: 75 Resp: 14048
 Ion Ratio Lower Upper
 75 100
 110 11.4 17.2 51.6#
 77 0.0 24.2 36.4#

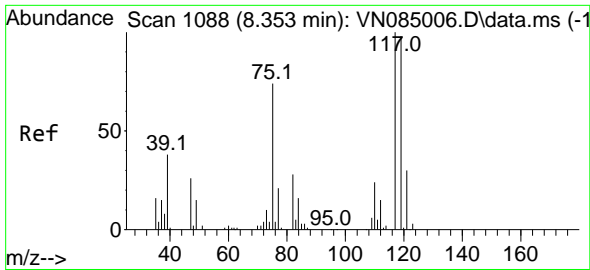


#37
 Ethyl Acetate
 Concen: 1.144 ug/l
 RT: 7.559 min Scan# 953
 Delta R.T. 0.006 min
 Lab File: VN085090.D
 Acq: 04 Dec 2024 13:37



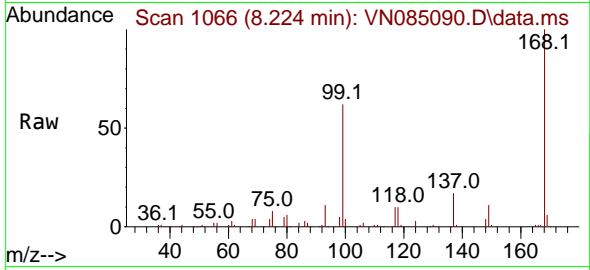
Tgt Ion: 43 Resp: 2914
 Ion Ratio Lower Upper
 43 100
 61 7.1 11.7 17.5#
 70 2.5 9.3 13.9#



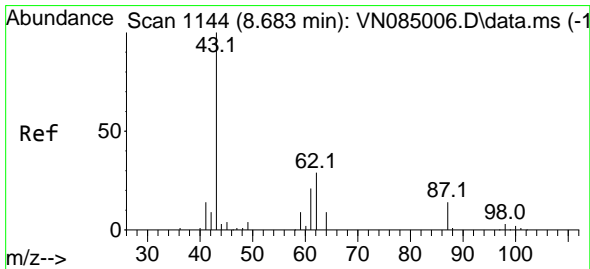
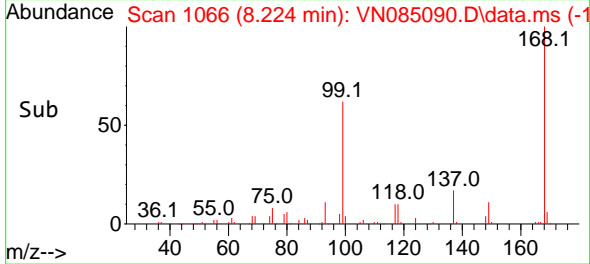
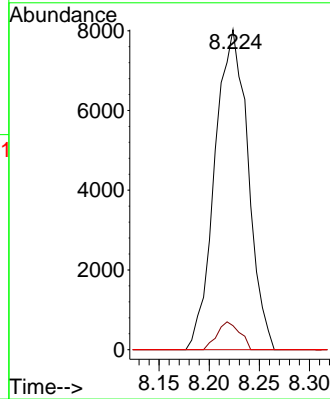


#38
 Carbon Tetrachloride
 Concen: 5.706 ug/l
 RT: 8.224 min Scan# 1066
 Delta R.T. -0.130 min
 Lab File: VN085090.D
 Acq: 04 Dec 2024 13:37

Instrument :
 MSVOA_N
 ClientSampleId :

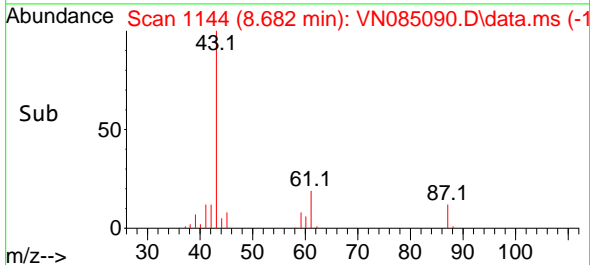
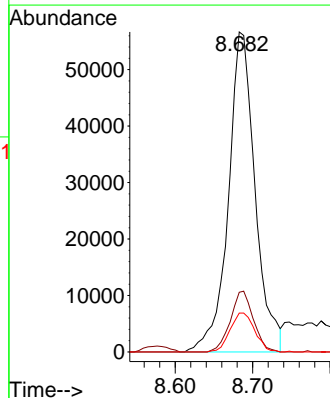
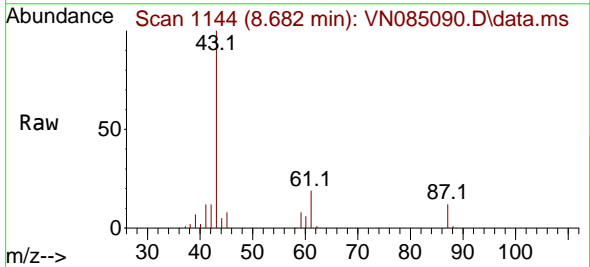


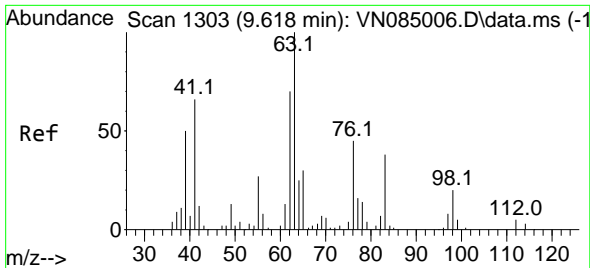
Tgt Ion: 117 Resp: 18460
 Ion Ratio Lower Upper
 117 100
 119 7.5 78.6 117.8#
 121 0.0 24.2 36.2#



#43
 Isopropyl Acetate
 Concen: 25.743 ug/l
 RT: 8.682 min Scan# 1144
 Delta R.T. -0.000 min
 Lab File: VN085090.D
 Acq: 04 Dec 2024 13:37

Tgt Ion: 43 Resp: 136255
 Ion Ratio Lower Upper
 43 100
 61 16.4 20.6 30.8#
 87 11.2 11.0 16.4

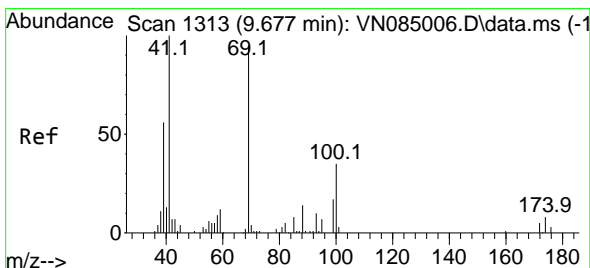
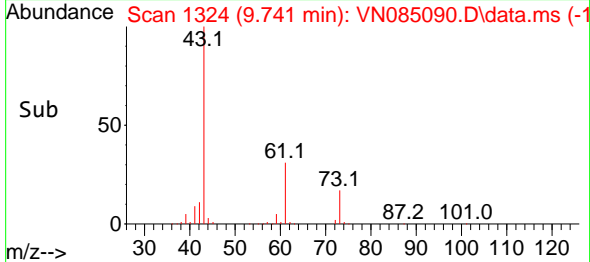
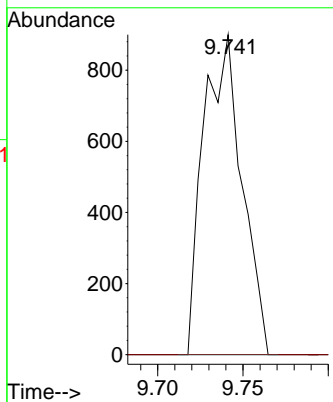
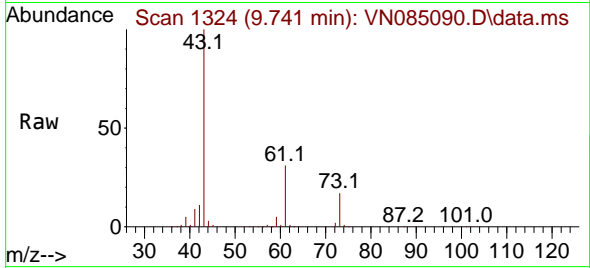




#45
 1,2-Dichloropropane
 Concen: 0.649 ug/l
 RT: 9.741 min Scan# 11
 Delta R.T. 0.123 min
 Lab File: VN085090.D
 Acq: 04 Dec 2024 13:37

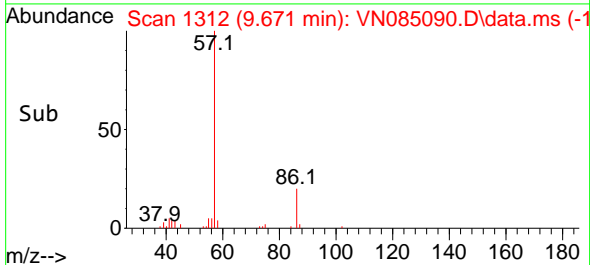
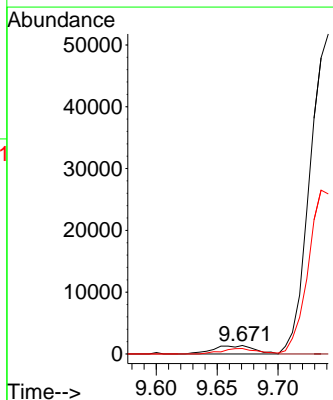
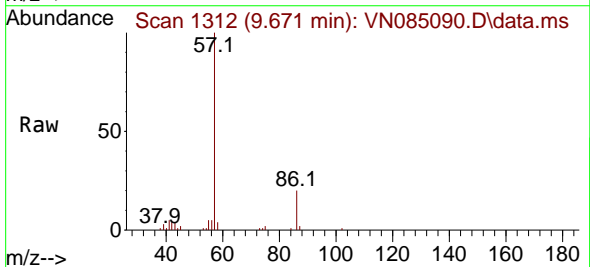
Instrument :
 MSVOA_N
 ClientSampleId :

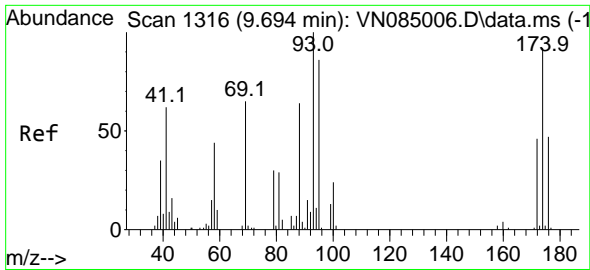
Tgt Ion: 63 Resp: 1417
 Ion Ratio Lower Upper
 63 100
 65 0.0 24.0 36.0#



#48
 Methyl methacrylate
 Concen: 1.591 ug/l
 RT: 9.671 min Scan# 1312
 Delta R.T. -0.006 min
 Lab File: VN085090.D
 Acq: 04 Dec 2024 13:37

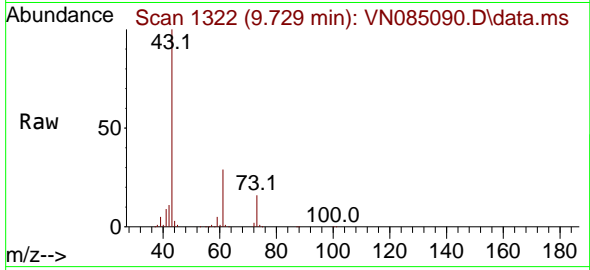
Tgt Ion: 41 Resp: 3134
 Ion Ratio Lower Upper
 41 100
 69 0.0 73.2 109.8#
 39 57.6 46.2 69.4



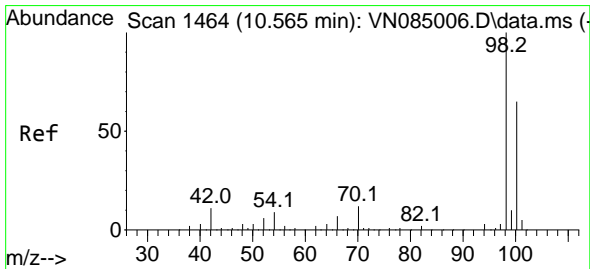
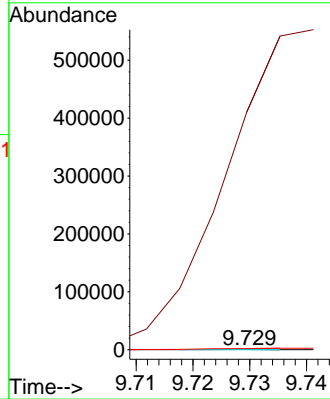
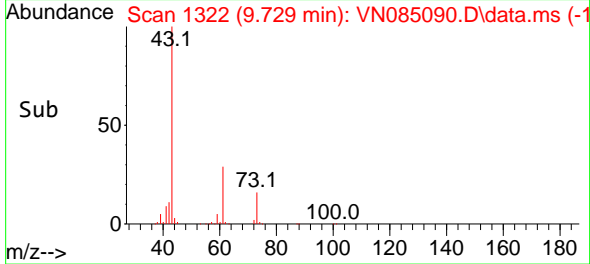


#49
 1,4-Dioxane
 Concen: 1.757 ug/l
 RT: 9.729 min Scan# 11
 Delta R.T. 0.035 min
 Lab File: VN085090.D
 Acq: 04 Dec 2024 13:37

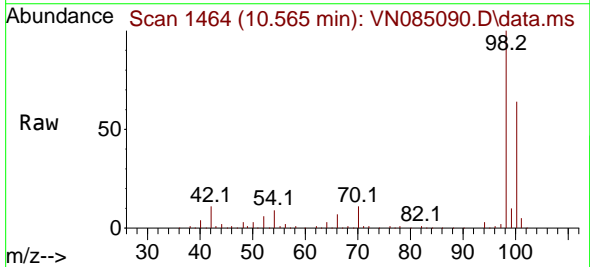
Instrument :
 MSVOA_N
 ClientSampleId :



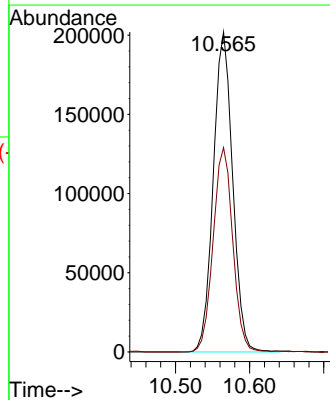
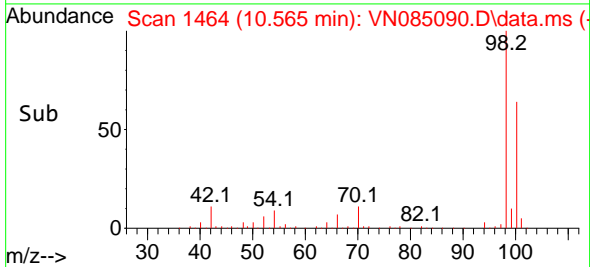
Tgt Ion: 88 Resp: 60
 Ion Ratio Lower Upper
 88 100
 43 0.0 16.7 25.1#
 58 0.0 56.5 84.7#

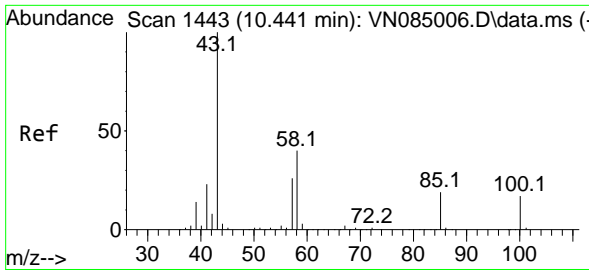


#50
 Toluene-d8
 Concen: 49.348 ug/l
 RT: 10.565 min Scan# 1464
 Delta R.T. -0.000 min
 Lab File: VN085090.D
 Acq: 04 Dec 2024 13:37



Tgt Ion: 98 Resp: 365962
 Ion Ratio Lower Upper
 98 100
 100 64.7 52.5 78.7

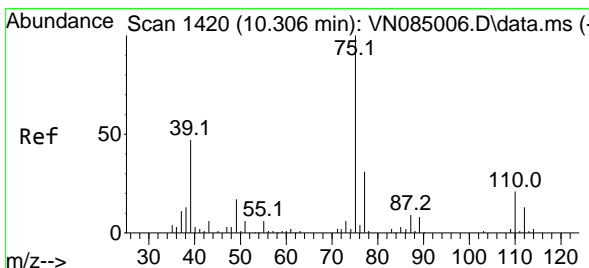
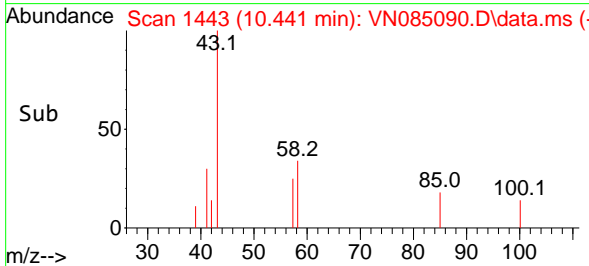
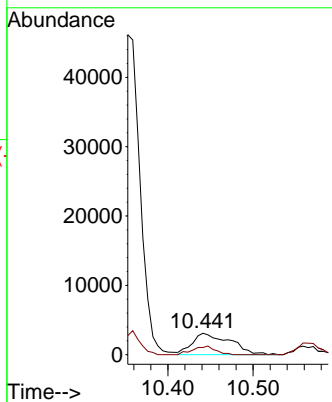
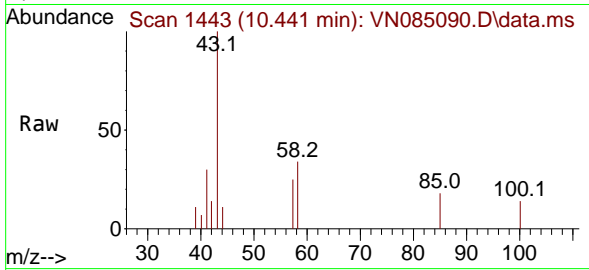




#51
 4-Methyl-2-Pentanone
 Concen: 3.974 ug/l
 RT: 10.441 min Scan# 1443
 Delta R.T. -0.000 min
 Lab File: VN085090.D
 Acq: 04 Dec 2024 13:37

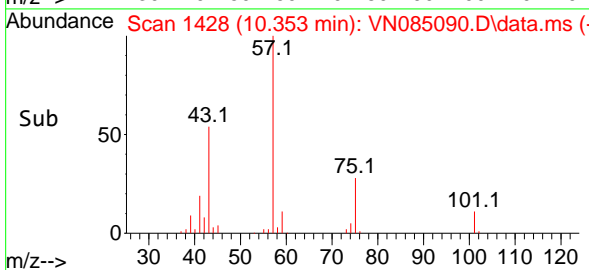
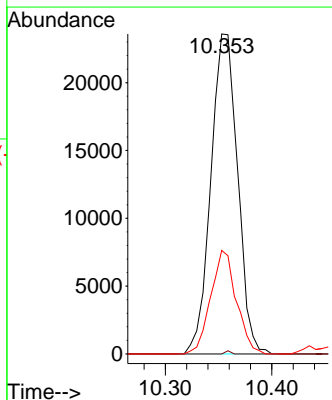
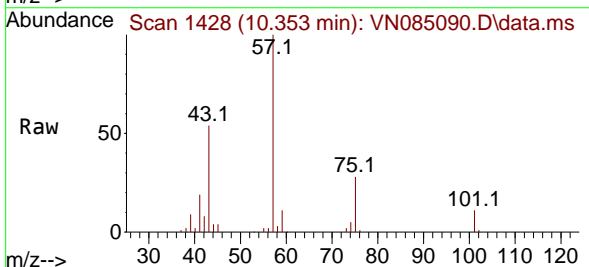
Instrument : MSVOA_N
 ClientSampleId :

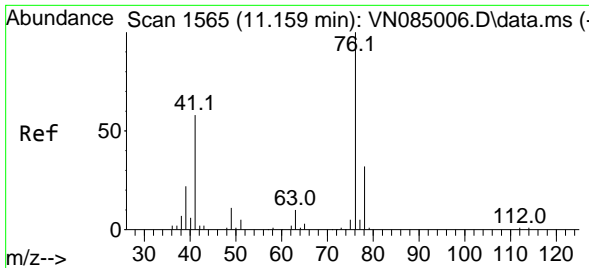
Tgt Ion: 43 Resp: 9608
 Ion Ratio Lower Upper
 43 100
 58 23.7 32.1 48.1#



#54
 cis-1,3-Dichloropropene
 Concen: 12.033 ug/l
 RT: 10.353 min Scan# 1428
 Delta R.T. 0.047 min
 Lab File: VN085090.D
 Acq: 04 Dec 2024 13:37

Tgt Ion: 75 Resp: 41155
 Ion Ratio Lower Upper
 75 100
 77 0.0 25.0 37.4#
 39 32.4 37.6 56.4#

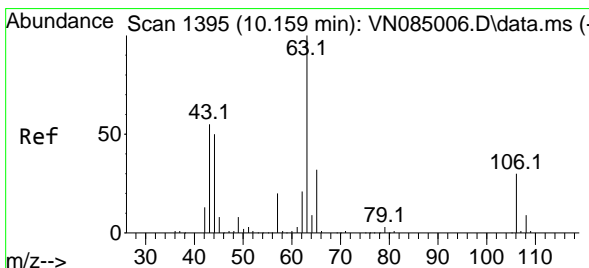
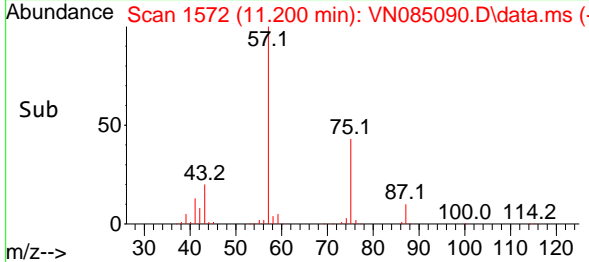
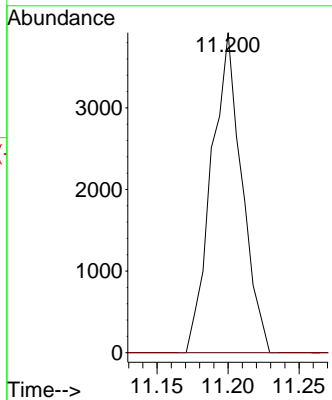
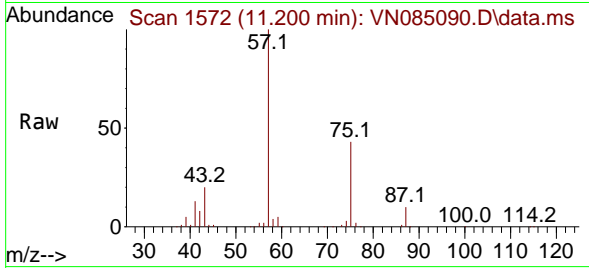




#57
 1,3-Dichloropropane
 Concen: 1.700 ug/l
 RT: 11.200 min Scan# 1111
 Delta R.T. 0.041 min
 Lab File: VN085090.D
 Acq: 04 Dec 2024 13:37

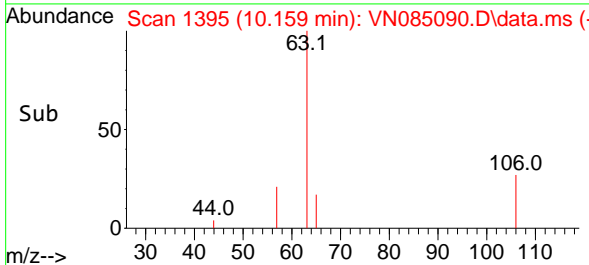
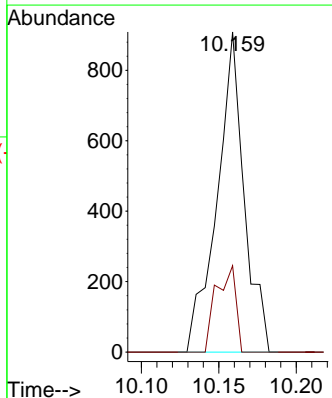
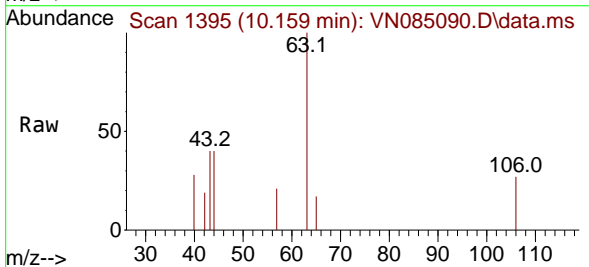
Instrument :
 MSVOA_N
 ClientSampleId :

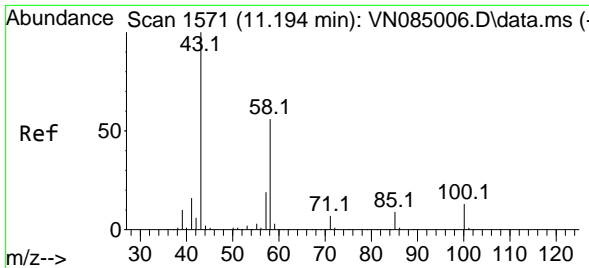
Tgt Ion: 76 Resp: 5848
 Ion Ratio Lower Upper
 76 100
 78 0.0 26.1 39.1#



#58
 2-Chloroethyl Vinyl ether
 Concen: 0.789 ug/l
 RT: 10.159 min Scan# 1395
 Delta R.T. -0.000 min
 Lab File: VN085090.D
 Acq: 04 Dec 2024 13:37

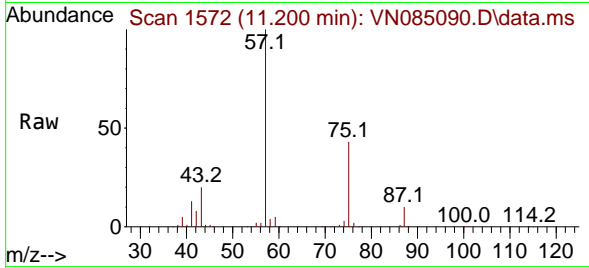
Tgt Ion: 63 Resp: 1106
 Ion Ratio Lower Upper
 63 100
 106 19.4 23.0 34.6#



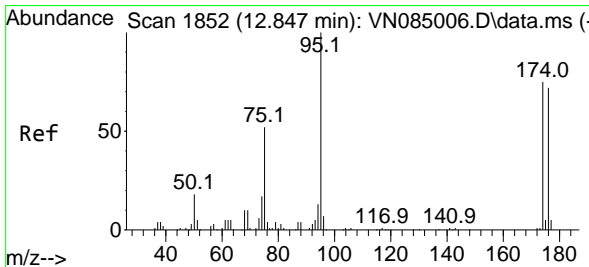
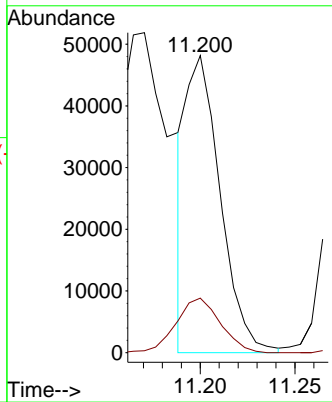
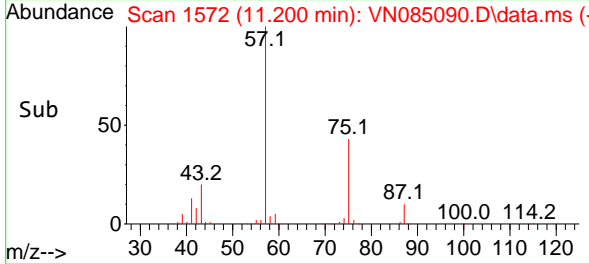


#59
 2-Hexanone
 Concen: 33.417 ug/l
 RT: 11.200 min Scan# 1111
 Delta R.T. 0.006 min
 Lab File: VN085090.D
 Acq: 04 Dec 2024 13:37

Instrument : MSVOA_N
 ClientSampleId :

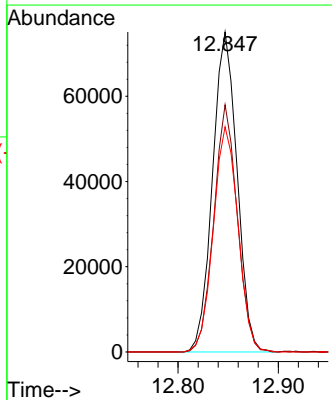
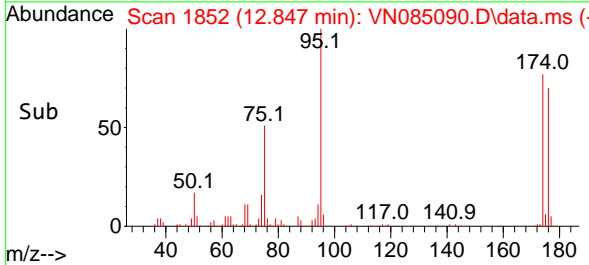
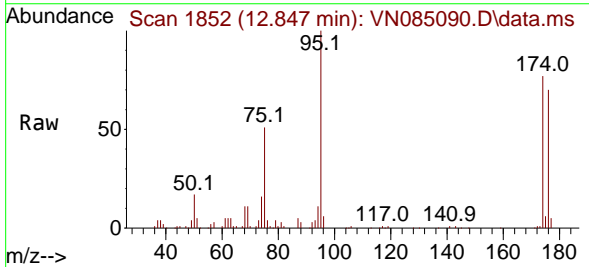


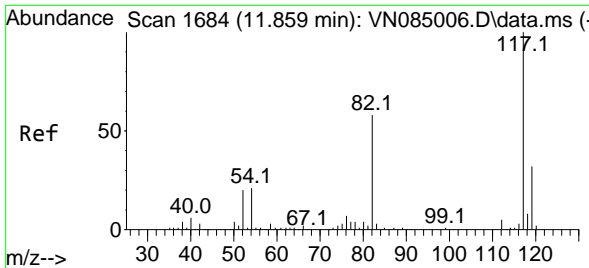
Tgt Ion: 43 Resp: 60420
 Ion Ratio Lower Upper
 43 100
 58 23.9 28.3 85.0#



#62
 4-Bromofluorobenzene
 Concen: 45.862 ug/l
 RT: 12.847 min Scan# 1852
 Delta R.T. -0.000 min
 Lab File: VN085090.D
 Acq: 04 Dec 2024 13:37

Tgt Ion: 95 Resp: 127190
 Ion Ratio Lower Upper
 95 100
 174 74.1 0.0 146.6
 176 71.1 0.0 141.8



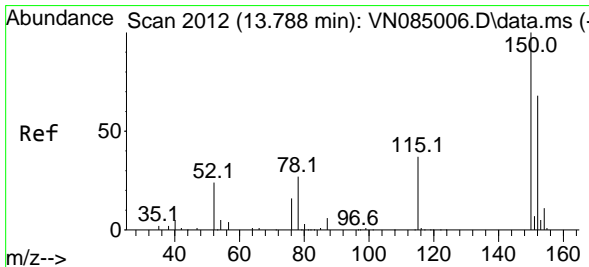
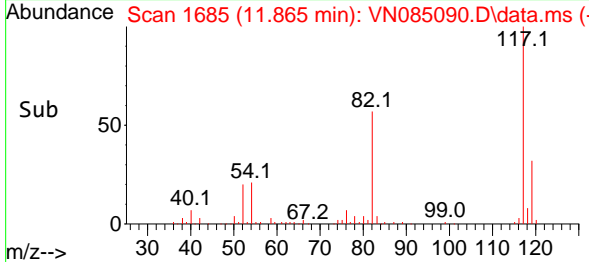
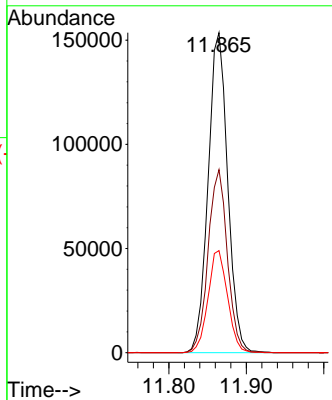
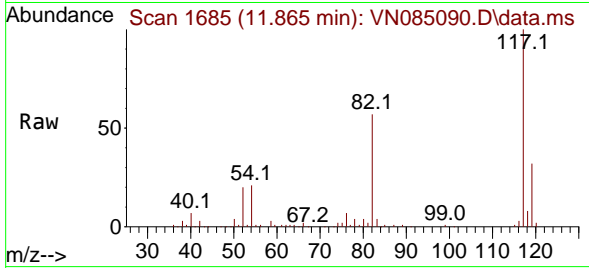


#63
 Chlorobenzene-d5
 Concen: 50.000 ug/l
 RT: 11.865 min Scan# 11
 Delta R.T. 0.006 min
 Lab File: VN085090.D
 Acq: 04 Dec 2024 13:37

Instrument : MSVOA_N
 ClientSampleId :

Tgt Ion:117 Resp: 269451

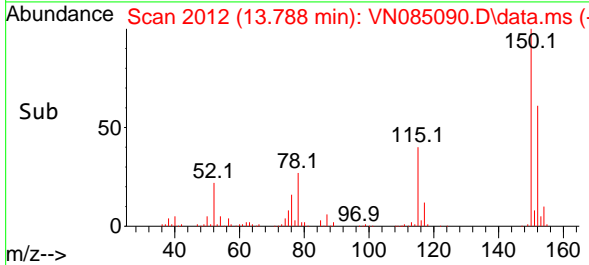
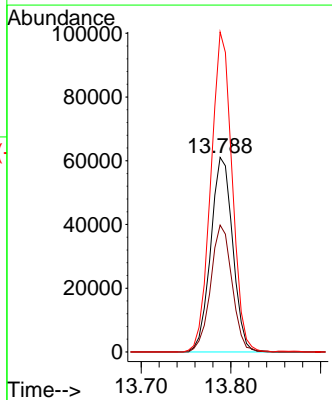
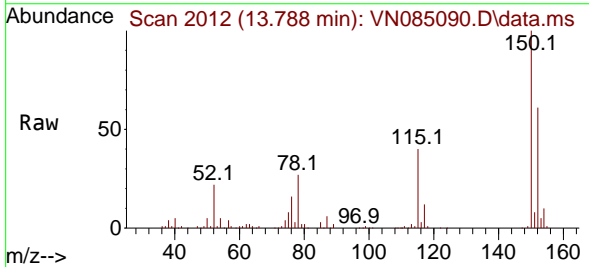
Ion	Ratio	Lower	Upper
117	100		
82	57.2	46.0	69.0
119	31.9	25.6	38.4

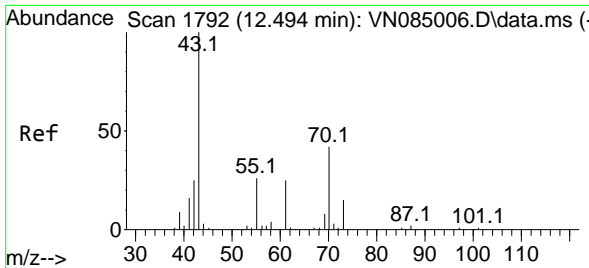


#72
 1,4-Dichlorobenzene-d4
 Concen: 50.000 ug/l
 RT: 13.788 min Scan# 2012
 Delta R.T. -0.000 min
 Lab File: VN085090.D
 Acq: 04 Dec 2024 13:37

Tgt Ion:152 Resp: 103980

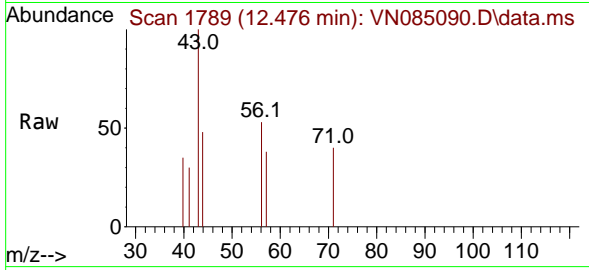
Ion	Ratio	Lower	Upper
152	100		
115	63.4	31.7	95.1
150	158.8	0.0	351.4





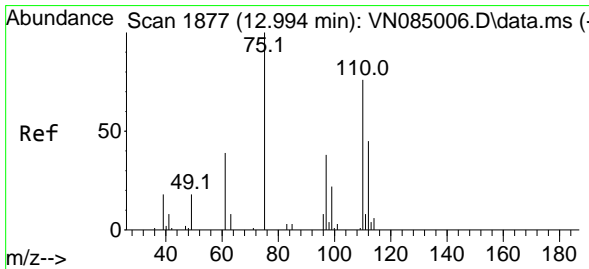
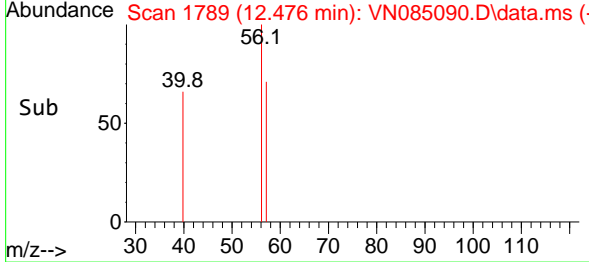
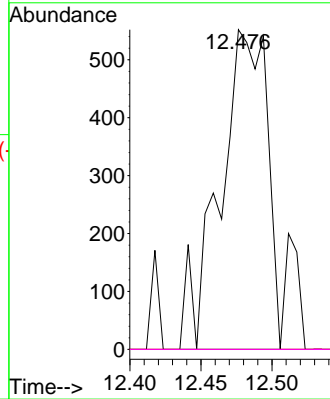
#74
 N-amy1 acetate
 Concen: 0.426 ug/l
 RT: 12.476 min Scan# 11
 Delta R.T. -0.018 min
 Lab File: VN085090.D
 Acq: 04 Dec 2024 13:37

Instrument :
 MSVOA_N
 ClientSampleId :



Tgt Ion: 43 Resp: 1287

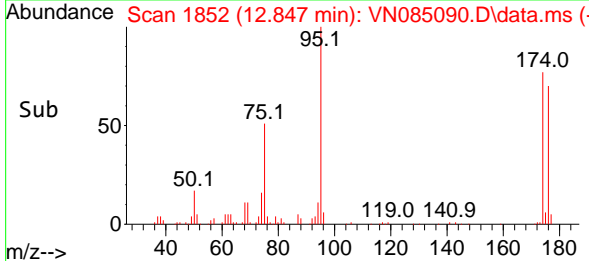
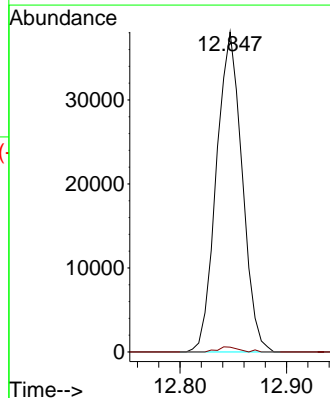
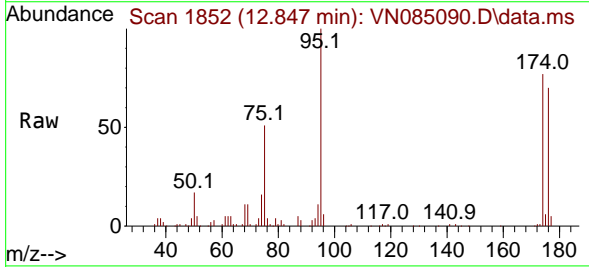
Ion	Ratio	Lower	Upper
43	100		
70	0.0	34.6	51.8#
55	0.0	20.5	30.7#
61	0.0	19.6	29.4#

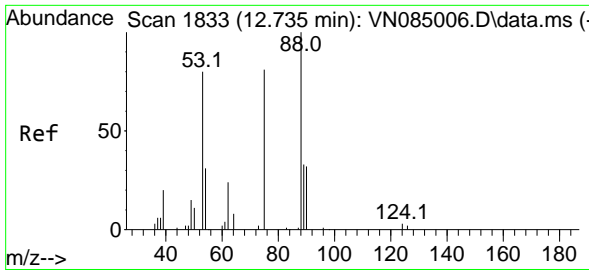


#76
 1,2,3-Trichloropropane
 Concen: 33.844 ug/l
 RT: 12.847 min Scan# 1852
 Delta R.T. -0.147 min
 Lab File: VN085090.D
 Acq: 04 Dec 2024 13:37

Tgt Ion: 75 Resp: 64009

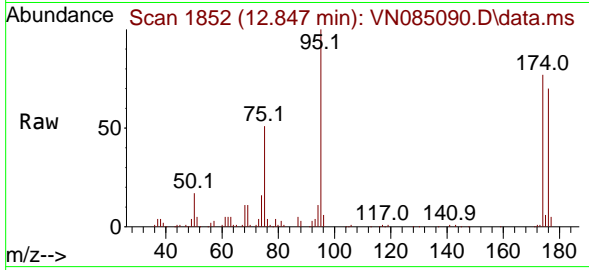
Ion	Ratio	Lower	Upper
75	100		
77	1.2	109.1	327.4#



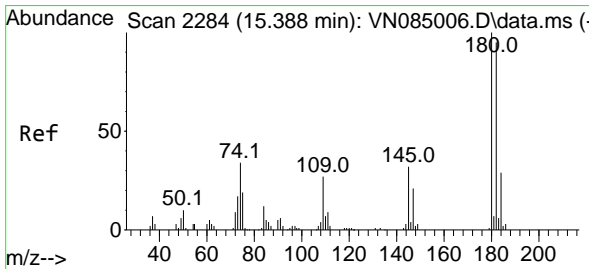
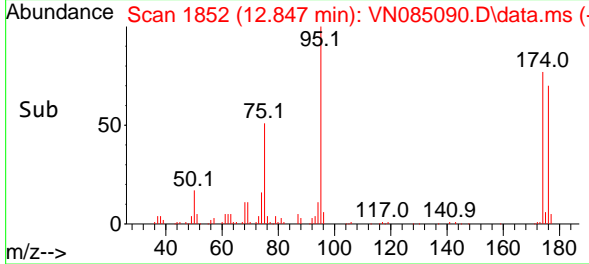
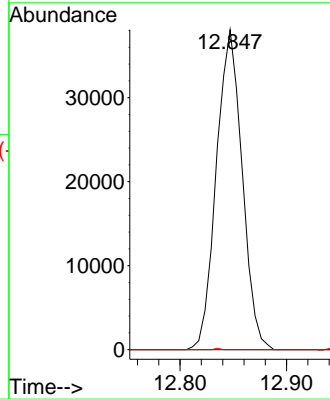


#81
 trans-1,4-Dichloro-2-butene
 Concen: 74.712 ug/l
 RT: 12.847 min Scan# 1833
 Delta R.T. 0.112 min
 Lab File: VN085090.D
 Acq: 04 Dec 2024 13:37

Instrument : MSVOA_N
 ClientSampleId :

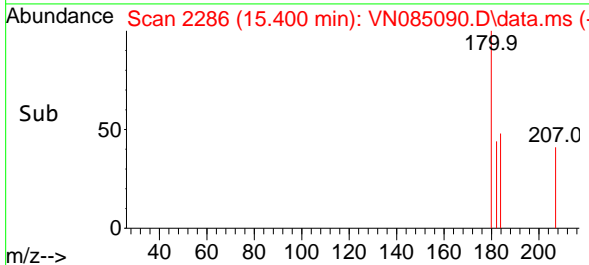
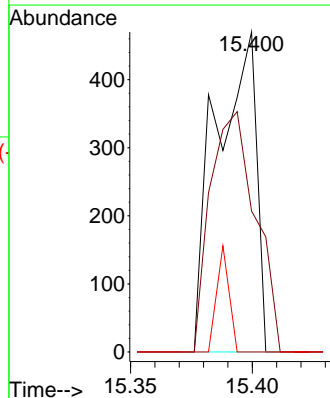
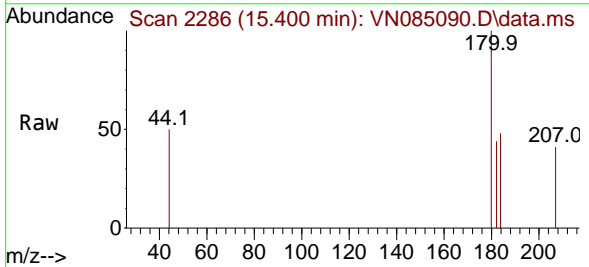


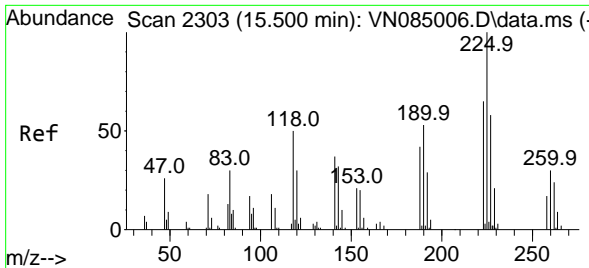
Tgt Ion: 75 Resp: 64009
 Ion Ratio Lower Upper
 75 100
 53 0.0 78.2 117.4#
 89 0.1 37.9 56.9#



#93
 1,2,4-Trichlorobenzene
 Concen: 0.264 ug/l
 RT: 15.400 min Scan# 2286
 Delta R.T. 0.012 min
 Lab File: VN085090.D
 Acq: 04 Dec 2024 13:37

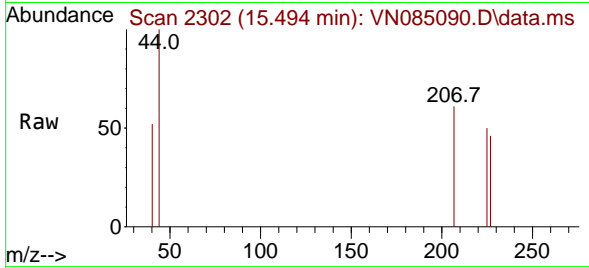
Tgt Ion:180 Resp: 536
 Ion Ratio Lower Upper
 180 100
 182 84.9 46.9 140.8
 145 10.3 16.3 48.8#



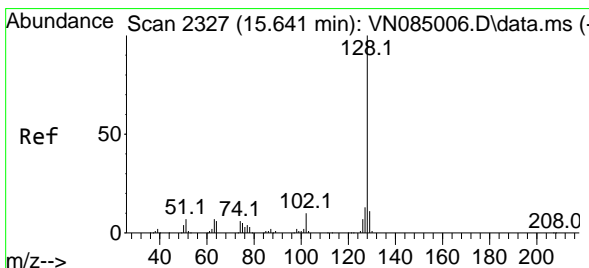
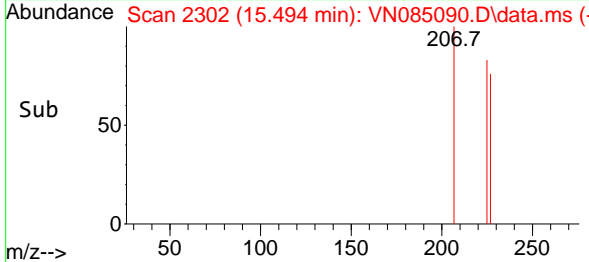
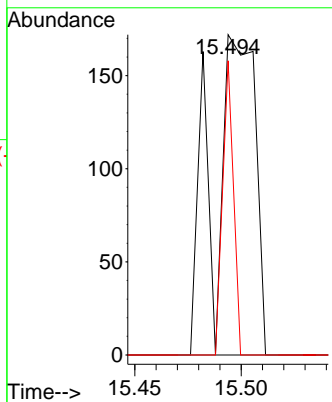


#94
 Hexachlorobutadiene
 Concen: 0.249 ug/l
 RT: 15.494 min Scan# 21
 Delta R.T. -0.006 min
 Lab File: VN085090.D
 Acq: 04 Dec 2024 13:37

Instrument :
 MSVOA_N
 ClientSampleId :

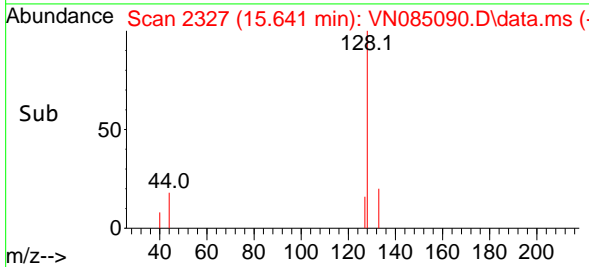
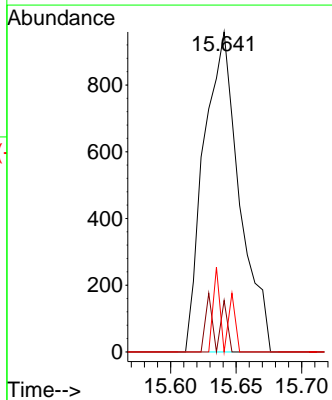
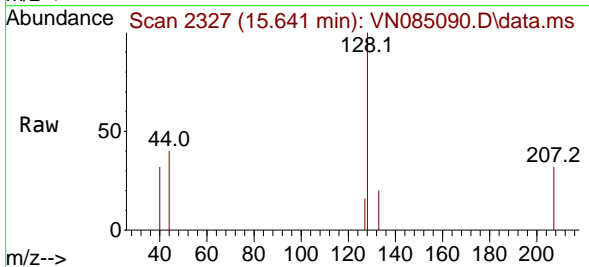


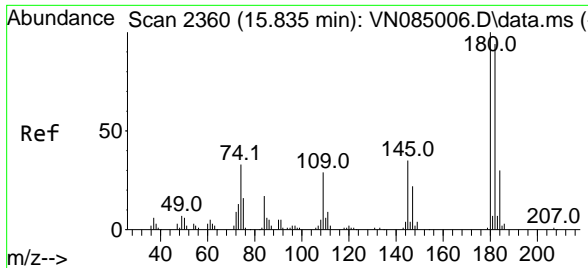
Tgt Ion:225 Resp: 233
 Ion Ratio Lower Upper
 225 100
 223 0.0 30.9 92.8#
 227 24.0 31.5 94.5#



#95
 Naphthalene
 Concen: 0.314 ug/l
 RT: 15.641 min Scan# 2327
 Delta R.T. -0.000 min
 Lab File: VN085090.D
 Acq: 04 Dec 2024 13:37

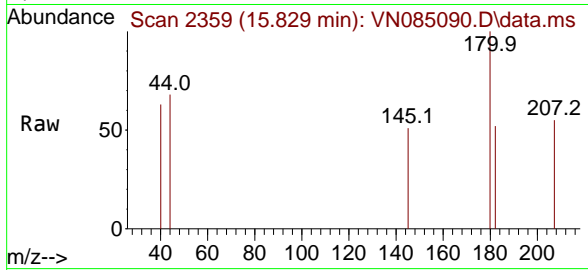
Tgt Ion:128 Resp: 1810
 Ion Ratio Lower Upper
 128 100
 127 6.4 10.6 16.0#
 129 8.4 8.6 12.8#





#96
 1,2,3-Trichlorobenzene
 Concen: 0.247 ug/l
 RT: 15.829 min Scan# 21
 Delta R.T. -0.006 min
 Lab File: VN085090.D
 Acq: 04 Dec 2024 13:37

Instrument :
 MSVOA_N
 ClientSampleId :



Tgt Ion:180 Resp: 477
 Ion Ratio Lower Upper
 180 100
 182 128.7 46.4 139.2
 145 12.2 17.3 52.0#

