

Data Path : Z:\voasrv\HPCHEM1\MSVOA_N\Data\VN120424\
 Data File : VN085091.D
 Acq On : 04 Dec 2024 14:01
 Operator : JC\MD
 Sample : P5052-08
 Misc : 5.0mL/MSVOA_N/WATER
 ALS Vial : 9 Sample Multiplier: 1

Instrument :
 MSVOA_N
 ClientSampleId :

Quant Time: Dec 04 22:06:17 2024
 Quant Method : Z:\voasrv\HPCHEM1\MSVOA_N\methods\82N112224W.M
 Quant Title : SW846 8260
 QLast Update : Sat Nov 23 02:54:10 2024
 Response via : Initial Calibration

Compound	R.T.	QIon	Response	Conc	Units	Dev(Min)

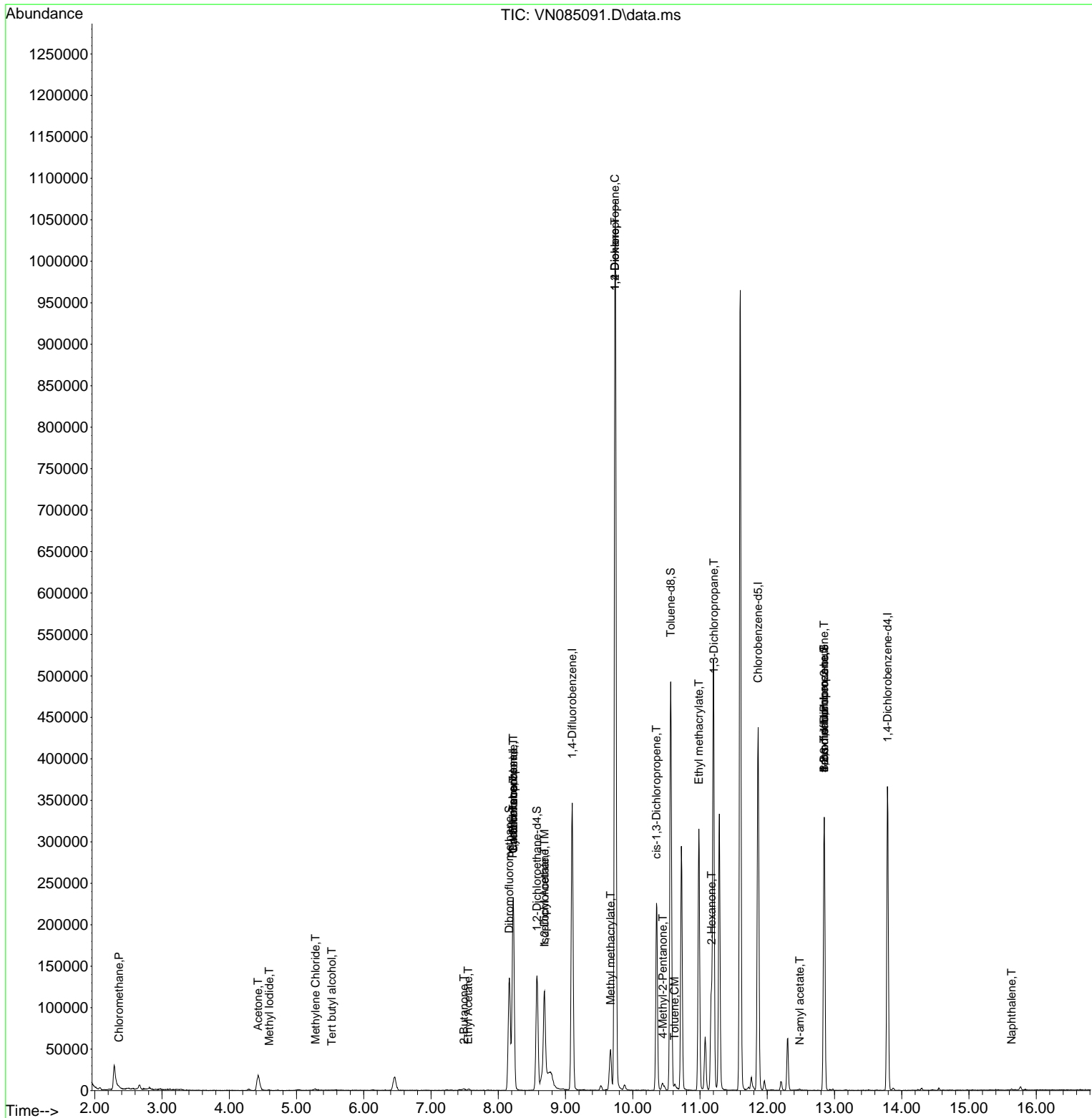
Internal Standards						
1) Pentafluorobenzene	8.218	168	164843	50.000	ug/l	0.00
34) 1,4-Difluorobenzene	9.100	114	296406	50.000	ug/l	0.00
63) Chlorobenzene-d5	11.865	117	254007	50.000	ug/l	0.00
72) 1,4-Dichlorobenzene-d4	13.788	152	98955	50.000	ug/l	0.00
System Monitoring Compounds						
33) 1,2-Dichloroethane-d4	8.577	65	117832	50.183	ug/l	0.00
Spiked Amount	50.000	Range 74 - 125	Recovery	=	100.360%	
35) Dibromofluoromethane	8.165	113	98277	49.166	ug/l	0.00
Spiked Amount	50.000	Range 75 - 124	Recovery	=	98.340%	
50) Toluene-d8	10.565	98	342182	47.768	ug/l	0.00
Spiked Amount	50.000	Range 86 - 113	Recovery	=	95.540%	
62) 4-Bromofluorobenzene	12.847	95	118097	44.084	ug/l	0.00
Spiked Amount	50.000	Range 77 - 121	Recovery	=	88.160%	
Target Compounds						
						Qvalue
3) Chloromethane	2.359	50	739	0.342	ug/l #	88
10) Methyl Iodide	4.595	142	1072	0.432	ug/l #	39
11) Tert butyl alcohol	5.524	59	145	0.462	ug/l #	75
16) Acetone	4.430	43	33404	48.847	ug/l	91
18) Methyl Acetate	5.030	43	2030	Below Cal	#	72
20) Methylene Chloride	5.283	84	1436	0.688	ug/l #	78
25) 2-Butanone	7.489	43	3468	3.102	ug/l	93
31) Cyclohexane	8.224	56	3759	1.202	ug/l #	1
36) 1,1-Dichloropropene	8.224	75	13108	4.841	ug/l #	52
37) Ethyl Acetate	7.553	43	2689	1.092	ug/l #	74
38) Carbon Tetrachloride	8.224	117	17771	5.686	ug/l #	16
42) 1,2-Dichloroethane	8.688	62	881	0.301	ug/l #	75
43) Isopropyl Acetate	8.688	43	155484	30.412	ug/l #	84
45) 1,2-Dichloropropane	9.735	63	1474	0.699	ug/l #	45
48) Methyl methacrylate	9.671	41	3071	1.614	ug/l #	40
49) 1,4-Dioxane	9.735	88	119	3.607	ug/l #	1
51) 4-Methyl-2-Pentanone	10.447	43	10460	4.479	ug/l #	71
52) Toluene	10.624	92	2723	0.537	ug/l	96
54) cis-1,3-Dichloropropene	10.353	75	41107	12.443	ug/l #	66
56) Ethyl methacrylate	10.982	69	1341	0.486	ug/l #	1
57) 1,3-Dichloropropane	11.206	76	5530	1.664	ug/l #	42
59) 2-Hexanone	11.171	43	89139	51.038	ug/l #	23
71) Bromoform	12.847	173	408	0.271	ug/l #	1
74) N-amyl acetate	12.482	43	1116	0.388	ug/l #	42
76) 1,2,3-Trichloropropane	12.847	75	61149	33.973	ug/l #	1
81) trans-1,4-Dichloro-2-b...	12.847	75	61149	74.998	ug/l #	10
95) Naphthalene	15.635	128	1778	0.324	ug/l #	69

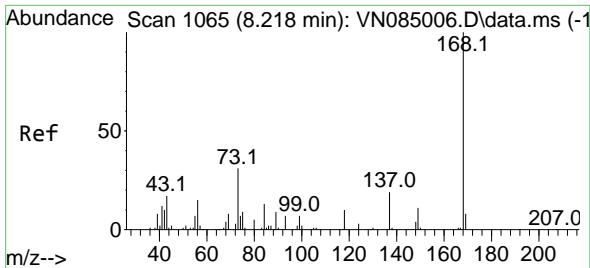
(#) = qualifier out of range (m) = manual integration (+) = signals summed

Data Path : Z:\voasrv\HPCHEM1\MSVOA_N\Data\VN120424\
 Data File : VN085091.D
 Acq On : 04 Dec 2024 14:01
 Operator : JC\MD
 Sample : P5052-08
 Misc : 5.0mL/MSVOA_N/WATER
 ALS Vial : 9 Sample Multiplier: 1

Instrument :
 MSVOA_N
 ClientSampleId :

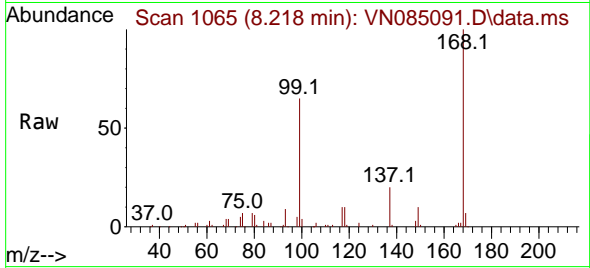
Quant Time: Dec 04 22:06:17 2024
 Quant Method : Z:\voasrv\HPCHEM1\MSVOA_N\methods\82N112224W.M
 Quant Title : SW846 8260
 QLast Update : Sat Nov 23 02:54:10 2024
 Response via : Initial Calibration



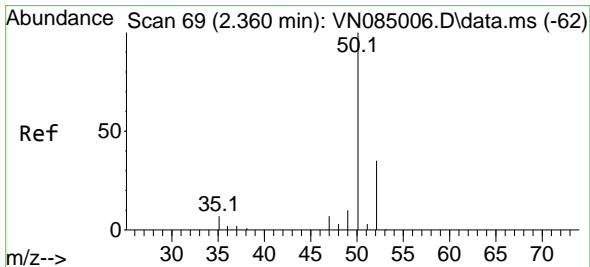
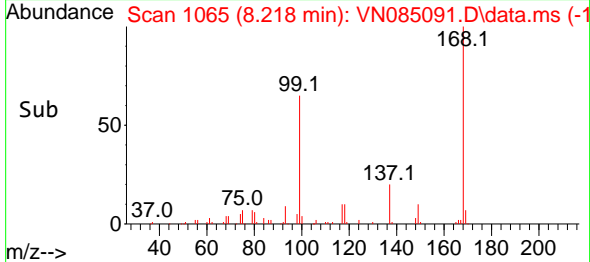
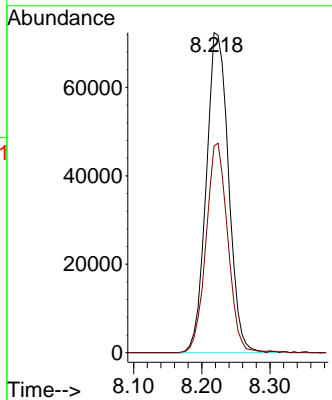


#1
 Pentafluorobenzene
 Concen: 50.000 ug/l
 RT: 8.218 min Scan# 1065
 Delta R.T. -0.000 min
 Lab File: VN085091.D
 Acq: 04 Dec 2024 14:01

Instrument :
 MSVOA_N
 ClientSampleId :

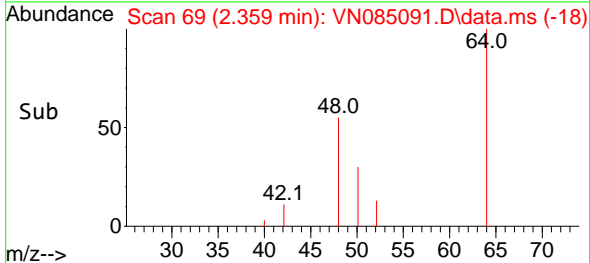
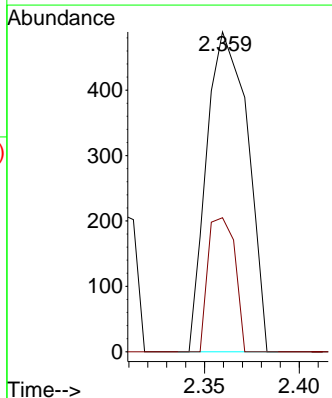
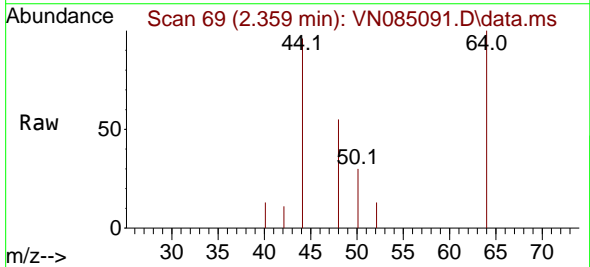


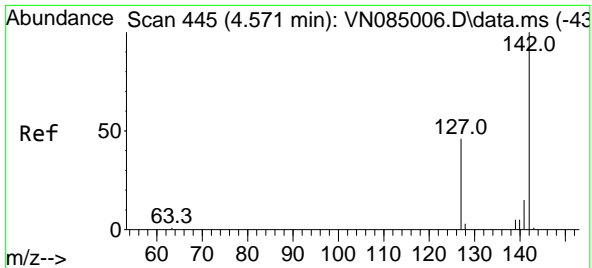
Tgt Ion:168 Resp: 164843
 Ion Ratio Lower Upper
 168 100
 99 64.5 51.2 76.8



#3
 Chloromethane
 Concen: 0.342 ug/l
 RT: 2.359 min Scan# 69
 Delta R.T. -0.000 min
 Lab File: VN085091.D
 Acq: 04 Dec 2024 14:01

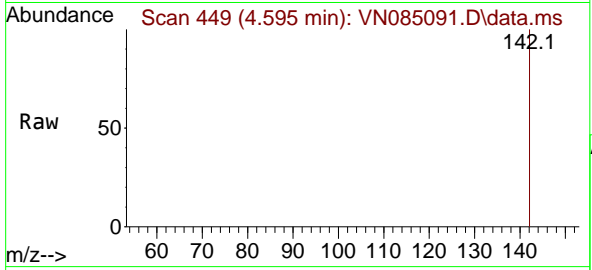
Tgt Ion: 50 Resp: 739
 Ion Ratio Lower Upper
 50 100
 52 41.9 27.8 41.8#



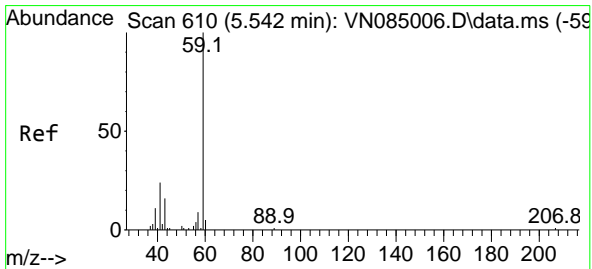
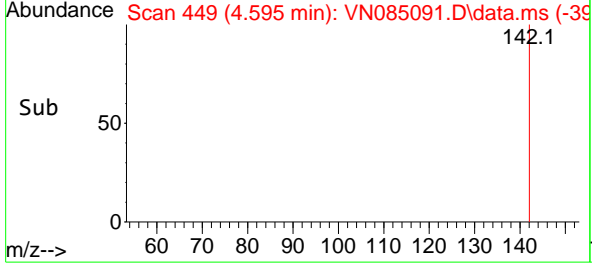
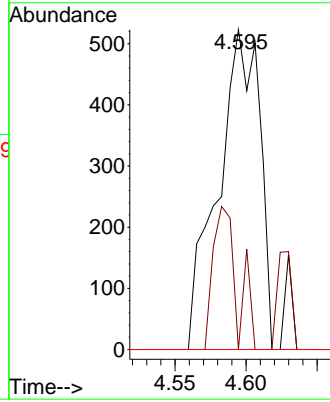


#10
Methyl Iodide
Concen: 0.432 ug/l
RT: 4.595 min Scan# 449
Delta R.T. 0.023 min
Lab File: VN085091.D
Acq: 04 Dec 2024 14:01

Instrument :
MSVOA_N
ClientSampleId :

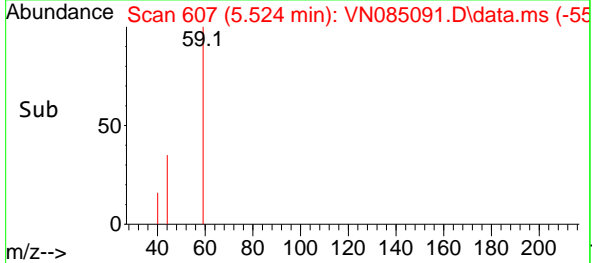
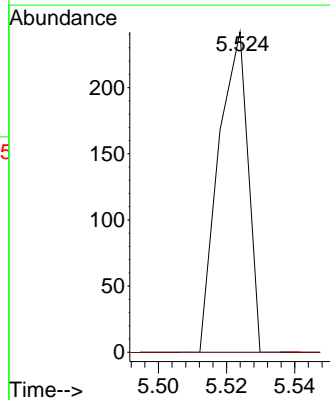
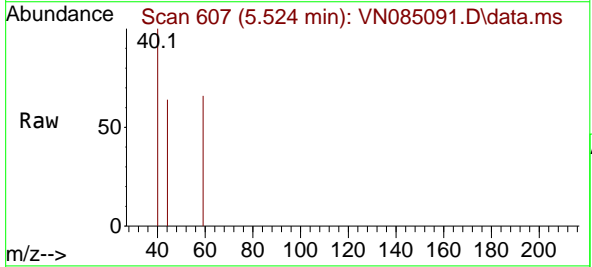


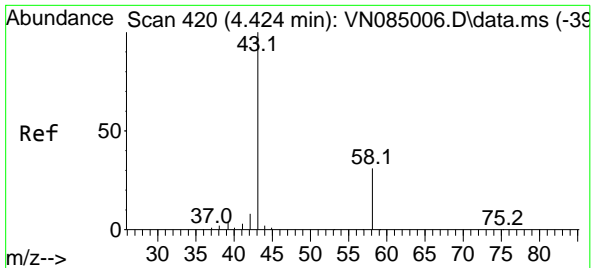
Tgt Ion:142 Resp: 1072
Ion Ratio Lower Upper
142 100
127 0.0 36.6 54.8#
141 0.0 12.2 18.4#



#11
Tert butyl alcohol
Concen: 0.462 ug/l
RT: 5.524 min Scan# 607
Delta R.T. -0.018 min
Lab File: VN085091.D
Acq: 04 Dec 2024 14:01

Tgt Ion: 59 Resp: 145
Ion Ratio Lower Upper
59 100
57 0.0 7.4 11.0#

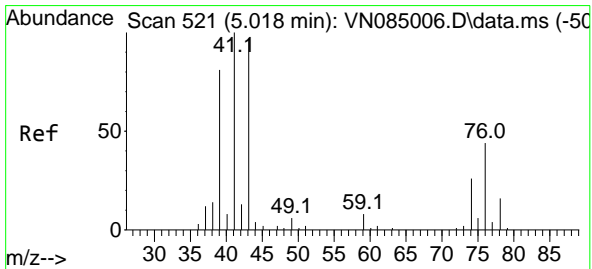
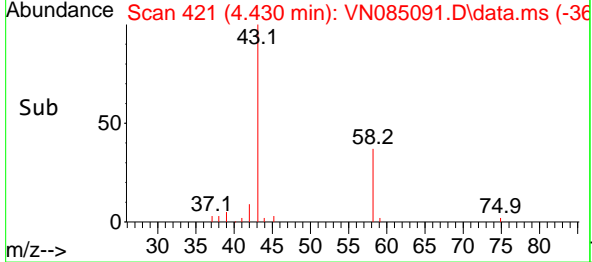
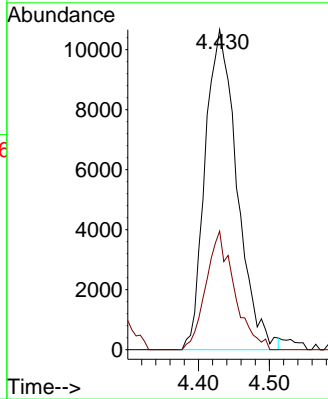
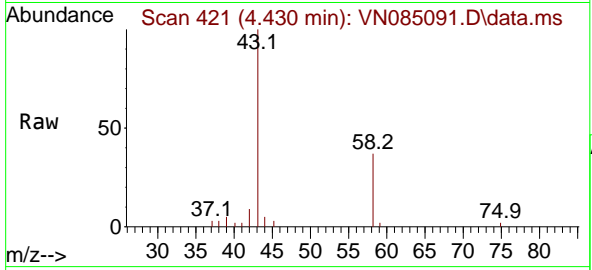




#16
 Acetone
 Concen: 48.847 ug/l
 RT: 4.430 min Scan# 41
 Delta R.T. 0.006 min
 Lab File: VN085091.D
 Acq: 04 Dec 2024 14:01

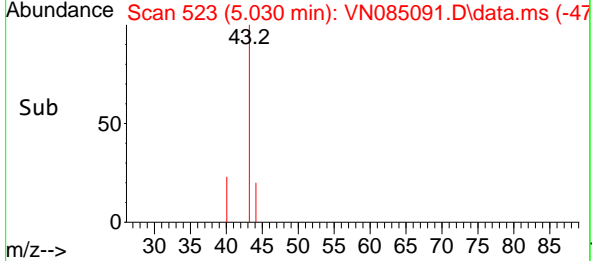
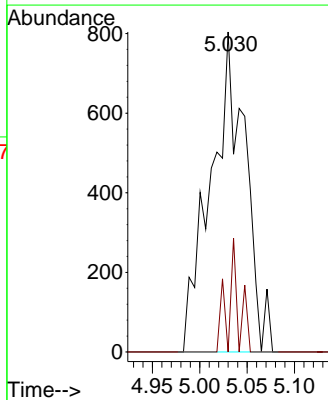
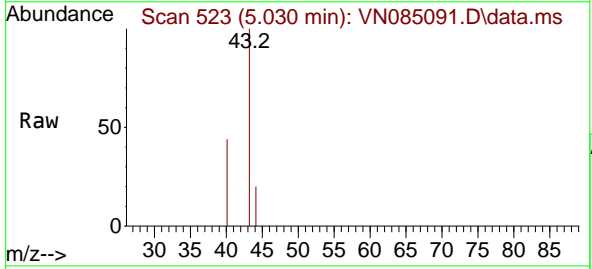
Instrument : MSVOA_N
 ClientSampleId :

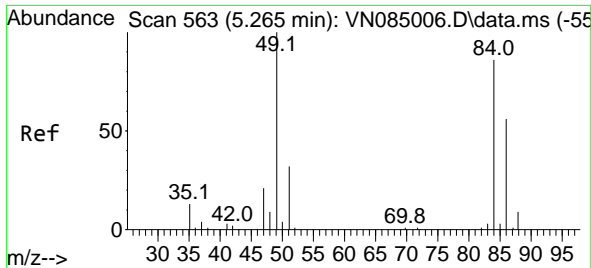
Tgt Ion: 43 Resp: 33404
 Ion Ratio Lower Upper
 43 100
 58 37.1 25.4 38.2



#18
 Methyl Acetate
 Concen: Below Cal
 RT: 5.030 min Scan# 523
 Delta R.T. 0.012 min
 Lab File: VN085091.D
 Acq: 04 Dec 2024 14:01

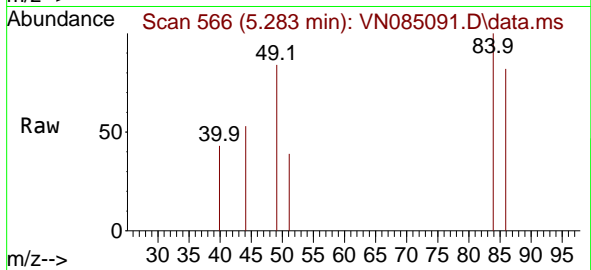
Tgt Ion: 43 Resp: 2030
 Ion Ratio Lower Upper
 43 100
 74 11.1 20.1 30.1#





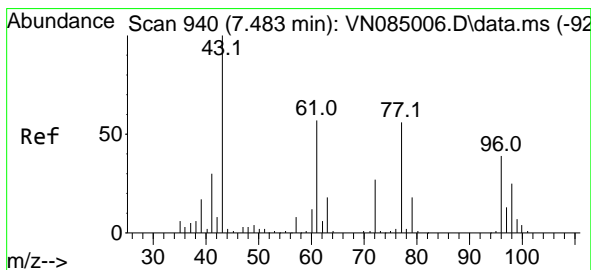
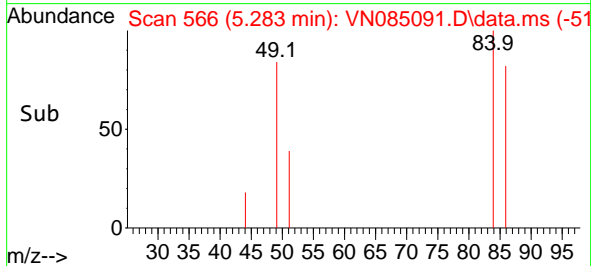
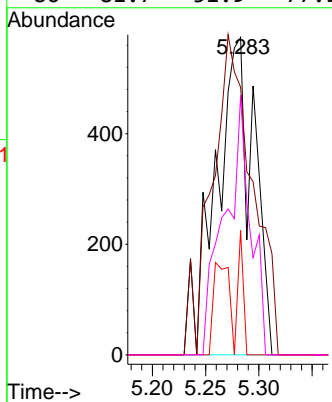
#20
 Methylene Chloride
 Concen: 0.688 ug/l
 RT: 5.283 min Scan# 501
 Delta R.T. 0.018 min
 Lab File: VN085091.D
 Acq: 04 Dec 2024 14:01

Instrument :
 MSVOA_N
 ClientSampleId :



Tgt Ion: 84 Resp: 1436

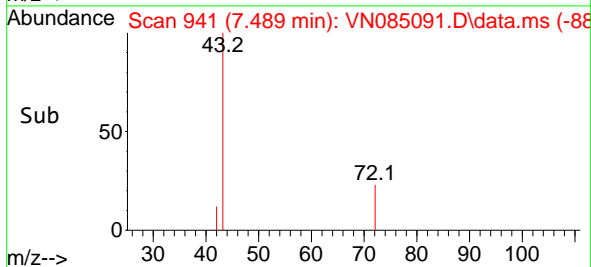
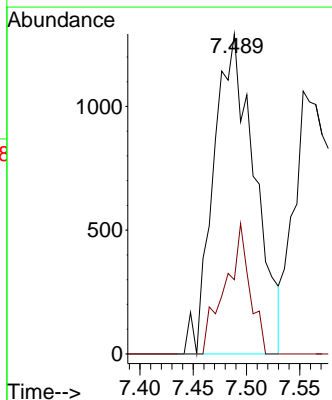
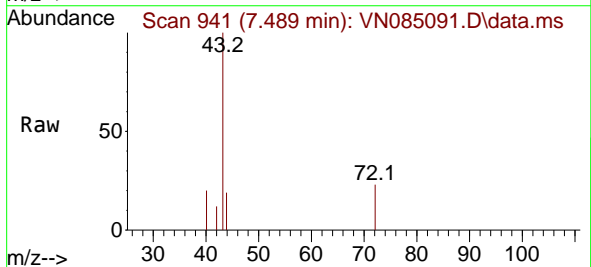
Ion	Ratio	Lower	Upper
84	100		
49	84.3	92.7	139.1#
51	39.2	29.4	44.2
86	81.7	51.9	77.9#

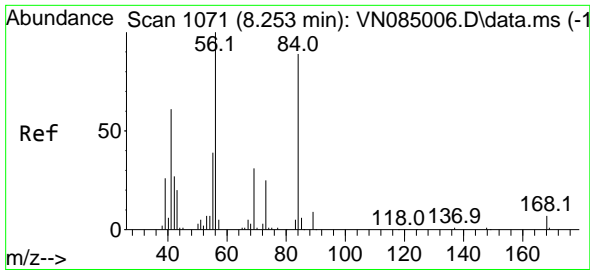


#25
 2-Butanone
 Concen: 3.102 ug/l
 RT: 7.489 min Scan# 941
 Delta R.T. 0.006 min
 Lab File: VN085091.D
 Acq: 04 Dec 2024 14:01

Tgt Ion: 43 Resp: 3468

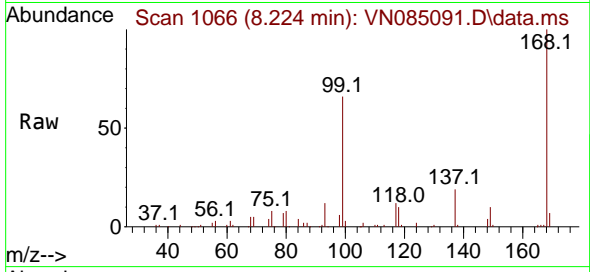
Ion	Ratio	Lower	Upper
43	100		
72	23.2	21.4	32.0



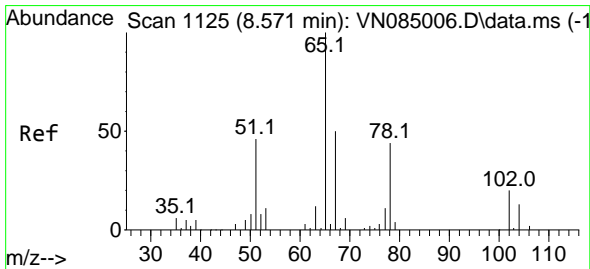
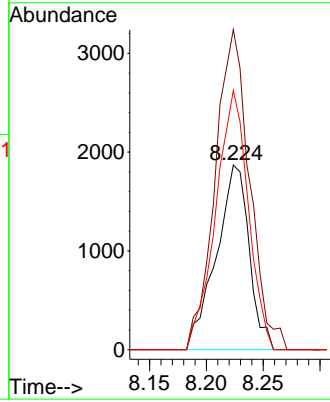
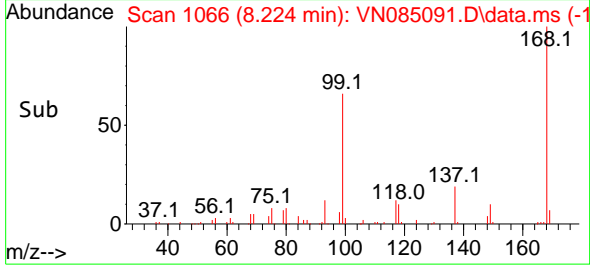


#31
 Cyclohexane
 Concen: 1.202 ug/l
 RT: 8.224 min Scan# 1066
 Delta R.T. -0.029 min
 Lab File: VN085091.D
 Acq: 04 Dec 2024 14:01

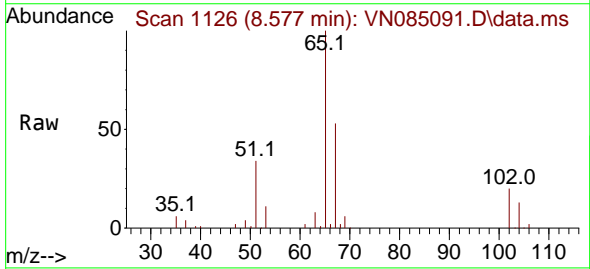
Instrument :
 MSVOA_N
 ClientSampleId :



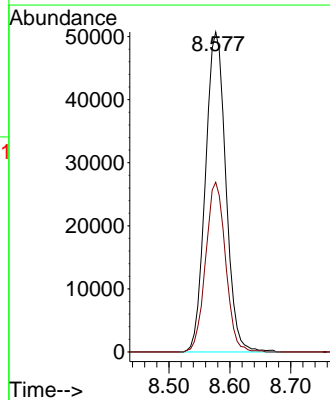
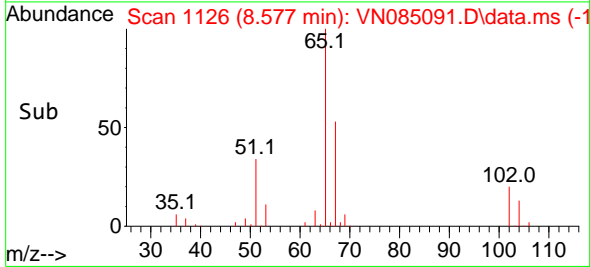
Tgt Ion: 56 Resp: 3759
 Ion Ratio Lower Upper
 56 100
 69 173.3 24.6 36.8#
 84 140.4 71.4 107.2#

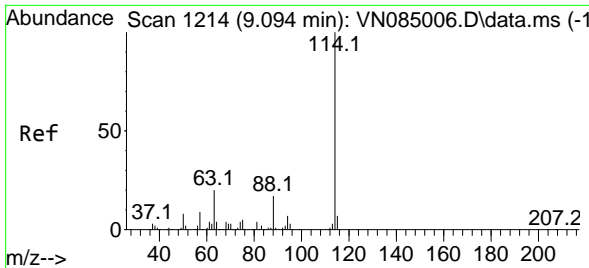


#33
 1,2-Dichloroethane-d4
 Concen: 50.183 ug/l
 RT: 8.577 min Scan# 1126
 Delta R.T. 0.006 min
 Lab File: VN085091.D
 Acq: 04 Dec 2024 14:01



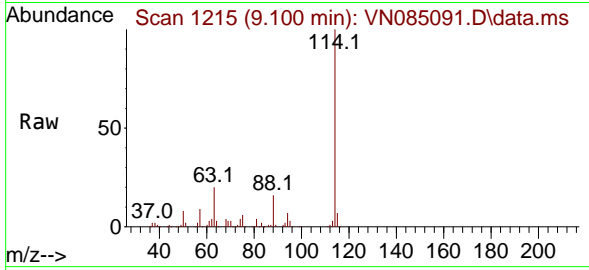
Tgt Ion: 65 Resp: 117832
 Ion Ratio Lower Upper
 65 100
 67 51.9 0.0 105.0



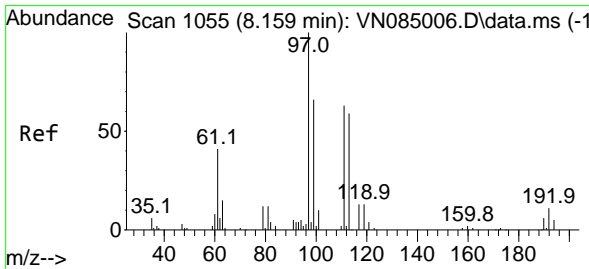
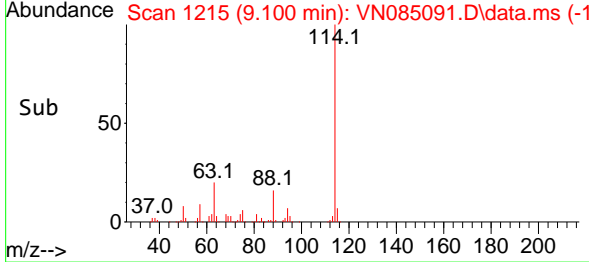
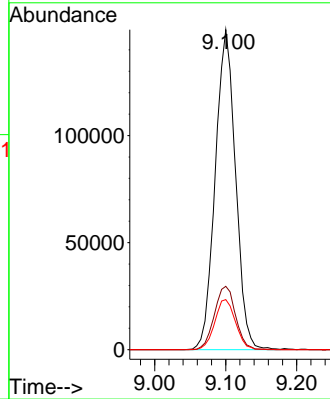


#34
 1,4-Difluorobenzene
 Concen: 50.000 ug/l
 RT: 9.100 min Scan# 11
 Delta R.T. 0.006 min
 Lab File: VN085091.D
 Acq: 04 Dec 2024 14:01

Instrument :
 MSVOA_N
 ClientSampleId :

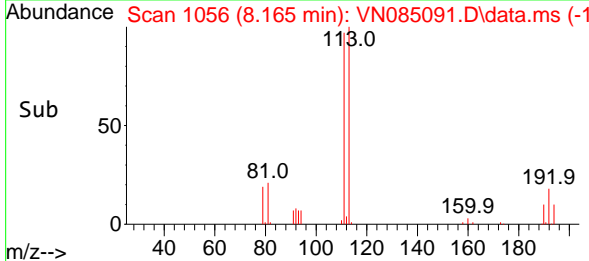
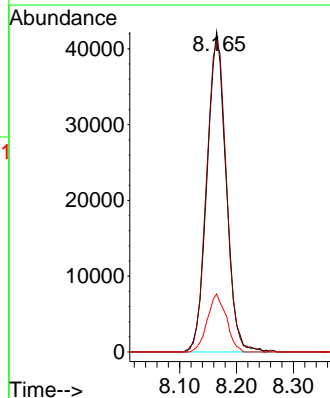
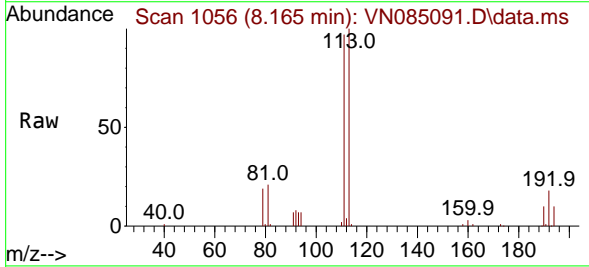


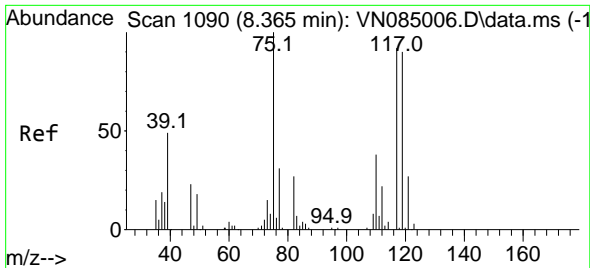
Tgt Ion:114 Resp: 296406
 Ion Ratio Lower Upper
 114 100
 63 19.8 0.0 41.0
 88 15.7 0.0 34.8



#35
 Dibromofluoromethane
 Concen: 49.166 ug/l
 RT: 8.165 min Scan# 1056
 Delta R.T. 0.006 min
 Lab File: VN085091.D
 Acq: 04 Dec 2024 14:01

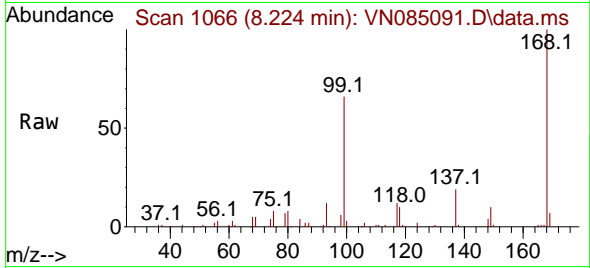
Tgt Ion:113 Resp: 98277
 Ion Ratio Lower Upper
 113 100
 111 101.4 82.0 123.0
 192 18.1 14.8 22.2



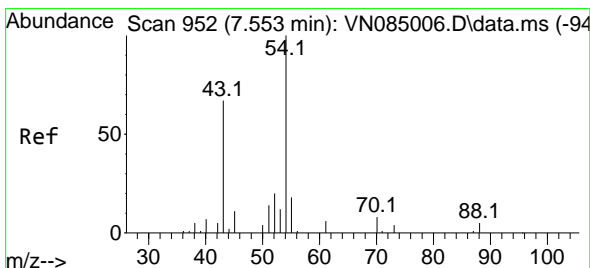
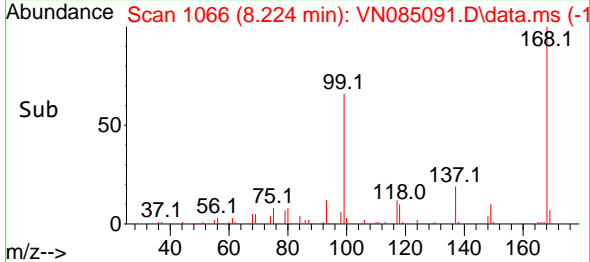
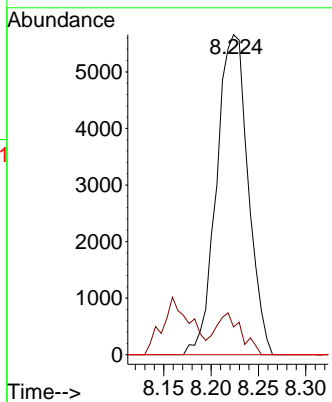


#36
 1,1-Dichloropropene
 Concen: 4.841 ug/l
 RT: 8.224 min Scan# 1066
 Delta R.T. -0.141 min
 Lab File: VN085091.D
 Acq: 04 Dec 2024 14:01

Instrument : MSVOA_N
 ClientSampleId :

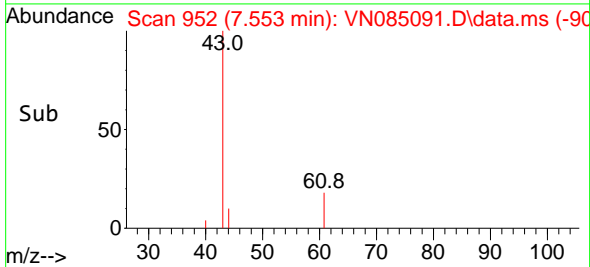
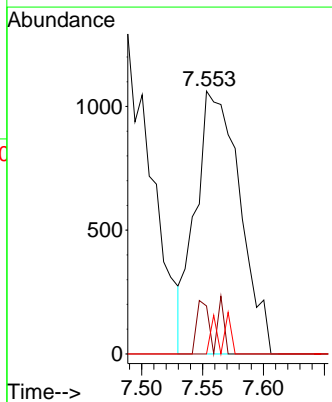
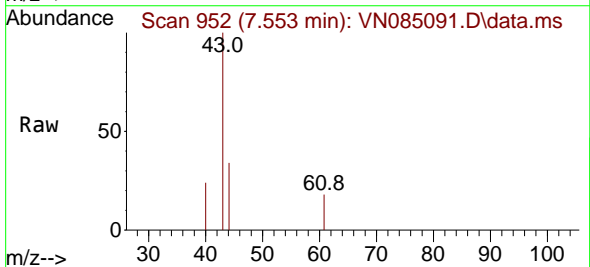


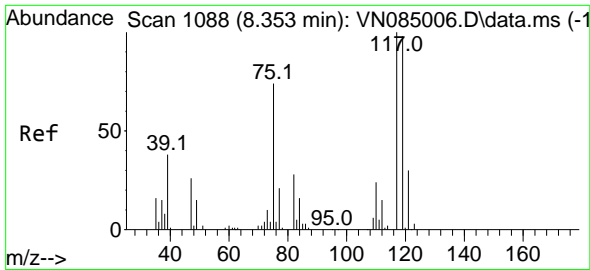
Tgt Ion: 75 Resp: 13108
 Ion Ratio Lower Upper
 75 100
 110 10.6 17.2 51.6#
 77 0.0 24.2 36.4#



#37
 Ethyl Acetate
 Concen: 1.092 ug/l
 RT: 7.553 min Scan# 952
 Delta R.T. -0.000 min
 Lab File: VN085091.D
 Acq: 04 Dec 2024 14:01

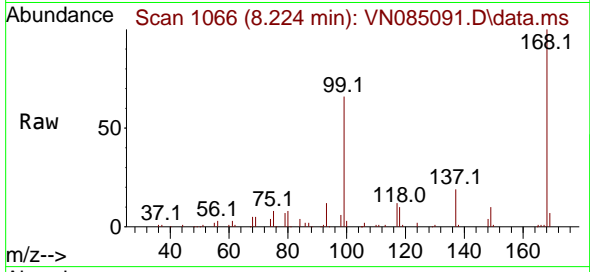
Tgt Ion: 43 Resp: 2689
 Ion Ratio Lower Upper
 43 100
 61 5.4 11.7 17.5#
 70 0.0 9.3 13.9#



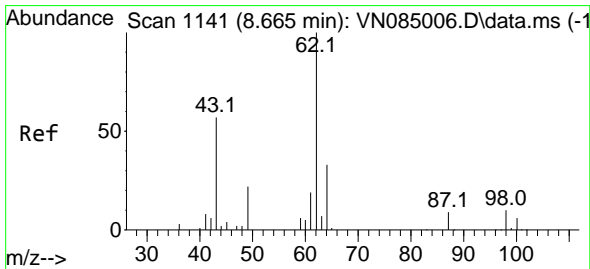
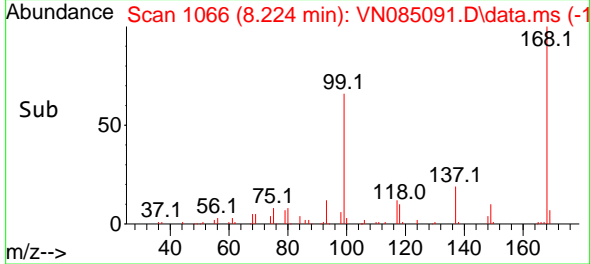
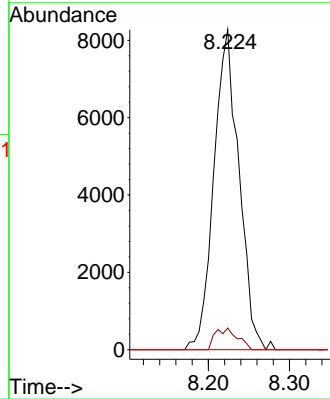


#38
 Carbon Tetrachloride
 Concen: 5.686 ug/l
 RT: 8.224 min Scan# 1106
 Delta R.T. -0.129 min
 Lab File: VN085091.D
 Acq: 04 Dec 2024 14:01

Instrument : MSVOA_N
 ClientSampleId :

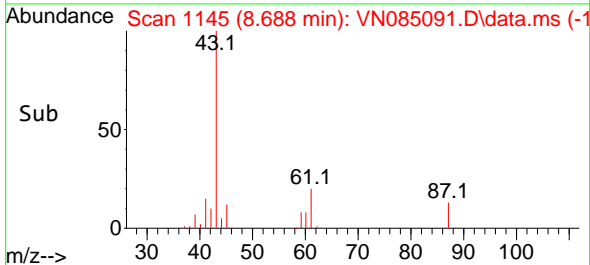
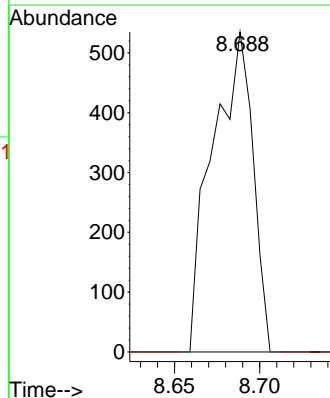
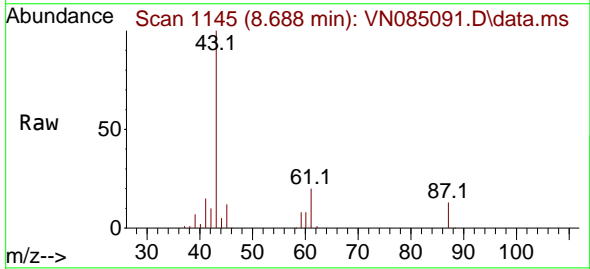


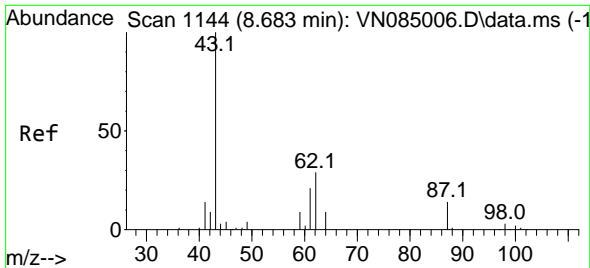
Tgt Ion:117 Resp: 17771
 Ion Ratio Lower Upper
 117 100
 119 6.8 78.6 117.8#
 121 0.0 24.2 36.2#



#42
 1,2-Dichloroethane
 Concen: 0.301 ug/l
 RT: 8.688 min Scan# 1145
 Delta R.T. 0.023 min
 Lab File: VN085091.D
 Acq: 04 Dec 2024 14:01

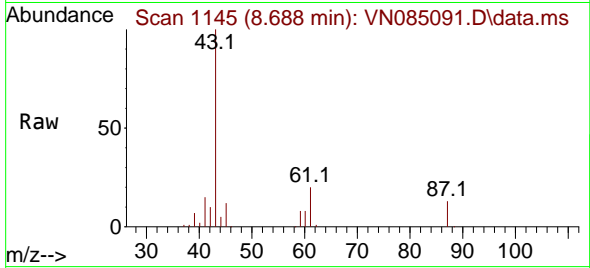
Tgt Ion: 62 Resp: 881
 Ion Ratio Lower Upper
 62 100
 98 0.0 0.0 18.2



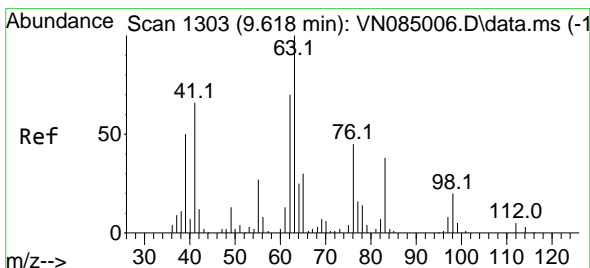
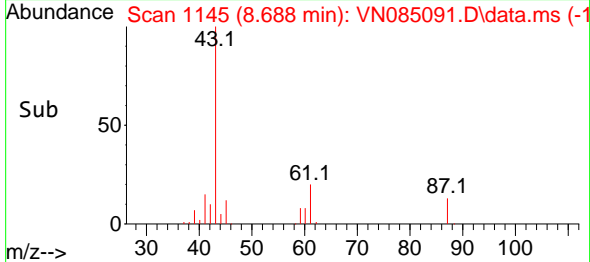
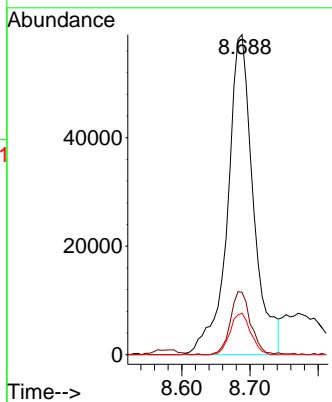


#43
 Isopropyl Acetate
 Concen: 30.412 ug/l
 RT: 8.688 min Scan# 1145
 Delta R.T. 0.006 min
 Lab File: VN085091.D
 Acq: 04 Dec 2024 14:01

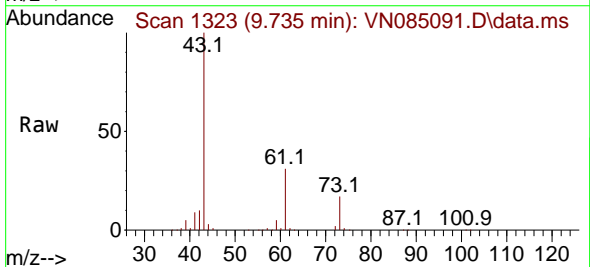
Instrument :
 MSVOA_N
 ClientSampleId :



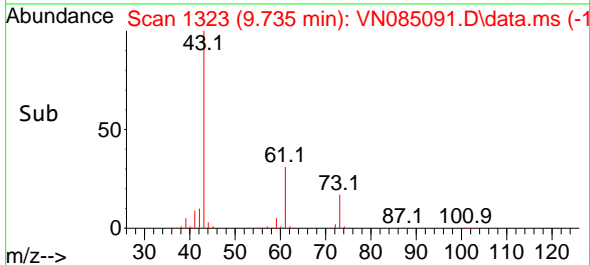
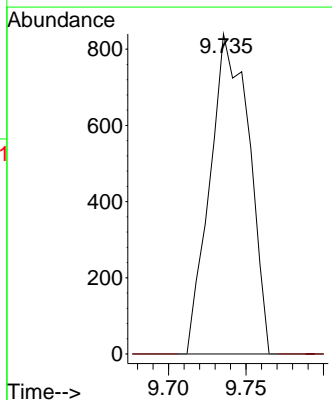
Tgt Ion: 43 Resp: 155484
 Ion Ratio Lower Upper
 43 100
 61 15.7 20.6 30.8#
 87 10.3 11.0 16.4#

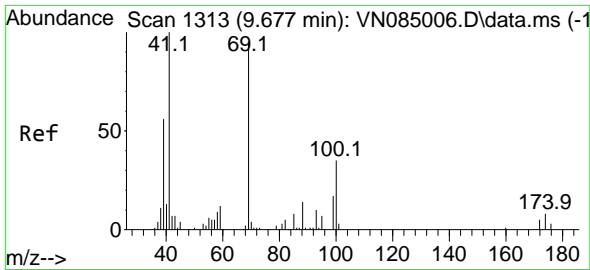


#45
 1,2-Dichloropropane
 Concen: 0.699 ug/l
 RT: 9.735 min Scan# 1323
 Delta R.T. 0.118 min
 Lab File: VN085091.D
 Acq: 04 Dec 2024 14:01



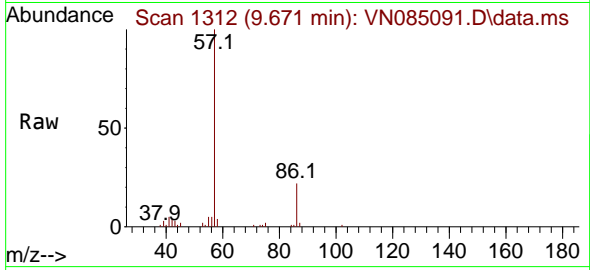
Tgt Ion: 63 Resp: 1474
 Ion Ratio Lower Upper
 63 100
 65 0.0 24.0 36.0#



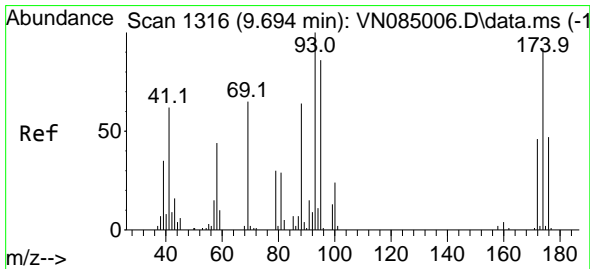
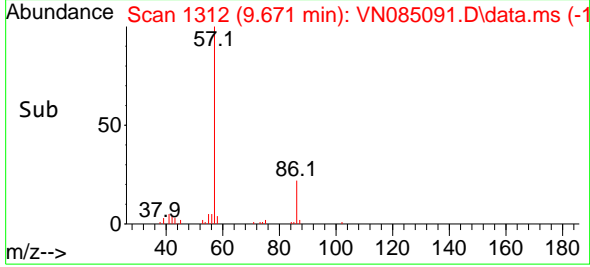
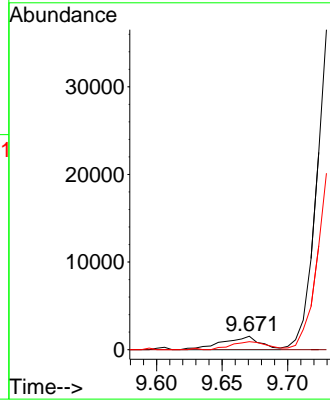


#48
 Methyl methacrylate
 Concen: 1.614 ug/l
 RT: 9.671 min Scan# 11
 Delta R.T. -0.006 min
 Lab File: VN085091.D
 Acq: 04 Dec 2024 14:01

Instrument :
 MSVOA_N
 ClientSampleId :

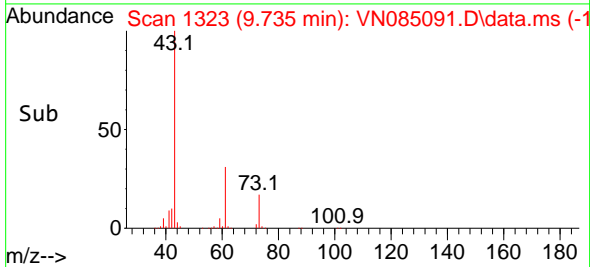
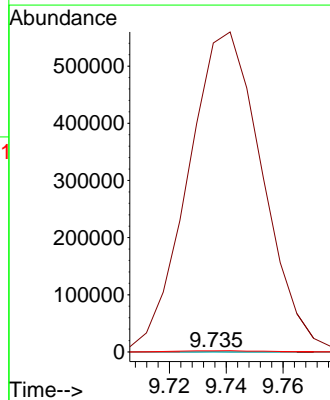
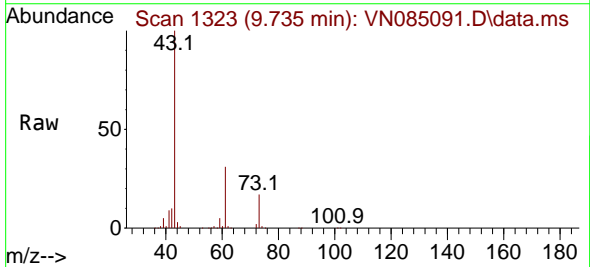


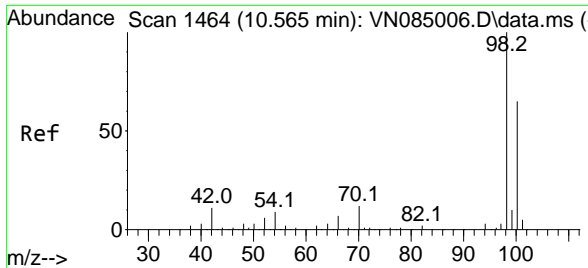
Tgt Ion: 41 Resp: 3071
 Ion Ratio Lower Upper
 41 100
 69 0.0 73.2 109.8#
 39 55.6 46.2 69.4



#49
 1,4-Dioxane
 Concen: 3.607 ug/l
 RT: 9.735 min Scan# 1323
 Delta R.T. 0.041 min
 Lab File: VN085091.D
 Acq: 04 Dec 2024 14:01

Tgt Ion: 88 Resp: 119
 Ion Ratio Lower Upper
 88 100
 43 863163.9 16.7 25.1#
 58 4143.7 56.5 84.7#

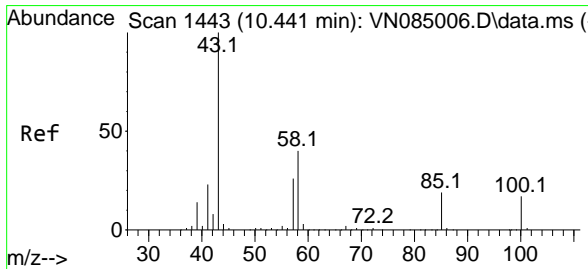
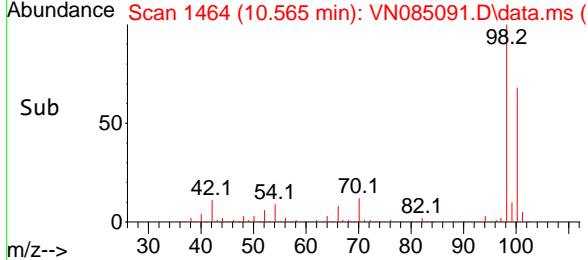
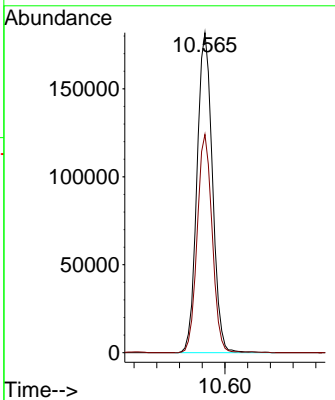
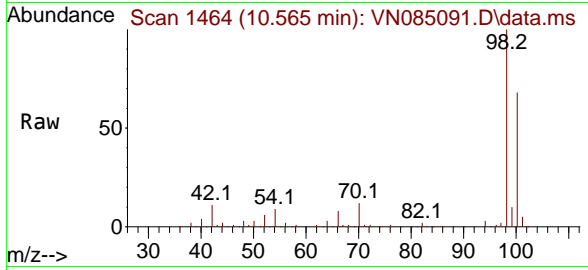




#50
 Toluene-d8
 Concen: 47.768 ug/l
 RT: 10.565 min Scan# 1464
 Delta R.T. -0.000 min
 Lab File: VN085091.D
 Acq: 04 Dec 2024 14:01

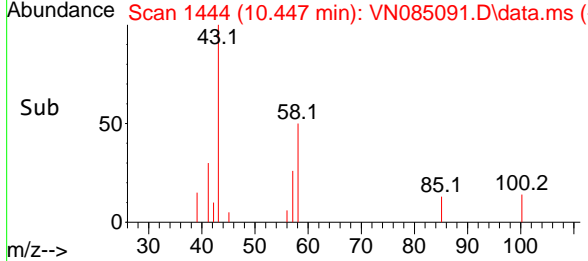
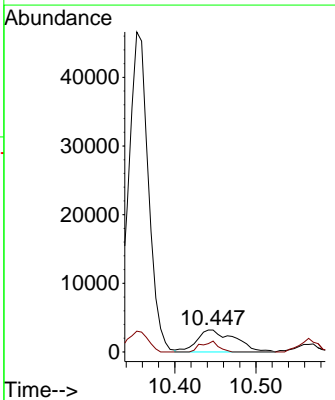
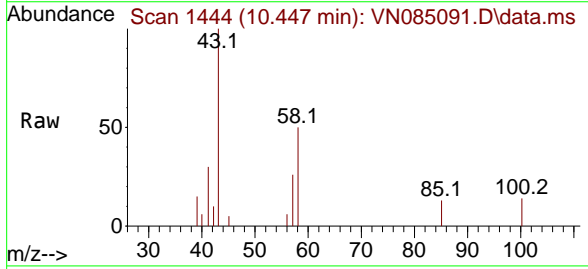
Instrument : MSVOA_N
 ClientSampleId :

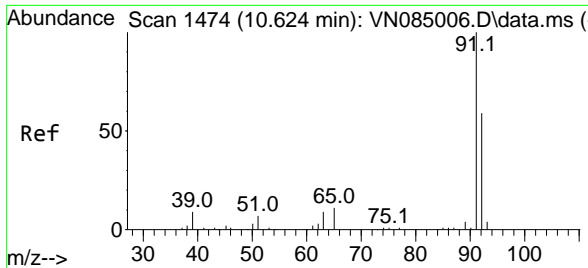
Tgt Ion: 98 Resp: 342182
 Ion Ratio Lower Upper
 98 100
 100 66.2 52.5 78.7



#51
 4-Methyl-2-Pentanone
 Concen: 4.479 ug/l
 RT: 10.447 min Scan# 1444
 Delta R.T. 0.006 min
 Lab File: VN085091.D
 Acq: 04 Dec 2024 14:01

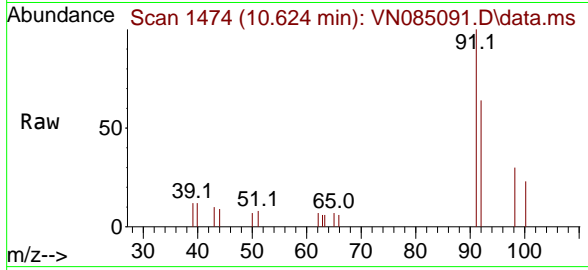
Tgt Ion: 43 Resp: 10460
 Ion Ratio Lower Upper
 43 100
 58 22.4 32.1 48.1#



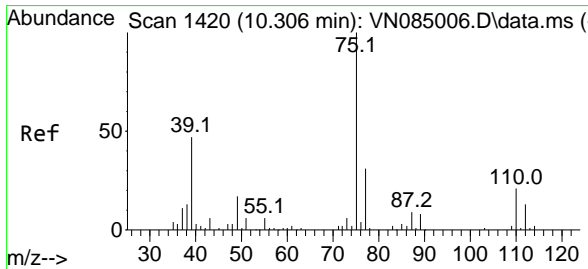
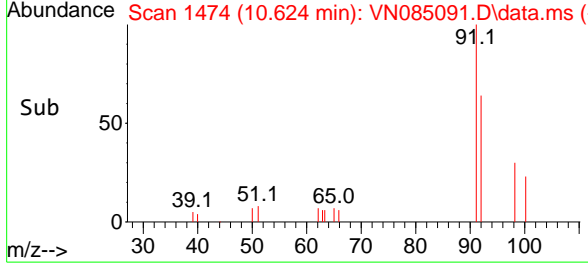
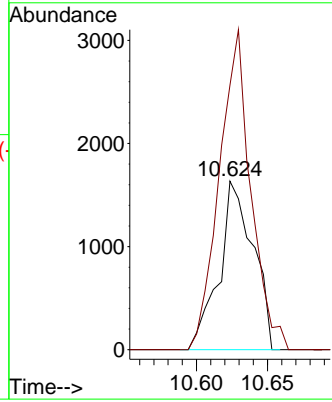


#52
 Toluene
 Concen: 0.537 ug/l
 RT: 10.624 min Scan# 1474
 Delta R.T. -0.000 min
 Lab File: VN085091.D
 Acq: 04 Dec 2024 14:01

Instrument : MSVOA_N
 ClientSampleId :

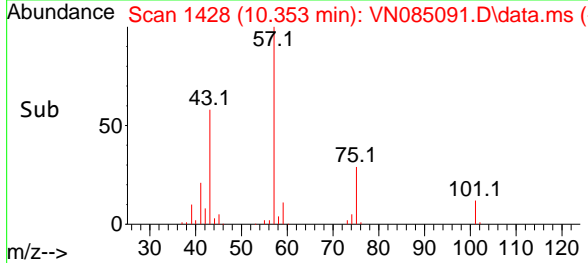
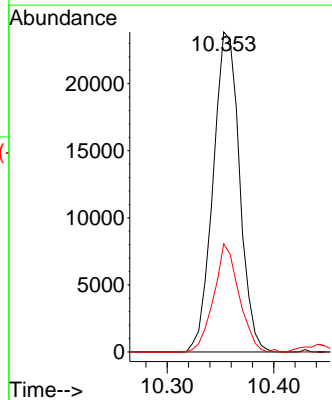
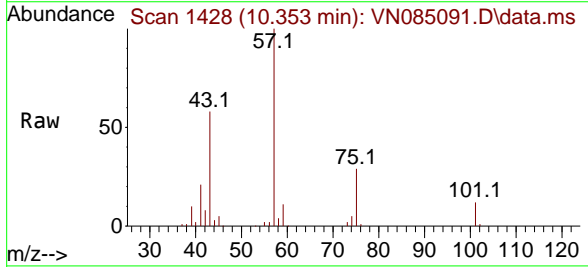


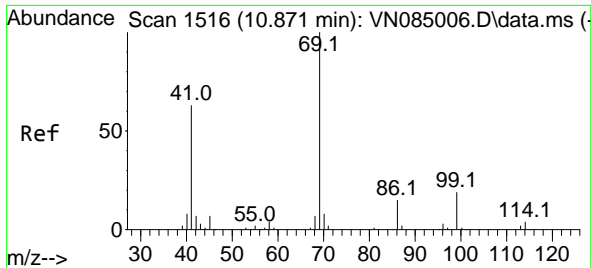
Tgt Ion: 92 Resp: 2723
 Ion Ratio Lower Upper
 92 100
 91 176.3 136.7 205.1



#54
 cis-1,3-Dichloropropene
 Concen: 12.443 ug/l
 RT: 10.353 min Scan# 1428
 Delta R.T. 0.047 min
 Lab File: VN085091.D
 Acq: 04 Dec 2024 14:01

Tgt Ion: 75 Resp: 41107
 Ion Ratio Lower Upper
 75 100
 77 0.0 25.0 37.4#
 39 33.8 37.6 56.4#

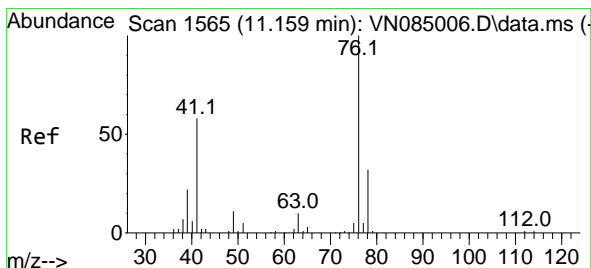
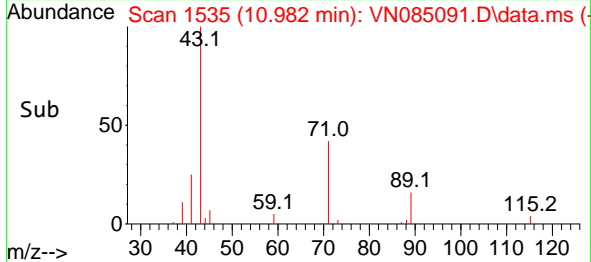
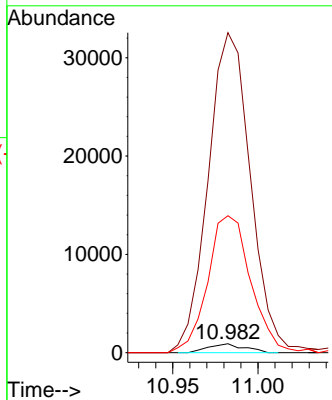
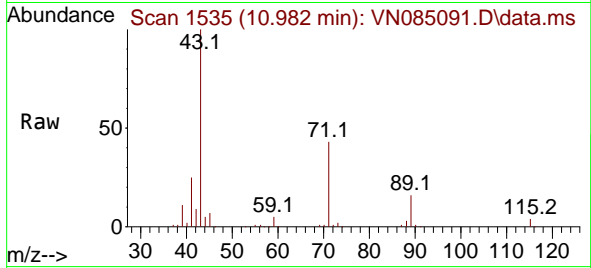




#56
 Ethyl methacrylate
 Concen: 0.486 ug/l
 RT: 10.982 min Scan# 1535
 Delta R.T. 0.112 min
 Lab File: VN085091.D
 Acq: 04 Dec 2024 14:01

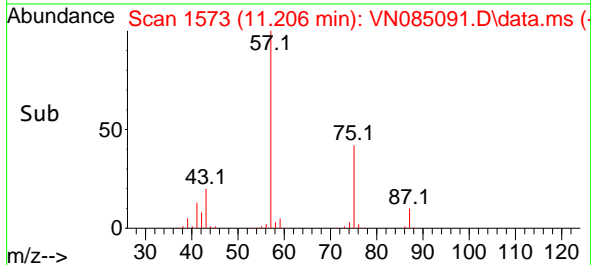
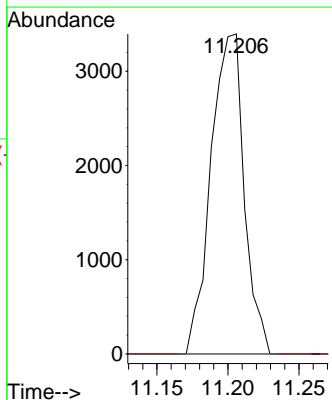
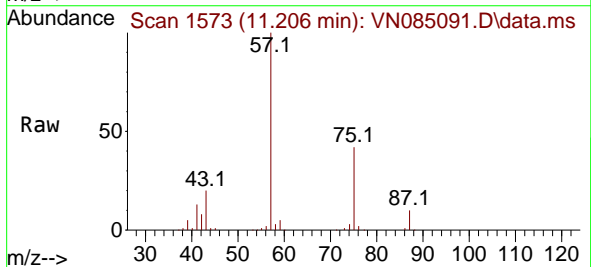
Instrument :
 MSVOA_N
 ClientSampleId :

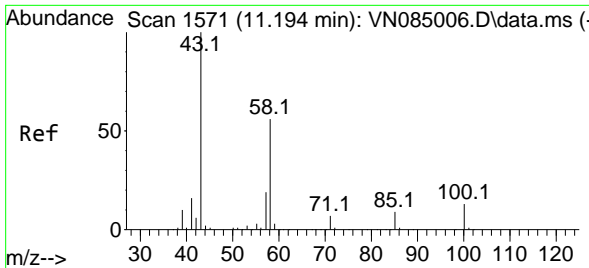
Tgt Ion: 69 Resp: 1341
 Ion Ratio Lower Upper
 69 100
 41 4216.1 50.0 75.0#
 39 1832.4 27.0 40.6#



#57
 1,3-Dichloropropane
 Concen: 1.664 ug/l
 RT: 11.206 min Scan# 1573
 Delta R.T. 0.047 min
 Lab File: VN085091.D
 Acq: 04 Dec 2024 14:01

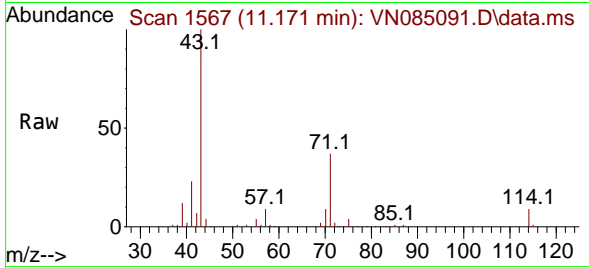
Tgt Ion: 76 Resp: 5530
 Ion Ratio Lower Upper
 76 100
 78 0.0 26.1 39.1#



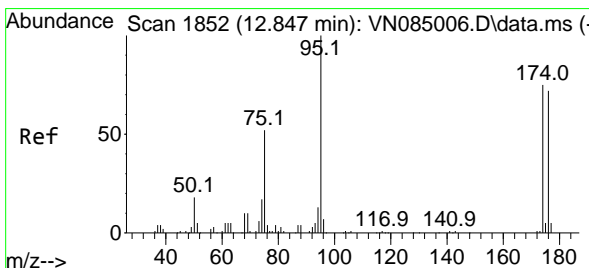
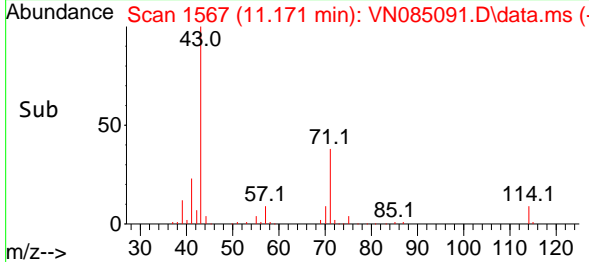
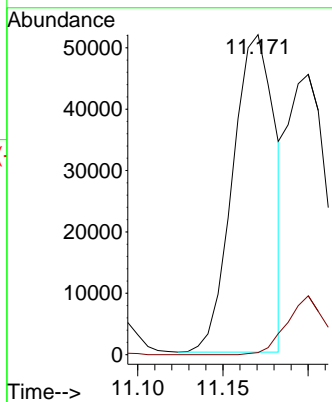


#59
 2-Hexanone
 Concen: 51.038 ug/l
 RT: 11.171 min Scan# 1567
 Delta R.T. -0.024 min
 Lab File: VN085091.D
 Acq: 04 Dec 2024 14:01

Instrument : MSVOA_N
 ClientSampleId :

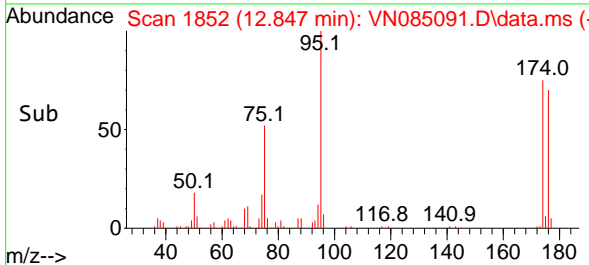
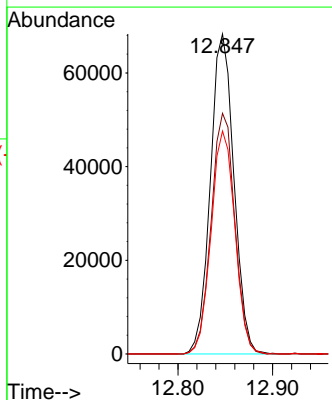
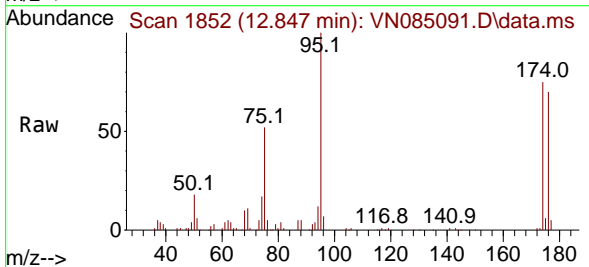


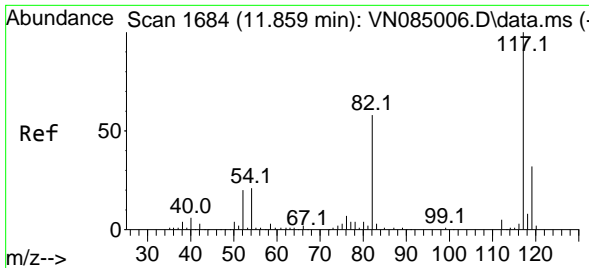
Tgt Ion: 43 Resp: 89139
 Ion Ratio Lower Upper
 43 100
 58 0.0 28.3 85.0#



#62
 4-Bromofluorobenzene
 Concen: 44.084 ug/l
 RT: 12.847 min Scan# 1852
 Delta R.T. -0.000 min
 Lab File: VN085091.D
 Acq: 04 Dec 2024 14:01

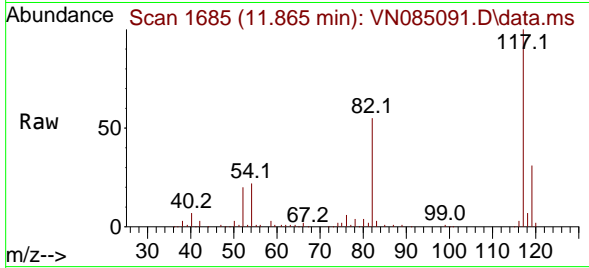
Tgt Ion: 95 Resp: 118097
 Ion Ratio Lower Upper
 95 100
 174 75.5 0.0 146.6
 176 70.3 0.0 141.8



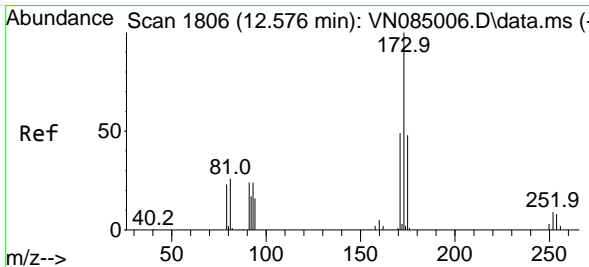
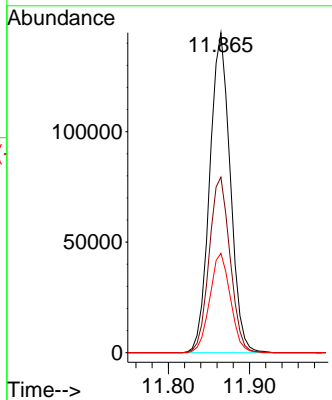
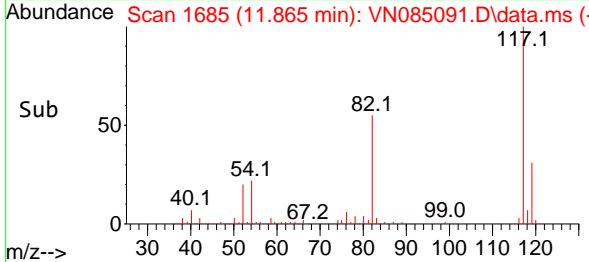


#63
 Chlorobenzene-d5
 Concen: 50.000 ug/l
 RT: 11.865 min Scan# 1177
 Delta R.T. 0.006 min
 Lab File: VN085091.D
 Acq: 04 Dec 2024 14:01

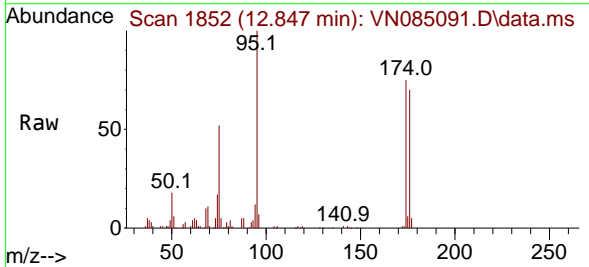
Instrument :
 MSVOA_N
 ClientSampleId :



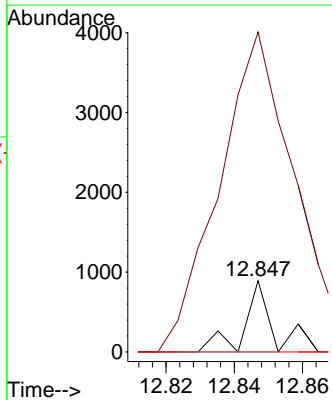
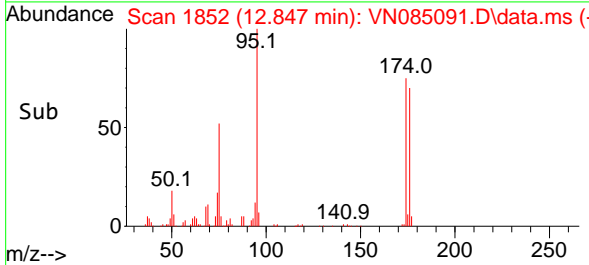
Tgt Ion:117 Resp: 254007
 Ion Ratio Lower Upper
 117 100
 82 54.8 46.0 69.0
 119 31.1 25.6 38.4

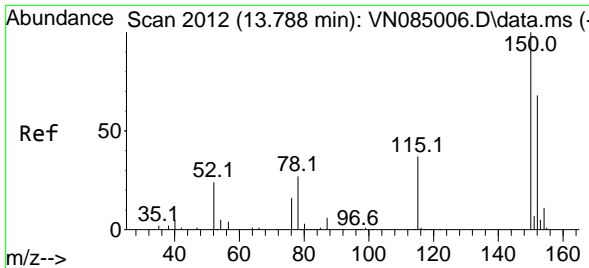


#71
 Bromoform
 Concen: 0.271 ug/l
 RT: 12.847 min Scan# 1852
 Delta R.T. 0.271 min
 Lab File: VN085091.D
 Acq: 04 Dec 2024 14:01



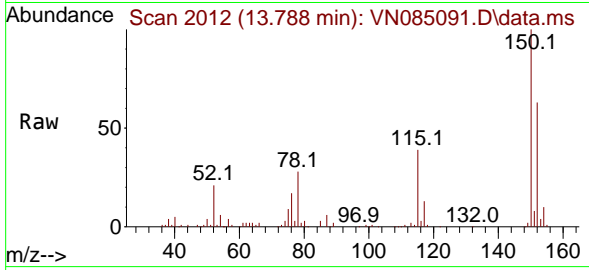
Tgt Ion:173 Resp: 408
 Ion Ratio Lower Upper
 173 100
 175 1189.2 23.8 71.2#
 254 0.0 0.0 0.0



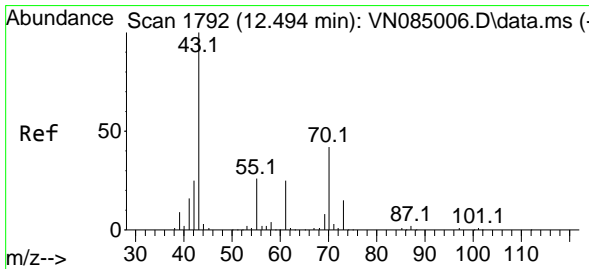
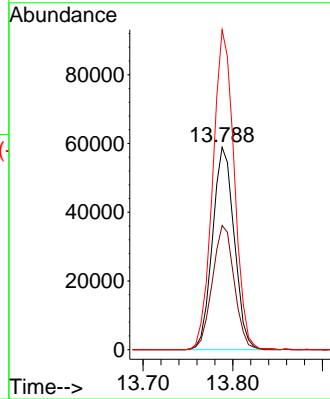
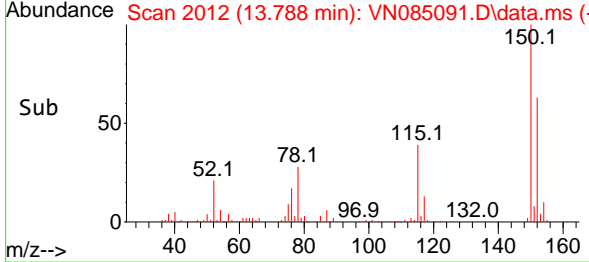


#72
 1,4-Dichlorobenzene-d4
 Concen: 50.000 ug/l
 RT: 13.788 min Scan# 20
 Delta R.T. -0.000 min
 Lab File: VN085091.D
 Acq: 04 Dec 2024 14:01

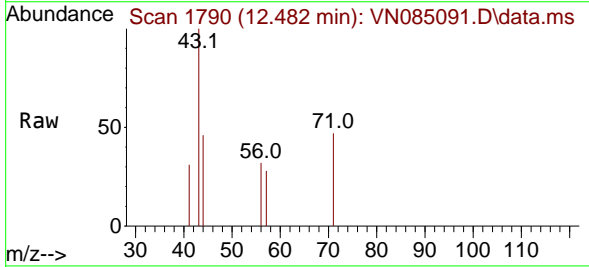
Instrument :
 MSVOA_N
 ClientSampleId :



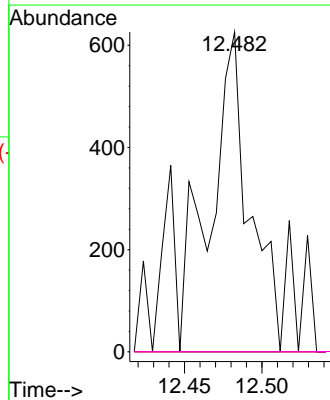
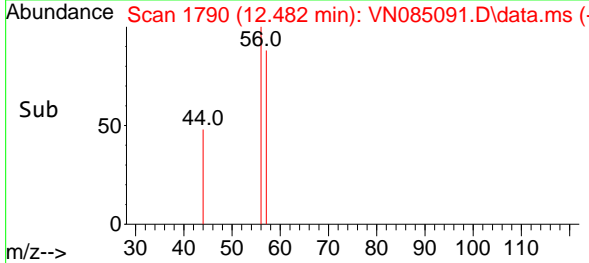
Tgt Ion:152 Resp: 98955
 Ion Ratio Lower Upper
 152 100
 115 61.9 31.7 95.1
 150 156.0 0.0 351.4

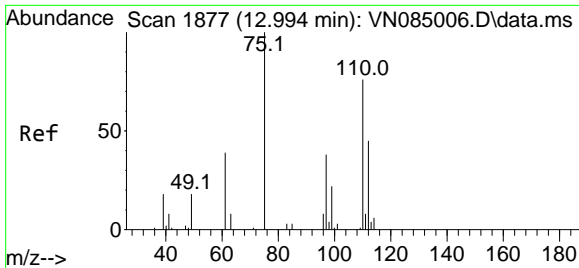


#74
 N-amy1 acetate
 Concen: 0.388 ug/l
 RT: 12.482 min Scan# 1790
 Delta R.T. -0.012 min
 Lab File: VN085091.D
 Acq: 04 Dec 2024 14:01



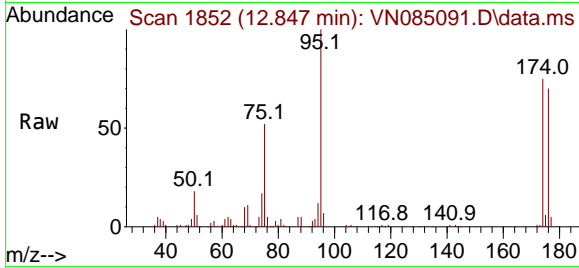
Tgt Ion: 43 Resp: 1116
 Ion Ratio Lower Upper
 43 100
 70 0.0 34.6 51.8#
 55 0.0 20.5 30.7#
 61 0.0 19.6 29.4#



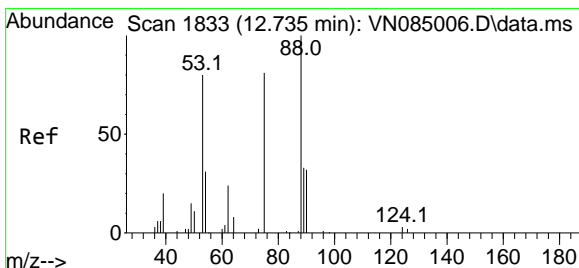
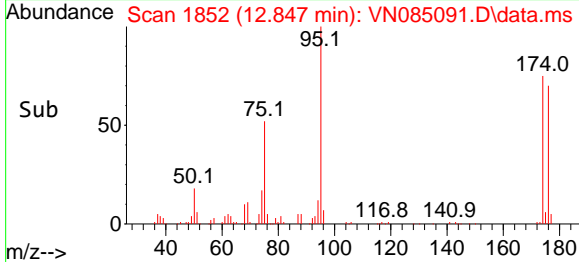
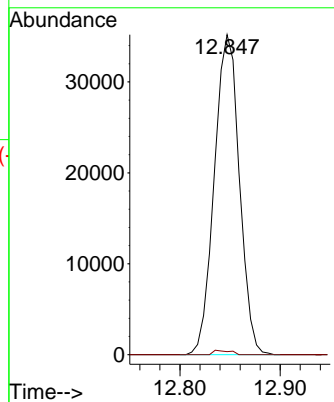


#76
 1,2,3-Trichloropropane
 Concen: 33.973 ug/l
 RT: 12.847 min Scan# 1852
 Delta R.T. -0.147 min
 Lab File: VN085091.D
 Acq: 04 Dec 2024 14:01

Instrument : MSVOA_N
 ClientSampleId :

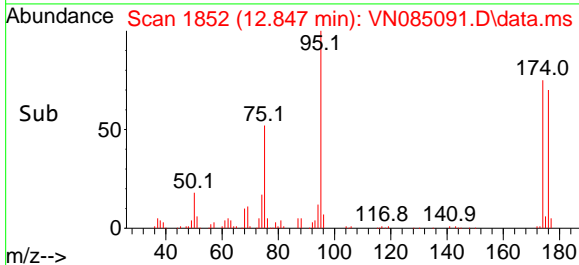
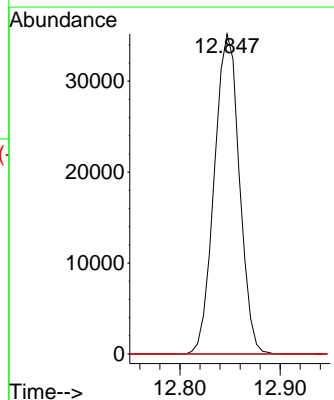
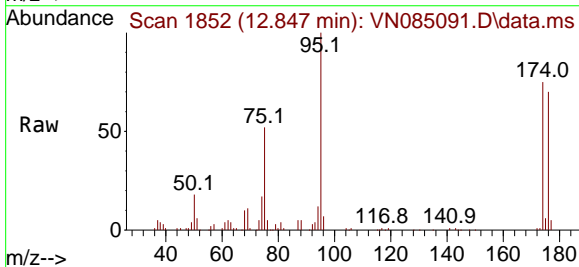


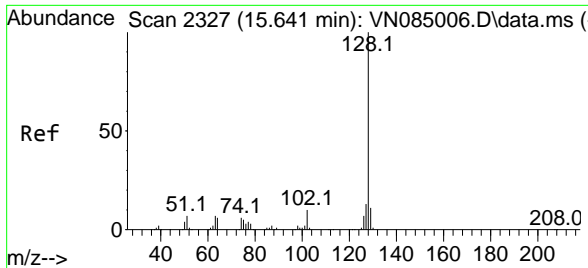
Tgt Ion: 75 Resp: 61149
 Ion Ratio Lower Upper
 75 100
 77 0.9 109.1 327.4#



#81
 trans-1,4-Dichloro-2-butene
 Concen: 74.998 ug/l
 RT: 12.847 min Scan# 1852
 Delta R.T. 0.112 min
 Lab File: VN085091.D
 Acq: 04 Dec 2024 14:01

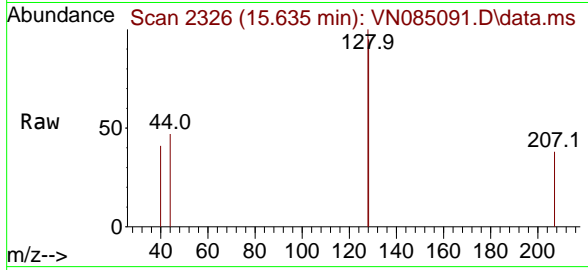
Tgt Ion: 75 Resp: 61149
 Ion Ratio Lower Upper
 75 100
 53 0.0 78.2 117.4#
 89 0.0 37.9 56.9#





#95
 Naphthalene
 Concen: 0.324 ug/l
 RT: 15.635 min Scan# 21
 Delta R.T. -0.006 min
 Lab File: VN085091.D
 Acq: 04 Dec 2024 14:01

Instrument :
 MSVOA_N
 ClientSampleId :



Tgt Ion:128 Resp: 1778

Ion	Ratio	Lower	Upper
128	100		
127	0.0	10.6	16.0#
129	0.0	8.6	12.8#

