

Data Path : Z:\VOASRV\HPCHEM1\MSVOA N\DATA\VN120618\
 Data File : VN052710.D
 Acq On : 6 Dec 2018 21:19
 Operator : MD\SY
 Sample : VN1206WBL02
 Misc : 5.00mL/MSVOA N/WATER
 ALS Vial : 26 Sample Multiplier: 28

Instrument :
 MSVOA_N
 ClientSampleId :
 VN1206WBL02

Quant Time: Dec 07 07:28:00 2018
 Quant Method : Z:\VOASRV\HPCHEM1\MSVOA N\METHODS\624N112618W.M
 Quant Title : METHOD 624 VOLATILE ORGANIC ANALYSIS
 QLast Update : Tue Nov 27 00:48:33 2018
 Response via : Initial Calibration

Internal Standards	R.T.	QIon	Response	Conc	Units	Dev(Min)
1) Bromochloromethane	7.20	128	156158	30.00	ug/l	0.00
28) 1,4-Difluorobenzene	8.59	114	877758	30.00	ug/l	0.00
57) Chlorobenzene-d5	11.41	117	726223	30.00	ug/l	0.00

System Monitoring Compounds

27) 1,2-Dichloroethane-d4	8.03	65	321603	30.23	ug/l	0.00
Spiked Amount	30.000	Range	50 - 169	Recovery	=	100.77%
60) 4-Bromofluorobenzene	12.40	95	283067	25.49	ug/l	0.00
Spiked Amount	30.000	Range	56 - 143	Recovery	=	84.97%
63) Toluene-d8	10.09	98	1024825	30.43	ug/l	0.00
Spiked Amount	30.000	Range	66 - 137	Recovery	=	101.43%

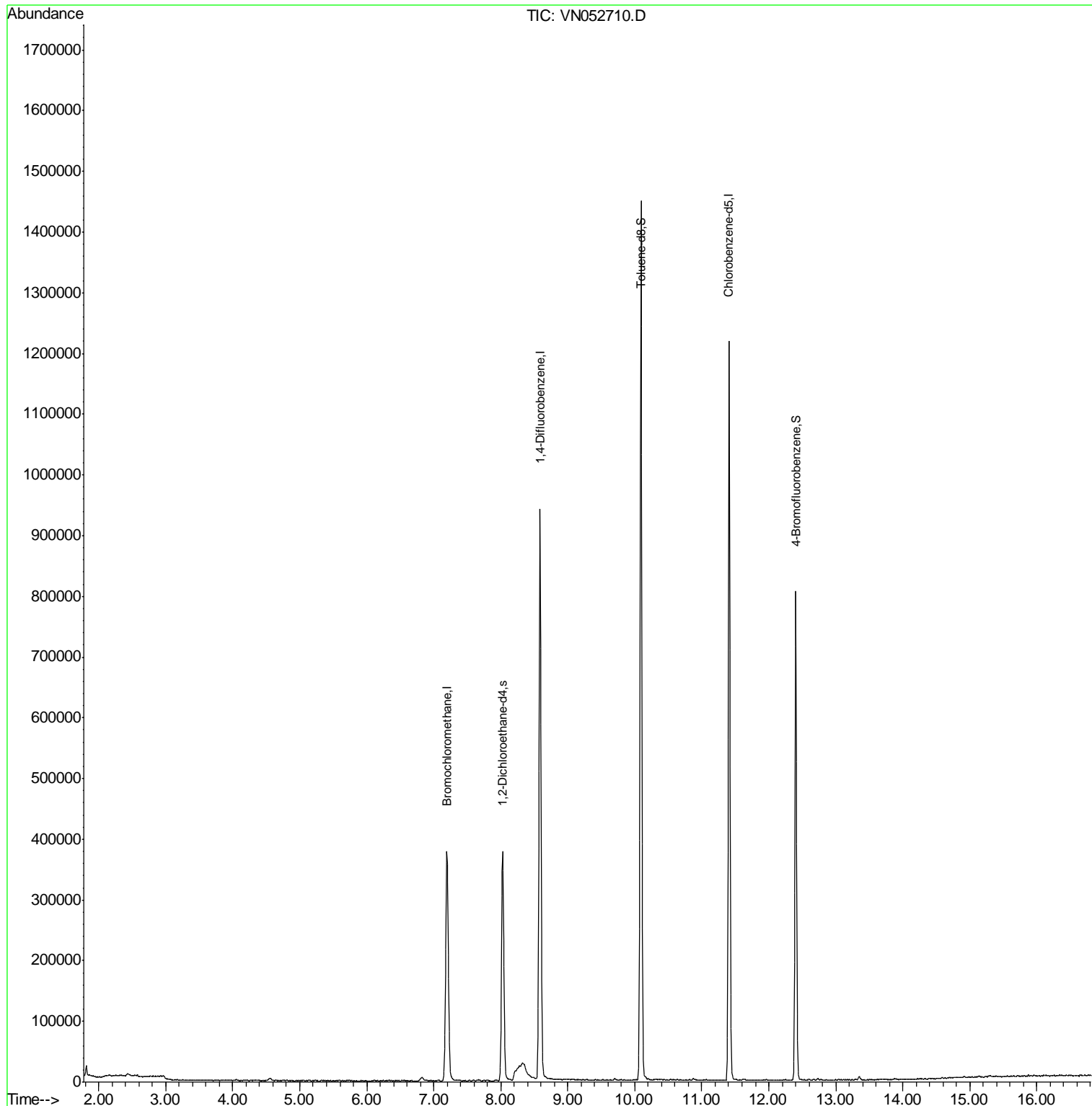
Target Compounds Ovalue

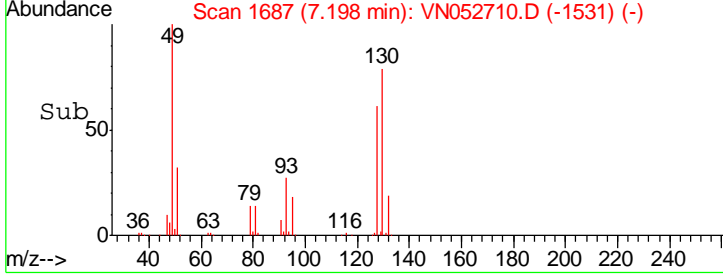
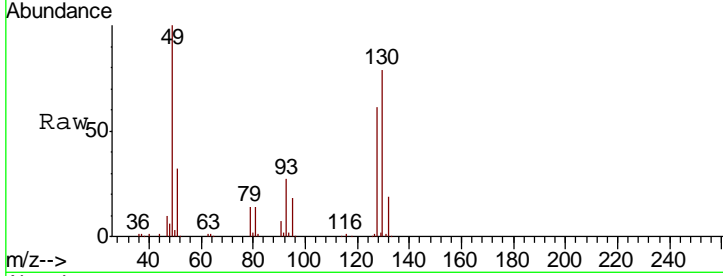
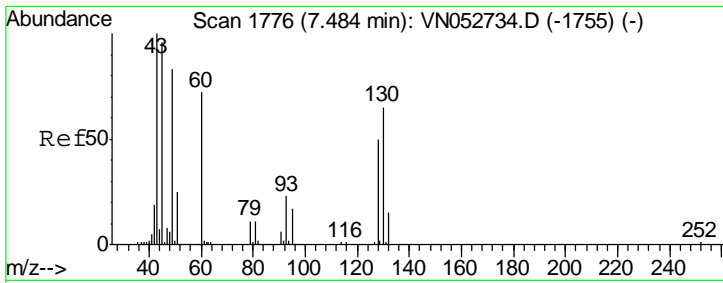
(#) = qualifier out of range (m) = manual integration (+) = signals summed

Data Path : Z:\VOASRV\HPCHEM1\MSVOA N\DATA\VN120618\
Data File : VN052710.D
Acq On : 6 Dec 2018 21:19
Operator : MD\SY
Sample : VN1206WBL02
Misc : 5.00mL/MSVOA N/WATER
ALS Vial : 26 Sample Multiplier: 28

Instrument :
MSVOA_N
ClientSampleId :
VN1206WBL02

Quant Time: Dec 07 07:28:00 2018
Quant Method : Z:\VOASRV\HPCHEM1\MSVOA N\METHODS\624N112618W.M
Quant Title : METHOD 624 VOLATILE ORGANIC ANALYSIS
QLast Update : Tue Nov 27 00:48:33 2018
Response via : Initial Calibration

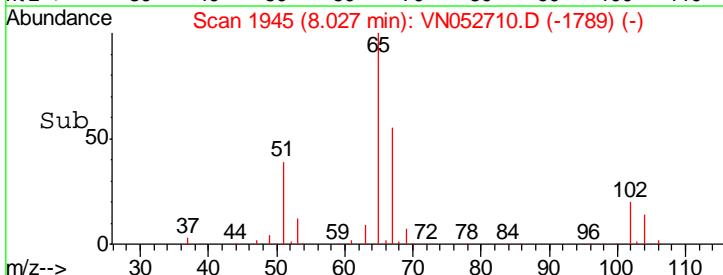
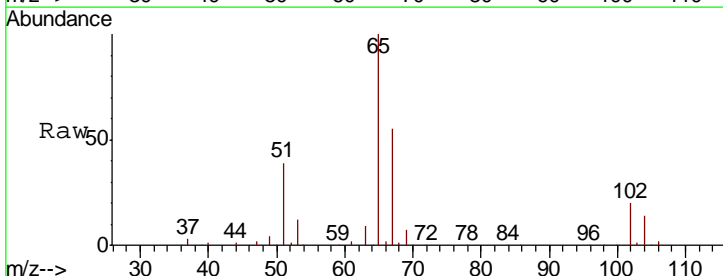
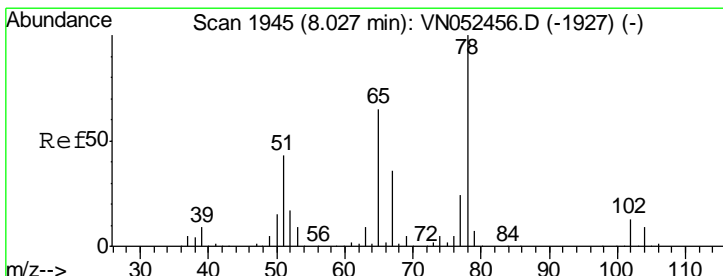
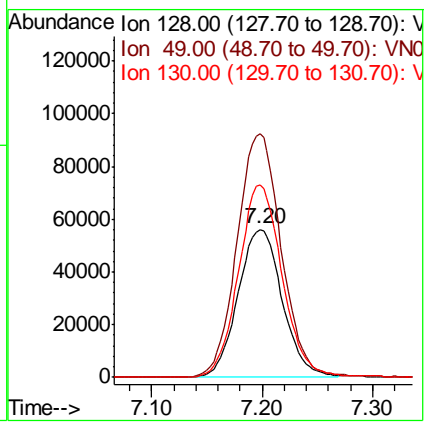




#1
 Bromochloromethane
 Concen: 30.000 ug/l
 RT: 7.20 min Scan# 1687
 Delta R.T. 0.00 min
 Lab File: VN052710.D
 Acq: 6 Dec 2018 21:19

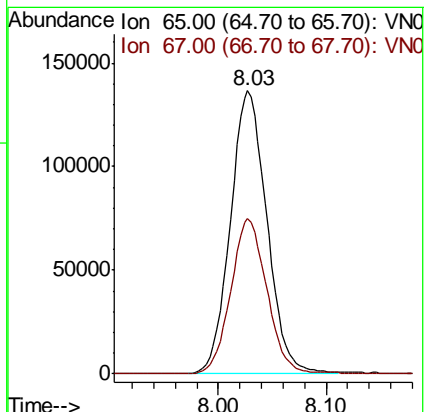
Instrument : MSVOA_N
 ClientSampled : VN1206WBL02

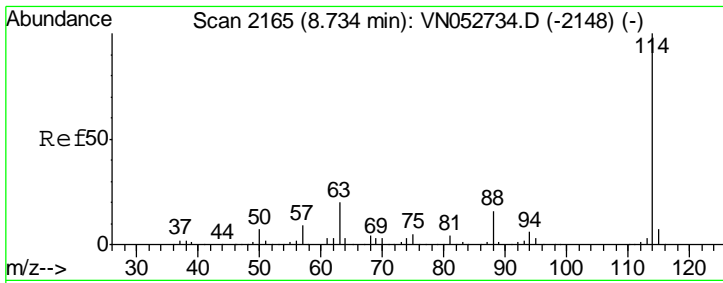
Tgt Ion	Resp	Lower	Upper
128	156158		
49	164.4	0.0	431.8
130	128.6	0.0	317.0



#27
 1,2-Dichloroethane-d4
 Concen: Below ug/l
 RT: 8.03 min Scan# 1945
 Delta R.T. 0.00 min
 Lab File: VN052710.D
 Acq: 6 Dec 2018 21:19

Tgt Ion	Resp	Lower	Upper
65	321603		
67	54.2	44.6	66.8

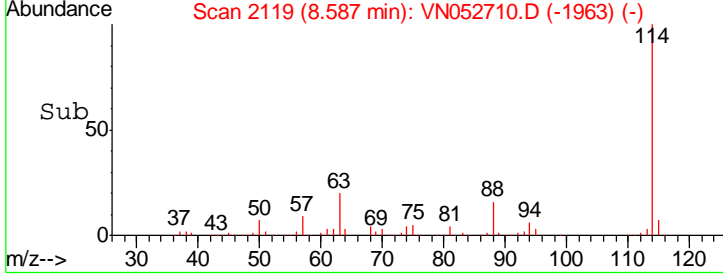
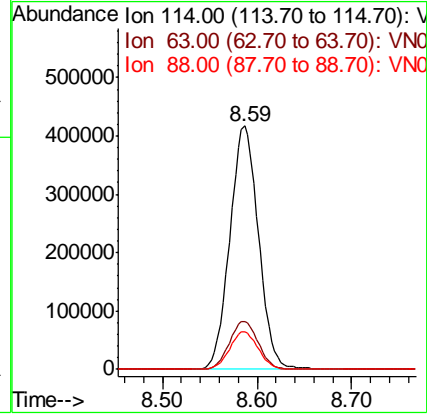
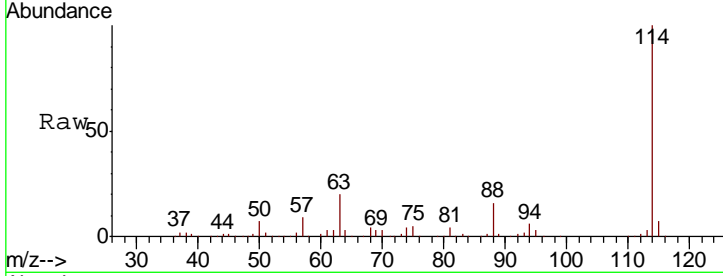




#28
 1,4-Difluorobenzene
 Concen: 30.000 ug/l
 RT: 8.59 min Scan# 2119
 Delta R.T. 0.00 min
 Lab File: VN052710.D
 Acq: 6 Dec 2018 21:19

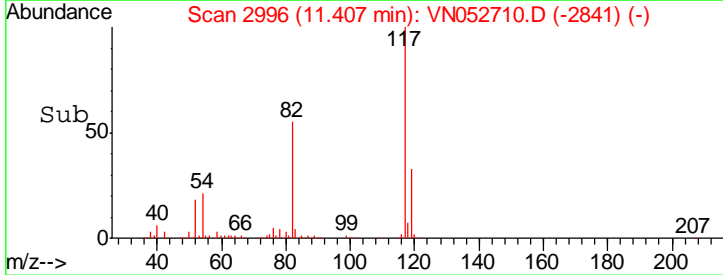
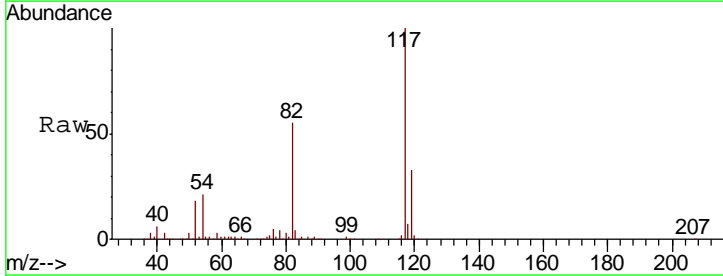
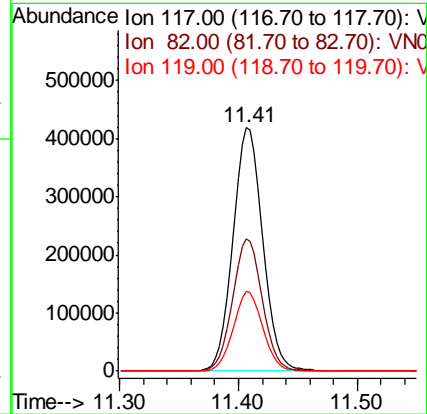
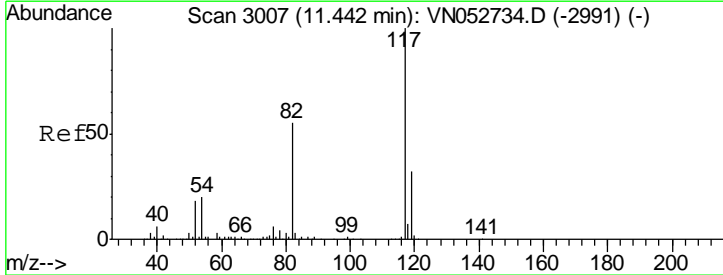
Instrument :
 MSVOA_N
ClientSampled :
 VN1206WBL02

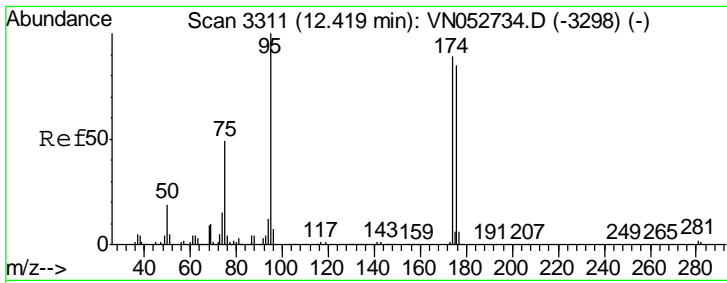
Tgt Ion	Resp	Lower	Upper
114	100		
63	20.0	16.9	25.3
88	15.5	12.8	19.2



#57
 Chlorobenzene-d5
 Concen: 30.000 ug/l
 RT: 11.41 min Scan# 2996
 Delta R.T. -0.00 min
 Lab File: VN052710.D
 Acq: 6 Dec 2018 21:19

Tgt Ion	Resp	Lower	Upper
117	100		
82	54.3	44.2	66.2
119	32.4	25.4	38.2

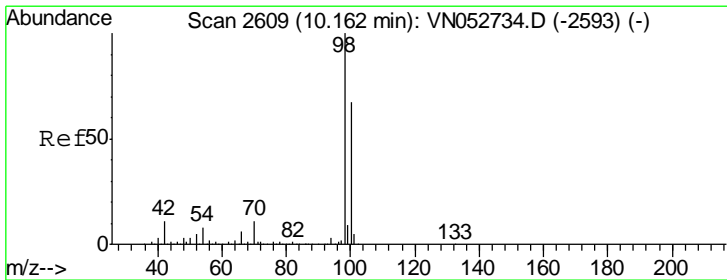
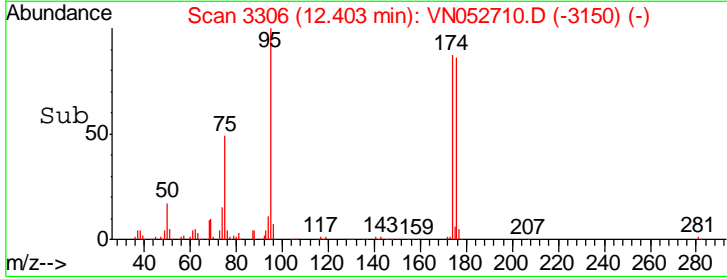
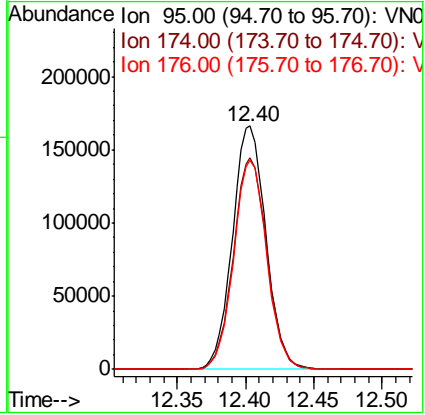
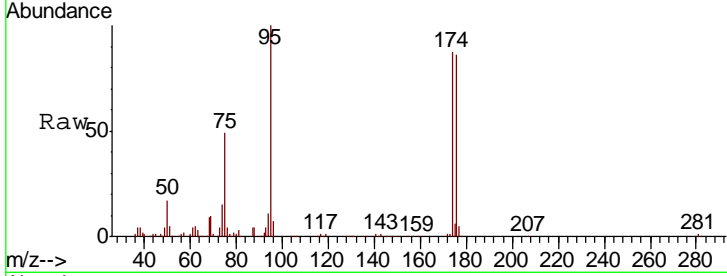




#60
 4-Bromofluorobenzene
 Concen: Below ug/l
 RT: 12.40 min Scan# 3306
 Delta R.T. 0.00 min
 Lab File: VN052710.D
 Acq: 6 Dec 2018 21:19

Instrument :
 MSVOA_N
 ClientSampled :
 VN1206WBL02

Tgt Ion	Resp	Lower	Upper
95	100		
174	87.6	67.9	101.9
176	84.7	66.4	99.6



#63
 Toluene-d8
 Concen: Below ug/l
 RT: 10.09 min Scan# 2587
 Delta R.T. 0.00 min
 Lab File: VN052710.D
 Acq: 6 Dec 2018 21:19

Tgt Ion	Resp	Lower	Upper
98	100		
100	64.4	51.1	76.7

