

Data Path : Z:\VOASRV\HPCHEM1\MSVOA L\DATA\VL121020\
 Data File : VL036160.D
 Acq On : 11 Dec 2020 11:58
 Operator : SY/AP
 Sample : L4948-16DL2 100X
 Misc : 400ml/MSVOA L
 ALS Vial : 1 Sample Multiplier: 1

Quant Time: Dec 13 22:53:22 2020
 Quant Method : Z:\VOASRV\HPCHEM1\MSVOA L\METHODS\VL120720AIR.M
 Quant Title : AIR ANALYSIS BY METHOD TO-15 Instrument: MSVOA_L Mon Dec 07 16:56:49 2020
 QLast Update : Mon Dec 07 16:56:49 2020
 Response via : Initial Calibration

| Internal Standards | R.T. | QIon | Response | Conc | Units | Dev(Min) |
|-------------------------|-------|------|----------|-------|-------|----------|
| 1) Bromochloromethane | 5.65 | 49 | 1271585 | 10.00 | ppbv | -0.03 |
| 33) 1,4-Difluorobenzene | 7.16 | 114 | 2619126 | 10.00 | ppbv | -0.04 |
| 55) Chlorobenzene-d5 | 12.08 | 117 | 2315871 | 10.00 | ppbv | -0.04 |

System Monitoring Compounds

| | | | | | | |
|-----------------------------|--------|-------|----------|----------|------|---------|
| 68) 1-Bromo-4-Fluorobenzene | 14.41 | 95 | 2021298 | 10.99 | ppbv | -0.04 |
| Spiked Amount | 10.000 | Range | 65 - 135 | Recovery | = | 109.90% |

| Target Compounds | R.T. | QIon | Response | Conc | Units | Ovalue |
|--------------------------------|-------|------|----------|-------|--------|--------|
| 2) Dichlorodifluoromethane | 3.11 | 85 | 426 | 0.003 | ppbv | 96 |
| 4) Chloromethane | 3.13 | 50 | 884 | 0.012 | ppbv # | 61 |
| 5) Vinyl Chloride | 3.26 | 62 | 152 | 0.002 | ppbv # | 44 |
| 6) Bromomethane | 3.48 | 94 | 95 | 0.002 | ppbv # | 1 |
| 7) Chloroethane | 3.60 | 64 | 105 | 0.004 | ppbv # | 40 |
| 8) Dichlorotetrafluoroethane | 3.11 | 85 | 426 | 0.003 | ppbv # | 16 |
| 9) Propene | 3.28 | 41 | 521 | 0.007 | ppbv | 92 |
| 10) Heptane | 8.10 | 43 | 329 | 0.002 | ppbv # | 29 |
| 11) Trichlorofluoromethane | 3.94 | 101 | 1466 | 0.008 | ppbv # | 19 |
| 12) 1,1,2-Trichlorotrifluoroet | 4.50 | 101 | 116 | 0.001 | ppbv # | 56 |
| 13) Ethanol | 3.60 | 45 | 54159m | 5.406 | ppbv | |
| 14) Bromoethene | 3.72 | 108 | 108 | 0.002 | ppbv # | 1 |
| 16) 1,3-Butadiene | 3.32 | 39 | 526 | 0.007 | ppbv # | 11 |
| 17) tert-Butyl alcohol | 4.28 | 59 | 34 | 0.000 | ppbv # | 71 |
| 18) 1,1-Dichloroethene | 4.29 | 96 | 621 | 0.012 | ppbv # | 42 |
| 19) Isopropyl Alcohol | 3.94 | 45 | 443 | 0.005 | ppbv # | 100 |
| 21) Allyl Chloride | 4.40 | 41 | 223 | 0.002 | ppbv # | 18 |
| 22) trans-1,2-Dichloroethene | 4.87 | 96 | 313 | 0.006 | ppbv # | 32 |
| 23) Vinyl Acetate | 5.06 | 43 | 1178 | 0.006 | ppbv # | 1 |
| 27) Carbon Disulfide | 4.55 | 76 | 67 | 0.000 | ppbv # | 59 |
| 28) Methyl tert-Butyl Ether | 5.02 | 73 | 156 | 0.001 | ppbv # | 51 |
| 29) Chloroform | 5.72 | 83 | 216 | 0.001 | ppbv | 84 |
| 30) Cyclohexane | 7.11 | 84 | 682 | 0.007 | ppbv # | 1 |
| 31) cis-1,2-Dichloroethene | 5.53 | 61 | 690 | 0.006 | ppbv # | 47 |
| 32) 1,1,1-Trichloroethane | 6.50 | 97 | 129641m | 0.696 | ppbv | |
| 35) Carbon Tetrachloride | 7.00 | 117 | 65 | 0.000 | ppbv # | 13 |
| 36) Benzene | 6.88 | 78 | 3934 | 0.018 | ppbv # | 78 |
| 37) 1,2-Dichloroethane | 6.30 | 62 | 453 | 0.004 | ppbv # | 83 |
| 38) Trichloroethene | 7.82 | 130 | 38600m | 0.465 | ppbv | |
| 40) 1,4-Dioxane | 7.82 | 88 | 274 | 0.010 | ppbv # | 1 |
| 41) Tetrahydrofuran | 6.30 | 42 | 451 | 0.004 | ppbv # | 65 |
| 42) Bromodichloromethane | 7.77 | 83 | 474 | 0.003 | ppbv # | 30 |
| 43) Methyl Methacrylate | 7.99 | 69 | 91 | 0.001 | ppbv # | 1 |
| 44) 2,2,4-Trimethylpentane | 7.85 | 57 | 1894 | 0.005 | ppbv # | 1 |
| 45) t-1,3-Dichloropropene | 9.20 | 75 | 76 | 0.001 | ppbv # | 42 |
| 46) cis-1,3-Dichloropropene | 8.68 | 75 | 53 | 0.000 | ppbv # | 1 |
| 47) 1,1,2-Trichloroethane | 9.45 | 97 | 127 | 0.002 | ppbv # | 35 |
| 48) Dibromochloromethane | 10.06 | 129 | 75 | 0.001 | ppbv | 82 |
| 49) Bromoform | 12.87 | 173 | 100 | 0.001 | ppbv # | 41 |
| 50) 4-Methyl-2-Pentanone | 8.71 | 43 | 90 | 0.000 | ppbv # | 40 |
| 51) 2-Hexanone | 10.10 | 43 | 223 | 0.001 | ppbv # | 29 |

Data Path : Z:\VOASRV\HPCHEM1\MSVOA L\DATA\VL121020\
 Data File : VL036160.D
 Acq On : 11 Dec 2020 11:58
 Operator : SY/AP
 Sample : L4948-16DL2 100X
 Misc : 400ml/MSVOA L
 ALS Vial : 1 Sample Multiplier: 1

Quant Time: Dec 13 22:53:22 2020

Quant Method : Z:\VOASRV\HPCHEM1\MSVOA L\METHODS\VL120720AIR.M

Quant Title : AIR ANALYSIS BY METHOD TO-15 Instrument: MSVOA_L Mon Dec 07 16:56:49 2020

QLast Update : Mon Dec 07 16:56:49 2020

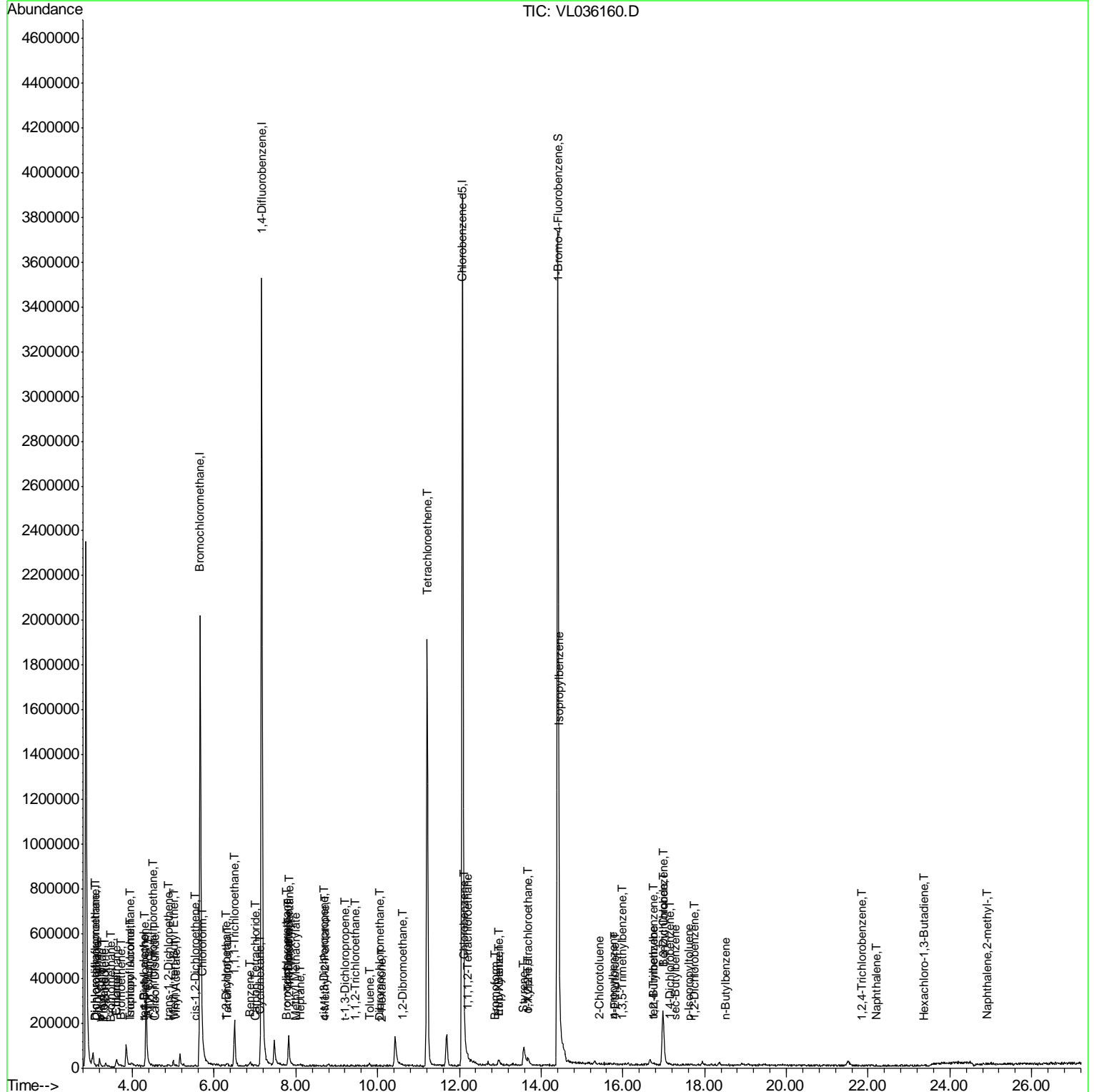
Response via : Initial Calibration

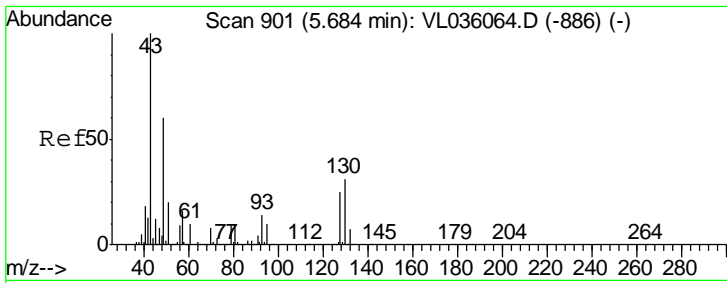
| Internal Standards | R.T. | QIon | Response | Conc | Units | Dev(Min) |
|-------------------------------|-------|------|----------|-------|--------|----------|
| 52) Tetrachloroethene | 11.21 | 164 | 420990m | 5.239 | ppbv | |
| 53) Toluene | 9.79 | 91 | 1395 | 0.006 | ppbv # | 21 |
| 54) 1,2-Dibromoethane | 10.59 | 107 | 261 | 0.002 | ppbv # | 1 |
| 56) 1,1,1,2-Tetrachloroethane | 12.21 | 131 | 42 | 0.000 | ppbv # | 8 |
| 57) Chlorobenzene | 12.13 | 112 | 1005 | 0.006 | ppbv # | 52 |
| 58) Ethyl Benzene | 12.94 | 91 | 3088 | 0.010 | ppbv | 94 |
| 59) m/p-Xylene | 12.98 | 91 | 2916 | 0.011 | ppbv # | 34 |
| 60) o-Xylene | 13.68 | 91 | 5124 | 0.020 | ppbv # | 33 |
| 61) Styrene | 13.55 | 104 | 96 | 0.001 | ppbv # | 1 |
| 62) Isopropylbenzene | 14.44 | 105 | 175 | 0.000 | ppbv | 99 |
| 63) 1,1,2,2-Tetrachloroethane | 13.67 | 83 | 224 | 0.001 | ppbv # | 13 |
| 64) n-propylbenzene | 15.76 | 120 | 120 | 0.001 | ppbv | 100 |
| 65) tert-Butylbenzene | 16.74 | 119 | 437 | 0.001 | ppbv # | 15 |
| 66) Benzyl Chloride | 16.98 | 91 | 108 | 0.001 | ppbv # | 1 |
| 67) sec-Butylbenzene | 17.27 | 105 | 232 | 0.001 | ppbv # | 60 |
| 69) p-Isopropyltoluene | 17.63 | 119 | 149 | 0.000 | ppbv # | 46 |
| 70) n-Butylbenzene | 18.52 | 91 | 177 | 0.001 | ppbv # | 33 |
| 71) 2-Chlorotoluene | 15.43 | 91 | 434 | 0.002 | ppbv # | 46 |
| 72) 4-Ethyltoluene | 15.82 | 105 | 260 | 0.001 | ppbv # | 55 |
| 73) 1,3,5-Trimethylbenzene | 15.99 | 105 | 610 | 0.002 | ppbv # | 54 |
| 74) 1,2,4-Trimethylbenzene | 16.74 | 105 | 708 | 0.003 | ppbv # | 47 |
| 75) 1,3-Dichlorobenzene | 16.99 | 146 | 148 | 0.001 | ppbv # | 1 |
| 76) 1,4-Dichlorobenzene | 17.13 | 146 | 339 | 0.003 | ppbv # | 22 |
| 77) 1,2-Dichlorobenzene | 17.73 | 146 | 175 | 0.001 | ppbv | 79 |
| 78) Hexachloro-1,3-Butadiene | 23.37 | 225 | 109 | 0.001 | ppbv # | 18 |
| 79) Naphthalene | 22.19 | 128 | 78 | 0.001 | ppbv # | 1 |
| 80) Naphthalene,2-methyl- | 24.91 | 142 | 80 | 0.003 | ppbv # | 7 |
| 81) 1,2,4-Trichlorobenzene | 21.85 | 180 | 90 | 0.001 | ppbv # | 100 |

(#) = qualifier out of range (m) = manual integration (+) = signals summed

Data Path : Z:\VOASRV\HPCHEM1\MSVOA L\DATA\VL121020\
 Data File : VL036160.D
 Acq On : 11 Dec 2020 11:58
 Operator : SY/AP
 Sample : L4948-16DL2 100X
 Misc : 400ml/MSVOA L
 ALS Vial : 1 Sample Multiplier: 1

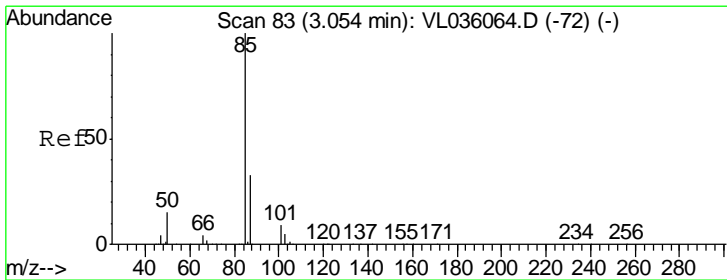
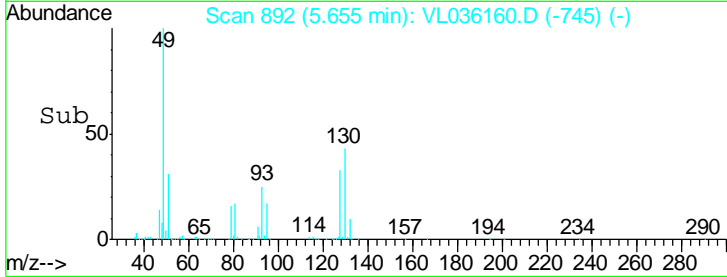
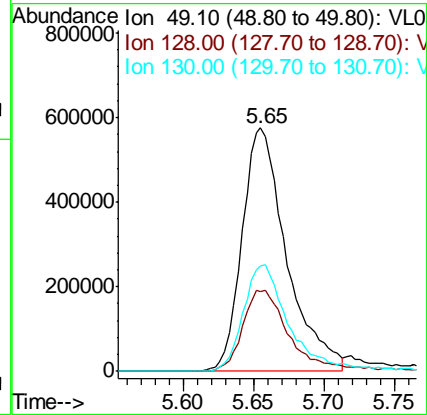
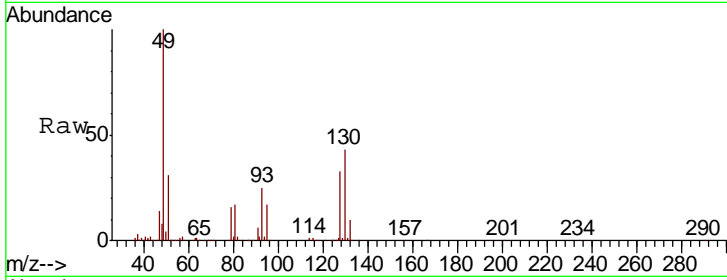
Quant Time: Dec 13 22:53:22 2020
 Quant Method : Z:\VOASRV\HPCHEM1\MSVOA L\METHODS\VL120720AIR.M
 Quant Title : AIR ANALYSIS BY METHOD TO-15 Instrument: MSVOA_L Mon Dec 07 16:56:49 2020
 QLast Update : Mon Dec 07 16:56:49 2020
 Response via : Initial Calibration





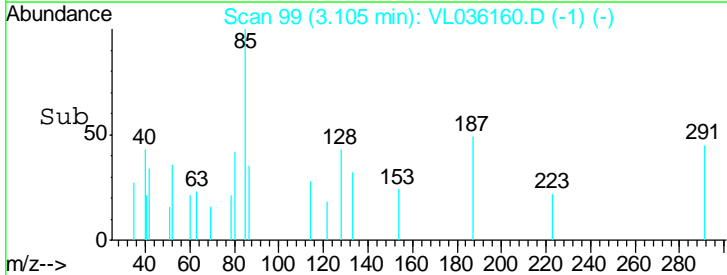
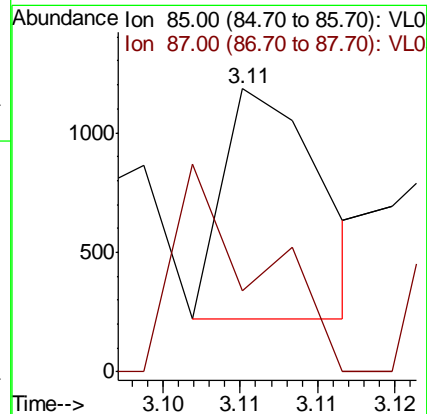
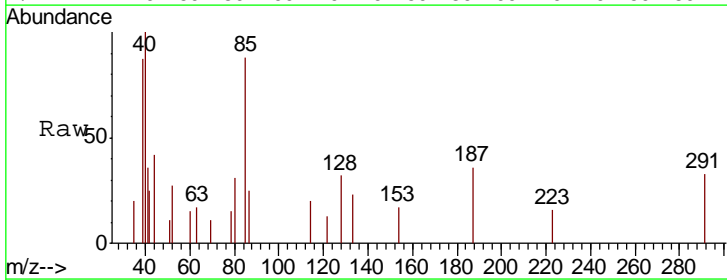
#1
 Bromochloromethane
 Concen: 10.000 ppbv
 RT: 5.65 min Scan# 892
 Delta R.T. -0.03 min
 Lab File: VL036160.D
 Acq: 11 Dec 2020 11:58

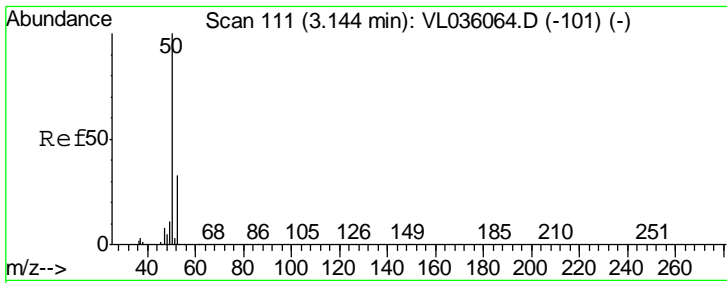
| Tgt Ion | Resp | Lower | Upper |
|---------|------|-------|-------|
| 49 | 100 | | |
| 128 | 35.7 | 21.1 | 63.1 |
| 130 | 46.5 | 27.1 | 81.3 |



#2
 Dichlorodifluoromethane
 Concen: 0.003 ppbv
 RT: 3.11 min Scan# 99
 Delta R.T. 0.05 min
 Lab File: VL036160.D
 Acq: 11 Dec 2020 11:58

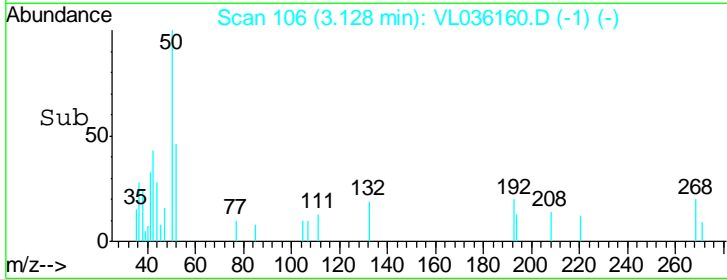
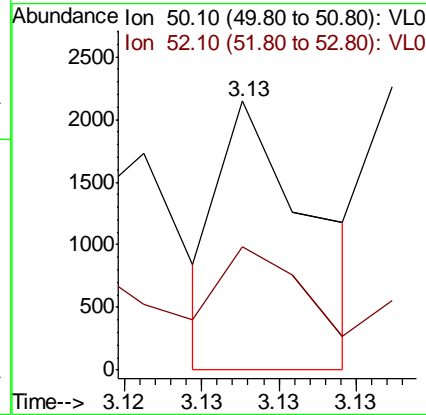
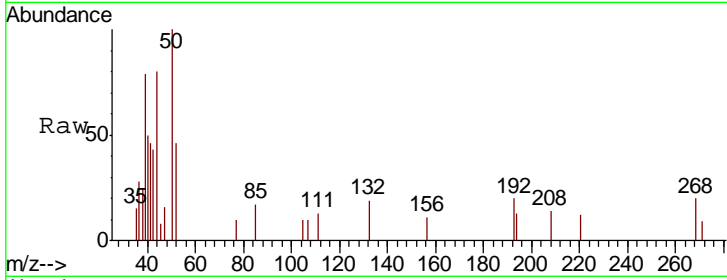
| Tgt Ion | Resp | Lower | Upper |
|---------|------|-------|-------|
| 85 | 100 | | |
| 87 | 35.3 | 26.5 | 39.7 |





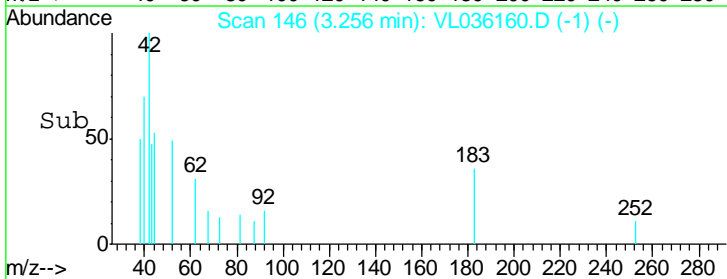
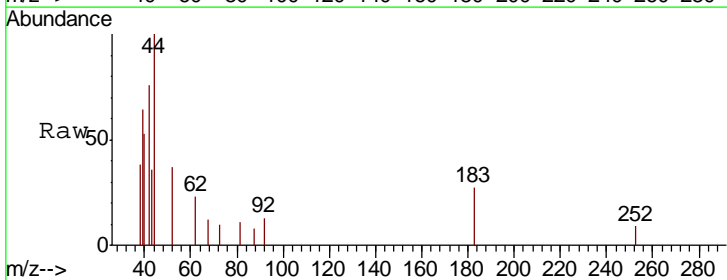
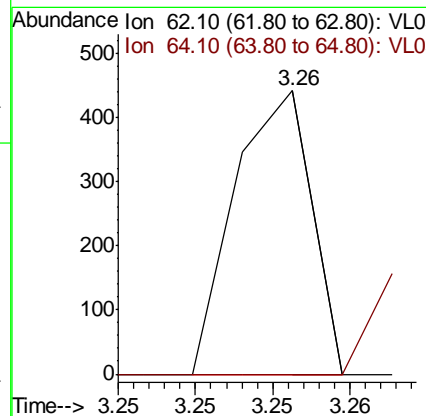
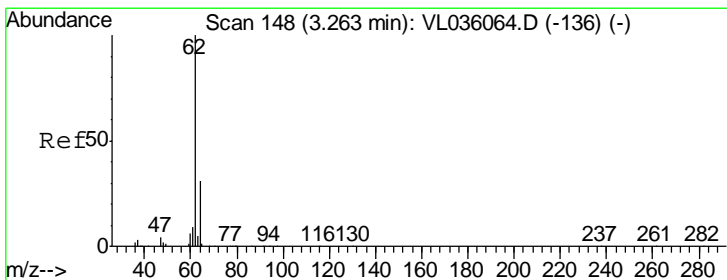
#4
 Chloromethane
 Concen: 0.012 ppbv
 RT: 3.13 min Scan# 106
 Delta R.T. -0.02 min
 Lab File: VL036160.D
 Acq: 11 Dec 2020 11:58

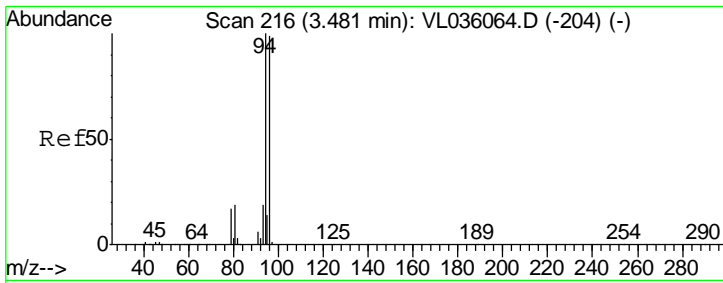
| Tgt Ion | Resp | Lower | Upper |
|---------|------|-------|-------|
| 50 | 100 | | |
| 52 | 54.5 | 26.1 | 39.1# |



#5
 Vinyl Chloride
 Concen: 0.002 ppbv
 RT: 3.26 min Scan# 146
 Delta R.T. -0.01 min
 Lab File: VL036160.D
 Acq: 11 Dec 2020 11:58

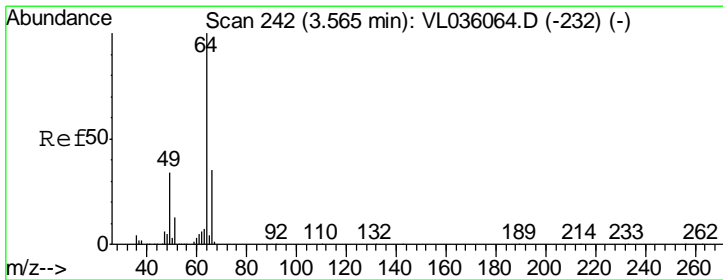
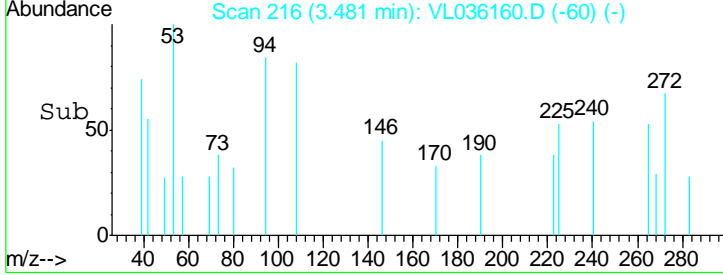
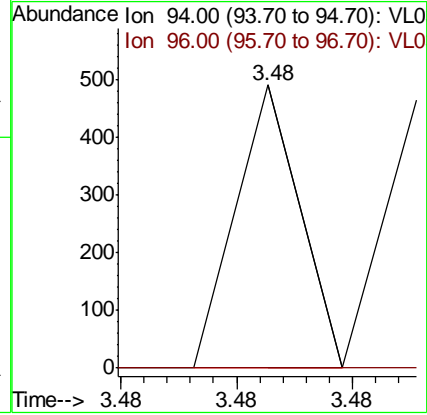
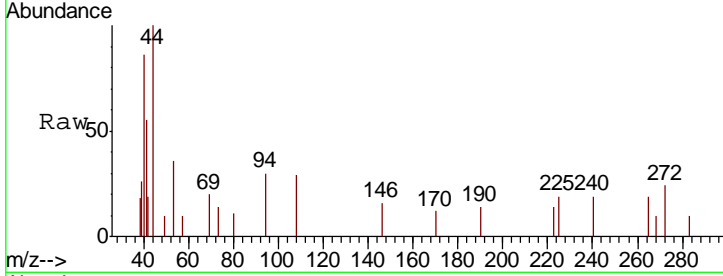
| Tgt Ion | Resp | Lower | Upper |
|---------|------|-------|-------|
| 62 | 100 | | |
| 64 | 0.0 | 24.5 | 36.7# |





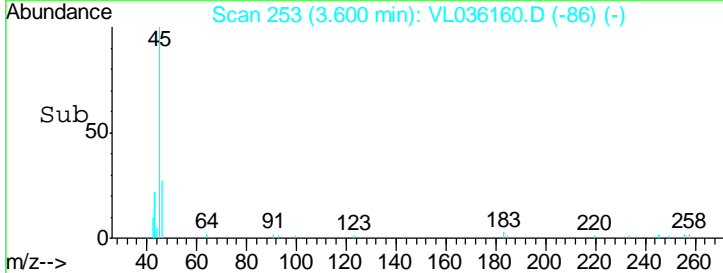
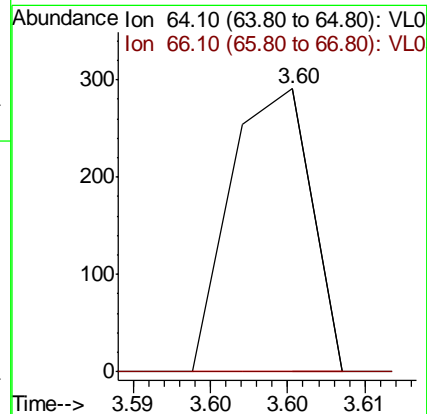
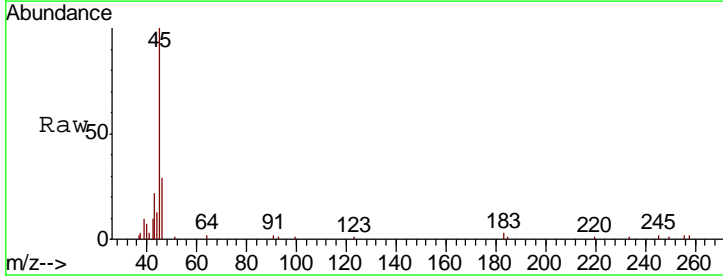
#6
 Bromomethane
 Concen: 0.002 ppbv
 RT: 3.48 min Scan# 216
 Delta R.T. 0.00 min
 Lab File: VL036160.D
 Acq: 11 Dec 2020 11:58

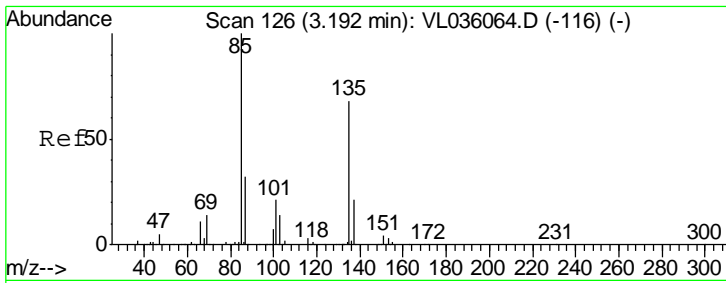
| Tgt Ion | Resp | Lower | Upper |
|---------|------|-------|--------|
| 94 | 100 | | |
| 96 | 0.0 | 79.4 | 119.0# |



#7
 Chloroethane
 Concen: 0.004 ppbv
 RT: 3.60 min Scan# 253
 Delta R.T. 0.04 min
 Lab File: VL036160.D
 Acq: 11 Dec 2020 11:58

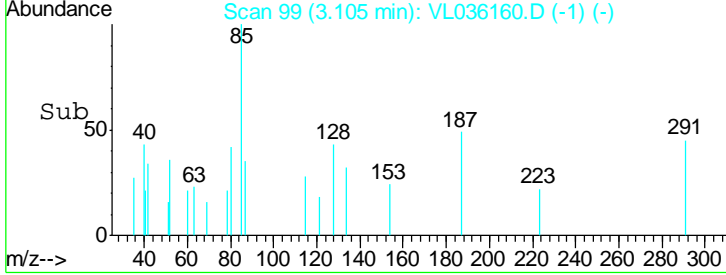
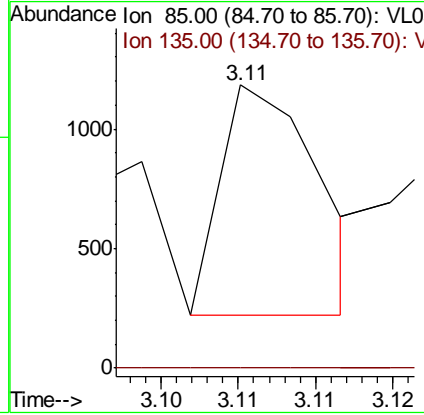
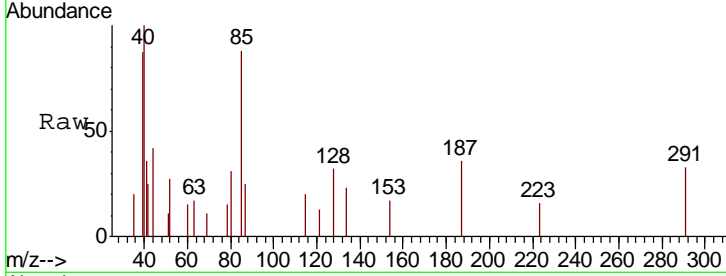
| Tgt Ion | Resp | Lower | Upper |
|---------|------|-------|-------|
| 64 | 100 | | |
| 66 | 0.0 | 27.7 | 41.5# |





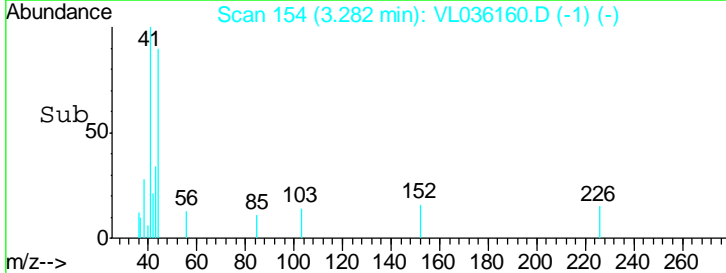
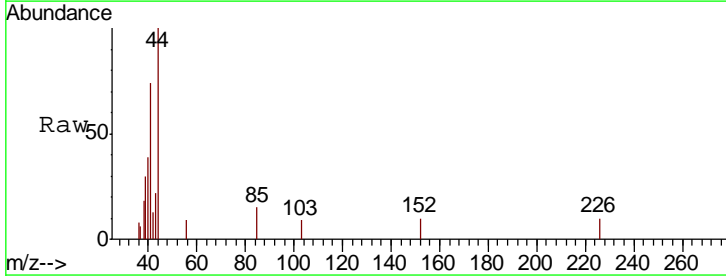
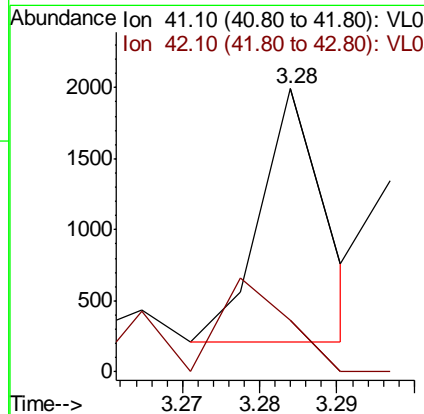
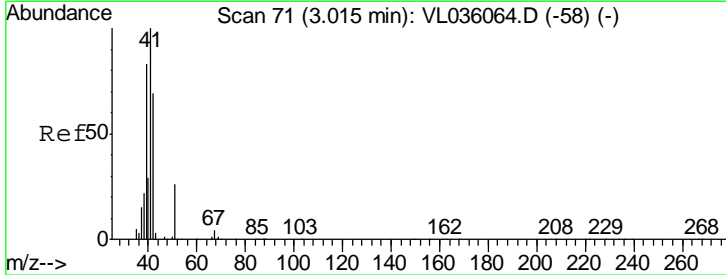
#8
 Dichlorotetrafluoroethane
 Concen: 0.003 ppbv
 RT: 3.11 min Scan# 99
 Delta R.T. -0.09 min
 Lab File: VL036160.D
 Acq: 11 Dec 2020 11:58

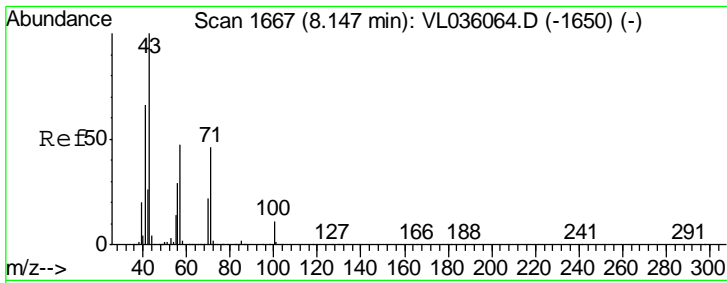
Tgt Ion: 85 Resp: 426
 Ion Ratio Lower Upper
 85 100
 135 0.0 53.8 80.8#



#9
 Propene
 Concen: 0.007 ppbv
 RT: 3.28 min Scan# 154
 Delta R.T. 0.27 min
 Lab File: VL036160.D
 Acq: 11 Dec 2020 11:58

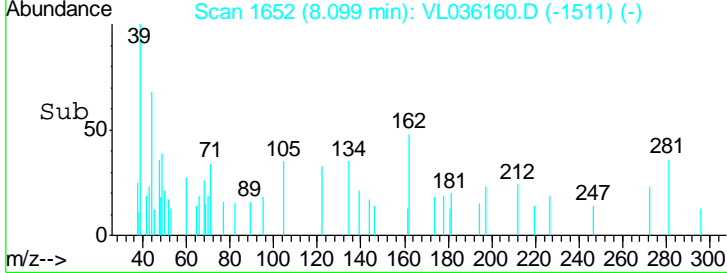
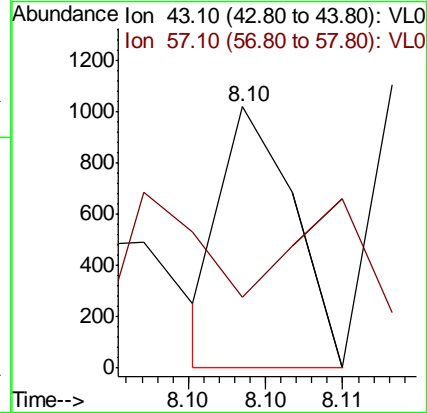
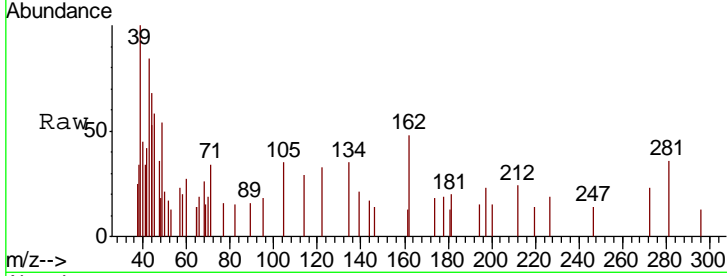
Tgt Ion: 41 Resp: 521
 Ion Ratio Lower Upper
 41 100
 42 64.9 57.0 85.6





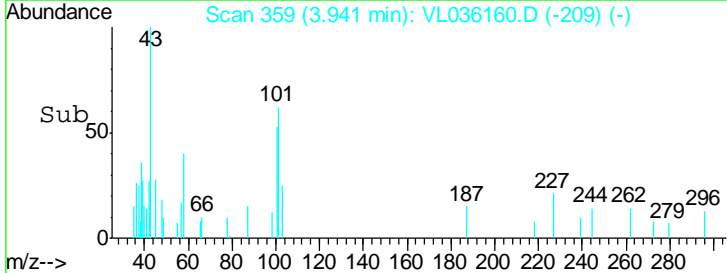
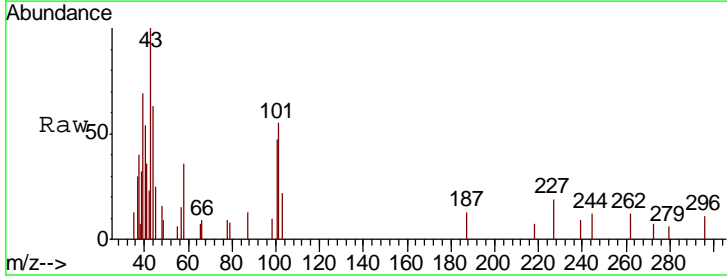
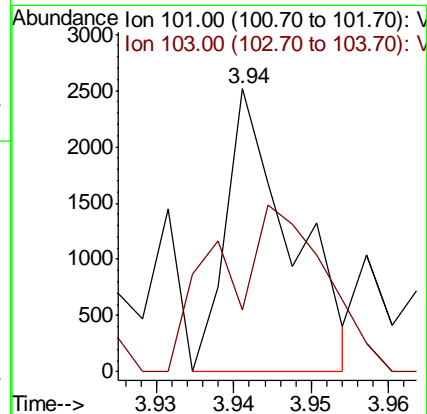
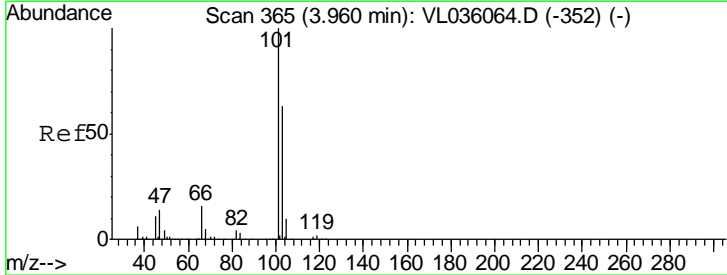
#10
 Heptane
 Concen: 0.002 ppbv
 RT: 8.10 min Scan# 1652
 Delta R.T. -0.05 min
 Lab File: VL036160.D
 Acq: 11 Dec 2020 11:58

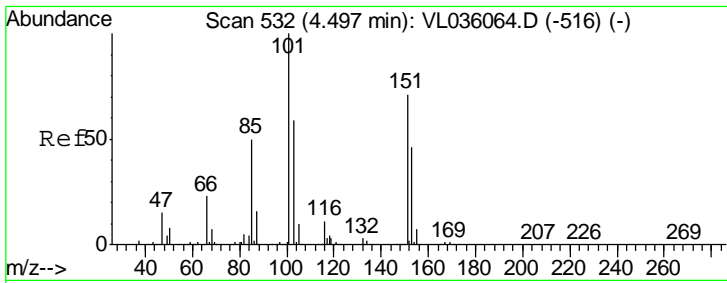
| Tgt Ion | Resp | Lower | Upper |
|---------|------|-------|-------|
| 43 | 100 | | |
| 57 | 0.0 | 37.9 | 56.9# |



#11
 Trichlorofluoromethane
 Concen: 0.008 ppbv
 RT: 3.94 min Scan# 359
 Delta R.T. -0.02 min
 Lab File: VL036160.D
 Acq: 11 Dec 2020 11:58

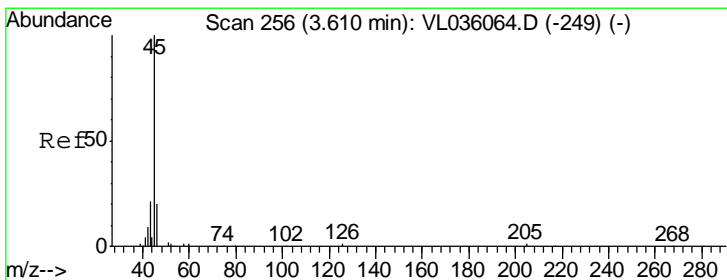
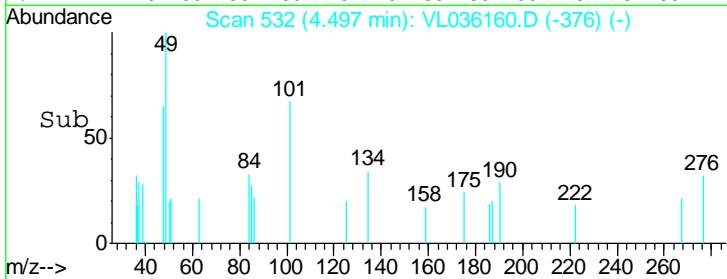
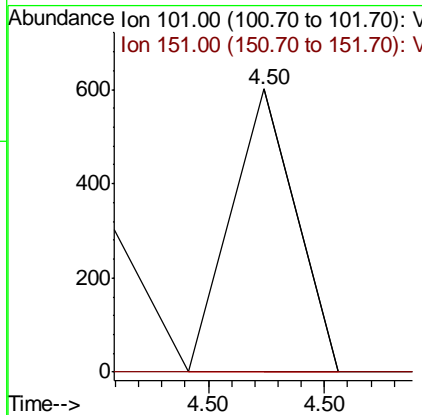
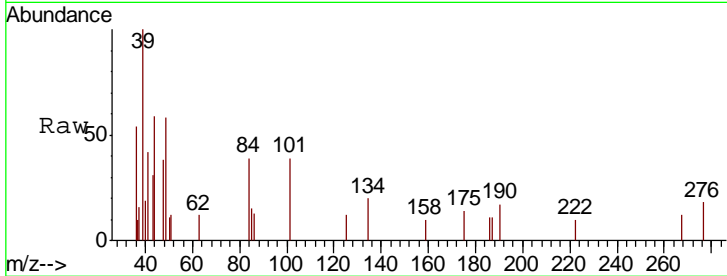
| Tgt Ion | Resp | Lower | Upper |
|---------|------|-------|-------|
| 101 | 100 | | |
| 103 | 0.0 | 50.3 | 75.5# |





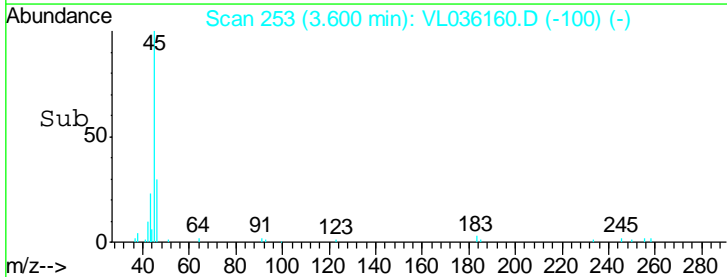
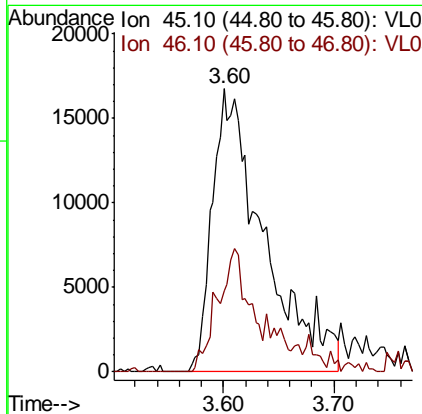
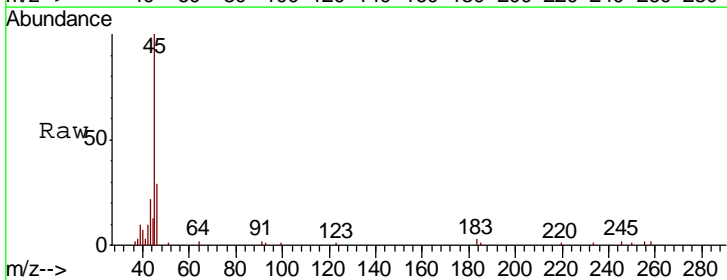
#12
 1,1,2-Trichlorotrifluoroethane
 Concen: 0.001 ppbv
 RT: 4.50 min Scan# 532
 Delta R.T. 0.00 min
 Lab File: VL036160.D
 Acq: 11 Dec 2020 11:58

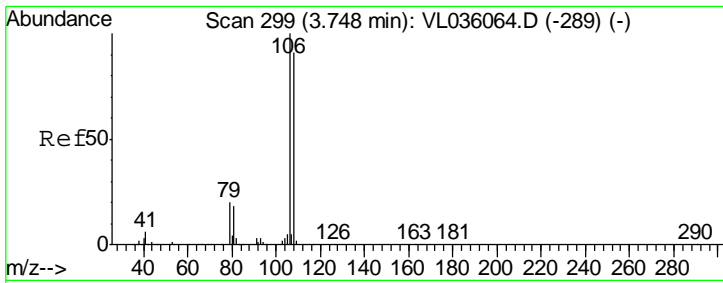
Tgt Ion: 101 Resp: 116
 Ion Ratio Lower Upper
 101 100
 151 111.2 59.3 88.9#



#13
 Ethanol
 Concen: 5.406 ppbv m
 RT: 3.60 min Scan# 253
 Delta R.T. -0.01 min
 Lab File: VL036160.D
 Acq: 11 Dec 2020 11:58

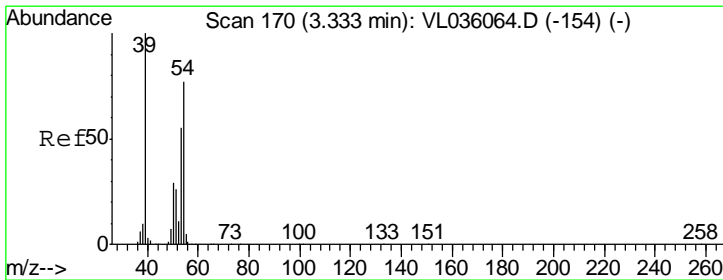
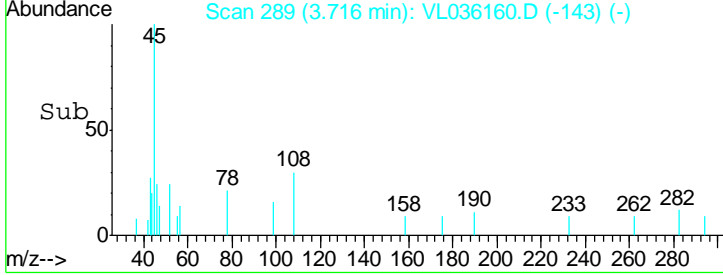
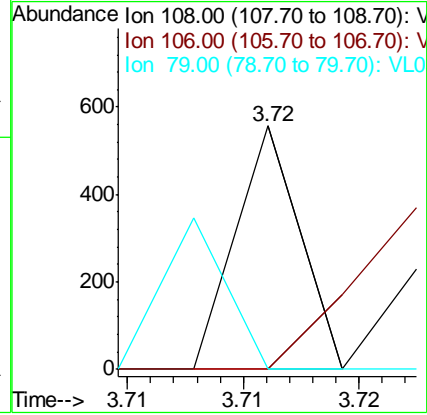
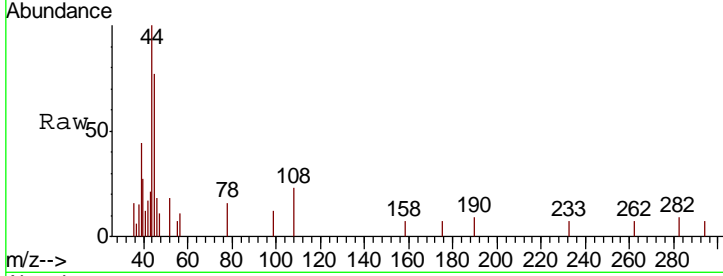
Tgt Ion: 45 Resp: 54159
 Ion Ratio Lower Upper
 45 100
 46 0.0 19.0 75.8#





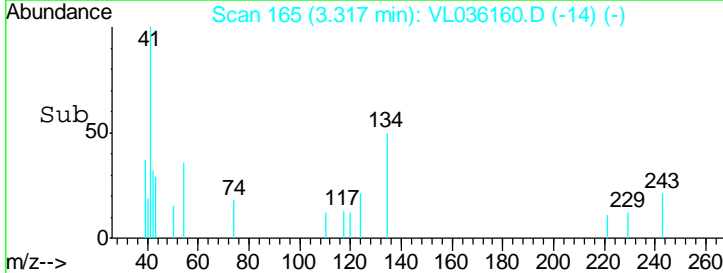
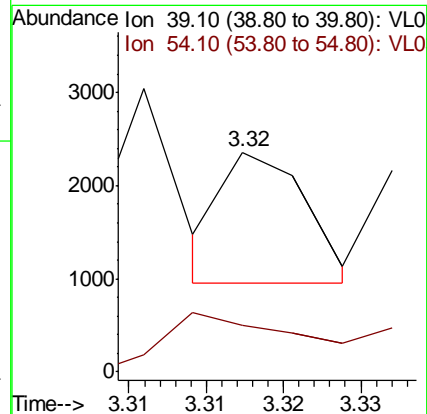
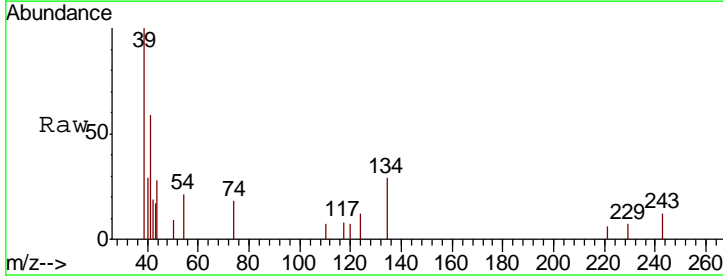
#14
 Bromoethene
 Concen: 0.002 ppbv
 RT: 3.72 min Scan# 289
 Delta R.T. -0.03 min
 Lab File: VL036160.D
 Acq: 11 Dec 2020 11:58

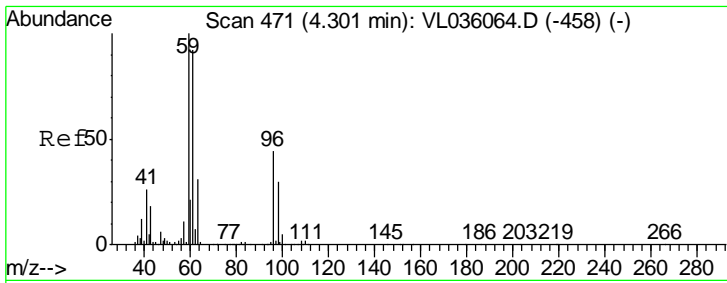
| Tgt Ion | Resp | Lower | Upper |
|---------|-------|-------|--------|
| 108 | 100 | | |
| 106 | 0.0 | 91.0 | 136.4# |
| 79 | 196.3 | 19.3 | 28.9# |



#16
 1,3-Butadiene
 Concen: 0.007 ppbv
 RT: 3.32 min Scan# 165
 Delta R.T. -0.02 min
 Lab File: VL036160.D
 Acq: 11 Dec 2020 11:58

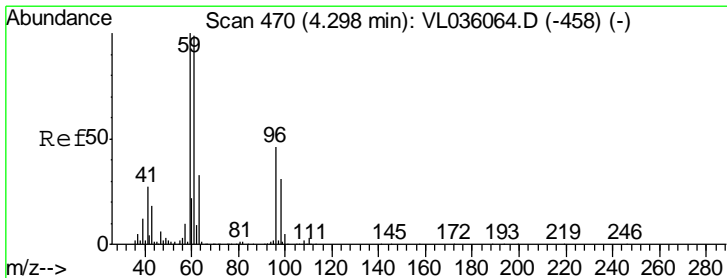
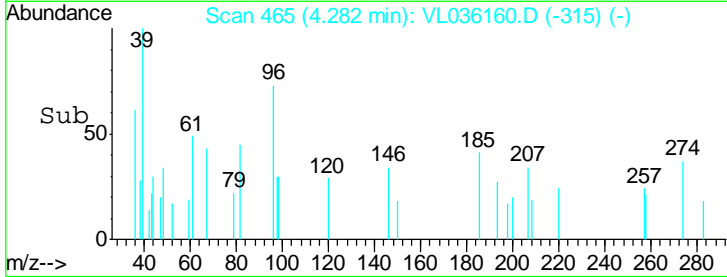
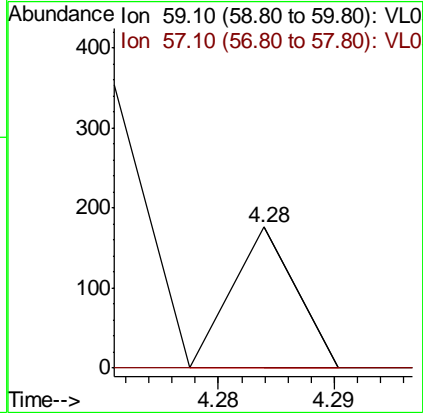
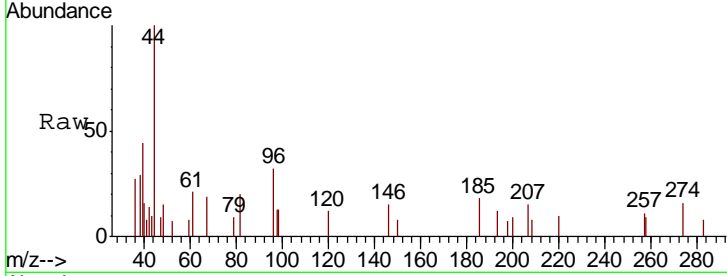
| Tgt Ion | Resp | Lower | Upper |
|---------|------|-------|-------|
| 39 | 100 | | |
| 54 | 0.0 | 62.1 | 93.1# |





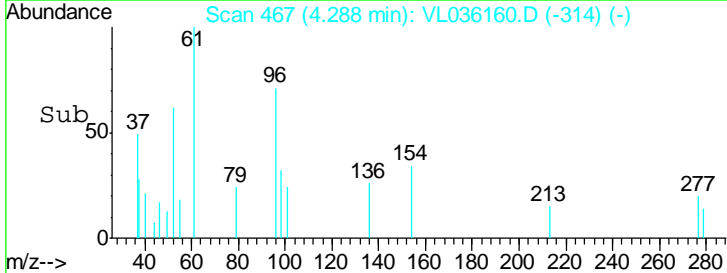
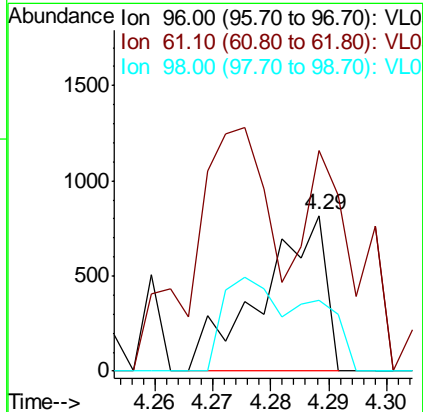
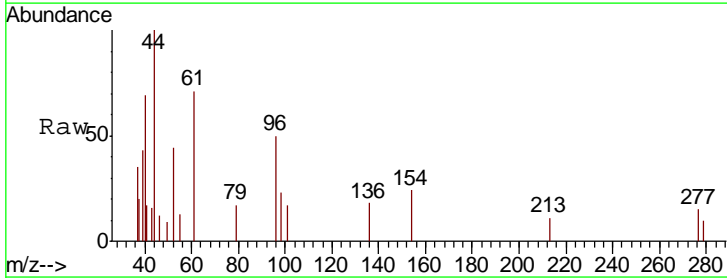
#17
 tert-Butyl alcohol
 Concen: 0.000 ppbv
 RT: 4.28 min Scan# 465
 Delta R.T. -0.02 min
 Lab File: VL036160.D
 Acq: 11 Dec 2020 11:58

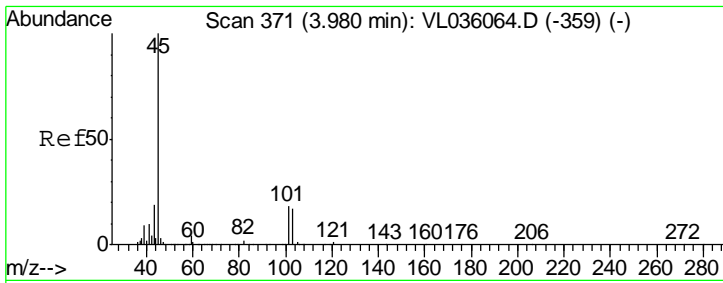
| Tgt Ion | Resp | Lower | Upper |
|---------|------|-------|-------|
| 59 | 100 | | |
| 57 | 0.0 | 8.7 | 13.1# |



#18
 1,1-Dichloroethene
 Concen: 0.012 ppbv
 RT: 4.29 min Scan# 467
 Delta R.T. -0.01 min
 Lab File: VL036160.D
 Acq: 11 Dec 2020 11:58

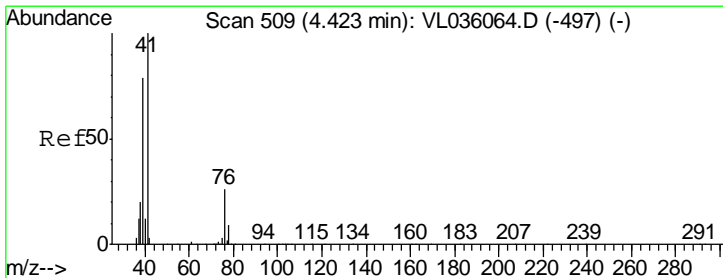
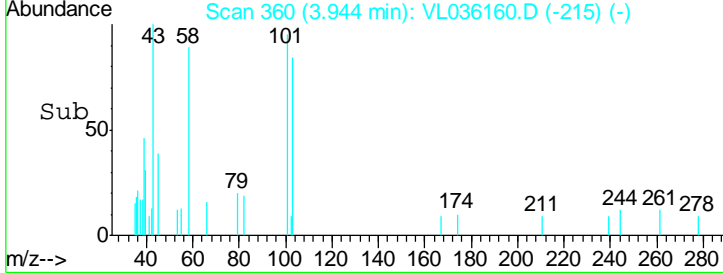
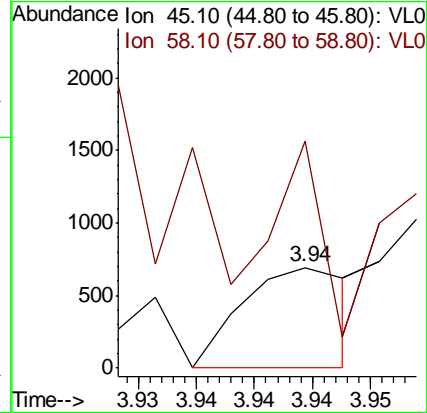
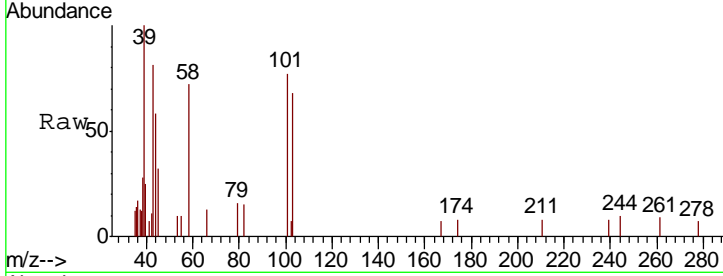
| Tgt Ion | Resp | Lower | Upper |
|---------|-------|-------|--------|
| 96 | 100 | | |
| 61 | 106.7 | 171.4 | 257.2# |
| 98 | 45.2 | 54.2 | 81.2# |





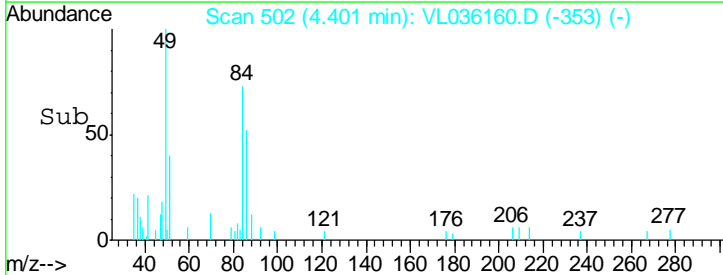
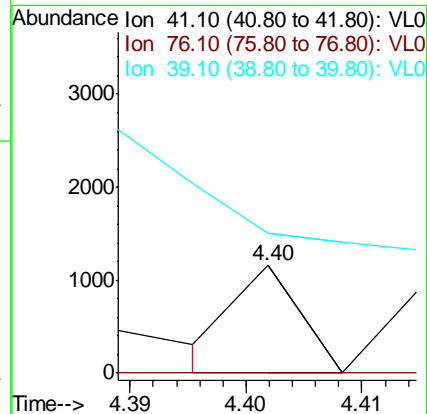
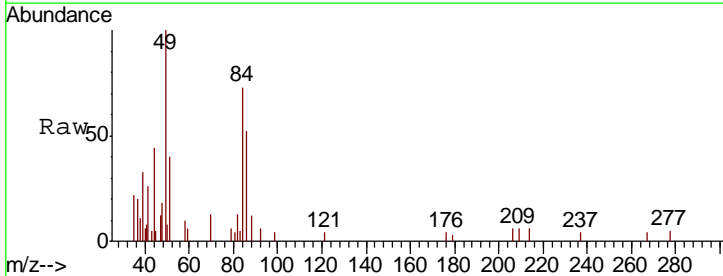
#19
 Isopropyl Alcohol
 Concen: 0.005 ppbv
 RT: 3.94 min Scan# 360
 Delta R.T. -0.04 min
 Lab File: VL036160.D
 Acq: 11 Dec 2020 11:58

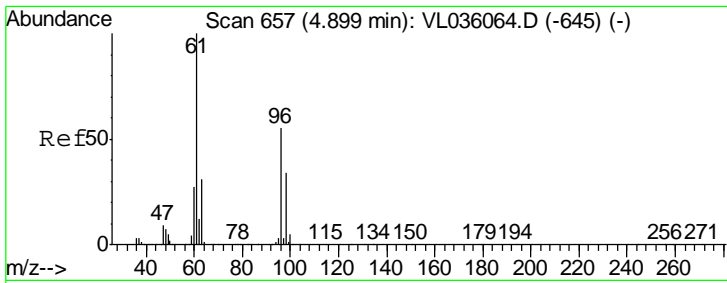
| Tgt Ion | Resp | Lower | Upper |
|---------|------|-------|-------|
| 45 | 443 | | |
| 100 | | | |
| 58 | 0.0 | 0.0 | 0.0 |



#21
 Allyl Chloride
 Concen: 0.002 ppbv
 RT: 4.40 min Scan# 502
 Delta R.T. -0.02 min
 Lab File: VL036160.D
 Acq: 11 Dec 2020 11:58

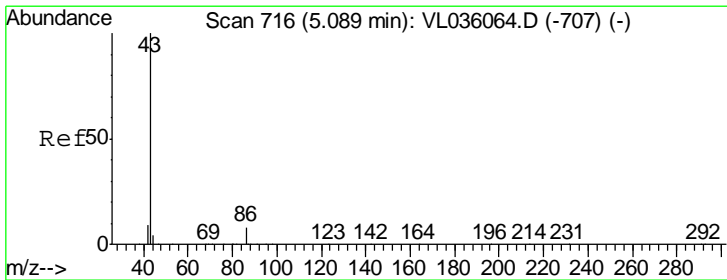
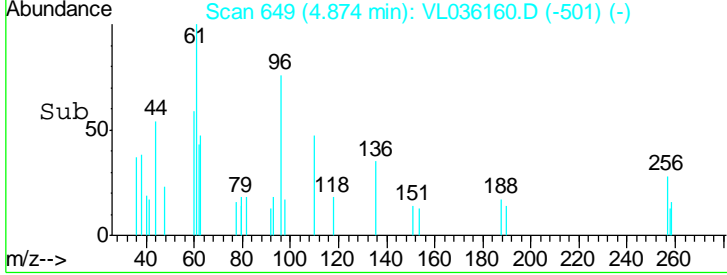
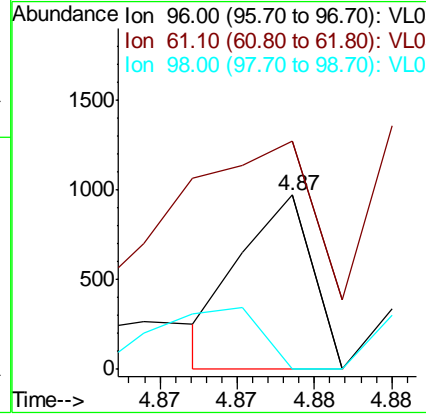
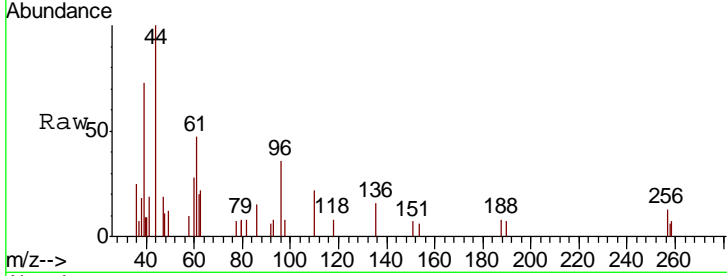
| Tgt Ion | Resp | Lower | Upper |
|---------|------|-------|-------|
| 41 | 223 | | |
| 100 | | | |
| 76 | 0.0 | 21.0 | 31.4# |
| 39 | 0.0 | 66.0 | 99.0# |





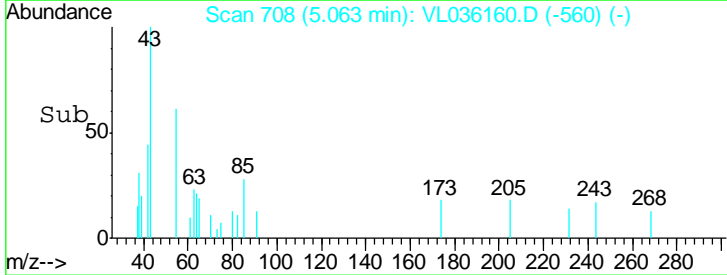
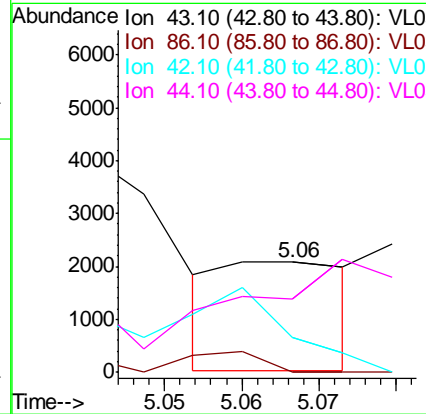
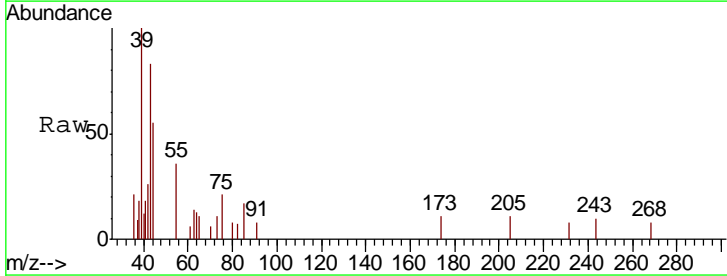
#22
 trans-1,2-Dichloroethene
 Concen: 0.006 ppbv
 RT: 4.87 min Scan# 649
 Delta R.T. -0.03 min
 Lab File: VL036160.D
 Acq: 11 Dec 2020 11:58

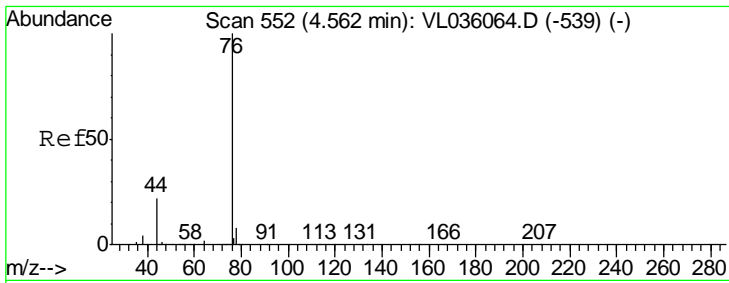
| Tgt Ion | Resp | Lower | Upper |
|-----------|------|-------|--------|
| 96 | 313 | | |
| Ion Ratio | | | |
| 96 | 100 | | |
| 61 | 91.2 | 145.7 | 218.5# |
| 98 | 0.0 | 49.2 | 73.8# |



#23
 Vinyl Acetate
 Concen: 0.006 ppbv
 RT: 5.06 min Scan# 708
 Delta R.T. -0.03 min
 Lab File: VL036160.D
 Acq: 11 Dec 2020 11:58

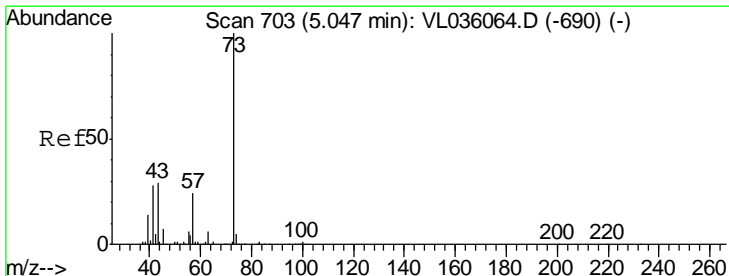
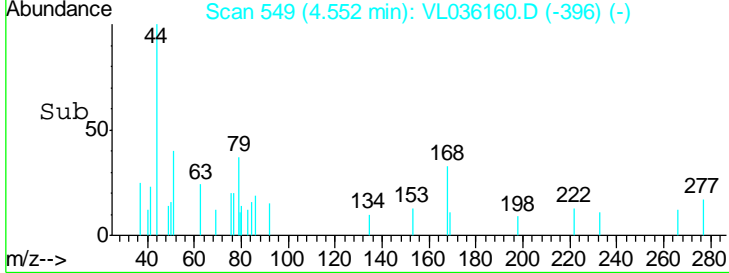
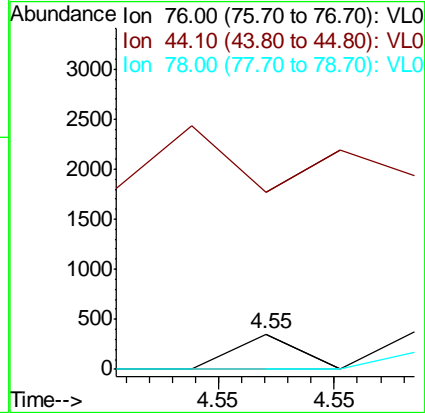
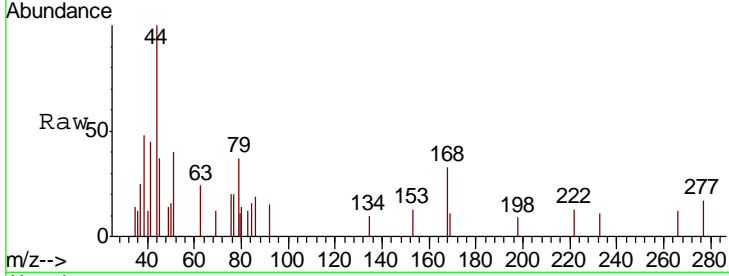
| Tgt Ion | Resp | Lower | Upper |
|-----------|-------|-------|-------|
| 43 | 1178 | | |
| Ion Ratio | | | |
| 43 | 100 | | |
| 86 | 0.0 | 5.0 | 7.4# |
| 42 | 123.1 | 7.8 | 11.6# |
| 44 | 16.3 | 3.2 | 4.8# |





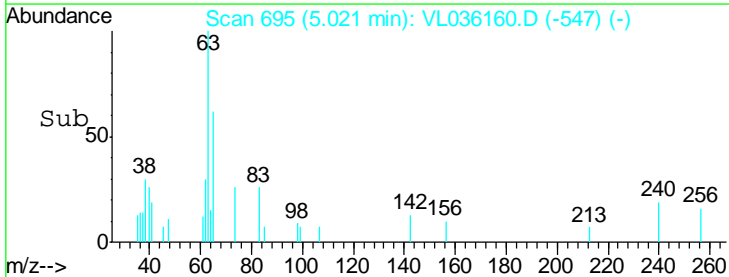
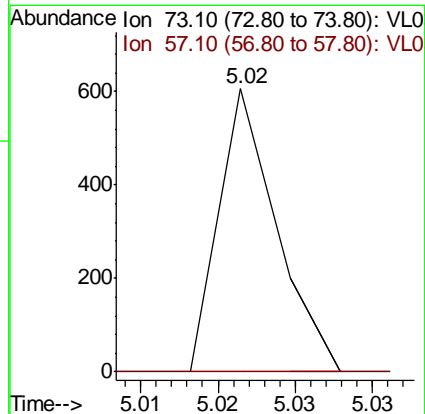
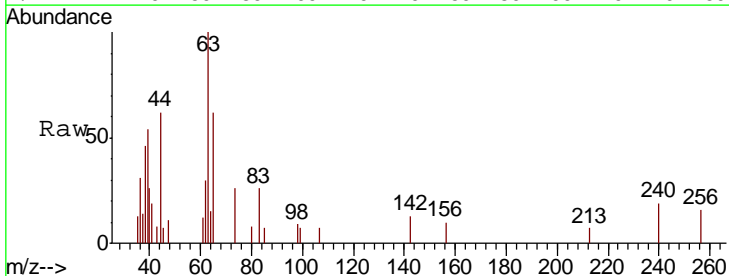
#27
 Carbon Disulfide
 Concen: 0.000 ppbv
 RT: 4.55 min Scan# 549
 Delta R.T. -0.01 min
 Lab File: VL036160.D
 Acq: 11 Dec 2020 11:58

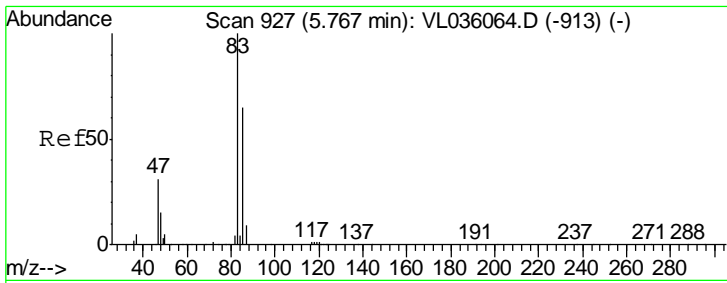
| Tgt Ion | Resp | Lower | Upper |
|---------|------|-------|-------|
| 76 | 100 | | |
| 44 | 0.0 | 17.9 | 26.9# |
| 78 | 0.0 | 7.8 | 11.8# |



#28
 Methyl tert-Butyl Ether
 Concen: 0.001 ppbv
 RT: 5.02 min Scan# 695
 Delta R.T. -0.03 min
 Lab File: VL036160.D
 Acq: 11 Dec 2020 11:58

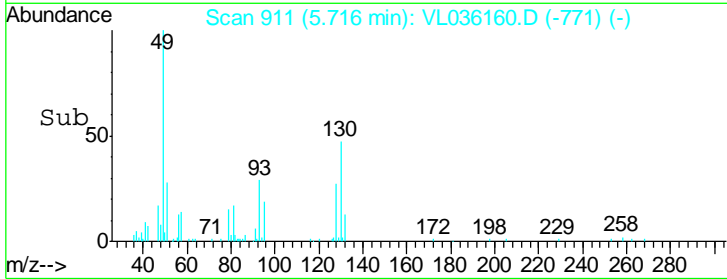
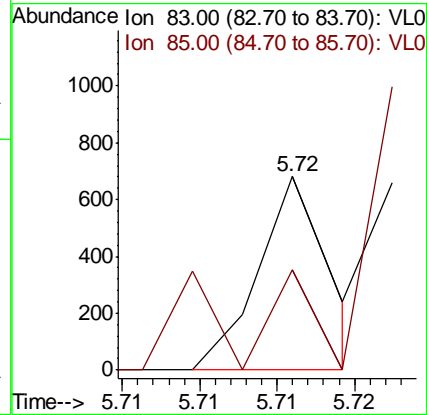
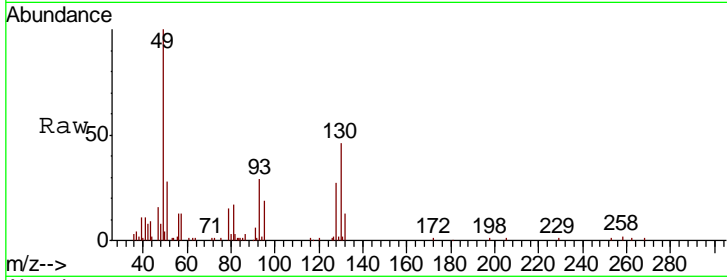
| Tgt Ion | Resp | Lower | Upper |
|---------|------|-------|-------|
| 73 | 100 | | |
| 57 | 0.0 | 19.2 | 28.8# |





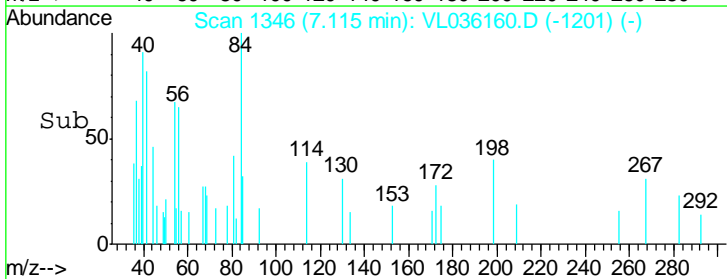
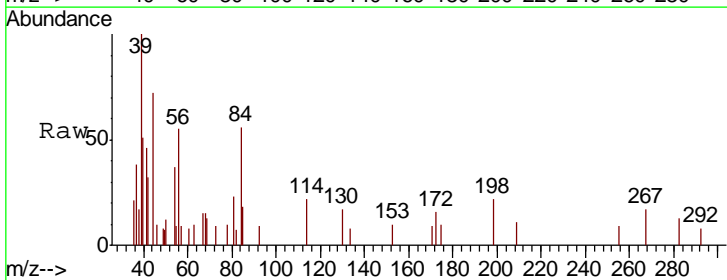
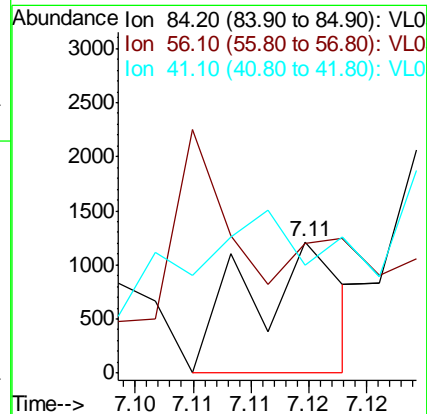
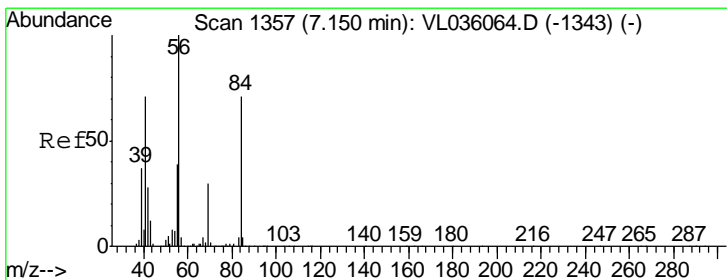
#29
 Chloroform
 Concen: 0.001 ppbv
 RT: 5.72 min Scan# 911
 Delta R.T. -0.05 min
 Lab File: VL036160.D
 Acq: 11 Dec 2020 11:58

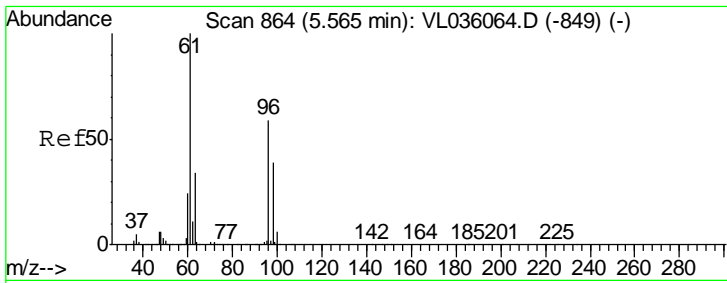
| Tgt Ion | Resp | Lower | Upper |
|---------|------|-------|-------|
| 83 | 216 | | |
| 83 | 100 | | |
| 85 | 51.8 | 51.8 | 77.6 |



#30
 Cyclohexane
 Concen: 0.007 ppbv
 RT: 7.11 min Scan# 1346
 Delta R.T. -0.04 min
 Lab File: VL036160.D
 Acq: 11 Dec 2020 11:58

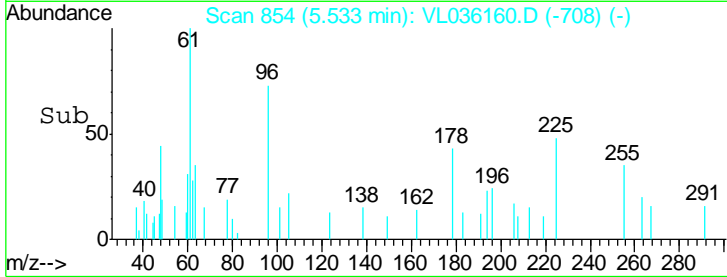
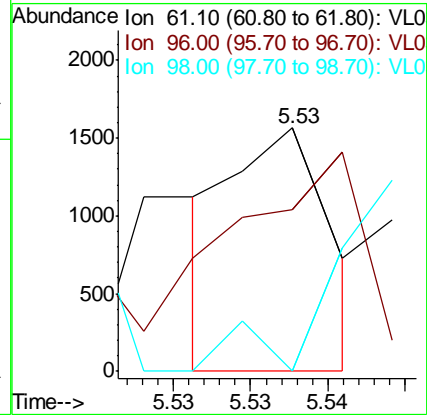
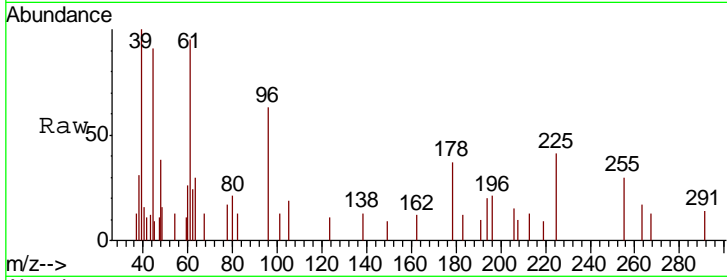
| Tgt Ion | Resp | Lower | Upper |
|---------|------|-------|--------|
| 84 | 682 | | |
| 84 | 100 | | |
| 56 | 0.0 | 128.0 | 192.0# |
| 41 | 0.0 | 81.3 | 121.9# |





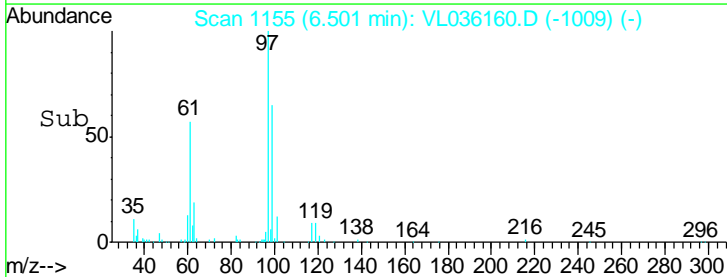
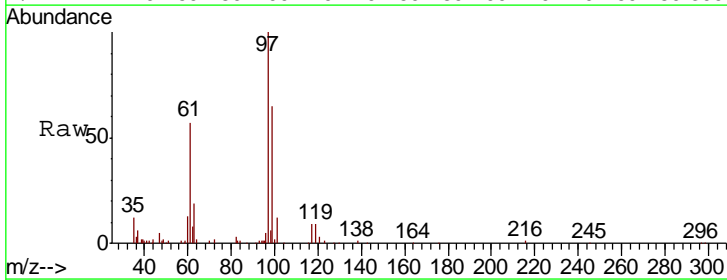
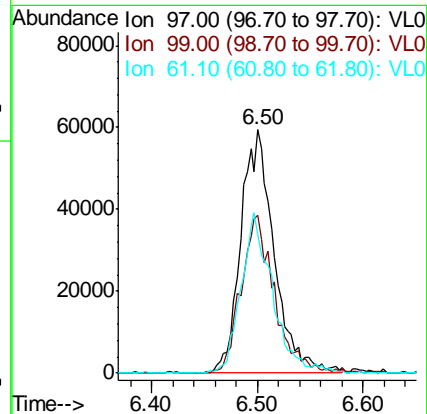
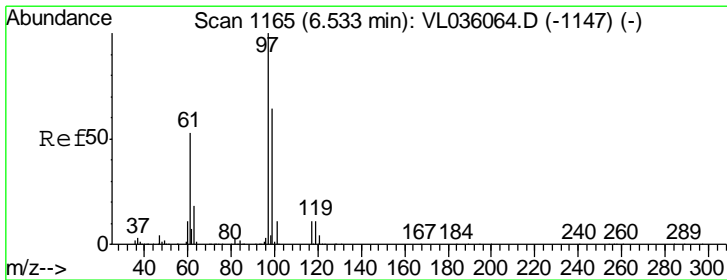
#31
 cis-1,2-Dichloroethene
 Concen: 0.006 ppbv
 RT: 5.53 min Scan# 854
 Delta R.T. -0.03 min
 Lab File: VL036160.D
 Acq: 11 Dec 2020 11:58

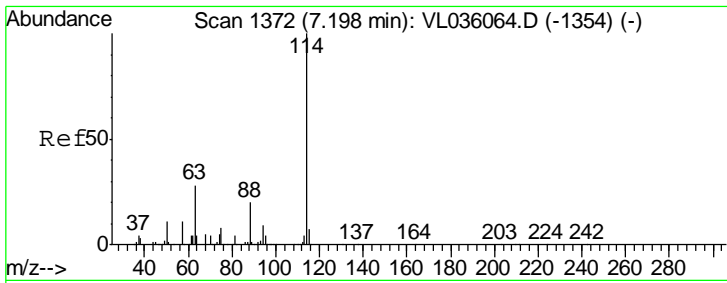
| Tgt Ion | Resp | Lower | Upper |
|---------|------|-------|-------|
| 61 | 100 | | |
| 96 | 25.3 | 47.3 | 70.9# |
| 98 | 0.0 | 31.4 | 47.0# |



#32
 1,1,1-Trichloroethane
 Concen: 0.696 ppbv m
 RT: 6.50 min Scan# 1155
 Delta R.T. -0.03 min
 Lab File: VL036160.D
 Acq: 11 Dec 2020 11:58

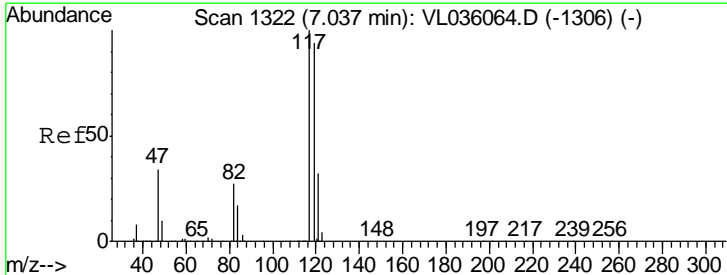
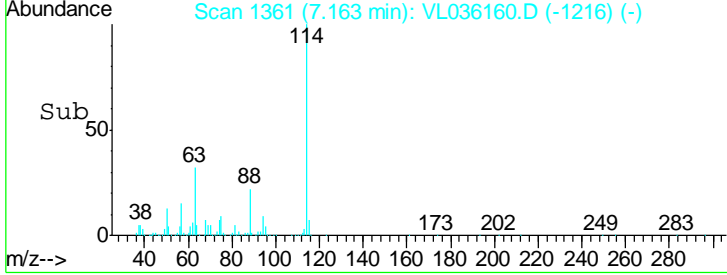
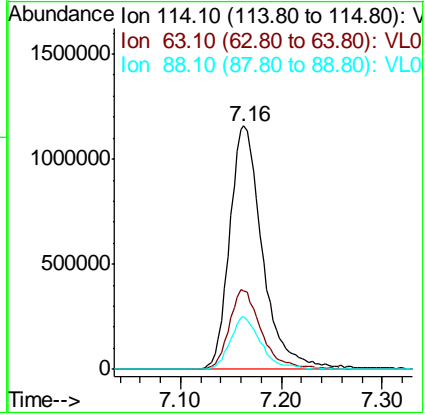
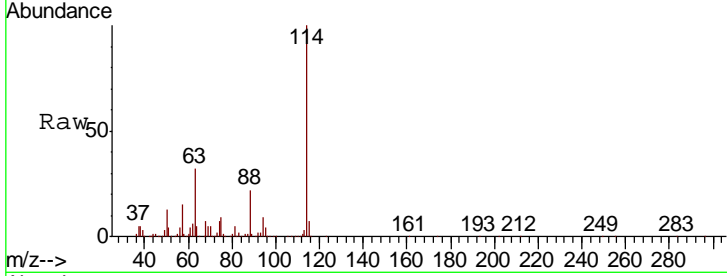
| Tgt Ion | Resp | Lower | Upper |
|---------|------|-------|-------|
| 97 | 100 | | |
| 99 | 64.6 | 52.4 | 78.6 |
| 61 | 62.3 | 43.4 | 65.0 |





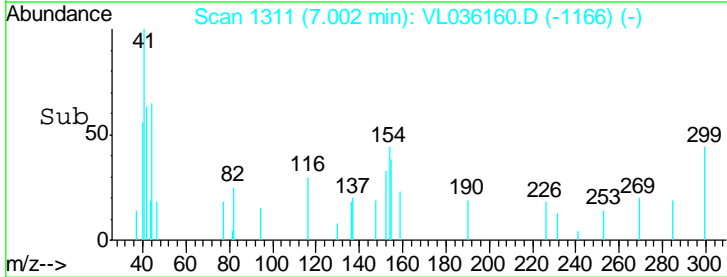
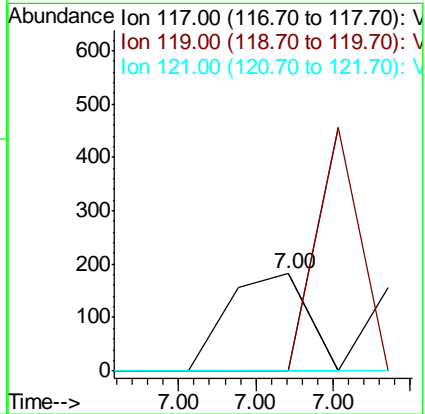
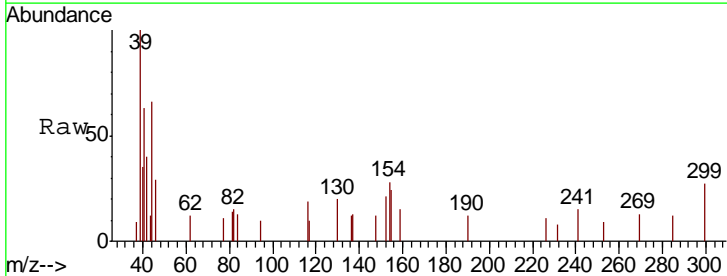
#33
 1,4-Difluorobenzene
 Concen: 10.000 ppbv
 RT: 7.16 min Scan# 1361
 Delta R.T. -0.04 min
 Lab File: VL036160.D
 Acq: 11 Dec 2020 11:58

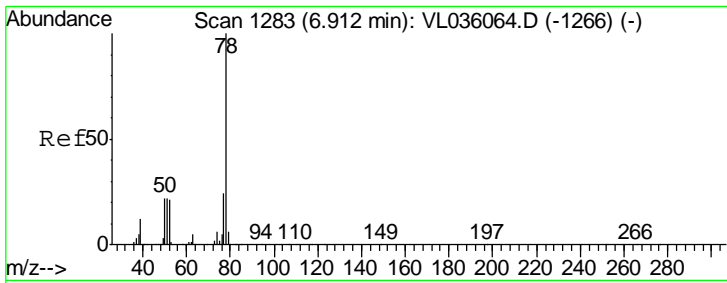
| Tgt Ion | Resp | Lower | Upper |
|---------|------|-------|-------|
| 114 | 100 | | |
| 63 | 32.6 | 23.6 | 35.4 |
| 88 | 20.6 | 15.8 | 23.6 |



#35
 Carbon Tetrachloride
 Concen: 0.000 ppbv
 RT: 7.00 min Scan# 1311
 Delta R.T. -0.04 min
 Lab File: VL036160.D
 Acq: 11 Dec 2020 11:58

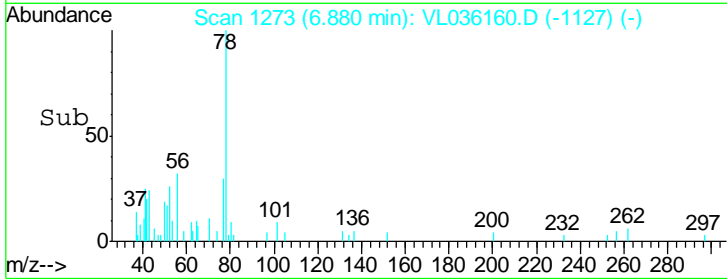
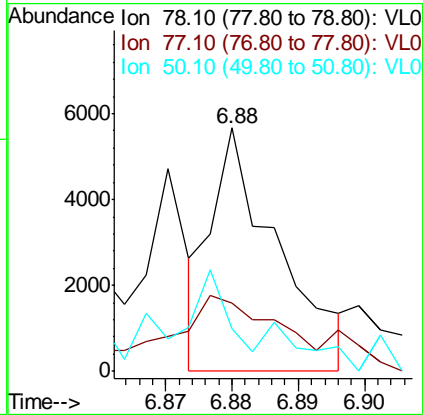
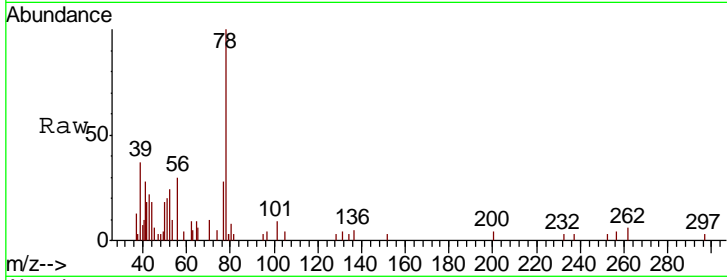
| Tgt Ion | Resp | Lower | Upper |
|---------|------|-------|--------|
| 117 | 100 | | |
| 119 | 0.0 | 75.1 | 112.7# |
| 121 | 0.0 | 25.6 | 38.4# |





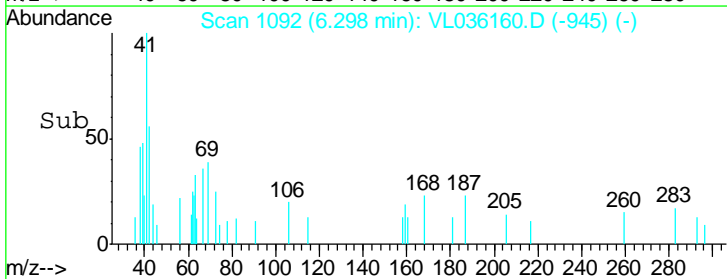
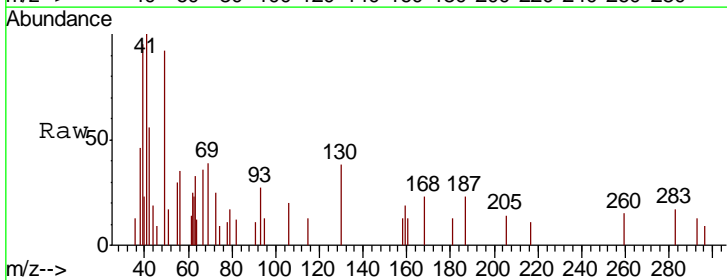
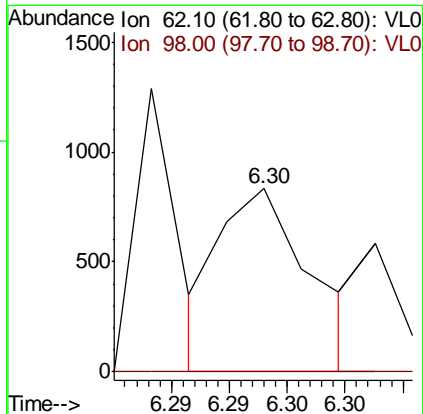
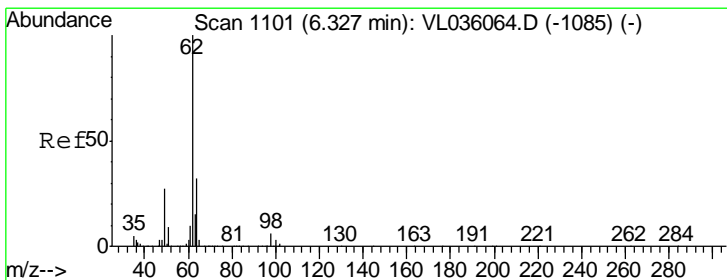
#36
Benzene
Concen: 0.018 ppbv
RT: 6.88 min Scan# 1273
Delta R.T. -0.03 min
Lab File: VL036160.D
Acq: 11 Dec 2020 11:58

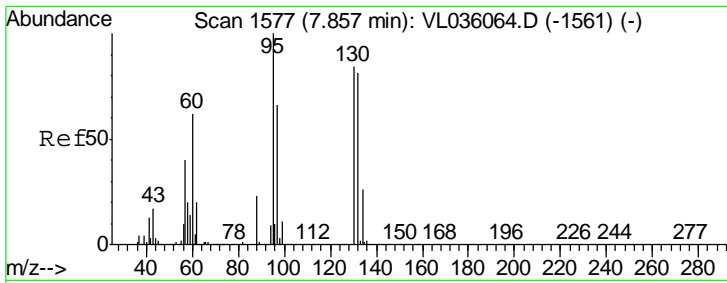
| Tgt Ion | Resp | Lower | Upper |
|---------|------|-------|-------|
| 78 | 3934 | | |
| 77 | 14.8 | 19.4 | 29.2# |
| 50 | 9.9 | 17.8 | 26.8# |



#37
1,2-Dichloroethane
Concen: 0.004 ppbv
RT: 6.30 min Scan# 1092
Delta R.T. -0.03 min
Lab File: VL036160.D
Acq: 11 Dec 2020 11:58

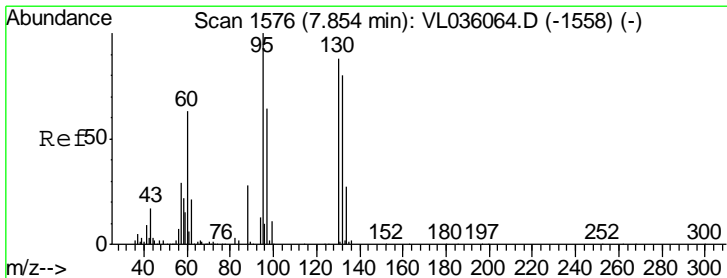
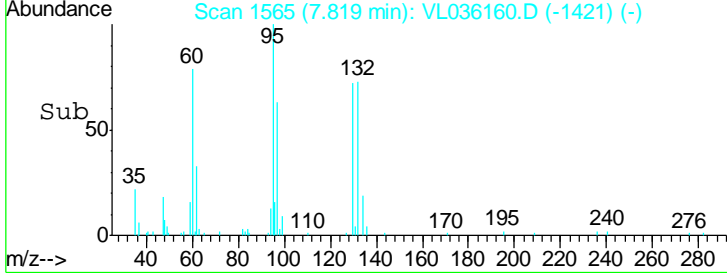
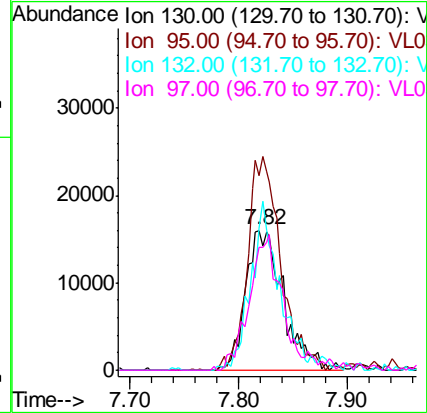
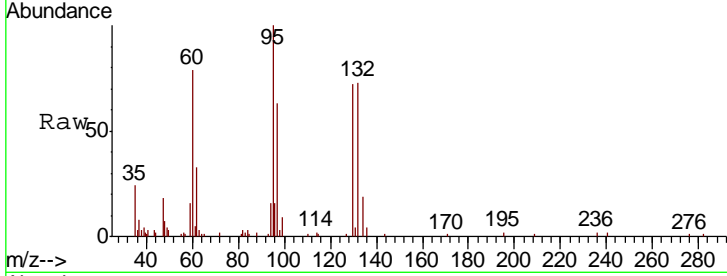
| Tgt Ion | Resp | Lower | Upper |
|---------|------|-------|-------|
| 62 | 453 | | |
| 98 | 0.0 | 4.6 | 7.0# |





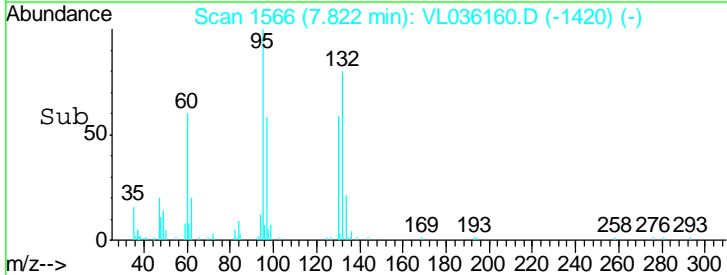
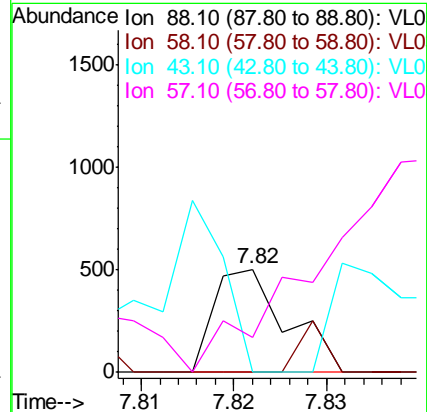
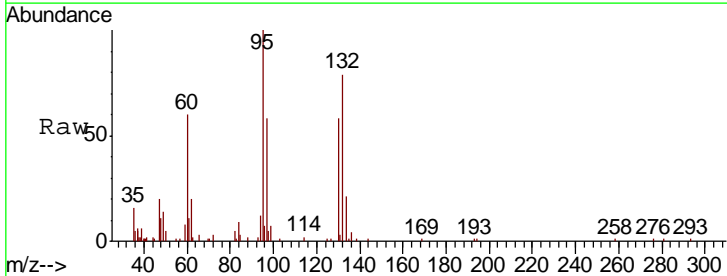
#38
 Trichloroethene
 Concen: 0.465 ppbv m
 RT: 7.82 min Scan# 1565
 Delta R.T. -0.04 min
 Lab File: VL036160.D
 Acq: 11 Dec 2020 11:58

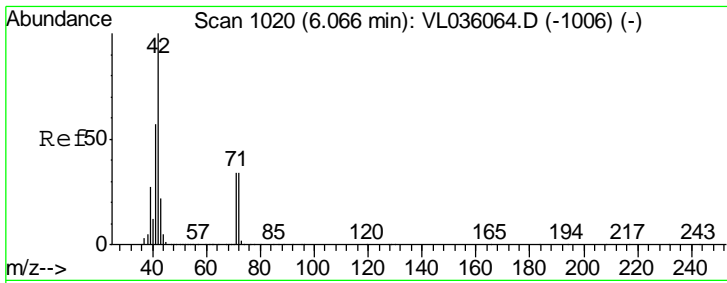
| Tgt Ion | Resp | Lower | Upper |
|---------|-------|-------|-------|
| 130 | 100 | | |
| 95 | 139.1 | 95.2 | 142.8 |
| 132 | 101.7 | 76.9 | 115.3 |
| 97 | 88.2 | 62.3 | 93.5 |



#40
 1,4-Dioxane
 Concen: 0.010 ppbv
 RT: 7.82 min Scan# 1566
 Delta R.T. -0.03 min
 Lab File: VL036160.D
 Acq: 11 Dec 2020 11:58

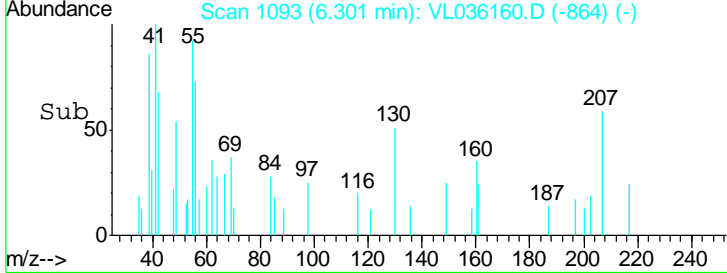
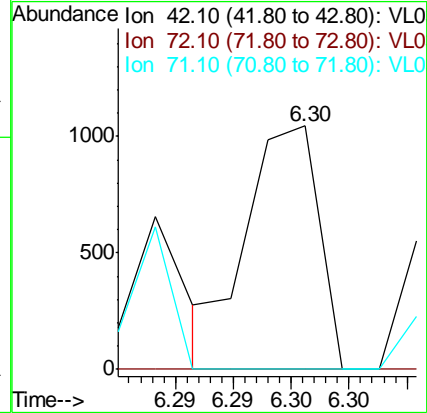
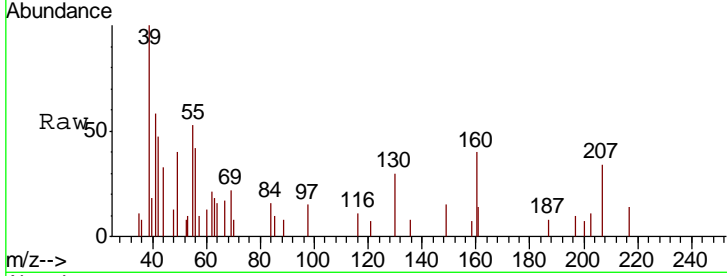
| Tgt Ion | Resp | Lower | Upper |
|---------|------|-------|--------|
| 88 | 100 | | |
| 58 | 0.0 | 122.6 | 184.0# |
| 43 | 0.0 | 0.0 | 0.0 |
| 57 | 0.0 | 0.0 | 0.0 |





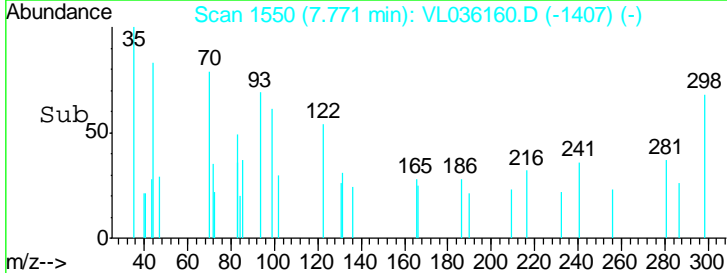
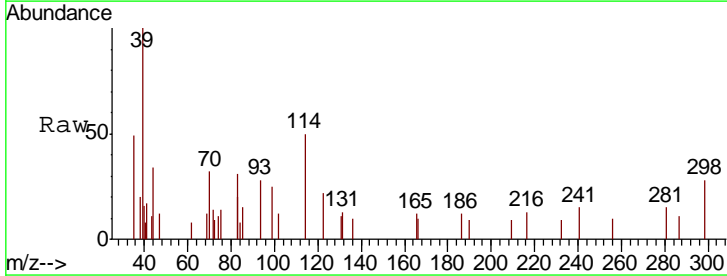
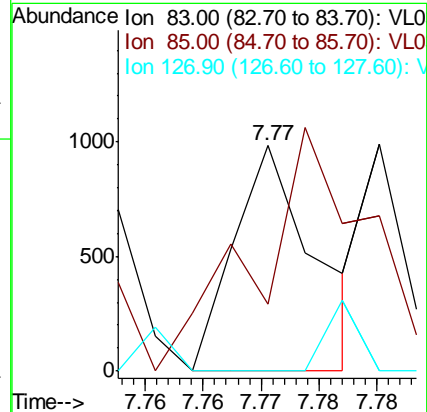
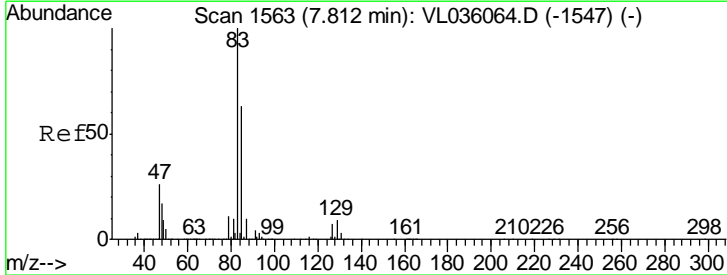
#41
 Tetrahydrofuran
 Concen: 0.004 ppbv
 RT: 6.30 min Scan# 1093
 Delta R.T. 0.23 min
 Lab File: VL036160.D
 Acq: 11 Dec 2020 11:58

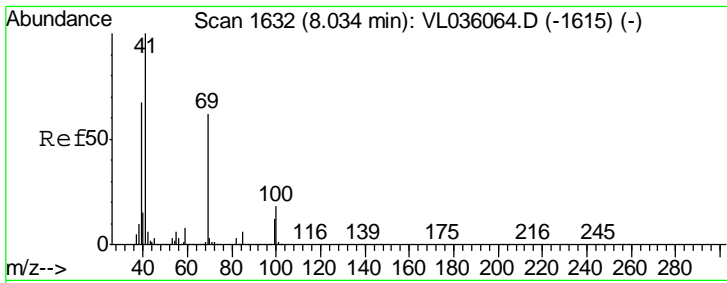
| Tgt Ion | Resp | Lower | Upper |
|---------|------|-------|-------|
| 42 | 100 | | |
| 72 | 28.2 | 28.3 | 42.5# |
| 71 | 0.0 | 27.3 | 40.9# |



#42
 Bromodichloromethane
 Concen: 0.003 ppbv
 RT: 7.77 min Scan# 1550
 Delta R.T. -0.04 min
 Lab File: VL036160.D
 Acq: 11 Dec 2020 11:58

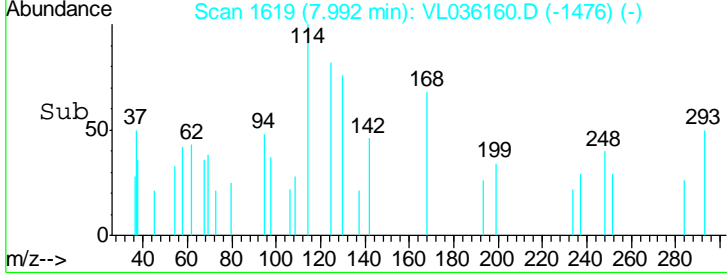
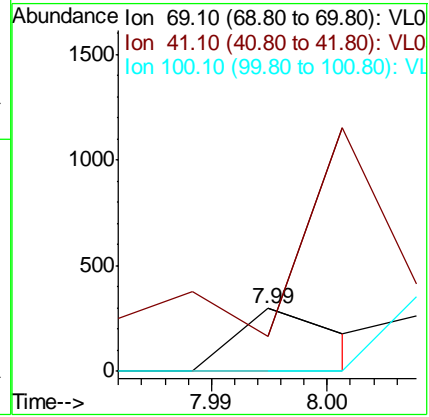
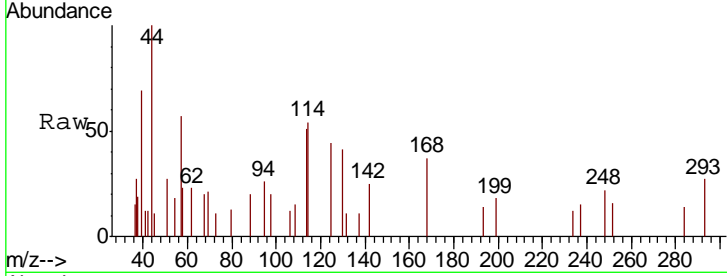
| Tgt Ion | Resp | Lower | Upper |
|---------|------|-------|-------|
| 83 | 100 | | |
| 85 | 4.2 | 50.2 | 75.2# |
| 127 | 0.0 | 5.5 | 8.3# |





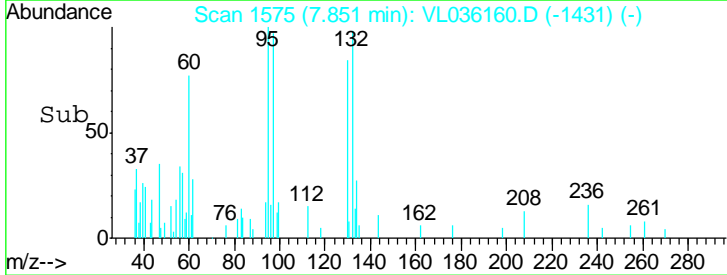
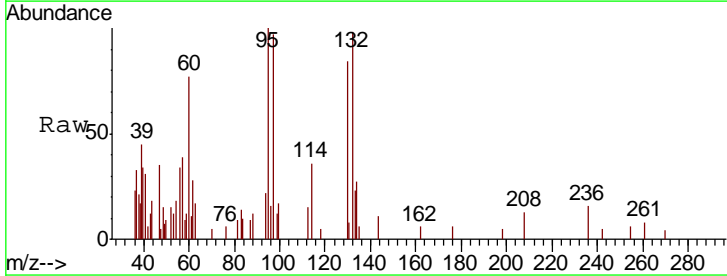
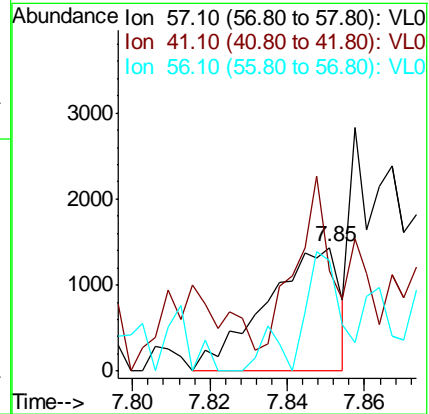
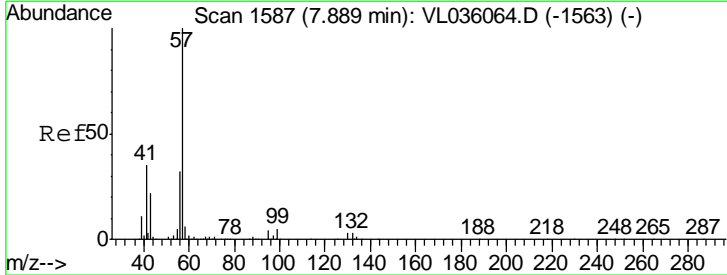
#43
 Methyl Methacrylate
 Concen: 0.001 ppbv
 RT: 7.99 min Scan# 1619
 Delta R.T. -0.04 min
 Lab File: VL036160.D
 Acq: 11 Dec 2020 11:58

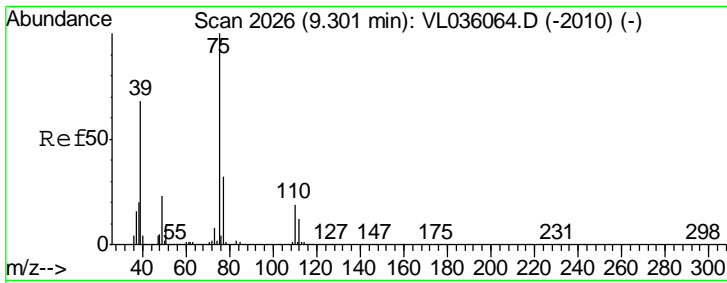
| Tgt Ion | Resp | Lower | Upper |
|---------|------|-------|--------|
| 69 | 100 | | |
| 41 | 0.0 | 133.0 | 199.6# |
| 100 | 0.0 | 25.4 | 38.0# |



#44
 2,2,4-Trimethylpentane
 Concen: 0.005 ppbv
 RT: 7.85 min Scan# 1575
 Delta R.T. -0.04 min
 Lab File: VL036160.D
 Acq: 11 Dec 2020 11:58

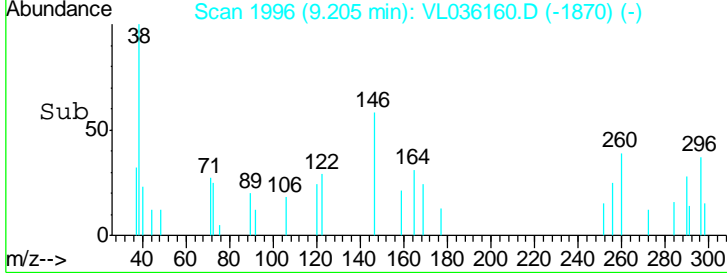
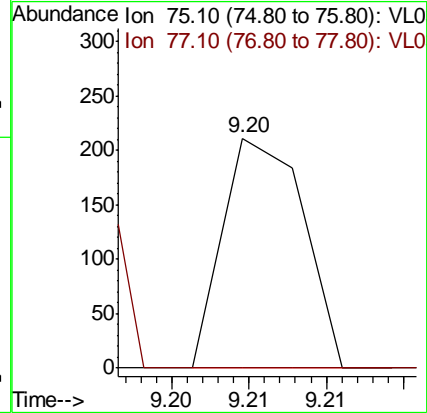
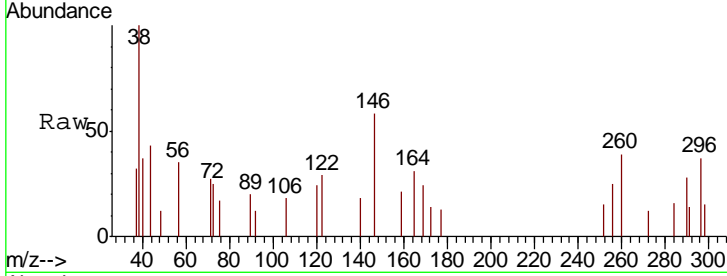
| Tgt Ion | Resp | Lower | Upper |
|---------|-------|-------|-------|
| 57 | 100 | | |
| 41 | 112.1 | 28.9 | 43.3# |
| 56 | 132.9 | 25.3 | 37.9# |





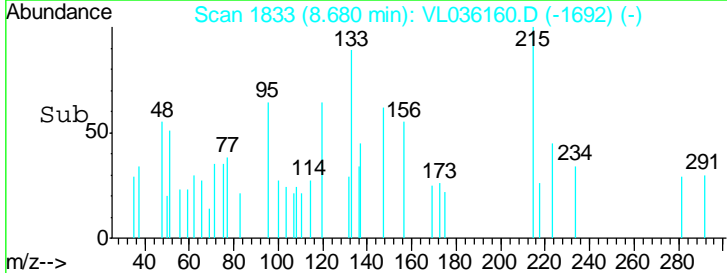
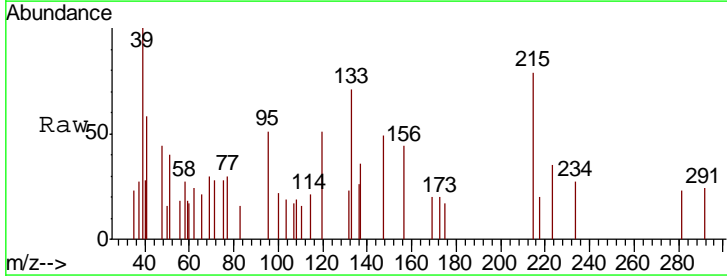
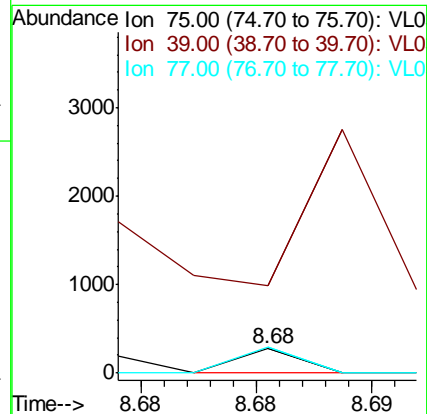
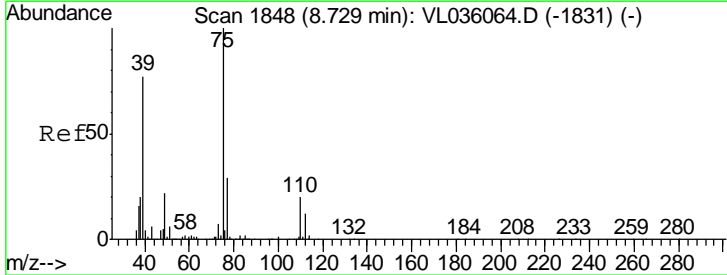
#45
 t-1,3-Dichloropropene
 Concen: 0.001 ppbv
 RT: 9.20 min Scan# 1996
 Delta R.T. -0.10 min
 Lab File: VL036160.D
 Acq: 11 Dec 2020 11:58

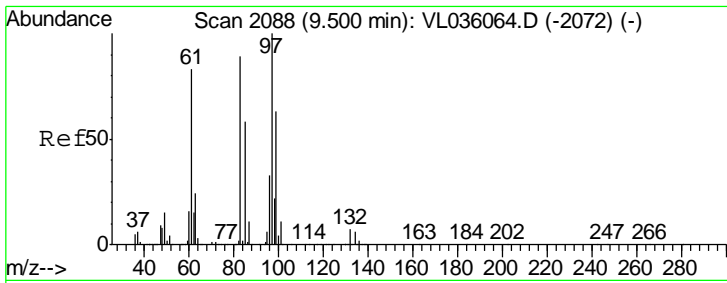
| Tgt Ion | Resp | Lower | Upper |
|---------|------|-------|-------|
| 75 | 100 | | |
| 77 | 0.0 | 26.0 | 39.0# |



#46
 cis-1,3-Dichloropropene
 Concen: 0.000 ppbv
 RT: 8.68 min Scan# 1833
 Delta R.T. -0.05 min
 Lab File: VL036160.D
 Acq: 11 Dec 2020 11:58

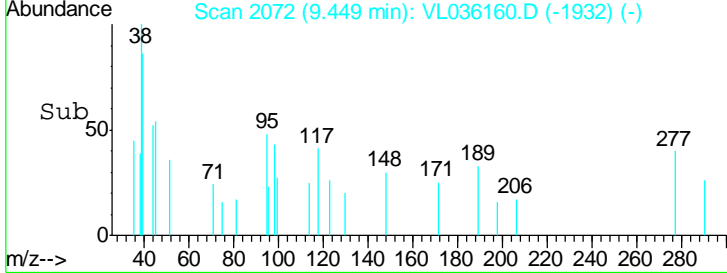
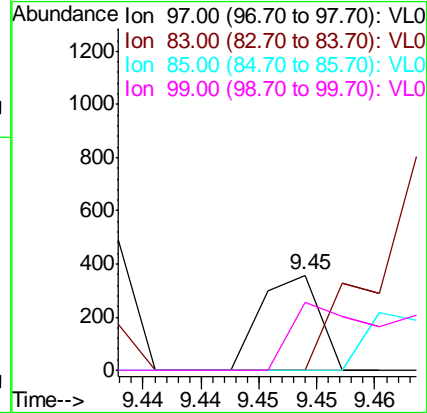
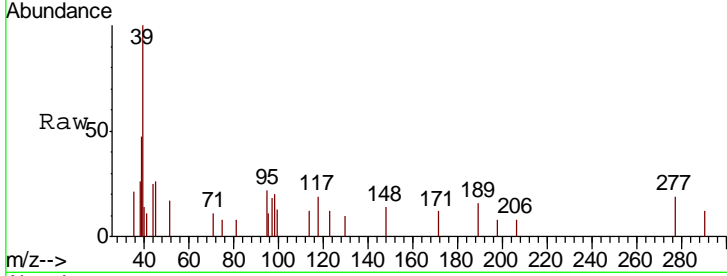
| Tgt Ion | Resp | Lower | Upper |
|---------|-------|-------|-------|
| 75 | 100 | | |
| 39 | 0.0 | 61.6 | 92.4# |
| 77 | 108.7 | 23.0 | 34.6# |





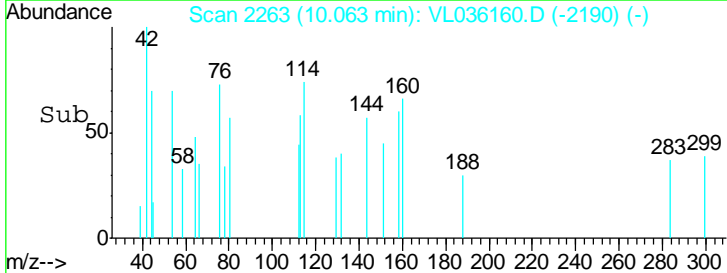
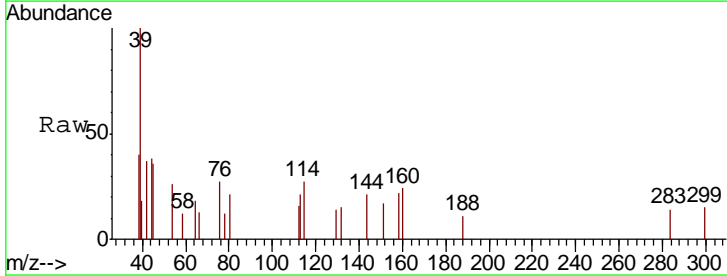
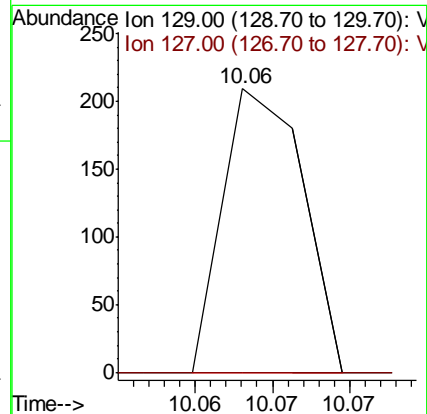
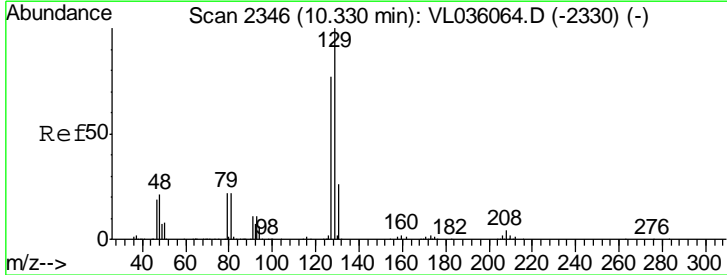
#47
 1,1,2-Trichloroethane
 Concen: 0.002 ppbv
 RT: 9.45 min Scan# 2072
 Delta R.T. -0.05 min
 Lab File: VL036160.D
 Acq: 11 Dec 2020 11:58

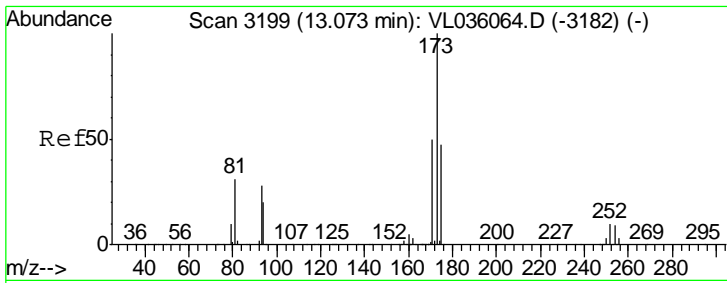
| Tgt Ion | Resp | Lower | Upper |
|---------|------|-------|--------|
| 97 | 100 | | |
| 83 | 0.0 | 71.4 | 107.2# |
| 85 | 0.0 | 46.6 | 70.0# |
| 99 | 71.8 | 50.7 | 76.1 |



#48
 Dibromochloromethane
 Concen: 0.001 ppbv
 RT: 10.06 min Scan# 2263
 Delta R.T. -0.27 min
 Lab File: VL036160.D
 Acq: 11 Dec 2020 11:58

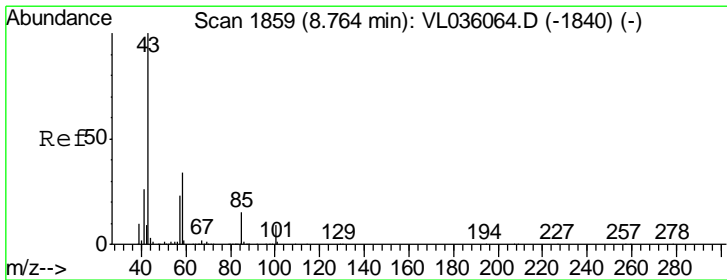
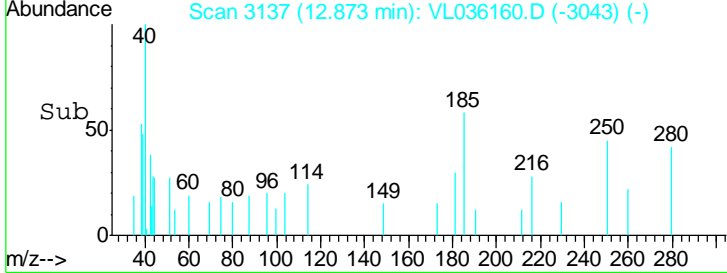
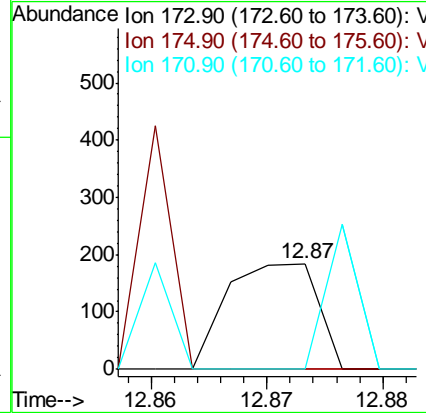
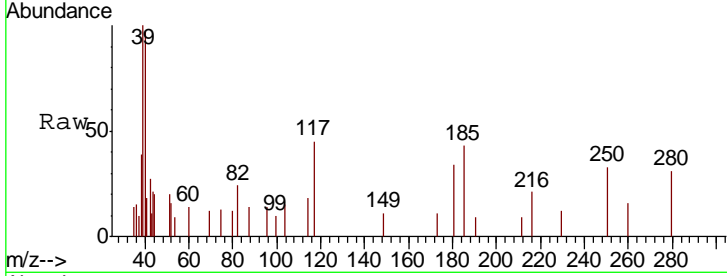
| Tgt Ion | Resp | Lower | Upper |
|---------|------|-------|-------|
| 129 | 100 | | |
| 127 | 62.7 | 39.0 | 117.0 |





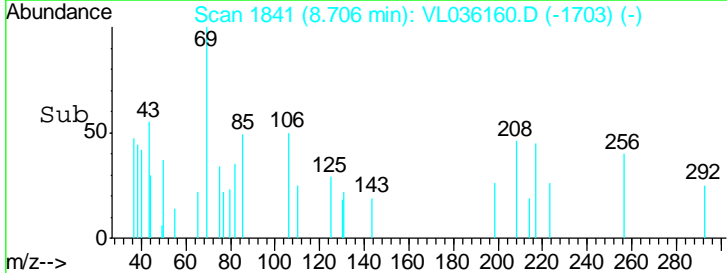
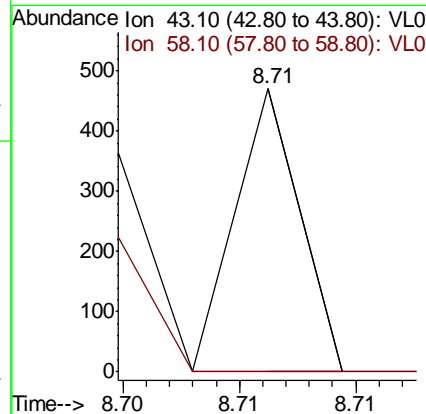
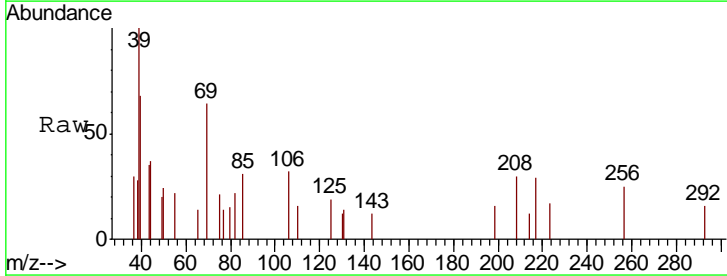
#49
 Bromoform
 Concen: 0.001 ppbv
 RT: 12.87 min Scan# 3137
 Delta R.T. -0.20 min
 Lab File: VL036160.D
 Acq: 11 Dec 2020 11:58

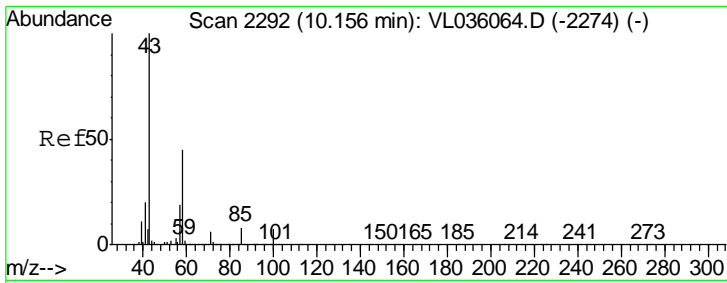
| Tgt Ion | Resp | Lower | Upper |
|---------|-------|-------|-------|
| 173 | 100 | | |
| 175 | 34.0 | 39.8 | 59.6# |
| 171 | 119.0 | 42.5 | 63.7# |



#50
 4-Methyl-2-Pentanone
 Concen: 0.000 ppbv
 RT: 8.71 min Scan# 1841
 Delta R.T. -0.06 min
 Lab File: VL036160.D
 Acq: 11 Dec 2020 11:58

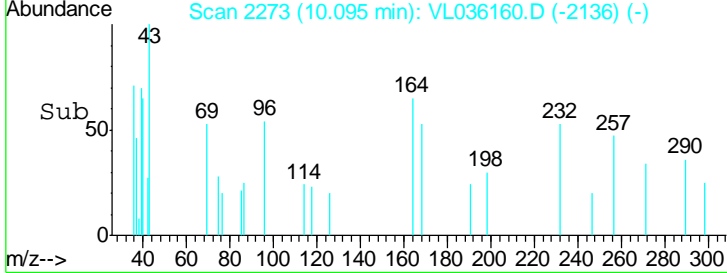
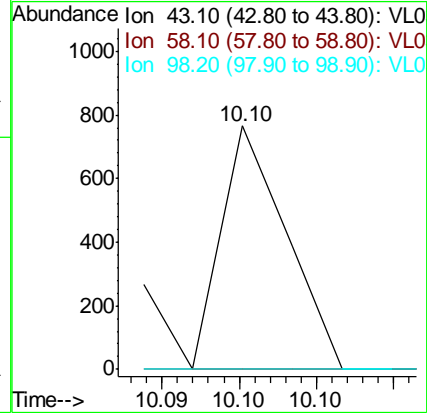
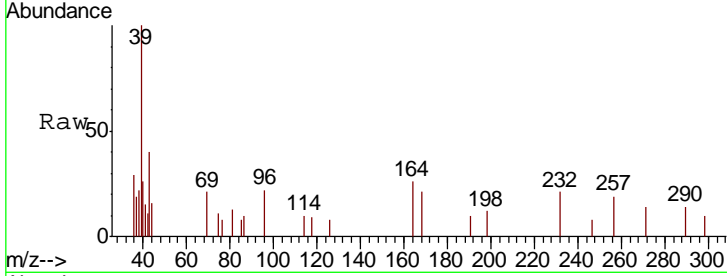
| Tgt Ion | Resp | Lower | Upper |
|---------|------|-------|-------|
| 43 | 100 | | |
| 58 | 0.0 | 27.4 | 41.2# |





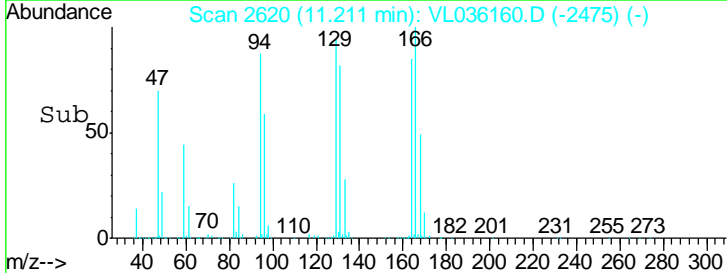
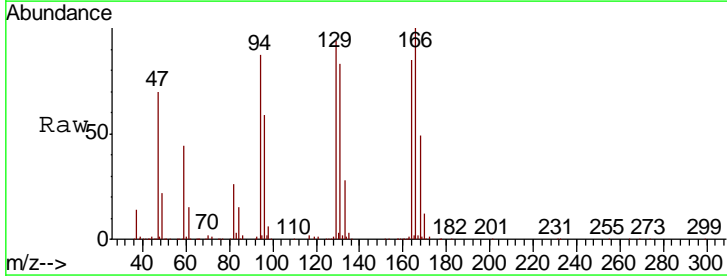
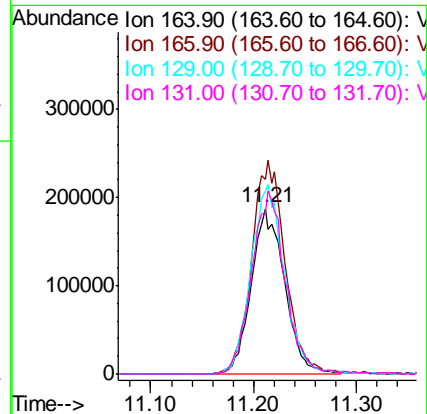
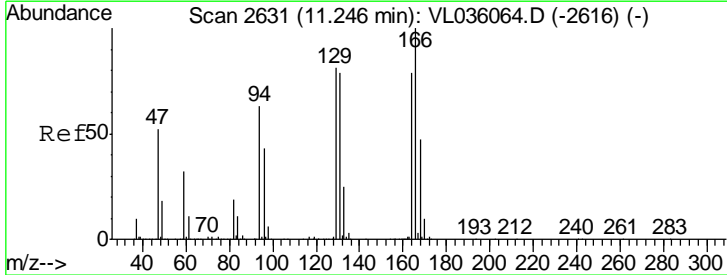
#51
 2-Hexanone
 Concen: 0.001 ppbv
 RT: 10.10 min Scan# 2273
 Delta R.T. -0.06 min
 Lab File: VL036160.D
 Acq: 11 Dec 2020 11:58

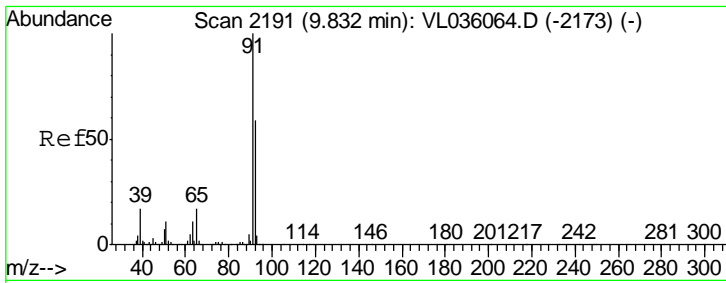
| Tgt Ion | Resp | Lower | Upper |
|---------|------|-------|-------|
| 43 | 100 | | |
| 58 | 0.0 | 38.7 | 58.1# |
| 98 | 33.2 | 0.1 | 0.1# |



#52
 Tetrachloroethene
 Concen: 5.239 ppbv m
 RT: 11.21 min Scan# 2620
 Delta R.T. -0.04 min
 Lab File: VL036160.D
 Acq: 11 Dec 2020 11:58

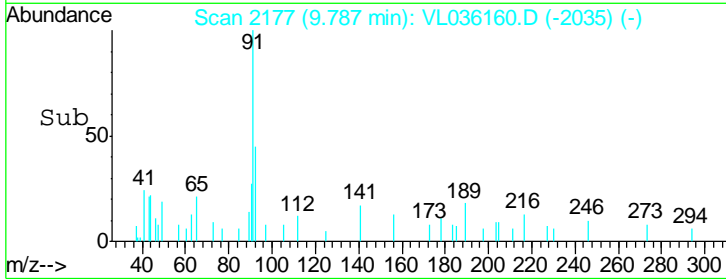
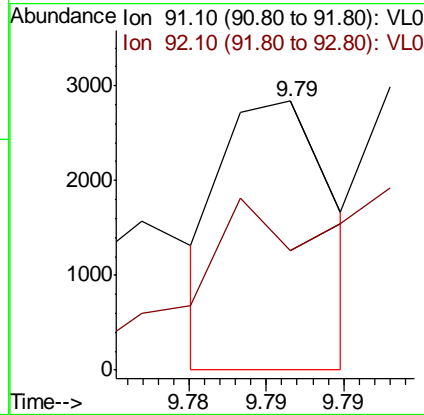
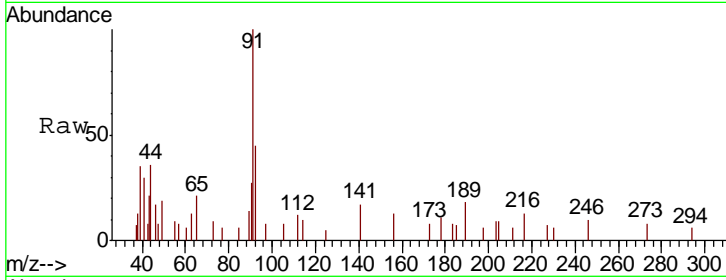
| Tgt Ion | Resp | Lower | Upper |
|---------|-------|-------|-------|
| 164 | 100 | | |
| 166 | 117.9 | 101.9 | 152.9 |
| 129 | 110.9 | 82.1 | 123.1 |
| 131 | 97.3 | 80.8 | 121.2 |





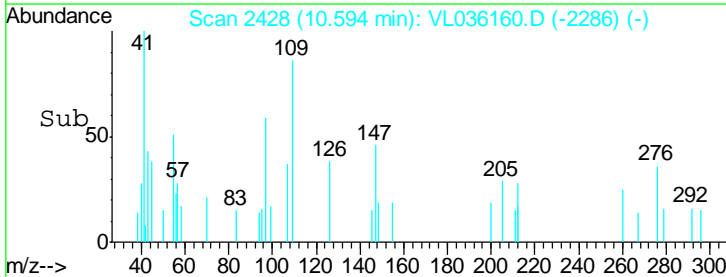
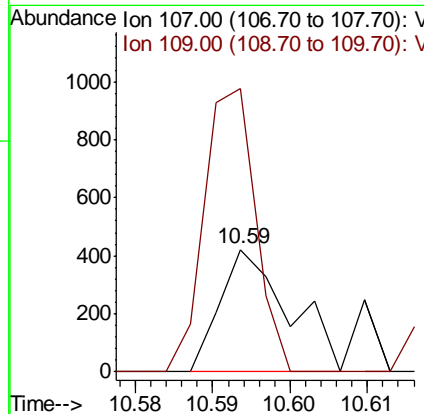
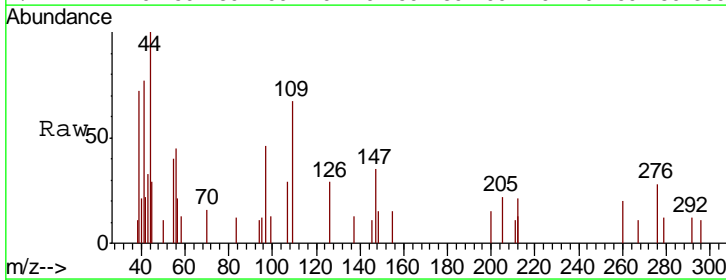
#53
 Toluene
 Concen: 0.006 ppbv
 RT: 9.79 min Scan# 2177
 Delta R.T. -0.04 min
 Lab File: VL036160.D
 Acq: 11 Dec 2020 11:58

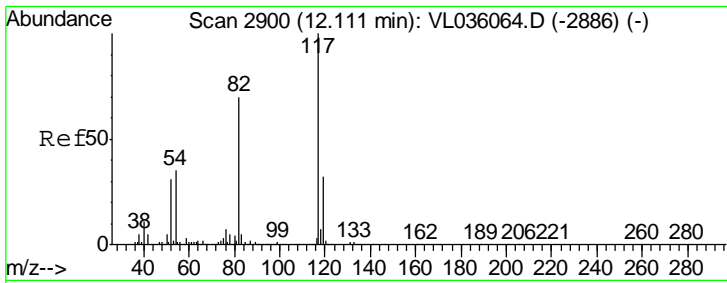
| Tgt Ion | Resp | Lower | Upper |
|---------|------|-------|-------|
| 91 | 100 | | |
| 92 | 0.0 | 48.2 | 72.2# |



#54
 1,2-Dibromoethane
 Concen: 0.002 ppbv
 RT: 10.59 min Scan# 2428
 Delta R.T. -0.04 min
 Lab File: VL036160.D
 Acq: 11 Dec 2020 11:58

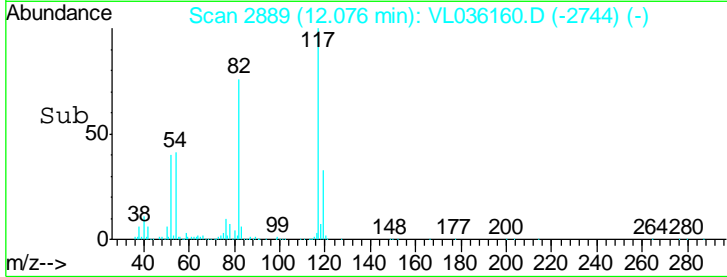
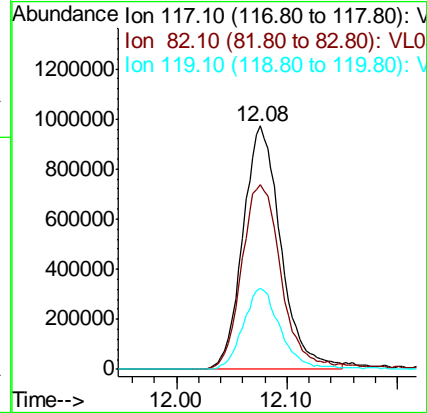
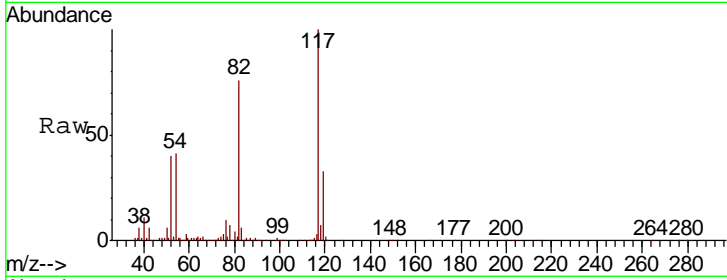
| Tgt Ion | Resp | Lower | Upper |
|---------|-------|-------|--------|
| 107 | 100 | | |
| 109 | 231.6 | 76.6 | 115.0# |





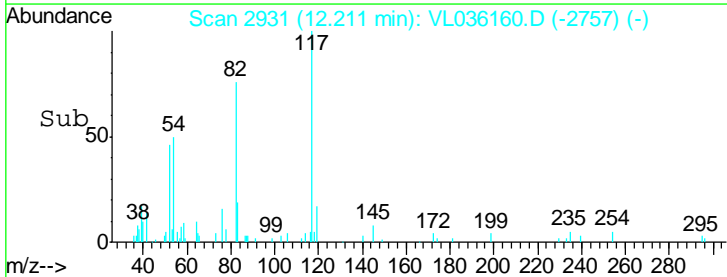
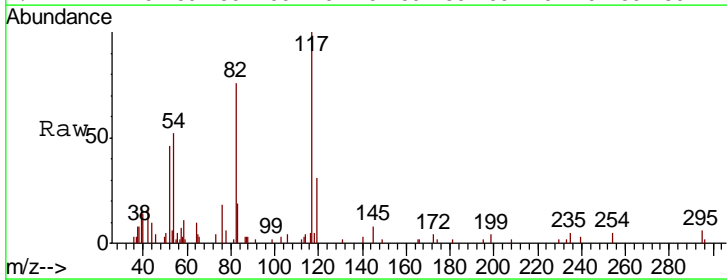
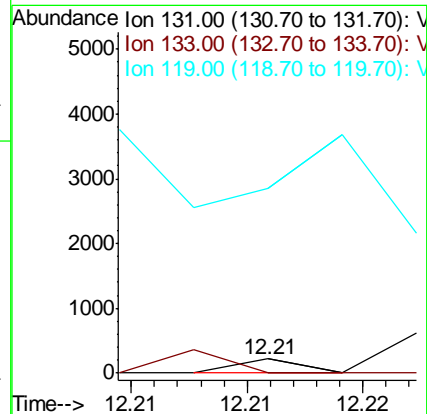
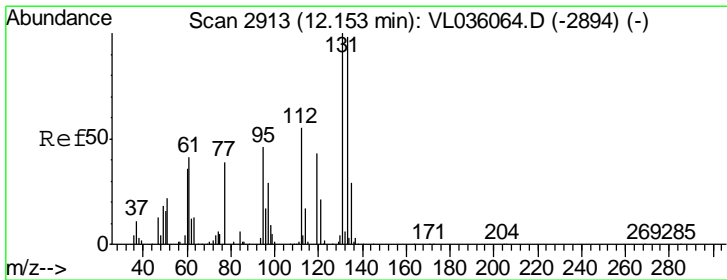
#55
 Chlorobenzene-d5
 Concen: 10.000 ppbv
 RT: 12.08 min Scan# 2889
 Delta R.T. -0.04 min
 Lab File: VL036160.D
 Acq: 11 Dec 2020 11:58

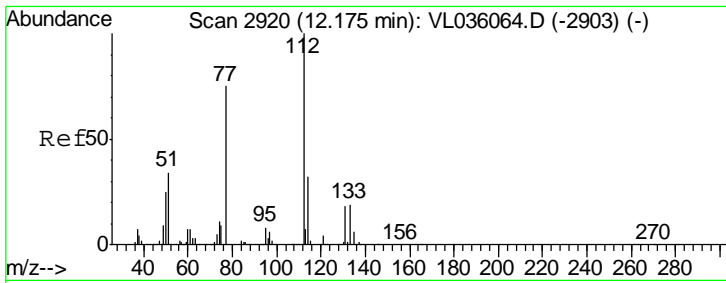
| Tgt Ion | Resp | Lower | Upper |
|---------|---------|-------|-------|
| 117 | 2315871 | | |
| 82 | 100 | 0.0 | 0.0# |
| 119 | 33.4 | 0.0 | 0.0# |



#56
 1,1,1,2-Tetrachloroethane
 Concen: 0.000 ppbv
 RT: 12.21 min Scan# 2931
 Delta R.T. 0.06 min
 Lab File: VL036160.D
 Acq: 11 Dec 2020 11:58

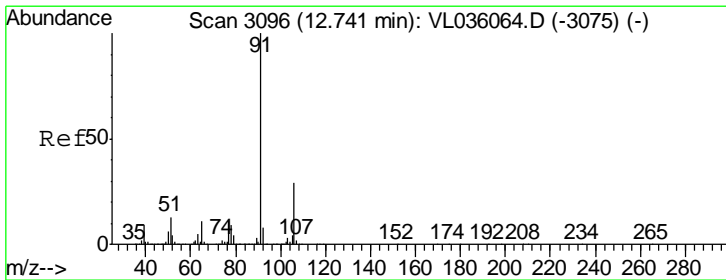
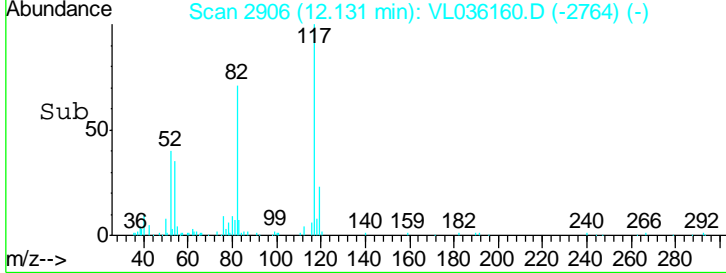
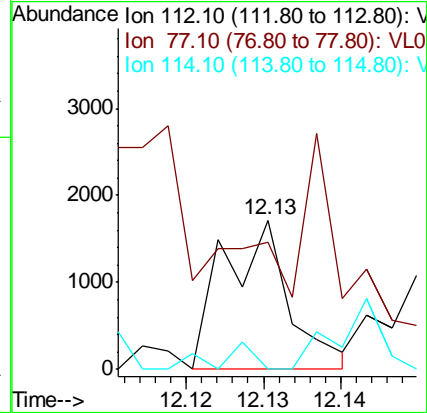
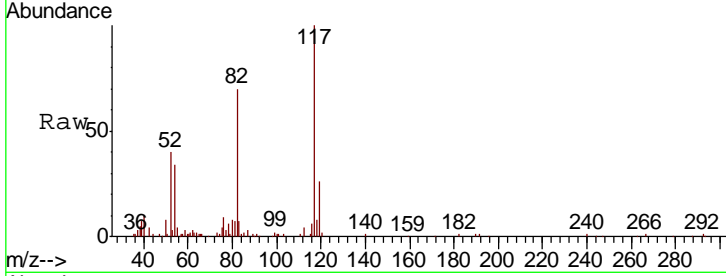
| Tgt Ion | Resp | Lower | Upper |
|---------|------|-------|--------|
| 131 | 42 | | |
| 133 | 100 | 77.7 | 116.5# |
| 119 | 0.0 | 51.6 | 77.4# |





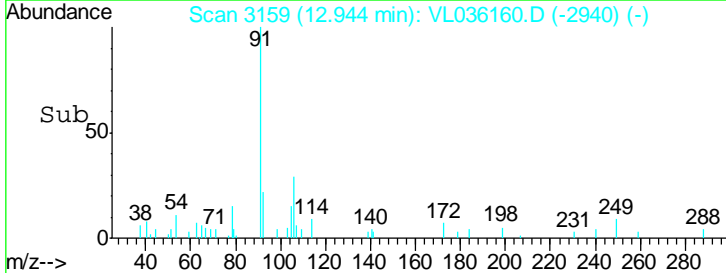
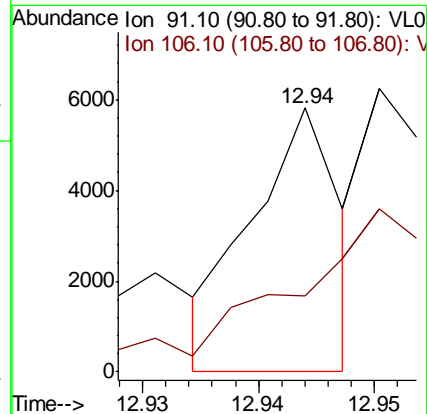
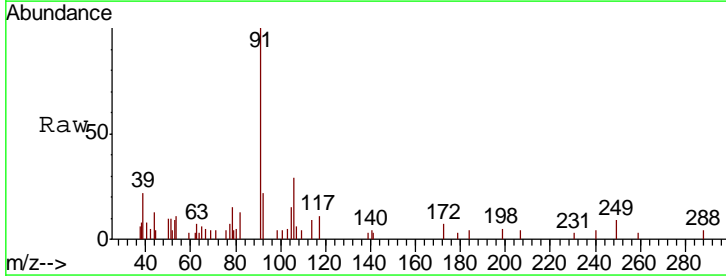
#57
 Chlorobenzene
 Concen: 0.006 ppbv
 RT: 12.13 min Scan# 2906
 Delta R.T. -0.04 min
 Lab File: VL036160.D
 Acq: 11 Dec 2020 11:58

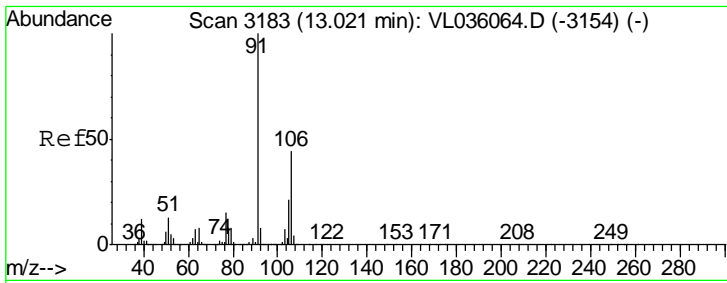
| Tgt Ion | Resp | Lower | Upper |
|---------|------|-------|-------|
| 112 | 1005 | | |
| 77 | 37.6 | 60.5 | 90.7# |
| 114 | 0.0 | 29.2 | 35.6# |



#58
 Ethyl Benzene
 Concen: 0.010 ppbv
 RT: 12.94 min Scan# 3159
 Delta R.T. 0.20 min
 Lab File: VL036160.D
 Acq: 11 Dec 2020 11:58

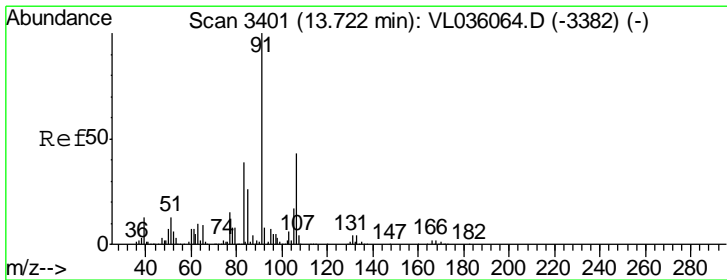
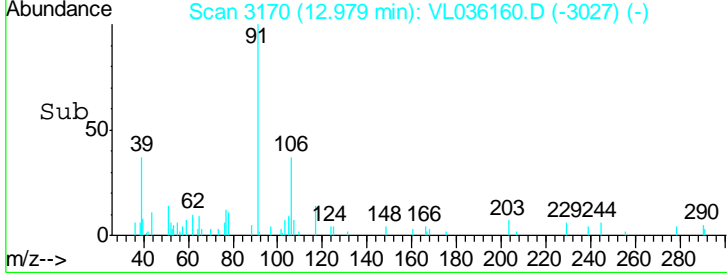
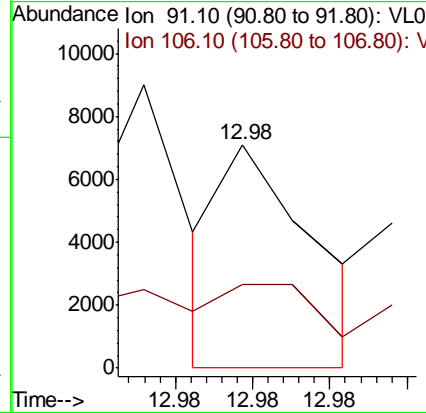
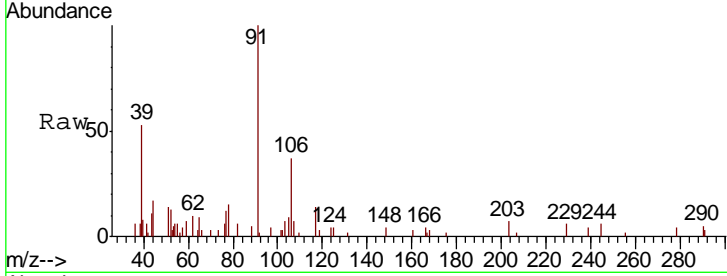
| Tgt Ion | Resp | Lower | Upper |
|---------|------|-------|-------|
| 91 | 3088 | | |
| 106 | 31.9 | 23.0 | 34.4 |





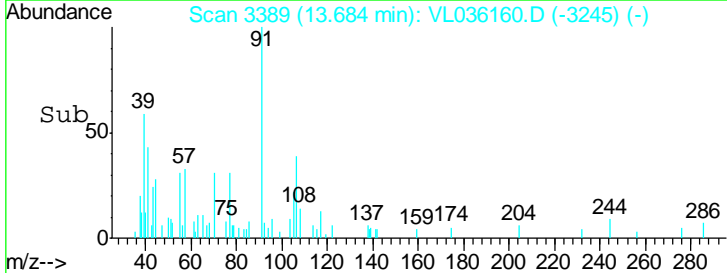
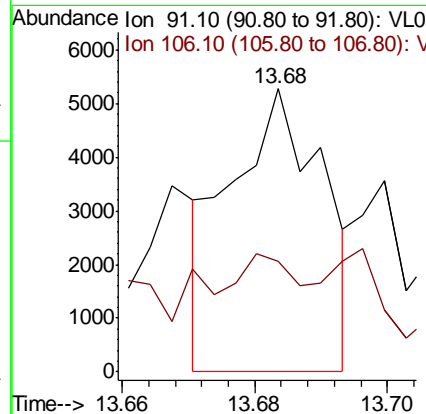
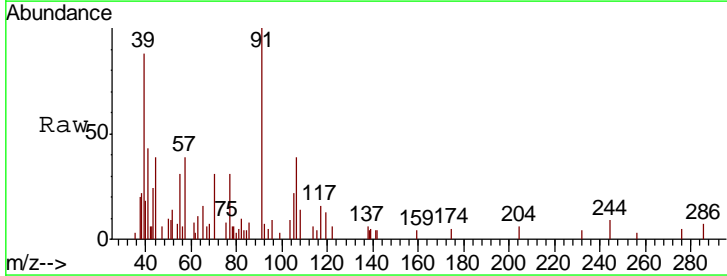
#59
 m/p-Xylene
 Concen: 0.011 ppbv
 RT: 12.98 min Scan# 3170
 Delta R.T. -0.04 min
 Lab File: VL036160.D
 Acq: 11 Dec 2020 11:58

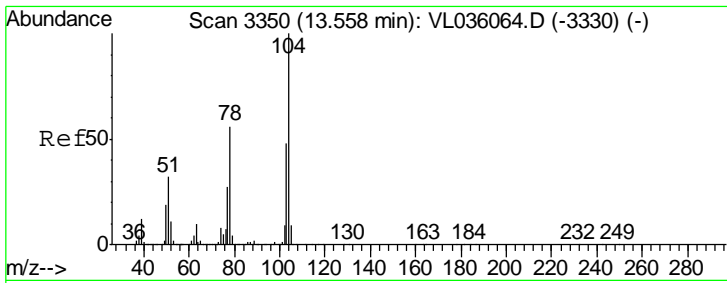
| Tgt Ion | Resp | Lower | Upper |
|---------|------|-------|-------|
| 91 | 100 | | |
| 106 | 0.0 | 33.6 | 50.4# |



#60
 o-Xylene
 Concen: 0.020 ppbv
 RT: 13.68 min Scan# 3389
 Delta R.T. -0.04 min
 Lab File: VL036160.D
 Acq: 11 Dec 2020 11:58

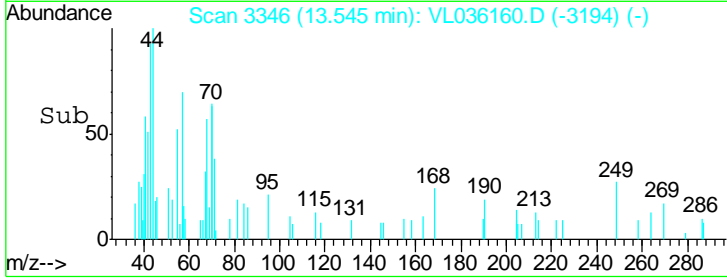
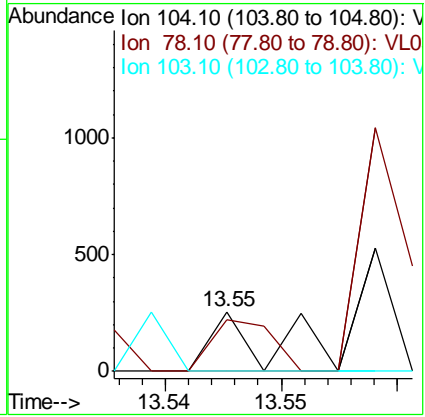
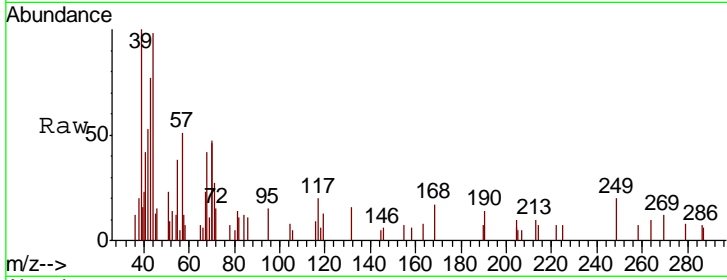
| Tgt Ion | Resp | Lower | Upper |
|---------|------|-------|-------|
| 91 | 100 | | |
| 106 | 0.0 | 21.6 | 64.6# |





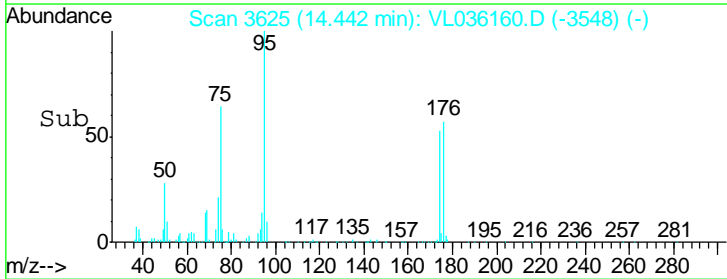
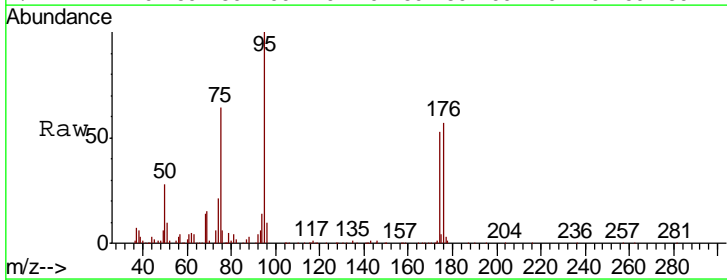
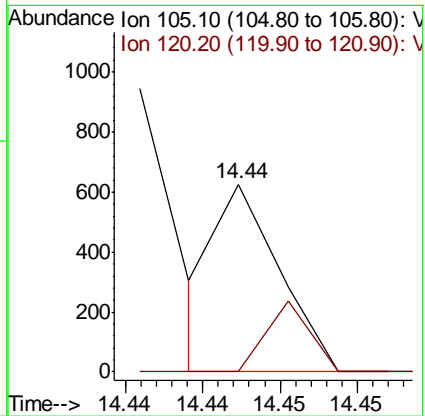
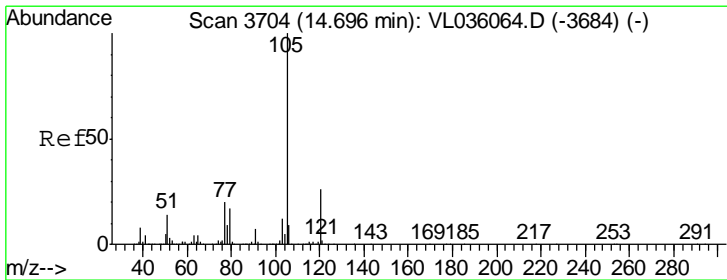
#61
 Styrene
 Concen: 0.001 ppbv
 RT: 13.55 min Scan# 3346
 Delta R.T. -0.01 min
 Lab File: VL036160.D
 Acq: 11 Dec 2020 11:58

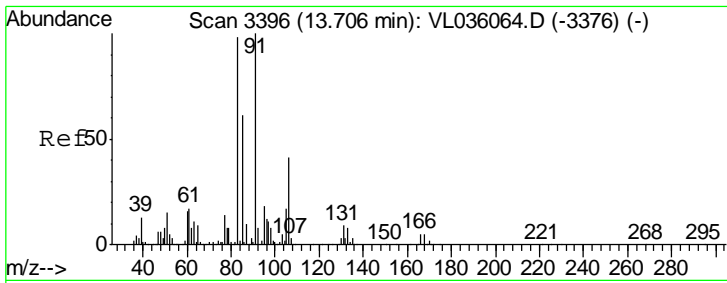
| Tgt Ion | Resp | Lower | Upper |
|---------|-------|-------|-------|
| 104 | 100 | | |
| 78 | 543.8 | 45.8 | 68.8# |
| 103 | 144.8 | 38.6 | 57.8# |



#62
 Isopropylbenzene
 Concen: 0.000 ppbv
 RT: 14.44 min Scan# 3625
 Delta R.T. -0.25 min
 Lab File: VL036160.D
 Acq: 11 Dec 2020 11:58

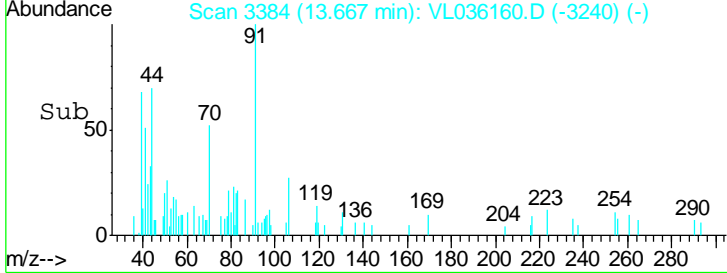
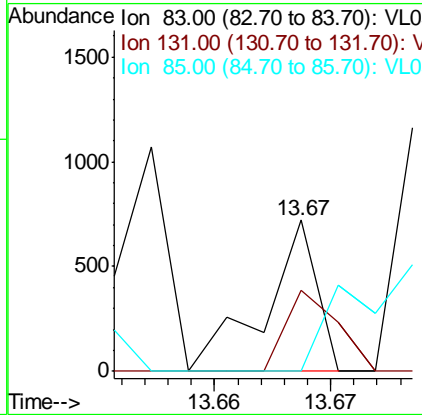
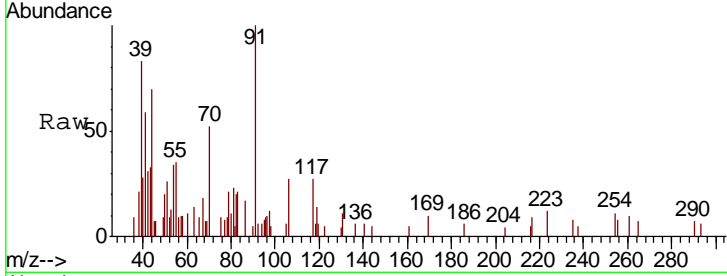
| Tgt Ion | Resp | Lower | Upper |
|---------|------|-------|-------|
| 105 | 100 | | |
| 120 | 25.7 | 20.1 | 30.1 |





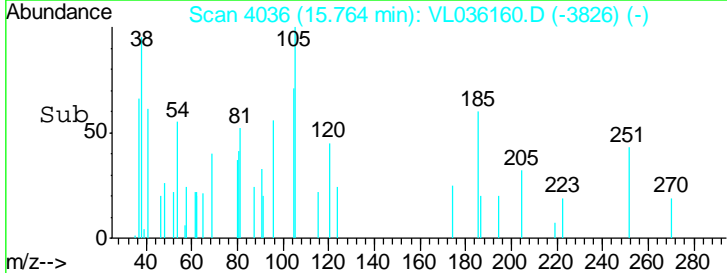
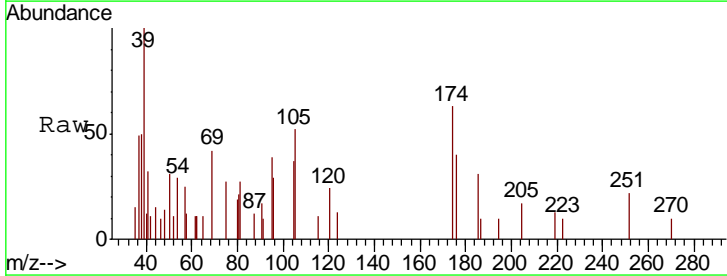
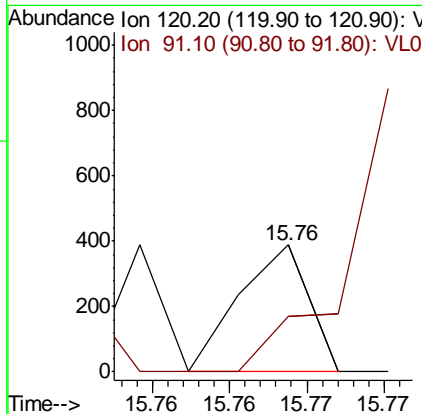
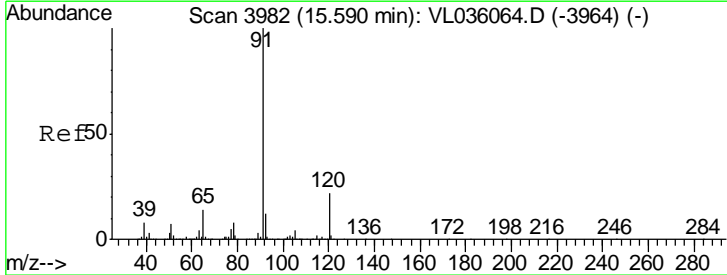
#63
 1,1,2,2-Tetrachloroethane
 Concen: 0.001 ppbv
 RT: 13.67 min Scan# 3384
 Delta R.T. -0.04 min
 Lab File: VL036160.D
 Acq: 11 Dec 2020 11:58

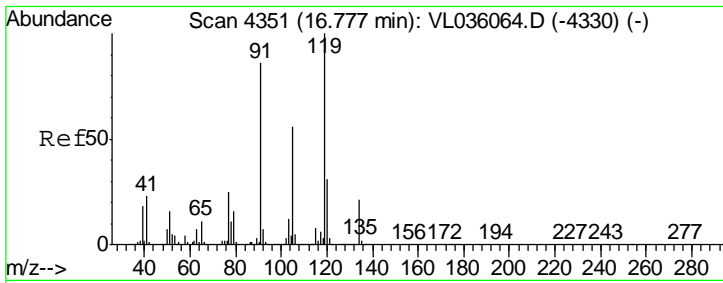
| Tgt Ion | Resp | Lower | Upper |
|---------|------|-------|-------|
| 83 | 100 | | |
| 131 | 53.6 | 4.6 | 13.8# |
| 85 | 0.0 | 32.5 | 97.5# |



#64
 n-propylbenzene
 Concen: 0.001 ppbv
 RT: 15.76 min Scan# 4036
 Delta R.T. 0.17 min
 Lab File: VL036160.D
 Acq: 11 Dec 2020 11:58

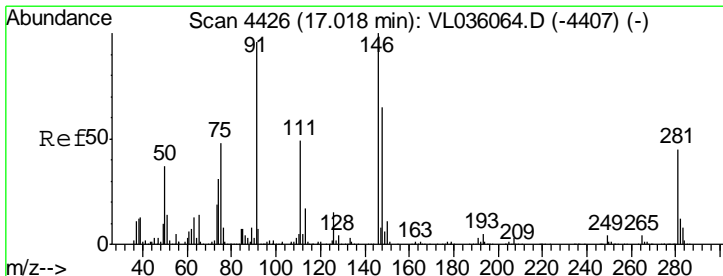
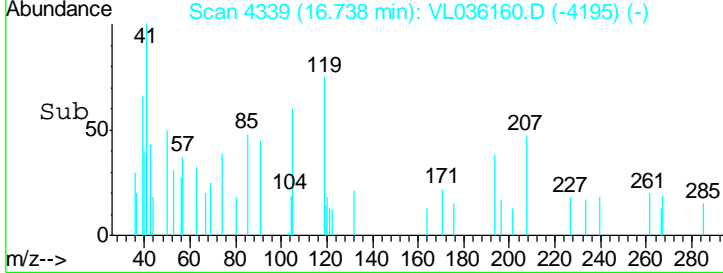
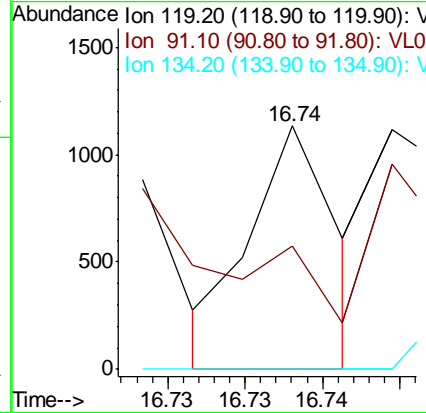
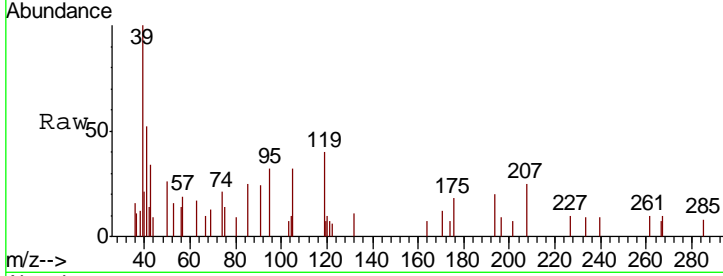
| Tgt Ion | Resp | Lower | Upper |
|---------|-------|-------|-------|
| 120 | 100 | | |
| 91 | 485.8 | 388.9 | 583.3 |





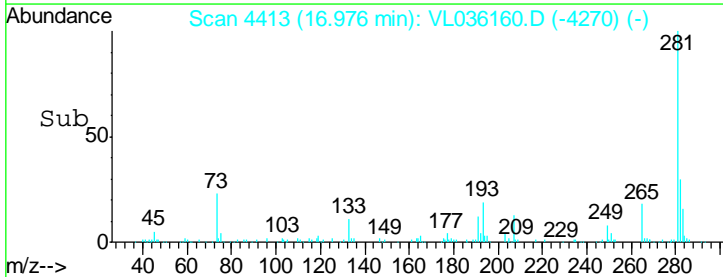
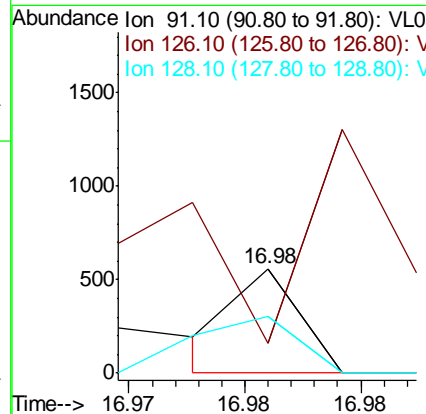
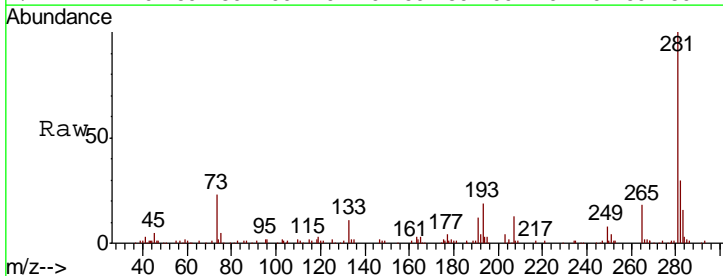
#65
 tert-Butylbenzene
 Concen: 0.001 ppbv
 RT: 16.74 min Scan# 4339
 Delta R.T. -0.04 min
 Lab File: VL036160.D
 Acq: 11 Dec 2020 11:58

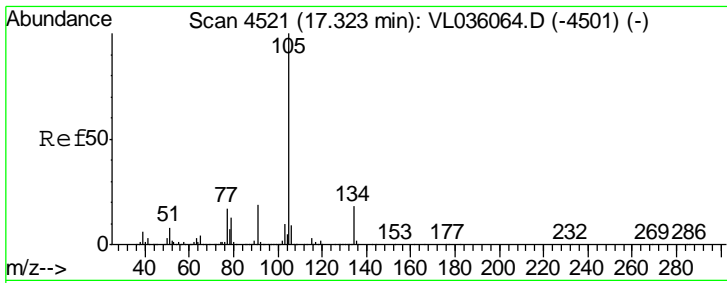
| Tgt Ion | Resp | Lower | Upper |
|---------|------|-------|--------|
| 119 | 100 | | |
| 91 | 0.0 | 70.2 | 105.2# |
| 134 | 0.0 | 15.8 | 23.6# |



#66
 Benzyl Chloride
 Concen: 0.001 ppbv
 RT: 16.98 min Scan# 4413
 Delta R.T. -0.04 min
 Lab File: VL036160.D
 Acq: 11 Dec 2020 11:58

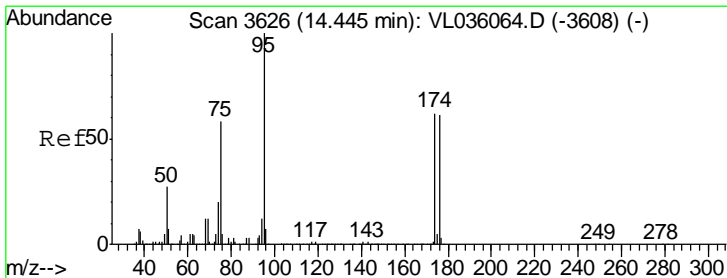
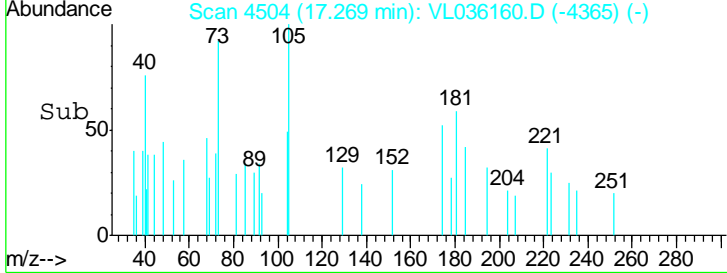
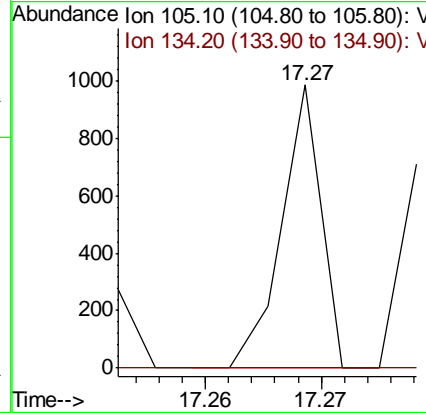
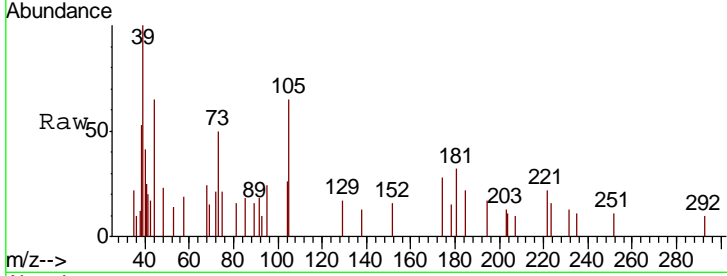
| Tgt Ion | Resp | Lower | Upper |
|---------|--------|-------|-------|
| 91 | 100 | | |
| 126 | 1372.2 | 13.5 | 20.3# |
| 128 | 0.0 | 4.4 | 6.6# |





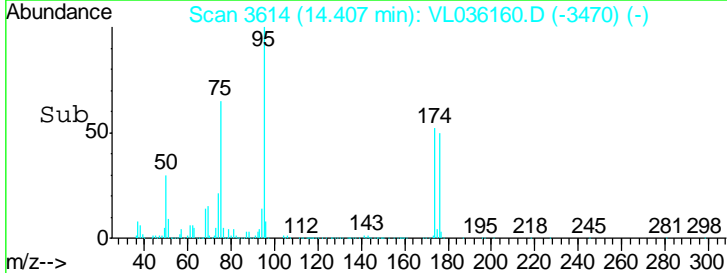
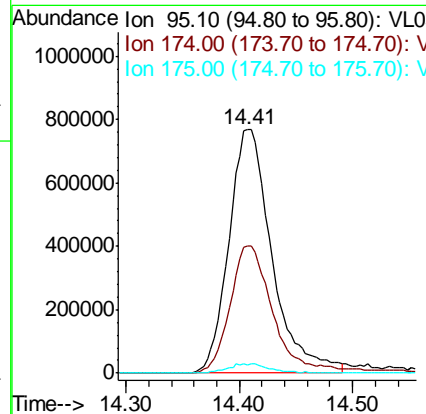
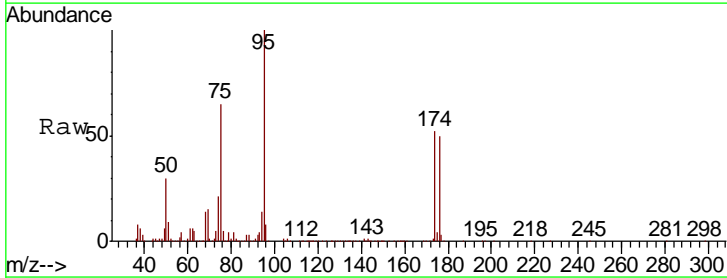
#67
 sec-Butylbenzene
 Concen: 0.001 ppbv
 RT: 17.27 min Scan# 4504
 Delta R.T. -0.05 min
 Lab File: VL036160.D
 Acq: 11 Dec 2020 11:58

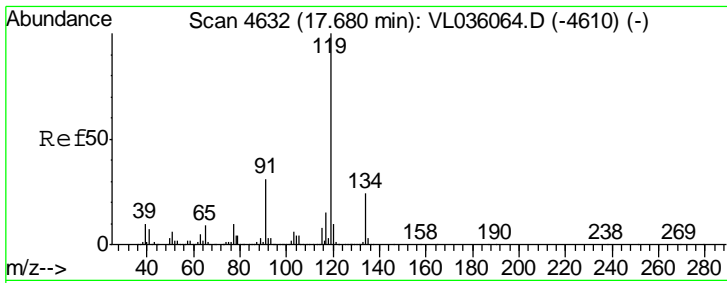
| Tgt Ion | Resp | Lower | Upper |
|---------|------|-------|-------|
| 105 | 100 | | |
| 134 | 0.0 | 14.2 | 21.4# |



#68
 1-Bromo-4-Fluorobenzene
 Concen: 10.992 ppbv
 RT: 14.41 min Scan# 3614
 Delta R.T. -0.04 min
 Lab File: VL036160.D
 Acq: 11 Dec 2020 11:58

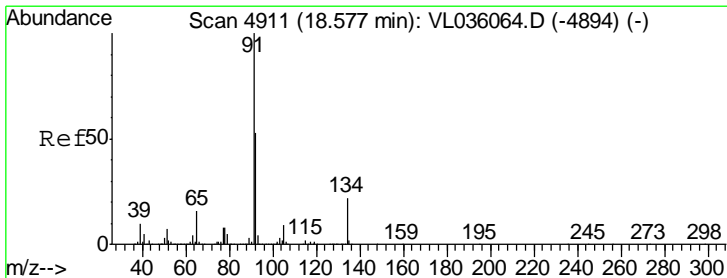
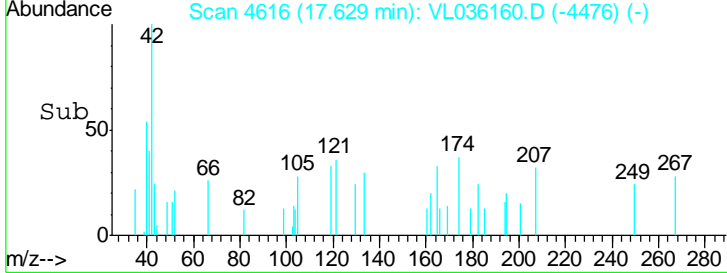
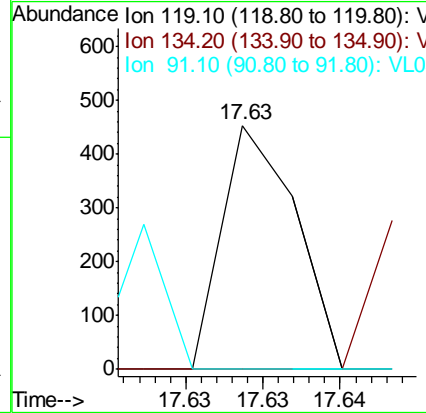
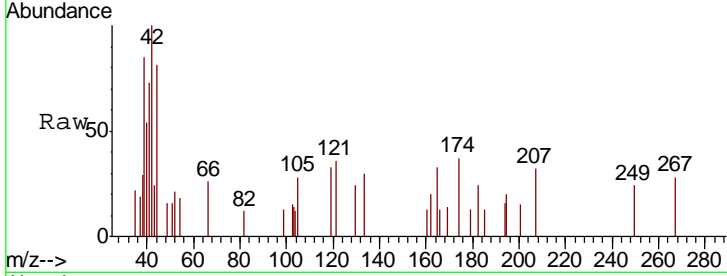
| Tgt Ion | Resp | Lower | Upper |
|---------|------|-------|-------|
| 95 | 100 | | |
| 174 | 54.3 | 50.7 | 76.1 |
| 175 | 3.9 | 4.0 | 6.0# |





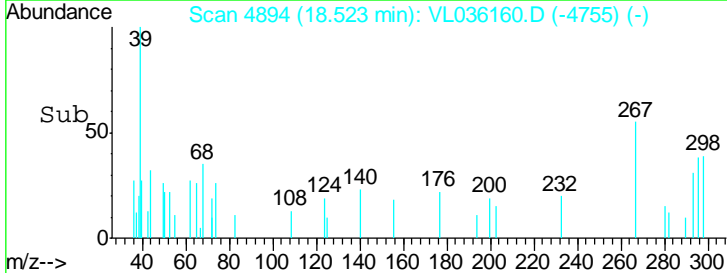
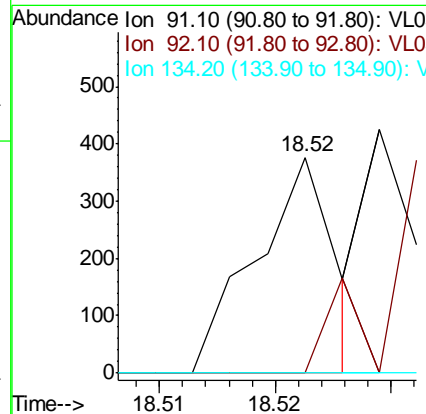
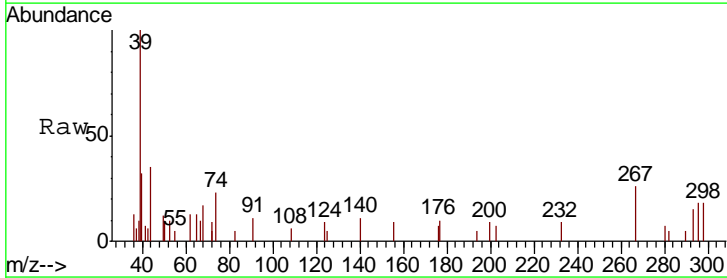
#69
 p-Isopropyltoluene
 Concen: 0.000 ppbv
 RT: 17.63 min Scan# 4616
 Delta R.T. -0.05 min
 Lab File: VL036160.D
 Acq: 11 Dec 2020 11:58

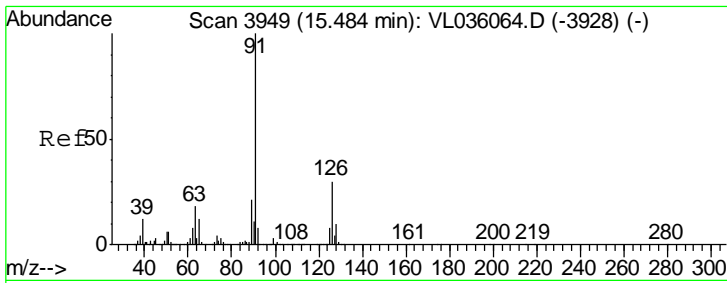
| Tgt Ion | Resp | Lower | Upper |
|---------|------|-------|-------|
| 119 | 149 | | |
| 134 | 0.0 | 19.8 | 29.6# |
| 91 | 0.0 | 25.8 | 38.6# |



#70
 n-Butylbenzene
 Concen: 0.001 ppbv
 RT: 18.52 min Scan# 4894
 Delta R.T. -0.05 min
 Lab File: VL036160.D
 Acq: 11 Dec 2020 11:58

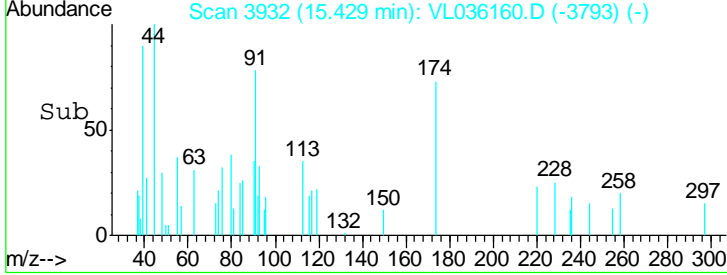
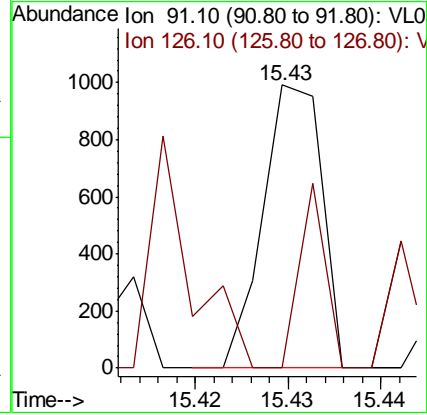
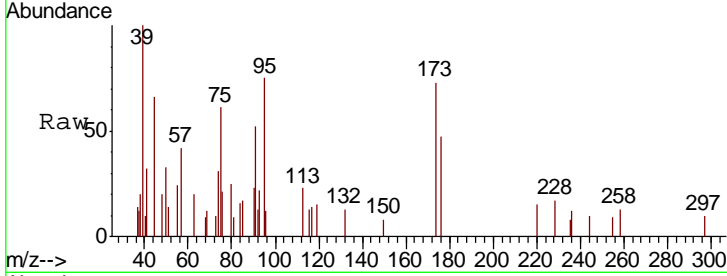
| Tgt Ion | Resp | Lower | Upper |
|---------|------|-------|-------|
| 91 | 177 | | |
| 92 | 0.0 | 43.3 | 64.9# |
| 134 | 0.0 | 17.1 | 25.7# |





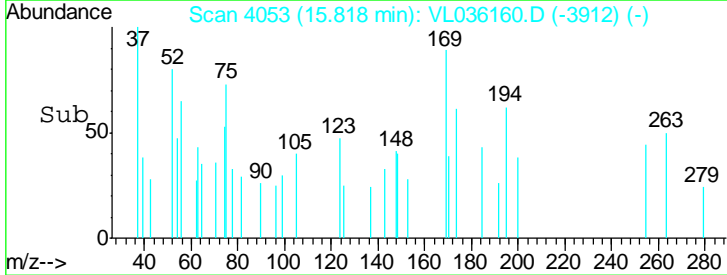
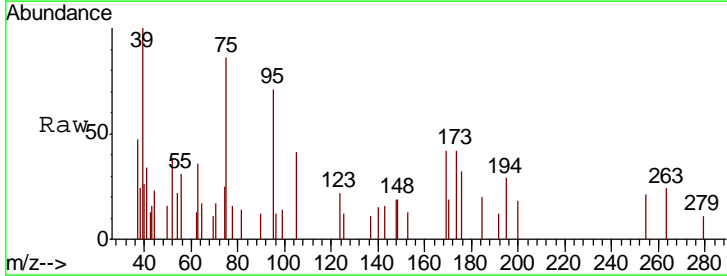
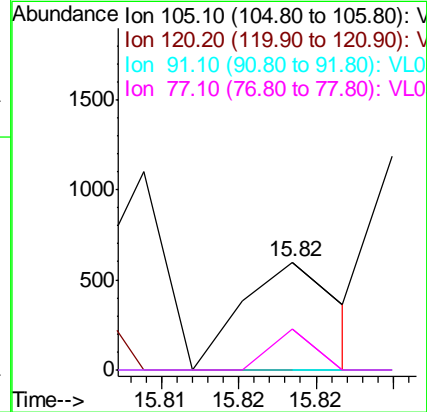
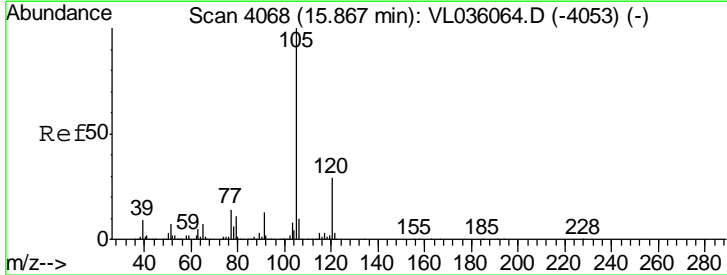
#71
 2-Chlorotoluene
 Concen: 0.002 ppbv
 RT: 15.43 min Scan# 3932
 Delta R.T. -0.05 min
 Lab File: VL036160.D
 Acq: 11 Dec 2020 11:58

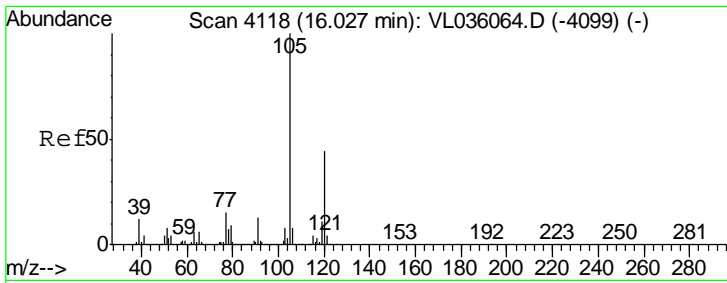
| Tgt Ion | Resp | Lower | Upper |
|---------|------|-------|-------|
| 91 | 100 | | |
| 126 | 0.0 | 11.6 | 46.4# |



#72
 4-Ethyltoluene
 Concen: 0.001 ppbv
 RT: 15.82 min Scan# 4053
 Delta R.T. -0.05 min
 Lab File: VL036160.D
 Acq: 11 Dec 2020 11:58

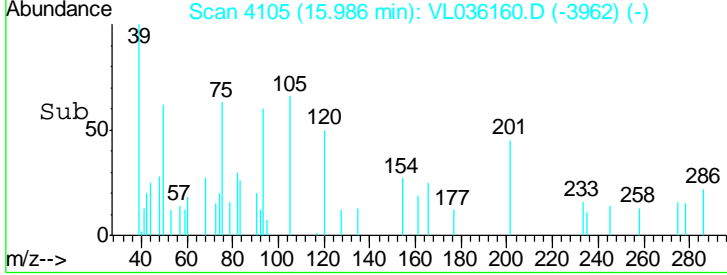
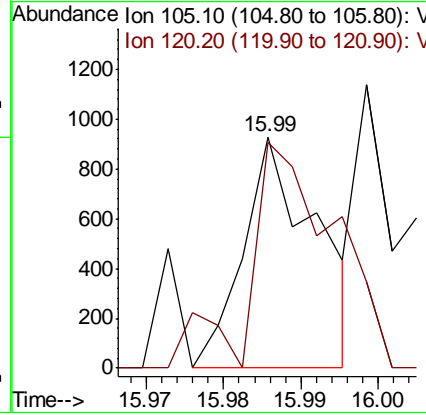
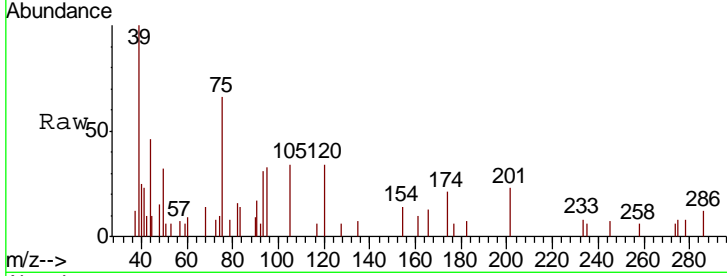
| Tgt Ion | Resp | Lower | Upper |
|---------|------|-------|-------|
| 105 | 100 | | |
| 120 | 0.0 | 23.6 | 35.4# |
| 91 | 0.0 | 11.4 | 17.0# |
| 77 | 0.0 | 12.1 | 18.1# |





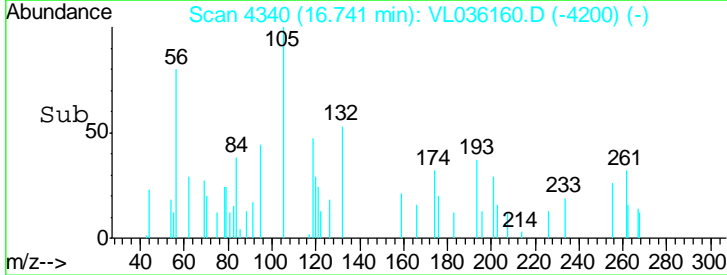
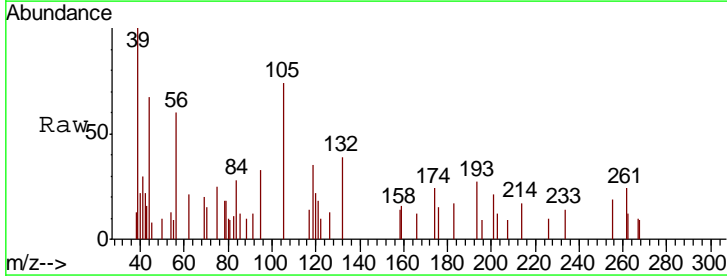
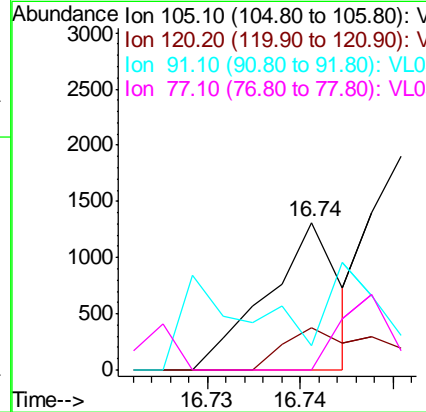
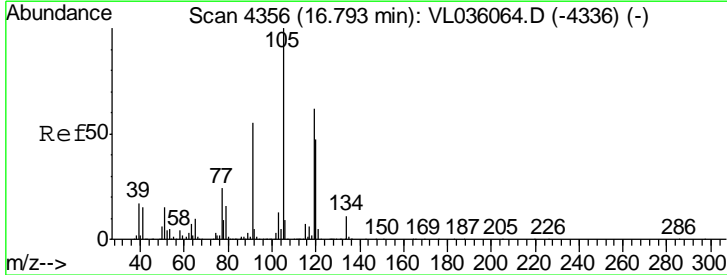
#73
 1,3,5-Trimethylbenzene
 Concen: 0.002 ppbv
 RT: 15.99 min Scan# 4105
 Delta R.T. -0.04 min
 Lab File: VL036160.D
 Acq: 11 Dec 2020 11:58

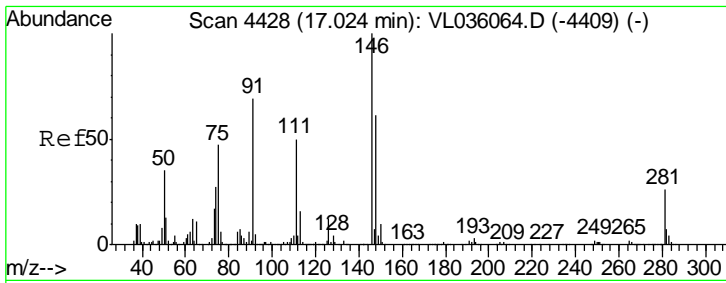
| Tgt Ion | Resp | Lower | Upper |
|---------|------|-------|-------|
| 105 | 100 | | |
| 120 | 73.8 | 35.4 | 53.2# |



#74
 1,2,4-Trimethylbenzene
 Concen: 0.003 ppbv
 RT: 16.74 min Scan# 4340
 Delta R.T. -0.05 min
 Lab File: VL036160.D
 Acq: 11 Dec 2020 11:58

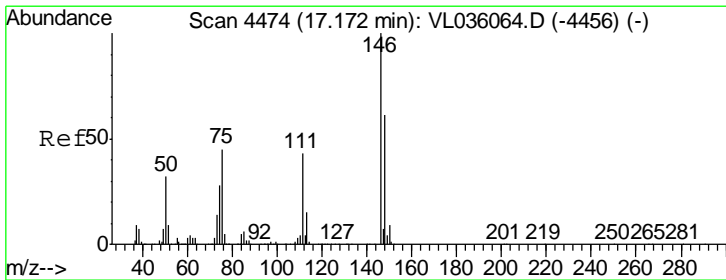
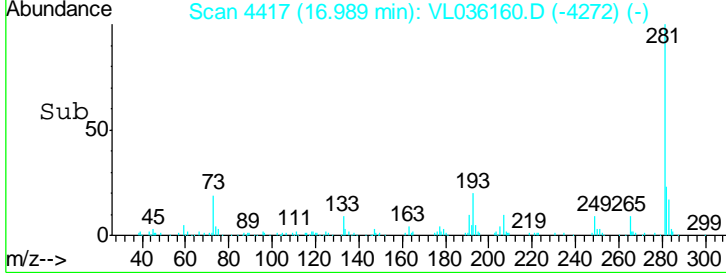
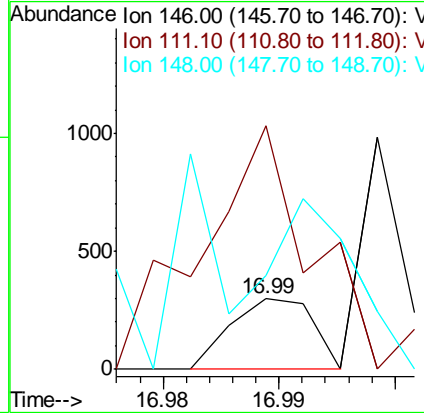
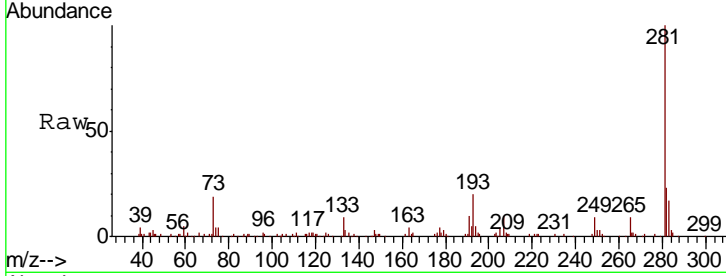
| Tgt Ion | Resp | Lower | Upper |
|---------|------|-------|-------|
| 105 | 100 | | |
| 120 | 29.0 | 37.4 | 56.0# |
| 91 | 0.0 | 45.6 | 68.4# |
| 77 | 0.0 | 19.4 | 29.2# |





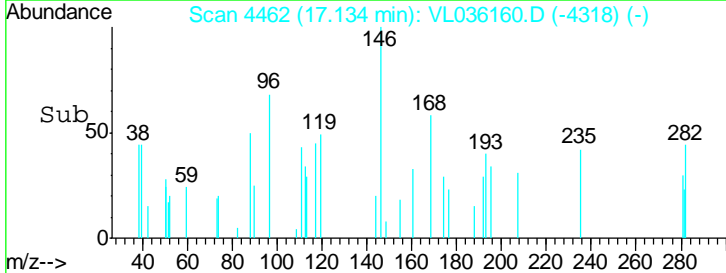
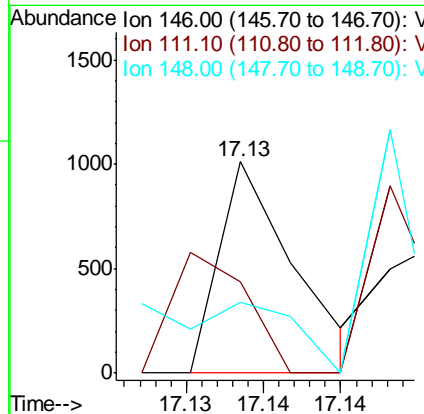
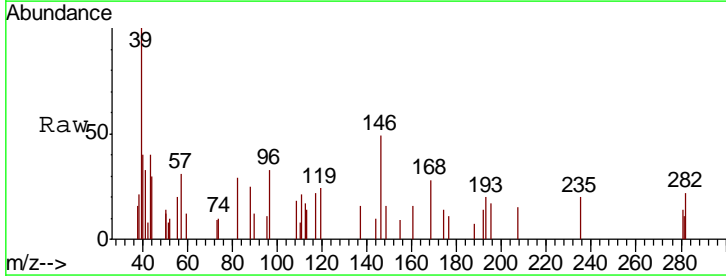
#75
 1,3-Dichlorobenzene
 Concen: 0.001 ppbv
 RT: 16.99 min Scan# 4417
 Delta R.T. -0.04 min
 Lab File: VL036160.D
 Acq: 11 Dec 2020 11:58

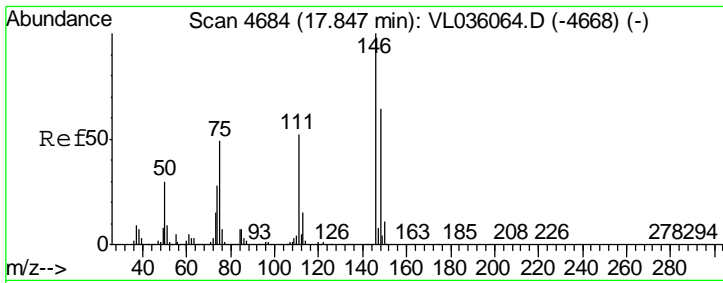
| Tgt Ion | Resp | Lower | Upper |
|---------|-------|-------|-------|
| 146 | 100 | | |
| 111 | 991.9 | 25.1 | 75.3# |
| 148 | 662.2 | 32.9 | 98.6# |



#76
 1,4-Dichlorobenzene
 Concen: 0.003 ppbv
 RT: 17.13 min Scan# 4462
 Delta R.T. -0.04 min
 Lab File: VL036160.D
 Acq: 11 Dec 2020 11:58

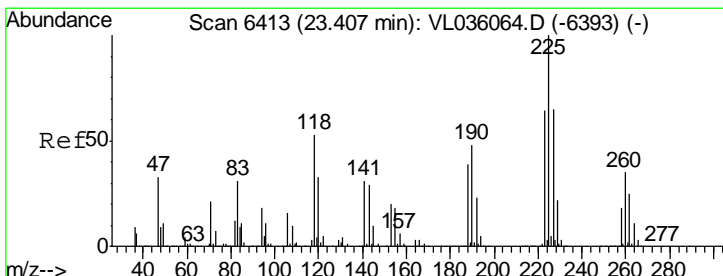
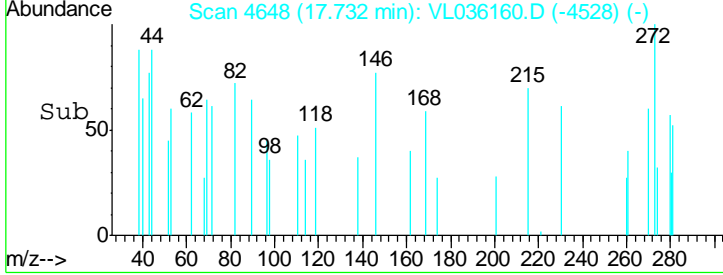
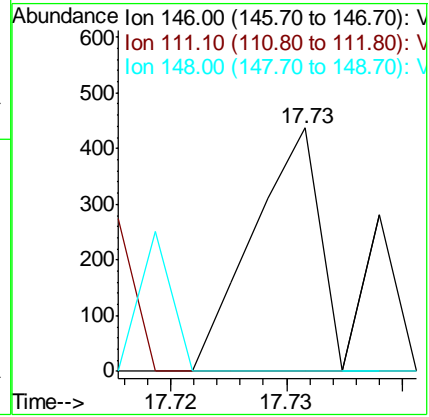
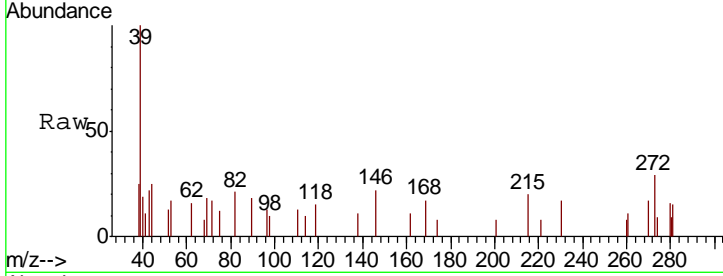
| Tgt Ion | Resp | Lower | Upper |
|---------|------|-------|-------|
| 146 | 100 | | |
| 111 | 0.0 | 24.3 | 72.8# |
| 148 | 0.0 | 32.8 | 98.3# |





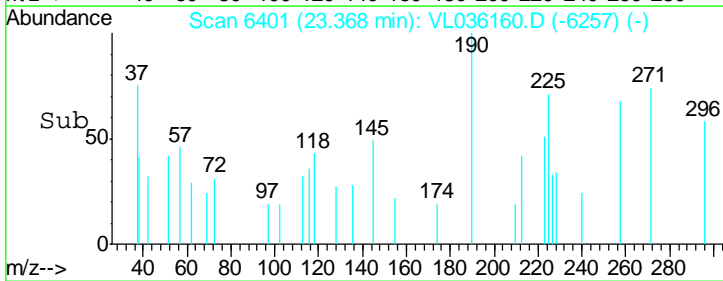
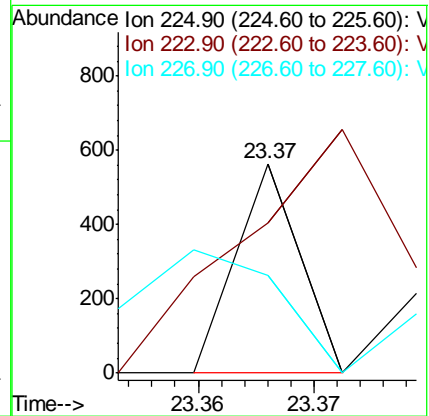
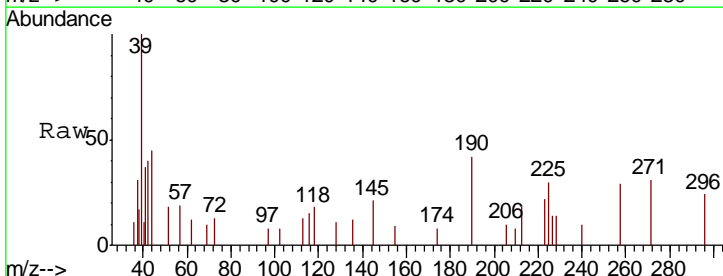
#77
 1,2-Dichlorobenzene
 Concen: 0.001 ppbv
 RT: 17.73 min Scan# 4648
 Delta R.T. -0.12 min
 Lab File: VL036160.D
 Acq: 11 Dec 2020 11:58

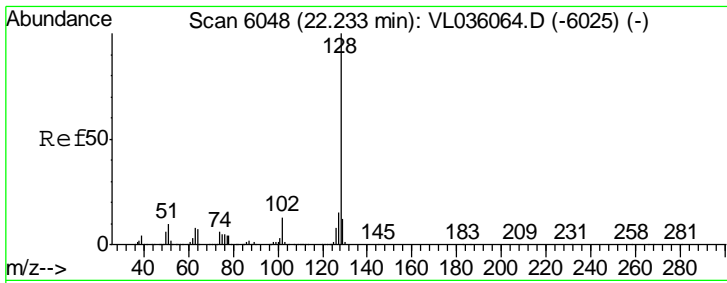
| Tgt Ion | Resp | Lower | Upper |
|---------|------|-------|-------|
| 146 | 100 | | |
| 111 | 54.9 | 26.1 | 78.2 |
| 148 | 38.9 | 33.1 | 99.5 |



#78
 Hexachloro-1,3-Butadiene
 Concen: 0.001 ppbv
 RT: 23.37 min Scan# 6401
 Delta R.T. -0.04 min
 Lab File: VL036160.D
 Acq: 11 Dec 2020 11:58

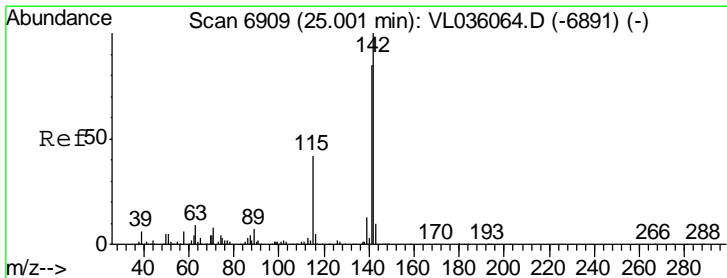
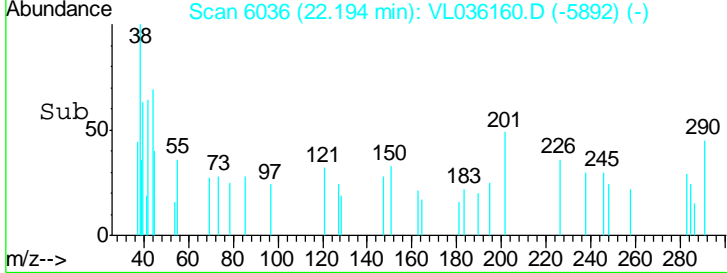
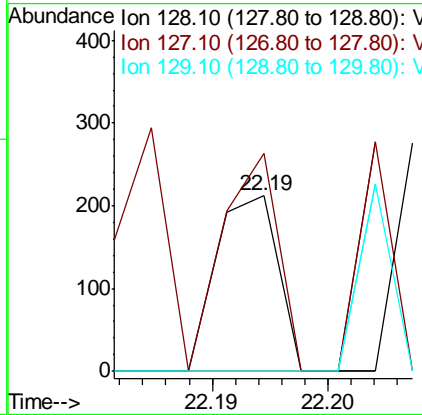
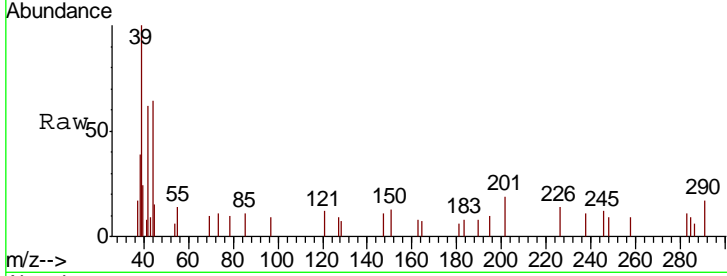
| Tgt Ion | Resp | Lower | Upper |
|---------|------|-------|-------|
| 225 | 100 | | |
| 223 | 0.0 | 51.1 | 76.7# |
| 227 | 0.0 | 51.7 | 77.5# |





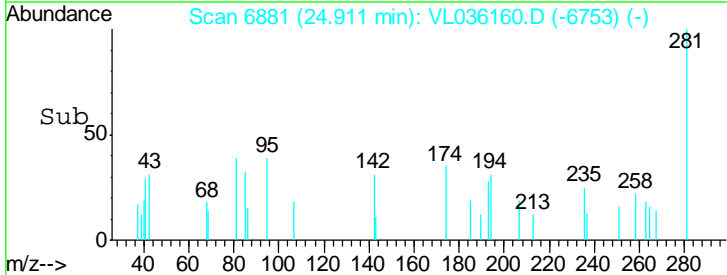
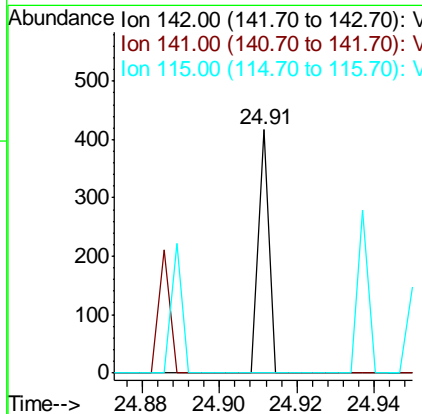
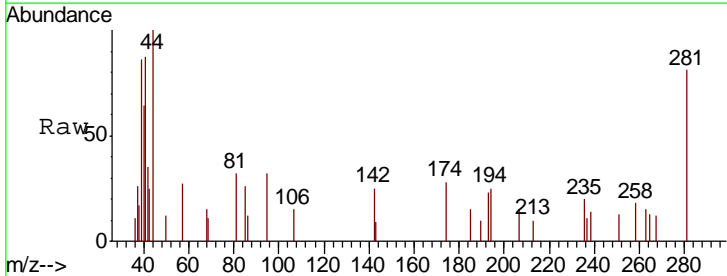
#79
 Naphthalene
 Concen: 0.001 ppbv
 RT: 22.19 min Scan# 6036
 Delta R.T. -0.04 min
 Lab File: VL036160.D
 Acq: 11 Dec 2020 11:58

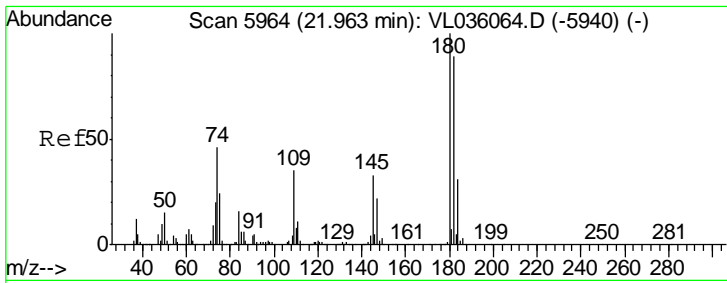
| Tgt Ion | Resp | Lower | Upper |
|---------|-------|-------|-------|
| 128 | 100 | | |
| 127 | 124.1 | 11.7 | 17.5# |
| 129 | 0.0 | 9.3 | 13.9# |



#80
 Naphthalene, 2-methyl-
 Concen: 0.003 ppbv
 RT: 24.91 min Scan# 6881
 Delta R.T. -0.09 min
 Lab File: VL036160.D
 Acq: 11 Dec 2020 11:58

| Tgt Ion | Resp | Lower | Upper |
|---------|-------|-------|-------|
| 142 | 100 | | |
| 141 | 0.0 | 64.3 | 96.5# |
| 115 | 103.8 | 33.9 | 50.9# |





#81
 1,2,4-Trichlorobenzene
 Concen: 0.001 ppbv
 RT: 21.85 min Scan# 5929
 Delta R.T. -0.11 min
 Lab File: VL036160.D
 Acq: 11 Dec 2020 11:58

| Tot Ion | Ratio | Lower | Upper |
|---------|-------|-------|-------|
| 180 | 100 | | |
| 182 | 0.0 | 0.0 | 0.0 |
| 184 | 57.8 | 0.0 | 0.0# |

