

Data Path : Z:\voasrv\HPCHEM1\MSVOA\_N\Data\VN120721\  
 Data File : VN069810.D  
 Acq On : 7 Dec 2021 13:17  
 Operator : JC/MD  
 Sample : M4956-04  
 Misc : 5.00mL/MSVOA\_N/WATER  
 ALS Vial : 9 Sample Multiplier: 1

Instrument :  
 MSVOA\_N  
 ClientSampleId :  
 EB01-20211203

Integration Parameters: RTEINT.P

Integrator: RTE  
 Smoothing : ON Filtering: 5  
 Sampling : 1 Min Area: 3 % of largest Peak  
 Start Thrs: 0.2 Max Peaks: 100  
 Stop Thrs : 0 Peak Location: TOP

If leading or trailing edge < 100 prefer < Baseline drop else tangent >  
 Peak separation: 5

Method : Z:\voasrv\HPCHEM1\MSVOA\_N\methods\82N120221W.M  
 Title : SW846 8260

Signal : TIC: VN069810.D\data.ms

peak #	R.T. min	first scan	max scan	last scan	PK TY	peak height	corr. area	corr. % max.	% of total
1	4.296	841	860	892	rBV2	39811	124046	1.42%	0.273%
2	8.021	2226	2249	2261	rBV2	989488	2421556	27.82%	5.337%
3	8.088	2261	2274	2312	rVB	1840700	4264535	48.99%	9.398%
4	8.440	2382	2405	2437	rBV	1179665	2810454	32.28%	6.194%
5	8.968	2583	2602	2638	rBV	2916537	6092989	69.99%	13.427%
6	10.443	3129	3152	3197	rBV	4589556	8705301	100.00%	19.184%
7	11.744	3618	3637	3683	rBV	4521378	8468392	97.28%	18.662%
8	12.731	3988	4005	4034	rBV	3424888	6097361	70.04%	13.437%
9	13.675	4339	4357	4385	rBV	3651305	6392474	73.43%	14.087%

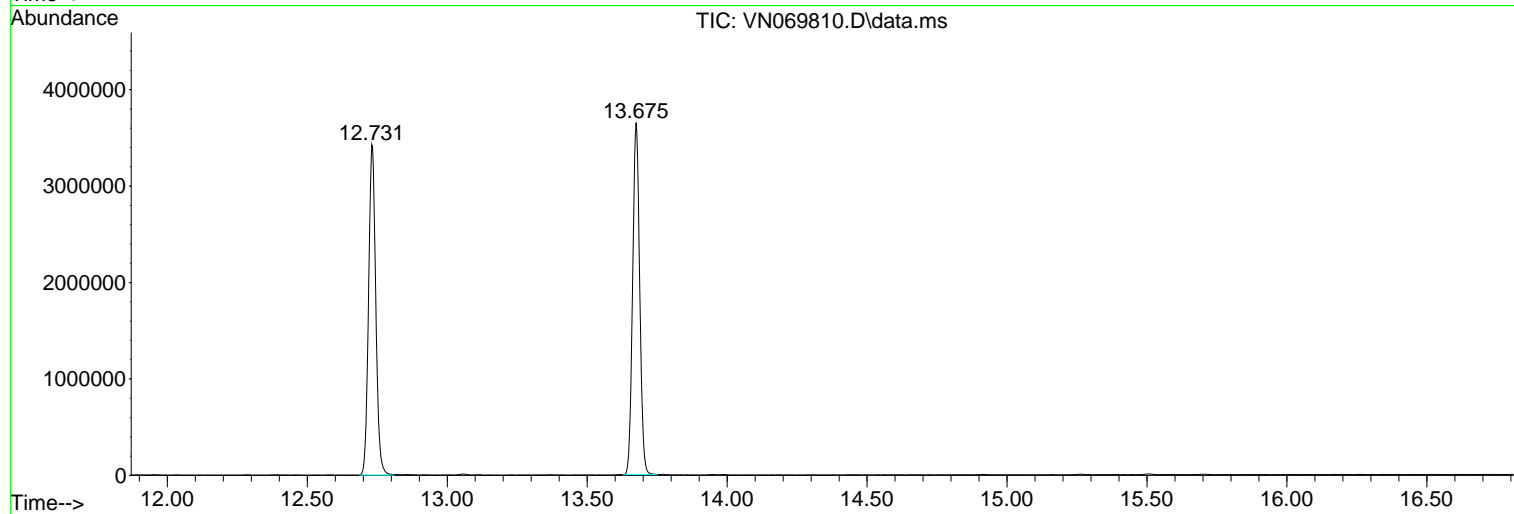
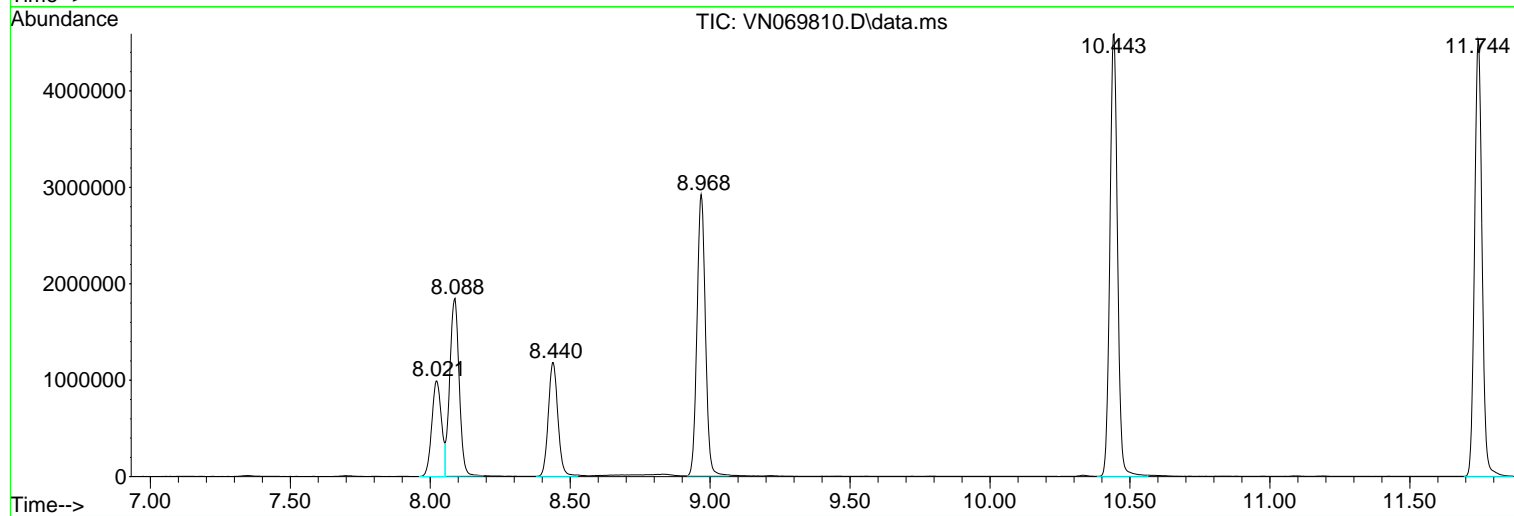
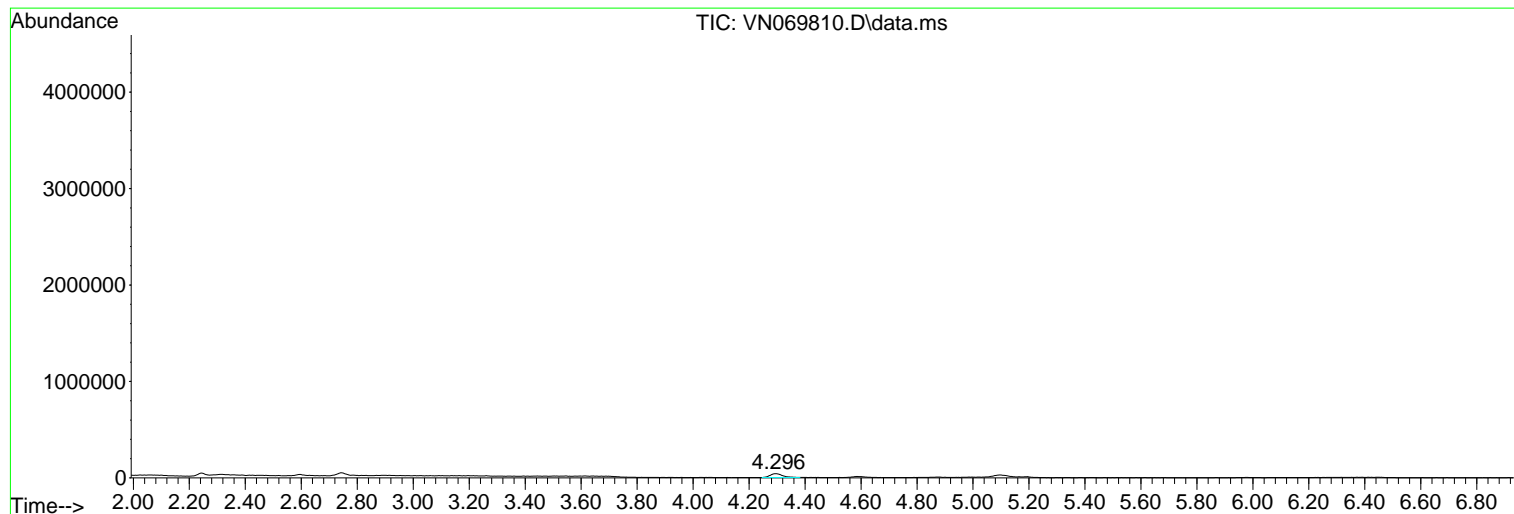
Sum of corrected areas: 45377108

Data Path : Z:\voasrv\HPCHEM1\MSVOA\_N\Data\VN120721\  
Data File : VN069810.D  
Acq On : 7 Dec 2021 13:17  
Operator : JC/MD  
Sample : M4956-04  
Misc : 5.00mL/MSVOA\_N/WATER  
ALS Vial : 9 Sample Multiplier: 1

Instrument :  
MSVOA\_N  
ClientSampleId :  
EB01-20211203

Quant Method : Z:\voasrv\HPCHEM1\MSVOA\_N\methods\82N120221W.M  
Quant Title : SW846 8260

TIC Library : C:\Database\NIST20.L  
TIC Integration Parameters: LSCINT.P



Data Path : Z:\voasrv\HPCHEM1\MSVOA\_N\Data\VN120721\  
Data File : VN069810.D  
Acq On : 7 Dec 2021 13:17  
Operator : JC/MD  
Sample : M4956-04  
Misc : 5.00mL/MSVOA\_N/WATER  
ALS Vial : 9 Sample Multiplier: 1

**Instrument :**  
MSVOA\_N  
**ClientSampleId :**  
EB01-20211203

Quant Method : Z:\voasrv\HPCHEM1\MSVOA\_N\methods\82N120221W.M  
Quant Title : SW846 8260

TIC Library : C:\Database\NIST0.L  
TIC Integration Parameters: LSCINT.P

No Library Search Compounds Detected

\*\*\*\*\*

Data Path : Z:\voasrv\HPCHEM1\MSVOA\_N\Data\VN120721\  
Data File : VN069810.D  
Acq On : 7 Dec 2021 13:17  
Operator : JC/MD  
Sample : M4956-04  
Misc : 5.00mL/MSVOA\_N/WATER  
ALS Vial : 9 Sample Multiplier: 1

Instrument :  
MSVOA\_N  
ClientSampleId :  
EB01-20211203

Quant Method : Z:\voasrv\HPCHEM1\MSVOA\_N\methods\82N120221W.M  
Quant Title : SW846 8260

TIC Library : C:\Database\NIST20.L  
TIC Integration Parameters: LSCINT.P

TIC Top Hit name	RT	EstConc	Units	Response	--Internal Standard--			
					#	RT	Resp	Conc

---