

Data Path : Z:\voasrv\HPCHEM1\MSVOA\_N\Data\VN120821\  
 Data File : VN069868.D  
 Acq On : 8 Dec 2021 18:11  
 Operator : JC/MD  
 Sample : M4957-08  
 Misc : 5.00mL/MSVOA\_N/WATER  
 ALS Vial : 18 Sample Multiplier: 1

Instrument :  
 MSVOA\_N  
 ClientSampleId :  
 RE125D3-20211206

Quant Time: Dec 09 11:44:07 2021  
 Quant Method : Z:\voasrv\HPCHEM1\MSVOA\_N\methods\82N120221W.M  
 Quant Title : SW846 8260  
 QLast Update : Fri Dec 03 08:46:47 2021  
 Response via : Initial Calibration

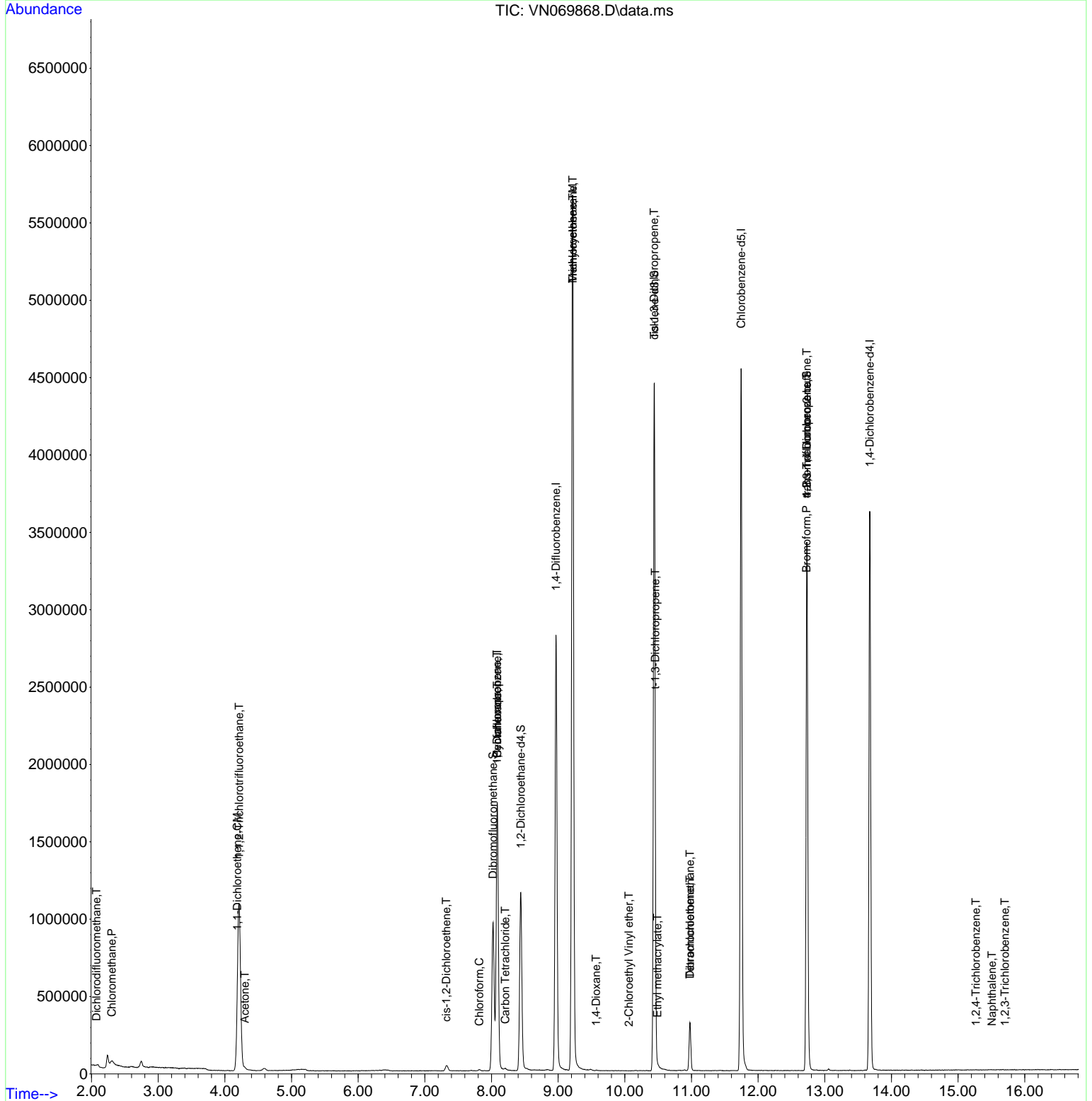
Compound	R.T.	QIon	Response	Conc	Units	Dev(Min)
Internal Standards						
1) Pentafluorobenzene	8.086	168	1289693	50.000	ug/l	0.00
34) 1,4-Difluorobenzene	8.968	114	2318359	50.000	ug/l	0.00
63) Chlorobenzene-d5	11.747	117	2543324	50.000	ug/l	0.00
72) 1,4-Dichlorobenzene-d4	13.675	152	963516	50.000	ug/l	0.00
System Monitoring Compounds						
33) 1,2-Dichloroethane-d4	8.440	65	1003092	50.374	ug/l	0.00
Spiked Amount	50.000	Range 61 - 141	Recovery	=	100.740%	
35) Dibromofluoromethane	8.024	113	695423	47.889	ug/l	0.00
Spiked Amount	50.000	Range 69 - 133	Recovery	=	95.780%	
50) Toluene-d8	10.443	98	3033701	52.028	ug/l	0.00
Spiked Amount	50.000	Range 65 - 126	Recovery	=	104.060%	
62) 4-Bromofluorobenzene	12.731	95	1201594	56.882	ug/l	0.00
Spiked Amount	50.000	Range 58 - 135	Recovery	=	113.760%	
Target Compounds						
						Qvalue
2) Dichlorodifluoromethane	2.075	85	3566	0.237	ug/l	97
3) Chloromethane	2.303	50	4030	0.214	ug/l	93
9) 1,1,2-Trichlorotrifluo...	4.213	101	733034	57.500	ug/l	96
12) 1,1-Dichloroethene	4.189	96	9627	0.784	ug/l	89
16) Acetone	4.299	43	20062	1.675	ug/l	97
27) cis-1,2-Dichloroethene	7.321	96	19094	1.184	ug/l	93
30) Chloroform	7.817	83	6609	0.233	ug/l	93
31) Cyclohexane	8.086	56	32975	1.190	ug/l #	27
36) 1,1-Dichloropropene	8.083	75	110034	4.986	ug/l #	48
38) Carbon Tetrachloride	8.206	117	7033	0.325	ug/l	91
39) Methylcyclohexane	9.217	83	28272	1.077	ug/l #	1
44) Trichloroethene	9.217	130	2004138	124.471	ug/l	91
49) 1,4-Dioxane	9.569	88	2061	5.063	ug/l #	61
53) t-1,3-Dichloropropene	10.457	75	254	2.803	ug/l #	1
54) cis-1,3-Dichloropropene	10.440	75	456	2.014	ug/l #	1
56) Ethyl methacrylate	10.489	69	85	2.282	ug/l #	1
58) 2-Chloroethyl Vinyl ether	10.060	63	99	18.400	ug/l #	45
60) Dibromochloromethane	10.977	129	65902	5.902	ug/l #	11
64) Tetrachloroethene	10.977	164	71668	4.156	ug/l	97
71) Bromoform	12.725	173	2669	2.893	ug/l #	1
76) 1,2,3-Trichloropropane	12.731	75	661528	23.941	ug/l #	1
81) trans-1,4-Dichloro-2-b...	12.731	75	661528	76.053	ug/l #	5
93) 1,2,4-Trichlorobenzene	15.268	180	275	2.894	ug/l #	71
95) Naphthalene	15.507	128	1573	4.016	ug/l #	74
96) 1,2,3-Trichlorobenzene	15.702	180	147	2.445	ug/l #	41

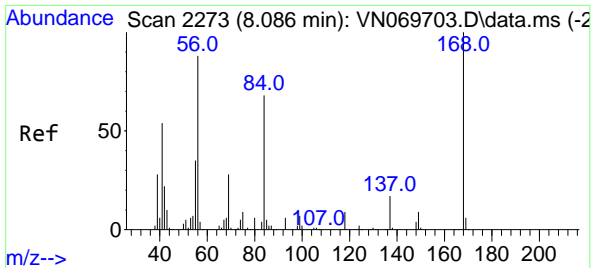
(#) = qualifier out of range (m) = manual integration (+) = signals summed

Data Path : Z:\voasrv\HPCHEM1\MSVOA\_N\Data\VN120821\  
 Data File : VN069868.D  
 Acq On : 8 Dec 2021 18:11  
 Operator : JC/MD  
 Sample : M4957-08  
 Misc : 5.00mL/MSVOA\_N/WATER  
 ALS Vial : 18 Sample Multiplier: 1

Instrument :  
 MSVOA\_N  
 ClientSampleId :  
 RE125D3-20211206

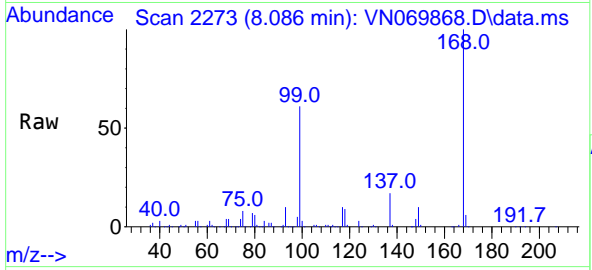
Quant Time: Dec 09 11:44:07 2021  
 Quant Method : Z:\voasrv\HPCHEM1\MSVOA\_N\methods\82N120221W.M  
 Quant Title : SW846 8260  
 QLast Update : Fri Dec 03 08:46:47 2021  
 Response via : Initial Calibration



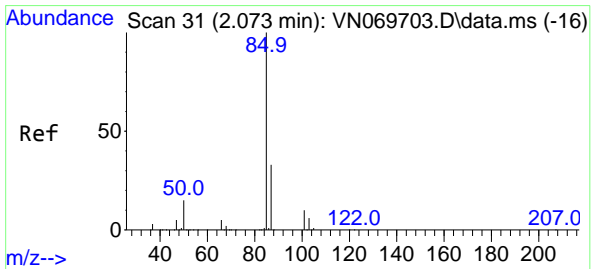
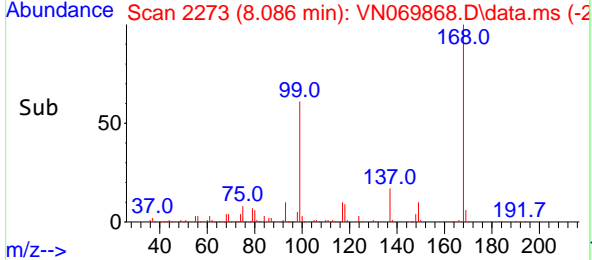
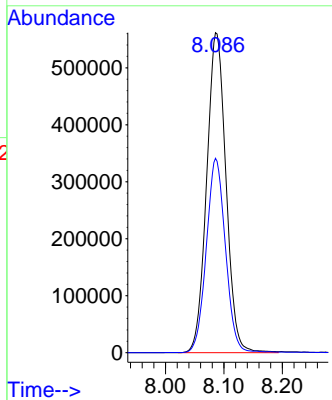


#1  
 Pentafluorobenzene  
 Concen: 50.000 ug/l  
 RT: 8.086 min Scan# 21  
 Delta R.T. -0.000 min  
 Lab File: VN069868.D  
 Acq: 8 Dec 2021 18:11

Instrument :  
 MSVOA\_N  
 ClientSampleId :  
 RE125D3-20211206

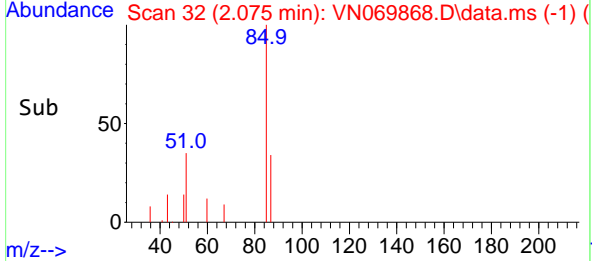
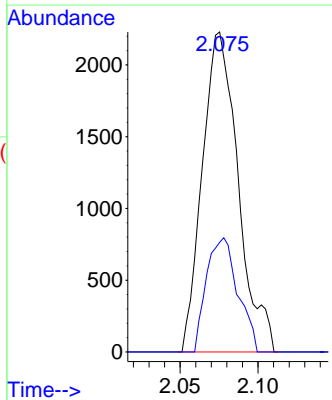
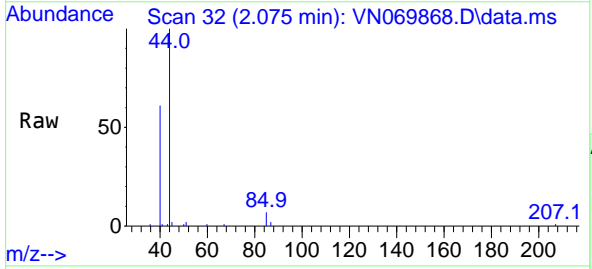


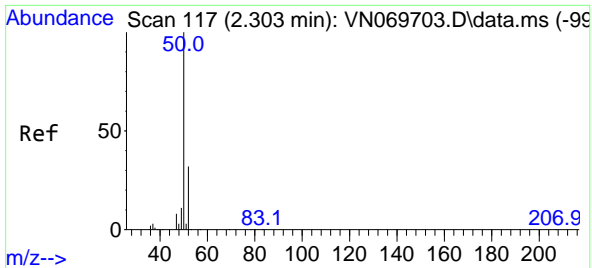
Tgt Ion:168 Resp: 1289693  
 Ion Ratio Lower Upper  
 168 100  
 99 60.7 41.3 61.9



#2  
 Dichlorodifluoromethane  
 Concen: 0.237 ug/l  
 RT: 2.075 min Scan# 32  
 Delta R.T. 0.003 min  
 Lab File: VN069868.D  
 Acq: 8 Dec 2021 18:11

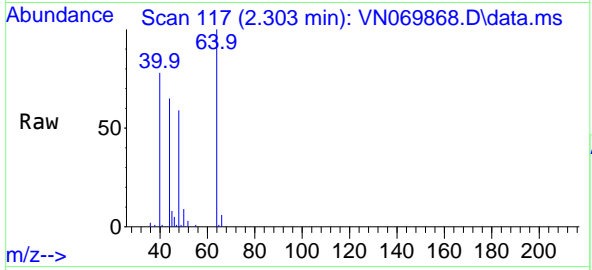
Tgt Ion: 85 Resp: 3566  
 Ion Ratio Lower Upper  
 85 100  
 87 34.3 16.3 48.9



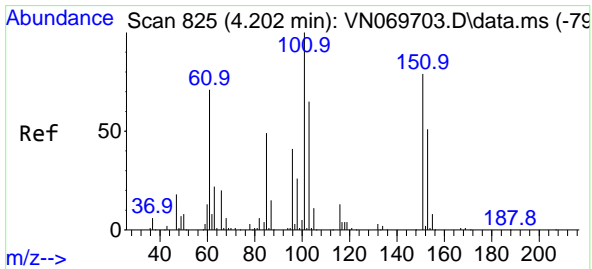
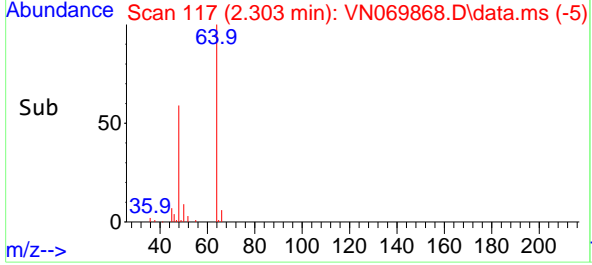
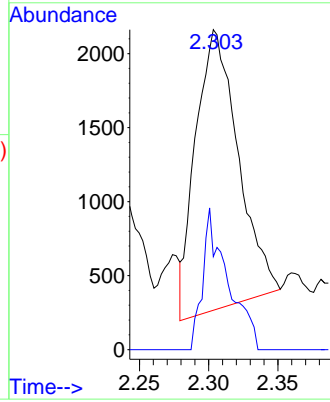


#3  
 Chloromethane  
 Concen: 0.214 ug/l  
 RT: 2.303 min Scan# 117  
 Delta R.T. 0.000 min  
 Lab File: VN069868.D  
 Acq: 8 Dec 2021 18:11

Instrument : MSVOA\_N  
 ClientSampleId : RE125D3-20211206

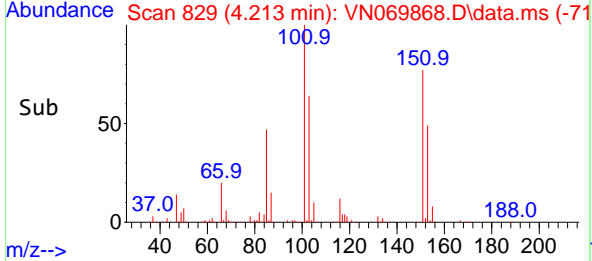
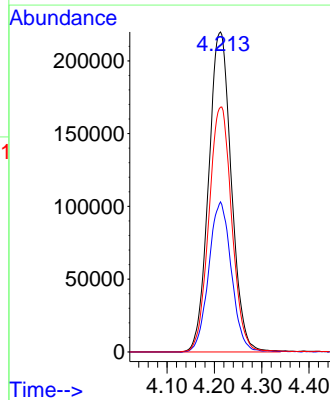
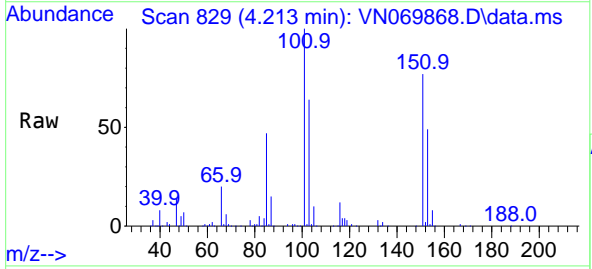


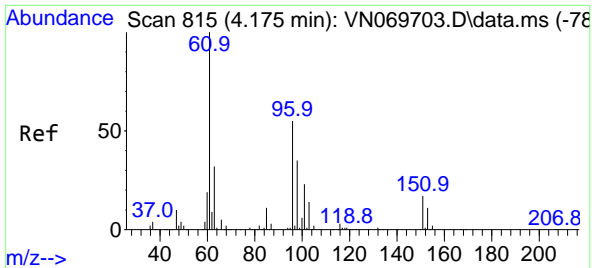
Tgt Ion: 50 Resp: 4030  
 Ion Ratio Lower Upper  
 50 100  
 52 35.9 25.4 38.0



#9  
 1,1,2-Trichlorotrifluoroethane  
 Concen: 57.500 ug/l  
 RT: 4.213 min Scan# 829  
 Delta R.T. 0.011 min  
 Lab File: VN069868.D  
 Acq: 8 Dec 2021 18:11

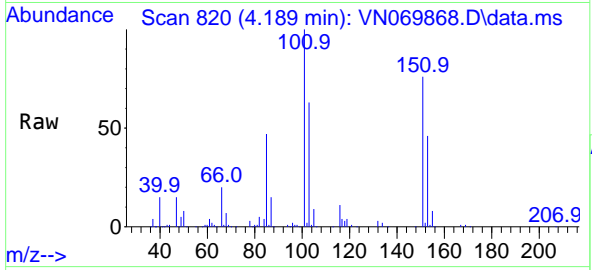
Tgt Ion: 101 Resp: 733034  
 Ion Ratio Lower Upper  
 101 100  
 85 46.7 37.2 55.8  
 151 77.2 65.9 98.9



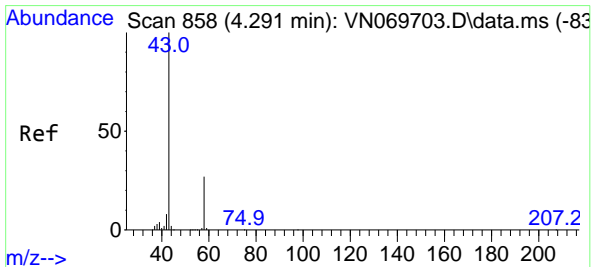
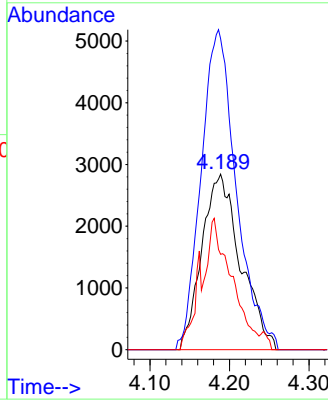
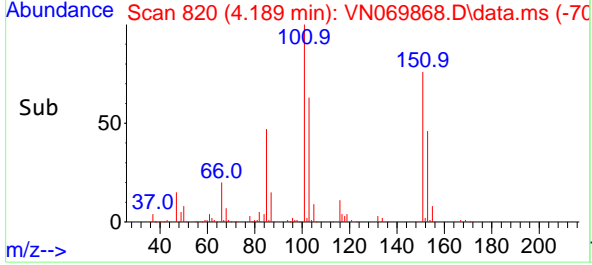


#12  
 1,1-Dichloroethene  
 Concen: 0.784 ug/l  
 RT: 4.189 min Scan# 811  
 Delta R.T. 0.014 min  
 Lab File: VN069868.D  
 Acq: 8 Dec 2021 18:11

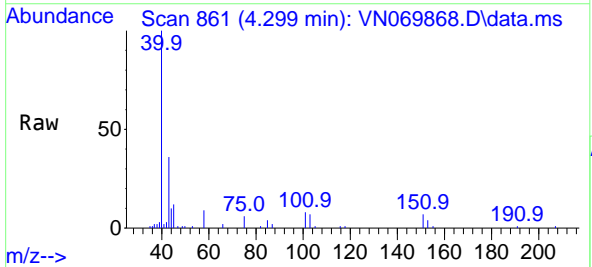
Instrument : MSVOA\_N  
 ClientSampleId : RE125D3-20211206



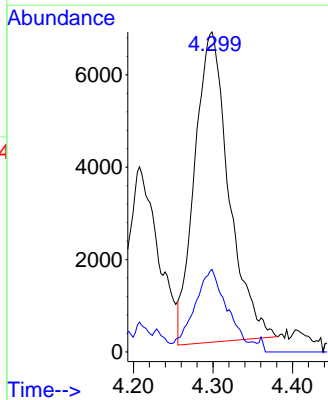
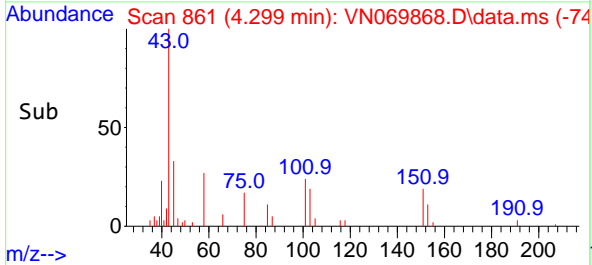
Tgt Ion: 96 Resp: 9627  
 Ion Ratio Lower Upper  
 96 100  
 61 177.3 131.0 196.6  
 98 54.4 52.4 78.6

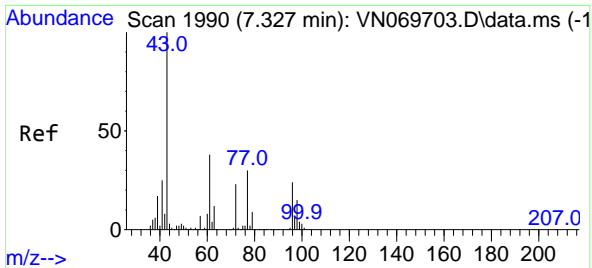


#16  
 Acetone  
 Concen: 1.675 ug/l  
 RT: 4.299 min Scan# 861  
 Delta R.T. 0.008 min  
 Lab File: VN069868.D  
 Acq: 8 Dec 2021 18:11



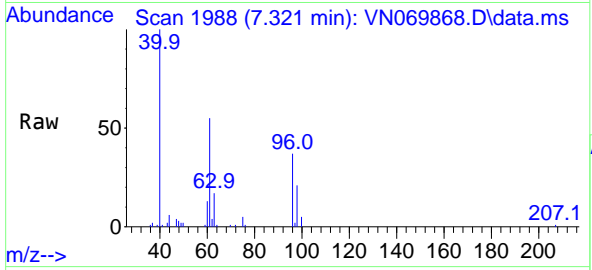
Tgt Ion: 43 Resp: 20062  
 Ion Ratio Lower Upper  
 43 100  
 58 27.1 23.1 34.7



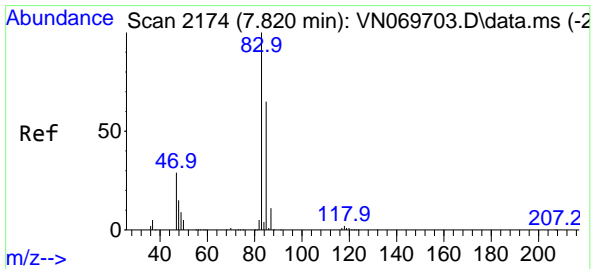
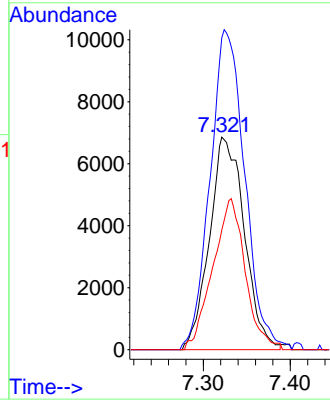
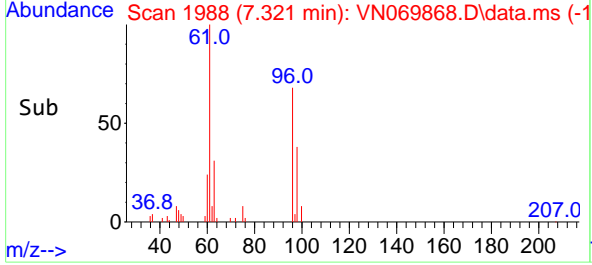


#27  
 cis-1,2-Dichloroethene  
 Concen: 1.184 ug/l  
 RT: 7.321 min Scan# 1994  
 Delta R.T. -0.005 min  
 Lab File: VN069868.D  
 Acq: 8 Dec 2021 18:11

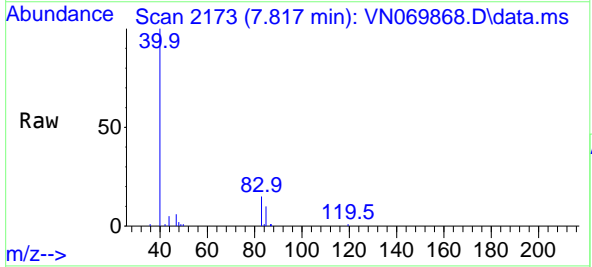
Instrument : MSVOA\_N  
 ClientSampleId : RE125D3-20211206



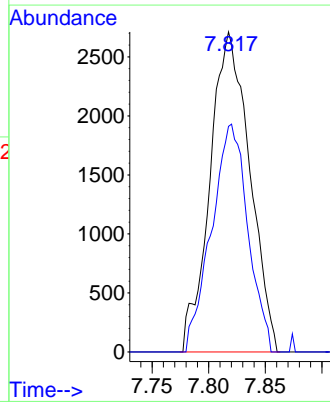
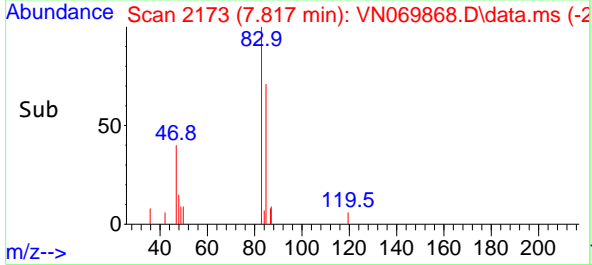
Tgt Ion: 96 Resp: 19094  
 Ion Ratio Lower Upper  
 96 100  
 61 149.7 0.0 275.0  
 98 66.2 0.0 129.6

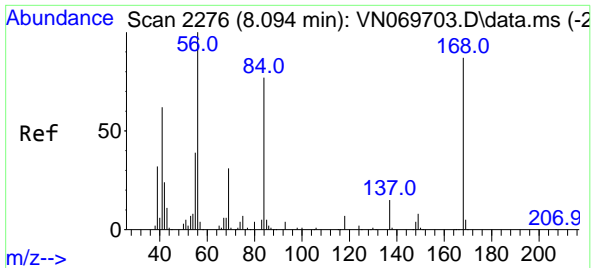


#30  
 Chloroform  
 Concen: 0.233 ug/l  
 RT: 7.817 min Scan# 2173  
 Delta R.T. -0.003 min  
 Lab File: VN069868.D  
 Acq: 8 Dec 2021 18:11



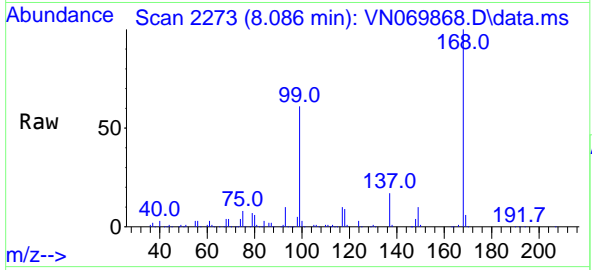
Tgt Ion: 83 Resp: 6609  
 Ion Ratio Lower Upper  
 83 100  
 85 70.5 51.9 77.9



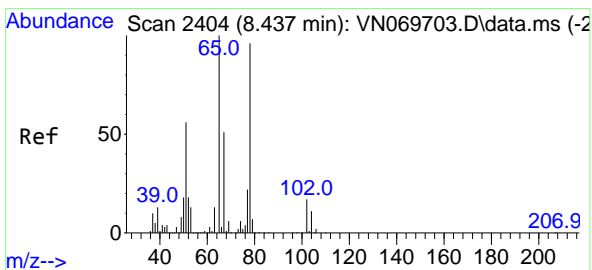
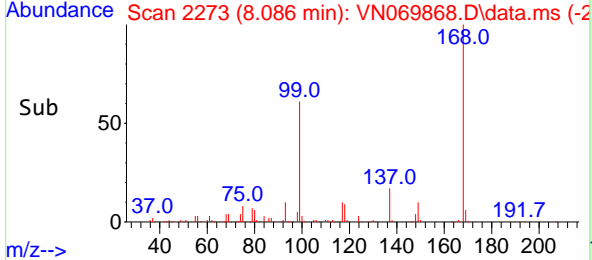
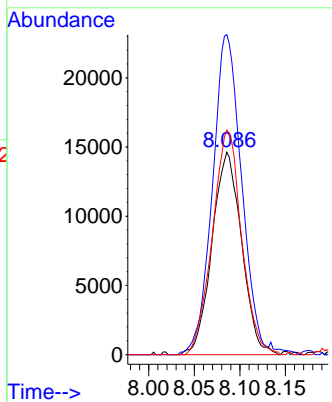


#31  
 Cyclohexane  
 Concen: 1.190 ug/l  
 RT: 8.086 min Scan# 21  
 Delta R.T. -0.008 min  
 Lab File: VN069868.D  
 Acq: 8 Dec 2021 18:11

Instrument : MSVOA\_N  
 ClientSampleId : RE125D3-20211206

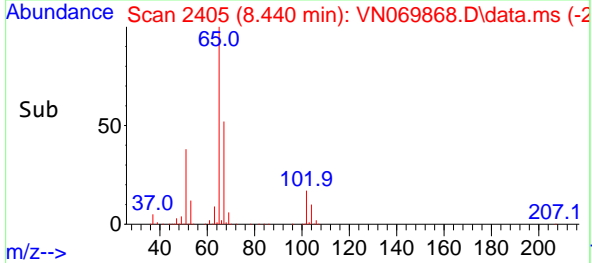
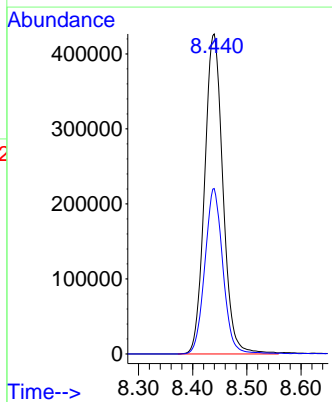
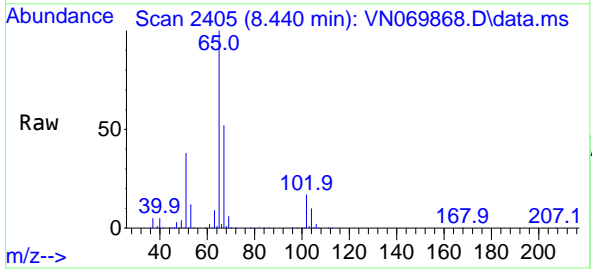


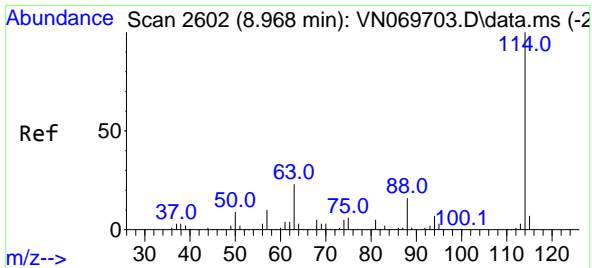
Tgt Ion: 56 Resp: 32975  
 Ion Ratio Lower Upper  
 56 100  
 69 158.1 27.1 40.7#  
 84 110.9 73.4 110.0#



#33  
 1,2-Dichloroethane-d4  
 Concen: 50.374 ug/l  
 RT: 8.440 min Scan# 2405  
 Delta R.T. 0.003 min  
 Lab File: VN069868.D  
 Acq: 8 Dec 2021 18:11

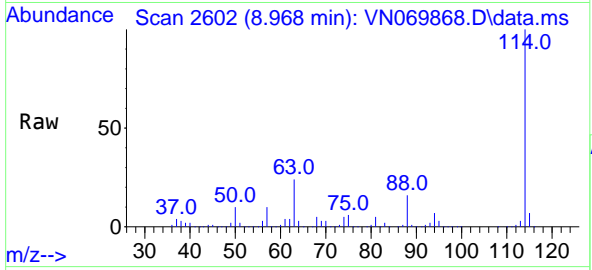
Tgt Ion: 65 Resp: 1003092  
 Ion Ratio Lower Upper  
 65 100  
 67 50.6 0.0 103.0



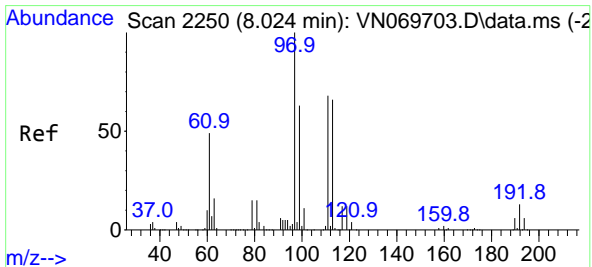
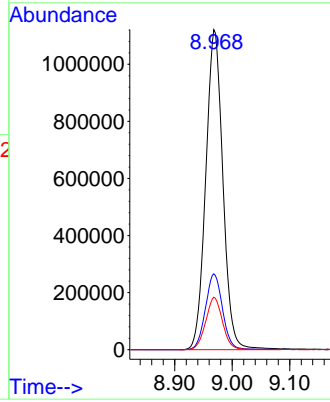
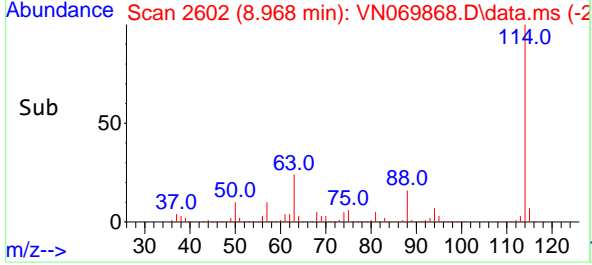


#34  
 1,4-Difluorobenzene  
 Concen: 50.000 ug/l  
 RT: 8.968 min Scan# 2602  
 Delta R.T. 0.000 min  
 Lab File: VN069868.D  
 Acq: 8 Dec 2021 18:11

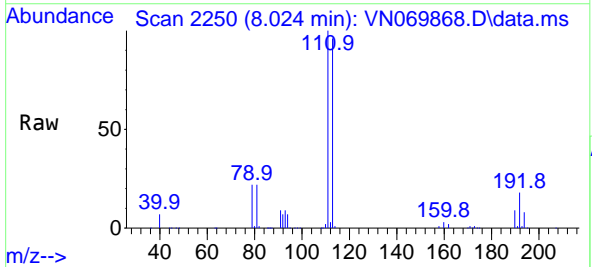
Instrument : MSVOA\_N  
 ClientSampleId : RE125D3-20211206



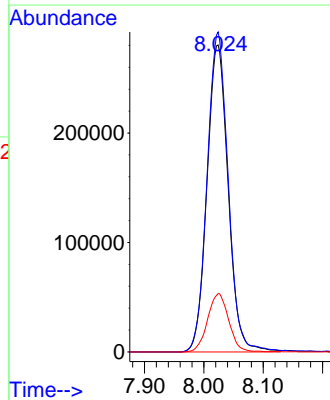
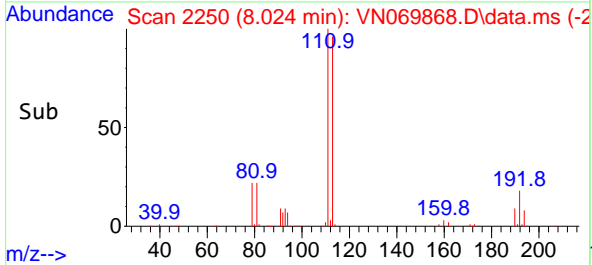
Tgt Ion:114 Resp: 2318359  
 Ion Ratio Lower Upper  
 114 100  
 63 23.7 0.0 37.8  
 88 16.4 0.0 27.4



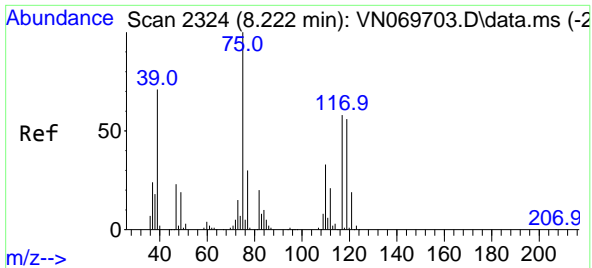
#35  
 Dibromofluoromethane  
 Concen: 47.889 ug/l  
 RT: 8.024 min Scan# 2250  
 Delta R.T. 0.000 min  
 Lab File: VN069868.D  
 Acq: 8 Dec 2021 18:11



Tgt Ion:113 Resp: 695423  
 Ion Ratio Lower Upper  
 113 100  
 111 104.0 82.2 123.2  
 192 18.9 16.9 25.3

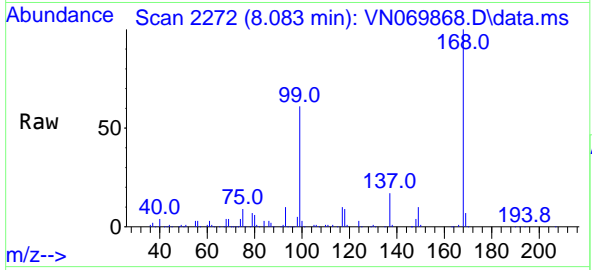




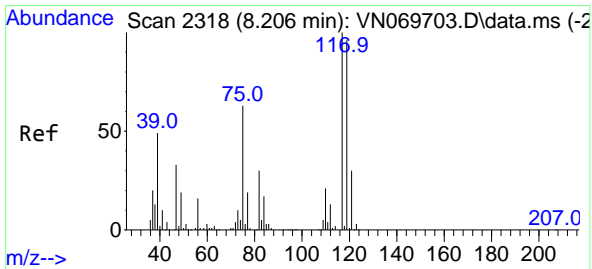
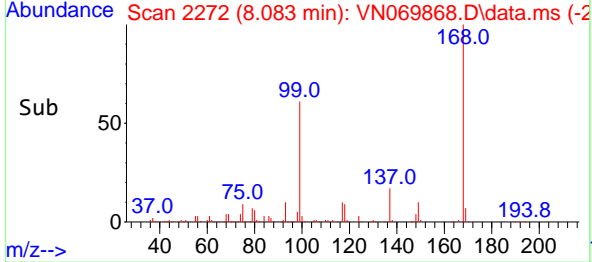
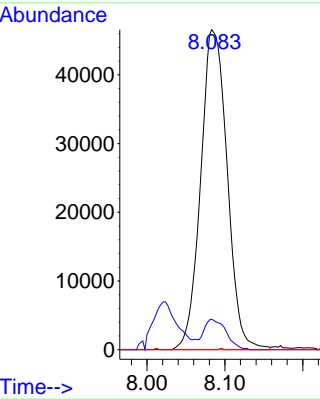


#36  
 1,1-Dichloropropene  
 Concen: 4.986 ug/l  
 RT: 8.083 min Scan# 2118  
 Delta R.T. -0.139 min  
 Lab File: VN069868.D  
 Acq: 8 Dec 2021 18:11

Instrument : MSVOA\_N  
 ClientSampleId : RE125D3-20211206

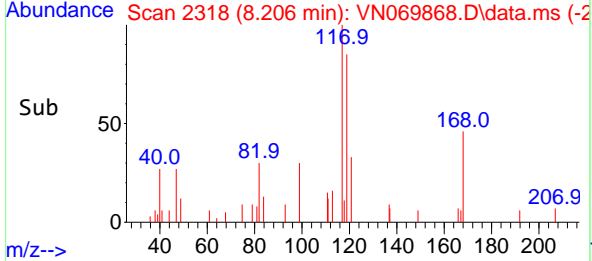
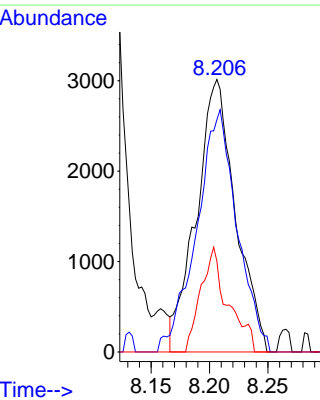
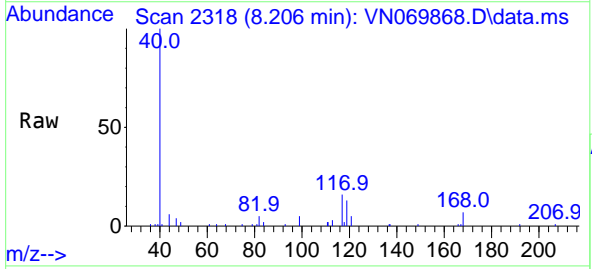


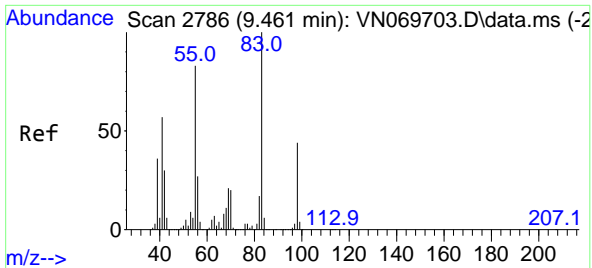
Tgt Ion: 75 Resp: 110034  
 Ion Ratio Lower Upper  
 75 100  
 110 8.1 18.4 55.2#  
 77 0.0 24.4 36.6#



#38  
 Carbon Tetrachloride  
 Concen: 0.325 ug/l  
 RT: 8.206 min Scan# 2318  
 Delta R.T. 0.000 min  
 Lab File: VN069868.D  
 Acq: 8 Dec 2021 18:11

Tgt Ion: 117 Resp: 7033  
 Ion Ratio Lower Upper  
 117 100  
 119 85.3 76.1 114.1  
 121 33.2 24.2 36.2



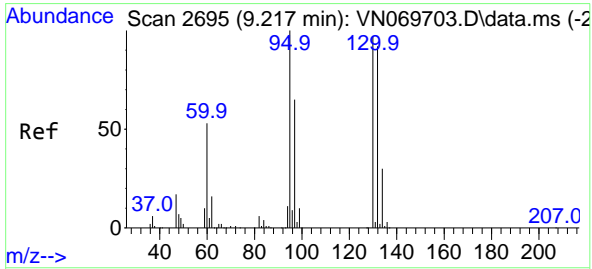
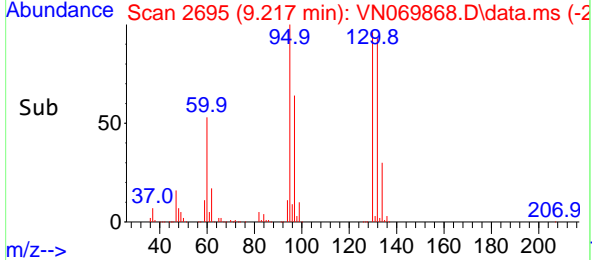
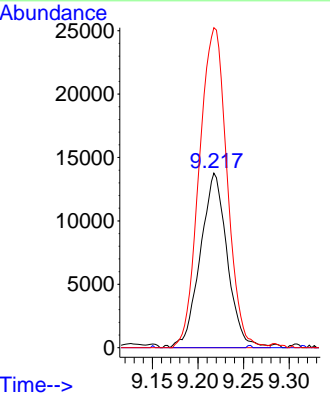
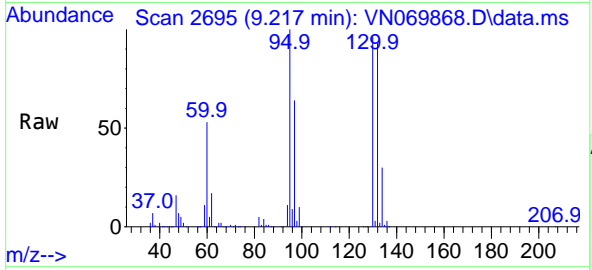


#39  
 Methylcyclohexane  
 Concen: 1.077 ug/l  
 RT: 9.217 min Scan# 2695  
 Delta R.T. -0.244 min  
 Lab File: VN069868.D  
 Acq: 8 Dec 2021 18:11

Instrument : MSVOA\_N  
 ClientSampleId : RE125D3-20211206

Tgt Ion: 83 Resp: 28272

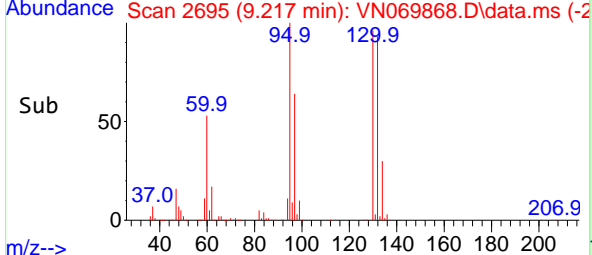
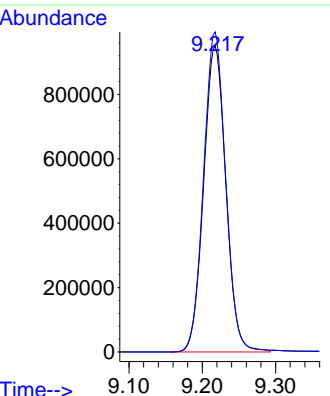
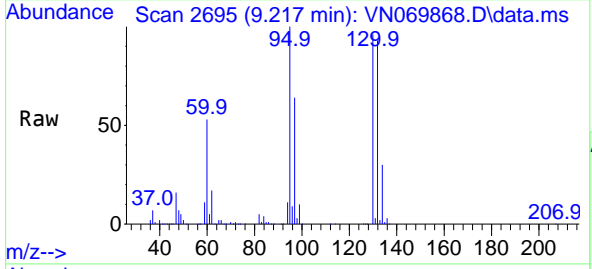
Ion	Ratio	Lower	Upper
83	100		
55	0.0	58.1	87.1#
98	183.2	38.4	57.6#

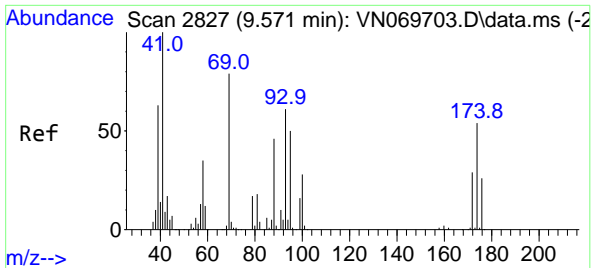


#44  
 Trichloroethene  
 Concen: 124.471 ug/l  
 RT: 9.217 min Scan# 2695  
 Delta R.T. 0.000 min  
 Lab File: VN069868.D  
 Acq: 8 Dec 2021 18:11

Tgt Ion:130 Resp: 2004138

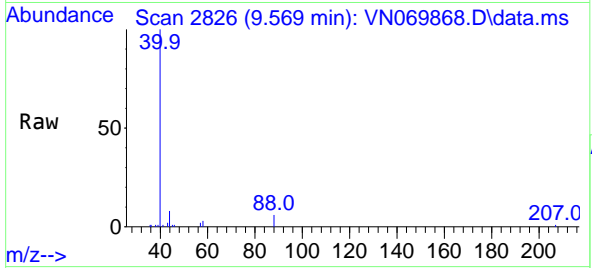
Ion	Ratio	Lower	Upper
130	100		
95	104.7	0.0	191.2



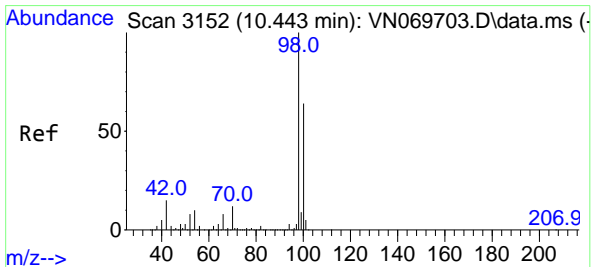
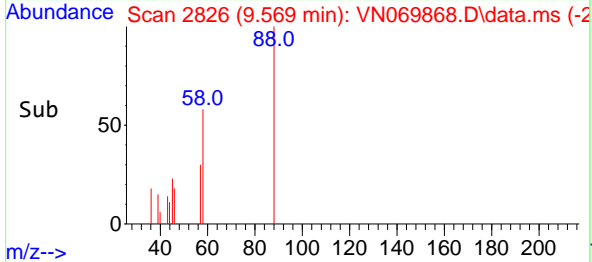
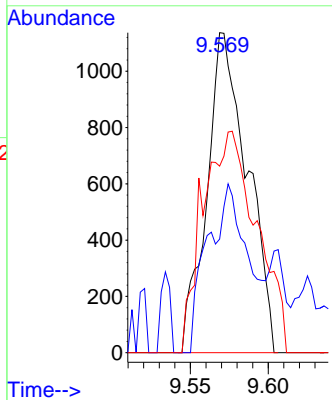


#49  
 1,4-Dioxane  
 Concen: 5.063 ug/l  
 RT: 9.569 min Scan# 21  
 Delta R.T. -0.003 min  
 Lab File: VN069868.D  
 Acq: 8 Dec 2021 18:11

Instrument : MSVOA\_N  
 ClientSampleId : RE125D3-20211206

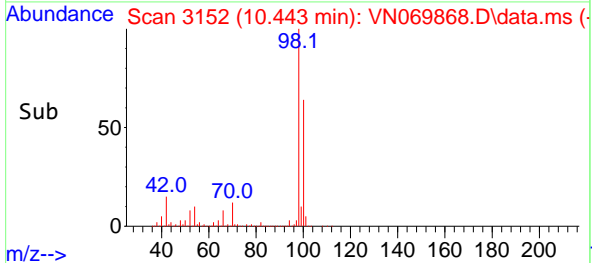
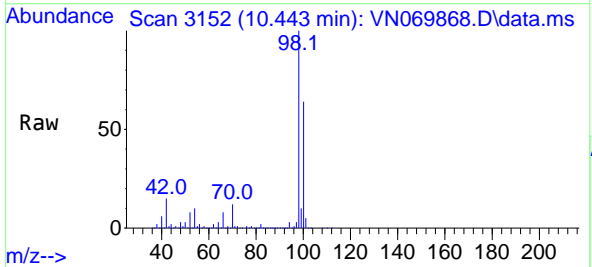
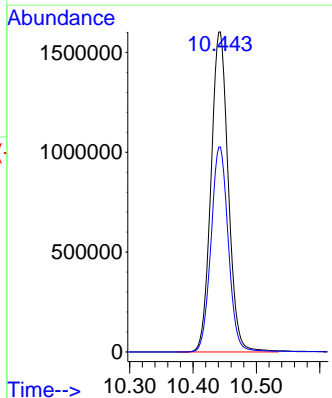


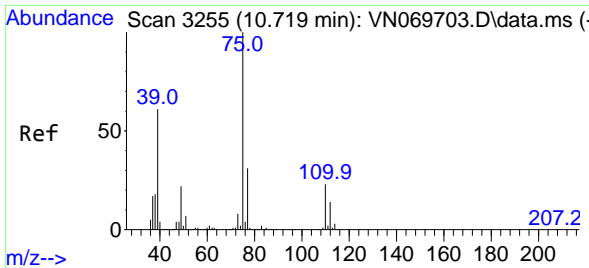
Tgt Ion: 88 Resp: 2061  
 Ion Ratio Lower Upper  
 88 100  
 43 53.5 23.4 35.2#  
 58 91.8 50.6 75.8#



#50  
 Toluene-d8  
 Concen: 52.028 ug/l  
 RT: 10.443 min Scan# 3152  
 Delta R.T. 0.000 min  
 Lab File: VN069868.D  
 Acq: 8 Dec 2021 18:11

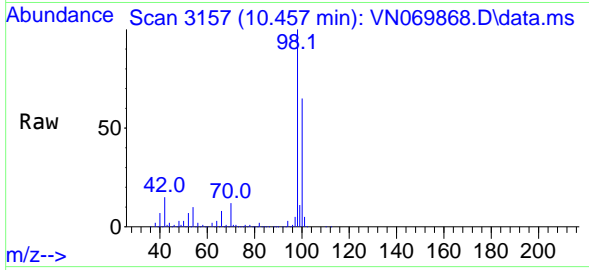
Tgt Ion: 98 Resp: 3033701  
 Ion Ratio Lower Upper  
 98 100  
 100 64.4 50.4 75.6



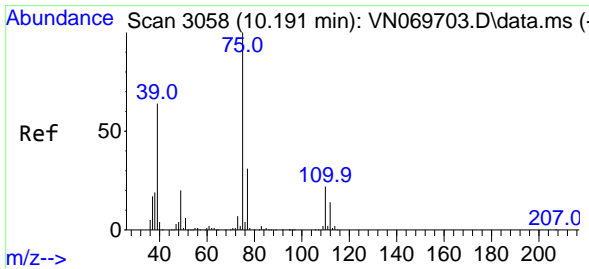
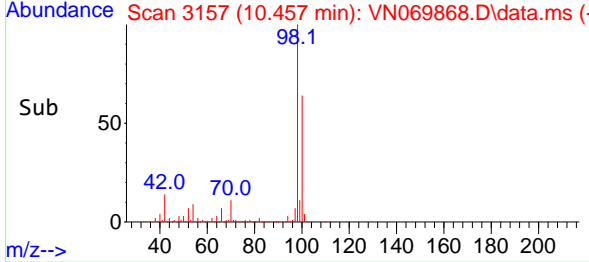
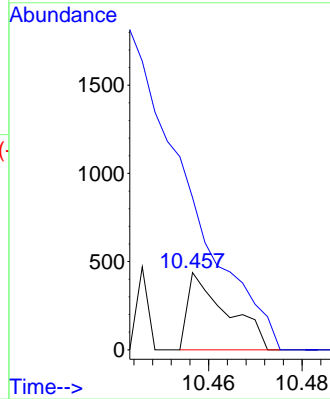


#53  
 t-1,3-Dichloropropene  
 Concen: 2.803 ug/l  
 RT: 10.457 min Scan# 3157  
 Delta R.T. -0.262 min  
 Lab File: VN069868.D  
 Acq: 8 Dec 2021 18:11

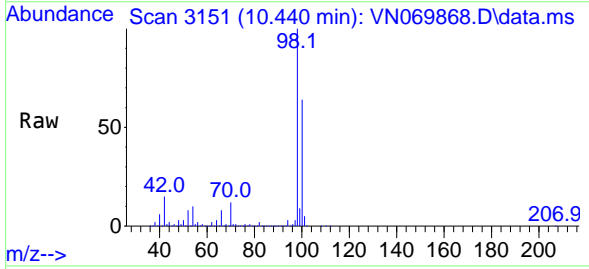
Instrument : MSVOA\_N  
 Client SampleId : RE125D3-20211206



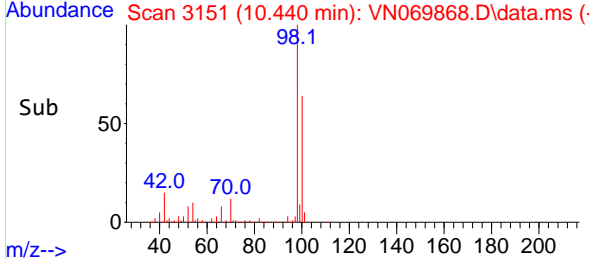
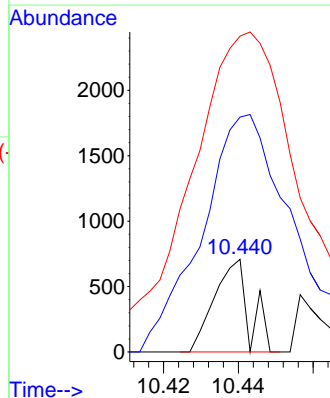
Tgt Ion: 75 Resp: 254  
 Ion Ratio Lower Upper  
 75 100  
 77 197.0 25.6 38.4#

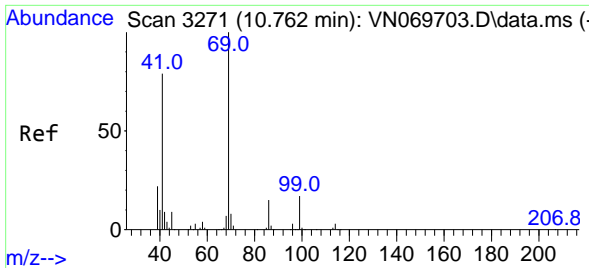


#54  
 cis-1,3-Dichloropropene  
 Concen: 2.014 ug/l  
 RT: 10.440 min Scan# 3151  
 Delta R.T. 0.249 min  
 Lab File: VN069868.D  
 Acq: 8 Dec 2021 18:11



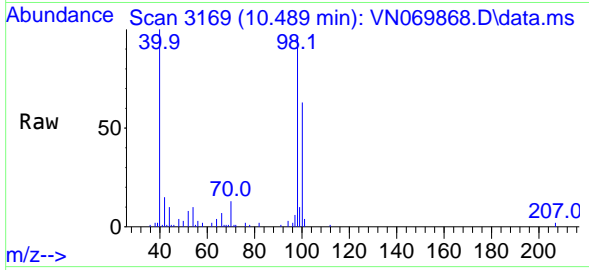
Tgt Ion: 75 Resp: 456  
 Ion Ratio Lower Upper  
 75 100  
 77 170.5 26.4 39.6#  
 39 186.7 42.5 63.7#



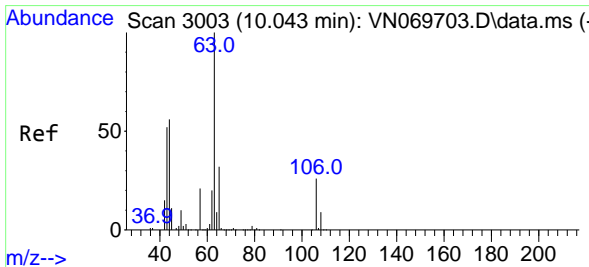
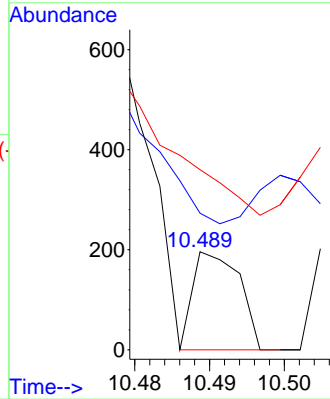
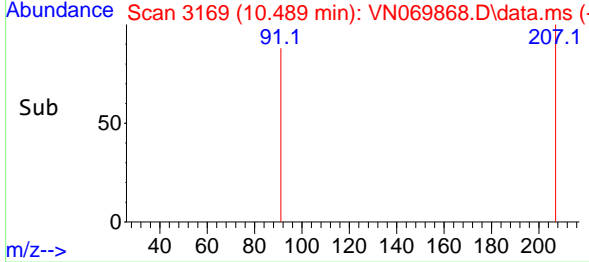


#56  
 Ethyl methacrylate  
 Concen: 2.282 ug/l  
 RT: 10.489 min Scan# 3169  
 Delta R.T. -0.273 min  
 Lab File: VN069868.D  
 Acq: 8 Dec 2021 18:11

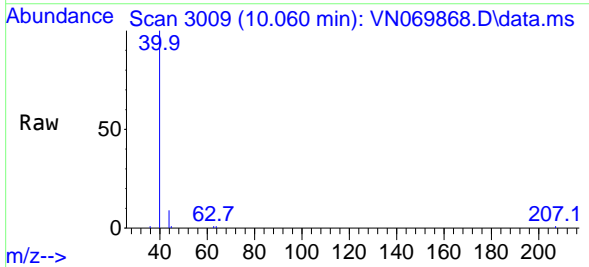
Instrument :  
 MSVOA\_N  
 ClientSampleId :  
 RE125D3-20211206



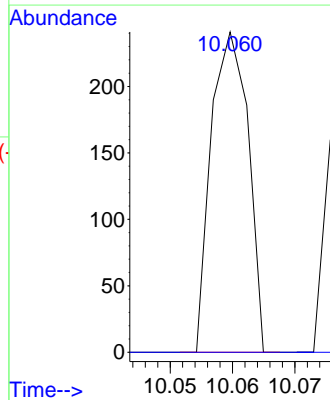
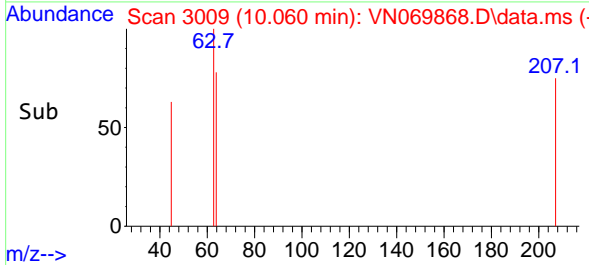
Tgt Ion: 69 Resp: 85  
 Ion Ratio Lower Upper  
 69 100  
 41 416.5 51.4 77.0#  
 39 481.2 34.6 52.0#

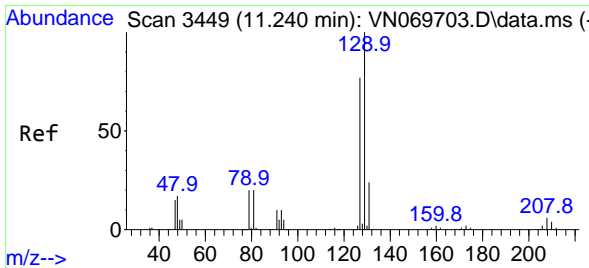


#58  
 2-Chloroethyl Vinyl ether  
 Concen: 18.400 ug/l  
 RT: 10.060 min Scan# 3009  
 Delta R.T. 0.017 min  
 Lab File: VN069868.D  
 Acq: 8 Dec 2021 18:11



Tgt Ion: 63 Resp: 99  
 Ion Ratio Lower Upper  
 63 100  
 106 0.0 23.9 35.9#

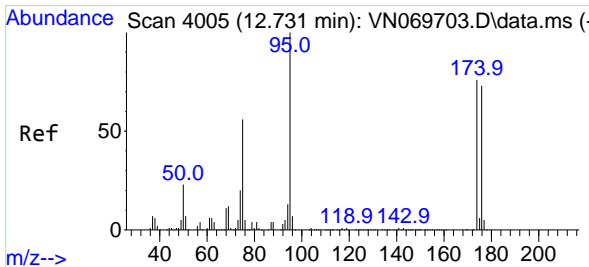
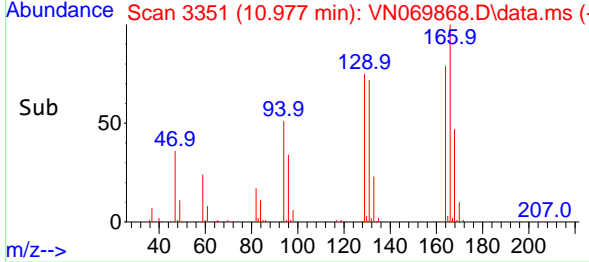
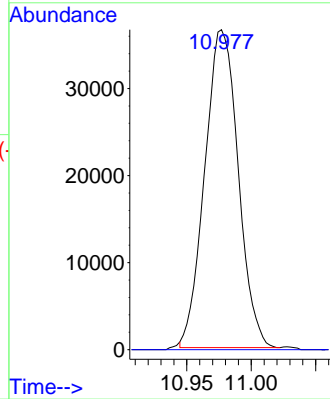
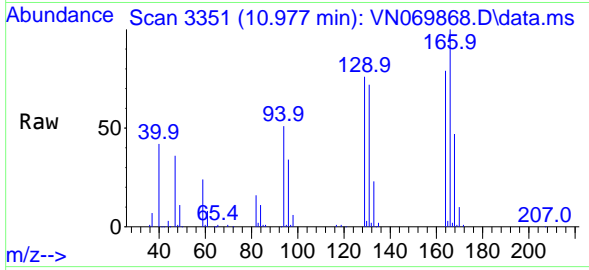




#60  
 Dibromochloromethane  
 Concen: 5.902 ug/l  
 RT: 10.977 min Scan# 311  
 Delta R.T. -0.263 min  
 Lab File: VN069868.D  
 Acq: 8 Dec 2021 18:11

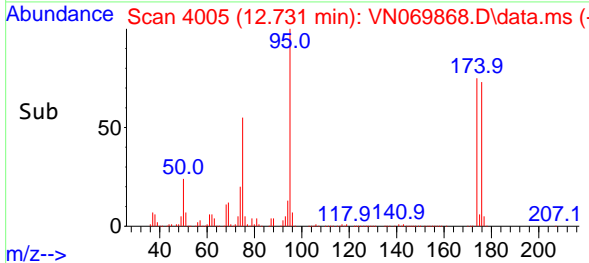
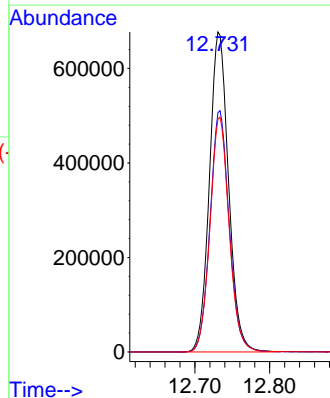
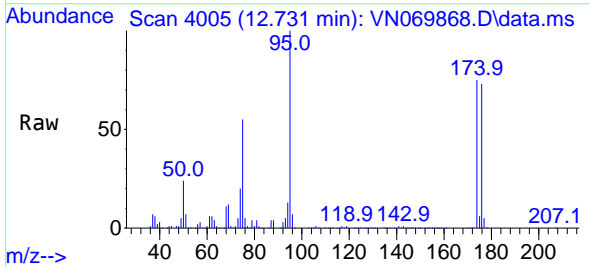
Instrument : MSVOA\_N  
 ClientSampleId : RE125D3-20211206

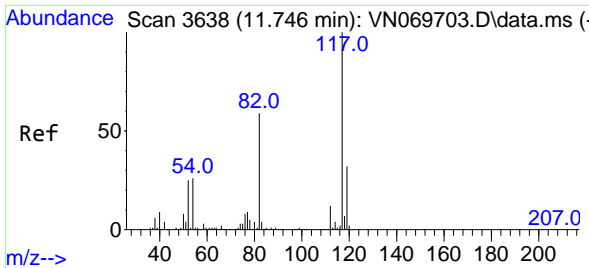
Tgt Ion:129 Resp: 65902  
 Ion Ratio Lower Upper  
 129 100  
 127 0.0 38.6 116.0#



#62  
 4-Bromofluorobenzene  
 Concen: 56.882 ug/l  
 RT: 12.731 min Scan# 4005  
 Delta R.T. -0.000 min  
 Lab File: VN069868.D  
 Acq: 8 Dec 2021 18:11

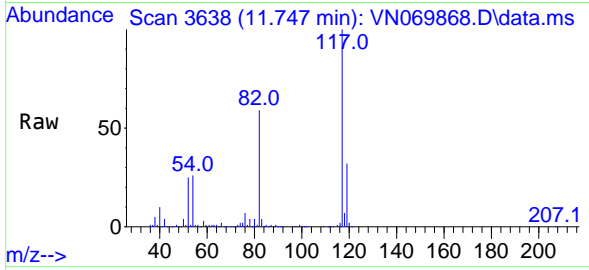
Tgt Ion: 95 Resp: 1201594  
 Ion Ratio Lower Upper  
 95 100  
 174 75.6 0.0 187.2  
 176 73.4 0.0 181.4





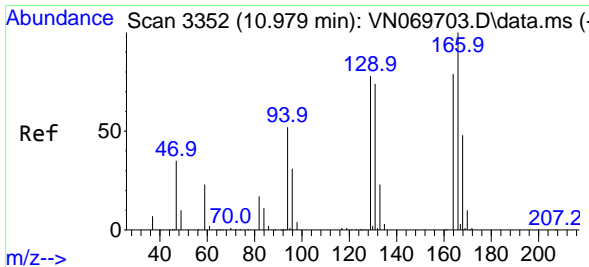
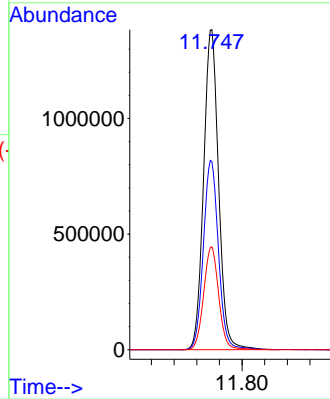
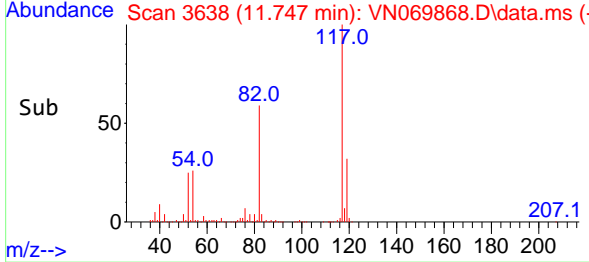
#63  
 Chlorobenzene-d5  
 Concen: 50.000 ug/l  
 RT: 11.747 min Scan# 30  
 Delta R.T. 0.001 min  
 Lab File: VN069868.D  
 Acq: 8 Dec 2021 18:11

Instrument : MSVOA\_N  
 ClientSampleId : RE125D3-20211206

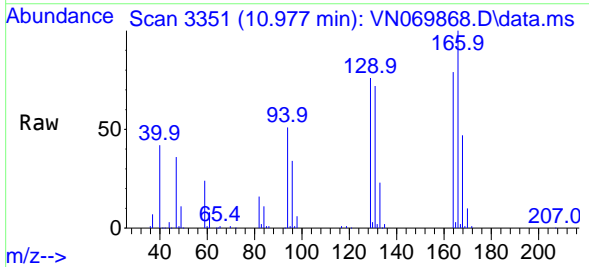


Tgt Ion:117 Resp: 2543324

Ion	Ratio	Lower	Upper
117	100		
82	58.7	42.4	63.6
119	32.1	25.4	38.2

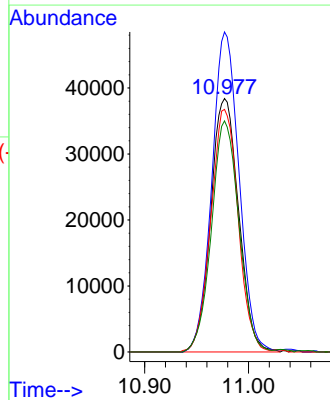
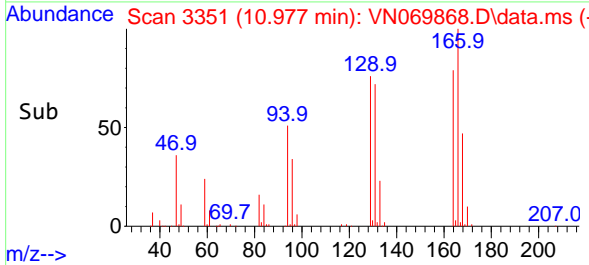


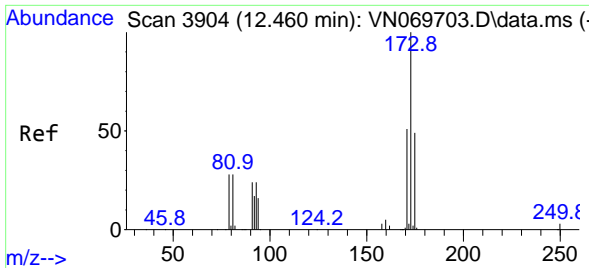
#64  
 Tetrachloroethene  
 Concen: 4.156 ug/l  
 RT: 10.977 min Scan# 3351  
 Delta R.T. -0.002 min  
 Lab File: VN069868.D  
 Acq: 8 Dec 2021 18:11



Tgt Ion:164 Resp: 71668

Ion	Ratio	Lower	Upper
164	100		
166	126.3	101.9	152.9
129	95.7	72.0	108.0
131	91.2	70.9	106.3

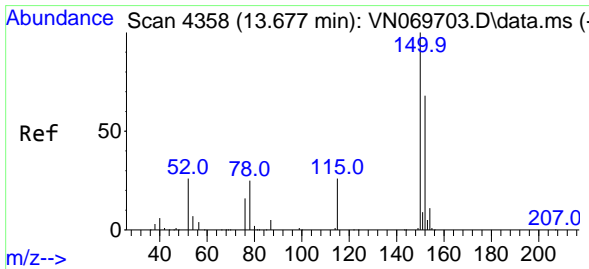
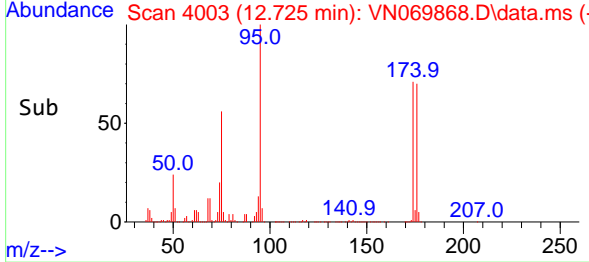
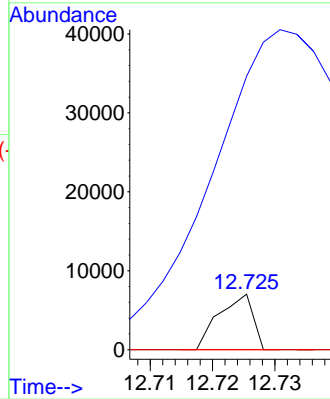
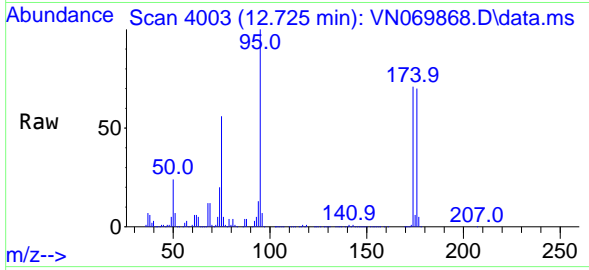




#71  
 Bromoform  
 Concen: 2.893 ug/l  
 RT: 12.725 min Scan# 4003  
 Delta R.T. 0.265 min  
 Lab File: VN069868.D  
 Acq: 8 Dec 2021 18:11

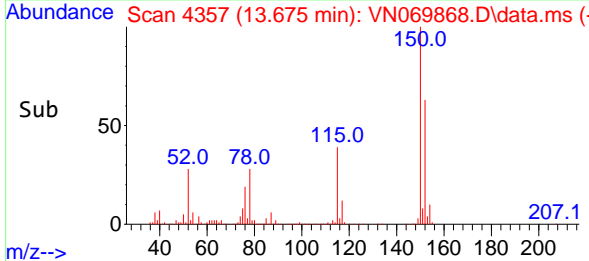
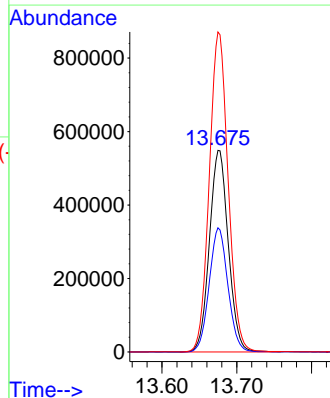
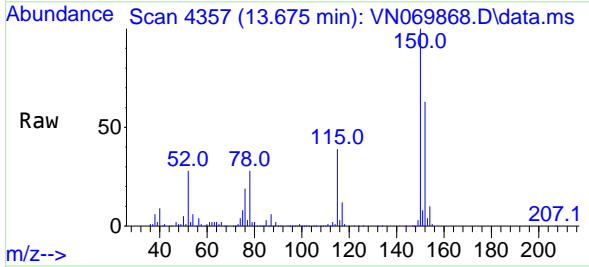
Instrument :  
 MSVOA\_N  
 ClientSampleId :  
 RE125D3-20211206

Tgt Ion:173 Resp: 2669  
 Ion Ratio Lower Upper  
 173 100  
 175 2490.5 24.2 72.6#  
 254 0.0 0.0 0.0

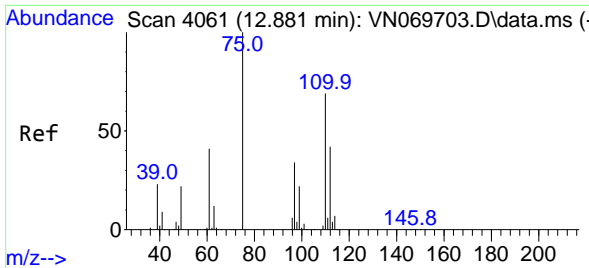


#72  
 1,4-Dichlorobenzene-d4  
 Concen: 50.000 ug/l  
 RT: 13.675 min Scan# 4357  
 Delta R.T. -0.003 min  
 Lab File: VN069868.D  
 Acq: 8 Dec 2021 18:11

Tgt Ion:152 Resp: 963516  
 Ion Ratio Lower Upper  
 152 100  
 115 60.9 27.5 82.5  
 150 158.0 0.0 344.4

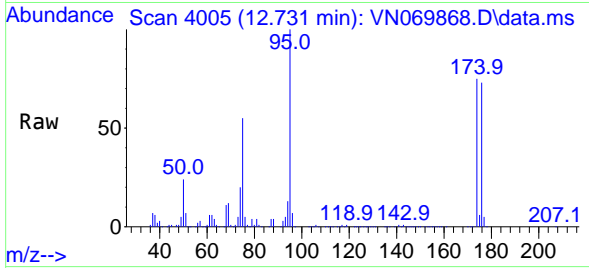




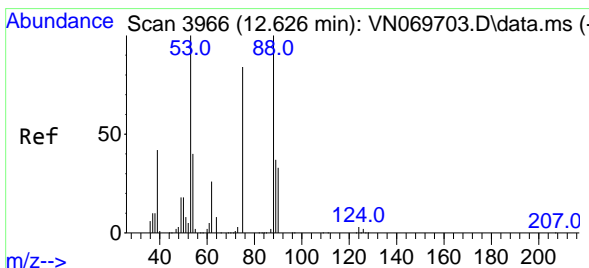
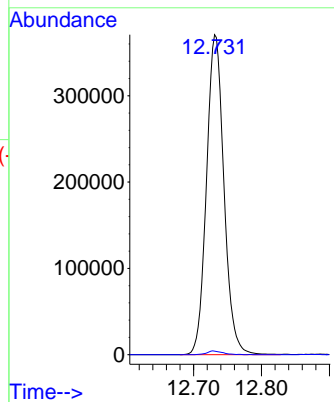
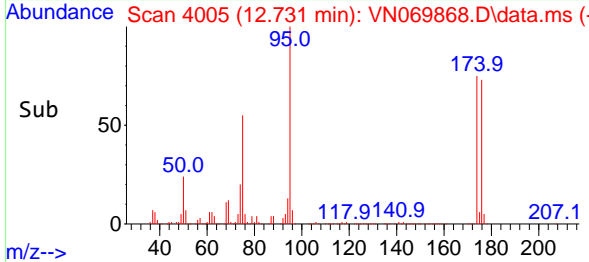


#76  
 1,2,3-Trichloropropane  
 Concen: 23.941 ug/l  
 RT: 12.731 min Scan# 4005  
 Delta R.T. -0.150 min  
 Lab File: VN069868.D  
 Acq: 8 Dec 2021 18:11

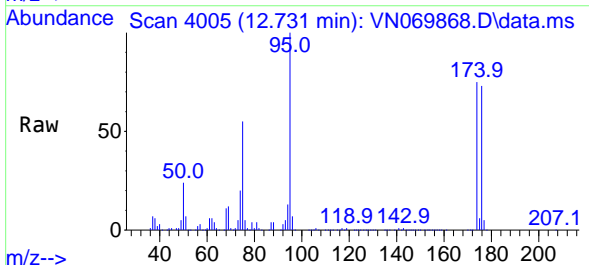
Instrument : MSVOA\_N  
 ClientSampleId : RE125D3-20211206



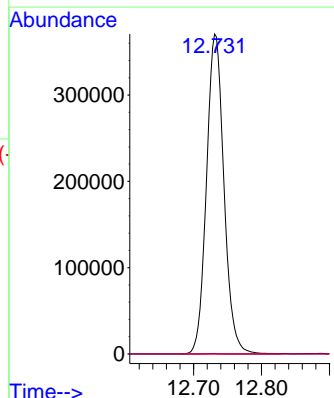
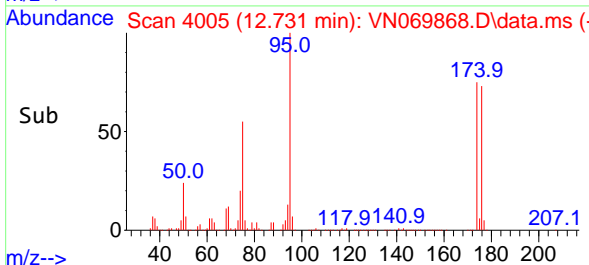
Tgt Ion: 75 Resp: 661528  
 Ion Ratio Lower Upper  
 75 100  
 77 1.1 82.6 247.8#

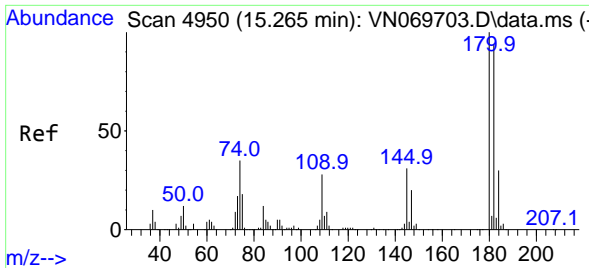


#81  
 trans-1,4-Dichloro-2-butene  
 Concen: 76.053 ug/l  
 RT: 12.731 min Scan# 4005  
 Delta R.T. 0.105 min  
 Lab File: VN069868.D  
 Acq: 8 Dec 2021 18:11



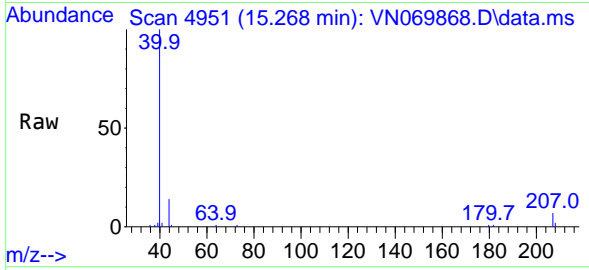
Tgt Ion: 75 Resp: 661528  
 Ion Ratio Lower Upper  
 75 100  
 53 0.1 90.5 135.7#  
 89 0.0 38.2 57.4#



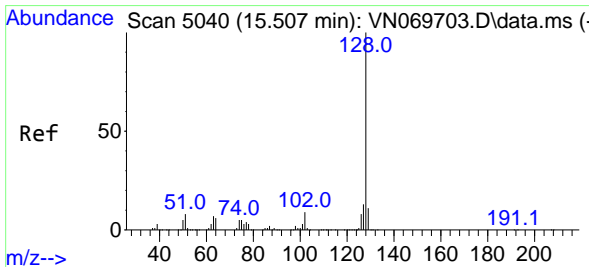
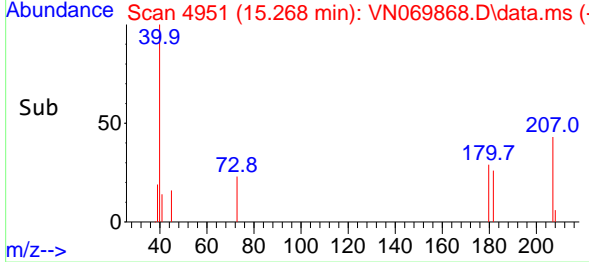
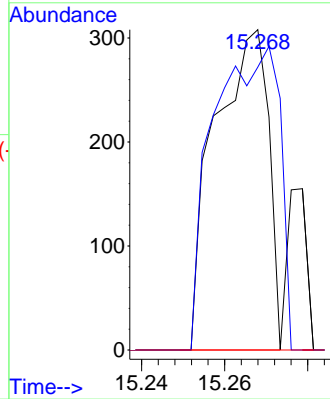


#93  
 1,2,4-Trichlorobenzene  
 Concen: 2.894 ug/l  
 RT: 15.268 min Scan# 4950  
 Delta R.T. 0.003 min  
 Lab File: VN069868.D  
 Acq: 8 Dec 2021 18:11

Instrument : MSVOA\_N  
 ClientSampleId : RE125D3-20211206

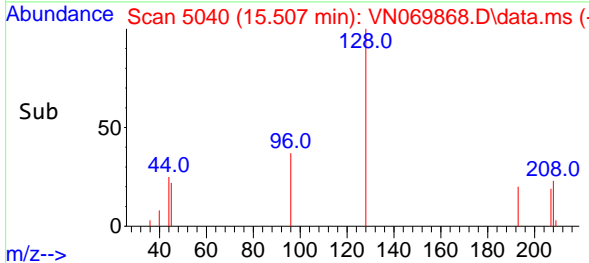
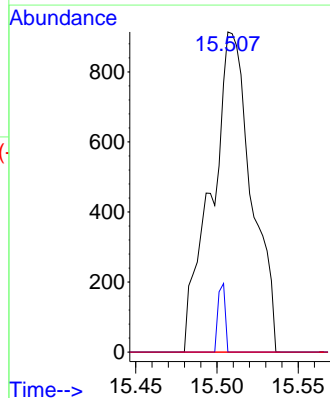
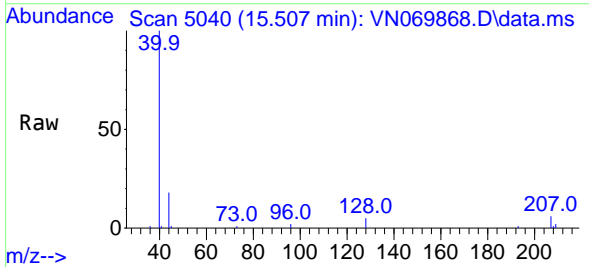


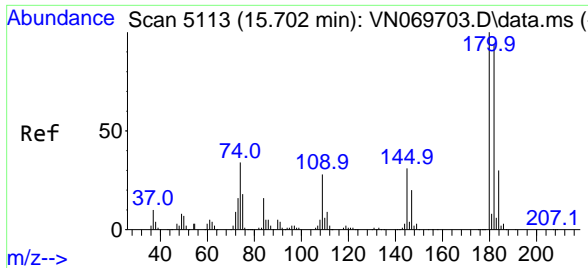
Tgt Ion:180 Resp: 275  
 Ion Ratio Lower Upper  
 180 100  
 182 117.1 48.3 144.9  
 145 0.0 14.5 43.5#



#95  
 Naphthalene  
 Concen: 4.016 ug/l  
 RT: 15.507 min Scan# 5040  
 Delta R.T. -0.000 min  
 Lab File: VN069868.D  
 Acq: 8 Dec 2021 18:11

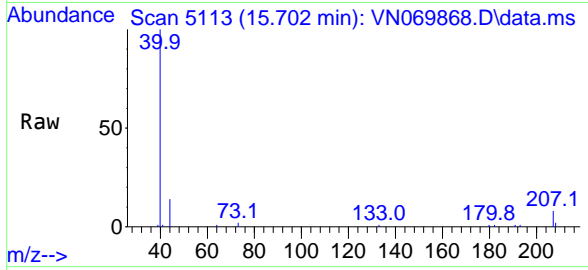
Tgt Ion:128 Resp: 1573  
 Ion Ratio Lower Upper  
 128 100  
 127 3.8 10.5 15.7#  
 129 0.0 8.7 13.1#





#96  
 1,2,3-Trichlorobenzene  
 Concen: 2.445 ug/l  
 RT: 15.702 min Scan# 51  
 Delta R.T. 0.000 min  
 Lab File: VN069868.D  
 Acq: 8 Dec 2021 18:11

Instrument :  
 MSVOA\_N  
 ClientSampleId :  
 RE125D3-20211206



Tgt Ion:180 Resp: 147

Ion	Ratio	Lower	Upper
180	100		
182	36.7	47.4	142.2#
145	0.0	15.0	45.1#

