

Data Path : Z:\voasrv\HPCHEM1\MSVOA_N\Data\VN120822\
 Data File : VN075644.D
 Acq On : 08 Dec 2022 13:44
 Operator : JC\MD
 Sample : N5944-03
 Misc : 5.0mL/MSVOA_N/WATER
 ALS Vial : 9 Sample Multiplier: 1

Instrument :
 MSVOA_N
 ClientSampleId :
 FB-01-120722

Quant Time: Dec 09 02:06:44 2022
 Quant Method : Z:\voasrv\HPCHEM1\MSVOA_N\methods\82N112122W.M
 Quant Title : SW846 8260
 QLast Update : Wed Nov 23 00:18:03 2022
 Response via : Initial Calibration

Compound	R.T.	QIon	Response	Conc	Units	Dev(Min)

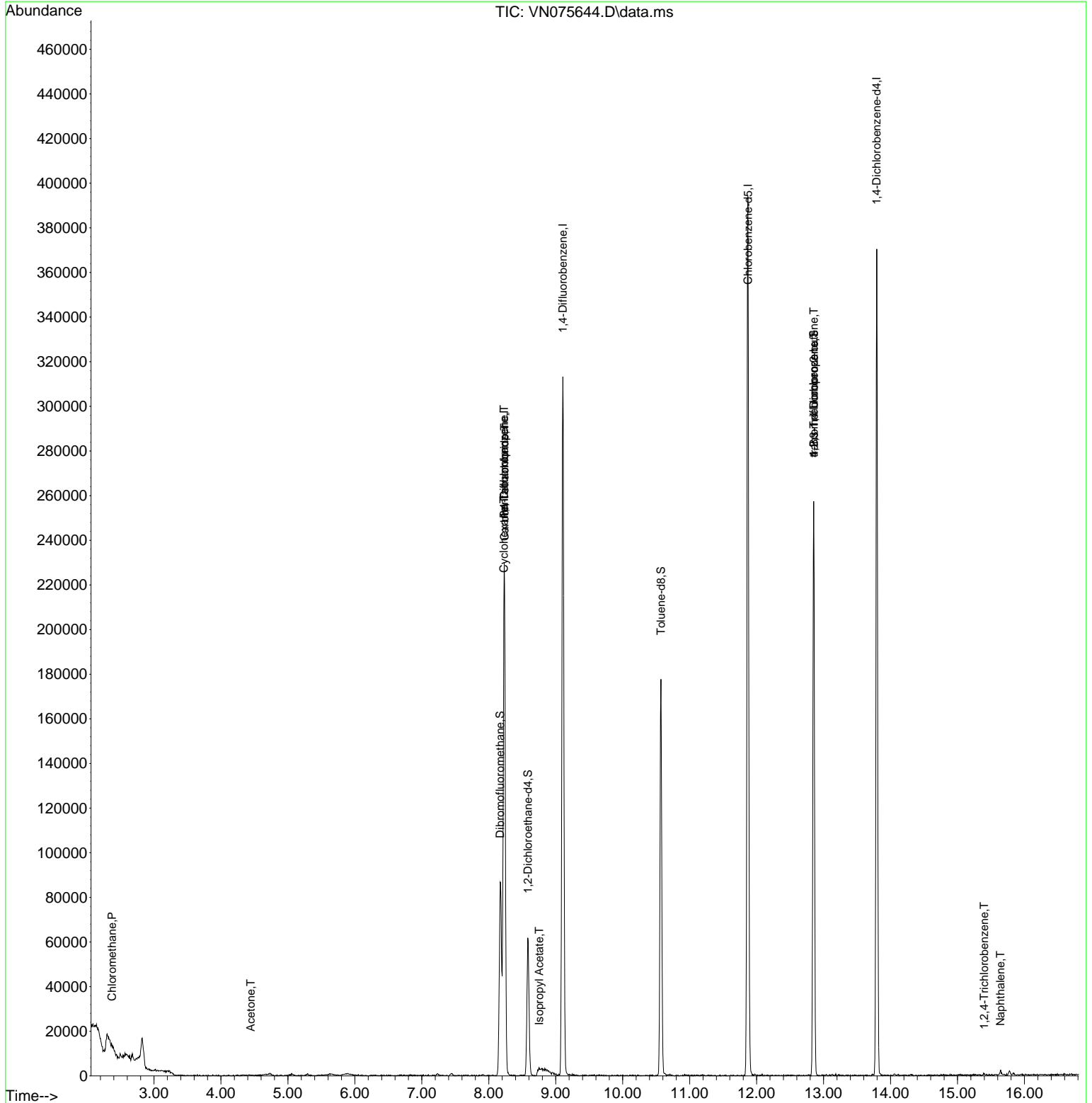
Internal Standards						
1) Pentafluorobenzene	8.230	168	181251	50.000	ug/l	0.00
34) 1,4-Difluorobenzene	9.106	114	292984	50.000	ug/l	0.00
63) Chlorobenzene-d5	11.871	117	250084	50.000	ug/l	0.00
72) 1,4-Dichlorobenzene-d4	13.794	152	106250	50.000	ug/l	0.00
System Monitoring Compounds						
33) 1,2-Dichloroethane-d4	8.583	65	47980	49.315	ug/l	0.00
Spiked Amount	50.000	Range 74 - 125	Recovery	=	98.620%	
35) Dibromofluoromethane	8.171	113	63437	55.118	ug/l	0.00
Spiked Amount	50.000	Range 75 - 124	Recovery	=	110.240%	
50) Toluene-d8	10.571	98	127681	49.255	ug/l	0.00
Spiked Amount	50.000	Range 86 - 113	Recovery	=	98.520%	
62) 4-Bromofluorobenzene	12.853	95	87290	45.622	ug/l	0.00
Spiked Amount	50.000	Range 83 - 123	Recovery	=	91.240%	
Target Compounds						
						Qvalue
3) Chloromethane	2.371	50	455	0.264	ug/l #	42
16) Acetone	4.448	43	603	0.664	ug/l #	43
18) Methyl Acetate	5.059	43	1564	Below Cal	#	47
20) Methylene Chloride	5.289	84	670	Below Cal	#	38
31) Cyclohexane	8.224	56	2828	0.915	ug/l #	1
36) 1,1-Dichloropropene	8.230	75	12686	5.054	ug/l #	46
38) Carbon Tetrachloride	8.236	117	17657	6.404	ug/l #	16
43) Isopropyl Acetate	8.753	43	2465	0.680	ug/l #	53
76) 1,2,3-Trichloropropane	12.853	75	43939	21.872	ug/l #	1
81) trans-1,4-Dichloro-2-b...	12.853	75	43939	64.715	ug/l #	10
93) 1,2,4-Trichlorobenzene	15.400	180	491	0.271	ug/l #	66
95) Naphthalene	15.641	128	2441	0.428	ug/l #	82

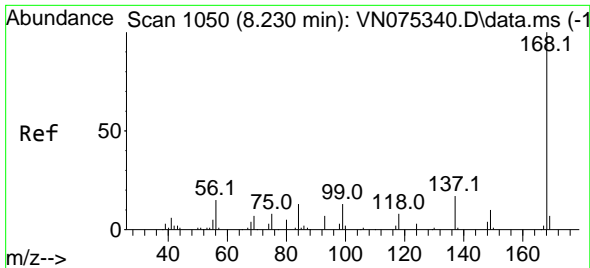
(#) = qualifier out of range (m) = manual integration (+) = signals summed

Data Path : Z:\voasrv\HPCHEM1\MSVOA_N\Data\VN120822\
 Data File : VN075644.D
 Acq On : 08 Dec 2022 13:44
 Operator : JC\MD
 Sample : N5944-03
 Misc : 5.0mL/MSVOA_N/WATER
 ALS Vial : 9 Sample Multiplier: 1

Instrument :
 MSVOA_N
 ClientSampleId :
 FB-01-120722

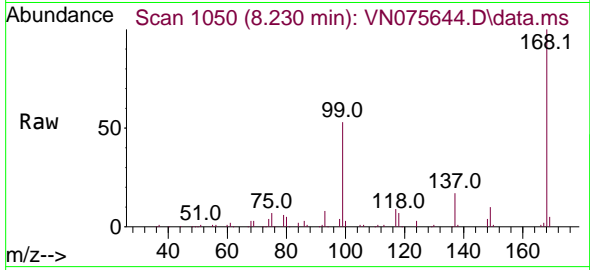
Quant Time: Dec 09 02:06:44 2022
 Quant Method : Z:\voasrv\HPCHEM1\MSVOA_N\methods\82N112122W.M
 Quant Title : SW846 8260
 QLast Update : Wed Nov 23 00:18:03 2022
 Response via : Initial Calibration



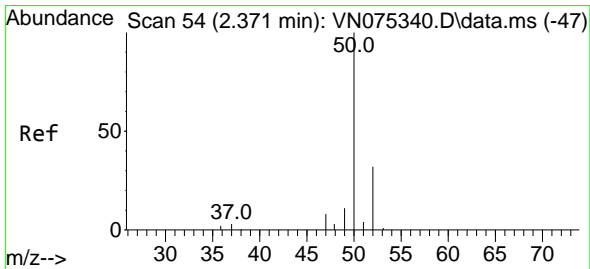
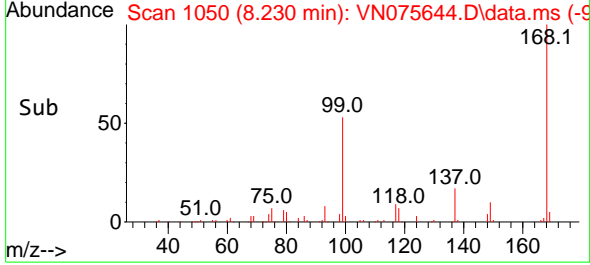
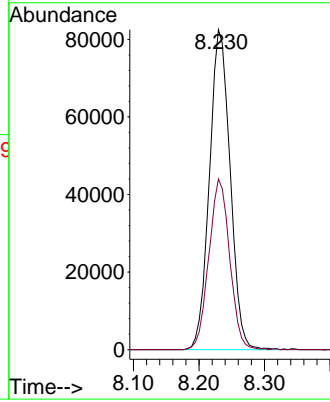


#1
 Pentafluorobenzene
 Concen: 50.000 ug/l
 RT: 8.230 min Scan# 10
 Delta R.T. -0.000 min
 Lab File: VN075644.D
 Acq: 08 Dec 2022 13:44

Instrument : MSVOA_N
 ClientSampleId : FB-01-120722

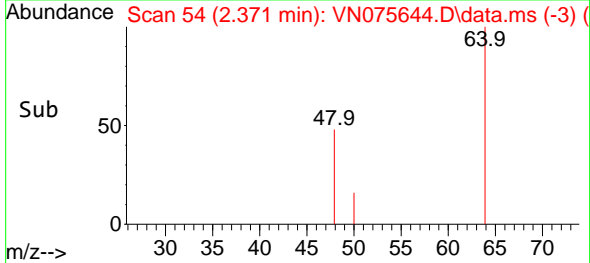
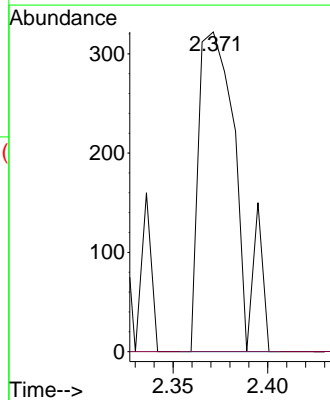
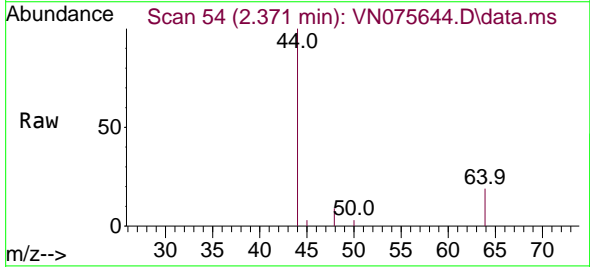


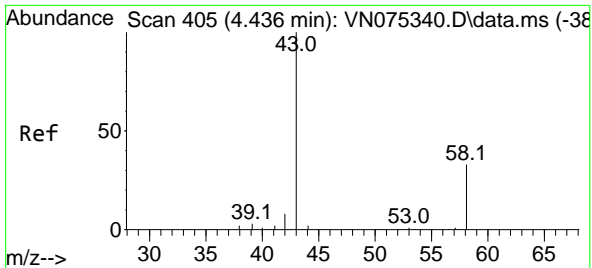
Tgt Ion:168 Resp: 181251
 Ion Ratio Lower Upper
 168 100
 99 53.3 51.6 77.4



#3
 Chloromethane
 Concen: 0.264 ug/l
 RT: 2.371 min Scan# 54
 Delta R.T. 0.000 min
 Lab File: VN075644.D
 Acq: 08 Dec 2022 13:44

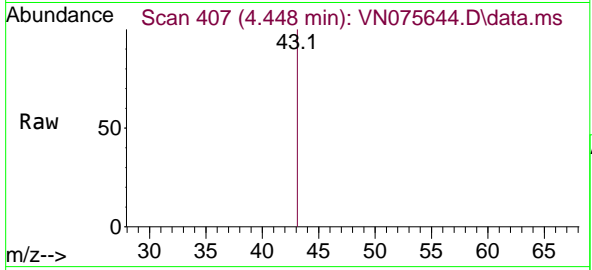
Tgt Ion: 50 Resp: 455
 Ion Ratio Lower Upper
 50 100
 52 0.0 25.8 38.6#



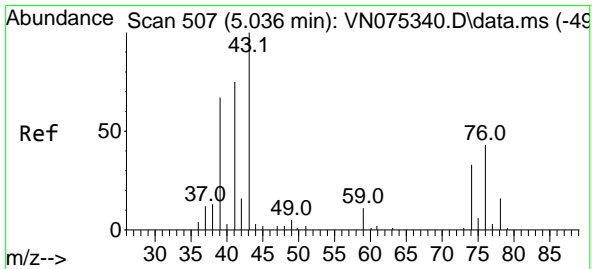
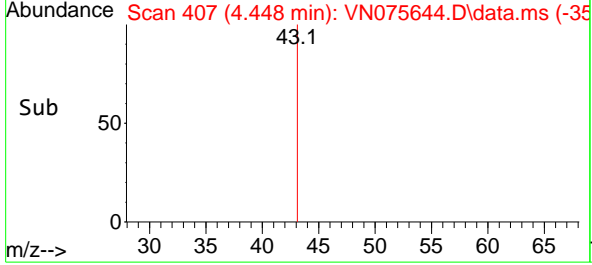
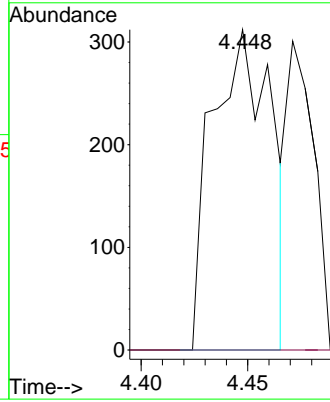


#16
 Acetone
 Concen: 0.664 ug/l
 RT: 4.448 min Scan# 407
 Delta R.T. 0.012 min
 Lab File: VN075644.D
 Acq: 08 Dec 2022 13:44

Instrument : MSVOA_N
 ClientSampleId : FB-01-120722

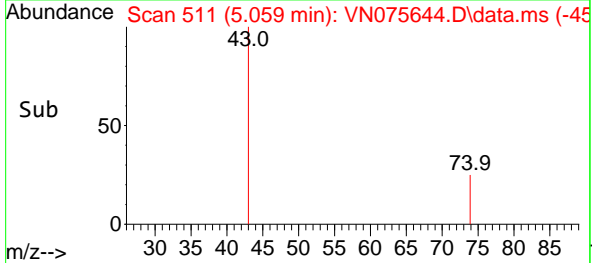
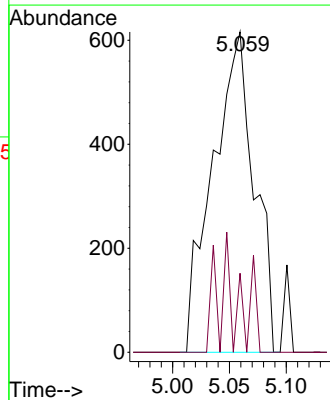
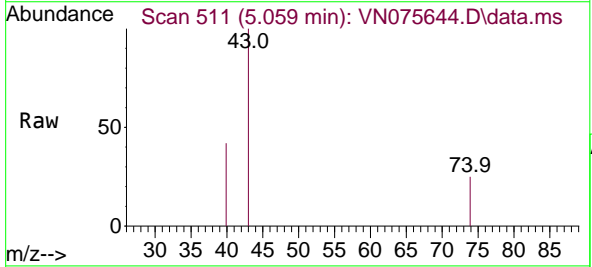


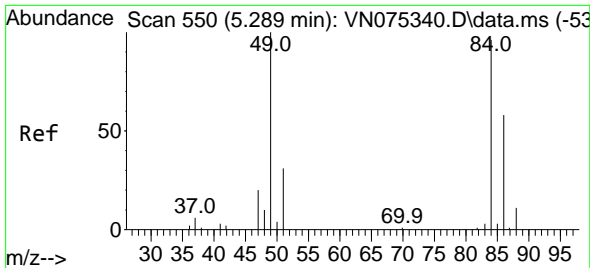
Tgt Ion: 43 Resp: 603
 Ion Ratio Lower Upper
 43 100
 58 0.0 25.5 38.3#



#18
 Methyl Acetate
 Concen: Below Cal
 RT: 5.059 min Scan# 511
 Delta R.T. 0.023 min
 Lab File: VN075644.D
 Acq: 08 Dec 2022 13:44

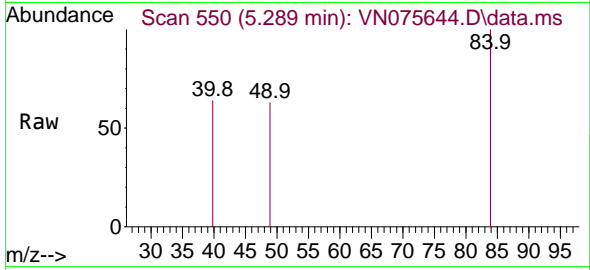
Tgt Ion: 43 Resp: 1564
 Ion Ratio Lower Upper
 43 100
 74 0.0 22.0 33.0#





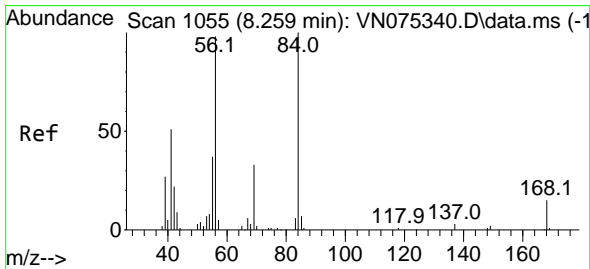
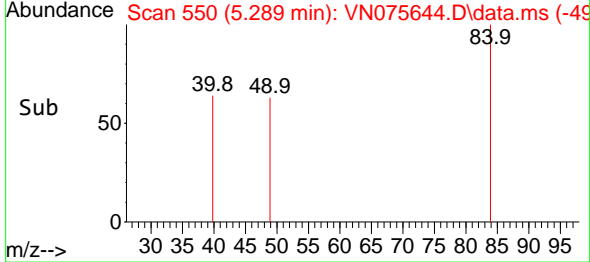
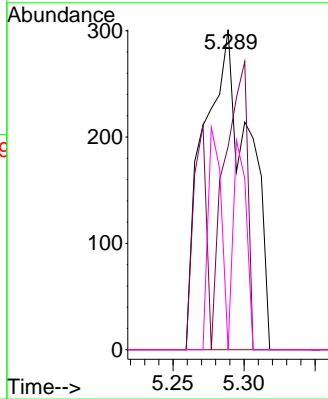
#20
 Methylene Chloride
 Concen: Below Cal
 RT: 5.289 min Scan# 51
 Delta R.T. -0.000 min
 Lab File: VN075644.D
 Acq: 08 Dec 2022 13:44

Instrument : MSVOA_N
 ClientSampleId : FB-01-120722

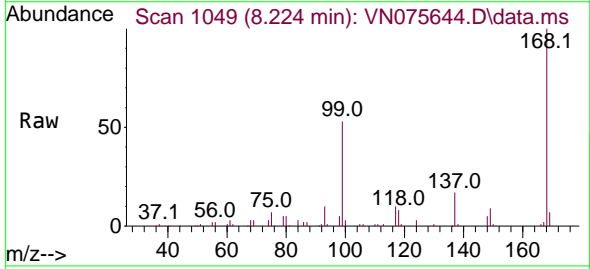


Tgt Ion: 84 Resp: 670

Ion	Ratio	Lower	Upper
84	100		
49	63.5	94.9	142.3#
51	0.0	26.8	40.2#
86	0.0	53.7	80.5#

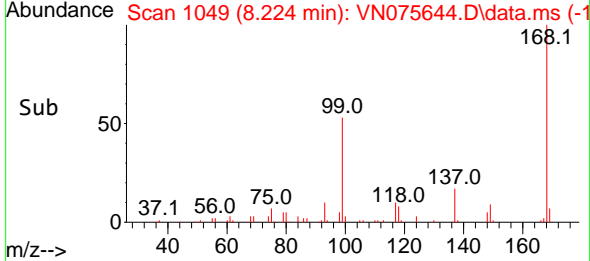
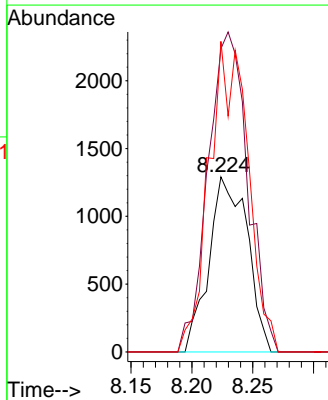


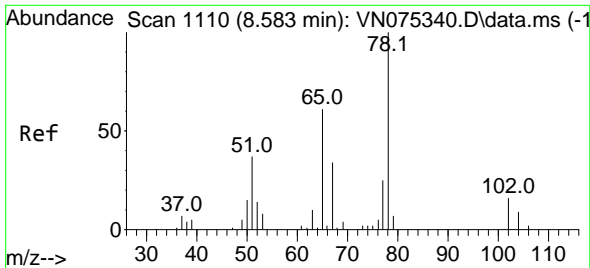
#31
 Cyclohexane
 Concen: 0.915 ug/l
 RT: 8.224 min Scan# 1049
 Delta R.T. -0.035 min
 Lab File: VN075644.D
 Acq: 08 Dec 2022 13:44



Tgt Ion: 56 Resp: 2828

Ion	Ratio	Lower	Upper
56	100		
69	173.2	25.2	37.8#
84	177.5	77.8	116.8#

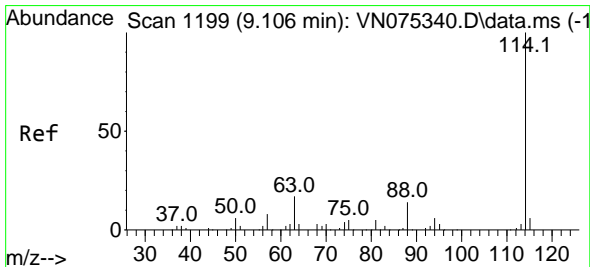
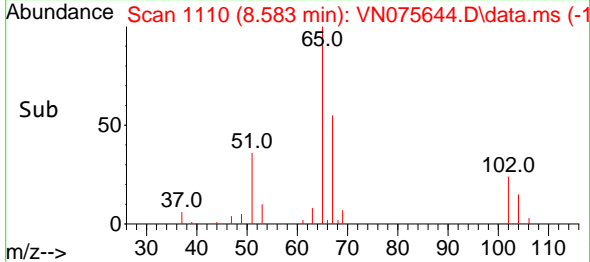
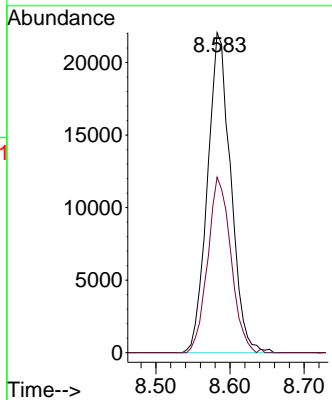
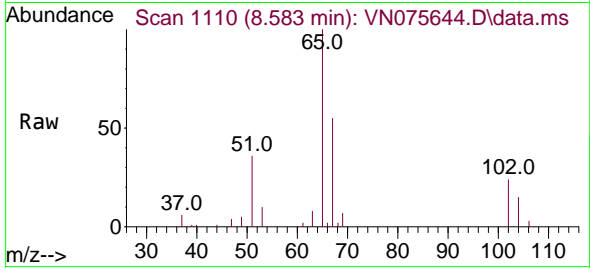




#33
 1,2-Dichloroethane-d4
 Concen: 49.315 ug/l
 RT: 8.583 min Scan# 1110
 Delta R.T. -0.000 min
 Lab File: VN075644.D
 Acq: 08 Dec 2022 13:44

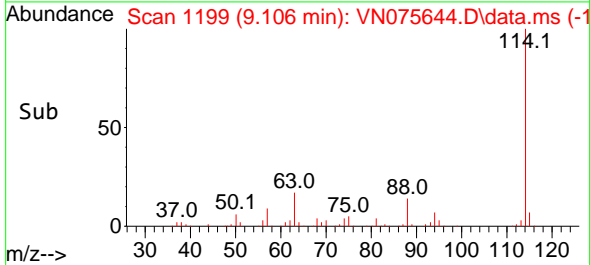
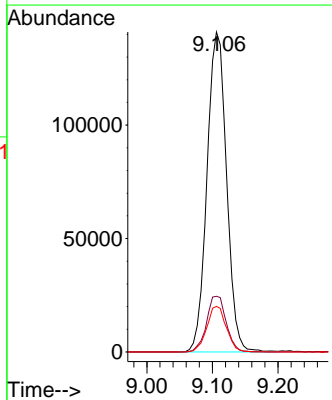
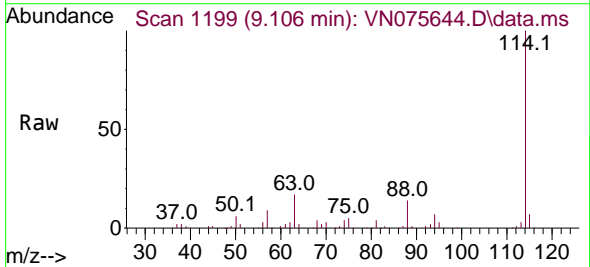
Instrument : MSVOA_N
 ClientSampleId : FB-01-120722

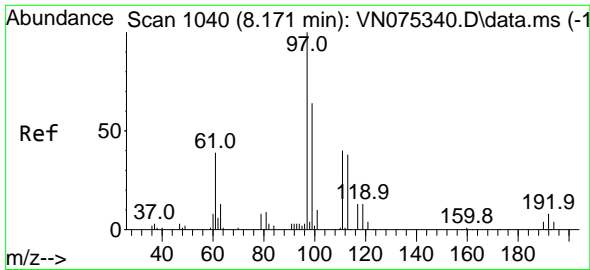
Tgt Ion: 65 Resp: 47980
 Ion Ratio Lower Upper
 65 100
 67 54.9 0.0 102.0



#34
 1,4-Difluorobenzene
 Concen: 50.000 ug/l
 RT: 9.106 min Scan# 1199
 Delta R.T. 0.000 min
 Lab File: VN075644.D
 Acq: 08 Dec 2022 13:44

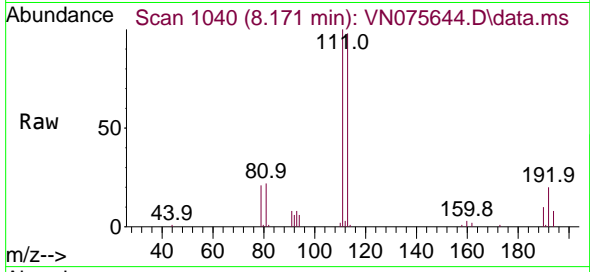
Tgt Ion:114 Resp: 292984
 Ion Ratio Lower Upper
 114 100
 63 17.4 0.0 39.6
 88 14.2 0.0 29.0



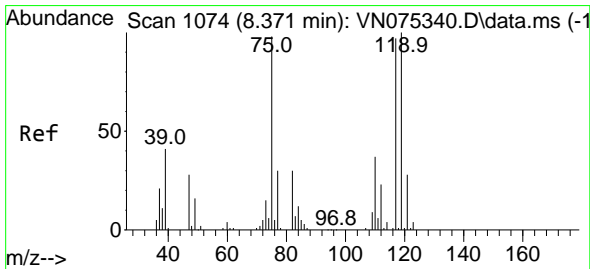
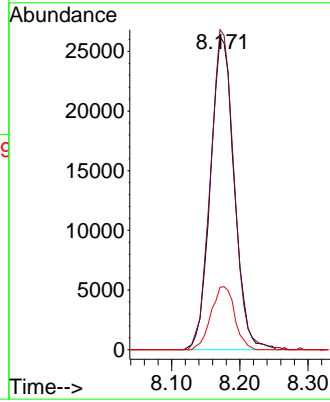
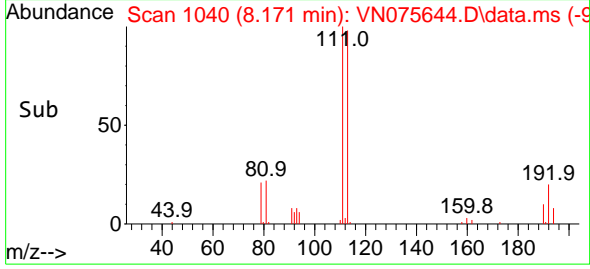


#35
 Dibromofluoromethane
 Concen: 55.118 ug/l
 RT: 8.171 min Scan# 1040
 Delta R.T. -0.000 min
 Lab File: VN075644.D
 Acq: 08 Dec 2022 13:44

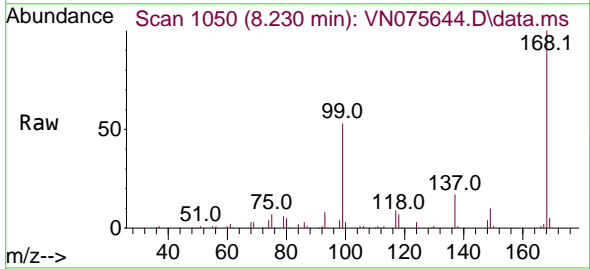
Instrument : MSVOA_N
 ClientSampleId : FB-01-120722



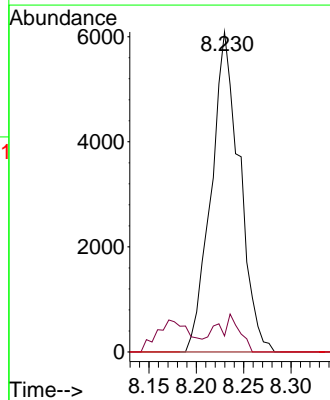
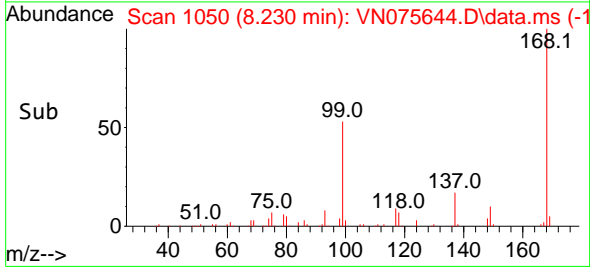
Tgt Ion:113 Resp: 63437
 Ion Ratio Lower Upper
 113 100
 111 102.0 80.5 120.7
 192 20.0 13.2 19.8#

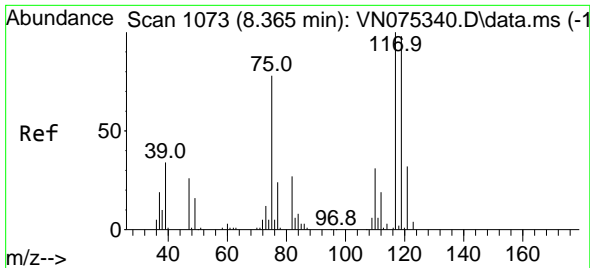


#36
 1,1-Dichloropropene
 Concen: 5.054 ug/l
 RT: 8.230 min Scan# 1050
 Delta R.T. -0.141 min
 Lab File: VN075644.D
 Acq: 08 Dec 2022 13:44



Tgt Ion: 75 Resp: 12686
 Ion Ratio Lower Upper
 75 100
 110 5.1 17.8 53.3#
 77 0.0 24.6 37.0#

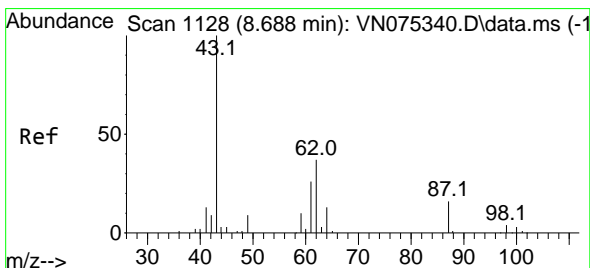
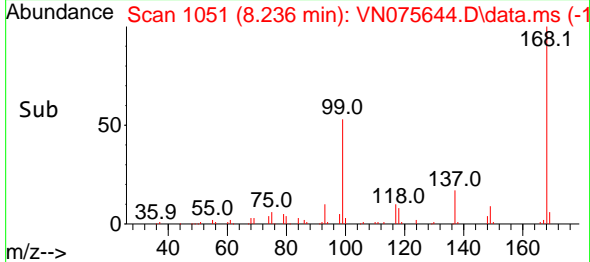
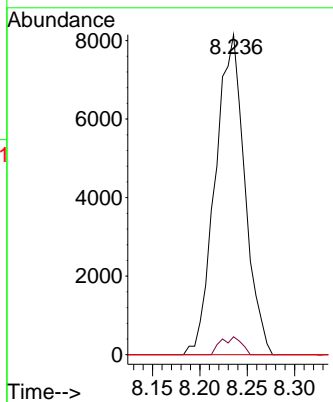
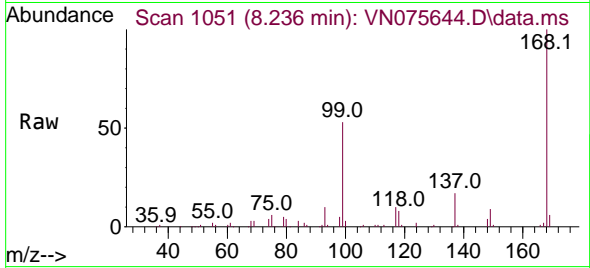




#38
 Carbon Tetrachloride
 Concen: 6.404 ug/l
 RT: 8.236 min Scan# 1109
 Delta R.T. -0.129 min
 Lab File: VN075644.D
 Acq: 08 Dec 2022 13:44

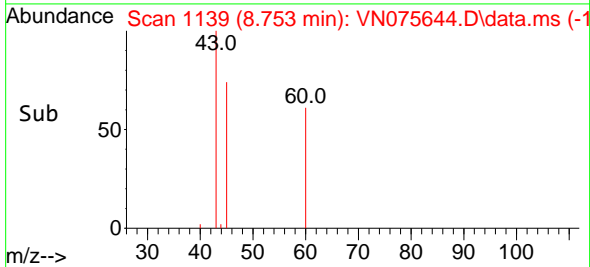
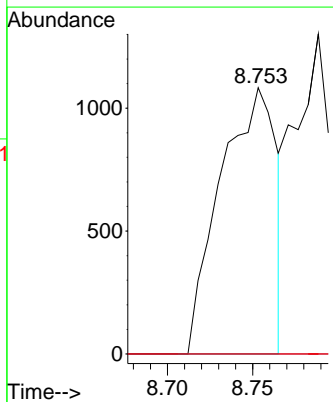
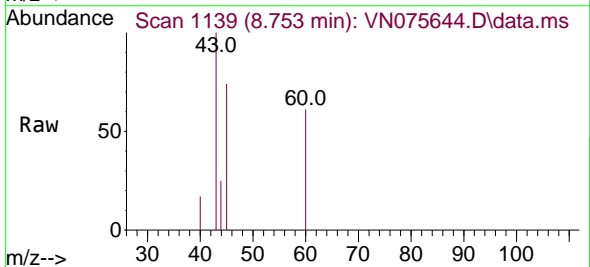
Instrument : MSVOA_N
 ClientSampleId : FB-01-120722

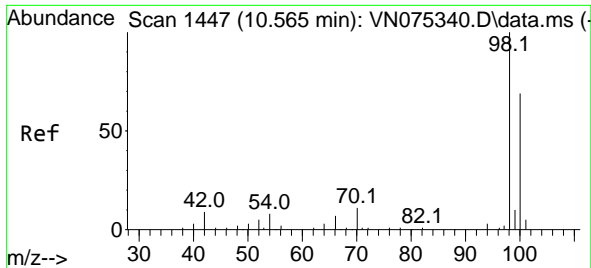
Tgt Ion	Resp	Lower	Upper
117	17657		
119	5.6	76.7	115.1#
121	0.0	23.9	35.9#



#43
 Isopropyl Acetate
 Concen: 0.680 ug/l
 RT: 8.753 min Scan# 1139
 Delta R.T. 0.065 min
 Lab File: VN075644.D
 Acq: 08 Dec 2022 13:44

Tgt Ion	Resp	Lower	Upper
43	2465		
61	0.0	22.4	33.6#
87	0.0	12.5	18.7#

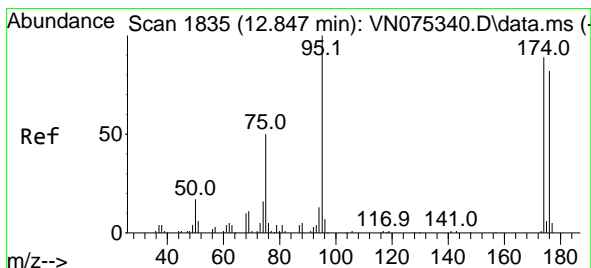
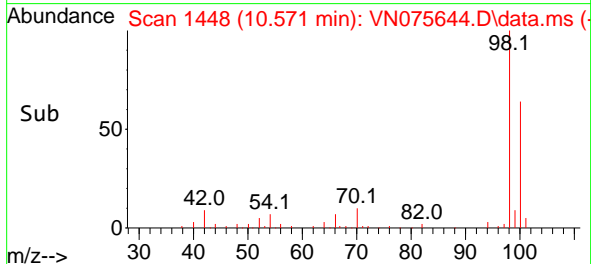
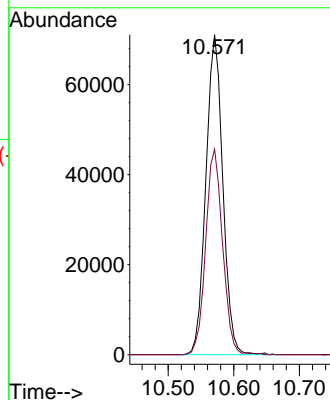
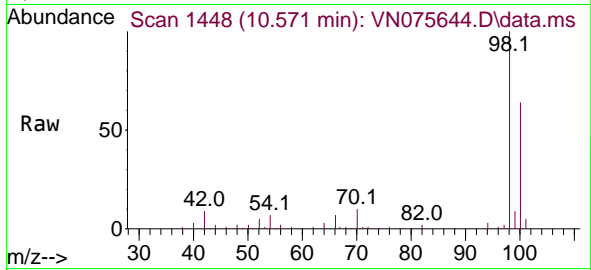




#50
 Toluene-d8
 Concen: 49.255 ug/l
 RT: 10.571 min Scan# 1447
 Delta R.T. 0.006 min
 Lab File: VN075644.D
 Acq: 08 Dec 2022 13:44

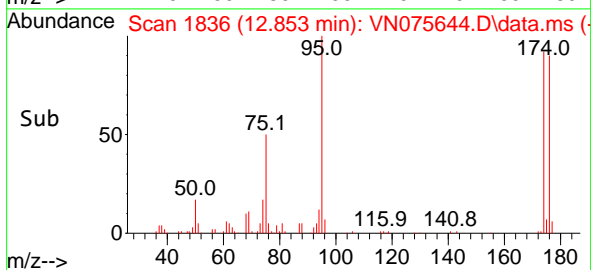
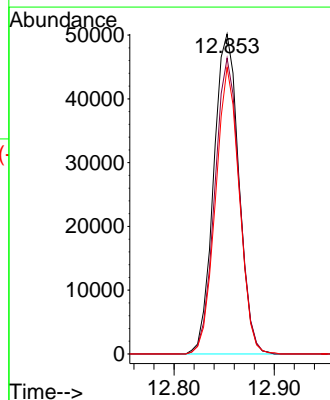
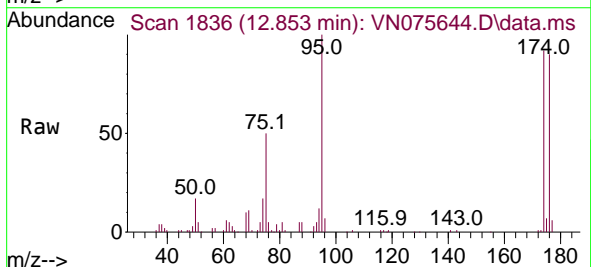
Instrument : MSVOA_N
 ClientSampleId : FB-01-120722

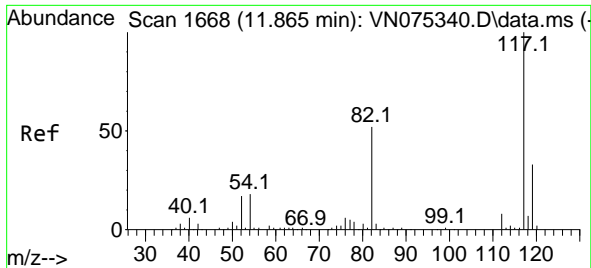
Tgt Ion: 98 Resp: 127681
 Ion Ratio Lower Upper
 98 100
 100 64.2 53.0 79.6



#62
 4-Bromofluorobenzene
 Concen: 45.622 ug/l
 RT: 12.853 min Scan# 1836
 Delta R.T. 0.006 min
 Lab File: VN075644.D
 Acq: 08 Dec 2022 13:44

Tgt Ion: 95 Resp: 87290
 Ion Ratio Lower Upper
 95 100
 174 90.3 0.0 147.4
 176 84.8 0.0 142.2

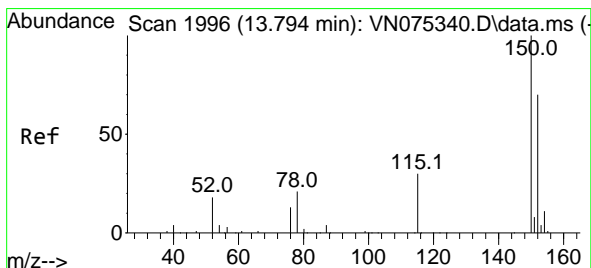
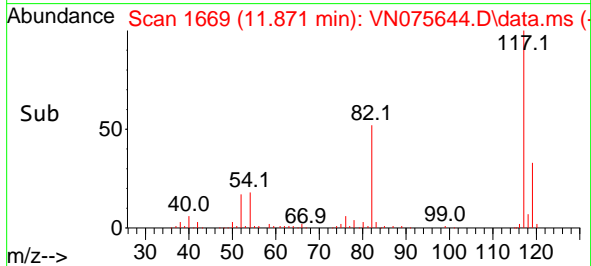
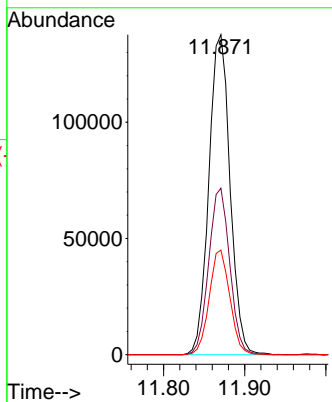
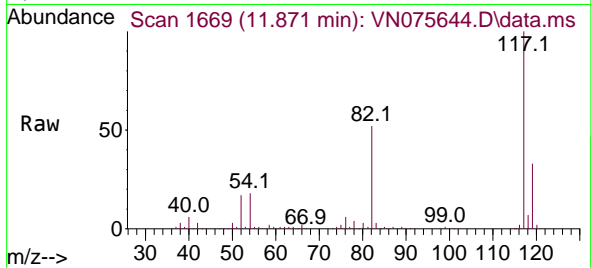




#63
 Chlorobenzene-d5
 Concen: 50.000 ug/l
 RT: 11.871 min Scan# 1669
 Delta R.T. 0.006 min
 Lab File: VN075644.D
 Acq: 08 Dec 2022 13:44

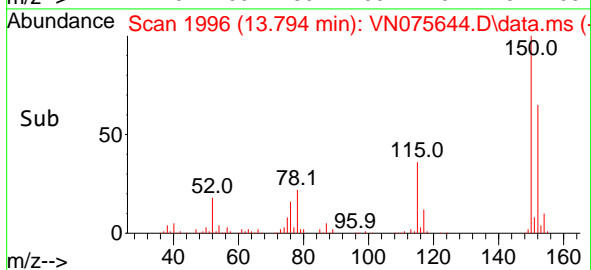
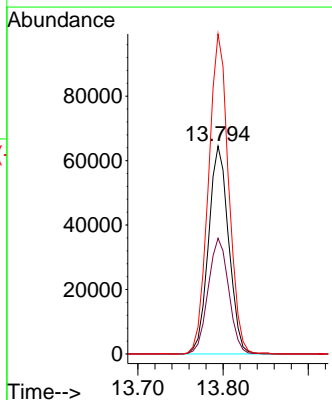
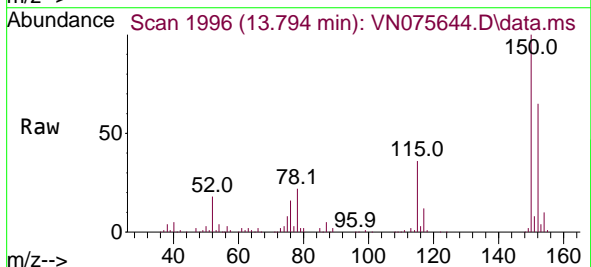
Instrument : MSVOA_N
 ClientSampleId : FB-01-120722

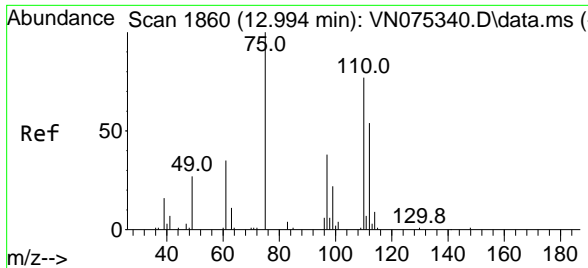
Tgt Ion:117 Resp: 250084
 Ion Ratio Lower Upper
 117 100
 82 52.0 43.1 64.7
 119 32.7 25.5 38.3



#72
 1,4-Dichlorobenzene-d4
 Concen: 50.000 ug/l
 RT: 13.794 min Scan# 1996
 Delta R.T. 0.000 min
 Lab File: VN075644.D
 Acq: 08 Dec 2022 13:44

Tgt Ion:152 Resp: 106250
 Ion Ratio Lower Upper
 152 100
 115 56.8 30.2 90.6
 150 153.7 0.0 348.4

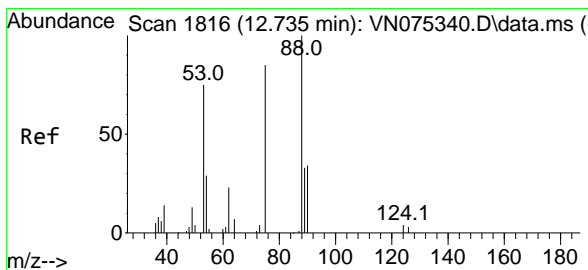
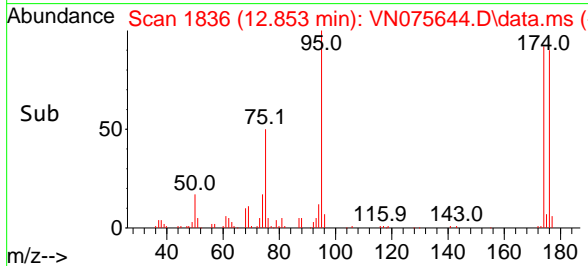
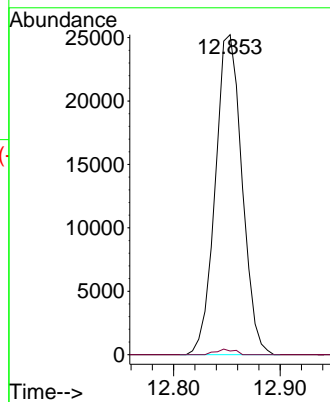
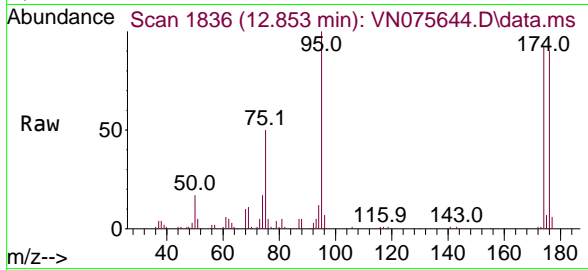




#76
 1,2,3-Trichloropropane
 Concen: 21.872 ug/l
 RT: 12.853 min Scan# 1836
 Delta R.T. -0.141 min
 Lab File: VN075644.D
 Acq: 08 Dec 2022 13:44

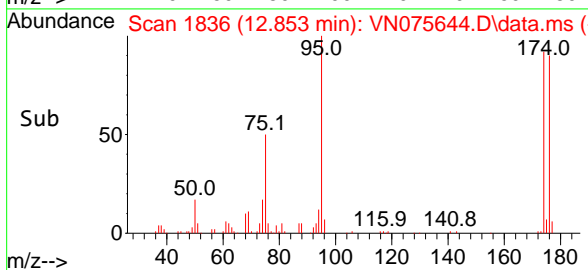
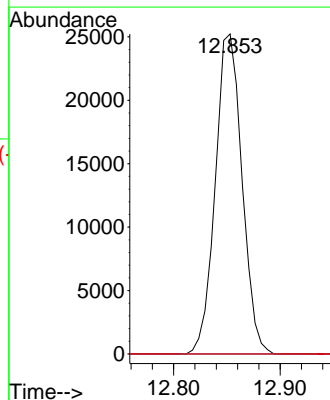
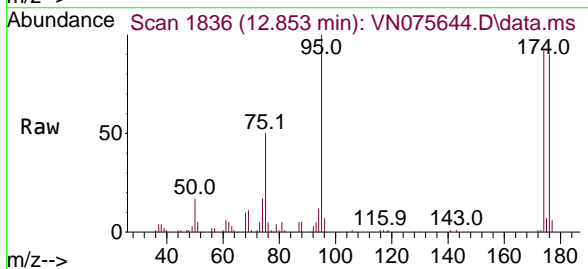
Instrument : MSVOA_N
 ClientSampleId : FB-01-120722

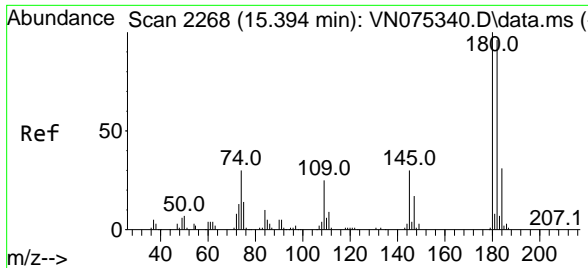
Tgt Ion: 75 Resp: 43939
 Ion Ratio Lower Upper
 75 100
 77 1.2 75.6 226.8#



#81
 trans-1,4-Dichloro-2-butene
 Concen: 64.715 ug/l
 RT: 12.853 min Scan# 1836
 Delta R.T. 0.118 min
 Lab File: VN075644.D
 Acq: 08 Dec 2022 13:44

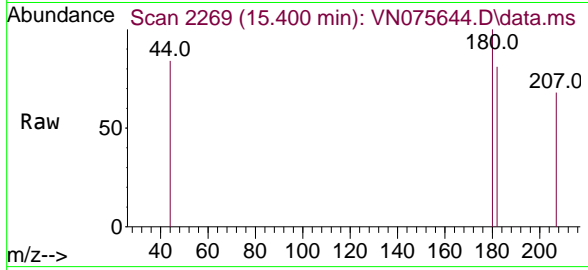
Tgt Ion: 75 Resp: 43939
 Ion Ratio Lower Upper
 75 100
 53 0.0 78.5 117.7#
 89 0.0 37.7 56.5#



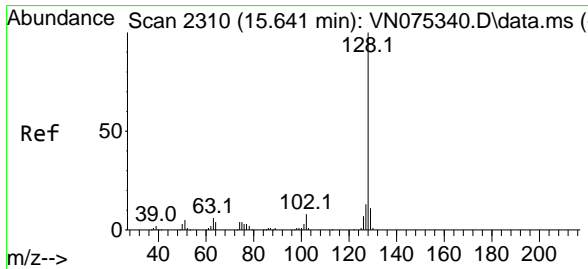
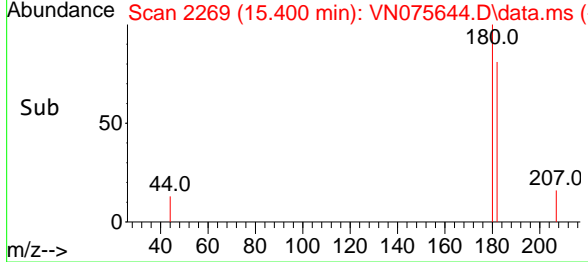
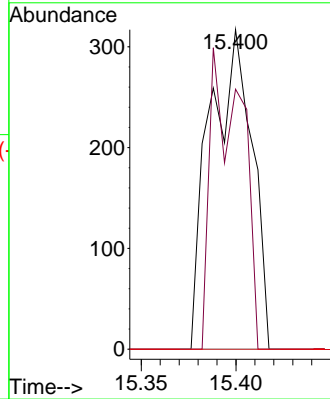


#93
 1,2,4-Trichlorobenzene
 Concen: 0.271 ug/l
 RT: 15.400 min Scan# 21
 Delta R.T. 0.006 min
 Lab File: VN075644.D
 Acq: 08 Dec 2022 13:44

Instrument :
 MSVOA_N
 ClientSampleId :
 FB-01-120722



Tgt Ion:180 Resp: 491
 Ion Ratio Lower Upper
 180 100
 182 70.5 47.8 143.4
 145 0.0 16.8 50.3#



#95
 Naphthalene
 Concen: 0.428 ug/l
 RT: 15.641 min Scan# 2310
 Delta R.T. -0.000 min
 Lab File: VN075644.D
 Acq: 08 Dec 2022 13:44

Tgt Ion:128 Resp: 2441
 Ion Ratio Lower Upper
 128 100
 127 7.3 10.4 15.6#
 129 2.6 8.6 12.8#

