

Data Path : Z:\voasrv\HPCHEM1\MSVOA_N\Data\VN120822\
 Data File : VN075650.D
 Acq On : 08 Dec 2022 16:08
 Operator : JC\MD
 Sample : N5924-03DL 10X
 Misc : 5.0mL/MSVOA_N/WATER
 ALS Vial : 15 Sample Multiplier: 1

Instrument :
 MSVOA_N
 ClientSampleId :
 INF1222DL

Quant Time: Dec 09 02:09:06 2022
 Quant Method : Z:\voasrv\HPCHEM1\MSVOA_N\methods\82N112122W.M
 Quant Title : SW846 8260
 QLast Update : Wed Nov 23 00:18:03 2022
 Response via : Initial Calibration

Compound	R.T.	QIon	Response	Conc	Units	Dev(Min)
Internal Standards						
1) Pentafluorobenzene	8.230	168	170187	50.000	ug/l	0.00
34) 1,4-Difluorobenzene	9.106	114	281097	50.000	ug/l	0.00
63) Chlorobenzene-d5	11.871	117	242700	50.000	ug/l	0.00
72) 1,4-Dichlorobenzene-d4	13.794	152	121319	50.000	ug/l	0.00
System Monitoring Compounds						
33) 1,2-Dichloroethane-d4	8.583	65	46276	50.656	ug/l	0.00
Spiked Amount	50.000	Range	74 - 125	Recovery	=	101.320%
35) Dibromofluoromethane	8.171	113	59435	53.824	ug/l	0.00
Spiked Amount	50.000	Range	75 - 124	Recovery	=	107.640%
50) Toluene-d8	10.571	98	118761	47.752	ug/l	0.00
Spiked Amount	50.000	Range	86 - 113	Recovery	=	95.500%
62) 4-Bromofluorobenzene	12.853	95	88859	48.406	ug/l	0.00
Spiked Amount	50.000	Range	83 - 123	Recovery	=	96.820%
Target Compounds						
						Qvalue
6) Chloroethane	3.142	64	324	0.210	ug/l #	45
11) Tert butyl alcohol	5.506	59	1110	2.894	ug/l #	72
13) Acrolein	4.153	56	1389	4.158	ug/l #	1
14) Allyl chloride	5.159	41	1762	0.864	ug/l #	6
16) Acetone	4.453	43	3939	4.623	ug/l #	68
18) Methyl Acetate	5.036	43	707	Below Cal	#	47
20) Methylene Chloride	5.289	84	1477	Below Cal	#	73
25) 2-Butanone	7.506	43	775	0.651	ug/l #	43
29) Tetrahydrofuran	8.000	42	450	0.622	ug/l #	1
30) Chloroform	7.936	83	1689	0.493	ug/l #	18
31) Cyclohexane	8.265	56	21917	7.551	ug/l	96
36) 1,1-Dichloropropene	8.230	75	11373	4.723	ug/l #	49
37) Ethyl Acetate	7.506	43	775	0.357	ug/l #	66
38) Carbon Tetrachloride	8.230	117	15551	5.879	ug/l #	17
39) Methylcyclohexane	9.606	83	11688	3.878	ug/l	90
40) Benzene	8.612	78	354548	48.088	ug/l	96
42) 1,2-Dichloroethane	8.612	62	3011	1.219	ug/l	87
43) Isopropyl Acetate	8.783	43	8079	2.321	ug/l #	53
48) Methyl methacrylate	9.600	41	4539	2.820	ug/l #	81
52) Toluene	10.635	92	83249	17.522	ug/l	98
53) t-1,3-Dichloropropene	10.630	75	760	0.294	ug/l #	1
55) 1,1,2-Trichloroethane	11.006	97	1104	0.571	ug/l #	17
67) Ethyl Benzene	11.965	91	384525	44.968	ug/l	96
68) m/p-Xylenes	12.071	106	455725	131.239	ug/l	99
69) o-Xylene	12.400	106	48983	14.197	ug/l	95
70) Styrene	12.406	104	2734	0.502	ug/l #	1
71) Bromoform	12.847	173	548	0.385	ug/l #	1
73) Isopropylbenzene	12.700	105	40722	4.594	ug/l	97
76) 1,2,3-Trichloropropane	12.853	75	45343	19.767	ug/l #	1
78) n-propylbenzene	13.041	91	87444	8.840	ug/l	100
79) 2-Chlorotoluene	13.129	91	9453	1.586	ug/l #	41
80) 1,3,5-Trimethylbenzene	13.176	105	79175	10.752	ug/l	100
81) trans-1,4-Dichloro-2-b...	12.853	75	45343	58.487	ug/l #	10
82) 4-Chlorotoluene	13.129	91	9453	1.586	ug/l #	41
83) tert-Butylbenzene	13.488	119	37246	5.547	ug/l #	70
84) 1,2,4-Trimethylbenzene	13.488	105	305370	41.342	ug/l	98

Data Path : Z:\voasrv\HPCHEM1\MSVOA_N\Data\VN120822\
 Data File : VN075650.D
 Acq On : 08 Dec 2022 16:08
 Operator : JC\MD
 Sample : N5924-03DL 10X
 Misc : 5.0mL/MSVOA_N/WATER
 ALS Vial : 15 Sample Multiplier: 1

Instrument :
 MSVOA_N
 ClientSampleId :
 INF1222DL

Quant Time: Dec 09 02:09:06 2022
 Quant Method : Z:\voasrv\HPCHEM1\MSVOA_N\methods\82N112122W.M
 Quant Title : SW846 8260
 QLast Update : Wed Nov 23 00:18:03 2022
 Response via : Initial Calibration

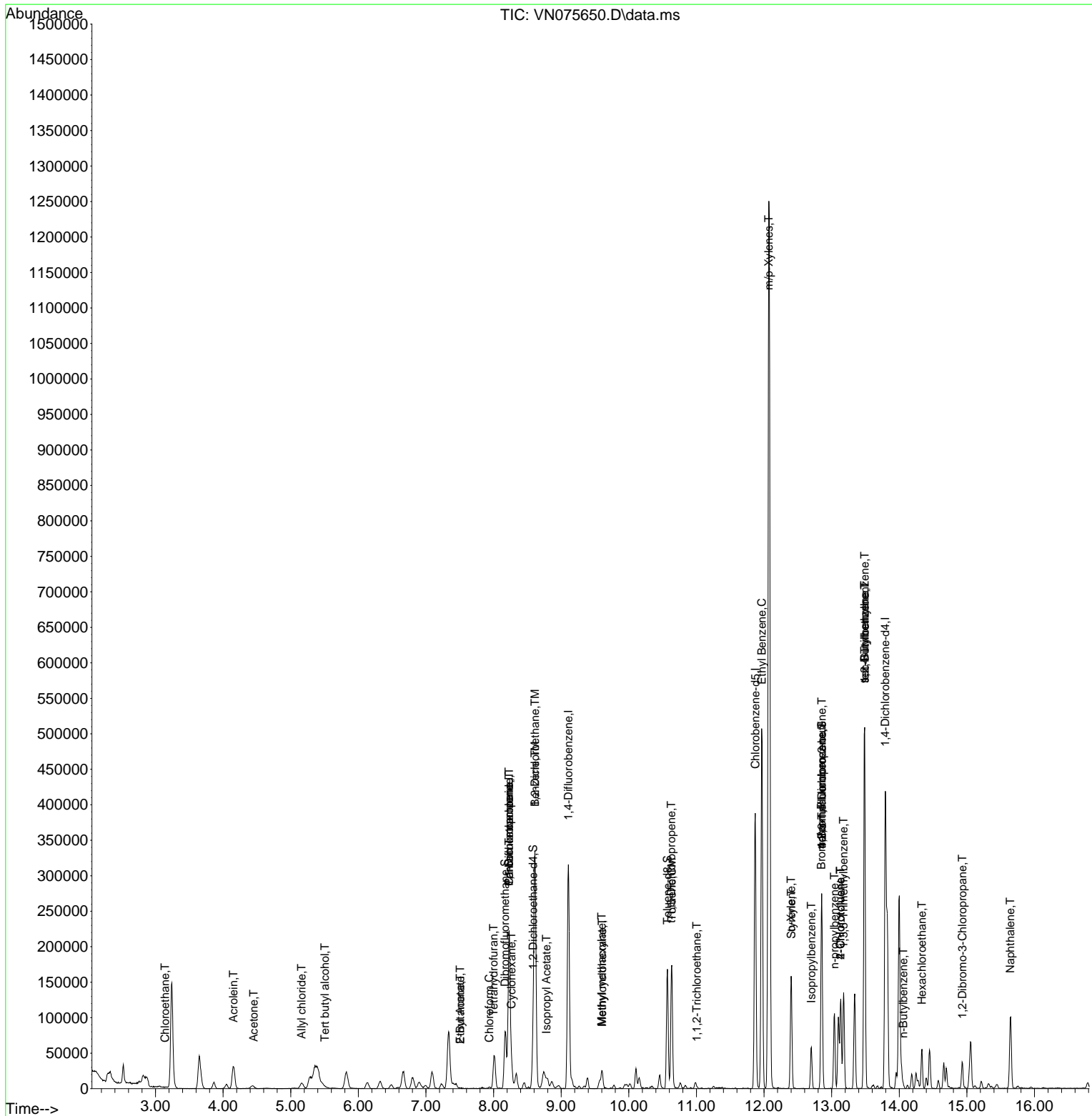
Compound	R.T.	QIon	Response	Conc	Units	Dev(Min)
85) sec-Butylbenzene	13.488	105	305370	33.520	ug/l #	56
89) n-Butylbenzene	14.059	91	3784	0.585	ug/l #	80
90) Hexachloroethane	14.335	117	3423	2.589	ug/l #	19
92) 1,2-Dibromo-3-Chloropr...	14.935	75	290	0.567	ug/l #	2
95) Naphthalene	15.641	128	101699	15.609	ug/l	99

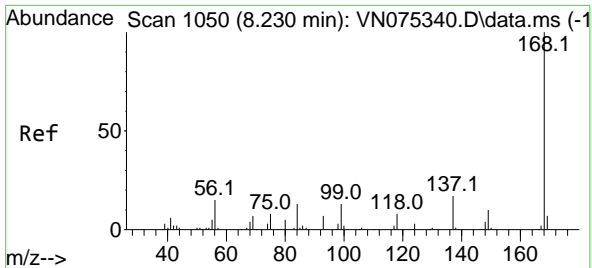
(#) = qualifier out of range (m) = manual integration (+) = signals summed

Data Path : Z:\voasrv\HPCHEM1\MSVOA_N\Data\VN120822\
 Data File : VN075650.D
 Acq On : 08 Dec 2022 16:08
 Operator : JC\MD
 Sample : N5924-03DL 10X
 Misc : 5.0mL/MSVOA_N/WATER
 ALS Vial : 15 Sample Multiplier: 1

Instrument :
 MSVOA_N
 ClientSampleId :
 INF1222DL

Quant Time: Dec 09 02:09:06 2022
 Quant Method : Z:\voasrv\HPCHEM1\MSVOA_N\methods\82N112122W.M
 Quant Title : SW846 8260
 QLast Update : Wed Nov 23 00:18:03 2022
 Response via : Initial Calibration

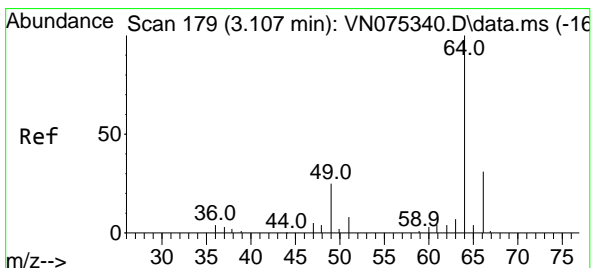
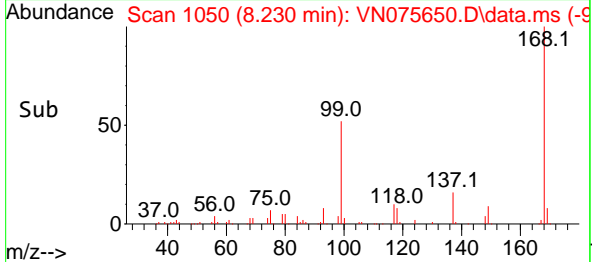
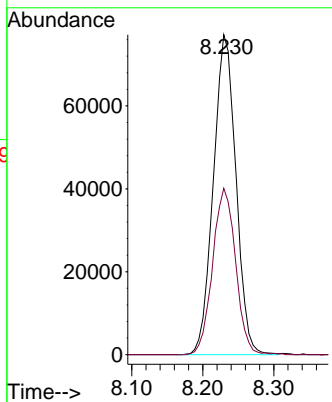
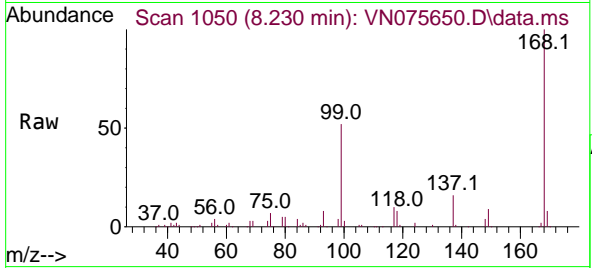




#1
 Pentafluorobenzene
 Concen: 50.000 ug/l
 RT: 8.230 min Scan# 10
 Delta R.T. -0.000 min
 Lab File: VN075650.D
 Acq: 08 Dec 2022 16:08

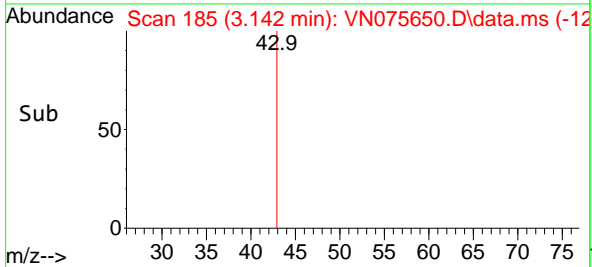
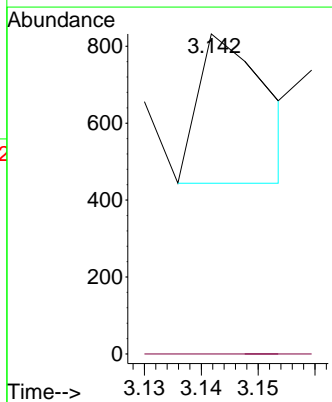
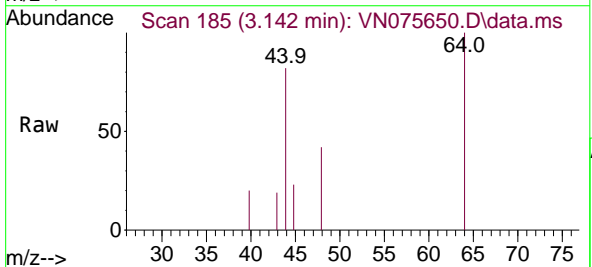
Instrument : MSVOA_N
 ClientSampleId : INF1222DL

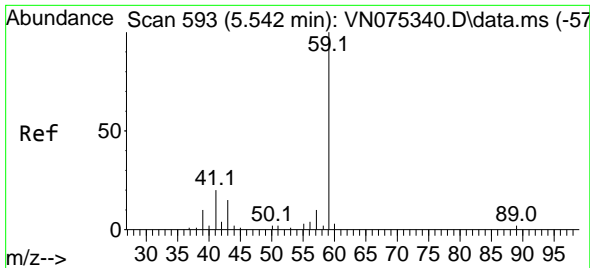
Tgt Ion:168 Resp: 170187
 Ion Ratio Lower Upper
 168 100
 99 52.0 51.6 77.4



#6
 Chloroethane
 Concen: 0.210 ug/l
 RT: 3.142 min Scan# 185
 Delta R.T. 0.035 min
 Lab File: VN075650.D
 Acq: 08 Dec 2022 16:08

Tgt Ion: 64 Resp: 324
 Ion Ratio Lower Upper
 64 100
 66 0.0 23.8 35.8#

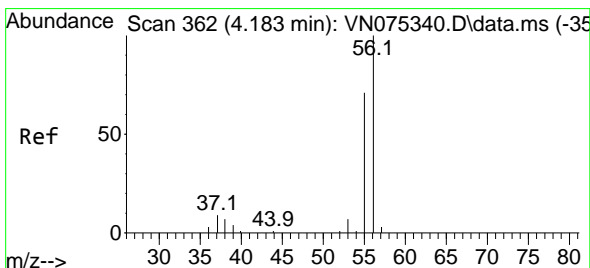
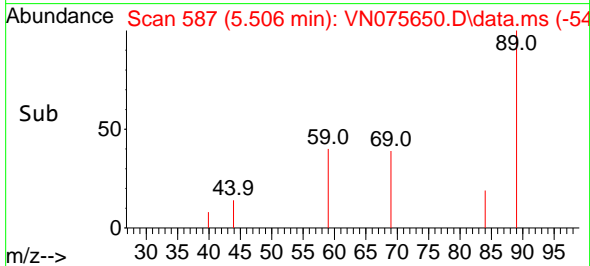
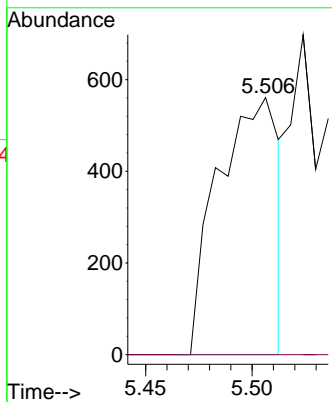
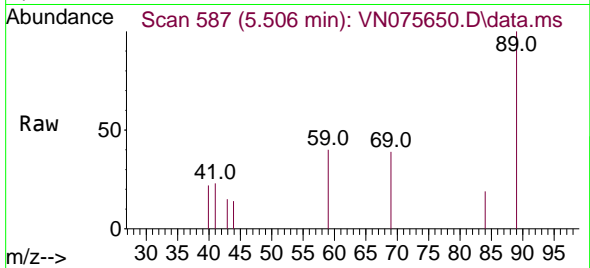




#11
 Tert butyl alcohol
 Concen: 2.894 ug/l
 RT: 5.506 min Scan# 51
 Delta R.T. -0.036 min
 Lab File: VN075650.D
 Acq: 08 Dec 2022 16:08

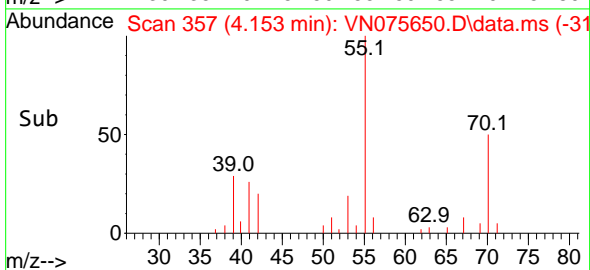
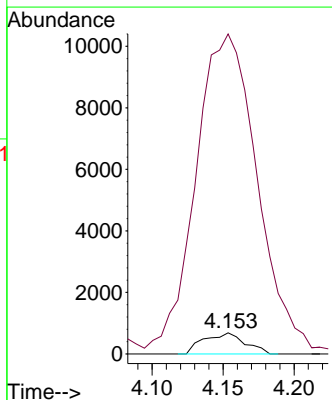
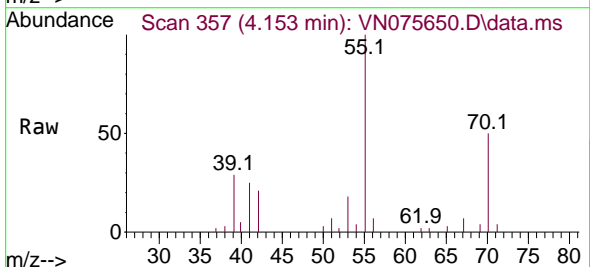
Instrument :
 MSVOA_N
 ClientSampleId :
 INF1222DL

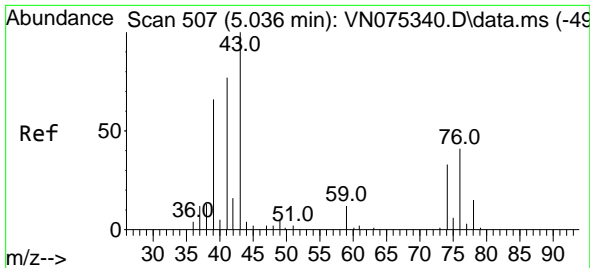
Tgt Ion: 59 Resp: 1110
 Ion Ratio Lower Upper
 59 100
 57 0.0 8.5 12.7#



#13
 Acrolein
 Concen: 4.158 ug/l
 RT: 4.153 min Scan# 357
 Delta R.T. -0.030 min
 Lab File: VN075650.D
 Acq: 08 Dec 2022 16:08

Tgt Ion: 56 Resp: 1389
 Ion Ratio Lower Upper
 56 100
 55 2280.6 55.2 82.8#

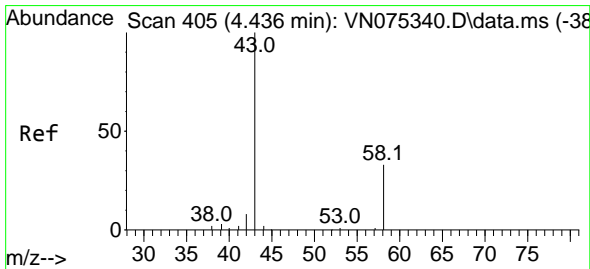
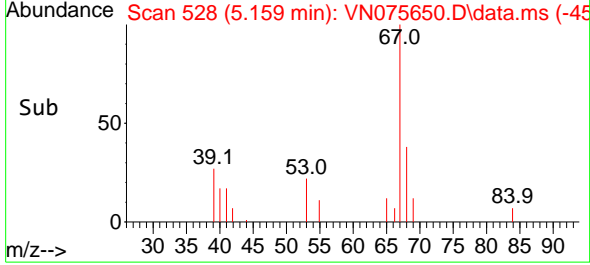
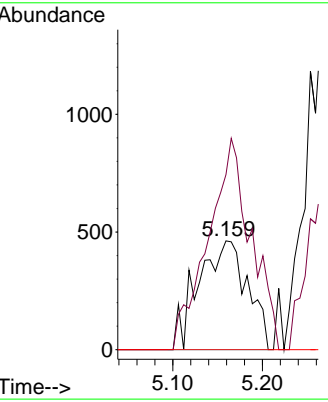
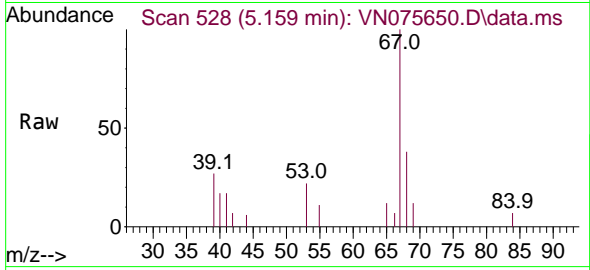




#14
 Allyl chloride
 Concen: 0.864 ug/l
 RT: 5.159 min Scan# 51
 Delta R.T. 0.123 min
 Lab File: VN075650.D
 Acq: 08 Dec 2022 16:08

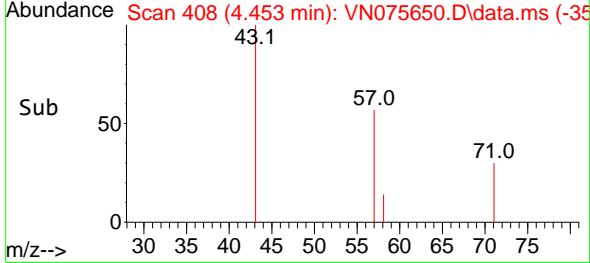
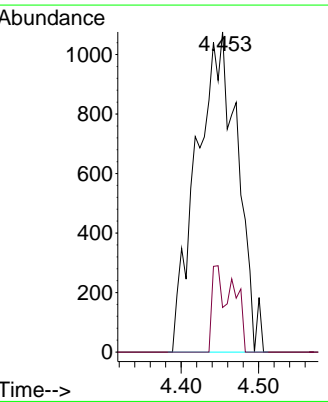
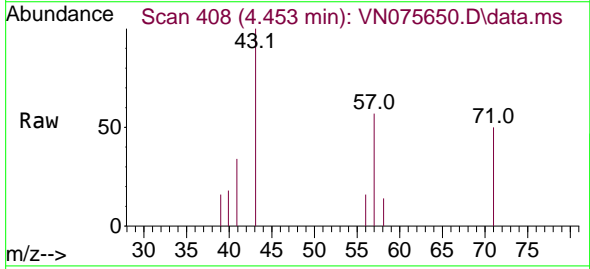
Instrument :
 MSVOA_N
 ClientSampleId :
 INF1222DL

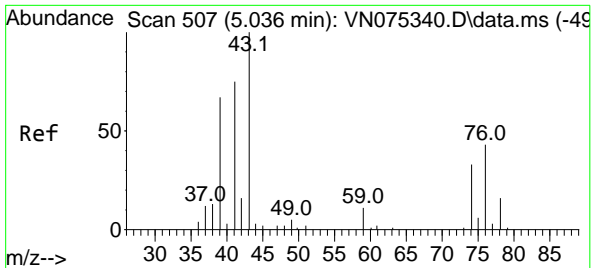
Tgt Ion	Resp	Lower	Upper
41	1762		
39	169.5	61.0	91.4#
76	0.0	33.4	50.0#



#16
 Acetone
 Concen: 4.623 ug/l
 RT: 4.453 min Scan# 408
 Delta R.T. 0.017 min
 Lab File: VN075650.D
 Acq: 08 Dec 2022 16:08

Tgt Ion	Resp	Lower	Upper
43	3939		
58	13.9	25.5	38.3#

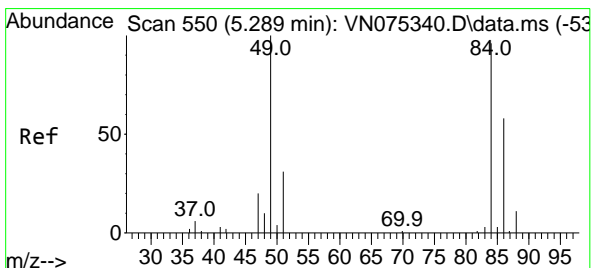
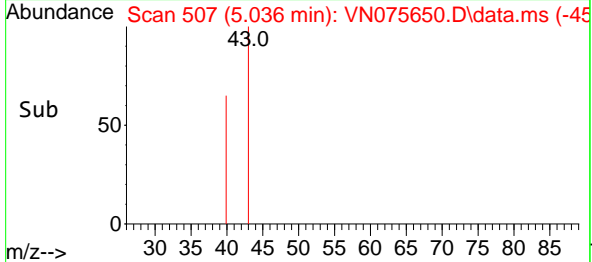
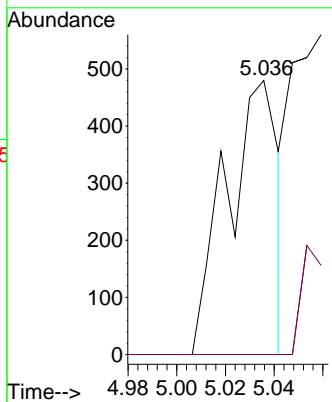
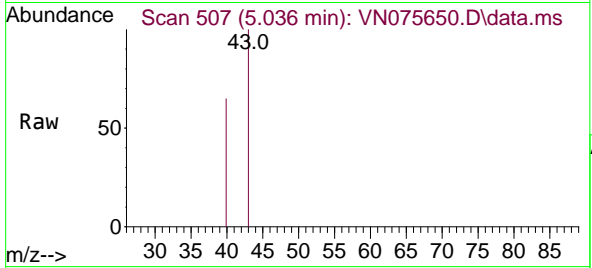




#18
 Methyl Acetate
 Concen: Below Cal
 RT: 5.036 min Scan# 50
 Delta R.T. -0.000 min
 Lab File: VN075650.D
 Acq: 08 Dec 2022 16:08

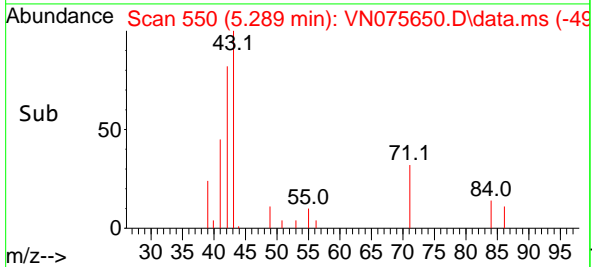
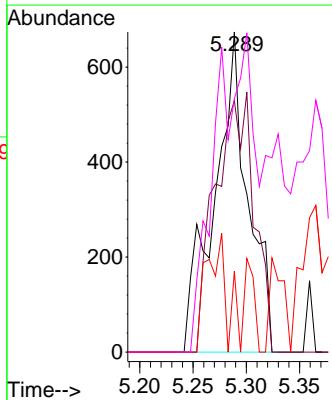
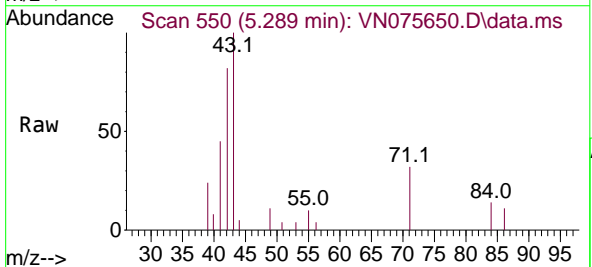
Instrument : MSVOA_N
 ClientSampleId : INF1222DL

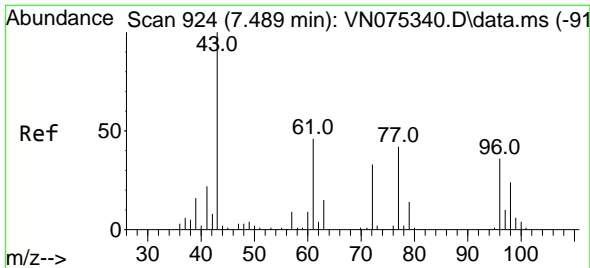
Tgt Ion: 43 Resp: 707
 Ion Ratio Lower Upper
 43 100
 74 0.0 22.0 33.0#



#20
 Methylene Chloride
 Concen: Below Cal
 RT: 5.289 min Scan# 550
 Delta R.T. -0.000 min
 Lab File: VN075650.D
 Acq: 08 Dec 2022 16:08

Tgt Ion: 84 Resp: 1477
 Ion Ratio Lower Upper
 84 100
 49 78.5 94.9 142.3#
 51 25.2 26.8 40.2#
 86 79.2 53.7 80.5

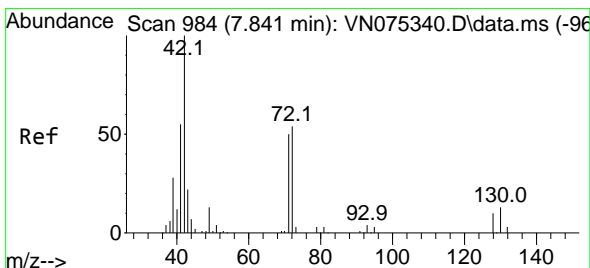
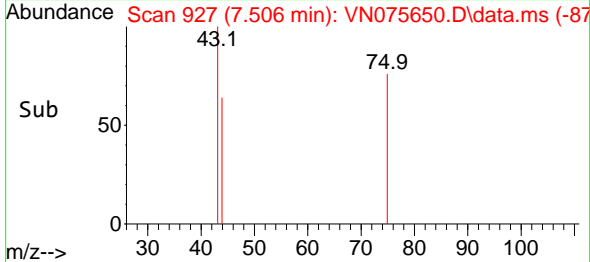
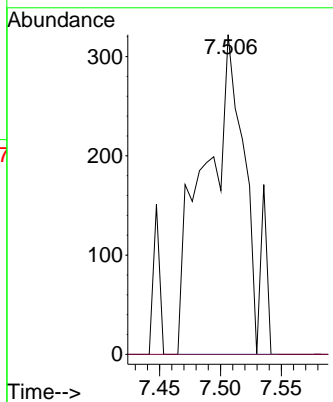
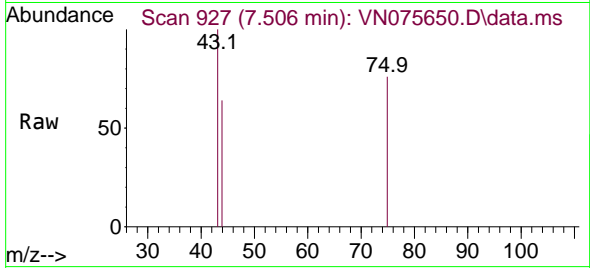




#25
 2-Butanone
 Concen: 0.651 ug/l
 RT: 7.506 min Scan# 911
 Delta R.T. 0.017 min
 Lab File: VN075650.D
 Acq: 08 Dec 2022 16:08

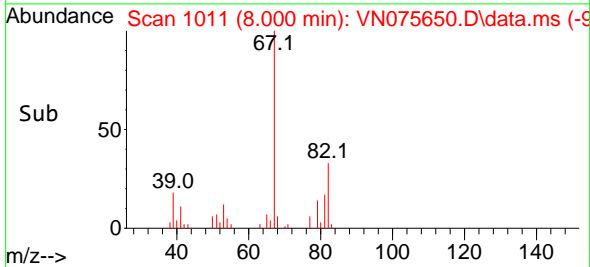
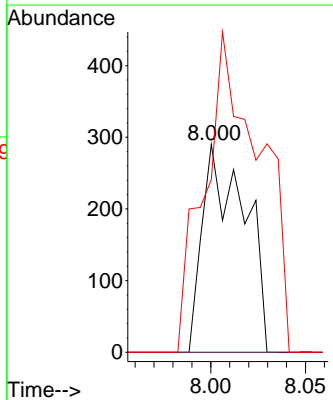
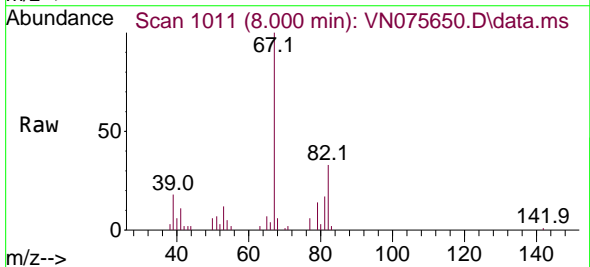
Instrument :
 MSVOA_N
 ClientSampleId :
 INF1222DL

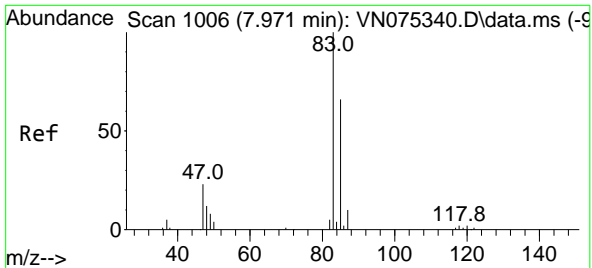
Tgt Ion: 43 Resp: 775
 Ion Ratio Lower Upper
 43 100
 72 0.0 25.5 38.3#



#29
 Tetrahydrofuran
 Concen: 0.622 ug/l
 RT: 8.000 min Scan# 1011
 Delta R.T. 0.159 min
 Lab File: VN075650.D
 Acq: 08 Dec 2022 16:08

Tgt Ion: 42 Resp: 450
 Ion Ratio Lower Upper
 42 100
 72 0.0 43.0 64.6#
 71 201.8 39.9 59.9#

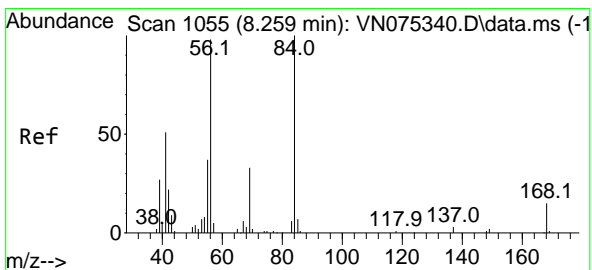
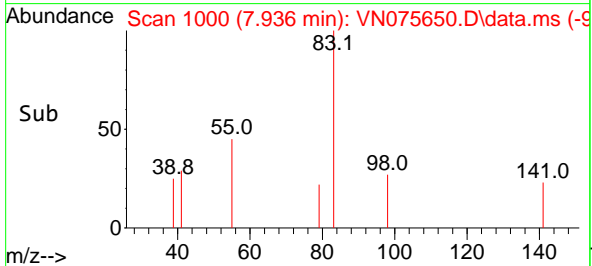
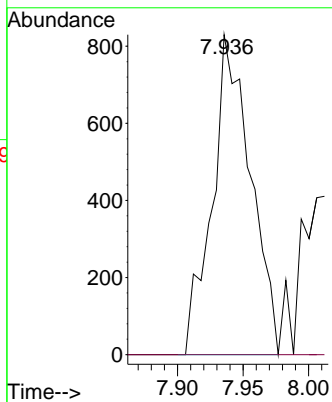
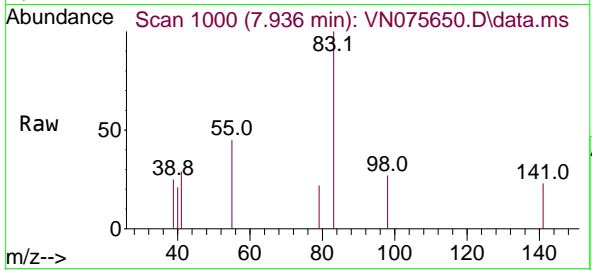




#30
 Chloroform
 Concen: 0.493 ug/l
 RT: 7.936 min Scan# 1000
 Delta R.T. -0.035 min
 Lab File: VN075650.D
 Acq: 08 Dec 2022 16:08

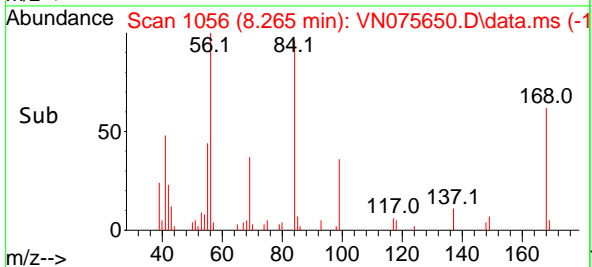
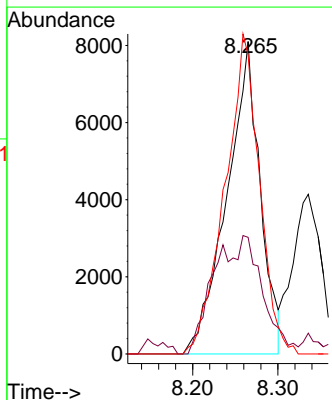
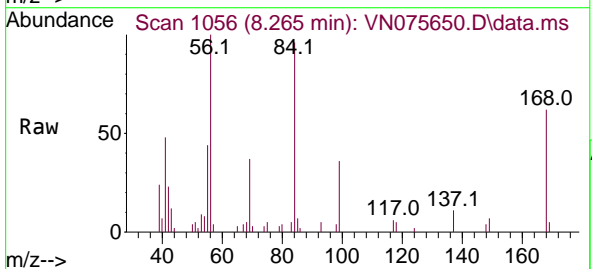
Instrument : MSVOA_N
 ClientSampleId : INF1222DL

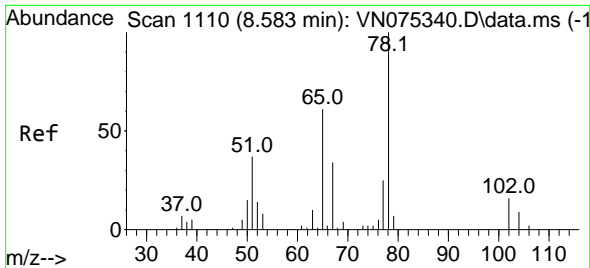
Tgt Ion: 83 Resp: 1689
 Ion Ratio Lower Upper
 83 100
 85 0.0 51.4 77.0#



#31
 Cyclohexane
 Concen: 7.551 ug/l
 RT: 8.265 min Scan# 1056
 Delta R.T. 0.006 min
 Lab File: VN075650.D
 Acq: 08 Dec 2022 16:08

Tgt Ion: 56 Resp: 21917
 Ion Ratio Lower Upper
 56 100
 69 37.3 25.2 37.8
 84 95.6 77.8 116.8

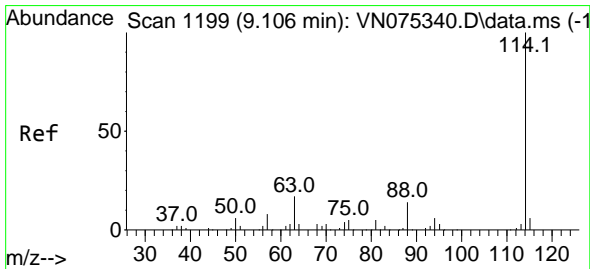
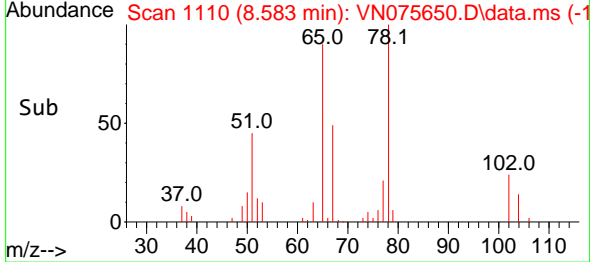
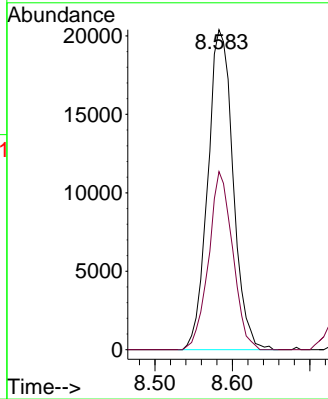
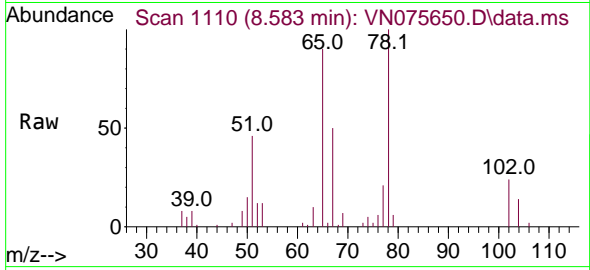




#33
 1,2-Dichloroethane-d4
 Concen: 50.656 ug/l
 RT: 8.583 min Scan# 1110
 Delta R.T. -0.000 min
 Lab File: VN075650.D
 Acq: 08 Dec 2022 16:08

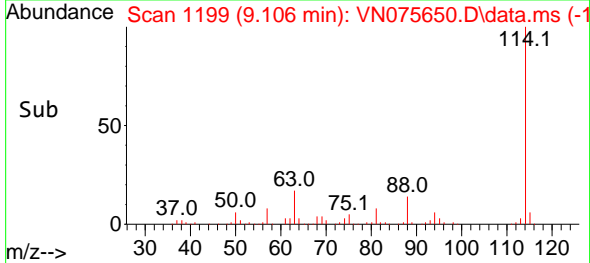
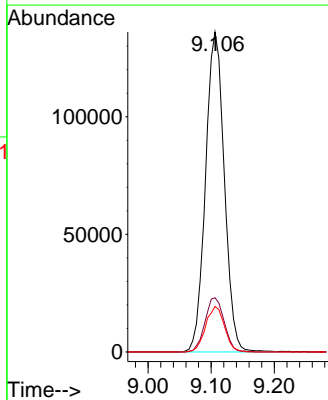
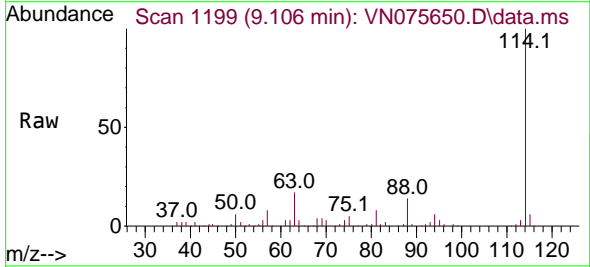
Instrument : MSVOA_N
 ClientSampleId : INF1222DL

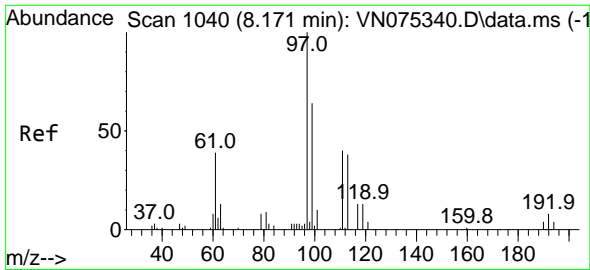
Tgt Ion: 65 Resp: 46276
 Ion Ratio Lower Upper
 65 100
 67 52.8 0.0 102.0



#34
 1,4-Difluorobenzene
 Concen: 50.000 ug/l
 RT: 9.106 min Scan# 1199
 Delta R.T. 0.000 min
 Lab File: VN075650.D
 Acq: 08 Dec 2022 16:08

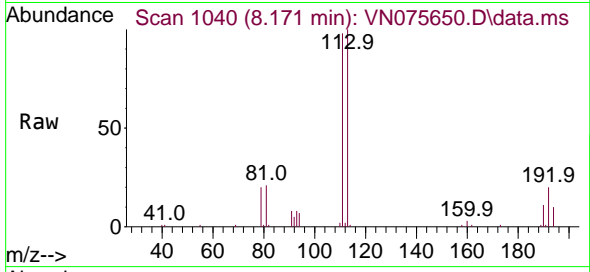
Tgt Ion:114 Resp: 281097
 Ion Ratio Lower Upper
 114 100
 63 16.9 0.0 39.6
 88 14.2 0.0 29.0



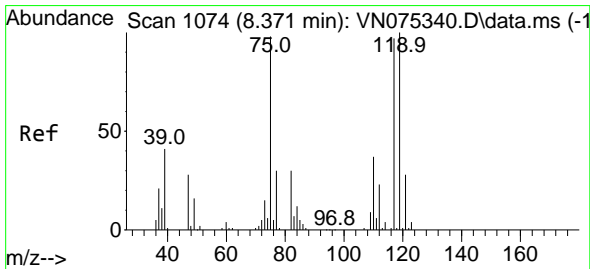
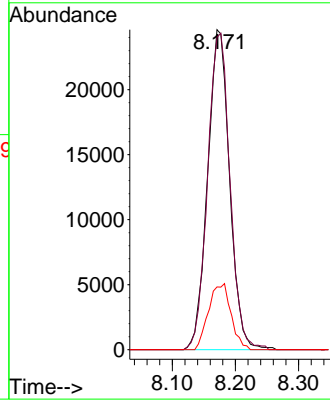
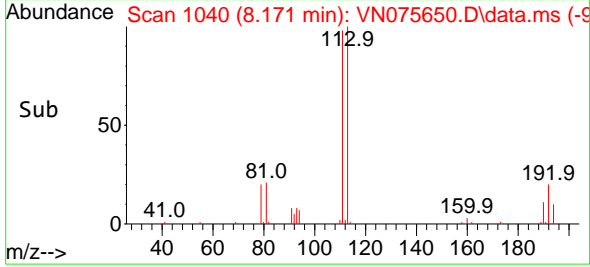


#35
 Dibromofluoromethane
 Concen: 53.824 ug/l
 RT: 8.171 min Scan# 1040
 Delta R.T. -0.000 min
 Lab File: VN075650.D
 Acq: 08 Dec 2022 16:08

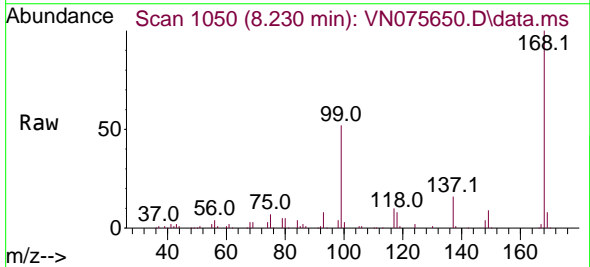
Instrument : MSVOA_N
 ClientSampleId : INF1222DL



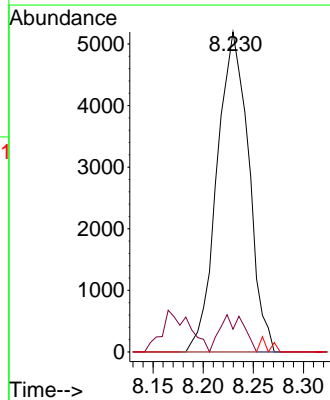
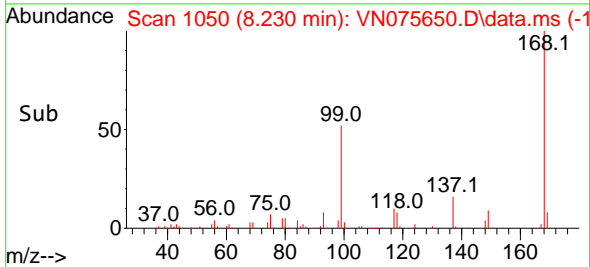
Tgt Ion:113 Resp: 59435
 Ion Ratio Lower Upper
 113 100
 111 100.7 80.5 120.7
 192 21.0 13.2 19.8#

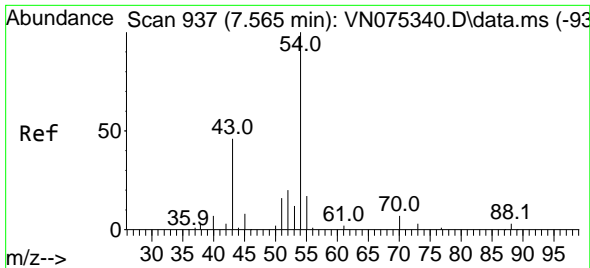


#36
 1,1-Dichloropropene
 Concen: 4.723 ug/l
 RT: 8.230 min Scan# 1050
 Delta R.T. -0.141 min
 Lab File: VN075650.D
 Acq: 08 Dec 2022 16:08



Tgt Ion: 75 Resp: 11373
 Ion Ratio Lower Upper
 75 100
 110 8.7 17.8 53.3#
 77 0.0 24.6 37.0#

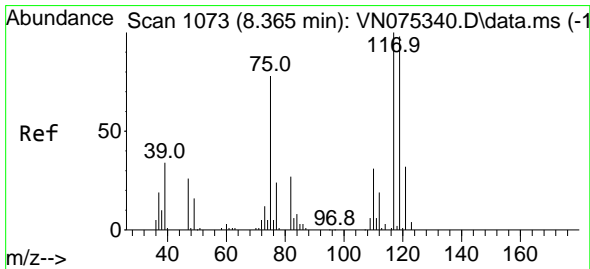
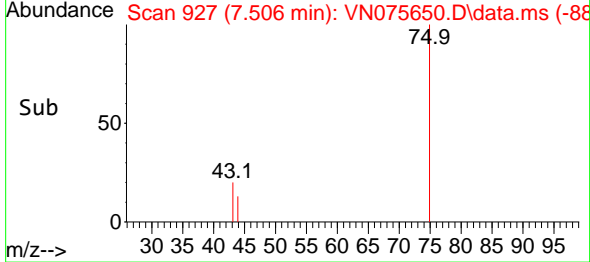
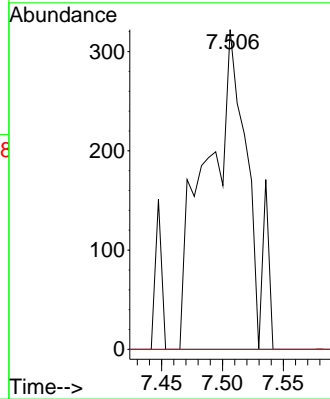
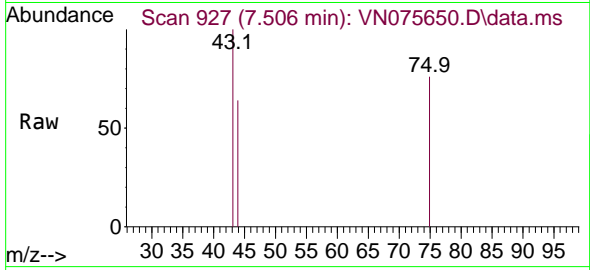




#37
 Ethyl Acetate
 Concen: 0.357 ug/l
 RT: 7.506 min Scan# 91
 Delta R.T. -0.059 min
 Lab File: VN075650.D
 Acq: 08 Dec 2022 16:08

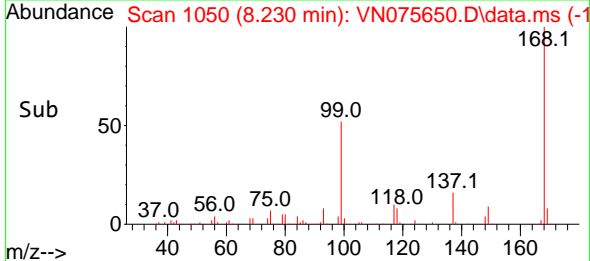
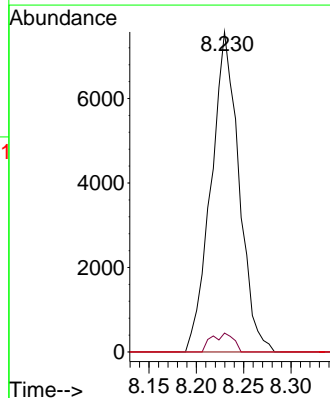
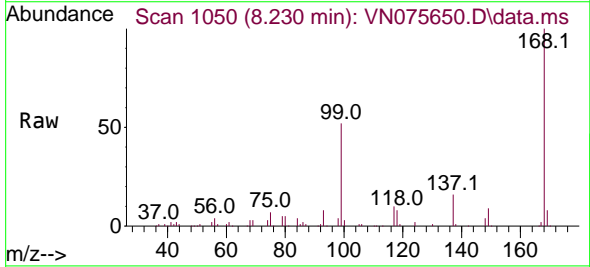
Instrument :
 MSVOA_N
 ClientSampleId :
 INF1222DL

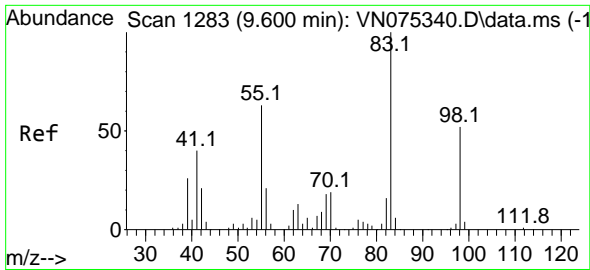
Tgt Ion	Resp	Lower	Upper
43	100		
61	0.0	12.2	18.4#
70	0.0	9.4	14.2#



#38
 Carbon Tetrachloride
 Concen: 5.879 ug/l
 RT: 8.230 min Scan# 1050
 Delta R.T. -0.135 min
 Lab File: VN075650.D
 Acq: 08 Dec 2022 16:08

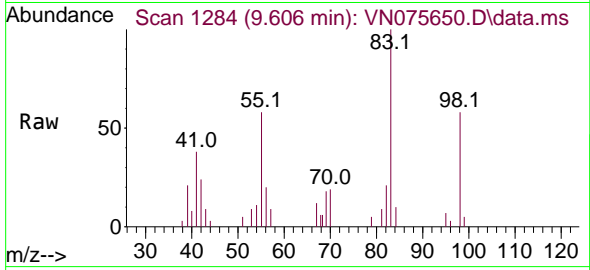
Tgt Ion	Resp	Lower	Upper
117	100		
119	5.9	76.7	115.1#
121	0.0	23.9	35.9#



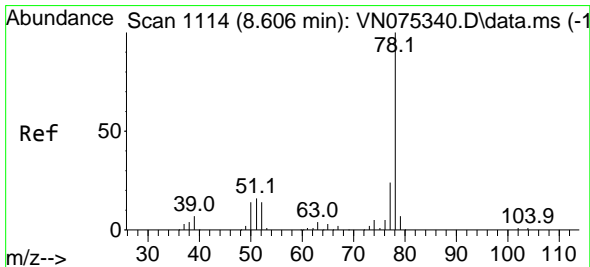
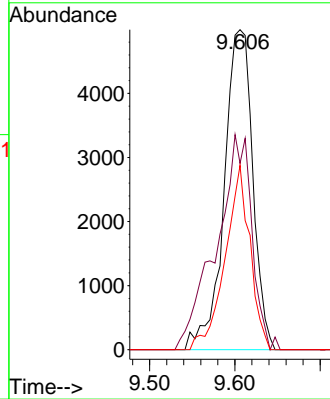
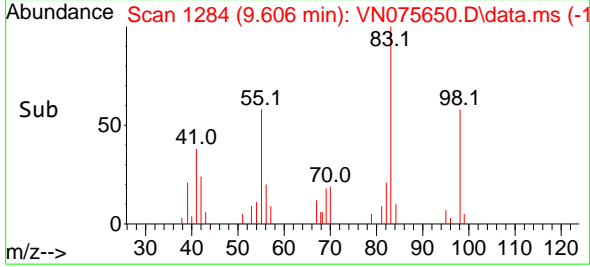


#39
 Methylcyclohexane
 Concen: 3.878 ug/l
 RT: 9.606 min Scan# 1115
 Delta R.T. 0.006 min
 Lab File: VN075650.D
 Acq: 08 Dec 2022 16:08

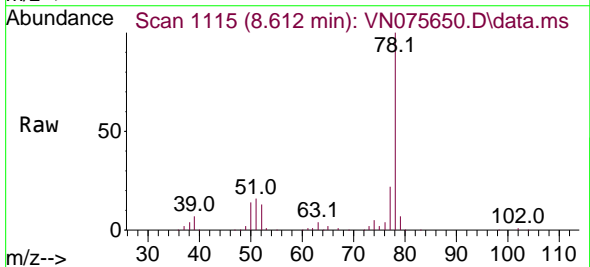
Instrument :
 MSVOA_N
 ClientSampleId :
 INF1222DL



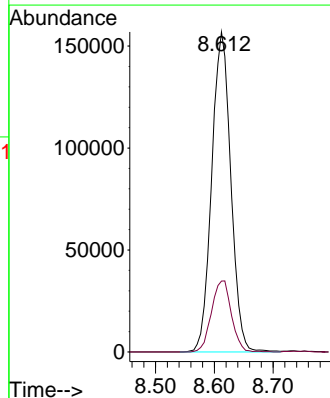
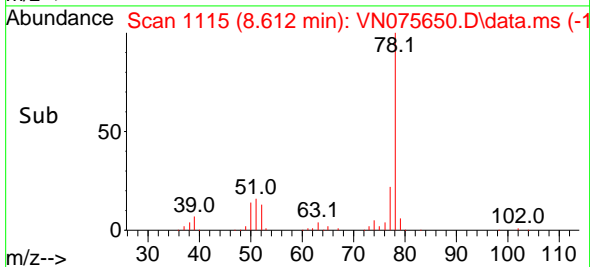
Tgt Ion: 83 Resp: 11688
 Ion Ratio Lower Upper
 83 100
 55 58.2 53.6 80.4
 98 57.6 41.1 61.7

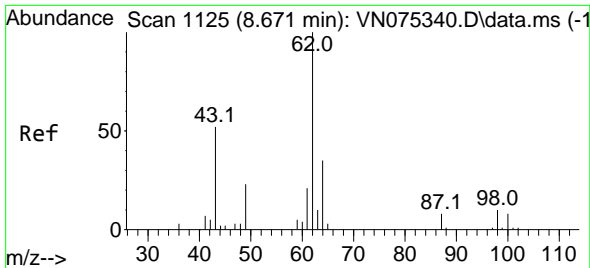


#40
 Benzene
 Concen: 48.088 ug/l
 RT: 8.612 min Scan# 1115
 Delta R.T. 0.006 min
 Lab File: VN075650.D
 Acq: 08 Dec 2022 16:08



Tgt Ion: 78 Resp: 354548
 Ion Ratio Lower Upper
 78 100
 77 22.1 19.4 29.0

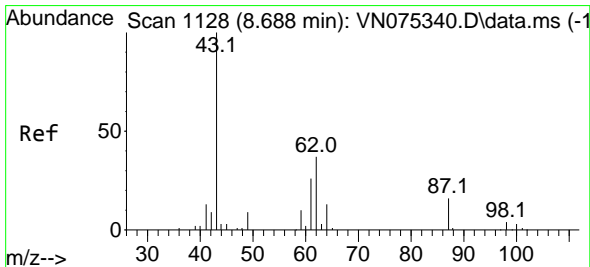
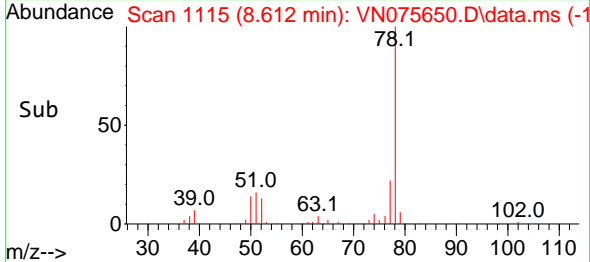
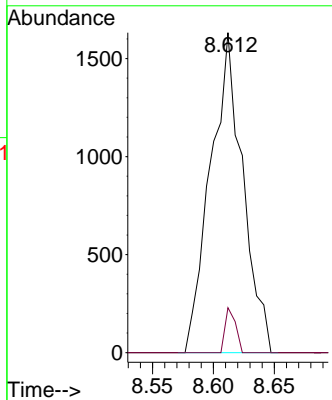
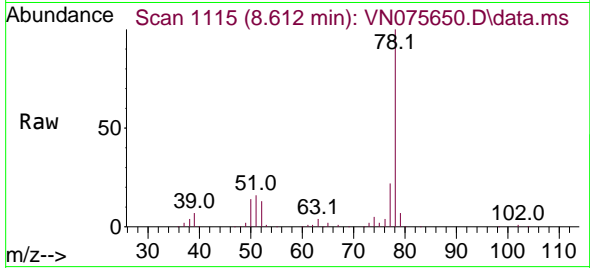




#42
 1,2-Dichloroethane
 Concen: 1.219 ug/l
 RT: 8.612 min Scan# 1115
 Delta R.T. -0.059 min
 Lab File: VN075650.D
 Acq: 08 Dec 2022 16:08

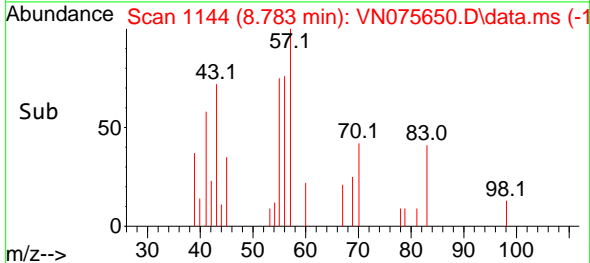
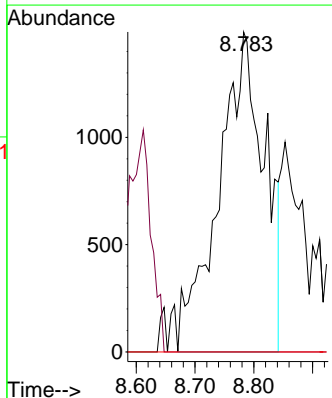
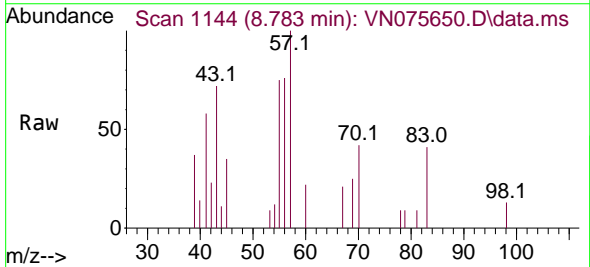
Instrument : MSVOA_N
 ClientSampleId : INF1222DL

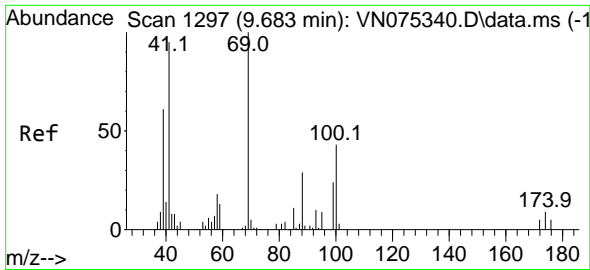
Tgt Ion: 62 Resp: 3011
 Ion Ratio Lower Upper
 62 100
 98 4.5 0.0 18.2



#43
 Isopropyl Acetate
 Concen: 2.321 ug/l
 RT: 8.783 min Scan# 1144
 Delta R.T. 0.095 min
 Lab File: VN075650.D
 Acq: 08 Dec 2022 16:08

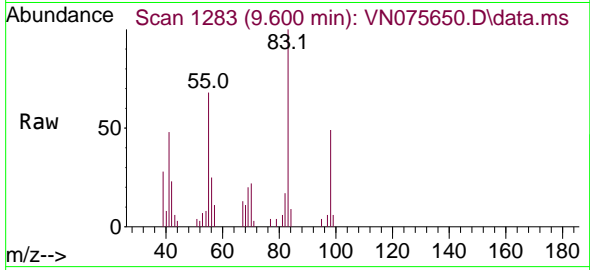
Tgt Ion: 43 Resp: 8079
 Ion Ratio Lower Upper
 43 100
 61 0.0 22.4 33.6#
 87 0.0 12.5 18.7#



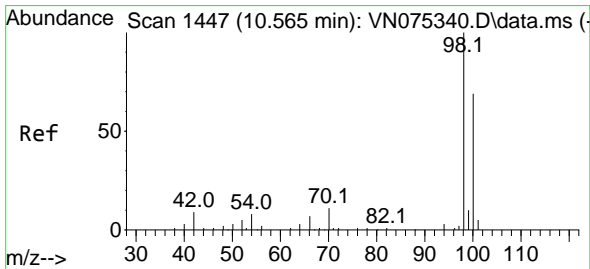
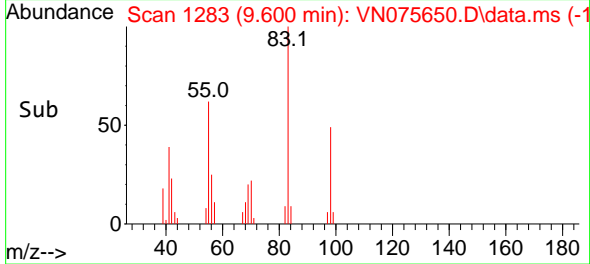
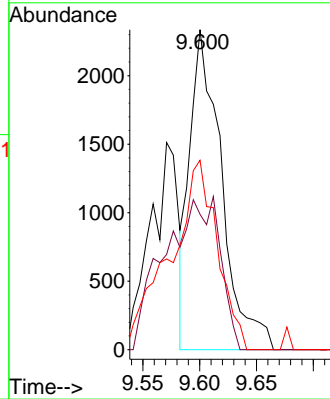


#48
 Methyl methacrylate
 Concen: 2.820 ug/l
 RT: 9.600 min Scan# 11
 Delta R.T. -0.083 min
 Lab File: VN075650.D
 Acq: 08 Dec 2022 16:08

Instrument :
 MSVOA_N
 ClientSampleId :
 INF1222DL

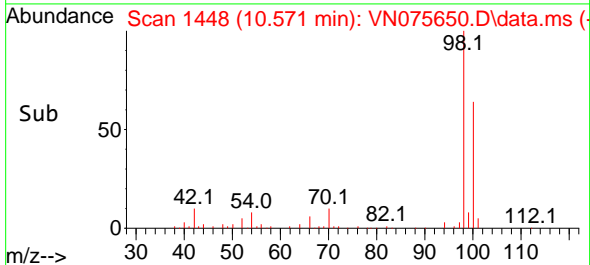
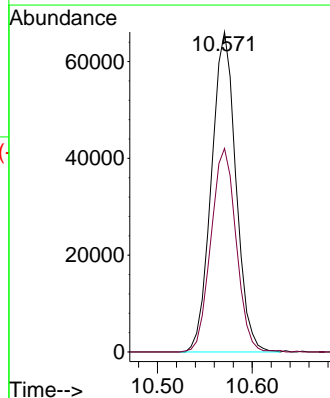
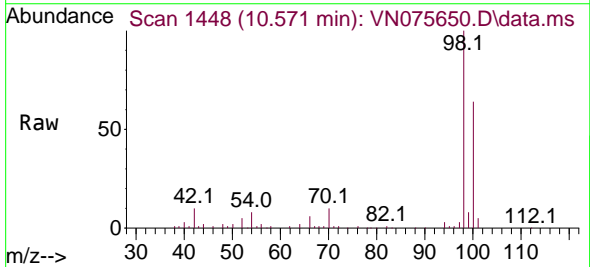


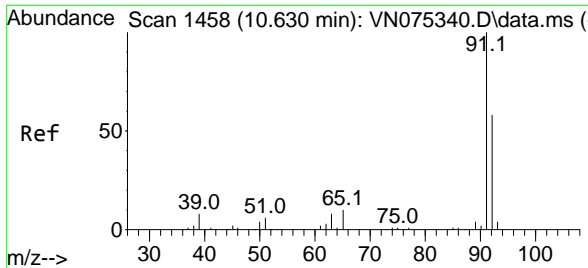
Tgt Ion: 41 Resp: 4539
 Ion Ratio Lower Upper
 41 100
 69 83.1 80.2 120.2
 39 88.1 56.2 84.2#



#50
 Toluene-d8
 Concen: 47.752 ug/l
 RT: 10.571 min Scan# 1448
 Delta R.T. 0.006 min
 Lab File: VN075650.D
 Acq: 08 Dec 2022 16:08

Tgt Ion: 98 Resp: 118761
 Ion Ratio Lower Upper
 98 100
 100 65.4 53.0 79.6

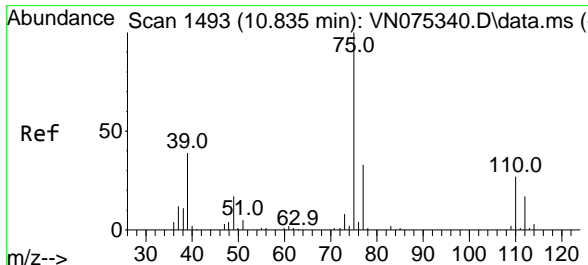
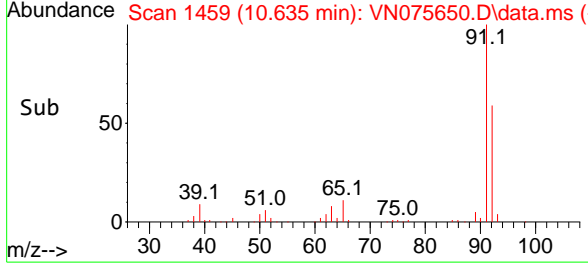
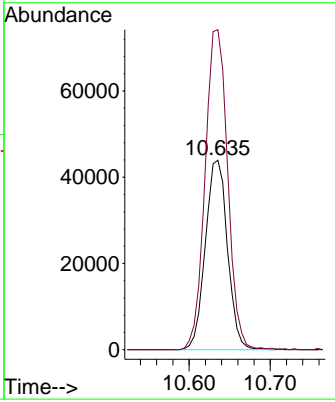
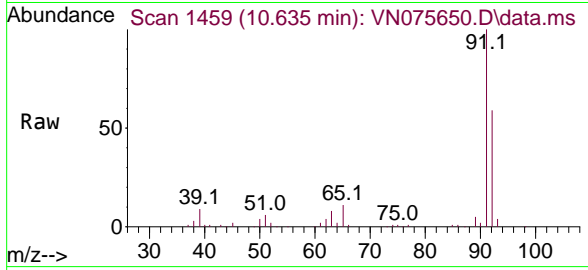




#52
 Toluene
 Concen: 17.522 ug/l
 RT: 10.635 min Scan# 1458
 Delta R.T. 0.005 min
 Lab File: VN075650.D
 Acq: 08 Dec 2022 16:08

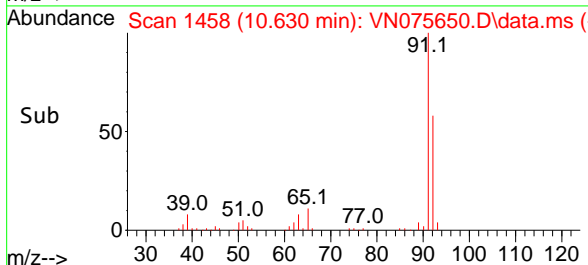
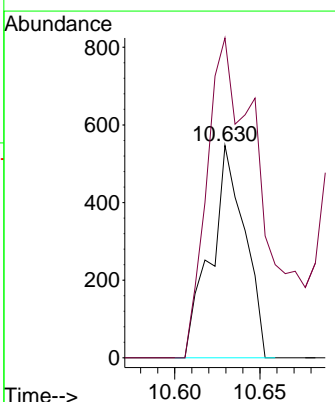
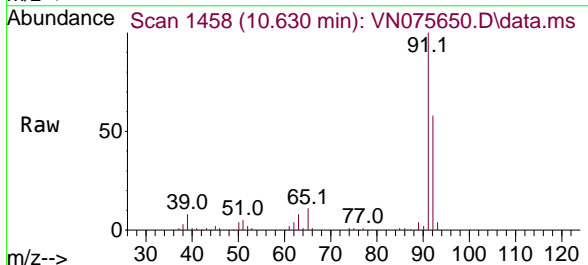
Instrument : MSVOA_N
 ClientSampleId : INF1222DL

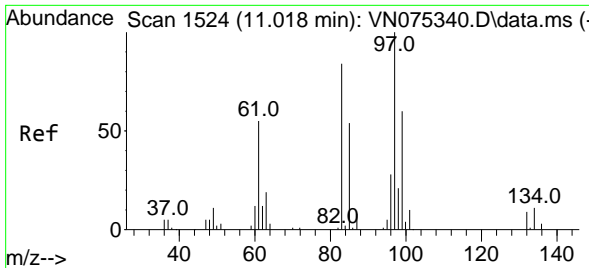
Tgt Ion: 92 Resp: 83249
 Ion Ratio Lower Upper
 92 100
 91 172.4 135.4 203.2



#53
 t-1,3-Dichloropropene
 Concen: 0.294 ug/l
 RT: 10.630 min Scan# 1458
 Delta R.T. -0.206 min
 Lab File: VN075650.D
 Acq: 08 Dec 2022 16:08

Tgt Ion: 75 Resp: 760
 Ion Ratio Lower Upper
 75 100
 77 150.6 25.4 38.2#



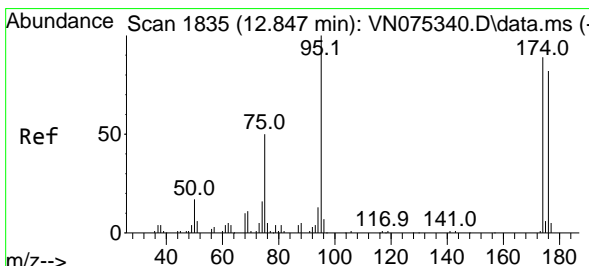
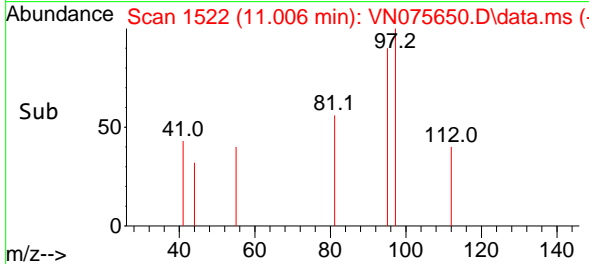
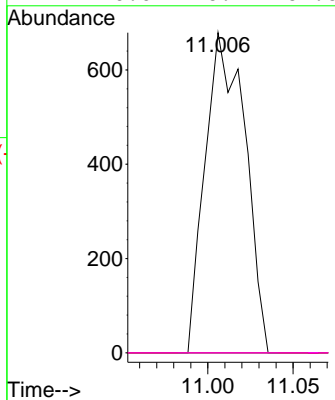
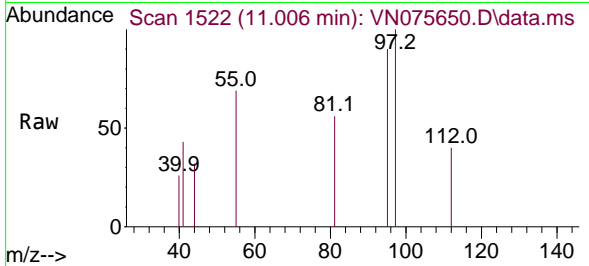


#55
 1,1,2-Trichloroethane
 Concen: 0.571 ug/l
 RT: 11.006 min Scan# 1104
 Delta R.T. -0.012 min
 Lab File: VN075650.D
 Acq: 08 Dec 2022 16:08

Instrument : MSVOA_N
 ClientSampleId : INF1222DL

Tgt Ion: 97 Resp: 1104

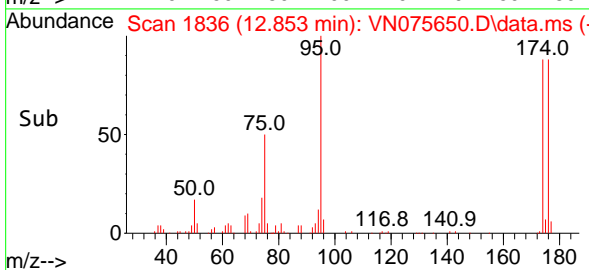
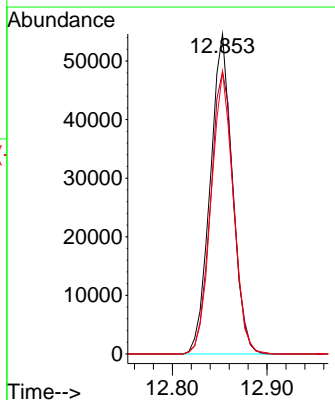
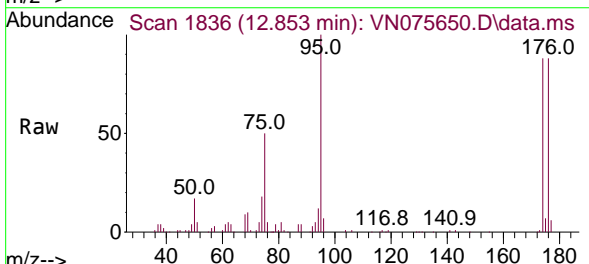
Ion	Ratio	Lower	Upper
97	100		
83	0.0	65.9	98.9#
85	0.0	40.4	60.6#
99	0.0	46.4	69.6#

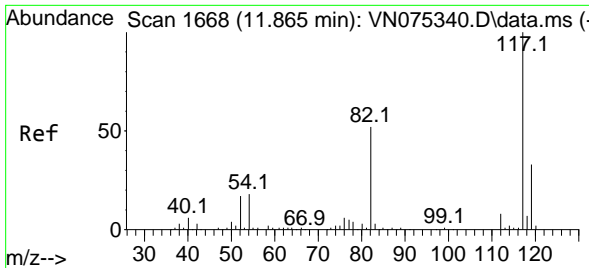


#62
 4-Bromofluorobenzene
 Concen: 48.406 ug/l
 RT: 12.853 min Scan# 1836
 Delta R.T. 0.006 min
 Lab File: VN075650.D
 Acq: 08 Dec 2022 16:08

Tgt Ion: 95 Resp: 88859

Ion	Ratio	Lower	Upper
95	100		
174	91.5	0.0	147.4
176	88.1	0.0	142.2

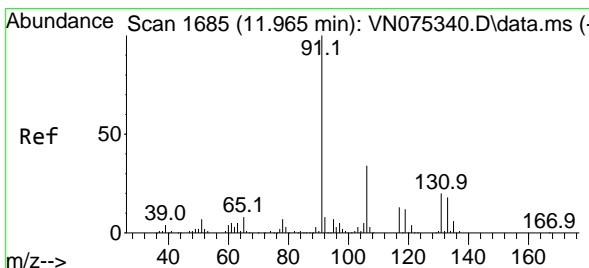
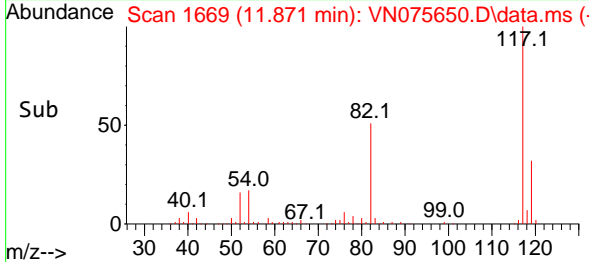
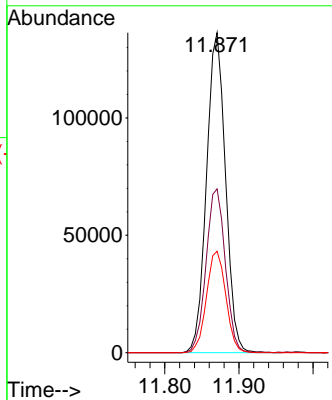
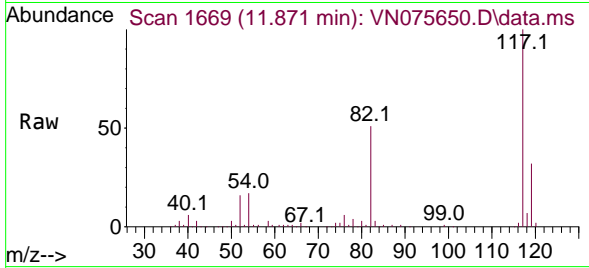




#63
 Chlorobenzene-d5
 Concen: 50.000 ug/l
 RT: 11.871 min Scan# 1669
 Delta R.T. 0.006 min
 Lab File: VN075650.D
 Acq: 08 Dec 2022 16:08

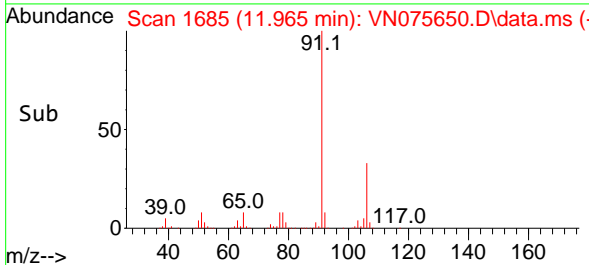
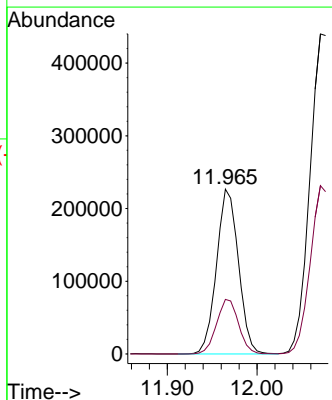
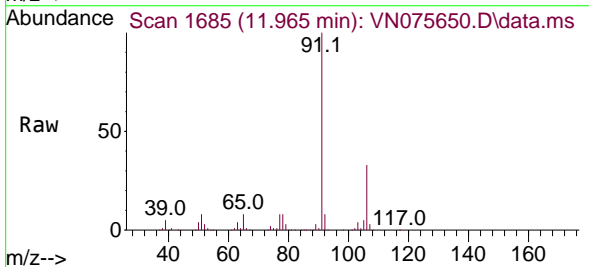
Instrument :
 MSVOA_N
 ClientSampleId :
 INF1222DL

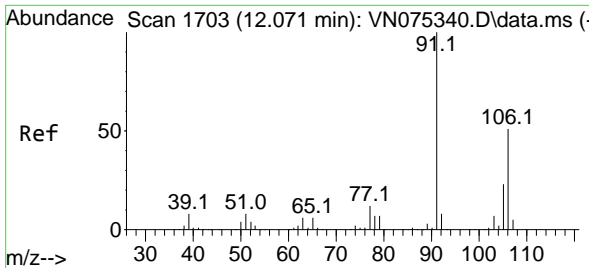
Tgt Ion:117 Resp: 242700
 Ion Ratio Lower Upper
 117 100
 82 51.2 43.1 64.7
 119 31.7 25.5 38.3



#67
 Ethyl Benzene
 Concen: 44.968 ug/l
 RT: 11.965 min Scan# 1685
 Delta R.T. -0.000 min
 Lab File: VN075650.D
 Acq: 08 Dec 2022 16:08

Tgt Ion: 91 Resp: 384525
 Ion Ratio Lower Upper
 91 100
 106 33.1 24.9 37.3

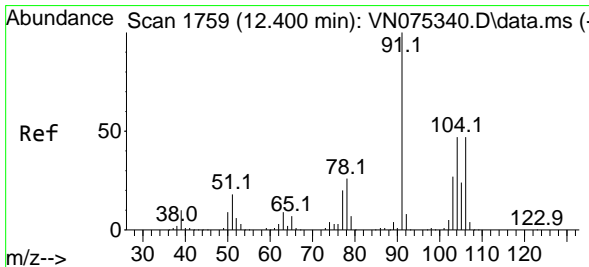
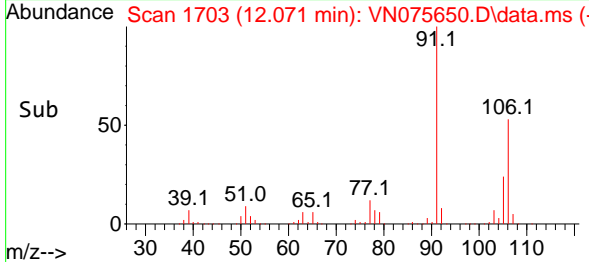
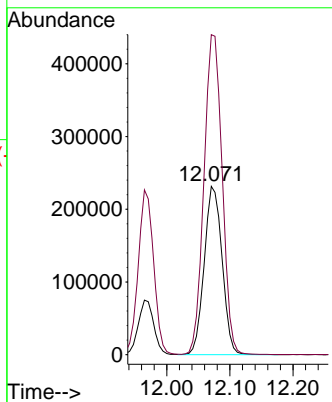
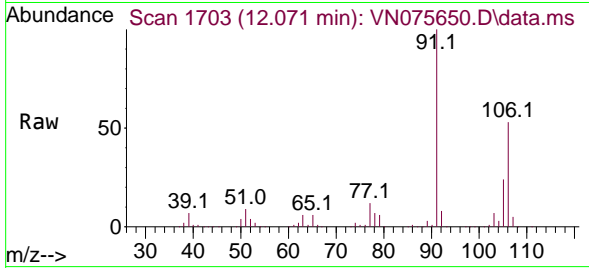




#68
 m/p-Xylenes
 Concen: 131.239 ug/l
 RT: 12.071 min Scan# 1703
 Delta R.T. -0.000 min
 Lab File: VN075650.D
 Acq: 08 Dec 2022 16:08

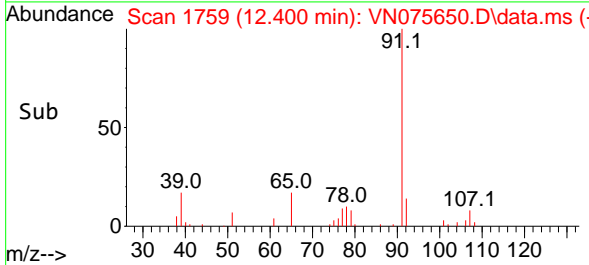
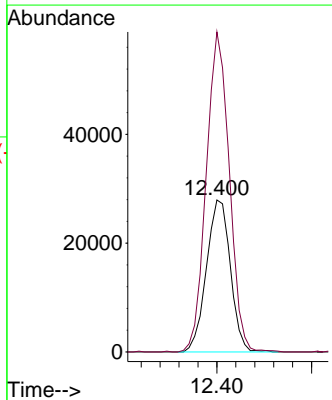
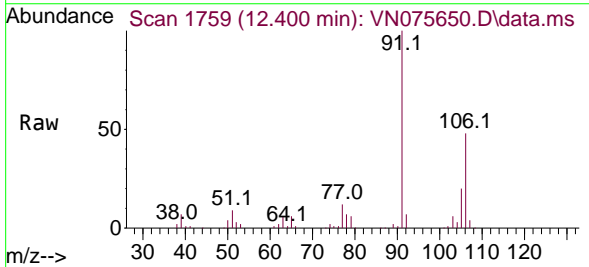
Instrument : MSVOA_N
 ClientSampleId : INF1222DL

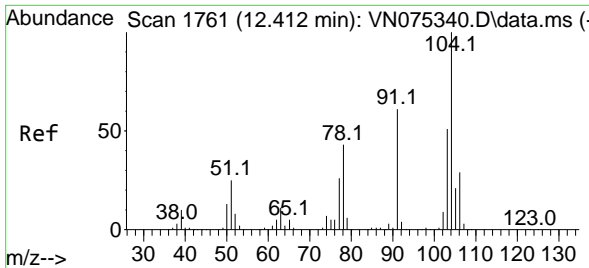
Tgt Ion:106 Resp: 455725
 Ion Ratio Lower Upper
 106 100
 91 193.3 156.0 234.0



#69
 o-Xylene
 Concen: 14.197 ug/l
 RT: 12.400 min Scan# 1759
 Delta R.T. -0.000 min
 Lab File: VN075650.D
 Acq: 08 Dec 2022 16:08

Tgt Ion:106 Resp: 48983
 Ion Ratio Lower Upper
 106 100
 91 203.1 105.2 315.5

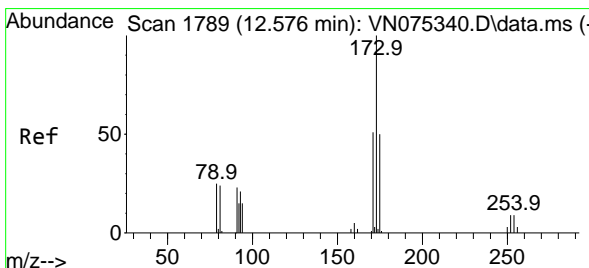
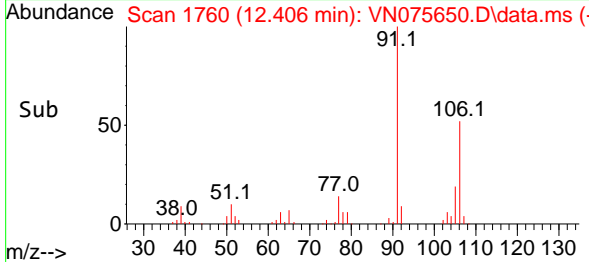
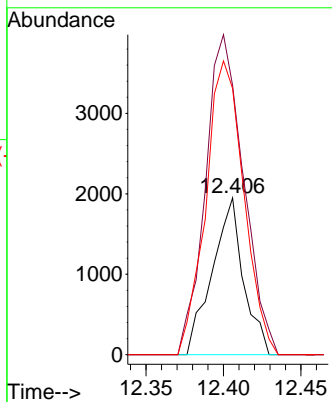
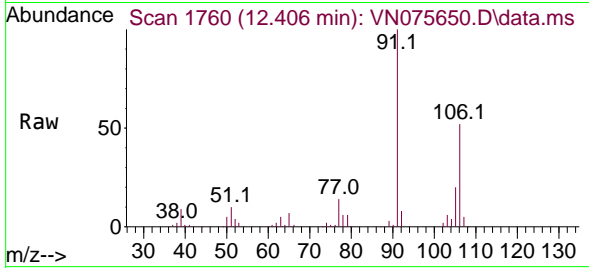




#70
 Styrene
 Concen: 0.502 ug/l
 RT: 12.406 min Scan# 11
 Delta R.T. -0.006 min
 Lab File: VN075650.D
 Acq: 08 Dec 2022 16:08

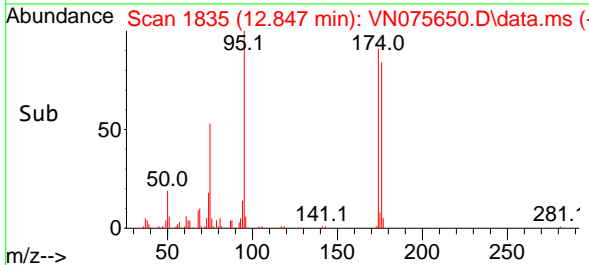
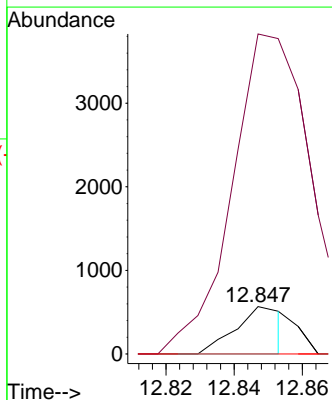
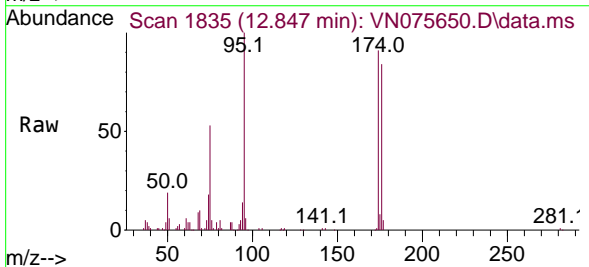
Instrument :
 MSVOA_N
 ClientSampleId :
 INF1222DL

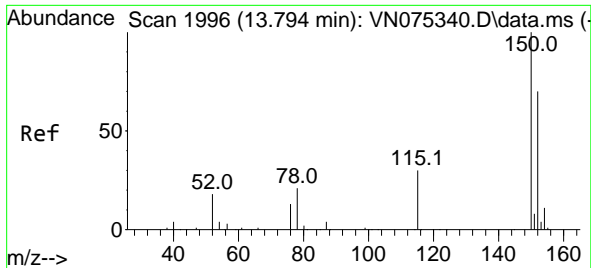
Tgt Ion:104 Resp: 2734
 Ion Ratio Lower Upper
 104 100
 78 248.7 38.1 57.1#
 103 227.6 44.6 66.8#



#71
 Bromoform
 Concen: 0.385 ug/l
 RT: 12.847 min Scan# 1835
 Delta R.T. 0.271 min
 Lab File: VN075650.D
 Acq: 08 Dec 2022 16:08

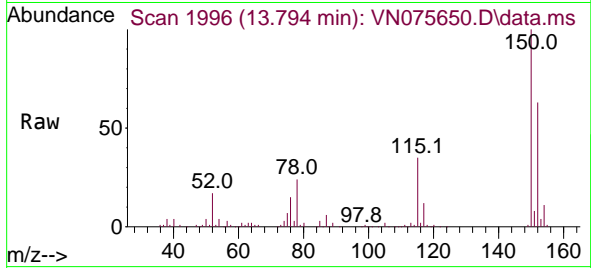
Tgt Ion:173 Resp: 548
 Ion Ratio Lower Upper
 173 100
 175 755.8 24.6 74.0#
 254 0.0 0.0 0.0



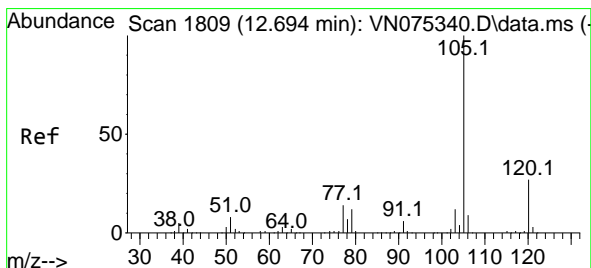
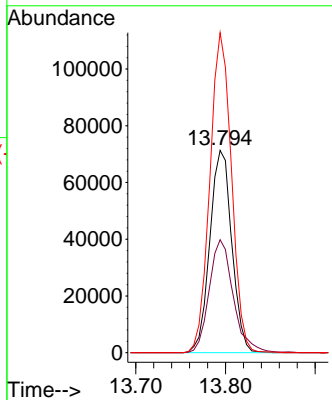
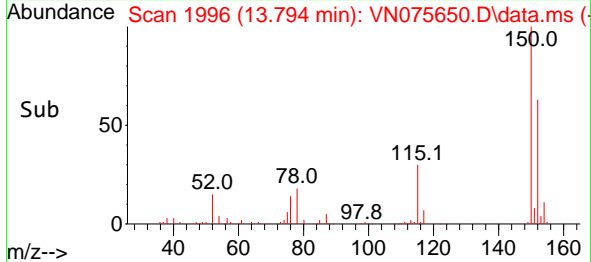


#72
 1,4-Dichlorobenzene-d4
 Concen: 50.000 ug/l
 RT: 13.794 min Scan# 1996
 Delta R.T. 0.000 min
 Lab File: VN075650.D
 Acq: 08 Dec 2022 16:08

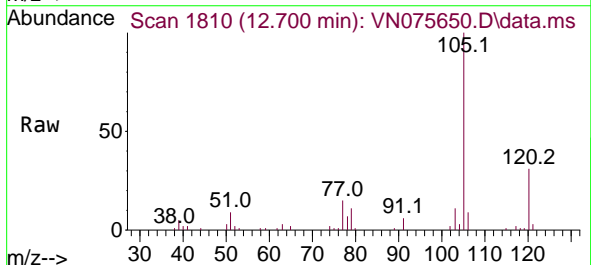
Instrument : MSVOA_N
 ClientSampleId : INF1222DL



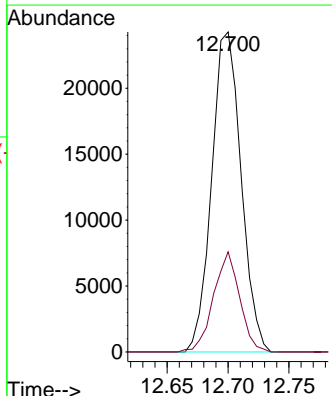
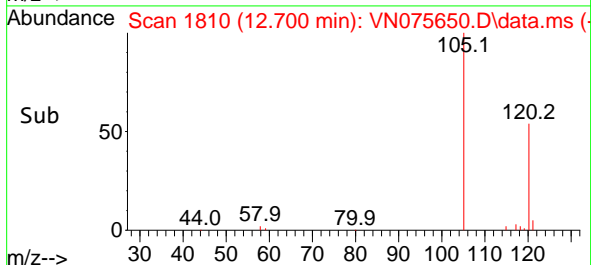
Tgt Ion:152 Resp: 121319
 Ion Ratio Lower Upper
 152 100
 115 61.2 30.2 90.6
 150 155.3 0.0 348.4

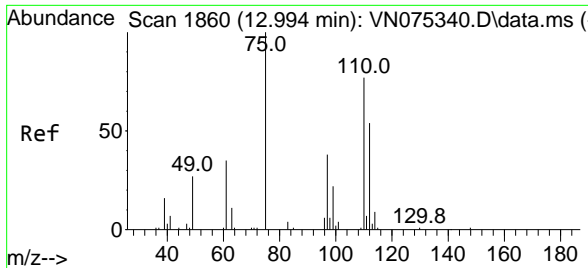


#73
 Isopropylbenzene
 Concen: 4.594 ug/l
 RT: 12.700 min Scan# 1810
 Delta R.T. 0.006 min
 Lab File: VN075650.D
 Acq: 08 Dec 2022 16:08



Tgt Ion:105 Resp: 40722
 Ion Ratio Lower Upper
 105 100
 120 27.9 13.1 39.1

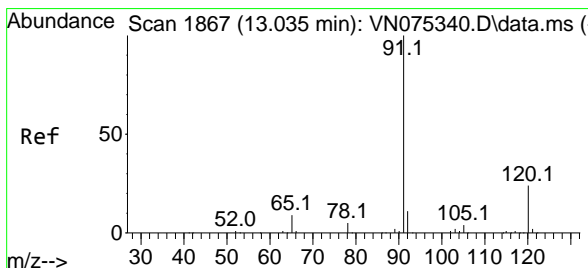
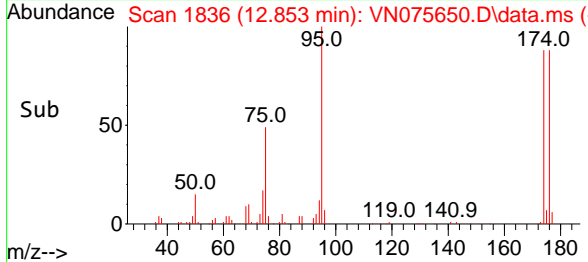
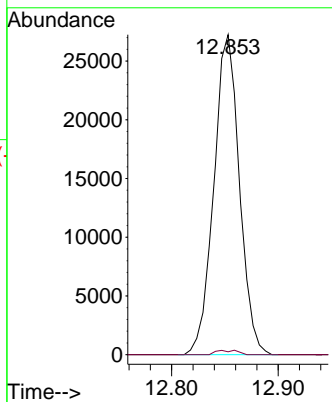
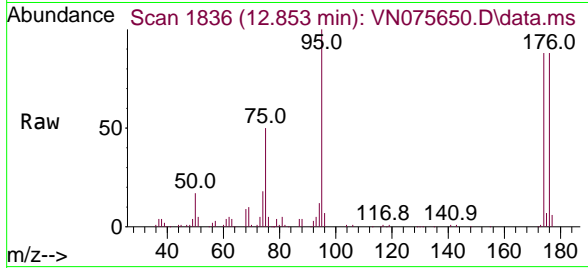




#76
 1,2,3-Trichloropropane
 Concen: 19.767 ug/l
 RT: 12.853 min Scan# 1836
 Delta R.T. -0.141 min
 Lab File: VN075650.D
 Acq: 08 Dec 2022 16:08

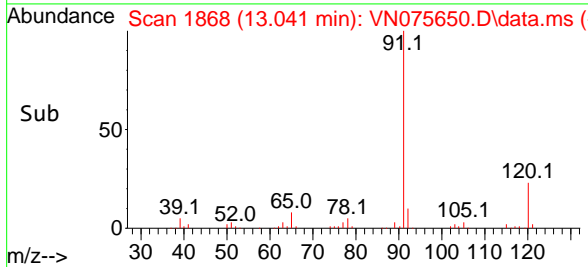
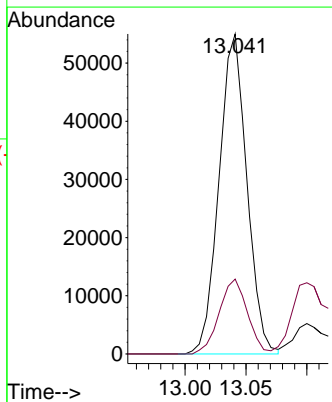
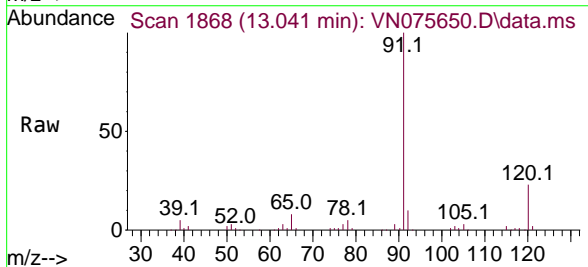
Instrument : MSVOA_N
 ClientSampleId : INF1222DL

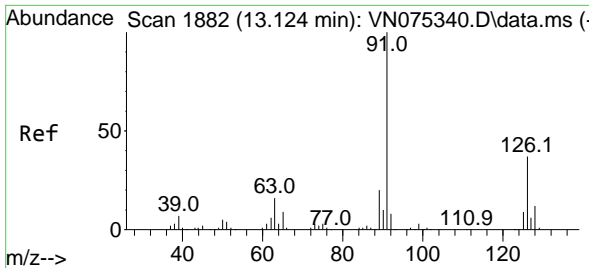
Tgt Ion: 75 Resp: 45343
 Ion Ratio Lower Upper
 75 100
 77 1.1 75.6 226.8#



#78
 n-propylbenzene
 Concen: 8.840 ug/l
 RT: 13.041 min Scan# 1868
 Delta R.T. 0.006 min
 Lab File: VN075650.D
 Acq: 08 Dec 2022 16:08

Tgt Ion: 91 Resp: 87444
 Ion Ratio Lower Upper
 91 100
 120 23.8 11.9 35.5

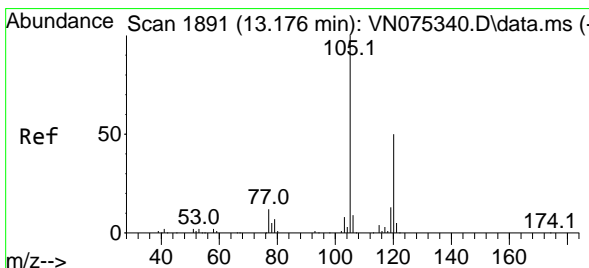
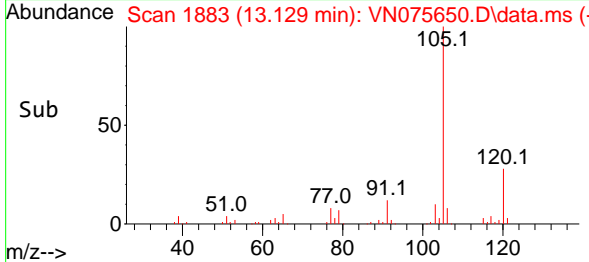
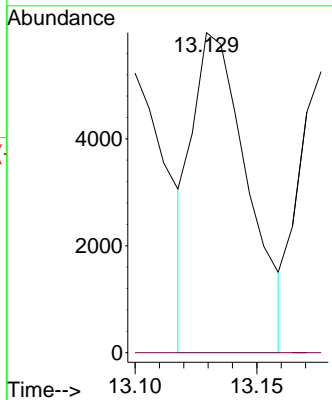
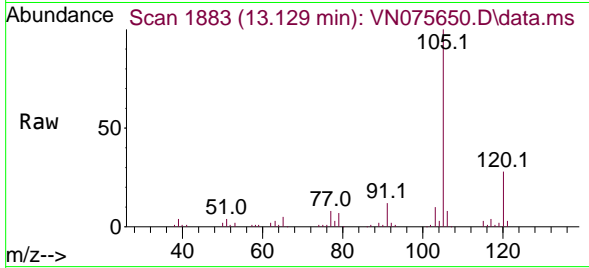




#79
 2-Chlorotoluene
 Concen: 1.586 ug/l
 RT: 13.129 min Scan# 1883
 Delta R.T. 0.005 min
 Lab File: VN075650.D
 Acq: 08 Dec 2022 16:08

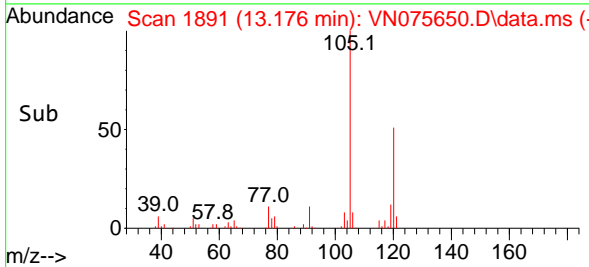
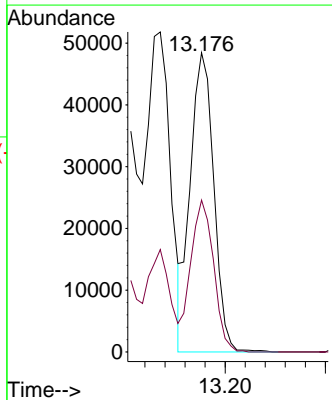
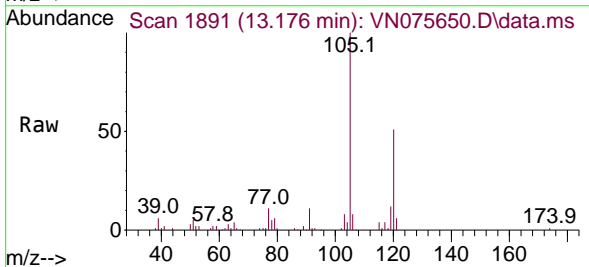
Instrument :
 MSVOA_N
 ClientSampleId :
 INF1222DL

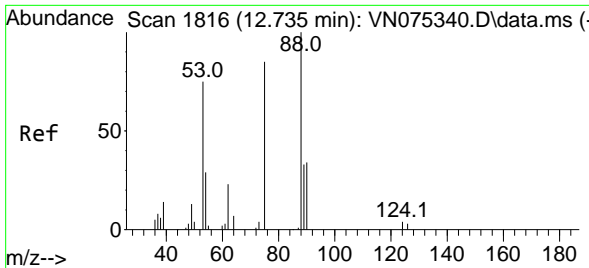
Tgt Ion: 91 Resp: 9453
 Ion Ratio Lower Upper
 91 100
 126 0.0 16.9 50.7#



#80
 1,3,5-Trimethylbenzene
 Concen: 10.752 ug/l
 RT: 13.176 min Scan# 1891
 Delta R.T. 0.000 min
 Lab File: VN075650.D
 Acq: 08 Dec 2022 16:08

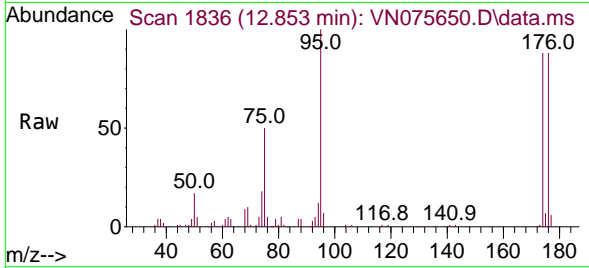
Tgt Ion: 105 Resp: 79175
 Ion Ratio Lower Upper
 105 100
 120 49.6 24.7 74.1



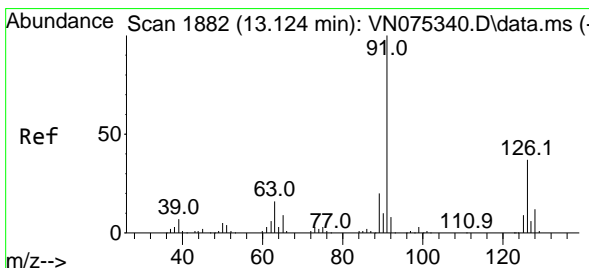
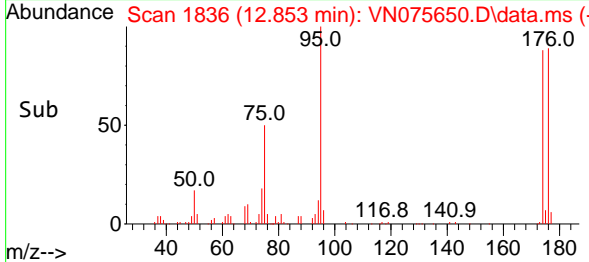
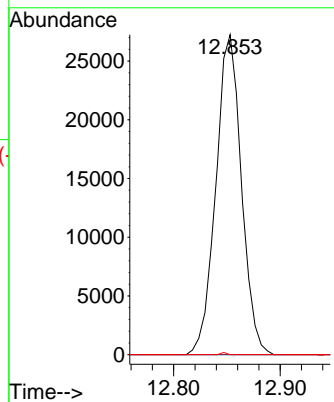


#81
 trans-1,4-Dichloro-2-butene
 Concen: 58.487 ug/l
 RT: 12.853 min Scan# 1836
 Delta R.T. 0.118 min
 Lab File: VN075650.D
 Acq: 08 Dec 2022 16:08

Instrument : MSVOA_N
 ClientSampleId : INF1222DL

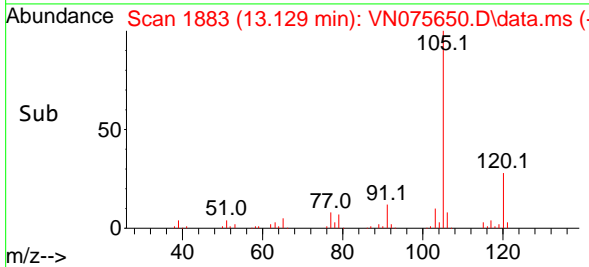
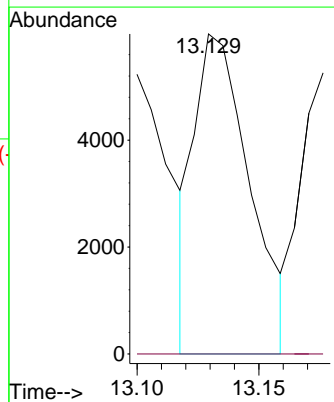
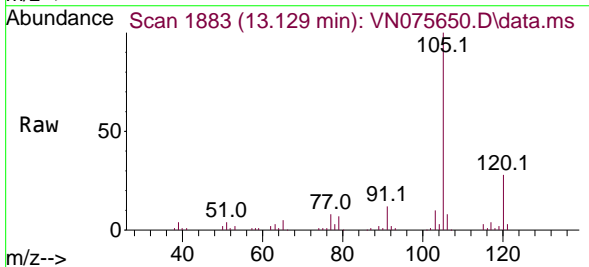


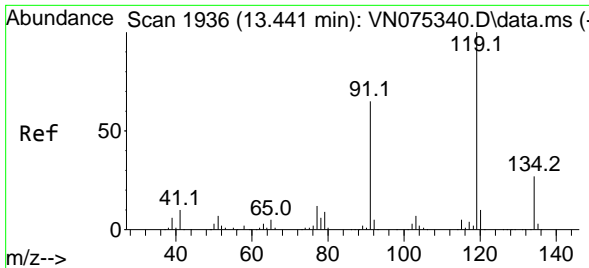
Tgt Ion: 75 Resp: 45343
 Ion Ratio Lower Upper
 75 100
 53 0.0 78.5 117.7#
 89 0.1 37.7 56.5#



#82
 4-Chlorotoluene
 Concen: 1.586 ug/l
 RT: 13.129 min Scan# 1883
 Delta R.T. 0.005 min
 Lab File: VN075650.D
 Acq: 08 Dec 2022 16:08

Tgt Ion: 91 Resp: 9453
 Ion Ratio Lower Upper
 91 100
 126 0.0 16.9 50.7#



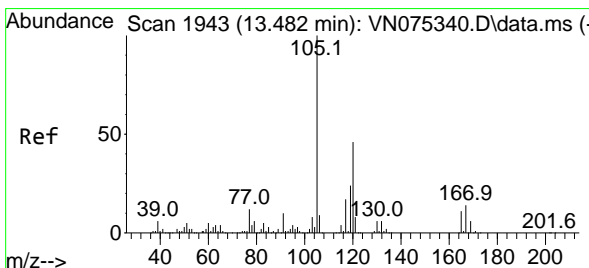
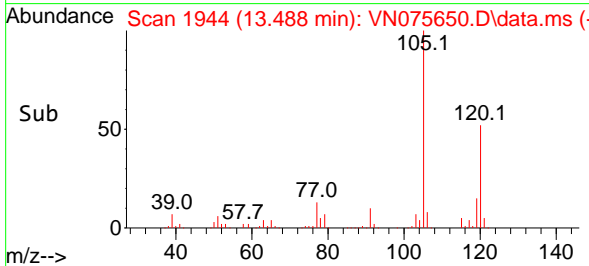
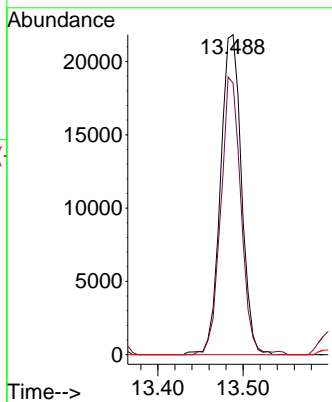
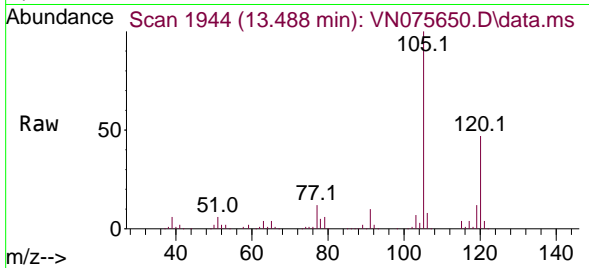


#83
 tert-Butylbenzene
 Concen: 5.547 ug/l
 RT: 13.488 min Scan# 1944
 Delta R.T. 0.047 min
 Lab File: VN075650.D
 Acq: 08 Dec 2022 16:08

Instrument : MSVOA_N
 ClientSampleId : INF1222DL

Tgt Ion:119 Resp: 37246

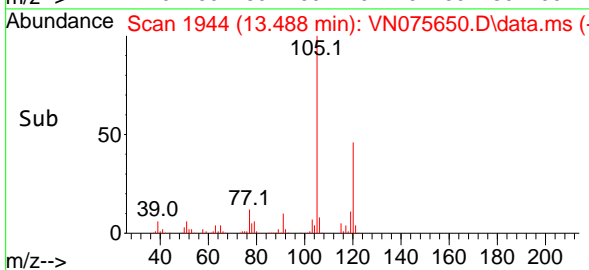
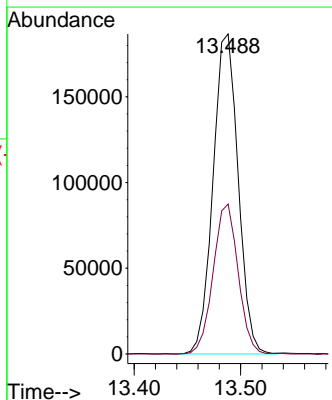
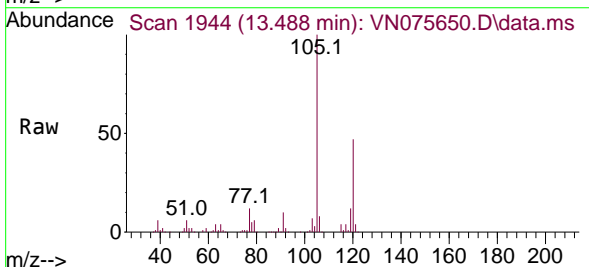
Ion	Ratio	Lower	Upper
119	100		
91	83.5	32.8	98.4
134	0.0	12.3	36.9

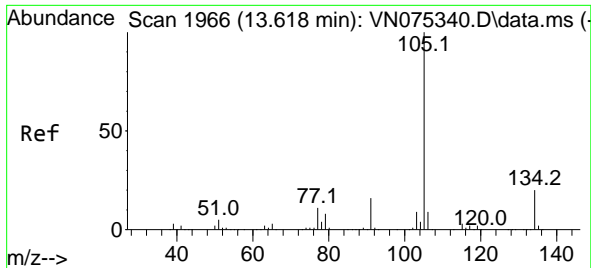


#84
 1,2,4-Trimethylbenzene
 Concen: 41.342 ug/l
 RT: 13.488 min Scan# 1944
 Delta R.T. 0.006 min
 Lab File: VN075650.D
 Acq: 08 Dec 2022 16:08

Tgt Ion:105 Resp: 305370

Ion	Ratio	Lower	Upper
105	100		
120	46.6	22.7	68.1

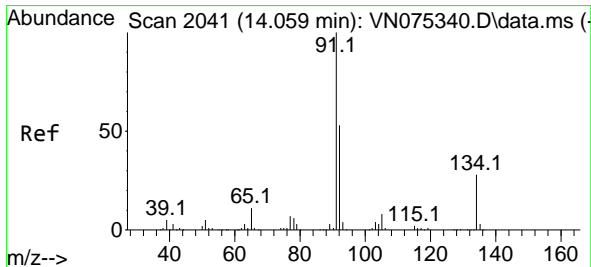
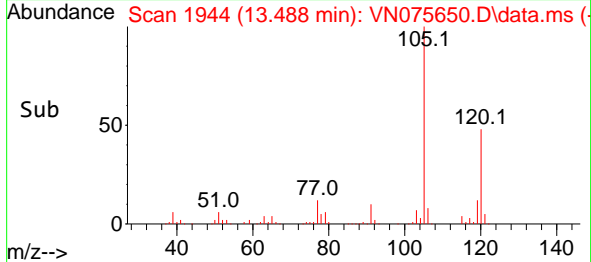
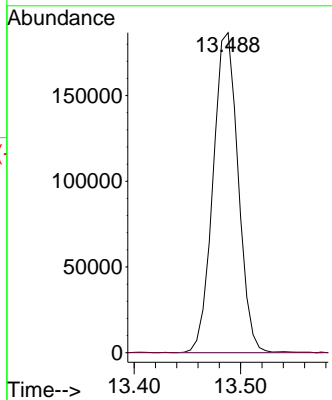
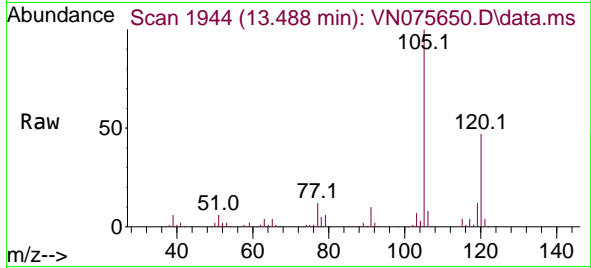




#85
 sec-Butylbenzene
 Concen: 33.520 ug/l
 RT: 13.488 min Scan# 1966
 Delta R.T. -0.130 min
 Lab File: VN075650.D
 Acq: 08 Dec 2022 16:08

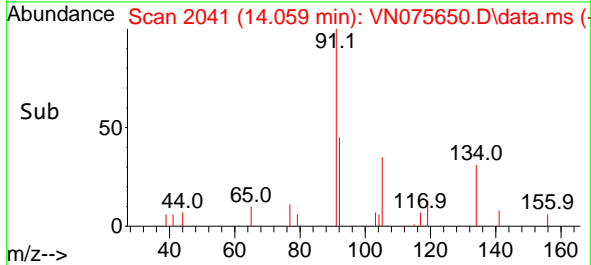
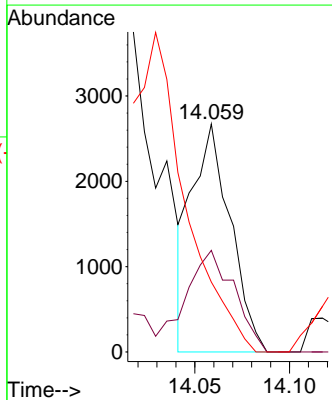
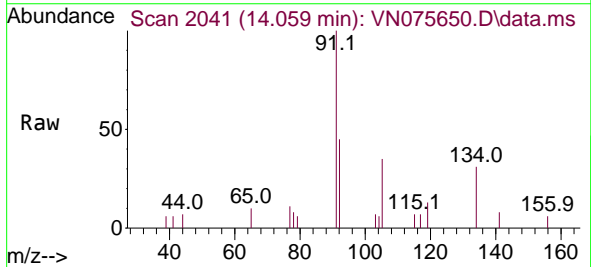
Instrument : MSVOA_N
 ClientSampleId : INF1222DL

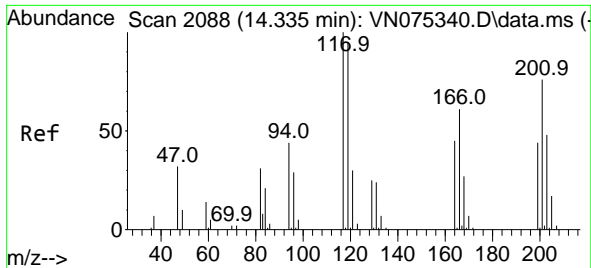
Tgt Ion:105 Resp: 305370
 Ion Ratio Lower Upper
 105 100
 134 0.0 10.2 30.6#



#89
 n-Butylbenzene
 Concen: 0.585 ug/l
 RT: 14.059 min Scan# 2041
 Delta R.T. -0.000 min
 Lab File: VN075650.D
 Acq: 08 Dec 2022 16:08

Tgt Ion: 91 Resp: 3784
 Ion Ratio Lower Upper
 91 100
 92 55.9 26.5 79.4
 134 0.0 13.0 39.0#

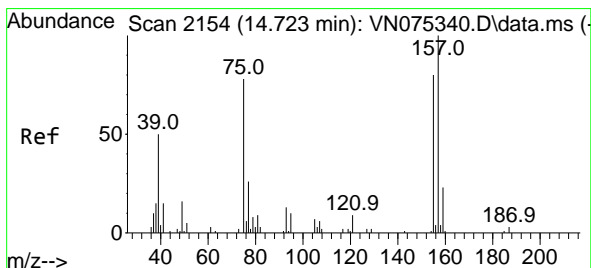
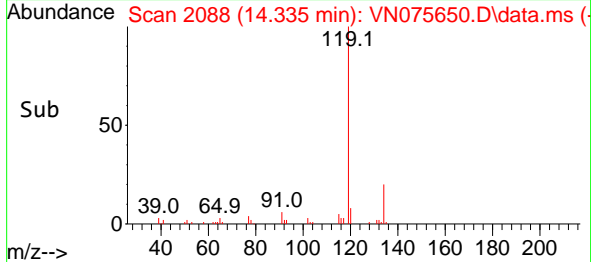
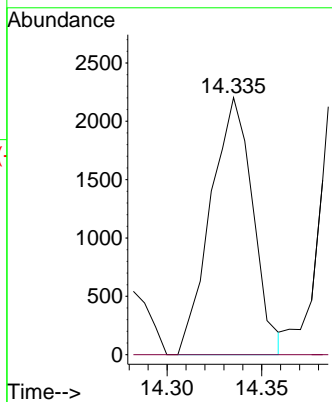
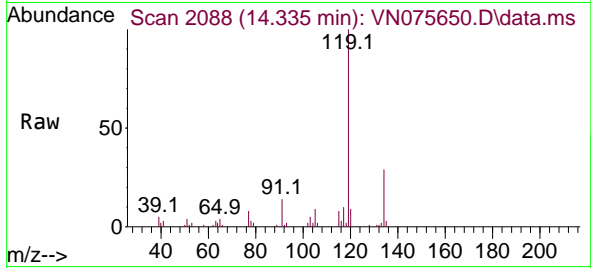




#90
 Hexachloroethane
 Concen: 2.589 ug/l
 RT: 14.335 min Scan# 2088
 Delta R.T. 0.000 min
 Lab File: VN075650.D
 Acq: 08 Dec 2022 16:08

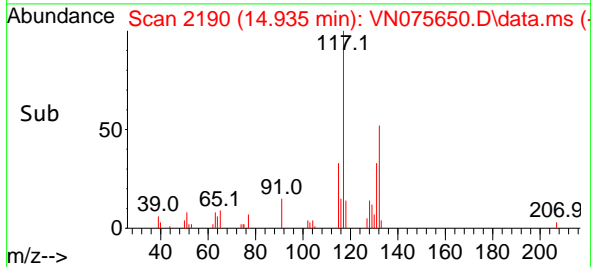
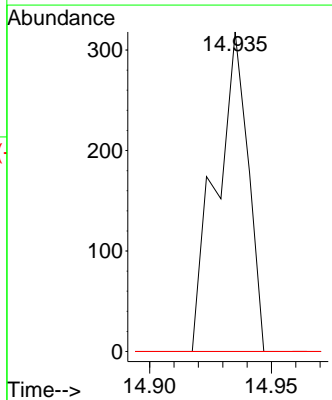
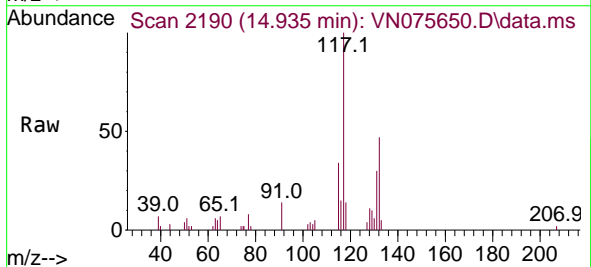
Instrument : MSVOA_N
 Client SampleId : INF1222DL

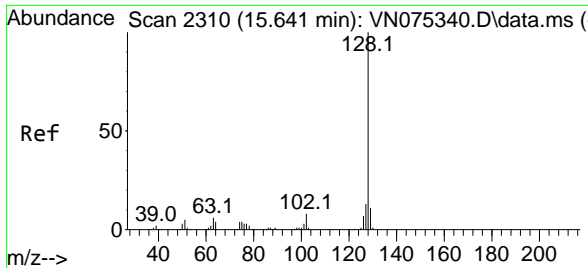
Tgt Ion: 117 Resp: 3423
 Ion Ratio Lower Upper
 117 100
 201 0.0 31.5 94.5#



#92
 1,2-Dibromo-3-Chloropropane
 Concen: 0.567 ug/l
 RT: 14.935 min Scan# 2190
 Delta R.T. 0.212 min
 Lab File: VN075650.D
 Acq: 08 Dec 2022 16:08

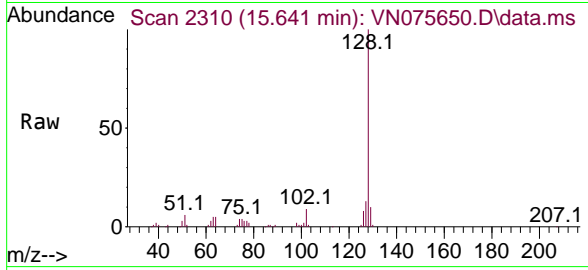
Tgt Ion: 75 Resp: 290
 Ion Ratio Lower Upper
 75 100
 155 0.0 42.1 126.3#
 157 0.0 51.7 155.1#





#95
 Naphthalene
 Concen: 15.609 ug/l
 RT: 15.641 min Scan# 21
 Delta R.T. -0.000 min
 Lab File: VN075650.D
 Acq: 08 Dec 2022 16:08

Instrument : MSVOA_N
 ClientSampleId : INF1222DL



Tgt Ion:128 Resp: 101699

Ion	Ratio	Lower	Upper
128	100		
127	12.6	10.4	15.6
129	10.6	8.6	12.8

