

Data Path : Z:\VOASRV\HPCHEM1\MSVOA N\DATA\VN120920\
 Data File : VN065028.D
 Acq On : 9 Dec 2020 18:14
 Operator : JC/MD
 Sample : PB133472ZHE#09
 Misc : 5.00mL/MSVOA N/WATER
 ALS Vial : 20 Sample Multiplier: 1

Instrument :
 MSVOA_N
 ClientSampleId :
 PB133472ZHE#09

Quant Time: Dec 10 04:52:04 2020
 Quant Method : Z:\VOASRV\HPCHEM1\MSVOA_N\METHODS\82N112320W.M
 Quant Title : SW846 8260
 QLast Update : Mon Nov 23 13:54:12 2020
 Response via : Initial Calibration

Internal Standards	R.T.	QIon	Response	Conc	Units	Dev(Min)
1) Pentafluorobenzene	7.63	168	162963	50.00	ug/l	0.00
34) 1,4-Difluorobenzene	8.55	114	318216	50.00	ug/l	0.00
63) Chlorobenzene-d5	11.38	117	333223	50.00	ug/l	0.00
72) 1,4-Dichlorobenzene-d4	13.32	152	137271	50.00	ug/l	0.00

System Monitoring Compounds

33) 1,2-Dichloroethane-d4	7.99	65	106067	55.99	ug/l	0.00
Spiked Amount	50.000	Range	61 - 141	Recovery	=	111.98%
35) Dibromofluoromethane	7.55	113	97281	51.09	ug/l	0.00
Spiked Amount	50.000	Range	69 - 133	Recovery	=	102.18%
50) Toluene-d8	10.06	98	398056	51.16	ug/l	0.00
Spiked Amount	50.000	Range	65 - 126	Recovery	=	102.32%
62) 4-Bromofluorobenzene	12.38	95	146182	52.50	ug/l	0.00
Spiked Amount	50.000	Range	58 - 135	Recovery	=	105.00%

Target Compounds

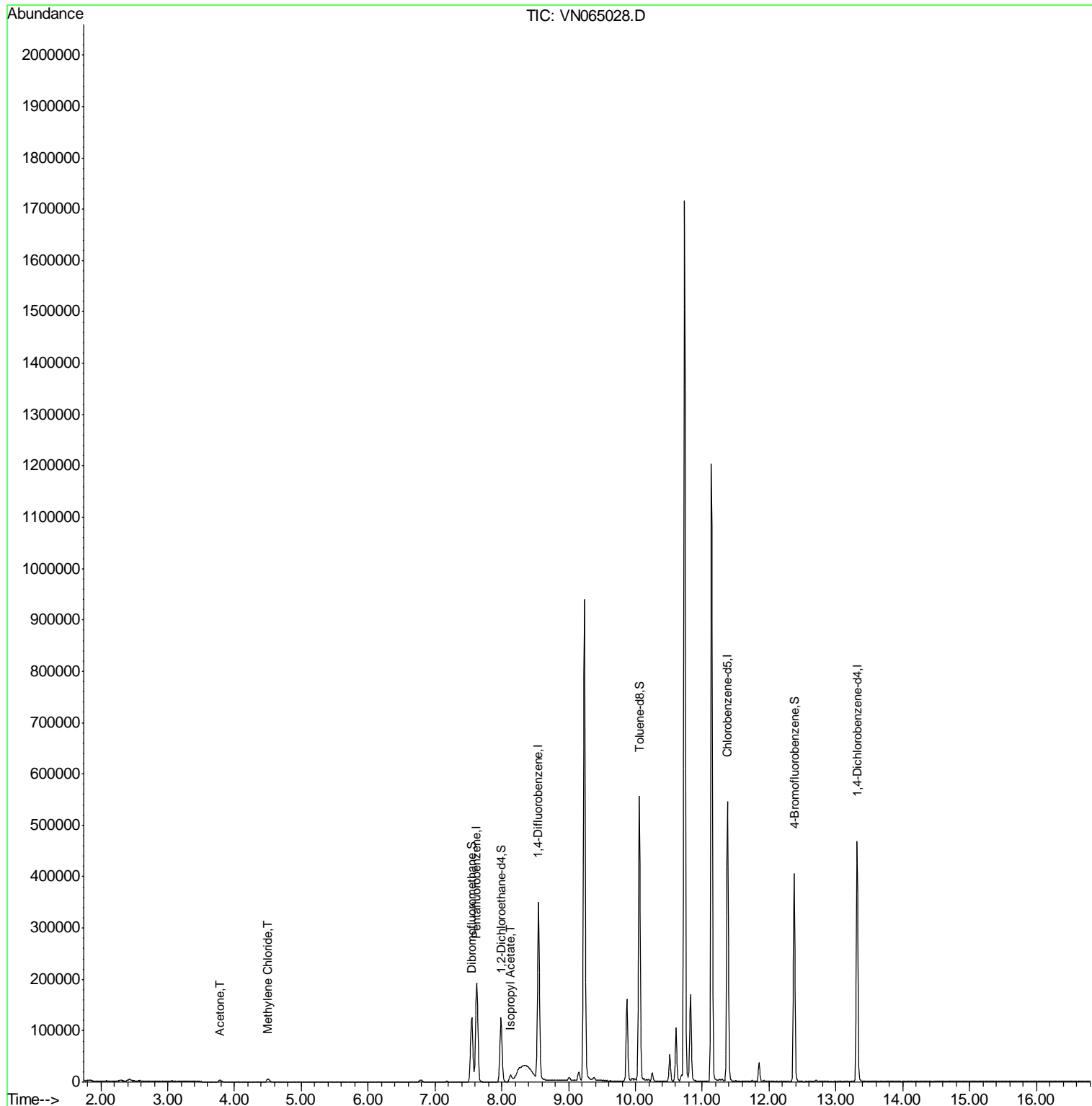
					Qvalue
16) Acetone	3.78	43	5879	9.440	ug/l 99
20) Methylene Chloride	4.50	84	4760	2.439	ug/l # 90
43) Isopropyl Acetate	8.13	43	18744	4.100	ug/l # 89

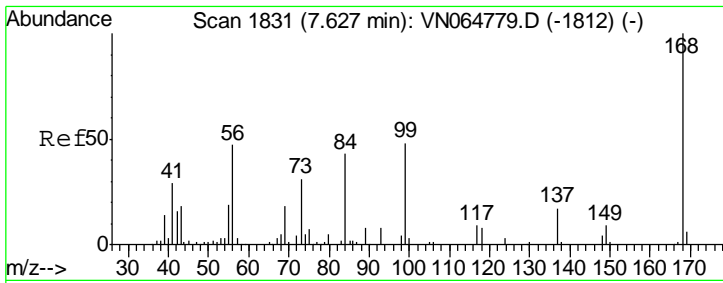
(#) = qualifier out of range (m) = manual integration (+) = signals summed

Data Path : Z:\VOASRV\HPCHEM1\MSVOA N\DATA\VN120920\
 Data File : VN065028.D
 Acq On : 9 Dec 2020 18:14
 Operator : JC/MD
 Sample : PB133472ZHE#09
 Misc : 5.00mL/MSVOA N/WATER
 ALS Vial : 20 Sample Multiplier: 1

Instrument :
 MSVOA_N
 ClientSampleId :
 PB133472ZHE#09

Quant Time: Dec 10 04:52:04 2020
 Quant Method : Z:\VOASRV\HPCHEM1\MSVOA_N\METHODS\82N112320W.M
 Quant Title : SW846 8260
 QLast Update : Mon Nov 23 13:54:12 2020
 Response via : Initial Calibration

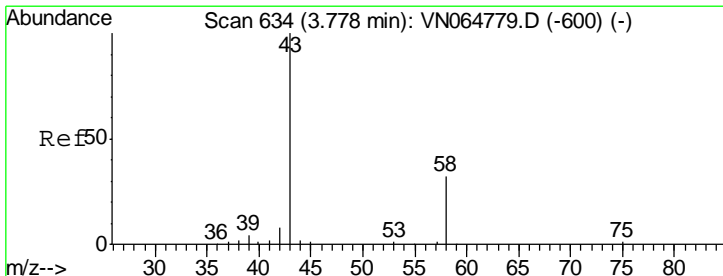
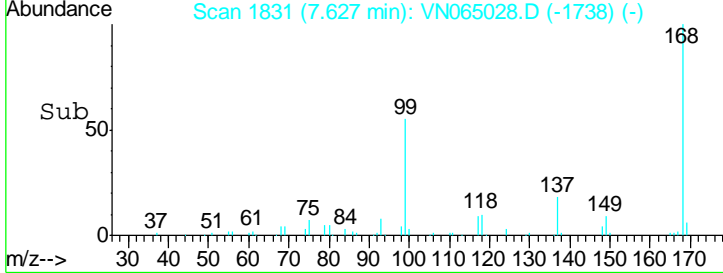
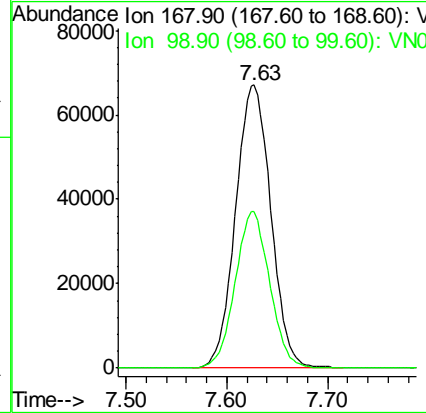
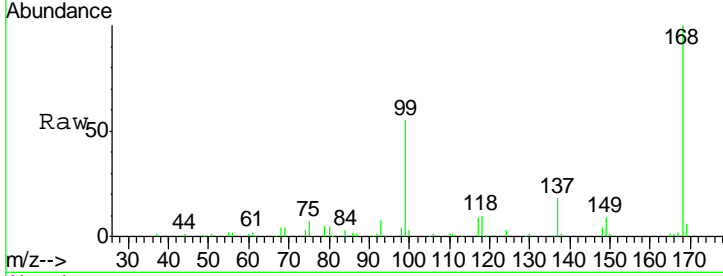




#1
 Pentafluorobenzene
 Concen: 50.000 ug/l
 RT: 7.63 min Scan# 1831
 Delta R.T. 0.00 min
 Lab File: VN065028.D
 Acq: 9 Dec 2020 18:14

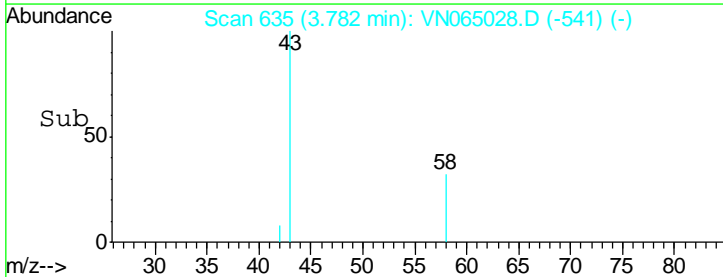
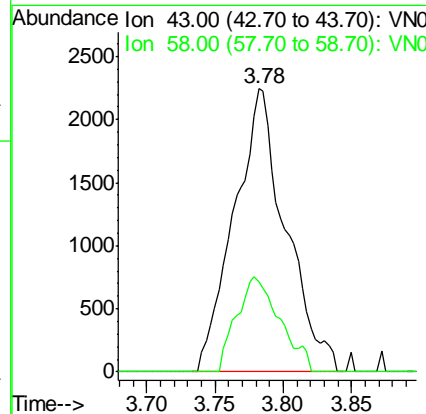
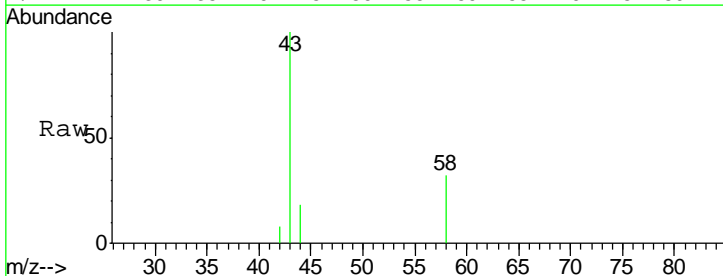
Instrument : MSVOA_N
 ClientSampleID : PB133472ZHE#09

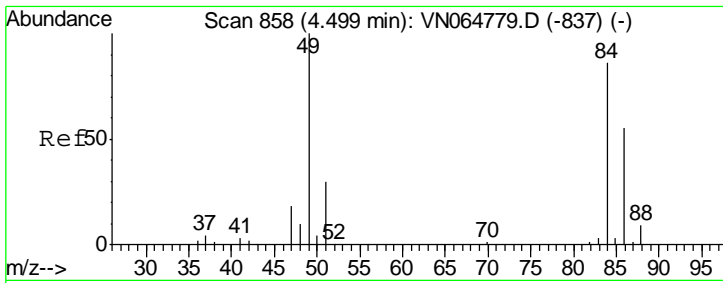
Tgt Ion: 168 Resp: 162963
 Ion Ratio Lower Upper
 168 100
 99 55.4 43.0 64.4



#16
 Acetone
 Concen: 9.440 ug/l
 RT: 3.78 min Scan# 635
 Delta R.T. 0.00 min
 Lab File: VN065028.D
 Acq: 9 Dec 2020 18:14

Tgt Ion: 43 Resp: 5879
 Ion Ratio Lower Upper
 43 100
 58 31.7 25.7 38.5

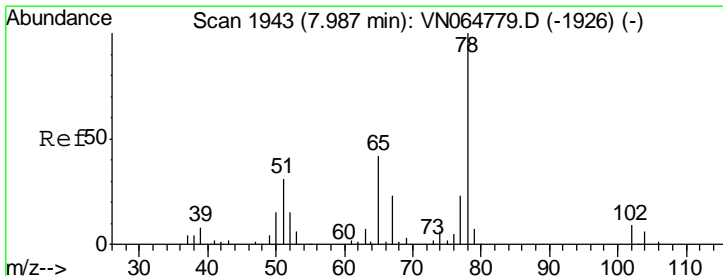
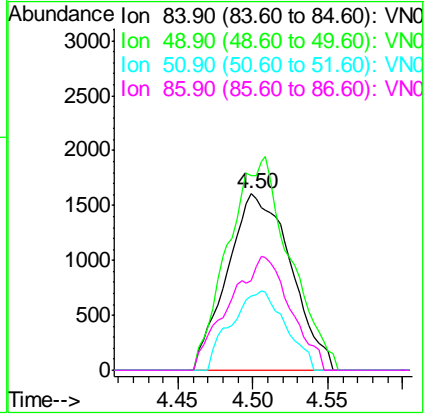
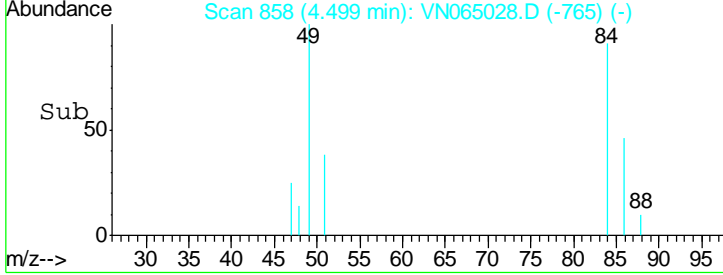
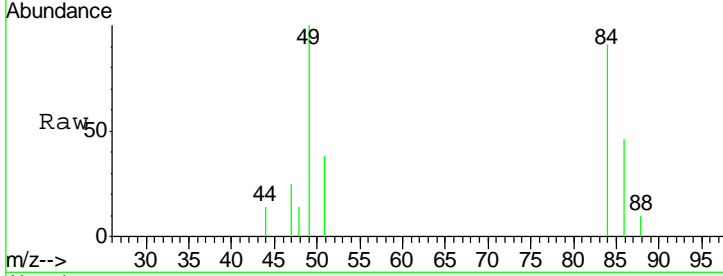




#20
 Methylene Chloride
 Concen: 2.439 ug/l
 RT: 4.50 min Scan# 858
 Delta R.T. 0.00 min
 Lab File: VN065028.D
 Acq: 9 Dec 2020 18:14

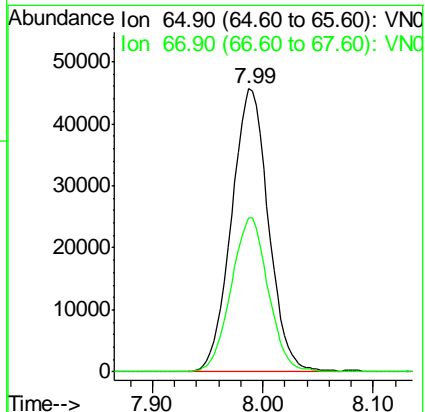
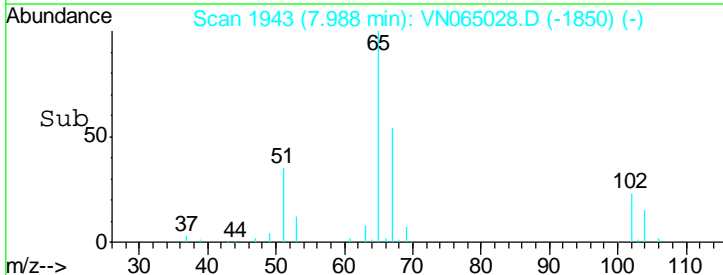
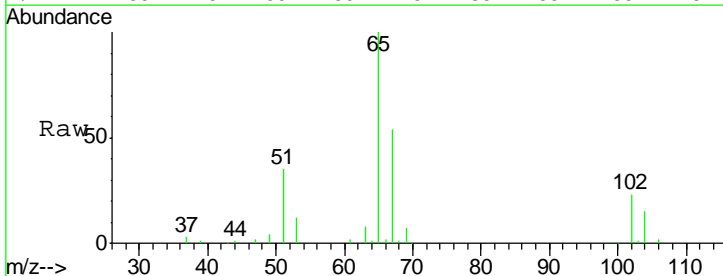
Instrument : MSVOA_N
 ClientSampleId : PB133472ZHE#09

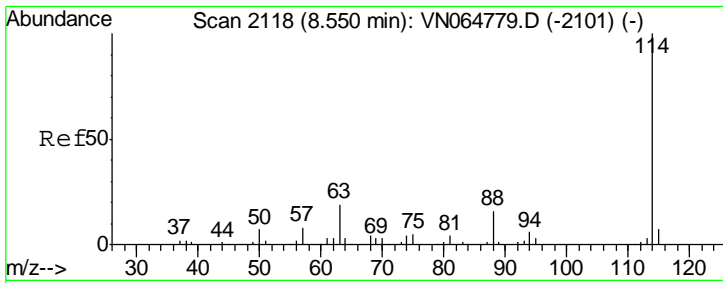
Tgt Ion	Resp	Lower	Upper
84	100		
49	110.5	93.4	140.0
51	41.9	28.2	42.4
86	51.0	51.7	77.5#



#33
 1,2-Dichloroethane-d4
 Concen: 55.985 ug/l
 RT: 7.99 min Scan# 1943
 Delta R.T. 0.00 min
 Lab File: VN065028.D
 Acq: 9 Dec 2020 18:14

Tgt Ion	Resp	Lower	Upper
65	100		
67	54.5	0.0	108.2

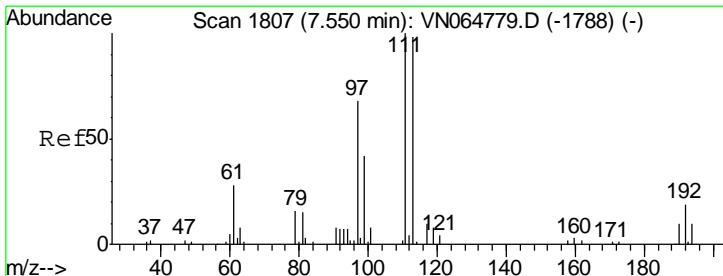
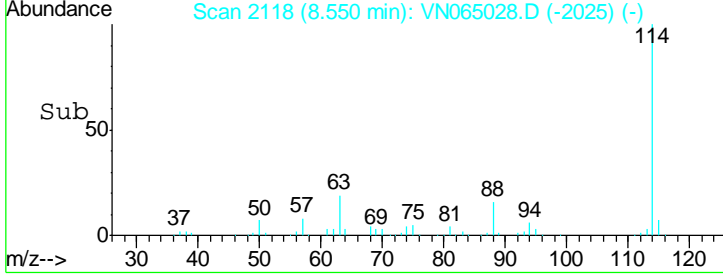
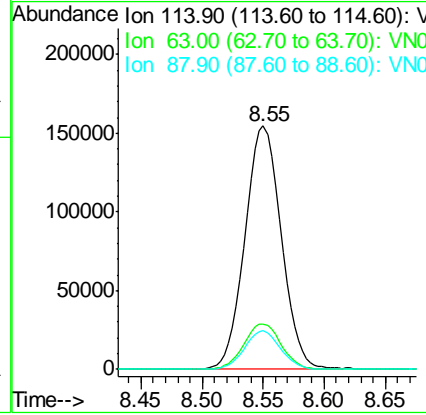
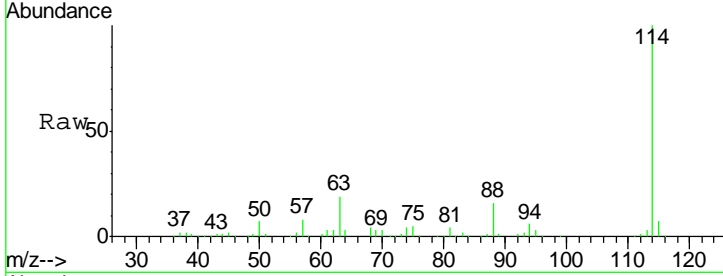




#34
 1,4-Difluorobenzene
 Concen: 50.000 ug/l
 RT: 8.55 min Scan# 2118
 Delta R.T. 0.00 min
 Lab File: VN065028.D
 Acq: 9 Dec 2020 18:14

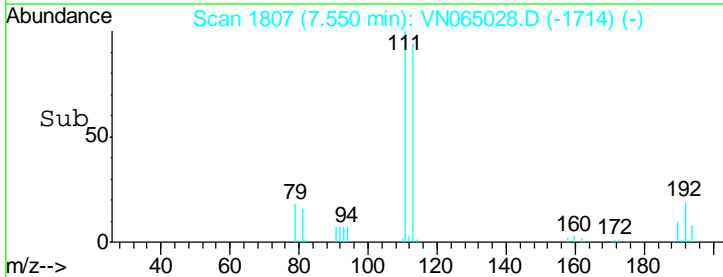
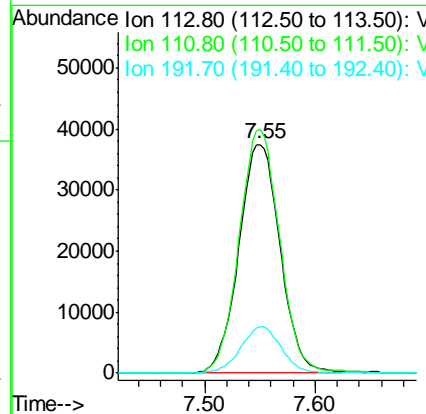
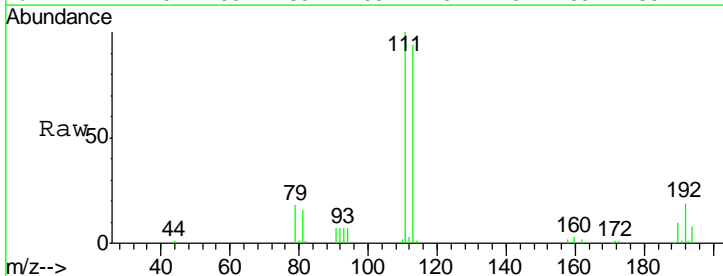
Instrument : MSVOA_N
 ClientSampleId : PB133472ZHE#09

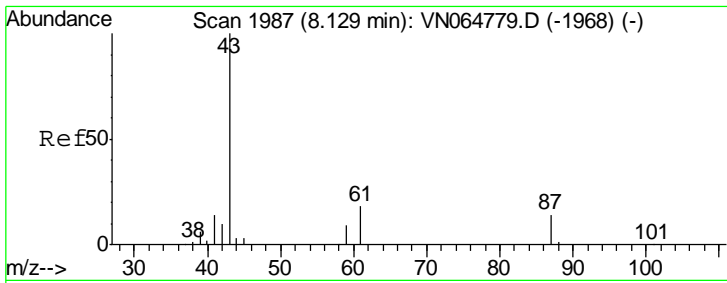
Tgt Ion	Resp	Lower	Upper
114	318216		
63	18.6	0.0	38.6
88	15.8	0.0	32.6



#35
 Dibromofluoromethane
 Concen: 51.090 ug/l
 RT: 7.55 min Scan# 1807
 Delta R.T. 0.00 min
 Lab File: VN065028.D
 Acq: 9 Dec 2020 18:14

Tgt Ion	Resp	Lower	Upper
113	97281		
111	104.5	81.6	122.4
192	19.9	16.2	24.2

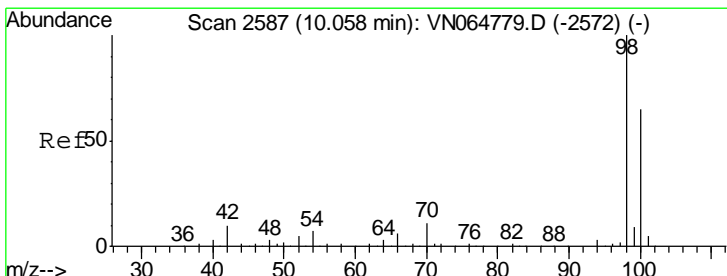
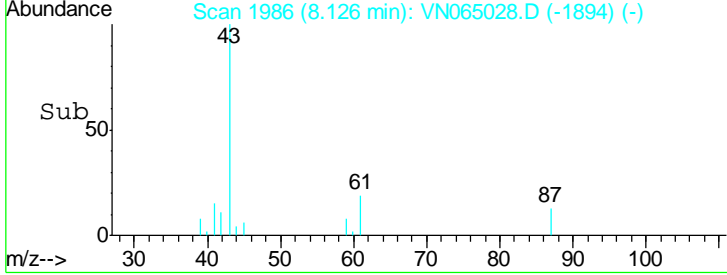
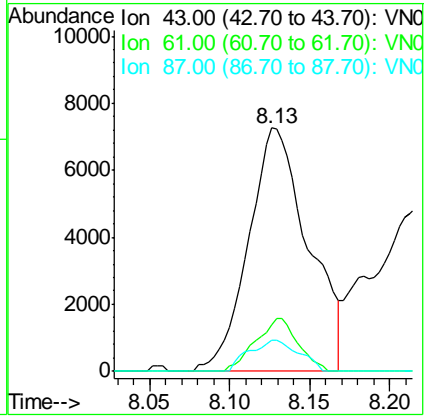
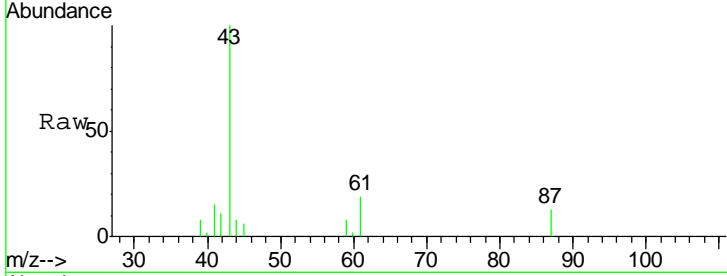




#43
 Isopropyl Acetate
 Concen: 4.100 ug/l
 RT: 8.13 min Scan# 1986
 Delta R.T. -0.00 min
 Lab File: VN065028.D
 Acq: 9 Dec 2020 18:14

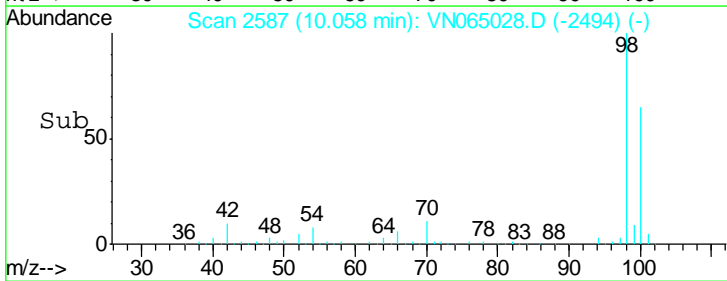
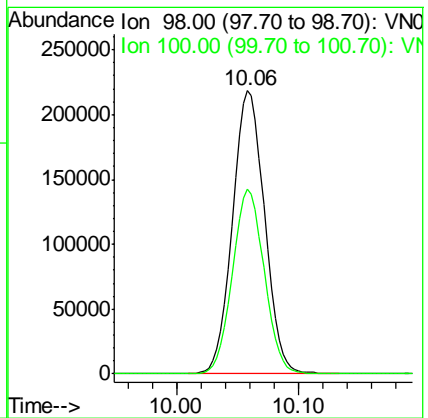
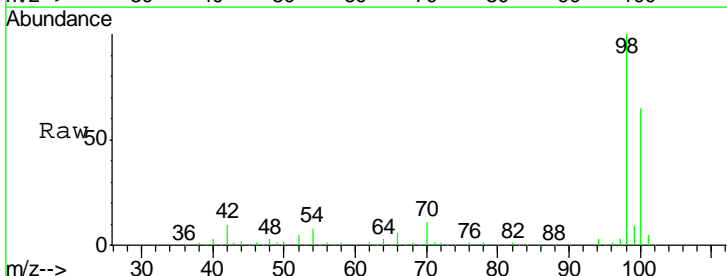
Instrument :
 MSVOA_N
ClientSampled :
 PB133472ZHE#09

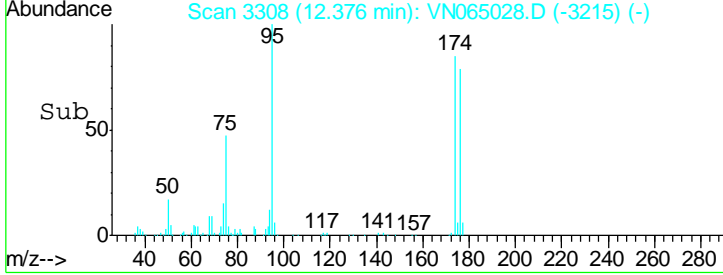
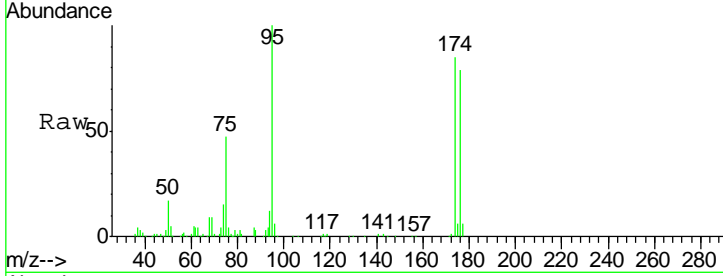
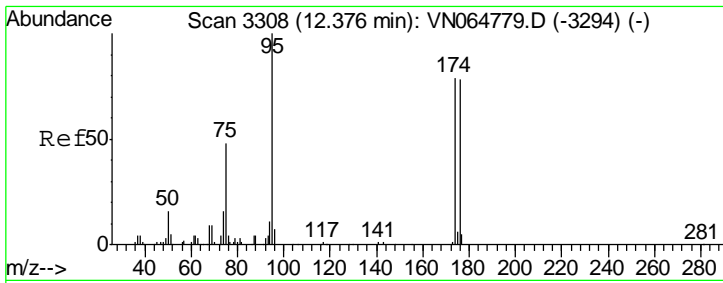
Tgt Ion	Resp	Lower	Upper
43	18744		
61	15.4	17.2	25.8#
87	10.6	11.4	17.0#



#50
 Toluene-d8
 Concen: 51.164 ug/l
 RT: 10.06 min Scan# 2587
 Delta R.T. 0.00 min
 Lab File: VN065028.D
 Acq: 9 Dec 2020 18:14

Tgt Ion	Resp	Lower	Upper
98	398056		
100	64.5	51.7	77.5

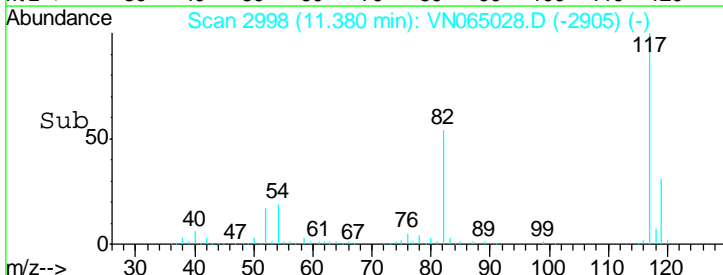
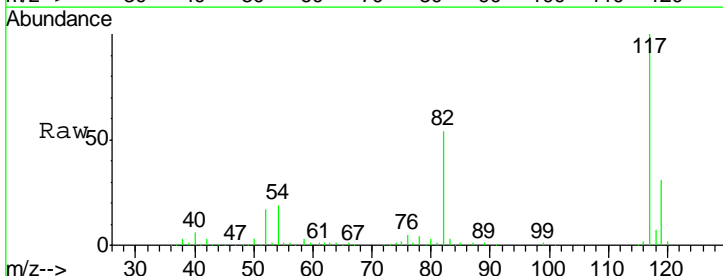
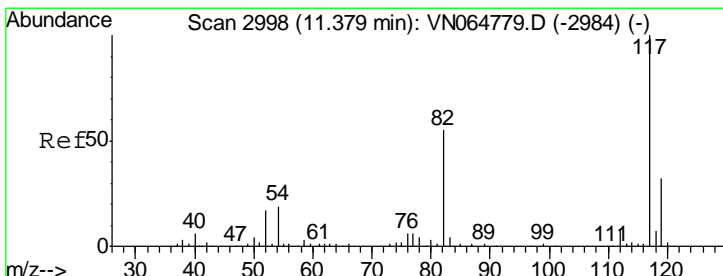
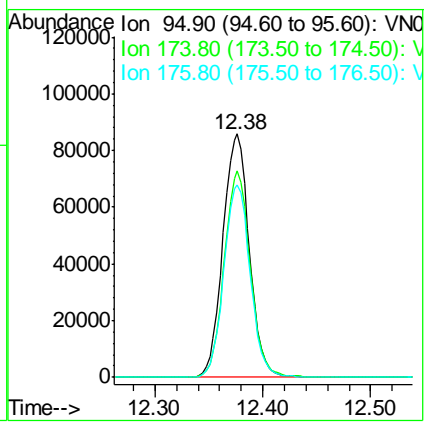




#62
 4-Bromofluorobenzene
 Concen: 52.502 ug/l
 RT: 12.38 min Scan# 3308
 Delta R.T. 0.00 min
 Lab File: VN065028.D
 Acq: 9 Dec 2020 18:14

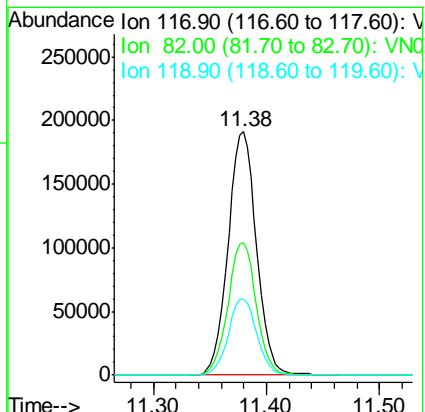
Instrument : MSVOA_N
 ClientSampleId : PB133472ZHE#09

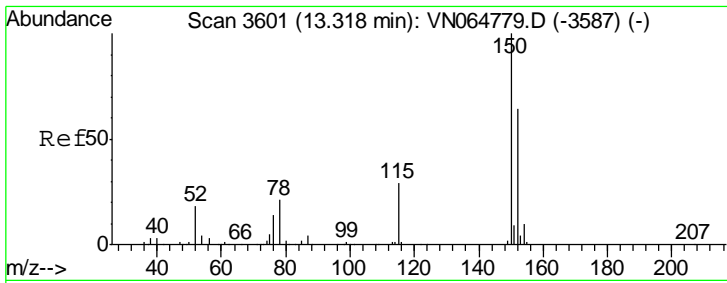
Tgt Ion	Resp	Lower	Upper
95	146182		
174	84.0	0.0	160.4
176	78.9	0.0	158.4



#63
 Chlorobenzene-d5
 Concen: 50.000 ug/l
 RT: 11.38 min Scan# 2998
 Delta R.T. 0.00 min
 Lab File: VN065028.D
 Acq: 9 Dec 2020 18:14

Tgt Ion	Resp	Lower	Upper
117	333223		
82	54.2	44.2	66.2
119	31.4	25.8	38.6





#72
 1,4-Dichlorobenzene-d4
 Concen: 50.000 ug/l
 RT: 13.32 min Scan# 3601
 Delta R.T. 0.00 min
 Lab File: VN065028.D
 Acq: 9 Dec 2020 18:14

Instrument : MSVOA_N
 ClientSampled : PB133472ZHE#09

Tot Ion:152 Resp: 137271

Ion	Ratio	Lower	Upper
152	100		
115	57.6	29.7	89.1
150	155.6	0.0	350.6

