

Data Path : Z:\VOASRV\HPCHEM1\MSVOA N\DATA\VN120920\  
 Data File : VN065033.D  
 Acq On : 9 Dec 2020 20:15  
 Operator : JC/MD  
 Sample : PB133472ZHE#14  
 Misc : 5.00mL/MSVOA N/WATER  
 ALS Vial : 25 Sample Multiplier: 1

Instrument :  
 MSVOA\_N  
 ClientSampleId :  
 PB133472ZHE#14

Quant Time: Dec 10 05:00:42 2020  
 Quant Method : Z:\VOASRV\HPCHEM1\MSVOA\_N\METHODS\82N112320W.M  
 Quant Title : SW846 8260  
 QLast Update : Mon Nov 23 13:54:12 2020  
 Response via : Initial Calibration

Internal Standards	R.T.	QIon	Response	Conc	Units	Dev(Min)
1) Pentafluorobenzene	7.63	168	151813	50.00	ug/l	0.00
34) 1,4-Difluorobenzene	8.55	114	300502	50.00	ug/l	0.00
63) Chlorobenzene-d5	11.38	117	320786	50.00	ug/l	0.00
72) 1,4-Dichlorobenzene-d4	13.32	152	129089	50.00	ug/l	0.00

## System Monitoring Compounds

33) 1,2-Dichloroethane-d4	7.99	65	100430	56.90	ug/l	0.00
Spiked Amount	50.000	Range	61 - 141	Recovery	=	113.80%
35) Dibromofluoromethane	7.55	113	93981	52.27	ug/l	0.00
Spiked Amount	50.000	Range	69 - 133	Recovery	=	104.54%
50) Toluene-d8	10.06	98	379176	51.61	ug/l	0.00
Spiked Amount	50.000	Range	65 - 126	Recovery	=	103.22%
62) 4-Bromofluorobenzene	12.38	95	139251	52.96	ug/l	0.00
Spiked Amount	50.000	Range	58 - 135	Recovery	=	105.92%

## Target Compounds

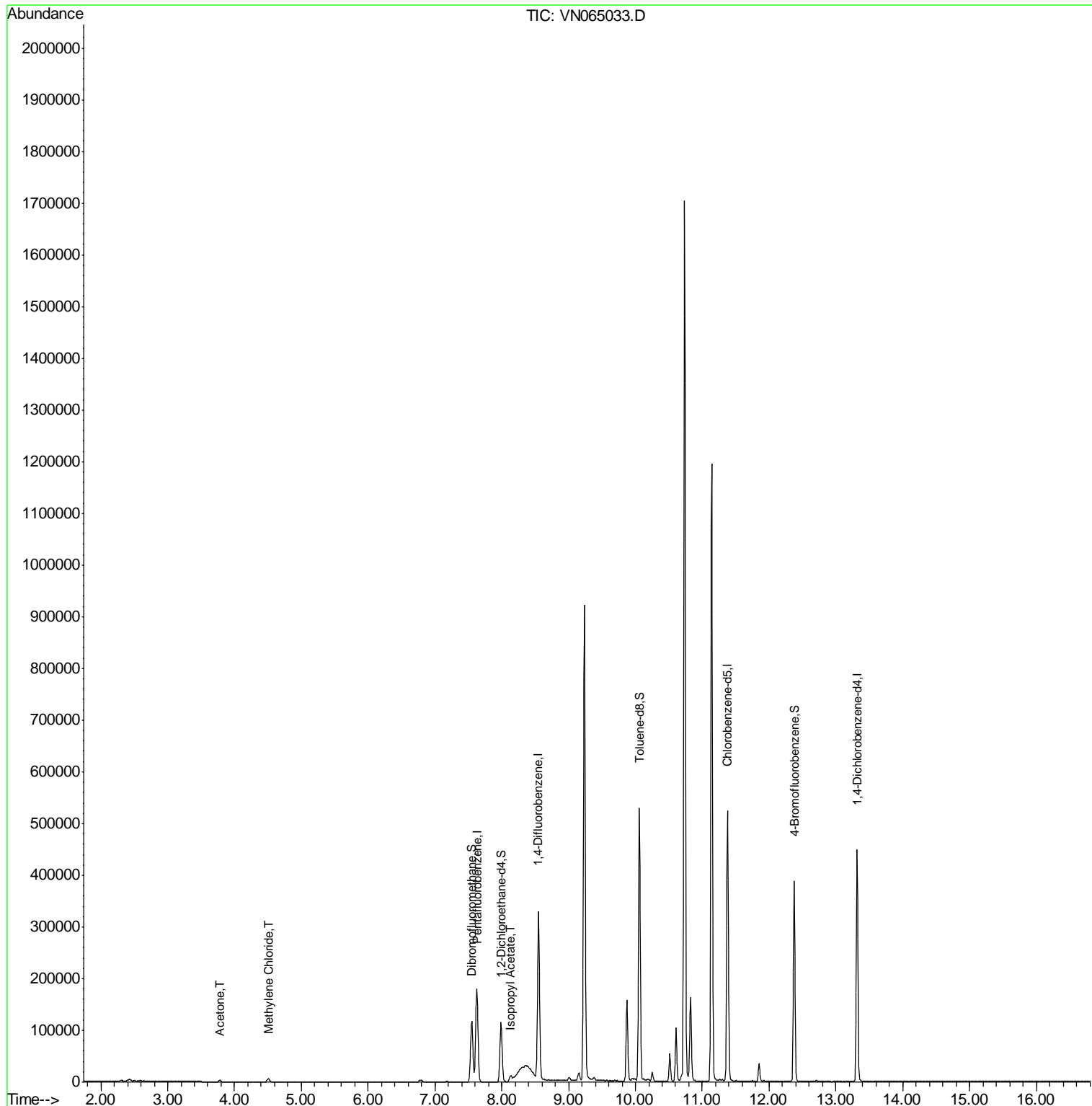
					Qvalue
16) Acetone	3.78	43	5145	8.868	ug/l 99
20) Methylene Chloride	4.51	84	5000	2.750	ug/l # 87
43) Isopropyl Acetate	8.13	43	17645	4.087	ug/l # 90

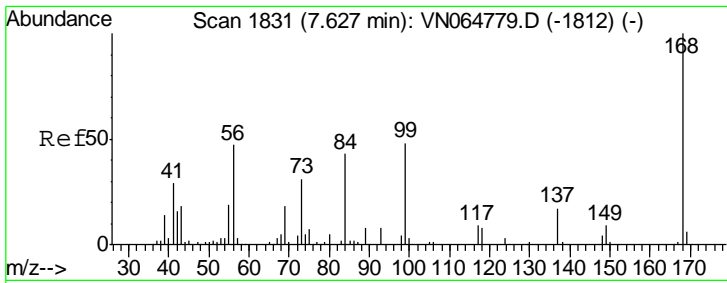
(#) = qualifier out of range (m) = manual integration (+) = signals summed

Data Path : Z:\VOASRV\HPCHEM1\MSVOA N\DATA\VN120920\  
 Data File : VN065033.D  
 Acq On : 9 Dec 2020 20:15  
 Operator : JC/MD  
 Sample : PB133472ZHE#14  
 Misc : 5.00mL/MSVOA N/WATER  
 ALS Vial : 25 Sample Multiplier: 1

Instrument :  
 MSVOA\_N  
 ClientSampleId :  
 PB133472ZHE#14

Quant Time: Dec 10 05:00:42 2020  
 Quant Method : Z:\VOASRV\HPCHEM1\MSVOA\_N\METHODS\82N112320W.M  
 Quant Title : SW846 8260  
 QLast Update : Mon Nov 23 13:54:12 2020  
 Response via : Initial Calibration

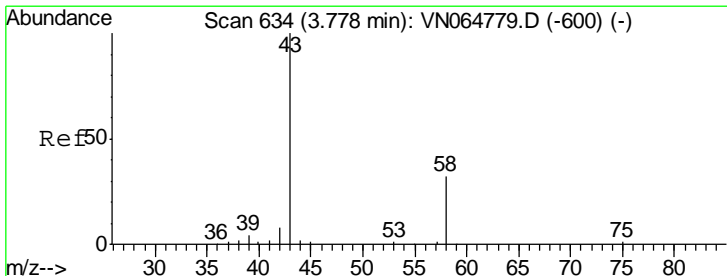
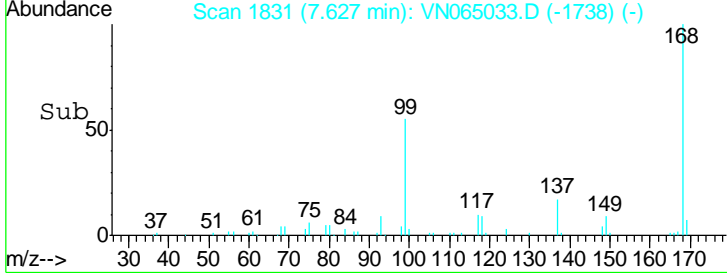
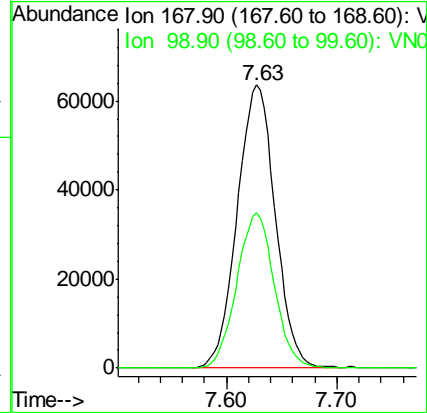
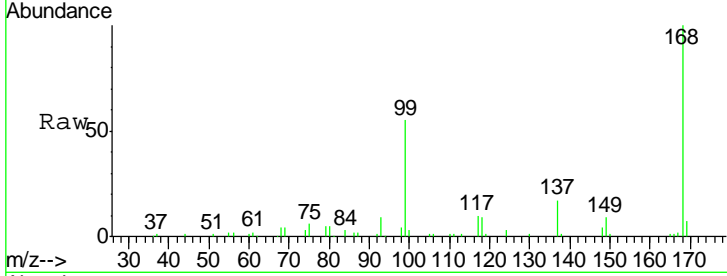




#1  
 Pentafluorobenzene  
 Concen: 50.000 ug/l  
 RT: 7.63 min Scan# 1831  
 Delta R.T. 0.00 min  
 Lab File: VN065033.D  
 Acq: 9 Dec 2020 20:15

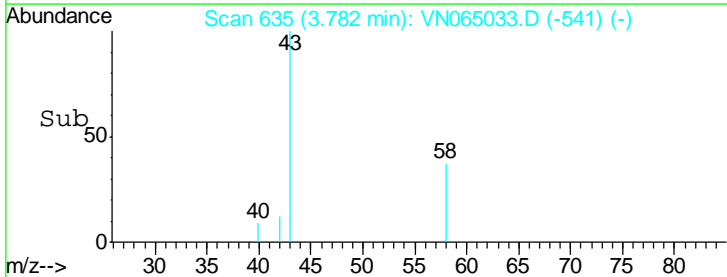
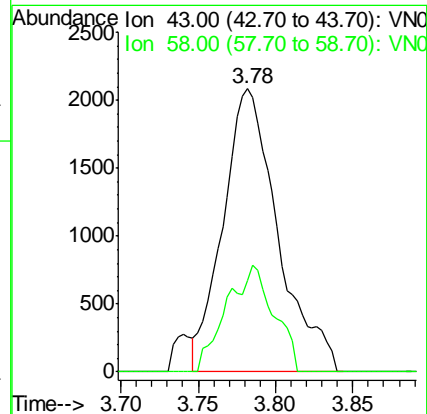
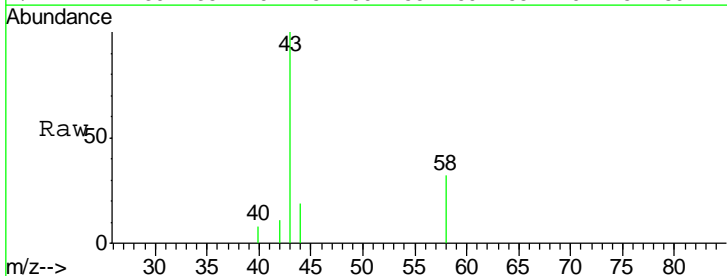
Instrument : MSVOA\_N  
 ClientSampled : PB133472ZHE#14

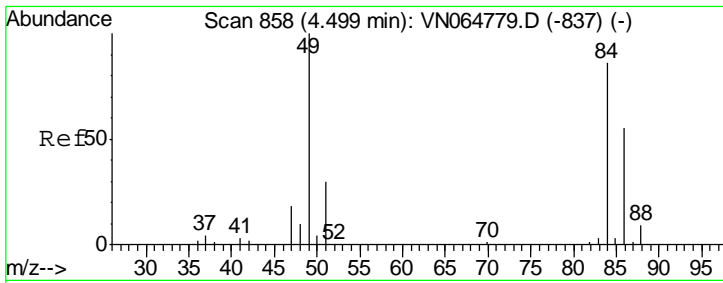
Tot Ion:168 Resp: 151813  
 Ion Ratio Lower Upper  
 168 100  
 99 54.7 43.0 64.4



#16  
 Acetone  
 Concen: 8.868 ug/l  
 RT: 3.78 min Scan# 635  
 Delta R.T. 0.00 min  
 Lab File: VN065033.D  
 Acq: 9 Dec 2020 20:15

Tgt Ion: 43 Resp: 5145  
 Ion Ratio Lower Upper  
 43 100  
 58 32.4 25.7 38.5

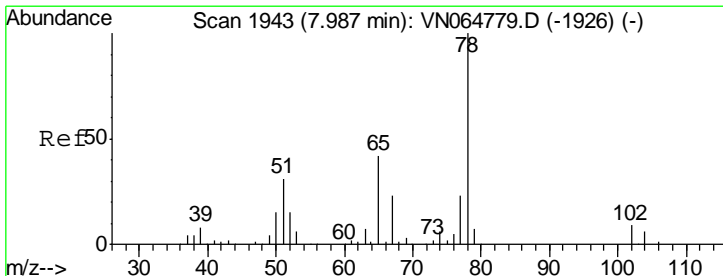
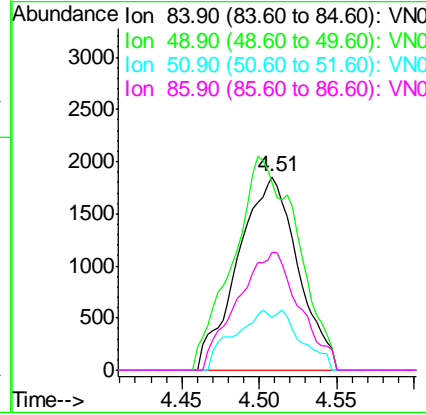
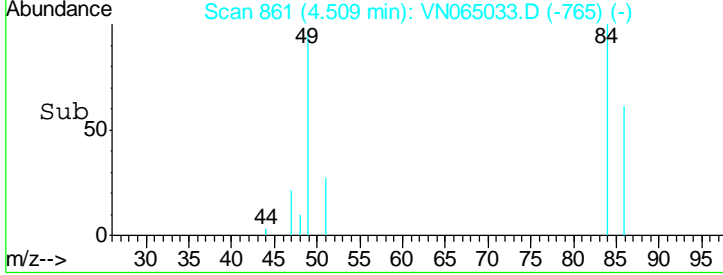
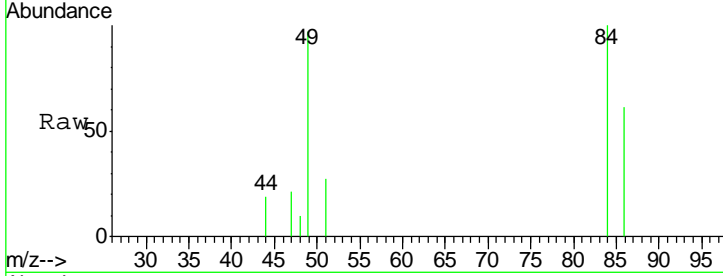




#20  
 Methylene Chloride  
 Concen: 2.750 ug/l  
 RT: 4.51 min Scan# 861  
 Delta R.T. 0.01 min  
 Lab File: VN065033.D  
 Acq: 9 Dec 2020 20:15

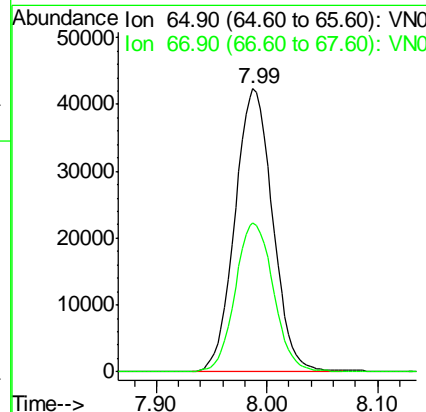
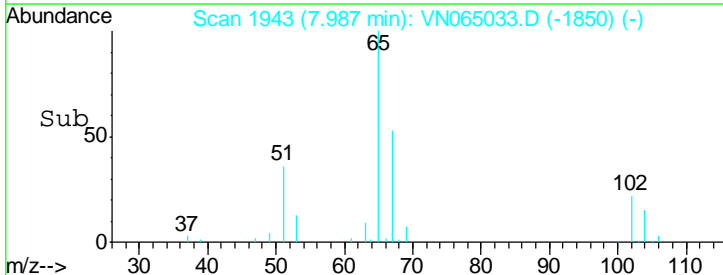
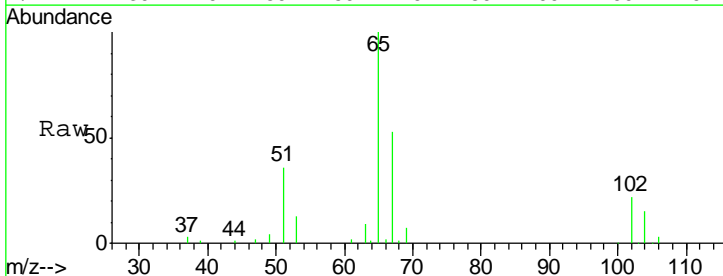
Instrument :  
 MSVOA\_N  
 ClientSampleId :  
 PB133472ZHE#14

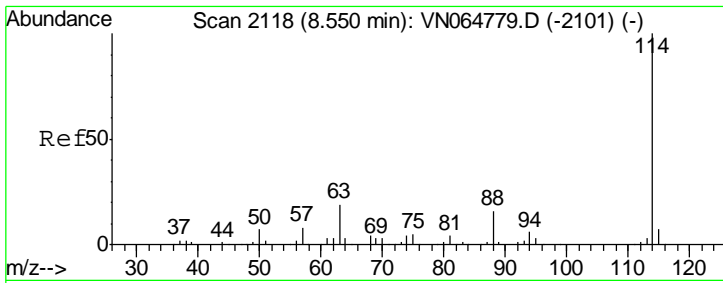
Tgt Ion	Resp	Lower	Upper
84	100		
49	96.9	93.4	140.0
51	27.4	28.2	42.4#
86	61.0	51.7	77.5



#33  
 1,2-Dichloroethane-d4  
 Concen: 56.903 ug/l  
 RT: 7.99 min Scan# 1943  
 Delta R.T. 0.00 min  
 Lab File: VN065033.D  
 Acq: 9 Dec 2020 20:15

Tgt Ion	Resp	Lower	Upper
65	100		
67	53.1	0.0	108.2

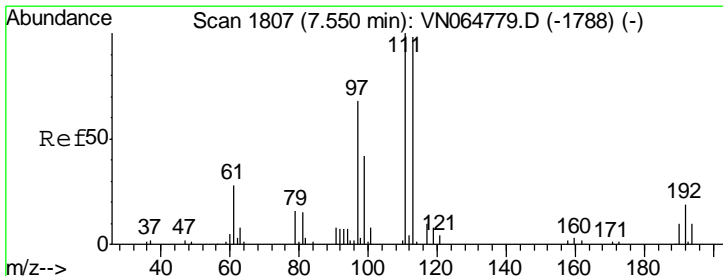
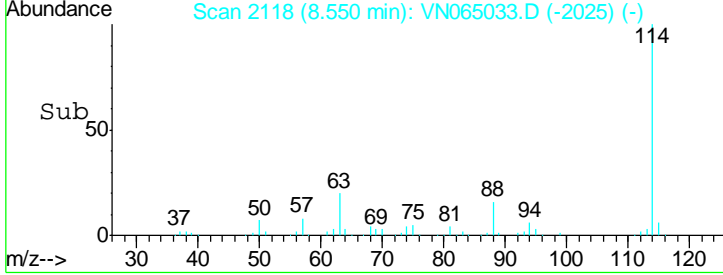
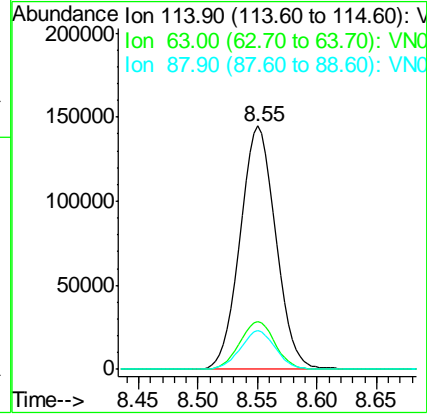
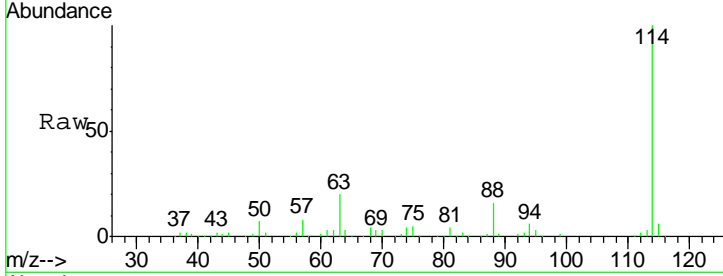




#34  
 1,4-Difluorobenzene  
 Concen: 50.000 ug/l  
 RT: 8.55 min Scan# 2118  
 Delta R.T. 0.00 min  
 Lab File: VN065033.D  
 Acq: 9 Dec 2020 20:15

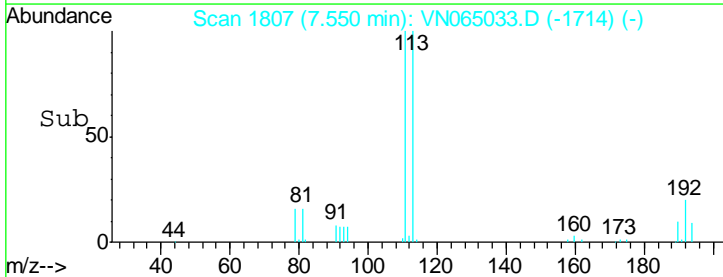
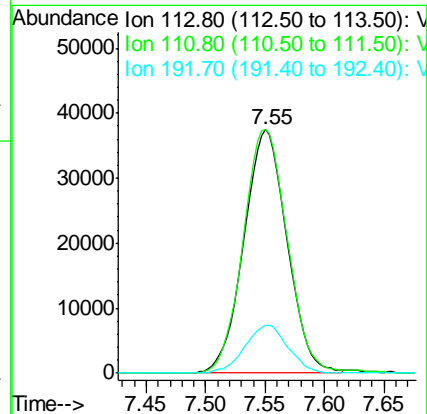
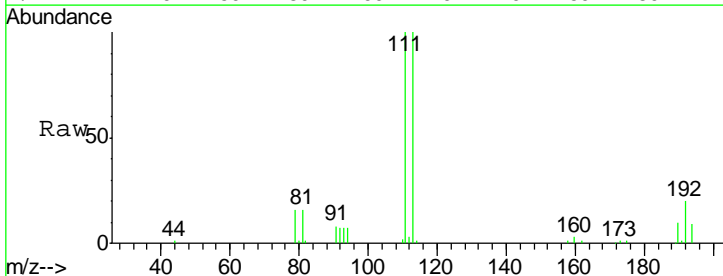
Instrument :  
 MSVOA\_N  
 ClientSampled :  
 PB133472ZHE#14

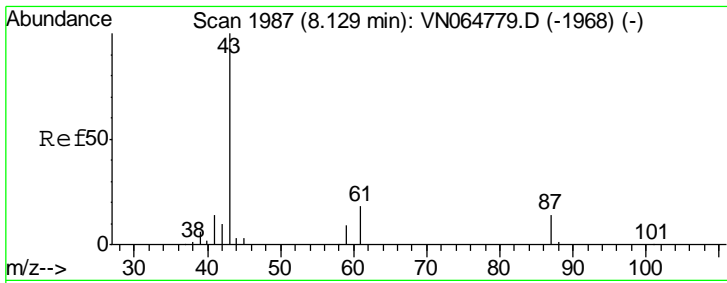
Tgt Ion	Resp	Lower	Upper
114	100		
63	19.5	0.0	38.6
88	15.8	0.0	32.6



#35  
 Dibromofluoromethane  
 Concen: 52.267 ug/l  
 RT: 7.55 min Scan# 1807  
 Delta R.T. 0.00 min  
 Lab File: VN065033.D  
 Acq: 9 Dec 2020 20:15

Tgt Ion	Resp	Lower	Upper
113	100		
111	102.7	81.6	122.4
192	19.6	16.2	24.2

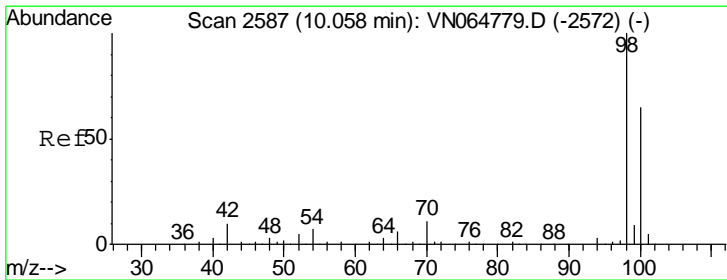
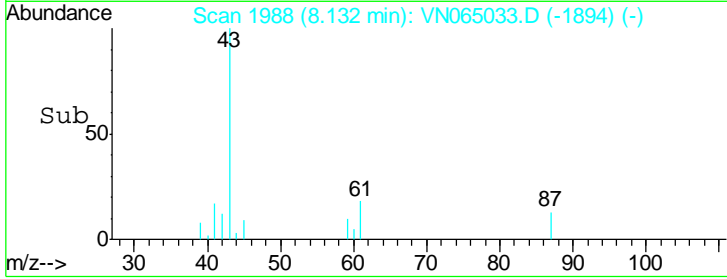
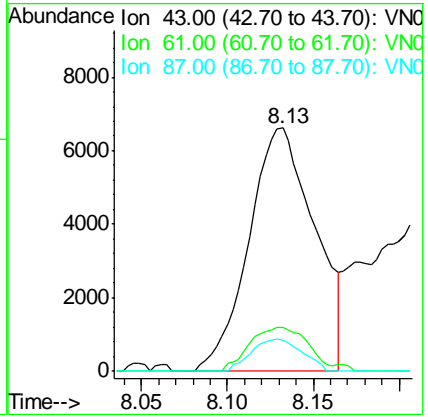
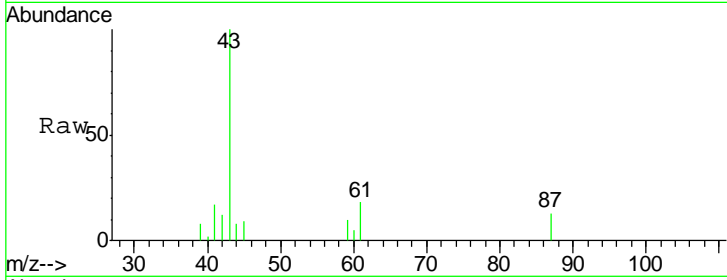




#43  
 Isopropyl Acetate  
 Concen: 4.087 ug/l  
 RT: 8.13 min Scan# 1988  
 Delta R.T. 0.00 min  
 Lab File: VN065033.D  
 Acq: 9 Dec 2020 20:15

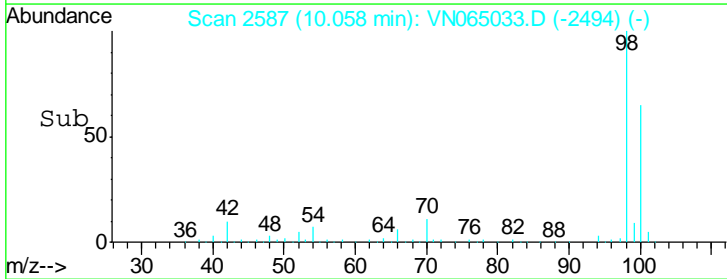
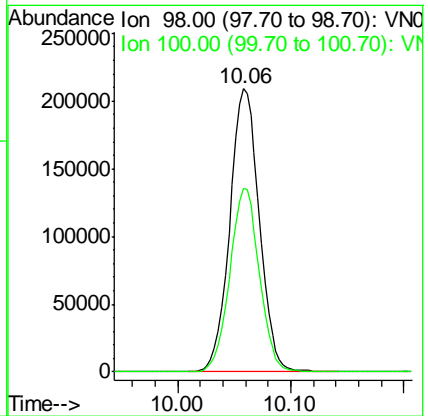
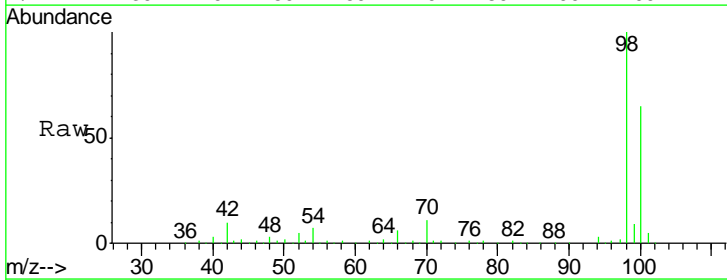
Instrument : MSVOA\_N  
 ClientSampled : PB133472ZHE#14

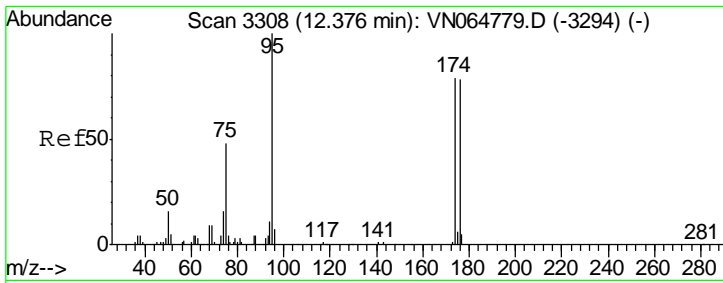
Tgt Ion	Resp	Lower	Upper
43	17645		
61	16.4	17.2	25.8#
87	10.2	11.4	17.0#



#50  
 Toluene-d8  
 Concen: 51.610 ug/l  
 RT: 10.06 min Scan# 2587  
 Delta R.T. 0.00 min  
 Lab File: VN065033.D  
 Acq: 9 Dec 2020 20:15

Tgt Ion	Resp	Lower	Upper
98	379176		
100	64.8	51.7	77.5

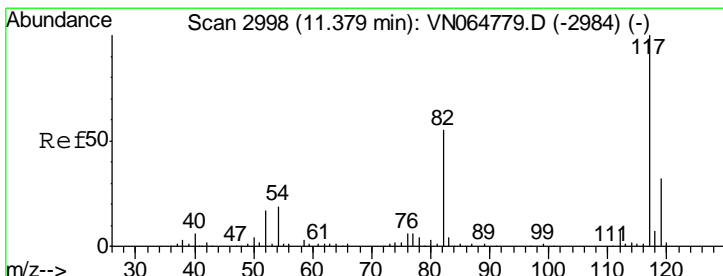
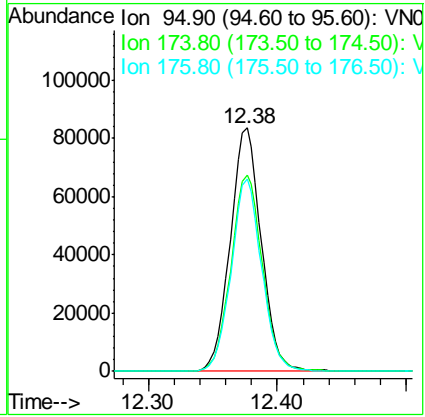
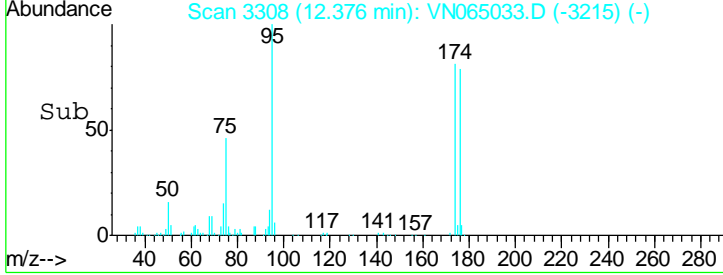
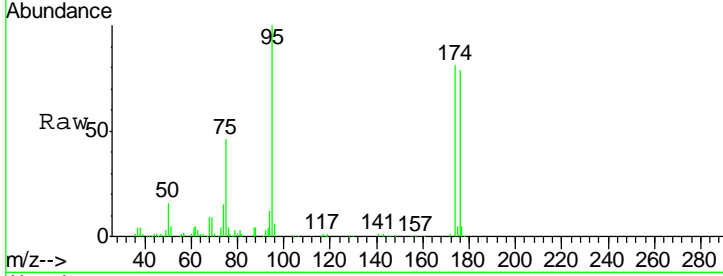




#62  
 4-Bromofluorobenzene  
 Concen: 52.961 ug/l  
 RT: 12.38 min Scan# 3308  
 Delta R.T. 0.00 min  
 Lab File: VN065033.D  
 Acq: 9 Dec 2020 20:15

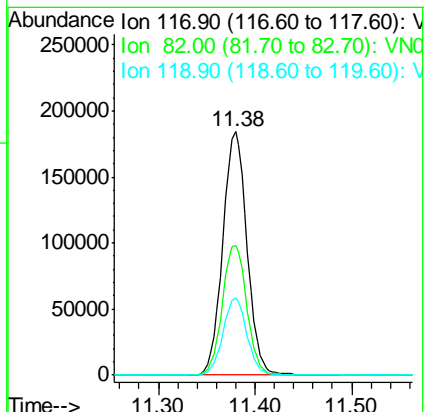
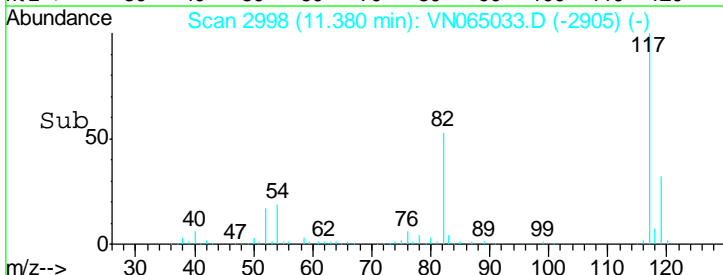
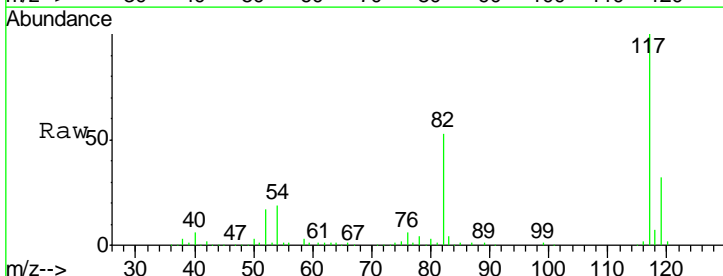
Instrument : MSVOA\_N  
 ClientSampleId : PB133472ZHE#14

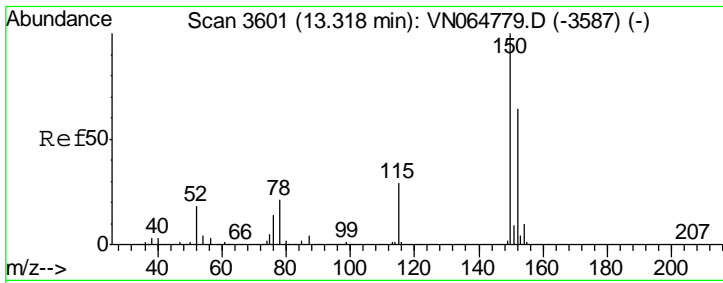
Tgt Ion	Resp	Lower	Upper
95	139251		
174	82.3	0.0	160.4
176	77.9	0.0	158.4



#63  
 Chlorobenzene-d5  
 Concen: 50.000 ug/l  
 RT: 11.38 min Scan# 2998  
 Delta R.T. 0.00 min  
 Lab File: VN065033.D  
 Acq: 9 Dec 2020 20:15

Tgt Ion	Resp	Lower	Upper
117	320786		
82	53.5	44.2	66.2
119	31.9	25.8	38.6





#72  
 1,4-Dichlorobenzene-d4  
 Concen: 50.000 ug/l  
 RT: 13.32 min Scan# 3601  
 Delta R.T. 0.00 min  
 Lab File: VN065033.D  
 Acq: 9 Dec 2020 20:15

Instrument : MSVOA\_N  
 ClientSampleId : PB133472ZHE#14

Tot Ion	Resp	Lower	Upper
152	129089		
115	57.5	29.7	89.1
150	156.5	0.0	350.6

