

Data Path : Z:\voasrv\HPCHEM1\MSVOA_N\Data\VN120921\
 Data File : VN069950.D
 Acq On : 10 Dec 2021 8:26
 Operator : JC/MD
 Sample : M4967-08
 Misc : 5.00mL/MSVOA_N/WATER
 ALS Vial : 50 Sample Multiplier: 1

Instrument :
 MSVOA_N
 ClientSampleId :
 TP-8S

Quant Time: Dec 10 09:02:03 2021
 Quant Method : Z:\voasrv\HPCHEM1\MSVOA_N\methods\82N120221W.M
 Quant Title : SW846 8260
 QLast Update : Fri Dec 03 08:46:47 2021
 Response via : Initial Calibration

Compound	R.T.	QIon	Response	Conc	Units	Dev(Min)

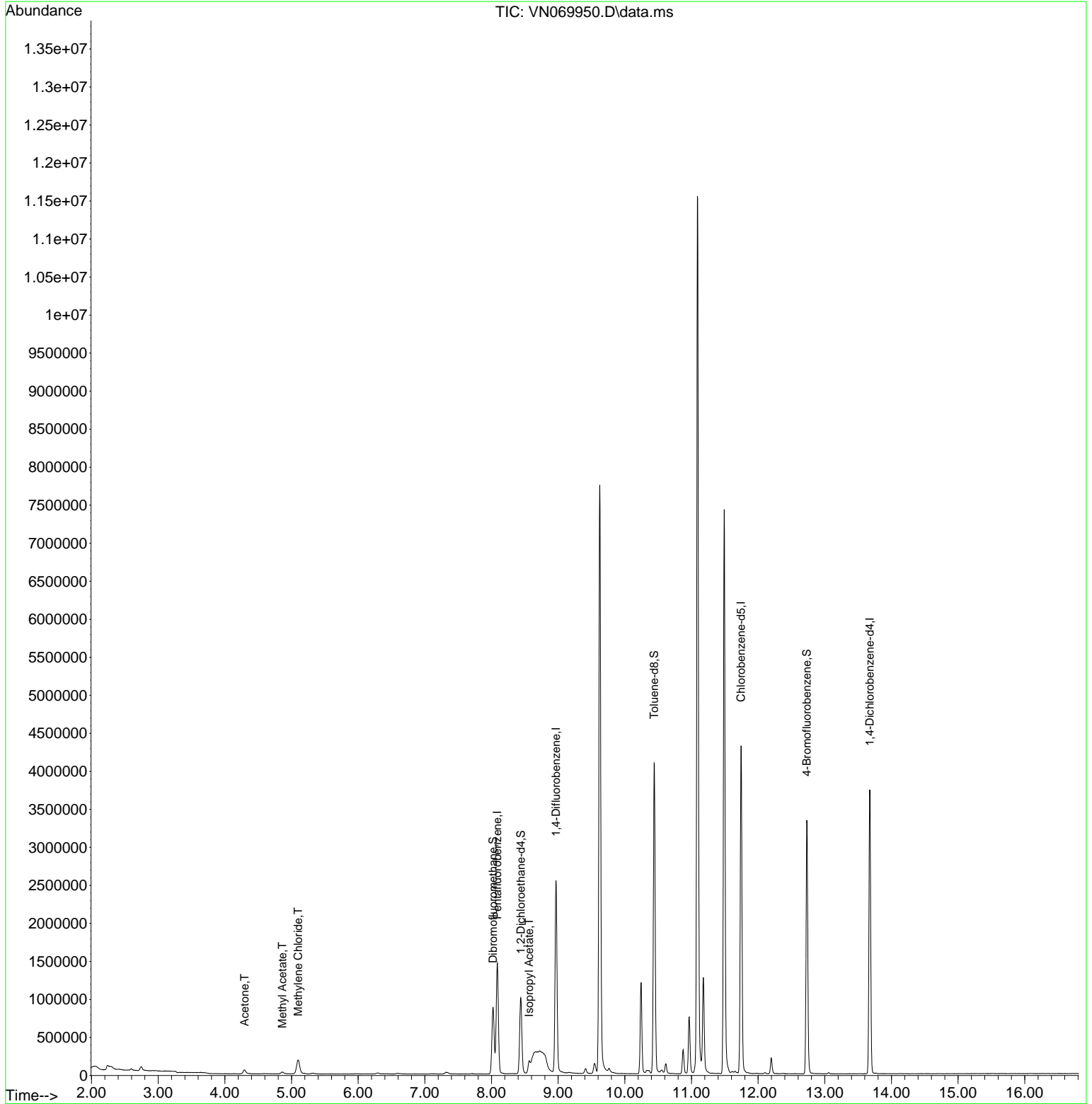
Internal Standards						
1) Pentafluorobenzene	8.088	168	1073340	50.000	ug/l	0.00
34) 1,4-Difluorobenzene	8.968	114	2076072	50.000	ug/l	0.00
63) Chlorobenzene-d5	11.744	117	2389884	50.000	ug/l	0.00
72) 1,4-Dichlorobenzene-d4	13.675	152	986493	50.000	ug/l	0.00
System Monitoring Compounds						
33) 1,2-Dichloroethane-d4	8.440	65	870337	52.517	ug/l	0.00
Spiked Amount	50.000	Range	61 - 141	Recovery	=	105.040%
35) Dibromofluoromethane	8.024	113	636001	48.908	ug/l	0.00
Spiked Amount	50.000	Range	69 - 133	Recovery	=	97.820%
50) Toluene-d8	10.440	98	2762754	52.910	ug/l	0.00
Spiked Amount	50.000	Range	65 - 126	Recovery	=	105.820%
62) 4-Bromofluorobenzene	12.731	95	1137746	60.145	ug/l	0.00
Spiked Amount	50.000	Range	58 - 135	Recovery	=	120.300%
Target Compounds						
						Qvalue
16) Acetone	4.296	43	101371	10.169	ug/l	95
18) Methyl Acetate	4.862	43	50317	1.672	ug/l	90
20) Methylene Chloride	5.100	84	133437	10.069	ug/l #	85
43) Isopropyl Acetate	8.566	43	198260	4.555	ug/l #	80

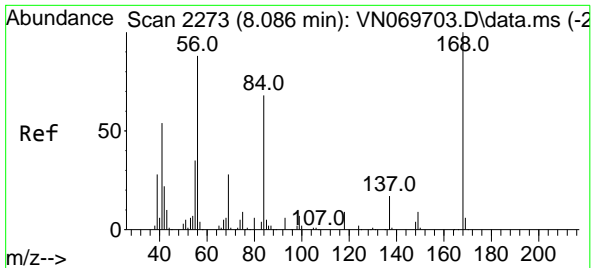
(#) = qualifier out of range (m) = manual integration (+) = signals summed

Data Path : Z:\voasrv\HPCHEM1\MSVOA_N\Data\VN120921\
 Data File : VN069950.D
 Acq On : 10 Dec 2021 8:26
 Operator : JC/MD
 Sample : M4967-08
 Misc : 5.00mL/MSVOA_N/WATER
 ALS Vial : 50 Sample Multiplier: 1

Instrument :
 MSVOA_N
 ClientSampleId :
 TP-8S

Quant Time: Dec 10 09:02:03 2021
 Quant Method : Z:\voasrv\HPCHEM1\MSVOA_N\methods\82N120221W.M
 Quant Title : SW846 8260
 QLast Update : Fri Dec 03 08:46:47 2021
 Response via : Initial Calibration

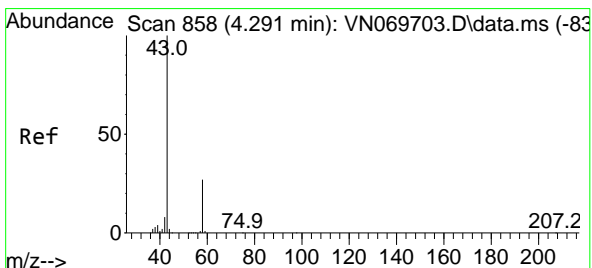
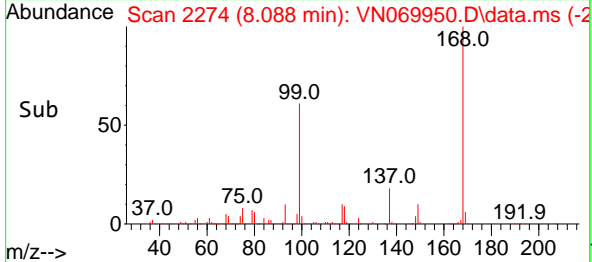
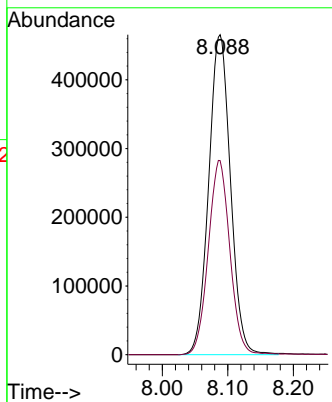
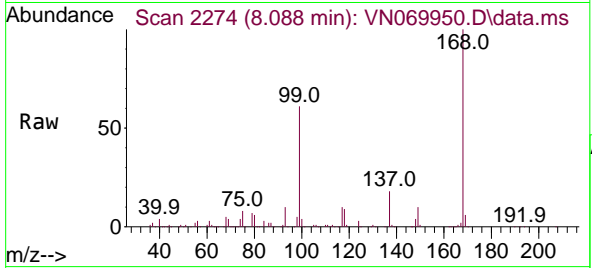




#1
 Pentafluorobenzene
 Concen: 50.000 ug/l
 RT: 8.088 min Scan# 21
 Delta R.T. 0.002 min
 Lab File: VN069950.D
 Acq: 10 Dec 2021 8:26

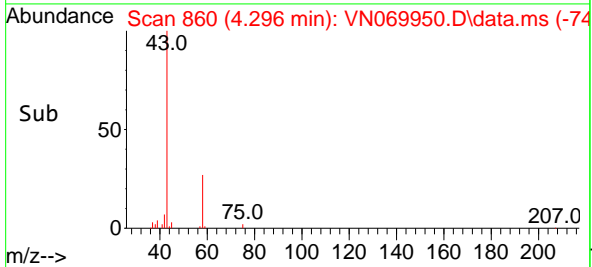
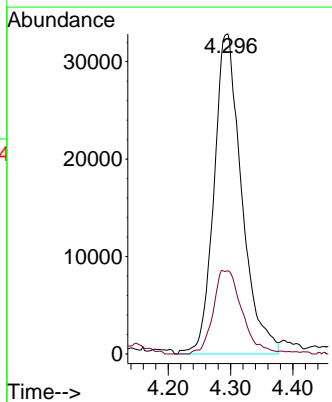
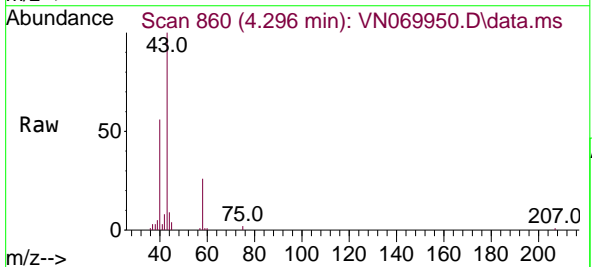
Instrument :
 MSVOA_N
 ClientSampleId :
 TP-8S

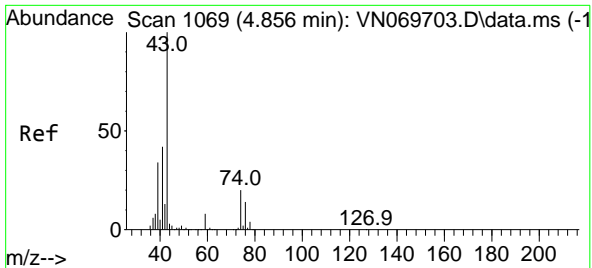
Tgt Ion:168 Resp: 1073340
 Ion Ratio Lower Upper
 168 100
 99 60.6 41.3 61.9



#16
 Acetone
 Concen: 10.169 ug/l
 RT: 4.296 min Scan# 860
 Delta R.T. 0.005 min
 Lab File: VN069950.D
 Acq: 10 Dec 2021 8:26

Tgt Ion: 43 Resp: 101371
 Ion Ratio Lower Upper
 43 100
 58 26.0 23.1 34.7

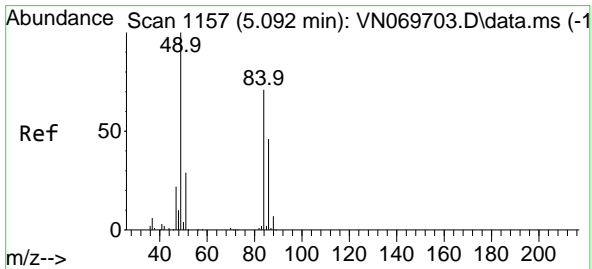
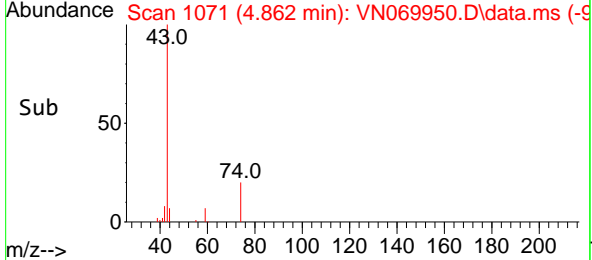
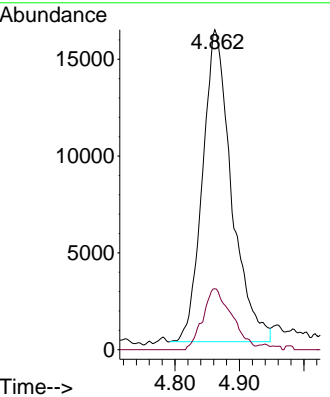
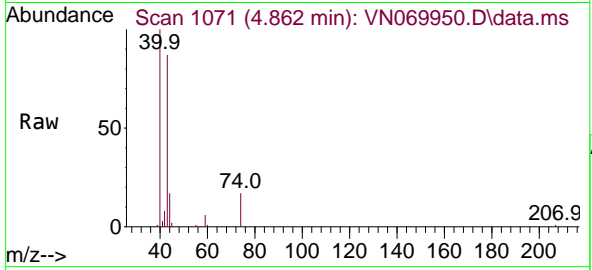




#18
 Methyl Acetate
 Concen: 1.672 ug/l
 RT: 4.862 min Scan# 1160
 Delta R.T. 0.005 min
 Lab File: VN069950.D
 Acq: 10 Dec 2021 8:26

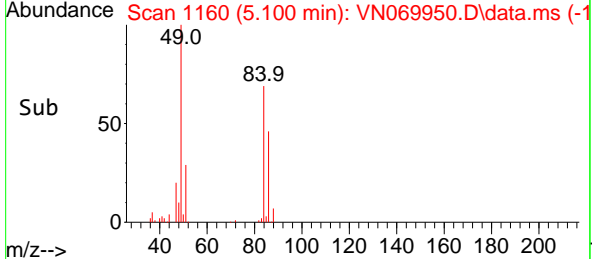
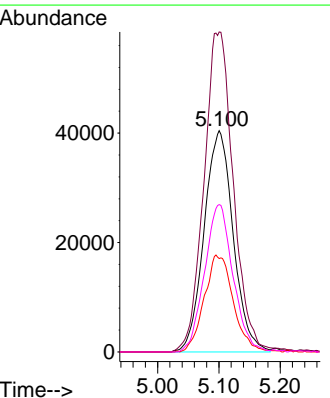
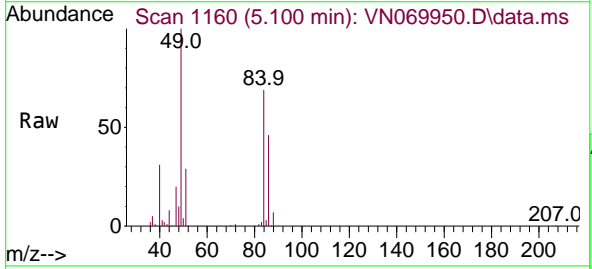
Instrument : MSVOA_N
 ClientSampleId : TP-8S

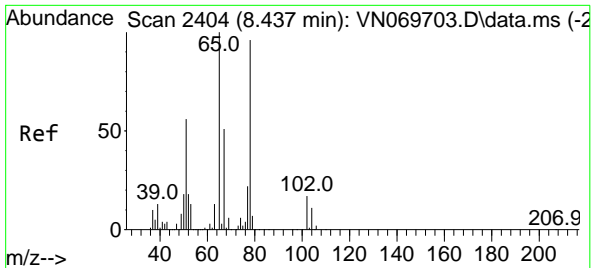
Tgt Ion: 43 Resp: 50317
 Ion Ratio Lower Upper
 43 100
 74 19.5 19.4 29.2



#20
 Methylene Chloride
 Concen: 10.069 ug/l
 RT: 5.100 min Scan# 1160
 Delta R.T. 0.008 min
 Lab File: VN069950.D
 Acq: 10 Dec 2021 8:26

Tgt Ion: 84 Resp: 133437
 Ion Ratio Lower Upper
 84 100
 49 144.7 93.5 140.3#
 51 42.3 29.4 44.2
 86 66.6 53.0 79.4

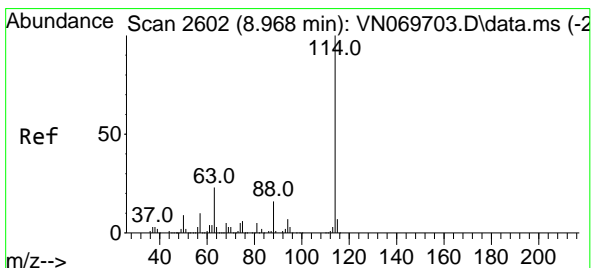
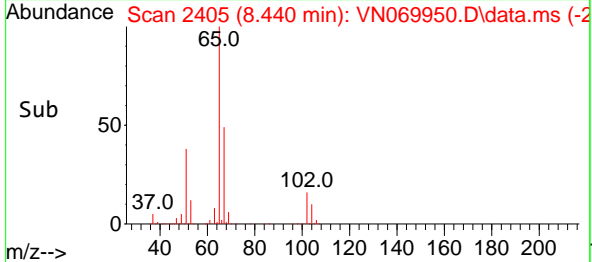
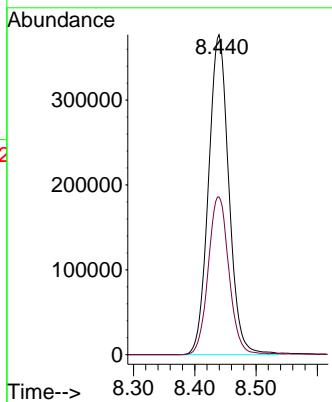
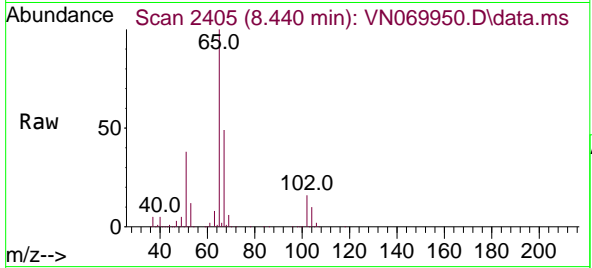




#33
 1,2-Dichloroethane-d4
 Concen: 52.517 ug/l
 RT: 8.440 min Scan# 2404
 Delta R.T. 0.003 min
 Lab File: VN069950.D
 Acq: 10 Dec 2021 8:26

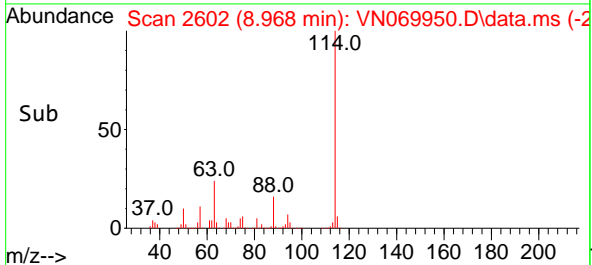
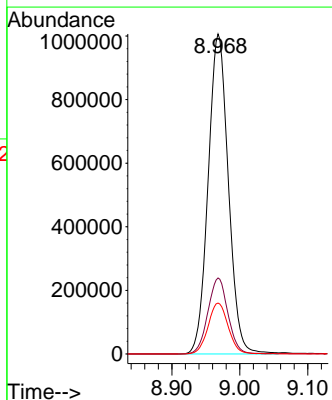
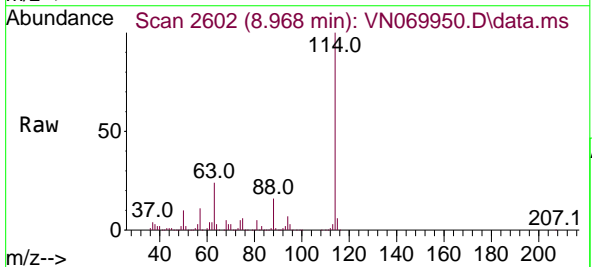
Instrument :
 MSVOA_N
 ClientSampleId :
 TP-8S

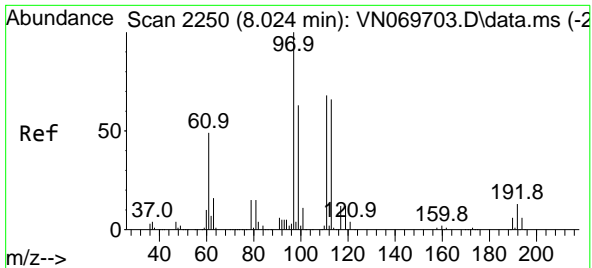
Tgt Ion: 65 Resp: 870337
 Ion Ratio Lower Upper
 65 100
 67 50.2 0.0 103.0



#34
 1,4-Difluorobenzene
 Concen: 50.000 ug/l
 RT: 8.968 min Scan# 2602
 Delta R.T. -0.000 min
 Lab File: VN069950.D
 Acq: 10 Dec 2021 8:26

Tgt Ion:114 Resp: 2076072
 Ion Ratio Lower Upper
 114 100
 63 23.7 0.0 37.8
 88 15.9 0.0 27.4



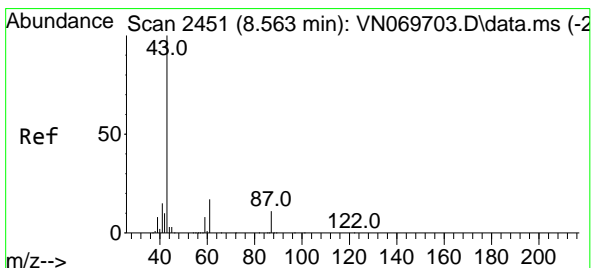
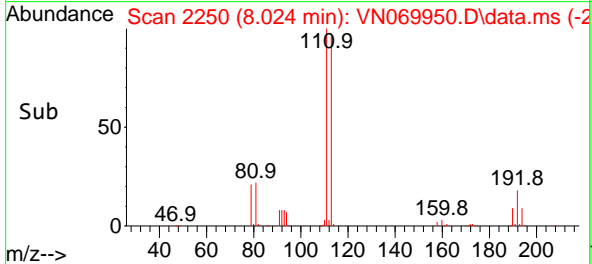
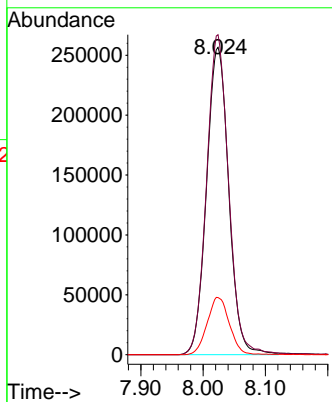
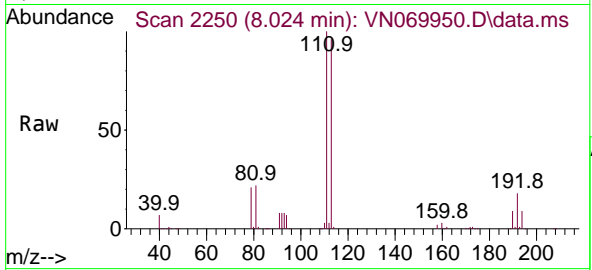


#35
 Dibromofluoromethane
 Concen: 48.908 ug/l
 RT: 8.024 min Scan# 21
 Delta R.T. 0.000 min
 Lab File: VN069950.D
 Acq: 10 Dec 2021 8:26

Instrument :
 MSVOA_N
 ClientSampleId :
 TP-8S

Tgt Ion:113 Resp: 636001

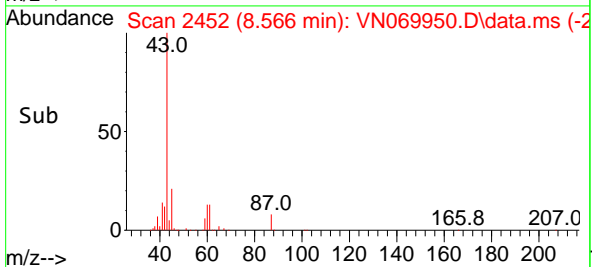
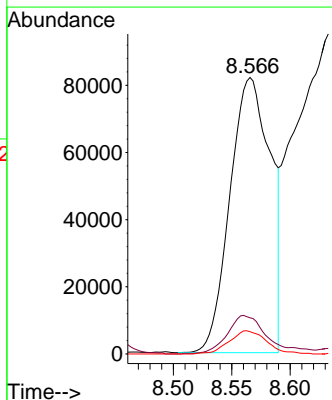
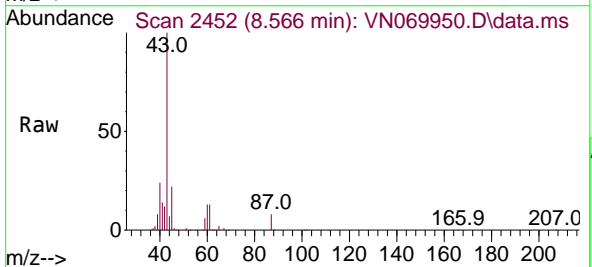
Ion	Ratio	Lower	Upper
113	100		
111	103.2	82.2	123.2
192	18.6	16.9	25.3

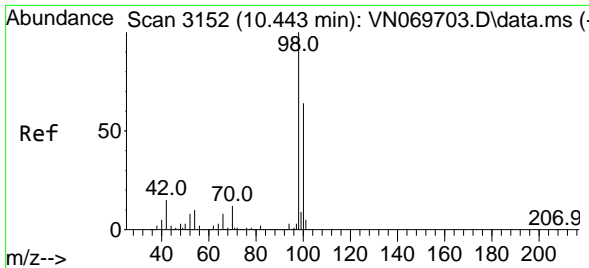


#43
 Isopropyl Acetate
 Concen: 4.555 ug/l
 RT: 8.566 min Scan# 2452
 Delta R.T. 0.003 min
 Lab File: VN069950.D
 Acq: 10 Dec 2021 8:26

Tgt Ion: 43 Resp: 198260

Ion	Ratio	Lower	Upper
43	100		
61	14.1	20.4	30.6#
87	7.8	11.2	16.8#

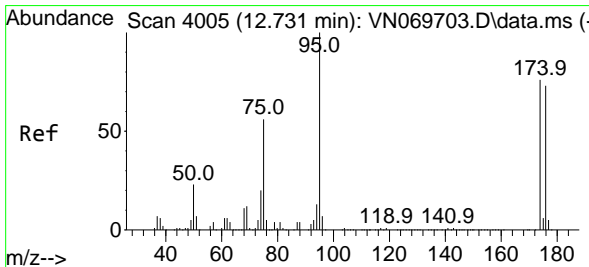
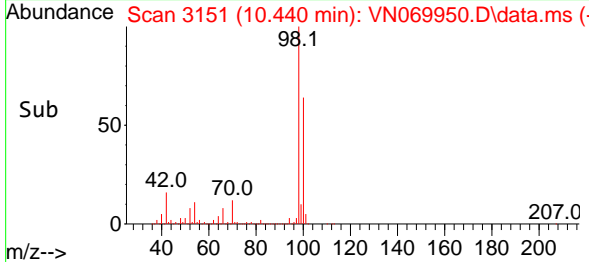
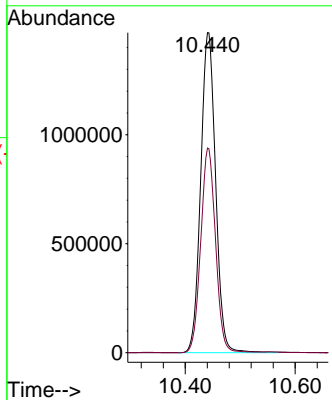
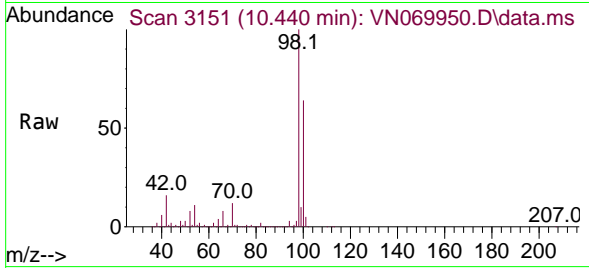




#50
 Toluene-d8
 Concen: 52.910 ug/l
 RT: 10.440 min Scan# 3152
 Delta R.T. -0.003 min
 Lab File: VN069950.D
 Acq: 10 Dec 2021 8:26

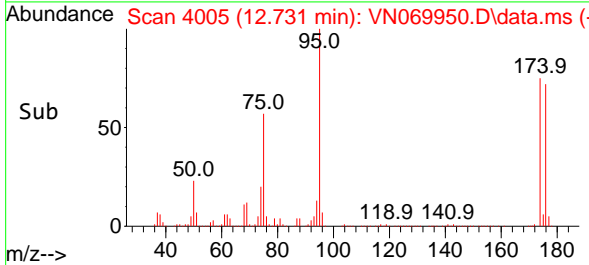
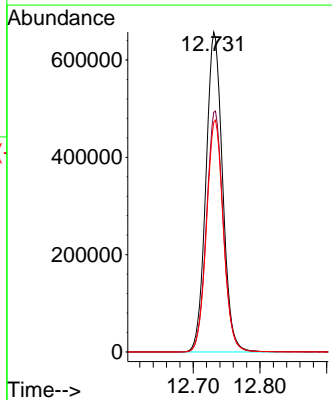
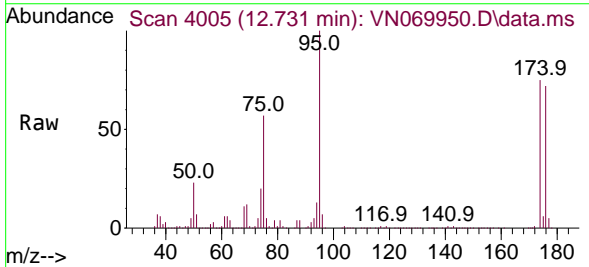
Instrument : MSVOA_N
 ClientSampleId : TP-8S

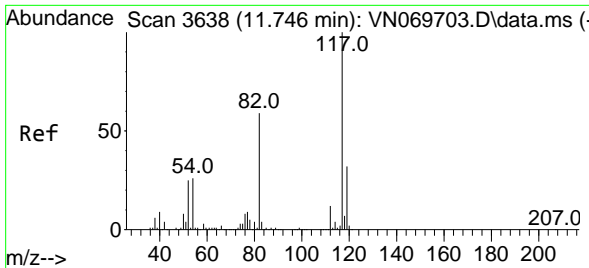
Tgt Ion: 98 Resp: 2762754
 Ion Ratio Lower Upper
 98 100
 100 63.6 50.4 75.6



#62
 4-Bromofluorobenzene
 Concen: 60.145 ug/l
 RT: 12.731 min Scan# 4005
 Delta R.T. -0.000 min
 Lab File: VN069950.D
 Acq: 10 Dec 2021 8:26

Tgt Ion: 95 Resp: 1137746
 Ion Ratio Lower Upper
 95 100
 174 76.2 0.0 187.2
 176 73.5 0.0 181.4



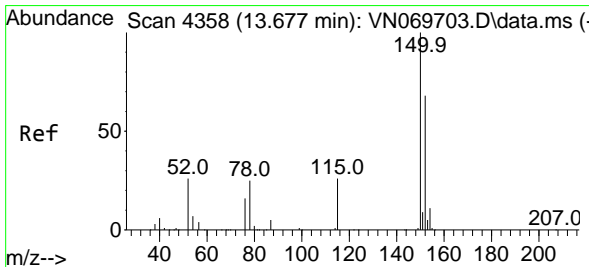
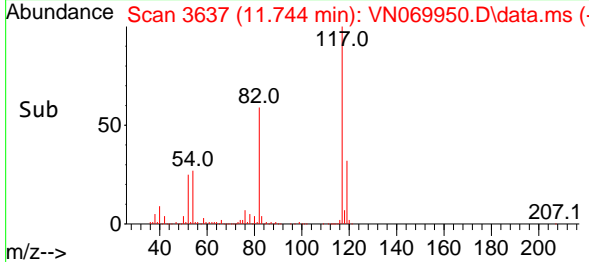
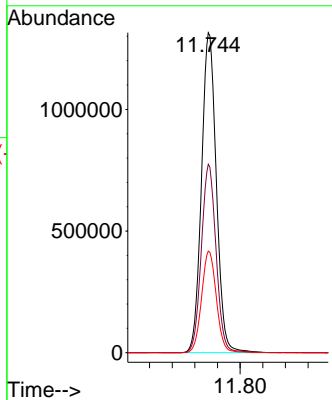
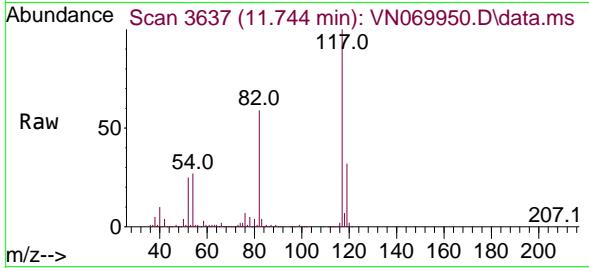


#63
 Chlorobenzene-d5
 Concen: 50.000 ug/l
 RT: 11.744 min Scan# 30
 Delta R.T. -0.002 min
 Lab File: VN069950.D
 Acq: 10 Dec 2021 8:26

Instrument :
 MSVOA_N
 ClientSampleId :
 TP-8S

Tgt Ion:117 Resp: 2389884

Ion	Ratio	Lower	Upper
117	100		
82	58.9	42.4	63.6
119	31.7	25.4	38.2



#72
 1,4-Dichlorobenzene-d4
 Concen: 50.000 ug/l
 RT: 13.675 min Scan# 4357
 Delta R.T. -0.003 min
 Lab File: VN069950.D
 Acq: 10 Dec 2021 8:26

Tgt Ion:152 Resp: 986493

Ion	Ratio	Lower	Upper
152	100		
115	60.9	27.5	82.5
150	157.4	0.0	344.4

