

Data Path : Z:\VOASRV\HPCHEM1\MSVOA N\DATA\VN121018\
 Data File : VN052788.D
 Acq On : 11 Dec 2018 8:04
 Operator : MD\SY
 Sample : J6316-24
 Misc : 5.00mL/MSVOA N/WATER
 ALS Vial : 52 Sample Multiplier: 28

Instrument :
 MSVOA_N
ClientSampleId :
 BORING-SAMPLE-STEAL-WELL-YA

Quant Time: Dec 11 10:52:21 2018
 Quant Method : Z:\VOASRV\HPCHEM1\MSVOA_N\METHODS\82N112718W.M
 Quant Title : SW846 8260
 QLast Update : Mon Dec 03 03:24:02 2018
 Response via : Initial Calibration

Internal Standards	R.T.	QIon	Response	Conc	Units	Dev(Min)
1) Pentafluorobenzene	7.67	168	1170908	50.00	ug/l	0.00
34) 1,4-Difluorobenzene	8.59	114	1812187	50.00	ug/l	0.00
63) Chlorobenzene-d5	11.41	117	1639927	50.00	ug/l	0.00
72) 1,4-Dichlorobenzene-d4	13.35	152	684901	50.00	ug/l	0.00

System Monitoring Compounds

33) 1,2-Dichloroethane-d4	8.03	65	614708	48.22	ug/l	0.00
Spiked Amount				50.000		
			Recovery	=	96.44%	
35) Dibromofluoromethane	7.59	113	534065	47.80	ug/l	0.00
Spiked Amount				50.000		
			Recovery	=	95.60%	
50) Toluene-d8	10.09	98	2222474	51.11	ug/l	0.00
Spiked Amount				50.000		
			Recovery	=	102.22%	
62) 4-Bromofluorobenzene	12.40	95	744165	50.92	ug/l	0.00
Spiked Amount				50.000		
			Recovery	=	101.84%	

Target Compounds

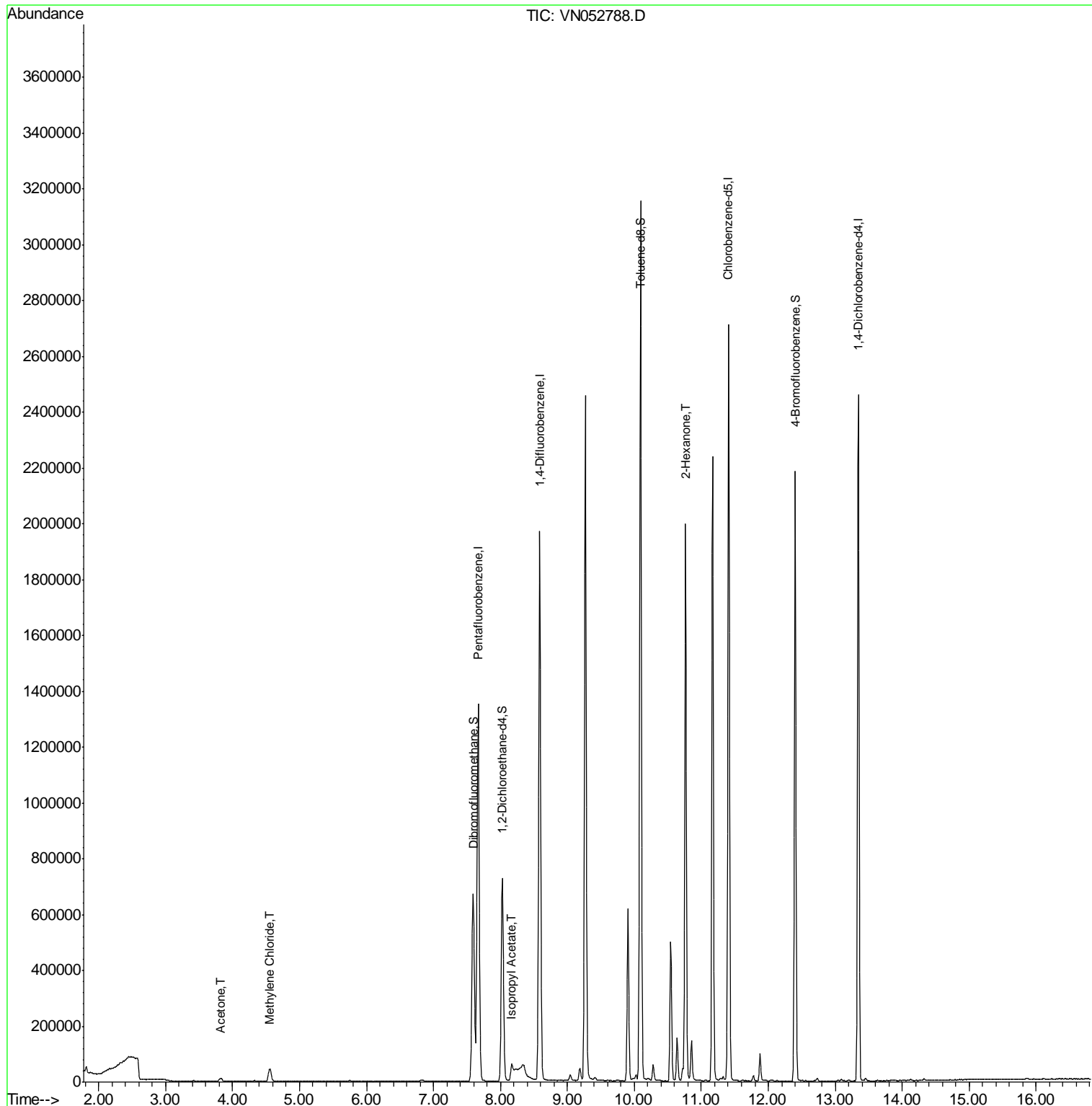
						Qvalue
16) Acetone	3.82	43	22504	6.692	ug/l	98
20) Methylene Chloride	4.56	84	34773	2.643	ug/l	99
43) Isopropyl Acetate	8.17	43	77293	4.373	ug/l #	73
59) 2-Hexanone	10.76	43	288175	43.299	ug/l #	52

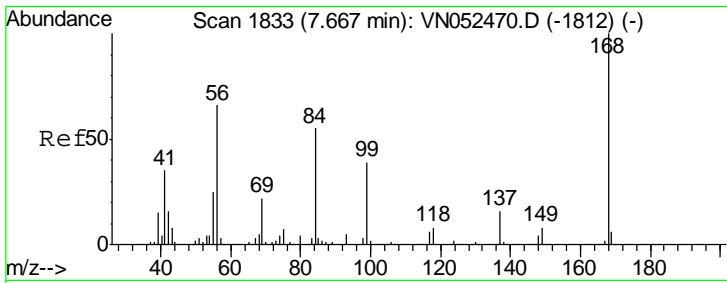
(#) = qualifier out of range (m) = manual integration (+) = signals summed

Data Path : Z:\VOASRV\HPCHEM1\MSVOA N\DATA\VN121018\
 Data File : VN052788.D
 Acq On : 11 Dec 2018 8:04
 Operator : MD\SY
 Sample : J6316-24
 Misc : 5.00mL/MSVOA N/WATER
 ALS Vial : 52 Sample Multiplier: 28

Instrument :
 MSVOA_N
ClientSampleId :
 BORING-SAMPLE-STEAL-WELL-YA

Quant Time: Dec 11 10:52:21 2018
 Quant Method : Z:\VOASRV\HPCHEM1\MSVOA_N\METHODS\82N112718W.M
 Quant Title : SW846 8260
 QLast Update : Mon Dec 03 03:24:02 2018
 Response via : Initial Calibration

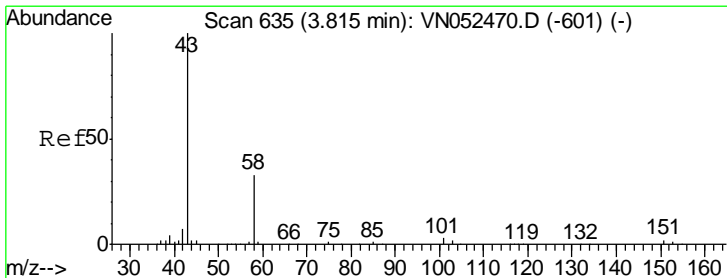
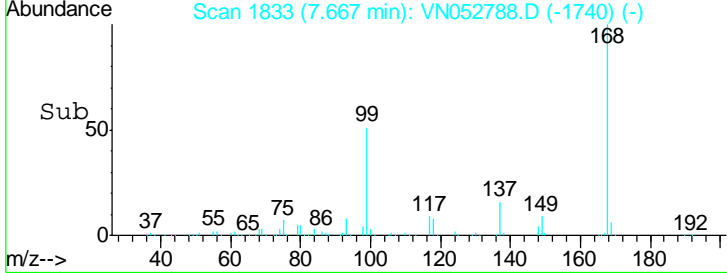
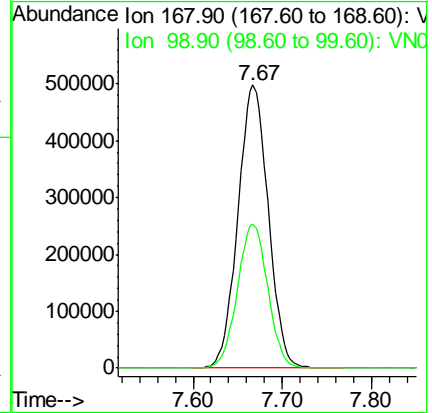
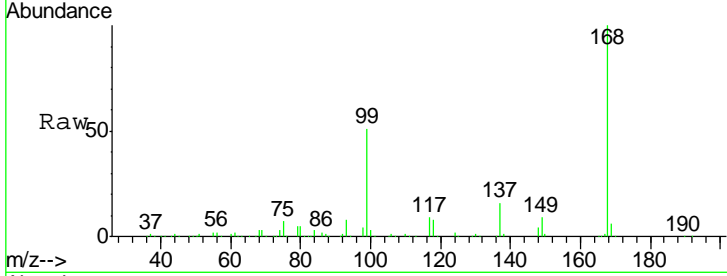




#1
 Pentafluorobenzene
 Concen: 50.000 ug/l
 RT: 7.67 min Scan# 1833
 Delta R.T. 0.00 min
 Lab File: VN052788.D
 Acq: 11 Dec 2018 8:04

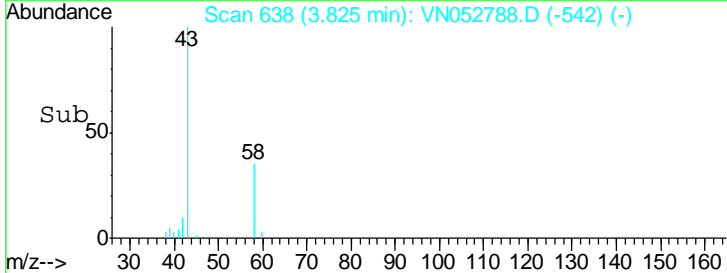
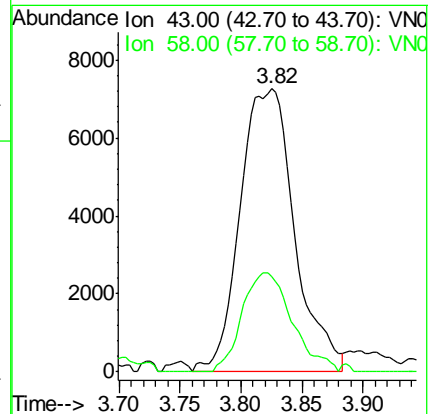
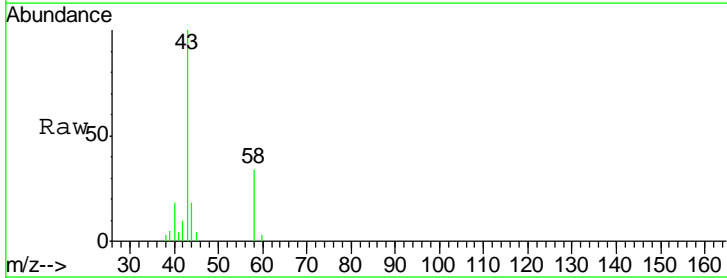
Instrument :
 MSVOA_N
 ClientSampled :
 BORING-SAMPLE-STEAL-WELL-YA

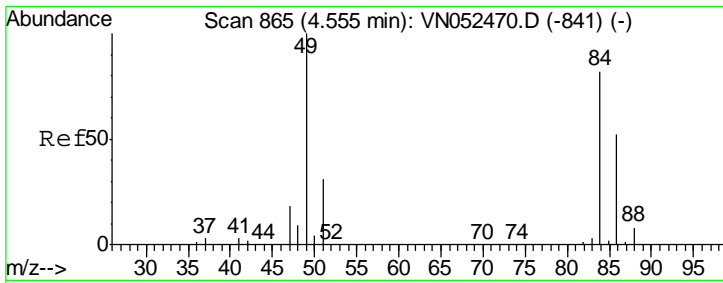
Tgt Ion: 168 Resp: 1170908
 Ion Ratio Lower Upper
 168 100
 99 50.9 41.7 62.5



#16
 Acetone
 Concen: 6.692 ug/l
 RT: 3.82 min Scan# 638
 Delta R.T. 0.01 min
 Lab File: VN052788.D
 Acq: 11 Dec 2018 8:04

Tgt Ion: 43 Resp: 22504
 Ion Ratio Lower Upper
 43 100
 58 33.7 26.0 39.0

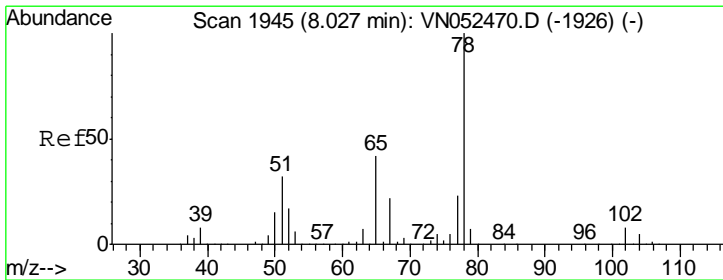
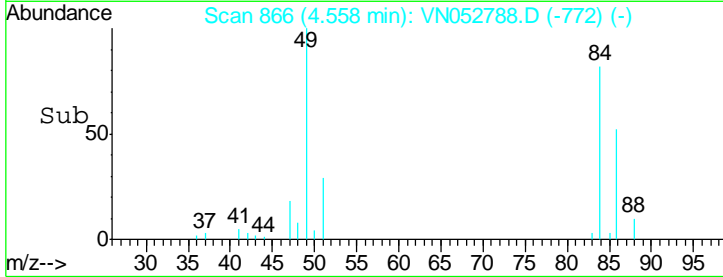
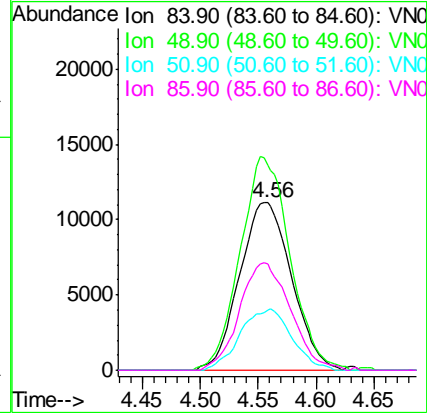
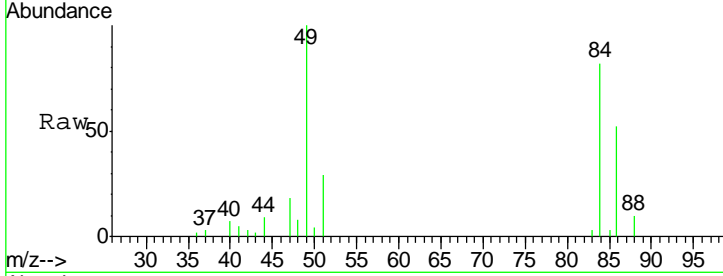




#20
Methylene Chloride
Concen: 2.643 ug/l
RT: 4.56 min Scan# 866
Delta R.T. 0.00 min
Lab File: VN052788.D
Acq: 11 Dec 2018 8:04

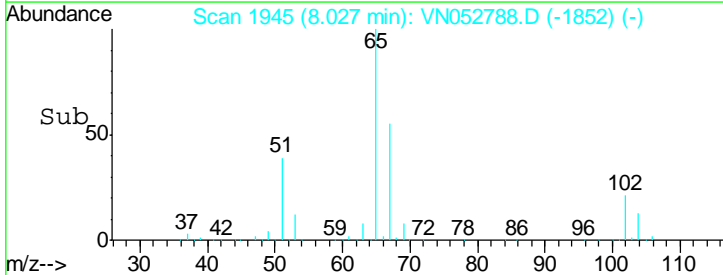
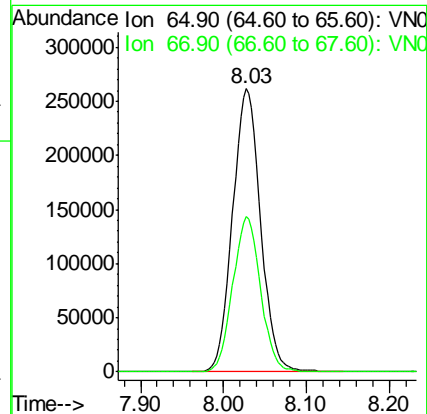
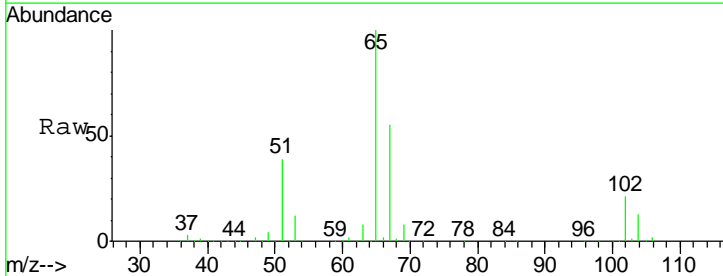
Instrument :
MSVOA_N
ClientSampled :
BORING-SAMPLE-STEAL-WELL-YA

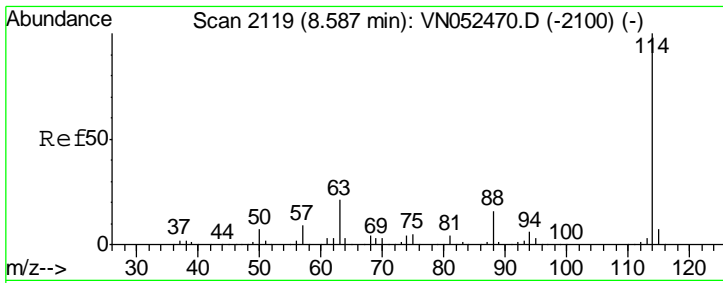
Tgt Ion	Resp	Lower	Upper
84	34773		
49	122.1	98.0	147.0
51	35.7	30.1	45.1
86	63.1	50.7	76.1



#33
1,2-Dichloroethane-d4
Concen: Below ug/l
RT: 8.03 min Scan# 1945
Delta R.T. 0.00 min
Lab File: VN052788.D
Acq: 11 Dec 2018 8:04

Tgt Ion	Resp	Lower	Upper
65	614708		
67	54.3	0.0	109.8

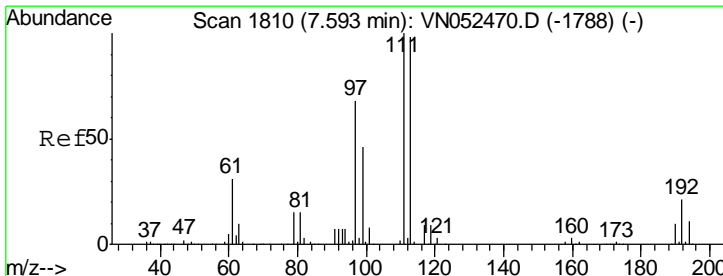
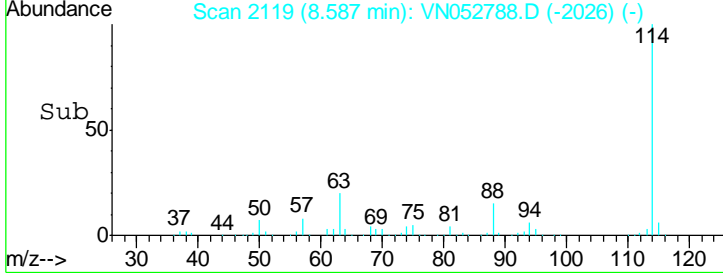
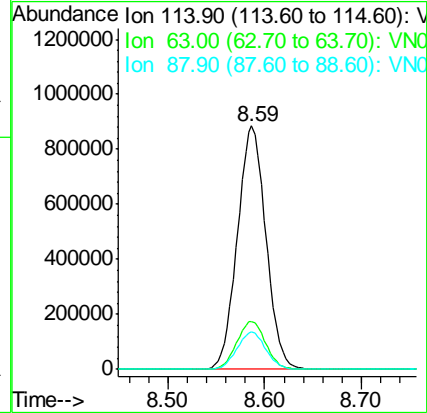
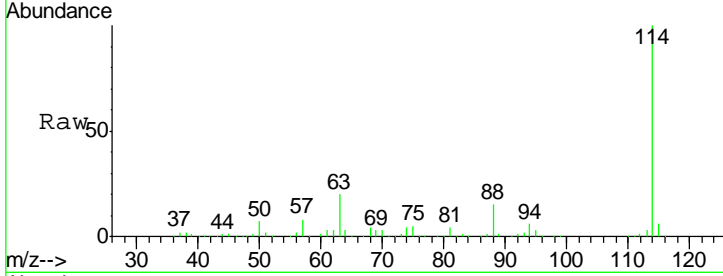




#34
 1,4-Difluorobenzene
 Concen: 50.000 ug/l
 RT: 8.59 min Scan# 2119
 Delta R.T. 0.00 min
 Lab File: VN052788.D
 Acq: 11 Dec 2018 8:04

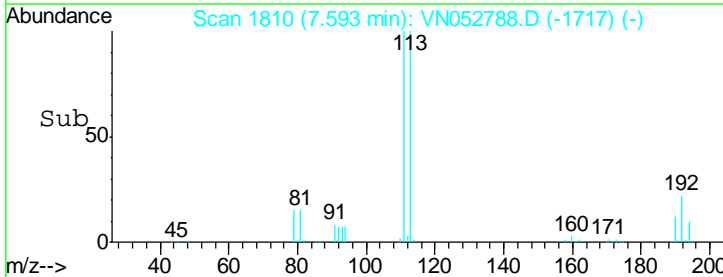
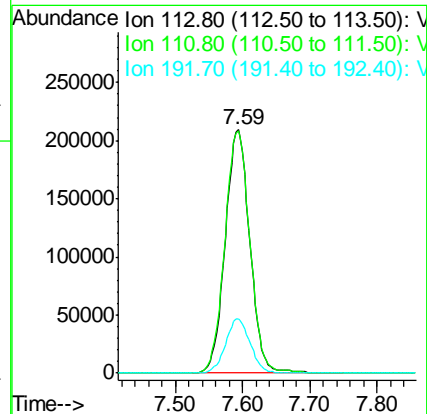
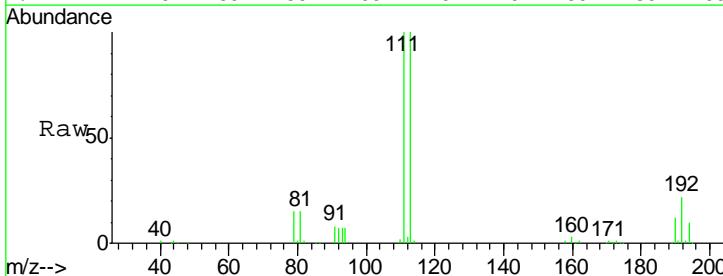
Instrument :
 MSVOA_N
ClientSampleId :
 BORING-SAMPLE-STEAL-WELL-YA

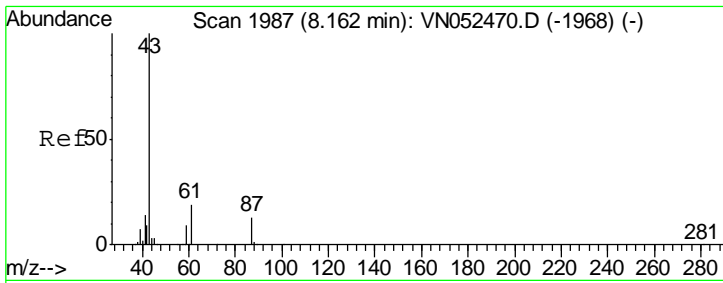
Tgt Ion	Resp	Lower	Upper
114	1812187		
63	19.8	0.0	41.8
88	15.4	0.0	31.6



#35
 Dibromofluoromethane
 Concen: 50.000 ug/l
 RT: 7.59 min Scan# 1810
 Delta R.T. 0.00 min
 Lab File: VN052788.D
 Acq: 11 Dec 2018 8:04

Tgt Ion	Resp	Lower	Upper
113	534065		
111	100.4	82.0	123.0
192	22.1	17.0	25.6

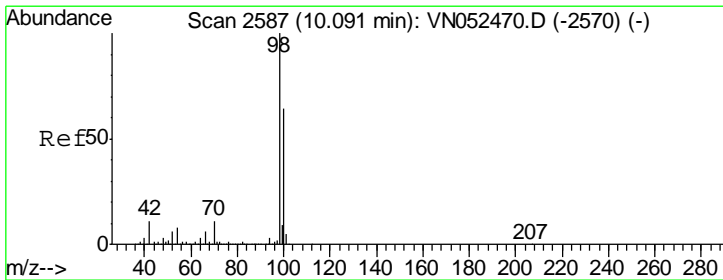
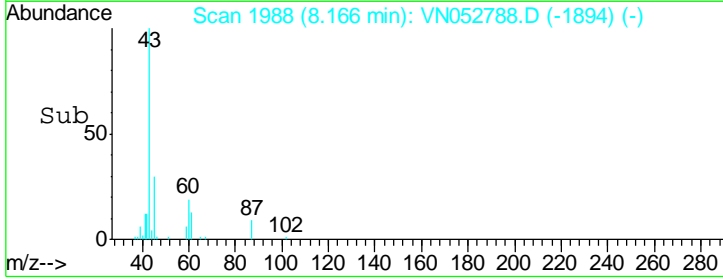
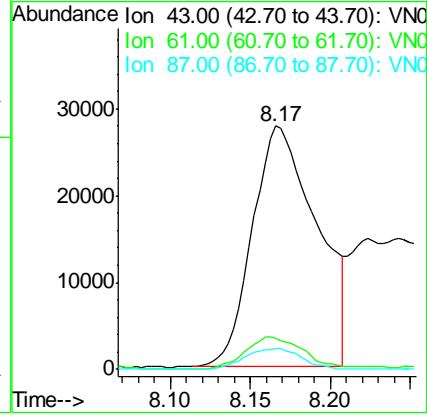
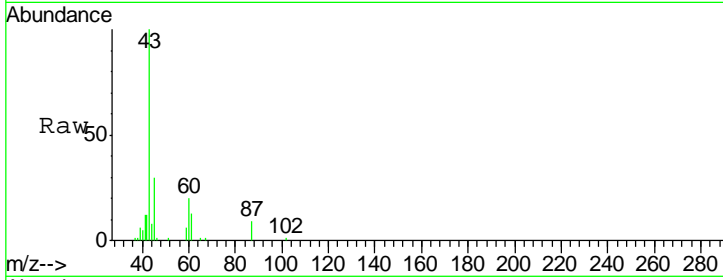




#43
 Isopropyl Acetate
 Concen: 4.373 ug/l
 RT: 8.17 min Scan# 1988
 Delta R.T. 0.00 min
 Lab File: VN052788.D
 Acq: 11 Dec 2018 8:04

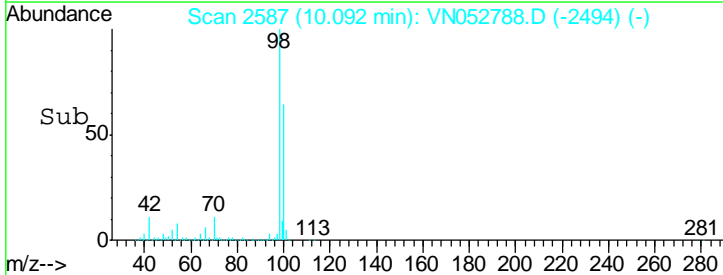
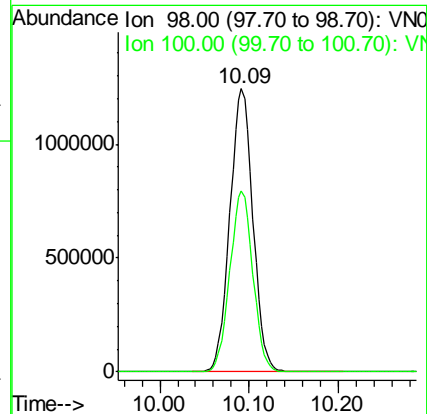
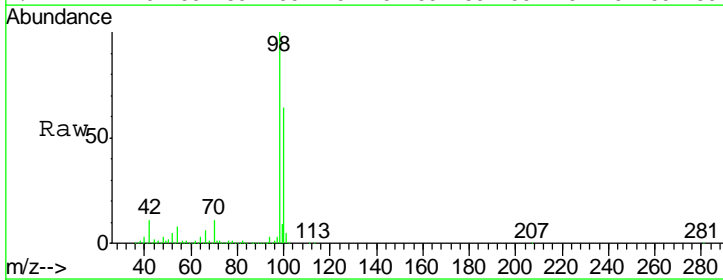
Instrument :
 MSVOA_N
 ClientSampled :
 BORING-SAMPLE-STEAL-WELL-YA

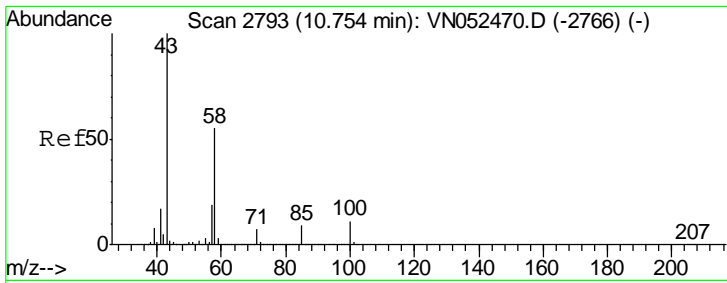
Tgt Ion	Resp	Lower	Upper
43	100		
61	12.1	24.1	36.1#
87	7.5	10.6	15.8#



#50
 Toluene-d8
 Concen: N.D. ug/l
 RT: 10.09 min Scan# 2587
 Delta R.T. 0.00 min
 Lab File: VN052788.D
 Acq: 11 Dec 2018 8:04

Tgt Ion	Resp	Lower	Upper
98	100		
100	63.9	51.3	76.9

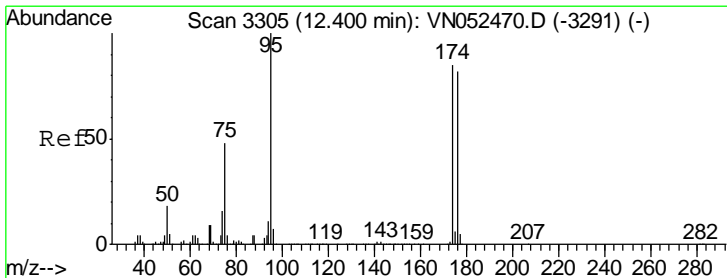
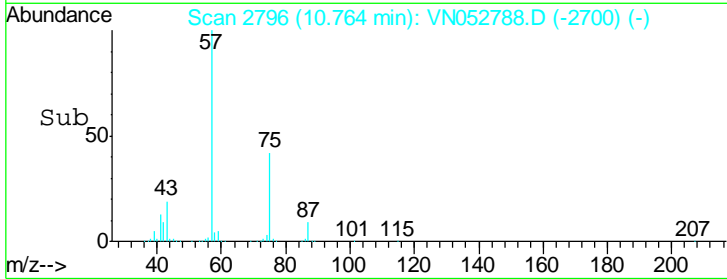
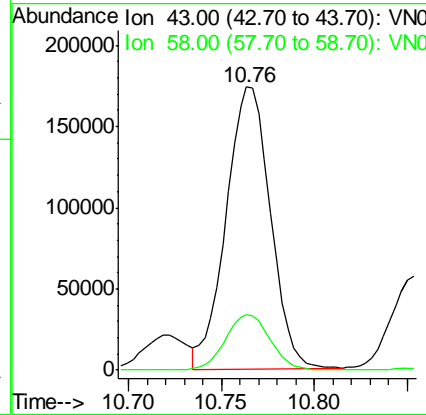
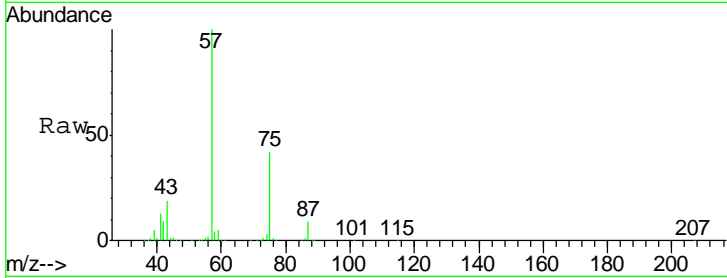




#59
 2-Hexanone
 Concen: 43.299 ug/l
 RT: 10.76 min Scan# 2796
 Delta R.T. 0.01 min
 Lab File: VN052788.D
 Acq: 11 Dec 2018 8:04

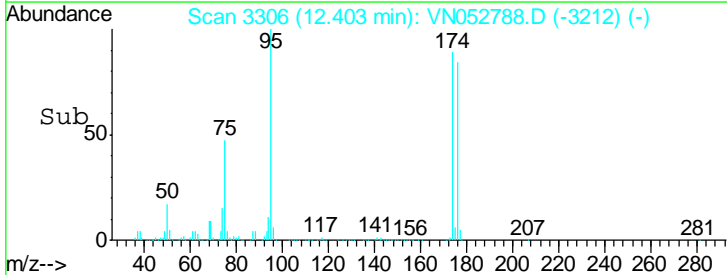
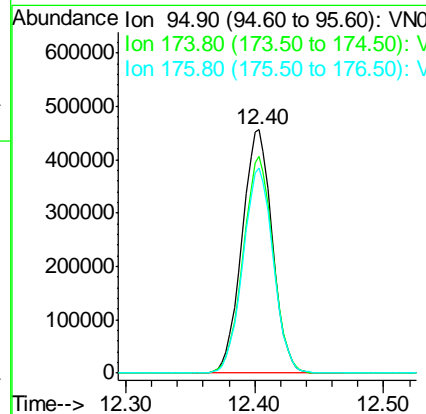
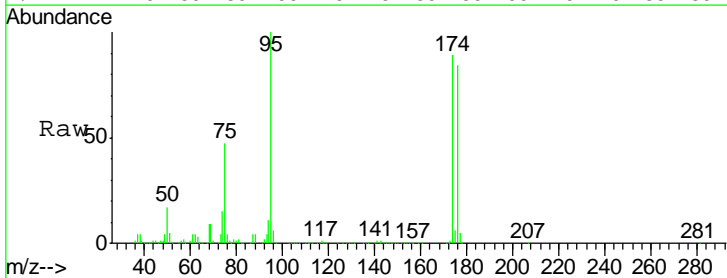
Instrument :
 MSVOA_N
 ClientSampleId :
 BORING-SAMPLE-STEAL-WELL-YA

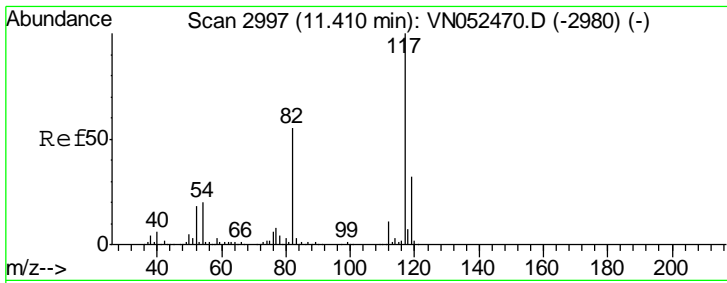
Tgt Ion: 43 Resp: 288175
 Ion Ratio Lower Upper
 43 100
 58 20.0 27.4 82.0#



#62
 4-Bromofluorobenzene
 Concen: N.D. ug/l
 RT: 12.40 min Scan# 3306
 Delta R.T. 0.00 min
 Lab File: VN052788.D
 Acq: 11 Dec 2018 8:04

Tgt Ion: 95 Resp: 744165
 Ion Ratio Lower Upper
 95 100
 174 88.2 0.0 173.0
 176 84.4 0.0 166.2



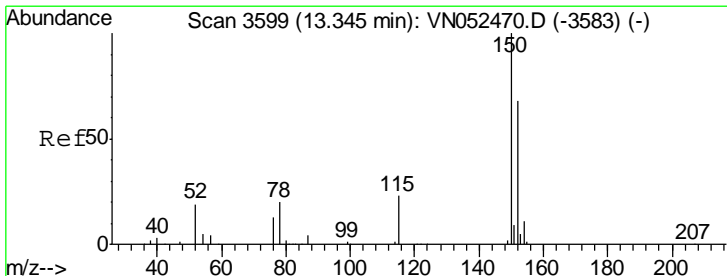
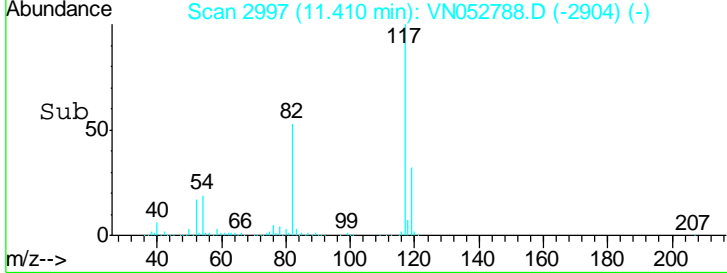
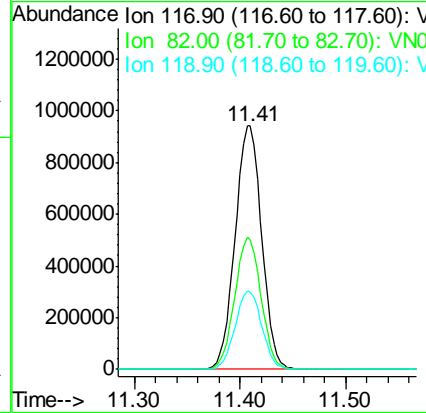
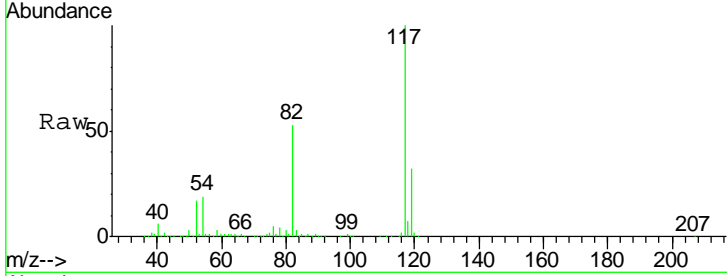


#63
 Chlorobenzene-d5
 Concen: 50.000 ug/l
 RT: 11.41 min Scan# 2997
 Delta R.T. 0.00 min
 Lab File: VN052788.D
 Acq: 11 Dec 2018 8:04

Instrument :
 MSVOA_N
 ClientSampled :
 BORING-SAMPLE-STEAL-WELL-YA

Tgt Ion: 117 Resp: 1639927

Ion	Ratio	Lower	Upper
117	100		
82	53.1	43.6	65.4
119	32.0	25.4	38.2



#72
 1,4-Dichlorobenzene-d4
 Concen: 50.000 ug/l
 RT: 13.35 min Scan# 3599
 Delta R.T. 0.00 min
 Lab File: VN052788.D
 Acq: 11 Dec 2018 8:04

Tgt Ion: 152 Resp: 684901

Ion	Ratio	Lower	Upper
152	100		
115	56.9	28.4	85.2
150	158.0	0.0	346.0

