

Data Path : Z:\VOASRV\HPCHEM1\MSVOA N\DATA\VN121119\
 Data File : VN059556.D
 Acq On : 11 Dec 2019 12:30
 Operator : JC/SP
 Sample : VN1211WBL01
 Misc : 5.00mL/MSVOA N/WATER
 ALS Vial : 4 Sample Multiplier: 1

Instrument :
 MSVOA_N
 ClientSampled :
 VN1211WBL01

Quant Time: Dec 12 01:03:49 2019
 Quant Method : Z:\VOASRV\HPCHEM1\MSVOA_N\METHODS\82N120919W.M
 Quant Title : SW846 8260
 QLast Update : Tue Dec 10 01:09:52 2019
 Response via : Initial Calibration

| Internal Standards | R.T. | QIon | Response | Conc | Units | Dev(Min) |
|----------------------------|-------|------|----------|-------|-------|----------|
| 1) Pentafluorobenzene | 7.64 | 168 | 247015 | 50.00 | ug/l | 0.00 |
| 34) 1,4-Difluorobenzene | 8.57 | 114 | 402440 | 50.00 | ug/l | 0.00 |
| 63) Chlorobenzene-d5 | 11.40 | 117 | 348945 | 50.00 | ug/l | 0.00 |
| 72) 1,4-Dichlorobenzene-d4 | 13.34 | 152 | 131764 | 50.00 | ug/l | 0.00 |

System Monitoring Compounds

| | | | | | | |
|---------------------------|-------|-----|--------|-------|------|--------------------|
| 33) 1,2-Dichloroethane-d4 | 8.01 | 65 | 178484 | 51.70 | ug/l | 0.00 |
| Spiked Amount | | | | | | |
| | | | | | | Recovery = 103.40% |
| 35) Dibromofluoromethane | 7.57 | 113 | 128174 | 53.37 | ug/l | 0.00 |
| Spiked Amount | | | | | | |
| | | | | | | Recovery = 106.74% |
| 50) Toluene-d8 | 10.08 | 98 | 493620 | 50.35 | ug/l | 0.00 |
| Spiked Amount | | | | | | |
| | | | | | | Recovery = 100.70% |
| 62) 4-Bromofluorobenzene | 12.40 | 95 | 153795 | 42.38 | ug/l | 0.00 |
| Spiked Amount | | | | | | |
| | | | | | | Recovery = 84.76% |

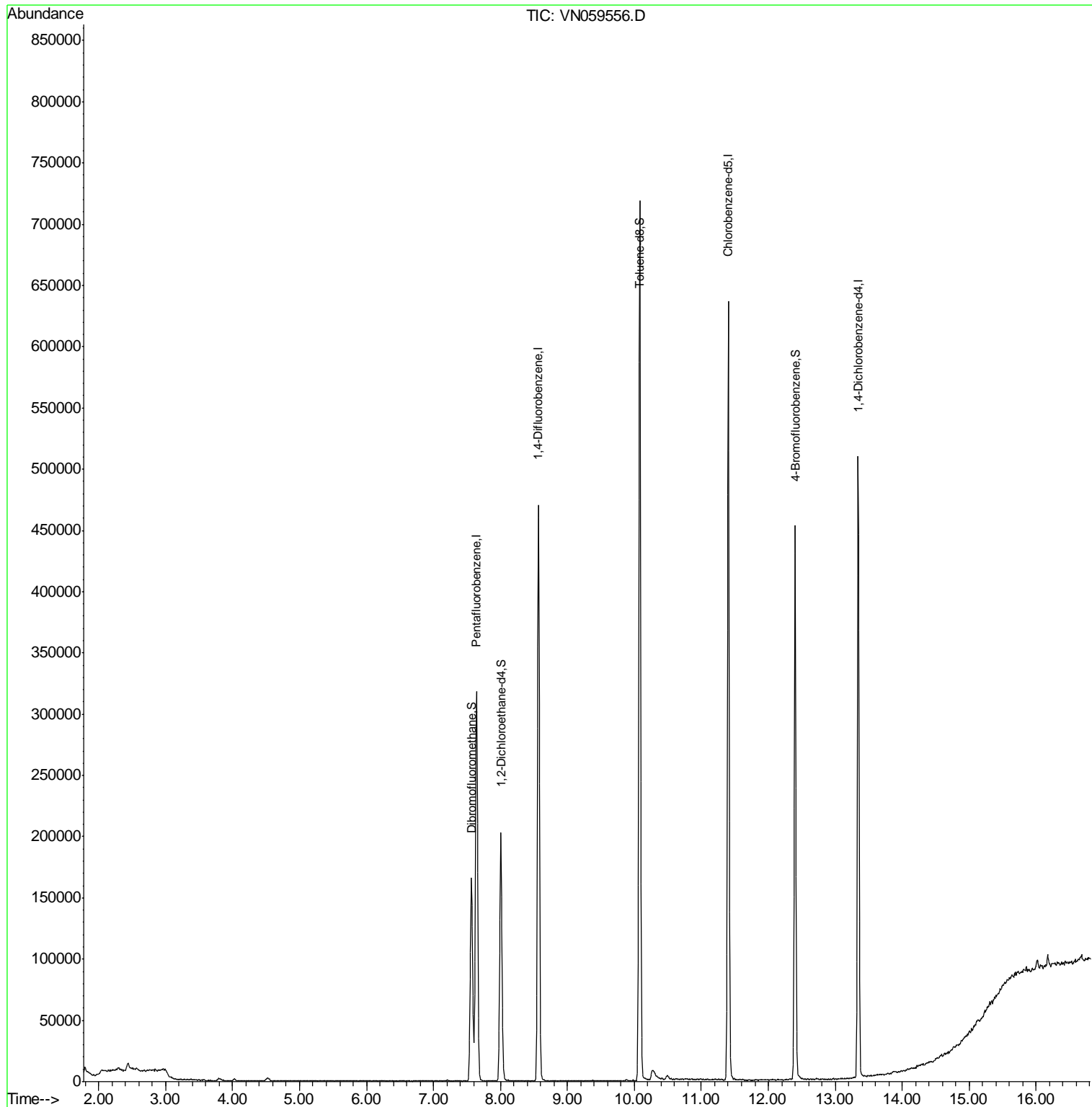
Target Compounds Qvalue

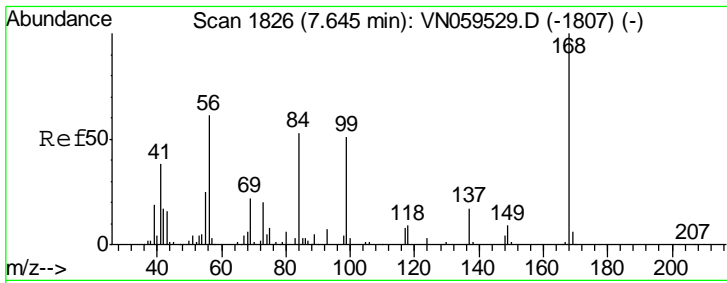
(#) = qualifier out of range (m) = manual integration (+) = signals summed

Data Path : Z:\VOASRV\HPCHEM1\MSVOA N\DATA\VN121119\
 Data File : VN059556.D
 Acq On : 11 Dec 2019 12:30
 Operator : JC/SP
 Sample : VN1211WBL01
 Misc : 5.00mL/MSVOA N/WATER
 ALS Vial : 4 Sample Multiplier: 1

Instrument :
 MSVOA_N
 ClientSampleId :
 VN1211WBL01

Quant Time: Dec 12 01:03:49 2019
 Quant Method : Z:\VOASRV\HPCHEM1\MSVOA_N\METHODS\82N120919W.M
 Quant Title : SW846 8260
 QLast Update : Tue Dec 10 01:09:52 2019
 Response via : Initial Calibration

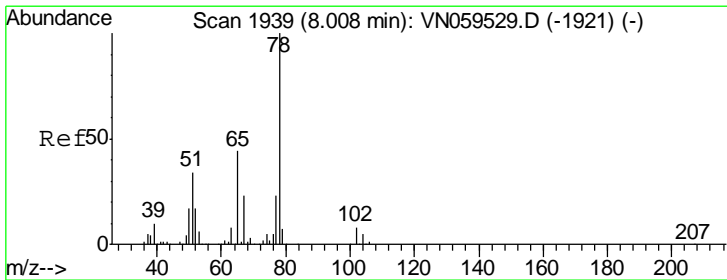
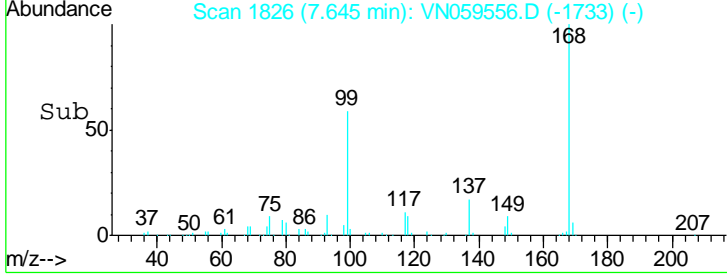
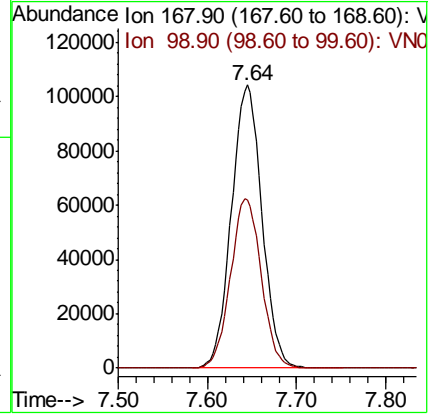
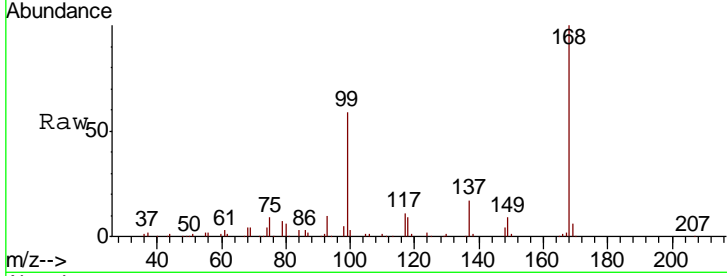




#1
 Pentafluorobenzene
 Concen: 50.000 ug/l
 RT: 7.64 min Scan# 1826
 Delta R.T. -0.00 min
 Lab File: VN059556.D
 Acq: 11 Dec 2019 12:30

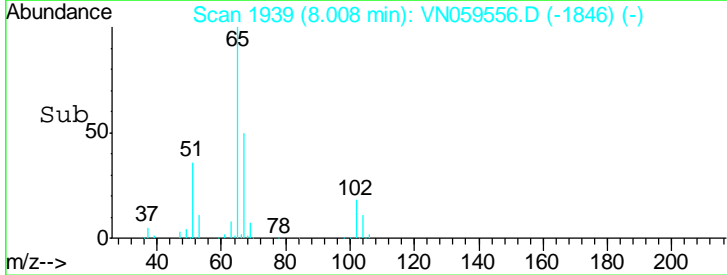
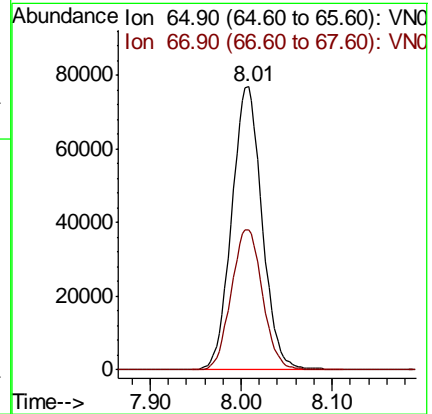
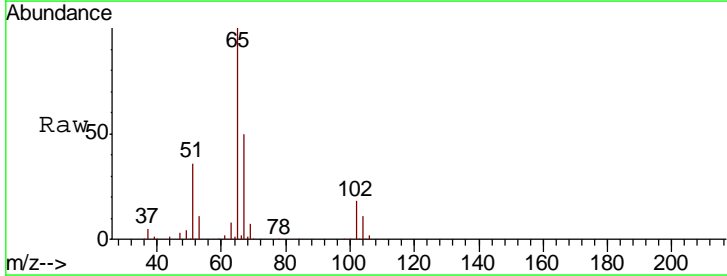
Instrument :
 MSVOA_N
 ClientSampled :
 VN1211WBL01

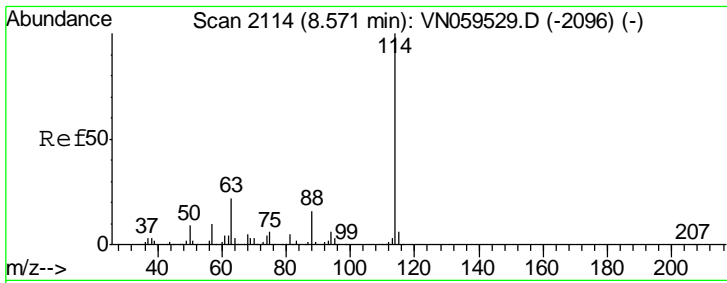
Tgt Ion: 168 Resp: 247015
 Ion Ratio Lower Upper
 168 100
 99 59.3 46.6 70.0



#33
 1,2-Dichloroethane-d4
 Concen: 51.700 ug/l
 RT: 8.01 min Scan# 1939
 Delta R.T. -0.00 min
 Lab File: VN059556.D
 Acq: 11 Dec 2019 12:30

Tgt Ion: 65 Resp: 178484
 Ion Ratio Lower Upper
 65 100
 67 51.0 0.0 103.6

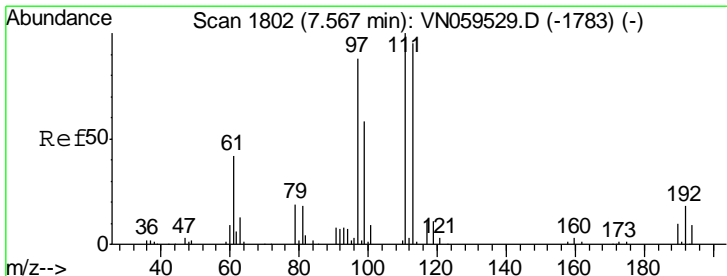
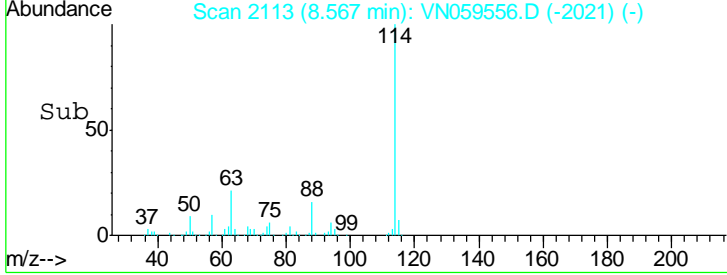
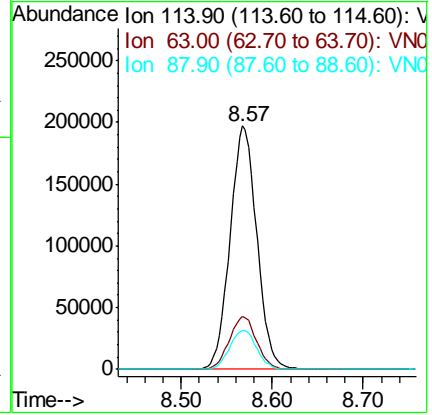
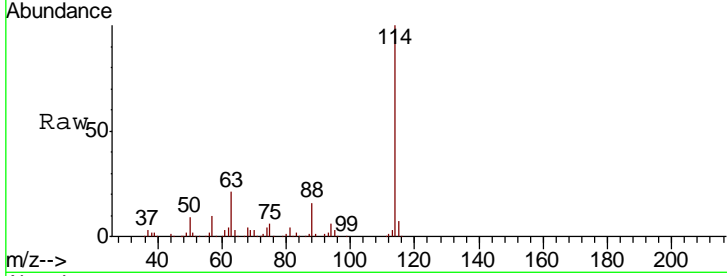




#34
 1,4-Difluorobenzene
 Concen: 50.000 ug/l
 RT: 8.57 min Scan# 2113
 Delta R.T. -0.00 min
 Lab File: VN059556.D
 Acq: 11 Dec 2019 12:30

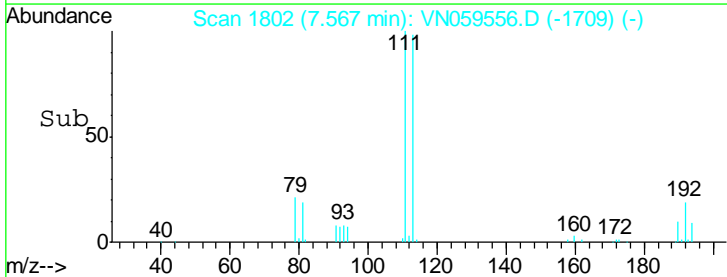
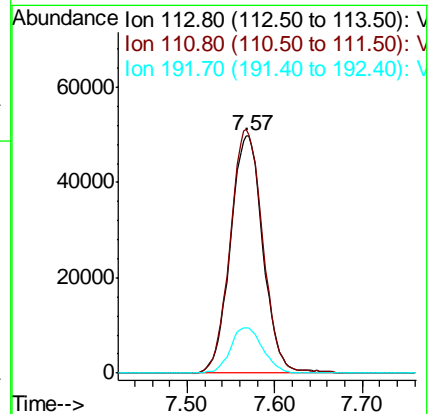
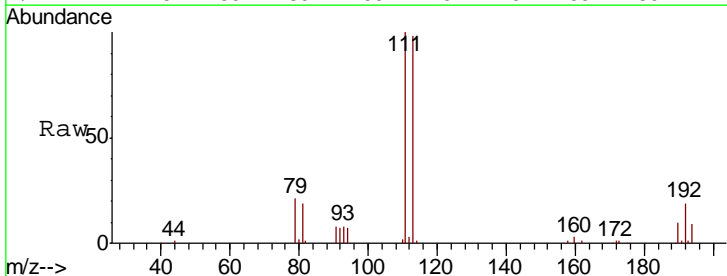
Instrument :
 MSVOA_N
 ClientSampled :
 VN1211WBL01

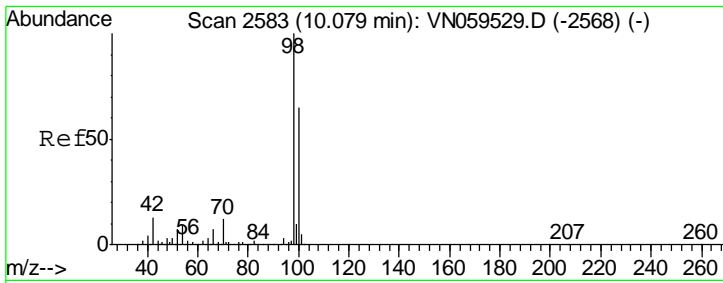
| Tgt Ion | Resp | Lower | Upper |
|---------|--------|-------|-------|
| 114 | 402440 | | |
| 63 | 21.5 | 0.0 | 45.0 |
| 88 | 16.0 | 0.0 | 32.2 |



#35
 Dibromofluoromethane
 Concen: 53.372 ug/l
 RT: 7.57 min Scan# 1802
 Delta R.T. -0.00 min
 Lab File: VN059556.D
 Acq: 11 Dec 2019 12:30

| Tgt Ion | Resp | Lower | Upper |
|---------|--------|-------|-------|
| 113 | 128174 | | |
| 111 | 103.1 | 82.2 | 123.4 |
| 192 | 19.0 | 14.8 | 22.2 |

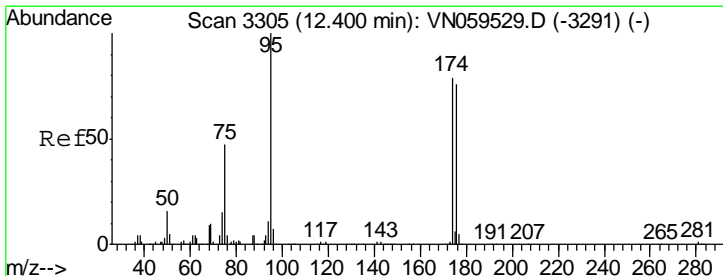
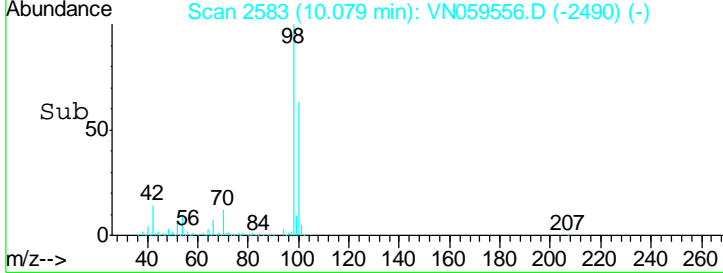
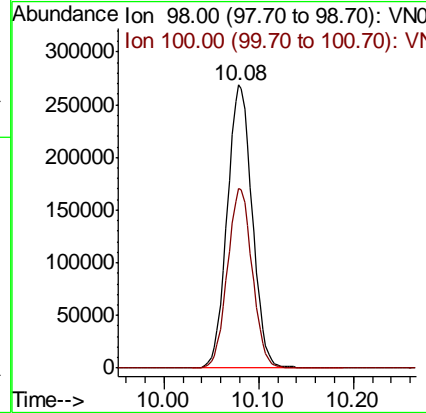
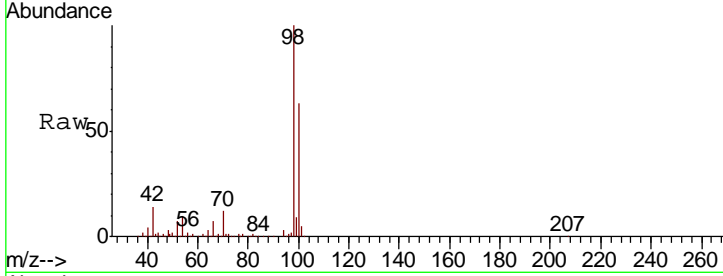




#50
 Toluene-d8
 Concen: 50.347 ug/l
 RT: 10.08 min Scan# 2583
 Delta R.T. -0.00 min
 Lab File: VN059556.D
 Acq: 11 Dec 2019 12:30

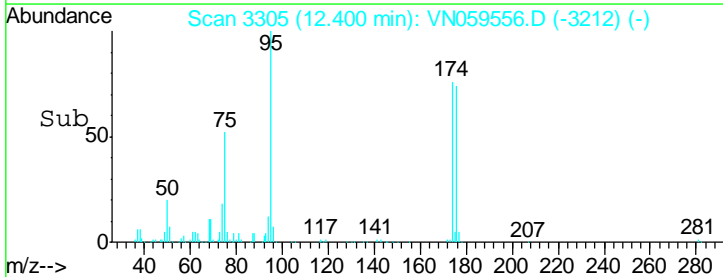
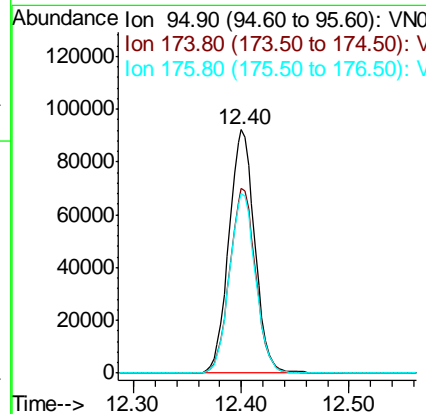
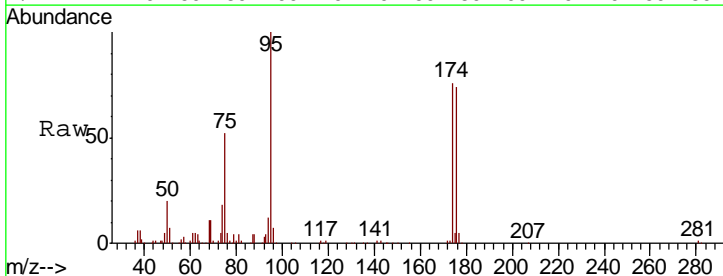
Instrument :
 MSVOA_N
 ClientSampled :
 VN1211WBL01

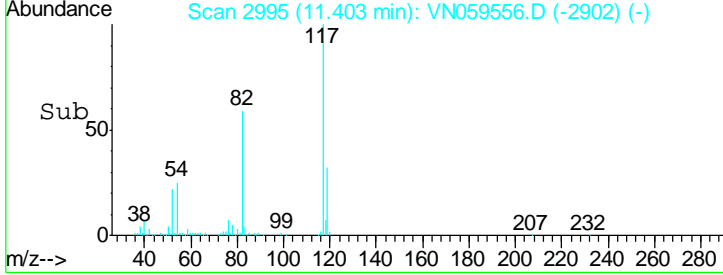
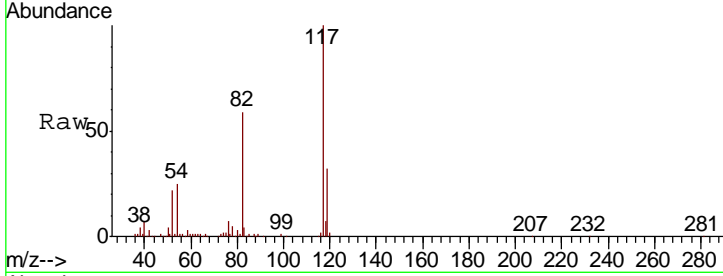
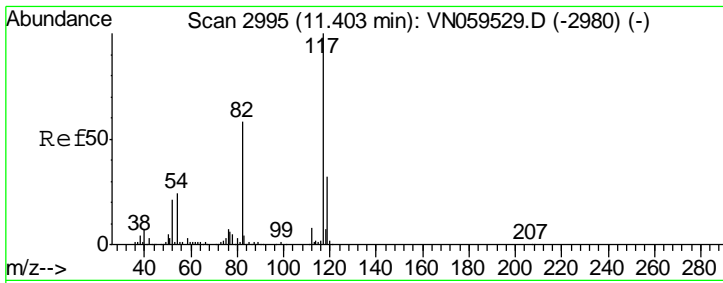
Tgt Ion: 98 Resp: 493620
 Ion Ratio Lower Upper
 98 100
 100 62.9 51.8 77.8



#62
 4-Bromofluorobenzene
 Concen: 42.376 ug/l
 RT: 12.40 min Scan# 3305
 Delta R.T. -0.00 min
 Lab File: VN059556.D
 Acq: 11 Dec 2019 12:30

Tgt Ion: 95 Resp: 153795
 Ion Ratio Lower Upper
 95 100
 174 76.3 0.0 158.0
 176 73.9 0.0 155.4

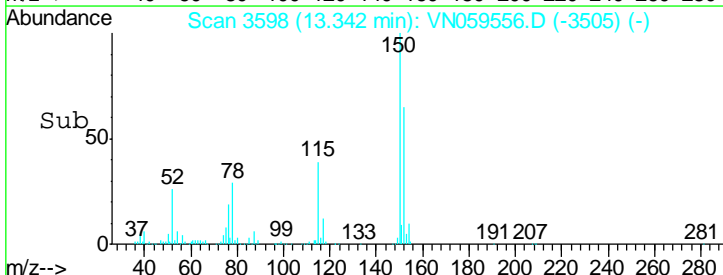
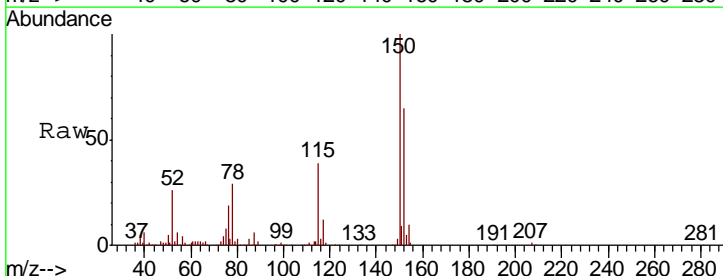
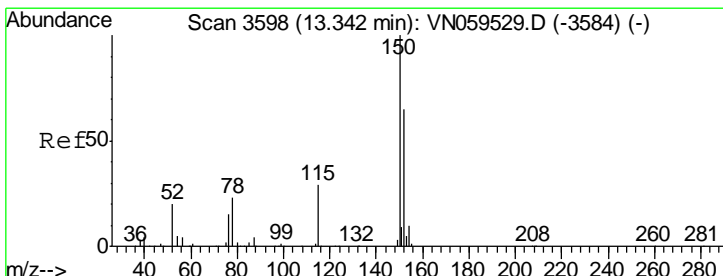
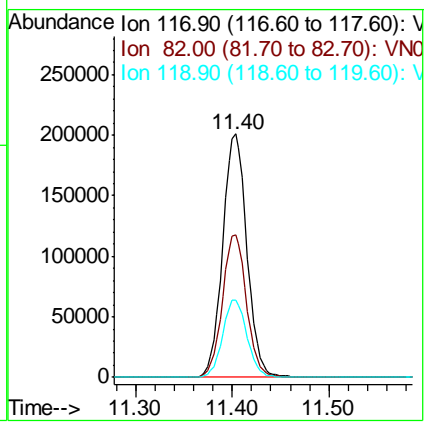




#63
 Chlorobenzene-d5
 Concen: 50.000 ug/l
 RT: 11.40 min Scan# 2995
 Delta R.T. -0.00 min
 Lab File: VN059556.D
 Acq: 11 Dec 2019 12:30

Instrument :
 MSVOA_N
 ClientSampled :
 VN1211WBL01

| Tgt Ion | Resp | Lower | Upper |
|---------|--------|-------|-------|
| 117 | 348945 | | |
| 82 | 58.8 | 46.5 | 69.7 |
| 119 | 31.9 | 25.2 | 37.8 |



#72
 1,4-Dichlorobenzene-d4
 Concen: 50.000 ug/l
 RT: 13.34 min Scan# 3598
 Delta R.T. -0.00 min
 Lab File: VN059556.D
 Acq: 11 Dec 2019 12:30

| Tgt Ion | Resp | Lower | Upper |
|---------|--------|-------|-------|
| 152 | 131764 | | |
| 115 | 60.8 | 29.4 | 88.2 |
| 150 | 155.7 | 0.0 | 342.4 |

