

Data Path : Z:\voasrv\HPCHEM1\MSVOA\_N\Data\VN121121\  
 Data File : VN070017.D  
 Acq On : 11 Dec 2021 19:02  
 Operator : JC/MD  
 Sample : M4873-01 20X  
 Misc : 5.22g/10mL/100uL/5.00mL/MSVOA\_N/MEOH  
 ALS Vial : 19 Sample Multiplier: 1

Instrument :  
 MSVOA\_N  
 ClientSampleId :

Quant Time: Dec 12 16:25:41 2021  
 Quant Method : Z:\voasrv\HPCHEM1\MSVOA\_N\methods\82N120221W.M  
 Quant Title : SW846 8260  
 QLast Update : Fri Dec 03 08:46:47 2021  
 Response via : Initial Calibration

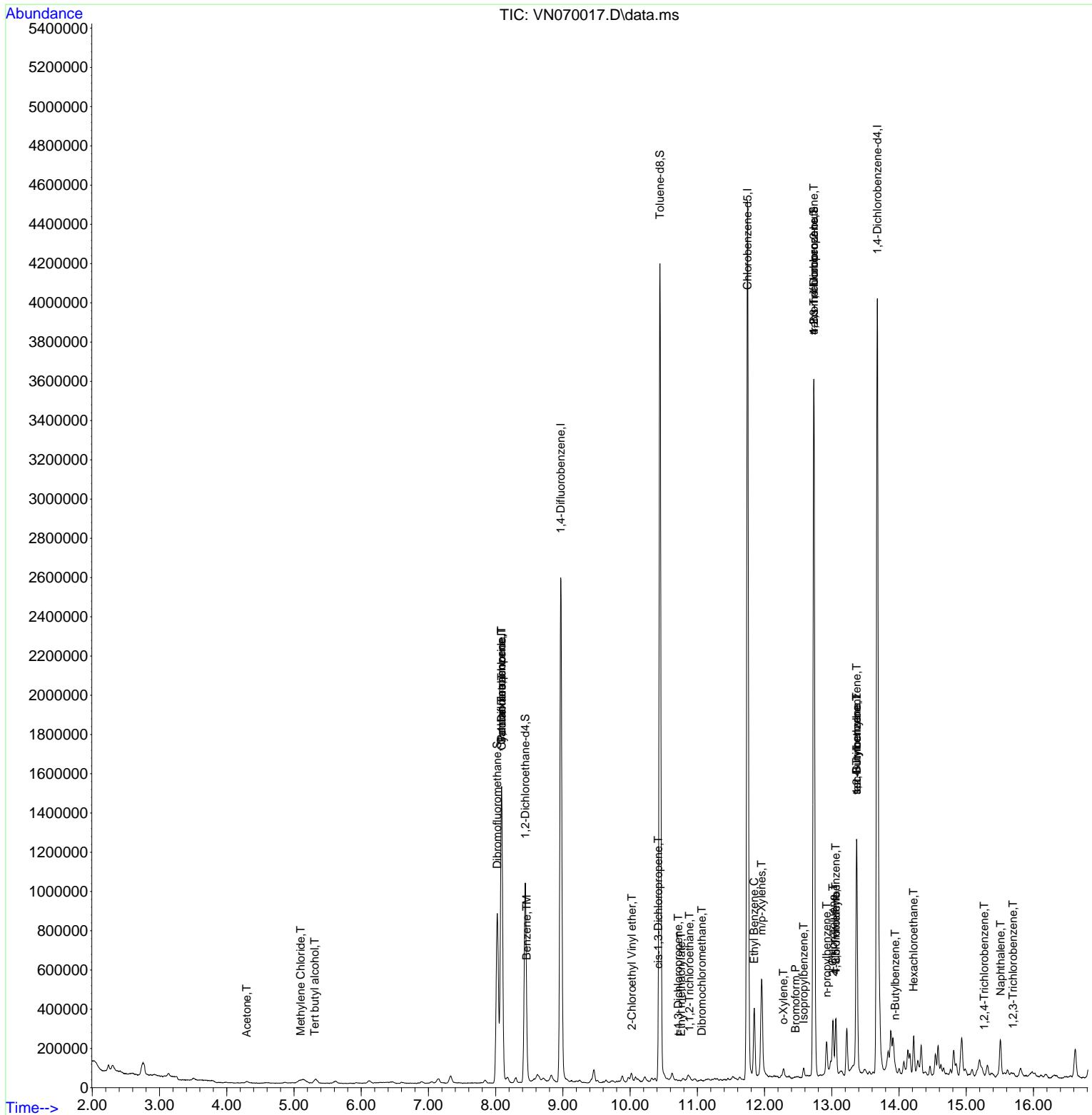
Compound	R.T.	QIon	Response	Conc	Units	Dev(Min)
-----						
Internal Standards						
1) Pentafluorobenzene	8.088	168	1116566	50.000	ug/l	0.00
34) 1,4-Difluorobenzene	8.968	114	2098134	50.000	ug/l	0.00
63) Chlorobenzene-d5	11.747	117	2450813	50.000	ug/l	0.00
72) 1,4-Dichlorobenzene-d4	13.678	152	1041171	50.000	ug/l	0.00
System Monitoring Compounds						
33) 1,2-Dichloroethane-d4	8.440	65	862445	50.026	ug/l	0.00
Spiked Amount	50.000	Range 61 - 141	Recovery	=	100.060%	
35) Dibromofluoromethane	8.024	113	632426	48.122	ug/l	0.00
Spiked Amount	50.000	Range 69 - 133	Recovery	=	96.240%	
50) Toluene-d8	10.443	98	2798799	53.037	ug/l	0.00
Spiked Amount	50.000	Range 65 - 126	Recovery	=	106.080%	
62) 4-Bromofluorobenzene	12.734	95	1222406	63.941	ug/l	0.00
Spiked Amount	50.000	Range 58 - 135	Recovery	=	127.880%	
Target Compounds						
						Qvalue
11) Tert butyl alcohol	5.307	59	8103	2.487	ug/l #	71
16) Acetone	4.296	43	12565	1.212	ug/l	97
20) Methylene Chloride	5.101	84	5784	0.420	ug/l #	86
31) Cyclohexane	8.091	56	40055	1.670	ug/l #	40
36) 1,1-Dichloropropene	8.088	75	94321	4.722	ug/l #	49
38) Carbon Tetrachloride	8.086	117	115231	5.883	ug/l #	16
40) Benzene	8.461	78	15659	0.256	ug/l	97
53) t-1,3-Dichloropropene	10.717	75	106	2.798	ug/l #	43
54) cis-1,3-Dichloropropene	10.416	75	153	2.004	ug/l #	1
55) 1,1,2-Trichloroethane	10.880	97	4800	0.319	ug/l #	24
56) Ethyl methacrylate	10.757	69	194	2.286	ug/l #	1
58) 2-Chloroethyl Vinyl ether	10.027	63	309	18.426	ug/l #	45
60) Dibromochloromethane	11.065	129	87	2.381	ug/l	77
67) Ethyl Benzene	11.846	91	251932	2.789	ug/l	93
68) m/p-Xylenes	11.956	106	143530	4.365	ug/l	87
69) o-Xylene	12.280	106	11731	0.354	ug/l	95
71) Bromoform	12.463	173	214	2.744	ug/l #	29
73) Isopropylbenzene	12.581	105	29861	0.322	ug/l	92
76) 1,2,3-Trichloropropane	12.734	75	676401	22.654	ug/l #	1
78) n-propylbenzene	12.924	91	130509	1.266	ug/l	99
79) 2-Chlorotoluene	13.018	91	26002	0.399	ug/l #	40
80) 1,3,5-Trimethylbenzene	13.061	105	149307	2.003	ug/l	97
81) trans-1,4-Dichloro-2-b...	12.734	75	676401	72.182	ug/l #	5
82) 4-Chlorotoluene	13.061	91	15108	0.247	ug/l #	39
83) tert-Butylbenzene	13.369	119	79161	1.199	ug/l #	55
84) 1,2,4-Trimethylbenzene	13.369	105	658665	9.276	ug/l	98
85) sec-Butylbenzene	13.369	105	658665	7.355	ug/l #	56
89) n-Butylbenzene	13.943	91	20620	0.363	ug/l #	75
90) Hexachloroethane	14.217	117	9383	0.763	ug/l #	6
93) 1,2,4-Trichlorobenzene	15.268	180	545	2.908	ug/l #	85
95) Naphthalene	15.509	128	166098	6.989	ug/l	99
96) 1,2,3-Trichlorobenzene	15.697	180	210	2.448	ug/l #	1

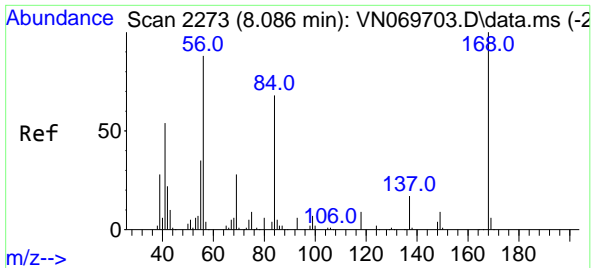
(#) = qualifier out of range (m) = manual integration (+) = signals summed

Data Path : Z:\voasrv\HPCHEM1\MSVOA\_N\Data\VN121121\  
 Data File : VN070017.D  
 Acq On : 11 Dec 2021 19:02  
 Operator : JC/MD  
 Sample : M4873-01 20X  
 Misc : 5.22g/10mL/100uL/5.00mL/MSVOA\_N/MEOH  
 ALS Vial : 19 Sample Multiplier: 1

Instrument :  
 MSVOA\_N  
 ClientSampleId :

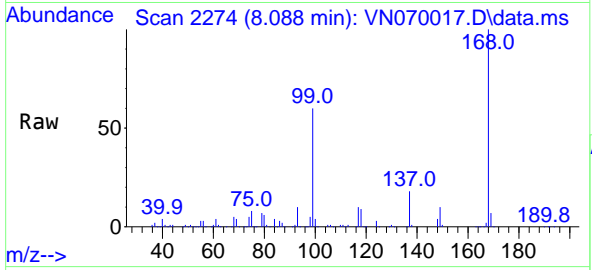
Quant Time: Dec 12 16:25:41 2021  
 Quant Method : Z:\voasrv\HPCHEM1\MSVOA\_N\methods\82N120221W.M  
 Quant Title : SW846 8260  
 QLast Update : Fri Dec 03 08:46:47 2021  
 Response via : Initial Calibration



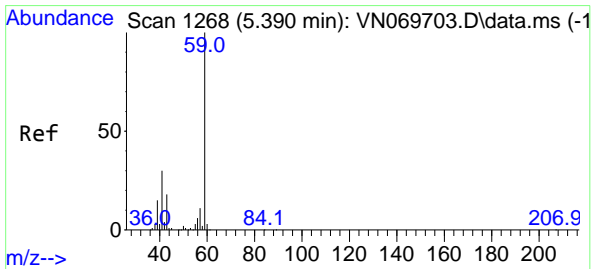
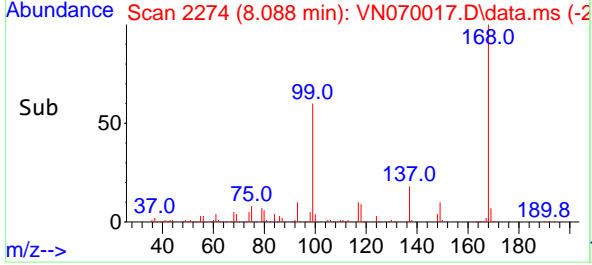
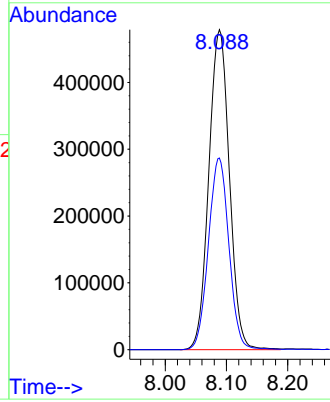


#1  
 Pentafluorobenzene  
 Concen: 50.000 ug/l  
 RT: 8.088 min Scan# 21  
 Delta R.T. 0.002 min  
 Lab File: VN070017.D  
 Acq: 11 Dec 2021 19:02

Instrument :  
 MSVOA\_N  
 ClientSampleId :

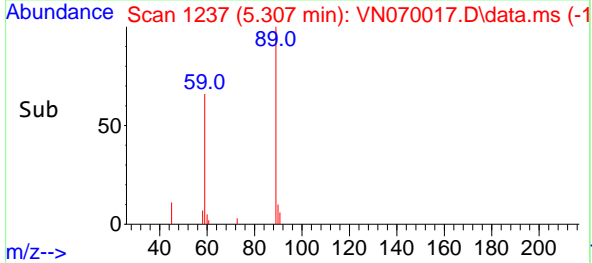
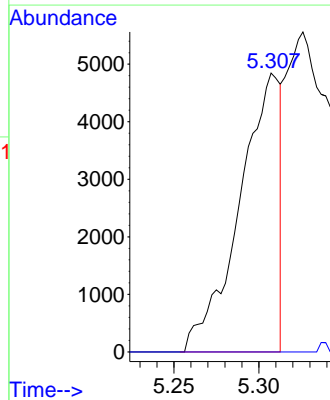
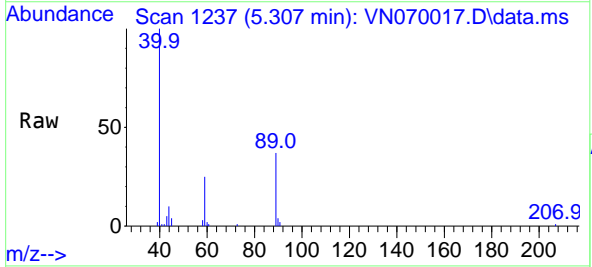


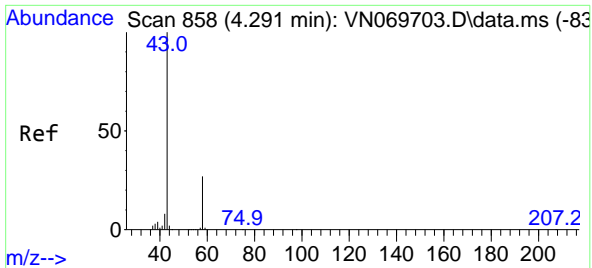
Tgt Ion:168 Resp: 1116566  
 Ion Ratio Lower Upper  
 168 100  
 99 59.9 41.3 61.9



#11  
 Tert butyl alcohol  
 Concen: 2.487 ug/l  
 RT: 5.307 min Scan# 1237  
 Delta R.T. -0.083 min  
 Lab File: VN070017.D  
 Acq: 11 Dec 2021 19:02

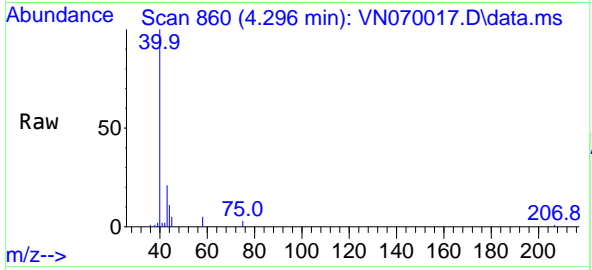
Tgt Ion: 59 Resp: 8103  
 Ion Ratio Lower Upper  
 59 100  
 57 0.0 8.7 13.1#



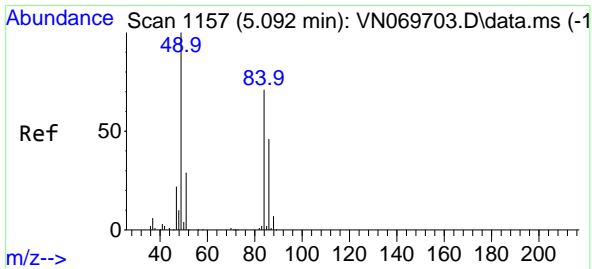
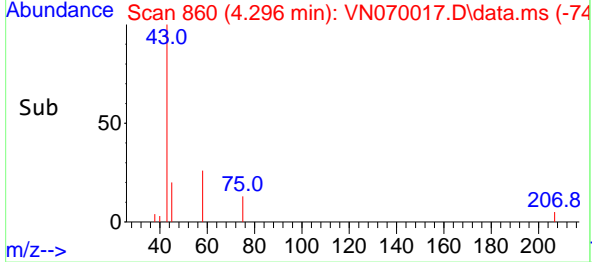
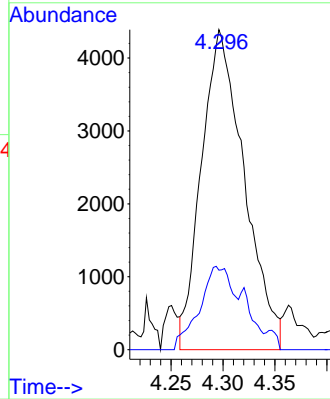


#16  
 Acetone  
 Concen: 1.212 ug/l  
 RT: 4.296 min Scan# 80  
 Delta R.T. 0.006 min  
 Lab File: VN070017.D  
 Acq: 11 Dec 2021 19:02

Instrument :  
 MSVOA\_N  
 ClientSampleId :

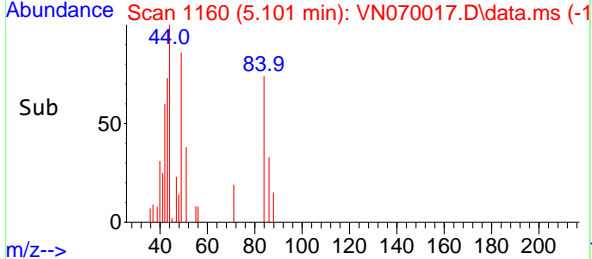
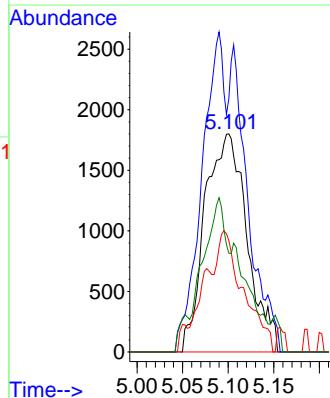
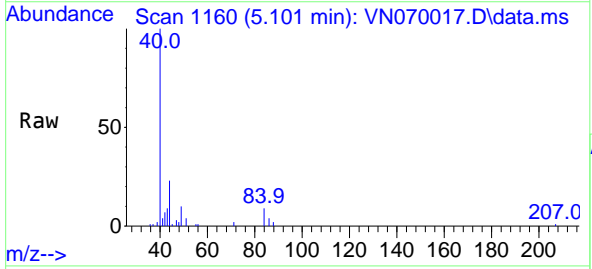


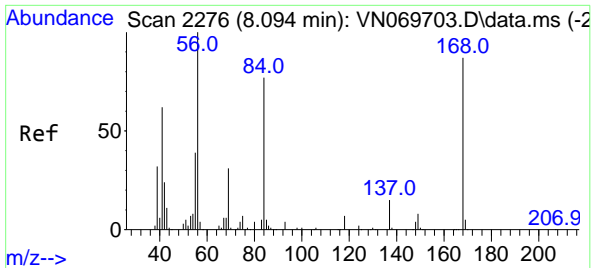
Tgt Ion: 43 Resp: 12565  
 Ion Ratio Lower Upper  
 43 100  
 58 27.5 23.1 34.7



#20  
 Methylene Chloride  
 Concen: 0.420 ug/l  
 RT: 5.101 min Scan# 1160  
 Delta R.T. 0.008 min  
 Lab File: VN070017.D  
 Acq: 11 Dec 2021 19:02

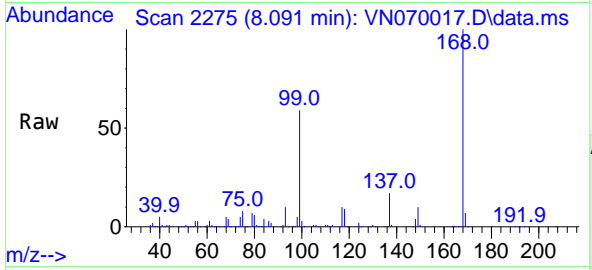
Tgt Ion: 84 Resp: 5784  
 Ion Ratio Lower Upper  
 84 100  
 49 116.2 93.5 140.3  
 51 41.7 29.4 44.2  
 86 34.3 53.0 79.4#



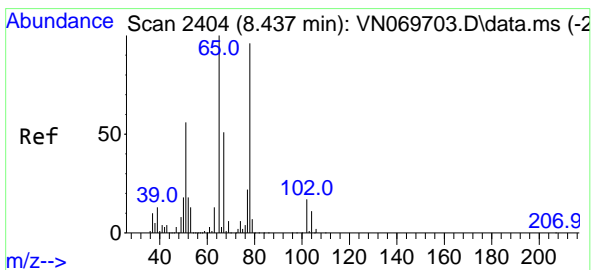
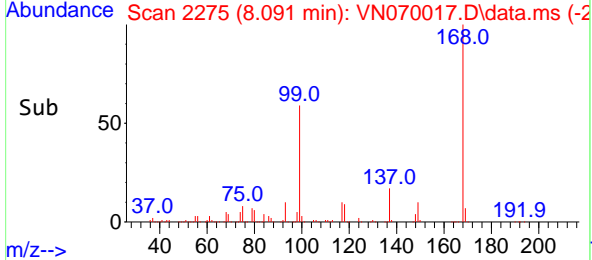
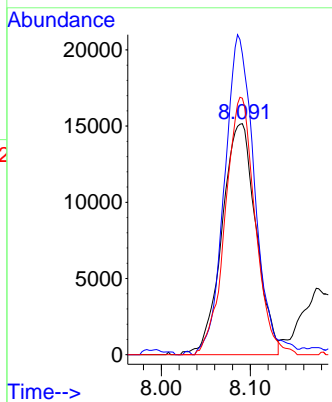


#31  
 Cyclohexane  
 Concen: 1.670 ug/l  
 RT: 8.091 min Scan# 21  
 Delta R.T. -0.003 min  
 Lab File: VN070017.D  
 Acq: 11 Dec 2021 19:02

Instrument :  
 MSVOA\_N  
 ClientSampleId :

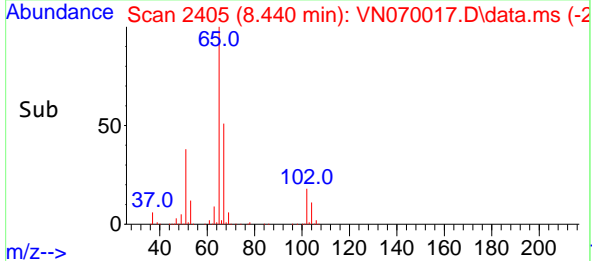
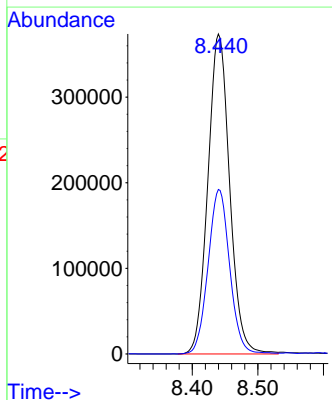
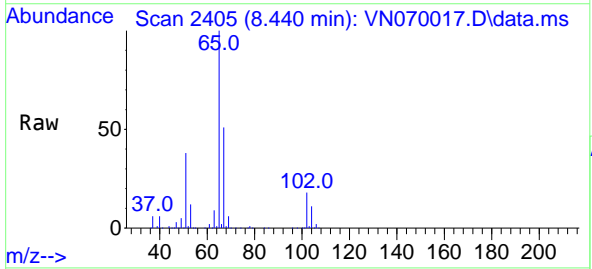


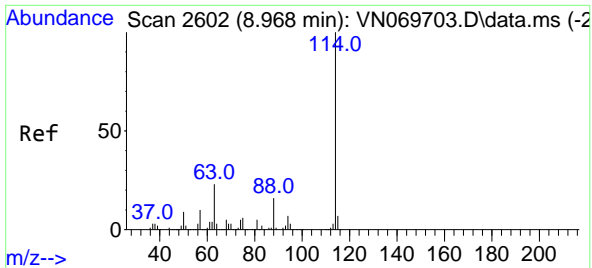
Tgt Ion: 56 Resp: 40055  
 Ion Ratio Lower Upper  
 56 100  
 69 130.2 27.1 40.7#  
 84 111.0 73.4 110.0#



#33  
 1,2-Dichloroethane-d4  
 Concen: 50.026 ug/l  
 RT: 8.440 min Scan# 2405  
 Delta R.T. 0.003 min  
 Lab File: VN070017.D  
 Acq: 11 Dec 2021 19:02

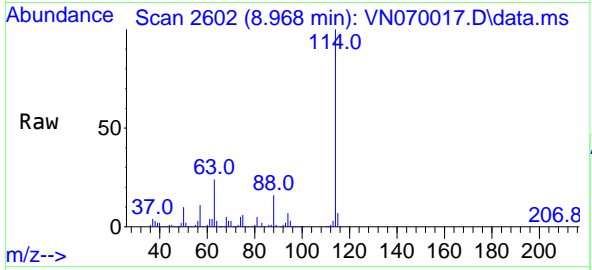
Tgt Ion: 65 Resp: 862445  
 Ion Ratio Lower Upper  
 65 100  
 67 51.0 0.0 103.0





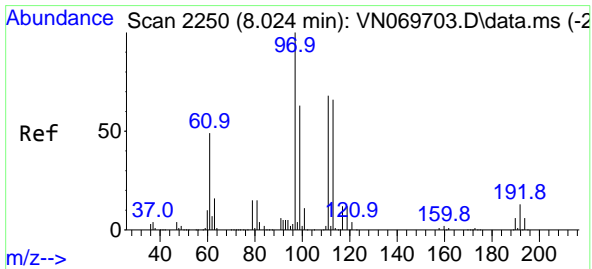
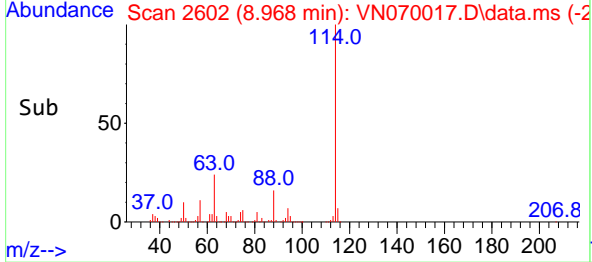
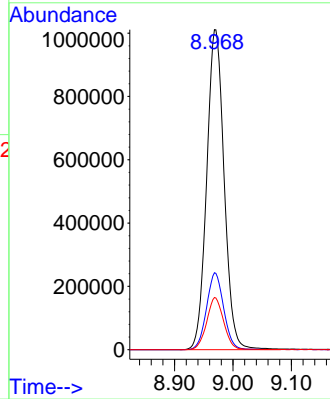
#34  
 1,4-Difluorobenzene  
 Concen: 50.000 ug/l  
 RT: 8.968 min Scan# 2602  
 Delta R.T. 0.000 min  
 Lab File: VN070017.D  
 Acq: 11 Dec 2021 19:02

Instrument : MSVOA\_N  
 ClientSampleId :



Tgt Ion:114 Resp: 2098134

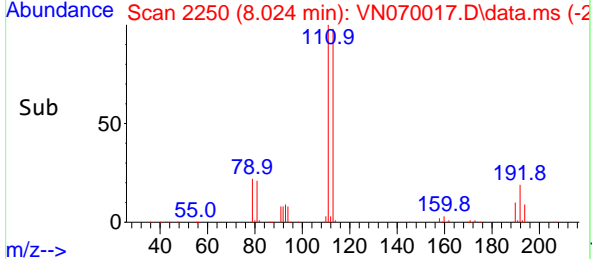
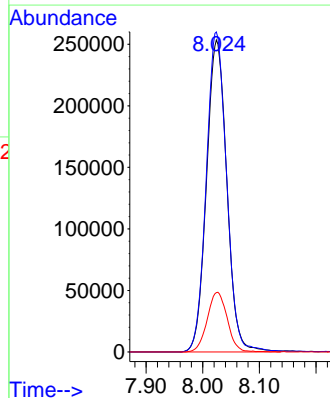
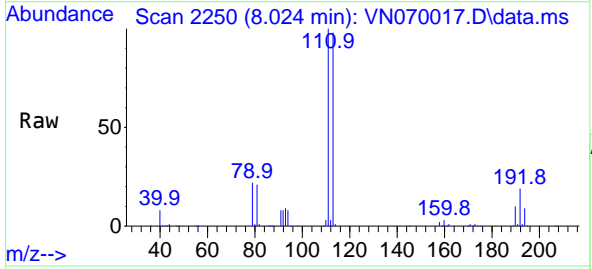
Ion	Ratio	Lower	Upper
114	100		
63	24.1	0.0	37.8
88	16.3	0.0	27.4

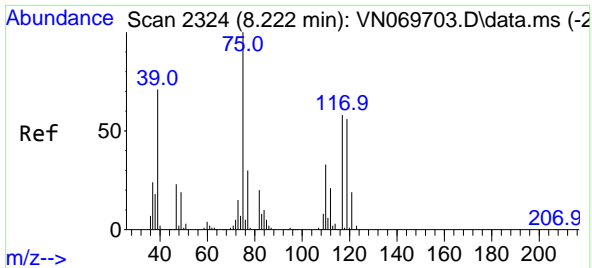


#35  
 Dibromofluoromethane  
 Concen: 48.122 ug/l  
 RT: 8.024 min Scan# 2250  
 Delta R.T. 0.000 min  
 Lab File: VN070017.D  
 Acq: 11 Dec 2021 19:02

Tgt Ion:113 Resp: 632426

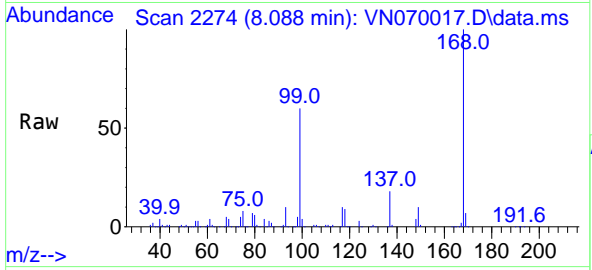
Ion	Ratio	Lower	Upper
113	100		
111	102.6	82.2	123.2
192	18.8	16.9	25.3



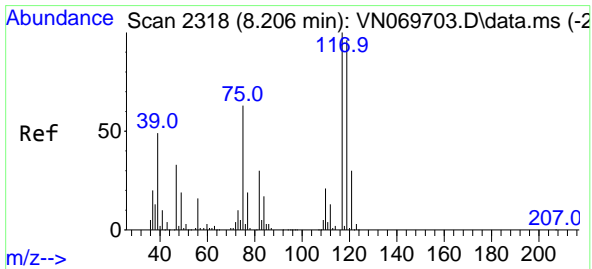
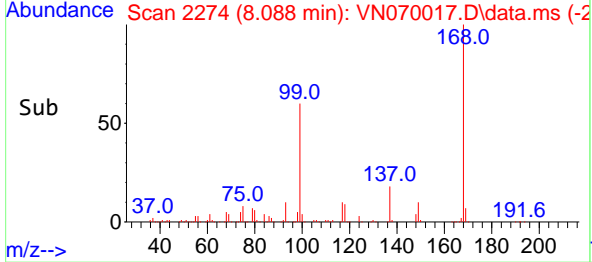
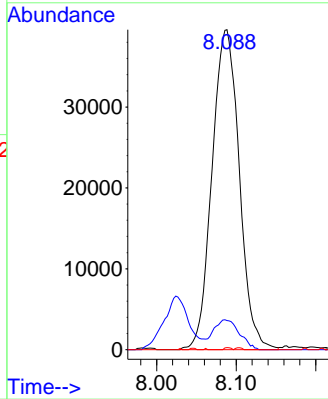


#36  
 1,1-Dichloropropene  
 Concen: 4.722 ug/l  
 RT: 8.088 min Scan# 21  
 Delta R.T. -0.134 min  
 Lab File: VN070017.D  
 Acq: 11 Dec 2021 19:02

Instrument :  
 MSVOA\_N  
 ClientSampleId :

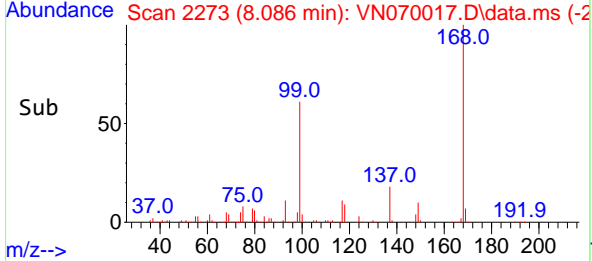
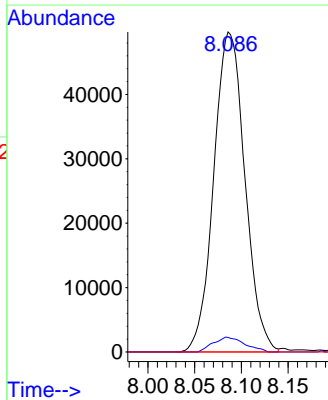
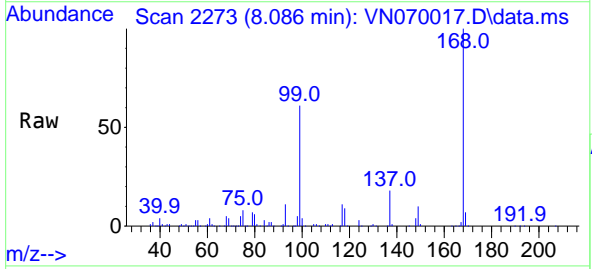


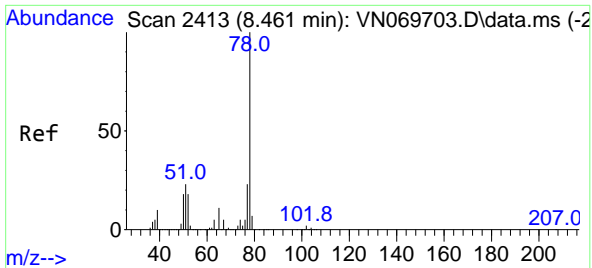
Tgt Ion: 75 Resp: 94321  
 Ion Ratio Lower Upper  
 75 100  
 110 8.9 18.4 55.2#  
 77 0.2 24.4 36.6#



#38  
 Carbon Tetrachloride  
 Concen: 5.883 ug/l  
 RT: 8.086 min Scan# 2273  
 Delta R.T. -0.121 min  
 Lab File: VN070017.D  
 Acq: 11 Dec 2021 19:02

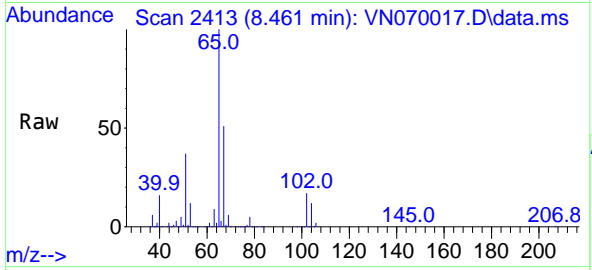
Tgt Ion: 117 Resp: 115231  
 Ion Ratio Lower Upper  
 117 100  
 119 4.6 76.1 114.1#  
 121 0.0 24.2 36.2#



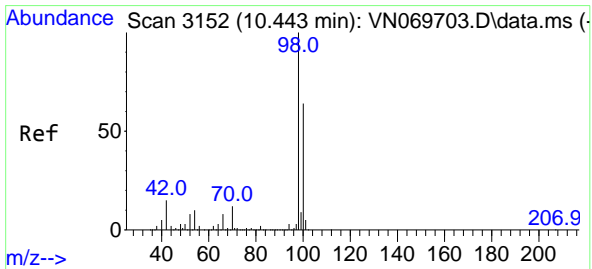
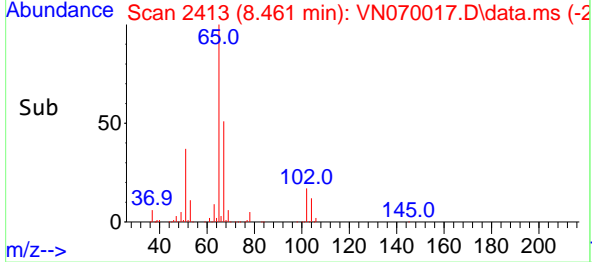
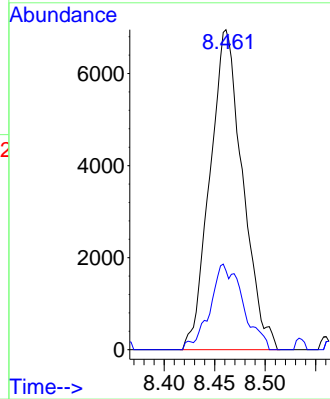


#40  
Benzene  
Concen: 0.256 ug/l  
RT: 8.461 min Scan# 2413  
Delta R.T. 0.000 min  
Lab File: VN070017.D  
Acq: 11 Dec 2021 19:02

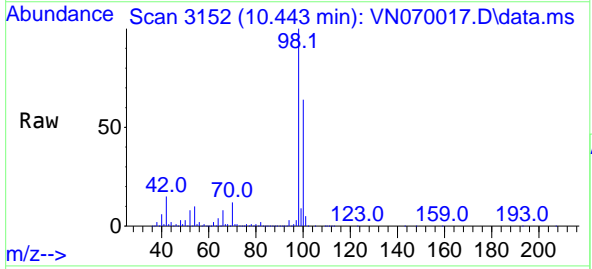
Instrument : MSVOA\_N  
ClientSampleId :



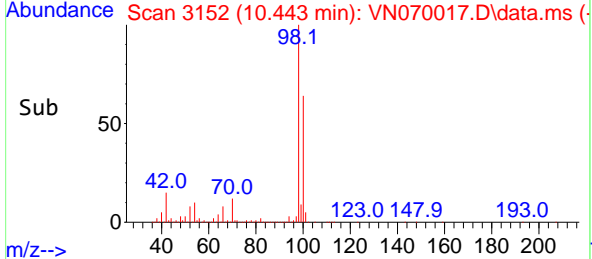
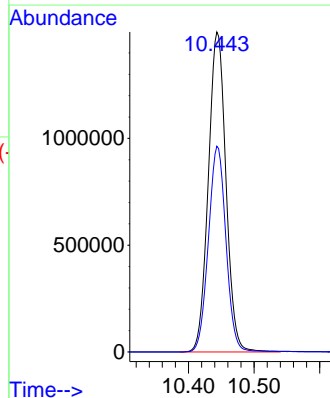
Tgt Ion: 78 Resp: 15659  
Ion Ratio Lower Upper  
78 100  
77 24.7 18.6 27.8



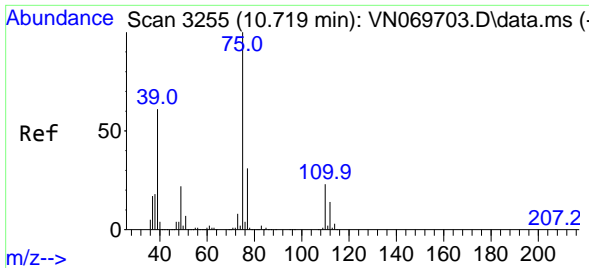
#50  
Toluene-d8  
Concen: 53.037 ug/l  
RT: 10.443 min Scan# 3152  
Delta R.T. 0.000 min  
Lab File: VN070017.D  
Acq: 11 Dec 2021 19:02



Tgt Ion: 98 Resp: 2798799  
Ion Ratio Lower Upper  
98 100  
100 64.0 50.4 75.6

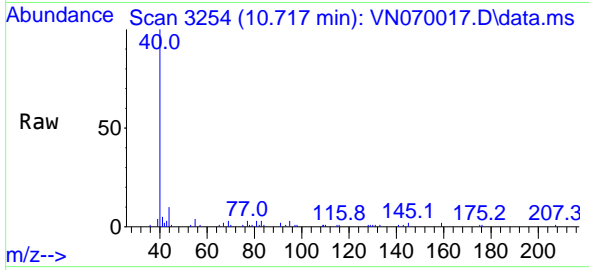




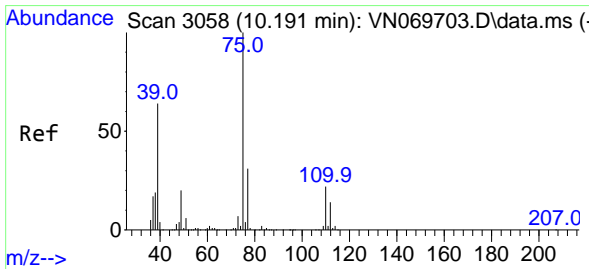
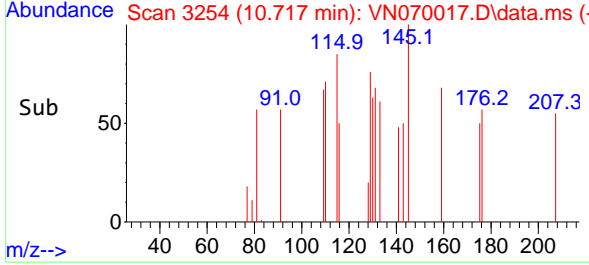
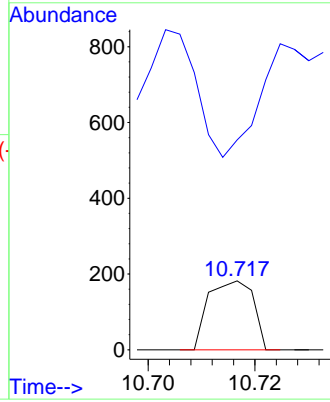


#53  
 t-1,3-Dichloropropene  
 Concen: 2.798 ug/l  
 RT: 10.717 min Scan# 3112  
 Delta R.T. -0.002 min  
 Lab File: VN070017.D  
 Acq: 11 Dec 2021 19:02

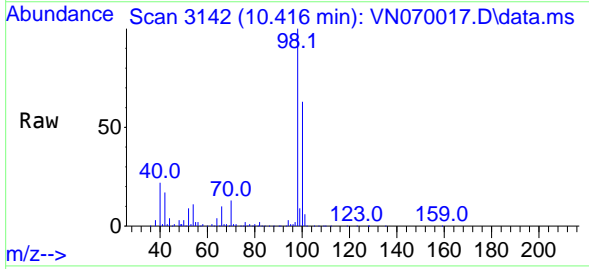
Instrument : MSVOA\_N  
 ClientSampleId :



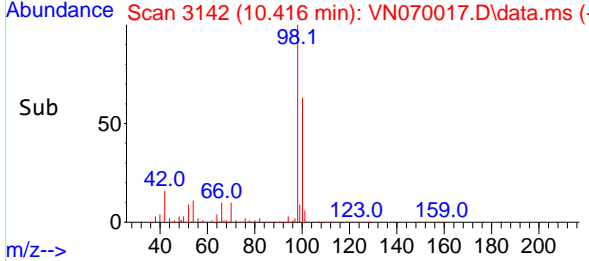
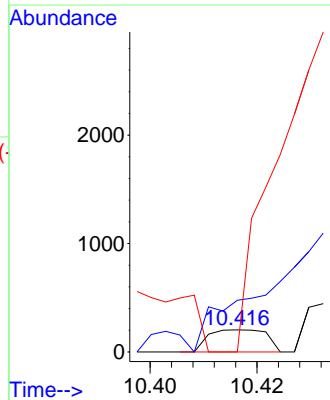
Tgt Ion: 75 Resp: 106  
 Ion Ratio Lower Upper  
 75 100  
 77 0.0 25.6 38.4#

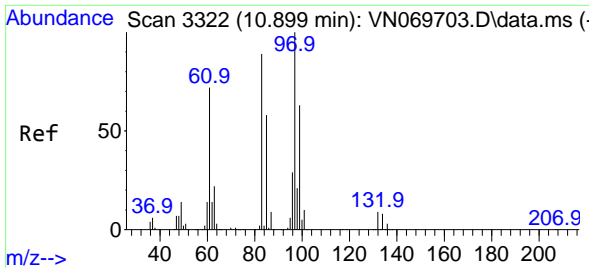


#54  
 cis-1,3-Dichloropropene  
 Concen: 2.004 ug/l  
 RT: 10.416 min Scan# 3142  
 Delta R.T. 0.225 min  
 Lab File: VN070017.D  
 Acq: 11 Dec 2021 19:02



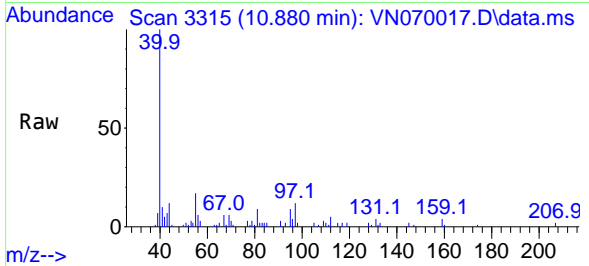
Tgt Ion: 75 Resp: 153  
 Ion Ratio Lower Upper  
 75 100  
 77 157.6 26.4 39.6#  
 39 0.0 42.5 63.7#





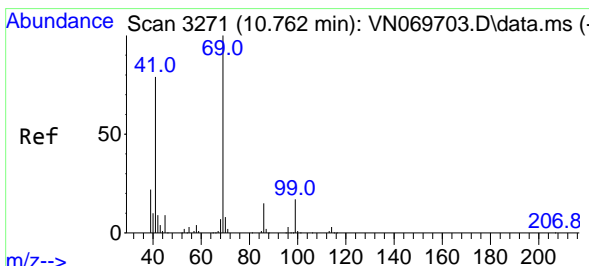
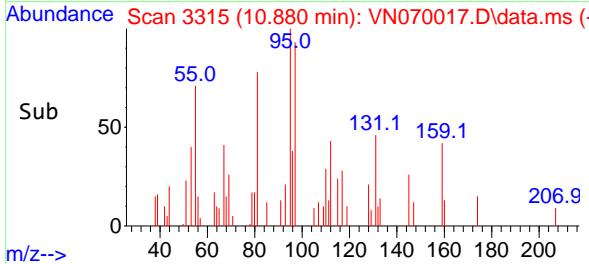
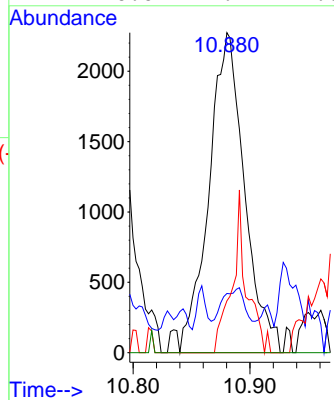
#55  
 1,1,2-Trichloroethane  
 Concen: 0.319 ug/l  
 RT: 10.880 min Scan# 31  
 Delta R.T. -0.019 min  
 Lab File: VN070017.D  
 Acq: 11 Dec 2021 19:02

Instrument :  
 MSVOA\_N  
 ClientSampleId :



Tgt Ion: 97 Resp: 4800

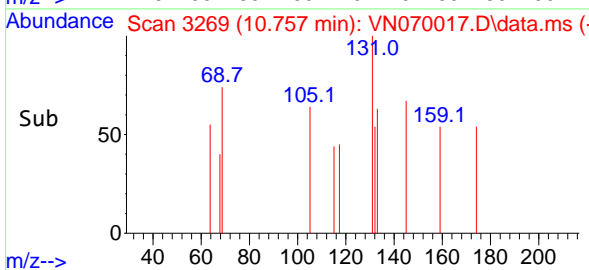
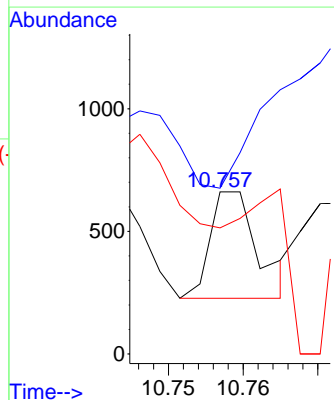
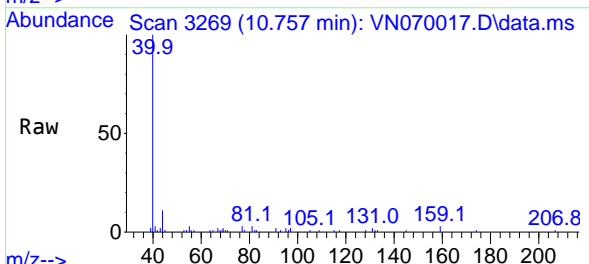
Ion	Ratio	Lower	Upper
97	100		
83	5.7	67.8	101.6#
85	16.2	45.4	68.2#
99	0.0	49.4	74.0#

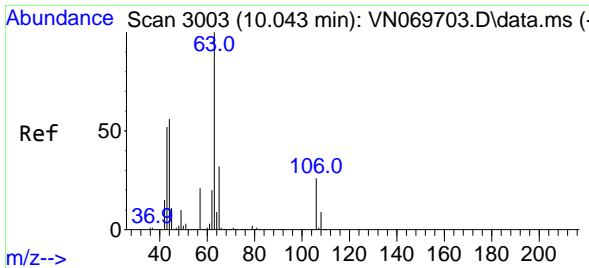


#56  
 Ethyl methacrylate  
 Concen: 2.286 ug/l  
 RT: 10.757 min Scan# 3269  
 Delta R.T. -0.005 min  
 Lab File: VN070017.D  
 Acq: 11 Dec 2021 19:02

Tgt Ion: 69 Resp: 194

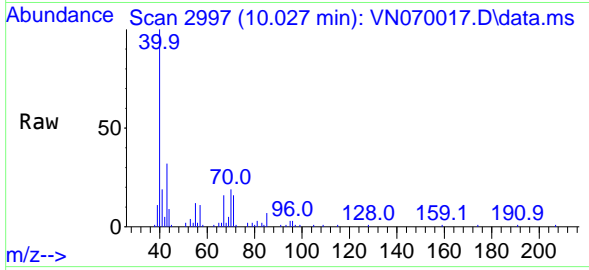
Ion	Ratio	Lower	Upper
69	100		
41	0.0	51.4	77.0#
39	274.2	34.6	52.0#



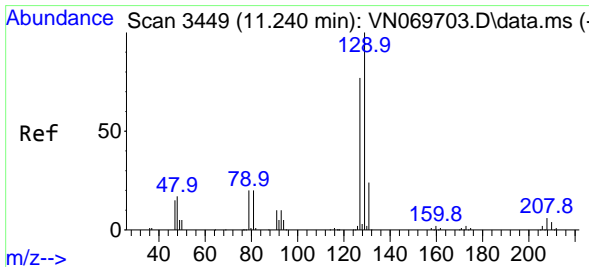
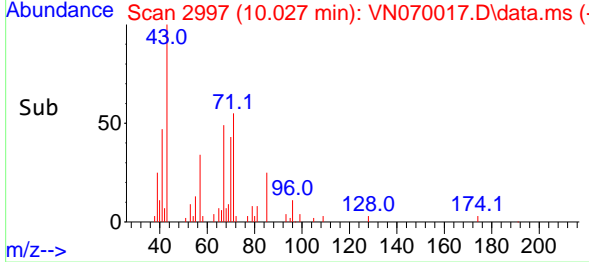
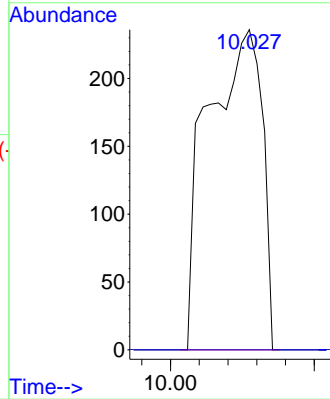


#58  
 2-Chloroethyl Vinyl ether  
 Concen: 18.426 ug/l  
 RT: 10.027 min Scan# 21  
 Delta R.T. -0.016 min  
 Lab File: VN070017.D  
 Acq: 11 Dec 2021 19:02

Instrument :  
 MSVOA\_N  
 ClientSampleId :

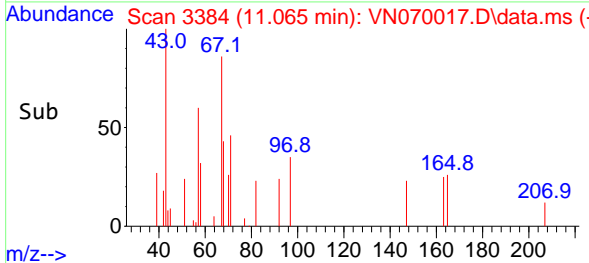
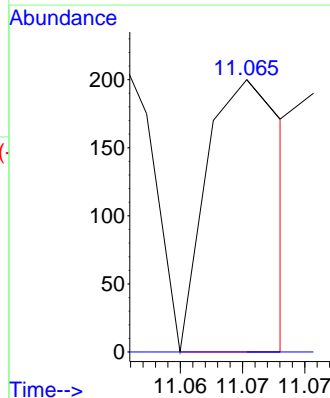
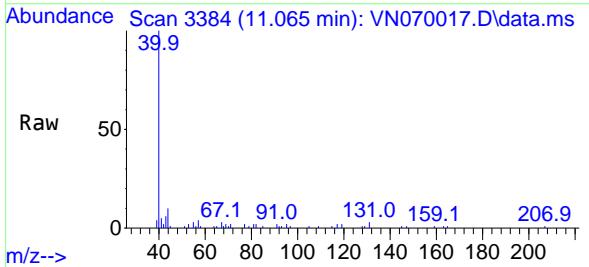


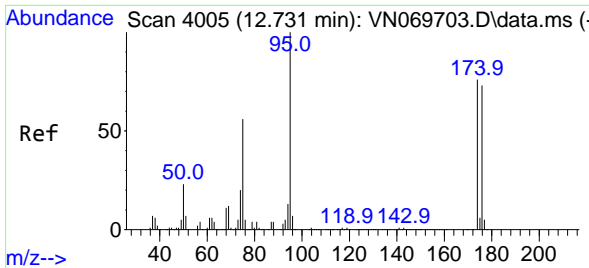
Tgt Ion: 63 Resp: 309  
 Ion Ratio Lower Upper  
 63 100  
 106 0.0 23.9 35.9#



#60  
 Dibromochloromethane  
 Concen: 2.381 ug/l  
 RT: 11.065 min Scan# 3384  
 Delta R.T. -0.175 min  
 Lab File: VN070017.D  
 Acq: 11 Dec 2021 19:02

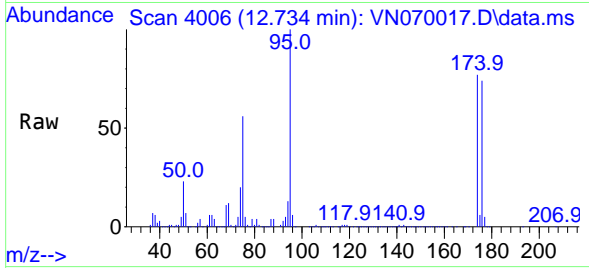
Tgt Ion:129 Resp: 87  
 Ion Ratio Lower Upper  
 129 100  
 127 57.5 38.6 116.0



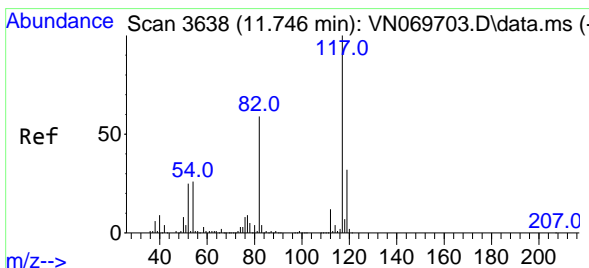
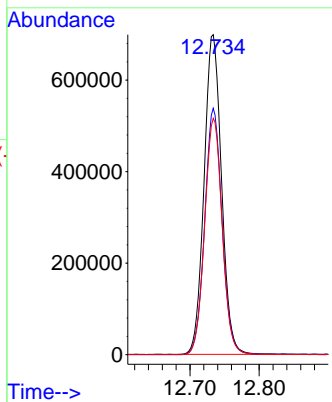
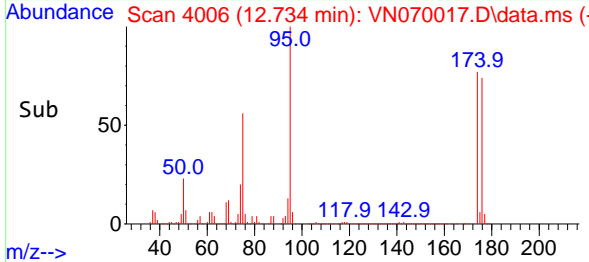


#62  
 4-Bromofluorobenzene  
 Concen: 63.941 ug/l  
 RT: 12.734 min Scan# 4005  
 Delta R.T. 0.003 min  
 Lab File: VN070017.D  
 Acq: 11 Dec 2021 19:02

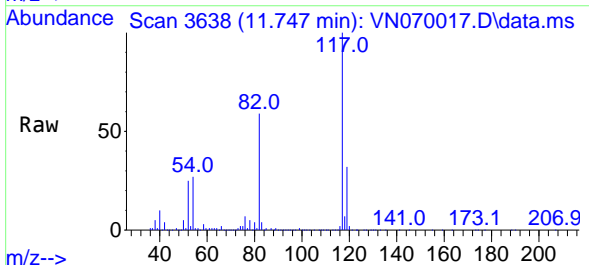
Instrument :  
 MSVOA\_N  
 ClientSampleId :



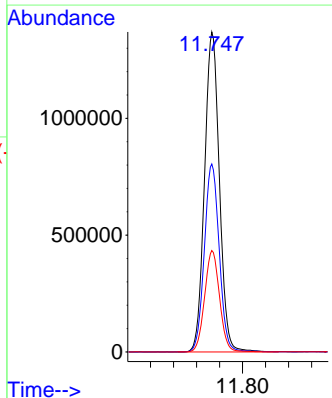
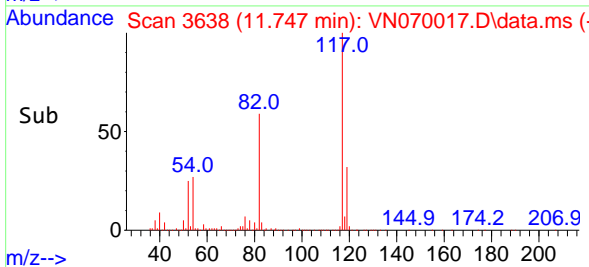
Tgt Ion: 95 Resp: 1222406  
 Ion Ratio Lower Upper  
 95 100  
 174 76.7 0.0 187.2  
 176 74.3 0.0 181.4

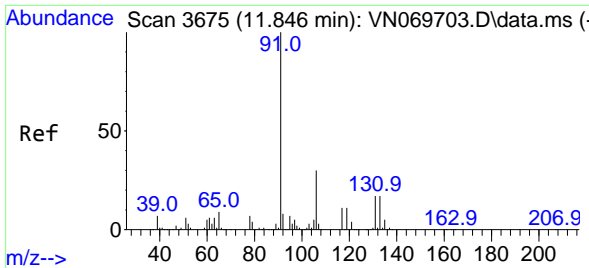


#63  
 Chlorobenzene-d5  
 Concen: 50.000 ug/l  
 RT: 11.747 min Scan# 3638  
 Delta R.T. 0.001 min  
 Lab File: VN070017.D  
 Acq: 11 Dec 2021 19:02



Tgt Ion: 117 Resp: 2450813  
 Ion Ratio Lower Upper  
 117 100  
 82 58.7 42.4 63.6  
 119 31.7 25.4 38.2

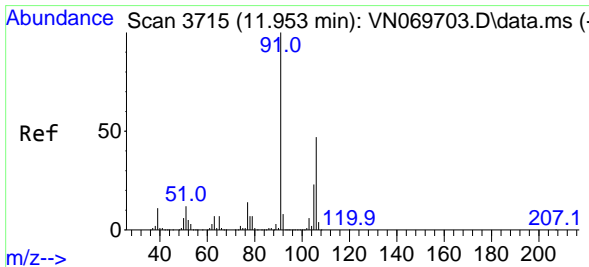
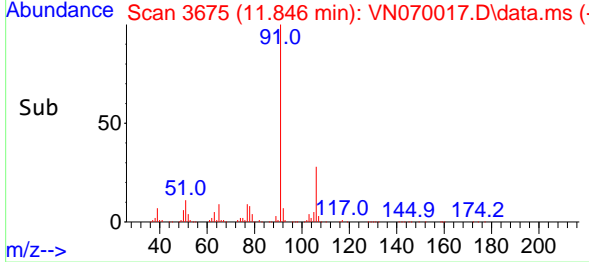
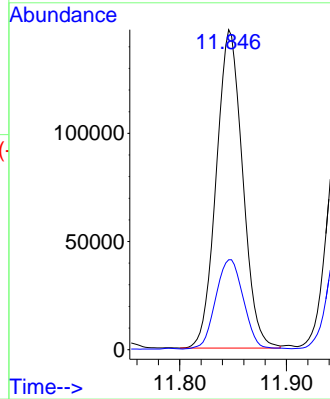
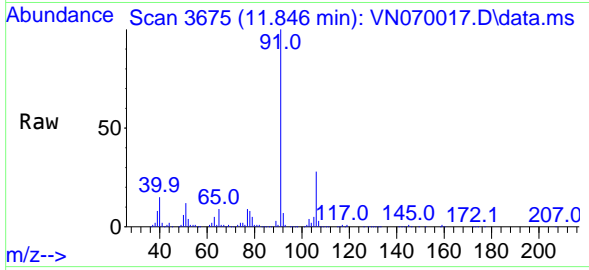




#67  
 Ethyl Benzene  
 Concen: 2.789 ug/l  
 RT: 11.846 min Scan# 30  
 Delta R.T. 0.000 min  
 Lab File: VN070017.D  
 Acq: 11 Dec 2021 19:02

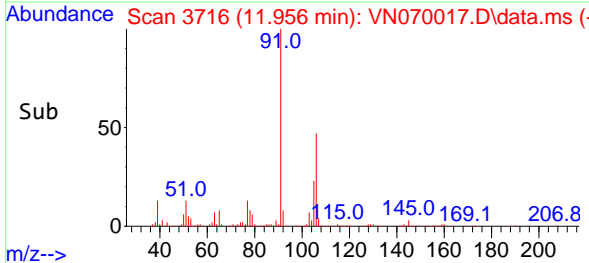
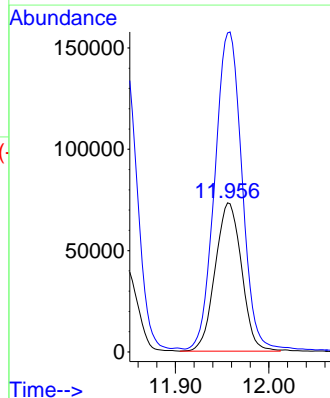
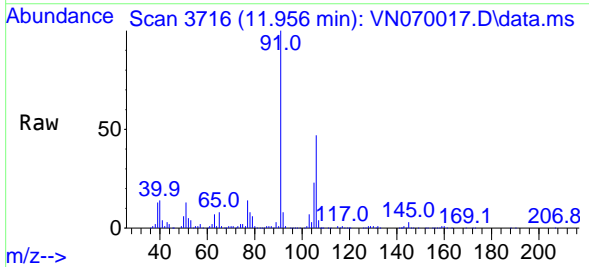
Instrument :  
 MSVOA\_N  
 ClientSampleId :

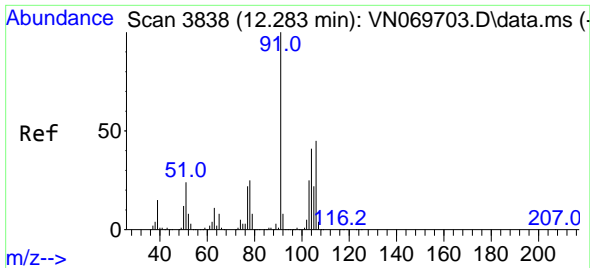
Tgt Ion: 91 Resp: 251932  
 Ion Ratio Lower Upper  
 91 100  
 106 28.0 25.7 38.5



#68  
 m/p-Xylenes  
 Concen: 4.365 ug/l  
 RT: 11.956 min Scan# 3716  
 Delta R.T. 0.003 min  
 Lab File: VN070017.D  
 Acq: 11 Dec 2021 19:02

Tgt Ion:106 Resp: 143530  
 Ion Ratio Lower Upper  
 106 100  
 91 220.6 160.6 240.8

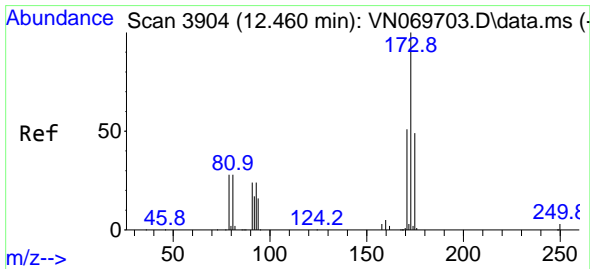
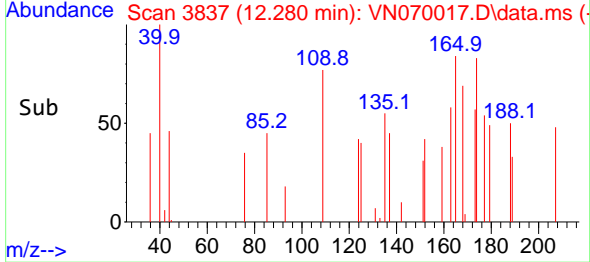
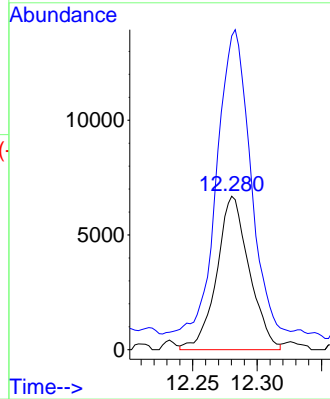
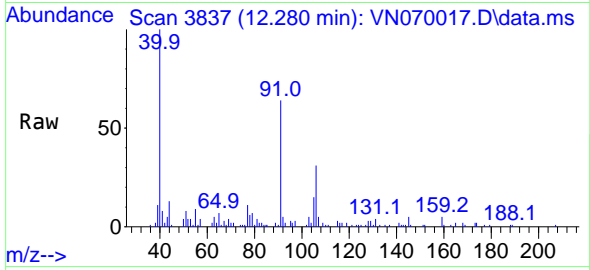




#69  
 o-Xylene  
 Concen: 0.354 ug/l  
 RT: 12.280 min Scan# 3838  
 Delta R.T. -0.003 min  
 Lab File: VN070017.D  
 Acq: 11 Dec 2021 19:02

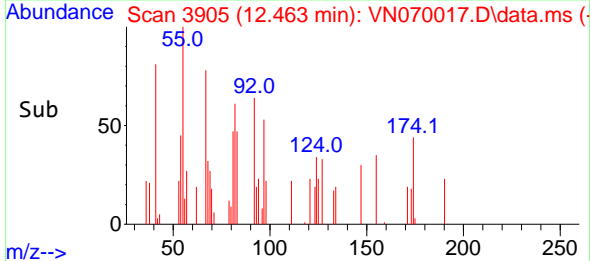
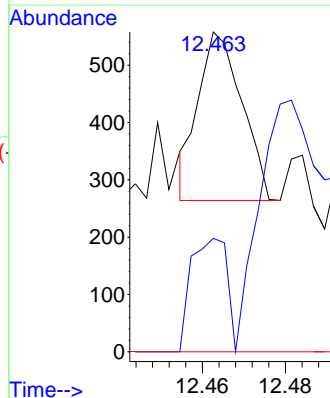
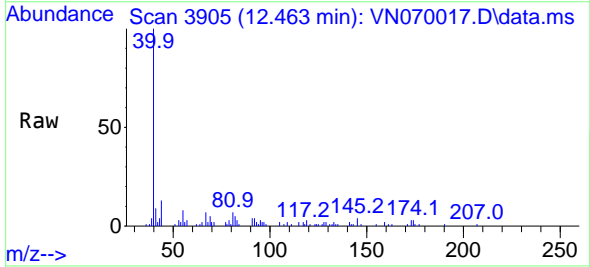
Instrument : MSVOA\_N  
 ClientSampleId :

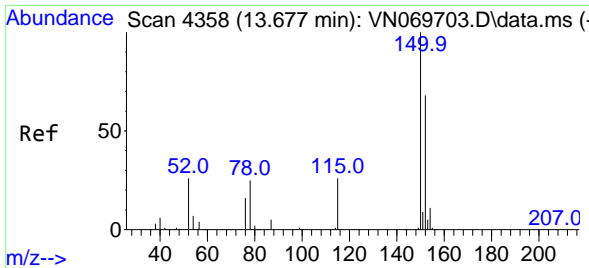
Tgt Ion:106 Resp: 11731  
 Ion Ratio Lower Upper  
 106 100  
 91 203.1 105.8 317.3



#71  
 Bromoform  
 Concen: 2.744 ug/l  
 RT: 12.463 min Scan# 3905  
 Delta R.T. 0.003 min  
 Lab File: VN070017.D  
 Acq: 11 Dec 2021 19:02

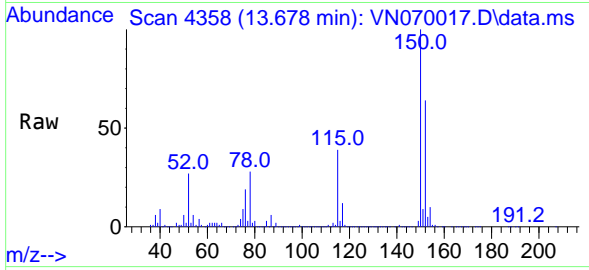
Tgt Ion:173 Resp: 214  
 Ion Ratio Lower Upper  
 173 100  
 175 0.0 24.2 72.6#  
 254 0.0 0.0 0.0



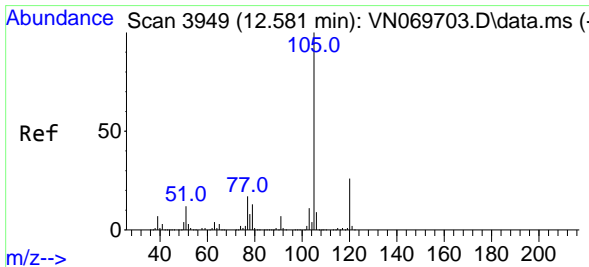
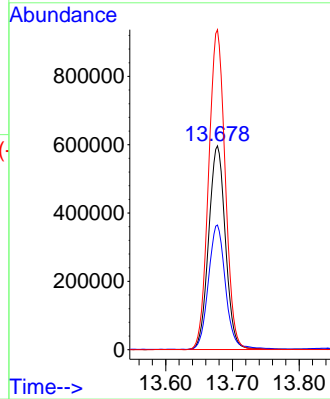
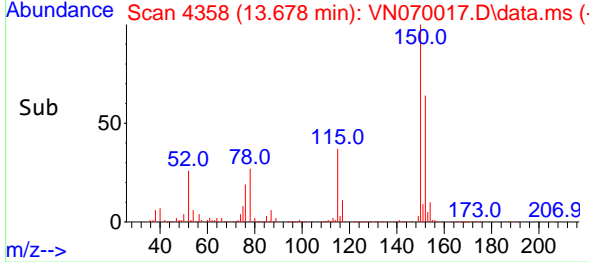


#72  
 1,4-Dichlorobenzene-d4  
 Concen: 50.000 ug/l  
 RT: 13.678 min Scan# 41  
 Delta R.T. 0.000 min  
 Lab File: VN070017.D  
 Acq: 11 Dec 2021 19:02

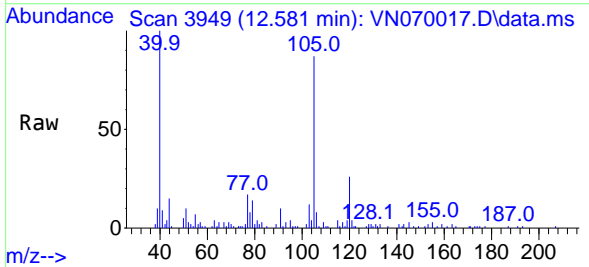
Instrument :  
 MSVOA\_N  
 ClientSampleId :



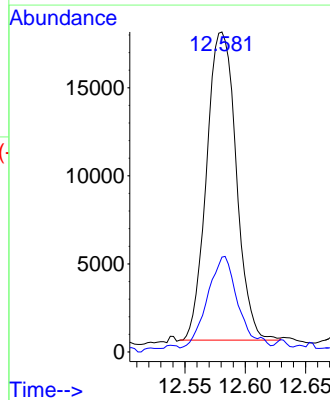
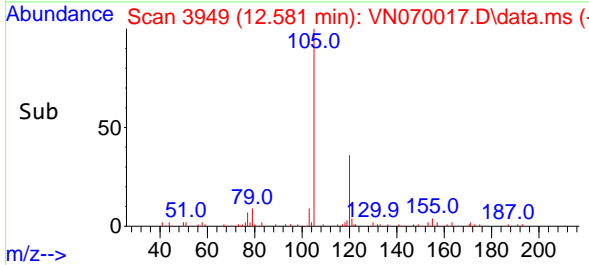
Tgt Ion:152 Resp: 1041171  
 Ion Ratio Lower Upper  
 152 100  
 115 62.4 27.5 82.5  
 150 155.5 0.0 344.4

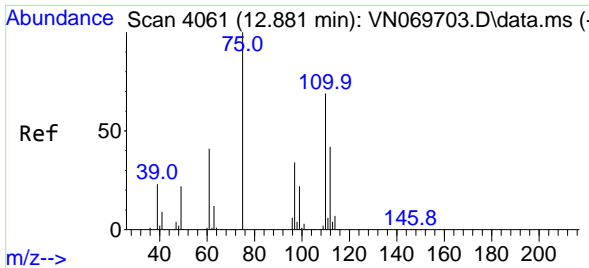


#73  
 Isopropylbenzene  
 Concen: 0.322 ug/l  
 RT: 12.581 min Scan# 3949  
 Delta R.T. 0.000 min  
 Lab File: VN070017.D  
 Acq: 11 Dec 2021 19:02



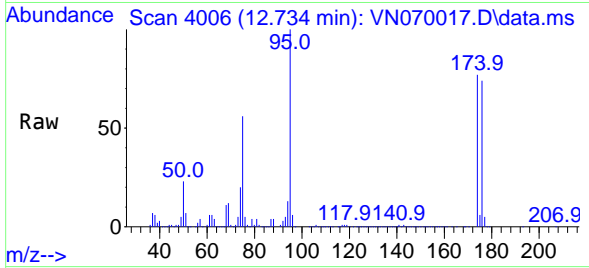
Tgt Ion:105 Resp: 29861  
 Ion Ratio Lower Upper  
 105 100  
 120 30.8 13.4 40.1



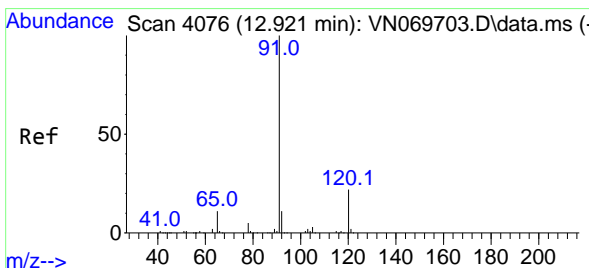
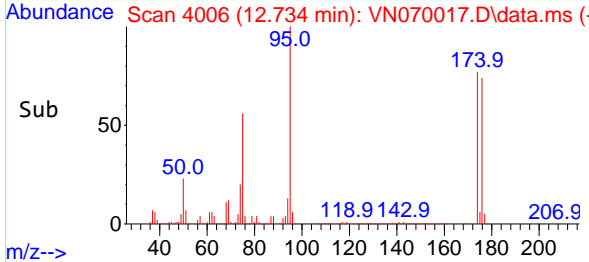
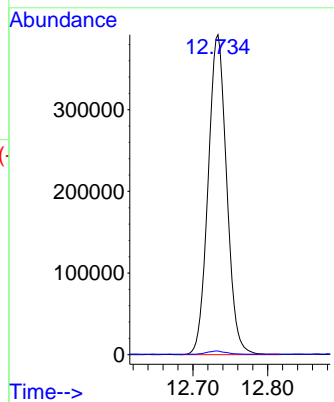


#76  
 1,2,3-Trichloropropane  
 Concen: 22.654 ug/l  
 RT: 12.734 min Scan# 4006  
 Delta R.T. -0.147 min  
 Lab File: VN070017.D  
 Acq: 11 Dec 2021 19:02

Instrument :  
 MSVOA\_N  
 ClientSampleId :

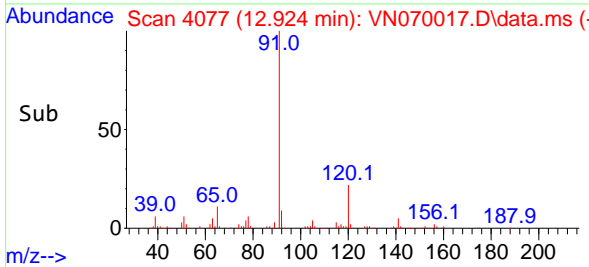
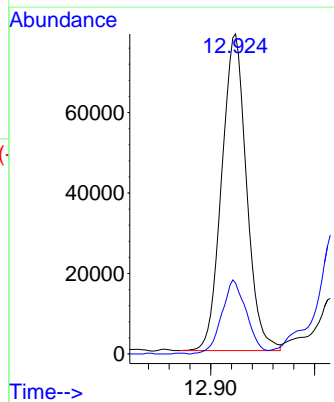
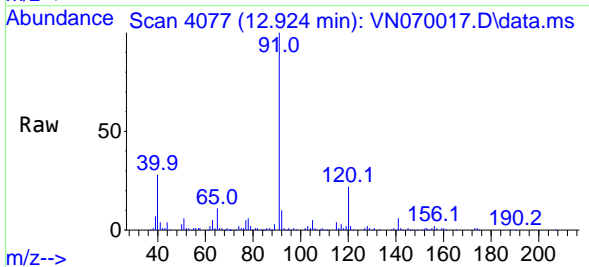


Tgt Ion: 75 Resp: 676401  
 Ion Ratio Lower Upper  
 75 100  
 77 1.0 82.6 247.8#

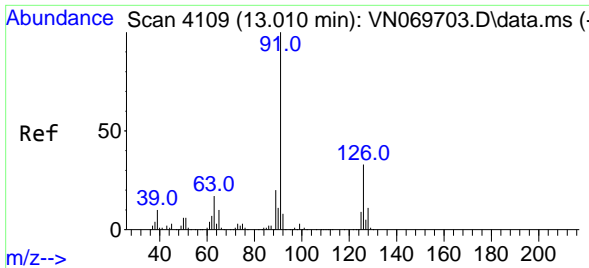


#78  
 n-propylbenzene  
 Concen: 1.266 ug/l  
 RT: 12.924 min Scan# 4077  
 Delta R.T. 0.003 min  
 Lab File: VN070017.D  
 Acq: 11 Dec 2021 19:02

Tgt Ion: 91 Resp: 130509  
 Ion Ratio Lower Upper  
 91 100  
 120 23.3 11.9 35.9

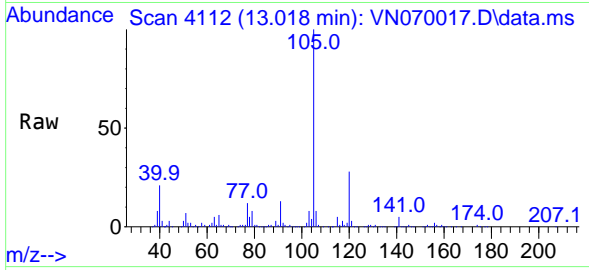




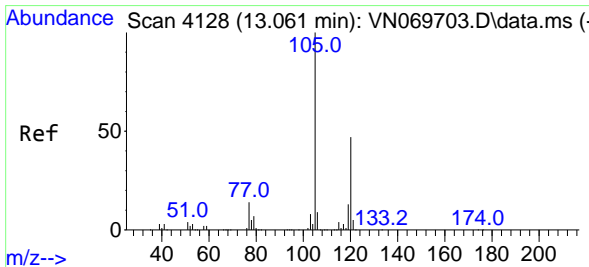
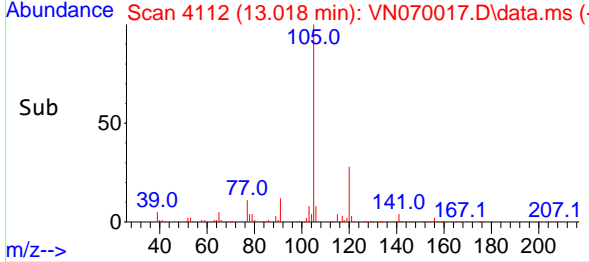
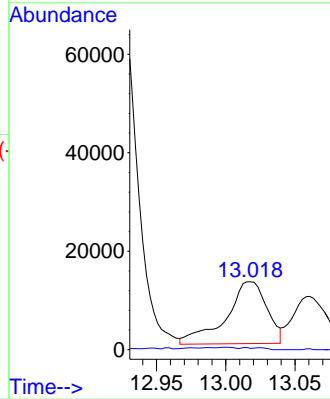


#79  
 2-Chlorotoluene  
 Concen: 0.399 ug/l  
 RT: 13.018 min Scan# 41  
 Delta R.T. 0.008 min  
 Lab File: VN070017.D  
 Acq: 11 Dec 2021 19:02

Instrument :  
 MSVOA\_N  
 ClientSampleId :

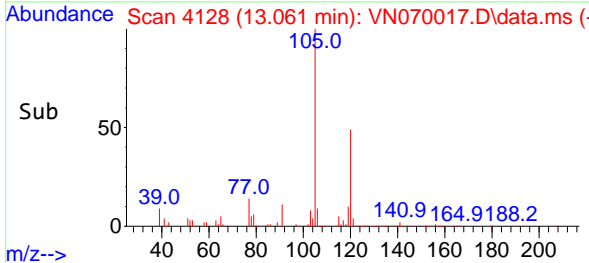
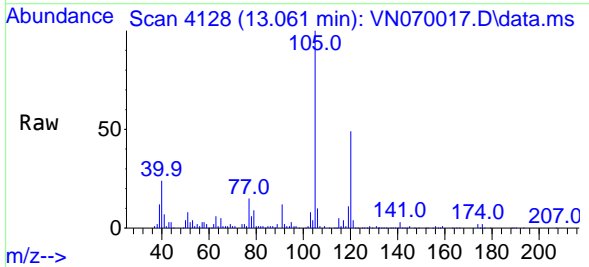
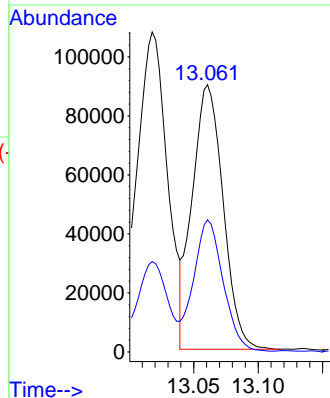


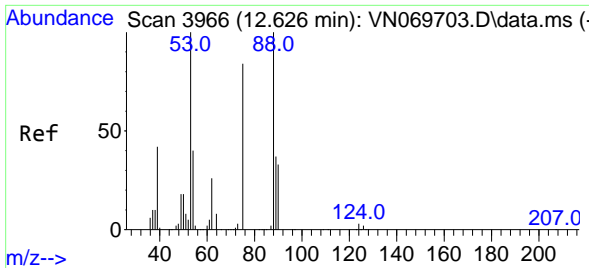
Tgt Ion: 91 Resp: 26002  
 Ion Ratio Lower Upper  
 91 100  
 126 0.7 18.3 54.8#



#80  
 1,3,5-Trimethylbenzene  
 Concen: 2.003 ug/l  
 RT: 13.061 min Scan# 4128  
 Delta R.T. 0.000 min  
 Lab File: VN070017.D  
 Acq: 11 Dec 2021 19:02

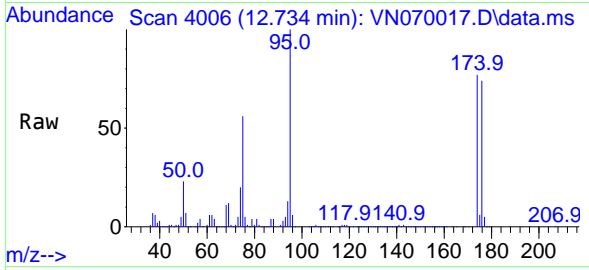
Tgt Ion: 105 Resp: 149307  
 Ion Ratio Lower Upper  
 105 100  
 120 47.2 24.6 73.6



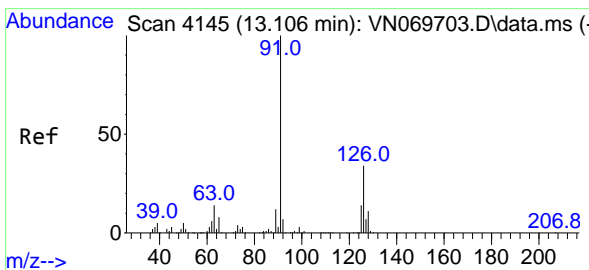
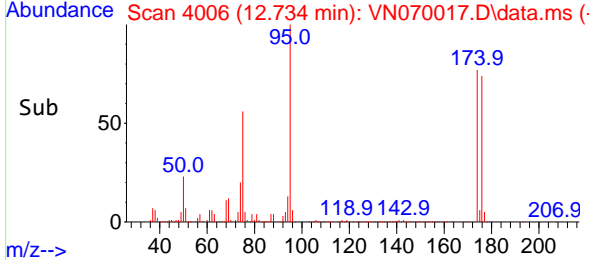
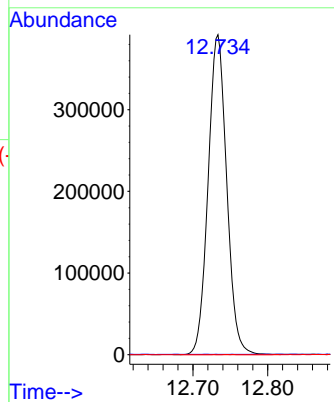


#81  
 trans-1,4-Dichloro-2-butene  
 Concen: 72.182 ug/l  
 RT: 12.734 min Scan# 4006  
 Delta R.T. 0.108 min  
 Lab File: VN070017.D  
 Acq: 11 Dec 2021 19:02

Instrument : MSVOA\_N  
 ClientSampleId :

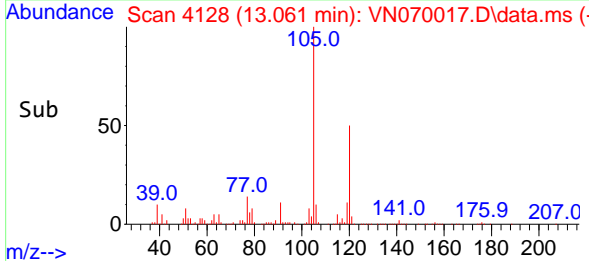
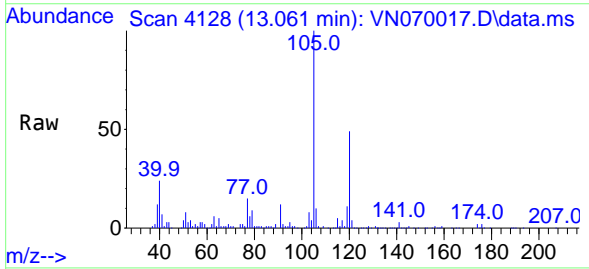
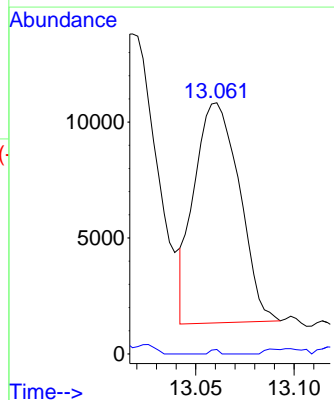


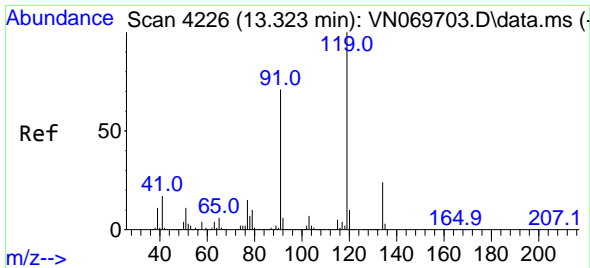
Tgt Ion: 75 Resp: 676401  
 Ion Ratio Lower Upper  
 75 100  
 53 0.0 90.5 135.7#  
 89 0.0 38.2 57.4#



#82  
 4-Chlorotoluene  
 Concen: 0.247 ug/l  
 RT: 13.061 min Scan# 4128  
 Delta R.T. -0.045 min  
 Lab File: VN070017.D  
 Acq: 11 Dec 2021 19:02

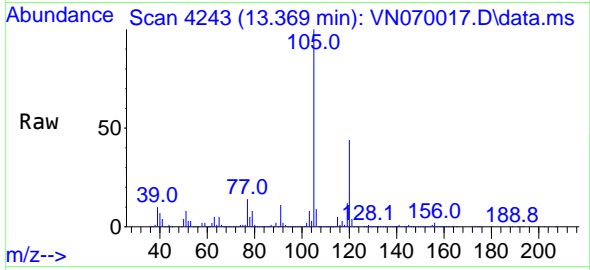
Tgt Ion: 91 Resp: 15108  
 Ion Ratio Lower Upper  
 91 100  
 126 0.4 18.2 54.6#



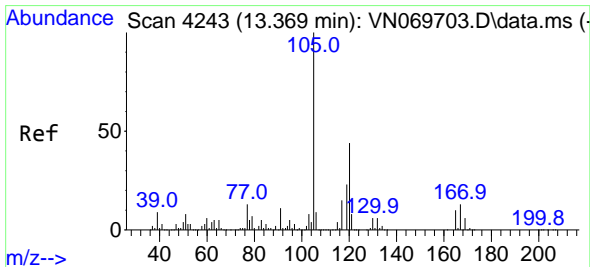
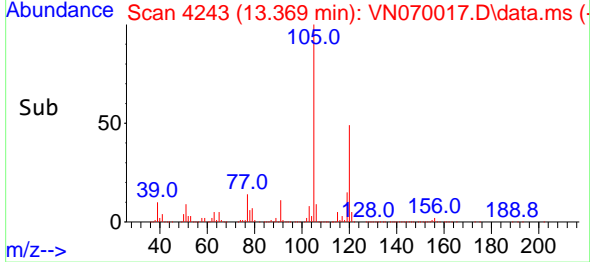
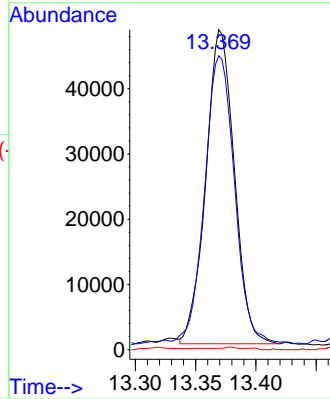


#83  
 tert-Butylbenzene  
 Concen: 1.199 ug/l  
 RT: 13.369 min Scan# 4226  
 Delta R.T. 0.046 min  
 Lab File: VN070017.D  
 Acq: 11 Dec 2021 19:02

Instrument :  
 MSVOA\_N  
 ClientSampleId :

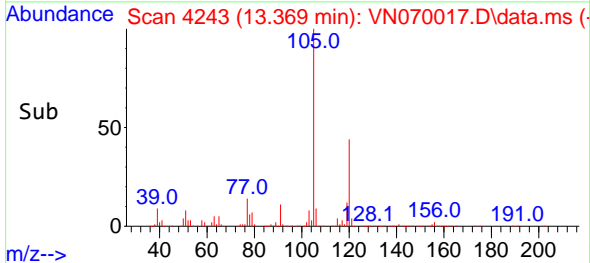
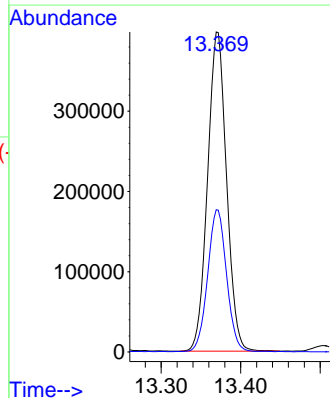
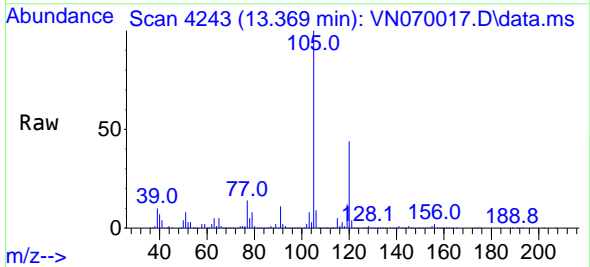


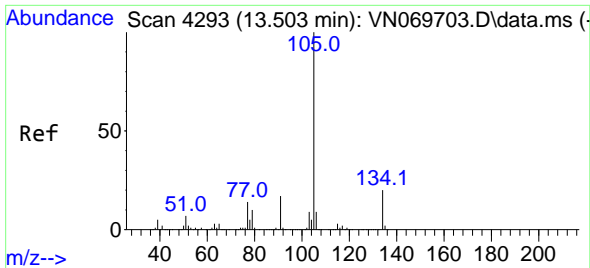
Tgt Ion:119 Resp: 79161  
 Ion Ratio Lower Upper  
 119 100  
 91 96.5 31.5 94.5#  
 134 0.2 12.4 37.4#



#84  
 1,2,4-Trimethylbenzene  
 Concen: 9.276 ug/l  
 RT: 13.369 min Scan# 4243  
 Delta R.T. 0.000 min  
 Lab File: VN070017.D  
 Acq: 11 Dec 2021 19:02

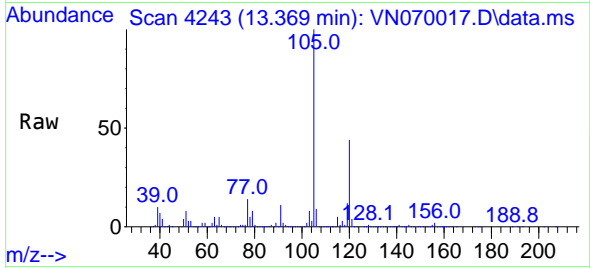
Tgt Ion:105 Resp: 658665  
 Ion Ratio Lower Upper  
 105 100  
 120 44.2 22.8 68.4



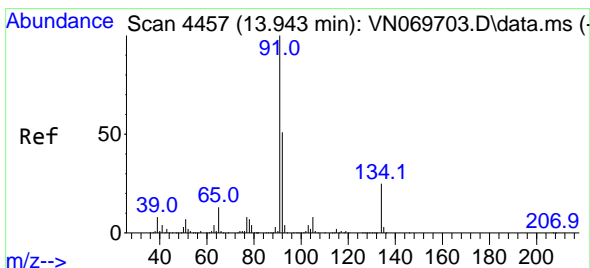
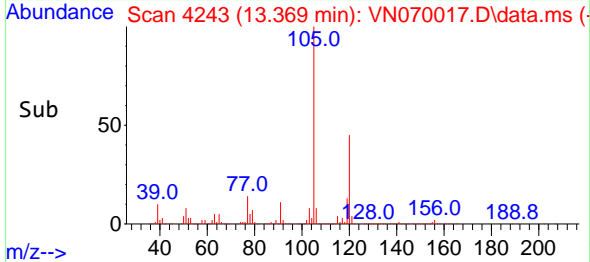
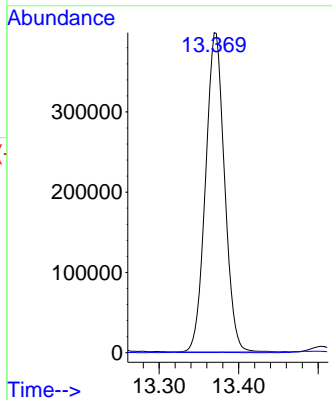


#85  
 sec-Butylbenzene  
 Concen: 7.355 ug/l  
 RT: 13.369 min Scan# 41  
 Delta R.T. -0.134 min  
 Lab File: VN070017.D  
 Acq: 11 Dec 2021 19:02

Instrument :  
 MSVOA\_N  
 ClientSampleId :

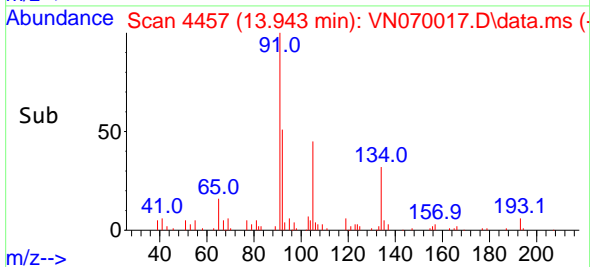
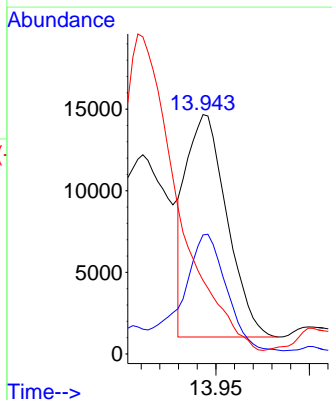
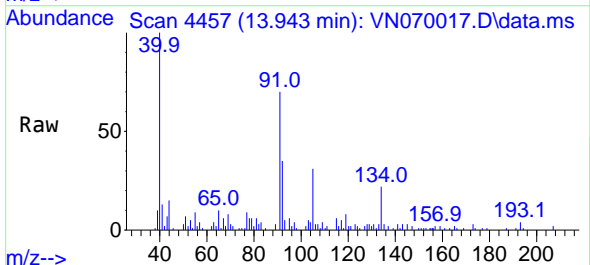


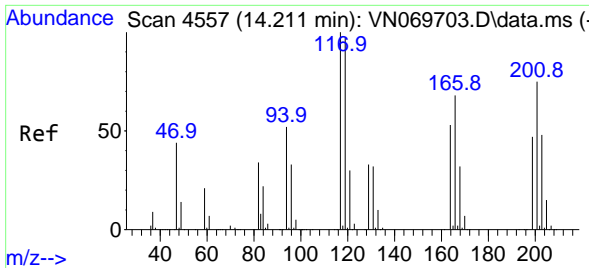
Tgt Ion:105 Resp: 658665  
 Ion Ratio Lower Upper  
 105 100  
 134 0.0 10.4 31.1#



#89  
 n-Butylbenzene  
 Concen: 0.363 ug/l  
 RT: 13.943 min Scan# 4457  
 Delta R.T. 0.000 min  
 Lab File: VN070017.D  
 Acq: 11 Dec 2021 19:02

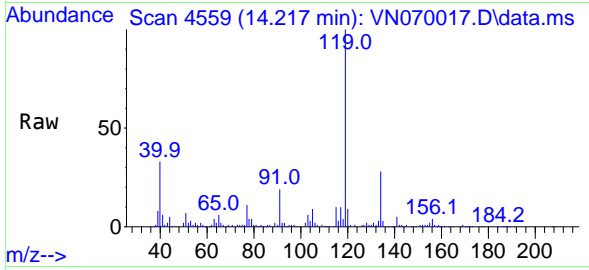
Tgt Ion: 91 Resp: 20620  
 Ion Ratio Lower Upper  
 91 100  
 92 57.6 25.4 76.0  
 134 0.0 13.6 40.8#



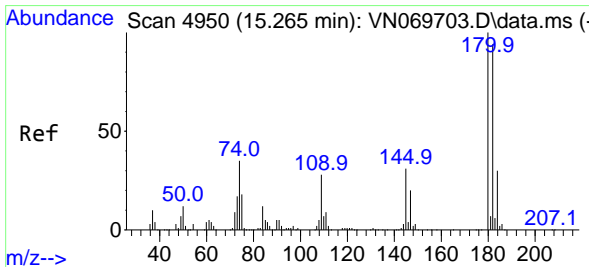
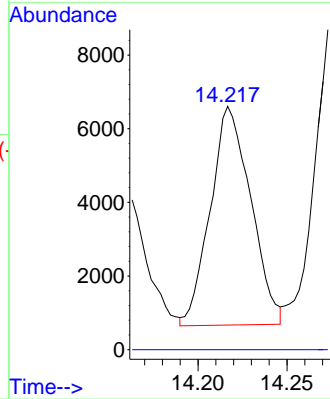
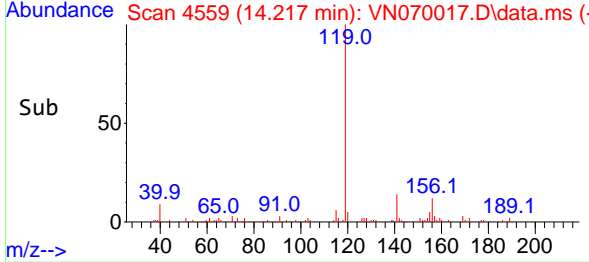


#90  
 Hexachloroethane  
 Concen: 0.763 ug/l  
 RT: 14.217 min Scan# 411  
 Delta R.T. 0.006 min  
 Lab File: VN070017.D  
 Acq: 11 Dec 2021 19:02

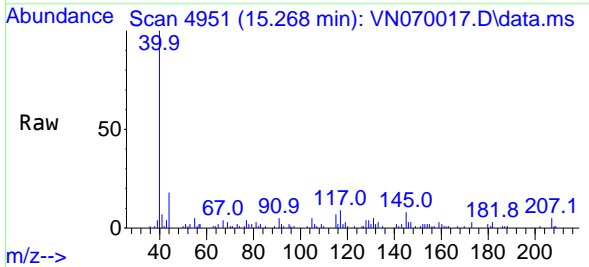
Instrument :  
 MSVOA\_N  
 ClientSampleId :



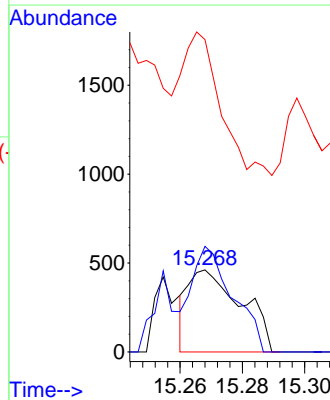
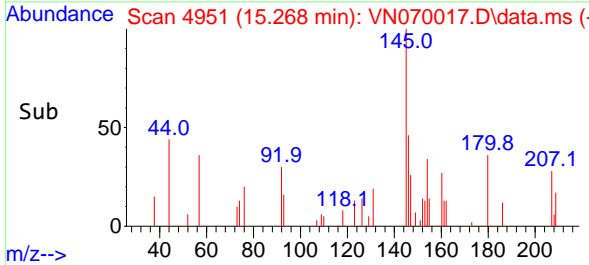
Tgt Ion:117 Resp: 9383  
 Ion Ratio Lower Upper  
 117 100  
 201 0.0 43.9 131.6#

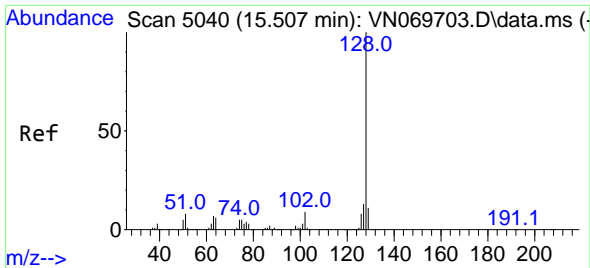


#93  
 1,2,4-Trichlorobenzene  
 Concen: 2.908 ug/l  
 RT: 15.268 min Scan# 4951  
 Delta R.T. 0.003 min  
 Lab File: VN070017.D  
 Acq: 11 Dec 2021 19:02



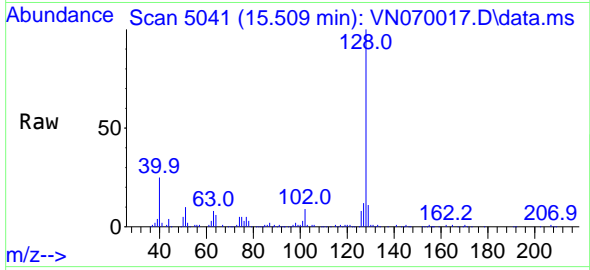
Tgt Ion:180 Resp: 545  
 Ion Ratio Lower Upper  
 180 100  
 182 99.4 48.3 144.9  
 145 0.0 14.5 43.5#



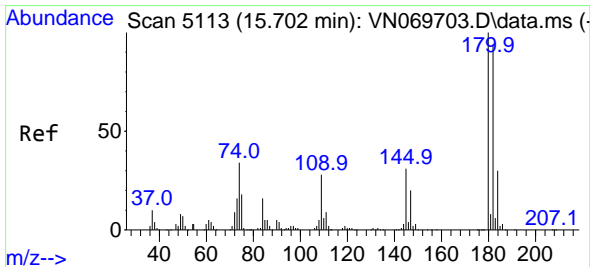
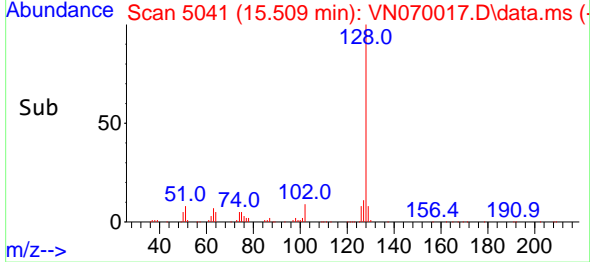
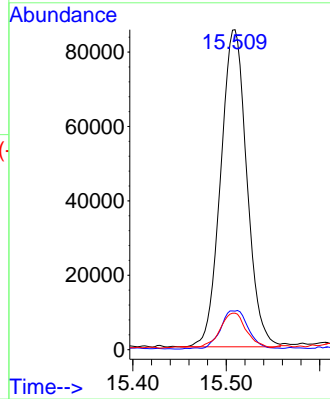


#95  
 Naphthalene  
 Concen: 6.989 ug/l  
 RT: 15.509 min Scan# 5040  
 Delta R.T. 0.002 min  
 Lab File: VN070017.D  
 Acq: 11 Dec 2021 19:02

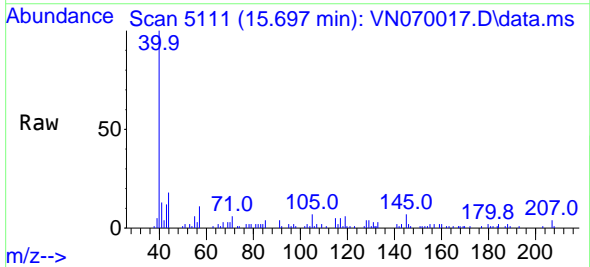
Instrument :  
 MSVOA\_N  
 ClientSampleId :



Tgt Ion:128 Resp: 166098  
 Ion Ratio Lower Upper  
 128 100  
 127 12.3 10.5 15.7  
 129 10.8 8.7 13.1



#96  
 1,2,3-Trichlorobenzene  
 Concen: 2.448 ug/l  
 RT: 15.697 min Scan# 5111  
 Delta R.T. -0.005 min  
 Lab File: VN070017.D  
 Acq: 11 Dec 2021 19:02



Tgt Ion:180 Resp: 210  
 Ion Ratio Lower Upper  
 180 100  
 182 228.1 47.4 142.2#  
 145 569.5 15.0 45.1#

