

Data Path : Z:\voasrv\HPCHEM1\MSVOA_N\Data\VN121121\
 Data File : VN070009.D
 Acq On : 11 Dec 2021 15:36
 Operator : JC/MD
 Sample : M4873-12
 Misc : 7.07g/10mL/100uL/5.00mL/MSVOA_N/MEOH
 ALS Vial : 11 Sample Multiplier: 1

Instrument :
 MSVOA_N
 ClientSampleId :
 A6-19-4.5

Quant Time: Dec 12 16:21:36 2021
 Quant Method : Z:\voasrv\HPCHEM1\MSVOA_N\methods\82N120221W.M
 Quant Title : SW846 8260
 QLast Update : Fri Dec 03 08:46:47 2021
 Response via : Initial Calibration

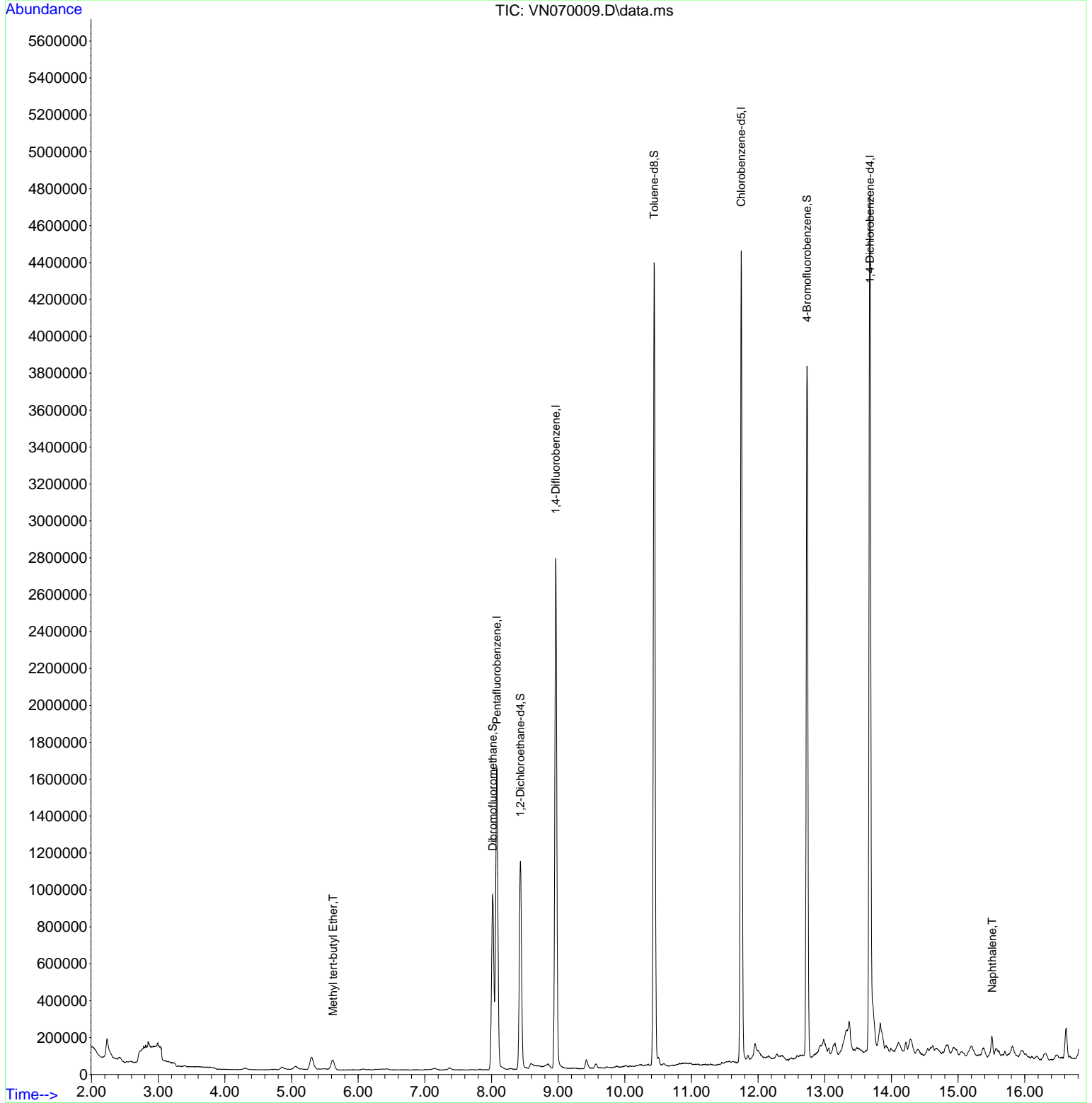
Compound	R.T.	QIon	Response	Conc	Units	Dev(Min)
Internal Standards						
1) Pentafluorobenzene	8.080	168	1218001	50.00	ug/l	0.00
34) 1,4-Difluorobenzene	8.965	114	2303984	50.00	ug/l	0.00
63) Chlorobenzene-d5	11.746	117	2411312	50.00	ug/l	0.00
72) 1,4-Dichlorobenzene-d4	13.677	152	1211438	50.00	ug/l	0.00
System Monitoring Compounds						
33) 1,2-Dichloroethane-d4	8.434	65	969994	51.58	ug/l	0.00
Spiked Amount	50.000	Range	61 - 141	Recovery	=	103.16%
35) Dibromofluoromethane	8.018	113	695611	48.20	ug/l	0.00
Spiked Amount	50.000	Range	69 - 133	Recovery	=	96.40%
50) Toluene-d8	10.440	98	2963528	51.14	ug/l	0.00
Spiked Amount	50.000	Range	65 - 126	Recovery	=	102.28%
62) 4-Bromofluorobenzene	12.733	95	1266410	60.32	ug/l	0.00
Spiked Amount	50.000	Range	58 - 135	Recovery	=	120.64%
Target Compounds						
19) Methyl tert-butyl Ether	5.623	73	80742	1.79	ug/l	92
95) Naphthalene	15.509	128	97055	5.49	ug/l	98

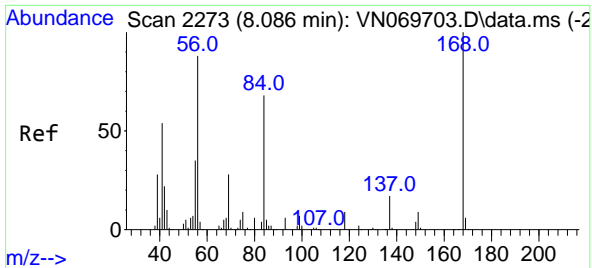
(#) = qualifier out of range (m) = manual integration (+) = signals summed

Data Path : Z:\voasrv\HPCHEM1\MSVOA_N\Data\VN121121\
 Data File : VN070009.D
 Acq On : 11 Dec 2021 15:36
 Operator : JC/MD
 Sample : M4873-12
 Misc : 7.07g/10mL/100uL/5.00mL/MSVOA_N/MEOH
 ALS Vial : 11 Sample Multiplier: 1

Instrument :
 MSVOA_N
 ClientSampleId :
 A6-19-4.5

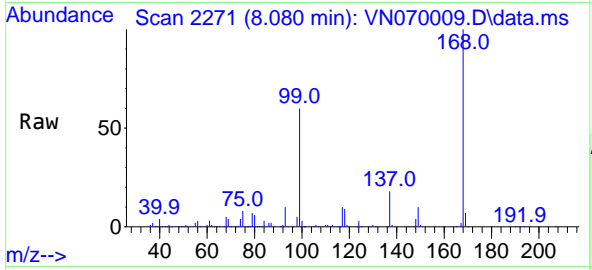
Quant Time: Dec 12 16:21:36 2021
 Quant Method : Z:\voasrv\HPCHEM1\MSVOA_N\methods\82N120221W.M
 Quant Title : SW846 8260
 QLast Update : Fri Dec 03 08:46:47 2021
 Response via : Initial Calibration



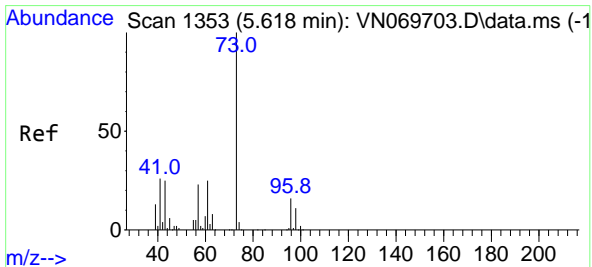
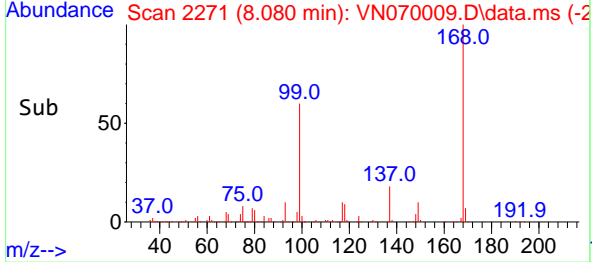
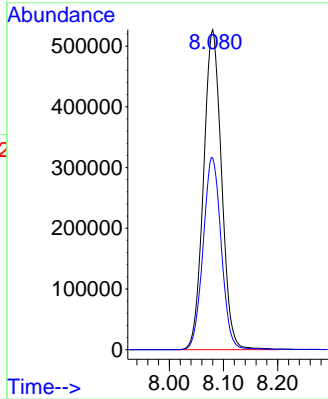


#1
 Pentafluorobenzene
 Concen: 50.00 ug/l
 RT: 8.080 min Scan# 21
 Delta R.T. -0.006 min
 Lab File: VN070009.D
 Acq: 11 Dec 2021 15:36

Instrument :
 MSVOA_N
 ClientSampleId :
 A6-19-4.5

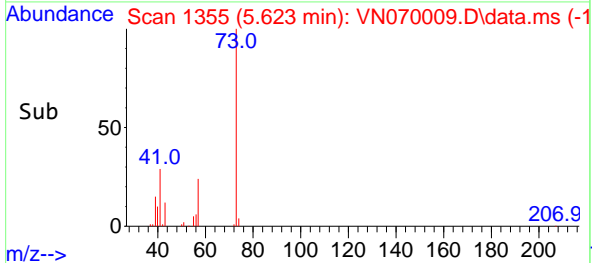
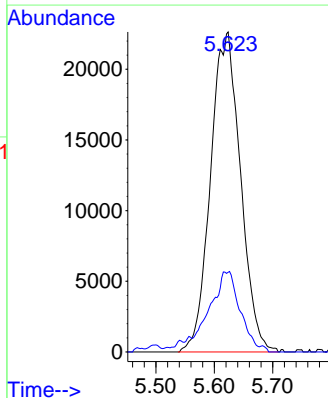
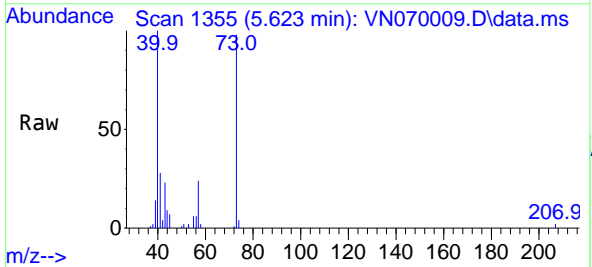


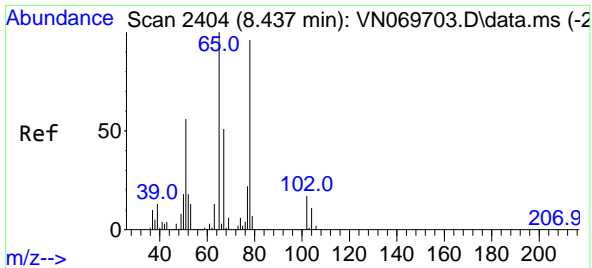
Tgt Ion:168 Resp: 1218001
 Ion Ratio Lower Upper
 168 100
 99 59.8 41.3 61.9



#19
 Methyl tert-butyl Ether
 Concen: 1.79 ug/l
 RT: 5.623 min Scan# 1355
 Delta R.T. 0.005 min
 Lab File: VN070009.D
 Acq: 11 Dec 2021 15:36

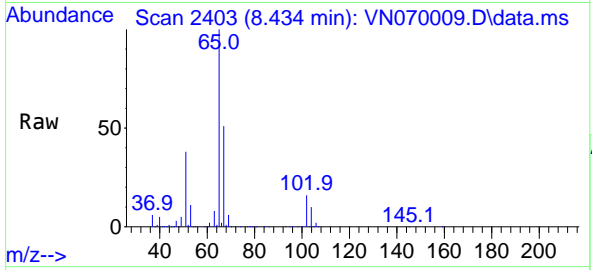
Tgt Ion: 73 Resp: 80742
 Ion Ratio Lower Upper
 73 100
 57 24.9 16.8 25.2



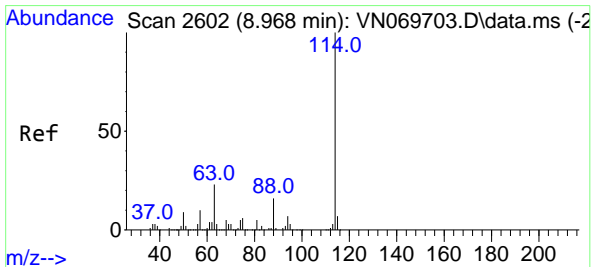
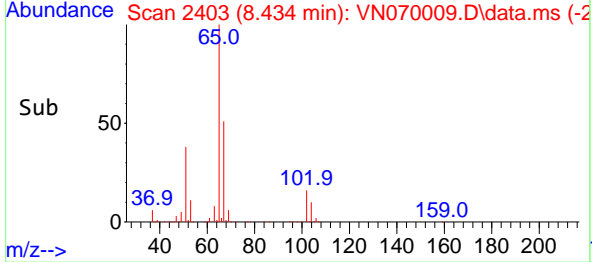
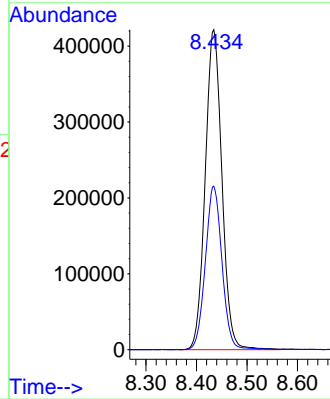


#33
 1,2-Dichloroethane-d4
 Concen: 51.58 ug/l
 RT: 8.434 min Scan# 24
 Delta R.T. -0.003 min
 Lab File: VN070009.D
 Acq: 11 Dec 2021 15:36

Instrument : MSVOA_N
 ClientSampleId : A6-19-4.5

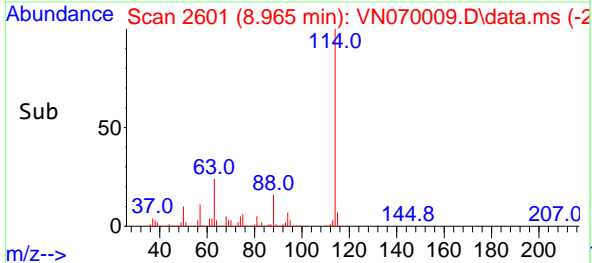
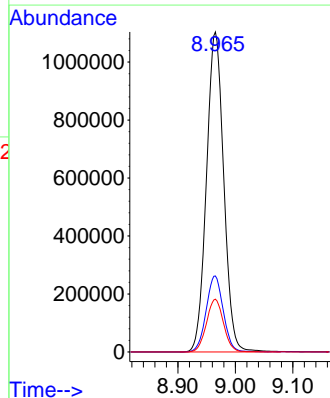
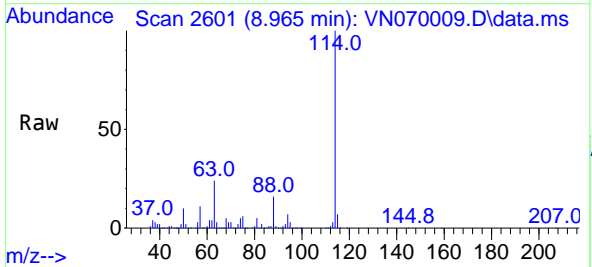


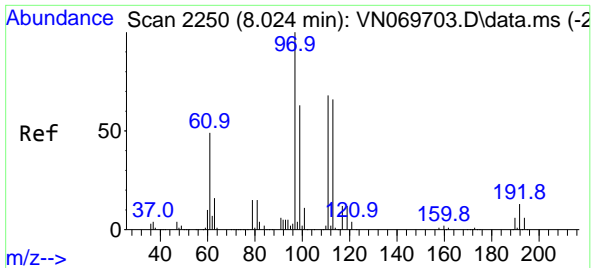
Tgt Ion: 65 Resp: 969994
 Ion Ratio Lower Upper
 65 100
 67 50.8 0.0 103.0



#34
 1,4-Difluorobenzene
 Concen: 50.00 ug/l
 RT: 8.965 min Scan# 2601
 Delta R.T. -0.003 min
 Lab File: VN070009.D
 Acq: 11 Dec 2021 15:36

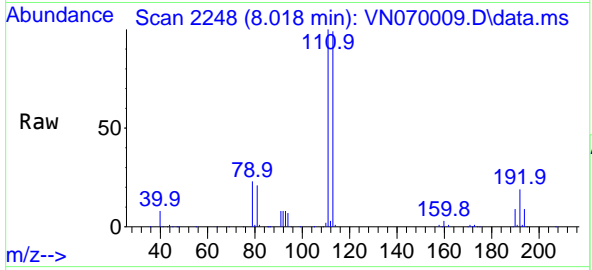
Tgt Ion: 114 Resp: 2303984
 Ion Ratio Lower Upper
 114 100
 63 23.7 0.0 37.8
 88 16.5 0.0 27.4



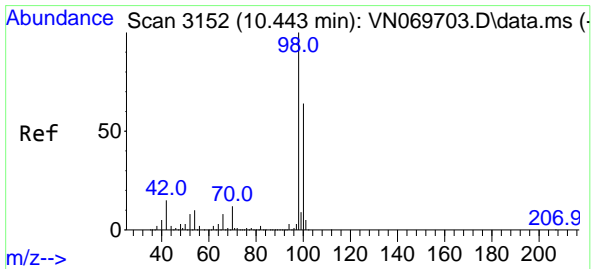
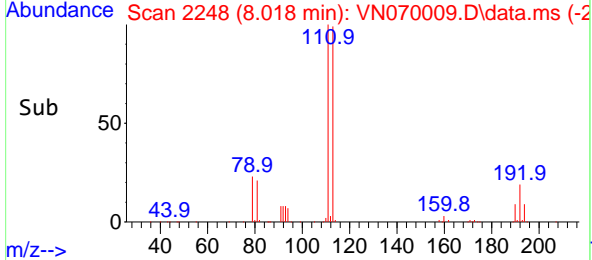
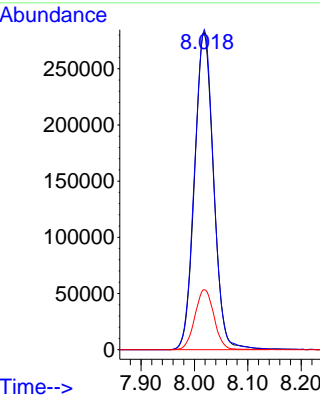


#35
 Dibromofluoromethane
 Concen: 48.20 ug/l
 RT: 8.018 min Scan# 21
 Delta R.T. -0.005 min
 Lab File: VN070009.D
 Acq: 11 Dec 2021 15:36

Instrument : MSVOA_N
 ClientSampleId : A6-19-4.5

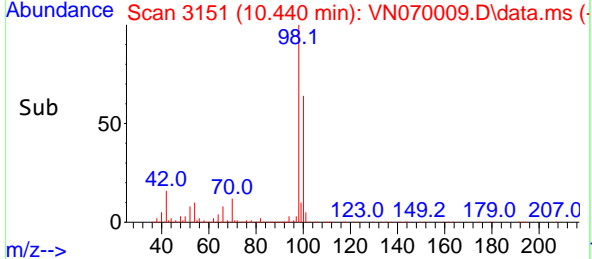
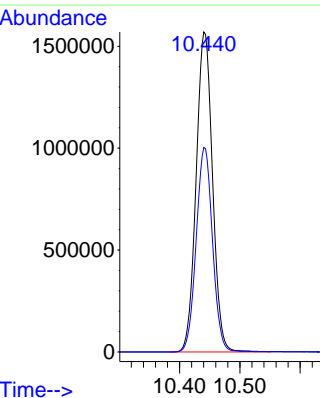
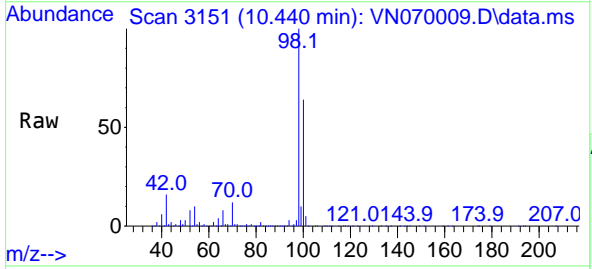


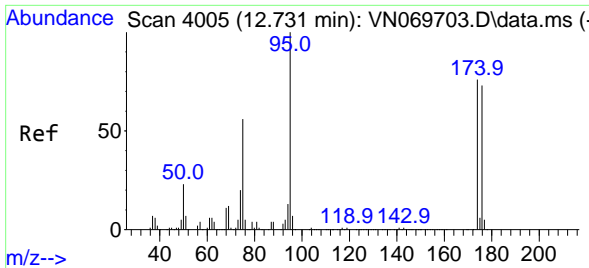
Tgt Ion:113 Resp: 695611
 Ion Ratio Lower Upper
 113 100
 111 101.8 82.2 123.2
 192 19.0 16.9 25.3



#50
 Toluene-d8
 Concen: 51.14 ug/l
 RT: 10.440 min Scan# 3151
 Delta R.T. -0.003 min
 Lab File: VN070009.D
 Acq: 11 Dec 2021 15:36

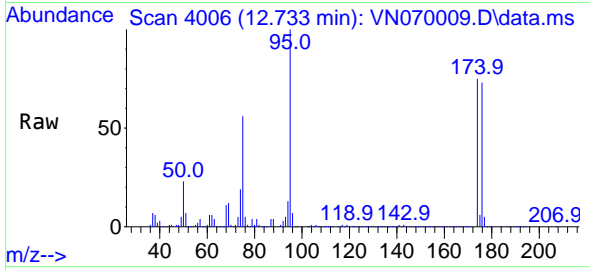
Tgt Ion: 98 Resp: 2963528
 Ion Ratio Lower Upper
 98 100
 100 63.7 50.4 75.6



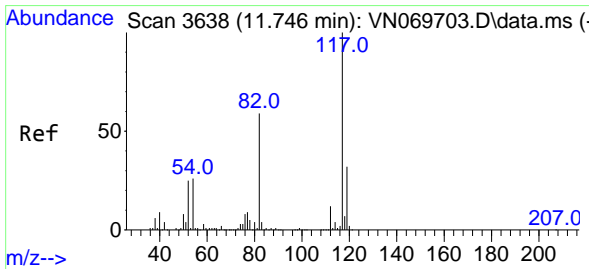
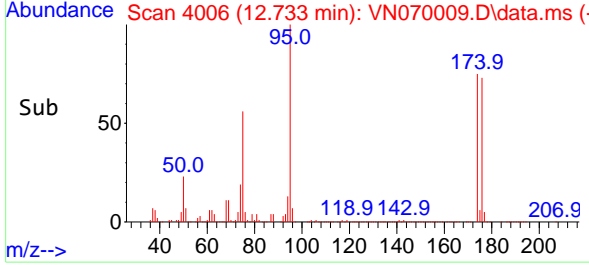
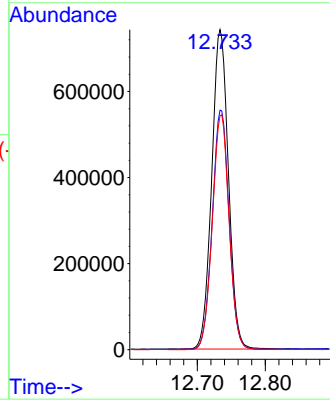


#62
 4-Bromofluorobenzene
 Concen: 60.32 ug/l
 RT: 12.733 min Scan# 4005
 Delta R.T. 0.002 min
 Lab File: VN070009.D
 Acq: 11 Dec 2021 15:36

Instrument :
 MSVOA_N
 ClientSampleId :
 A6-19-4.5

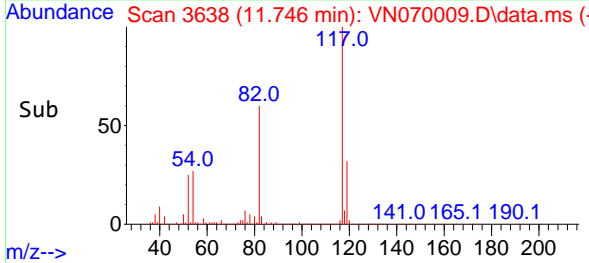
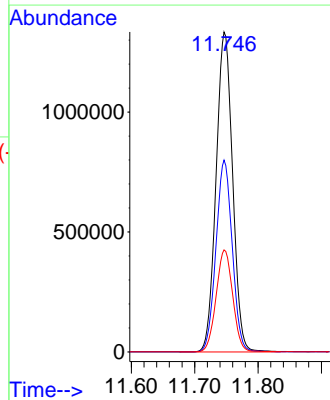
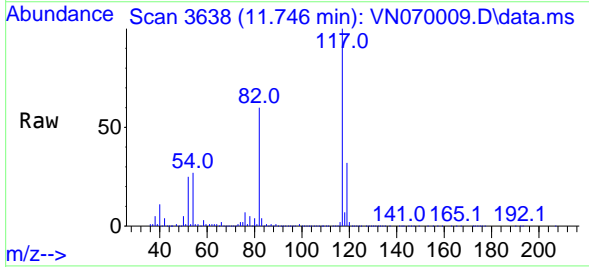


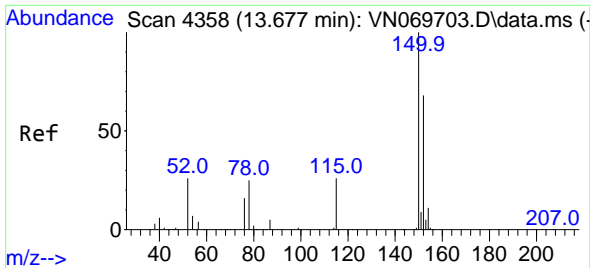
Tgt Ion: 95 Resp: 1266410
 Ion Ratio Lower Upper
 95 100
 174 75.2 0.0 187.2
 176 73.7 0.0 181.4



#63
 Chlorobenzene-d5
 Concen: 50.00 ug/l
 RT: 11.746 min Scan# 3638
 Delta R.T. 0.000 min
 Lab File: VN070009.D
 Acq: 11 Dec 2021 15:36

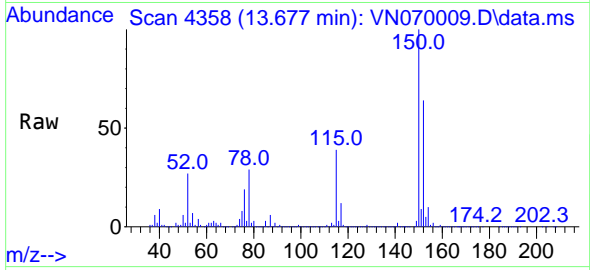
Tgt Ion: 117 Resp: 2411312
 Ion Ratio Lower Upper
 117 100
 82 59.9 42.4 63.6
 119 31.9 25.4 38.2



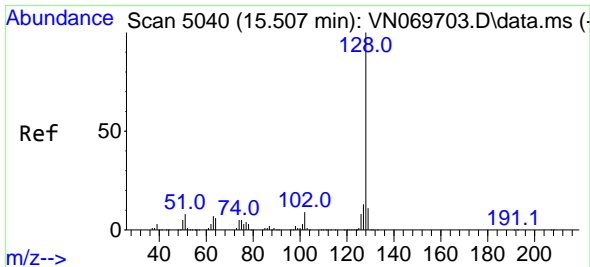
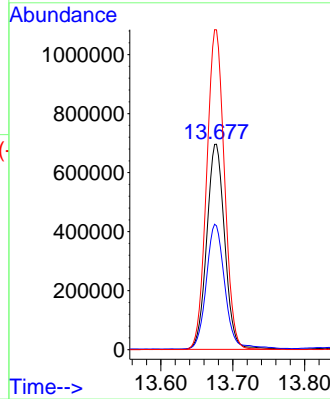
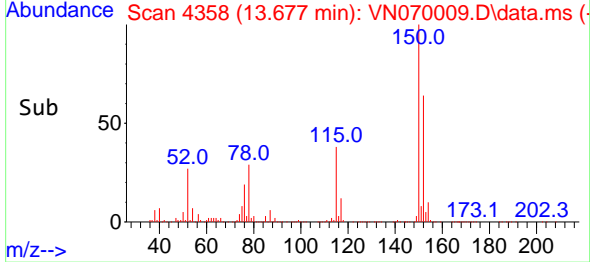


#72
 1,4-Dichlorobenzene-d4
 Concen: 50.00 ug/l
 RT: 13.677 min Scan# 41
 Delta R.T. -0.000 min
 Lab File: VN070009.D
 Acq: 11 Dec 2021 15:36

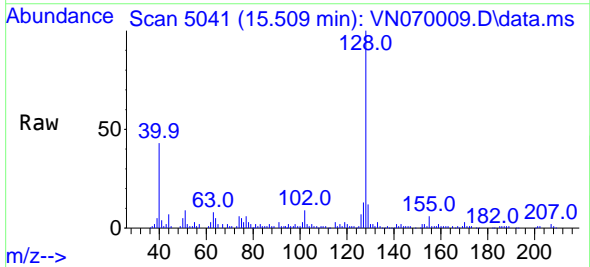
Instrument :
 MSVOA_N
 ClientSampleId :
 A6-19-4.5



Tgt Ion:152 Resp: 1211438
 Ion Ratio Lower Upper
 152 100
 115 63.2 27.5 82.5
 150 153.8 0.0 344.4



#95
 Naphthalene
 Concen: 5.49 ug/l
 RT: 15.509 min Scan# 5041
 Delta R.T. 0.002 min
 Lab File: VN070009.D
 Acq: 11 Dec 2021 15:36



Tgt Ion:128 Resp: 97055
 Ion Ratio Lower Upper
 128 100
 127 14.2 10.5 15.7
 129 11.4 8.7 13.1

