

Data Path : Z:\VOASRV\HPCHEM1\MSVOA N\DATA\VN121218\  
 Data File : VN052841.D  
 Acq On : 12 Dec 2018 21:33  
 Operator : MD\SY  
 Sample : PB115564ZHE#05  
 Misc : 5.00mL/MSVOA N/WATER  
 ALS Vial : 26 Sample Multiplier: 28

Instrument :  
 MSVOA\_N  
 ClientSampleId :  
 PB115564ZHE#05

Quant Time: Dec 13 04:48:55 2018  
 Quant Method : Z:\VOASRV\HPCHEM1\MSVOA\_N\METHODS\82N121218W.M  
 Quant Title : SW846 8260  
 QLast Update : Thu Dec 13 01:08:35 2018  
 Response via : Initial Calibration

Internal Standards	R.T.	QIon	Response	Conc	Units	Dev(Min)
1) Pentafluorobenzene	7.67	168	1154598	50.00	ug/l	0.00
34) 1,4-Difluorobenzene	8.59	114	1817397	50.00	ug/l	0.00
63) Chlorobenzene-d5	11.41	117	1634904	50.00	ug/l	0.00
72) 1,4-Dichlorobenzene-d4	13.35	152	681963	50.00	ug/l	0.00

## System Monitoring Compounds

33) 1,2-Dichloroethane-d4	8.03	65	613577	49.98	ug/l	0.00
Spiked Amount	50.000		Recovery	=	99.96%	
35) Dibromofluoromethane	7.59	113	522628	51.52	ug/l	0.00
Spiked Amount	50.000		Recovery	=	103.04%	
50) Toluene-d8	10.09	98	2226831	50.63	ug/l	0.00
Spiked Amount	50.000		Recovery	=	101.26%	
62) 4-Bromofluorobenzene	12.40	95	735097	49.32	ug/l	0.00
Spiked Amount	50.000		Recovery	=	98.64%	

## Target Compounds

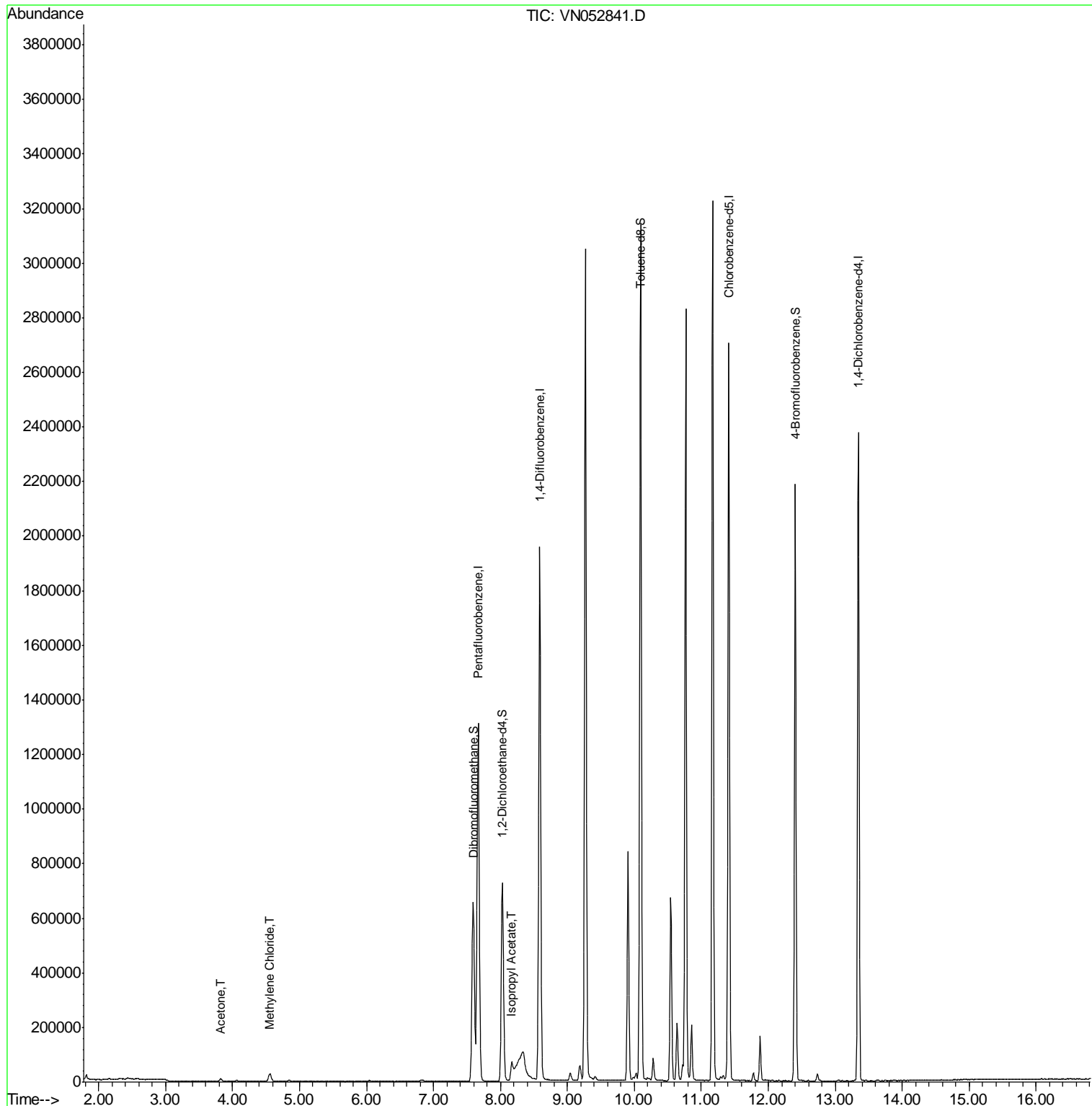
					Qvalue
16) Acetone	3.82	43	15413	5.590	ug/l 94
20) Methylene Chloride	4.56	84	21245	1.712	ug/l 97
43) Isopropyl Acetate	8.17	43	94535	4.586	ug/l # 75

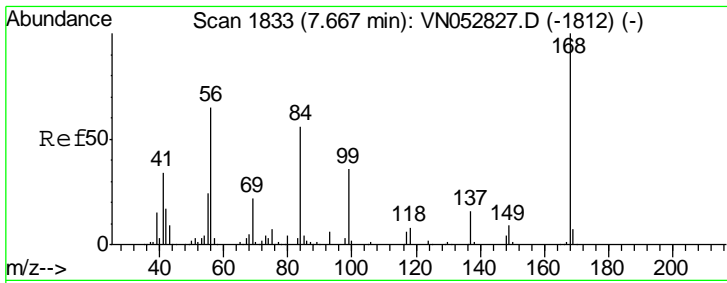
(#) = qualifier out of range (m) = manual integration (+) = signals summed

Data Path : Z:\VOASRV\HPCHEM1\MSVOA N\DATA\VN121218\  
 Data File : VN052841.D  
 Acq On : 12 Dec 2018 21:33  
 Operator : MD\SY  
 Sample : PB115564ZHE#05  
 Misc : 5.00mL/MSVOA N/WATER  
 ALS Vial : 26 Sample Multiplier: 28

Instrument :  
 MSVOA\_N  
 ClientSampleId :  
 PB115564ZHE#05

Quant Time: Dec 13 04:48:55 2018  
 Quant Method : Z:\VOASRV\HPCHEM1\MSVOA\_N\METHODS\82N121218W.M  
 Quant Title : SW846 8260  
 QLast Update : Thu Dec 13 01:08:35 2018  
 Response via : Initial Calibration

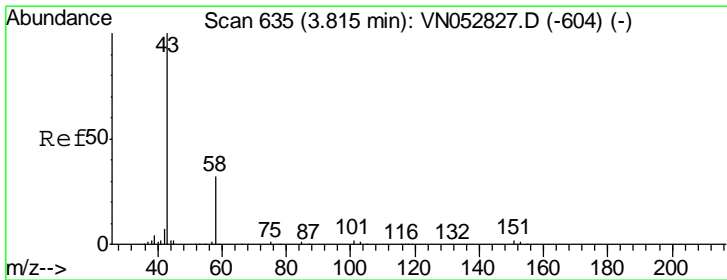
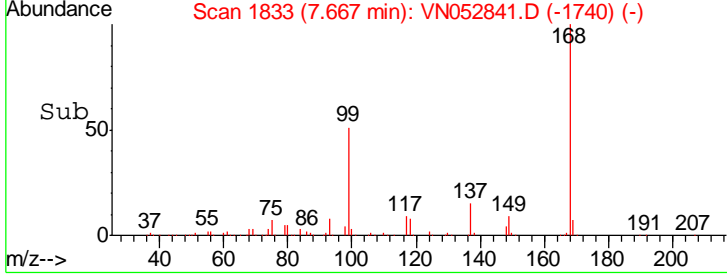
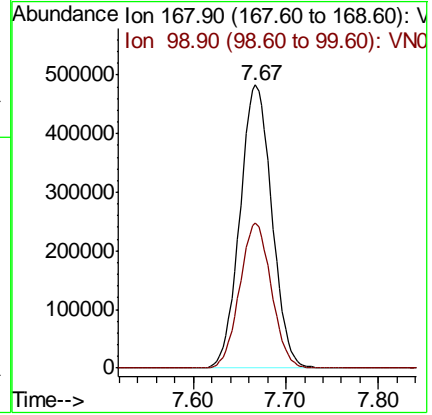
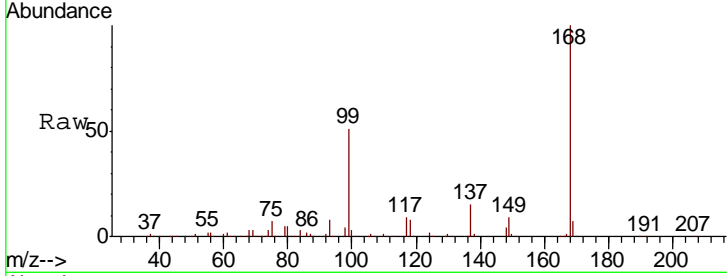




#1  
 Pentafluorobenzene  
 Concen: 50.000 ug/l  
 RT: 7.67 min Scan# 1833  
 Delta R.T. 0.00 min  
 Lab File: VN052841.D  
 Acq: 12 Dec 2018 21:33

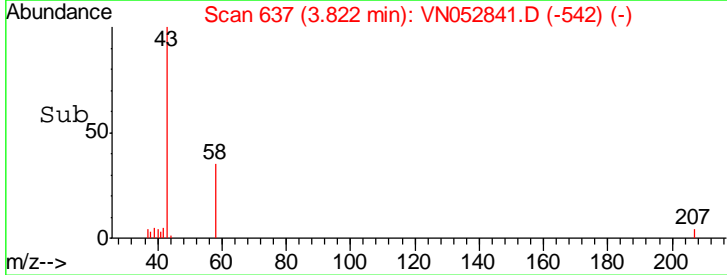
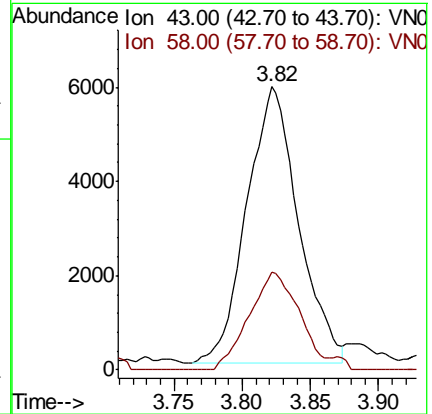
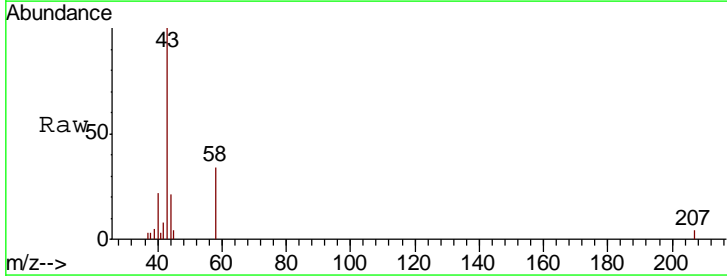
Instrument : MSVOA\_N  
 ClientSampled : PB115564ZHE#05

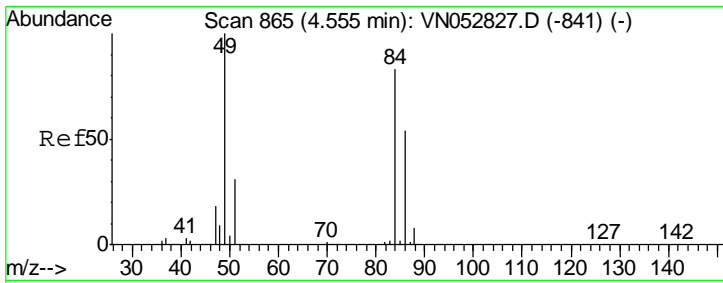
Tgt Ion: 168 Resp: 1154598  
 Ion Ratio Lower Upper  
 168 100  
 99 51.3 40.2 60.2



#16  
 Acetone  
 Concen: 5.590 ug/l  
 RT: 3.82 min Scan# 637  
 Delta R.T. 0.01 min  
 Lab File: VN052841.D  
 Acq: 12 Dec 2018 21:33

Tgt Ion: 43 Resp: 15413  
 Ion Ratio Lower Upper  
 43 100  
 58 35.2 25.4 38.0

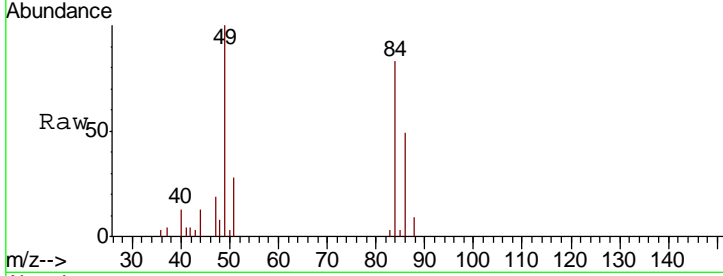




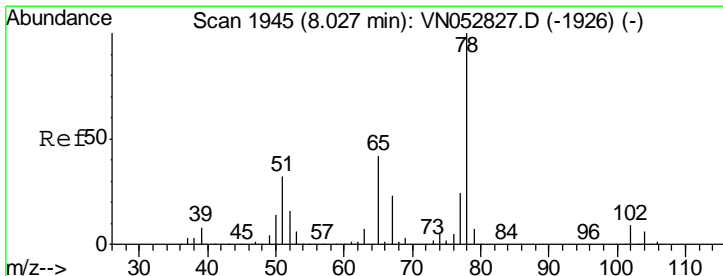
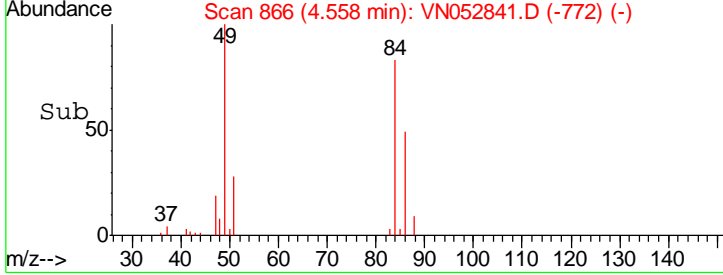
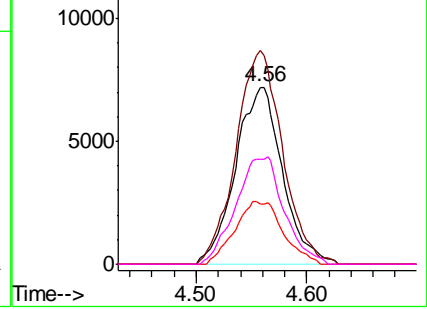
#20  
 Methylene Chloride  
 Concen: 1.712 ug/l  
 RT: 4.56 min Scan# 866  
 Delta R.T. 0.00 min  
 Lab File: VN052841.D  
 Acq: 12 Dec 2018 21:33

Instrument : MSVOA\_N  
 ClientSampled : PB115564ZHE#05

Tgt Ion	Resp	Lower	Upper
84	21245		
84	100		
49	120.7	96.8	145.2
51	34.3	29.9	44.9
86	59.5	51.8	77.6

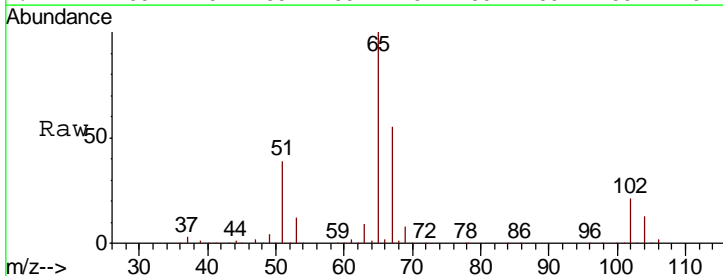


Abundance Ion 83.90 (83.60 to 84.60): VNC  
 Ion 48.90 (48.60 to 49.60): VNC  
 Ion 50.90 (50.60 to 51.60): VNC  
 Ion 85.90 (85.60 to 86.60): VNC

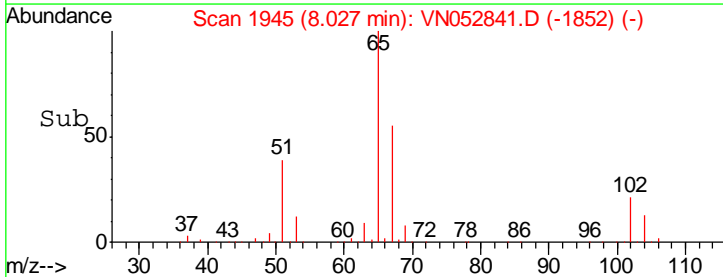
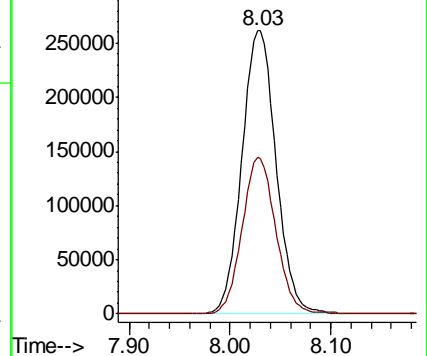


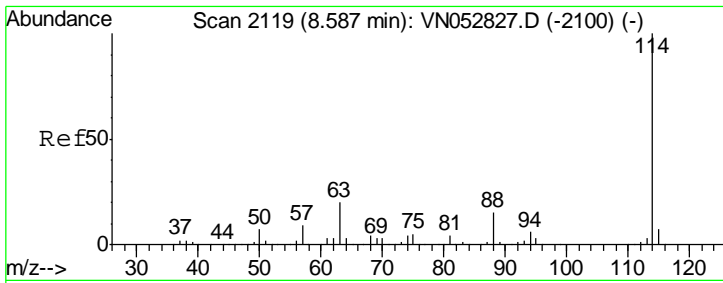
#33  
 1,2-Dichloroethane-d4  
 Concen: N.D. ug/l  
 RT: 8.03 min Scan# 1945  
 Delta R.T. 0.00 min  
 Lab File: VN052841.D  
 Acq: 12 Dec 2018 21:33

Tgt Ion	Resp	Lower	Upper
65	613577		
65	100		
67	54.6	0.0	110.4



Abundance Ion 64.90 (64.60 to 65.60): VNC  
 Ion 66.90 (66.60 to 67.60): VNC

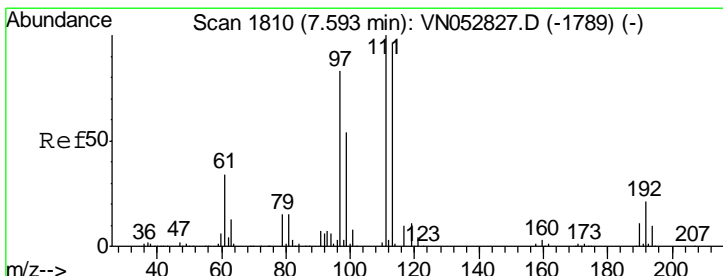
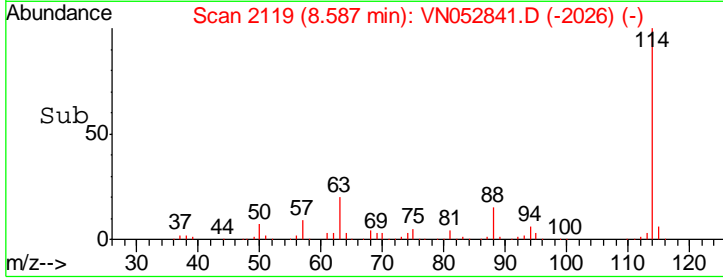
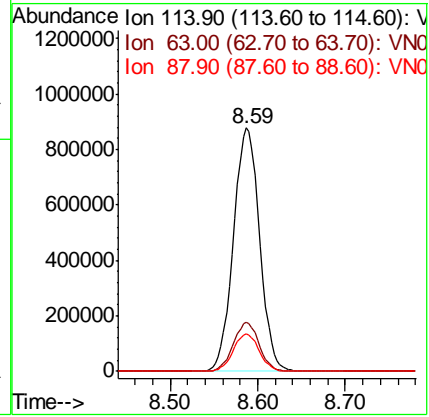
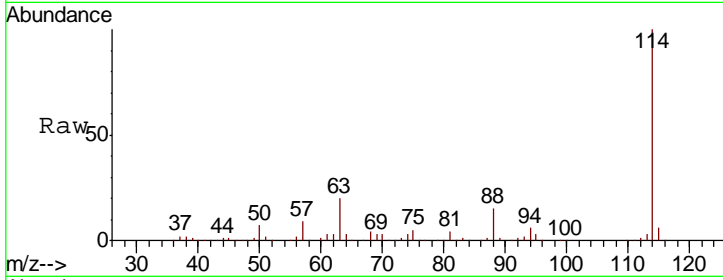




#34  
 1,4-Difluorobenzene  
 Concen: 50.000 ug/l  
 RT: 8.59 min Scan# 2119  
 Delta R.T. 0.00 min  
 Lab File: VN052841.D  
 Acq: 12 Dec 2018 21:33

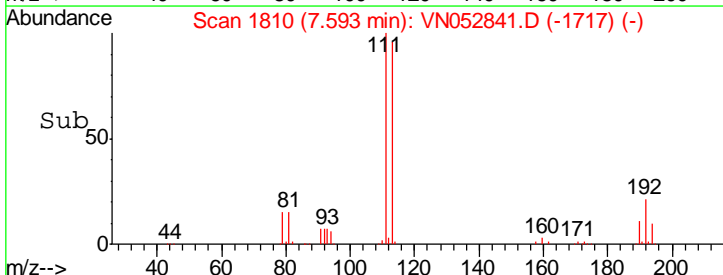
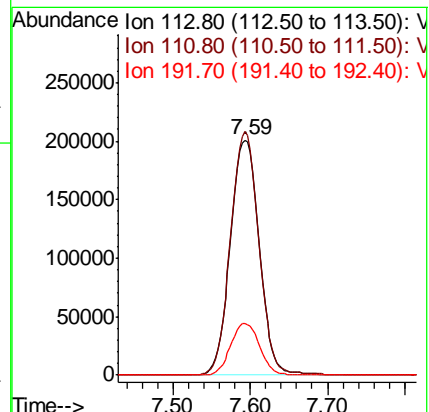
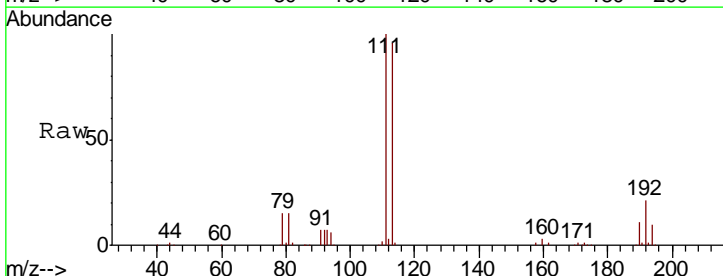
Instrument : MSVOA\_N  
 ClientSampleId : PB115564ZHE#05

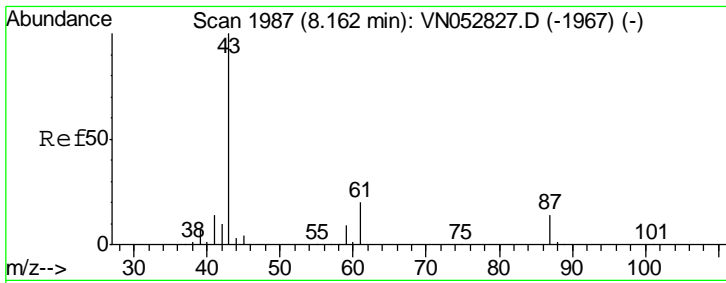
Tgt Ion	Resp	Lower	Upper
114	1817397		
63	20.1	0.0	39.8
88	15.4	0.0	31.0



#35  
 Dibromofluoromethane  
 Concen: 50.000 ug/l  
 RT: 7.59 min Scan# 1810  
 Delta R.T. 0.00 min  
 Lab File: VN052841.D  
 Acq: 12 Dec 2018 21:33

Tgt Ion	Resp	Lower	Upper
113	522628		
111	101.2	83.0	124.4
192	22.0	17.5	26.3

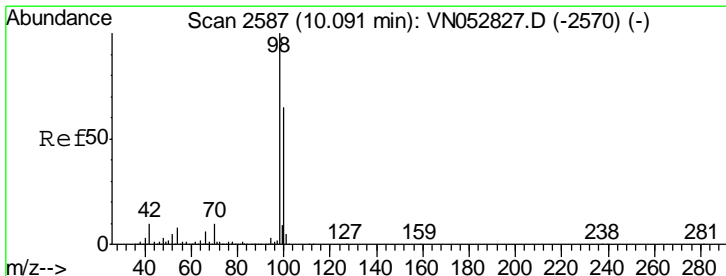
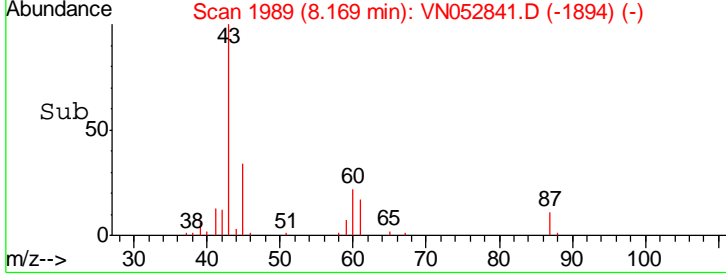
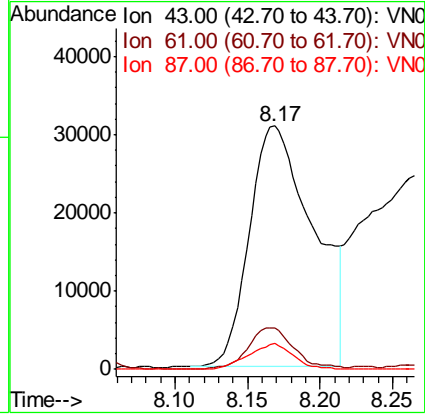
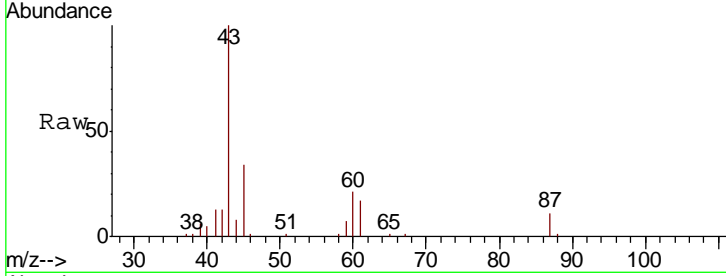




#43  
 Isopropyl Acetate  
 Concen: 4.586 ug/l  
 RT: 8.17 min Scan# 1989  
 Delta R.T. 0.01 min  
 Lab File: VN052841.D  
 Acq: 12 Dec 2018 21:33

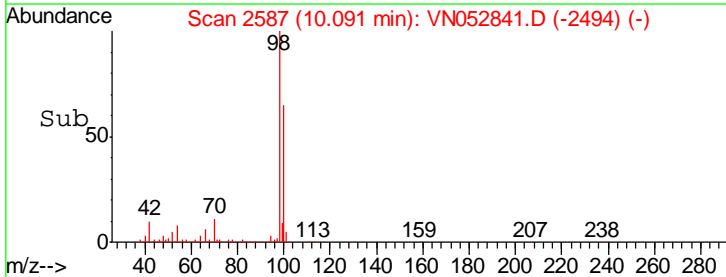
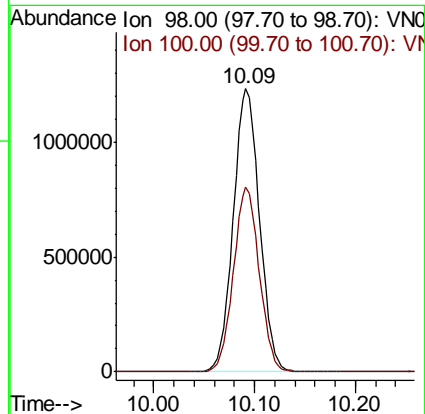
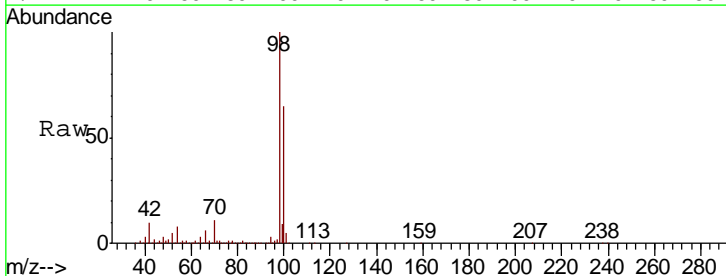
Instrument : MSVOA\_N  
 ClientSampled : PB115564ZHE#05

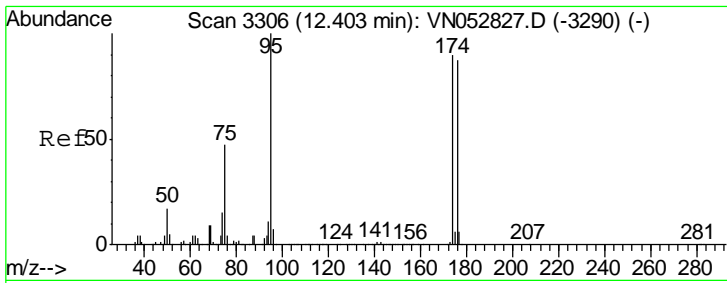
Tgt Ion	Resp	Lower	Upper
43	100		
61	12.5	22.9	34.3#
87	7.4	10.6	15.8#



#50  
 Toluene-d8  
 Concen: N.D. ug/l  
 RT: 10.09 min Scan# 2587  
 Delta R.T. 0.00 min  
 Lab File: VN052841.D  
 Acq: 12 Dec 2018 21:33

Tgt Ion	Resp	Lower	Upper
98	100		
100	64.3	51.6	77.4

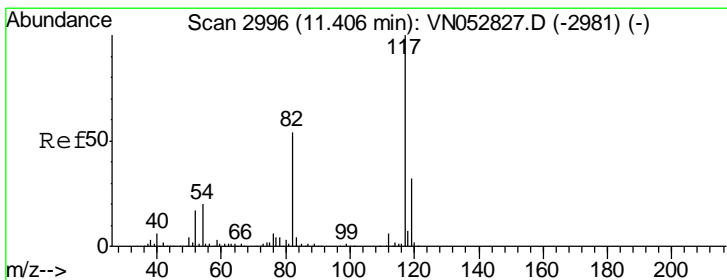
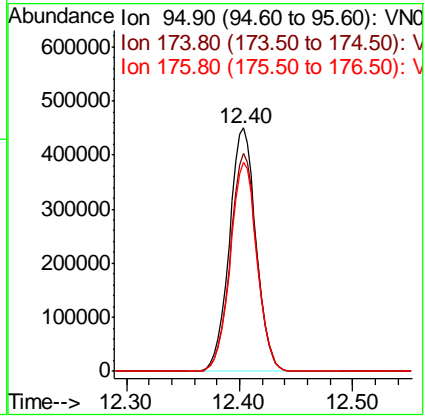
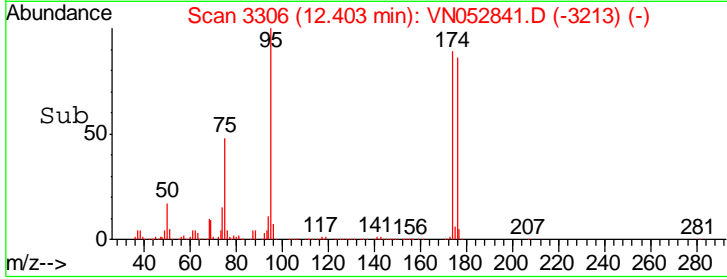
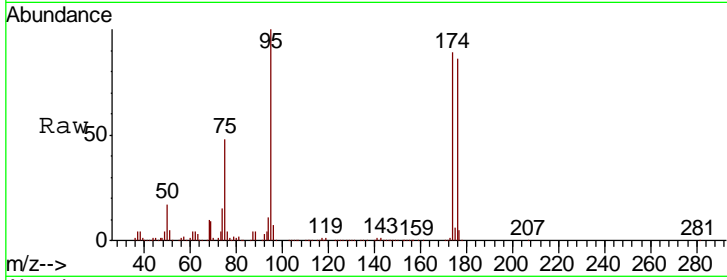




#62  
 4-Bromofluorobenzene  
 Concen: N.D. ug/l  
 RT: 12.40 min Scan# 3306  
 Delta R.T. 0.00 min  
 Lab File: VN052841.D  
 Acq: 12 Dec 2018 21:33

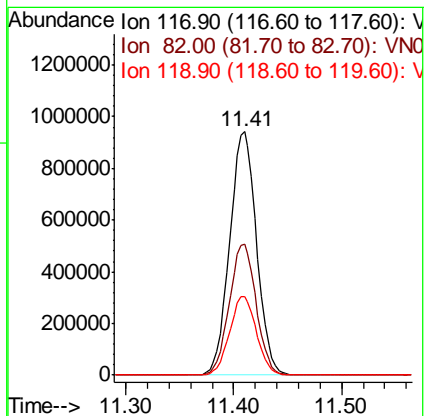
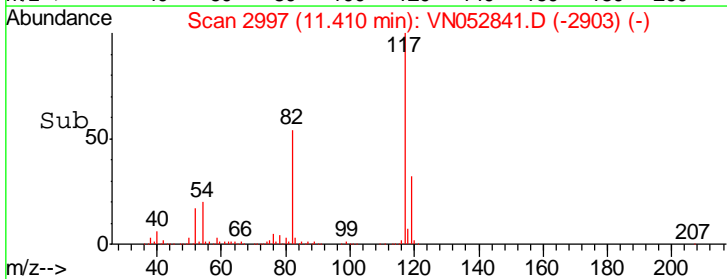
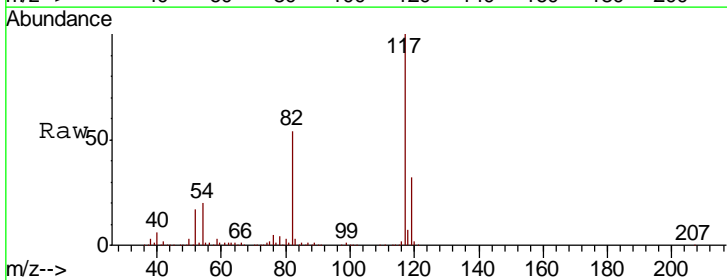
Instrument : MSVOA\_N  
 ClientSampleId : PB115564ZHE#05

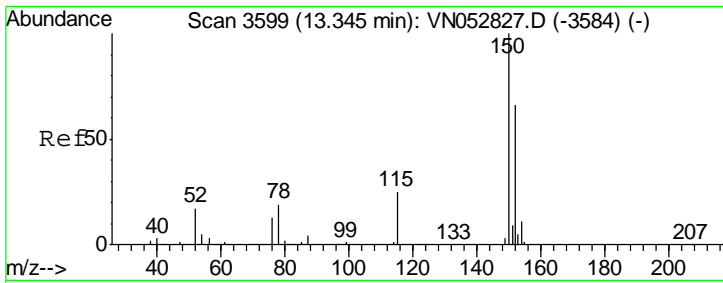
Tgt Ion	Resp	Lower	Upper
95	735097		
174	89.6	0.0	178.8
176	86.1	0.0	173.8



#63  
 Chlorobenzene-d5  
 Concen: 50.000 ug/l  
 RT: 11.41 min Scan# 2997  
 Delta R.T. 0.00 min  
 Lab File: VN052841.D  
 Acq: 12 Dec 2018 21:33

Tgt Ion	Resp	Lower	Upper
117	1634904		
82	53.9	42.8	64.2
119	32.4	25.5	38.3





#72  
 1,4-Dichlorobenzene-d4  
 Concen: 50.000 ug/l  
 RT: 13.35 min Scan# 3599  
 Delta R.T. 0.00 min  
 Lab File: VN052841.D  
 Acq: 12 Dec 2018 21:33

Instrument : MSVOA\_N  
 ClientSampled : PB115564ZHE#05

Tot Ion:152 Resp: 681963

Ion	Ratio	Lower	Upper
152	100		
115	55.4	28.3	85.0
150	156.8	0.0	347.8

