

Data Path : Z:\voasrv\HPCHEM1\MSVOA\_N\Data\VN121222\  
 Data File : VN075737.D  
 Acq On : 13 Dec 2022 03:41  
 Operator : JC\MD  
 Sample : PB149517TB  
 Misc : 5.0mL/MSVOA\_N/WATER  
 ALS Vial : 37 Sample Multiplier: 1

Instrument :  
 MSVOA\_N  
 ClientSampleId :  
 PB149517TB

Quant Time: Dec 13 05:35:04 2022  
 Quant Method : Z:\voasrv\HPCHEM1\MSVOA\_N\methods\82N120922W.M  
 Quant Title : SW846 8260  
 QLast Update : Mon Dec 12 07:54:35 2022  
 Response via : Initial Calibration

Compound	R.T.	QIon	Response	Conc	Units	Dev(Min)
Internal Standards						
1) Pentafluorobenzene	8.229	168	243900	50.000	ug/l	0.00
34) 1,4-Difluorobenzene	9.106	114	383525	50.000	ug/l	0.00
63) Chlorobenzene-d5	11.870	117	342512	50.000	ug/l	0.00
72) 1,4-Dichlorobenzene-d4	13.794	152	146256	50.000	ug/l	0.00
System Monitoring Compounds						
33) 1,2-Dichloroethane-d4	8.588	65	121823	47.075	ug/l	0.00
Spiked Amount	50.000	Range 74 - 125	Recovery	=	94.160%	
35) Dibromofluoromethane	8.177	113	110881	47.386	ug/l	0.00
Spiked Amount	50.000	Range 75 - 124	Recovery	=	94.780%	
50) Toluene-d8	10.570	98	447830	50.962	ug/l	0.00
Spiked Amount	50.000	Range 86 - 113	Recovery	=	101.920%	
62) 4-Bromofluorobenzene	12.853	95	141608	47.132	ug/l	0.00
Spiked Amount	50.000	Range 83 - 123	Recovery	=	94.260%	
Target Compounds						
						Qvalue
3) Chloromethane	2.371	50	503	0.235	ug/l #	40
5) Bromomethane	2.977	94	644	0.288	ug/l #	57
8) Diethyl Ether	3.971	74	287	0.206	ug/l	71
11) Tert butyl alcohol	5.518	59	2012	5.255	ug/l #	72
13) Acrolein	4.194	56	355	0.805	ug/l #	77
15) Acrylonitrile	5.747	53	433	0.438	ug/l #	85
16) Acetone	4.441	43	15263	17.416	ug/l	98
17) Carbon Disulfide	4.730	76	1309	0.237	ug/l #	74
18) Methyl Acetate	5.053	43	1858	0.660	ug/l #	59
20) Methylene Chloride	5.283	84	10099	3.865	ug/l	93
23) Vinyl Acetate	6.624	43	1576	0.349	ug/l #	65
25) 2-Butanone	7.500	43	2085	1.627	ug/l #	69
29) Tetrahydrofuran	7.853	42	453	0.574	ug/l #	79
31) Cyclohexane	8.229	56	4645	1.212	ug/l #	23
36) 1,1-Dichloropropene	8.229	75	16803	5.408	ug/l #	47
37) Ethyl Acetate	7.571	43	21002	8.419	ug/l	97
38) Carbon Tetrachloride	8.235	117	23704	6.611	ug/l #	14
42) 1,2-Dichloroethane	8.694	62	933	0.292	ug/l #	71
43) Isopropyl Acetate	8.694	43	107065	25.708	ug/l #	88
45) 1,2-Dichloropropane	9.741	63	1404	0.619	ug/l #	43
48) Methyl methacrylate	9.665	41	3133	1.633	ug/l #	6
51) 4-Methyl-2-Pentanone	10.441	43	9252	3.603	ug/l #	69
52) Toluene	10.641	92	1293	0.205	ug/l	82
54) cis-1,3-Dichloropropene	10.359	75	46158	12.583	ug/l #	64
57) 1,3-Dichloropropane	11.200	76	6490	1.620	ug/l #	41
58) 2-Chloroethyl Vinyl ether	10.165	63	267	0.269	ug/l #	41
59) 2-Hexanone	11.170	43	87498	46.898	ug/l #	20
65) Chlorobenzene	11.894	112	1577	0.224	ug/l #	84
67) Ethyl Benzene	11.959	91	2418	0.203	ug/l #	86
68) m/p-Xylenes	12.076	106	1999	0.415	ug/l	94
69) o-Xylene	12.400	106	995	0.213	ug/l	97
73) Isopropylbenzene	12.694	105	2182	0.208	ug/l	85
74) N-amyl acetate	12.500	43	2016	0.661	ug/l #	69
76) 1,2,3-Trichloropropane	12.853	75	72563	24.705	ug/l #	1
77) Bromobenzene	12.976	156	818	0.310	ug/l	96
78) n-propylbenzene	13.041	91	3845	0.330	ug/l	92

Data Path : Z:\voasrv\HPCHEM1\MSVOA\_N\Data\VN121222\  
 Data File : VN075737.D  
 Acq On : 13 Dec 2022 03:41  
 Operator : JC\MD  
 Sample : PB149517TB  
 Misc : 5.0mL/MSVOA\_N/WATER  
 ALS Vial : 37 Sample Multiplier: 1

Instrument :  
 MSVOA\_N  
 ClientSampleId :  
 PB149517TB

Quant Time: Dec 13 05:35:04 2022  
 Quant Method : Z:\voasrv\HPCHEM1\MSVOA\_N\methods\82N120922W.M  
 Quant Title : SW846 8260  
 QLast Update : Mon Dec 12 07:54:35 2022  
 Response via : Initial Calibration

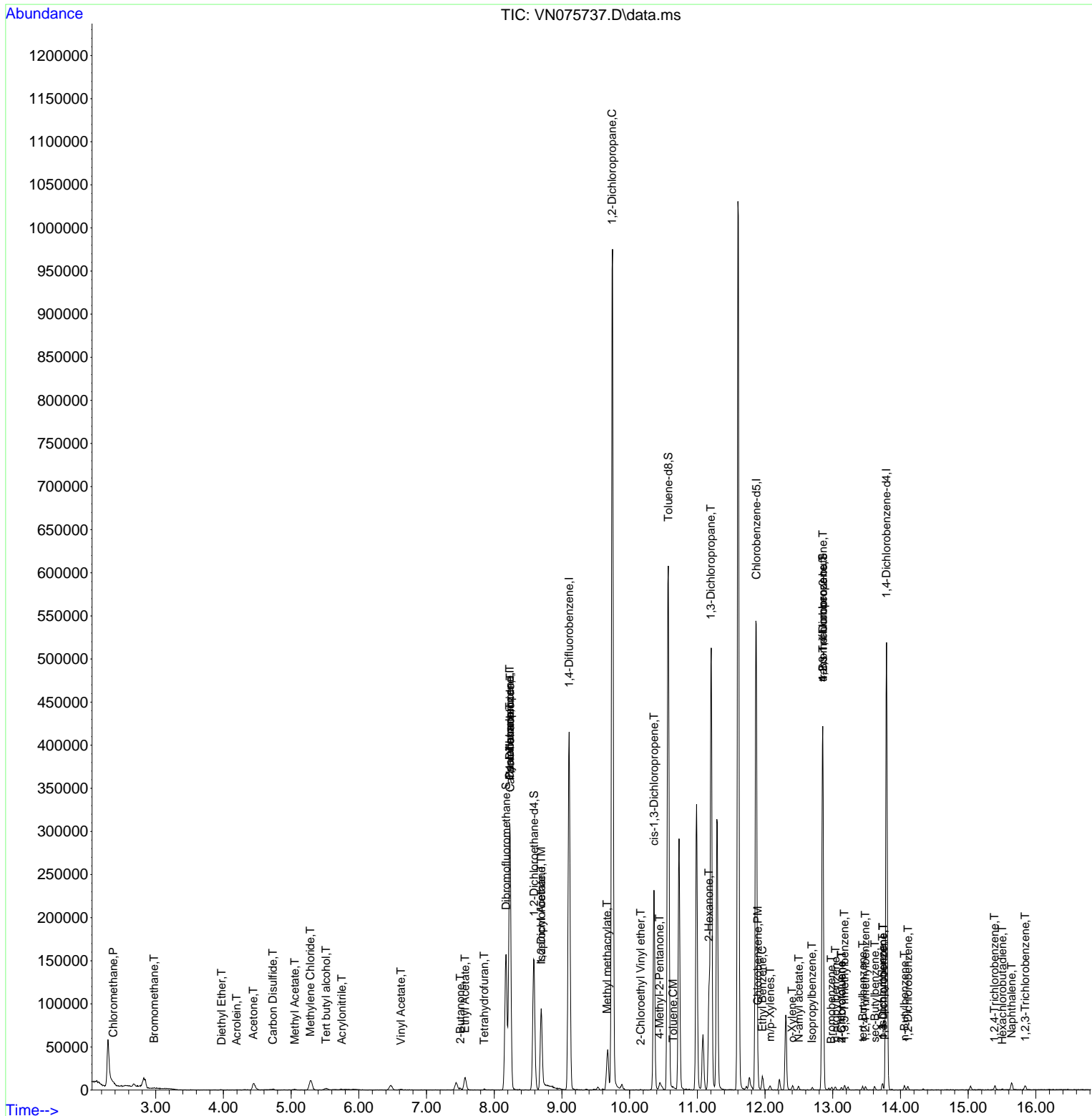
Compound	R.T.	QIon	Response	Conc	Units	Dev(Min)
79) 2-Chlorotoluene	13.129	91	2358	0.328	ug/l	87
80) 1,3,5-Trimethylbenzene	13.170	105	3349	0.381	ug/l	98
81) trans-1,4-Dichloro-2-b...	12.853	75	72563	78.853	ug/l #	13
82) 4-Chlorotoluene	13.129	91	2358	0.328	ug/l	87
83) tert-Butylbenzene	13.441	119	2093	0.263	ug/l	97
84) 1,2,4-Trimethylbenzene	13.482	105	2553	0.289	ug/l	99
85) sec-Butylbenzene	13.623	105	3281	0.300	ug/l	99
86) p-Isopropyltoluene	13.735	119	2780	0.304	ug/l	94
87) 1,3-Dichlorobenzene	13.741	146	2176	0.441	ug/l	97
88) 1,4-Dichlorobenzene	13.741	146	2176	0.433	ug/l	96
89) n-Butylbenzene	14.058	91	3383	0.461	ug/l	98
91) 1,2-Dichlorobenzene	14.111	146	2135	0.434	ug/l	92
93) 1,2,4-Trichlorobenzene	15.388	180	2214	0.938	ug/l	91
94) Hexachlorobutadiene	15.505	225	423	0.316	ug/l	85
95) Naphthalene	15.641	128	8558	1.227	ug/l #	90
96) 1,2,3-Trichlorobenzene	15.841	180	2312	0.997	ug/l	91

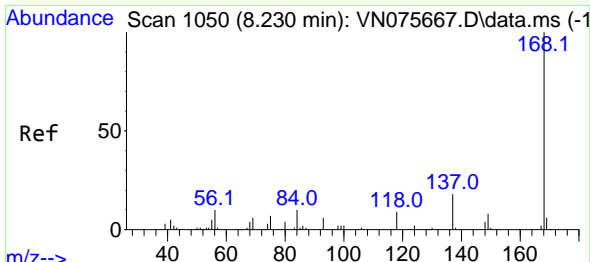
(#) = qualifier out of range (m) = manual integration (+) = signals summed

Data Path : Z:\voasrv\HPCHEM1\MSVOA\_N\Data\VN121222\  
 Data File : VN075737.D  
 Acq On : 13 Dec 2022 03:41  
 Operator : JC\MD  
 Sample : PB149517TB  
 Misc : 5.0mL/MSVOA\_N/WATER  
 ALS Vial : 37 Sample Multiplier: 1

Instrument :  
 MSVOA\_N  
 ClientSampleId :  
 PB149517TB

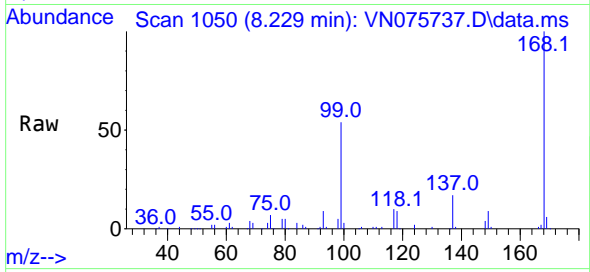
Quant Time: Dec 13 05:35:04 2022  
 Quant Method : Z:\voasrv\HPCHEM1\MSVOA\_N\methods\82N120922W.M  
 Quant Title : SW846 8260  
 QLast Update : Mon Dec 12 07:54:35 2022  
 Response via : Initial Calibration



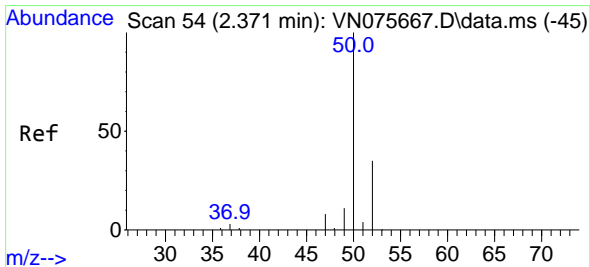
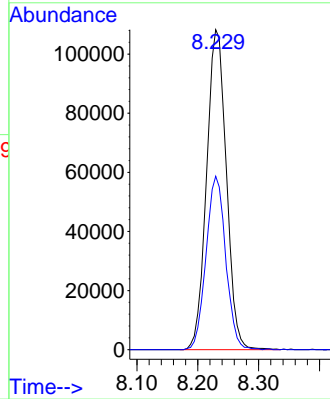
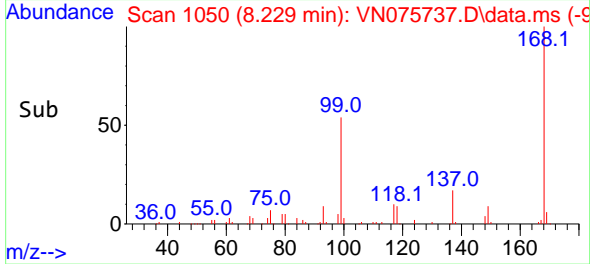


#1  
 Pentafluorobenzene  
 Concen: 50.000 ug/l  
 RT: 8.229 min Scan# 10  
 Delta R.T. -0.001 min  
 Lab File: VN075737.D  
 Acq: 13 Dec 2022 03:41

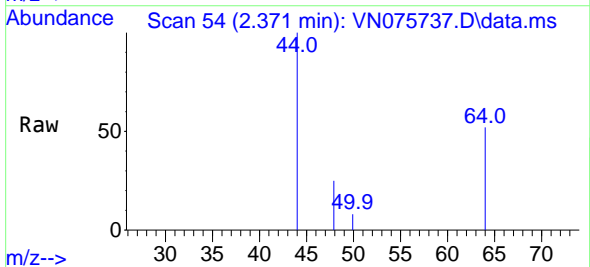
Instrument :  
 MSVOA\_N  
 ClientSampleId :  
 PB149517TB



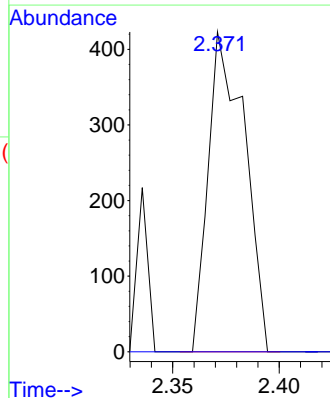
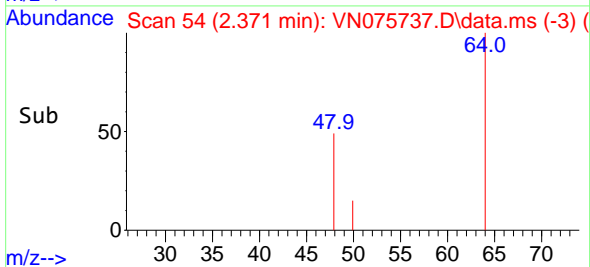
Tgt Ion:168 Resp: 243900  
 Ion Ratio Lower Upper  
 168 100  
 99 54.2 41.2 61.8

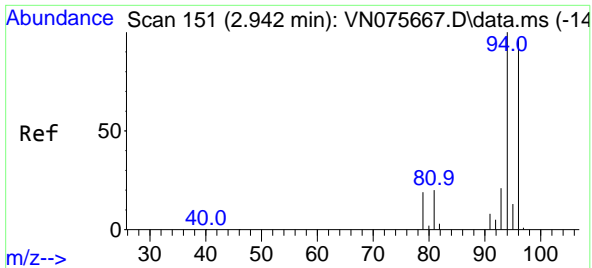


#3  
 Chloromethane  
 Concen: 0.235 ug/l  
 RT: 2.371 min Scan# 54  
 Delta R.T. -0.000 min  
 Lab File: VN075737.D  
 Acq: 13 Dec 2022 03:41



Tgt Ion: 50 Resp: 503  
 Ion Ratio Lower Upper  
 50 100  
 52 0.0 27.9 41.9#

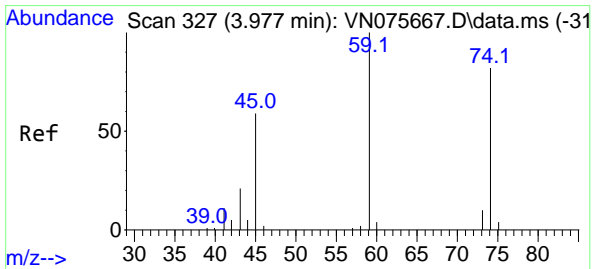
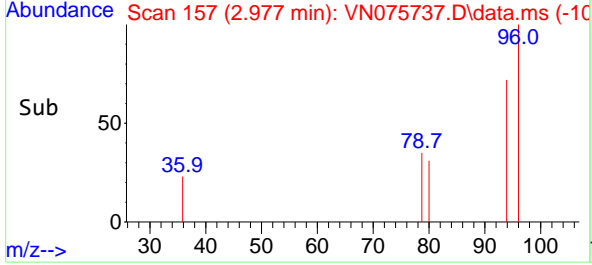
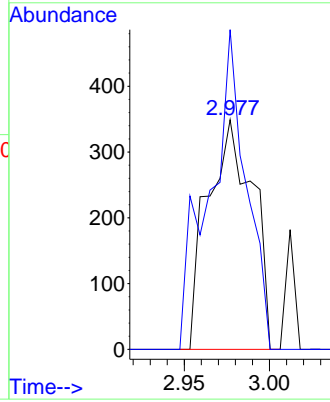
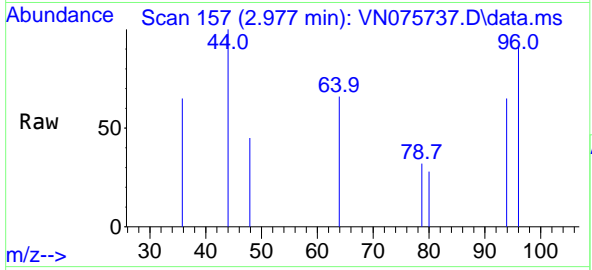




Bromomethane  
 Concen: 0.288 ug/l  
 RT: 2.977 min Scan# 11  
 Delta R.T. 0.035 min  
 Lab File: VN075737.D  
 Acq: 13 Dec 2022 03:41

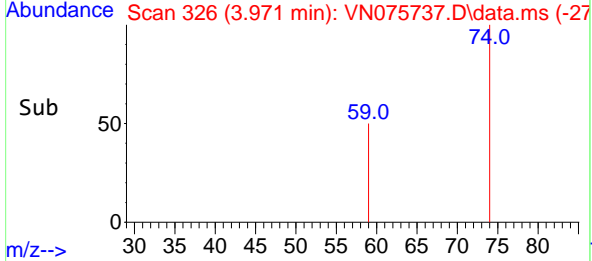
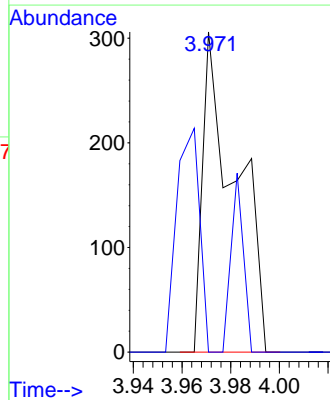
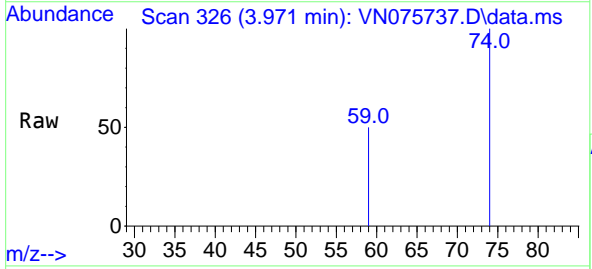
Instrument : MSVOA\_N  
 ClientSampleId : PB149517TB

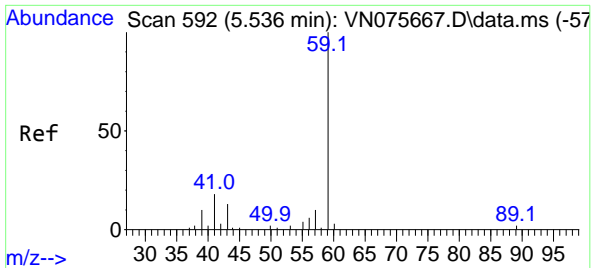
Tgt Ion: 94 Resp: 644  
 Ion Ratio Lower Upper  
 94 100  
 96 139.3 77.6 116.4#



Diethyl Ether  
 Concen: 0.206 ug/l  
 RT: 3.971 min Scan# 326  
 Delta R.T. -0.006 min  
 Lab File: VN075737.D  
 Acq: 13 Dec 2022 03:41

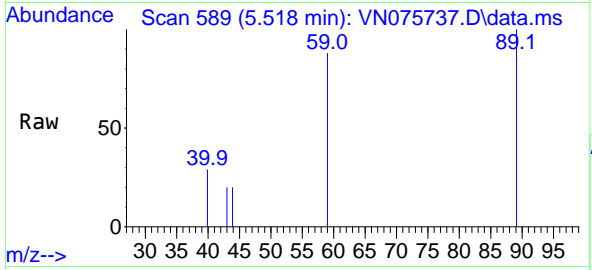
Tgt Ion: 74 Resp: 287  
 Ion Ratio Lower Upper  
 74 100  
 45 48.8 36.8 110.4



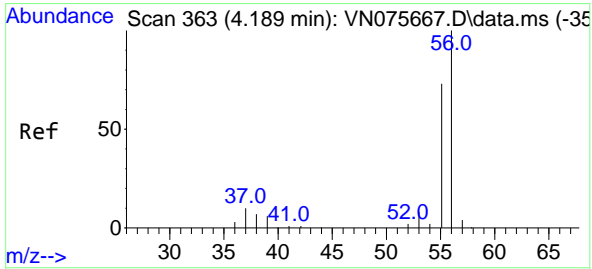
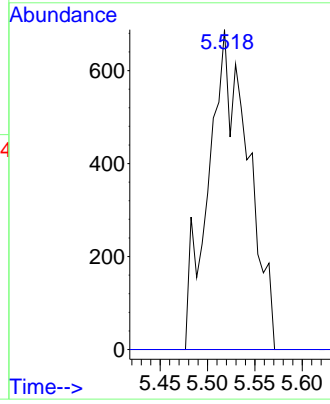
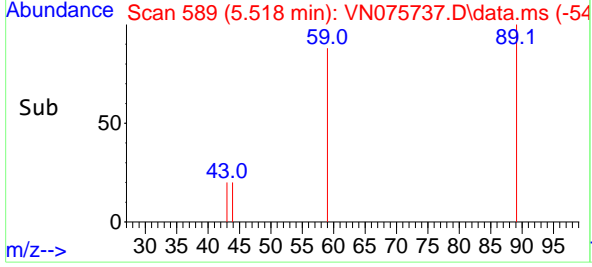


#11  
 Tert butyl alcohol  
 Concen: 5.255 ug/l  
 RT: 5.518 min Scan# 51  
 Delta R.T. -0.018 min  
 Lab File: VN075737.D  
 Acq: 13 Dec 2022 03:41

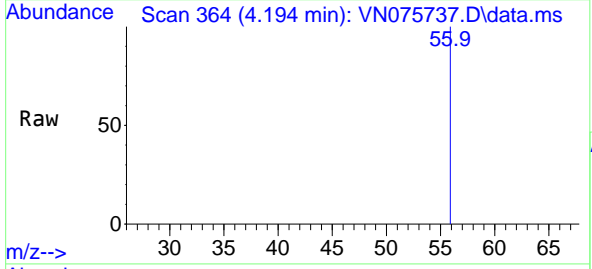
Instrument : MSVOA\_N  
 Client SampleId : PB149517TB



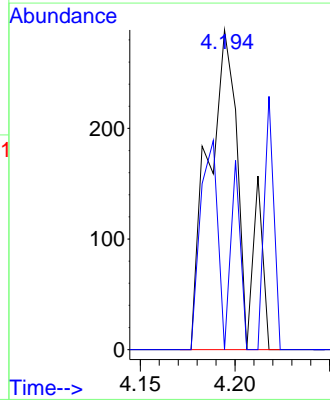
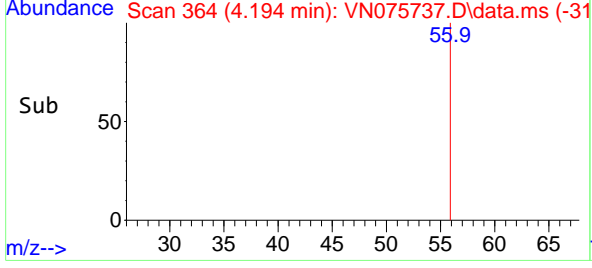
Tgt Ion: 59 Resp: 2012  
 Ion Ratio Lower Upper  
 59 100  
 57 0.0 8.2 12.4#

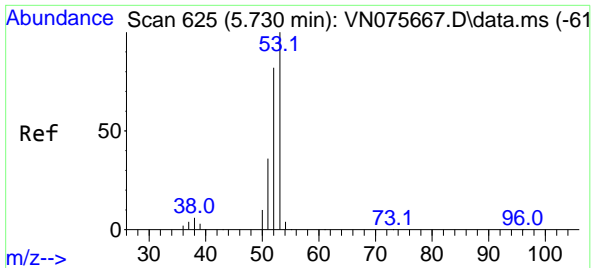


#13  
 Acrolein  
 Concen: 0.805 ug/l  
 RT: 4.194 min Scan# 364  
 Delta R.T. 0.006 min  
 Lab File: VN075737.D  
 Acq: 13 Dec 2022 03:41



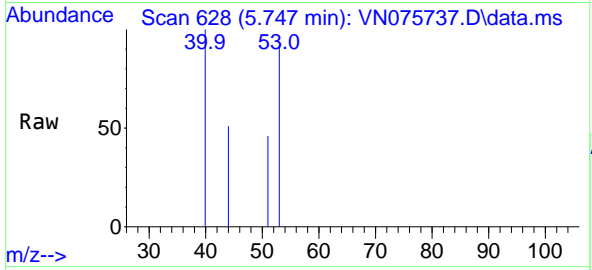
Tgt Ion: 56 Resp: 355  
 Ion Ratio Lower Upper  
 56 100  
 55 50.7 55.7 83.5#





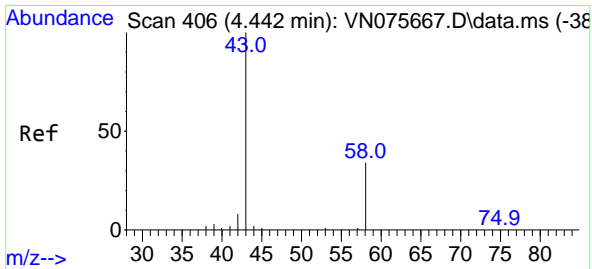
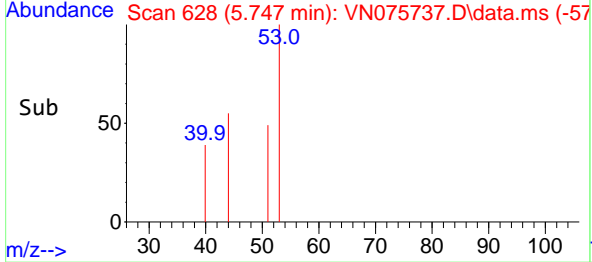
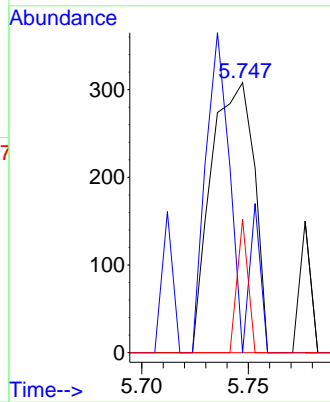
#15  
 Acrylonitrile  
 Concen: 0.438 ug/l  
 RT: 5.747 min Scan# 61  
 Delta R.T. 0.018 min  
 Lab File: VN075737.D  
 Acq: 13 Dec 2022 03:41

Instrument :  
 MSVOA\_N  
 ClientSampleId :  
 PB149517TB



Tgt Ion: 53 Resp: 433

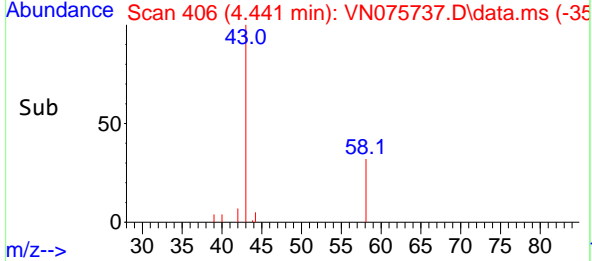
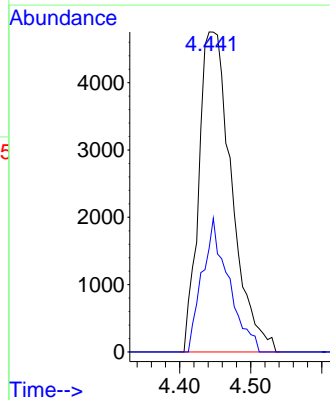
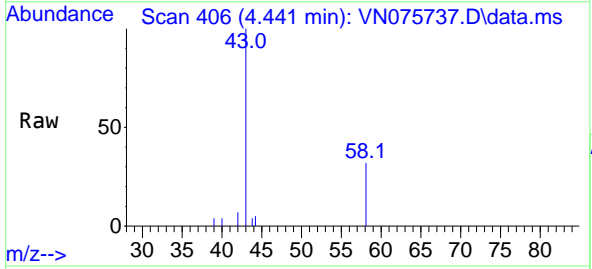
Ion	Ratio	Lower	Upper
53	100		
52	78.3	65.0	97.4
51	12.5	28.9	43.3#

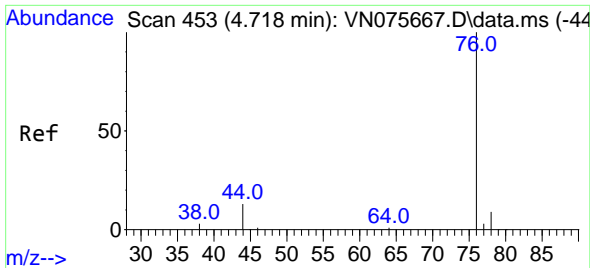


#16  
 Acetone  
 Concen: 17.416 ug/l  
 RT: 4.441 min Scan# 406  
 Delta R.T. -0.000 min  
 Lab File: VN075737.D  
 Acq: 13 Dec 2022 03:41

Tgt Ion: 43 Resp: 15263

Ion	Ratio	Lower	Upper
43	100		
58	32.4	27.0	40.4

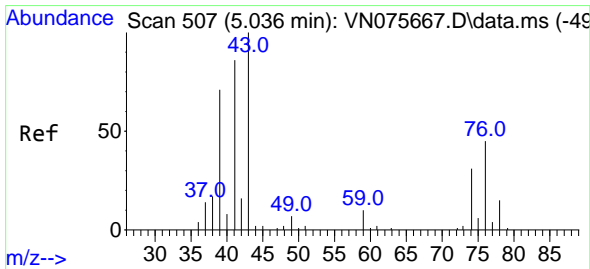
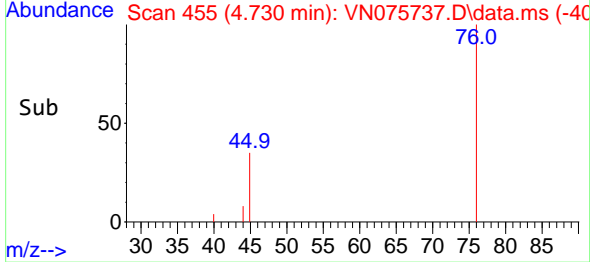
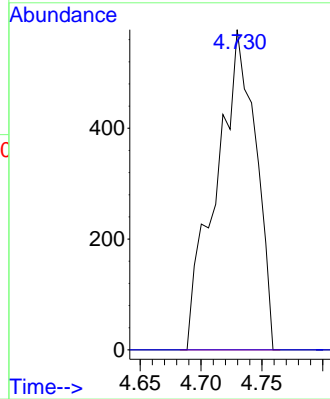
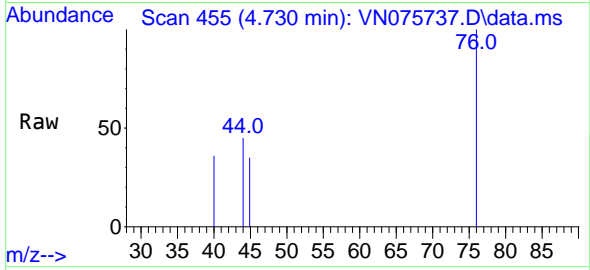




#17  
 Carbon Disulfide  
 Concen: 0.237 ug/l  
 RT: 4.730 min Scan# 41  
 Delta R.T. 0.012 min  
 Lab File: VN075737.D  
 Acq: 13 Dec 2022 03:41

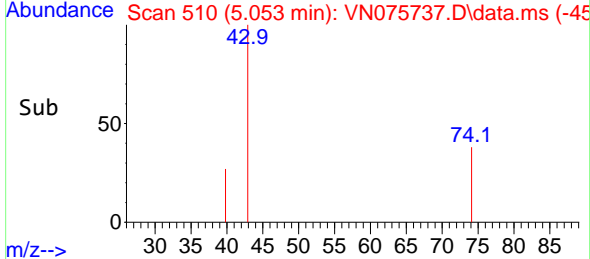
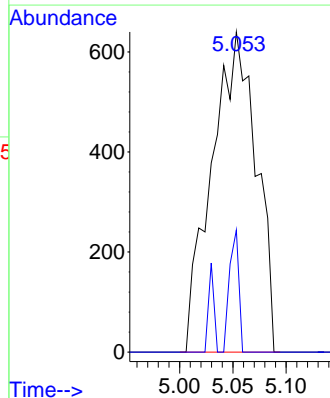
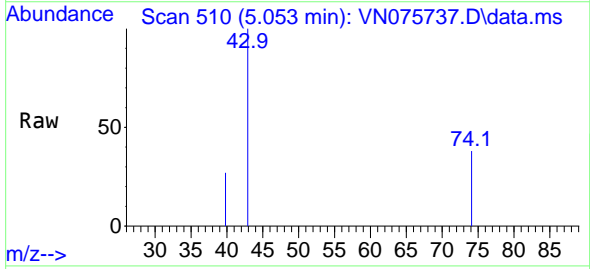
Instrument :  
 MSVOA\_N  
 ClientSampleId :  
 PB149517TB

Tgt Ion: 76 Resp: 1309  
 Ion Ratio Lower Upper  
 76 100  
 78 0.0 7.4 11.2#

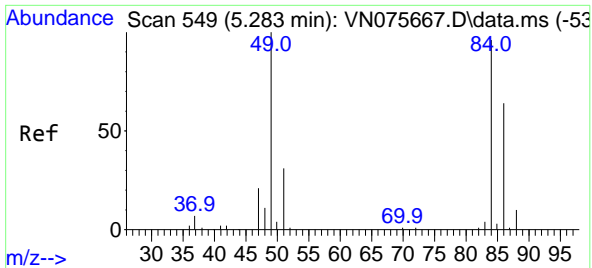


#18  
 Methyl Acetate  
 Concen: 0.660 ug/l  
 RT: 5.053 min Scan# 510  
 Delta R.T. 0.018 min  
 Lab File: VN075737.D  
 Acq: 13 Dec 2022 03:41

Tgt Ion: 43 Resp: 1858  
 Ion Ratio Lower Upper  
 43 100  
 74 8.0 24.5 36.7#

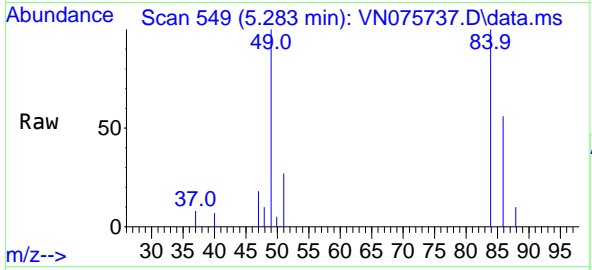






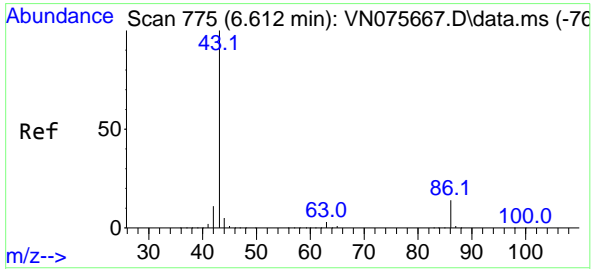
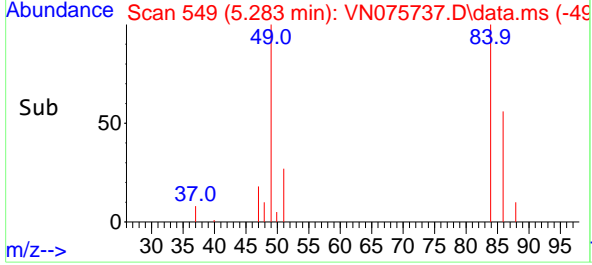
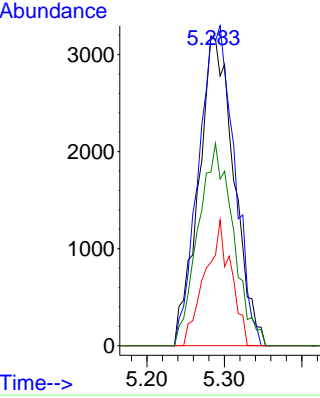
#20  
 Methylene Chloride  
 Concen: 3.865 ug/l  
 RT: 5.283 min Scan# 549  
 Delta R.T. -0.000 min  
 Lab File: VN075737.D  
 Acq: 13 Dec 2022 03:41

Instrument : MSVOA\_N  
 ClientSampleId : PB149517TB

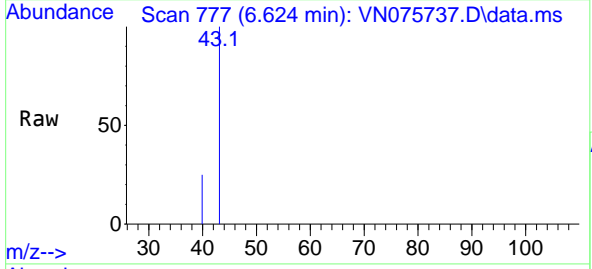


Tgt Ion: 84 Resp: 10099

Ion	Ratio	Lower	Upper
84	100		
49	100.4	83.0	124.4
51	27.0	26.0	39.0
86	56.3	52.6	79.0

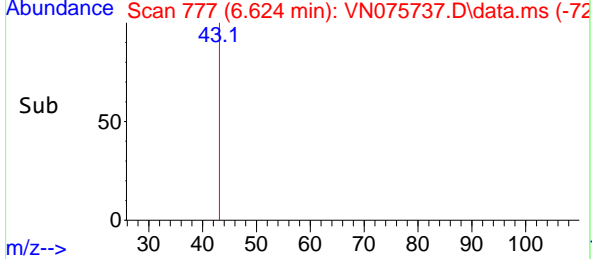
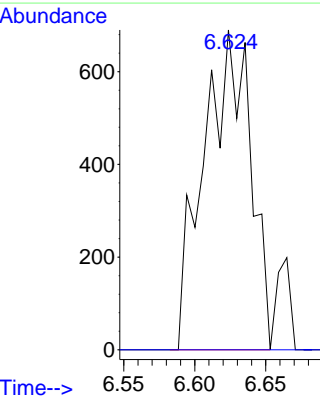


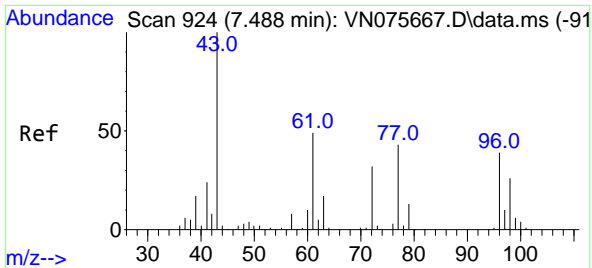
#23  
 Vinyl Acetate  
 Concen: 0.349 ug/l  
 RT: 6.624 min Scan# 777  
 Delta R.T. 0.012 min  
 Lab File: VN075737.D  
 Acq: 13 Dec 2022 03:41



Tgt Ion: 43 Resp: 1576

Ion	Ratio	Lower	Upper
43	100		
86	0.0	11.5	17.3#

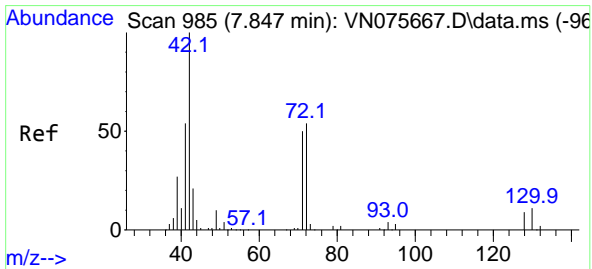
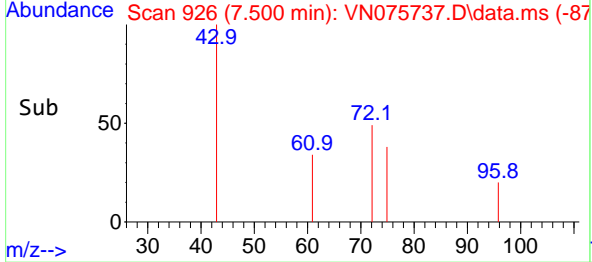
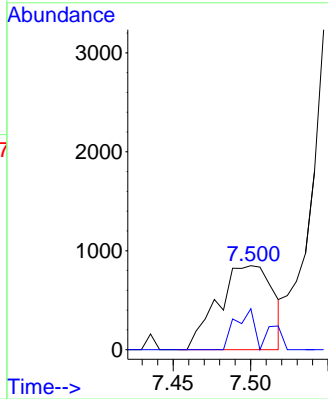
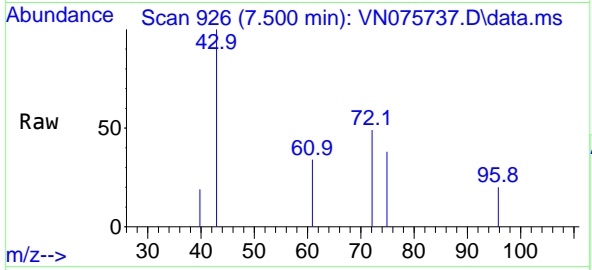




#25  
 2-Butanone  
 Concen: 1.627 ug/l  
 RT: 7.500 min Scan# 91  
 Delta R.T. 0.012 min  
 Lab File: VN075737.D  
 Acq: 13 Dec 2022 03:41

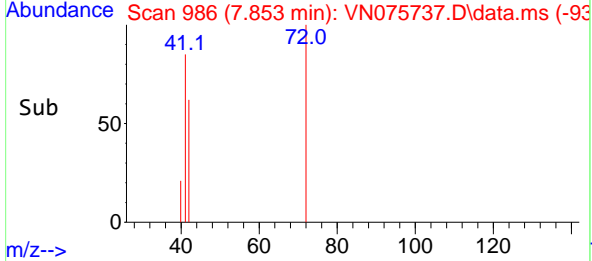
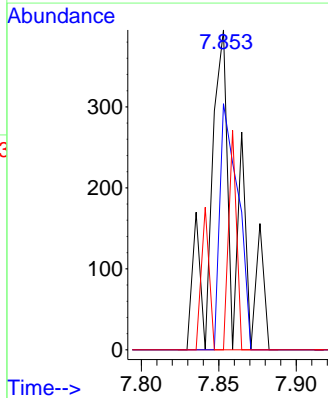
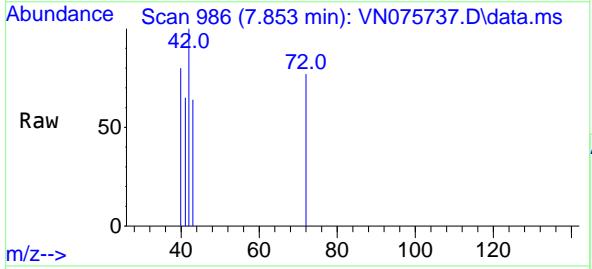
Instrument :  
 MSVOA\_N  
 ClientSampleId :  
 PB149517TB

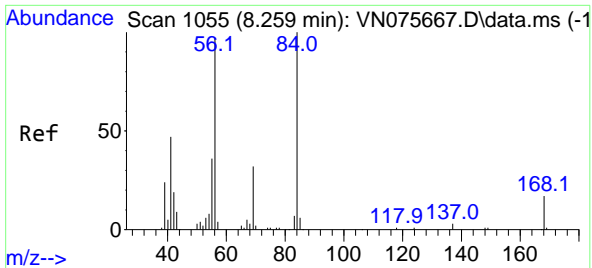
Tgt Ion: 43 Resp: 2085  
 Ion Ratio Lower Upper  
 43 100  
 72 48.8 25.3 37.9#



#29  
 Tetrahydrofuran  
 Concen: 0.574 ug/l  
 RT: 7.853 min Scan# 986  
 Delta R.T. 0.006 min  
 Lab File: VN075737.D  
 Acq: 13 Dec 2022 03:41

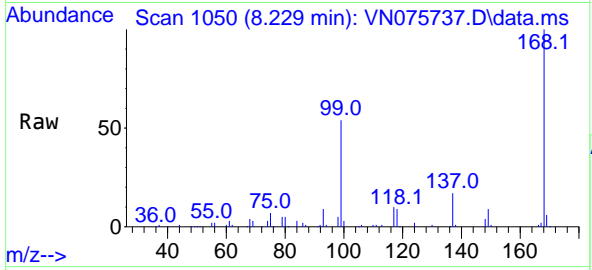
Tgt Ion: 42 Resp: 453  
 Ion Ratio Lower Upper  
 42 100  
 72 55.0 44.6 67.0  
 71 21.2 41.2 61.8#



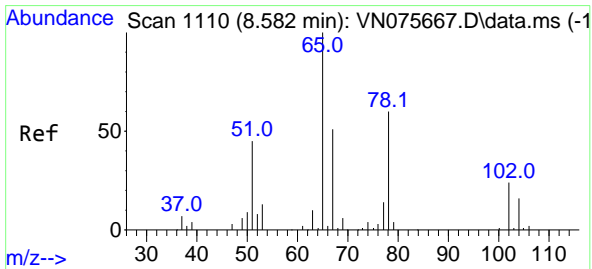
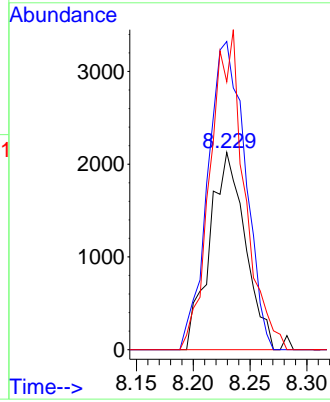
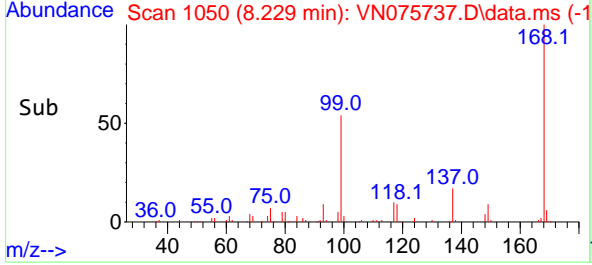


#31  
 Cyclohexane  
 Concen: 1.212 ug/l  
 RT: 8.229 min Scan# 1050  
 Delta R.T. -0.029 min  
 Lab File: VN075737.D  
 Acq: 13 Dec 2022 03:41

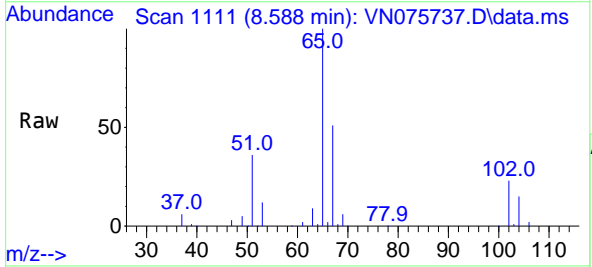
Instrument : MSVOA\_N  
 Client Sample Id : PB149517TB



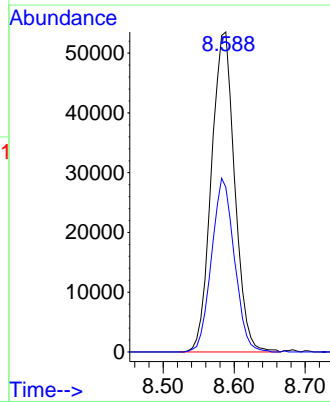
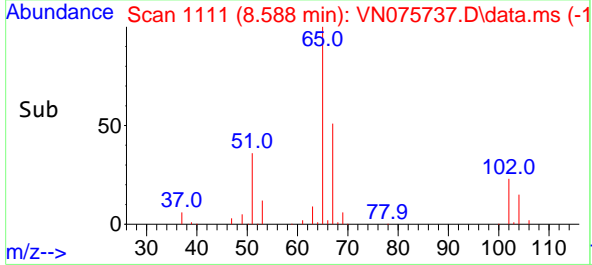
Tgt Ion: 56 Resp: 4645  
 Ion Ratio Lower Upper  
 56 100  
 69 156.3 26.2 39.2#  
 84 135.8 82.8 124.2#

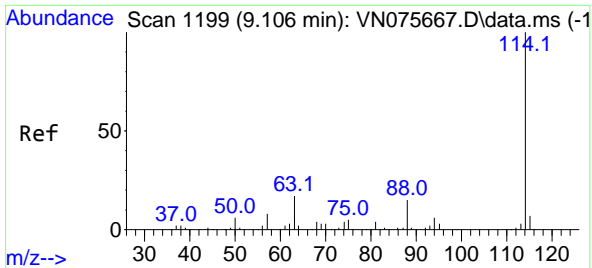


#33  
 1,2-Dichloroethane-d4  
 Concen: 47.075 ug/l  
 RT: 8.588 min Scan# 1111  
 Delta R.T. 0.006 min  
 Lab File: VN075737.D  
 Acq: 13 Dec 2022 03:41



Tgt Ion: 65 Resp: 121823  
 Ion Ratio Lower Upper  
 65 100  
 67 53.2 0.0 104.2



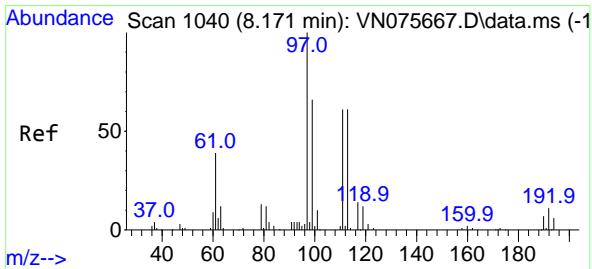
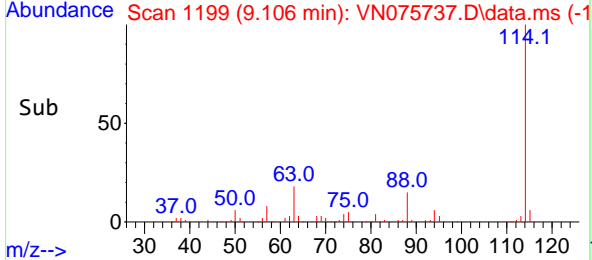
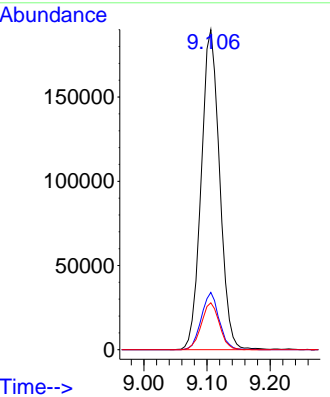
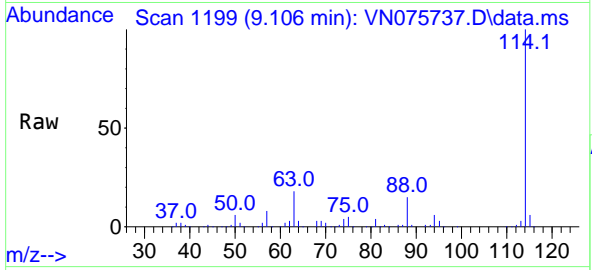


#34  
 1,4-Difluorobenzene  
 Concen: 50.000 ug/l  
 RT: 9.106 min Scan# 1199  
 Delta R.T. -0.000 min  
 Lab File: VN075737.D  
 Acq: 13 Dec 2022 03:41

Instrument : MSVOA\_N  
 ClientSampleId : PB149517TB

Tgt Ion:114 Resp: 383525

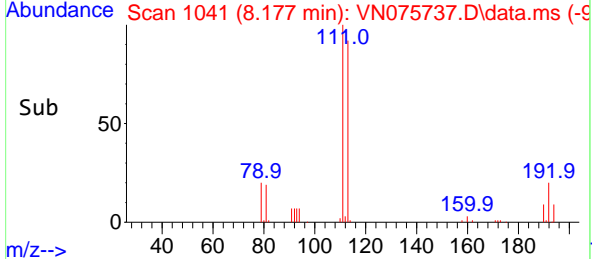
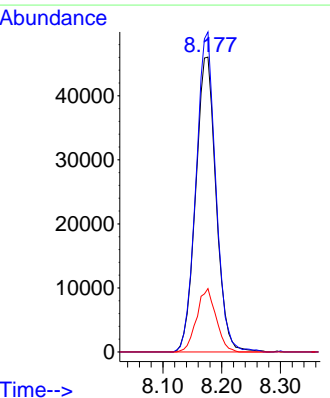
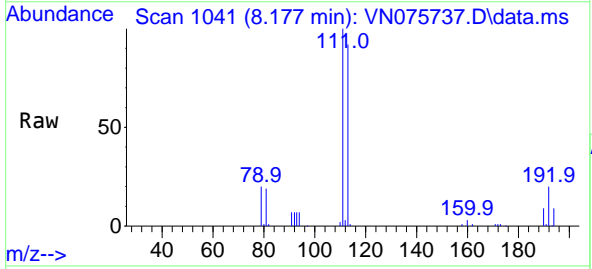
Ion	Ratio	Lower	Upper
114	100		
63	17.9	0.0	34.4
88	14.7	0.0	29.2

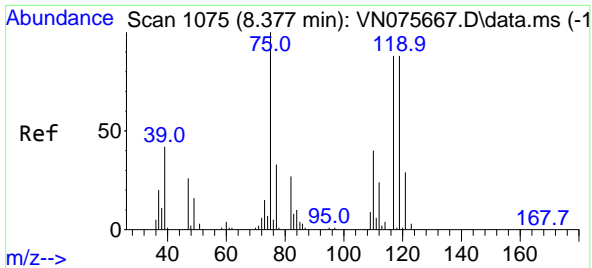


#35  
 Dibromofluoromethane  
 Concen: 47.386 ug/l  
 RT: 8.177 min Scan# 1041  
 Delta R.T. 0.006 min  
 Lab File: VN075737.D  
 Acq: 13 Dec 2022 03:41

Tgt Ion:113 Resp: 110881

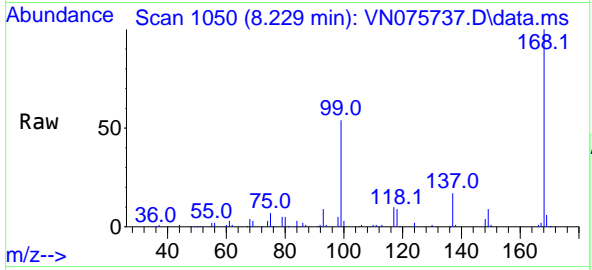
Ion	Ratio	Lower	Upper
113	100		
111	105.1	81.0	121.6
192	20.4	16.2	24.2





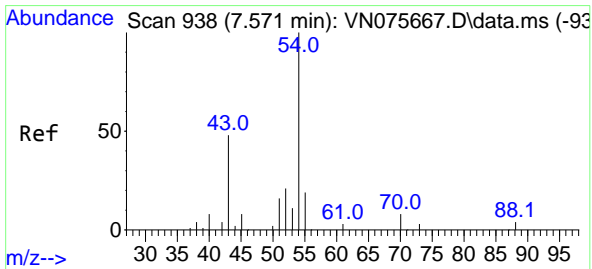
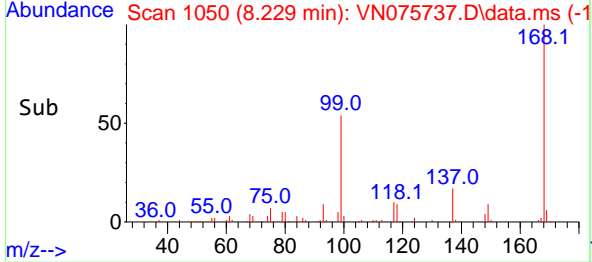
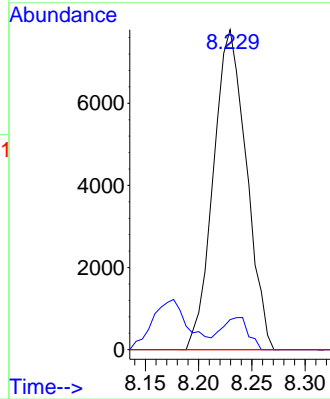
#36  
 1,1-Dichloropropene  
 Concen: 5.408 ug/l  
 RT: 8.229 min Scan# 10  
 Delta R.T. -0.147 min  
 Lab File: VN075737.D  
 Acq: 13 Dec 2022 03:41

Instrument : MSVOA\_N  
 ClientSampleId : PB149517TB



Tgt Ion: 75 Resp: 16803

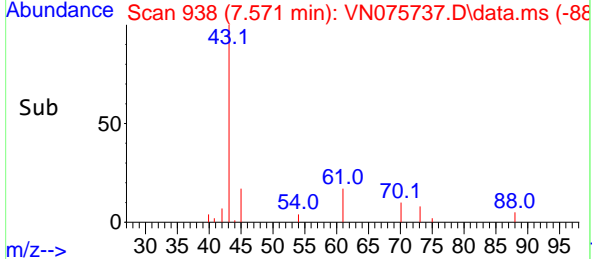
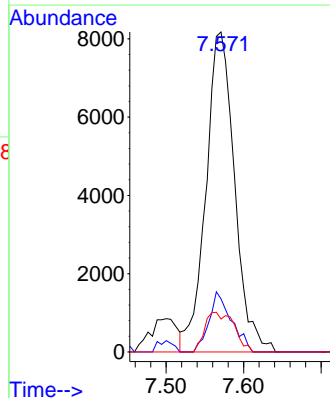
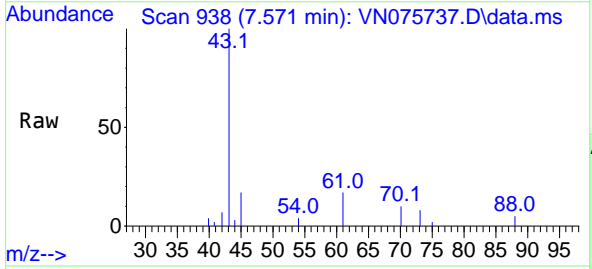
Ion	Ratio	Lower	Upper
75	100		
110	8.1	18.9	56.9#
77	0.0	25.4	38.2#

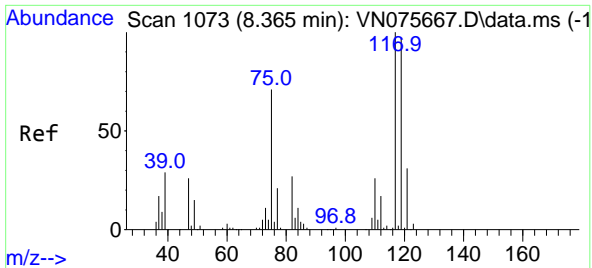


#37  
 Ethyl Acetate  
 Concen: 8.419 ug/l  
 RT: 7.571 min Scan# 938  
 Delta R.T. -0.000 min  
 Lab File: VN075737.D  
 Acq: 13 Dec 2022 03:41

Tgt Ion: 43 Resp: 21002

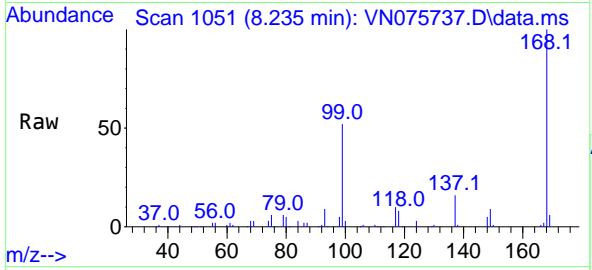
Ion	Ratio	Lower	Upper
43	100		
61	14.7	13.3	19.9
70	12.6	9.9	14.9



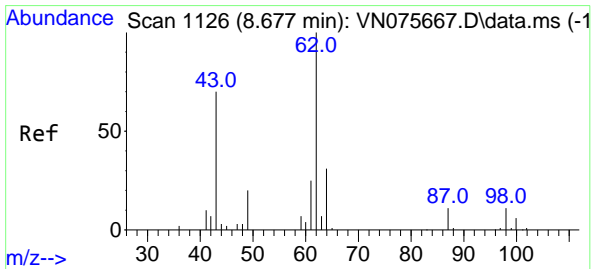
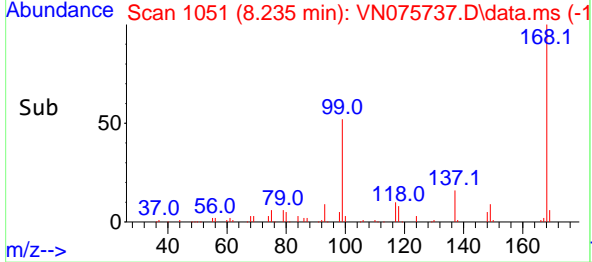
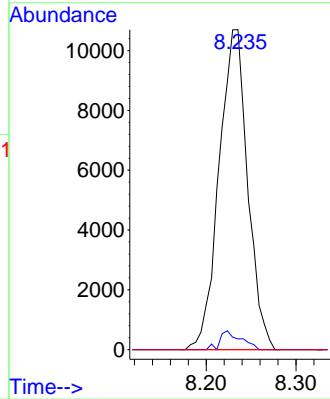


#38  
 Carbon Tetrachloride  
 Concen: 6.611 ug/l  
 RT: 8.235 min Scan# 1109  
 Delta R.T. -0.129 min  
 Lab File: VN075737.D  
 Acq: 13 Dec 2022 03:41

Instrument : MSVOA\_N  
 ClientSampleId : PB149517TB

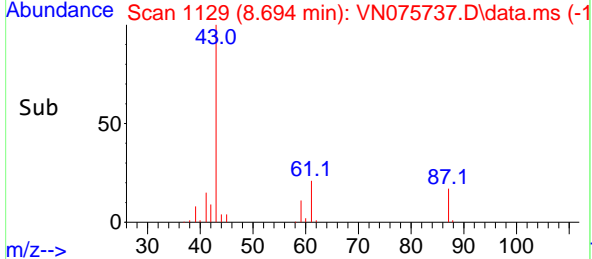
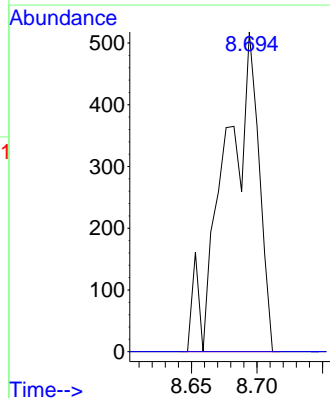
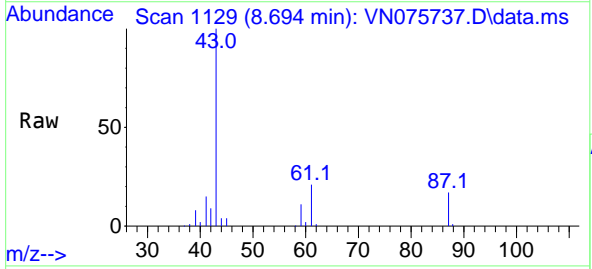


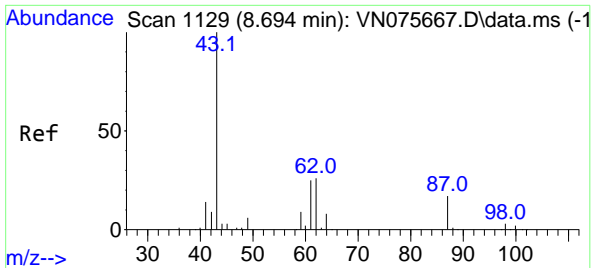
Tgt Ion:117 Resp: 23704  
 Ion Ratio Lower Upper  
 117 100  
 119 3.3 77.2 115.8#  
 121 0.0 24.6 37.0#



#42  
 1,2-Dichloroethane  
 Concen: 0.292 ug/l  
 RT: 8.694 min Scan# 1129  
 Delta R.T. 0.018 min  
 Lab File: VN075737.D  
 Acq: 13 Dec 2022 03:41

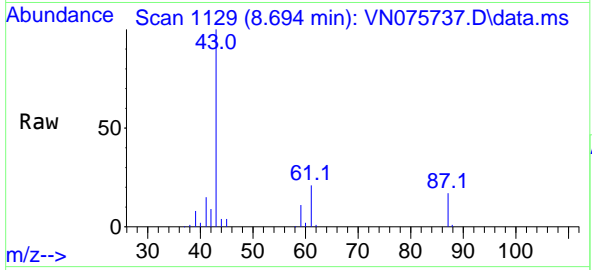
Tgt Ion: 62 Resp: 933  
 Ion Ratio Lower Upper  
 62 100  
 98 0.0 0.0 21.8



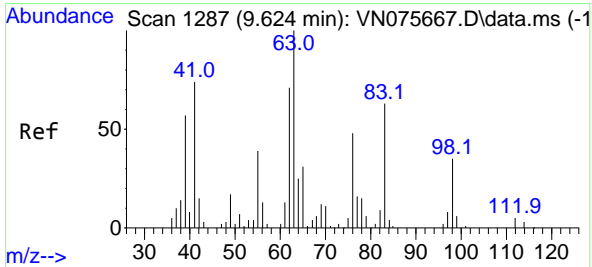
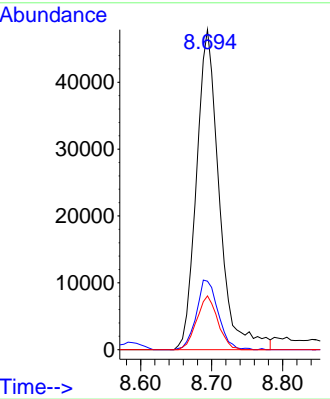
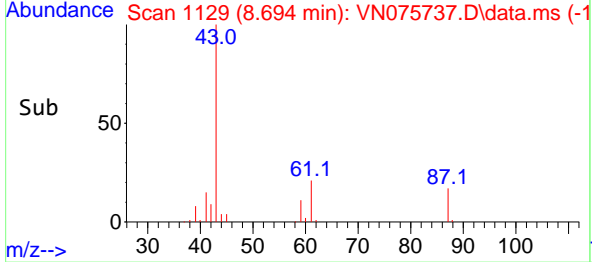


#43  
 Isopropyl Acetate  
 Concen: 25.708 ug/l  
 RT: 8.694 min Scan# 1129  
 Delta R.T. -0.000 min  
 Lab File: VN075737.D  
 Acq: 13 Dec 2022 03:41

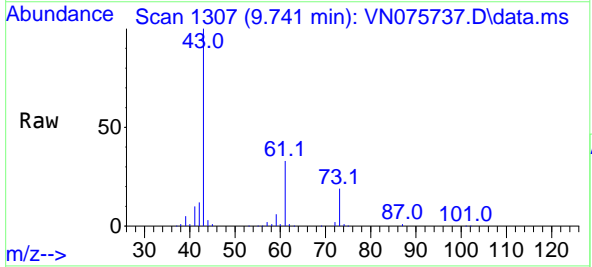
Instrument : MSVOA\_N  
 ClientSampleId : PB149517TB



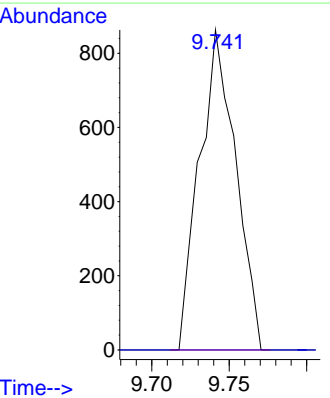
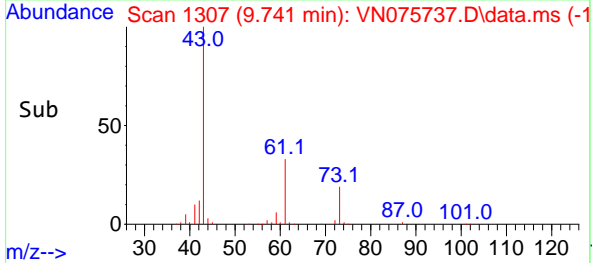
Tgt Ion: 43 Resp: 107065  
 Ion Ratio Lower Upper  
 43 100  
 61 20.7 23.8 35.8#  
 87 15.4 13.7 20.5

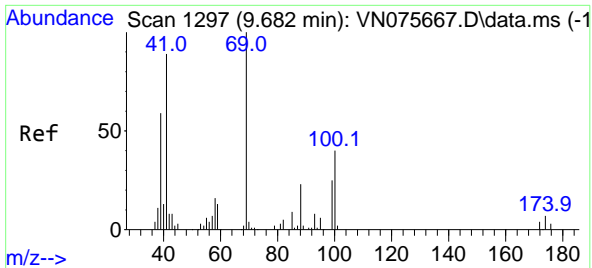


#45  
 1,2-Dichloropropane  
 Concen: 0.619 ug/l  
 RT: 9.741 min Scan# 1307  
 Delta R.T. 0.118 min  
 Lab File: VN075737.D  
 Acq: 13 Dec 2022 03:41



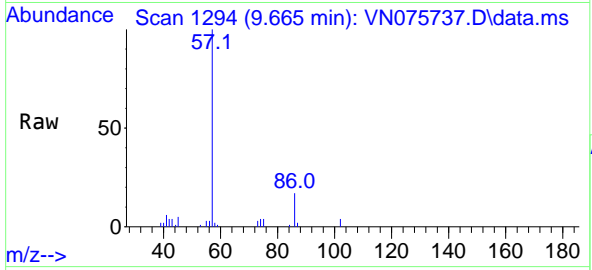
Tgt Ion: 63 Resp: 1404  
 Ion Ratio Lower Upper  
 63 100  
 65 0.0 25.1 37.7#



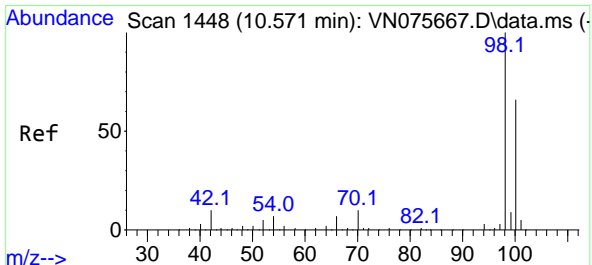
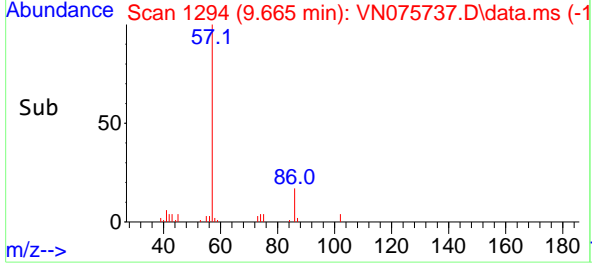
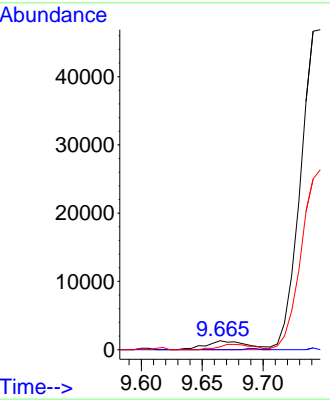


#48  
 Methyl methacrylate  
 Concen: 1.633 ug/l  
 RT: 9.665 min Scan# 11  
 Delta R.T. -0.018 min  
 Lab File: VN075737.D  
 Acq: 13 Dec 2022 03:41

Instrument : MSVOA\_N  
 ClientSampleId : PB149517TB

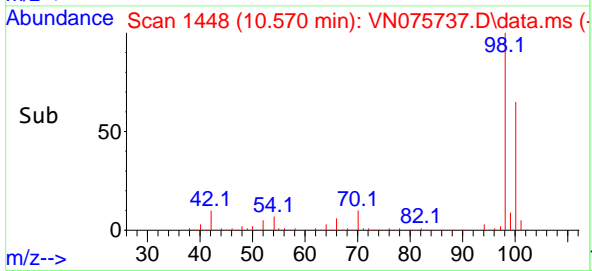
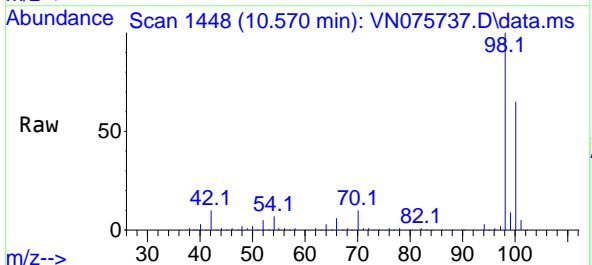
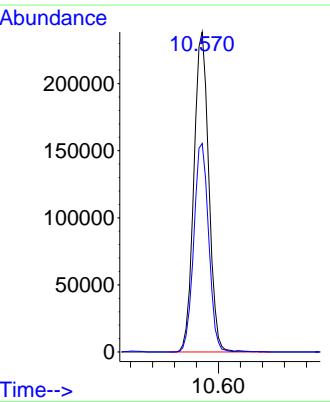


Tgt Ion: 41 Resp: 3133  
 Ion Ratio Lower Upper  
 41 100  
 69 0.0 82.5 123.7#  
 39 0.0 53.2 79.8#

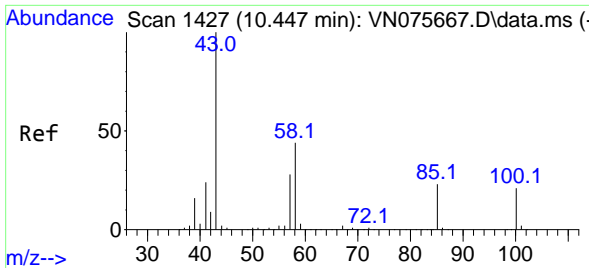


#50  
 Toluene-d8  
 Concen: 50.962 ug/l  
 RT: 10.570 min Scan# 1448  
 Delta R.T. -0.000 min  
 Lab File: VN075737.D  
 Acq: 13 Dec 2022 03:41

Tgt Ion: 98 Resp: 447830  
 Ion Ratio Lower Upper  
 98 100  
 100 65.1 52.6 78.8



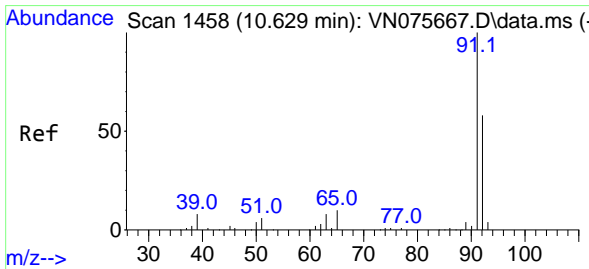
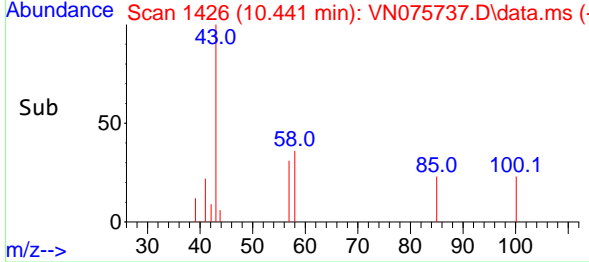
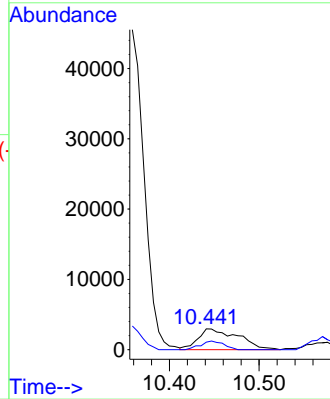
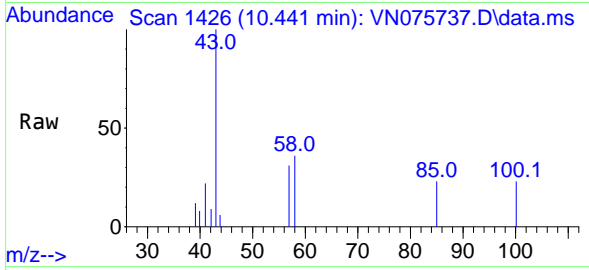




#51  
 4-Methyl-2-Pentanone  
 Concen: 3.603 ug/l  
 RT: 10.441 min Scan# 1427  
 Delta R.T. -0.006 min  
 Lab File: VN075737.D  
 Acq: 13 Dec 2022 03:41

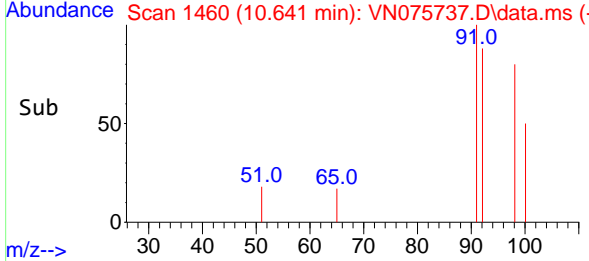
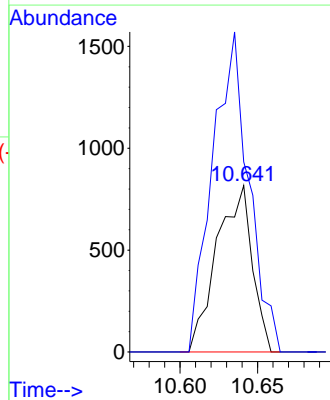
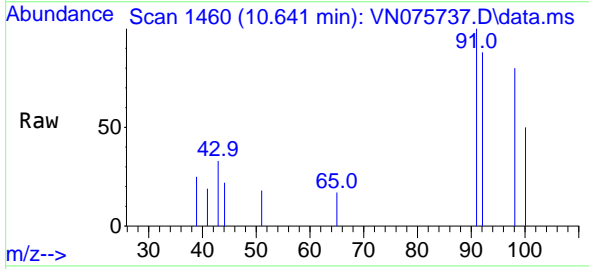
Instrument : MSVOA\_N  
 ClientSampleId : PB149517TB

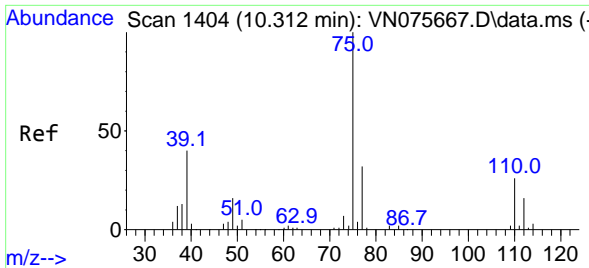
Tgt Ion: 43 Resp: 9252  
 Ion Ratio Lower Upper  
 43 100  
 58 23.9 35.0 52.6#



#52  
 Toluene  
 Concen: 0.205 ug/l  
 RT: 10.641 min Scan# 1460  
 Delta R.T. 0.012 min  
 Lab File: VN075737.D  
 Acq: 13 Dec 2022 03:41

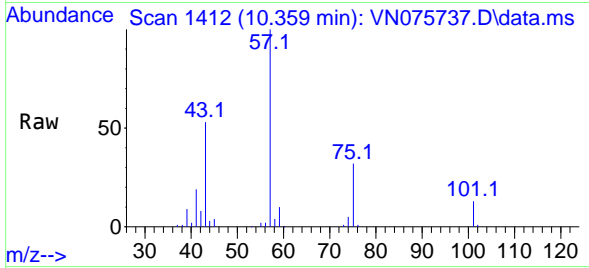
Tgt Ion: 92 Resp: 1293  
 Ion Ratio Lower Upper  
 92 100  
 91 197.5 137.9 206.9



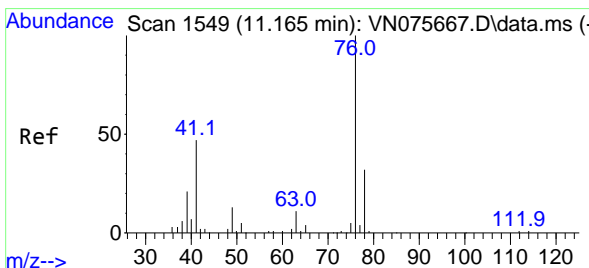
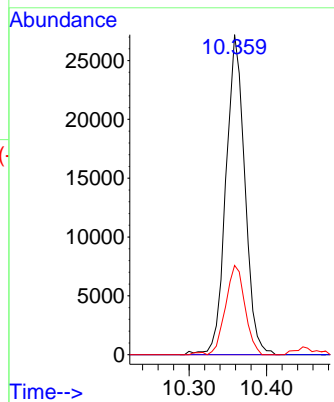
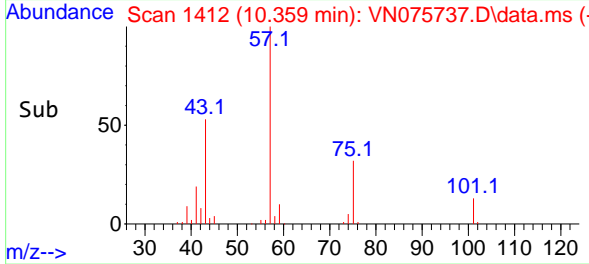


#54  
 cis-1,3-Dichloropropene  
 Concen: 12.583 ug/l  
 RT: 10.359 min Scan# 14  
 Delta R.T. 0.047 min  
 Lab File: VN075737.D  
 Acq: 13 Dec 2022 03:41

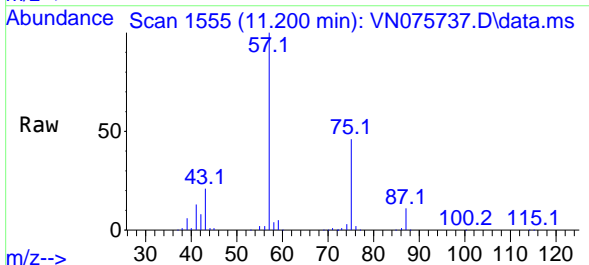
Instrument : MSVOA\_N  
 ClientSampleId : PB149517TB



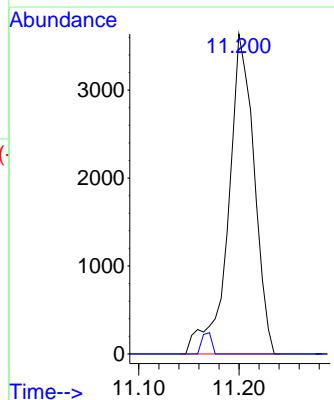
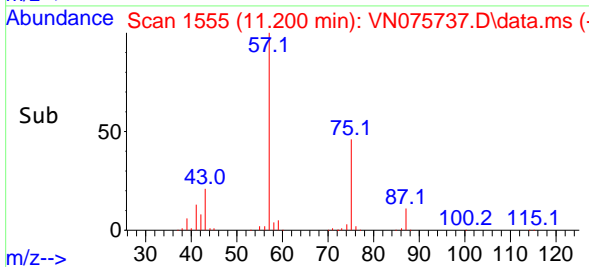
Tgt Ion: 75 Resp: 46158  
 Ion Ratio Lower Upper  
 75 100  
 77 0.0 25.3 37.9#  
 39 27.9 32.0 48.0#

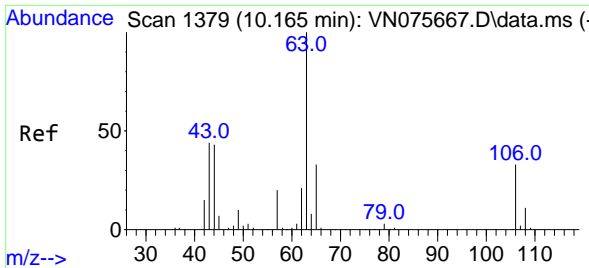


#57  
 1,3-Dichloropropane  
 Concen: 1.620 ug/l  
 RT: 11.200 min Scan# 1555  
 Delta R.T. 0.035 min  
 Lab File: VN075737.D  
 Acq: 13 Dec 2022 03:41



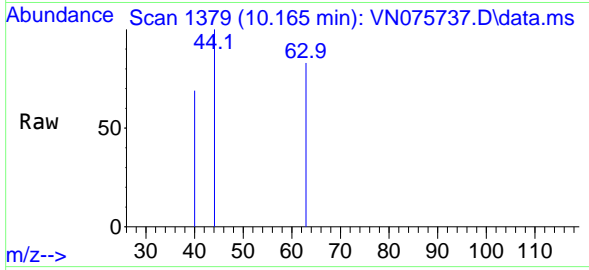
Tgt Ion: 76 Resp: 6490  
 Ion Ratio Lower Upper  
 76 100  
 78 0.0 26.8 40.2#



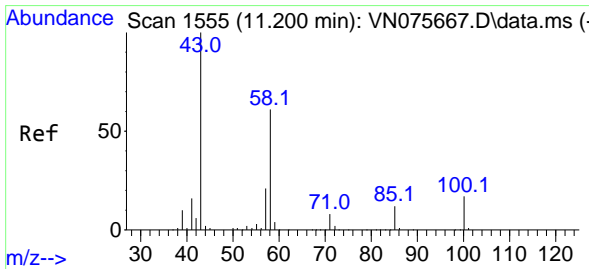
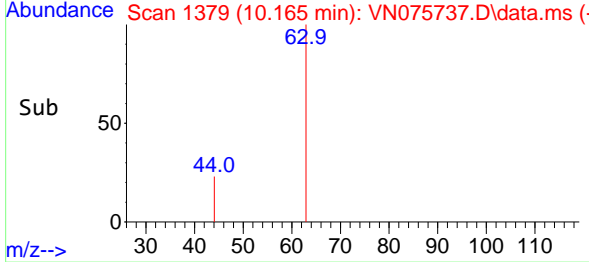
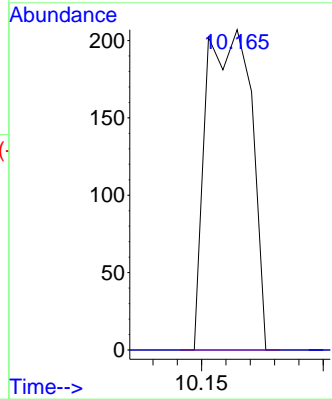


#58  
 2-Chloroethyl Vinyl ether  
 Concen: 0.269 ug/l  
 RT: 10.165 min Scan# 11  
 Delta R.T. -0.000 min  
 Lab File: VN075737.D  
 Acq: 13 Dec 2022 03:41

Instrument : MSVOA\_N  
 ClientSampleId : PB149517TB

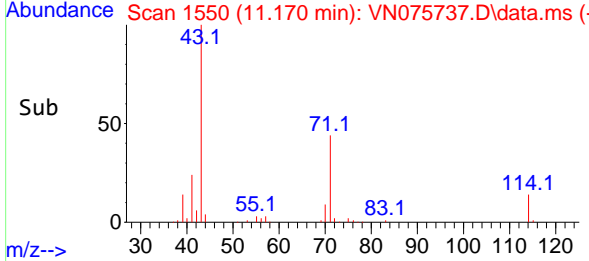
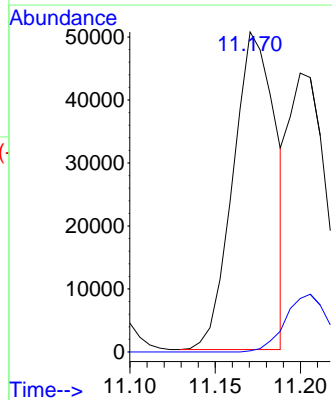
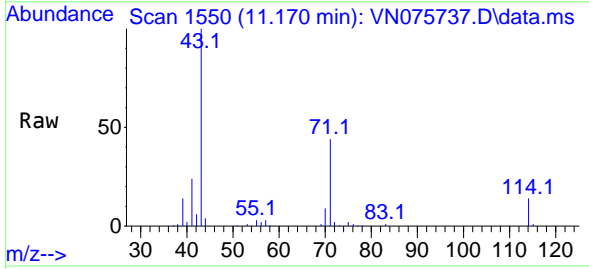


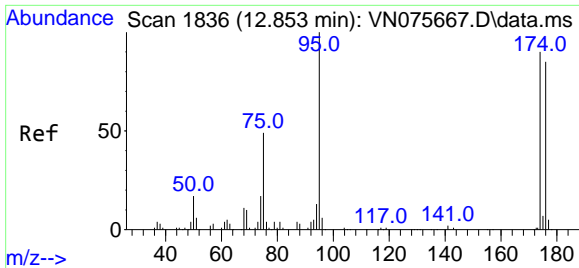
Tgt Ion: 63 Resp: 267  
 Ion Ratio Lower Upper  
 63 100  
 106 0.0 26.6 40.0#



#59  
 2-Hexanone  
 Concen: 46.898 ug/l  
 RT: 11.170 min Scan# 1550  
 Delta R.T. -0.029 min  
 Lab File: VN075737.D  
 Acq: 13 Dec 2022 03:41

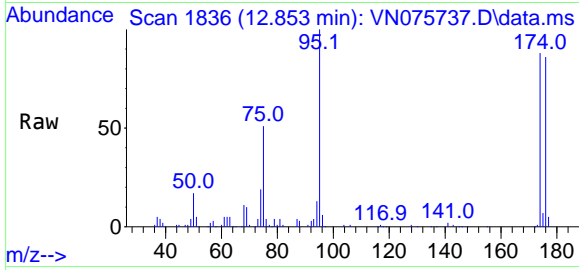
Tgt Ion: 43 Resp: 87498  
 Ion Ratio Lower Upper  
 43 100  
 58 0.0 30.9 92.5#



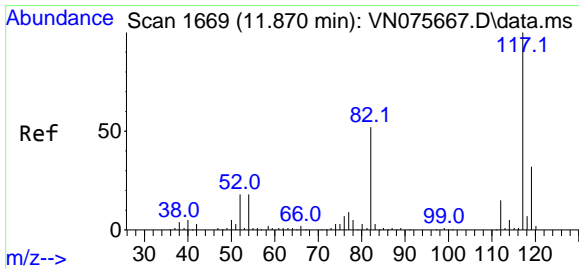
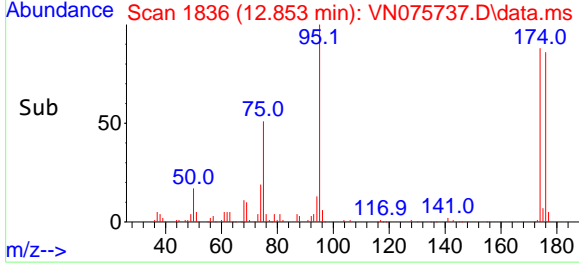
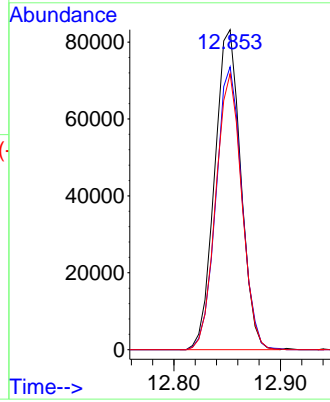


#62  
 4-Bromofluorobenzene  
 Concen: 47.132 ug/l  
 RT: 12.853 min Scan# 11  
 Delta R.T. -0.000 min  
 Lab File: VN075737.D  
 Acq: 13 Dec 2022 03:41

Instrument : MSVOA\_N  
 ClientSampleId : PB149517TB

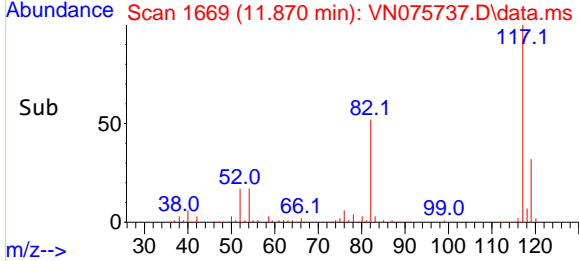
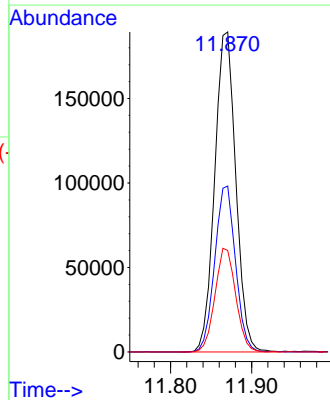
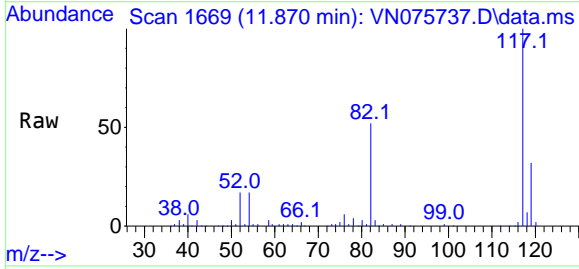


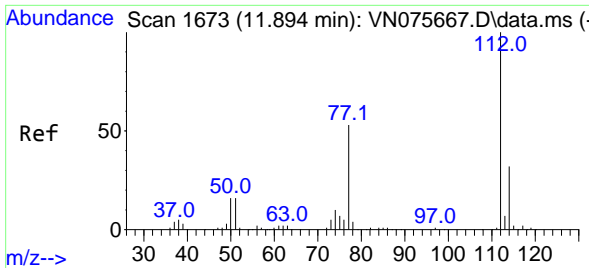
Tgt Ion: 95 Resp: 141608  
 Ion Ratio Lower Upper  
 95 100  
 174 87.3 0.0 178.6  
 176 85.4 0.0 170.8



#63  
 Chlorobenzene-d5  
 Concen: 50.000 ug/l  
 RT: 11.870 min Scan# 1669  
 Delta R.T. -0.000 min  
 Lab File: VN075737.D  
 Acq: 13 Dec 2022 03:41

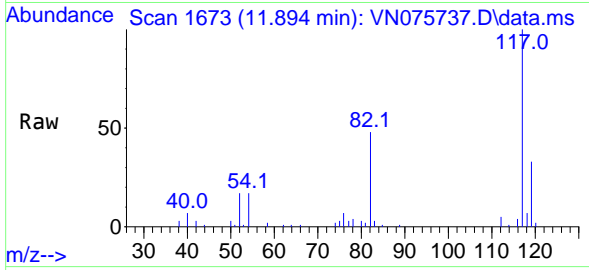
Tgt Ion: 117 Resp: 342512  
 Ion Ratio Lower Upper  
 117 100  
 82 51.9 41.8 62.8  
 119 31.7 25.8 38.6



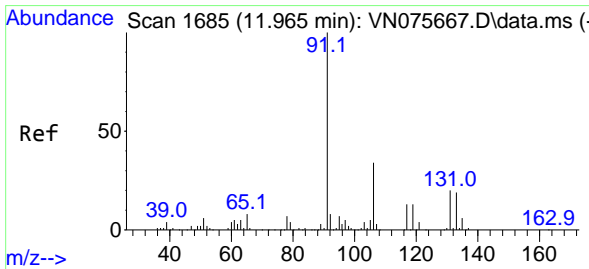
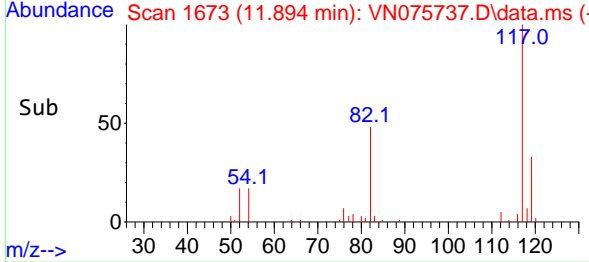
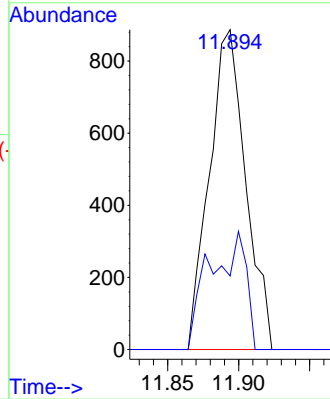


#65  
 Chlorobenzene  
 Concen: 0.224 ug/l  
 RT: 11.894 min Scan# 111  
 Delta R.T. -0.000 min  
 Lab File: VN075737.D  
 Acq: 13 Dec 2022 03:41

Instrument : MSVOA\_N  
 ClientSampleId : PB149517TB

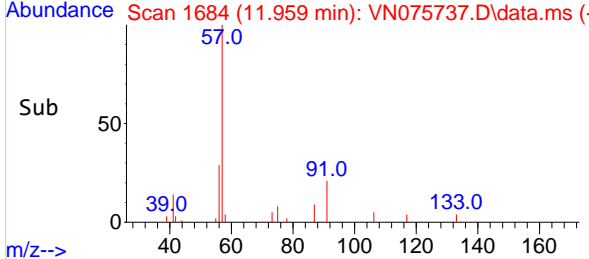
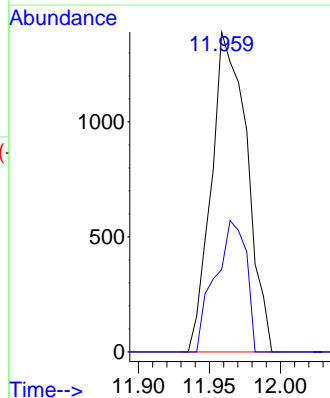
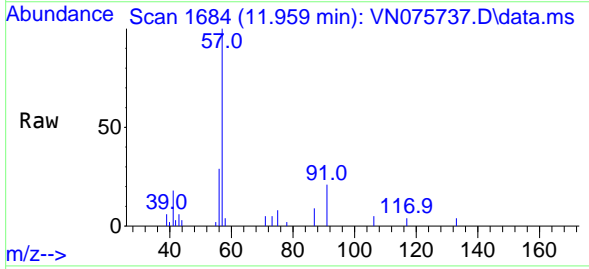


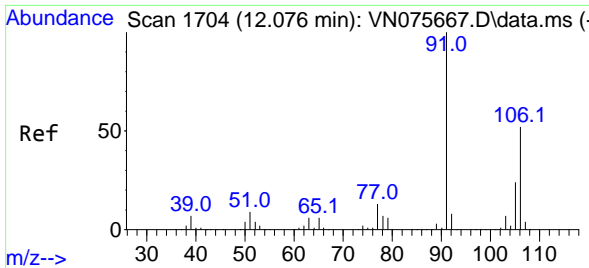
Tgt Ion:112 Resp: 1577  
 Ion Ratio Lower Upper  
 112 100  
 114 23.0 25.5 38.3#



#67  
 Ethyl Benzene  
 Concen: 0.203 ug/l  
 RT: 11.959 min Scan# 1684  
 Delta R.T. -0.006 min  
 Lab File: VN075737.D  
 Acq: 13 Dec 2022 03:41

Tgt Ion: 91 Resp: 2418  
 Ion Ratio Lower Upper  
 91 100  
 106 25.7 26.9 40.3#

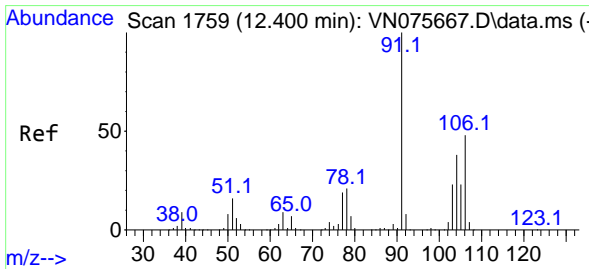
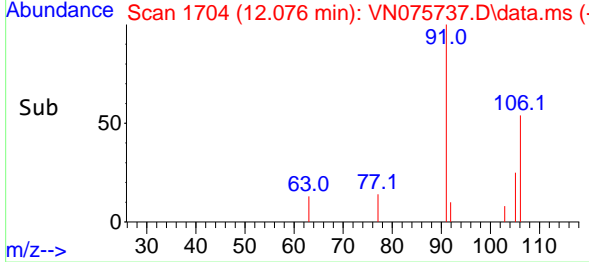
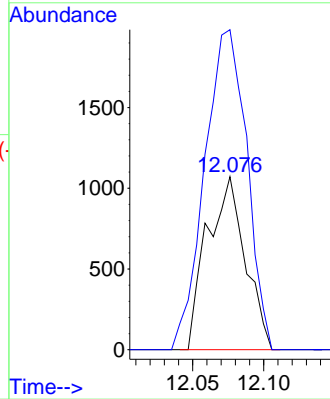
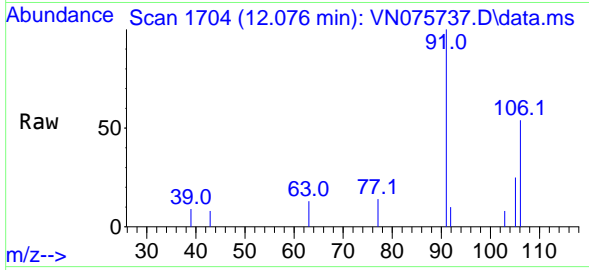




#68  
 m/p-Xylenes  
 Concen: 0.415 ug/l  
 RT: 12.076 min Scan# 11  
 Delta R.T. -0.000 min  
 Lab File: VN075737.D  
 Acq: 13 Dec 2022 03:41

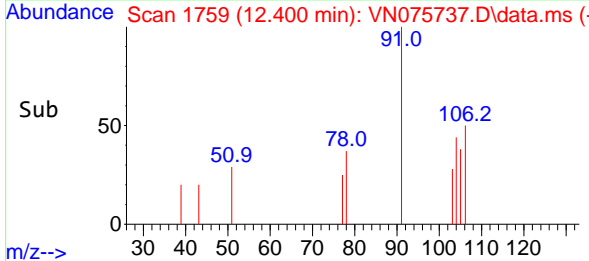
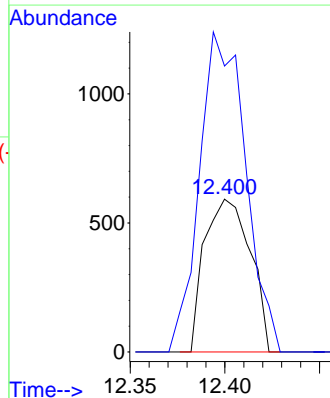
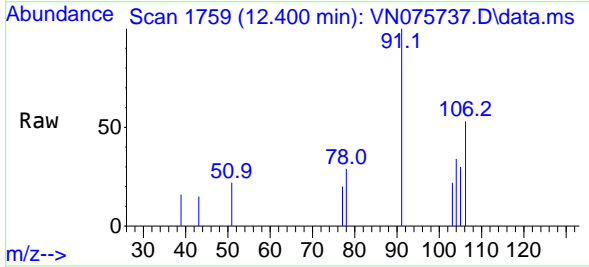
Instrument :  
 MSVOA\_N  
 ClientSampleId :  
 PB149517TB

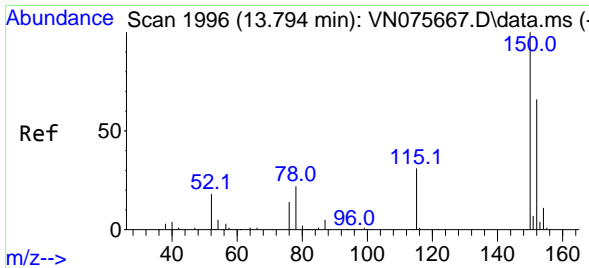
Tgt Ion:106 Resp: 1999  
 Ion Ratio Lower Upper  
 106 100  
 91 204.6 156.2 234.4



#69  
 o-Xylene  
 Concen: 0.213 ug/l  
 RT: 12.400 min Scan# 1759  
 Delta R.T. -0.000 min  
 Lab File: VN075737.D  
 Acq: 13 Dec 2022 03:41

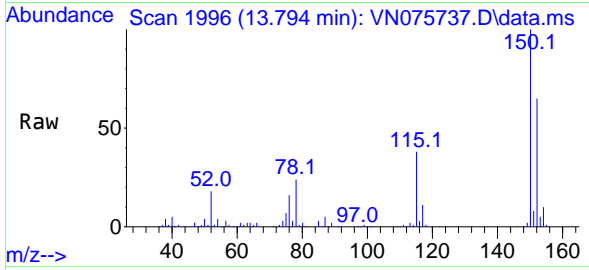
Tgt Ion:106 Resp: 995  
 Ion Ratio Lower Upper  
 106 100  
 91 210.6 102.8 308.5



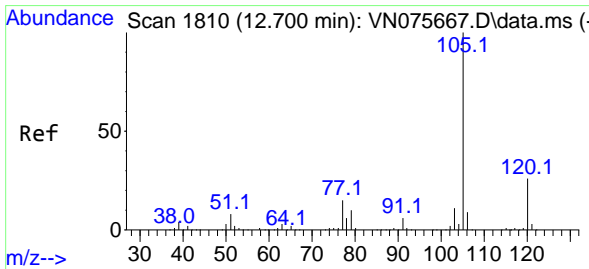
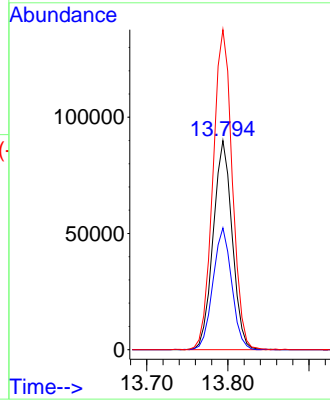
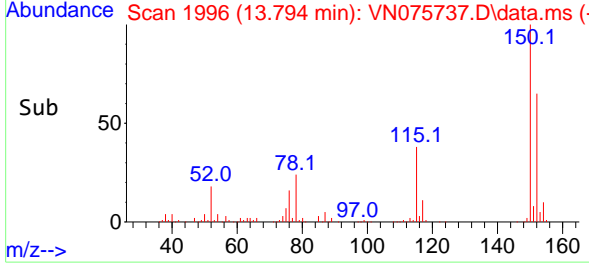


#72  
 1,4-Dichlorobenzene-d4  
 Concen: 50.000 ug/l  
 RT: 13.794 min Scan# 1996  
 Delta R.T. -0.000 min  
 Lab File: VN075737.D  
 Acq: 13 Dec 2022 03:41

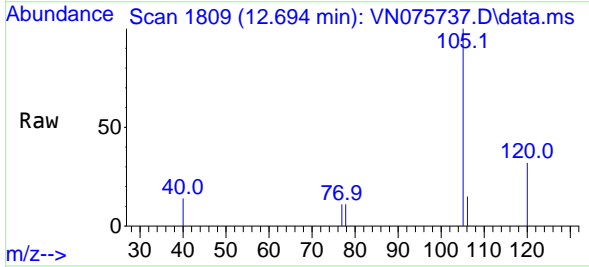
Instrument : MSVOA\_N  
 ClientSampleId : PB149517TB



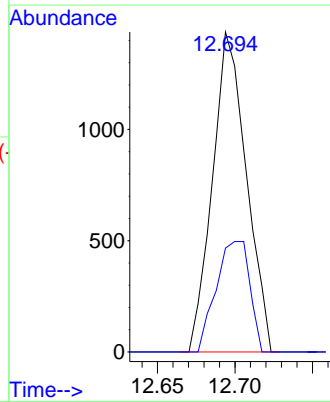
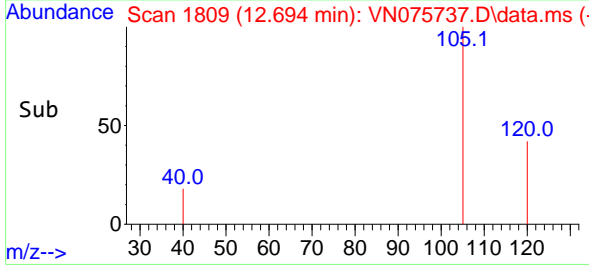
Tgt Ion:152 Resp: 146256  
 Ion Ratio Lower Upper  
 152 100  
 115 57.5 28.4 85.2  
 150 155.8 0.0 347.6

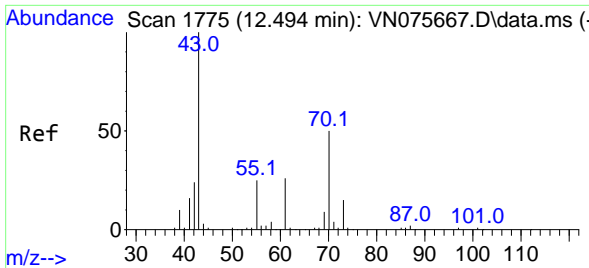


#73  
 Isopropylbenzene  
 Concen: 0.208 ug/l  
 RT: 12.694 min Scan# 1809  
 Delta R.T. -0.006 min  
 Lab File: VN075737.D  
 Acq: 13 Dec 2022 03:41



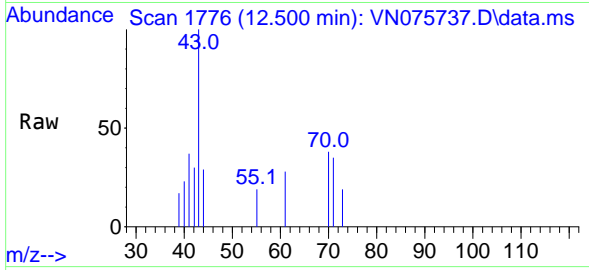
Tgt Ion:105 Resp: 2182  
 Ion Ratio Lower Upper  
 105 100  
 120 34.3 13.4 40.2





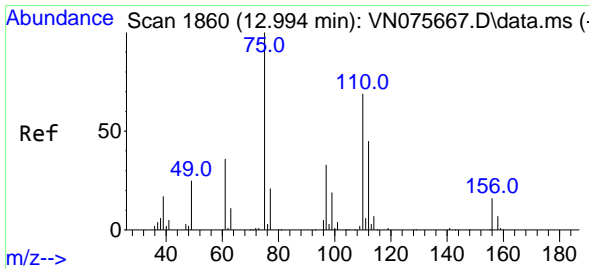
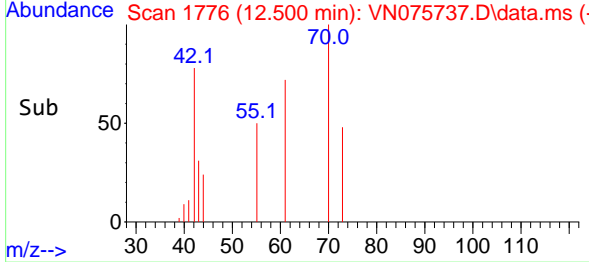
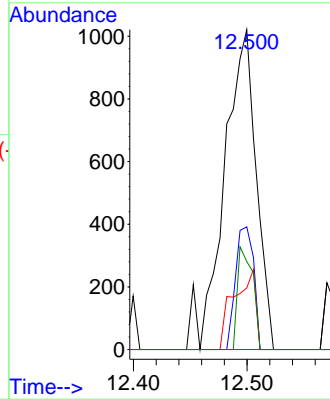
#74  
 N-amy1 acetate  
 Concen: 0.661 ug/l  
 RT: 12.500 min Scan# 11  
 Delta R.T. 0.006 min  
 Lab File: VN075737.D  
 Acq: 13 Dec 2022 03:41

Instrument :  
 MSVOA\_N  
 ClientSampleId :  
 PB149517TB



Tgt Ion: 43 Resp: 2016

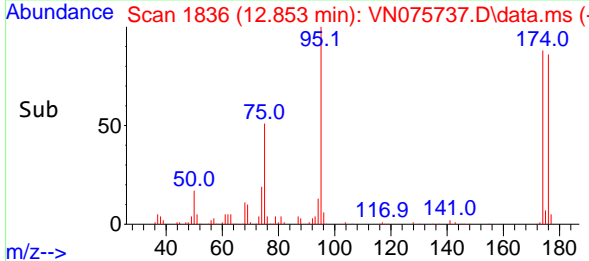
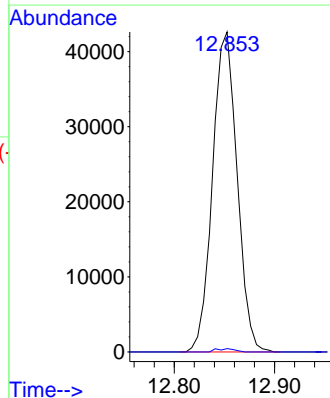
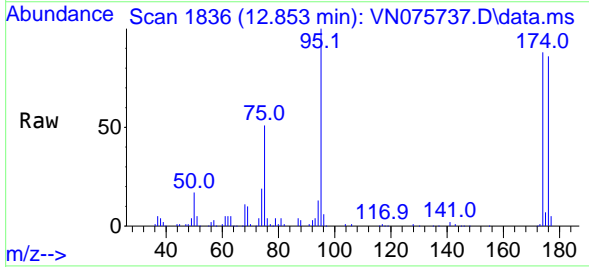
Ion	Ratio	Lower	Upper
43	100		
70	21.5	41.0	61.6#
55	17.0	20.7	31.1#
61	14.9	21.4	32.2#



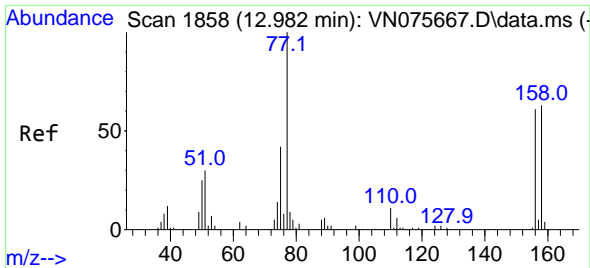
#76  
 1,2,3-Trichloropropane  
 Concen: 24.705 ug/l  
 RT: 12.853 min Scan# 1836  
 Delta R.T. -0.141 min  
 Lab File: VN075737.D  
 Acq: 13 Dec 2022 03:41

Tgt Ion: 75 Resp: 72563

Ion	Ratio	Lower	Upper
75	100		
77	0.8	81.8	245.4#

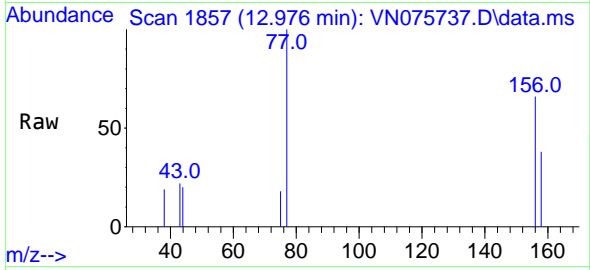






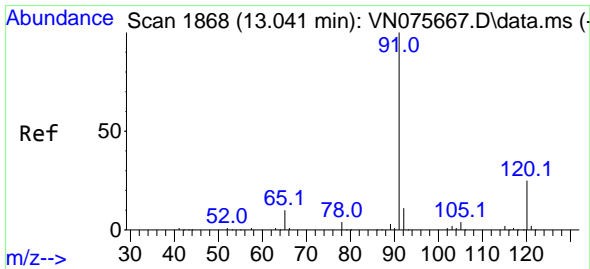
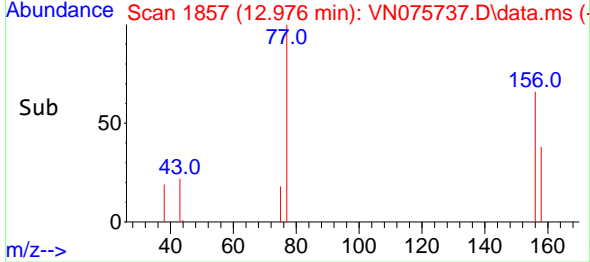
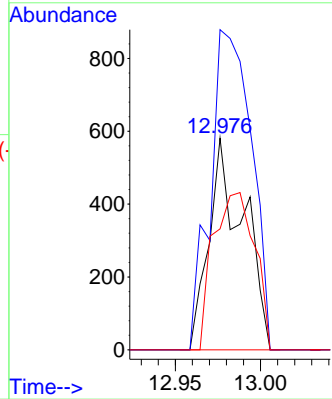
#77  
 Bromobenzene  
 Concen: 0.310 ug/l  
 RT: 12.976 min Scan# 1857  
 Delta R.T. -0.006 min  
 Lab File: VN075737.D  
 Acq: 13 Dec 2022 03:41

Instrument : MSVOA\_N  
 Client Sample Id : PB149517TB



Tgt Ion: 156 Resp: 818

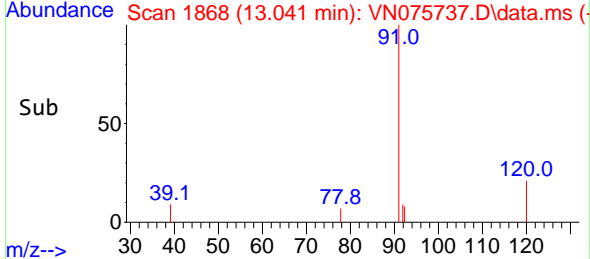
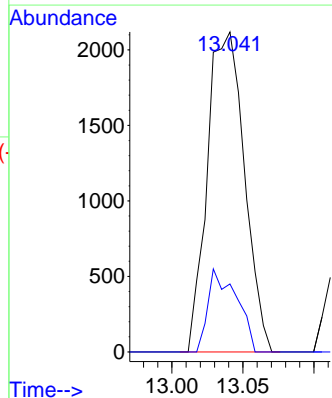
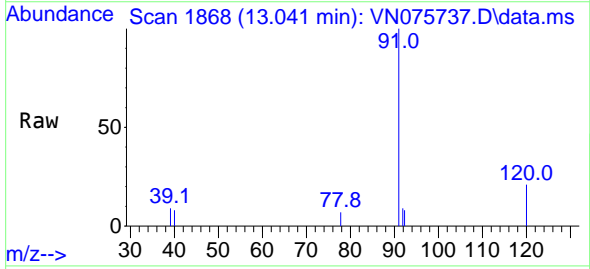
Ion	Ratio	Lower	Upper
156	100		
77	180.1	90.8	272.5
158	89.0	49.3	147.8

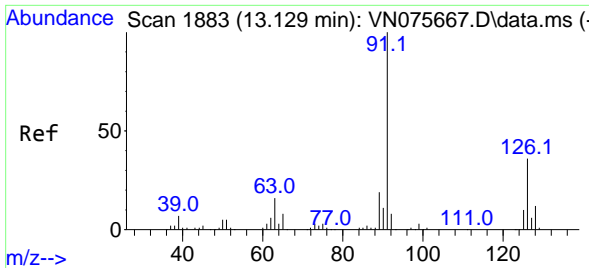


#78  
 n-propylbenzene  
 Concen: 0.330 ug/l  
 RT: 13.041 min Scan# 1868  
 Delta R.T. -0.000 min  
 Lab File: VN075737.D  
 Acq: 13 Dec 2022 03:41

Tgt Ion: 91 Resp: 3845

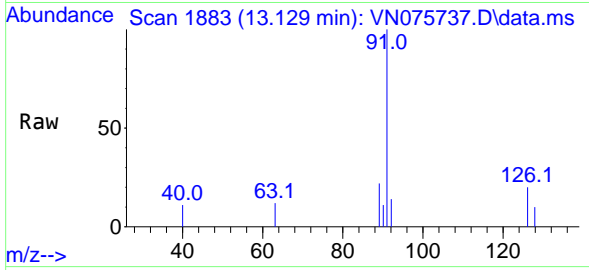
Ion	Ratio	Lower	Upper
91	100		
120	20.0	12.1	36.3



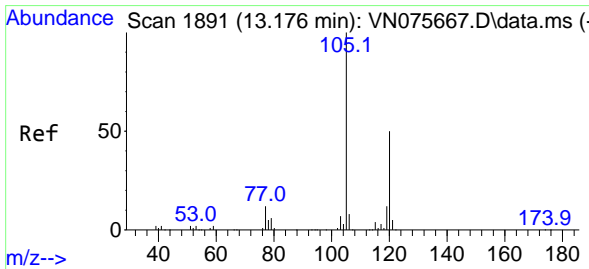
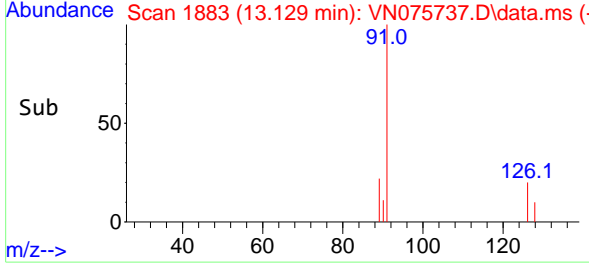
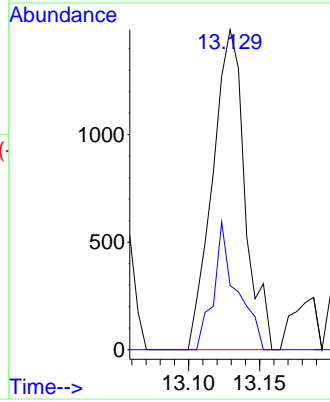


#79  
 2-Chlorotoluene  
 Concen: 0.328 ug/l  
 RT: 13.129 min Scan# 1883  
 Delta R.T. -0.000 min  
 Lab File: VN075737.D  
 Acq: 13 Dec 2022 03:41

Instrument : MSVOA\_N  
 ClientSampleId : PB149517TB

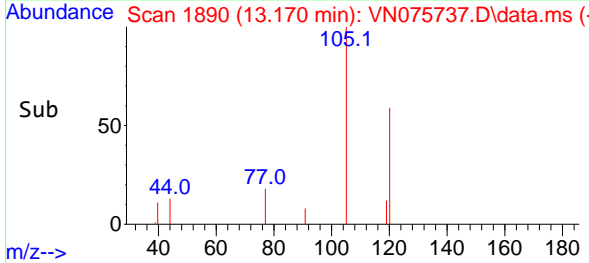
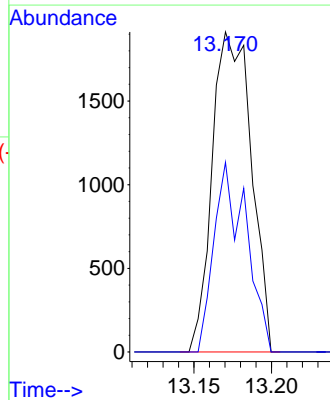
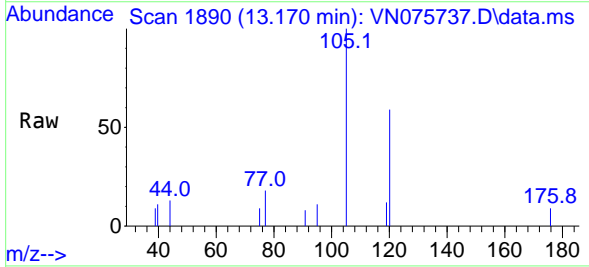


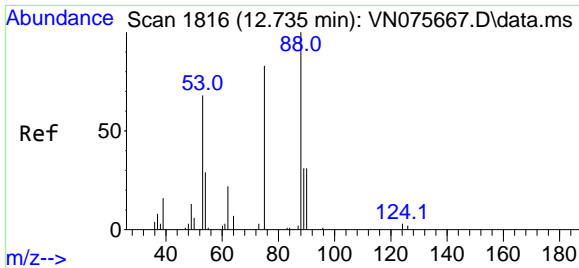
Tgt Ion: 91 Resp: 2358  
 Ion Ratio Lower Upper  
 91 100  
 126 28.2 17.8 53.4



#80  
 1,3,5-Trimethylbenzene  
 Concen: 0.381 ug/l  
 RT: 13.170 min Scan# 1890  
 Delta R.T. -0.006 min  
 Lab File: VN075737.D  
 Acq: 13 Dec 2022 03:41

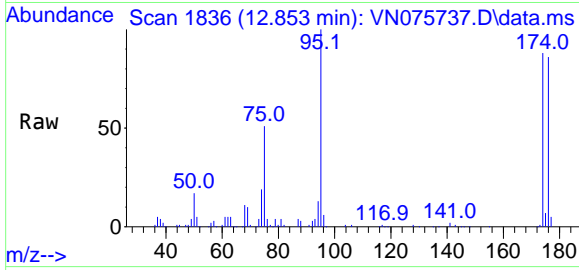
Tgt Ion: 105 Resp: 3349  
 Ion Ratio Lower Upper  
 105 100  
 120 48.6 24.9 74.6





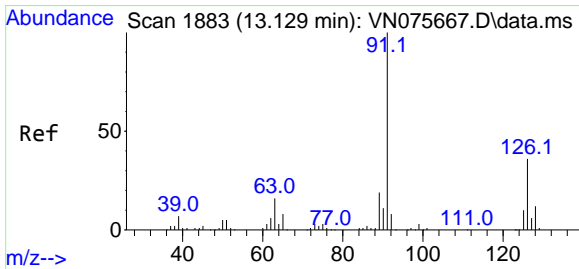
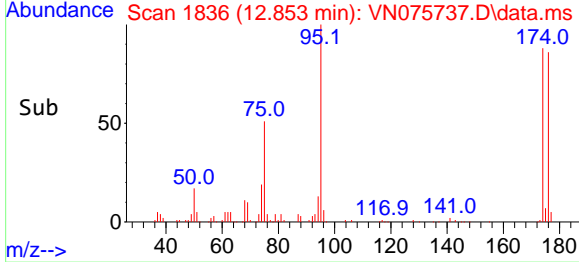
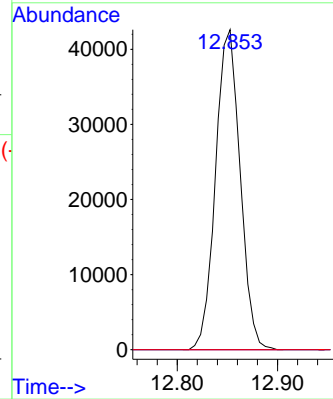
#81  
 trans-1,4-Dichloro-2-butene  
 Concen: 78.853 ug/l  
 RT: 12.853 min Scan# 1836  
 Delta R.T. 0.118 min  
 Lab File: VN075737.D  
 Acq: 13 Dec 2022 03:41

Instrument : MSVOA\_N  
 ClientSampleId : PB149517TB

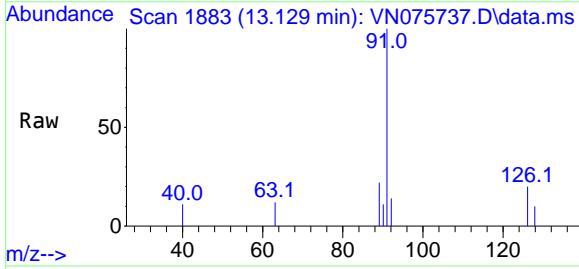


Tgt Ion: 75 Resp: 72563

Ion	Ratio	Lower	Upper
75	100		
53	0.0	72.4	108.6#
89	0.0	36.6	55.0#

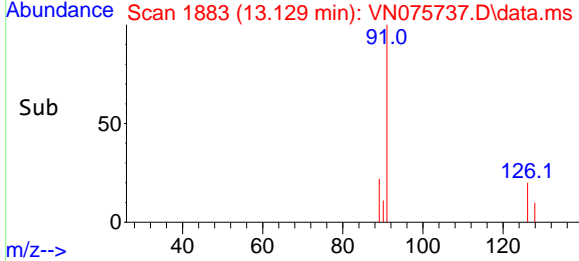
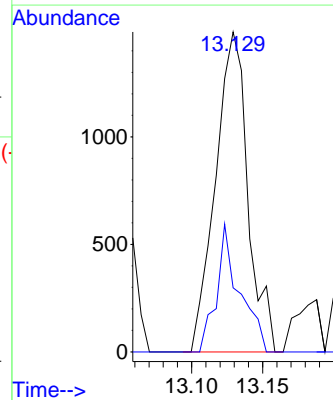


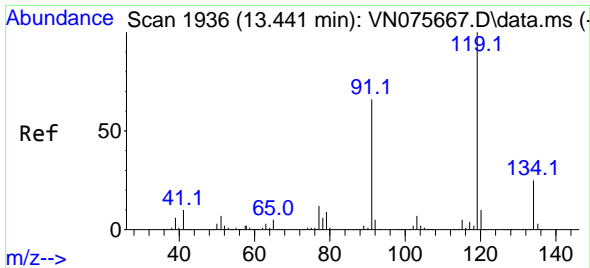
#82  
 4-Chlorotoluene  
 Concen: 0.328 ug/l  
 RT: 13.129 min Scan# 1883  
 Delta R.T. -0.000 min  
 Lab File: VN075737.D  
 Acq: 13 Dec 2022 03:41



Tgt Ion: 91 Resp: 2358

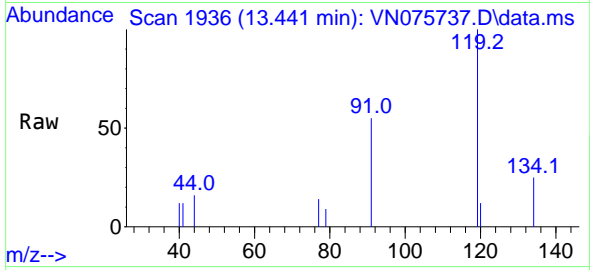
Ion	Ratio	Lower	Upper
91	100		
126	28.2	17.8	53.4





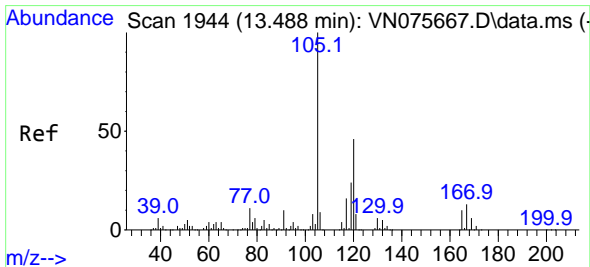
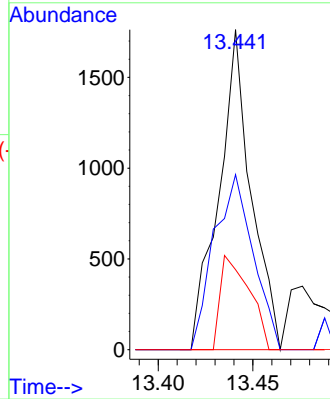
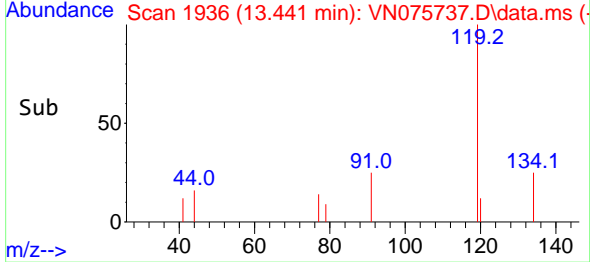
#83  
 tert-Butylbenzene  
 Concen: 0.263 ug/l  
 RT: 13.441 min Scan# 1936  
 Delta R.T. -0.000 min  
 Lab File: VN075737.D  
 Acq: 13 Dec 2022 03:41

Instrument : MSVOA\_N  
 ClientSampleId : PB149517TB

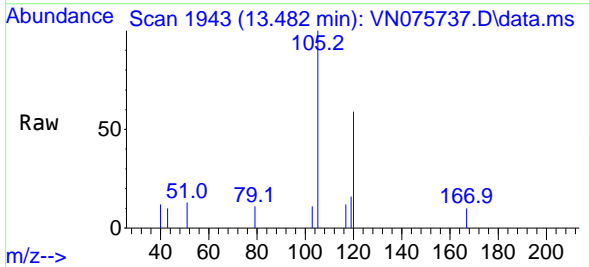


Tgt Ion:119 Resp: 2093

Ion	Ratio	Lower	Upper
119	100		
91	66.2	31.9	95.9
134	26.4	13.9	41.7

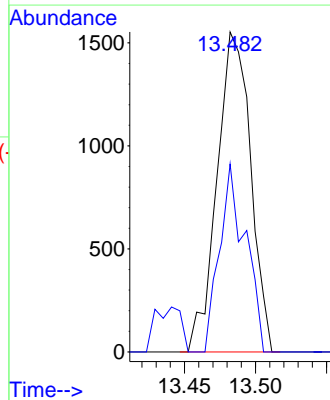
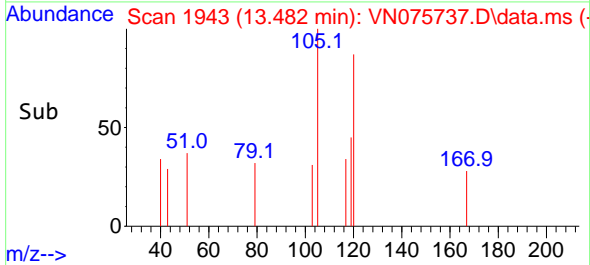


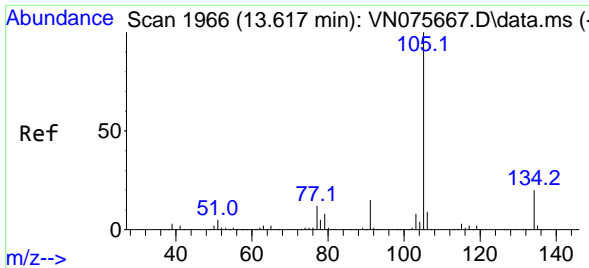
#84  
 1,2,4-Trimethylbenzene  
 Concen: 0.289 ug/l  
 RT: 13.482 min Scan# 1943  
 Delta R.T. -0.006 min  
 Lab File: VN075737.D  
 Acq: 13 Dec 2022 03:41



Tgt Ion:105 Resp: 2553

Ion	Ratio	Lower	Upper
105	100		
120	45.2	23.1	69.2

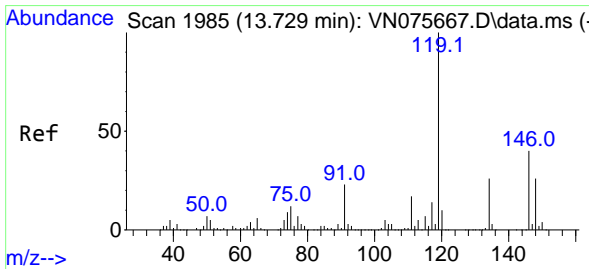
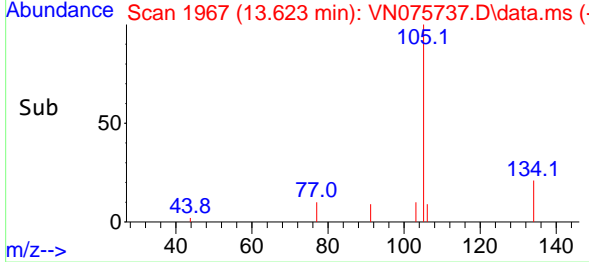
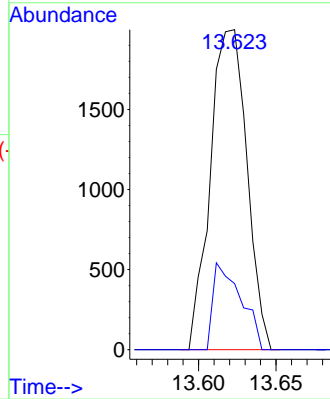
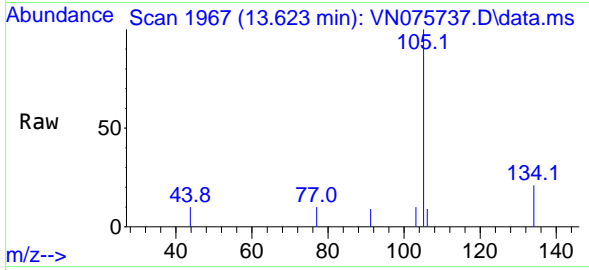




#85  
 sec-Butylbenzene  
 Concen: 0.300 ug/l  
 RT: 13.623 min Scan# 1967  
 Delta R.T. 0.006 min  
 Lab File: VN075737.D  
 Acq: 13 Dec 2022 03:41

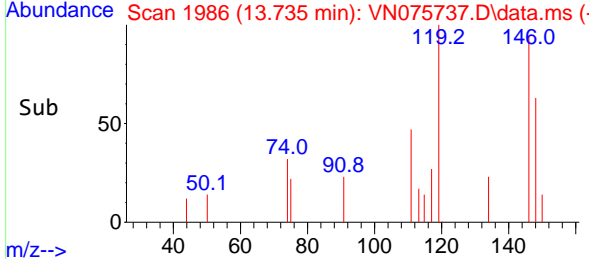
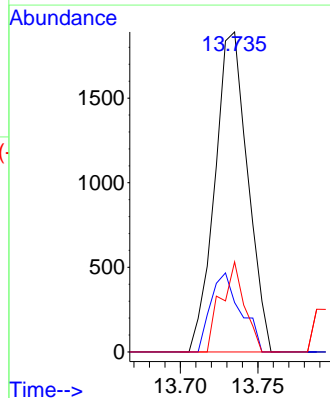
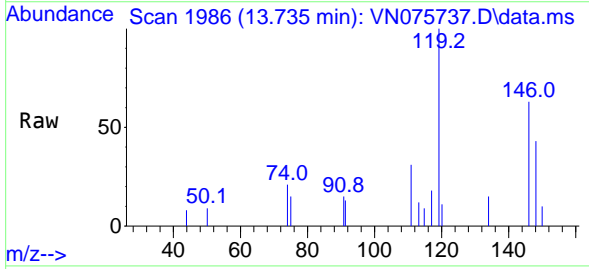
Instrument : MSVOA\_N  
 ClientSampleId : PB149517TB

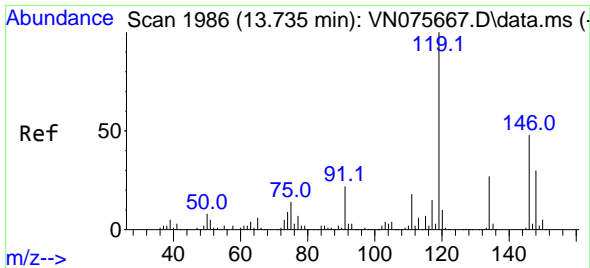
Tgt Ion:105 Resp: 3281  
 Ion Ratio Lower Upper  
 105 100  
 134 20.7 10.2 30.6



#86  
 p-Isopropyltoluene  
 Concen: 0.304 ug/l  
 RT: 13.735 min Scan# 1986  
 Delta R.T. 0.006 min  
 Lab File: VN075737.D  
 Acq: 13 Dec 2022 03:41

Tgt Ion:119 Resp: 2780  
 Ion Ratio Lower Upper  
 119 100  
 134 22.7 13.3 39.9  
 91 20.2 11.4 34.1



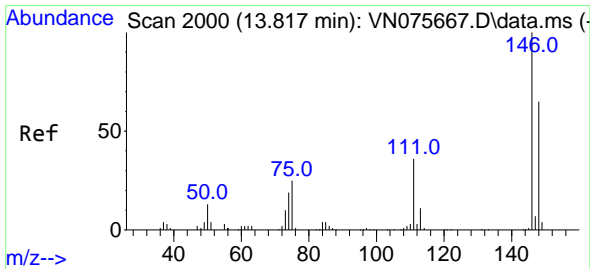
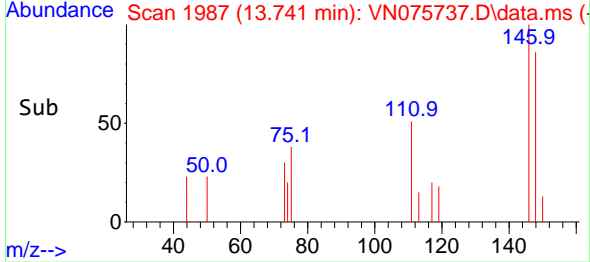
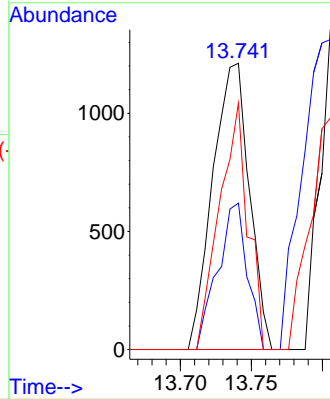
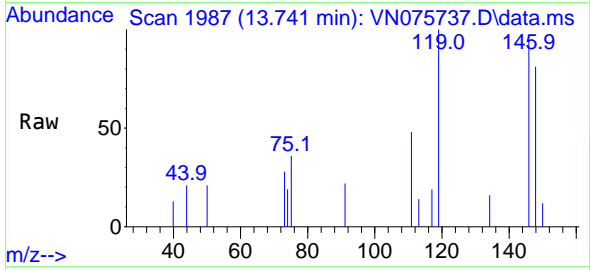


#87  
 1,3-Dichlorobenzene  
 Concen: 0.441 ug/l  
 RT: 13.741 min Scan# 1987  
 Delta R.T. 0.006 min  
 Lab File: VN075737.D  
 Acq: 13 Dec 2022 03:41

Instrument : MSVOA\_N  
 ClientSampleId : PB149517TB

Tgt Ion:146 Resp: 2176

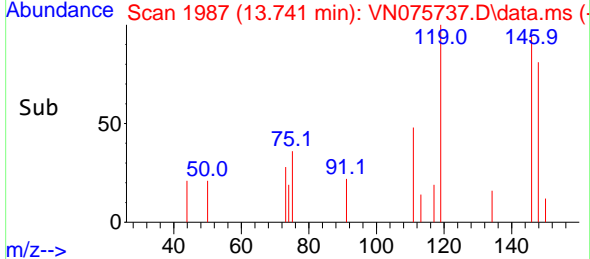
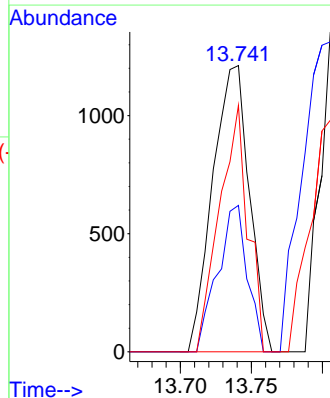
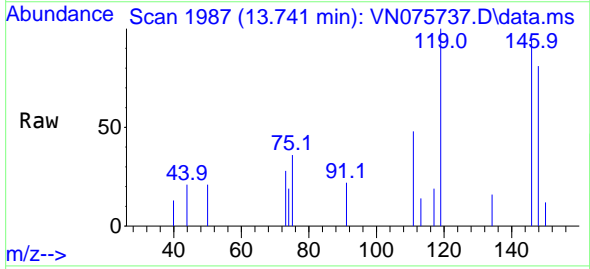
Ion	Ratio	Lower	Upper
146	100		
111	41.4	19.8	59.3
148	67.0	32.1	96.3

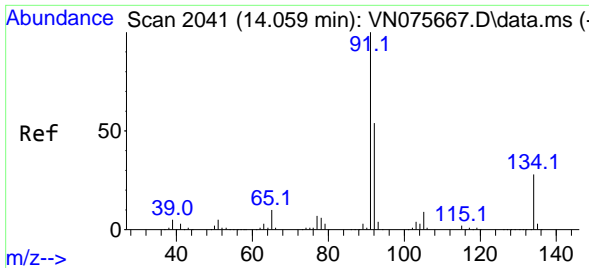


#88  
 1,4-Dichlorobenzene  
 Concen: 0.433 ug/l  
 RT: 13.741 min Scan# 1987  
 Delta R.T. -0.077 min  
 Lab File: VN075737.D  
 Acq: 13 Dec 2022 03:41

Tgt Ion:146 Resp: 2176

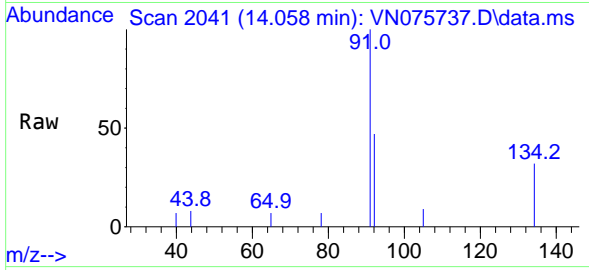
Ion	Ratio	Lower	Upper
146	100		
111	41.4	19.1	57.1
148	67.0	32.1	96.3





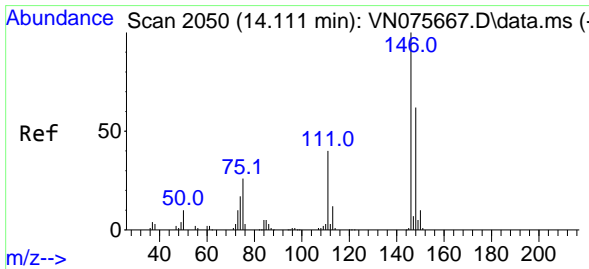
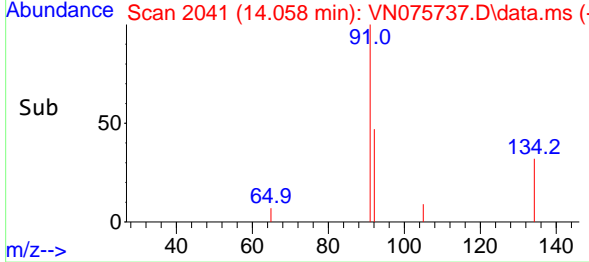
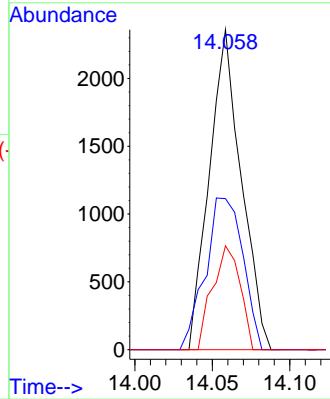
#89  
 n-Butylbenzene  
 Concen: 0.461 ug/l  
 RT: 14.058 min Scan# 2041  
 Delta R.T. -0.000 min  
 Lab File: VN075737.D  
 Acq: 13 Dec 2022 03:41

Instrument : MSVOA\_N  
 ClientSampleId : PB149517TB



Tgt Ion: 91 Resp: 3383

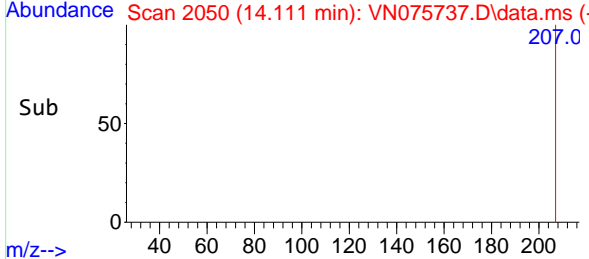
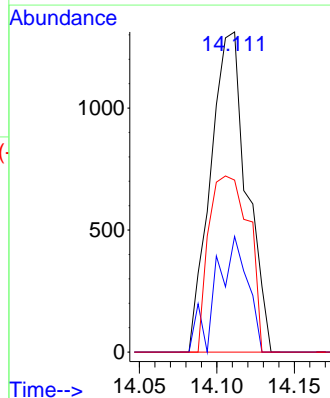
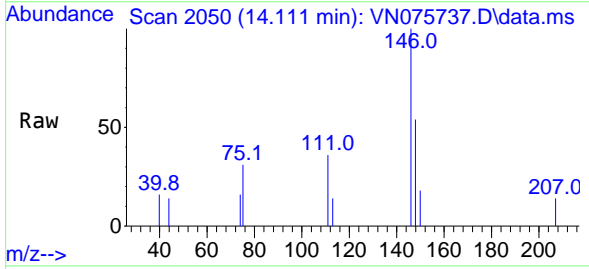
Ion	Ratio	Lower	Upper
91	100		
92	55.7	26.7	80.1
134	28.0	13.9	41.7

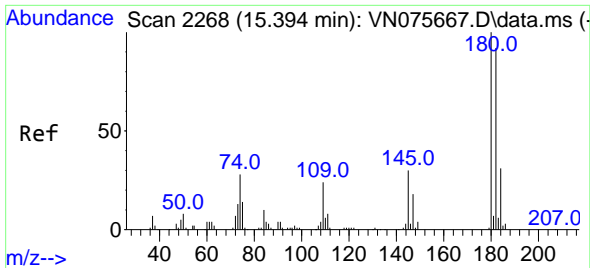


#91  
 1,2-Dichlorobenzene  
 Concen: 0.434 ug/l  
 RT: 14.111 min Scan# 2050  
 Delta R.T. -0.000 min  
 Lab File: VN075737.D  
 Acq: 13 Dec 2022 03:41

Tgt Ion: 146 Resp: 2135

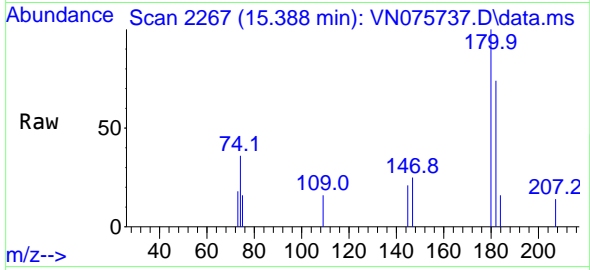
Ion	Ratio	Lower	Upper
146	100		
111	31.3	20.1	60.3
148	60.7	31.9	95.5



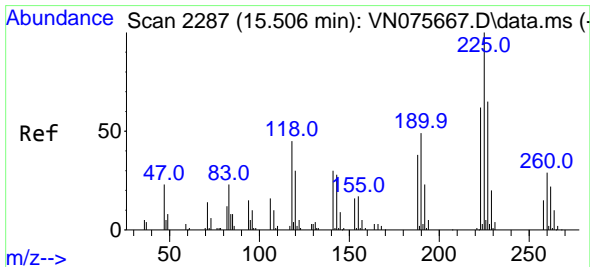
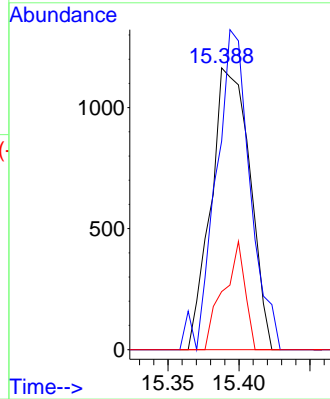
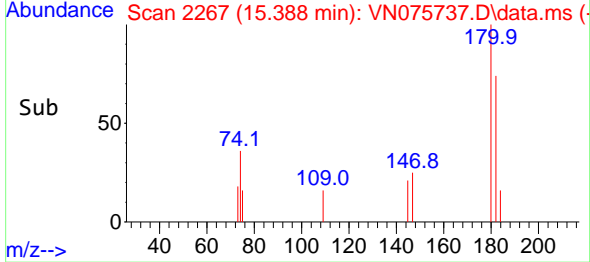


#93  
 1,2,4-Trichlorobenzene  
 Concen: 0.938 ug/l  
 RT: 15.388 min Scan# 21  
 Delta R.T. -0.006 min  
 Lab File: VN075737.D  
 Acq: 13 Dec 2022 03:41

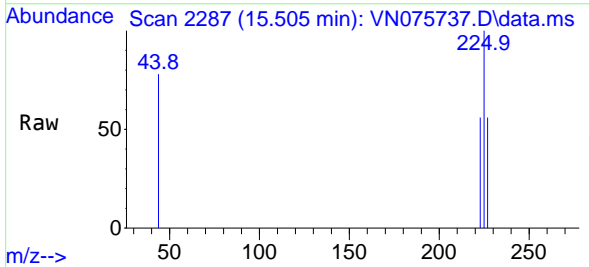
Instrument : MSVOA\_N  
 ClientSampleId : PB149517TB



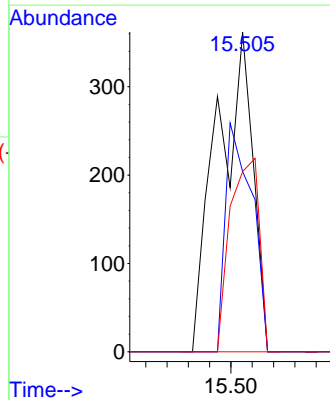
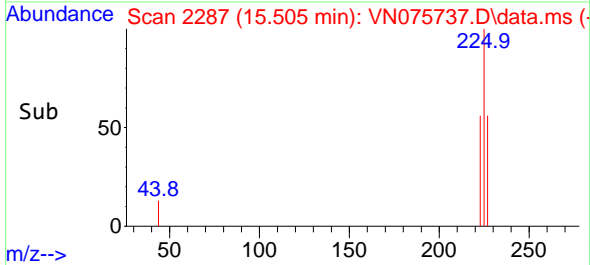
Tgt Ion:180 Resp: 2214  
 Ion Ratio Lower Upper  
 180 100  
 182 100.0 47.1 141.3  
 145 21.3 15.2 45.5



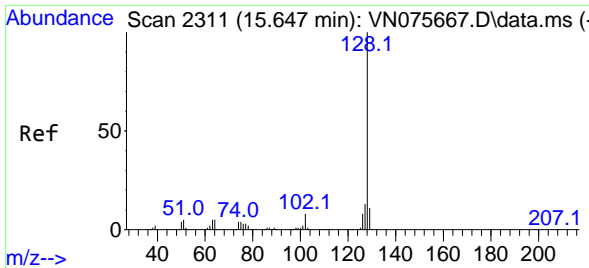
#94  
 Hexachlorobutadiene  
 Concen: 0.316 ug/l  
 RT: 15.505 min Scan# 2287  
 Delta R.T. -0.000 min  
 Lab File: VN075737.D  
 Acq: 13 Dec 2022 03:41



Tgt Ion:225 Resp: 423  
 Ion Ratio Lower Upper  
 225 100  
 223 53.0 31.4 94.2  
 227 49.2 31.3 93.9

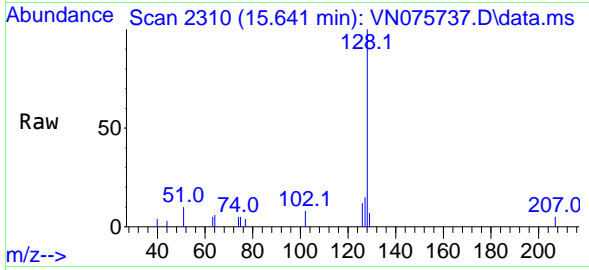




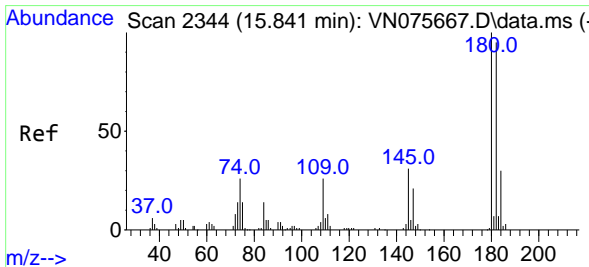
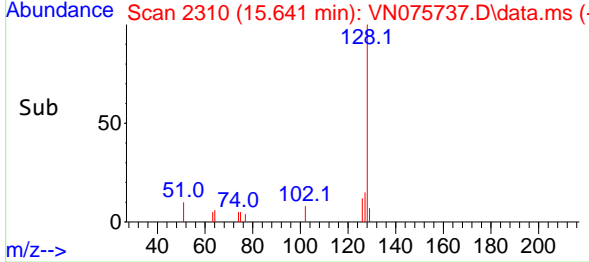
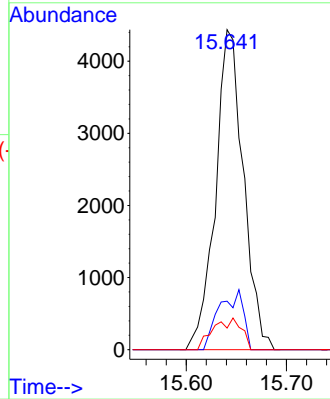


#95  
 Naphthalene  
 Concen: 1.227 ug/l  
 RT: 15.641 min Scan# 21  
 Delta R.T. -0.006 min  
 Lab File: VN075737.D  
 Acq: 13 Dec 2022 03:41

Instrument :  
 MSVOA\_N  
 ClientSampleId :  
 PB149517TB



Tgt Ion:128 Resp: 8558  
 Ion Ratio Lower Upper  
 128 100  
 127 16.2 10.2 15.4#  
 129 5.9 8.4 12.6#



#96  
 1,2,3-Trichlorobenzene  
 Concen: 0.997 ug/l  
 RT: 15.841 min Scan# 2344  
 Delta R.T. -0.000 min  
 Lab File: VN075737.D  
 Acq: 13 Dec 2022 03:41

Tgt Ion:180 Resp: 2312  
 Ion Ratio Lower Upper  
 180 100  
 182 84.3 46.8 140.4  
 145 27.7 15.6 46.8

