

Data Path : Z:\voasrv\HPCHEM1\MSVOA_N\Data\VN121222\
 Data File : VN075752.D
 Acq On : 13 Dec 2022 09:39
 Operator : JC\MD
 Sample : N5951-01
 Misc : 5.0mL/MSVOA_N/WATER
 ALS Vial : 52 Sample Multiplier: 1

Instrument :
 MSVOA_N
 ClientSampleId :
 STORAGE-BLANK-SOIL-REF-6

Quant Time: Dec 13 13:04:56 2022
 Quant Method : Z:\voasrv\HPCHEM1\MSVOA_N\methods\82N120922W.M
 Quant Title : SW846 8260
 QLast Update : Mon Dec 12 07:54:35 2022
 Response via : Initial Calibration

Compound	R.T.	QIon	Response	Conc	Units	Dev(Min)

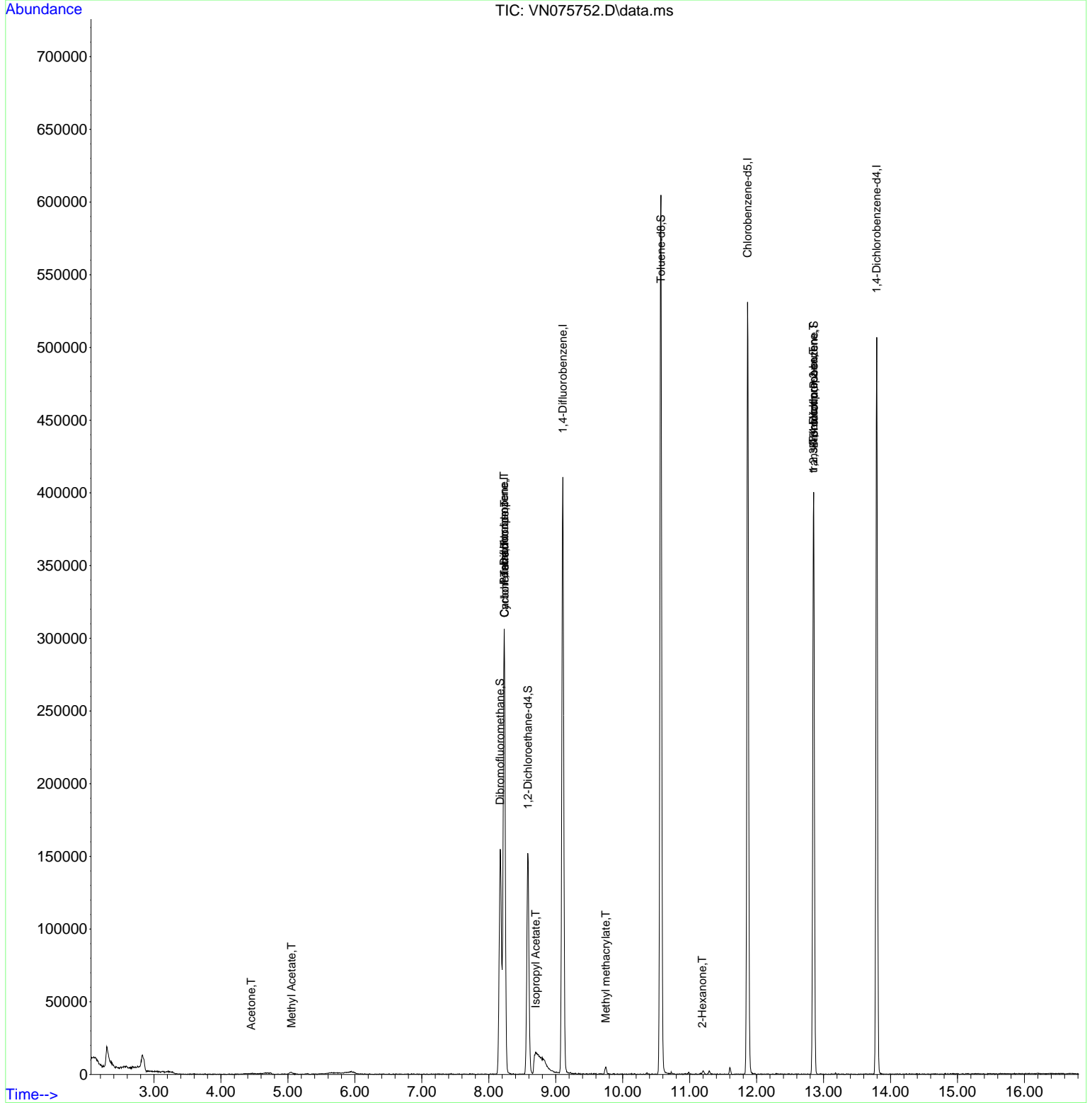
Internal Standards						
1) Pentafluorobenzene	8.229	168	235886	50.000	ug/l	0.00
34) 1,4-Difluorobenzene	9.106	114	377220	50.000	ug/l	0.00
63) Chlorobenzene-d5	11.865	117	325204	50.000	ug/l	0.00
72) 1,4-Dichlorobenzene-d4	13.794	152	141933	50.000	ug/l	0.00
System Monitoring Compounds						
33) 1,2-Dichloroethane-d4	8.582	65	122057	48.768	ug/l	0.00
Spiked Amount	50.000	Range 74 - 125	Recovery =	97.540%		
35) Dibromofluoromethane	8.171	113	111544	48.466	ug/l	0.00
Spiked Amount	50.000	Range 75 - 124	Recovery =	96.940%		
50) Toluene-d8	10.571	98	433642	50.172	ug/l	0.00
Spiked Amount	50.000	Range 86 - 113	Recovery =	100.340%		
62) 4-Bromofluorobenzene	12.853	95	134273	45.437	ug/l	0.00
Spiked Amount	50.000	Range 83 - 123	Recovery =	90.880%		
Target Compounds						
					Qvalue	
16) Acetone	4.453	43	283	0.334	ug/l #	41
18) Methyl Acetate	5.053	43	3003	1.103	ug/l #	61
31) Cyclohexane	8.235	56	4326	1.167	ug/l #	54
36) 1,1-Dichloropropene	8.229	75	15973	5.227	ug/l #	48
38) Carbon Tetrachloride	8.235	117	23154	6.566	ug/l #	17
43) Isopropyl Acetate	8.700	43	20962	5.117	ug/l #	51
48) Methyl methacrylate	9.747	41	580	0.307	ug/l #	18
59) 2-Hexanone	11.188	43	909	0.495	ug/l #	20
71) Bromoform	12.853	173	1102	0.597	ug/l #	1
76) 1,2,3-Trichloropropane	12.847	75	68460	24.018	ug/l #	1
81) trans-1,4-Dichloro-2-b...	12.847	75	68460	76.735	ug/l #	13

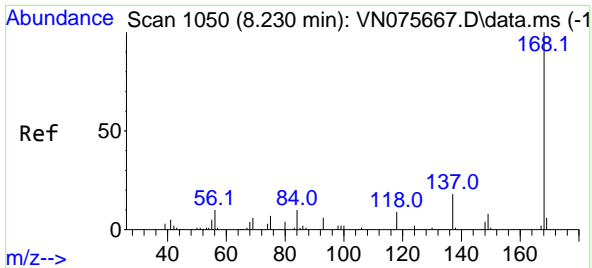
(#) = qualifier out of range (m) = manual integration (+) = signals summed

Data Path : Z:\voasrv\HPCHEM1\MSVOA_N\Data\VN121222\
 Data File : VN075752.D
 Acq On : 13 Dec 2022 09:39
 Operator : JC\MD
 Sample : N5951-01
 Misc : 5.0mL/MSVOA_N/WATER
 ALS Vial : 52 Sample Multiplier: 1

Instrument :
 MSVOA_N
ClientSampleId :
 STORAGE-BLANK-SOIL-REF-6

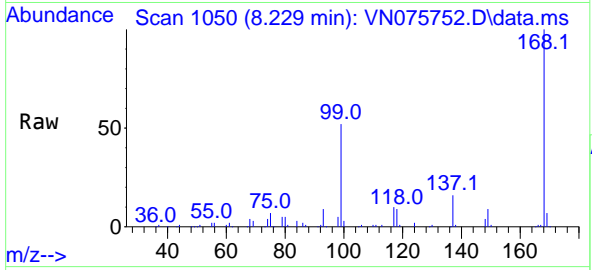
Quant Time: Dec 13 13:04:56 2022
 Quant Method : Z:\voasrv\HPCHEM1\MSVOA_N\methods\82N120922W.M
 Quant Title : SW846 8260
 QLast Update : Mon Dec 12 07:54:35 2022
 Response via : Initial Calibration



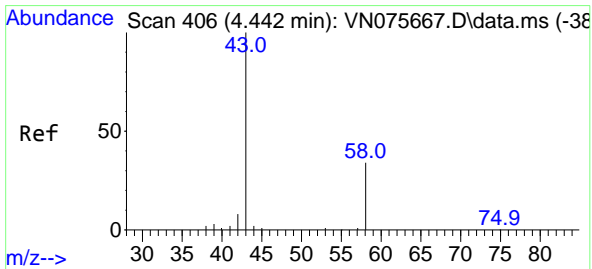
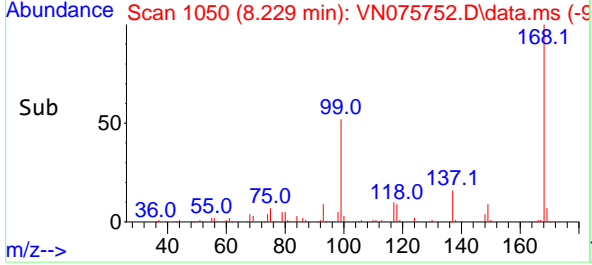
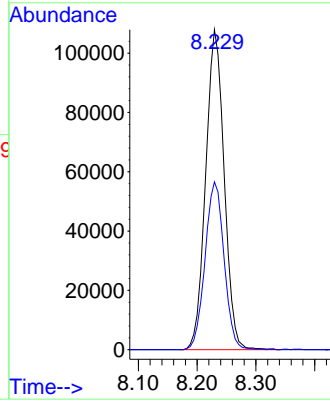


#1
 Pentafluorobenzene
 Concen: 50.000 ug/l
 RT: 8.229 min Scan# 10
 Delta R.T. -0.001 min
 Lab File: VN075752.D
 Acq: 13 Dec 2022 09:39

Instrument : MSVOA_N
 ClientSampleId : STORAGE-BLANK-SOIL-REF-6

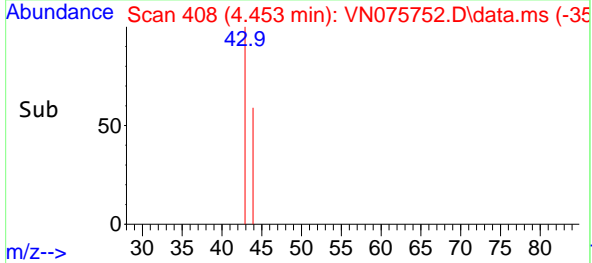
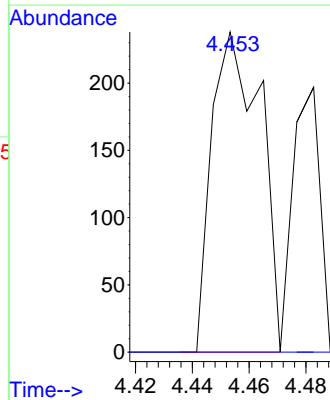
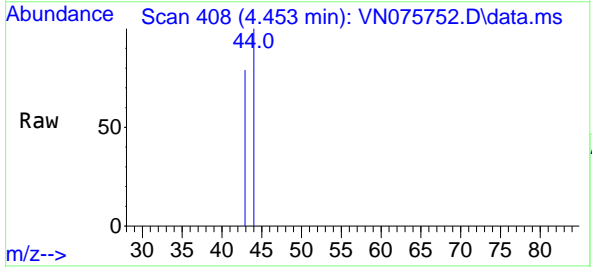


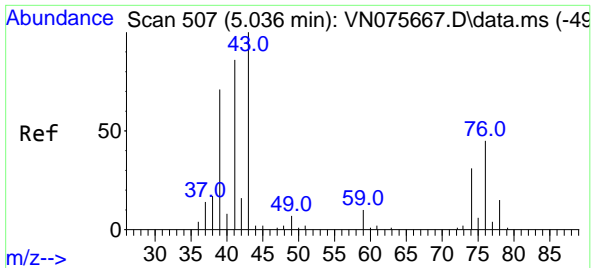
Tgt Ion:168 Resp: 235886
 Ion Ratio Lower Upper
 168 100
 99 52.5 41.2 61.8



#16
 Acetone
 Concen: 0.334 ug/l
 RT: 4.453 min Scan# 408
 Delta R.T. 0.012 min
 Lab File: VN075752.D
 Acq: 13 Dec 2022 09:39

Tgt Ion: 43 Resp: 283
 Ion Ratio Lower Upper
 43 100
 58 0.0 27.0 40.4#



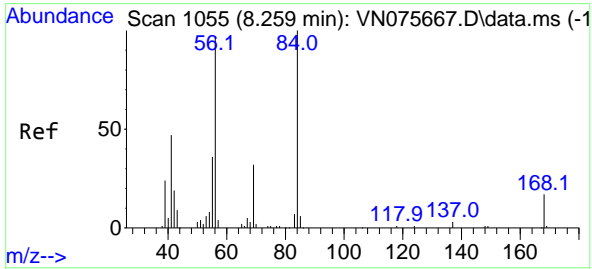
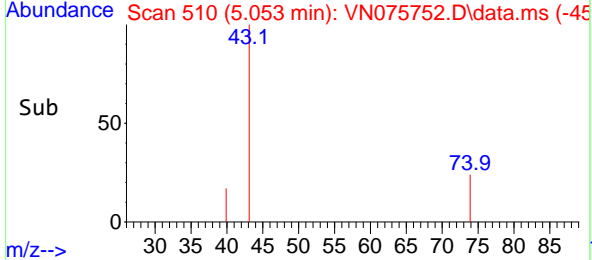
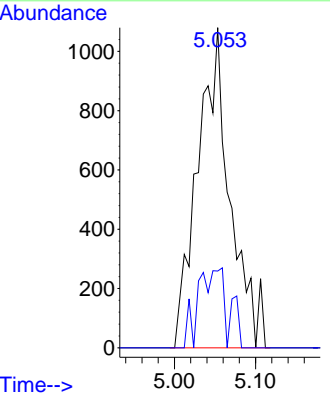
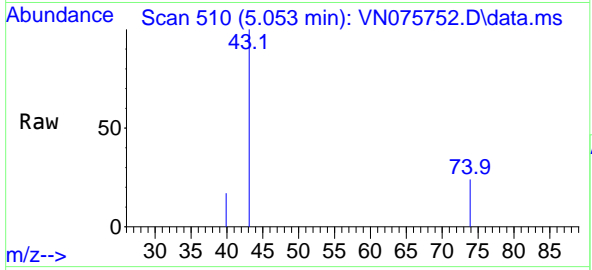


#18
 Methyl Acetate
 Concen: 1.103 ug/l
 RT: 5.053 min Scan# 510
 Delta R.T. 0.018 min
 Lab File: VN075752.D
 Acq: 13 Dec 2022 09:39

Instrument : MSVOA_N
 ClientSampleId : STORAGE-BLANK-SOIL-REF-6

Tgt Ion: 43 Resp: 3003

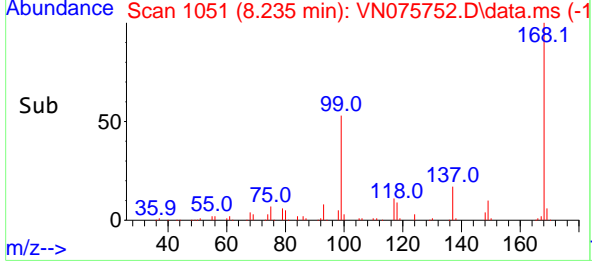
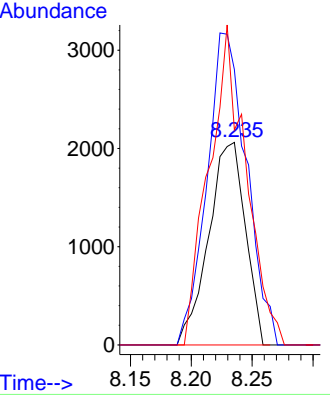
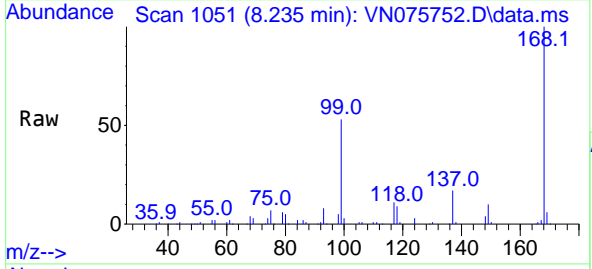
Ion	Ratio	Lower	Upper
43	100		
74	9.3	24.5	36.7#

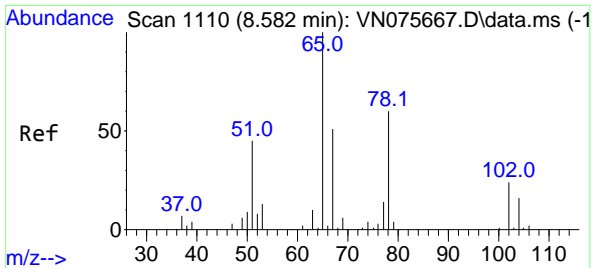


#31
 Cyclohexane
 Concen: 1.167 ug/l
 RT: 8.235 min Scan# 1051
 Delta R.T. -0.024 min
 Lab File: VN075752.D
 Acq: 13 Dec 2022 09:39

Tgt Ion: 56 Resp: 4326

Ion	Ratio	Lower	Upper
56	100		
69	136.0	26.2	39.2#
84	106.3	82.8	124.2

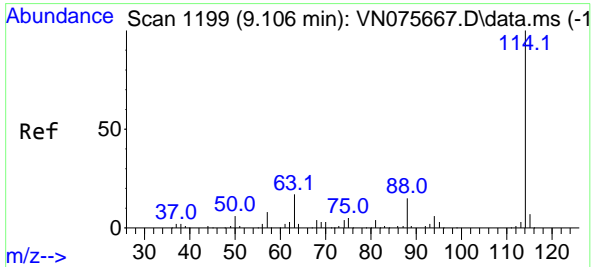
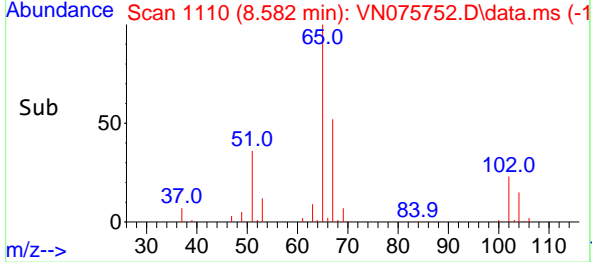
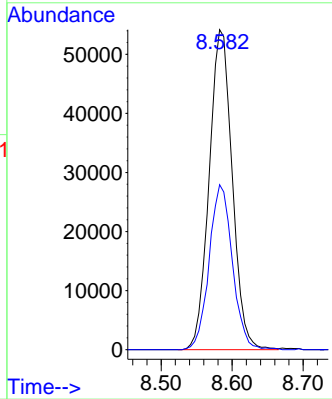
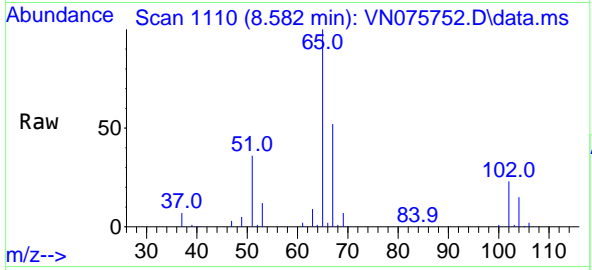




#33
 1,2-Dichloroethane-d4
 Concen: 48.768 ug/l
 RT: 8.582 min Scan# 1110
 Delta R.T. -0.000 min
 Lab File: VN075752.D
 Acq: 13 Dec 2022 09:39

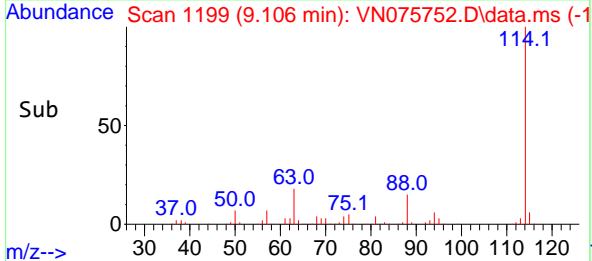
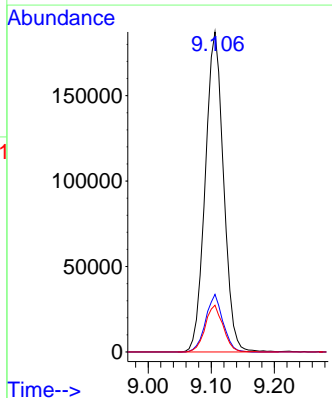
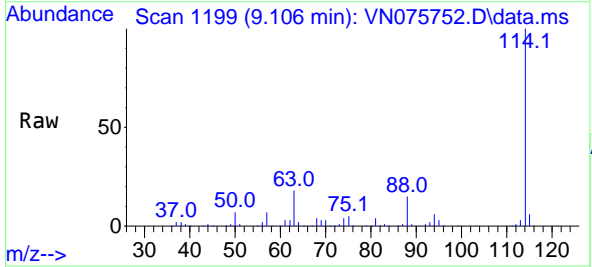
Instrument : MSVOA_N
 ClientSampleId : STORAGE-BLANK-SOIL-REF-6

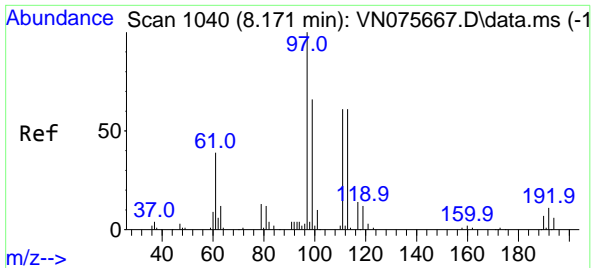
Tgt Ion: 65 Resp: 122057
 Ion Ratio Lower Upper
 65 100
 67 52.0 0.0 104.2



#34
 1,4-Difluorobenzene
 Concen: 50.000 ug/l
 RT: 9.106 min Scan# 1199
 Delta R.T. -0.000 min
 Lab File: VN075752.D
 Acq: 13 Dec 2022 09:39

Tgt Ion: 114 Resp: 377220
 Ion Ratio Lower Upper
 114 100
 63 18.0 0.0 34.4
 88 14.6 0.0 29.2



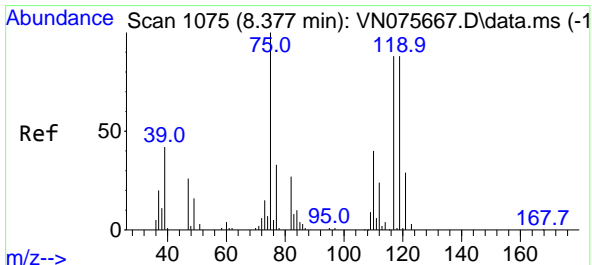
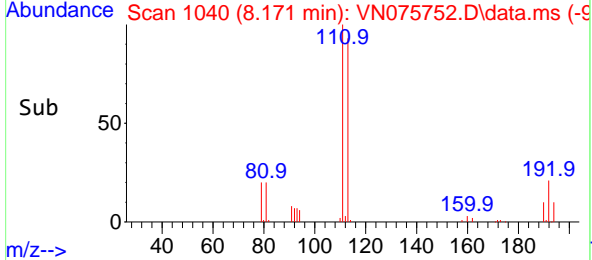
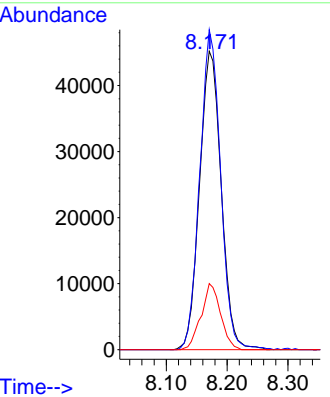
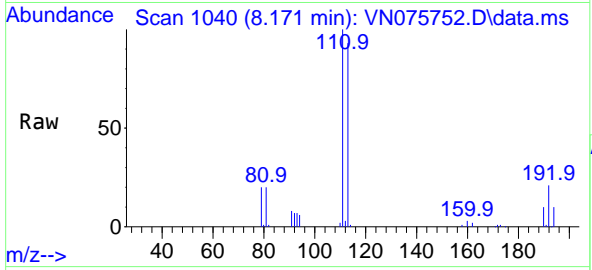


#35
 Dibromofluoromethane
 Concen: 48.466 ug/l
 RT: 8.171 min Scan# 1040
 Delta R.T. -0.000 min
 Lab File: VN075752.D
 Acq: 13 Dec 2022 09:39

Instrument : MSVOA_N
 ClientSampleId : STORAGE-BLANK-SOIL-REF-6

Tgt Ion: 113 Resp: 111544

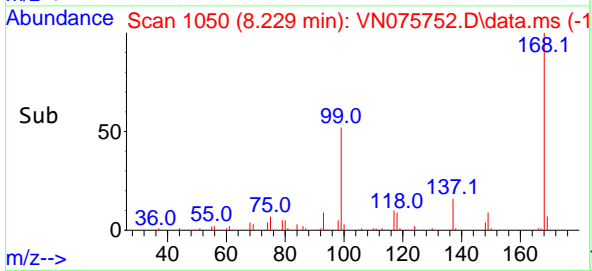
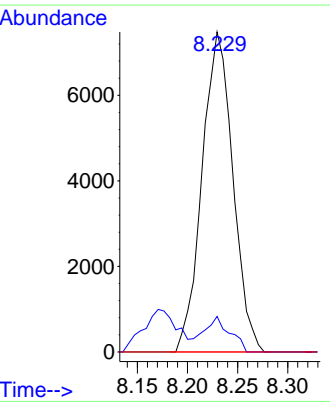
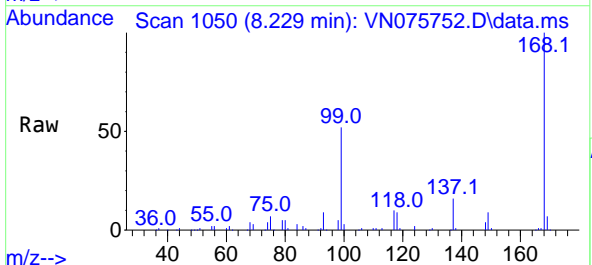
Ion	Ratio	Lower	Upper
113	100		
111	102.9	81.0	121.6
192	19.9	16.2	24.2

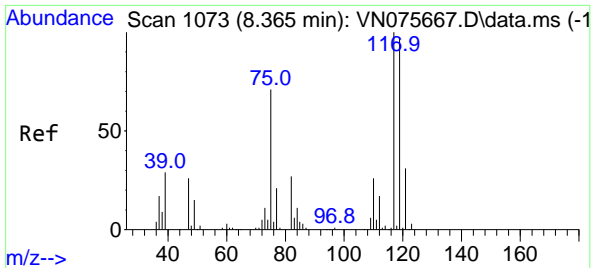


#36
 1,1-Dichloropropene
 Concen: 5.227 ug/l
 RT: 8.229 min Scan# 1050
 Delta R.T. -0.147 min
 Lab File: VN075752.D
 Acq: 13 Dec 2022 09:39

Tgt Ion: 75 Resp: 15973

Ion	Ratio	Lower	Upper
75	100		
110	9.0	18.9	56.9#
77	0.0	25.4	38.2#



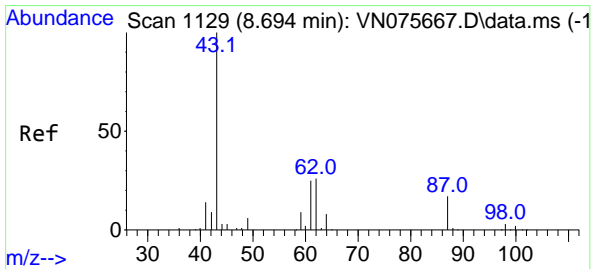
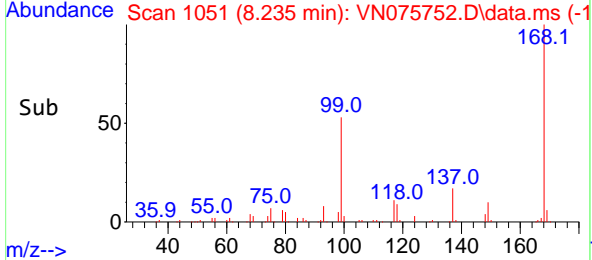
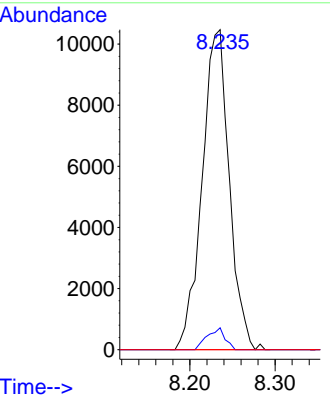
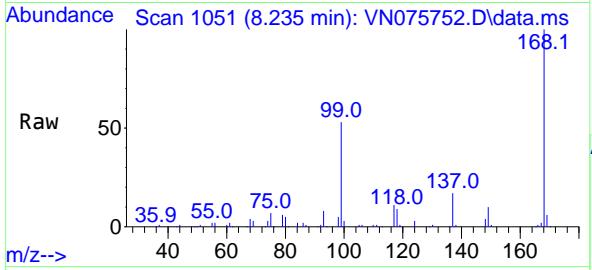


#38
 Carbon Tetrachloride
 Concen: 6.566 ug/l
 RT: 8.235 min Scan# 1130
 Delta R.T. -0.129 min
 Lab File: VN075752.D
 Acq: 13 Dec 2022 09:39

Instrument : MSVOA_N
 ClientSampleId : STORAGE-BLANK-SOIL-REF-6

Tgt Ion:117 Resp: 23154

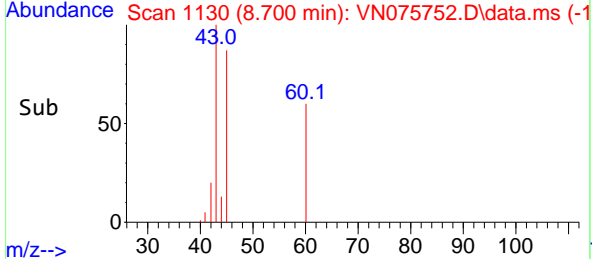
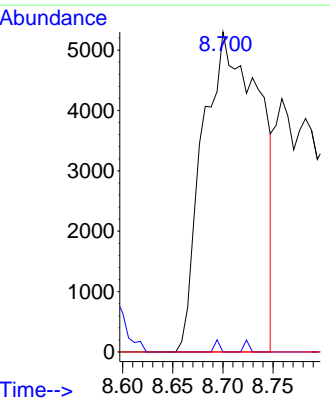
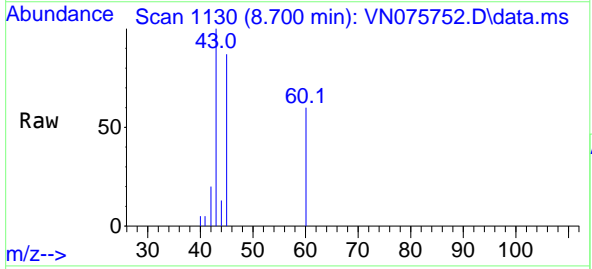
Ion	Ratio	Lower	Upper
117	100		
119	6.9	77.2	115.8#
121	0.0	24.6	37.0#

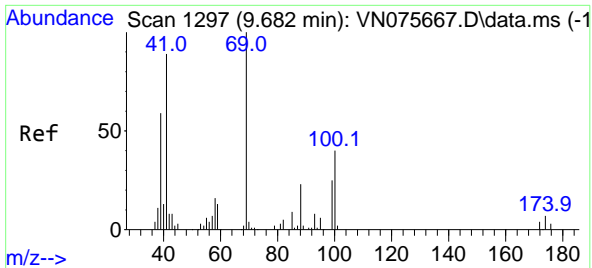


#43
 Isopropyl Acetate
 Concen: 5.117 ug/l
 RT: 8.700 min Scan# 1130
 Delta R.T. 0.006 min
 Lab File: VN075752.D
 Acq: 13 Dec 2022 09:39

Tgt Ion: 43 Resp: 20962

Ion	Ratio	Lower	Upper
43	100		
61	0.3	23.8	35.8#
87	0.0	13.7	20.5#



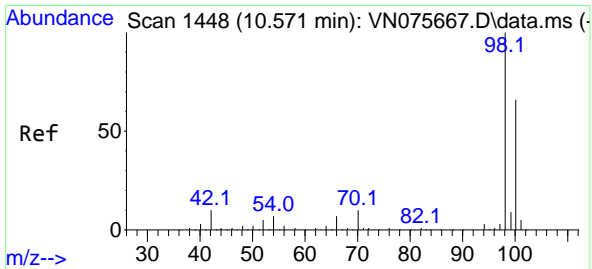
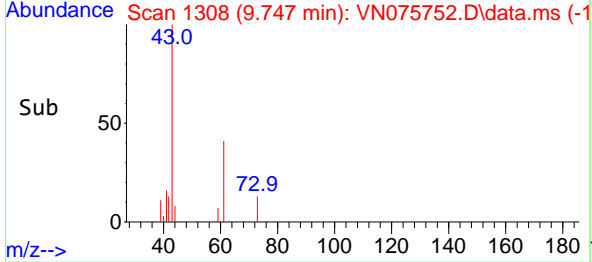
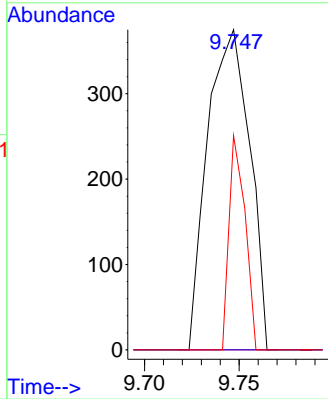
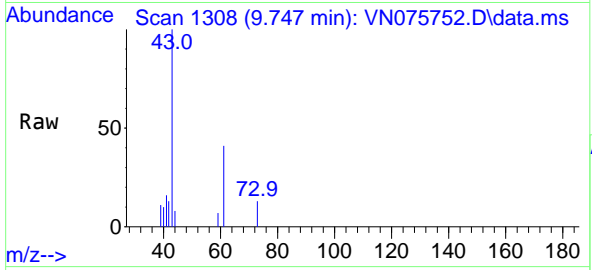


#48
 Methyl methacrylate
 Concen: 0.307 ug/l
 RT: 9.747 min Scan# 11
 Delta R.T. 0.065 min
 Lab File: VN075752.D
 Acq: 13 Dec 2022 09:39

Instrument : MSVOA_N
 ClientSampleId : STORAGE-BLANK-SOIL-REF-6

Tgt Ion: 41 Resp: 580

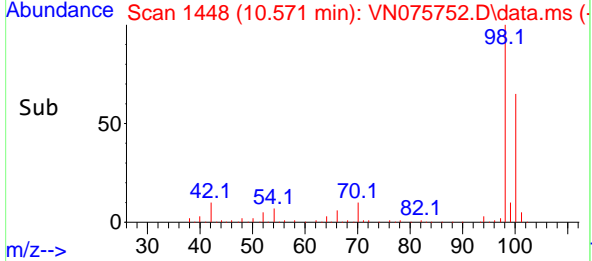
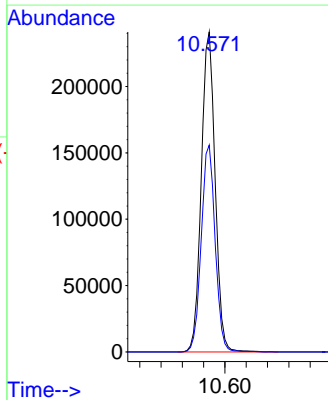
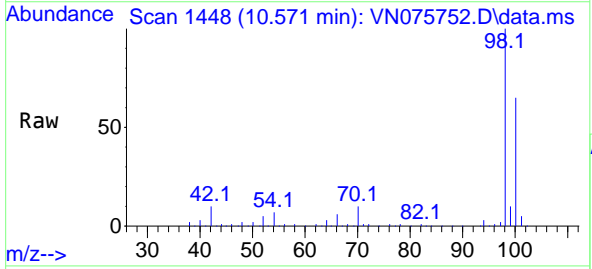
Ion	Ratio	Lower	Upper
41	100		
69	0.0	82.5	123.7#
39	25.3	53.2	79.8#

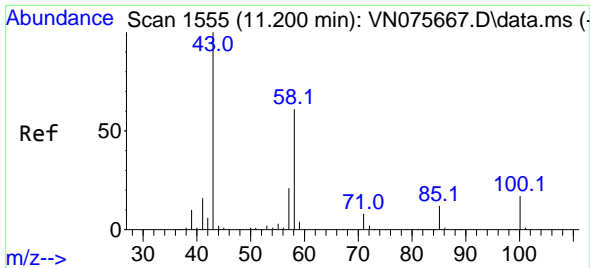


#50
 Toluene-d8
 Concen: 50.172 ug/l
 RT: 10.571 min Scan# 1448
 Delta R.T. -0.000 min
 Lab File: VN075752.D
 Acq: 13 Dec 2022 09:39

Tgt Ion: 98 Resp: 433642

Ion	Ratio	Lower	Upper
98	100		
100	65.2	52.6	78.8

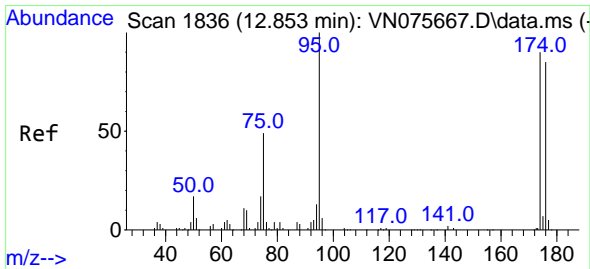
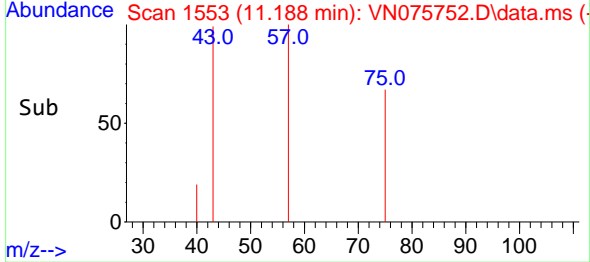
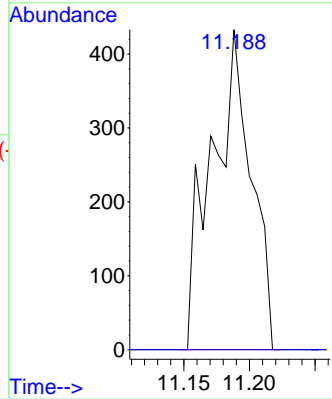
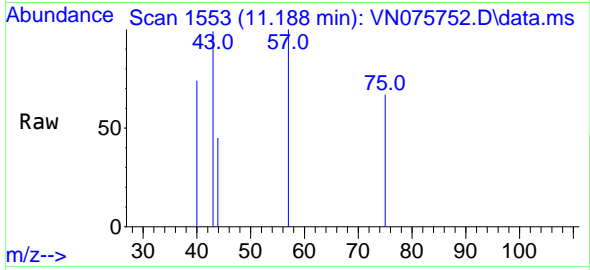




#59
 2-Hexanone
 Concen: 0.495 ug/l
 RT: 11.188 min Scan# 1111
 Delta R.T. -0.012 min
 Lab File: VN075752.D
 Acq: 13 Dec 2022 09:39

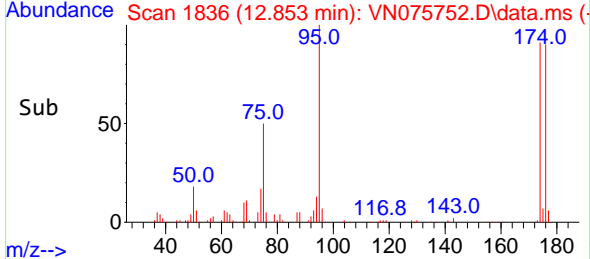
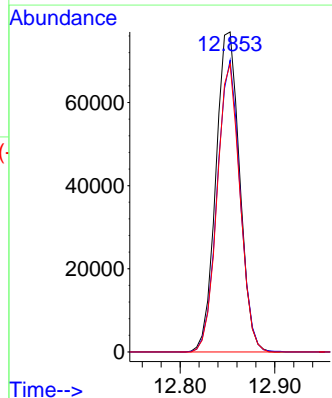
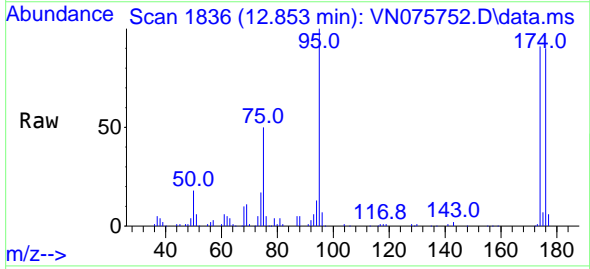
Instrument : MSVOA_N
 ClientSampleId : STORAGE-BLANK-SOIL-REF-6

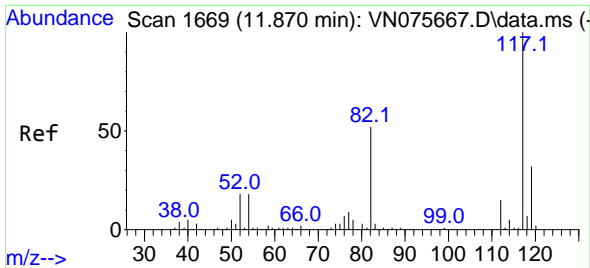
Tgt Ion: 43 Resp: 909
 Ion Ratio Lower Upper
 43 100
 58 0.0 30.9 92.5#



#62
 4-Bromofluorobenzene
 Concen: 45.437 ug/l
 RT: 12.853 min Scan# 1836
 Delta R.T. -0.000 min
 Lab File: VN075752.D
 Acq: 13 Dec 2022 09:39

Tgt Ion: 95 Resp: 134273
 Ion Ratio Lower Upper
 95 100
 174 87.8 0.0 178.6
 176 86.1 0.0 170.8



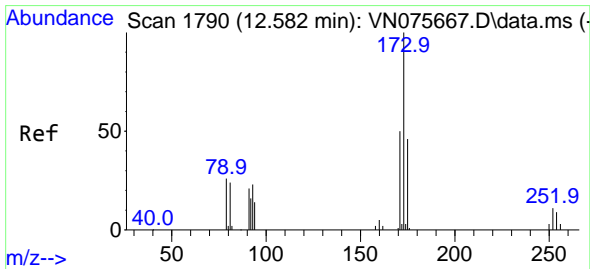
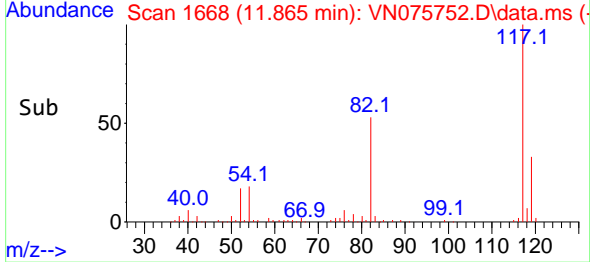
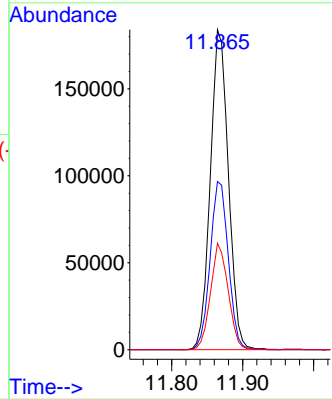
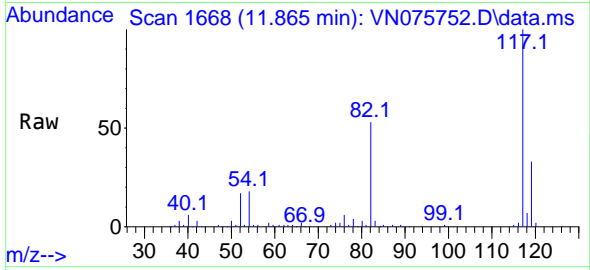


#63
 Chlorobenzene-d5
 Concen: 50.000 ug/l
 RT: 11.865 min Scan# 11
 Delta R.T. -0.006 min
 Lab File: VN075752.D
 Acq: 13 Dec 2022 09:39

Instrument : MSVOA_N
 ClientSampleId : STORAGE-BLANK-SOIL-REF-6

Tgt Ion:117 Resp: 325204

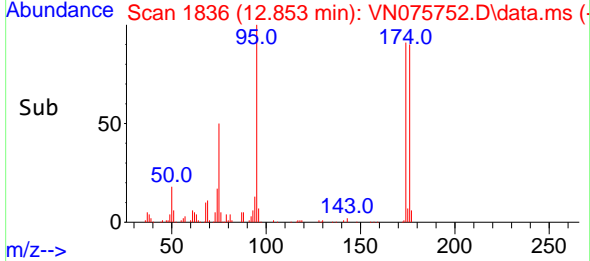
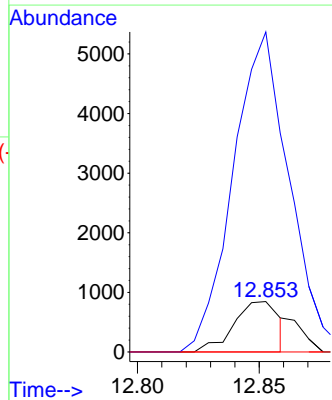
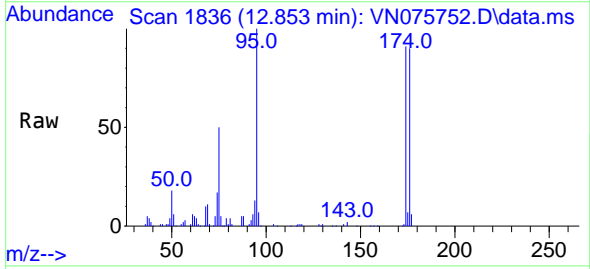
Ion	Ratio	Lower	Upper
117	100		
82	52.6	41.8	62.8
119	33.2	25.8	38.6

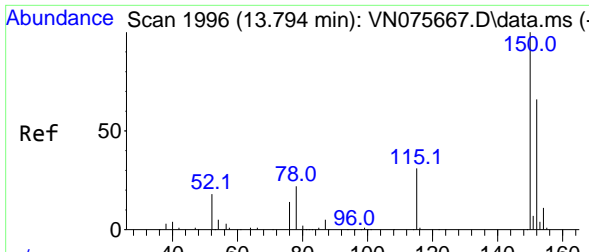


#71
 Bromoform
 Concen: 0.597 ug/l
 RT: 12.853 min Scan# 1836
 Delta R.T. 0.271 min
 Lab File: VN075752.D
 Acq: 13 Dec 2022 09:39

Tgt Ion:173 Resp: 1102

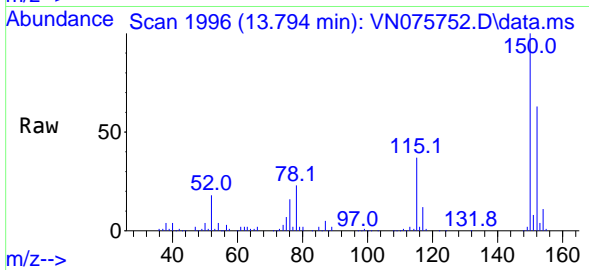
Ion	Ratio	Lower	Upper
173	100		
175	644.8	23.8	71.2#
254	0.0	0.0	0.0



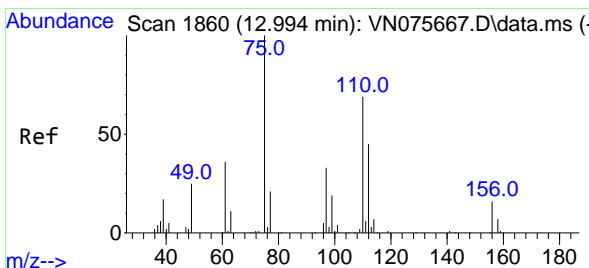
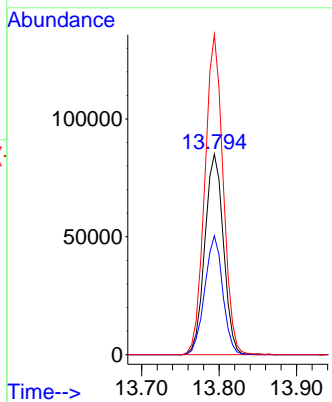
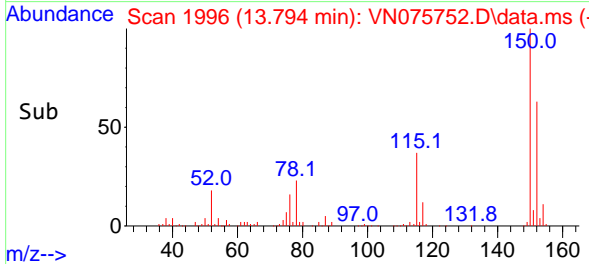


#72
 1,4-Dichlorobenzene-d4
 Concen: 50.000 ug/l
 RT: 13.794 min Scan# 1996
 Delta R.T. -0.000 min
 Lab File: VN075752.D
 Acq: 13 Dec 2022 09:39

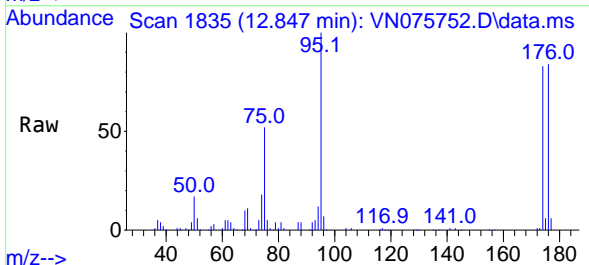
Instrument : MSVOA_N
 ClientSampleId : STORAGE-BLANK-SOIL-REF-6



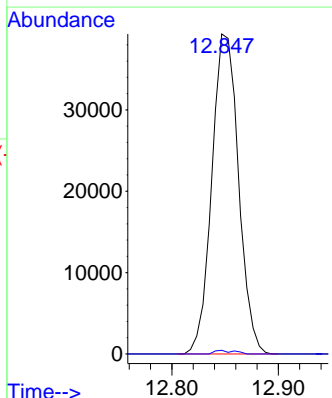
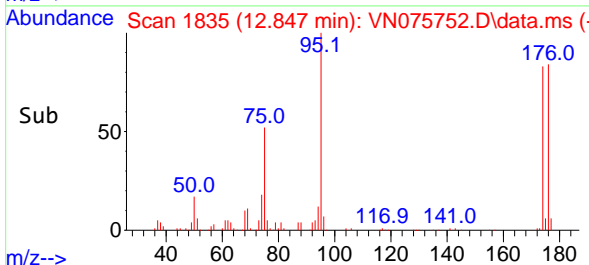
Tgt Ion:152 Resp: 141933
 Ion Ratio Lower Upper
 152 100
 115 57.4 28.4 85.2
 150 156.8 0.0 347.6

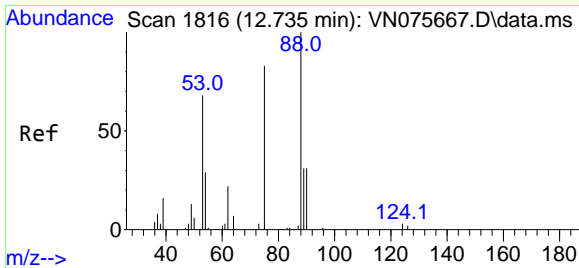


#76
 1,2,3-Trichloropropane
 Concen: 24.018 ug/l
 RT: 12.847 min Scan# 1835
 Delta R.T. -0.147 min
 Lab File: VN075752.D
 Acq: 13 Dec 2022 09:39



Tgt Ion: 75 Resp: 68460
 Ion Ratio Lower Upper
 75 100
 77 0.8 81.8 245.4#





#81
 trans-1,4-Dichloro-2-butene
 Concen: 76.735 ug/l
 RT: 12.847 min Scan# 11
 Delta R.T. 0.112 min
 Lab File: VN075752.D
 Acq: 13 Dec 2022 09:39

Instrument :
 MSVOA_N
 ClientSampleId :
 STORAGE-BLANK-SOIL-REF-6

Tgt Ion: 75 Resp: 68460

Ion	Ratio	Lower	Upper
75	100		
53	0.0	72.4	108.6#
89	0.0	36.6	55.0#

