

Data Path : Z:\VOASRV\HPCHEM1\MSVOA N\DATA\VN121318\
 Data File : VN052859.D
 Acq On : 13 Dec 2018 12:54
 Operator : MD\SY
 Sample : J6319-03
 Misc : 4.92µ/10mL/100uL/5.00mL/MSVOA_N/MEOH
 ALS Vial : 9 Sample Multiplier: 28

Instrument :
 MSVOA_N
 ClientSampleId :
 057_BT-2-1

Quant Time: Dec 14 01:37:24 2018
 Quant Method : Z:\VOASRV\HPCHEM1\MSVOA_N\METHODS\82N121218W.M
 Quant Title : SW846 8260
 QLast Update : Thu Dec 13 01:08:35 2018
 Response via : Initial Calibration

Internal Standards	R.T.	QIon	Response	Conc	Units	Dev(Min)
1) Pentafluorobenzene	7.66	168	1171619	50.00	µg/l	0.00
34) 1,4-Difluorobenzene	8.58	114	1767367	50.00	µg/l	0.00
63) Chlorobenzene-d5	11.41	117	1601597	50.00	µg/l	0.00
72) 1,4-Dichlorobenzene-d4	13.35	152	766313	50.00	µg/l	0.00

System Monitoring Compounds

33) 1,2-Dichloroethane-d4	8.03	65	566021	45.43	µg/l	0.00
Spiked Amount	50.000		Recovery	=	90.86%	
35) Dibromofluoromethane	7.59	113	468005	47.44	µg/l	0.00
Spiked Amount	50.000		Recovery	=	94.88%	
50) Toluene-d8	10.09	98	2231120	52.16	µg/l	0.00
Spiked Amount	50.000		Recovery	=	104.32%	
62) 4-Bromofluorobenzene	12.40	95	779362	53.77	µg/l	0.00
Spiked Amount	50.000		Recovery	=	107.54%	

Target Compounds

						Qvalue
13) Acrolein	3.61	56	229	0.349	µg/l #	70
14) Allyl chloride	4.59	41	61424	3.491	µg/l #	43
15) Acrylonitrile	5.05	53	3714	0.951	µg/l #	19
16) Acetone	3.80	43	1377	0.492	µg/l #	88
18) Methyl Acetate	4.33	43	4623	0.450	µg/l #	60
25) 2-Butanone	6.82	43	2765	0.637	µg/l #	49
29) Tetrahydrofuran	7.21	42	2980	1.005	µg/l #	75
30) Chloroform	7.32	83	18891	0.895	µg/l #	18
31) Cyclohexane	7.64	56	145686	6.395	µg/l #	82
36) 1,1-Dichloropropene	7.66	75	76851	4.722	µg/l #	50
38) Carbon Tetrachloride	7.66	117	100832	6.731	µg/l #	16
39) Methylcyclohexane	9.08	83	424887	21.274	µg/l	94
43) Isopropyl Acetate	8.15	43	52048	2.596	µg/l #	53
45) 1,2-Dichloropropane	9.09	63	4144	0.324	µg/l #	1
47) Bromodichloromethane	9.38	83	57459	3.734	µg/l #	26
48) Methyl methacrylate	9.14	41	38614	4.393	µg/l #	38
51) 4-Methyl-2-Pentanone	10.09	43	42496	4.623	µg/l	96
52) Toluene	10.16	92	8894	0.301	µg/l	84
55) 1,1,2-Trichloroethane	10.53	97	208669	19.758	µg/l #	18
56) Ethyl methacrylate	10.43	69	42887	3.164	µg/l #	24
59) 2-Hexanone	10.72	43	228034	36.200	µg/l #	28
67) Ethyl Benzene	11.51	91	13866	0.243	µg/l	97
68) m/p-Xylenes	11.62	106	23608	1.102	µg/l	99
69) o-Xylene	11.95	106	5724	0.274	µg/l	81
73) Isopropylbenzene	12.25	105	101494	1.774	µg/l	99
74) N-amyl acetate	12.04	43	131898	8.397	µg/l #	55
75) 1,1,2,2-Tetrachloroethane	12.56	83	25157	1.962	µg/l #	66
76) 1,2,3-Trichloropropane	12.40	75	359680	31.813	µg/l #	100
77) Bromobenzene	12.57	156	41067	2.822	µg/l #	1
78) n-propylbenzene	12.59	91	253516	3.885	µg/l	100
79) 2-Chlorotoluene	12.59	91	253516	6.572	µg/l #	40
81) trans-1,4-Dichloro-2-buten	12.40	75	359680	102.199	µg/l #	13
82) 4-Chlorotoluene	12.59	91	253516	6.427	µg/l #	40
84) 1,2,4-Trimethylbenzene	13.04	105	17765	0.380	µg/l	98

Data Path : Z:\VOASRV\HPCHEM1\MSVOA N\DATA\VN121318\
Data File : VN052859.D
Acq On : 13 Dec 2018 12:54
Operator : MD\SY
Sample : J6319-03
Misc : 4.92µ/10mL/100uL/5.00mL/MSVOA_N/MEOH
ALS Vial : 9 Sample Multiplier: 28

Instrument :
MSVOA_N
ClientSampleId :
057_BT-2-1

Quant Time: Dec 14 01:37:24 2018
Quant Method : Z:\VOASRV\HPCHEM1\MSVOA_N\METHODS\82N121218W.M
Quant Title : SW846 8260
QLast Update : Thu Dec 13 01:08:35 2018
Response via : Initial Calibration

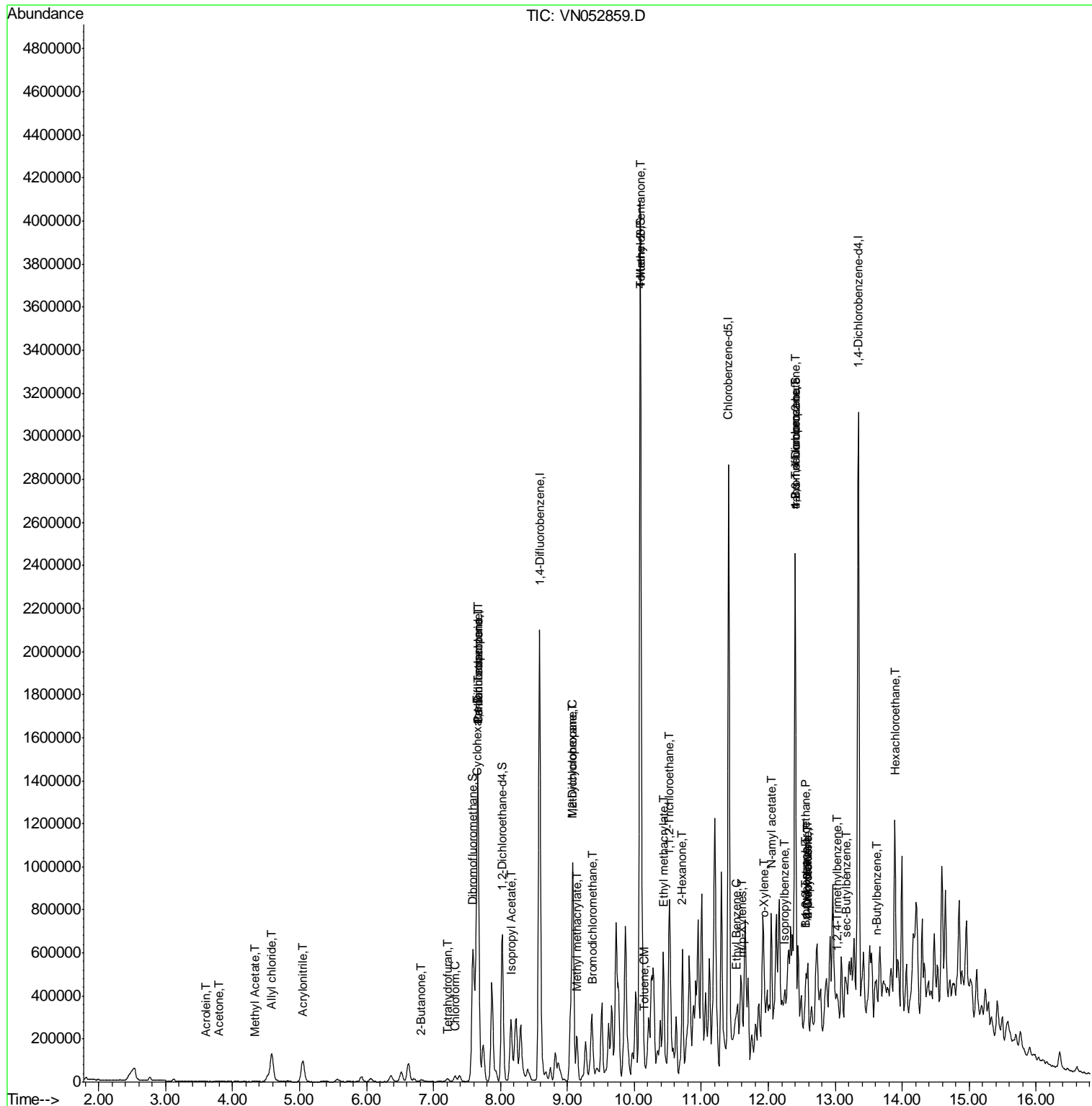
Internal Standards	R.T.	QIon	Response	Conc	Units	Dev(Min)
85) sec-Butylbenzene	13.17	105	61112	1.108	µg/l #	43
89) n-Butylbenzene	13.62	91	87100	2.164	µg/l #	78
90) Hexachloroethane	13.89	117	39581	4.945	µg/l #	4

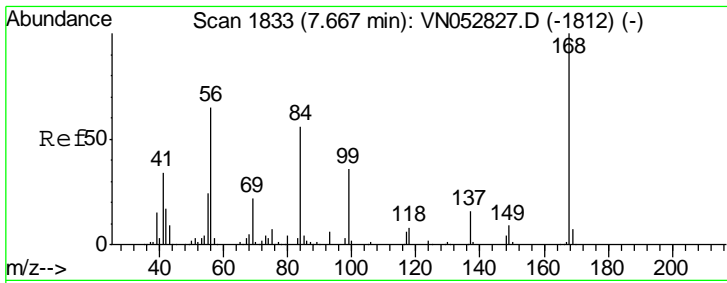
(#) = qualifier out of range (m) = manual integration (+) = signals summed

Data Path : Z:\VOASRV\HPCHEM1\MSVOA N\DATA\VN121318\
 Data File : VN052859.D
 Acq On : 13 Dec 2018 12:54
 Operator : MD\SY
 Sample : J6319-03
 Misc : 4.92µ/10mL/100uL/5.00mL/MSVOA_N/MEOH
 ALS Vial : 9 Sample Multiplier: 28

Instrument :
 MSVOA_N
 Client Sampled :
 057_BT-2-1

Quant Time: Dec 14 01:37:24 2018
 Quant Method : Z:\VOASRV\HPCHEM1\MSVOA_N\METHODS\82N121218W.M
 Quant Title : SW846 8260
 QLast Update : Thu Dec 13 01:08:35 2018
 Response via : Initial Calibration

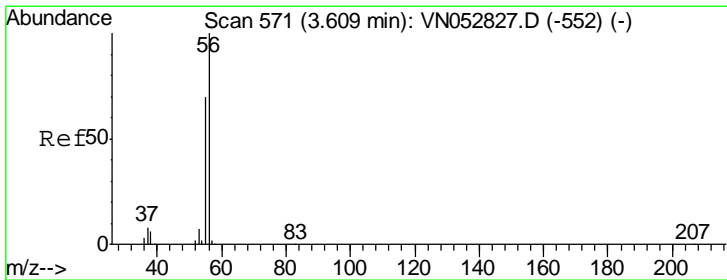
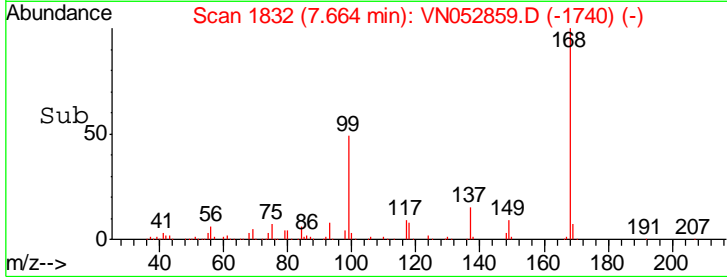
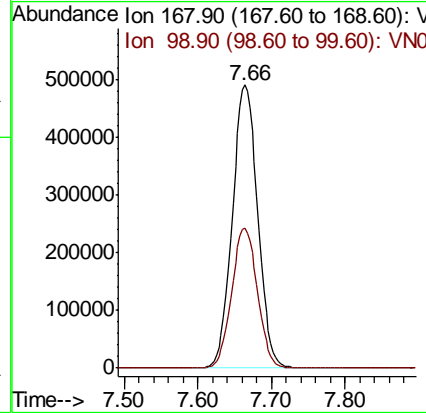
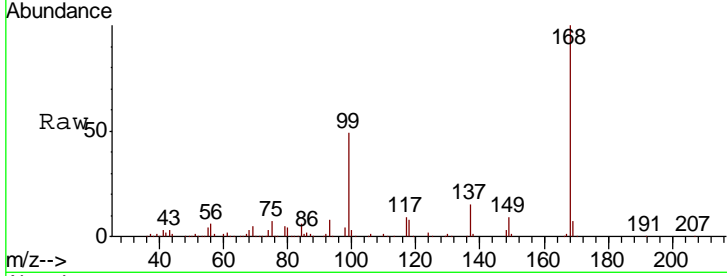




#1
 Pentafluorobenzene
 Concen: 50.000 ug/l
 RT: 7.66 min Scan# 1832
 Delta R.T. -0.00 min
 Lab File: VN052859.D
 Acq: 13 Dec 2018 12:54

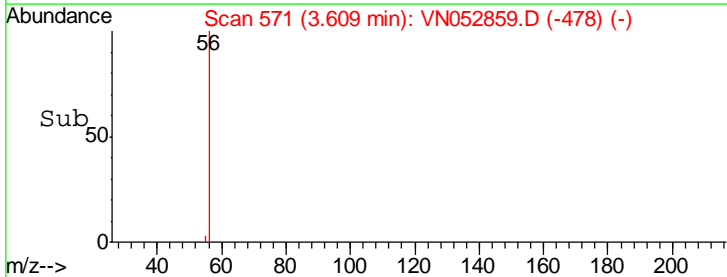
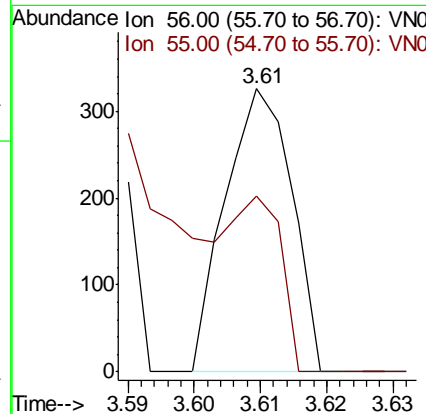
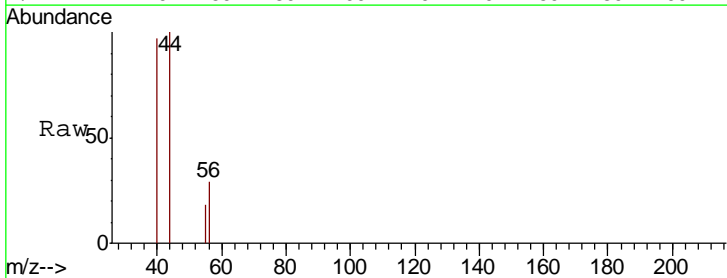
Instrument :
 MSVOA_N
 ClientSampleId :
 057_BT-2-1

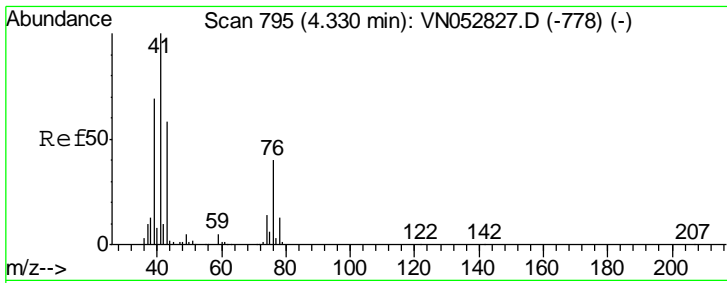
Tgt Ion: 168 Resp: 1171619
 Ion Ratio Lower Upper
 168 100
 99 49.5 40.2 60.2



#13
 Acrolein
 Concen: 0.349 ug/l
 RT: 3.61 min Scan# 571
 Delta R.T. 0.00 min
 Lab File: VN052859.D
 Acq: 13 Dec 2018 12:54

Tgt Ion: 56 Resp: 229
 Ion Ratio Lower Upper
 56 100
 55 46.3 56.6 85.0#

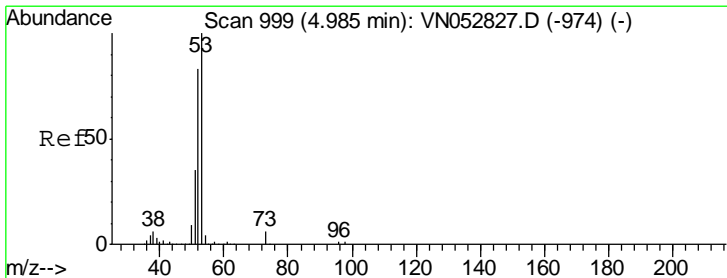
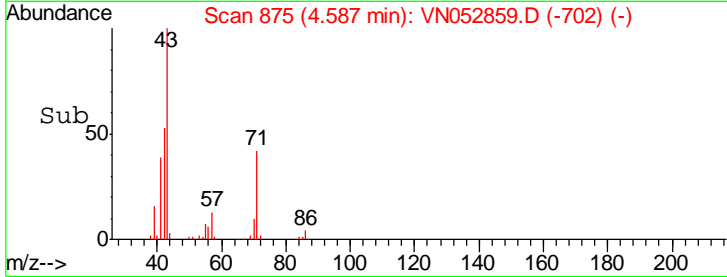
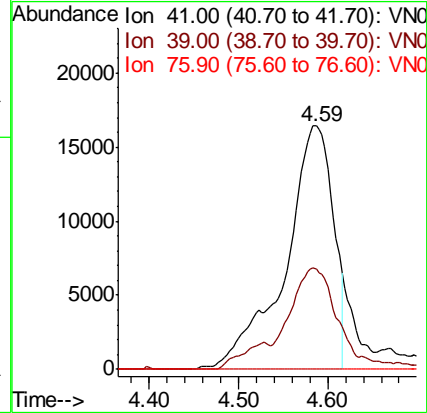
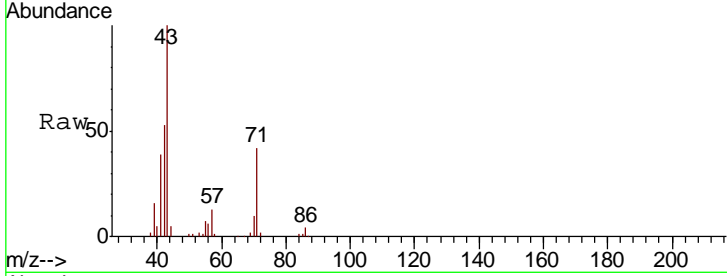




#14
 Allvl chloride
 Concen: 3.491 ug/l
 RT: 4.59 min Scan# 875
 Delta R.T. 0.26 min
 Lab File: VN052859.D
 Acq: 13 Dec 2018 12:54

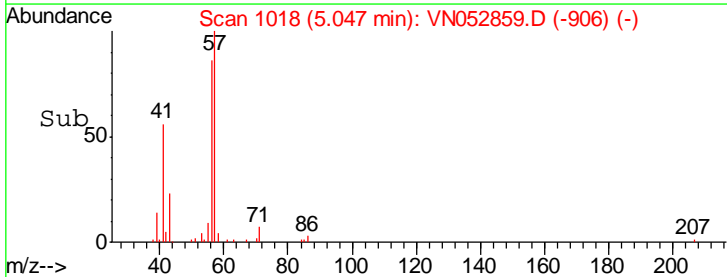
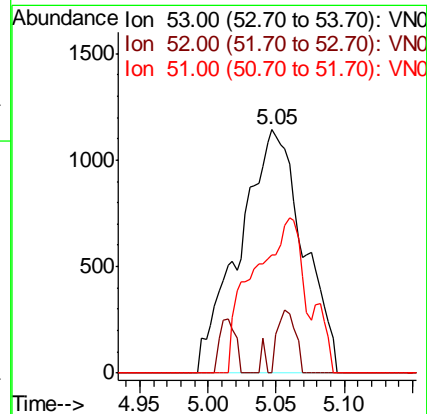
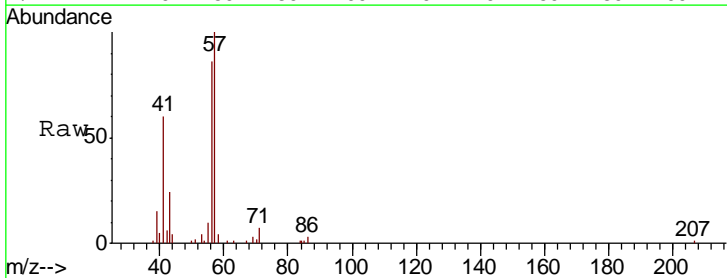
Instrument :
 MSVOA_N
 ClientSampled :
 057_BT-2-1

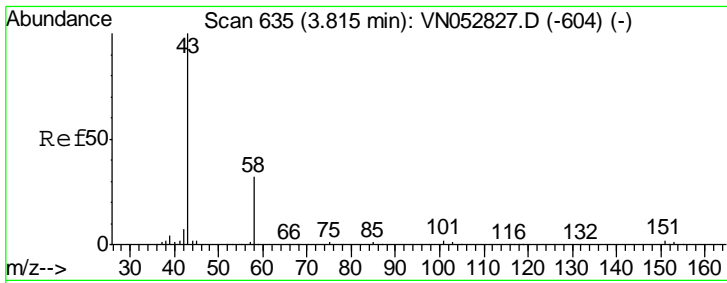
Tgt Ion	Resp	Lower	Upper
41	100		
39	24.5	54.1	81.1#
76	0.0	30.3	45.5#



#15
 Acrylonitrile
 Concen: 0.951 ug/l
 RT: 5.05 min Scan# 1018
 Delta R.T. 0.06 min
 Lab File: VN052859.D
 Acq: 13 Dec 2018 12:54

Tgt Ion	Resp	Lower	Upper
53	100		
52	0.9	65.1	97.7#
51	0.0	28.1	42.1#

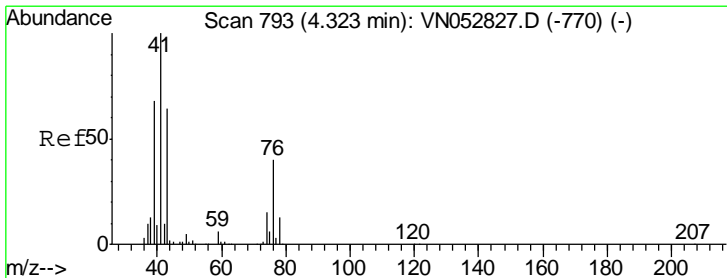
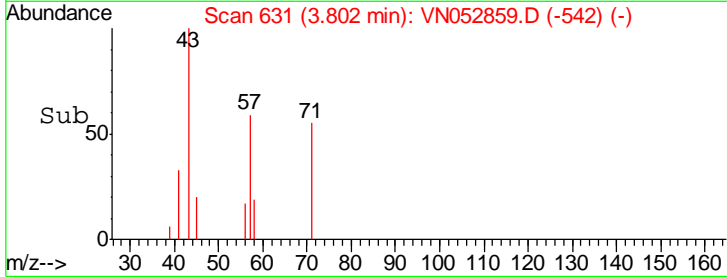
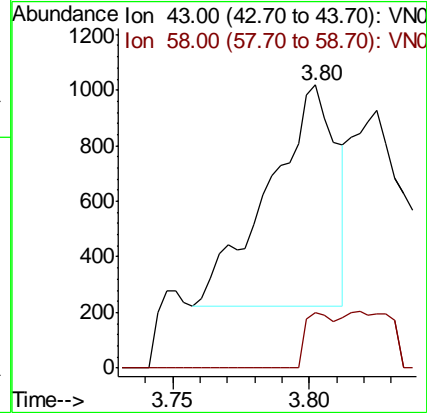
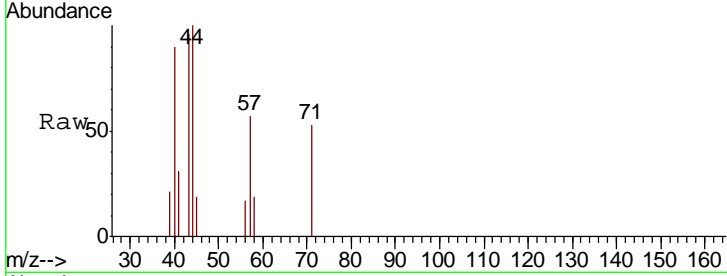




#16
 Acetone
 Concen: 0.492 ug/l
 RT: 3.80 min Scan# 631
 Delta R.T. -0.01 min
 Lab File: VN052859.D
 Acq: 13 Dec 2018 12:54

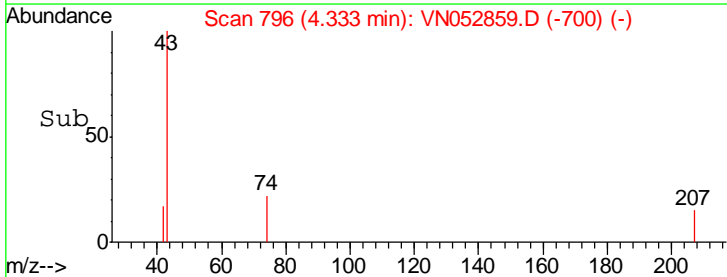
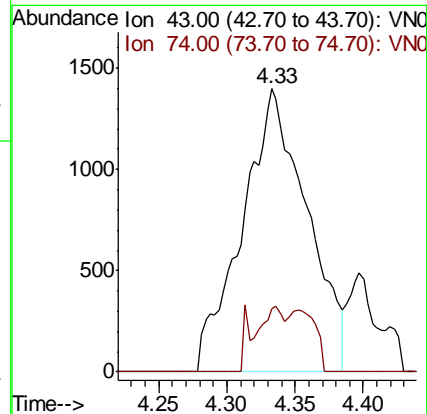
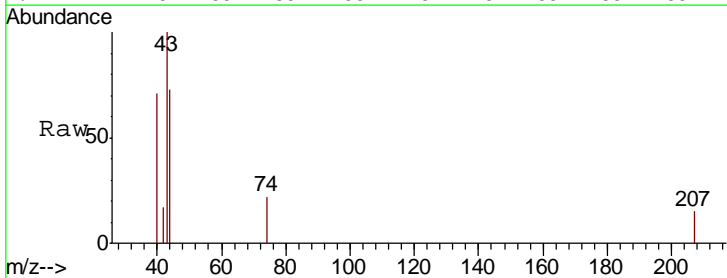
Instrument :
 MSVOA_N
 ClientSampled :
 057_BT-2-1

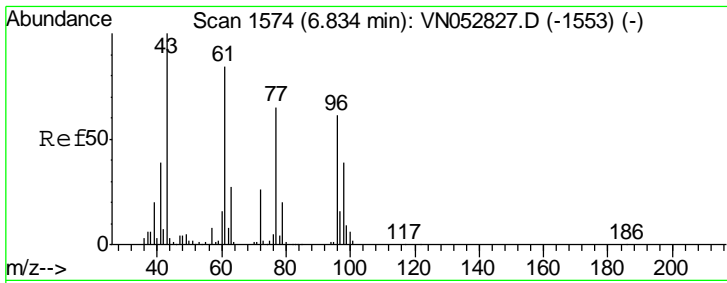
Tgt Ion: 43 Resp: 1377
 Ion Ratio Lower Upper
 43 100
 58 24.9 25.4 38.0#



#18
 Methyl Acetate
 Concen: 0.450 ug/l
 RT: 4.33 min Scan# 796
 Delta R.T. 0.01 min
 Lab File: VN052859.D
 Acq: 13 Dec 2018 12:54

Tgt Ion: 43 Resp: 4623
 Ion Ratio Lower Upper
 43 100
 74 4.0 19.2 28.8#

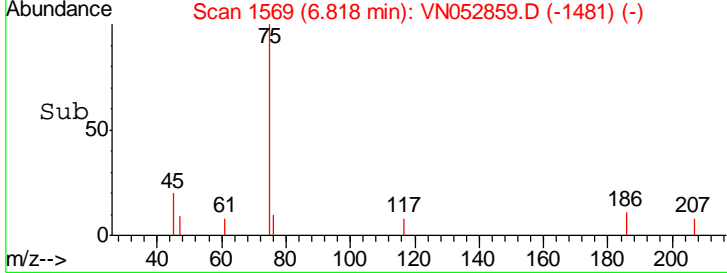
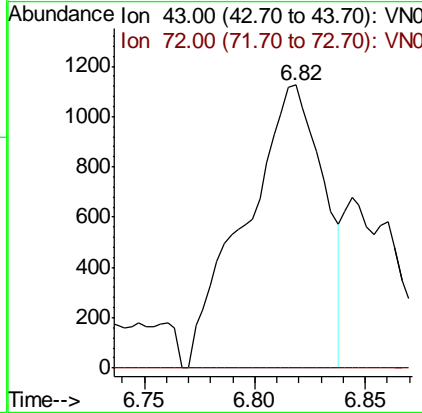
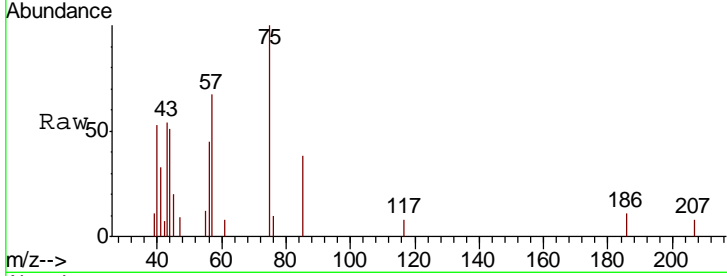




#25
 2-Butanone
 Concen: 0.637 ug/l
 RT: 6.82 min Scan# 1569
 Delta R.T. -0.02 min
 Lab File: VN052859.D
 Acq: 13 Dec 2018 12:54

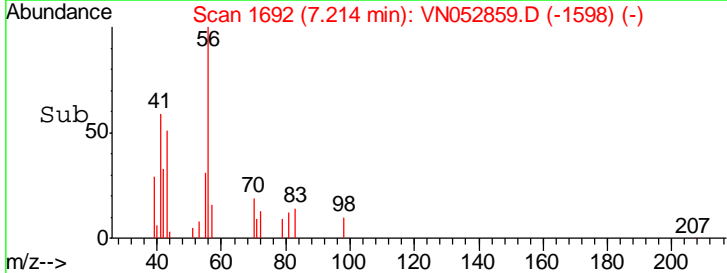
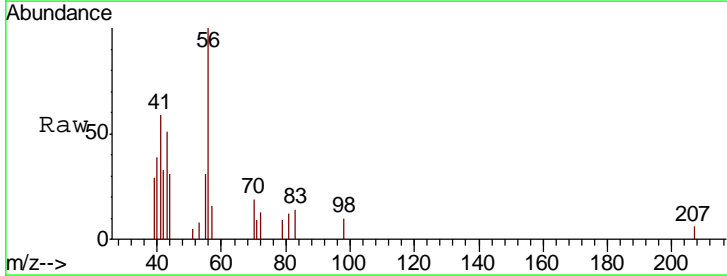
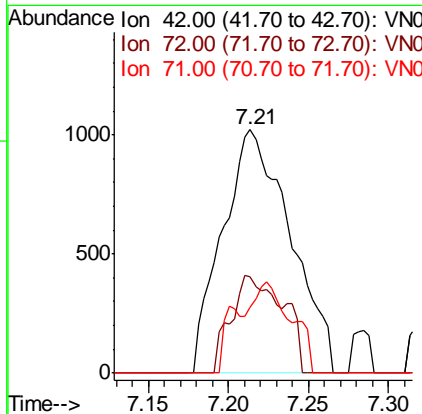
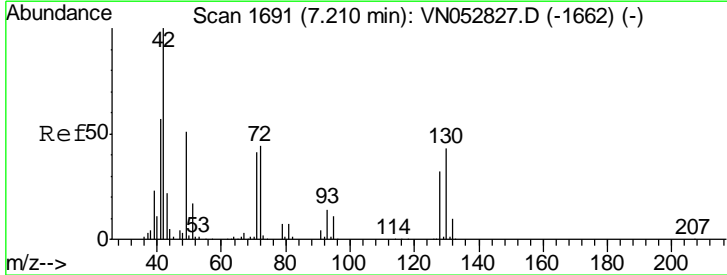
Instrument :
 MSVOA_N
 ClientSampled :
 057_BT-2-1

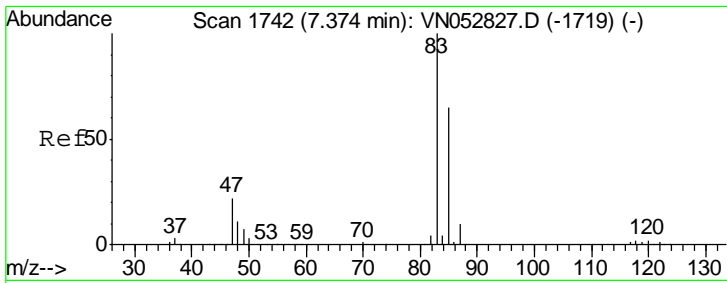
Tgt Ion	Resp	Lower	Upper
43	100		
72	0.0	21.0	31.6#



#29
 Tetrahydrofuran
 Concen: 1.005 ug/l
 RT: 7.21 min Scan# 1692
 Delta R.T. 0.00 min
 Lab File: VN052859.D
 Acq: 13 Dec 2018 12:54

Tgt Ion	Resp	Lower	Upper
42	100		
72	30.5	34.7	52.1#
71	21.5	32.3	48.5#

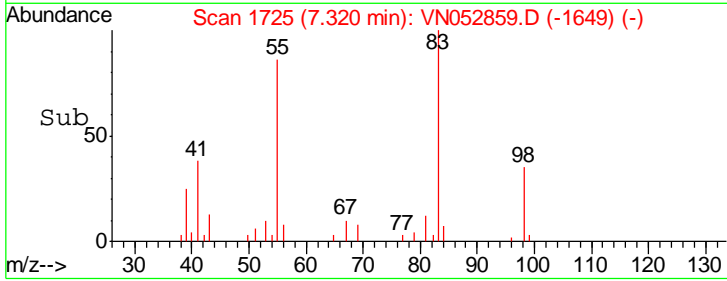
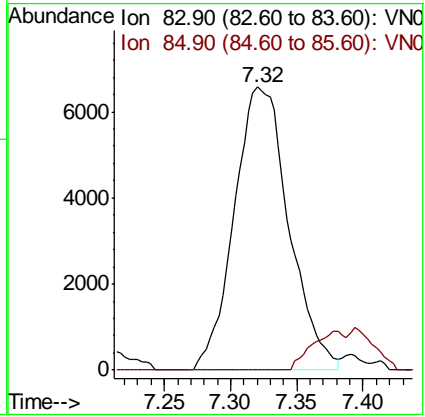
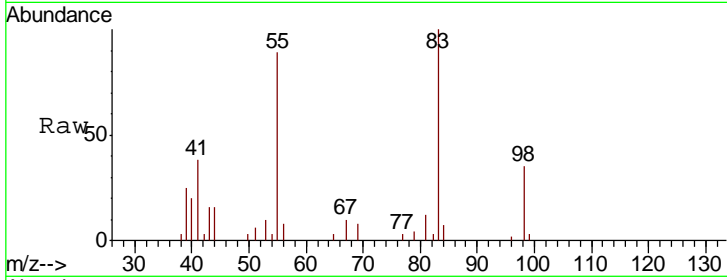




#30
 Chloroform
 Concen: 0.895 ug/l
 RT: 7.32 min Scan# 1725
 Delta R.T. -0.05 min
 Lab File: VN052859.D
 Acq: 13 Dec 2018 12:54

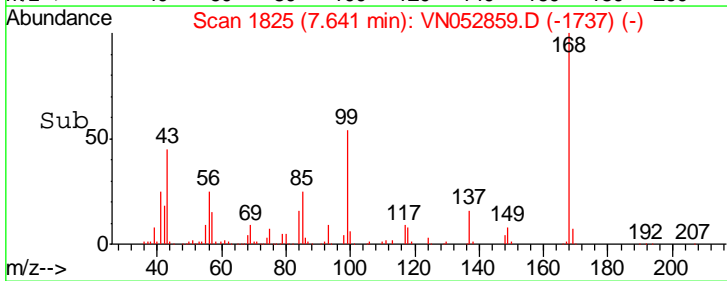
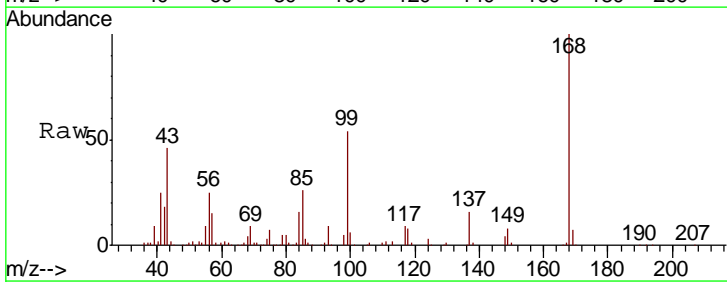
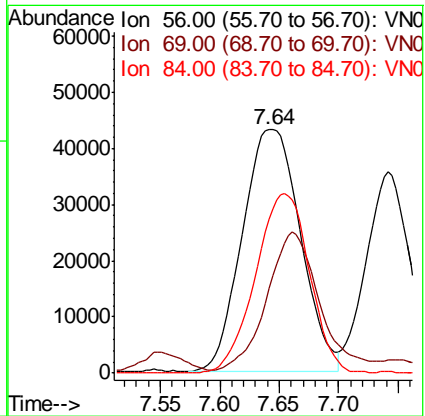
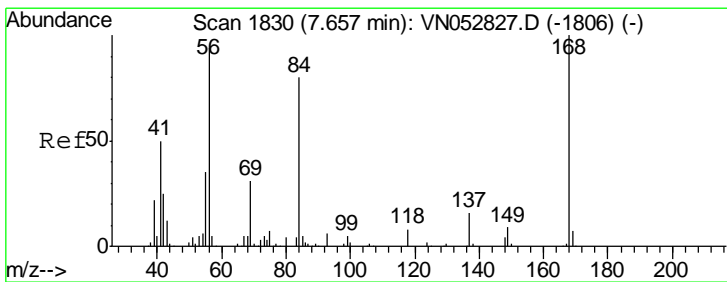
Instrument :
 MSVOA_N
ClientSampled :
 057_BT-2-1

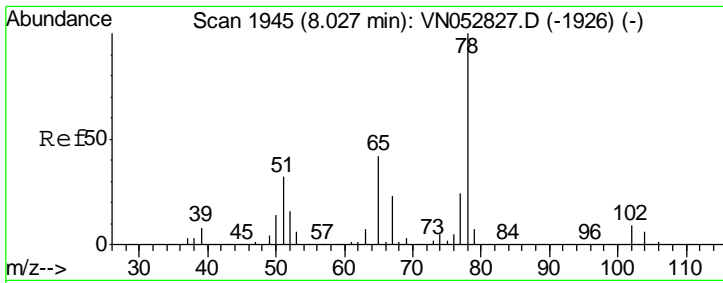
Tgt Ion	Resp	Lower	Upper
83	100		
85	0.0	52.1	78.1#



#31
 Cyclohexane
 Concen: 6.395 ug/l
 RT: 7.64 min Scan# 1825
 Delta R.T. -0.02 min
 Lab File: VN052859.D
 Acq: 13 Dec 2018 12:54

Tgt Ion	Resp	Lower	Upper
56	100		
69	31.2	26.6	39.8
84	63.6	68.4	102.6#

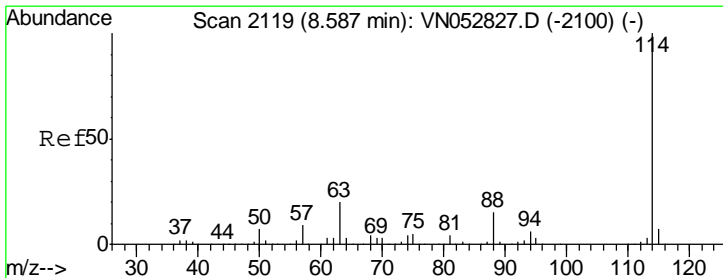
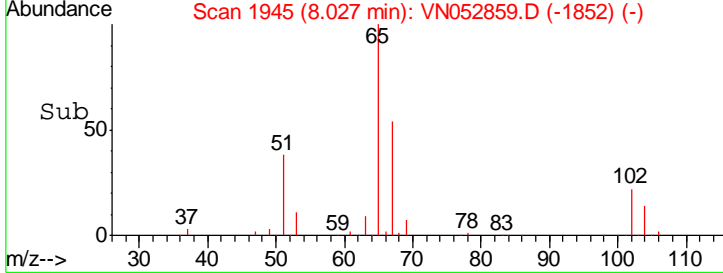
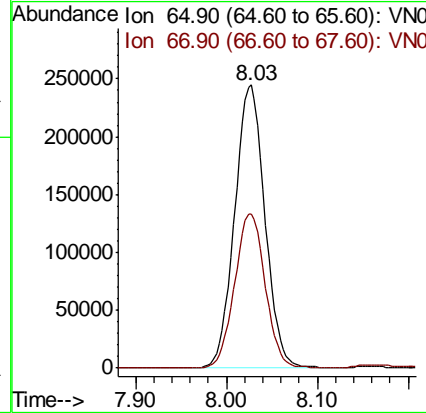
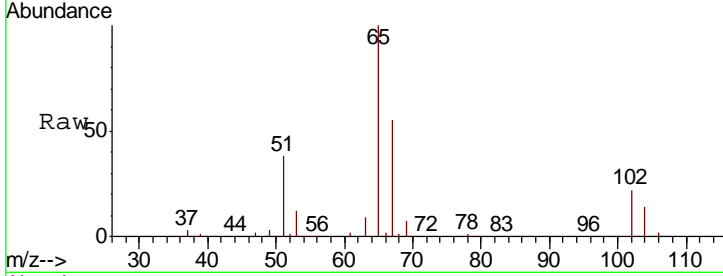




#33
 1,2-Dichloroethane-d4
 Concen: N.D. ug/l
 RT: 8.03 min Scan# 1945
 Delta R.T. 0.00 min
 Lab File: VN052859.D
 Acq: 13 Dec 2018 12:54

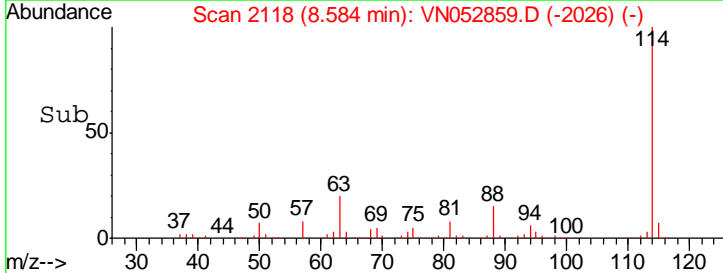
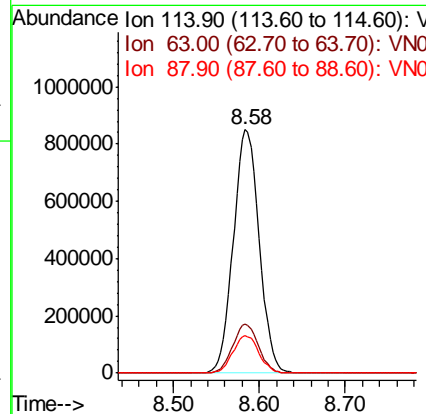
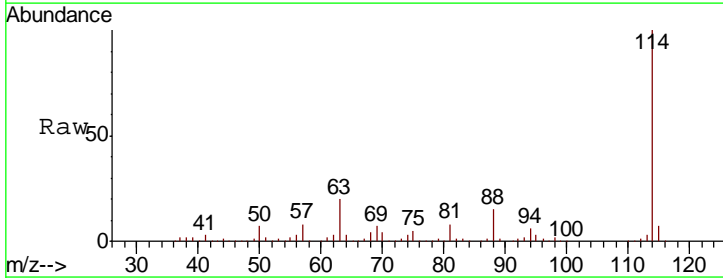
Instrument :
 MSVOA_N
ClientSampled :
 057_BT-2-1

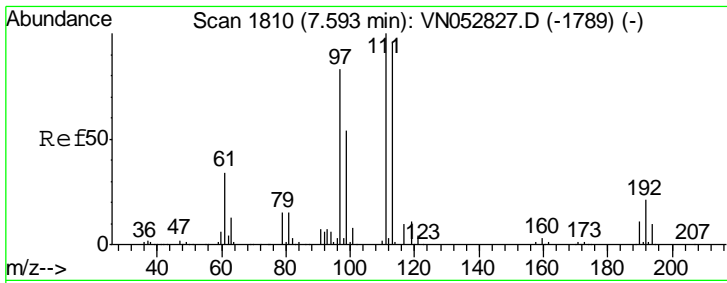
Tgt Ion	Resp	Lower	Upper
65	100		
67	55.2	0.0	110.4



#34
 1,4-Difluorobenzene
 Concen: 50.000 ug/l
 RT: 8.58 min Scan# 2118
 Delta R.T. -0.00 min
 Lab File: VN052859.D
 Acq: 13 Dec 2018 12:54

Tgt Ion	Resp	Lower	Upper
114	100		
63	20.0	0.0	39.8
88	15.4	0.0	31.0

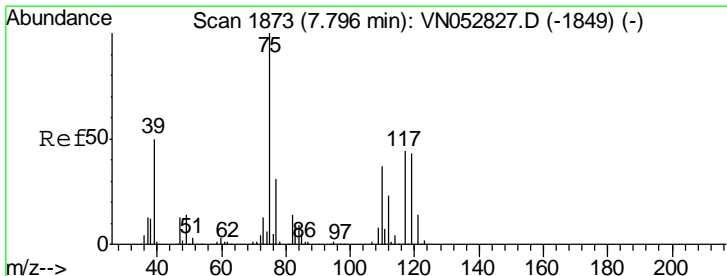
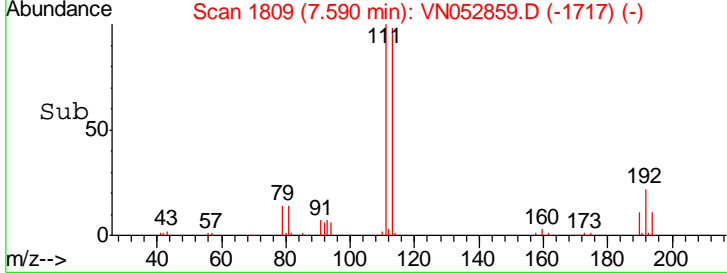
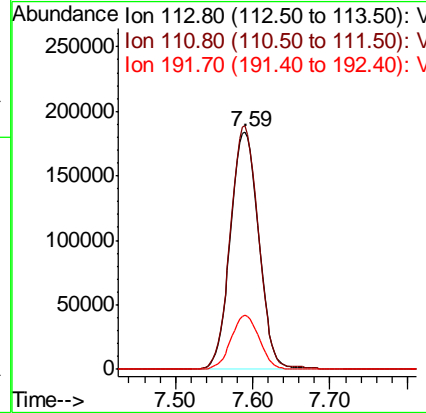
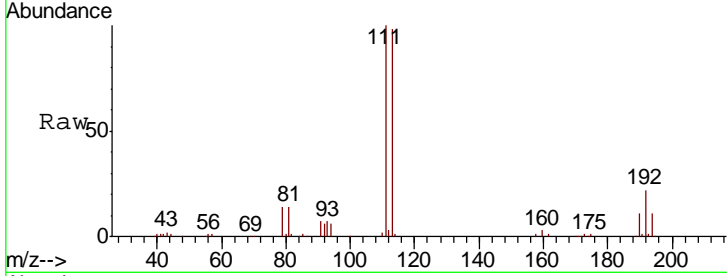




#35
 Dibromofluoromethane
 Concen: 50.000 ug/l
 RT: 7.59 min Scan# 1809
 Delta R.T. -0.00 min
 Lab File: VN052859.D
 Acq: 13 Dec 2018 12:54

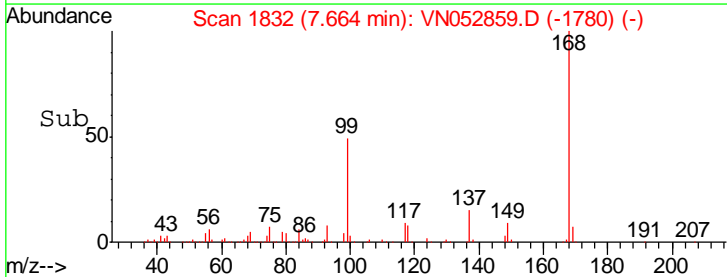
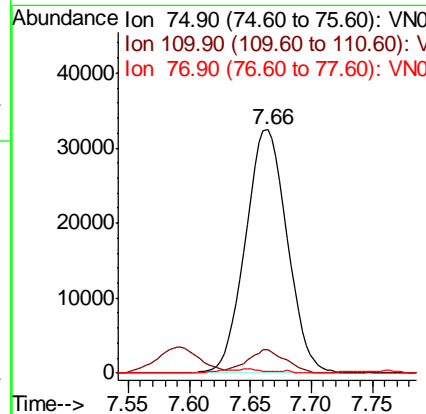
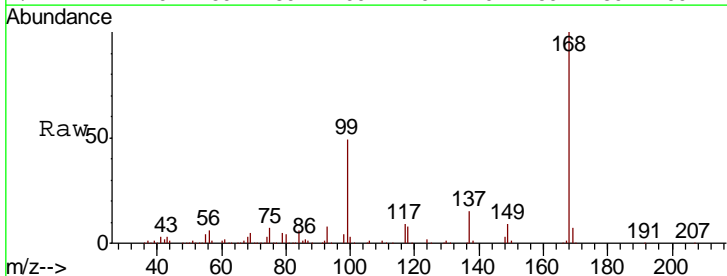
Instrument : MSVOA_N
 ClientSampled : 057_BT-2-1

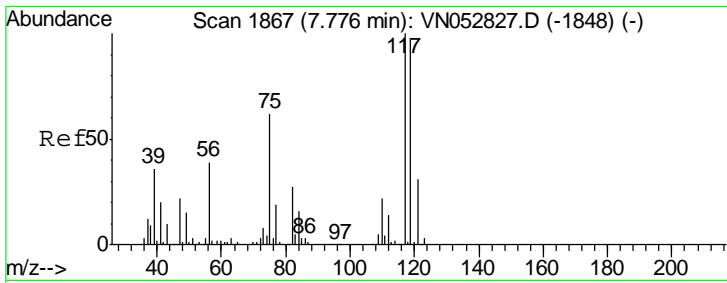
Tgt Ion	Resp	Lower	Upper
113	100		
111	100.7	83.0	124.4
192	22.6	17.5	26.3



#36
 1,1-Dichloropropene
 Concen: 4.722 ug/l
 RT: 7.66 min Scan# 1832
 Delta R.T. -0.13 min
 Lab File: VN052859.D
 Acq: 13 Dec 2018 12:54

Tgt Ion	Resp	Lower	Upper
75	100		
110	8.9	18.2	54.6#
77	1.6	24.9	37.3#

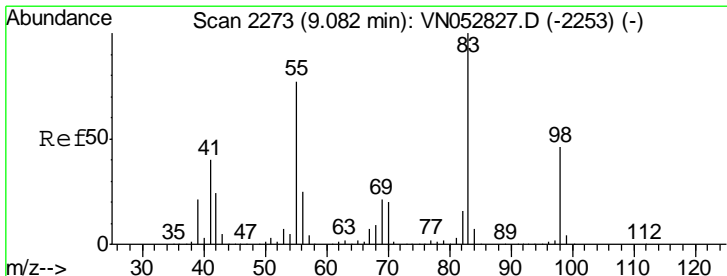
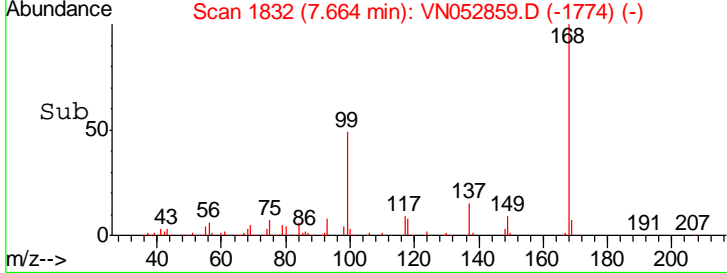
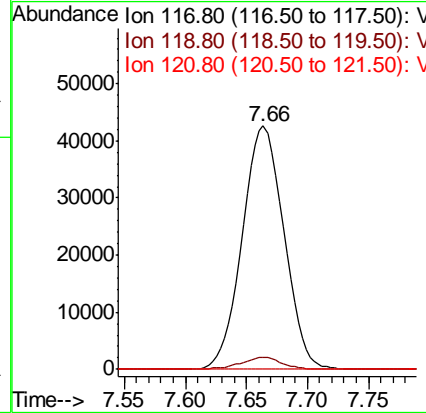
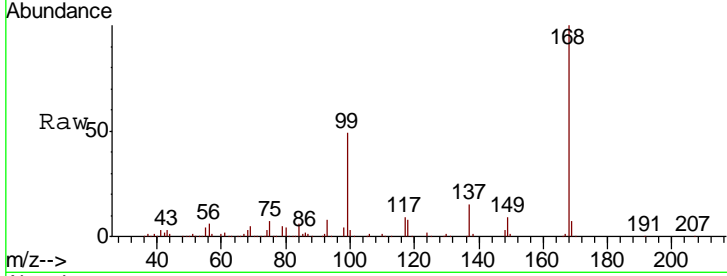




#38
 Carbon Tetrachloride
 Concen: 6.731 ug/l
 RT: 7.66 min Scan# 1832
 Delta R.T. -0.11 min
 Lab File: VN052859.D
 Acq: 13 Dec 2018 12:54

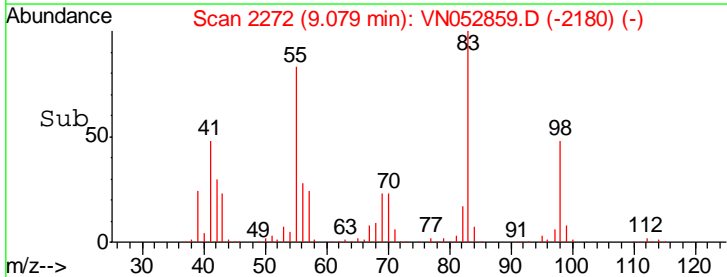
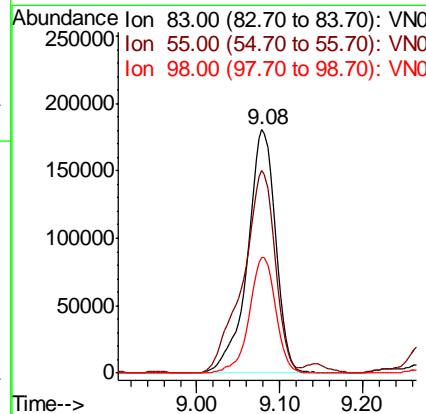
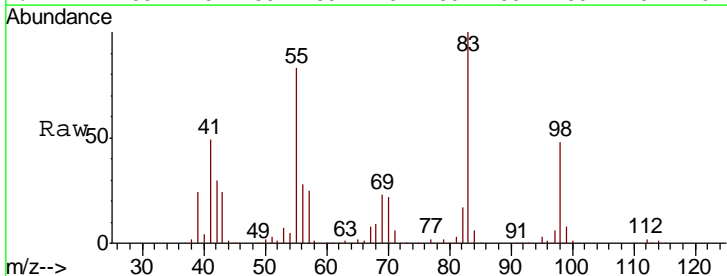
Instrument :
 MSVOA_N
 ClientSampled :
 057_BT-2-1

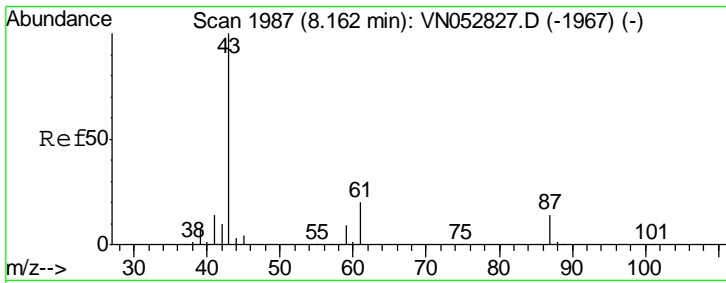
Tgt Ion	Resp	Lower	Upper
117	100		
119	4.9	77.1	115.7#
121	0.0	24.9	37.3#



#39
 Methylcyclohexane
 Concen: 21.274 ug/l
 RT: 9.08 min Scan# 2272
 Delta R.T. -0.00 min
 Lab File: VN052859.D
 Acq: 13 Dec 2018 12:54

Tgt Ion	Resp	Lower	Upper
83	100		
55	83.2	61.3	91.9
98	47.7	37.0	55.4

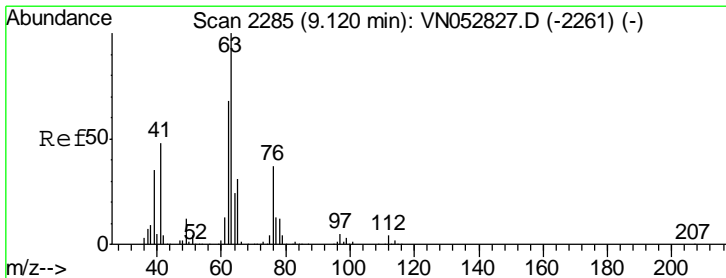
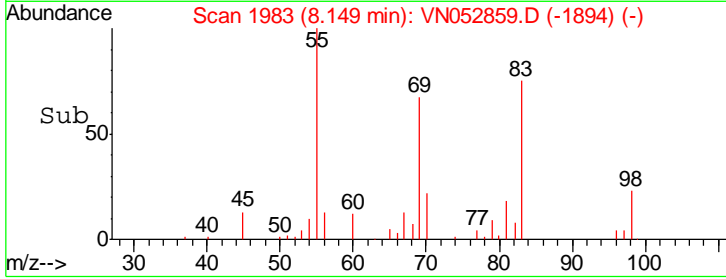
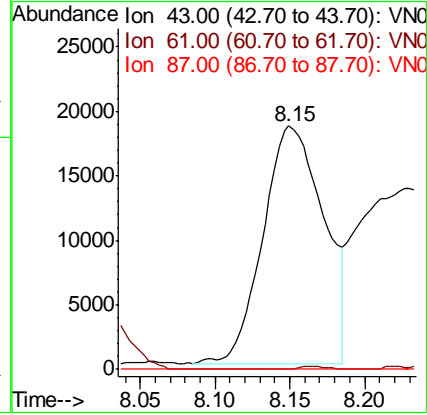
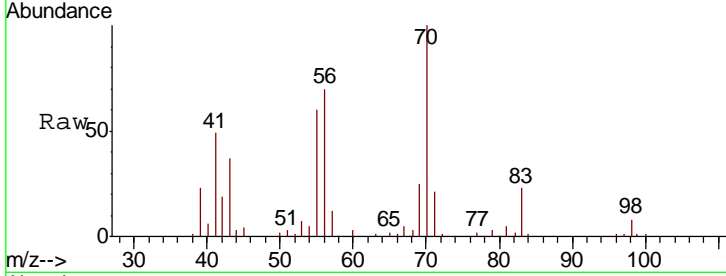




#43
 Isopropyl Acetate
 Concen: 2.596 ug/l
 RT: 8.15 min Scan# 1983
 Delta R.T. -0.01 min
 Lab File: VN052859.D
 Acq: 13 Dec 2018 12:54

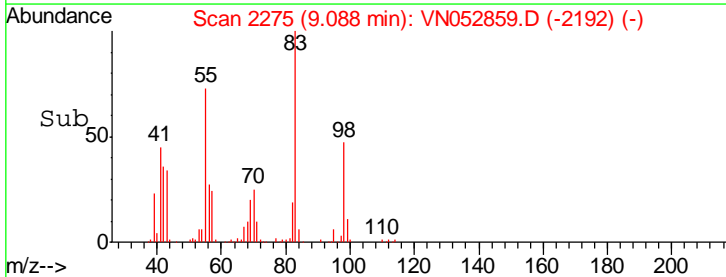
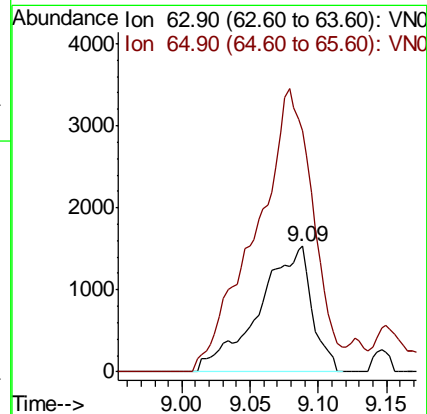
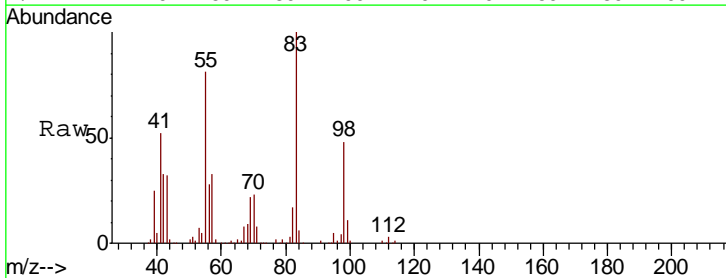
Instrument :
 MSVOA_N
 ClientSampled :
 057_BT-2-1

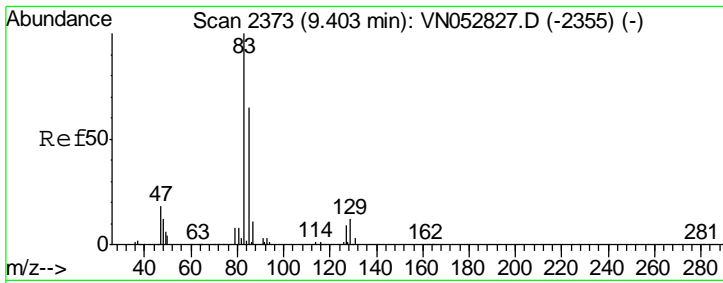
Tgt Ion	Resp	Lower	Upper
43	100		
61	0.0	22.9	34.3#
87	0.0	10.6	15.8#



#45
 1,2-Dichloropropane
 Concen: 0.324 ug/l
 RT: 9.09 min Scan# 2275
 Delta R.T. -0.03 min
 Lab File: VN052859.D
 Acq: 13 Dec 2018 12:54

Tgt Ion	Resp	Lower	Upper
63	100		
65	192.3	24.6	37.0#



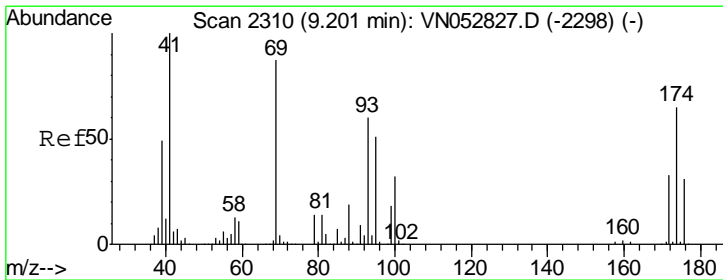
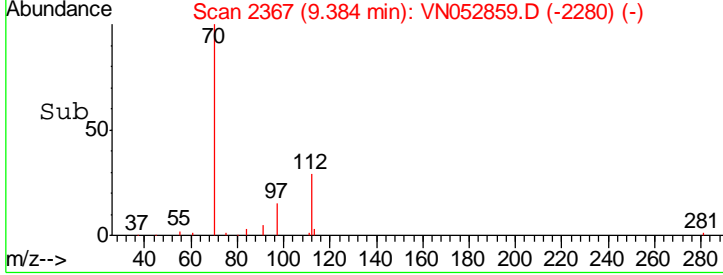
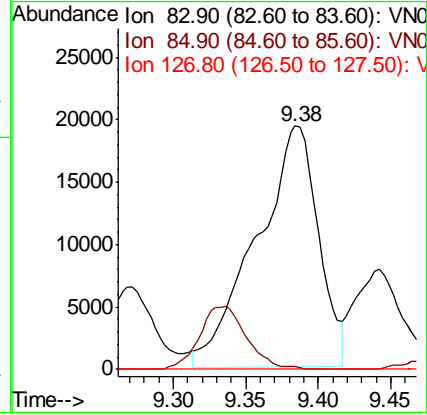
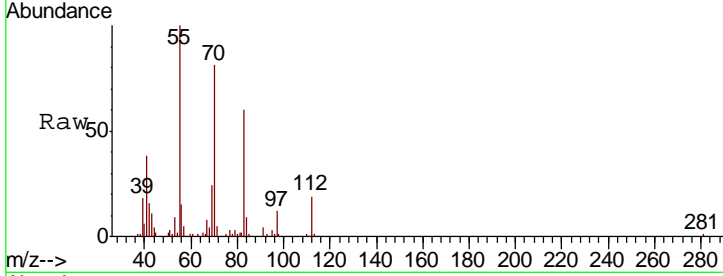


#47

Bromodichloromethane
 Concen: 3.734 ug/l
 RT: 9.38 min Scan# 2367
 Delta R.T. -0.02 min
 Lab File: VN052859.D
 Acq: 13 Dec 2018 12:54

Instrument :
 MSVOA_N
 ClientSampled :
 057_BT-2-1

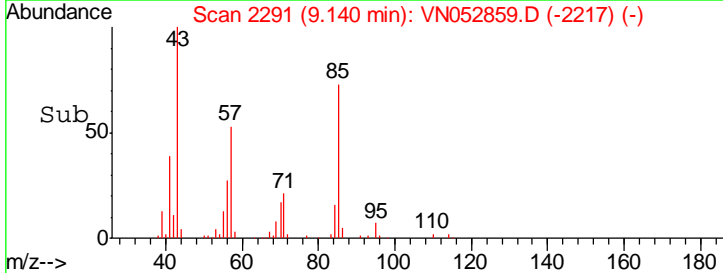
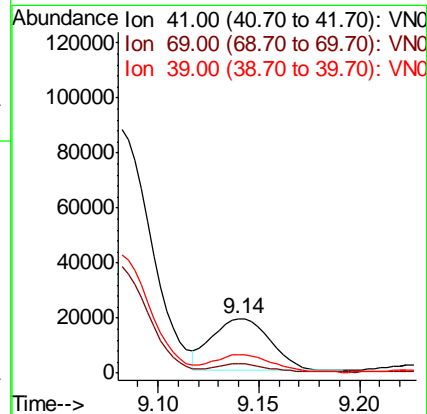
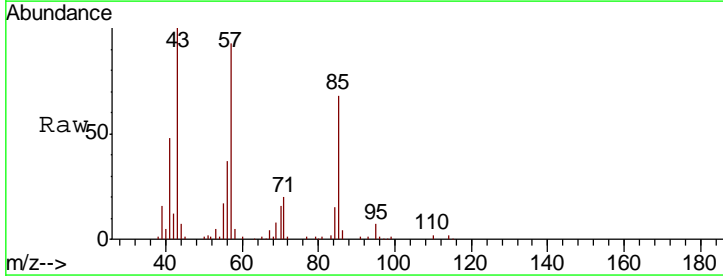
Tgt Ion	Resp	Lower	Upper
83	100		
85	1.2	51.6	77.4#
127	0.0	7.1	10.7#

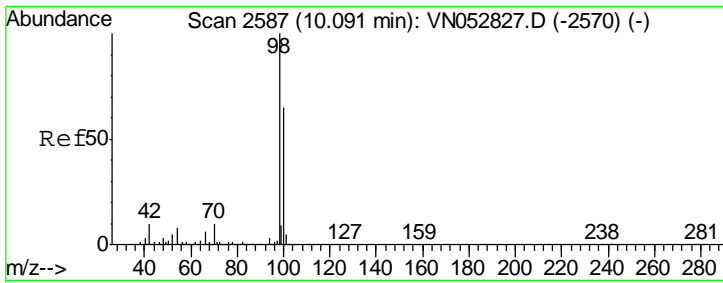


#48

Methyl methacrylate
 Concen: 4.393 ug/l
 RT: 9.14 min Scan# 2291
 Delta R.T. -0.06 min
 Lab File: VN052859.D
 Acq: 13 Dec 2018 12:54

Tgt Ion	Resp	Lower	Upper
41	100		
69	13.1	72.2	108.2#
39	33.5	41.9	62.9#

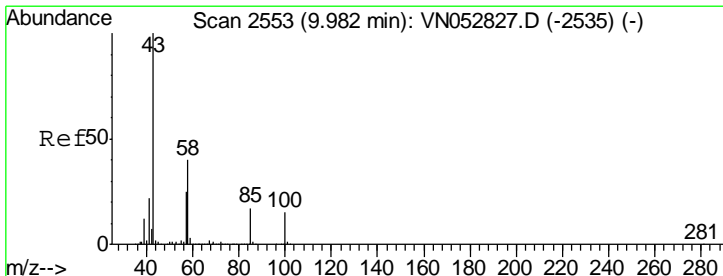
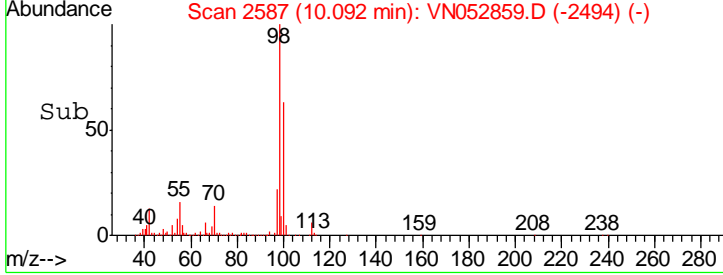
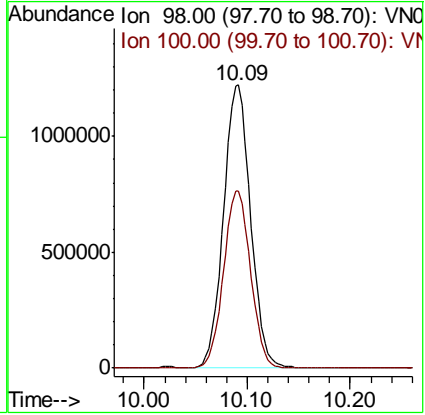
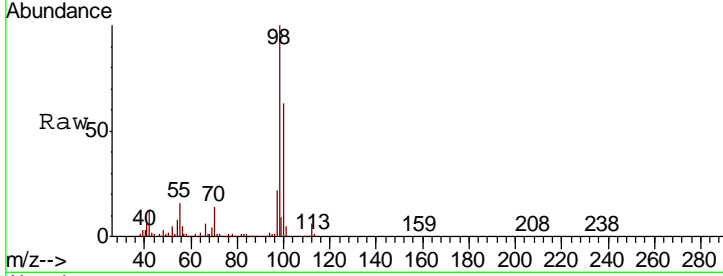




#50
 Toluene-d8
 Concen: N.D. ug/l
 RT: 10.09 min Scan# 2587
 Delta R.T. 0.00 min
 Lab File: VN052859.D
 Acq: 13 Dec 2018 12:54

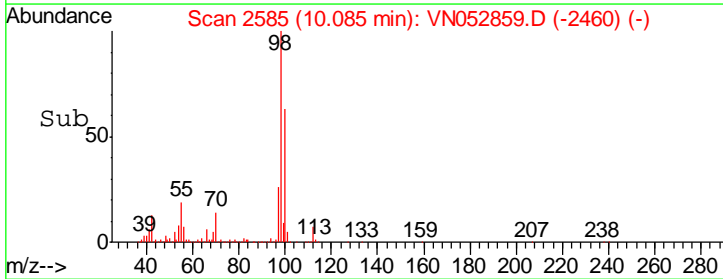
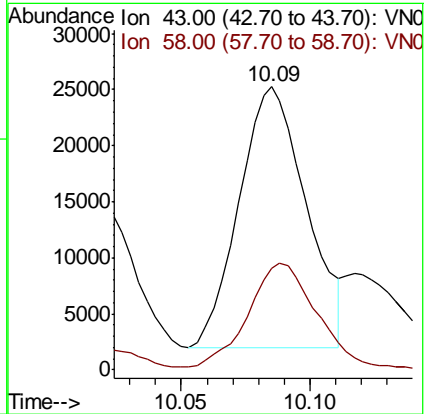
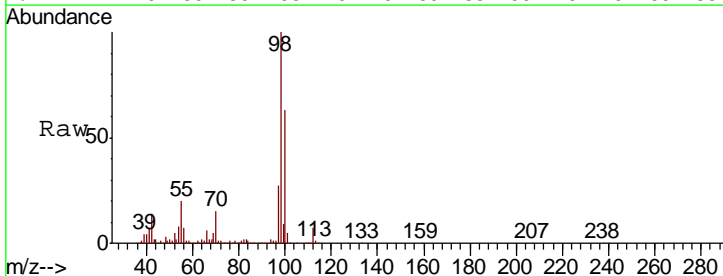
Instrument : MSVOA_N
 ClientSampled : 057_BT-2-1

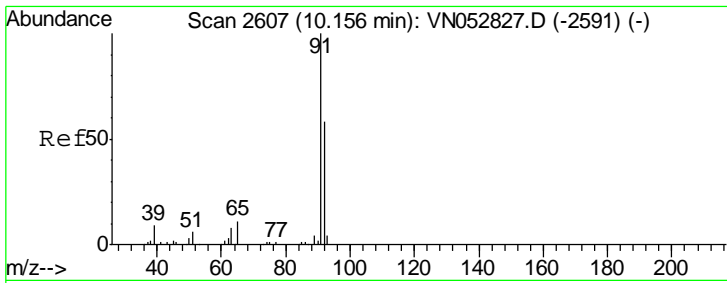
Tgt Ion: 98 Resp: 2231120
 Ion Ratio Lower Upper
 98 100
 100 62.5 51.6 77.4



#51
 4-Methyl-2-Pentanone
 Concen: 4.623 ug/l
 RT: 10.09 min Scan# 2585
 Delta R.T. 0.10 min
 Lab File: VN052859.D
 Acq: 13 Dec 2018 12:54

Tgt Ion: 43 Resp: 42496
 Ion Ratio Lower Upper
 43 100
 58 42.9 32.2 48.4

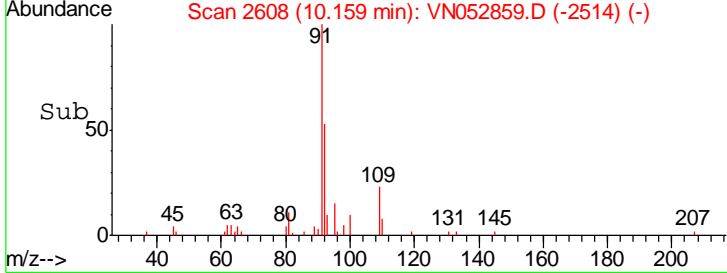
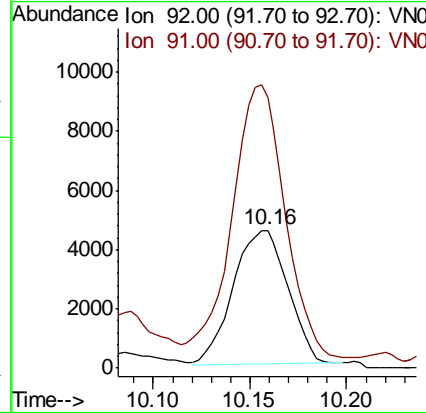
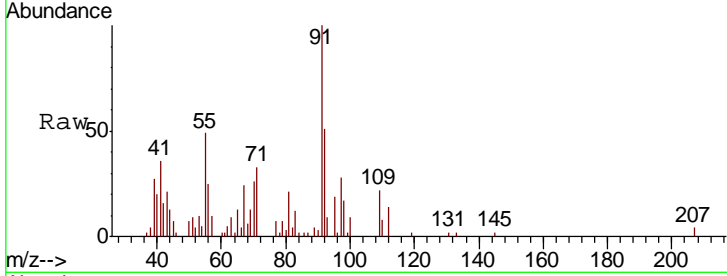




#52
 Toluene
 Concen: 0.301 ug/l
 RT: 10.16 min Scan# 2608
 Delta R.T. 0.00 min
 Lab File: VN052859.D
 Acq: 13 Dec 2018 12:54

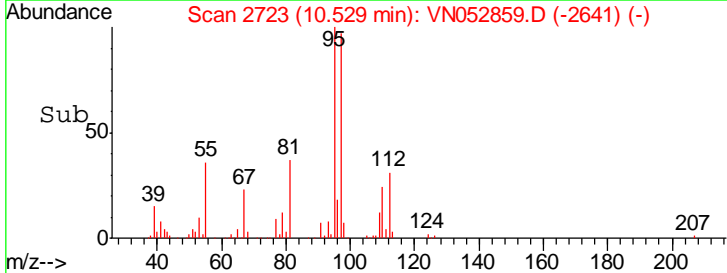
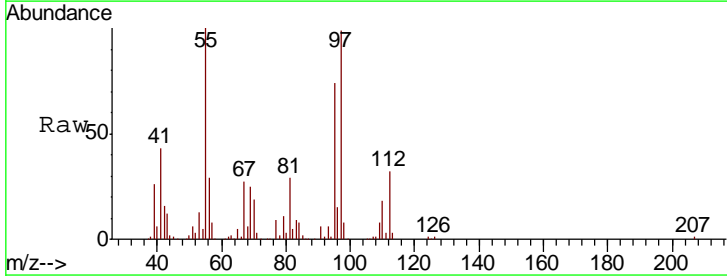
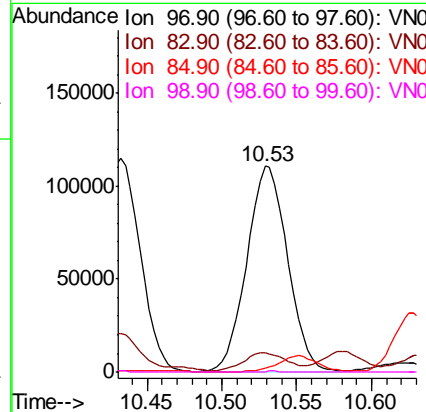
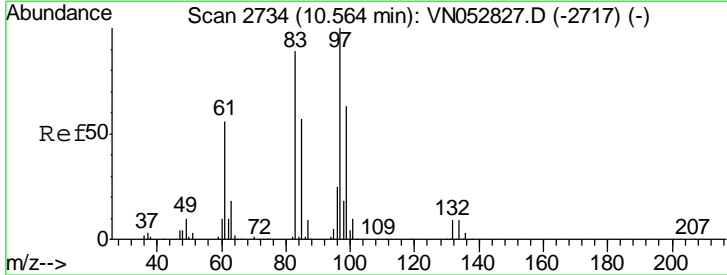
Instrument :
 MSVOA_N
 ClientSampled :
 057_BT-2-1

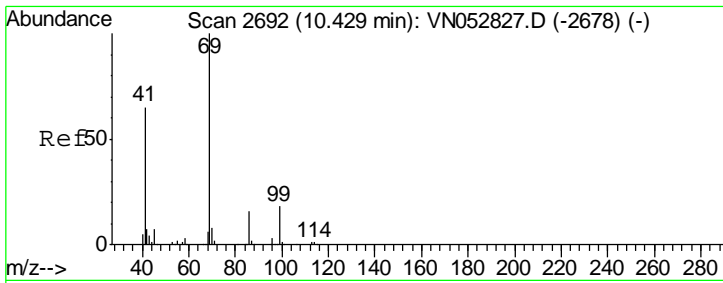
Tgt Ion	Resp	Lower	Upper
92	100		
91	196.7	139.8	209.6



#55
 1,1,2-Trichloroethane
 Concen: 19.758 ug/l
 RT: 10.53 min Scan# 2723
 Delta R.T. -0.04 min
 Lab File: VN052859.D
 Acq: 13 Dec 2018 12:54

Tgt Ion	Resp	Lower	Upper
97	100		
83	7.6	70.9	106.3#
85	1.4	45.4	68.2#
99	0.3	50.4	75.6#

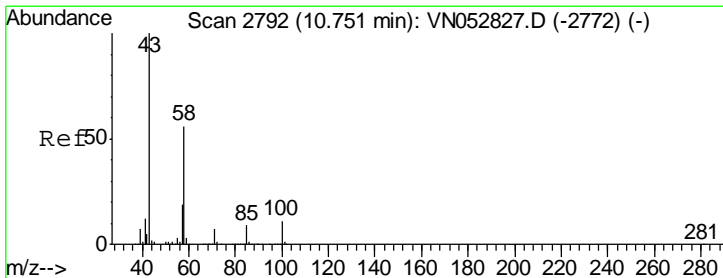
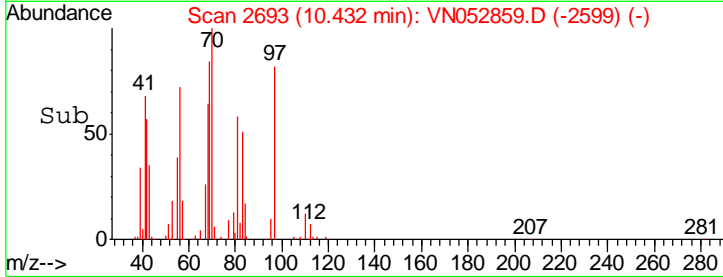
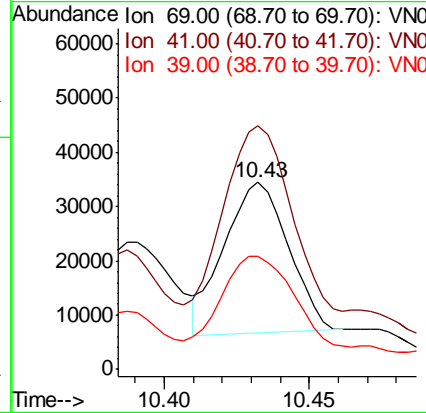
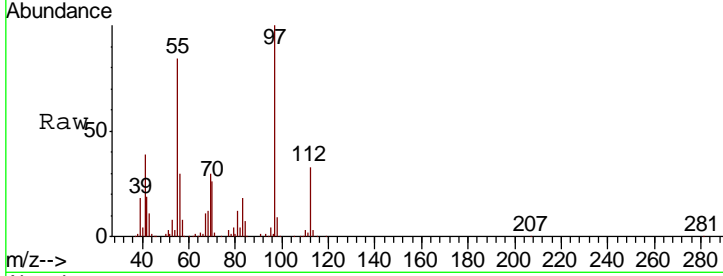




#56
Ethyl methacrylate
Concen: 3.164 ug/l
RT: 10.43 min Scan# 2693
Delta R.T. 0.00 min
Lab File: VN052859.D
Acq: 13 Dec 2018 12:54

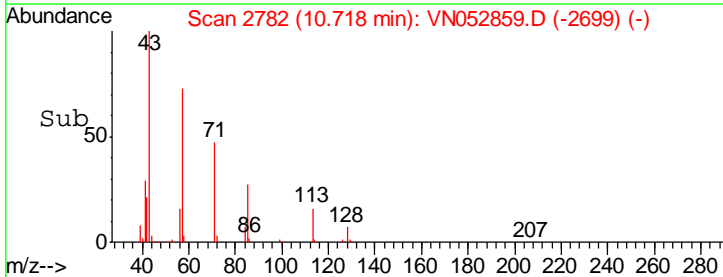
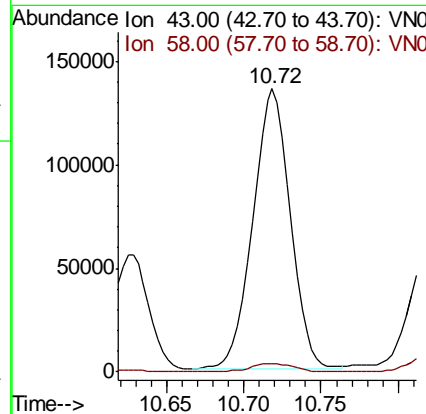
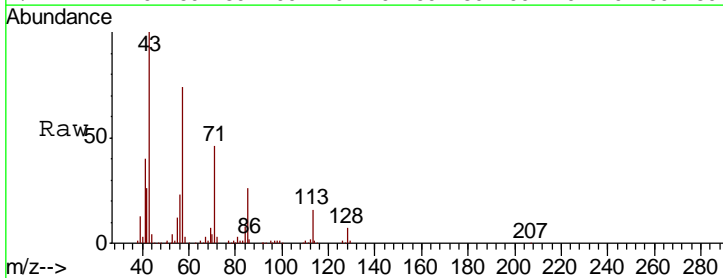
Instrument : MSVOA_N
Client Sampled : 057_BT-2-1

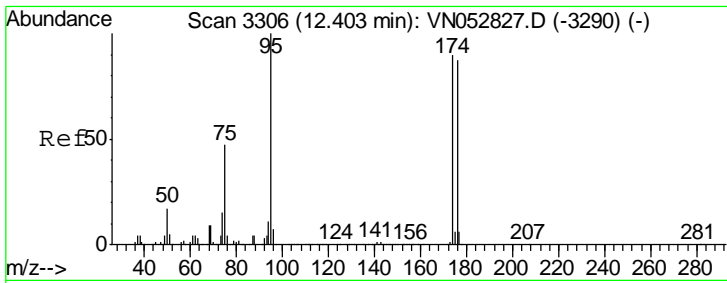
Tgt Ion	Resp	Lower	Upper
69	42887		
41	128.9	51.7	77.5#
39	65.3	24.6	37.0#



#59
2-Hexanone
Concen: 36.200 ug/l
RT: 10.72 min Scan# 2782
Delta R.T. -0.03 min
Lab File: VN052859.D
Acq: 13 Dec 2018 12:54

Tgt Ion	Resp	Lower	Upper
43	228034		
58	3.5	28.1	84.3#

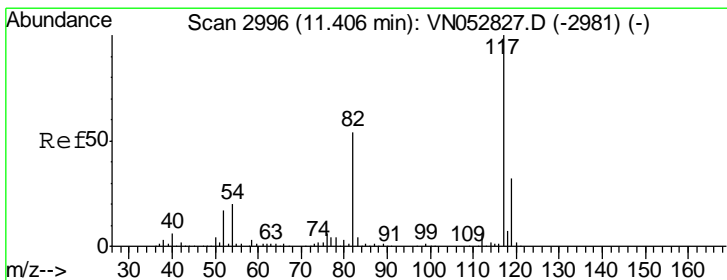
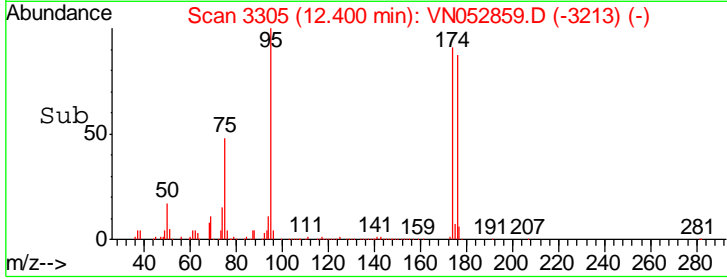
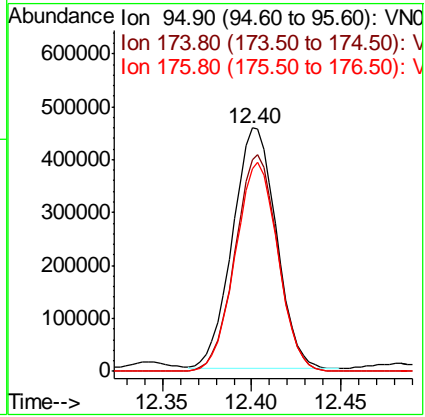
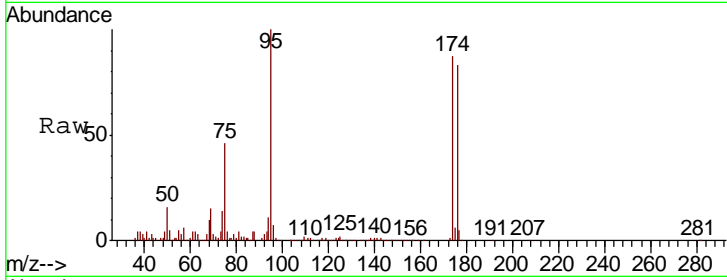




#62
 4-Bromofluorobenzene
 Concen: Below ug/l
 RT: 12.40 min Scan# 3305
 Delta R.T. -0.00 min
 Lab File: VN052859.D
 Acq: 13 Dec 2018 12:54

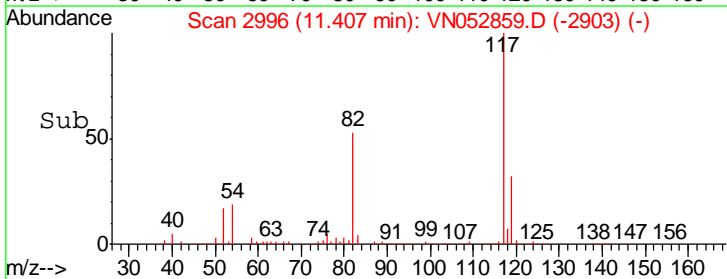
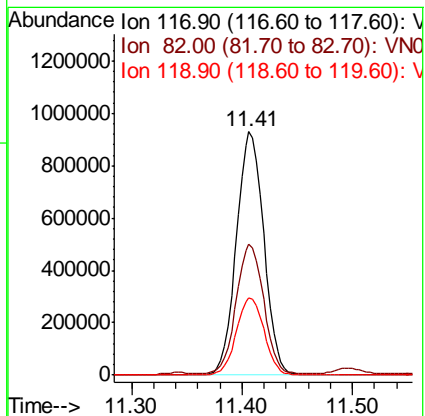
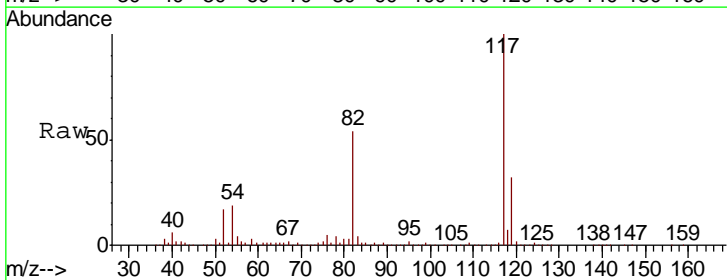
Instrument : MSVOA_N
 ClientSampled : 057_BT-2-1

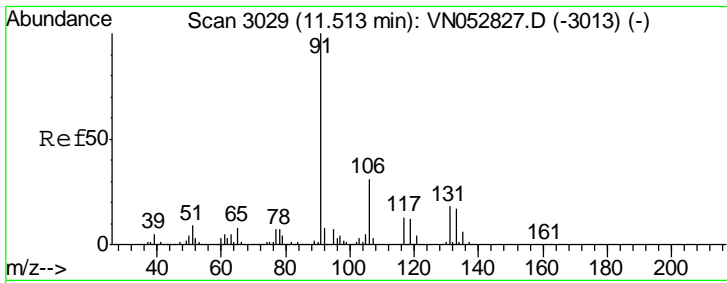
Tgt Ion	Resp	Lower	Upper
95	779362		
174	87.5	0.0	178.8
176	84.7	0.0	173.8



#63
 Chlorobenzene-d5
 Concen: 50.000 ug/l
 RT: 11.41 min Scan# 2996
 Delta R.T. 0.00 min
 Lab File: VN052859.D
 Acq: 13 Dec 2018 12:54

Tgt Ion	Resp	Lower	Upper
117	1601597		
82	52.8	42.8	64.2
119	31.9	25.5	38.3

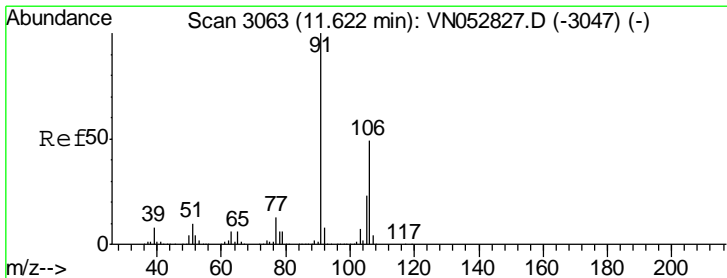
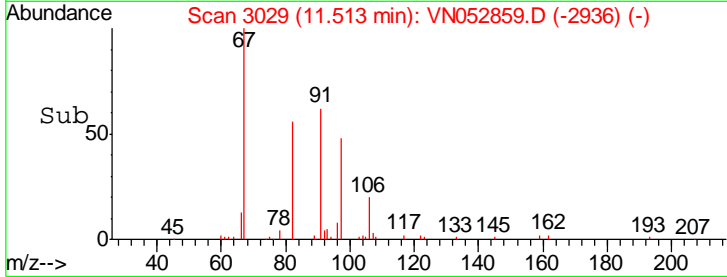
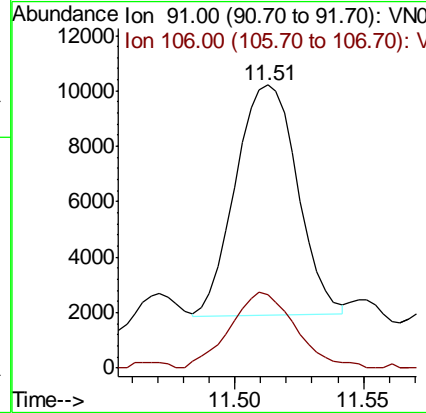
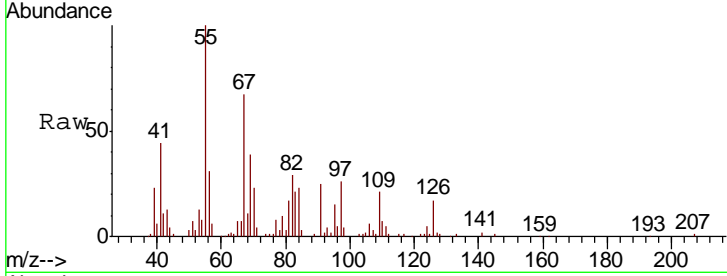




#67
Ethyl Benzene
Concen: 0.243 ug/l
RT: 11.51 min Scan# 3029
Delta R.T. 0.00 min
Lab File: VN052859.D
Acq: 13 Dec 2018 12:54

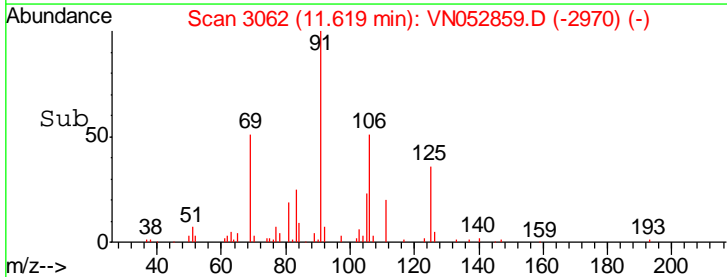
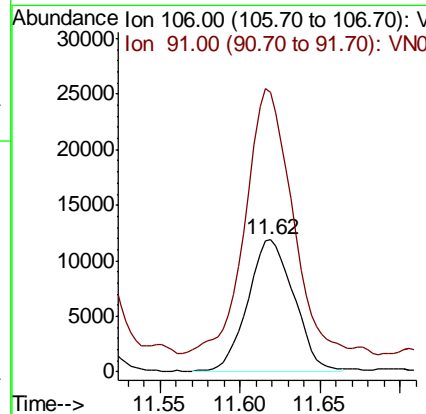
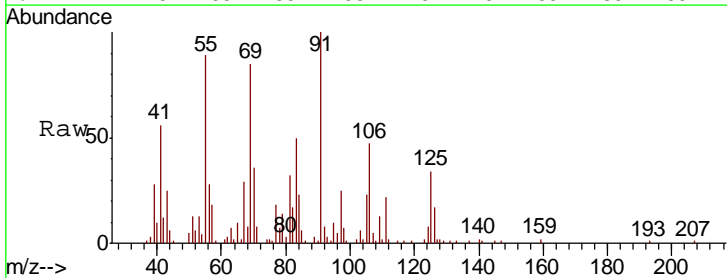
Instrument :
MSVOA_N
ClientSampled :
057_BT-2-1

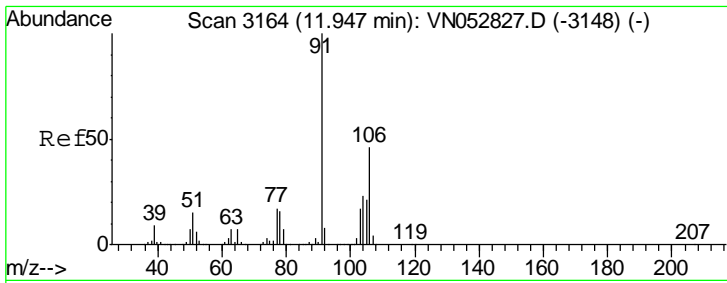
Tgt Ion: 91 Resp: 13866
Ion Ratio Lower Upper
91 100
106 29.5 24.9 37.3



#68
m/p-Xylenes
Concen: 1.102 ug/l
RT: 11.62 min Scan# 3062
Delta R.T. -0.00 min
Lab File: VN052859.D
Acq: 13 Dec 2018 12:54

Tgt Ion: 106 Resp: 23608
Ion Ratio Lower Upper
106 100
91 201.3 162.2 243.4

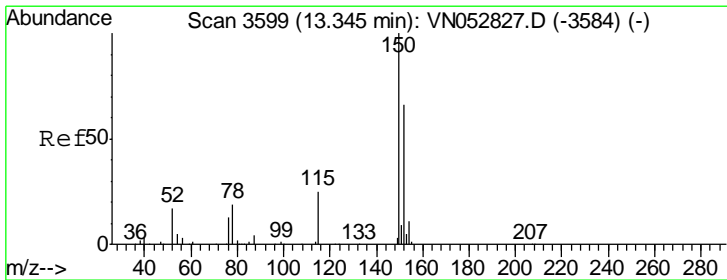
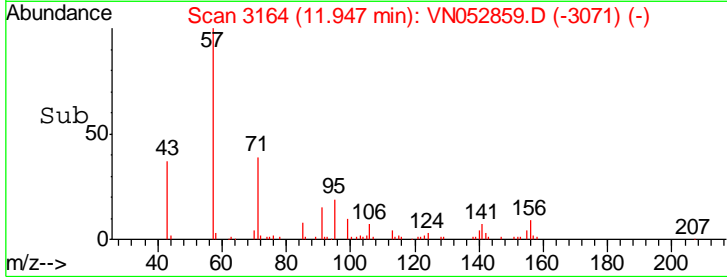
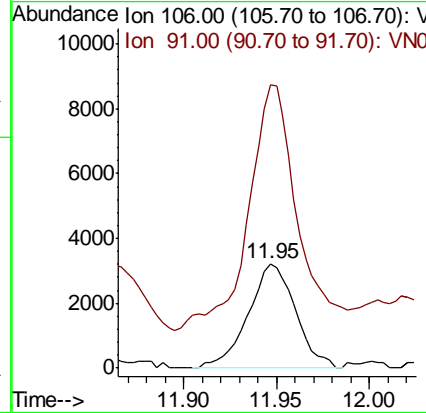
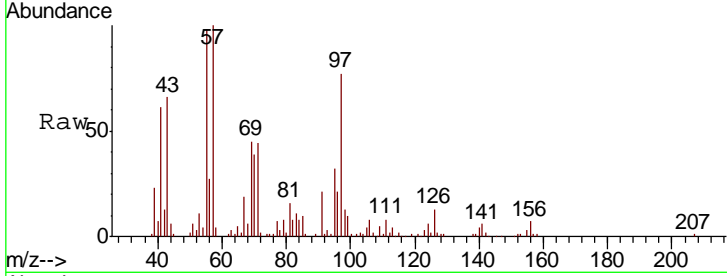




#69
 o-Xylene
 Concen: 0.274 ug/l
 RT: 11.95 min Scan# 3164
 Delta R.T. 0.00 min
 Lab File: VN052859.D
 Acq: 13 Dec 2018 12:54

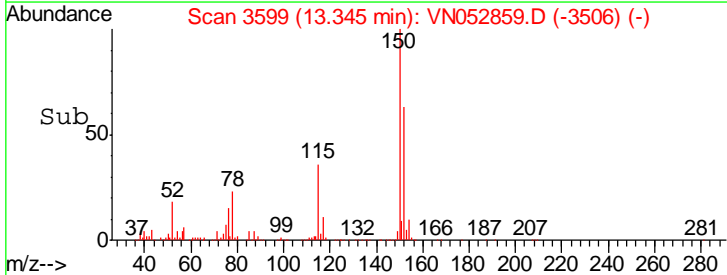
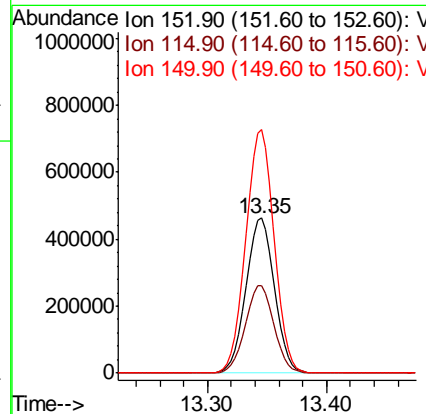
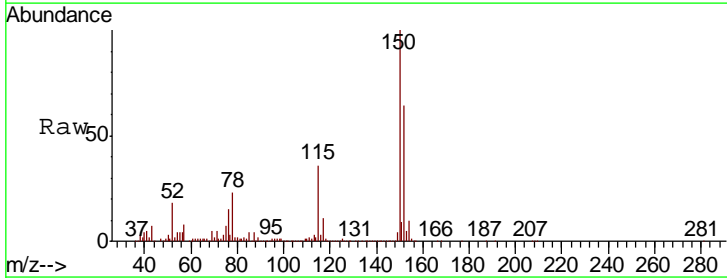
Instrument :
 MSVOA_N
 ClientSampled :
 057_BT-2-1

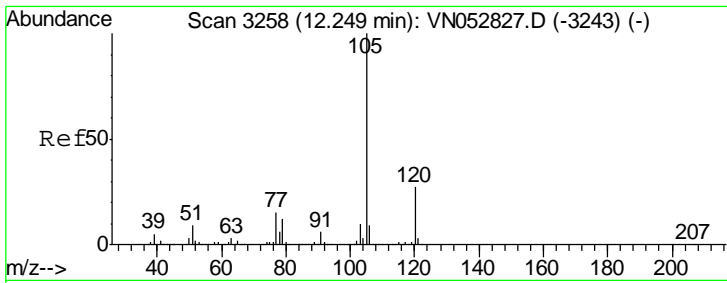
Tgt Ion	Resp	Lower	Upper
106	5724		
106	100		
91	243.0	106.6	319.8



#72
 1,4-Dichlorobenzene-d4
 Concen: 50.000 ug/l
 RT: 13.35 min Scan# 3599
 Delta R.T. 0.00 min
 Lab File: VN052859.D
 Acq: 13 Dec 2018 12:54

Tgt Ion	Resp	Lower	Upper
152	766313		
152	100		
115	56.2	28.3	85.0
150	156.4	0.0	347.8

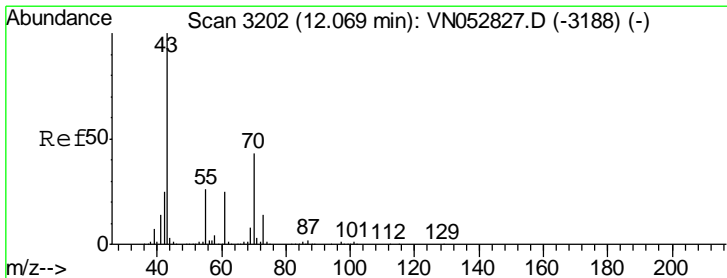
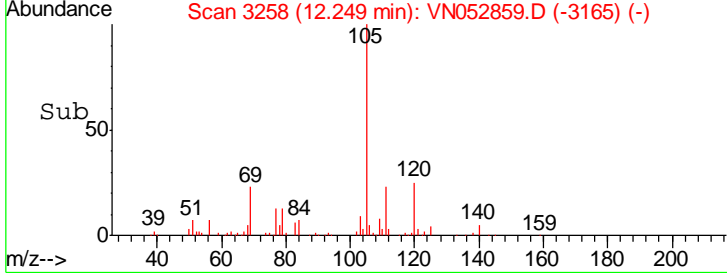
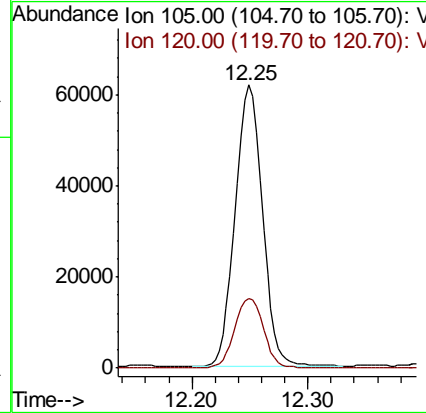
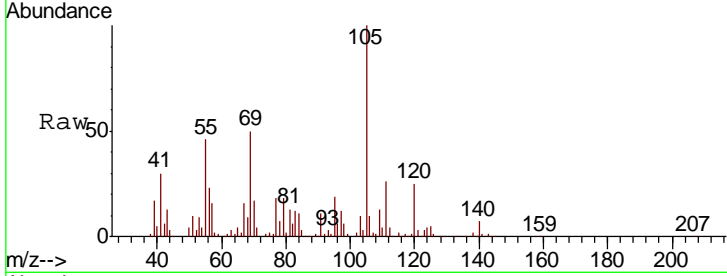




#73
 Isopropylbenzene
 Concen: 1.774 ug/l
 RT: 12.25 min Scan# 3258
 Delta R.T. 0.00 min
 Lab File: VN052859.D
 Acq: 13 Dec 2018 12:54

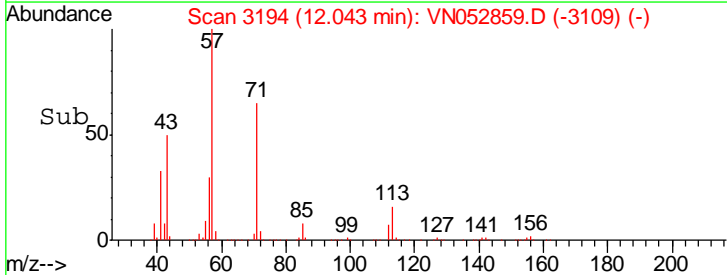
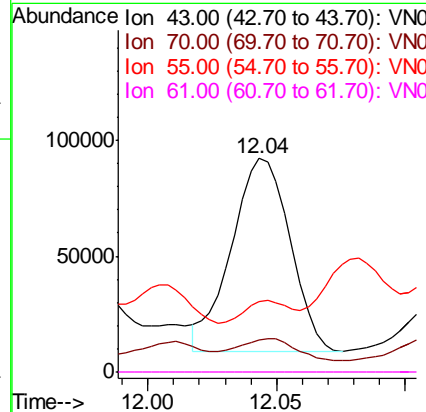
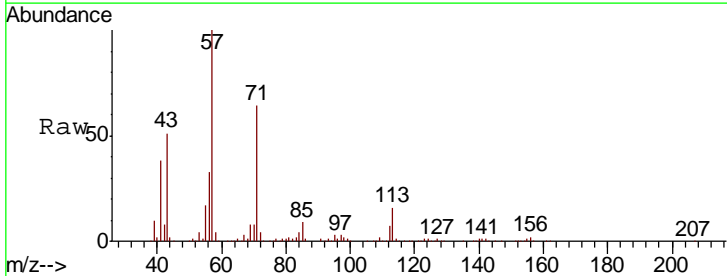
Instrument :
 MSVOA_N
 ClientSampled :
 057_BT-2-1

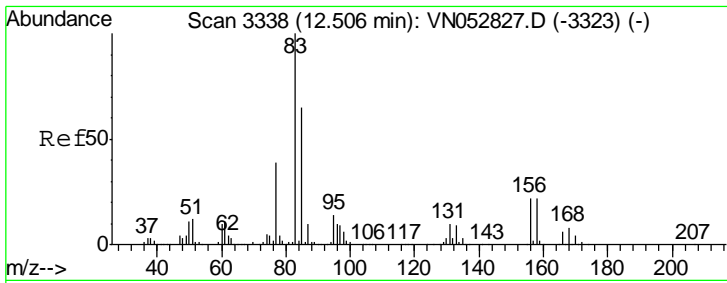
Tgt Ion	Resp	Lower	Upper
105	101494		
120	26.0	13.3	39.9



#74
 N-amyl acetate
 Concen: 8.397 ug/l
 RT: 12.04 min Scan# 3194
 Delta R.T. -0.03 min
 Lab File: VN052859.D
 Acq: 13 Dec 2018 12:54

Tgt Ion	Resp	Lower	Upper
43	131898		
70	11.1	34.2	51.4#
55	8.6	20.3	30.5#
61	0.0	20.0	30.0#

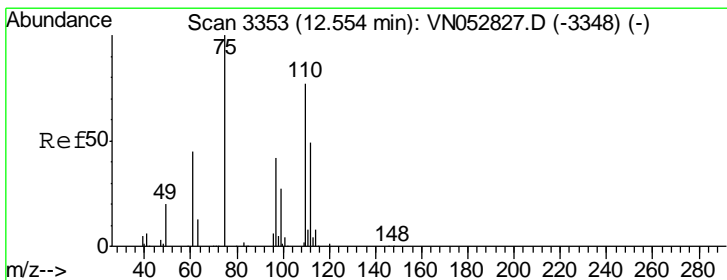
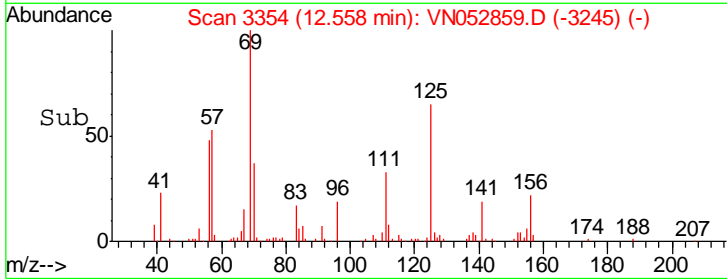
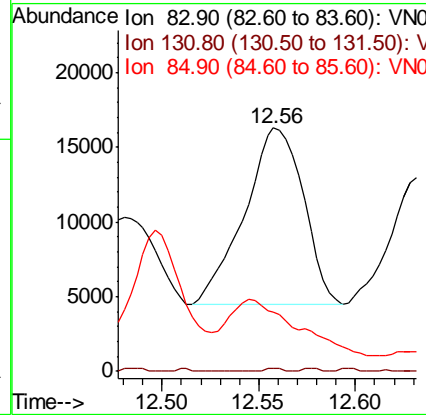
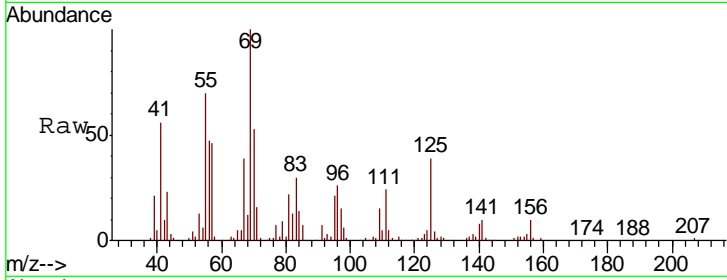




#75
 1,1,2,2-Tetrachloroethane
 Concen: 1.962 ug/l
 RT: 12.56 min Scan# 3354
 Delta R.T. 0.05 min
 Lab File: VN052859.D
 Acq: 13 Dec 2018 12:54

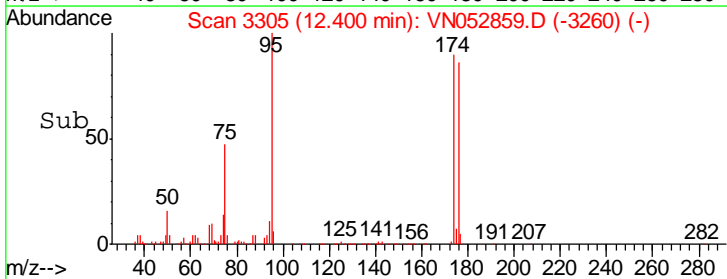
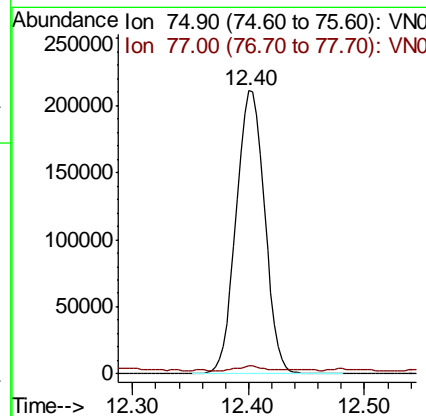
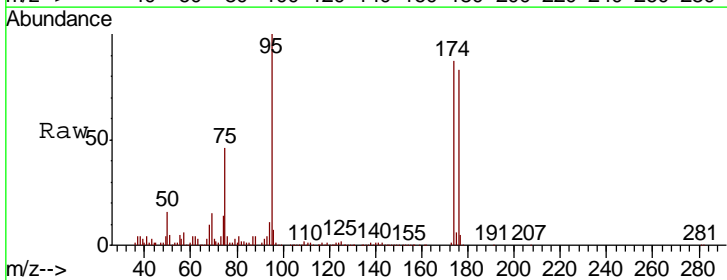
Instrument :
 MSVOA_N
 ClientSampled :
 057_BT-2-1

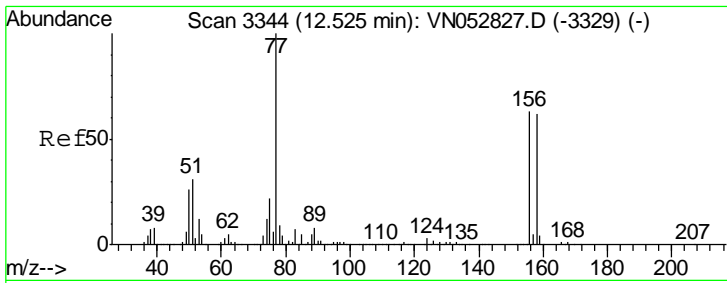
Tgt Ion	Resp	Lower	Upper
83	100		
131	0.5	5.2	15.6#
85	37.1	32.4	97.0



#76
 1,2,3-Trichloropropane
 Concen: 31.813 ug/l
 RT: 12.40 min Scan# 3305
 Delta R.T. -0.15 min
 Lab File: VN052859.D
 Acq: 13 Dec 2018 12:54

Tgt Ion	Resp	Lower	Upper
75	100		
77	1.3	0.0	0.0#

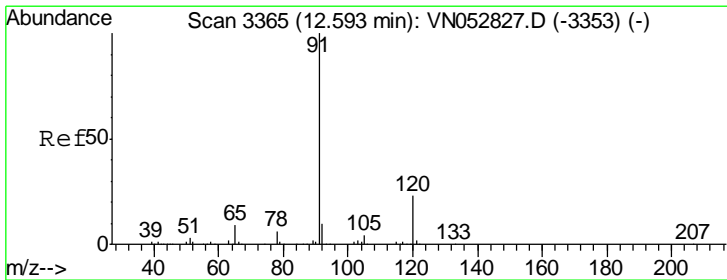
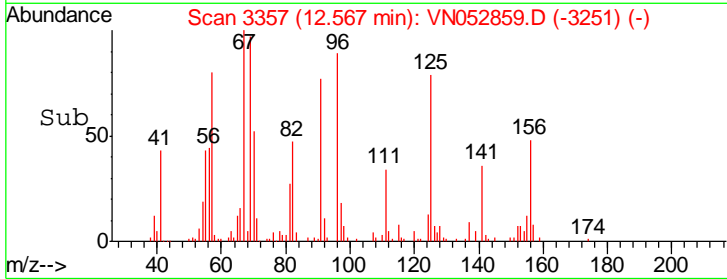
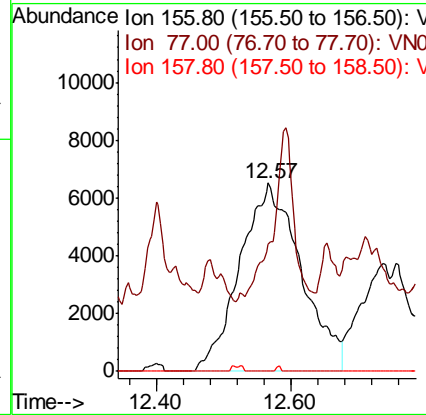
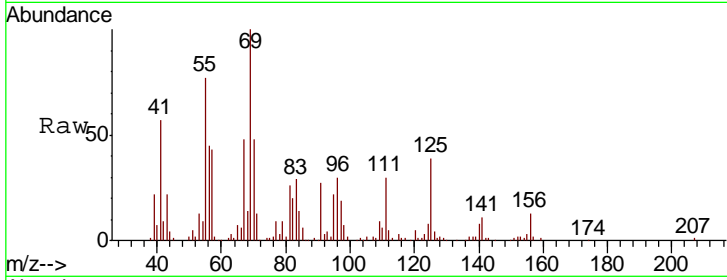




#77
 Bromobenzene
 Concen: 2.822 ug/l
 RT: 12.57 min Scan# 3357
 Delta R.T. 0.04 min
 Lab File: VN052859.D
 Acq: 13 Dec 2018 12:54

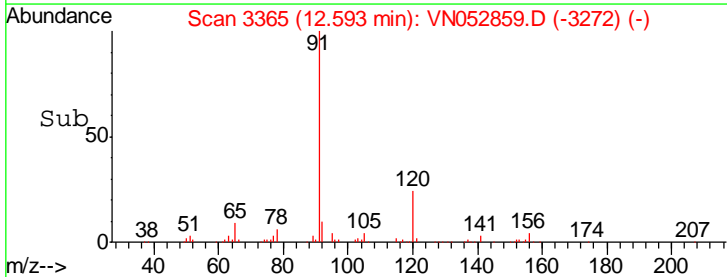
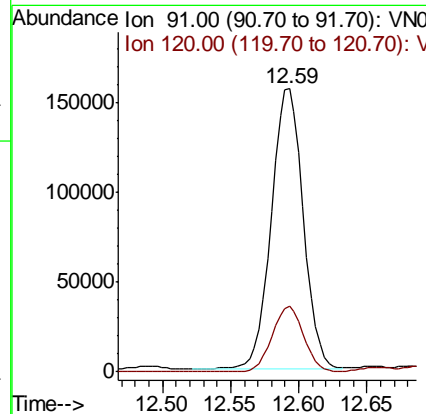
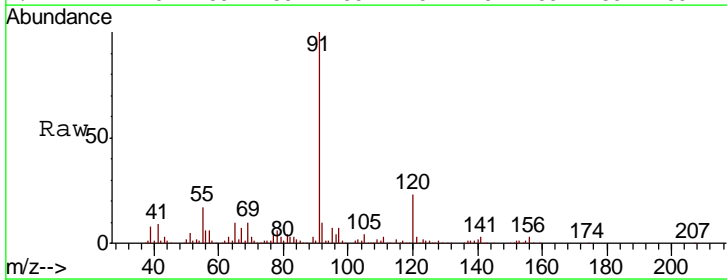
Instrument :
 MSVOA_N
 ClientSampled :
 057_BT-2-1

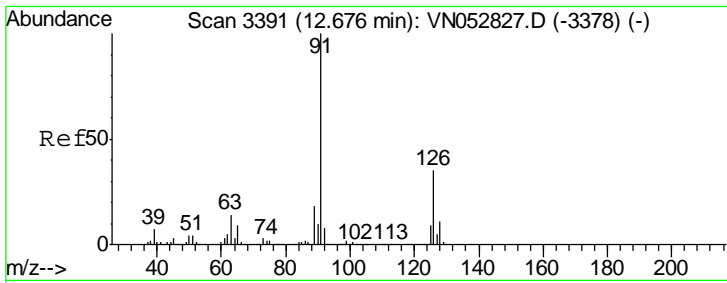
Tgt Ion	Resp	Lower	Upper
156	41067		
77	0.0	91.3	273.8#
158	0.0	49.0	147.2#



#78
 n-propylbenzene
 Concen: 3.885 ug/l
 RT: 12.59 min Scan# 3365
 Delta R.T. 0.00 min
 Lab File: VN052859.D
 Acq: 13 Dec 2018 12:54

Tgt Ion	Resp	Lower	Upper
91	253516		
120	23.1	11.5	34.5

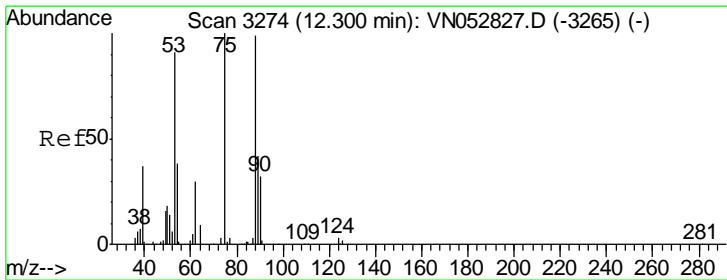
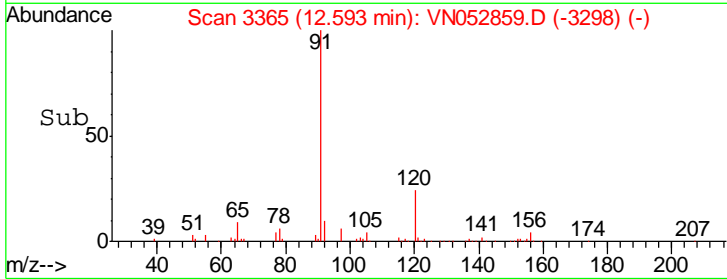
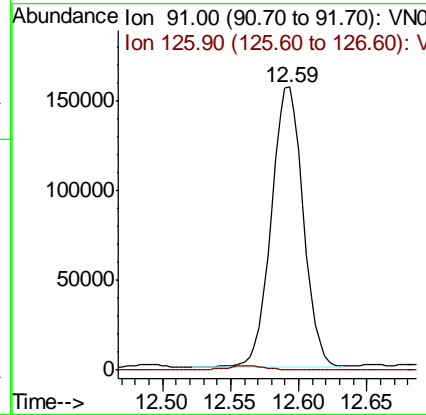
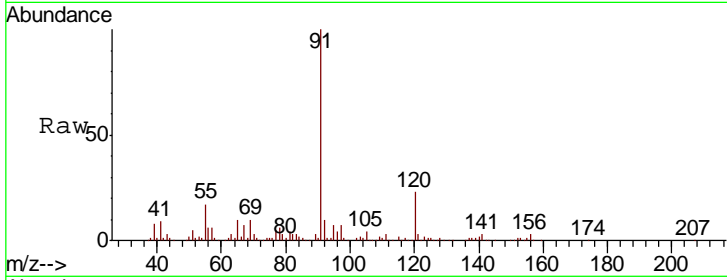




#79
 2-Chlorotoluene
 Concen: 6.572 ug/l
 RT: 12.59 min Scan# 3365
 Delta R.T. -0.08 min
 Lab File: VN052859.D
 Acq: 13 Dec 2018 12:54

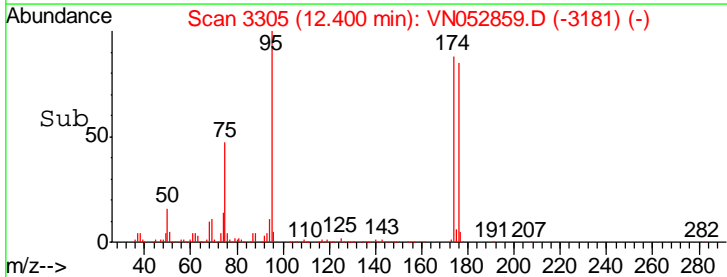
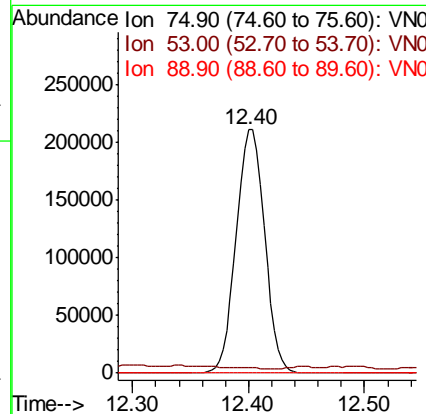
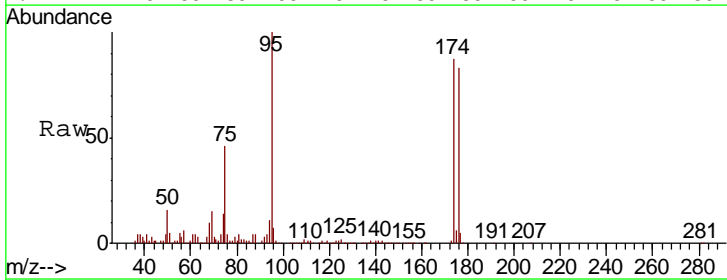
Instrument :
 MSVOA_N
 ClientSampled :
 057_BT-2-1

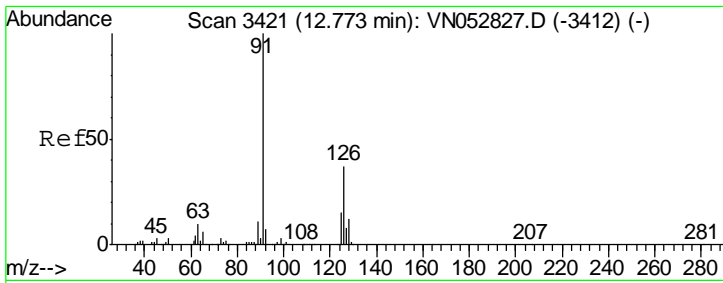
Tgt Ion: 91 Resp: 253516
 Ion Ratio Lower Upper
 91 100
 126 0.0 17.4 52.3#



#81
 trans-1,4-Dichloro-2-butene
 Concen: 102.199 ug/l
 RT: 12.40 min Scan# 3305
 Delta R.T. 0.10 min
 Lab File: VN052859.D
 Acq: 13 Dec 2018 12:54

Tgt Ion: 75 Resp: 359680
 Ion Ratio Lower Upper
 75 100
 53 0.7 74.7 112.1#
 89 0.0 36.1 54.1#

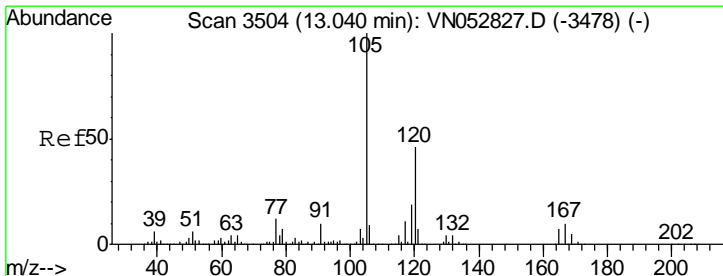
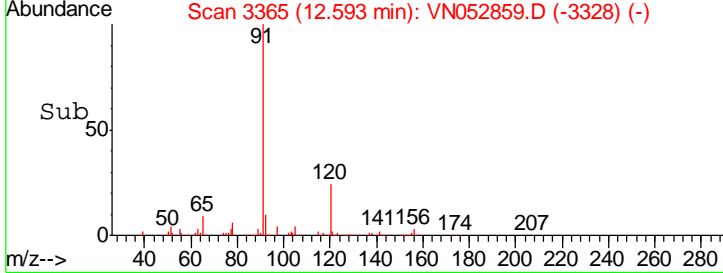
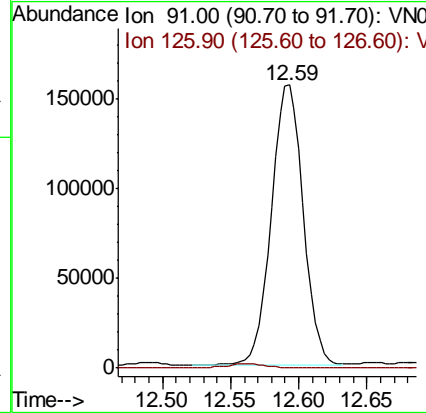
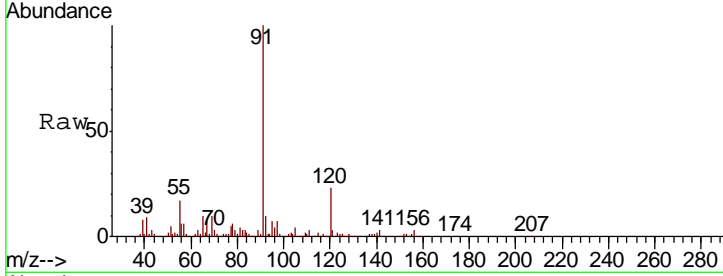




#82
 4-Chlorotoluene
 Concen: 6.427 ug/l
 RT: 12.59 min Scan# 3365
 Delta R.T. -0.18 min
 Lab File: VN052859.D
 Acq: 13 Dec 2018 12:54

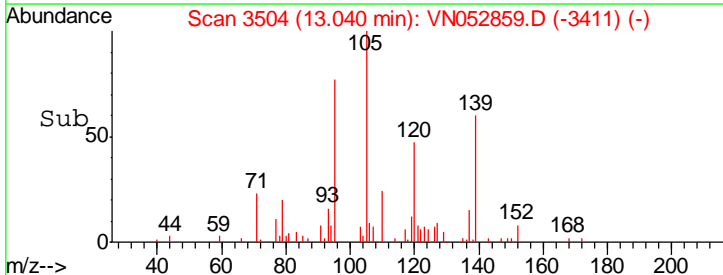
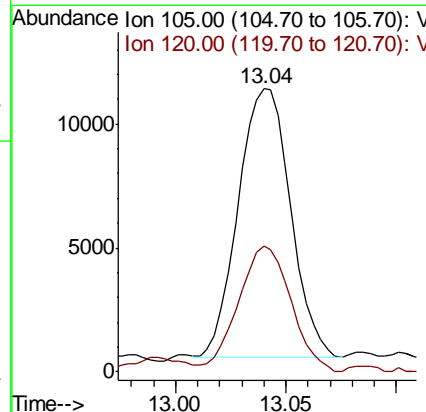
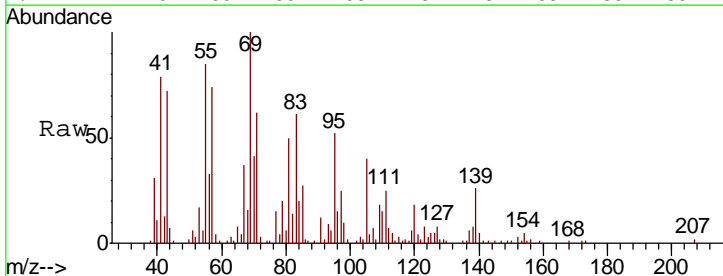
Instrument :
 MSVOA_N
 ClientSampled :
 057_BT-2-1

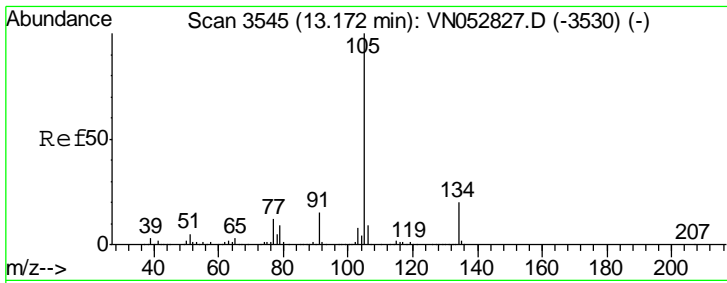
Tgt Ion: 91 Resp: 253516
 Ion Ratio Lower Upper
 91 100
 126 0.0 17.3 51.7#



#84
 1,2,4-Trimethylbenzene
 Concen: 0.380 ug/l
 RT: 13.04 min Scan# 3504
 Delta R.T. 0.00 min
 Lab File: VN052859.D
 Acq: 13 Dec 2018 12:54

Tgt Ion: 105 Resp: 17765
 Ion Ratio Lower Upper
 105 100
 120 47.4 22.9 68.8

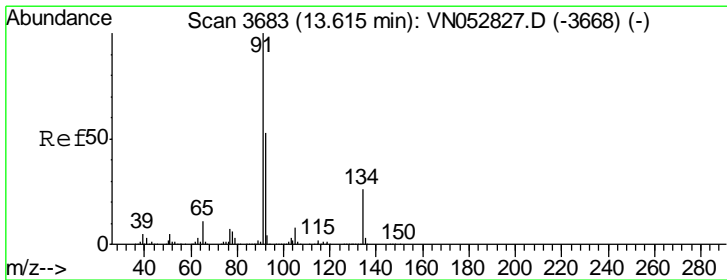
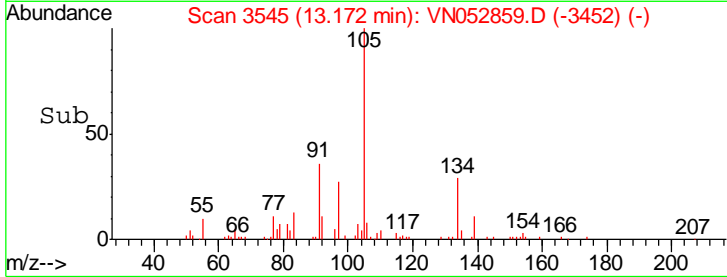
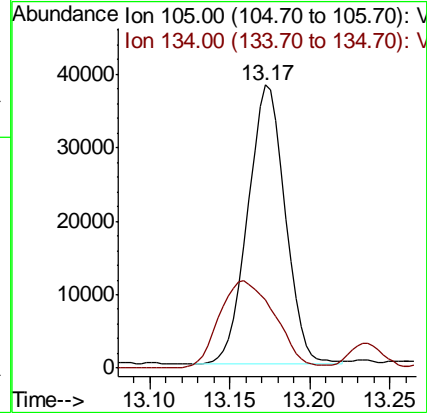
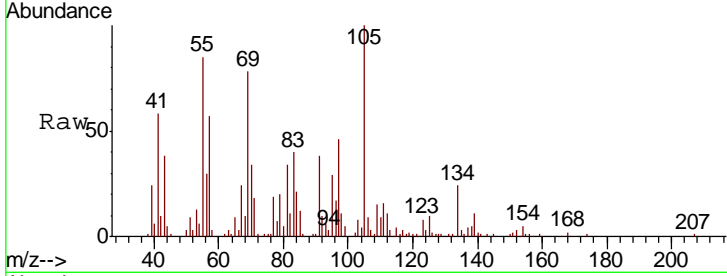




#85
 sec-Butylbenzene
 Concen: 1.108 ug/l
 RT: 13.17 min Scan# 3545
 Delta R.T. 0.00 min
 Lab File: VN052859.D
 Acq: 13 Dec 2018 12:54

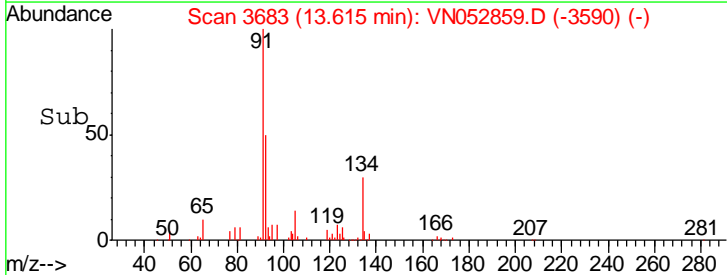
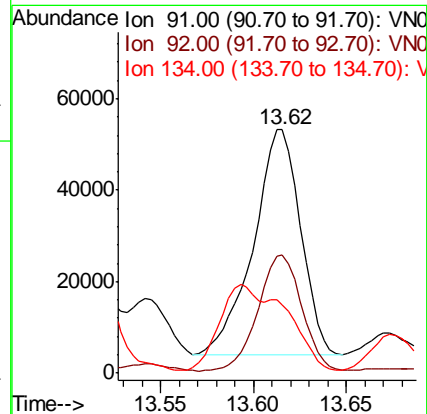
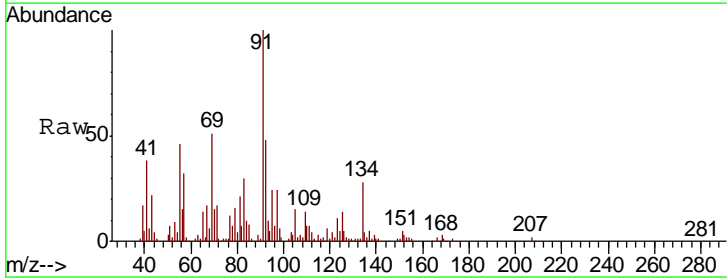
Instrument :
 MSVOA_N
 ClientSampled :
 057_BT-2-1

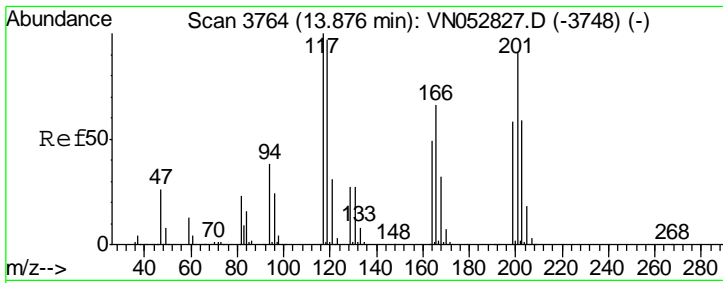
Tgt Ion	Resp	Lower	Upper
105	61112		
134	46.6	10.1	30.3#



#89
 n-Butylbenzene
 Concen: 2.164 ug/l
 RT: 13.62 min Scan# 3683
 Delta R.T. 0.00 min
 Lab File: VN052859.D
 Acq: 13 Dec 2018 12:54

Tgt Ion	Resp	Lower	Upper
91	87100		
92	47.6	26.3	78.9
134	0.0	13.3	39.8#





#90
 Hexachloroethane
 Concen: 4.945 ug/l
 RT: 13.89 min Scan# 3768
 Delta R.T. 0.01 min
 Lab File: VN052859.D
 Acq: 13 Dec 2018 12:54

Instrument : MSVOA_N
 ClientSampleId : 057_BT-2-1

Tot Ion	Ion	Resp	Lower	Upper
39581	117	100		
45.7	201	0.0		137.1#

