

Data Path : Z:\voasrv\HPCHEM1\MSVOA_N\Data\VN121321\
 Data File : VN070047.D
 Acq On : 13 Dec 2021 22:51
 Operator : JC/MD
 Sample : M5007-01
 Misc : 5.00mL/MSVOA_N/WATER
 ALS Vial : 27 Sample Multiplier: 1

Instrument :
 MSVOA_N
 ClientSampleId :

Quant Time: Dec 14 07:29:13 2021
 Quant Method : Z:\voasrv\HPCHEM1\MSVOA_N\methods\82N120221W.M
 Quant Title : SW846 8260
 QLast Update : Fri Dec 03 08:46:47 2021
 Response via : Initial Calibration

Compound	R.T.	QIon	Response	Conc	Units	Dev(Min)
Internal Standards						
1) Pentafluorobenzene	8.088	168	981292	50.000	ug/l	0.00
34) 1,4-Difluorobenzene	8.968	114	1841594	50.000	ug/l	0.00
63) Chlorobenzene-d5	11.744	117	2126708	50.000	ug/l	0.00
72) 1,4-Dichlorobenzene-d4	13.675	152	885234	50.000	ug/l	0.00
System Monitoring Compounds						
33) 1,2-Dichloroethane-d4	8.437	65	786843	51.933	ug/l	0.00
Spiked Amount	50.000	Range 61 - 141	Recovery	=	103.860%	
35) Dibromofluoromethane	8.024	113	570791	49.482	ug/l	0.00
Spiked Amount	50.000	Range 69 - 133	Recovery	=	98.960%	
50) Toluene-d8	10.443	98	2448171	52.855	ug/l	0.00
Spiked Amount	50.000	Range 65 - 126	Recovery	=	105.720%	
62) 4-Bromofluorobenzene	12.731	95	1049760	62.560	ug/l	0.00
Spiked Amount	50.000	Range 58 - 135	Recovery	=	125.120%	
Target Compounds						
						Qvalue
4) Vinyl Chloride	2.451	62	5960	0.452	ug/l #	85
6) Chloroethane	3.025	64	4002	0.495	ug/l	88
11) Tert butyl alcohol	5.382	59	1681	0.587	ug/l #	71
13) Acrolein	4.039	56	1330	0.545	ug/l #	14
14) Allyl chloride	4.588	41	9373	0.445	ug/l #	62
15) Acrylonitrile	5.613	53	23257	3.014	ug/l #	33
16) Acetone	4.291	43	35826	3.931	ug/l	90
17) Carbon Disulfide	4.529	76	8041	0.333	ug/l	96
18) Methyl Acetate	4.870	43	5820	0.212	ug/l #	86
19) Methyl tert-butyl Ether	5.621	73	43224	1.189	ug/l #	1
25) 2-Butanone	7.340	43	3323	0.268	ug/l	97
26) 2,2-Dichloropropane	7.144	77	9145	0.552	ug/l #	52
27) cis-1,2-Dichloroethene	7.332	96	3637	0.297	ug/l	77
29) Tetrahydrofuran	7.699	42	3049	0.405	ug/l #	50
31) Cyclohexane	8.096	56	339123	16.084	ug/l	87
36) 1,1-Dichloropropene	8.086	75	83743	4.777	ug/l #	56
38) Carbon Tetrachloride	8.088	117	101383	5.897	ug/l #	17
39) Methylcyclohexane	9.459	83	85343	4.093	ug/l #	74
40) Benzene	8.461	78	87674	1.636	ug/l	98
47) Bromodichloromethane	9.802	83	3579	0.200	ug/l #	25
48) Methyl methacrylate	9.638	41	6520	0.362	ug/l #	63
49) 1,4-Dioxane	9.579	88	451	1.395	ug/l #	57
51) 4-Methyl-2-Pentanone	10.333	43	10804	0.431	ug/l	92
53) t-1,3-Dichloropropene	10.719	75	1562	2.863	ug/l	91
54) cis-1,3-Dichloropropene	10.191	75	764	2.031	ug/l #	6
55) 1,1,2-Trichloroethane	10.875	97	25974	1.968	ug/l #	21
56) Ethyl methacrylate	10.781	69	15425	2.870	ug/l #	2
58) 2-Chloroethyl Vinyl ether	10.054	63	261	18.425	ug/l #	45
59) 2-Hexanone	11.092	43	18290	0.965	ug/l	90
60) Dibromochloromethane	11.240	129	478	2.408	ug/l	86
68) m/p-Xylenes	11.953	106	10186	0.357	ug/l	81
71) Bromoform	12.465	173	922	2.798	ug/l #	29
73) Isopropylbenzene	12.578	105	79980	1.015	ug/l	97
74) N-ethyl acetate	12.390	43	10656	0.306	ug/l #	84
76) 1,2,3-Trichloropropane	12.731	75	592038	23.321	ug/l #	1
78) n-propylbenzene	12.921	91	56379	0.643	ug/l	94

Data Path : Z:\voasrv\HPCHEM1\MSVOA_N\Data\VN121321\
 Data File : VN070047.D
 Acq On : 13 Dec 2021 22:51
 Operator : JC/MD
 Sample : M5007-01
 Misc : 5.00mL/MSVOA_N/WATER
 ALS Vial : 27 Sample Multiplier: 1

Instrument :
 MSVOA_N
 ClientSampleId :

Quant Time: Dec 14 07:29:13 2021
 Quant Method : Z:\voasrv\HPCHEM1\MSVOA_N\methods\82N120221W.M
 Quant Title : SW846 8260
 QLast Update : Fri Dec 03 08:46:47 2021
 Response via : Initial Calibration

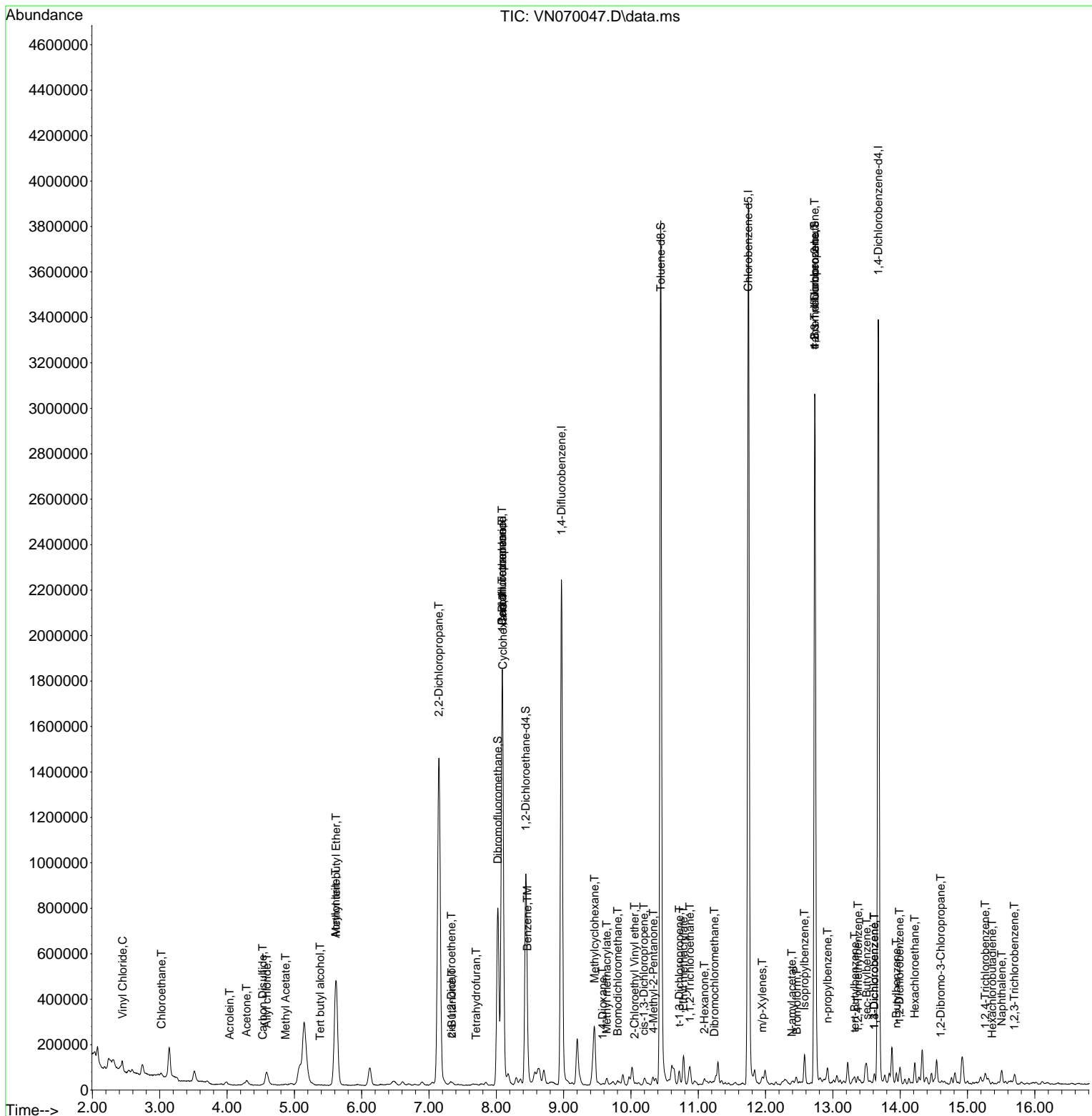
Compound	R.T.	QIon	Response	Conc	Units	Dev(Min)
81) trans-1,4-Dichloro-2-b...	12.731	75	592038	74.188	ug/l #	5
83) tert-Butylbenzene	13.323	119	13558	0.242	ug/l	86
84) 1,2,4-Trimethylbenzene	13.374	105	17117	0.284	ug/l	92
85) sec-Butylbenzene	13.501	105	48429	0.636	ug/l	99
87) 1,3-Dichlorobenzene	13.616	146	10466	0.344	ug/l	91
88) 1,4-Dichlorobenzene	13.616	146	10466	0.350	ug/l	91
89) n-Butylbenzene	13.943	91	24905	0.516	ug/l	96
90) Hexachloroethane	14.217	117	4916	0.470	ug/l #	11
91) 1,2-Dichlorobenzene	13.991	146	14856	0.502	ug/l	94
92) 1,2-Dibromo-3-Chloropr...	14.603	75	2045	0.416	ug/l	68
93) 1,2,4-Trichlorobenzene	15.265	180	11908	3.651	ug/l #	88
94) Hexachlorobutadiene	15.364	225	1678	0.214	ug/l	94
95) Naphthalene	15.507	128	57585	5.210	ug/l #	90
96) 1,2,3-Trichlorobenzene	15.694	180	14689	3.423	ug/l #	83

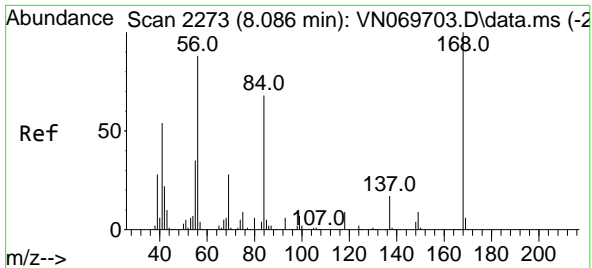
(#) = qualifier out of range (m) = manual integration (+) = signals summed

Data Path : Z:\voasrv\HPCHEM1\MSVOA_N\Data\VN121321\
 Data File : VN070047.D
 Acq On : 13 Dec 2021 22:51
 Operator : JC/MD
 Sample : M5007-01
 Misc : 5.00mL/MSVOA_N/WATER
 ALS Vial : 27 Sample Multiplier: 1

Instrument :
 MSVOA_N
 ClientSampleId :

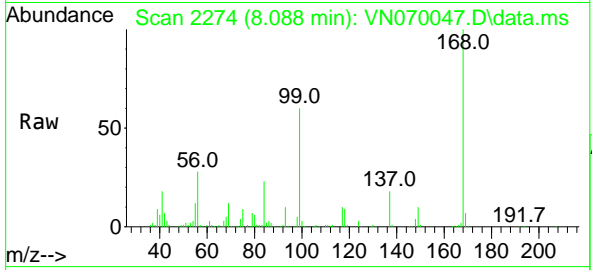
Quant Time: Dec 14 07:29:13 2021
 Quant Method : Z:\voasrv\HPCHEM1\MSVOA_N\methods\82N120221W.M
 Quant Title : SW846 8260
 QLast Update : Fri Dec 03 08:46:47 2021
 Response via : Initial Calibration



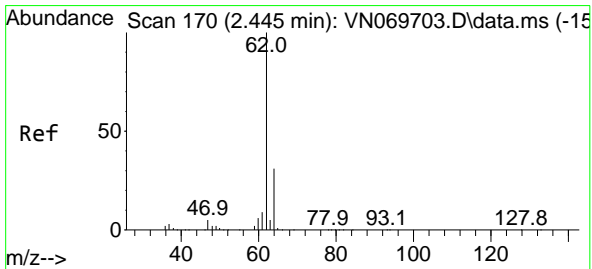
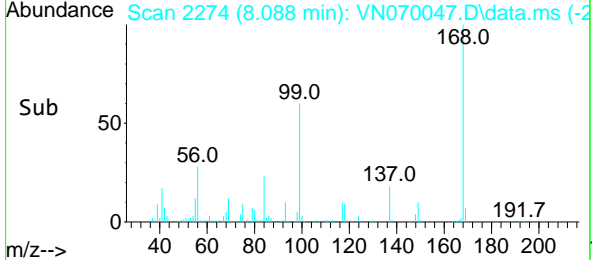
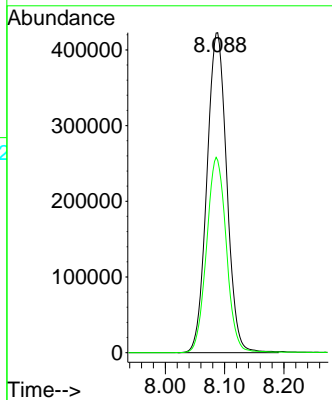


#1
 Pentafluorobenzene
 Concen: 50.000 ug/l
 RT: 8.088 min Scan# 21
 Delta R.T. 0.002 min
 Lab File: VN070047.D
 Acq: 13 Dec 2021 22:51

Instrument :
 MSVOA_N
 ClientSampleId :

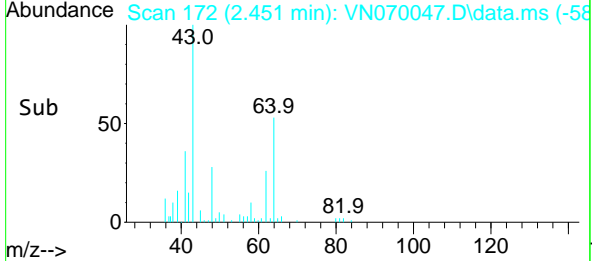
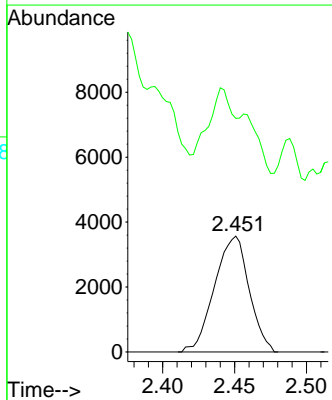
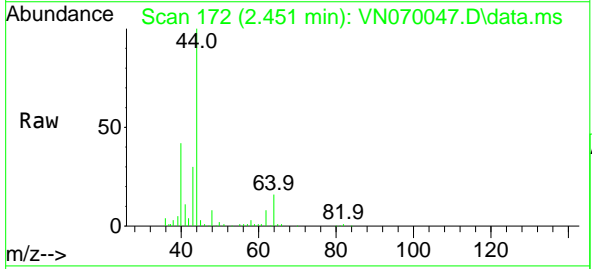


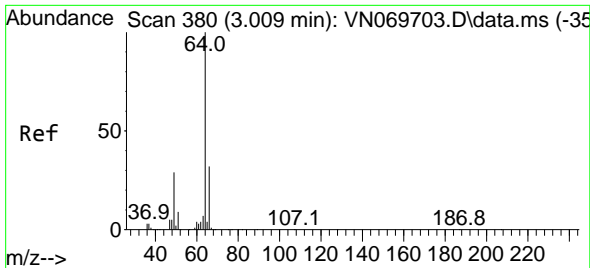
Tgt Ion:168 Resp: 981292
 Ion Ratio Lower Upper
 168 100
 99 60.1 41.3 61.9



#4
 Vinyl Chloride
 Concen: 0.452 ug/l
 RT: 2.451 min Scan# 172
 Delta R.T. 0.005 min
 Lab File: VN070047.D
 Acq: 13 Dec 2021 22:51

Tgt Ion: 62 Resp: 5960
 Ion Ratio Lower Upper
 62 100
 64 40.6 25.8 38.6#

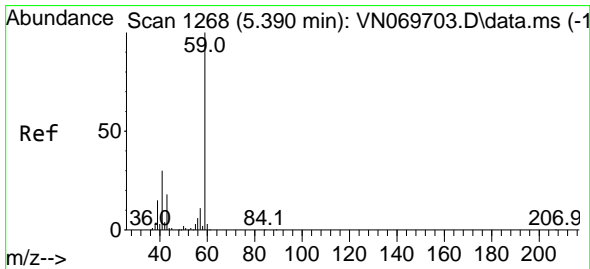
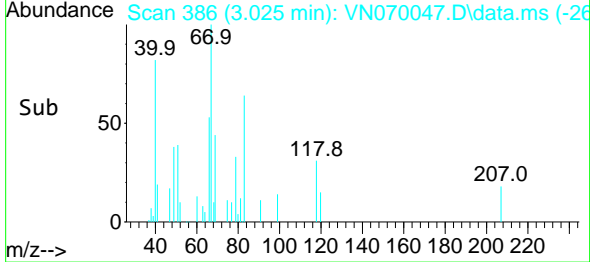
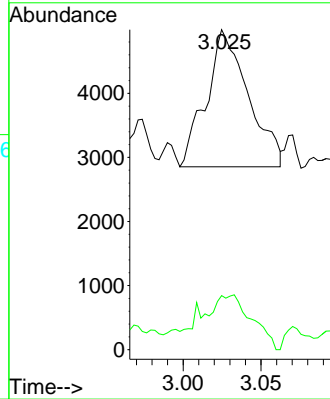
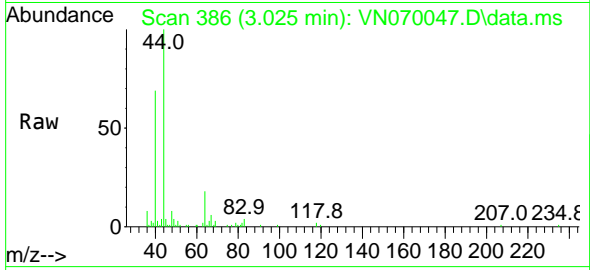




#6
 Chloroethane
 Concen: 0.495 ug/l
 RT: 3.025 min Scan# 386
 Delta R.T. 0.016 min
 Lab File: VN070047.D
 Acq: 13 Dec 2021 22:51

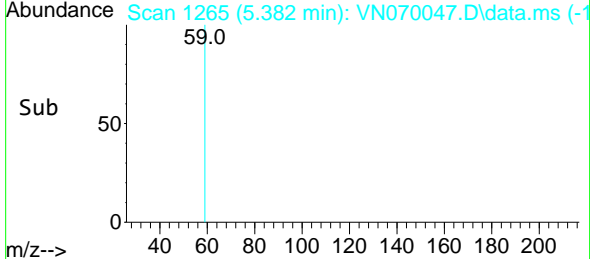
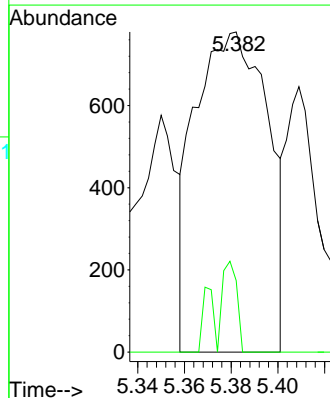
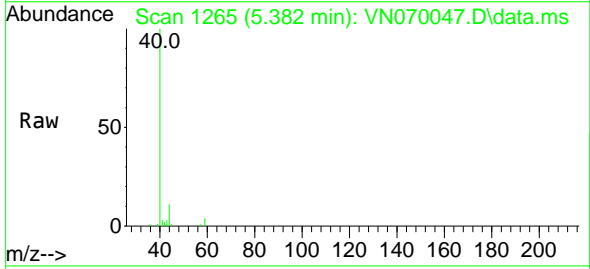
Instrument : MSVOA_N
 ClientSampleId :

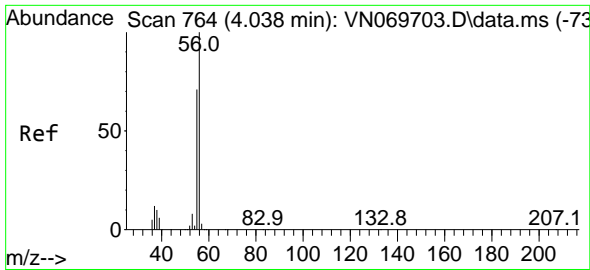
Tgt Ion: 64 Resp: 4002
 Ion Ratio Lower Upper
 64 100
 66 39.4 26.3 39.5



#11
 Tert butyl alcohol
 Concen: 0.587 ug/l
 RT: 5.382 min Scan# 1265
 Delta R.T. -0.008 min
 Lab File: VN070047.D
 Acq: 13 Dec 2021 22:51

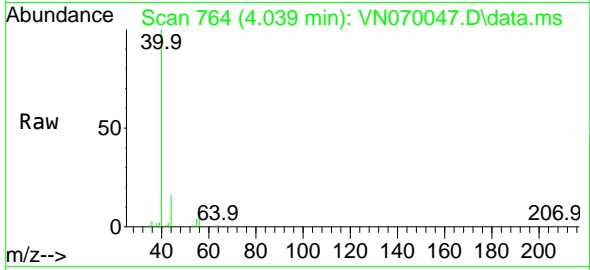
Tgt Ion: 59 Resp: 1681
 Ion Ratio Lower Upper
 59 100
 57 0.0 8.7 13.1#



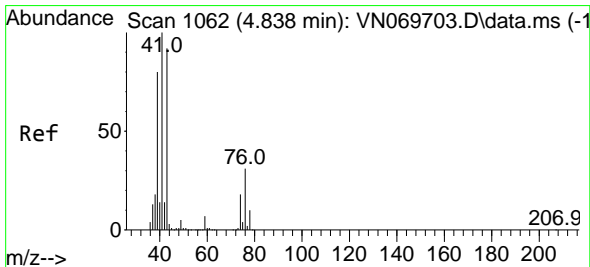
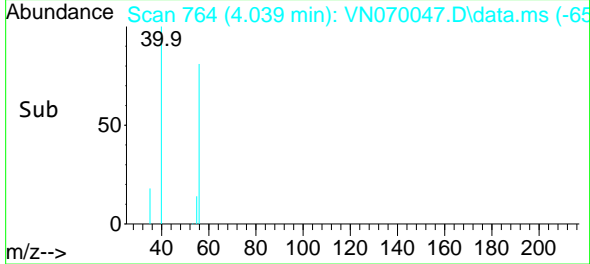
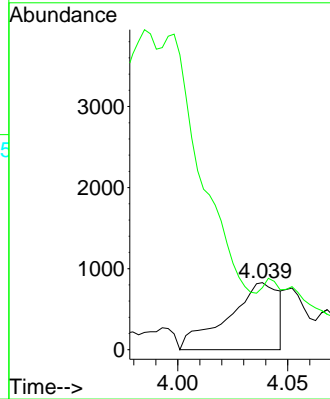


#13
 Acrolein
 Concen: 0.545 ug/l
 RT: 4.039 min Scan# 701
 Delta R.T. 0.000 min
 Lab File: VN070047.D
 Acq: 13 Dec 2021 22:51

Instrument : MSVOA_N
 ClientSampleId :

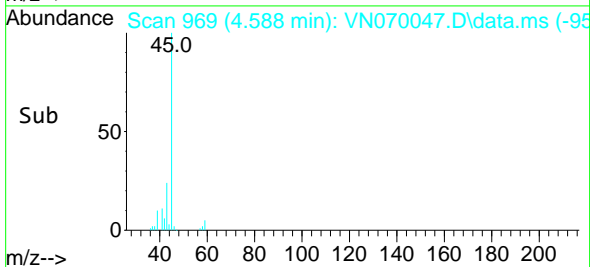
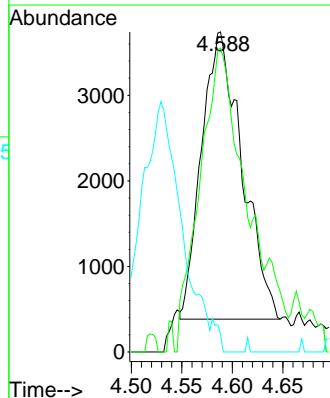
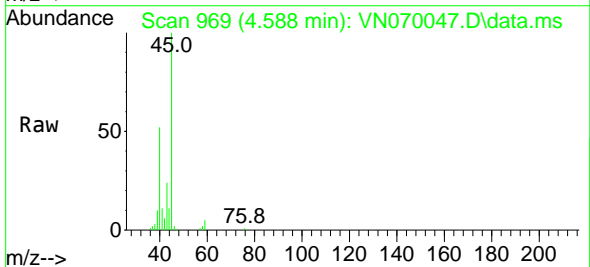


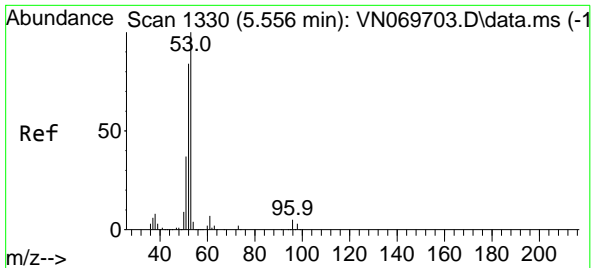
Tgt Ion: 56 Resp: 1330
 Ion Ratio Lower Upper
 56 100
 55 0.0 56.6 85.0#



#14
 Allyl chloride
 Concen: 0.445 ug/l
 RT: 4.588 min Scan# 969
 Delta R.T. -0.249 min
 Lab File: VN070047.D
 Acq: 13 Dec 2021 22:51

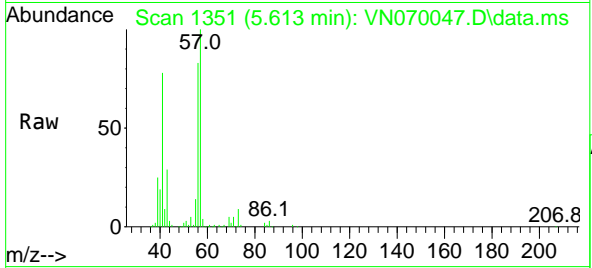
Tgt Ion: 41 Resp: 9373
 Ion Ratio Lower Upper
 41 100
 39 102.0 61.2 91.8#
 76 0.0 26.0 39.0#



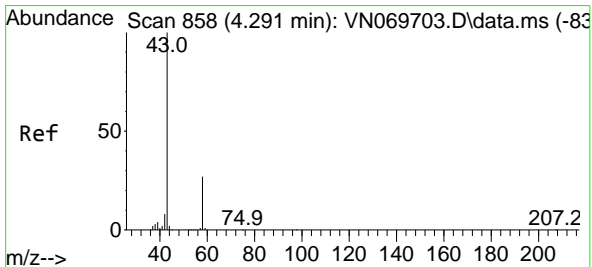
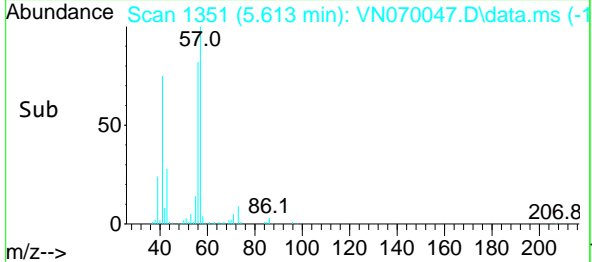
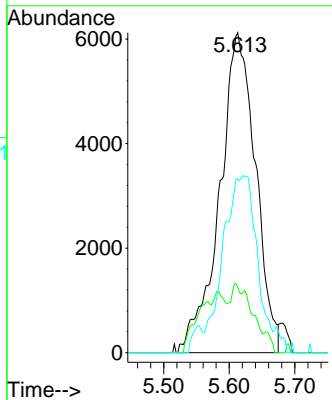


#15
 Acrylonitrile
 Concen: 3.014 ug/l
 RT: 5.613 min Scan# 11
 Delta R.T. 0.056 min
 Lab File: VN070047.D
 Acq: 13 Dec 2021 22:51

Instrument :
 MSVOA_N
 ClientSampleId :

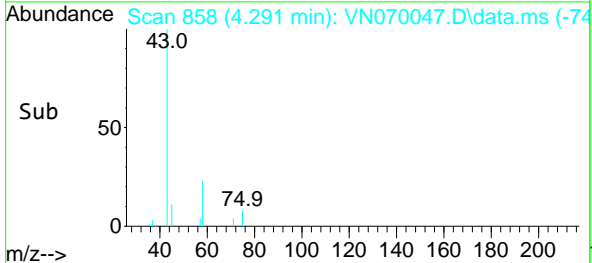
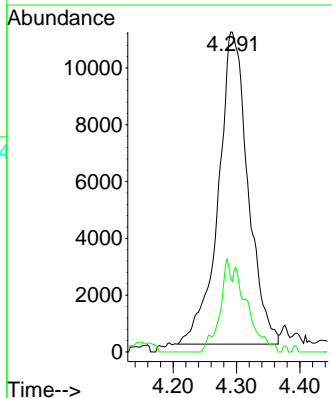
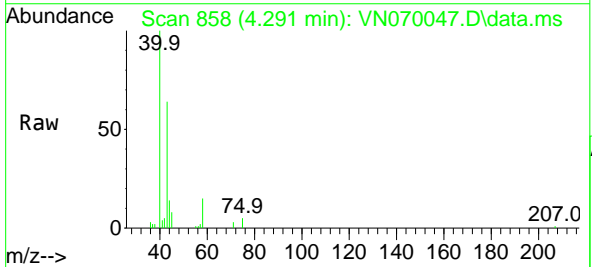


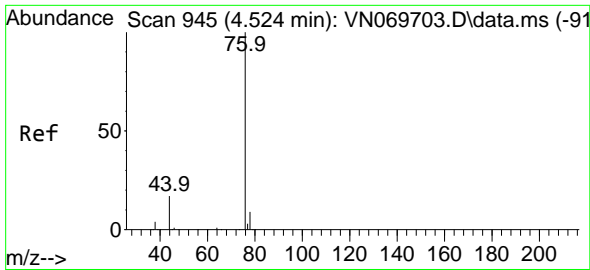
Tgt Ion	Resp	Lower	Upper
53	100		
52	1.3	66.2	99.2#
51	45.3	29.6	44.4#



#16
 Acetone
 Concen: 3.931 ug/l
 RT: 4.291 min Scan# 858
 Delta R.T. 0.000 min
 Lab File: VN070047.D
 Acq: 13 Dec 2021 22:51

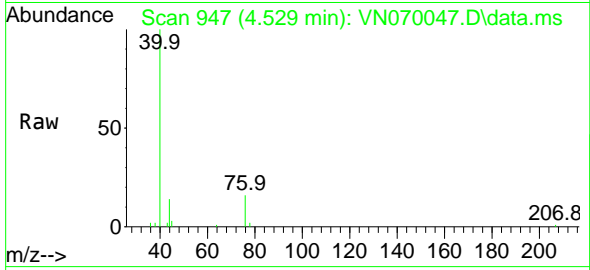
Tgt Ion	Resp	Lower	Upper
43	100		
58	23.4	23.1	34.7



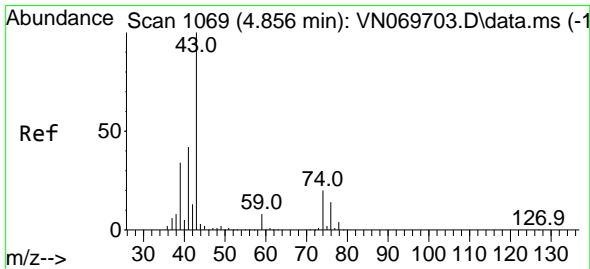
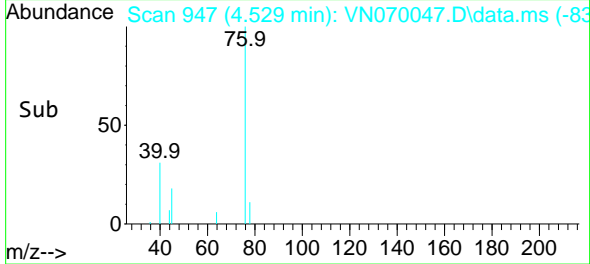
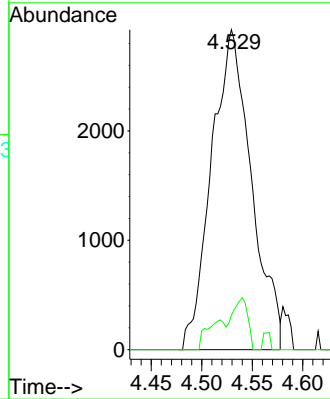


#17
 Carbon Disulfide
 Concen: 0.333 ug/l
 RT: 4.529 min Scan# 94
 Delta R.T. 0.005 min
 Lab File: VN070047.D
 Acq: 13 Dec 2021 22:51

Instrument :
 MSVOA_N
 ClientSampleId :

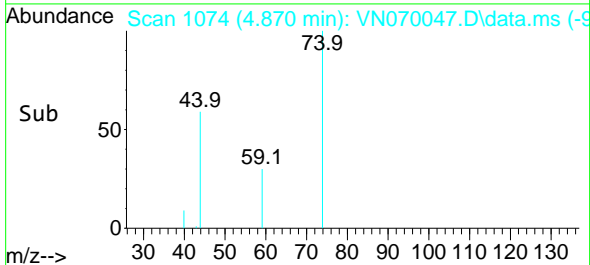
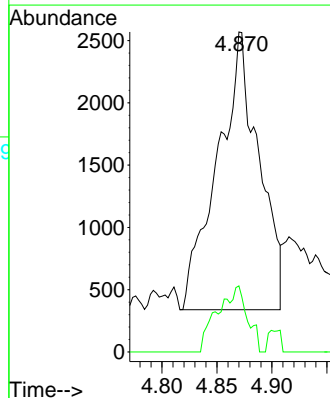
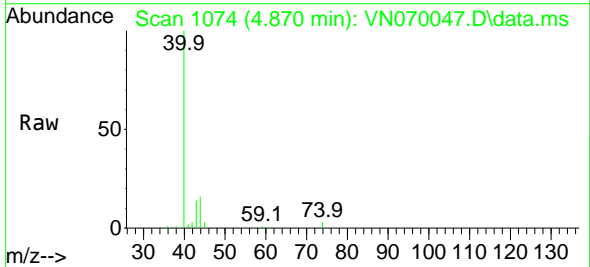


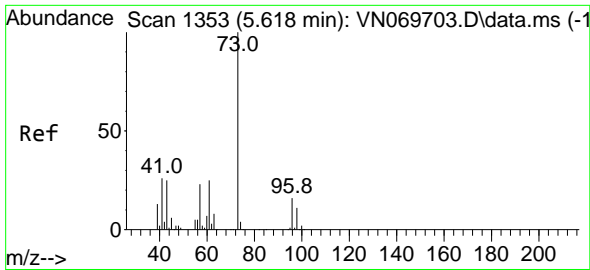
Tgt Ion: 76 Resp: 8041
 Ion Ratio Lower Upper
 76 100
 78 10.7 7.5 11.3



#18
 Methyl Acetate
 Concen: 0.212 ug/l
 RT: 4.870 min Scan# 1074
 Delta R.T. 0.013 min
 Lab File: VN070047.D
 Acq: 13 Dec 2021 22:51

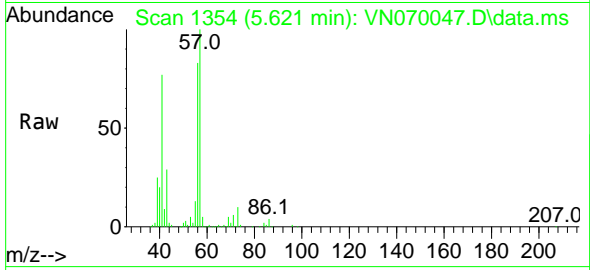
Tgt Ion: 43 Resp: 5820
 Ion Ratio Lower Upper
 43 100
 74 17.2 19.4 29.2#



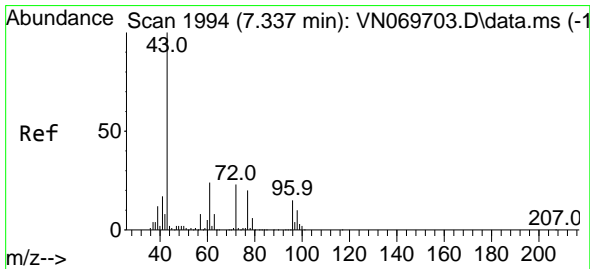
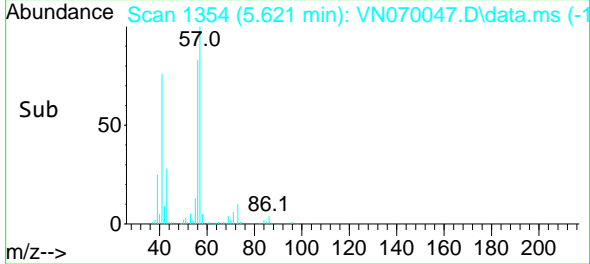
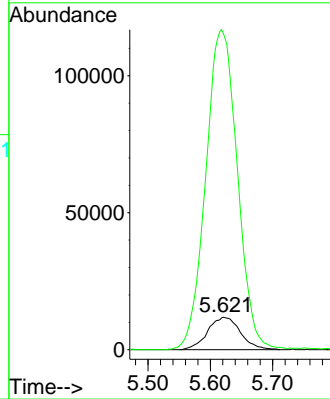


#19
 Methyl tert-butyl Ether
 Concen: 1.189 ug/l
 RT: 5.621 min Scan# 11
 Delta R.T. 0.003 min
 Lab File: VN070047.D
 Acq: 13 Dec 2021 22:51

Instrument :
 MSVOA_N
 ClientSampleId :

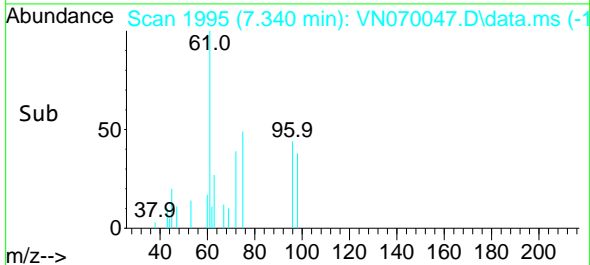
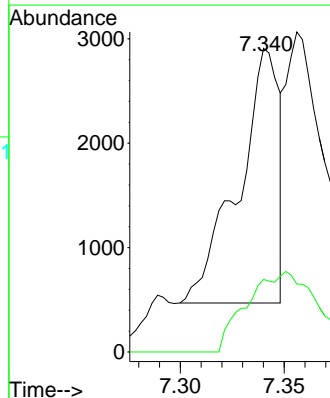
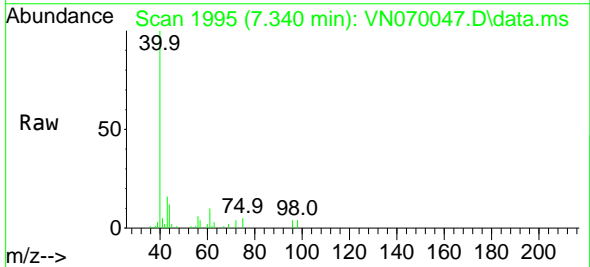


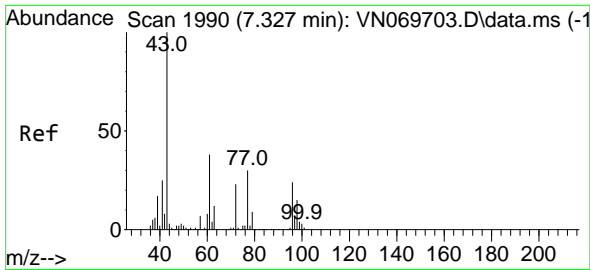
Tgt Ion: 73 Resp: 43224
 Ion Ratio Lower Upper
 73 100
 57 965.1 16.8 25.2#



#25
 2-Butanone
 Concen: 0.268 ug/l
 RT: 7.340 min Scan# 1995
 Delta R.T. 0.003 min
 Lab File: VN070047.D
 Acq: 13 Dec 2021 22:51

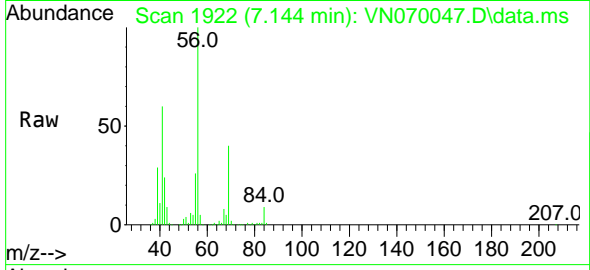
Tgt Ion: 43 Resp: 3323
 Ion Ratio Lower Upper
 43 100
 72 28.4 21.7 32.5



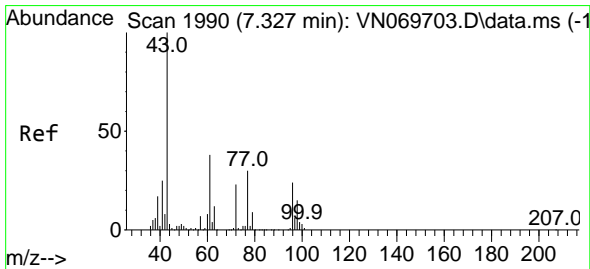
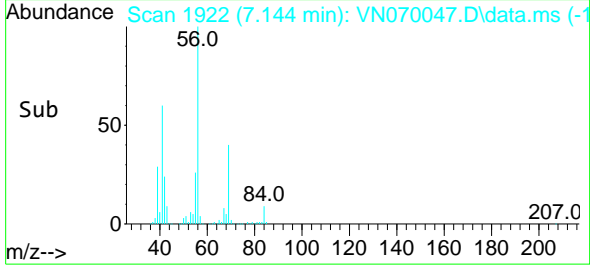
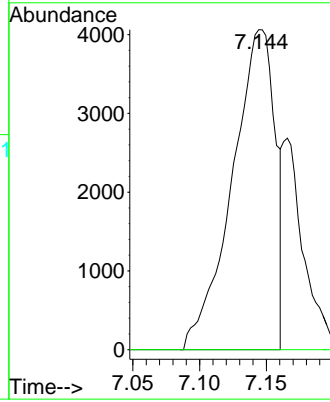


#26
 2,2-Dichloropropane
 Concen: 0.552 ug/l
 RT: 7.144 min Scan# 1922
 Delta R.T. -0.182 min
 Lab File: VN070047.D
 Acq: 13 Dec 2021 22:51

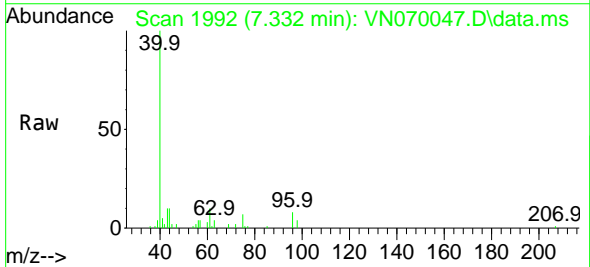
Instrument :
 MSVOA_N
 ClientSampleId :



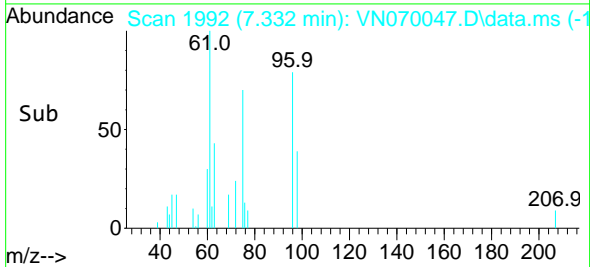
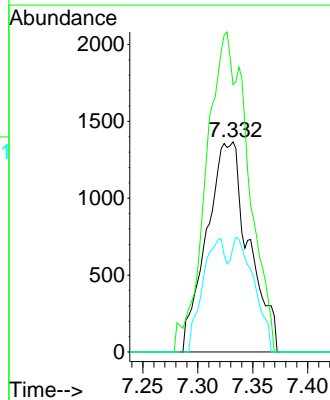
Tgt Ion: 77 Resp: 9145
 Ion Ratio Lower Upper
 77 100
 97 0.0 11.6 34.8#

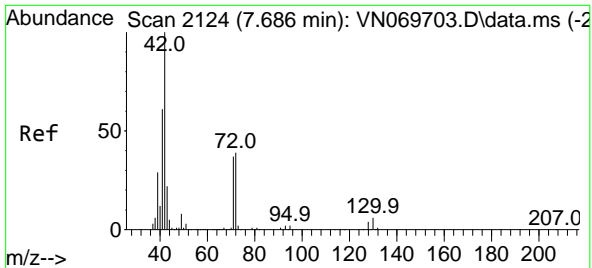


#27
 cis-1,2-Dichloroethene
 Concen: 0.297 ug/l
 RT: 7.332 min Scan# 1992
 Delta R.T. 0.005 min
 Lab File: VN070047.D
 Acq: 13 Dec 2021 22:51



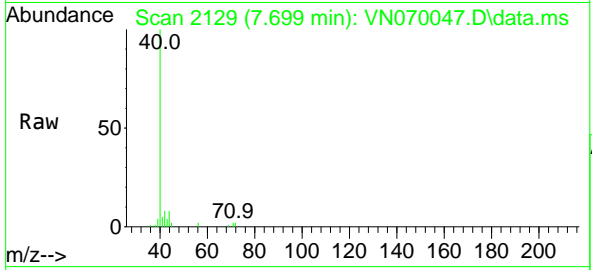
Tgt Ion: 96 Resp: 3637
 Ion Ratio Lower Upper
 96 100
 61 152.4 0.0 275.0
 98 28.2 0.0 129.6





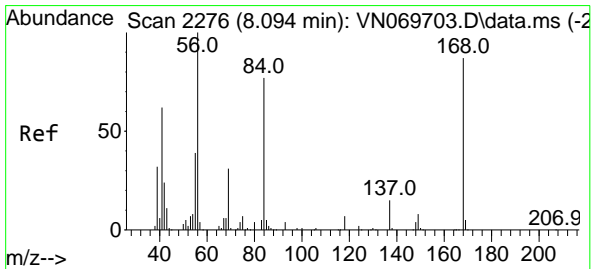
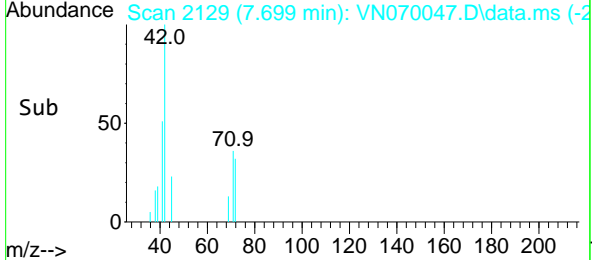
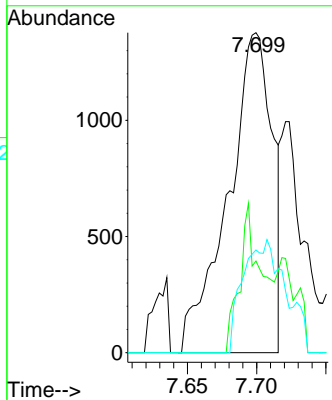
#29
 Tetrahydrofuran
 Concen: 0.405 ug/l
 RT: 7.699 min Scan# 2129
 Delta R.T. 0.013 min
 Lab File: VN070047.D
 Acq: 13 Dec 2021 22:51

Instrument : MSVOA_N
 ClientSampleId :



Tgt Ion: 42 Resp: 3049

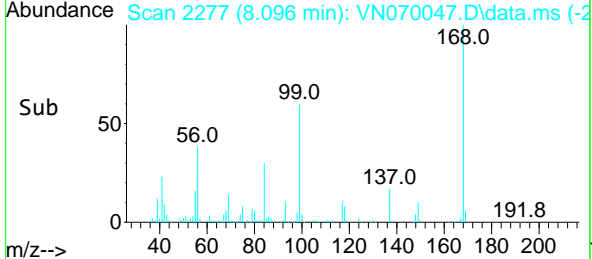
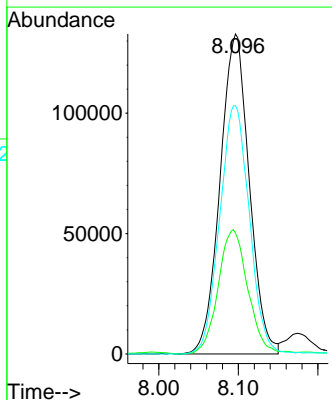
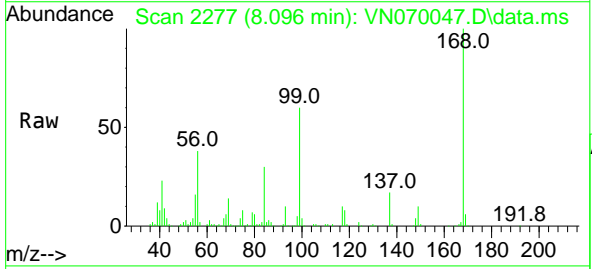
Ion	Ratio	Lower	Upper
42	100		
72	23.8	36.3	54.5#
71	0.0	34.7	52.1#

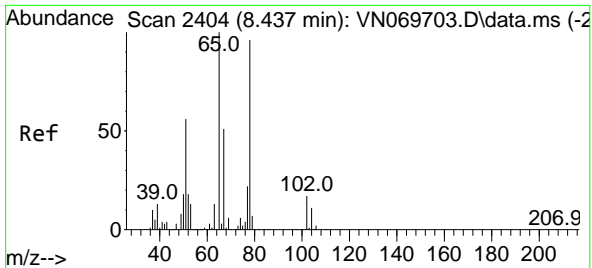


#31
 Cyclohexane
 Concen: 16.084 ug/l
 RT: 8.096 min Scan# 2277
 Delta R.T. 0.003 min
 Lab File: VN070047.D
 Acq: 13 Dec 2021 22:51

Tgt Ion: 56 Resp: 339123

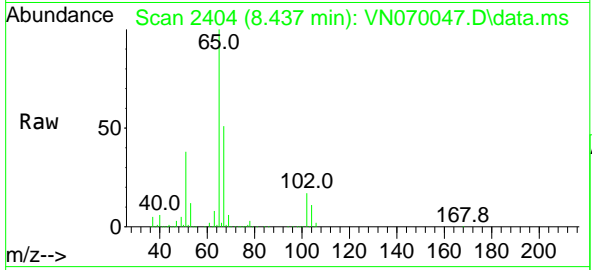
Ion	Ratio	Lower	Upper
56	100		
69	37.8	27.1	40.7
84	77.6	73.4	110.0



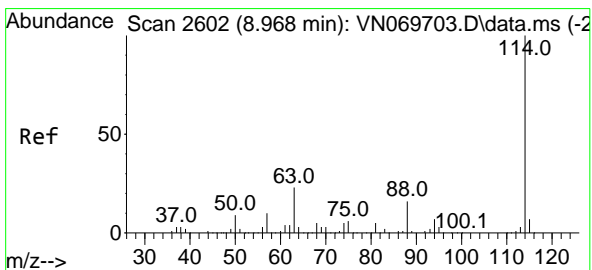
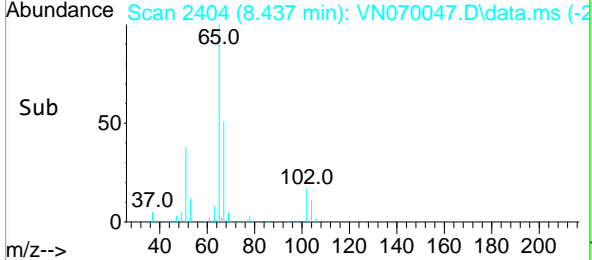
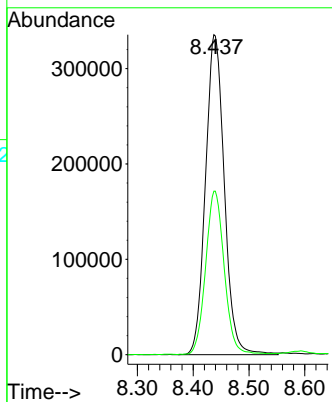


#33
 1,2-Dichloroethane-d4
 Concen: 51.933 ug/l
 RT: 8.437 min Scan# 24
 Delta R.T. 0.000 min
 Lab File: VN070047.D
 Acq: 13 Dec 2021 22:51

Instrument : MSVOA_N
 ClientSampleId :

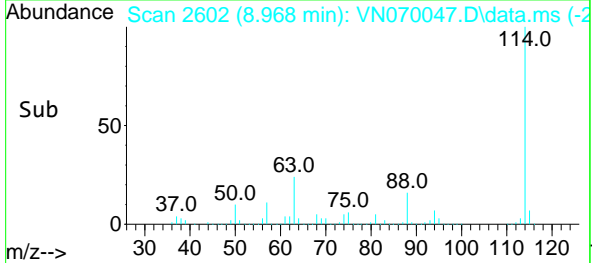
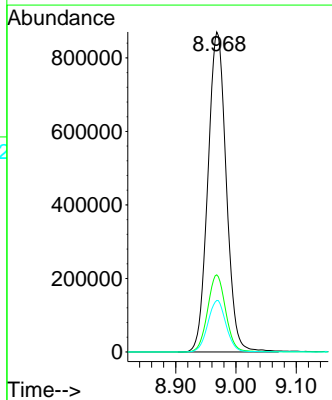
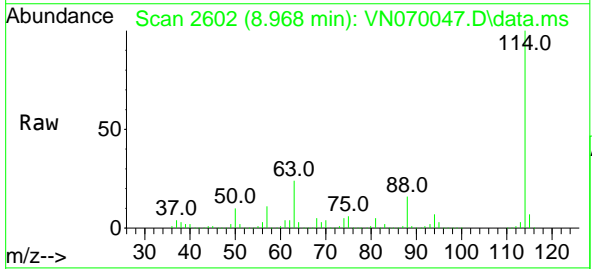


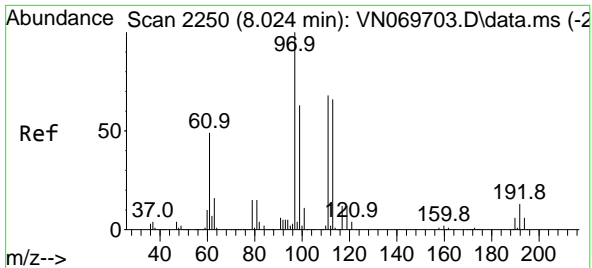
Tgt Ion: 65 Resp: 786843
 Ion Ratio Lower Upper
 65 100
 67 50.3 0.0 103.0



#34
 1,4-Difluorobenzene
 Concen: 50.000 ug/l
 RT: 8.968 min Scan# 2602
 Delta R.T. -0.000 min
 Lab File: VN070047.D
 Acq: 13 Dec 2021 22:51

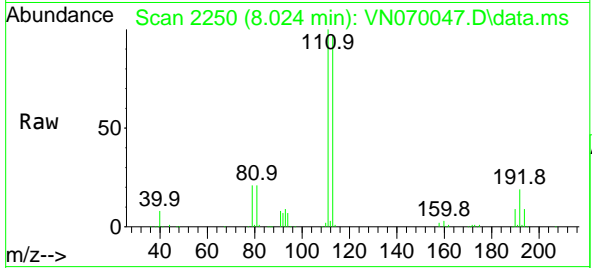
Tgt Ion:114 Resp: 1841594
 Ion Ratio Lower Upper
 114 100
 63 24.1 0.0 37.8
 88 16.1 0.0 27.4



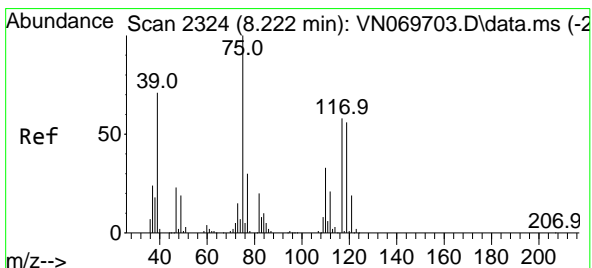
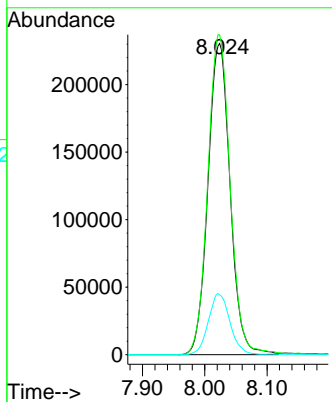
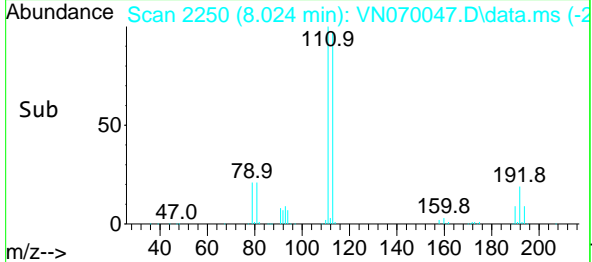


#35
 Dibromofluoromethane
 Concen: 49.482 ug/l
 RT: 8.024 min Scan# 21
 Delta R.T. 0.000 min
 Lab File: VN070047.D
 Acq: 13 Dec 2021 22:51

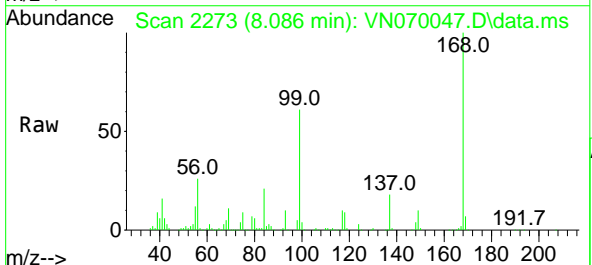
Instrument :
 MSVOA_N
 ClientSampleId :



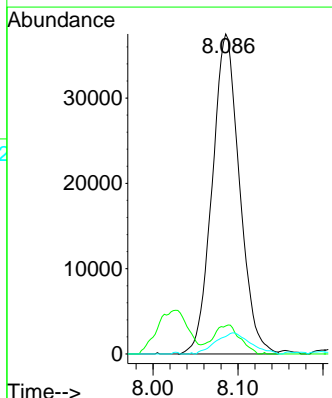
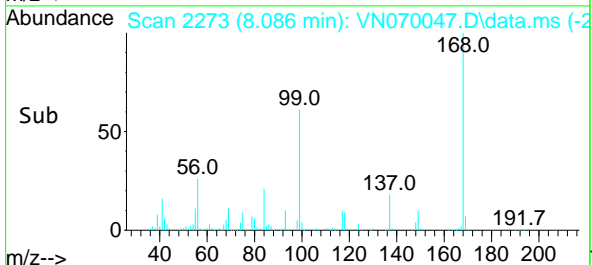
Tgt Ion:113 Resp: 570791
 Ion Ratio Lower Upper
 113 100
 111 103.9 82.2 123.2
 192 19.1 16.9 25.3

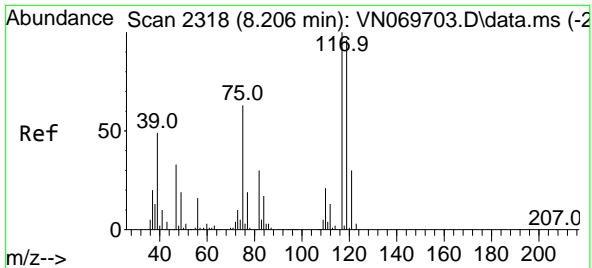


#36
 1,1-Dichloropropene
 Concen: 4.777 ug/l
 RT: 8.086 min Scan# 2273
 Delta R.T. -0.137 min
 Lab File: VN070047.D
 Acq: 13 Dec 2021 22:51



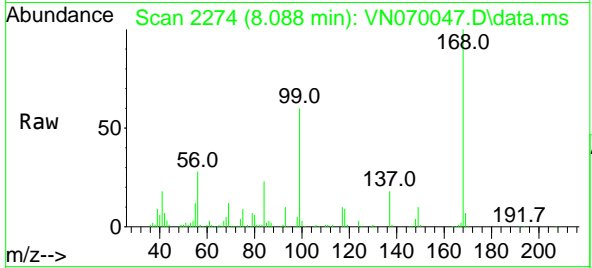
Tgt Ion: 75 Resp: 83743
 Ion Ratio Lower Upper
 75 100
 110 8.9 18.4 55.2#
 77 8.2 24.4 36.6#



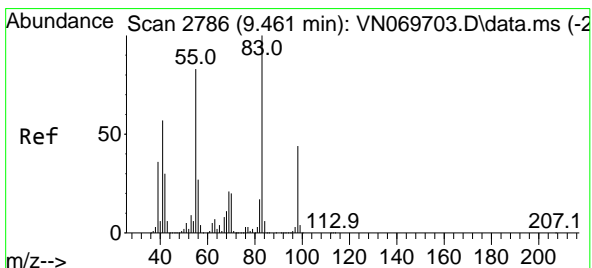
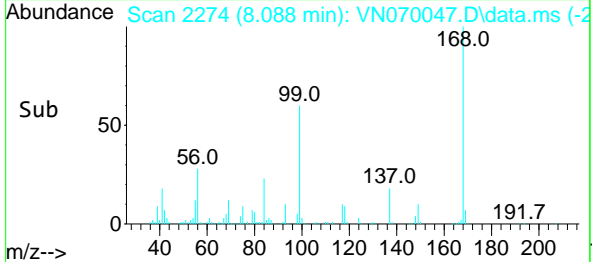
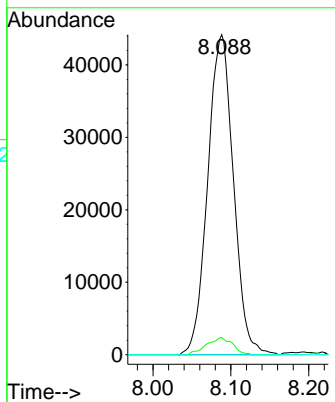


#38
 Carbon Tetrachloride
 Concen: 5.897 ug/l
 RT: 8.088 min Scan# 211
 Delta R.T. -0.118 min
 Lab File: VN070047.D
 Acq: 13 Dec 2021 22:51

Instrument : MSVOA_N
 ClientSampleId :

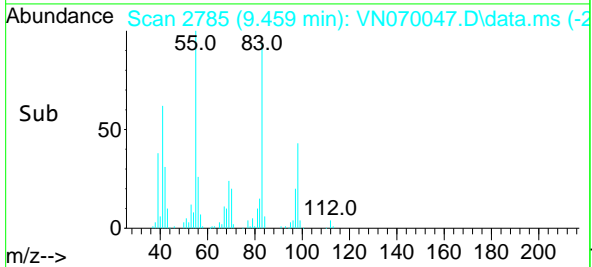
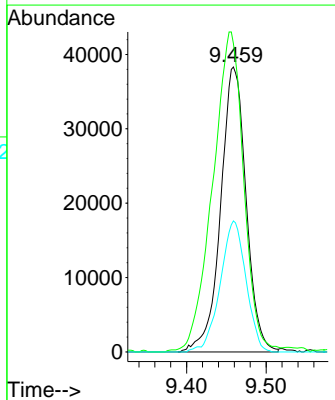
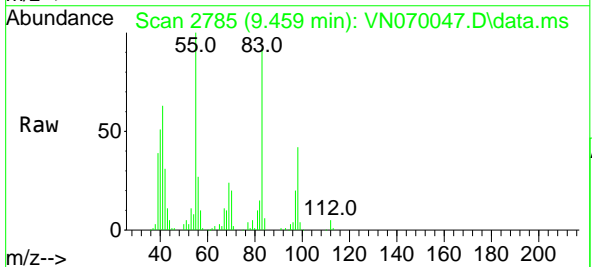


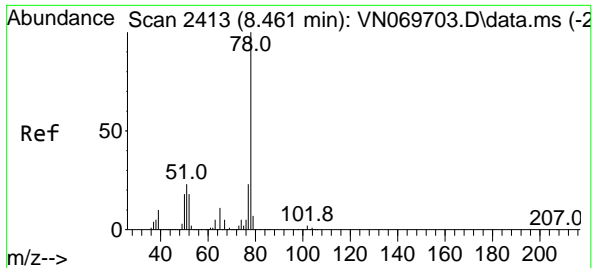
Tgt Ion:117 Resp: 101383
 Ion Ratio Lower Upper
 117 100
 119 5.3 76.1 114.1#
 121 0.0 24.2 36.2#



#39
 Methylcyclohexane
 Concen: 4.093 ug/l
 RT: 9.459 min Scan# 2785
 Delta R.T. -0.003 min
 Lab File: VN070047.D
 Acq: 13 Dec 2021 22:51

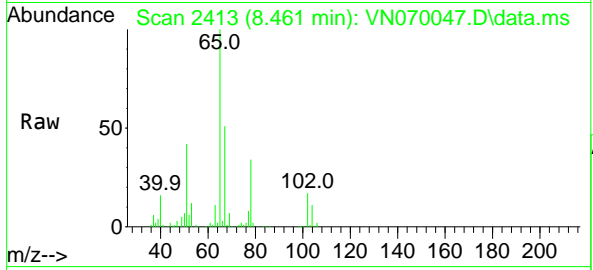
Tgt Ion: 83 Resp: 85343
 Ion Ratio Lower Upper
 83 100
 55 107.3 58.1 87.1#
 98 46.0 38.4 57.6



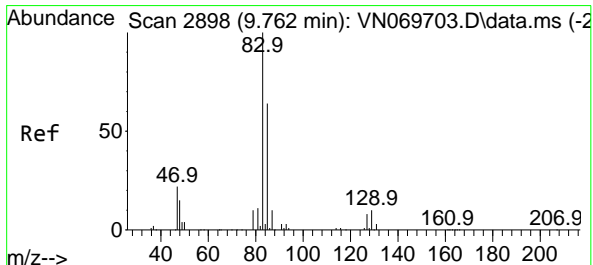
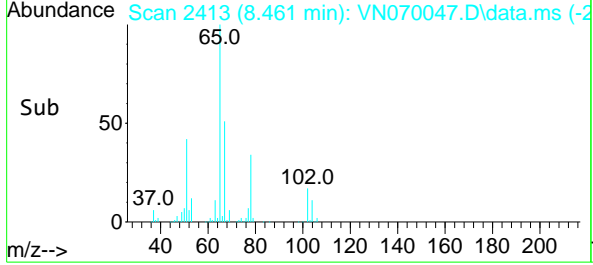
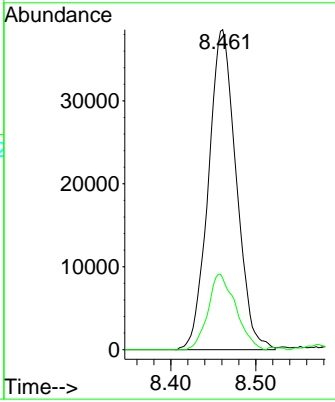


#40
Benzene
Concen: 1.636 ug/l
RT: 8.461 min Scan# 2413
Delta R.T. 0.000 min
Lab File: VN070047.D
Acq: 13 Dec 2021 22:51

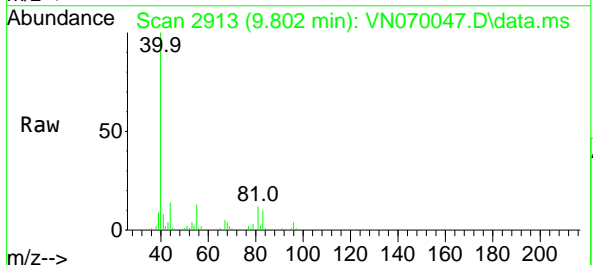
Instrument : MSVOA_N
ClientSampleId :



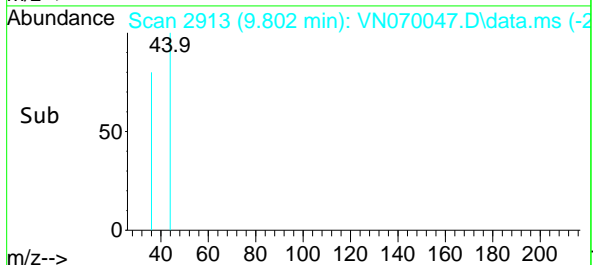
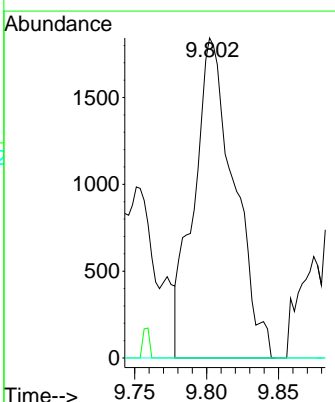
Tgt Ion: 78 Resp: 87674
Ion Ratio Lower Upper
78 100
77 22.3 18.6 27.8

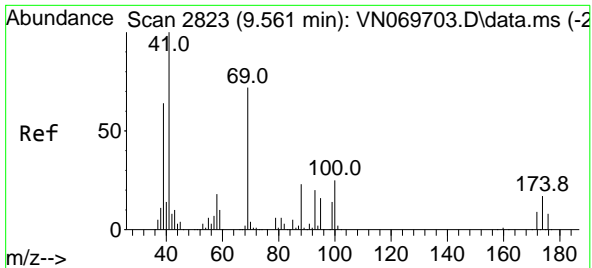


#47
Bromodichloromethane
Concen: 0.200 ug/l
RT: 9.802 min Scan# 2913
Delta R.T. 0.040 min
Lab File: VN070047.D
Acq: 13 Dec 2021 22:51



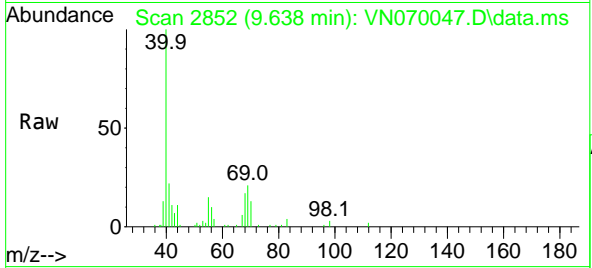
Tgt Ion: 83 Resp: 3579
Ion Ratio Lower Upper
83 100
85 0.0 50.9 76.3#
127 0.0 7.1 10.7#





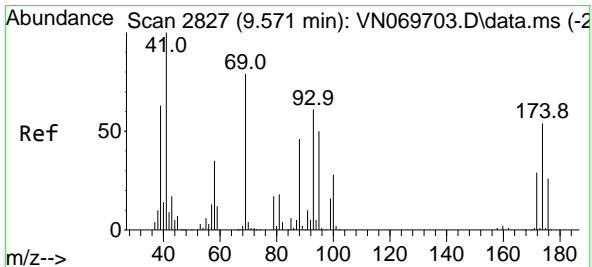
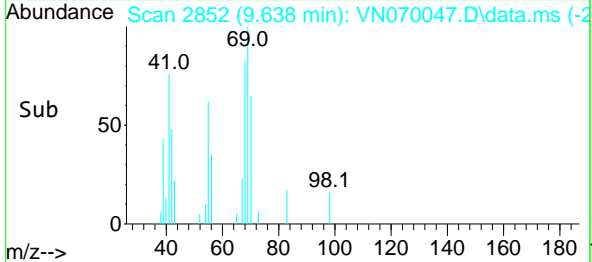
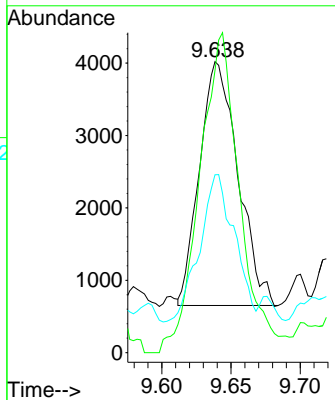
#48
 Methyl methacrylate
 Concen: 0.362 ug/l
 RT: 9.638 min Scan# 2852
 Delta R.T. 0.077 min
 Lab File: VN070047.D
 Acq: 13 Dec 2021 22:51

Instrument : MSVOA_N
 ClientSampleId :



Tgt Ion: 41 Resp: 6520

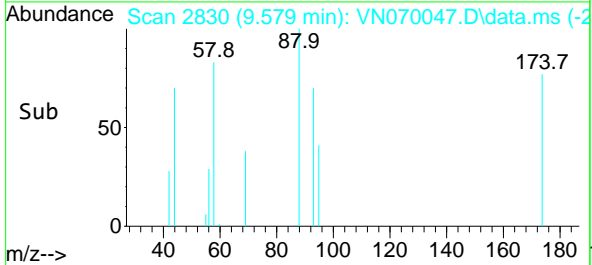
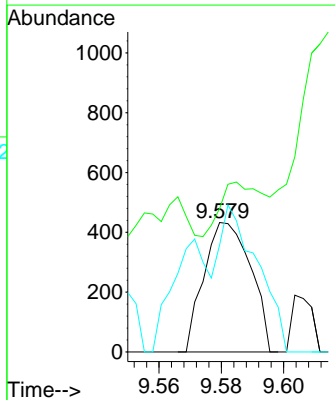
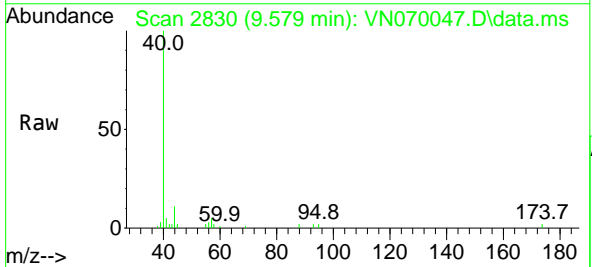
Ion	Ratio	Lower	Upper
41	100		
69	135.9	72.4	108.6#
39	53.1	58.4	87.6#

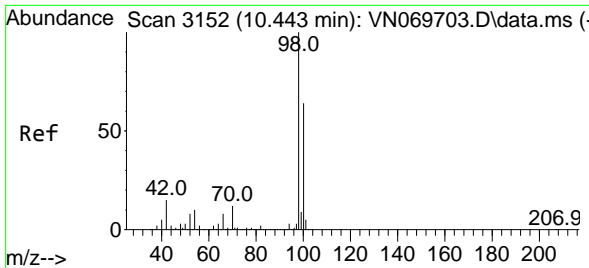


#49
 1,4-Dioxane
 Concen: 1.395 ug/l
 RT: 9.579 min Scan# 2830
 Delta R.T. 0.008 min
 Lab File: VN070047.D
 Acq: 13 Dec 2021 22:51

Tgt Ion: 88 Resp: 451

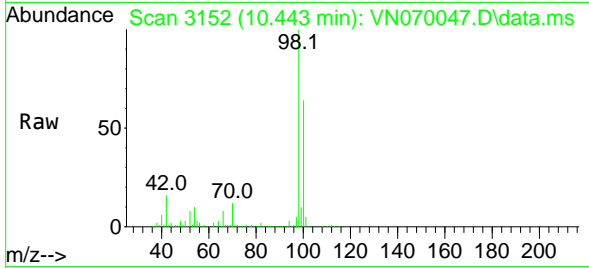
Ion	Ratio	Lower	Upper
88	100		
43	0.0	23.4	35.2#
58	92.5	50.6	75.8#



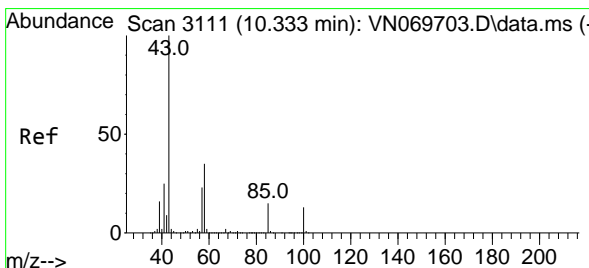
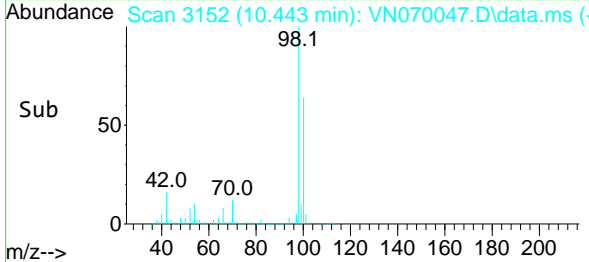
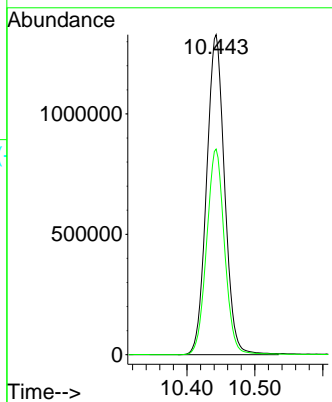


#50
 Toluene-d8
 Concen: 52.855 ug/l
 RT: 10.443 min Scan# 3152
 Delta R.T. 0.000 min
 Lab File: VN070047.D
 Acq: 13 Dec 2021 22:51

Instrument : MSVOA_N
 ClientSampleId :

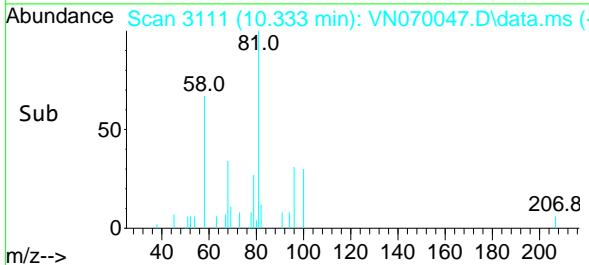
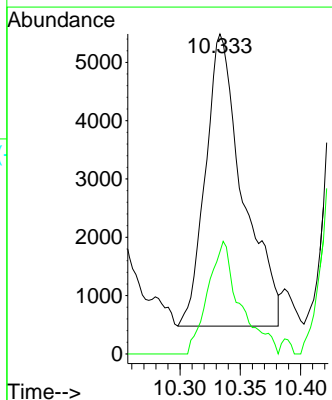
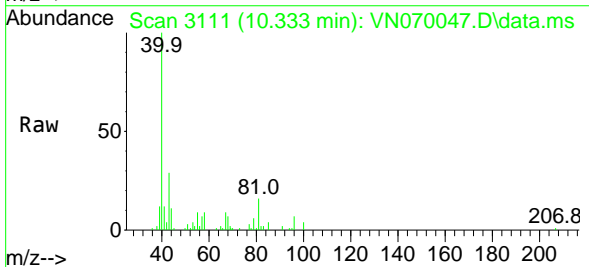


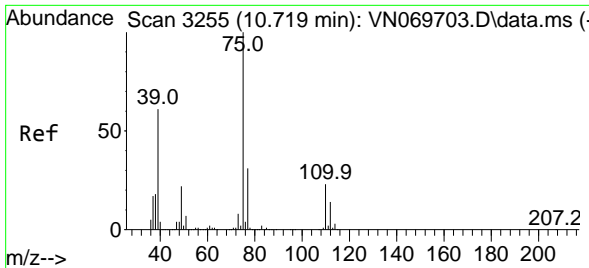
Tgt Ion: 98 Resp: 2448171
 Ion Ratio Lower Upper
 98 100
 100 64.0 50.4 75.6



#51
 4-Methyl-2-Pentanone
 Concen: 0.431 ug/l
 RT: 10.333 min Scan# 3111
 Delta R.T. 0.000 min
 Lab File: VN070047.D
 Acq: 13 Dec 2021 22:51

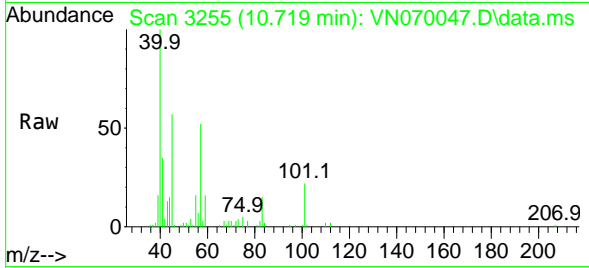
Tgt Ion: 43 Resp: 10804
 Ion Ratio Lower Upper
 43 100
 58 33.3 30.4 45.6



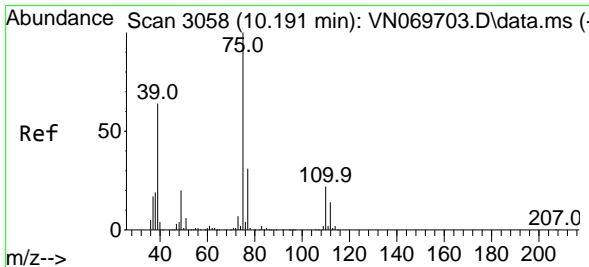
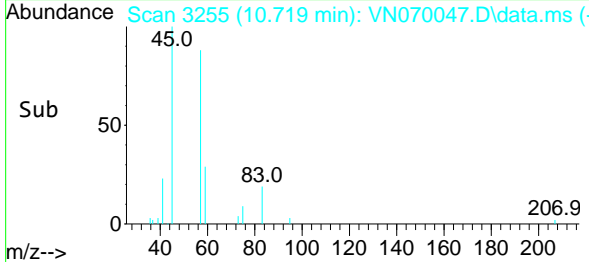
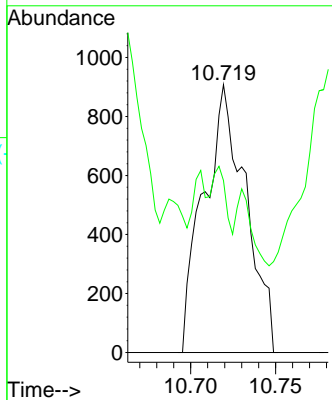


#53
 t-1,3-Dichloropropene
 Concen: 2.863 ug/l
 RT: 10.719 min Scan# 31
 Delta R.T. 0.000 min
 Lab File: VN070047.D
 Acq: 13 Dec 2021 22:51

Instrument :
 MSVOA_N
 ClientSampleId :

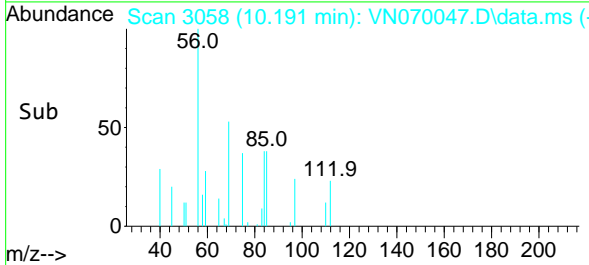
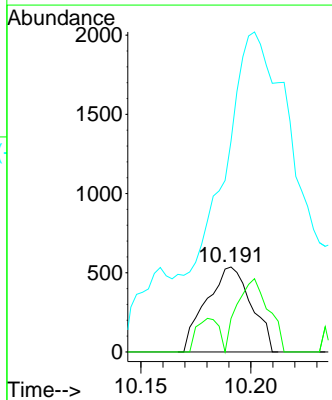
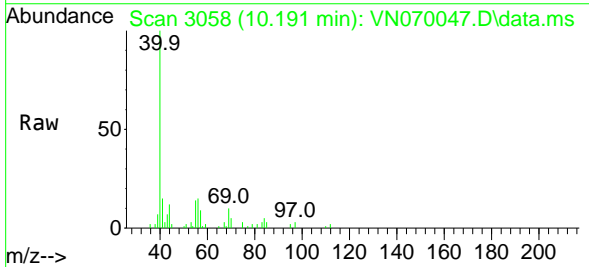


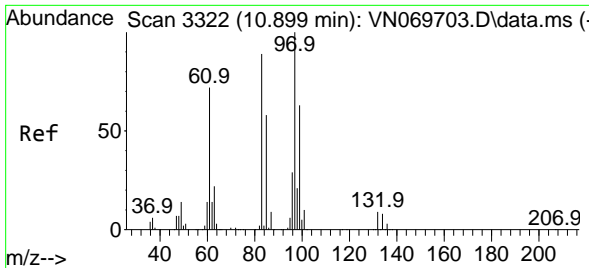
Tgt Ion: 75 Resp: 1562
 Ion Ratio Lower Upper
 75 100
 77 26.8 25.6 38.4



#54
 cis-1,3-Dichloropropene
 Concen: 2.031 ug/l
 RT: 10.191 min Scan# 3058
 Delta R.T. -0.000 min
 Lab File: VN070047.D
 Acq: 13 Dec 2021 22:51

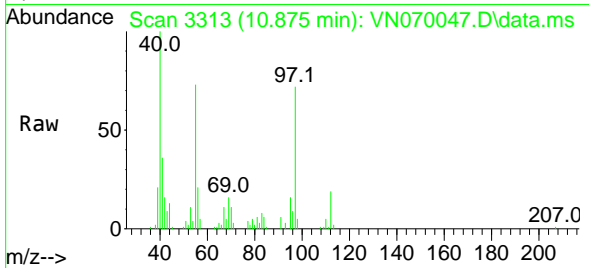
Tgt Ion: 75 Resp: 764
 Ion Ratio Lower Upper
 75 100
 77 39.4 26.4 39.6
 39 156.7 42.5 63.7#





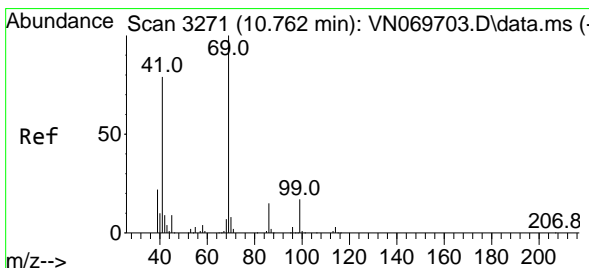
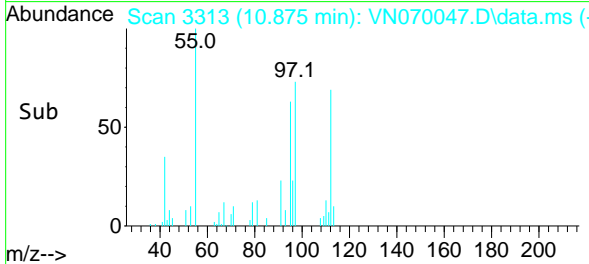
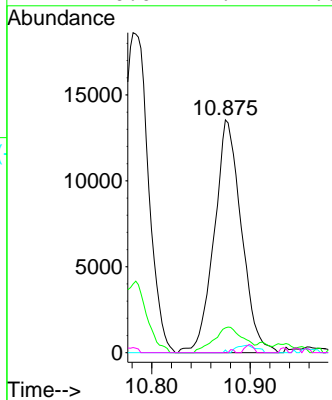
#55
 1,1,2-Trichloroethane
 Concen: 1.968 ug/l
 RT: 10.875 min Scan# 31
 Delta R.T. -0.024 min
 Lab File: VN070047.D
 Acq: 13 Dec 2021 22:51

Instrument : MSVOA_N
 ClientSampleId :



Tgt Ion: 97 Resp: 25974

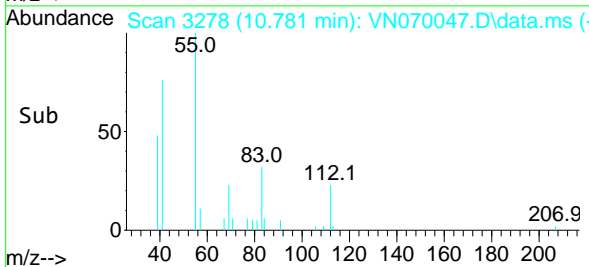
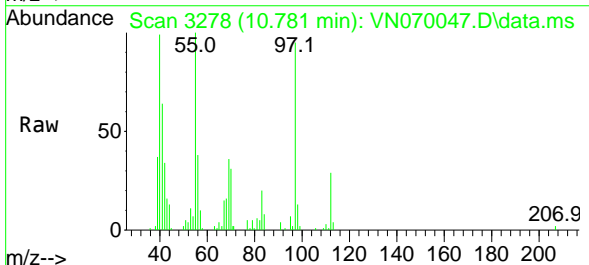
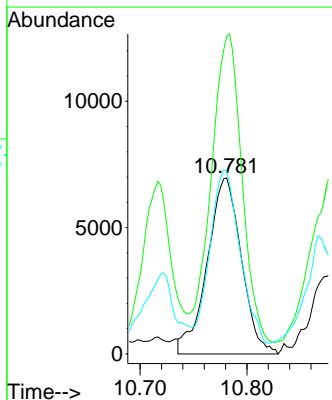
Ion	Ratio	Lower	Upper
97	100		
83	10.7	67.8	101.6#
85	1.2	45.4	68.2#
99	0.0	49.4	74.0#

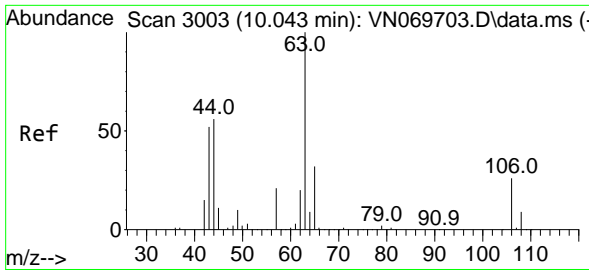


#56
 Ethyl methacrylate
 Concen: 2.870 ug/l
 RT: 10.781 min Scan# 3278
 Delta R.T. 0.019 min
 Lab File: VN070047.D
 Acq: 13 Dec 2021 22:51

Tgt Ion: 69 Resp: 15425

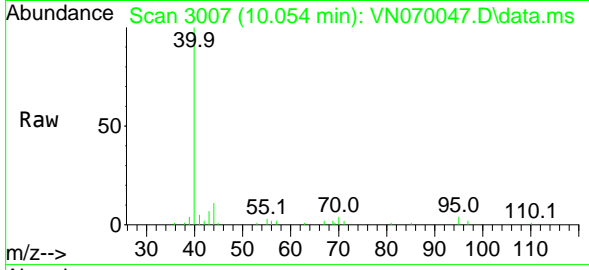
Ion	Ratio	Lower	Upper
69	100		
41	157.0	51.4	77.0#
39	86.2	34.6	52.0#



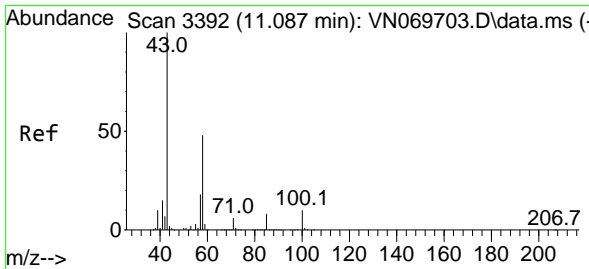
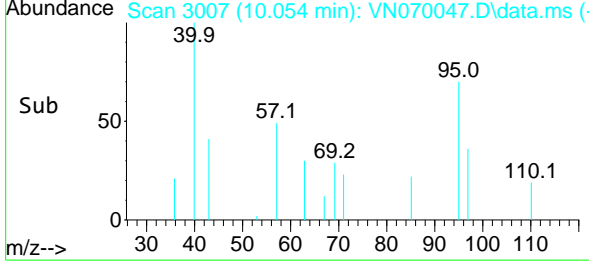
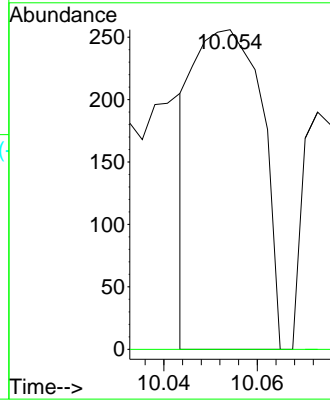


#58
 2-Chloroethyl Vinyl ether
 Concen: 18.425 ug/l
 RT: 10.054 min Scan# 3007
 Delta R.T. 0.011 min
 Lab File: VN070047.D
 Acq: 13 Dec 2021 22:51

Instrument : MSVOA_N
 ClientSampleId :

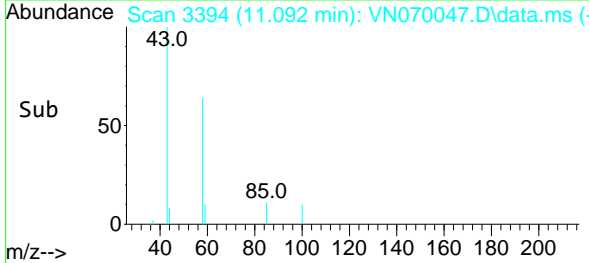
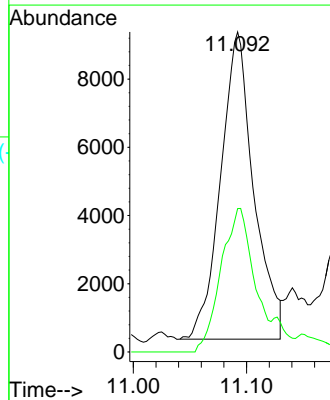
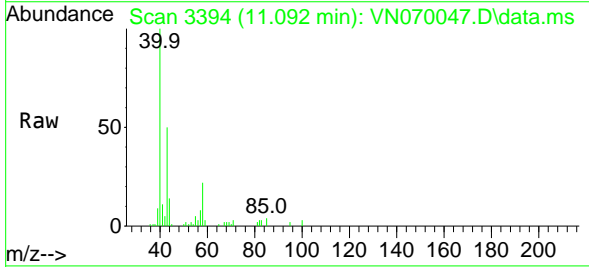


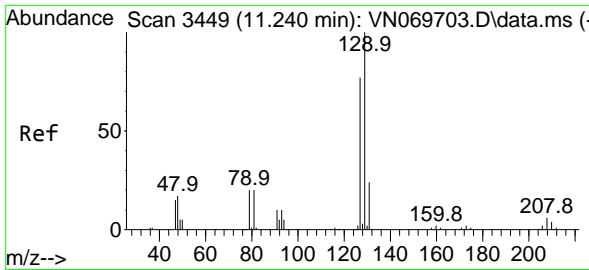
Tgt Ion: 63 Resp: 261
 Ion Ratio Lower Upper
 63 100
 106 0.0 23.9 35.9#



#59
 2-Hexanone
 Concen: 0.965 ug/l
 RT: 11.092 min Scan# 3394
 Delta R.T. 0.005 min
 Lab File: VN070047.D
 Acq: 13 Dec 2021 22:51

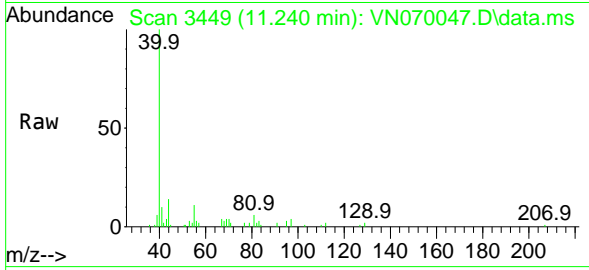
Tgt Ion: 43 Resp: 18290
 Ion Ratio Lower Upper
 43 100
 58 46.4 26.9 80.7



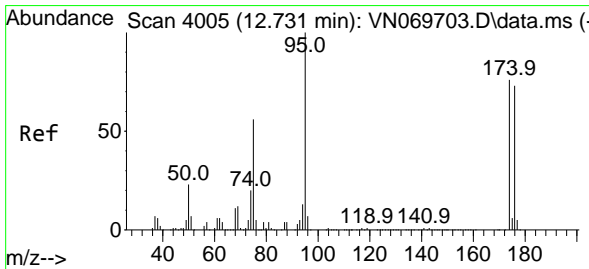
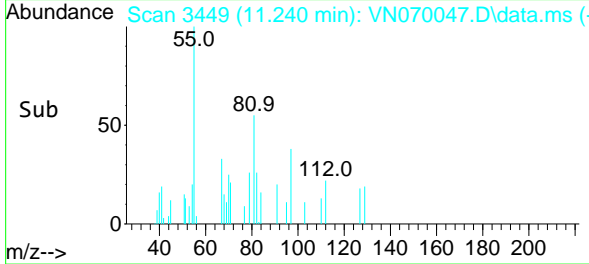
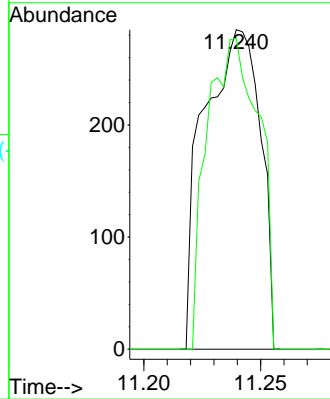


#60
 Dibromochloromethane
 Concen: 2.408 ug/l
 RT: 11.240 min Scan# 3449
 Delta R.T. -0.000 min
 Lab File: VN070047.D
 Acq: 13 Dec 2021 22:51

Instrument : MSVOA_N
 ClientSampleId :

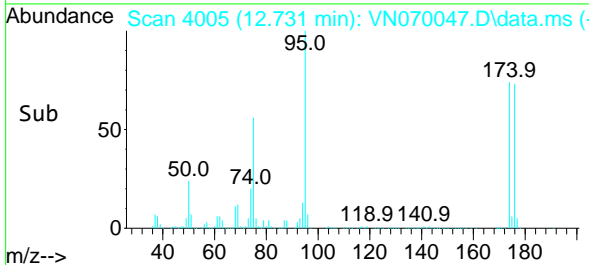
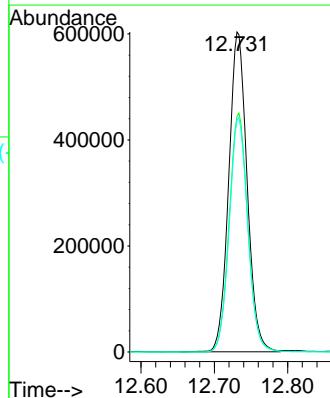
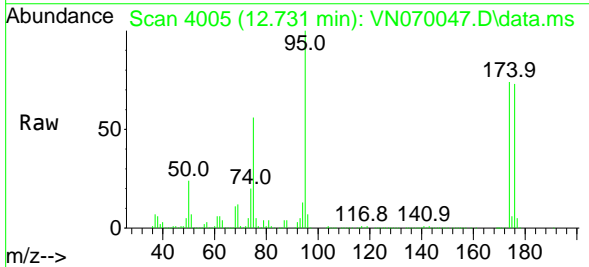


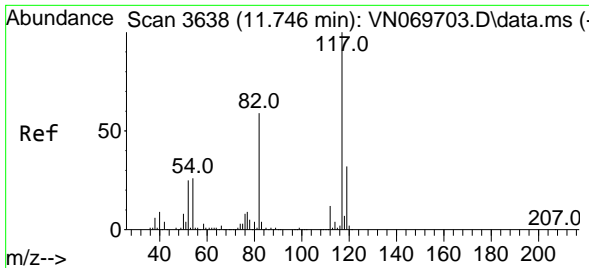
Tgt Ion:129 Resp: 478
 Ion Ratio Lower Upper
 129 100
 127 89.5 38.6 116.0



#62
 4-Bromofluorobenzene
 Concen: 62.560 ug/l
 RT: 12.731 min Scan# 4005
 Delta R.T. -0.000 min
 Lab File: VN070047.D
 Acq: 13 Dec 2021 22:51

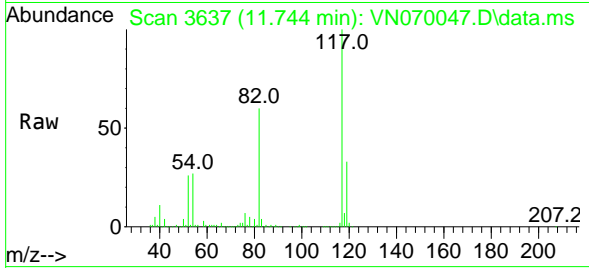
Tgt Ion: 95 Resp: 1049760
 Ion Ratio Lower Upper
 95 100
 174 76.0 0.0 187.2
 176 73.9 0.0 181.4



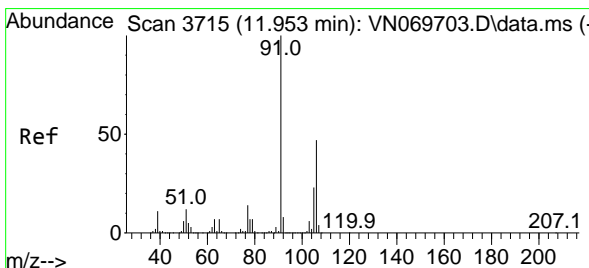
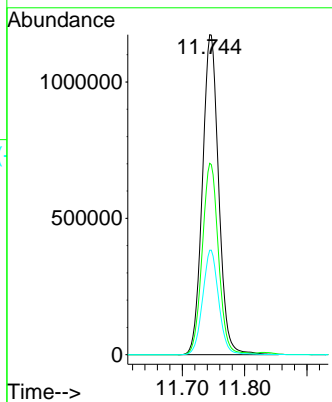
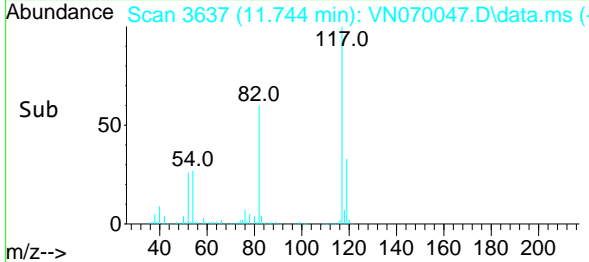


#63
 Chlorobenzene-d5
 Concen: 50.000 ug/l
 RT: 11.744 min Scan# 3638
 Delta R.T. -0.002 min
 Lab File: VN070047.D
 Acq: 13 Dec 2021 22:51

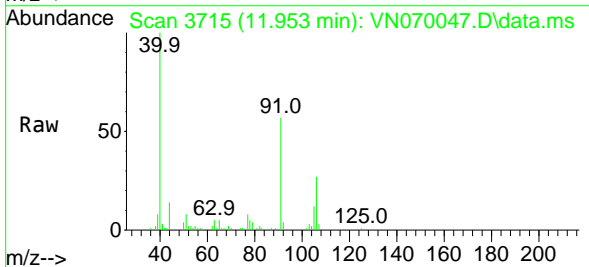
Instrument : MSVOA_N
 ClientSampleId :



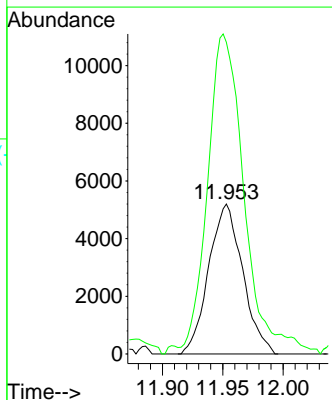
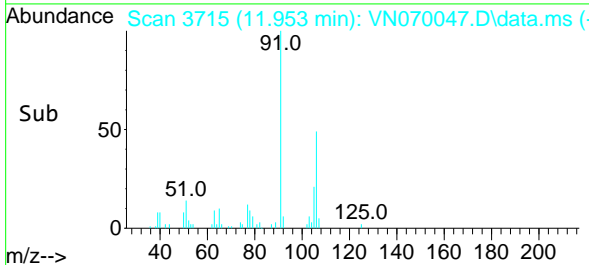
Tgt Ion:117 Resp: 2126708
 Ion Ratio Lower Upper
 117 100
 82 59.8 42.4 63.6
 119 32.6 25.4 38.2

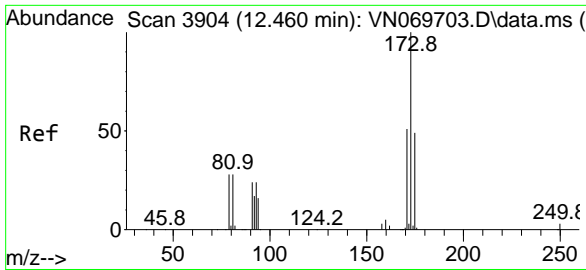


#68
 m/p-Xylenes
 Concen: 0.357 ug/l
 RT: 11.953 min Scan# 3715
 Delta R.T. 0.000 min
 Lab File: VN070047.D
 Acq: 13 Dec 2021 22:51



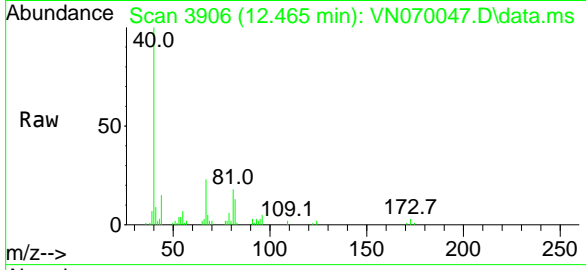
Tgt Ion:106 Resp: 10186
 Ion Ratio Lower Upper
 106 100
 91 230.1 160.6 240.8



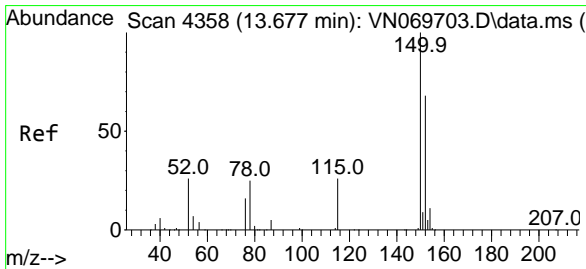
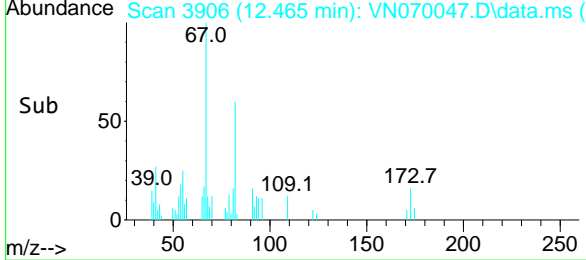
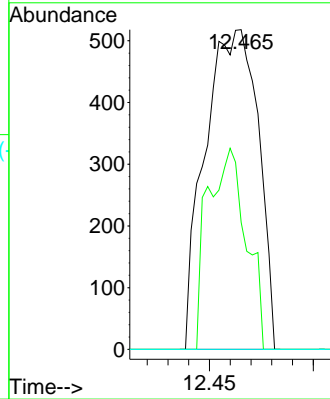


#71
 Bromoform
 Concen: 2.798 ug/l
 RT: 12.465 min Scan# 3906
 Delta R.T. 0.005 min
 Lab File: VN070047.D
 Acq: 13 Dec 2021 22:51

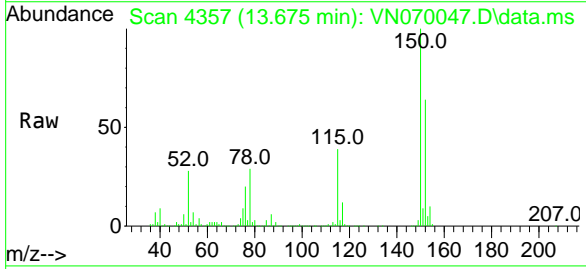
Instrument :
 MSVOA_N
 ClientSampleId :



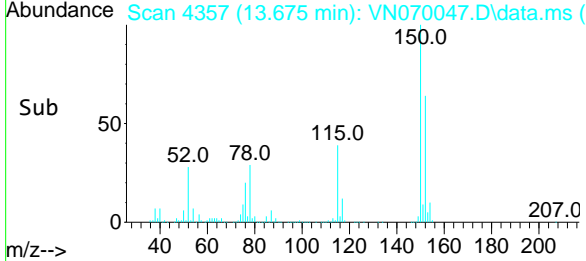
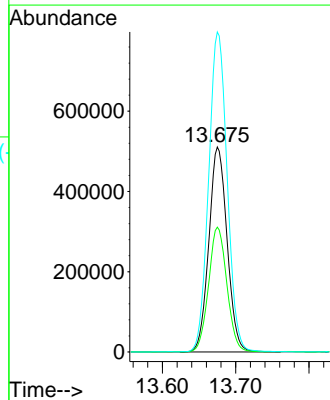
Tgt Ion:173 Resp: 922
 Ion Ratio Lower Upper
 173 100
 175 0.0 24.2 72.6#
 254 0.0 0.0 0.0

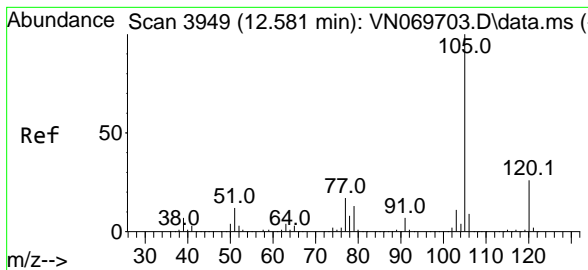


#72
 1,4-Dichlorobenzene-d4
 Concen: 50.000 ug/l
 RT: 13.675 min Scan# 4357
 Delta R.T. -0.003 min
 Lab File: VN070047.D
 Acq: 13 Dec 2021 22:51



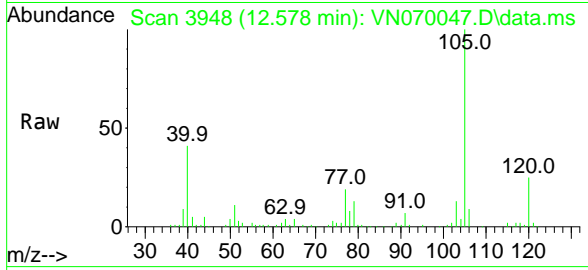
Tgt Ion:152 Resp: 885234
 Ion Ratio Lower Upper
 152 100
 115 60.8 27.5 82.5
 150 158.0 0.0 344.4



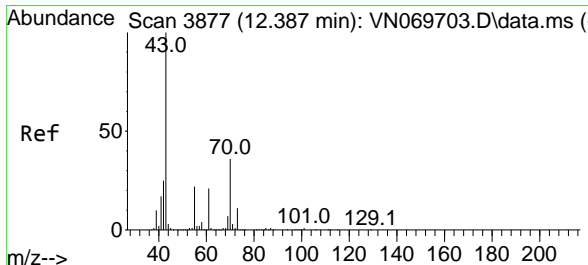
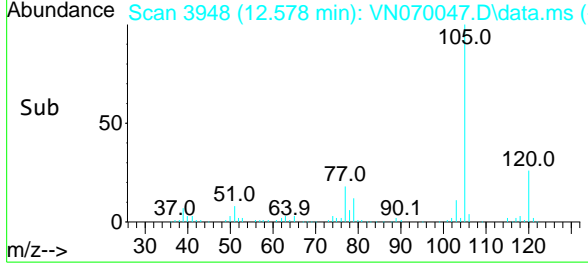
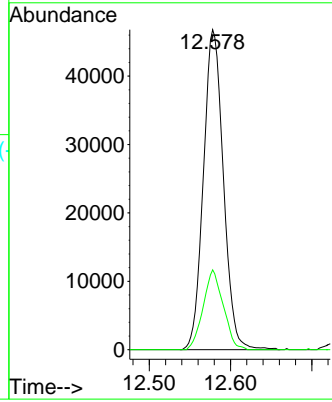


#73
 Isopropylbenzene
 Concen: 1.015 ug/l
 RT: 12.578 min Scan# 3948
 Delta R.T. -0.003 min
 Lab File: VN070047.D
 Acq: 13 Dec 2021 22:51

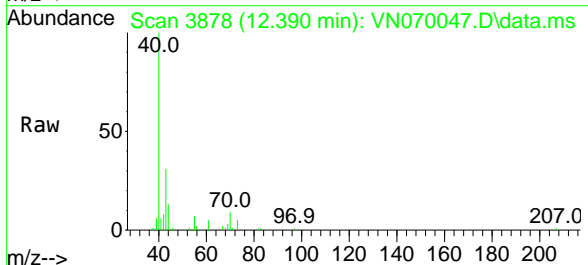
Instrument : MSVOA_N
 ClientSampleId :



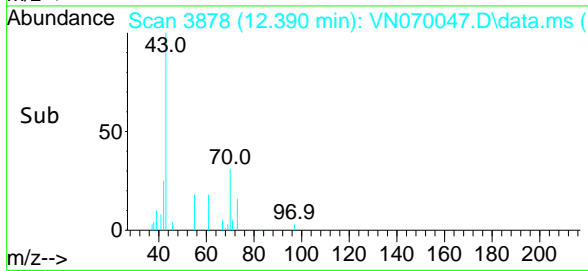
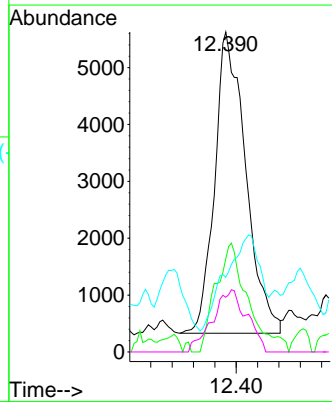
Tgt Ion:105 Resp: 79980
 Ion Ratio Lower Upper
 105 100
 120 25.0 13.4 40.1

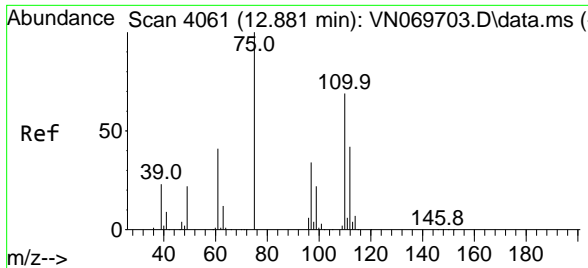


#74
 N-amy1 acetate
 Concen: 0.306 ug/l
 RT: 12.390 min Scan# 3878
 Delta R.T. 0.003 min
 Lab File: VN070047.D
 Acq: 13 Dec 2021 22:51



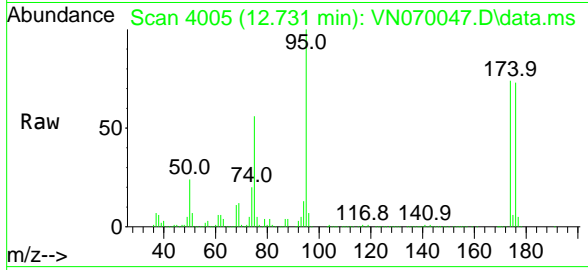
Tgt Ion: 43 Resp: 10656
 Ion Ratio Lower Upper
 43 100
 70 37.5 33.4 50.0
 55 0.0 19.3 28.9#
 61 22.9 18.5 27.7



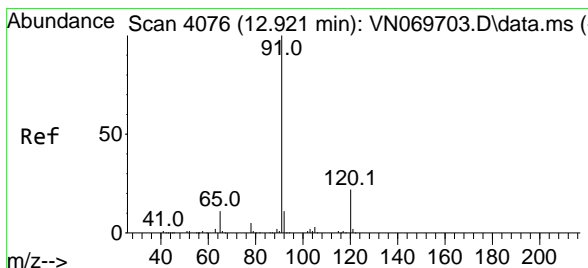
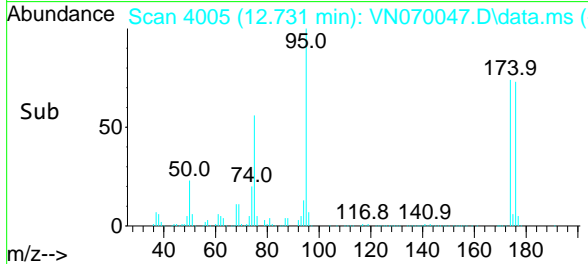
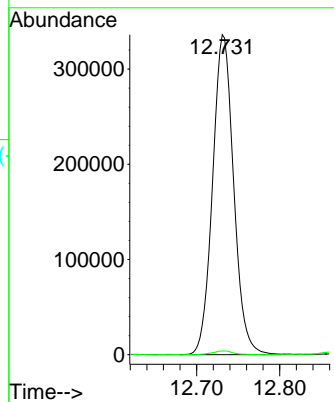


#76
 1,2,3-Trichloropropane
 Concen: 23.321 ug/l
 RT: 12.731 min Scan# 4061
 Delta R.T. -0.150 min
 Lab File: VN070047.D
 Acq: 13 Dec 2021 22:51

Instrument : MSVOA_N
 ClientSampleId :

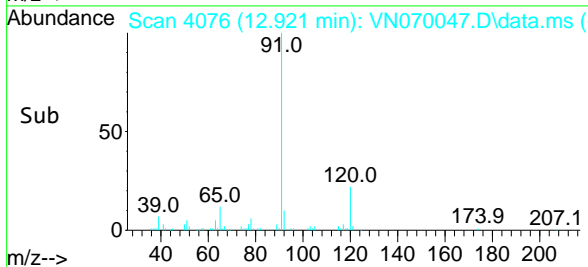
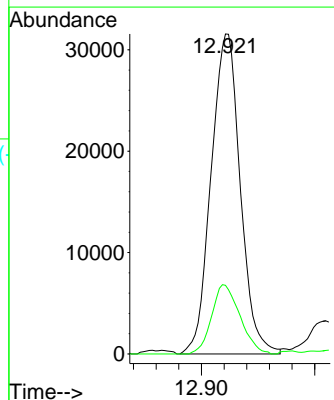
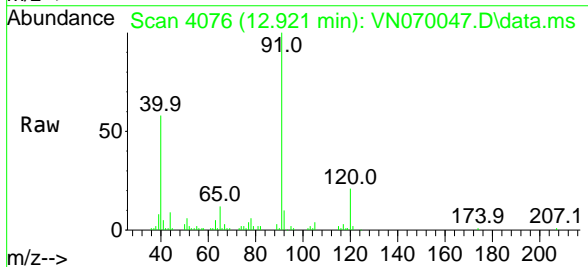


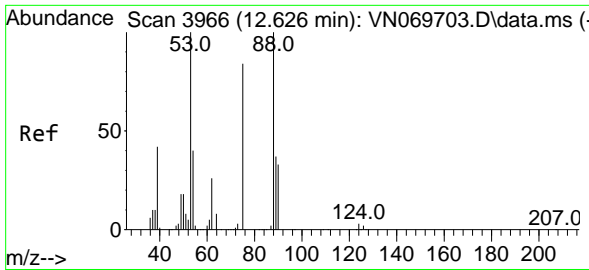
Tgt Ion: 75 Resp: 592038
 Ion Ratio Lower Upper
 75 100
 77 1.2 82.6 247.8#



#78
 n-propylbenzene
 Concen: 0.643 ug/l
 RT: 12.921 min Scan# 4076
 Delta R.T. 0.000 min
 Lab File: VN070047.D
 Acq: 13 Dec 2021 22:51

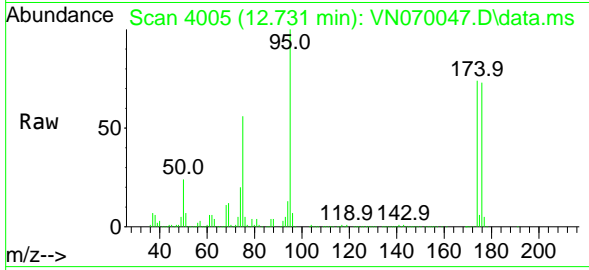
Tgt Ion: 91 Resp: 56379
 Ion Ratio Lower Upper
 91 100
 120 21.0 11.9 35.9



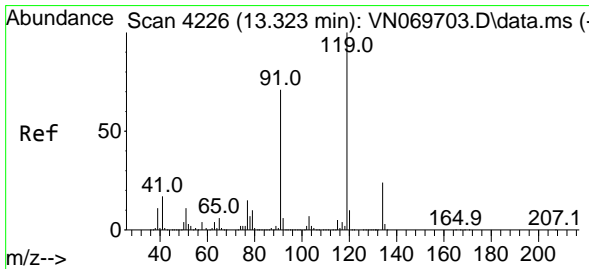
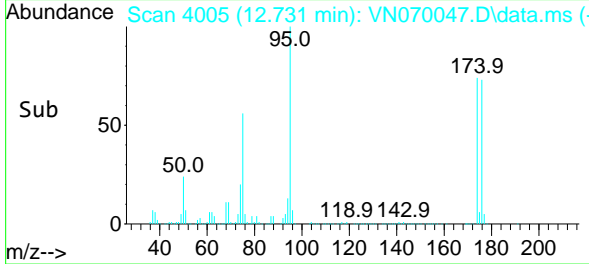
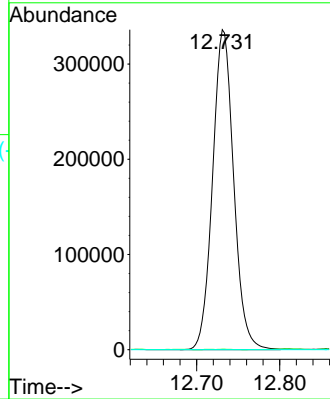


#81
 trans-1,4-Dichloro-2-butene
 Concen: 74.188 ug/l
 RT: 12.731 min Scan# 4005
 Delta R.T. 0.105 min
 Lab File: VN070047.D
 Acq: 13 Dec 2021 22:51

Instrument : MSVOA_N
 ClientSampleId :

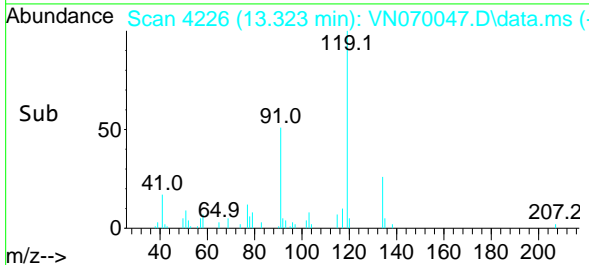
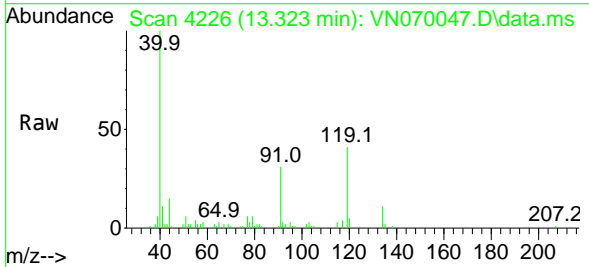
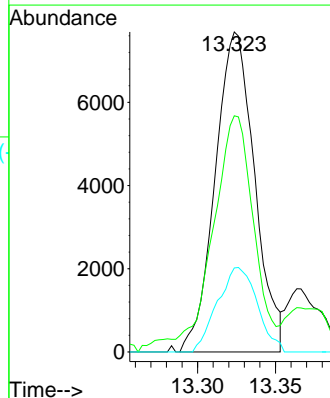


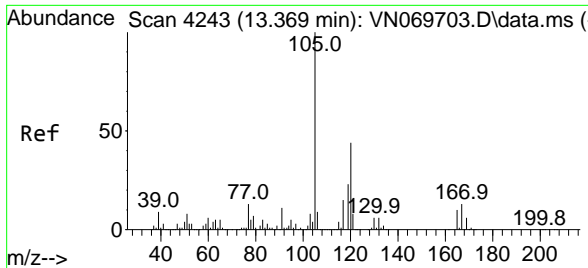
Tgt Ion: 75 Resp: 592038
 Ion Ratio Lower Upper
 75 100
 53 0.1 90.5 135.7#
 89 0.0 38.2 57.4#



#83
 tert-Butylbenzene
 Concen: 0.242 ug/l
 RT: 13.323 min Scan# 4226
 Delta R.T. 0.000 min
 Lab File: VN070047.D
 Acq: 13 Dec 2021 22:51

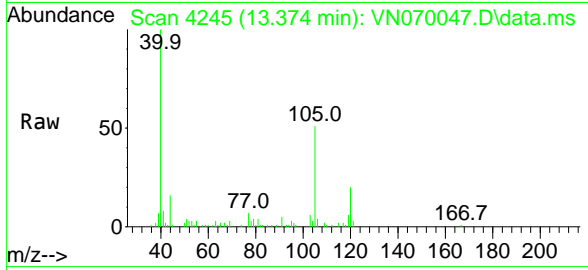
Tgt Ion: 119 Resp: 13558
 Ion Ratio Lower Upper
 119 100
 91 77.2 31.5 94.5
 134 26.6 12.4 37.4



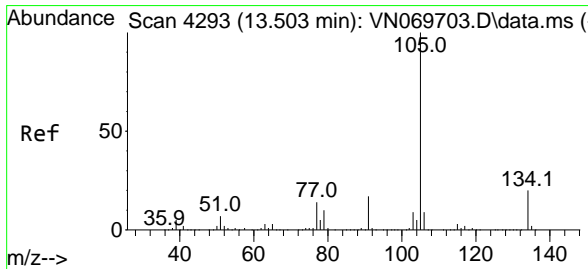
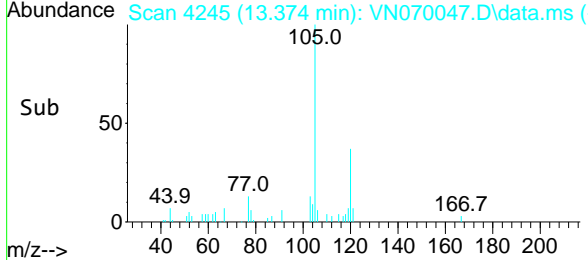
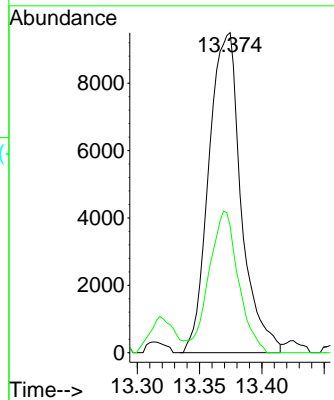


#84
 1,2,4-Trimethylbenzene
 Concen: 0.284 ug/l
 RT: 13.374 min Scan# 4245
 Delta R.T. 0.005 min
 Lab File: VN070047.D
 Acq: 13 Dec 2021 22:51

Instrument :
 MSVOA_N
 ClientSampleId :

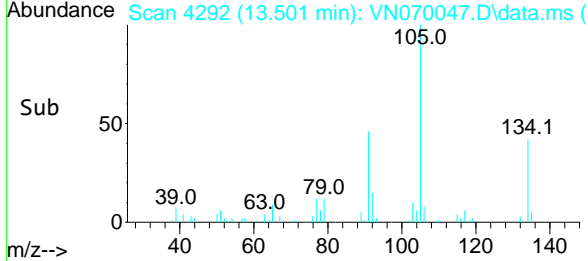
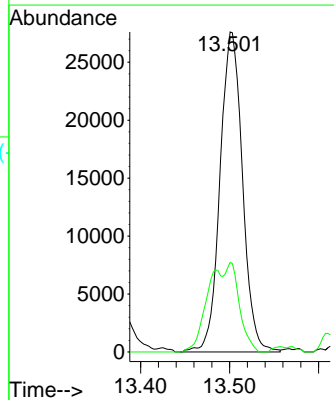
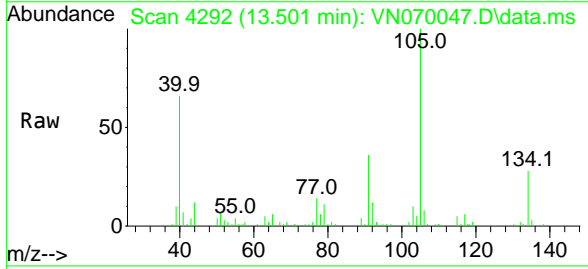


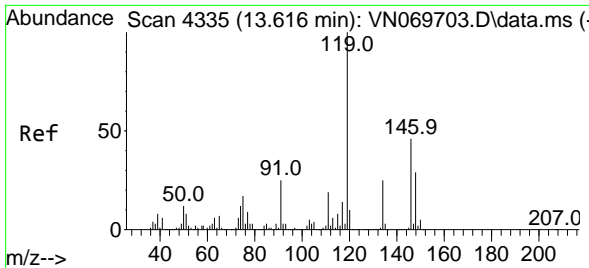
Tgt Ion:105 Resp: 17117
 Ion Ratio Lower Upper
 105 100
 120 40.2 22.8 68.4



#85
 sec-Butylbenzene
 Concen: 0.636 ug/l
 RT: 13.501 min Scan# 4292
 Delta R.T. -0.003 min
 Lab File: VN070047.D
 Acq: 13 Dec 2021 22:51

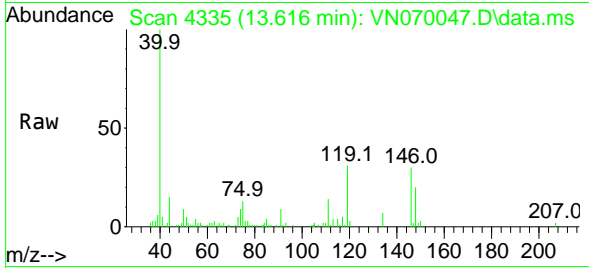
Tgt Ion:105 Resp: 48429
 Ion Ratio Lower Upper
 105 100
 134 20.4 10.4 31.1



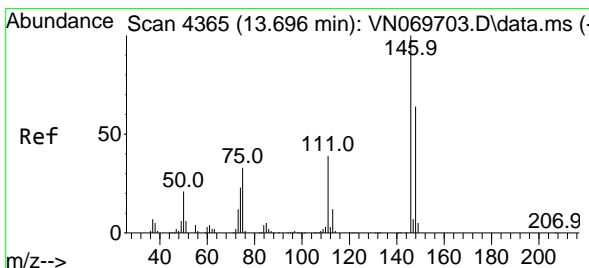
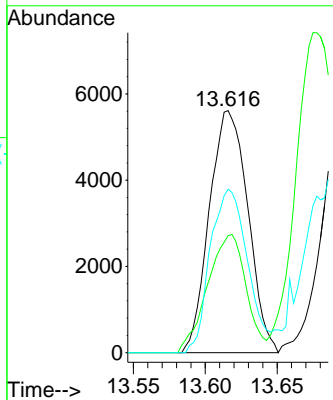
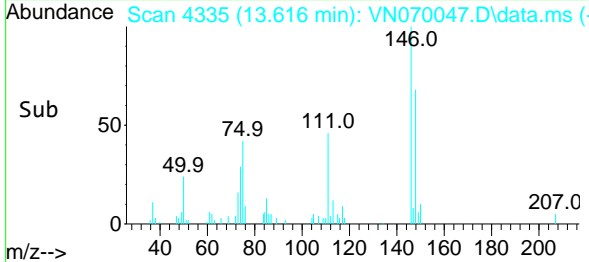


#87
 1,3-Dichlorobenzene
 Concen: 0.344 ug/l
 RT: 13.616 min Scan# 41
 Delta R.T. 0.000 min
 Lab File: VN070047.D
 Acq: 13 Dec 2021 22:51

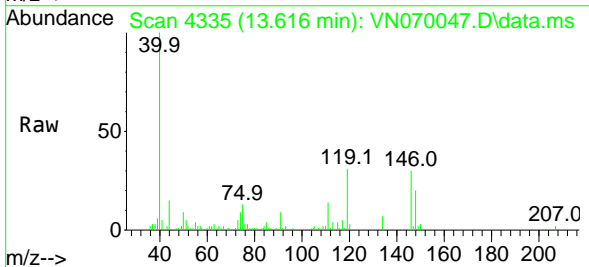
Instrument :
 MSVOA_N
 ClientSampleId :



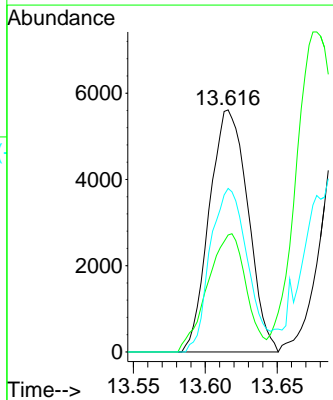
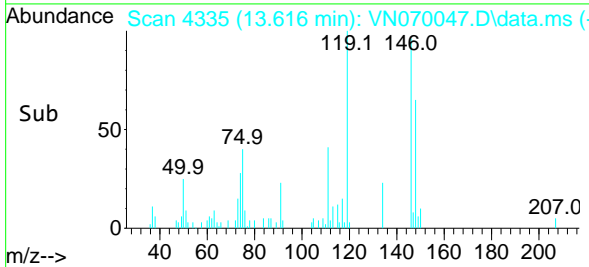
Tgt Ion:146 Resp: 10466
 Ion Ratio Lower Upper
 146 100
 111 48.8 18.6 55.6
 148 65.6 31.6 95.0

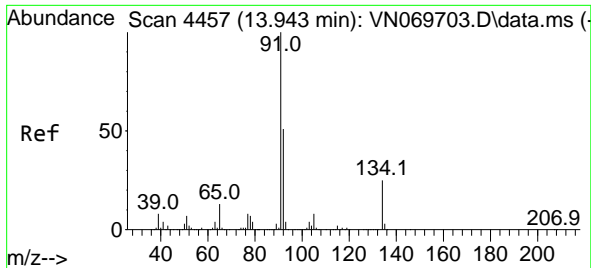


#88
 1,4-Dichlorobenzene
 Concen: 0.350 ug/l
 RT: 13.616 min Scan# 4335
 Delta R.T. -0.080 min
 Lab File: VN070047.D
 Acq: 13 Dec 2021 22:51



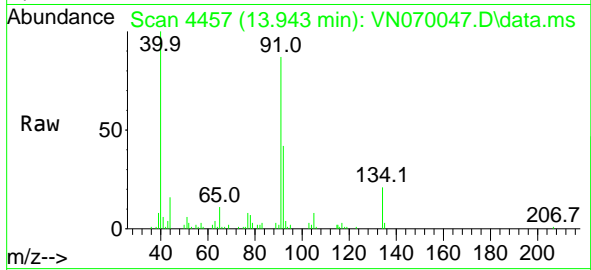
Tgt Ion:146 Resp: 10466
 Ion Ratio Lower Upper
 146 100
 111 48.8 18.3 54.8
 148 65.6 31.8 95.4





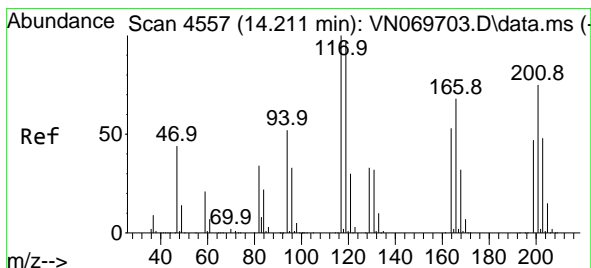
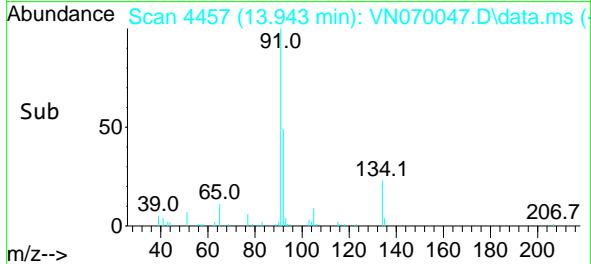
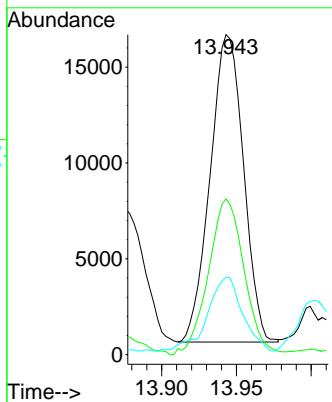
#89
 n-Butylbenzene
 Concen: 0.516 ug/l
 RT: 13.943 min Scan# 4457
 Delta R.T. 0.000 min
 Lab File: VN070047.D
 Acq: 13 Dec 2021 22:51

Instrument : MSVOA_N
 ClientSampleId :



Tgt Ion: 91 Resp: 24905

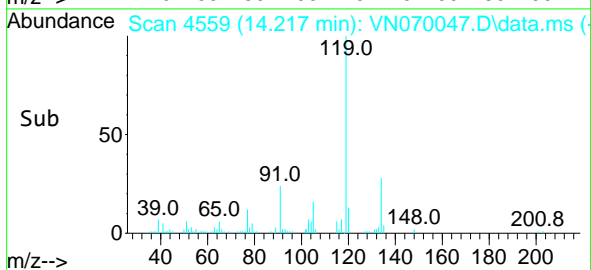
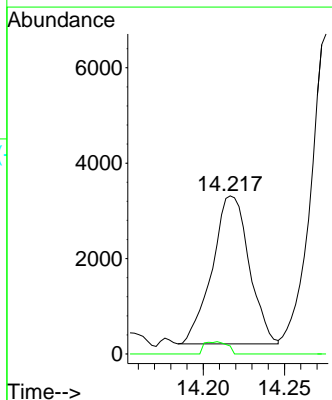
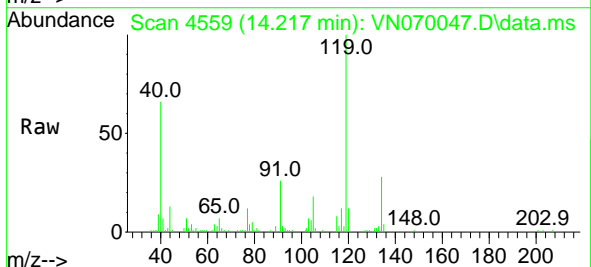
Ion	Ratio	Lower	Upper
91	100		
92	54.1	25.4	76.0
134	25.3	13.6	40.8

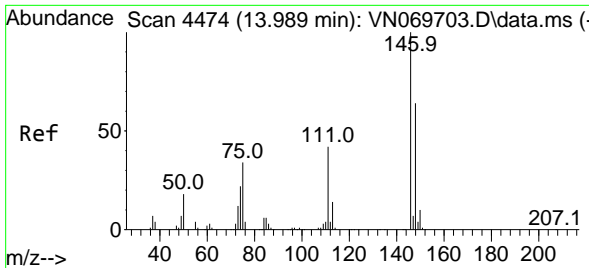


#90
 Hexachloroethane
 Concen: 0.470 ug/l
 RT: 14.217 min Scan# 4559
 Delta R.T. 0.005 min
 Lab File: VN070047.D
 Acq: 13 Dec 2021 22:51

Tgt Ion: 117 Resp: 4916

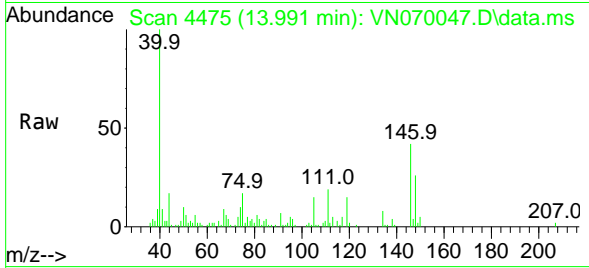
Ion	Ratio	Lower	Upper
117	100		
201	5.1	43.9	131.6#



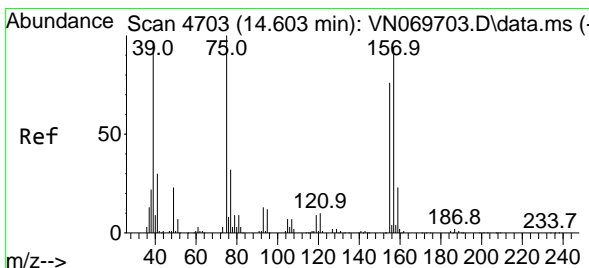
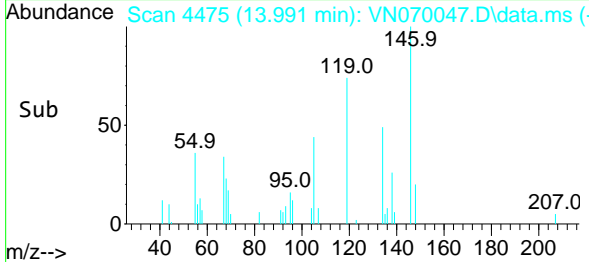
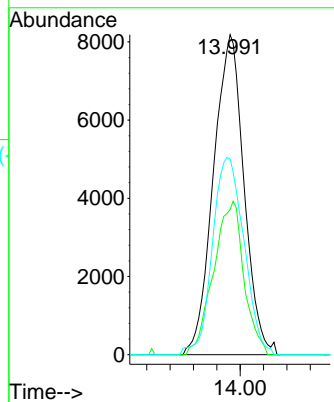


#91
 1,2-Dichlorobenzene
 Concen: 0.502 ug/l
 RT: 13.991 min Scan# 4475
 Delta R.T. 0.003 min
 Lab File: VN070047.D
 Acq: 13 Dec 2021 22:51

Instrument : MSVOA_N
 ClientSampleId :

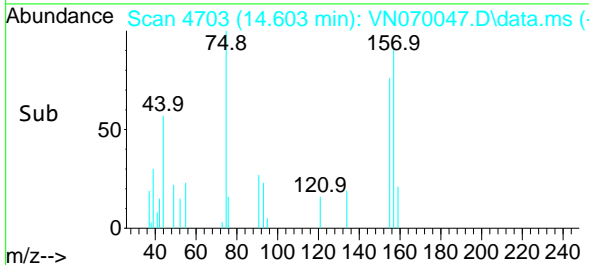
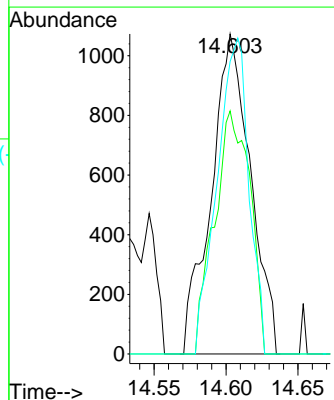
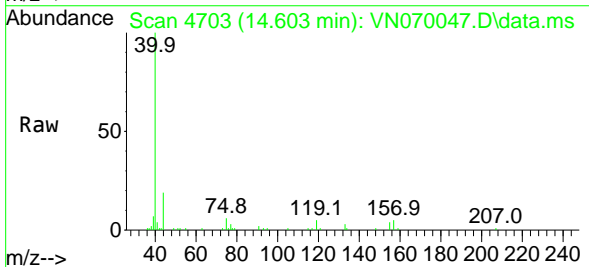


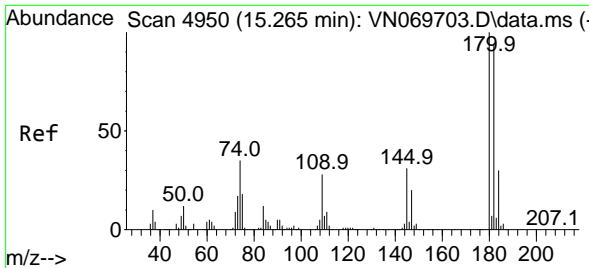
Tgt Ion:146 Resp: 14856
 Ion Ratio Lower Upper
 146 100
 111 47.5 19.1 57.3
 148 63.6 32.1 96.3



#92
 1,2-Dibromo-3-Chloropropane
 Concen: 0.416 ug/l
 RT: 14.603 min Scan# 4703
 Delta R.T. 0.000 min
 Lab File: VN070047.D
 Acq: 13 Dec 2021 22:51

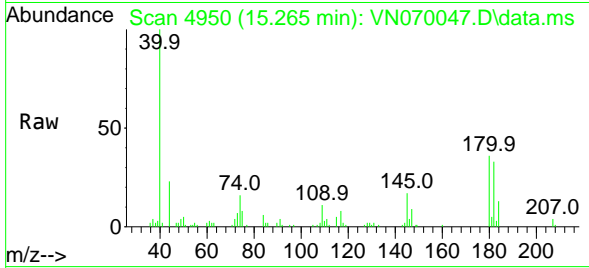
Tgt Ion: 75 Resp: 2045
 Ion Ratio Lower Upper
 75 100
 155 69.1 46.9 140.7
 157 79.6 60.6 181.7



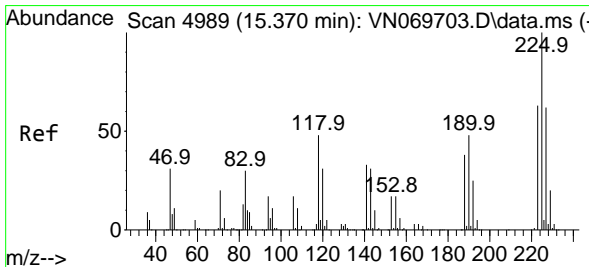
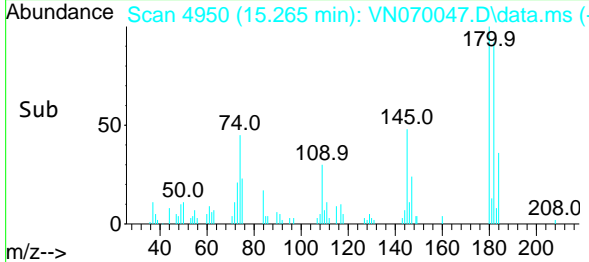
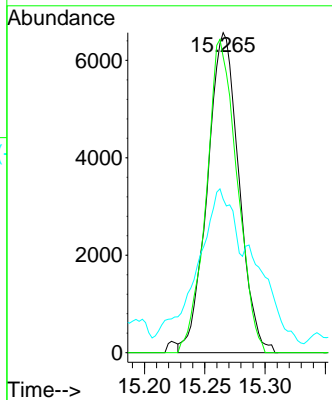


#93
 1,2,4-Trichlorobenzene
 Concen: 3.651 ug/l
 RT: 15.265 min Scan# 4950
 Delta R.T. 0.000 min
 Lab File: VN070047.D
 Acq: 13 Dec 2021 22:51

Instrument : MSVOA_N
 ClientSampleId :

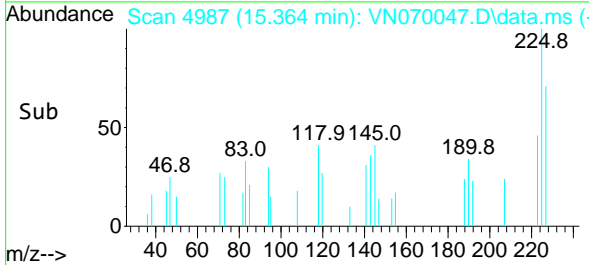
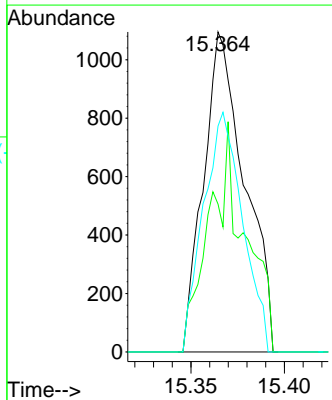
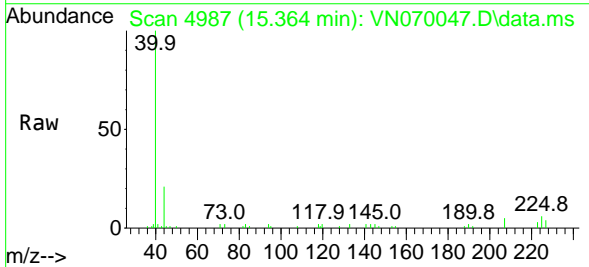


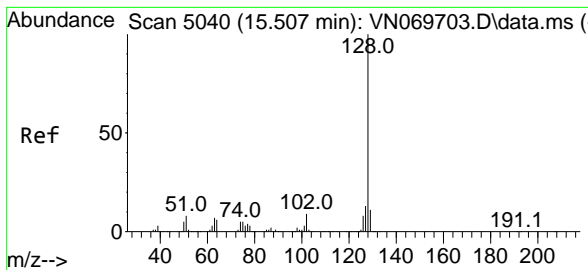
Tgt Ion:180 Resp: 11908
 Ion Ratio Lower Upper
 180 100
 182 96.1 48.3 144.9
 145 56.2 14.5 43.5#



#94
 Hexachlorobutadiene
 Concen: 0.214 ug/l
 RT: 15.364 min Scan# 4987
 Delta R.T. -0.005 min
 Lab File: VN070047.D
 Acq: 13 Dec 2021 22:51

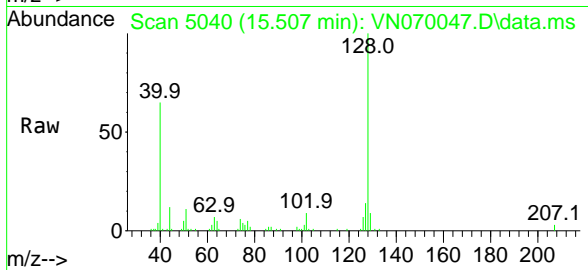
Tgt Ion:225 Resp: 1678
 Ion Ratio Lower Upper
 225 100
 223 61.9 31.9 95.7
 227 71.1 32.1 96.3



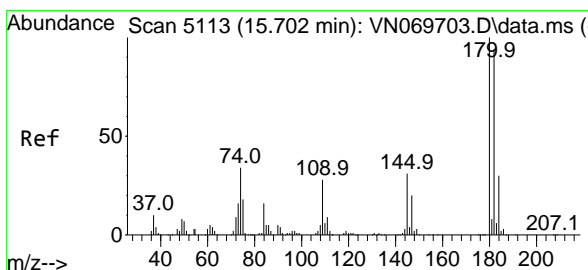
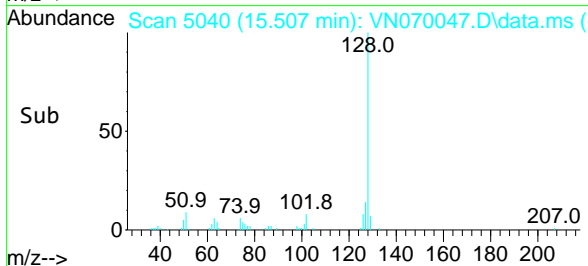
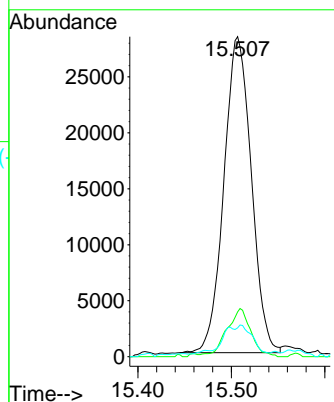


#95
 Naphthalene
 Concen: 5.210 ug/l
 RT: 15.507 min Scan# 5040
 Delta R.T. -0.000 min
 Lab File: VN070047.D
 Acq: 13 Dec 2021 22:51

Instrument : MSVOA_N
 ClientSampleId :



Tgt Ion:128 Resp: 57585
 Ion Ratio Lower Upper
 128 100
 127 13.4 10.5 15.7
 129 3.3 8.7 13.1#



#96
 1,2,3-Trichlorobenzene
 Concen: 3.423 ug/l
 RT: 15.694 min Scan# 5110
 Delta R.T. -0.008 min
 Lab File: VN070047.D
 Acq: 13 Dec 2021 22:51

Tgt Ion:180 Resp: 14689
 Ion Ratio Lower Upper
 180 100
 182 99.8 47.4 142.2
 145 58.9 15.0 45.1#

