

Data Path : Z:\voasrv\HPCHEM1\MSVOA\_N\Data\VN121323\  
 Data File : VN080460.D  
 Acq On : 13 Dec 2023 14:30  
 Operator : JC\MD  
 Sample : 05688-04  
 Misc : 5.0mL/MSVOA\_N/WATER  
 ALS Vial : 12 Sample Multiplier: 1

Instrument :  
 MSVOA\_N  
 ClientSampleId :  
 MW-3

Integration Parameters: RTEINT.P

Integrator: RTE  
 Smoothing : ON  
 Sampling : 1  
 Start Thrs : 0.2  
 Stop Thrs : 0

Filtering: 5  
 Min Area: 3 % of largest Peak  
 Max Peaks: 100  
 Peak Location: TOP

If leading or trailing edge < 100 prefer < Baseline drop else tangent >  
 Peak separation: 5

Method : Z:\voasrv\HPCHEM1\MSVOA\_N\methods\82N121223W.M  
 Title : SW846 8260

Signal : TIC: VN080460.D\data.ms

peak #	R.T. min	first scan	max scan	last scan	PK TY	peak height	corr. area	corr. % max.	% of total
1	2.512	88	95	103	rVB	45095	74977	1.38%	0.148%
2	3.248	207	220	231	rBV	250515	558095	10.31%	1.102%
3	3.648	278	288	303	rBV	172986	435597	8.04%	0.860%
4	3.865	315	325	333	rBV3	25737	64253	1.19%	0.127%
5	4.147	363	373	382	rBV2	32737	84649	1.56%	0.167%
6	4.424	407	420	433	rBV3	23680	77047	1.42%	0.152%
7	5.142	529	542	553	rBV8	16859	67565	1.25%	0.133%
8	5.289	554	567	568	rBV5	59221	174779	3.23%	0.345%
9	5.342	569	576	591	rVB5	142142	579118	10.69%	1.144%
10	5.812	642	656	670	rBV	179188	594300	10.97%	1.174%
11	6.130	699	710	726	rVB6	28090	102605	1.89%	0.203%
12	6.318	730	742	754	rBV2	100802	303415	5.60%	0.599%
13	6.594	778	789	795	rBV3	42545	135664	2.51%	0.268%
14	6.800	812	824	832	rBV4	37804	120755	2.23%	0.239%
15	6.918	832	844	853	rBV5	31846	140550	2.60%	0.278%
16	7.083	863	872	889	rVB5	33501	102742	1.90%	0.203%
17	7.330	902	914	933	rVB	601385	1721913	31.80%	3.401%
18	8.006	1022	1029	1037	rVB3	46888	115746	2.14%	0.229%
19	8.165	1048	1056	1061	rBV	192695	461839	8.53%	0.912%
20	8.253	1061	1071	1080	rVV3	512370	1928634	35.62%	3.810%
21	8.330	1080	1084	1094	rVB4	72113	180576	3.33%	0.357%
22	8.447	1096	1104	1109	rBV	61823	134238	2.48%	0.265%
23	8.512	1109	1115	1120	rVV	48575	102117	1.89%	0.202%
24	8.577	1120	1126	1136	rVB	170165	373556	6.90%	0.738%
25	8.724	1142	1151	1157	rBV3	134892	343061	6.34%	0.678%
26	8.788	1157	1162	1168	rVV2	124209	274966	5.08%	0.543%
27	8.859	1168	1174	1182	rVB3	140923	323267	5.97%	0.639%
28	8.965	1182	1192	1195	rBV7	18549	55349	1.02%	0.109%
29	9.100	1206	1215	1223	rBV	510281	1128459	20.84%	2.229%
30	9.388	1258	1264	1271	rVB2	31324	68998	1.27%	0.136%
31	9.600	1283	1300	1316	rBV	694961	1714513	31.66%	3.387%
32	9.777	1323	1330	1337	rVB2	75063	145566	2.69%	0.288%
33	9.941	1351	1358	1359	rBV4	41069	69682	1.29%	0.138%
34	10.100	1380	1385	1391	rBV3	47373	94529	1.75%	0.187%
35	10.335	1416	1425	1431	rBV6	23996	54169	1.00%	0.107%
36	10.453	1438	1445	1456	rVB2	89946	183741	3.39%	0.363%

Data Path : Z:\voasrv\HPCHEM1\MSVOA\_N\Data\VN121323\  
 Data File : VN080460.D  
 Acq On : 13 Dec 2023 14:30  
 Operator : JC\MD  
 Sample : 05688-04  
 Misc : 5.0mL/MSVOA\_N/WATER  
 ALS Vial : 12 Sample Multiplier: 1

Instrument :  
 MSVOA\_N  
 ClientSampleId :  
 MW-3

Integration Parameters: RTEINT.P  
 Integrator: RTE  
 Smoothing : ON  
 Sampling : 1  
 Start Thrs : 0.2  
 Stop Thrs : 0  
 Filtering: 5  
 Min Area: 3 % of largest Peak  
 Max Peaks: 100  
 Peak Location: TOP

If leading or trailing edge < 100 prefer < Baseline drop else tangent >  
 Peak separation: 5

Method : Z:\voasrv\HPCHEM1\MSVOA\_N\methods\82N121223W.M  
 Title : SW846 8260

37	10.571	1456	1465	1470	rBV	749819	1415587	26.14%	2.796%
38	10.629	1470	1475	1486	rVV	212810	448385	8.28%	0.886%
39	10.753	1488	1496	1507	rVB6	43036	126002	2.33%	0.249%
40	10.912	1517	1523	1529	rBV3	48958	95982	1.77%	0.190%
41	10.982	1529	1535	1546	rVB2	70441	189380	3.50%	0.374%
42	11.300	1584	1589	1593	rVB	38328	58339	1.08%	0.115%
43	11.865	1677	1685	1696	rBV	693881	1252892	23.14%	2.475%
44	11.965	1696	1702	1711	rVV	569439	947104	17.49%	1.871%
45	12.070	1711	1720	1738	rVB	2751276	5415088	100.00%	10.696%
46	12.400	1767	1776	1795	rVB	1589877	2709769	50.04%	5.353%
47	12.694	1817	1826	1833	rBV	246285	415326	7.67%	0.820%
48	12.847	1842	1852	1862	rBV	578021	1003958	18.54%	1.983%
49	13.035	1878	1884	1889	rBV	409869	658718	12.16%	1.301%
50	13.100	1889	1895	1898	rVV	1000898	1745821	32.24%	3.449%
51	13.129	1898	1900	1904	rVV	568184	828878	15.31%	1.637%
52	13.176	1904	1908	1916	rVB	437861	696482	12.86%	1.376%
53	13.335	1927	1935	1944	rVB	1105378	1821206	33.63%	3.597%
54	13.482	1952	1960	1968	rBV	2464185	3917629	72.35%	7.738%
55	13.612	1974	1982	1988	rBV3	61348	146122	2.70%	0.289%
56	13.670	1988	1992	1998	rVB	104454	163315	3.02%	0.323%
57	13.729	1998	2002	2006	rBV	62870	86752	1.60%	0.171%
58	13.794	2006	2013	2015	rVV	724503	1225938	22.64%	2.422%
59	13.817	2015	2017	2025	rVB	684253	1026368	18.95%	2.027%
60	13.953	2033	2040	2042	rBV2	182542	293800	5.43%	0.580%
61	13.988	2042	2046	2050	rVV3	439146	835447	15.43%	1.650%
62	14.029	2051	2053	2063	rVB4	279984	485271	8.96%	0.959%
63	14.117	2063	2068	2073	rBV2	53488	85118	1.57%	0.168%
64	14.182	2073	2079	2084	rBV	161082	255143	4.71%	0.504%
65	14.247	2084	2090	2093	rBV	310955	552725	10.21%	1.092%
66	14.329	2099	2104	2111	rVB	670710	1038251	19.17%	2.051%
67	14.394	2111	2115	2118	rBV	83292	134721	2.49%	0.266%
68	14.447	2118	2124	2131	rVB2	569090	987759	18.24%	1.951%
69	14.576	2141	2146	2152	rVB2	146233	234378	4.33%	0.463%
70	14.653	2152	2159	2163	rBV	388173	664491	12.27%	1.313%
71	14.694	2163	2166	2170	rVV	259738	359491	6.64%	0.710%
72	14.735	2170	2173	2177	rVB2	59687	77518	1.43%	0.153%
73	14.776	2177	2180	2188	rVB6	30697	59277	1.09%	0.117%
74	14.876	2192	2197	2201	rBV	53621	88925	1.64%	0.176%
75	14.929	2201	2206	2211	rBV2	303893	505814	9.34%	0.999%
76	15.053	2218	2227	2233	rBV3	554985	1266802	23.39%	2.502%

Data Path : Z:\voasrv\HPCHEM1\MSVOA\_N\Data\VN121323\  
 Data File : VN080460.D  
 Acq On : 13 Dec 2023 14:30  
 Operator : JC\MD  
 Sample : 05688-04  
 Misc : 5.0mL/MSVOA\_N/WATER  
 ALS Vial : 12 Sample Multiplier: 1

Instrument :  
 MSVOA\_N  
 ClientSampleId :  
 MW-3

Integration Parameters: RTEINT.P

Integrator: RTE  
 Smoothing : ON Filtering: 5  
 Sampling : 1 Min Area: 3 % of largest Peak  
 Start Thrs: 0.2 Max Peaks: 100  
 Stop Thrs : 0 Peak Location: TOP

If leading or trailing edge < 100 prefer < Baseline drop else tangent >  
 Peak separation: 5

Method : Z:\voasrv\HPCHEM1\MSVOA\_N\methods\82N121223W.M  
 Title : SW846 8260

77	15.117	2233	2238	2247	rVB6	51389	129665	2.39%	0.256%
78	15.211	2247	2254	2261	rBV3	96405	192016	3.55%	0.379%
79	15.317	2261	2272	2277	rVV3	189609	533076	9.84%	1.053%
80	15.359	2277	2279	2285	rVV2	110287	191384	3.53%	0.378%
81	15.441	2285	2293	2306	rVB3	202446	520503	9.61%	1.028%
82	15.641	2320	2327	2334	rVB	527596	991969	18.32%	1.959%
83	15.747	2340	2345	2350	rBV3	51245	98553	1.82%	0.195%
84	15.806	2351	2355	2370	rVB3	45840	108190	2.00%	0.214%
85	15.947	2370	2379	2387	rBV	61922	133374	2.46%	0.263%
86	16.129	2399	2410	2415	rBV2	41162	117301	2.17%	0.232%
87	16.347	2439	2447	2456	rVB2	34400	83094	1.53%	0.164%
88	16.782	2513	2521	2522	rBV2	74817	115330	2.13%	0.228%

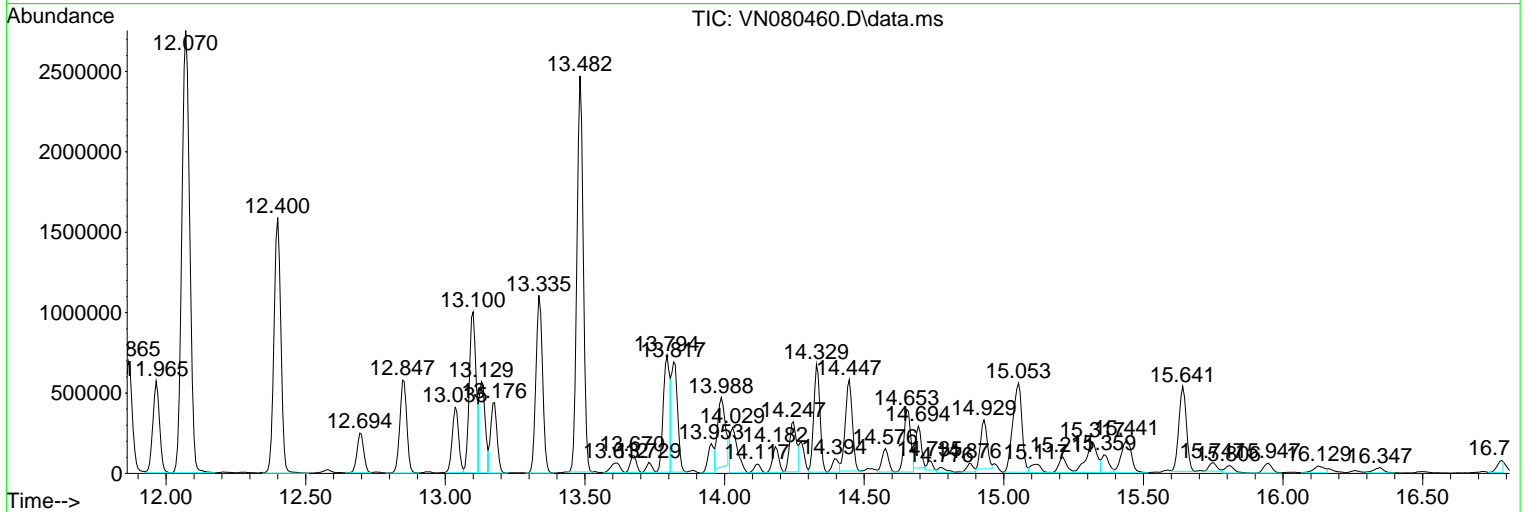
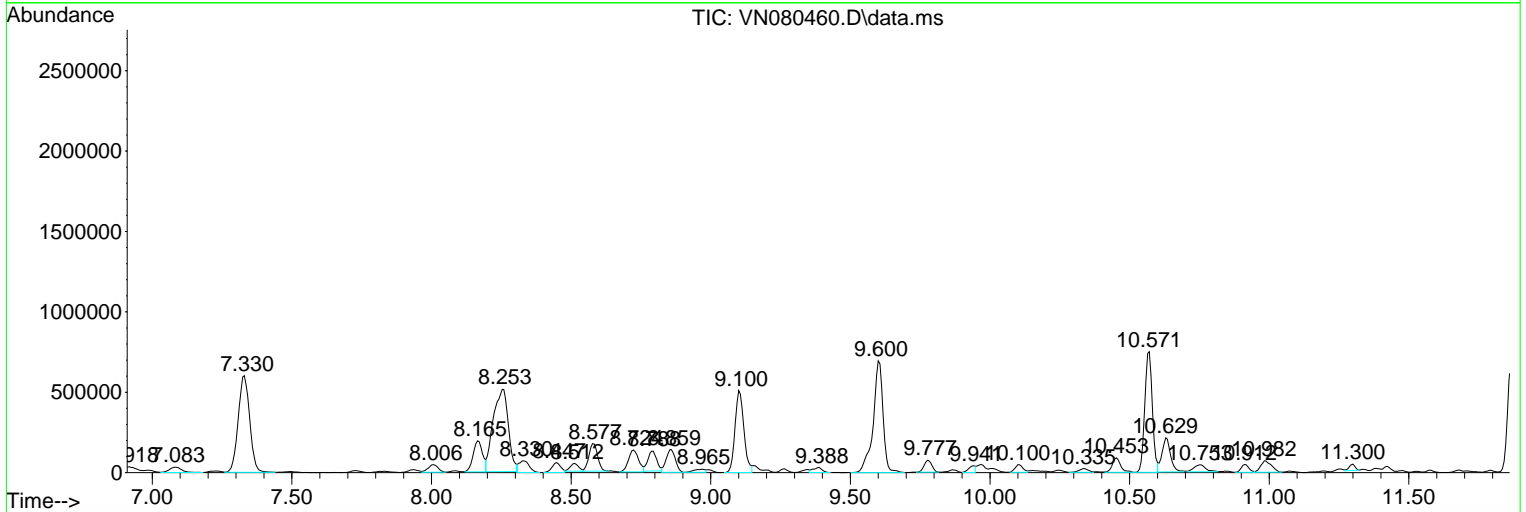
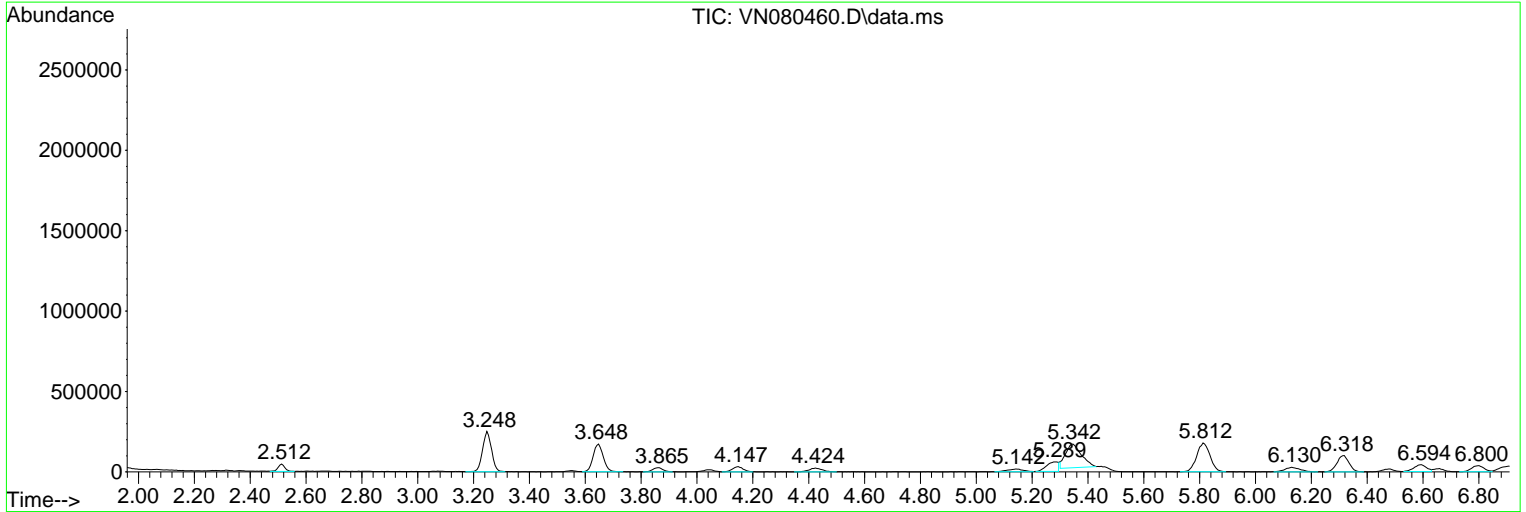
Sum of corrected areas: 50625457

Data Path : Z:\voasrv\HPCHEM1\MSVOA\_N\Data\VN121323\  
 Data File : VN080460.D  
 Acq On : 13 Dec 2023 14:30  
 Operator : JC\MD  
 Sample : 05688-04  
 Misc : 5.0mL/MSVOA\_N/WATER  
 ALS Vial : 12 Sample Multiplier: 1

Instrument :  
 MSVOA\_N  
 ClientSampleId :  
 MW-3

Quant Method : Z:\voasrv\HPCHEM1\MSVOA\_N\methods\82N121223W.M  
 Quant Title : SW846 8260

TIC Library : C:\Database\NIST20.L  
 TIC Integration Parameters: LSCINT.P



Data Path : Z:\voasrv\HPCHEM1\MSVOA\_N\Data\VN121323\  
 Data File : VN080460.D  
 Acq On : 13 Dec 2023 14:30  
 Operator : JC\MD  
 Sample : 05688-04  
 Misc : 5.0mL/MSVOA\_N/WATER  
 ALS Vial : 12 Sample Multiplier: 1

Instrument :  
 MSVOA\_N  
 ClientSampleId :  
 MW-3

Quant Method : Z:\voasrv\HPCHEM1\MSVOA\_N\methods\82N121223W.M  
 Quant Title : SW846 8260

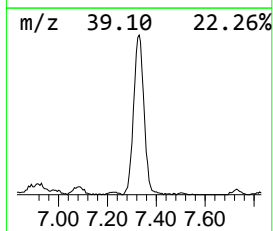
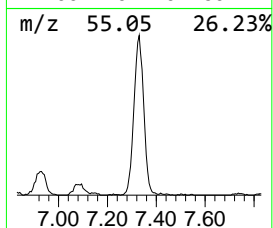
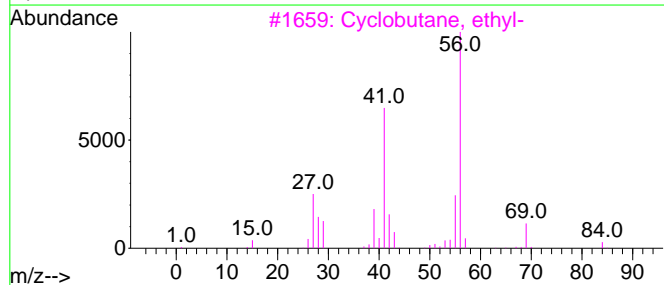
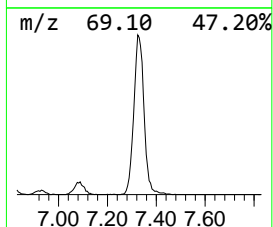
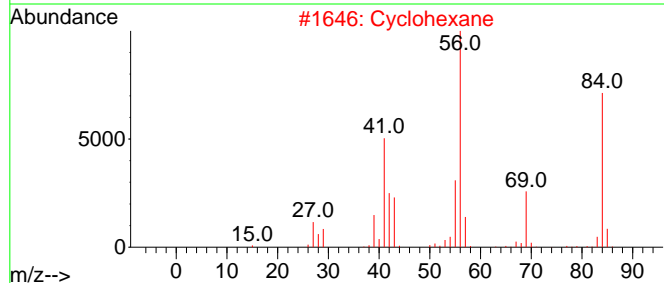
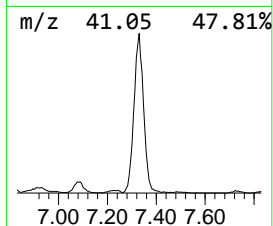
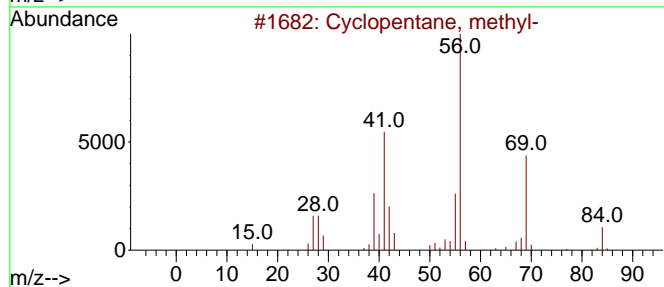
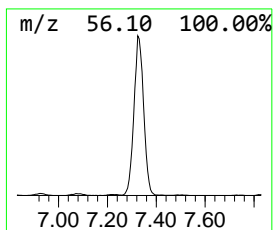
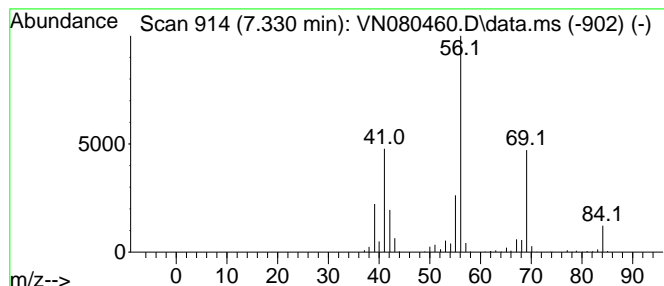
TIC Library : C:\Database\NIST20.L  
 TIC Integration Parameters: LSCINT.P

\*\*\*\*\*  
 Peak Number 1 Cyclopentane, methyl- Concentration Rank 4

R.T.	EstConc	Area	Relative to ISTD	R.T.
7.330	44.64 ug/l	1721910	Pentafluorobenzene	8.230

Hit#	of 5	Tentative ID	MW	MolForm	CAS#	Qual
1		Cyclopentane, methyl-	84	C6H12	000096-37-7	94
2		Cyclohexane	84	C6H12	000110-82-7	78
3		Cyclobutane, ethyl-	84	C6H12	004806-61-5	72
4		1H-Tetrazole, 5-methyl-	84	C2H4N4	004076-36-2	72
5		Cyclobutane, butyl-	112	C8H16	013152-44-8	50



Data Path : Z:\voasrv\HPCHEM1\MSVOA\_N\Data\VN121323\  
 Data File : VN080460.D  
 Acq On : 13 Dec 2023 14:30  
 Operator : JC\MD  
 Sample : 05688-04  
 Misc : 5.0mL/MSVOA\_N/WATER  
 ALS Vial : 12 Sample Multiplier: 1

Instrument :  
 MSVOA\_N  
 ClientSampleId :  
 MW-3

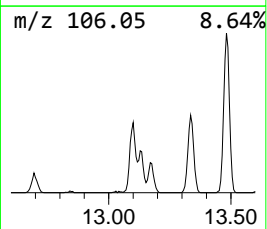
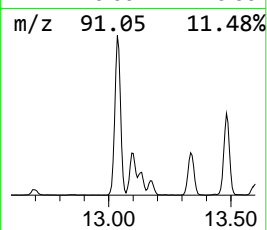
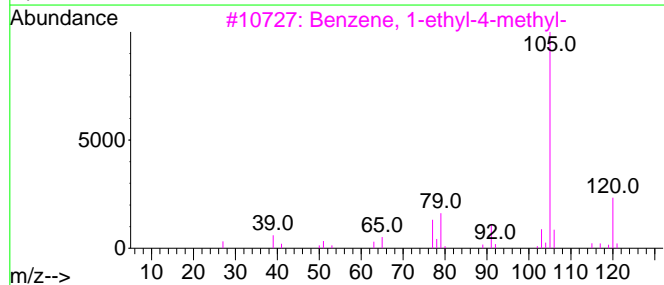
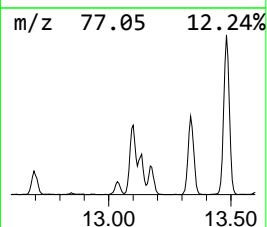
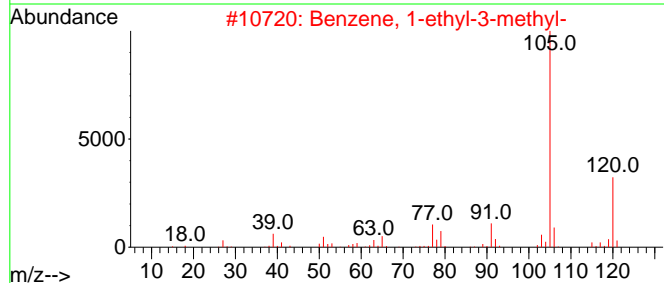
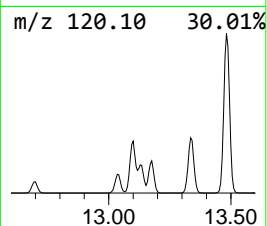
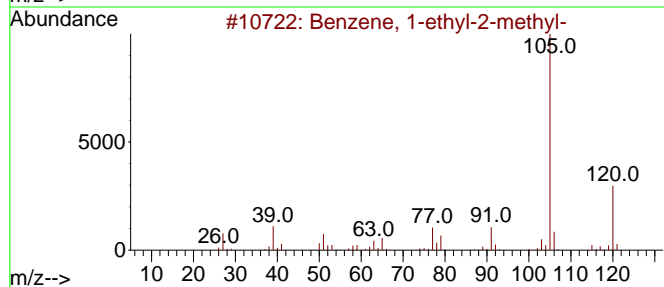
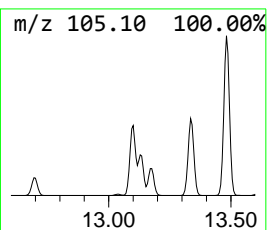
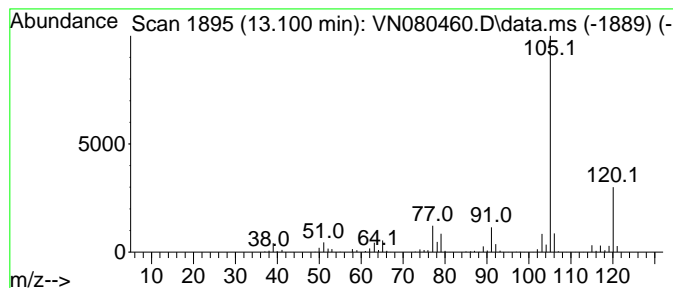
Quant Method : Z:\voasrv\HPCHEM1\MSVOA\_N\methods\82N121223W.M  
 Quant Title : SW846 8260

TIC Library : C:\Database\NIST20.L  
 TIC Integration Parameters: LSCINT.P

\*\*\*\*\*  
 Peak Number 2 Benzene, 1-ethyl-2-methyl- Concentration Rank 2

R.T.	EstConc	Area	Relative to ISTD	R.T.
13.100	71.20 ug/l	1745820	1,4-Dichlorobenzene-d4	13.794

Hit#	of	5	Tentative ID	MW	MolForm	CAS#	Qual
1			Benzene, 1-ethyl-2-methyl-	120	C9H12	000611-14-3	95
2			Benzene, 1-ethyl-3-methyl-	120	C9H12	000620-14-4	95
3			Benzene, 1-ethyl-4-methyl-	120	C9H12	000622-96-8	94
4			Mesitylene	120	C9H12	000108-67-8	91
5			Benzene, 1,2,3-trimethyl-	120	C9H12	000526-73-8	91



Data Path : Z:\voasrv\HPCHEM1\MSVOA\_N\Data\VN121323\  
 Data File : VN080460.D  
 Acq On : 13 Dec 2023 14:30  
 Operator : JC\MD  
 Sample : 05688-04  
 Misc : 5.0mL/MSVOA\_N/WATER  
 ALS Vial : 12 Sample Multiplier: 1

Instrument :  
 MSVOA\_N  
 ClientSampleId :  
 MW-3

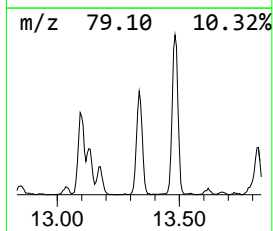
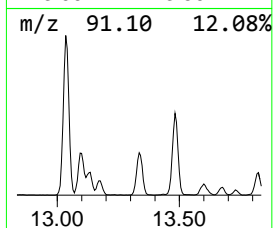
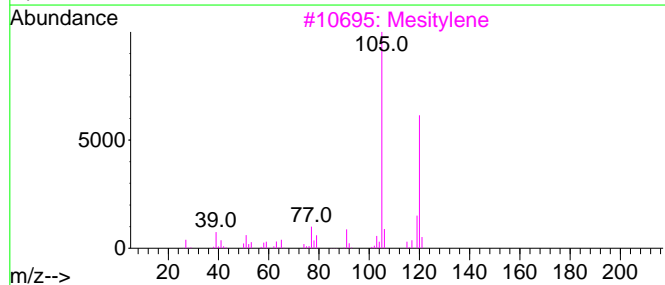
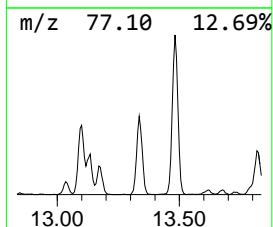
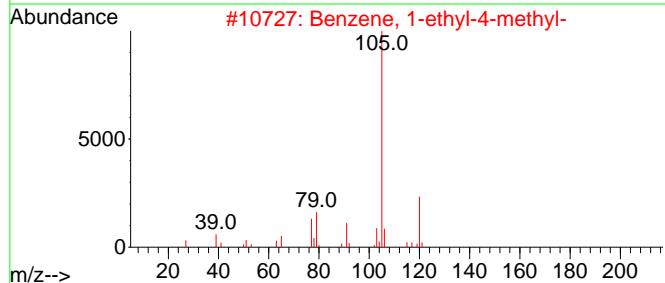
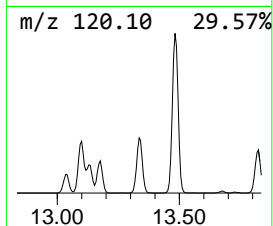
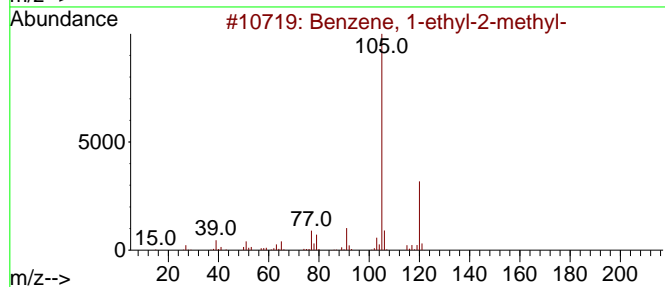
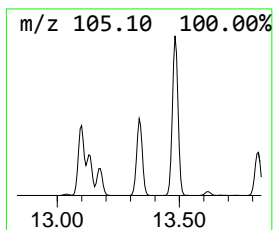
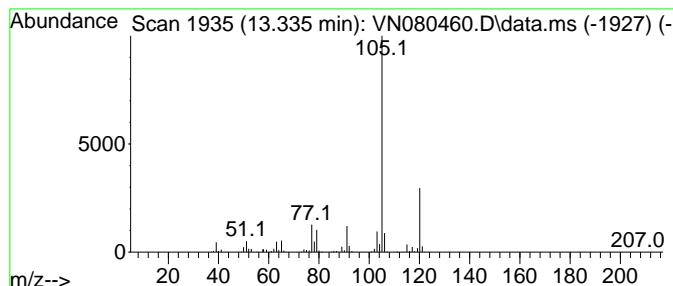
Quant Method : Z:\voasrv\HPCHEM1\MSVOA\_N\methods\82N121223W.M  
 Quant Title : SW846 8260

TIC Library : C:\Database\NIST20.L  
 TIC Integration Parameters: LSCINT.P

\*\*\*\*\*  
 Peak Number 3 Benzene, 1-ethyl-4-methyl- Concentration Rank 1

R.T.	EstConc	Area	Relative to ISTD	R.T.
13.335	74.28 ug/l	1821210	1,4-Dichlorobenzene-d4	13.794

Hit#	of	5	Tentative ID	MW	MolForm	CAS#	Qual
1			Benzene, 1-ethyl-2-methyl-	120	C9H12	000611-14-3	94
2			Benzene, 1-ethyl-4-methyl-	120	C9H12	000622-96-8	93
3			Mesitylene	120	C9H12	000108-67-8	91
4			Benzene, 1,2,3-trimethyl-	120	C9H12	000526-73-8	91
5			Benzene, 1-ethyl-3-methyl-	120	C9H12	000620-14-4	91



Data Path : Z:\voasrv\HPCHEM1\MSVOA\_N\Data\VN121323\  
 Data File : VN080460.D  
 Acq On : 13 Dec 2023 14:30  
 Operator : JC\MD  
 Sample : 05688-04  
 Misc : 5.0mL/MSVOA\_N/WATER  
 ALS Vial : 12 Sample Multiplier: 1

Instrument :  
 MSVOA\_N  
 ClientSampleId :  
 MW-3

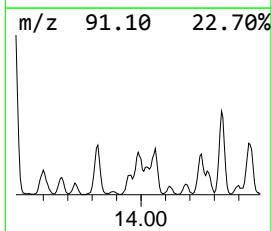
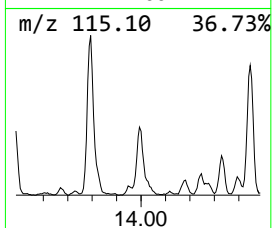
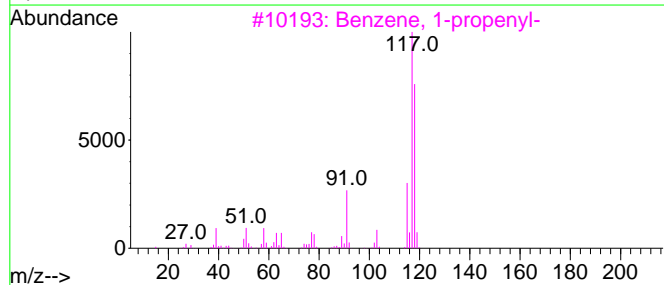
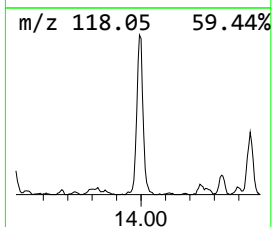
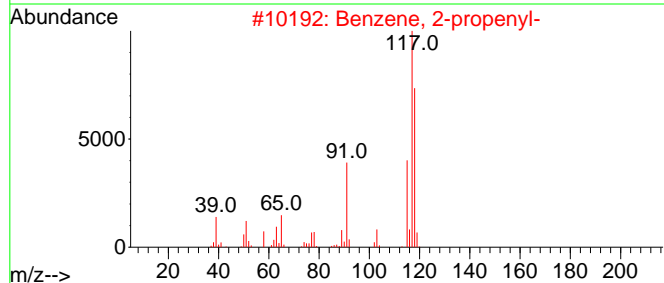
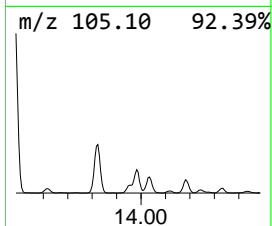
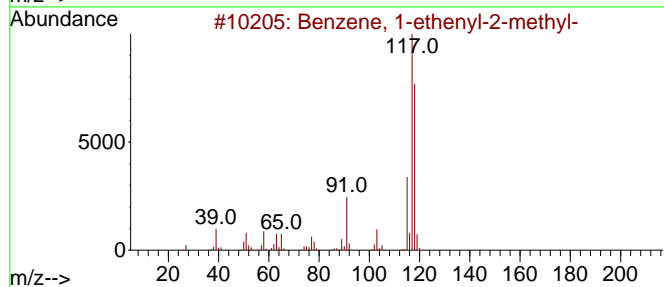
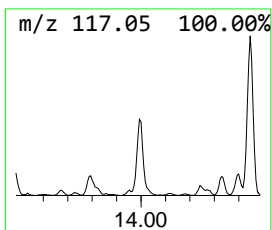
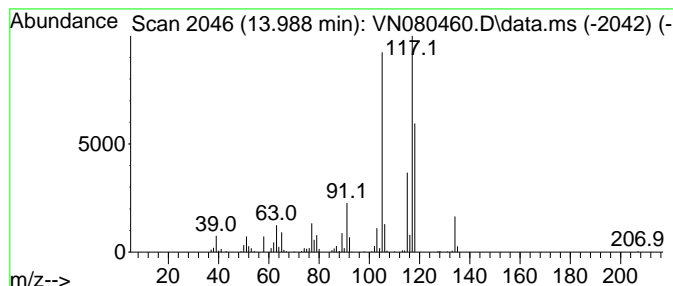
Quant Method : Z:\voasrv\HPCHEM1\MSVOA\_N\methods\82N121223W.M  
 Quant Title : SW846 8260

TIC Library : C:\Database\NIST20.L  
 TIC Integration Parameters: LSCINT.P

\*\*\*\*\*  
 Peak Number 4 Benzene, 1-ethenyl-2-methyl- Concentration Rank 8

R.T.	EstConc	Area	Relative to ISTD	R.T.
13.988	34.07 ug/l	835447	1,4-Dichlorobenzene-d4	13.794

Hit#	of	5	Tentative ID	MW	MolForm	CAS#	Qual
1			Benzene, 1-ethenyl-2-methyl-	118	C9H10	000611-15-4	70
2			Benzene, 2-propenyl-	118	C9H10	000300-57-2	70
3			Benzene, 1-propenyl-	118	C9H10	000637-50-3	70
4			Benzene, cyclopropyl-	118	C9H10	000873-49-4	70
5			Tetracyclo[3.3.1.0(2,8).0(4,6)]-...	118	C9H10	1000191-13-7	58





Data Path : Z:\voasrv\HPCHEM1\MSVOA\_N\Data\VN121323\  
 Data File : VN080460.D  
 Acq On : 13 Dec 2023 14:30  
 Operator : JC\MD  
 Sample : 05688-04  
 Misc : 5.0mL/MSVOA\_N/WATER  
 ALS Vial : 12 Sample Multiplier: 1

Instrument :  
 MSVOA\_N  
 ClientSampleId :  
 MW-3

Quant Method : Z:\voasrv\HPCHEM1\MSVOA\_N\methods\82N121223W.M  
 Quant Title : SW846 8260

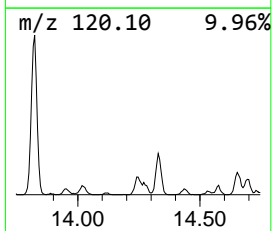
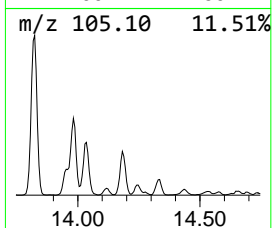
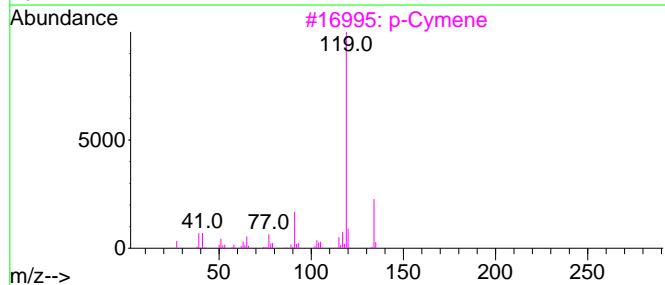
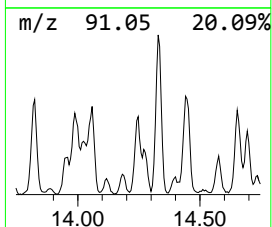
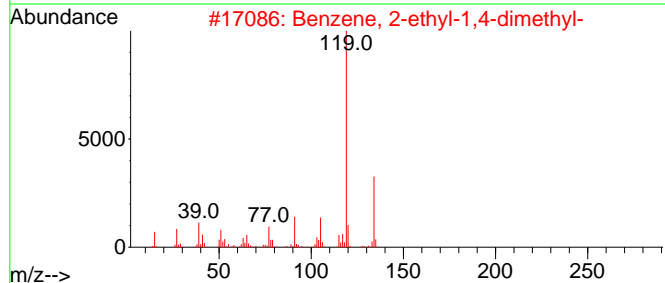
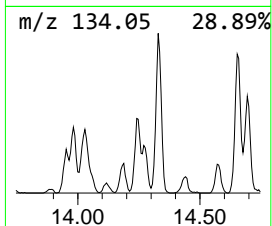
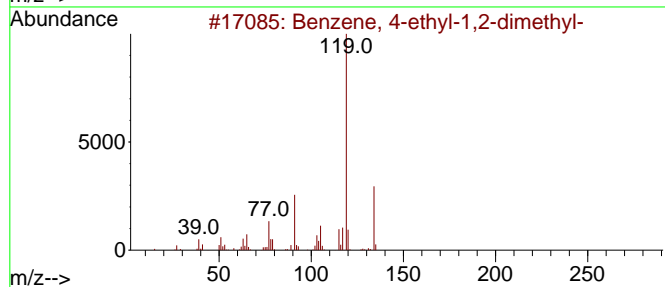
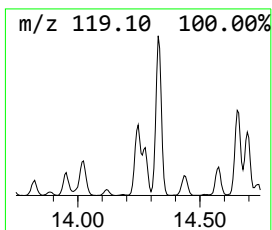
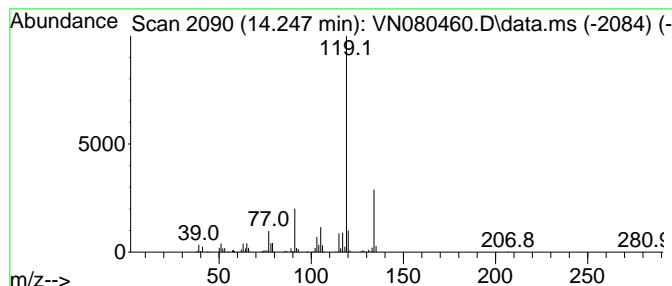
TIC Library : C:\Database\NIST20.L  
 TIC Integration Parameters: LSCINT.P

\*\*\*\*\*  
 Peak Number 5 Benzene, 4-ethyl-1,2-dimethyl- Concentration Rank 10

R.T.	EstConc	Area	Relative to ISTD	R.T.
14.247	22.54 ug/l	552725	1,4-Dichlorobenzene-d4	13.794

Hit#	of	Tentative ID	MW	MolForm	CAS#	Qual
1	5	Benzene, 4-ethyl-1,2-dimethyl-	134	C10H14	000934-80-5	97
2		Benzene, 2-ethyl-1,4-dimethyl-	134	C10H14	001758-88-9	95
3		p-Cymene	134	C10H14	000099-87-6	95
4		o-Cymene	134	C10H14	000527-84-4	95
5		Benzene, 1-ethyl-2,3-dimethyl-	134	C10H14	000933-98-2	95



Data Path : Z:\voasrv\HPCHEM1\MSVOA\_N\Data\VN121323\  
 Data File : VN080460.D  
 Acq On : 13 Dec 2023 14:30  
 Operator : JC\MD  
 Sample : 05688-04  
 Misc : 5.0mL/MSVOA\_N/WATER  
 ALS Vial : 12 Sample Multiplier: 1

Instrument :  
 MSVOA\_N  
 ClientSampleId :  
 MW-3

Quant Method : Z:\voasrv\HPCHEM1\MSVOA\_N\methods\82N121223W.M  
 Quant Title : SW846 8260

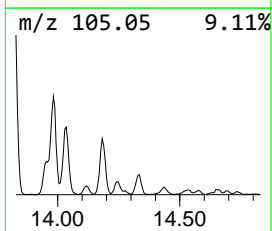
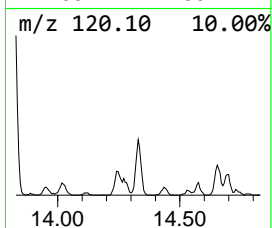
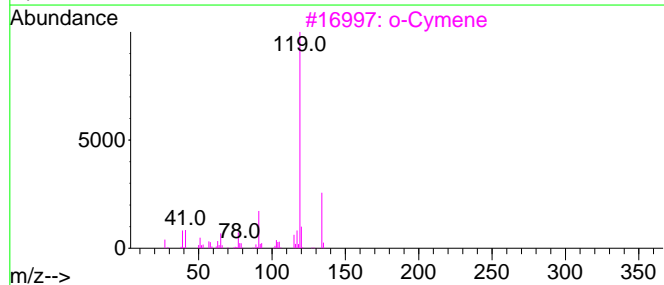
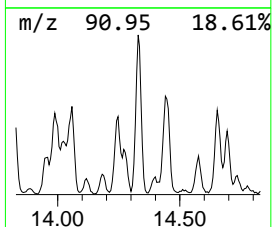
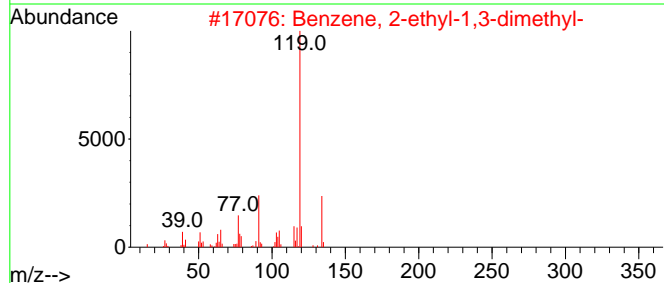
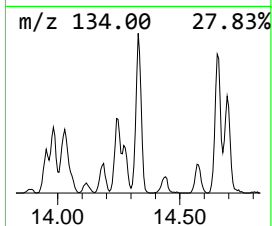
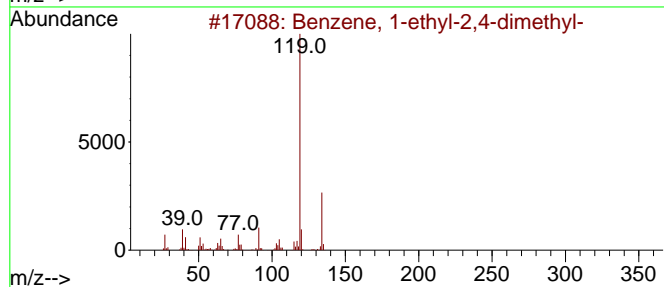
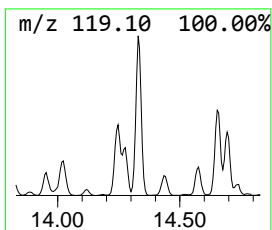
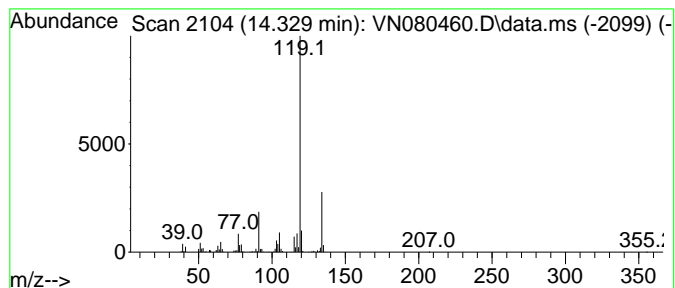
TIC Library : C:\Database\NIST20.L  
 TIC Integration Parameters: LSCINT.P

\*\*\*\*\*  
 Peak Number 6 Benzene, 1-ethyl-2,4-dimethyl- Concentration Rank 5

R.T.	EstConc	Area	Relative to ISTD	R.T.
14.329	42.35 ug/l	1038250	1,4-Dichlorobenzene-d4	13.794

Hit#	of	Tentative ID	MW	MolForm	CAS#	Qual
1	5	Benzene, 1-ethyl-2,4-dimethyl-	134	C10H14	000874-41-9	95
2		Benzene, 2-ethyl-1,3-dimethyl-	134	C10H14	002870-04-4	95
3		o-Cymene	134	C10H14	000527-84-4	95
4		Benzene, 1-ethyl-2,3-dimethyl-	134	C10H14	000933-98-2	95
5		Benzene, 2-ethyl-1,4-dimethyl-	134	C10H14	001758-88-9	94



Data Path : Z:\voasrv\HPCHEM1\MSVOA\_N\Data\VN121323\  
 Data File : VN080460.D  
 Acq On : 13 Dec 2023 14:30  
 Operator : JC\MD  
 Sample : 05688-04  
 Misc : 5.0mL/MSVOA\_N/WATER  
 ALS Vial : 12 Sample Multiplier: 1

Instrument :  
 MSVOA\_N  
 ClientSampleId :  
 MW-3

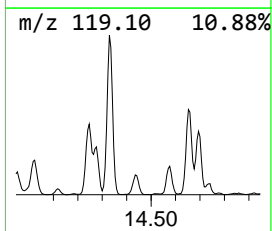
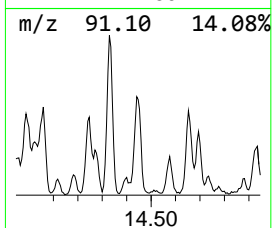
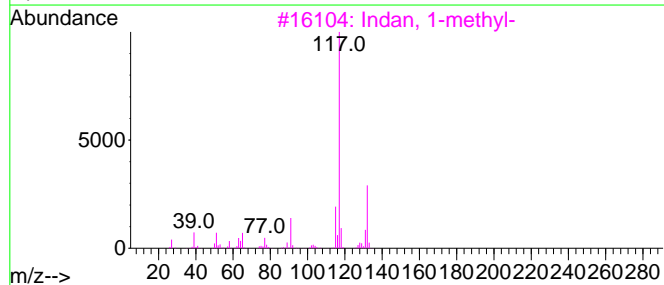
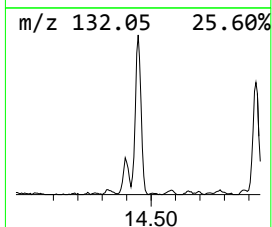
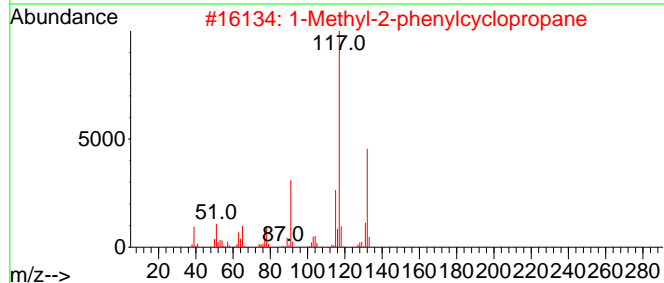
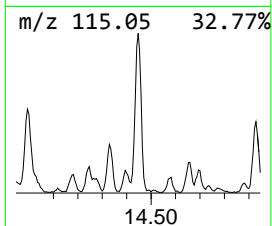
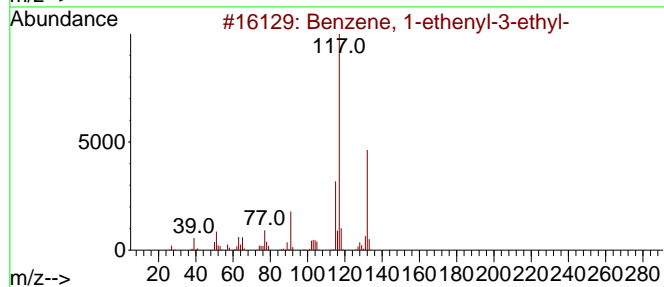
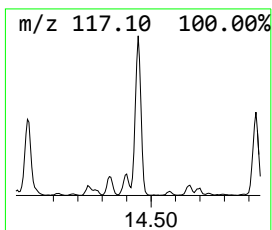
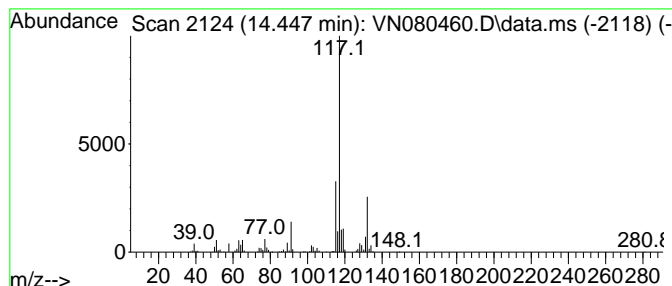
Quant Method : Z:\voasrv\HPCHEM1\MSVOA\_N\methods\82N121223W.M  
 Quant Title : SW846 8260

TIC Library : C:\Database\NIST20.L  
 TIC Integration Parameters: LSCINT.P

\*\*\*\*\*  
 Peak Number 7 Benzene, 1-ethenyl-3-ethyl- Concentration Rank 7

R.T.	EstConc	Area	Relative to ISTD	R.T.
14.447	40.29 ug/l	987759	1,4-Dichlorobenzene-d4	13.794

Hit#	of	5	Tentative ID	MW	MolForm	CAS#	Qual
1			Benzene, 1-ethenyl-3-ethyl-	132	C10H12	007525-62-4	86
2			1-Methyl-2-phenylcyclopropane	132	C10H12	003145-76-4	83
3			Indan, 1-methyl-	132	C10H12	000767-58-8	83
4			Benzene, (2-methyl-1-propenyl)-	132	C10H12	000768-49-0	83
5			Benzene, 1-ethenyl-4-ethyl-	132	C10H12	003454-07-7	80



Data Path : Z:\voasrv\HPCHEM1\MSVOA\_N\Data\VN121323\  
 Data File : VN080460.D  
 Acq On : 13 Dec 2023 14:30  
 Operator : JC\MD  
 Sample : 05688-04  
 Misc : 5.0mL/MSVOA\_N/WATER  
 ALS Vial : 12 Sample Multiplier: 1

Instrument :  
 MSVOA\_N  
 ClientSampleId :  
 MW-3

Quant Method : Z:\voasrv\HPCHEM1\MSVOA\_N\methods\82N121223W.M  
 Quant Title : SW846 8260

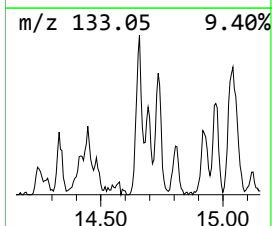
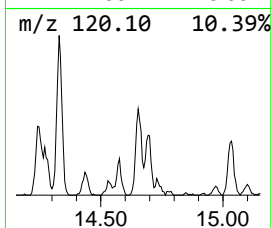
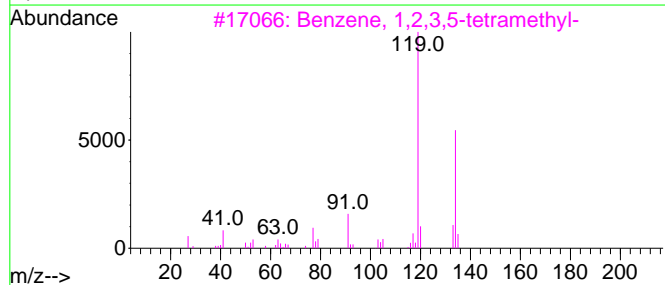
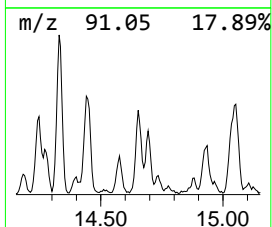
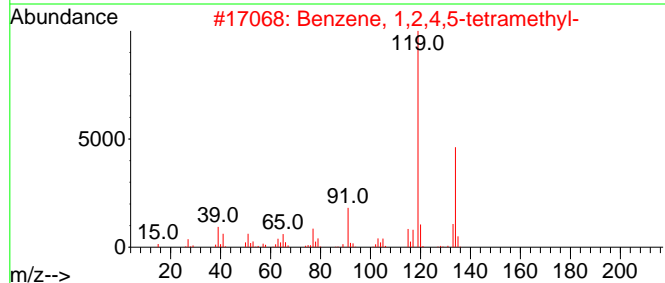
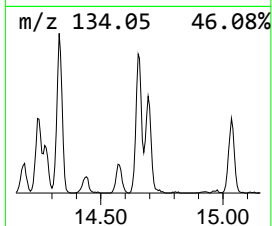
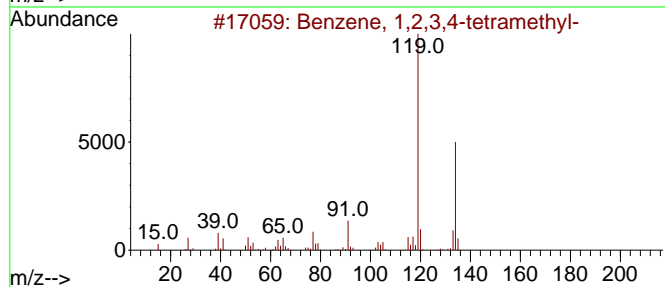
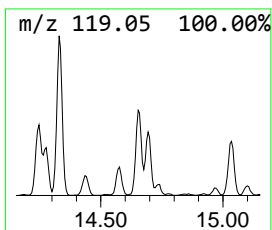
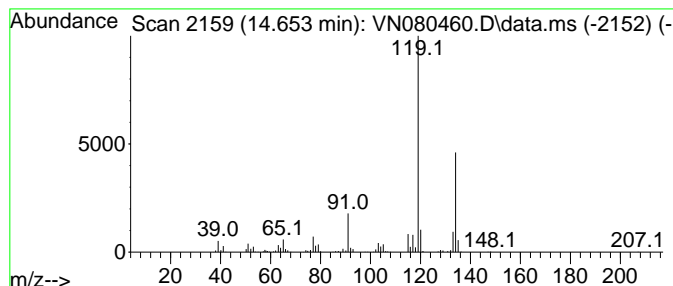
TIC Library : C:\Database\NIST20.L  
 TIC Integration Parameters: LSCINT.P

\*\*\*\*\*  
 Peak Number 8 Benzene, 1,2,3,4-tetramethyl- Concentration Rank 9

R.T.	EstConc	Area	Relative to ISTD	R.T.
14.653	27.10 ug/l	664491	1,4-Dichlorobenzene-d4	13.794

Hit#	of	5	Tentative ID	MW	MolForm	CAS#	Qual
1			Benzene, 1,2,3,4-tetramethyl-	134	C10H14	000488-23-3	97
2			Benzene, 1,2,4,5-tetramethyl-	134	C10H14	000095-93-2	96
3			Benzene, 1,2,3,5-tetramethyl-	134	C10H14	000527-53-7	96
4			o-Cymene	134	C10H14	000527-84-4	94
5			Benzene, 2-ethyl-1,3-dimethyl-	134	C10H14	002870-04-4	94



Data Path : Z:\voasrv\HPCHEM1\MSVOA\_N\Data\VN121323\  
 Data File : VN080460.D  
 Acq On : 13 Dec 2023 14:30  
 Operator : JC\MD  
 Sample : 05688-04  
 Misc : 5.0mL/MSVOA\_N/WATER  
 ALS Vial : 12 Sample Multiplier: 1

Instrument :  
 MSVOA\_N  
 ClientSampleId :  
 MW-3

Quant Method : Z:\voasrv\HPCHEM1\MSVOA\_N\methods\82N121223W.M  
 Quant Title : SW846 8260

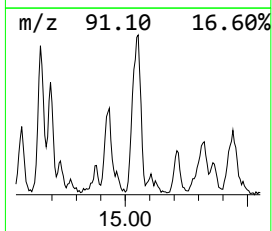
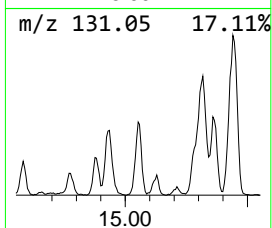
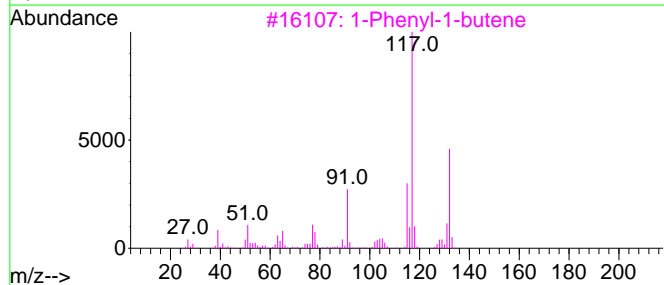
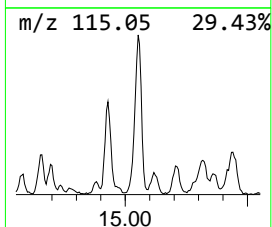
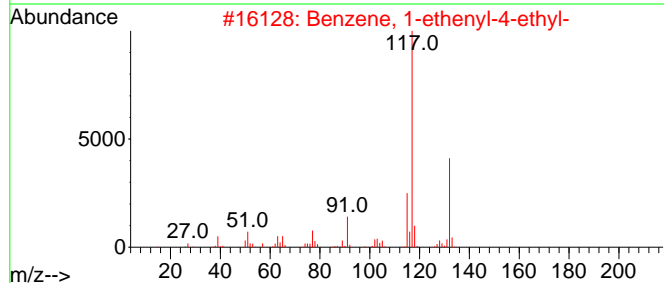
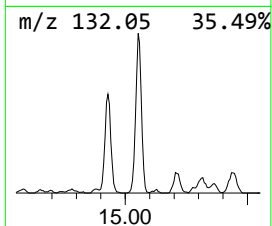
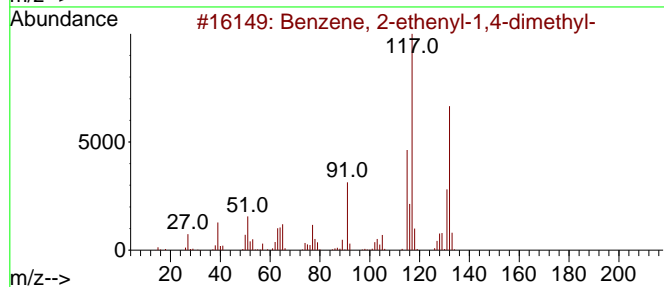
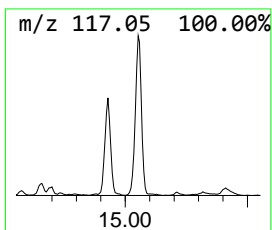
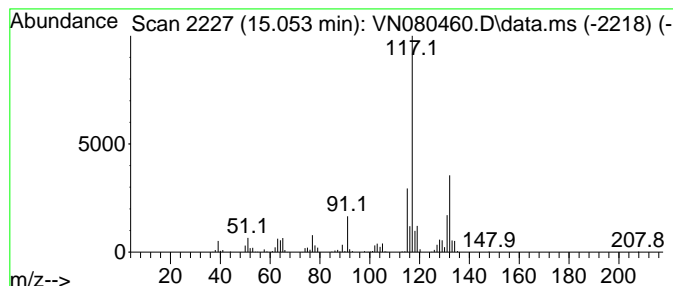
TIC Library : C:\Database\NIST20.L  
 TIC Integration Parameters: LSCINT.P

\*\*\*\*\*  
 Peak Number 9 Benzene, 2-ethenyl-1,4-dime... Concentration Rank 3

R.T.	EstConc	Area	Relative to ISTD	R.T.
15.053	51.67 ug/l	1266800	1,4-Dichlorobenzene-d4	13.794

Hit#	of 5	Tentative ID	MW	MolForm	CAS#	Qual
1		Benzene, 2-ethenyl-1,4-dimethyl-	132	C10H12	002039-89-6	96
2		Benzene, 1-ethenyl-4-ethyl-	132	C10H12	003454-07-7	94
3		1-Phenyl-1-butene	132	C10H12	000824-90-8	90
4		1H-Indene, 2,3-dihydro-4-methyl-	132	C10H12	000824-22-6	87
5		1-Methyl-2-phenylcyclopropane	132	C10H12	003145-76-4	87



Data Path : Z:\voasrv\HPCHEM1\MSVOA\_N\Data\VN121323\  
 Data File : VN080460.D  
 Acq On : 13 Dec 2023 14:30  
 Operator : JC\MD  
 Sample : 05688-04  
 Misc : 5.0mL/MSVOA\_N/WATER  
 ALS Vial : 12 Sample Multiplier: 1

Instrument :  
 MSVOA\_N  
 ClientSampleId :  
 MW-3

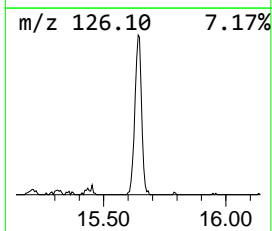
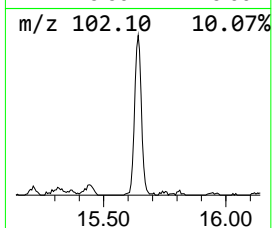
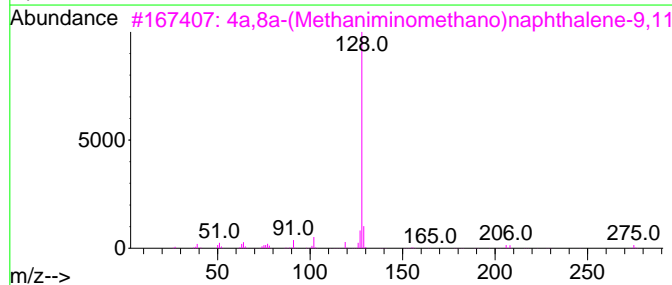
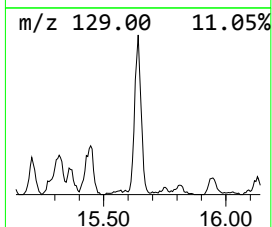
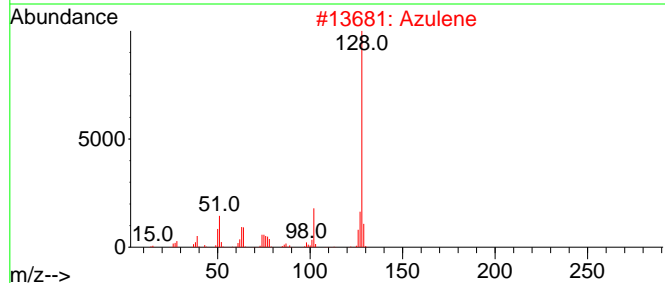
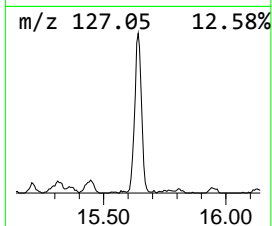
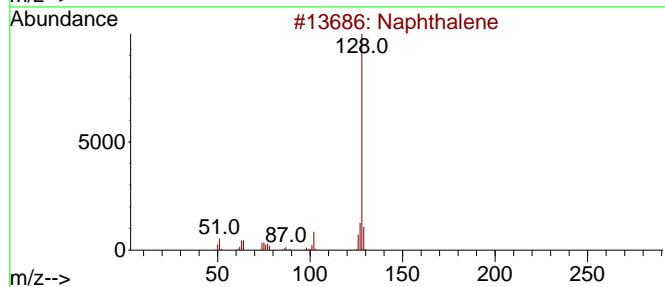
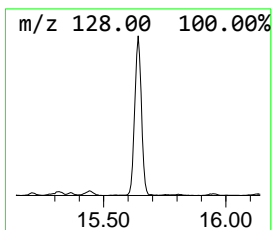
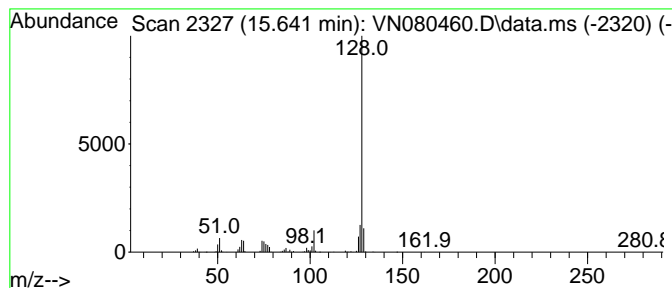
Quant Method : Z:\voasrv\HPCHEM1\MSVOA\_N\methods\82N121223W.M  
 Quant Title : SW846 8260

TIC Library : C:\Database\NIST20.L  
 TIC Integration Parameters: LSCINT.P

\*\*\*\*\*  
 Peak Number 10 Azulene Concentration Rank 6

R.T.	EstConc	Area	Relative to ISTD	R.T.
15.641	40.46 ug/l	991969	1,4-Dichlorobenzene-d4	13.794

Hit#	of 5	Tentative ID	MW	MolForm	CAS#	Qual
1		Naphthalene	128	C10H8	000091-20-3	95
2		Azulene	128	C10H8	000275-51-4	91
3		4a,8a-(Methaniminomethano)naphth...	275	C18H13NO2	069915-10-2	74
4		1H-Indene, 1-methylene-	128	C10H8	002471-84-3	52
5		m-Fluorothiophenol	128	C6H5FS	002557-77-9	50



Data Path : Z:\voasrv\HPCHEM1\MSVOA\_N\Data\VN121323\  
 Data File : VN080460.D  
 Acq On : 13 Dec 2023 14:30  
 Operator : JC\MD  
 Sample : 05688-04  
 Misc : 5.0mL/MSVOA\_N/WATER  
 ALS Vial : 12 Sample Multiplier: 1

Instrument :  
 MSVOA\_N  
 ClientSampleId :  
 MW-3

Quant Method : Z:\voasrv\HPCHEM1\MSVOA\_N\methods\82N121223W.M  
 Quant Title : SW846 8260

TIC Library : C:\Database\NIST20.L  
 TIC Integration Parameters: LSCINT.P

TIC Top Hit name	RT	EstConc	Units	Response	--Internal Standard--			
					#	RT	Resp	Conc
Cyclopentane, m...	7.330	44.6	ug/l	1721910	1	8.230	1928630	50.0
Benzene, 1-ethy...	13.100	71.2	ug/l	1745820	4	13.794	1225940	50.0
Benzene, 1-ethy...	13.335	74.3	ug/l	1821210	4	13.794	1225940	50.0
Benzene, 1-ethe...	13.988	34.1	ug/l	835447	4	13.794	1225940	50.0
Benzene, 4-ethy...	14.247	22.5	ug/l	552725	4	13.794	1225940	50.0
Benzene, 1-ethy...	14.329	42.4	ug/l	1038250	4	13.794	1225940	50.0
Benzene, 1-ethe...	14.447	40.3	ug/l	987759	4	13.794	1225940	50.0
Benzene, 1,2,3,...	14.653	27.1	ug/l	664491	4	13.794	1225940	50.0
Benzene, 2-ethe...	15.053	51.7	ug/l	1266800	4	13.794	1225940	50.0
Azulene	15.641	40.5	ug/l	991969	4	13.794	1225940	50.0