

Data Path : Z:\voasrv\HPCHEM1\MSVOA\_N\Data\VN121421\  
 Data File : VN070070.D  
 Acq On : 14 Dec 2021 14:44  
 Operator : JC/MD  
 Sample : M5051-02  
 Misc : 5.01g/10mL/100uL/5.00mL/MSVOA\_N/MEOH  
 ALS Vial : 10 Sample Multiplier: 1

Instrument :  
 MSVOA\_N  
 ClientSampleId :  
 P-2

Manual Integrations  
 APPROVED

Reviewed By :John Carlone 12/15/2021  
 Supervised By :Mahesh Dadoda 12/21/2021

Quant Time: Dec 14 17:12:57 2021  
 Quant Method : Z:\voasrv\HPCHEM1\MSVOA\_N\methods\82N120221W.M  
 Quant Title : SW846 8260  
 QLast Update : Fri Dec 03 08:46:47 2021  
 Response via : Initial Calibration

Compound	R.T.	QIon	Response	Conc	Units	Dev(Min)
-----						
Internal Standards						
1) Pentafluorobenzene	8.080	168	1148806	50.000	ug/l	0.00
34) 1,4-Difluorobenzene	8.963	114	2227448	50.000	ug/l	0.00
63) Chlorobenzene-d5	11.747	117	2560395	50.000	ug/l	0.00
72) 1,4-Dichlorobenzene-d4	13.675	152	1244113	50.000	ug/l	0.00
System Monitoring Compounds						
33) 1,2-Dichloroethane-d4	8.434	65	942617	53.142	ug/l	0.00
Spiked Amount	50.000	Range	61 - 141	Recovery	=	106.280%
35) Dibromofluoromethane	8.016	113	620168	44.449	ug/l	0.00
Spiked Amount	50.000	Range	69 - 133	Recovery	=	88.900%
50) Toluene-d8	10.440	98	3014952	53.816	ug/l	0.00
Spiked Amount	50.000	Range	65 - 126	Recovery	=	107.640%
62) 4-Bromofluorobenzene	12.733	95	1332826	65.670	ug/l	0.00
Spiked Amount	50.000	Range	58 - 135	Recovery	=	131.340%
Target Compounds						
						Qvalue
11) Tert butyl alcohol	5.307	59	50202m	14.973	ug/l	
16) Acetone	4.304	43	14629	1.371	ug/l	96
25) 2-Butanone	7.348	43	145821	10.058	ug/l #	89
95) Naphthalene	15.507	128	283830	8.281	ug/l	100
-----						

(#) = qualifier out of range (m) = manual integration (+) = signals summed

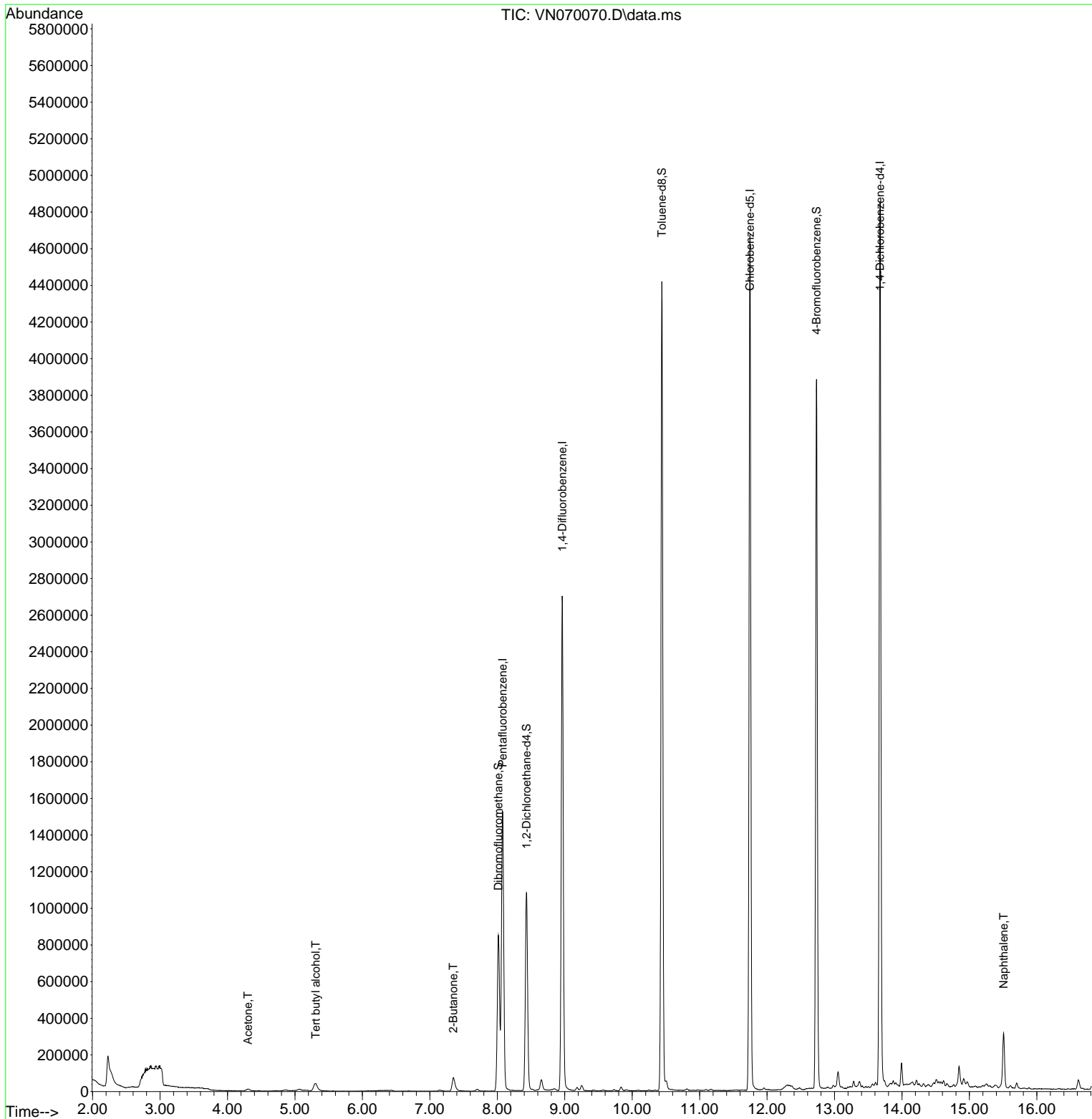
Data Path : Z:\voasrv\HPCHEM1\MSVOA\_N\Data\VN121421\  
 Data File : VN070070.D  
 Acq On : 14 Dec 2021 14:44  
 Operator : JC/MD  
 Sample : M5051-02  
 Misc : 5.01g/10mL/100uL/5.00mL/MSVOA\_N/MEOH  
 ALS Vial : 10 Sample Multiplier: 1

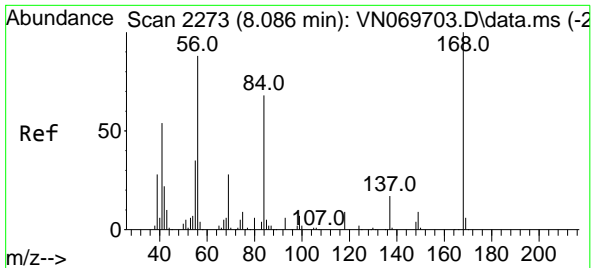
Instrument :  
 MSVOA\_N  
 ClientSampleId :  
 P-2

Manual Integrations  
 APPROVED

Reviewed By :John Carlone 12/15/2021  
 Supervised By :Mahesh Dadoda 12/21/2021

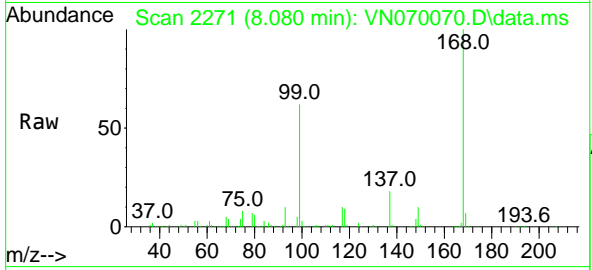
Quant Time: Dec 14 17:12:57 2021  
 Quant Method : Z:\voasrv\HPCHEM1\MSVOA\_N\methods\82N120221W.M  
 Quant Title : SW846 8260  
 QLast Update : Fri Dec 03 08:46:47 2021  
 Response via : Initial Calibration





#1  
 Pentafluorobenzene  
 Concen: 50.000 ug/l  
 RT: 8.080 min Scan# 21  
 Delta R.T. -0.006 min  
 Lab File: VN070070.D  
 Acq: 14 Dec 2021 14:44

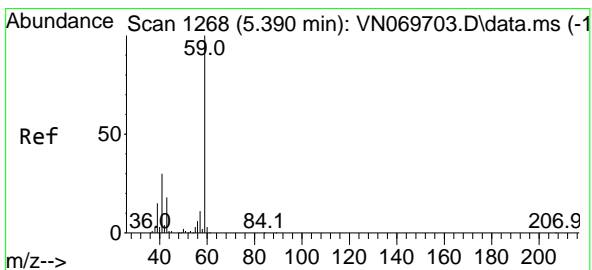
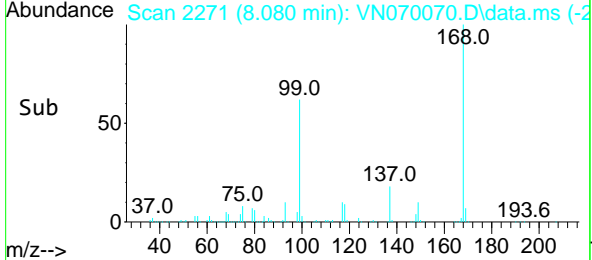
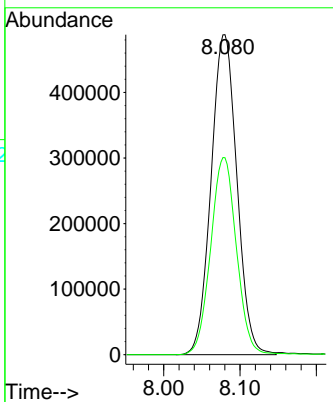
Instrument : MSVOA\_N  
 ClientSampleId : P-2



Tgt Ion:168 Resp: 1148800  
 Ion Ratio Lower Upper  
 168 100  
 99 61.6 41.3 61.9

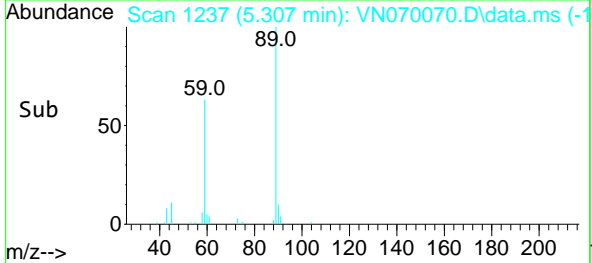
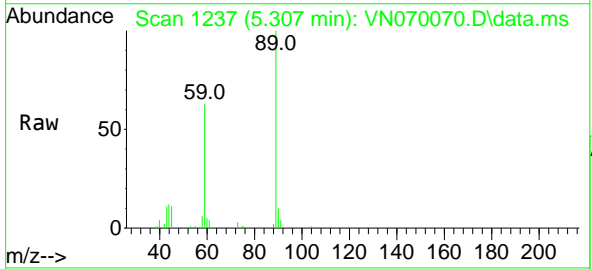
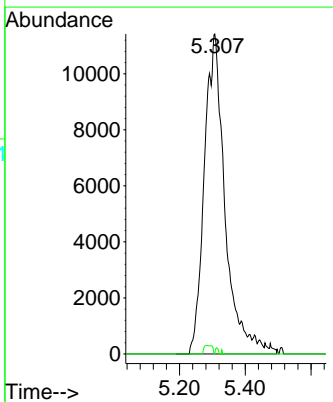
Manual Integrations  
**APPROVED**

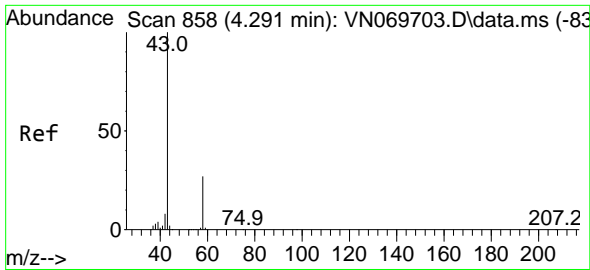
Reviewed By :John Carlone 12/15/2021  
 Supervised By :Mahesh Dadoda 12/21/2021



#11  
 Tert butyl alcohol  
 Concen: 14.973 ug/l m  
 RT: 5.307 min Scan# 1237  
 Delta R.T. -0.083 min  
 Lab File: VN070070.D  
 Acq: 14 Dec 2021 14:44

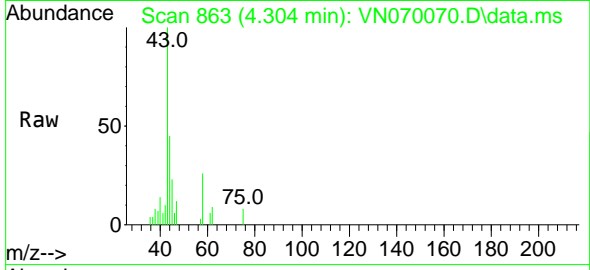
Tgt Ion: 59 Resp: 50202  
 Ion Ratio Lower Upper  
 59 100  
 57 0.7 8.7 13.1#





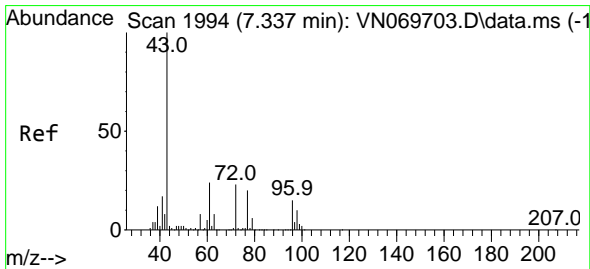
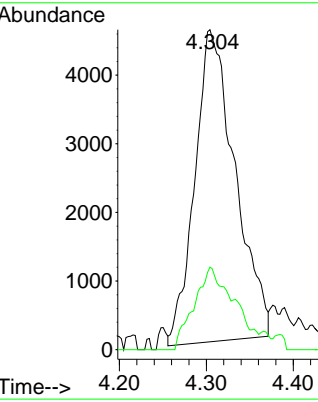
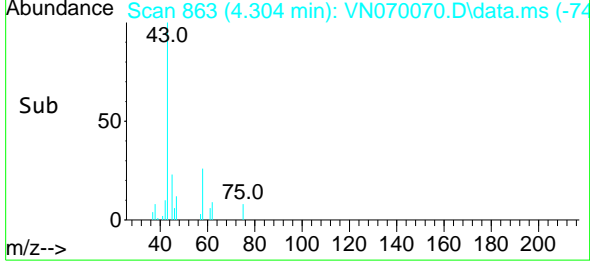
#16  
 Acetone  
 Concen: 1.371 ug/l  
 RT: 4.304 min Scan# 80  
 Delta R.T. 0.014 min  
 Lab File: VN070070.D  
 Acq: 14 Dec 2021 14:44

Instrument : MSVOA\_N  
 ClientSampleId : P-2

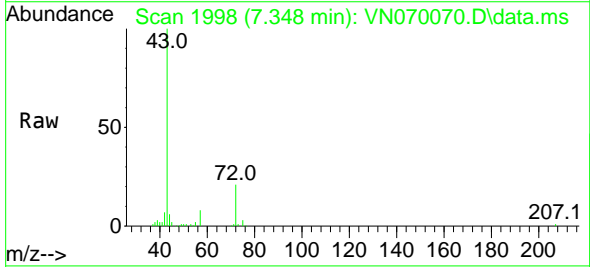


Tgt Ion: 43 Resp: 14629  
 Ion Ratio Lower Upper  
 43 100  
 58 27.0 23.1 34.7

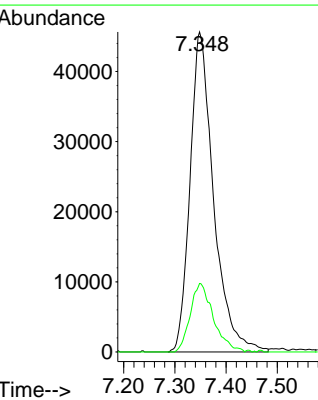
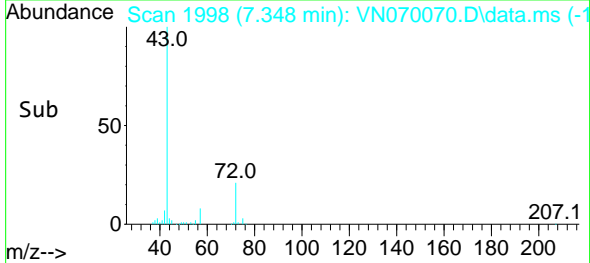
Manual Integrations  
**APPROVED**  
 Reviewed By :John Carlone 12/15/2021  
 Supervised By :Mahesh Dadoda 12/21/2021

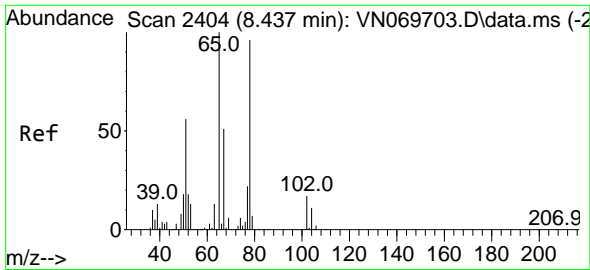


#25  
 2-Butanone  
 Concen: 10.058 ug/l  
 RT: 7.348 min Scan# 1998  
 Delta R.T. 0.011 min  
 Lab File: VN070070.D  
 Acq: 14 Dec 2021 14:44



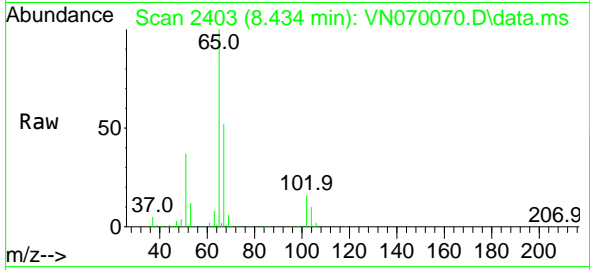
Tgt Ion: 43 Resp: 145821  
 Ion Ratio Lower Upper  
 43 100  
 72 21.4 21.7 32.5#





#33  
 1,2-Dichloroethane-d4  
 Concen: 53.142 ug/l  
 RT: 8.434 min Scan# 2404  
 Delta R.T. -0.003 min  
 Lab File: VN070070.D  
 Acq: 14 Dec 2021 14:44

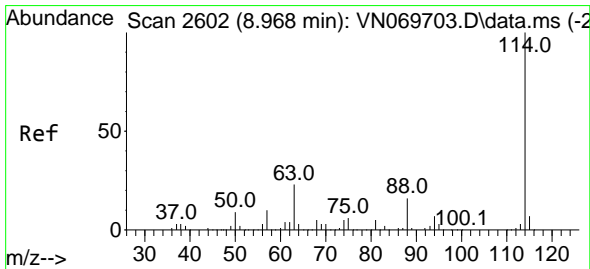
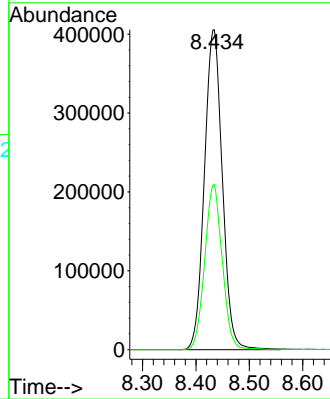
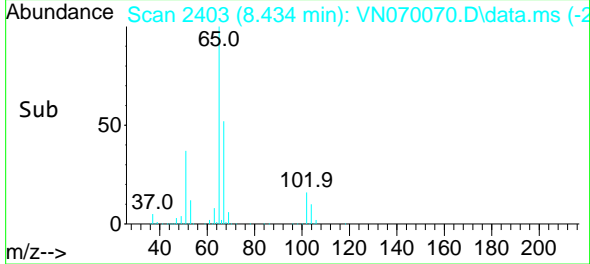
Instrument : MSVOA\_N  
 ClientSampleId : P-2



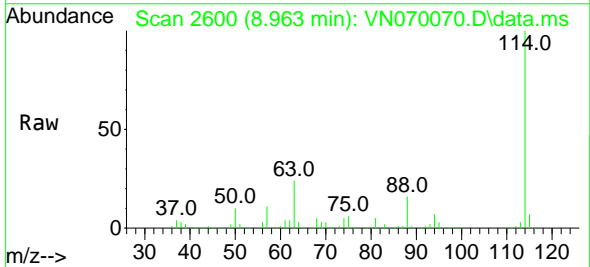
Tgt Ion: 65 Resp: 94261  
 Ion Ratio Lower Upper  
 65 100  
 67 50.3 0.0 103.0

Manual Integrations  
 APPROVED

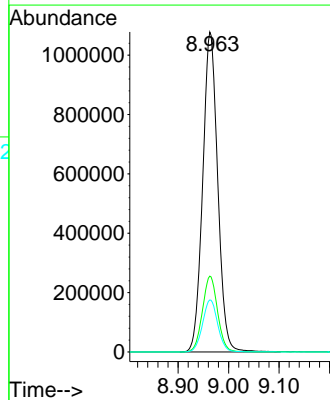
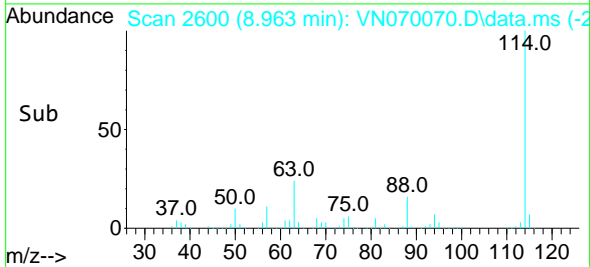
Reviewed By :John Carlone 12/15/2021  
 Supervised By :Mahesh Dadoda 12/21/2021

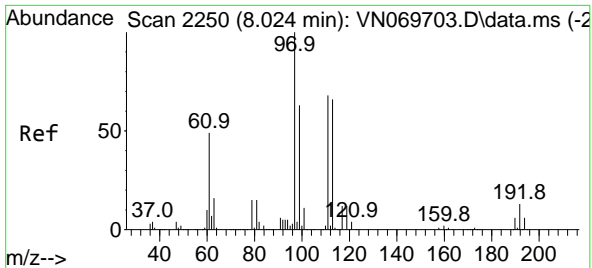


#34  
 1,4-Difluorobenzene  
 Concen: 50.000 ug/l  
 RT: 8.963 min Scan# 2600  
 Delta R.T. -0.005 min  
 Lab File: VN070070.D  
 Acq: 14 Dec 2021 14:44



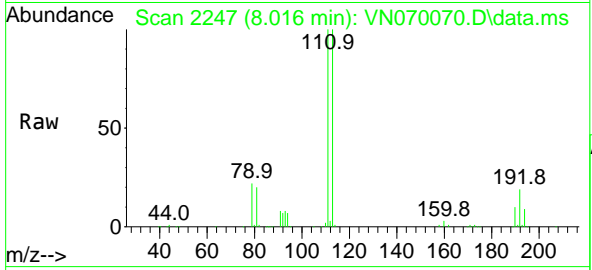
Tgt Ion:114 Resp: 2227448  
 Ion Ratio Lower Upper  
 114 100  
 63 23.7 0.0 37.8  
 88 16.3 0.0 27.4





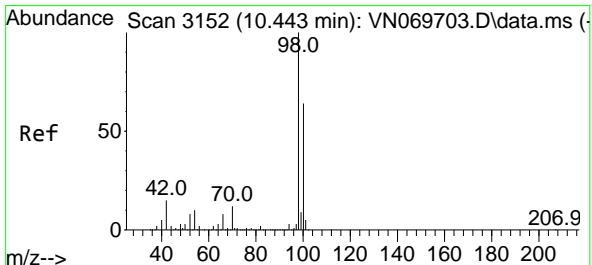
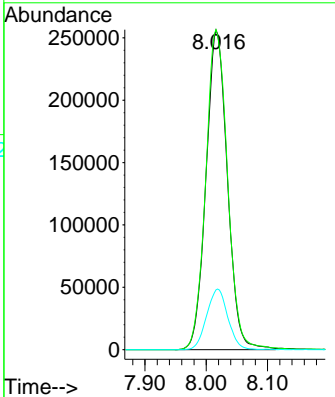
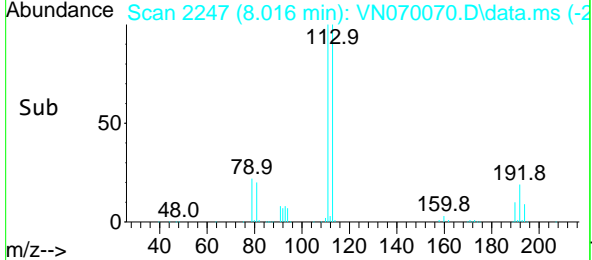
#35  
 Dibromofluoromethane  
 Concen: 44.449 ug/l  
 RT: 8.016 min Scan# 21  
 Delta R.T. -0.008 min  
 Lab File: VN070070.D  
 Acq: 14 Dec 2021 14:44

Instrument : MSVOA\_N  
 ClientSampleId : P-2

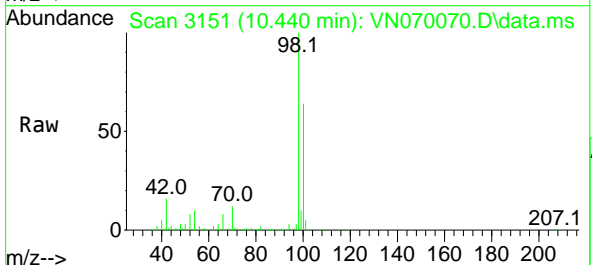


Tgt Ion: 113 Resp: 62016  
 Ion Ratio Lower Upper  
 113 100  
 111 102.7 82.2 123.2  
 192 18.8 16.9 25.3

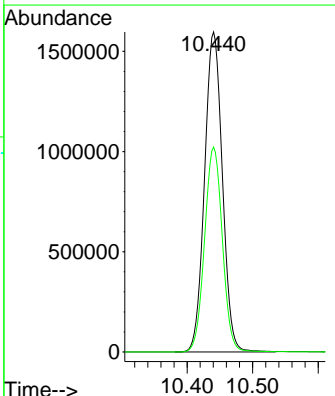
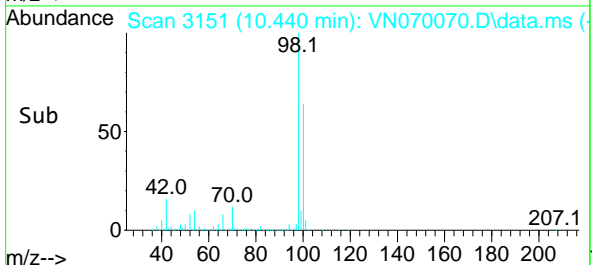
Manual Integrations  
**APPROVED**  
 Reviewed By :John Carlone 12/15/2021  
 Supervised By :Mahesh Dadoda 12/21/2021

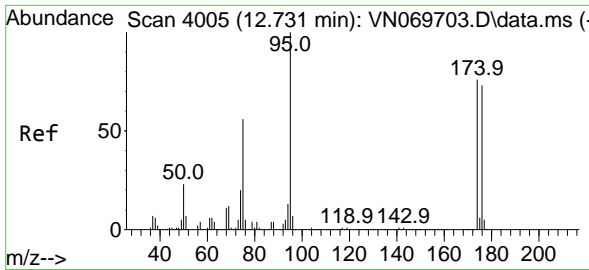


#50  
 Toluene-d8  
 Concen: 53.816 ug/l  
 RT: 10.440 min Scan# 3151  
 Delta R.T. -0.003 min  
 Lab File: VN070070.D  
 Acq: 14 Dec 2021 14:44



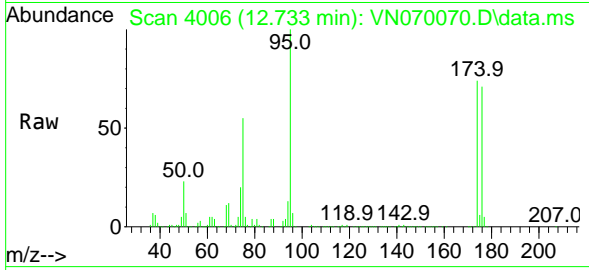
Tgt Ion: 98 Resp: 3014952  
 Ion Ratio Lower Upper  
 98 100  
 100 64.0 50.4 75.6





#62  
 4-Bromofluorobenzene  
 Concen: 65.670 ug/l  
 RT: 12.733 min Scan# 4005  
 Delta R.T. 0.002 min  
 Lab File: VN070070.D  
 Acq: 14 Dec 2021 14:44

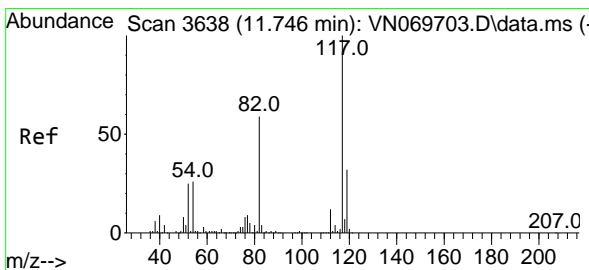
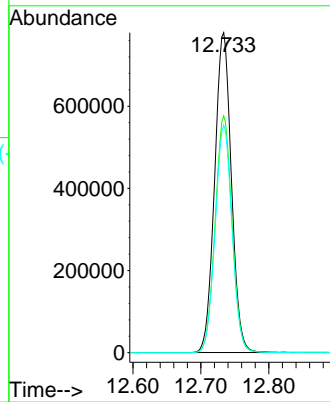
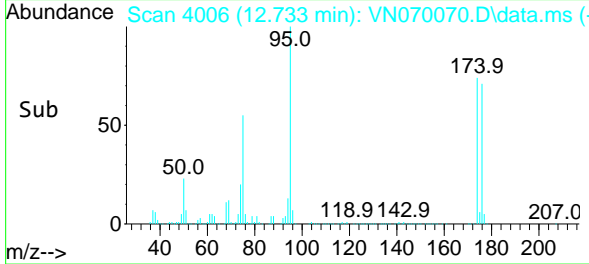
Instrument : MSVOA\_N  
 ClientSampleId : P-2



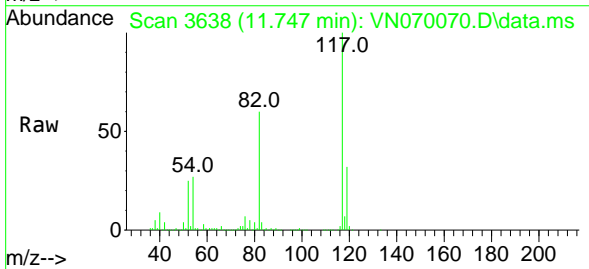
Tgt Ion: 95 Resp: 1332820  
 Ion Ratio Lower Upper  
 95 100  
 174 75.0 0.0 187.2  
 176 71.8 0.0 181.4

Manual Integrations  
 APPROVED

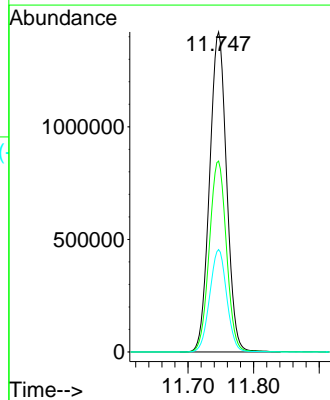
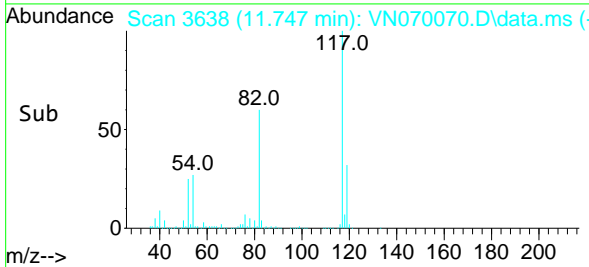
Reviewed By :John Carlone 12/15/2021  
 Supervised By :Mahesh Dadoda 12/21/2021

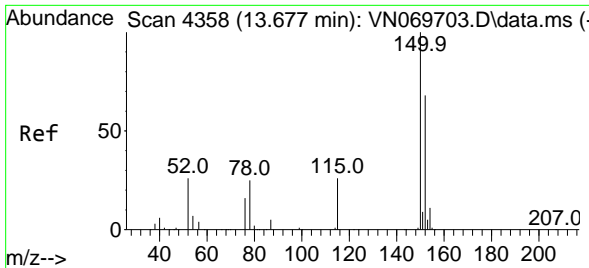


#63  
 Chlorobenzene-d5  
 Concen: 50.000 ug/l  
 RT: 11.747 min Scan# 3638  
 Delta R.T. 0.001 min  
 Lab File: VN070070.D  
 Acq: 14 Dec 2021 14:44



Tgt Ion:117 Resp: 2560395  
 Ion Ratio Lower Upper  
 117 100  
 82 59.7 42.4 63.6  
 119 32.0 25.4 38.2





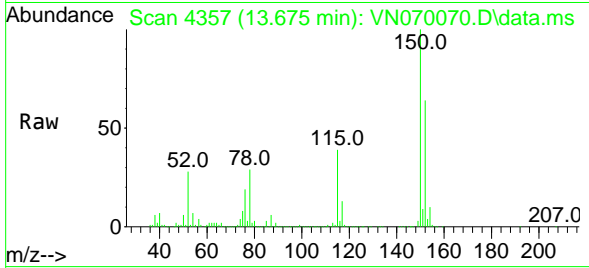
#72  
 1,4-Dichlorobenzene-d4  
 Concen: 50.000 ug/l  
 RT: 13.675 min Scan# 41  
 Delta R.T. -0.003 min  
 Lab File: VN070070.D  
 Acq: 14 Dec 2021 14:44

Instrument :

MSVOA\_N

ClientSampleId :

P-2

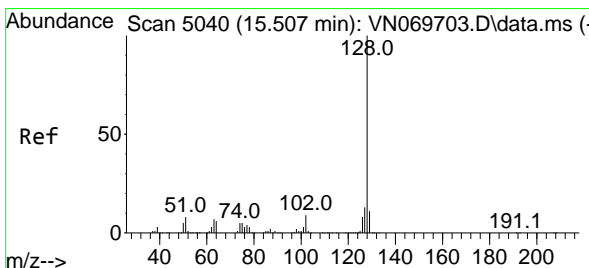
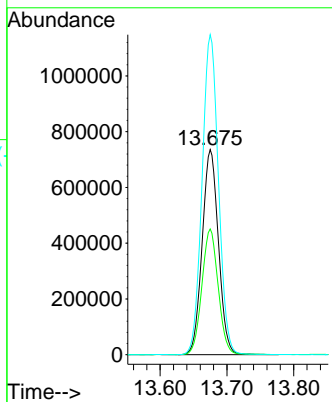
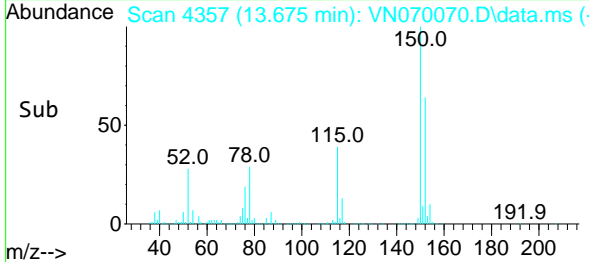


Tgt Ion:152 Resp: 124411  
 Ion Ratio Lower Upper  
 152 100  
 115 61.4 27.5 82.5  
 150 156.8 0.0 344.4

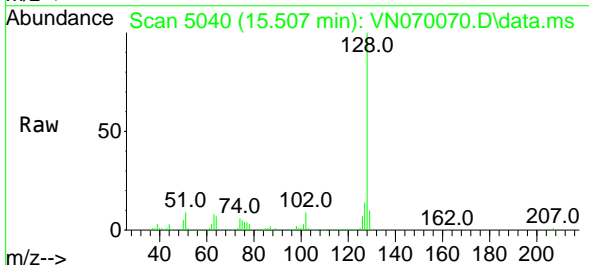
Manual Integrations

APPROVED

Reviewed By :John Carlone 12/15/2021  
 Supervised By :Mahesh Dadoda 12/21/2021



#95  
 Naphthalene  
 Concen: 8.281 ug/l  
 RT: 15.507 min Scan# 5040  
 Delta R.T. -0.000 min  
 Lab File: VN070070.D  
 Acq: 14 Dec 2021 14:44



Tgt Ion:128 Resp: 283830  
 Ion Ratio Lower Upper  
 128 100  
 127 13.3 10.5 15.7  
 129 10.9 8.7 13.1

