

Data Path : Z:\voasrv\HPCHEM1\MSVOA\_N\Data\VN121520\  
 Data File : VN065154.D  
 Acq On : 15 Dec 2020 20:09  
 Operator : JC/MD  
 Sample : VSTDCCC020  
 Misc : 5.00mL/MSVOA\_N/WATER  
 ALS Vial : 17 Sample Multiplier: 1

Instrument :  
 MSVOA\_N  
 ClientSampled :

Quant Time: Dec 16 07:19:41 2020  
 Quant Method : Z:\voasrv\HPCHEM1\MSVOA\_N\methods\624N121520W.M  
 Quant Title : METHOD 624 VOLATILE ORGANIC ANALYSIS  
 QLast Update : Tue Dec 15 15:18:54 2020  
 Response via : Initial Calibration

Compound	R.T.	QIon	Response	Conc	Units	Dev(Min)
Internal Standards						
1) Bromochloromethane	7.152	128	104277	30.00	ug/l	0.00
28) 1,4-Difluorobenzene	8.550	114	503593	30.00	ug/l	0.00
57) Chlorobenzene-d5	11.380	117	306992	30.00	ug/l	0.00
System Monitoring Compounds						
27) 1,2-Dichloroethane-d4	7.987	65	209666	29.37	ug/l	0.00
Spiked Amount	30.000	Range 91 - 110	Recovery	=	97.90%	
60) 4-Bromofluorobenzene	12.373	95	149873	31.07	ug/l	0.00
Spiked Amount	30.000	Range 63 - 112	Recovery	=	103.57%	
63) Toluene-d8	10.058	98	438476	29.59	ug/l	0.00
Spiked Amount	30.000	Range 91 - 112	Recovery	=	98.63%	
Target Compounds						
						Qvalue
2) Dichlorodifluoromethane	1.830	85	76365	12.92	ug/l	97
3) Chloromethane	2.036	50	74658	10.96	ug/l	95
4) Vinyl Chloride	2.165	62	113936	15.19	ug/l	100
5) Bromomethane	2.534	94	88397	16.78	ug/l	92
6) Chloroethane	2.676	64	81243	18.17	ug/l	96
7) Trichlorofluoromethane	2.988	101	166217	14.98	ug/l	97
8) Diethyl Ether	3.374	74	37014	10.44	ug/l	79
9) 1,1,2-Trichlorotrifluo...	3.724	101	63912	11.16	ug/l	44
10) 1,1-Dichloroethene	3.698	96	59961	10.79	ug/l	87
11) Methyl Iodide	3.917	142	81464	10.54	ug/l	99
12) Methyl Acetate	4.277	43	57708	11.41	ug/l	97
13) Acrolein	3.566	56	34333	47.99	ug/l	99
14) Acrylonitrile	4.930	53	131270	52.95	ug/l	96
15) Acetone	3.779	58	33871	43.52	ug/l	91
16) Carbon Disulfide	4.013	76	164963	10.09	ug/l	98
17) Allyl chloride	4.280	41	88630	11.01	ug/l	90
18) Methylene Chloride	4.509	84	69610	10.65	ug/l	95
19) trans-1,2-Dichloroethene	4.991	96	66067	10.94	ug/l	89
20) Diisopropyl ether	5.898	45	214254	10.79	ug/l	95
21) 1,1-Dichloroethane	5.798	63	124218	10.37	ug/l	97
22) cis-1,2-Dichloroethene	6.782	96	98269	14.44	ug/l	86
23) tert-Butyl Alcohol	4.721	59	23962	29.90	ug/l #	100
24) Methyl tert-Butyl Ether	4.991	73	193808	11.51	ug/l #	72
25) Chloroform	7.328	83	206657	18.25	ug/l	94
26) Cyclohexane	7.615	56	161167	18.41	ug/l #	93
29) 1,1-Dichloropropene	7.753	75	149047	18.81	ug/l	96
30) 2-Butanone	6.785	43	238801	77.89	ug/l #	79
31) 2,2-Dichloropropane	6.779	77	137236	15.64	ug/l	97
32) 1,1,1-Trichloroethane	7.528	97	177389	18.83	ug/l	95
33) Carbon Tetrachloride	7.734	117	158228	18.59	ug/l	99
34) Benzene	8.000	78	463726	19.35	ug/l	94
35) Methacrylonitrile	7.126	41	58363	19.45	ug/l	91
36) 1,2-Dichloroethane	8.084	62	154854	18.87	ug/l #	91
37) Trichloroethene	8.798	130	116083	17.76	ug/l	98
38) Methylcyclohexane	9.049	83	98277	10.40	ug/l	93
39) 1,2-Dichloropropane	9.084	63	75001	11.65	ug/l	94
40) Dibromomethane	9.174	93	55008	12.19	ug/l	95
41) Bromodichloromethane	9.367	83	110378	12.04	ug/l	100
42) Vinyl Acetate	5.843	43	826839	56.57	ug/l	96

Data Path : Z:\voasrv\HPCHEM1\MSVOA\_N\Data\VN121520\  
 Data File : VN065154.D  
 Acq On : 15 Dec 2020 20:09  
 Operator : JC/MD  
 Sample : VSTDCCC020  
 Misc : 5.00mL/MSVOA\_N/WATER  
 ALS Vial : 17 Sample Multiplier: 1

Instrument :  
 MSVOA\_N  
 ClientSampleId :

Quant Time: Dec 16 07:19:41 2020  
 Quant Method : Z:\voasrv\HPCHEM1\MSVOA\_N\methods\624N121520W.M  
 Quant Title : METHOD 624 VOLATILE ORGANIC ANALYSIS  
 QLast Update : Tue Dec 15 15:18:54 2020  
 Response via : Initial Calibration

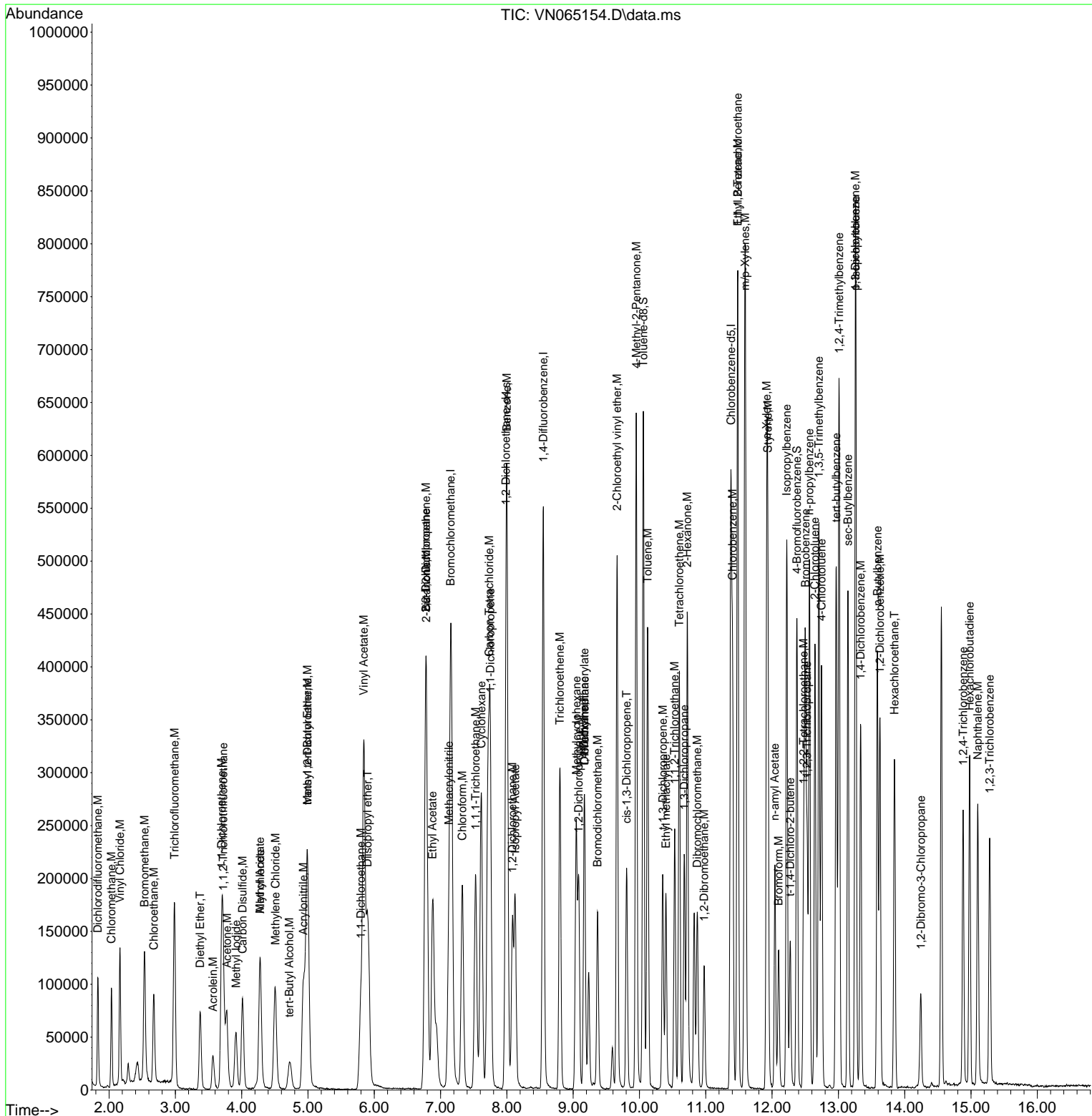
Compound	R.T.	QIon	Response	Conc	Units	Dev(Min)
43) Ethyl Acetate	6.878	43	121424	19.21	ug/l	96
44) Isopropyl Acetate	8.126	43	200925	19.00	ug/l	93
45) 1,4-Dioxane	9.164	88	22353	232.58	ug/l	91
46) Methyl methacrylate	9.168	41	63353	11.78	ug/l	90
47) n-amyl Acetate	12.042	43	109577	12.54	ug/l	95
48) t-1,3-Dichloropropene	10.351	75	114104	12.74	ug/l	93
49) cis-1,3-Dichloropropene	9.807	75	117370	11.53	ug/l	97
50) 1,1,2-Trichloroethane	10.531	97	75105	12.83	ug/l	92
51) Ethyl methacrylate	10.399	69	90972	11.61	ug/l	94
52) 1,3-Dichloropropane	10.676	76	120694	12.43	ug/l	98
53) Dibromochloromethane	10.872	129	85384	12.59	ug/l	97
54) 1,2-Dibromoethane	10.975	107	75753	12.41	ug/l	99
55) 2-Chloroethyl vinyl ether	9.663	63	221215	55.73	ug/l	97
56) Bromoform	12.097	173	55304	11.99	ug/l #	97
58) 4-Methyl-2-Pentanone	9.952	43	412239	92.17	ug/l	97
59) 2-Hexanone	10.721	43	293446	98.82	ug/l	97
61) Tetrachloroethene	10.602	164	86266	19.32	ug/l	94
62) Toluene	10.122	91	324013	19.05	ug/l	99
64) Chlorobenzene	11.402	112	199761	18.84	ug/l	97
65) 1,1,1,2-Tetrachloroethane	11.483	131	79252	19.70	ug/l	99
66) Ethyl Benzene	11.483	91	336383	18.66	ug/l	95
67) m/p-Xylenes	11.595	106	262677	37.42	ug/l	95
68) o-Xylene	11.920	106	124967	18.83	ug/l	97
69) Styrene	11.936	104	199331	18.06	ug/l	97
70) Isopropylbenzene	12.222	105	332369	19.17	ug/l	100
71) 1,1,2,2-Tetrachloroethane	12.476	83	95695	19.05	ug/l	97
72) 1,2,3-Trichloropropane	12.528	75	129697	26.95	ug/l	62
73) Bromobenzene	12.502	156	82465	18.32	ug/l	87
74) n-propylbenzene	12.563	91	382853	19.36	ug/l	97
75) 2-Chlorotoluene	12.646	91	235623	19.58	ug/l	95
76) 1,3,5-Trimethylbenzene	12.708	105	293776	19.64	ug/l	96
77) t-1,4-Dichloro-2-butene	12.274	75	28355	16.68	ug/l	93
78) 4-Chlorotoluene	12.746	91	233854	19.03	ug/l	95
79) tert-butylbenzene	12.968	119	237759	18.94	ug/l	93
80) 1,2,4-Trimethylbenzene	13.013	105	287525	19.38	ug/l	99
81) sec-Butylbenzene	13.145	105	310746	19.07	ug/l	99
82) p-Isopropyltoluene	13.261	119	284780	18.60	ug/l	99
83) 1,3-Dichlorobenzene	13.257	146	146158	18.23	ug/l	98
84) 1,4-Dichlorobenzene	13.335	146	142355	16.95	ug/l	95
85) n-Butylbenzene	13.589	91	229217	16.96	ug/l	97
86) Hexachloroethane	13.846	117	62129	21.11	ug/l	94
87) 1,2-Dichlorobenzene	13.627	146	143225	17.21	ug/l	96
88) 1,2-Dibromo-3-Chloropr...	14.244	75	23296	23.77	ug/l	82
89) 1,2,4-Trichlorobenzene	14.881	180	85878	22.92	ug/l	98
90) Hexachlorobutadiene	14.981	225	62410	26.38	ug/l	99
91) Naphthalene	15.103	128	235531	22.28	ug/l	99
92) 1,2,3-Trichlorobenzene	15.283	180	86133	24.40	ug/l	97

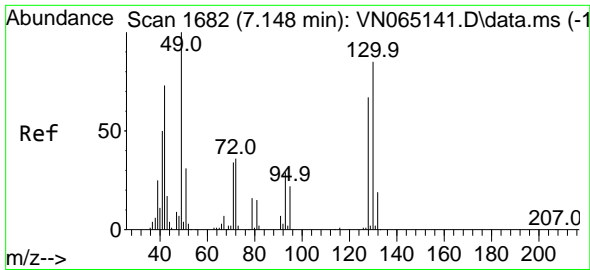
(#) = qualifier out of range (m) = manual integration (+) = signals summed

Data Path : Z:\voasrv\HPCHEM1\MSVOA\_N\Data\VN121520\  
 Data File : VN065154.D  
 Acq On : 15 Dec 2020 20:09  
 Operator : JC/MD  
 Sample : VSTDCCC020  
 Misc : 5.00mL/MSVOA\_N/WATER  
 ALS Vial : 17 Sample Multiplier: 1

Instrument :  
 MSVOA\_N  
 Client Sampled :

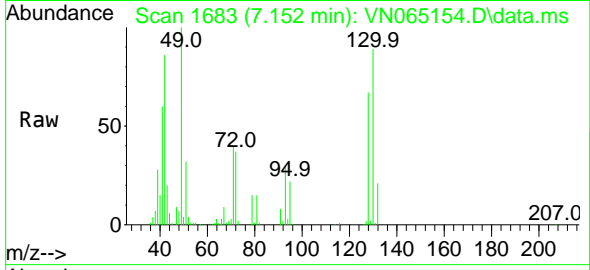
Quant Time: Dec 16 07:19:41 2020  
 Quant Method : Z:\voasrv\HPCHEM1\MSVOA\_N\methods\624N121520W.M  
 Quant Title : METHOD 624 VOLATILE ORGANIC ANALYSIS  
 QLast Update : Tue Dec 15 15:18:54 2020  
 Response via : Initial Calibration



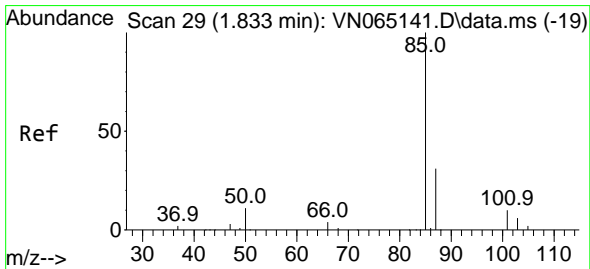
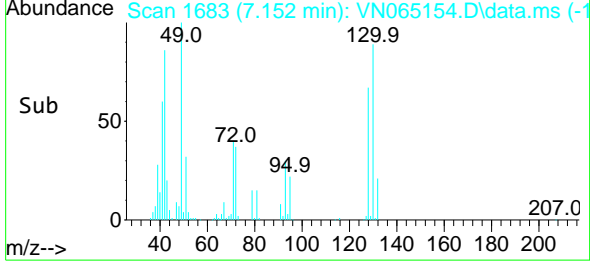
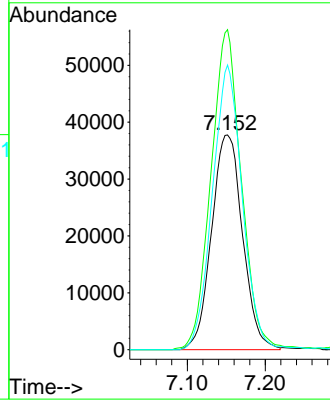


#1  
 Bromochloromethane  
 Concen: 30.00 ug/l  
 RT: 7.152 min Scan# 1683  
 Delta R.T. 0.004 min  
 Lab File: VN065154.D  
 Acq: 15 Dec 2020 20:09

Instrument :  
 MSVOA\_N  
 ClientSampled :

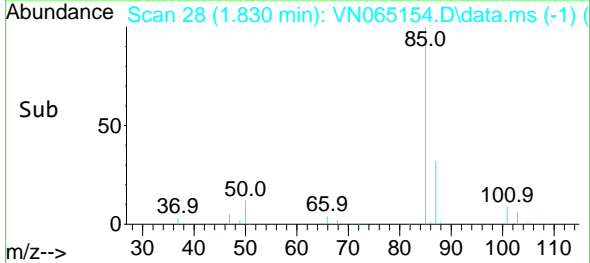
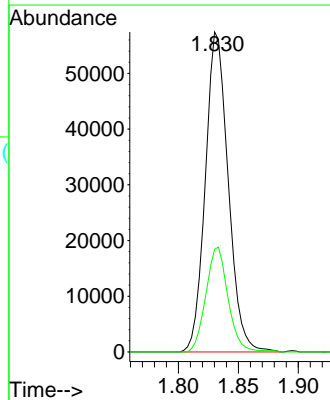
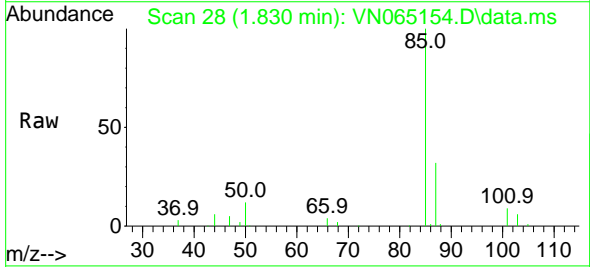


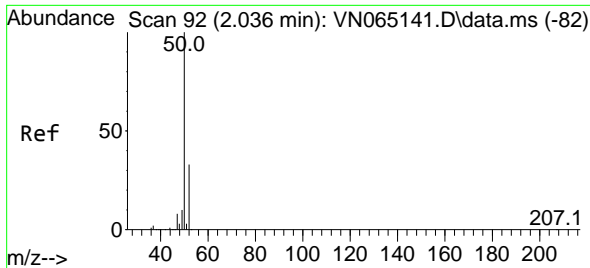
Tgt Ion:128 Resp: 104277  
 Ion Ratio Lower Upper  
 128 100  
 49 145.6 0.0 475.5  
 130 127.1 0.0 315.3



#2  
 Dichlorodifluoromethane  
 Concen: 12.92 ug/l  
 RT: 1.830 min Scan# 28  
 Delta R.T. -0.003 min  
 Lab File: VN065154.D  
 Acq: 15 Dec 2020 20:09

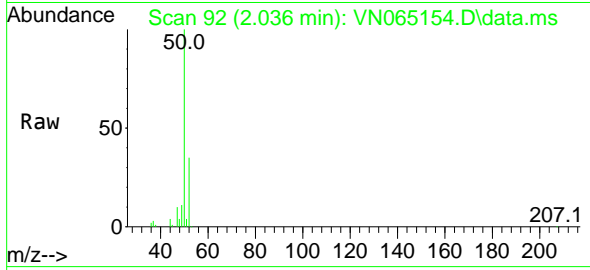
Tgt Ion: 85 Resp: 76365  
 Ion Ratio Lower Upper  
 85 100  
 87 32.1 17.0 50.9



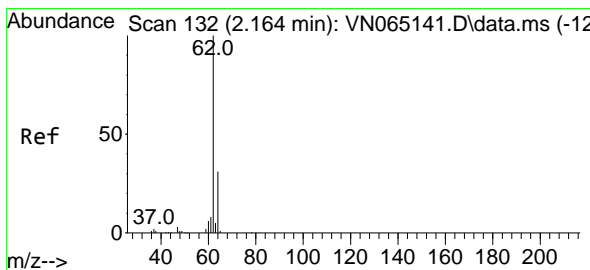
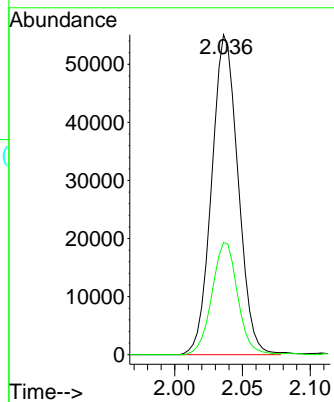
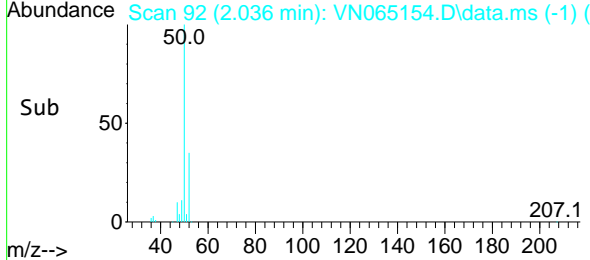


#3  
 Chloromethane  
 Concen: 10.96 ug/l  
 RT: 2.036 min Scan# 92  
 Delta R.T. 0.000 min  
 Lab File: VN065154.D  
 Acq: 15 Dec 2020 20:09

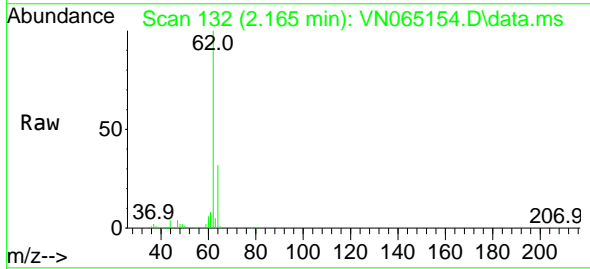
Instrument :  
 MSVOA\_N  
 ClientSampled :



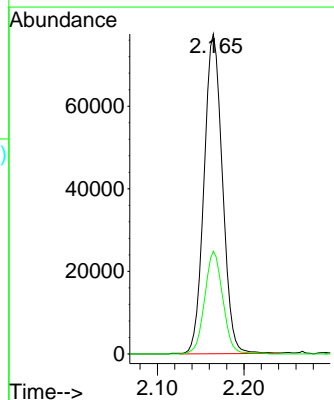
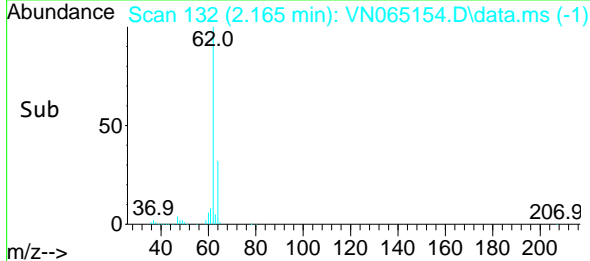
Tgt Ion: 50 Resp: 74658  
 Ion Ratio Lower Upper  
 50 100  
 52 35.1 26.0 39.0

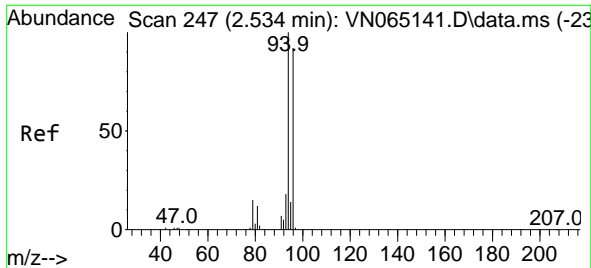


#4  
 Vinyl Chloride  
 Concen: 15.19 ug/l  
 RT: 2.165 min Scan# 132  
 Delta R.T. 0.000 min  
 Lab File: VN065154.D  
 Acq: 15 Dec 2020 20:09



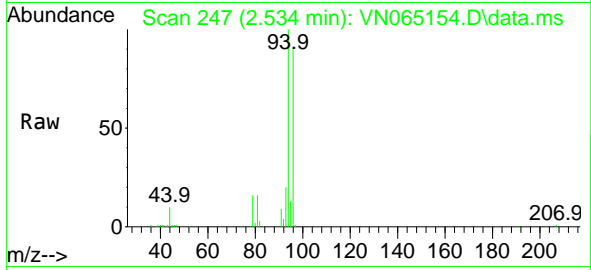
Tgt Ion: 62 Resp: 113936  
 Ion Ratio Lower Upper  
 62 100  
 64 32.2 25.8 38.8



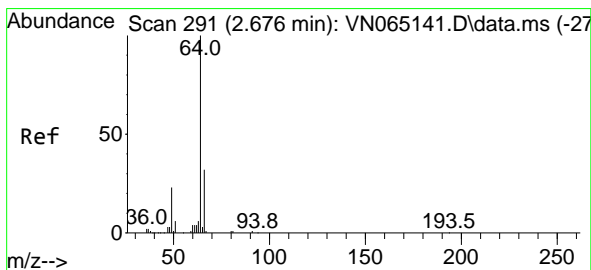
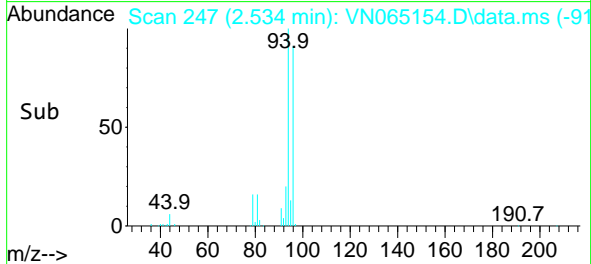
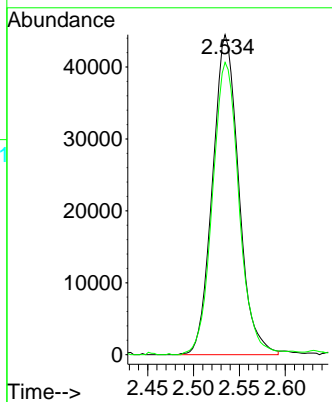


#5  
 Bromomethane  
 Concen: 16.78 ug/l  
 RT: 2.534 min Scan# 247  
 Delta R.T. 0.000 min  
 Lab File: VN065154.D  
 Acq: 15 Dec 2020 20:09

Instrument :  
 MSVOA\_N  
 ClientSampled :

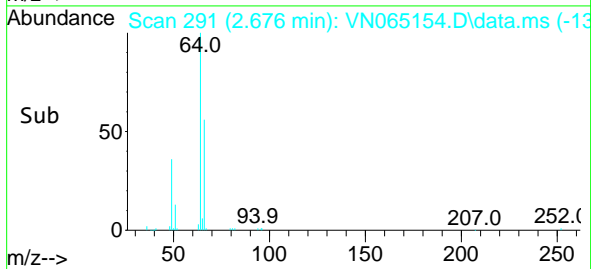
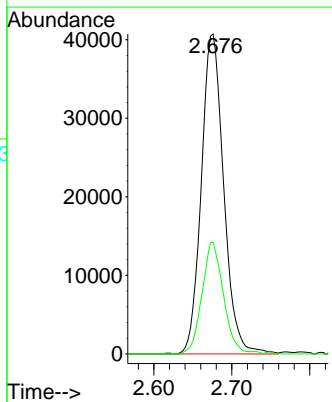
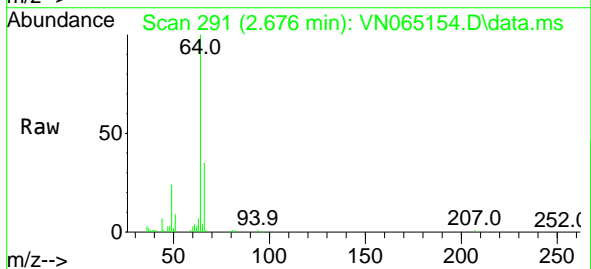


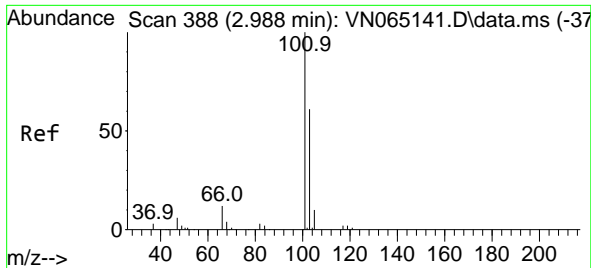
Tgt Ion: 94 Resp: 88397  
 Ion Ratio Lower Upper  
 94 100  
 96 91.4 79.3 118.9



#6  
 Chloroethane  
 Concen: 18.17 ug/l  
 RT: 2.676 min Scan# 291  
 Delta R.T. 0.000 min  
 Lab File: VN065154.D  
 Acq: 15 Dec 2020 20:09

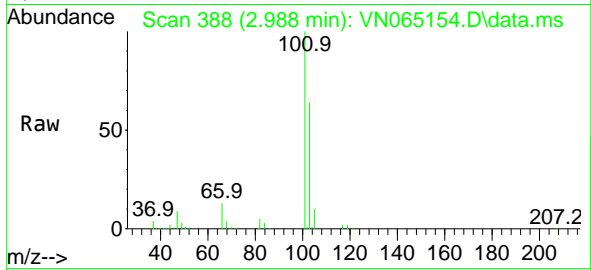
Tgt Ion: 64 Resp: 81243  
 Ion Ratio Lower Upper  
 64 100  
 66 34.9 26.0 39.0



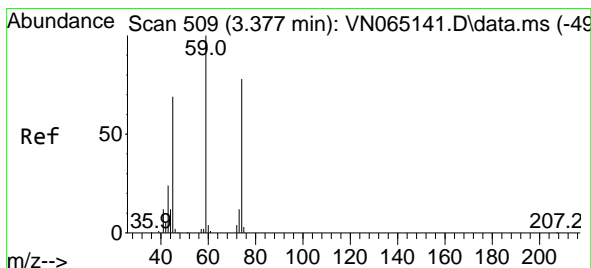
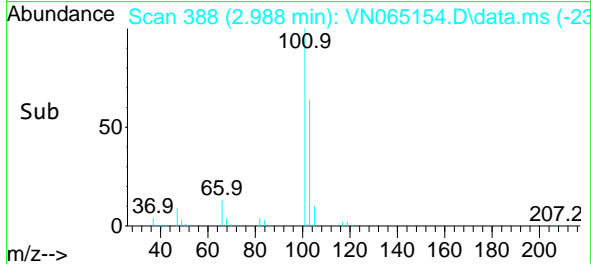
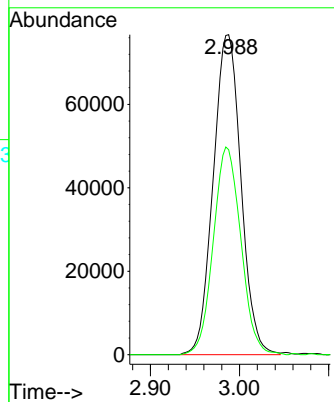


#7  
 Trichlorofluoromethane  
 Concen: 14.98 ug/l  
 RT: 2.988 min Scan# 388  
 Delta R.T. 0.000 min  
 Lab File: VN065154.D  
 Acq: 15 Dec 2020 20:09

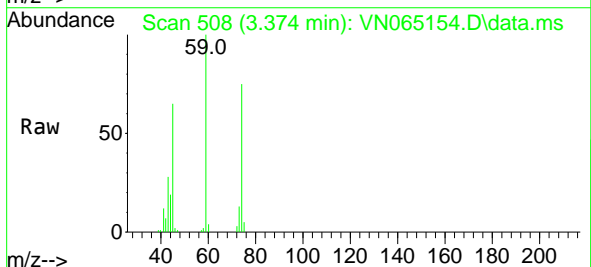
Instrument :  
 MSVOA\_N  
 ClientSampled :



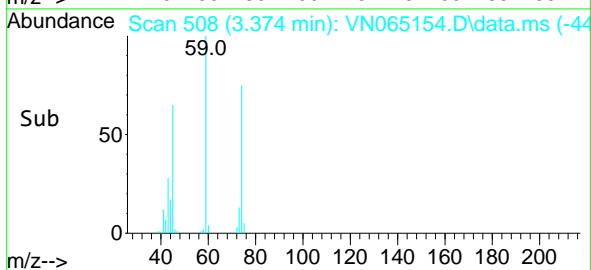
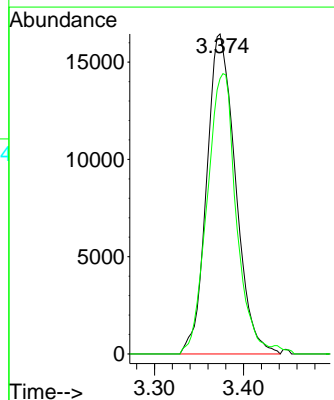
Tgt Ion:101 Resp: 166217  
 Ion Ratio Lower Upper  
 101 100  
 103 64.1 49.3 73.9

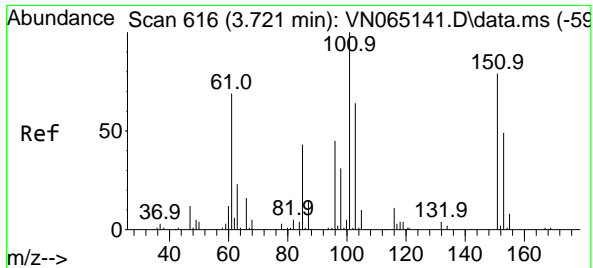


#8  
 Diethyl Ether  
 Concen: 10.44 ug/l  
 RT: 3.374 min Scan# 508  
 Delta R.T. -0.003 min  
 Lab File: VN065154.D  
 Acq: 15 Dec 2020 20:09



Tgt Ion: 74 Resp: 37014  
 Ion Ratio Lower Upper  
 74 100  
 45 88.3 22.1 198.5

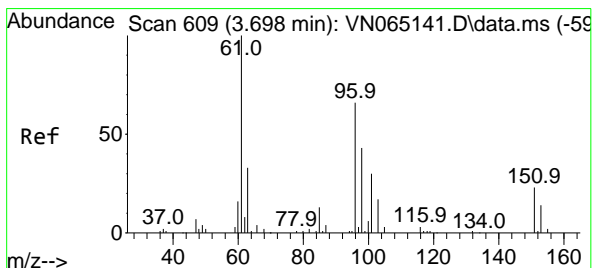
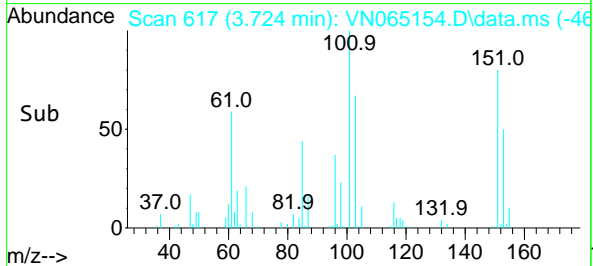
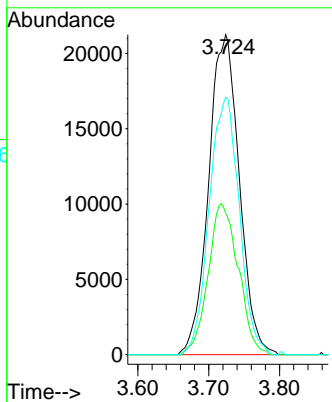
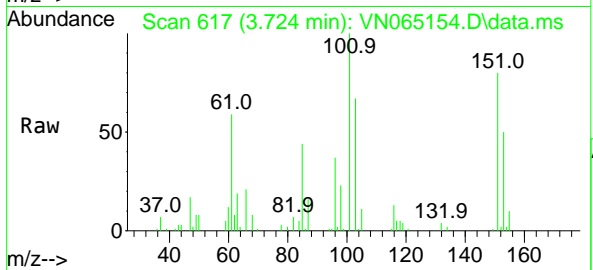




#9  
 1,1,2-Trichlorotrifluoroethane  
 Concen: 11.16 ug/l  
 RT: 3.724 min Scan# 617  
 Delta R.T. 0.003 min  
 Lab File: VN065154.D  
 Acq: 15 Dec 2020 20:09

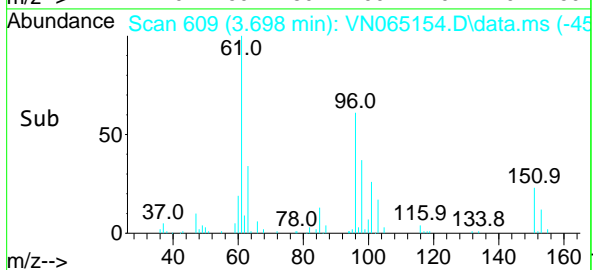
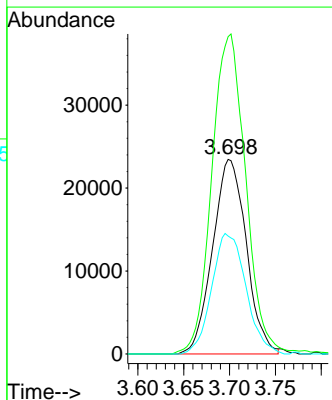
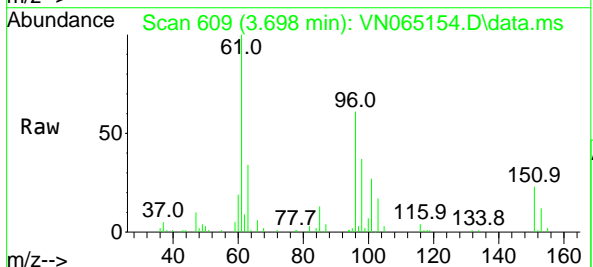
Instrument :  
 MSVOA\_N  
 ClientSampled :

Tgt Ion	Resp	Lower	Upper
101	63912		
101	100		
85	46.4	0.0	49.0
151	79.1	0.0	80.2

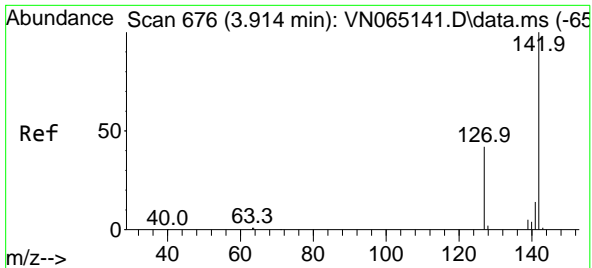


#10  
 1,1-Dichloroethene  
 Concen: 10.79 ug/l  
 RT: 3.698 min Scan# 609  
 Delta R.T. 0.000 min  
 Lab File: VN065154.D  
 Acq: 15 Dec 2020 20:09

Tgt Ion	Resp	Lower	Upper
96	59961		
96	100		
61	161.7	149.2	223.8
98	60.6	49.6	74.4

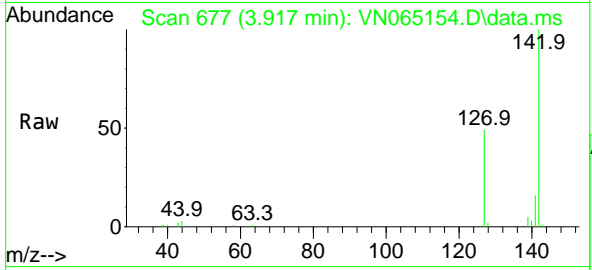






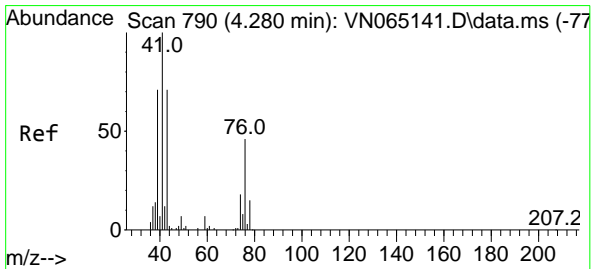
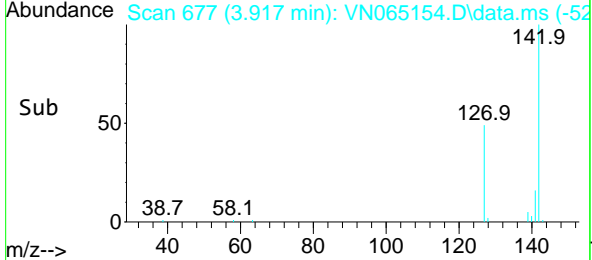
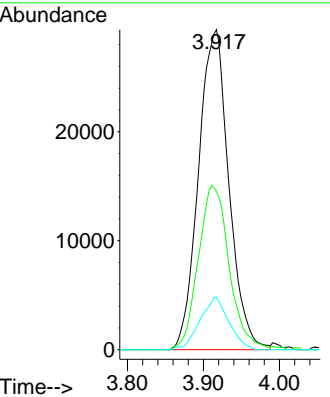
#11  
 Methyl Iodide  
 Concen: 10.54 ug/l  
 RT: 3.917 min Scan# 677  
 Delta R.T. 0.003 min  
 Lab File: VN065154.D  
 Acq: 15 Dec 2020 20:09

Instrument :  
 MSVOA\_N  
 ClientSampled :

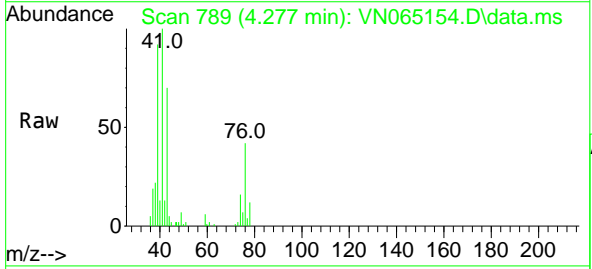


Tgt Ion: 142 Resp: 81464

Ion	Ratio	Lower	Upper
142	100		
127	49.3	24.7	74.1
141	16.4	7.8	23.3

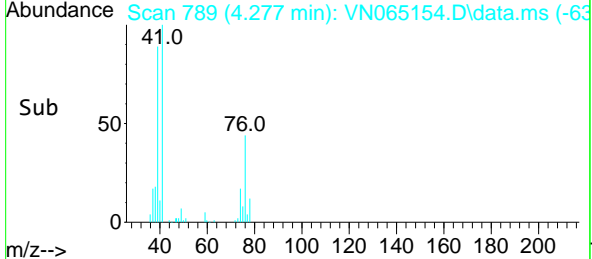
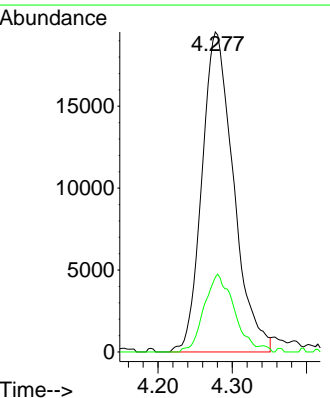


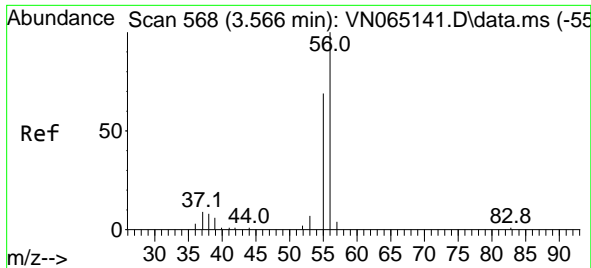
#12  
 Methyl Acetate  
 Concen: 11.41 ug/l  
 RT: 4.277 min Scan# 789  
 Delta R.T. -0.003 min  
 Lab File: VN065154.D  
 Acq: 15 Dec 2020 20:09



Tgt Ion: 43 Resp: 57708

Ion	Ratio	Lower	Upper
43	100		
74	23.4	17.7	26.5

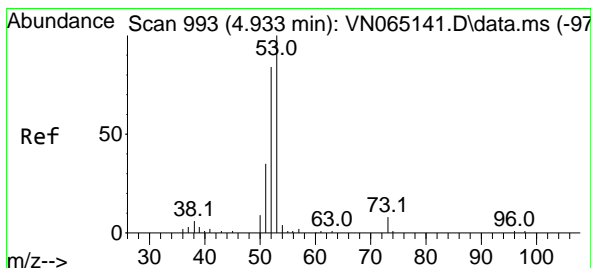
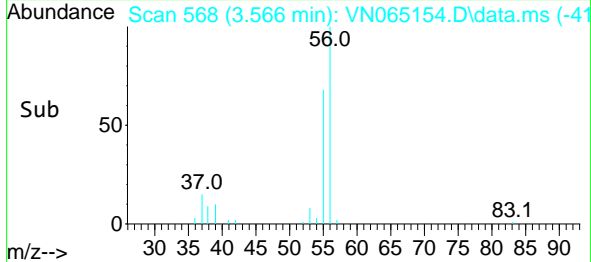
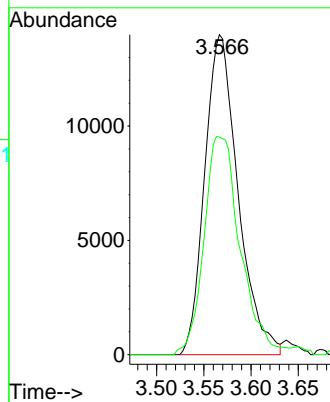
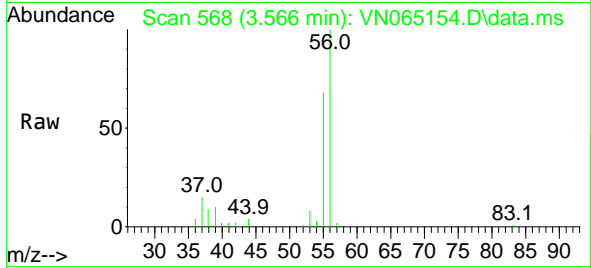




#13  
 Acrolein  
 Concen: 47.99 ug/l  
 RT: 3.566 min Scan# 568  
 Delta R.T. 0.000 min  
 Lab File: VN065154.D  
 Acq: 15 Dec 2020 20:09

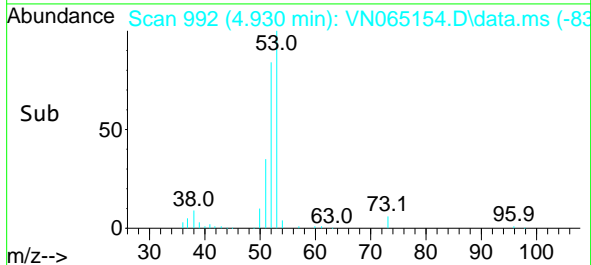
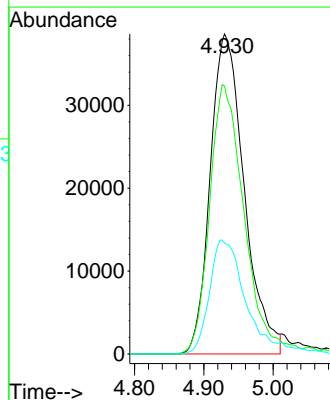
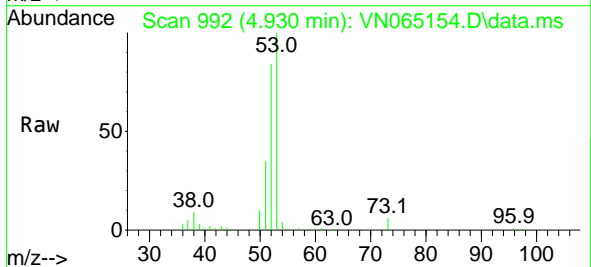
Instrument :  
 MSVOA\_N  
 ClientSampled :

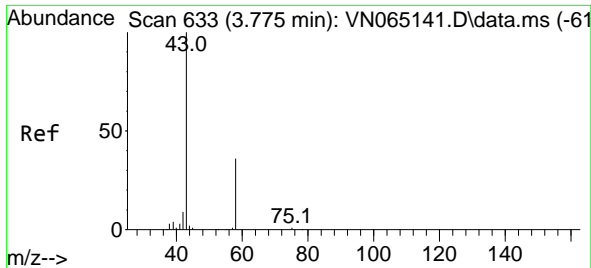
Tgt Ion: 56 Resp: 34333  
 Ion Ratio Lower Upper  
 56 100  
 55 74.0 58.2 87.2



#14  
 Acrylonitrile  
 Concen: 52.95 ug/l  
 RT: 4.930 min Scan# 992  
 Delta R.T. -0.003 min  
 Lab File: VN065154.D  
 Acq: 15 Dec 2020 20:09

Tgt Ion: 53 Resp: 131270  
 Ion Ratio Lower Upper  
 53 100  
 52 85.6 41.3 124.1  
 51 34.9 18.9 56.5

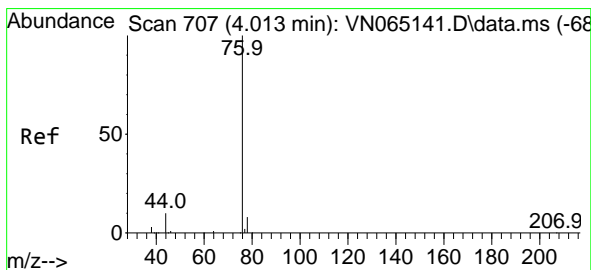
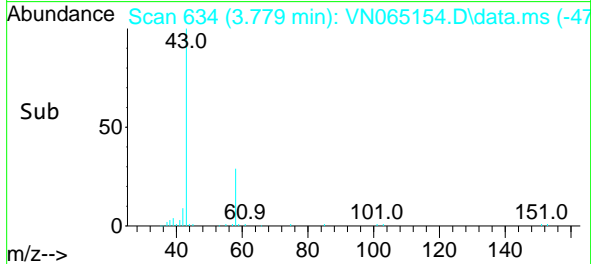
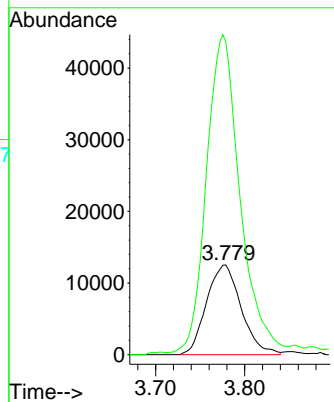
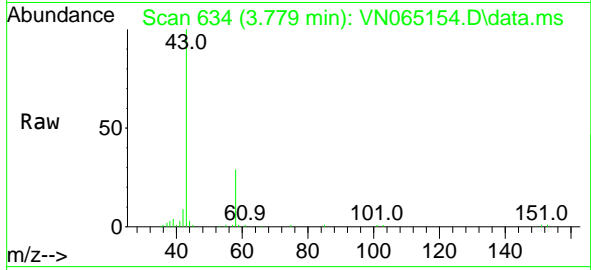




#15  
 Acetone  
 Concen: 43.52 ug/l  
 RT: 3.779 min Scan# 634  
 Delta R.T. 0.003 min  
 Lab File: VN065154.D  
 Acq: 15 Dec 2020 20:09

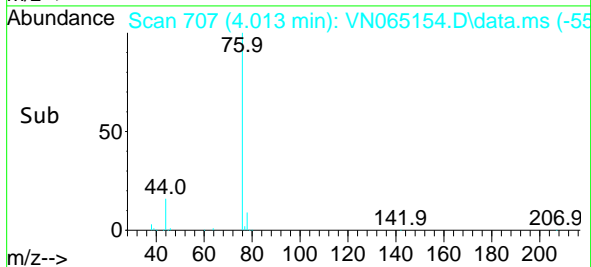
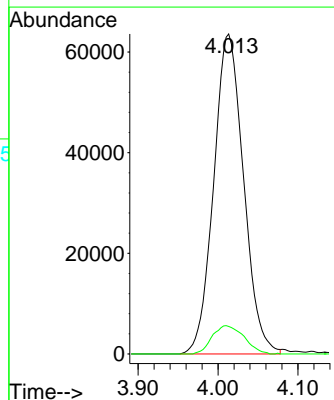
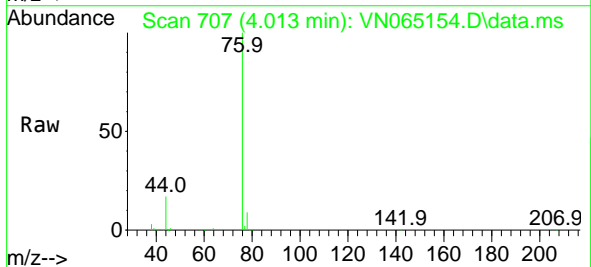
Instrument :  
 MSVOA\_N  
 ClientSampled :

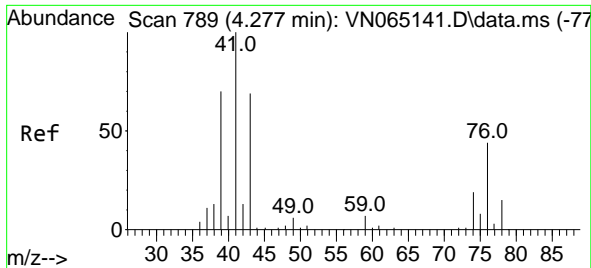
Tgt Ion: 58 Resp: 33871  
 Ion Ratio Lower Upper  
 58 100  
 43 341.2 289.8 434.8



#16  
 Carbon Disulfide  
 Concen: 10.09 ug/l  
 RT: 4.013 min Scan# 707  
 Delta R.T. 0.000 min  
 Lab File: VN065154.D  
 Acq: 15 Dec 2020 20:09

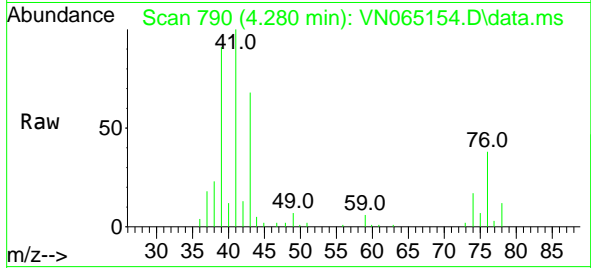
Tgt Ion: 76 Resp: 164963  
 Ion Ratio Lower Upper  
 76 100  
 78 8.6 7.6 11.4



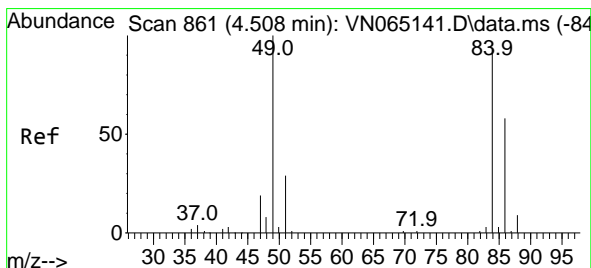
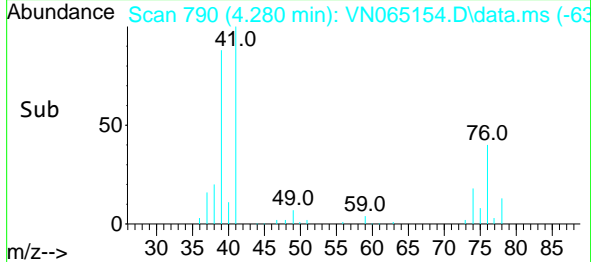
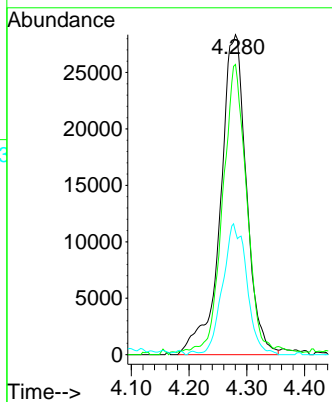


#17  
 Allyl chloride  
 Concen: 11.01 ug/l  
 RT: 4.280 min Scan# 790  
 Delta R.T. 0.003 min  
 Lab File: VN065154.D  
 Acq: 15 Dec 2020 20:09

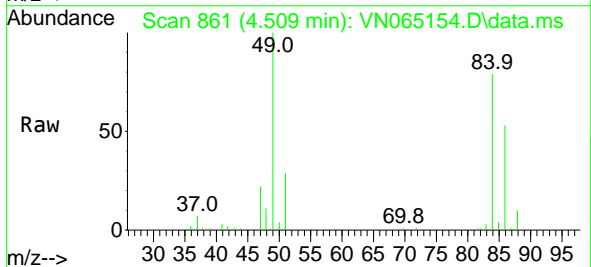
Instrument :  
 MSVOA\_N  
 ClientSampled :



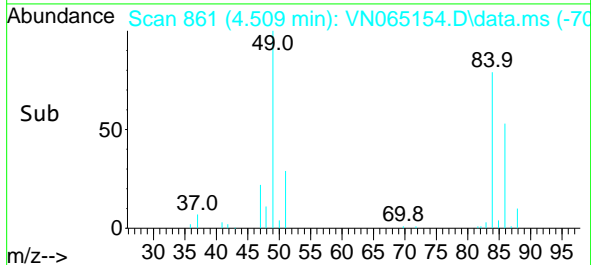
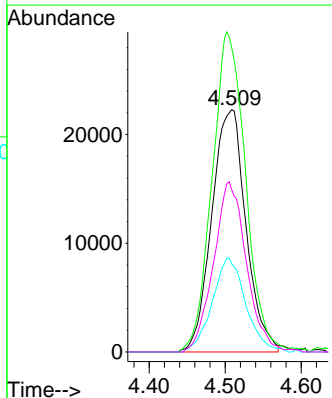
Tgt Ion: 41 Resp: 88630  
 Ion Ratio Lower Upper  
 41 100  
 39 89.8 40.3 120.8  
 76 38.4 16.8 50.3

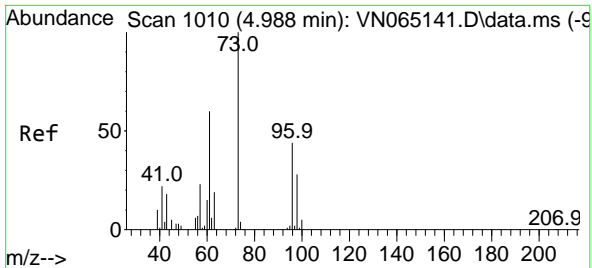


#18  
 Methylene Chloride  
 Concen: 10.65 ug/l  
 RT: 4.509 min Scan# 861  
 Delta R.T. 0.000 min  
 Lab File: VN065154.D  
 Acq: 15 Dec 2020 20:09



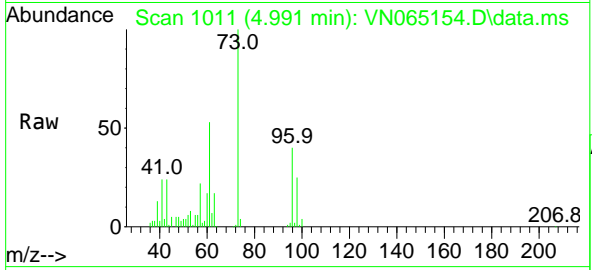
Tgt Ion: 84 Resp: 69610  
 Ion Ratio Lower Upper  
 84 100  
 49 125.8 102.1 153.1  
 51 36.6 32.6 48.8  
 86 67.1 46.7 70.1



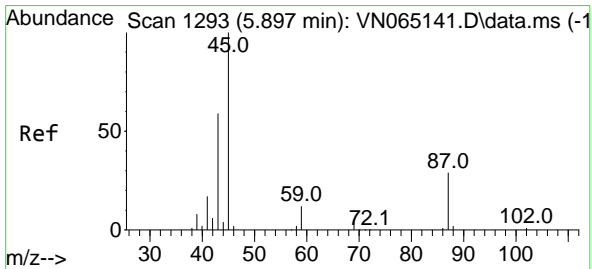
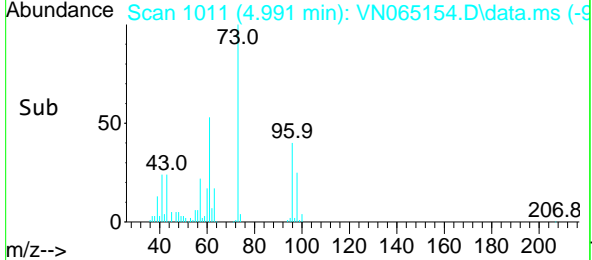
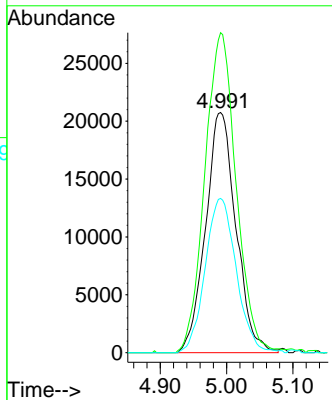


#19  
 trans-1,2-Dichloroethene  
 Concen: 10.94 ug/l  
 RT: 4.991 min Scan# 1011  
 Delta R.T. 0.003 min  
 Lab File: VN065154.D  
 Acq: 15 Dec 2020 20:09

Instrument :  
 MSVOA\_N  
 ClientSampled :

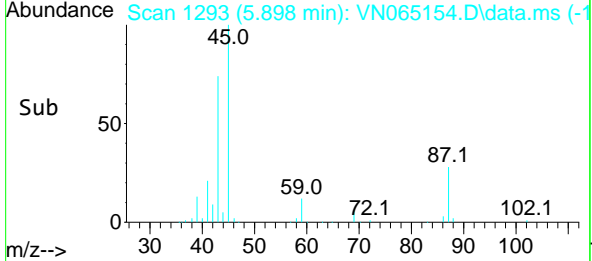
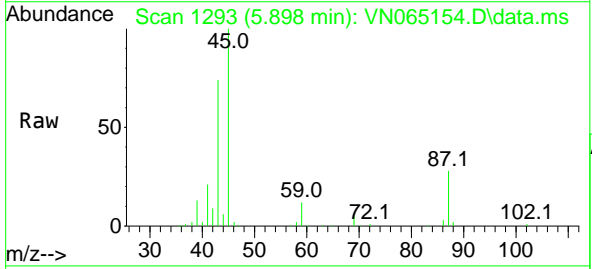
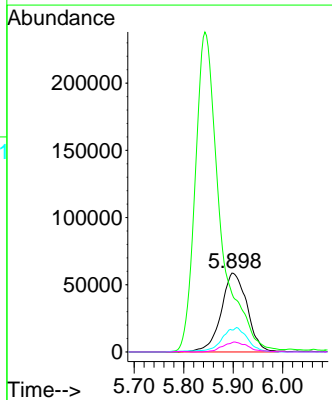


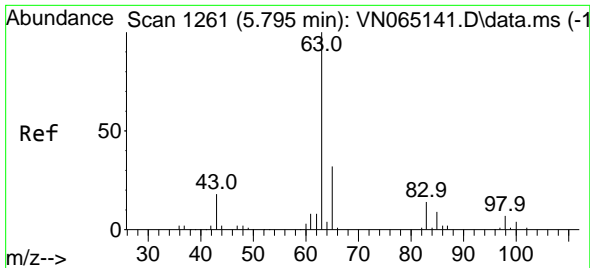
Tgt Ion: 96 Resp: 66067  
 Ion Ratio Lower Upper  
 96 100  
 61 132.4 120.1 180.1  
 98 64.3 49.1 73.7



#20  
 Diisopropyl ether  
 Concen: 10.79 ug/l  
 RT: 5.898 min Scan# 1293  
 Delta R.T. 0.000 min  
 Lab File: VN065154.D  
 Acq: 15 Dec 2020 20:09

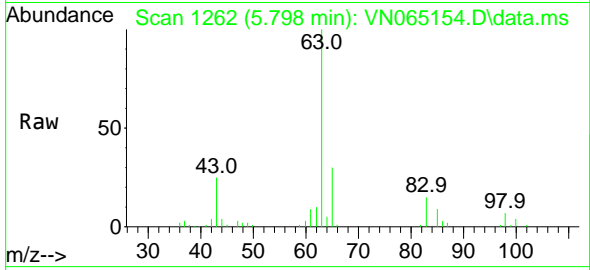
Tgt Ion: 45 Resp: 214254  
 Ion Ratio Lower Upper  
 45 100  
 43 71.0 53.1 79.7  
 87 27.9 21.0 31.6  
 59 11.4 8.2 12.4





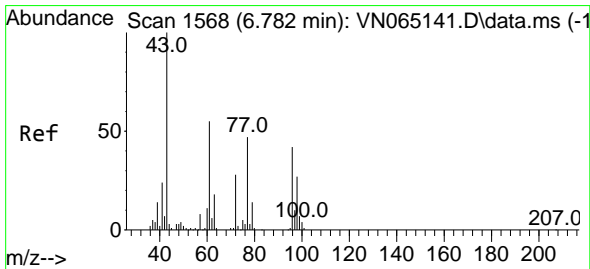
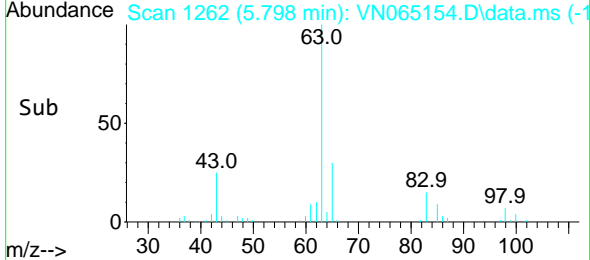
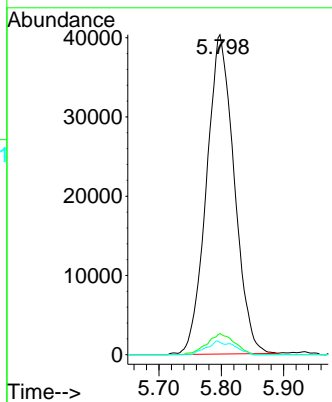
#21  
 1,1-Dichloroethane  
 Concen: 10.37 ug/l  
 RT: 5.798 min Scan# 1262  
 Delta R.T. 0.003 min  
 Lab File: VN065154.D  
 Acq: 15 Dec 2020 20:09

Instrument :  
 MSVOA\_N  
 ClientSampled :

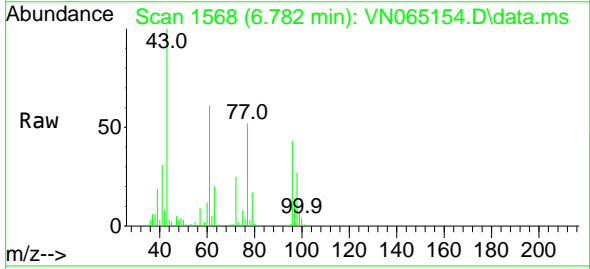


Tgt Ion: 63 Resp: 124218

Ion	Ratio	Lower	Upper
63	100		
98	6.6	2.6	8.0
100	3.8	1.7	5.1

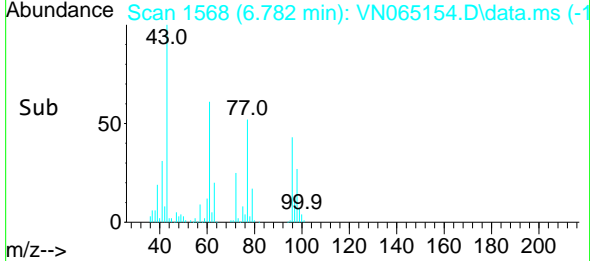
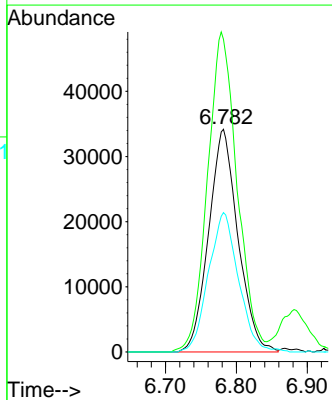


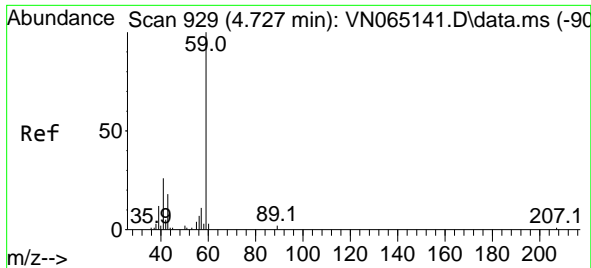
#22  
 cis-1,2-Dichloroethene  
 Concen: 14.44 ug/l  
 RT: 6.782 min Scan# 1568  
 Delta R.T. 0.000 min  
 Lab File: VN065154.D  
 Acq: 15 Dec 2020 20:09



Tgt Ion: 96 Resp: 98269

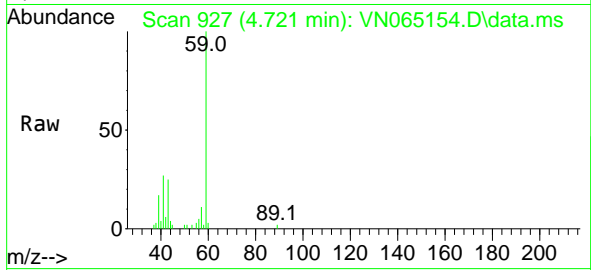
Ion	Ratio	Lower	Upper
96	100		
61	144.9	136.1	204.1
98	63.7	51.8	77.8



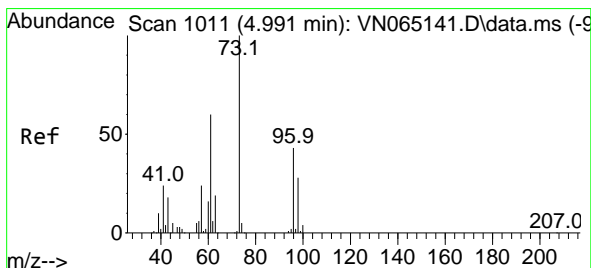
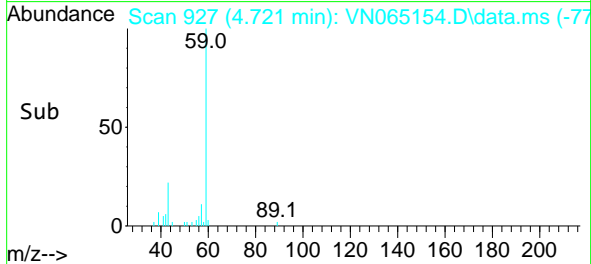
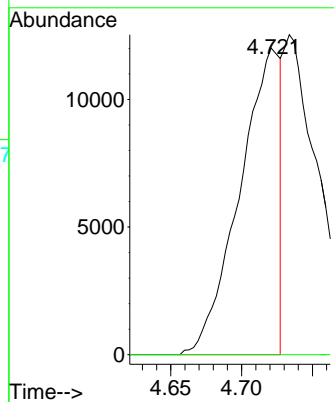


#23  
 tert-Butyl Alcohol  
 Concen: 29.90 ug/l  
 RT: 4.721 min Scan# 927  
 Delta R.T. -0.006 min  
 Lab File: VN065154.D  
 Acq: 15 Dec 2020 20:09

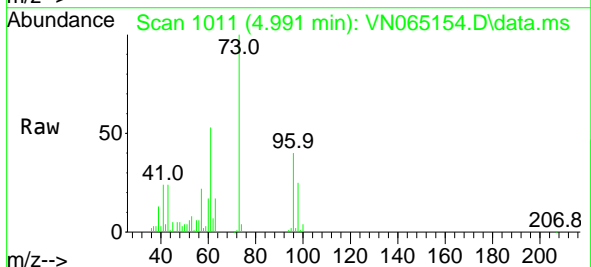
Instrument :  
 MSVOA\_N  
 ClientSampled :



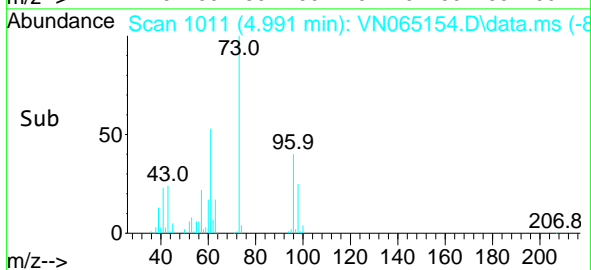
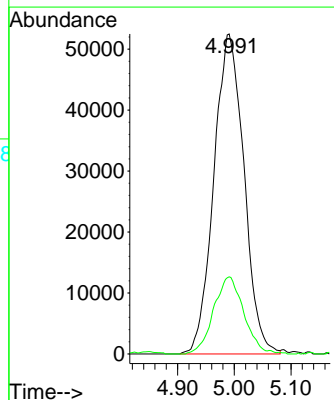
Tgt Ion: 59 Resp: 23962  
 Ion Ratio Lower Upper  
 59 100  
 52 0.0 0.0 0.0

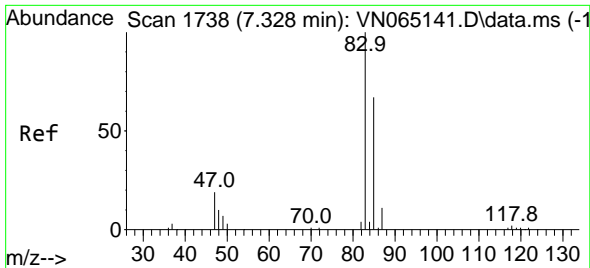


#24  
 Methyl tert-Butyl Ether  
 Concen: 11.51 ug/l  
 RT: 4.991 min Scan# 1011  
 Delta R.T. 0.000 min  
 Lab File: VN065154.D  
 Acq: 15 Dec 2020 20:09



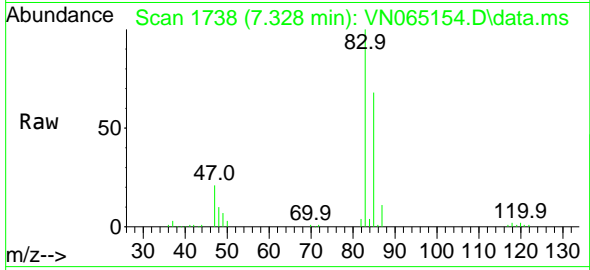
Tgt Ion: 73 Resp: 193808  
 Ion Ratio Lower Upper  
 73 100  
 43 23.9 10.2 15.2#



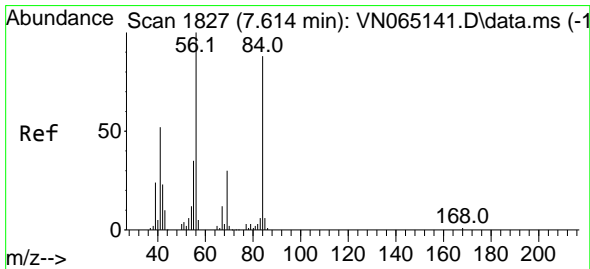
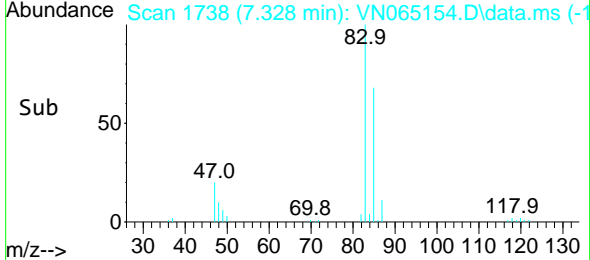
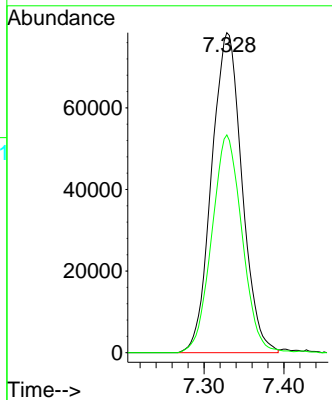


#25  
 Chloroform  
 Concen: 18.25 ug/l  
 RT: 7.328 min Scan# 1738  
 Delta R.T. 0.000 min  
 Lab File: VN065154.D  
 Acq: 15 Dec 2020 20:09

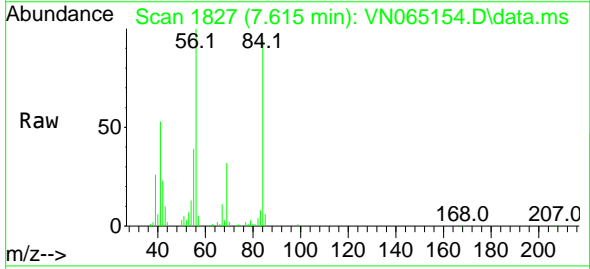
Instrument :  
 MSVOA\_N  
 ClientSampled :



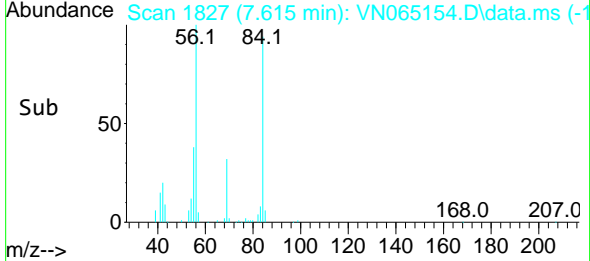
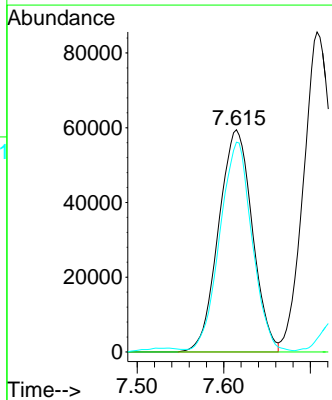
Tgt Ion: 83 Resp: 206657  
 Ion Ratio Lower Upper  
 83 100  
 85 68.1 50.6 75.8



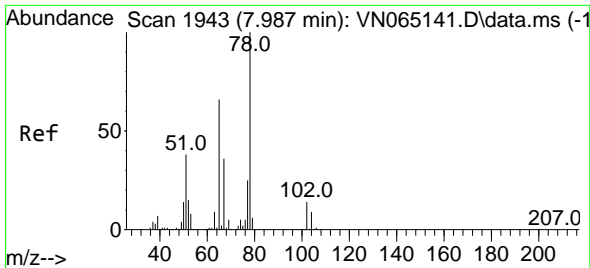
#26  
 Cyclohexane  
 Concen: 18.41 ug/l  
 RT: 7.615 min Scan# 1827  
 Delta R.T. 0.000 min  
 Lab File: VN065154.D  
 Acq: 15 Dec 2020 20:09



Tgt Ion: 56 Resp: 161167  
 Ion Ratio Lower Upper  
 56 100  
 89 0.0 0.6 0.8#  
 84 89.1 66.1 99.1

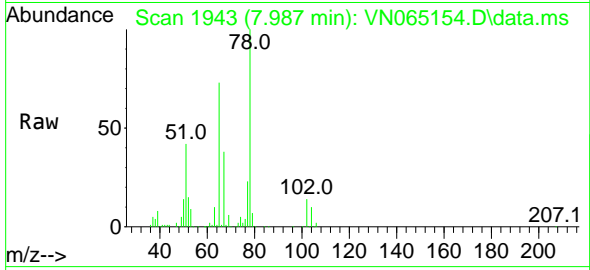




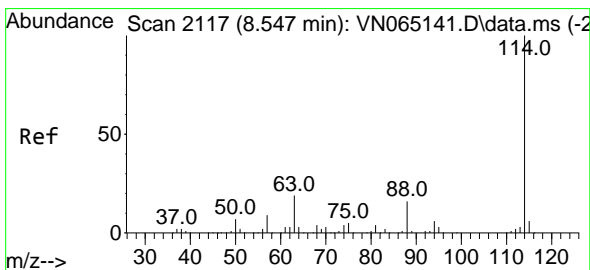
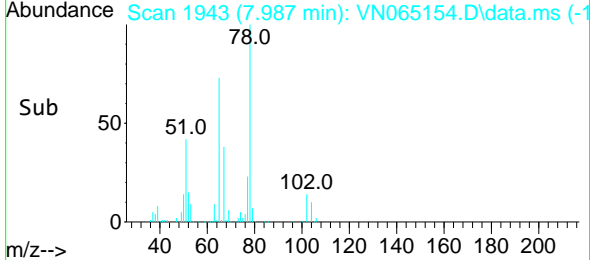
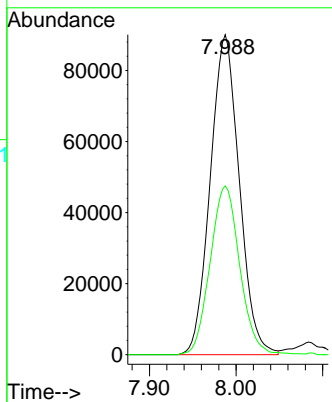


#27  
 1,2-Dichloroethane-d4  
 Concen: 29.37 ug/l  
 RT: 7.987 min Scan# 1943  
 Delta R.T. 0.000 min  
 Lab File: VN065154.D  
 Acq: 15 Dec 2020 20:09

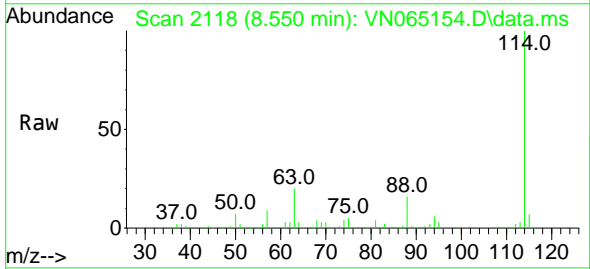
Instrument :  
 MSVOA\_N  
 ClientSampled :



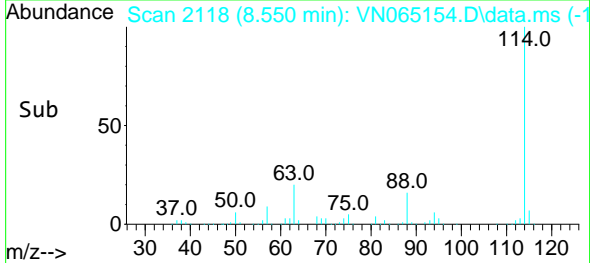
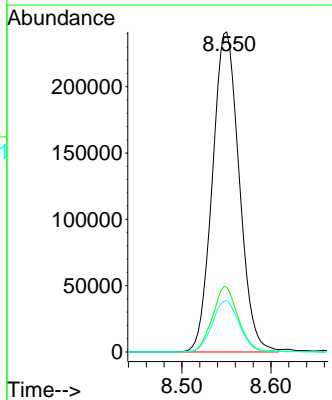
Tgt Ion: 65 Resp: 209666  
 Ion Ratio Lower Upper  
 65 100  
 67 53.8 41.1 61.7

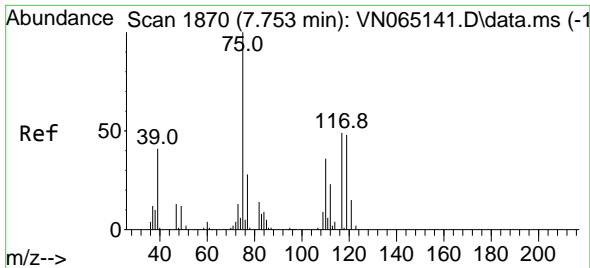


#28  
 1,4-Difluorobenzene  
 Concen: 30.00 ug/l  
 RT: 8.550 min Scan# 2118  
 Delta R.T. 0.003 min  
 Lab File: VN065154.D  
 Acq: 15 Dec 2020 20:09



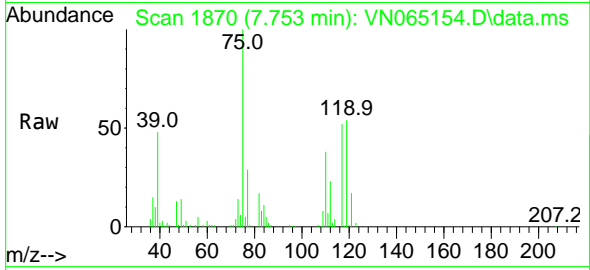
Tgt Ion: 114 Resp: 503593  
 Ion Ratio Lower Upper  
 114 100  
 63 19.6 18.5 27.7  
 88 16.2 13.0 19.6



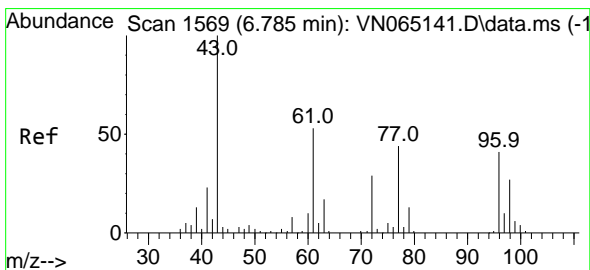
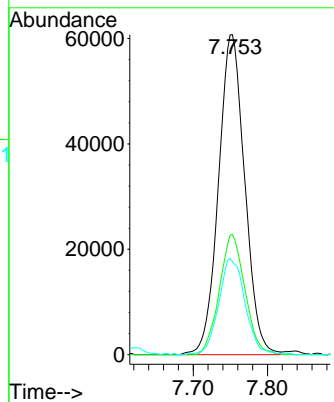
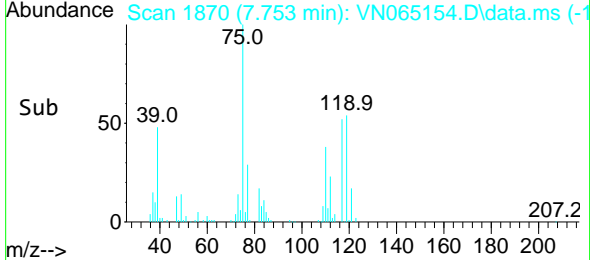


#29  
 1,1-Dichloropropene  
 Concen: 18.81 ug/l  
 RT: 7.753 min Scan# 1870  
 Delta R.T. 0.000 min  
 Lab File: VN065154.D  
 Acq: 15 Dec 2020 20:09

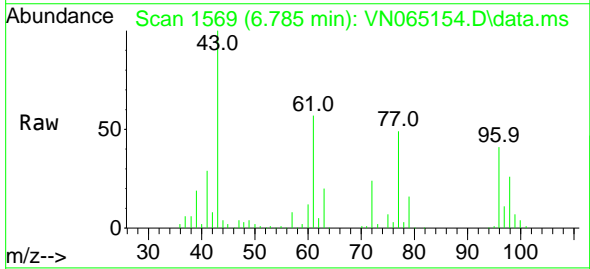
Instrument :  
 MSVOA\_N  
 ClientSampled :



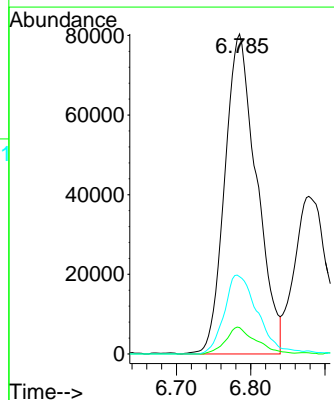
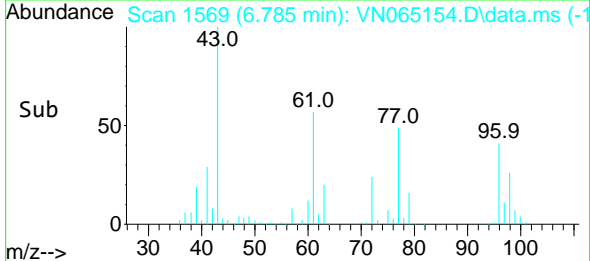
Tgt Ion: 75 Resp: 149047  
 Ion Ratio Lower Upper  
 75 100  
 110 36.6 0.0 66.4  
 77 30.3 0.0 62.0

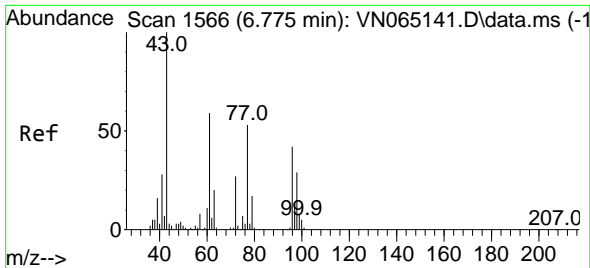


#30  
 2-Butanone  
 Concen: 77.89 ug/l  
 RT: 6.785 min Scan# 1569  
 Delta R.T. 0.000 min  
 Lab File: VN065154.D  
 Acq: 15 Dec 2020 20:09



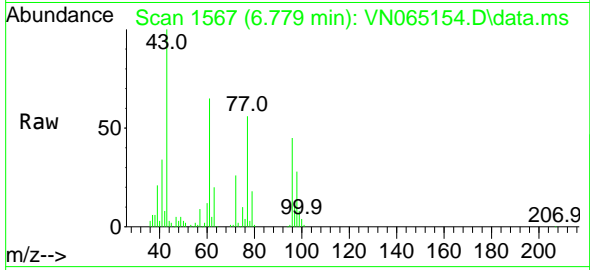
Tgt Ion: 43 Resp: 238801  
 Ion Ratio Lower Upper  
 43 100  
 57 8.0 6.2 9.4  
 72 25.9 9.9 14.9#



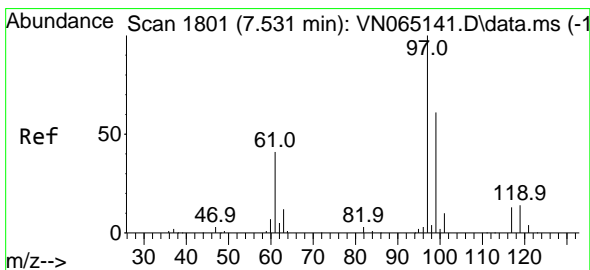
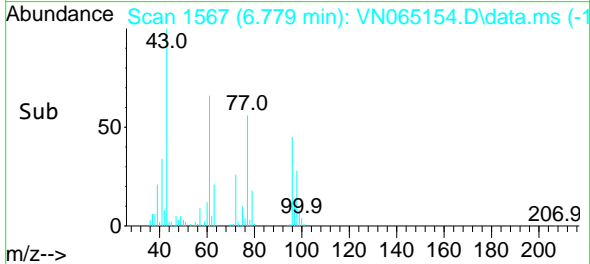
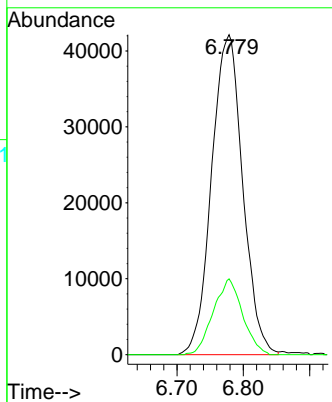


#31  
 2,2-Dichloropropane  
 Concen: 15.64 ug/l  
 RT: 6.779 min Scan# 1567  
 Delta R.T. 0.003 min  
 Lab File: VN065154.D  
 Acq: 15 Dec 2020 20:09

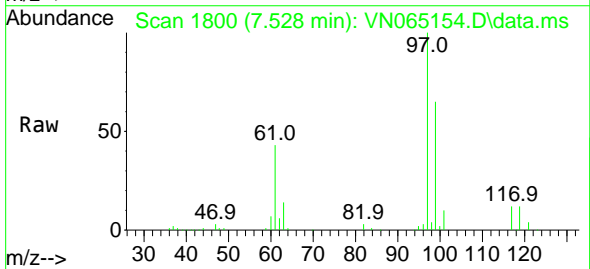
Instrument :  
 MSVOA\_N  
 ClientSampled :



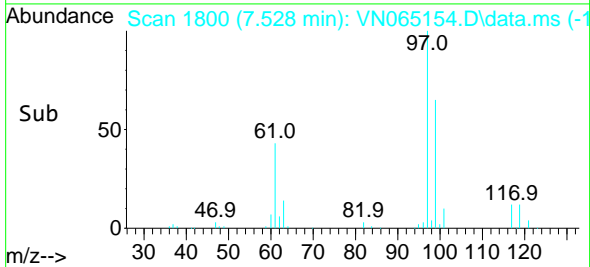
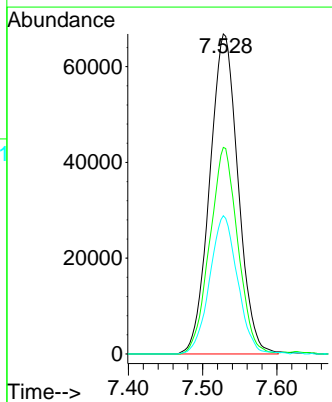
Tgt Ion: 77 Resp: 137236  
 Ion Ratio Lower Upper  
 77 100  
 97 22.3 16.9 25.3

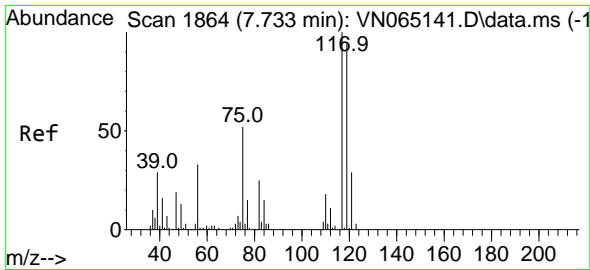


#32  
 1,1,1-Trichloroethane  
 Concen: 18.83 ug/l  
 RT: 7.528 min Scan# 1800  
 Delta R.T. -0.003 min  
 Lab File: VN065154.D  
 Acq: 15 Dec 2020 20:09



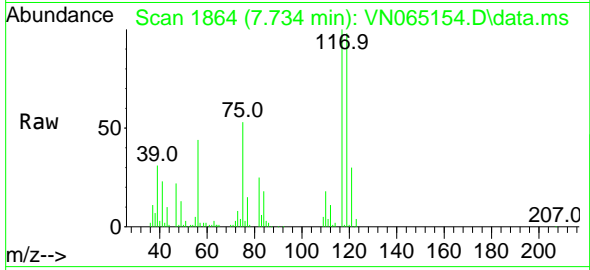
Tgt Ion: 97 Resp: 177389  
 Ion Ratio Lower Upper  
 97 100  
 99 63.9 51.8 77.8  
 61 42.3 39.4 59.0



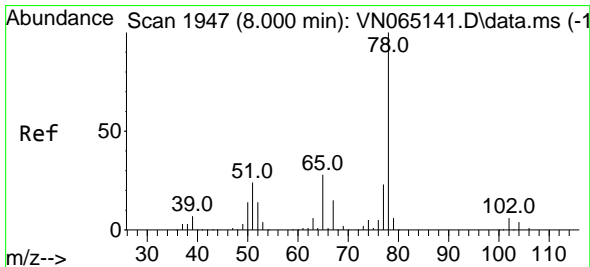
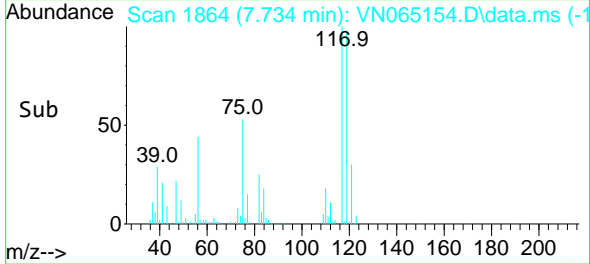
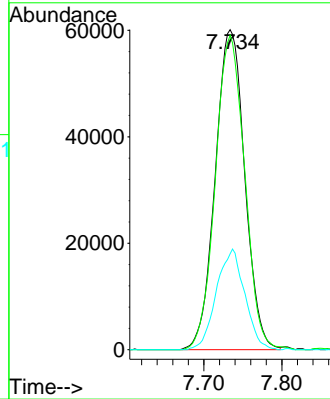


#33  
 Carbon Tetrachloride  
 Concen: 18.59 ug/l  
 RT: 7.734 min Scan# 1864  
 Delta R.T. 0.000 min  
 Lab File: VN065154.D  
 Acq: 15 Dec 2020 20:09

Instrument :  
 MSVOA\_N  
 ClientSampled :

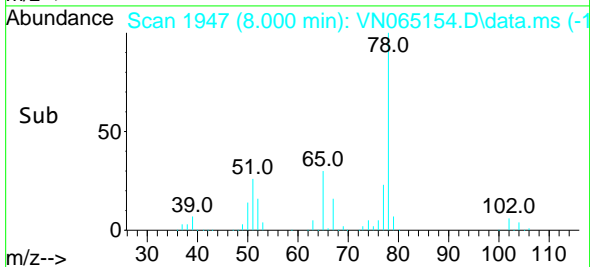
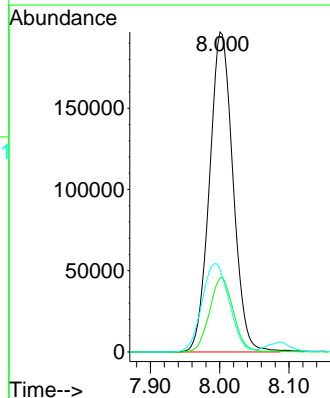
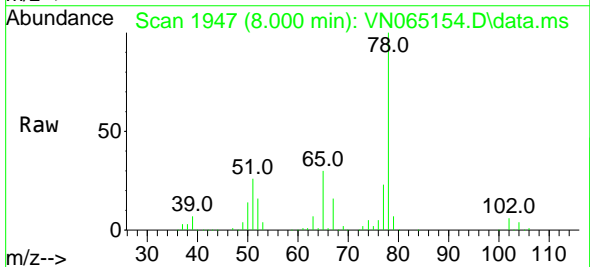


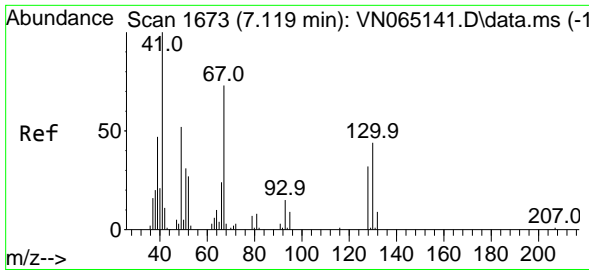
Tgt Ion:117 Resp: 158228  
 Ion Ratio Lower Upper  
 117 100  
 119 98.2 77.9 116.9  
 121 30.0 24.0 36.0



#34  
 Benzene  
 Concen: 19.35 ug/l  
 RT: 8.000 min Scan# 1947  
 Delta R.T. 0.000 min  
 Lab File: VN065154.D  
 Acq: 15 Dec 2020 20:09

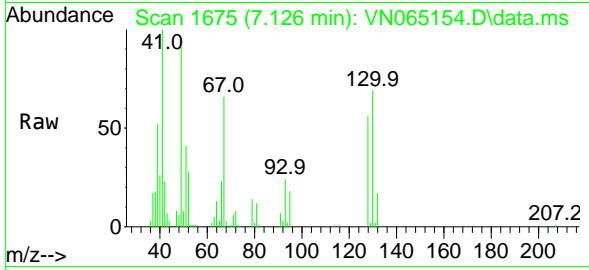
Tgt Ion: 78 Resp: 463726  
 Ion Ratio Lower Upper  
 78 100  
 77 23.1 18.9 28.3  
 51 25.6 24.6 36.8





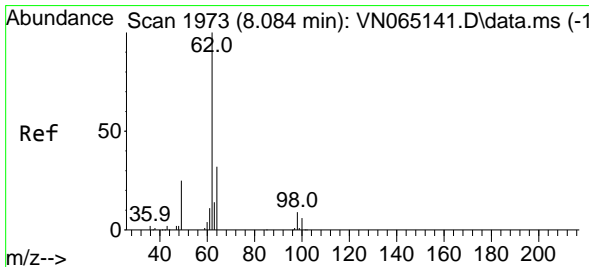
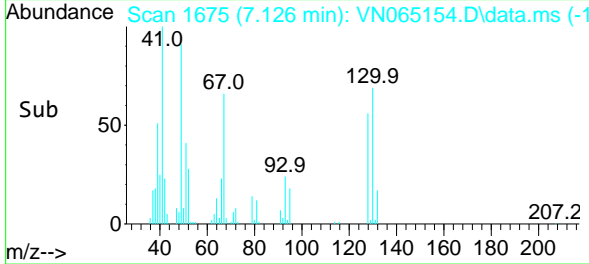
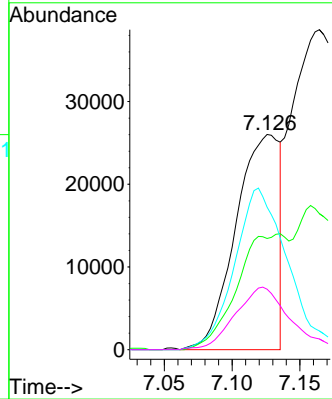
#35  
 Methacrylonitrile  
 Concen: 19.45 ug/l  
 RT: 7.126 min Scan# 1675  
 Delta R.T. 0.007 min  
 Lab File: VN065154.D  
 Acq: 15 Dec 2020 20:09

Instrument :  
 MSVOA\_N  
 ClientSampled :



Tgt Ion: 41 Resp: 58363

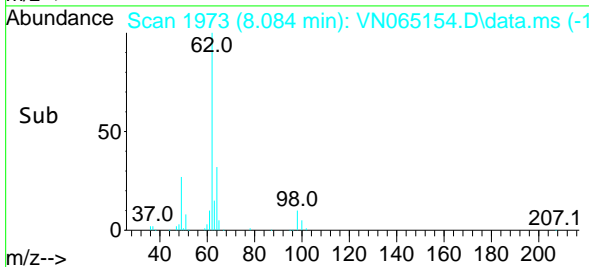
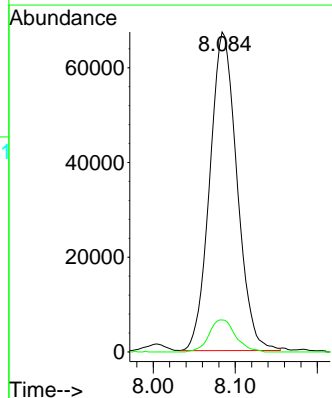
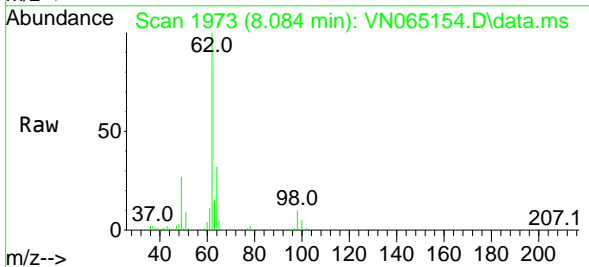
Ion	Ratio	Lower	Upper
41	100		
39	51.7	30.0	90.1
67	66.2	29.2	87.6
52	28.1	14.9	44.9

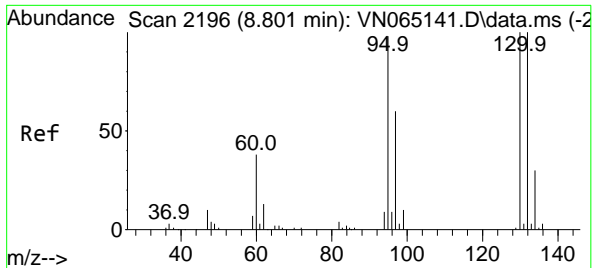


#36  
 1,2-Dichloroethane  
 Concen: 18.87 ug/l  
 RT: 8.084 min Scan# 1973  
 Delta R.T. 0.000 min  
 Lab File: VN065154.D  
 Acq: 15 Dec 2020 20:09

Tgt Ion: 62 Resp: 154854

Ion	Ratio	Lower	Upper
62	100		
98	9.9	5.5	8.3#

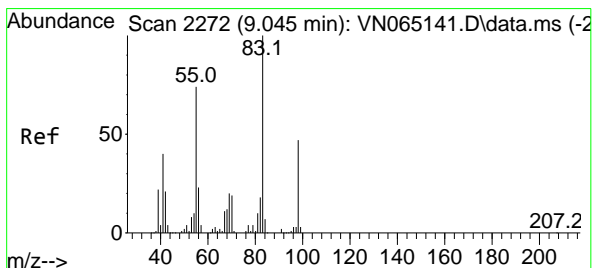
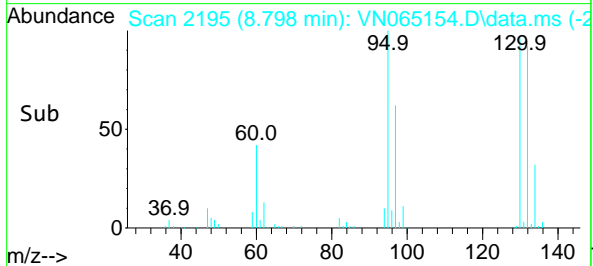
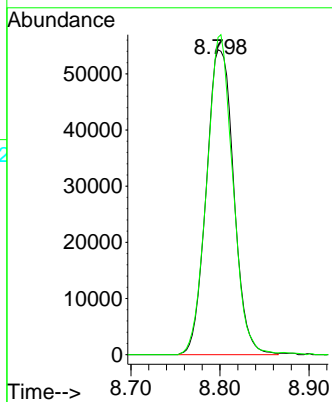
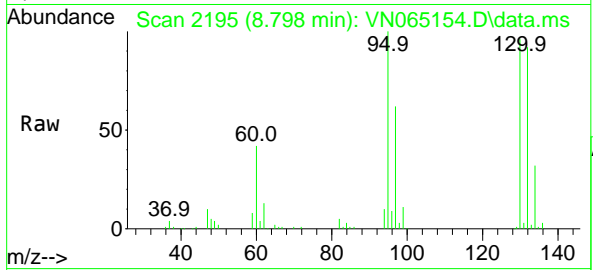




#37  
 Trichloroethene  
 Concen: 17.76 ug/l  
 RT: 8.798 min Scan# 2195  
 Delta R.T. -0.003 min  
 Lab File: VN065154.D  
 Acq: 15 Dec 2020 20:09

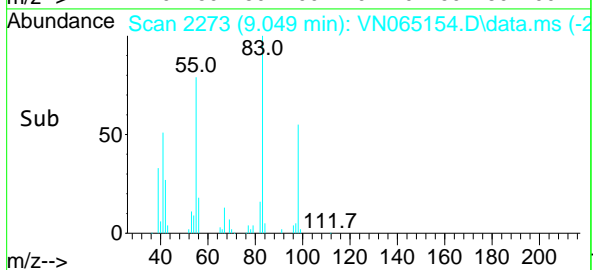
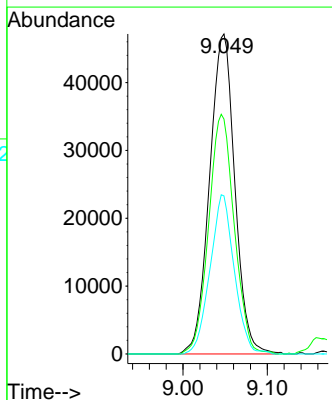
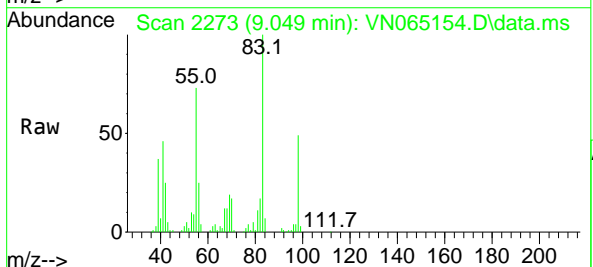
Instrument :  
 MSVOA\_N  
 ClientSampled :

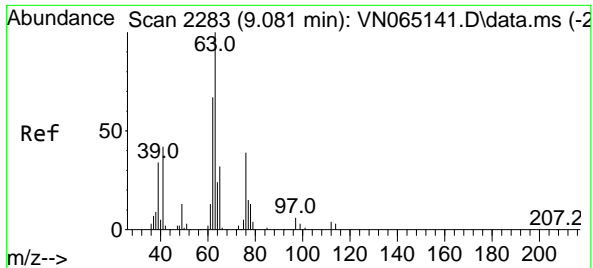
Tgt Ion:130 Resp: 116083  
 Ion Ratio Lower Upper  
 130 100  
 95 104.0 85.1 127.7



#38  
 Methylcyclohexane  
 Concen: 10.40 ug/l  
 RT: 9.049 min Scan# 2273  
 Delta R.T. 0.003 min  
 Lab File: VN065154.D  
 Acq: 15 Dec 2020 20:09

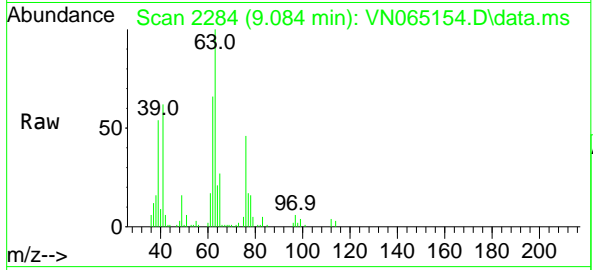
Tgt Ion: 83 Resp: 98277  
 Ion Ratio Lower Upper  
 83 100  
 55 75.9 42.0 126.1  
 98 47.4 22.5 67.5



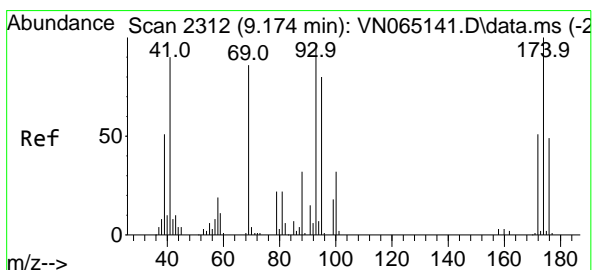
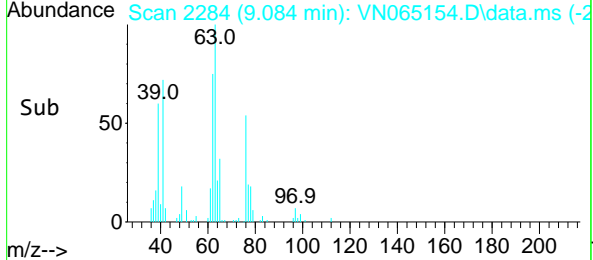
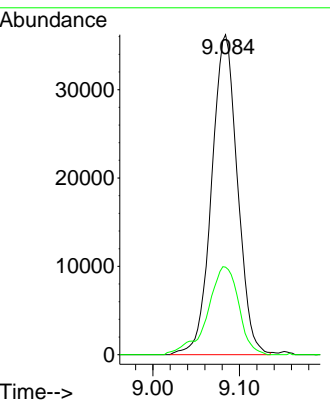


#39  
 1,2-Dichloropropane  
 Concen: 11.65 ug/l  
 RT: 9.084 min Scan# 2284  
 Delta R.T. 0.003 min  
 Lab File: VN065154.D  
 Acq: 15 Dec 2020 20:09

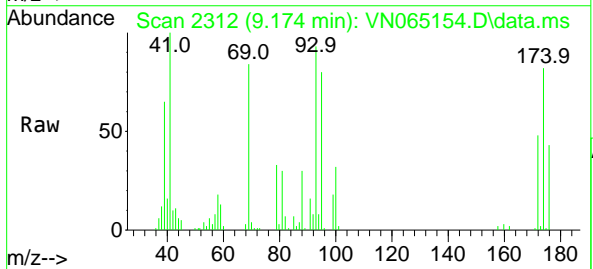
Instrument :  
 MSVOA\_N  
 ClientSampled :



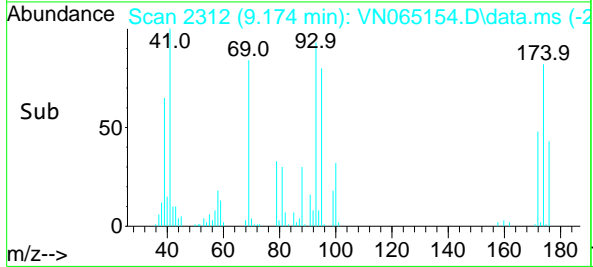
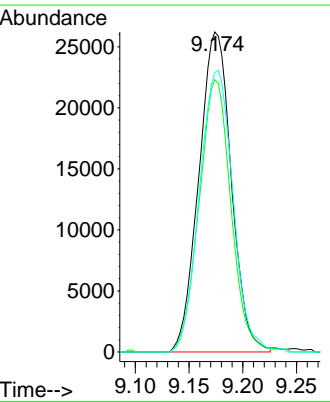
Tgt Ion: 63 Resp: 75001  
 Ion Ratio Lower Upper  
 63 100  
 65 27.4 24.4 36.6

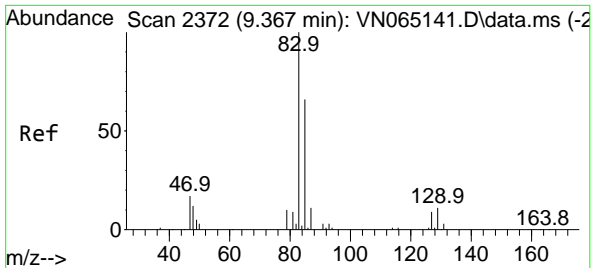


#40  
 Dibromomethane  
 Concen: 12.19 ug/l  
 RT: 9.174 min Scan# 2312  
 Delta R.T. 0.000 min  
 Lab File: VN065154.D  
 Acq: 15 Dec 2020 20:09



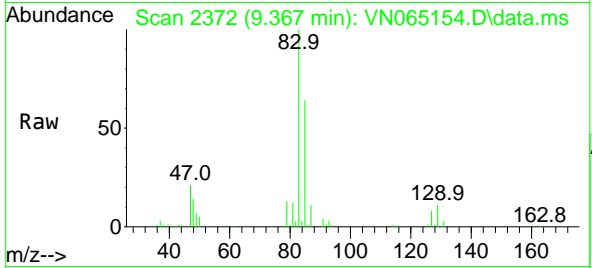
Tgt Ion: 93 Resp: 55008  
 Ion Ratio Lower Upper  
 93 100  
 95 83.7 0.0 164.6  
 174 90.5 0.0 165.6





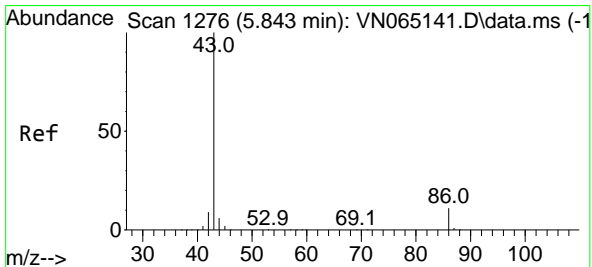
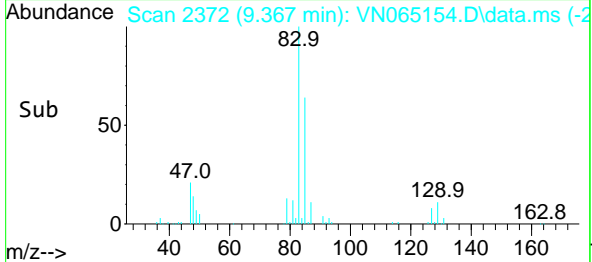
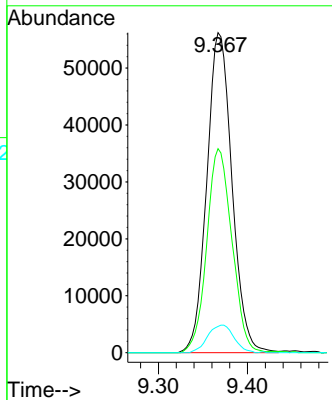
#41  
 Bromodichloromethane  
 Concen: 12.04 ug/l  
 RT: 9.367 min Scan# 2372  
 Delta R.T. 0.000 min  
 Lab File: VN065154.D  
 Acq: 15 Dec 2020 20:09

Instrument :  
 MSVOA\_N  
 ClientSampled :

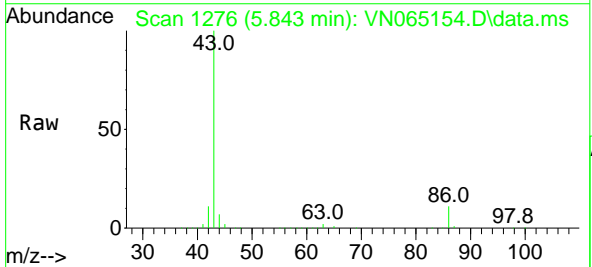


Tgt Ion: 83 Resp: 110378

Ion	Ratio	Lower	Upper
83	100		
85	63.8	51.0	76.4
127	8.2	6.2	9.4

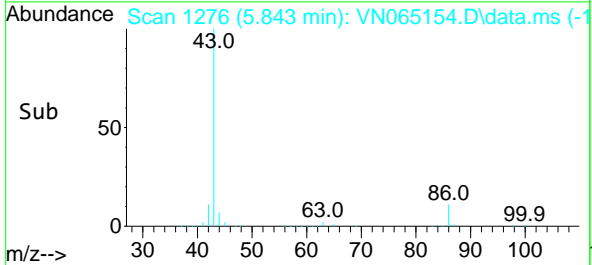
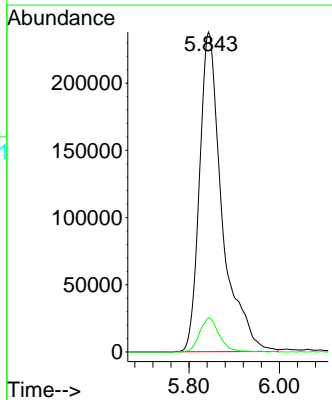


#42  
 Vinyl Acetate  
 Concen: 56.57 ug/l  
 RT: 5.843 min Scan# 1276  
 Delta R.T. 0.000 min  
 Lab File: VN065154.D  
 Acq: 15 Dec 2020 20:09

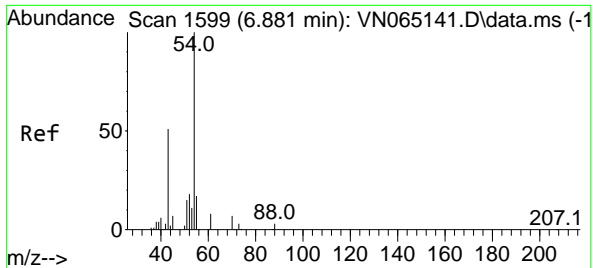


Tgt Ion: 43 Resp: 826839

Ion	Ratio	Lower	Upper
43	100		
86	9.2	6.3	9.5

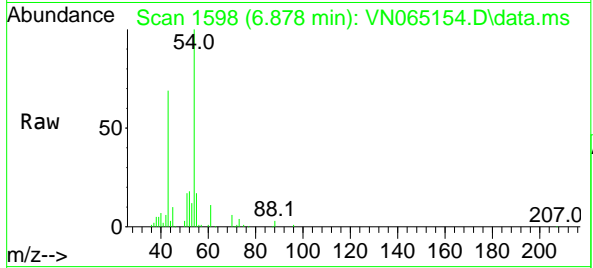




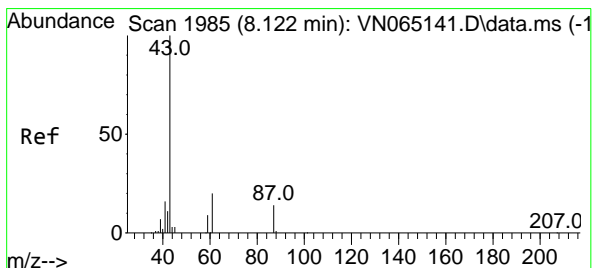
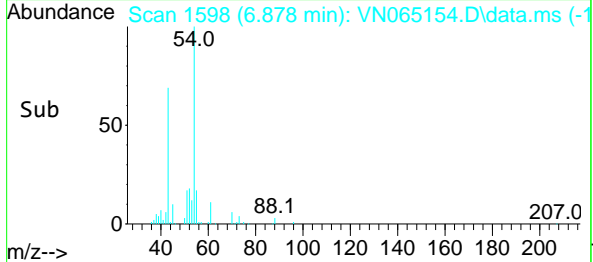
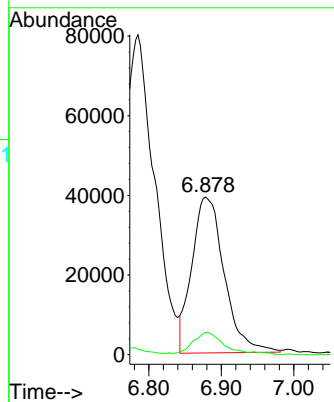


#43  
 Ethyl Acetate  
 Concen: 19.21 ug/l  
 RT: 6.878 min Scan# 1598  
 Delta R.T. -0.003 min  
 Lab File: VN065154.D  
 Acq: 15 Dec 2020 20:09

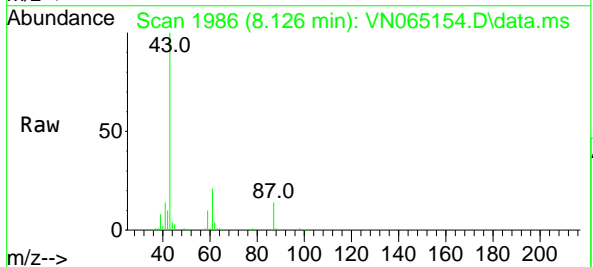
Instrument :  
 MSVOA\_N  
 ClientSampled :



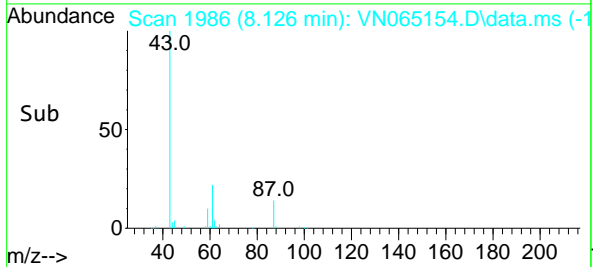
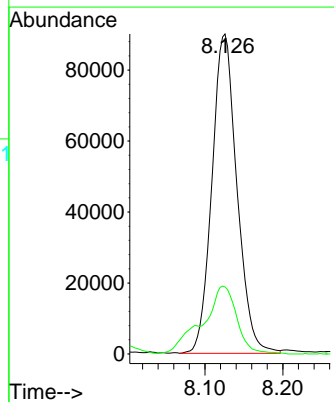
Tgt Ion: 43 Resp: 121424  
 Ion Ratio Lower Upper  
 43 100  
 45 11.9 10.9 16.3

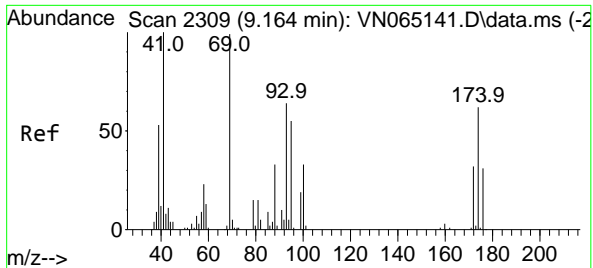


#44  
 Isopropyl Acetate  
 Concen: 19.00 ug/l  
 RT: 8.126 min Scan# 1986  
 Delta R.T. 0.003 min  
 Lab File: VN065154.D  
 Acq: 15 Dec 2020 20:09



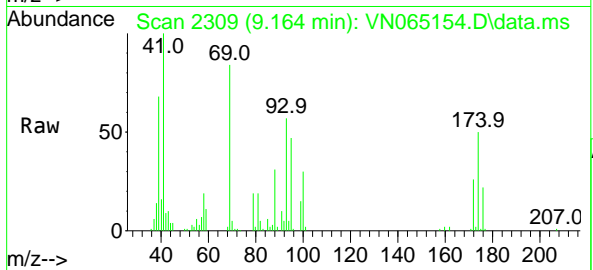
Tgt Ion: 43 Resp: 200925  
 Ion Ratio Lower Upper  
 43 100  
 61 19.3 13.0 19.4



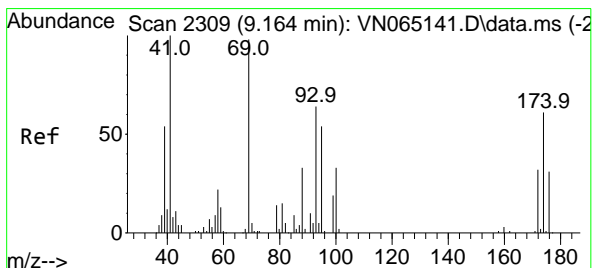
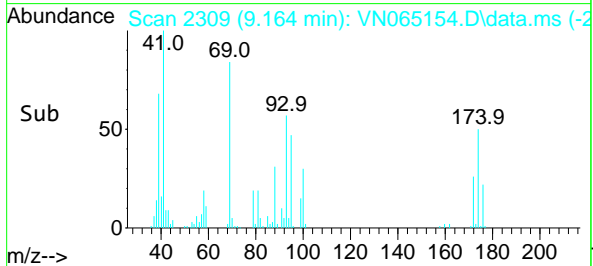
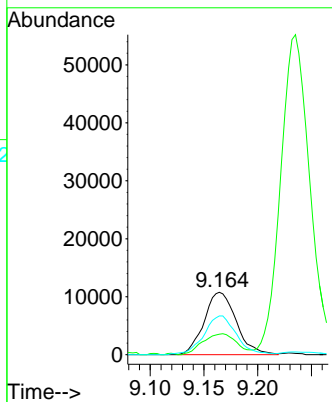


#45  
 1,4-Dioxane  
 Concen: 232.58 ug/l  
 RT: 9.164 min Scan# 2309  
 Delta R.T. 0.000 min  
 Lab File: VN065154.D  
 Acq: 15 Dec 2020 20:09

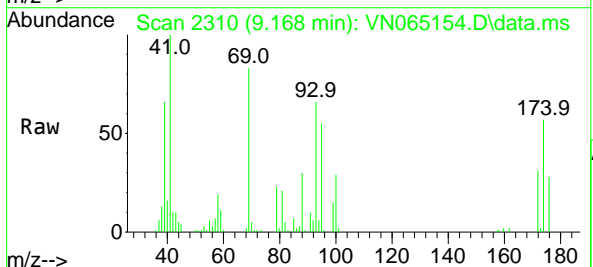
Instrument :  
 MSVOA\_N  
 ClientSampled :



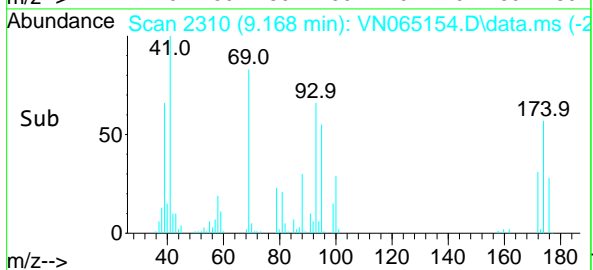
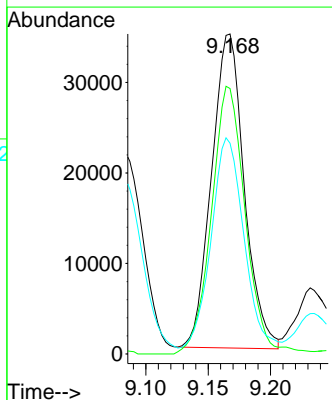
Tgt Ion: 88 Resp: 22353  
 Ion Ratio Lower Upper  
 88 100  
 43 36.2 30.6 46.0  
 58 62.7 57.9 86.9

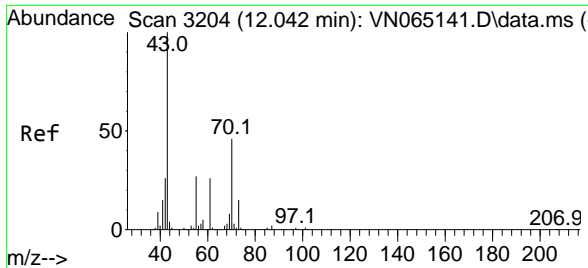


#46  
 Methyl methacrylate  
 Concen: 11.78 ug/l  
 RT: 9.168 min Scan# 2310  
 Delta R.T. 0.003 min  
 Lab File: VN065154.D  
 Acq: 15 Dec 2020 20:09



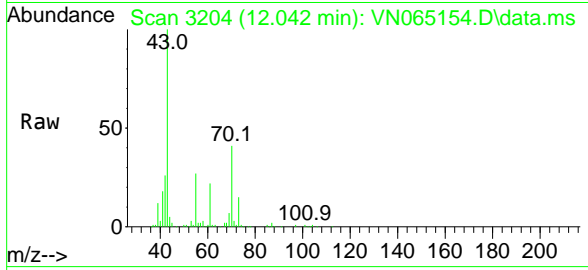
Tgt Ion: 41 Resp: 63353  
 Ion Ratio Lower Upper  
 41 100  
 69 84.1 35.4 106.2  
 39 65.4 31.6 94.7



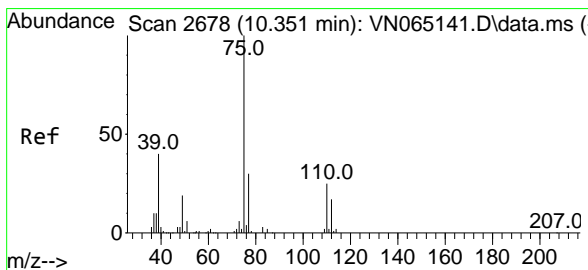
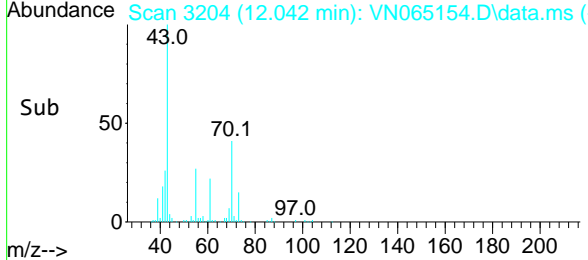
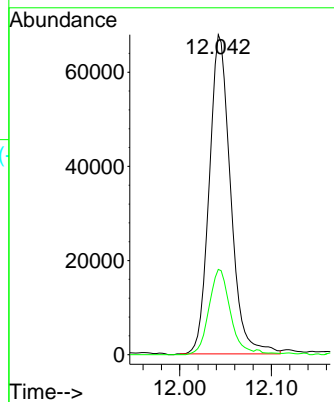


#47  
 n-amy1 Acetate  
 Concen: 12.54 ug/l  
 RT: 12.042 min Scan# 3204  
 Delta R.T. 0.000 min  
 Lab File: VN065154.D  
 Acq: 15 Dec 2020 20:09

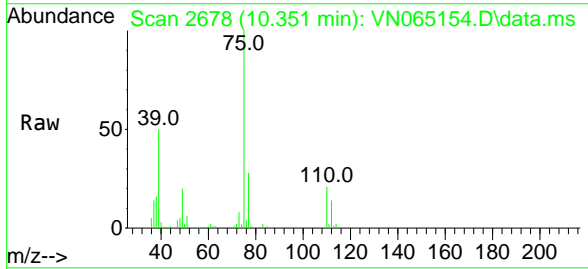
Instrument :  
 MSVOA\_N  
 ClientSampled :



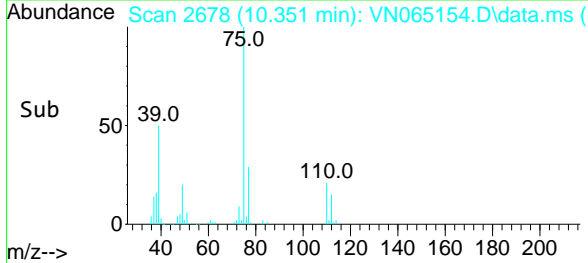
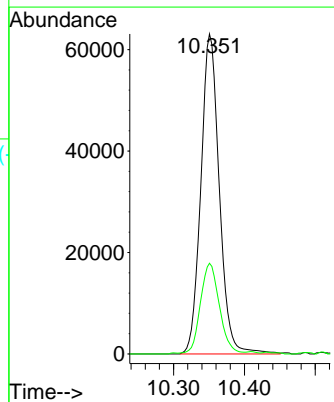
Tgt Ion: 43 Resp: 109577  
 Ion Ratio Lower Upper  
 43 100  
 55 26.5 19.2 28.8

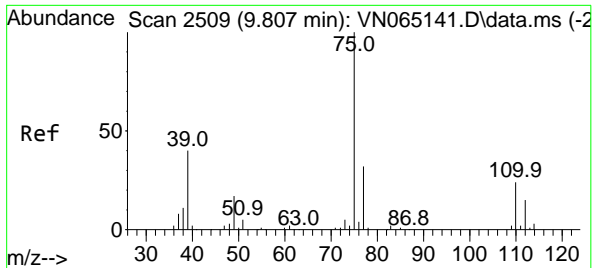


#48  
 t-1,3-Dichloropropene  
 Concen: 12.74 ug/l  
 RT: 10.351 min Scan# 2678  
 Delta R.T. 0.000 min  
 Lab File: VN065154.D  
 Acq: 15 Dec 2020 20:09



Tgt Ion: 75 Resp: 114104  
 Ion Ratio Lower Upper  
 75 100  
 77 28.0 25.8 38.6

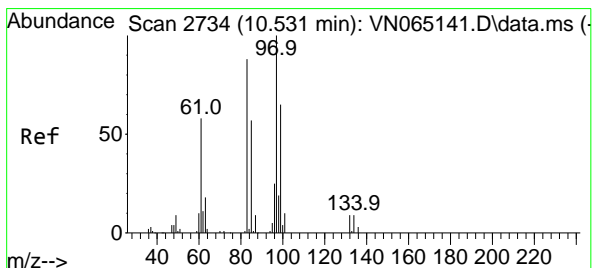
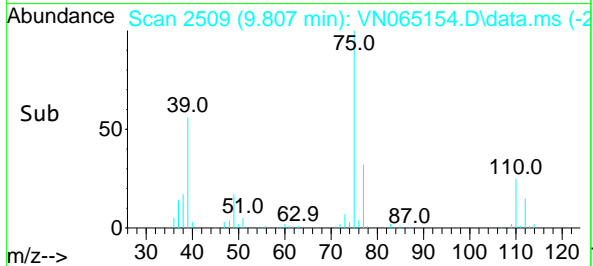
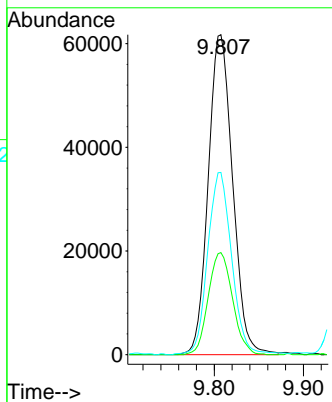
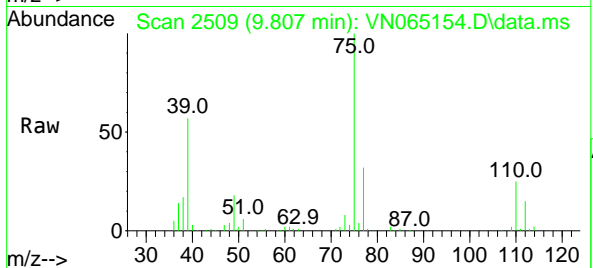




#49  
 cis-1,3-Dichloropropene  
 Concen: 11.53 ug/l  
 RT: 9.807 min Scan# 2509  
 Delta R.T. 0.000 min  
 Lab File: VN065154.D  
 Acq: 15 Dec 2020 20:09

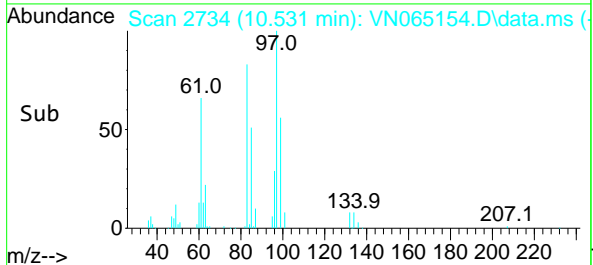
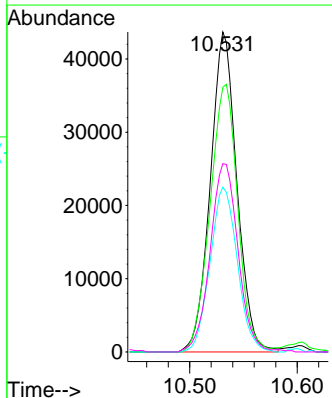
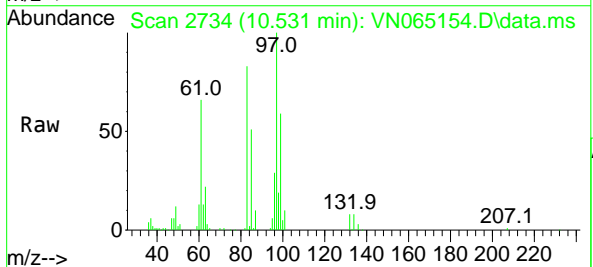
Instrument :  
 MSVOA\_N  
 ClientSampled :

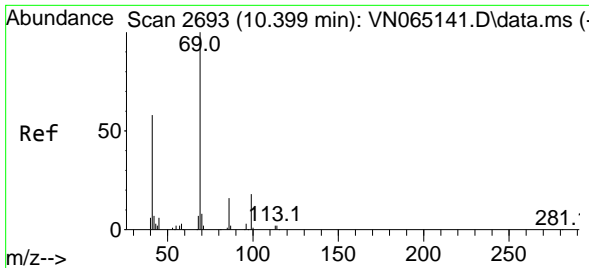
Tgt Ion	Resp	Lower	Upper
75	117370		
75	100		
77	31.9	24.8	37.2
39	56.6	47.4	71.0



#50  
 1,1,2-Trichloroethane  
 Concen: 12.83 ug/l  
 RT: 10.531 min Scan# 2734  
 Delta R.T. 0.000 min  
 Lab File: VN065154.D  
 Acq: 15 Dec 2020 20:09

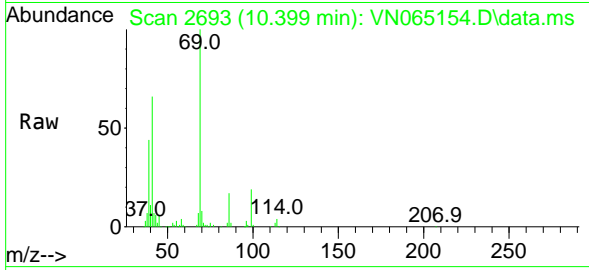
Tgt Ion	Resp	Lower	Upper
97	75105		
97	100		
83	82.7	74.2	111.4
85	51.5	44.8	67.2
99	58.9	50.5	75.7





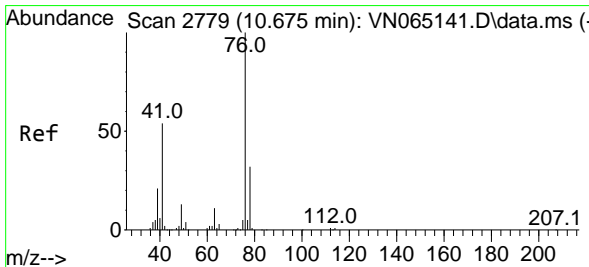
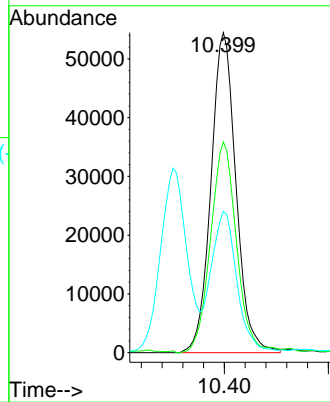
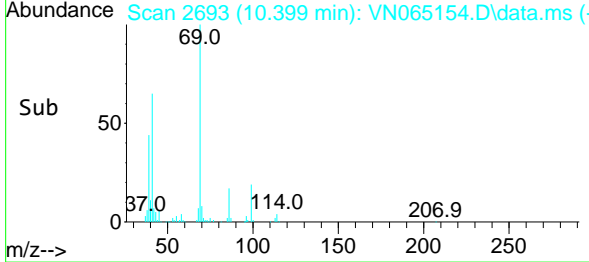
#51  
 Ethyl methacrylate  
 Concen: 11.61 ug/l  
 RT: 10.399 min Scan# 2693  
 Delta R.T. 0.000 min  
 Lab File: VN065154.D  
 Acq: 15 Dec 2020 20:09

Instrument :  
 MSVOA\_N  
 ClientSampled :

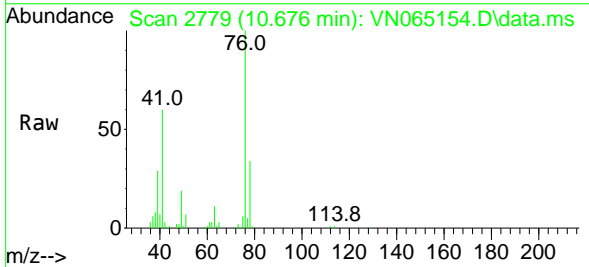


Tgt Ion: 69 Resp: 90972

Ion	Ratio	Lower	Upper
69	100		
41	65.8	35.4	106.1
39	43.3	24.1	72.2

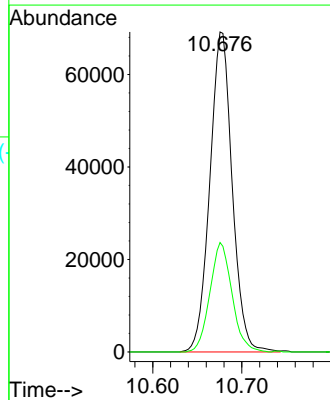
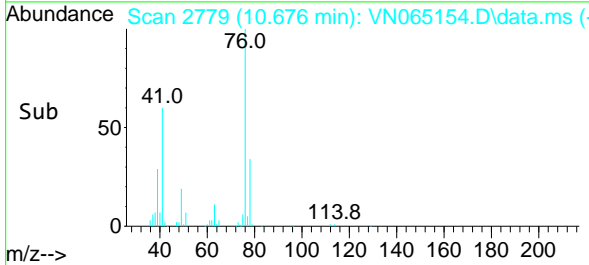


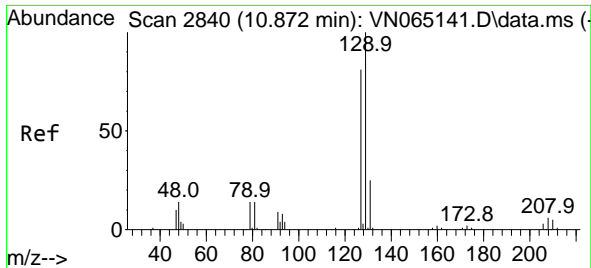
#52  
 1,3-Dichloropropane  
 Concen: 12.43 ug/l  
 RT: 10.676 min Scan# 2779  
 Delta R.T. 0.000 min  
 Lab File: VN065154.D  
 Acq: 15 Dec 2020 20:09



Tgt Ion: 76 Resp: 120694

Ion	Ratio	Lower	Upper
76	100		
78	33.8	0.0	65.2

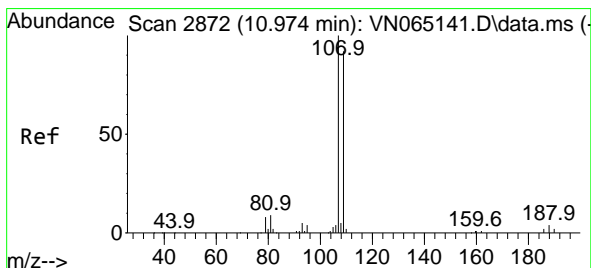
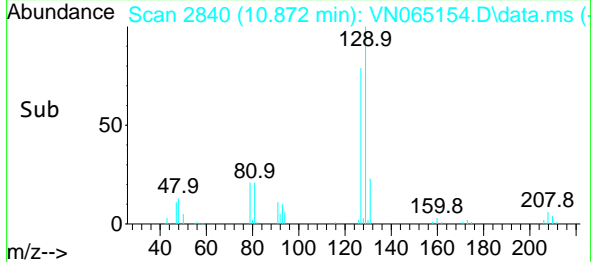
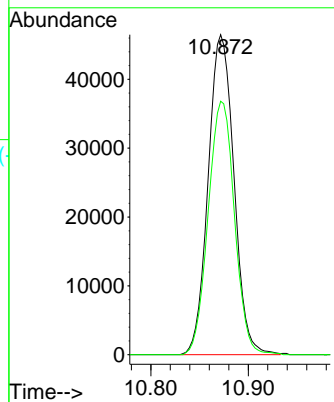
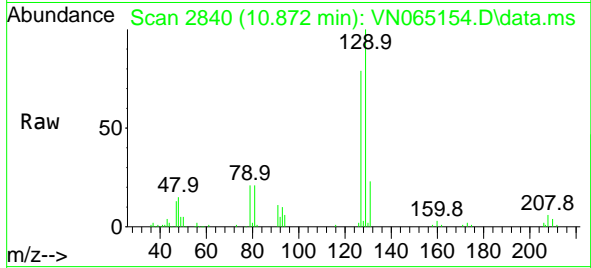




#53  
 Dibromochloromethane  
 Concen: 12.59 ug/l  
 RT: 10.872 min Scan# 2840  
 Delta R.T. 0.000 min  
 Lab File: VN065154.D  
 Acq: 15 Dec 2020 20:09

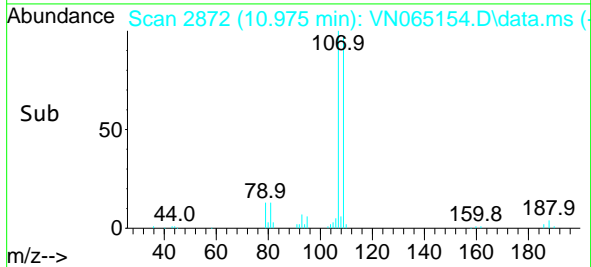
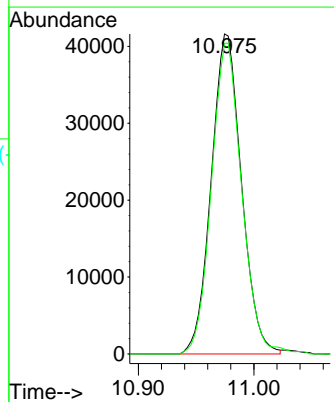
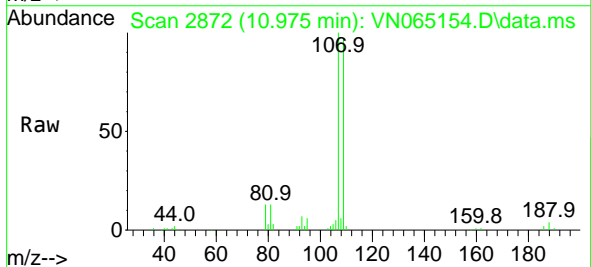
Instrument :  
 MSVOA\_N  
 ClientSampled :

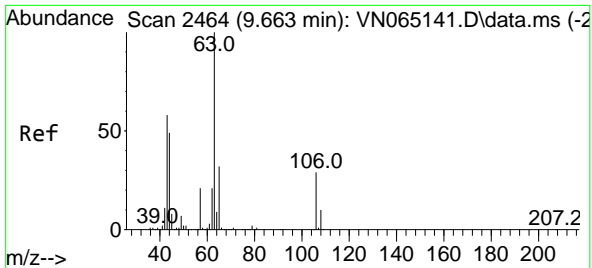
Tgt Ion:129 Resp: 85384  
 Ion Ratio Lower Upper  
 129 100  
 127 80.8 39.1 117.2



#54  
 1,2-Dibromoethane  
 Concen: 12.41 ug/l  
 RT: 10.975 min Scan# 2872  
 Delta R.T. 0.000 min  
 Lab File: VN065154.D  
 Acq: 15 Dec 2020 20:09

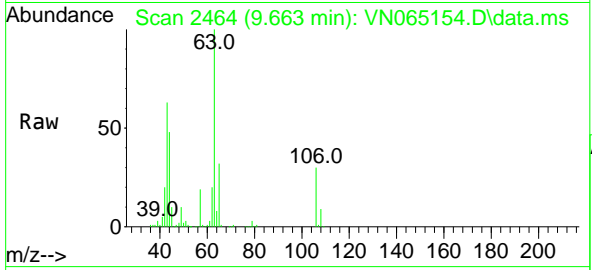
Tgt Ion:107 Resp: 75753  
 Ion Ratio Lower Upper  
 107 100  
 109 97.1 77.2 115.8





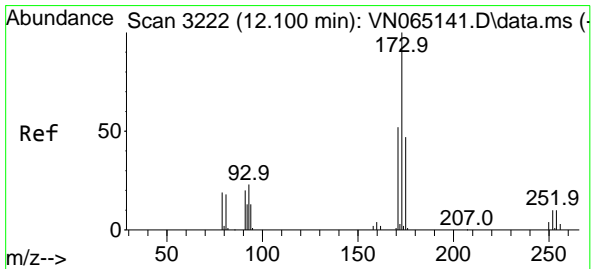
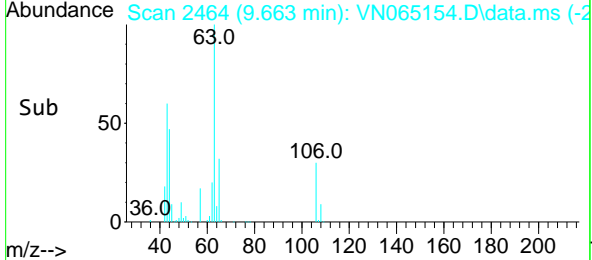
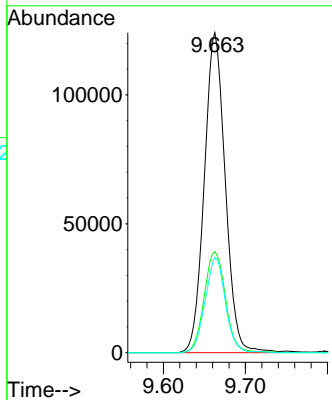
#55  
 2-Chloroethyl vinyl ether  
 Concen: 55.73 ug/l  
 RT: 9.663 min Scan# 2464  
 Delta R.T. 0.000 min  
 Lab File: VN065154.D  
 Acq: 15 Dec 2020 20:09

Instrument :  
 MSVOA\_N  
 ClientSampled :

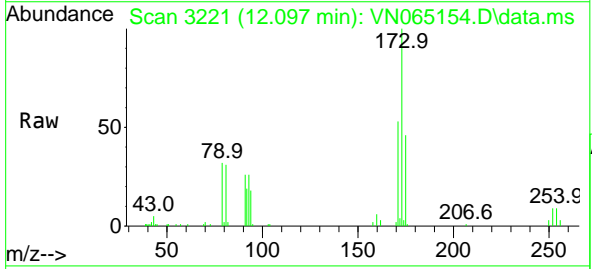


Tgt Ion: 63 Resp: 221215

Ion	Ratio	Lower	Upper
63	100		
65	32.0	25.7	38.5
106	28.7	19.9	29.9

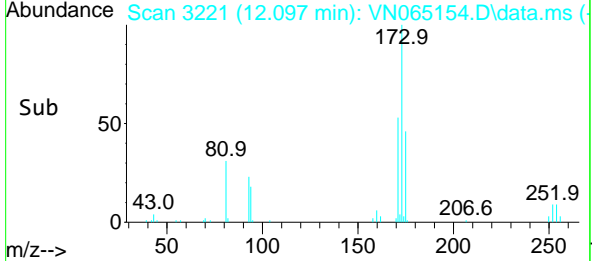
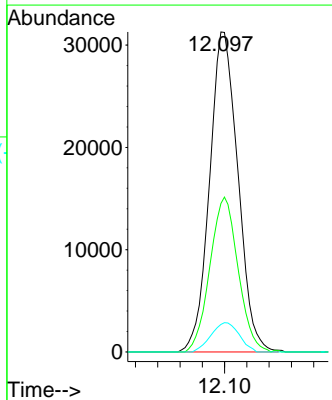


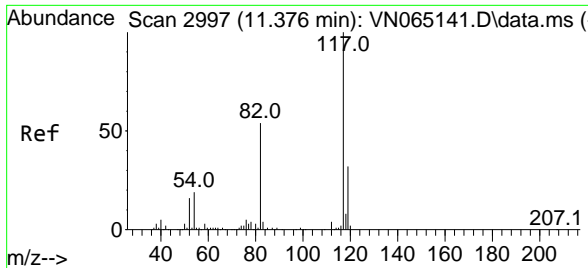
#56  
 Bromoform  
 Concen: 11.99 ug/l  
 RT: 12.097 min Scan# 3221  
 Delta R.T. -0.003 min  
 Lab File: VN065154.D  
 Acq: 15 Dec 2020 20:09



Tgt Ion: 173 Resp: 55304

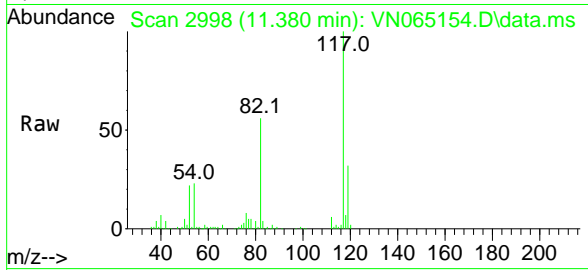
Ion	Ratio	Lower	Upper
173	100		
175	48.0	37.1	55.7
254	9.1	5.4	8.2





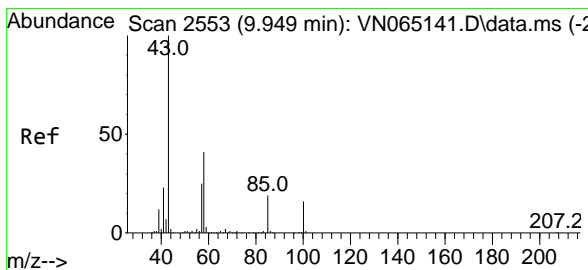
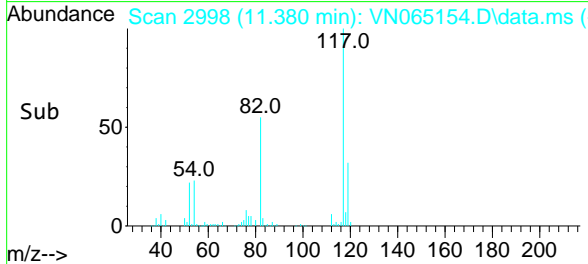
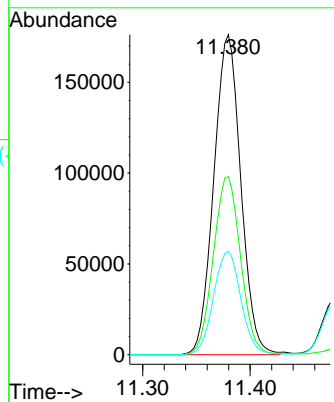
#57  
 Chlorobenzene-d5  
 Concen: 30.00 ug/l  
 RT: 11.380 min Scan# 2998  
 Delta R.T. 0.003 min  
 Lab File: VN065154.D  
 Acq: 15 Dec 2020 20:09

Instrument :  
 MSVOA\_N  
 ClientSampled :

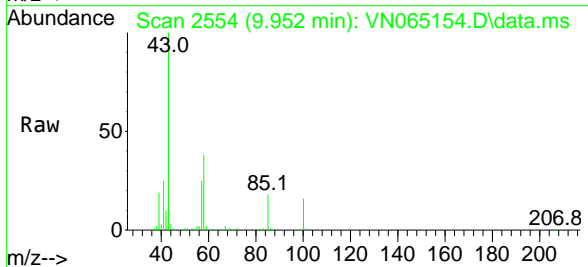


Tgt Ion:117 Resp: 306992

Ion	Ratio	Lower	Upper
117	100		
82	56.4	47.8	71.8
119	32.9	25.7	38.5

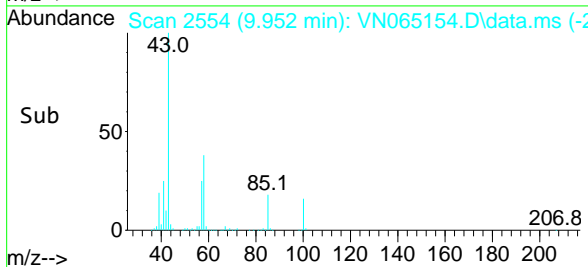
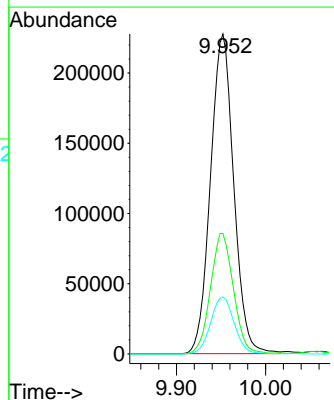


#58  
 4-Methyl-2-Pentanone  
 Concen: 92.17 ug/l  
 RT: 9.952 min Scan# 2554  
 Delta R.T. 0.003 min  
 Lab File: VN065154.D  
 Acq: 15 Dec 2020 20:09

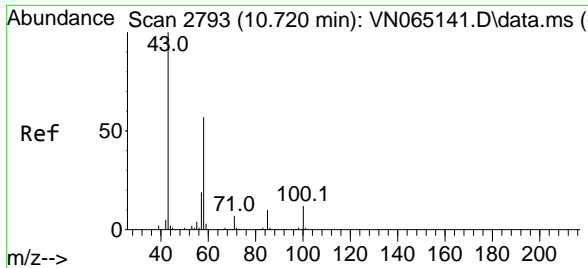


Tgt Ion: 43 Resp: 412239

Ion	Ratio	Lower	Upper
43	100		
58	37.3	28.8	43.2
85	18.1	12.3	18.5

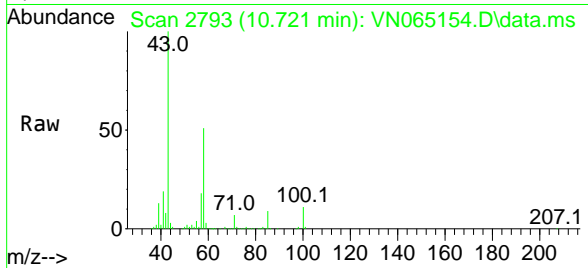






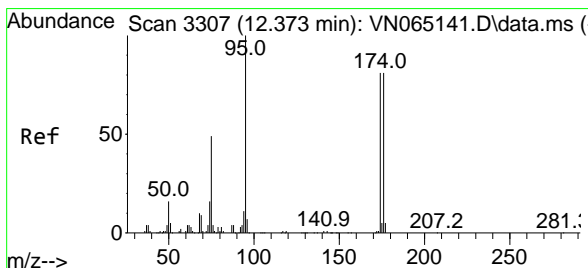
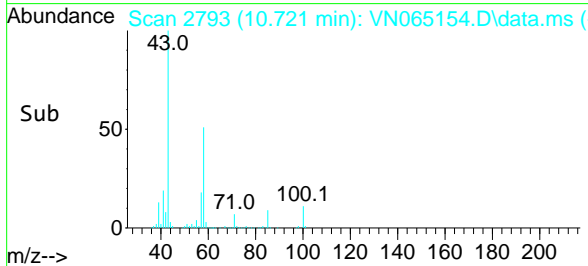
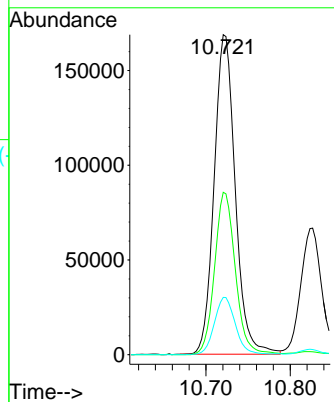
#59  
 2-Hexanone  
 Concen: 98.82 ug/l  
 RT: 10.721 min Scan# 2793  
 Delta R.T. 0.000 min  
 Lab File: VN065154.D  
 Acq: 15 Dec 2020 20:09

Instrument :  
 MSVOA\_N  
 ClientSampled :

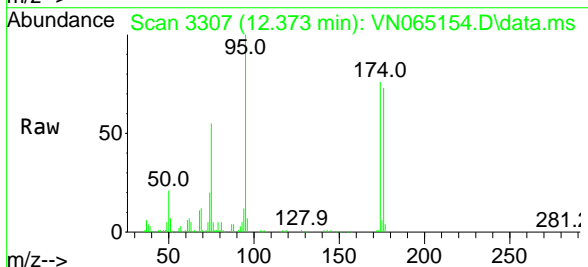


Tgt Ion: 43 Resp: 293446

Ion	Ratio	Lower	Upper
43	100		
58	50.1	38.2	57.4
57	18.0	13.8	20.8

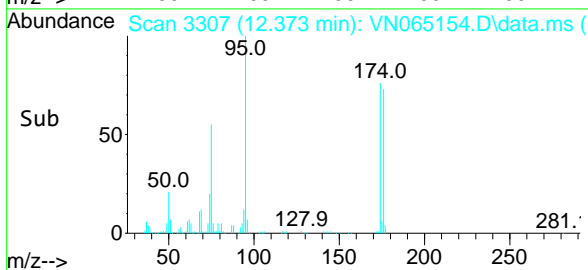
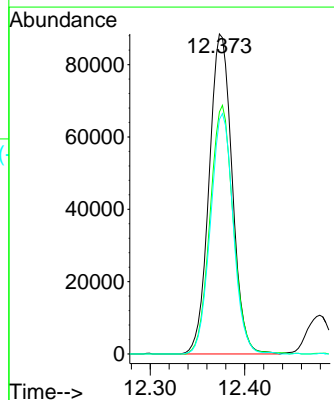


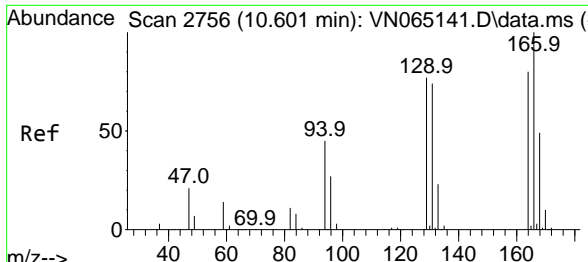
#60  
 4-Bromofluorobenzene  
 Concen: 31.07 ug/l  
 RT: 12.373 min Scan# 3307  
 Delta R.T. 0.000 min  
 Lab File: VN065154.D  
 Acq: 15 Dec 2020 20:09



Tgt Ion: 95 Resp: 149873

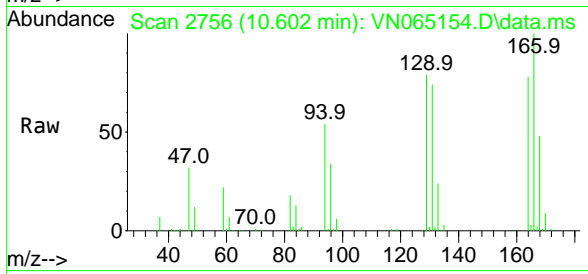
Ion	Ratio	Lower	Upper
95	100		
174	77.8	56.4	84.6
176	73.9	53.3	79.9



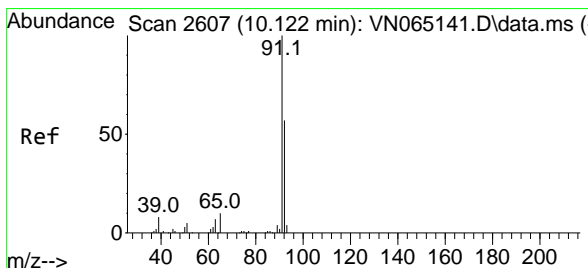
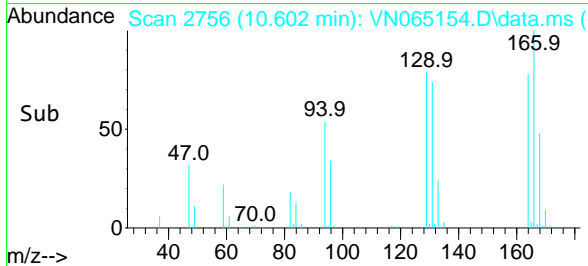
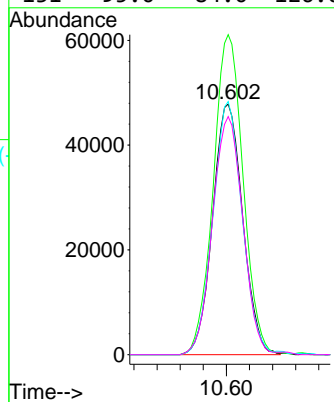


#61  
 Tetrachloroethene  
 Concen: 19.32 ug/l  
 RT: 10.602 min Scan# 2756  
 Delta R.T. 0.000 min  
 Lab File: VN065154.D  
 Acq: 15 Dec 2020 20:09

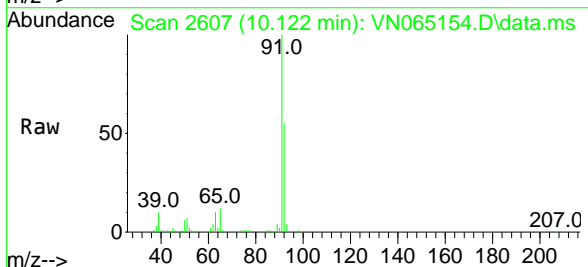
Instrument :  
 MSVOA\_N  
 ClientSampled :



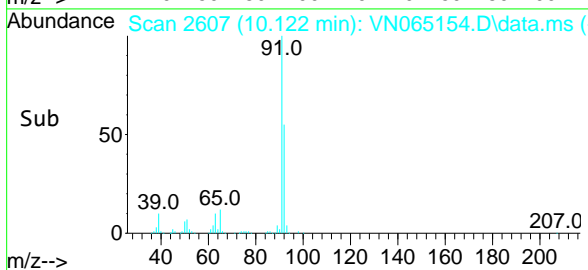
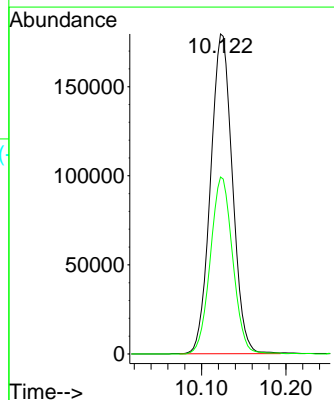
Tgt Ion:164 Resp: 86266  
 Ion Ratio Lower Upper  
 164 100  
 166 127.7 103.2 154.8  
 129 101.0 86.4 129.6  
 131 95.0 84.0 126.0

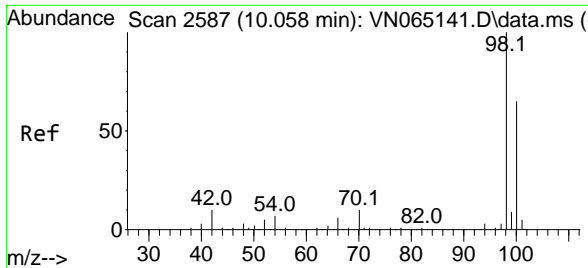


#62  
 Toluene  
 Concen: 19.05 ug/l  
 RT: 10.122 min Scan# 2607  
 Delta R.T. 0.000 min  
 Lab File: VN065154.D  
 Acq: 15 Dec 2020 20:09



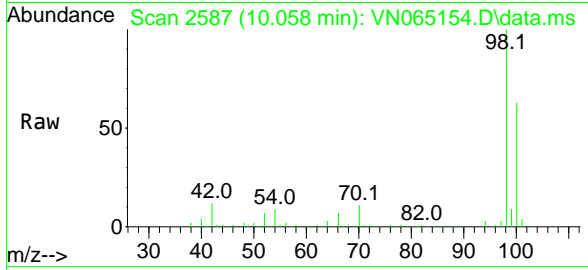
Tgt Ion: 91 Resp: 324013  
 Ion Ratio Lower Upper  
 91 100  
 92 56.3 45.4 68.2



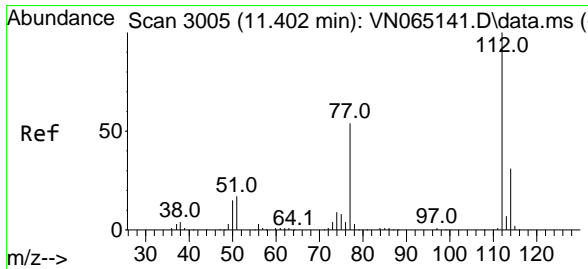
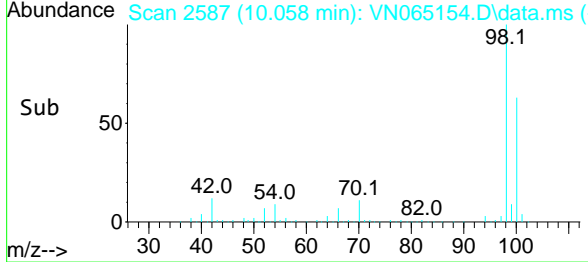
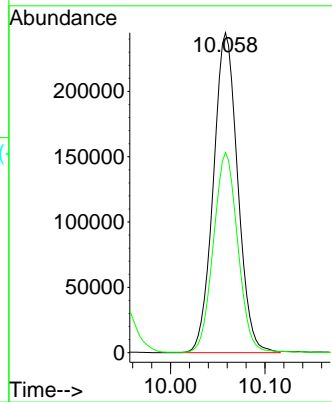


#63  
 Toluene-d8  
 Concen: 29.59 ug/l  
 RT: 10.058 min Scan# 2587  
 Delta R.T. 0.000 min  
 Lab File: VN065154.D  
 Acq: 15 Dec 2020 20:09

Instrument :  
 MSVOA\_N  
 ClientSampled :

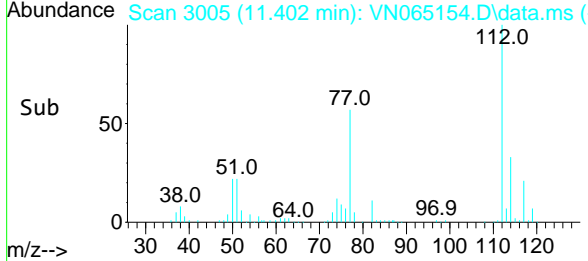
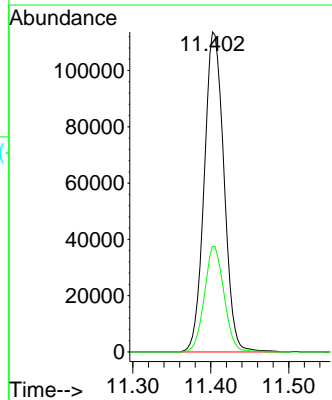
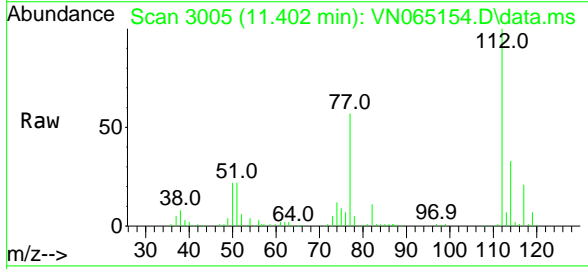


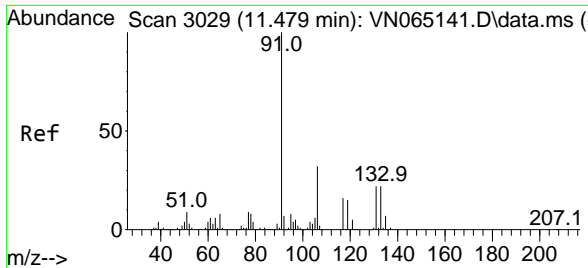
Tgt Ion: 98 Resp: 438476  
 Ion Ratio Lower Upper  
 98 100  
 100 62.0 49.4 74.2



#64  
 Chlorobenzene  
 Concen: 18.84 ug/l  
 RT: 11.402 min Scan# 3005  
 Delta R.T. 0.000 min  
 Lab File: VN065154.D  
 Acq: 15 Dec 2020 20:09

Tgt Ion: 112 Resp: 199761  
 Ion Ratio Lower Upper  
 112 100  
 114 33.1 25.0 37.6



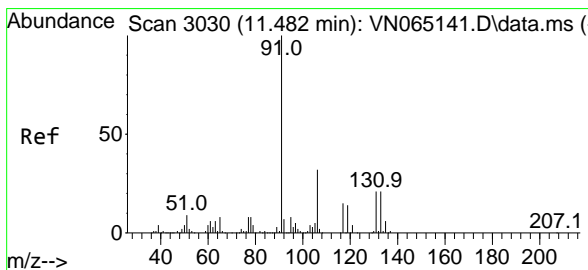
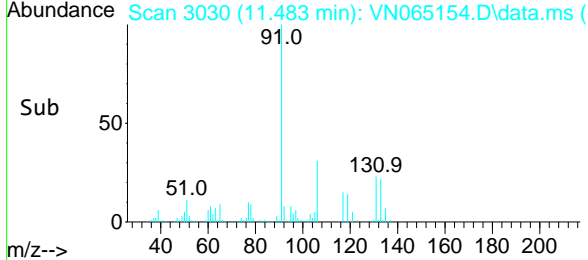
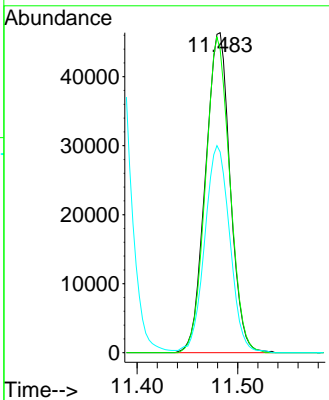
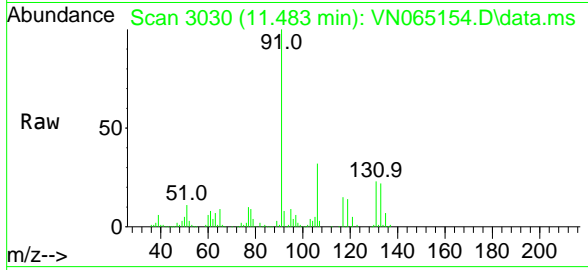


#65  
 1,1,1,2-Tetrachloroethane  
 Concen: 19.70 ug/l  
 RT: 11.483 min Scan# 3030  
 Delta R.T. 0.003 min  
 Lab File: VN065154.D  
 Acq: 15 Dec 2020 20:09

Instrument :  
 MSVOA\_N  
 ClientSampled :

Tgt Ion:131 Resp: 79252

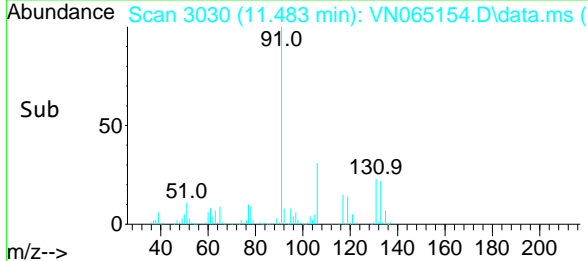
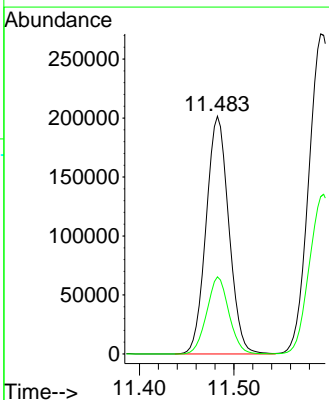
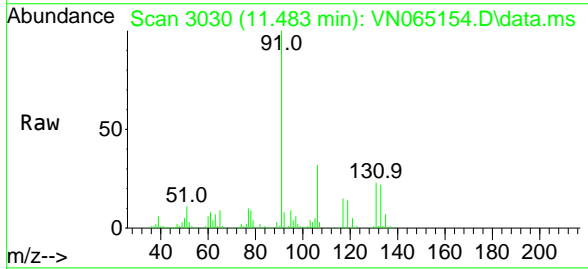
Ion	Ratio	Lower	Upper
131	100		
133	96.9	0.0	191.2
119	65.7	0.0	131.6

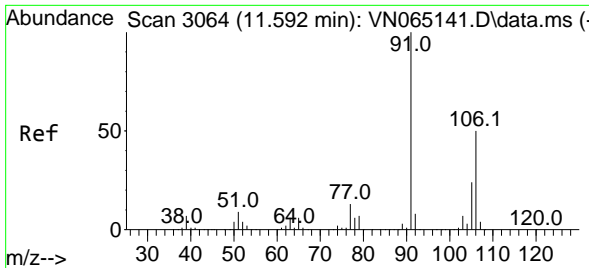


#66  
 Ethyl Benzene  
 Concen: 18.66 ug/l  
 RT: 11.483 min Scan# 3030  
 Delta R.T. 0.000 min  
 Lab File: VN065154.D  
 Acq: 15 Dec 2020 20:09

Tgt Ion: 91 Resp: 336383

Ion	Ratio	Lower	Upper
91	100		
106	32.4	23.9	35.9

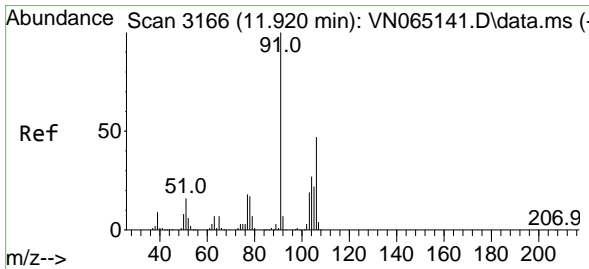
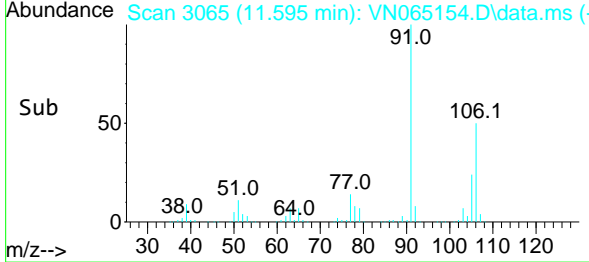
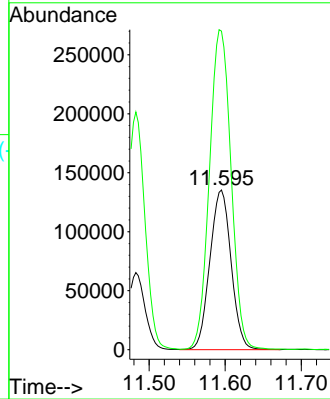
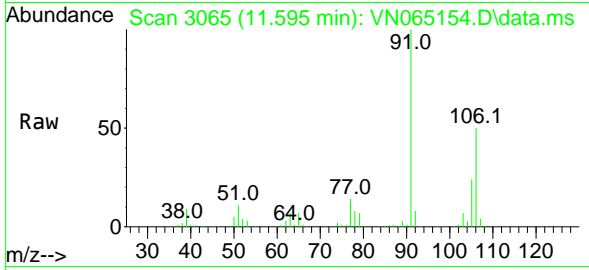




#67  
 m/p-Xylenes  
 Concen: 37.42 ug/l  
 RT: 11.595 min Scan# 3065  
 Delta R.T. 0.003 min  
 Lab File: VN065154.D  
 Acq: 15 Dec 2020 20:09

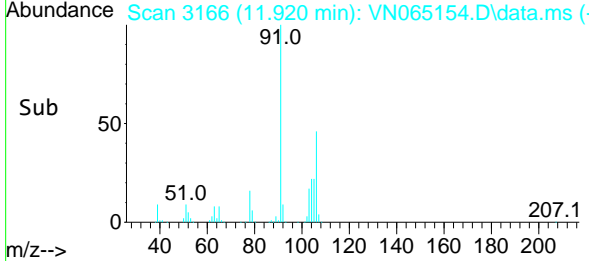
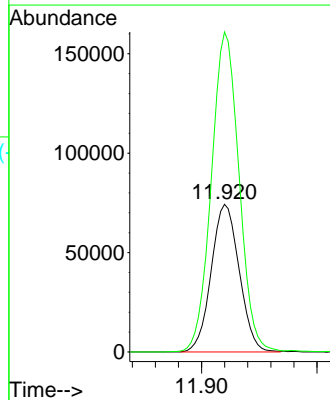
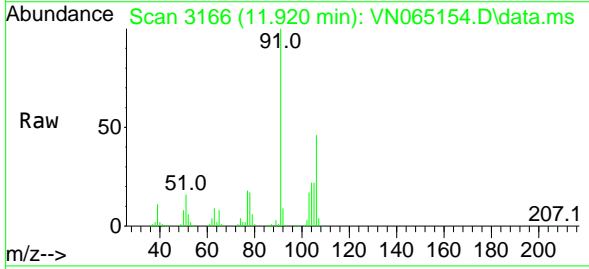
Instrument :  
 MSVOA\_N  
 ClientSampled :

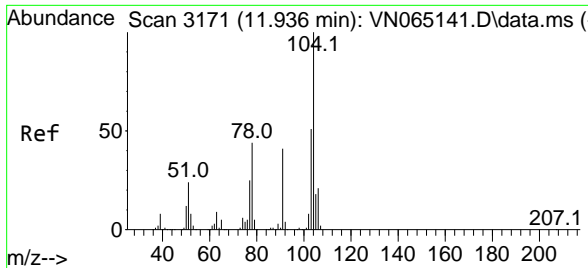
Tgt Ion:106 Resp: 262677  
 Ion Ratio Lower Upper  
 106 100  
 91 203.5 168.8 253.2



#68  
 o-Xylene  
 Concen: 18.83 ug/l  
 RT: 11.920 min Scan# 3166  
 Delta R.T. 0.000 min  
 Lab File: VN065154.D  
 Acq: 15 Dec 2020 20:09

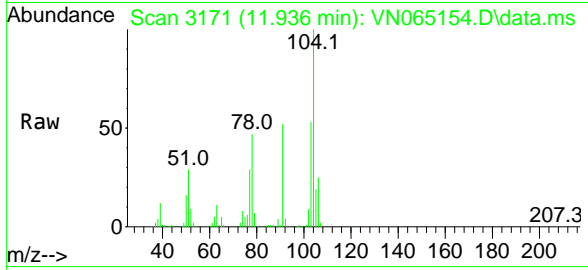
Tgt Ion:106 Resp: 124967  
 Ion Ratio Lower Upper  
 106 100  
 91 214.3 109.7 329.2





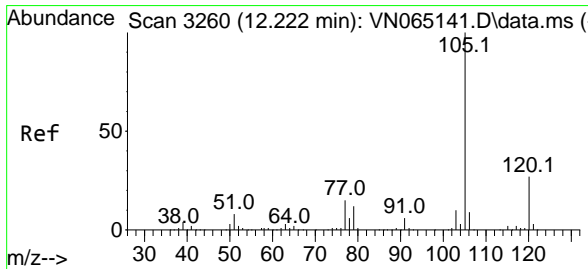
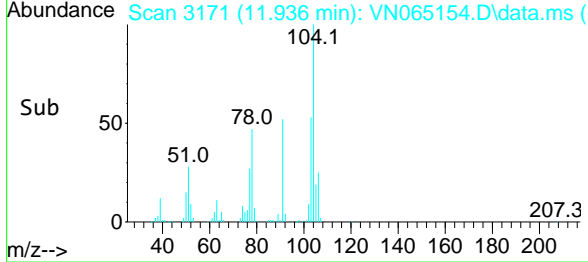
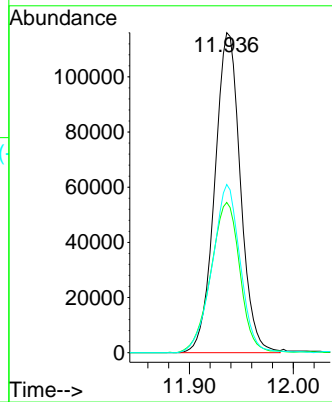
#69  
 Styrene  
 Concen: 18.06 ug/l  
 RT: 11.936 min Scan# 3171  
 Delta R.T. 0.000 min  
 Lab File: VN065154.D  
 Acq: 15 Dec 2020 20:09

Instrument :  
 MSVOA\_N  
 ClientSampled :

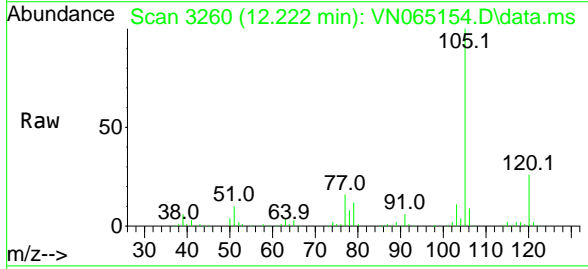


Tgt Ion:104 Resp: 199331

Ion	Ratio	Lower	Upper
104	100		
78	53.1	44.4	66.6
103	57.1	44.6	67.0

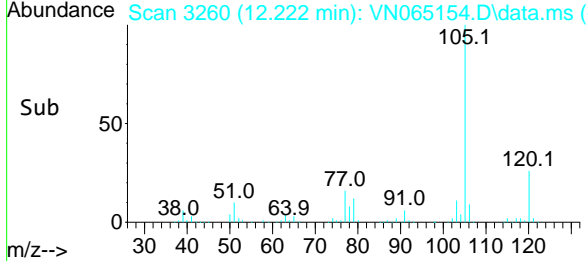
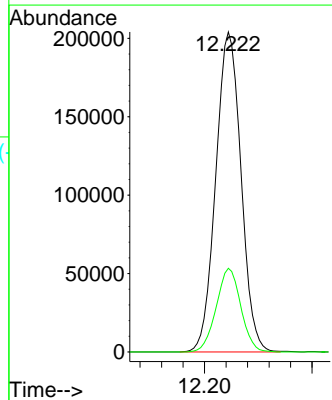


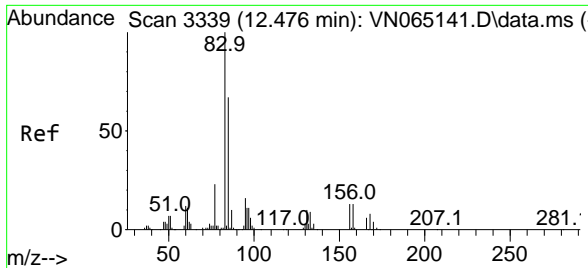
#70  
 Isopropylbenzene  
 Concen: 19.17 ug/l  
 RT: 12.222 min Scan# 3260  
 Delta R.T. 0.000 min  
 Lab File: VN065154.D  
 Acq: 15 Dec 2020 20:09



Tgt Ion:105 Resp: 332369

Ion	Ratio	Lower	Upper
105	100		
120	25.4	17.9	33.3

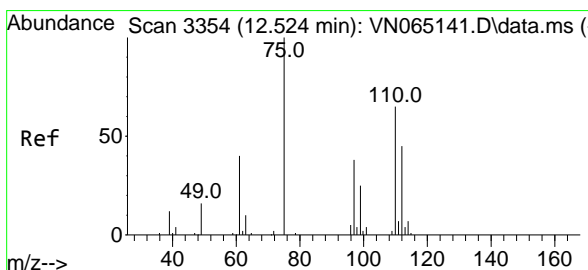
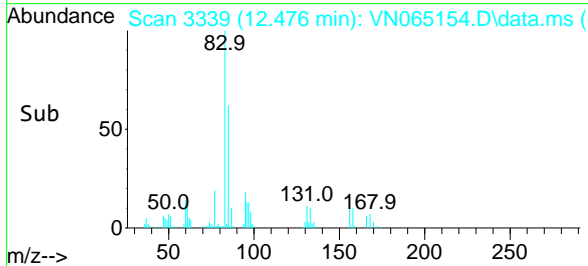
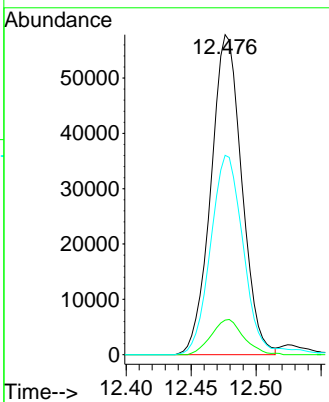
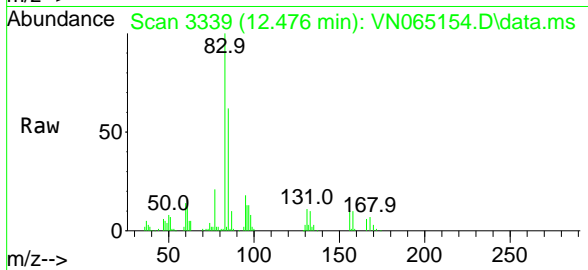




#71  
 1,1,2,2-Tetrachloroethane  
 Concen: 19.05 ug/l  
 RT: 12.476 min Scan# 3339  
 Delta R.T. 0.000 min  
 Lab File: VN065154.D  
 Acq: 15 Dec 2020 20:09

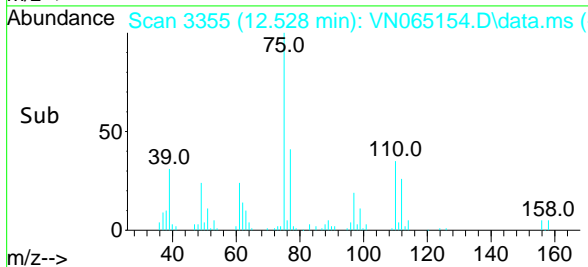
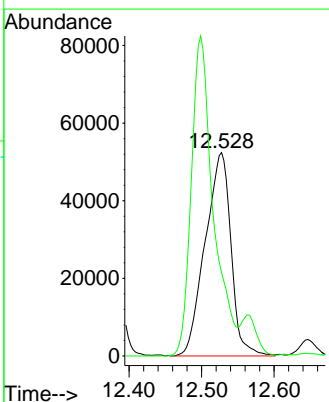
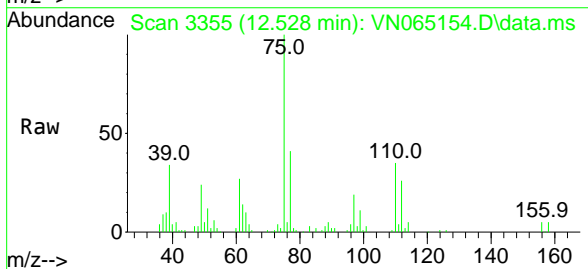
Instrument :  
 MSVOA\_N  
 ClientSampled :

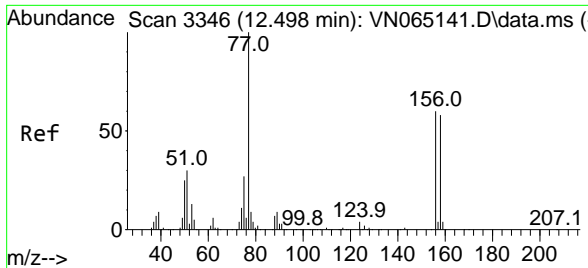
Tgt Ion	Resp	Lower	Upper
83	95695		
83	100		
131	11.4	4.6	13.8
85	65.1	31.4	94.0



#72  
 1,2,3-Trichloropropane  
 Concen: 26.95 ug/l  
 RT: 12.528 min Scan# 3355  
 Delta R.T. 0.003 min  
 Lab File: VN065154.D  
 Acq: 15 Dec 2020 20:09

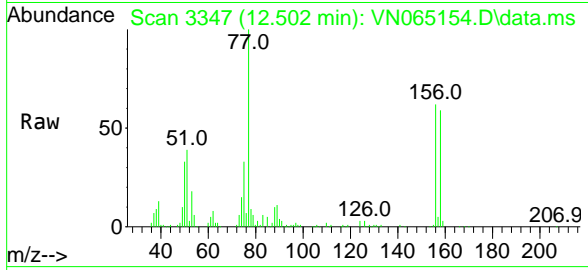
Tgt Ion	Resp	Lower	Upper
75	129697		
75	100		
77	134.1	0.0	379.4





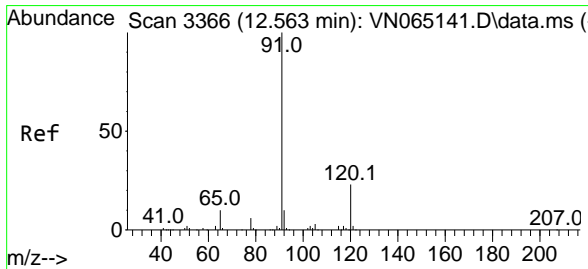
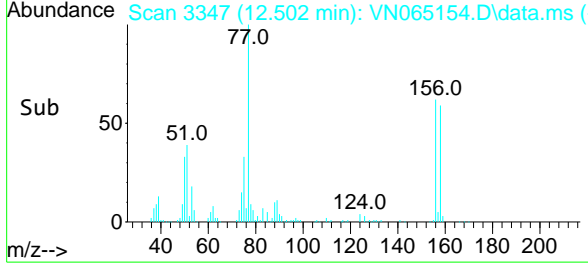
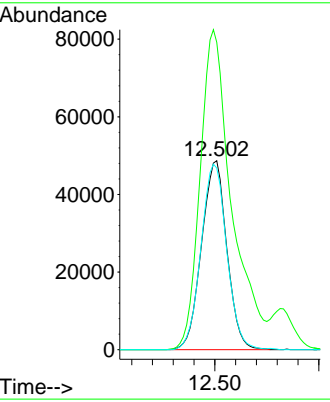
#73  
 Bromobenzene  
 Concen: 18.32 ug/l  
 RT: 12.502 min Scan# 3347  
 Delta R.T. 0.003 min  
 Lab File: VN065154.D  
 Acq: 15 Dec 2020 20:09

Instrument :  
 MSVOA\_N  
 ClientSampled :

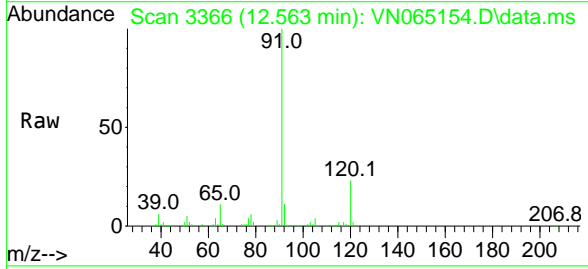


Tgt Ion:156 Resp: 82465

Ion	Ratio	Lower	Upper
156	100		
77	210.8	0.0	480.2
158	100.0	0.0	194.0

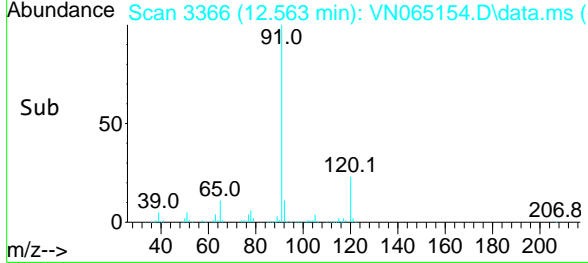
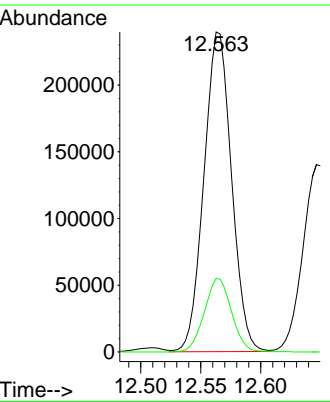


#74  
 n-propylbenzene  
 Concen: 19.36 ug/l  
 RT: 12.563 min Scan# 3366  
 Delta R.T. 0.000 min  
 Lab File: VN065154.D  
 Acq: 15 Dec 2020 20:09

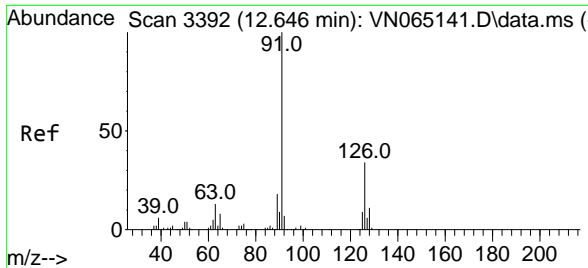


Tgt Ion: 91 Resp: 382853

Ion	Ratio	Lower	Upper
91	100		
120	22.6	0.0	42.8



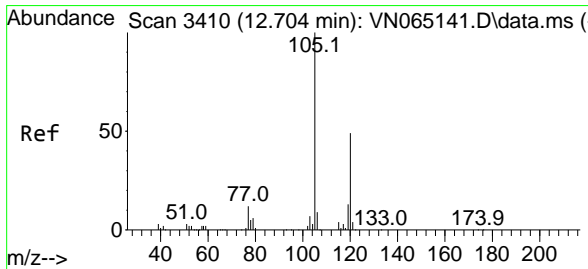
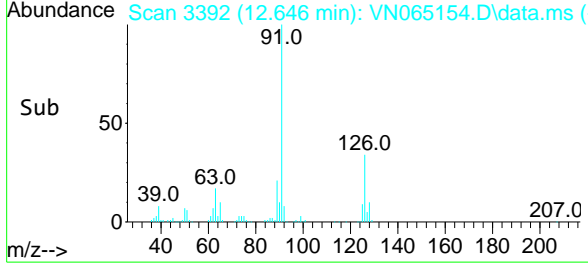
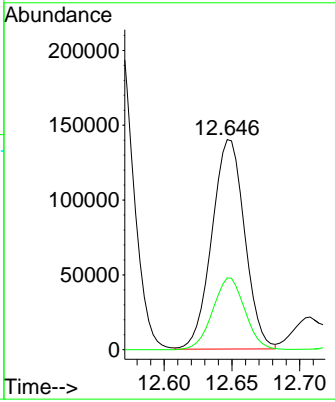
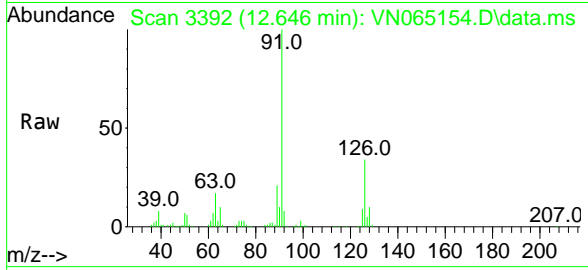




#75  
 2-Chlorotoluene  
 Concen: 19.58 ug/l  
 RT: 12.646 min Scan# 3392  
 Delta R.T. 0.000 min  
 Lab File: VN065154.D  
 Acq: 15 Dec 2020 20:09

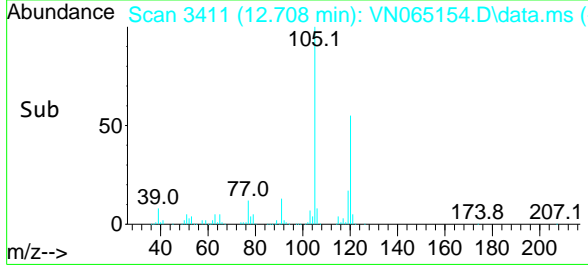
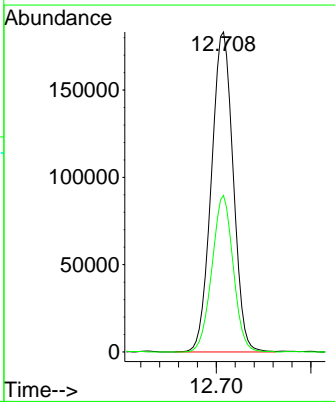
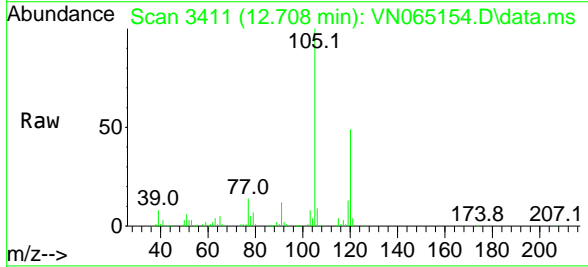
Instrument :  
 MSVOA\_N  
 ClientSampled :

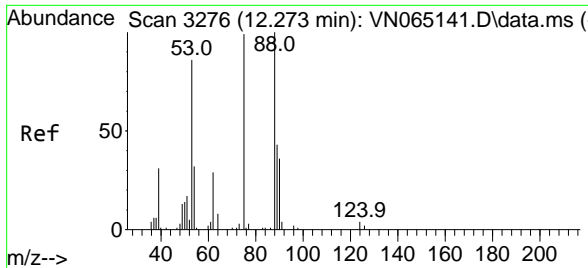
Tgt Ion: 91 Resp: 235623  
 Ion Ratio Lower Upper  
 91 100  
 126 33.6 0.0 61.8



#76  
 1,3,5-Trimethylbenzene  
 Concen: 19.64 ug/l  
 RT: 12.708 min Scan# 3411  
 Delta R.T. 0.003 min  
 Lab File: VN065154.D  
 Acq: 15 Dec 2020 20:09

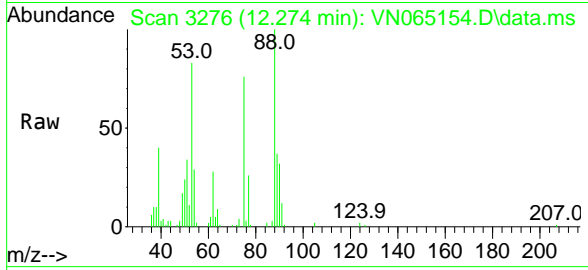
Tgt Ion: 105 Resp: 293776  
 Ion Ratio Lower Upper  
 105 100  
 120 47.7 0.0 90.4





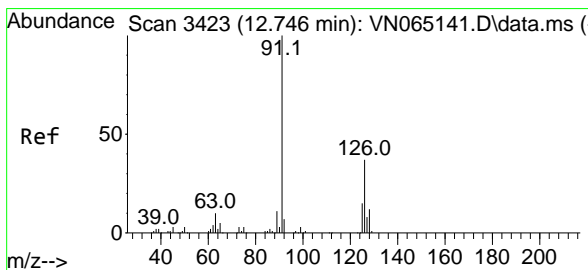
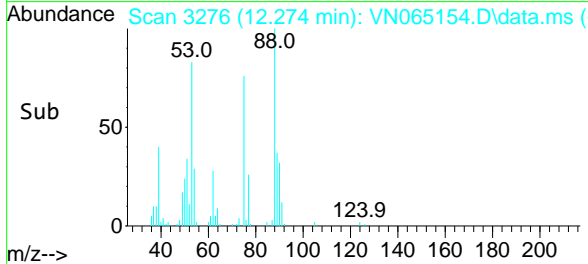
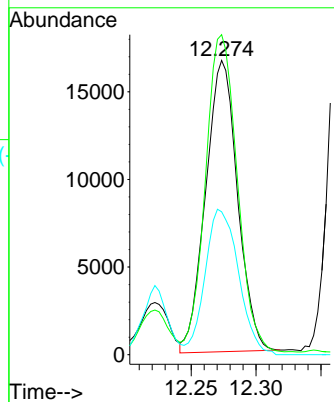
#77  
 t-1,4-Dichloro-2-butene  
 Concen: 16.68 ug/l  
 RT: 12.274 min Scan# 3276  
 Delta R.T. 0.000 min  
 Lab File: VN065154.D  
 Acq: 15 Dec 2020 20:09

Instrument :  
 MSVOA\_N  
 ClientSampled :



Tgt Ion: 75 Resp: 28355

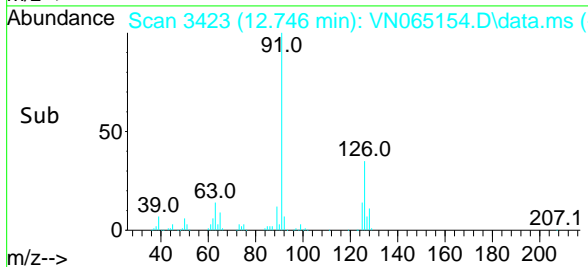
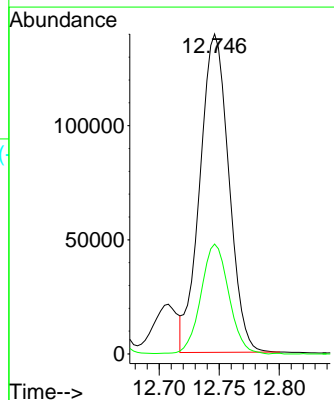
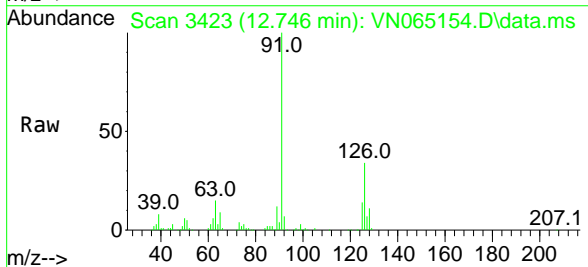
Ion	Ratio	Lower	Upper
75	100		
53	109.3	50.3	150.9
89	49.3	23.3	69.8

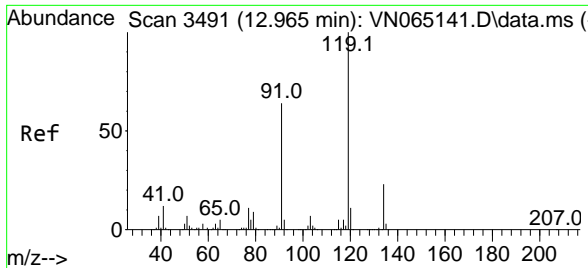


#78  
 4-Chlorotoluene  
 Concen: 19.03 ug/l  
 RT: 12.746 min Scan# 3423  
 Delta R.T. 0.000 min  
 Lab File: VN065154.D  
 Acq: 15 Dec 2020 20:09

Tgt Ion: 91 Resp: 233854

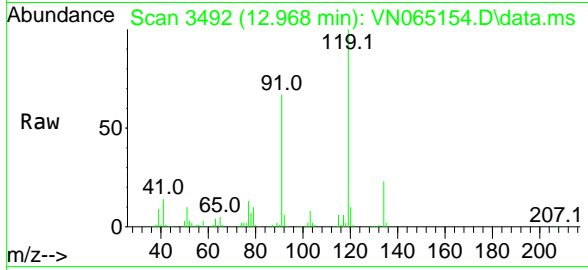
Ion	Ratio	Lower	Upper
91	100		
126	33.5	0.0	61.8





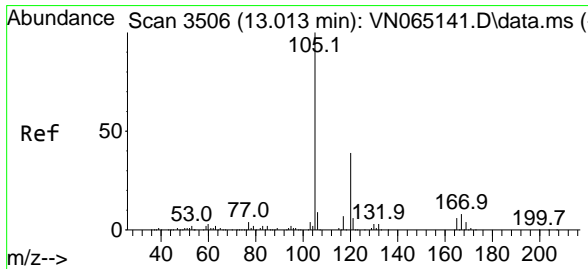
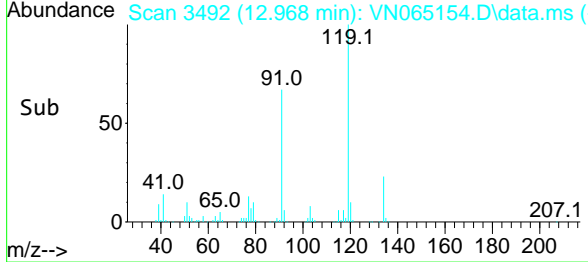
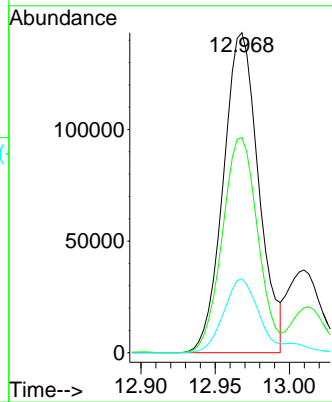
#79  
 tert-butylbenzene  
 Concen: 18.94 ug/l  
 RT: 12.968 min Scan# 3492  
 Delta R.T. 0.003 min  
 Lab File: VN065154.D  
 Acq: 15 Dec 2020 20:09

Instrument :  
 MSVOA\_N  
 ClientSampled :

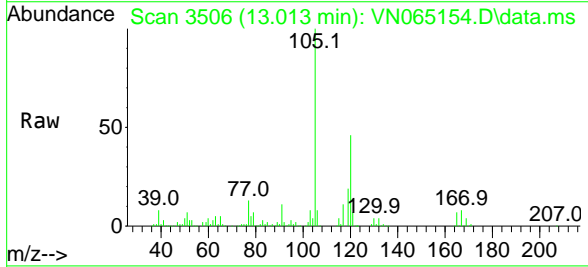


Tgt Ion:119 Resp: 237759

Ion	Ratio	Lower	Upper
119	100		
91	67.5	0.0	147.8
134	22.6	0.0	50.6

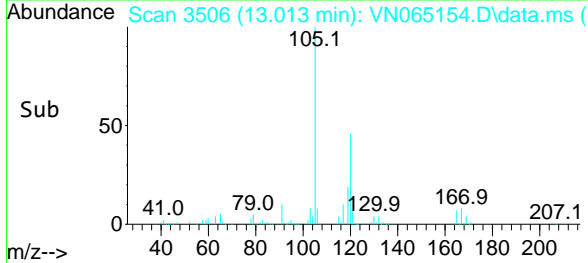
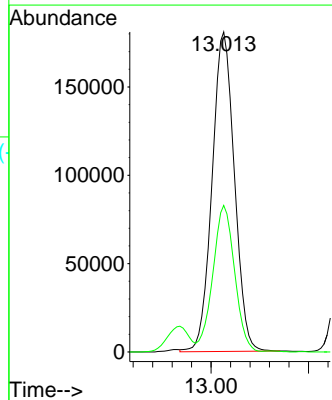


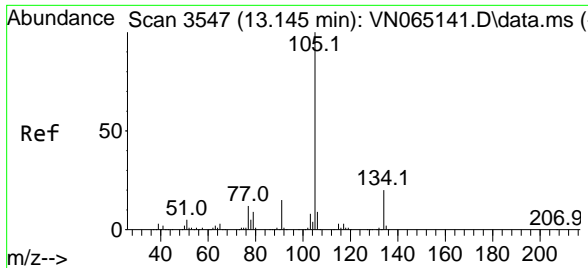
#80  
 1,2,4-Trimethylbenzene  
 Concen: 19.38 ug/l  
 RT: 13.013 min Scan# 3506  
 Delta R.T. 0.000 min  
 Lab File: VN065154.D  
 Acq: 15 Dec 2020 20:09



Tgt Ion:105 Resp: 287525

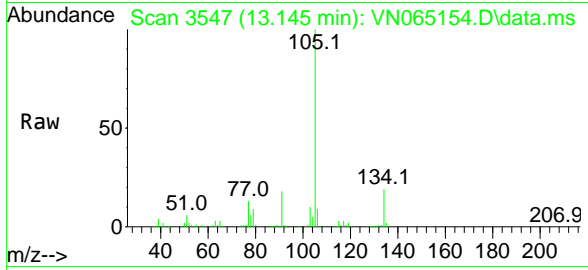
Ion	Ratio	Lower	Upper
105	100		
120	44.8	0.0	88.6



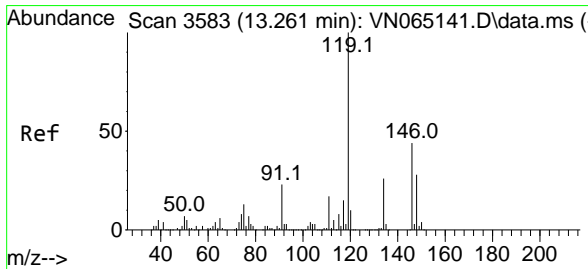
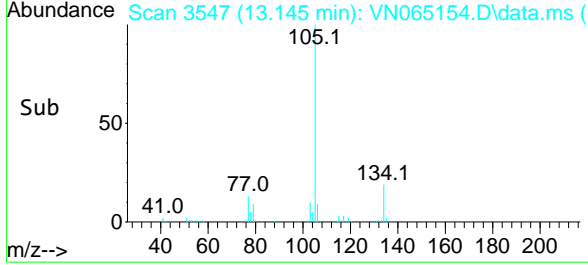
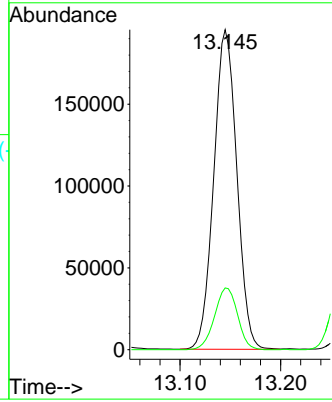


#81  
 sec-Butylbenzene  
 Concen: 19.07 ug/l  
 RT: 13.145 min Scan# 3547  
 Delta R.T. 0.000 min  
 Lab File: VN065154.D  
 Acq: 15 Dec 2020 20:09

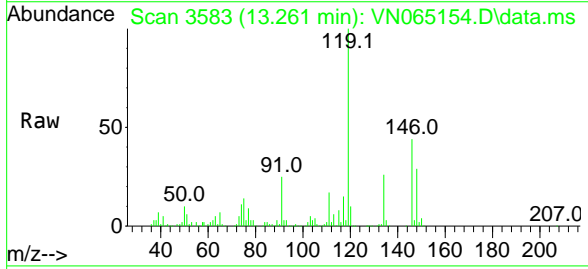
Instrument :  
 MSVOA\_N  
 ClientSampled :



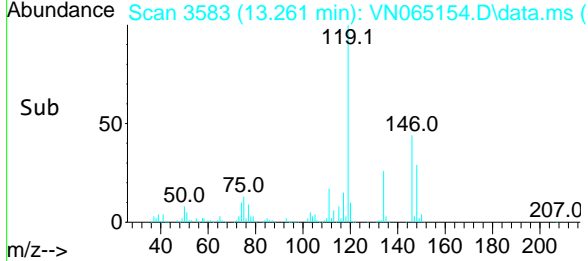
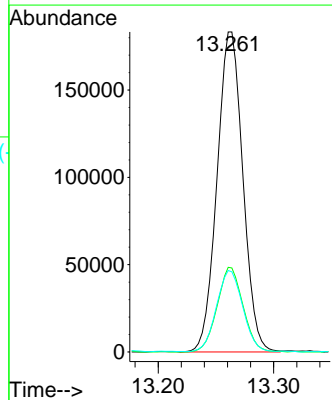
Tgt Ion:105 Resp: 310746  
 Ion Ratio Lower Upper  
 105 100  
 134 19.3 0.0 37.8

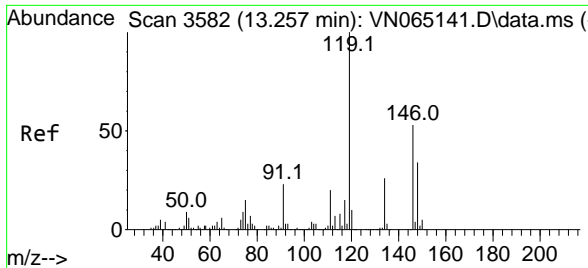


#82  
 p-Isopropyltoluene  
 Concen: 18.60 ug/l  
 RT: 13.261 min Scan# 3583  
 Delta R.T. 0.000 min  
 Lab File: VN065154.D  
 Acq: 15 Dec 2020 20:09



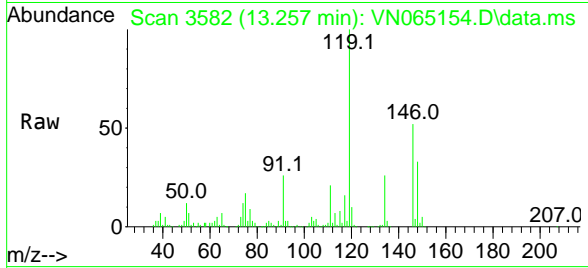
Tgt Ion:119 Resp: 284780  
 Ion Ratio Lower Upper  
 119 100  
 134 26.5 0.0 53.0  
 91 25.6 0.0 53.2



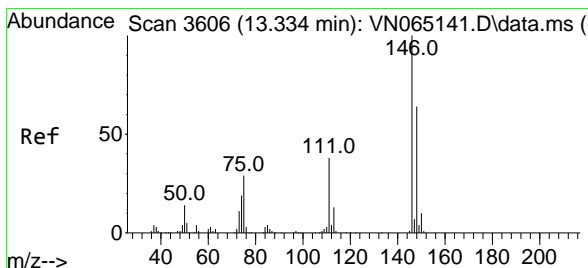
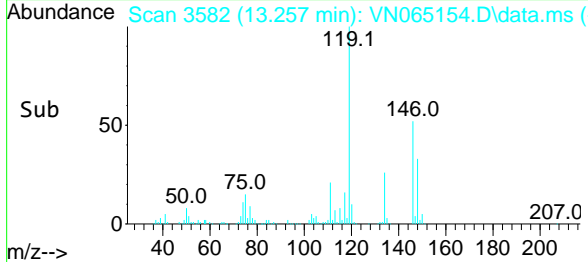
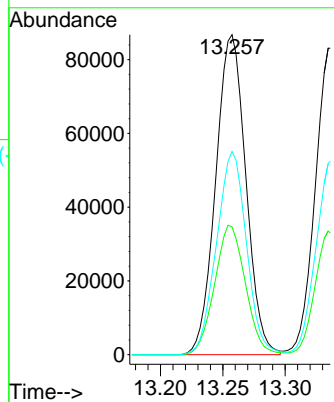


#83  
 1,3-Dichlorobenzene  
 Concen: 18.23 ug/l  
 RT: 13.257 min Scan# 3582  
 Delta R.T. 0.000 min  
 Lab File: VN065154.D  
 Acq: 15 Dec 2020 20:09

Instrument :  
 MSVOA\_N  
 ClientSampled :

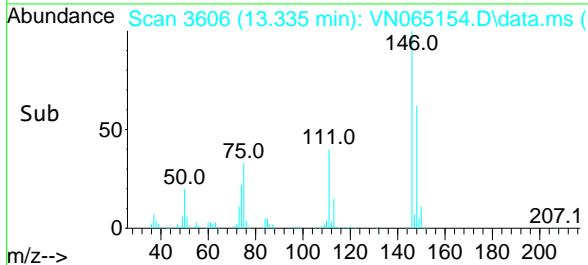
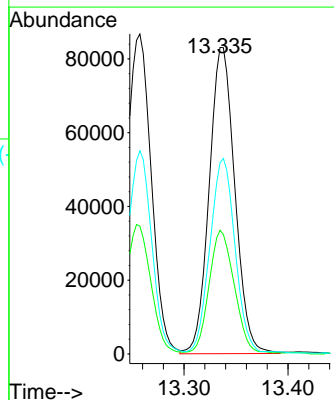
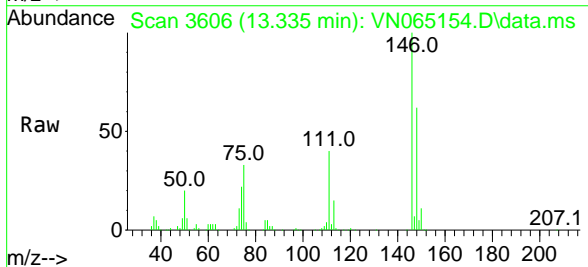


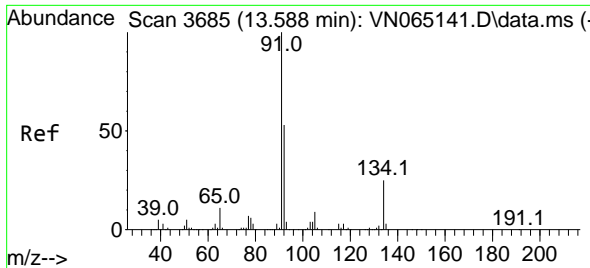
Tgt Ion:146 Resp: 146158  
 Ion Ratio Lower Upper  
 146 100  
 111 41.3 22.3 66.9  
 148 63.3 31.8 95.3



#84  
 1,4-Dichlorobenzene  
 Concen: 16.95 ug/l  
 RT: 13.335 min Scan# 3606  
 Delta R.T. 0.000 min  
 Lab File: VN065154.D  
 Acq: 15 Dec 2020 20:09

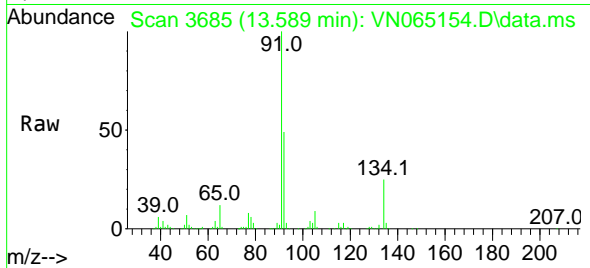
Tgt Ion:146 Resp: 142355  
 Ion Ratio Lower Upper  
 146 100  
 111 38.5 21.8 65.4  
 148 61.4 31.5 94.5





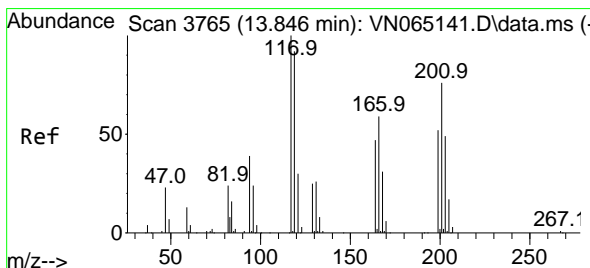
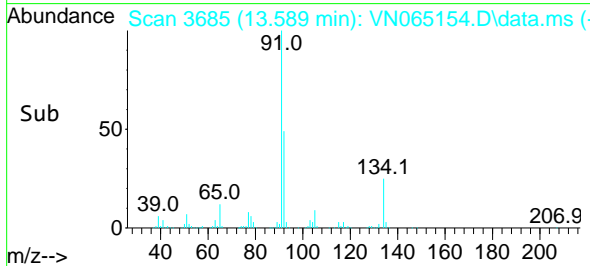
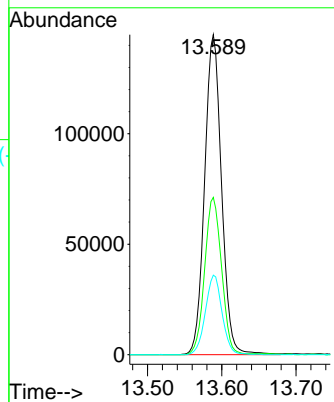
#85  
 n-Butylbenzene  
 Concen: 16.96 ug/l  
 RT: 13.589 min Scan# 3685  
 Delta R.T. 0.000 min  
 Lab File: VN065154.D  
 Acq: 15 Dec 2020 20:09

Instrument :  
 MSVOA\_N  
 ClientSampled :

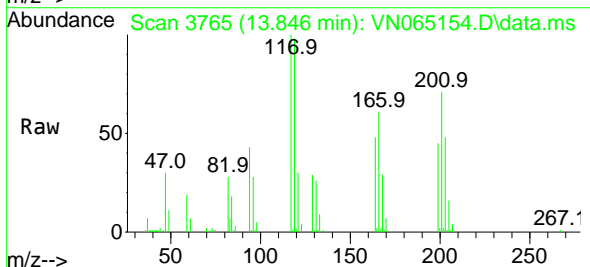


Tgt Ion: 91 Resp: 229217

Ion	Ratio	Lower	Upper
91	100		
92	49.0	0.0	101.4
134	24.5	0.0	45.2

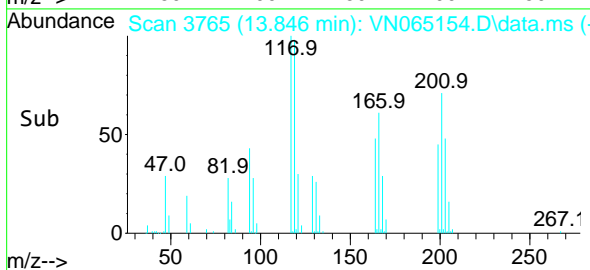
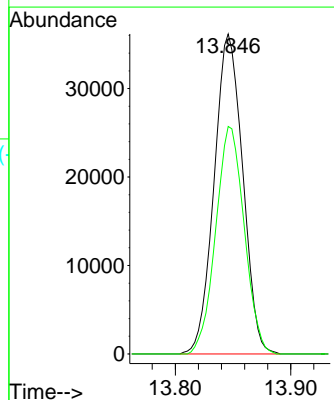


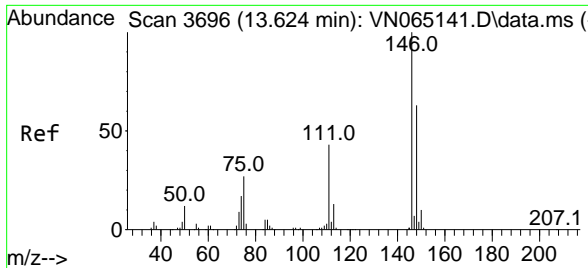
#86  
 Hexachloroethane  
 Concen: 21.11 ug/l  
 RT: 13.846 min Scan# 3765  
 Delta R.T. 0.000 min  
 Lab File: VN065154.D  
 Acq: 15 Dec 2020 20:09



Tgt Ion: 117 Resp: 62129

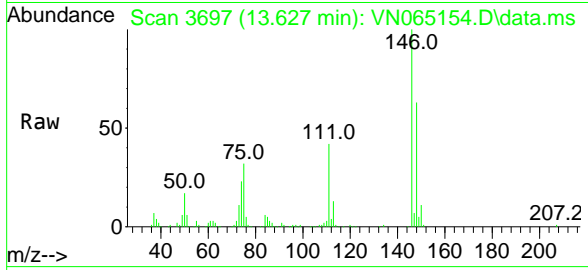
Ion	Ratio	Lower	Upper
117	100		
201	71.1	33.1	99.3



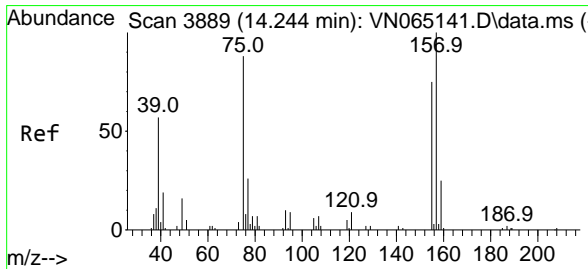
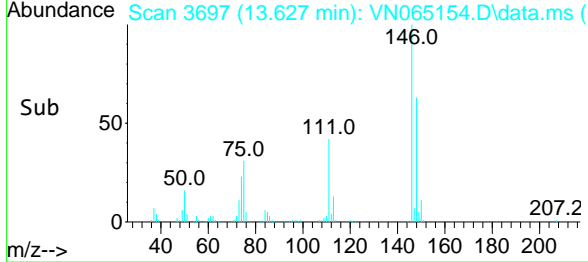
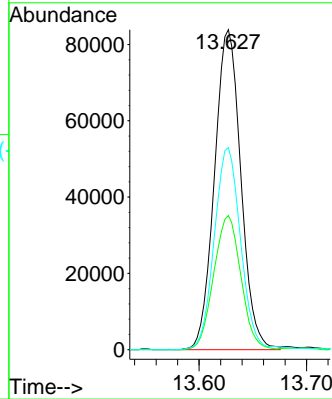


#87  
 1,2-Dichlorobenzene  
 Concen: 17.21 ug/l  
 RT: 13.627 min Scan# 3697  
 Delta R.T. 0.003 min  
 Lab File: VN065154.D  
 Acq: 15 Dec 2020 20:09

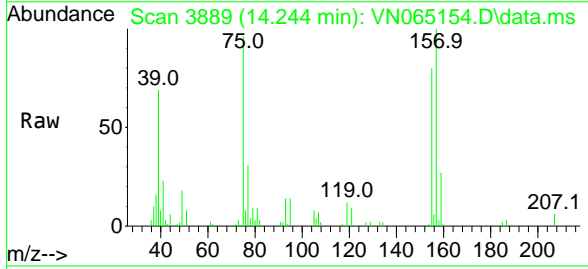
Instrument :  
 MSVOA\_N  
 ClientSampled :



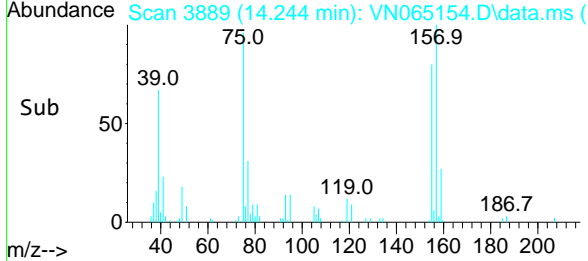
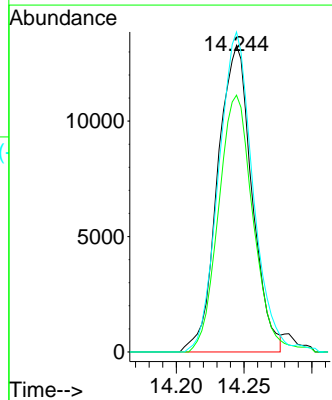
Tgt Ion:146 Resp: 143225  
 Ion Ratio Lower Upper  
 146 100  
 111 43.1 23.1 69.2  
 148 62.8 32.6 97.8

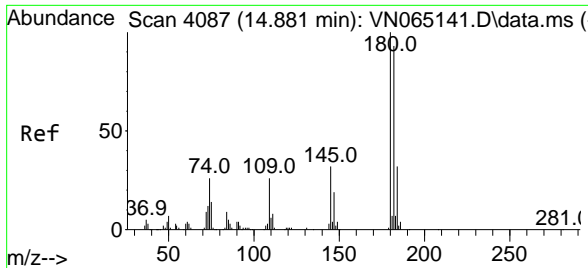


#88  
 1,2-Dibromo-3-Chloropropane  
 Concen: 23.77 ug/l  
 RT: 14.244 min Scan# 3889  
 Delta R.T. 0.000 min  
 Lab File: VN065154.D  
 Acq: 15 Dec 2020 20:09



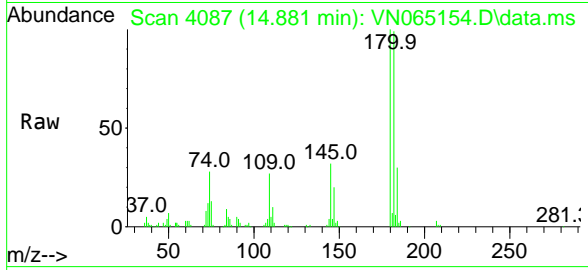
Tgt Ion: 75 Resp: 23296  
 Ion Ratio Lower Upper  
 75 100  
 155 84.5 56.5 84.7  
 157 104.2 69.7 104.5



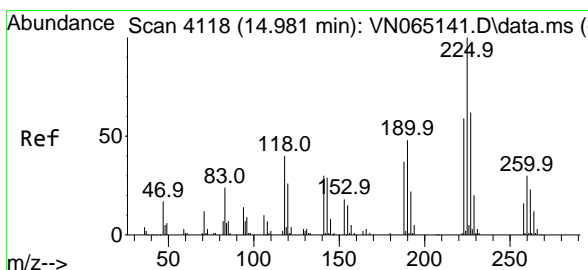
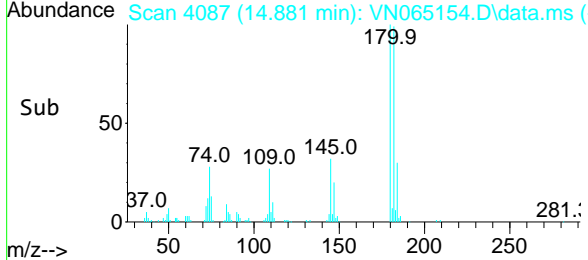
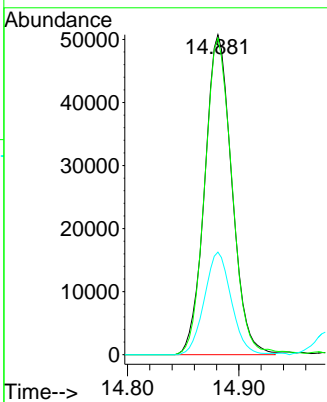


#89  
 1,2,4-Trichlorobenzene  
 Concen: 22.92 ug/l  
 RT: 14.881 min Scan# 4087  
 Delta R.T. 0.000 min  
 Lab File: VN065154.D  
 Acq: 15 Dec 2020 20:09

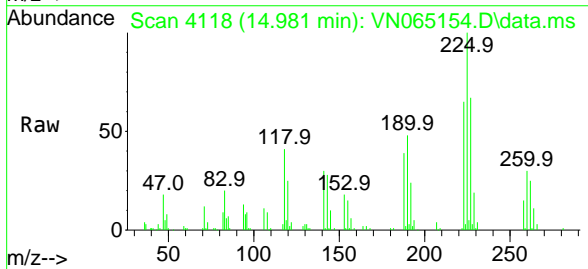
Instrument :  
 MSVOA\_N  
 ClientSampled :



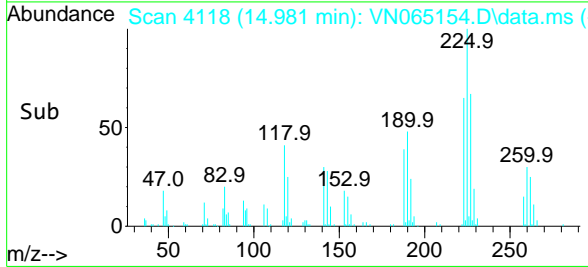
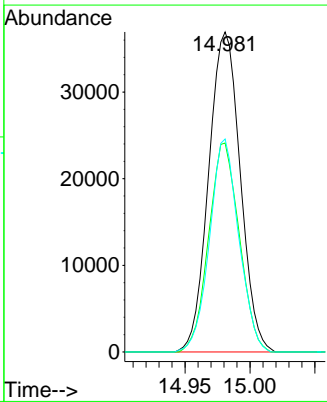
Tgt Ion	Resp	Lower	Upper
180	100		
182	98.2	79.4	119.0
145	31.8	27.6	41.4



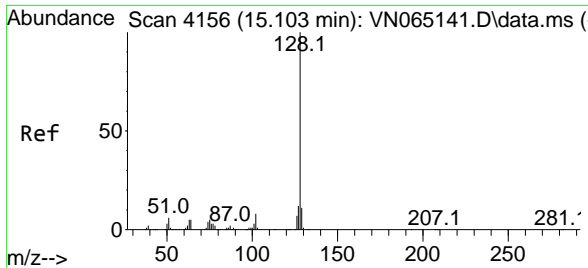
#90  
 Hexachlorobutadiene  
 Concen: 26.38 ug/l  
 RT: 14.981 min Scan# 4118  
 Delta R.T. 0.000 min  
 Lab File: VN065154.D  
 Acq: 15 Dec 2020 20:09



Tgt Ion	Resp	Lower	Upper
225	100		
223	63.2	0.0	125.4
227	61.7	0.0	122.0



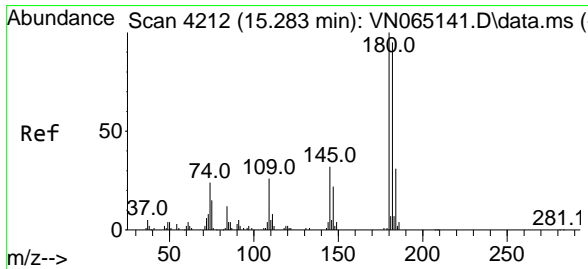
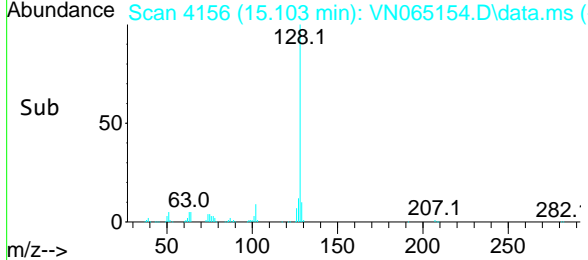
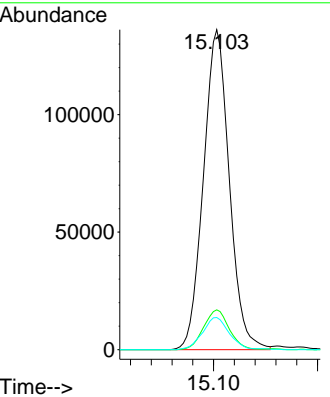
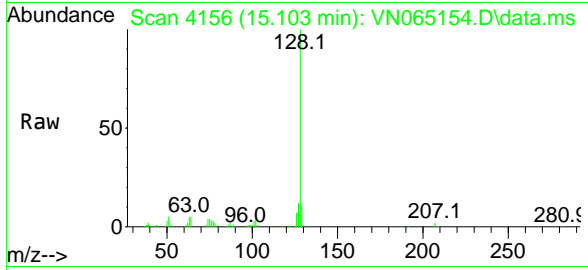




#91  
 Naphthalene  
 Concen: 22.28 ug/l  
 RT: 15.103 min Scan# 4156  
 Delta R.T. 0.000 min  
 Lab File: VN065154.D  
 Acq: 15 Dec 2020 20:09

Instrument :  
 MSVOA\_N  
 ClientSampled :

Tgt Ion	Resp	Lower	Upper
128	235531		
127	12.4	10.2	15.4
129	10.5	8.5	12.7



#92  
 1,2,3-Trichlorobenzene  
 Concen: 24.40 ug/l  
 RT: 15.283 min Scan# 4212  
 Delta R.T. 0.000 min  
 Lab File: VN065154.D  
 Acq: 15 Dec 2020 20:09

Tgt Ion	Resp	Lower	Upper
180	86133		
182	91.1	0.0	186.0
145	31.7	0.0	69.6

