

Data Path : Z:\voasrv\HPCHEM1\MSVOA_N\Data\VN121523\
 Data File : VN080503.D
 Acq On : 15 Dec 2023 15:12
 Operator : JC\MD
 Sample : 05862-12
 Misc : 5.0mL/MSVOA_N/WATER
 ALS Vial : 10 Sample Multiplier: 1

Instrument :
 MSVOA_N
 ClientSampleId :
 WC-LIQUIDS-20231213-01

Quant Time: Dec 16 02:53:25 2023
 Quant Method : Z:\voasrv\HPCHEM1\MSVOA_N\methods\82N121223W.M
 Quant Title : SW846 8260
 QLast Update : Wed Dec 13 01:57:14 2023
 Response via : Initial Calibration

Compound	R.T.	QIon	Response	Conc	Units	Dev(Min)

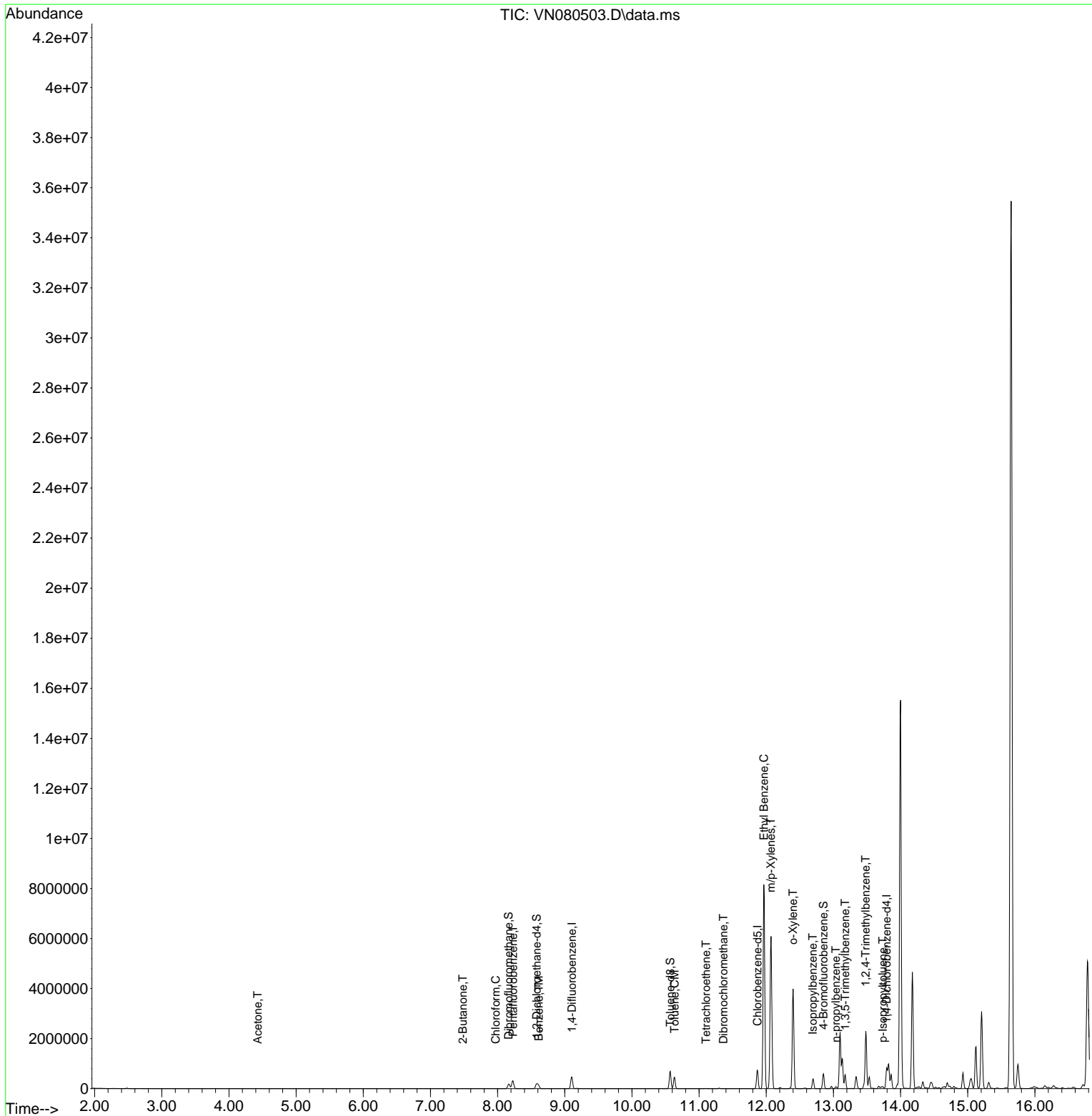
Internal Standards						
1) Pentafluorobenzene	8.229	168	223846	50.000	ug/l	0.00
34) 1,4-Difluorobenzene	9.106	114	408878	50.000	ug/l	0.00
63) Chlorobenzene-d5	11.870	117	429774	50.000	ug/l	0.00
72) 1,4-Dichlorobenzene-d4	13.794	152	212983	50.000	ug/l	0.00
System Monitoring Compounds						
33) 1,2-Dichloroethane-d4	8.582	65	156228	54.644	ug/l	0.00
Spiked Amount	50.000	Range 74 - 125	Recovery	=	109.280%	
35) Dibromofluoromethane	8.165	113	130543	50.355	ug/l	0.00
Spiked Amount	50.000	Range 75 - 124	Recovery	=	100.720%	
50) Toluene-d8	10.570	98	476803	49.315	ug/l	0.00
Spiked Amount	50.000	Range 86 - 113	Recovery	=	98.640%	
62) 4-Bromofluorobenzene	12.853	95	208888	56.896	ug/l	0.00
Spiked Amount	50.000	Range 83 - 123	Recovery	=	113.800%	
Target Compounds						
						Qvalue
16) Acetone	4.430	43	14843	29.280	ug/l	98
25) 2-Butanone	7.482	43	3535	3.620	ug/l	92
30) Chloroform	7.971	83	3165	0.636	ug/l	88
40) Benzene	8.612	78	135524	11.072	ug/l	94
52) Toluene	10.635	92	207604	26.848	ug/l	100
60) Dibromochloromethane	11.365	129	1941	0.589	ug/l	93
64) Tetrachloroethene	11.106	164	2618	0.789	ug/l #	69
67) Ethyl Benzene	11.965	91	6064792	344.999	ug/l	96
68) m/p-Xylenes	12.070	106	1900352	292.546	ug/l	89
69) o-Xylene	12.400	106	1068890	168.230	ug/l	87
73) Isopropylbenzene	12.694	105	267630	15.642	ug/l	98
78) n-propylbenzene	13.035	91	62000	3.287	ug/l	100
80) 1,3,5-Trimethylbenzene	13.176	105	294860	20.010	ug/l	99
84) 1,2,4-Trimethylbenzene	13.482	105	1326554	90.492	ug/l	97
86) p-Isopropyltoluene	13.735	119	29737	2.133	ug/l #	75

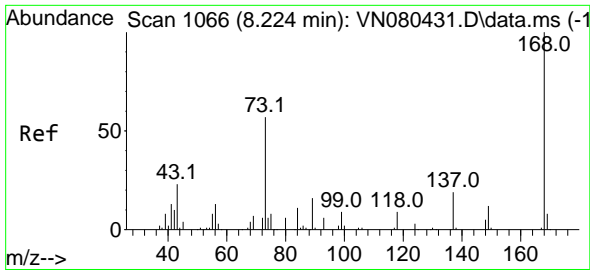
(#) = qualifier out of range (m) = manual integration (+) = signals summed

Data Path : Z:\voasrv\HPCHEM1\MSVOA_N\Data\VN121523\
 Data File : VN080503.D
 Acq On : 15 Dec 2023 15:12
 Operator : JC\MD
 Sample : 05862-12
 Misc : 5.0mL/MSVOA_N/WATER
 ALS Vial : 10 Sample Multiplier: 1

Instrument :
 MSVOA_N
 ClientSampleId :
 WC-LIQUIDS-20231213-01

Quant Time: Dec 16 02:53:25 2023
 Quant Method : Z:\voasrv\HPCHEM1\MSVOA_N\methods\82N121223W.M
 Quant Title : SW846 8260
 QLast Update : Wed Dec 13 01:57:14 2023
 Response via : Initial Calibration

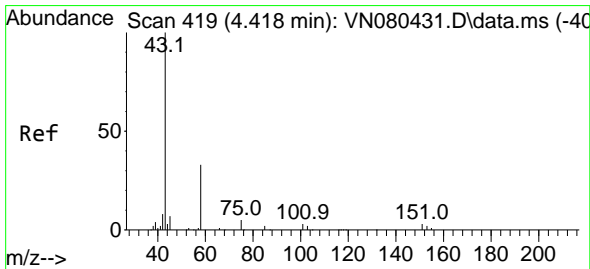
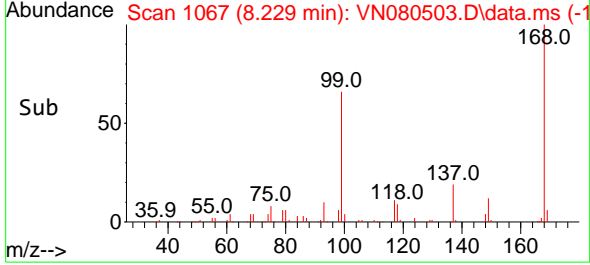
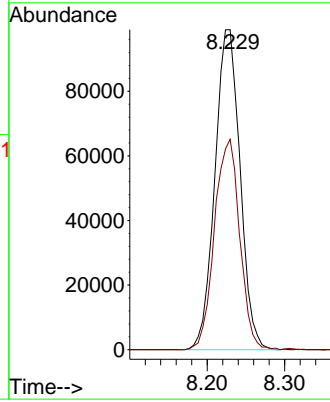
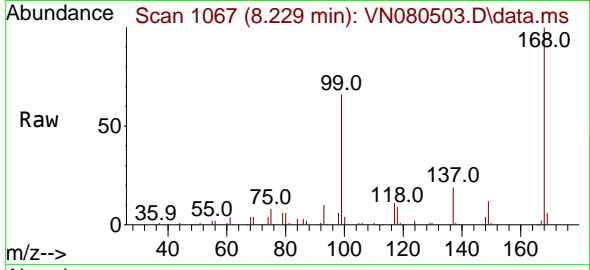




#1
 Pentafluorobenzene
 Concen: 50.000 ug/l
 RT: 8.229 min Scan# 1067
 Delta R.T. 0.005 min
 Lab File: VN080503.D
 Acq: 15 Dec 2023 15:12

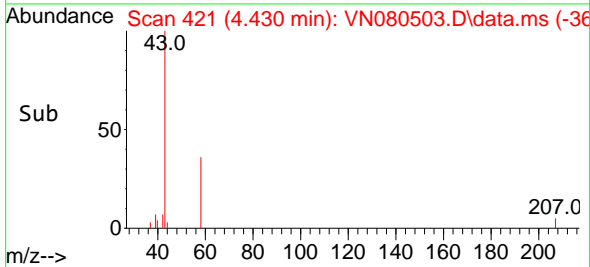
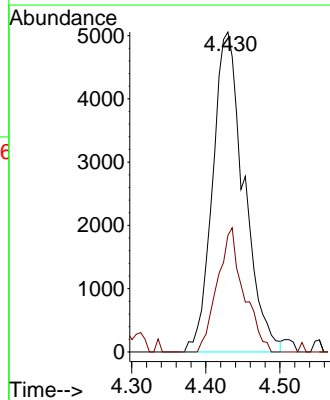
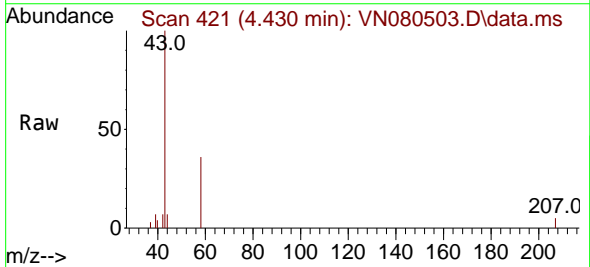
Instrument : MSVOA_N
 ClientSampleId : WC-LIQUIDS-20231213-01

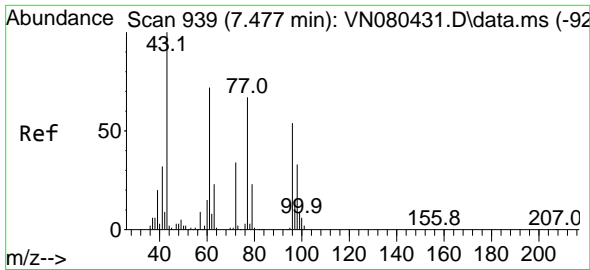
Tgt Ion:168 Resp: 223846
 Ion Ratio Lower Upper
 168 100
 99 65.7 53.0 79.6



#16
 Acetone
 Concen: 29.280 ug/l
 RT: 4.430 min Scan# 421
 Delta R.T. 0.012 min
 Lab File: VN080503.D
 Acq: 15 Dec 2023 15:12

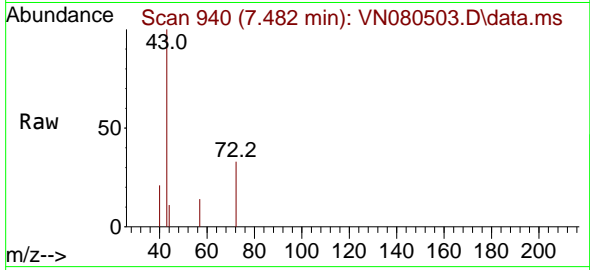
Tgt Ion: 43 Resp: 14843
 Ion Ratio Lower Upper
 43 100
 58 36.4 28.0 42.0



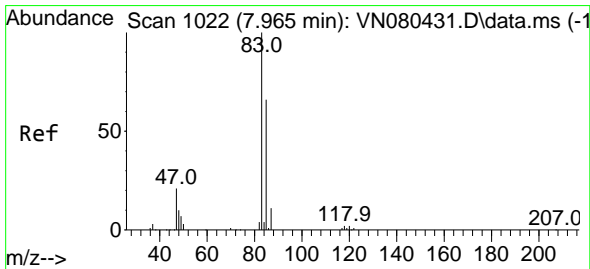
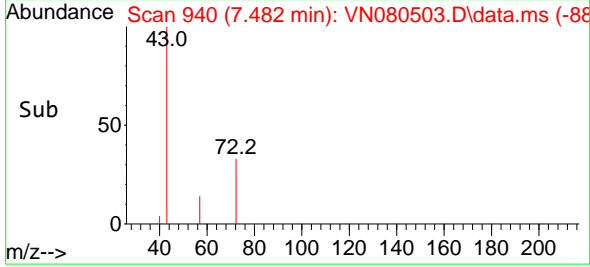
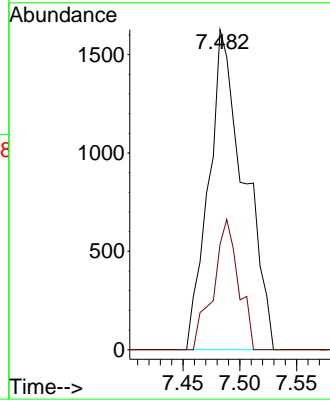


#25
 2-Butanone
 Concen: 3.620 ug/l
 RT: 7.482 min Scan# 940
 Delta R.T. 0.006 min
 Lab File: VN080503.D
 Acq: 15 Dec 2023 15:12

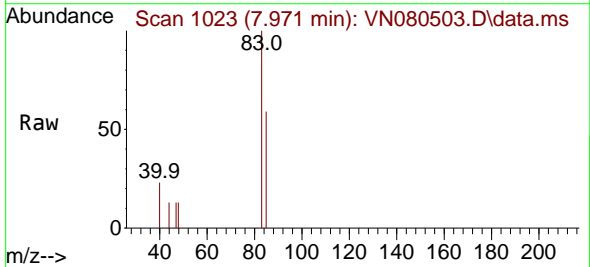
Instrument : MSVOA_N
 ClientSampleId : WC-LIQUIDS-20231213-01



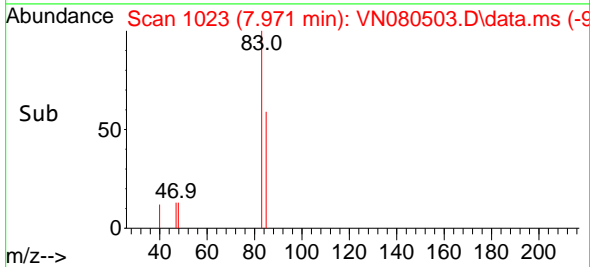
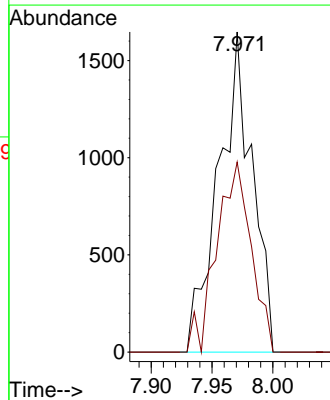
Tgt Ion: 43 Resp: 3535
 Ion Ratio Lower Upper
 43 100
 72 32.9 30.2 45.2

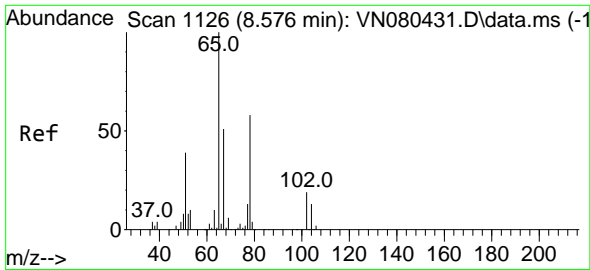


#30
 Chloroform
 Concen: 0.636 ug/l
 RT: 7.971 min Scan# 1023
 Delta R.T. 0.006 min
 Lab File: VN080503.D
 Acq: 15 Dec 2023 15:12



Tgt Ion: 83 Resp: 3165
 Ion Ratio Lower Upper
 83 100
 85 59.4 55.4 83.0

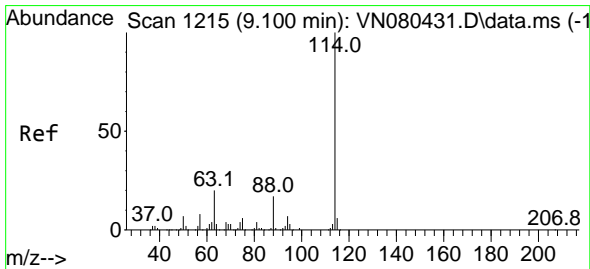
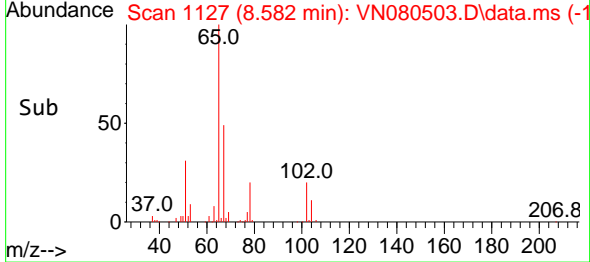
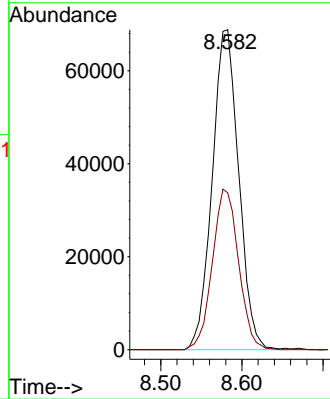
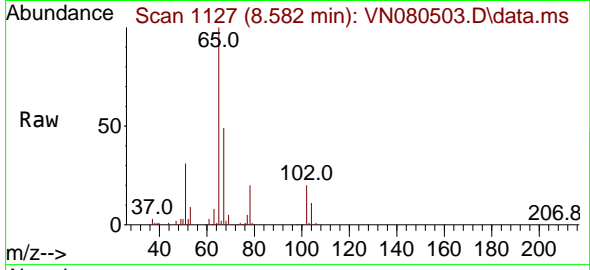




#33
 1,2-Dichloroethane-d4
 Concen: 54.644 ug/l
 RT: 8.582 min Scan# 1127
 Delta R.T. 0.006 min
 Lab File: VN080503.D
 Acq: 15 Dec 2023 15:12

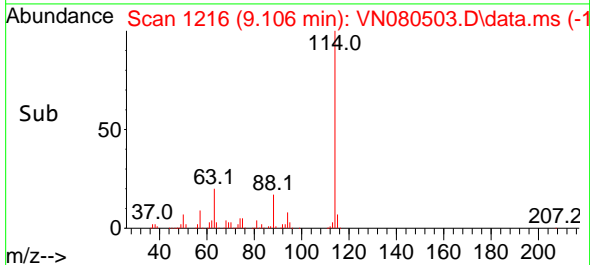
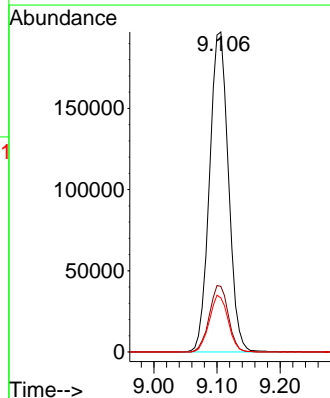
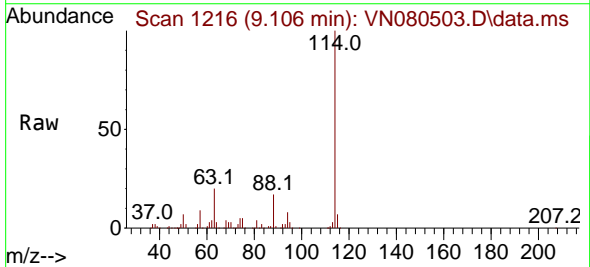
Instrument : MSVOA_N
 ClientSampleId : WC-LIQUIDS-20231213-01

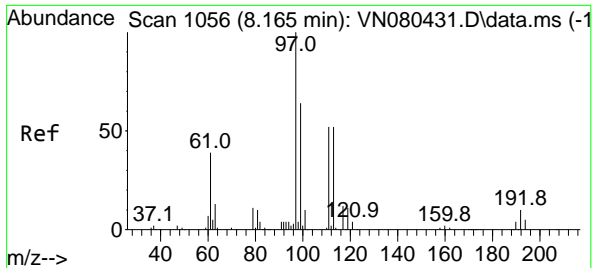
Tgt Ion: 65 Resp: 156228
 Ion Ratio Lower Upper
 65 100
 67 49.6 0.0 106.6



#34
 1,4-Difluorobenzene
 Concen: 50.000 ug/l
 RT: 9.106 min Scan# 1216
 Delta R.T. 0.006 min
 Lab File: VN080503.D
 Acq: 15 Dec 2023 15:12

Tgt Ion: 114 Resp: 408878
 Ion Ratio Lower Upper
 114 100
 63 20.5 0.0 36.4
 88 16.9 0.0 30.6



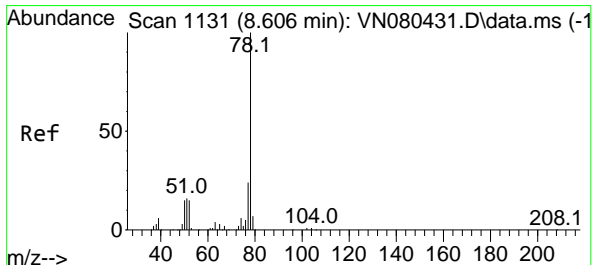
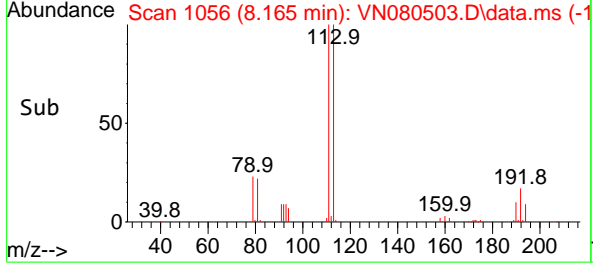
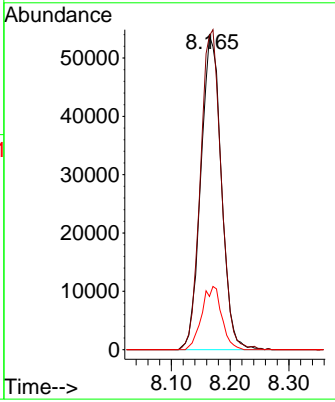
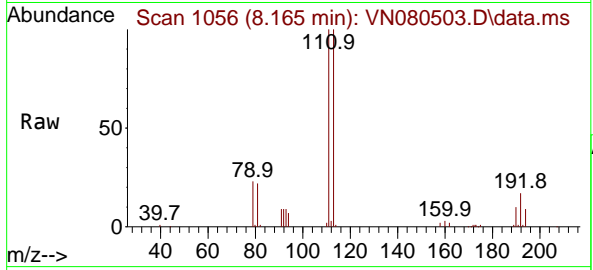


#35
 Dibromofluoromethane
 Concen: 50.355 ug/l
 RT: 8.165 min Scan# 1056
 Delta R.T. 0.000 min
 Lab File: VN080503.D
 Acq: 15 Dec 2023 15:12

Instrument : MSVOA_N
 ClientSampleId : WC-LIQUIDS-20231213-01

Tgt Ion:113 Resp: 130543

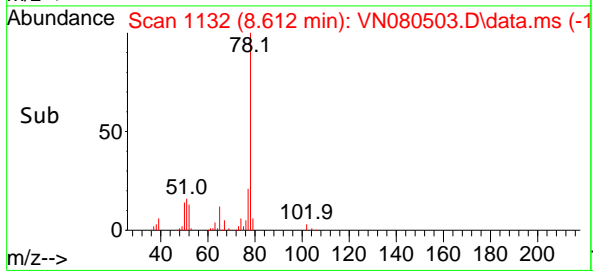
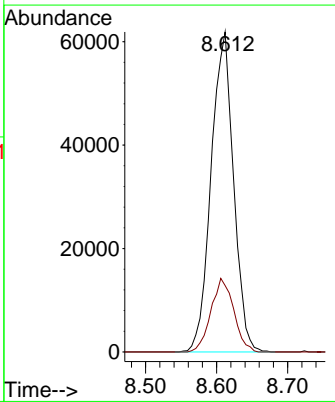
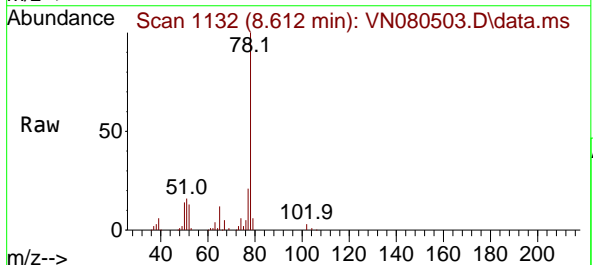
Ion	Ratio	Lower	Upper
113	100		
111	102.6	82.6	123.8
192	19.6	12.7	19.1#

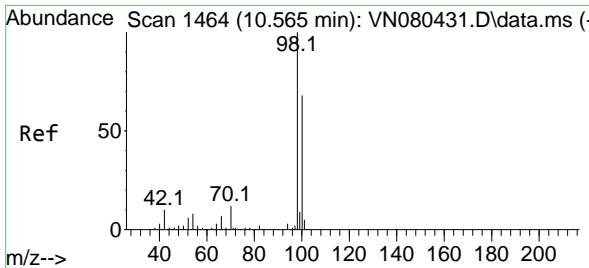


#40
 Benzene
 Concen: 11.072 ug/l
 RT: 8.612 min Scan# 1132
 Delta R.T. 0.006 min
 Lab File: VN080503.D
 Acq: 15 Dec 2023 15:12

Tgt Ion: 78 Resp: 135524

Ion	Ratio	Lower	Upper
78	100		
77	20.8	19.0	28.6

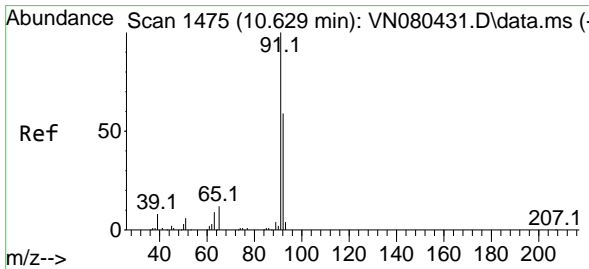
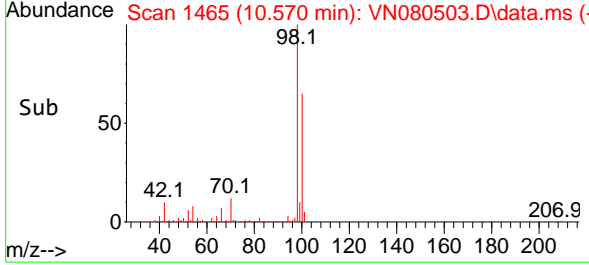
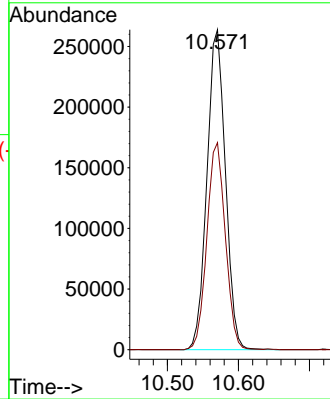
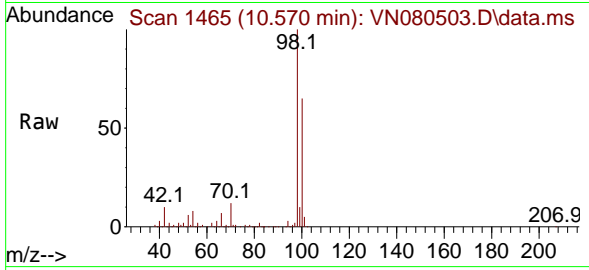




#50
 Toluene-d8
 Concen: 49.315 ug/l
 RT: 10.570 min Scan# 1465
 Delta R.T. 0.006 min
 Lab File: VN080503.D
 Acq: 15 Dec 2023 15:12

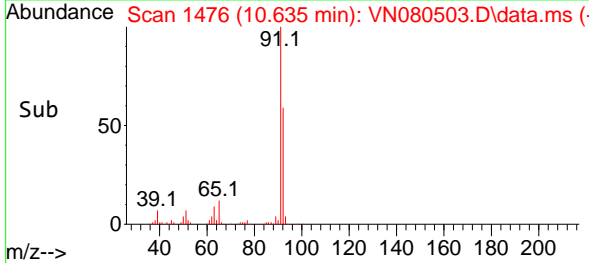
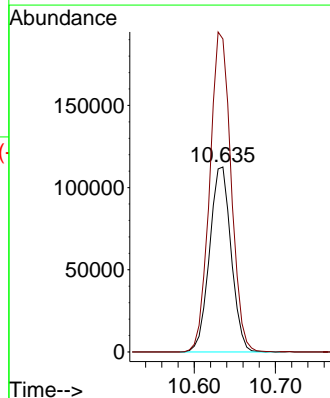
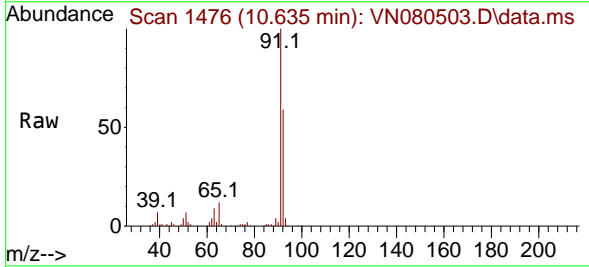
Instrument : MSVOA_N
 ClientSampleId : WC-LIQUIDS-20231213-01

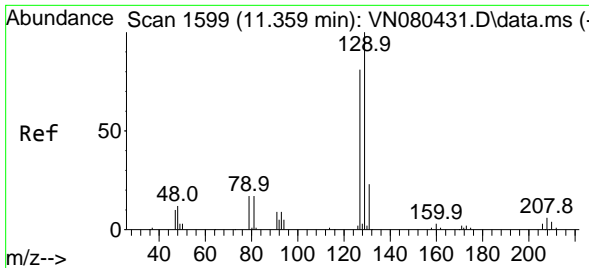
Tgt Ion: 98 Resp: 476803
 Ion Ratio Lower Upper
 98 100
 100 64.7 52.0 78.0



#52
 Toluene
 Concen: 26.848 ug/l
 RT: 10.635 min Scan# 1476
 Delta R.T. 0.006 min
 Lab File: VN080503.D
 Acq: 15 Dec 2023 15:12

Tgt Ion: 92 Resp: 207604
 Ion Ratio Lower Upper
 92 100
 91 171.2 137.4 206.0

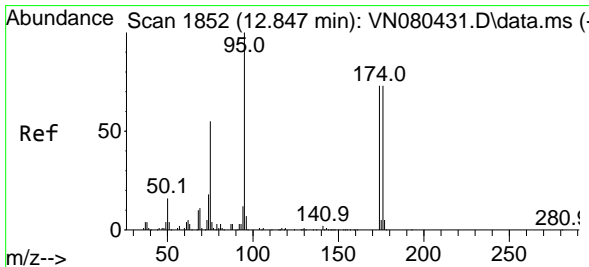
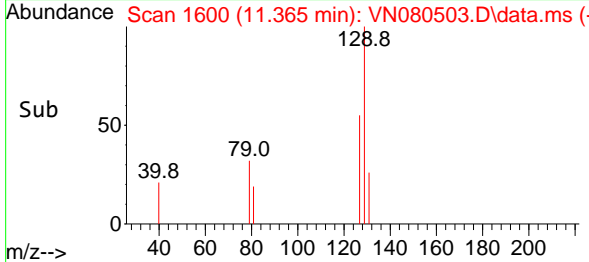
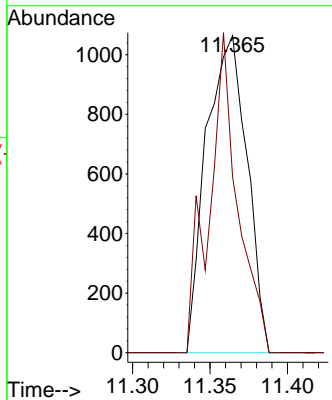
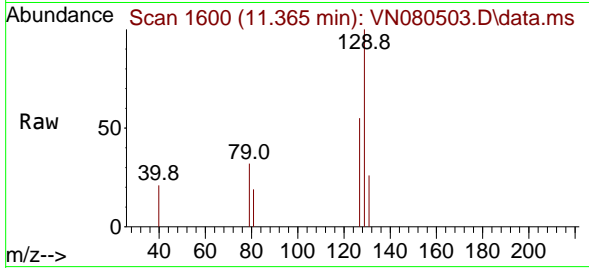




#60
 Dibromochloromethane
 Concen: 0.589 ug/l
 RT: 11.365 min Scan# 11
 Delta R.T. 0.006 min
 Lab File: VN080503.D
 Acq: 15 Dec 2023 15:12

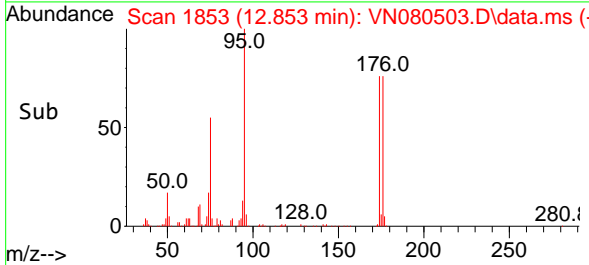
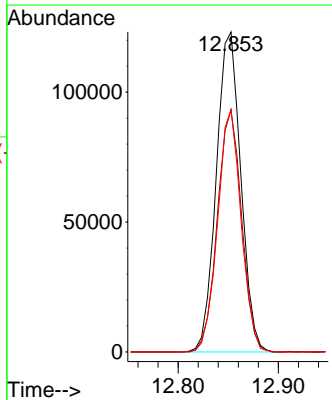
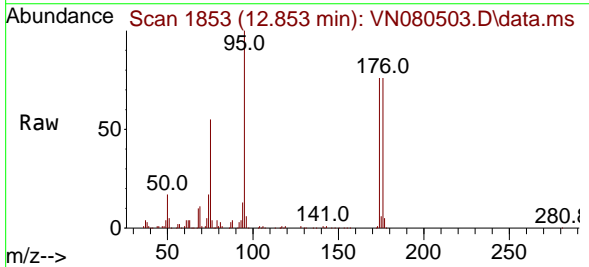
Instrument :
 MSVOA_N
 ClientSampleId :
 WC-LIQUIDS-20231213-01

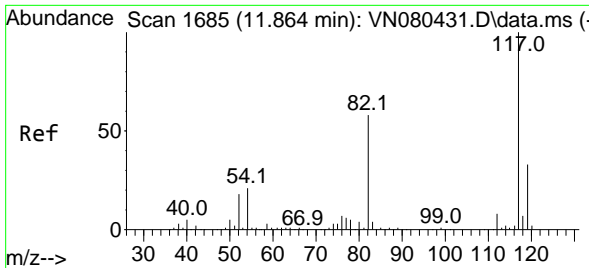
Tgt Ion:129 Resp: 1941
 Ion Ratio Lower Upper
 129 100
 127 71.5 38.6 116.0



#62
 4-Bromofluorobenzene
 Concen: 56.896 ug/l
 RT: 12.853 min Scan# 1853
 Delta R.T. 0.006 min
 Lab File: VN080503.D
 Acq: 15 Dec 2023 15:12

Tgt Ion: 95 Resp: 208888
 Ion Ratio Lower Upper
 95 100
 174 74.8 0.0 143.8
 176 72.4 0.0 135.8



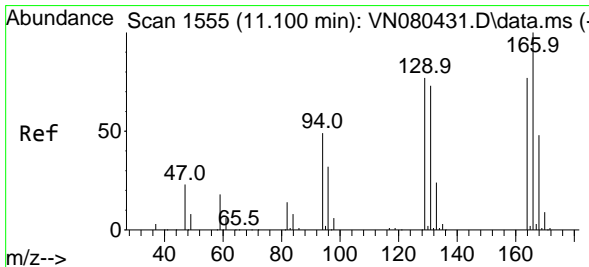
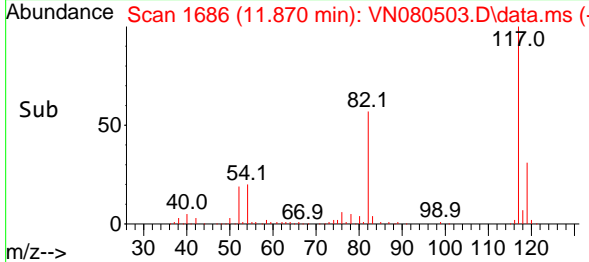
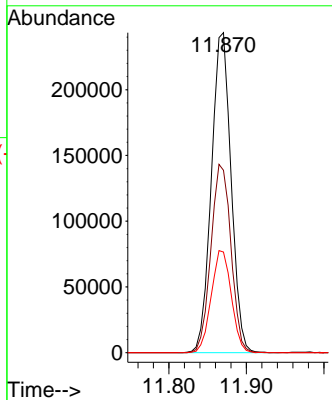
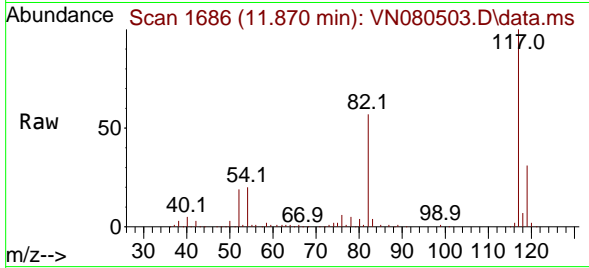


#63
 Chlorobenzene-d5
 Concen: 50.000 ug/l
 RT: 11.870 min Scan# 1177
 Delta R.T. 0.006 min
 Lab File: VN080503.D
 Acq: 15 Dec 2023 15:12

Instrument : MSVOA_N
 ClientSampleId : WC-LIQUIDS-20231213-01

Tgt Ion:117 Resp: 429774

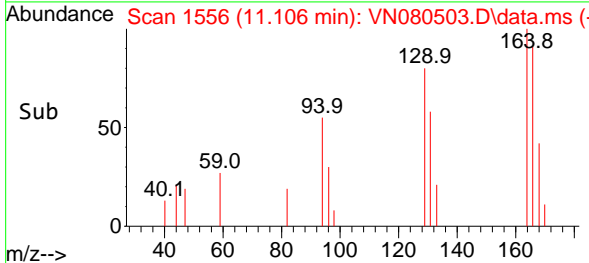
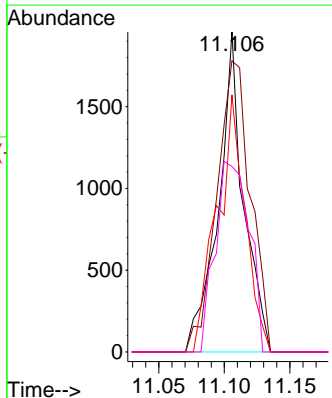
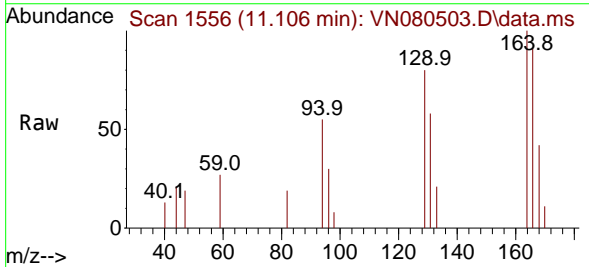
Ion	Ratio	Lower	Upper
117	100		
82	57.0	44.0	66.0
119	31.5	25.6	38.4

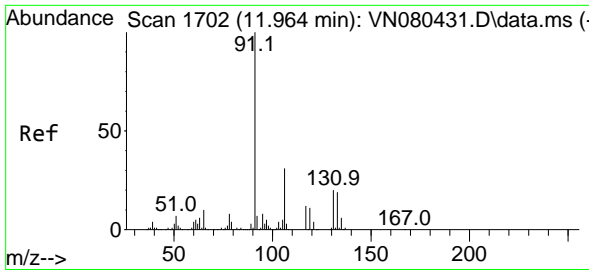


#64
 Tetrachloroethene
 Concen: 0.789 ug/l
 RT: 11.106 min Scan# 1556
 Delta R.T. 0.006 min
 Lab File: VN080503.D
 Acq: 15 Dec 2023 15:12

Tgt Ion:164 Resp: 2618

Ion	Ratio	Lower	Upper
164	100		
166	91.0	101.4	152.0#
129	80.3	82.4	123.6#
131	57.9	78.2	117.4#

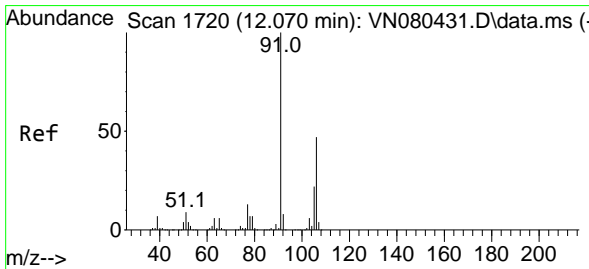
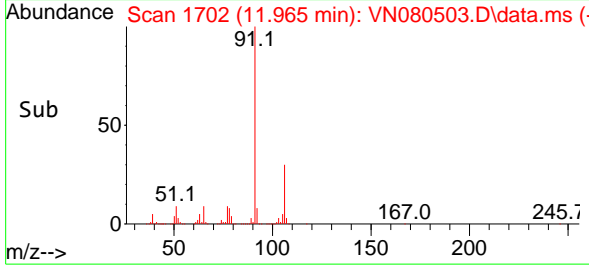
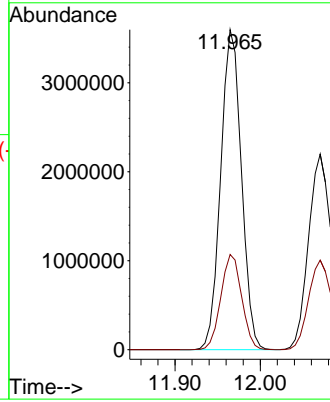
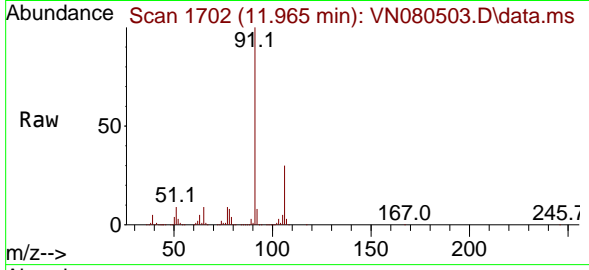




#67
 Ethyl Benzene
 Concen: 344.999 ug/l
 RT: 11.965 min Scan# 1702
 Delta R.T. 0.000 min
 Lab File: VN080503.D
 Acq: 15 Dec 2023 15:12

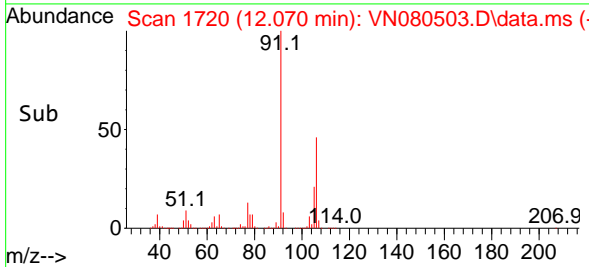
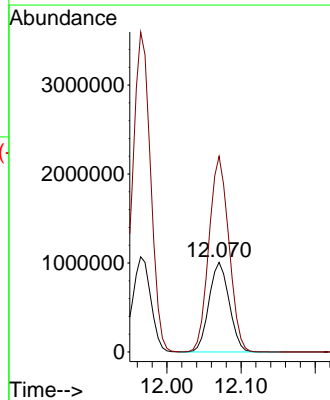
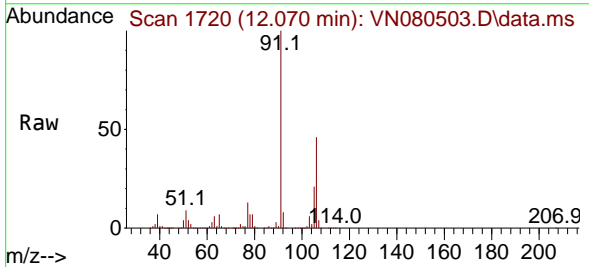
Instrument : MSVOA_N
 ClientSampleId : WC-LIQUIDS-20231213-01

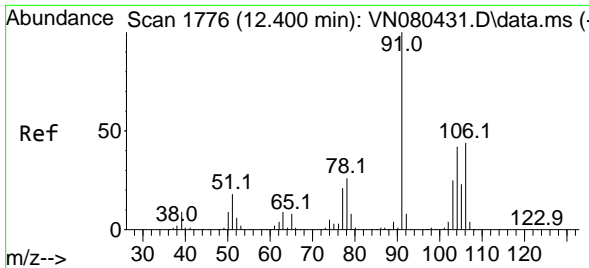
Tgt Ion: 91 Resp: 6064792
 Ion Ratio Lower Upper
 91 100
 106 29.8 25.6 38.4



#68
 m/p-Xylenes
 Concen: 292.546 ug/l
 RT: 12.070 min Scan# 1720
 Delta R.T. 0.000 min
 Lab File: VN080503.D
 Acq: 15 Dec 2023 15:12

Tgt Ion:106 Resp: 1900352
 Ion Ratio Lower Upper
 106 100
 91 216.6 159.6 239.4

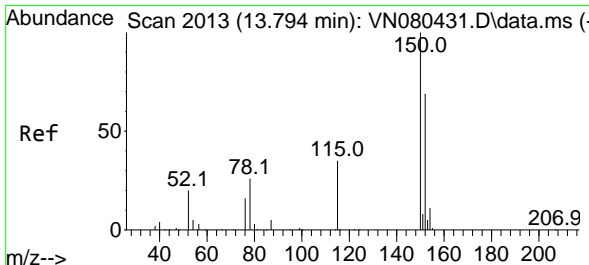
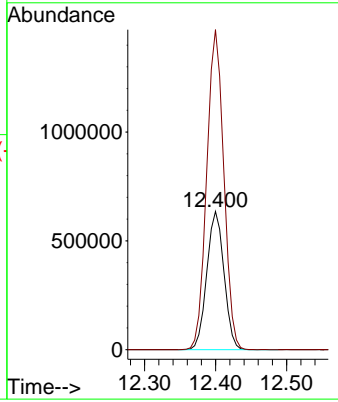
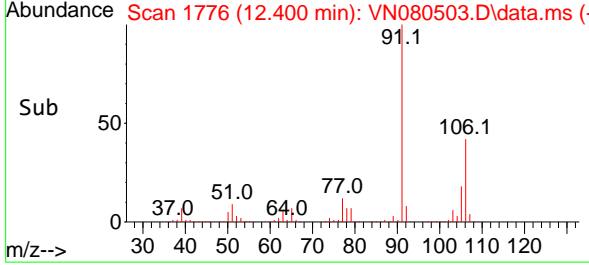
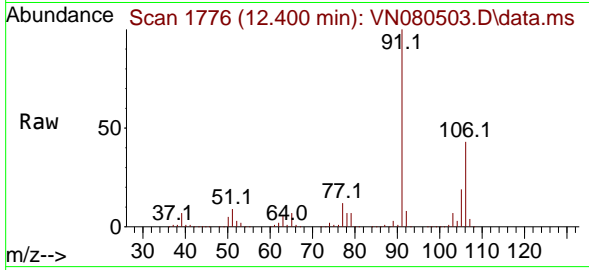




#69
 o-Xylene
 Concen: 168.230 ug/l
 RT: 12.400 min Scan# 11
 Delta R.T. 0.000 min
 Lab File: VN080503.D
 Acq: 15 Dec 2023 15:12

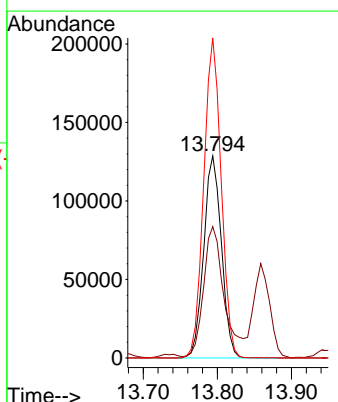
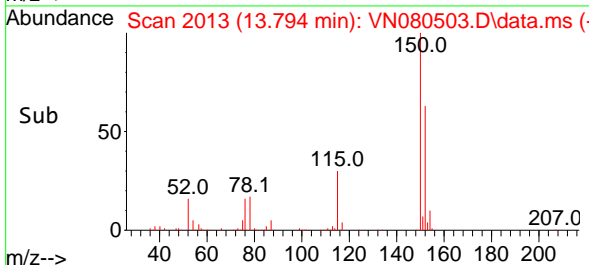
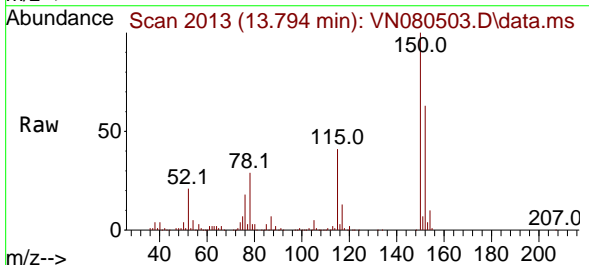
Instrument : MSVOA_N
 ClientSampleId : WC-LIQUIDS-20231213-01

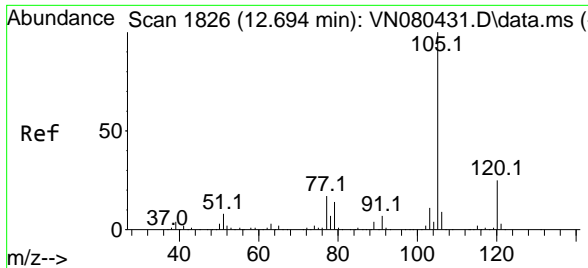
Tgt Ion:106 Resp: 1068890
 Ion Ratio Lower Upper
 106 100
 91 230.0 105.2 315.5



#72
 1,4-Dichlorobenzene-d4
 Concen: 50.000 ug/l
 RT: 13.794 min Scan# 2013
 Delta R.T. 0.000 min
 Lab File: VN080503.D
 Acq: 15 Dec 2023 15:12

Tgt Ion:152 Resp: 212983
 Ion Ratio Lower Upper
 152 100
 115 74.1 32.3 96.8
 150 156.4 0.0 355.8

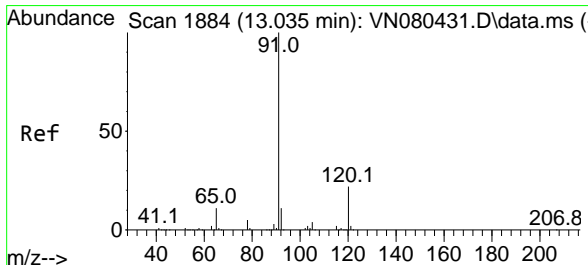
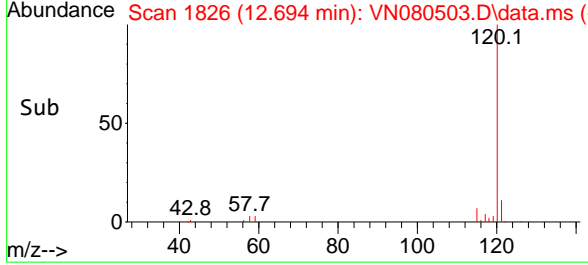
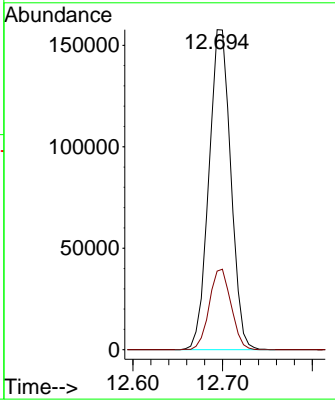
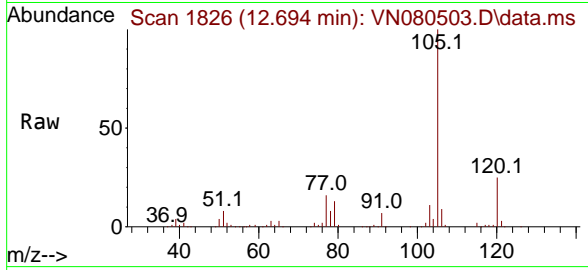




#73
 Isopropylbenzene
 Concen: 15.642 ug/l
 RT: 12.694 min Scan# 1826
 Delta R.T. 0.000 min
 Lab File: VN080503.D
 Acq: 15 Dec 2023 15:12

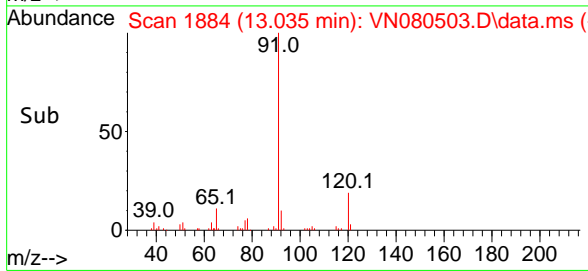
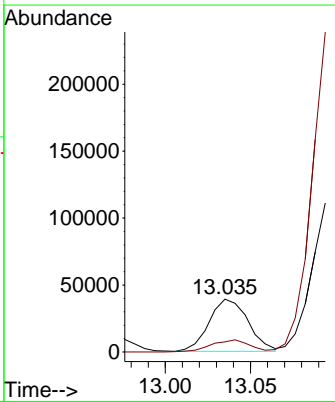
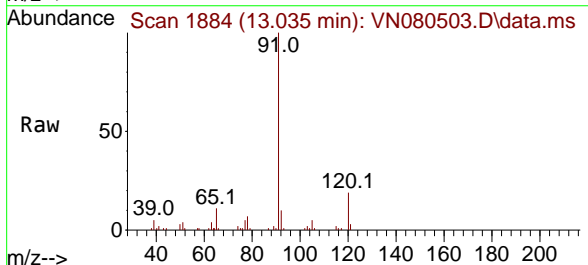
Instrument : MSVOA_N
 ClientSampleId : WC-LIQUIDS-20231213-01

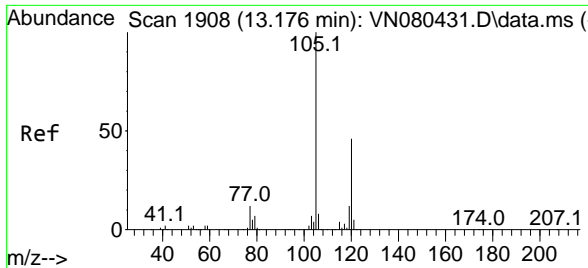
Tgt Ion:105 Resp: 267630
 Ion Ratio Lower Upper
 105 100
 120 25.0 13.1 39.1



#78
 n-propylbenzene
 Concen: 3.287 ug/l
 RT: 13.035 min Scan# 1884
 Delta R.T. 0.000 min
 Lab File: VN080503.D
 Acq: 15 Dec 2023 15:12

Tgt Ion: 91 Resp: 62000
 Ion Ratio Lower Upper
 91 100
 120 23.0 11.5 34.4

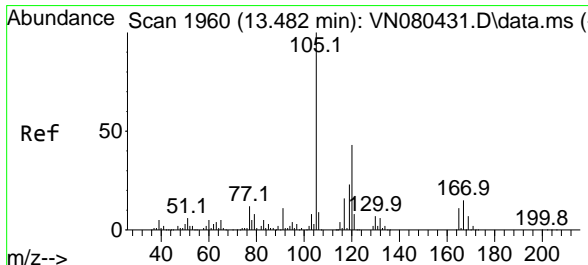
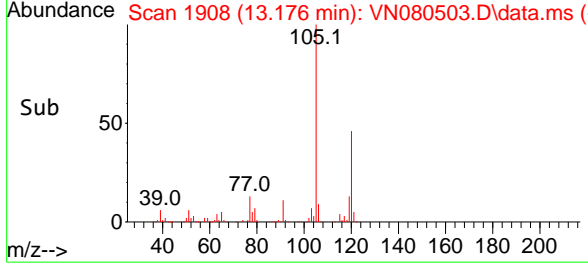
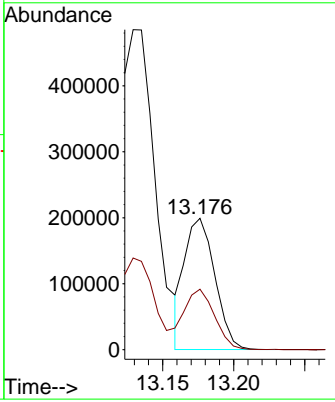
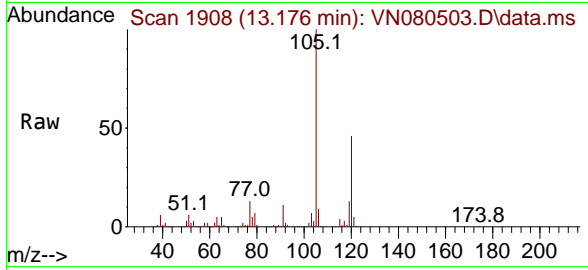




#80
 1,3,5-Trimethylbenzene
 Concen: 20.010 ug/l
 RT: 13.176 min Scan# 1908
 Delta R.T. 0.000 min
 Lab File: VN080503.D
 Acq: 15 Dec 2023 15:12

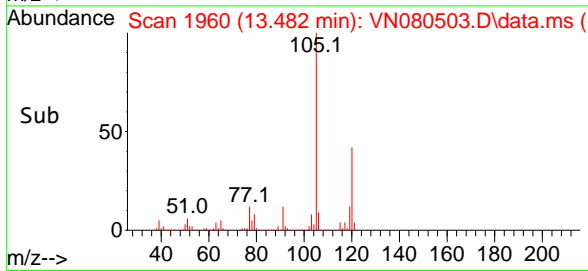
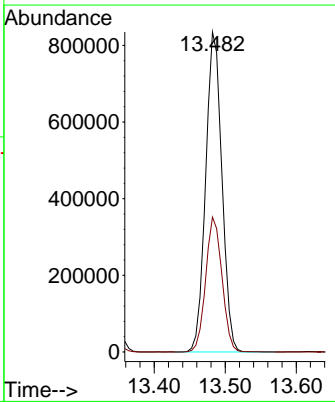
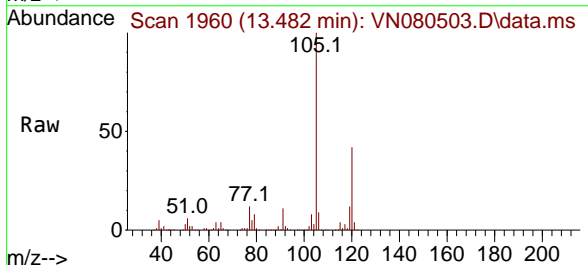
Instrument : MSVOA_N
 ClientSampleId : WC-LIQUIDS-20231213-01

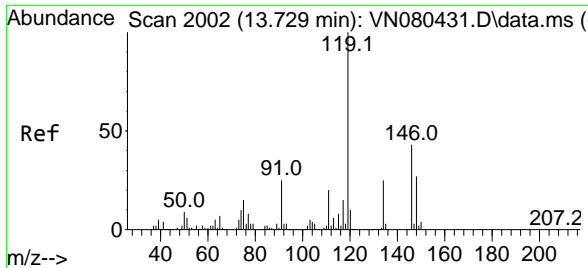
Tgt Ion:105 Resp: 294860
 Ion Ratio Lower Upper
 105 100
 120 48.9 24.1 72.3



#84
 1,2,4-Trimethylbenzene
 Concen: 90.492 ug/l
 RT: 13.482 min Scan# 1960
 Delta R.T. 0.000 min
 Lab File: VN080503.D
 Acq: 15 Dec 2023 15:12

Tgt Ion:105 Resp: 1326554
 Ion Ratio Lower Upper
 105 100
 120 42.3 22.0 66.0





#86
 p-Isopropyltoluene
 Concen: 2.133 ug/l
 RT: 13.735 min Scan# 20
 Delta R.T. 0.006 min
 Lab File: VN080503.D
 Acq: 15 Dec 2023 15:12

Instrument : MSVOA_N
 ClientSampleId : WC-LIQUIDS-20231213-01

Tgt Ion	Resp	Lower	Upper
119	29737		
134	25.3	12.6	37.8
91	0.0	12.4	37.2#

