

Data Path : Z:\voasrv\HPCHEM1\MSVOA_N\Data\VN121621\
 Data File : VN070148.D
 Acq On : 16 Dec 2021 19:39
 Operator : JC/MD
 Sample : M4940-04
 Misc : 5.00mL/MSVOA_N/WATER
 ALS Vial : 23 Sample Multiplier: 1

Instrument :
 MSVOA_N
 ClientSampleId :

Quant Time: Dec 17 01:03:16 2021
 Quant Method : Z:\voasrv\HPCHEM1\MSVOA_N\methods\82N120221W.M
 Quant Title : SW846 8260
 QLast Update : Fri Dec 03 08:46:47 2021
 Response via : Initial Calibration

Compound	R.T.	QIon	Response	Conc	Units	Dev(Min)
Internal Standards						
1) Pentafluorobenzene	8.088	168	950072	50.000	ug/l	0.00
34) 1,4-Difluorobenzene	8.968	114	1615326	50.000	ug/l	0.00
63) Chlorobenzene-d5	11.746	117	1445093	50.000	ug/l	0.00
72) 1,4-Dichlorobenzene-d4	13.677	152	587038	50.000	ug/l	0.00
System Monitoring Compounds						
33) 1,2-Dichloroethane-d4	8.440	65	839414	57.223	ug/l	0.00
Spiked Amount	50.000	Range 61 - 141	Recovery	=	114.440%	
35) Dibromofluoromethane	8.027	113	532700	52.648	ug/l	0.00
Spiked Amount	50.000	Range 69 - 133	Recovery	=	105.300%	
50) Toluene-d8	10.443	98	2147879	52.868	ug/l	0.00
Spiked Amount	50.000	Range 65 - 126	Recovery	=	105.740%	
62) 4-Bromofluorobenzene	12.731	95	768023	52.181	ug/l	0.00
Spiked Amount	50.000	Range 58 - 135	Recovery	=	104.360%	
Target Compounds						
						Qvalue
3) Chloromethane	2.303	50	7764	0.559	ug/l #	69
4) Vinyl Chloride	2.445	62	18758	1.469	ug/l #	1
6) Chloroethane	3.070	64	2511	0.321	ug/l #	44
11) Tert butyl alcohol	5.396	59	56021	20.204	ug/l #	71
13) Acrolein	4.047	56	908	0.385	ug/l #	14
15) Acrylonitrile	5.613	53	15234	2.039	ug/l #	29
16) Acetone	4.296	43	102979	11.670	ug/l	94
17) Carbon Disulfide	4.537	76	12780	0.547	ug/l	99
18) Methyl Acetate	5.076	43	149575	5.616	ug/l #	51
19) Methyl tert-butyl Ether	5.624	73	109257	3.105	ug/l #	1
22) Diisopropyl ether	6.498	45	8839	0.222	ug/l #	81
25) 2-Butanone	7.345	43	43208	3.604	ug/l	90
26) 2,2-Dichloropropane	7.142	77	5663	0.353	ug/l #	52
27) cis-1,2-Dichloroethene	7.324	96	8481	0.714	ug/l	92
30) Chloroform	7.777	83	6357	0.305	ug/l #	18
31) Cyclohexane	8.094	56	309424	15.157	ug/l #	86
36) 1,1-Dichloropropene	8.086	75	81357	5.291	ug/l #	49
37) Ethyl Acetate	7.345	43	43208	1.888	ug/l #	67
38) Carbon Tetrachloride	8.086	117	97512	6.467	ug/l #	16
39) Methylcyclohexane	9.461	83	204768	11.195	ug/l #	86
40) Benzene	8.461	78	2735428	58.197	ug/l	100
43) Isopropyl Acetate	8.544	43	37229	1.099	ug/l #	55
47) Bromodichloromethane	9.748	83	5240	0.334	ug/l #	25
48) Methyl methacrylate	9.590	41	6438	0.407	ug/l #	8
49) 1,4-Dioxane	9.579	88	503	1.774	ug/l #	64
51) 4-Methyl-2-Pentanone	10.336	43	31384	1.428	ug/l	88
52) Toluene	10.507	92	4939433	172.130	ug/l	98
53) t-1,3-Dichloropropene	10.507	75	64410	6.020	ug/l #	1
54) cis-1,3-Dichloropropene	10.446	75	575	2.027	ug/l #	1
55) 1,1,2-Trichloroethane	10.880	97	24954	2.155	ug/l #	22
56) Ethyl methacrylate	10.778	69	3819	2.446	ug/l #	1
58) 2-Chloroethyl Vinyl ether	10.062	63	213	18.422	ug/l #	45
59) 2-Hexanone	10.947	43	29522	1.776	ug/l	64
60) Dibromochloromethane	11.240	129	87	2.383	ug/l	68
67) Ethyl Benzene	11.846	91	6532778	122.674	ug/l	97
68) m/p-Xylenes	11.950	106	3657736	188.642	ug/l	92

Data Path : Z:\voasrv\HPCHEM1\MSVOA_N\Data\VN121621\
 Data File : VN070148.D
 Acq On : 16 Dec 2021 19:39
 Operator : JC/MD
 Sample : M4940-04
 Misc : 5.00mL/MSVOA_N/WATER
 ALS Vial : 23 Sample Multiplier: 1

Instrument :
 MSVOA_N
 ClientSampleId :

Quant Time: Dec 17 01:03:16 2021
 Quant Method : Z:\voasrv\HPCHEM1\MSVOA_N\methods\82N120221W.M
 Quant Title : SW846 8260
 QLast Update : Fri Dec 03 08:46:47 2021
 Response via : Initial Calibration

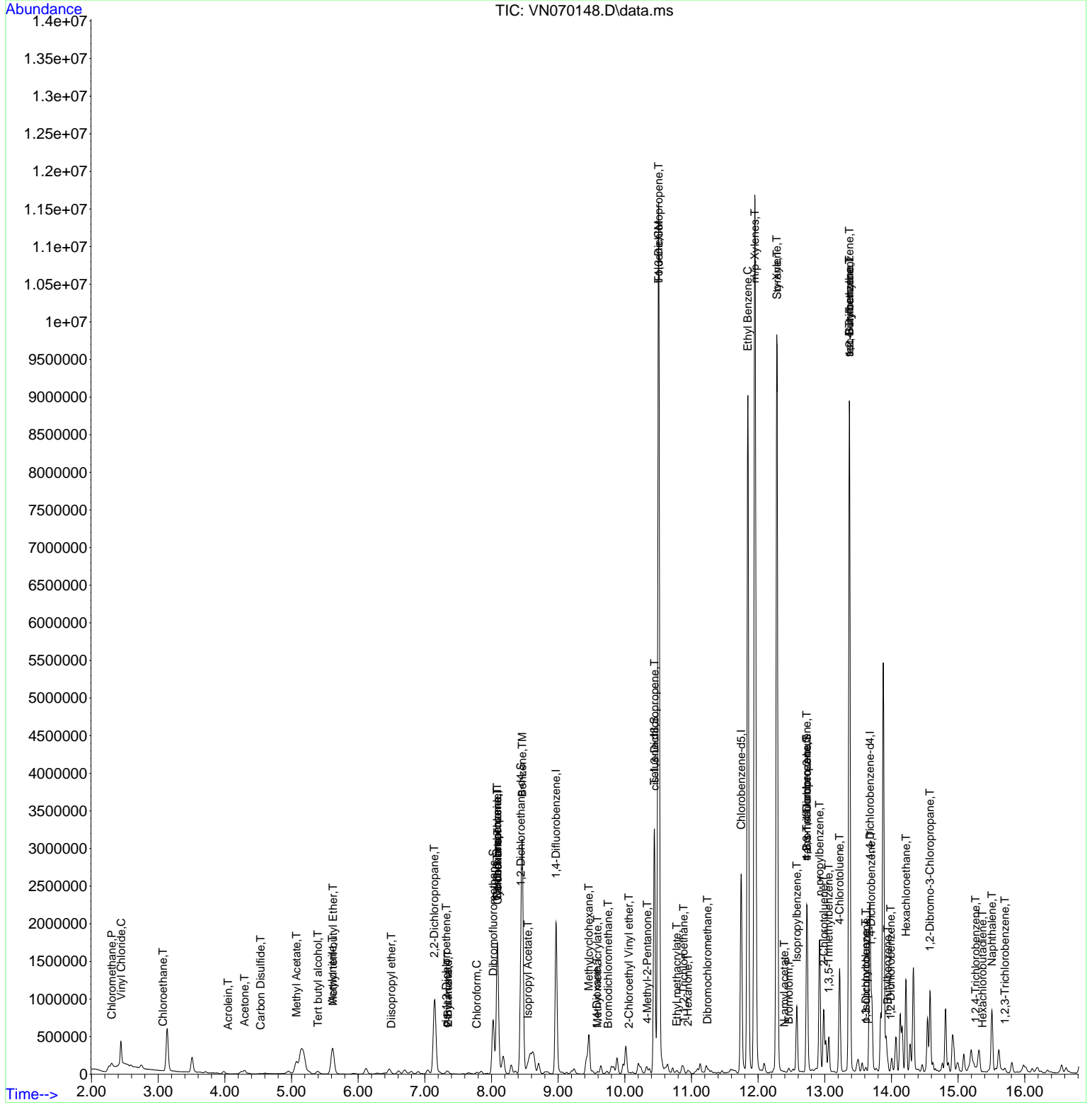
Compound	R.T.	QIon	Response	Conc	Units	Dev(Min)
69) o-Xylene	12.280	106	2595385	132.886	ug/l	90
70) Styrene	12.283	104	140644	4.541	ug/l #	1
71) Bromoform	12.460	173	375	2.771	ug/l #	29
73) Isopropylbenzene	12.581	105	565651	10.830	ug/l	98
74) N-amyl acetate	12.393	43	14374	0.622	ug/l #	65
76) 1,2,3-Trichloropropane	12.731	75	420931	25.003	ug/l #	1
78) n-propylbenzene	12.921	91	1415132	24.348	ug/l	96
79) 2-Chlorotoluene	12.986	91	46721	1.272	ug/l #	38
80) 1,3,5-Trimethylbenzene	13.061	105	243080	5.782	ug/l	99
81) trans-1,4-Dichloro-2-b...	12.731	75	420931	79.248	ug/l #	5
82) 4-Chlorotoluene	13.222	91	113146	3.276	ug/l #	38
83) tert-Butylbenzene	13.369	119	602057	16.174	ug/l #	57
84) 1,2,4-Trimethylbenzene	13.369	105	5083191	126.965	ug/l	97
85) sec-Butylbenzene	13.369	105	5083191	100.675	ug/l #	56
86) p-Isopropyltoluene	13.616	119	22653	0.574	ug/l #	77
87) 1,3-Dichlorobenzene	13.618	146	5426	0.269	ug/l #	63
88) 1,4-Dichlorobenzene	13.696	146	6749	0.341	ug/l #	1
89) n-Butylbenzene	13.943	91	73134	2.284	ug/l #	72
90) Hexachloroethane	14.219	117	60143	8.680	ug/l #	6
91) 1,2-Dichlorobenzene	13.991	146	5095	0.259	ug/l #	68
92) 1,2-Dibromo-3-Chloropr...	14.576	75	6277	1.923	ug/l #	1
93) 1,2,4-Trichlorobenzene	15.265	180	11366	3.990	ug/l #	65
94) Hexachlorobutadiene	15.364	225	1324	0.254	ug/l	82
95) Naphthalene	15.507	128	742222	27.795	ug/l	99
96) 1,2,3-Trichlorobenzene	15.702	180	13522	3.806	ug/l #	78

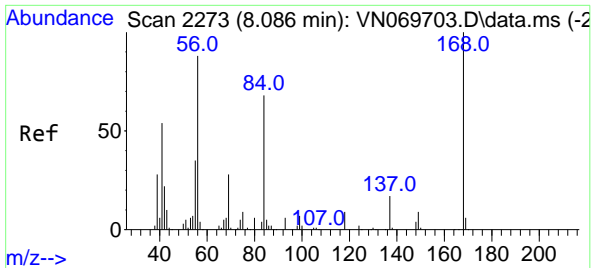
(#) = qualifier out of range (m) = manual integration (+) = signals summed

Data Path : Z:\voasrv\HPCHEM1\MSVOA_N\Data\VN121621\
 Data File : VN070148.D
 Acq On : 16 Dec 2021 19:39
 Operator : JC/MD
 Sample : M4940-04
 Misc : 5.00mL/MSVOA_N/WATER
 ALS Vial : 23 Sample Multiplier: 1

Instrument :
 MSVOA_N
 ClientSampleId :

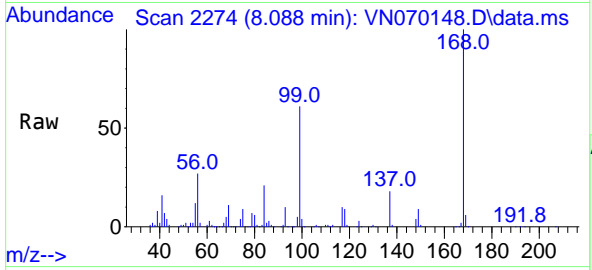
Quant Time: Dec 17 01:03:16 2021
 Quant Method : Z:\voasrv\HPCHEM1\MSVOA_N\methods\82N120221W.M
 Quant Title : SW846 8260
 QLast Update : Fri Dec 03 08:46:47 2021
 Response via : Initial Calibration



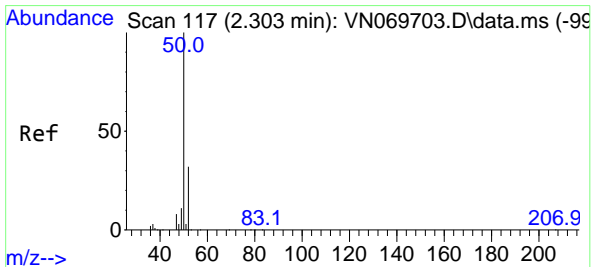
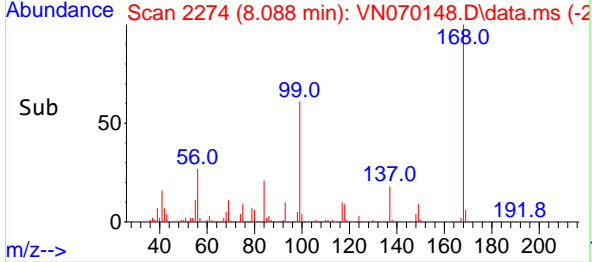
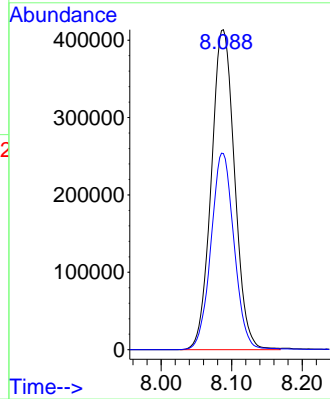


#1
 Pentafluorobenzene
 Concen: 50.000 ug/l
 RT: 8.088 min Scan# 21
 Delta R.T. 0.002 min
 Lab File: VN070148.D
 Acq: 16 Dec 2021 19:39

Instrument :
 MSVOA_N
 ClientSampleId :

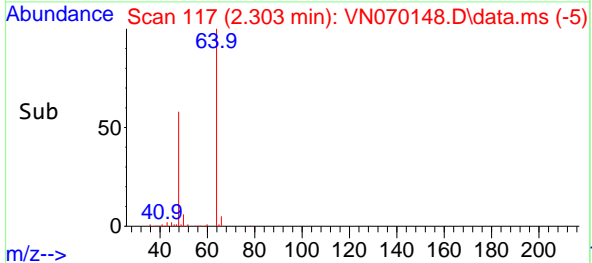
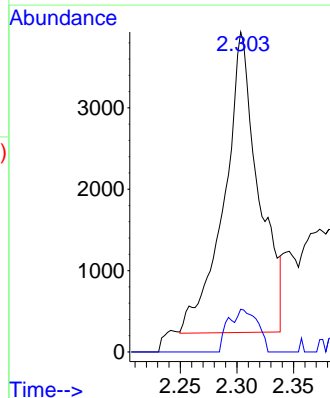
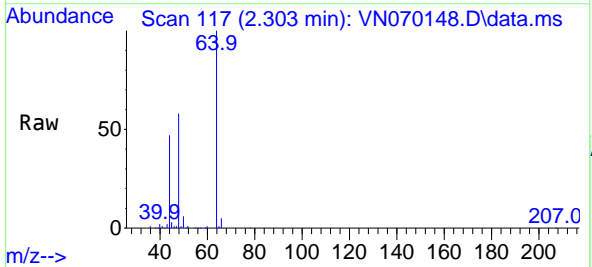


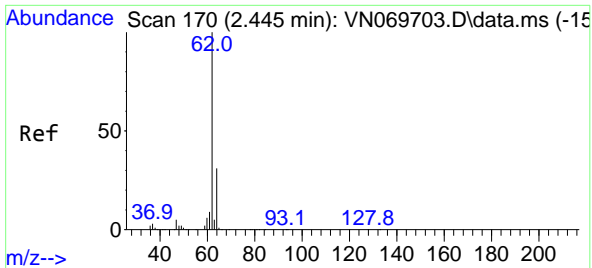
Tgt Ion:168 Resp: 950072
 Ion Ratio Lower Upper
 168 100
 99 61.3 41.3 61.9



#3
 Chloromethane
 Concen: 0.559 ug/l
 RT: 2.303 min Scan# 117
 Delta R.T. 0.000 min
 Lab File: VN070148.D
 Acq: 16 Dec 2021 19:39

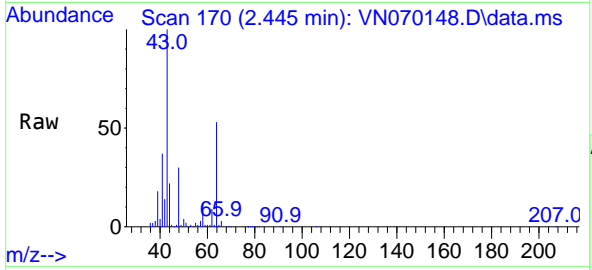
Tgt Ion: 50 Resp: 7764
 Ion Ratio Lower Upper
 50 100
 52 14.3 25.4 38.0#



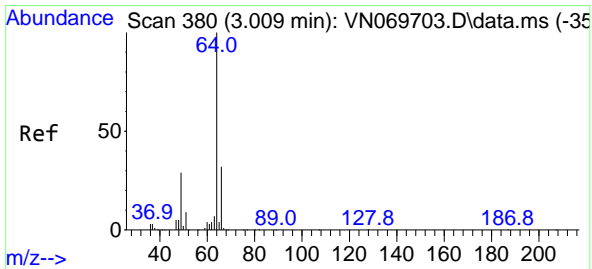
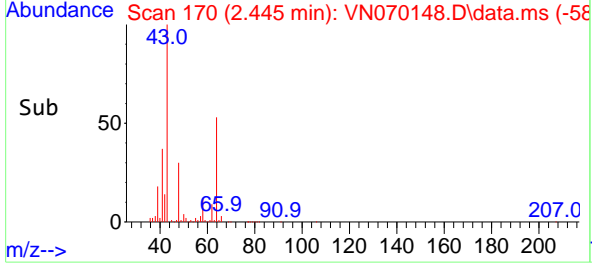
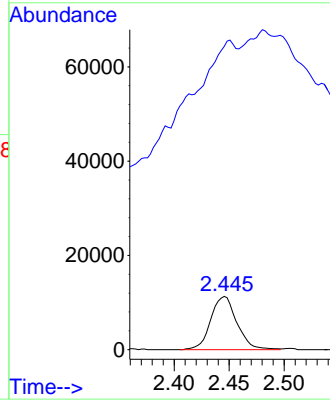


#4
 Vinyl Chloride
 Concen: 1.469 ug/l
 RT: 2.445 min Scan# 11
 Delta R.T. 0.000 min
 Lab File: VN070148.D
 Acq: 16 Dec 2021 19:39

Instrument :
 MSVOA_N
 ClientSampleId :

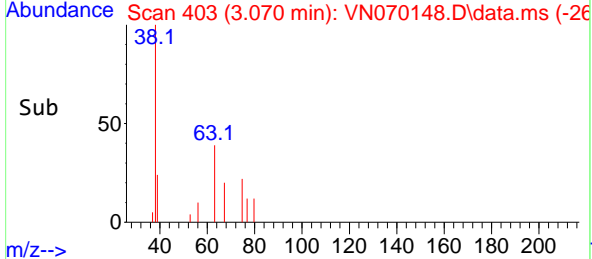
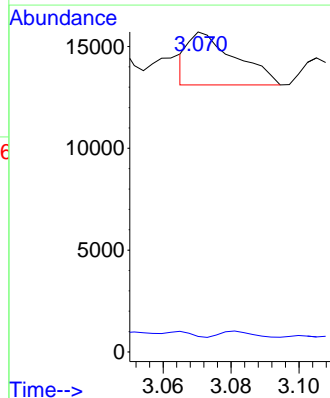
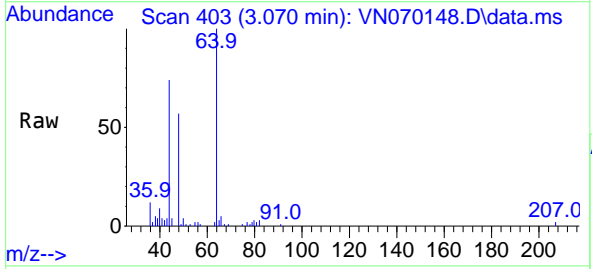


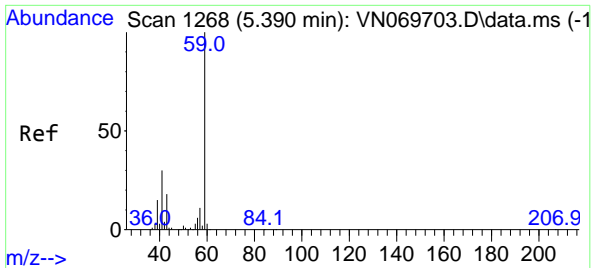
Tgt Ion: 62 Resp: 18758
 Ion Ratio Lower Upper
 62 100
 64 111.8 25.8 38.6#



#6
 Chloroethane
 Concen: 0.321 ug/l
 RT: 3.070 min Scan# 403
 Delta R.T. 0.062 min
 Lab File: VN070148.D
 Acq: 16 Dec 2021 19:39

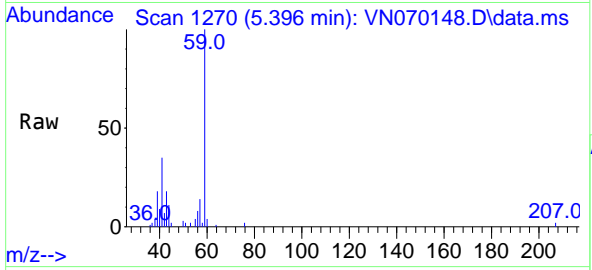
Tgt Ion: 64 Resp: 2511
 Ion Ratio Lower Upper
 64 100
 66 1.4 26.3 39.5#



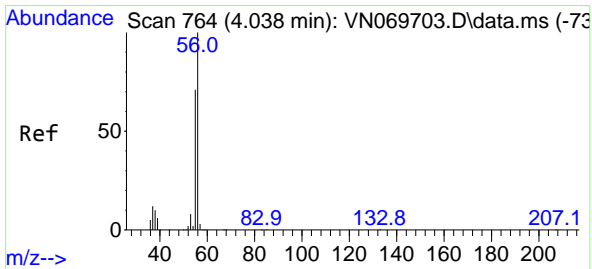
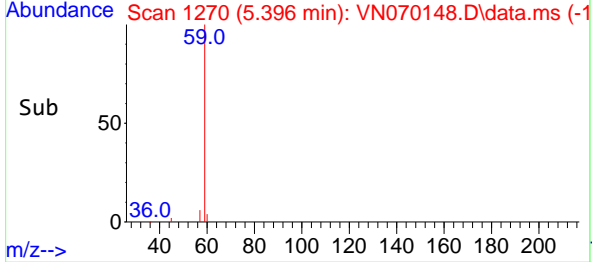
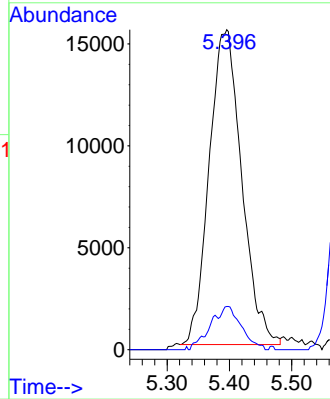


#11
 Tert butyl alcohol
 Concen: 20.204 ug/l
 RT: 5.396 min Scan# 11
 Delta R.T. 0.005 min
 Lab File: VN070148.D
 Acq: 16 Dec 2021 19:39

Instrument :
 MSVOA_N
 ClientSampleId :

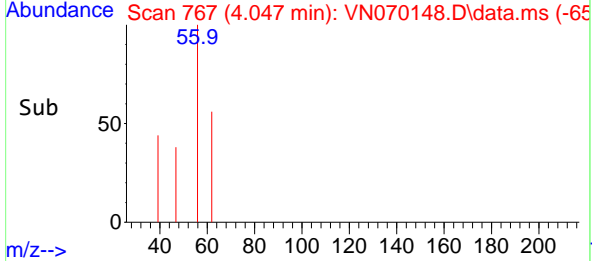
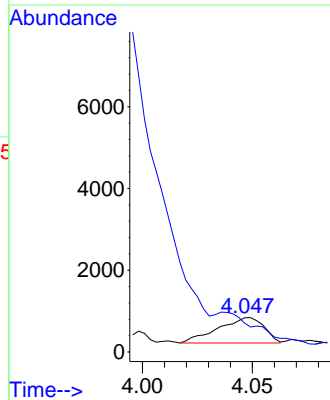
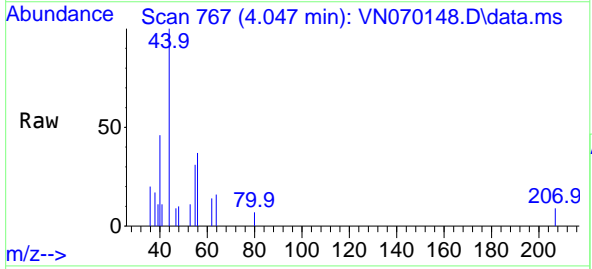


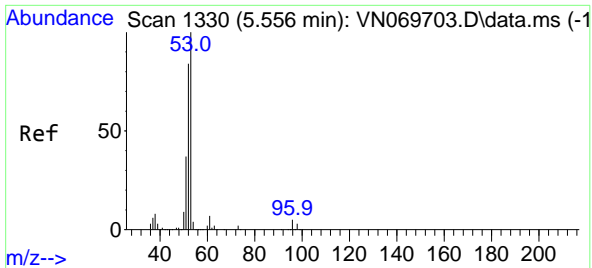
Tgt Ion: 59 Resp: 56021
 Ion Ratio Lower Upper
 59 100
 57 0.0 8.7 13.1#



#13
 Acrolein
 Concen: 0.385 ug/l
 RT: 4.047 min Scan# 767
 Delta R.T. 0.008 min
 Lab File: VN070148.D
 Acq: 16 Dec 2021 19:39

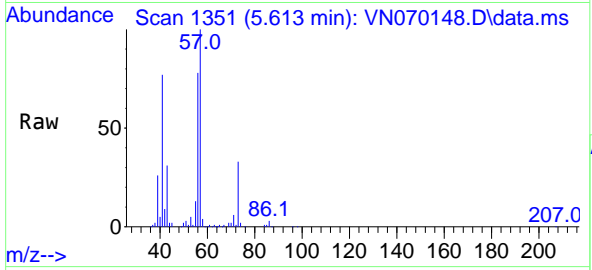
Tgt Ion: 56 Resp: 908
 Ion Ratio Lower Upper
 56 100
 55 0.0 56.6 85.0#



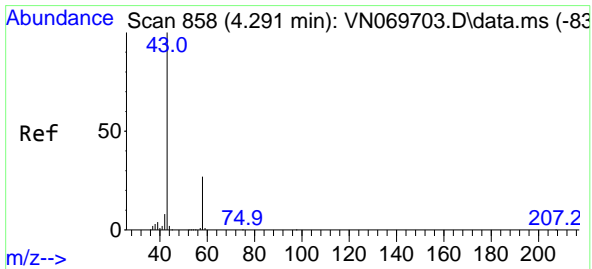
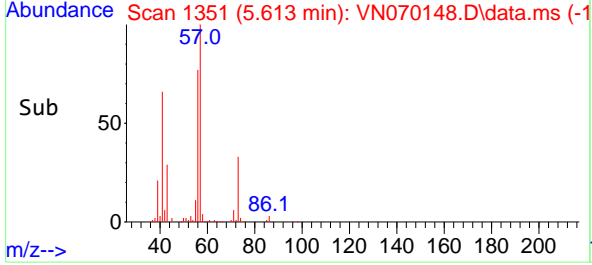
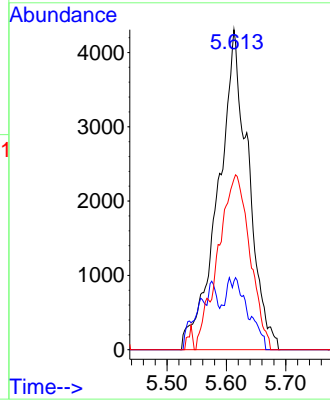


#15
 Acrylonitrile
 Concen: 2.039 ug/l
 RT: 5.613 min Scan# 11
 Delta R.T. 0.056 min
 Lab File: VN070148.D
 Acq: 16 Dec 2021 19:39

Instrument :
 MSVOA_N
 ClientSampleId :

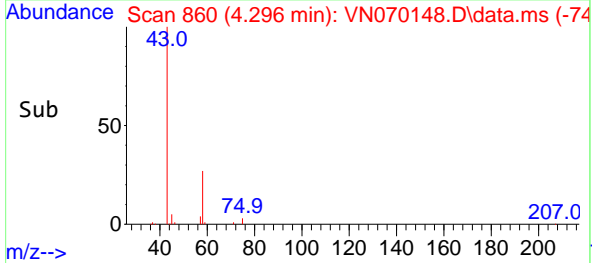
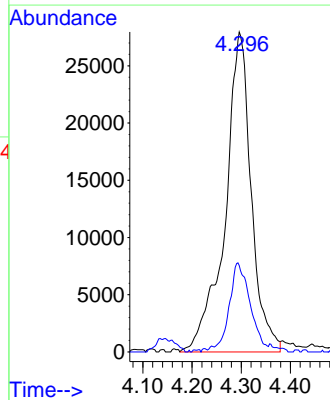
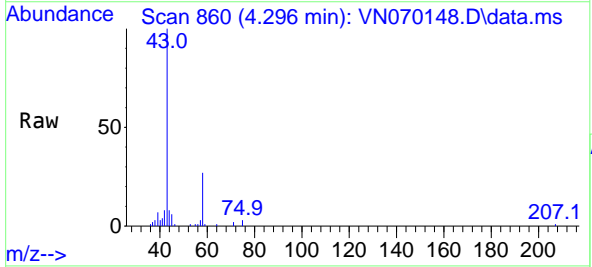


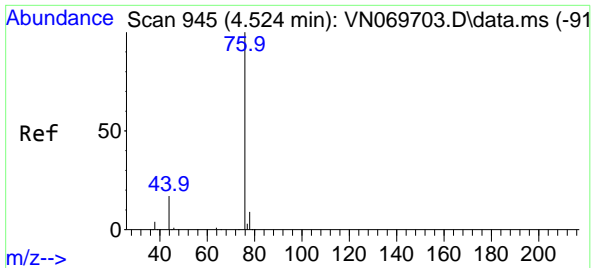
Tgt Ion: 53 Resp: 15234
 Ion Ratio Lower Upper
 53 100
 52 1.4 66.2 99.2#
 51 53.3 29.6 44.4#



#16
 Acetone
 Concen: 11.670 ug/l
 RT: 4.296 min Scan# 860
 Delta R.T. 0.005 min
 Lab File: VN070148.D
 Acq: 16 Dec 2021 19:39

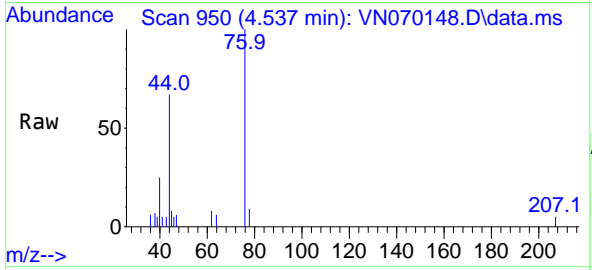
Tgt Ion: 43 Resp: 102979
 Ion Ratio Lower Upper
 43 100
 58 25.9 23.1 34.7



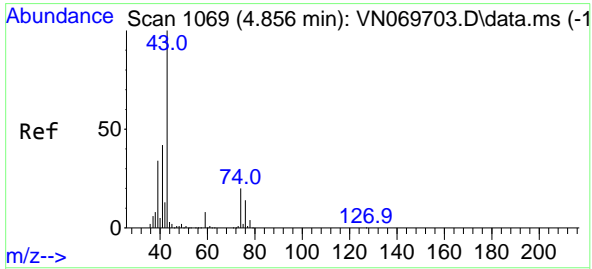
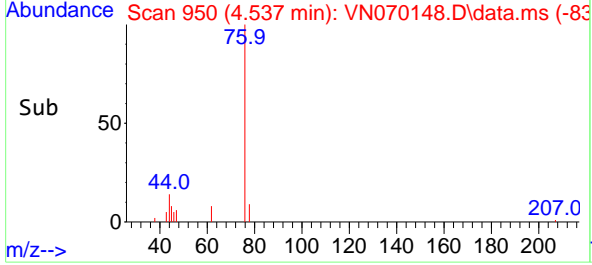
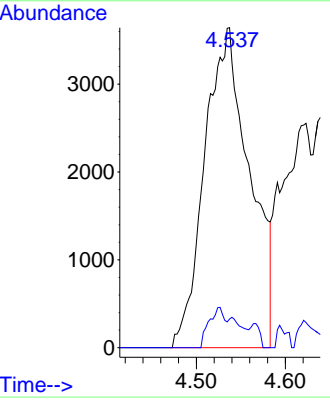


#17
 Carbon Disulfide
 Concen: 0.547 ug/l
 RT: 4.537 min Scan# 91
 Delta R.T. 0.013 min
 Lab File: VN070148.D
 Acq: 16 Dec 2021 19:39

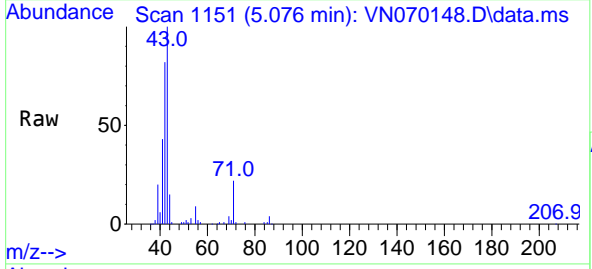
Instrument :
 MSVOA_N
 ClientSampleId :



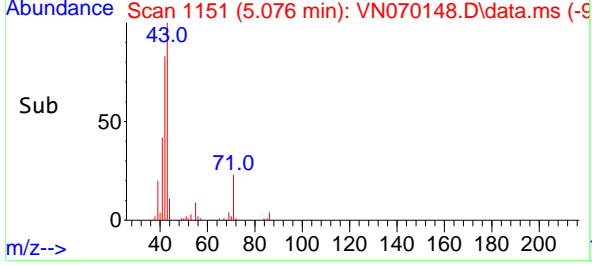
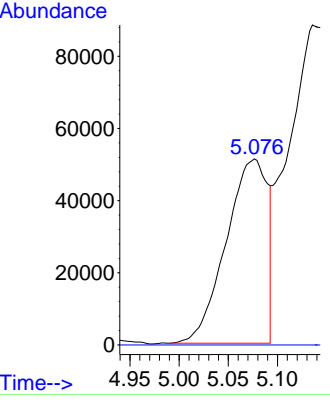
Tgt Ion: 76 Resp: 12780
 Ion Ratio Lower Upper
 76 100
 78 8.9 7.5 11.3

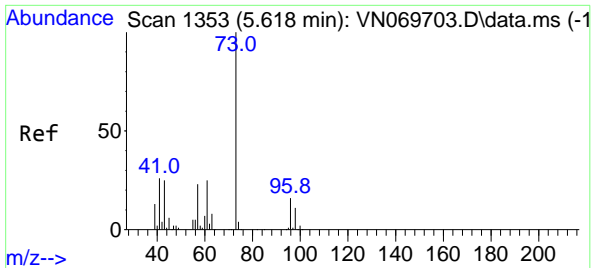


#18
 Methyl Acetate
 Concen: 5.616 ug/l
 RT: 5.076 min Scan# 1151
 Delta R.T. 0.220 min
 Lab File: VN070148.D
 Acq: 16 Dec 2021 19:39



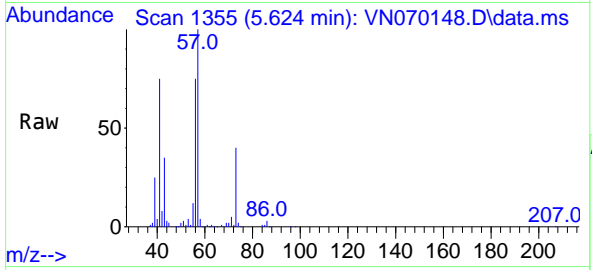
Tgt Ion: 43 Resp: 149575
 Ion Ratio Lower Upper
 43 100
 74 0.0 19.4 29.2#



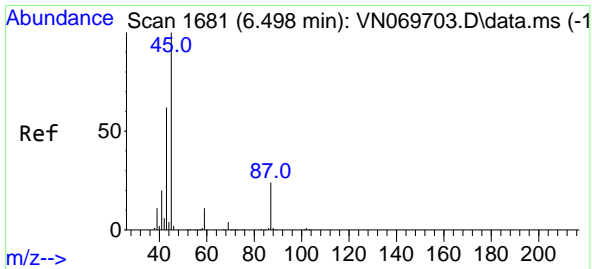
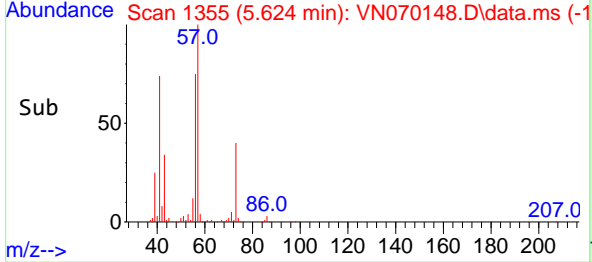
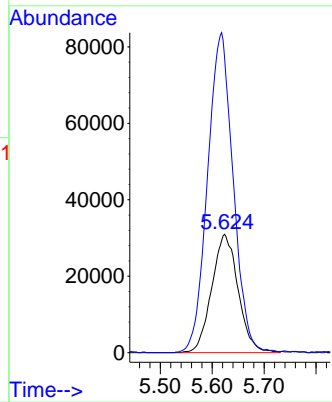


#19
 Methyl tert-butyl Ether
 Concen: 3.105 ug/l
 RT: 5.624 min Scan# 11
 Delta R.T. 0.005 min
 Lab File: VN070148.D
 Acq: 16 Dec 2021 19:39

Instrument : MSVOA_N
 ClientSampleId :

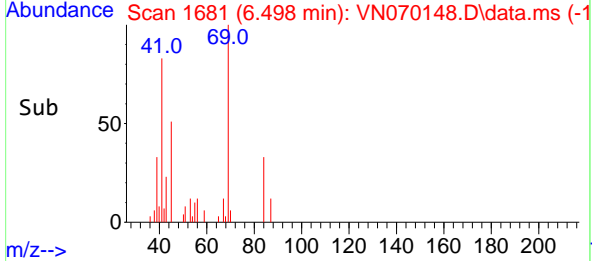
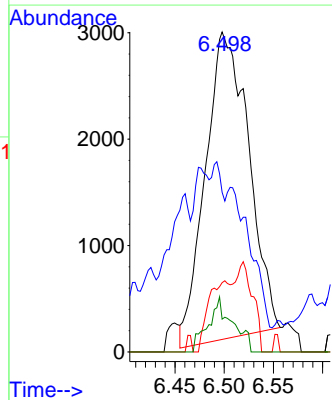
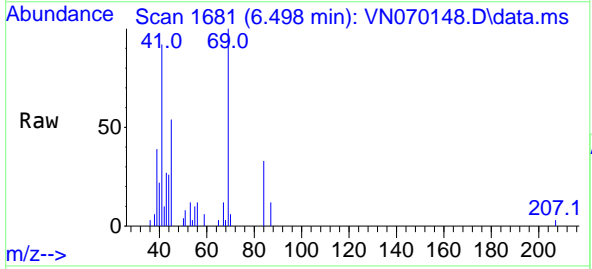


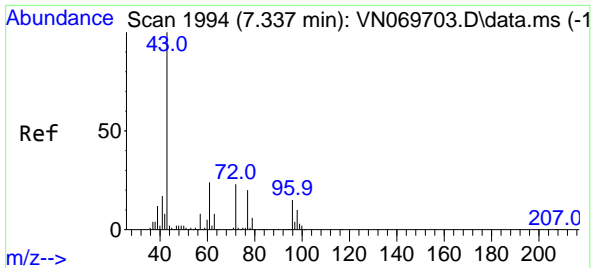
Tgt Ion: 73 Resp: 109257
 Ion Ratio Lower Upper
 73 100
 57 249.3 16.8 25.2#



#22
 Diisopropyl ether
 Concen: 0.222 ug/l
 RT: 6.498 min Scan# 1681
 Delta R.T. 0.000 min
 Lab File: VN070148.D
 Acq: 16 Dec 2021 19:39

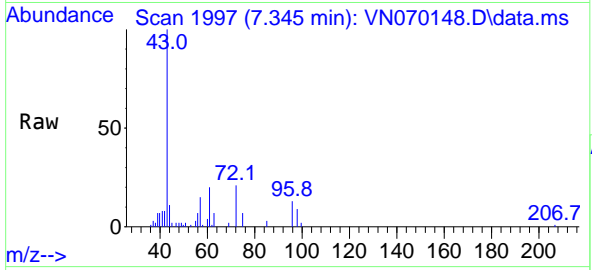
Tgt Ion: 45 Resp: 8839
 Ion Ratio Lower Upper
 45 100
 43 43.6 51.7 77.5#
 87 23.5 23.2 34.8
 59 11.1 9.4 14.0



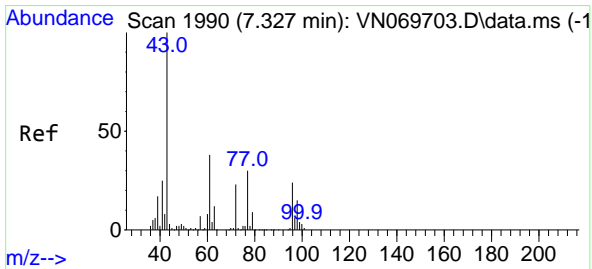
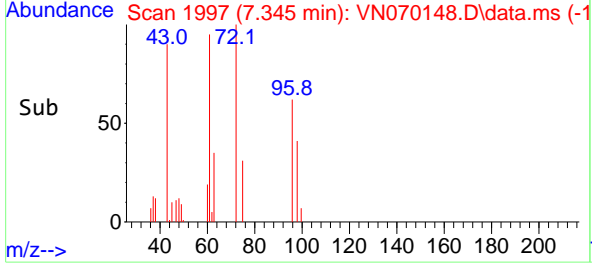
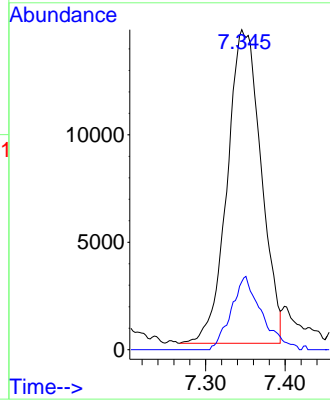


#25
 2-Butanone
 Concen: 3.604 ug/l
 RT: 7.345 min Scan# 1921
 Delta R.T. 0.008 min
 Lab File: VN070148.D
 Acq: 16 Dec 2021 19:39

Instrument : MSVOA_N
 ClientSampleId :

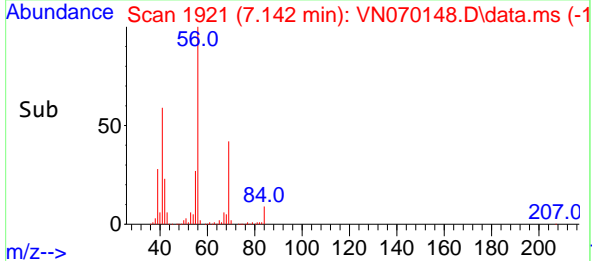
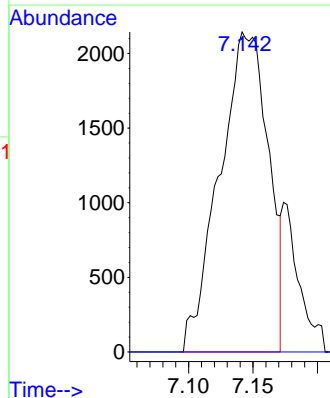
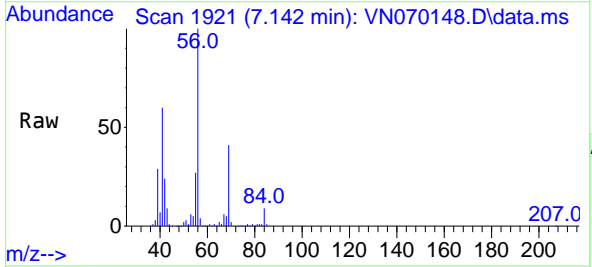


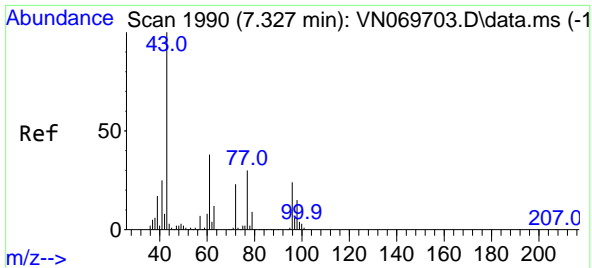
Tgt Ion: 43 Resp: 43208
 Ion Ratio Lower Upper
 43 100
 72 21.7 21.7 32.5



#26
 2,2-Dichloropropane
 Concen: 0.353 ug/l
 RT: 7.142 min Scan# 1921
 Delta R.T. -0.185 min
 Lab File: VN070148.D
 Acq: 16 Dec 2021 19:39

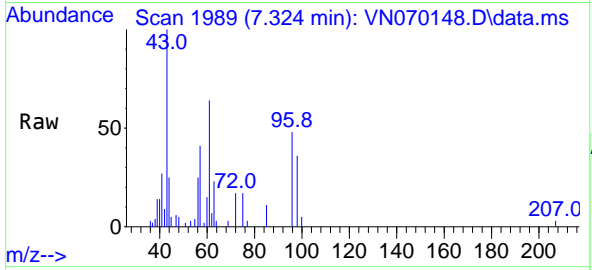
Tgt Ion: 77 Resp: 5663
 Ion Ratio Lower Upper
 77 100
 97 0.0 11.6 34.8#





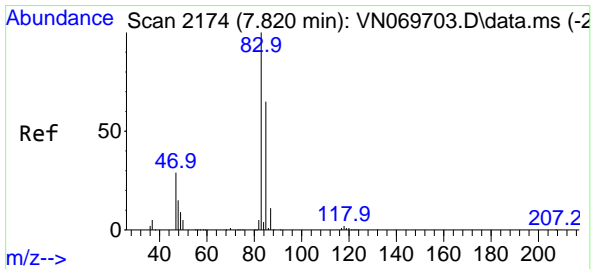
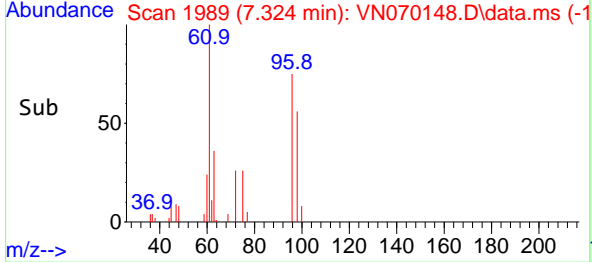
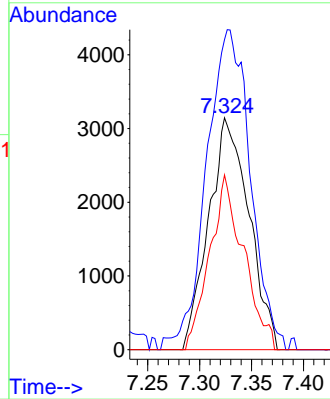
#27
 cis-1,2-Dichloroethene
 Concen: 0.714 ug/l
 RT: 7.324 min Scan# 1989
 Delta R.T. -0.003 min
 Lab File: VN070148.D
 Acq: 16 Dec 2021 19:39

Instrument : MSVOA_N
 ClientSampleId :



Tgt Ion: 96 Resp: 8481

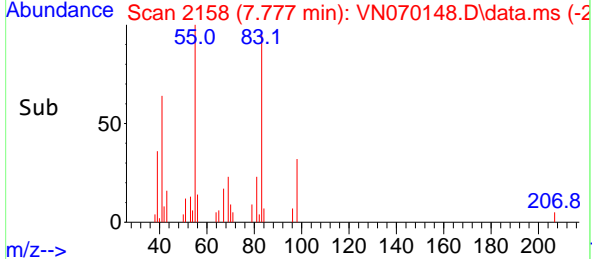
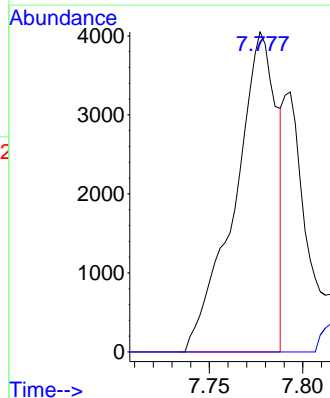
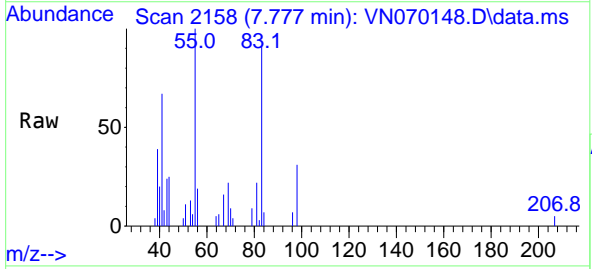
Ion	Ratio	Lower	Upper
96	100		
61	150.1	0.0	275.0
98	63.5	0.0	129.6

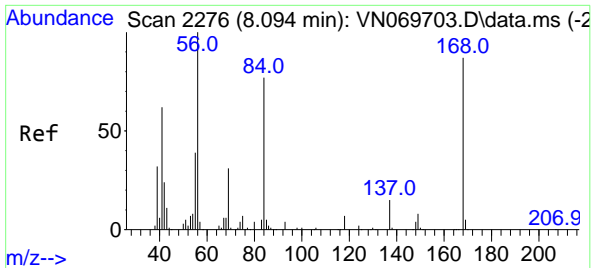


#30
 Chloroform
 Concen: 0.305 ug/l
 RT: 7.777 min Scan# 2158
 Delta R.T. -0.043 min
 Lab File: VN070148.D
 Acq: 16 Dec 2021 19:39

Tgt Ion: 83 Resp: 6357

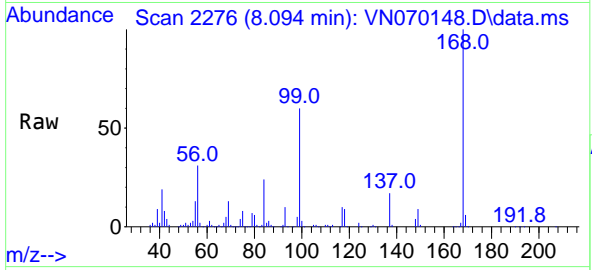
Ion	Ratio	Lower	Upper
83	100		
85	0.0	51.9	77.9#



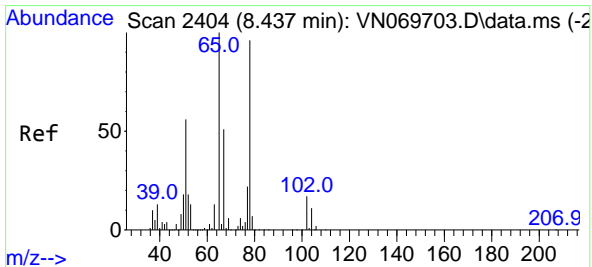
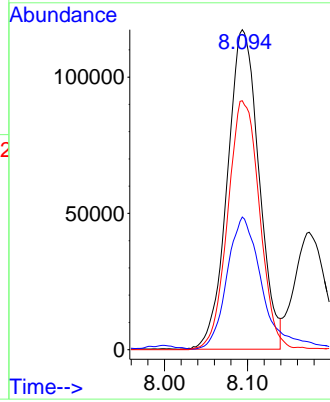
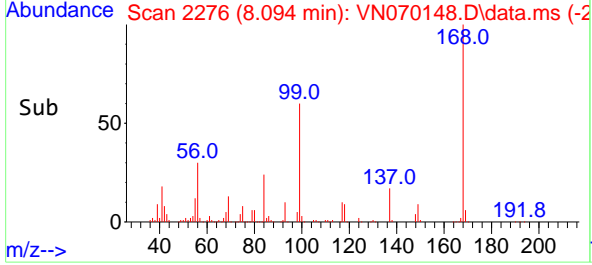


#31
 Cyclohexane
 Concen: 15.157 ug/l
 RT: 8.094 min Scan# 210
 Delta R.T. 0.000 min
 Lab File: VN070148.D
 Acq: 16 Dec 2021 19:39

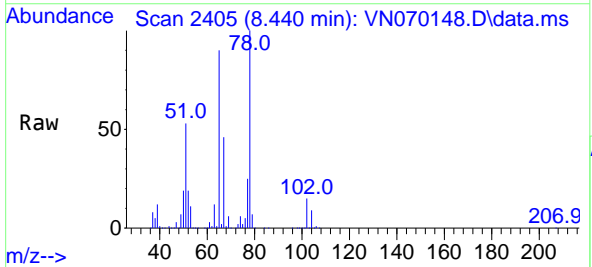
Instrument :
 MSVOA_N
 ClientSampleId :



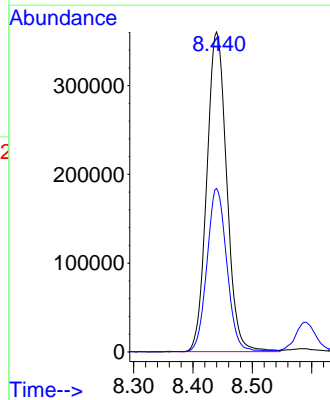
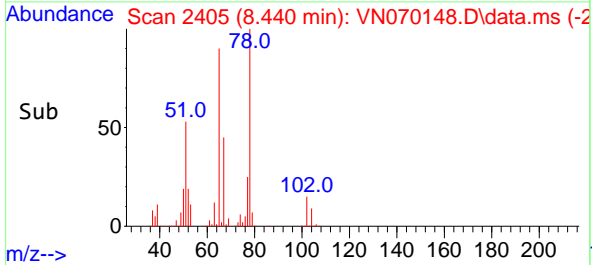
Tgt Ion: 56 Resp: 309424
 Ion Ratio Lower Upper
 56 100
 69 40.8 27.1 40.7#
 84 78.0 73.4 110.0

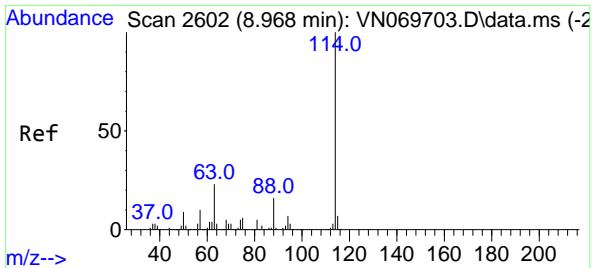


#33
 1,2-Dichloroethane-d4
 Concen: 57.223 ug/l
 RT: 8.440 min Scan# 2405
 Delta R.T. 0.003 min
 Lab File: VN070148.D
 Acq: 16 Dec 2021 19:39



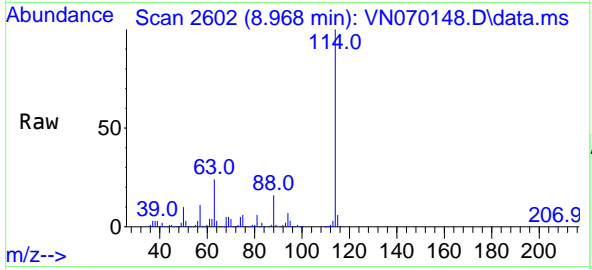
Tgt Ion: 65 Resp: 839414
 Ion Ratio Lower Upper
 65 100
 67 50.6 0.0 103.0





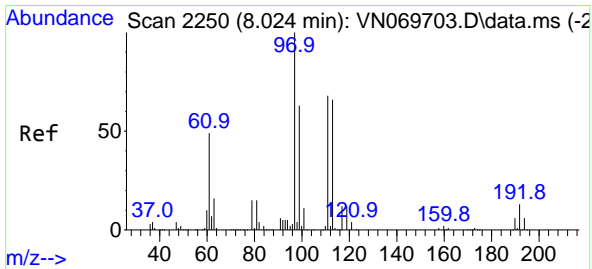
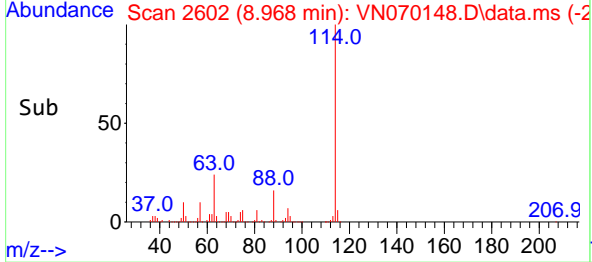
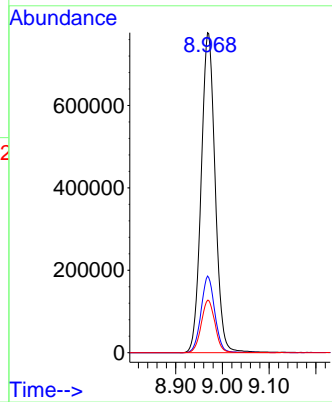
#34
 1,4-Difluorobenzene
 Concen: 50.000 ug/l
 RT: 8.968 min Scan# 2602
 Delta R.T. -0.000 min
 Lab File: VN070148.D
 Acq: 16 Dec 2021 19:39

Instrument : MSVOA_N
 ClientSampleId :



Tgt Ion:114 Resp: 1615326

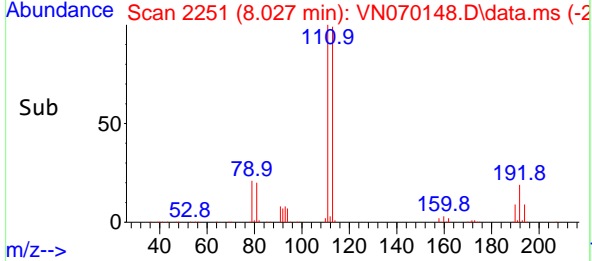
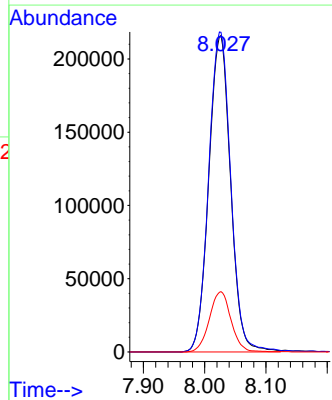
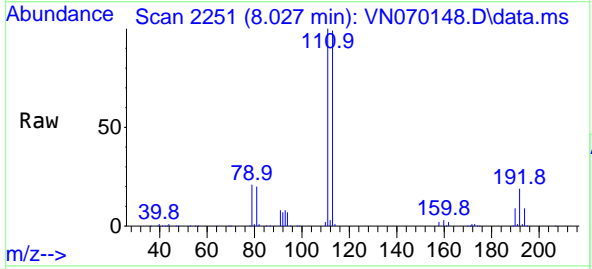
Ion	Ratio	Lower	Upper
114	100		
63	23.9	0.0	37.8
88	16.4	0.0	27.4

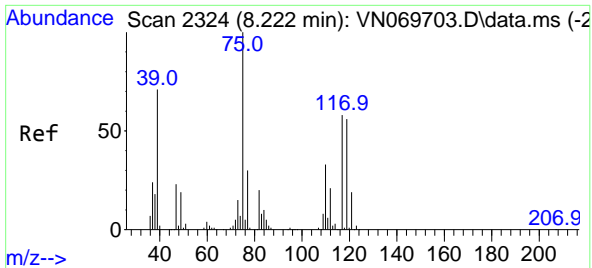


#35
 Dibromofluoromethane
 Concen: 52.648 ug/l
 RT: 8.027 min Scan# 2251
 Delta R.T. 0.003 min
 Lab File: VN070148.D
 Acq: 16 Dec 2021 19:39

Tgt Ion:113 Resp: 532700

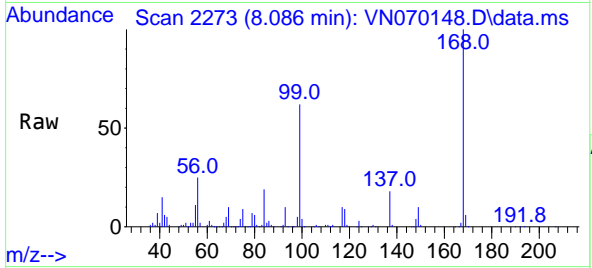
Ion	Ratio	Lower	Upper
113	100		
111	102.5	82.2	123.2
192	19.0	16.9	25.3



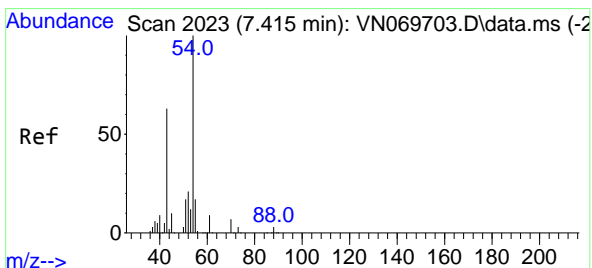
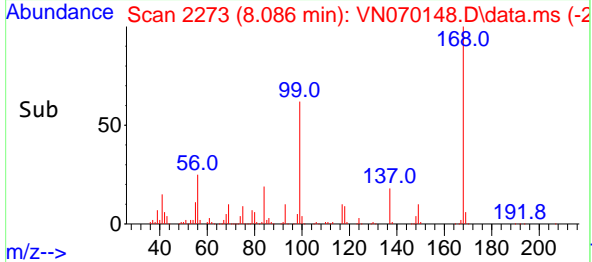
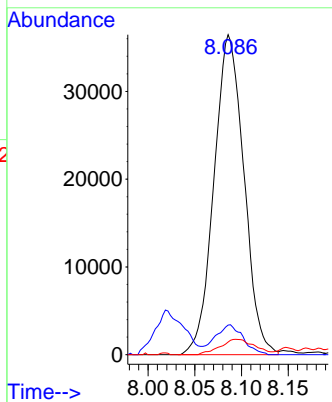


#36
 1,1-Dichloropropene
 Concen: 5.291 ug/l
 RT: 8.086 min Scan# 21
 Delta R.T. -0.137 min
 Lab File: VN070148.D
 Acq: 16 Dec 2021 19:39

Instrument :
 MSVOA_N
 ClientSampleId :

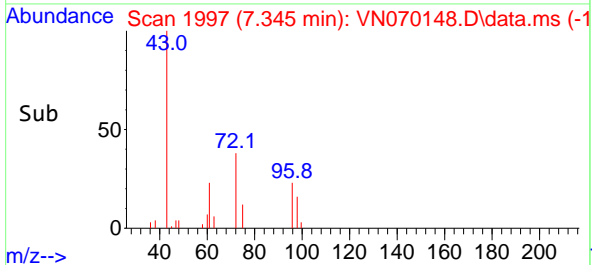
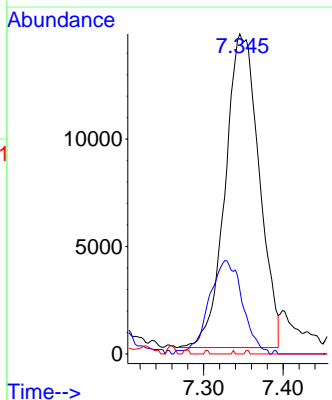
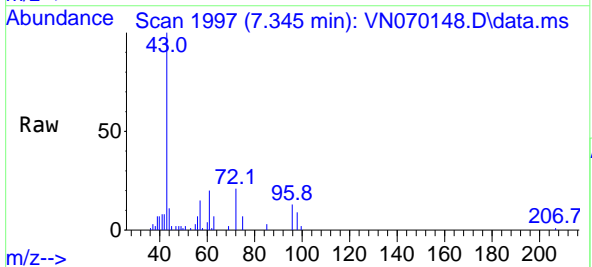


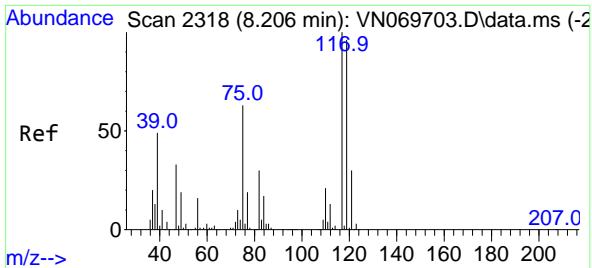
Tgt Ion: 75 Resp: 81357
 Ion Ratio Lower Upper
 75 100
 110 8.7 18.4 55.2#
 77 0.0 24.4 36.6#



#37
 Ethyl Acetate
 Concen: 1.888 ug/l
 RT: 7.345 min Scan# 1997
 Delta R.T. -0.070 min
 Lab File: VN070148.D
 Acq: 16 Dec 2021 19:39

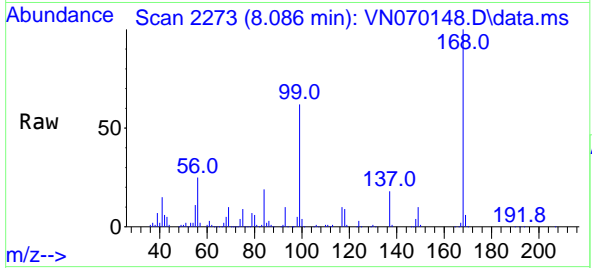
Tgt Ion: 43 Resp: 43208
 Ion Ratio Lower Upper
 43 100
 61 29.5 11.5 17.3#
 70 0.0 7.9 11.9#



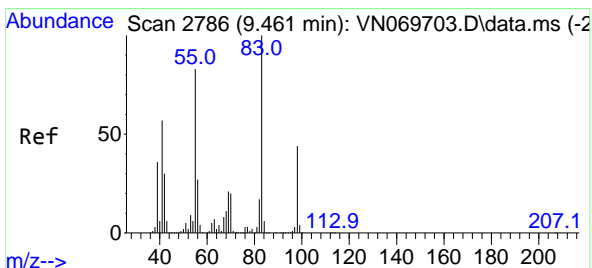
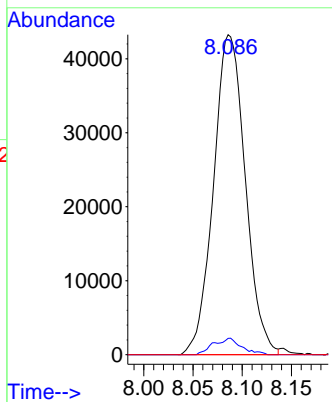
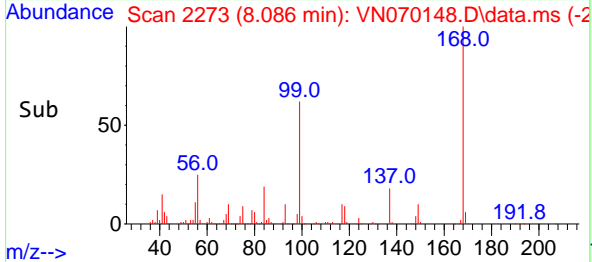


#38
 Carbon Tetrachloride
 Concen: 6.467 ug/l
 RT: 8.086 min Scan# 2117
 Delta R.T. -0.121 min
 Lab File: VN070148.D
 Acq: 16 Dec 2021 19:39

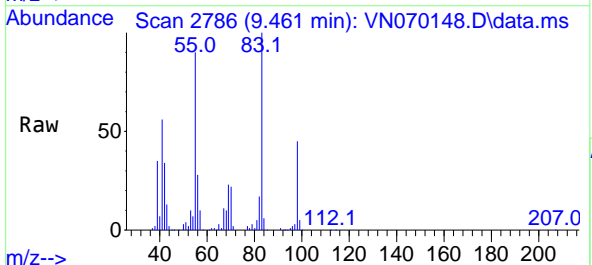
Instrument : MSVOA_N
 ClientSampleId :



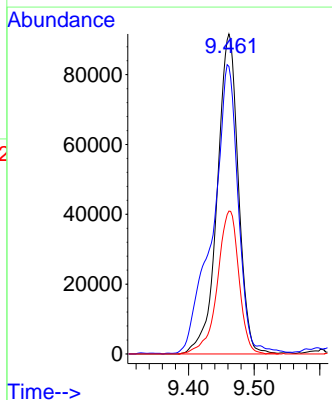
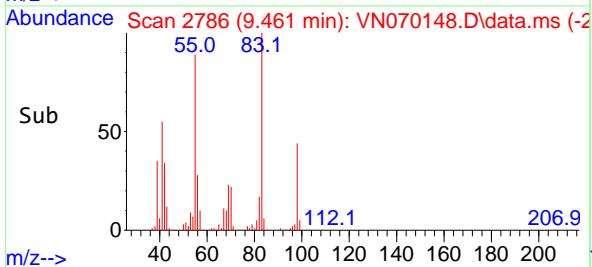
Tgt Ion:117 Resp: 97512
 Ion Ratio Lower Upper
 117 100
 119 5.1 76.1 114.1#
 121 0.0 24.2 36.2#

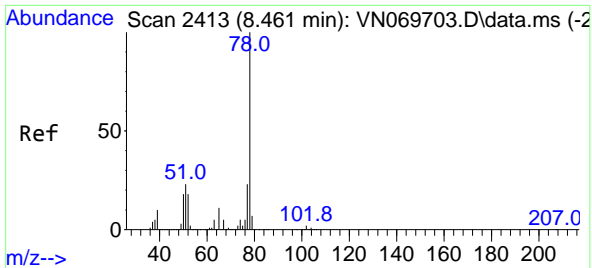


#39
 Methylcyclohexane
 Concen: 11.195 ug/l
 RT: 9.461 min Scan# 2786
 Delta R.T. 0.000 min
 Lab File: VN070148.D
 Acq: 16 Dec 2021 19:39



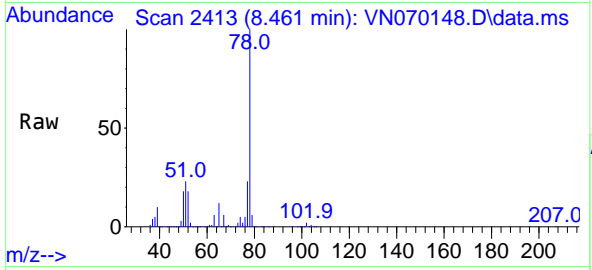
Tgt Ion: 83 Resp: 204768
 Ion Ratio Lower Upper
 83 100
 55 89.4 58.1 87.1#
 98 44.6 38.4 57.6



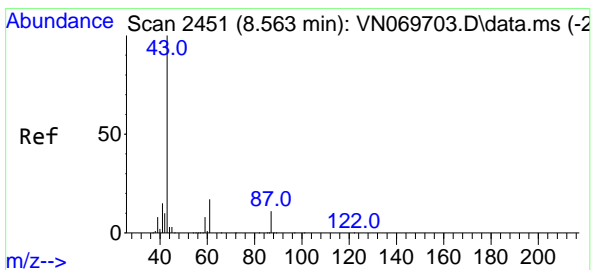
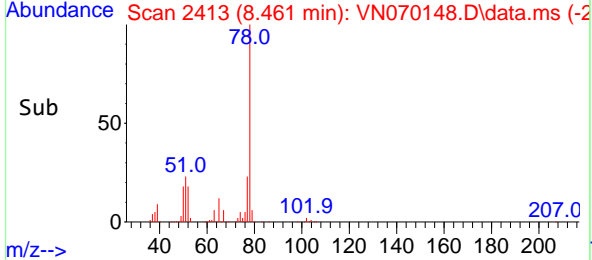
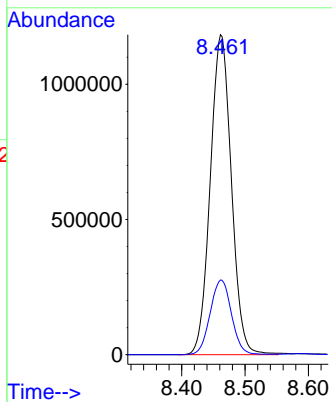


#40
Benzene
Concen: 58.197 ug/l
RT: 8.461 min Scan# 2413
Delta R.T. 0.000 min
Lab File: VN070148.D
Acq: 16 Dec 2021 19:39

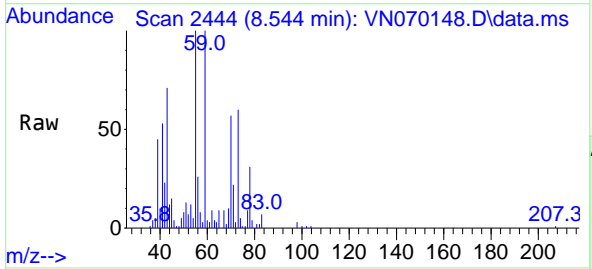
Instrument : MSVOA_N
ClientSampleId :



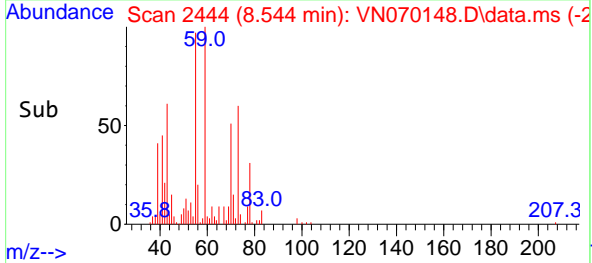
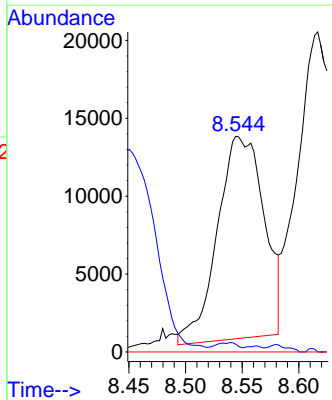
Tgt Ion: 78 Resp: 2735428
Ion Ratio Lower Upper
78 100
77 23.3 18.6 27.8

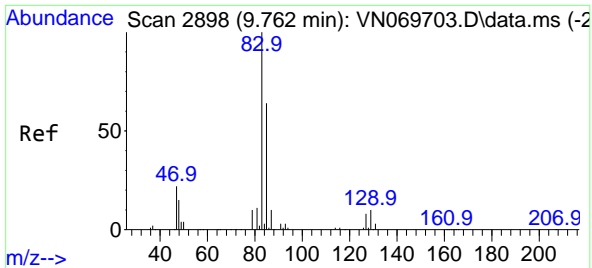


#43
Isopropyl Acetate
Concen: 1.099 ug/l
RT: 8.544 min Scan# 2444
Delta R.T. -0.019 min
Lab File: VN070148.D
Acq: 16 Dec 2021 19:39



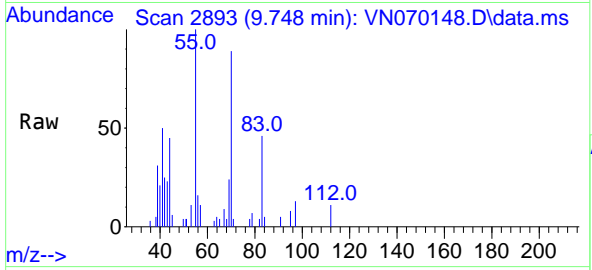
Tgt Ion: 43 Resp: 37229
Ion Ratio Lower Upper
43 100
61 0.0 20.4 30.6#
87 0.0 11.2 16.8#



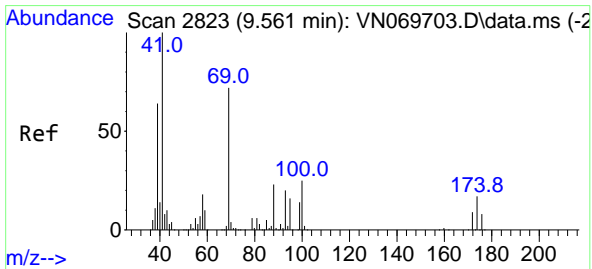
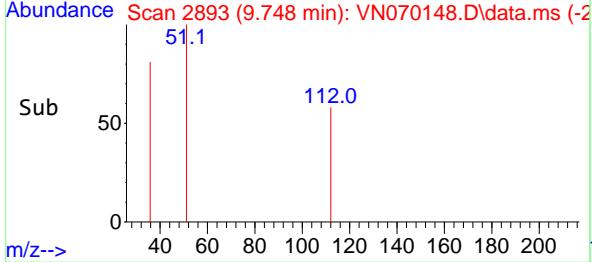
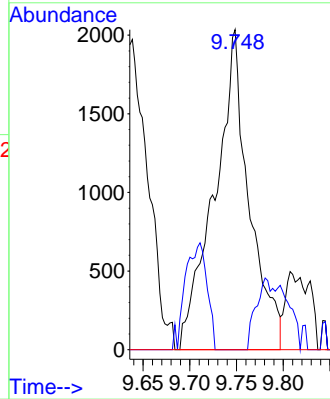


#47
 Bromodichloromethane
 Concen: 0.334 ug/l
 RT: 9.748 min Scan# 21
 Delta R.T. -0.013 min
 Lab File: VN070148.D
 Acq: 16 Dec 2021 19:39

Instrument : MSVOA_N
 ClientSampleId :

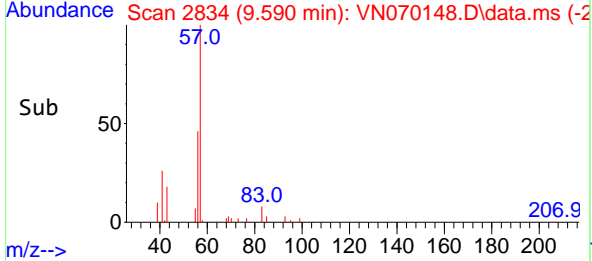
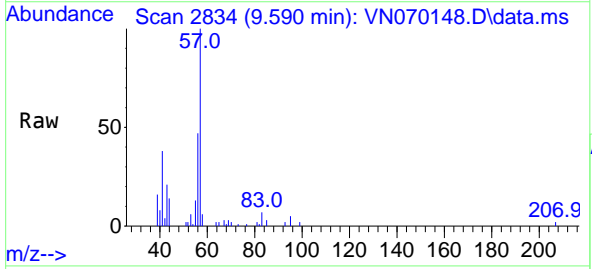
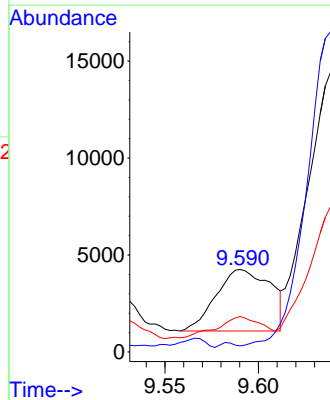


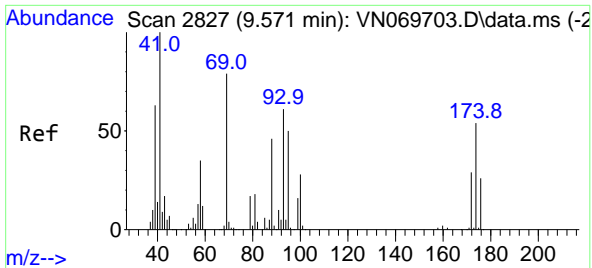
Tgt Ion: 83 Resp: 5240
 Ion Ratio Lower Upper
 83 100
 85 0.0 50.9 76.3#
 127 0.0 7.1 10.7#



#48
 Methyl methacrylate
 Concen: 0.407 ug/l
 RT: 9.590 min Scan# 2834
 Delta R.T. 0.029 min
 Lab File: VN070148.D
 Acq: 16 Dec 2021 19:39

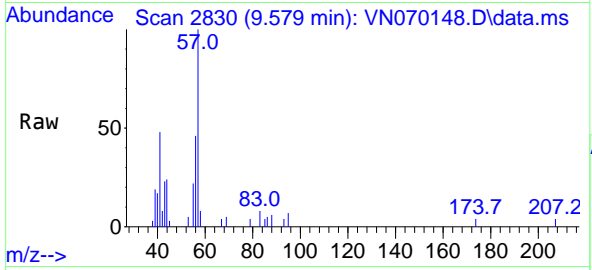
Tgt Ion: 41 Resp: 6438
 Ion Ratio Lower Upper
 41 100
 69 0.0 72.4 108.6#
 39 0.0 58.4 87.6#



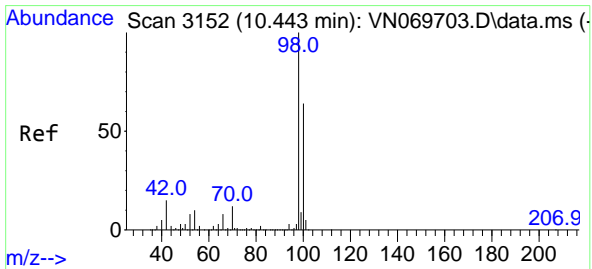
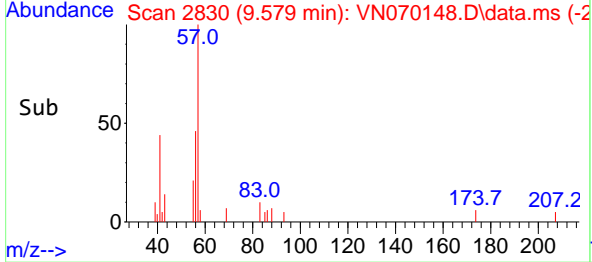
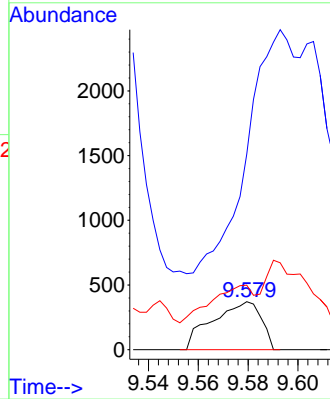


#49
 1,4-Dioxane
 Concen: 1.774 ug/l
 RT: 9.579 min Scan# 2827
 Delta R.T. 0.008 min
 Lab File: VN070148.D
 Acq: 16 Dec 2021 19:39

Instrument :
 MSVOA_N
 ClientSampleId :

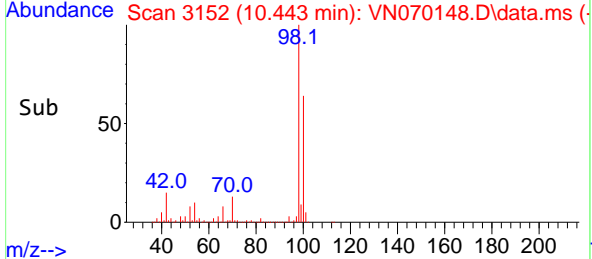
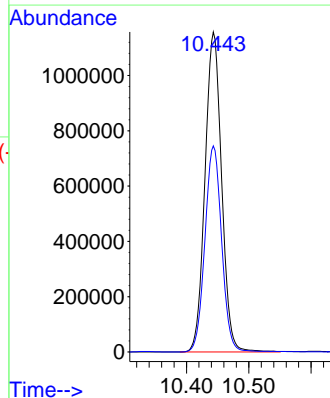
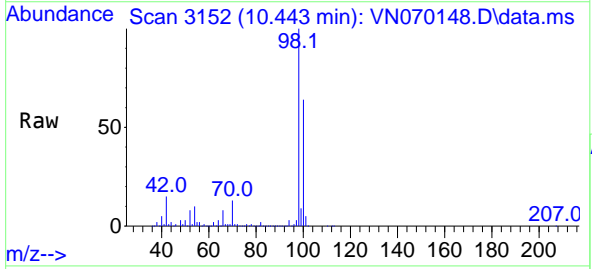


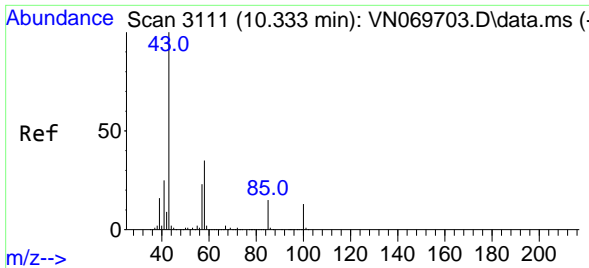
Tgt Ion: 88 Resp: 503
 Ion Ratio Lower Upper
 88 100
 43 0.0 23.4 35.2#
 58 84.3 50.6 75.8#



#50
 Toluene-d8
 Concen: 52.868 ug/l
 RT: 10.443 min Scan# 3152
 Delta R.T. 0.000 min
 Lab File: VN070148.D
 Acq: 16 Dec 2021 19:39

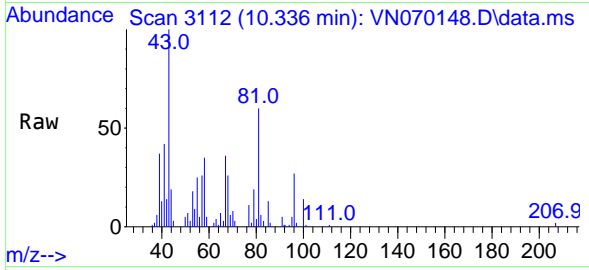
Tgt Ion: 98 Resp: 2147879
 Ion Ratio Lower Upper
 98 100
 100 64.9 50.4 75.6



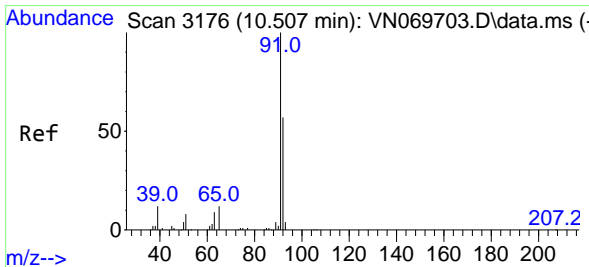
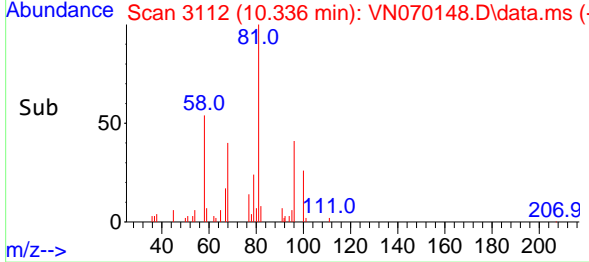
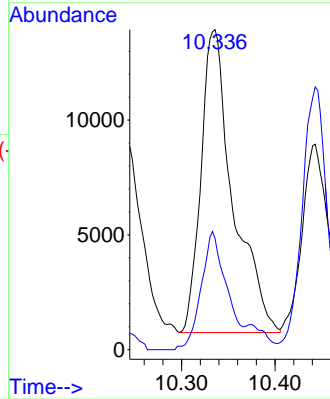


#51
 4-Methyl-2-Pentanone
 Concen: 1.428 ug/l
 RT: 10.336 min Scan# 3111
 Delta R.T. 0.003 min
 Lab File: VN070148.D
 Acq: 16 Dec 2021 19:39

Instrument : MSVOA_N
 ClientSampleId :

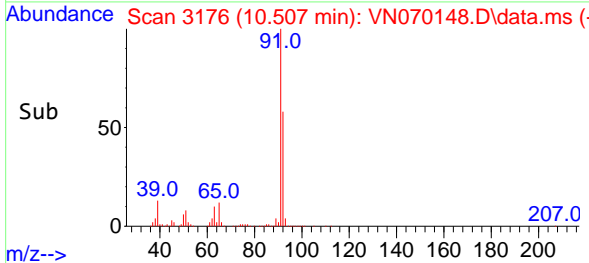
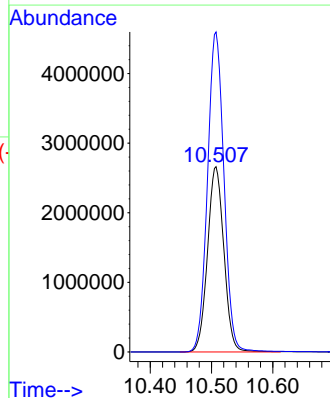
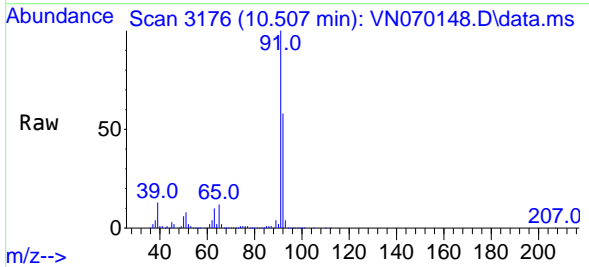


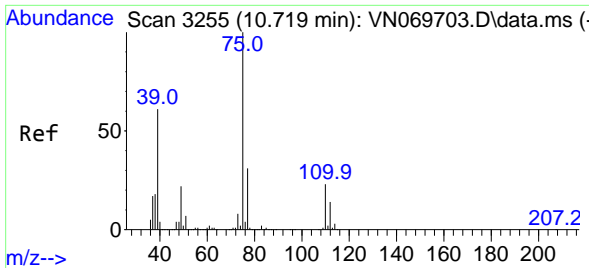
Tgt Ion: 43 Resp: 31384
 Ion Ratio Lower Upper
 43 100
 58 30.7 30.4 45.6



#52
 Toluene
 Concen: 172.130 ug/l
 RT: 10.507 min Scan# 3176
 Delta R.T. 0.000 min
 Lab File: VN070148.D
 Acq: 16 Dec 2021 19:39

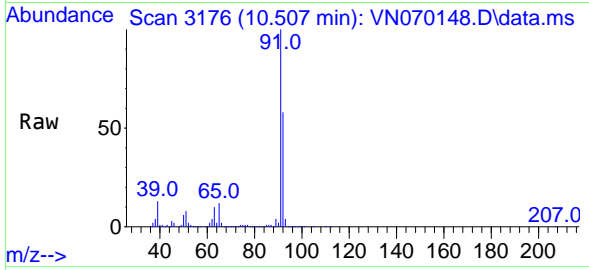
Tgt Ion: 92 Resp: 4939433
 Ion Ratio Lower Upper
 92 100
 91 174.1 142.0 213.0



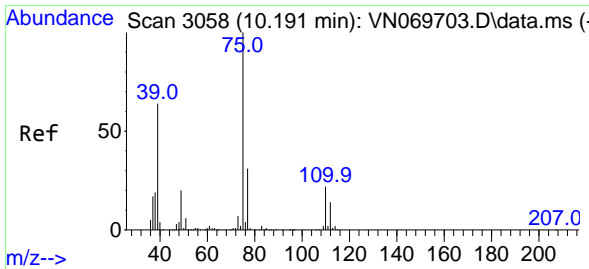
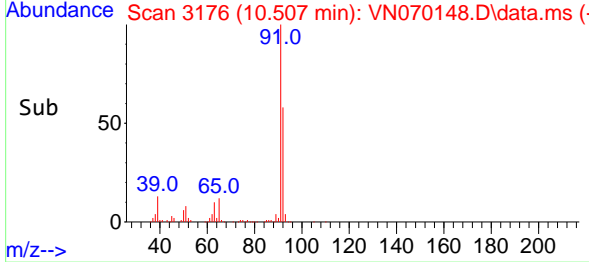
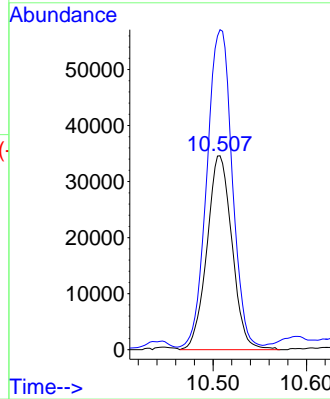


#53
 t-1,3-Dichloropropene
 Concen: 6.020 ug/l
 RT: 10.507 min Scan# 3117
 Delta R.T. -0.212 min
 Lab File: VN070148.D
 Acq: 16 Dec 2021 19:39

Instrument : MSVOA_N
 ClientSampleId :

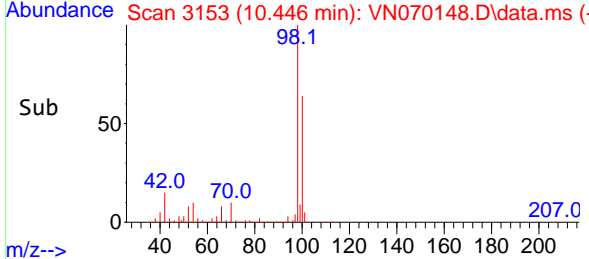
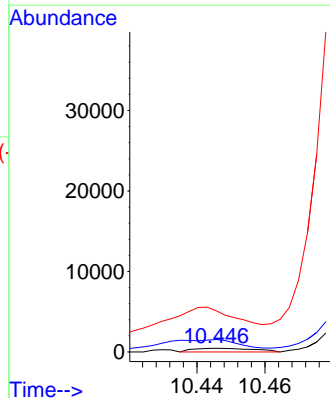
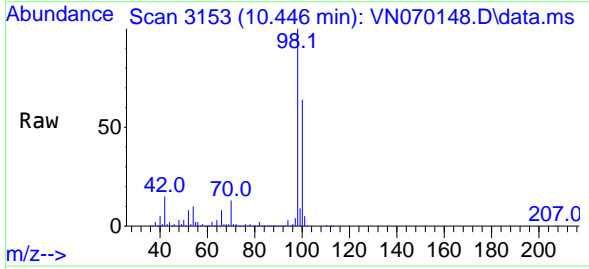


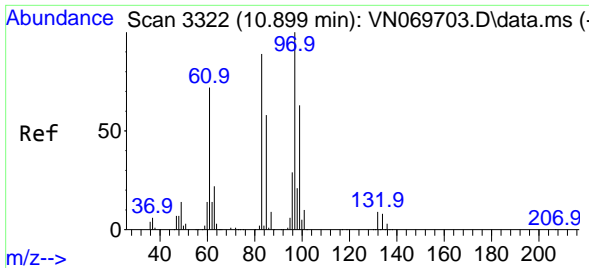
Tgt Ion: 75 Resp: 64410
 Ion Ratio Lower Upper
 75 100
 77 163.5 25.6 38.4#



#54
 cis-1,3-Dichloropropene
 Concen: 2.027 ug/l
 RT: 10.446 min Scan# 3153
 Delta R.T. 0.255 min
 Lab File: VN070148.D
 Acq: 16 Dec 2021 19:39

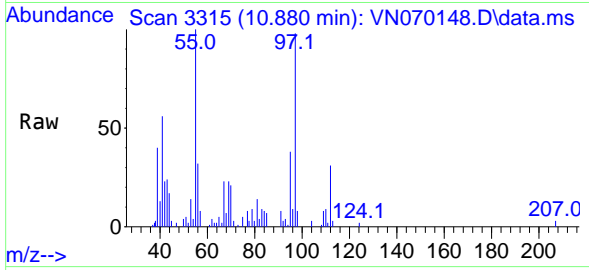
Tgt Ion: 75 Resp: 575
 Ion Ratio Lower Upper
 75 100
 77 215.7 26.4 39.6#
 39 231.4 42.5 63.7#





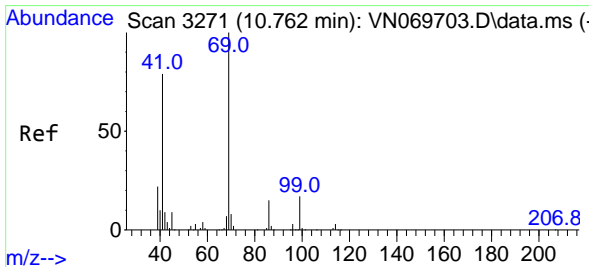
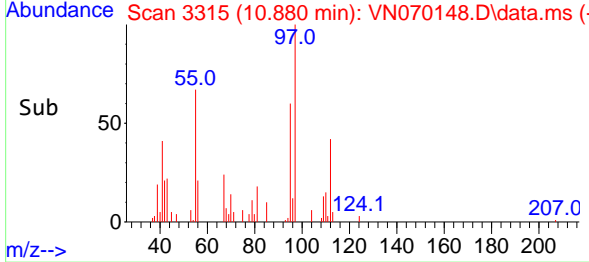
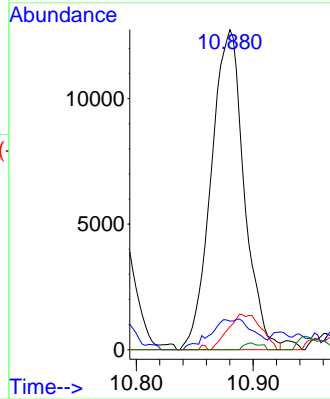
#55
 1,1,2-Trichloroethane
 Concen: 2.155 ug/l
 RT: 10.880 min Scan# 31
 Delta R.T. -0.019 min
 Lab File: VN070148.D
 Acq: 16 Dec 2021 19:39

Instrument :
 MSVOA_N
 ClientSampleId :



Tgt Ion: 97 Resp: 24954

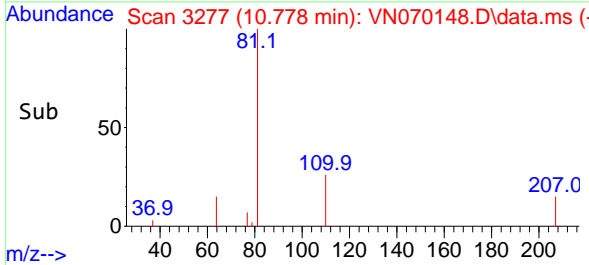
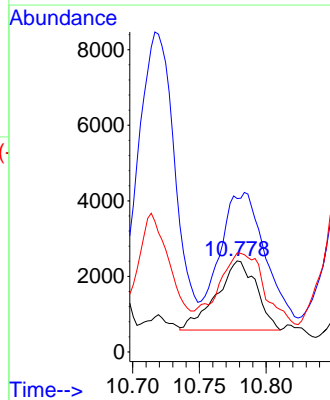
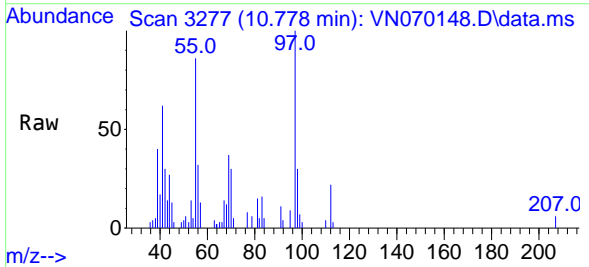
Ion	Ratio	Lower	Upper
97	100		
83	8.9	67.8	101.6#
85	7.1	45.4	68.2#
99	0.0	49.4	74.0#

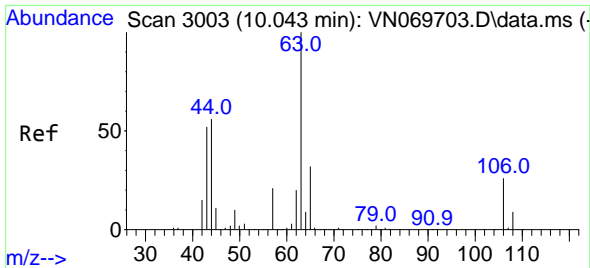


#56
 Ethyl methacrylate
 Concen: 2.446 ug/l
 RT: 10.778 min Scan# 3277
 Delta R.T. 0.016 min
 Lab File: VN070148.D
 Acq: 16 Dec 2021 19:39

Tgt Ion: 69 Resp: 3819

Ion	Ratio	Lower	Upper
69	100		
41	193.0	51.4	77.0#
39	0.0	34.6	52.0#

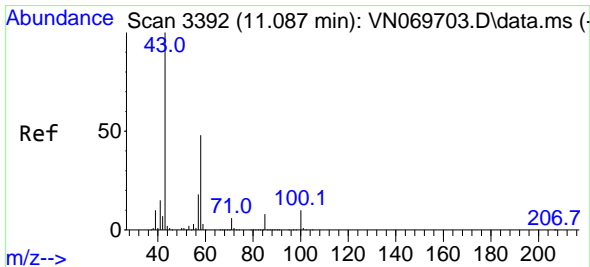
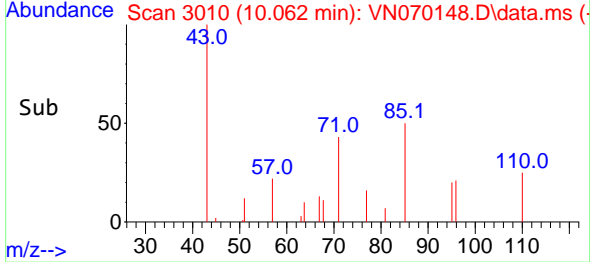
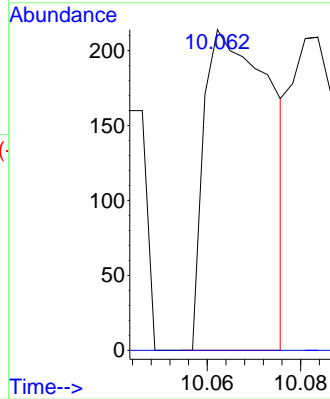
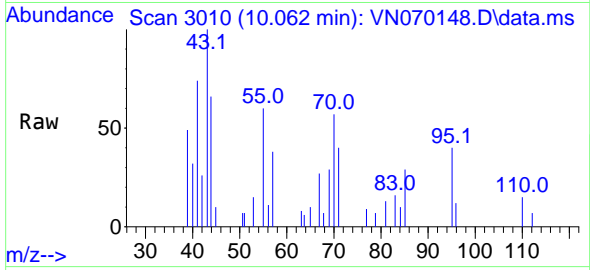




#58
 2-Chloroethyl Vinyl ether
 Concen: 18.422 ug/l
 RT: 10.062 min Scan# 3003
 Delta R.T. 0.019 min
 Lab File: VN070148.D
 Acq: 16 Dec 2021 19:39

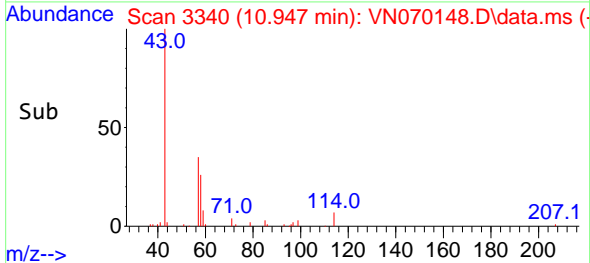
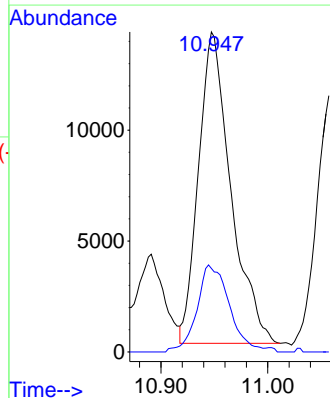
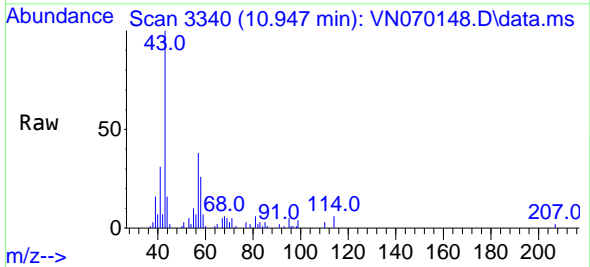
Instrument :
 MSVOA_N
 ClientSampleId :

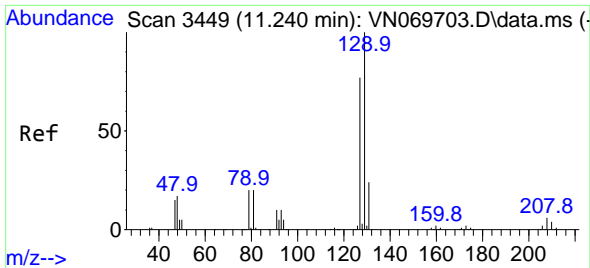
Tgt Ion: 63 Resp: 213
 Ion Ratio Lower Upper
 63 100
 106 0.0 23.9 35.9#



#59
 2-Hexanone
 Concen: 1.776 ug/l
 RT: 10.947 min Scan# 3340
 Delta R.T. -0.140 min
 Lab File: VN070148.D
 Acq: 16 Dec 2021 19:39

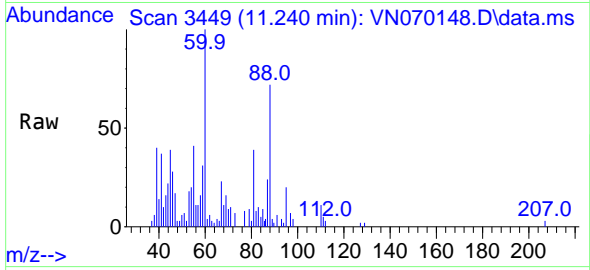
Tgt Ion: 43 Resp: 29522
 Ion Ratio Lower Upper
 43 100
 58 27.8 26.9 80.7



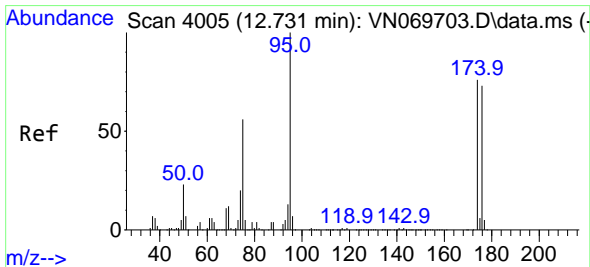
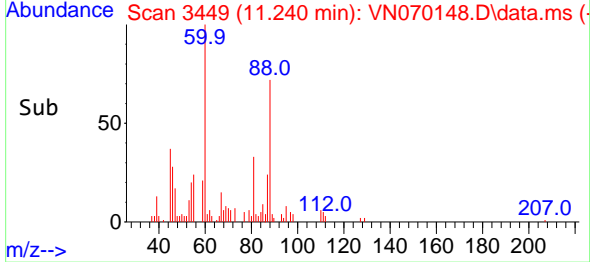
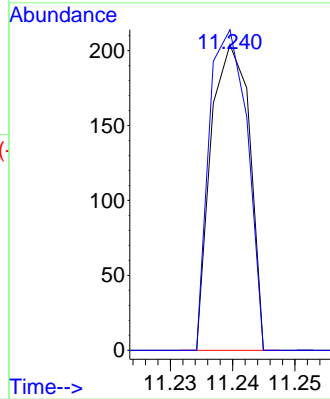


#60
 Dibromochloromethane
 Concen: 2.383 ug/l
 RT: 11.240 min Scan# 3449
 Delta R.T. -0.000 min
 Lab File: VN070148.D
 Acq: 16 Dec 2021 19:39

Instrument : MSVOA_N
 ClientSampleId :

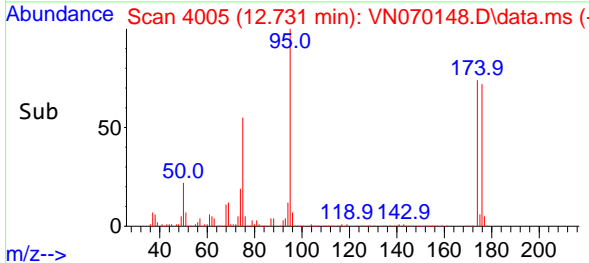
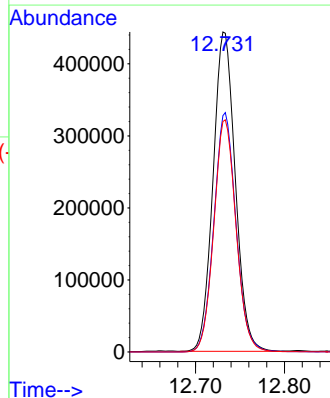
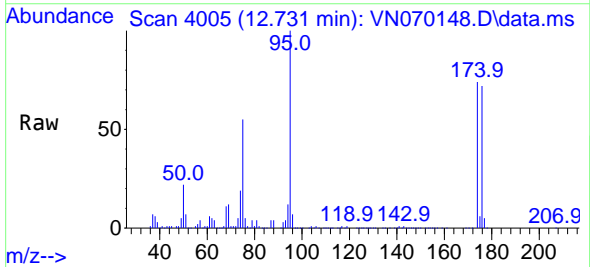


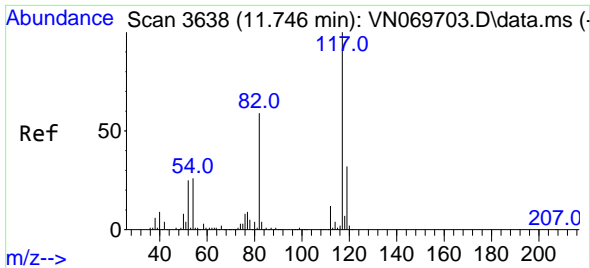
Tgt Ion:129 Resp: 87
 Ion Ratio Lower Upper
 129 100
 127 104.6 38.6 116.0



#62
 4-Bromofluorobenzene
 Concen: 52.181 ug/l
 RT: 12.731 min Scan# 4005
 Delta R.T. -0.000 min
 Lab File: VN070148.D
 Acq: 16 Dec 2021 19:39

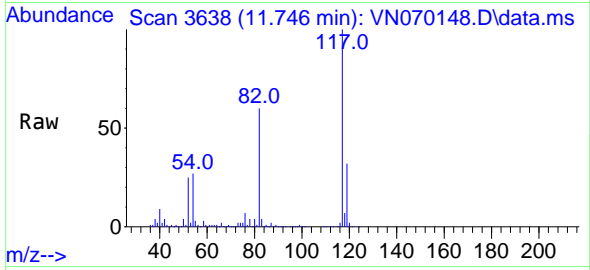
Tgt Ion: 95 Resp: 768023
 Ion Ratio Lower Upper
 95 100
 174 74.7 0.0 187.2
 176 72.8 0.0 181.4





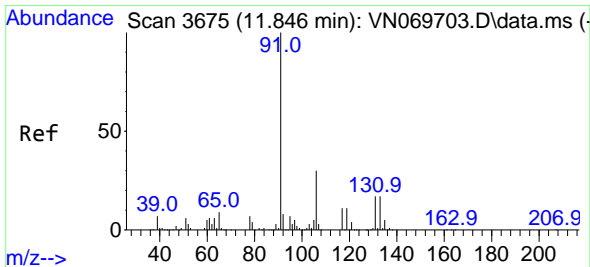
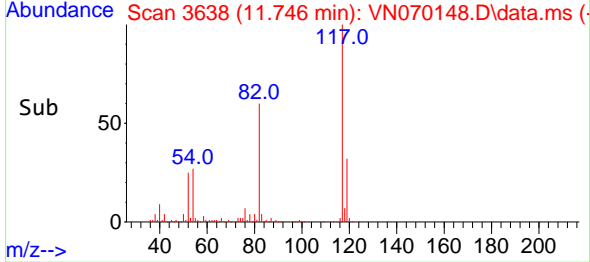
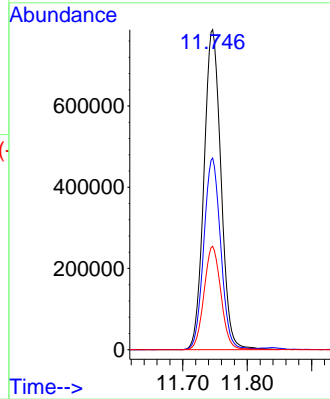
#63
 Chlorobenzene-d5
 Concen: 50.000 ug/l
 RT: 11.746 min Scan# 3638
 Delta R.T. 0.000 min
 Lab File: VN070148.D
 Acq: 16 Dec 2021 19:39

Instrument : MSVOA_N
 ClientSampleId :



Tgt Ion:117 Resp: 1445093

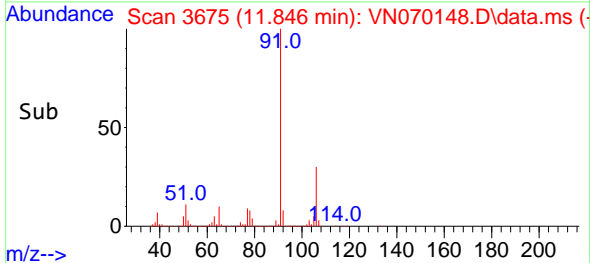
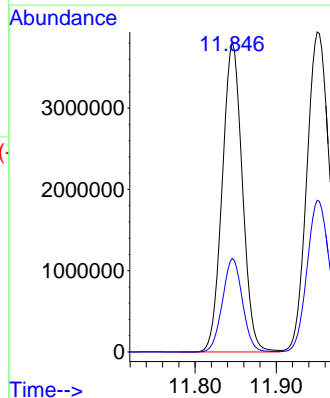
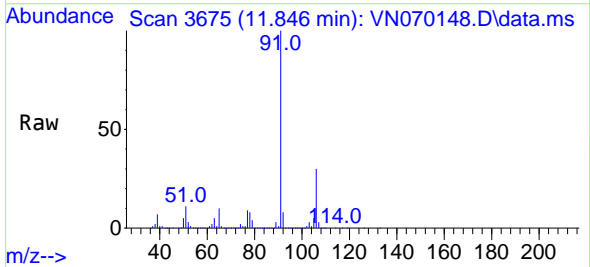
Ion	Ratio	Lower	Upper
117	100		
82	59.8	42.4	63.6
119	32.3	25.4	38.2

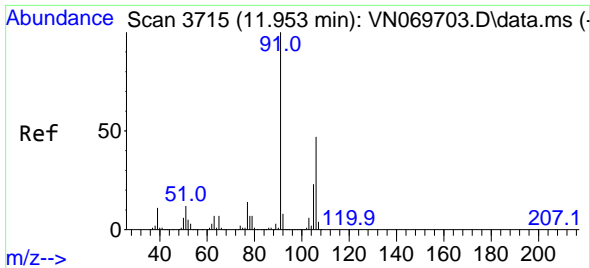


#67
 Ethyl Benzene
 Concen: 122.674 ug/l
 RT: 11.846 min Scan# 3675
 Delta R.T. 0.000 min
 Lab File: VN070148.D
 Acq: 16 Dec 2021 19:39

Tgt Ion: 91 Resp: 6532778

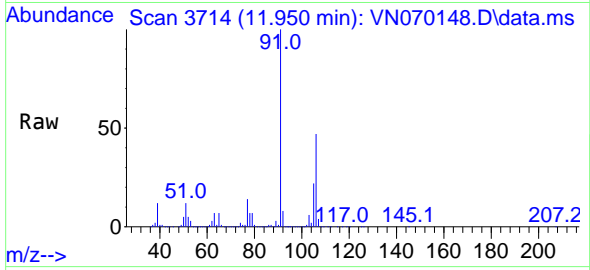
Ion	Ratio	Lower	Upper
91	100		
106	30.2	25.7	38.5



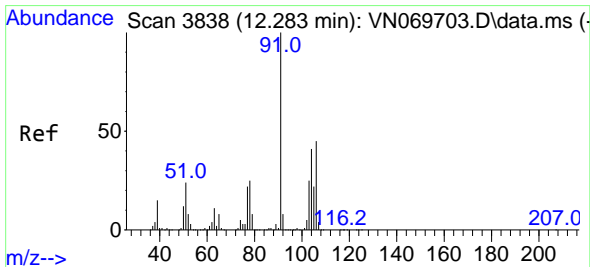
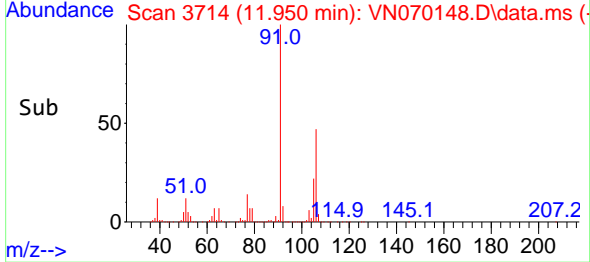
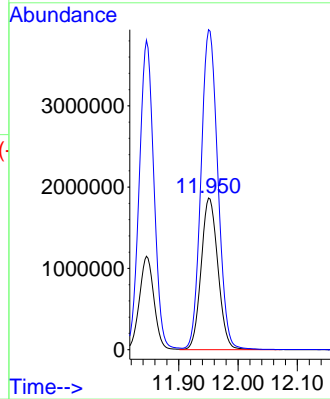


#68
 m/p-Xylenes
 Concen: 188.642 ug/l
 RT: 11.950 min Scan# 31
 Delta R.T. -0.003 min
 Lab File: VN070148.D
 Acq: 16 Dec 2021 19:39

Instrument :
 MSVOA_N
 ClientSampleId :

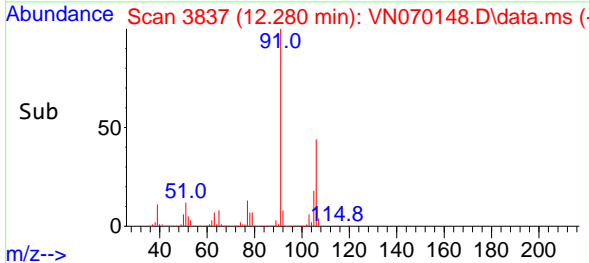
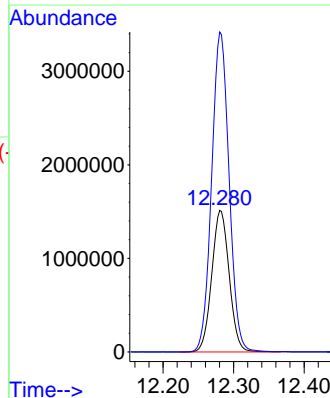
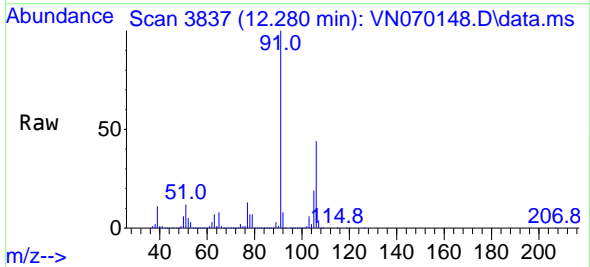


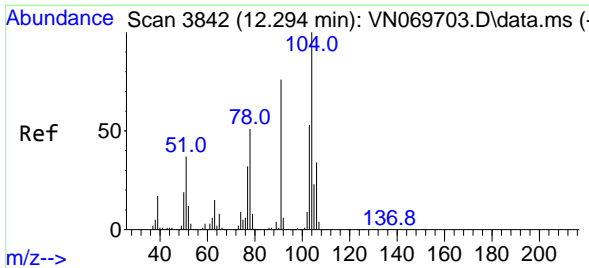
Tgt Ion:106 Resp: 3657736
 Ion Ratio Lower Upper
 106 100
 91 212.7 160.6 240.8



#69
 o-Xylene
 Concen: 132.886 ug/l
 RT: 12.280 min Scan# 3837
 Delta R.T. -0.003 min
 Lab File: VN070148.D
 Acq: 16 Dec 2021 19:39

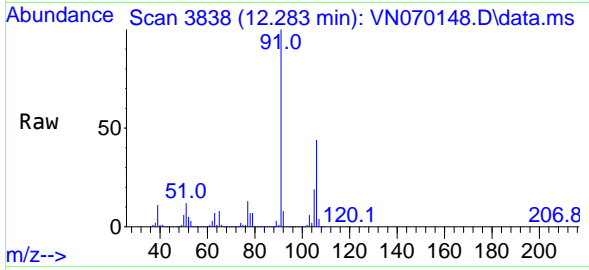
Tgt Ion:106 Resp: 2595385
 Ion Ratio Lower Upper
 106 100
 91 226.7 105.8 317.3





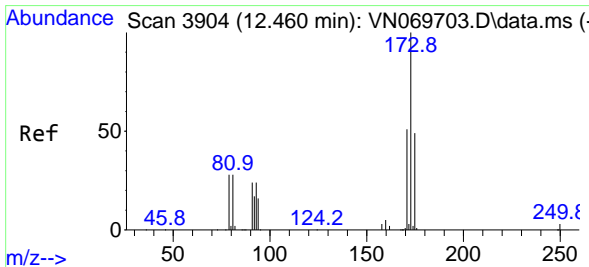
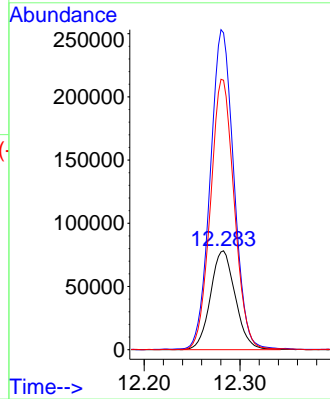
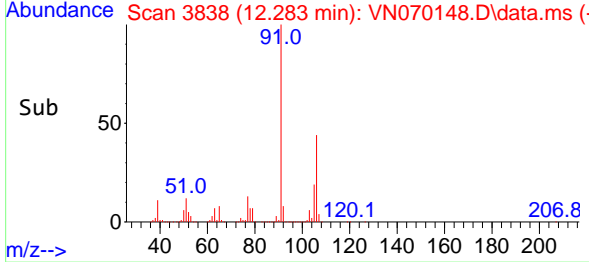
#70
 Styrene
 Concen: 4.541 ug/l
 RT: 12.283 min Scan# 3838
 Delta R.T. -0.011 min
 Lab File: VN070148.D
 Acq: 16 Dec 2021 19:39

Instrument : MSVOA_N
 ClientSampleId :

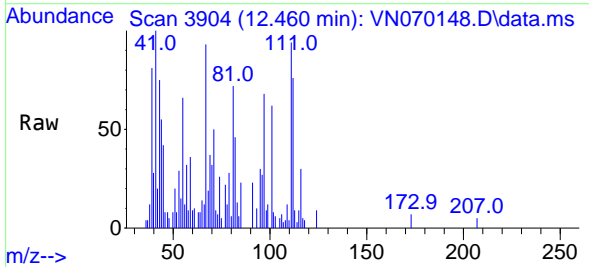


Tgt Ion:104 Resp: 140644

Ion	Ratio	Lower	Upper
104	100		
78	307.7	38.7	58.1#
103	262.6	45.0	67.6#

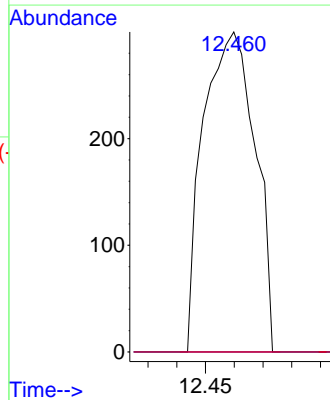
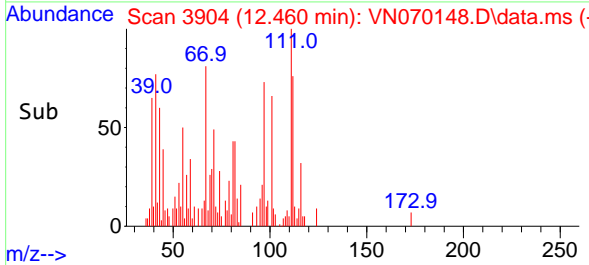


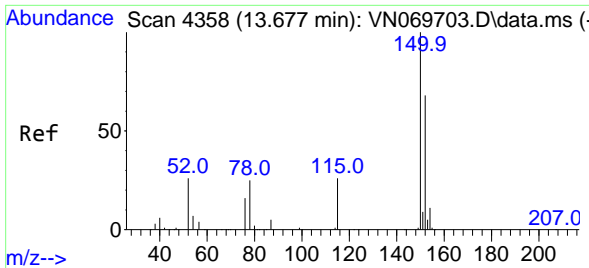
#71
 Bromoform
 Concen: 2.771 ug/l
 RT: 12.460 min Scan# 3904
 Delta R.T. -0.000 min
 Lab File: VN070148.D
 Acq: 16 Dec 2021 19:39



Tgt Ion:173 Resp: 375

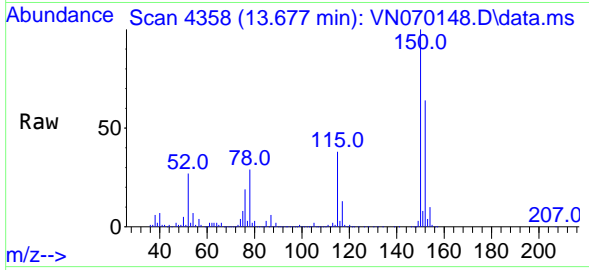
Ion	Ratio	Lower	Upper
173	100		
175	0.0	24.2	72.6#
254	0.0	0.0	0.0



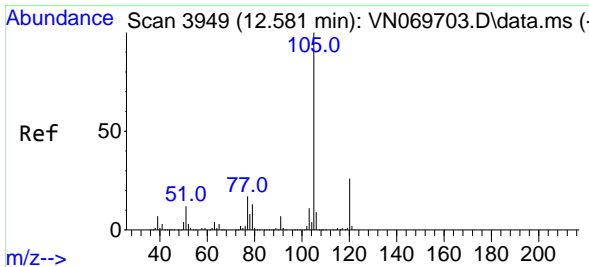
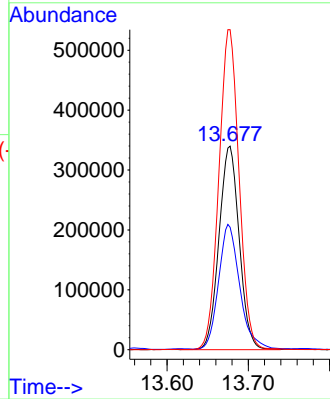
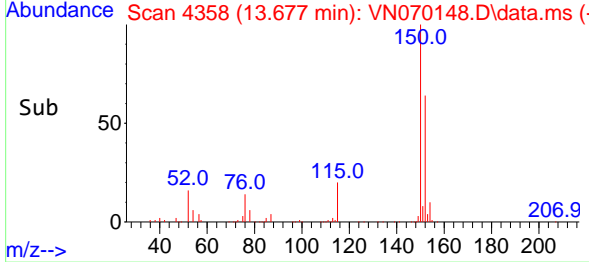


#72
 1,4-Dichlorobenzene-d4
 Concen: 50.000 ug/l
 RT: 13.677 min Scan# 41
 Delta R.T. 0.000 min
 Lab File: VN070148.D
 Acq: 16 Dec 2021 19:39

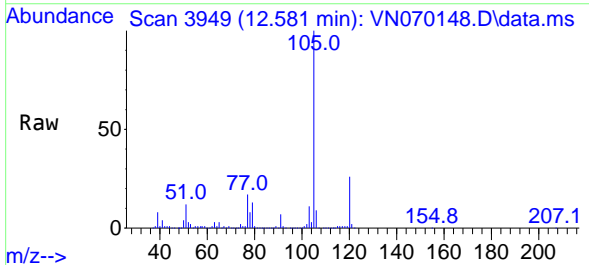
Instrument :
 MSVOA_N
 ClientSampleId :



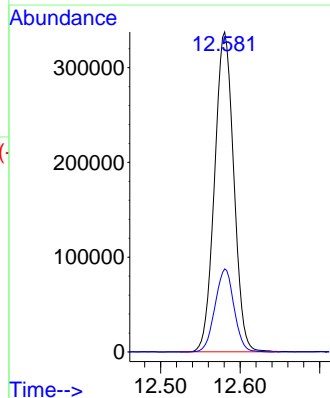
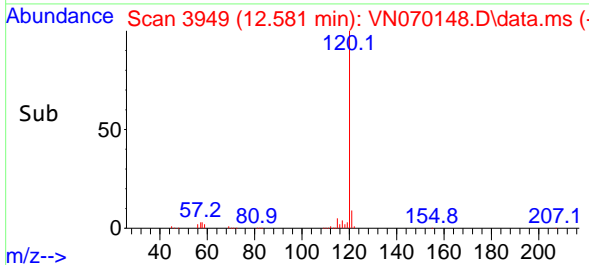
Tgt Ion:152 Resp: 587038
 Ion Ratio Lower Upper
 152 100
 115 64.0 27.5 82.5
 150 156.9 0.0 344.4

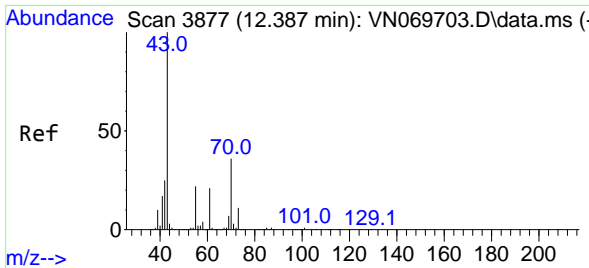


#73
 Isopropylbenzene
 Concen: 10.830 ug/l
 RT: 12.581 min Scan# 3949
 Delta R.T. 0.000 min
 Lab File: VN070148.D
 Acq: 16 Dec 2021 19:39



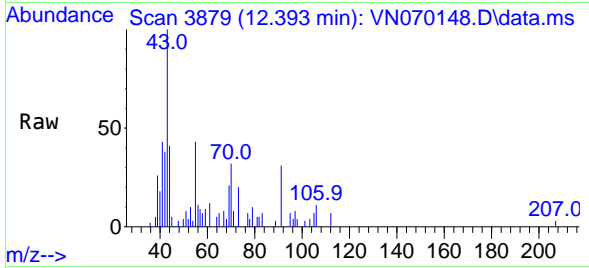
Tgt Ion:105 Resp: 565651
 Ion Ratio Lower Upper
 105 100
 120 25.8 13.4 40.1





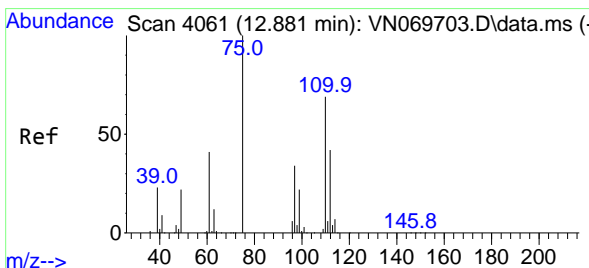
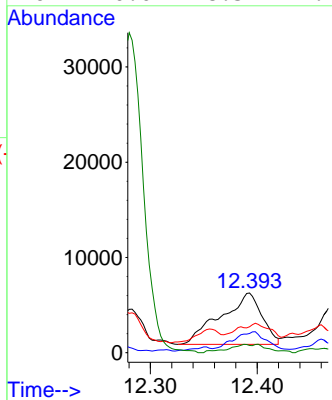
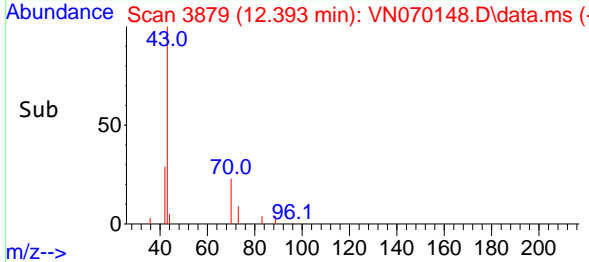
#74
 N-amy1 acetate
 Concen: 0.622 ug/l
 RT: 12.393 min Scan# 3877
 Delta R.T. 0.005 min
 Lab File: VN070148.D
 Acq: 16 Dec 2021 19:39

Instrument : MSVOA_N
 ClientSampleId :

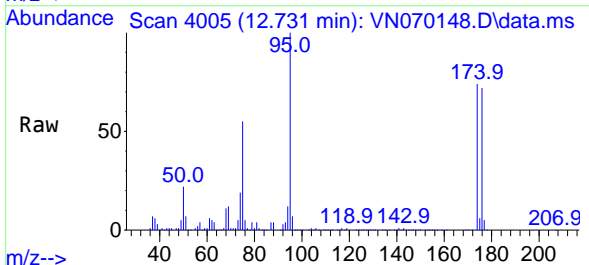


Tgt Ion: 43 Resp: 14374

Ion	Ratio	Lower	Upper
43	100		
70	25.7	33.4	50.0#
55	3.8	19.3	28.9#
61	0.0	18.5	27.7#

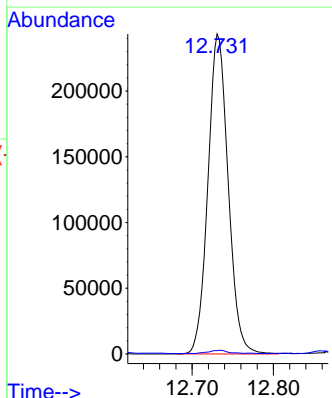
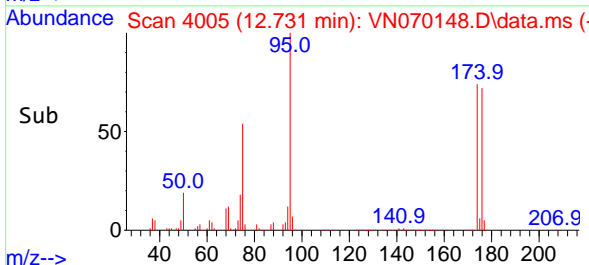


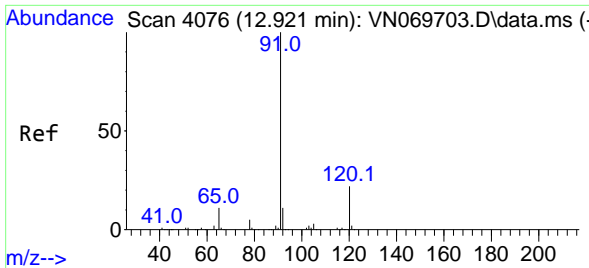
#76
 1,2,3-Trichloropropane
 Concen: 25.003 ug/l
 RT: 12.731 min Scan# 4005
 Delta R.T. -0.150 min
 Lab File: VN070148.D
 Acq: 16 Dec 2021 19:39



Tgt Ion: 75 Resp: 420931

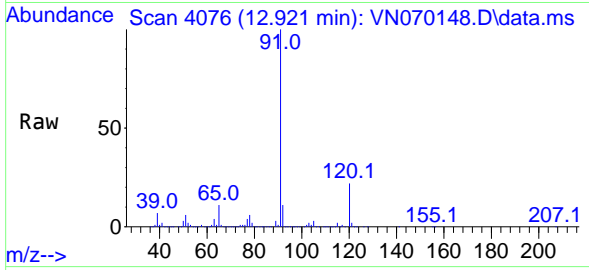
Ion	Ratio	Lower	Upper
75	100		
77	0.9	82.6	247.8#



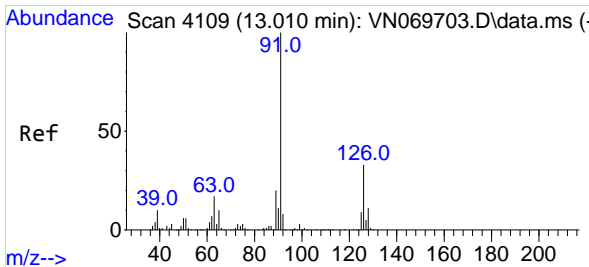
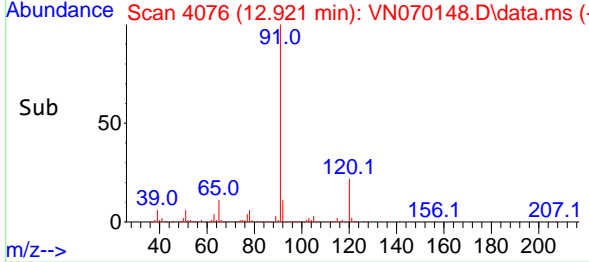
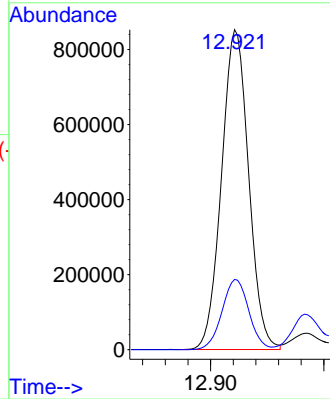


#78
 n-propylbenzene
 Concen: 24.348 ug/l
 RT: 12.921 min Scan# 4076
 Delta R.T. 0.000 min
 Lab File: VN070148.D
 Acq: 16 Dec 2021 19:39

Instrument :
 MSVOA_N
 ClientSampleId :

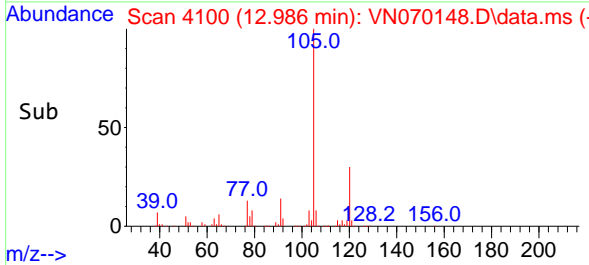
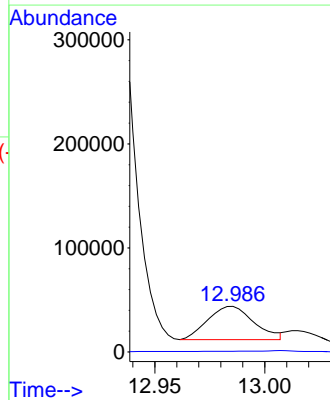
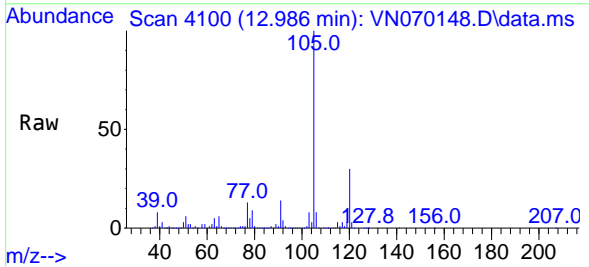


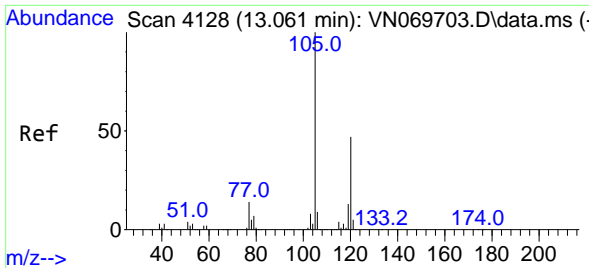
Tgt Ion: 91 Resp: 1415132
 Ion Ratio Lower Upper
 91 100
 120 21.8 11.9 35.9



#79
 2-Chlorotoluene
 Concen: 1.272 ug/l
 RT: 12.986 min Scan# 4100
 Delta R.T. -0.024 min
 Lab File: VN070148.D
 Acq: 16 Dec 2021 19:39

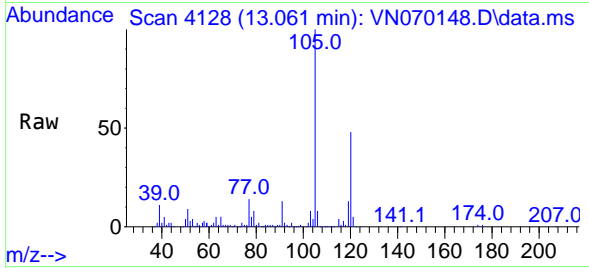
Tgt Ion: 91 Resp: 46721
 Ion Ratio Lower Upper
 91 100
 126 0.0 18.3 54.8#



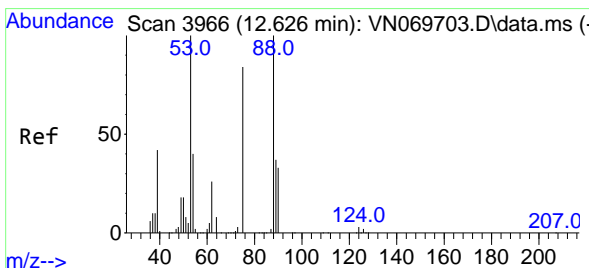
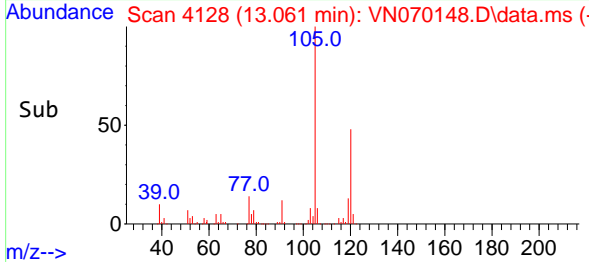
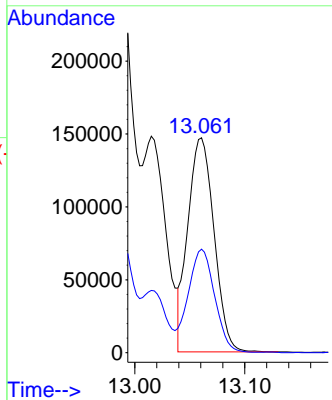


#80
 1,3,5-Trimethylbenzene
 Concen: 5.782 ug/l
 RT: 13.061 min Scan# 41
 Delta R.T. 0.000 min
 Lab File: VN070148.D
 Acq: 16 Dec 2021 19:39

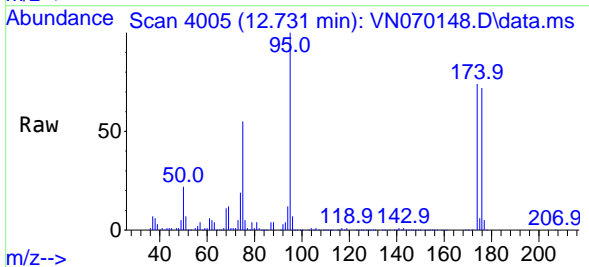
Instrument :
 MSVOA_N
 ClientSampleId :



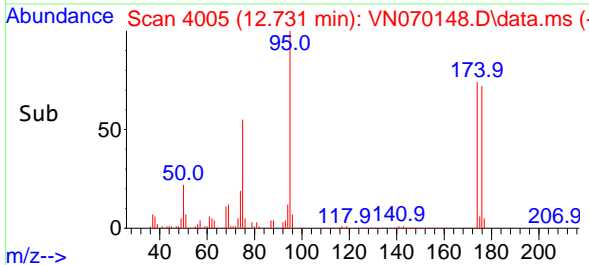
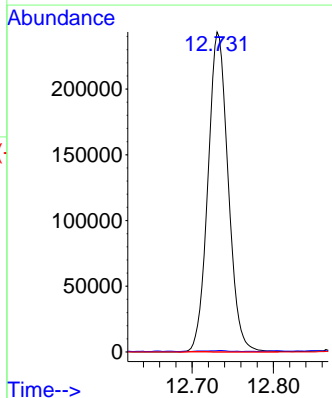
Tgt Ion:105 Resp: 243080
 Ion Ratio Lower Upper
 105 100
 120 48.7 24.6 73.6

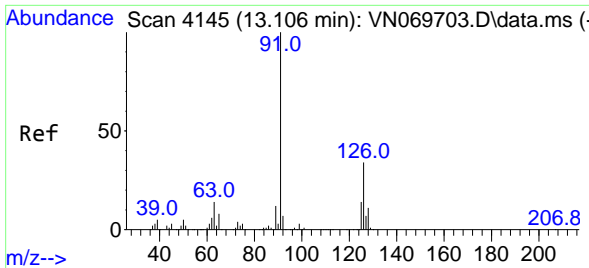


#81
 trans-1,4-Dichloro-2-butene
 Concen: 79.248 ug/l
 RT: 12.731 min Scan# 4005
 Delta R.T. 0.105 min
 Lab File: VN070148.D
 Acq: 16 Dec 2021 19:39



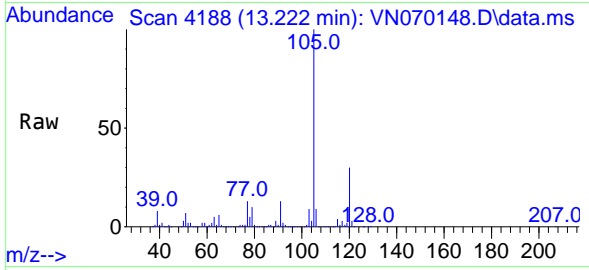
Tgt Ion: 75 Resp: 420931
 Ion Ratio Lower Upper
 75 100
 53 0.1 90.5 135.7#
 89 0.0 38.2 57.4#



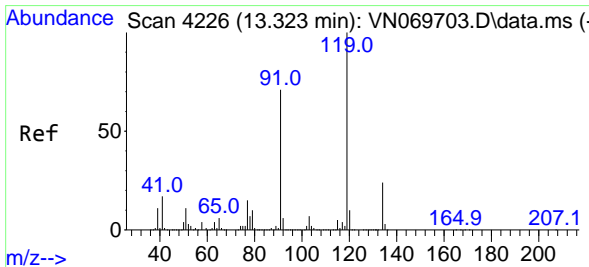
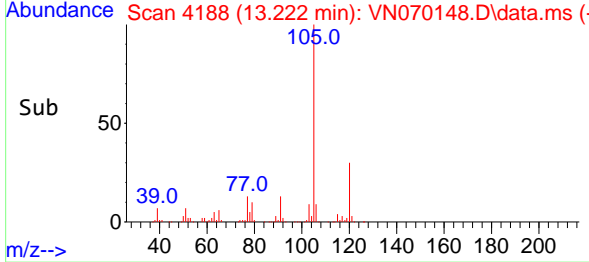
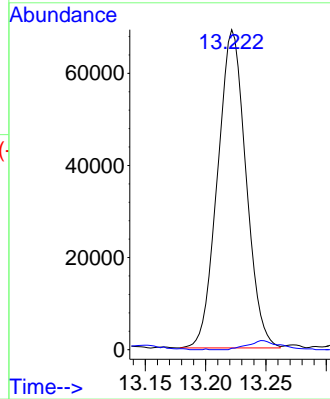


#82
 4-Chlorotoluene
 Concen: 3.276 ug/l
 RT: 13.222 min Scan# 4145
 Delta R.T. 0.115 min
 Lab File: VN070148.D
 Acq: 16 Dec 2021 19:39

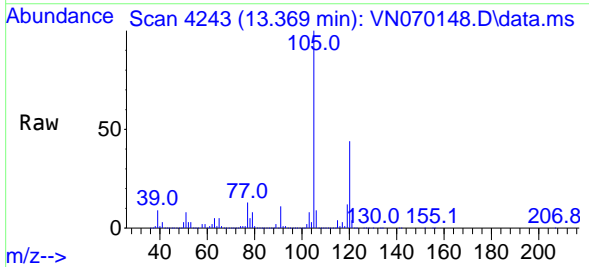
Instrument : MSVOA_N
 ClientSampleId :



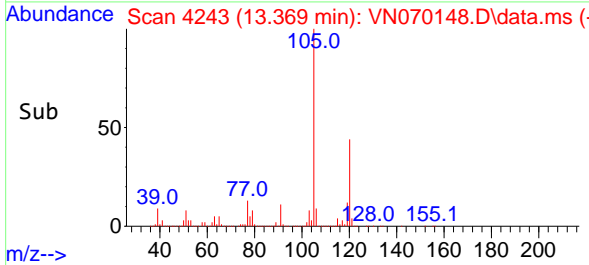
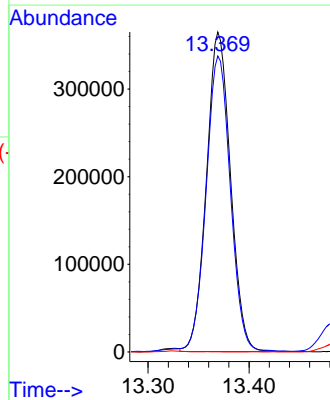
Tgt Ion: 91 Resp: 113146
 Ion Ratio Lower Upper
 91 100
 126 0.0 18.2 54.6#

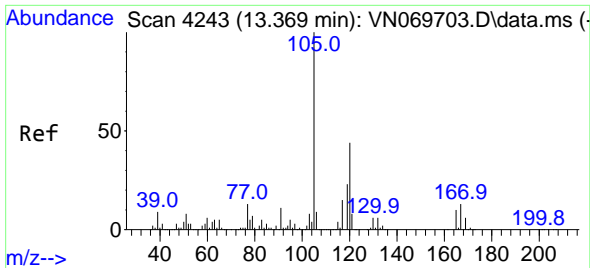


#83
 tert-Butylbenzene
 Concen: 16.174 ug/l
 RT: 13.369 min Scan# 4243
 Delta R.T. 0.046 min
 Lab File: VN070148.D
 Acq: 16 Dec 2021 19:39



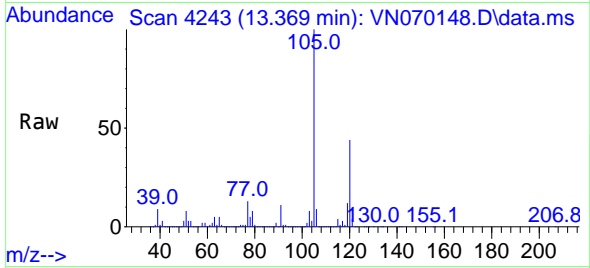
Tgt Ion: 119 Resp: 602057
 Ion Ratio Lower Upper
 119 100
 91 94.0 31.5 94.5
 134 0.0 12.4 37.4#



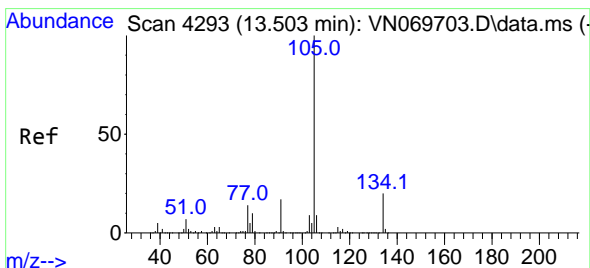
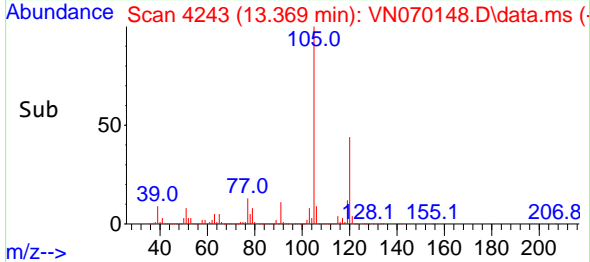
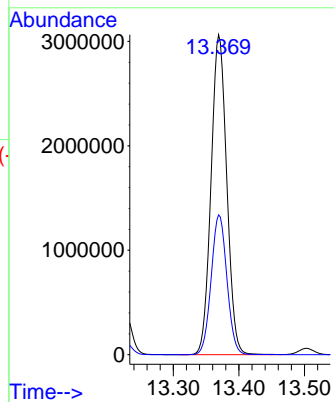


#84
 1,2,4-Trimethylbenzene
 Concen: 126.965 ug/l
 RT: 13.369 min Scan# 4243
 Delta R.T. 0.000 min
 Lab File: VN070148.D
 Acq: 16 Dec 2021 19:39

Instrument :
 MSVOA_N
 ClientSampleId :

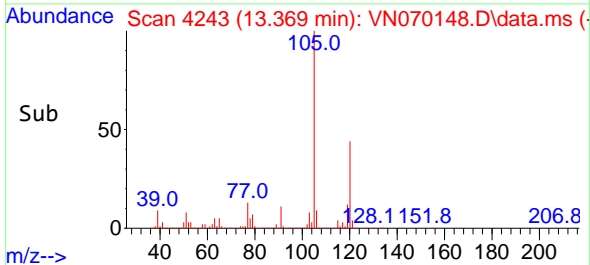
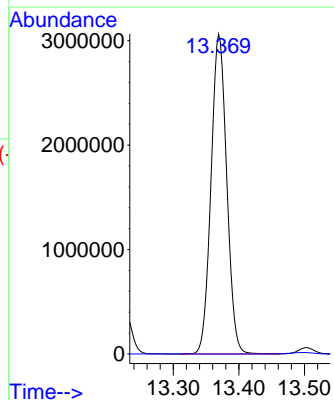
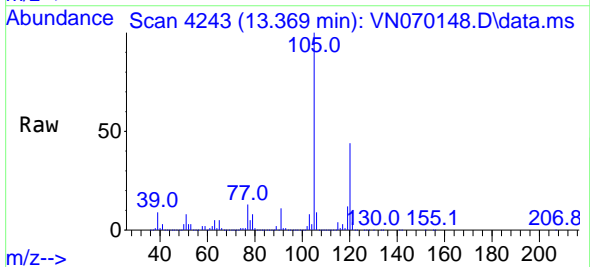


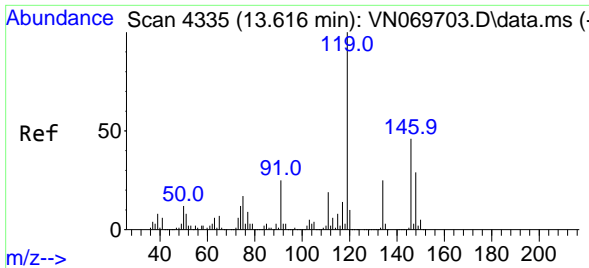
Tgt Ion:105 Resp: 5083191
 Ion Ratio Lower Upper
 105 100
 120 43.8 22.8 68.4



#85
 sec-Butylbenzene
 Concen: 100.675 ug/l
 RT: 13.369 min Scan# 4243
 Delta R.T. -0.134 min
 Lab File: VN070148.D
 Acq: 16 Dec 2021 19:39

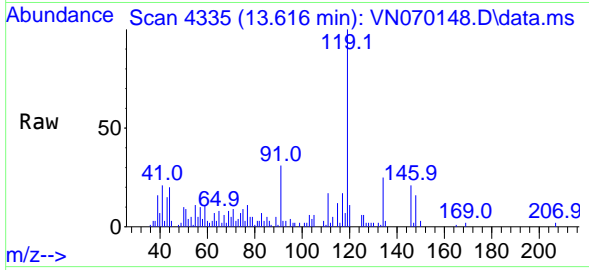
Tgt Ion:105 Resp: 5083191
 Ion Ratio Lower Upper
 105 100
 134 0.0 10.4 31.1#



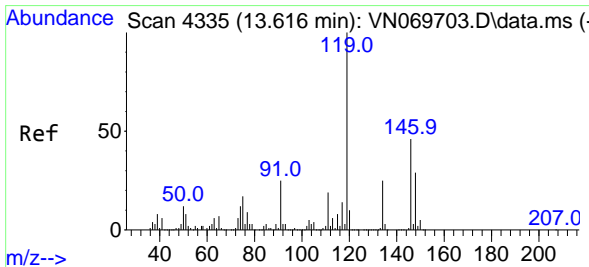
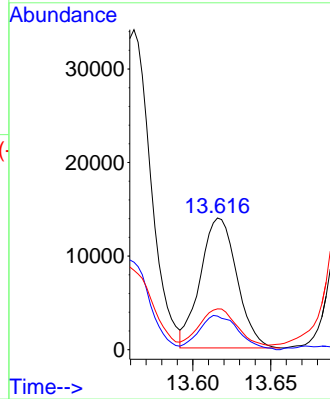
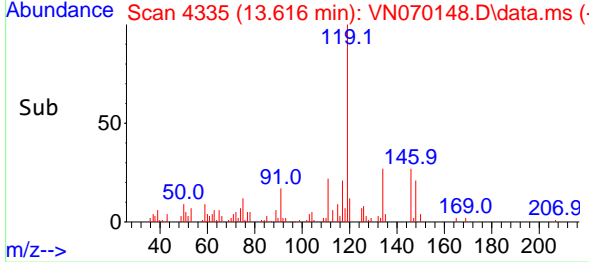


#86
 p-Isopropyltoluene
 Concen: 0.574 ug/l
 RT: 13.616 min Scan# 4335
 Delta R.T. 0.000 min
 Lab File: VN070148.D
 Acq: 16 Dec 2021 19:39

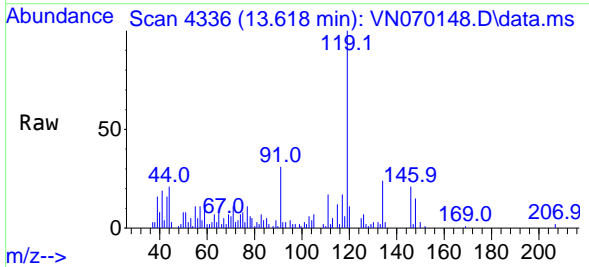
Instrument : MSVOA_N
 ClientSampleId :



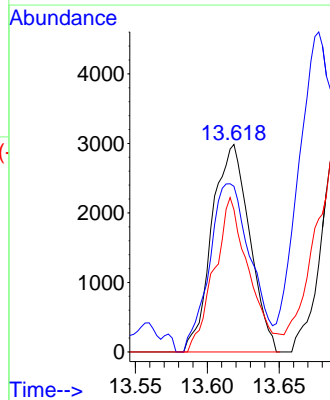
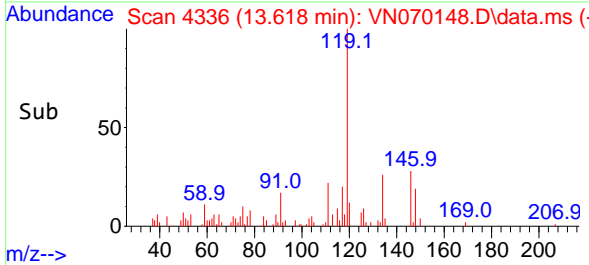
Tgt Ion:119 Resp: 22653
 Ion Ratio Lower Upper
 119 100
 134 28.2 13.6 40.7
 91 0.0 11.4 34.1#

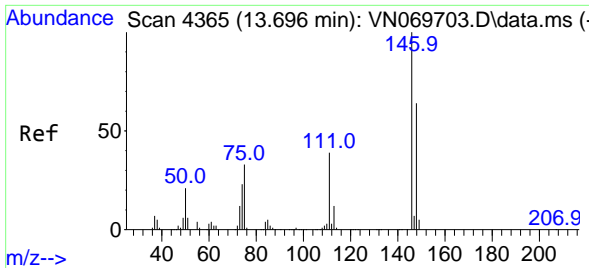


#87
 1,3-Dichlorobenzene
 Concen: 0.269 ug/l
 RT: 13.618 min Scan# 4336
 Delta R.T. 0.003 min
 Lab File: VN070148.D
 Acq: 16 Dec 2021 19:39



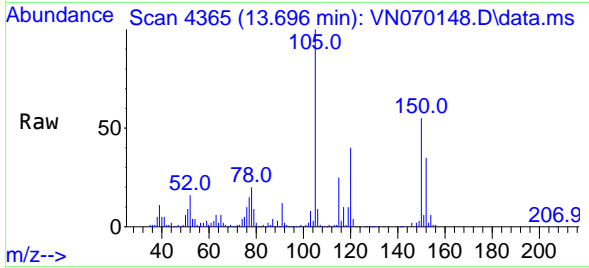
Tgt Ion:146 Resp: 5426
 Ion Ratio Lower Upper
 146 100
 111 89.2 18.6 55.6#
 148 69.1 31.6 95.0



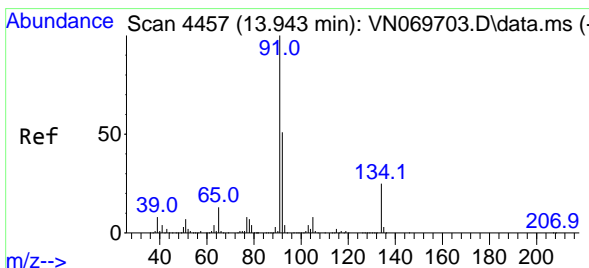
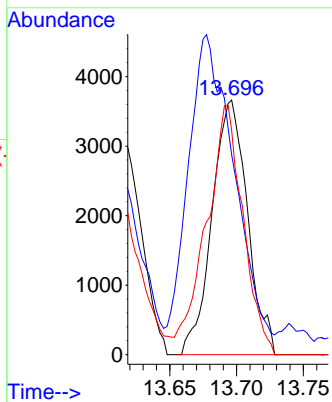
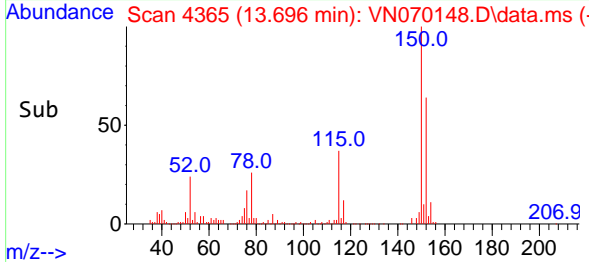


#88
 1,4-Dichlorobenzene
 Concen: 0.341 ug/l
 RT: 13.696 min Scan# 41
 Delta R.T. 0.000 min
 Lab File: VN070148.D
 Acq: 16 Dec 2021 19:39

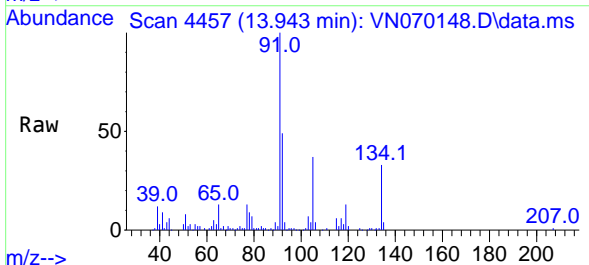
Instrument :
 MSVOA_N
 ClientSampleId :



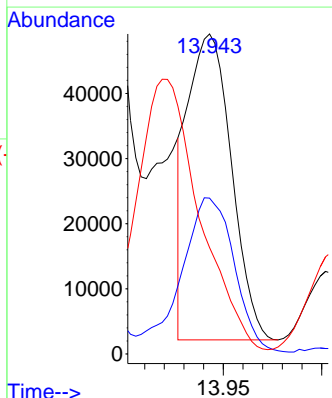
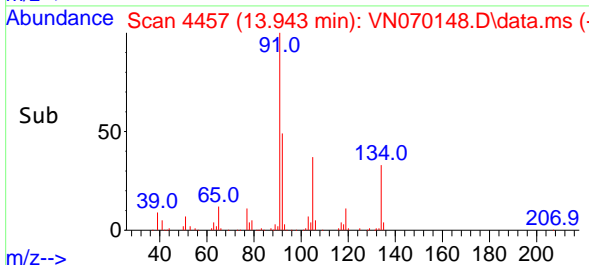
Tgt Ion:146 Resp: 6749
 Ion Ratio Lower Upper
 146 100
 111 158.2 18.3 54.8#
 148 101.4 31.8 95.4#

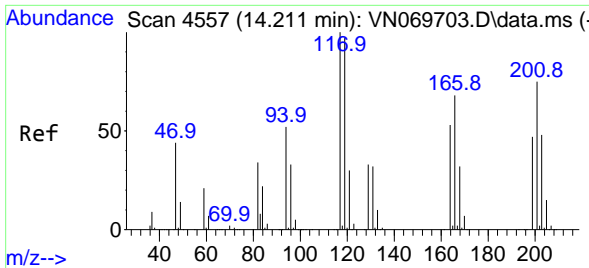


#89
 n-Butylbenzene
 Concen: 2.284 ug/l
 RT: 13.943 min Scan# 4457
 Delta R.T. 0.000 min
 Lab File: VN070148.D
 Acq: 16 Dec 2021 19:39



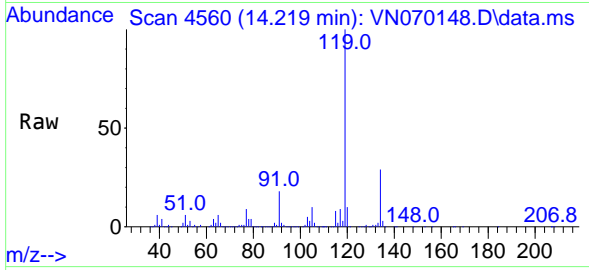
Tgt Ion: 91 Resp: 73134
 Ion Ratio Lower Upper
 91 100
 92 61.0 25.4 76.0
 134 0.0 13.6 40.8#



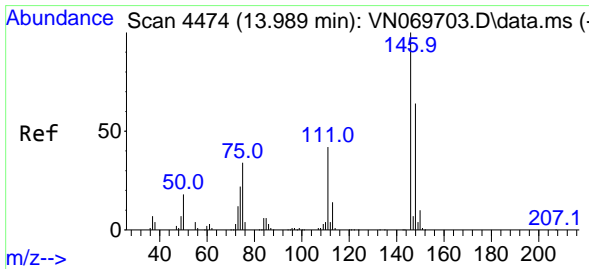
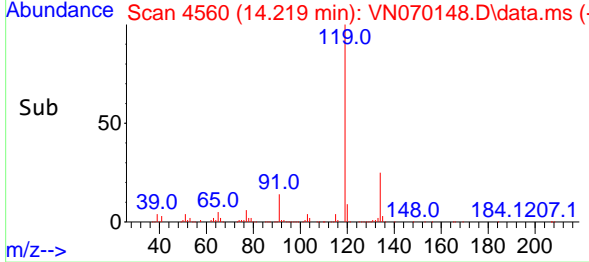
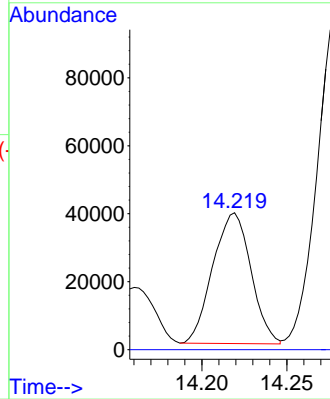


#90
 Hexachloroethane
 Concen: 8.680 ug/l
 RT: 14.219 min Scan# 41
 Delta R.T. 0.008 min
 Lab File: VN070148.D
 Acq: 16 Dec 2021 19:39

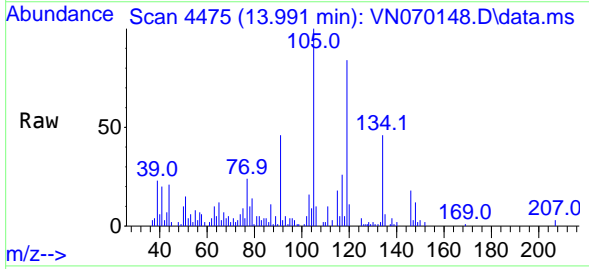
Instrument :
 MSVOA_N
 ClientSampleId :



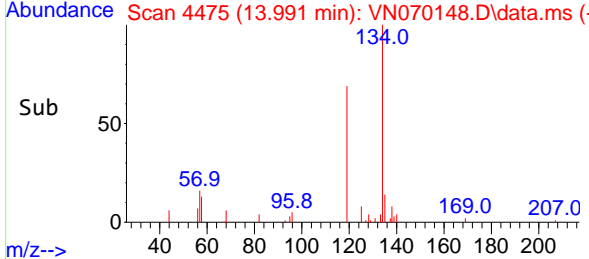
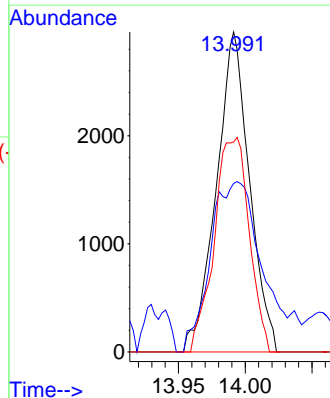
Tgt Ion:117 Resp: 60143
 Ion Ratio Lower Upper
 117 100
 201 0.0 43.9 131.6#

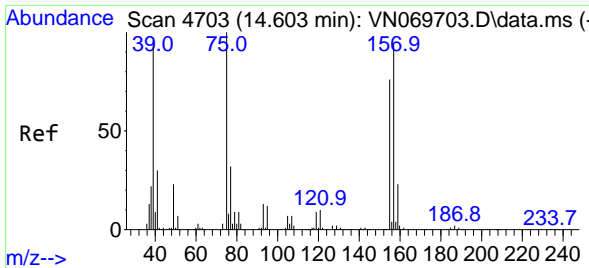


#91
 1,2-Dichlorobenzene
 Concen: 0.259 ug/l
 RT: 13.991 min Scan# 4475
 Delta R.T. 0.003 min
 Lab File: VN070148.D
 Acq: 16 Dec 2021 19:39



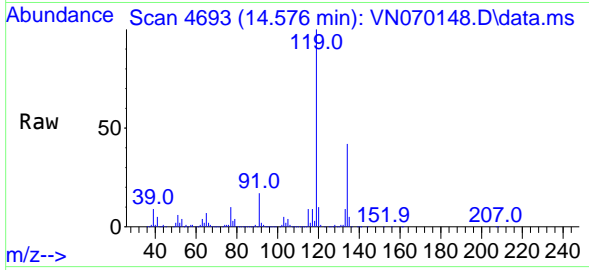
Tgt Ion:146 Resp: 5095
 Ion Ratio Lower Upper
 146 100
 111 81.6 19.1 57.3#
 148 70.7 32.1 96.3



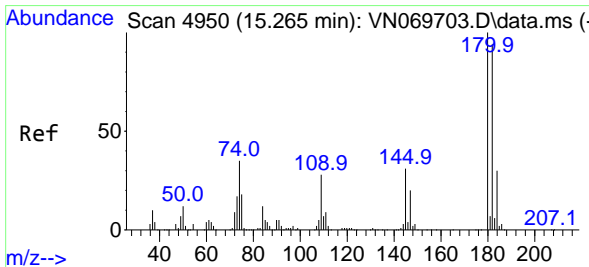
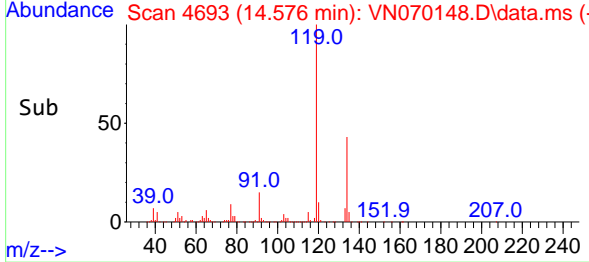
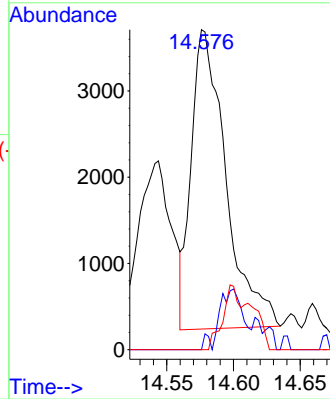


#92
 1,2-Dibromo-3-Chloropropane
 Concen: 1.923 ug/l
 RT: 14.576 min Scan# 4693
 Delta R.T. -0.027 min
 Lab File: VN070148.D
 Acq: 16 Dec 2021 19:39

Instrument : MSVOA_N
 ClientSampleId :

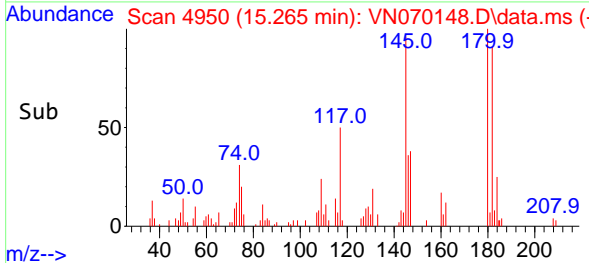
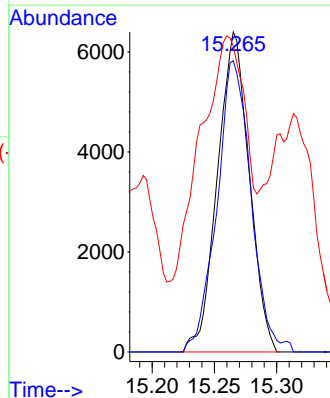
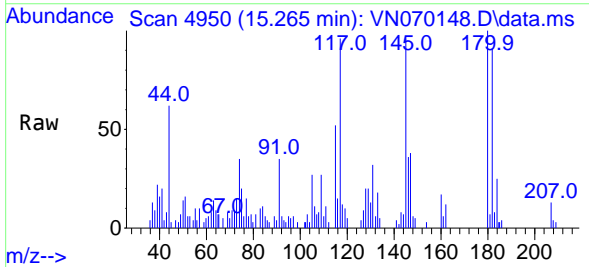


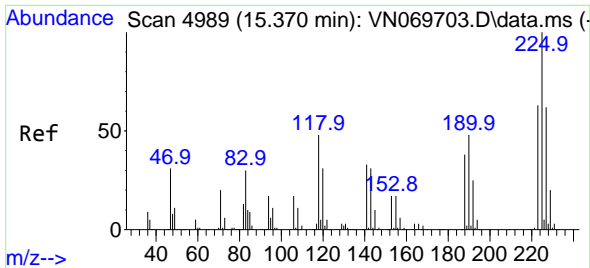
Tgt Ion: 75 Resp: 6277
 Ion Ratio Lower Upper
 75 100
 155 0.9 46.9 140.7#
 157 0.0 60.6 181.7#



#93
 1,2,4-Trichlorobenzene
 Concen: 3.990 ug/l
 RT: 15.265 min Scan# 4950
 Delta R.T. 0.000 min
 Lab File: VN070148.D
 Acq: 16 Dec 2021 19:39

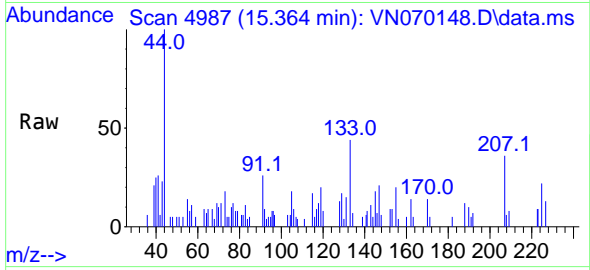
Tgt Ion:180 Resp: 11366
 Ion Ratio Lower Upper
 180 100
 182 97.4 48.3 144.9
 145 107.7 14.5 43.5#





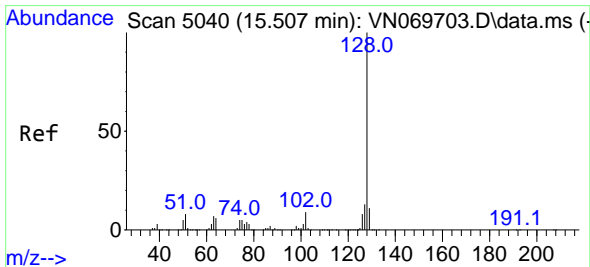
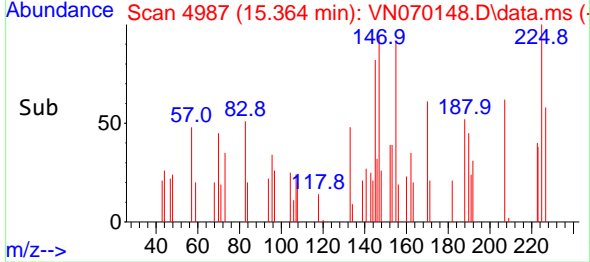
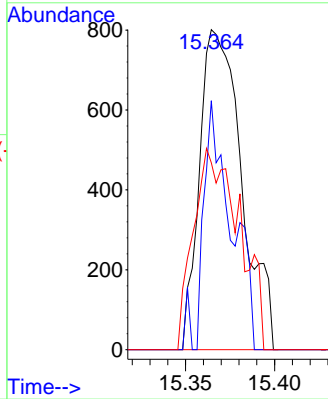
#94
 Hexachlorobutadiene
 Concen: 0.254 ug/l
 RT: 15.364 min Scan# 4989
 Delta R.T. -0.005 min
 Lab File: VN070148.D
 Acq: 16 Dec 2021 19:39

Instrument : MSVOA_N
 ClientSampleId :

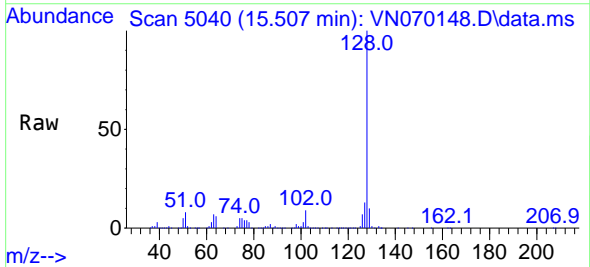


Tgt Ion:225 Resp: 1324

Ion	Ratio	Lower	Upper
225	100		
223	39.5	31.9	95.7
227	68.4	32.1	96.3

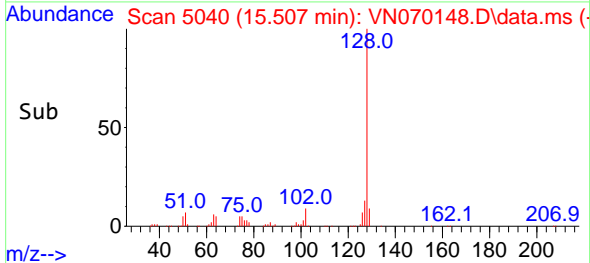
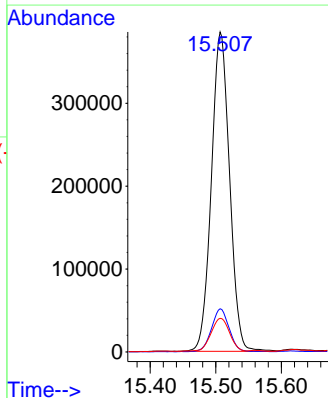


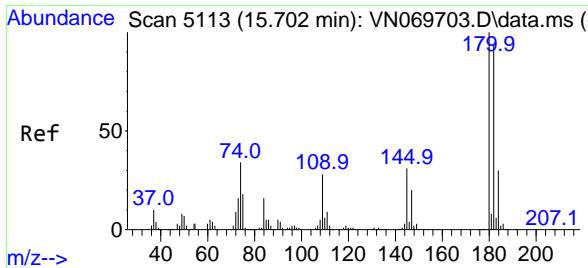
#95
 Naphthalene
 Concen: 27.795 ug/l
 RT: 15.507 min Scan# 5040
 Delta R.T. -0.000 min
 Lab File: VN070148.D
 Acq: 16 Dec 2021 19:39



Tgt Ion:128 Resp: 742222

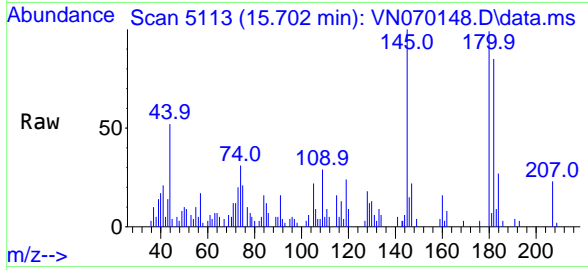
Ion	Ratio	Lower	Upper
128	100		
127	12.9	10.5	15.7
129	10.6	8.7	13.1





#96
 1,2,3-Trichlorobenzene
 Concen: 3.806 ug/l
 RT: 15.702 min Scan# 51
 Delta R.T. 0.000 min
 Lab File: VN070148.D
 Acq: 16 Dec 2021 19:39

Instrument :
 MSVOA_N
 ClientSampleId :



Tgt Ion:180 Resp: 13522

Ion	Ratio	Lower	Upper
180	100		
182	91.0	47.4	142.2
145	72.8	15.0	45.1#

