

Data Path : Z:\voasrv\HPCHEM1\MSVOA_N\Data\VN121721\
 Data File : VN070202.D
 Acq On : 18 Dec 2021 8:22
 Operator : JC/MD
 Sample : M5115-10
 Misc : 5.00mL/MSVOA_N/WATER
 ALS Vial : 52 Sample Multiplier: 1

Instrument :
 MSVOA_N
 ClientSampleId :

Quant Time: Dec 19 07:26:08 2021
 Quant Method : Z:\voasrv\HPCHEM1\MSVOA_N\methods\82N120221W.M
 Quant Title : SW846 8260
 QLast Update : Fri Dec 03 08:46:47 2021
 Response via : Initial Calibration

Compound	R.T.	QIon	Response	Conc	Units	Dev(Min)

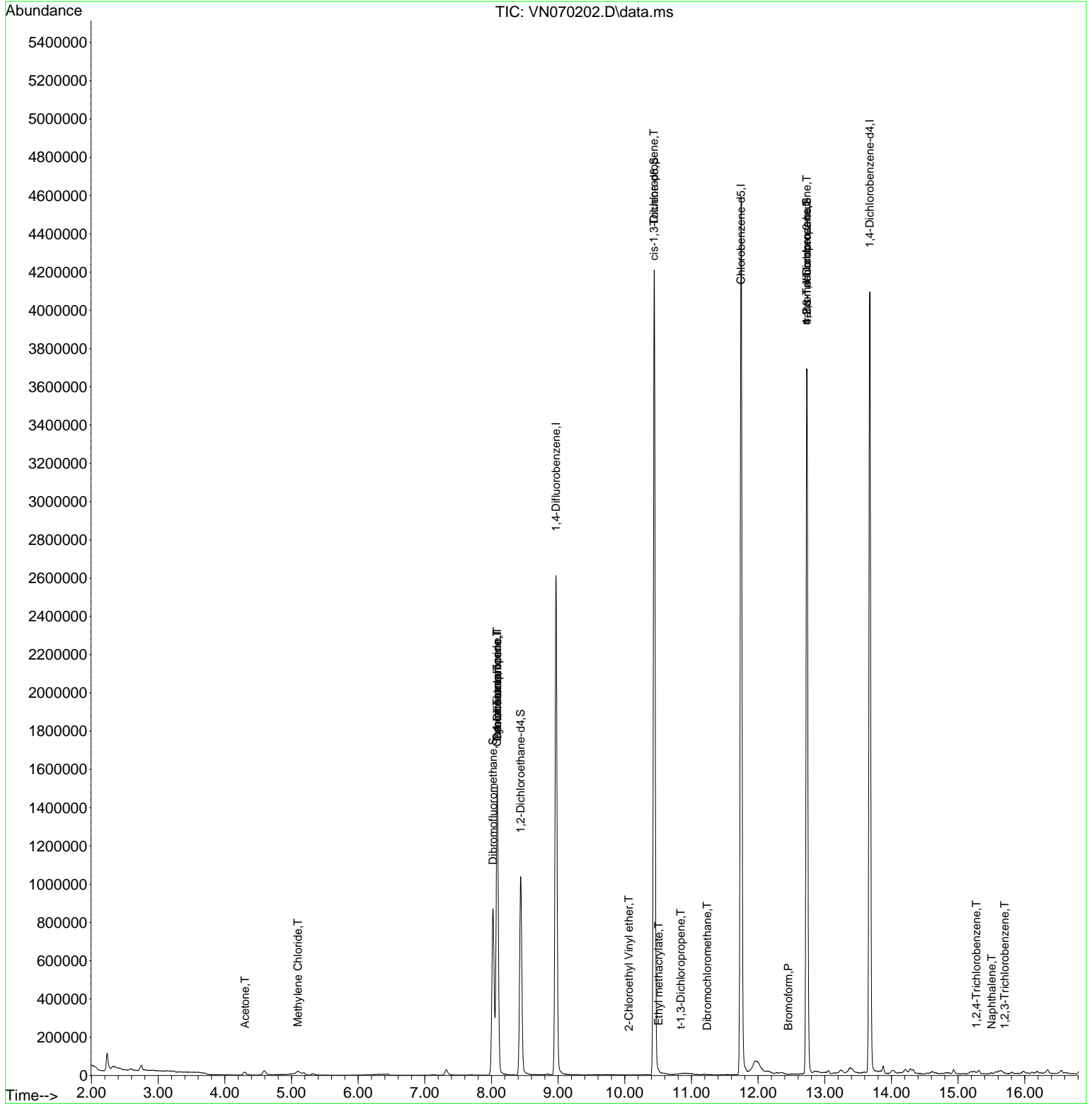
Internal Standards						
1) Pentafluorobenzene	8.086	168	1134053	50.000	ug/l	0.00
34) 1,4-Difluorobenzene	8.968	114	2172984	50.000	ug/l	0.00
63) Chlorobenzene-d5	11.744	117	2600700	50.000	ug/l	0.00
72) 1,4-Dichlorobenzene-d4	13.675	152	1088685	50.000	ug/l	0.00
System Monitoring Compounds						
33) 1,2-Dichloroethane-d4	8.437	65	897126	51.236	ug/l	0.00
Spiked Amount	50.000	Range 61 - 141	Recovery	=	102.480%	
35) Dibromofluoromethane	8.021	113	637466	46.834	ug/l	0.00
Spiked Amount	50.000	Range 69 - 133	Recovery	=	93.660%	
50) Toluene-d8	10.440	98	2913465	53.308	ug/l	0.00
Spiked Amount	50.000	Range 65 - 126	Recovery	=	106.620%	
62) 4-Bromofluorobenzene	12.731	95	1318535	66.594	ug/l	0.00
Spiked Amount	50.000	Range 58 - 135	Recovery	=	133.180%	
Target Compounds						
						Qvalue
16) Acetone	4.301	43	27098	2.573	ug/l	96
20) Methylene Chloride	5.095	84	7891	0.564	ug/l	95
31) Cyclohexane	8.086	56	27933	1.146	ug/l #	22
36) 1,1-Dichloropropene	8.086	75	96808	4.680	ug/l #	48
38) Carbon Tetrachloride	8.083	117	117082	5.772	ug/l #	16
53) t-1,3-Dichloropropene	10.840	75	28	2.795	ug/l #	43
54) cis-1,3-Dichloropropene	10.438	75	650	2.022	ug/l #	1
56) Ethyl methacrylate	10.507	69	79	2.282	ug/l #	1
58) 2-Chloroethyl Vinyl ether	10.062	63	54	18.395	ug/l #	45
60) Dibromochloromethane	11.237	129	30	2.378	ug/l	97
71) Bromoform	12.455	173	85	2.736	ug/l #	29
76) 1,2,3-Trichloropropane	12.731	75	725787	23.247	ug/l #	1
81) trans-1,4-Dichloro-2-b...	12.731	75	725787	73.965	ug/l #	5
93) 1,2,4-Trichlorobenzene	15.273	180	128	2.885	ug/l #	1
95) Naphthalene	15.504	128	4944	4.071	ug/l #	80
96) 1,2,3-Trichlorobenzene	15.700	180	286	2.451	ug/l #	1

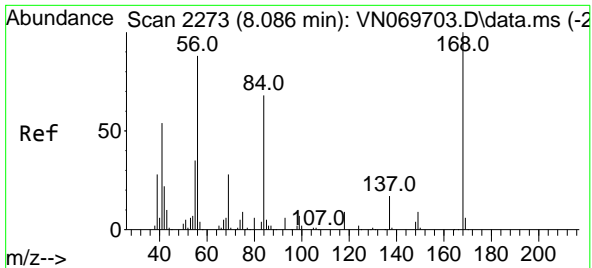
(#) = qualifier out of range (m) = manual integration (+) = signals summed

Data Path : Z:\voasrv\HPCHEM1\MSVOA_N\Data\VN121721\
 Data File : VN070202.D
 Acq On : 18 Dec 2021 8:22
 Operator : JC/MD
 Sample : M5115-10
 Misc : 5.00mL/MSVOA_N/WATER
 ALS Vial : 52 Sample Multiplier: 1

Instrument :
 MSVOA_N
 ClientSampleId :

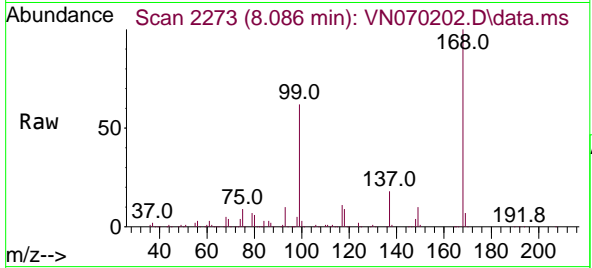
Quant Time: Dec 19 07:26:08 2021
 Quant Method : Z:\voasrv\HPCHEM1\MSVOA_N\methods\82N120221W.M
 Quant Title : SW846 8260
 QLast Update : Fri Dec 03 08:46:47 2021
 Response via : Initial Calibration



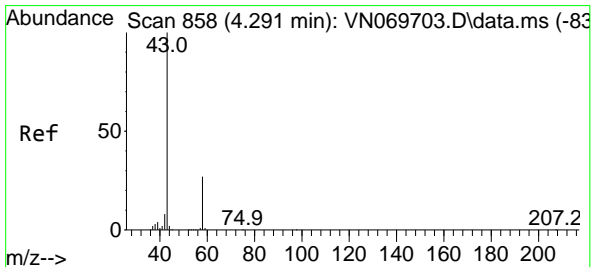
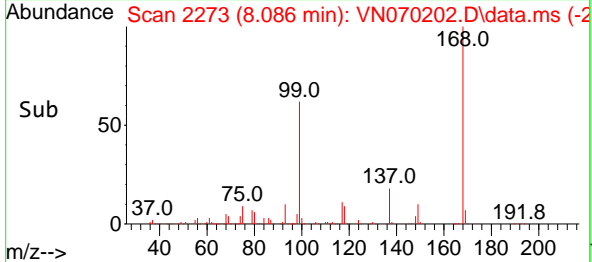
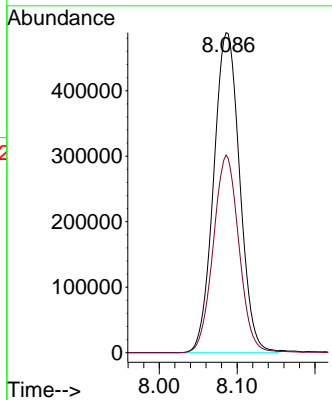


#1
 Pentafluorobenzene
 Concen: 50.000 ug/l
 RT: 8.086 min Scan# 21
 Delta R.T. -0.000 min
 Lab File: VN070202.D
 Acq: 18 Dec 2021 8:22

Instrument :
 MSVOA_N
 ClientSampleId :

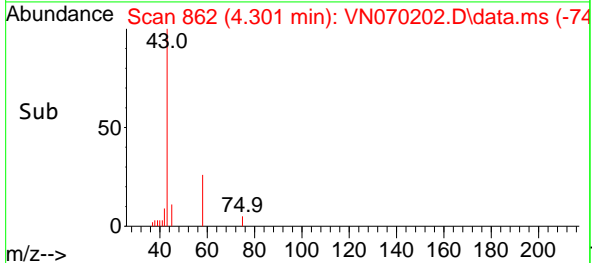
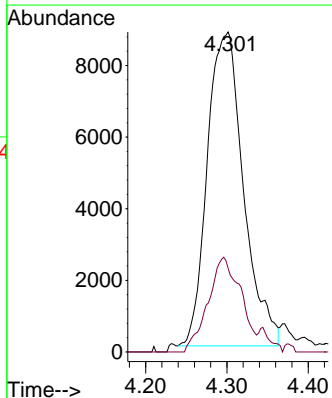
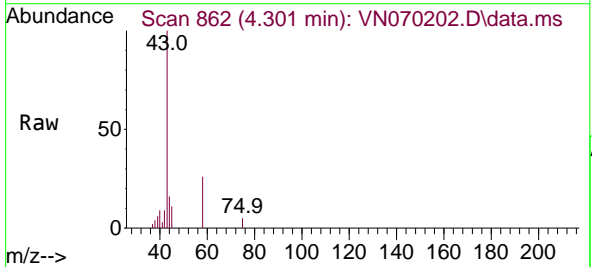


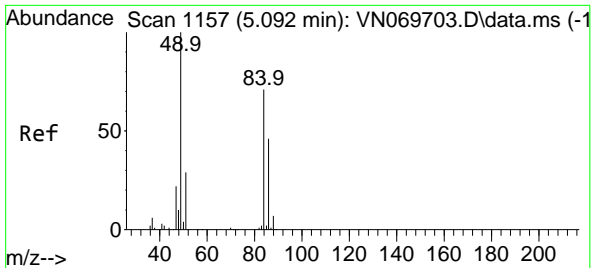
Tgt Ion:168 Resp: 1134053
 Ion Ratio Lower Upper
 168 100
 99 61.7 41.3 61.9



#16
 Acetone
 Concen: 2.573 ug/l
 RT: 4.301 min Scan# 862
 Delta R.T. 0.011 min
 Lab File: VN070202.D
 Acq: 18 Dec 2021 8:22

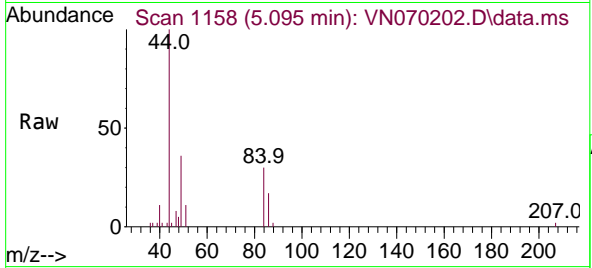
Tgt Ion: 43 Resp: 27098
 Ion Ratio Lower Upper
 43 100
 58 26.7 23.1 34.7





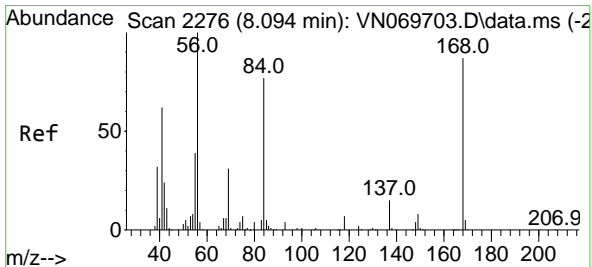
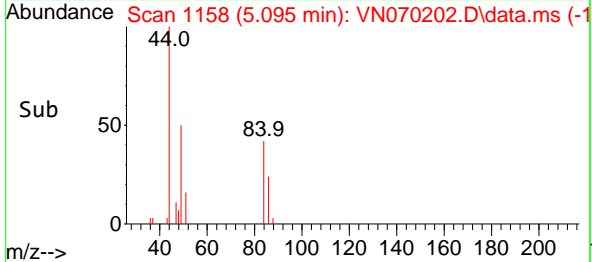
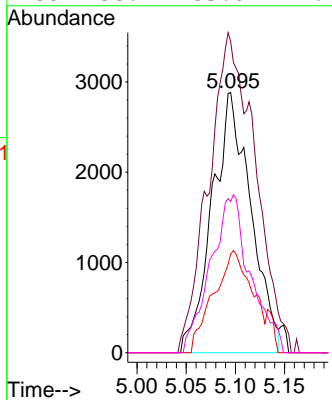
#20
 Methylene Chloride
 Concen: 0.564 ug/l
 RT: 5.095 min Scan# 1158
 Delta R.T. 0.003 min
 Lab File: VN070202.D
 Acq: 18 Dec 2021 8:22

Instrument :
 MSVOA_N
 ClientSampleId :



Tgt Ion: 84 Resp: 7891

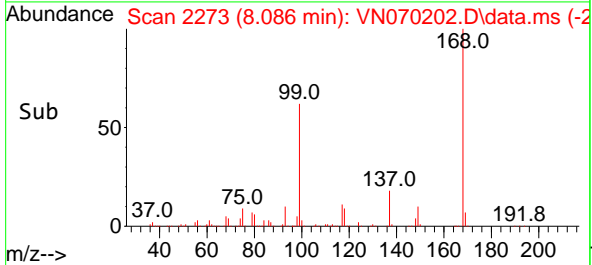
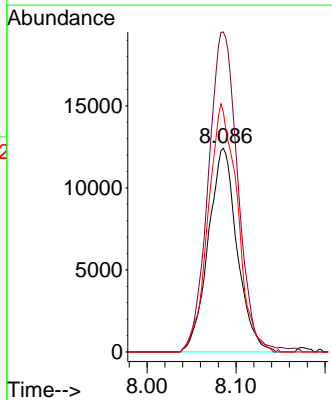
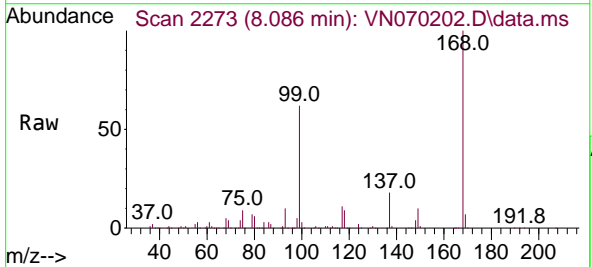
Ion	Ratio	Lower	Upper
84	100		
49	119.6	93.5	140.3
51	37.9	29.4	44.2
86	58.1	53.0	79.4

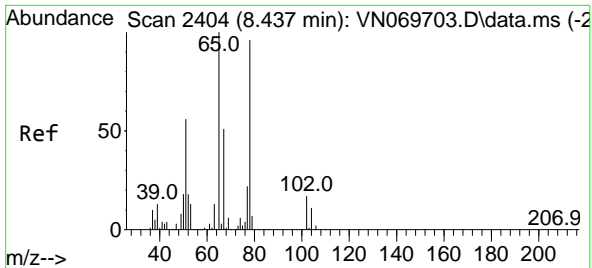


#31
 Cyclohexane
 Concen: 1.146 ug/l
 RT: 8.086 min Scan# 2273
 Delta R.T. -0.008 min
 Lab File: VN070202.D
 Acq: 18 Dec 2021 8:22

Tgt Ion: 56 Resp: 27933

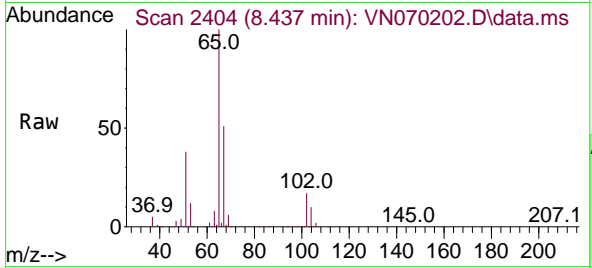
Ion	Ratio	Lower	Upper
56	100		
69	157.0	27.1	40.7#
84	117.8	73.4	110.0#



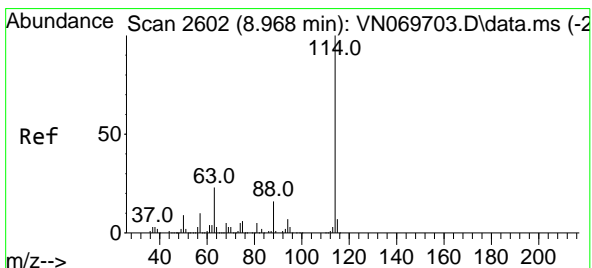
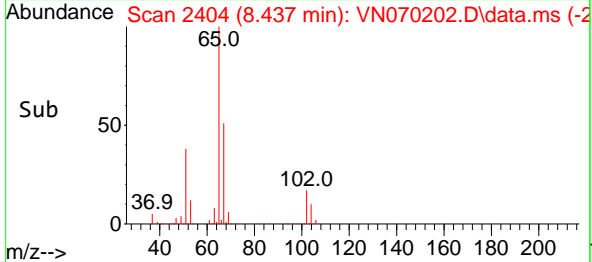
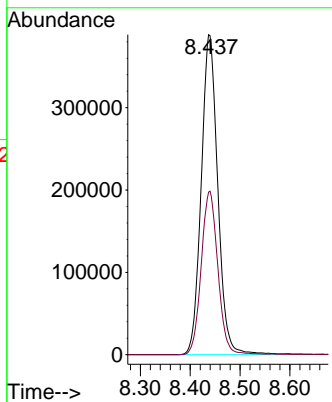


#33
 1,2-Dichloroethane-d4
 Concen: 51.236 ug/l
 RT: 8.437 min Scan# 24
 Delta R.T. 0.000 min
 Lab File: VN070202.D
 Acq: 18 Dec 2021 8:22

Instrument :
 MSVOA_N
 ClientSampleId :

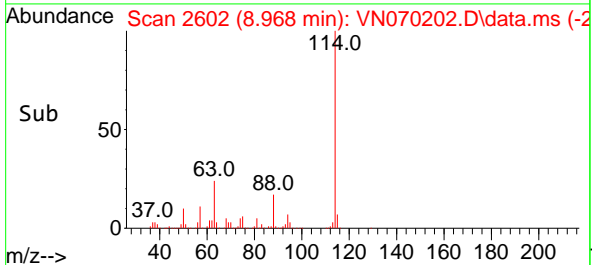
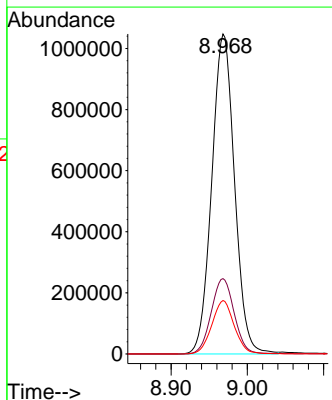
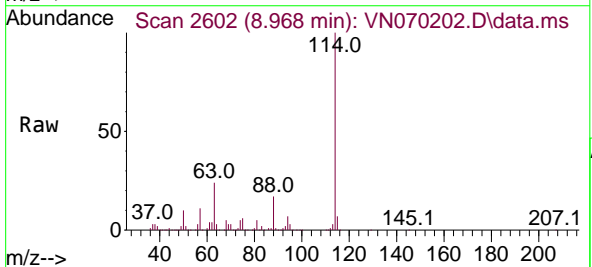


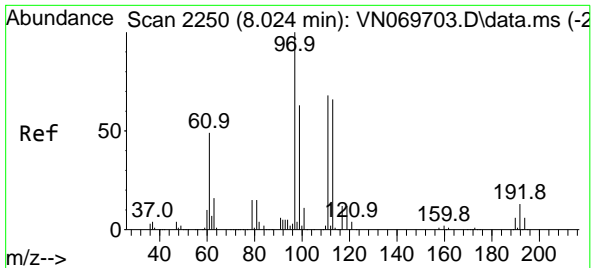
Tgt Ion: 65 Resp: 897126
 Ion Ratio Lower Upper
 65 100
 67 51.4 0.0 103.0



#34
 1,4-Difluorobenzene
 Concen: 50.000 ug/l
 RT: 8.968 min Scan# 2602
 Delta R.T. -0.000 min
 Lab File: VN070202.D
 Acq: 18 Dec 2021 8:22

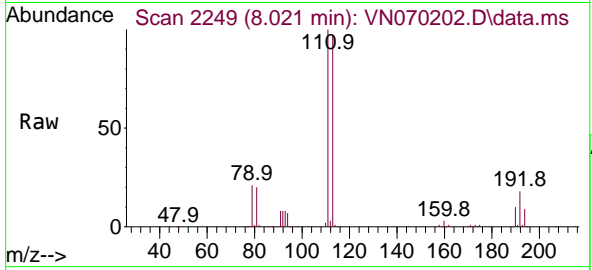
Tgt Ion:114 Resp: 2172984
 Ion Ratio Lower Upper
 114 100
 63 23.6 0.0 37.8
 88 16.7 0.0 27.4



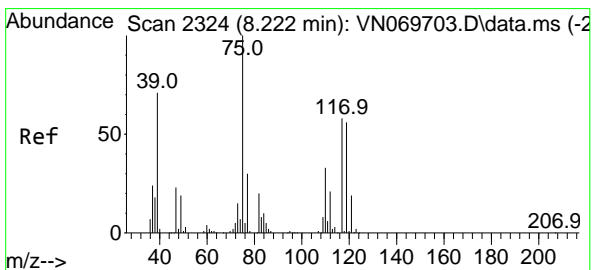
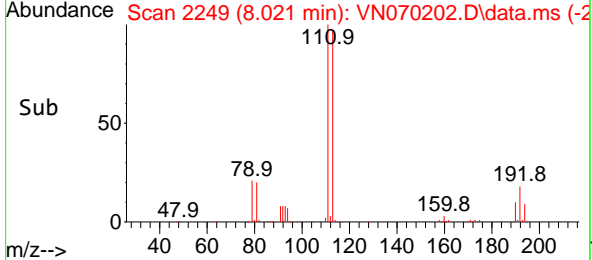
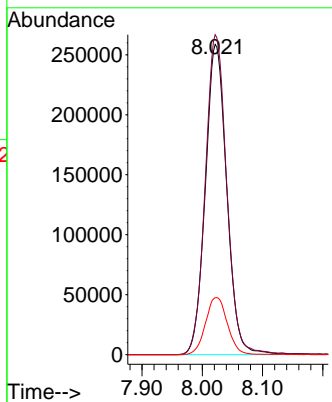


#35
 Dibromofluoromethane
 Concen: 46.834 ug/l
 RT: 8.021 min Scan# 21
 Delta R.T. -0.003 min
 Lab File: VN070202.D
 Acq: 18 Dec 2021 8:22

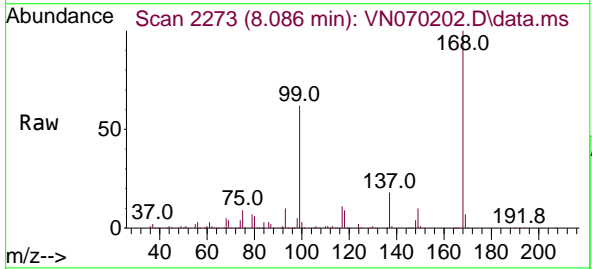
Instrument :
 MSVOA_N
 ClientSampleId :



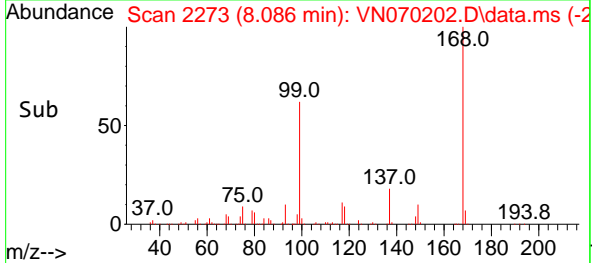
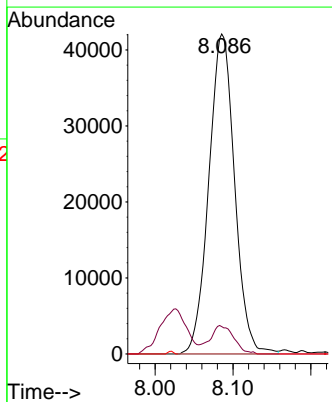
Tgt Ion:113 Resp: 637466
 Ion Ratio Lower Upper
 113 100
 111 103.6 82.2 123.2
 192 18.9 16.9 25.3

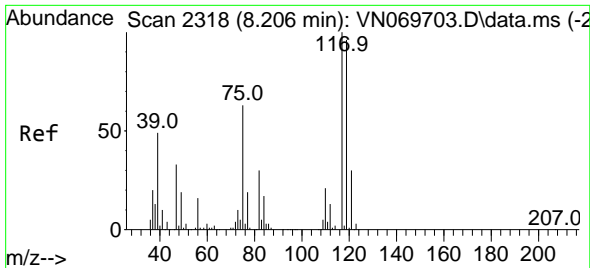


#36
 1,1-Dichloropropene
 Concen: 4.680 ug/l
 RT: 8.086 min Scan# 2273
 Delta R.T. -0.137 min
 Lab File: VN070202.D
 Acq: 18 Dec 2021 8:22



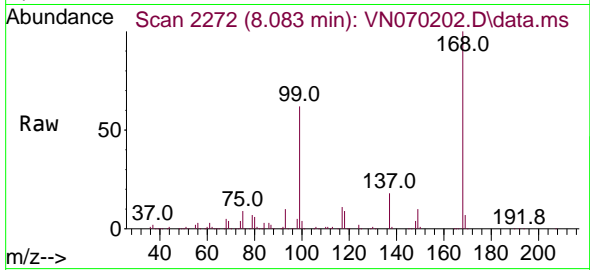
Tgt Ion: 75 Resp: 96808
 Ion Ratio Lower Upper
 75 100
 110 7.9 18.4 55.2#
 77 0.0 24.4 36.6#



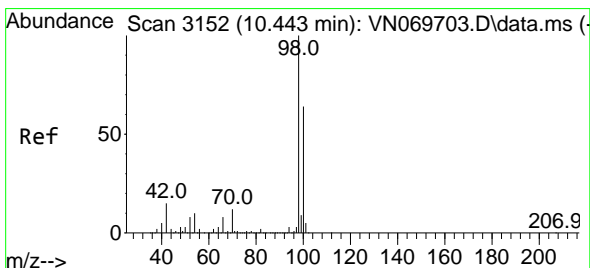
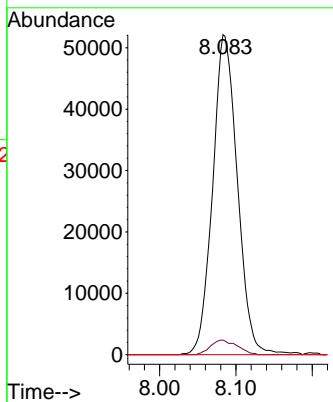
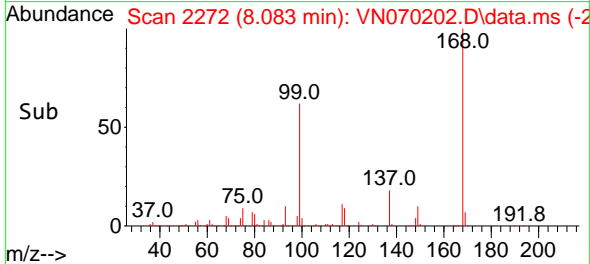


#38
 Carbon Tetrachloride
 Concen: 5.772 ug/l
 RT: 8.083 min Scan# 211
 Delta R.T. -0.123 min
 Lab File: VN070202.D
 Acq: 18 Dec 2021 8:22

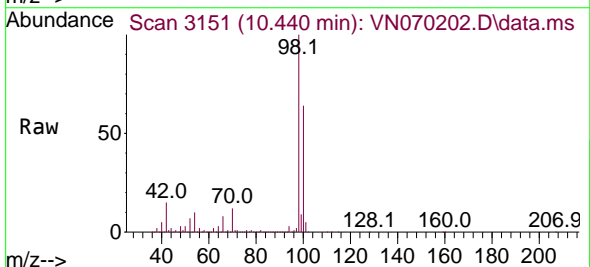
Instrument :
 MSVOA_N
 ClientSampleId :



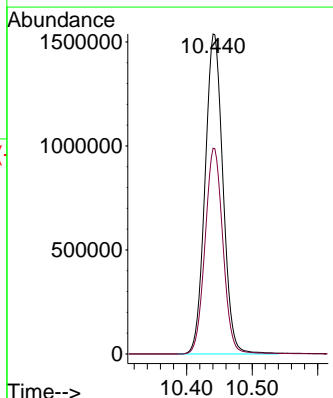
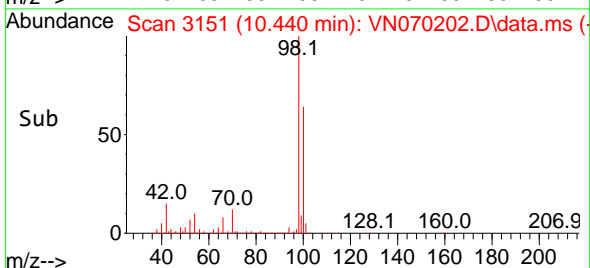
Tgt Ion:117 Resp: 117082
 Ion Ratio Lower Upper
 117 100
 119 4.5 76.1 114.1#
 121 0.0 24.2 36.2#

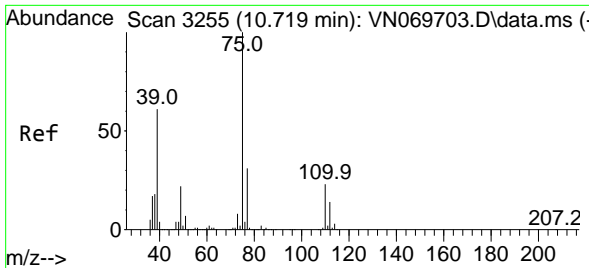


#50
 Toluene-d8
 Concen: 53.308 ug/l
 RT: 10.440 min Scan# 3151
 Delta R.T. -0.003 min
 Lab File: VN070202.D
 Acq: 18 Dec 2021 8:22



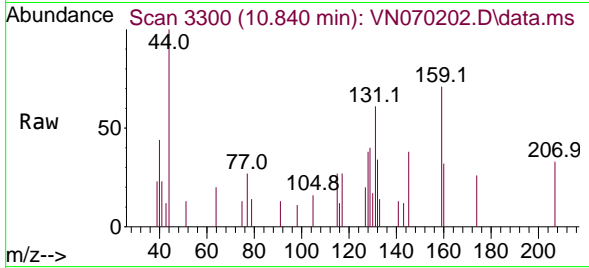
Tgt Ion: 98 Resp: 2913465
 Ion Ratio Lower Upper
 98 100
 100 64.1 50.4 75.6



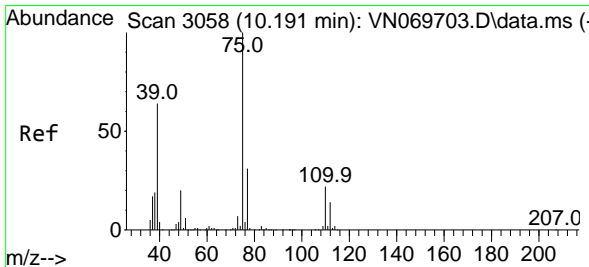
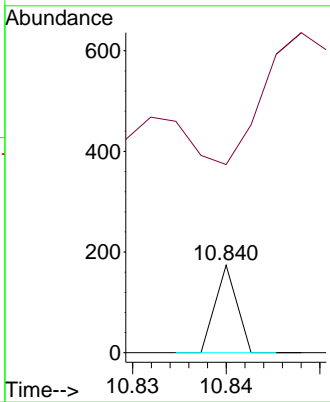
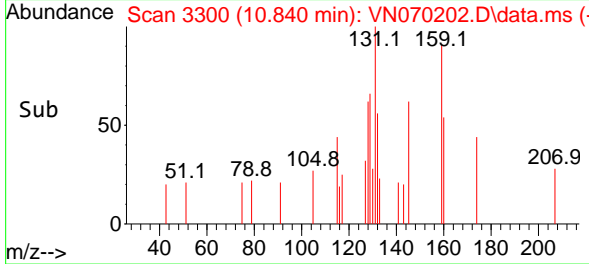


#53
 t-1,3-Dichloropropene
 Concen: 2.795 ug/l
 RT: 10.840 min Scan# 3150
 Delta R.T. 0.121 min
 Lab File: VN070202.D
 Acq: 18 Dec 2021 8:22

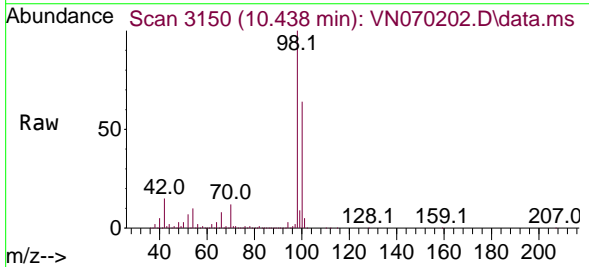
Instrument : MSVOA_N
 ClientSampleId :



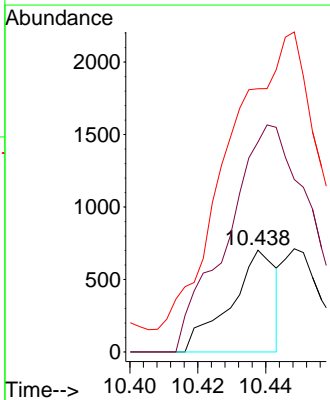
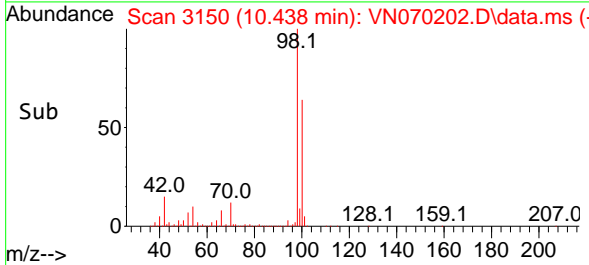
Tgt Ion: 75 Resp: 28
 Ion Ratio Lower Upper
 75 100
 77 0.0 25.6 38.4#

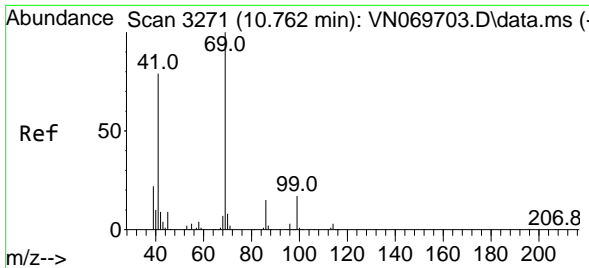


#54
 cis-1,3-Dichloropropene
 Concen: 2.022 ug/l
 RT: 10.438 min Scan# 3150
 Delta R.T. 0.247 min
 Lab File: VN070202.D
 Acq: 18 Dec 2021 8:22



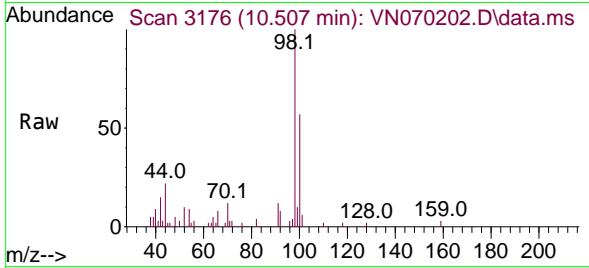
Tgt Ion: 75 Resp: 650
 Ion Ratio Lower Upper
 75 100
 77 206.4 26.4 39.6#
 39 206.8 42.5 63.7#



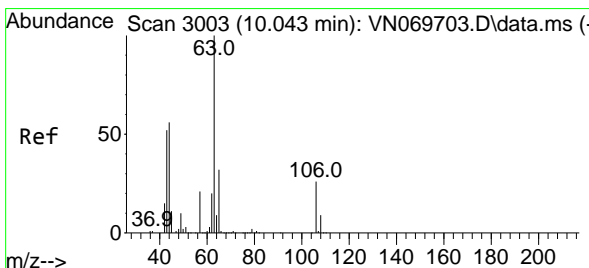
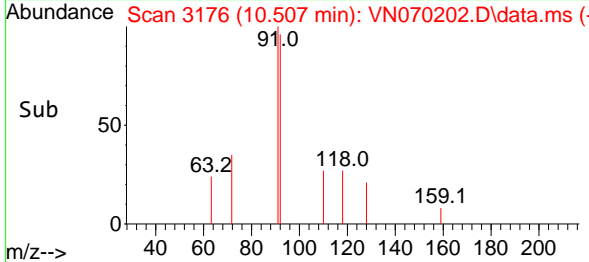
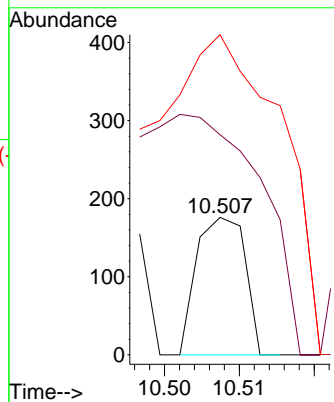


#56
 Ethyl methacrylate
 Concen: 2.282 ug/l
 RT: 10.507 min Scan# 31
 Delta R.T. -0.255 min
 Lab File: VN070202.D
 Acq: 18 Dec 2021 8:22

Instrument :
 MSVOA_N
 ClientSampleId :

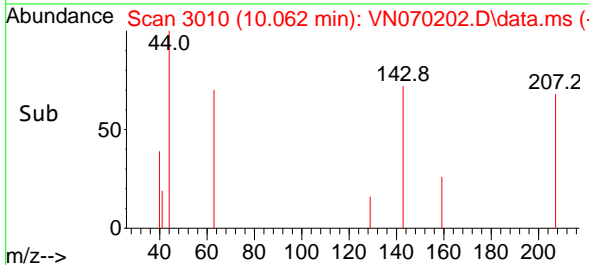
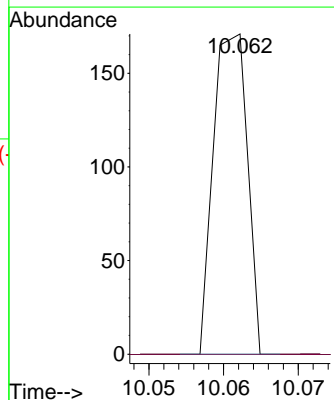
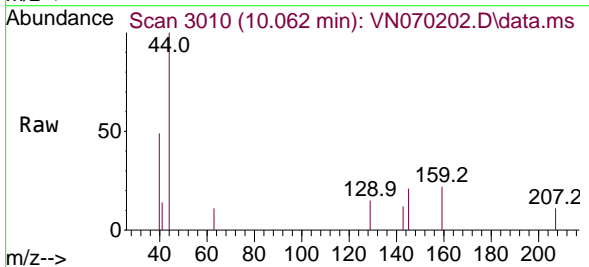


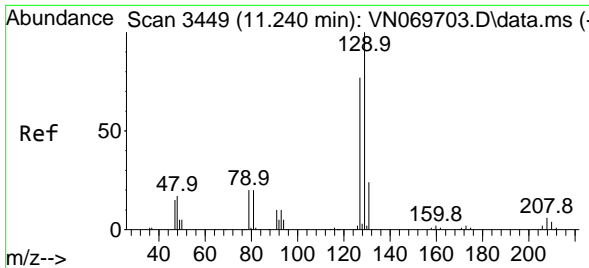
Tgt Ion: 69 Resp: 79
 Ion Ratio Lower Upper
 69 100
 41 0.0 51.4 77.0#
 39 483.5 34.6 52.0#



#58
 2-Chloroethyl Vinyl ether
 Concen: 18.395 ug/l
 RT: 10.062 min Scan# 3010
 Delta R.T. 0.019 min
 Lab File: VN070202.D
 Acq: 18 Dec 2021 8:22

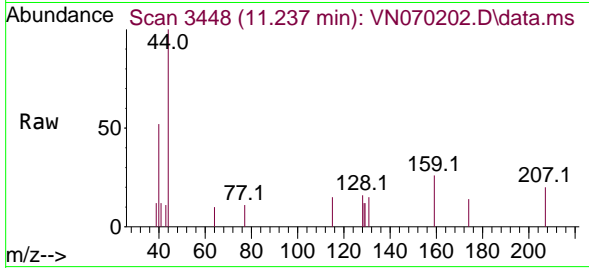
Tgt Ion: 63 Resp: 54
 Ion Ratio Lower Upper
 63 100
 106 0.0 23.9 35.9#



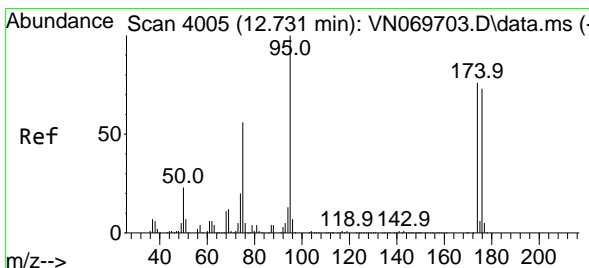
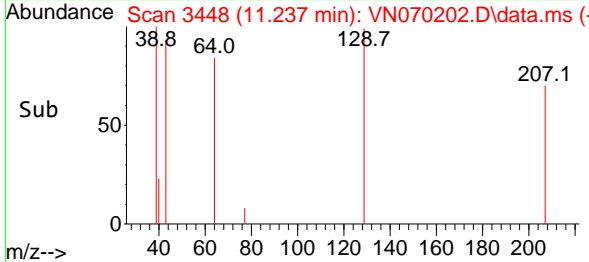
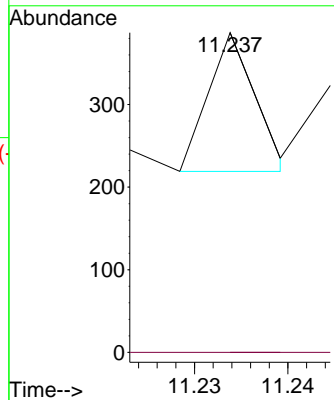


#60
 Dibromochloromethane
 Concen: 2.378 ug/l
 RT: 11.237 min Scan# 3448
 Delta R.T. -0.003 min
 Lab File: VN070202.D
 Acq: 18 Dec 2021 8:22

Instrument :
 MSVOA_N
 ClientSampleId :

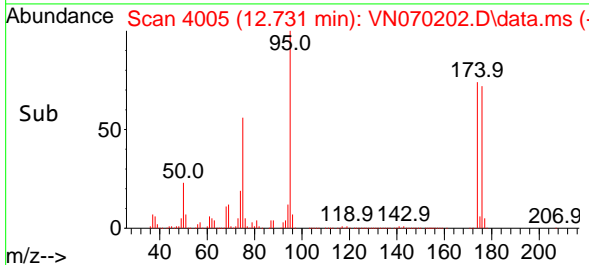
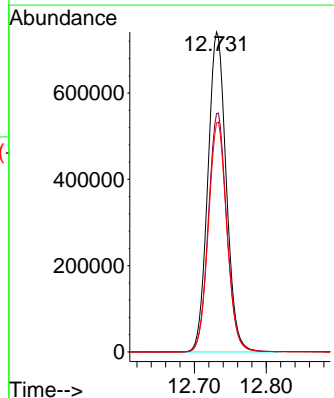
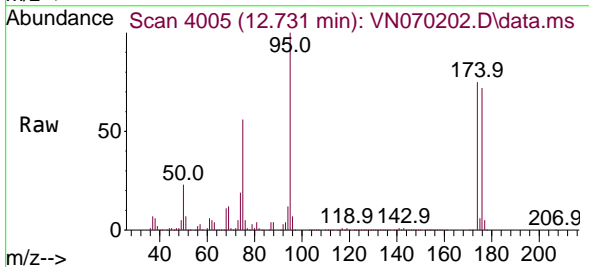


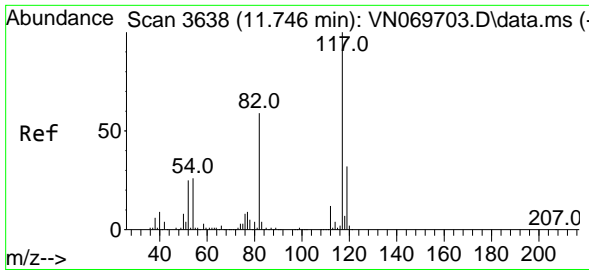
Tgt Ion:129 Resp: 30
 Ion Ratio Lower Upper
 129 100
 127 80.0 38.6 116.0



#62
 4-Bromofluorobenzene
 Concen: 66.594 ug/l
 RT: 12.731 min Scan# 4005
 Delta R.T. -0.000 min
 Lab File: VN070202.D
 Acq: 18 Dec 2021 8:22

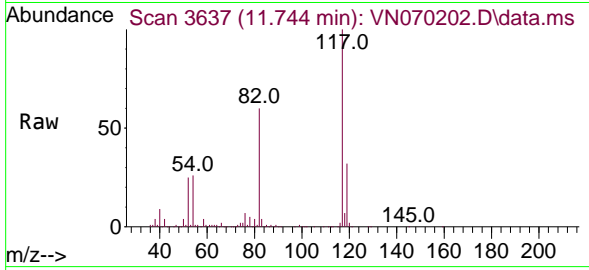
Tgt Ion: 95 Resp: 1318535
 Ion Ratio Lower Upper
 95 100
 174 74.8 0.0 187.2
 176 72.2 0.0 181.4





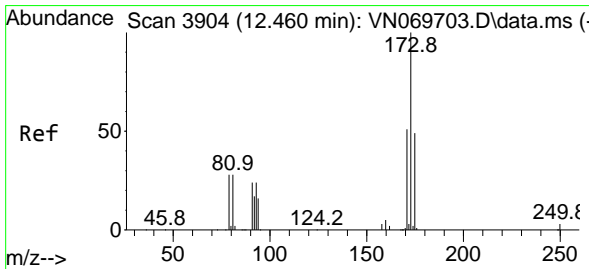
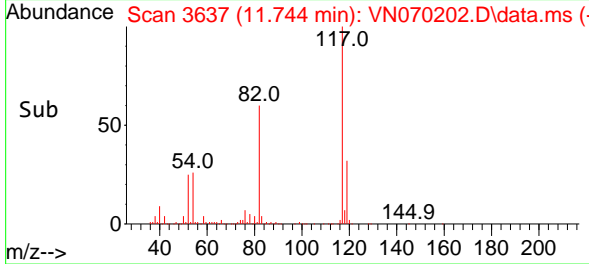
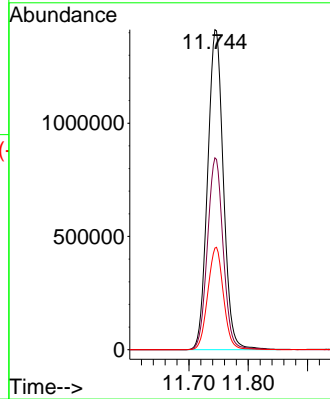
#63
 Chlorobenzene-d5
 Concen: 50.000 ug/l
 RT: 11.744 min Scan# 30
 Delta R.T. -0.002 min
 Lab File: VN070202.D
 Acq: 18 Dec 2021 8:22

Instrument :
 MSVOA_N
 ClientSampleId :



Tgt Ion:117 Resp: 2600700

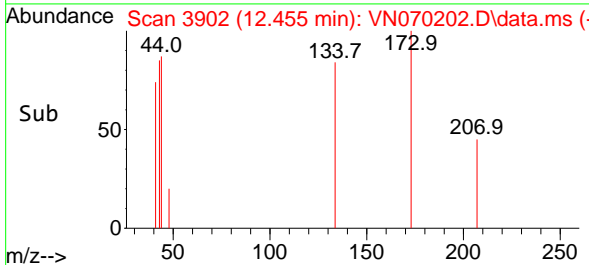
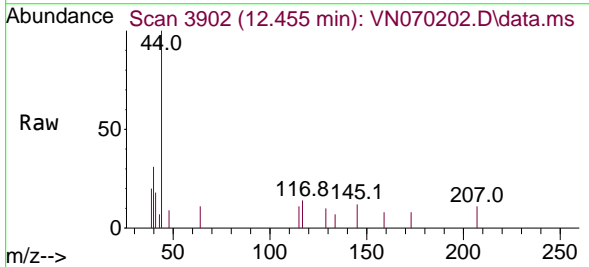
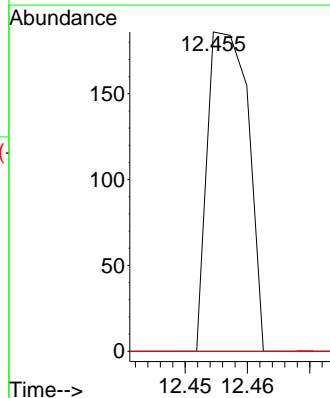
Ion	Ratio	Lower	Upper
117	100		
82	59.9	42.4	63.6
119	31.7	25.4	38.2

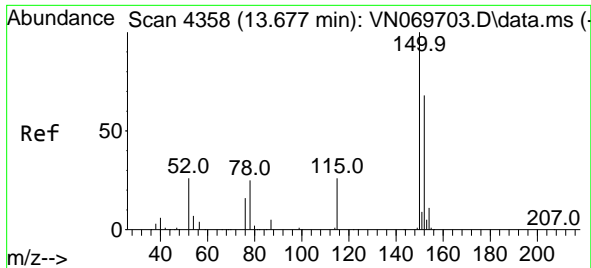


#71
 Bromoform
 Concen: 2.736 ug/l
 RT: 12.455 min Scan# 3902
 Delta R.T. -0.005 min
 Lab File: VN070202.D
 Acq: 18 Dec 2021 8:22

Tgt Ion:173 Resp: 85

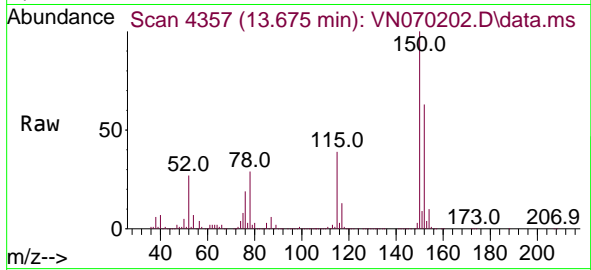
Ion	Ratio	Lower	Upper
173	100		
175	0.0	24.2	72.6#
254	0.0	0.0	0.0



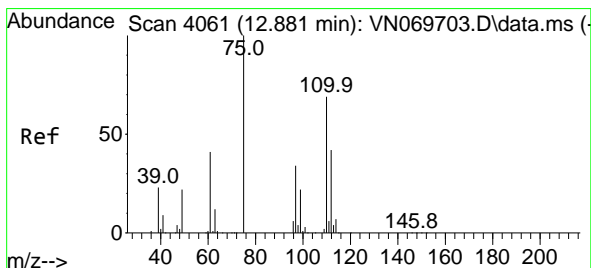
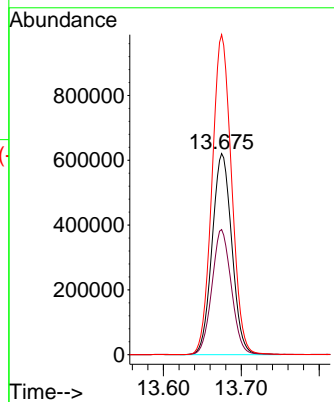
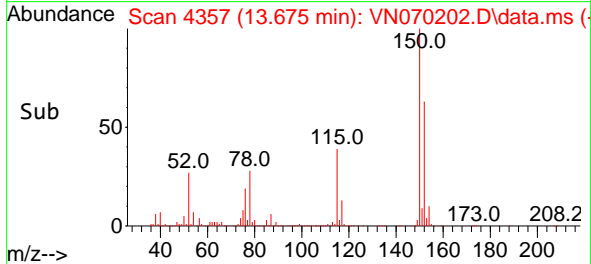


#72
 1,4-Dichlorobenzene-d4
 Concen: 50.000 ug/l
 RT: 13.675 min Scan# 41
 Delta R.T. -0.003 min
 Lab File: VN070202.D
 Acq: 18 Dec 2021 8:22

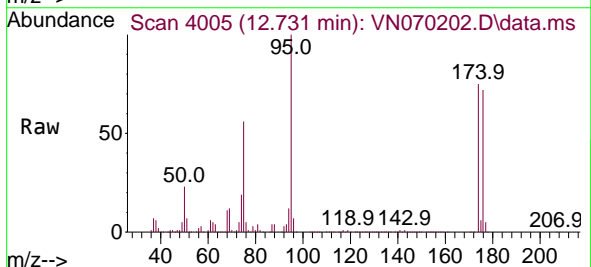
Instrument :
 MSVOA_N
 ClientSampleId :



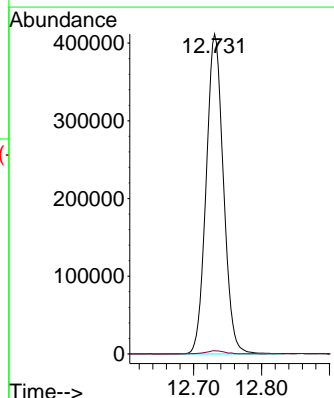
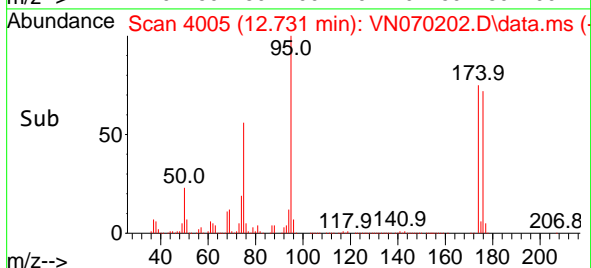
Tgt Ion:152 Resp: 1088685
 Ion Ratio Lower Upper
 152 100
 115 61.3 27.5 82.5
 150 157.9 0.0 344.4

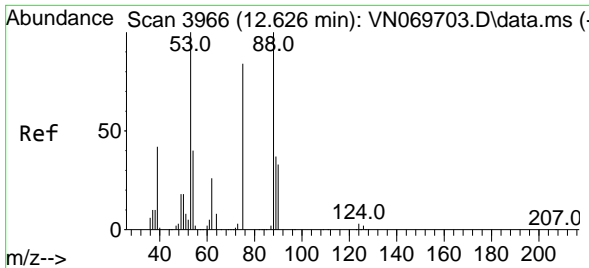


#76
 1,2,3-Trichloropropane
 Concen: 23.247 ug/l
 RT: 12.731 min Scan# 4005
 Delta R.T. -0.150 min
 Lab File: VN070202.D
 Acq: 18 Dec 2021 8:22



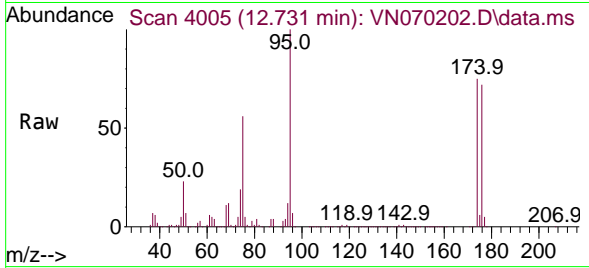
Tgt Ion: 75 Resp: 725787
 Ion Ratio Lower Upper
 75 100
 77 1.2 82.6 247.8#



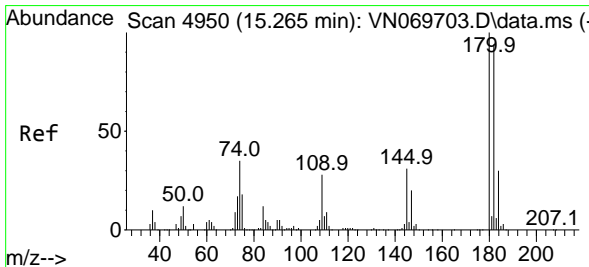
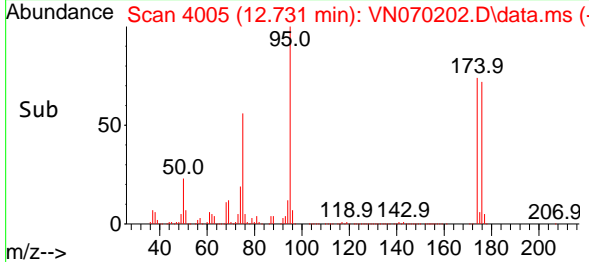
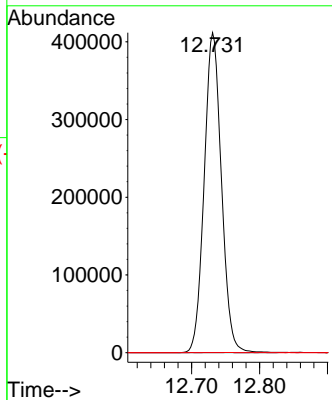


#81
 trans-1,4-Dichloro-2-butene
 Concen: 73.965 ug/l
 RT: 12.731 min Scan# 4005
 Delta R.T. 0.105 min
 Lab File: VN070202.D
 Acq: 18 Dec 2021 8:22

Instrument : MSVOA_N
 ClientSampleId :

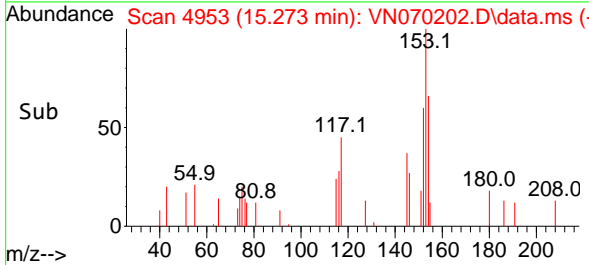
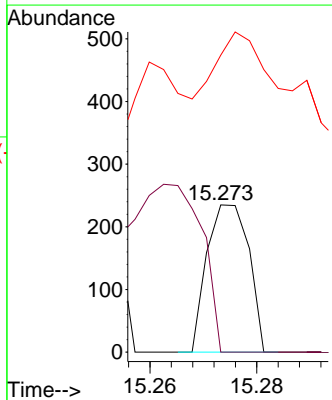
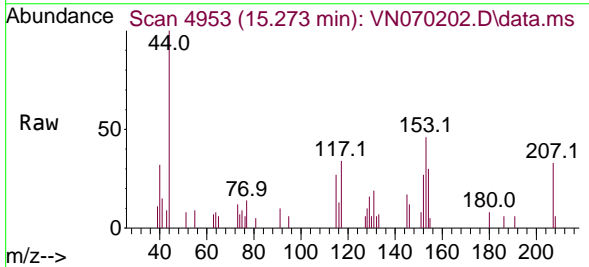


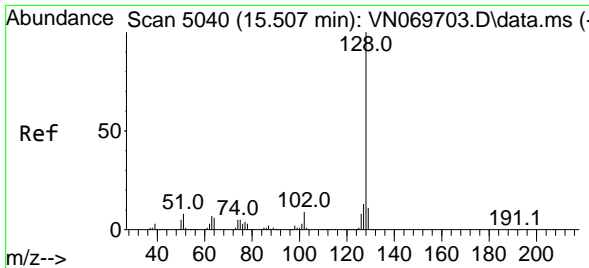
Tgt Ion: 75 Resp: 725787
 Ion Ratio Lower Upper
 75 100
 53 0.0 90.5 135.7#
 89 0.0 38.2 57.4#



#93
 1,2,4-Trichlorobenzene
 Concen: 2.885 ug/l
 RT: 15.273 min Scan# 4953
 Delta R.T. 0.008 min
 Lab File: VN070202.D
 Acq: 18 Dec 2021 8:22

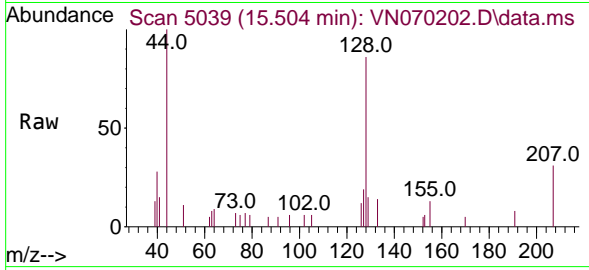
Tgt Ion:180 Resp: 128
 Ion Ratio Lower Upper
 180 100
 182 245.3 48.3 144.9#
 145 0.0 14.5 43.5#



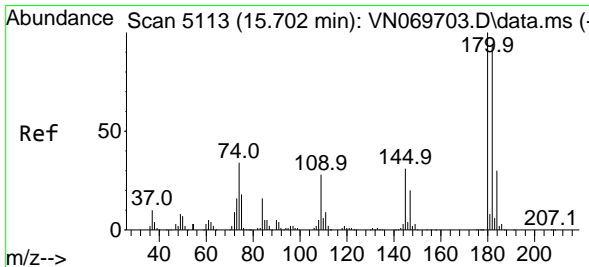
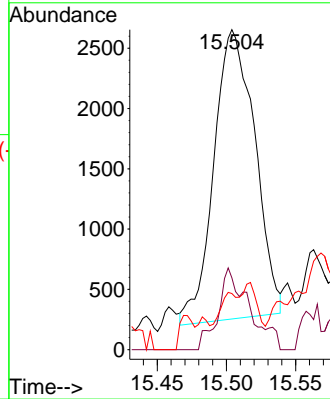
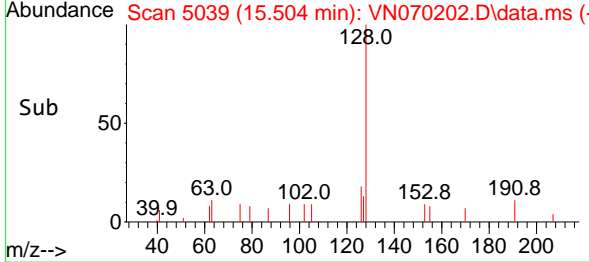


#95
 Naphthalene
 Concen: 4.071 ug/l
 RT: 15.504 min Scan# 5040
 Delta R.T. -0.003 min
 Lab File: VN070202.D
 Acq: 18 Dec 2021 8:22

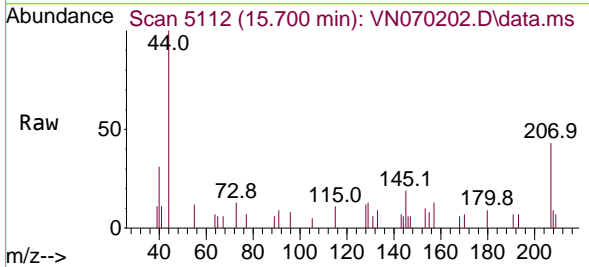
Instrument : MSVOA_N
 ClientSampleId :



Tgt Ion:128 Resp: 4944
 Ion Ratio Lower Upper
 128 100
 127 21.4 10.5 15.7#
 129 4.0 8.7 13.1#



#96
 1,2,3-Trichlorobenzene
 Concen: 2.451 ug/l
 RT: 15.700 min Scan# 5112
 Delta R.T. -0.002 min
 Lab File: VN070202.D
 Acq: 18 Dec 2021 8:22



Tgt Ion:180 Resp: 286
 Ion Ratio Lower Upper
 180 100
 182 18.2 47.4 142.2#
 145 287.4 15.0 45.1#

