

Data Path : Z:\voasrv\HPCHEM1\MSVOA\_N\Data\VN121721\  
 Data File : VN070197.D  
 Acq On : 18 Dec 2021 6:14  
 Operator : JC/MD  
 Sample : M5115-02  
 Misc : 5.00mL/MSVOA\_N/WATER  
 ALS Vial : 47 Sample Multiplier: 1

Instrument :  
 MSVOA\_N  
 ClientSampleId :  
 MW-2R

Integration Parameters: RTEINT.P

Integrator: RTE  
 Smoothing : ON  
 Sampling : 1  
 Start Thrs : 0.2  
 Stop Thrs : 0

Filtering: 5  
 Min Area: 3 % of largest Peak  
 Max Peaks: 100  
 Peak Location: TOP

If leading or trailing edge < 100 prefer < Baseline drop else tangent >  
 Peak separation: 5

Method : Z:\voasrv\HPCHEM1\MSVOA\_N\methods\82N120221W.M  
 Title : SW846 8260

Signal : TIC: VN070197.D\data.ms

peak #	R.T. min	first scan	max scan	last scan	PK TY	peak height	corr. area	corr. % max.	% of total
1	8.024	2225	2250	2260	rBV	910558	2161609	22.13%	2.731%
2	8.086	2261	2273	2298	rVB	1575866	3583728	36.69%	4.527%
3	8.437	2383	2404	2433	rBV	1084942	2525168	25.85%	3.190%
4	8.968	2579	2602	2642	rBV	2657006	5613626	57.47%	7.092%
5	10.440	3130	3151	3195	rBV	4320156	8252892	84.49%	10.426%
6	11.744	3618	3637	3664	rBV	4799949	8584717	87.89%	10.845%
7	12.578	3936	3948	3963	rVB	127273	221858	2.27%	0.280%
8	12.731	3988	4005	4028	rBV	3886138	6787745	69.49%	8.575%
9	13.501	4280	4292	4304	rBV2	120418	205889	2.11%	0.260%
10	13.675	4340	4357	4377	rBV	4461307	7624822	78.06%	9.632%
11	13.771	4382	4393	4404	rVV2	164768	277599	2.84%	0.351%
12	13.838	4405	4418	4421	rVV	708830	999702	10.23%	1.263%
13	13.876	4421	4432	4466	rVV	5573374	9768044	100.00%	12.340%
14	14.002	4467	4479	4494	rVB4	234666	389288	3.99%	0.492%
15	14.217	4547	4559	4569	rBV3	95009	150299	1.54%	0.190%
16	14.278	4569	4582	4589	rBV	588255	972217	9.95%	1.228%
17	14.327	4590	4600	4615	rVB	1819669	3129357	32.04%	3.953%
18	14.463	4638	4651	4660	rBV	185262	312528	3.20%	0.395%
19	14.538	4671	4679	4697	rVB2	277440	497406	5.09%	0.628%
20	14.619	4699	4709	4715	rBV2	95800	148167	1.52%	0.187%
21	14.656	4716	4723	4731	rVV2	118362	163144	1.67%	0.206%
22	14.761	4749	4762	4771	rBV3	201616	337293	3.45%	0.426%
23	14.817	4772	4783	4794	rBV7	225136	422795	4.33%	0.534%
24	14.933	4810	4826	4839	rBV	1656063	2821673	28.89%	3.565%
25	14.997	4840	4850	4861	rVB4	186732	322370	3.30%	0.407%
26	15.080	4873	4881	4891	rVB3	114222	166649	1.71%	0.211%
27	15.193	4911	4923	4931	rBV4	357390	652392	6.68%	0.824%
28	15.236	4932	4939	4949	rVV	397782	694665	7.11%	0.878%
29	15.314	4952	4968	4985	rVB2	1202989	2893242	29.62%	3.655%
30	15.466	5017	5025	5037	rVB2	85032	135788	1.39%	0.172%
31	15.560	5047	5060	5071	rBV2	366617	712974	7.30%	0.901%
32	15.641	5074	5090	5133	rVB3	663210	2213037	22.66%	2.796%
33	15.804	5136	5151	5166	rBV2	290918	600777	6.15%	0.759%
34	15.979	5198	5216	5237	rBV3	346445	984923	10.08%	1.244%
35	16.107	5254	5264	5277	rBV2	290820	553395	5.67%	0.699%
36	16.188	5282	5294	5307	rVB5	252794	607327	6.22%	0.767%

Data Path : Z:\voasrv\HPCHEM1\MSVOA\_N\Data\VN121721\  
Data File : VN070197.D  
Acq On : 18 Dec 2021 6:14  
Operator : JC/MD  
Sample : M5115-02  
Misc : 5.00mL/MSVOA\_N/WATER  
ALS Vial : 47 Sample Multiplier: 1

Instrument :  
MSVOA\_N  
ClientSampleId :  
MW-2R

Integration Parameters: RTEINT.P  
Integrator: RTE  
Smoothing : ON Filtering: 5  
Sampling : 1 Min Area: 3 % of largest Peak  
Start Thrs: 0.2 Max Peaks: 100  
Stop Thrs : 0 Peak Location: TOP

If leading or trailing edge < 100 prefer < Baseline drop else tangent >  
Peak separation: 5

Method : Z:\voasrv\HPCHEM1\MSVOA\_N\methods\82N120221W.M  
Title : SW846 8260

37	16.343	5333	5352	5377	rBV5	618877	1549066	15.86%	1.957%
38	16.550	5407	5429	5442	rBV6	340692	891943	9.13%	1.127%
39	16.614	5444	5453	5465	rVV3	123348	228849	2.34%	0.289%

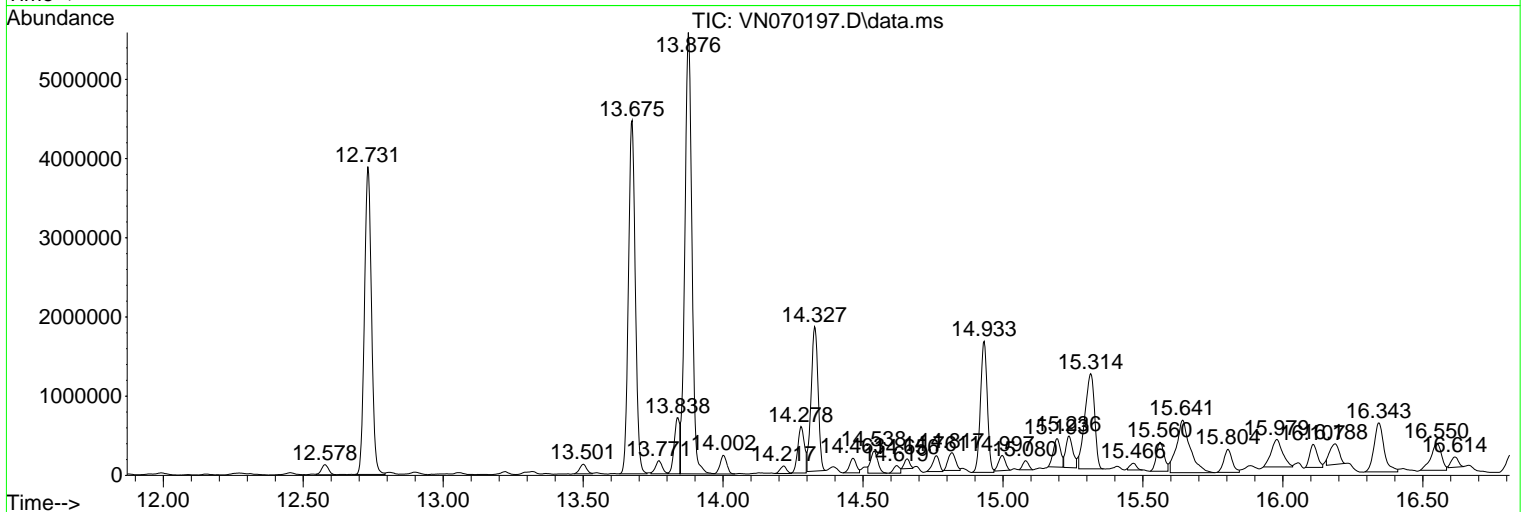
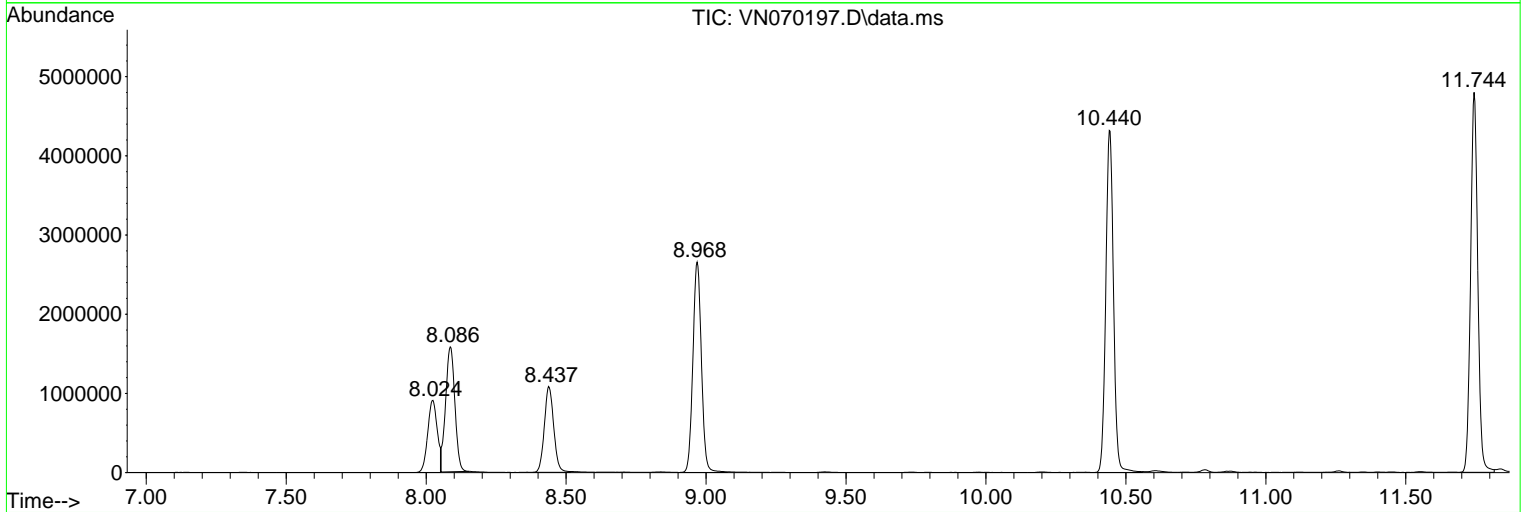
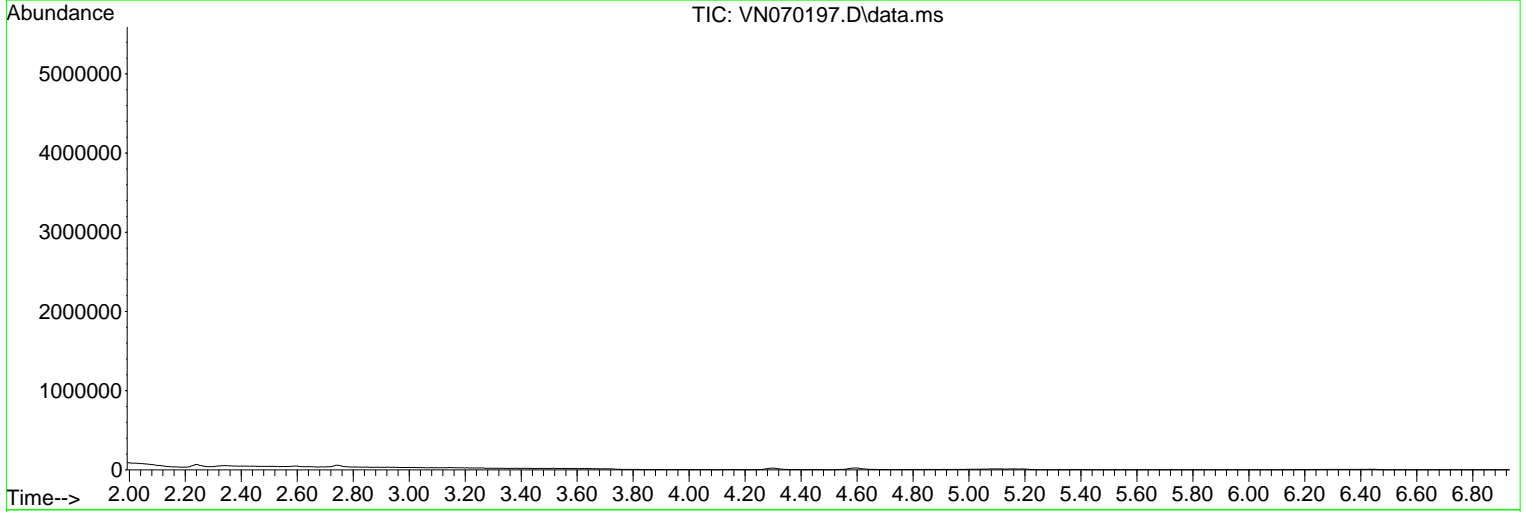
Sum of corrected areas: 79158963

Data Path : Z:\voasrv\HPCHEM1\MSVOA\_N\Data\VN121721\  
 Data File : VN070197.D  
 Acq On : 18 Dec 2021 6:14  
 Operator : JC/MD  
 Sample : M5115-02  
 Misc : 5.00mL/MSVOA\_N/WATER  
 ALS Vial : 47 Sample Multiplier: 1

Instrument :  
 MSVOA\_N  
 ClientSampleId :  
 MW-2R

Quant Method : Z:\voasrv\HPCHEM1\MSVOA\_N\methods\82N120221W.M  
 Quant Title : SW846 8260

TIC Library : C:\Database\NIST20.L  
 TIC Integration Parameters: LSCINT.P



Data Path : Z:\voasrv\HPCHEM1\MSVOA\_N\Data\VN121721\  
 Data File : VN070197.D  
 Acq On : 18 Dec 2021 6:14  
 Operator : JC/MD  
 Sample : M5115-02  
 Misc : 5.00mL/MSVOA\_N/WATER  
 ALS Vial : 47 Sample Multiplier: 1

Instrument :  
 MSVOA\_N  
 ClientSampleId :  
 MW-2R

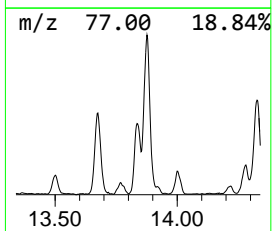
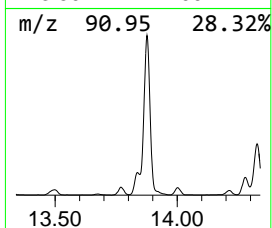
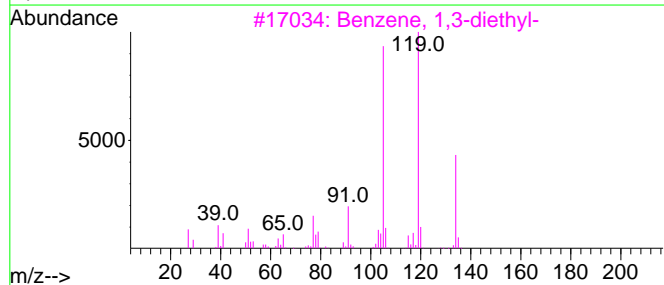
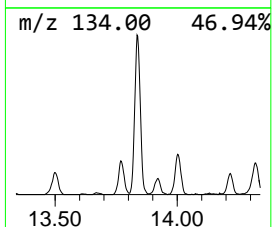
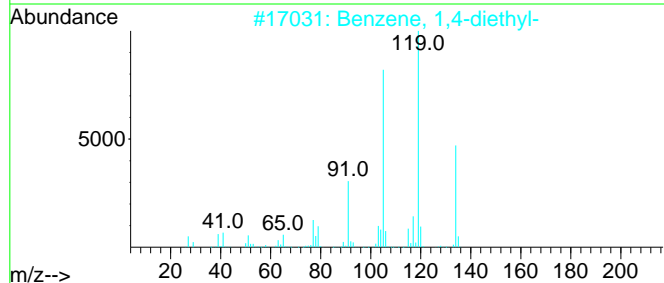
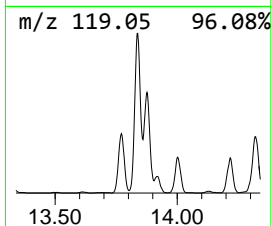
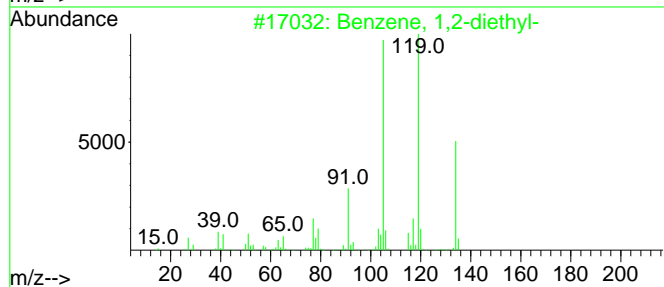
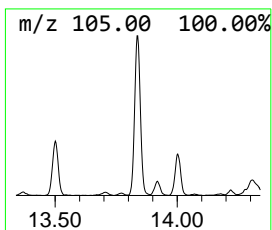
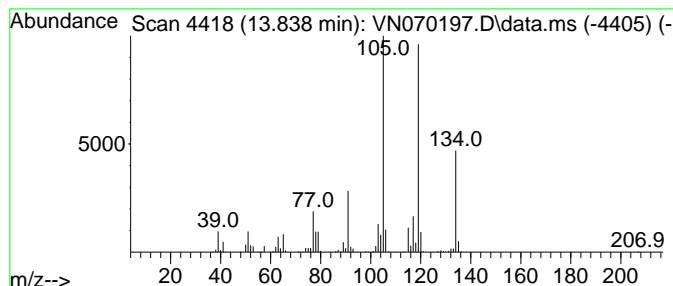
Quant Method : Z:\voasrv\HPCHEM1\MSVOA\_N\methods\82N120221W.M  
 Quant Title : SW846 8260

TIC Library : C:\Database\NIST20.L  
 TIC Integration Parameters: LSCINT.P

\*\*\*\*\*  
 Peak Number 1 Benzene, 1,2-diethyl- Concentration Rank 7

R.T.	EstConc	Area	Relative to ISTD	R.T.
13.839	6.56 ug/l	999702	1,4-Dichlorobenzene-d4	13.675

Hit#	of 5	Tentative ID	MW	MolForm	CAS#	Qual
1		Benzene, 1,2-diethyl-	134	C10H14	000135-01-3	97
2		Benzene, 1,4-diethyl-	134	C10H14	000105-05-5	96
3		Benzene, 1,3-diethyl-	134	C10H14	000141-93-5	95
4		Benzene, 1-ethyl-2,3-dimethyl-	134	C10H14	000933-98-2	91
5		Benzene, 1-ethyl-3,5-dimethyl-	134	C10H14	000934-74-7	90



Data Path : Z:\voasrv\HPCHEM1\MSVOA\_N\Data\VN121721\  
 Data File : VN070197.D  
 Acq On : 18 Dec 2021 6:14  
 Operator : JC/MD  
 Sample : M5115-02  
 Misc : 5.00mL/MSVOA\_N/WATER  
 ALS Vial : 47 Sample Multiplier: 1

Instrument :  
 MSVOA\_N  
 ClientSampleId :  
 MW-2R

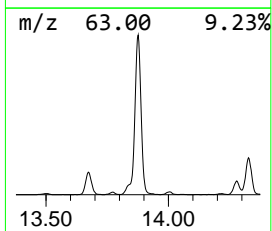
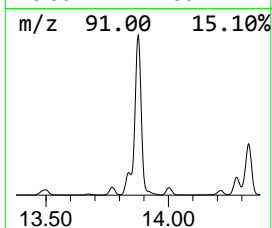
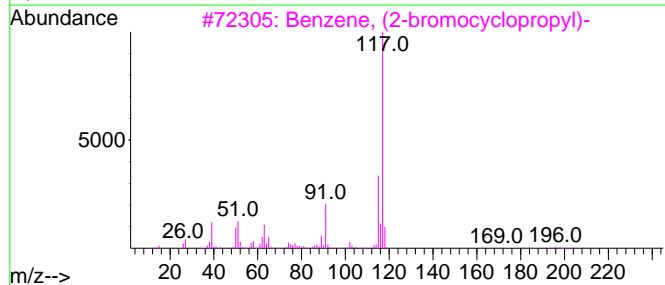
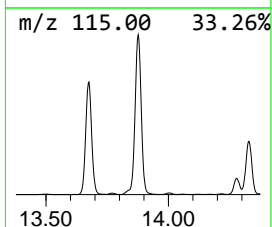
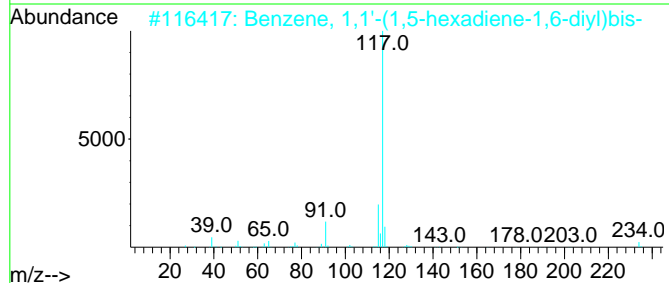
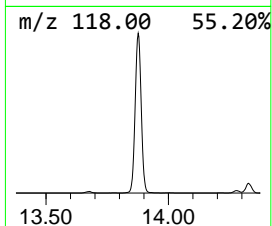
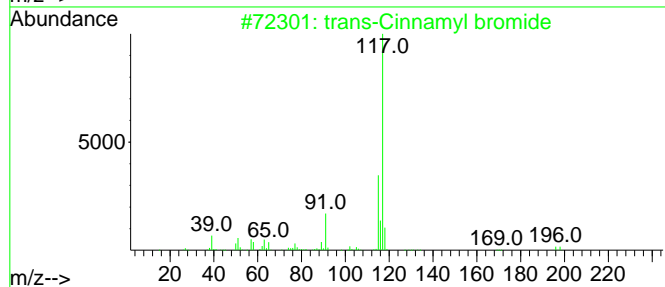
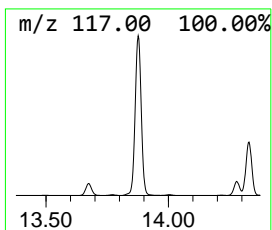
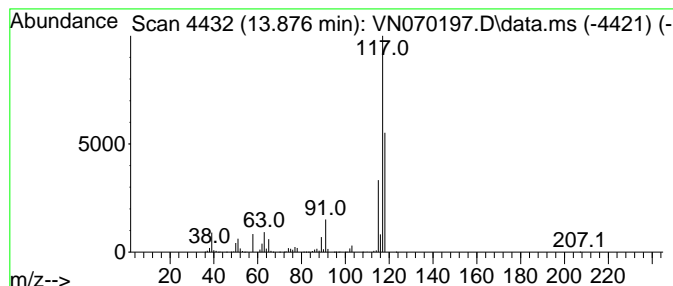
Quant Method : Z:\voasrv\HPCHEM1\MSVOA\_N\methods\82N120221W.M  
 Quant Title : SW846 8260

TIC Library : C:\Database\NIST20.L  
 TIC Integration Parameters: LSCINT.P

\*\*\*\*\*  
 Peak Number 2 trans-Cinnamyl bromide Concentration Rank 1

R.T.	EstConc	Area	Relative to ISTD	R.T.
13.876	64.05 ug/l	9768040	1,4-Dichlorobenzene-d4	13.675

Hit#	of	5	Tentative ID	MW	MolForm	CAS#	Qual
1			trans-Cinnamyl bromide	196	C9H9Br	026146-77-0	59
2			Benzene, 1,1'-(1,5-hexadiene-1,6...	234	C18H18	004439-45-6	53
3			Benzene, (2-bromocyclopropyl)-	196	C9H9Br	036617-02-4	50
4			Benzaldehyde, 4-(1-phenyl-2-prop...	238	C16H14O2	1000277-56-1	50
5			Indole	117	C8H7N	000120-72-9	49



Data Path : Z:\voasrv\HPCHEM1\MSVOA\_N\Data\VN121721\  
 Data File : VN070197.D  
 Acq On : 18 Dec 2021 6:14  
 Operator : JC/MD  
 Sample : M5115-02  
 Misc : 5.00mL/MSVOA\_N/WATER  
 ALS Vial : 47 Sample Multiplier: 1

Instrument :  
 MSVOA\_N  
 ClientSampleId :  
 MW-2R

Quant Method : Z:\voasrv\HPCHEM1\MSVOA\_N\methods\82N120221W.M  
 Quant Title : SW846 8260

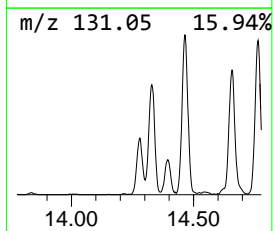
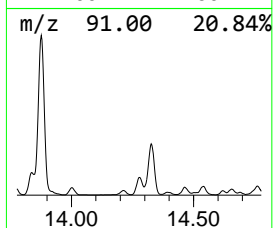
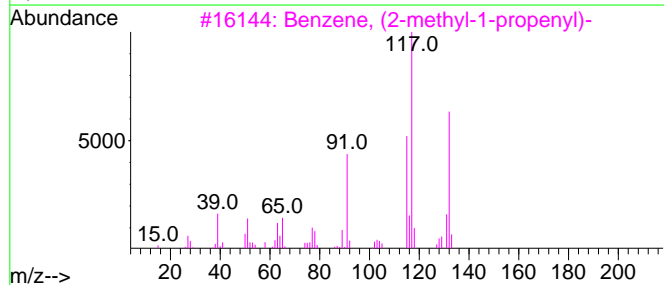
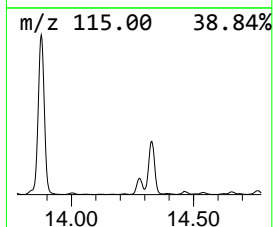
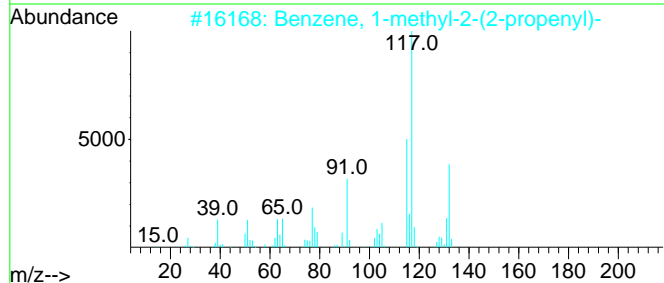
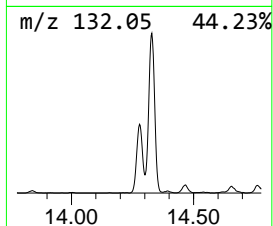
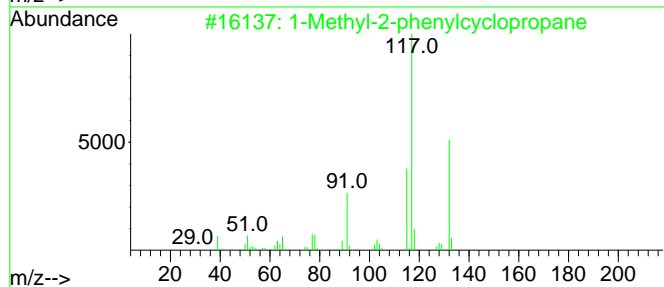
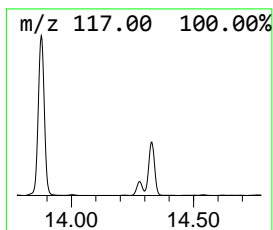
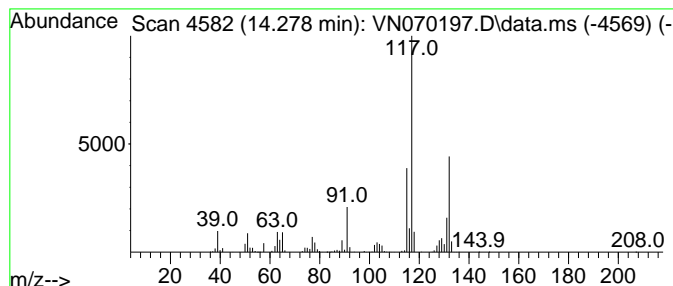
TIC Library : C:\Database\NIST20.L  
 TIC Integration Parameters: LSCINT.P

\*\*\*\*\*  
 Peak Number 3 1-Methyl-2-phenylcyclopropane Concentration Rank 9

R.T.	EstConc	Area	Relative to ISTD	R.T.
14.278	6.38 ug/l	972217	1,4-Dichlorobenzene-d4	13.675

Hit#	of 5	Tentative ID	MW	MolForm	CAS#	Qual
1		1-Methyl-2-phenylcyclopropane	132	C10H12	003145-76-4	94
2		Benzene, 1-methyl-2-(2-propenyl)-	132	C10H12	001587-04-8	94
3		Benzene, (2-methyl-1-propenyl)-	132	C10H12	000768-49-0	94
4		1-Phenyl-1-butene	132	C10H12	000824-90-8	91
5		Benzene, 2-butenyl-	132	C10H12	001560-06-1	91



Data Path : Z:\voasrv\HPCHEM1\MSVOA\_N\Data\VN121721\  
 Data File : VN070197.D  
 Acq On : 18 Dec 2021 6:14  
 Operator : JC/MD  
 Sample : M5115-02  
 Misc : 5.00mL/MSVOA\_N/WATER  
 ALS Vial : 47 Sample Multiplier: 1

Instrument :  
 MSVOA\_N  
 ClientSampleId :  
 MW-2R

Quant Method : Z:\voasrv\HPCHEM1\MSVOA\_N\methods\82N120221W.M  
 Quant Title : SW846 8260

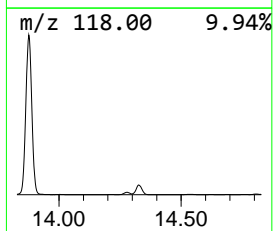
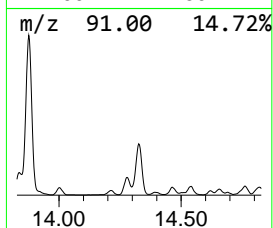
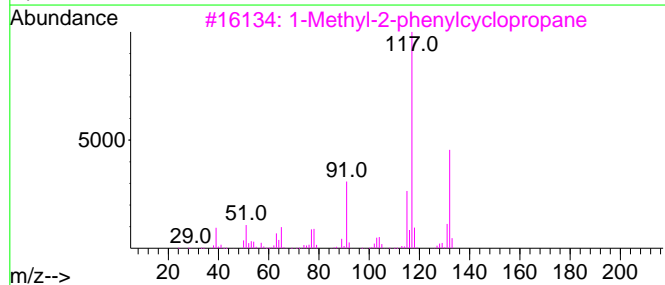
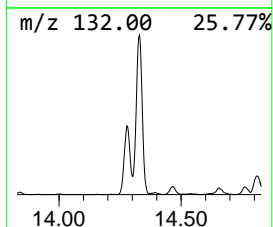
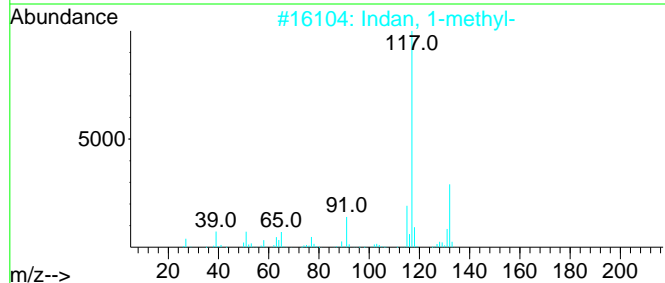
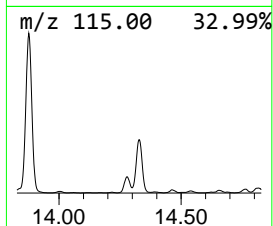
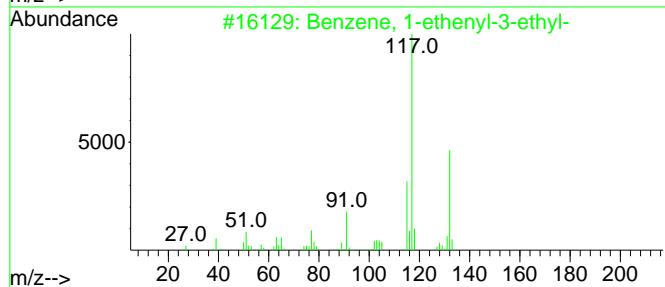
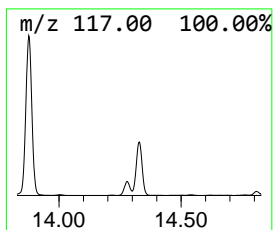
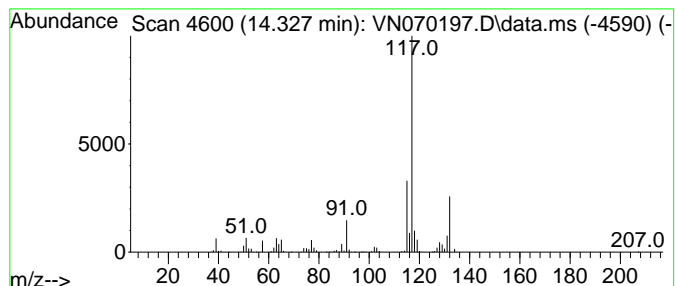
TIC Library : C:\Database\NIST20.L  
 TIC Integration Parameters: LSCINT.P

\*\*\*\*\*  
 Peak Number 4 Benzene, 1-ethenyl-3-ethyl- Concentration Rank 2

R.T.	EstConc	Area	Relative to ISTD	R.T.
14.327	20.52 ug/l	3129360	1,4-Dichlorobenzene-d4	13.675

Hit#	of	5	Tentative ID	MW	MolForm	CAS#	Qual
1			Benzene, 1-ethenyl-3-ethyl-	132	C10H12	007525-62-4	87
2			Indan, 1-methyl-	132	C10H12	000767-58-8	87
3			1-Methyl-2-phenylcyclopropane	132	C10H12	003145-76-4	86
4			3-Phenylbut-1-ene	132	C10H12	000934-10-1	80
5			Benzene, (1-methyl-1-propenyl)-,...	132	C10H12	000768-00-3	80



Data Path : Z:\voasrv\HPCHEM1\MSVOA\_N\Data\VN121721\  
 Data File : VN070197.D  
 Acq On : 18 Dec 2021 6:14  
 Operator : JC/MD  
 Sample : M5115-02  
 Misc : 5.00mL/MSVOA\_N/WATER  
 ALS Vial : 47 Sample Multiplier: 1

Instrument :  
 MSVOA\_N  
 ClientSampleId :  
 MW-2R

Quant Method : Z:\voasrv\HPCHEM1\MSVOA\_N\methods\82N120221W.M  
 Quant Title : SW846 8260

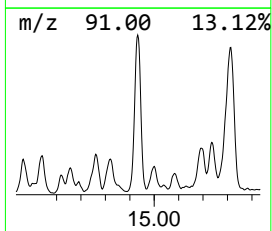
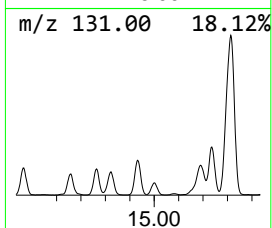
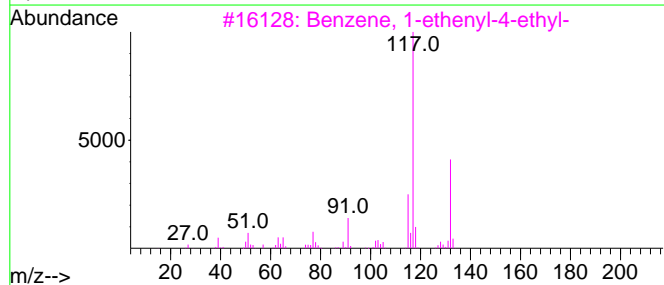
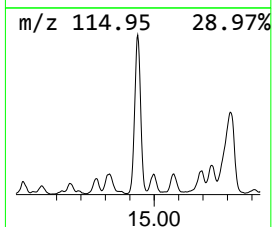
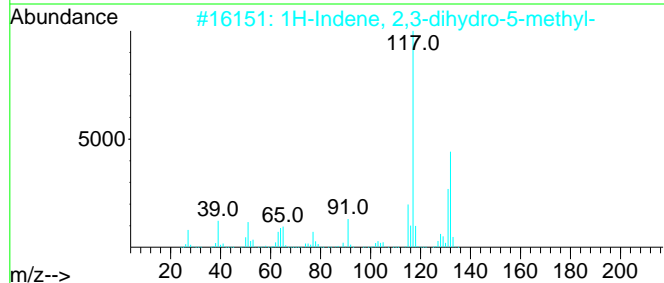
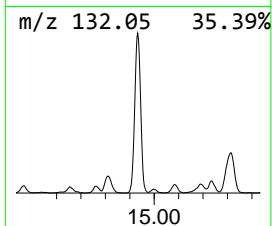
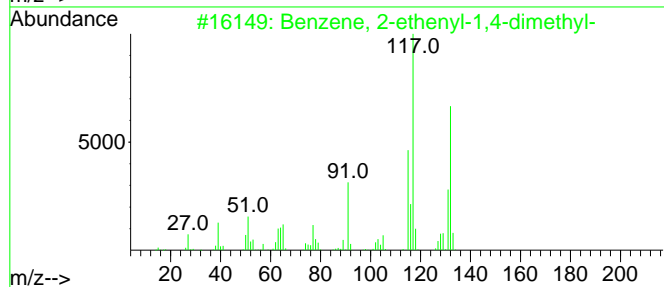
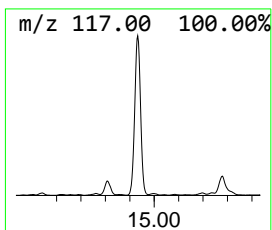
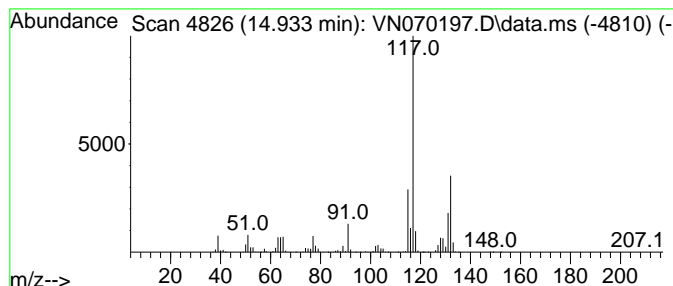
TIC Library : C:\Database\NIST20.L  
 TIC Integration Parameters: LSCINT.P

\*\*\*\*\*  
 Peak Number 5 Benzene, 2-ethenyl-1,4-dime... Concentration Rank 4

R.T.	EstConc	Area	Relative to ISTD	R.T.
14.933	18.50 ug/l	2821670	1,4-Dichlorobenzene-d4	13.675

Hit#	of	Tentative ID	MW	MolForm	CAS#	Qual
1	5	Benzene, 2-ethenyl-1,4-dimethyl-	132	C10H12	002039-89-6	96
2		1H-Indene, 2,3-dihydro-5-methyl-	132	C10H12	000874-35-1	95
3		Benzene, 1-ethenyl-4-ethyl-	132	C10H12	003454-07-7	94
4		3-Phenylbut-1-ene	132	C10H12	000934-10-1	90
5		1-Phenyl-1-butene	132	C10H12	000824-90-8	87





Data Path : Z:\voasrv\HPCHEM1\MSVOA\_N\Data\VN121721\  
 Data File : VN070197.D  
 Acq On : 18 Dec 2021 6:14  
 Operator : JC/MD  
 Sample : M5115-02  
 Misc : 5.00mL/MSVOA\_N/WATER  
 ALS Vial : 47 Sample Multiplier: 1

Instrument :  
 MSVOA\_N  
 ClientSampleId :  
 MW-2R

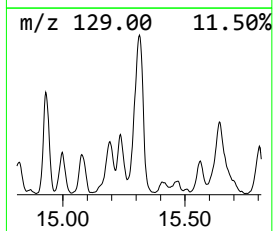
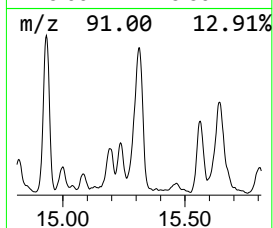
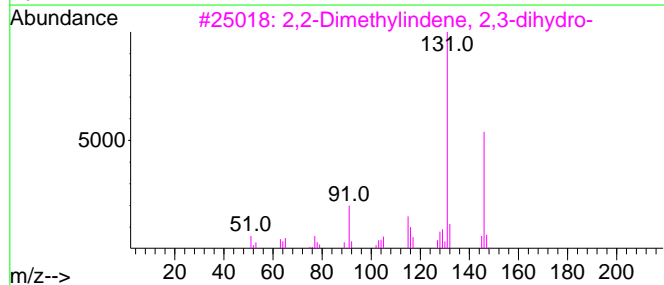
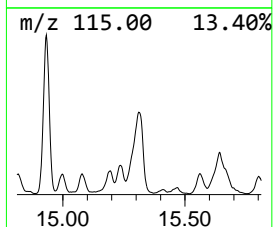
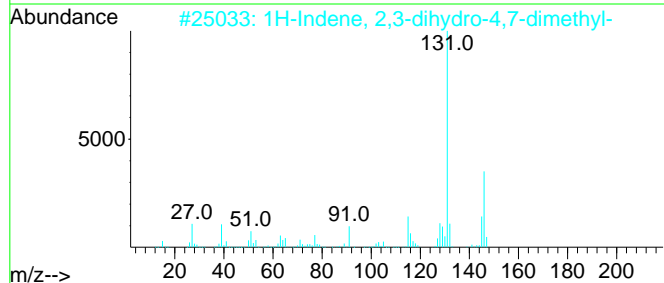
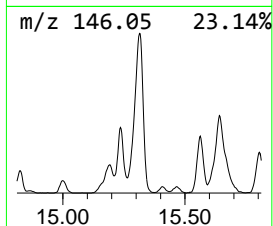
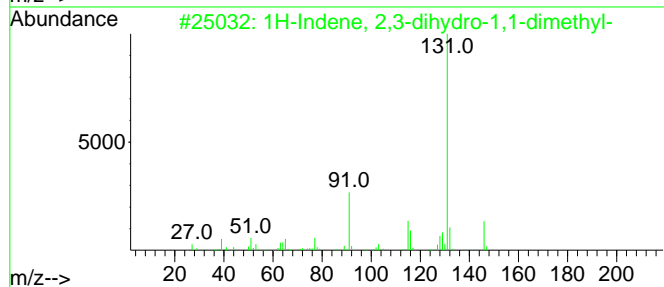
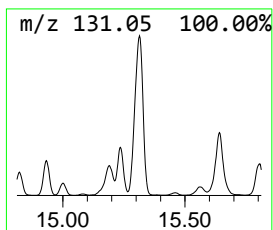
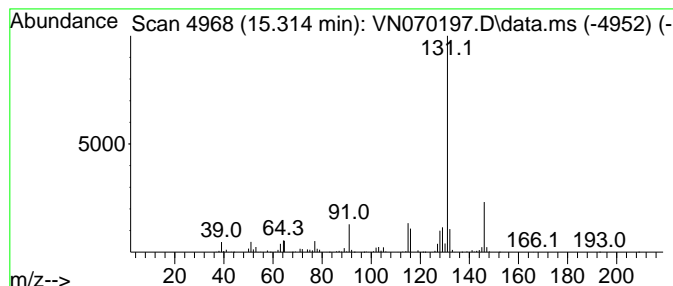
Quant Method : Z:\voasrv\HPCHEM1\MSVOA\_N\methods\82N120221W.M  
 Quant Title : SW846 8260

TIC Library : C:\Database\NIST0.L  
 TIC Integration Parameters: LSCINT.P

\*\*\*\*\*  
 Peak Number 6 1H-Indene, 2,3-dihydro-1,1-... Concentration Rank 3

R.T.	EstConc	Area	Relative to ISTD	R.T.
15.313	18.97 ug/l	2893240	1,4-Dichlorobenzene-d4	13.675

Hit#	of 5	Tentative ID	MW	MolForm	CAS#	Qual
1		1H-Indene, 2,3-dihydro-1,1-dimet...	146	C11H14	004912-92-9	94
2		1H-Indene, 2,3-dihydro-4,7-dimet...	146	C11H14	006682-71-9	91
3		2,2-Dimethylindene, 2,3-dihydro-	146	C11H14	020836-11-7	91
4		1H-Indene, 2,3-dihydro-1,3-dimet...	146	C11H14	004175-53-5	91
5		1H-Indene, 2,3-dihydro-1,6-dimet...	146	C11H14	017059-48-2	91



Data Path : Z:\voasrv\HPCHEM1\MSVOA\_N\Data\VN121721\  
 Data File : VN070197.D  
 Acq On : 18 Dec 2021 6:14  
 Operator : JC/MD  
 Sample : M5115-02  
 Misc : 5.00mL/MSVOA\_N/WATER  
 ALS Vial : 47 Sample Multiplier: 1

Instrument :  
 MSVOA\_N  
 ClientSampleId :  
 MW-2R

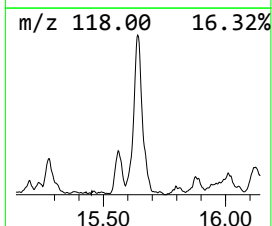
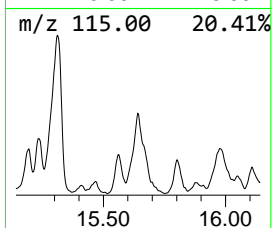
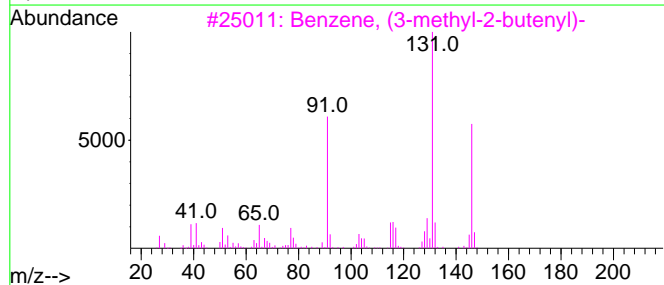
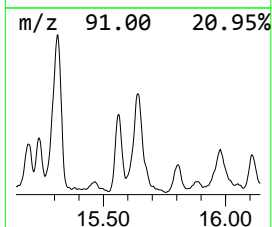
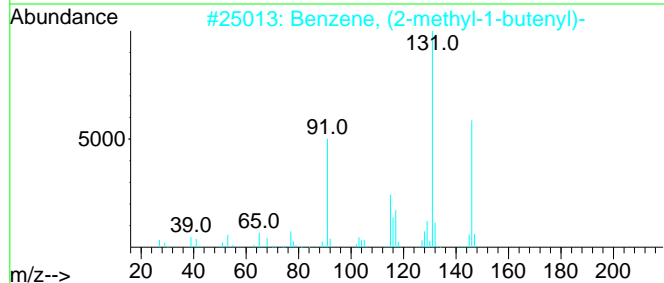
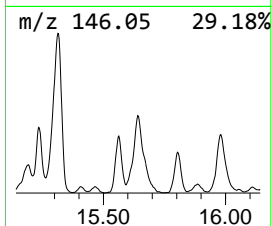
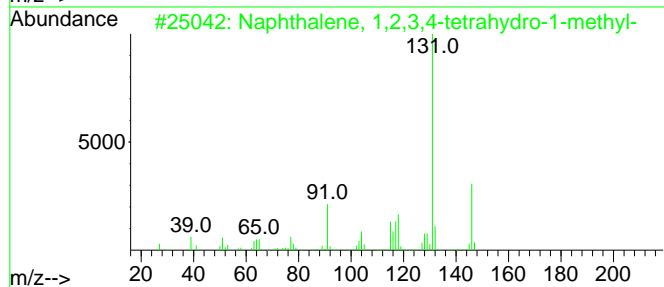
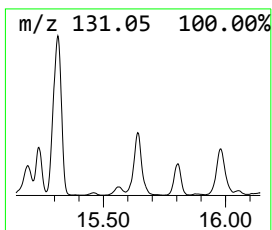
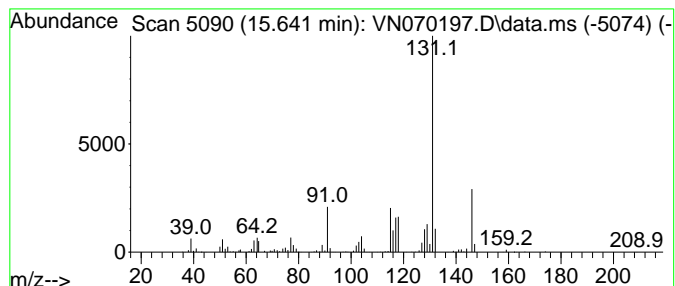
Quant Method : Z:\voasrv\HPCHEM1\MSVOA\_N\methods\82N120221W.M  
 Quant Title : SW846 8260

TIC Library : C:\Database\NIST0.L  
 TIC Integration Parameters: LSCINT.P

\*\*\*\*\*  
 Peak Number 7 Naphthalene, 1,2,3,4-tetra... Concentration Rank 5

R.T.	EstConc	Area	Relative to ISTD	R.T.
15.641	14.51 ug/l	2213040	1,4-Dichlorobenzene-d4	13.675

Hit#	of	5	Tentative ID	MW	MolForm	CAS#	Qual
1			Naphthalene, 1,2,3,4-tetrahydro-...	146	C11H14	001559-81-5	97
2			Benzene, (2-methyl-1-butenyl)-	146	C11H14	056253-64-6	96
3			Benzene, (3-methyl-2-butenyl)-	146	C11H14	004489-84-3	93
4			2,2-Dimethylindene, 2,3-dihydro-	146	C11H14	020836-11-7	93
5			1H-Indene, 2,3-dihydro-4,7-dimet...	146	C11H14	006682-71-9	90



Data Path : Z:\voasrv\HPCHEM1\MSVOA\_N\Data\VN121721\  
 Data File : VN070197.D  
 Acq On : 18 Dec 2021 6:14  
 Operator : JC/MD  
 Sample : M5115-02  
 Misc : 5.00mL/MSVOA\_N/WATER  
 ALS Vial : 47 Sample Multiplier: 1

Instrument :  
 MSVOA\_N  
 ClientSampleId :  
 MW-2R

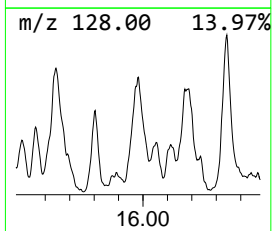
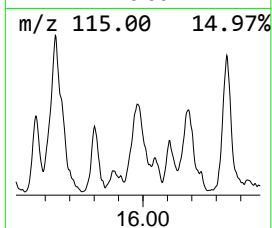
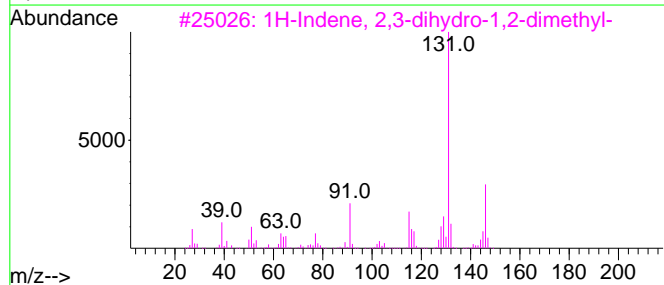
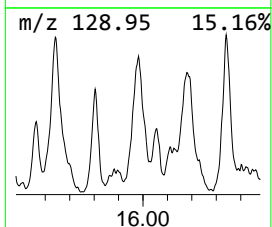
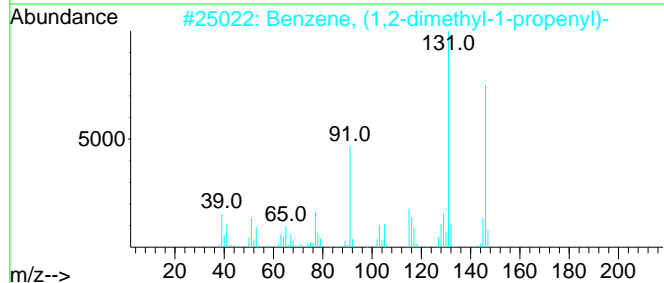
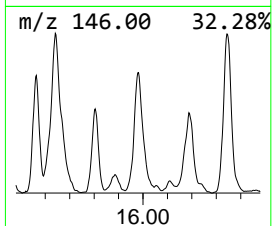
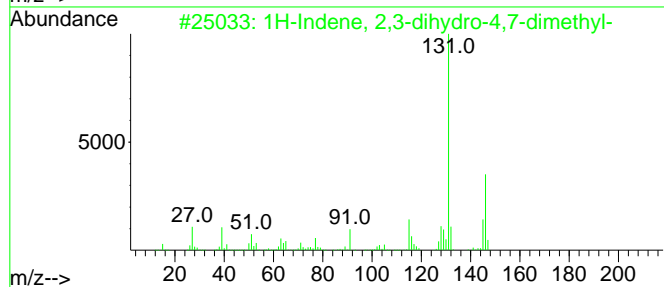
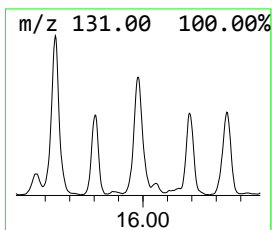
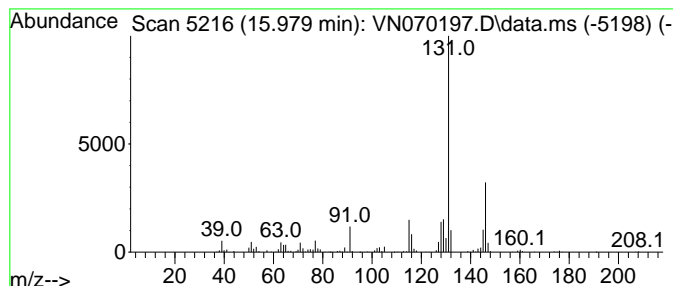
Quant Method : Z:\voasrv\HPCHEM1\MSVOA\_N\methods\82N120221W.M  
 Quant Title : SW846 8260

TIC Library : C:\Database\NIST0.L  
 TIC Integration Parameters: LSCINT.P

\*\*\*\*\*  
 Peak Number 8 1H-Indene, 2,3-dihydro-4,7-... Concentration Rank 8

R.T.	EstConc	Area	Relative to ISTD	R.T.
15.979	6.46 ug/l	984923	1,4-Dichlorobenzene-d4	13.675

Hit#	of	5	Tentative ID	MW	MolForm	CAS#	Qual
1			1H-Indene, 2,3-dihydro-4,7-dimet...	146	C11H14	006682-71-9	97
2			Benzene, (1,2-dimethyl-1-propenyl)-	146	C11H14	000769-57-3	94
3			1H-Indene, 2,3-dihydro-1,2-dimet...	146	C11H14	017057-82-8	94
4			2,2-Dimethylindene, 2,3-dihydro-	146	C11H14	020836-11-7	91
5			1H-Indene, 2,3-dihydro-1,3-dimet...	146	C11H14	004175-53-5	91



Data Path : Z:\voasrv\HPCHEM1\MSVOA\_N\Data\VN121721\  
 Data File : VN070197.D  
 Acq On : 18 Dec 2021 6:14  
 Operator : JC/MD  
 Sample : M5115-02  
 Misc : 5.00mL/MSVOA\_N/WATER  
 ALS Vial : 47 Sample Multiplier: 1

Instrument :  
 MSVOA\_N  
 ClientSampleId :  
 MW-2R

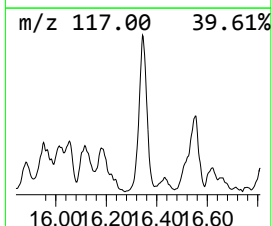
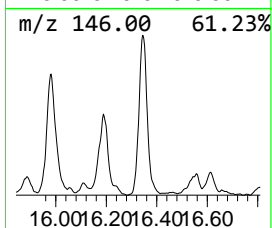
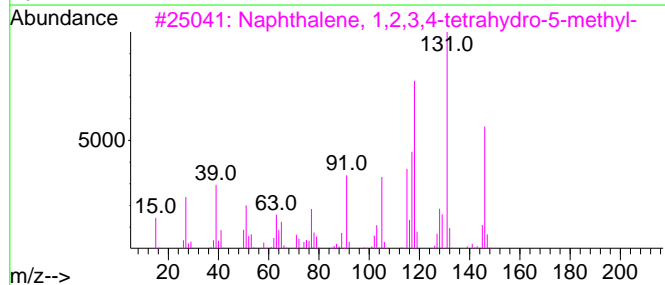
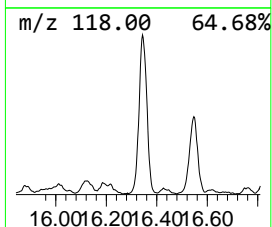
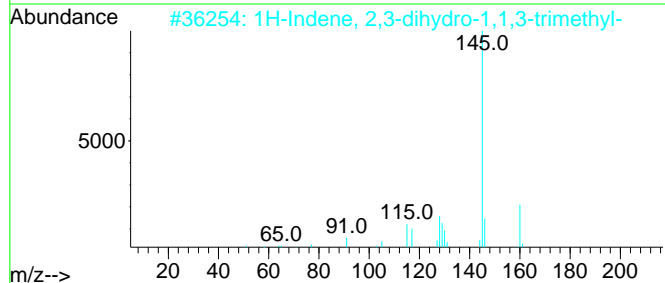
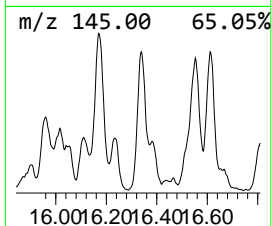
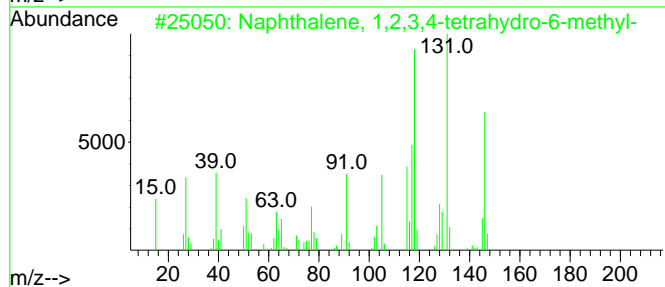
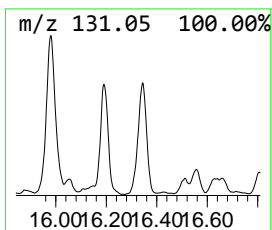
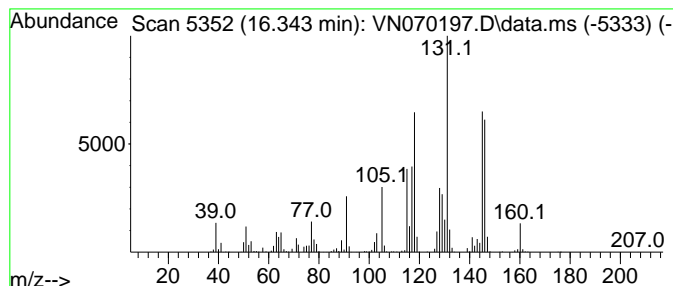
Quant Method : Z:\voasrv\HPCHEM1\MSVOA\_N\methods\82N120221W.M  
 Quant Title : SW846 8260

TIC Library : C:\Database\NIST20.L  
 TIC Integration Parameters: LSCINT.P

\*\*\*\*\*  
 Peak Number 9 Naphthalene, 1,2,3,4-tetra... Concentration Rank 6

R.T.	EstConc	Area	Relative to ISTD	R.T.
16.343	10.16 ug/l	1549070	1,4-Dichlorobenzene-d4	13.675

Hit#	of 5	Tentative ID	MW	MolForm	CAS#	Qual
1		Naphthalene, 1,2,3,4-tetrahydro-...	146	C11H14	001680-51-9	95
2		1H-Indene, 2,3-dihydro-1,1,3-tri...	160	C12H16	002613-76-5	90
3		Naphthalene, 1,2,3,4-tetrahydro-...	146	C11H14	002809-64-5	81
4		2-Propyn-1-ol, 3-(4-methylphenyl)-	146	C10H10O	016017-24-6	76
5		2-Propenal, 2-methyl-3-phenyl-	146	C10H10O	000101-39-3	64



Data Path : Z:\voasrv\HPCHEM1\MSVOA\_N\Data\VN121721\  
 Data File : VN070197.D  
 Acq On : 18 Dec 2021 6:14  
 Operator : JC/MD  
 Sample : M5115-02  
 Misc : 5.00mL/MSVOA\_N/WATER  
 ALS Vial : 47 Sample Multiplier: 1

Instrument :  
 MSVOA\_N  
 ClientSampleId :  
 MW-2R

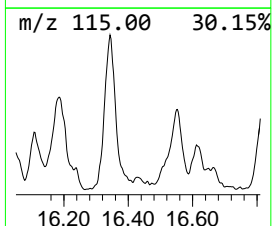
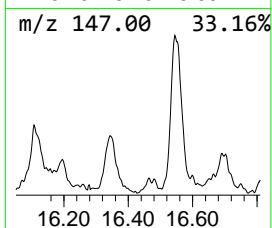
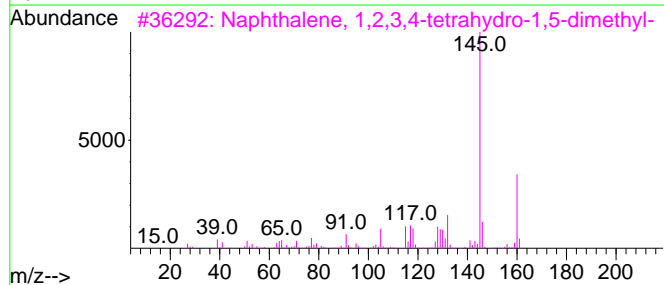
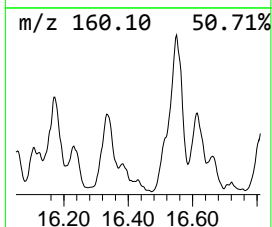
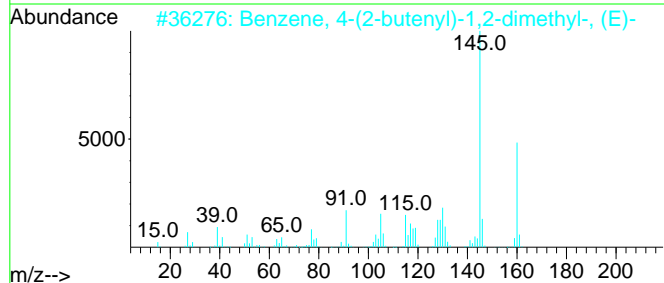
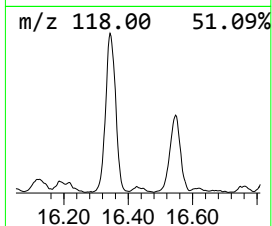
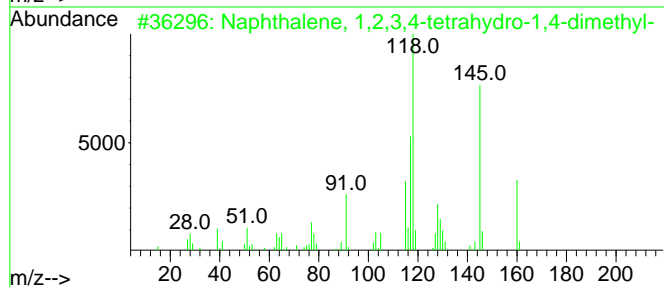
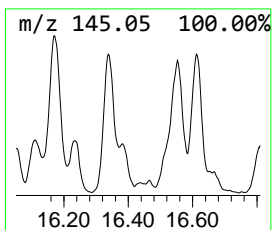
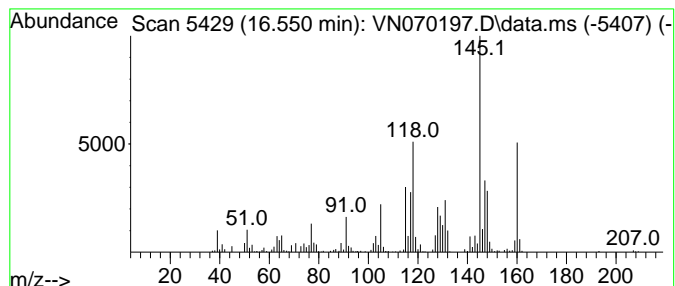
Quant Method : Z:\voasrv\HPCHEM1\MSVOA\_N\methods\82N120221W.M  
 Quant Title : SW846 8260

TIC Library : C:\Database\NIST0.L  
 TIC Integration Parameters: LSCINT.P

\*\*\*\*\*  
 Peak Number 10 Naphthalene, 1,2,3,4-tetra... Concentration Rank 10

R.T.	EstConc	Area	Relative to ISTD	R.T.
16.550	5.85 ug/l	891943	1,4-Dichlorobenzene-d4	13.675

Hit#	of 5	Tentative ID	MW	MolForm	CAS#	Qual
1		Naphthalene, 1,2,3,4-tetrahydro-...	160	C12H16	004175-54-6	94
2		Benzene, 4-(2-butenyl)-1,2-dimet...	160	C12H16	054340-86-2	83
3		Naphthalene, 1,2,3,4-tetrahydro-...	160	C12H16	021564-91-0	70
4		1H-Indene, 2,3-dihydro-1,1,3-tri...	160	C12H16	002613-76-5	70
5		Benzene, 1-(1-methylethenyl)-3-(...	160	C12H16	001129-29-9	60



Data Path : Z:\voasrv\HPCHEM1\MSVOA\_N\Data\VN121721\  
Data File : VN070197.D  
Acq On : 18 Dec 2021 6:14  
Operator : JC/MD  
Sample : M5115-02  
Misc : 5.00mL/MSVOA\_N/WATER  
ALS Vial : 47 Sample Multiplier: 1

Instrument :  
MSVOA\_N  
ClientSampleId :  
MW-2R

Quant Method : Z:\voasrv\HPCHEM1\MSVOA\_N\methods\82N120221W.M  
Quant Title : SW846 8260

TIC Library : C:\Database\NIST0.L  
TIC Integration Parameters: LSCINT.P

TIC Top Hit name	RT	EstConc	Units	Response	--Internal Standard--			
					#	RT	Resp	Conc
Benzene, 1,2-di...	13.839	6.6	ug/l	999702	4	13.675	7624820	50.0
trans-Cinnamyl ...	13.876	64.0	ug/l	9768040	4	13.675	7624820	50.0
1-Methyl-2-phen...	14.278	6.4	ug/l	972217	4	13.675	7624820	50.0
Benzene, 1-ethe...	14.327	20.5	ug/l	3129360	4	13.675	7624820	50.0
Benzene, 2-ethe...	14.933	18.5	ug/l	2821670	4	13.675	7624820	50.0
1H-Indene, 2,3-...	15.313	19.0	ug/l	2893240	4	13.675	7624820	50.0
Naphthalene, 1,...	15.641	14.5	ug/l	2213040	4	13.675	7624820	50.0
1H-Indene, 2,3-...	15.979	6.5	ug/l	984923	4	13.675	7624820	50.0
Naphthalene, 1,...	16.343	10.2	ug/l	1549070	4	13.675	7624820	50.0
Naphthalene, 1,...	16.550	5.8	ug/l	891943	4	13.675	7624820	50.0