

Data Path : Z:\voasrv\HPCHEM1\MSVOA_N\Data\VN121821\
 Data File : VN070207.D
 Acq On : 18 Dec 2021 12:07
 Operator : JC/MD
 Sample : VN1218MBL01
 Misc : 5.00g/10mL/100uL/5.00mL/MSVOA_N/MEOH
 ALS Vial : 3 Sample Multiplier: 1

Instrument :
 MSVOA_N
 ClientSampleId :
 VN1218MBL01

Quant Time: Dec 19 08:42:53 2021
 Quant Method : Z:\voasrv\HPCHEM1\MSVOA_N\methods\82N120221W.M
 Quant Title : SW846 8260
 QLast Update : Fri Dec 03 08:46:47 2021
 Response via : Initial Calibration

Compound	R.T.	QIon	Response	Conc	Units	Dev(Min)
Internal Standards						
1) Pentafluorobenzene	8.086	168	1071680	50.00	ug/l	0.00
34) 1,4-Difluorobenzene	8.968	114	2048544	50.00	ug/l	0.00
63) Chlorobenzene-d5	11.744	117	2348255	50.00	ug/l	0.00
72) 1,4-Dichlorobenzene-d4	13.675	152	939209	50.00	ug/l	0.00
System Monitoring Compounds						
33) 1,2-Dichloroethane-d4	8.437	65	843880	51.00	ug/l	0.00
Spiked Amount	50.000	Range	61 - 141	Recovery	=	102.00%
35) Dibromofluoromethane	8.021	113	600205	46.78	ug/l	0.00
Spiked Amount	50.000	Range	69 - 133	Recovery	=	93.56%
50) Toluene-d8	10.440	98	2703267	52.47	ug/l	0.00
Spiked Amount	50.000	Range	65 - 126	Recovery	=	104.94%
62) 4-Bromofluorobenzene	12.731	95	1153899	61.82	ug/l	0.00
Spiked Amount	50.000	Range	58 - 135	Recovery	=	123.64%

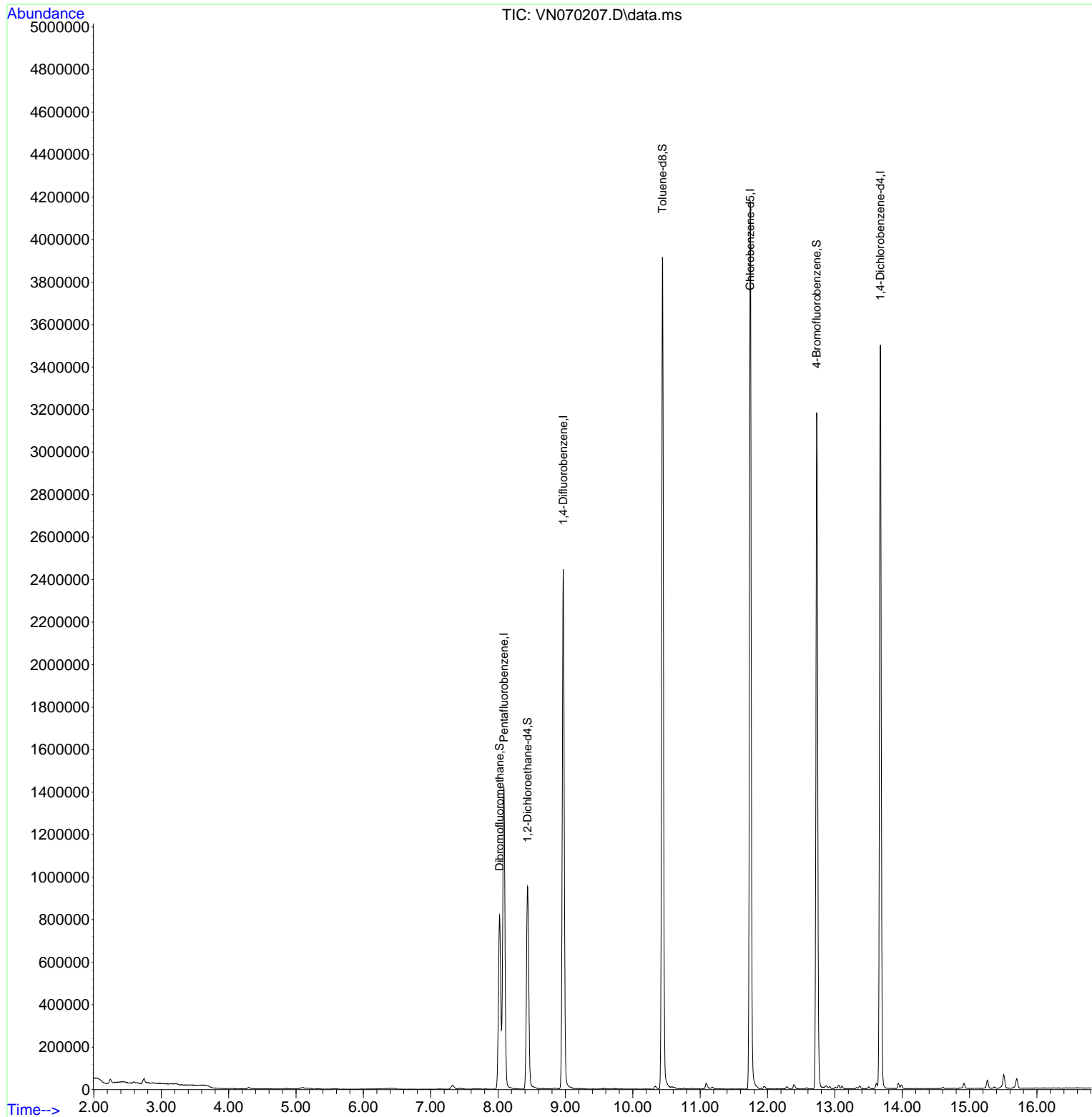
Target Compounds Qvalue

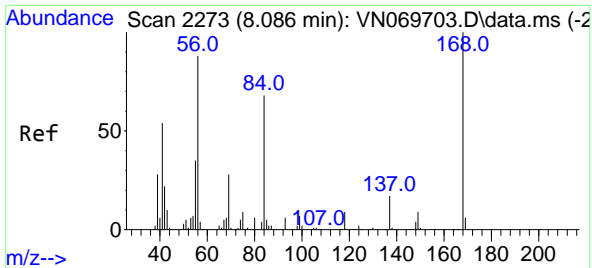
(#) = qualifier out of range (m) = manual integration (+) = signals summed

Data Path : Z:\voasrv\HPCHEM1\MSVOA_N\Data\VN121821\
 Data File : VN070207.D
 Acq On : 18 Dec 2021 12:07
 Operator : JC/MD
 Sample : VN1218MBL01
 Misc : 5.00g/10mL/100uL/5.00mL/MSVOA_N/MEOH
 ALS Vial : 3 Sample Multiplier: 1

Instrument :
 MSVOA_N
 ClientSampleId :
 VN1218MBL01

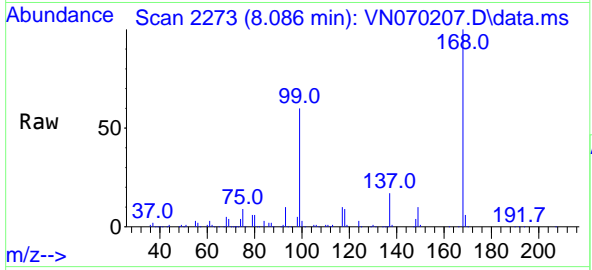
Quant Time: Dec 19 08:42:53 2021
 Quant Method : Z:\voasrv\HPCHEM1\MSVOA_N\methods\82N120221W.M
 Quant Title : SW846 8260
 QLast Update : Fri Dec 03 08:46:47 2021
 Response via : Initial Calibration



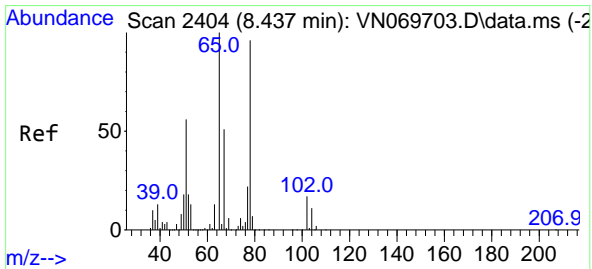
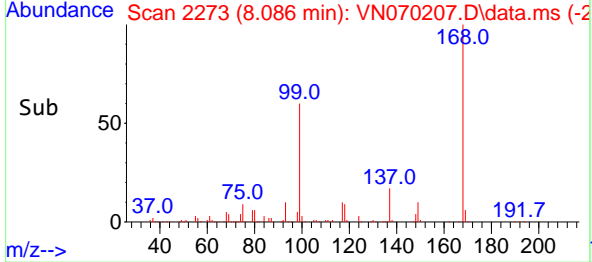
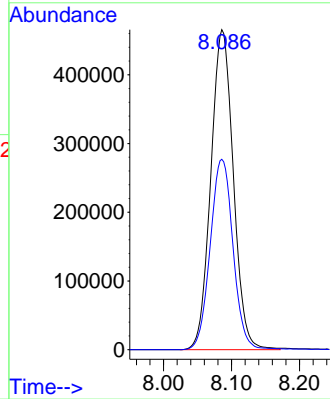


#1
 Pentafluorobenzene
 Concen: 50.00 ug/l
 RT: 8.086 min Scan# 21
 Delta R.T. -0.000 min
 Lab File: VN070207.D
 Acq: 18 Dec 2021 12:07

Instrument :
 MSVOA_N
 ClientSampleId :
 VN1218MBL01

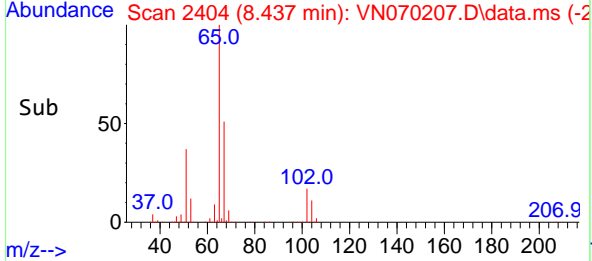
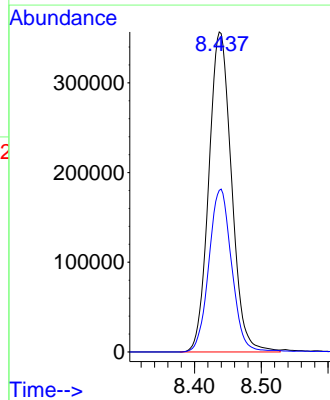
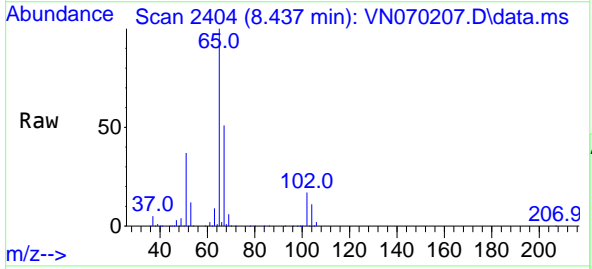


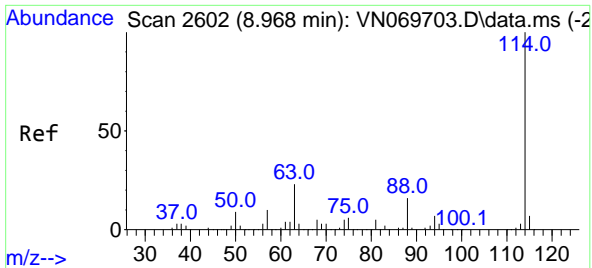
Tgt Ion:168 Resp: 1071680
 Ion Ratio Lower Upper
 168 100
 99 59.5 41.3 61.9



#33
 1,2-Dichloroethane-d4
 Concen: 51.00 ug/l
 RT: 8.437 min Scan# 2404
 Delta R.T. 0.000 min
 Lab File: VN070207.D
 Acq: 18 Dec 2021 12:07

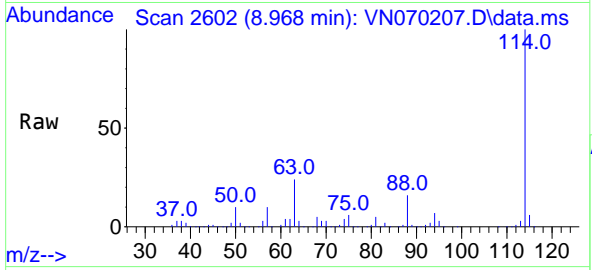
Tgt Ion: 65 Resp: 843880
 Ion Ratio Lower Upper
 65 100
 67 51.2 0.0 103.0



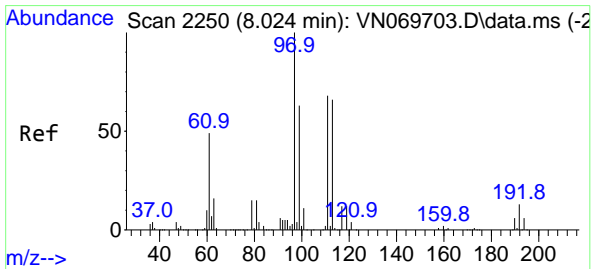
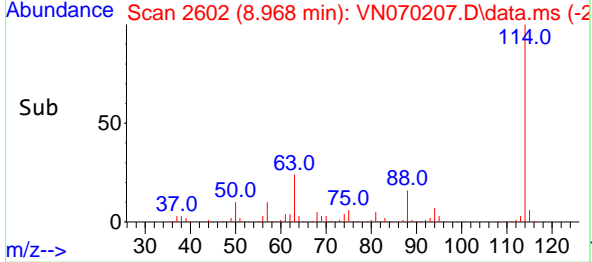
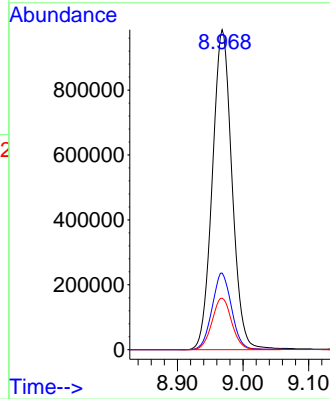


#34
 1,4-Difluorobenzene
 Concen: 50.00 ug/l
 RT: 8.968 min Scan# 20
 Delta R.T. 0.000 min
 Lab File: VN070207.D
 Acq: 18 Dec 2021 12:07

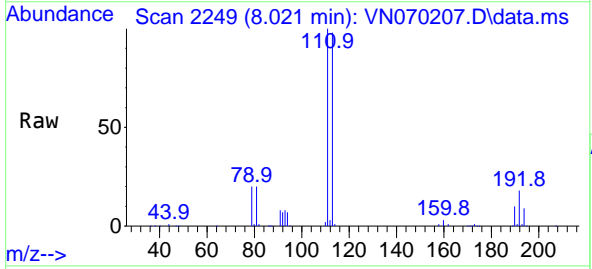
Instrument :
 MSVOA_N
 ClientSampleId :
 VN1218MBL01



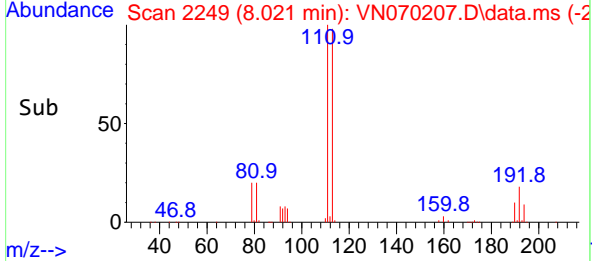
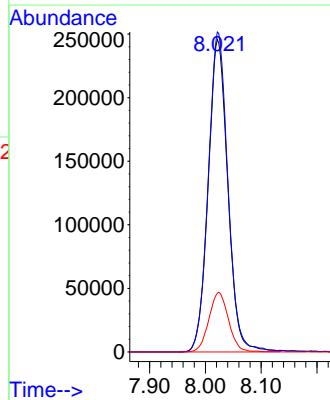
Tgt Ion:114 Resp: 2048544
 Ion Ratio Lower Upper
 114 100
 63 24.0 0.0 37.8
 88 16.1 0.0 27.4

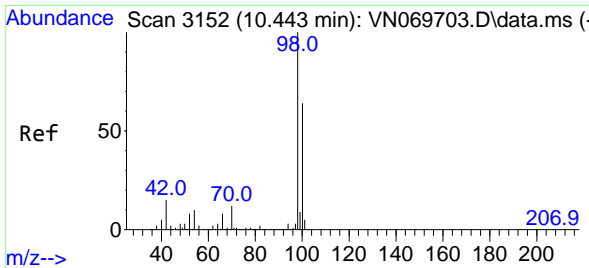


#35
 Dibromofluoromethane
 Concen: 46.78 ug/l
 RT: 8.021 min Scan# 2249
 Delta R.T. -0.003 min
 Lab File: VN070207.D
 Acq: 18 Dec 2021 12:07



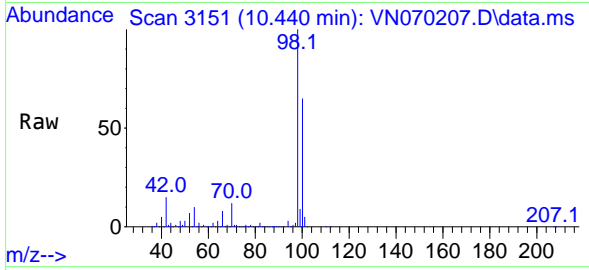
Tgt Ion:113 Resp: 600205
 Ion Ratio Lower Upper
 113 100
 111 102.7 82.2 123.2
 192 19.1 16.9 25.3



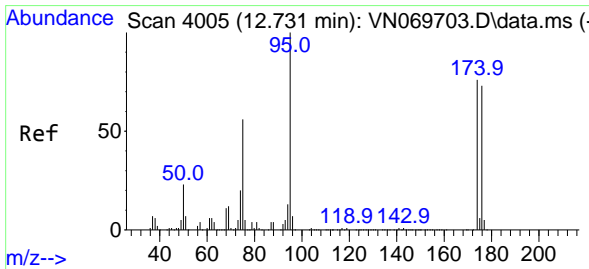
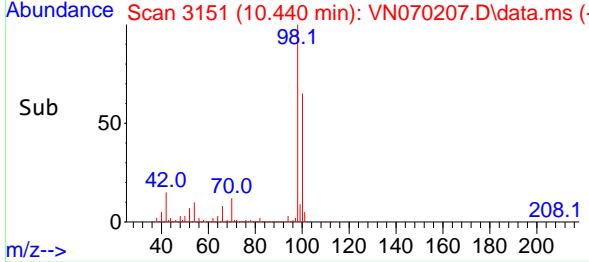
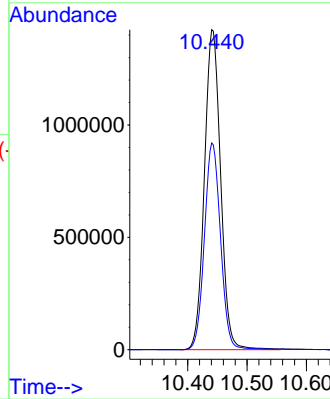


#50
 Toluene-d8
 Concen: 52.47 ug/l
 RT: 10.440 min Scan# 3152
 Delta R.T. -0.002 min
 Lab File: VN070207.D
 Acq: 18 Dec 2021 12:07

Instrument : MSVOA_N
 ClientSampleId : VN1218MBL01

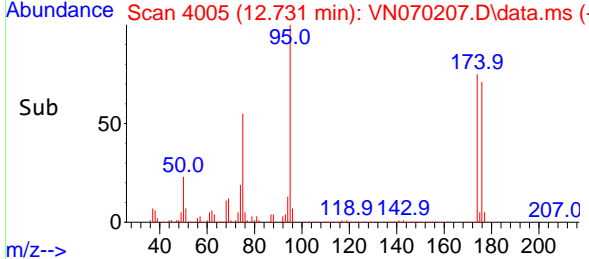
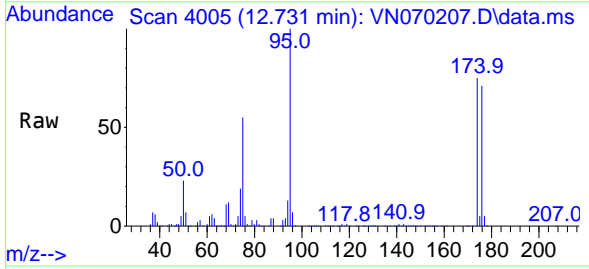
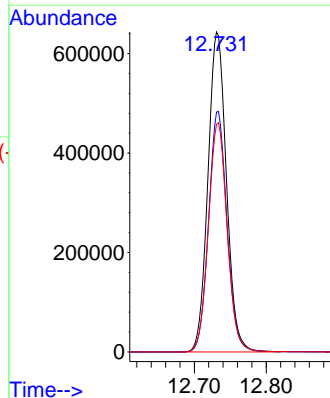


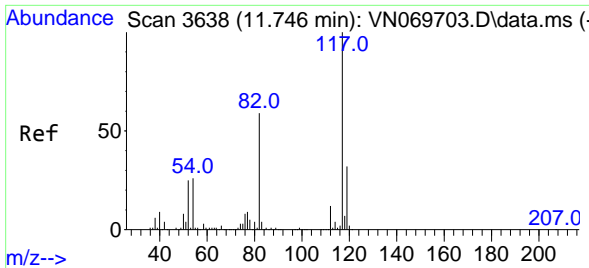
Tgt Ion: 98 Resp: 2703267
 Ion Ratio Lower Upper
 98 100
 100 64.2 50.4 75.6



#62
 4-Bromofluorobenzene
 Concen: 61.82 ug/l
 RT: 12.731 min Scan# 4005
 Delta R.T. -0.000 min
 Lab File: VN070207.D
 Acq: 18 Dec 2021 12:07

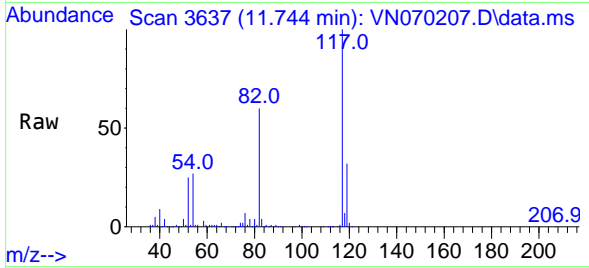
Tgt Ion: 95 Resp: 1153899
 Ion Ratio Lower Upper
 95 100
 174 75.2 0.0 187.2
 176 72.2 0.0 181.4





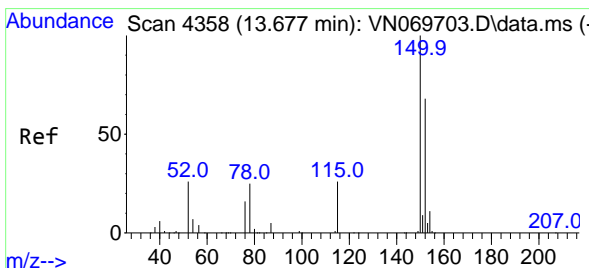
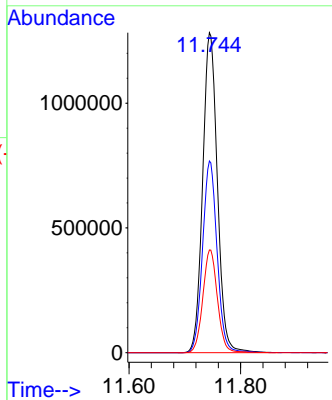
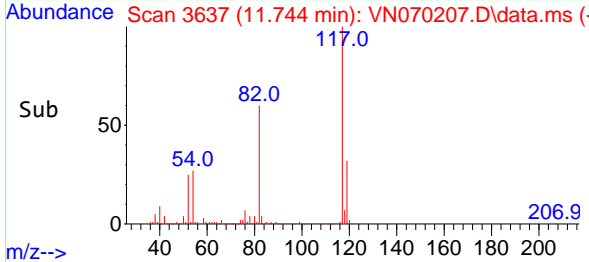
#63
 Chlorobenzene-d5
 Concen: 50.00 ug/l
 RT: 11.744 min Scan# 3637
 Delta R.T. -0.002 min
 Lab File: VN070207.D
 Acq: 18 Dec 2021 12:07

Instrument :
 MSVOA_N
 ClientSampleId :
 VN1218MBL01

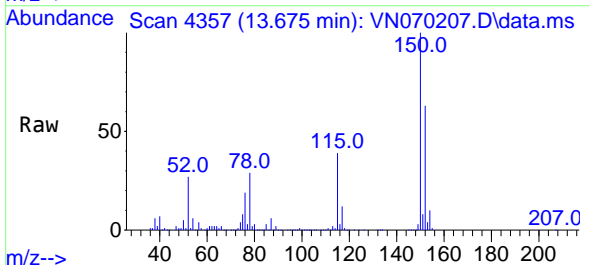


Tgt Ion:117 Resp: 2348255

Ion	Ratio	Lower	Upper
117	100		
82	59.9	42.4	63.6
119	32.1	25.4	38.2



#72
 1,4-Dichlorobenzene-d4
 Concen: 50.00 ug/l
 RT: 13.675 min Scan# 4357
 Delta R.T. -0.002 min
 Lab File: VN070207.D
 Acq: 18 Dec 2021 12:07



Tgt Ion:152 Resp: 939209

Ion	Ratio	Lower	Upper
152	100		
115	61.2	27.5	82.5
150	156.7	0.0	344.4

