

Data Path : Z:\voasrv\HPCHEM1\MSVOA_N\Data\VN121824\
 Data File : VN085254.D
 Acq On : 18 Dec 2024 16:26
 Operator : JC\MD
 Sample : VN1218WBL01
 Misc : 5.0mL/MSVOA_N/WATER
 ALS Vial : 13 Sample Multiplier: 1

Instrument :
 MSVOA_N
 ClientSampleId :

Quant Time: Dec 19 06:45:36 2024
 Quant Method : Z:\voasrv\HPCHEM1\MSVOA_N\methods\82N121824W.M
 Quant Title : SW846 8260
 QLast Update : Thu Dec 19 06:31:00 2024
 Response via : Initial Calibration

Compound	R.T.	QIon	Response	Conc	Units	Dev(Min)

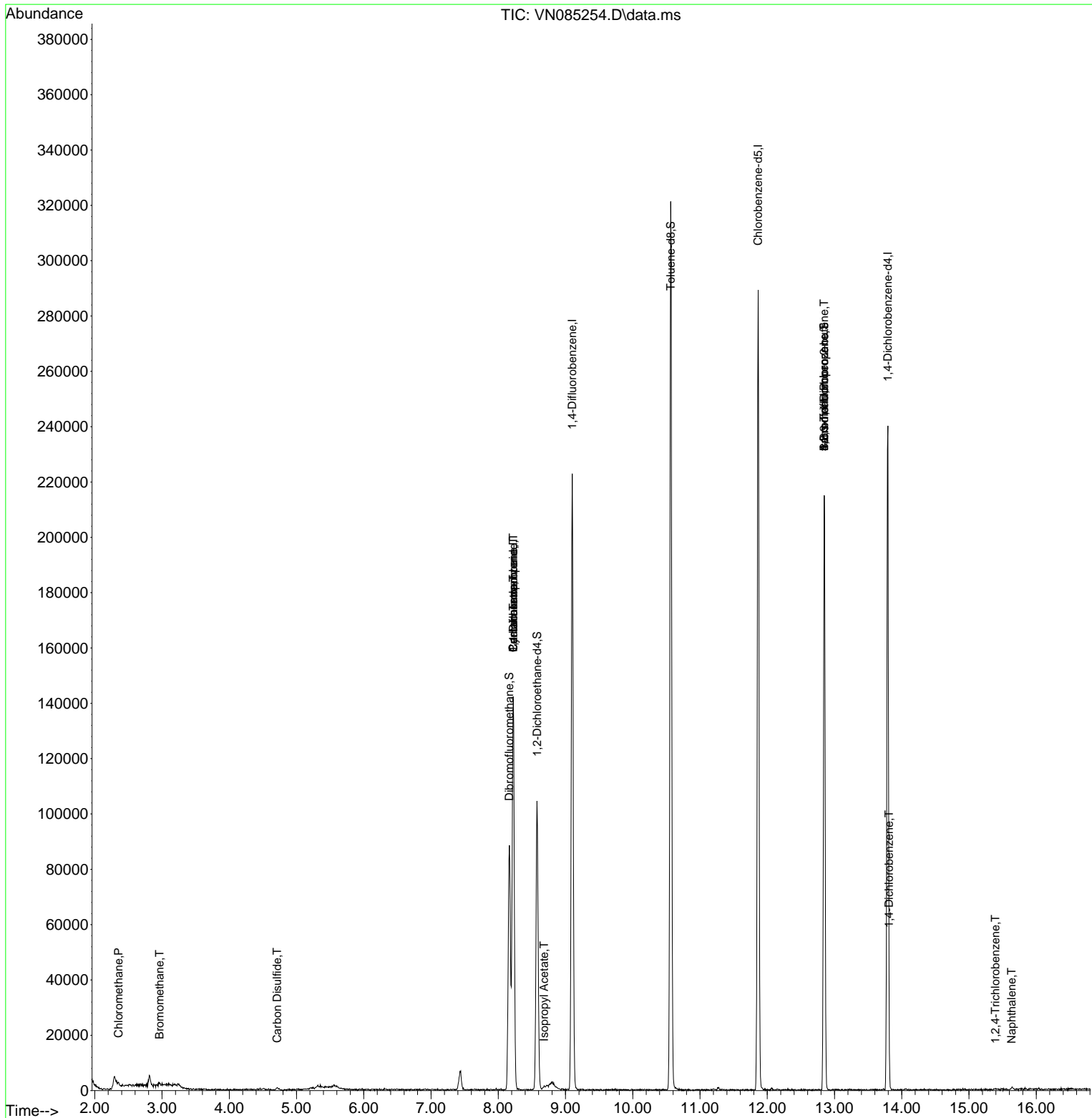
Internal Standards						
1) Pentafluorobenzene	8.224	168	94664	50.000	ug/l	0.00
34) 1,4-Difluorobenzene	9.100	114	169703	50.000	ug/l	0.00
63) Chlorobenzene-d5	11.865	117	150910	50.000	ug/l	0.00
72) 1,4-Dichlorobenzene-d4	13.794	152	59088	50.000	ug/l	0.00
System Monitoring Compounds						
33) 1,2-Dichloroethane-d4	8.577	65	84902	51.313	ug/l	0.00
Spiked Amount	50.000	Range 74 - 125	Recovery	=	102.620%	
35) Dibromofluoromethane	8.165	113	61482	51.531	ug/l	0.00
Spiked Amount	50.000	Range 75 - 124	Recovery	=	103.060%	
50) Toluene-d8	10.565	98	210506	48.273	ug/l	0.00
Spiked Amount	50.000	Range 86 - 113	Recovery	=	96.540%	
62) 4-Bromofluorobenzene	12.847	95	68890	44.230	ug/l	0.00
Spiked Amount	50.000	Range 77 - 121	Recovery	=	88.460%	
Target Compounds						
						Qvalue
3) Chloromethane	2.353	50	484	0.337	ug/l #	42
5) Bromomethane	2.965	94	602	0.681	ug/l #	56
6) Chloroethane	3.112	64	407	Below Cal	#	42
17) Carbon Disulfide	4.712	76	799	0.217	ug/l #	76
31) Cyclohexane	8.224	56	2589	1.209	ug/l #	1
36) 1,1-Dichloropropene	8.224	75	9485	5.709	ug/l #	50
38) Carbon Tetrachloride	8.224	117	11178	5.565	ug/l #	17
43) Isopropyl Acetate	8.682	43	845	0.241	ug/l #	58
71) Bromoform	12.847	173	611	0.659	ug/l #	28
76) 1,2,3-Trichloropropane	12.847	75	40198	28.540	ug/l #	1
81) trans-1,4-Dichloro-2-b...	12.847	75	40198	75.784	ug/l #	7
88) 1,4-Dichlorobenzene	13.812	146	486	0.228	ug/l #	46
93) 1,2,4-Trichlorobenzene	15.394	180	205	0.209	ug/l #	13
95) Naphthalene	15.635	128	1293	0.398	ug/l #	69

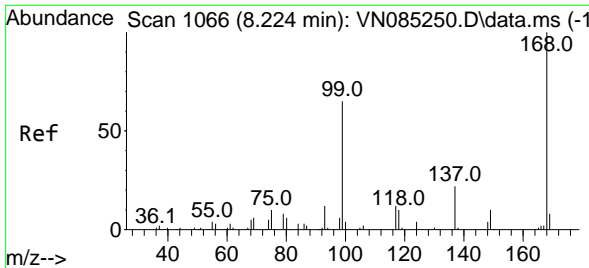
(#) = qualifier out of range (m) = manual integration (+) = signals summed

Data Path : Z:\voasrv\HPCHEM1\MSVOA_N\Data\VN121824\
 Data File : VN085254.D
 Acq On : 18 Dec 2024 16:26
 Operator : JC\MD
 Sample : VN1218WBL01
 Misc : 5.0mL/MSVOA_N/WATER
 ALS Vial : 13 Sample Multiplier: 1

Instrument :
 MSVOA_N
 ClientSampleId :

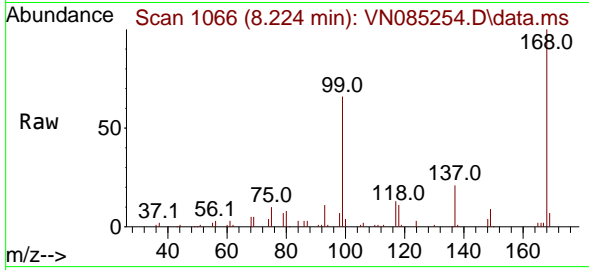
Quant Time: Dec 19 06:45:36 2024
 Quant Method : Z:\voasrv\HPCHEM1\MSVOA_N\methods\82N121824W.M
 Quant Title : SW846 8260
 QLast Update : Thu Dec 19 06:31:00 2024
 Response via : Initial Calibration



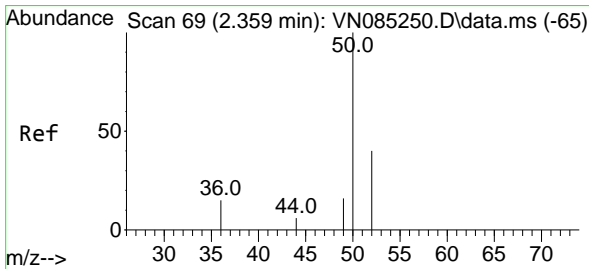
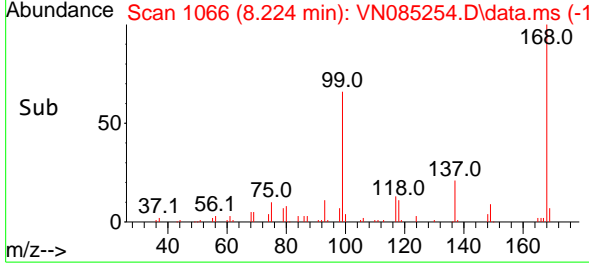
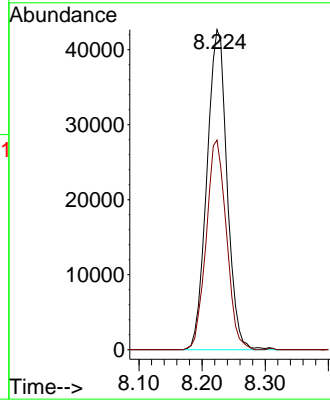


#1
 Pentafluorobenzene
 Concen: 50.000 ug/l
 RT: 8.224 min Scan# 10
 Delta R.T. 0.006 min
 Lab File: VN085254.D
 Acq: 18 Dec 2024 16:26

Instrument :
 MSVOA_N
 ClientSampleId :

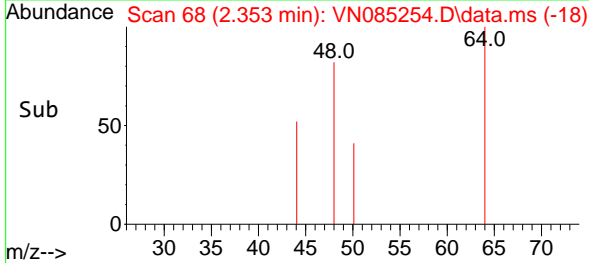
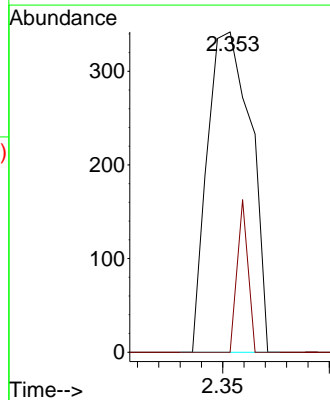
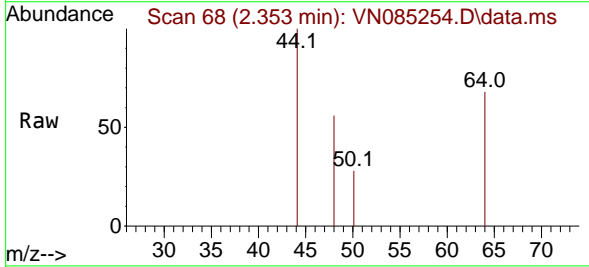


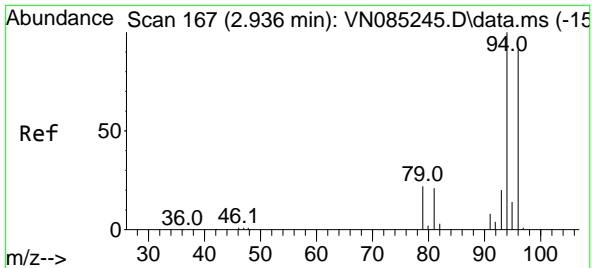
Tgt Ion:168 Resp: 94664
 Ion Ratio Lower Upper
 168 100
 99 65.5 50.7 76.1



#3
 Chloromethane
 Concen: 0.337 ug/l
 RT: 2.353 min Scan# 68
 Delta R.T. -0.006 min
 Lab File: VN085254.D
 Acq: 18 Dec 2024 16:26

Tgt Ion: 50 Resp: 484
 Ion Ratio Lower Upper
 50 100
 52 0.0 26.2 39.2#

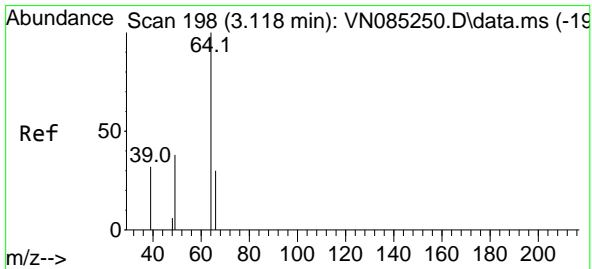
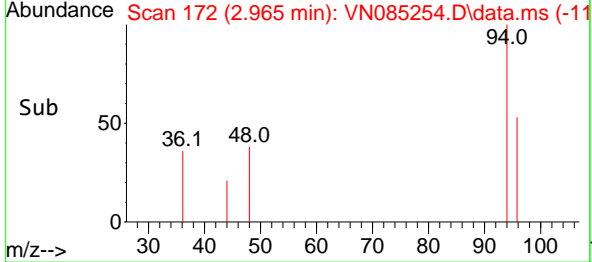
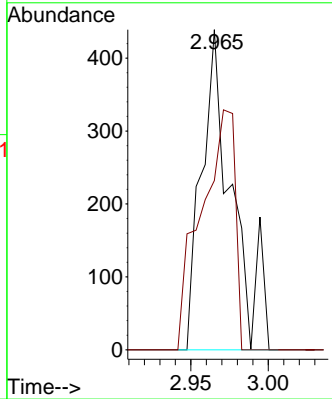
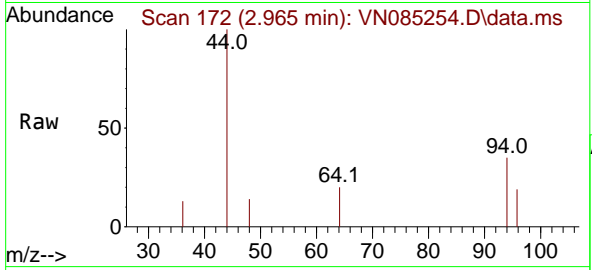




#5
 Bromomethane
 Concen: 0.681 ug/l
 RT: 2.965 min Scan# 11
 Delta R.T. 0.017 min
 Lab File: VN085254.D
 Acq: 18 Dec 2024 16:26

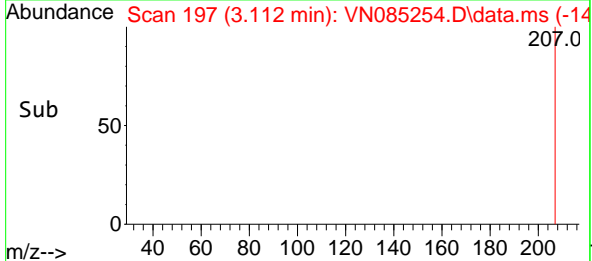
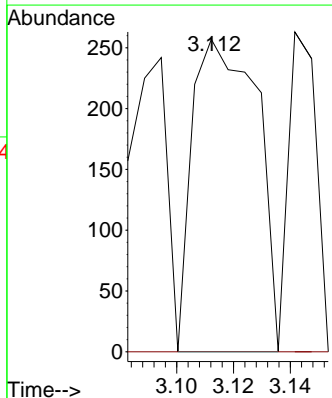
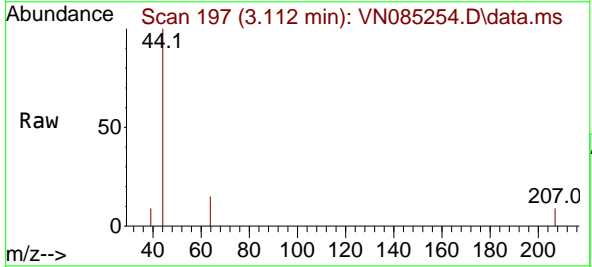
Instrument :
 MSVOA_N
 ClientSampleId :

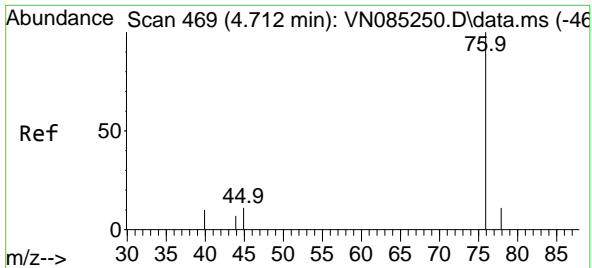
Tgt Ion: 94 Resp: 602
 Ion Ratio Lower Upper
 94 100
 96 52.8 76.8 115.2#



#6
 Chloroethane
 Concen: Below Cal
 RT: 3.112 min Scan# 197
 Delta R.T. 0.000 min
 Lab File: VN085254.D
 Acq: 18 Dec 2024 16:26

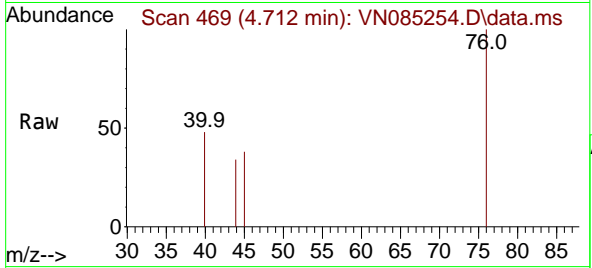
Tgt Ion: 64 Resp: 407
 Ion Ratio Lower Upper
 64 100
 66 0.0 26.3 39.5#



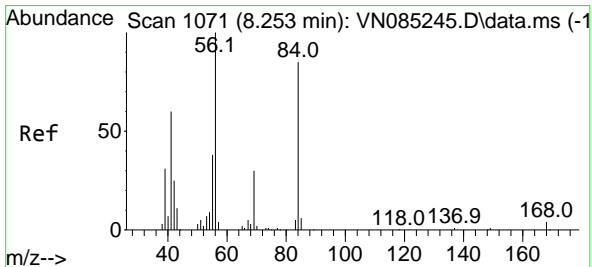
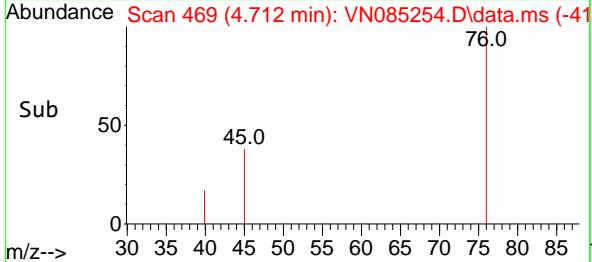
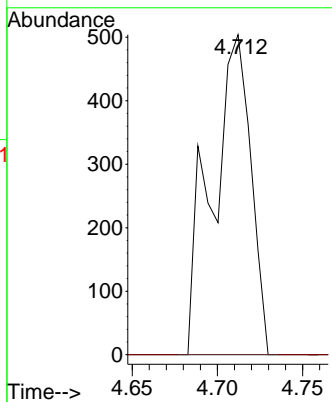


#17
 Carbon Disulfide
 Concen: 0.217 ug/l
 RT: 4.712 min Scan# 40
 Delta R.T. -0.000 min
 Lab File: VN085254.D
 Acq: 18 Dec 2024 16:26

Instrument : MSVOA_N
 ClientSampleId :

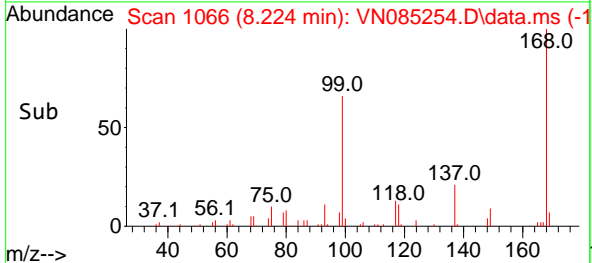
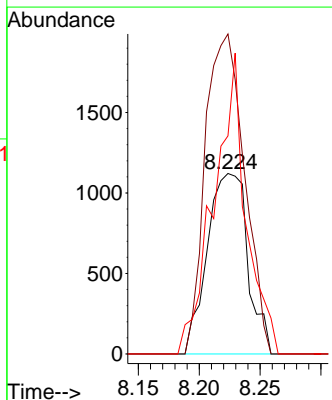
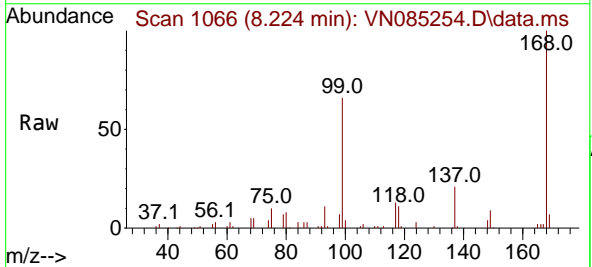


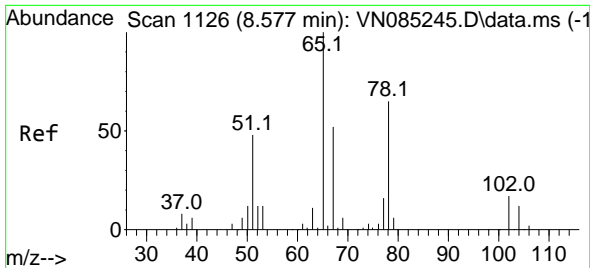
Tgt Ion: 76 Resp: 799
 Ion Ratio Lower Upper
 76 100
 78 0.0 6.8 10.2#



#31
 Cyclohexane
 Concen: 1.209 ug/l
 RT: 8.224 min Scan# 1066
 Delta R.T. -0.030 min
 Lab File: VN085254.D
 Acq: 18 Dec 2024 16:26

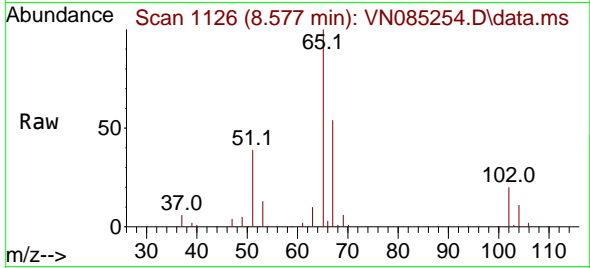
Tgt Ion: 56 Resp: 2589
 Ion Ratio Lower Upper
 56 100
 69 177.3 23.6 35.4#
 84 120.9 66.6 99.8#



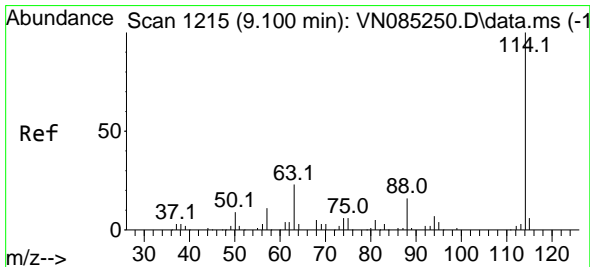
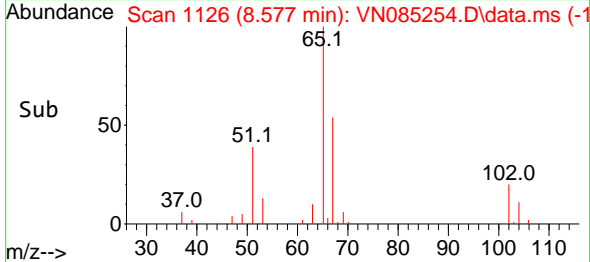
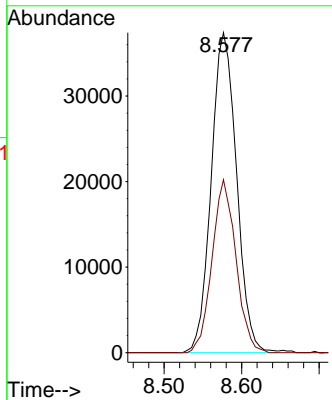


#33
 1,2-Dichloroethane-d4
 Concen: 51.313 ug/l
 RT: 8.577 min Scan# 1126
 Delta R.T. -0.000 min
 Lab File: VN085254.D
 Acq: 18 Dec 2024 16:26

Instrument : MSVOA_N
 ClientSampleId :

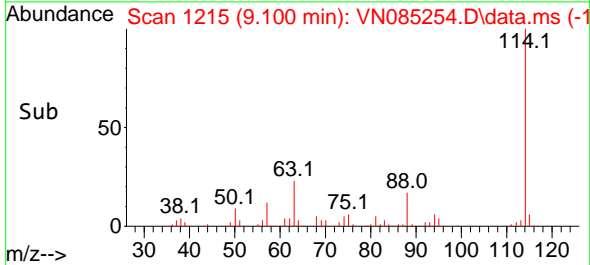
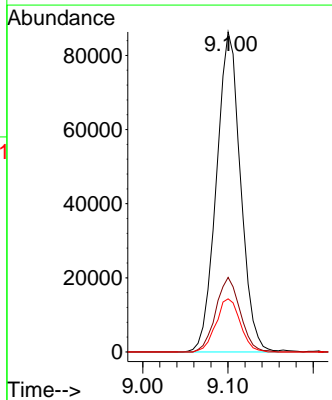
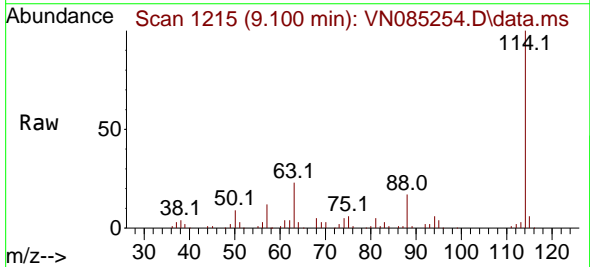


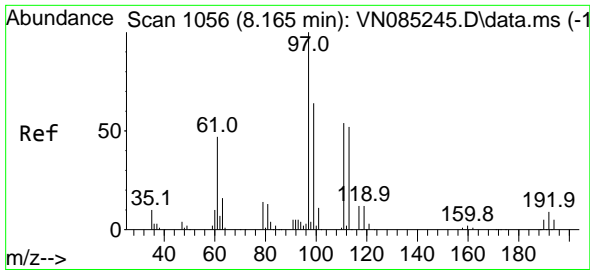
Tgt Ion: 65 Resp: 84902
 Ion Ratio Lower Upper
 65 100
 67 51.0 0.0 102.2



#34
 1,4-Difluorobenzene
 Concen: 50.000 ug/l
 RT: 9.100 min Scan# 1215
 Delta R.T. -0.000 min
 Lab File: VN085254.D
 Acq: 18 Dec 2024 16:26

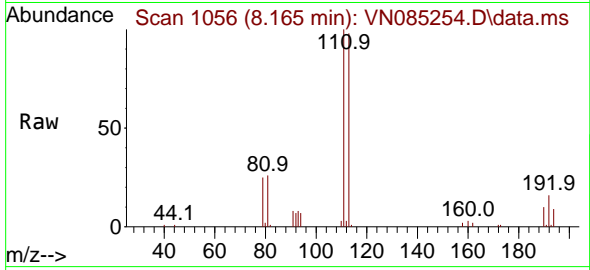
Tgt Ion: 114 Resp: 169703
 Ion Ratio Lower Upper
 114 100
 63 23.3 0.0 46.2
 88 16.6 0.0 32.6



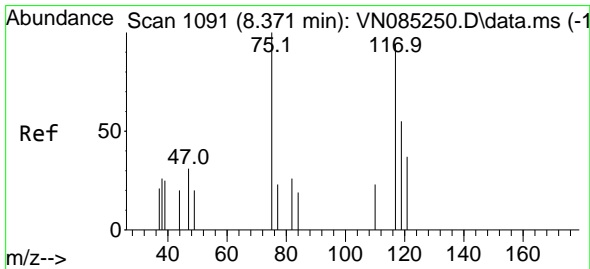
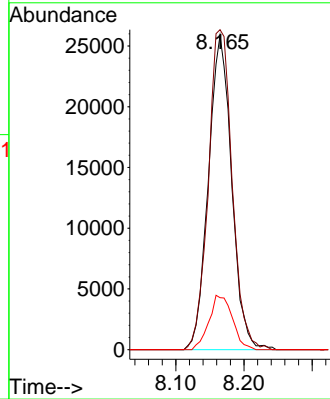
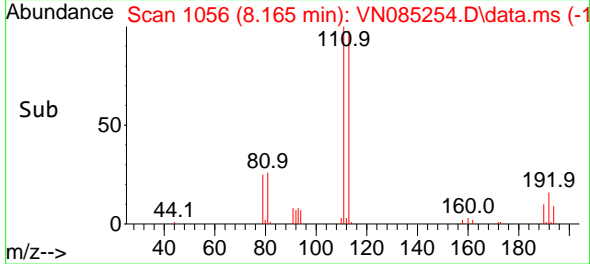


#35
 Dibromofluoromethane
 Concen: 51.531 ug/l
 RT: 8.165 min Scan# 1056
 Delta R.T. -0.000 min
 Lab File: VN085254.D
 Acq: 18 Dec 2024 16:26

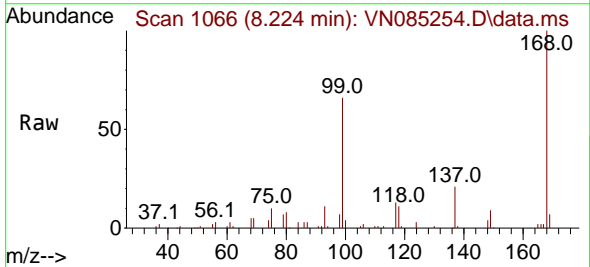
Instrument : MSVOA_N
 ClientSampleId :



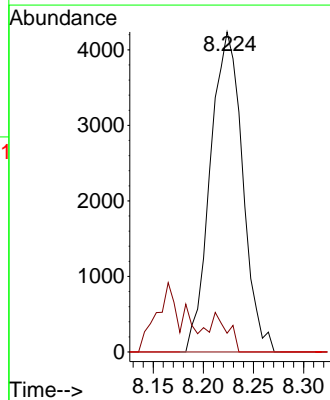
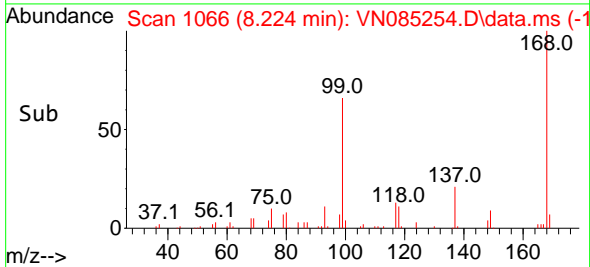
Tgt Ion:113 Resp: 61482
 Ion Ratio Lower Upper
 113 100
 111 104.4 82.1 123.1
 192 17.4 13.4 20.0

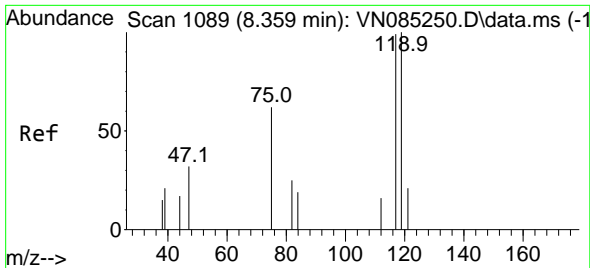


#36
 1,1-Dichloropropene
 Concen: 5.709 ug/l
 RT: 8.224 min Scan# 1066
 Delta R.T. -0.141 min
 Lab File: VN085254.D
 Acq: 18 Dec 2024 16:26



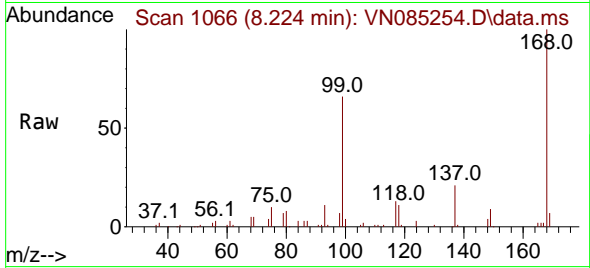
Tgt Ion: 75 Resp: 9485
 Ion Ratio Lower Upper
 75 100
 110 7.8 16.0 48.0#
 77 0.0 24.6 36.8#





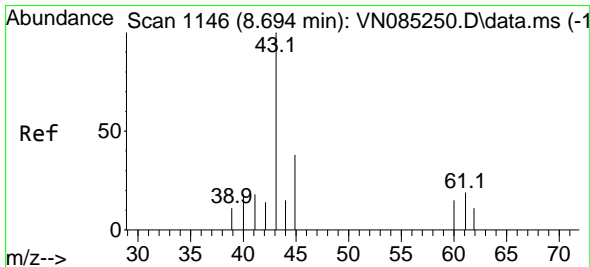
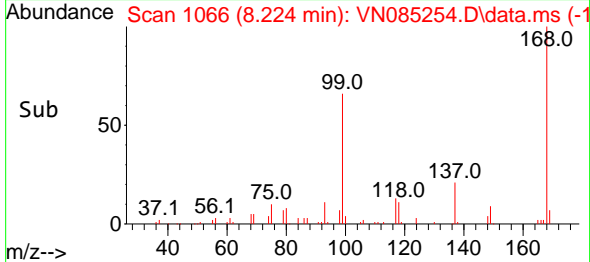
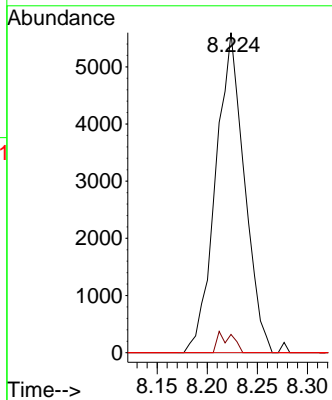
#38
 Carbon Tetrachloride
 Concen: 5.565 ug/l
 RT: 8.224 min Scan# 1066
 Delta R.T. -0.135 min
 Lab File: VN085254.D
 Acq: 18 Dec 2024 16:26

Instrument : MSVOA_N
 ClientSampleId :



Tgt Ion: 117 Resp: 11178

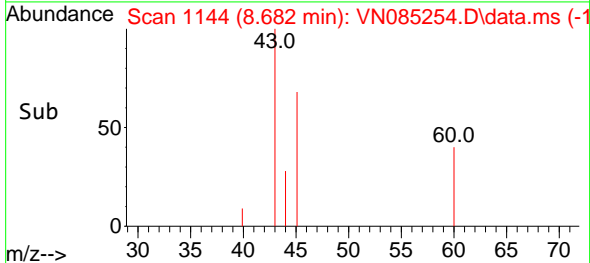
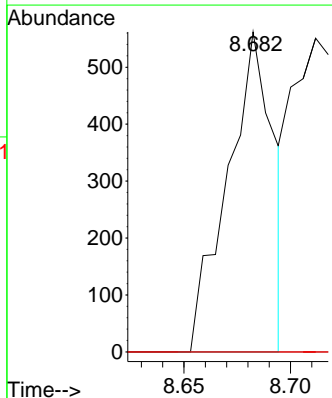
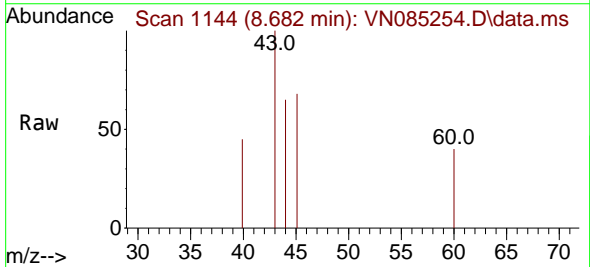
Ion	Ratio	Lower	Upper
117	100		
119	5.7	74.8	112.2#
121	0.0	24.2	36.4#

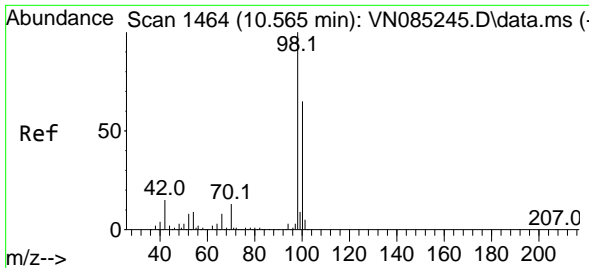


#43
 Isopropyl Acetate
 Concen: 0.241 ug/l
 RT: 8.682 min Scan# 1144
 Delta R.T. -0.000 min
 Lab File: VN085254.D
 Acq: 18 Dec 2024 16:26

Tgt Ion: 43 Resp: 845

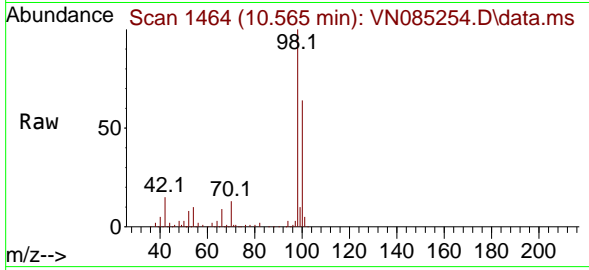
Ion	Ratio	Lower	Upper
43	100		
61	0.0	19.0	28.4#
87	0.0	9.3	13.9#



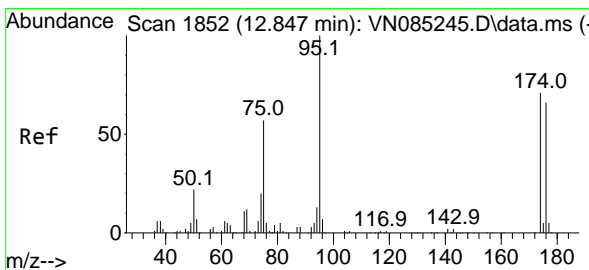
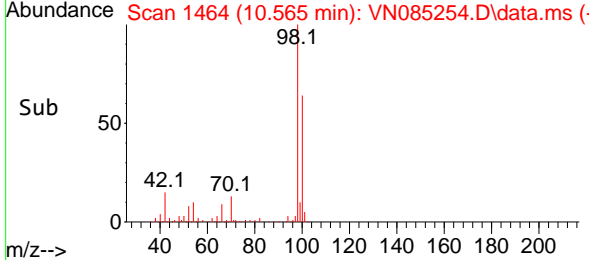
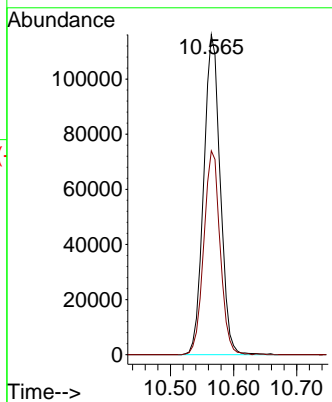


#50
 Toluene-d8
 Concen: 48.273 ug/l
 RT: 10.565 min Scan# 1464
 Delta R.T. -0.000 min
 Lab File: VN085254.D
 Acq: 18 Dec 2024 16:26

Instrument : MSVOA_N
 ClientSampleId :

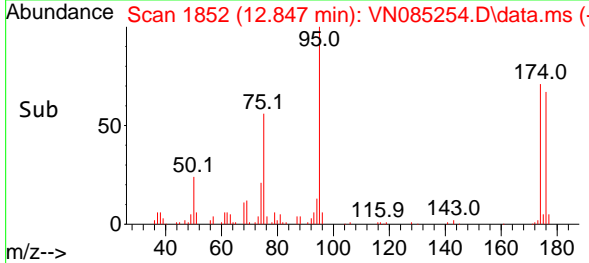
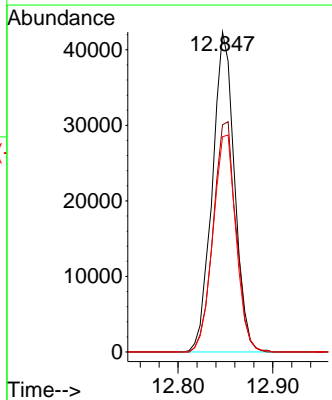
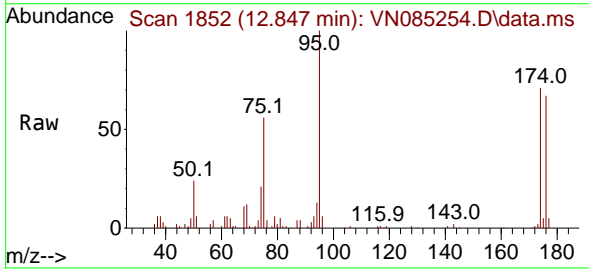


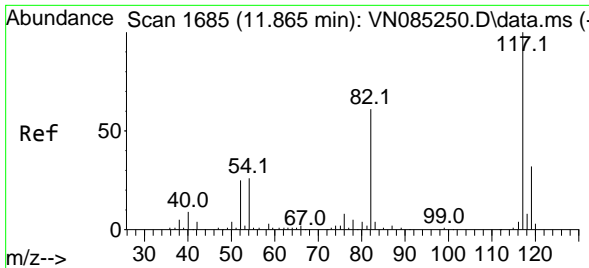
Tgt Ion: 98 Resp: 210506
 Ion Ratio Lower Upper
 98 100
 100 63.0 51.6 77.4



#62
 4-Bromofluorobenzene
 Concen: 44.230 ug/l
 RT: 12.847 min Scan# 1852
 Delta R.T. -0.000 min
 Lab File: VN085254.D
 Acq: 18 Dec 2024 16:26

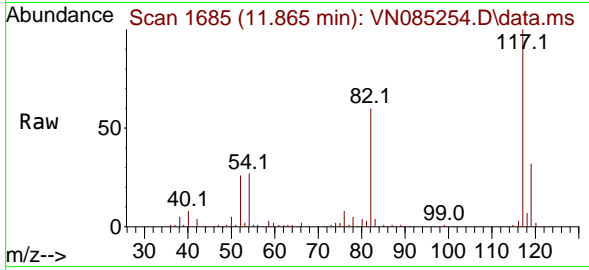
Tgt Ion: 95 Resp: 68890
 Ion Ratio Lower Upper
 95 100
 174 74.1 0.0 144.4
 176 70.7 0.0 136.6





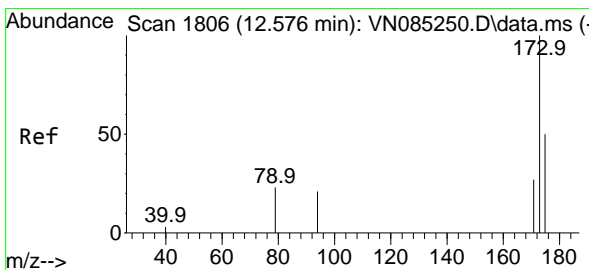
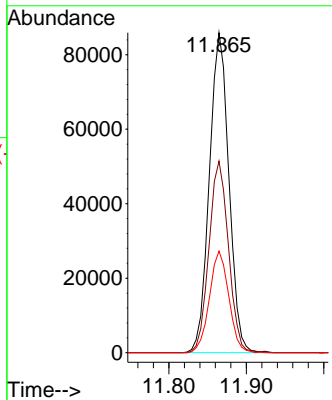
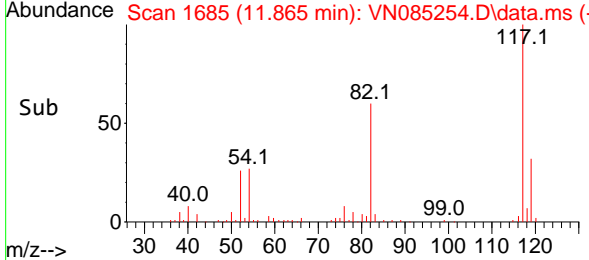
#63
 Chlorobenzene-d5
 Concen: 50.000 ug/l
 RT: 11.865 min Scan# 117
 Delta R.T. -0.000 min
 Lab File: VN085254.D
 Acq: 18 Dec 2024 16:26

Instrument : MSVOA_N
 ClientSampleId :

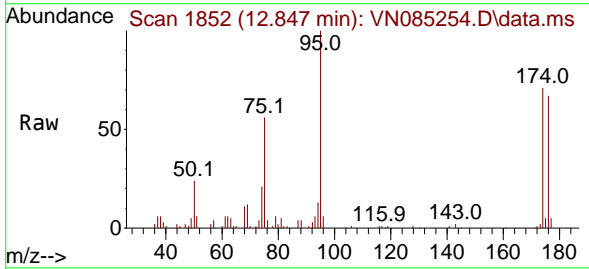


Tgt Ion:117 Resp: 150910

Ion	Ratio	Lower	Upper
117	100		
82	59.9	47.4	71.2
119	31.7	25.6	38.4

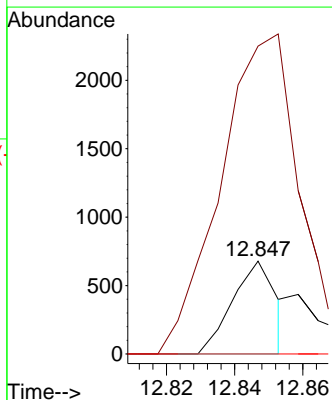
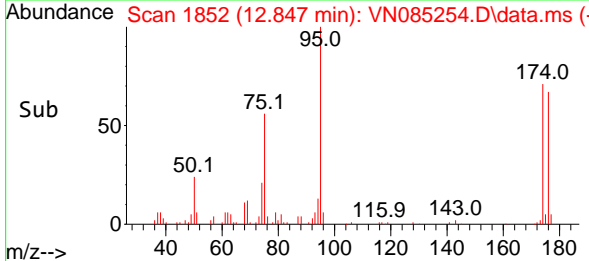


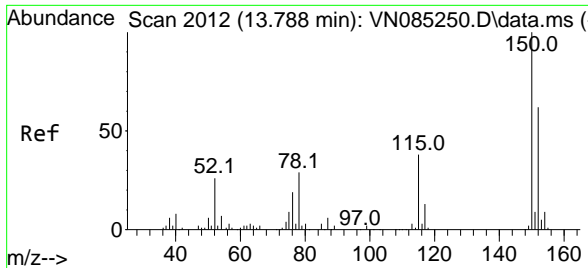
#71
 Bromoform
 Concen: 0.659 ug/l
 RT: 12.847 min Scan# 1852
 Delta R.T. 0.270 min
 Lab File: VN085254.D
 Acq: 18 Dec 2024 16:26



Tgt Ion:173 Resp: 611

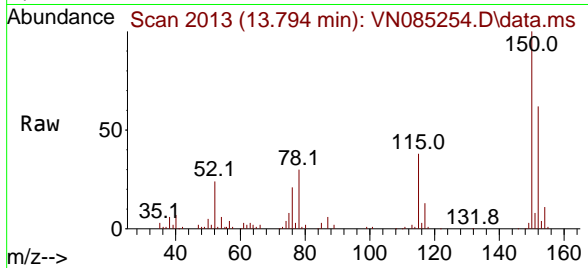
Ion	Ratio	Lower	Upper
173	100		
175	0.0	24.5	73.5#
254	0.0	0.0	0.0



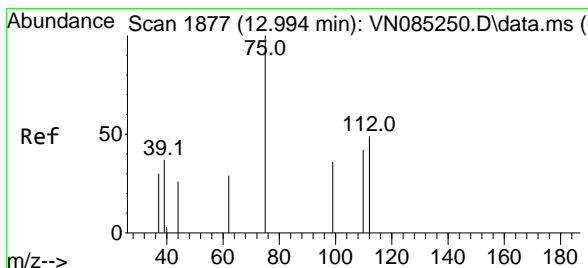
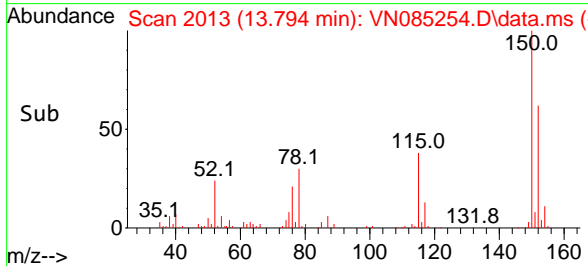
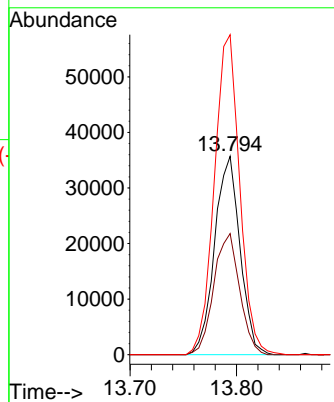


#72
 1,4-Dichlorobenzene-d4
 Concen: 50.000 ug/l
 RT: 13.794 min Scan# 20
 Delta R.T. 0.006 min
 Lab File: VN085254.D
 Acq: 18 Dec 2024 16:26

Instrument :
 MSVOA_N
 ClientSampleId :

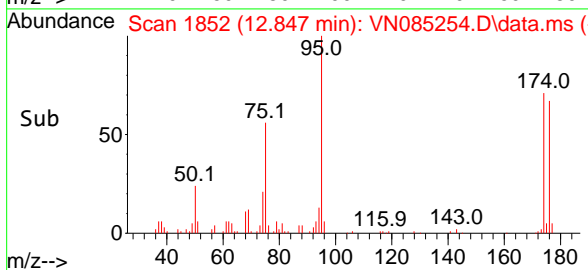
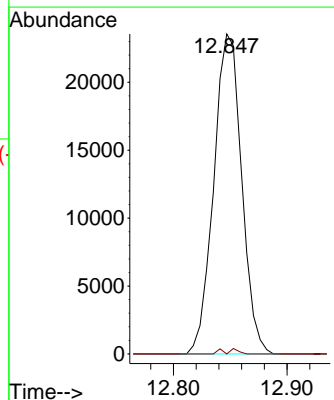
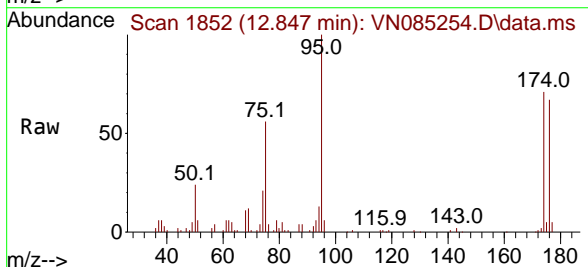


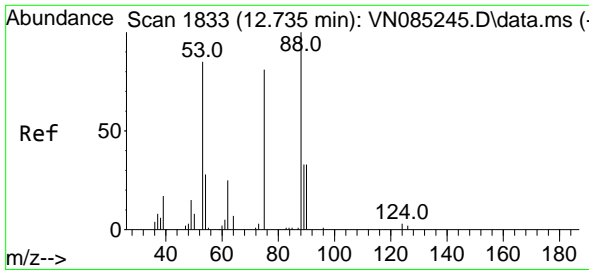
Tgt Ion:152 Resp: 59088
 Ion Ratio Lower Upper
 152 100
 115 62.1 32.1 96.3
 150 160.9 0.0 354.6



#76
 1,2,3-Trichloropropane
 Concen: 28.540 ug/l
 RT: 12.847 min Scan# 1852
 Delta R.T. -0.147 min
 Lab File: VN085254.D
 Acq: 18 Dec 2024 16:26

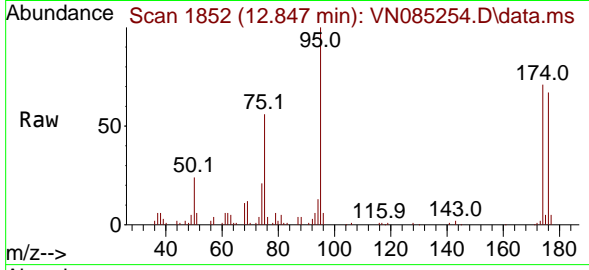
Tgt Ion: 75 Resp: 40198
 Ion Ratio Lower Upper
 75 100
 77 0.3 102.6 307.7#



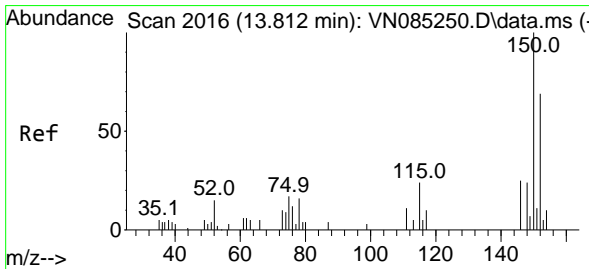
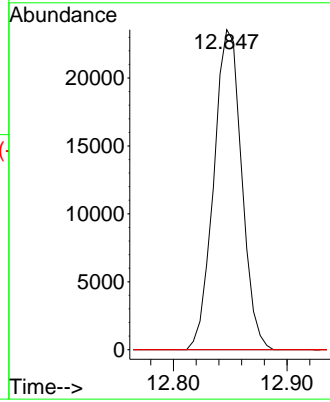
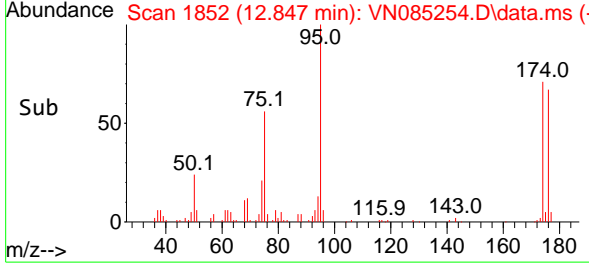


#81
 trans-1,4-Dichloro-2-butene
 Concen: 75.784 ug/l
 RT: 12.847 min Scan# 1833
 Delta R.T. 0.112 min
 Lab File: VN085254.D
 Acq: 18 Dec 2024 16:26

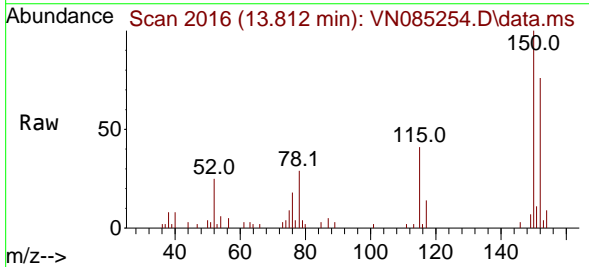
Instrument : MSVOA_N
 ClientSampleId :



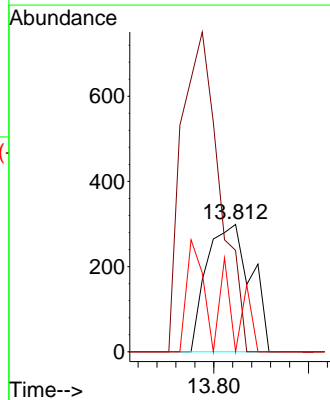
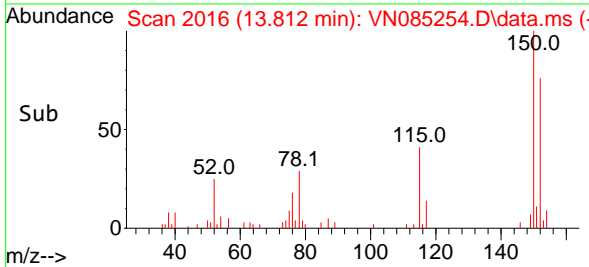
Tgt Ion: 75 Resp: 40198
 Ion Ratio Lower Upper
 75 100
 53 0.0 84.9 127.3#
 89 0.0 37.9 56.9#

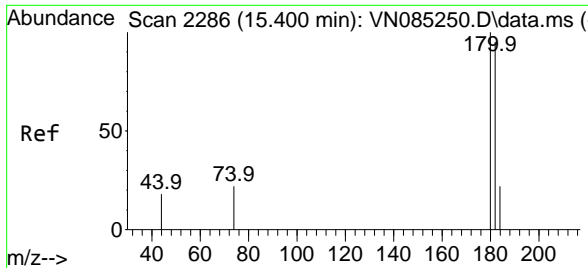


#88
 1,4-Dichlorobenzene
 Concen: 0.228 ug/l
 RT: 13.812 min Scan# 2016
 Delta R.T. -0.000 min
 Lab File: VN085254.D
 Acq: 18 Dec 2024 16:26



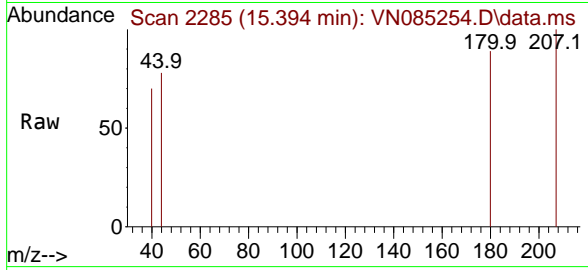
Tgt Ion: 146 Resp: 486
 Ion Ratio Lower Upper
 146 100
 111 0.0 20.8 62.5#
 148 27.4 31.9 95.9#



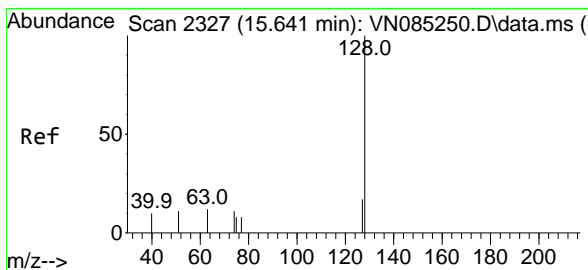
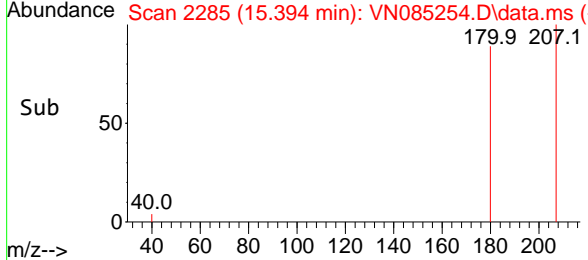
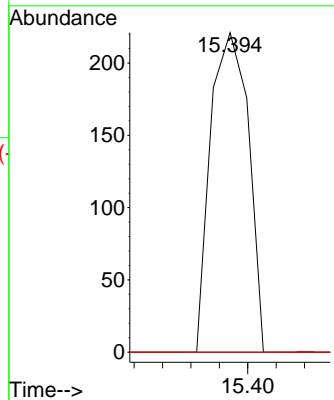


#93
 1,2,4-Trichlorobenzene
 Concen: 0.209 ug/l
 RT: 15.394 min Scan# 21
 Delta R.T. 0.006 min
 Lab File: VN085254.D
 Acq: 18 Dec 2024 16:26

Instrument :
 MSVOA_N
 ClientSampleId :



Tgt Ion:180 Resp: 205
 Ion Ratio Lower Upper
 180 100
 182 0.0 46.3 138.8#
 145 0.0 16.6 49.7#



#95
 Naphthalene
 Concen: 0.398 ug/l
 RT: 15.635 min Scan# 2326
 Delta R.T. -0.006 min
 Lab File: VN085254.D
 Acq: 18 Dec 2024 16:26

Tgt Ion:128 Resp: 1293
 Ion Ratio Lower Upper
 128 100
 127 0.0 10.3 15.5#
 129 0.0 8.6 13.0#

