

Data Path : Z:\VOASRV\HPCHEM1\MSVOA N\DATA\VN121918\
 Data File : VN053010.D
 Acq On : 19 Dec 2018 14:49
 Operator : MD\SY
 Sample : PB115821TB
 Misc : 5.00mL/MSVOA N/WATER
 ALS Vial : 15 Sample Multiplier: 28

Instrument :
 MSVOA_N
 ClientSampled :

Quant Time: Dec 20 05:20:31 2018
 Quant Method : Z:\VOASRV\HPCHEM1\MSVOA_N\METHODS\82N121818W.M
 Quant Title : SW846 8260
 QLast Update : Tue Dec 18 13:03:37 2018
 Response via : Initial Calibration

Internal Standards	R.T.	QIon	Response	Conc	Units	Dev(Min)
1) Pentafluorobenzene	7.67	168	1396631	50.00	ug/l	0.00
34) 1,4-Difluorobenzene	8.59	114	2132086	50.00	ug/l	0.00
63) Chlorobenzene-d5	11.41	117	1936366	50.00	ug/l	0.00
72) 1,4-Dichlorobenzene-d4	13.34	152	786863	50.00	ug/l	0.00

System Monitoring Compounds

33) 1,2-Dichloroethane-d4	8.03	65	684202	48.27	ug/l	0.00
Spiked Amount	50.000		Recovery	=	96.54%	
35) Dibromofluoromethane	7.59	113	525403	53.95	ug/l	0.00
Spiked Amount	50.000		Recovery	=	107.90%	
50) Toluene-d8	10.09	98	2640099	50.50	ug/l	0.00
Spiked Amount	50.000		Recovery	=	101.00%	
62) 4-Bromofluorobenzene	12.40	95	876795	47.77	ug/l	0.00
Spiked Amount	50.000		Recovery	=	95.54%	

Target Compounds

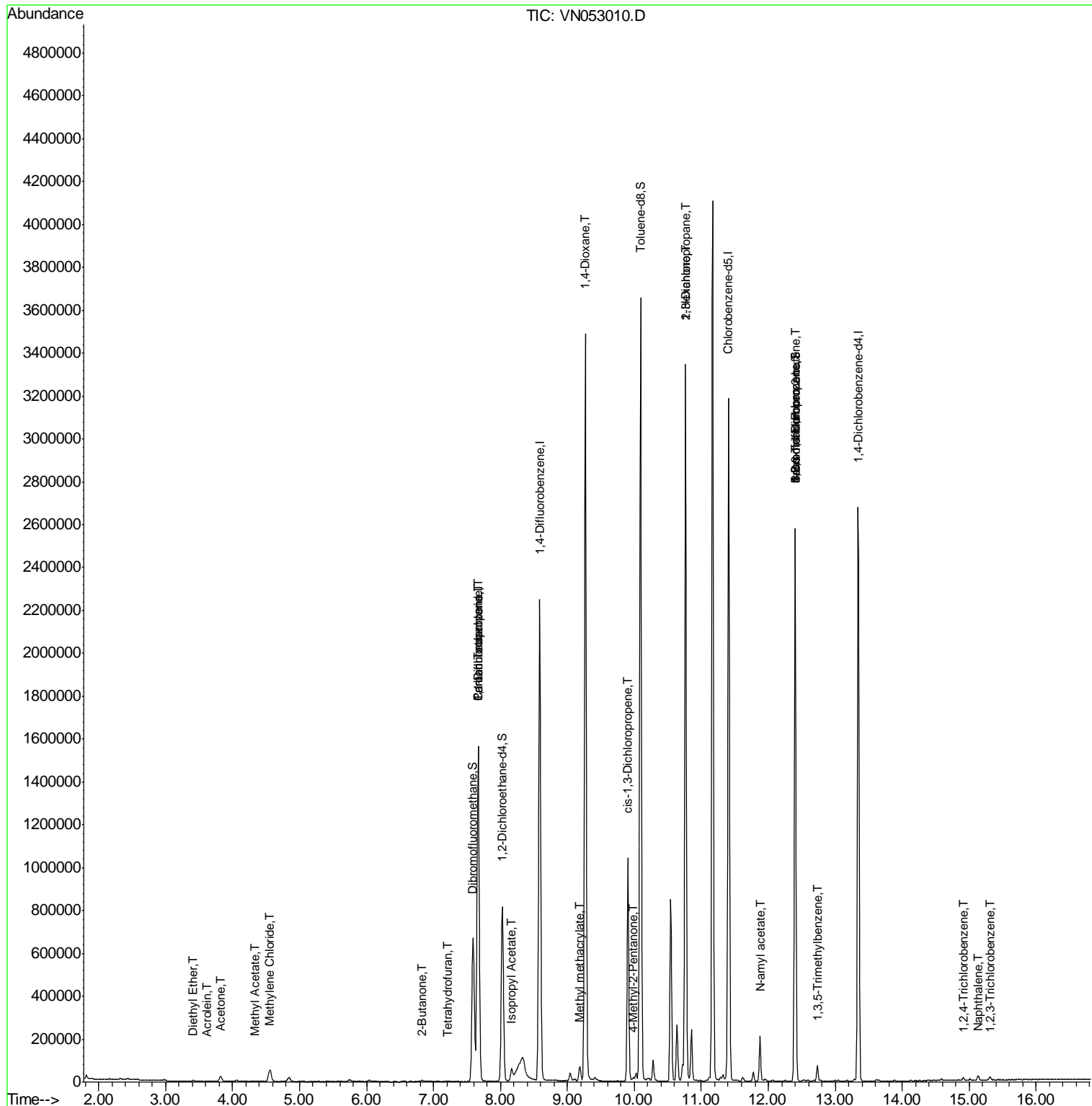
						Qvalue
8) Diethyl Ether	3.42	74	2543	0.312	ug/l #	44
13) Acrolein	3.61	56	571	0.728	ug/l	95
16) Acetone	3.82	43	43083	15.504	ug/l	95
18) Methyl Acetate	4.34	43	6538	1.500	ug/l #	89
20) Methylene Chloride	4.56	84	42664	2.815	ug/l	99
25) 2-Butanone	6.84	43	1956	0.419	ug/l #	84
29) Tetrahydrofuran	7.22	42	2092	0.601	ug/l #	59
31) Cyclohexane	7.66	56	23448	Below Cal	#	1
36) 1,1-Dichloropropene	7.67	75	90282	4.412	ug/l #	49
38) Carbon Tetrachloride	7.67	117	119507	6.371	ug/l #	15
43) Isopropyl Acetate	8.17	43	78860	2.576	ug/l #	83
48) Methyl methacrylate	9.18	41	23726	2.140	ug/l #	22
49) 1,4-Dioxane	9.27	88	627	4.471	ug/l #	1
51) 4-Methyl-2-Pentanone	9.99	43	11559	1.045	ug/l	96
54) cis-1,3-Dichloropropene	9.90	75	199080	8.401	ug/l #	59
57) 1,3-Dichloropropane	10.76	76	35803	1.586	ug/l #	42
59) 2-Hexanone	10.76	43	467015	62.391	ug/l #	51
71) Bromoform	12.40	173	4912	0.456	ug/l #	1
74) N-amyl acetate	11.88	43	64109	3.751	ug/l #	51
76) 1,2,3-Trichloropropane	12.40	75	411584	31.072	ug/l #	100
80) 1,3,5-Trimethylbenzene	12.73	105	39414	0.785	ug/l	98
81) trans-1,4-Dichloro-2-buten	12.40	75	411584	100.150	ug/l #	12
93) 1,2,4-Trichlorobenzene	14.91	180	5085	0.952	ug/l	91
94) Hexachlorobutadiene	15.01	225	1598	Below Cal		91
95) Naphthalene	15.13	128	18966	1.746	ug/l	99
96) 1,2,3-Trichlorobenzene	15.31	180	6080	0.981	ug/l	93

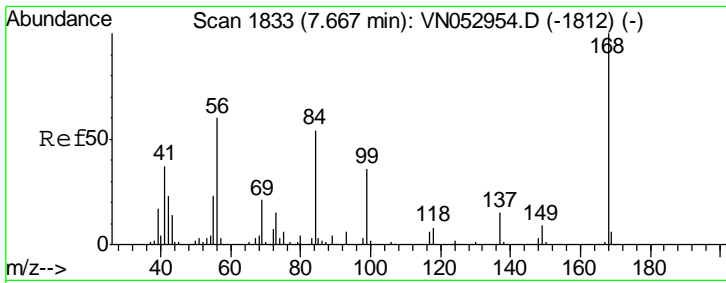
(#) = qualifier out of range (m) = manual integration (+) = signals summed

Data Path : Z:\VOASRV\HPCHEM1\MSVOA N\DATA\VN121918\
 Data File : VN053010.D
 Acq On : 19 Dec 2018 14:49
 Operator : MD\SY
 Sample : PB115821TB
 Misc : 5.00mL/MSVOA N/WATER
 ALS Vial : 15 Sample Multiplier: 28

Instrument :
 MSVOA_N
 Client Sampled :

Quant Time: Dec 20 05:20:31 2018
 Quant Method : Z:\VOASRV\HPCHEM1\MSVOA_N\METHODS\82N121818W.M
 Quant Title : SW846 8260
 QLast Update : Tue Dec 18 13:03:37 2018
 Response via : Initial Calibration

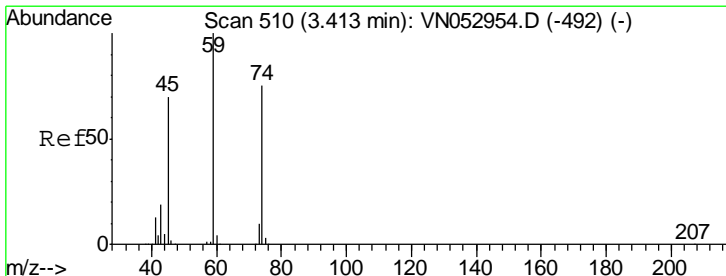
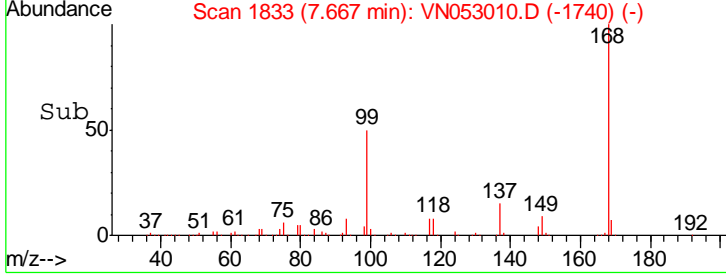
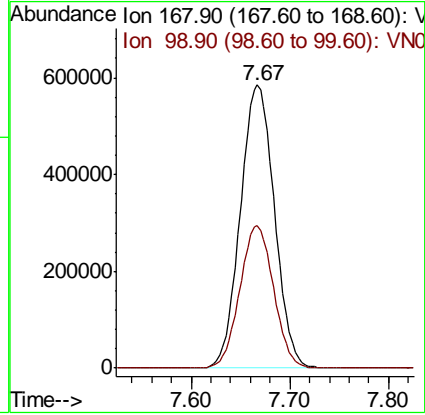
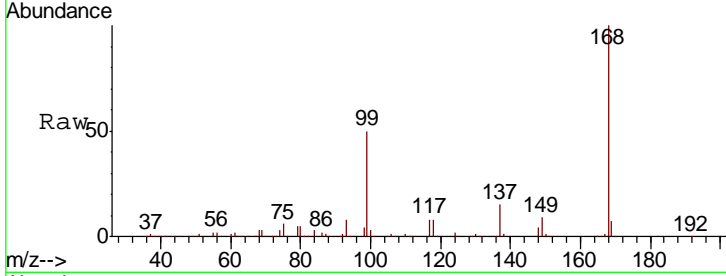




#1
 Pentafluorobenzene
 Concen: 50.000 ug/l
 RT: 7.67 min Scan# 1833
 Delta R.T. -0.00 min
 Lab File: VN053010.D
 Acq: 19 Dec 2018 14:49

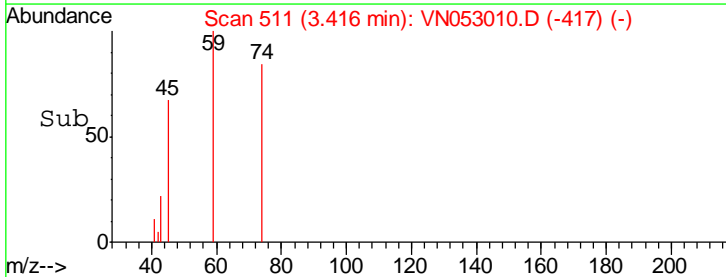
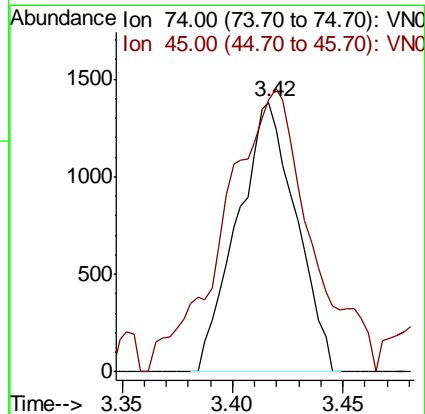
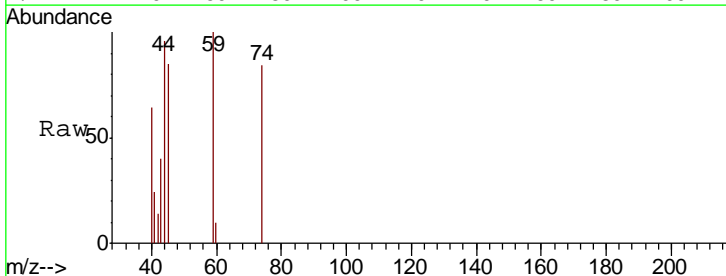
Instrument :
 MSVOA_N
 ClientSampled :

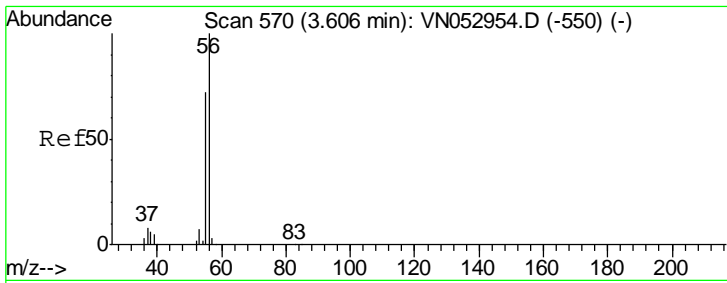
Tgt Ion: 168 Resp: 1396631
 Ion Ratio Lower Upper
 168 100
 99 50.3 40.2 60.2



#8
 Diethyl Ether
 Concen: 0.312 ug/l
 RT: 3.42 min Scan# 511
 Delta R.T. 0.00 min
 Lab File: VN053010.D
 Acq: 19 Dec 2018 14:49

Tgt Ion: 74 Resp: 2543
 Ion Ratio Lower Upper
 74 100
 45 154.1 49.4 148.0#

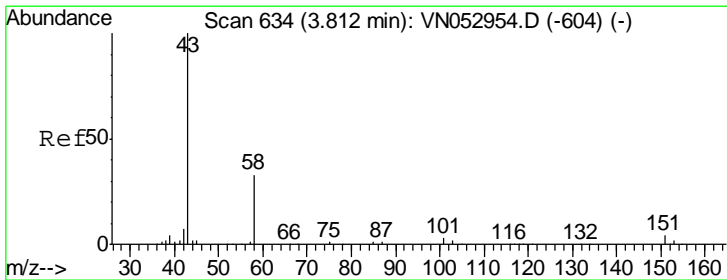
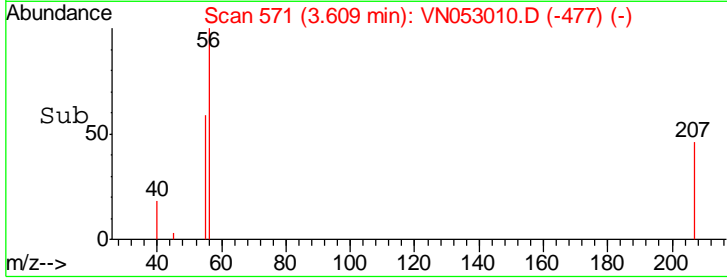
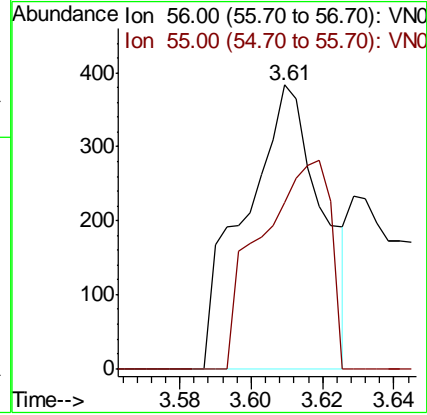
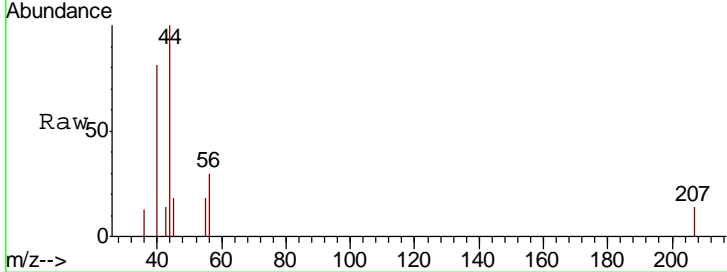




#13
 Acrolein
 Concen: 0.728 ug/l
 RT: 3.61 min Scan# 571
 Delta R.T. 0.00 min
 Lab File: VN053010.D
 Acq: 19 Dec 2018 14:49

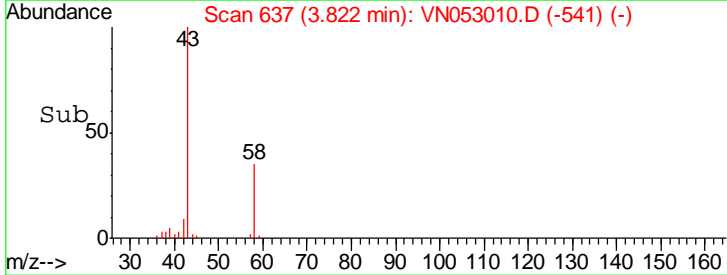
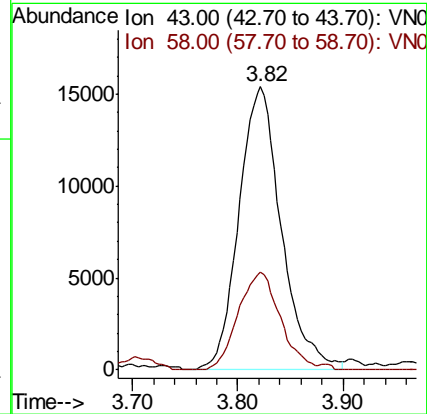
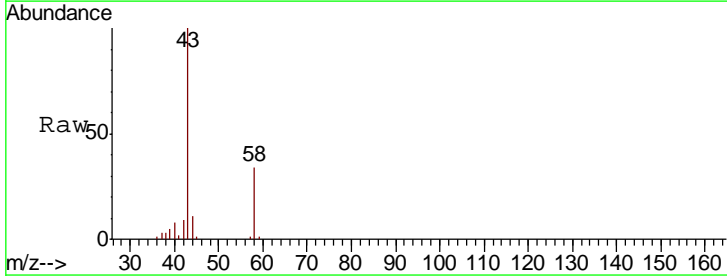
Instrument :
 MSVOA_N
 ClientSampled :

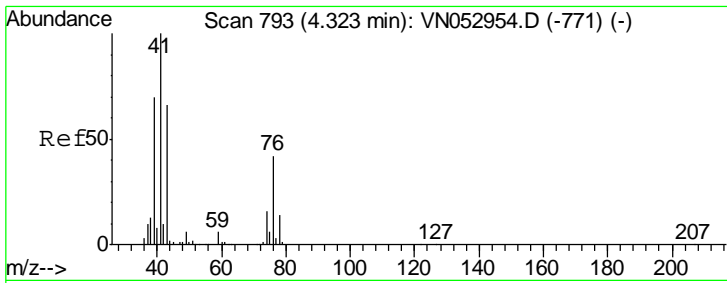
Tgt Ion	Resp	Lower	Upper
56	100		
55	66.4	56.6	85.0



#16
 Acetone
 Concen: 15.504 ug/l
 RT: 3.82 min Scan# 637
 Delta R.T. 0.01 min
 Lab File: VN053010.D
 Acq: 19 Dec 2018 14:49

Tgt Ion	Resp	Lower	Upper
43	100		
58	34.5	25.4	38.0

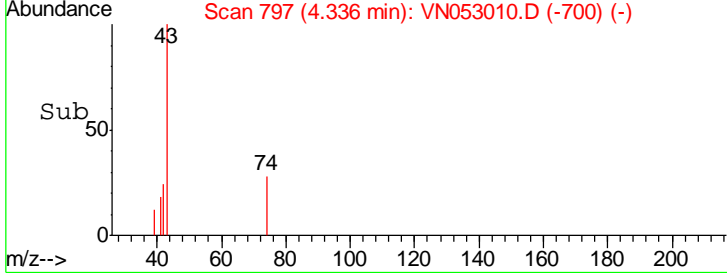
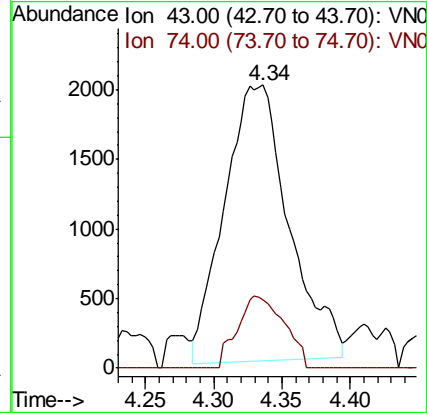
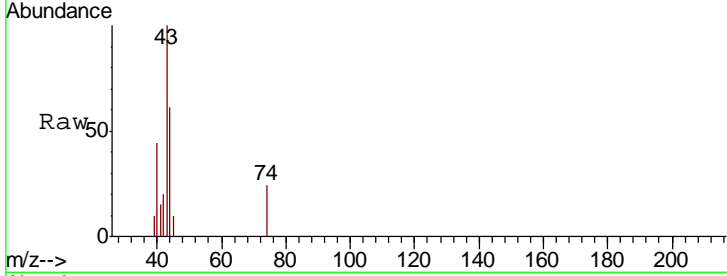




#18
 Methyl Acetate
 Concen: 1.500 ug/l
 RT: 4.34 min Scan# 797
 Delta R.T. 0.01 min
 Lab File: VN053010.D
 Acq: 19 Dec 2018 14:49

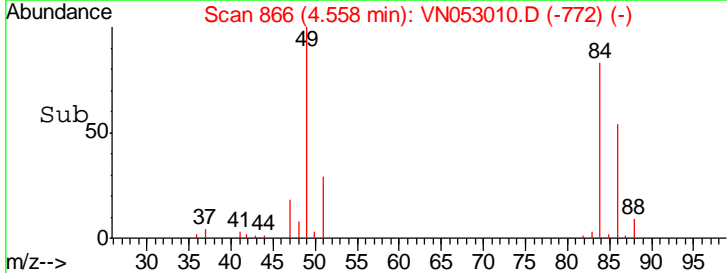
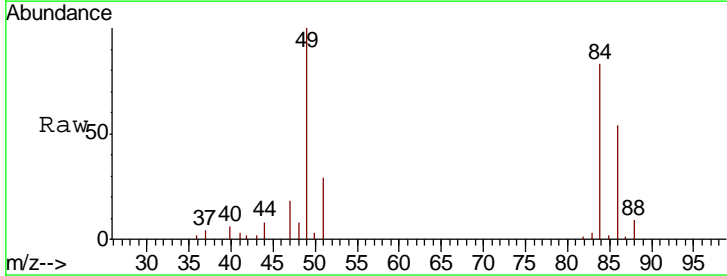
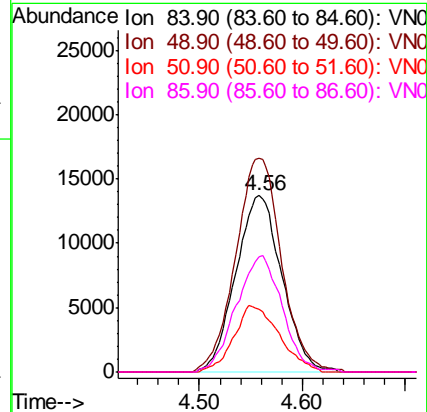
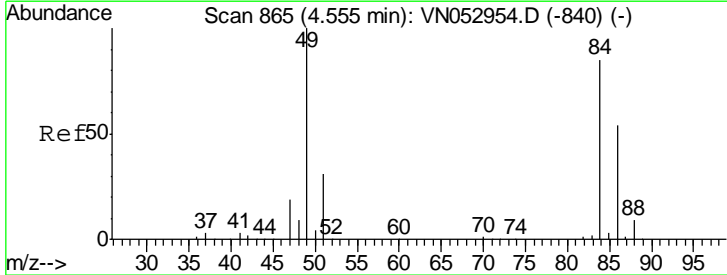
Instrument :
 MSVOA_N
 ClientSampled :

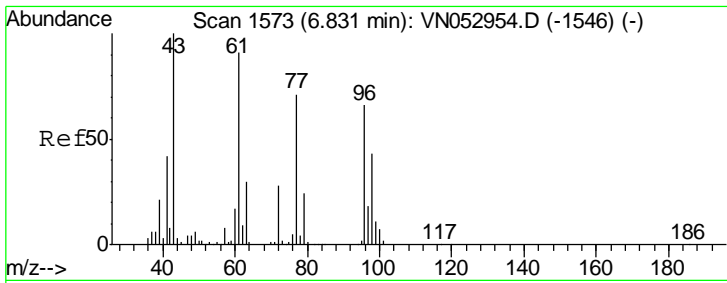
Tgt Ion	Resp	Lower	Upper
43	100		
74	18.8	19.2	28.8#



#20
 Methylene Chloride
 Concen: 2.815 ug/l
 RT: 4.56 min Scan# 866
 Delta R.T. 0.00 min
 Lab File: VN053010.D
 Acq: 19 Dec 2018 14:49

Tgt Ion	Resp	Lower	Upper
84	100		
49	121.1	96.8	145.2
51	35.6	29.9	44.9
86	65.1	51.8	77.6

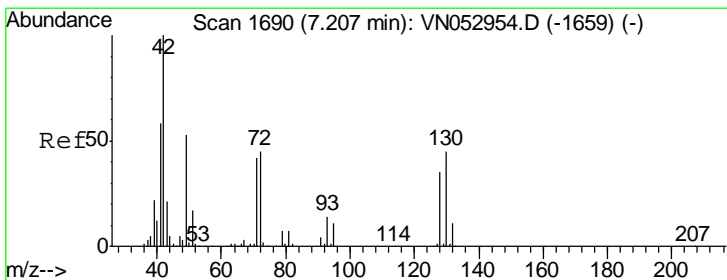
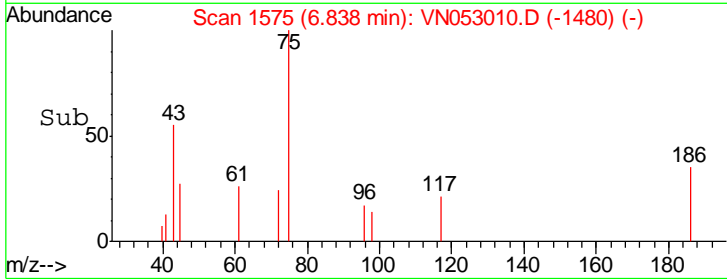
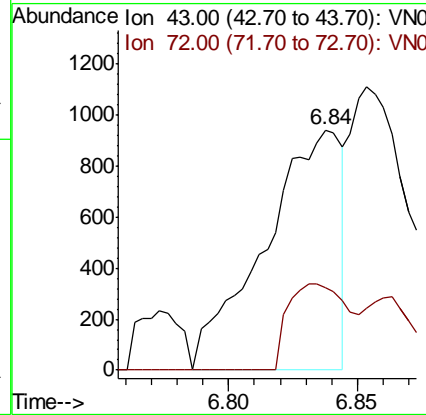
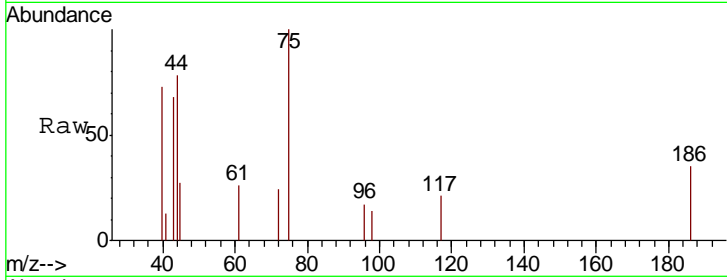




#25
 2-Butanone
 Concen: 0.419 ug/l
 RT: 6.84 min Scan# 1575
 Delta R.T. 0.01 min
 Lab File: VN053010.D
 Acq: 19 Dec 2018 14:49

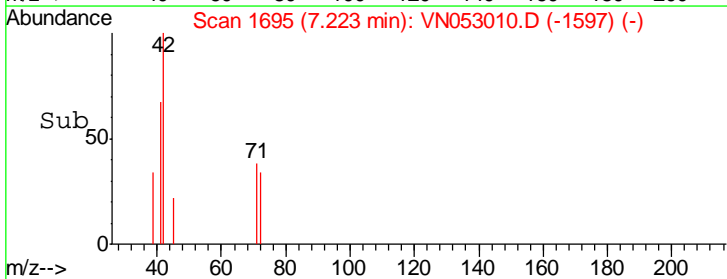
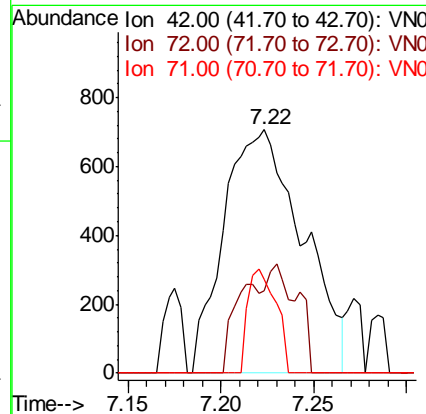
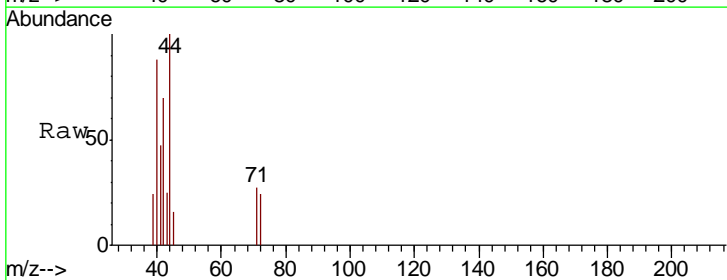
Instrument :
 MSVOA_N
 ClientSampled :

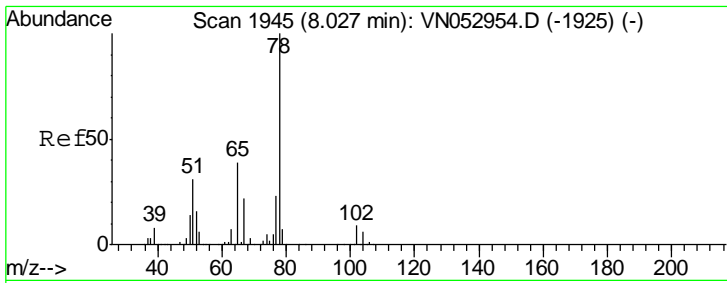
Tgt Ion: 43 Resp: 1956
 Ion Ratio Lower Upper
 43 100
 72 34.5 21.0 31.6#



#29
 Tetrahydrofuran
 Concen: 0.601 ug/l
 RT: 7.22 min Scan# 1695
 Delta R.T. 0.02 min
 Lab File: VN053010.D
 Acq: 19 Dec 2018 14:49

Tgt Ion: 42 Resp: 2092
 Ion Ratio Lower Upper
 42 100
 72 16.3 34.7 52.1#
 71 15.2 32.3 48.5#

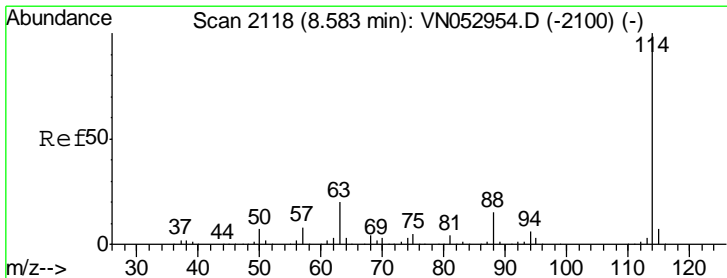
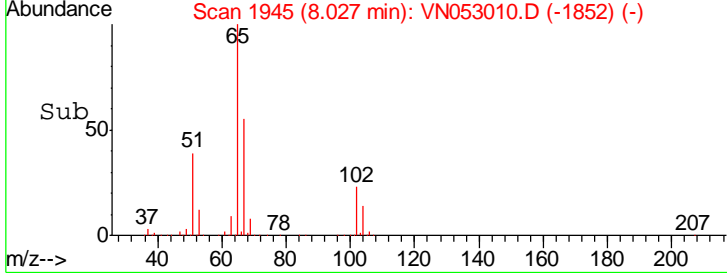
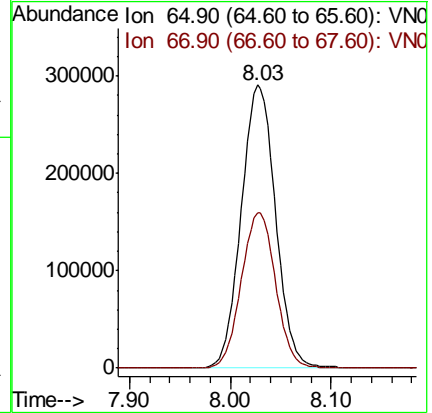
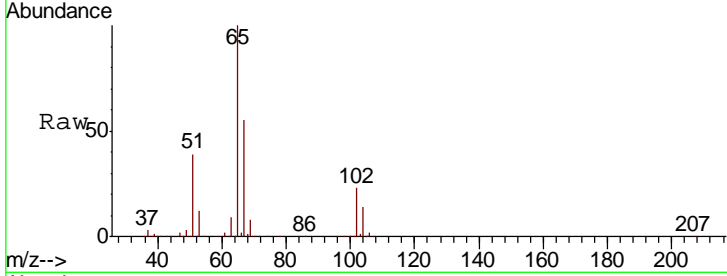




#33
 1,2-Dichloroethane-d4
 Concen: Below ug/l
 RT: 8.03 min Scan# 1945
 Delta R.T. -0.00 min
 Lab File: VN053010.D
 Acq: 19 Dec 2018 14:49

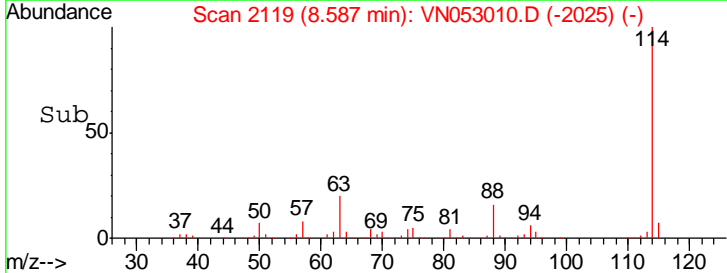
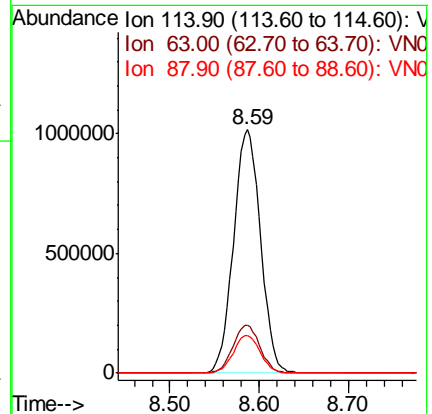
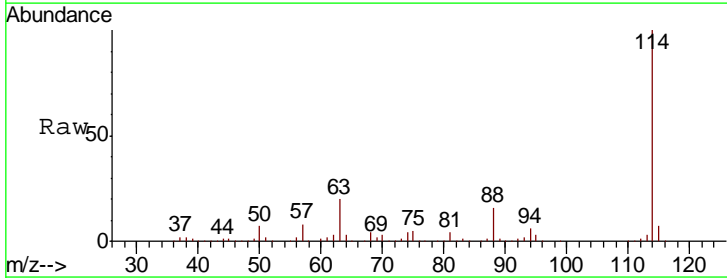
Instrument :
 MSVOA_N
 ClientSampled :

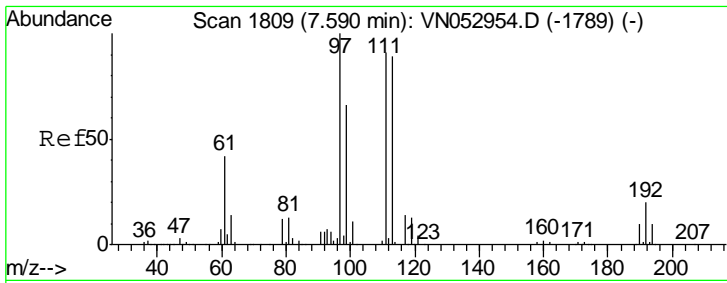
Tgt Ion	Resp	Lower	Upper
65	100		
67	55.1	0.0	110.4



#34
 1,4-Difluorobenzene
 Concen: 50.000 ug/l
 RT: 8.59 min Scan# 2119
 Delta R.T. 0.00 min
 Lab File: VN053010.D
 Acq: 19 Dec 2018 14:49

Tgt Ion	Resp	Lower	Upper
114	100		
63	19.7	0.0	39.8
88	15.7	0.0	31.0

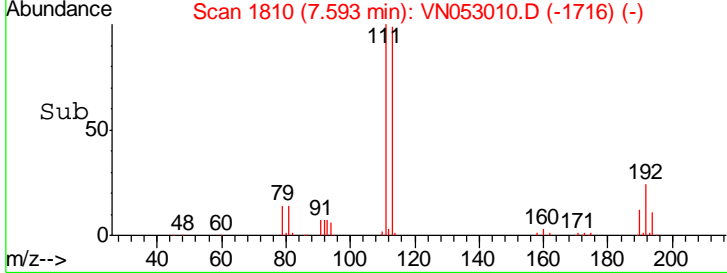
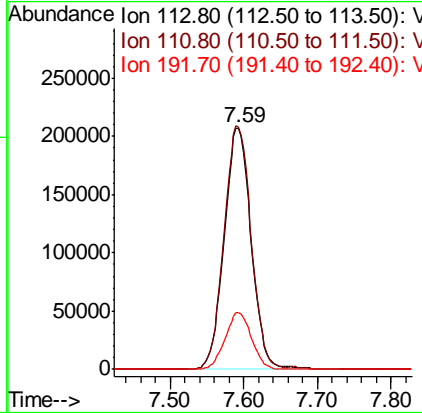
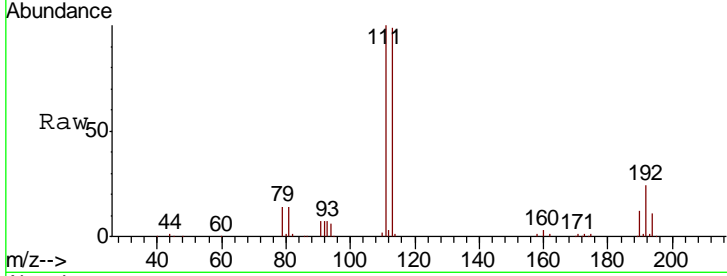




#35
 Dibromofluoromethane
 Concen: 50.000 ug/l
 RT: 7.59 min Scan# 1810
 Delta R.T. 0.00 min
 Lab File: VN053010.D
 Acq: 19 Dec 2018 14:49

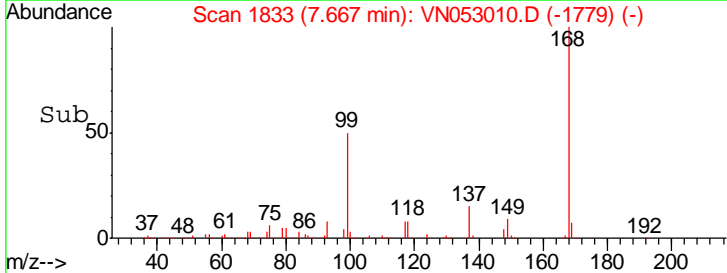
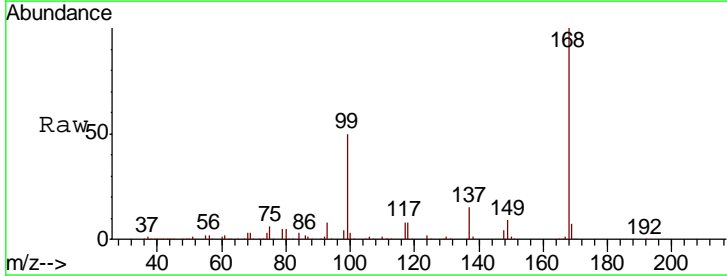
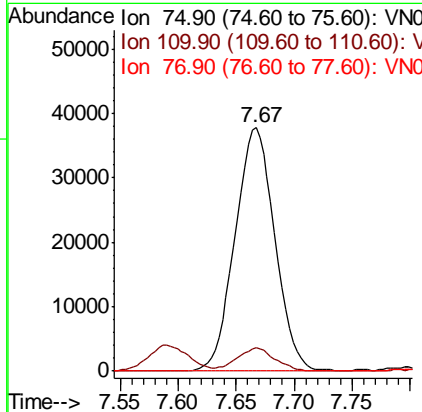
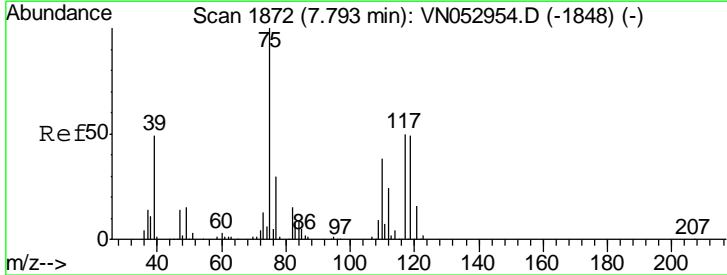
Instrument :
 MSVOA_N
 ClientSampled :

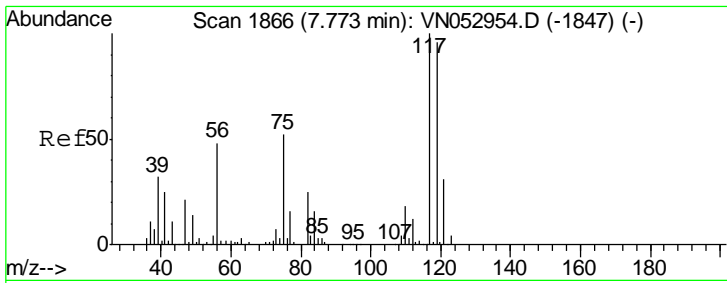
Tgt Ion	Resp	Lower	Upper
113	100		
111	101.7	83.0	124.4
192	23.1	17.5	26.3



#36
 1,1-Dichloropropene
 Concen: 4.412 ug/l
 RT: 7.67 min Scan# 1833
 Delta R.T. -0.13 min
 Lab File: VN053010.D
 Acq: 19 Dec 2018 14:49

Tgt Ion	Resp	Lower	Upper
75	100		
110	9.0	18.2	54.6#
77	0.0	24.9	37.3#

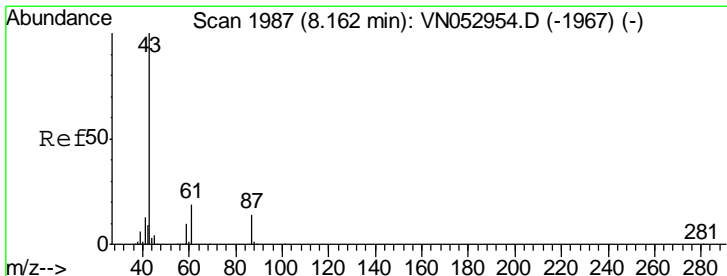
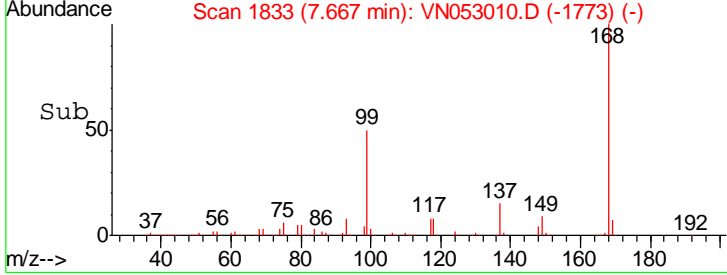
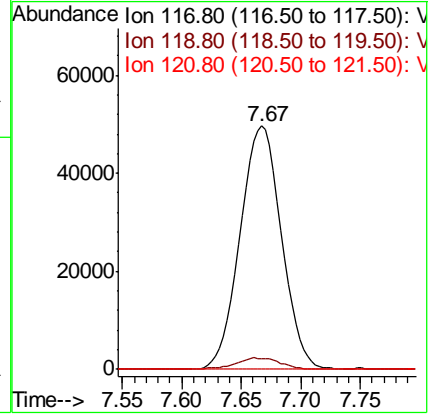
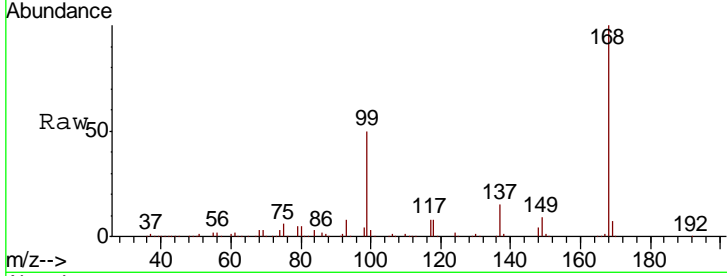




#38
 Carbon Tetrachloride
 Concen: 6.371 ug/l
 RT: 7.67 min Scan# 1833
 Delta R.T. -0.11 min
 Lab File: VN053010.D
 Acq: 19 Dec 2018 14:49

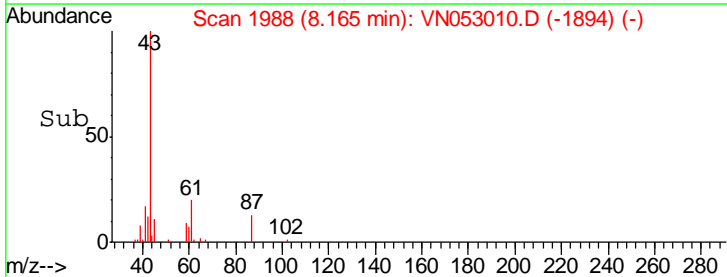
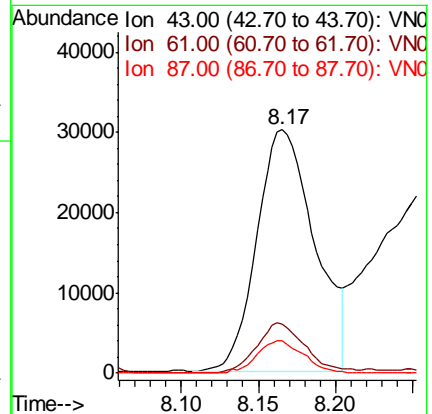
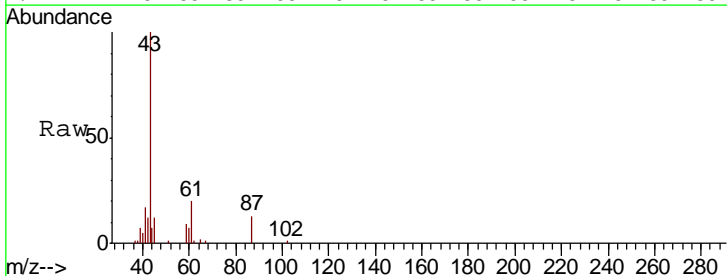
Instrument :
 MSVOA_N
 ClientSampled :

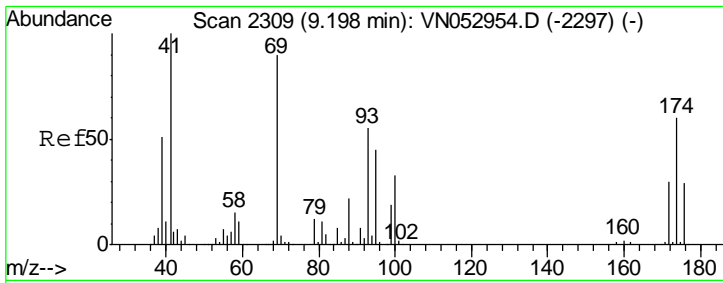
Tgt Ion	Resp	Lower	Upper
117	100		
119	4.4	77.1	115.7#
121	0.0	24.9	37.3#



#43
 Isopropyl Acetate
 Concen: 2.576 ug/l
 RT: 8.17 min Scan# 1988
 Delta R.T. 0.00 min
 Lab File: VN053010.D
 Acq: 19 Dec 2018 14:49

Tgt Ion	Resp	Lower	Upper
43	100		
61	17.3	22.9	34.3#
87	10.6	10.6	15.8

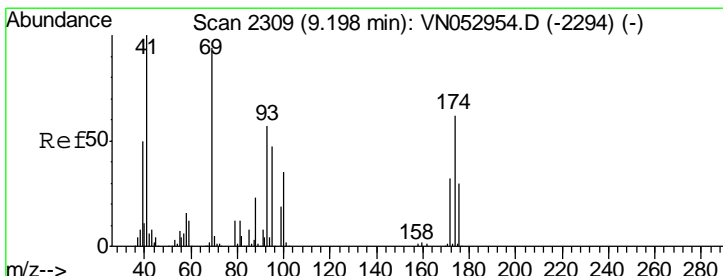
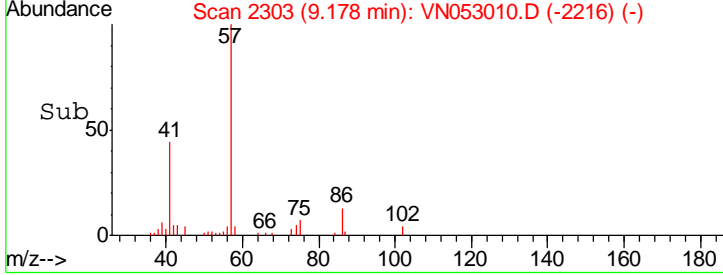
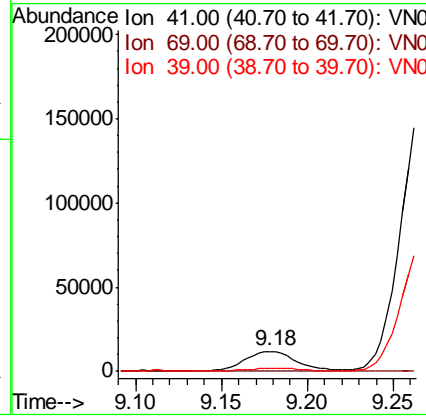
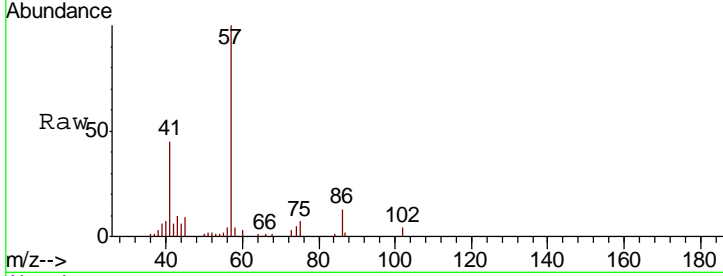




#48
 Methyl methacrylate
 Concen: 2.140 ug/l
 RT: 9.18 min Scan# 2303
 Delta R.T. -0.02 min
 Lab File: VN053010.D
 Acq: 19 Dec 2018 14:49

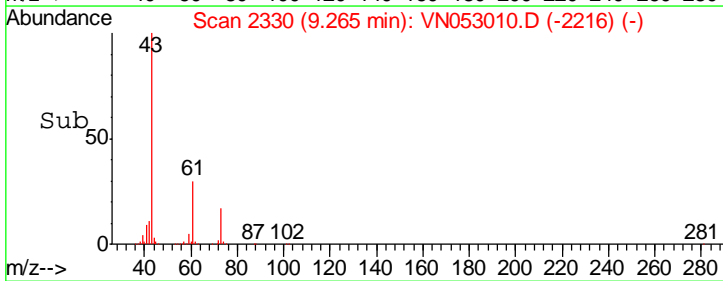
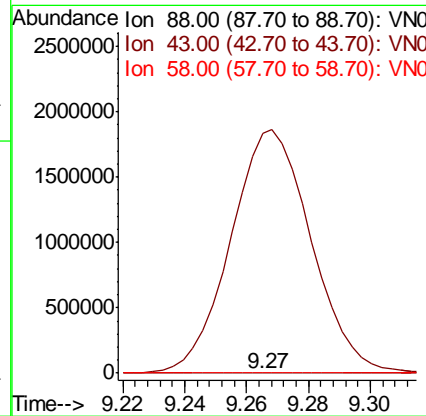
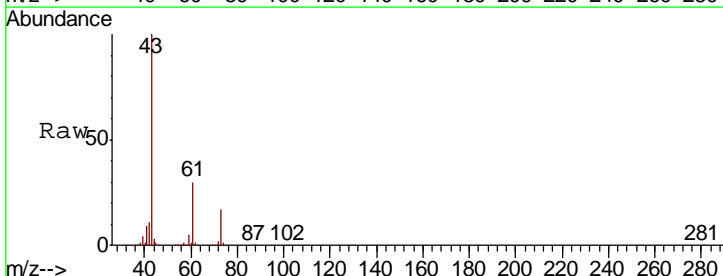
Instrument :
 MSVOA_N
 ClientSampled :

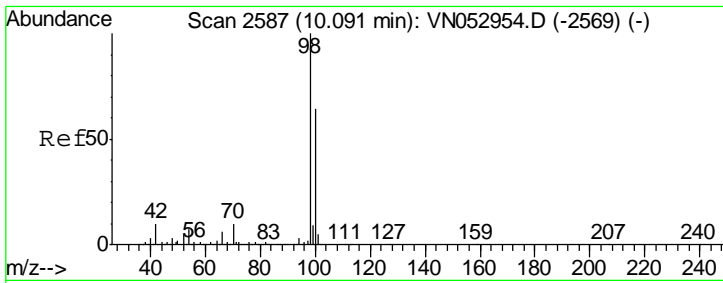
Tgt Ion	Resp	Lower	Upper
41	100		
69	0.0	72.2	108.2#
39	18.0	41.9	62.9#



#49
 1,4-Dioxane
 Concen: 4.471 ug/l
 RT: 9.27 min Scan# 2330
 Delta R.T. 0.07 min
 Lab File: VN053010.D
 Acq: 19 Dec 2018 14:49

Tgt Ion	Resp	Lower	Upper
88	100		
43	540311.2	26.6	40.0#
58	2203.5	58.4	87.6#

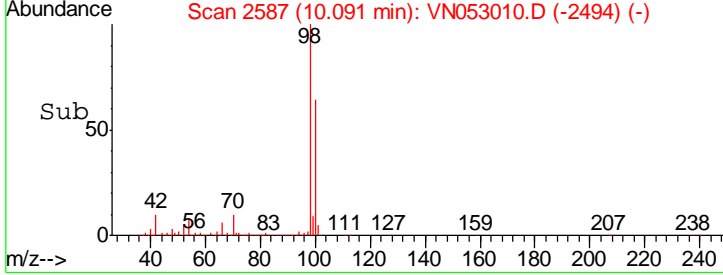
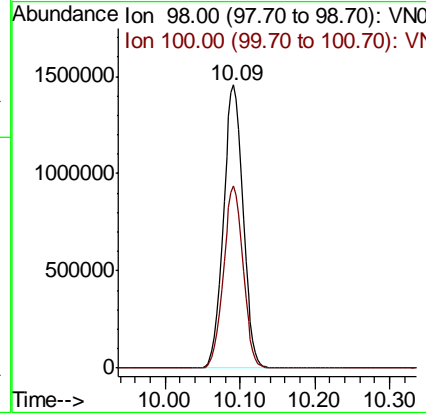
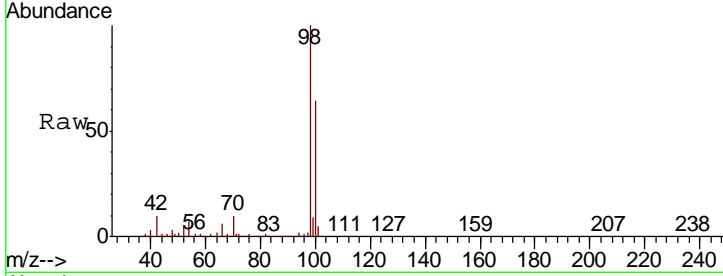




#50
 Toluene-d8
 Concen: 4.471 ug/l
 RT: 10.09 min Scan# 2587
 Delta R.T. -0.00 min
 Lab File: VN053010.D
 Acq: 19 Dec 2018 14:49

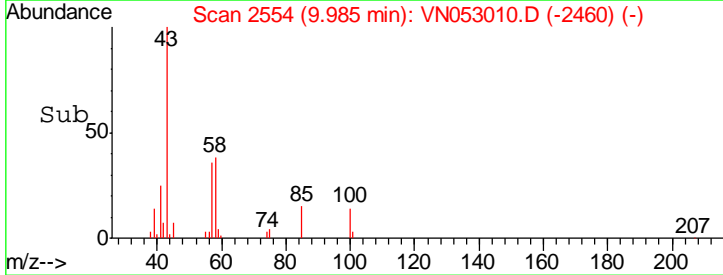
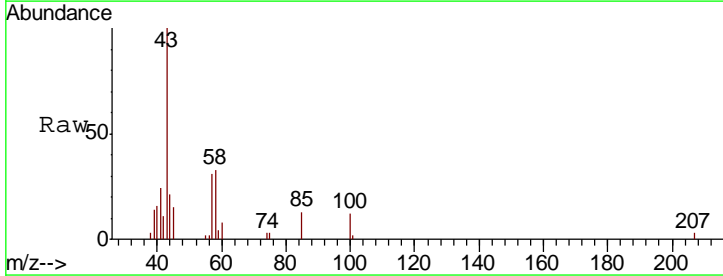
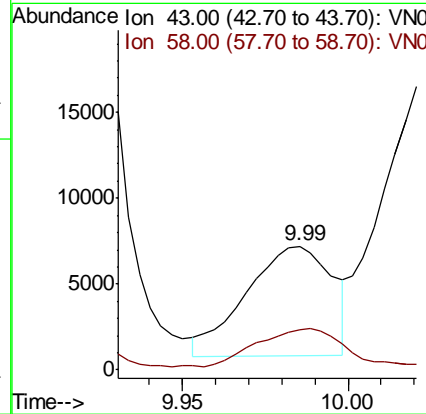
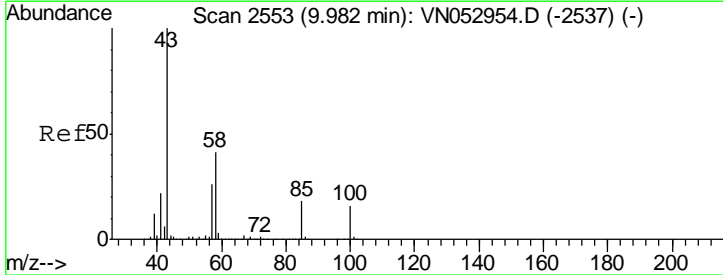
Instrument :
 MSVOA_N
 ClientSampled :

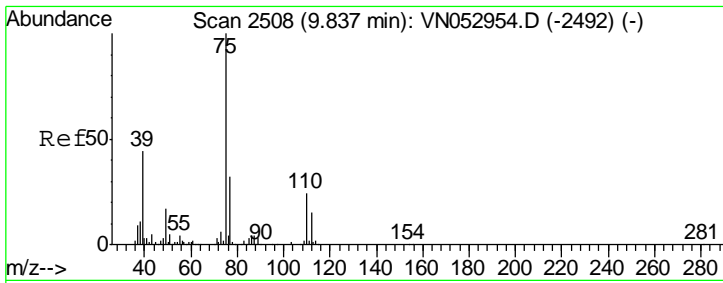
Tgt Ion: 98 Resp: 2640099
 Ion Ratio Lower Upper
 98 100
 100 64.1 51.6 77.4



#51
 4-Methyl-2-Pentanone
 Concen: 1.045 ug/l
 RT: 9.99 min Scan# 2554
 Delta R.T. 0.00 min
 Lab File: VN053010.D
 Acq: 19 Dec 2018 14:49

Tgt Ion: 43 Resp: 11559
 Ion Ratio Lower Upper
 43 100
 58 42.9 32.2 48.4

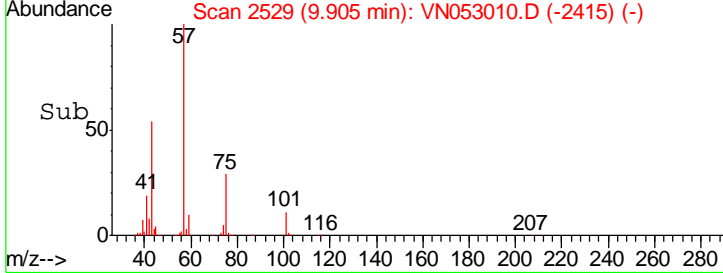
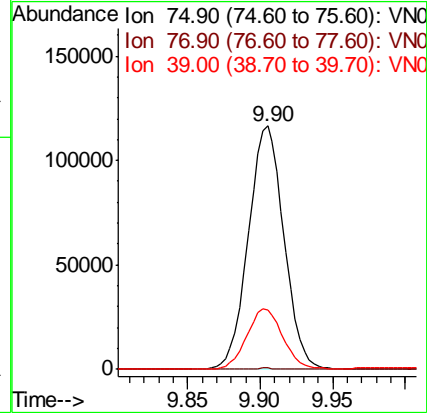
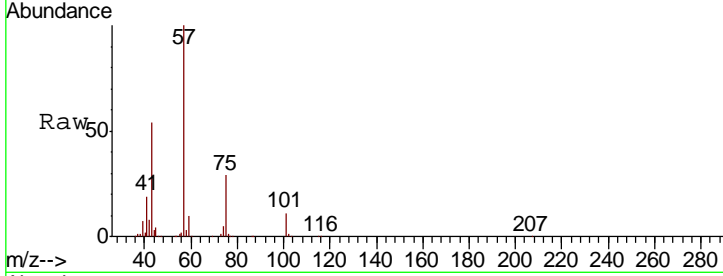




#54
 cis-1,3-Dichloropropene
 Concen: 8.401 ug/l
 RT: 9.90 min Scan# 2529
 Delta R.T. 0.07 min
 Lab File: VN053010.D
 Acq: 19 Dec 2018 14:49

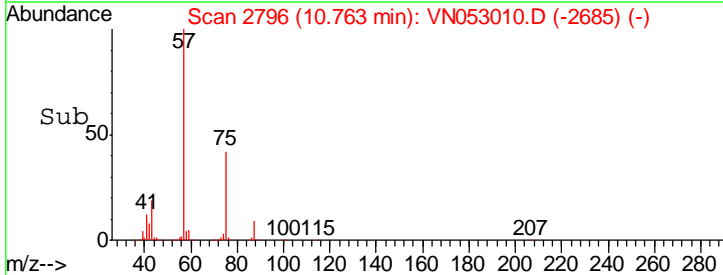
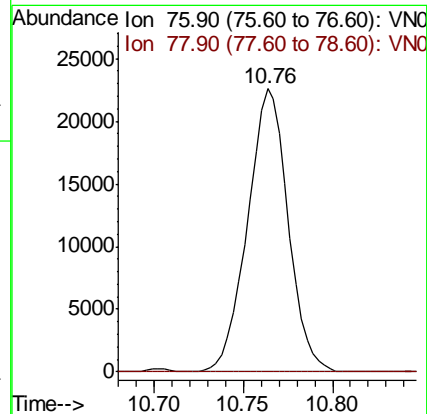
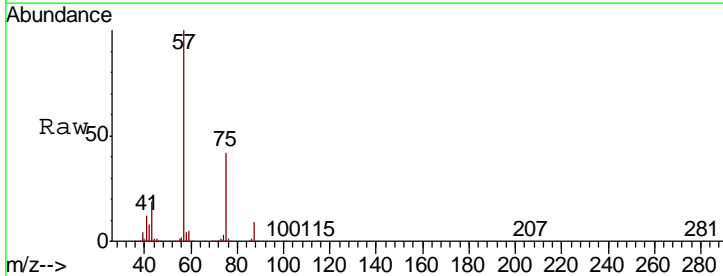
Instrument :
 MSVOA_N
 ClientSampled :

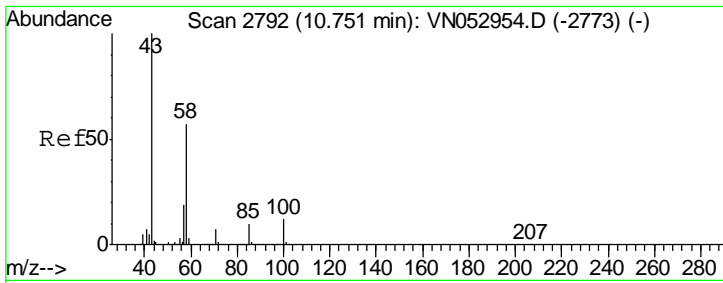
Tgt Ion	Resp	Lower	Upper
75	199080		
77	0.5	25.8	38.8#
39	24.4	34.8	52.2#



#57
 1,3-Dichloropropane
 Concen: 1.586 ug/l
 RT: 10.76 min Scan# 2796
 Delta R.T. 0.06 min
 Lab File: VN053010.D
 Acq: 19 Dec 2018 14:49

Tgt Ion	Resp	Lower	Upper
76	35803		
78	0.0	25.8	38.8#

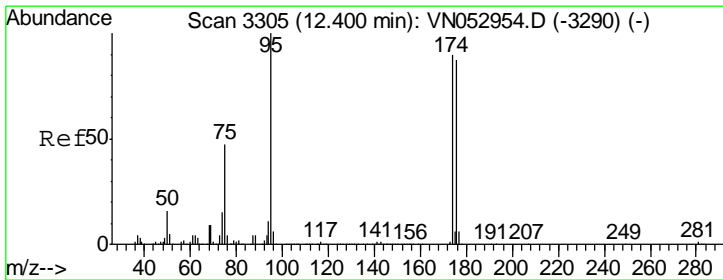
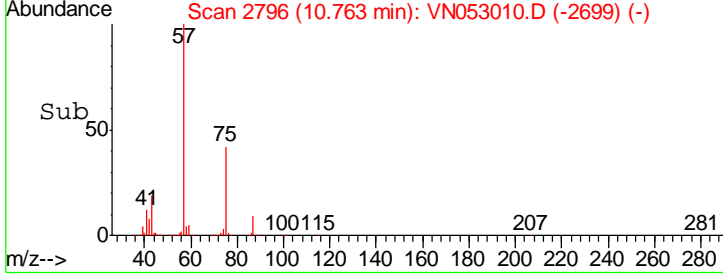
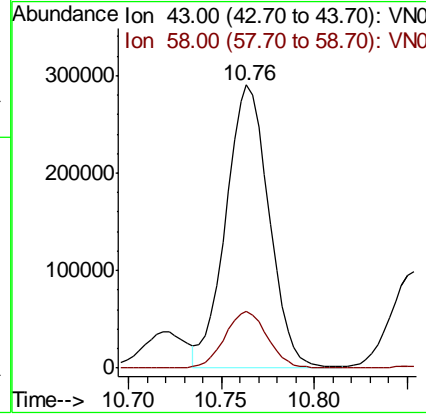
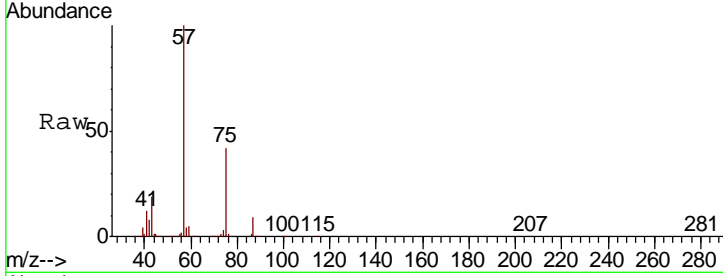




#59
 2-Hexanone
 Concen: 62.391 ug/l
 RT: 10.76 min Scan# 2796
 Delta R.T. 0.01 min
 Lab File: VN053010.D
 Acq: 19 Dec 2018 14:49

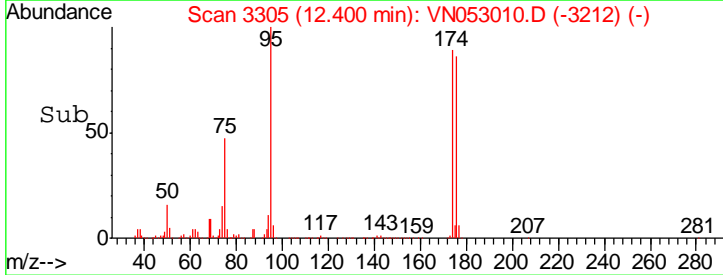
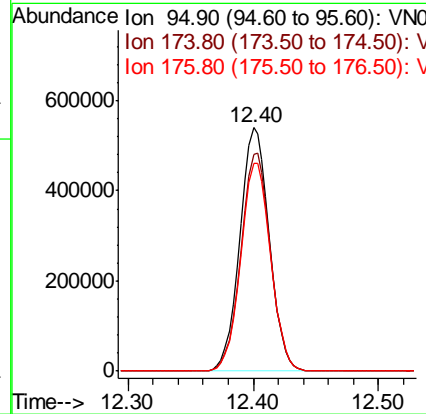
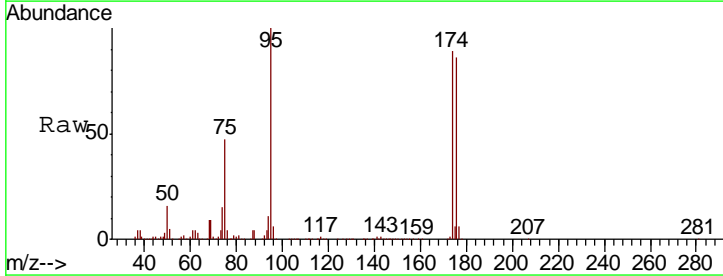
Instrument : MSVOA_N
 ClientSampled :

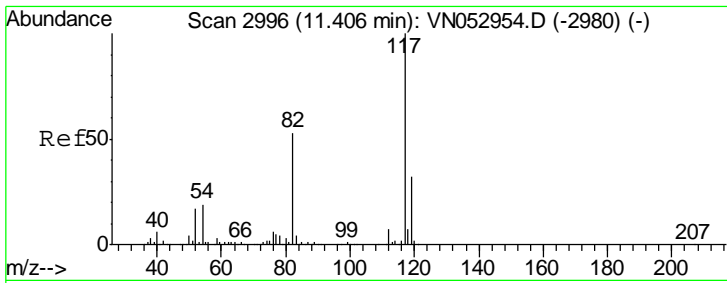
Tgt Ion	Resp	Lower	Upper
43	100		
58	20.1	28.1	84.3#



#62
 4-Bromofluorobenzene
 Concen: Below ug/l
 RT: 12.40 min Scan# 3305
 Delta R.T. -0.00 min
 Lab File: VN053010.D
 Acq: 19 Dec 2018 14:49

Tgt Ion	Resp	Lower	Upper
95	100		
174	89.8	0.0	178.8
176	87.0	0.0	173.8



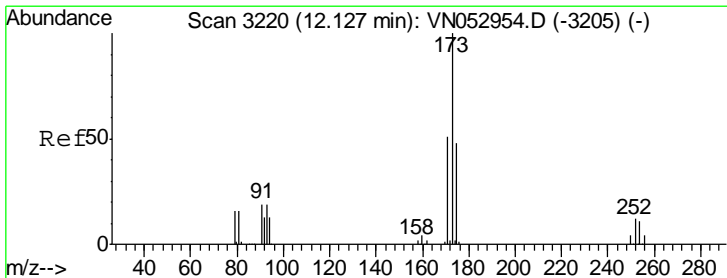
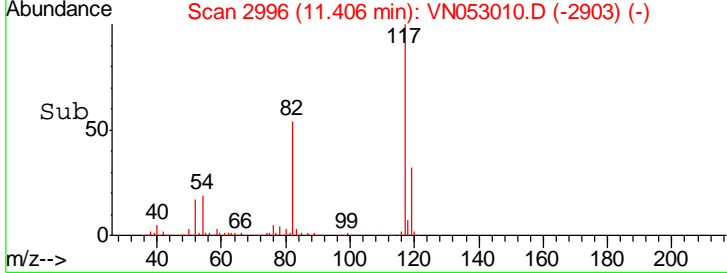
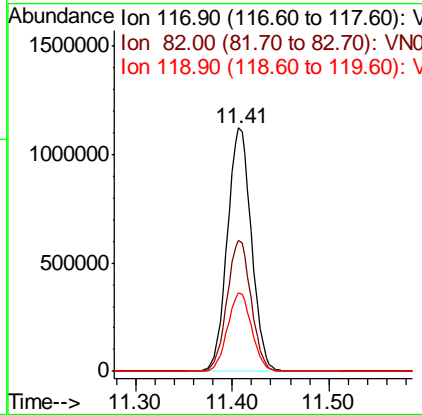
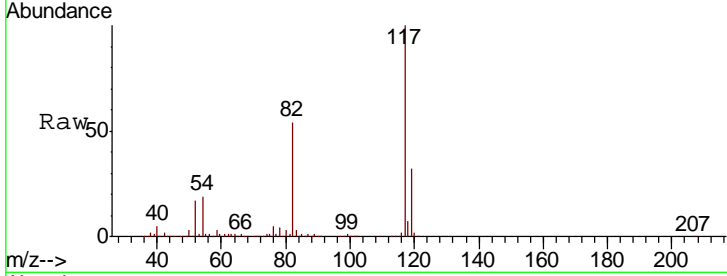


#63
 Chlorobenzene-d5
 Concen: 50.000 ug/l
 RT: 11.41 min Scan# 2996
 Delta R.T. -0.00 min
 Lab File: VN053010.D
 Acq: 19 Dec 2018 14:49

Instrument :
 MSVOA_N
 ClientSampled :

Tgt Ion: 117 Resp: 1936366

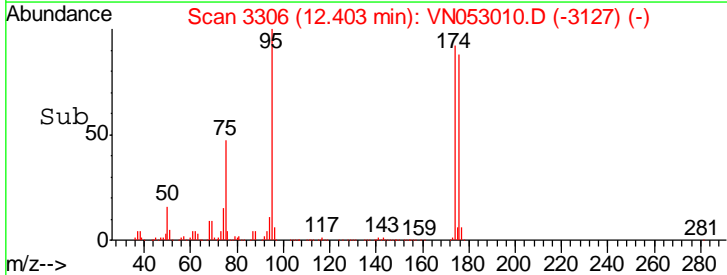
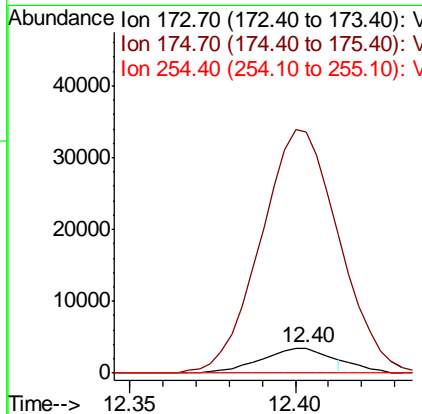
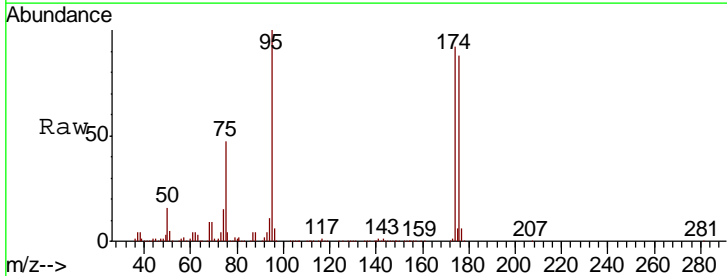
Ion	Ratio	Lower	Upper
117	100		
82	53.9	42.8	64.2
119	32.0	25.5	38.3

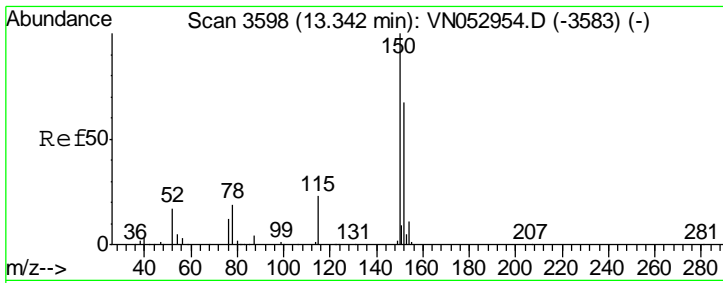


#71
 Bromoform
 Concen: 0.456 ug/l
 RT: 12.40 min Scan# 3306
 Delta R.T. 0.28 min
 Lab File: VN053010.D
 Acq: 19 Dec 2018 14:49

Tgt Ion: 173 Resp: 4912

Ion	Ratio	Lower	Upper
173	100		
175	998.3	24.3	72.9#
254	0.0	0.1	0.1#

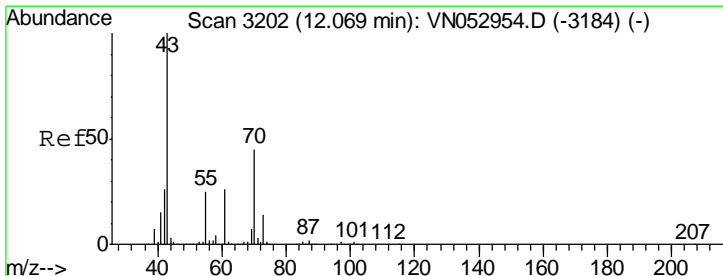
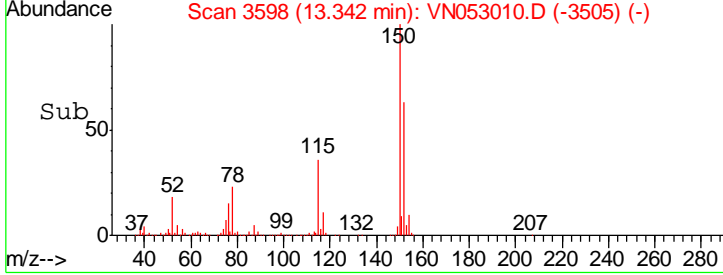
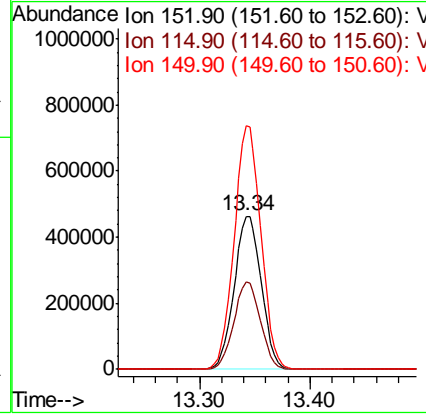
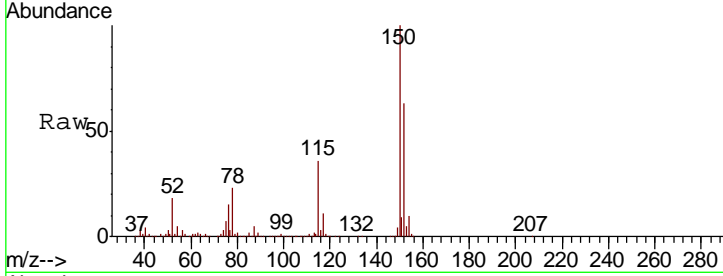




#72
 1,4-Dichlorobenzene-d4
 Concen: 50.000 ug/l
 RT: 13.34 min Scan# 3598
 Delta R.T. -0.00 min
 Lab File: VN053010.D
 Acq: 19 Dec 2018 14:49

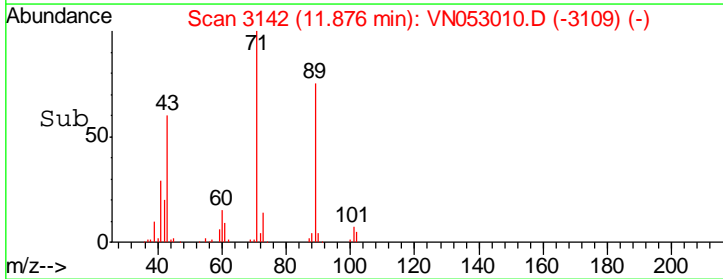
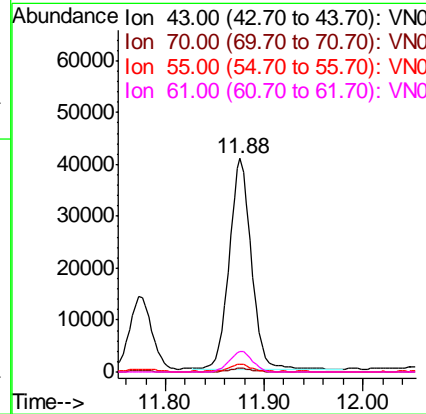
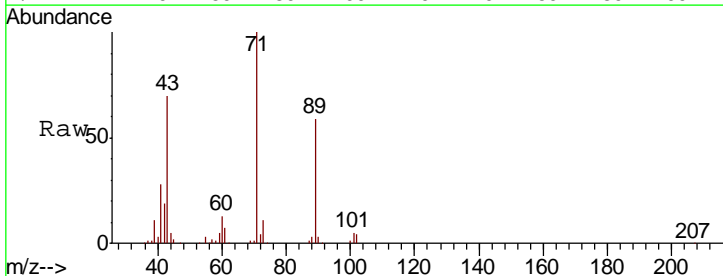
Instrument : MSVOA_N
 ClientSampled :

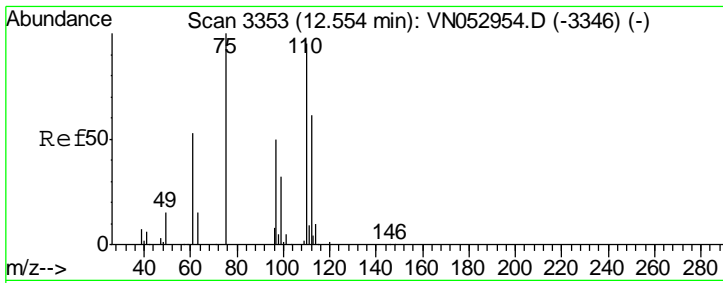
Tgt Ion	Resp	Lower	Upper
152	100		
115	56.1	28.3	85.0
150	157.1	0.0	347.8



#74
 N-amyl acetate
 Concen: 3.751 ug/l
 RT: 11.88 min Scan# 3142
 Delta R.T. -0.19 min
 Lab File: VN053010.D
 Acq: 19 Dec 2018 14:49

Tgt Ion	Resp	Lower	Upper
43	100		
70	1.8	34.2	51.4#
55	3.9	20.3	30.5#
61	10.0	20.0	30.0#

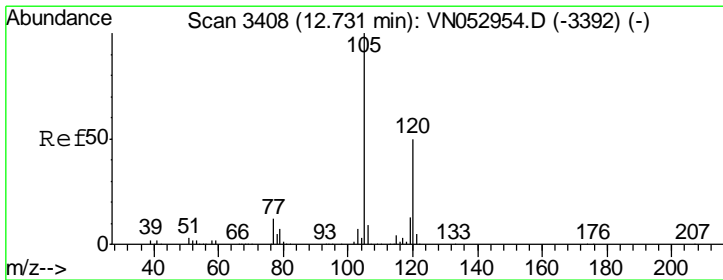
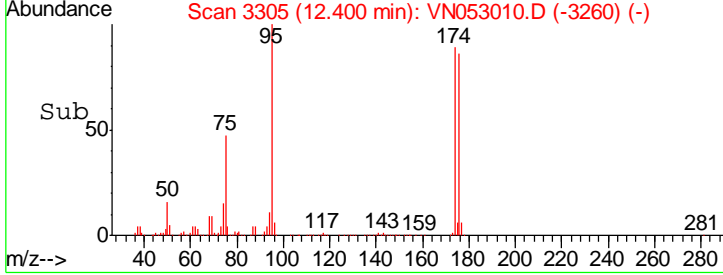
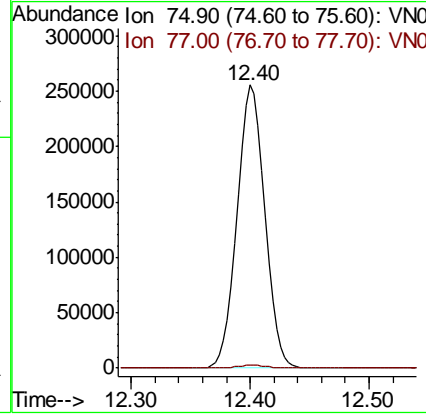
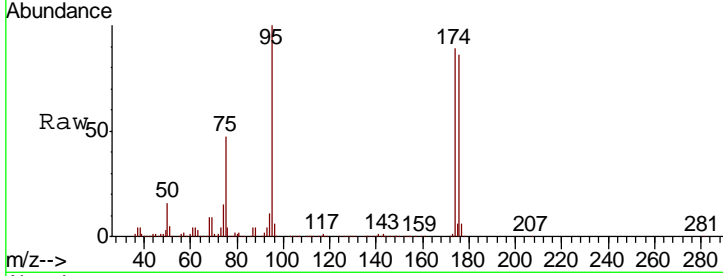




#76
 1,2,3-Trichloropropane
 Concen: 31.072 ug/l
 RT: 12.40 min Scan# 3305
 Delta R.T. -0.15 min
 Lab File: VN053010.D
 Acq: 19 Dec 2018 14:49

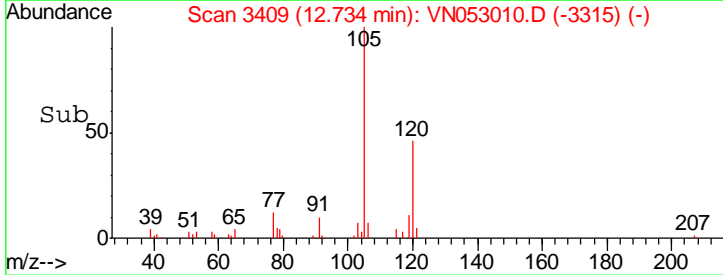
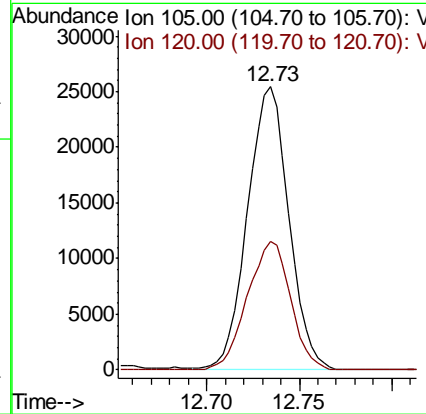
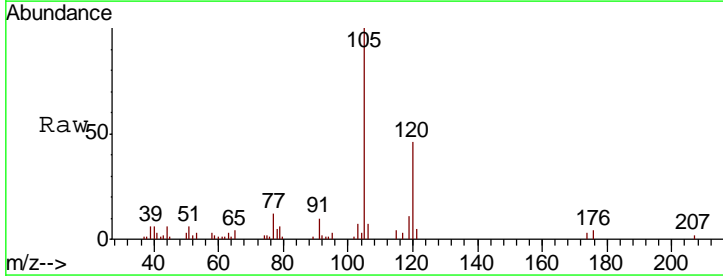
Instrument :
 MSVOA_N
 ClientSampled :

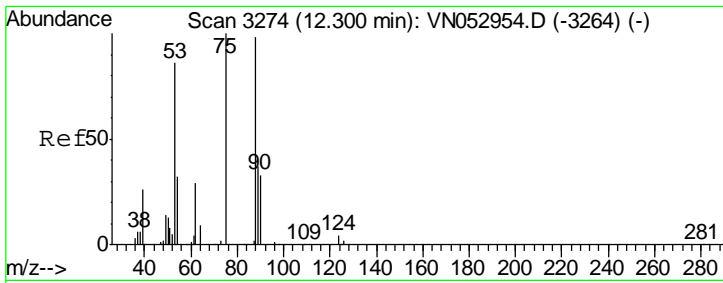
Tgt Ion	Resp	Lower	Upper
75	100		
77	1.1	0.0	0.0#



#80
 1,3,5-Trimethylbenzene
 Concen: 0.785 ug/l
 RT: 12.73 min Scan# 3409
 Delta R.T. 0.00 min
 Lab File: VN053010.D
 Acq: 19 Dec 2018 14:49

Tgt Ion	Resp	Lower	Upper
105	100		
120	47.2	24.4	73.2

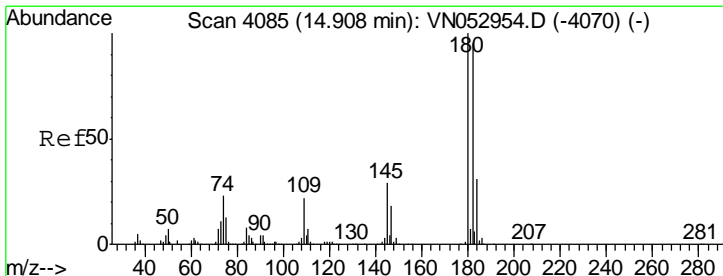
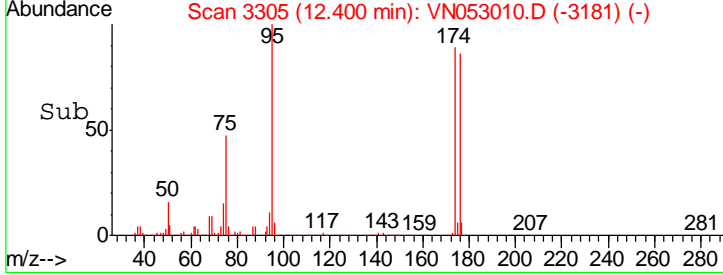
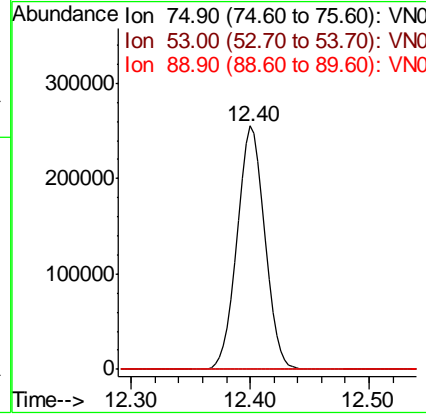
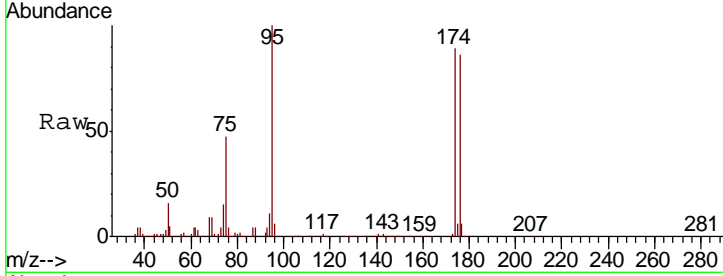




#81
 trans-1,4-Dichloro-2-butene
 Concen: 100.150 ug/l
 RT: 12.40 min Scan# 3305
 Delta R.T. 0.10 min
 Lab File: VN053010.D
 Acq: 19 Dec 2018 14:49

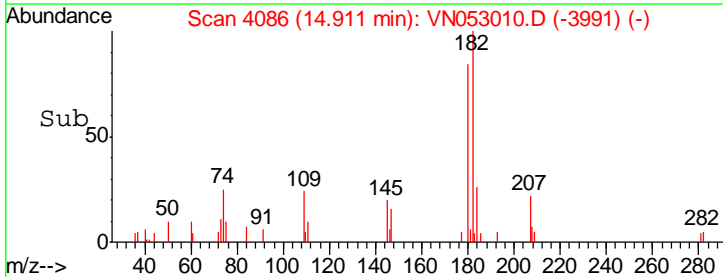
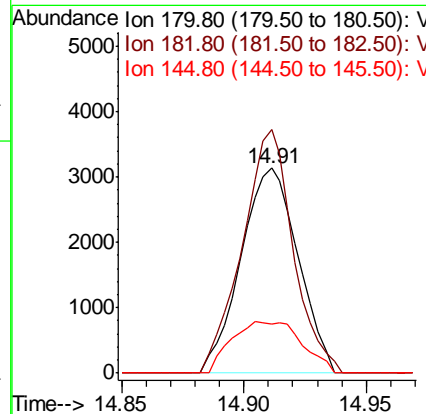
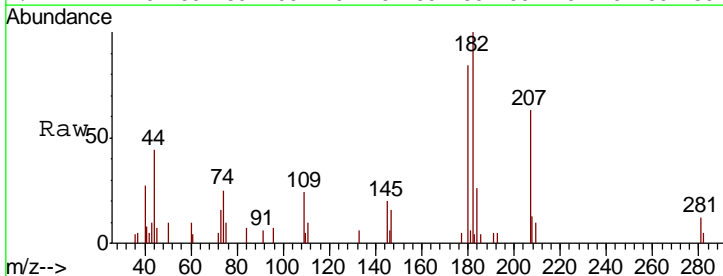
Instrument : MSVOA_N
 ClientSampled :

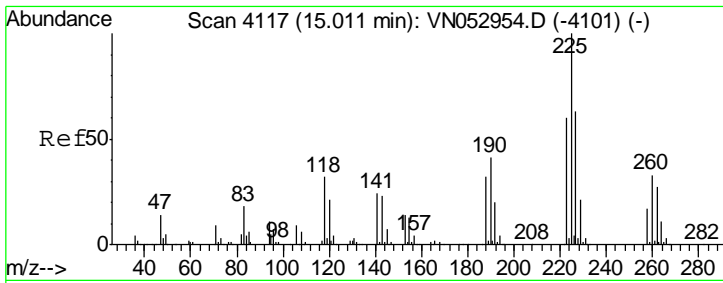
Tgt Ion	Resp	Lower	Upper
75	411584		
53	100	74.7	112.1#
89	0.0	36.1	54.1#



#93
 1,2,4-Trichlorobenzene
 Concen: 0.952 ug/l
 RT: 14.91 min Scan# 4086
 Delta R.T. 0.00 min
 Lab File: VN053010.D
 Acq: 19 Dec 2018 14:49

Tgt Ion	Resp	Lower	Upper
180	5085		
182	105.8	47.8	143.3
145	30.7	14.2	42.6

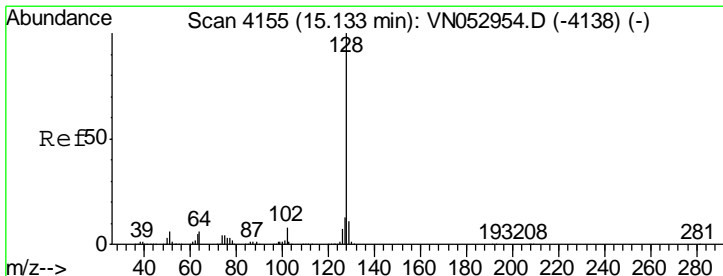
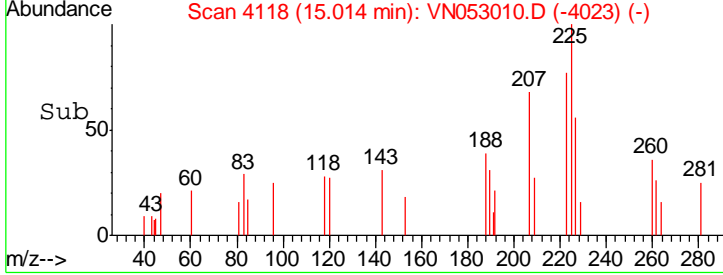
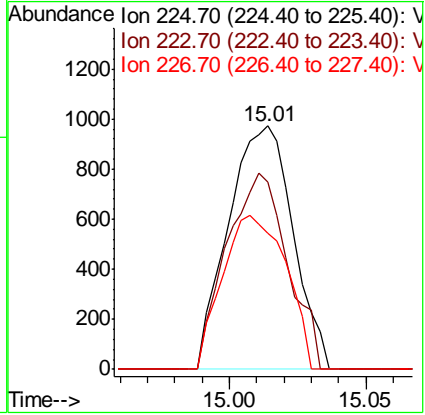
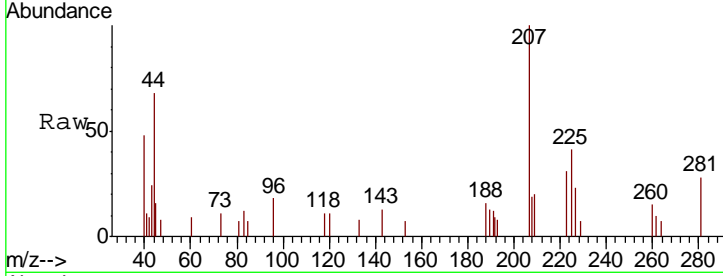




#94
 Hexachlorobutadiene
 Concen: Below Cal
 RT: 15.01 min Scan# 4118
 Delta R.T. 0.00 min
 Lab File: VN053010.D
 Acq: 19 Dec 2018 14:49

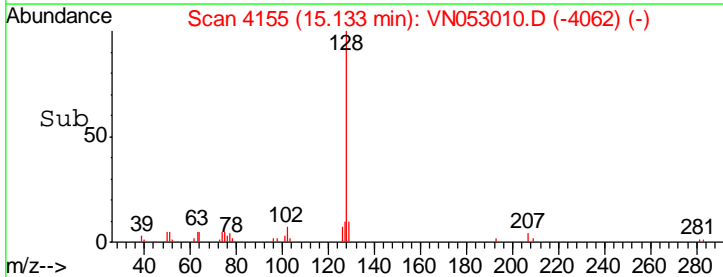
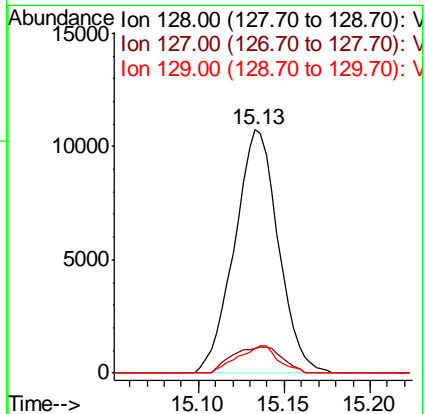
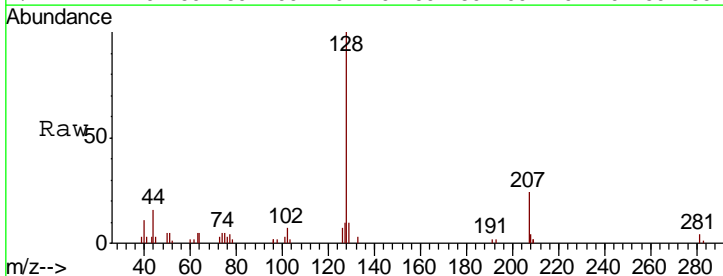
Instrument : MSVOA_N
 ClientSampled :

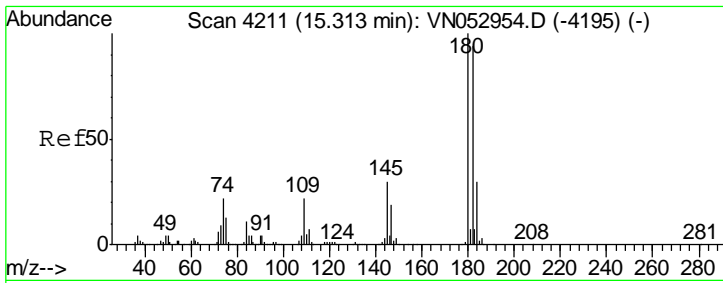
Tgt Ion	Resp	Lower	Upper
225	1598		
223	75.7	31.5	94.5
227	62.5	31.9	95.7



#95
 Naphthalene
 Concen: 1.746 ug/l
 RT: 15.13 min Scan# 4155
 Delta R.T. 0.00 min
 Lab File: VN053010.D
 Acq: 19 Dec 2018 14:49

Tgt Ion	Resp	Lower	Upper
128	18966		
127	12.3	10.2	15.4
129	10.4	8.6	13.0



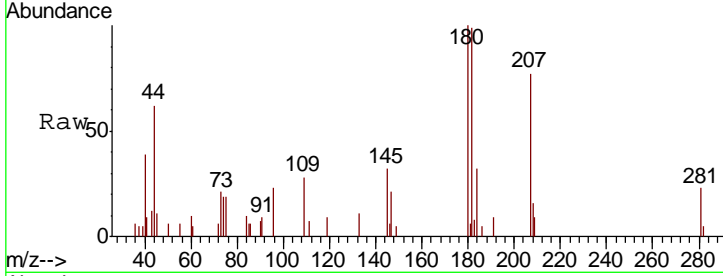


#96
 1,2,3-Trichlorobenzene
 Concen: 0.981 ug/l
 RT: 15.31 min Scan# 4211
 Delta R.T. 0.00 min
 Lab File: VN053010.D
 Acq: 19 Dec 2018 14:49

Instrument :
 MSVOA_N
 ClientSampled :

Tot Ion:180 Resp: 6080

Ion	Ratio	Lower	Upper
180	100		
182	88.5	47.9	143.7
145	32.0	15.0	45.0



Abundance Ion 179.80 (179.50 to 180.50): V
 Ion 181.80 (181.50 to 182.50): V
 Ion 144.90 (144.60 to 145.60): V

