

Data Path : Z:\voasrv\HPCHEM1\MSVOA_N\Data\VN122021\
 Data File : VN070253.D
 Acq On : 20 Dec 2021 20:34
 Operator : JC/MD
 Sample : M5044-09
 Misc : 7.12g/10mL/100uL/5.00mL/MSVOA_N/MEOH
 ALS Vial : 25 Sample Multiplier: 1

Instrument :
 MSVOA_N
 ClientSampleId :

Quant Time: Dec 21 04:09:09 2021
 Quant Method : Z:\voasrv\HPCHEM1\MSVOA_N\methods\82N120221W.M
 Quant Title : SW846 8260
 QLast Update : Fri Dec 03 08:46:47 2021
 Response via : Initial Calibration

Compound	R.T.	QIon	Response	Conc	Units	Dev(Min)

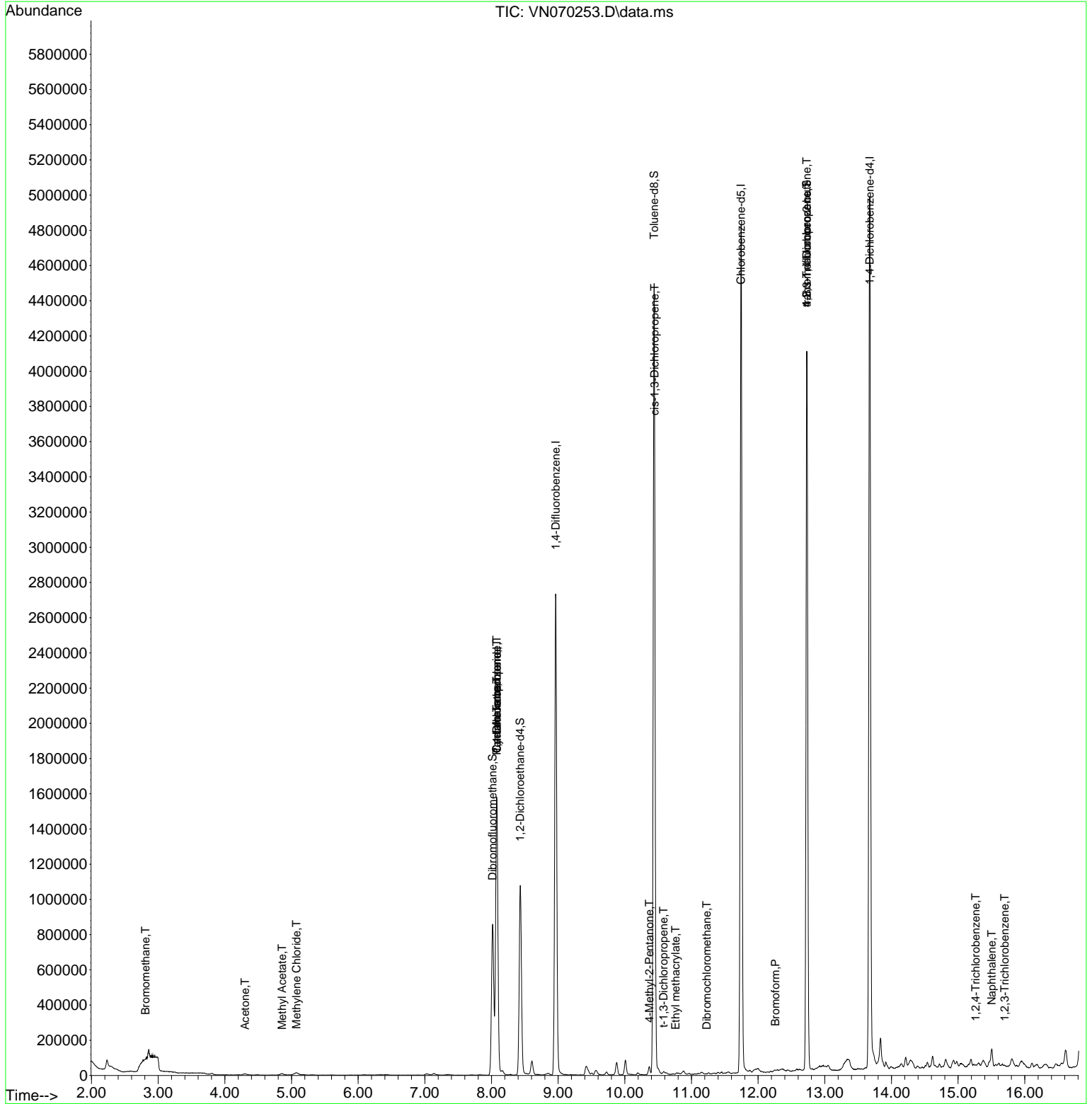
Internal Standards						
1) Pentafluorobenzene	8.080	168	1227006	50.000	ug/l	0.00
34) 1,4-Difluorobenzene	8.963	114	2341213	50.000	ug/l	0.00
63) Chlorobenzene-d5	11.744	117	2707506	50.000	ug/l	0.00
72) 1,4-Dichlorobenzene-d4	13.675	152	1339875	50.000	ug/l	0.00
System Monitoring Compounds						
33) 1,2-Dichloroethane-d4	8.432	65	951848	50.243	ug/l	0.00
Spiked Amount	50.000	Range 61 - 141	Recovery	=	100.480%	
35) Dibromofluoromethane	8.016	113	634629	43.275	ug/l	0.00
Spiked Amount	50.000	Range 69 - 133	Recovery	=	86.560%	
50) Toluene-d8	10.440	98	3124777	53.066	ug/l	0.00
Spiked Amount	50.000	Range 65 - 126	Recovery	=	106.140%	
62) 4-Bromofluorobenzene	12.731	95	1437923	67.405	ug/l	0.00
Spiked Amount	50.000	Range 58 - 135	Recovery	=	134.820%	
Target Compounds						
						Qvalue
5) Bromomethane	2.810	94	2195	0.245	ug/l	98
16) Acetone	4.304	43	9654	0.847	ug/l #	89
18) Methyl Acetate	4.859	43	16260	0.473	ug/l #	75
20) Methylene Chloride	5.076	84	8468	0.559	ug/l	92
31) Cyclohexane	8.078	56	30488	1.156	ug/l #	26
36) 1,1-Dichloropropene	8.078	75	101653	4.561	ug/l #	49
38) Carbon Tetrachloride	8.078	117	122400	5.600	ug/l #	16
51) 4-Methyl-2-Pentanone	10.368	43	6492	0.204	ug/l #	79
53) t-1,3-Dichloropropene	10.580	75	5304	2.977	ug/l	90
54) cis-1,3-Dichloropropene	10.448	75	979	2.031	ug/l #	1
56) Ethyl methacrylate	10.760	69	285	2.288	ug/l #	40
60) Dibromochloromethane	11.229	129	95	2.381	ug/l	87
71) Bromoform	12.259	173	204	2.743	ug/l #	29
76) 1,2,3-Trichloropropane	12.731	75	784822	20.425	ug/l #	1
81) trans-1,4-Dichloro-2-b...	12.731	75	784822	65.480	ug/l #	5
93) 1,2,4-Trichlorobenzene	15.263	180	794	2.912	ug/l #	1
95) Naphthalene	15.504	128	98301	5.367	ug/l	97
96) 1,2,3-Trichlorobenzene	15.700	180	853	2.473	ug/l #	20

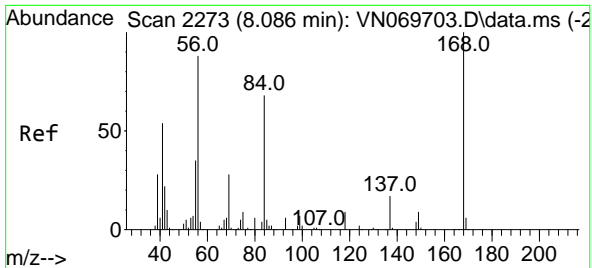
(#) = qualifier out of range (m) = manual integration (+) = signals summed

Data Path : Z:\voasrv\HPCHEM1\MSVOA_N\Data\VN122021\
 Data File : VN070253.D
 Acq On : 20 Dec 2021 20:34
 Operator : JC/MD
 Sample : M5044-09
 Misc : 7.12g/10mL/100uL/5.00mL/MSVOA_N/MEOH
 ALS Vial : 25 Sample Multiplier: 1

Instrument :
 MSVOA_N
 ClientSampleId :

Quant Time: Dec 21 04:09:09 2021
 Quant Method : Z:\voasrv\HPCHEM1\MSVOA_N\methods\82N120221W.M
 Quant Title : SW846 8260
 QLast Update : Fri Dec 03 08:46:47 2021
 Response via : Initial Calibration

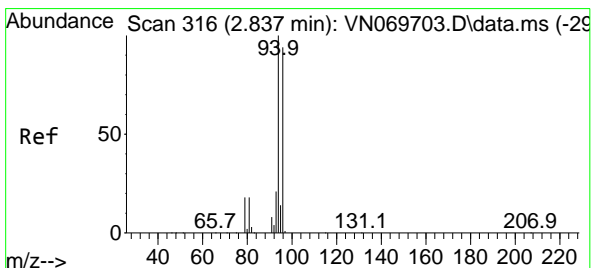
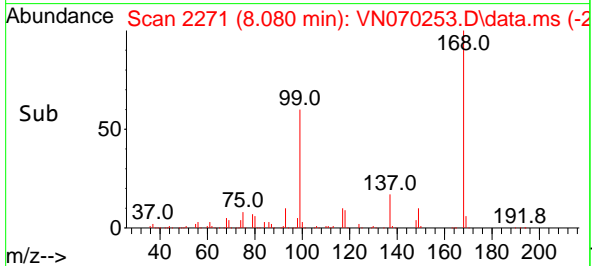
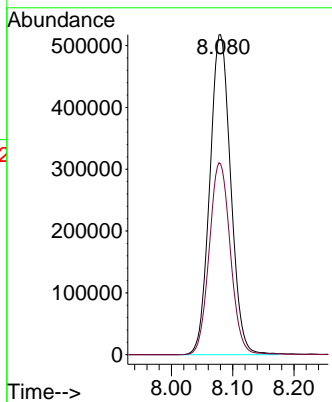
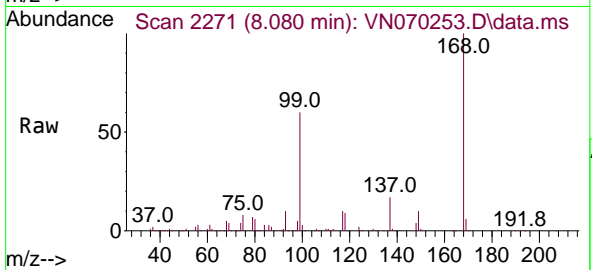




#1
 Pentafluorobenzene
 Concen: 50.000 ug/l
 RT: 8.080 min Scan# 21
 Delta R.T. -0.006 min
 Lab File: VN070253.D
 Acq: 20 Dec 2021 20:34

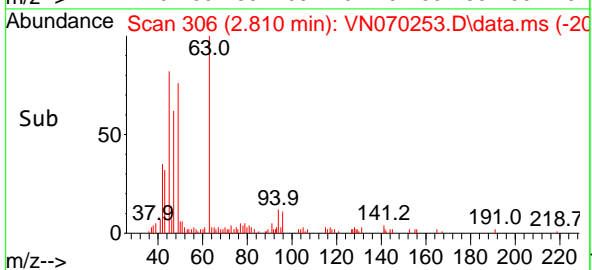
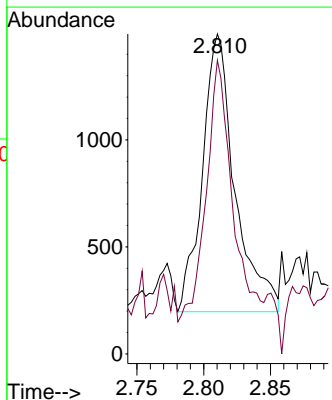
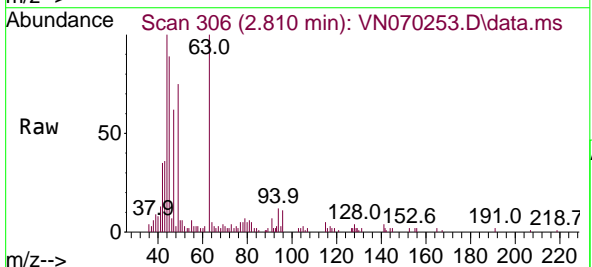
Instrument :
 MSVOA_N
 ClientSampleId :

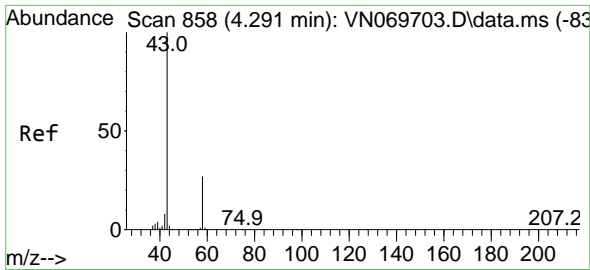
Tgt Ion:168 Resp: 1227006
 Ion Ratio Lower Upper
 168 100
 99 59.6 41.3 61.9



#5
 Bromomethane
 Concen: 0.245 ug/l
 RT: 2.810 min Scan# 306
 Delta R.T. -0.027 min
 Lab File: VN070253.D
 Acq: 20 Dec 2021 20:34

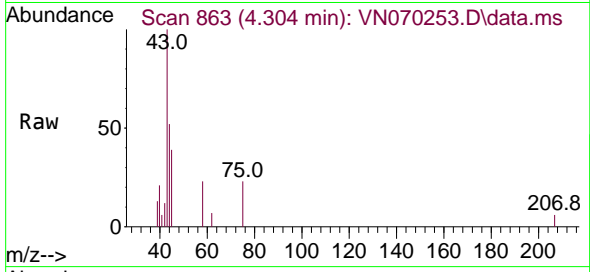
Tgt Ion: 94 Resp: 2195
 Ion Ratio Lower Upper
 94 100
 96 94.1 73.8 110.8



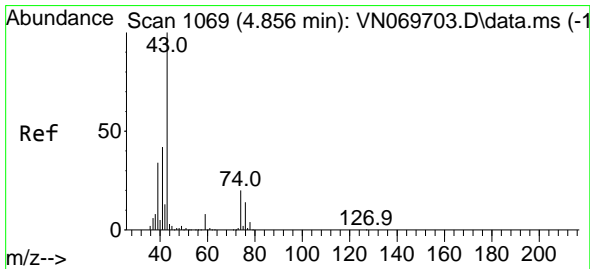
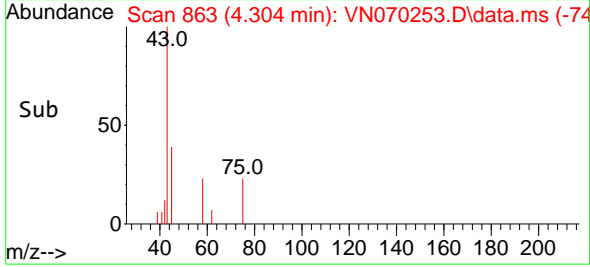
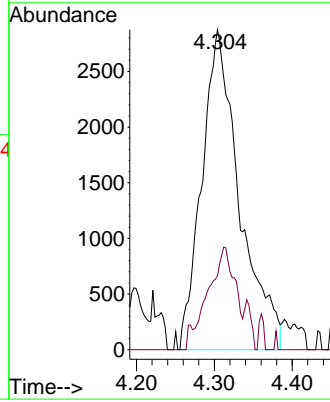


#16
 Acetone
 Concen: 0.847 ug/l
 RT: 4.304 min Scan# 80
 Delta R.T. 0.014 min
 Lab File: VN070253.D
 Acq: 20 Dec 2021 20:34

Instrument :
 MSVOA_N
 ClientSampleId :

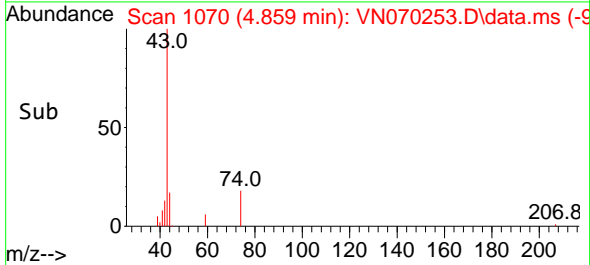
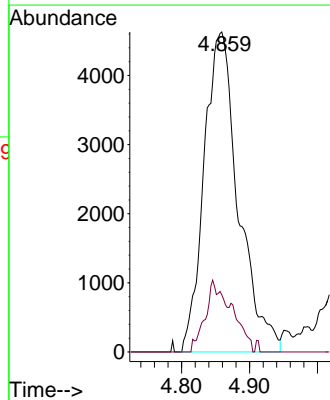
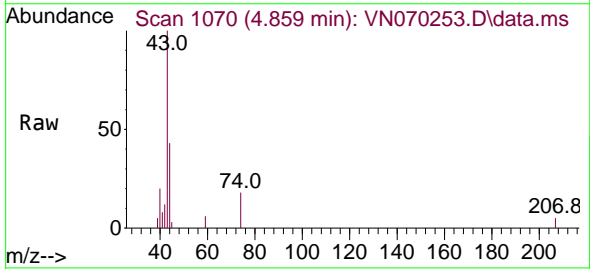


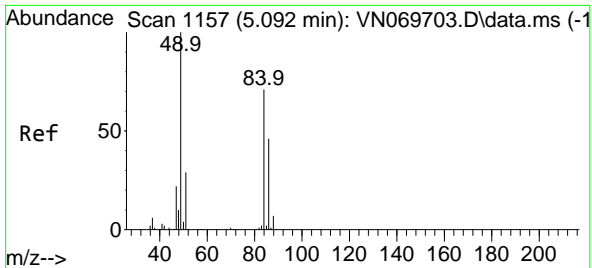
Tgt Ion: 43 Resp: 9654
 Ion Ratio Lower Upper
 43 100
 58 23.1 23.1 34.7#



#18
 Methyl Acetate
 Concen: 0.473 ug/l
 RT: 4.859 min Scan# 1070
 Delta R.T. 0.003 min
 Lab File: VN070253.D
 Acq: 20 Dec 2021 20:34

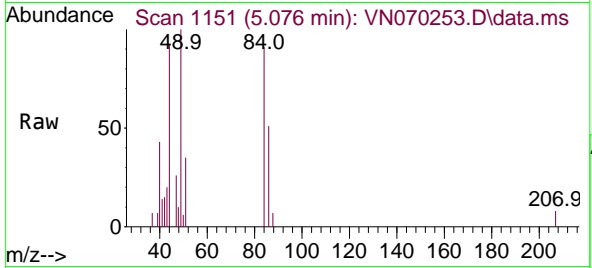
Tgt Ion: 43 Resp: 16260
 Ion Ratio Lower Upper
 43 100
 74 12.0 19.4 29.2#



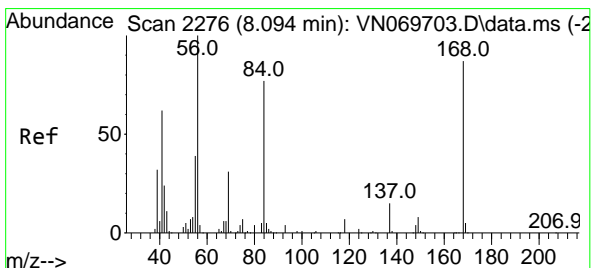
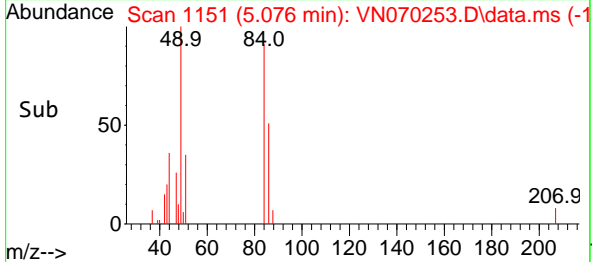
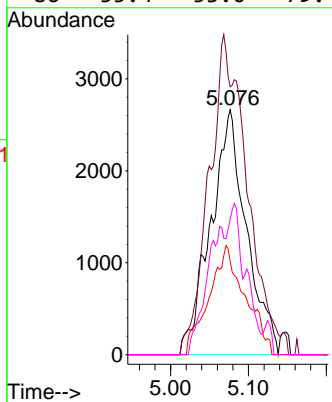


#20
 Methylene Chloride
 Concen: 0.559 ug/l
 RT: 5.076 min Scan# 1157
 Delta R.T. -0.016 min
 Lab File: VN070253.D
 Acq: 20 Dec 2021 20:34

Instrument : MSVOA_N
 ClientSampleId :

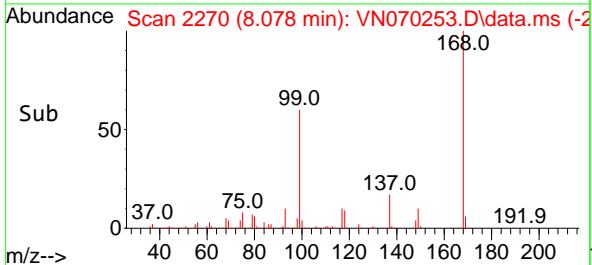
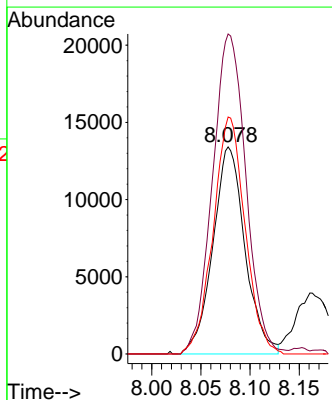
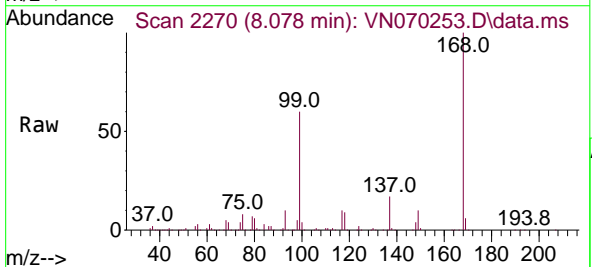


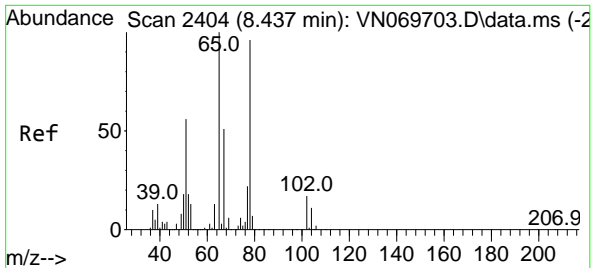
Tgt Ion	Resp	Lower	Upper
84	100		
49	109.3	93.5	140.3
51	38.1	29.4	44.2
86	55.4	53.0	79.4



#31
 Cyclohexane
 Concen: 1.156 ug/l
 RT: 8.078 min Scan# 2270
 Delta R.T. -0.016 min
 Lab File: VN070253.D
 Acq: 20 Dec 2021 20:34

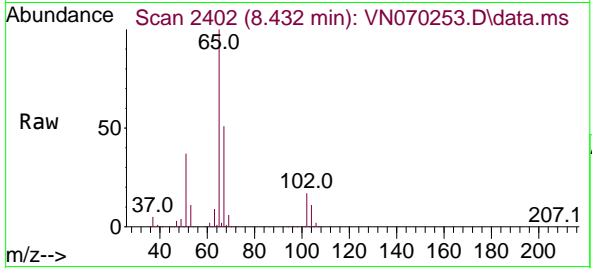
Tgt Ion	Resp	Lower	Upper
56	100		
69	154.6	27.1	40.7#
84	114.5	73.4	110.0#



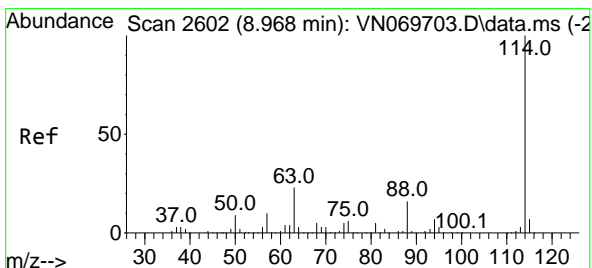
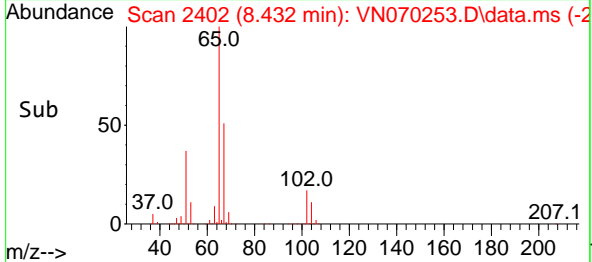
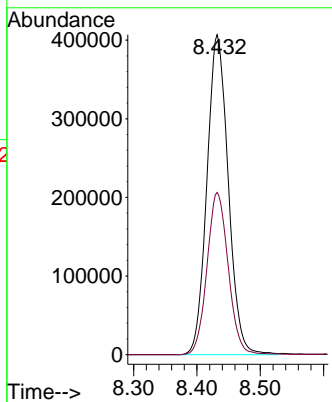


#33
 1,2-Dichloroethane-d4
 Concen: 50.243 ug/l
 RT: 8.432 min Scan# 24
 Delta R.T. -0.005 min
 Lab File: VN070253.D
 Acq: 20 Dec 2021 20:34

Instrument :
 MSVOA_N
 ClientSampleId :

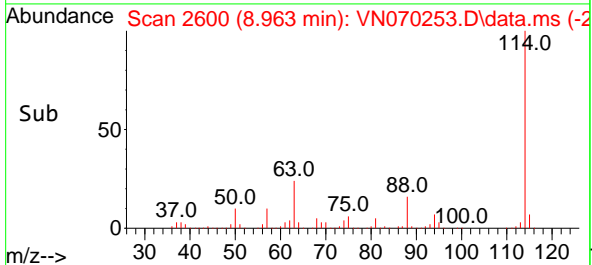
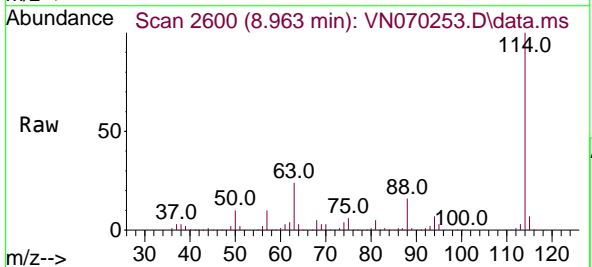
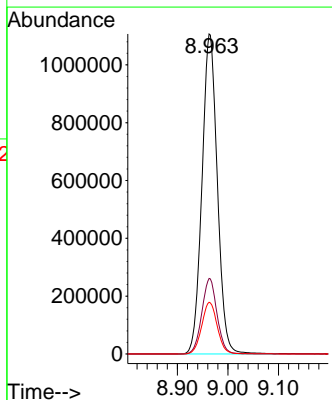


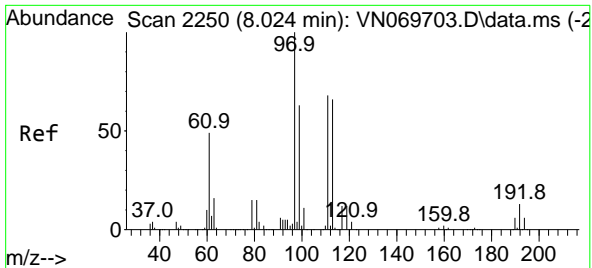
Tgt Ion: 65 Resp: 951848
 Ion Ratio Lower Upper
 65 100
 67 50.5 0.0 103.0



#34
 1,4-Difluorobenzene
 Concen: 50.000 ug/l
 RT: 8.963 min Scan# 2600
 Delta R.T. -0.005 min
 Lab File: VN070253.D
 Acq: 20 Dec 2021 20:34

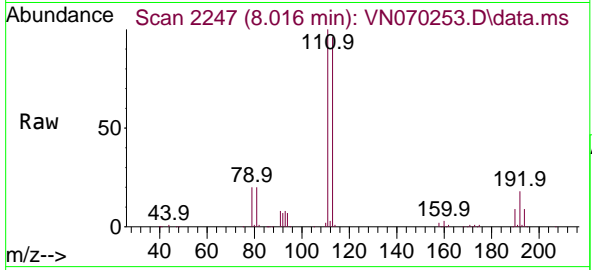
Tgt Ion: 114 Resp: 2341213
 Ion Ratio Lower Upper
 114 100
 63 23.6 0.0 37.8
 88 16.1 0.0 27.4



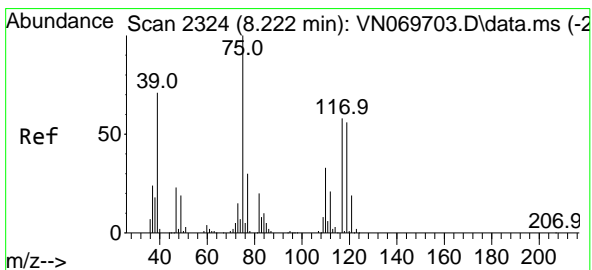
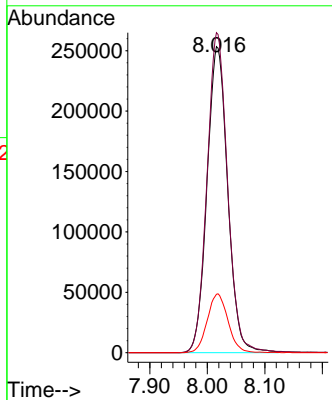
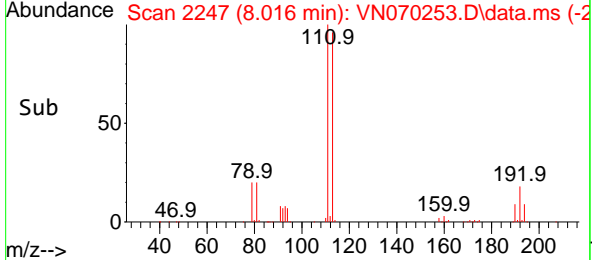


#35
 Dibromofluoromethane
 Concen: 43.275 ug/l
 RT: 8.016 min Scan# 21
 Delta R.T. -0.008 min
 Lab File: VN070253.D
 Acq: 20 Dec 2021 20:34

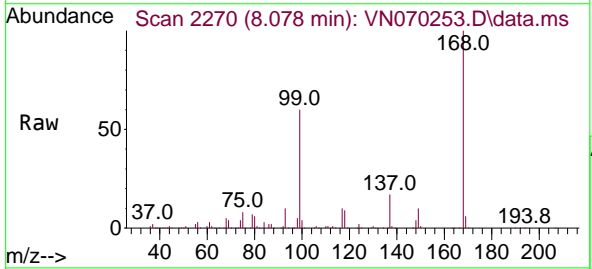
Instrument :
 MSVOA_N
 ClientSampleId :



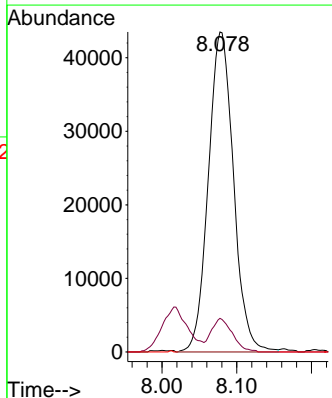
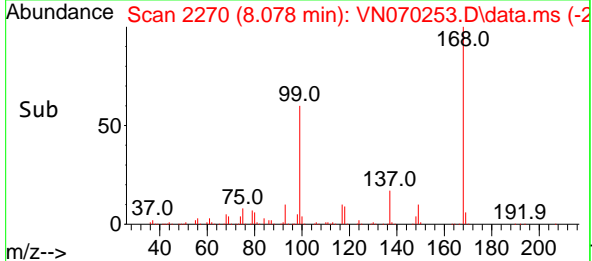
Tgt Ion:113 Resp: 634629
 Ion Ratio Lower Upper
 113 100
 111 103.9 82.2 123.2
 192 19.2 16.9 25.3

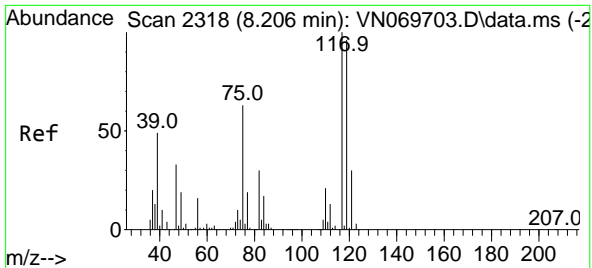


#36
 1,1-Dichloropropene
 Concen: 4.561 ug/l
 RT: 8.078 min Scan# 2270
 Delta R.T. -0.145 min
 Lab File: VN070253.D
 Acq: 20 Dec 2021 20:34



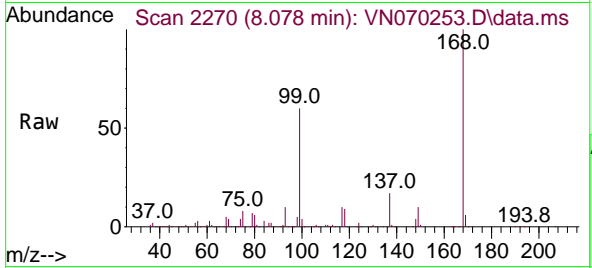
Tgt Ion: 75 Resp: 101653
 Ion Ratio Lower Upper
 75 100
 110 8.9 18.4 55.2#
 77 0.0 24.4 36.6#



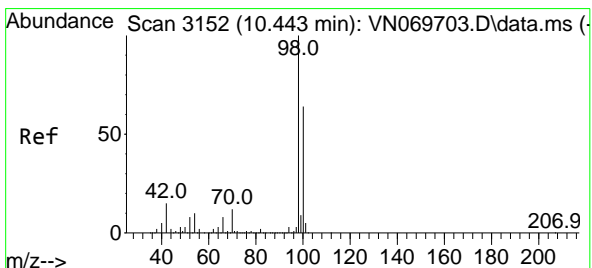
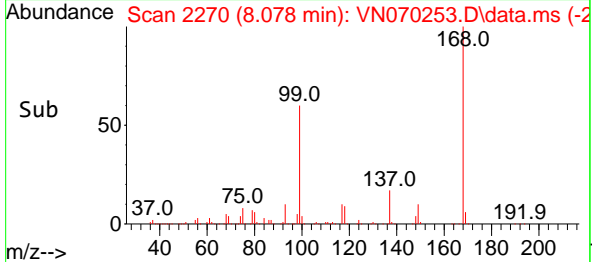
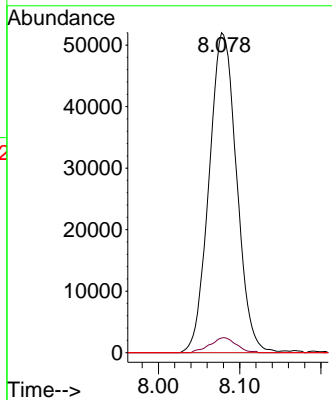


#38
 Carbon Tetrachloride
 Concen: 5.600 ug/l
 RT: 8.078 min Scan# 21
 Delta R.T. -0.129 min
 Lab File: VN070253.D
 Acq: 20 Dec 2021 20:34

Instrument :
 MSVOA_N
 ClientSampleId :

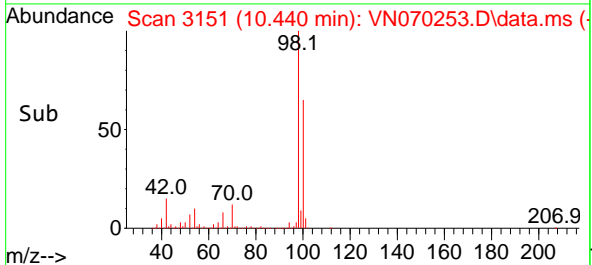
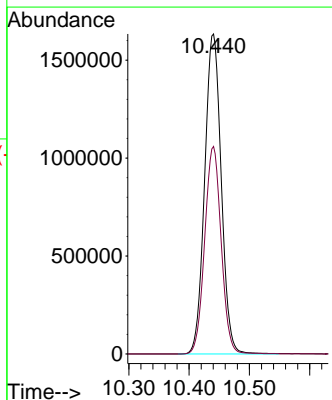
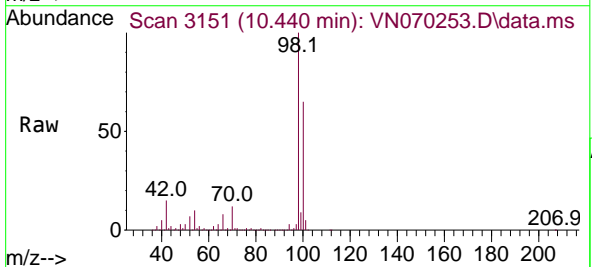


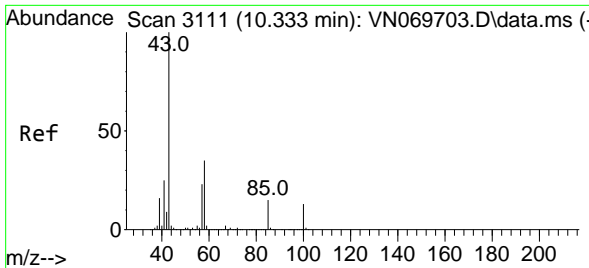
Tgt Ion:117 Resp: 122400
 Ion Ratio Lower Upper
 117 100
 119 4.6 76.1 114.1#
 121 0.0 24.2 36.2#



#50
 Toluene-d8
 Concen: 53.066 ug/l
 RT: 10.440 min Scan# 3151
 Delta R.T. -0.003 min
 Lab File: VN070253.D
 Acq: 20 Dec 2021 20:34

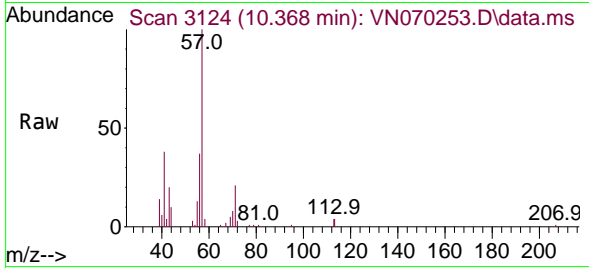
Tgt Ion: 98 Resp: 3124777
 Ion Ratio Lower Upper
 98 100
 100 64.3 50.4 75.6



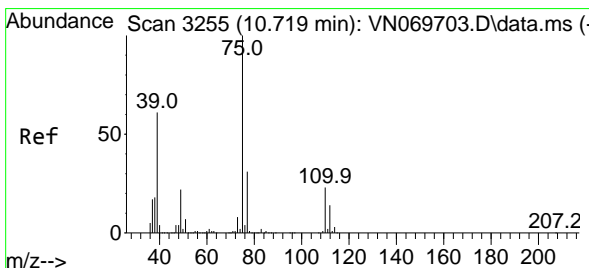
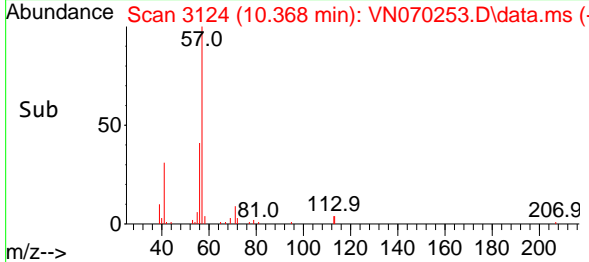
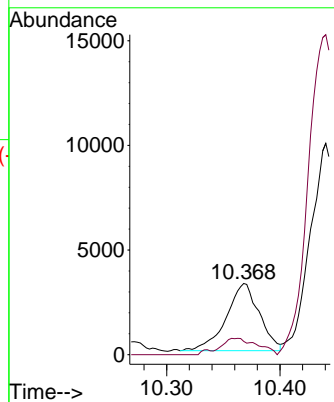


#51
 4-Methyl-2-Pentanone
 Concen: 0.204 ug/l
 RT: 10.368 min Scan# 3111
 Delta R.T. 0.035 min
 Lab File: VN070253.D
 Acq: 20 Dec 2021 20:34

Instrument : MSVOA_N
 ClientSampleId :

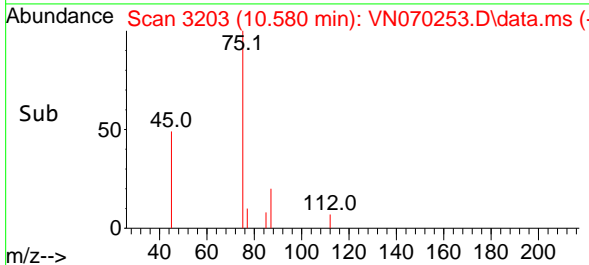
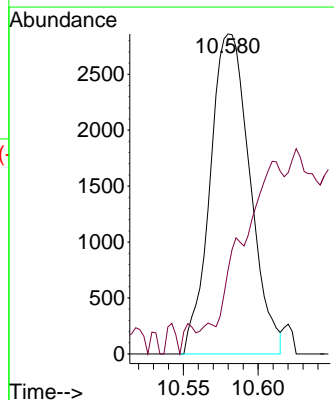
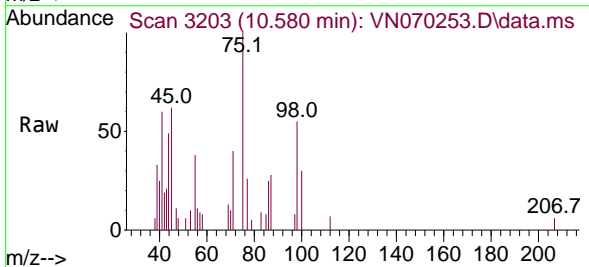


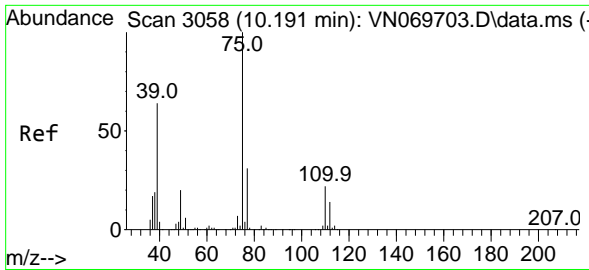
Tgt Ion: 43 Resp: 6492
 Ion Ratio Lower Upper
 43 100
 58 25.4 30.4 45.6#



#53
 t-1,3-Dichloropropene
 Concen: 2.977 ug/l
 RT: 10.580 min Scan# 3203
 Delta R.T. -0.139 min
 Lab File: VN070253.D
 Acq: 20 Dec 2021 20:34

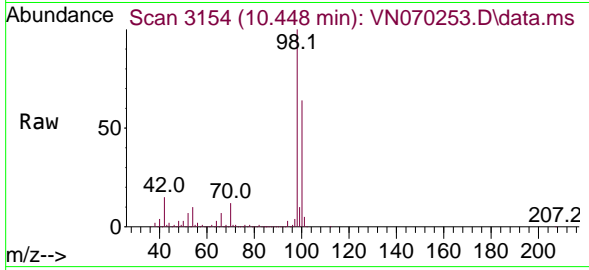
Tgt Ion: 75 Resp: 5304
 Ion Ratio Lower Upper
 75 100
 77 26.2 25.6 38.4



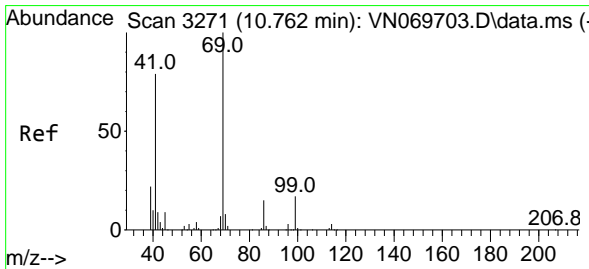
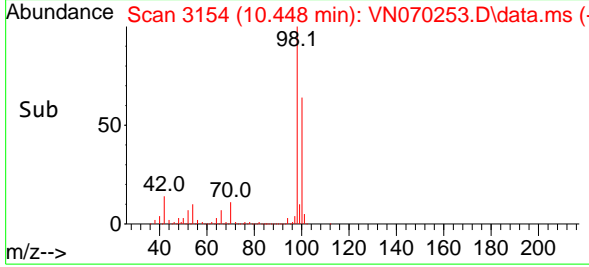
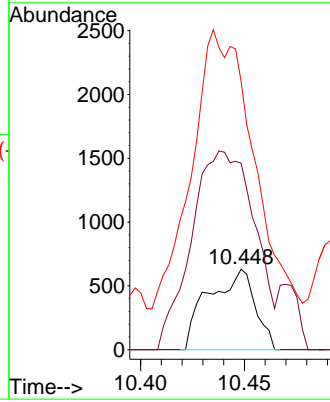


#54
 cis-1,3-Dichloropropene
 Concen: 2.031 ug/l
 RT: 10.448 min Scan# 3154
 Delta R.T. 0.257 min
 Lab File: VN070253.D
 Acq: 20 Dec 2021 20:34

Instrument :
 MSVOA_N
 ClientSampleId :

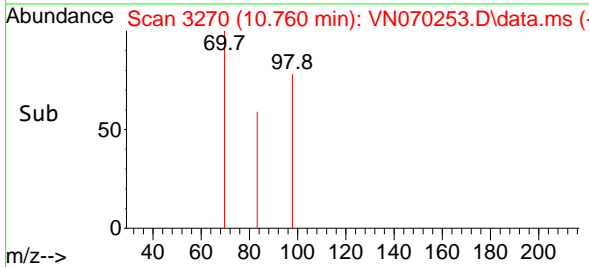
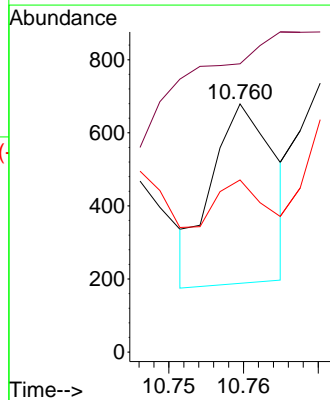
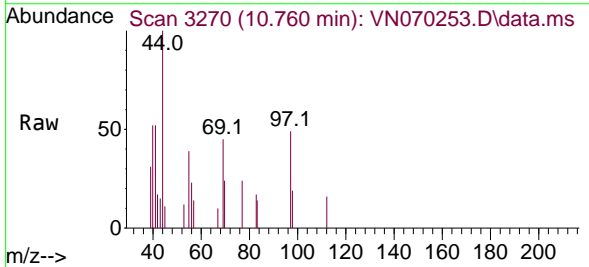


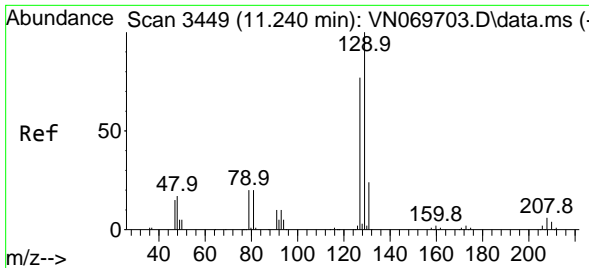
Tgt Ion: 75 Resp: 979
 Ion Ratio Lower Upper
 75 100
 77 157.1 26.4 39.6#
 39 226.0 42.5 63.7#



#56
 Ethyl methacrylate
 Concen: 2.288 ug/l
 RT: 10.760 min Scan# 3270
 Delta R.T. -0.002 min
 Lab File: VN070253.D
 Acq: 20 Dec 2021 20:34

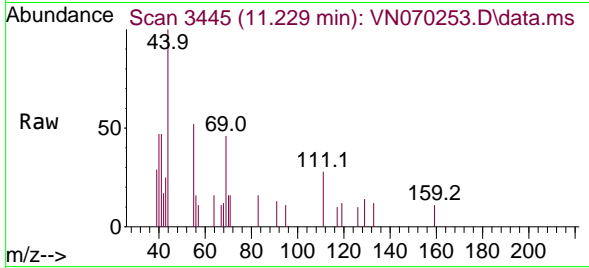
Tgt Ion: 69 Resp: 285
 Ion Ratio Lower Upper
 69 100
 41 0.0 51.4 77.0#
 39 25.6 34.6 52.0#



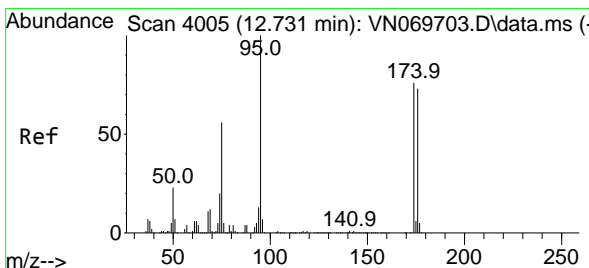
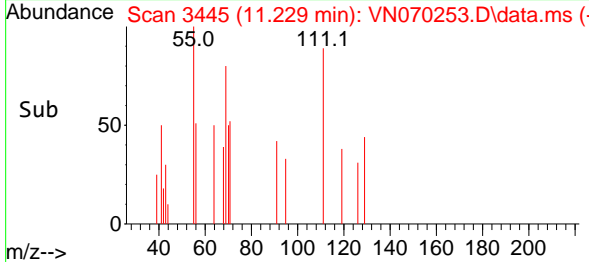
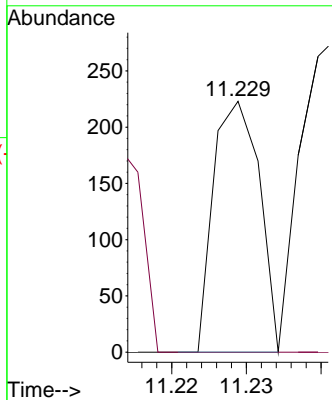


#60
 Dibromochloromethane
 Concen: 2.381 ug/l
 RT: 11.229 min Scan# 3445
 Delta R.T. -0.011 min
 Lab File: VN070253.D
 Acq: 20 Dec 2021 20:34

Instrument : MSVOA_N
 ClientSampleId :

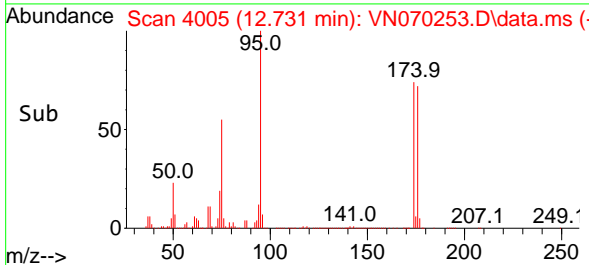
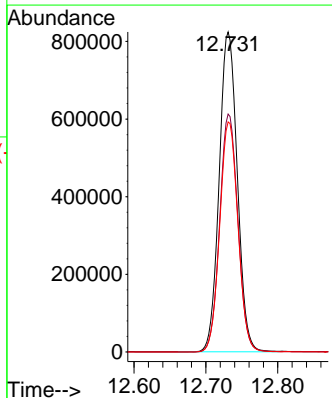
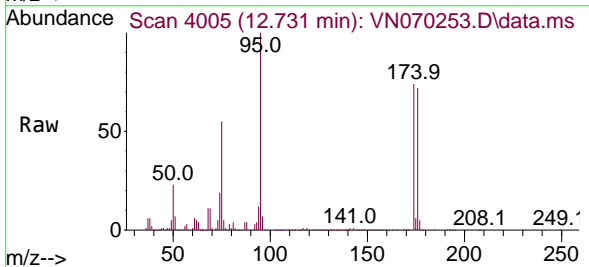


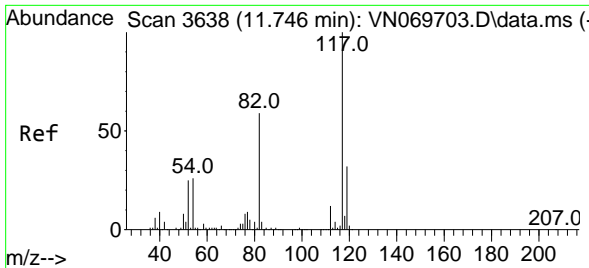
Tgt Ion: 129 Resp: 95
 Ion Ratio Lower Upper
 129 100
 127 88.4 38.6 116.0



#62
 4-Bromofluorobenzene
 Concen: 67.405 ug/l
 RT: 12.731 min Scan# 4005
 Delta R.T. -0.000 min
 Lab File: VN070253.D
 Acq: 20 Dec 2021 20:34

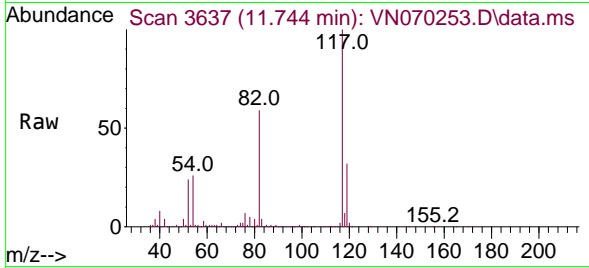
Tgt Ion: 95 Resp: 1437923
 Ion Ratio Lower Upper
 95 100
 174 74.7 0.0 187.2
 176 72.4 0.0 181.4



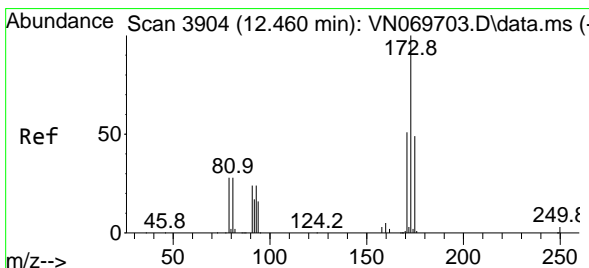
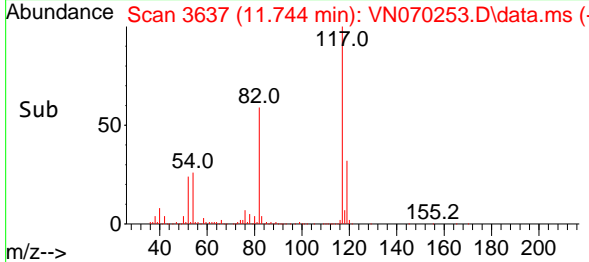
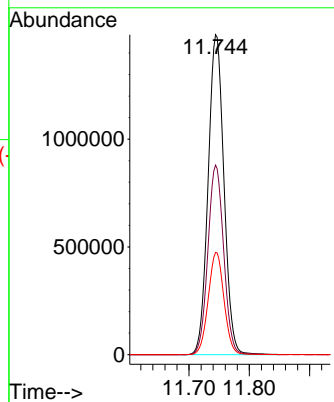


#63
 Chlorobenzene-d5
 Concen: 50.000 ug/l
 RT: 11.744 min Scan# 30
 Delta R.T. -0.002 min
 Lab File: VN070253.D
 Acq: 20 Dec 2021 20:34

Instrument :
 MSVOA_N
 ClientSampleId :

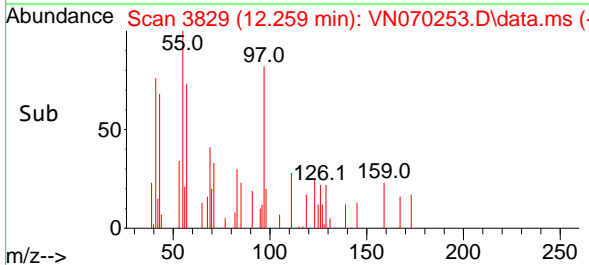
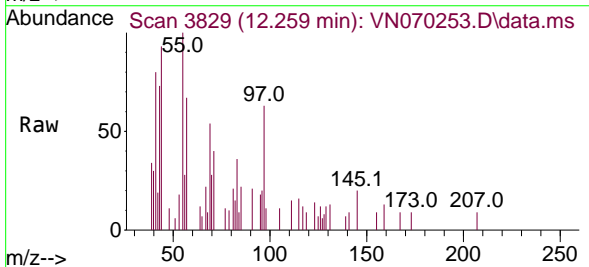
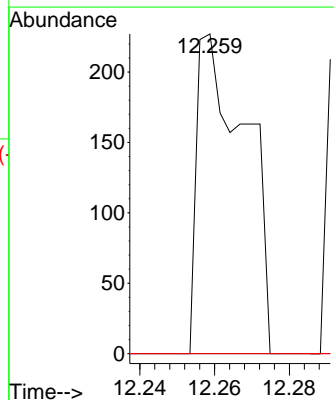


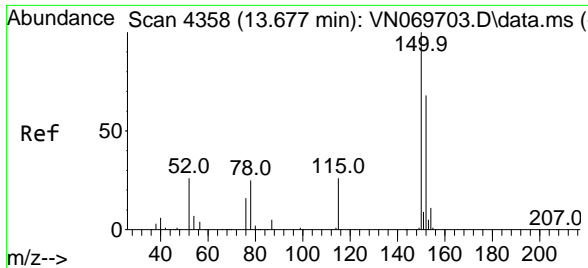
Tgt Ion:117 Resp: 2707506
 Ion Ratio Lower Upper
 117 100
 82 59.2 42.4 63.6
 119 31.9 25.4 38.2



#71
 Bromoform
 Concen: 2.743 ug/l
 RT: 12.259 min Scan# 3829
 Delta R.T. -0.201 min
 Lab File: VN070253.D
 Acq: 20 Dec 2021 20:34

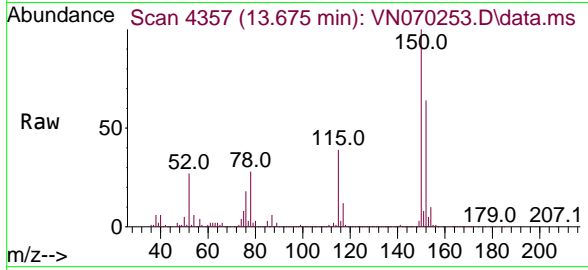
Tgt Ion:173 Resp: 204
 Ion Ratio Lower Upper
 173 100
 175 0.0 24.2 72.6#
 254 0.0 0.0 0.0



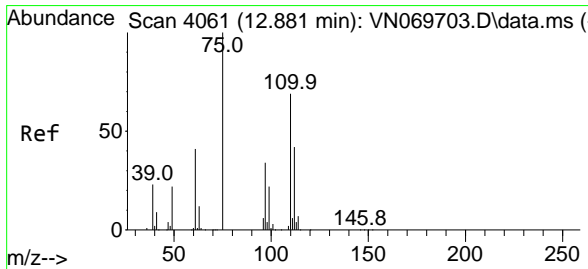
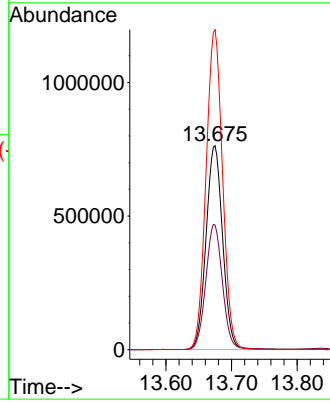
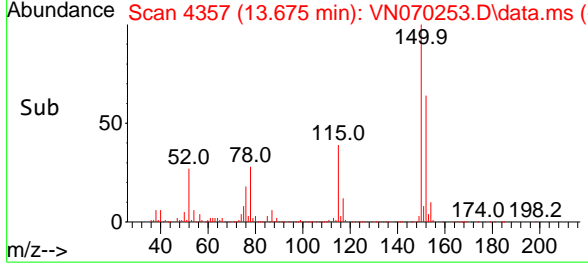


#72
 1,4-Dichlorobenzene-d4
 Concen: 50.000 ug/l
 RT: 13.675 min Scan# 41
 Delta R.T. -0.003 min
 Lab File: VN070253.D
 Acq: 20 Dec 2021 20:34

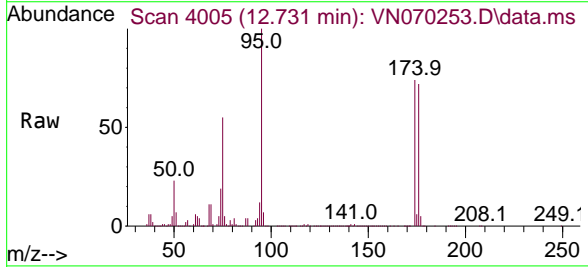
Instrument :
 MSVOA_N
 ClientSampleId :



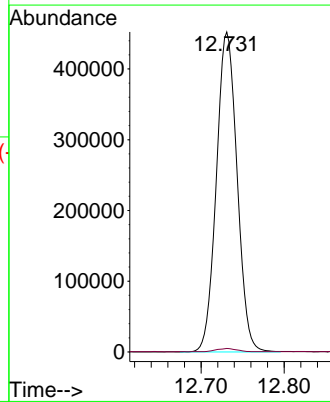
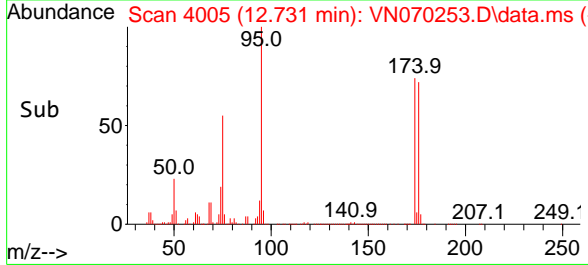
Tgt Ion:152 Resp: 1339875
 Ion Ratio Lower Upper
 152 100
 115 62.0 27.5 82.5
 150 155.9 0.0 344.4

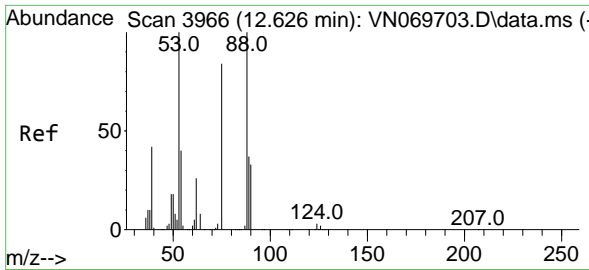


#76
 1,2,3-Trichloropropane
 Concen: 20.425 ug/l
 RT: 12.731 min Scan# 4005
 Delta R.T. -0.150 min
 Lab File: VN070253.D
 Acq: 20 Dec 2021 20:34



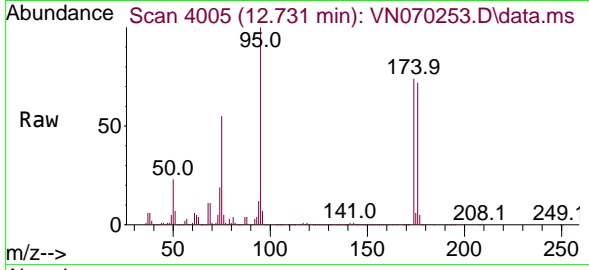
Tgt Ion: 75 Resp: 784822
 Ion Ratio Lower Upper
 75 100
 77 1.0 82.6 247.8#



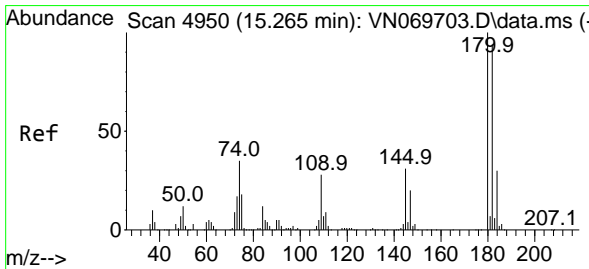
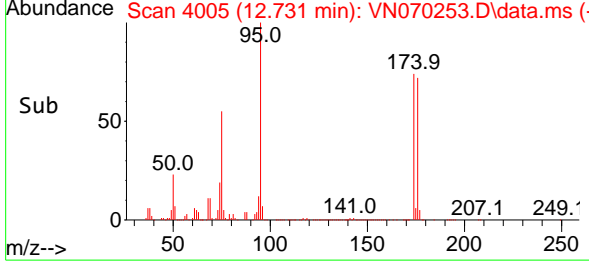
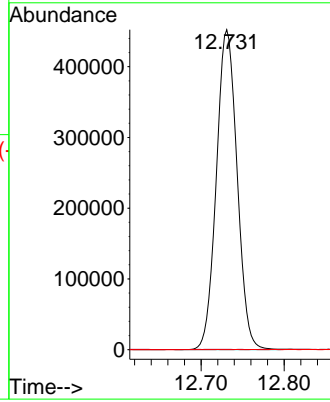


#81
 trans-1,4-Dichloro-2-butene
 Concen: 65.480 ug/l
 RT: 12.731 min Scan# 4005
 Delta R.T. 0.105 min
 Lab File: VN070253.D
 Acq: 20 Dec 2021 20:34

Instrument : MSVOA_N
 ClientSampleId :

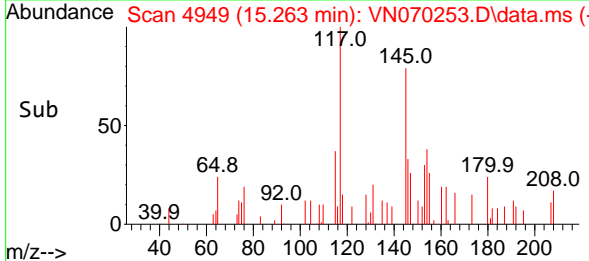
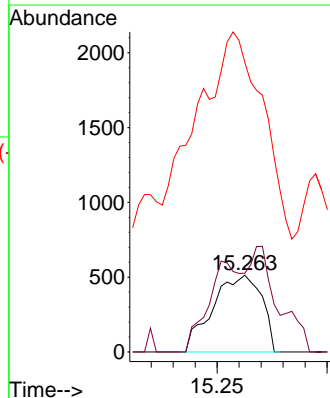
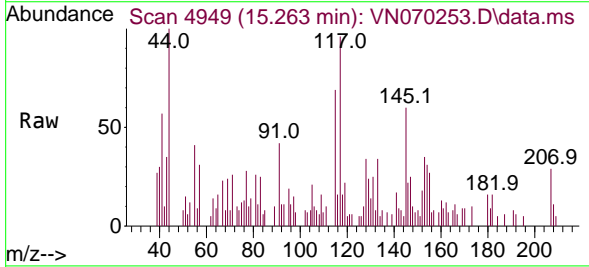


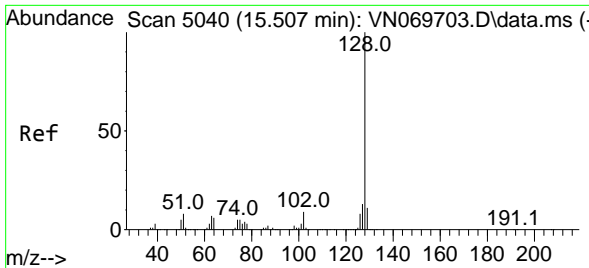
Tgt Ion: 75 Resp: 784822
 Ion Ratio Lower Upper
 75 100
 53 0.0 90.5 135.7#
 89 0.0 38.2 57.4#



#93
 1,2,4-Trichlorobenzene
 Concen: 2.912 ug/l
 RT: 15.263 min Scan# 4949
 Delta R.T. -0.002 min
 Lab File: VN070253.D
 Acq: 20 Dec 2021 20:34

Tgt Ion:180 Resp: 794
 Ion Ratio Lower Upper
 180 100
 182 74.1 48.3 144.9
 145 360.3 14.5 43.5#

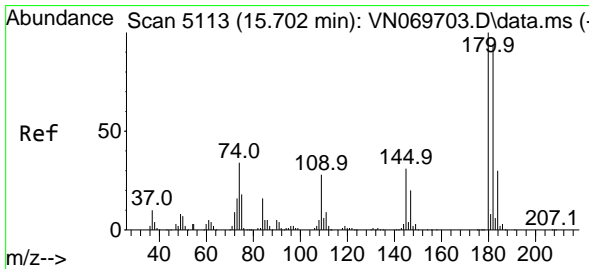
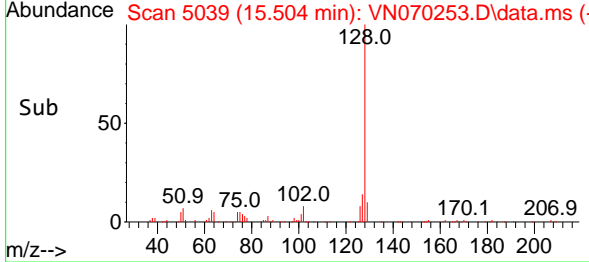
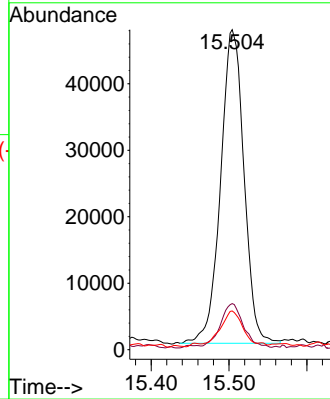
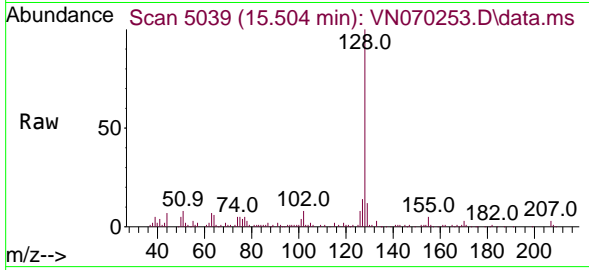




#95
 Naphthalene
 Concen: 5.367 ug/l
 RT: 15.504 min Scan# 5040
 Delta R.T. -0.003 min
 Lab File: VN070253.D
 Acq: 20 Dec 2021 20:34

Instrument : MSVOA_N
 ClientSampleId :

Tgt Ion	Resp	Lower	Upper
128	98301		
127	13.7	10.5	15.7
129	9.3	8.7	13.1



#96
 1,2,3-Trichlorobenzene
 Concen: 2.473 ug/l
 RT: 15.700 min Scan# 5112
 Delta R.T. -0.002 min
 Lab File: VN070253.D
 Acq: 20 Dec 2021 20:34

Tgt Ion	Resp	Lower	Upper
180	853		
182	59.8	47.4	142.2
145	148.2	15.0	45.1#

