

Data Path : Z:\voasrv\HPCHEM1\MSVOA\_N\Data\VN122023\  
 Data File : VN080548.D  
 Acq On : 20 Dec 2023 15:43  
 Operator : JC\MD  
 Sample : 05872-02  
 Misc : 5.0mL/MSVOA\_N/WATER  
 ALS Vial : 13 Sample Multiplier: 1

Instrument :  
 MSVOA\_N  
 ClientSampleId :  
 215-0210(TB-08)RE

Quant Time: Dec 21 02:43:28 2023  
 Quant Method : Z:\voasrv\HPCHEM1\MSVOA\_N\methods\82N121223W.M  
 Quant Title : SW846 8260  
 QLast Update : Wed Dec 13 01:57:14 2023  
 Response via : Initial Calibration

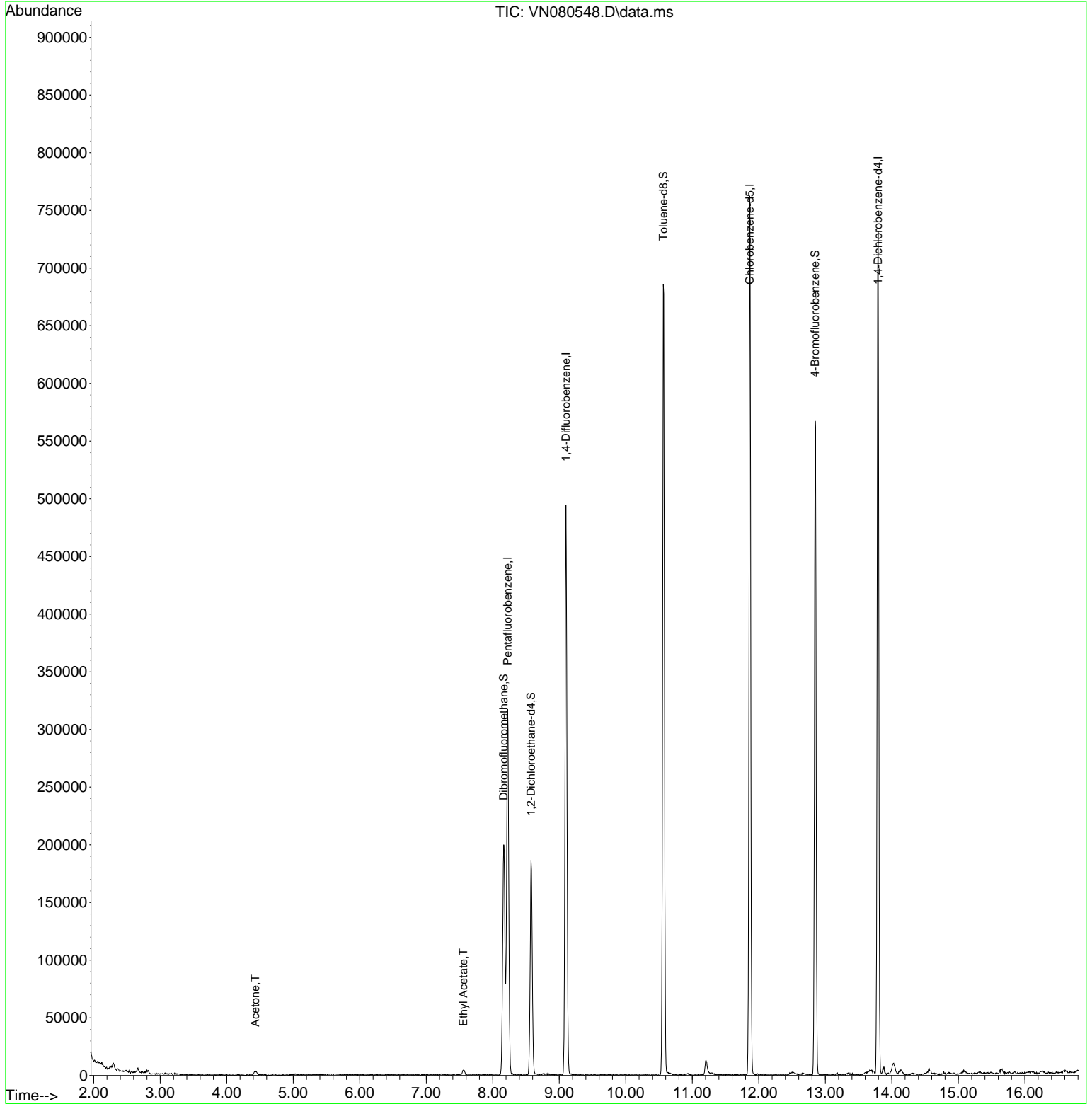
Compound	R.T.	QIon	Response	Conc	Units	Dev(Min)
-----						
Internal Standards						
1) Pentafluorobenzene	8.224	168	225095	50.000	ug/l	0.00
34) 1,4-Difluorobenzene	9.100	114	419077	50.000	ug/l	0.00
63) Chlorobenzene-d5	11.865	117	429397	50.000	ug/l	0.00
72) 1,4-Dichlorobenzene-d4	13.794	152	201656	50.000	ug/l	0.00
System Monitoring Compounds						
33) 1,2-Dichloroethane-d4	8.577	65	161678	56.236	ug/l	0.00
Spiked Amount	50.000	Range	74 - 125	Recovery	=	112.480%
35) Dibromofluoromethane	8.165	113	143254	53.913	ug/l	0.00
Spiked Amount	50.000	Range	75 - 124	Recovery	=	107.820%
50) Toluene-d8	10.565	98	488017	49.247	ug/l	0.00
Spiked Amount	50.000	Range	86 - 113	Recovery	=	98.500%
62) 4-Bromofluorobenzene	12.847	95	208588	55.432	ug/l	0.00
Spiked Amount	50.000	Range	83 - 123	Recovery	=	110.860%
Target Compounds						
						Qvalue
16) Acetone	4.430	43	7222	14.167	ug/l	92
37) Ethyl Acetate	7.559	43	6536	2.402	ug/l #	86
-----						

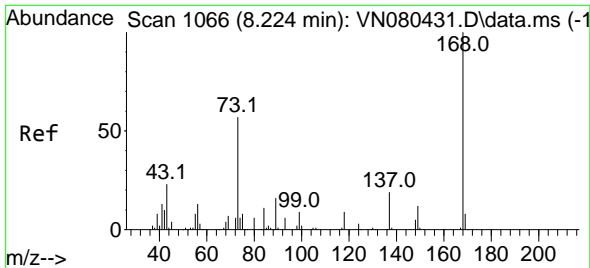
(#) = qualifier out of range (m) = manual integration (+) = signals summed

Data Path : Z:\voasrv\HPCHEM1\MSVOA\_N\Data\VN122023\  
 Data File : VN080548.D  
 Acq On : 20 Dec 2023 15:43  
 Operator : JC\MD  
 Sample : 05872-02  
 Misc : 5.0mL/MSVOA\_N/WATER  
 ALS Vial : 13 Sample Multiplier: 1

Instrument :  
 MSVOA\_N  
 ClientSampleId :  
 215-0210(TB-08)RE

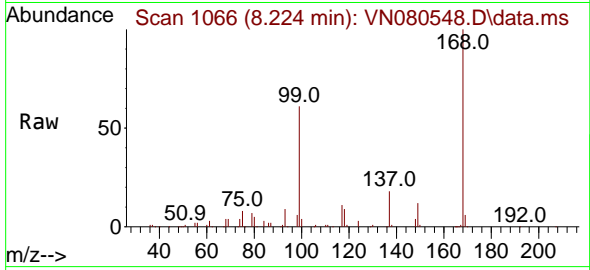
Quant Time: Dec 21 02:43:28 2023  
 Quant Method : Z:\voasrv\HPCHEM1\MSVOA\_N\methods\82N121223W.M  
 Quant Title : SW846 8260  
 QLast Update : Wed Dec 13 01:57:14 2023  
 Response via : Initial Calibration



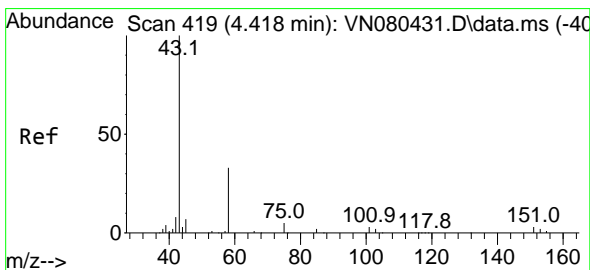
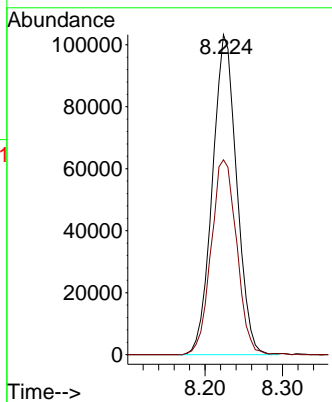
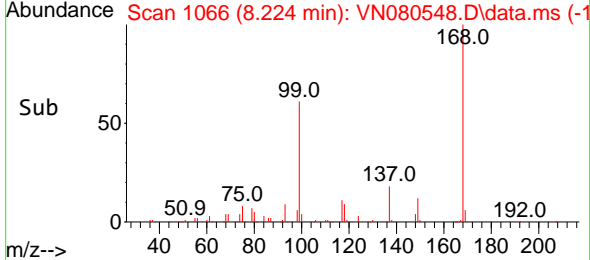


#1  
 Pentafluorobenzene  
 Concen: 50.000 ug/l  
 RT: 8.224 min Scan# 1066  
 Delta R.T. -0.000 min  
 Lab File: VN080548.D  
 Acq: 20 Dec 2023 15:43

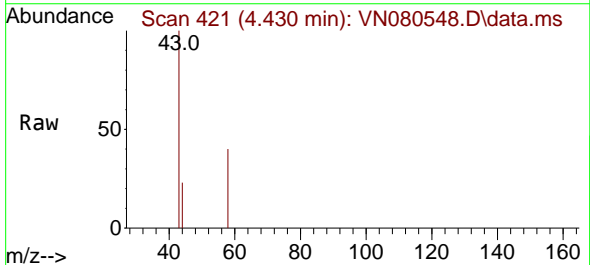
Instrument : MSVOA\_N  
 ClientSampleId : 215-0210(TB-08)RE



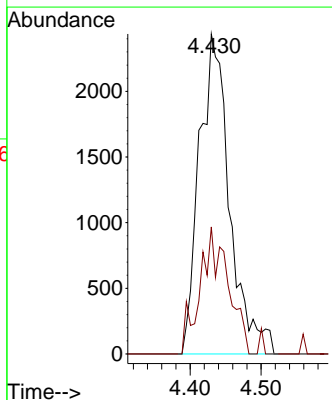
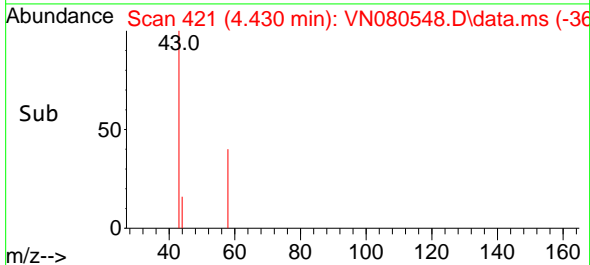
Tgt Ion:168 Resp: 225095  
 Ion Ratio Lower Upper  
 168 100  
 99 60.9 53.0 79.6

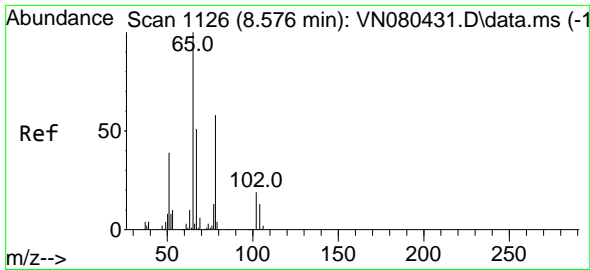


#16  
 Acetone  
 Concen: 14.167 ug/l  
 RT: 4.430 min Scan# 421  
 Delta R.T. 0.012 min  
 Lab File: VN080548.D  
 Acq: 20 Dec 2023 15:43



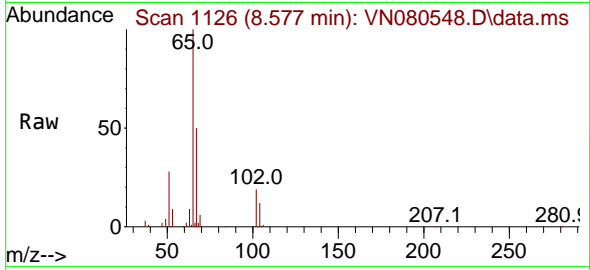
Tgt Ion: 43 Resp: 7222  
 Ion Ratio Lower Upper  
 43 100  
 58 39.7 28.0 42.0



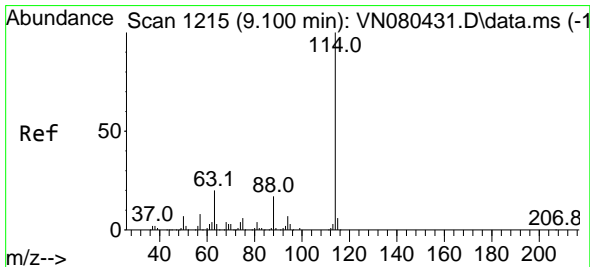
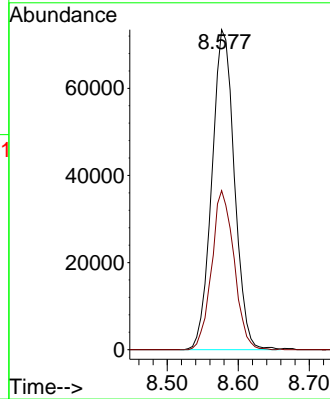
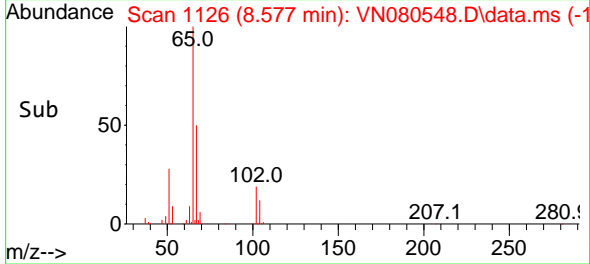


#33  
 1,2-Dichloroethane-d4  
 Concen: 56.236 ug/l  
 RT: 8.577 min Scan# 1126  
 Delta R.T. 0.000 min  
 Lab File: VN080548.D  
 Acq: 20 Dec 2023 15:43

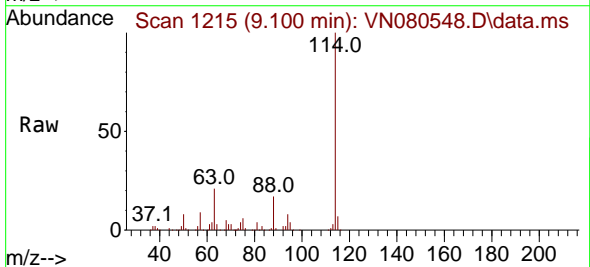
Instrument : MSVOA\_N  
 ClientSampleId : 215-0210(TB-08)RE



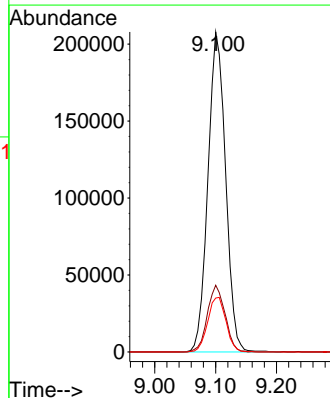
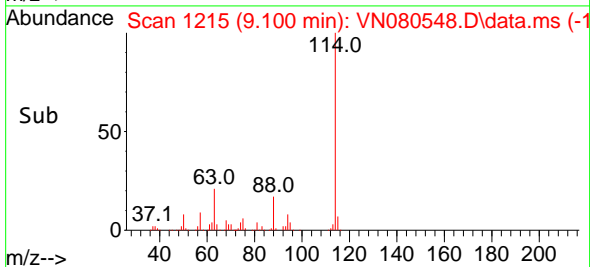
Tgt Ion: 65 Resp: 161678  
 Ion Ratio Lower Upper  
 65 100  
 67 49.3 0.0 106.6

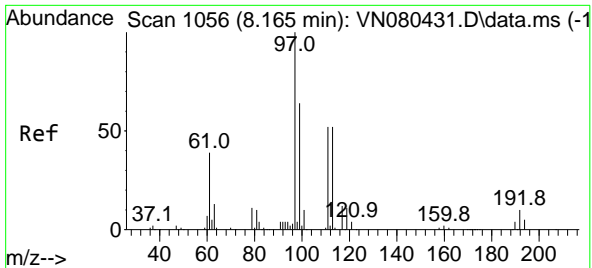


#34  
 1,4-Difluorobenzene  
 Concen: 50.000 ug/l  
 RT: 9.100 min Scan# 1215  
 Delta R.T. 0.000 min  
 Lab File: VN080548.D  
 Acq: 20 Dec 2023 15:43



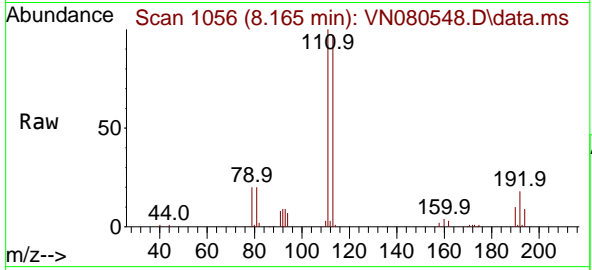
Tgt Ion: 114 Resp: 419077  
 Ion Ratio Lower Upper  
 114 100  
 63 20.9 0.0 36.4  
 88 16.8 0.0 30.6



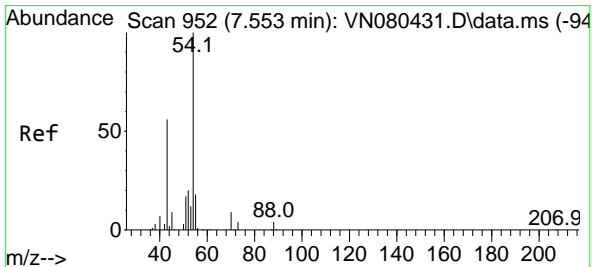
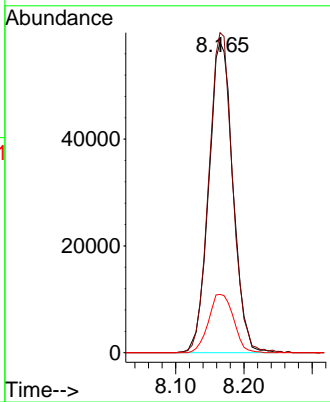
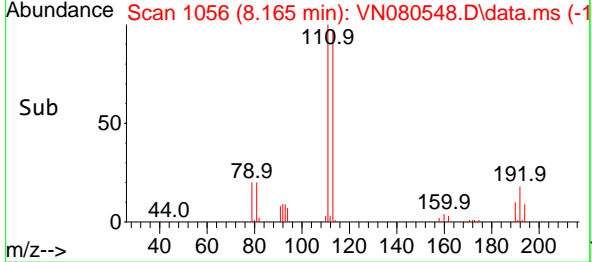


#35  
 Dibromofluoromethane  
 Concen: 53.913 ug/l  
 RT: 8.165 min Scan# 1056  
 Delta R.T. 0.000 min  
 Lab File: VN080548.D  
 Acq: 20 Dec 2023 15:43

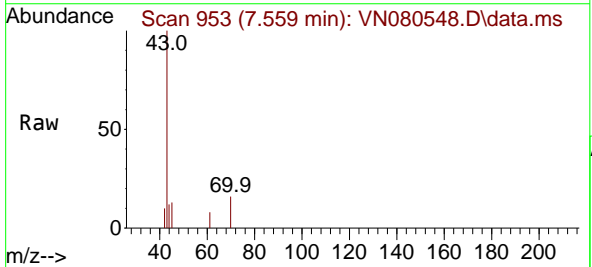
Instrument : MSVOA\_N  
 ClientSampleId : 215-0210(TB-08)RE



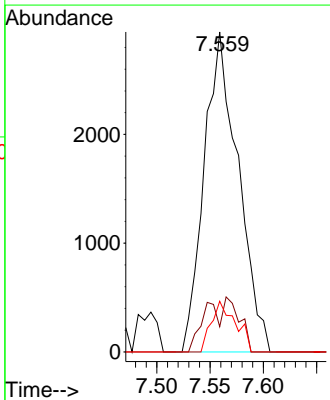
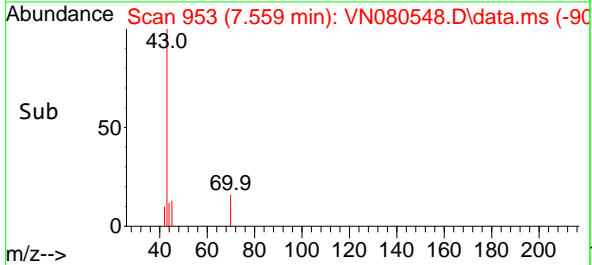
Tgt Ion:113 Resp: 143254  
 Ion Ratio Lower Upper  
 113 100  
 111 101.6 82.6 123.8  
 192 19.4 12.7 19.1#

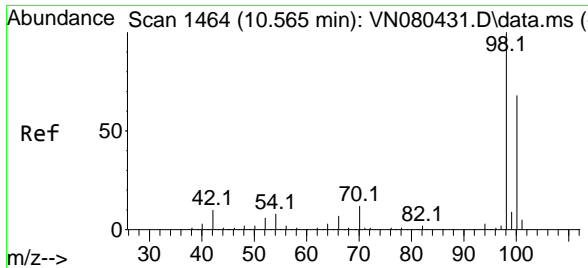


#37  
 Ethyl Acetate  
 Concen: 2.402 ug/l  
 RT: 7.559 min Scan# 953  
 Delta R.T. 0.006 min  
 Lab File: VN080548.D  
 Acq: 20 Dec 2023 15:43



Tgt Ion: 43 Resp: 6536  
 Ion Ratio Lower Upper  
 43 100  
 61 8.3 13.2 19.8#  
 70 11.3 11.3 16.9

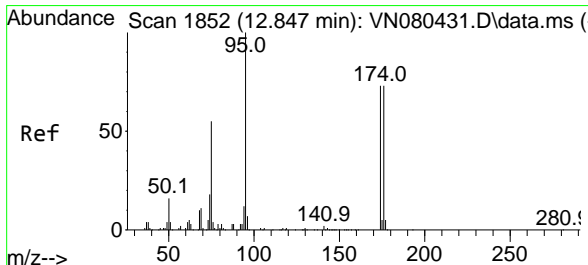
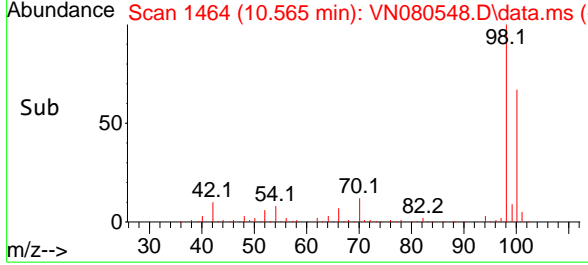
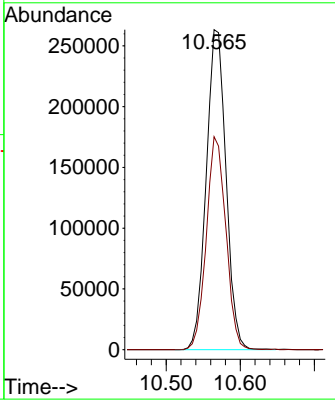
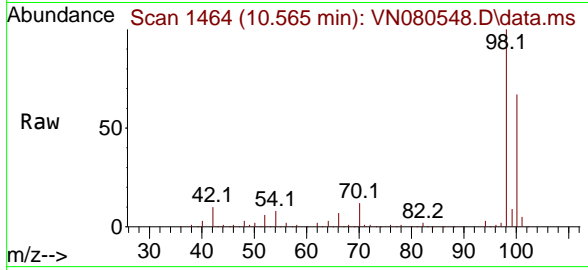




#50  
 Toluene-d8  
 Concen: 49.247 ug/l  
 RT: 10.565 min Scan# 14  
 Delta R.T. 0.000 min  
 Lab File: VN080548.D  
 Acq: 20 Dec 2023 15:43

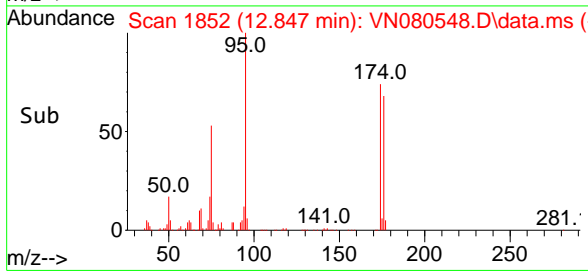
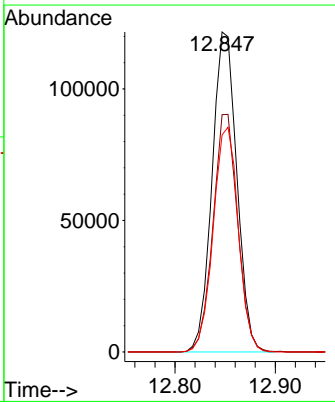
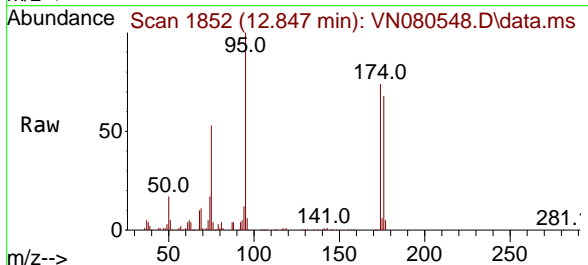
Instrument : MSVOA\_N  
 ClientSampleId : 215-0210(TB-08)RE

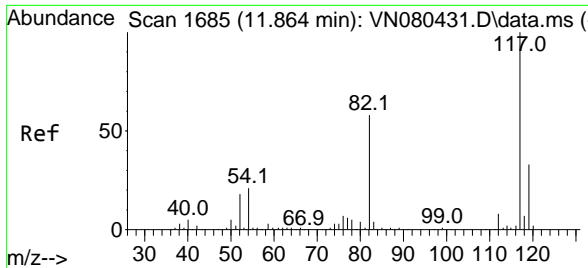
Tgt Ion: 98 Resp: 488017  
 Ion Ratio Lower Upper  
 98 100  
 100 65.7 52.0 78.0



#62  
 4-Bromofluorobenzene  
 Concen: 55.432 ug/l  
 RT: 12.847 min Scan# 1852  
 Delta R.T. 0.000 min  
 Lab File: VN080548.D  
 Acq: 20 Dec 2023 15:43

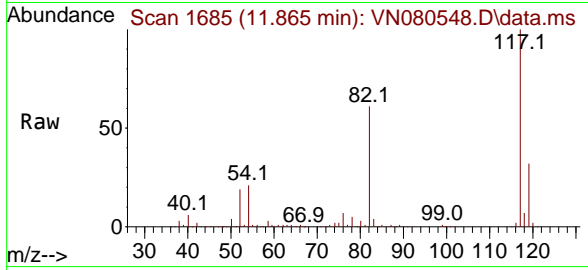
Tgt Ion: 95 Resp: 208588  
 Ion Ratio Lower Upper  
 95 100  
 174 74.0 0.0 143.8  
 176 71.1 0.0 135.8



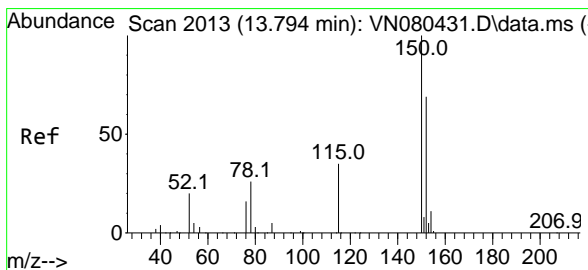
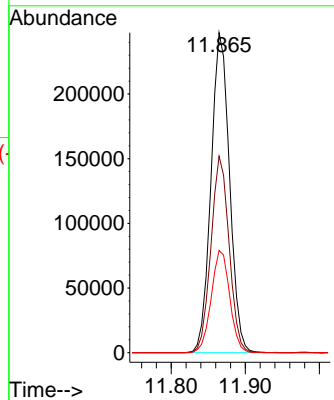
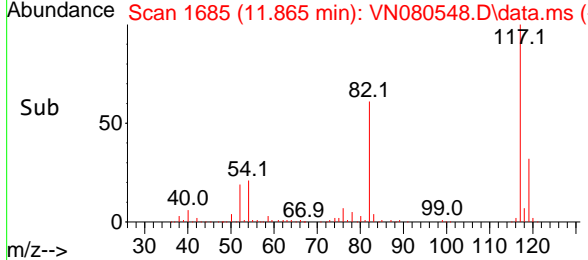


#63  
 Chlorobenzene-d5  
 Concen: 50.000 ug/l  
 RT: 11.865 min Scan# 11  
 Delta R.T. 0.000 min  
 Lab File: VN080548.D  
 Acq: 20 Dec 2023 15:43

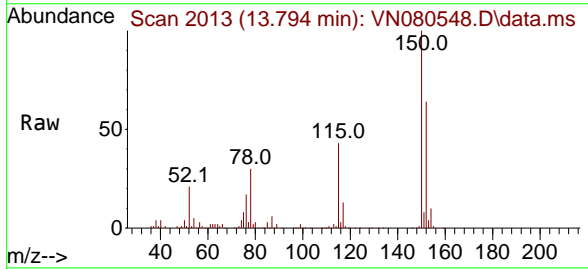
Instrument : MSVOA\_N  
 ClientSampleId : 215-0210(TB-08)RE



Tgt Ion:117 Resp: 429397  
 Ion Ratio Lower Upper  
 117 100  
 82 61.4 44.0 66.0  
 119 32.0 25.6 38.4



#72  
 1,4-Dichlorobenzene-d4  
 Concen: 50.000 ug/l  
 RT: 13.794 min Scan# 2013  
 Delta R.T. 0.000 min  
 Lab File: VN080548.D  
 Acq: 20 Dec 2023 15:43



Tgt Ion:152 Resp: 201656  
 Ion Ratio Lower Upper  
 152 100  
 115 65.4 32.3 96.8  
 150 155.9 0.0 355.8

