

Data Path : Z:\VOASRV\HPCHEM1\MSVOA_N\DATA\VN122118\
 Data File : VN053106.D
 Acq On : 21 Dec 2018 17:07
 Operator : MD\SY
 Sample : J6199-11
 Misc : 7.65g/5mL/100uL/5.00mL/MSVOA_N/MEOH
 ALS Vial : 16 Sample Multiplier: 28

Instrument :
 MSVOA_N
 ClientSampleId :
 SU-02-121818-B

Integration Parameters: RTEINT.P

Integrator: RTE
 Smoothing : ON
 Sampling : 1
 Start Thrs: 0.2
 Stop Thrs : 0

Filtering: 5
 Min Area: 3 % of largest Peak
 Max Peaks: 100
 Peak Location: TOP

If leading or trailing edge < 100 prefer < Baseline drop else tangent >
 Peak separation: 5

Method : Z:\VOASRV\HPCHEM1\MSVOA_N\METHODS\82N121818W.M
 Title : SW846 8260

Signal : TIC

peak #	R.T. min	first scan	max scan	last scan	PK TY	peak height	corr. area	corr. % max.	% of total
1	2.529	215	235	238	rBV5	26338	79410	1.48%	0.117%
2	7.590	1785	1809	1820	rBV	574776	1426721	26.61%	2.106%
3	7.667	1820	1833	1850	rVB	1226050	2879817	53.71%	4.251%
4	8.027	1926	1945	1967	rBV	668308	1572467	29.33%	2.321%
5	8.207	1975	2001	2016	rBV	136258	433880	8.09%	0.640%
6	8.587	2103	2119	2141	rVB	1806597	3704845	69.09%	5.469%
7	9.085	2251	2274	2283	rBV5	54341	139179	2.60%	0.205%
8	9.143	2283	2292	2305	rVB2	42355	83346	1.55%	0.123%
9	9.519	2396	2409	2425	rVB3	90920	188765	3.52%	0.279%
10	9.657	2437	2452	2464	rBV3	79718	182237	3.40%	0.269%
11	9.763	2480	2485	2496	rVB	34794	54414	1.01%	0.080%
12	9.866	2498	2517	2541	rVB6	52166	178930	3.34%	0.264%
13	10.021	2541	2565	2573	rBV4	31439	81652	1.52%	0.121%
14	10.091	2573	2587	2603	rBV	2913092	5361980	100.00%	7.915%
15	10.394	2660	2681	2686	rBV4	26903	53994	1.01%	0.080%
16	10.432	2686	2693	2710	rVB2	63029	115236	2.15%	0.170%
17	10.532	2710	2724	2734	rBV8	40808	99843	1.86%	0.147%
18	10.718	2773	2782	2792	rVB	58125	97683	1.82%	0.144%
19	10.821	2803	2814	2826	rBV2	47636	106357	1.98%	0.157%
20	10.953	2849	2855	2862	rVB	46965	62910	1.17%	0.093%
21	11.008	2862	2872	2882	rVB2	236094	408448	7.62%	0.603%
22	11.120	2897	2907	2915	rBV6	71710	135641	2.53%	0.200%
23	11.207	2916	2934	2952	rVB7	132047	426021	7.95%	0.629%
24	11.300	2952	2963	2981	rBV	122497	239379	4.46%	0.353%
25	11.410	2983	2997	3015	rBV	2565706	4456983	83.12%	6.579%
26	11.631	3046	3066	3069	rBV6	118045	345852	6.45%	0.510%
27	11.757	3096	3105	3113	rBV5	45229	92660	1.73%	0.137%
28	11.924	3143	3157	3172	rBV9	199371	604298	11.27%	0.892%
29	12.043	3188	3194	3202	rVB	161300	221558	4.13%	0.327%
30	12.120	3209	3218	3223	rBV2	184562	315325	5.88%	0.465%
31	12.156	3224	3229	3241	rVB4	277075	470096	8.77%	0.694%
32	12.336	3281	3285	3292	rVB2	84840	93166	1.74%	0.138%
33	12.403	3295	3306	3316	rVB	2030018	3290047	61.36%	4.856%
34	12.561	3347	3355	3371	rVB2	290076	645087	12.03%	0.952%

Data Path : Z:\VOASRV\HPCHEM1\MSVOA_N\DATA\VN122118\
 Data File : VN053106.D
 Acq On : 21 Dec 2018 17:07
 Operator : MD\SY
 Sample : J6199-11
 Misc : 7.65g/5mL/100uL/5.00mL/MSVOA_N/MEOH
 ALS Vial : 16 Sample Multiplier: 28

Instrument :
 MSVOA_N
 ClientSampleId :
 SU-02-121818-B

Integration Parameters: RTEINT.P

Integrator: RTE
 Smoothing : ON
 Sampling : 1
 Start Thrs: 0.2
 Stop Thrs : 0

Filtering: 5
 Min Area: 3 % of largest Peak
 Max Peaks: 100
 Peak Location: TOP

If leading or trailing edge < 100 prefer < Baseline drop else tangent >
 Peak separation: 5

Method : Z:\VOASRV\HPCHEM1\MSVOA_N\METHODS\82N121818W.M
 Title : SW846 8260

35	12.654	3372	3384	3391	rBV4	323358	613963	11.45%	0.906%
36	12.728	3399	3407	3418	rVB3	891716	1429583	26.66%	2.110%
37	12.892	3446	3458	3465	rBV4	195071	448479	8.36%	0.662%
38	12.963	3473	3480	3493	rVB2	503566	830302	15.48%	1.226%
39	13.040	3494	3504	3513	rBV	690565	1134781	21.16%	1.675%
40	13.091	3515	3520	3530	rVB4	123287	184985	3.45%	0.273%
41	13.149	3531	3538	3541	rBV3	158831	223213	4.16%	0.329%
42	13.236	3552	3565	3573	rBV5	367584	766666	14.30%	1.132%
43	13.287	3574	3581	3587	rVV4	298591	469610	8.76%	0.693%
44	13.345	3587	3599	3617	rVV2	2613439	4929128	91.93%	7.276%
45	13.426	3618	3624	3632	rVB3	193975	265635	4.95%	0.392%
46	13.545	3654	3661	3667	rVB	542768	732343	13.66%	1.081%
47	13.586	3668	3674	3689	rVB4	549680	1050059	19.58%	1.550%
48	13.673	3690	3701	3709	rBV	1623812	2616469	48.80%	3.862%
49	13.889	3761	3768	3776	rVB	698364	1006581	18.77%	1.486%
50	13.934	3778	3782	3792	rVB2	284760	407911	7.61%	0.602%
51	13.998	3793	3802	3811	rBV2	751243	1166065	21.75%	1.721%
52	14.168	3848	3855	3866	rBV2	468903	966180	18.02%	1.426%
53	14.297	3888	3895	3901	rBV2	604073	833529	15.55%	1.230%
54	14.336	3902	3907	3915	rVB2	497852	666899	12.44%	0.984%
55	14.477	3945	3951	3956	rBV2	407995	625929	11.67%	0.924%
56	14.525	3960	3966	3975	rVB	1376127	1951582	36.40%	2.881%
57	14.593	3976	3987	3997	rBV5	1306797	2853032	53.21%	4.211%
58	14.644	3998	4003	4015	rVB3	699378	1210910	22.58%	1.787%
59	14.850	4062	4067	4074	rVB6	403270	509146	9.50%	0.752%
60	15.136	4143	4156	4166	rBV	1261780	2552761	47.61%	3.768%
61	15.191	4168	4173	4180	rVB2	271208	347136	6.47%	0.512%
62	15.245	4183	4190	4201	rBV6	465884	886079	16.53%	1.308%
63	15.332	4211	4217	4232	rVB6	574925	1087070	20.27%	1.605%
64	15.422	4235	4245	4258	rVB3	442342	1031816	19.24%	1.523%
65	15.615	4300	4305	4317	rVB	785678	1292656	24.11%	1.908%
66	15.914	4388	4398	4408	rBV4	473070	902045	16.82%	1.331%
67	16.104	4450	4457	4466	rVV5	360916	633178	11.81%	0.935%
68	16.165	4468	4476	4502	rVB2	733781	1569375	29.27%	2.316%
69	16.355	4526	4535	4549	rBV3	420928	904892	16.88%	1.336%

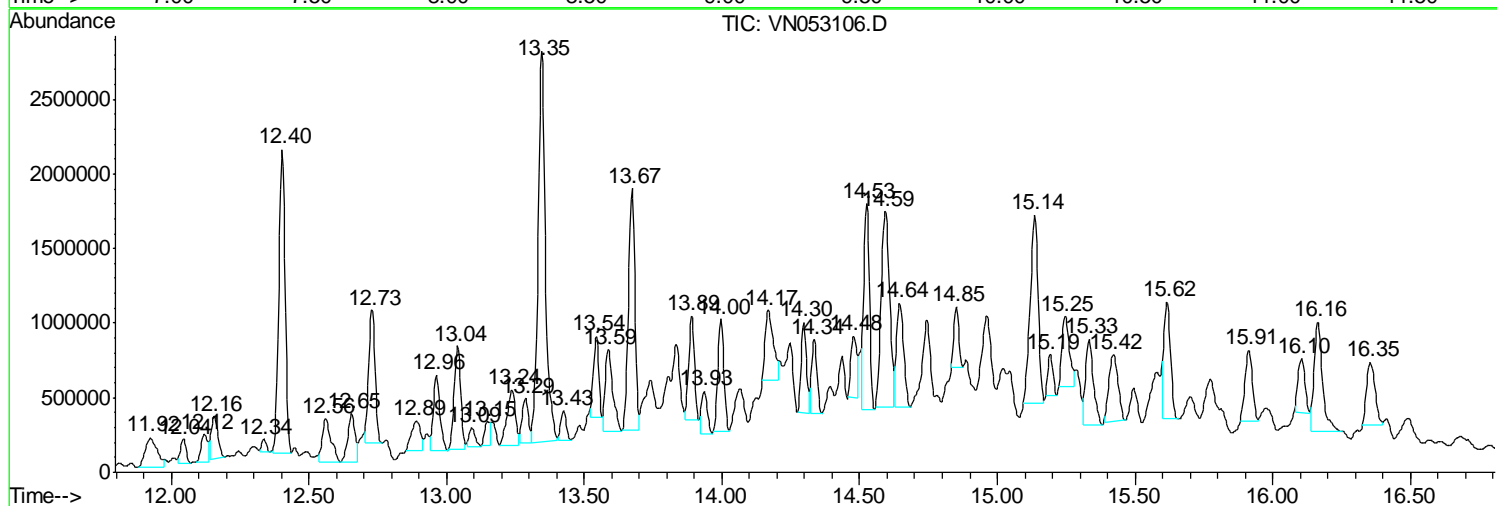
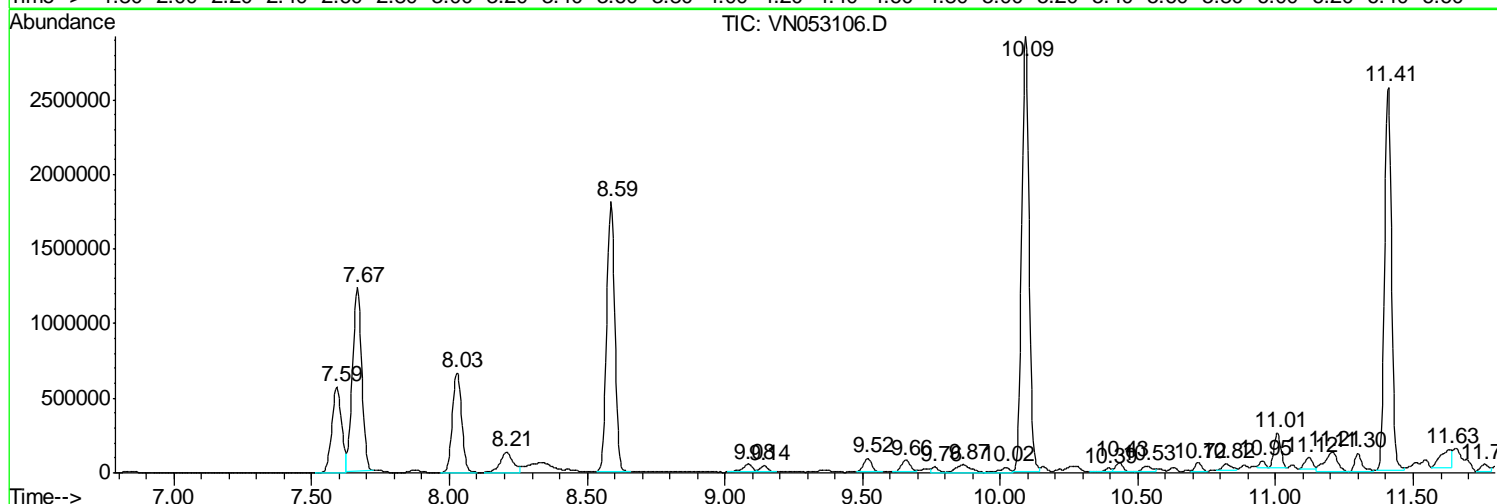
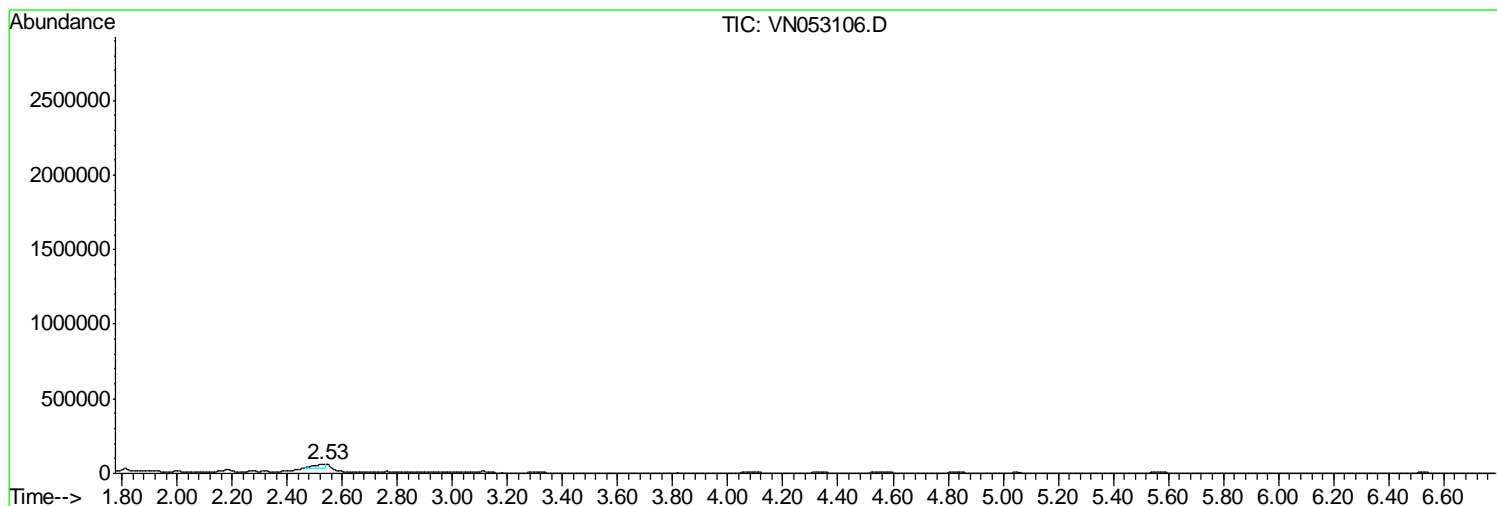
Sum of corrected areas: 67748215

Data Path : Z:\VOASRV\HPCHEM1\MSVOA_N\DATA\VN122118\
 Data File : VN053106.D
 Acq On : 21 Dec 2018 17:07
 Operator : MD\SY
 Sample : J6199-11
 Misc : 7.65g/5mL/100uL/5.00mL/MSVOA_N/MEOH
 ALS Vial : 16 Sample Multiplier: 28

Instrument :
 MSVOA_N
 ClientSampled :
 SU-02-121818-B

Quant Method : Z:\VOASRV\HPCHEM1\MSVOA_N\METHODS\82N121818W.M
 Quant Title : SW846 8260

TIC Library : C:\DATABASE\NIST11.L
 TIC Integration Parameters: LSCINT.P



Data Path : Z:\VOASRV\HPCHEM1\MSVOA_N\DATA\VN122118\
 Data File : VN053106.D
 Acq On : 21 Dec 2018 17:07
 Operator : MD\SY
 Sample : J6199-11
 Misc : 7.65g/5mL/100uL/5.00mL/MSVOA_N/MEOH
 ALS Vial : 16 Sample Multiplier: 28

Instrument :
 MSVOA_N
 ClientSampleID :
 SU-02-121818-B

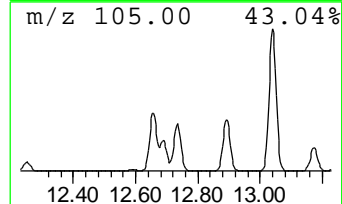
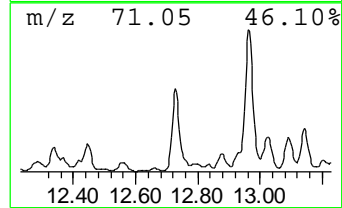
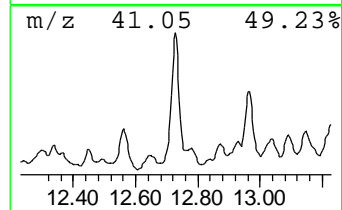
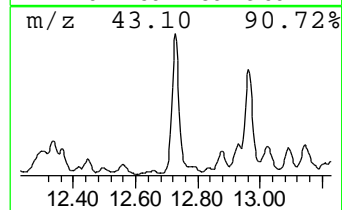
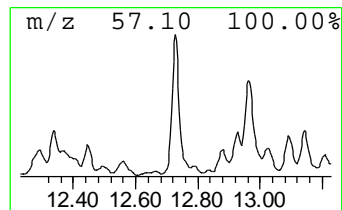
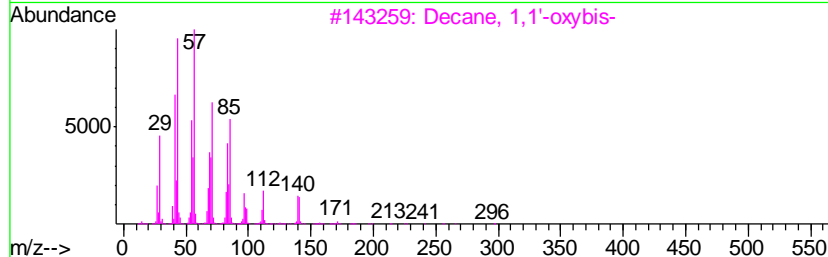
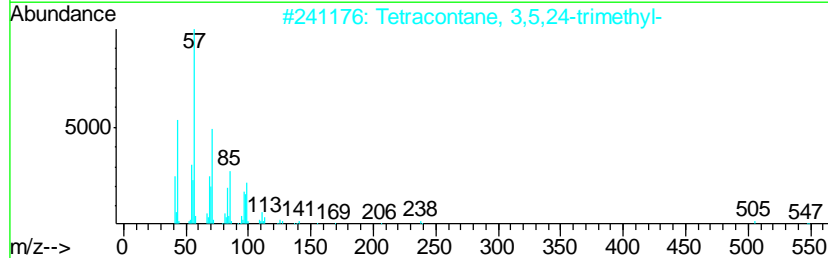
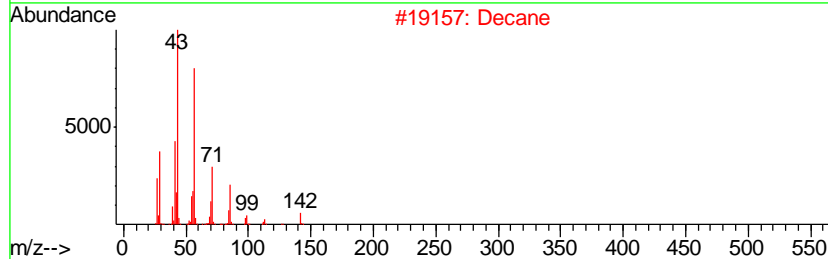
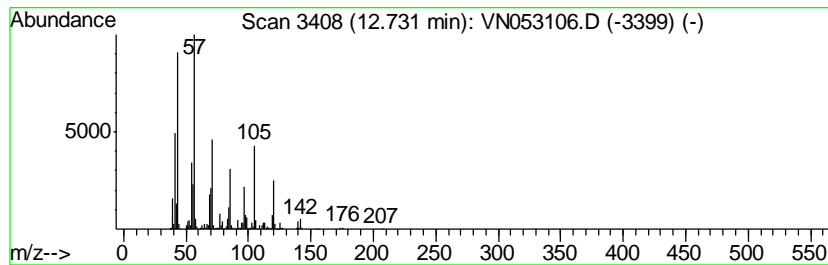
Quant Method : Z:\VOASRV\HPCHEM1\MSVOA_N\METHODS\82N121818W.M
 Quant Title : SW846 8260

TIC Library : C:\DATABASE\NIST11.L
 TIC Integration Parameters: LSCINT.P

 Peak Number 1 Decane Concentration Rank 6

R.T.	EstConc	Area	Relative to ISTD	R.T.
12.73	14.50 ug/l	1429580	1,4-Dichlorobenzene-d4	13.35

Hit#	of	Tentative ID	MW	MolForm	CAS#	Qual
1	5	Decane	142	C10H22	000124-18-5	93
2		Tetracontane, 3,5,24-trimethyl-	605	C43H88	055162-61-3	59
3		Decane, 1,1'-oxybis-	298	C20H42O	002456-28-2	50
4		Undecane	156	C11H24	001120-21-4	47
5		Dodecane	170	C12H26	000112-40-3	43



Data Path : Z:\VOASRV\HPCHEM1\MSVOA_N\DATA\VN122118\
 Data File : VN053106.D
 Acq On : 21 Dec 2018 17:07
 Operator : MD\SY
 Sample : J6199-11
 Misc : 7.65g/5mL/100uL/5.00mL/MSVOA_N/MEOH
 ALS Vial : 16 Sample Multiplier: 28

Instrument :
 MSVOA_N
 ClientSampled :
 SU-02-121818-B

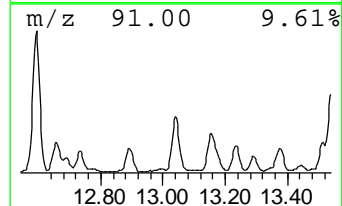
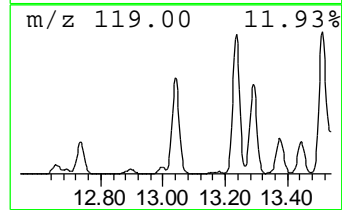
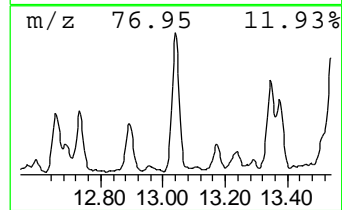
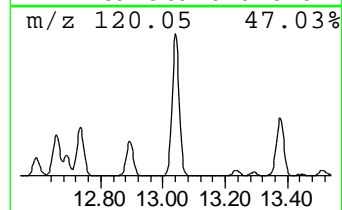
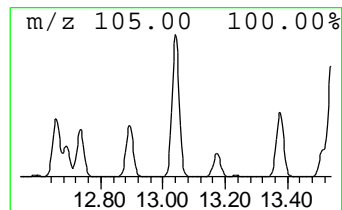
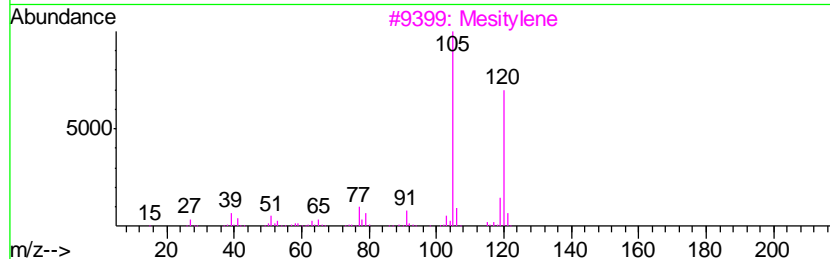
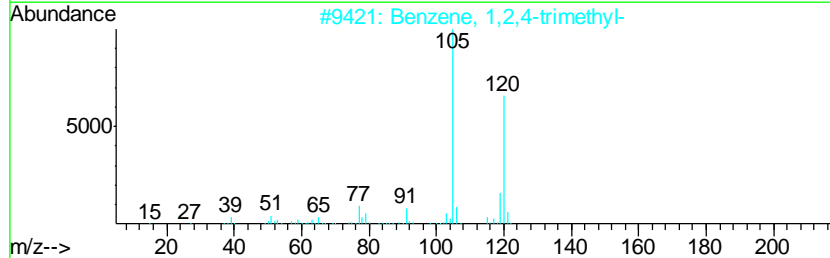
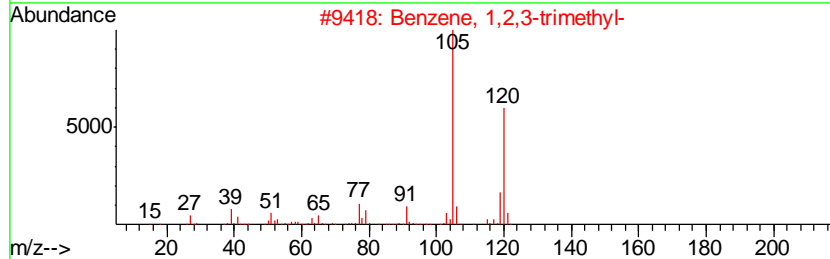
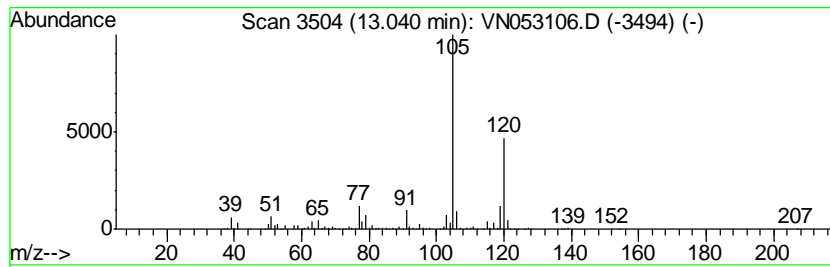
Quant Method : Z:\VOASRV\HPCHEM1\MSVOA_N\METHODS\82N121818W.M
 Quant Title : SW846 8260

TIC Library : C:\DATABASE\NIST11.L
 TIC Integration Parameters: LSCINT.P

 Peak Number 2 Benzene, 1,2,3-trimethyl- Concentration Rank 10

R.T.	EstConc	Area	Relative to ISTD	R.T.
13.04	11.51 ug/l	1134780	1,4-Dichlorobenzene-d4	13.35

Hit#	of	Tentative ID	MW	MolForm	CAS#	Qual
1	5	Benzene, 1,2,3-trimethyl-	120	C9H12	000526-73-8	97
2		Benzene, 1,2,4-trimethyl-	120	C9H12	000095-63-6	95
3		Mesitylene	120	C9H12	000108-67-8	95
4		Benzene, 1-ethyl-2-methyl-	120	C9H12	000611-14-3	93
5		Benzene, 1-ethyl-3-methyl-	120	C9H12	000620-14-4	90



Data Path : Z:\VOASRV\HPCHEM1\MSVOA_N\DATA\VN122118\
 Data File : VN053106.D
 Acq On : 21 Dec 2018 17:07
 Operator : MD\SY
 Sample : J6199-11
 Misc : 7.65g/5mL/100uL/5.00mL/MSVOA_N/MEOH
 ALS Vial : 16 Sample Multiplier: 28

Instrument :
 MSVOA_N
 ClientSampled :
 SU-02-121818-B

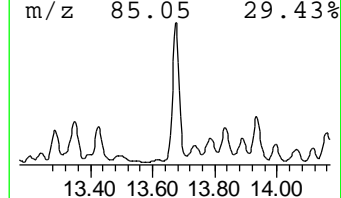
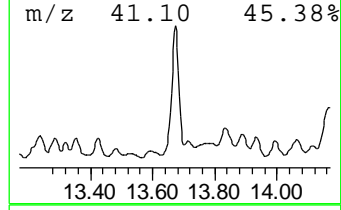
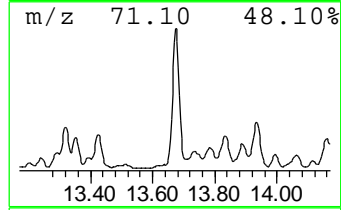
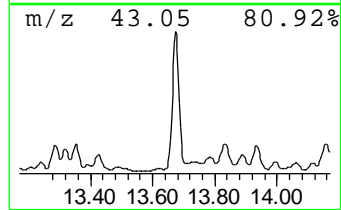
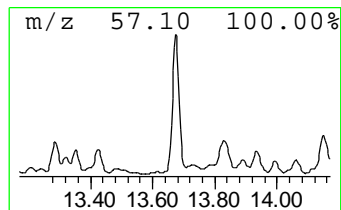
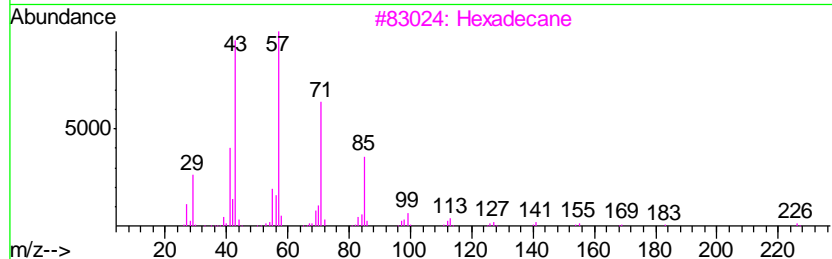
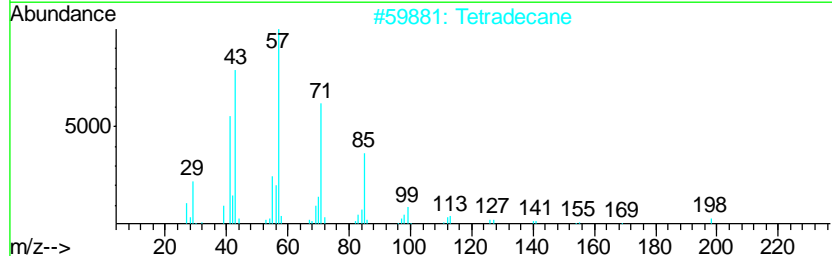
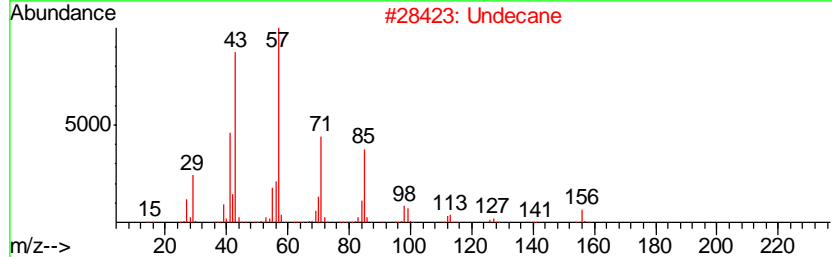
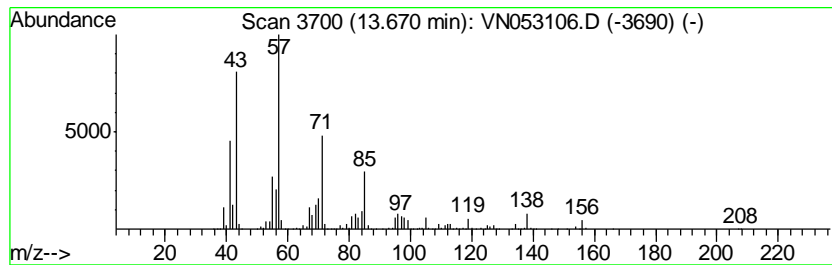
Quant Method : Z:\VOASRV\HPCHEM1\MSVOA_N\METHODS\82N121818W.M
 Quant Title : SW846 8260

TIC Library : C:\DATABASE\NIST11.L
 TIC Integration Parameters: LSCINT.P

 Peak Number 3 Undecane Concentration Rank 2

R.T.	EstConc	Area	Relative to ISTD	R.T.
13.67	26.54 ug/l	2616470	1,4-Dichlorobenzene-d4	13.35

Hit#	of	Tentative ID	MW	MolForm	CAS#	Qual
1	5	Undecane	156	C11H24	001120-21-4	94
2		Tetradecane	198	C14H30	000629-59-4	80
3		Hexadecane	226	C16H34	000544-76-3	72
4		Octane, 2,4,6-trimethyl-	156	C11H24	062016-37-9	72
5		Silane, trichlorooctadecyl-	386	C18H37Cl3Si	000112-04-9	72



Data Path : Z:\VOASRV\HPCHEM1\MSVOA_N\DATA\VN122118\
 Data File : VN053106.D
 Acq On : 21 Dec 2018 17:07
 Operator : MD\SY
 Sample : J6199-11
 Misc : 7.65g/5mL/100uL/5.00mL/MSVOA_N/MEOH
 ALS Vial : 16 Sample Multiplier: 28

Instrument :
 MSVOA_N
 ClientSampleID :
 SU-02-121818-B

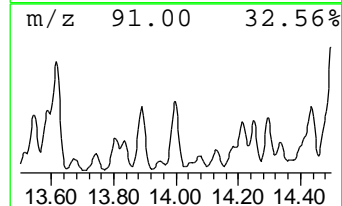
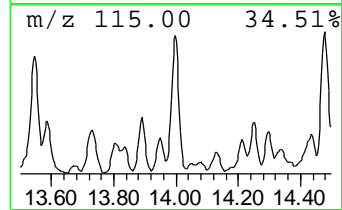
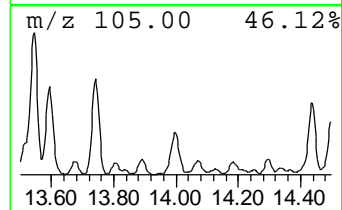
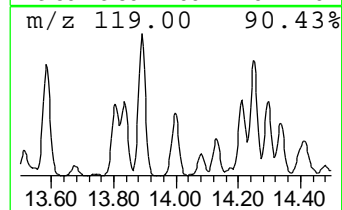
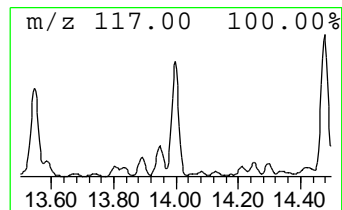
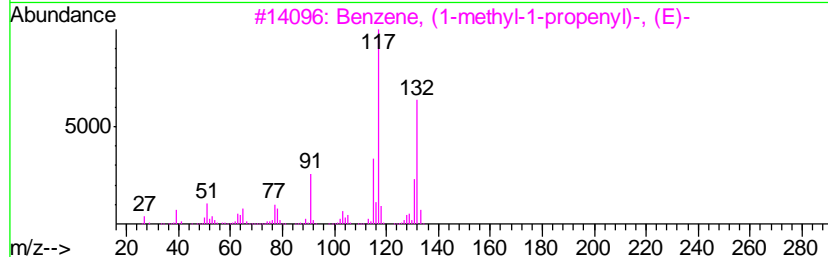
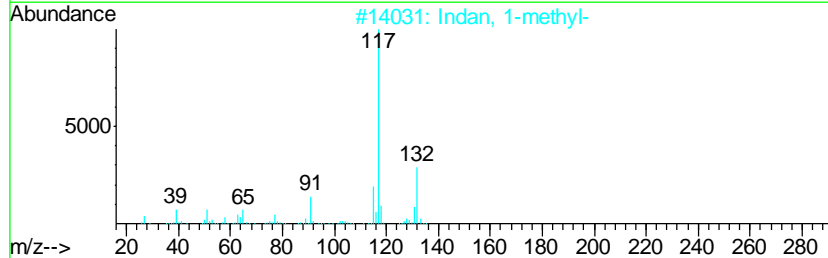
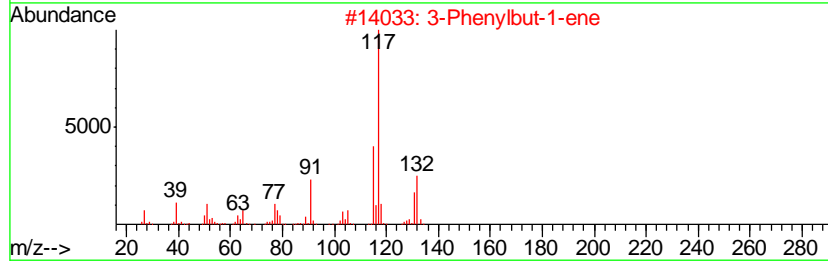
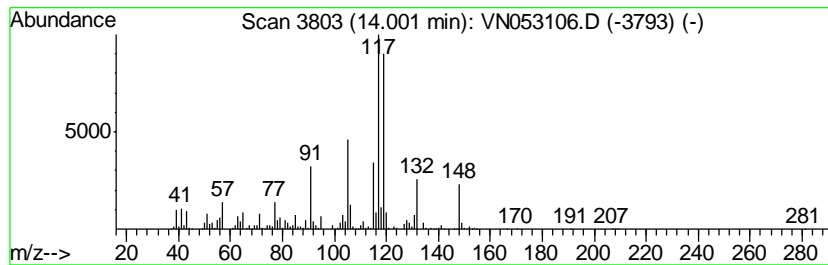
Quant Method : Z:\VOASRV\HPCHEM1\MSVOA_N\METHODS\82N121818W.M
 Quant Title : SW846 8260

TIC Library : C:\DATABASE\NIST11.L
 TIC Integration Parameters: LSCINT.P

 Peak Number 4 3-Phenylbut-1-ene Concentration Rank 9

R.T.	EstConc	Area	Relative to ISTD	R.T.
14.00	11.83 ug/l	1166070	1,4-Dichlorobenzene-d4	13.35

Hit#	of	Tentative ID	MW	MolForm	CAS#	Qual
1	5	3-Phenylbut-1-ene	132	C10H12	000934-10-1	50
2		Indan, 1-methyl-	132	C10H12	000767-58-8	50
3		Benzene, (1-methyl-1-propenyl)-, ...	132	C10H12	000768-00-3	50
4		Benzene, (2-methyl-1-propenyl)-	132	C10H12	000768-49-0	49
5		Benzene, 1-ethenyl-3-ethyl-	132	C10H12	007525-62-4	38



Data Path : Z:\VOASRV\HPCHEM1\MSVOA_N\DATA\VN122118\
 Data File : VN053106.D
 Acq On : 21 Dec 2018 17:07
 Operator : MD\SY
 Sample : J6199-11
 Misc : 7.65g/5mL/100uL/5.00mL/MSVOA_N/MEOH
 ALS Vial : 16 Sample Multiplier: 28

Instrument :
 MSVOA_N
 ClientSampleID :
 SU-02-121818-B

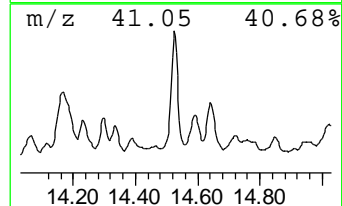
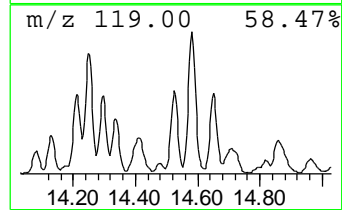
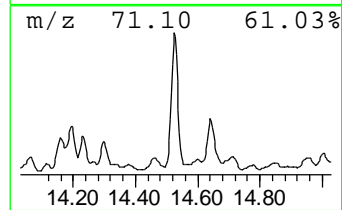
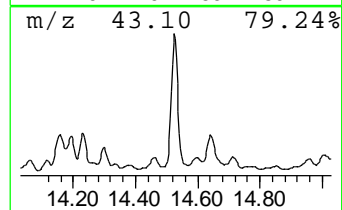
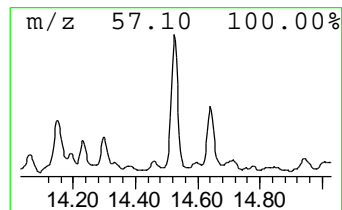
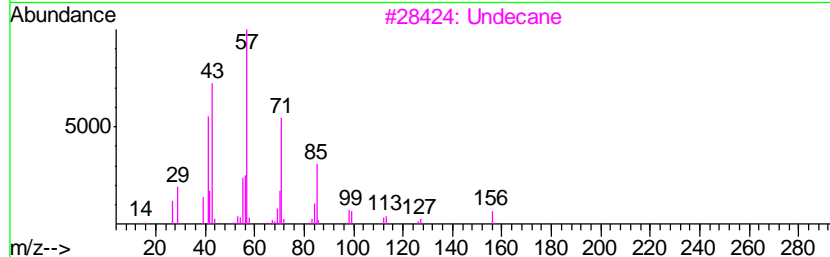
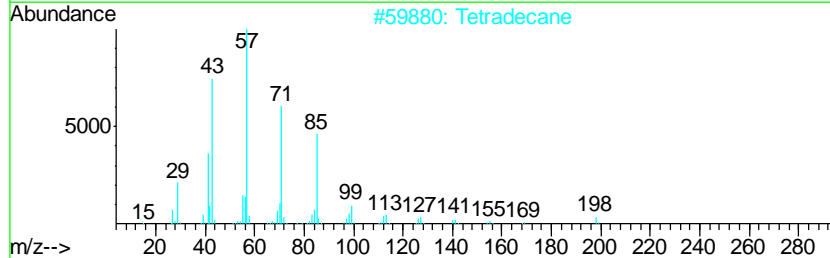
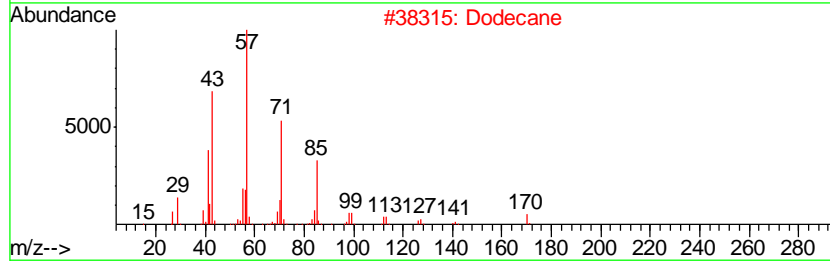
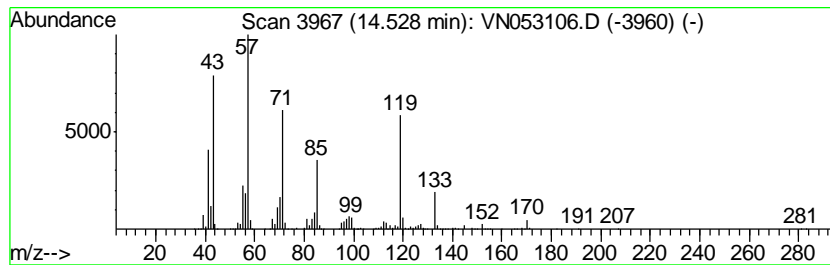
Quant Method : Z:\VOASRV\HPCHEM1\MSVOA_N\METHODS\82N121818W.M
 Quant Title : SW846 8260

TIC Library : C:\DATABASE\NIST11.L
 TIC Integration Parameters: LSCINT.P

 Peak Number 5 Dodecane Concentration Rank 4

R.T.	EstConc	Area	Relative to ISTD	R.T.
14.53	19.80 ug/l	1951580	1,4-Dichlorobenzene-d4	13.35

Hit#	of	Tentative ID	MW	MolForm	CAS#	Qual
1	5	Dodecane	170	C12H26	000112-40-3	91
2		Tetradecane	198	C14H30	000629-59-4	49
3		Undecane	156	C11H24	001120-21-4	47
4		Nonane	128	C9H20	000111-84-2	46
5		Hexadecane	226	C16H34	000544-76-3	43



Data Path : Z:\VOASRV\HPCHEM1\MSVOA_N\DATA\VN122118\
 Data File : VN053106.D
 Acq On : 21 Dec 2018 17:07
 Operator : MD\SY
 Sample : J6199-11
 Misc : 7.65g/5mL/100uL/5.00mL/MSVOA_N/MEOH
 ALS Vial : 16 Sample Multiplier: 28

Instrument :
 MSVOA_N
 ClientSampleID :
 SU-02-121818-B

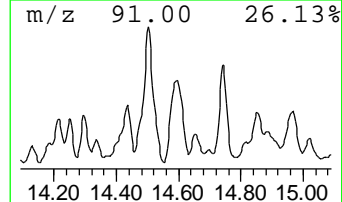
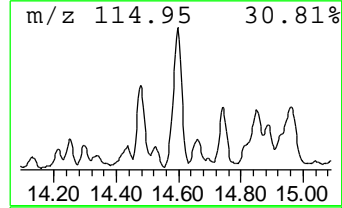
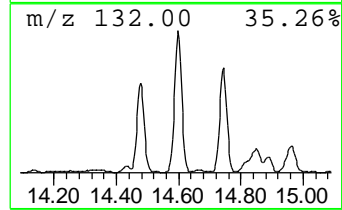
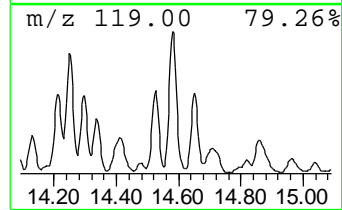
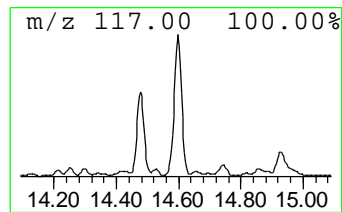
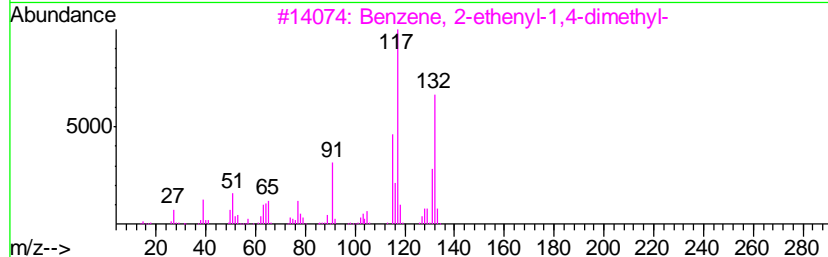
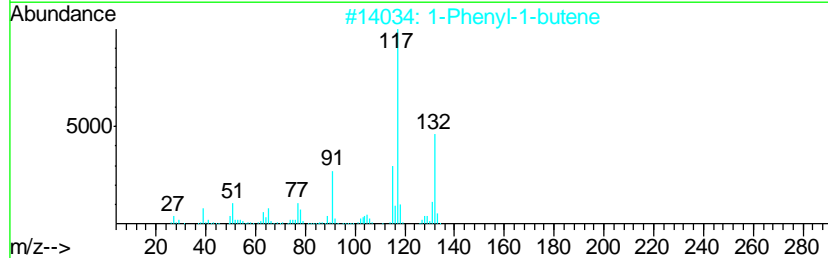
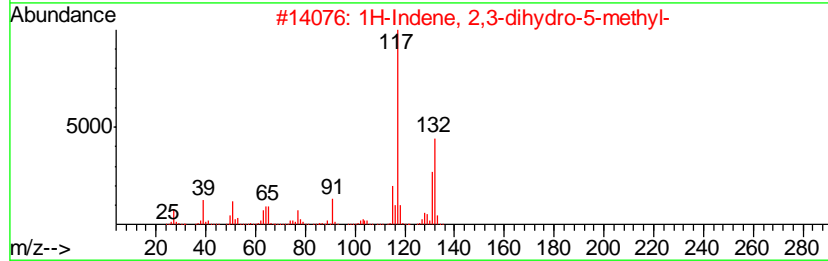
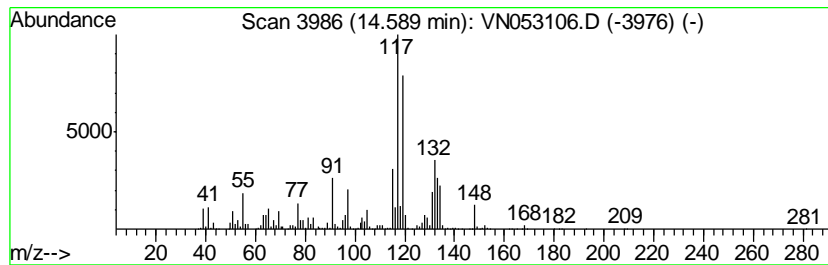
Quant Method : Z:\VOASRV\HPCHEM1\MSVOA_N\METHODS\82N121818W.M
 Quant Title : SW846 8260

TIC Library : C:\DATABASE\NIST11.L
 TIC Integration Parameters: LSCINT.P

 Peak Number 6 1H-Indene, 2,3-dihydro-5-me... Concentration Rank 1

R.T.	EstConc	Area	Relative to ISTD	R.T.
14.59	28.94 ug/l	2853030	1,4-Dichlorobenzene-d4	13.35

Hit#	of	Tentative ID	MW	MolForm	CAS#	Qual
1	5	1H-Indene, 2,3-dihydro-5-methyl-	132	C10H12	000874-35-1	91
2		1-Phenyl-1-butene	132	C10H12	000824-90-8	91
3		Benzene, 2-ethenyl-1,4-dimethyl-	132	C10H12	002039-89-6	91
4		Benzene, 1-methyl-4-(2-propenyl)-	132	C10H12	003333-13-9	89
5		3-Phenylbut-1-ene	132	C10H12	000934-10-1	70



Data Path : Z:\VOASRV\HPCHEM1\MSVOA_N\DATA\VN122118\
 Data File : VN053106.D
 Acq On : 21 Dec 2018 17:07
 Operator : MD\SY
 Sample : J6199-11
 Misc : 7.65g/5mL/100uL/5.00mL/MSVOA_N/MEOH
 ALS Vial : 16 Sample Multiplier: 28

Instrument :
 MSVOA_N
 ClientSampled :
 SU-02-121818-B

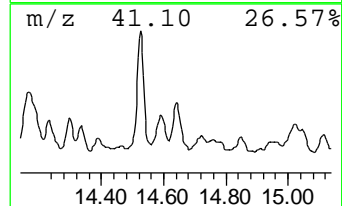
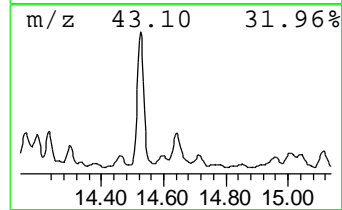
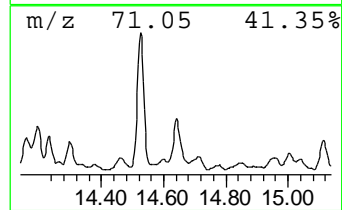
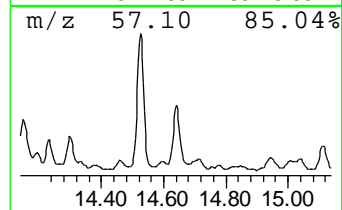
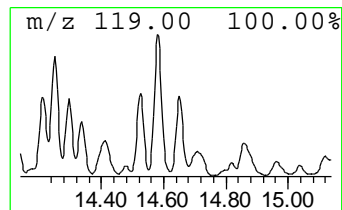
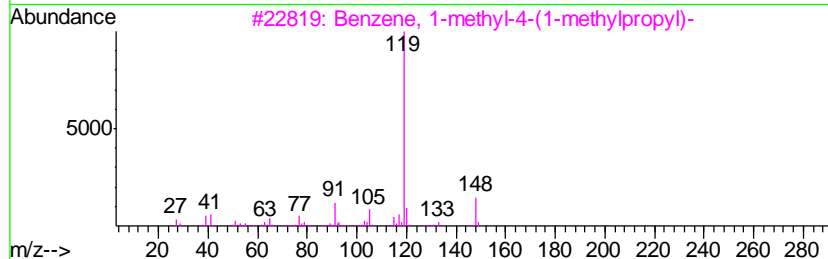
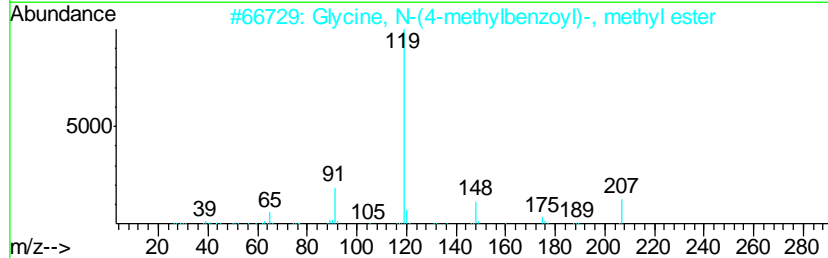
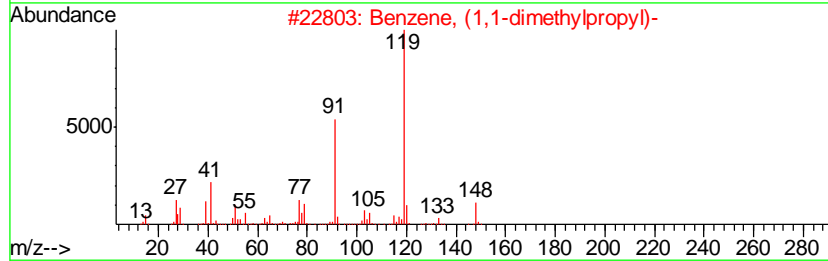
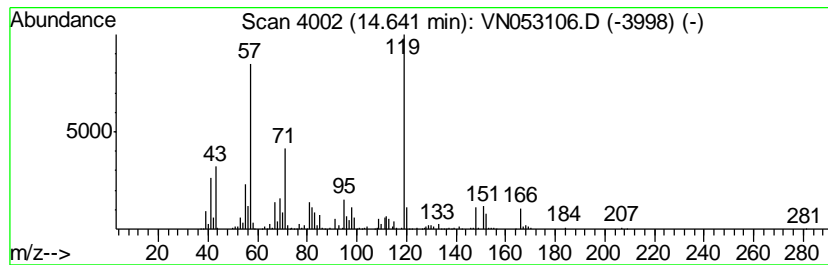
Quant Method : Z:\VOASRV\HPCHEM1\MSVOA_N\METHODS\82N121818W.M
 Quant Title : SW846 8260

TIC Library : C:\DATABASE\NIST11.L
 TIC Integration Parameters: LSCINT.P

 Peak Number 7 Benzene, (1,1-dimethylpropyl)- Concentration Rank 8

R.T.	EstConc	Area	Relative to ISTD	R.T.
14.64	12.28 ug/l	1210910	1,4-Dichlorobenzene-d4	13.35

Hit#	of	Tentative ID	MW	MolForm	CAS#	Qual
1	5	Benzene, (1,1-dimethylpropyl)-	148	C11H16	002049-95-8	50
2		Glycine, N-(4-methylbenzoyl)-, m...	207	C11H13NO3	001208-23-7	50
3		Benzene, 1-methyl-4-(1-methylpro...	148	C11H16	001595-16-0	50
4		o-Toluic acid, 3-methylbut-2-eny...	204	C13H16O2	1000292-51-1	40
5		p-Toluric acid	193	C10H11NO3	027115-50-0	40



Data Path : Z:\VOASRV\HPCHEM1\MSVOA_N\DATA\VN122118\
 Data File : VN053106.D
 Acq On : 21 Dec 2018 17:07
 Operator : MD\SY
 Sample : J6199-11
 Misc : 7.65g/5mL/100uL/5.00mL/MSVOA_N/MEOH
 ALS Vial : 16 Sample Multiplier: 28

Instrument :
 MSVOA_N
 ClientSampled :
 SU-02-121818-B

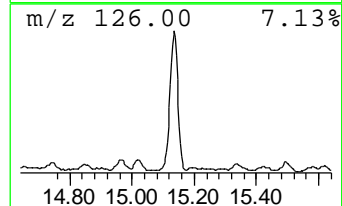
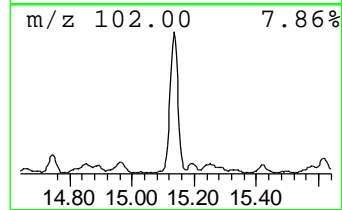
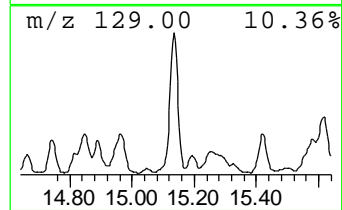
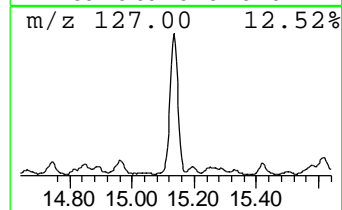
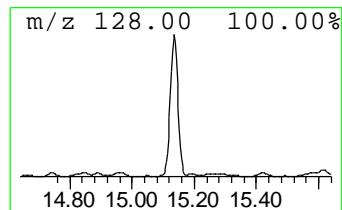
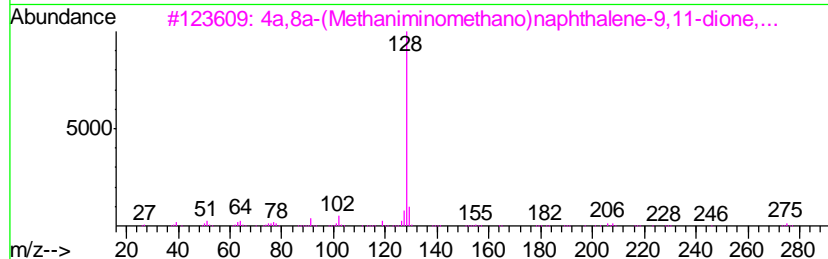
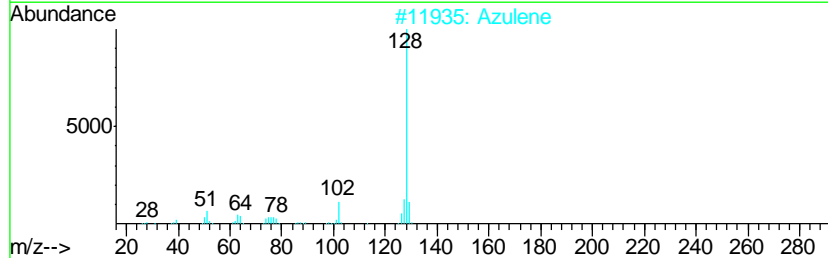
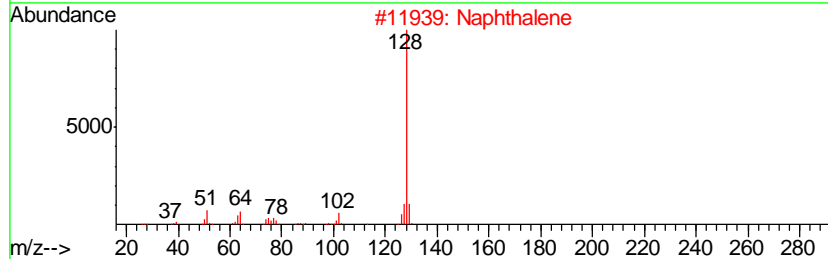
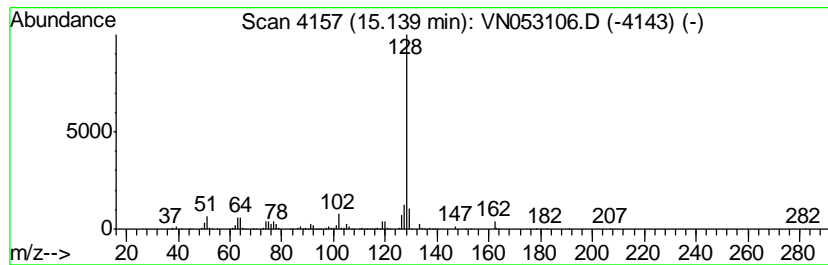
Quant Method : Z:\VOASRV\HPCHEM1\MSVOA_N\METHODS\82N121818W.M
 Quant Title : SW846 8260

TIC Library : C:\DATABASE\NIST11.L
 TIC Integration Parameters: LSCINT.P

 Peak Number 8 Naphthalene Concentration Rank 3

R.T.	EstConc	Area	Relative to ISTD	R.T.
15.14	25.89 ug/l	2552760	1,4-Dichlorobenzene-d4	13.35

Hit#	of	Tentative ID	MW	MolForm	CAS#	Qual
1	5	Naphthalene	128	C10H8	000091-20-3	94
2		Azulene	128	C10H8	000275-51-4	93
3		4a,8a-(Methaniminomethano)naphth...	275	C18H13NO2	069915-10-2	78
4		1,3-Dicyanobenzene	128	C8H4N2	000626-17-5	59
5		4-Fluorothiophenol	128	C6H5FS	000371-42-6	56



Data Path : Z:\VOASRV\HPCHEM1\MSVOA_N\DATA\VN122118\
 Data File : VN053106.D
 Acq On : 21 Dec 2018 17:07
 Operator : MD\SY
 Sample : J6199-11
 Misc : 7.65g/5mL/100uL/5.00mL/MSVOA_N/MEOH
 ALS Vial : 16 Sample Multiplier: 28

Instrument :
 MSVOA_N
 ClientSampled :
 SU-02-121818-B

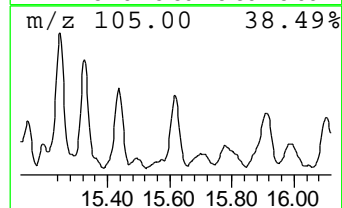
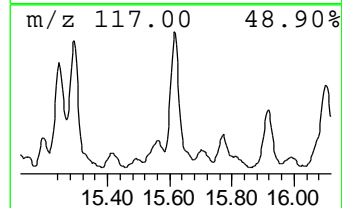
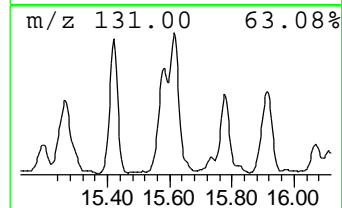
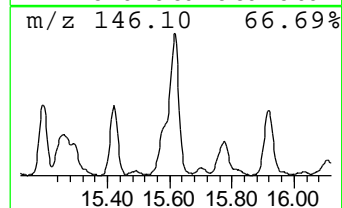
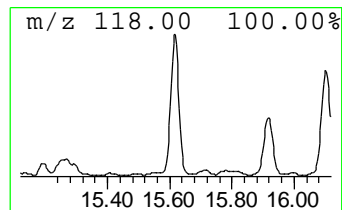
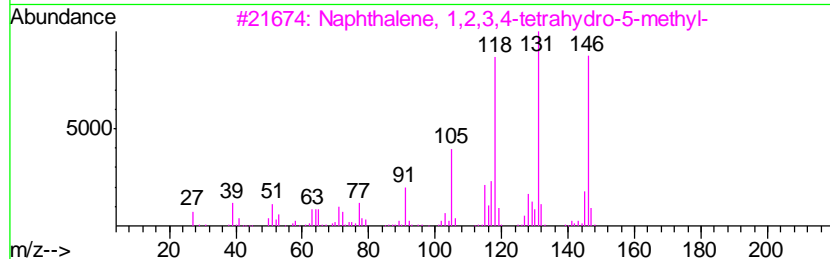
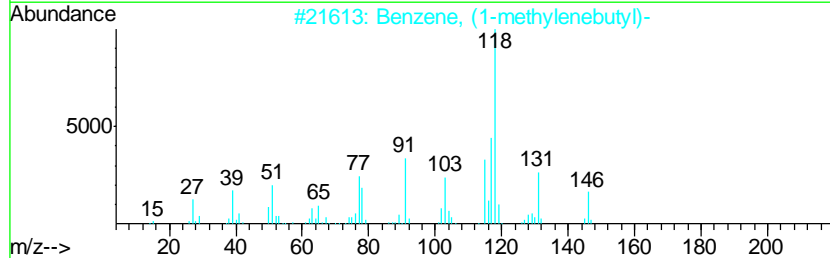
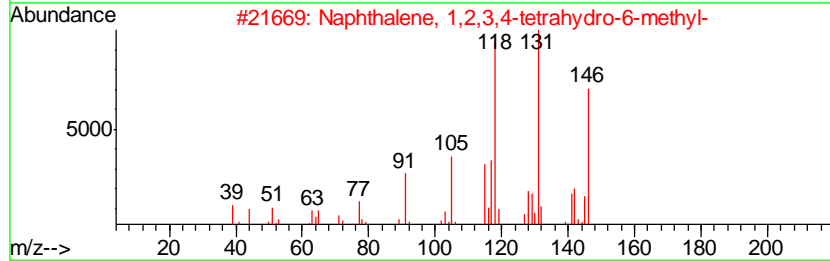
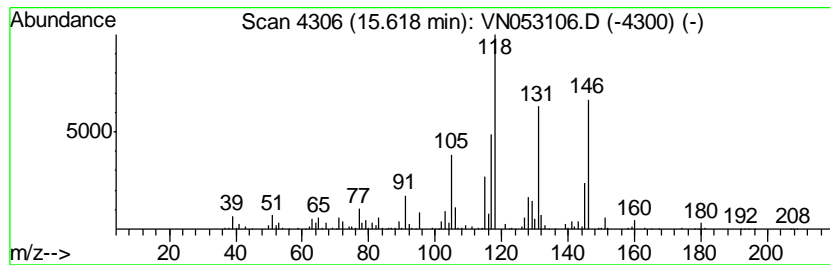
Quant Method : Z:\VOASRV\HPCHEM1\MSVOA_N\METHODS\82N121818W.M
 Quant Title : SW846 8260

TIC Library : C:\DATABASE\NIST11.L
 TIC Integration Parameters: LSCINT.P

 Peak Number 9 Naphthalene, 1,2,3,4-tetra... Concentration Rank 7

R.T.	EstConc	Area	Relative to ISTD	R.T.
15.62	13.11 ug/l	1292660	1,4-Dichlorobenzene-d4	13.35

Hit#	of	Tentative ID	MW	MolForm	CAS#	Qual
1	5	Naphthalene, 1,2,3,4-tetrahydro-...	146	C11H14	001680-51-9	94
2		Benzene, (1-methylenebutyl)-	146	C11H14	005676-32-4	74
3		Naphthalene, 1,2,3,4-tetrahydro-...	146	C11H14	002809-64-5	74
4		2,3,4,5,6,7-Hexahydro-1H-cyclope...	146	C11H14	1000189-31-0	52
5		Naphthalene, 1,2,3,4-tetrahydro-...	160	C12H16	013065-07-1	43



Data Path : Z:\VOASRV\HPCHEM1\MSVOA_N\DATA\VN122118\
 Data File : VN053106.D
 Acq On : 21 Dec 2018 17:07
 Operator : MD\SY
 Sample : J6199-11
 Misc : 7.65g/5mL/100uL/5.00mL/MSVOA_N/MEOH
 ALS Vial : 16 Sample Multiplier: 28

Instrument :
 MSVOA_N
 ClientSampleID :
 SU-02-121818-B

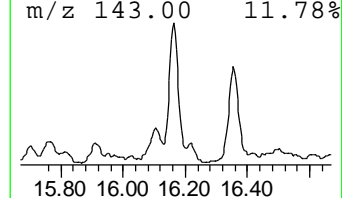
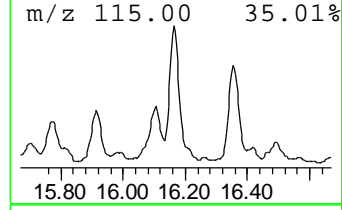
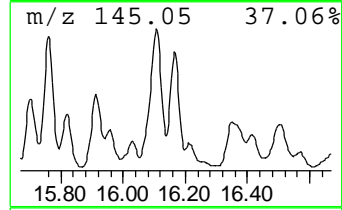
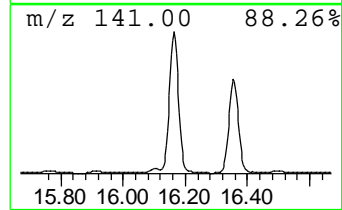
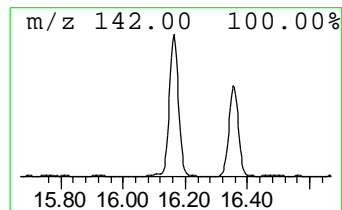
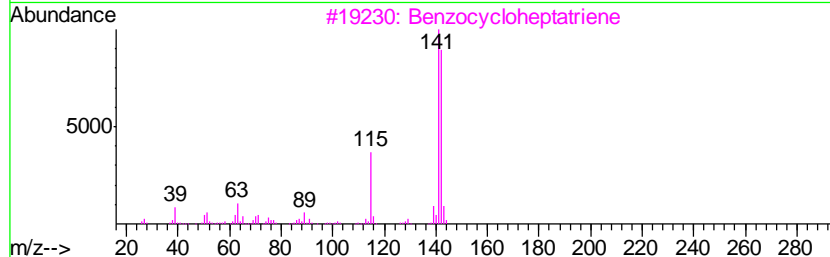
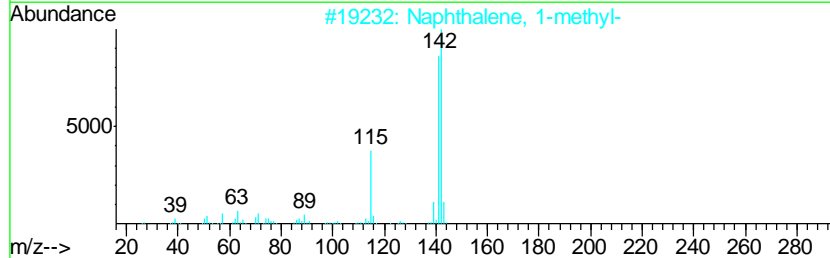
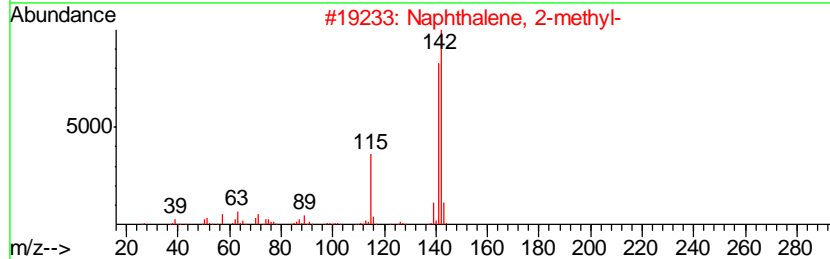
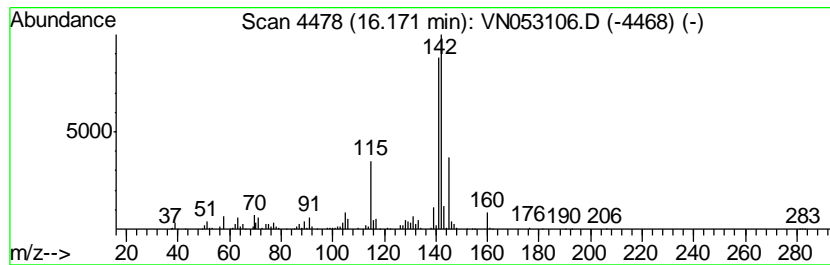
Quant Method : Z:\VOASRV\HPCHEM1\MSVOA_N\METHODS\82N121818W.M
 Quant Title : SW846 8260

TIC Library : C:\DATABASE\NIST11.L
 TIC Integration Parameters: LSCINT.P

 Peak Number 10 Naphthalene, 2-methyl- Concentration Rank 5

R.T.	EstConc	Area	Relative to ISTD	R.T.
16.17	15.92 ug/l	1569380	1,4-Dichlorobenzene-d4	13.35

Hit#	of	Tentative ID	MW	MolForm	CAS#	Qual
1	5	Naphthalene, 2-methyl-	142	C11H10	000091-57-6	96
2		Naphthalene, 1-methyl-	142	C11H10	000090-12-0	96
3		Benzocycloheptatriene	142	C11H10	000264-09-5	87
4		1,4-Methanonaphthalene, 1,4-dihy...	142	C11H10	004453-90-1	81
5		Naphthalene, 1-(2-hydroxypropyl)	186	C13H14O	027653-13-0	50



Data Path : Z:\VOASRV\HPCHEM1\MSVOA_N\DATA\VN122118\
 Data File : VN053106.D
 Acq On : 21 Dec 2018 17:07
 Operator : MD\SY
 Sample : J6199-11
 Misc : 7.65g/5mL/100uL/5.00mL/MSVOA_N/MEOH
 ALS Vial : 16 Sample Multiplier: 28

Instrument :
 MSVOA_N
 ClientSampleId :
 SU-02-121818-B

Quant Method : Z:\VOASRV\HPCHEM1\MSVOA_N\METHODS\82N121818W.M
 Quant Title : SW846 8260

TIC Library : C:\DATABASE\NIST11.L
 TIC Integration Parameters: LSCINT.P

TIC Top Hit name	RT	EstConc	Units	Response	--Internal Standard--			
					#	RT	Resp	Conc
Decane	12.73	14.5	ug/l	1429580	4	13.35	4929130	50.0
Benzene, 1,2,3-tr...	13.04	11.5	ug/l	1134780	4	13.35	4929130	50.0
Undecane	13.67	26.5	ug/l	2616470	4	13.35	4929130	50.0
3-Phenylbut-1-ene	14.00	11.8	ug/l	1166070	4	13.35	4929130	50.0
Dodecane	14.53	19.8	ug/l	1951580	4	13.35	4929130	50.0
1H-Indene, 2,3-di...	14.59	28.9	ug/l	2853030	4	13.35	4929130	50.0
Benzene, (1,1-dim...	14.64	12.3	ug/l	1210910	4	13.35	4929130	50.0
Naphthalene	15.14	25.9	ug/l	2552760	4	13.35	4929130	50.0
Naphthalene, 1,2,...	15.62	13.1	ug/l	1292660	4	13.35	4929130	50.0
Naphthalene, 2-me...	16.17	15.9	ug/l	1569380	4	13.35	4929130	50.0