

Data Path : Z:\voasrv\HPCHEM1\MSVOA_N\Data\VN122122\
 Data File : VN075920.D
 Acq On : 21 Dec 2022 15:29
 Operator : JC\MD
 Sample : IBLK
 Misc : 5.0mL/MSVOA_N/WATER
 ALS Vial : 14 Sample Multiplier: 1

Instrument :
 MSVOA_N
 ClientSampleId :
 IBLK

Quant Time: Dec 22 03:02:37 2022
 Quant Method : Z:\voasrv\HPCHEM1\MSVOA_N\methods\82N121422W.M
 Quant Title : SW846 8260
 QLast Update : Wed Dec 14 13:03:41 2022
 Response via : Initial Calibration

Compound	R.T.	QIon	Response	Conc	Units	Dev(Min)

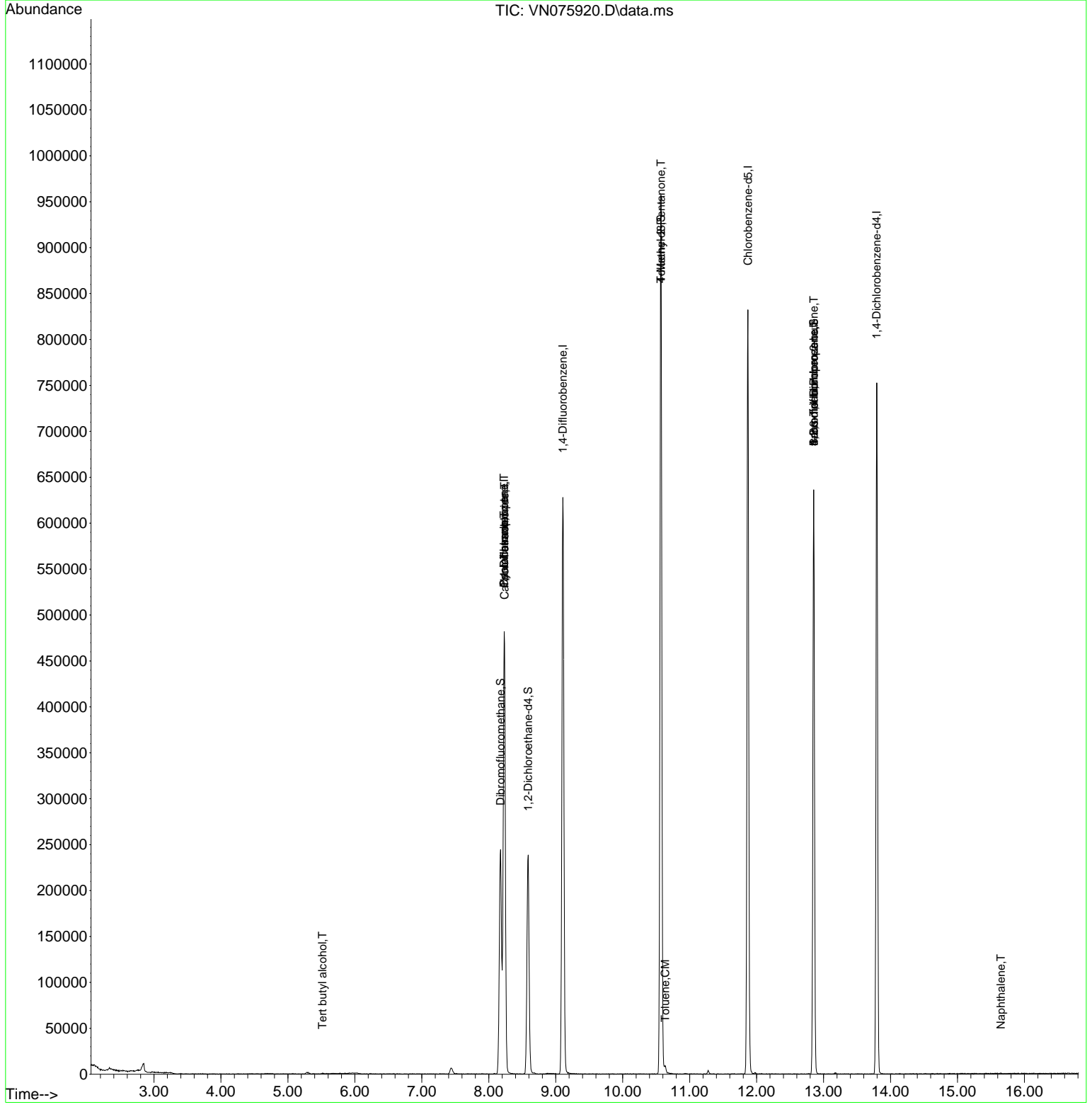
Internal Standards						
1) Pentafluorobenzene	8.230	168	378023	50.000	ug/l	0.00
34) 1,4-Difluorobenzene	9.106	114	593788	50.000	ug/l	0.00
63) Chlorobenzene-d5	11.871	117	509099	50.000	ug/l	0.00
72) 1,4-Dichlorobenzene-d4	13.794	152	212563	50.000	ug/l	0.00
System Monitoring Compounds						
33) 1,2-Dichloroethane-d4	8.588	65	188919	45.937	ug/l	0.00
Spiked Amount	50.000	Range	74 - 125	Recovery	=	91.880%
35) Dibromofluoromethane	8.177	113	172925	47.026	ug/l	0.00
Spiked Amount	50.000	Range	75 - 124	Recovery	=	94.060%
50) Toluene-d8	10.571	98	681992	49.604	ug/l	0.00
Spiked Amount	50.000	Range	86 - 113	Recovery	=	99.200%
62) 4-Bromofluorobenzene	12.853	95	211383	46.420	ug/l	0.00
Spiked Amount	50.000	Range	83 - 123	Recovery	=	92.840%
Target Compounds						
						Qvalue
11) Tert butyl alcohol	5.518	59	140	0.241	ug/l #	72
20) Methylene Chloride	5.283	84	1751	Below Cal	#	74
31) Cyclohexane	8.230	56	7090	1.204	ug/l #	1
36) 1,1-Dichloropropene	8.230	75	26983	5.524	ug/l #	50
38) Carbon Tetrachloride	8.235	117	36171	6.616	ug/l #	16
51) 4-Methyl-2-Pentanone	10.571	43	2911	0.744	ug/l #	1
52) Toluene	10.635	92	3365	0.343	ug/l	97
71) Bromoform	12.853	173	1855	0.659	ug/l #	1
76) 1,2,3-Trichloropropane	12.853	75	105583	24.642	ug/l #	1
81) trans-1,4-Dichloro-2-b...	12.853	75	105583	88.697	ug/l #	12
95) Naphthalene	15.647	128	464	2.216	ug/l #	69

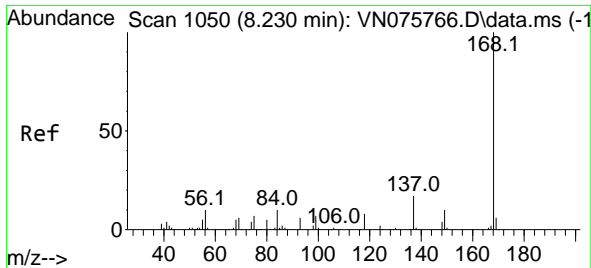
(#) = qualifier out of range (m) = manual integration (+) = signals summed

Data Path : Z:\voasrv\HPCHEM1\MSVOA_N\Data\VN122122\
 Data File : VN075920.D
 Acq On : 21 Dec 2022 15:29
 Operator : JC\MD
 Sample : IBLK
 Misc : 5.0mL/MSVOA_N/WATER
 ALS Vial : 14 Sample Multiplier: 1

Instrument :
 MSVOA_N
 ClientSampleId :
 IBLK

Quant Time: Dec 22 03:02:37 2022
 Quant Method : Z:\voasrv\HPCHEM1\MSVOA_N\methods\82N121422W.M
 Quant Title : SW846 8260
 QLast Update : Wed Dec 14 13:03:41 2022
 Response via : Initial Calibration

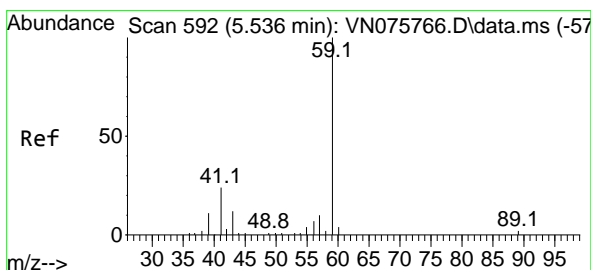
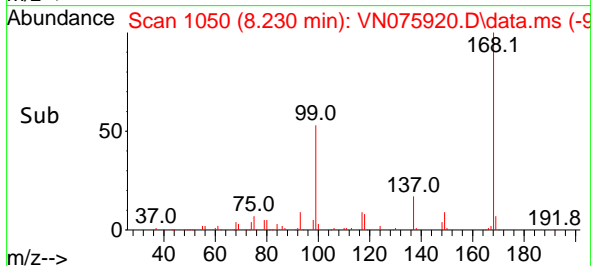
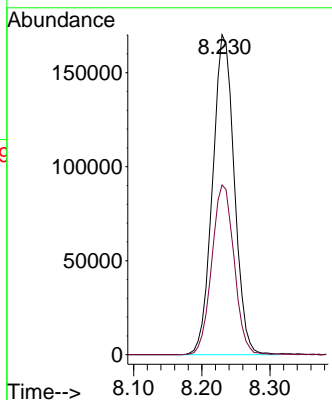
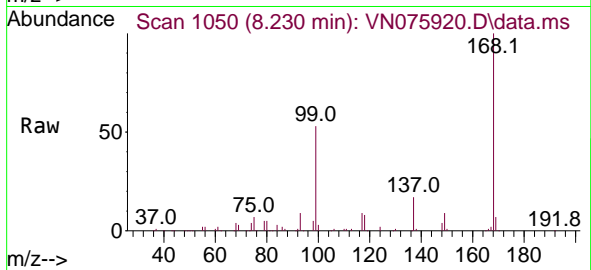




#1
 Pentafluorobenzene
 Concen: 50.000 ug/l
 RT: 8.230 min Scan# 10
 Delta R.T. -0.000 min
 Lab File: VN075920.D
 Acq: 21 Dec 2022 15:29

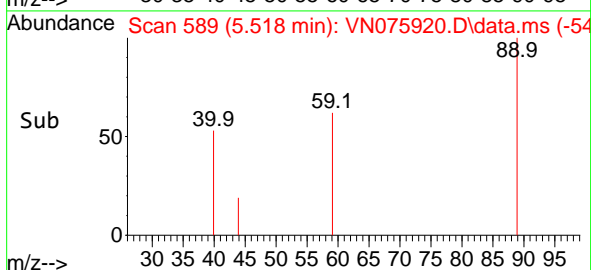
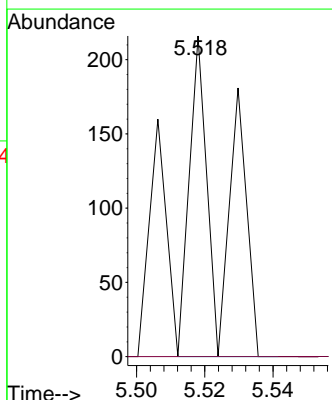
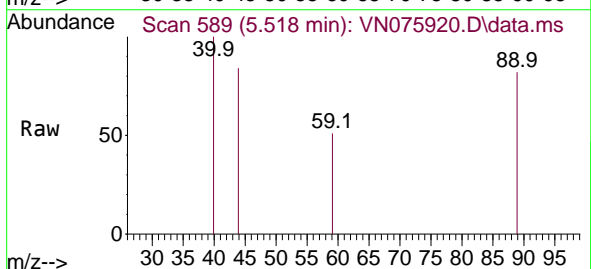
Instrument :
 MSVOA_N
 ClientSampleId :
 IBLK

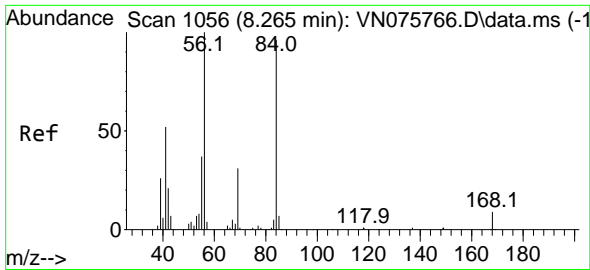
Tgt Ion:168 Resp: 378023
 Ion Ratio Lower Upper
 168 100
 99 53.0 44.2 66.4



#11
 Tert butyl alcohol
 Concen: 0.241 ug/l
 RT: 5.518 min Scan# 589
 Delta R.T. -0.018 min
 Lab File: VN075920.D
 Acq: 21 Dec 2022 15:29

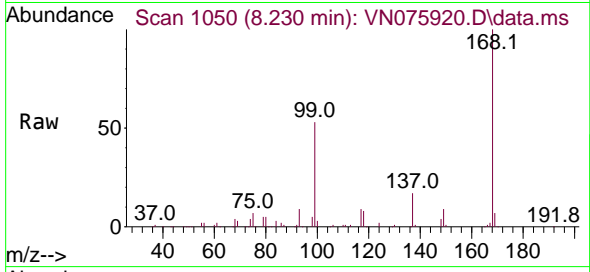
Tgt Ion: 59 Resp: 140
 Ion Ratio Lower Upper
 59 100
 57 0.0 8.2 12.4#



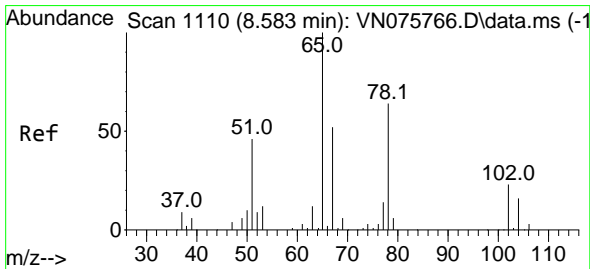
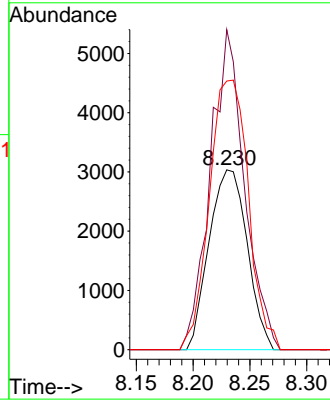
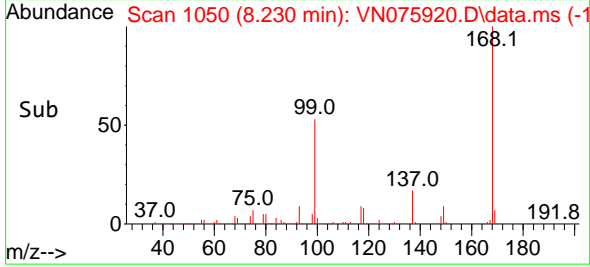


#31
 Cyclohexane
 Concen: 1.204 ug/l
 RT: 8.230 min Scan# 1056
 Delta R.T. -0.035 min
 Lab File: VN075920.D
 Acq: 21 Dec 2022 15:29

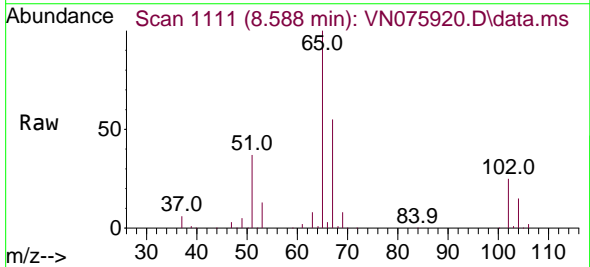
Instrument : MSVOA_N
 ClientSampleId : IBLK



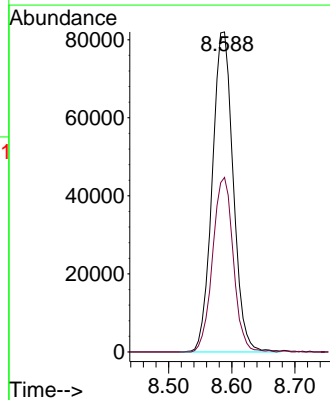
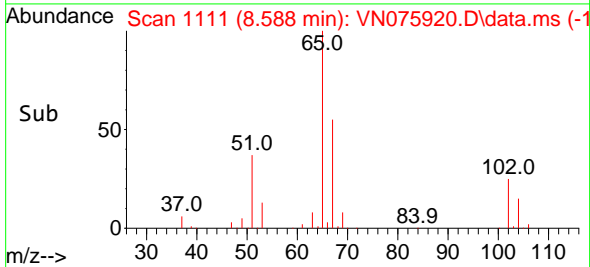
Tgt Ion: 56 Resp: 7090
 Ion Ratio Lower Upper
 56 100
 69 177.9 24.7 37.1#
 84 149.3 76.5 114.7#

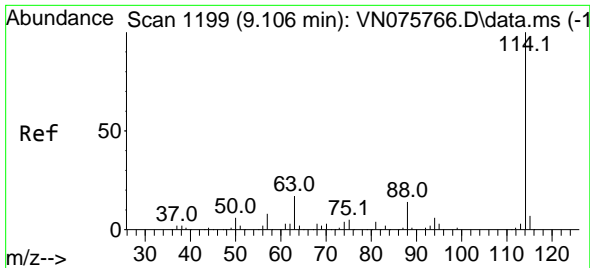


#33
 1,2-Dichloroethane-d4
 Concen: 45.937 ug/l
 RT: 8.588 min Scan# 1111
 Delta R.T. 0.006 min
 Lab File: VN075920.D
 Acq: 21 Dec 2022 15:29



Tgt Ion: 65 Resp: 188919
 Ion Ratio Lower Upper
 65 100
 67 53.8 0.0 103.4



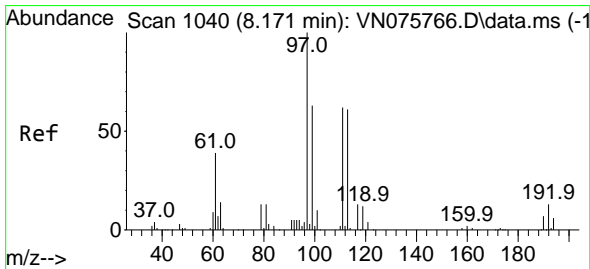
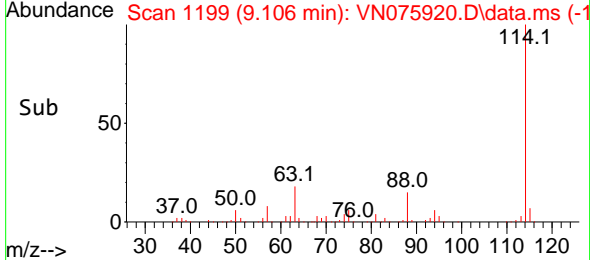
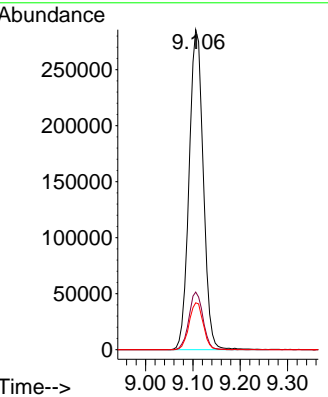
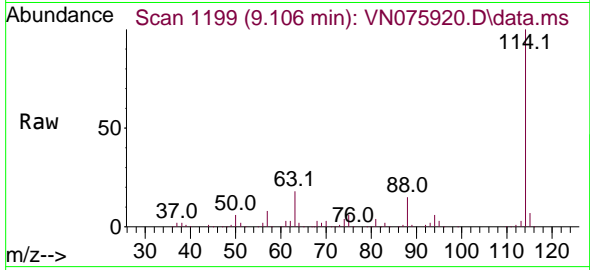


#34
 1,4-Difluorobenzene
 Concen: 50.000 ug/l
 RT: 9.106 min Scan# 1199
 Delta R.T. -0.000 min
 Lab File: VN075920.D
 Acq: 21 Dec 2022 15:29

Instrument : MSVOA_N
 ClientSampleId : IBLK

Tgt Ion:114 Resp: 593788

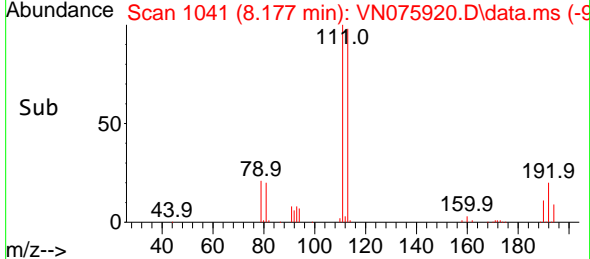
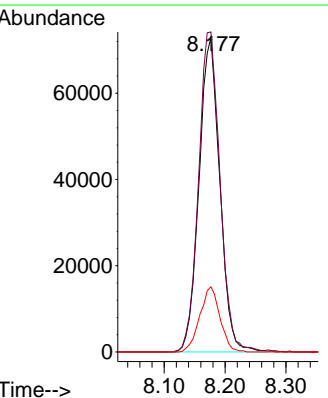
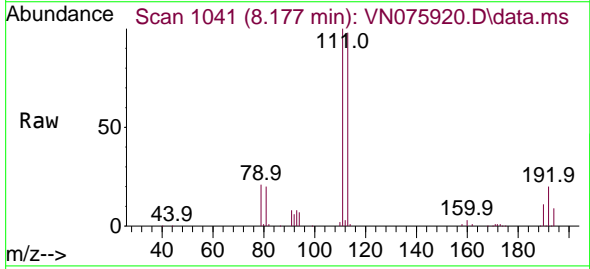
Ion	Ratio	Lower	Upper
114	100		
63	18.0	0.0	34.4
88	14.7	0.0	28.8

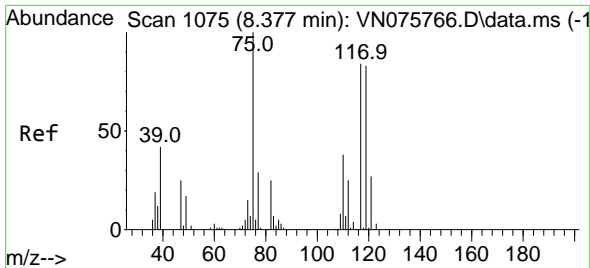


#35
 Dibromofluoromethane
 Concen: 47.026 ug/l
 RT: 8.177 min Scan# 1041
 Delta R.T. 0.006 min
 Lab File: VN075920.D
 Acq: 21 Dec 2022 15:29

Tgt Ion:113 Resp: 172925

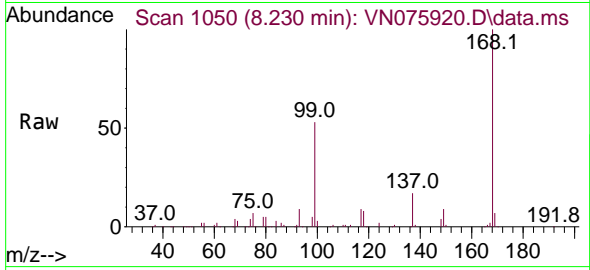
Ion	Ratio	Lower	Upper
113	100		
111	105.1	83.4	125.2
192	20.1	16.1	24.1



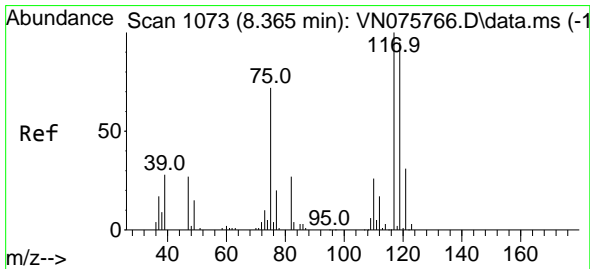
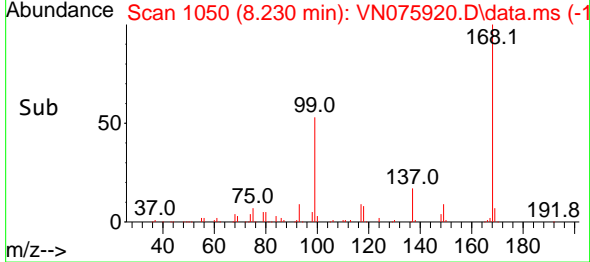
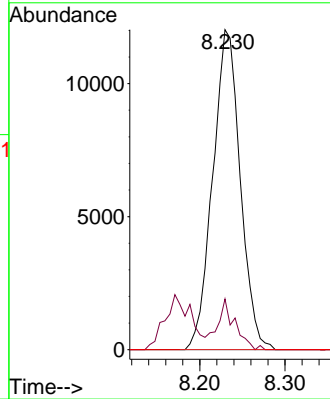


#36
 1,1-Dichloropropene
 Concen: 5.524 ug/l
 RT: 8.230 min Scan# 1050
 Delta R.T. -0.147 min
 Lab File: VN075920.D
 Acq: 21 Dec 2022 15:29

Instrument : MSVOA_N
 ClientSampleId : IBLK

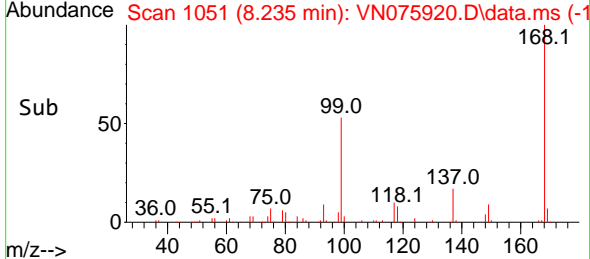
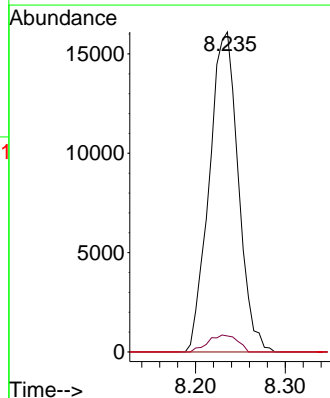
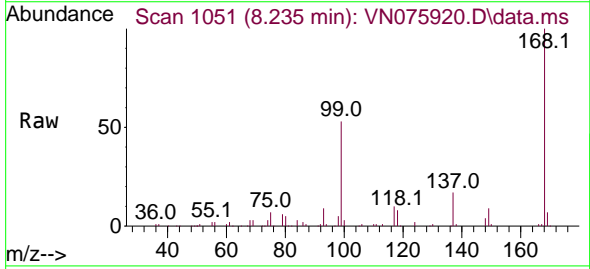


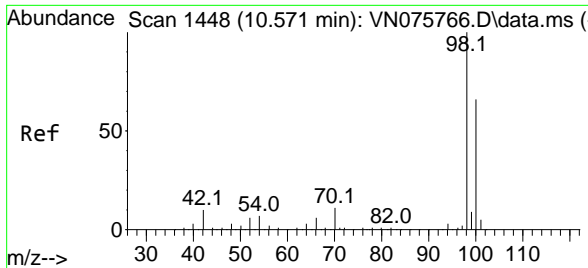
Tgt Ion: 75 Resp: 26983
 Ion Ratio Lower Upper
 75 100
 110 10.2 18.8 56.4#
 77 0.0 24.1 36.1#



#38
 Carbon Tetrachloride
 Concen: 6.616 ug/l
 RT: 8.235 min Scan# 1051
 Delta R.T. -0.129 min
 Lab File: VN075920.D
 Acq: 21 Dec 2022 15:29

Tgt Ion: 117 Resp: 36171
 Ion Ratio Lower Upper
 117 100
 119 5.0 76.1 114.1#
 121 0.0 24.5 36.7#

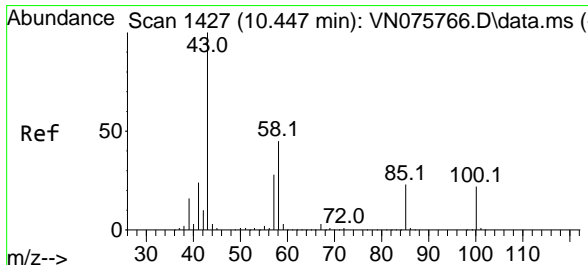
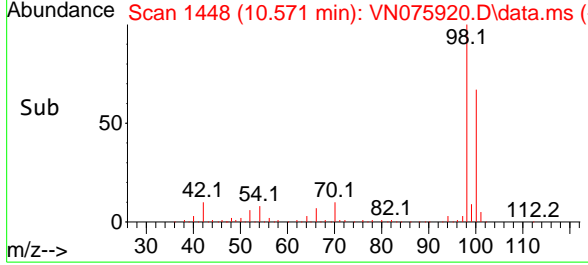
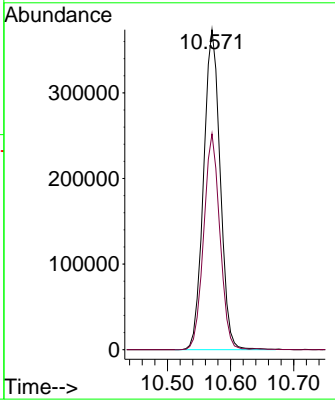
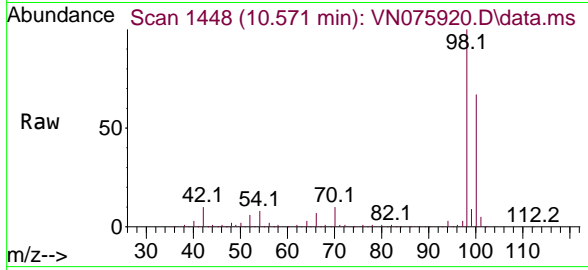




#50
 Toluene-d8
 Concen: 49.604 ug/l
 RT: 10.571 min Scan# 1448
 Delta R.T. -0.000 min
 Lab File: VN075920.D
 Acq: 21 Dec 2022 15:29

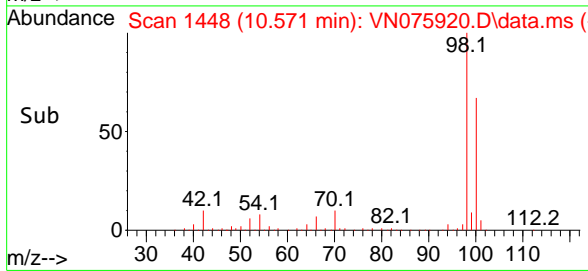
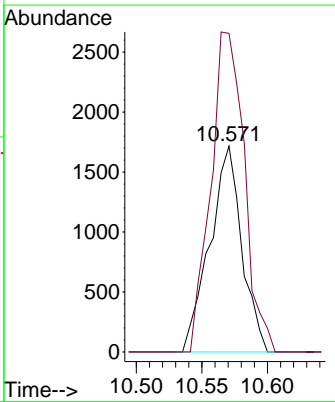
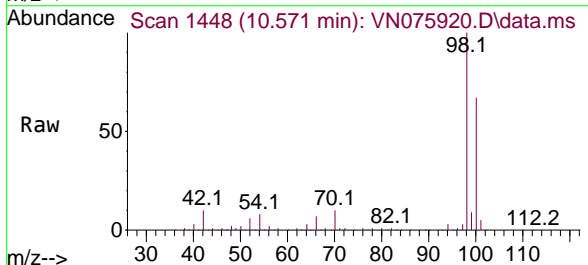
Instrument : MSVOA_N
 ClientSampleId : IBLK

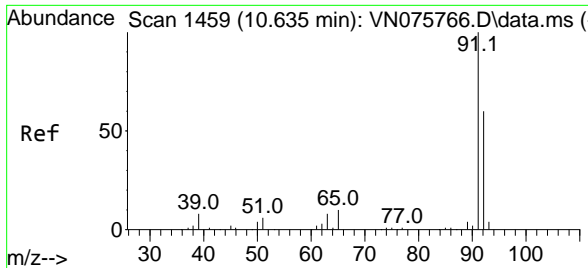
Tgt Ion: 98 Resp: 681992
 Ion Ratio Lower Upper
 98 100
 100 65.5 52.1 78.1



#51
 4-Methyl-2-Pentanone
 Concen: 0.744 ug/l
 RT: 10.571 min Scan# 1448
 Delta R.T. 0.123 min
 Lab File: VN075920.D
 Acq: 21 Dec 2022 15:29

Tgt Ion: 43 Resp: 2911
 Ion Ratio Lower Upper
 43 100
 58 163.2 35.5 53.3#

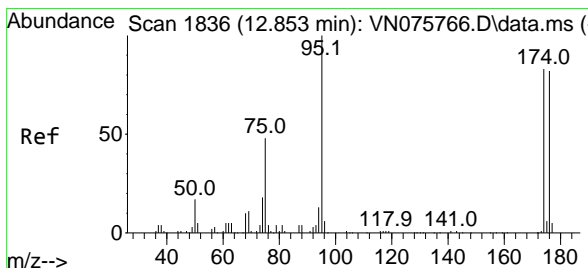
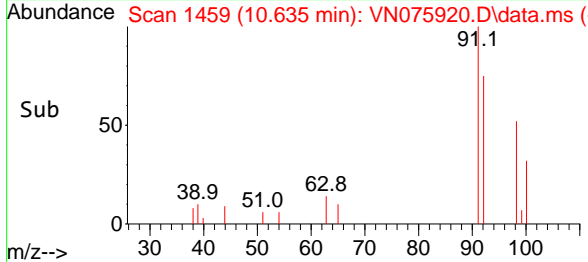
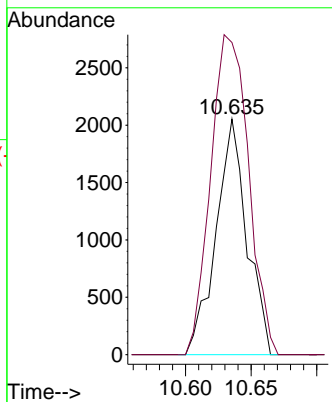
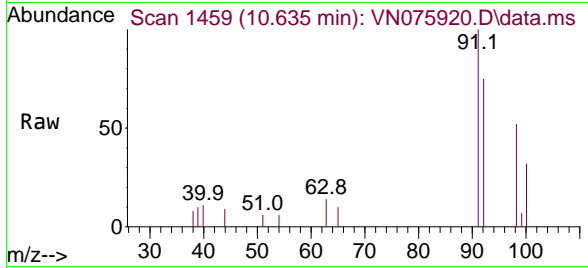




#52
 Toluene
 Concen: 0.343 ug/l
 RT: 10.635 min Scan# 1459
 Delta R.T. -0.000 min
 Lab File: VN075920.D
 Acq: 21 Dec 2022 15:29

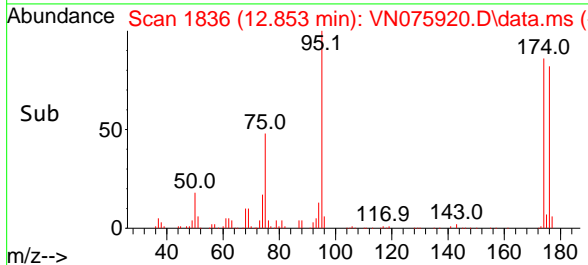
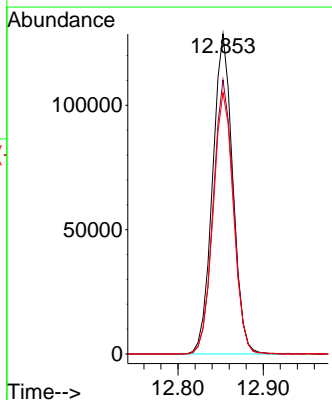
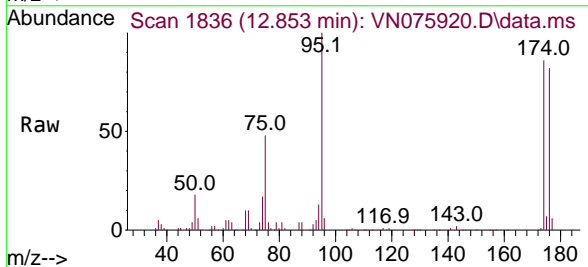
Instrument : MSVOA_N
 ClientSampleId : IBLK

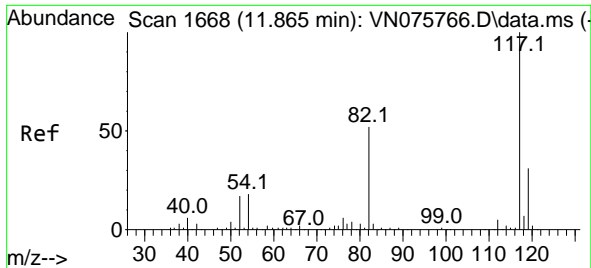
Tgt Ion: 92 Resp: 3365
 Ion Ratio Lower Upper
 92 100
 91 167.0 137.3 205.9



#62
 4-Bromofluorobenzene
 Concen: 46.420 ug/l
 RT: 12.853 min Scan# 1836
 Delta R.T. -0.000 min
 Lab File: VN075920.D
 Acq: 21 Dec 2022 15:29

Tgt Ion: 95 Resp: 211383
 Ion Ratio Lower Upper
 95 100
 174 86.1 0.0 171.6
 176 82.8 0.0 169.2



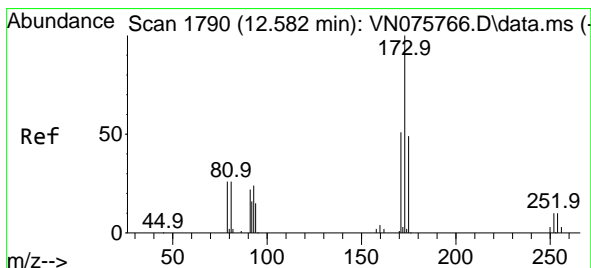
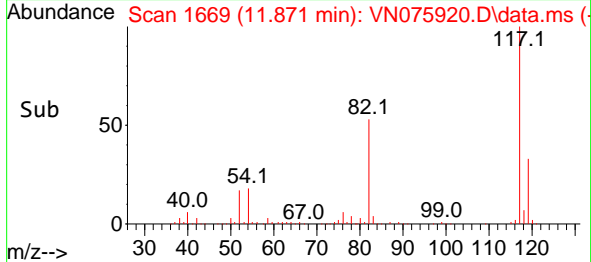
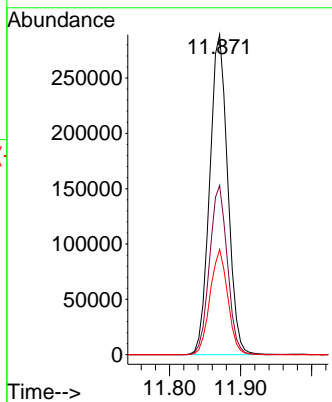
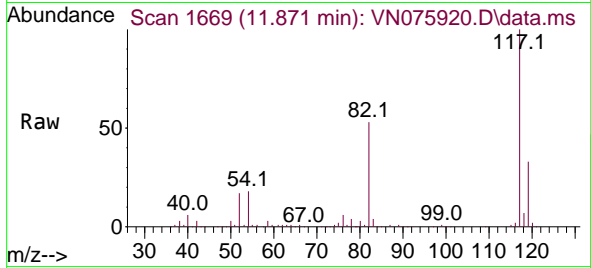


#63
 Chlorobenzene-d5
 Concen: 50.000 ug/l
 RT: 11.871 min Scan# 117
 Delta R.T. 0.006 min
 Lab File: VN075920.D
 Acq: 21 Dec 2022 15:29

Instrument :
 MSVOA_N
 ClientSampleId :
 IBLK

Tgt Ion:117 Resp: 509099

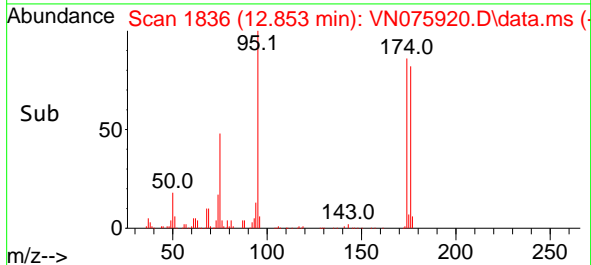
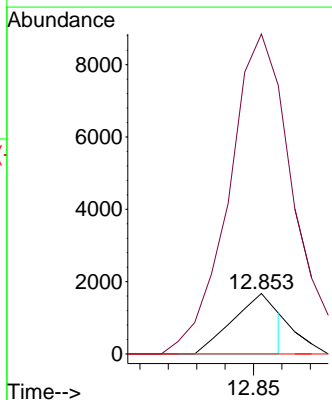
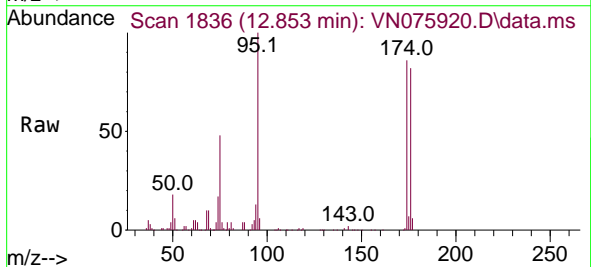
Ion	Ratio	Lower	Upper
117	100		
82	52.9	41.3	61.9
119	32.9	24.6	37.0

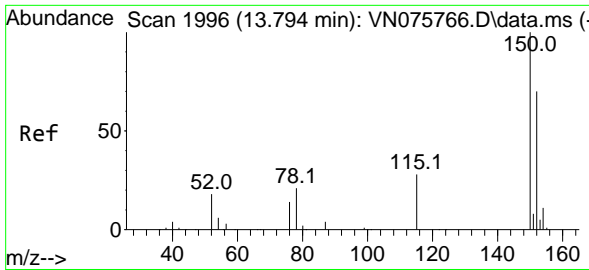


#71
 Bromoform
 Concen: 0.659 ug/l
 RT: 12.853 min Scan# 1836
 Delta R.T. 0.271 min
 Lab File: VN075920.D
 Acq: 21 Dec 2022 15:29

Tgt Ion:173 Resp: 1855

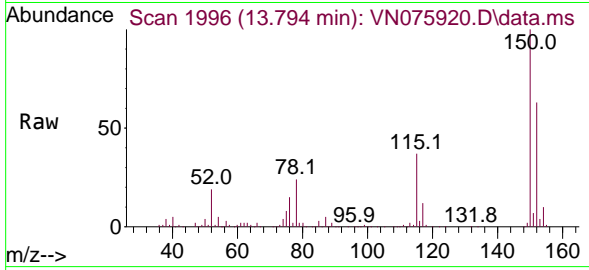
Ion	Ratio	Lower	Upper
173	100		
175	601.9	24.3	72.8#
254	0.0	0.0	0.0



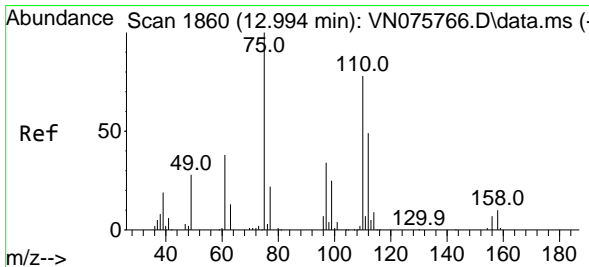
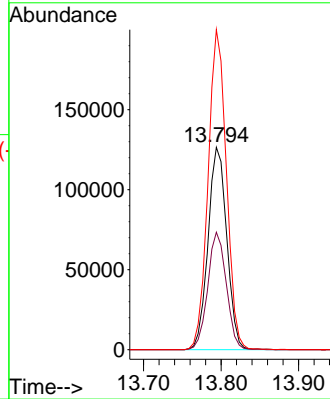
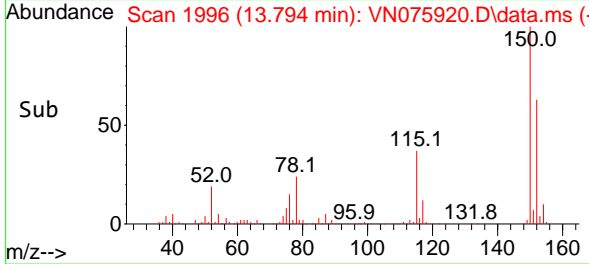


#72
 1,4-Dichlorobenzene-d4
 Concen: 50.000 ug/l
 RT: 13.794 min Scan# 1996
 Delta R.T. -0.000 min
 Lab File: VN075920.D
 Acq: 21 Dec 2022 15:29

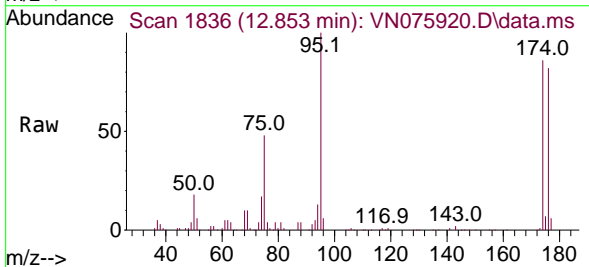
Instrument : MSVOA_N
 ClientSampleId : IBLK



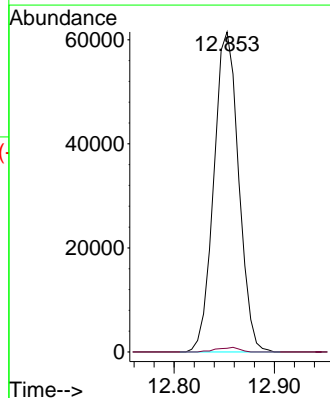
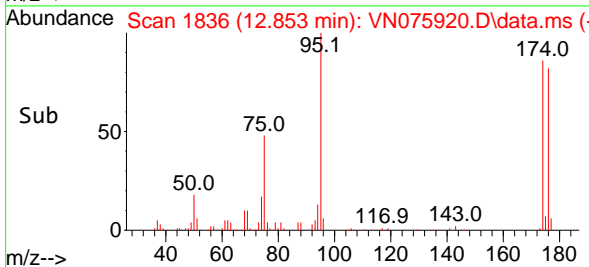
Tgt Ion:152 Resp: 212563
 Ion Ratio Lower Upper
 152 100
 115 57.4 29.1 87.4
 150 154.3 0.0 347.0

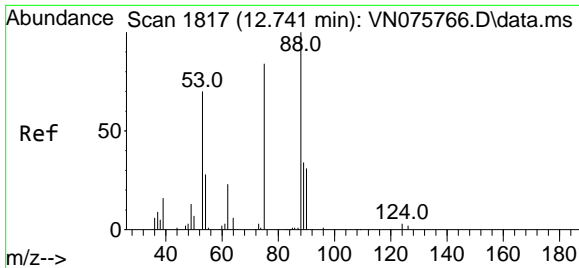


#76
 1,2,3-Trichloropropane
 Concen: 24.642 ug/l
 RT: 12.853 min Scan# 1836
 Delta R.T. -0.141 min
 Lab File: VN075920.D
 Acq: 21 Dec 2022 15:29



Tgt Ion: 75 Resp: 105583
 Ion Ratio Lower Upper
 75 100
 77 1.3 82.6 247.8#



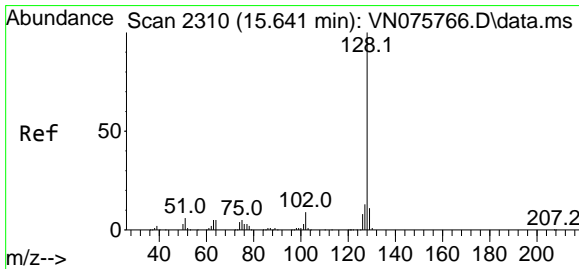
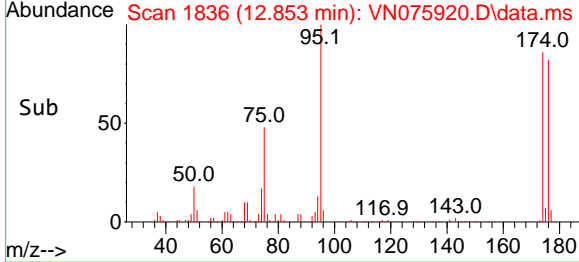
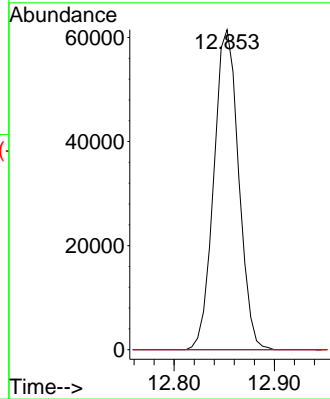
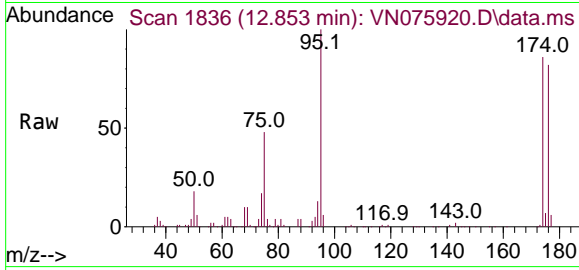


#81
 trans-1,4-Dichloro-2-butene
 Concen: 88.697 ug/l
 RT: 12.853 min Scan# 1836
 Delta R.T. 0.112 min
 Lab File: VN075920.D
 Acq: 21 Dec 2022 15:29

Instrument : MSVOA_N
 ClientSampleId : IBLK

Tgt Ion: 75 Resp: 105583

Ion	Ratio	Lower	Upper
75	100		
53	0.0	73.8	110.6#
89	0.0	39.5	59.3#



#95
 Naphthalene
 Concen: 2.216 ug/l
 RT: 15.647 min Scan# 2311
 Delta R.T. 0.006 min
 Lab File: VN075920.D
 Acq: 21 Dec 2022 15:29

Tgt Ion: 128 Resp: 464

Ion	Ratio	Lower	Upper
128	100		
127	0.0	10.4	15.6#
129	0.0	8.7	13.1#

