

Data Path : Z:\voasrv\HPCHEM1\MSVOA_N\Data\VN122122\
 Data File : VN075915.D
 Acq On : 21 Dec 2022 13:29
 Operator : JC\MD
 Sample : N6067-01
 Misc : 5.06g/10mL/100uL/5.00mL/MSVOA_N/MEOH
 ALS Vial : 9 Sample Multiplier: 1

Instrument :
 MSVOA_N
ClientSampleId :
 WC-SOIL-20221214

Quant Time: Dec 21 14:16:08 2022
 Quant Method : Z:\voasrv\HPCHEM1\MSVOA_N\methods\82N121422W.M
 Quant Title : SW846 8260
 QLast Update : Wed Dec 14 13:03:41 2022
 Response via : Initial Calibration

Compound	R.T.	QIon	Response	Conc	Units	Dev(Min)
Internal Standards						
1) Pentafluorobenzene	8.224	168	374688	50.000	ug/l	0.00
34) 1,4-Difluorobenzene	9.100	114	585118	50.000	ug/l	0.00
63) Chlorobenzene-d5	11.871	117	491065	50.000	ug/l	0.00
72) 1,4-Dichlorobenzene-d4	13.794	152	203567	50.000	ug/l	0.00
System Monitoring Compounds						
33) 1,2-Dichloroethane-d4	8.583	65	186775	45.820	ug/l	0.00
Spiked Amount	50.000	Range	74 - 125	Recovery	=	91.640%
35) Dibromofluoromethane	8.171	113	165793	45.754	ug/l	0.00
Spiked Amount	50.000	Range	75 - 124	Recovery	=	91.500%
50) Toluene-d8	10.571	98	667617	49.278	ug/l	0.00
Spiked Amount	50.000	Range	86 - 113	Recovery	=	98.560%
62) 4-Bromofluorobenzene	12.853	95	196615	43.816	ug/l	0.00
Spiked Amount	50.000	Range	83 - 123	Recovery	=	87.640%

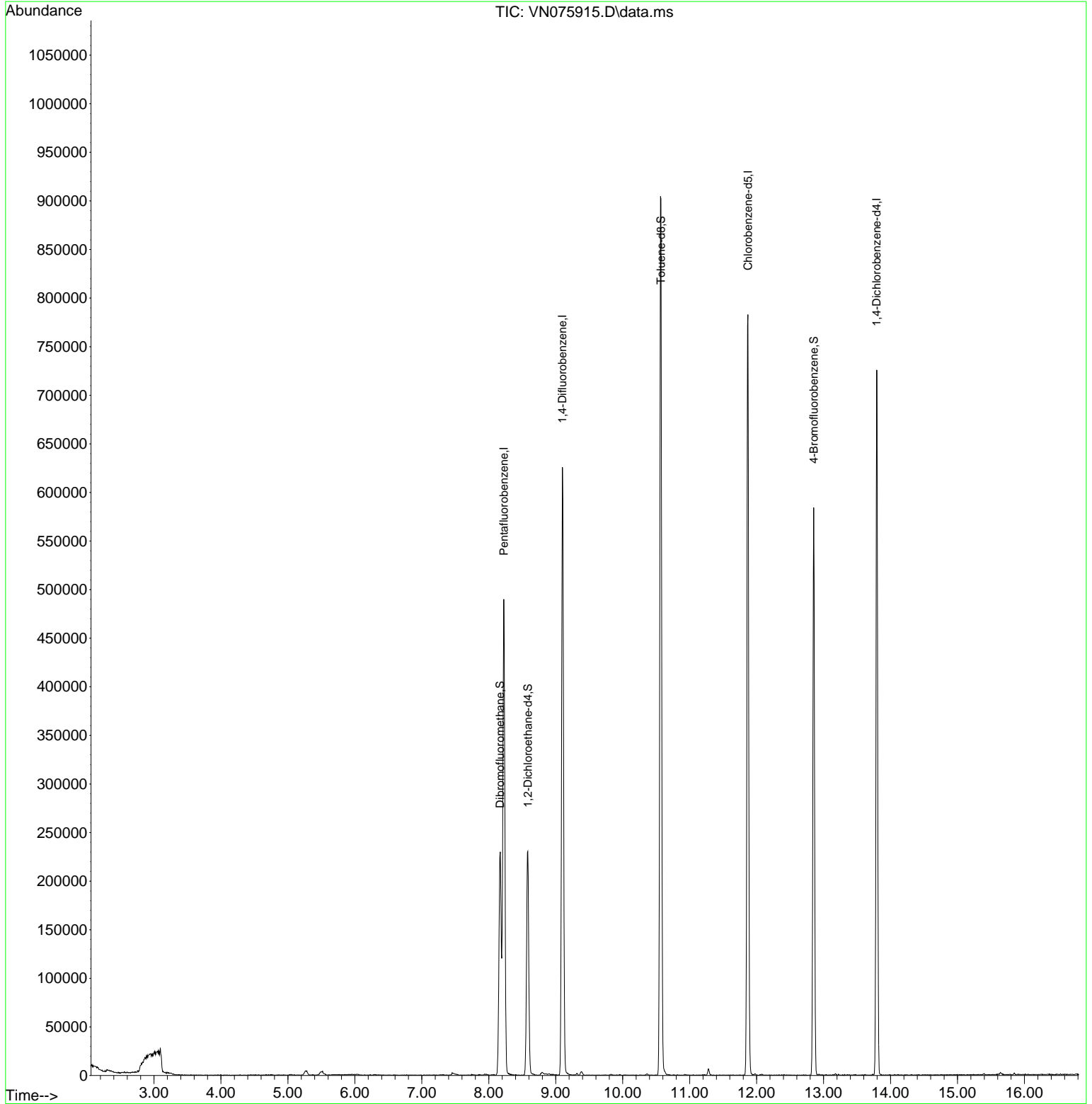
Target Compounds Qvalue

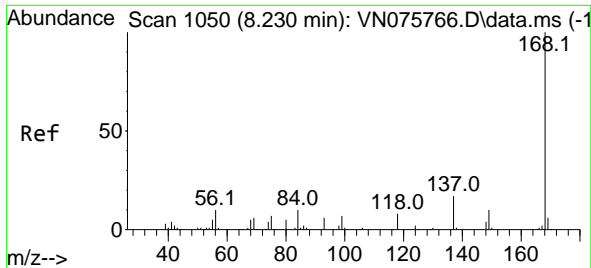
(#) = qualifier out of range (m) = manual integration (+) = signals summed

Data Path : Z:\voasrv\HPCHEM1\MSVOA_N\Data\VN122122\
 Data File : VN075915.D
 Acq On : 21 Dec 2022 13:29
 Operator : JC\MD
 Sample : N6067-01
 Misc : 5.06g/10mL/100uL/5.00mL/MSVOA_N/MEOH
 ALS Vial : 9 Sample Multiplier: 1

Instrument :
 MSVOA_N
 ClientSampleId :
 WC-SOIL-20221214

Quant Time: Dec 21 14:16:08 2022
 Quant Method : Z:\voasrv\HPCHEM1\MSVOA_N\methods\82N121422W.M
 Quant Title : SW846 8260
 QLast Update : Wed Dec 14 13:03:41 2022
 Response via : Initial Calibration

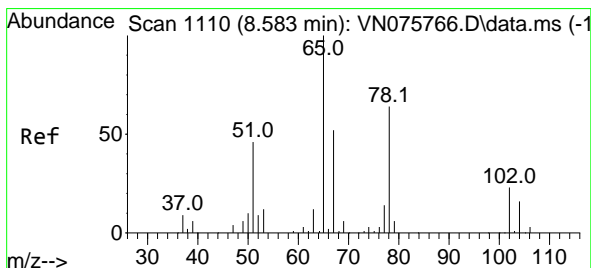
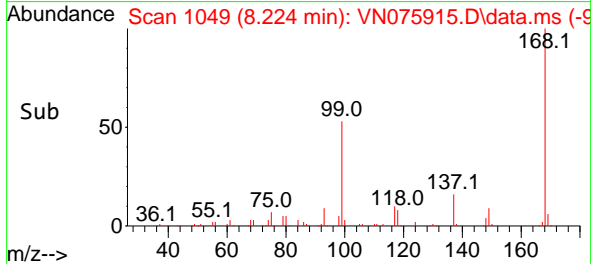
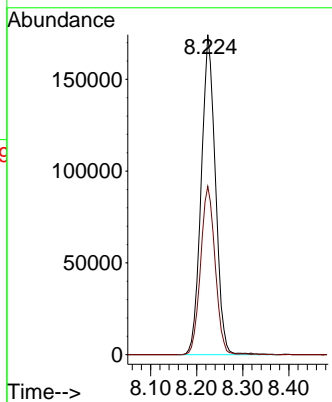
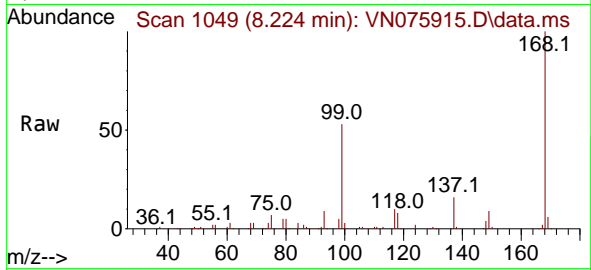




#1
 Pentafluorobenzene
 Concen: 50.000 ug/l
 RT: 8.224 min Scan# 1049
 Delta R.T. -0.006 min
 Lab File: VN075915.D
 Acq: 21 Dec 2022 13:29

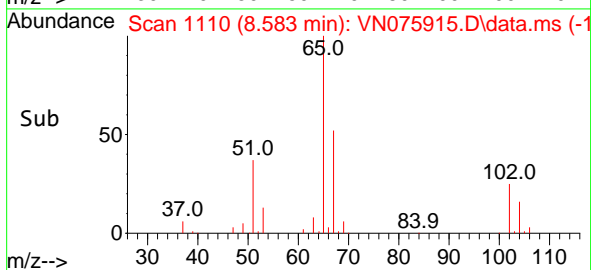
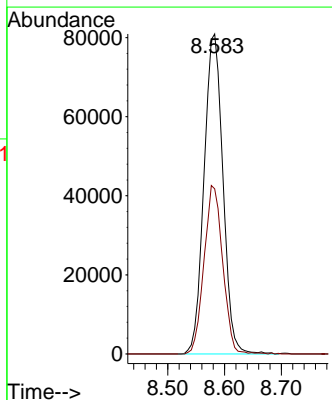
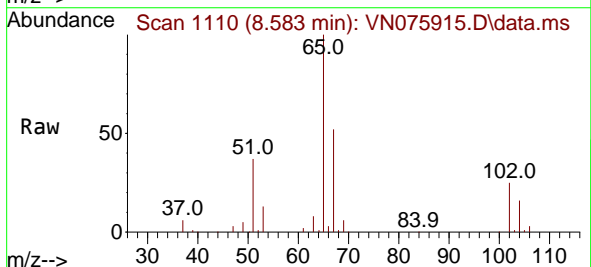
Instrument : MSVOA_N
 ClientSampleId : WC-SOIL-20221214

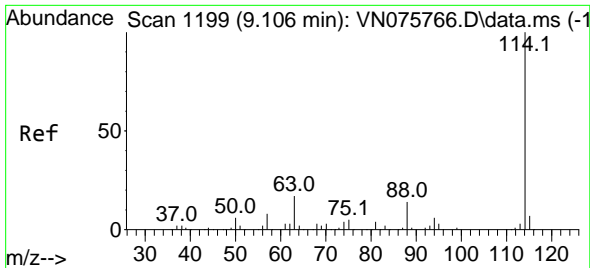
Tgt Ion:168 Resp: 374688
 Ion Ratio Lower Upper
 168 100
 99 52.6 44.2 66.4



#33
 1,2-Dichloroethane-d4
 Concen: 45.820 ug/l
 RT: 8.583 min Scan# 1110
 Delta R.T. 0.000 min
 Lab File: VN075915.D
 Acq: 21 Dec 2022 13:29

Tgt Ion: 65 Resp: 186775
 Ion Ratio Lower Upper
 65 100
 67 51.9 0.0 103.4

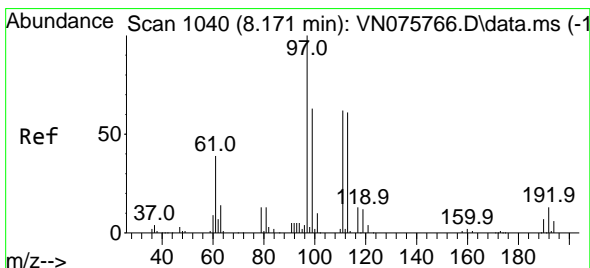
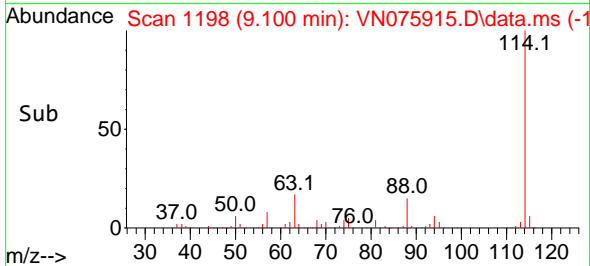
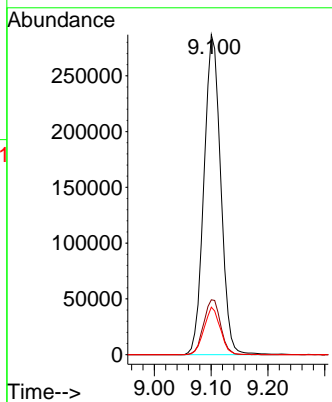
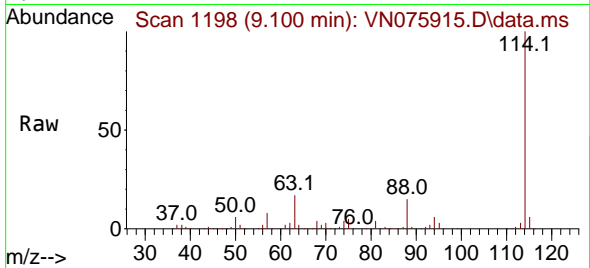




#34
 1,4-Difluorobenzene
 Concen: 50.000 ug/l
 RT: 9.100 min Scan# 1199
 Delta R.T. -0.006 min
 Lab File: VN075915.D
 Acq: 21 Dec 2022 13:29

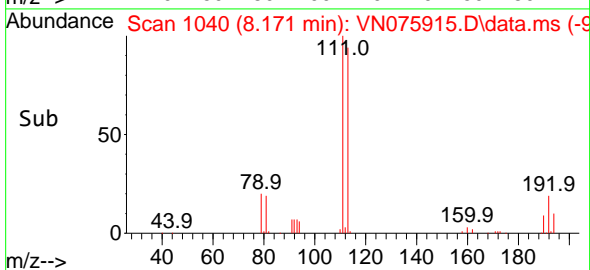
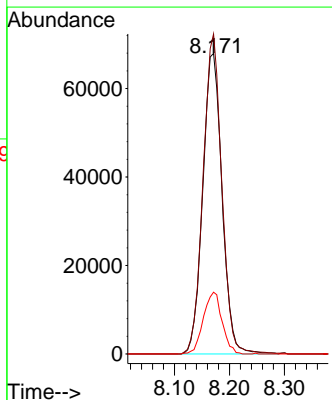
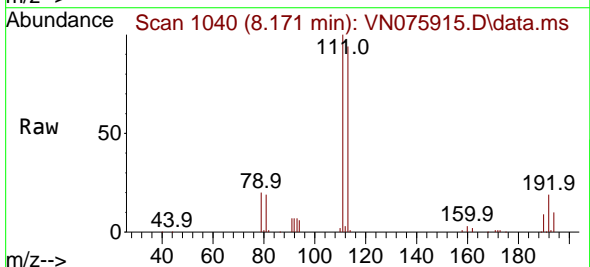
Instrument : MSVOA_N
 ClientSampleId : WC-SOIL-20221214

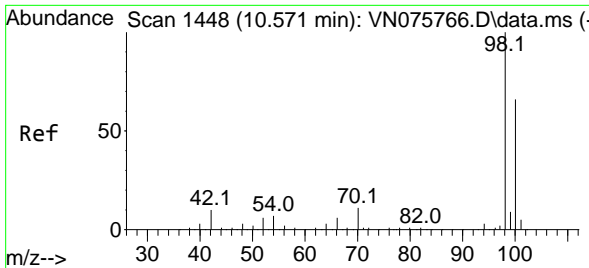
Tgt Ion	Resp	Lower	Upper
114	100		
63	17.1	0.0	34.4
88	14.9	0.0	28.8



#35
 Dibromofluoromethane
 Concen: 45.754 ug/l
 RT: 8.171 min Scan# 1040
 Delta R.T. 0.000 min
 Lab File: VN075915.D
 Acq: 21 Dec 2022 13:29

Tgt Ion	Resp	Lower	Upper
113	100		
111	103.2	83.4	125.2
192	20.0	16.1	24.1

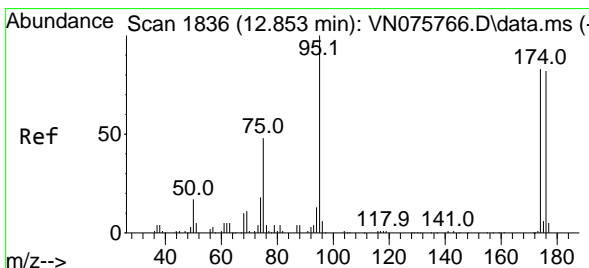
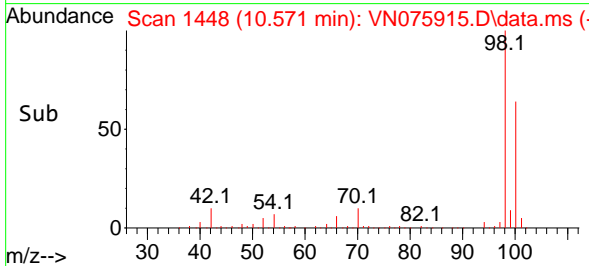
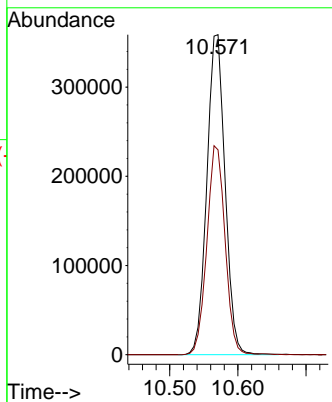
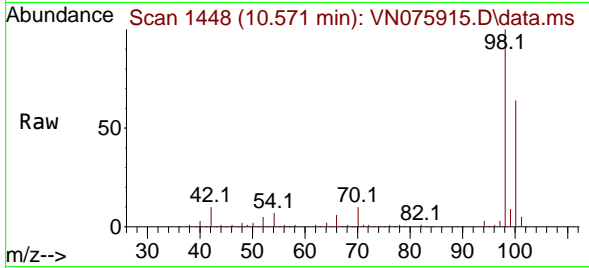




#50
 Toluene-d8
 Concen: 49.278 ug/l
 RT: 10.571 min Scan# 1448
 Delta R.T. 0.000 min
 Lab File: VN075915.D
 Acq: 21 Dec 2022 13:29

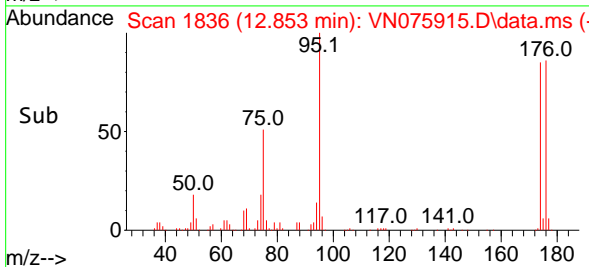
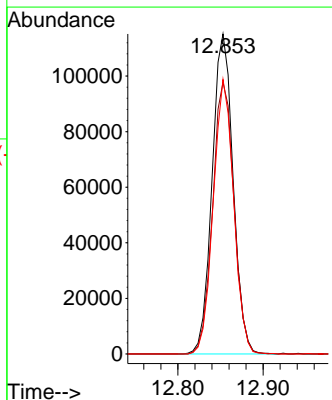
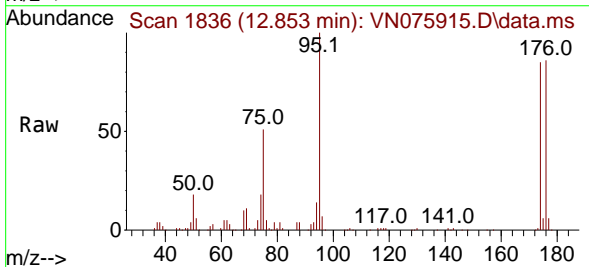
Instrument : MSVOA_N
 ClientSampleId : WC-SOIL-20221214

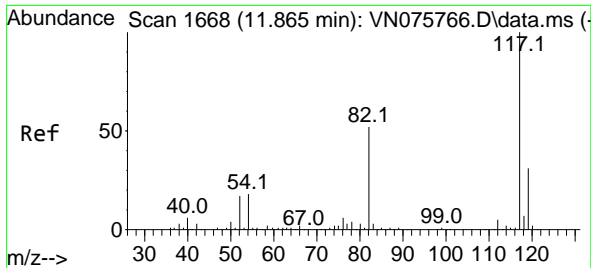
Tgt Ion: 98 Resp: 667617
 Ion Ratio Lower Upper
 98 100
 100 65.1 52.1 78.1



#62
 4-Bromofluorobenzene
 Concen: 43.816 ug/l
 RT: 12.853 min Scan# 1836
 Delta R.T. 0.000 min
 Lab File: VN075915.D
 Acq: 21 Dec 2022 13:29

Tgt Ion: 95 Resp: 196615
 Ion Ratio Lower Upper
 95 100
 174 86.5 0.0 171.6
 176 83.5 0.0 169.2

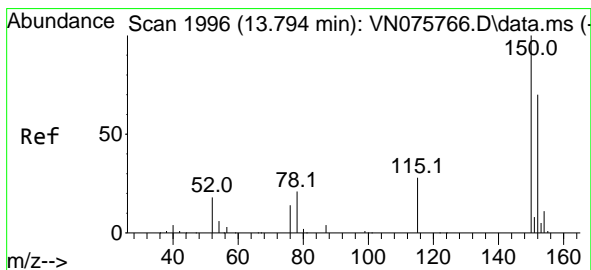
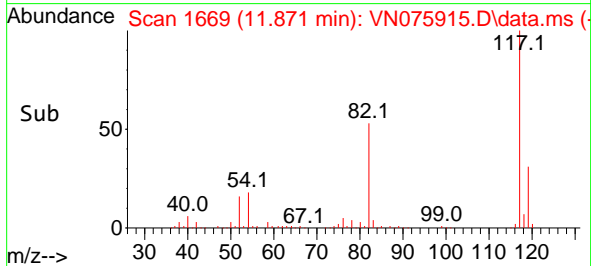
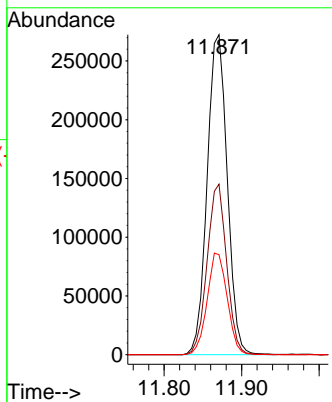
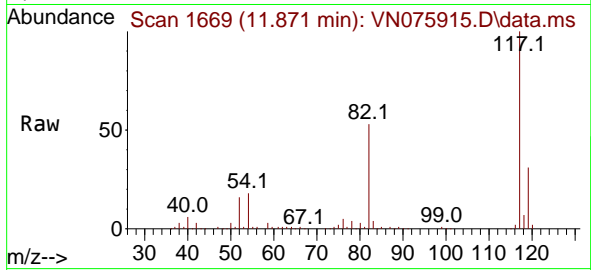




#63
 Chlorobenzene-d5
 Concen: 50.000 ug/l
 RT: 11.871 min Scan# 1669
 Delta R.T. 0.006 min
 Lab File: VN075915.D
 Acq: 21 Dec 2022 13:29

Instrument : MSVOA_N
 ClientSampleId : WC-SOIL-20221214

Tgt Ion	Resp	Ion Ratio	Lower	Upper
117	491065	100		
82		53.3	41.3	61.9
119		31.3	24.6	37.0



#72
 1,4-Dichlorobenzene-d4
 Concen: 50.000 ug/l
 RT: 13.794 min Scan# 1996
 Delta R.T. 0.000 min
 Lab File: VN075915.D
 Acq: 21 Dec 2022 13:29

Tgt Ion	Resp	Ion Ratio	Lower	Upper
152	203567	100		
115		58.1	29.1	87.4
150		158.7	0.0	347.0

