

Data Path : Z:\voasrv\HPCHEM1\MSVOA_N\Data\VN122123\
 Data File : VN080589.D
 Acq On : 21 Dec 2023 21:23
 Operator : JC\MD
 Sample : 05978-01 20X
 Misc : 1.00g/10mL/100uL/5.00mL/MSVOA_N/MEOH
 ALS Vial : 27 Sample Multiplier: 1

Instrument :
 MSVOA_N
 ClientSampleId :
 N41547

Quant Time: Dec 22 04:10:01 2023
 Quant Method : Z:\voasrv\HPCHEM1\MSVOA_N\methods\82N121223W.M
 Quant Title : SW846 8260
 QLast Update : Wed Dec 13 01:57:14 2023
 Response via : Initial Calibration

Compound	R.T.	QIon	Response	Conc	Units	Dev(Min)

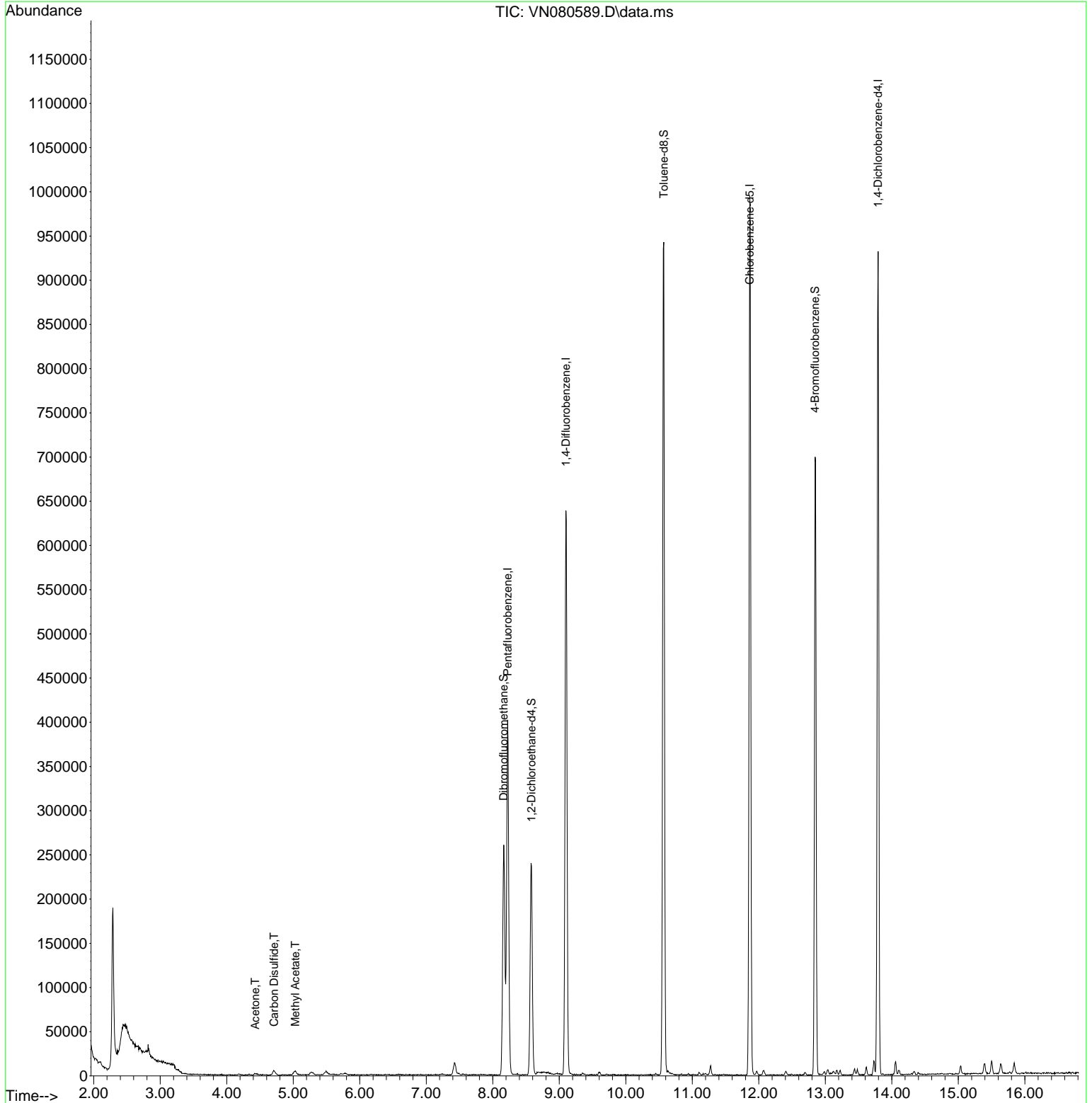
Internal Standards						
1) Pentafluorobenzene	8.224	168	291673	50.000	ug/l	0.00
34) 1,4-Difluorobenzene	9.100	114	570948	50.000	ug/l	0.00
63) Chlorobenzene-d5	11.865	117	595837	50.000	ug/l	0.00
72) 1,4-Dichlorobenzene-d4	13.794	152	259601	50.000	ug/l	0.00
System Monitoring Compounds						
33) 1,2-Dichloroethane-d4	8.583	65	200935	53.937	ug/l	0.00
Spiked Amount	50.000	Range	74 - 125	Recovery	=	107.880%
35) Dibromofluoromethane	8.165	113	191297	52.844	ug/l	0.00
Spiked Amount	50.000	Range	75 - 124	Recovery	=	105.680%
50) Toluene-d8	10.571	98	683705	50.642	ug/l	0.00
Spiked Amount	50.000	Range	86 - 113	Recovery	=	101.280%
62) 4-Bromofluorobenzene	12.847	95	263352	51.369	ug/l	0.00
Spiked Amount	50.000	Range	83 - 123	Recovery	=	102.740%
Target Compounds						
					Qvalue	
16) Acetone	4.430	43	2992	4.530	ug/l #	65
17) Carbon Disulfide	4.712	76	10379	1.168	ug/l #	75
18) Methyl Acetate	5.030	43	8515	2.003	ug/l	89

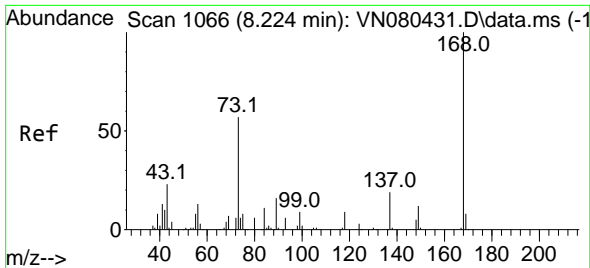
(#) = qualifier out of range (m) = manual integration (+) = signals summed

Data Path : Z:\voasrv\HPCHEM1\MSVOA_N\Data\VN122123\
Data File : VN080589.D
Acq On : 21 Dec 2023 21:23
Operator : JC\MD
Sample : 05978-01 20X
Misc : 1.00g/10mL/100uL/5.00mL/MSVOA_N/MEOH
ALS Vial : 27 Sample Multiplier: 1

Instrument :
MSVOA_N
ClientSampleId :
N41547

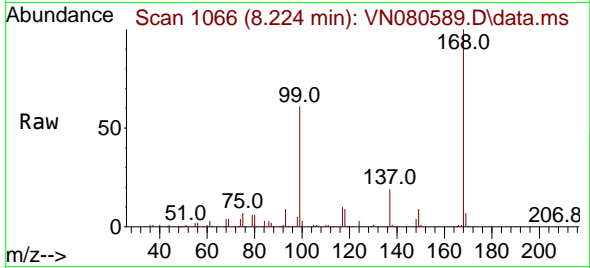
Quant Time: Dec 22 04:10:01 2023
Quant Method : Z:\voasrv\HPCHEM1\MSVOA_N\methods\82N121223W.M
Quant Title : SW846 8260
QLast Update : Wed Dec 13 01:57:14 2023
Response via : Initial Calibration



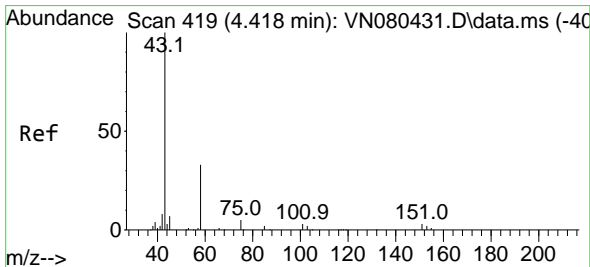
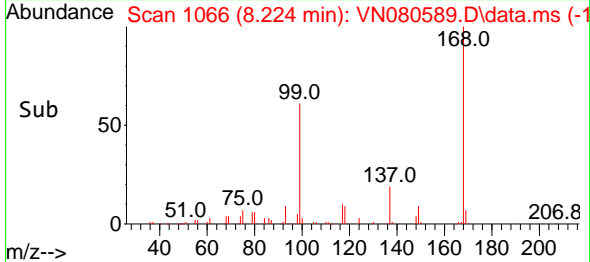
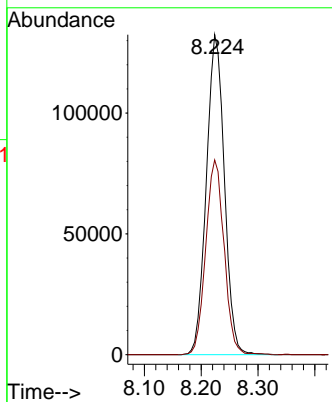


#1
 Pentafluorobenzene
 Concen: 50.000 ug/l
 RT: 8.224 min Scan# 1066
 Delta R.T. -0.000 min
 Lab File: VN080589.D
 Acq: 21 Dec 2023 21:23

Instrument : MSVOA_N
 ClientSampleId : N41547

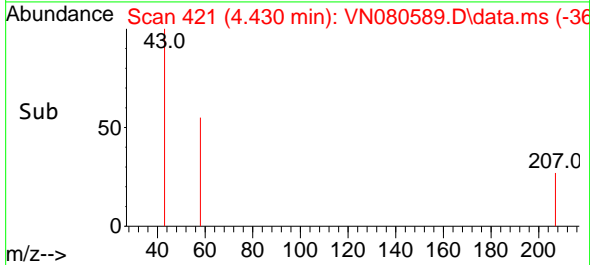
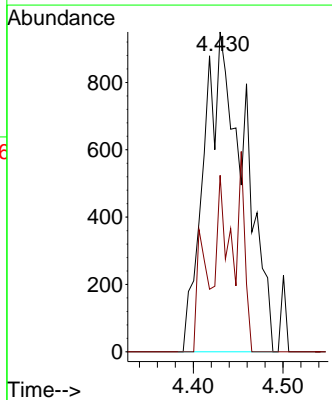
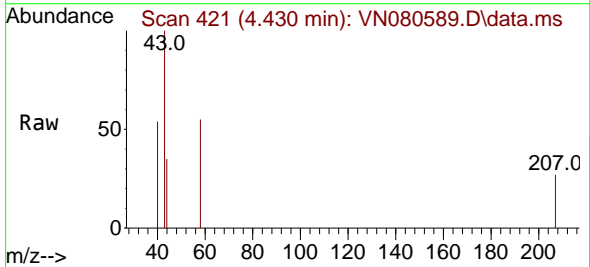


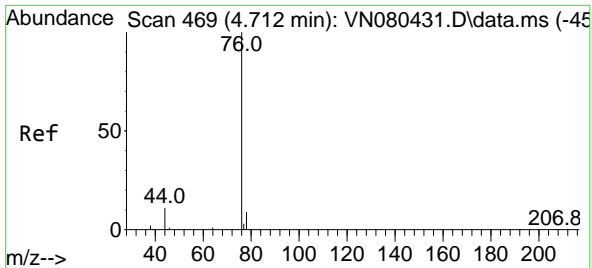
Tgt Ion:168 Resp: 291673
 Ion Ratio Lower Upper
 168 100
 99 60.9 53.0 79.6



#16
 Acetone
 Concen: 4.530 ug/l
 RT: 4.430 min Scan# 421
 Delta R.T. 0.012 min
 Lab File: VN080589.D
 Acq: 21 Dec 2023 21:23

Tgt Ion: 43 Resp: 2992
 Ion Ratio Lower Upper
 43 100
 58 55.2 28.0 42.0#

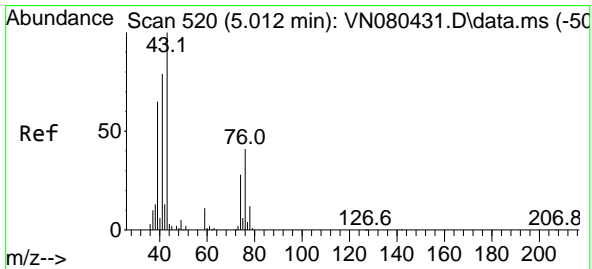
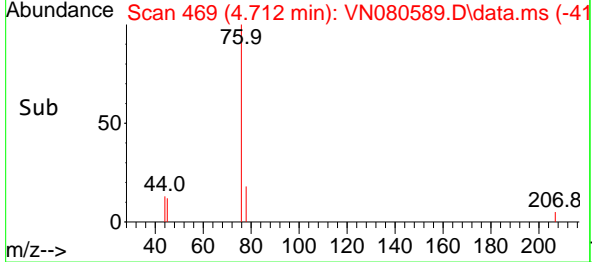
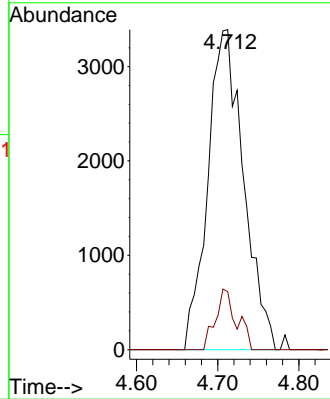
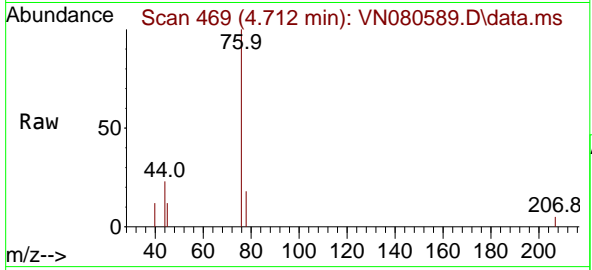




#17
 Carbon Disulfide
 Concen: 1.168 ug/l
 RT: 4.712 min Scan# 469
 Delta R.T. 0.000 min
 Lab File: VN080589.D
 Acq: 21 Dec 2023 21:23

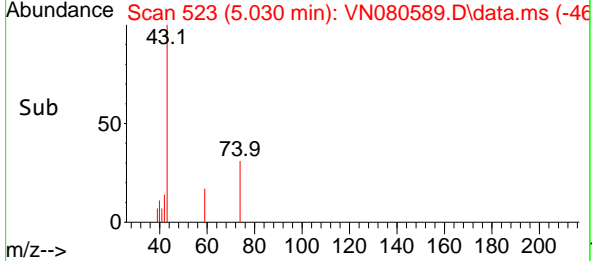
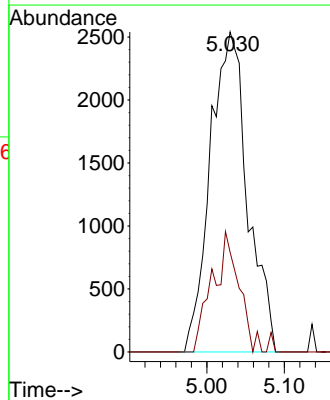
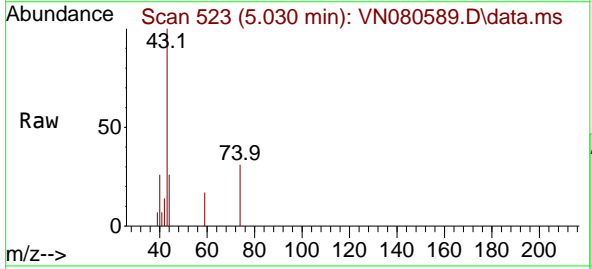
Instrument : MSVOA_N
 ClientSampleId : N41547

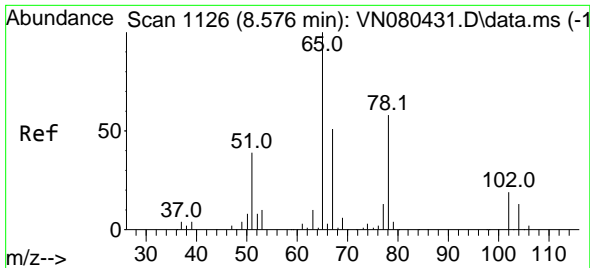
Tgt Ion: 76 Resp: 10379
 Ion Ratio Lower Upper
 76 100
 78 18.1 7.4 11.0#



#18
 Methyl Acetate
 Concen: 2.003 ug/l
 RT: 5.030 min Scan# 523
 Delta R.T. 0.018 min
 Lab File: VN080589.D
 Acq: 21 Dec 2023 21:23

Tgt Ion: 43 Resp: 8515
 Ion Ratio Lower Upper
 43 100
 74 26.7 26.2 39.4

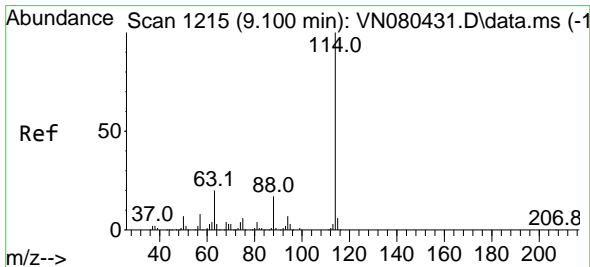
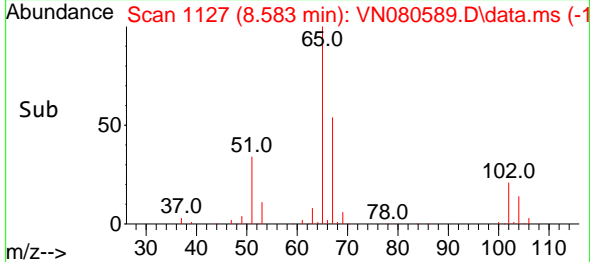
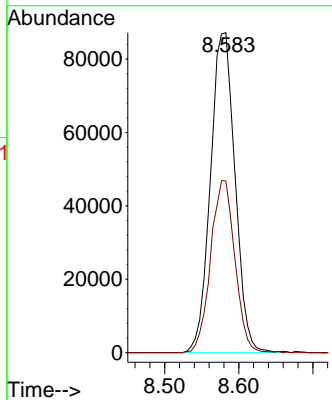
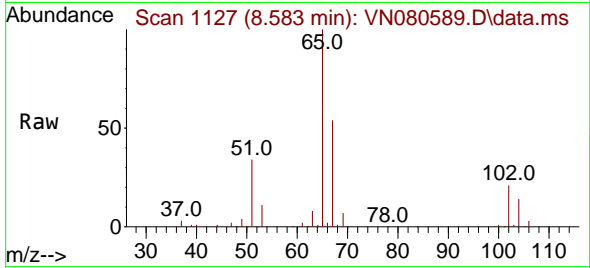




#33
 1,2-Dichloroethane-d4
 Concen: 53.937 ug/l
 RT: 8.583 min Scan# 1127
 Delta R.T. 0.006 min
 Lab File: VN080589.D
 Acq: 21 Dec 2023 21:23

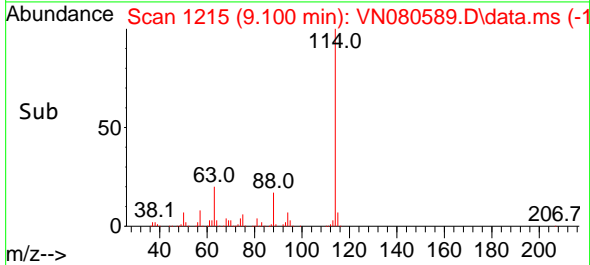
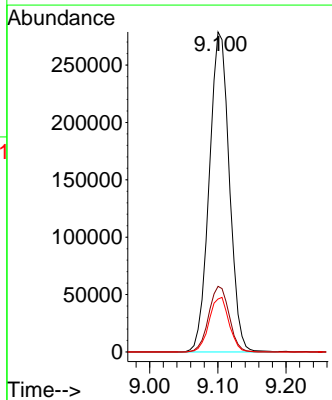
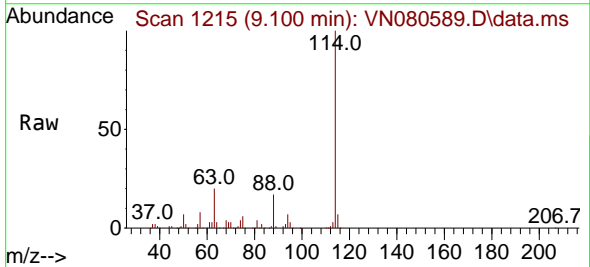
Instrument : MSVOA_N
 ClientSampleId : N41547

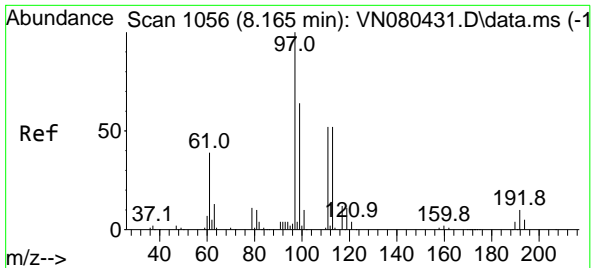
Tgt Ion: 65 Resp: 200935
 Ion Ratio Lower Upper
 65 100
 67 53.1 0.0 106.6



#34
 1,4-Difluorobenzene
 Concen: 50.000 ug/l
 RT: 9.100 min Scan# 1215
 Delta R.T. 0.000 min
 Lab File: VN080589.D
 Acq: 21 Dec 2023 21:23

Tgt Ion:114 Resp: 570948
 Ion Ratio Lower Upper
 114 100
 63 20.5 0.0 36.4
 88 16.5 0.0 30.6

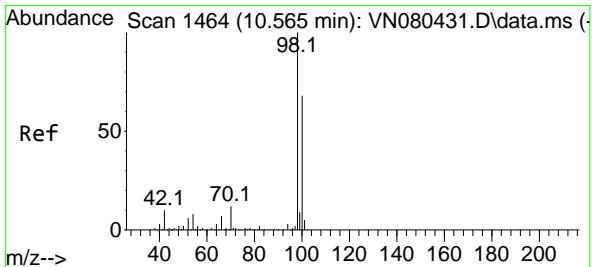
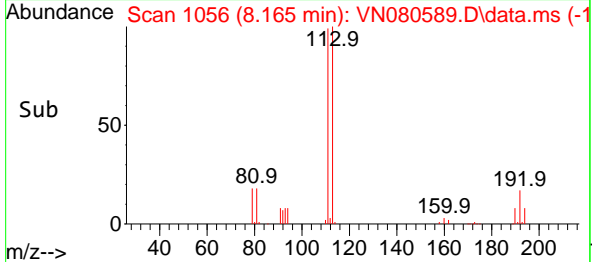
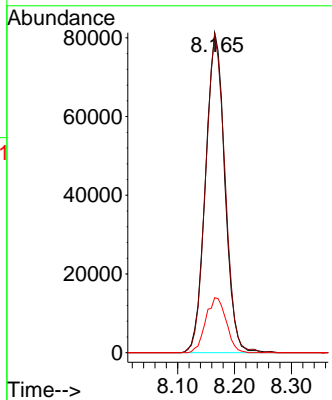
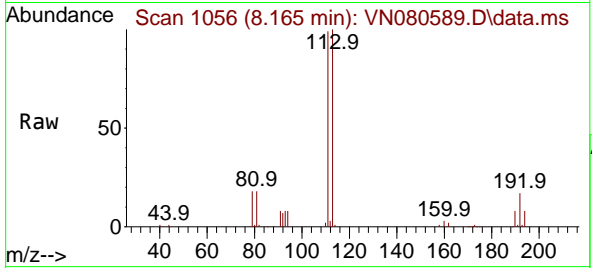




#35
 Dibromofluoromethane
 Concen: 52.844 ug/l
 RT: 8.165 min Scan# 1056
 Delta R.T. 0.000 min
 Lab File: VN080589.D
 Acq: 21 Dec 2023 21:23

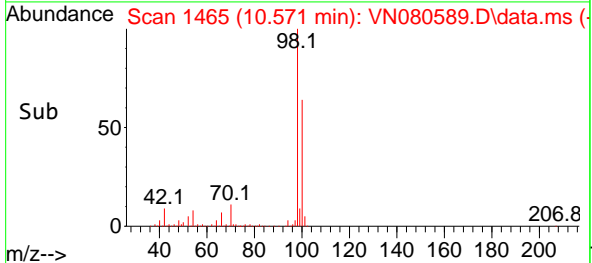
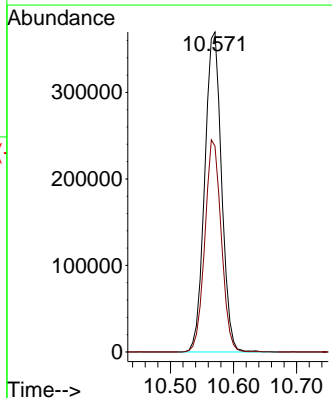
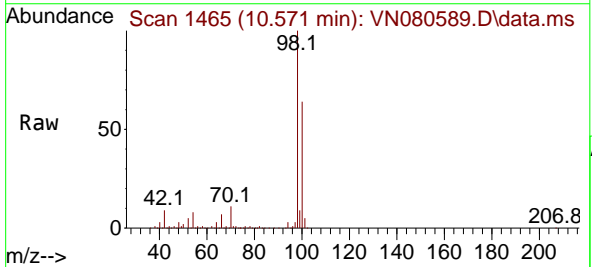
Instrument : MSVOA_N
 ClientSampleId : N41547

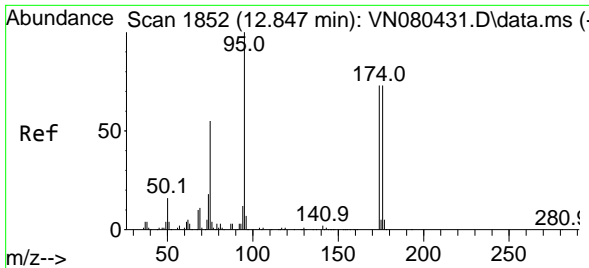
Tgt Ion	Resp	Lower	Upper
113	191297		
113	100		
111	100.0	82.6	123.8
192	18.3	12.7	19.1



#50
 Toluene-d8
 Concen: 50.642 ug/l
 RT: 10.571 min Scan# 1465
 Delta R.T. 0.006 min
 Lab File: VN080589.D
 Acq: 21 Dec 2023 21:23

Tgt Ion	Resp	Lower	Upper
98	683705		
98	100		
100	64.8	52.0	78.0



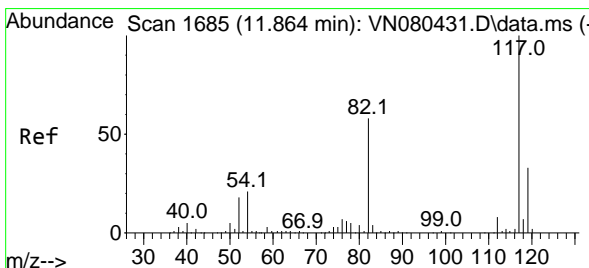
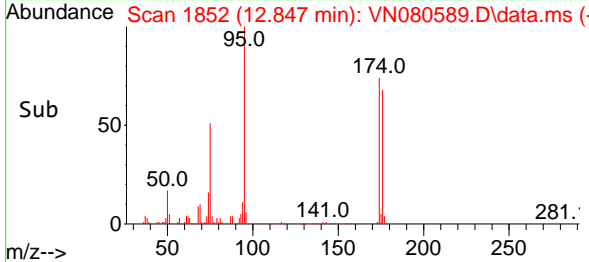
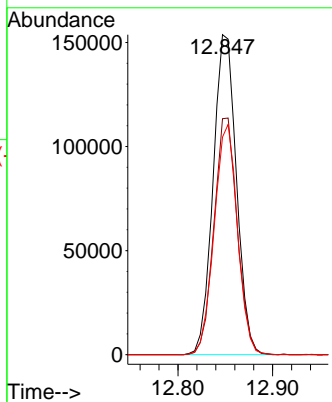
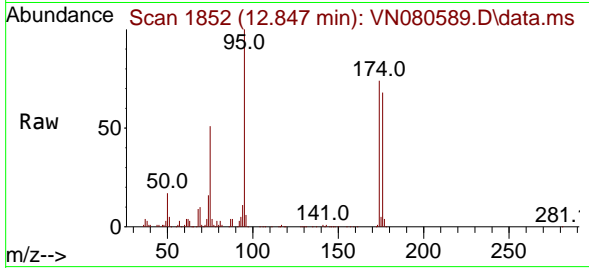


#62
 4-Bromofluorobenzene
 Concen: 51.369 ug/l
 RT: 12.847 min Scan# 1852
 Delta R.T. 0.000 min
 Lab File: VN080589.D
 Acq: 21 Dec 2023 21:23

Instrument : MSVOA_N
 ClientSampleId : N41547

Tgt Ion: 95 Resp: 263352

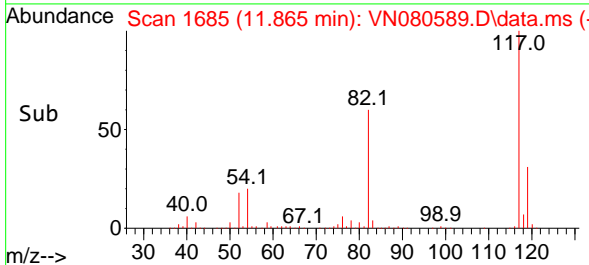
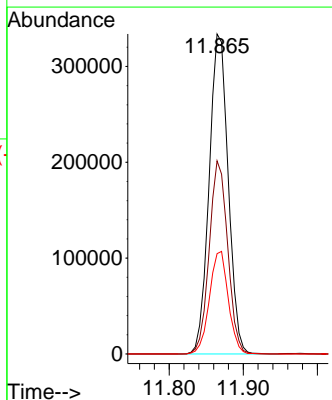
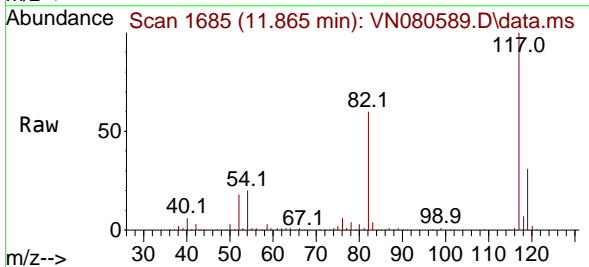
Ion	Ratio	Lower	Upper
95	100		
174	73.9	0.0	143.8
176	71.6	0.0	135.8

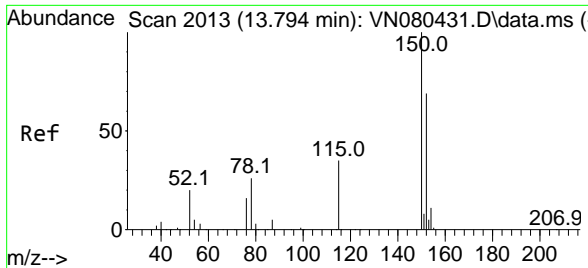


#63
 Chlorobenzene-d5
 Concen: 50.000 ug/l
 RT: 11.865 min Scan# 1685
 Delta R.T. 0.000 min
 Lab File: VN080589.D
 Acq: 21 Dec 2023 21:23

Tgt Ion: 117 Resp: 595837

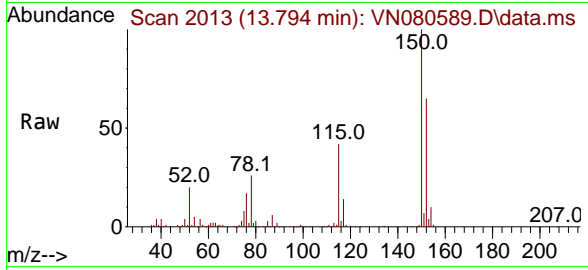
Ion	Ratio	Lower	Upper
117	100		
82	60.3	44.0	66.0
119	31.4	25.6	38.4





#72
 1,4-Dichlorobenzene-d4
 Concen: 50.000 ug/l
 RT: 13.794 min Scan# 20
 Delta R.T. 0.000 min
 Lab File: VN080589.D
 Acq: 21 Dec 2023 21:23

Instrument :
 MSVOA_N
 ClientSampleId :
 N41547



Tgt Ion:152 Resp: 259601

Ion	Ratio	Lower	Upper
152	100		
115	63.3	32.3	96.8
150	156.9	0.0	355.8

